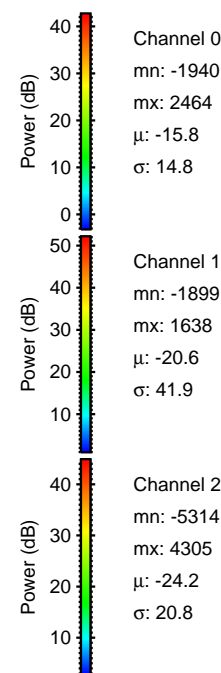
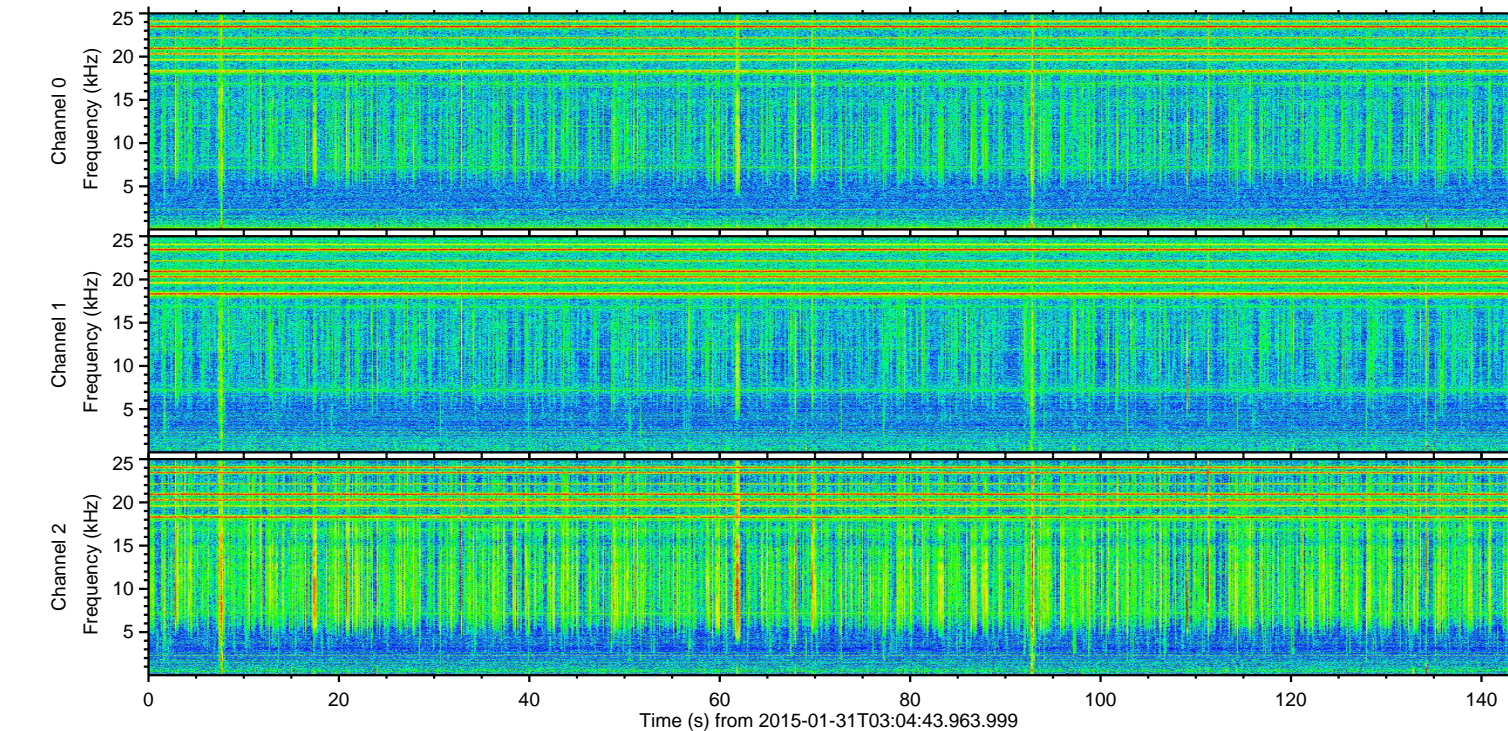
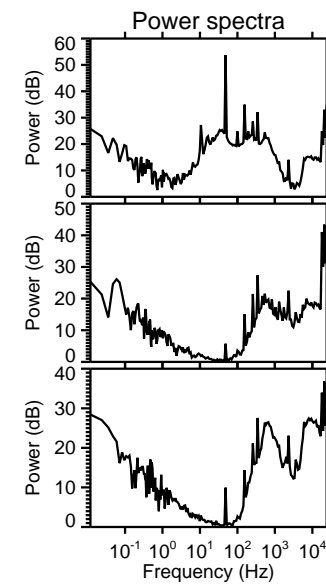
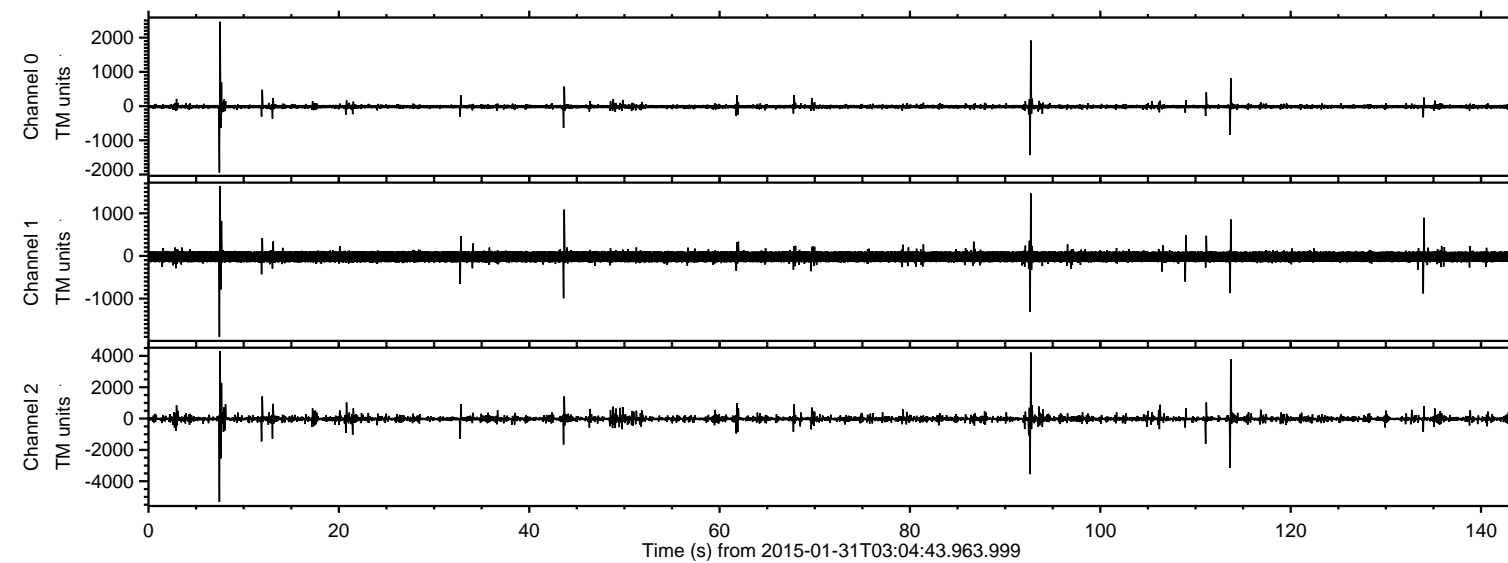


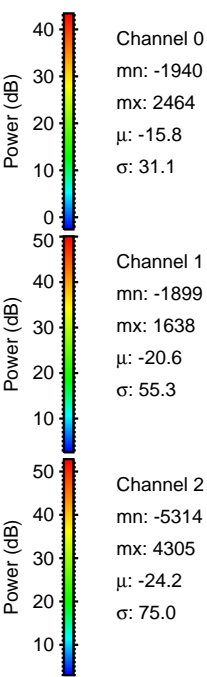
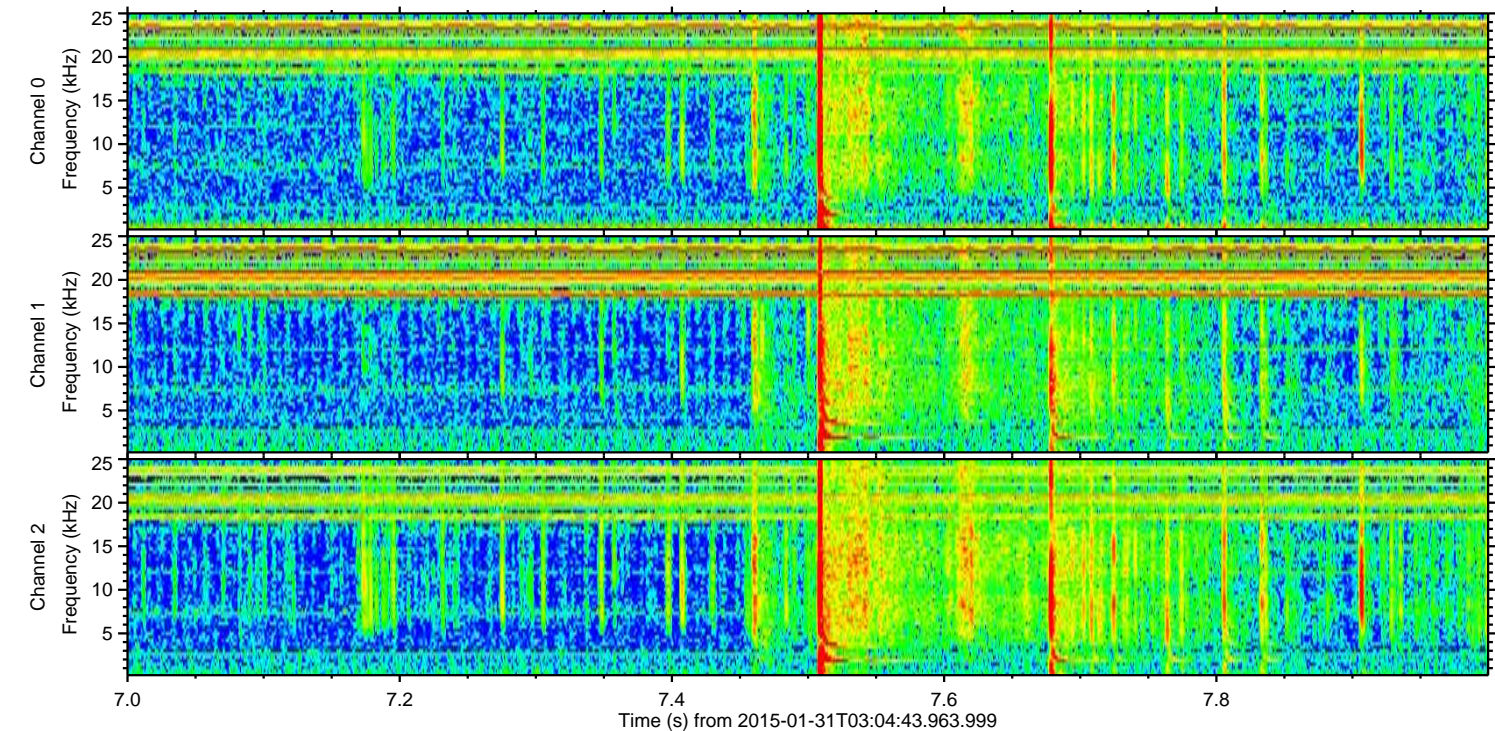
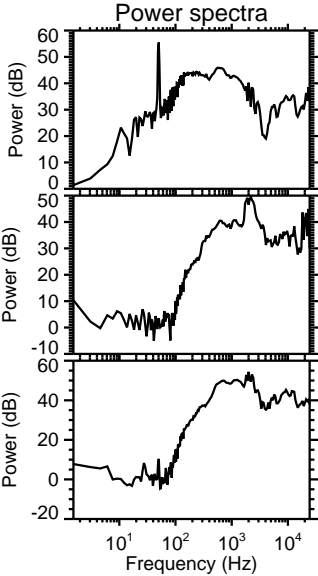
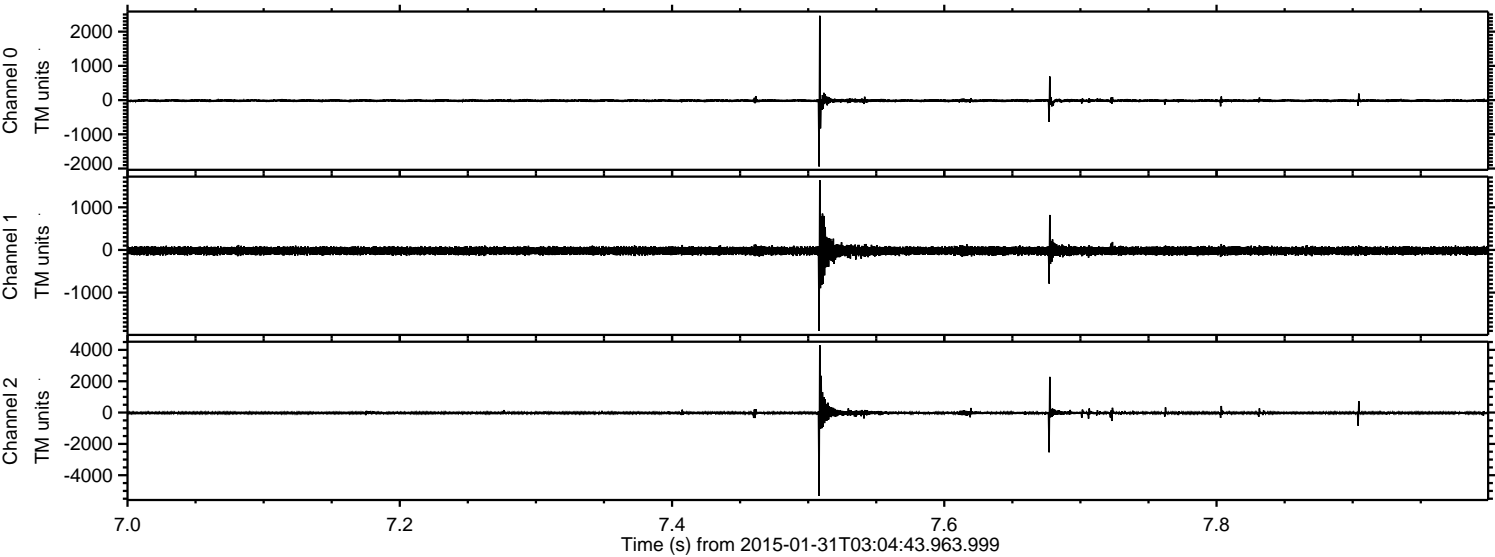
ELMAVAN 3D WAVEFORMS (Measured data sampled at 50 kHz) 49636 packets of 144 samples from 2015-01-31T03:04:43.963.999.

Processed Fri Feb 13 21:38:56 2015 by ELM ver.2012-10-06 from 001__elm20150131_030442__dat00.bin



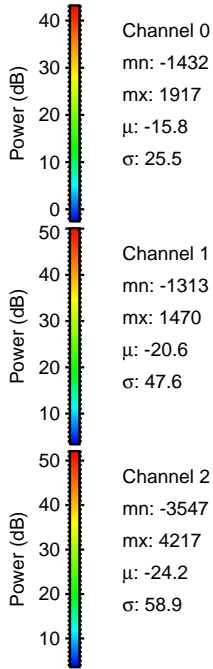
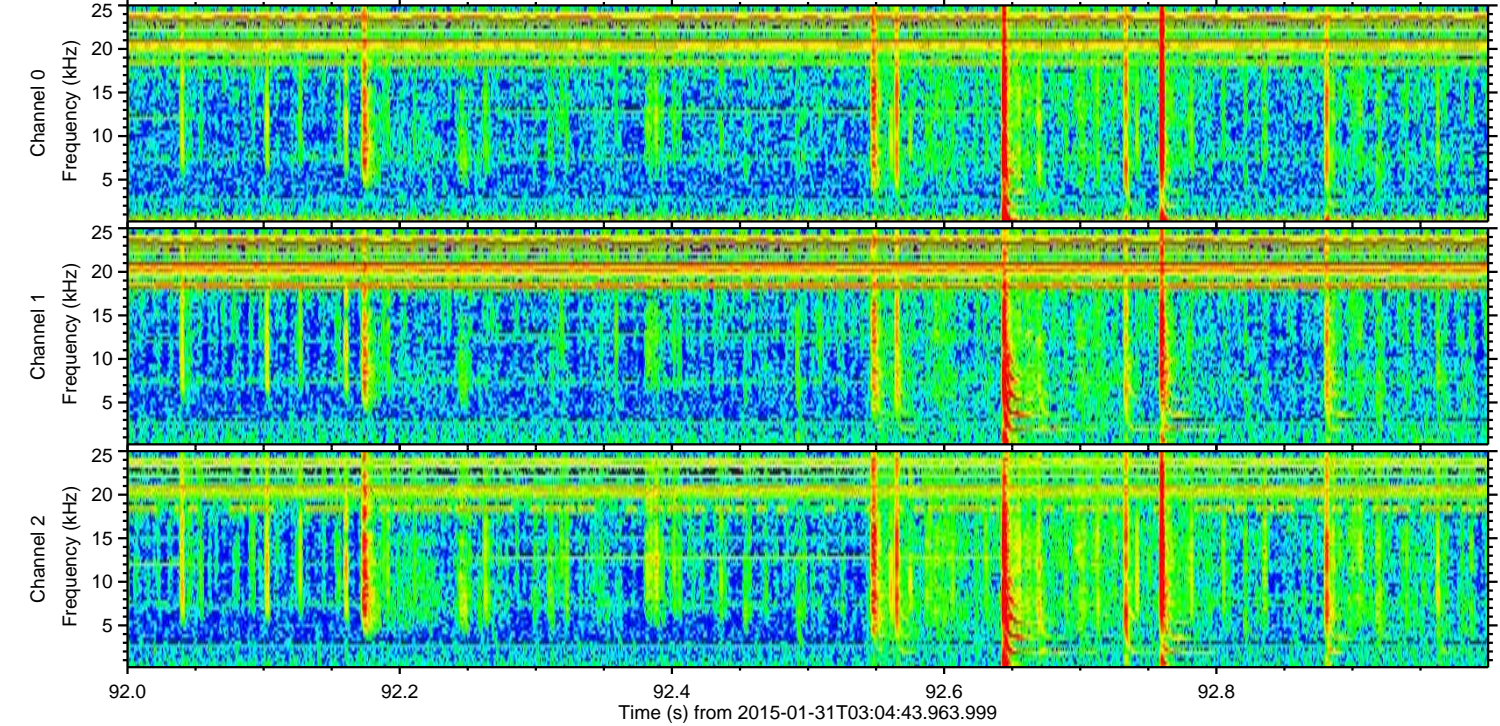
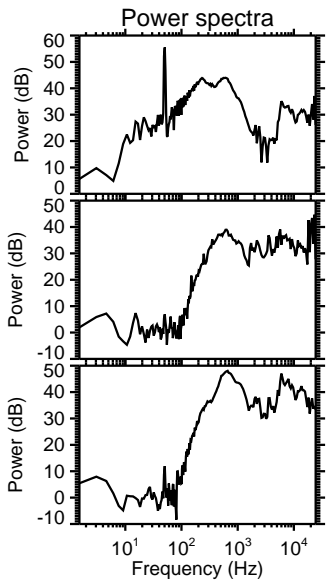
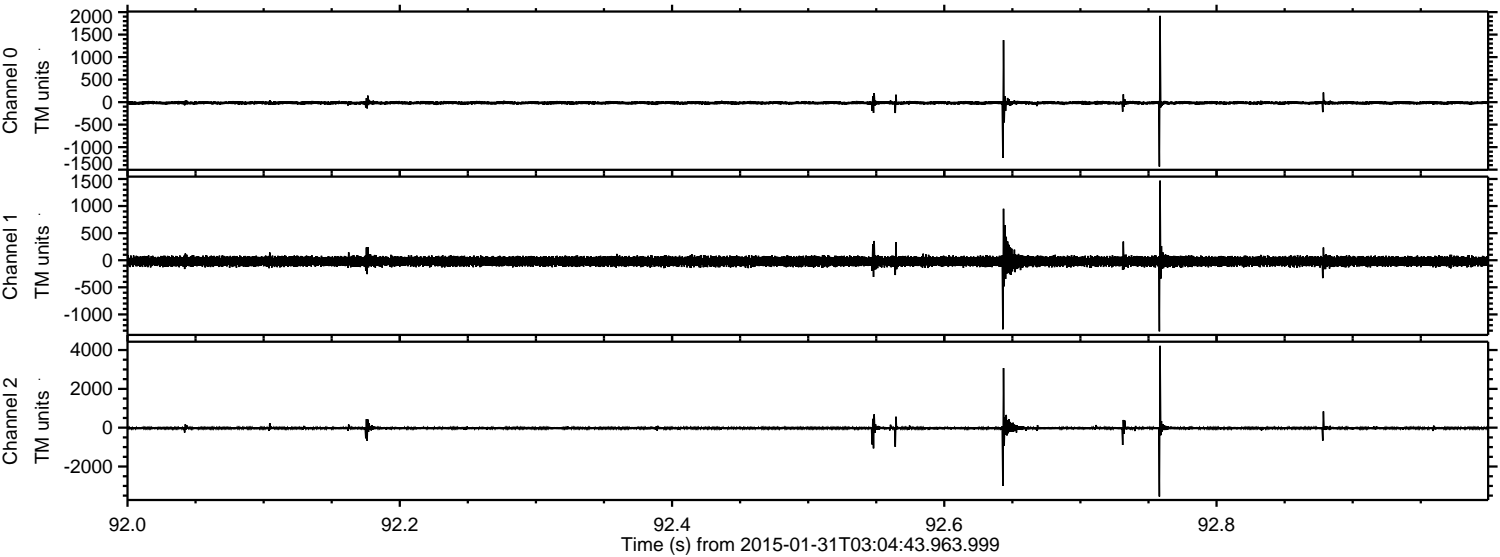
ELMAVAN 3D WAVEFORMS (Measured data sampled at 50 kHz) 49636 packets of 144 samples from 2015-01-31T03:04:43.963.999. Part 8/143

Processed Fri Feb 13 21:39:12 2015 by ELM ver.2012-10-06 from 001__elm20150131_030442__dat00.bin



ELMAVAN 3D WAVEFORMS (Measured data sampled at 50 kHz) 49636 packets of 144 samples from 2015-01-31T03:04:43.963.999. Part 93/143

Processed Fri Feb 13 21:39:13 2015 by ELM ver.2012-10-06 from 001__elm20150131_030442__dat00.bin



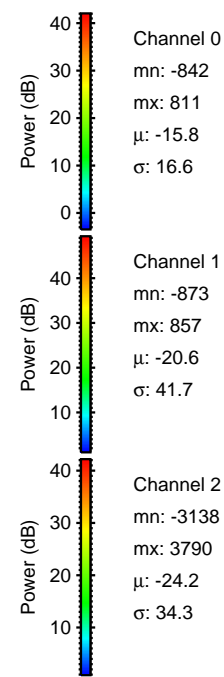
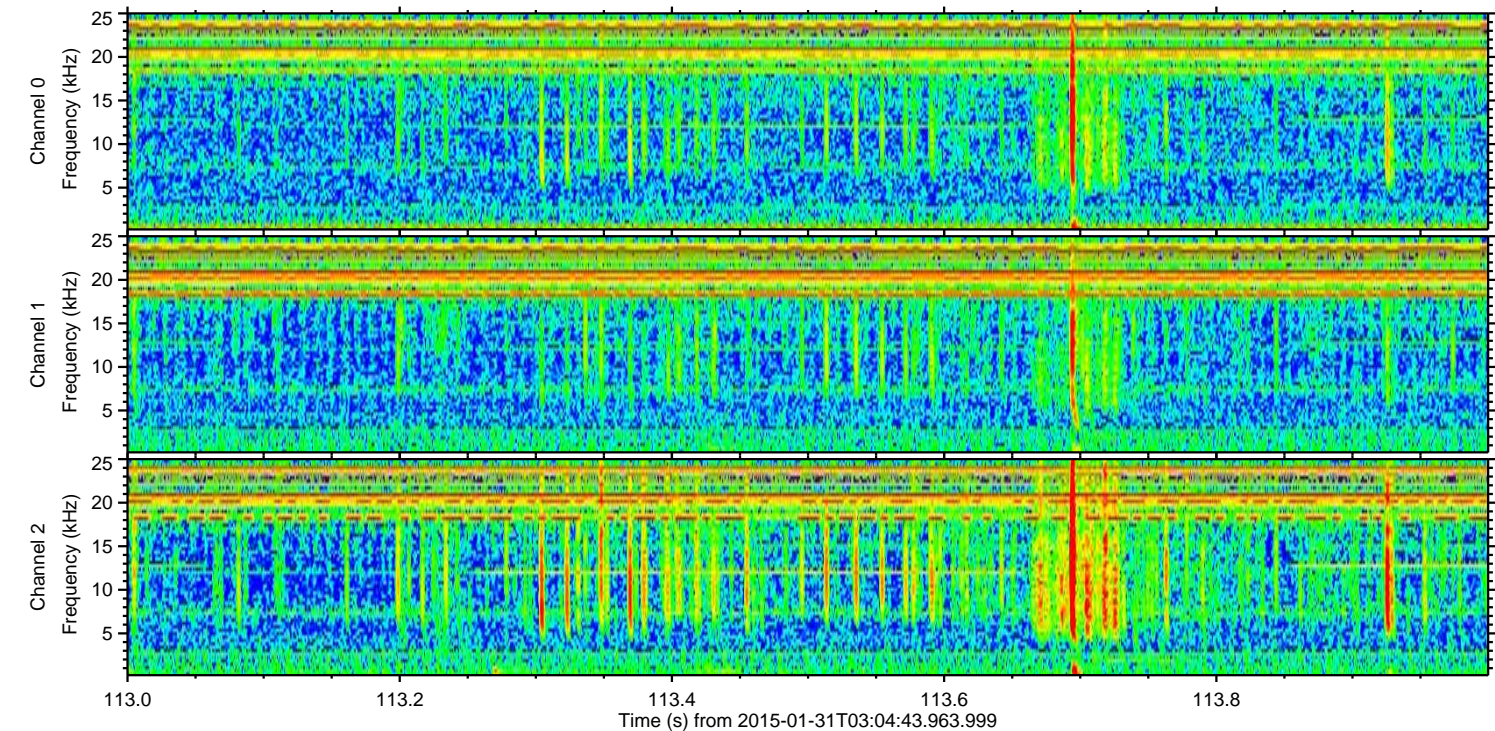
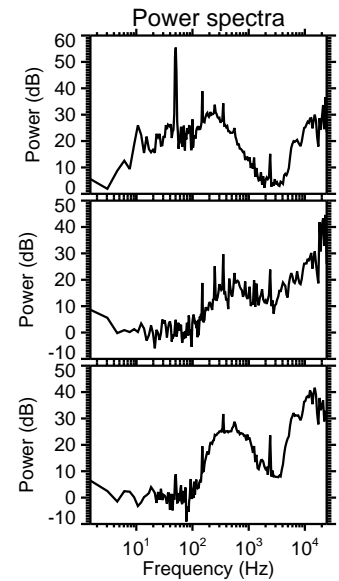
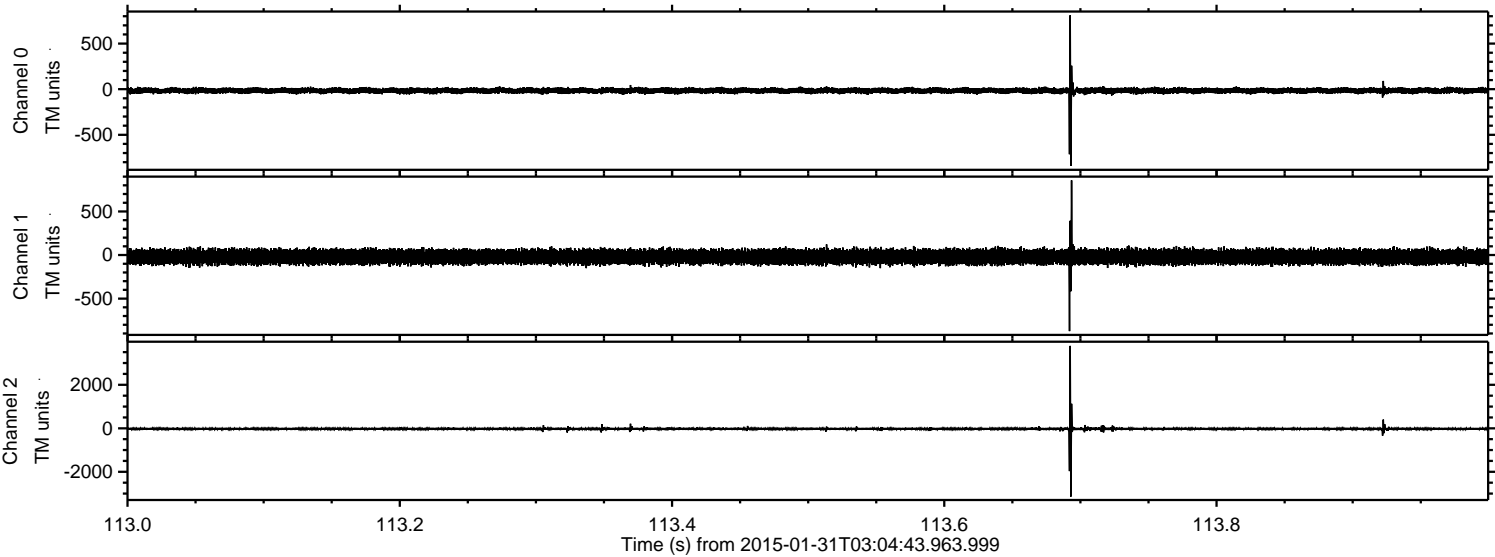
Channel 0
mn: -1432
mx: 1917
 μ : -15.8
 σ : 25.5

Channel 1
mn: -1313
mx: 1470
 μ : -20.6
 σ : 47.6

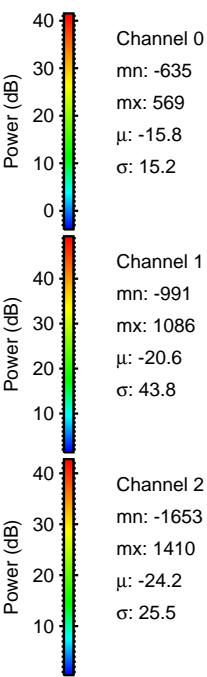
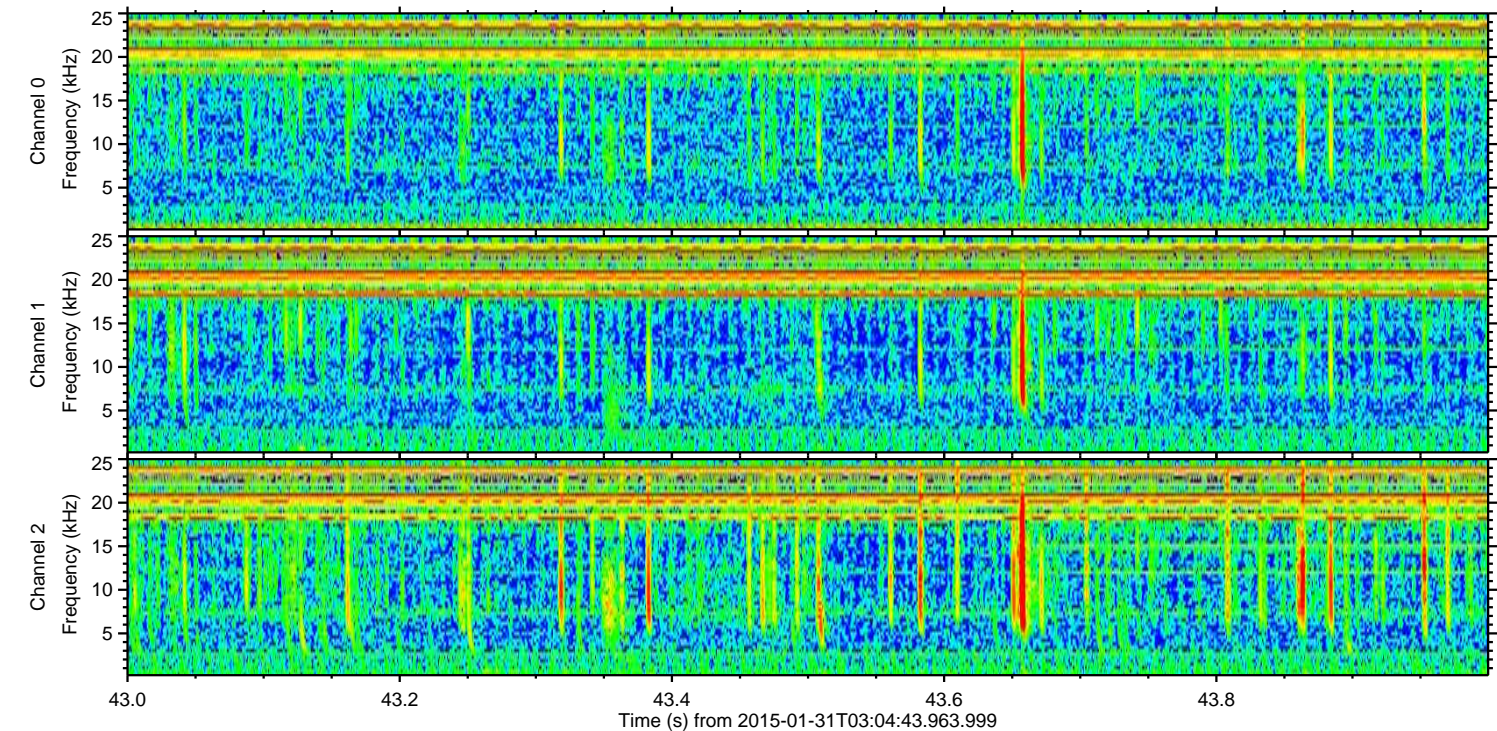
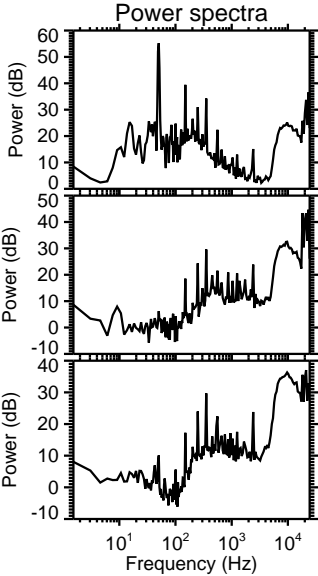
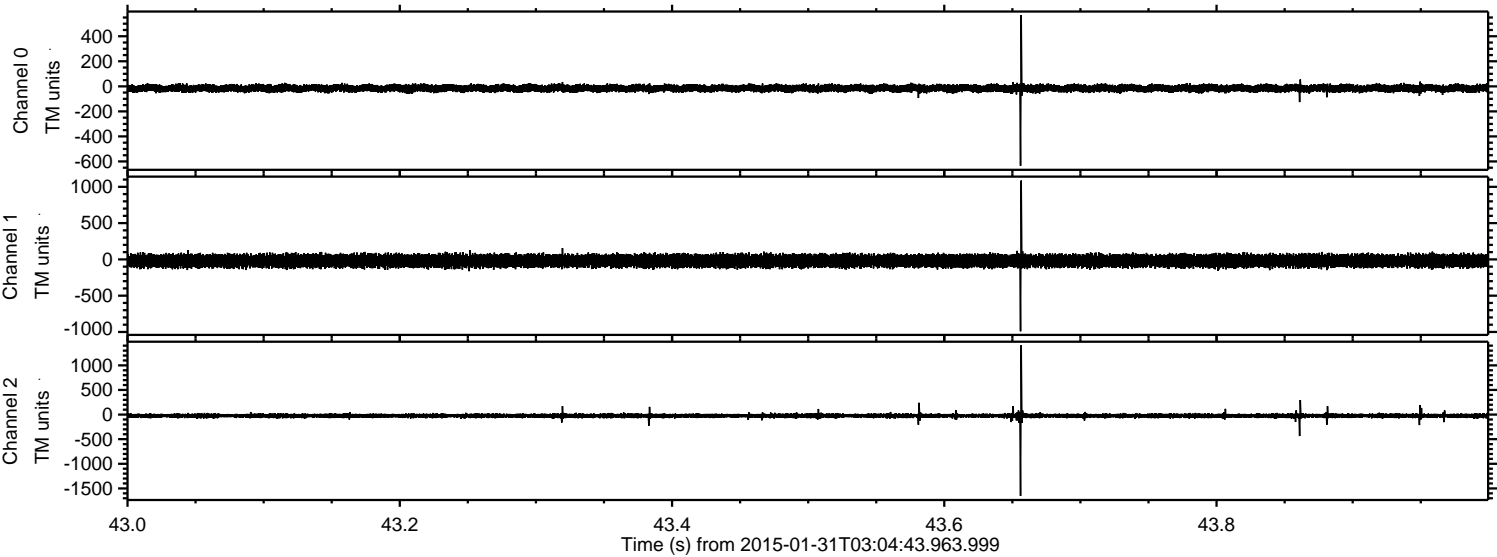
Channel 2
mn: -3547
mx: 4217
 μ : -24.2
 σ : 58.9

ELMAVAN 3D WAVEFORMS (Measured data sampled at 50 kHz) 49636 packets of 144 samples from 2015-01-31T03:04:43.963.999. Part 114/143

Processed Fri Feb 13 21:39:14 2015 by ELM ver.2012-10-06 from 001__elm20150131_030442__dat00.bin

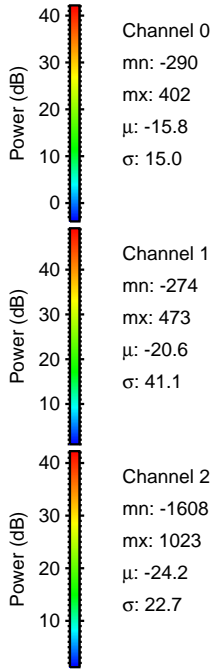
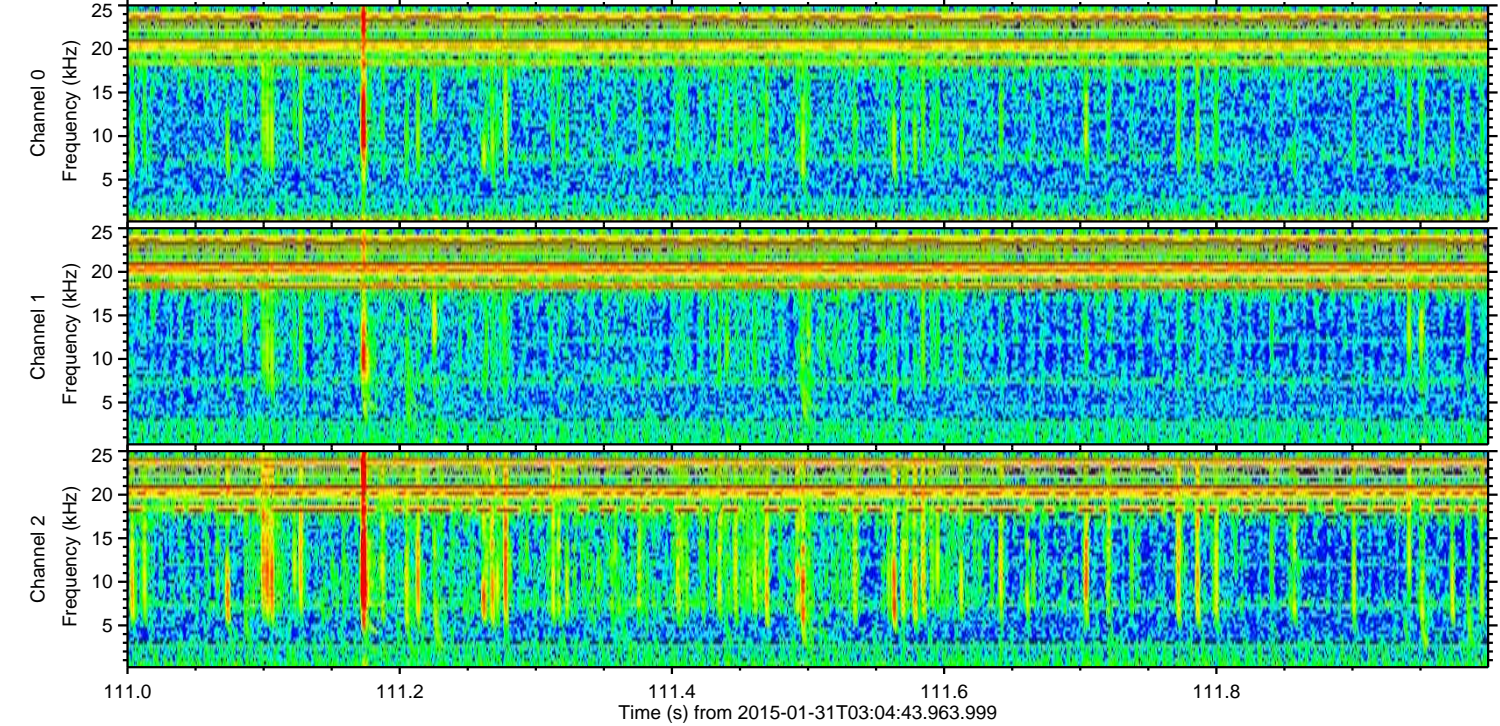
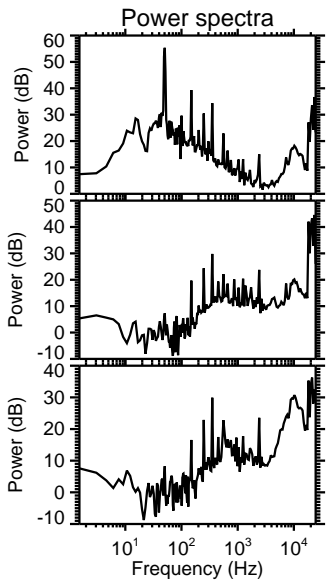
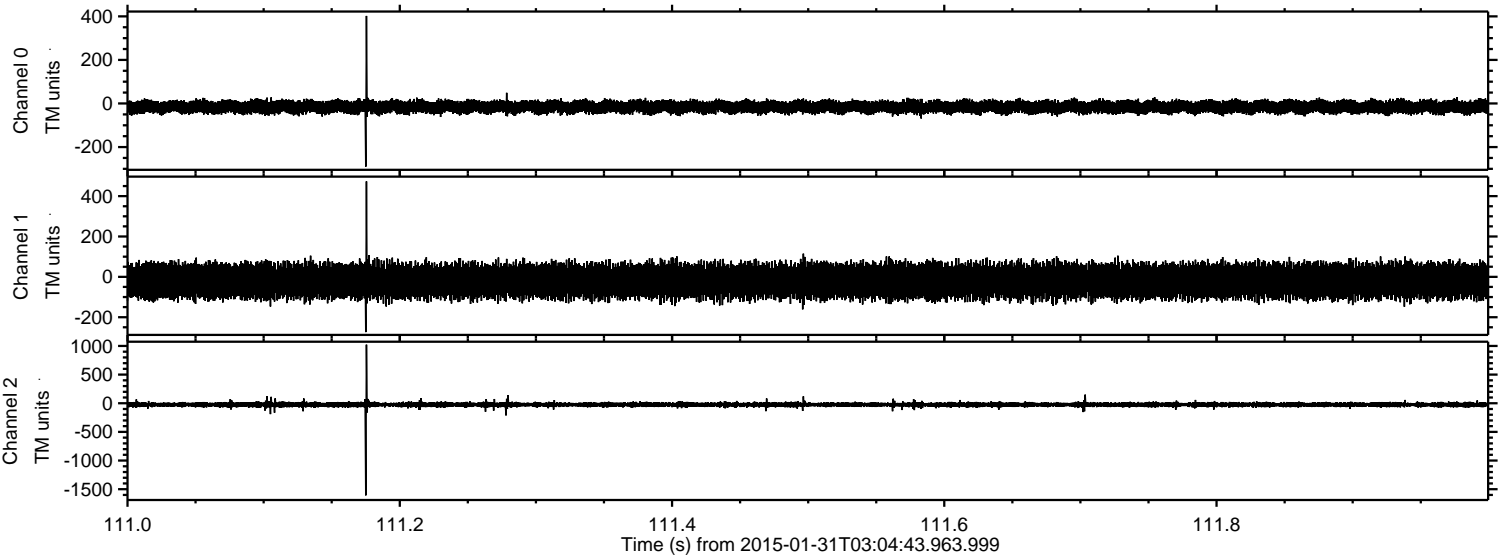


Processed Fri Feb 13 21:39:15 2015 by ELM ver.2012-10-06 from 001__elm20150131_030442__dat00.bin

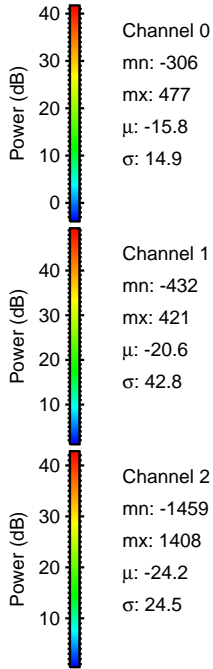
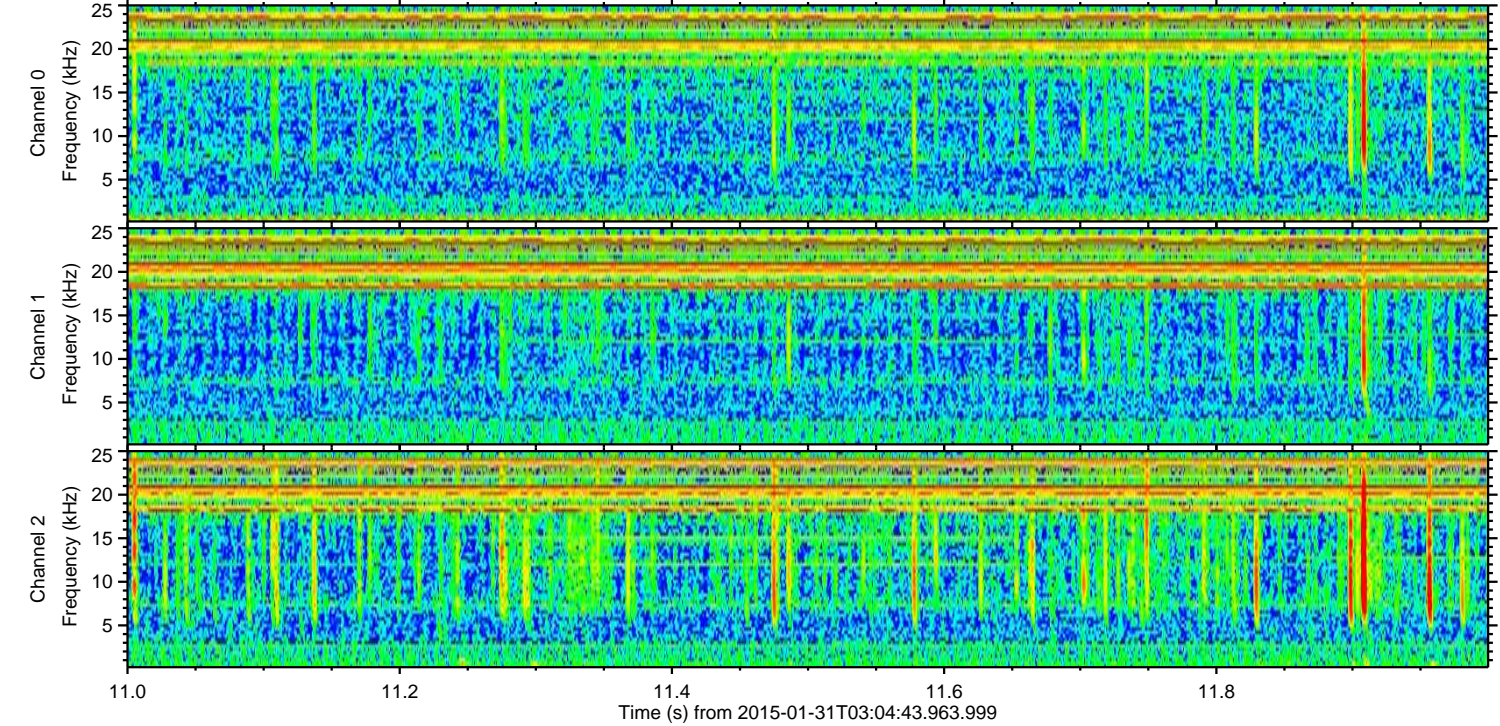
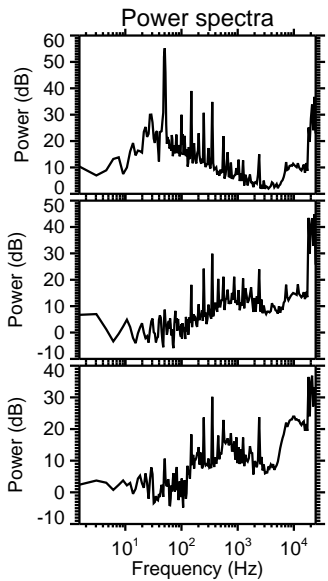
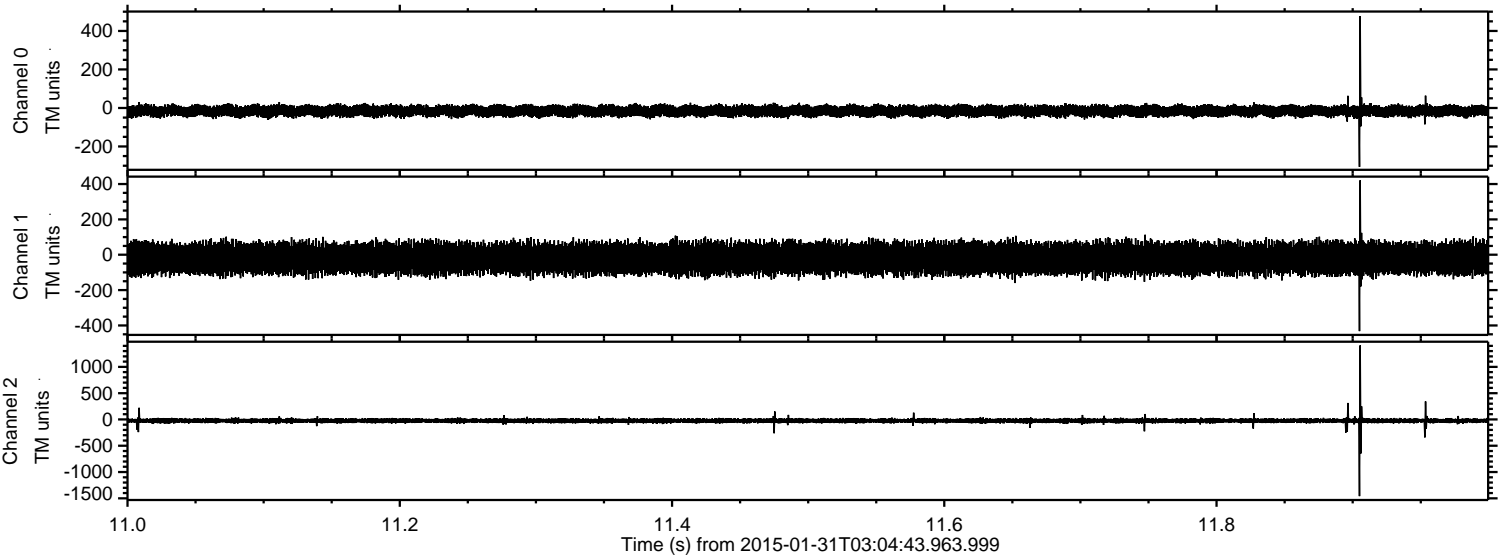


ELMAVAN 3D WAVEFORMS (Measured data sampled at 50 kHz) 49636 packets of 144 samples from 2015-01-31T03:04:43.963.999. Part 112/143

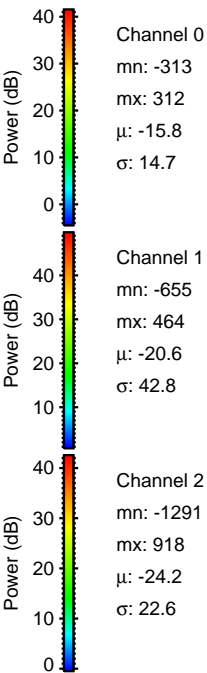
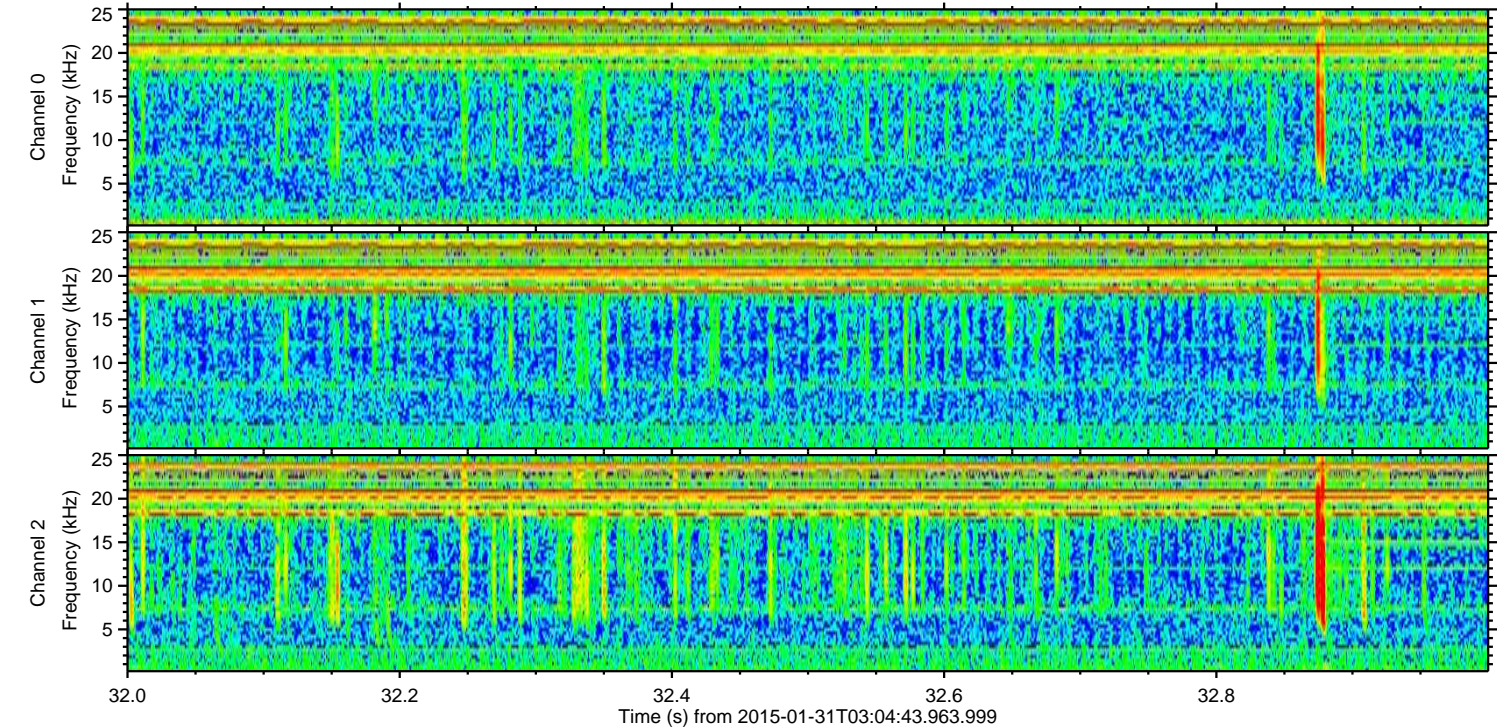
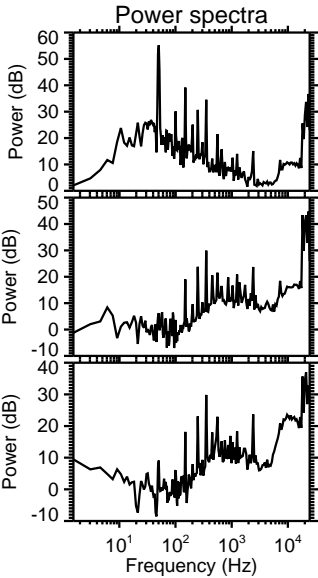
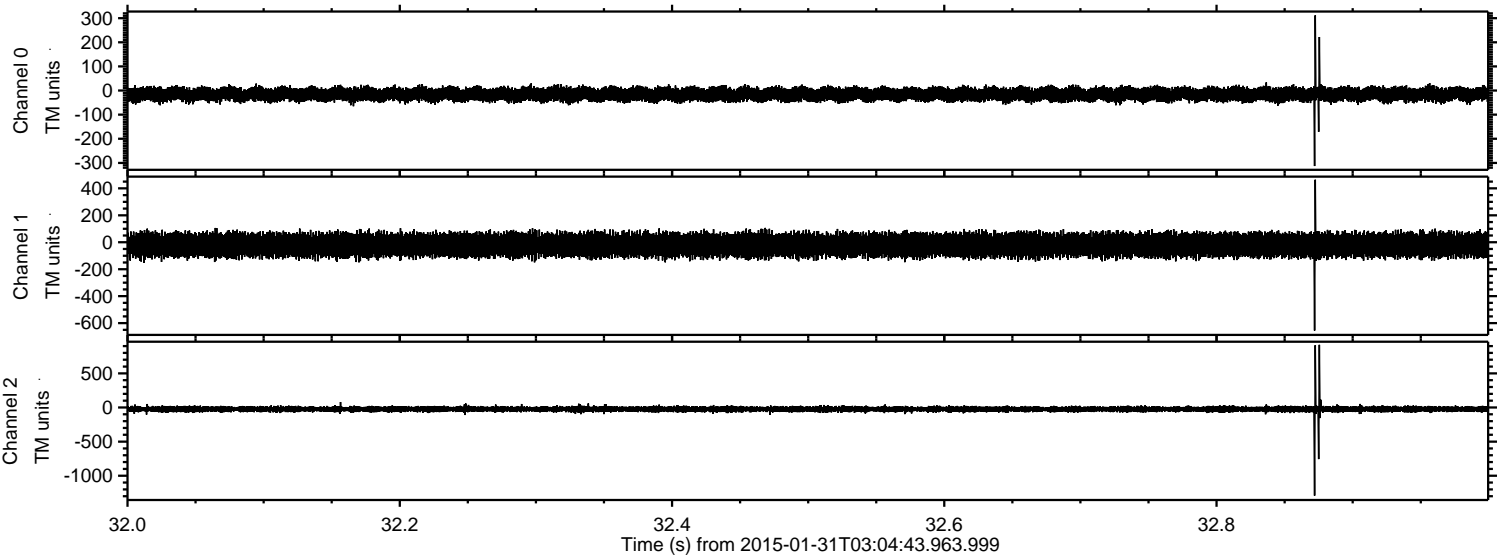
Processed Fri Feb 13 21:39:16 2015 by ELM ver.2012-10-06 from 001__elm20150131_030442__dat00.bin



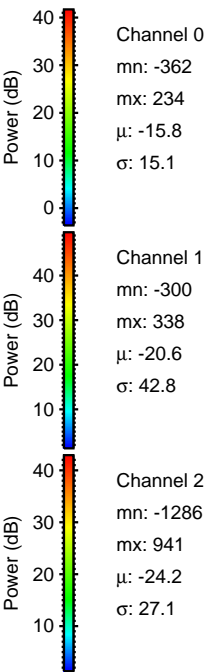
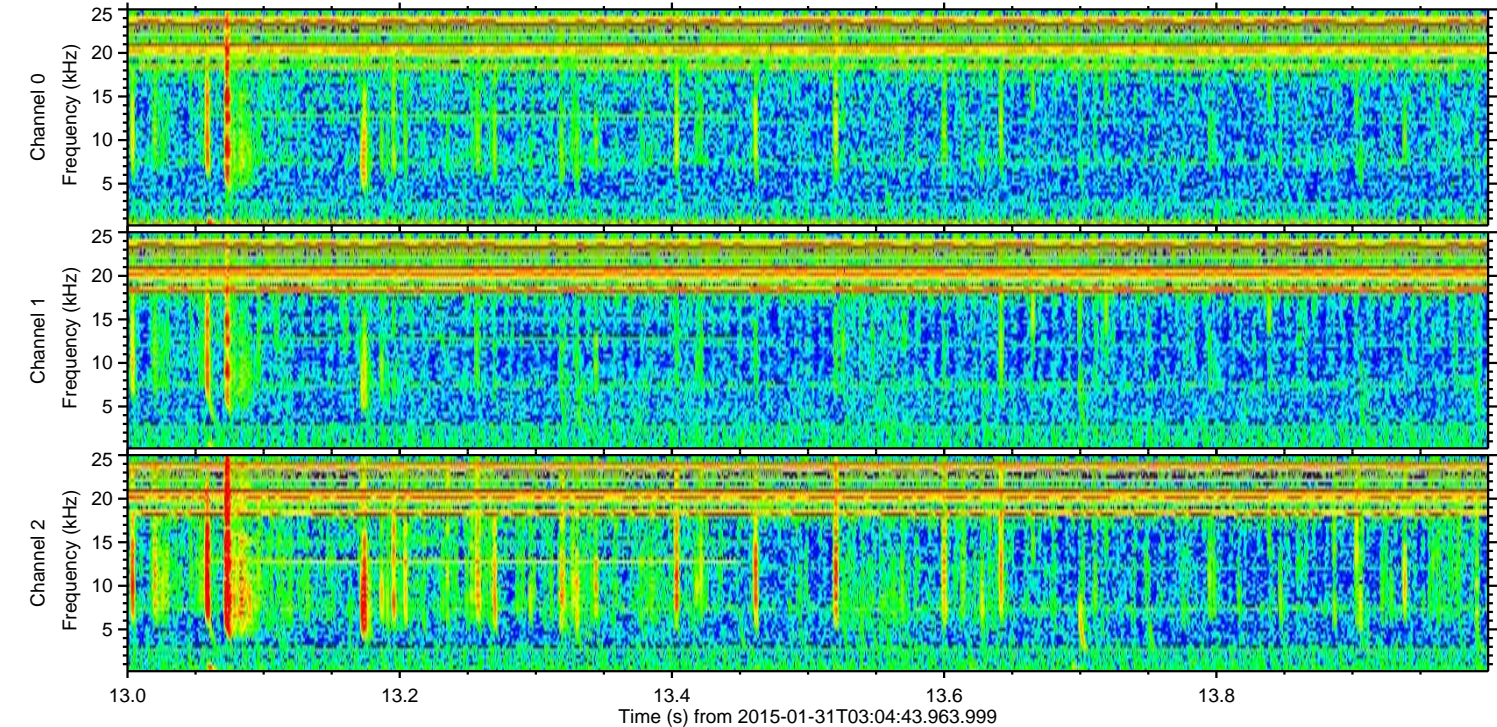
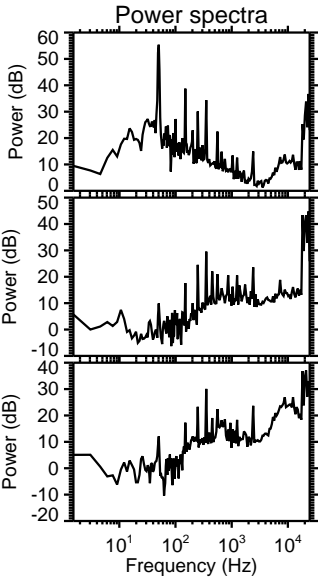
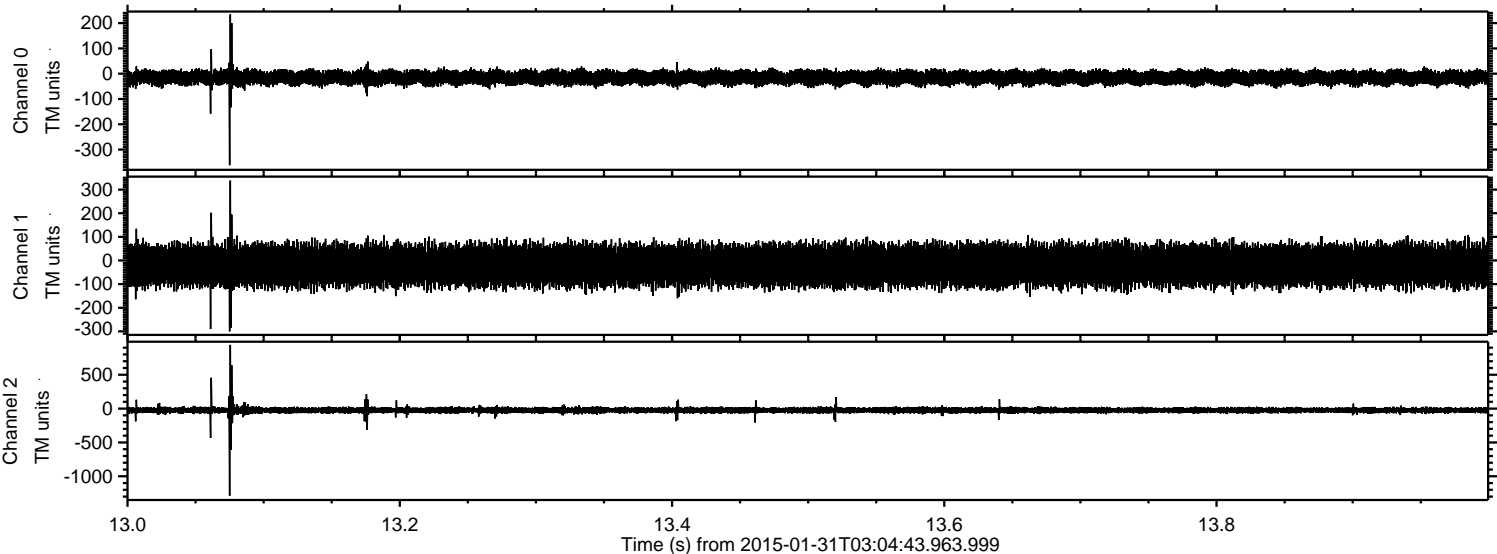
Processed Fri Feb 13 21:39:17 2015 by ELM ver.2012-10-06 from 001__elm20150131_030442__dat00.bin



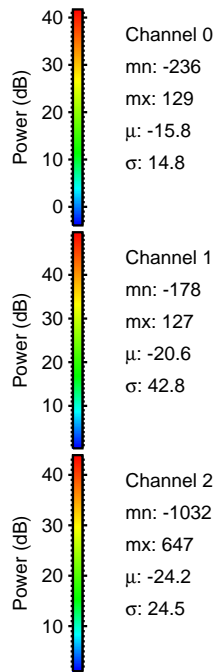
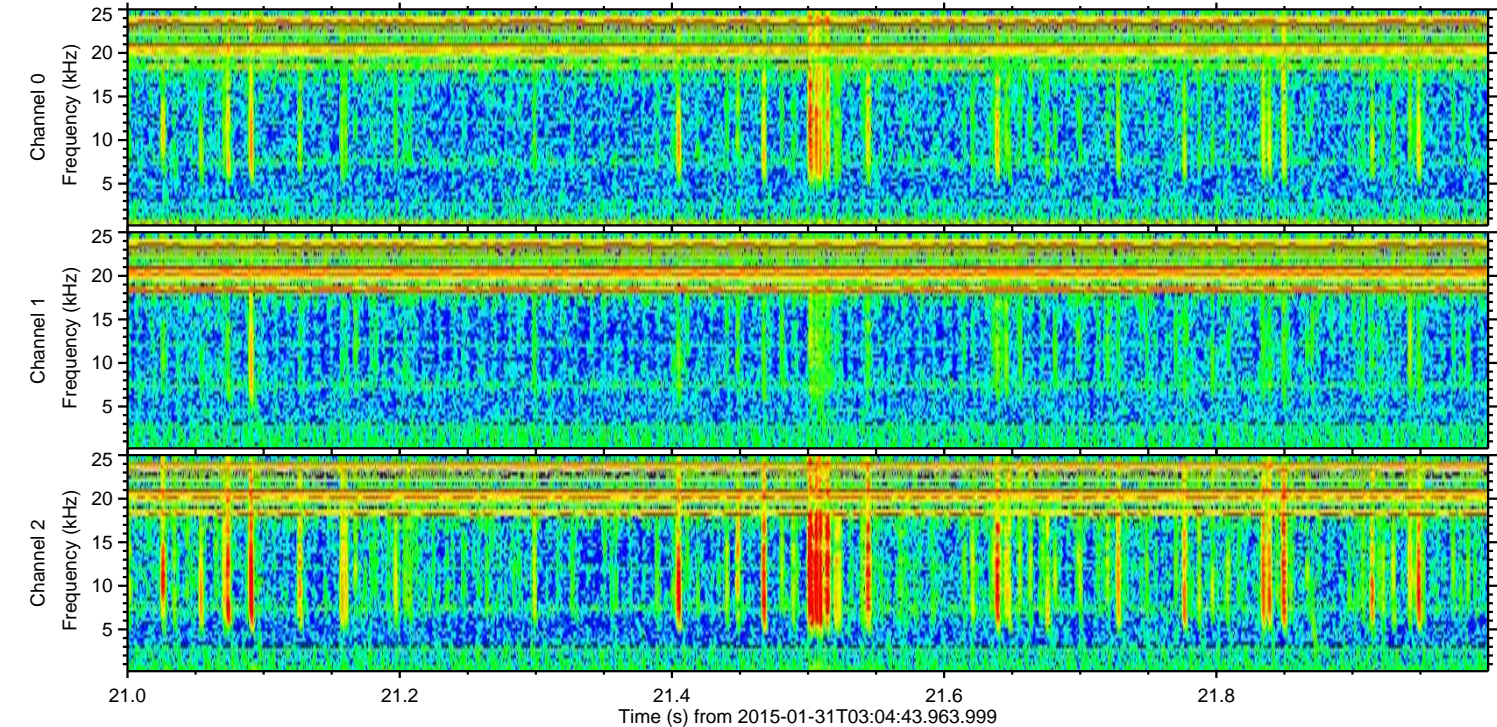
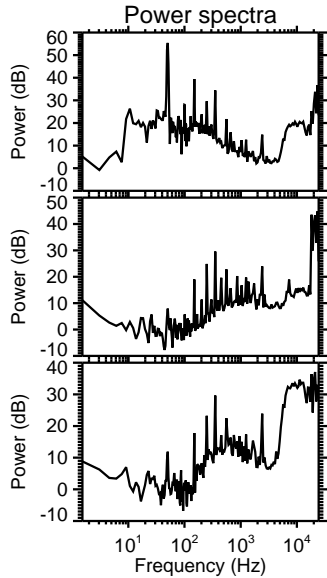
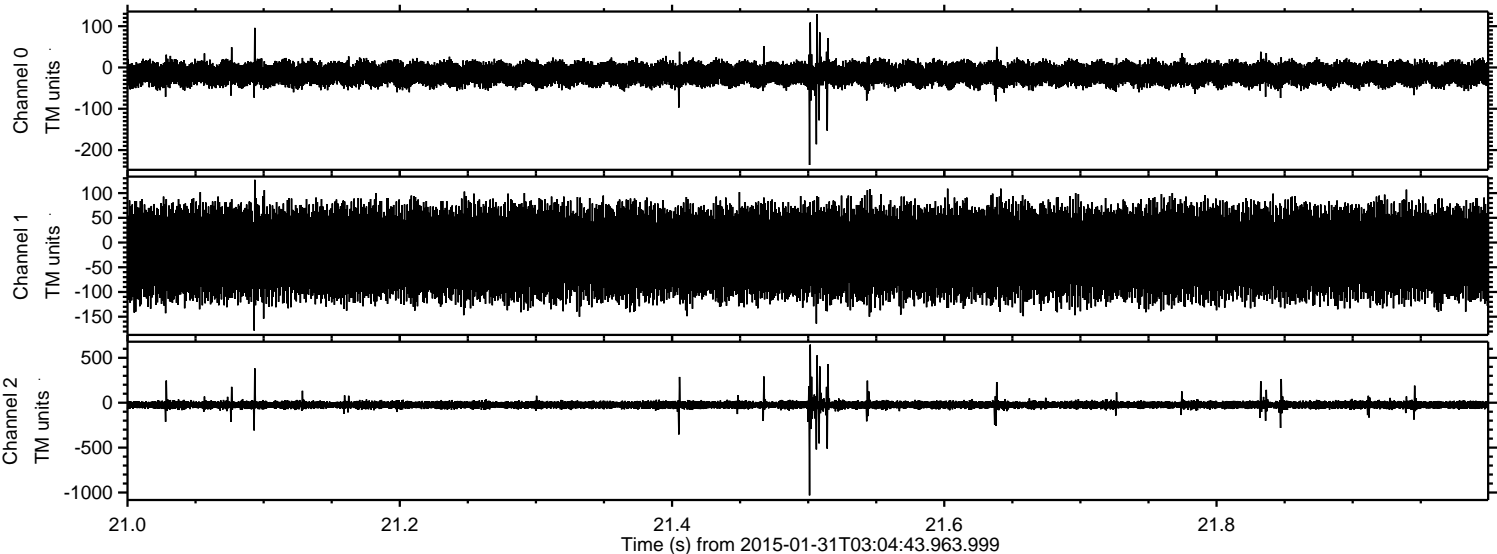
Processed Fri Feb 13 21:39:18 2015 by ELM ver.2012-10-06 from 001__elm20150131_030442__dat00.bin



Processed Fri Feb 13 21:39:19 2015 by ELM ver.2012-10-06 from 001__elm20150131_030442__dat00.bin



Processed Fri Feb 13 21:39:20 2015 by ELM ver.2012-10-06 from 001__elm20150131_030442__dat00.bin



Processed Fri Feb 13 21:39:21 2015 by ELM ver.2012-10-06 from 001__elm20150131_030442__dat00.bin

