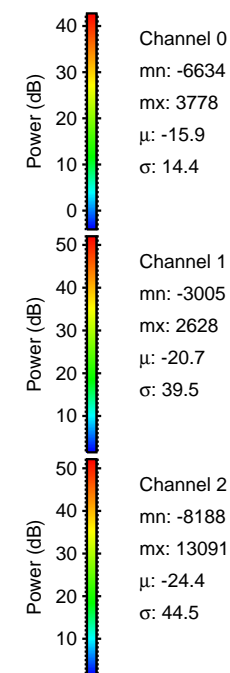
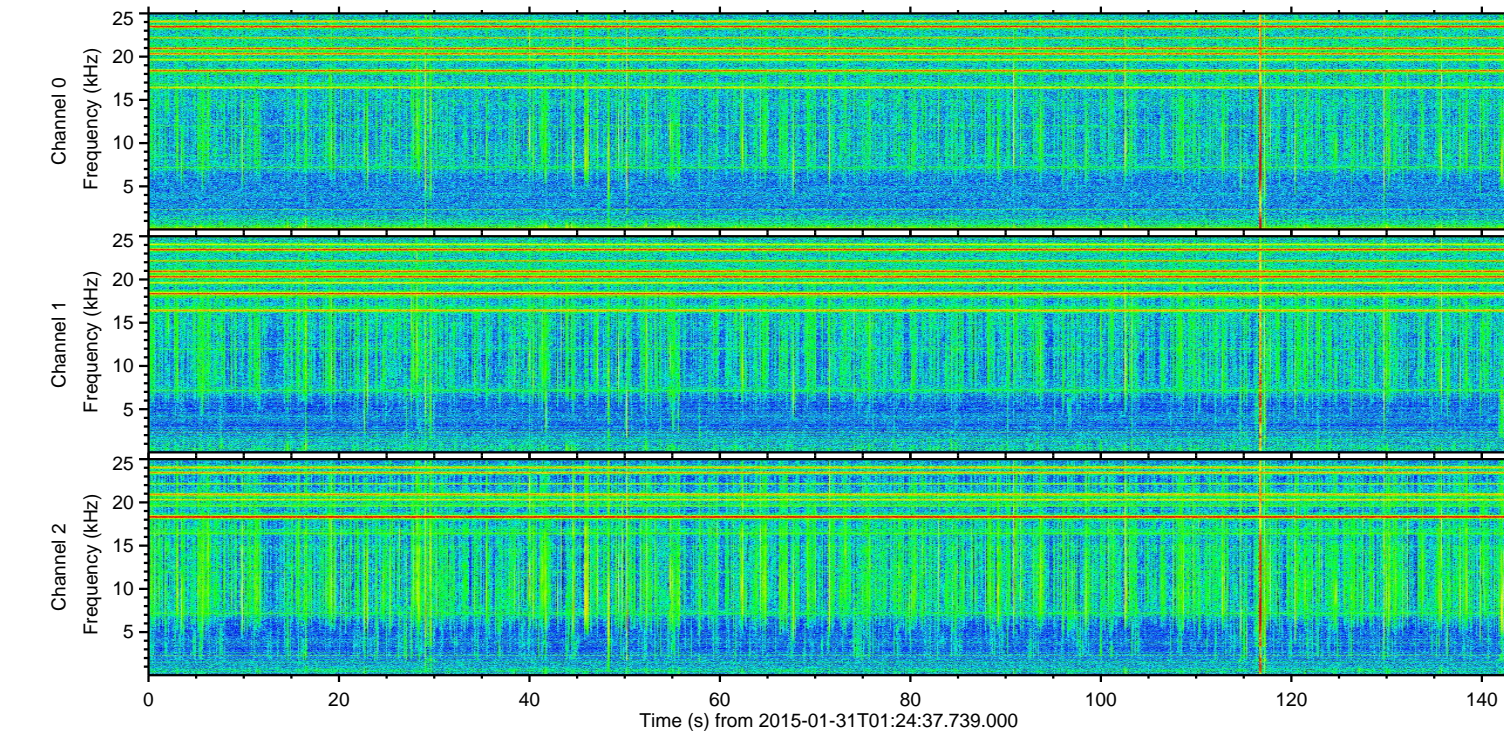
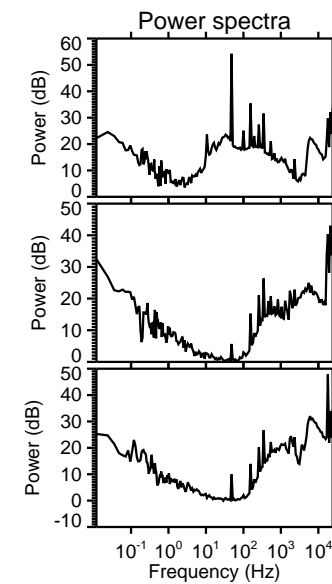
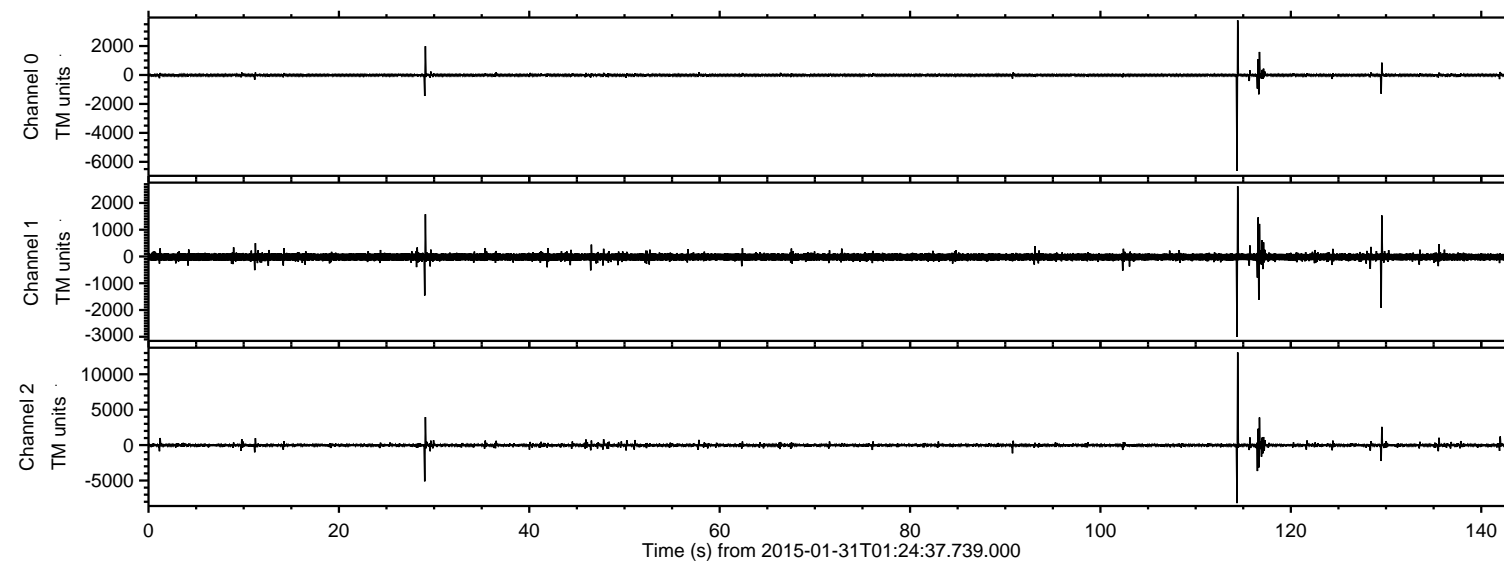


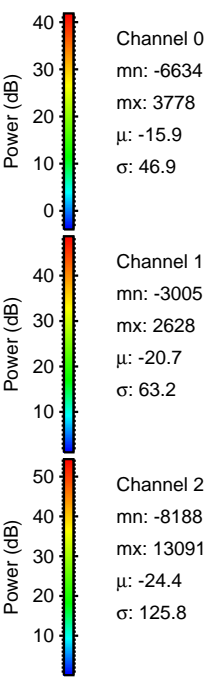
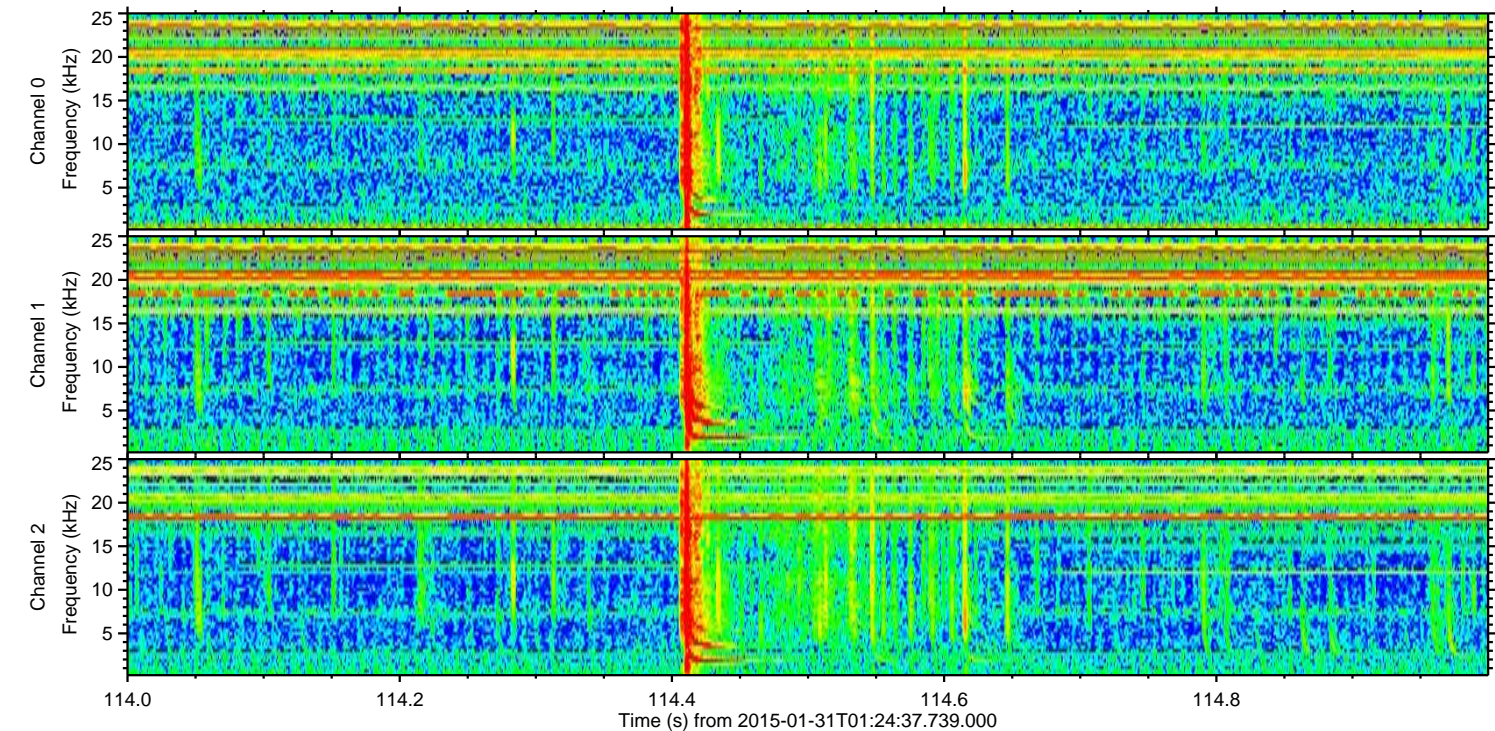
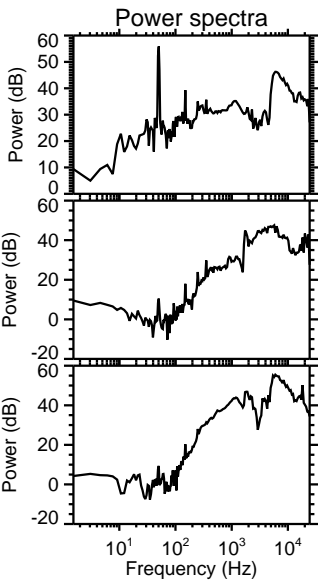
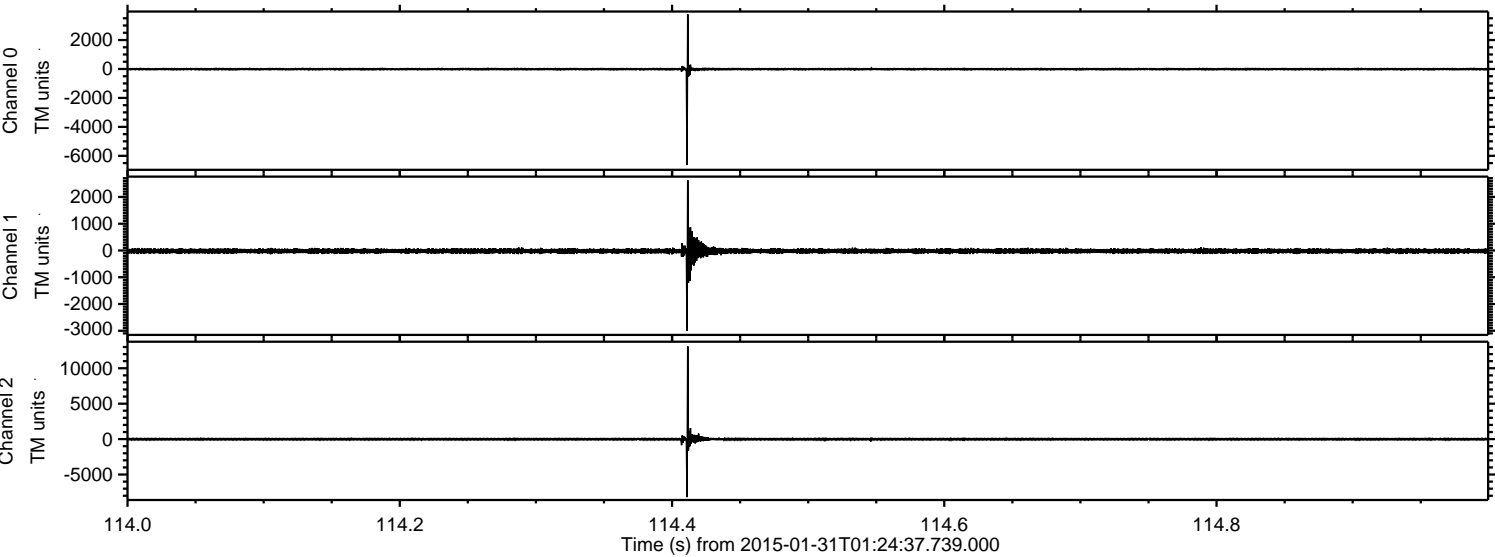
ELMAVAN 3D WAVEFORMS (Measured data sampled at 50 kHz) 49629 packets of 144 samples from 2015-01-31T01:24:37.739.000.

Processed Fri Feb 13 20:35:02 2015 by ELM ver.2012-10-06 from 001__elm20150131_012436__dat00.bin



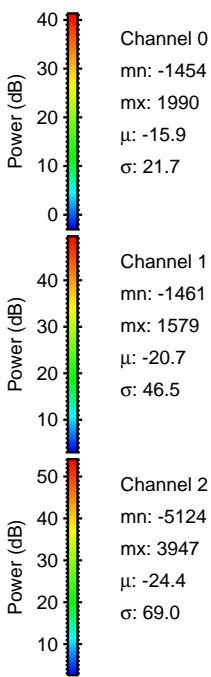
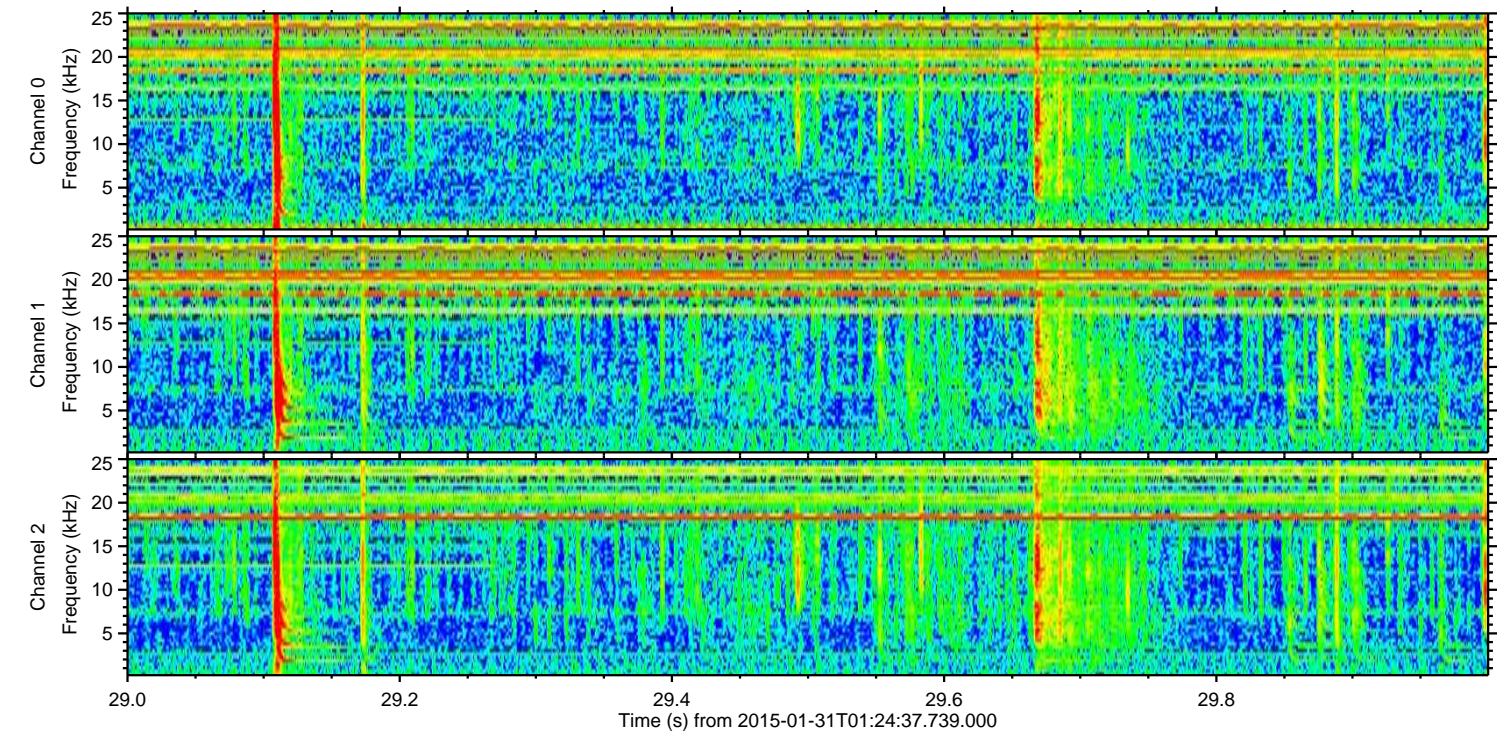
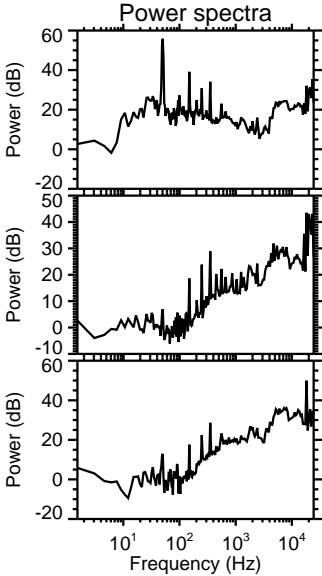
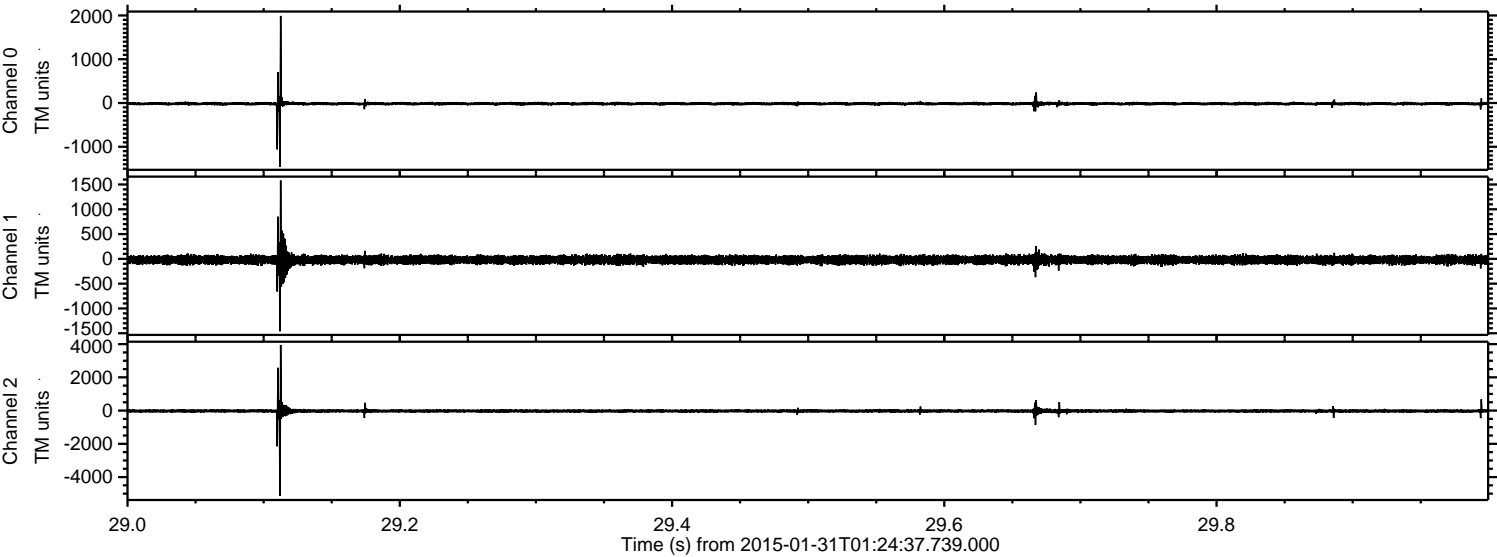
ELMAVAN 3D WAVEFORMS (Measured data sampled at 50 kHz) 49629 packets of 144 samples from 2015-01-31T01:24:37.739.000. Part 115/143

Processed Fri Feb 13 20:35:17 2015 by ELM ver.2012-10-06 from 001__elm20150131_012436__dat00.bin



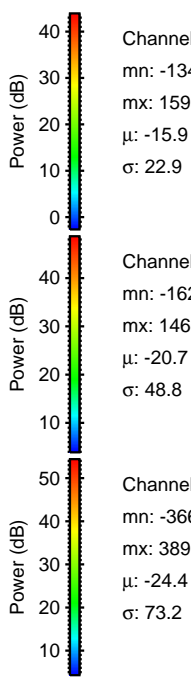
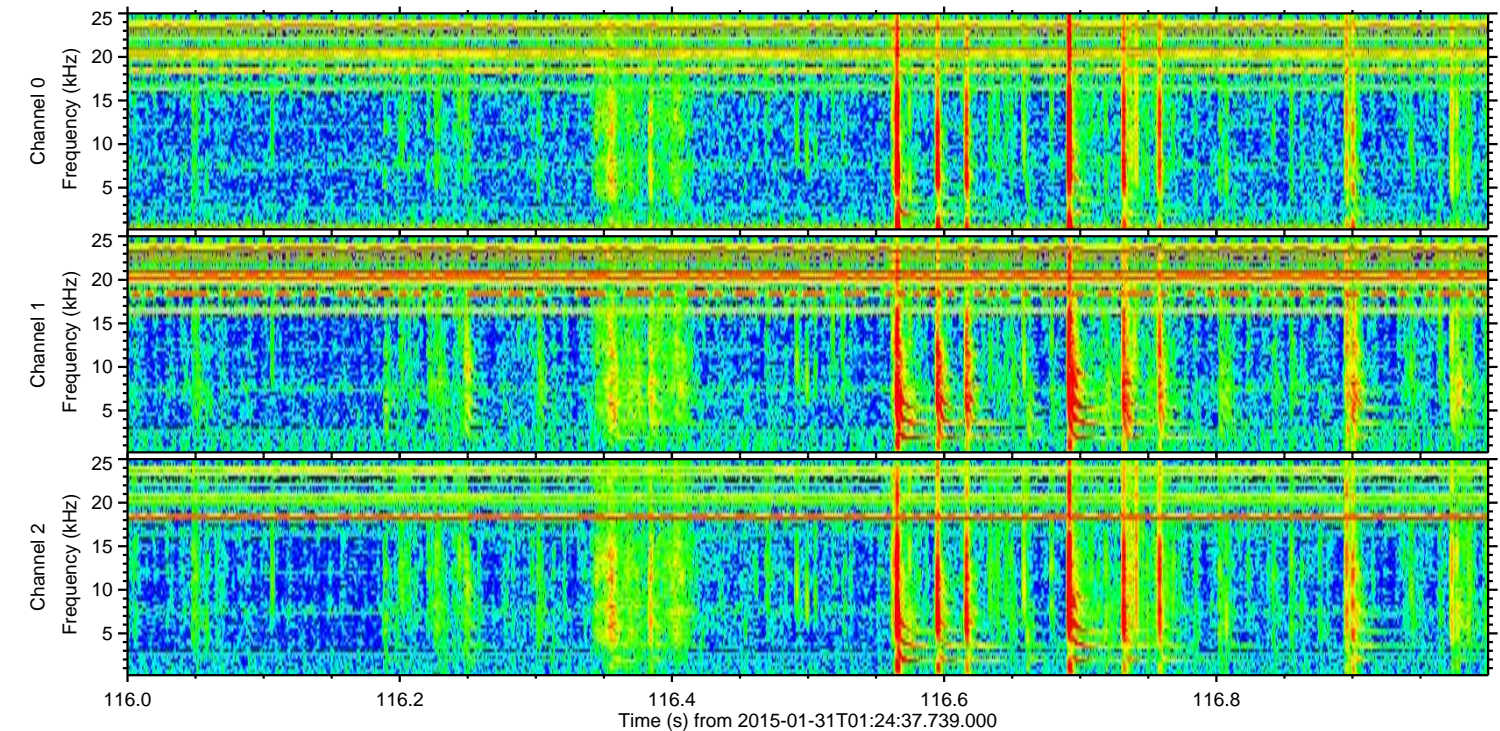
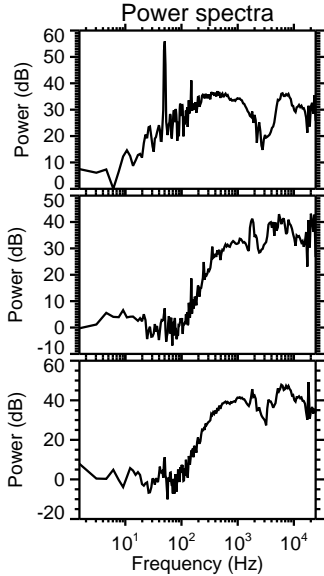
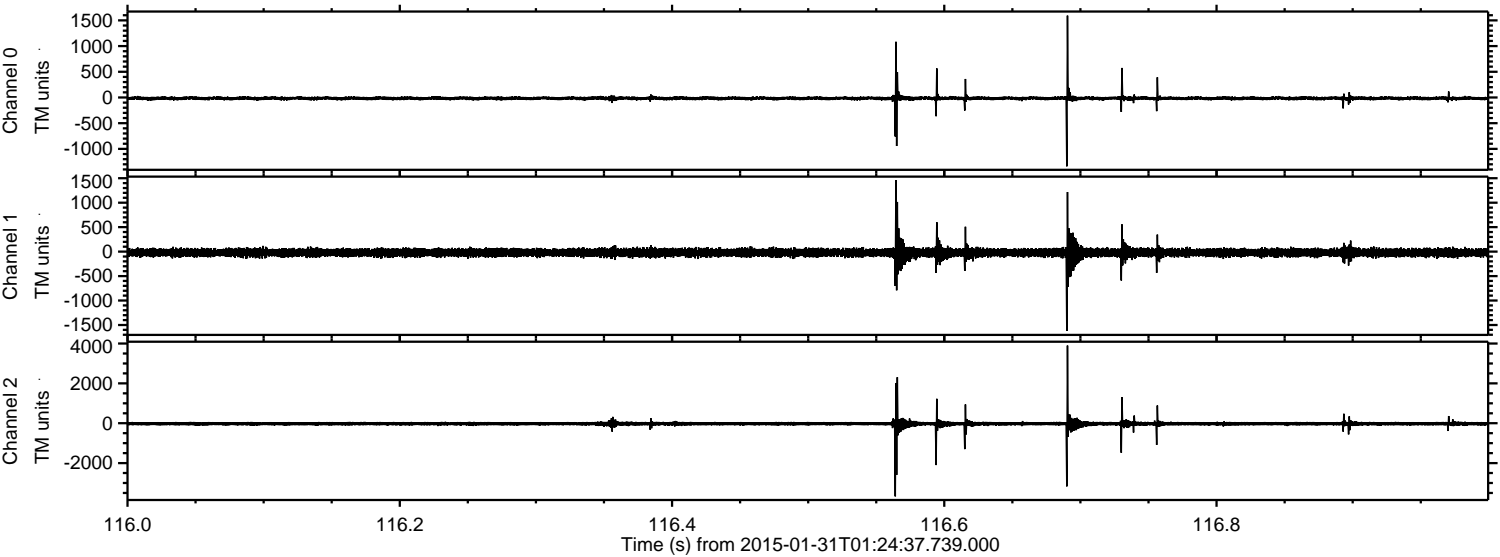
ELMAVAN 3D WAVEFORMS (Measured data sampled at 50 kHz) 49629 packets of 144 samples from 2015-01-31T01:24:37.739.000. Part 30/143

Processed Fri Feb 13 20:35:18 2015 by ELM ver.2012-10-06 from 001__elm20150131_012436__dat00.bin



ELMAVAN 3D WAVEFORMS (Measured data sampled at 50 kHz) 49629 packets of 144 samples from 2015-01-31T01:24:37.739.000. Part 117/143

Processed Fri Feb 13 20:35:19 2015 by ELM ver.2012-10-06 from 001__elm20150131_012436__dat00.bin



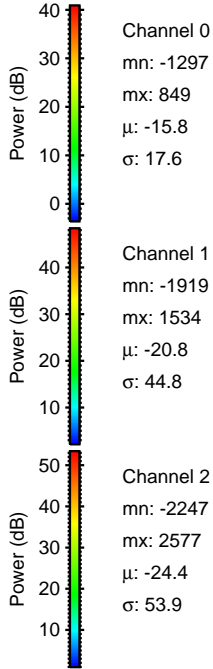
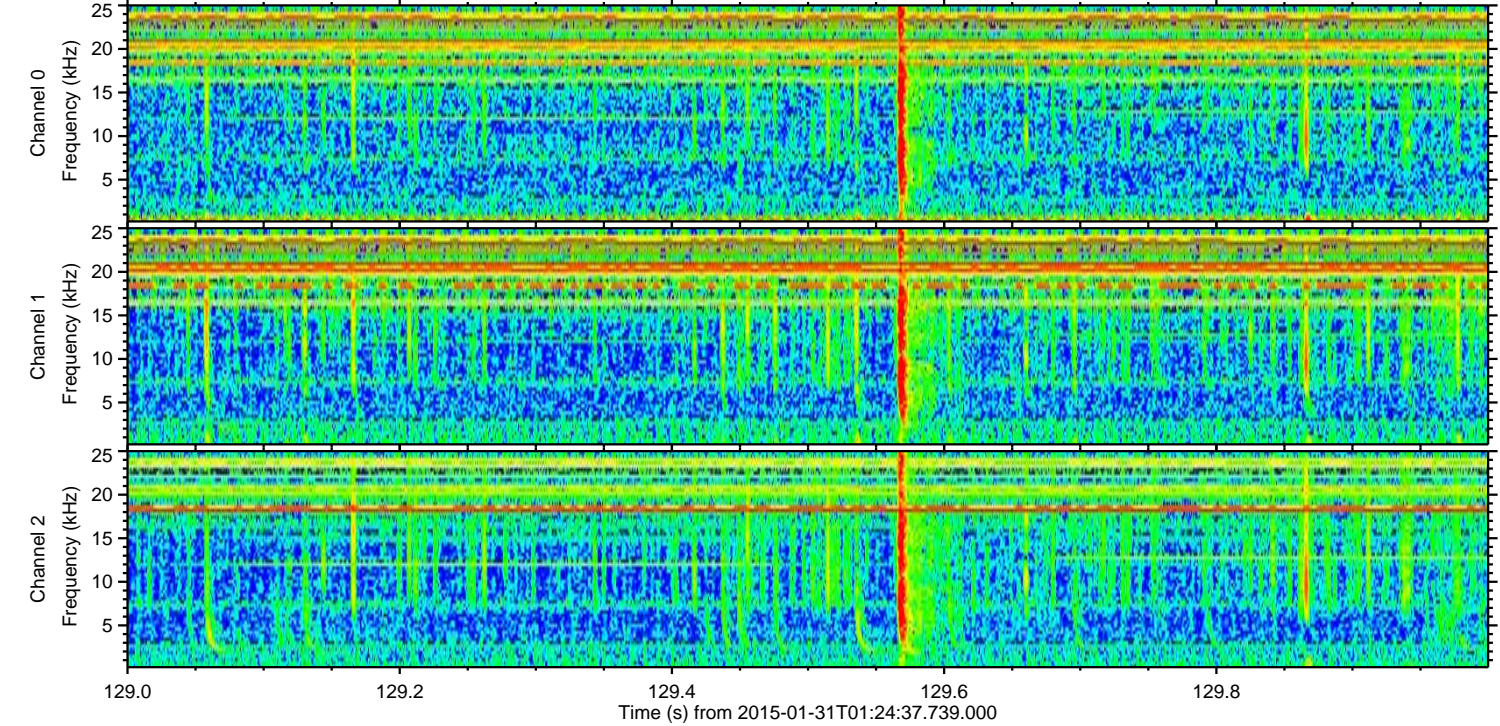
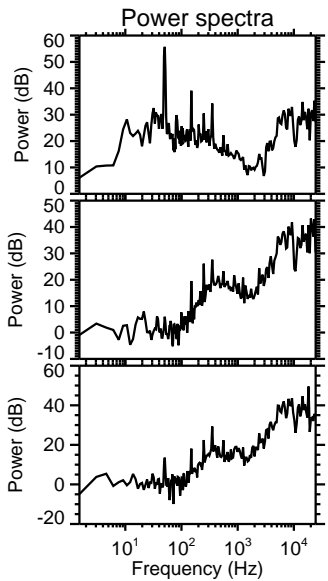
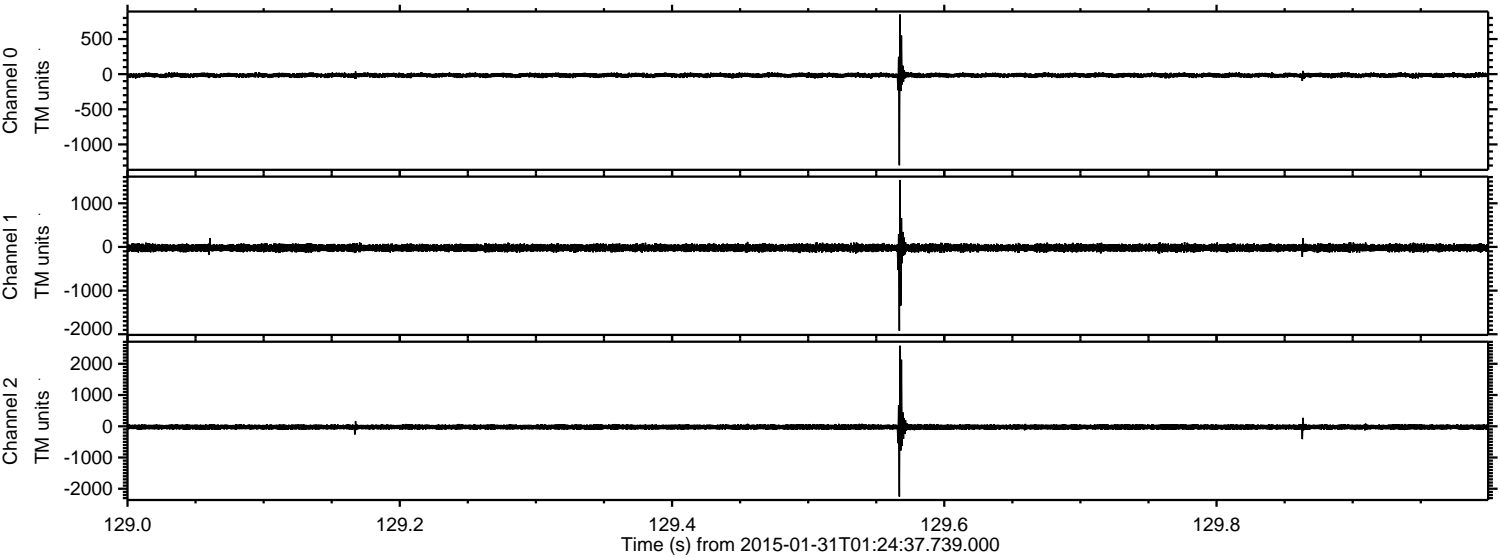
Channel 0
mn: -1340
mx: 1593
 μ : -15.9
 σ : 22.9

Channel 1
mn: -1622
mx: 1460
 μ : -20.7
 σ : 48.8

Channel 2
mn: -3669
mx: 3896
 μ : -24.4
 σ : 73.2

ELMAVAN 3D WAVEFORMS (Measured data sampled at 50 kHz) 49629 packets of 144 samples from 2015-01-31T01:24:37.739.000. Part 130/143

Processed Fri Feb 13 20:35:20 2015 by ELM ver.2012-10-06 from 001__elm20150131_012436__dat00.bin



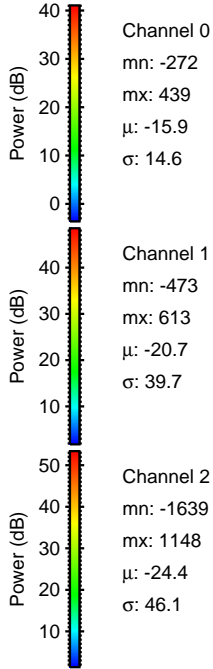
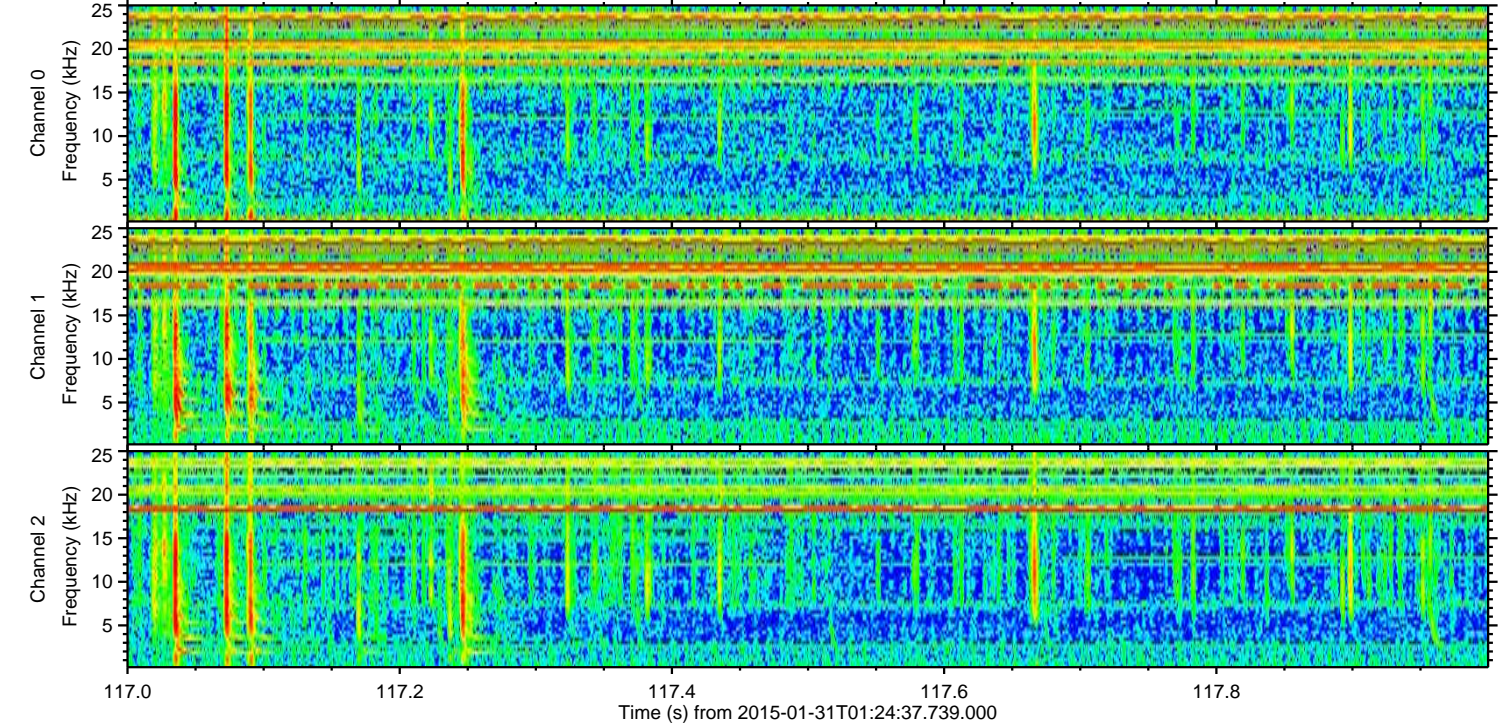
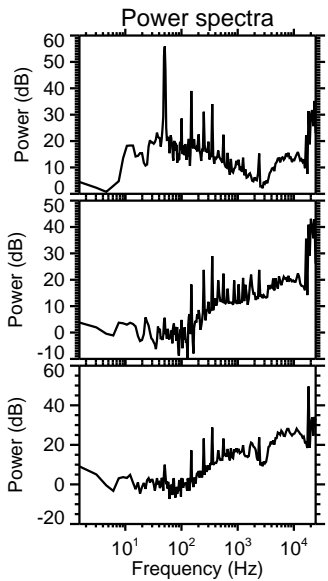
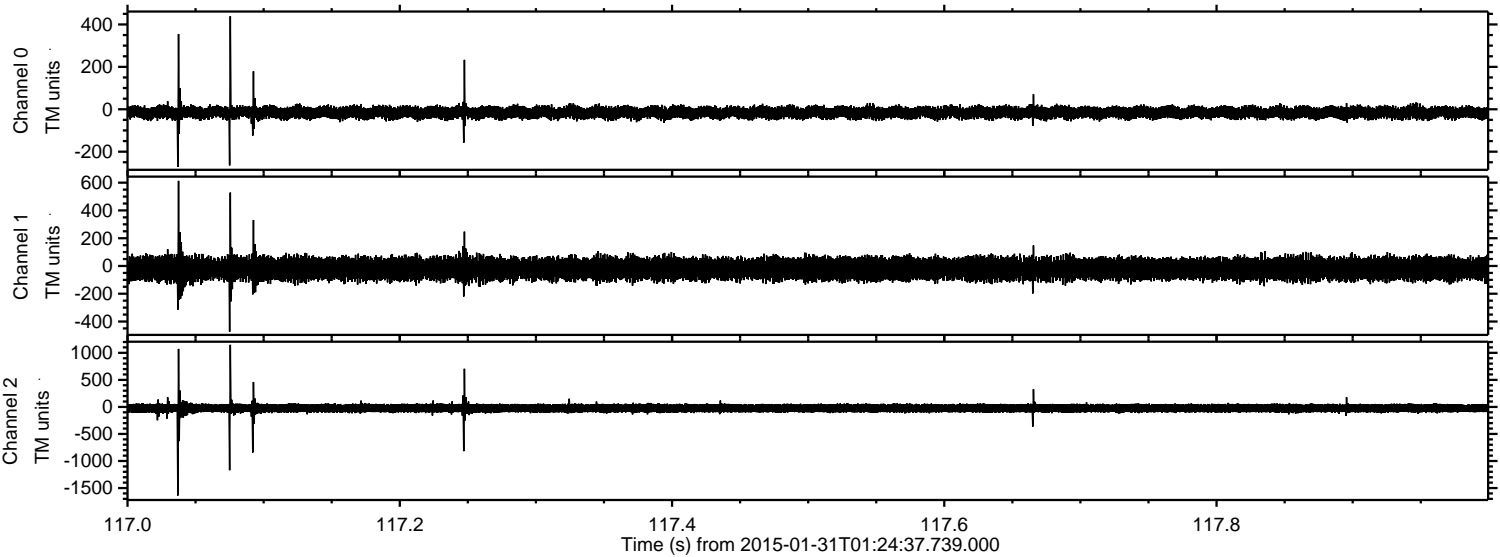
Channel 0
mn: -1297
mx: 849
 μ : -15.8
 σ : 17.6

Channel 1
mn: -1919
mx: 1534
 μ : -20.8
 σ : 44.8

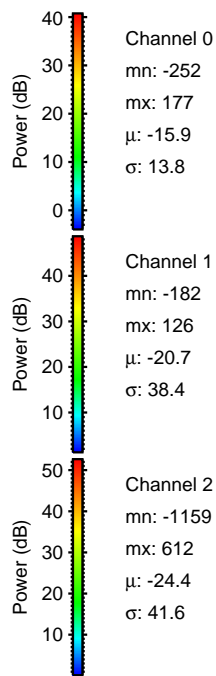
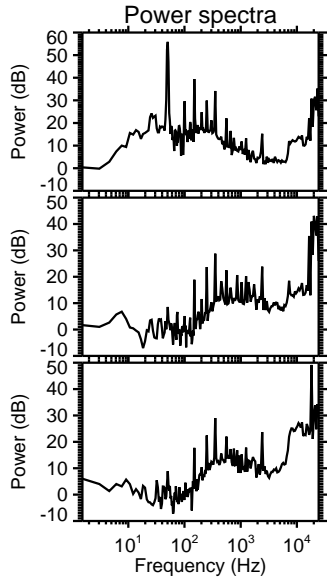
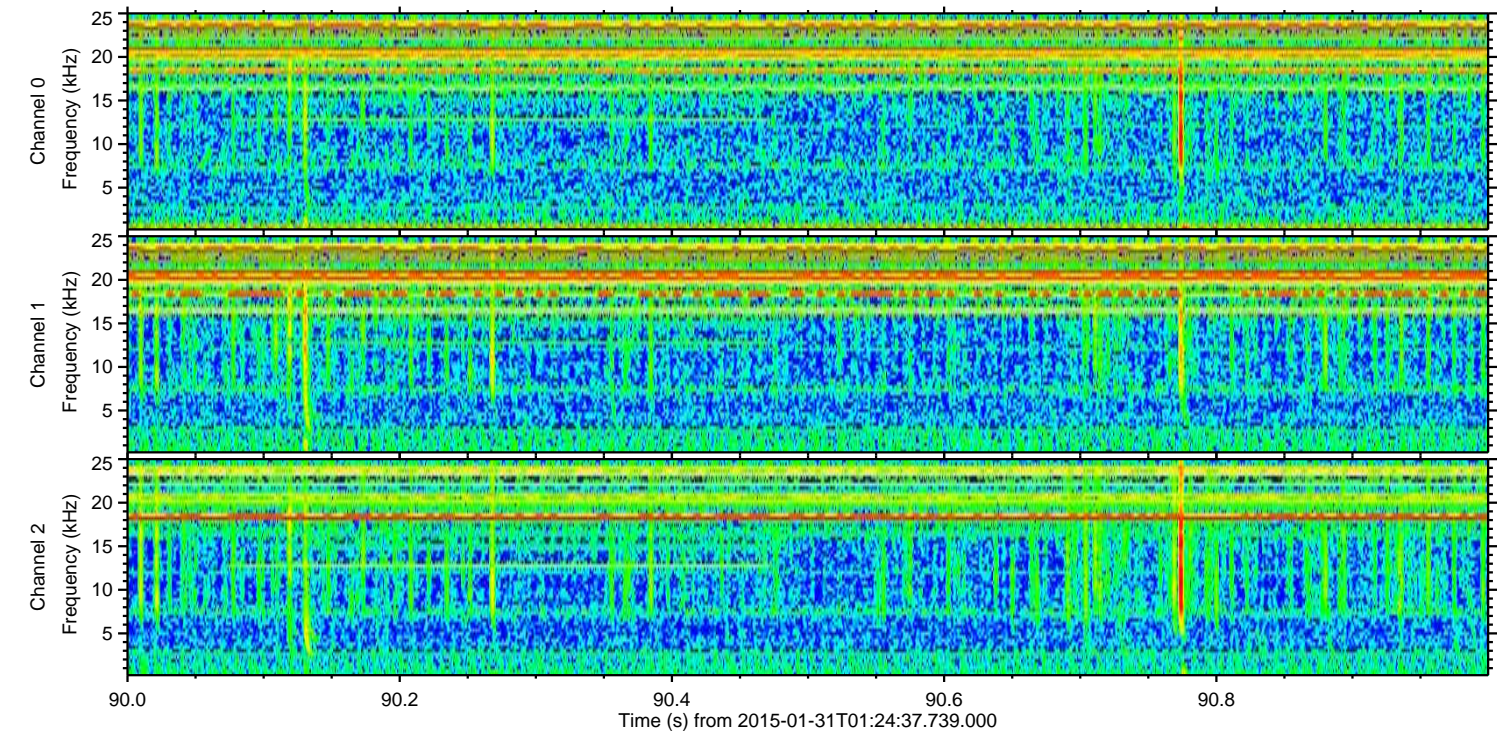
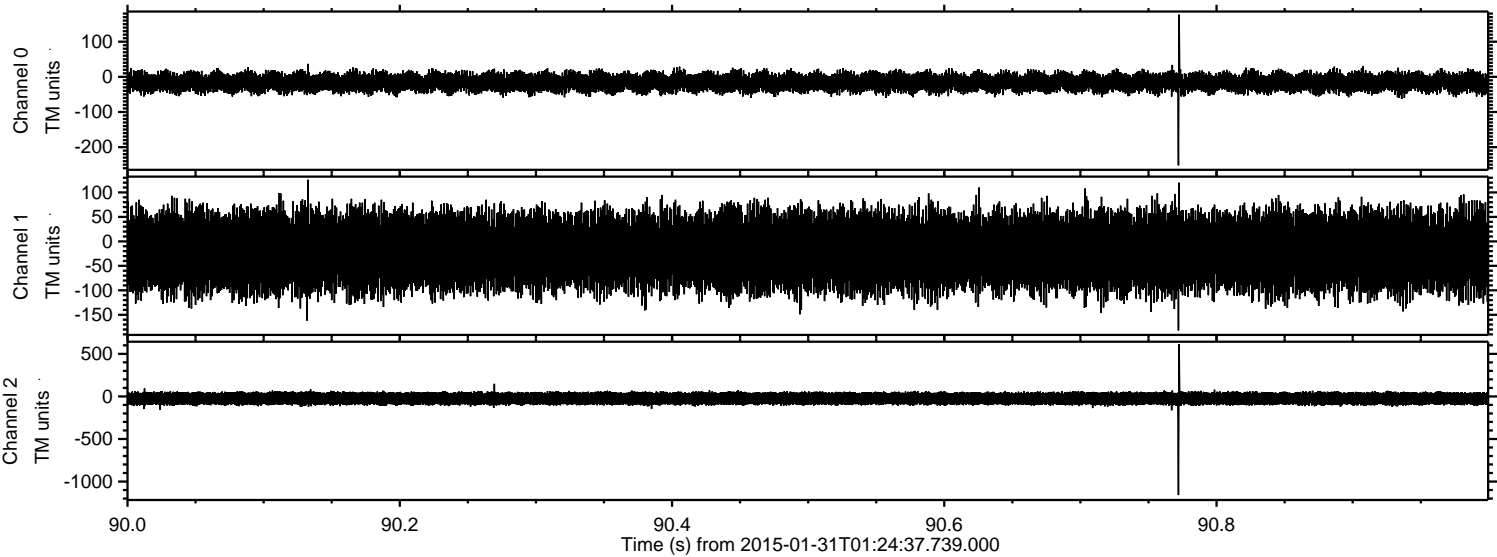
Channel 2
mn: -2247
mx: 2577
 μ : -24.4
 σ : 53.9

ELMAVAN 3D WAVEFORMS (Measured data sampled at 50 kHz) 49629 packets of 144 samples from 2015-01-31T01:24:37.739.000. Part 118/143

Processed Fri Feb 13 20:35:21 2015 by ELM ver.2012-10-06 from 001__elm20150131_012436__dat00.bin

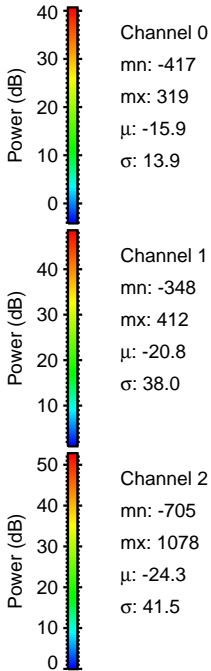
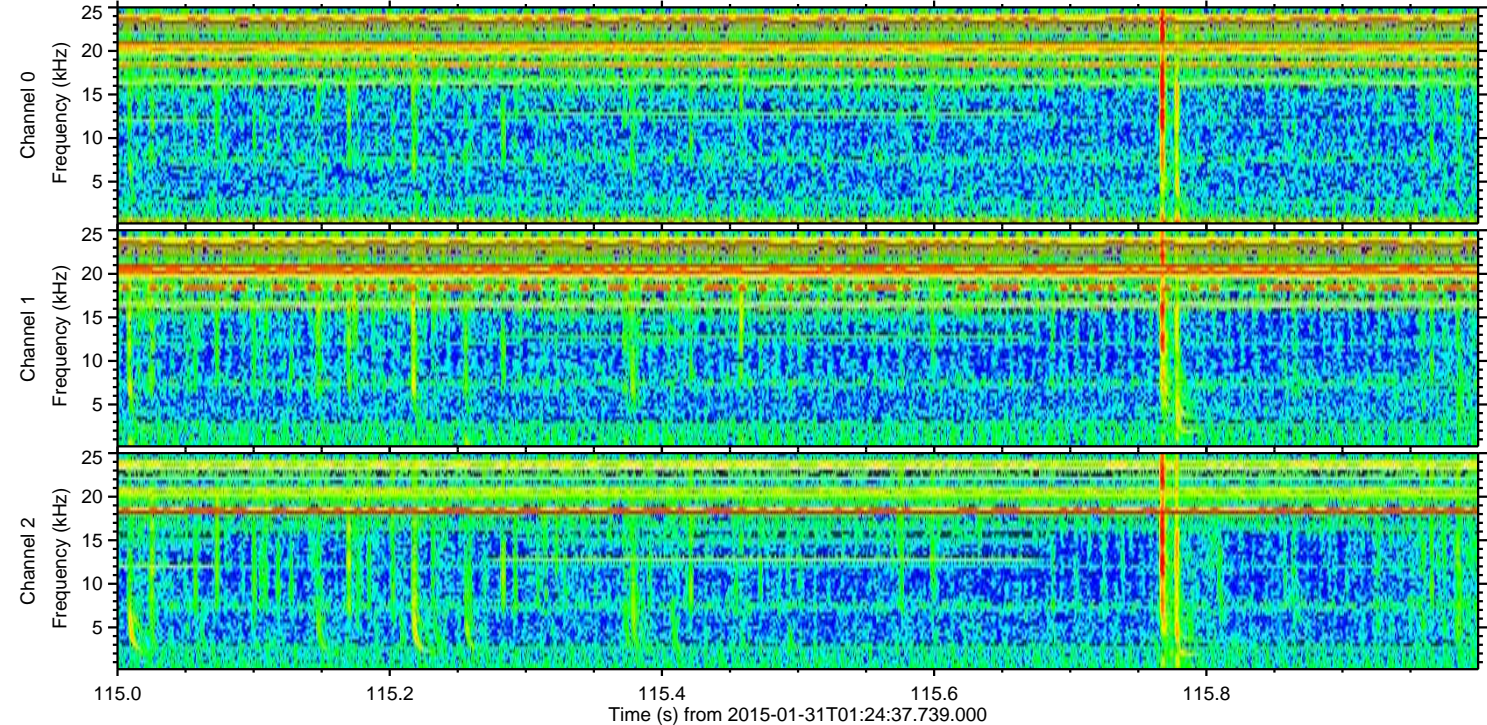
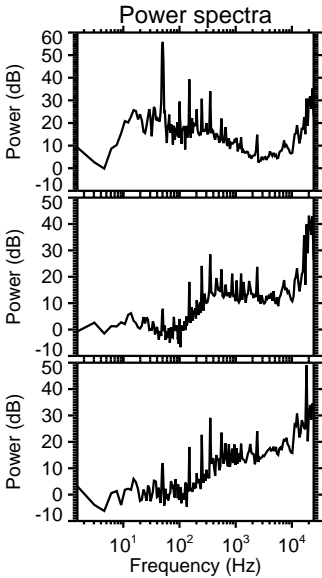
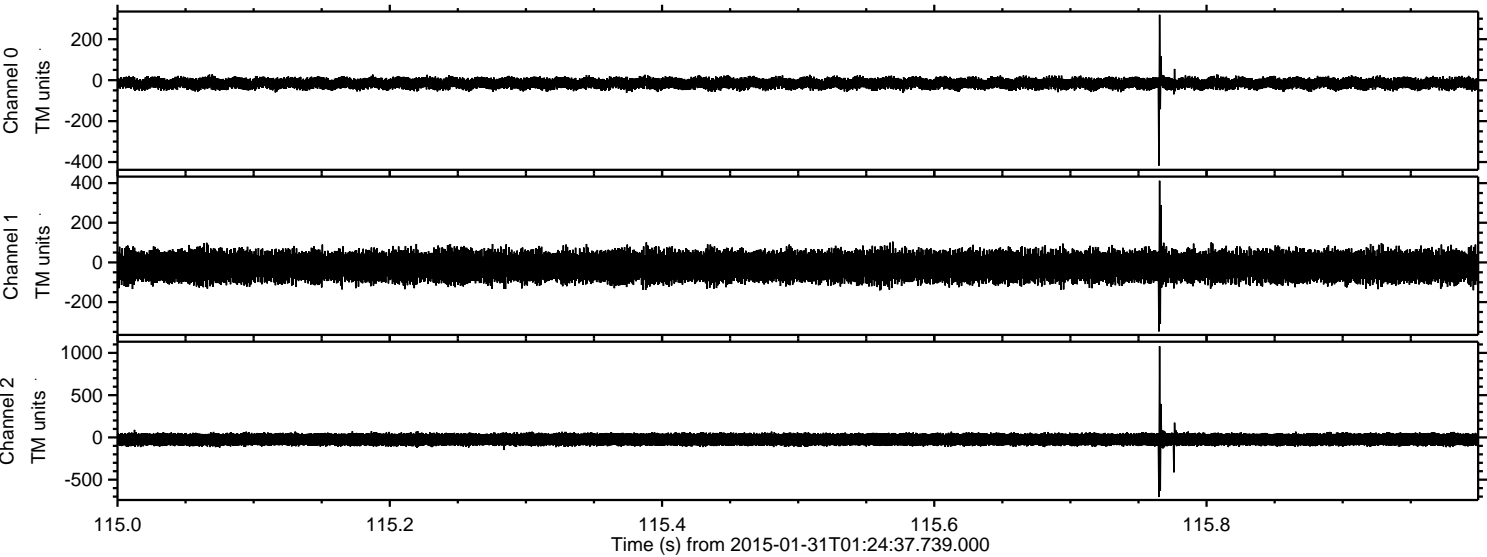


Processed Fri Feb 13 20:35:22 2015 by ELM ver.2012-10-06 from 001__elm20150131_012436__dat00.bin

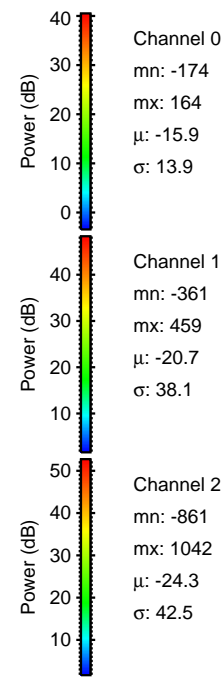
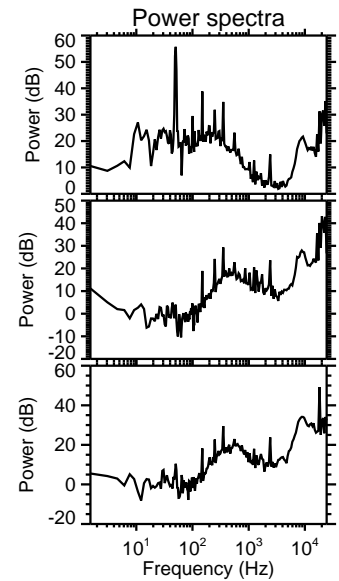
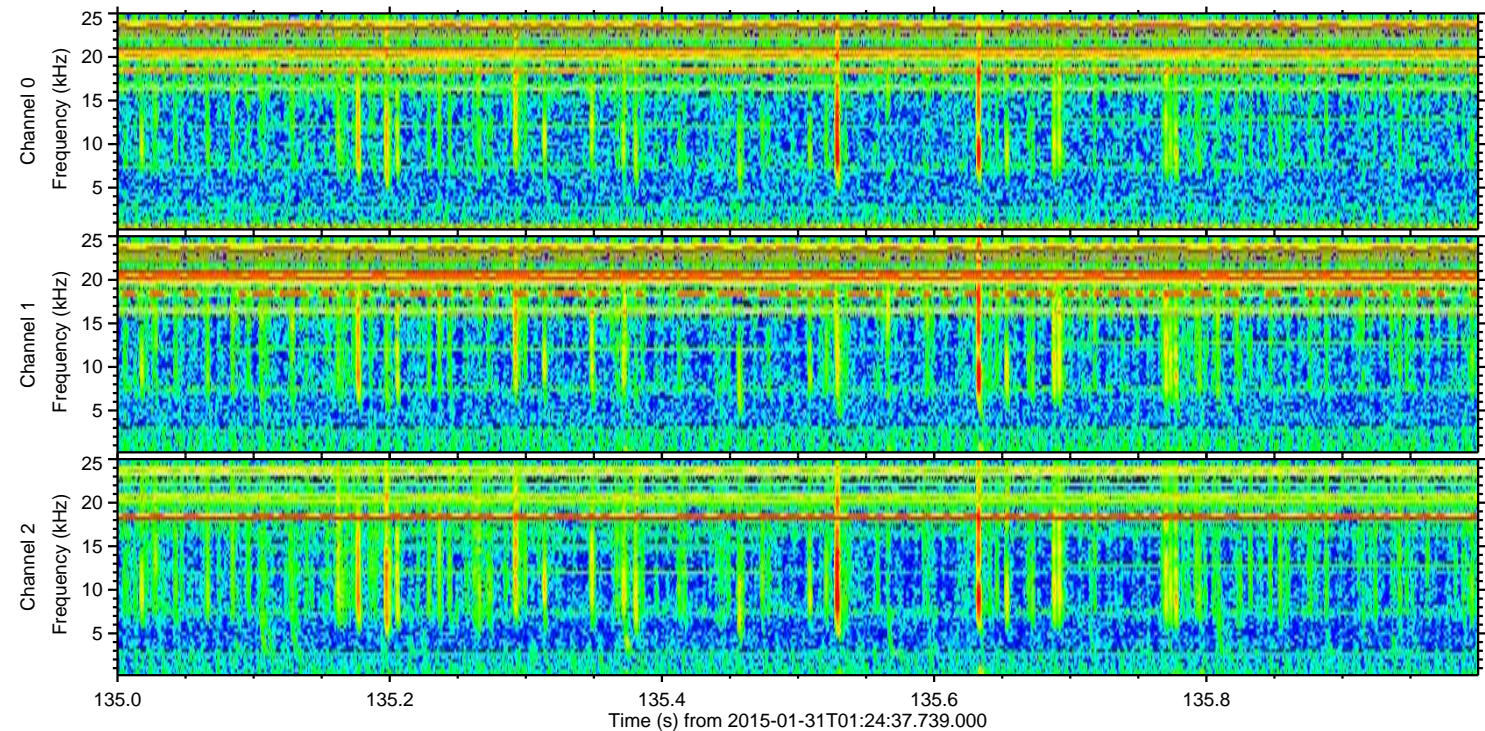
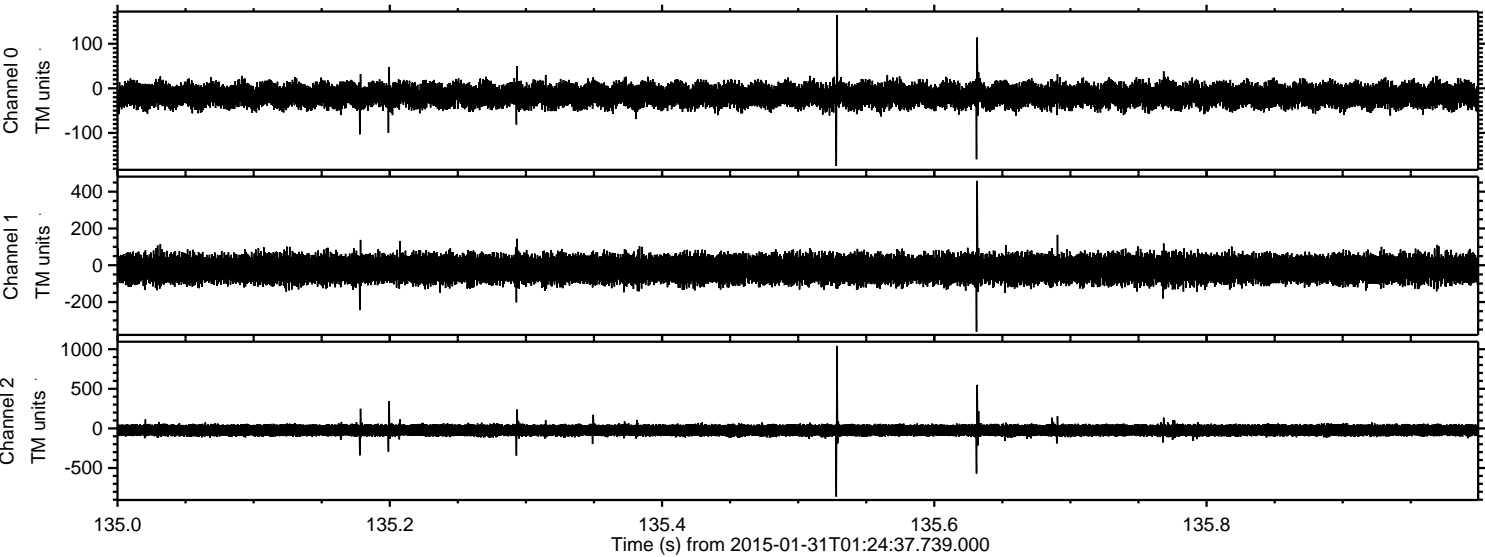


ELMAVAN 3D WAVEFORMS (Measured data sampled at 50 kHz) 49629 packets of 144 samples from 2015-01-31T01:24:37.739.000. Part 116/143

Processed Fri Feb 13 20:35:23 2015 by ELM ver.2012-10-06 from 001__elm20150131_012436__dat00.bin



Processed Fri Feb 13 20:35:24 2015 by ELM ver.2012-10-06 from 001__elm20150131_012436__dat00.bin

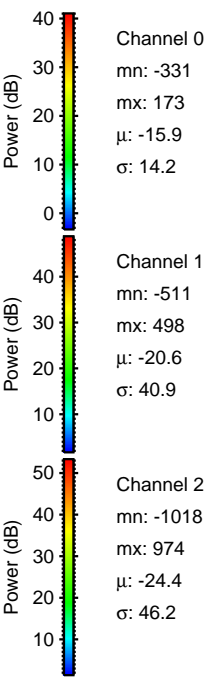
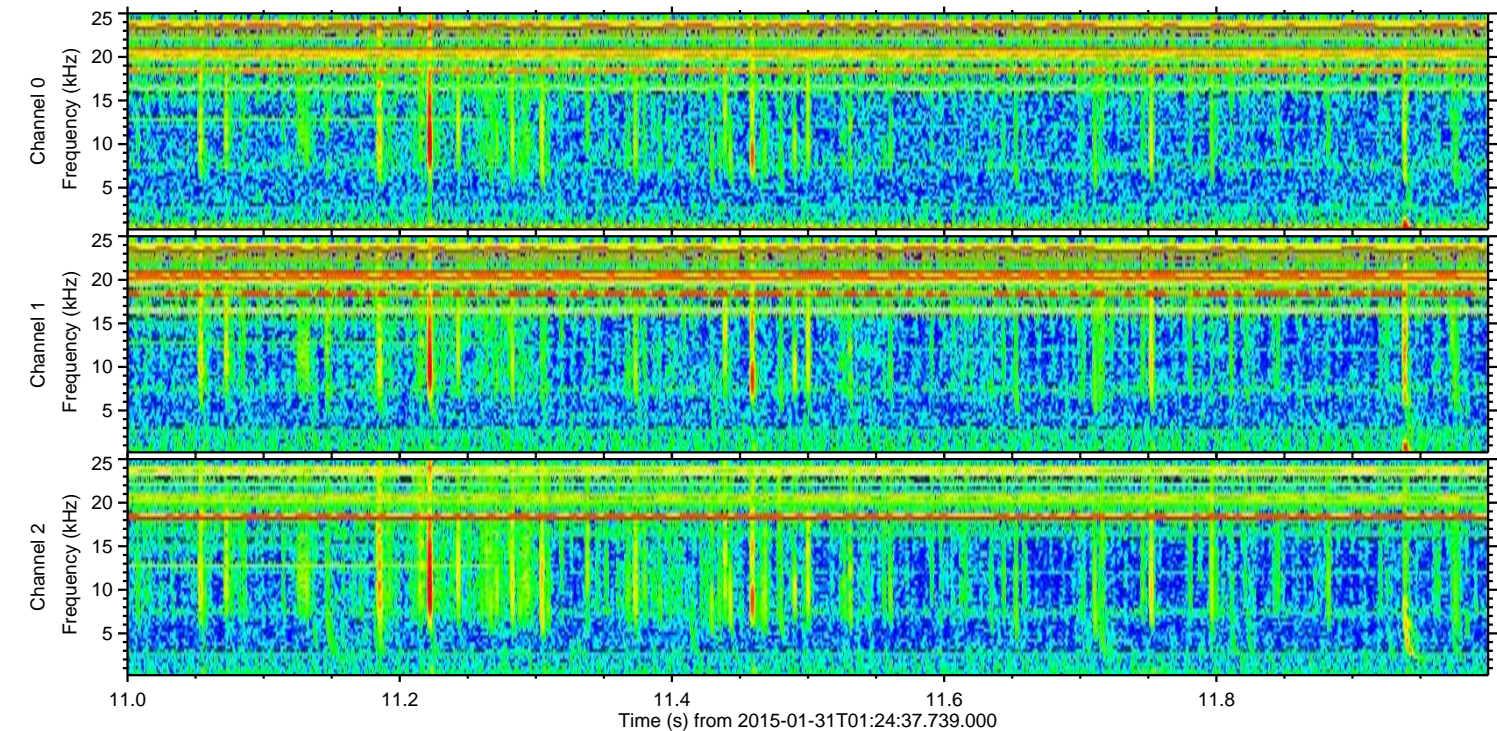
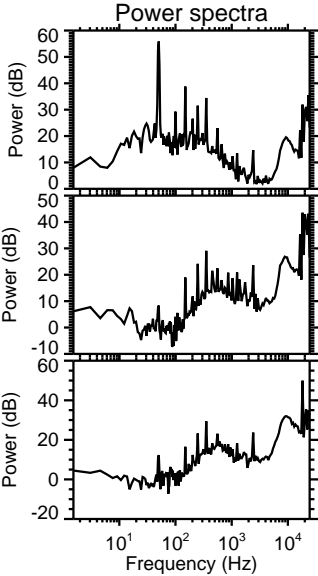
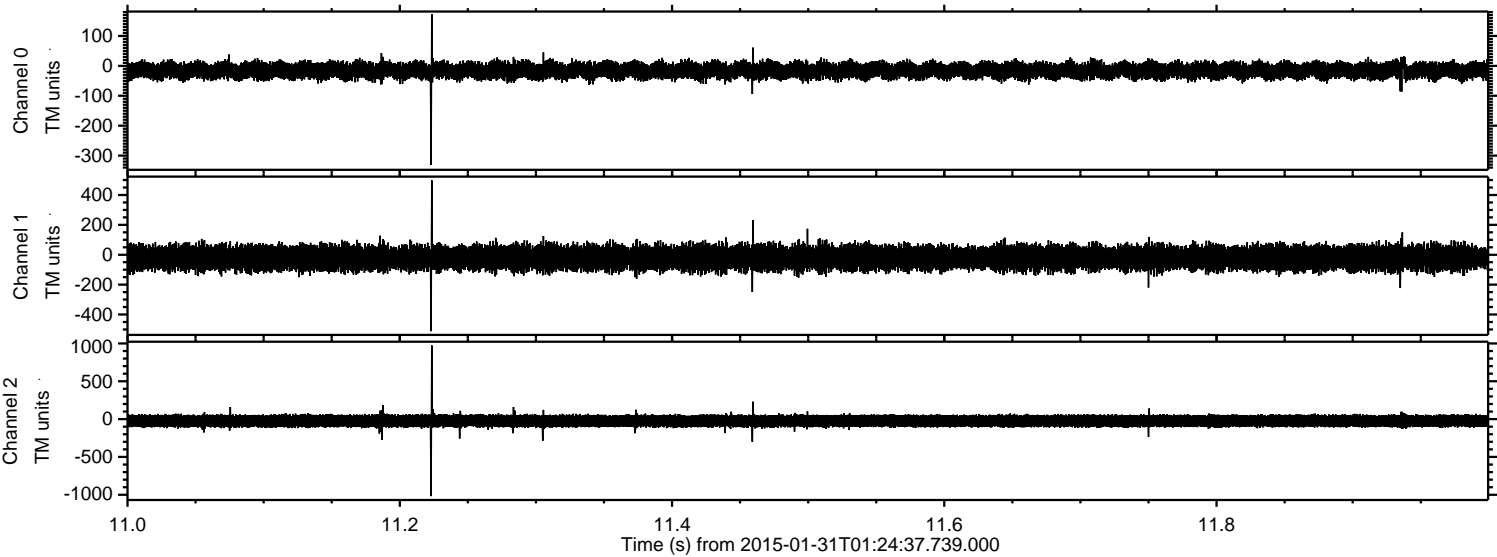


Channel 0
mn: -174
mx: 164
 μ : -15.9
 σ : 13.9

Channel 1
mn: -361
mx: 459
 μ : -20.7
 σ : 38.1

Channel 2
mn: -861
mx: 1042
 μ : -24.3
 σ : 42.5

Processed Fri Feb 13 20:35:25 2015 by ELM ver.2012-10-06 from 001__elm20150131_012436__dat00.bin



Processed Fri Feb 13 20:35:26 2015 by ELM ver.2012-10-06 from 001__elm20150131_012436__dat00.bin

