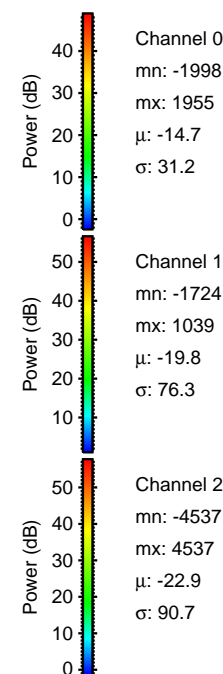
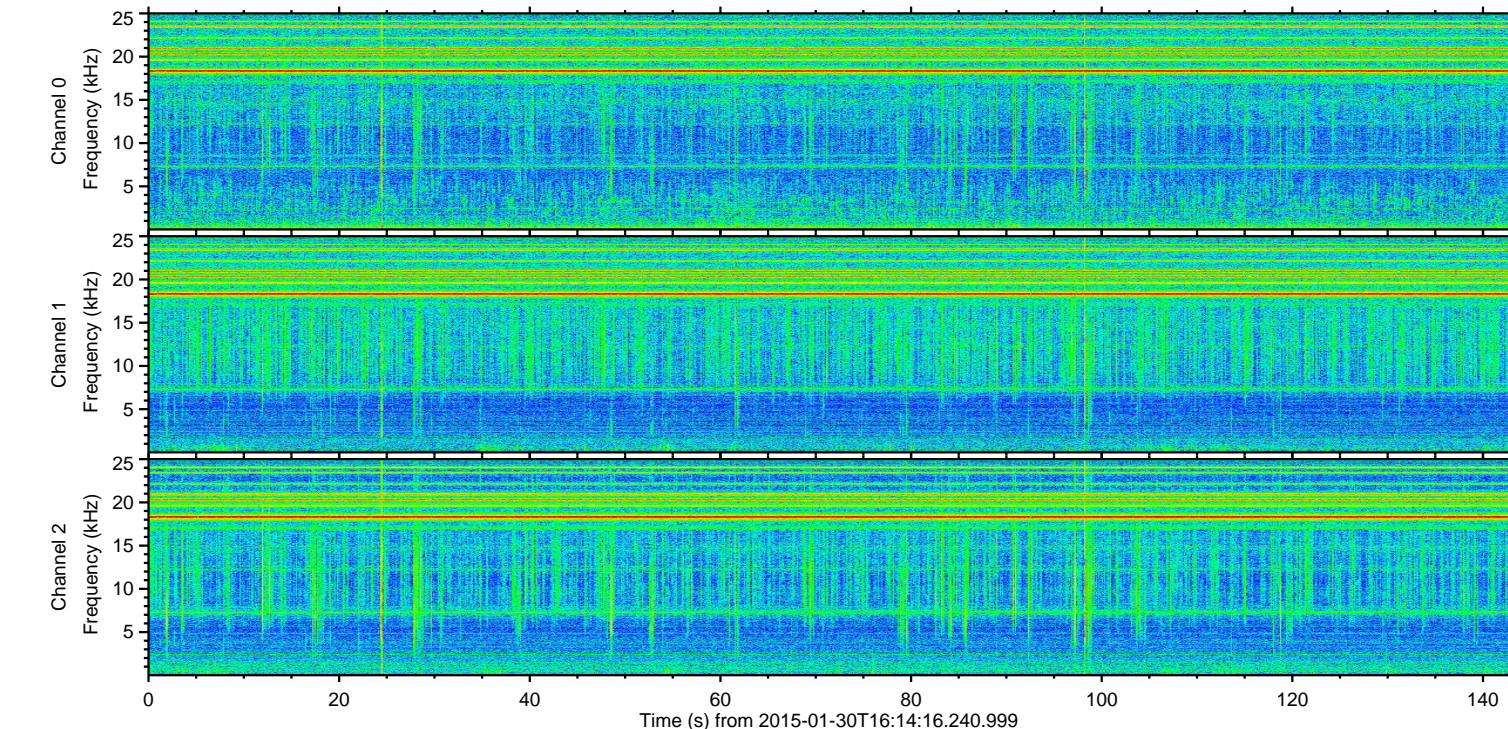
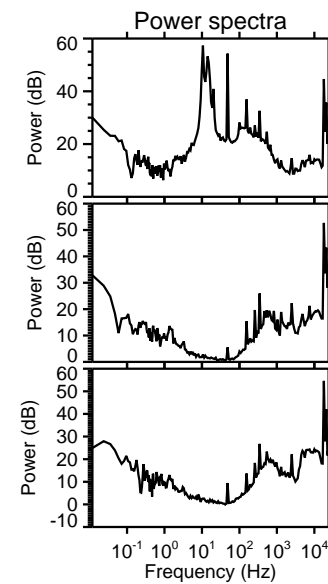
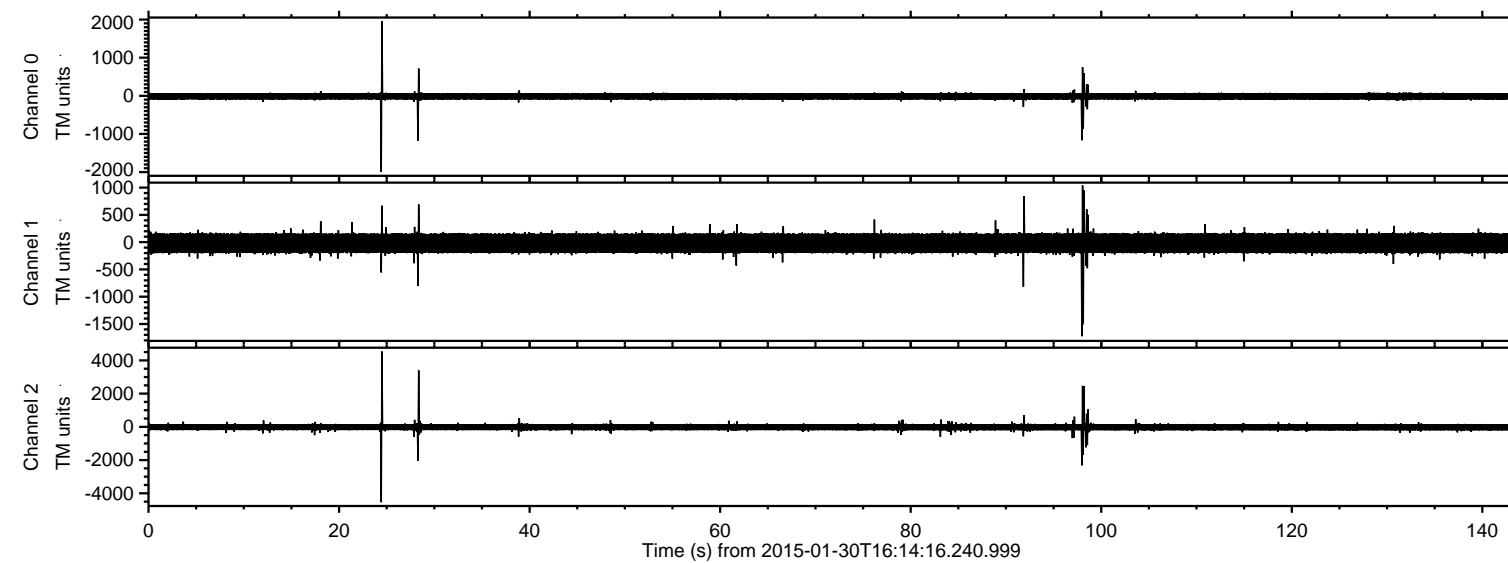


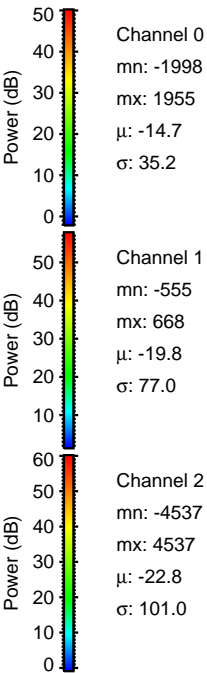
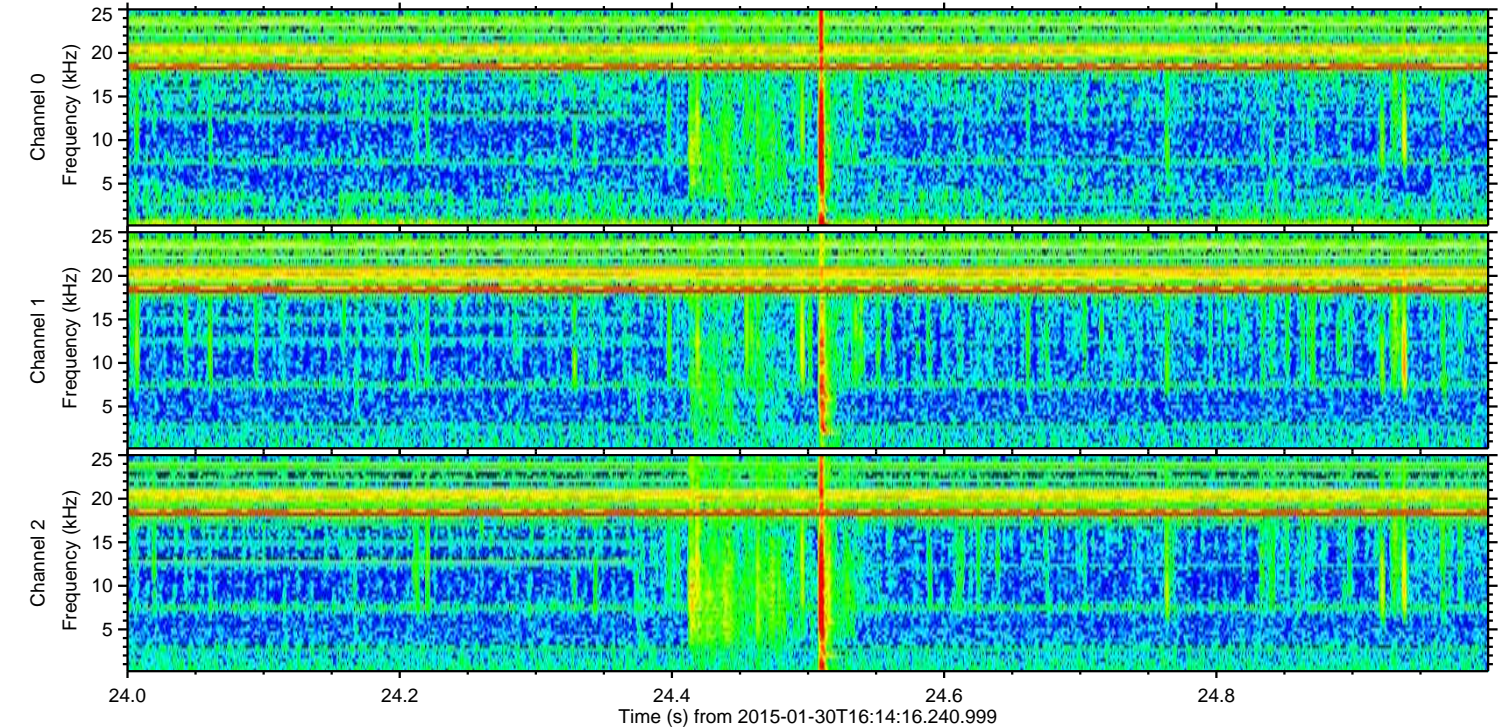
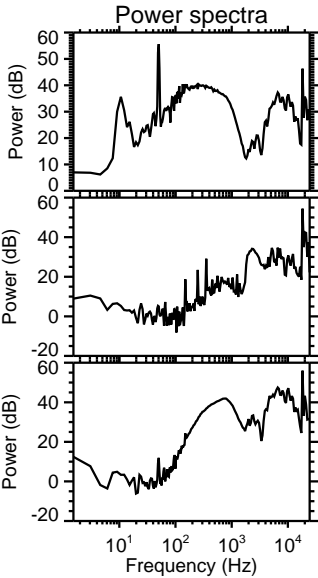
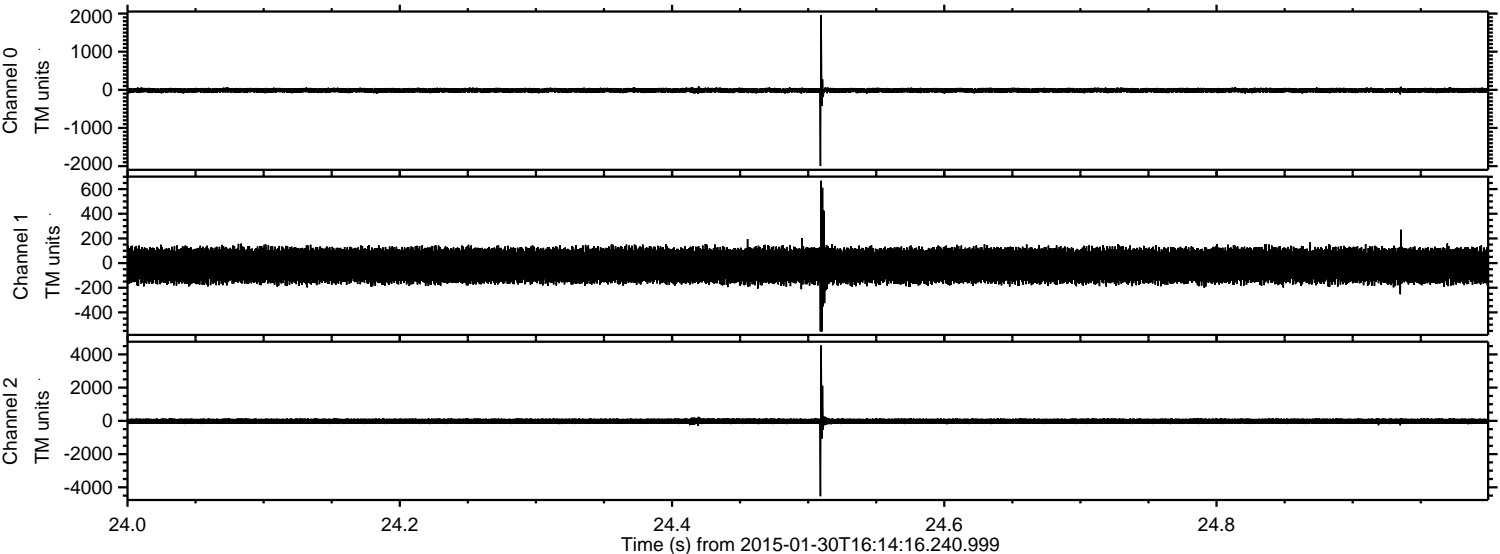
ELMAVAN 3D WAVEFORMS (Measured data sampled at 50 kHz) 49588 packets of 144 samples from 2015-01-30T16:14:16.240.999.

Processed Fri Feb 13 06:10:27 2015 by ELM ver.2012-10-06 from 001__elm20150130_161415__dat00.bin

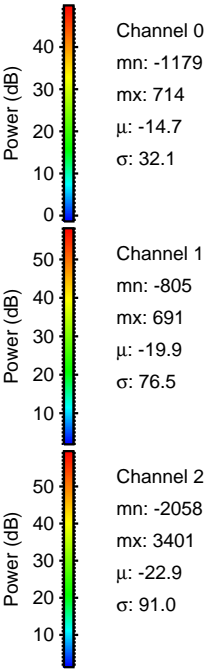
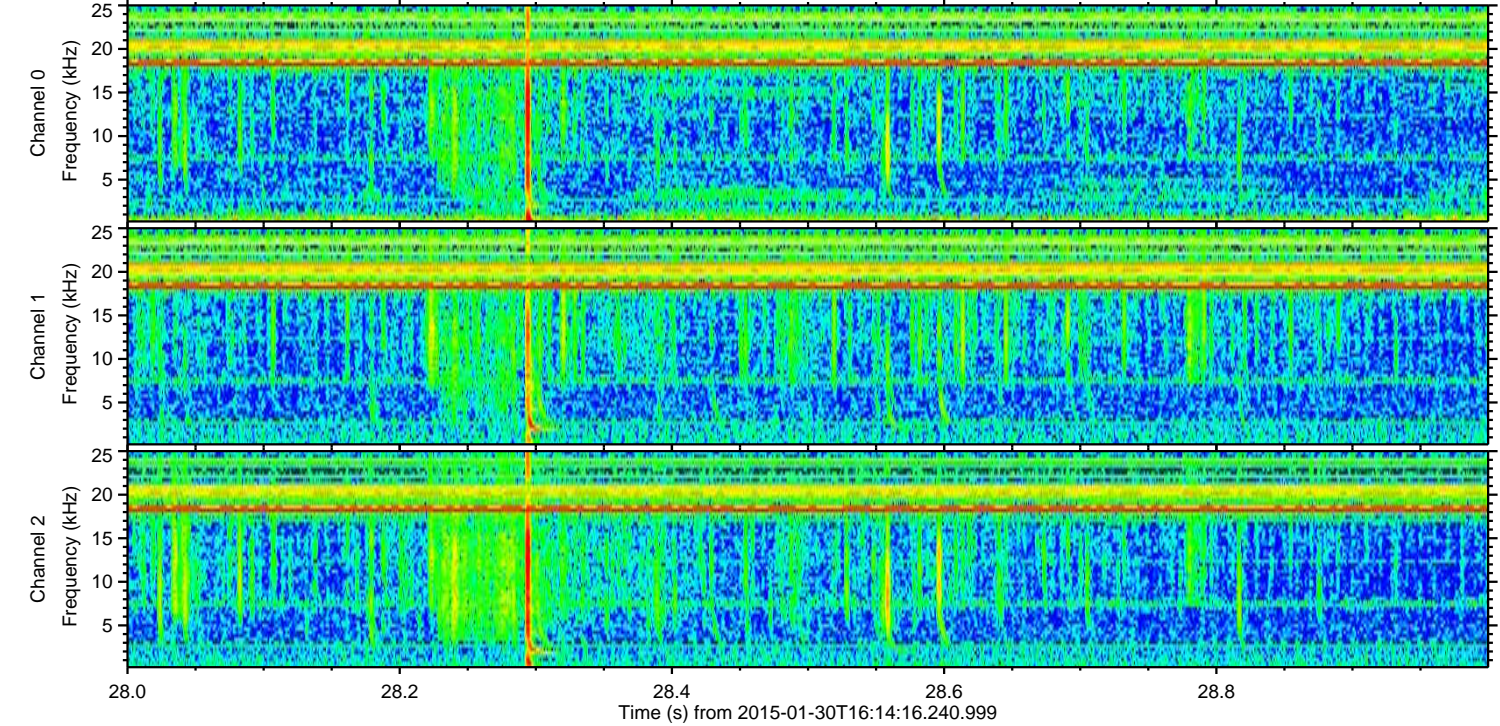
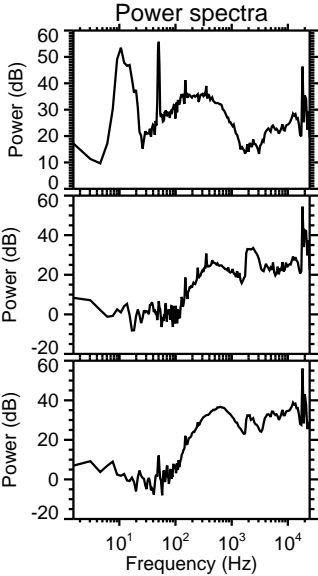
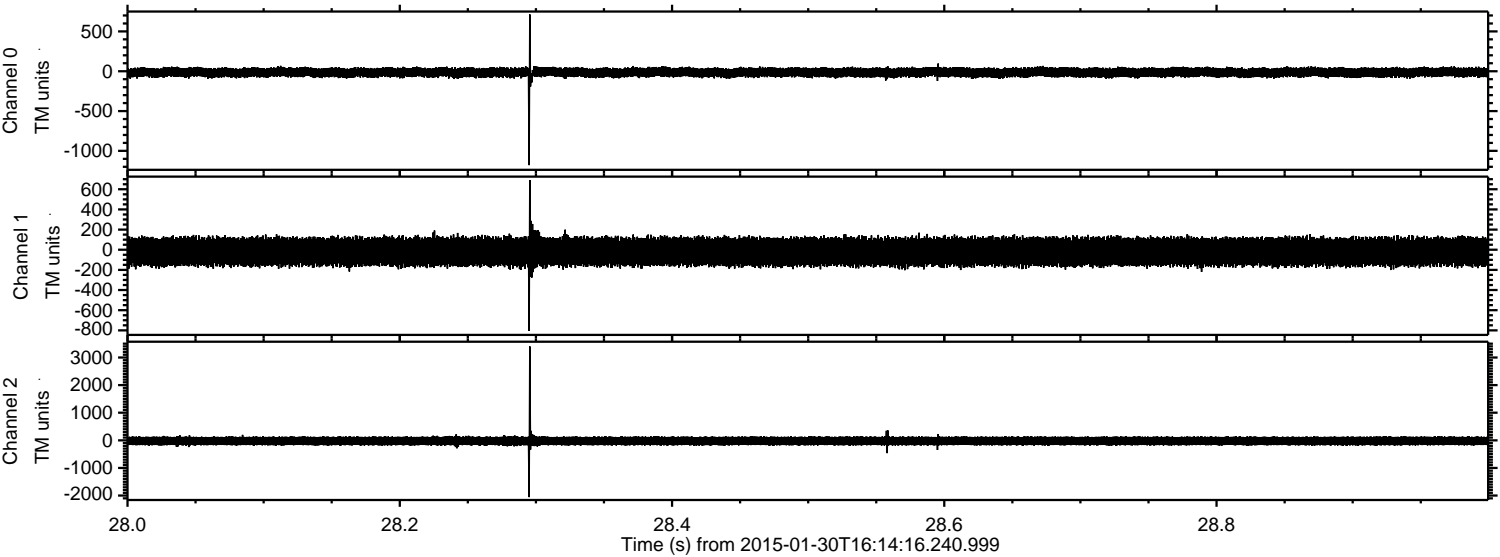


ELMAVAN 3D WAVEFORMS (Measured data sampled at 50 kHz) 49588 packets of 144 samples from 2015-01-30T16:14:16.240.999. Part 25/143

Processed Fri Feb 13 06:10:42 2015 by ELM ver.2012-10-06 from 001__elm20150130_161415__dat00.bin

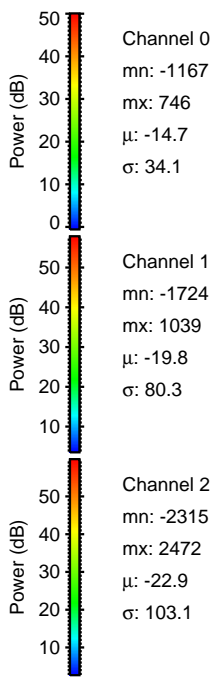
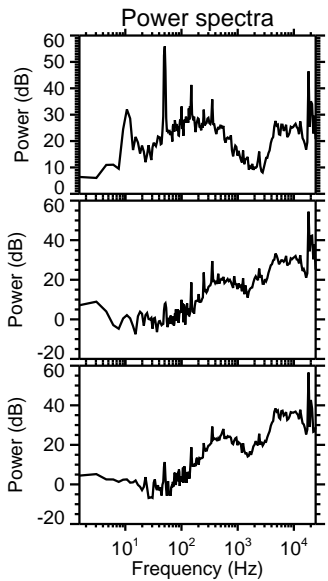
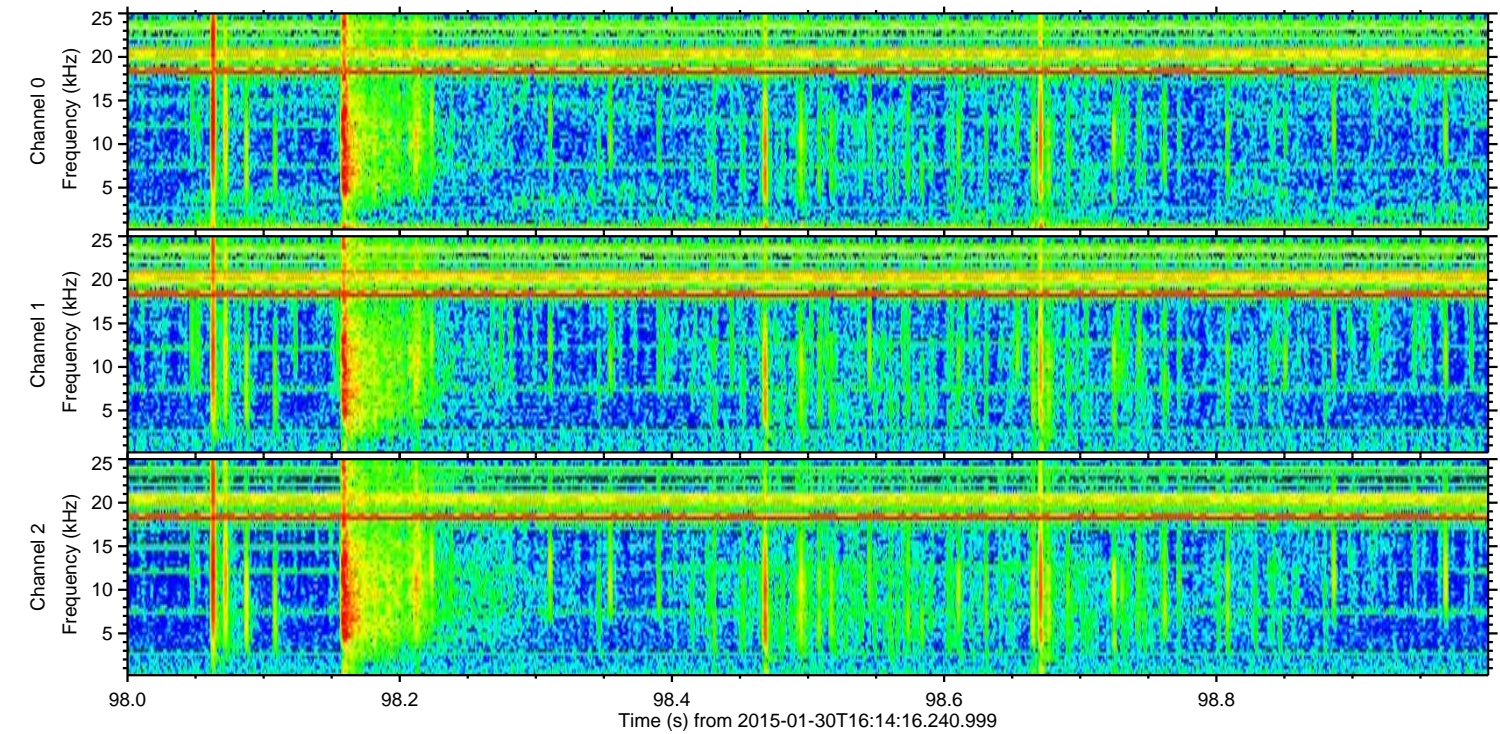
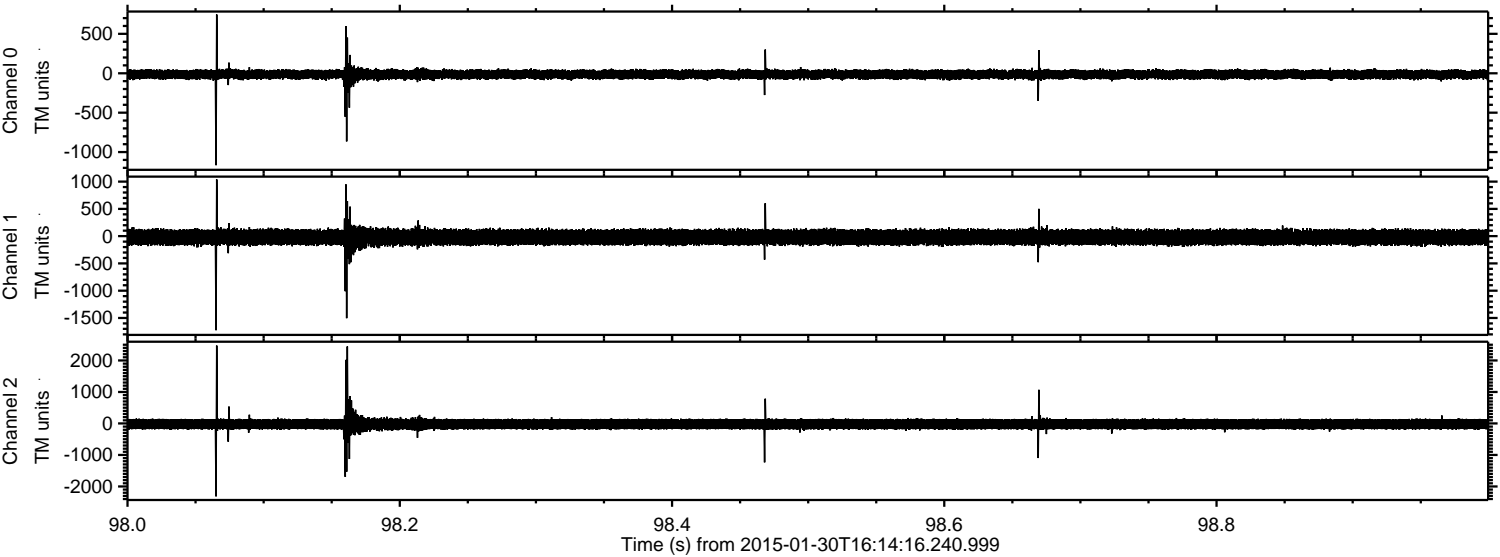


Processed Fri Feb 13 06:10:43 2015 by ELM ver.2012-10-06 from 001__elm20150130_161415__dat00.bin



ELMAVAN 3D WAVEFORMS (Measured data sampled at 50 kHz) 49588 packets of 144 samples from 2015-01-30T16:14:16.240.999. Part 99/143

Processed Fri Feb 13 06:10:44 2015 by ELM ver.2012-10-06 from 001__elm20150130_161415__dat00.bin

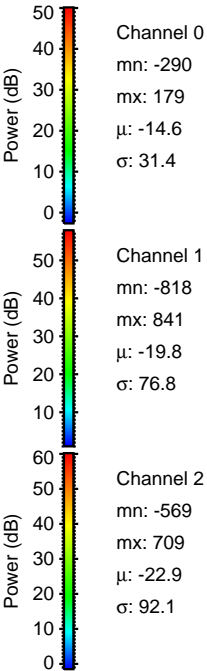
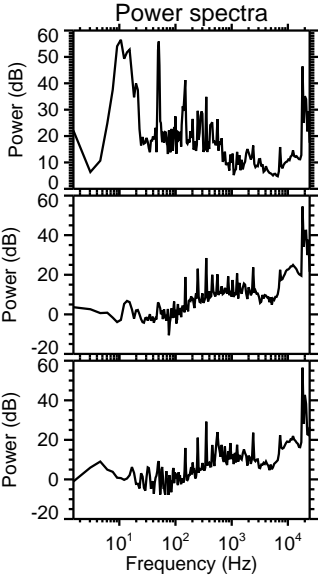
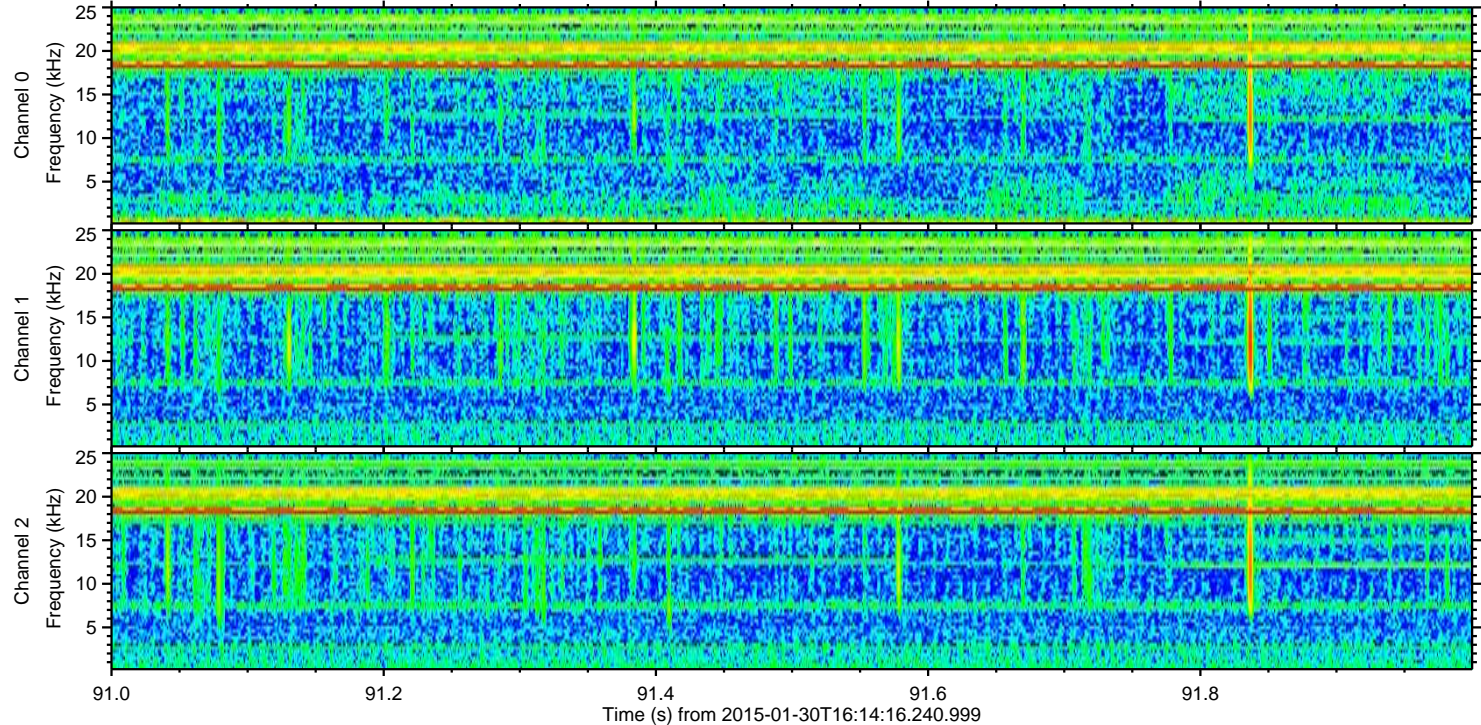
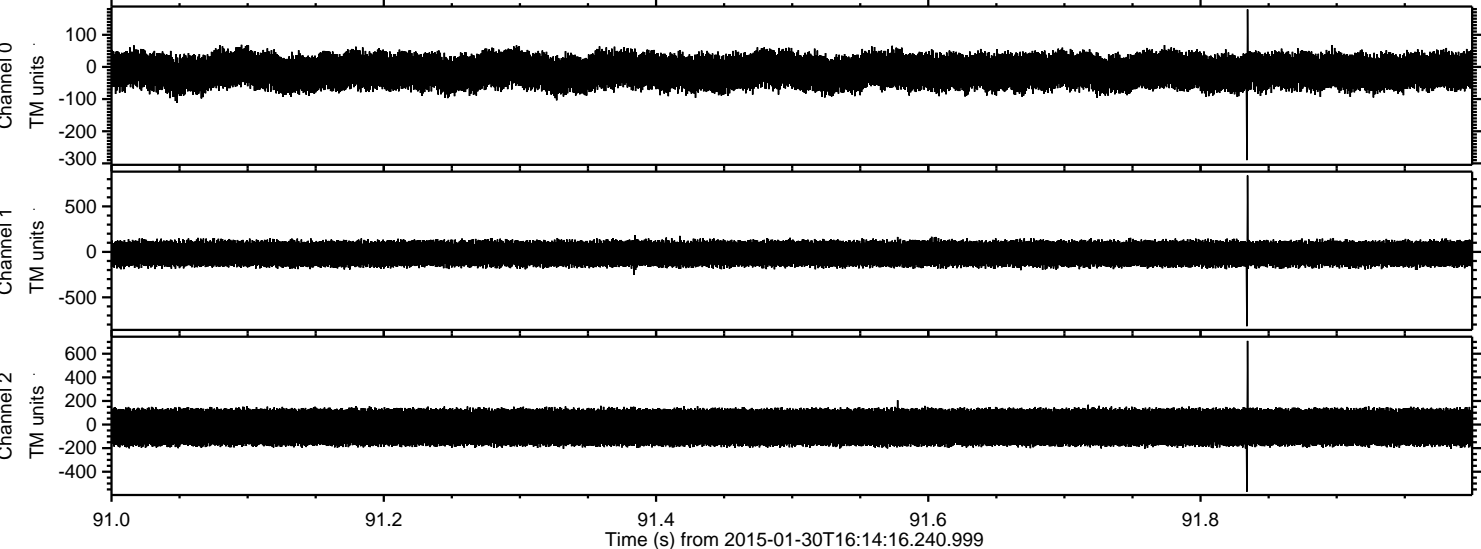


Channel 0
mn: -1167
mx: 746
 μ : -14.7
 σ : 34.1

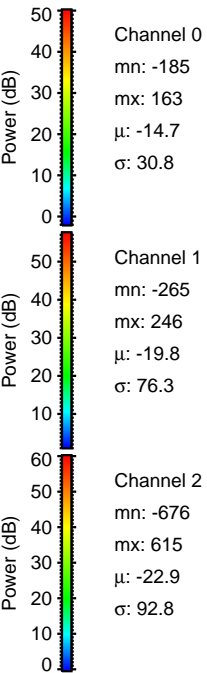
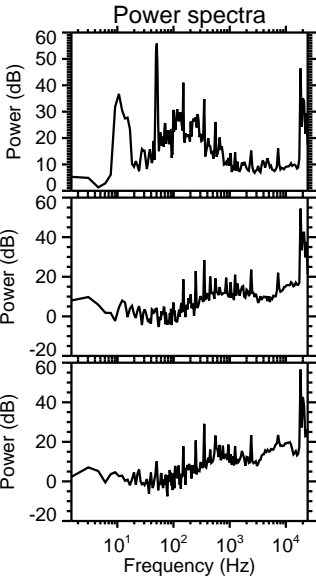
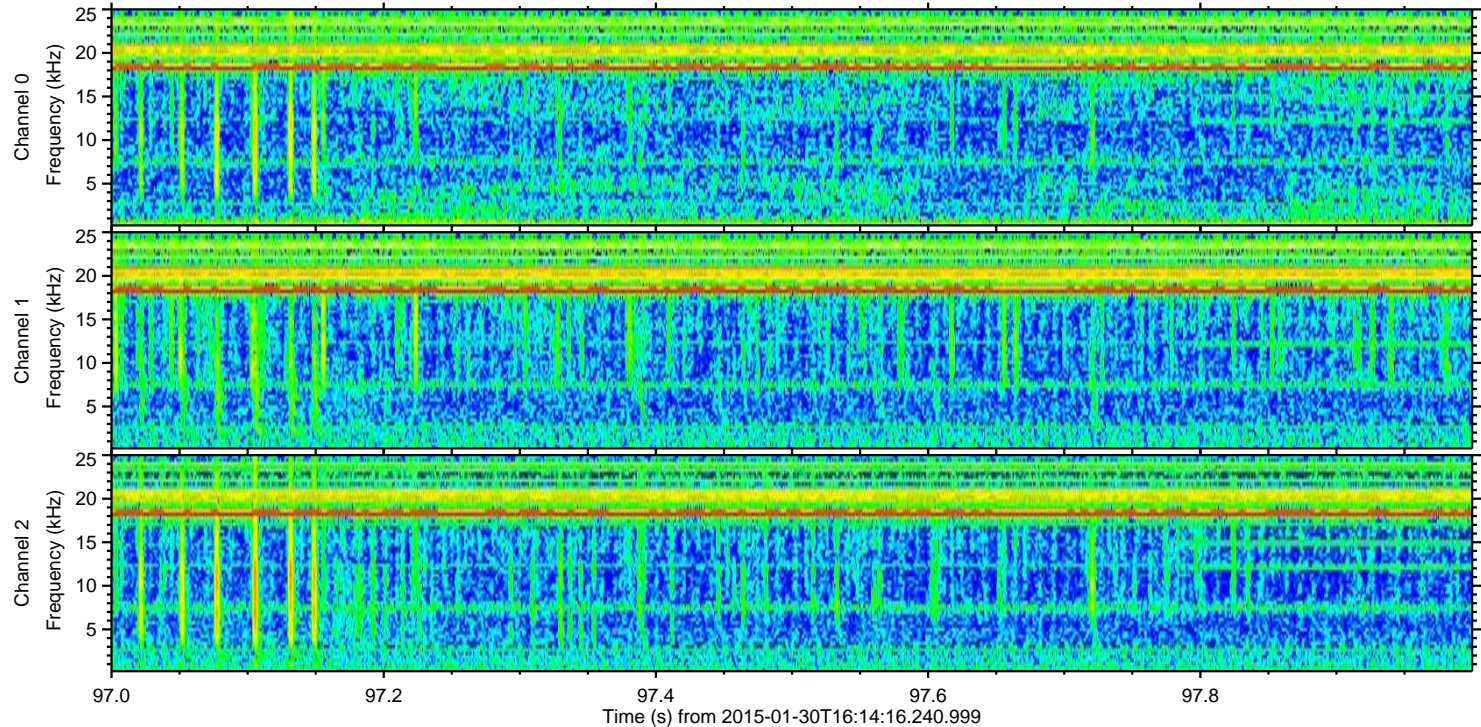
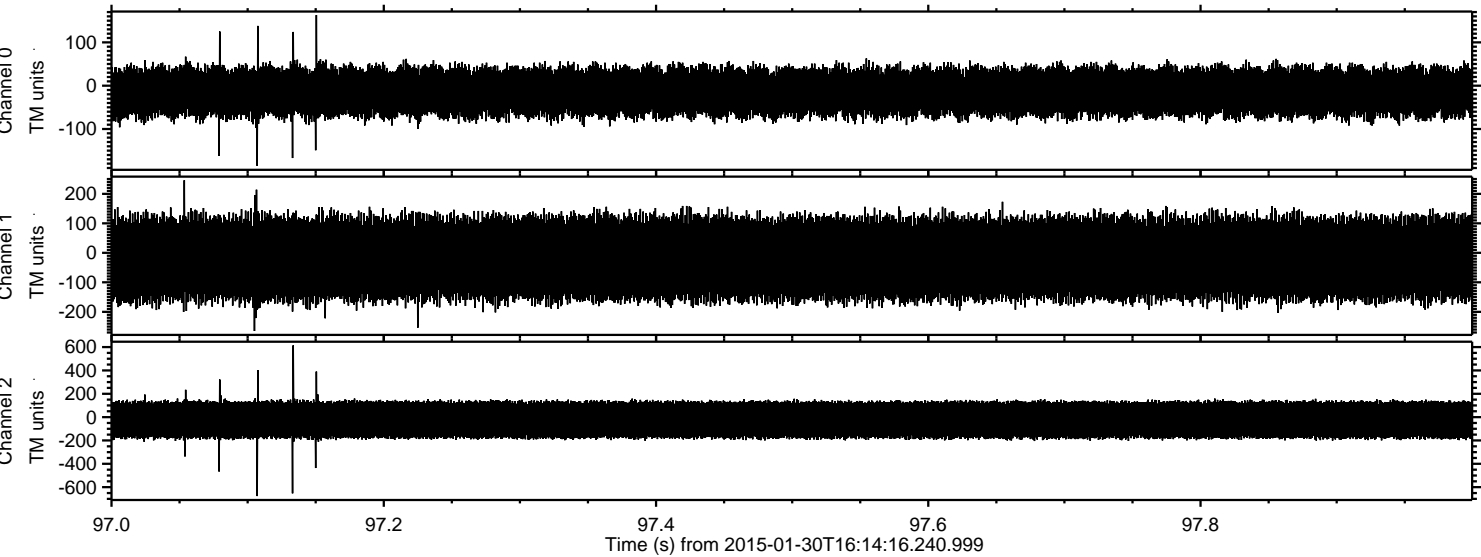
Channel 1
mn: -1724
mx: 1039
 μ : -19.8
 σ : 80.3

Channel 2
mn: -2315
mx: 2472
 μ : -22.9
 σ : 103.1

Processed Fri Feb 13 06:10:45 2015 by ELM ver.2012-10-06 from 001__elm20150130_161415__dat00.bin



Processed Fri Feb 13 06:10:46 2015 by ELM ver.2012-10-06 from 001__elm20150130_161415__dat00.bin

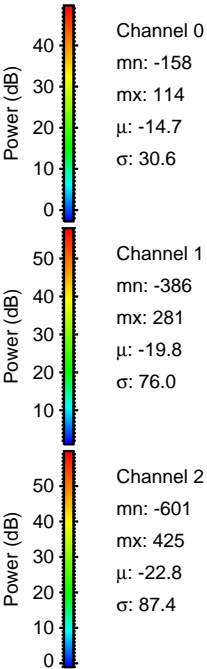
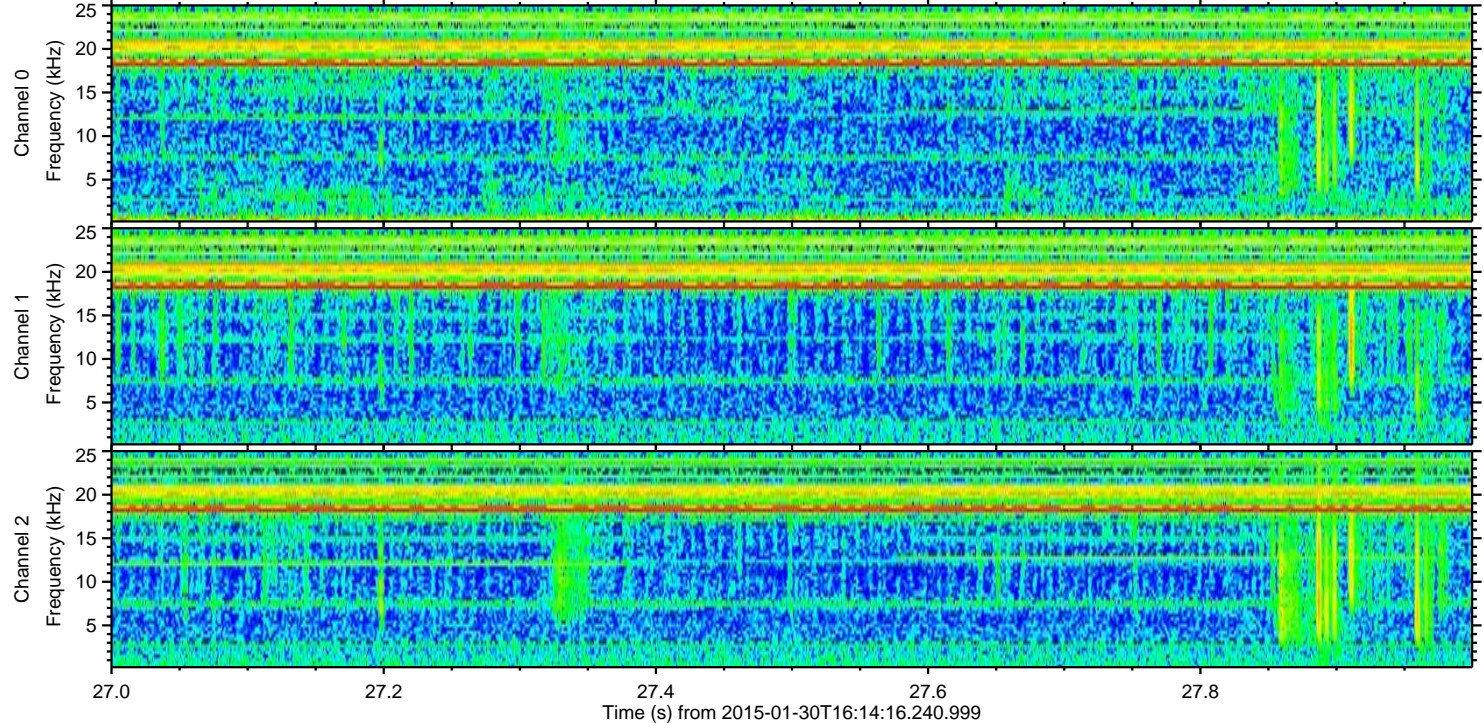
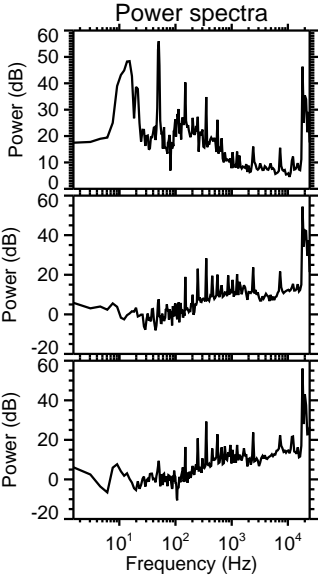
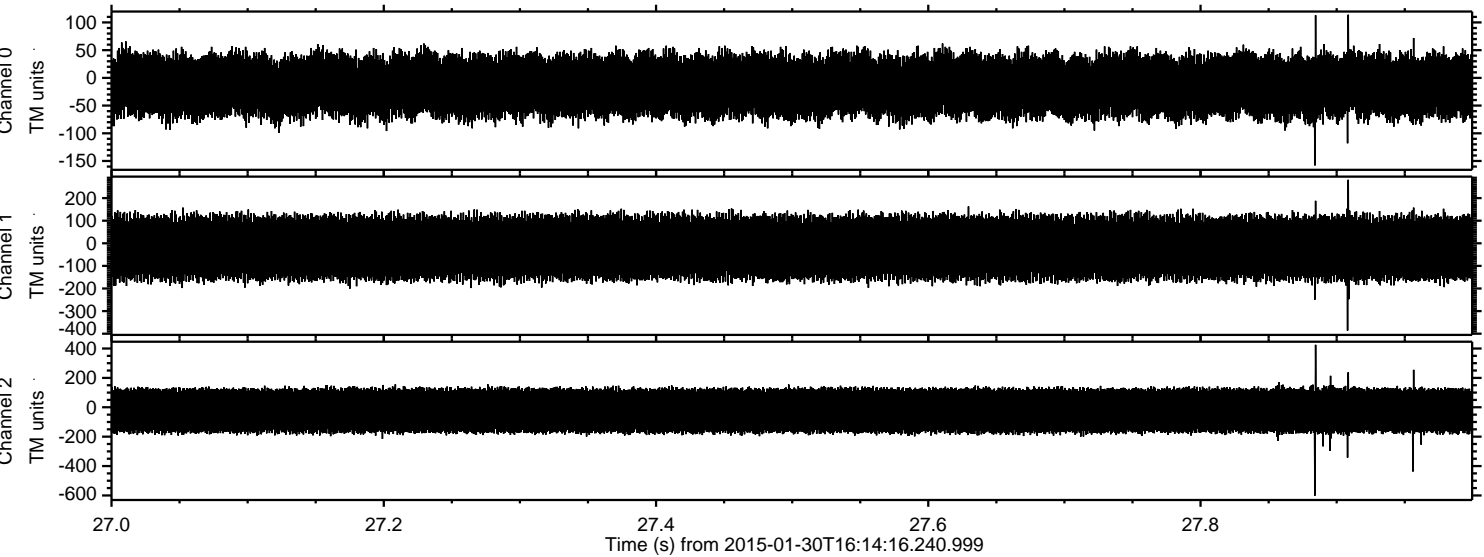


Channel 0
mn: -185
mx: 163
 μ : -14.7
 σ : 30.8

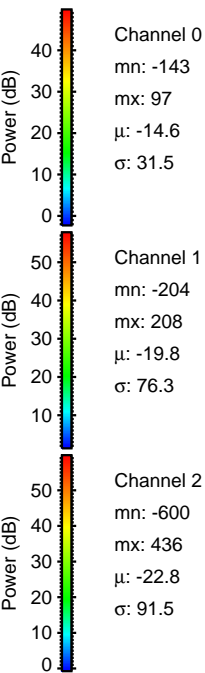
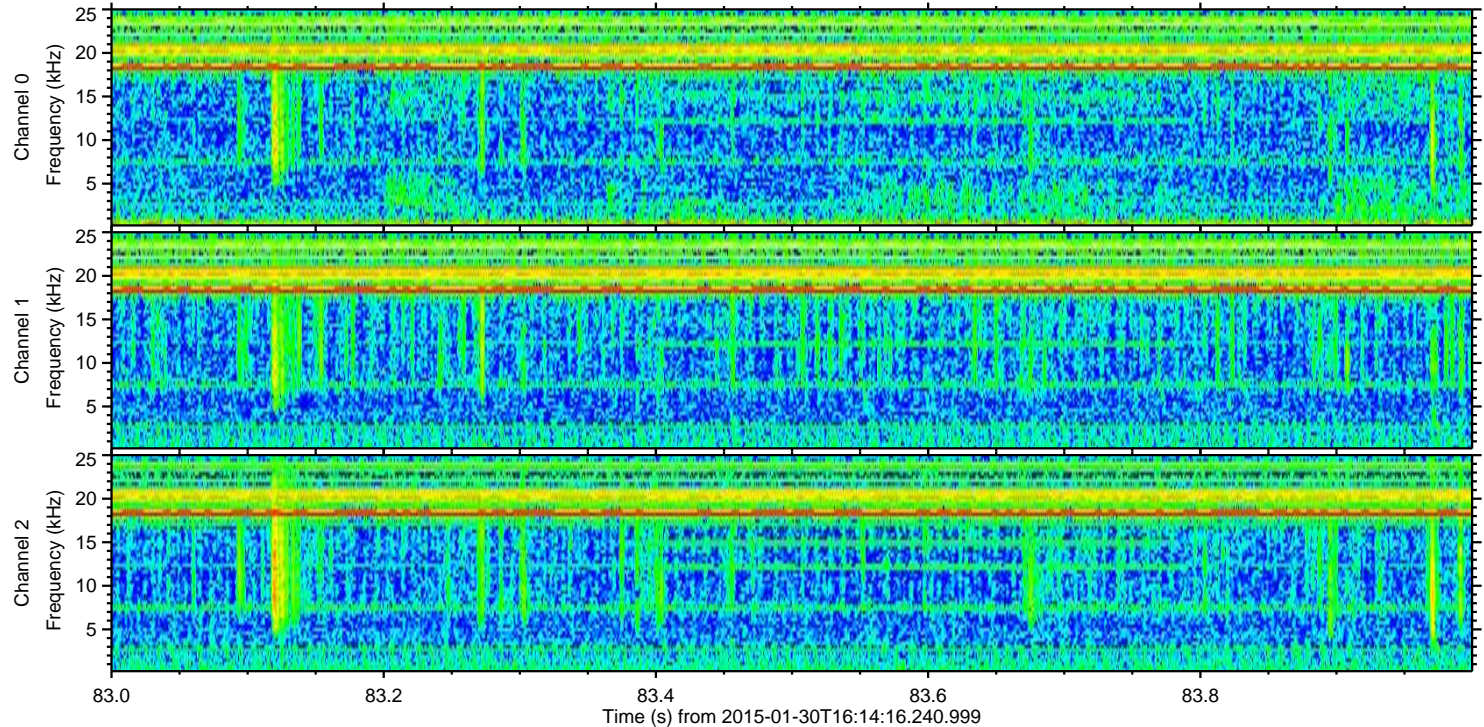
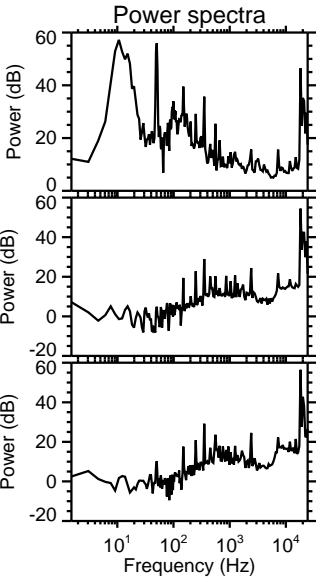
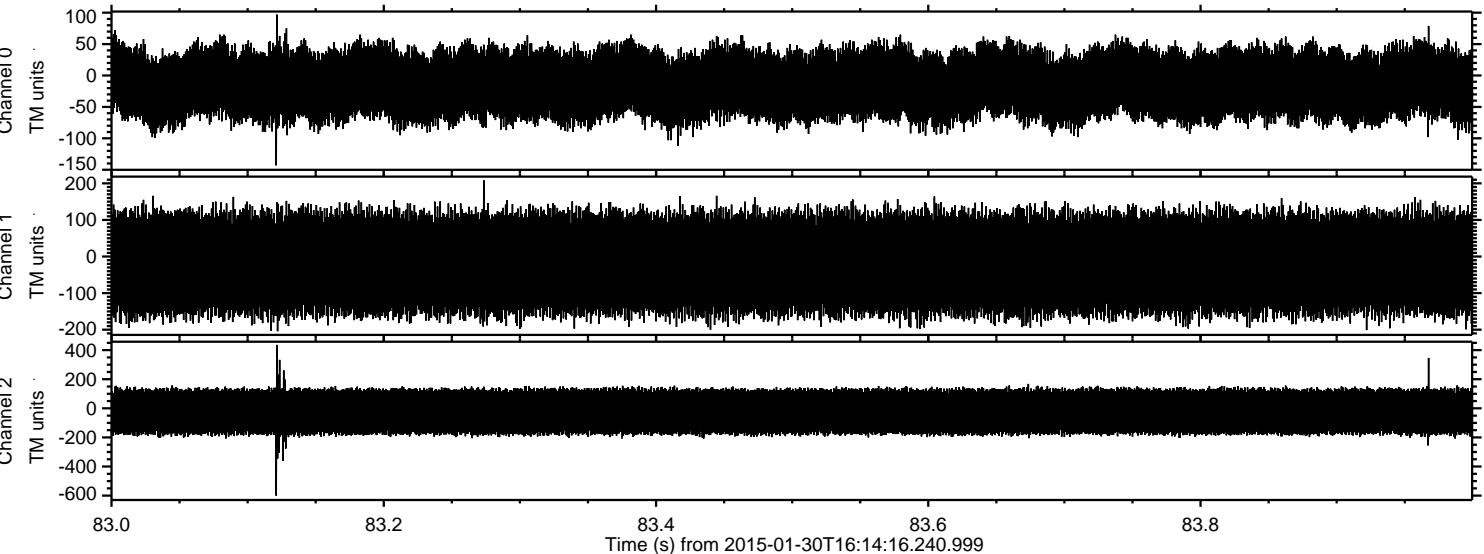
Channel 1
mn: -265
mx: 246
 μ : -19.8
 σ : 76.3

Channel 2
mn: -676
mx: 615
 μ : -22.9
 σ : 92.8

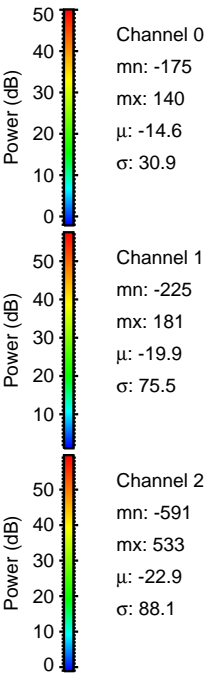
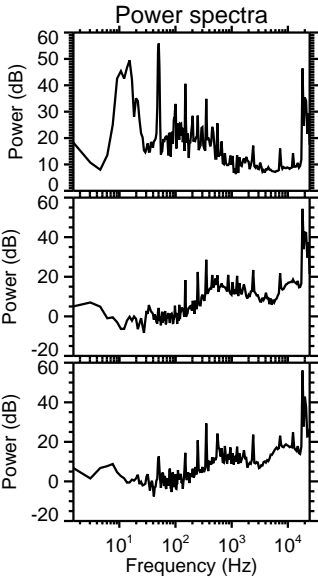
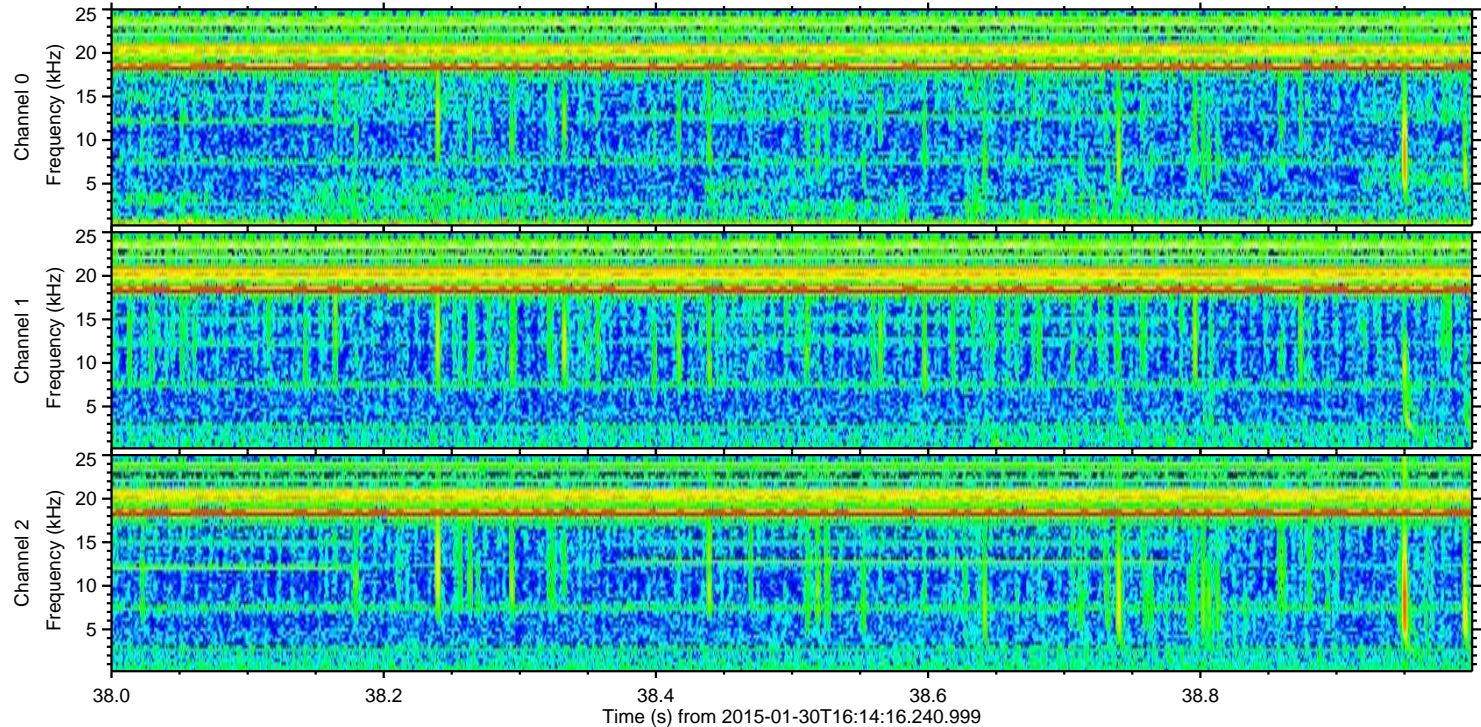
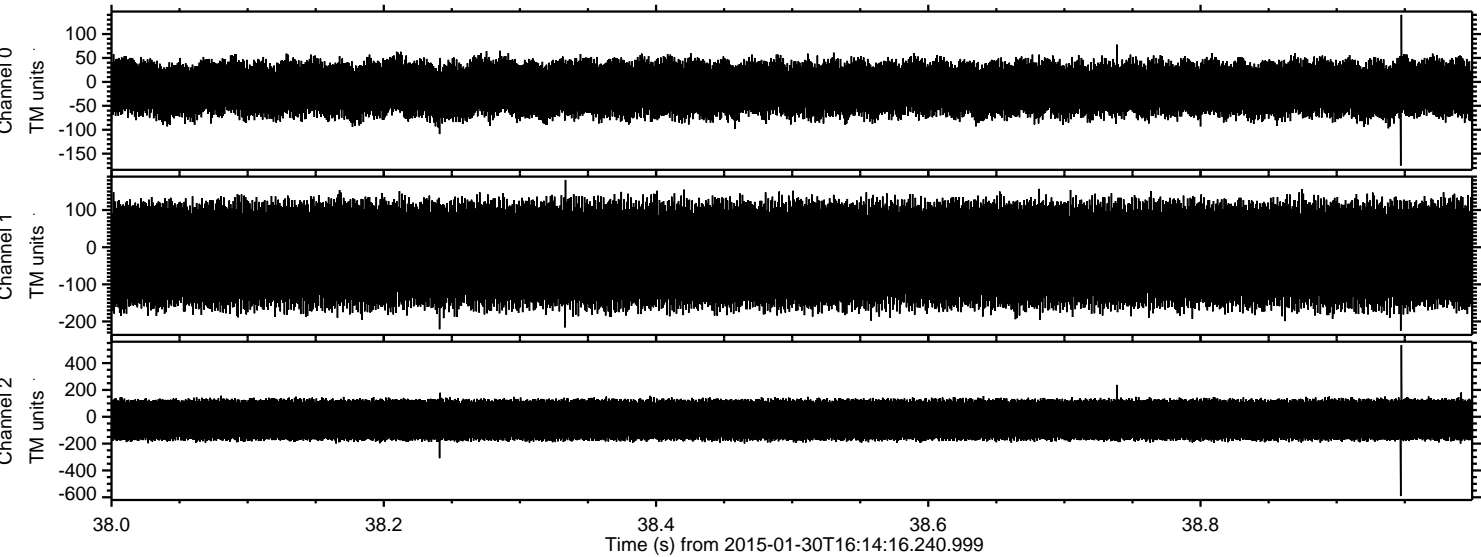
Processed Fri Feb 13 06:10:48 2015 by ELM ver.2012-10-06 from 001__elm20150130_161415__dat00.bin



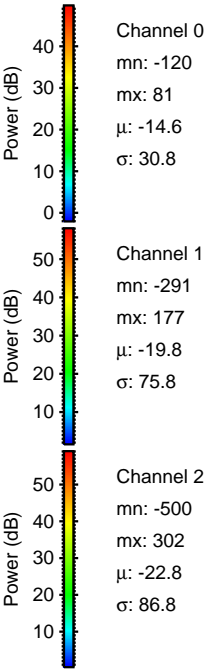
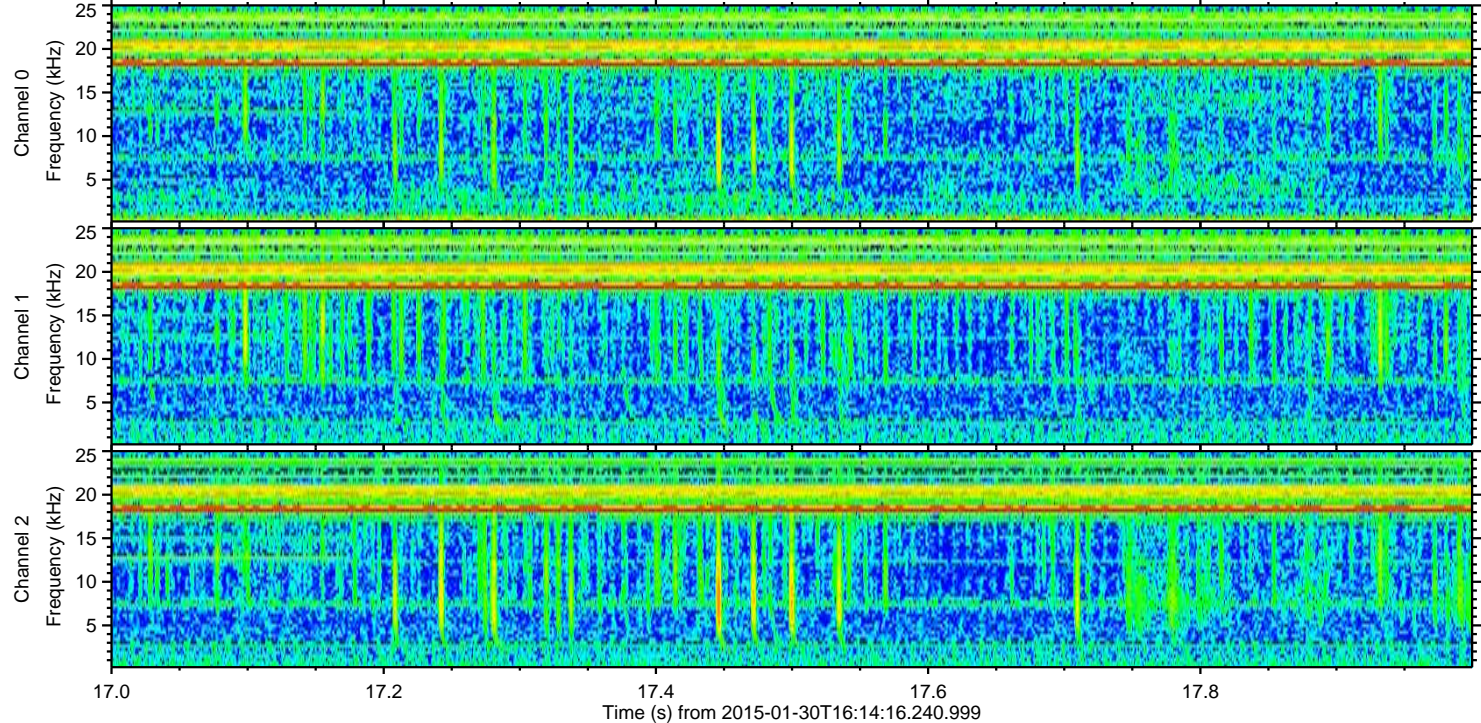
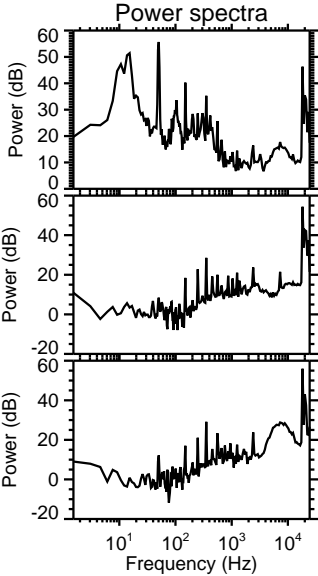
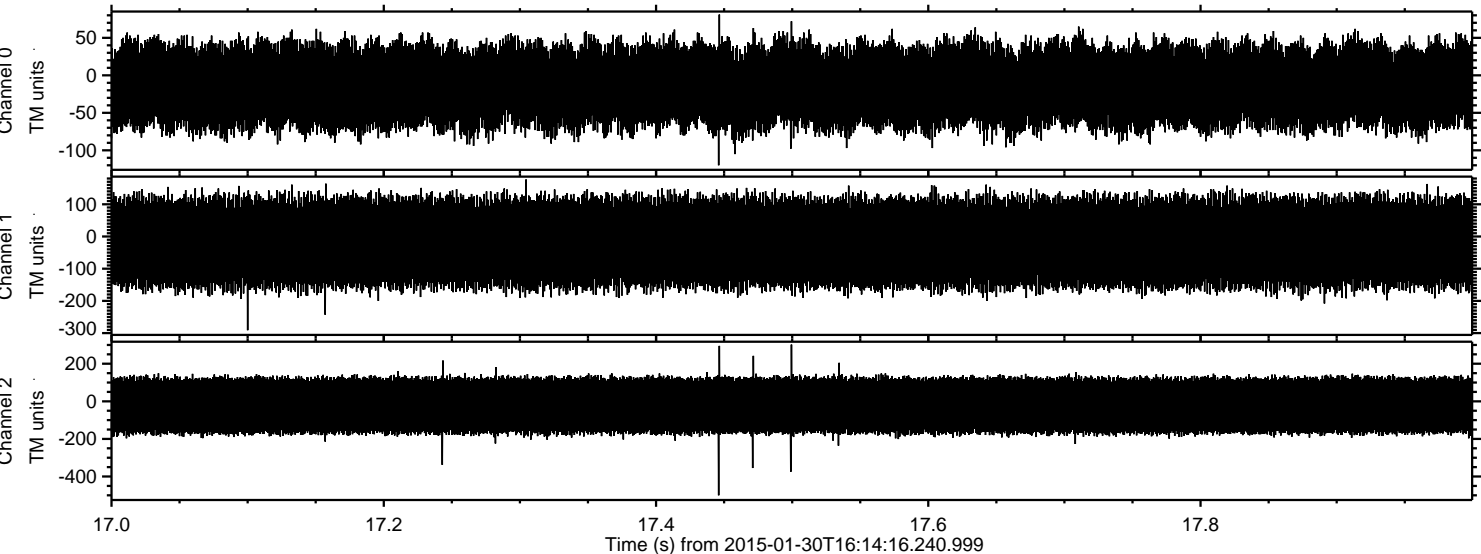
Processed Fri Feb 13 06:10:49 2015 by ELM ver.2012-10-06 from 001__elm20150130_161415__dat00.bin



Processed Fri Feb 13 06:10:50 2015 by ELM ver.2012-10-06 from 001__elm20150130_161415__dat00.bin



Processed Fri Feb 13 06:10:51 2015 by ELM ver.2012-10-06 from 001__elm20150130_161415__dat00.bin



Processed Fri Feb 13 06:10:52 2015 by ELM ver.2012-10-06 from 001__elm20150130_161415__dat00.bin

