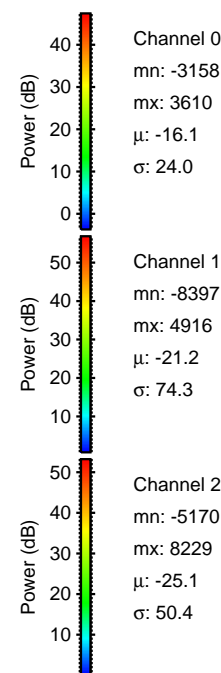
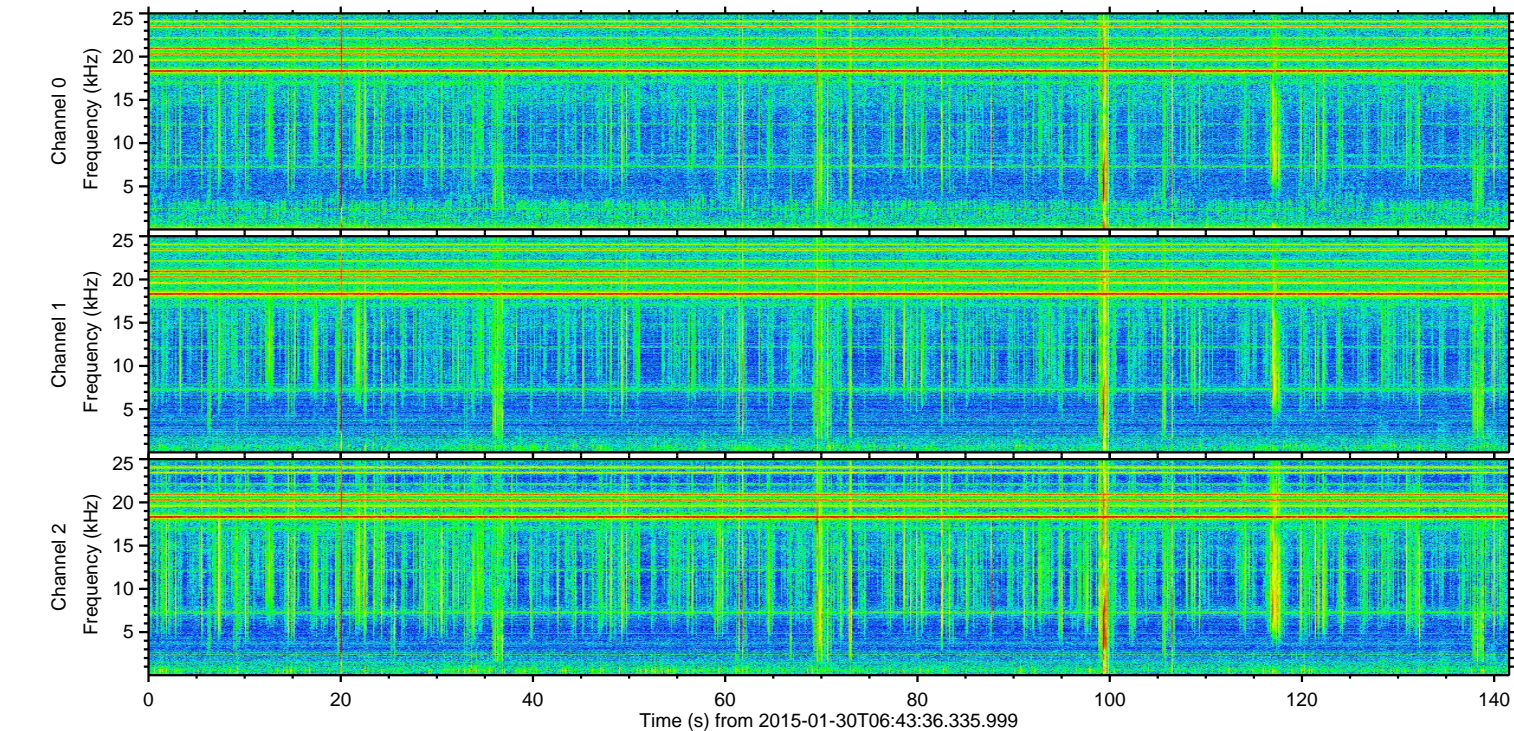
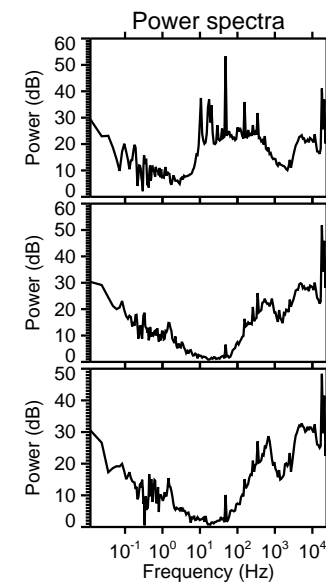
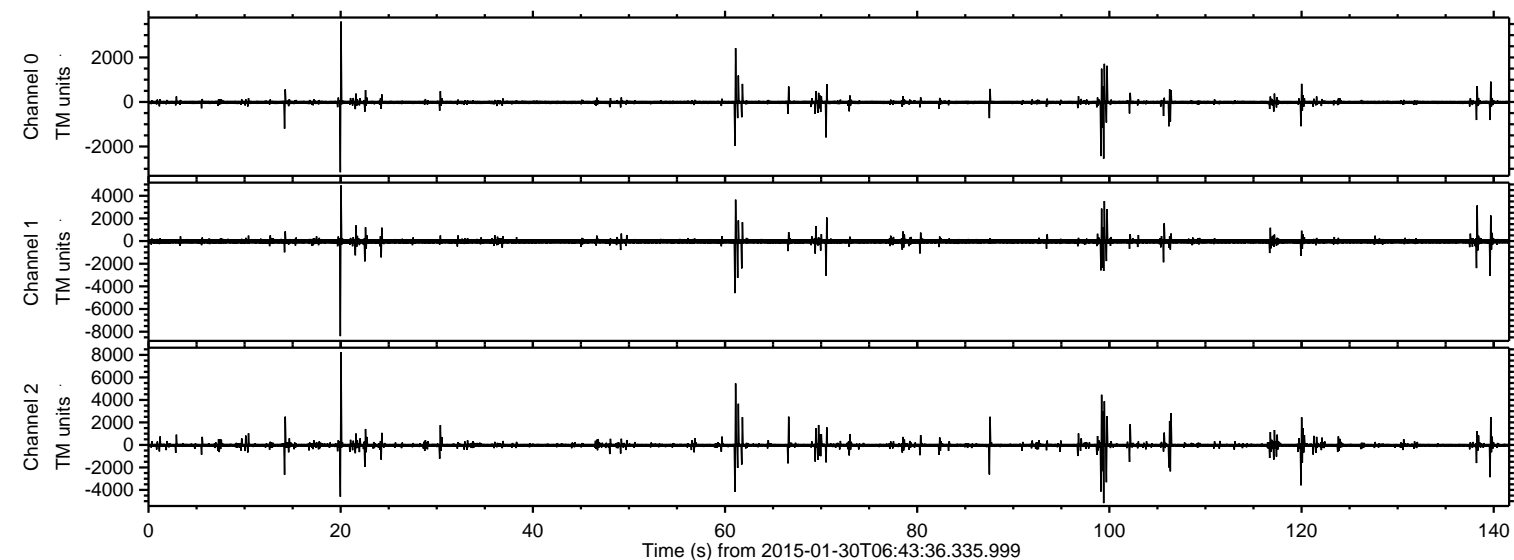
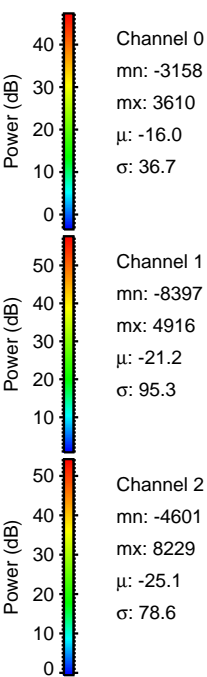
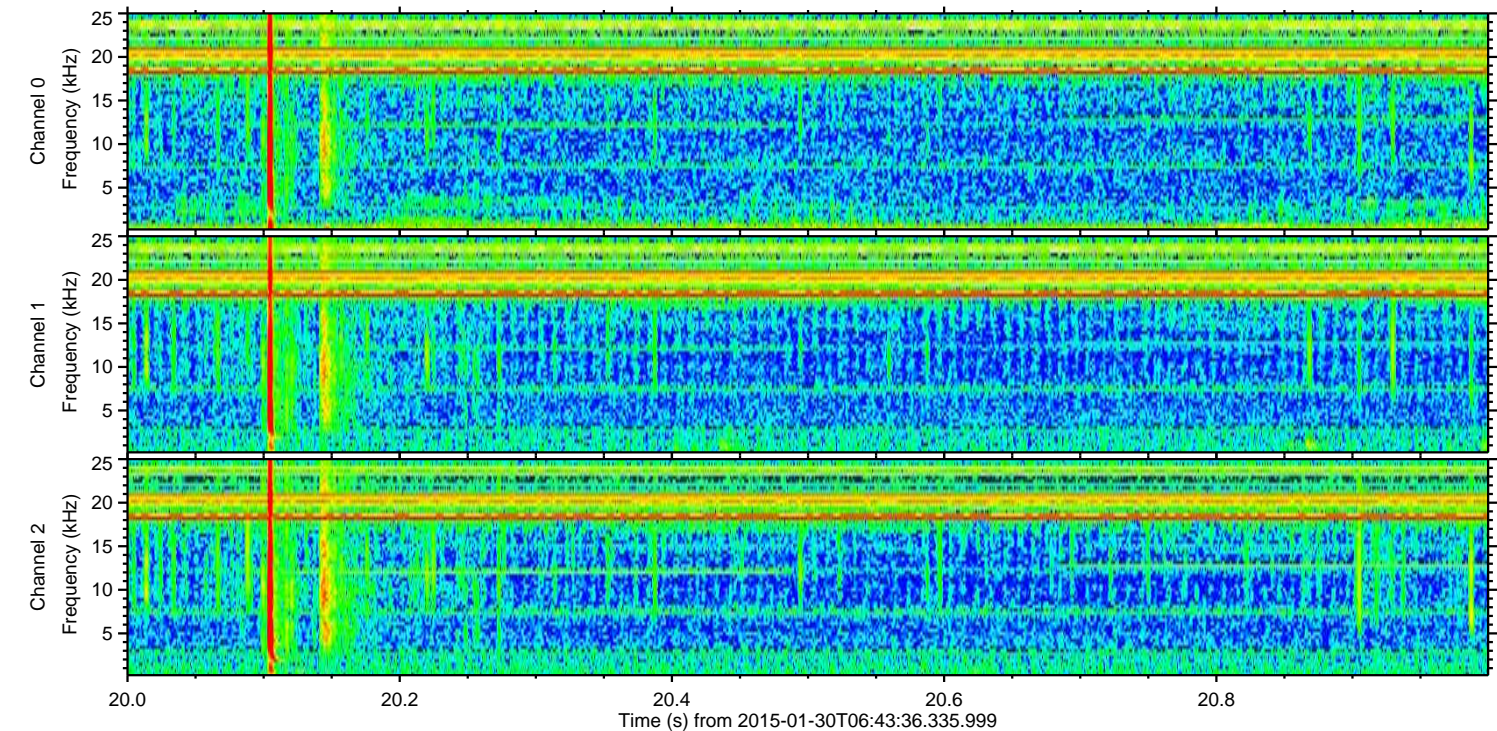
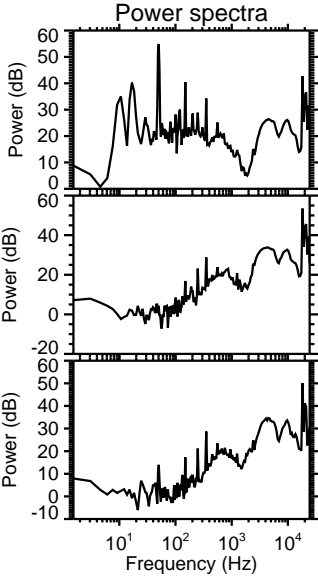
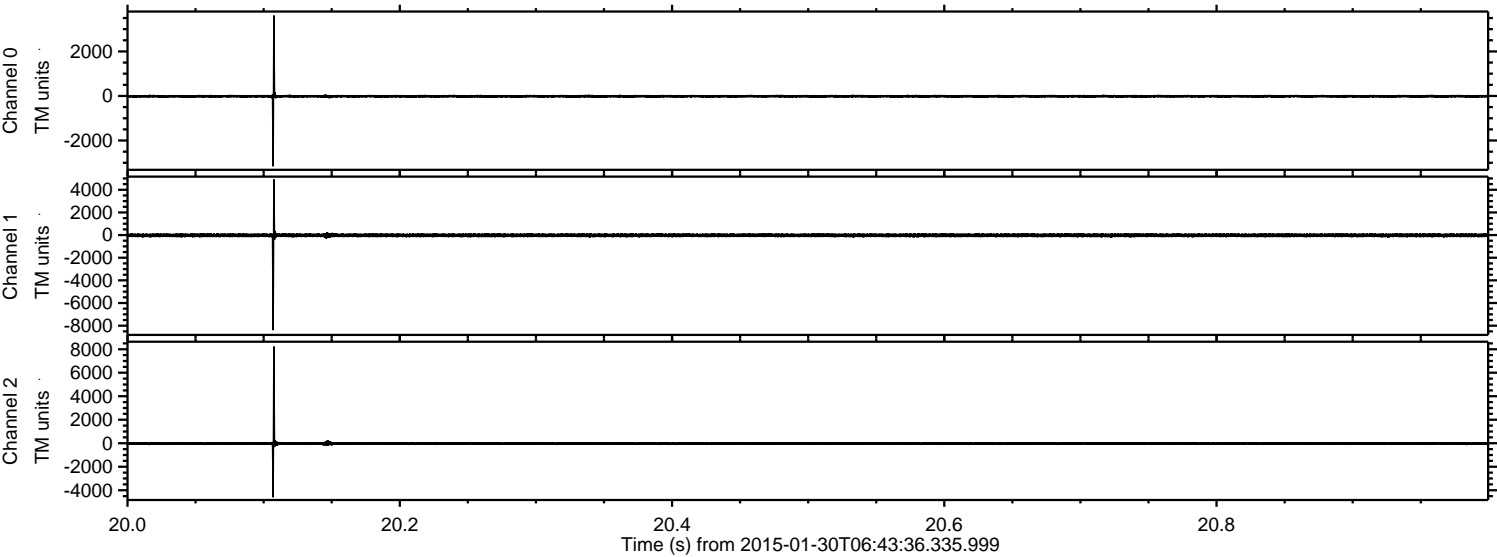


# ELMAVAN 3D WAVEFORMS (Measured data sampled at 50 kHz) 49169 packets of 144 samples from 2015-01-30T06:43:36.335.999.

Processed Thu Feb 12 16:04:20 2015 by ELM ver.2012-10-06 from 001\_\_elm20150130\_064335\_\_dat00.bin

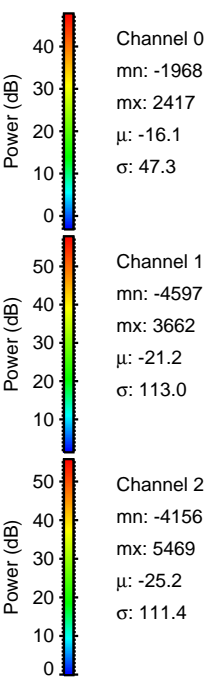
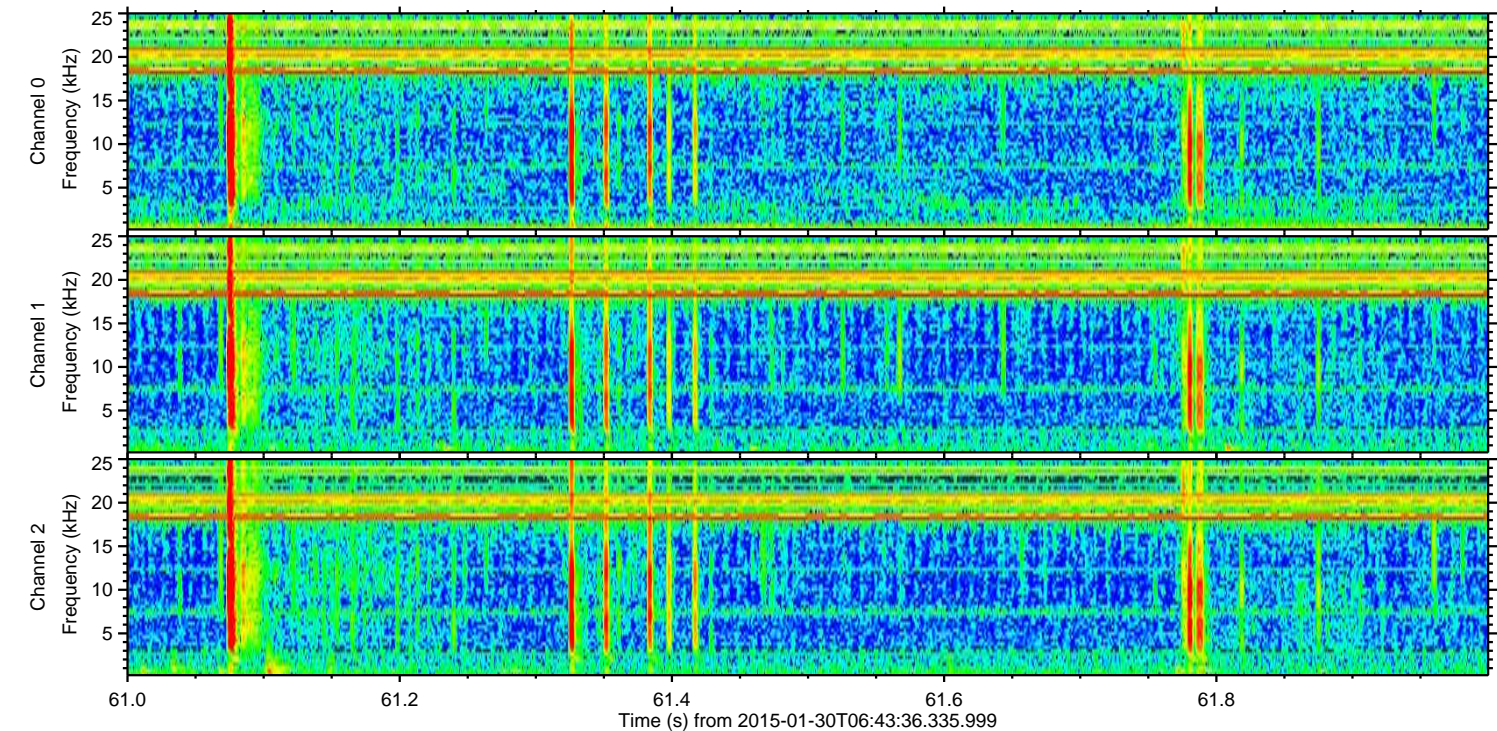
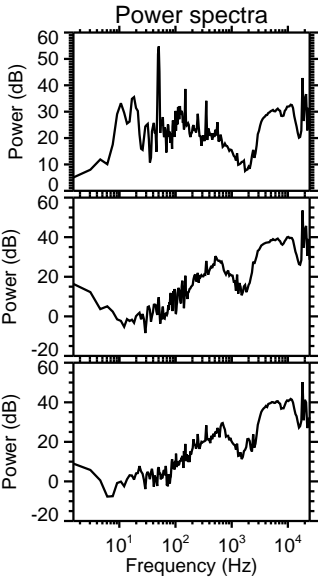
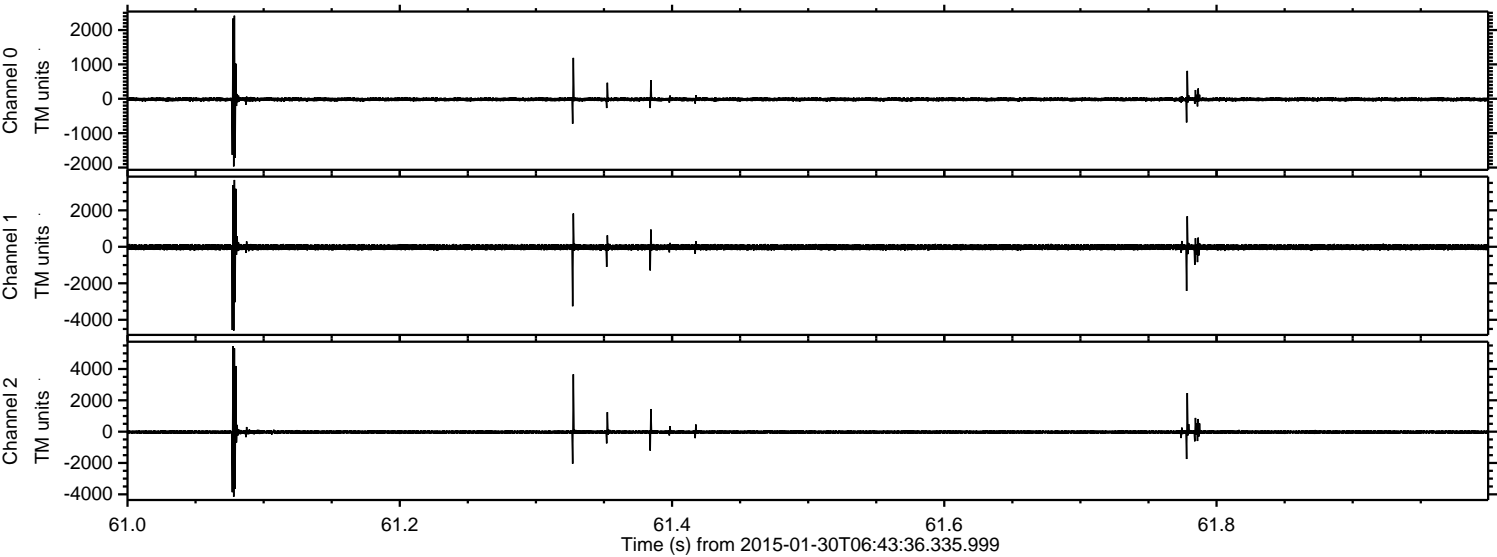


Processed Thu Feb 12 16:04:34 2015 by ELM ver.2012-10-06 from 001\_\_elm20150130\_064335\_\_dat00.bin



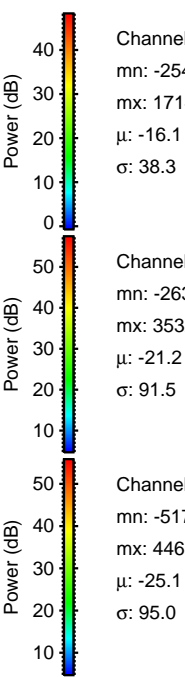
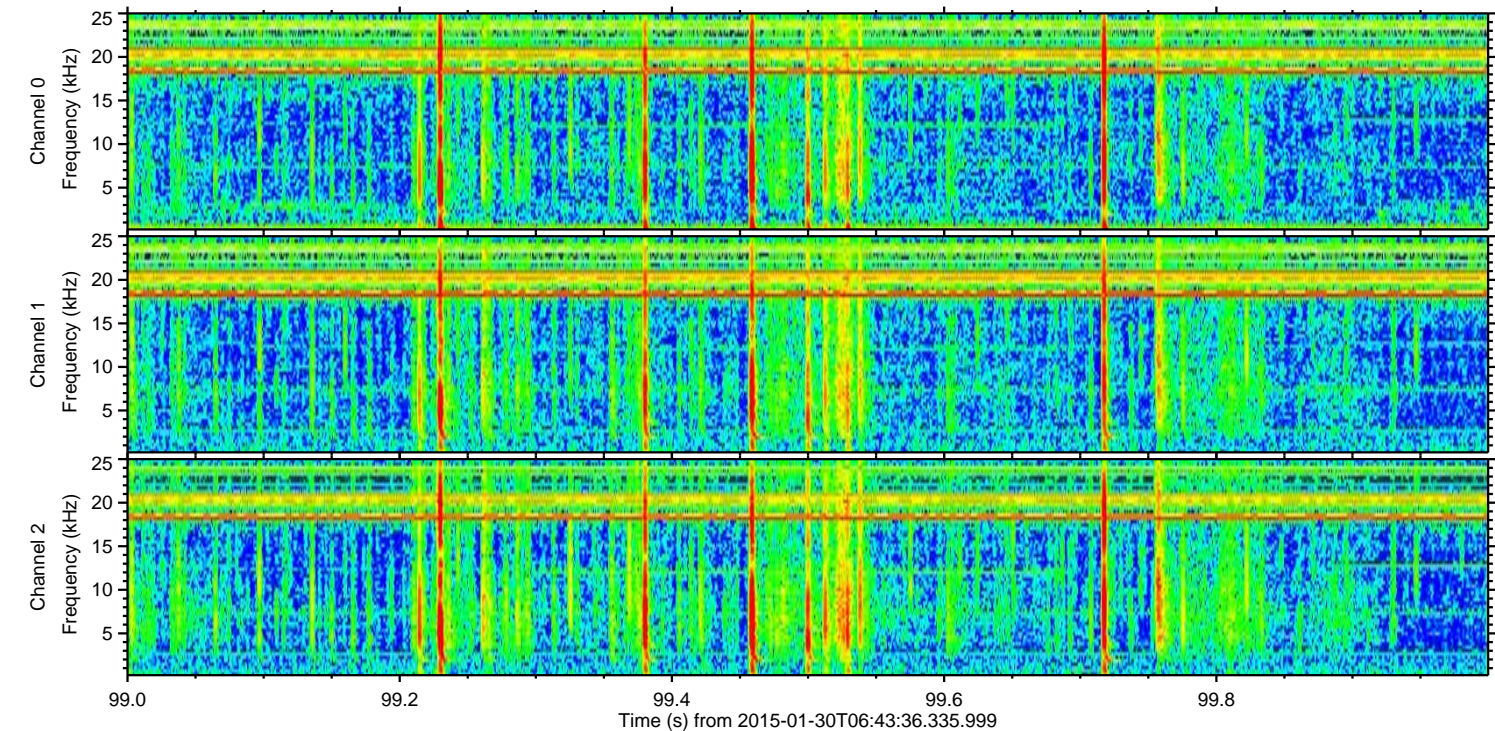
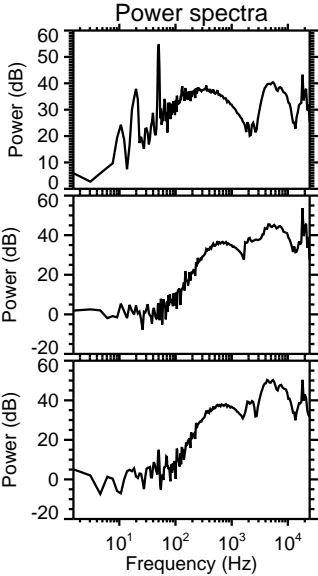
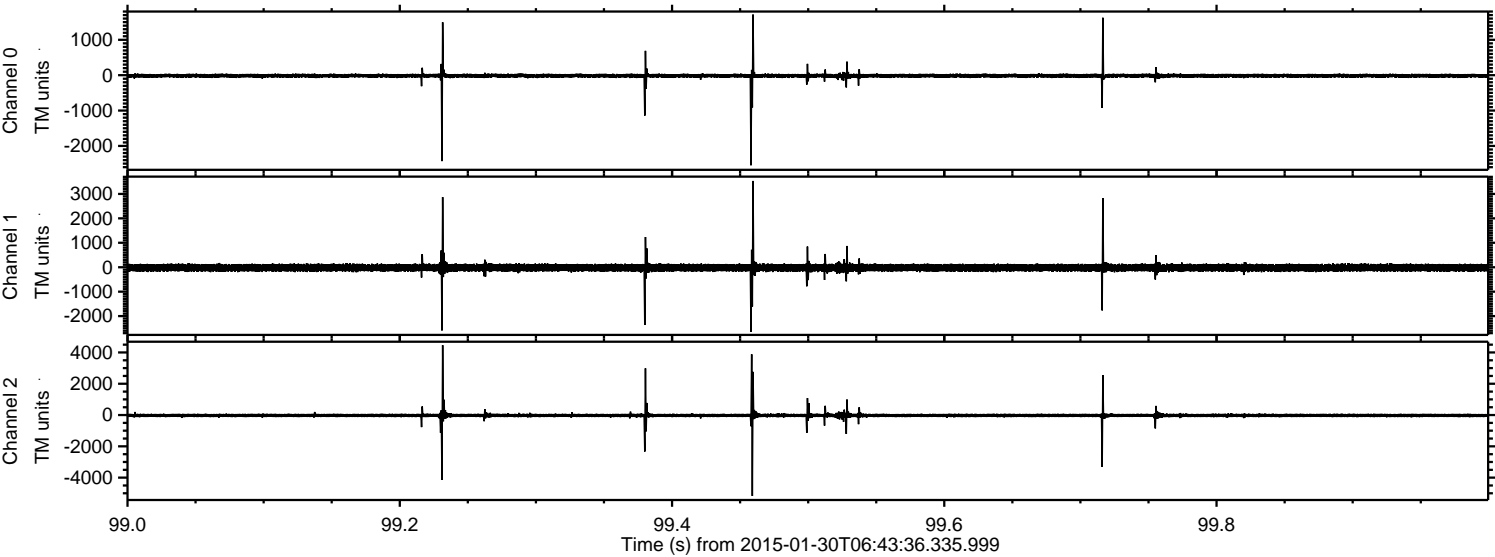
ELMAVAN 3D WAVEFORMS (Measured data sampled at 50 kHz) 49169 packets of 144 samples from 2015-01-30T06:43:36.335.999. Part 62/142

Processed Thu Feb 12 16:04:35 2015 by ELM ver.2012-10-06 from 001\_\_elm20150130\_064335\_\_dat00.bin



ELMAVAN 3D WAVEFORMS (Measured data sampled at 50 kHz) 49169 packets of 144 samples from 2015-01-30T06:43:36.335.999. Part 100/142

Processed Thu Feb 12 16:04:36 2015 by ELM ver.2012-10-06 from 001\_\_elm20150130\_064335\_\_dat00.bin



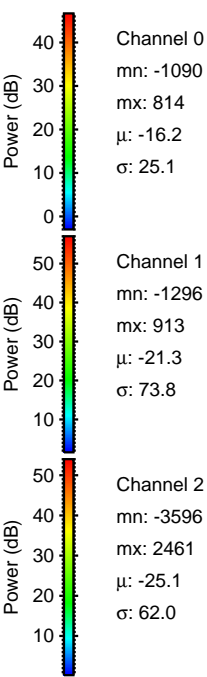
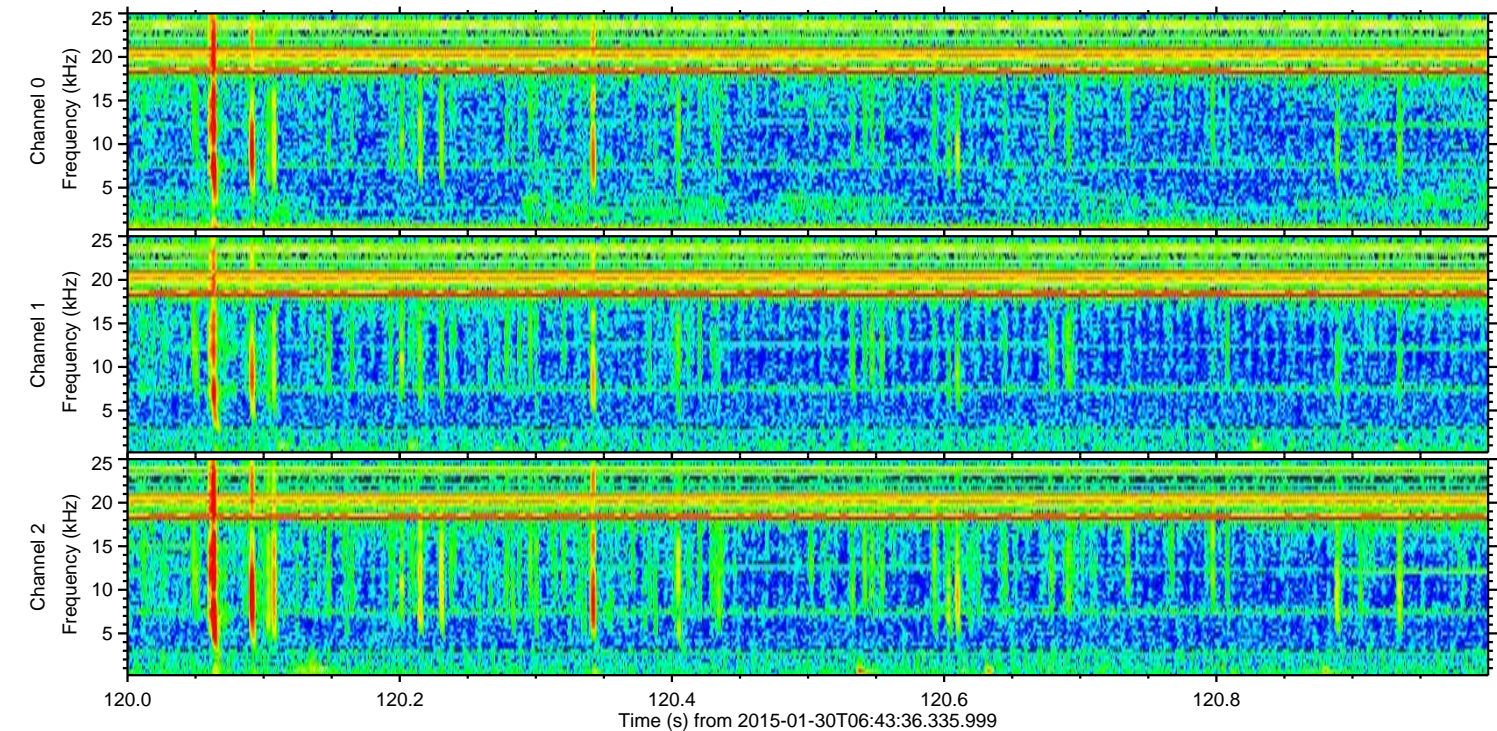
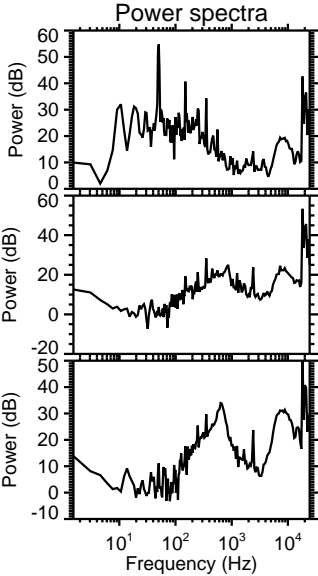
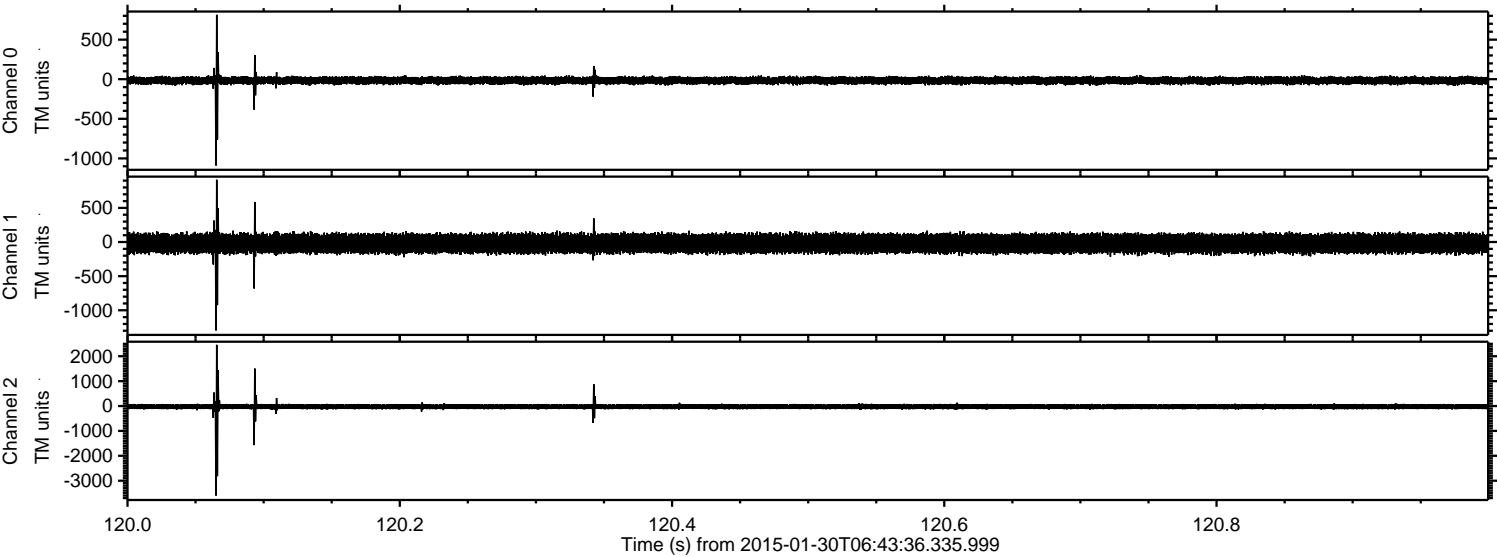
Channel 0  
mn: -2547  
mx: 1714  
 $\mu$ : -16.1  
 $\sigma$ : 38.3

Channel 1  
mn: -2639  
mx: 3532  
 $\mu$ : -21.2  
 $\sigma$ : 91.5

Channel 2  
mn: -5170  
mx: 4463  
 $\mu$ : -25.1  
 $\sigma$ : 95.0

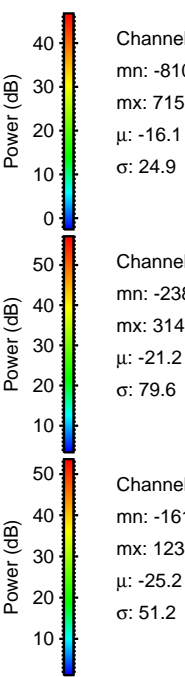
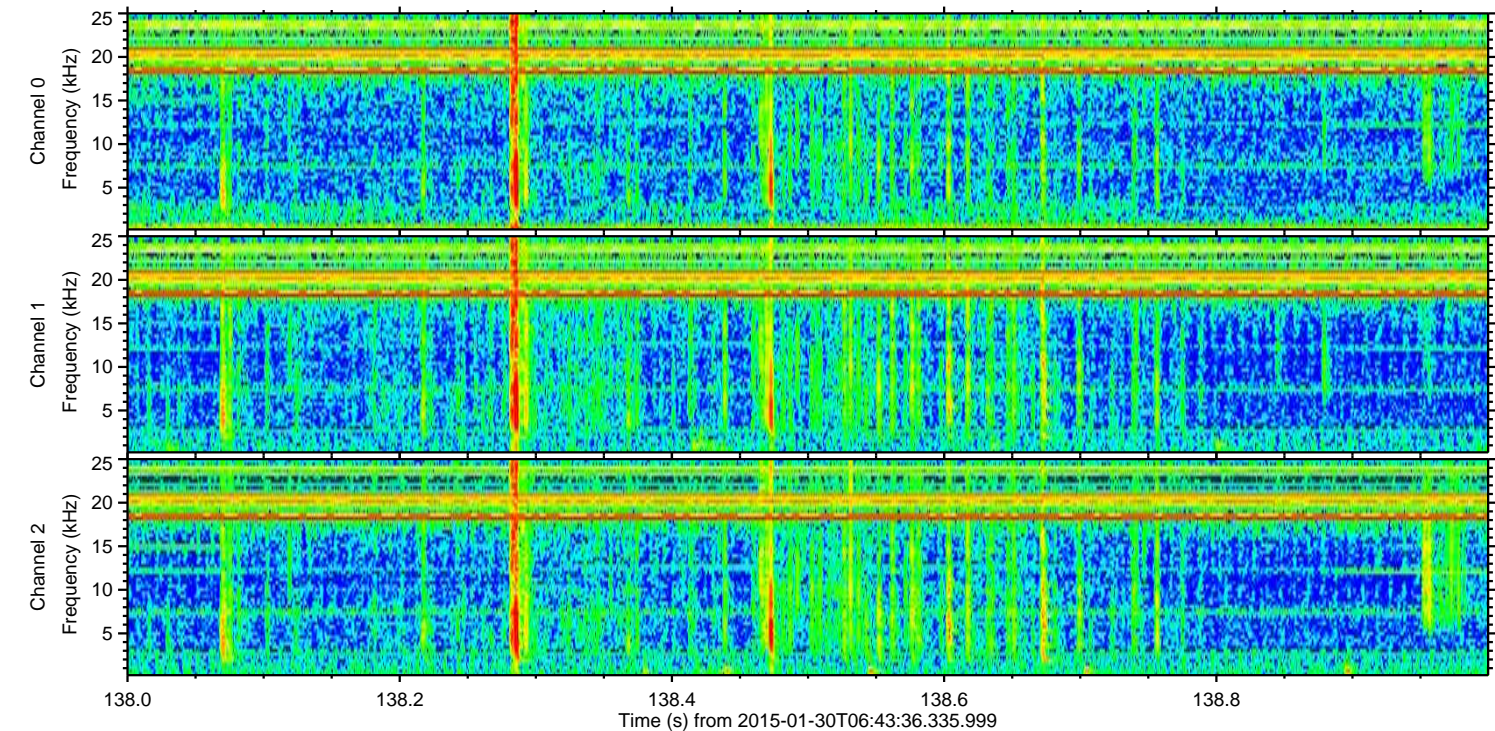
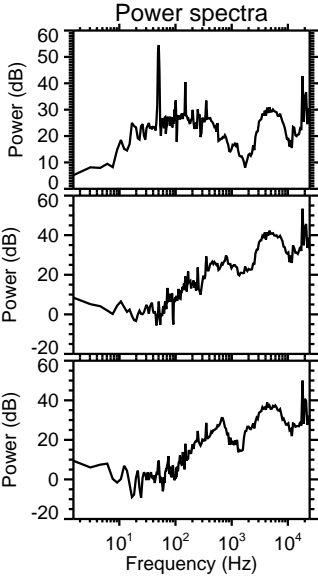
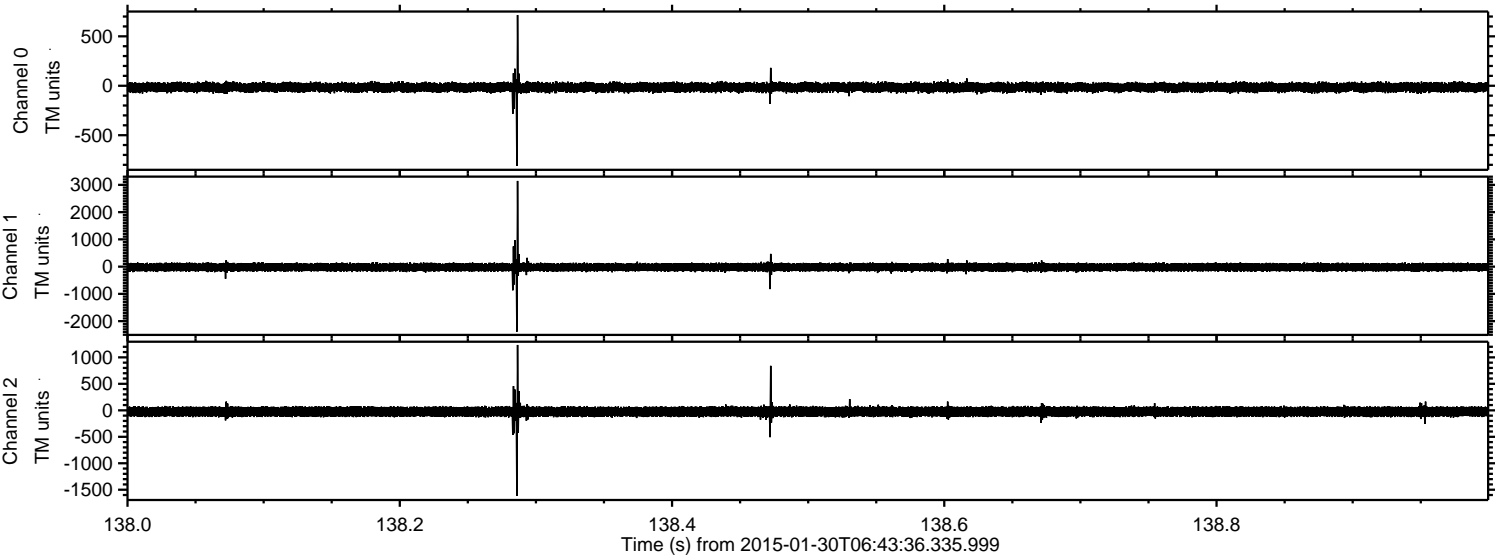
ELMAVAN 3D WAVEFORMS (Measured data sampled at 50 kHz) 49169 packets of 144 samples from 2015-01-30T06:43:36.335.999. Part 121/142

Processed Thu Feb 12 16:04:37 2015 by ELM ver.2012-10-06 from 001\_\_elm20150130\_064335\_\_dat00.bin



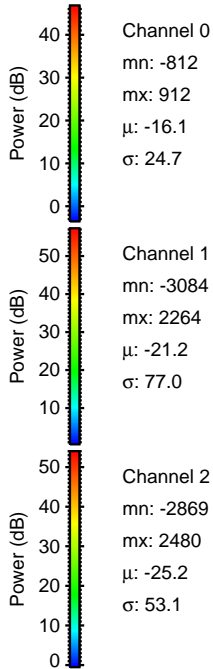
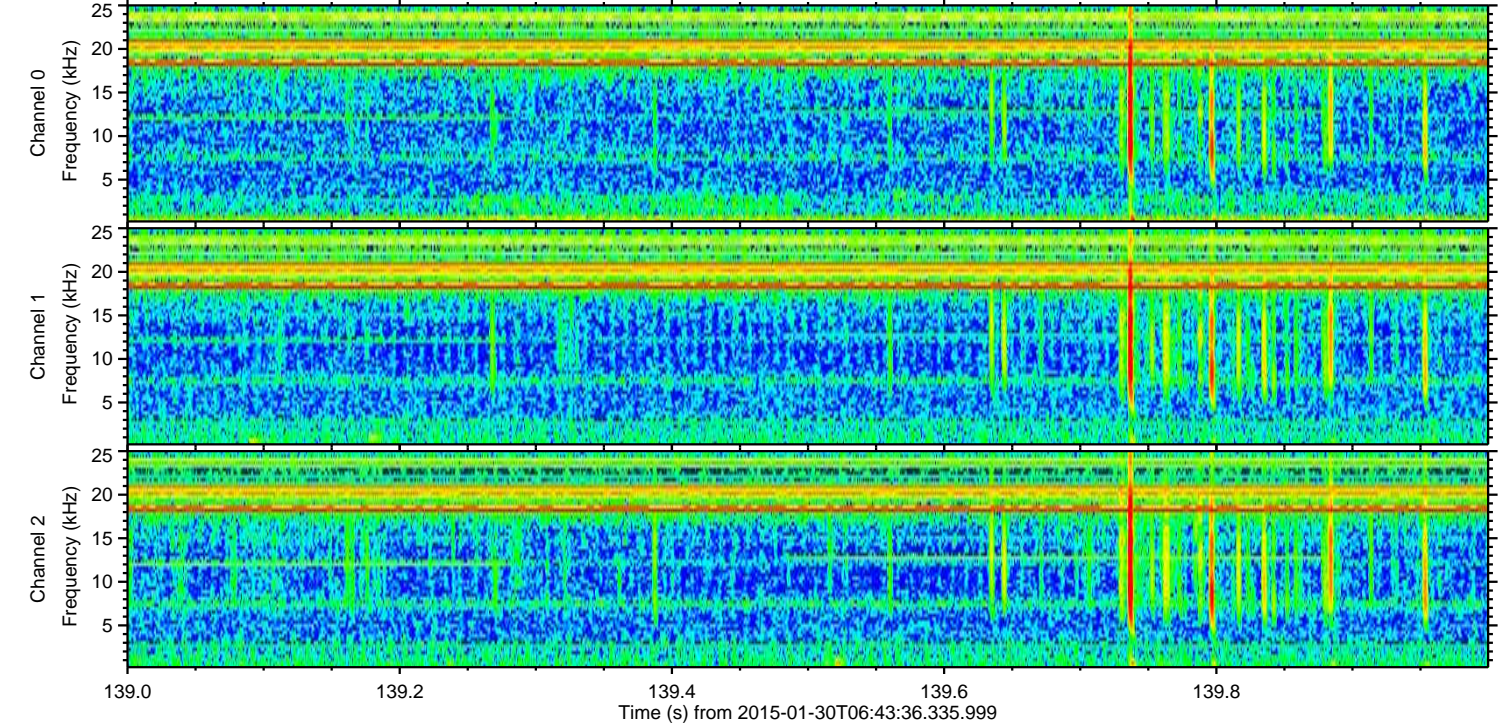
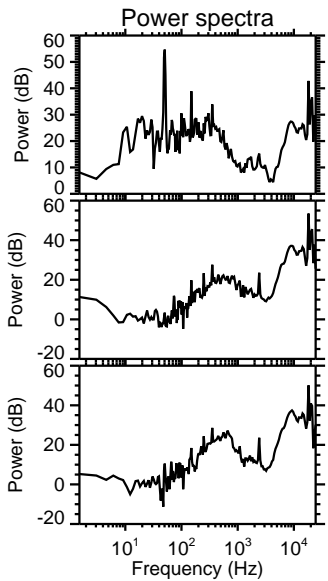
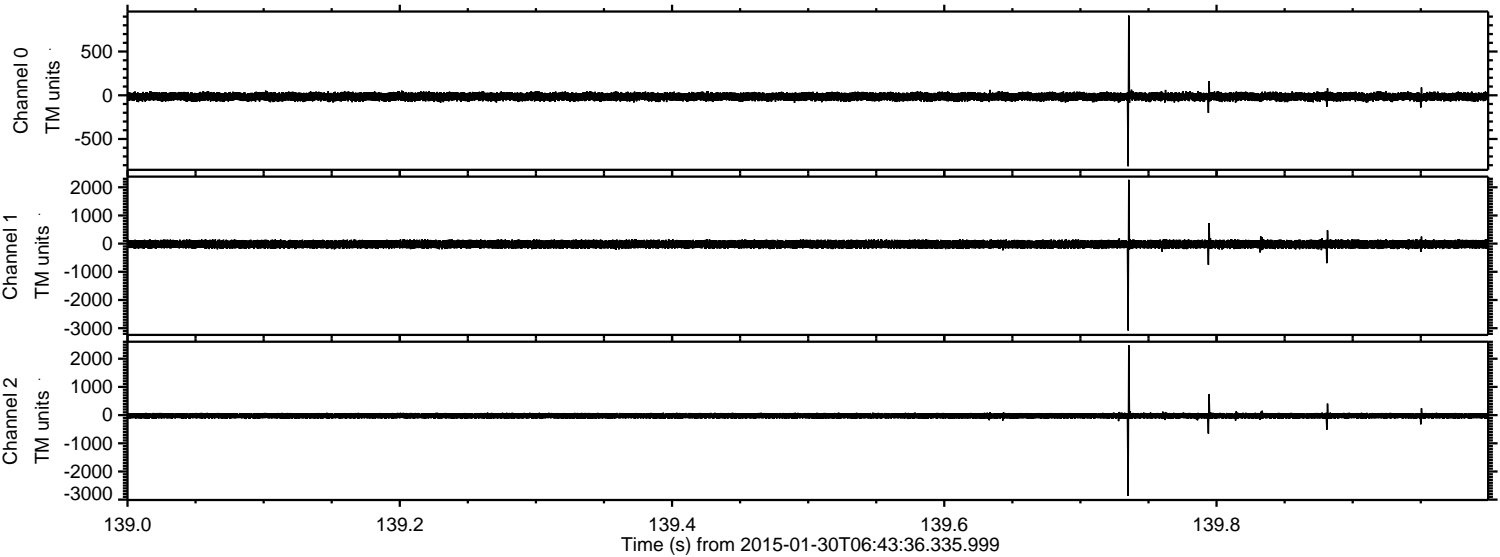
ELMAVAN 3D WAVEFORMS (Measured data sampled at 50 kHz) 49169 packets of 144 samples from 2015-01-30T06:43:36.335.999. Part 139/142

Processed Thu Feb 12 16:04:38 2015 by ELM ver.2012-10-06 from 001\_\_elm20150130\_064335\_\_dat00.bin



ELMAVAN 3D WAVEFORMS (Measured data sampled at 50 kHz) 49169 packets of 144 samples from 2015-01-30T06:43:36.335.999. Part 140/142

Processed Thu Feb 12 16:04:40 2015 by ELM ver.2012-10-06 from 001\_\_elm20150130\_064335\_\_dat00.bin



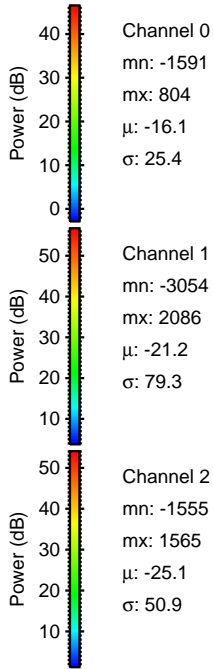
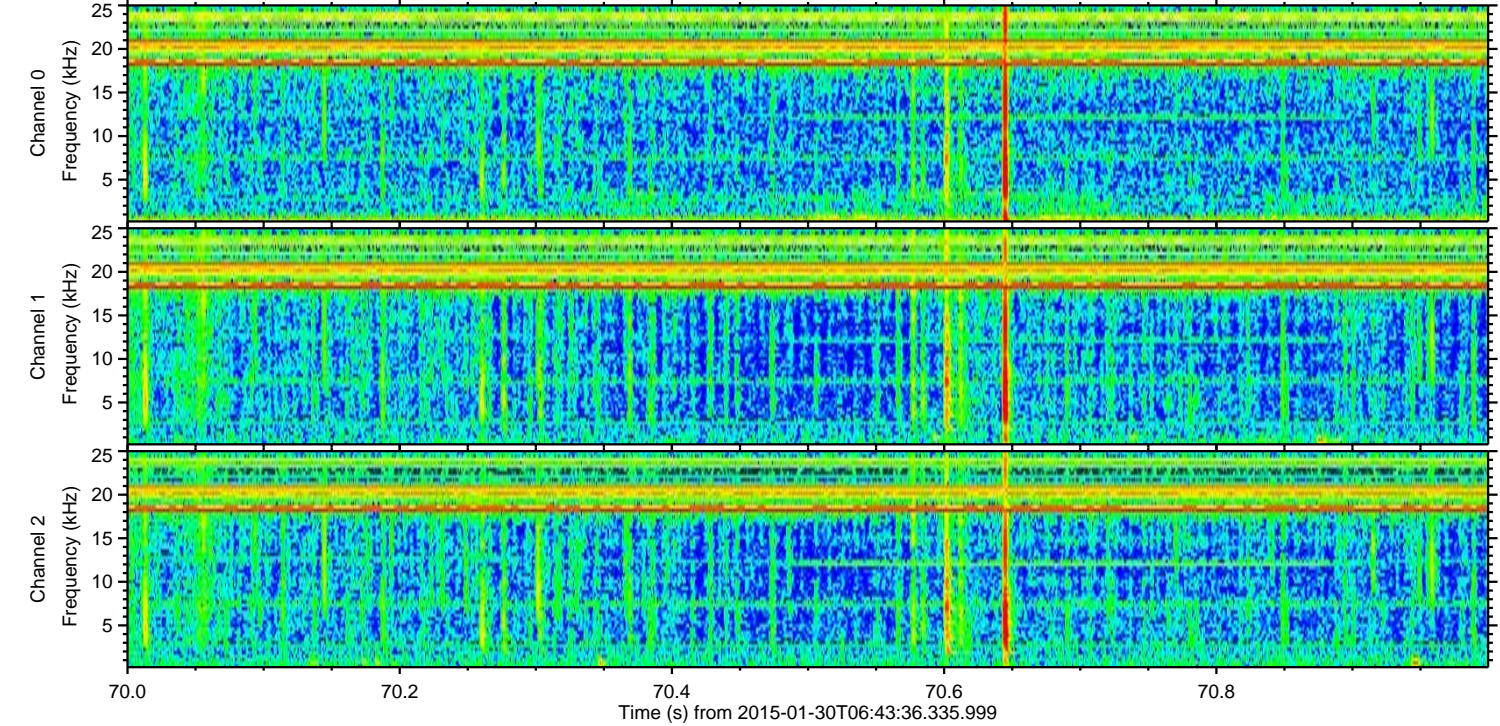
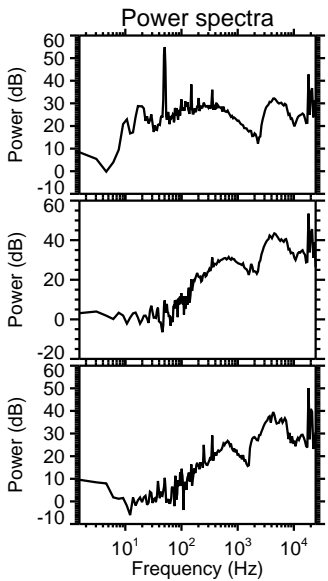
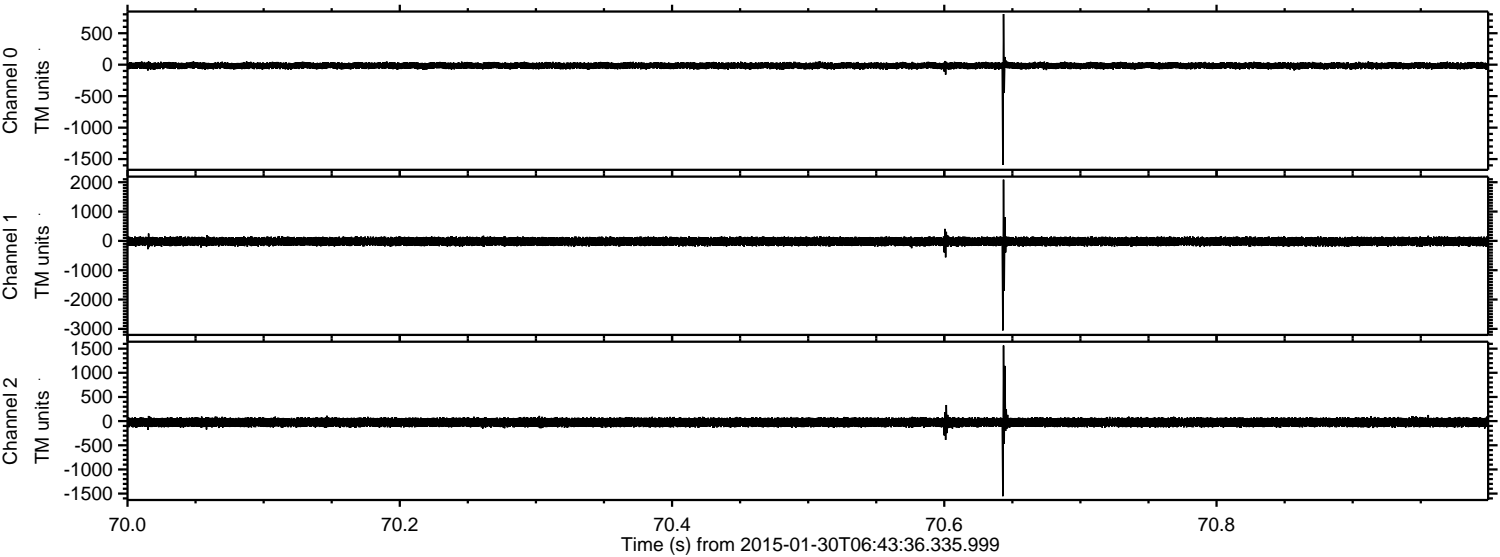
Channel 0  
mn: -812  
mx: 912  
 $\mu$ : -16.1  
 $\sigma$ : 24.7

Channel 1  
mn: -3084  
mx: 2264  
 $\mu$ : -21.2  
 $\sigma$ : 77.0

Channel 2  
mn: -2869  
mx: 2480  
 $\mu$ : -25.2  
 $\sigma$ : 53.1

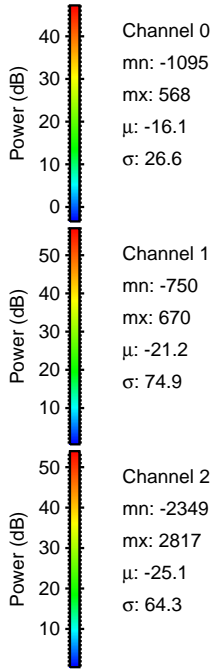
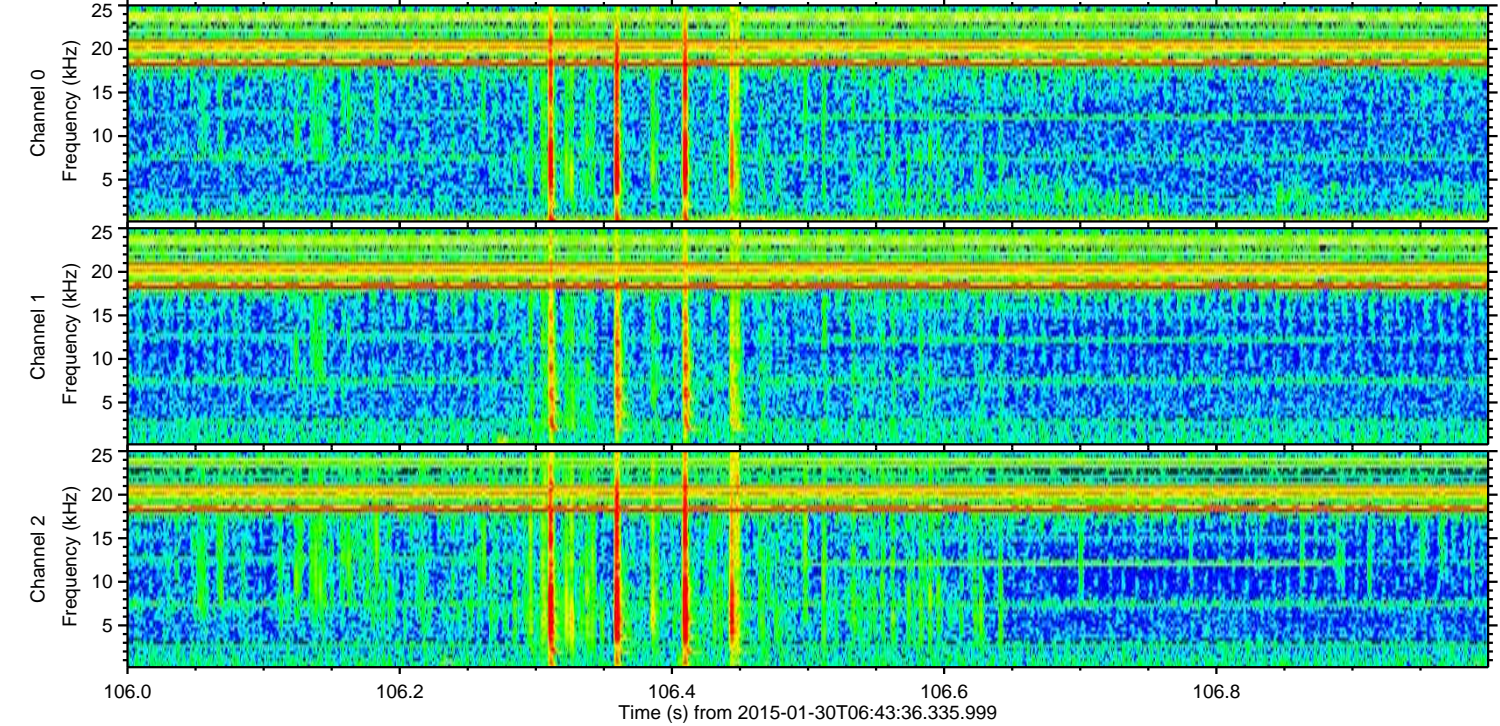
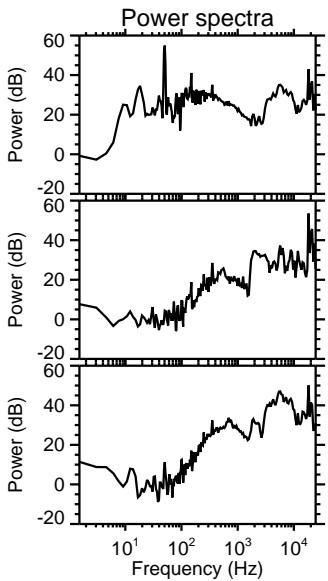
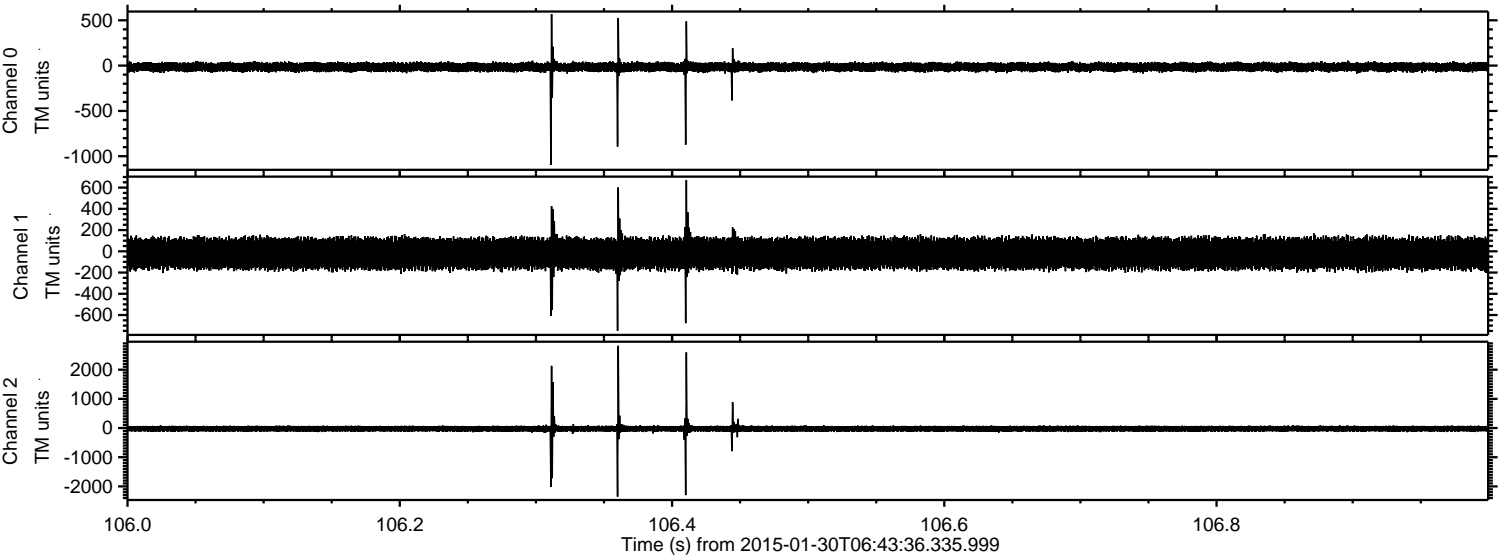
ELMAVAN 3D WAVEFORMS (Measured data sampled at 50 kHz) 49169 packets of 144 samples from 2015-01-30T06:43:36.335.999. Part 71/142

Processed Thu Feb 12 16:04:41 2015 by ELM ver.2012-10-06 from 001\_\_elm20150130\_064335\_\_dat00.bin

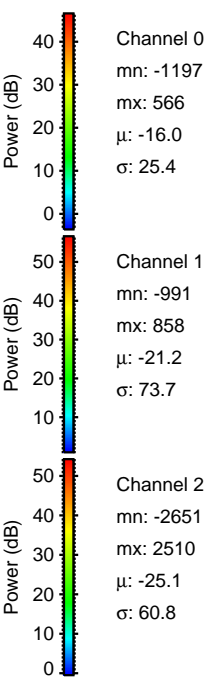
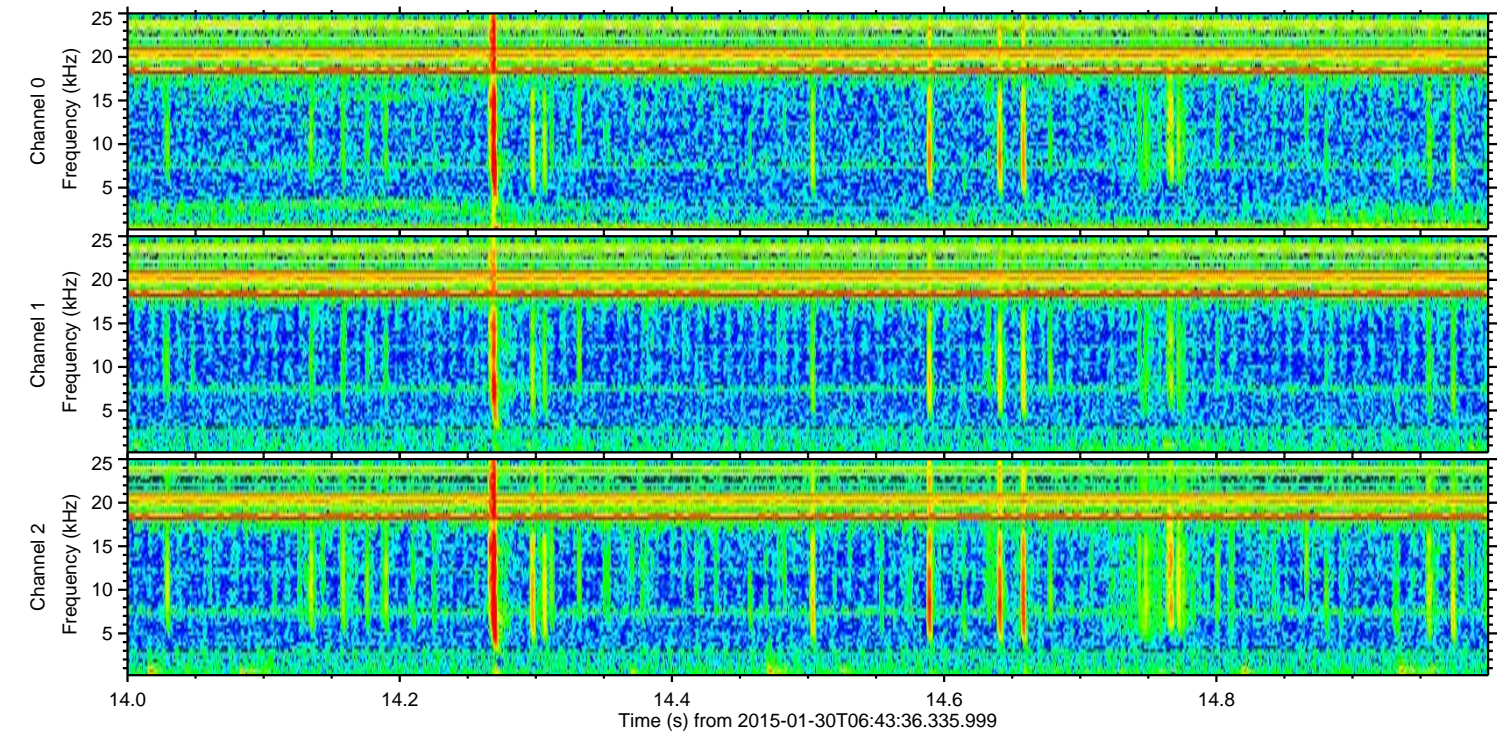
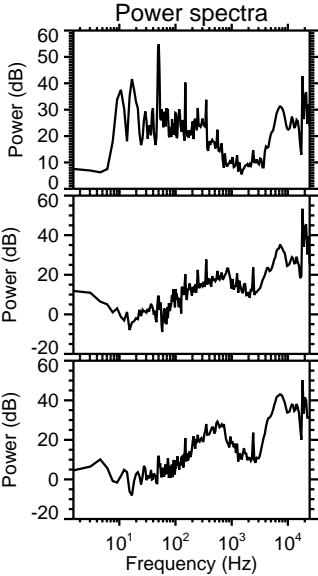
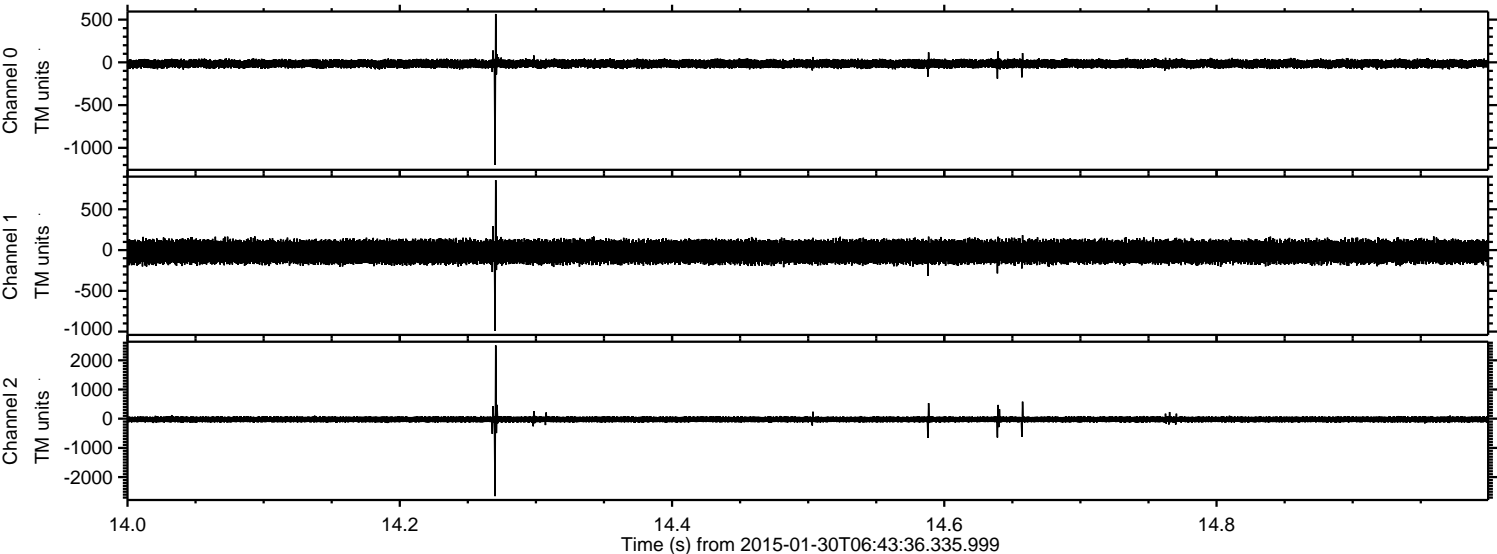


ELMAVAN 3D WAVEFORMS (Measured data sampled at 50 kHz) 49169 packets of 144 samples from 2015-01-30T06:43:36.335.999. Part 107/142

Processed Thu Feb 12 16:04:42 2015 by ELM ver.2012-10-06 from 001\_\_elm20150130\_064335\_\_dat00.bin



Processed Thu Feb 12 16:04:43 2015 by ELM ver.2012-10-06 from 001\_\_elm20150130\_064335\_\_dat00.bin



Processed Thu Feb 12 16:04:44 2015 by ELM ver.2012-10-06 from 001\_\_elm20150130\_064335\_\_dat00.bin

