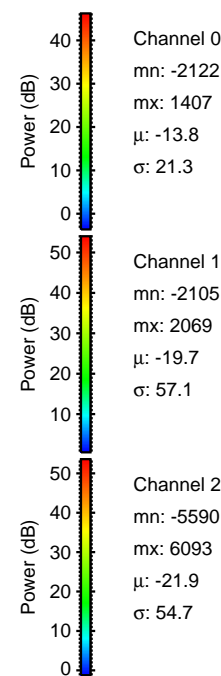
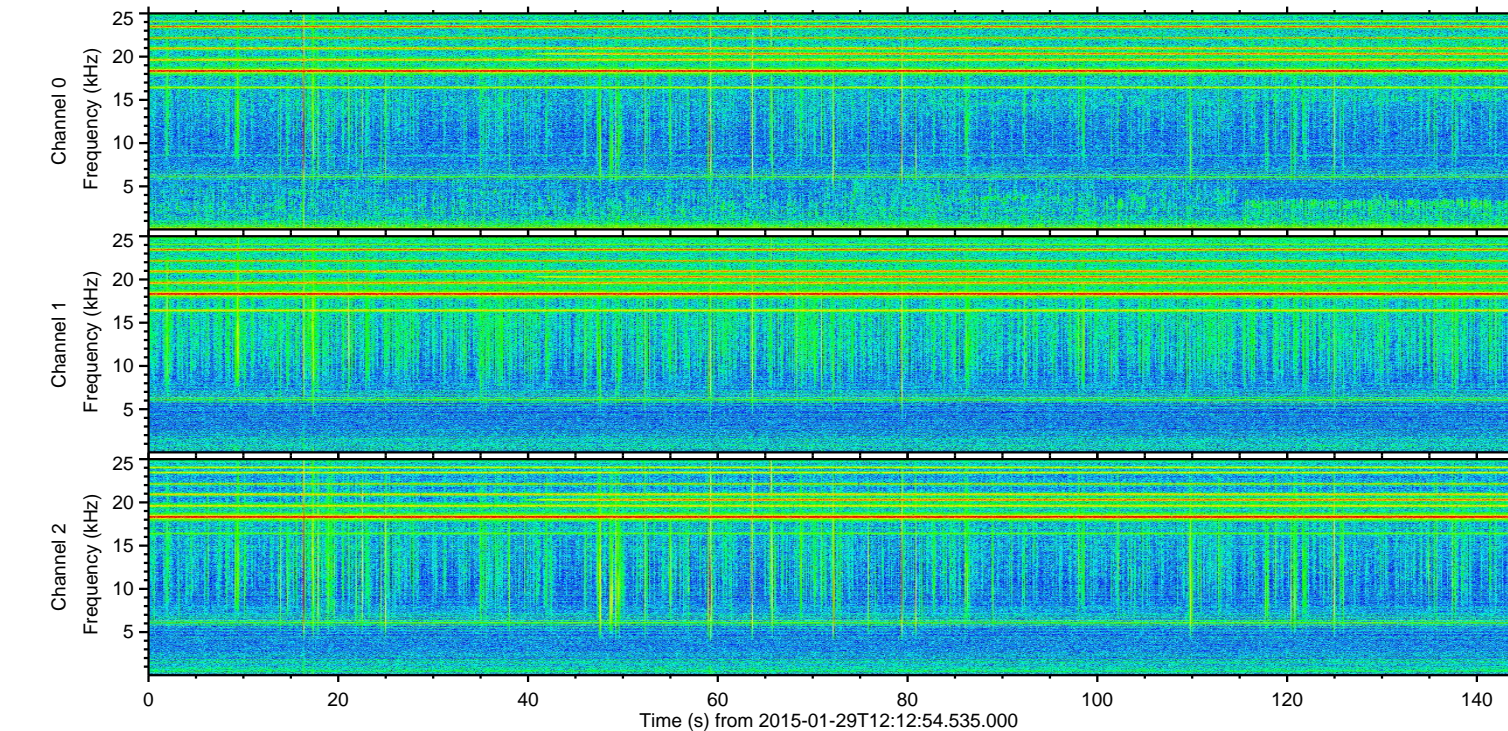
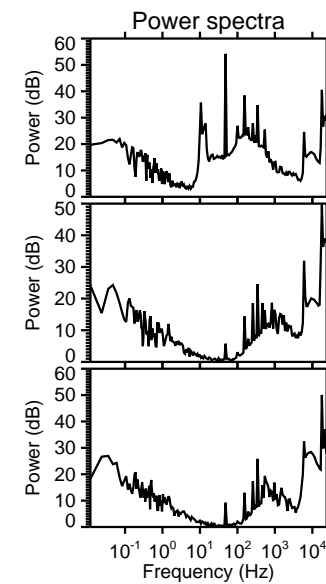
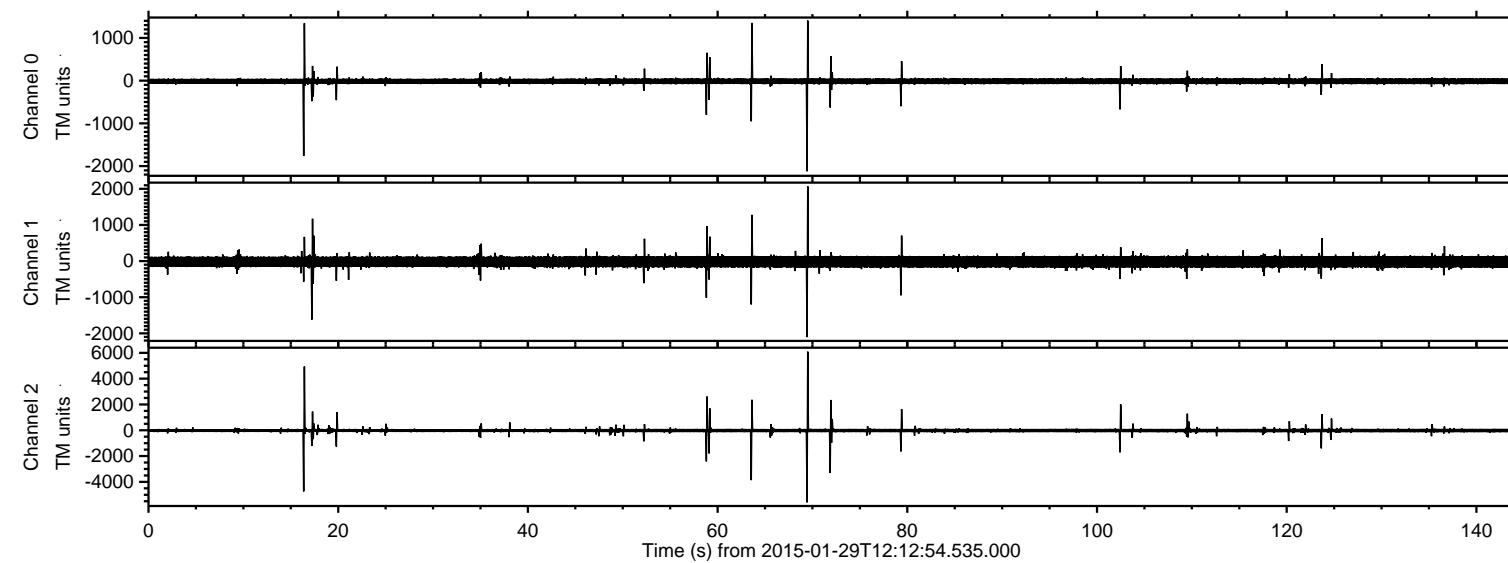


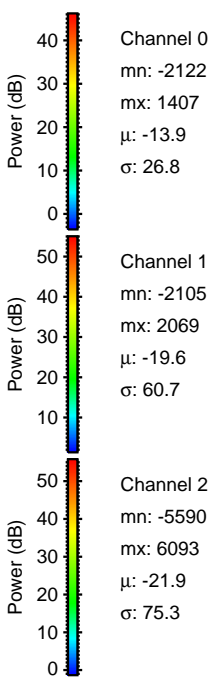
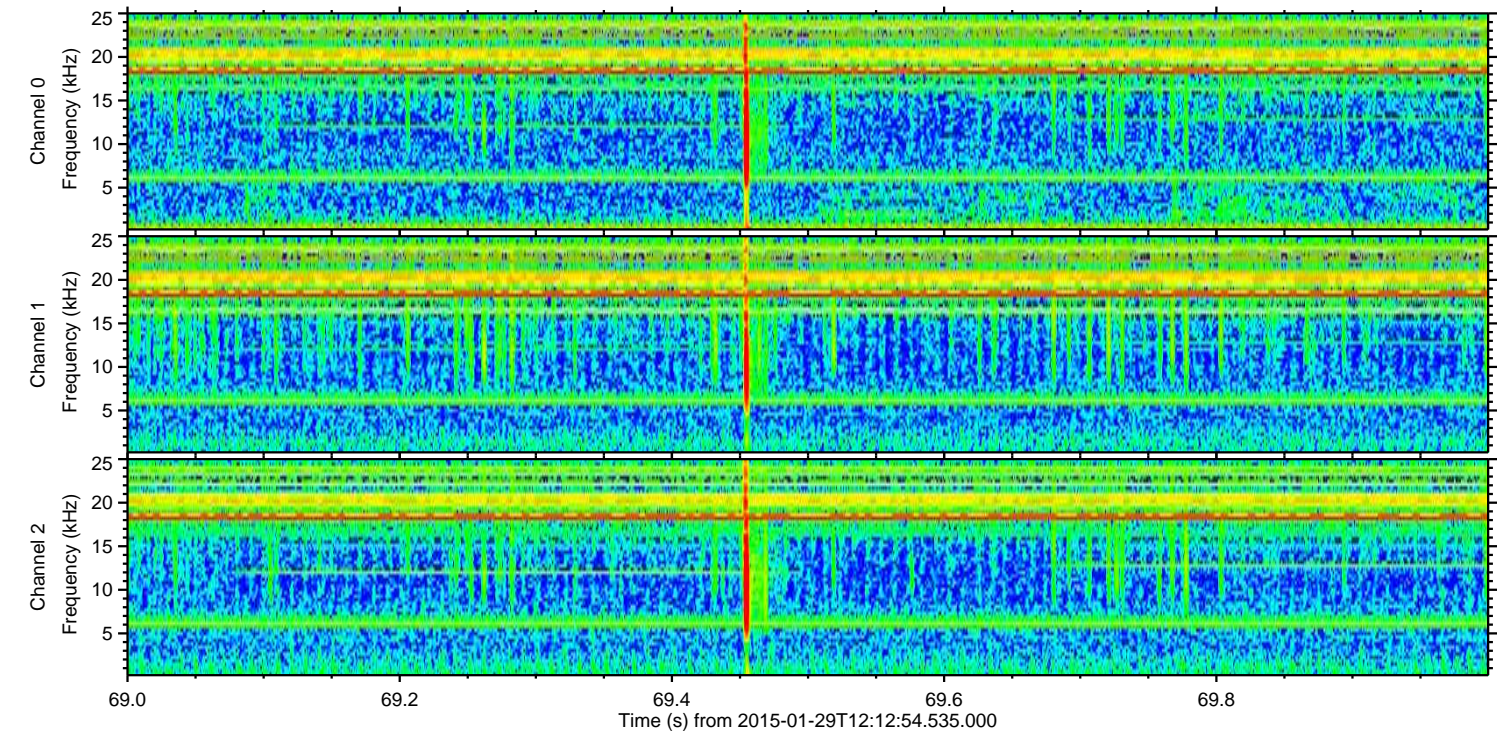
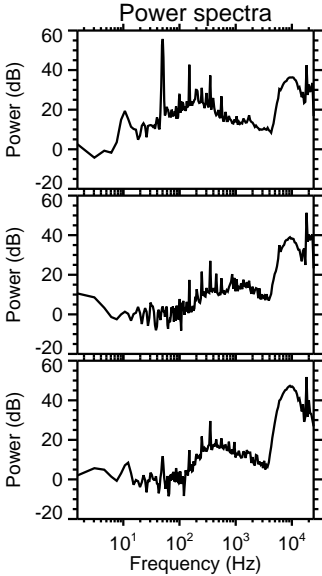
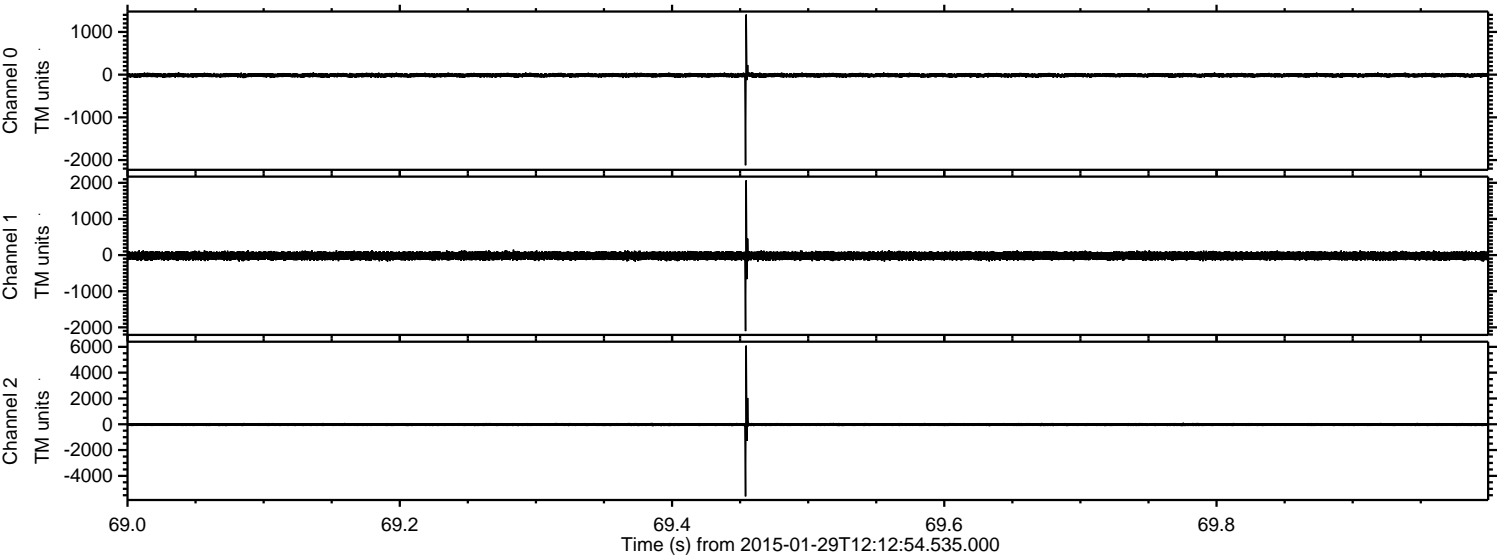
# ELMAVAN 3D WAVEFORMS (Measured data sampled at 50 kHz) 49810 packets of 144 samples from 2015-01-29T12:12:54.535.000.

Processed Thu Feb 12 08:57:38 2015 by ELM ver.2012-10-06 from 001\_\_elm20150129\_121253\_\_dat00.bin





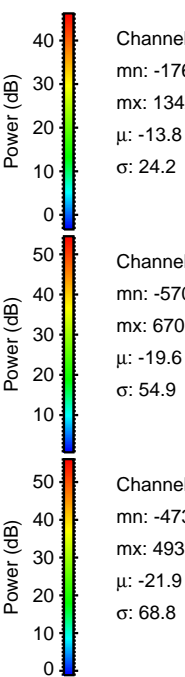
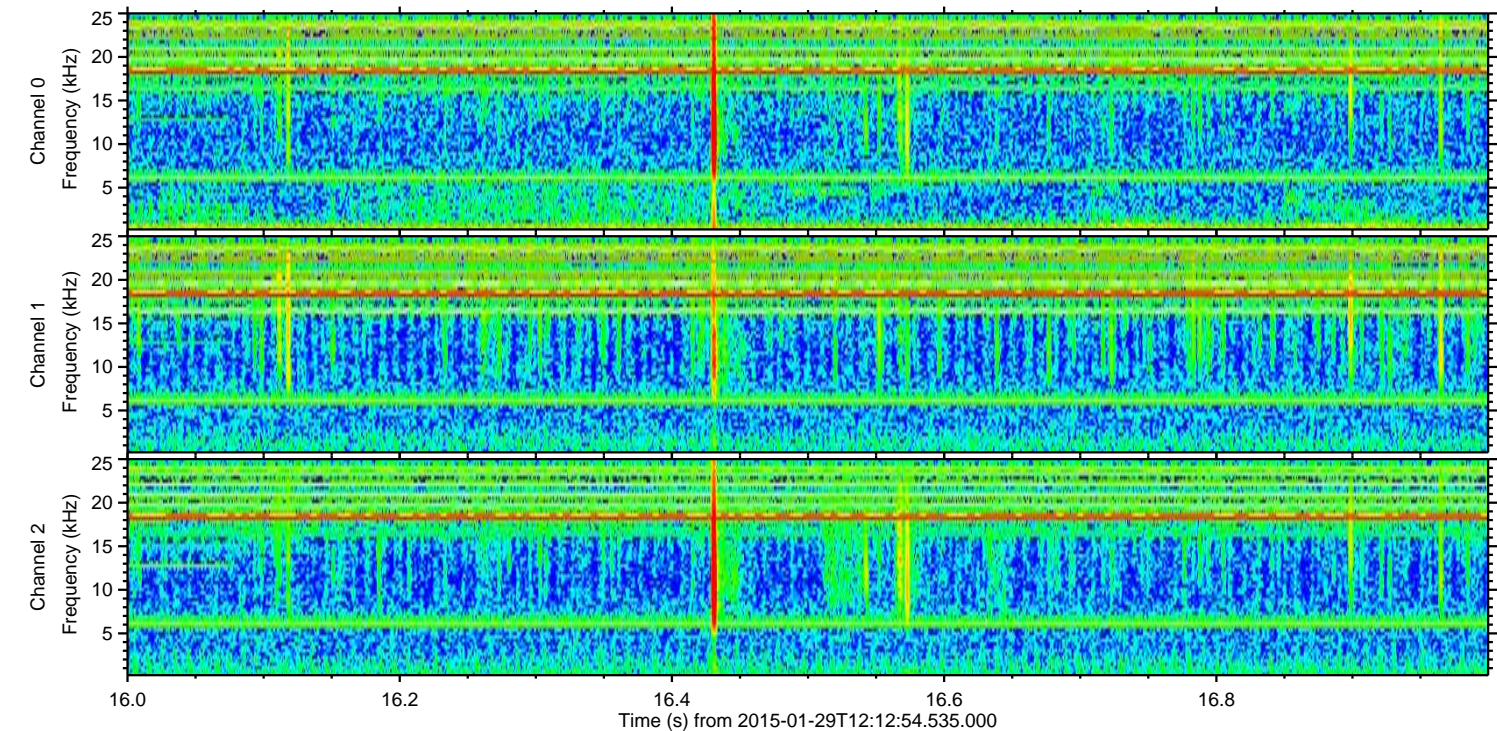
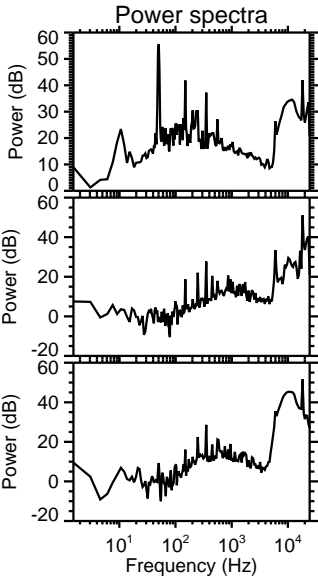
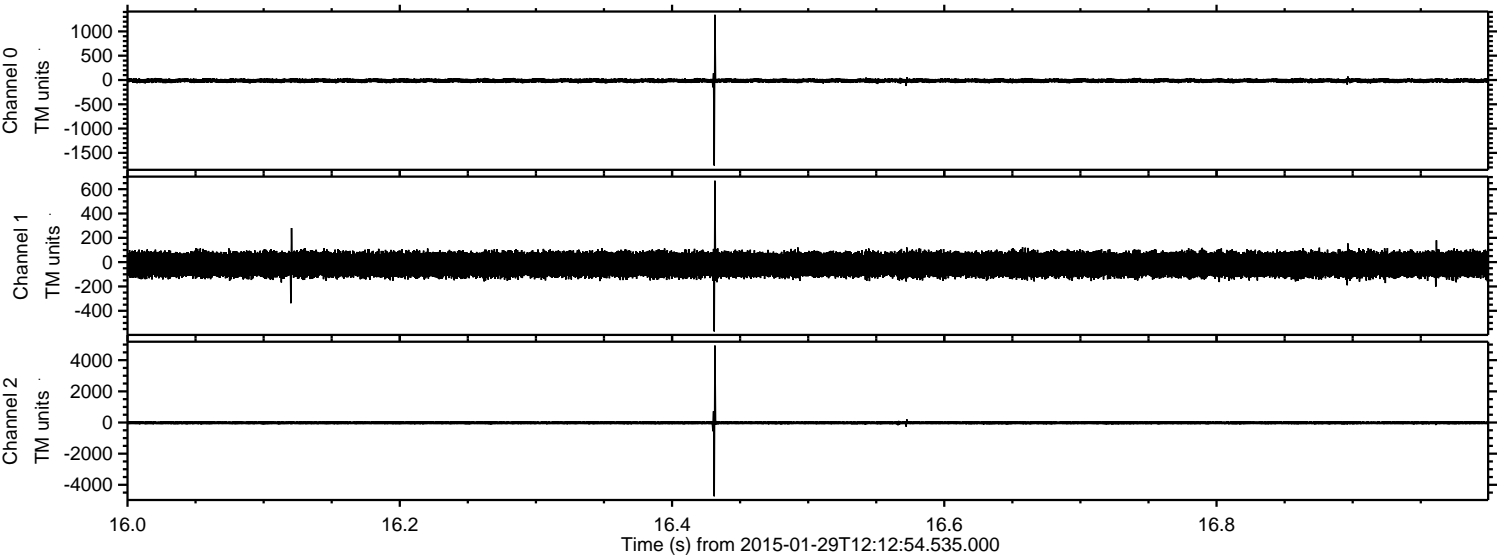
Processed Thu Feb 12 08:57:52 2015 by ELM ver.2012-10-06 from 001\_\_elm20150129\_121253\_\_dat00.bin





ELMAVAN 3D WAVEFORMS (Measured data sampled at 50 kHz) 49810 packets of 144 samples from 2015-01-29T12:12:54.535.000. Part 17/144

Processed Thu Feb 12 08:57:53 2015 by ELM ver.2012-10-06 from 001\_\_elm20150129\_121253\_\_dat00.bin



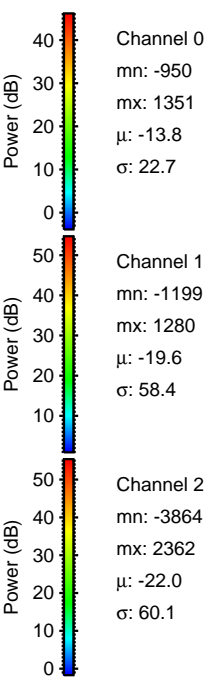
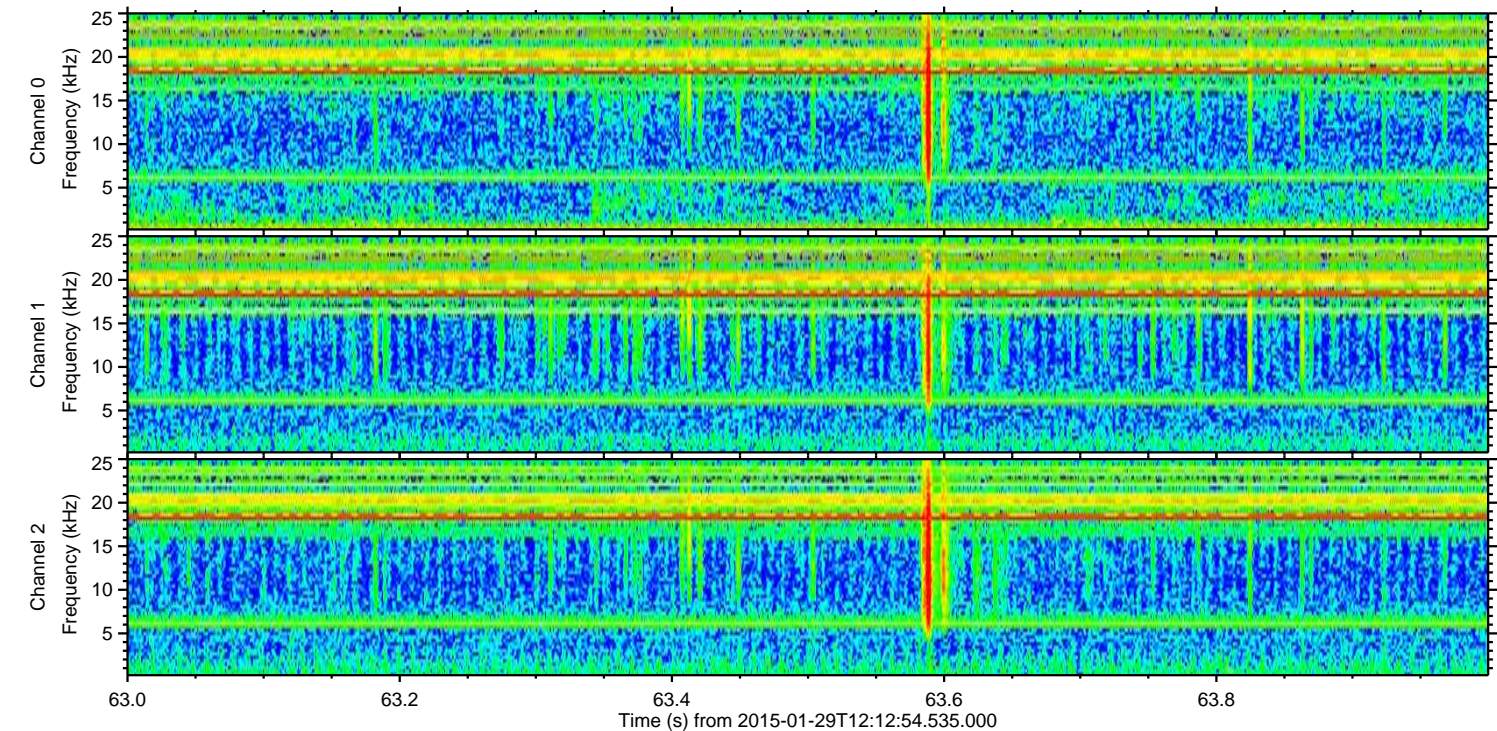
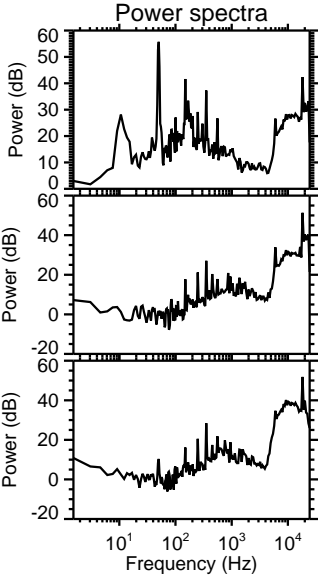
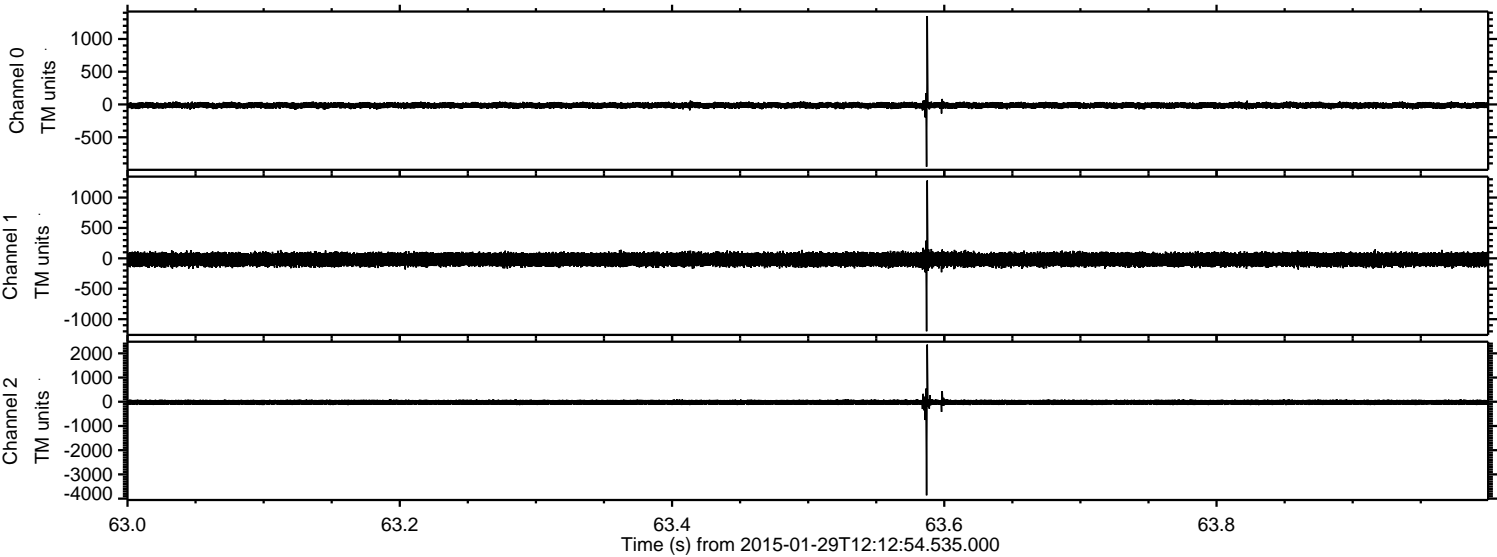
Channel 0  
mn: -1761  
mx: 1342  
 $\mu$ : -13.8  
 $\sigma$ : 24.2

Channel 1  
mn: -570  
mx: 670  
 $\mu$ : -19.6  
 $\sigma$ : 54.9

Channel 2  
mn: -4739  
mx: 4939  
 $\mu$ : -21.9  
 $\sigma$ : 68.8



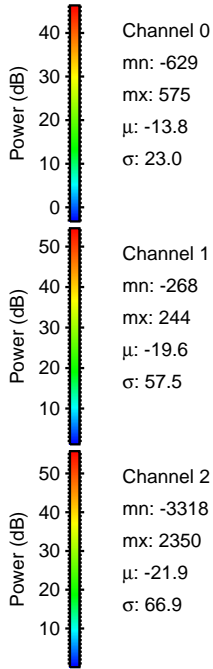
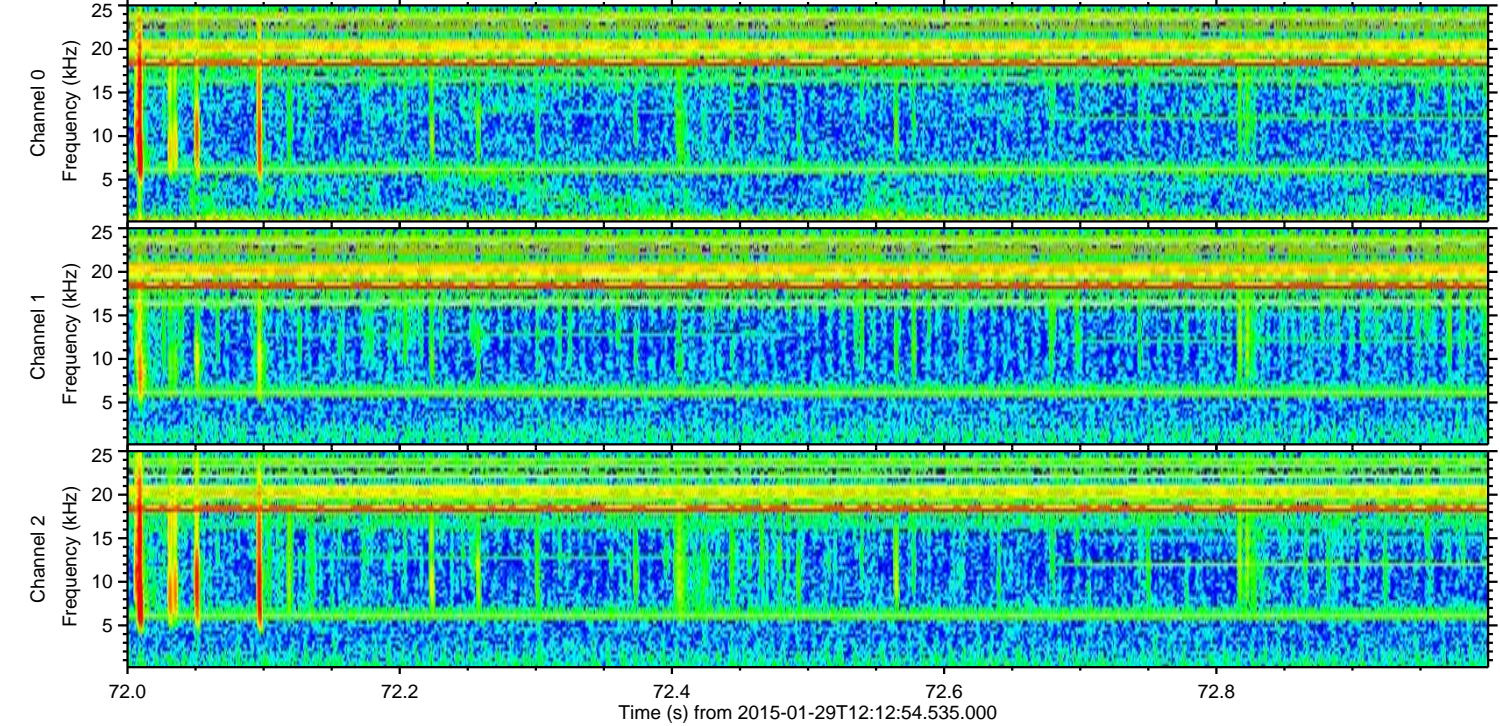
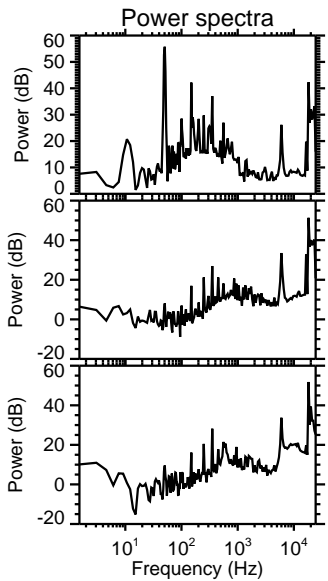
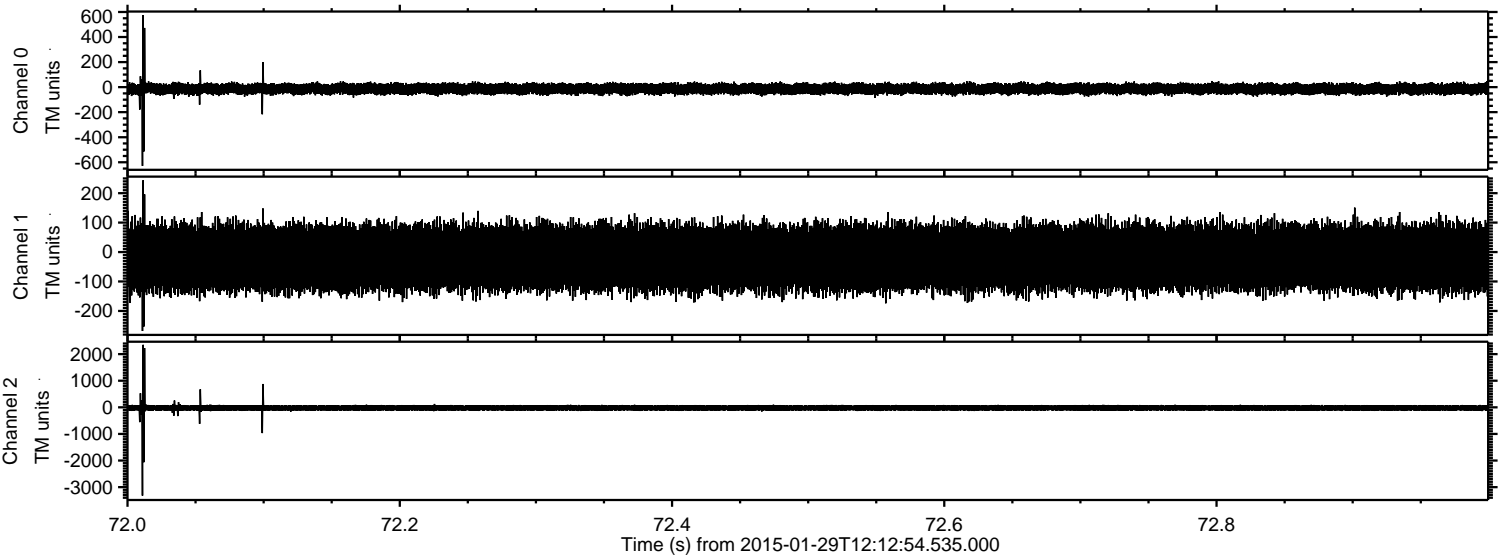
Processed Thu Feb 12 08:57:54 2015 by ELM ver.2012-10-06 from 001\_\_elm20150129\_121253\_\_dat00.bin





ELMAVAN 3D WAVEFORMS (Measured data sampled at 50 kHz) 49810 packets of 144 samples from 2015-01-29T12:12:54.535.000. Part 73/144

Processed Thu Feb 12 08:57:55 2015 by ELM ver.2012-10-06 from 001\_\_elm20150129\_121253\_\_dat00.bin



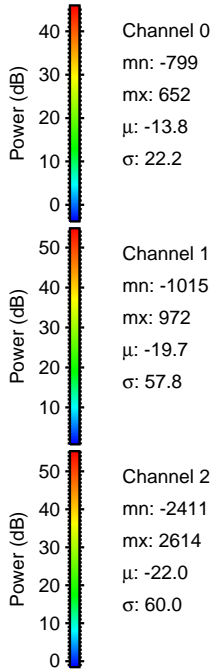
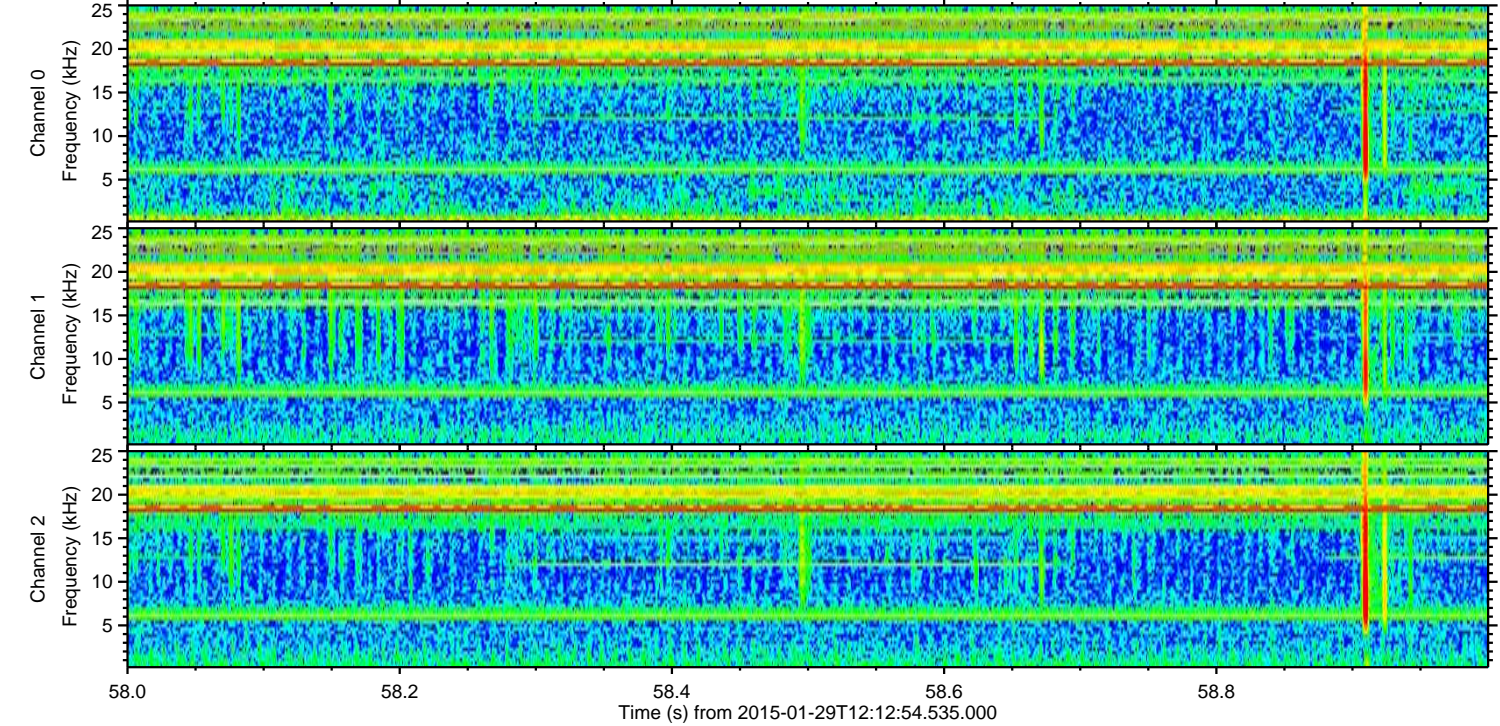
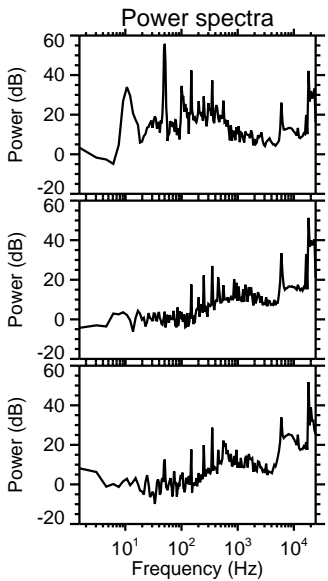
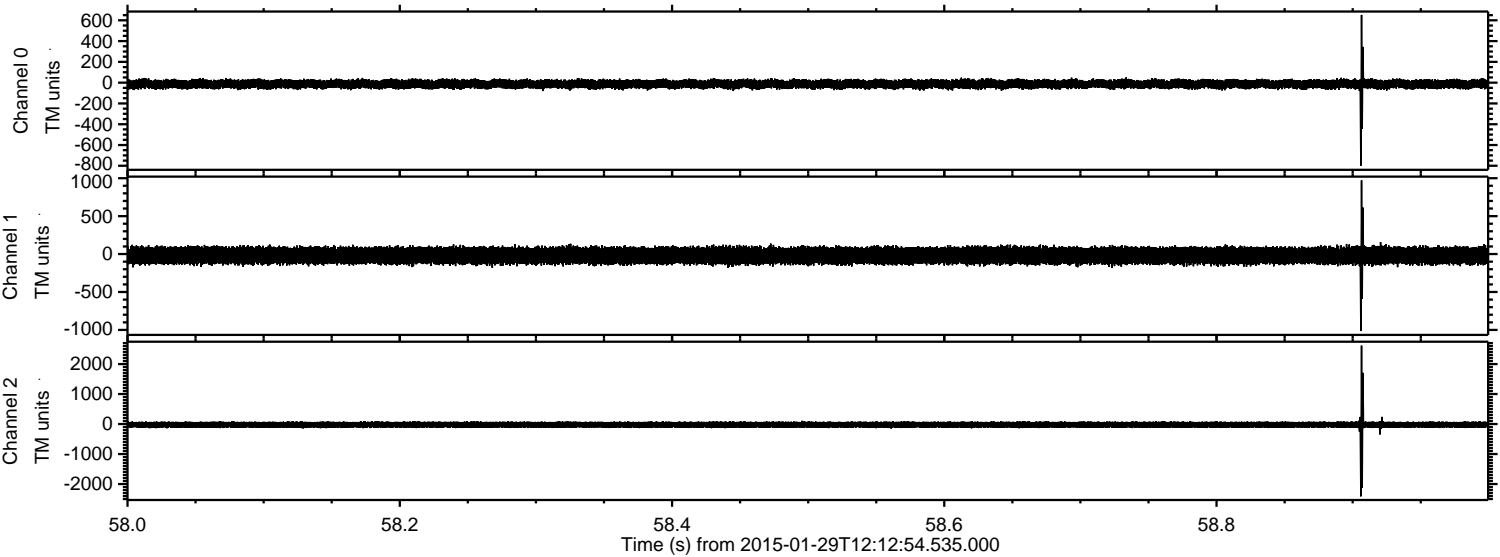
Channel 0  
mn: -629  
mx: 575  
 $\mu$ : -13.8  
 $\sigma$ : 23.0

Channel 1  
mn: -268  
mx: 244  
 $\mu$ : -19.6  
 $\sigma$ : 57.5

Channel 2  
mn: -3318  
mx: 2350  
 $\mu$ : -21.9  
 $\sigma$ : 66.9



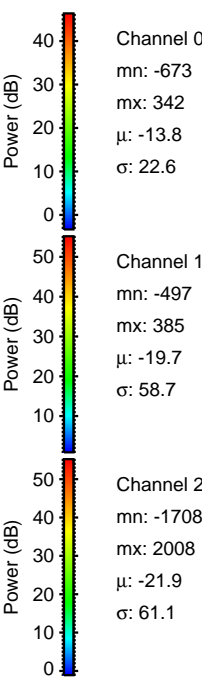
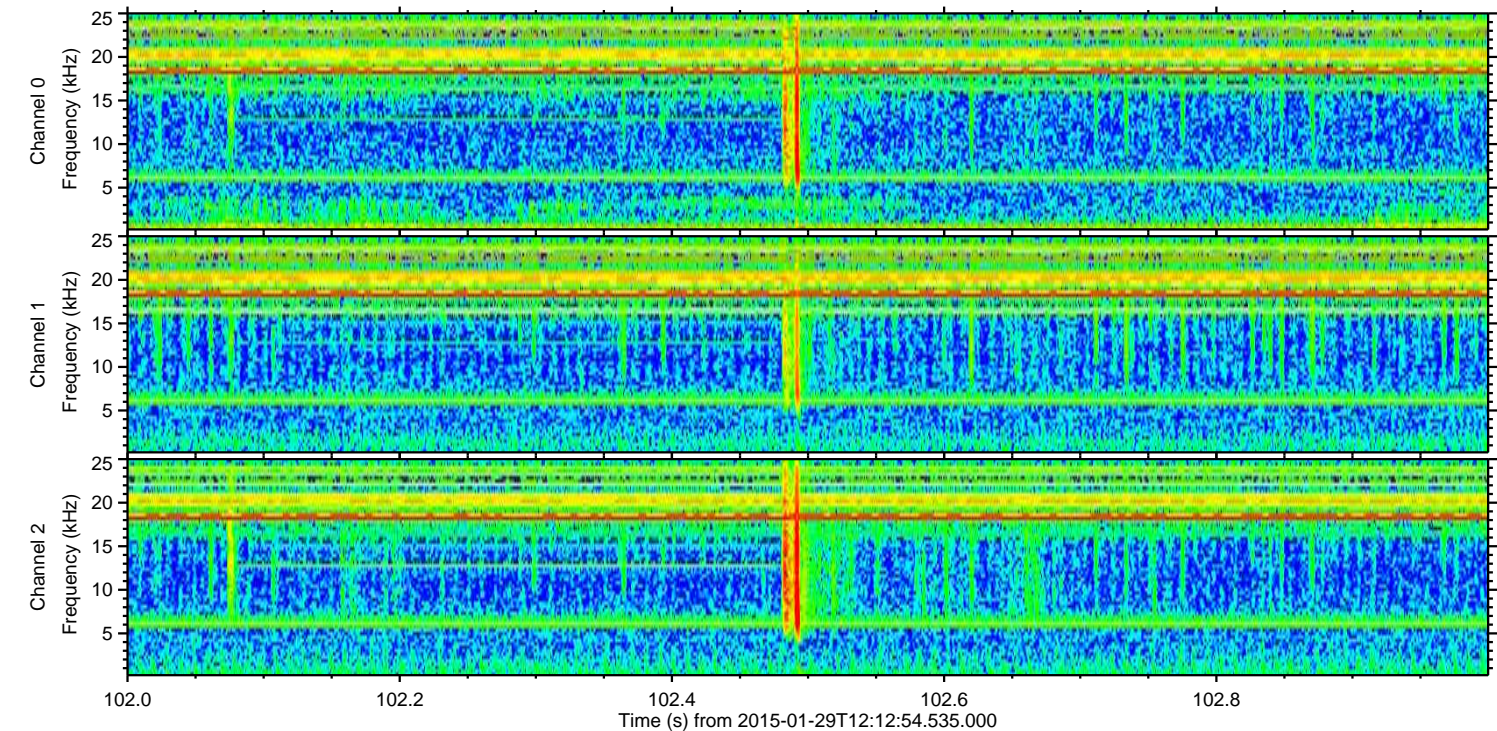
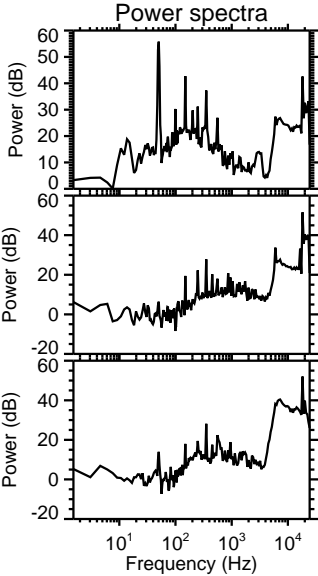
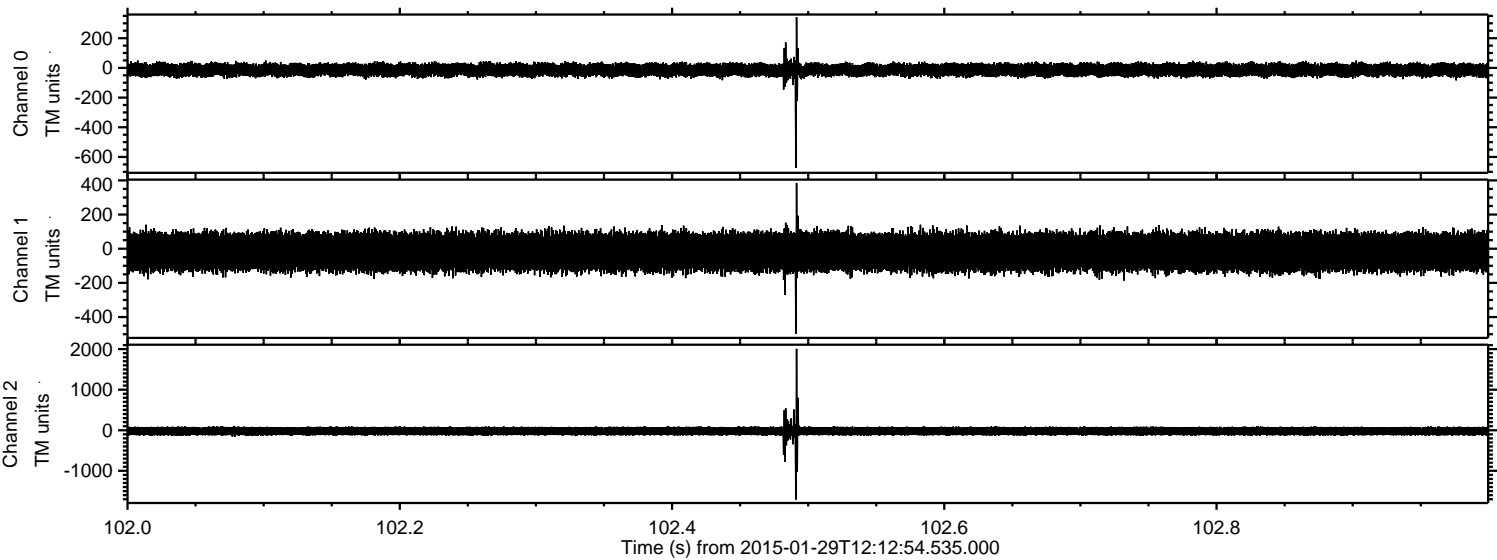
Processed Thu Feb 12 08:57:56 2015 by ELM ver.2012-10-06 from 001\_\_elm20150129\_121253\_\_dat00.bin





ELMAVAN 3D WAVEFORMS (Measured data sampled at 50 kHz) 49810 packets of 144 samples from 2015-01-29T12:12:54.535.000. Part 103/144

Processed Thu Feb 12 08:57:57 2015 by ELM ver.2012-10-06 from 001\_\_elm20150129\_121253\_\_dat00.bin



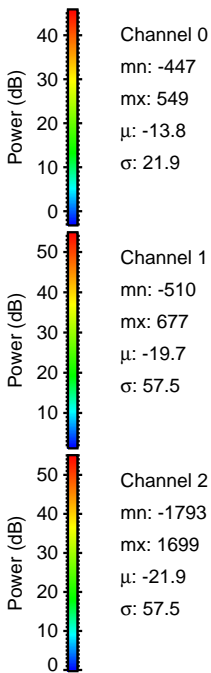
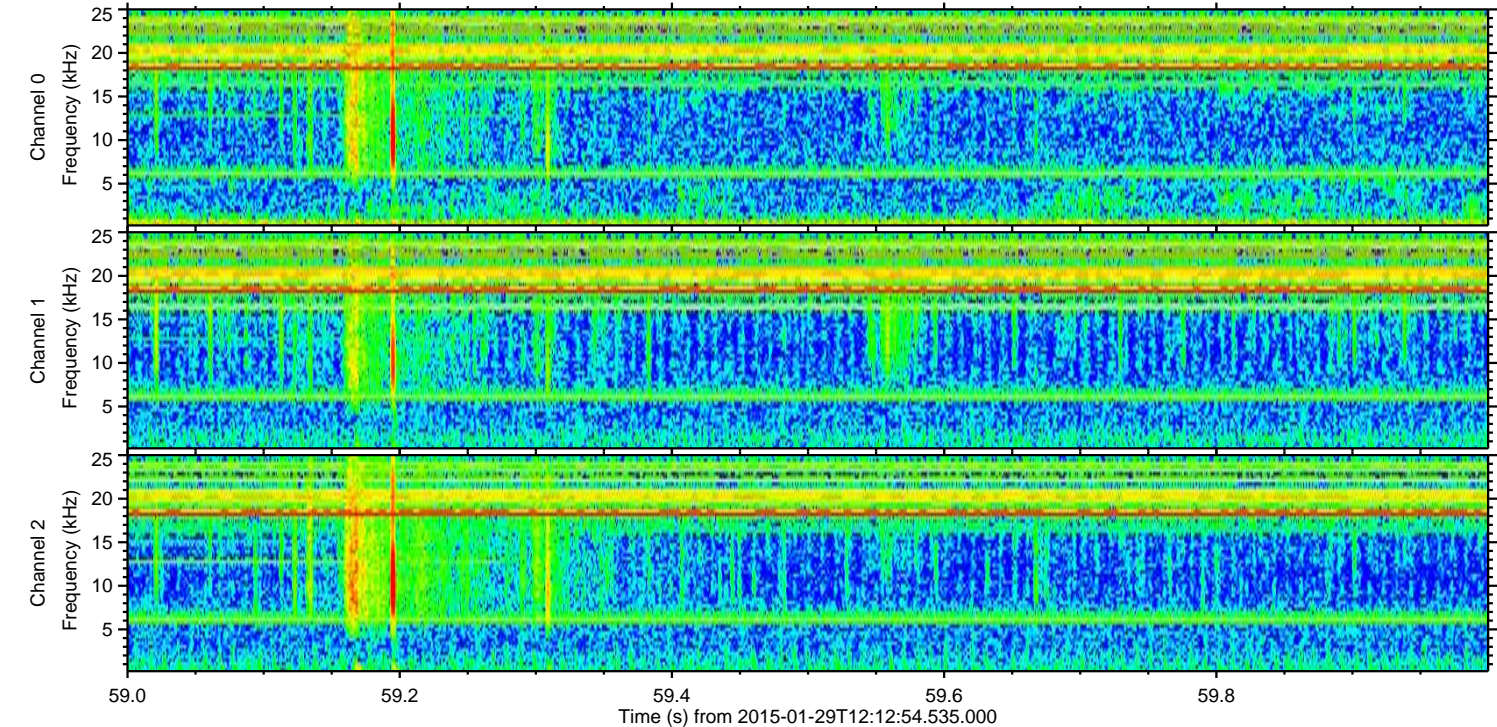
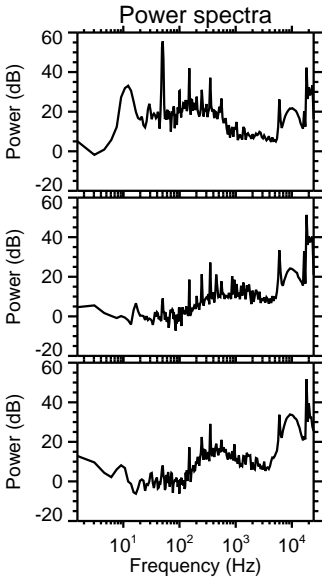
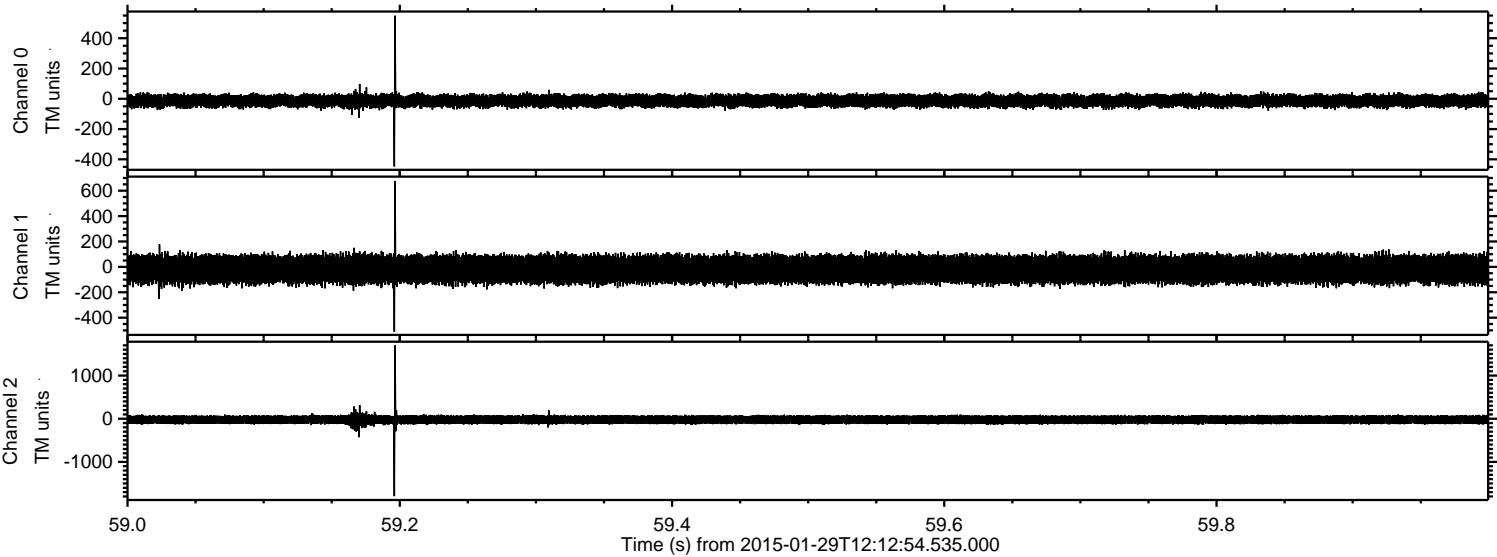
Channel 0  
mn: -673  
mx: 342  
 $\mu$ : -13.8  
 $\sigma$ : 22.6

Channel 1  
mn: -497  
mx: 385  
 $\mu$ : -19.7  
 $\sigma$ : 58.7

Channel 2  
mn: -1708  
mx: 2008  
 $\mu$ : -21.9  
 $\sigma$ : 61.1

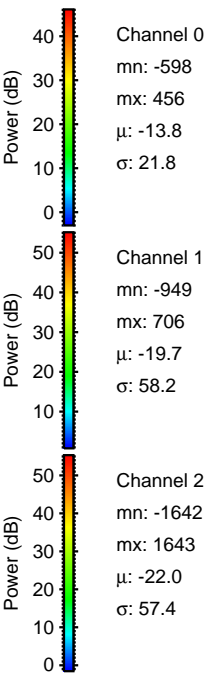
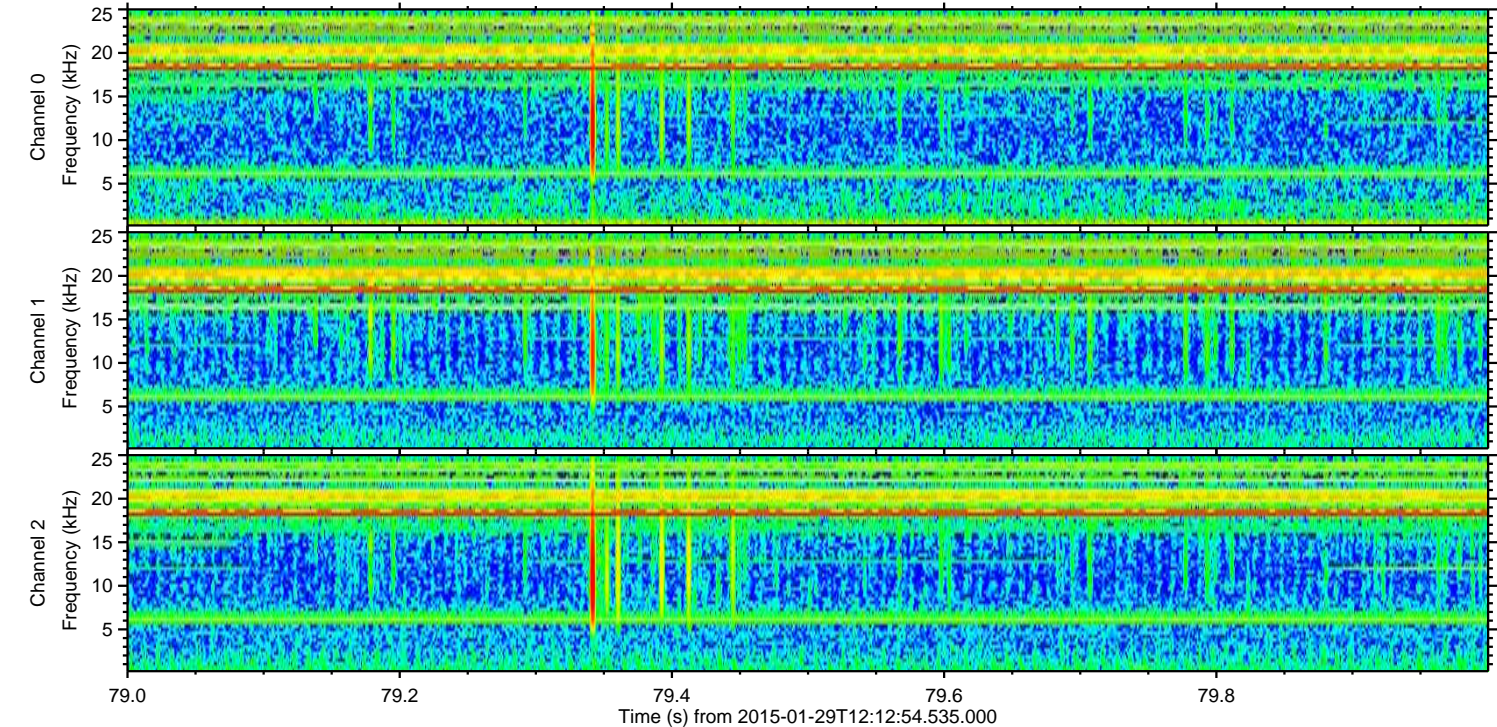
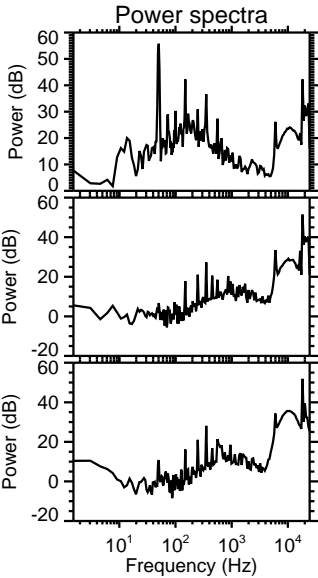
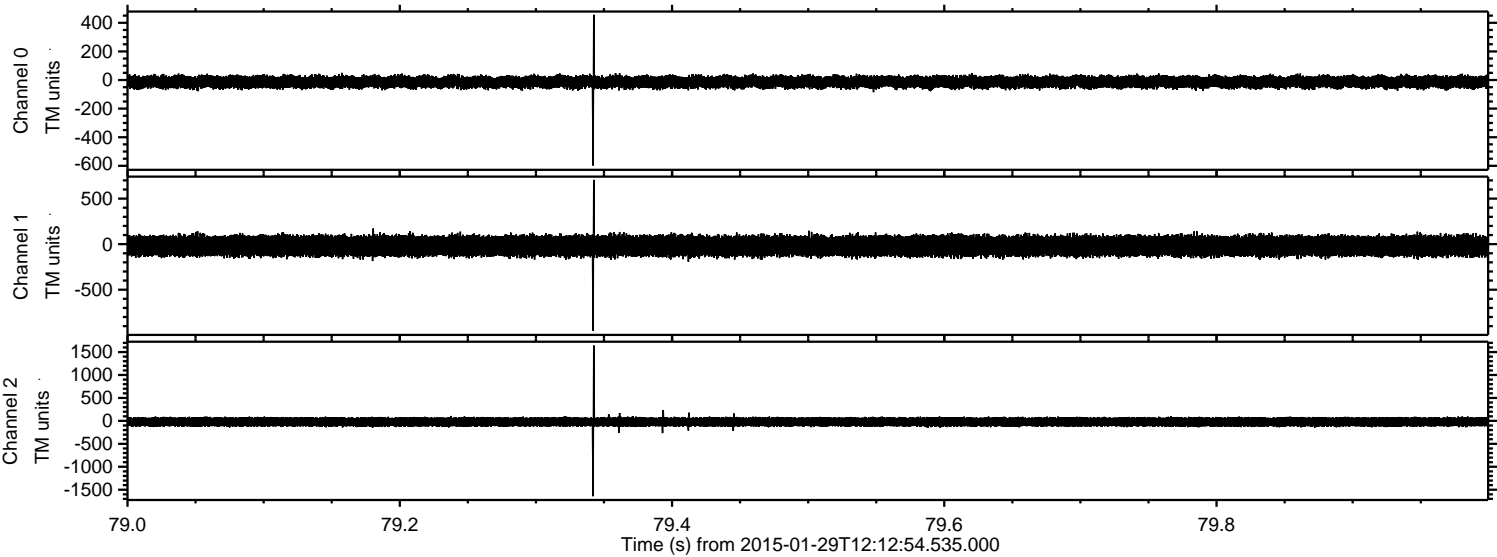


Processed Thu Feb 12 08:57:58 2015 by ELM ver.2012-10-06 from 001\_\_elm20150129\_121253\_\_dat00.bin



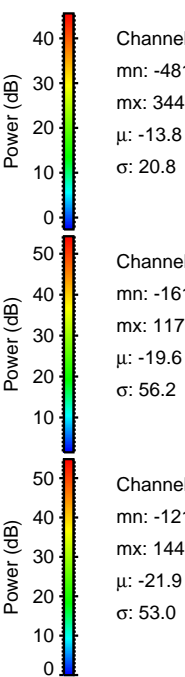
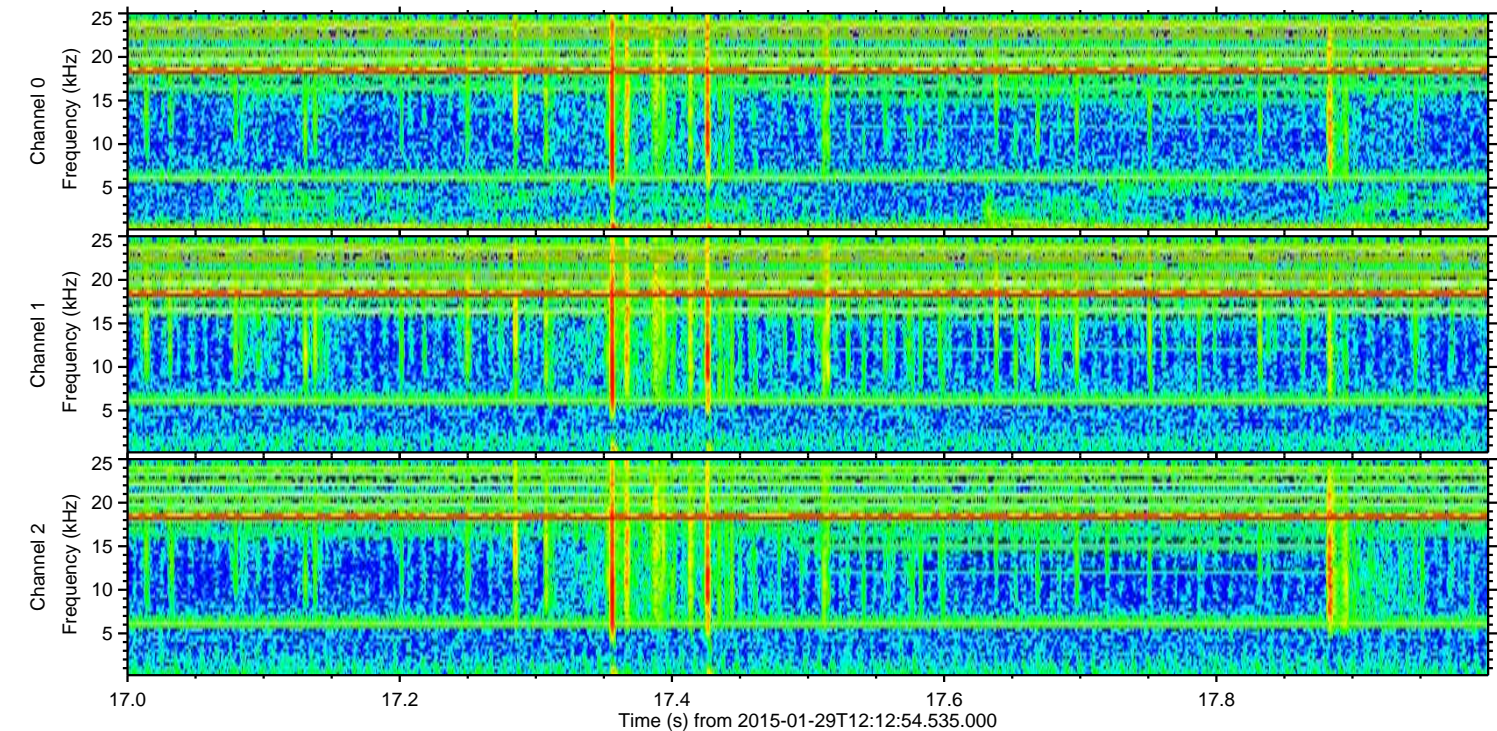
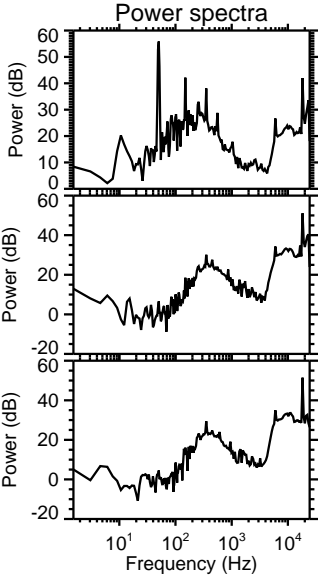
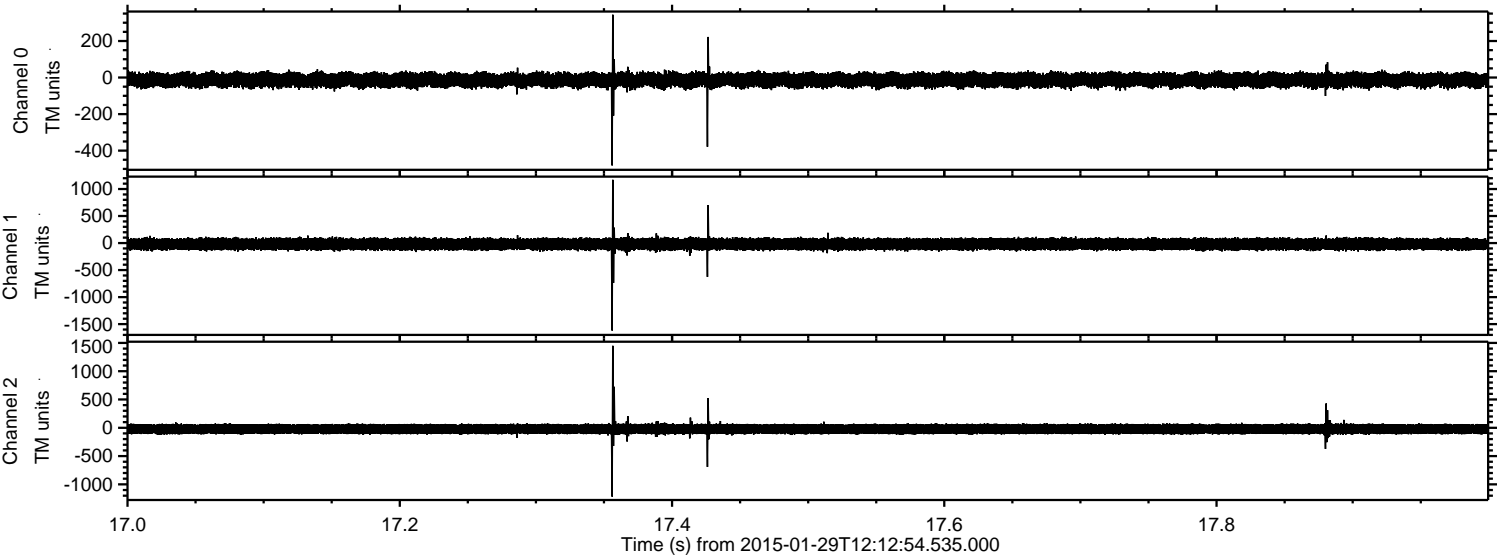


Processed Thu Feb 12 08:57:59 2015 by ELM ver.2012-10-06 from 001\_\_elm20150129\_121253\_\_dat00.bin





Processed Thu Feb 12 08:58:00 2015 by ELM ver.2012-10-06 from 001\_\_elm20150129\_121253\_\_dat00.bin



Channel 0  
mn: -481  
mx: 344  
μ: -13.8  
σ: 20.8

Channel 1  
mn: -1619  
mx: 1171  
μ: -19.6  
σ: 56.2

Channel 2  
mn: -1216  
mx: 1449  
μ: -21.9  
σ: 53.0



ELMAVAN 3D WAVEFORMS (Measured data sampled at 50 kHz) 49810 packets of 144 samples from 2015-01-29T12:12:54.535.000. Part 13/144

Processed Thu Feb 12 08:58:01 2015 by ELM ver.2012-10-06 from 001\_\_elm20150129\_121253\_\_dat00.bin

