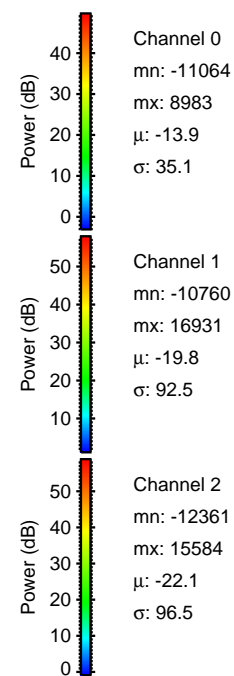
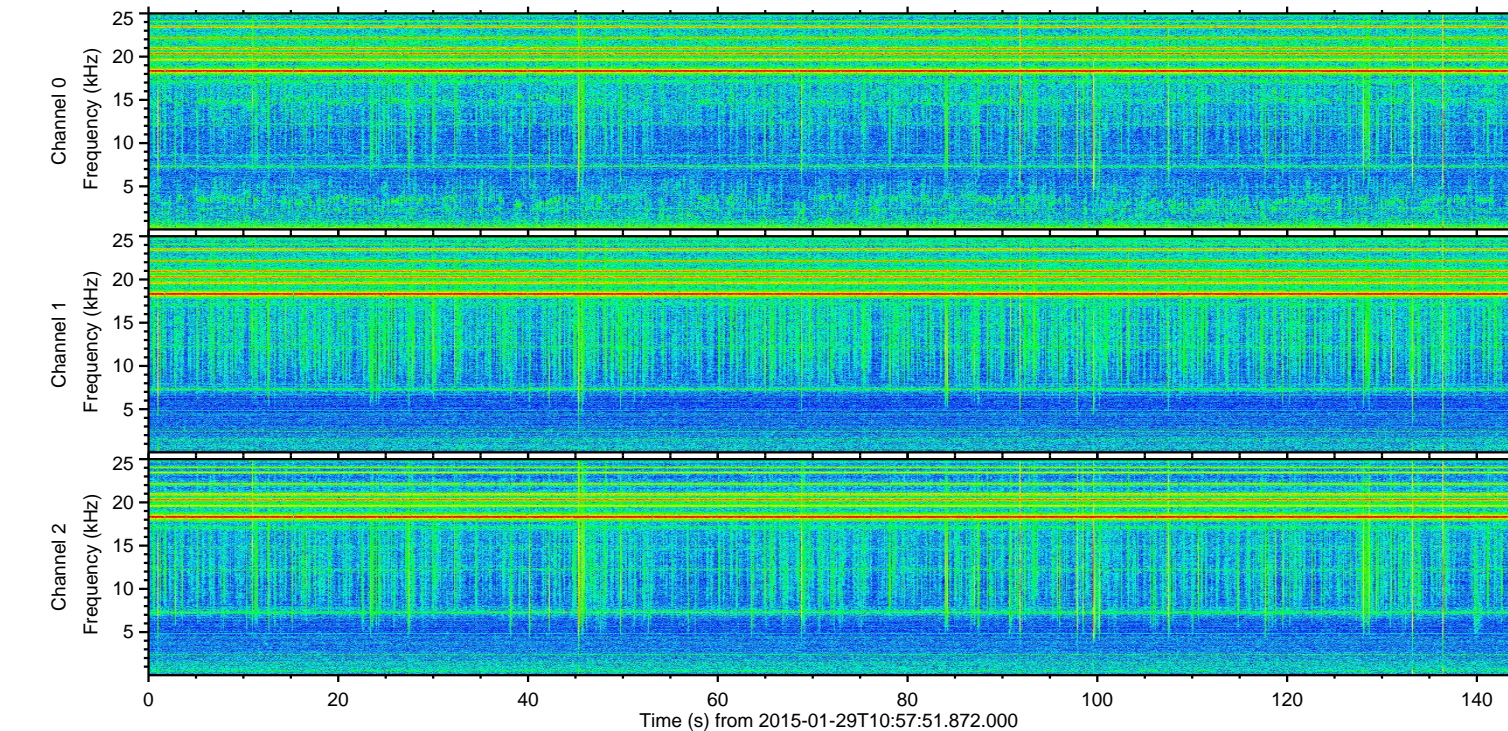
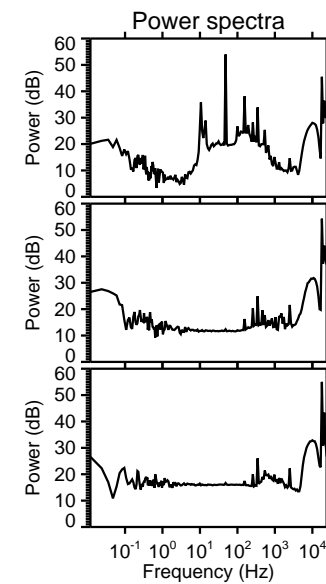
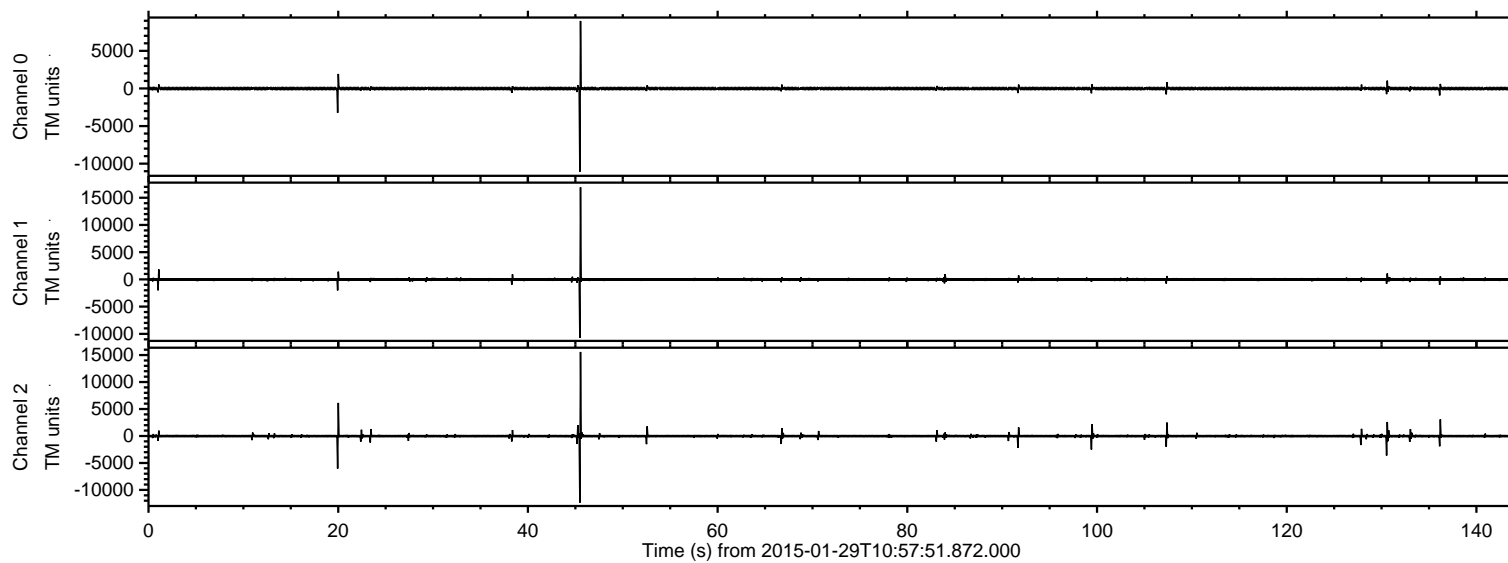
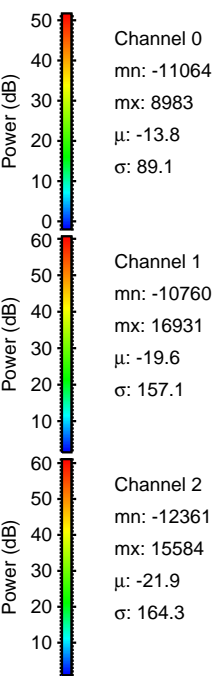
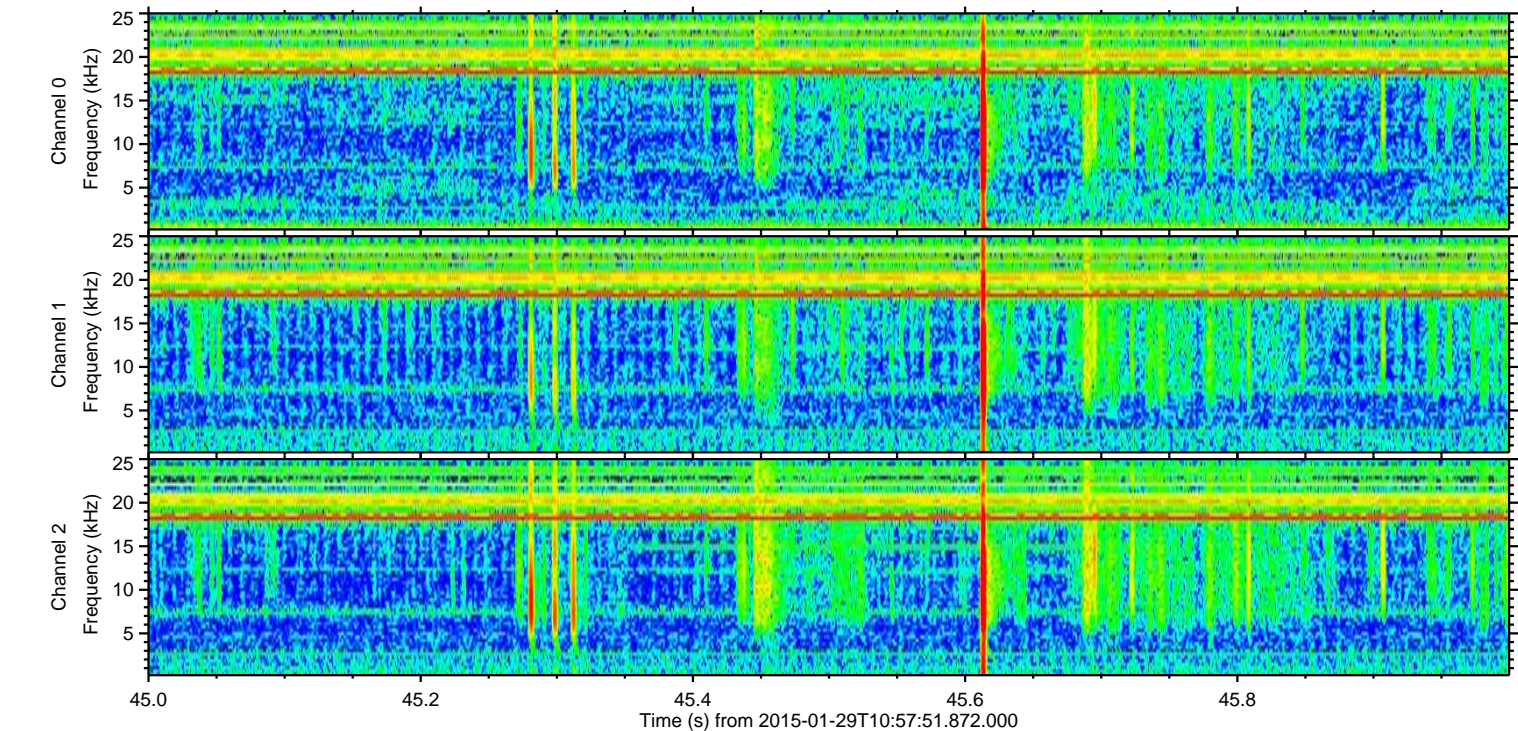
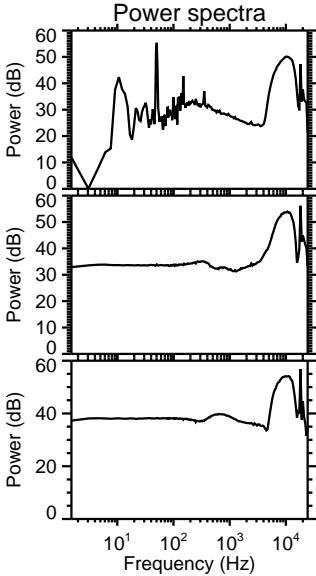
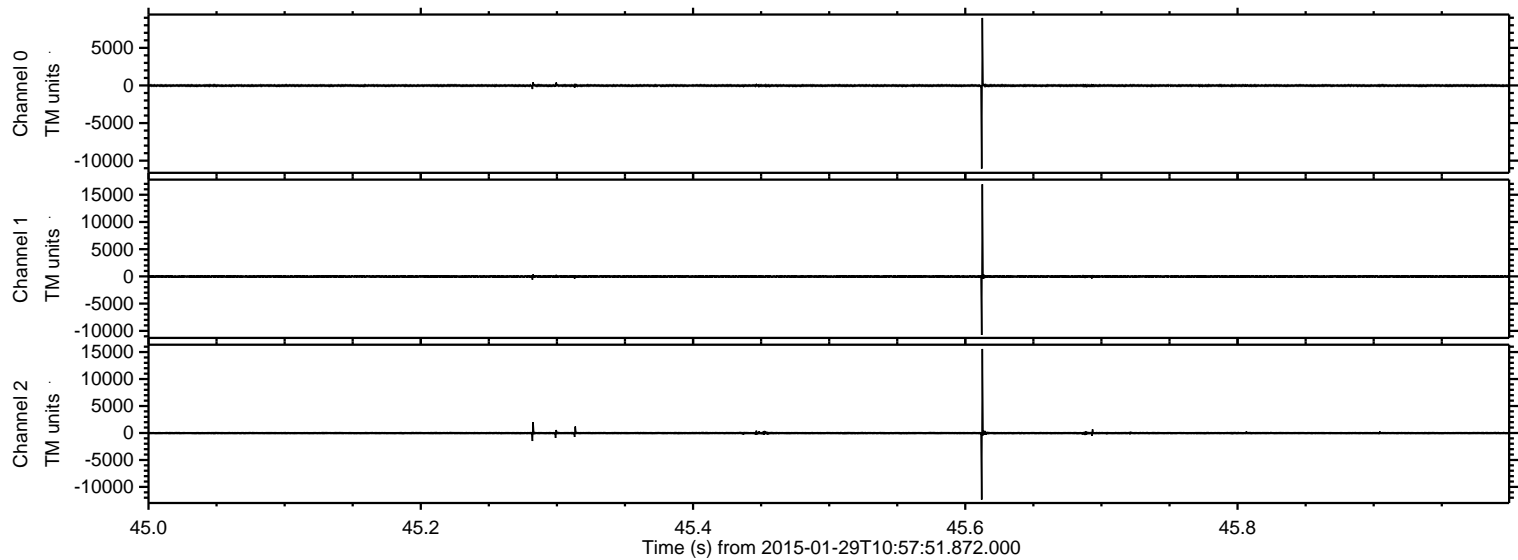


ELMAVAN 3D WAVEFORMS (Measured data sampled at 50 kHz) 49809 packets of 144 samples from 2015-01-29T10:57:51.872.000.

Processed Thu Feb 12 08:28:16 2015 by ELM ver.2012-10-06 from 001__elm20150129_105750__dat00.bin

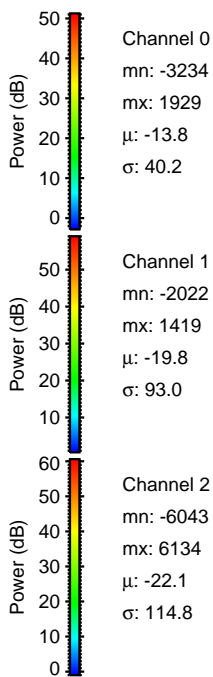
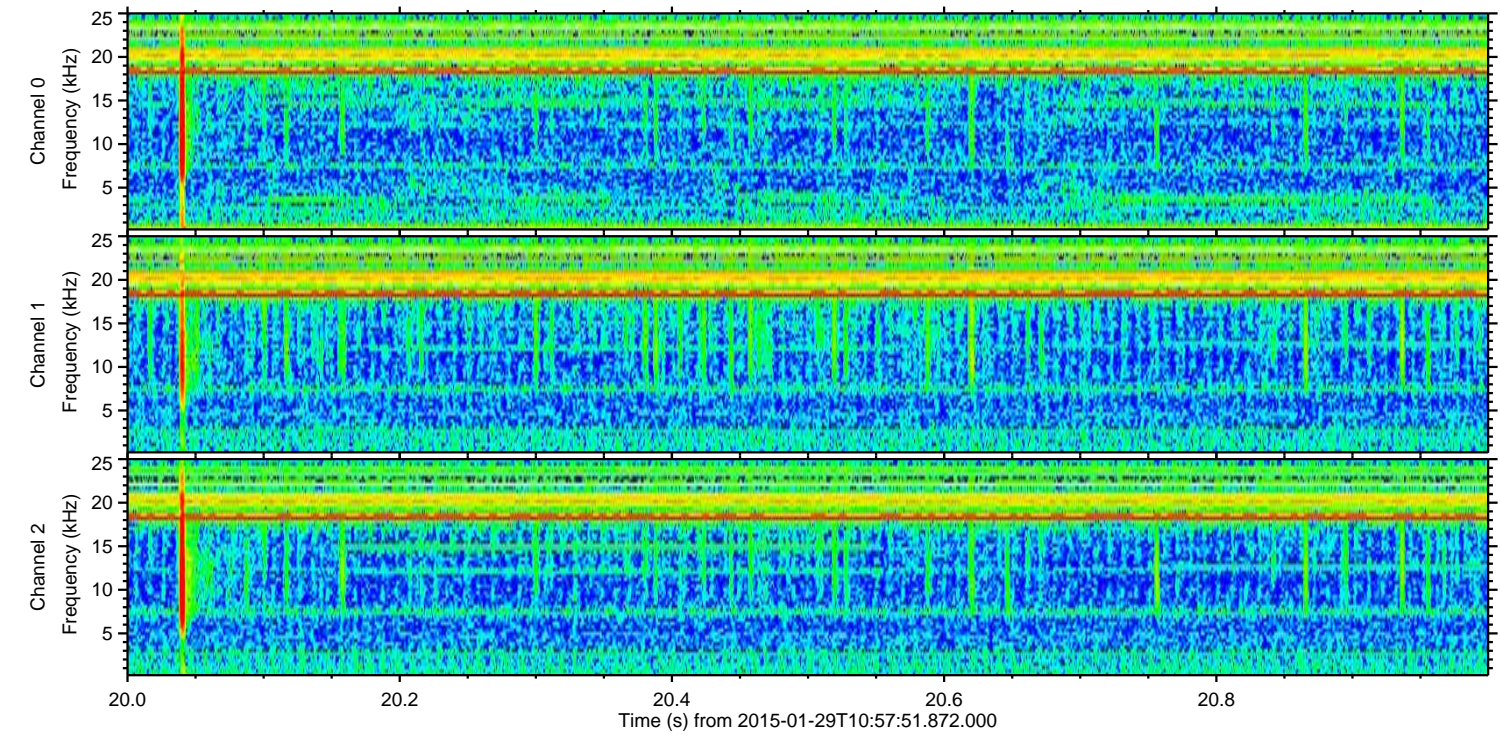
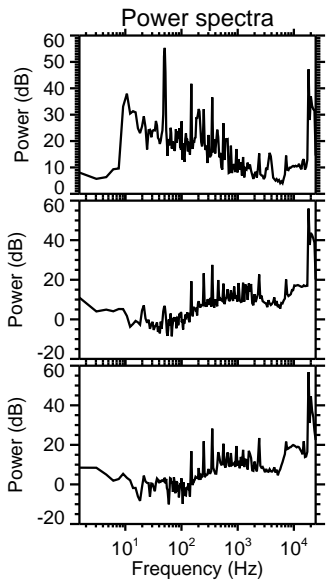
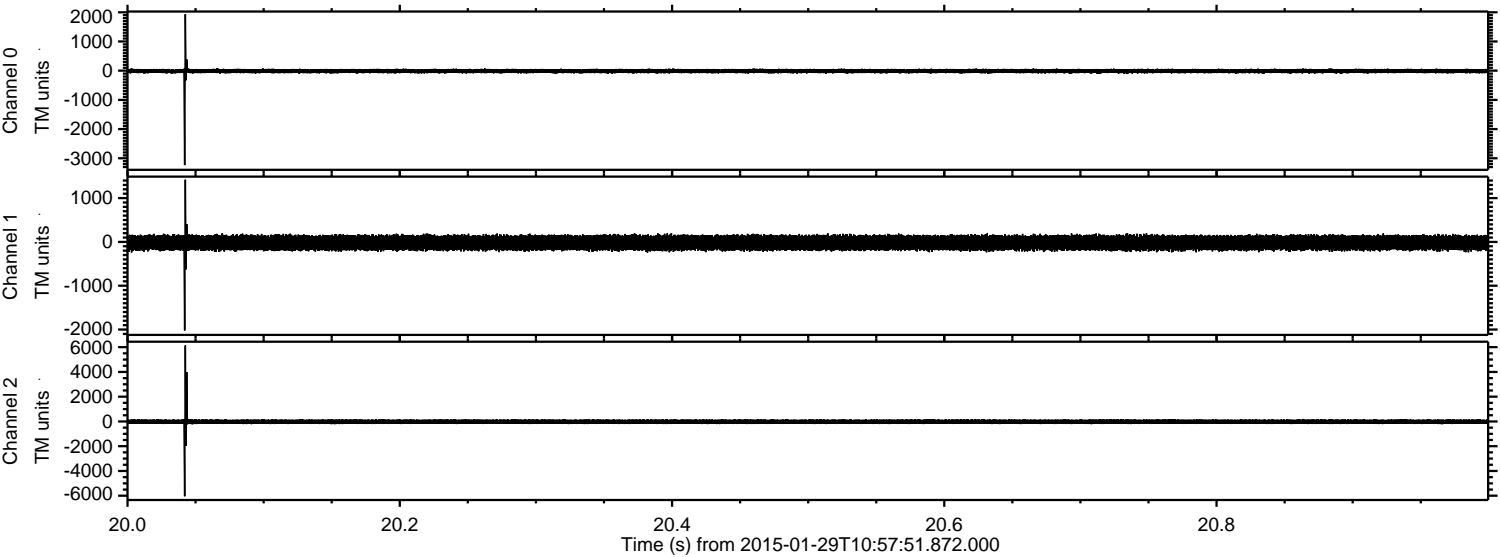


Processed Thu Feb 12 08:28:28 2015 by ELM ver.2012-10-06 from 001__elm20150129_105750__dat00.bin



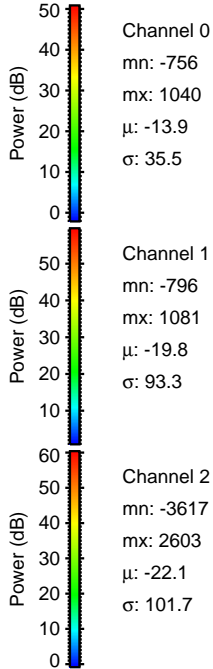
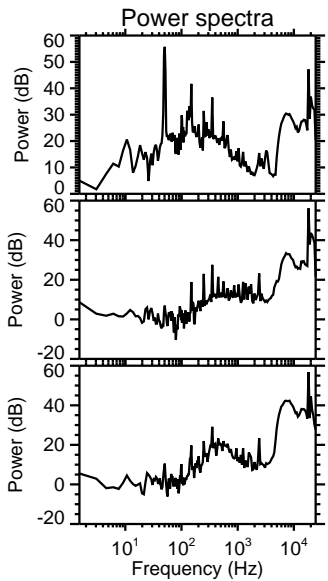
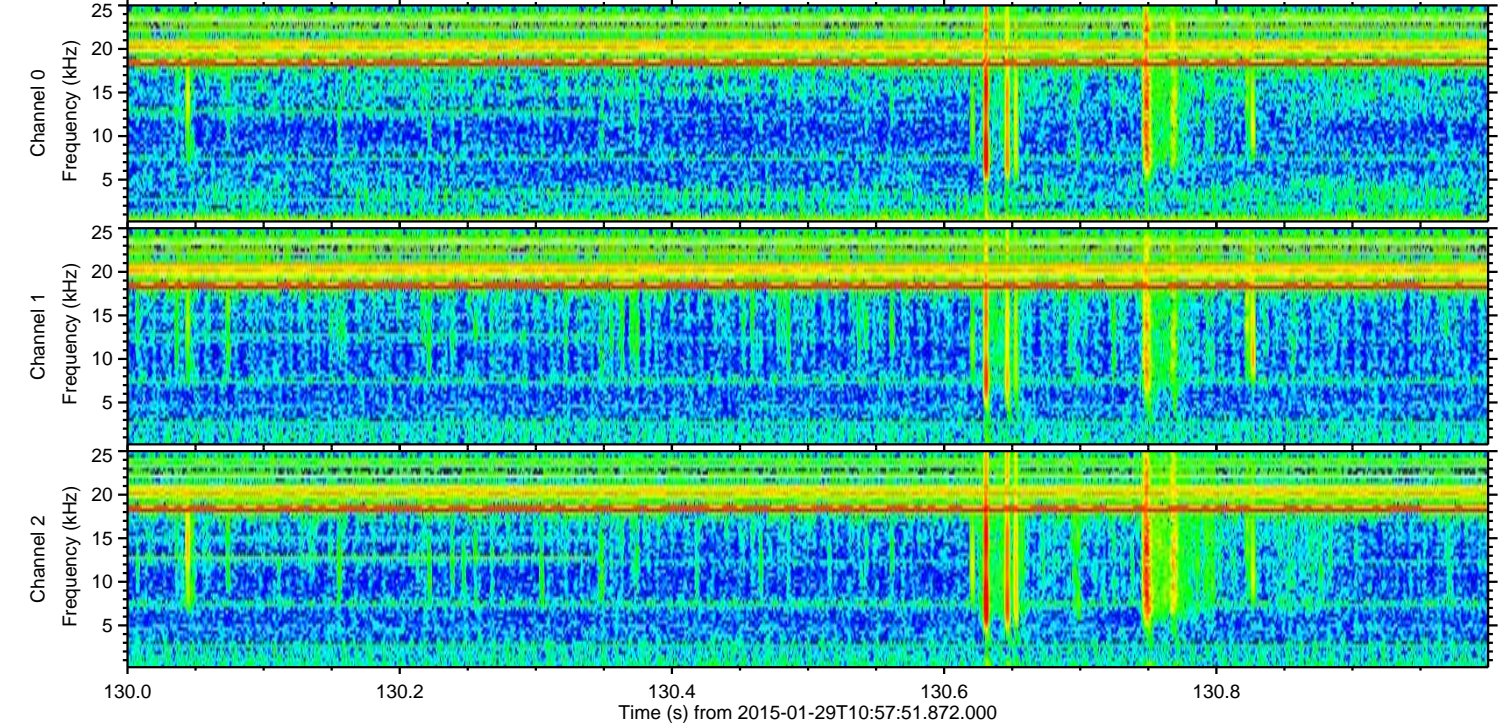
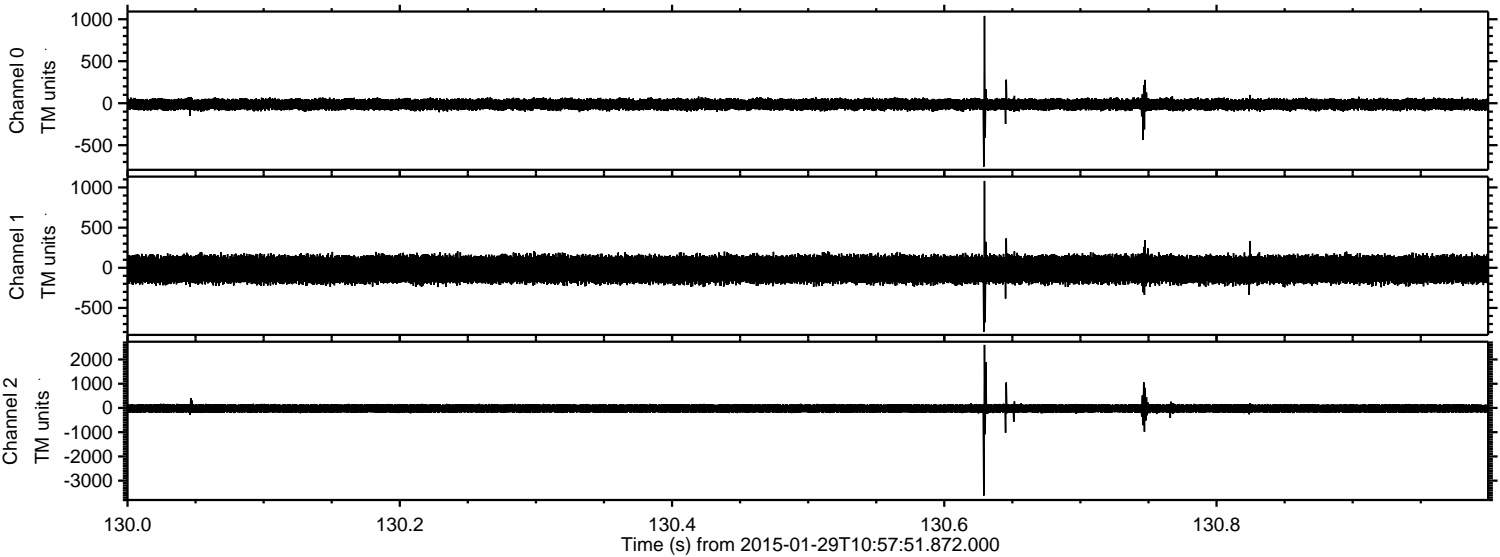
ELMAVAN 3D WAVEFORMS (Measured data sampled at 50 kHz) 49809 packets of 144 samples from 2015-01-29T10:57:51.872.000. Part 21/144

Processed Thu Feb 12 08:28:29 2015 by ELM ver.2012-10-06 from 001__elm20150129_105750__dat00.bin

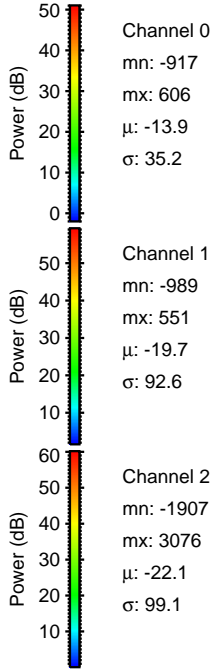
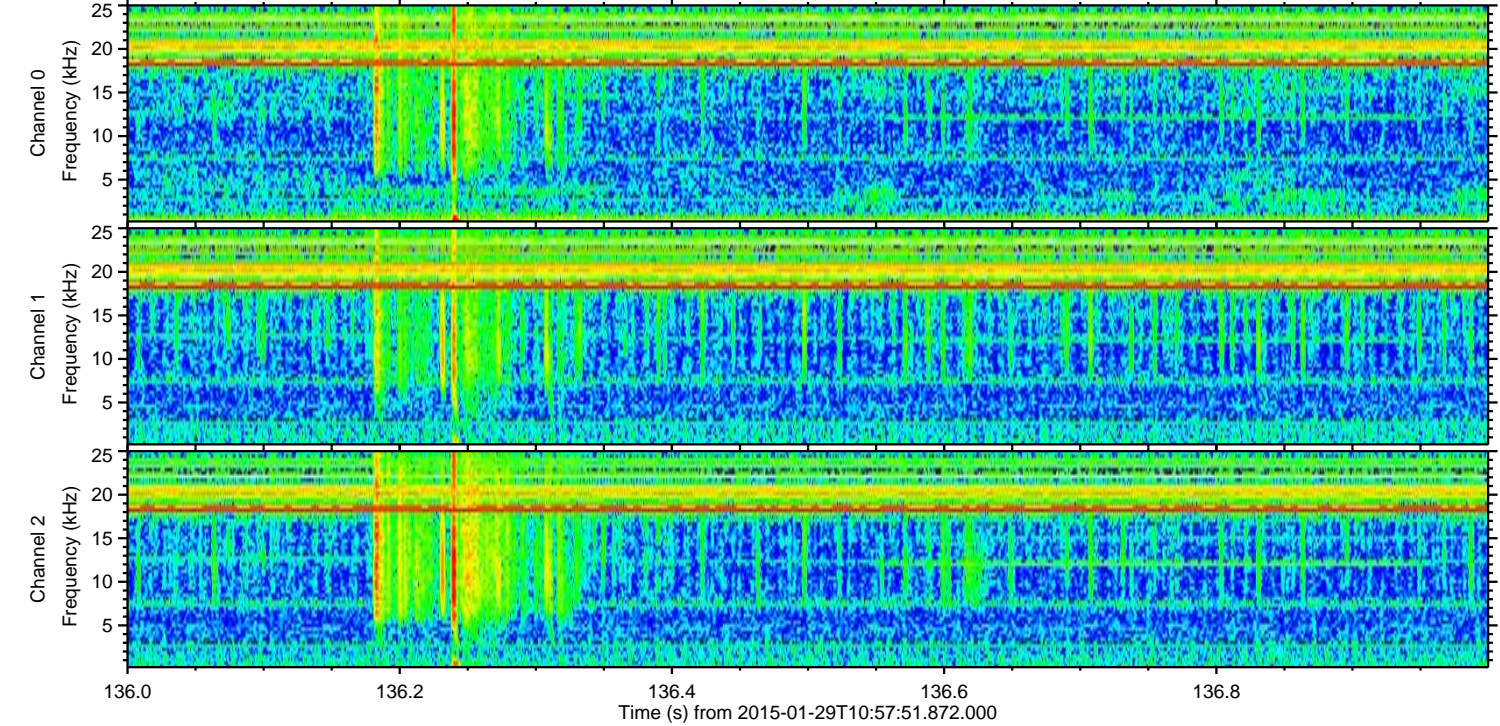
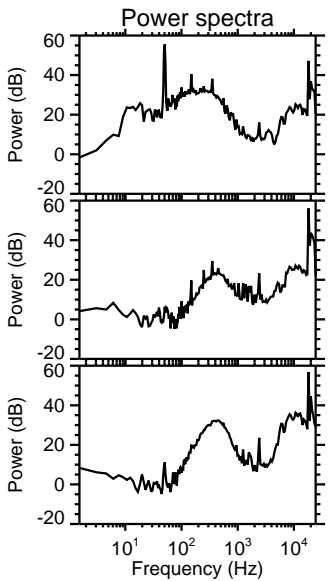
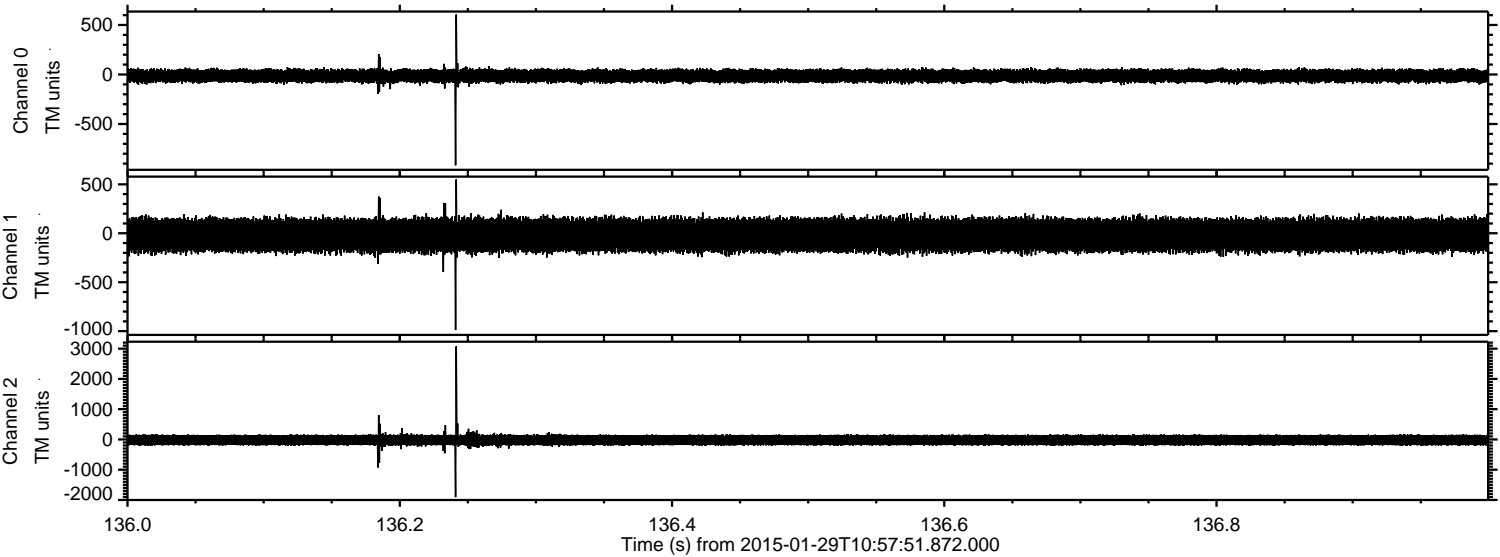


ELMAVAN 3D WAVEFORMS (Measured data sampled at 50 kHz) 49809 packets of 144 samples from 2015-01-29T10:57:51.872.000. Part 131/144

Processed Thu Feb 12 08:28:30 2015 by ELM ver.2012-10-06 from 001__elm20150129_105750__dat00.bin

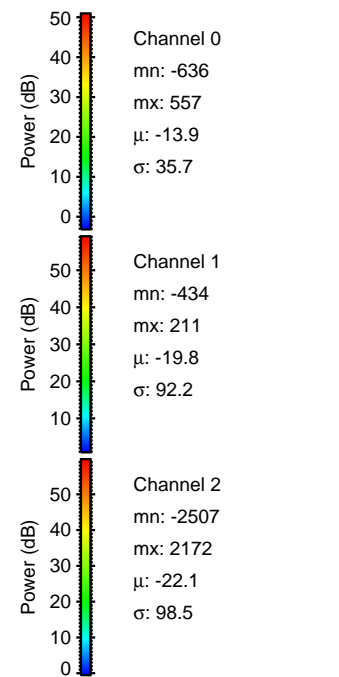
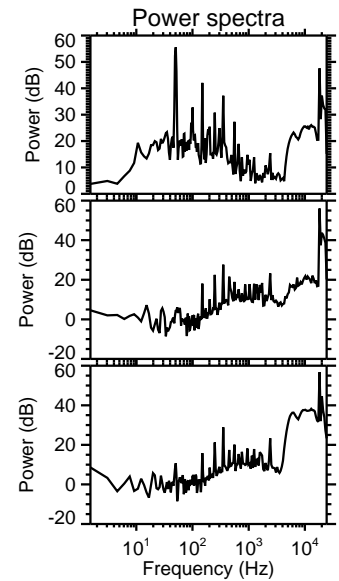
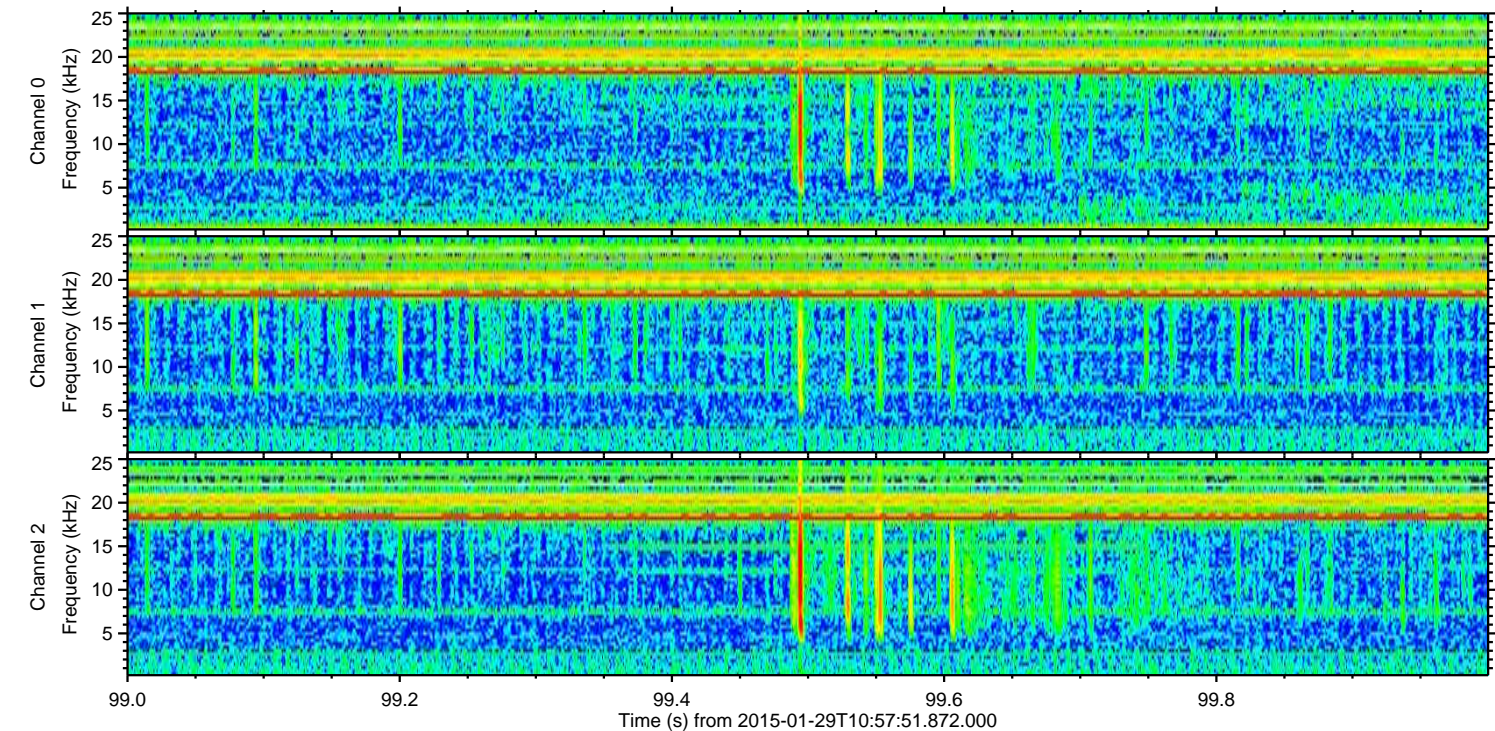
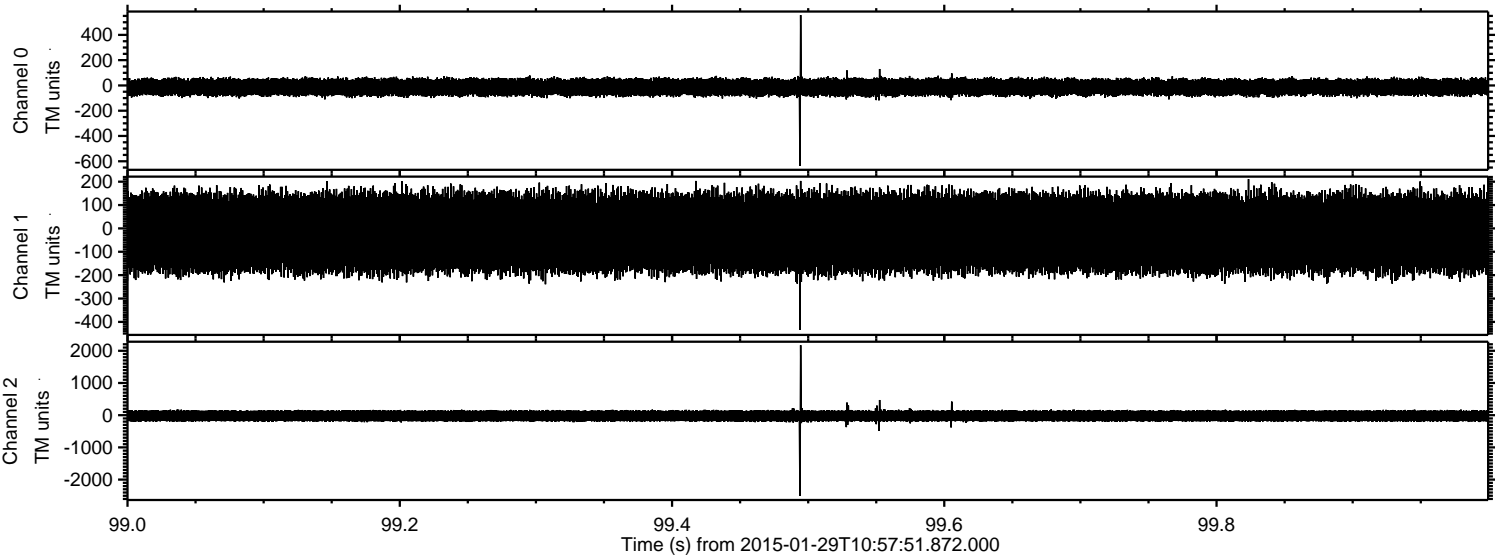


Processed Thu Feb 12 08:28:31 2015 by ELM ver.2012-10-06 from 001__elm20150129_105750__dat00.bin

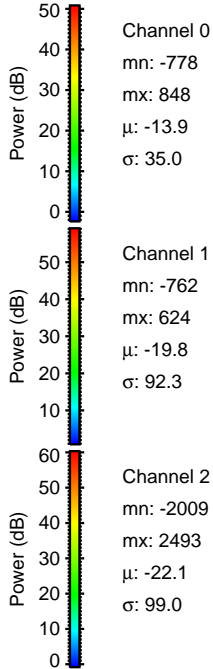
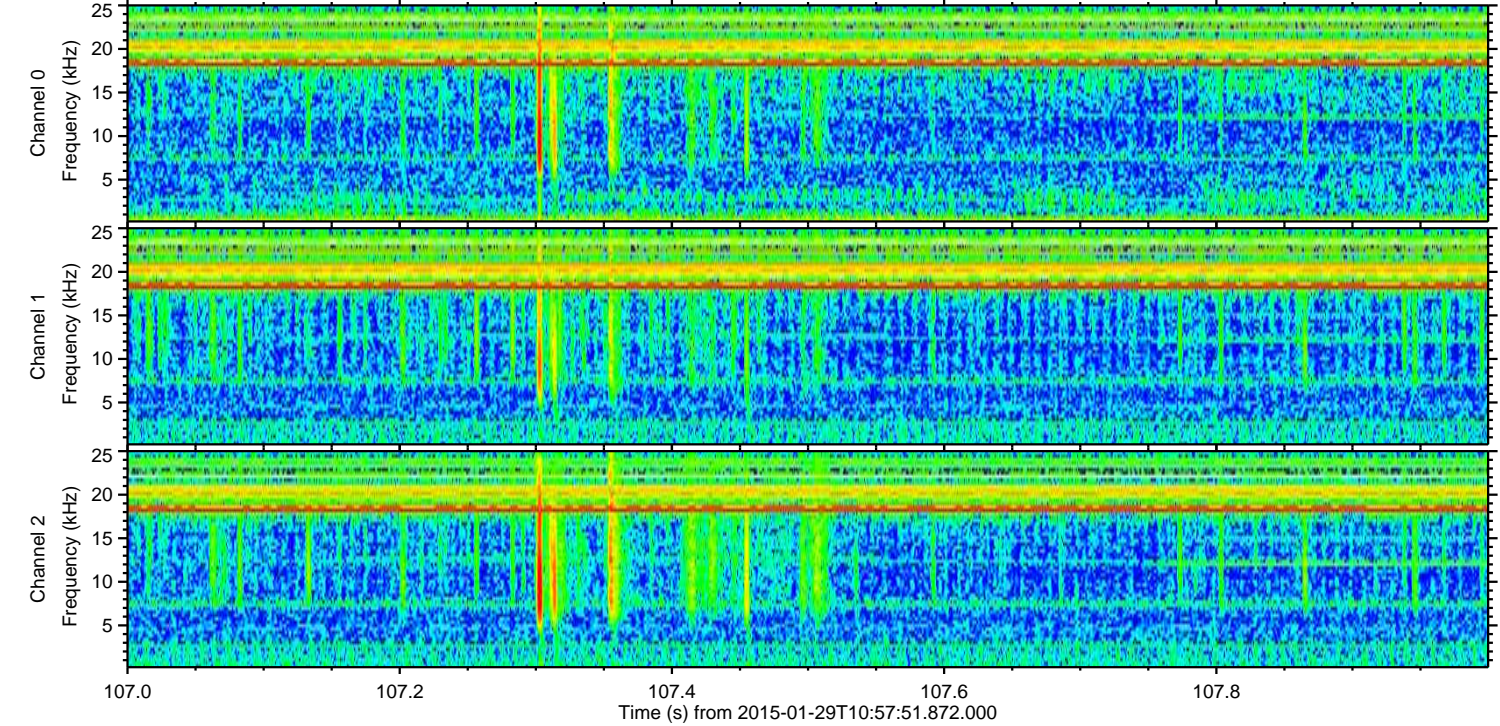
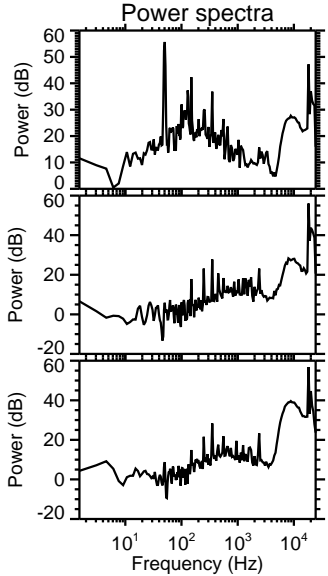
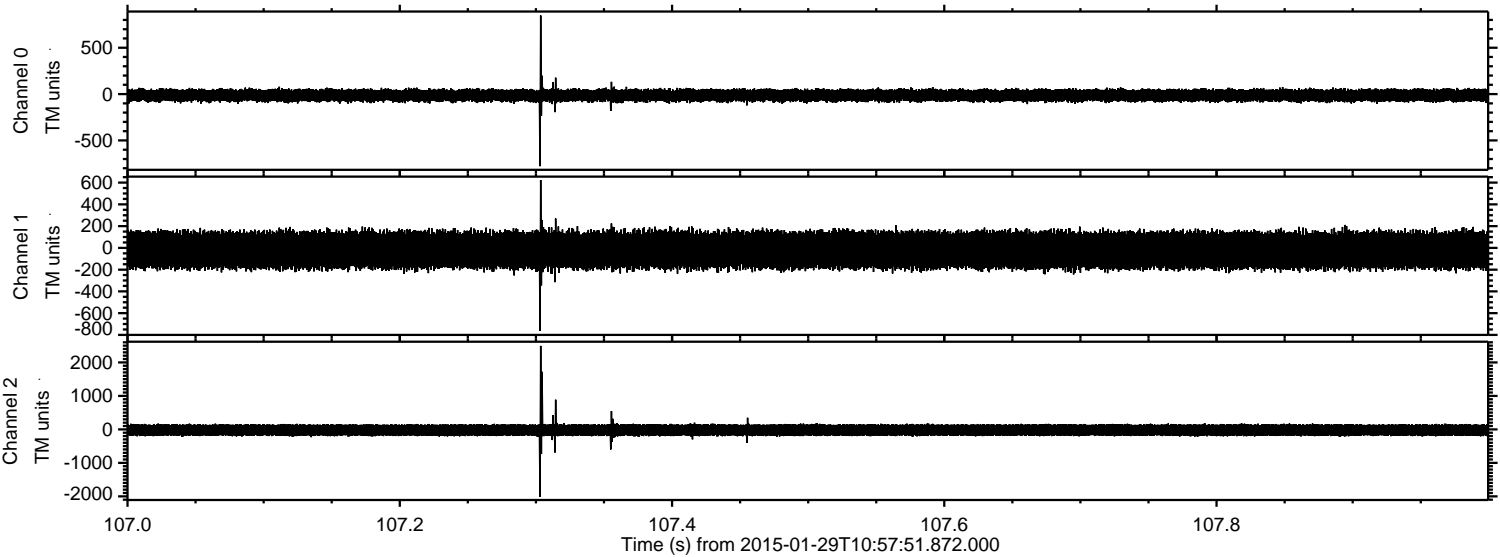


ELMAVAN 3D WAVEFORMS (Measured data sampled at 50 kHz) 49809 packets of 144 samples from 2015-01-29T10:57:51.872.000. Part 100/144

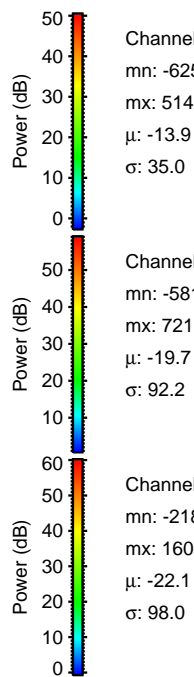
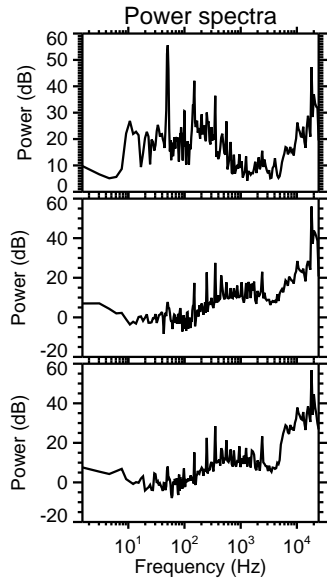
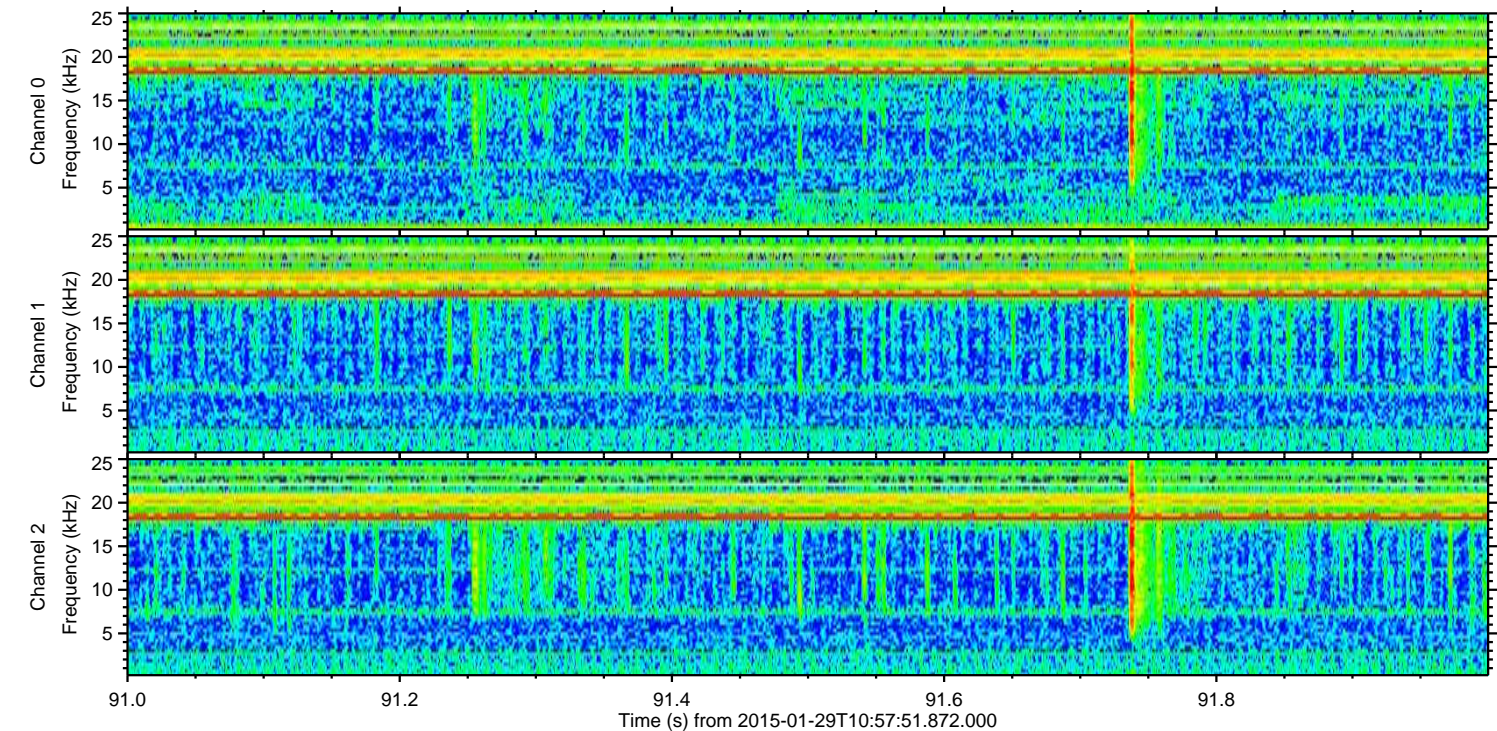
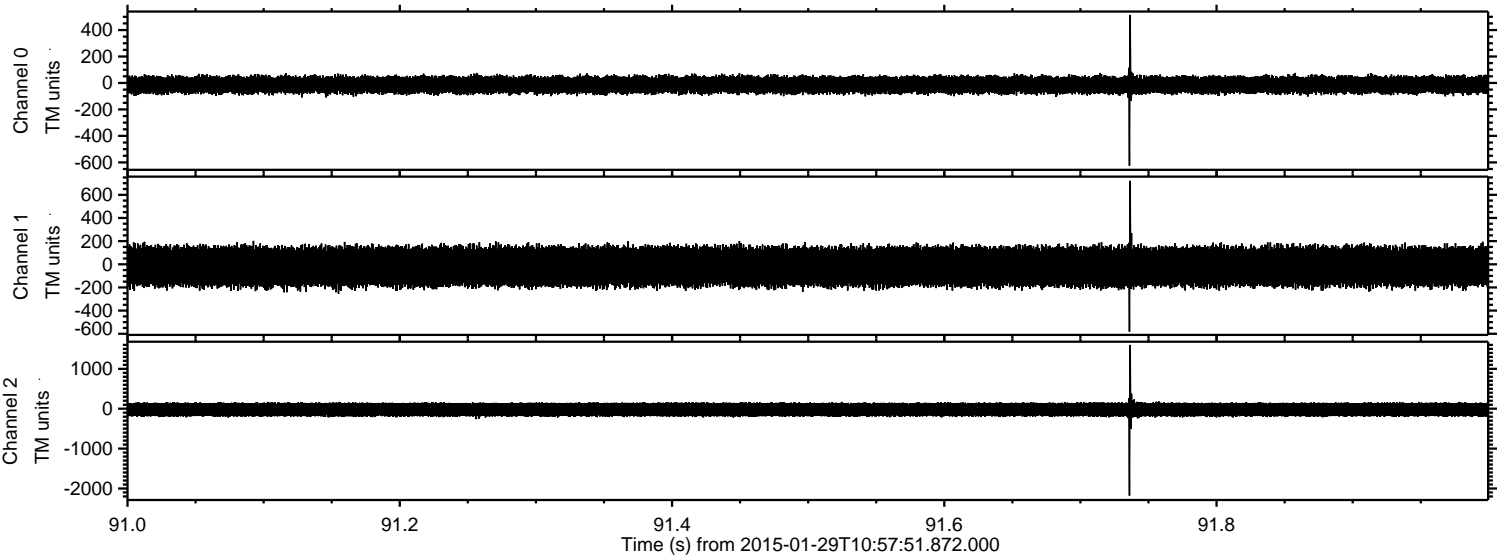
Processed Thu Feb 12 08:28:31 2015 by ELM ver.2012-10-06 from 001__elm20150129_105750__dat00.bin



Processed Thu Feb 12 08:28:32 2015 by ELM ver.2012-10-06 from 001__elm20150129_105750__dat00.bin



Processed Thu Feb 12 08:28:33 2015 by ELM ver.2012-10-06 from 001__elm20150129_105750__dat00.bin

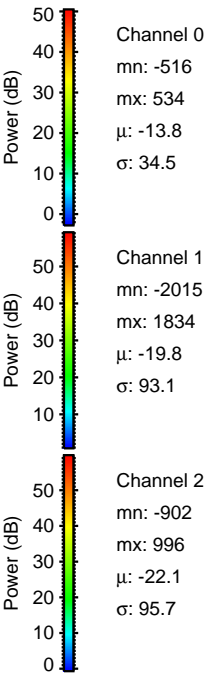
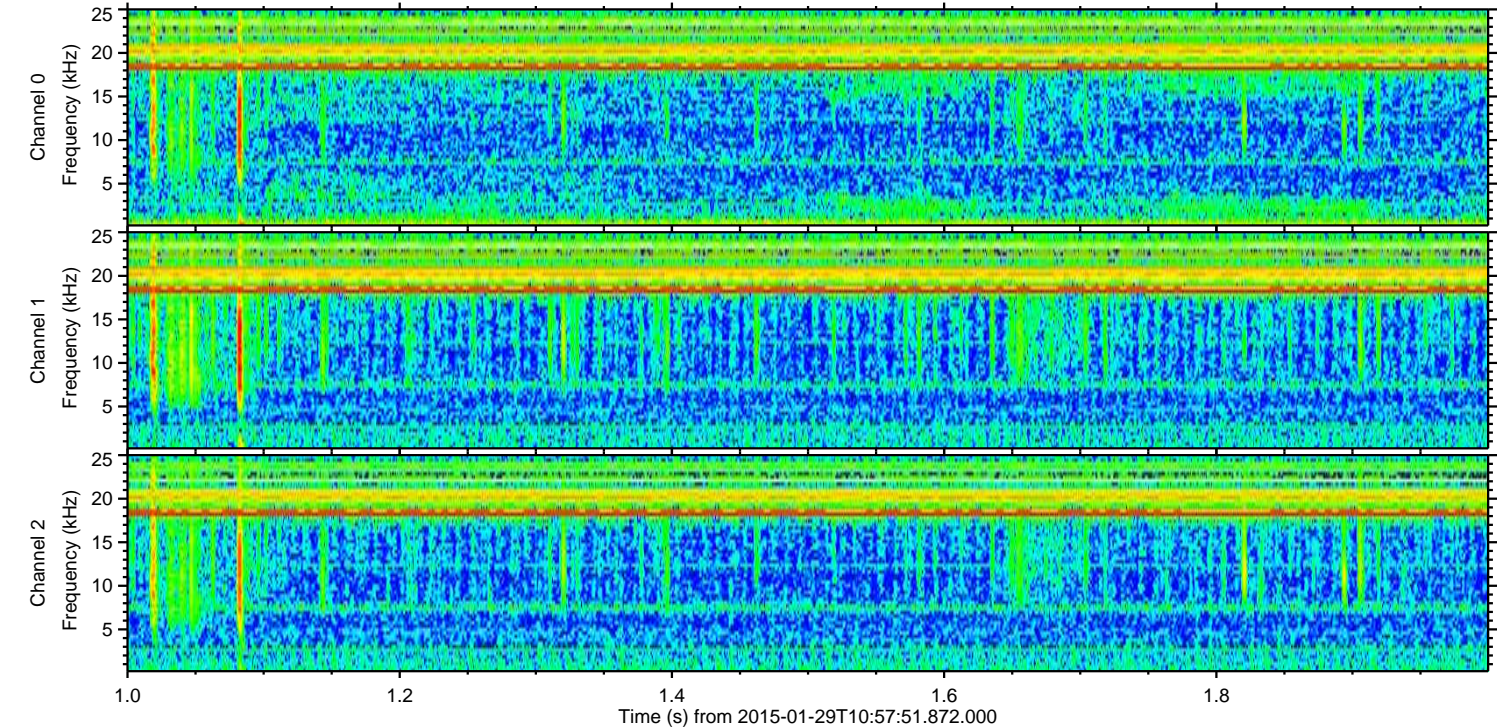
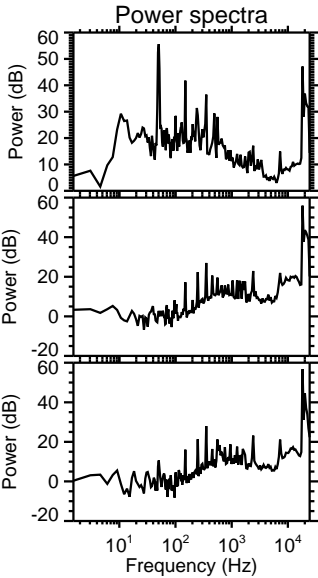
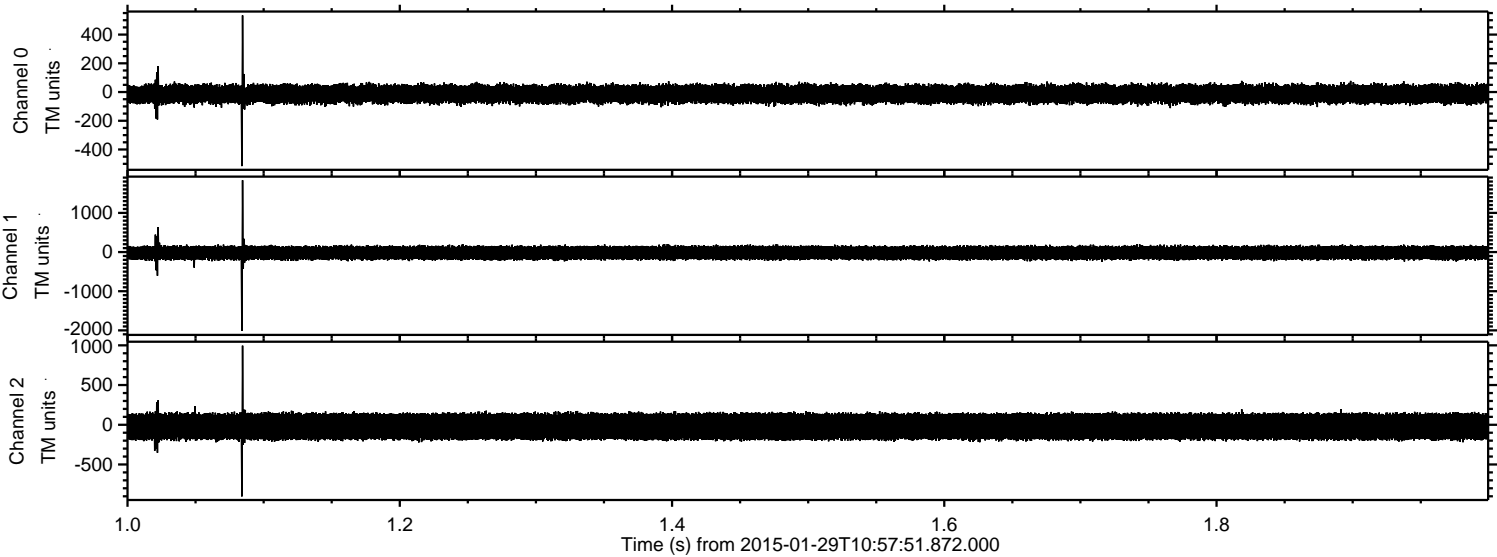


Channel 0
mn: -625
mx: 514
 μ : -13.9
 σ : 35.0

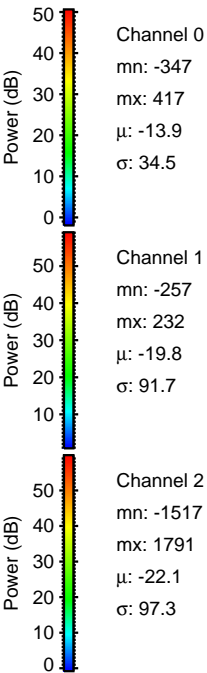
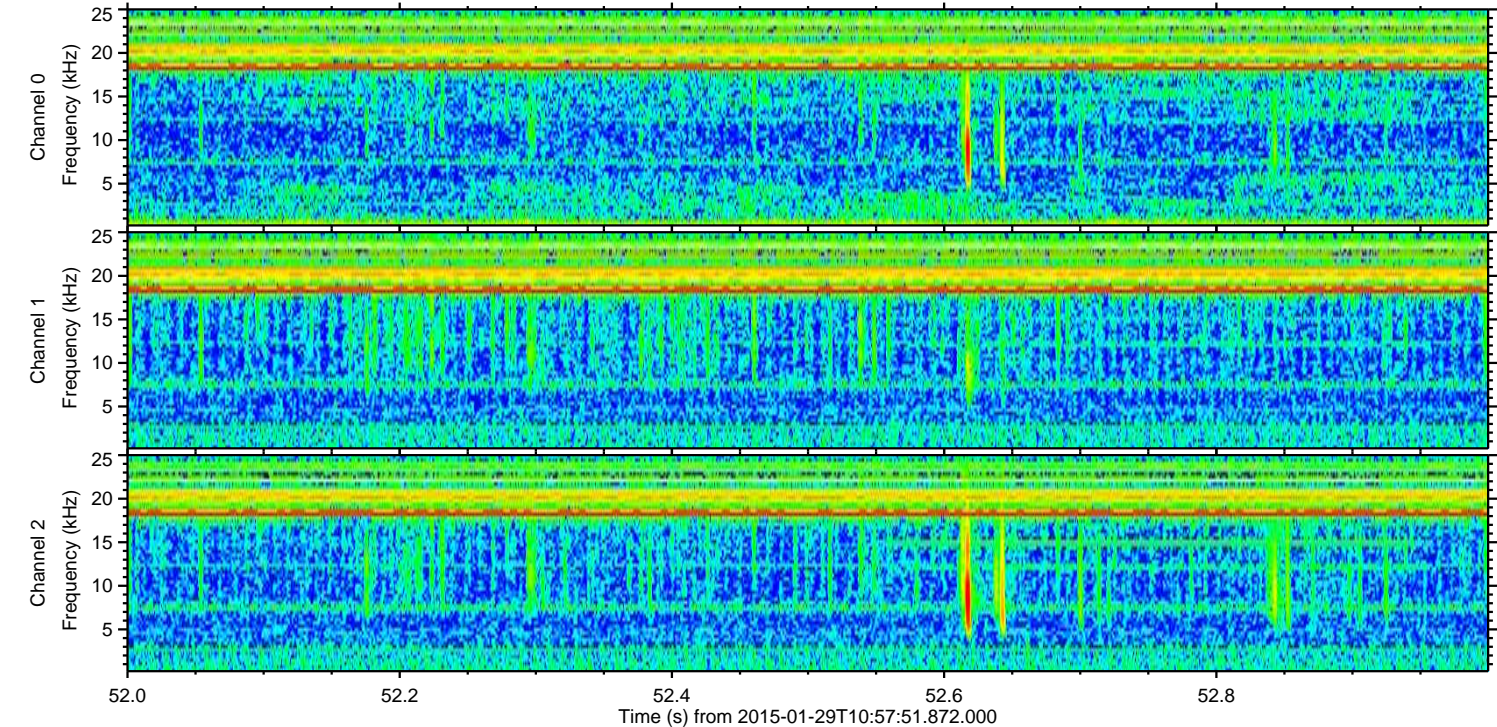
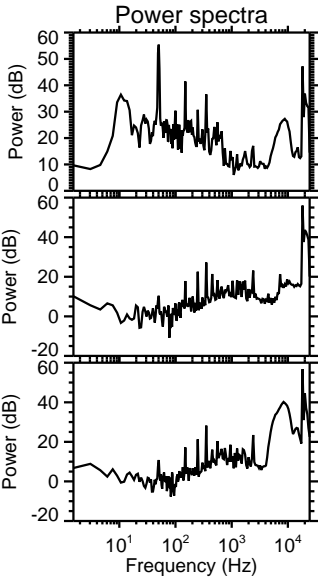
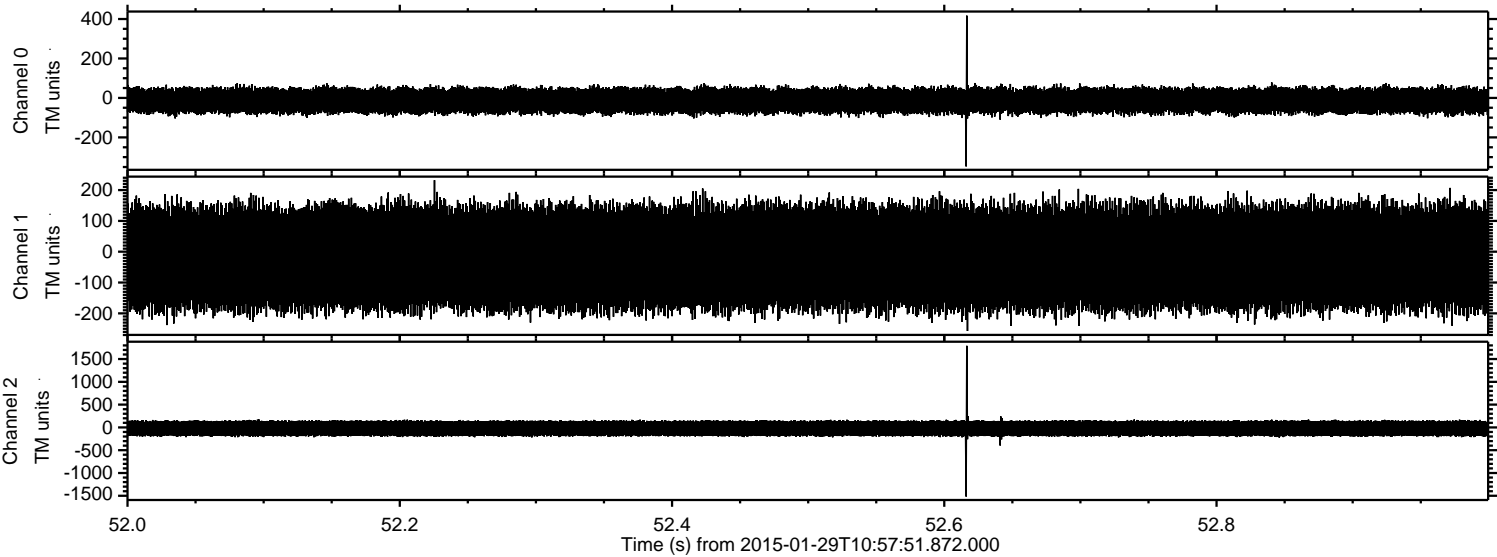
Channel 1
mn: -581
mx: 721
 μ : -19.7
 σ : 92.2

Channel 2
mn: -2180
mx: 1600
 μ : -22.1
 σ : 98.0

Processed Thu Feb 12 08:28:34 2015 by ELM ver.2012-10-06 from 001__elm20150129_105750__dat00.bin



Processed Thu Feb 12 08:28:35 2015 by ELM ver.2012-10-06 from 001__elm20150129_105750__dat00.bin



Processed Thu Feb 12 08:28:36 2015 by ELM ver.2012-10-06 from 001__elm20150129_105750__dat00.bin

