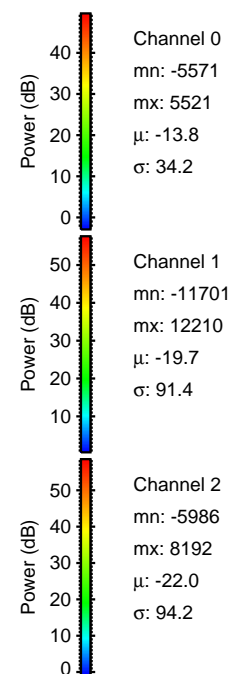
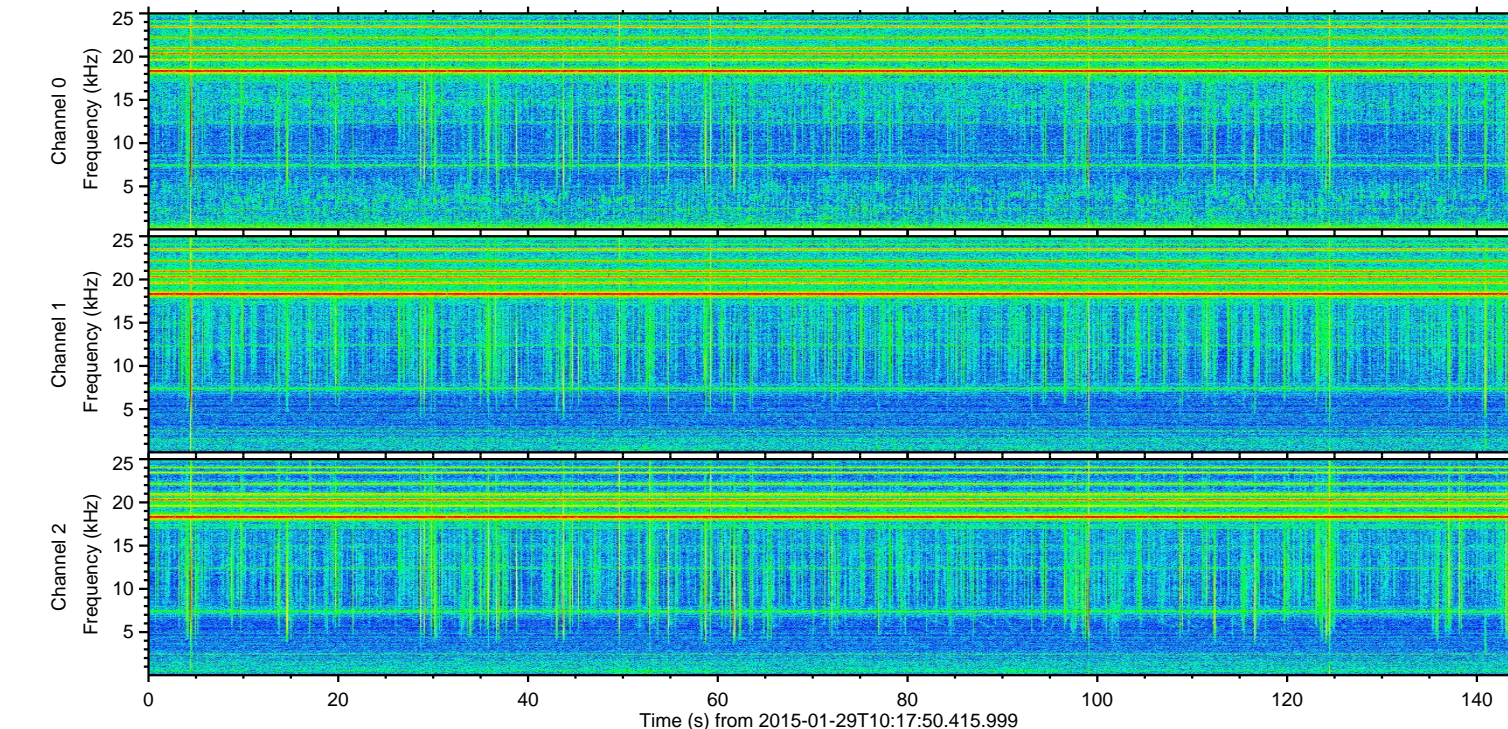
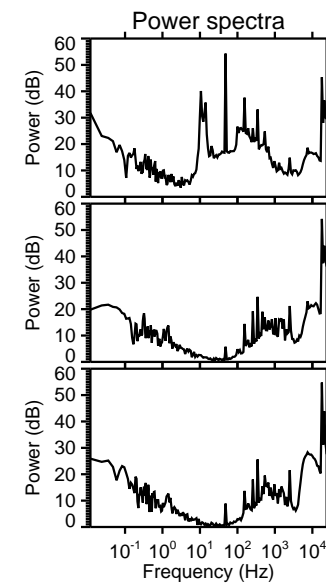
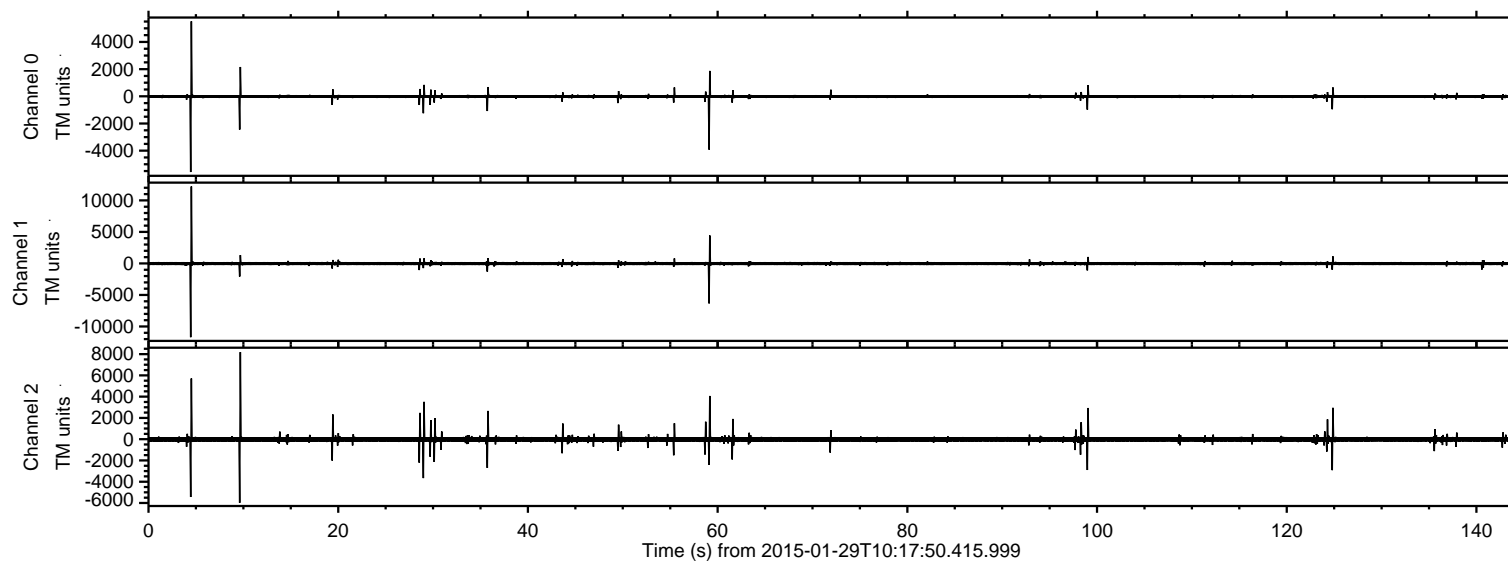
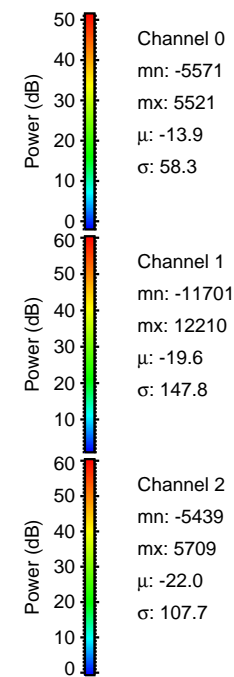
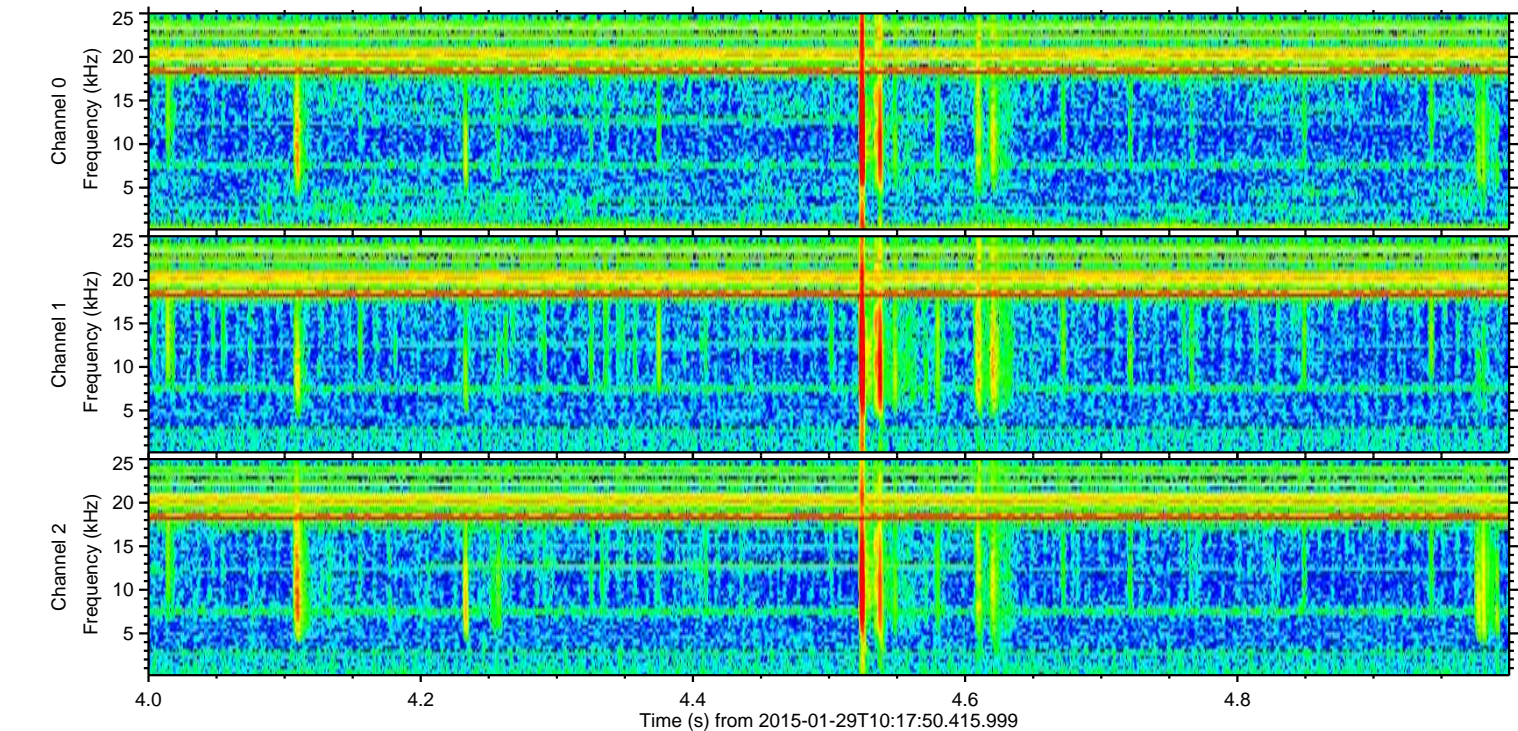
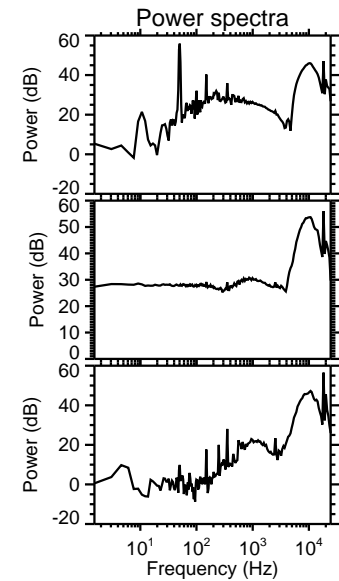
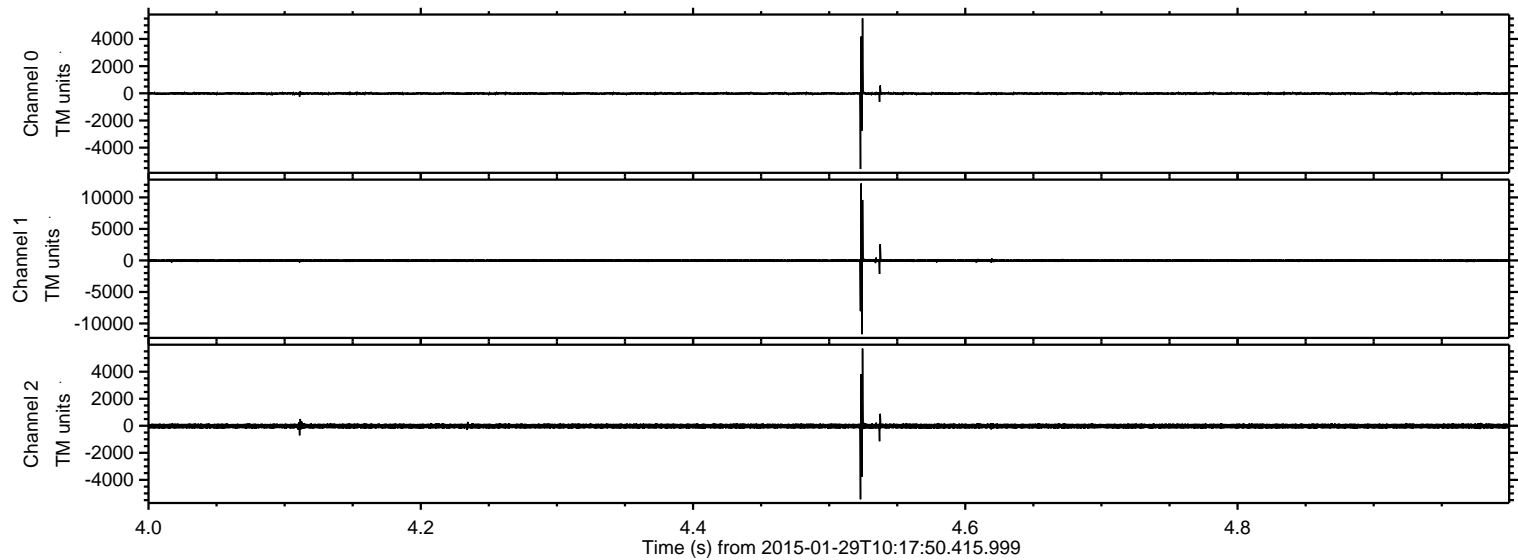


ELMAVAN 3D WAVEFORMS (Measured data sampled at 50 kHz) 49808 packets of 144 samples from 2015-01-29T10:17:50.415.999.

Processed Thu Feb 12 08:18:47 2015 by ELM ver.2012-10-06 from 001__elm20150129_101749__dat00.bin

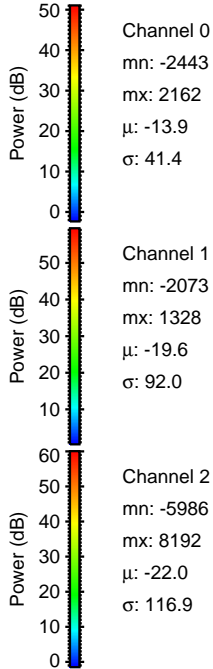
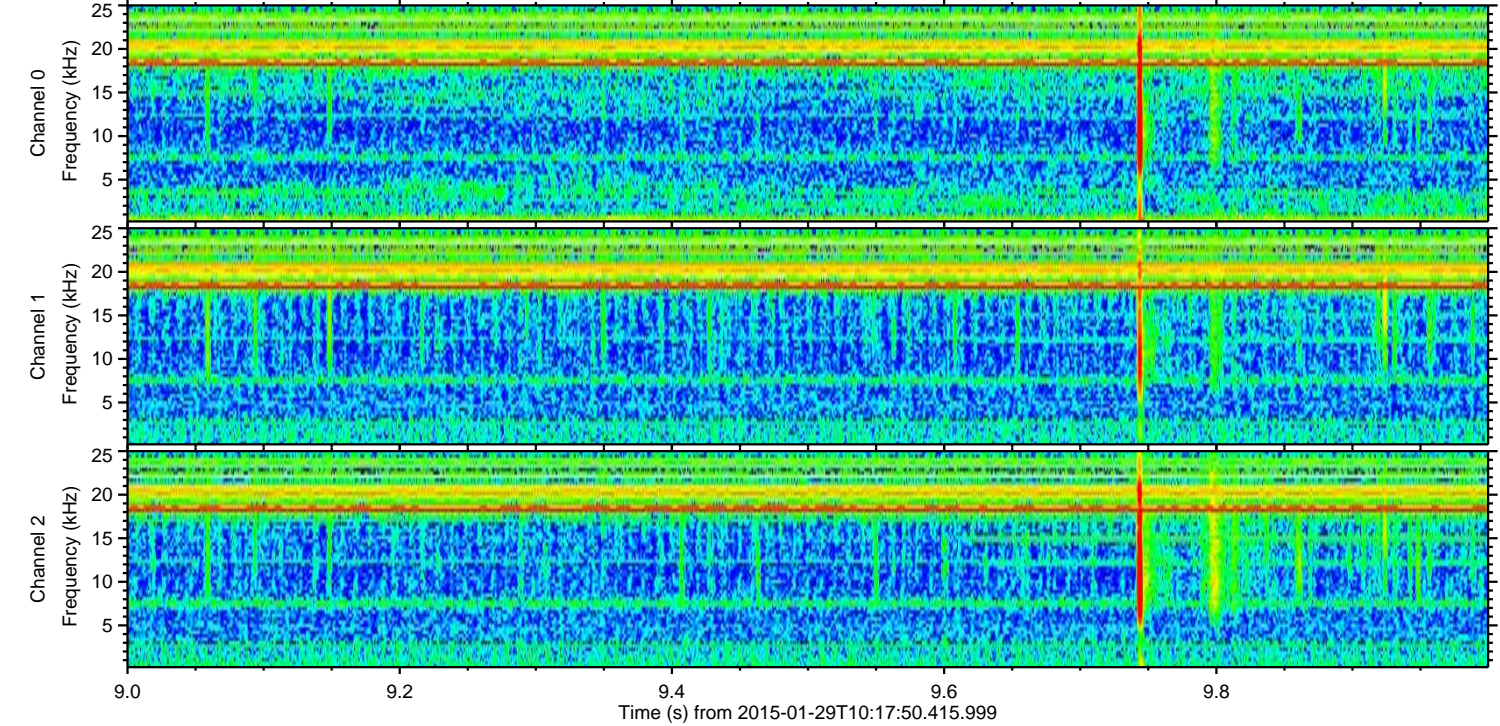
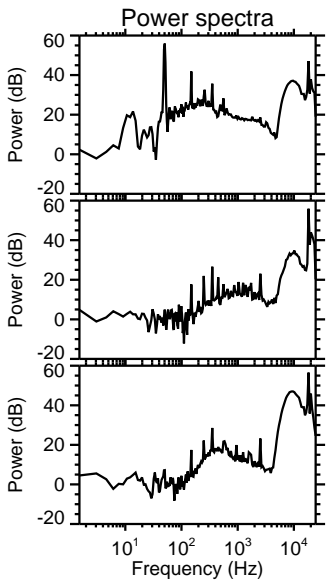
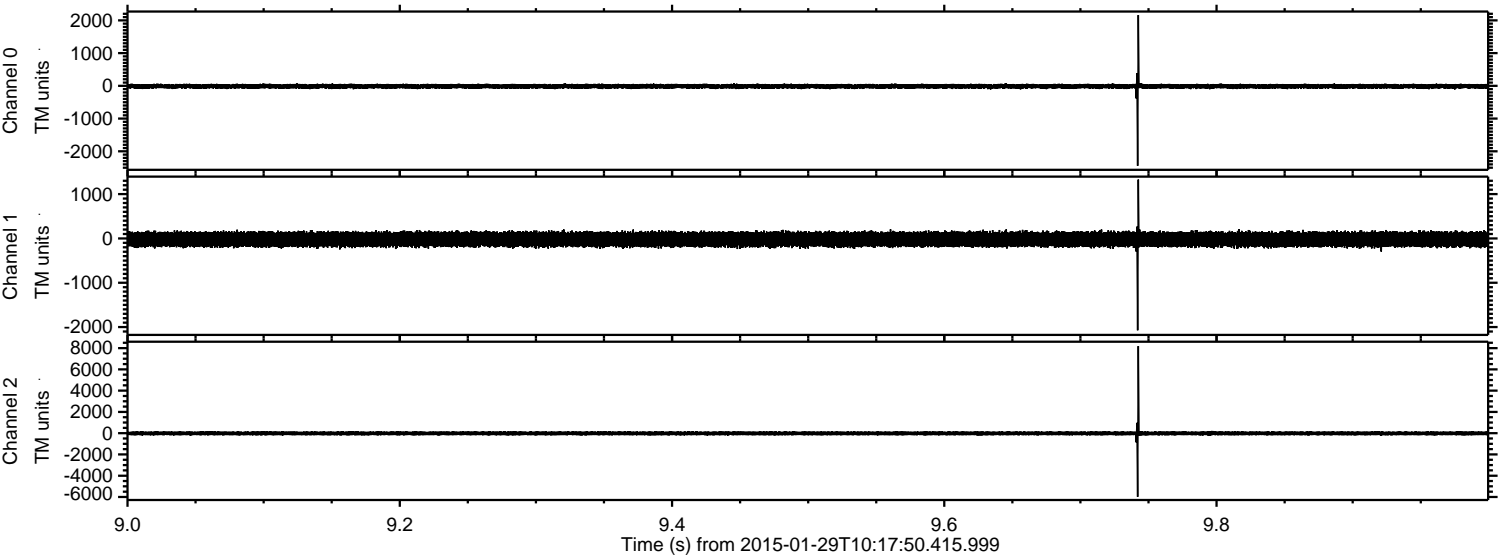


Processed Thu Feb 12 08:19:02 2015 by ELM ver.2012-10-06 from 001__elm20150129_101749__dat00.bin



ELMAVAN 3D WAVEFORMS (Measured data sampled at 50 kHz) 49808 packets of 144 samples from 2015-01-29T10:17:50.415.999. Part 10/144

Processed Thu Feb 12 08:19:03 2015 by ELM ver.2012-10-06 from 001__elm20150129_101749__dat00.bin

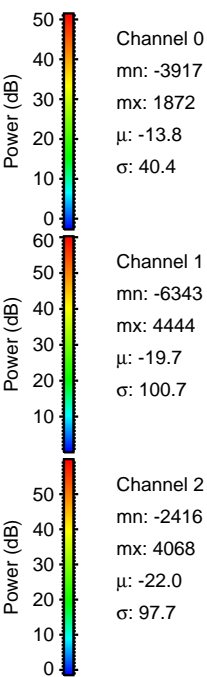
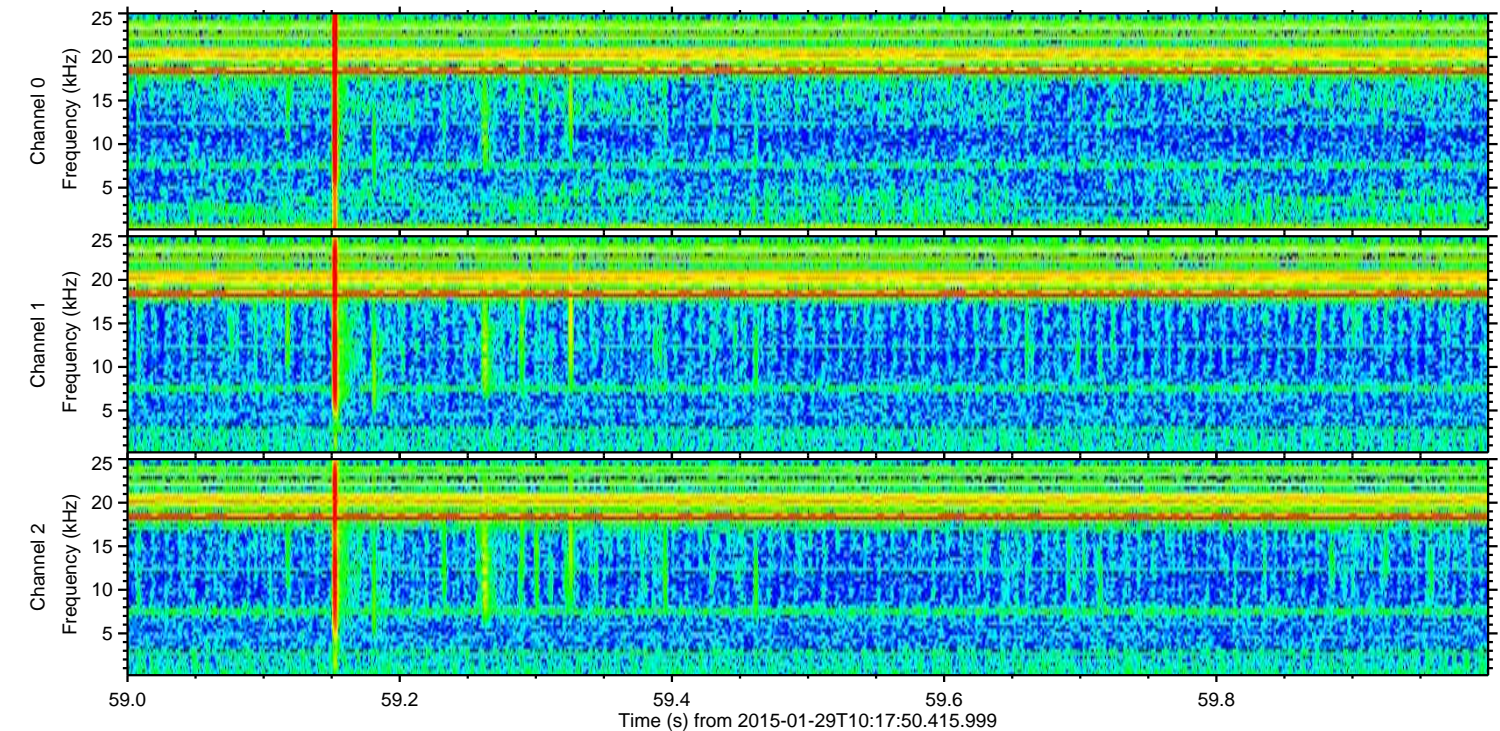
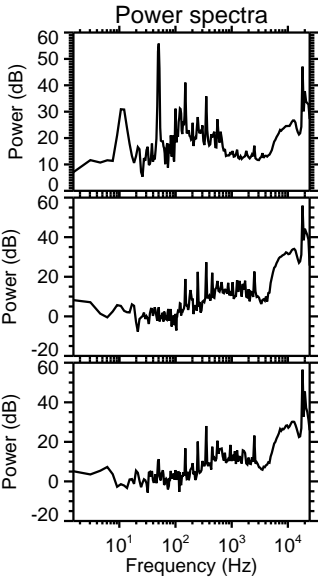
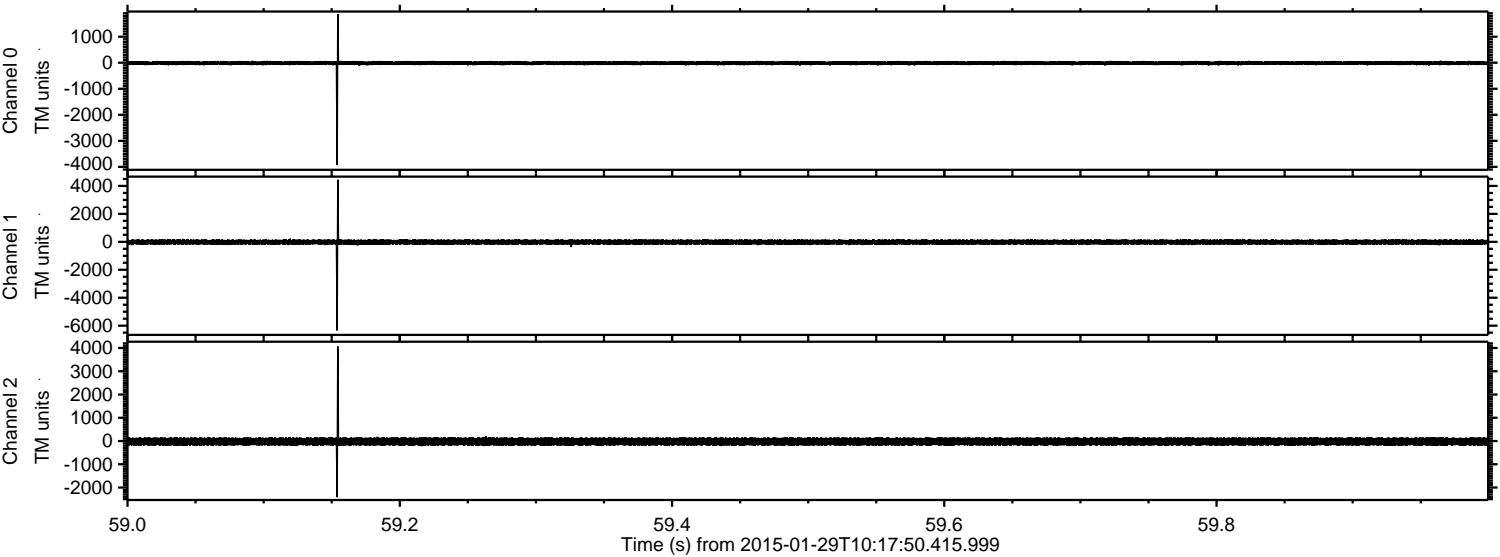


Channel 0
mn: -2443
mx: 2162
 μ : -13.9
 σ : 41.4

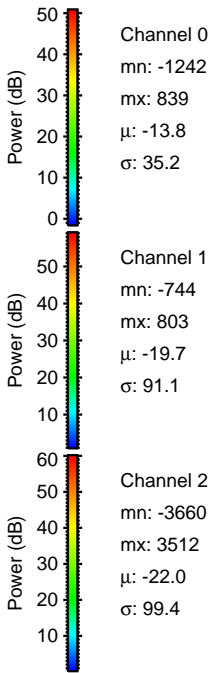
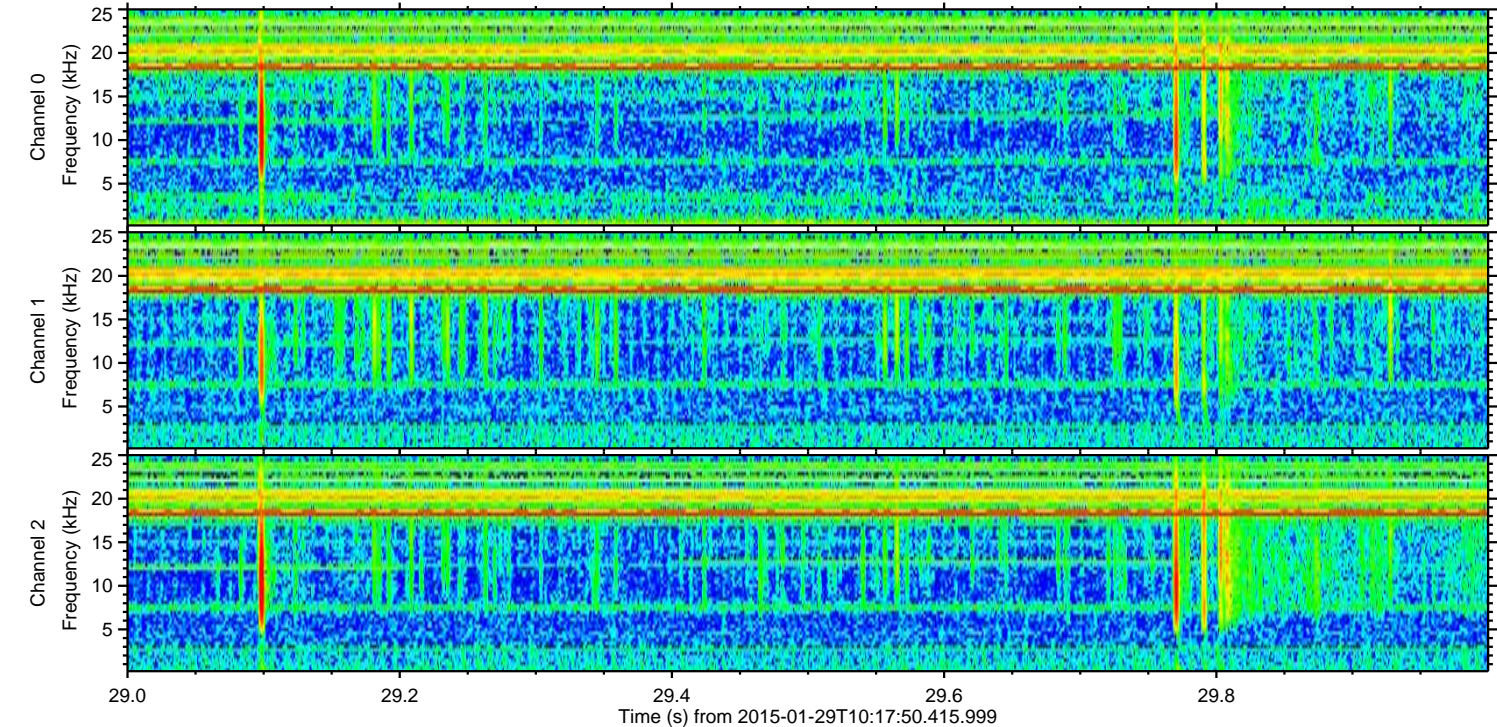
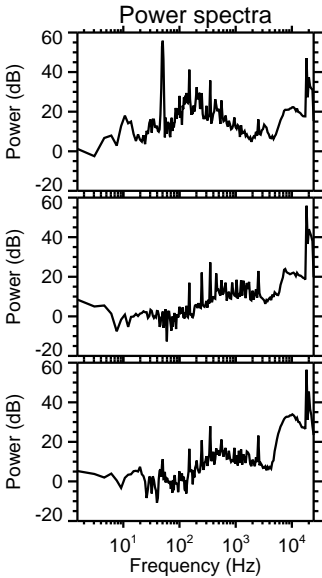
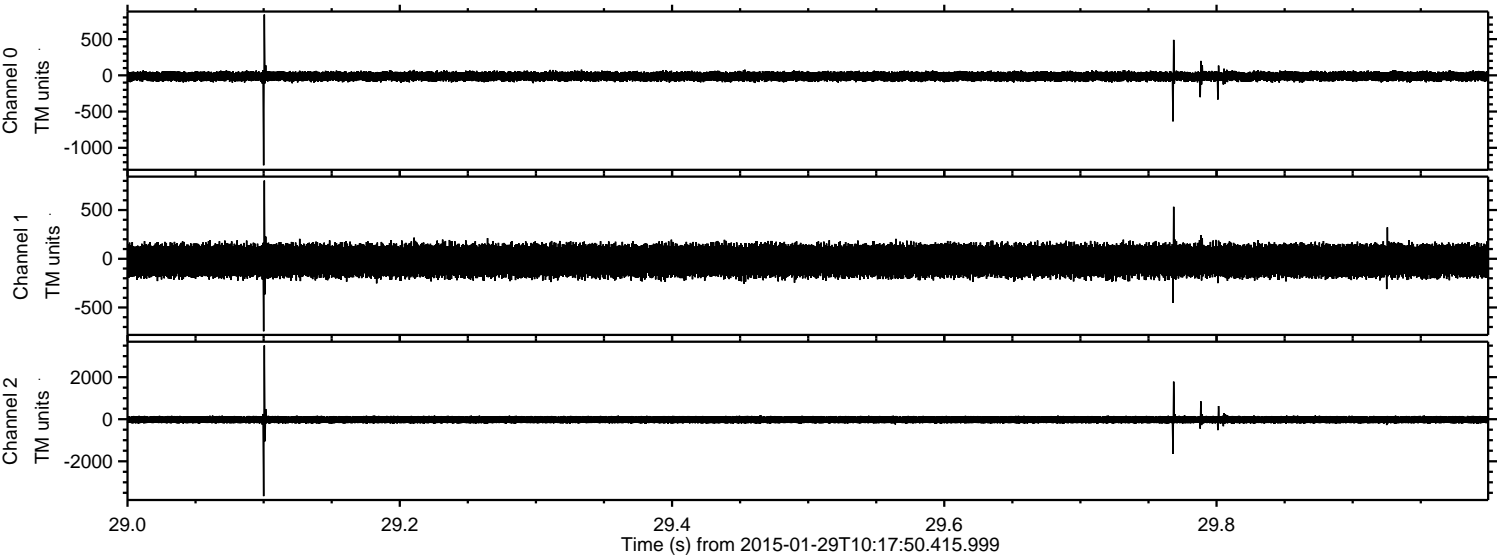
Channel 1
mn: -2073
mx: 1328
 μ : -19.6
 σ : 92.0

Channel 2
mn: -5986
mx: 8192
 μ : -22.0
 σ : 116.9

Processed Thu Feb 12 08:19:04 2015 by ELM ver.2012-10-06 from 001__elm20150129_101749__dat00.bin

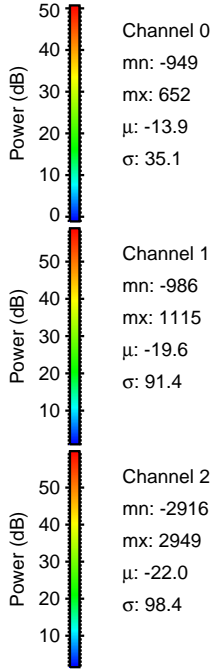
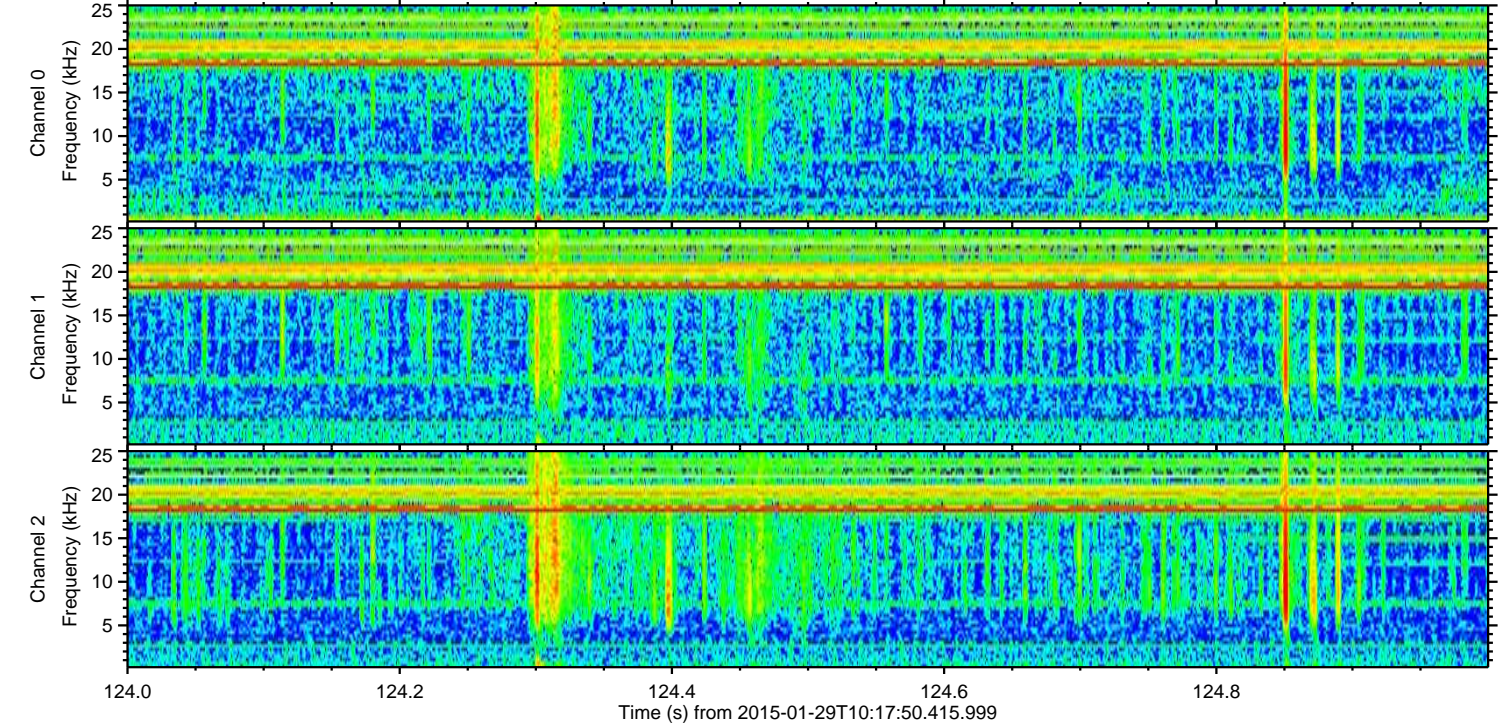
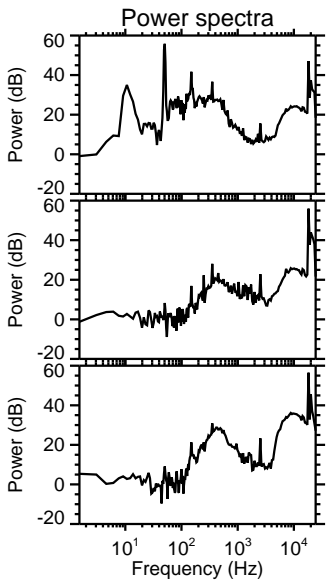
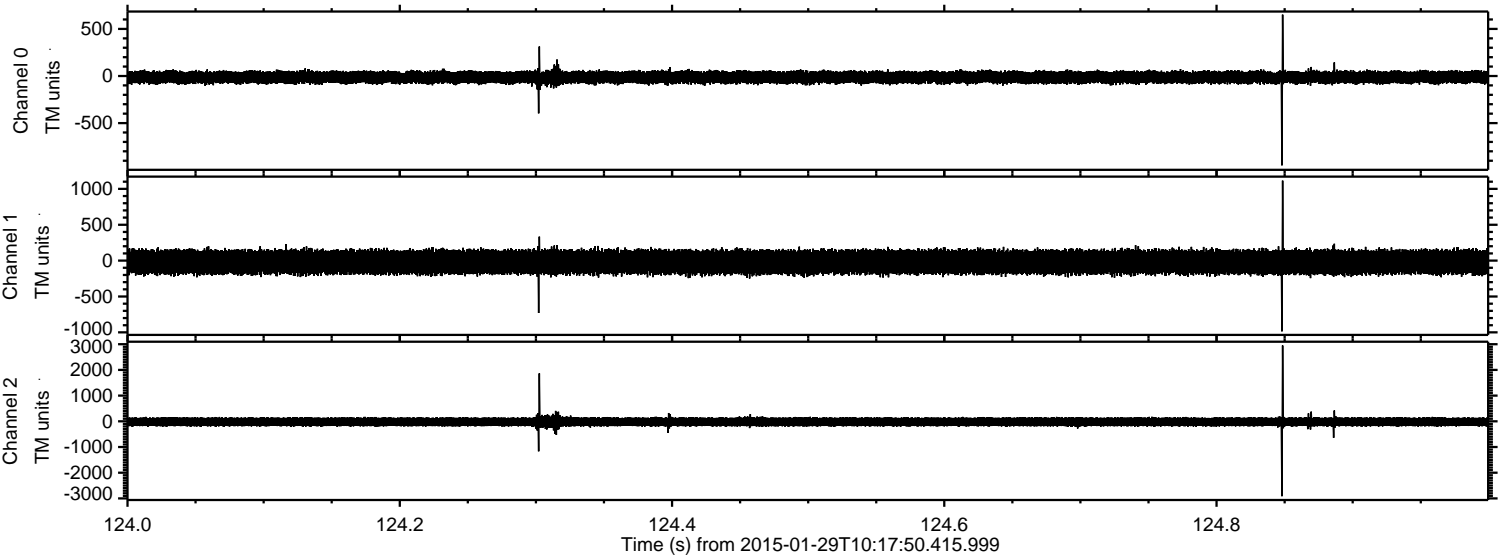


Processed Thu Feb 12 08:19:05 2015 by ELM ver.2012-10-06 from 001__elm20150129_101749__dat00.bin

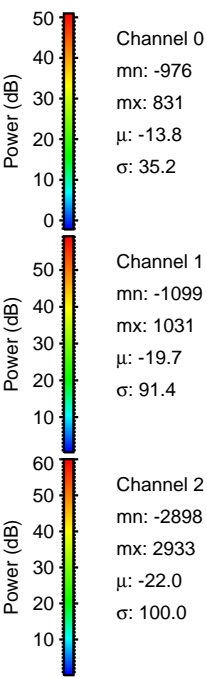
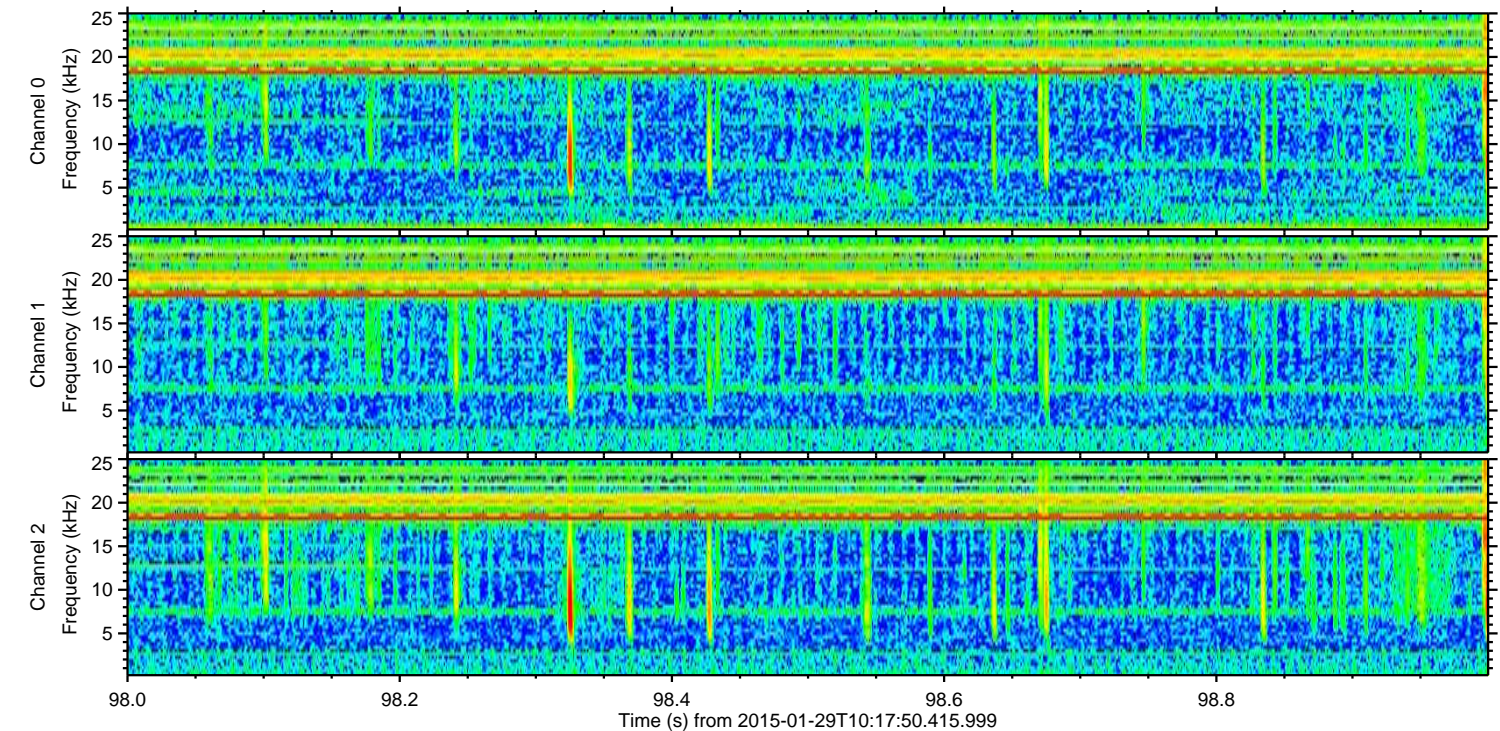
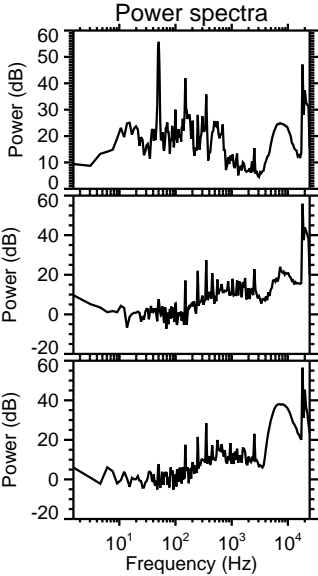
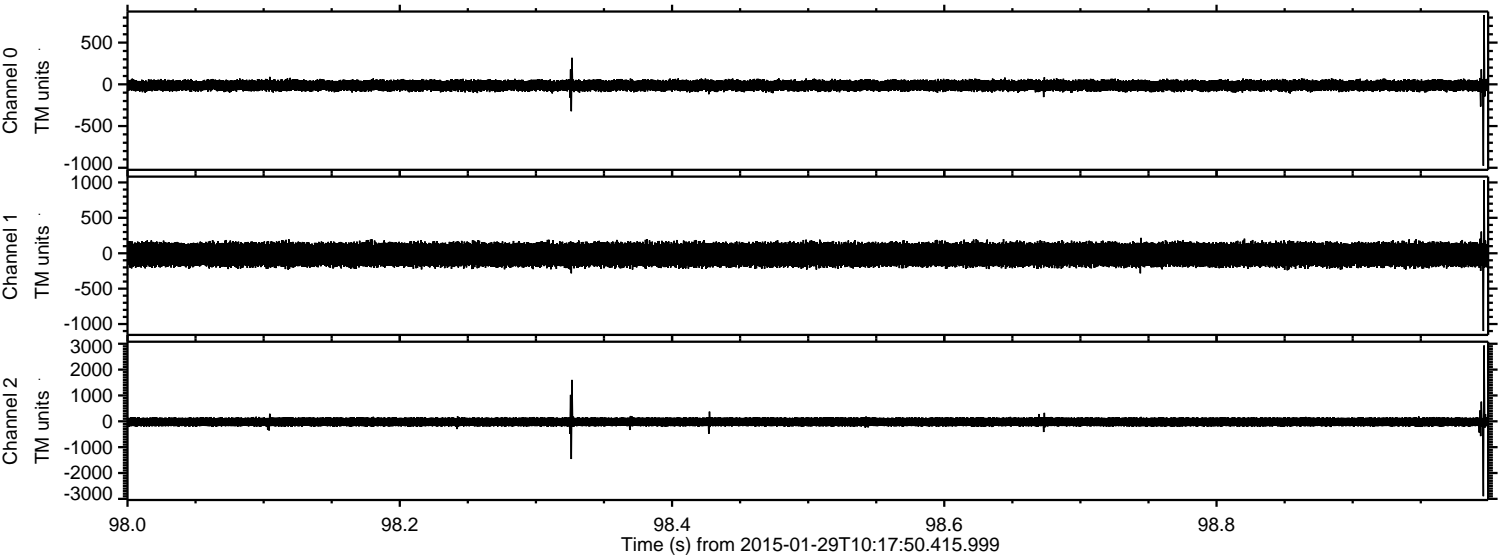


ELMAVAN 3D WAVEFORMS (Measured data sampled at 50 kHz) 49808 packets of 144 samples from 2015-01-29T10:17:50.415.999. Part 125/144

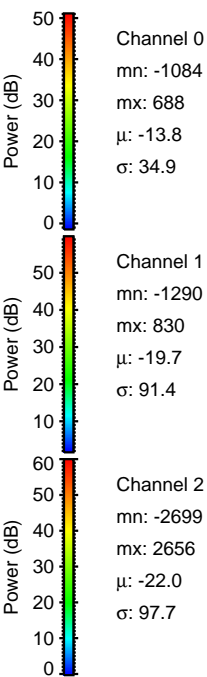
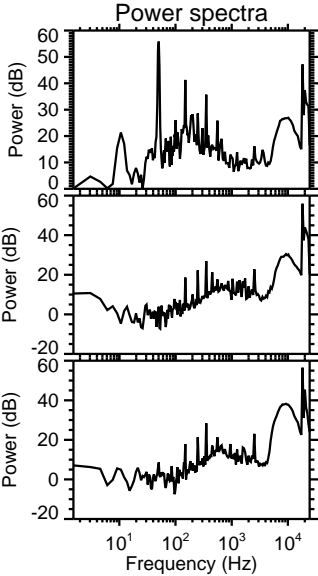
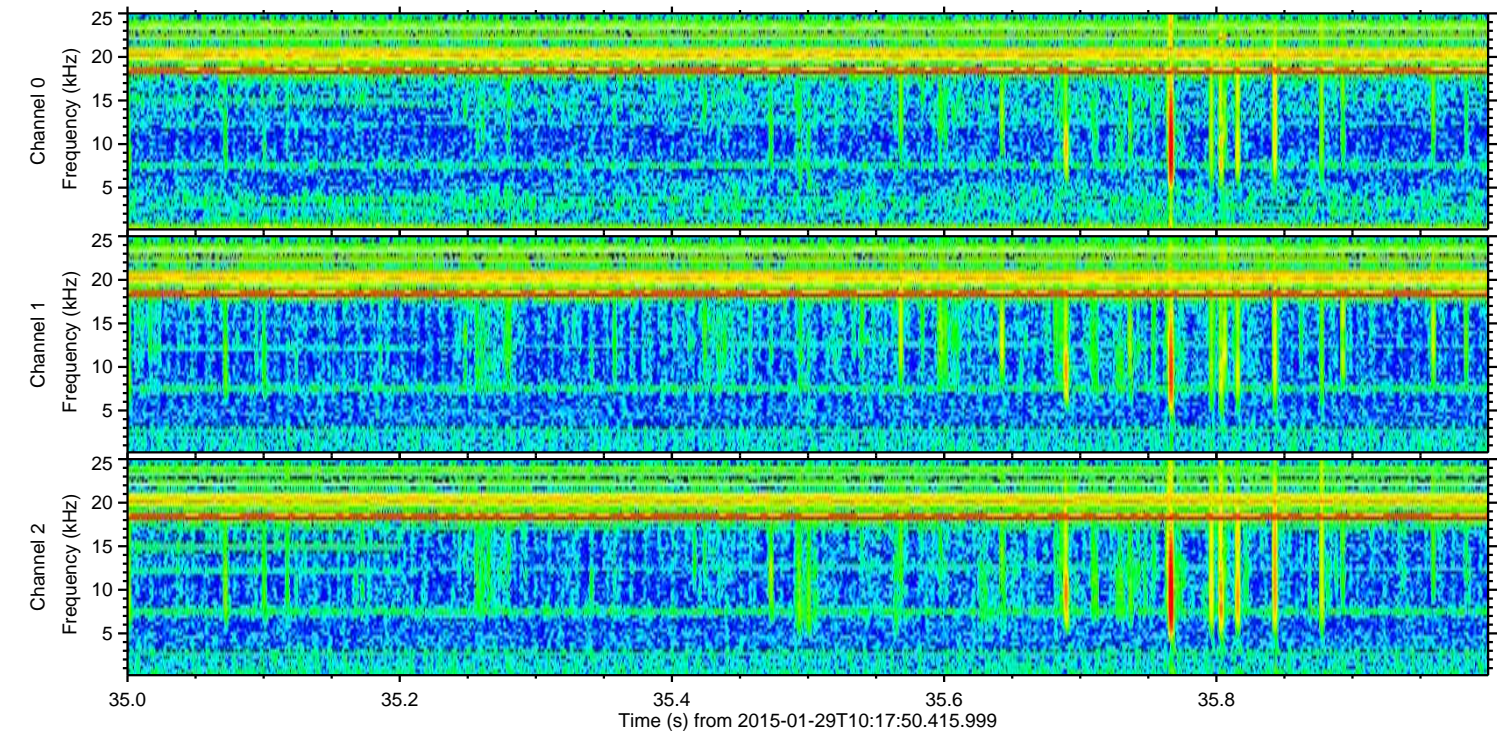
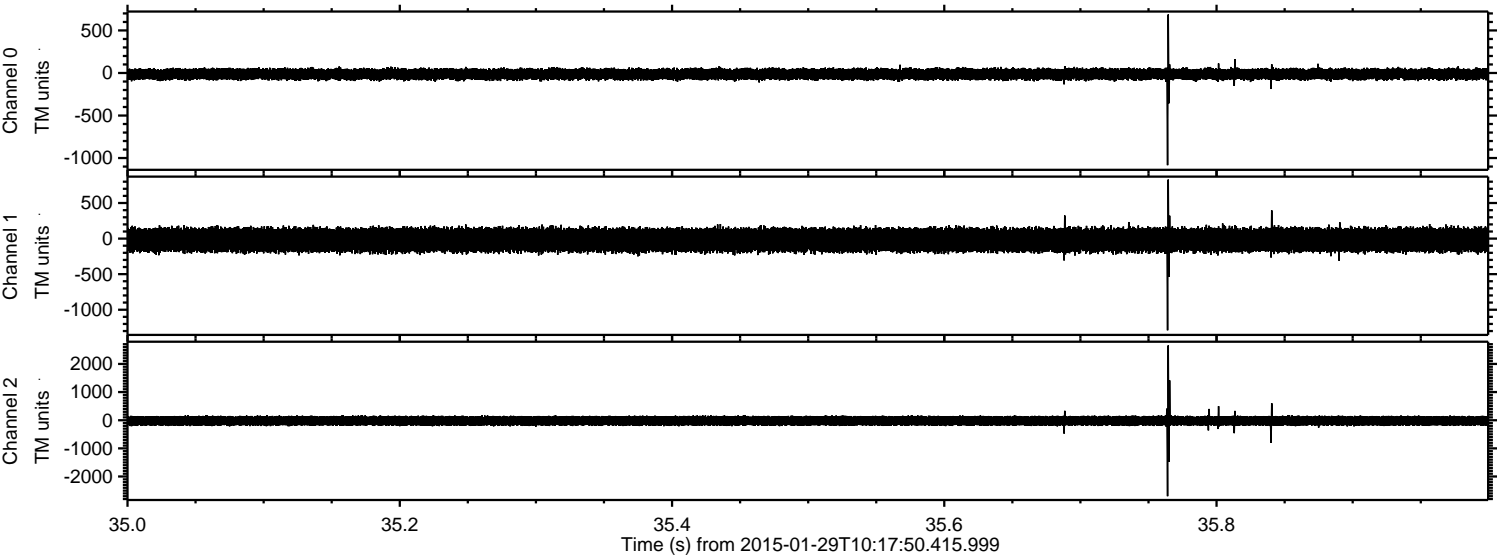
Processed Thu Feb 12 08:19:06 2015 by ELM ver.2012-10-06 from 001__elm20150129_101749__dat00.bin



Processed Thu Feb 12 08:19:08 2015 by ELM ver.2012-10-06 from 001__elm20150129_101749__dat00.bin



Processed Thu Feb 12 08:19:09 2015 by ELM ver.2012-10-06 from 001__elm20150129_101749__dat00.bin

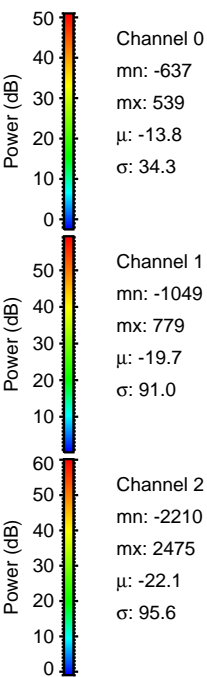
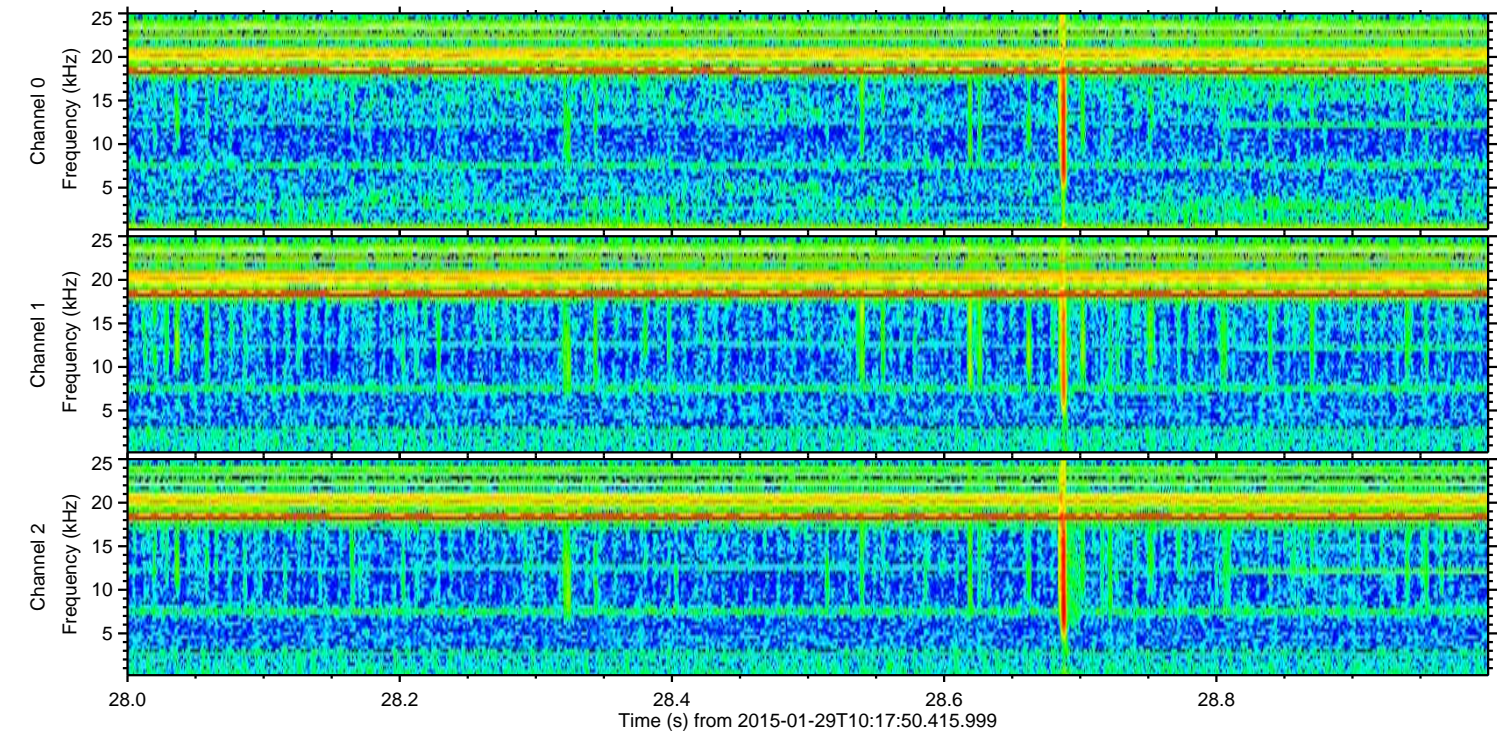
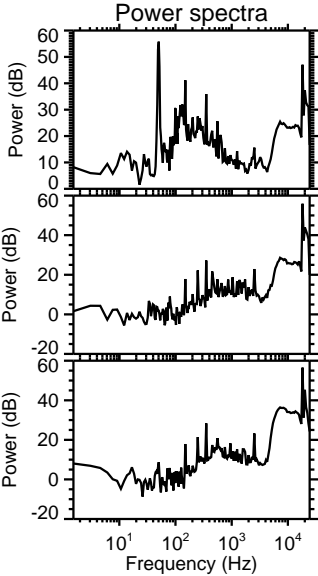
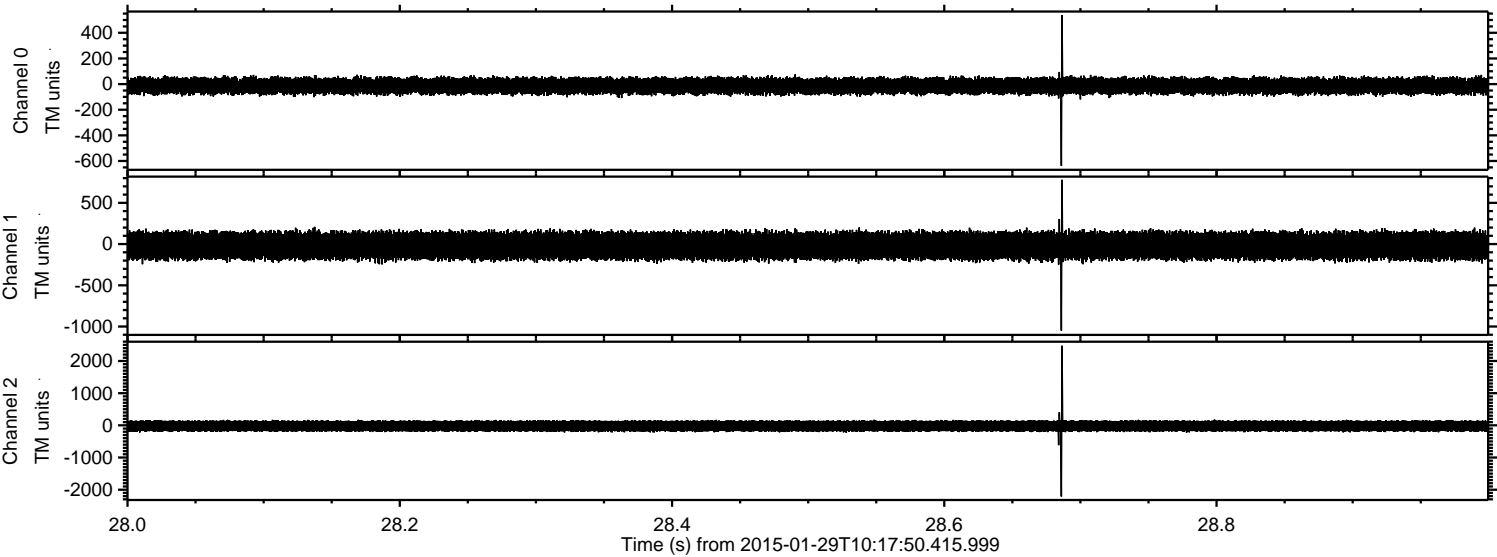


Channel 0
mn: -1084
mx: 688
 μ : -13.8
 σ : 34.9

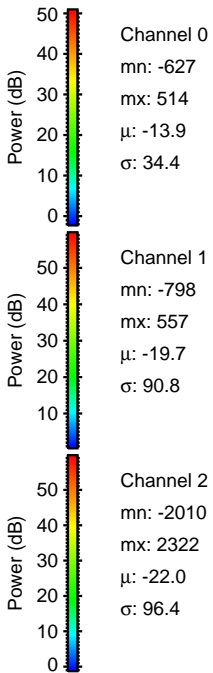
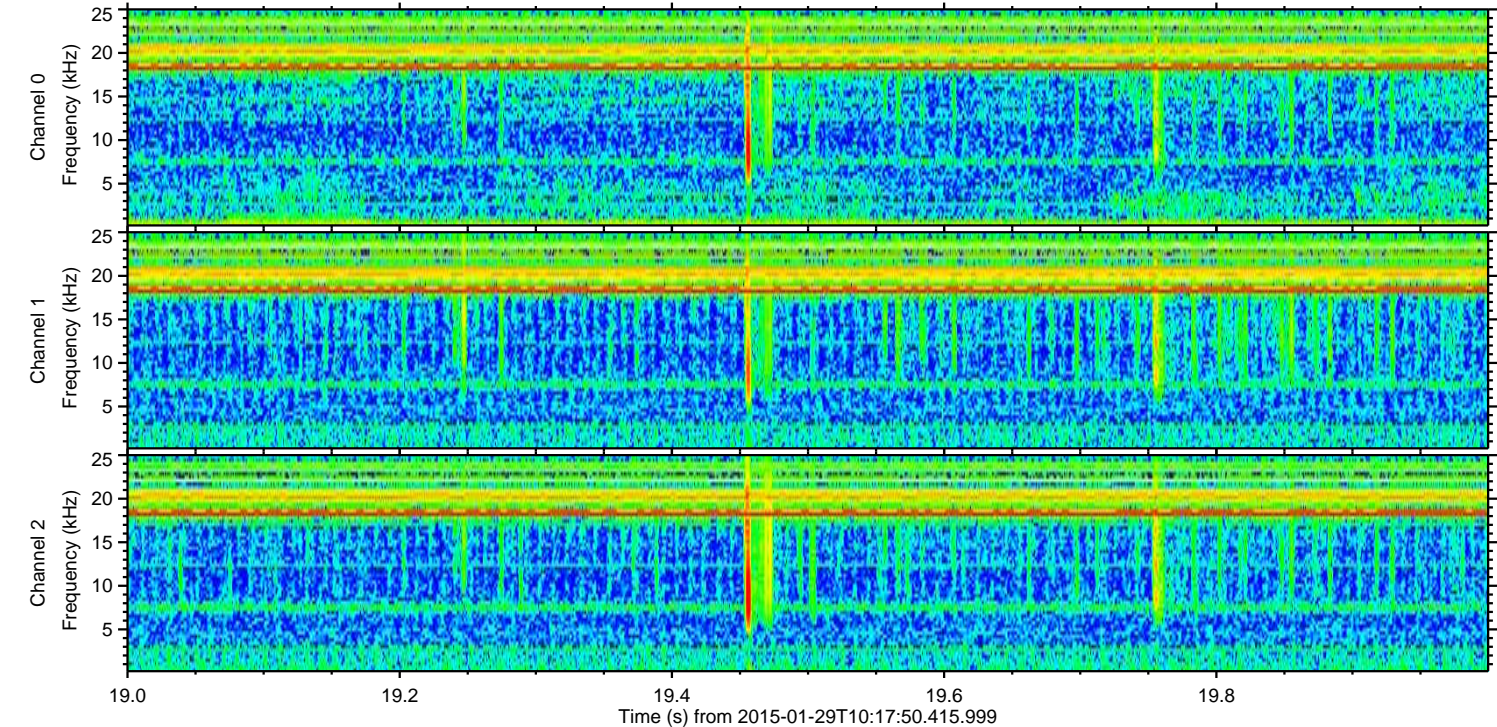
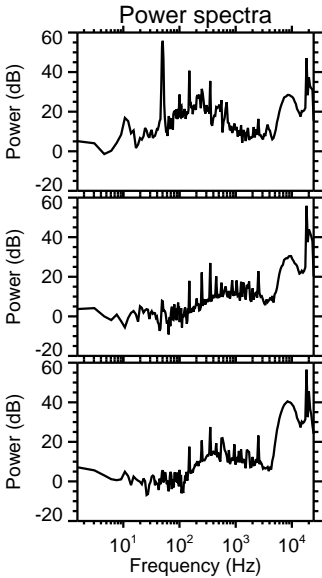
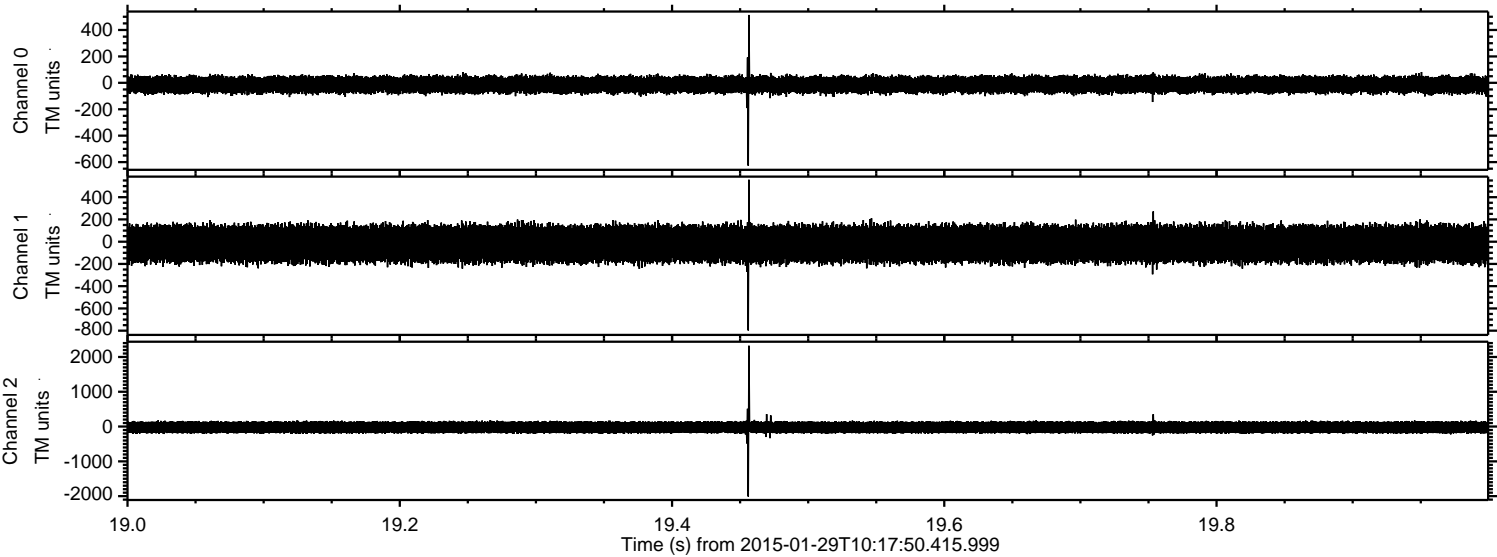
Channel 1
mn: -1290
mx: 830
 μ : -19.7
 σ : 91.4

Channel 2
mn: -2699
mx: 2656
 μ : -22.0
 σ : 97.7

Processed Thu Feb 12 08:19:10 2015 by ELM ver.2012-10-06 from 001__elm20150129_101749__dat00.bin



Processed Thu Feb 12 08:19:11 2015 by ELM ver.2012-10-06 from 001__elm20150129_101749__dat00.bin



Processed Thu Feb 12 08:19:12 2015 by ELM ver.2012-10-06 from 001__elm20150129_101749__dat00.bin

