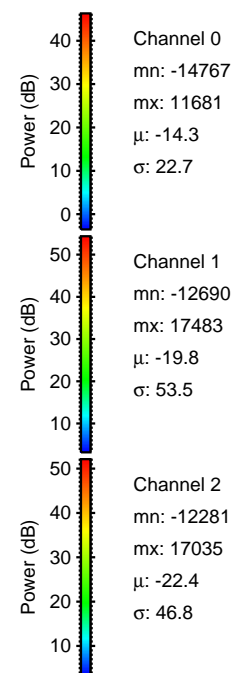
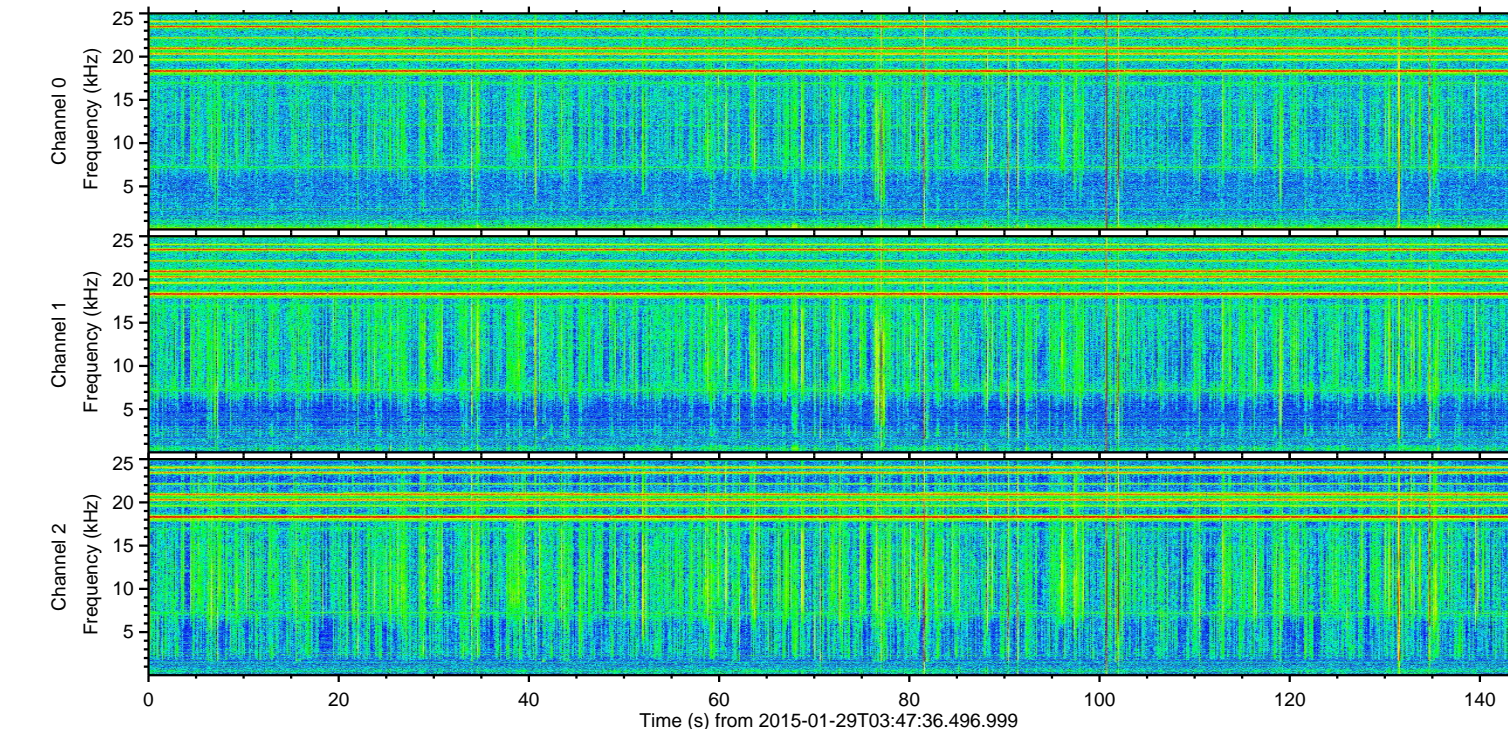
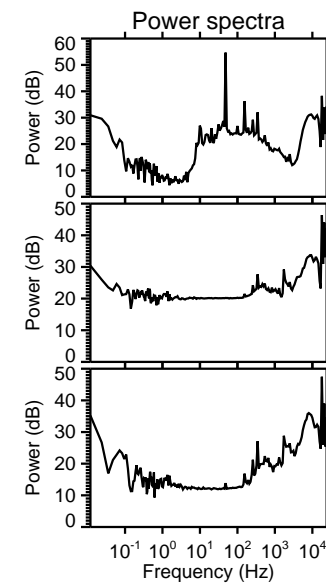
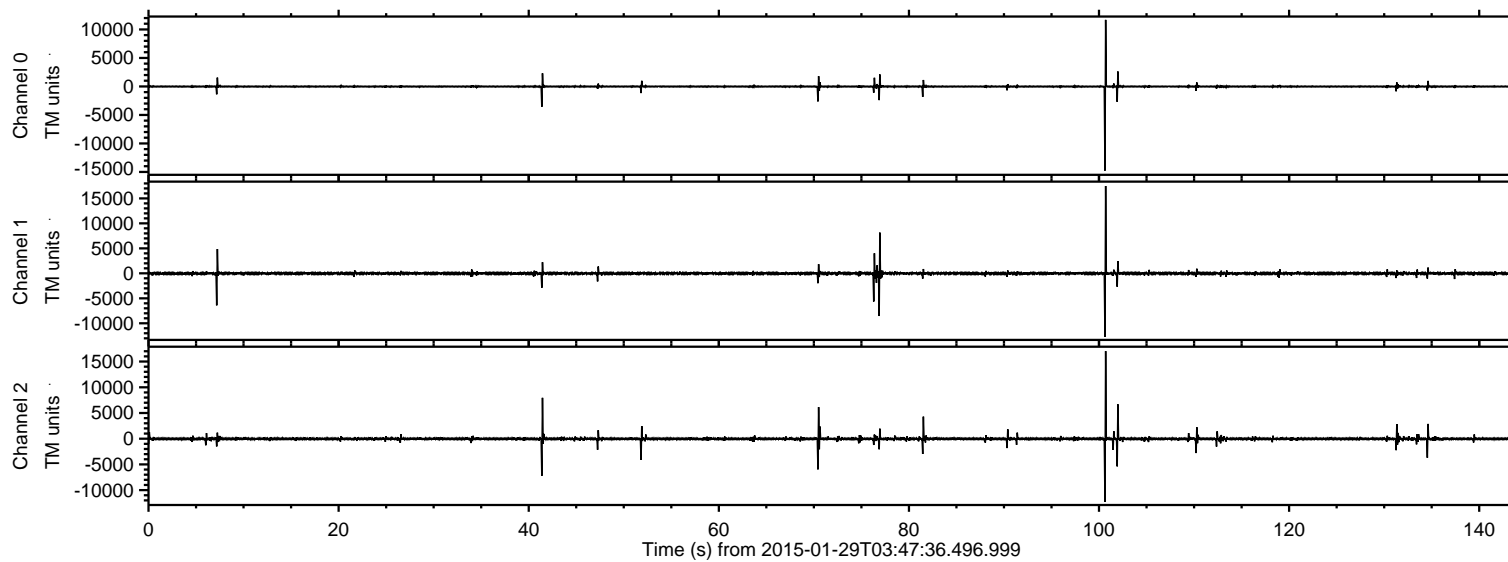


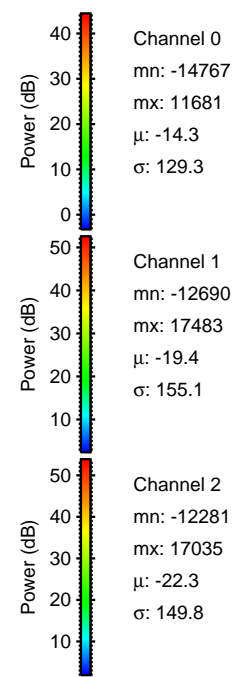
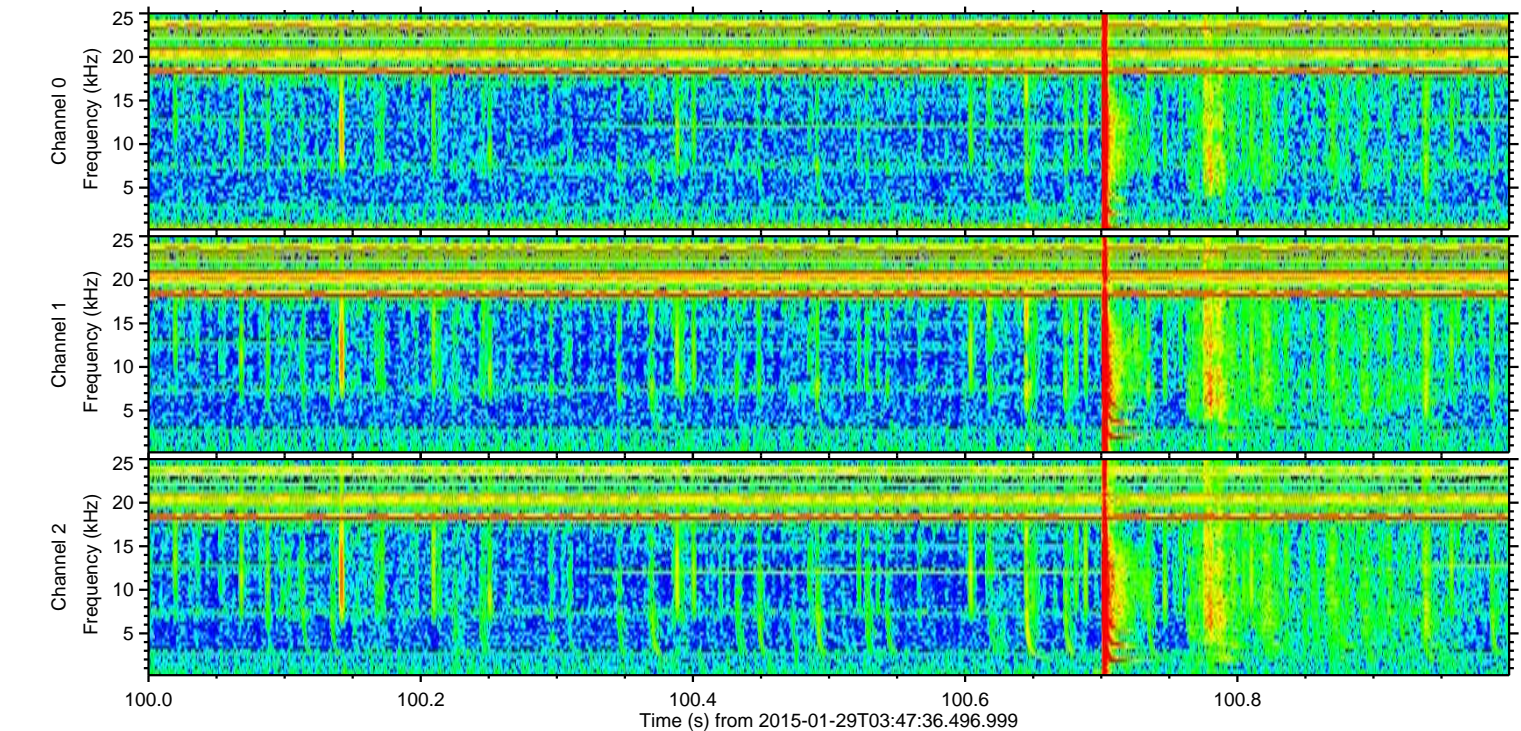
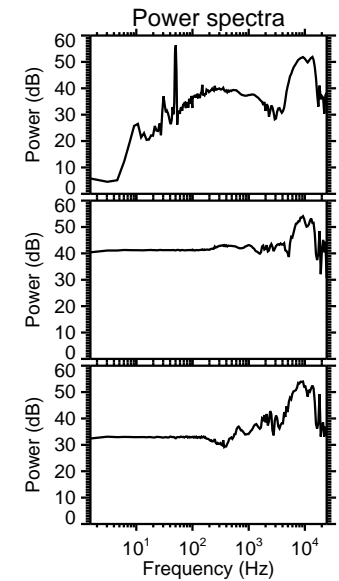
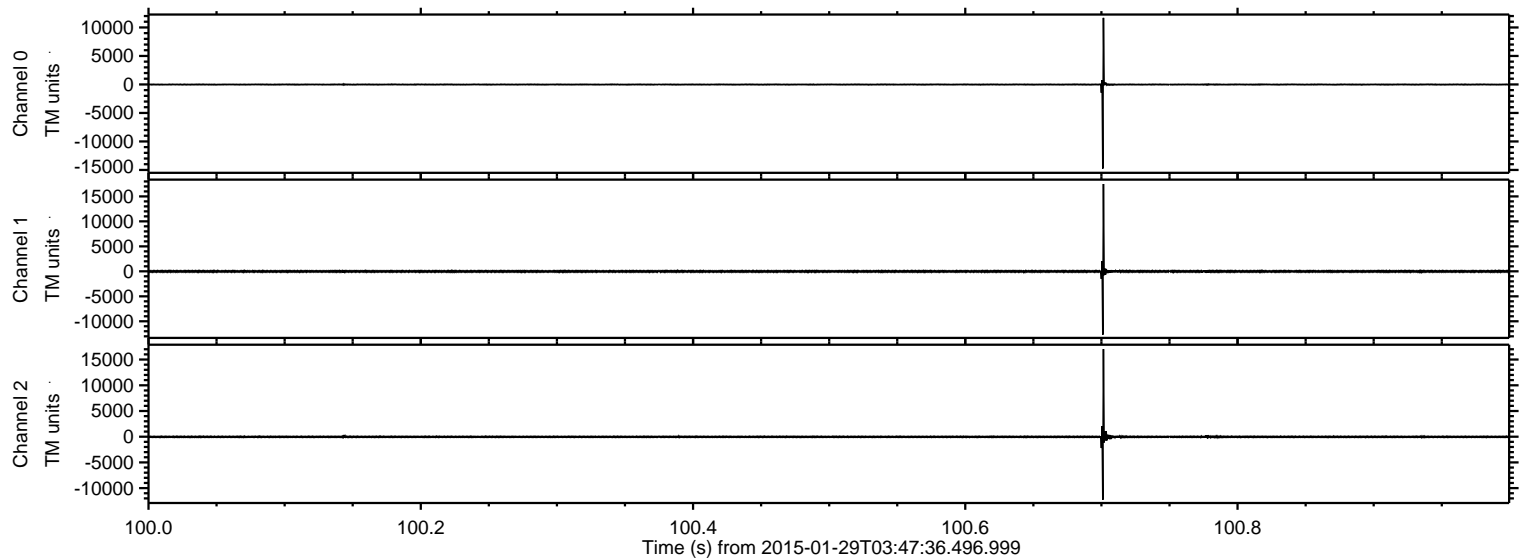
ELMAVAN 3D WAVEFORMS (Measured data sampled at 50 kHz) 49704 packets of 144 samples from 2015-01-29T03:47:36.496.999.

Processed Thu Feb 12 06:48:33 2015 by ELM ver.2012-10-06 from 001__elm20150129_034735__dat00.bin



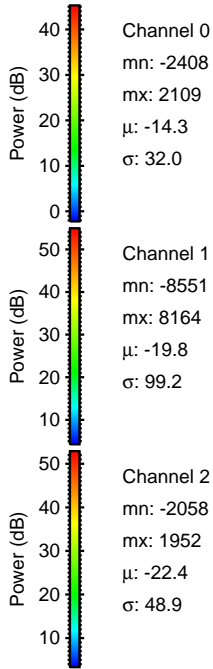
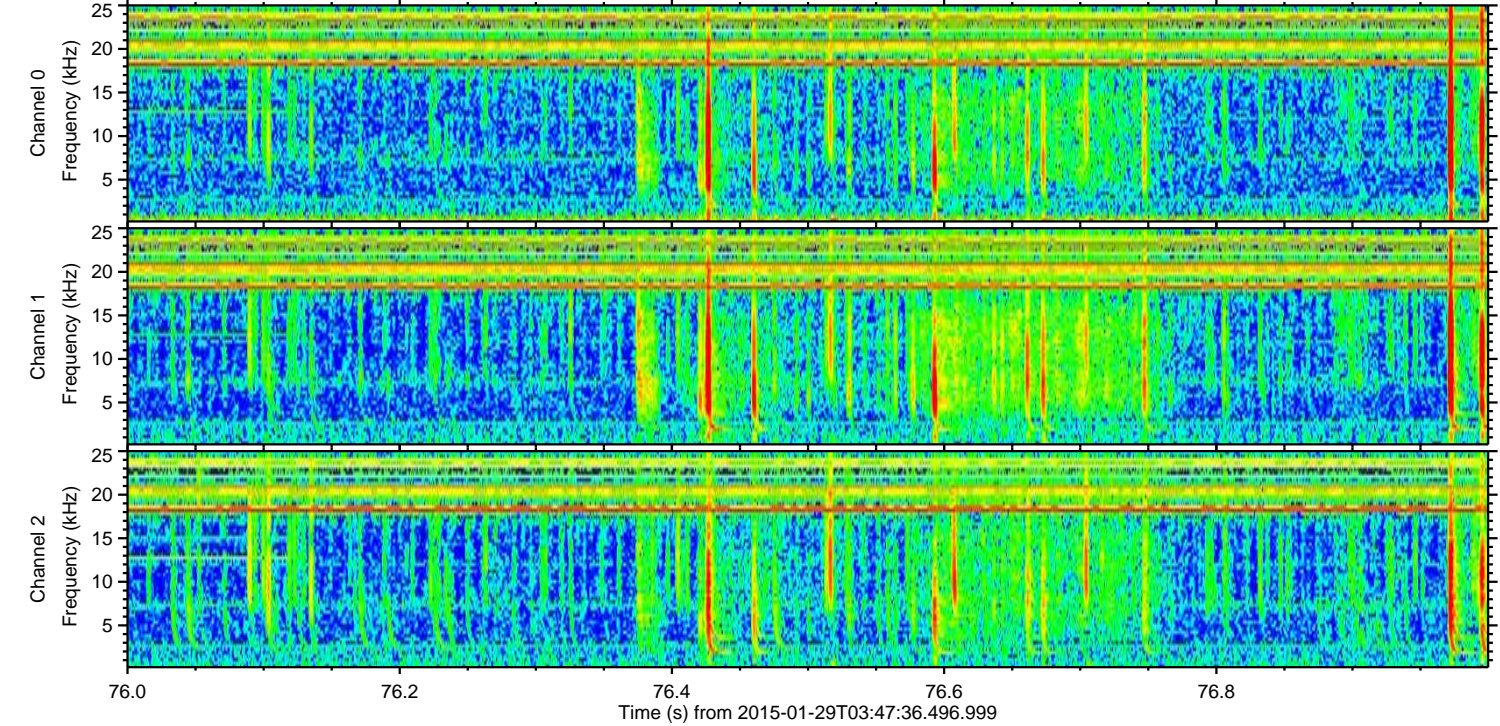
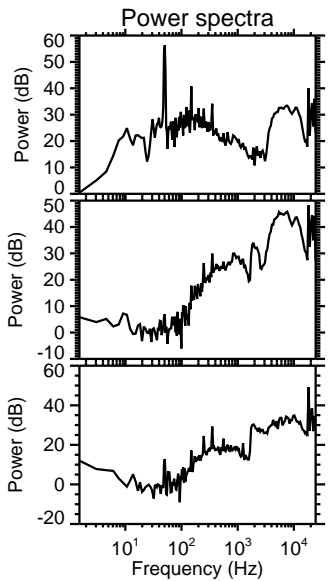
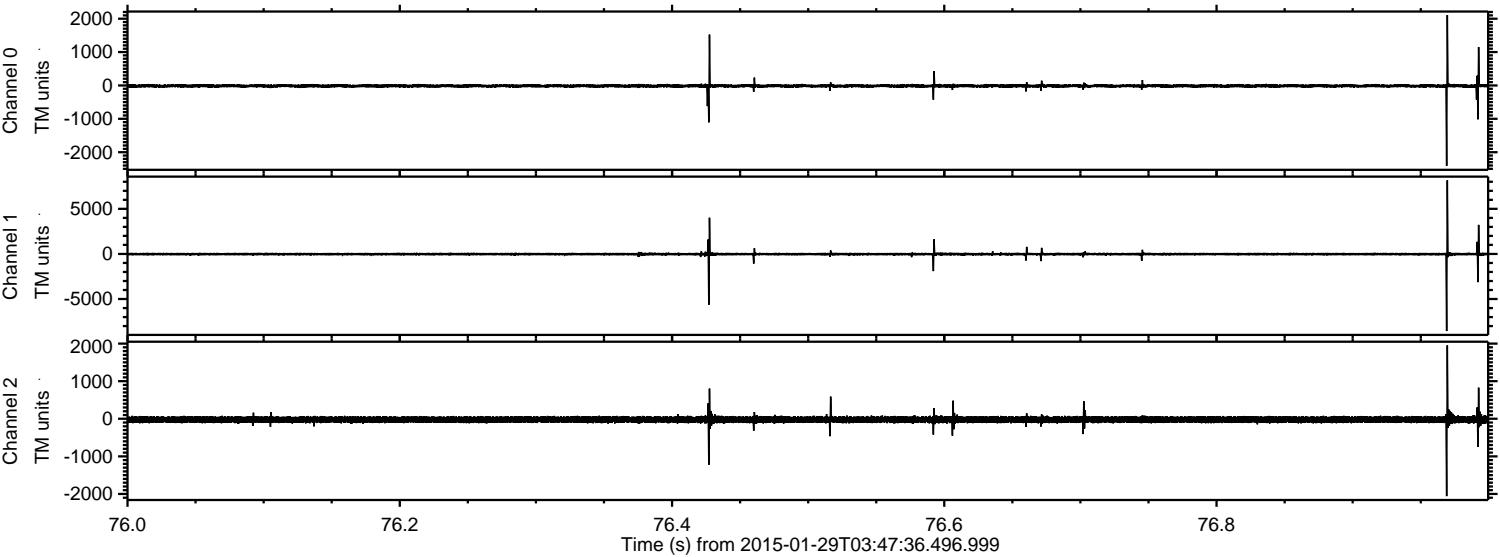
ELMAVAN 3D WAVEFORMS (Measured data sampled at 50 kHz) 49704 packets of 144 samples from 2015-01-29T03:47:36.496.999. Part 101/144

Processed Thu Feb 12 06:48:44 2015 by ELM ver.2012-10-06 from 001__elm20150129_034735__dat00.bin

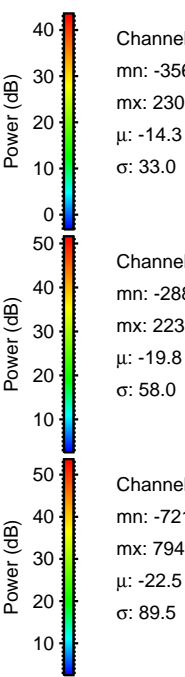
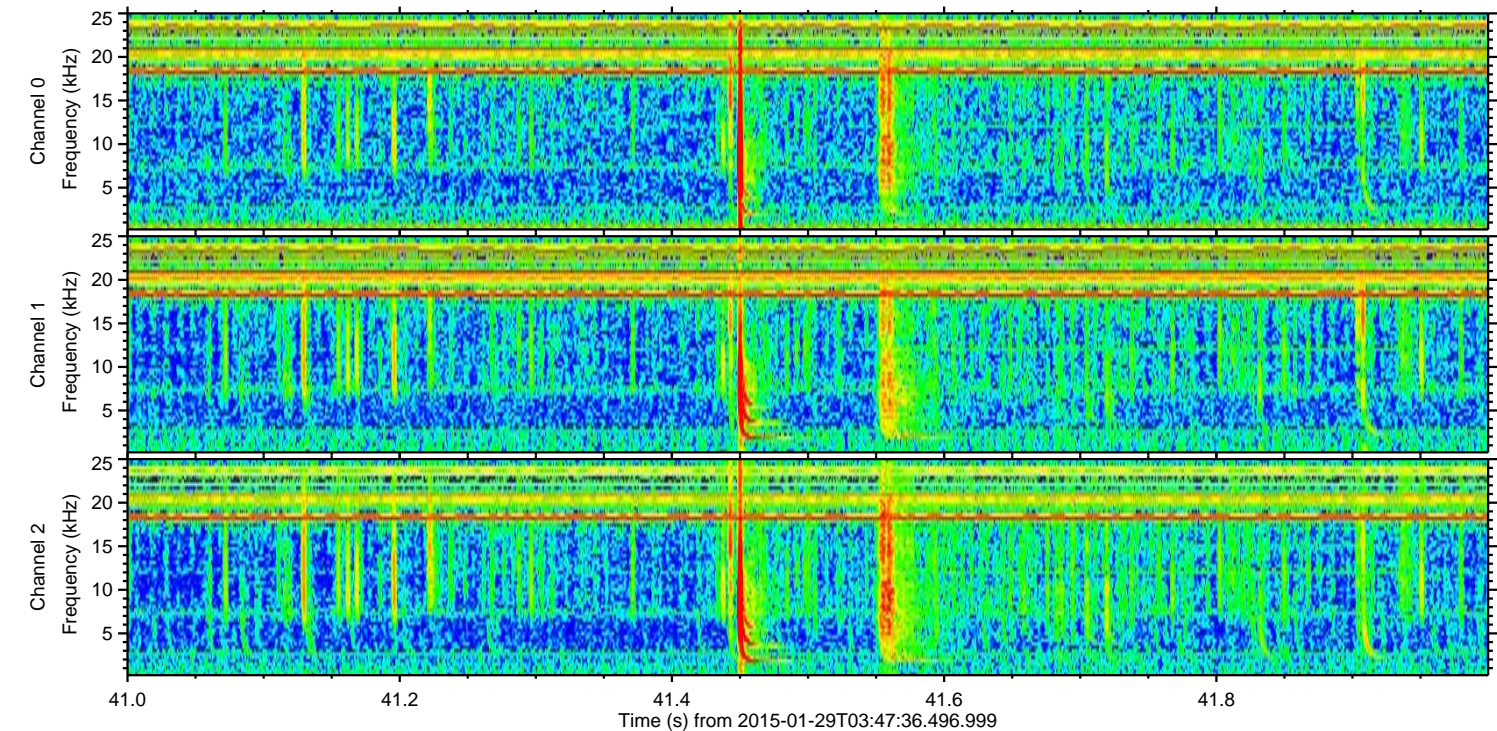
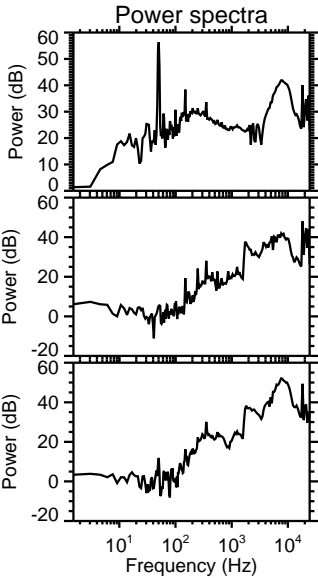
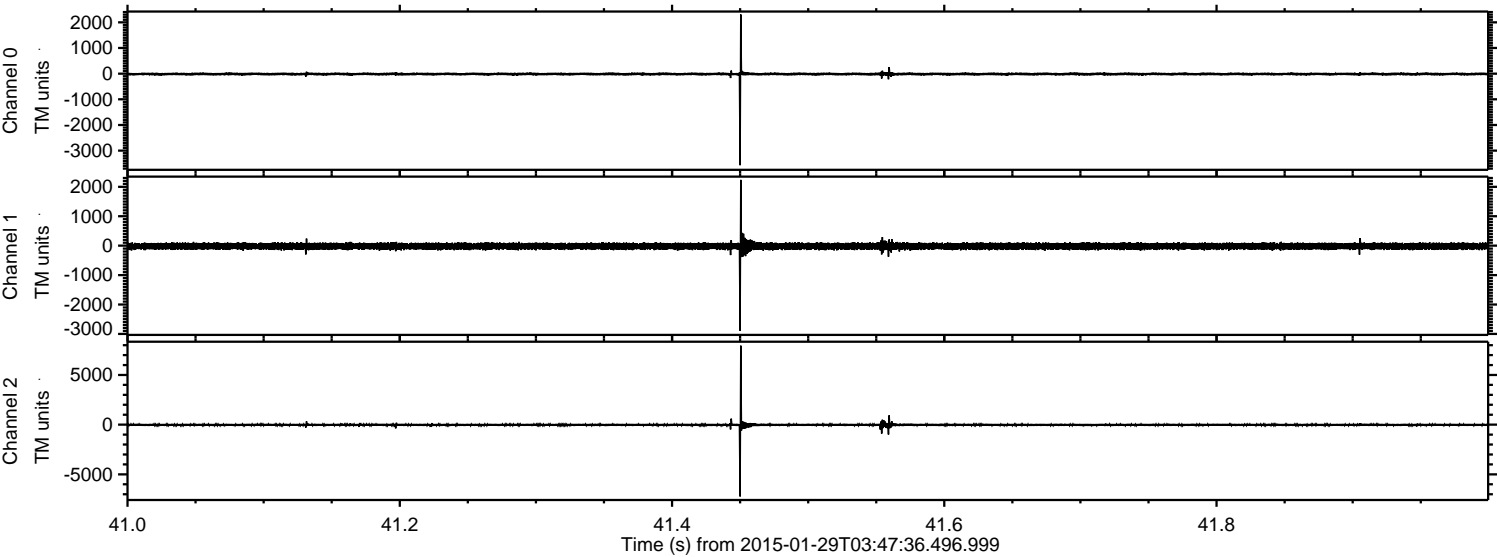


ELMAVAN 3D WAVEFORMS (Measured data sampled at 50 kHz) 49704 packets of 144 samples from 2015-01-29T03:47:36.496.999. Part 77/144

Processed Thu Feb 12 06:48:45 2015 by ELM ver.2012-10-06 from 001__elm20150129_034735__dat00.bin



Processed Thu Feb 12 06:48:46 2015 by ELM ver.2012-10-06 from 001__elm20150129_034735__dat00.bin



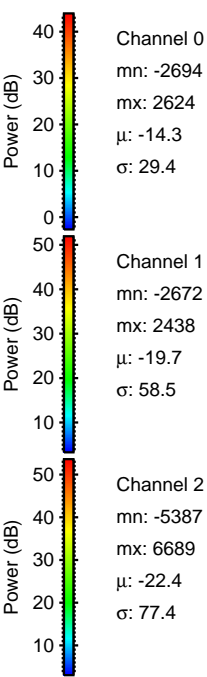
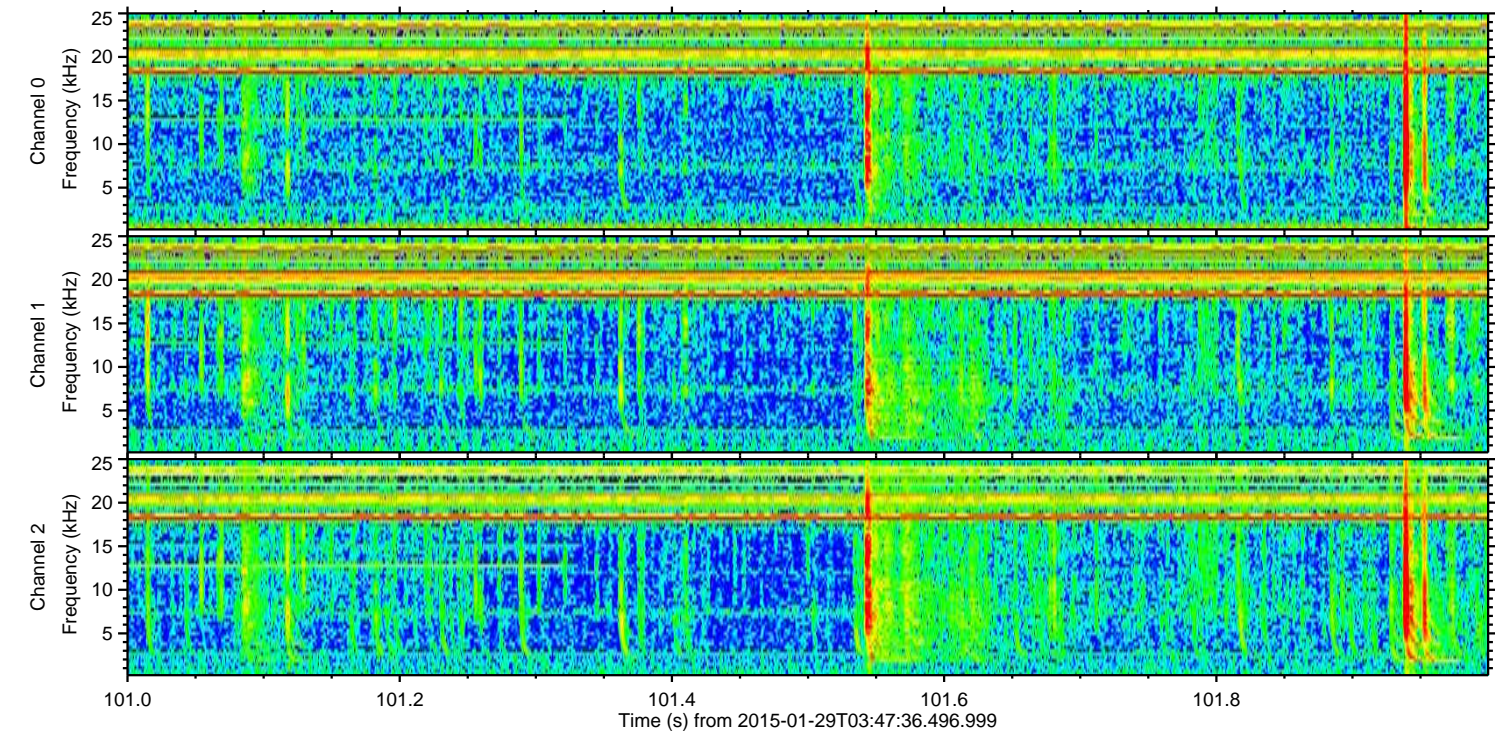
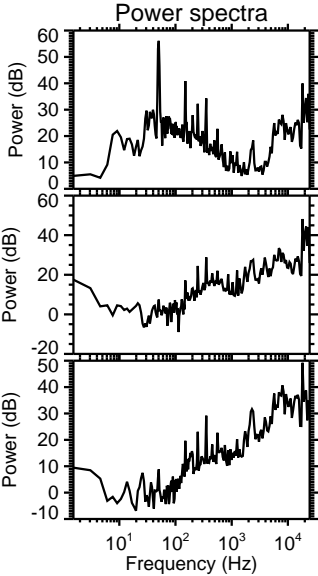
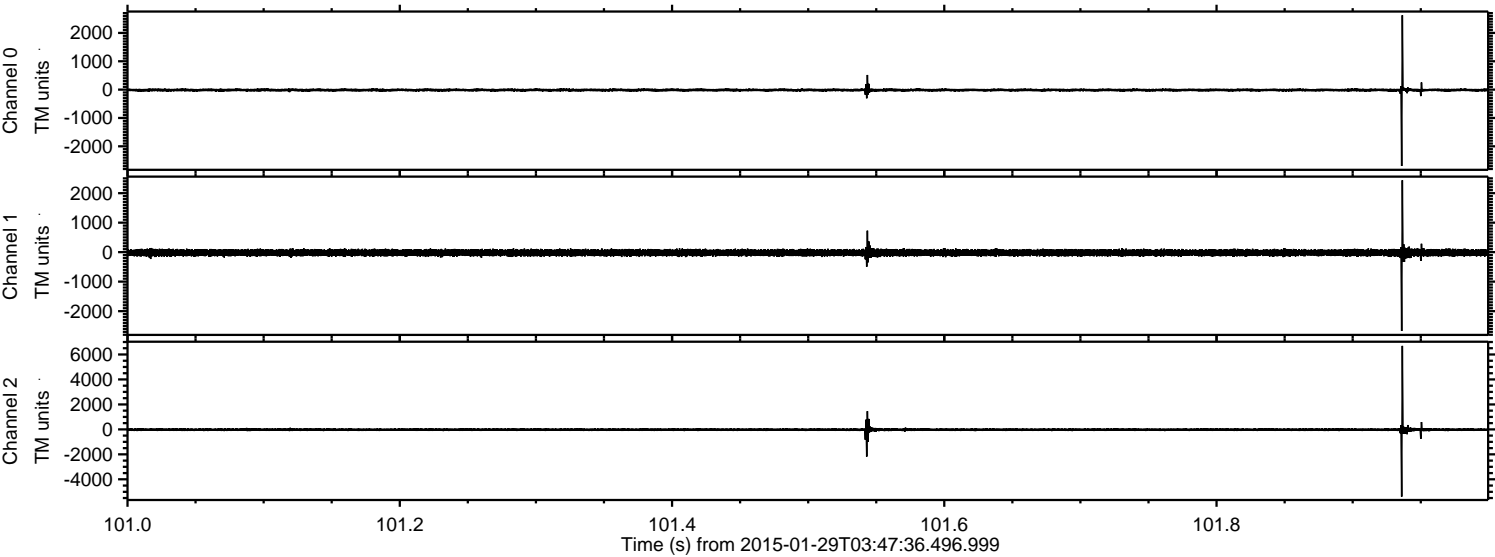
Channel 0
mn: -3569
mx: 2306
 μ : -14.3
 σ : 33.0

Channel 1
mn: -2889
mx: 2235
 μ : -19.8
 σ : 58.0

Channel 2
mn: -7219
mx: 7949
 μ : -22.5
 σ : 89.5

ELMAVAN 3D WAVEFORMS (Measured data sampled at 50 kHz) 49704 packets of 144 samples from 2015-01-29T03:47:36.496.999. Part 102/144

Processed Thu Feb 12 06:48:47 2015 by ELM ver.2012-10-06 from 001__elm20150129_034735__dat00.bin



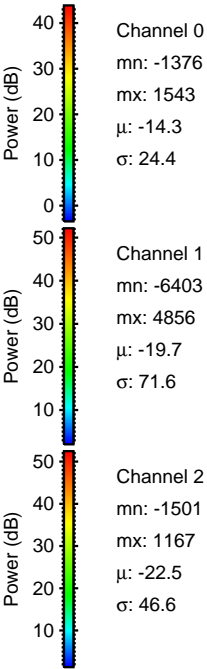
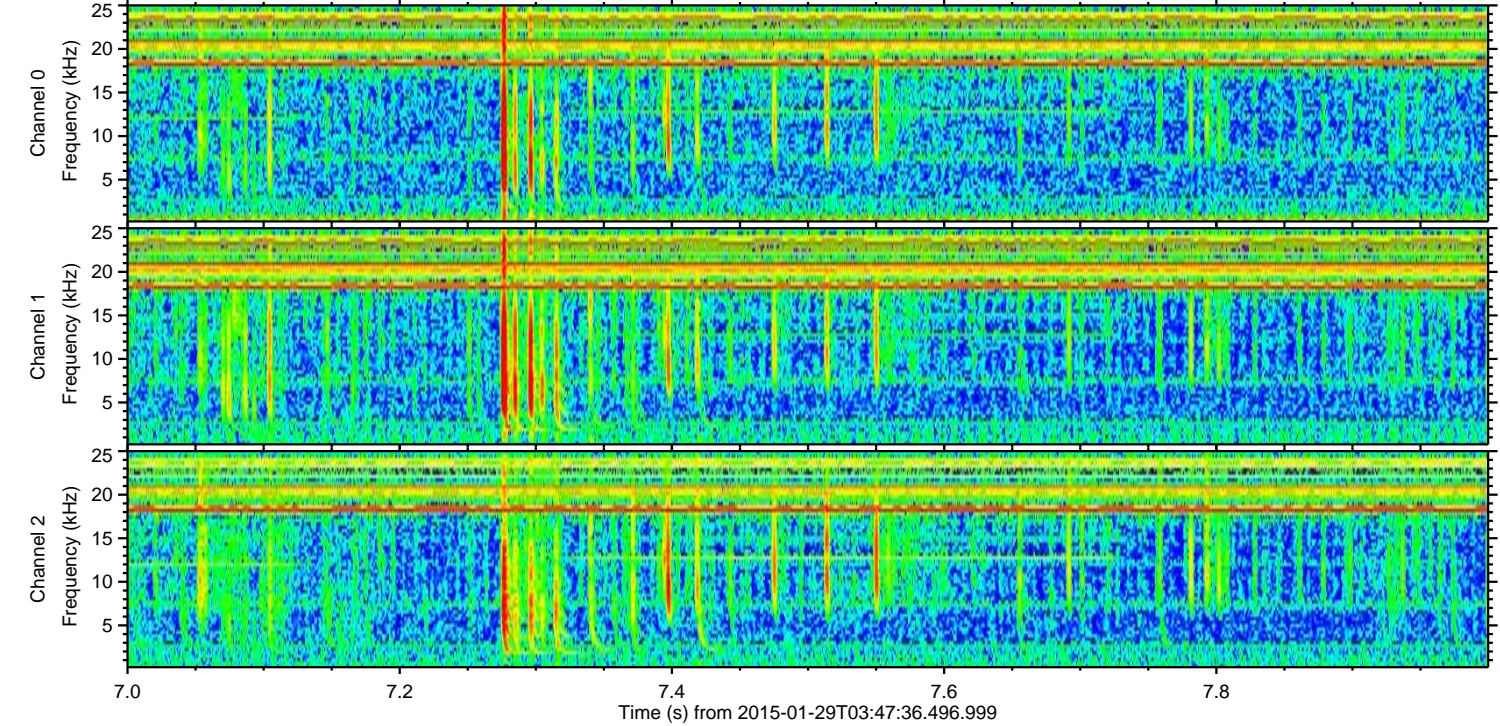
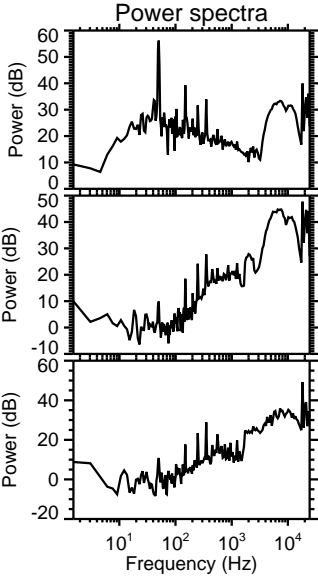
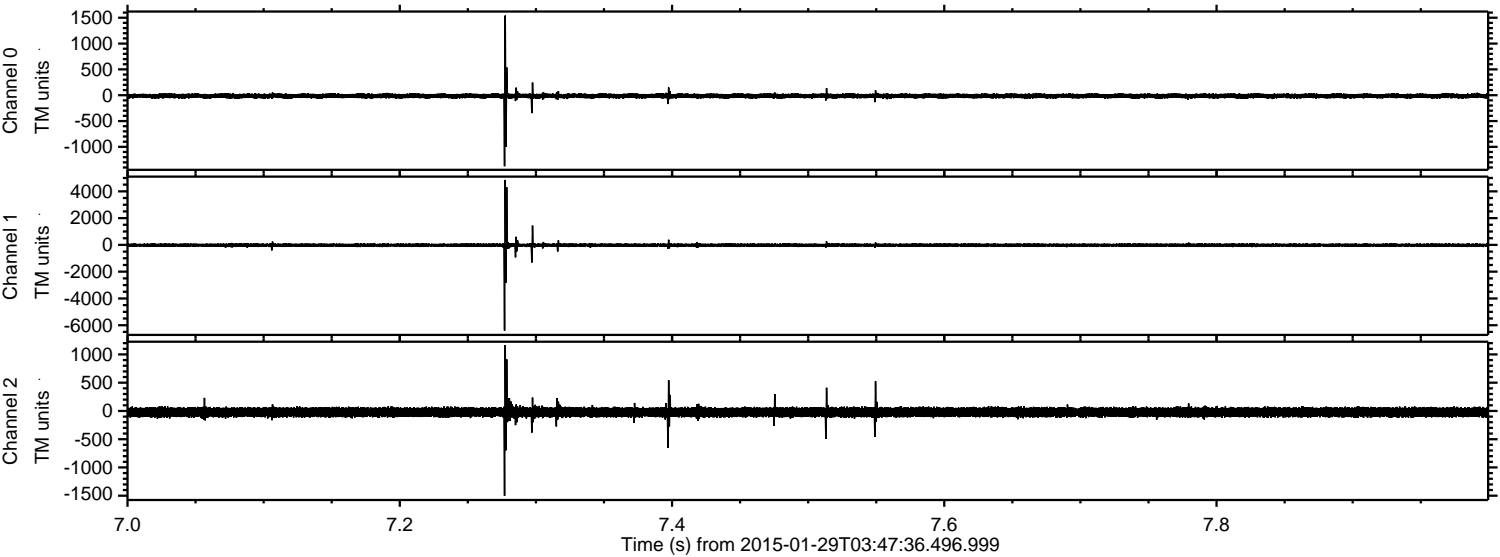
Channel 0
mn: -2694
mx: 2624
 μ : -14.3
 σ : 29.4

Channel 1
mn: -2672
mx: 2438
 μ : -19.7
 σ : 58.5

Channel 2
mn: -5387
mx: 6689
 μ : -22.4
 σ : 77.4

ELMAVAN 3D WAVEFORMS (Measured data sampled at 50 kHz) 49704 packets of 144 samples from 2015-01-29T03:47:36.496.999. Part 8/144

Processed Thu Feb 12 06:48:48 2015 by ELM ver.2012-10-06 from 001__elm20150129_034735__dat00.bin

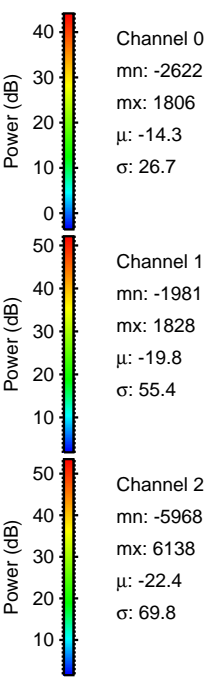
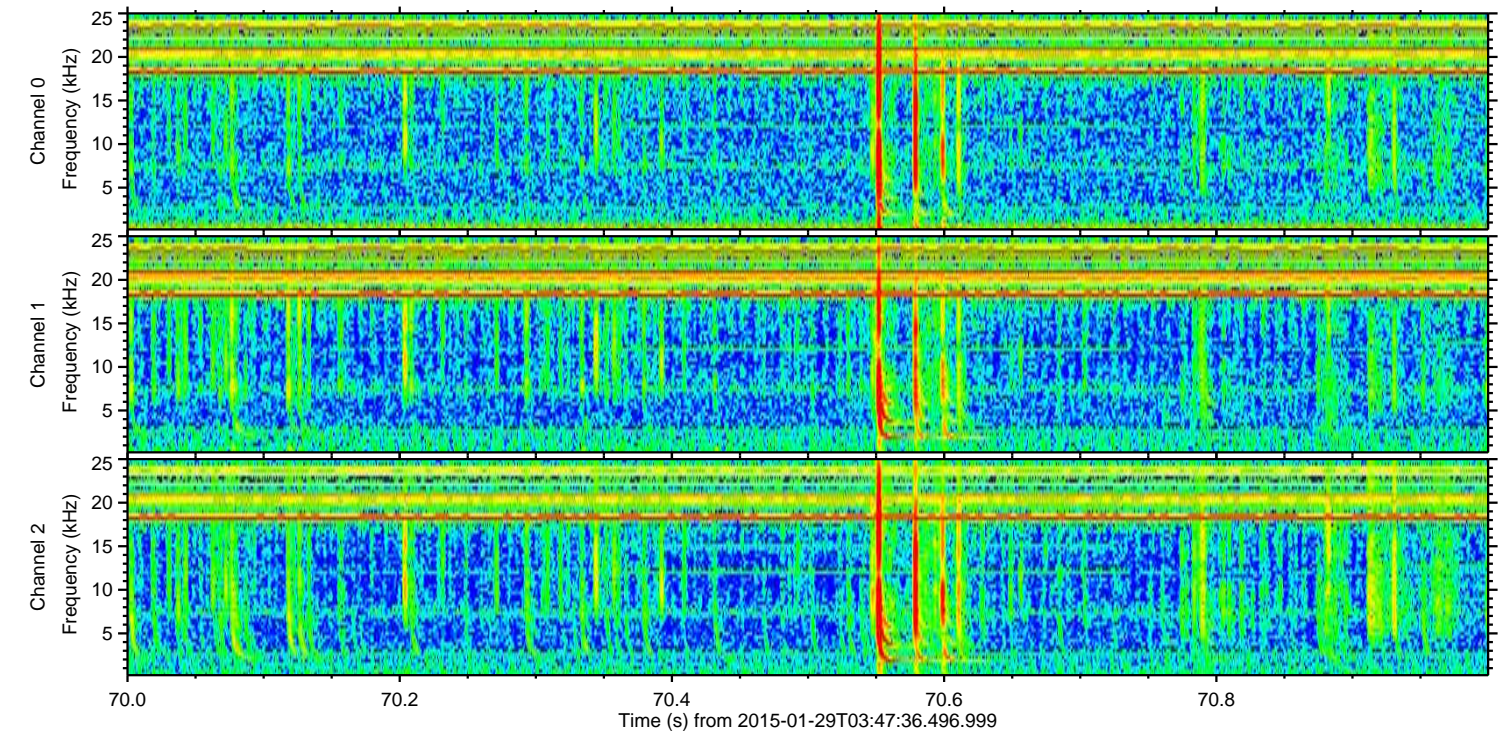
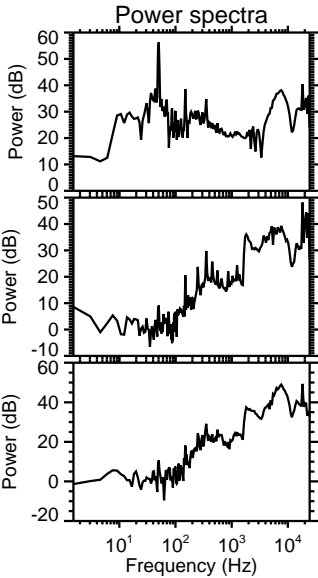
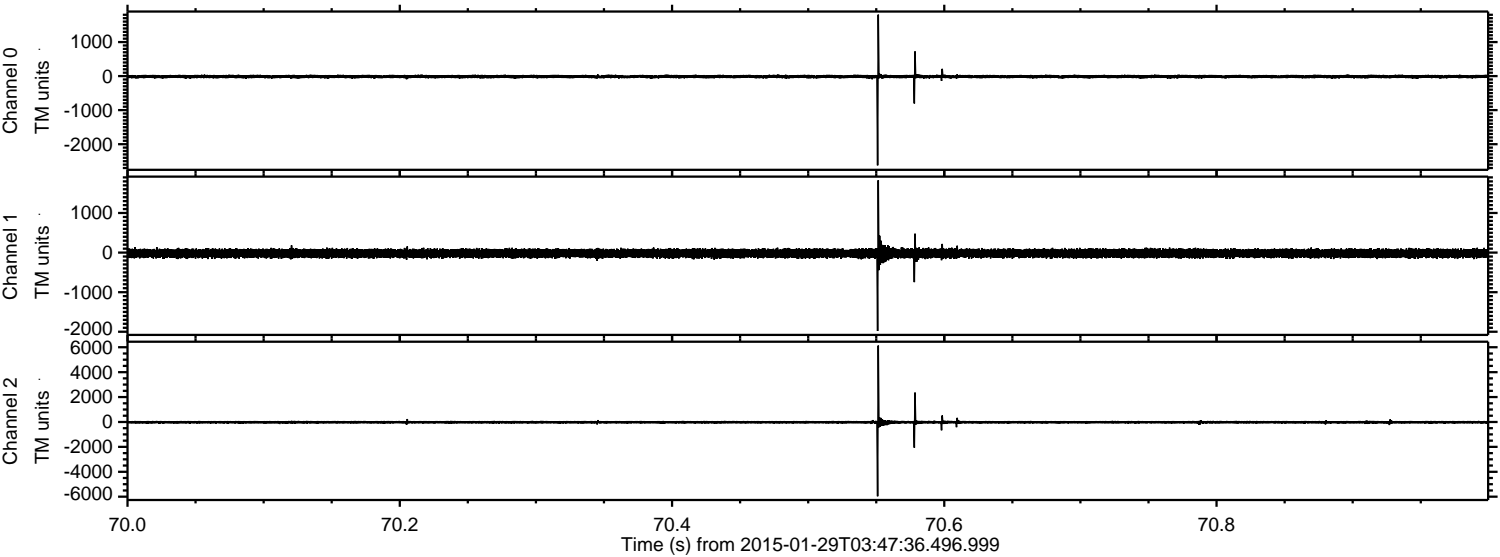


Channel 0
mn: -1376
mx: 1543
 μ : -14.3
 σ : 24.4

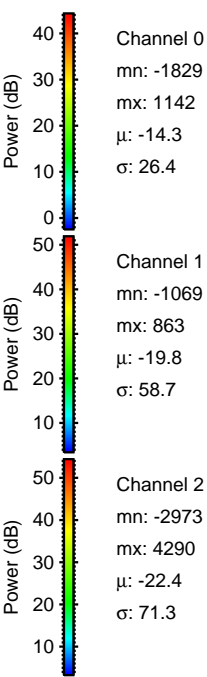
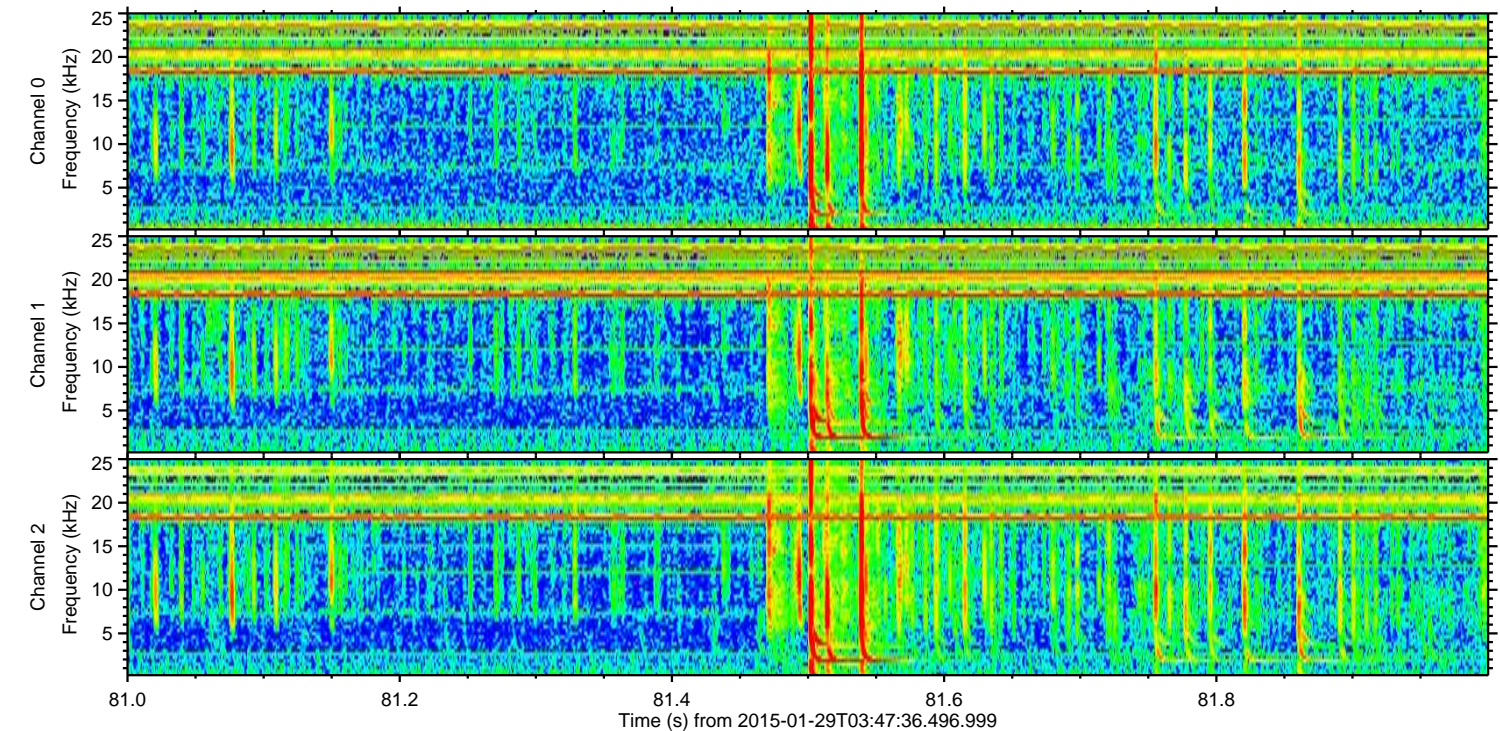
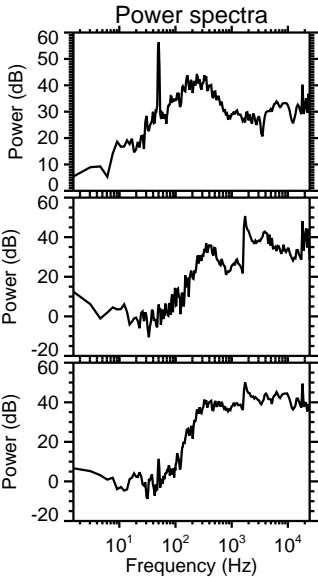
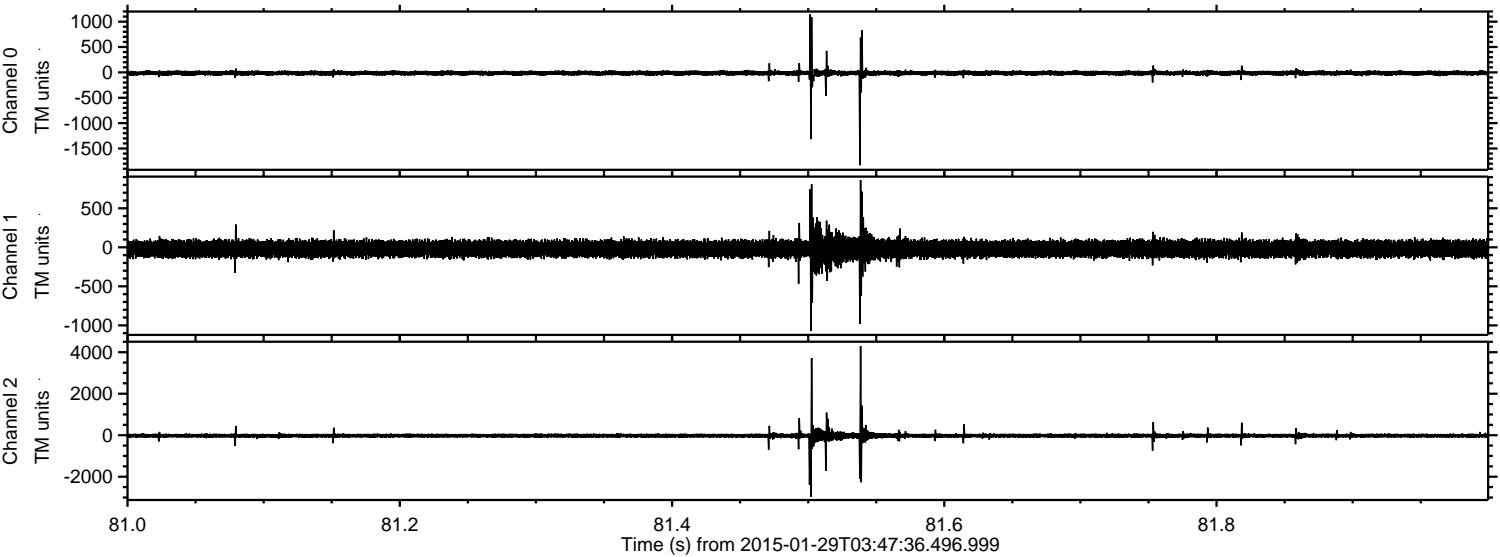
Channel 1
mn: -6403
mx: 4856
 μ : -19.7
 σ : 71.6

Channel 2
mn: -1501
mx: 1167
 μ : -22.5
 σ : 46.6

Processed Thu Feb 12 06:48:49 2015 by ELM ver.2012-10-06 from 001__elm20150129_034735__dat00.bin



Processed Thu Feb 12 06:48:50 2015 by ELM ver.2012-10-06 from 001__elm20150129_034735__dat00.bin



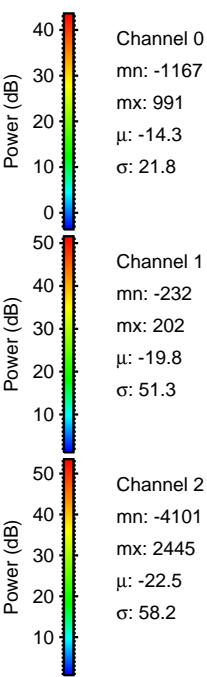
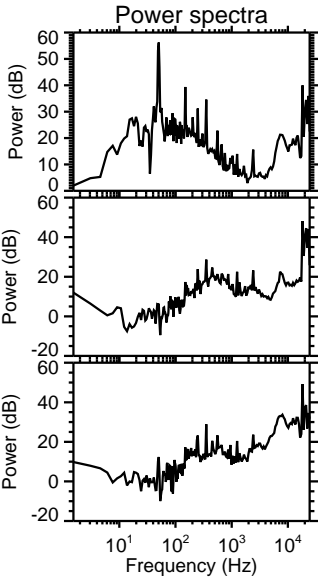
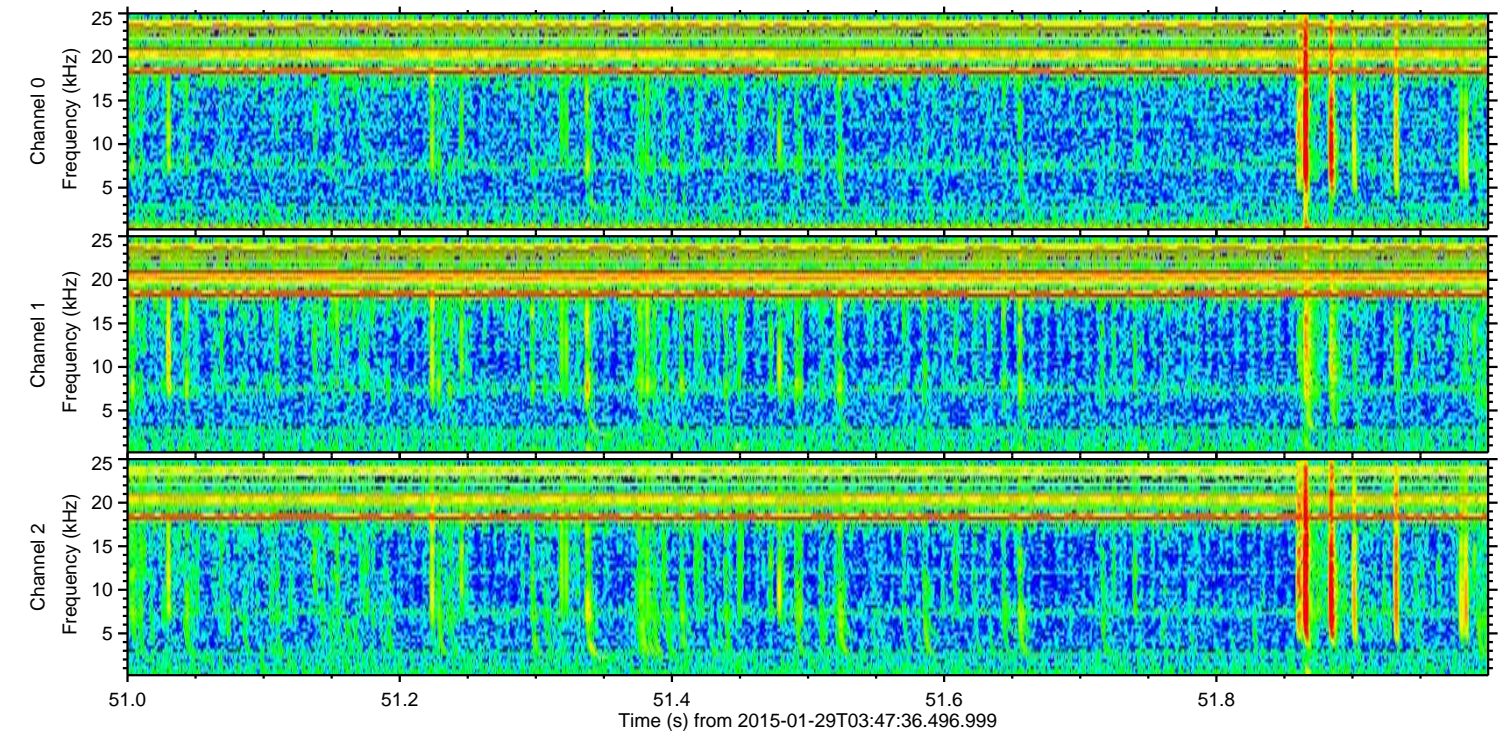
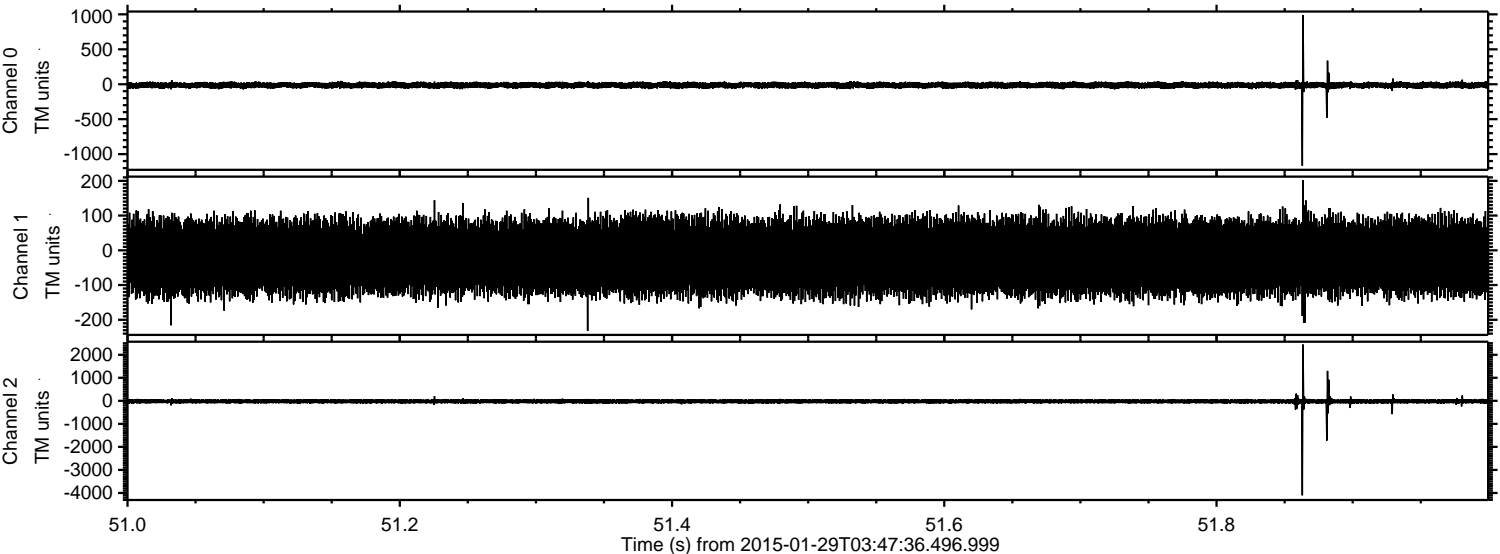
Channel 0
mn: -1829
mx: 1142
 μ : -14.3
 σ : 26.4

Channel 1
mn: -1069
mx: 863
 μ : -19.8
 σ : 58.7

Channel 2
mn: -2973
mx: 4290
 μ : -22.4
 σ : 71.3

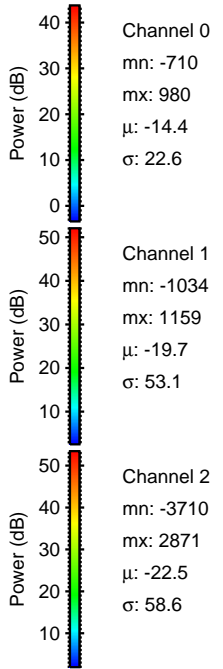
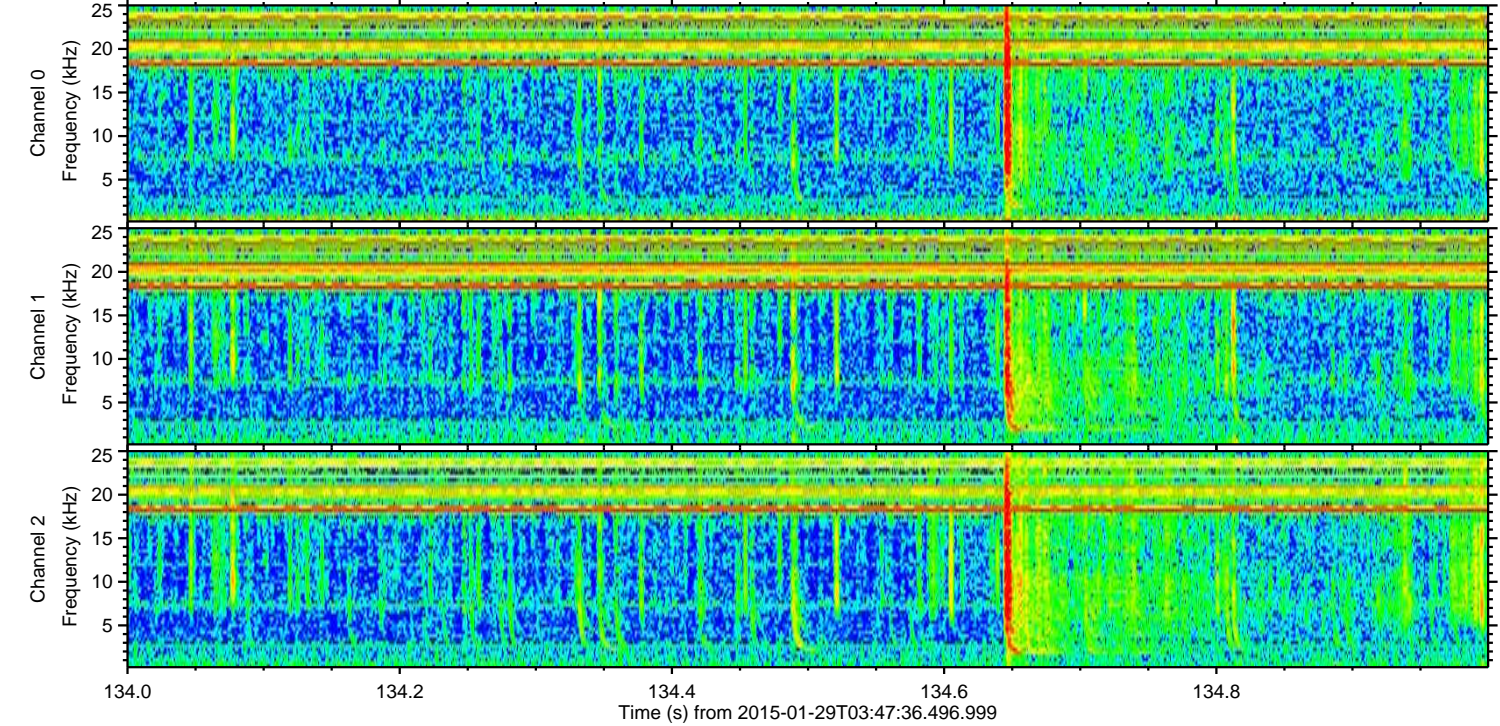
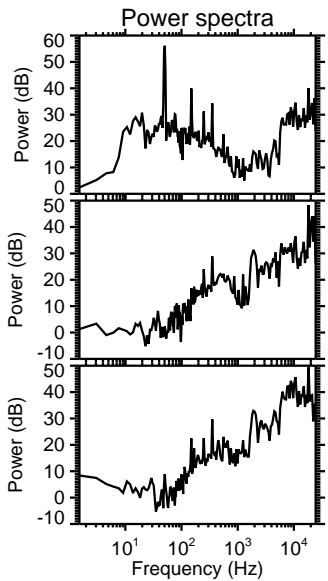
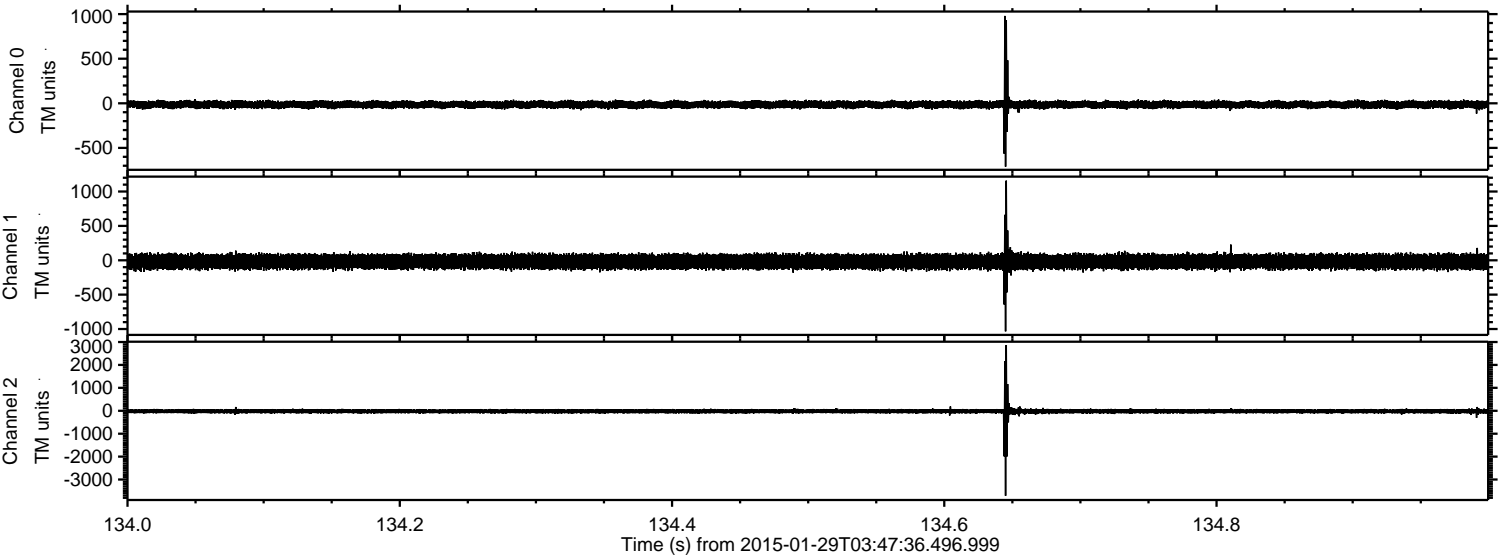
ELMAVAN 3D WAVEFORMS (Measured data sampled at 50 kHz) 49704 packets of 144 samples from 2015-01-29T03:47:36.496.999. Part 52/144

Processed Thu Feb 12 06:48:51 2015 by ELM ver.2012-10-06 from 001__elm20150129_034735__dat00.bin



ELMAVAN 3D WAVEFORMS (Measured data sampled at 50 kHz) 49704 packets of 144 samples from 2015-01-29T03:47:36.496.999. Part 135/144

Processed Thu Feb 12 06:48:52 2015 by ELM ver.2012-10-06 from 001__elm20150129_034735__dat00.bin



Processed Thu Feb 12 06:48:53 2015 by ELM ver.2012-10-06 from 001__elm20150129_034735__dat00.bin

