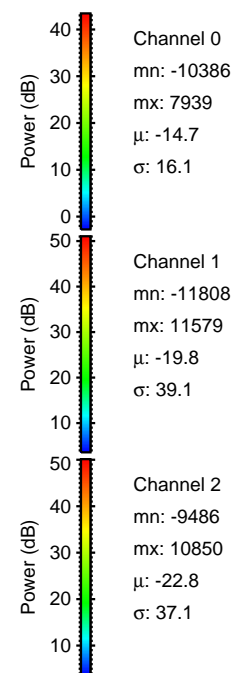
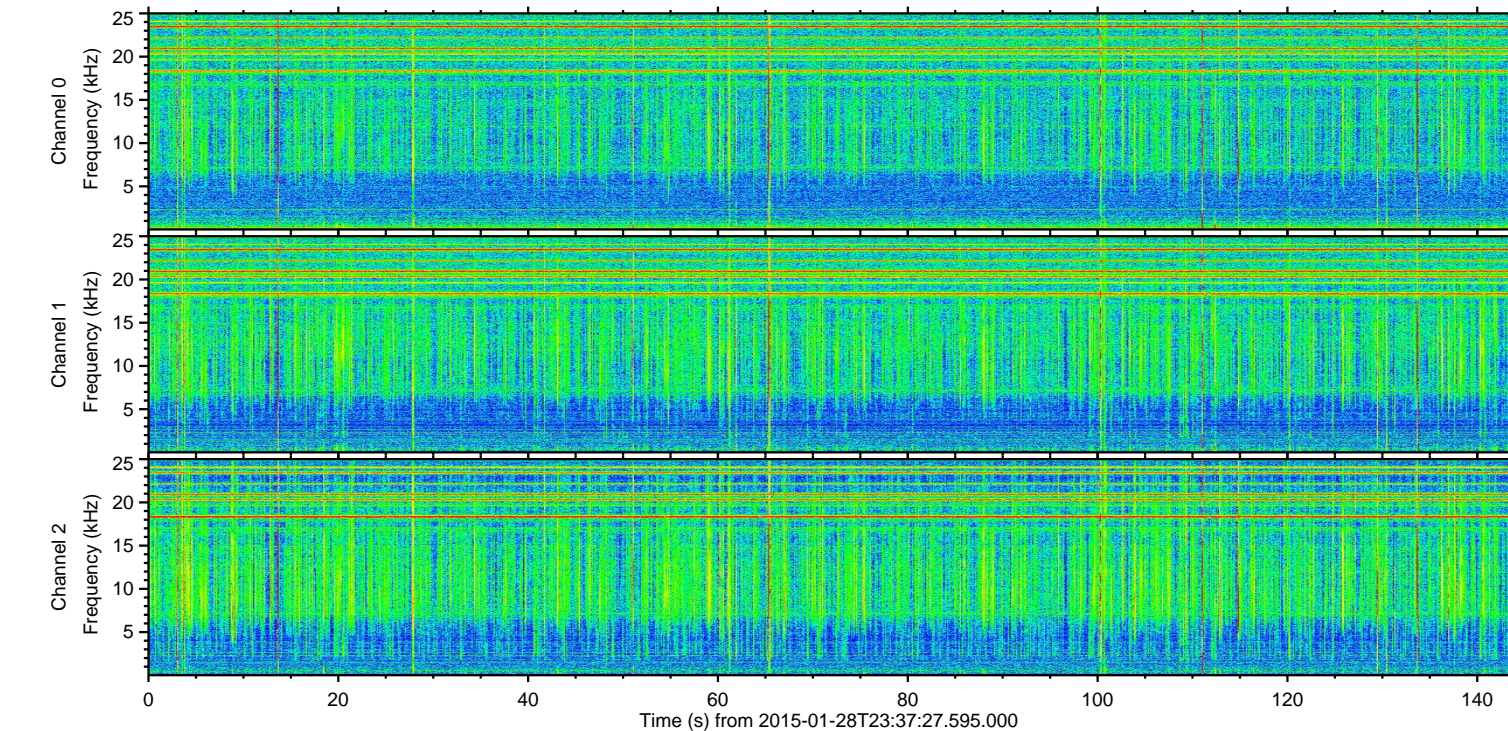
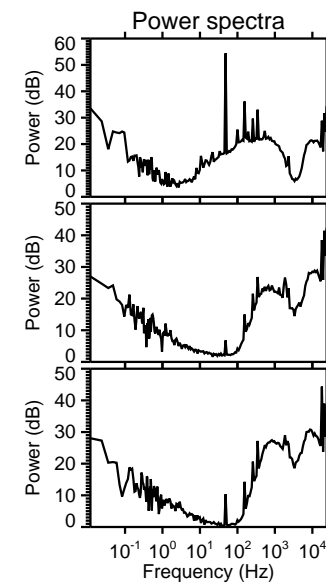
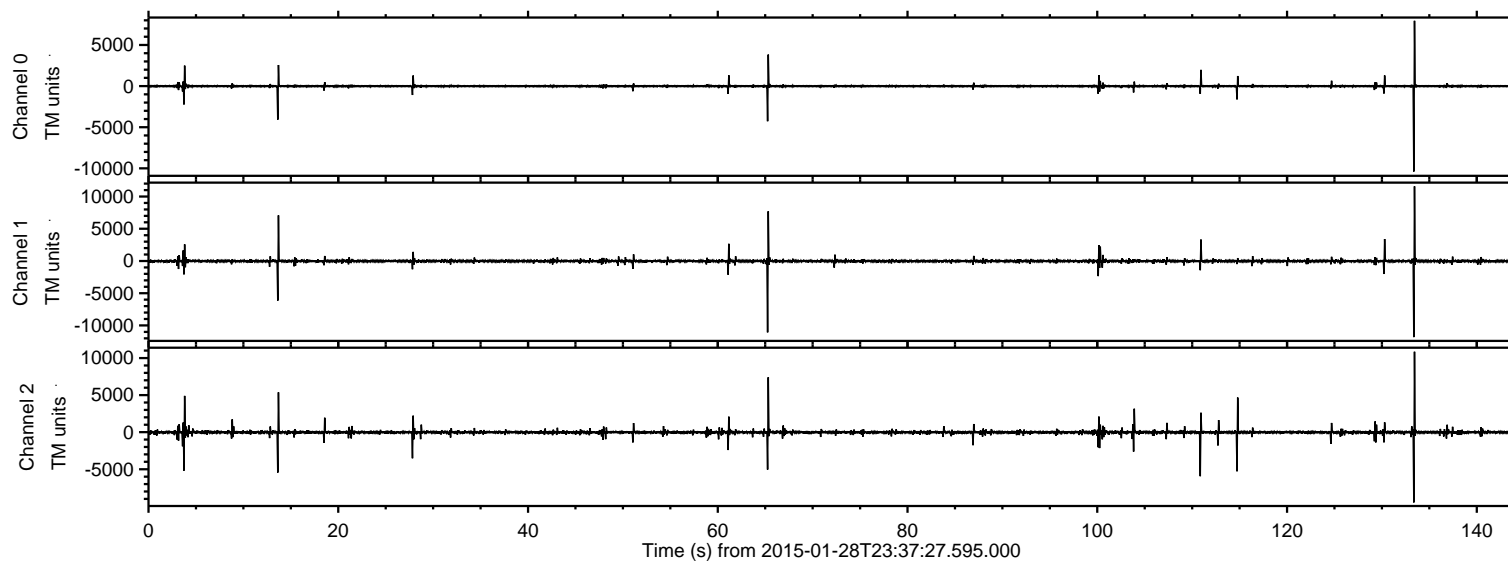


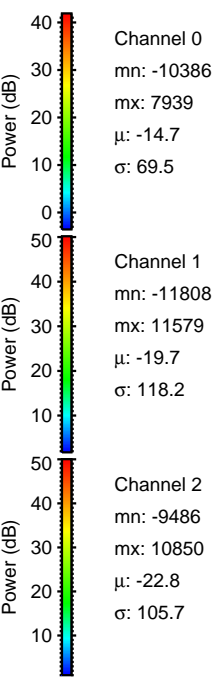
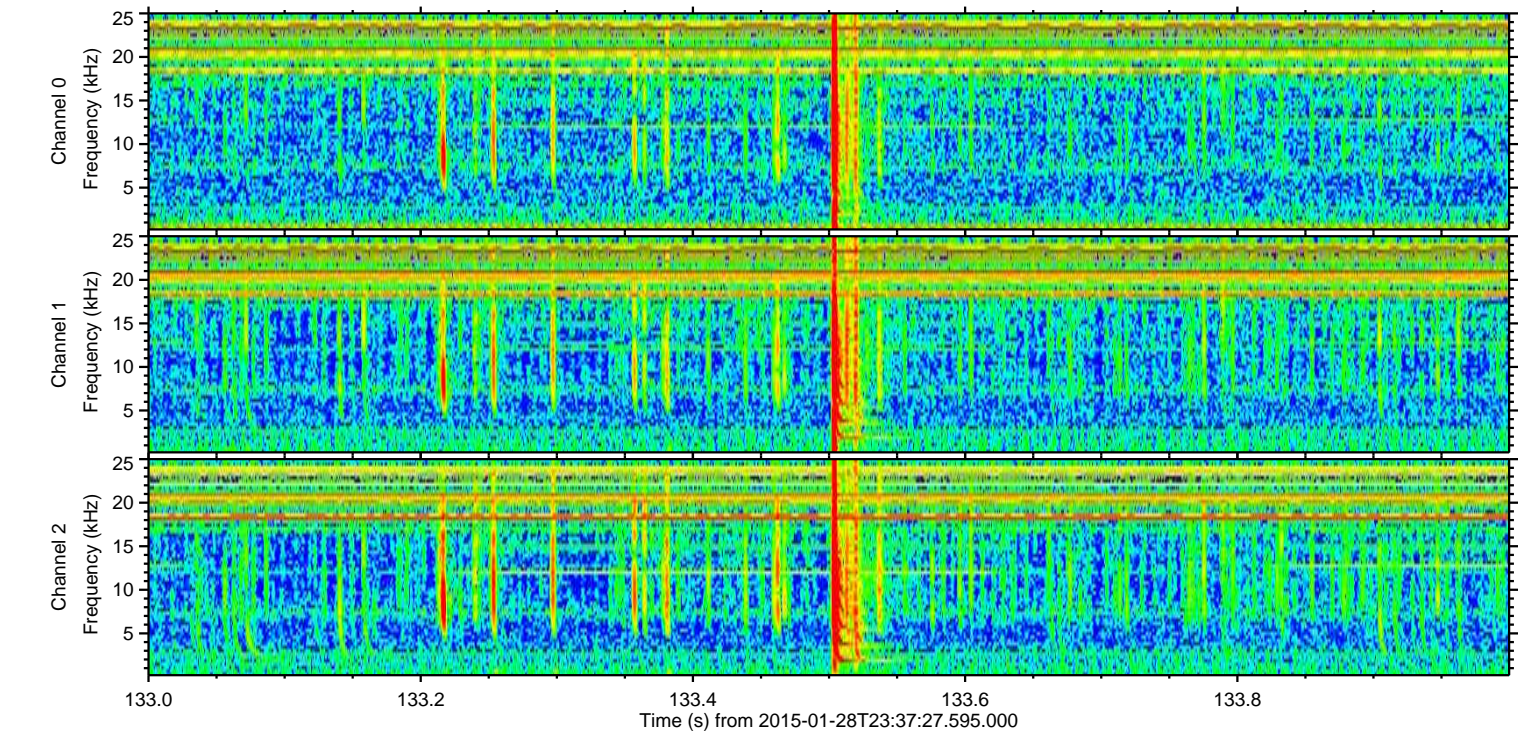
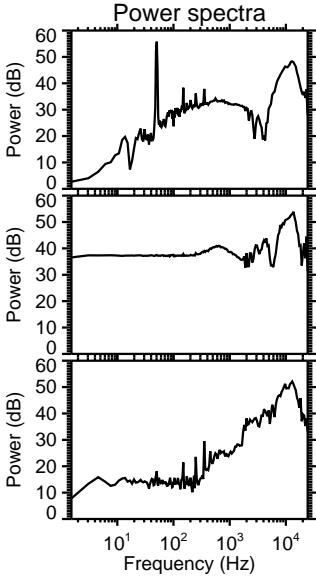
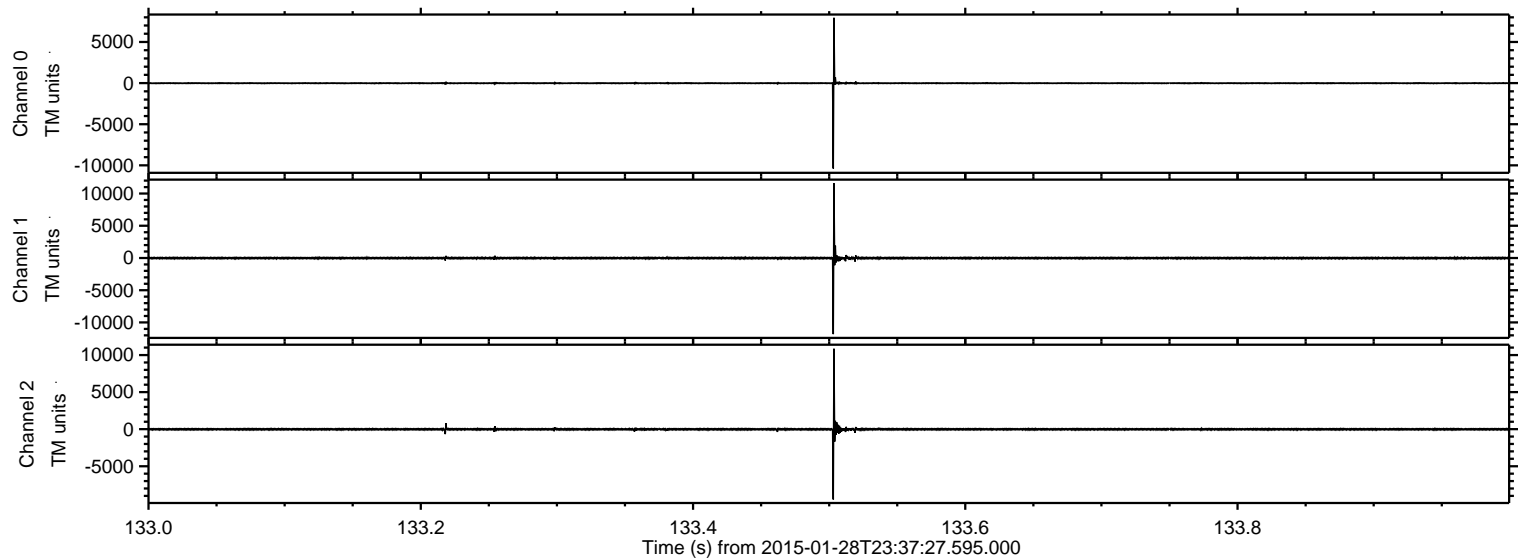
# ELMAVAN 3D WAVEFORMS (Measured data sampled at 50 kHz) 49795 packets of 144 samples from 2015-01-28T23:37:27.595.000.

Processed Thu Feb 12 05:49:52 2015 by ELM ver.2012-10-06 from 001\_\_elm20150128\_233726\_\_dat00.bin



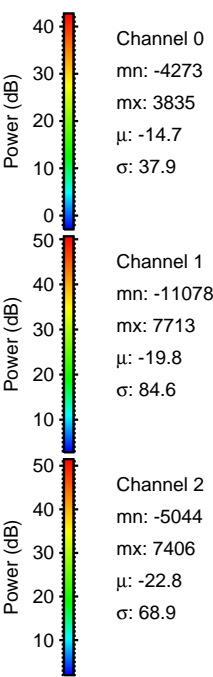
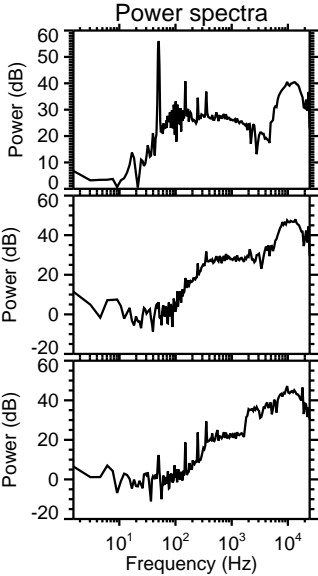
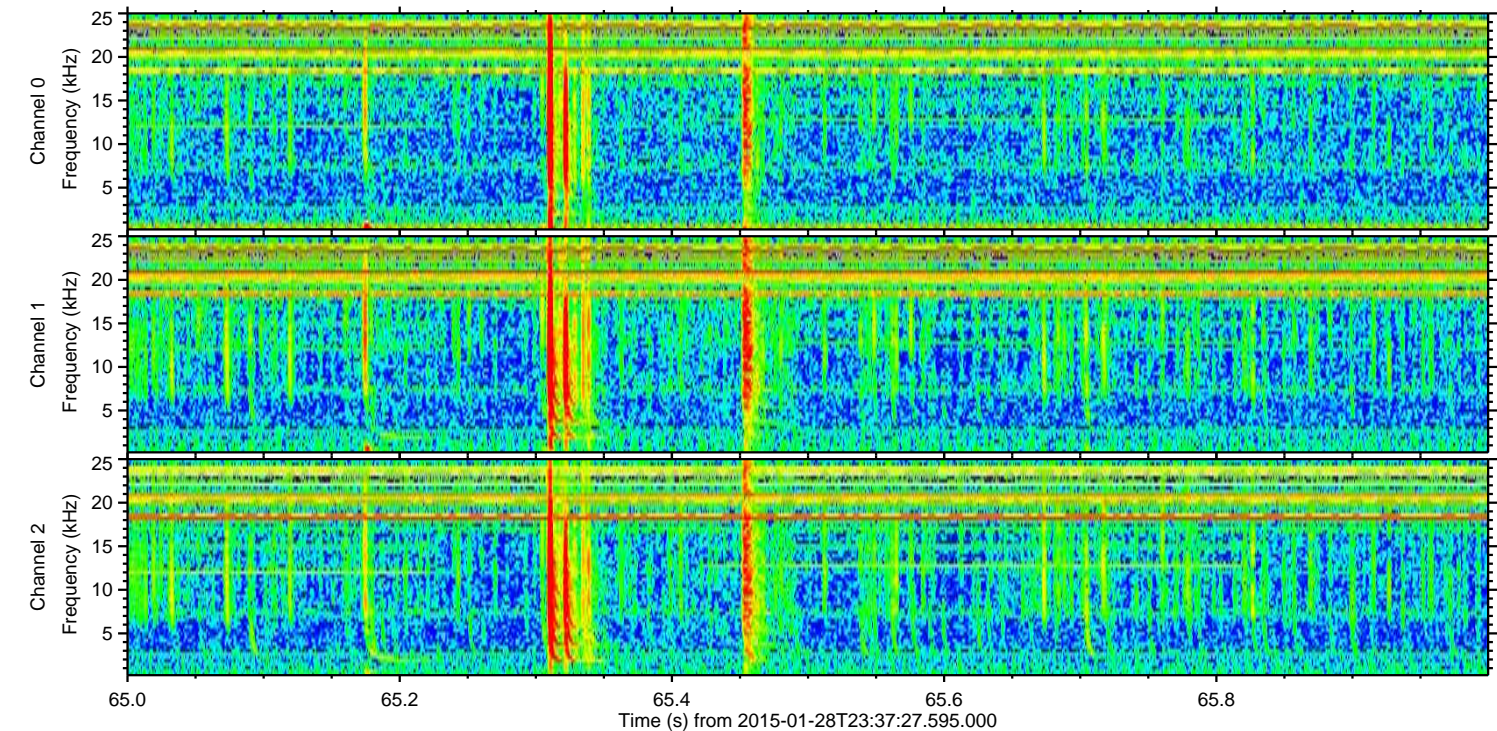
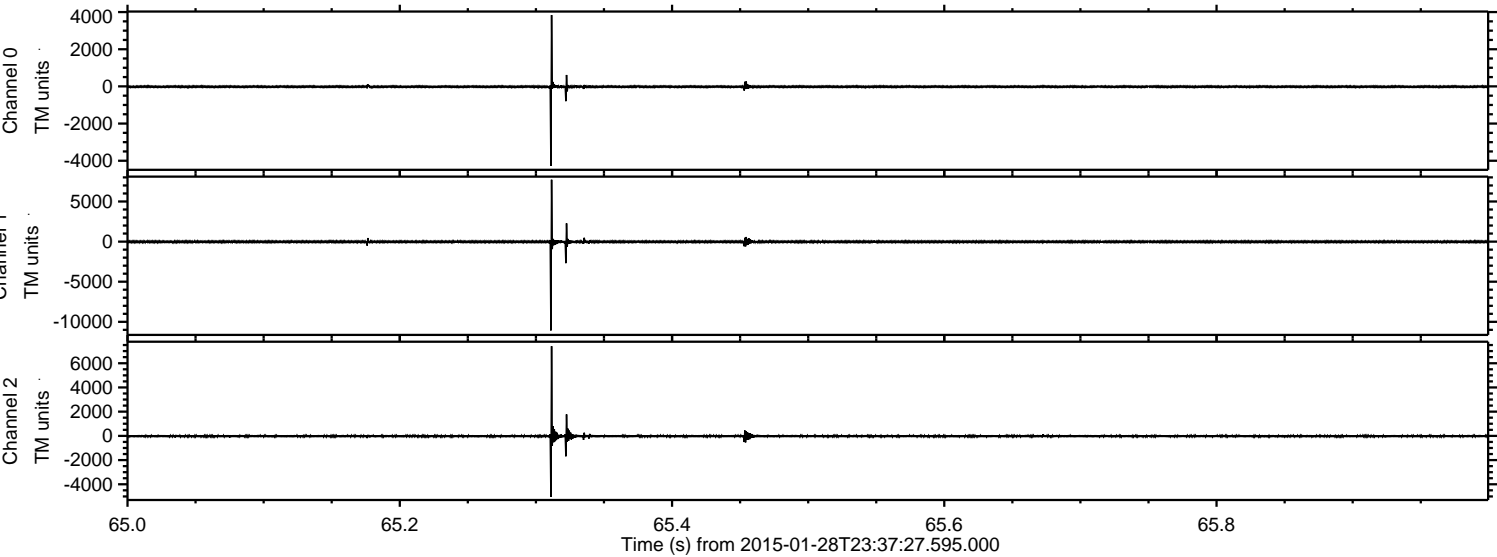
ELMAVAN 3D WAVEFORMS (Measured data sampled at 50 kHz) 49795 packets of 144 samples from 2015-01-28T23:37:27.595.000. Part 134/144

Processed Thu Feb 12 05:50:04 2015 by ELM ver.2012-10-06 from 001\_\_elm20150128\_233726\_\_dat00.bin

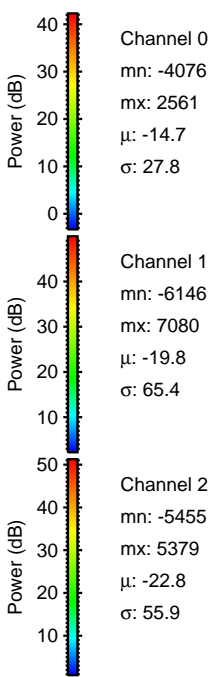
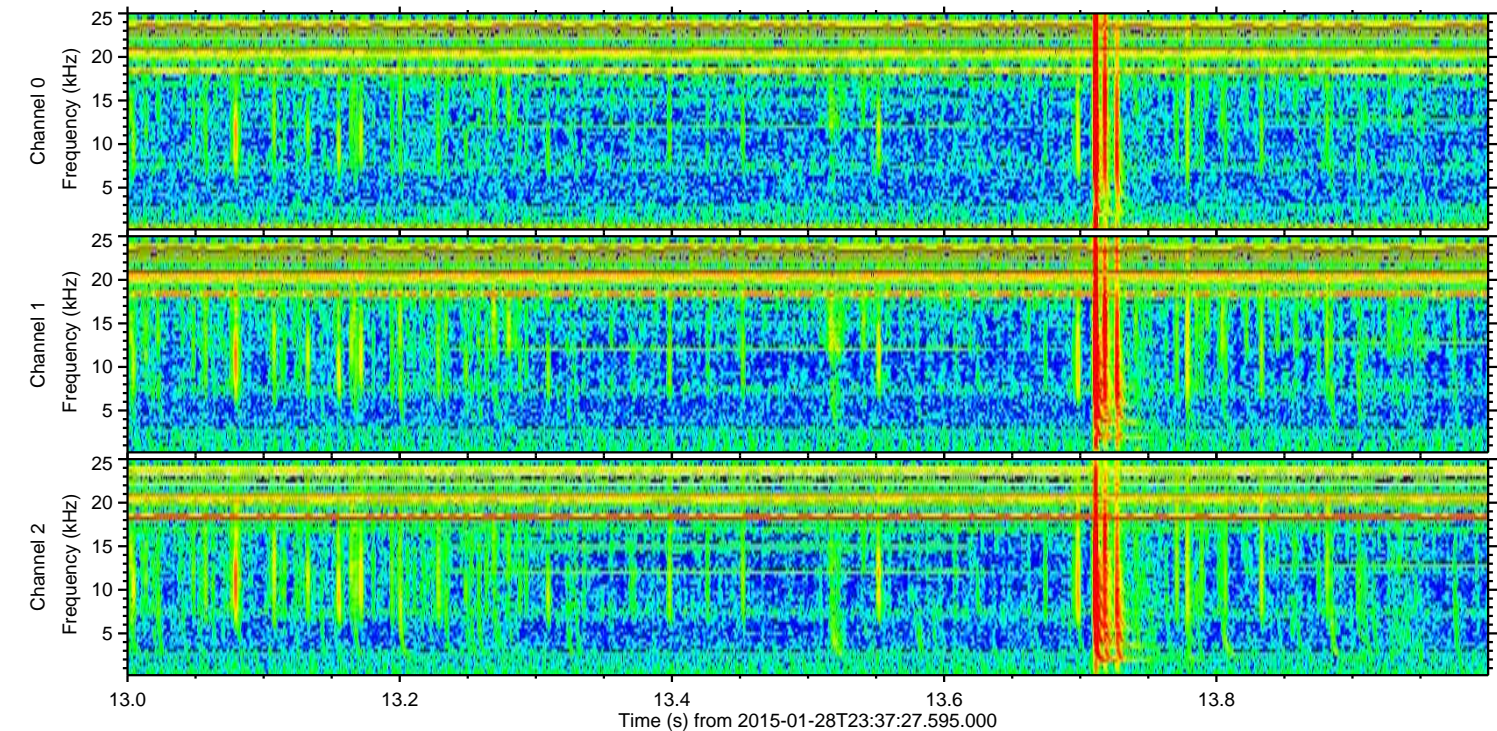
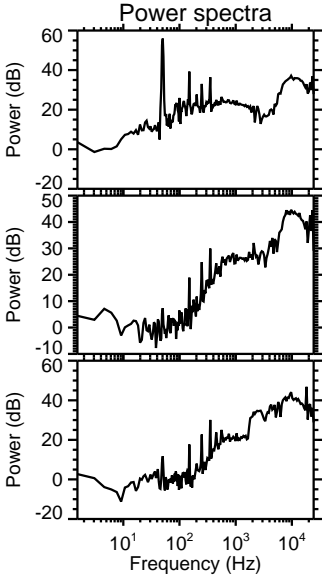
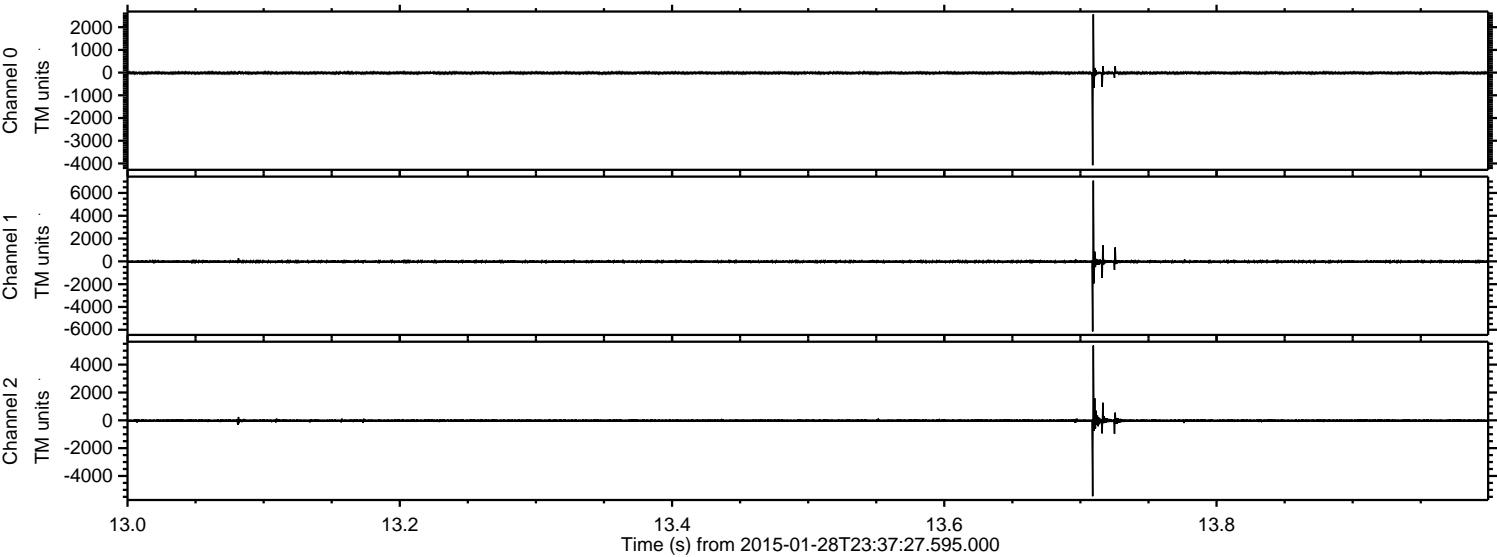


ELMAVAN 3D WAVEFORMS (Measured data sampled at 50 kHz) 49795 packets of 144 samples from 2015-01-28T23:37:27.595.000. Part 66/144

Processed Thu Feb 12 05:50:05 2015 by ELM ver.2012-10-06 from 001\_\_elm20150128\_233726\_\_dat00.bin

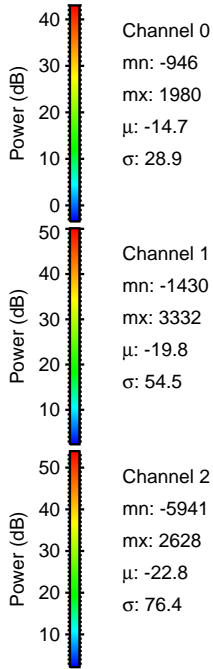
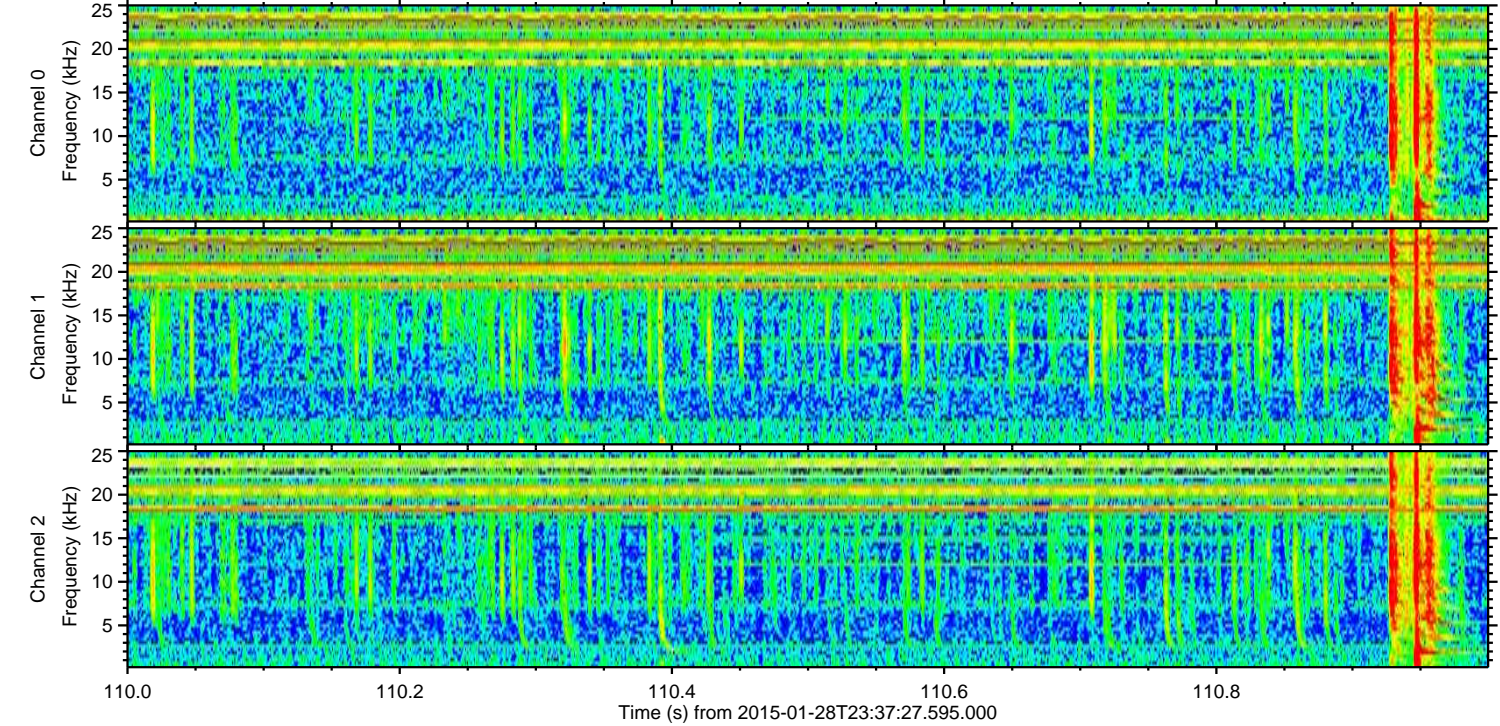
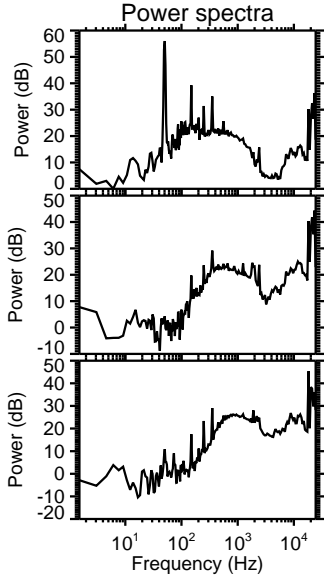
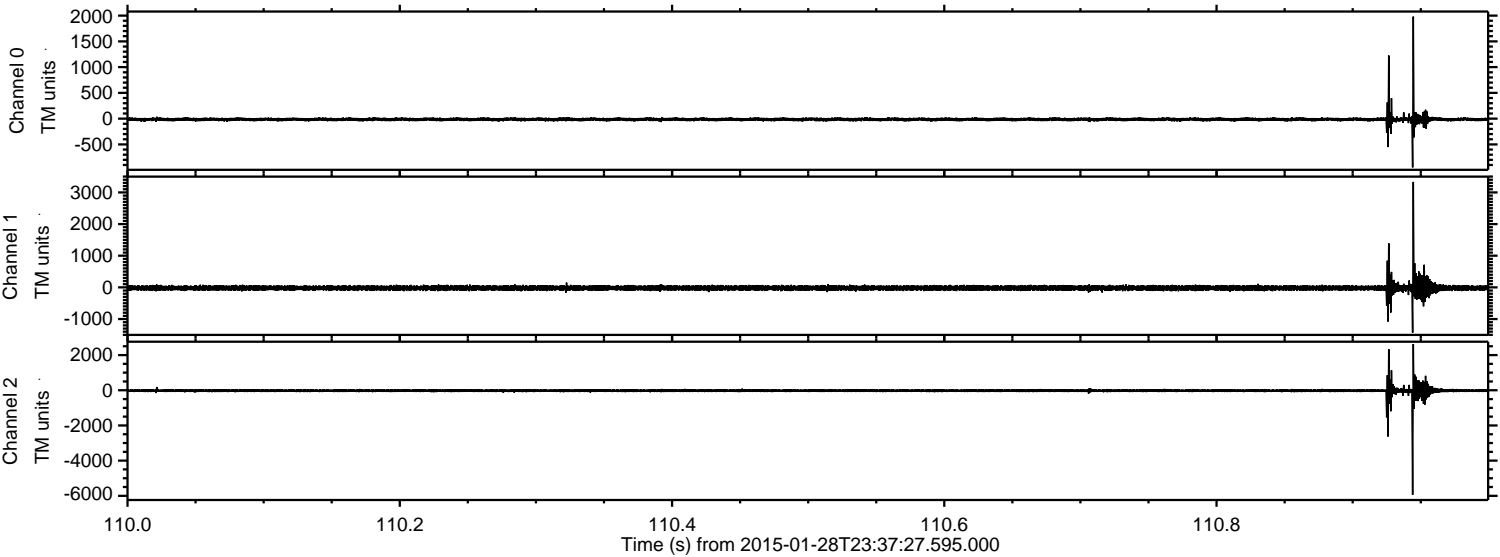


Processed Thu Feb 12 05:50:06 2015 by ELM ver.2012-10-06 from 001\_\_elm20150128\_233726\_\_dat00.bin



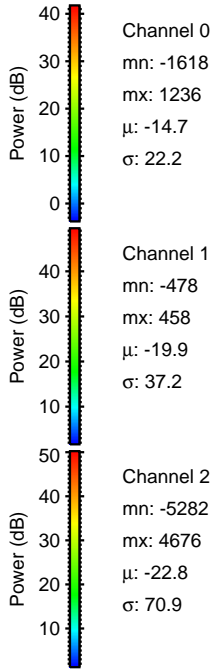
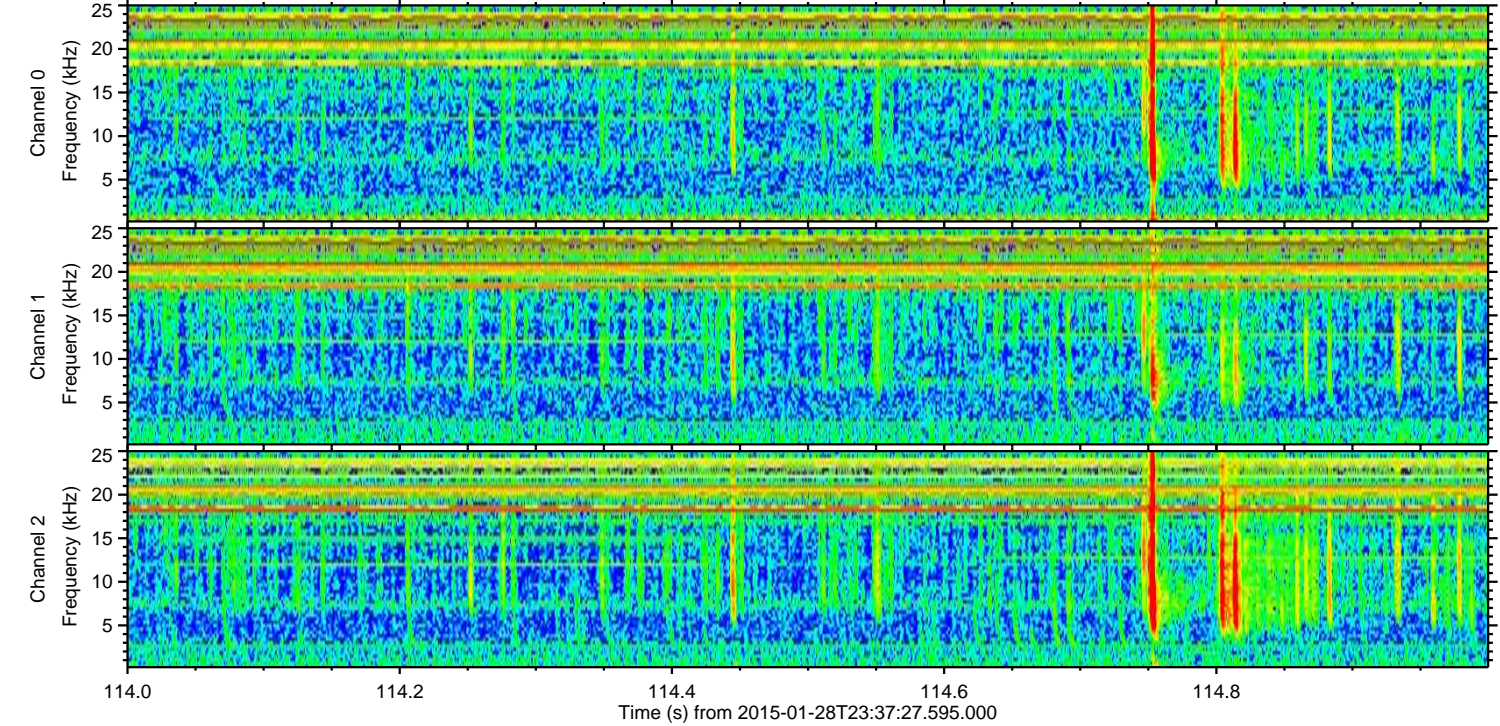
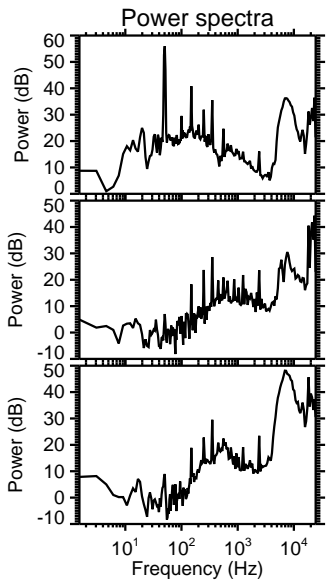
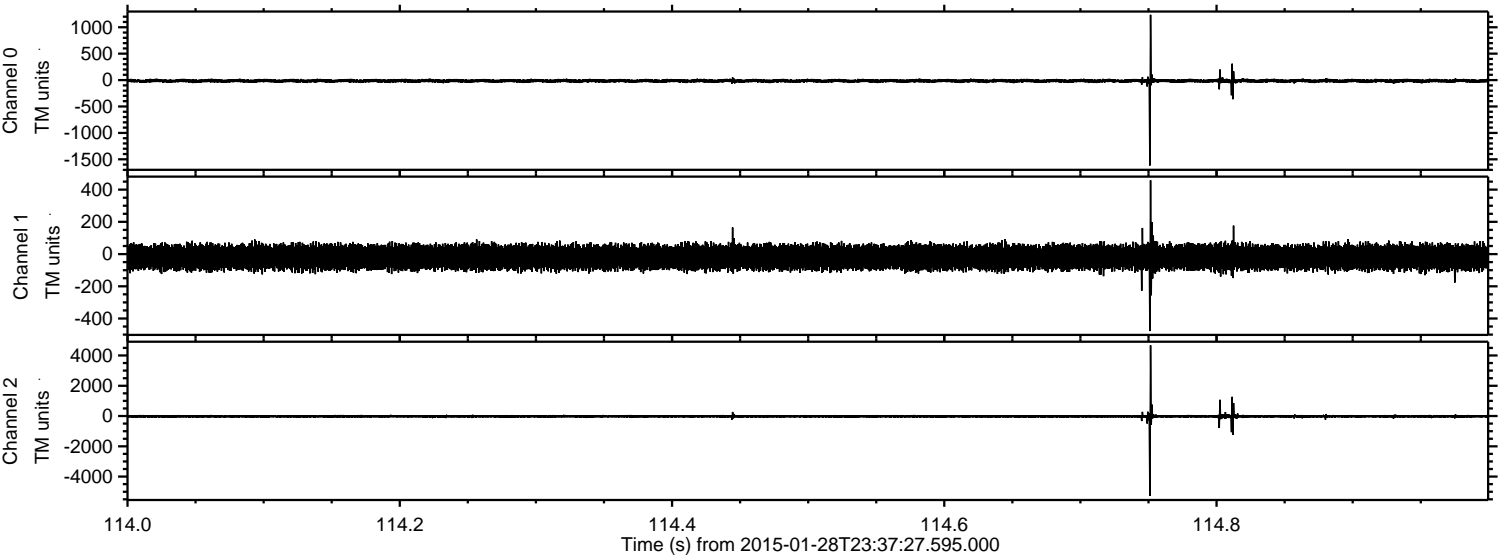
ELMAVAN 3D WAVEFORMS (Measured data sampled at 50 kHz) 49795 packets of 144 samples from 2015-01-28T23:37:27.595.000. Part 111/144

Processed Thu Feb 12 05:50:07 2015 by ELM ver.2012-10-06 from 001\_\_elm20150128\_233726\_\_dat00.bin



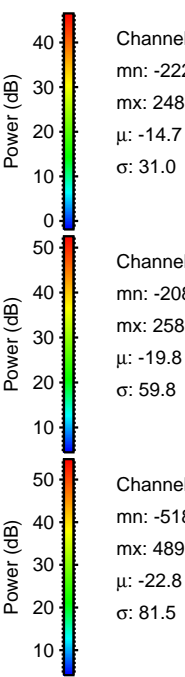
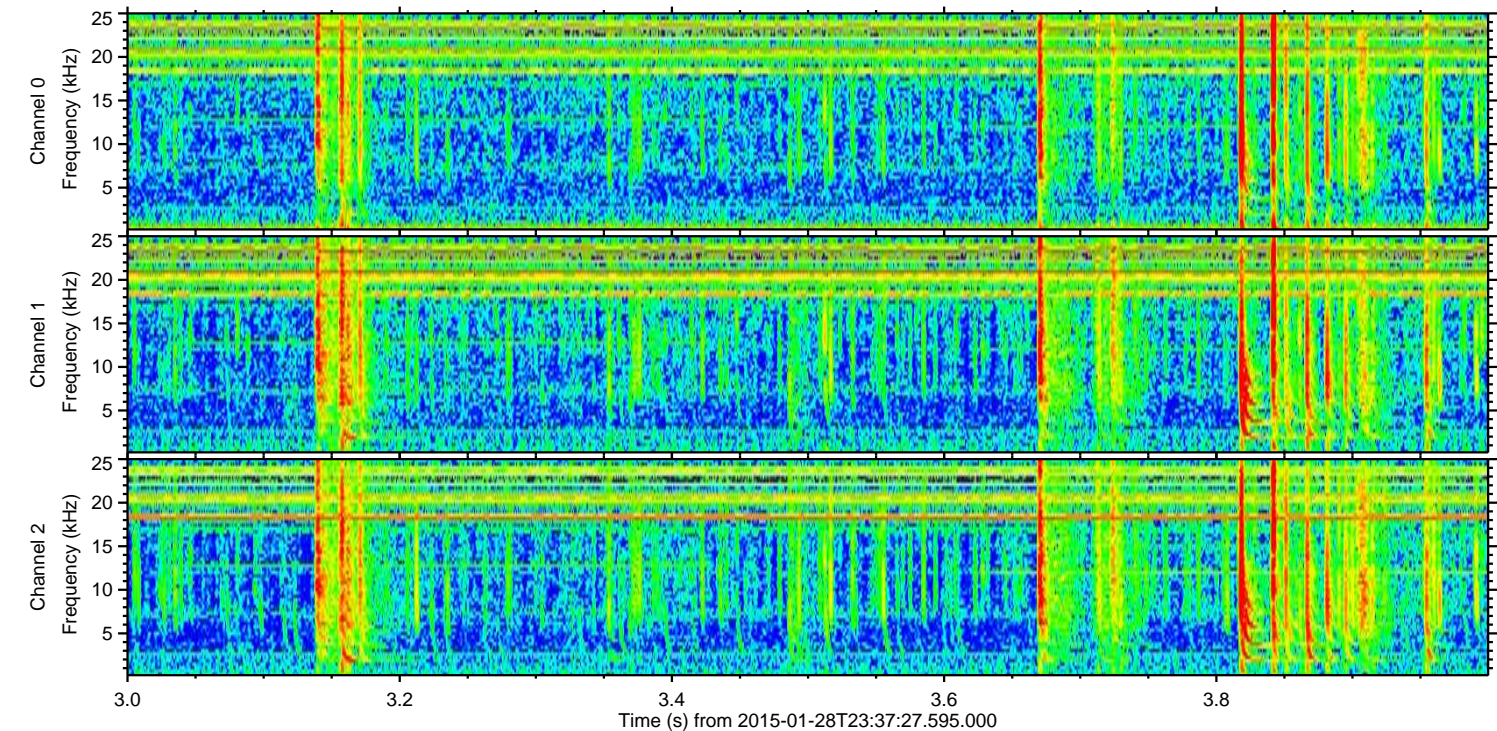
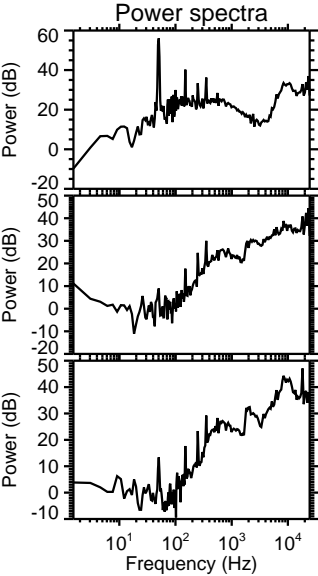
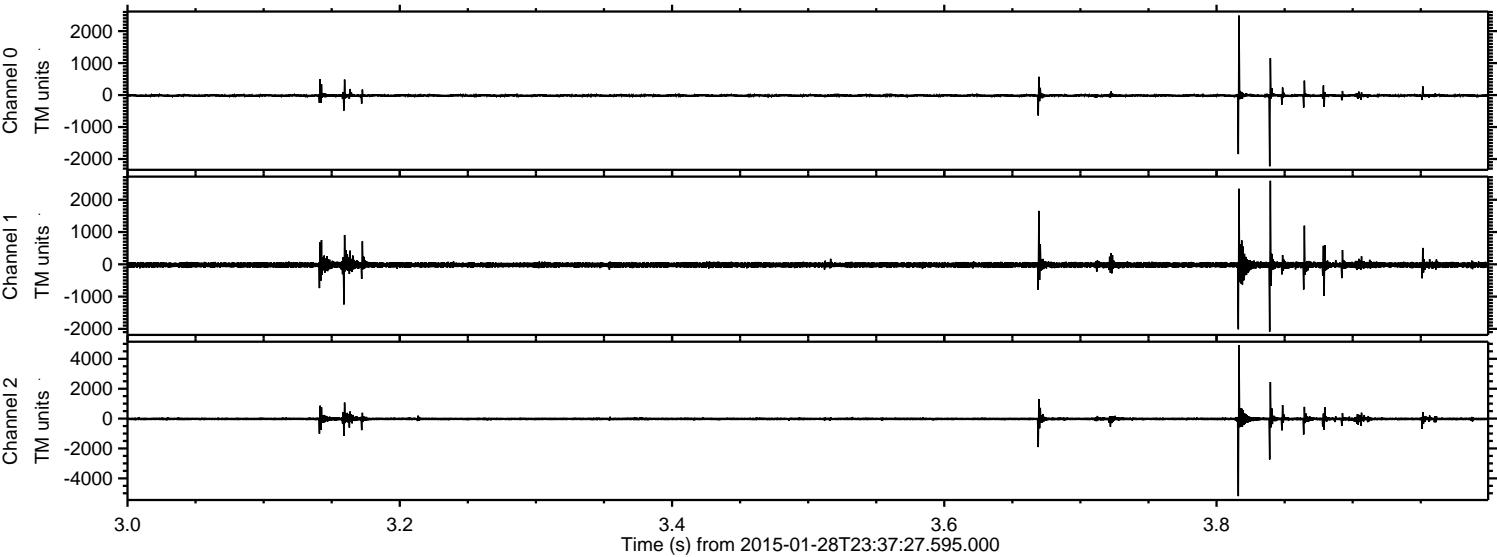
ELMAVAN 3D WAVEFORMS (Measured data sampled at 50 kHz) 49795 packets of 144 samples from 2015-01-28T23:37:27.595.000. Part 115/144

Processed Thu Feb 12 05:50:08 2015 by ELM ver.2012-10-06 from 001\_\_elm20150128\_233726\_\_dat00.bin



ELMAVAN 3D WAVEFORMS (Measured data sampled at 50 kHz) 49795 packets of 144 samples from 2015-01-28T23:37:27.595.000. Part 4/144

Processed Thu Feb 12 05:50:09 2015 by ELM ver.2012-10-06 from 001\_\_elm20150128\_233726\_\_dat00.bin



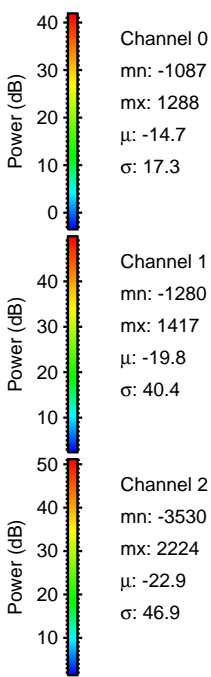
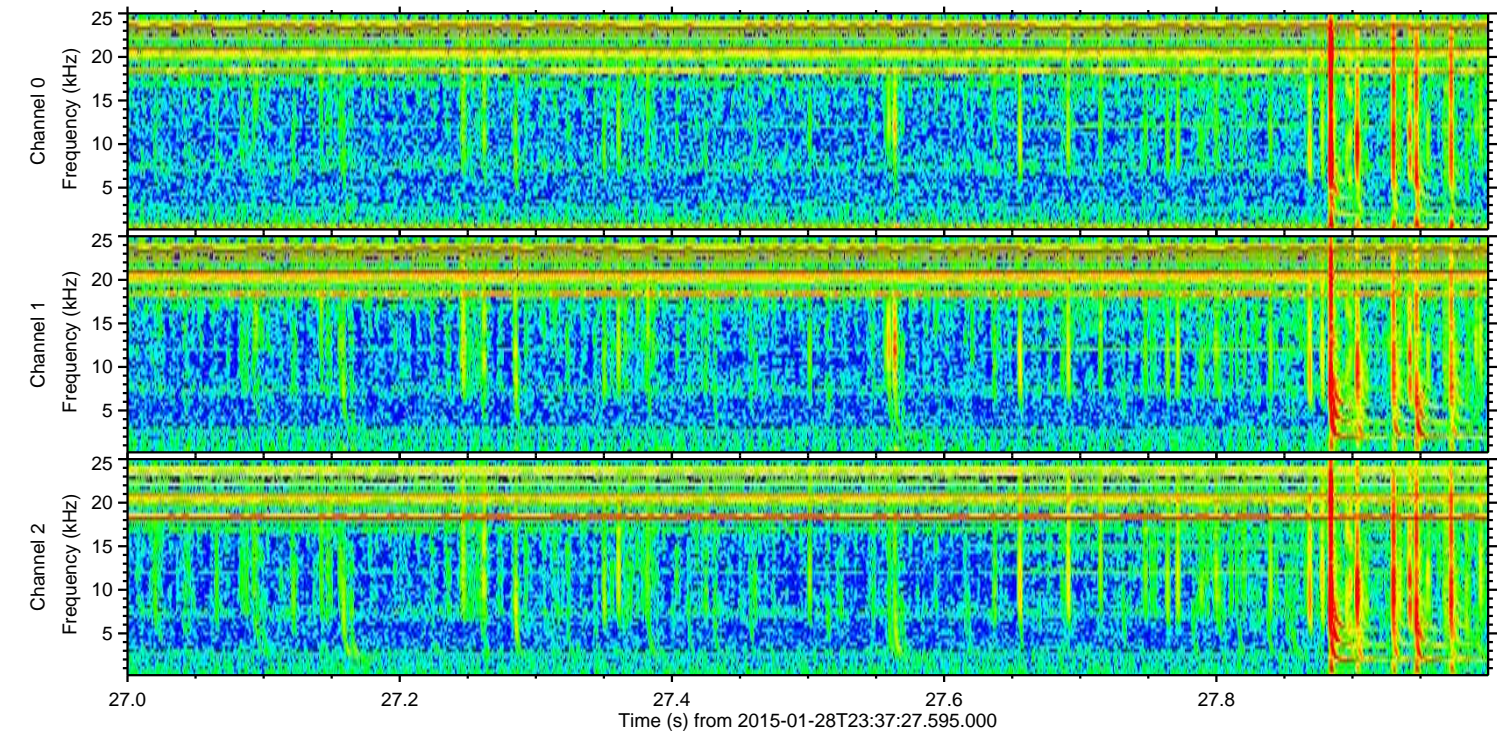
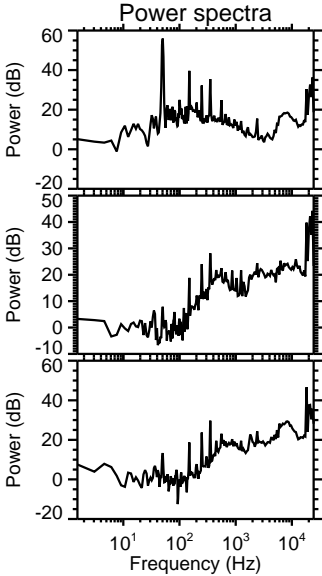
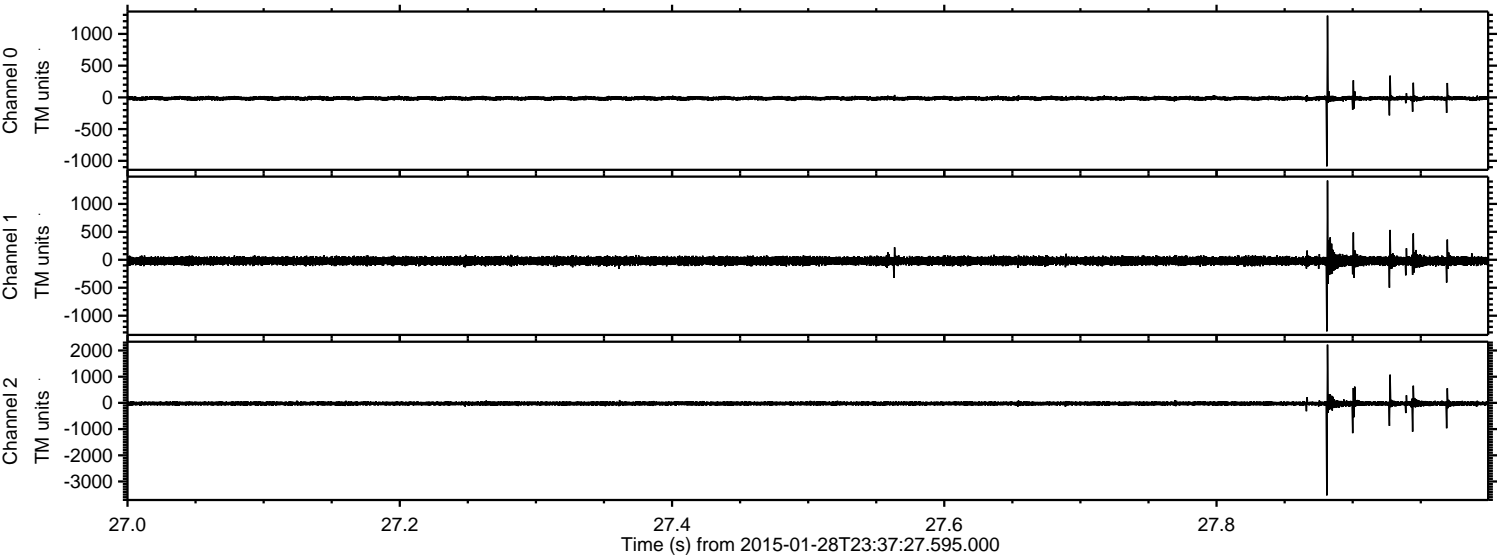
Channel 0  
mn: -2227  
mx: 2489  
 $\mu$ : -14.7  
 $\sigma$ : 31.0

Channel 1  
mn: -2083  
mx: 2586  
 $\mu$ : -19.8  
 $\sigma$ : 59.8

Channel 2  
mn: -5189  
mx: 4899  
 $\mu$ : -22.8  
 $\sigma$ : 81.5

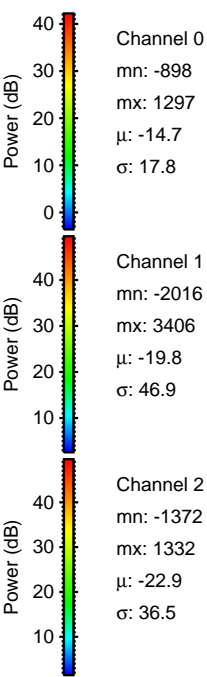
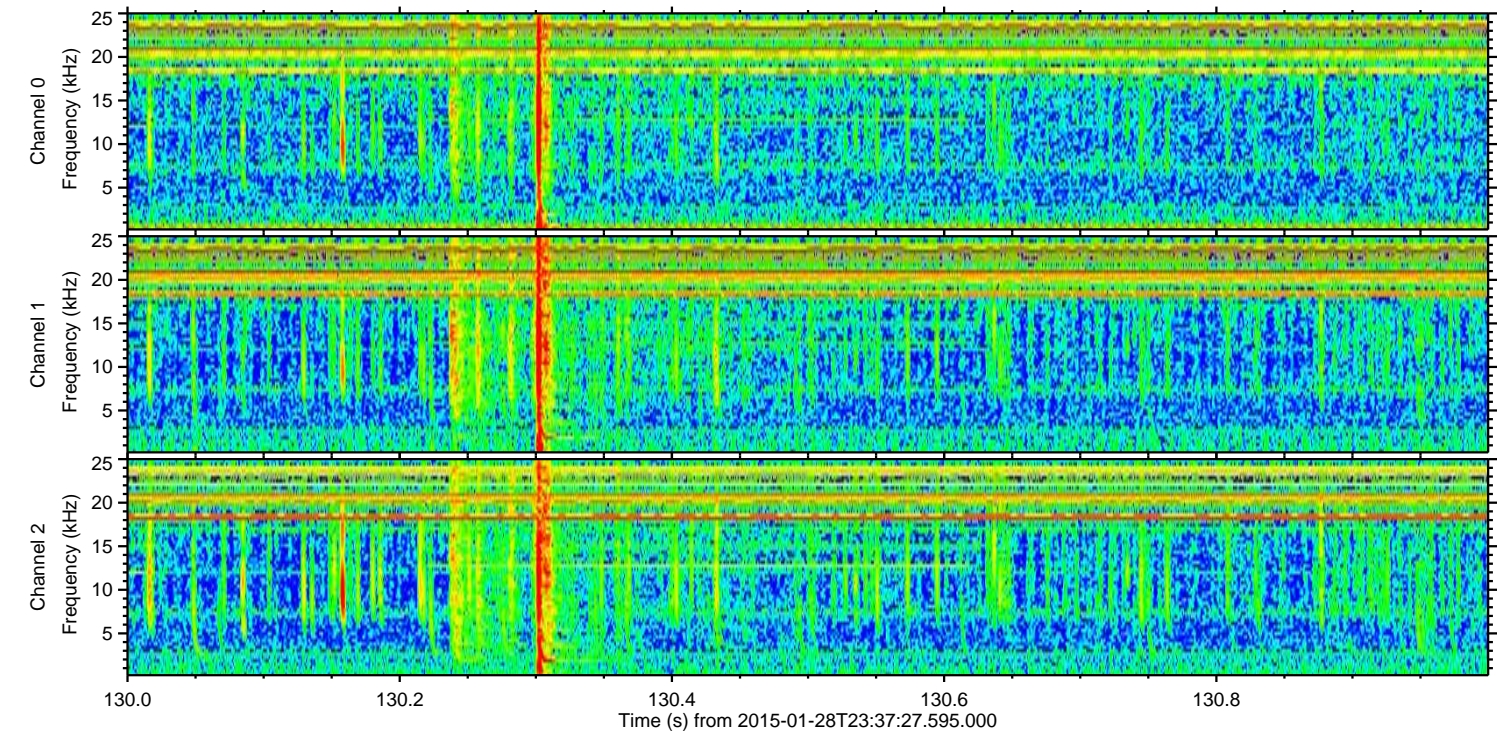
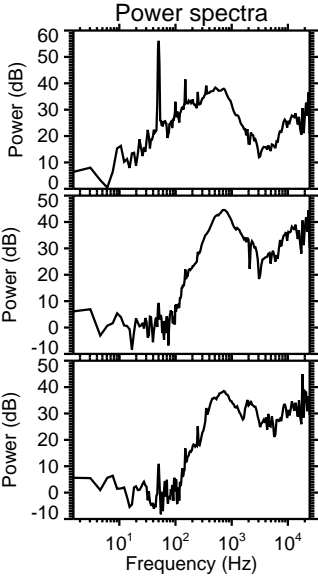
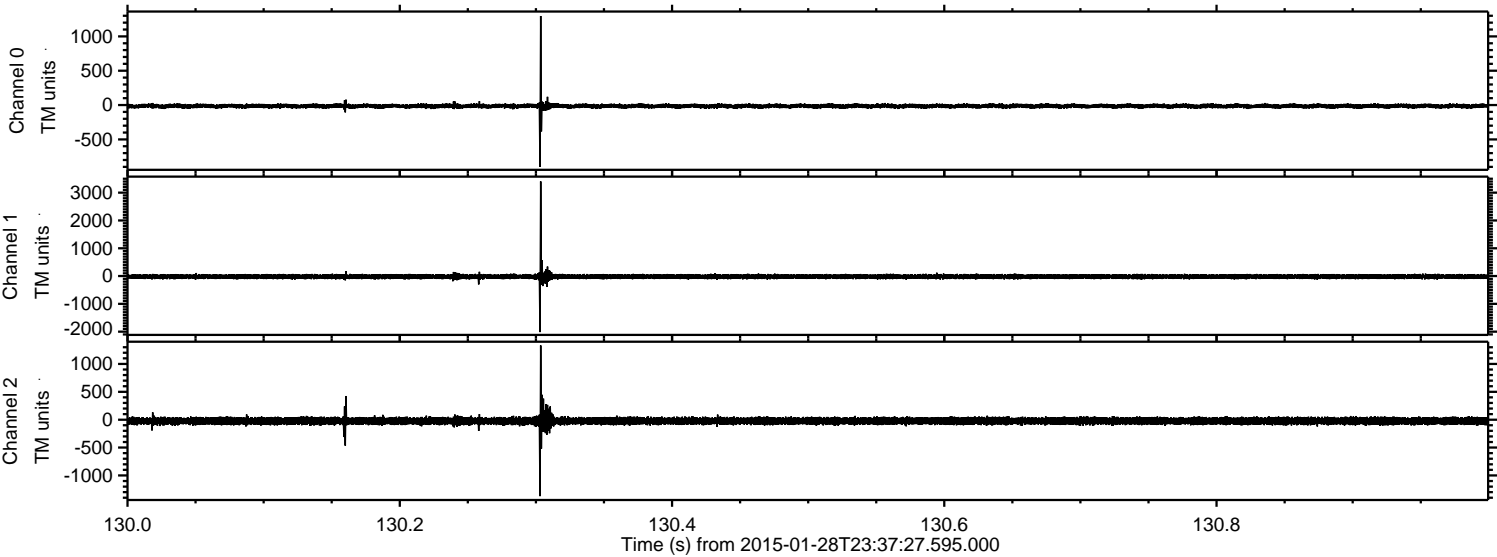
ELMAVAN 3D WAVEFORMS (Measured data sampled at 50 kHz) 49795 packets of 144 samples from 2015-01-28T23:37:27.595.000. Part 28/144

Processed Thu Feb 12 05:50:10 2015 by ELM ver.2012-10-06 from 001\_\_elm20150128\_233726\_\_dat00.bin



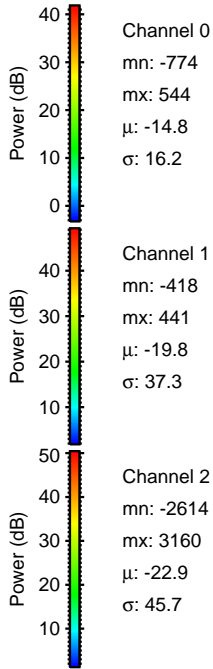
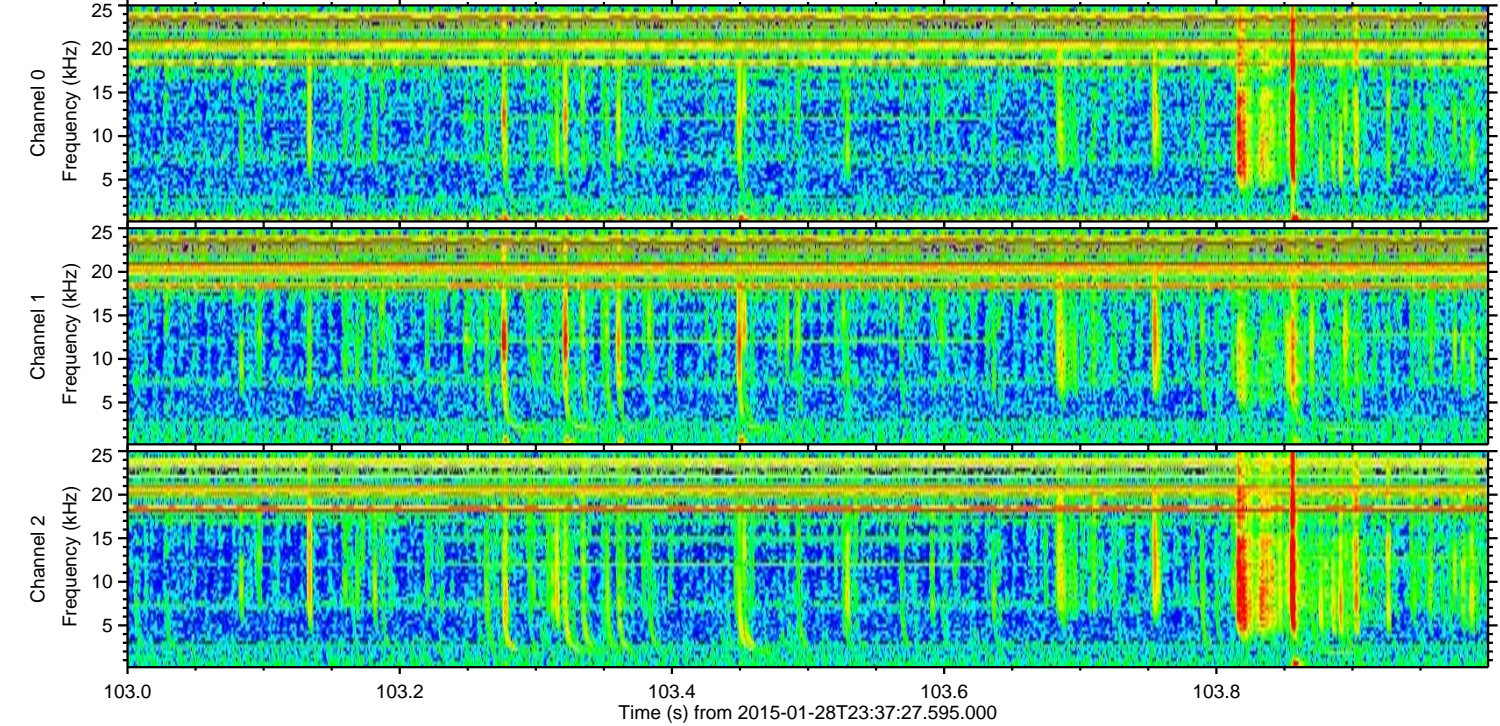
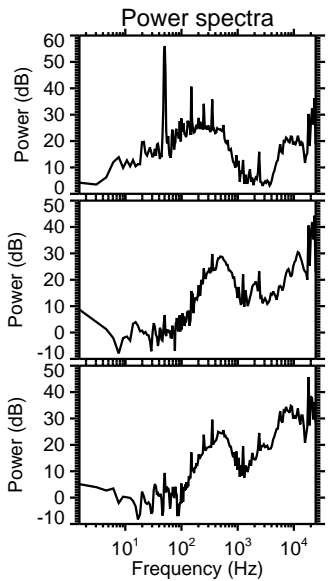
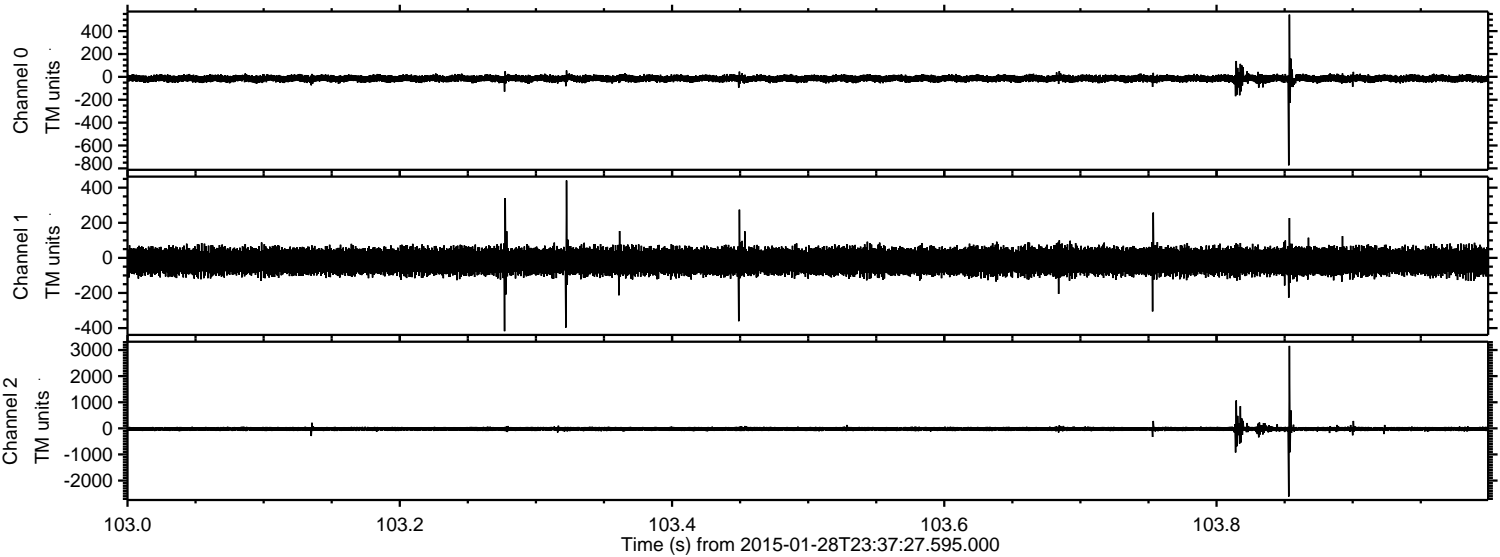
ELMAVAN 3D WAVEFORMS (Measured data sampled at 50 kHz) 49795 packets of 144 samples from 2015-01-28T23:37:27.595.000. Part 131/144

Processed Thu Feb 12 05:50:11 2015 by ELM ver.2012-10-06 from 001\_\_elm20150128\_233726\_\_dat00.bin



ELMAVAN 3D WAVEFORMS (Measured data sampled at 50 kHz) 49795 packets of 144 samples from 2015-01-28T23:37:27.595.000. Part 104/144

Processed Thu Feb 12 05:50:12 2015 by ELM ver.2012-10-06 from 001\_\_elm20150128\_233726\_\_dat00.bin



Processed Thu Feb 12 05:50:12 2015 by ELM ver.2012-10-06 from 001\_\_elm20150128\_233726\_\_dat00.bin

