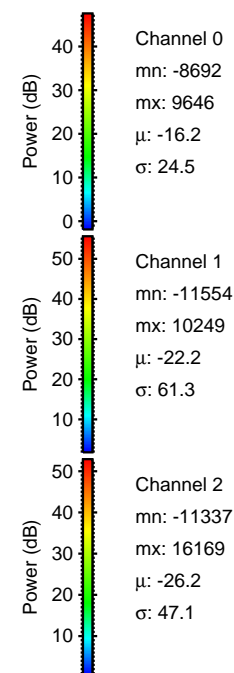
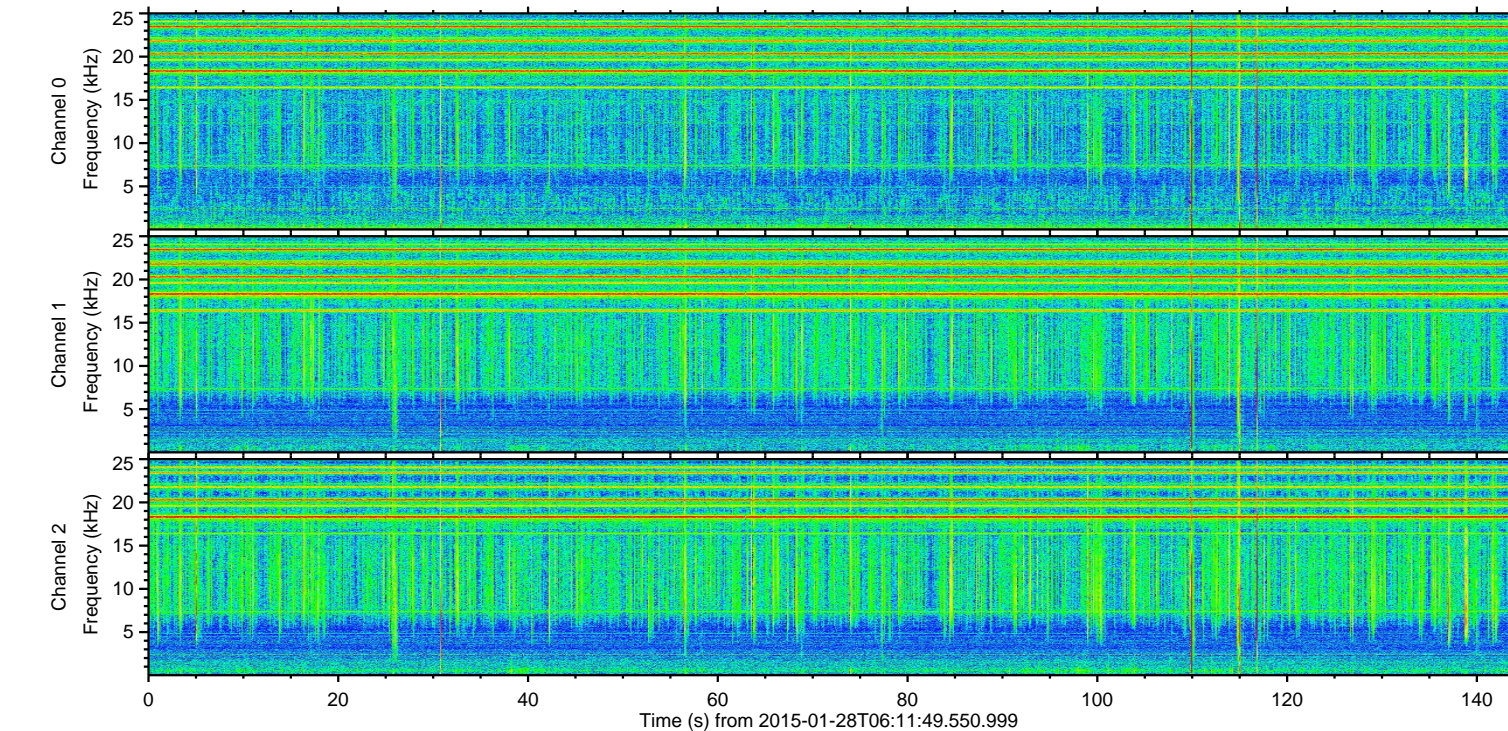
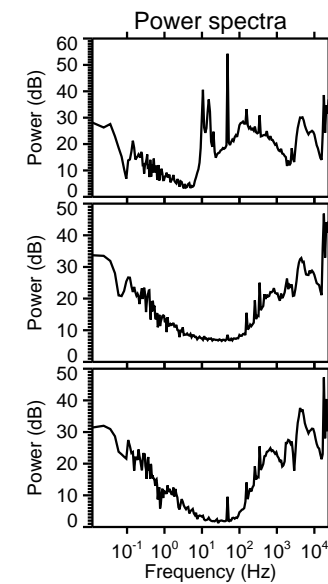
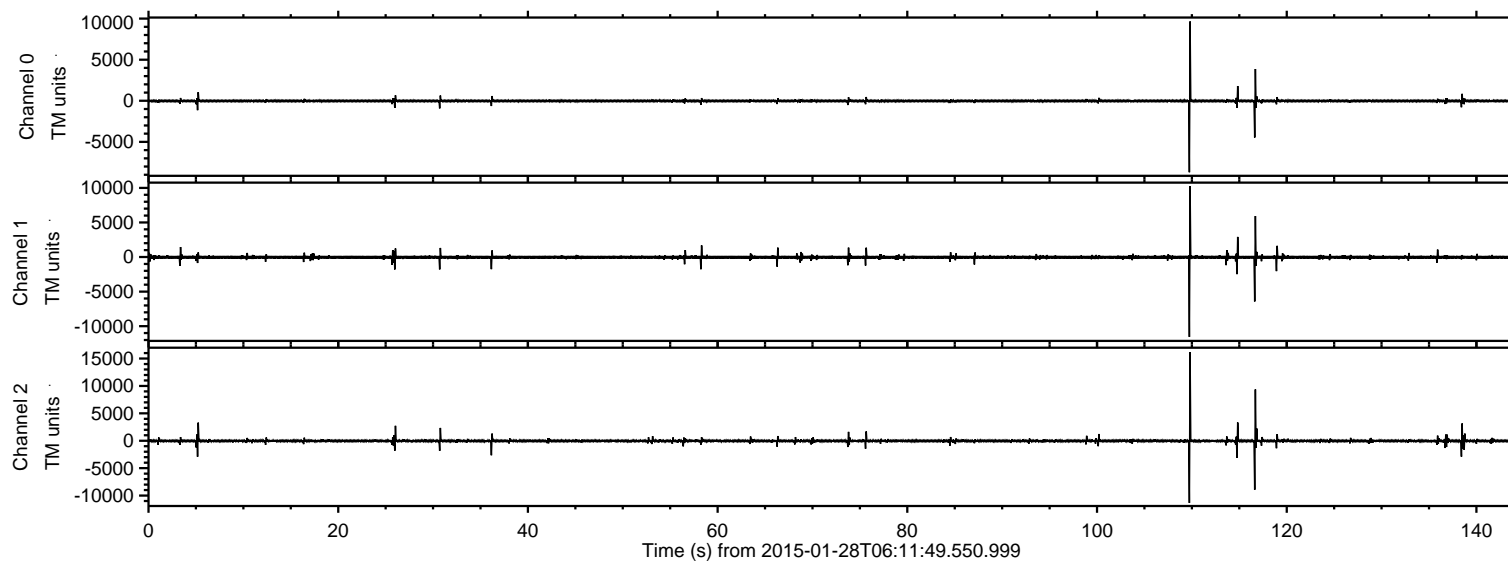


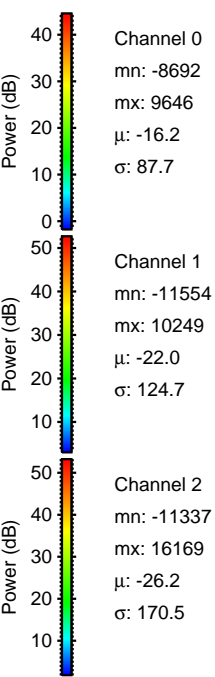
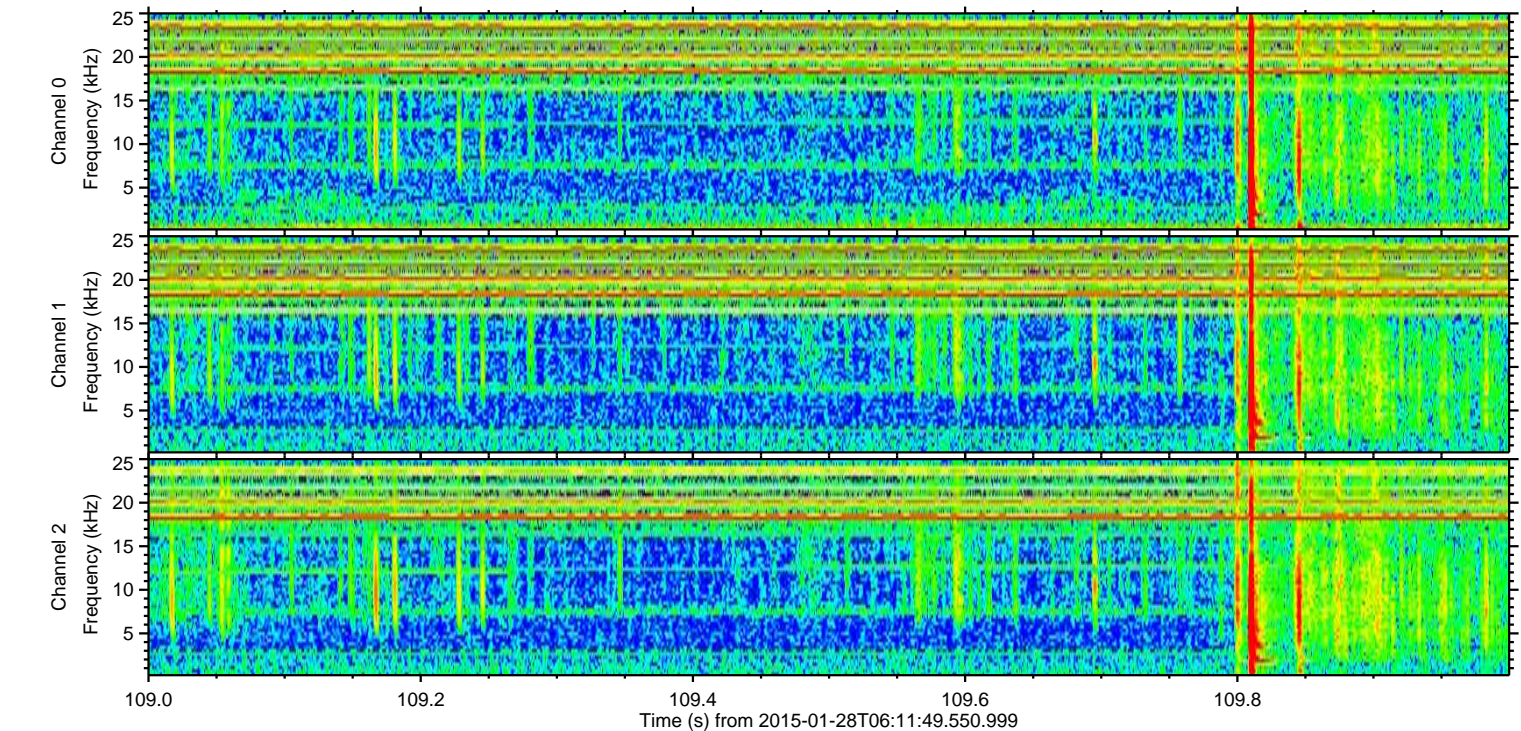
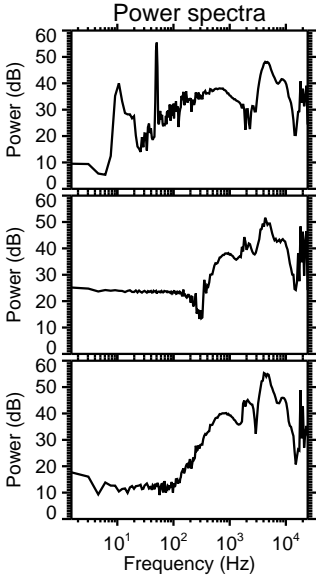
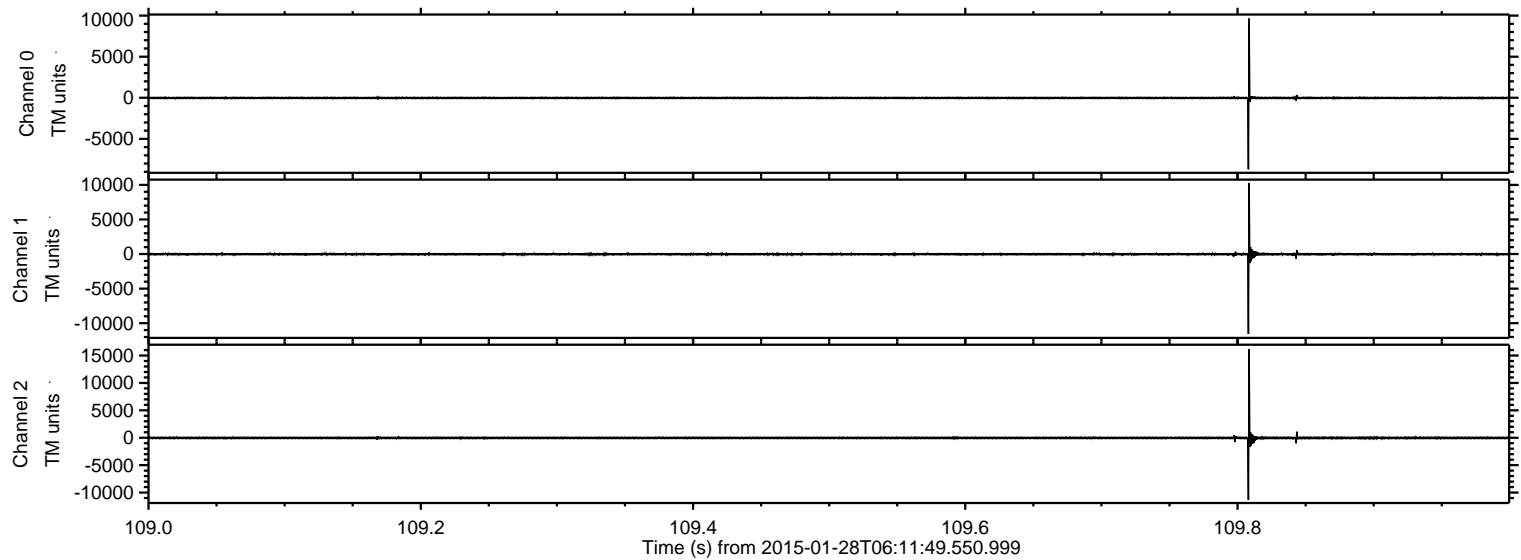
ELMAVAN 3D WAVEFORMS (Measured data sampled at 50 kHz) 49809 packets of 144 samples from 2015-01-28T06:11:49.550.999.

Processed Thu Feb 12 01:40:14 2015 by ELM ver.2012-10-06 from 001__elm20150128_061148__dat00.bin



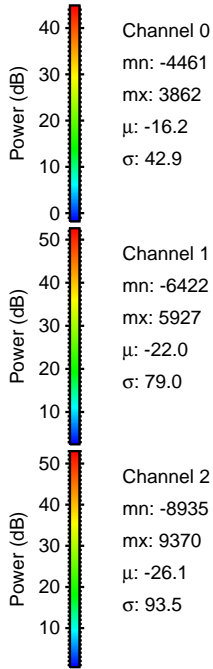
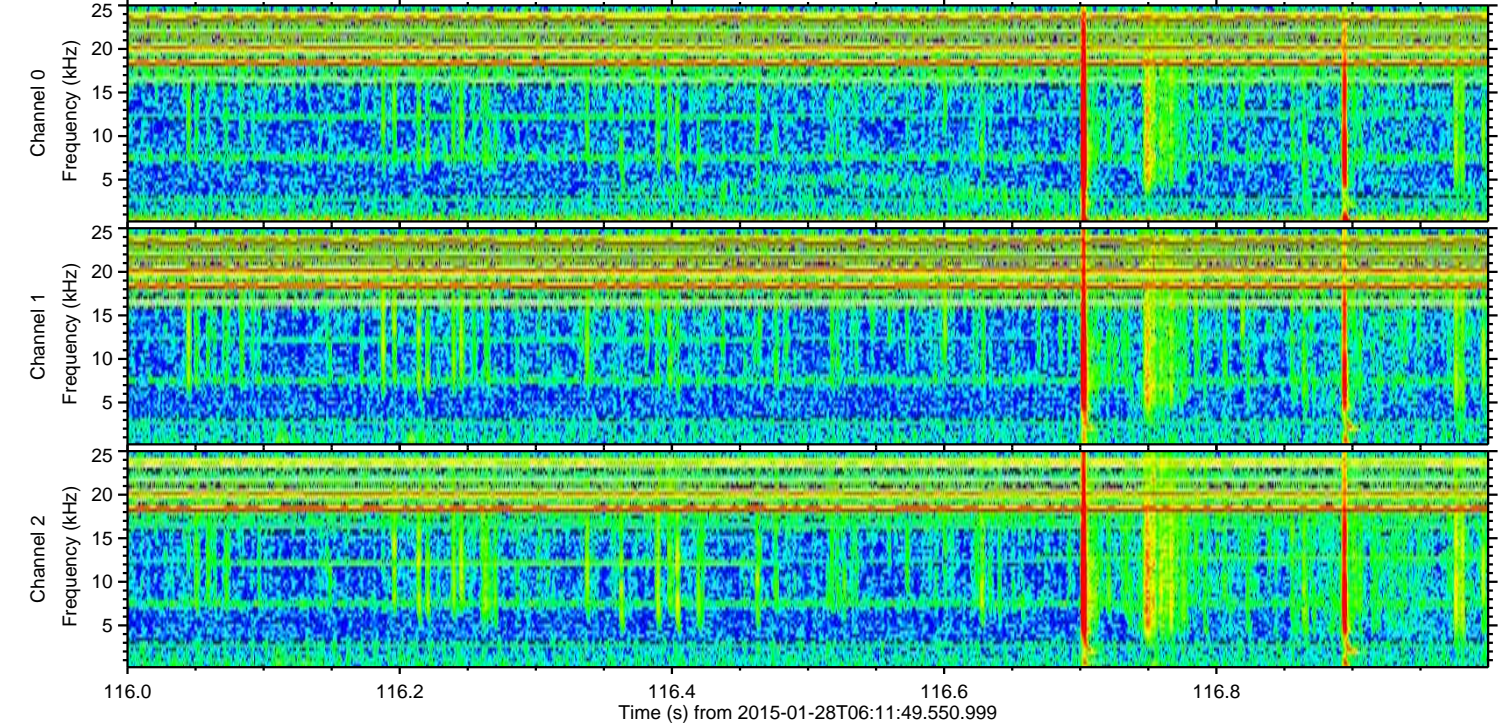
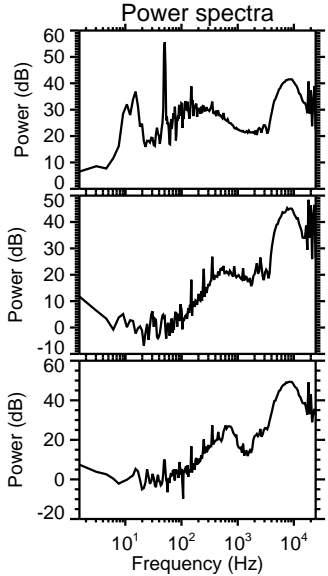
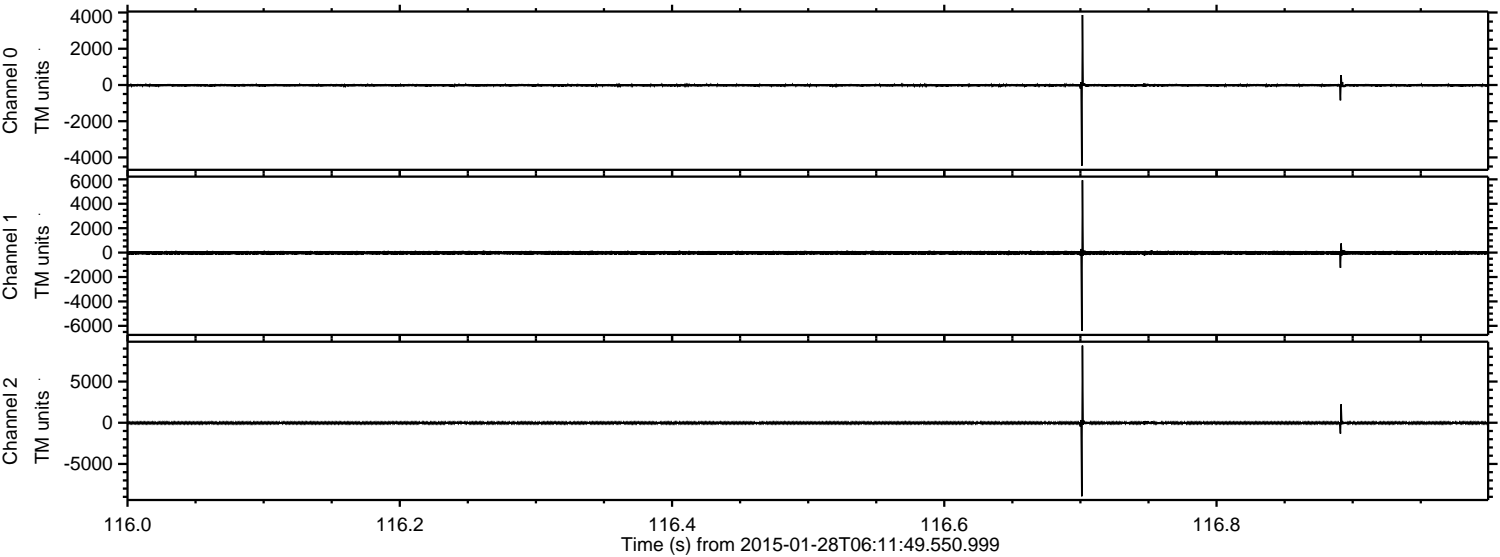
ELMAVAN 3D WAVEFORMS (Measured data sampled at 50 kHz) 49809 packets of 144 samples from 2015-01-28T06:11:49.550.999. Part 110/144

Processed Thu Feb 12 01:40:30 2015 by ELM ver.2012-10-06 from 001__elm20150128_061148__dat00.bin



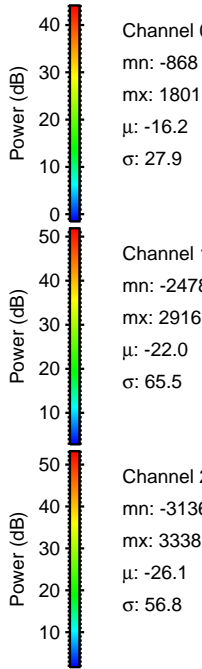
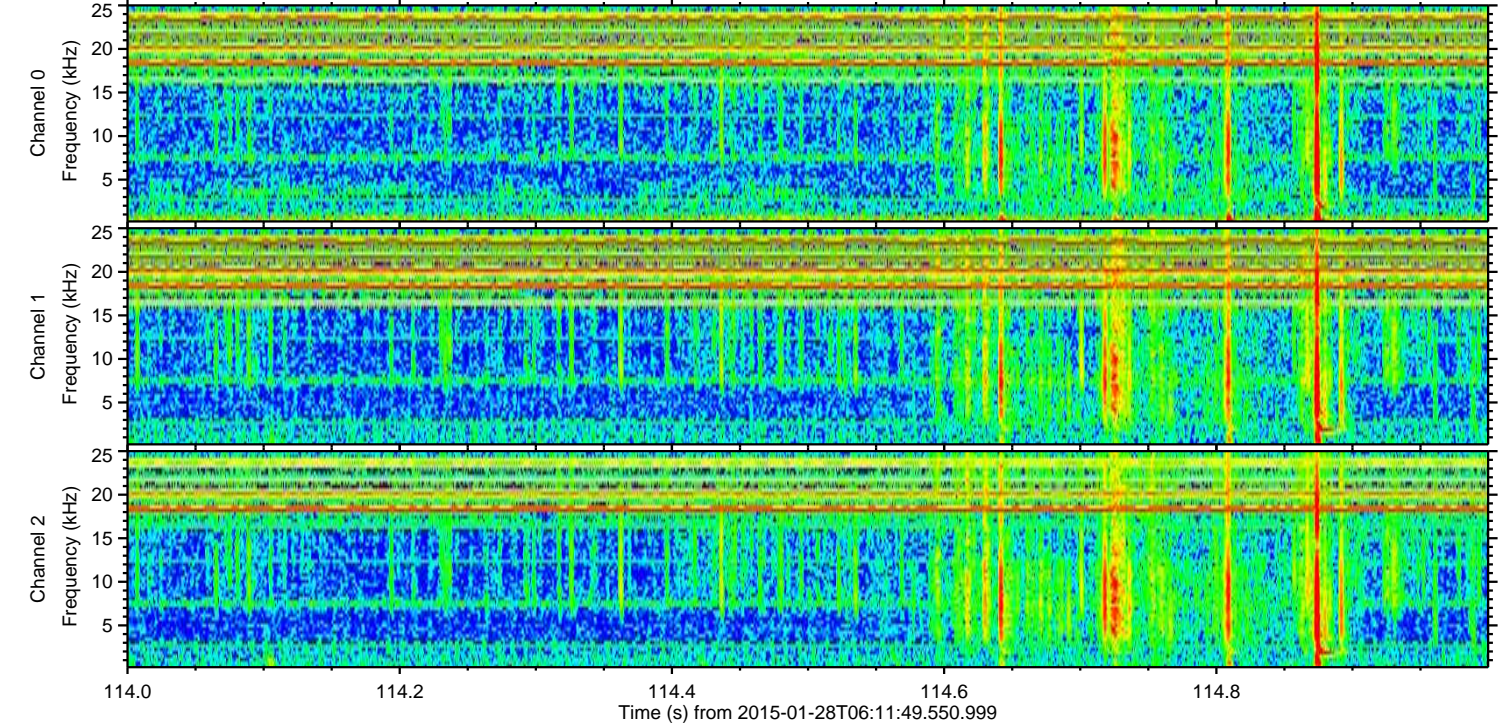
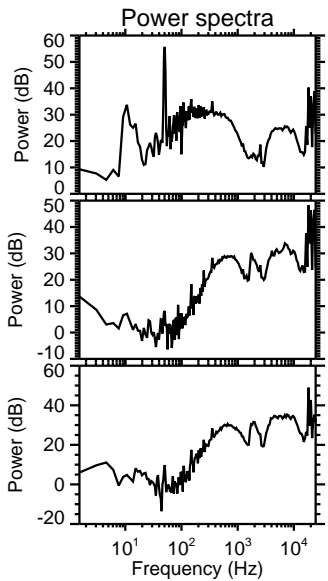
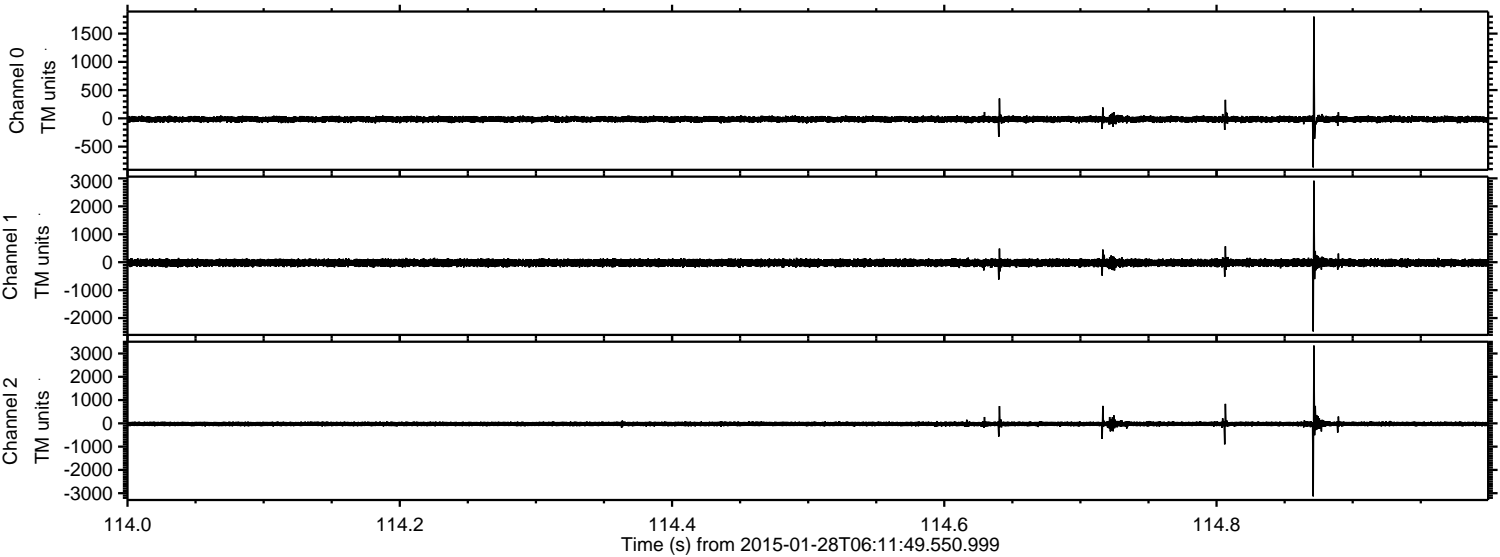
ELMAVAN 3D WAVEFORMS (Measured data sampled at 50 kHz) 49809 packets of 144 samples from 2015-01-28T06:11:49.550.999. Part 117/144

Processed Thu Feb 12 01:40:31 2015 by ELM ver.2012-10-06 from 001__elm20150128_061148__dat00.bin



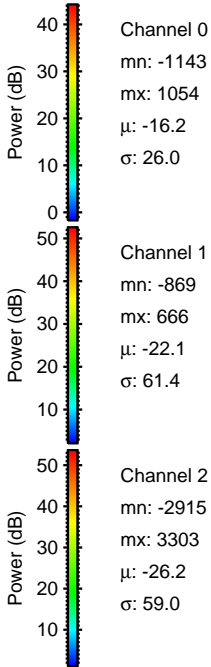
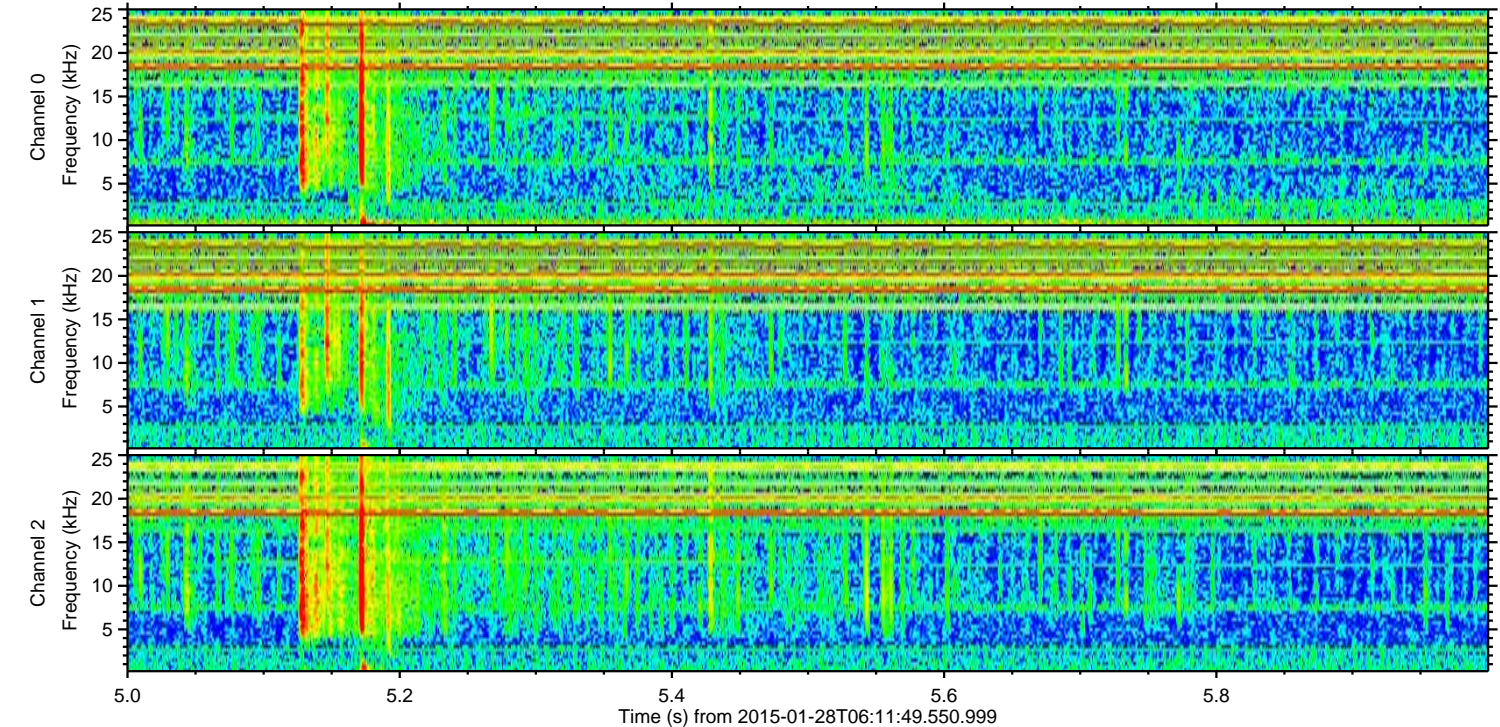
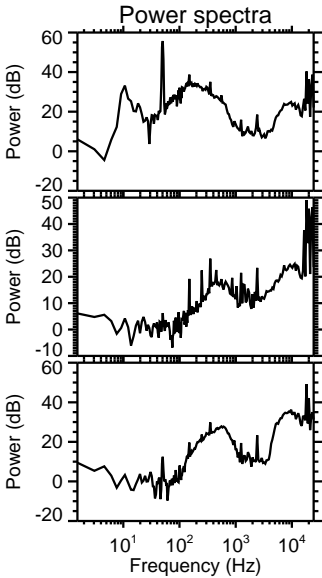
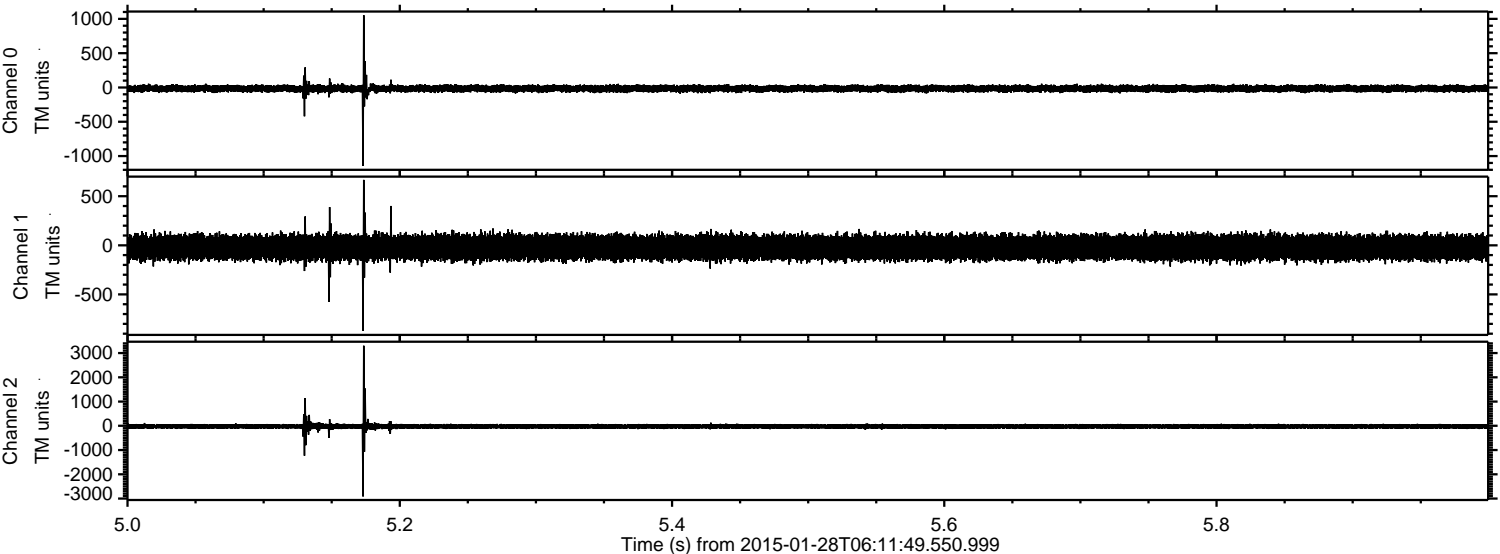
ELMAVAN 3D WAVEFORMS (Measured data sampled at 50 kHz) 49809 packets of 144 samples from 2015-01-28T06:11:49.550.999. Part 115/144

Processed Thu Feb 12 01:40:32 2015 by ELM ver.2012-10-06 from 001__elm20150128_061148__dat00.bin



ELMAVAN 3D WAVEFORMS (Measured data sampled at 50 kHz) 49809 packets of 144 samples from 2015-01-28T06:11:49.550.999. Part 6/144

Processed Thu Feb 12 01:40:33 2015 by ELM ver.2012-10-06 from 001__elm20150128_061148__dat00.bin



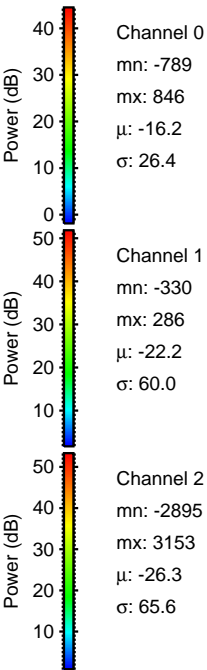
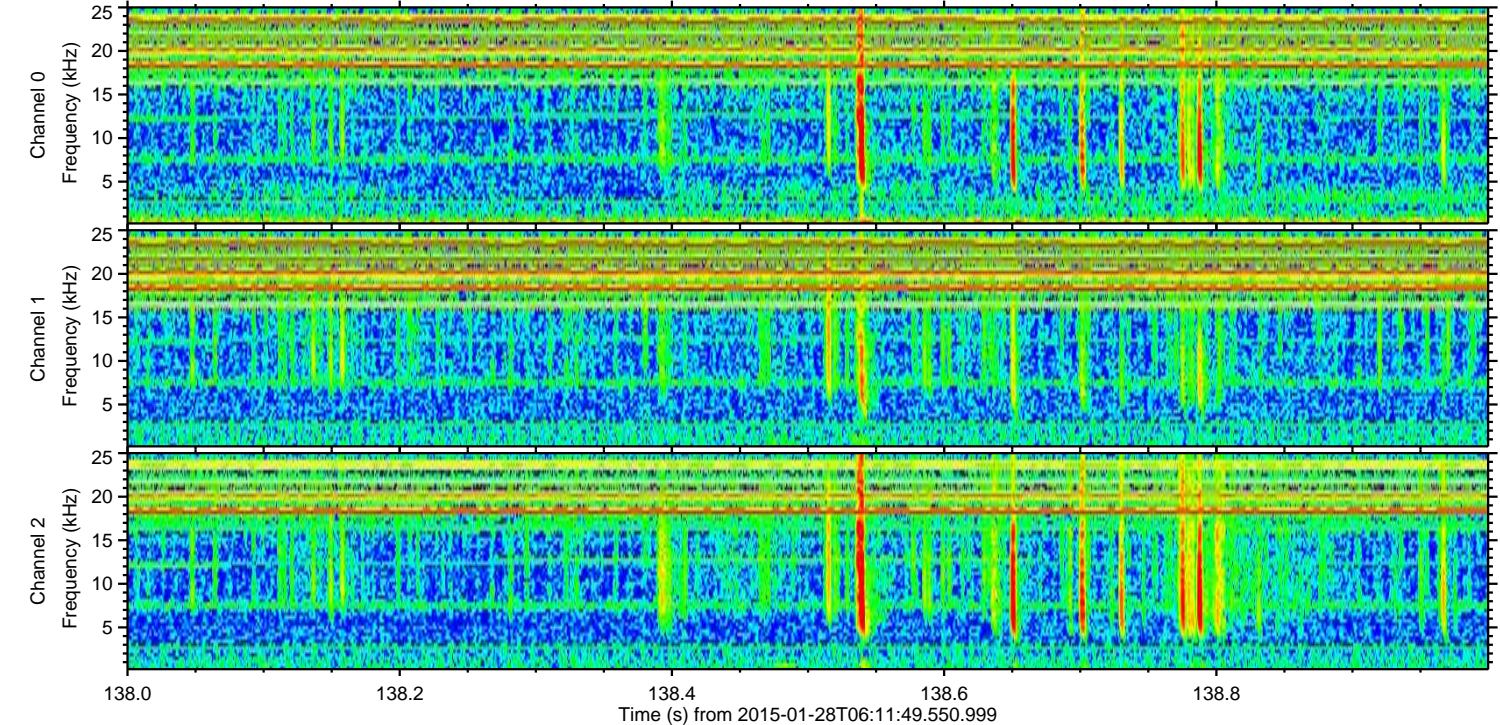
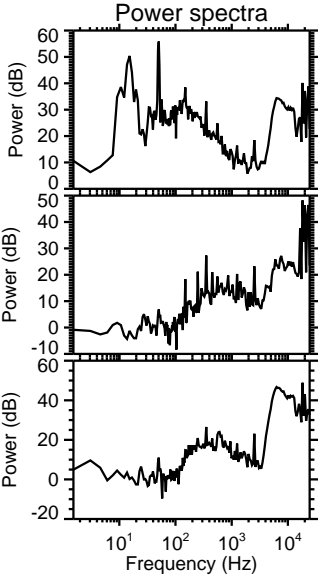
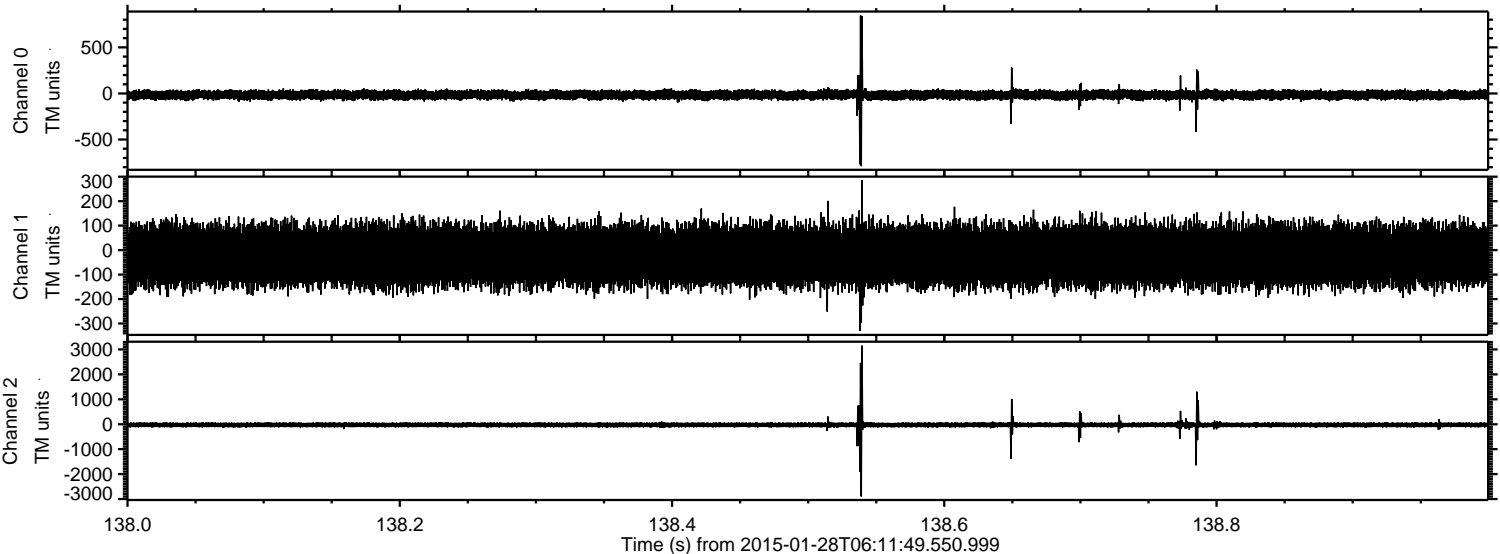
Channel 0
mn: -1143
mx: 1054
 μ : -16.2
 σ : 26.0

Channel 1
mn: -869
mx: 666
 μ : -22.1
 σ : 61.4

Channel 2
mn: -2915
mx: 3303
 μ : -26.2
 σ : 59.0

ELMAVAN 3D WAVEFORMS (Measured data sampled at 50 kHz) 49809 packets of 144 samples from 2015-01-28T06:11:49.550.999. Part 139/144

Processed Thu Feb 12 01:40:34 2015 by ELM ver.2012-10-06 from 001__elm20150128_061148__dat00.bin

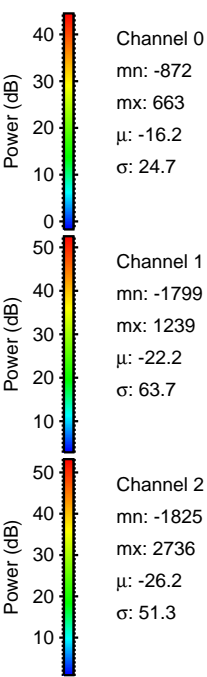
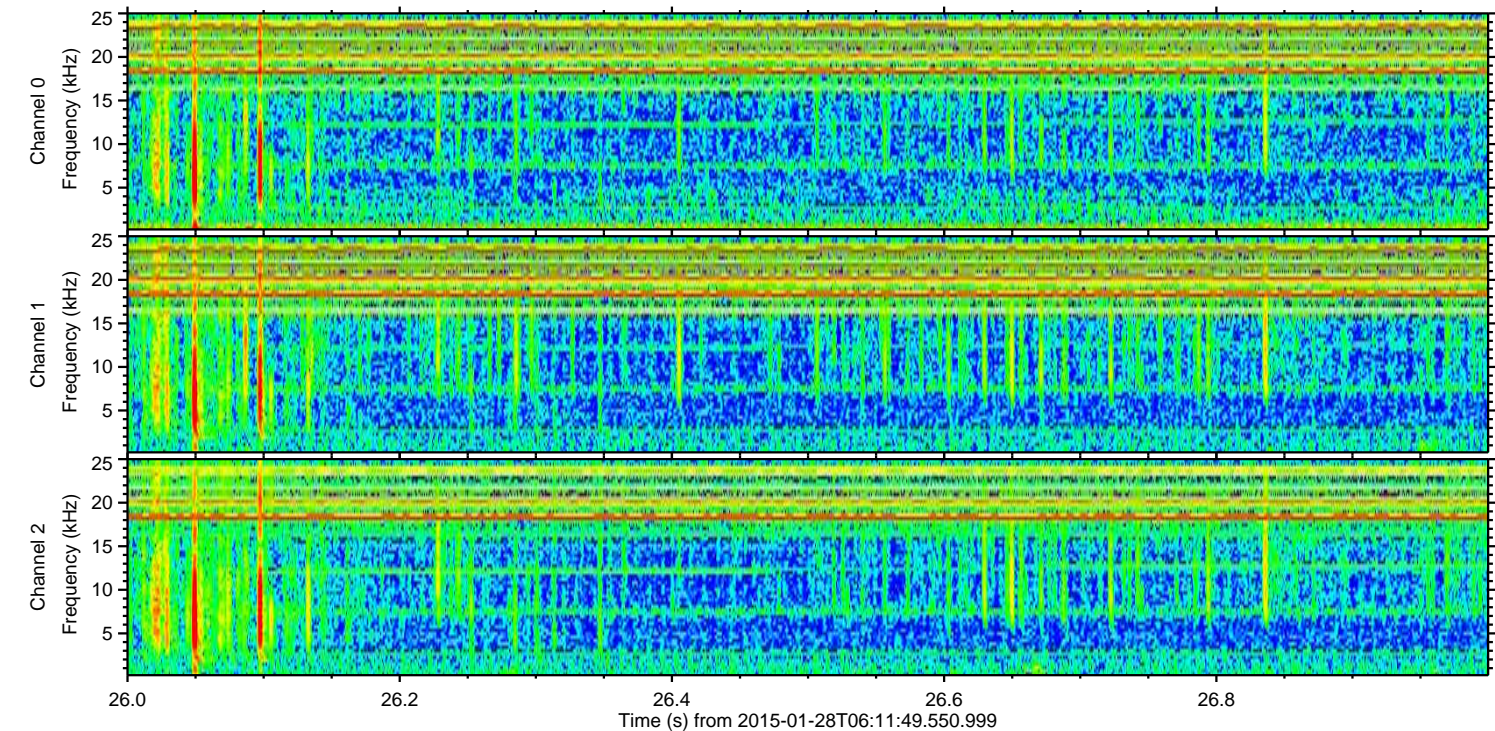
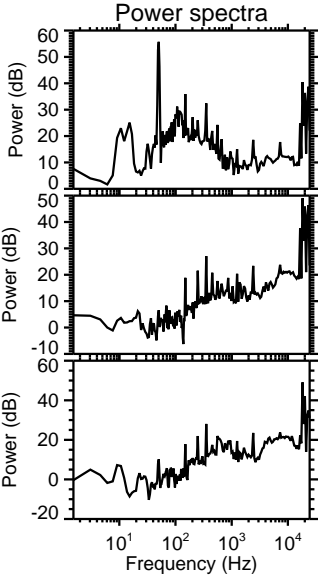
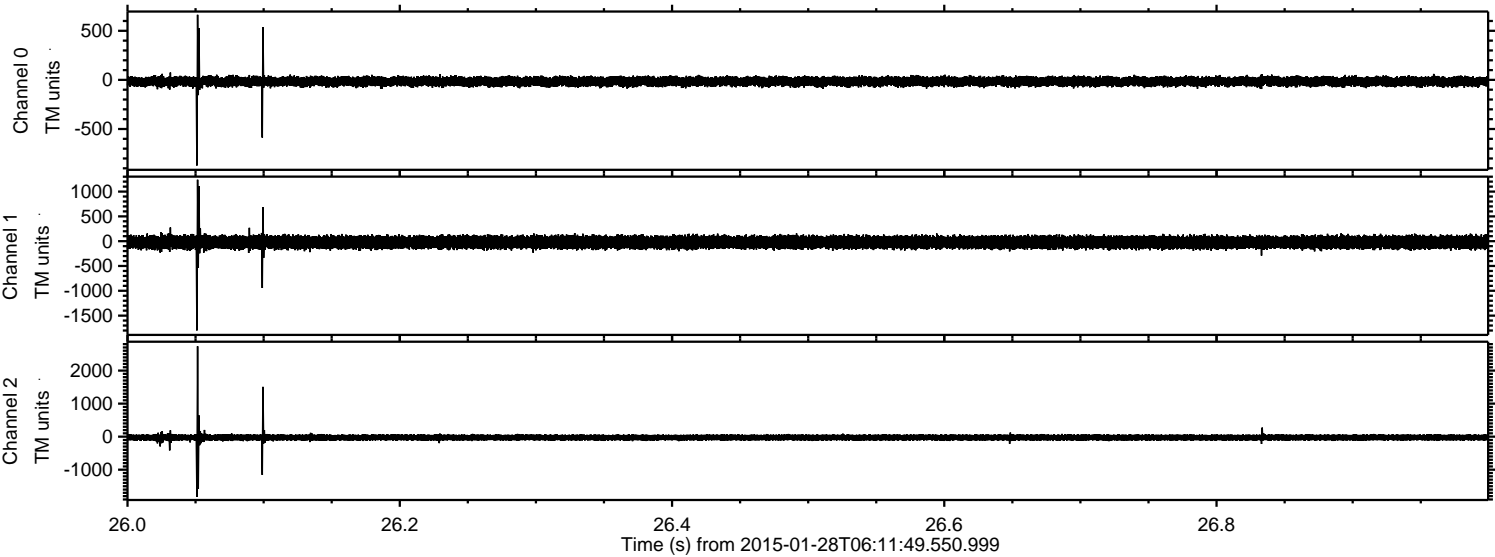


Channel 0
mn: -789
mx: 846
 μ : -16.2
 σ : 26.4

Channel 1
mn: -330
mx: 286
 μ : -22.2
 σ : 60.0

Channel 2
mn: -2895
mx: 3153
 μ : -26.3
 σ : 65.6

Processed Thu Feb 12 01:40:35 2015 by ELM ver.2012-10-06 from 001__elm20150128_061148__dat00.bin

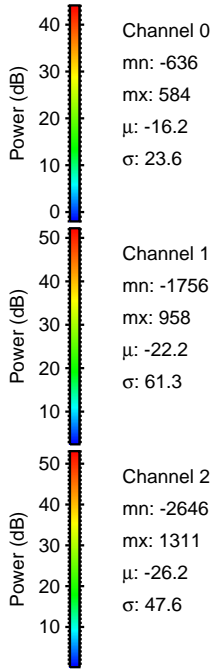
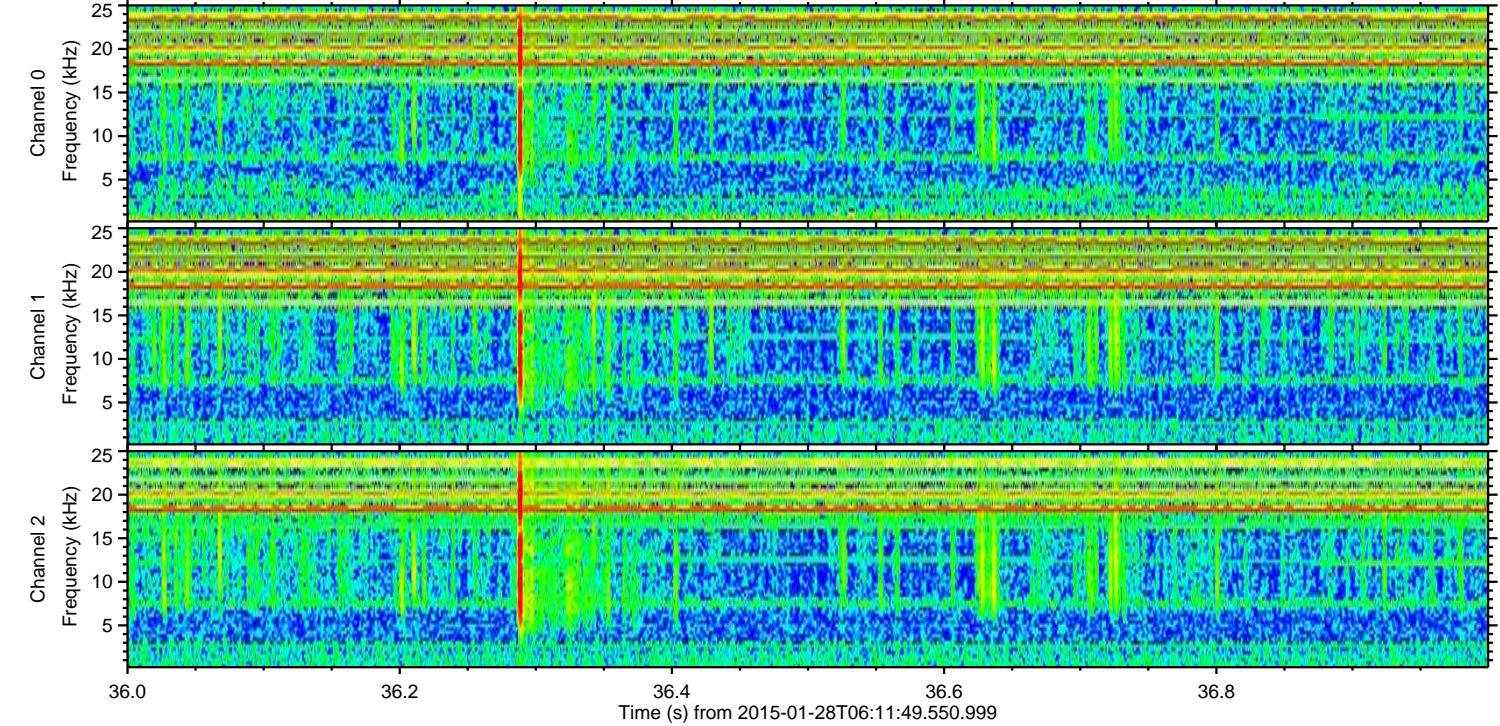
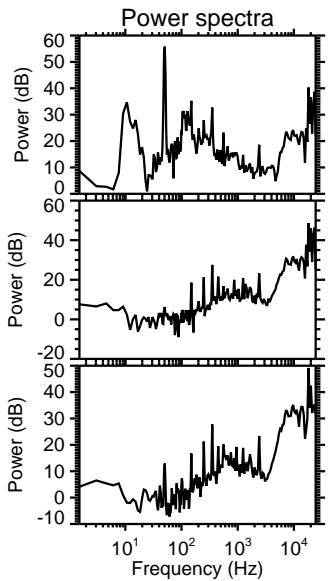
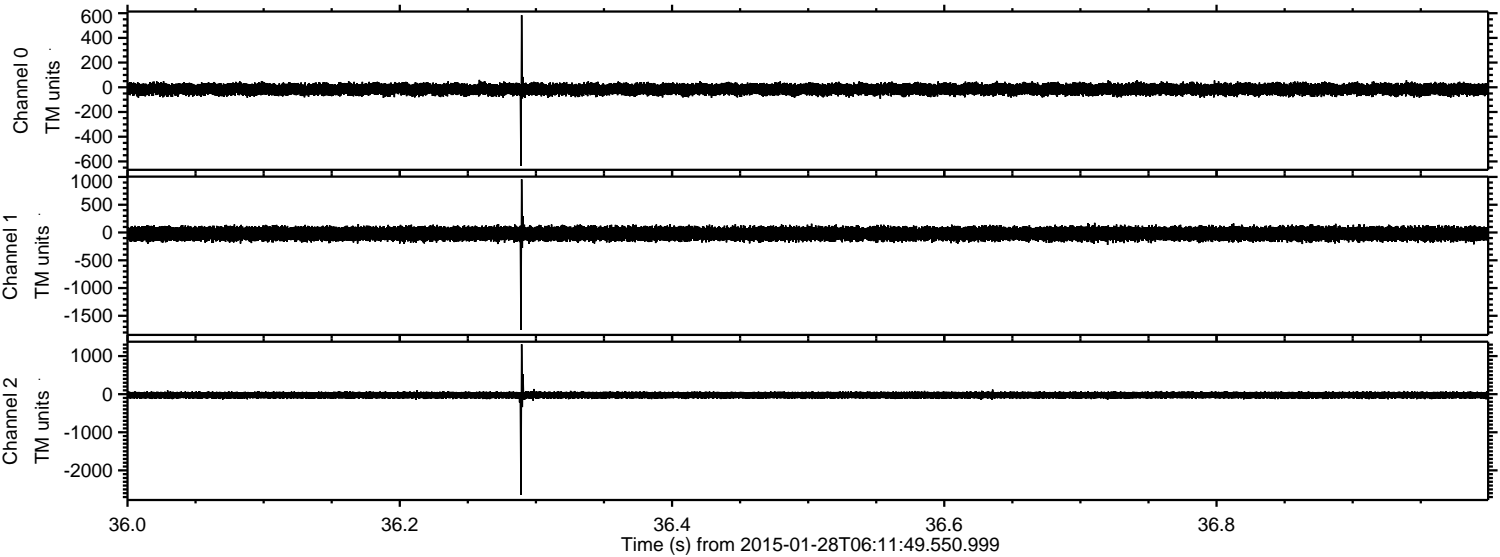


Channel 0
mn: -872
mx: 663
 μ : -16.2
 σ : 24.7

Channel 1
mn: -1799
mx: 1239
 μ : -22.2
 σ : 63.7

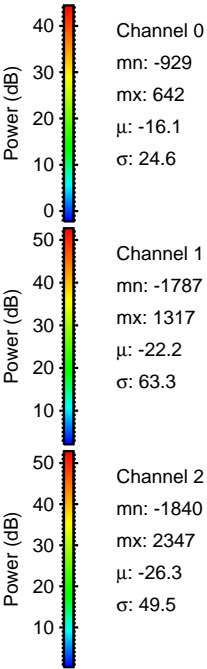
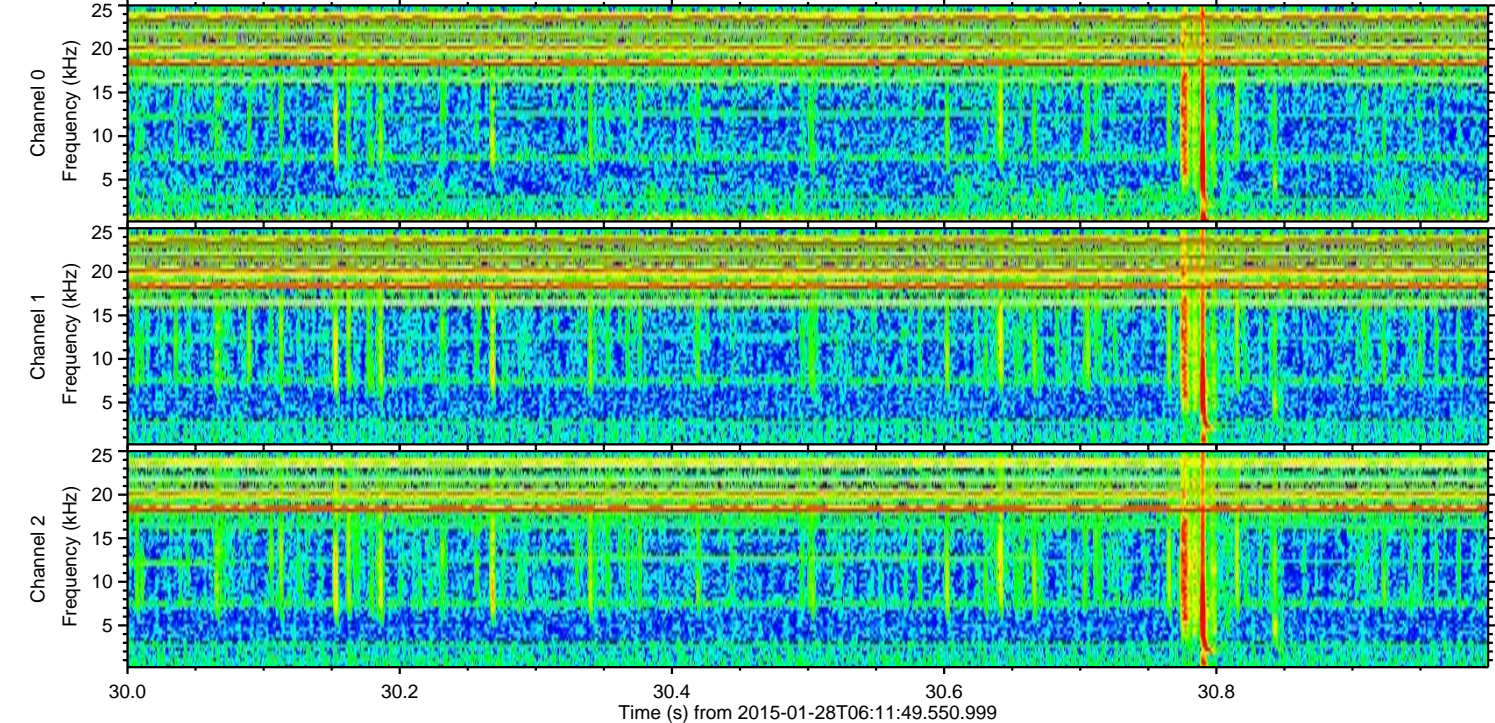
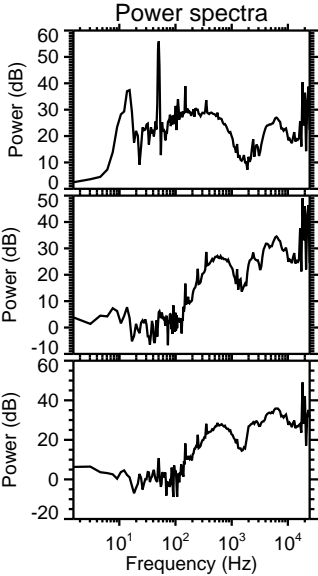
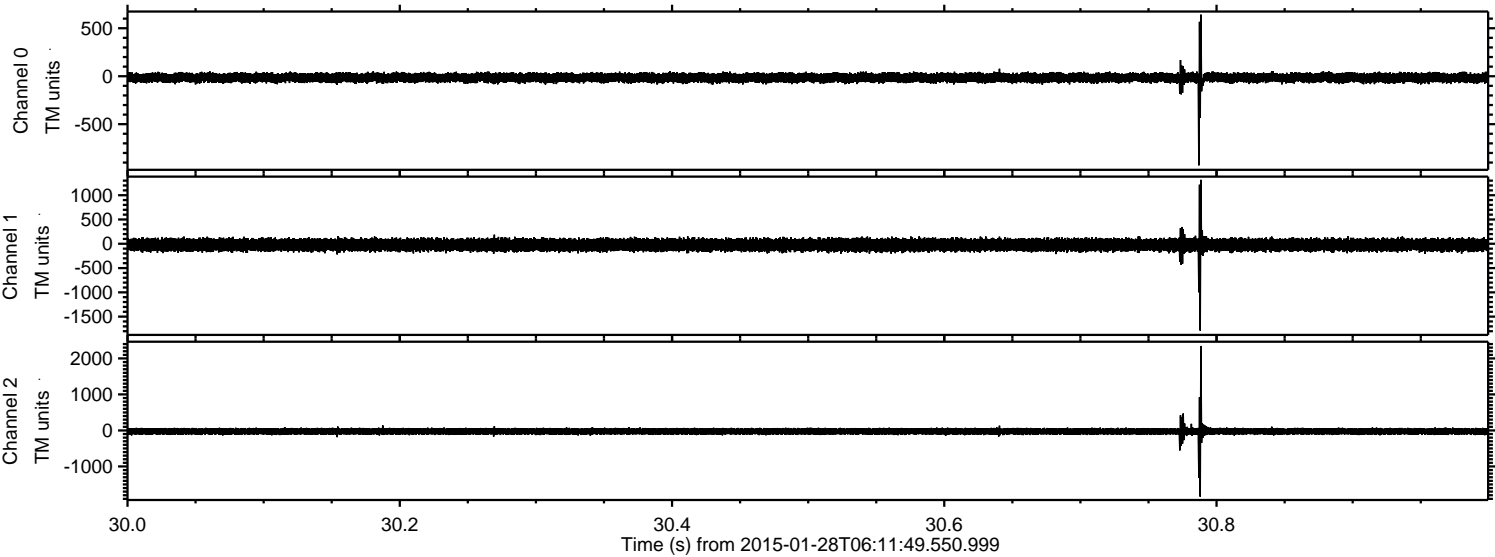
Channel 2
mn: -1825
mx: 2736
 μ : -26.2
 σ : 51.3

Processed Thu Feb 12 01:40:37 2015 by ELM ver.2012-10-06 from 001__elm20150128_061148__dat00.bin



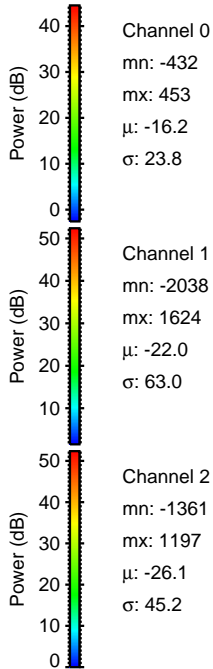
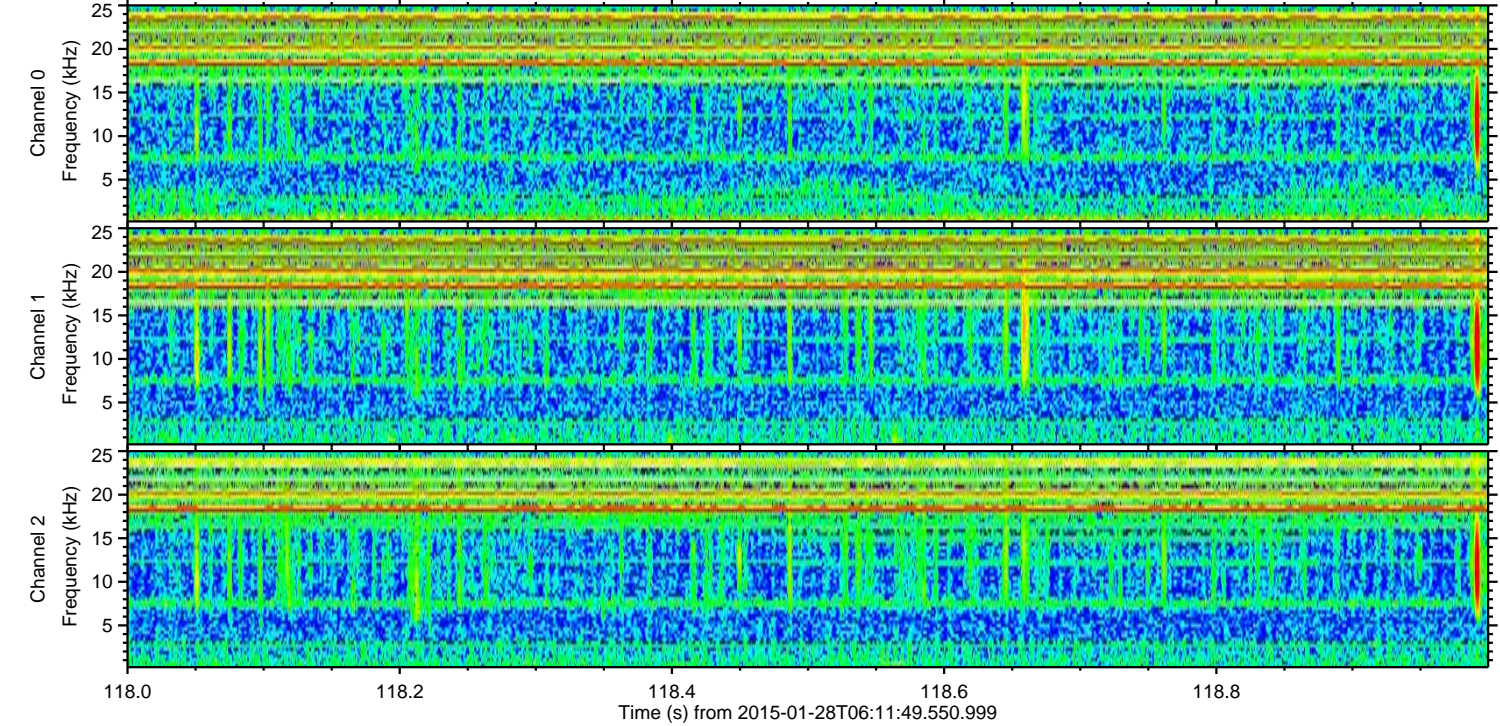
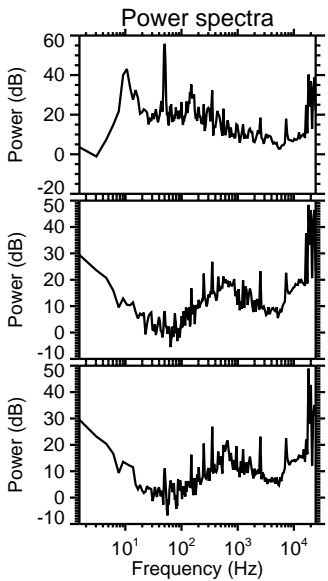
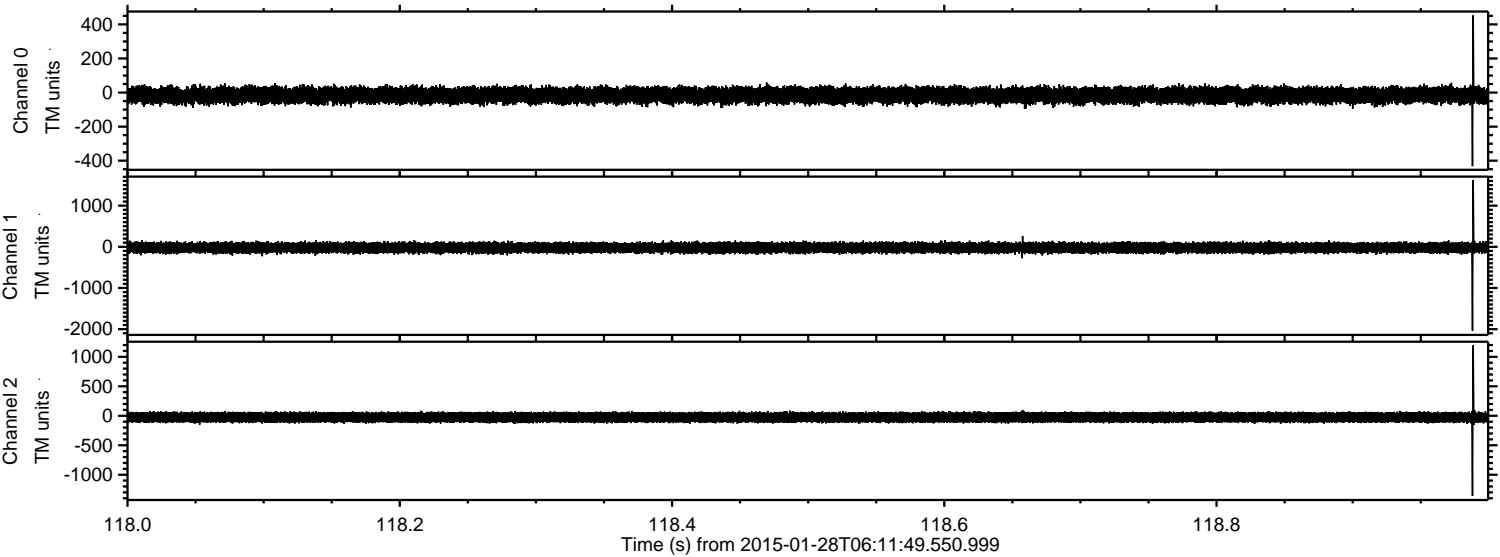
ELMAVAN 3D WAVEFORMS (Measured data sampled at 50 kHz) 49809 packets of 144 samples from 2015-01-28T06:11:49.550.999. Part 31/144

Processed Thu Feb 12 01:40:38 2015 by ELM ver.2012-10-06 from 001__elm20150128_061148__dat00.bin



ELMAVAN 3D WAVEFORMS (Measured data sampled at 50 kHz) 49809 packets of 144 samples from 2015-01-28T06:11:49.550.999. Part 119/144

Processed Thu Feb 12 01:40:39 2015 by ELM ver.2012-10-06 from 001__elm20150128_061148__dat00.bin



Processed Thu Feb 12 01:40:40 2015 by ELM ver.2012-10-06 from 001__elm20150128_061148__dat00.bin

