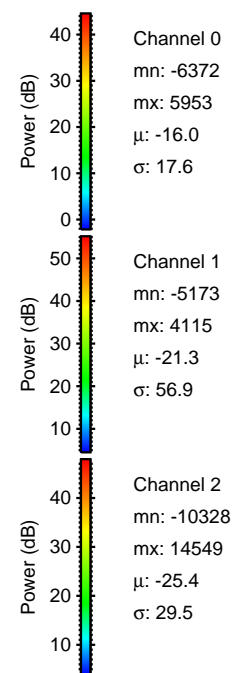
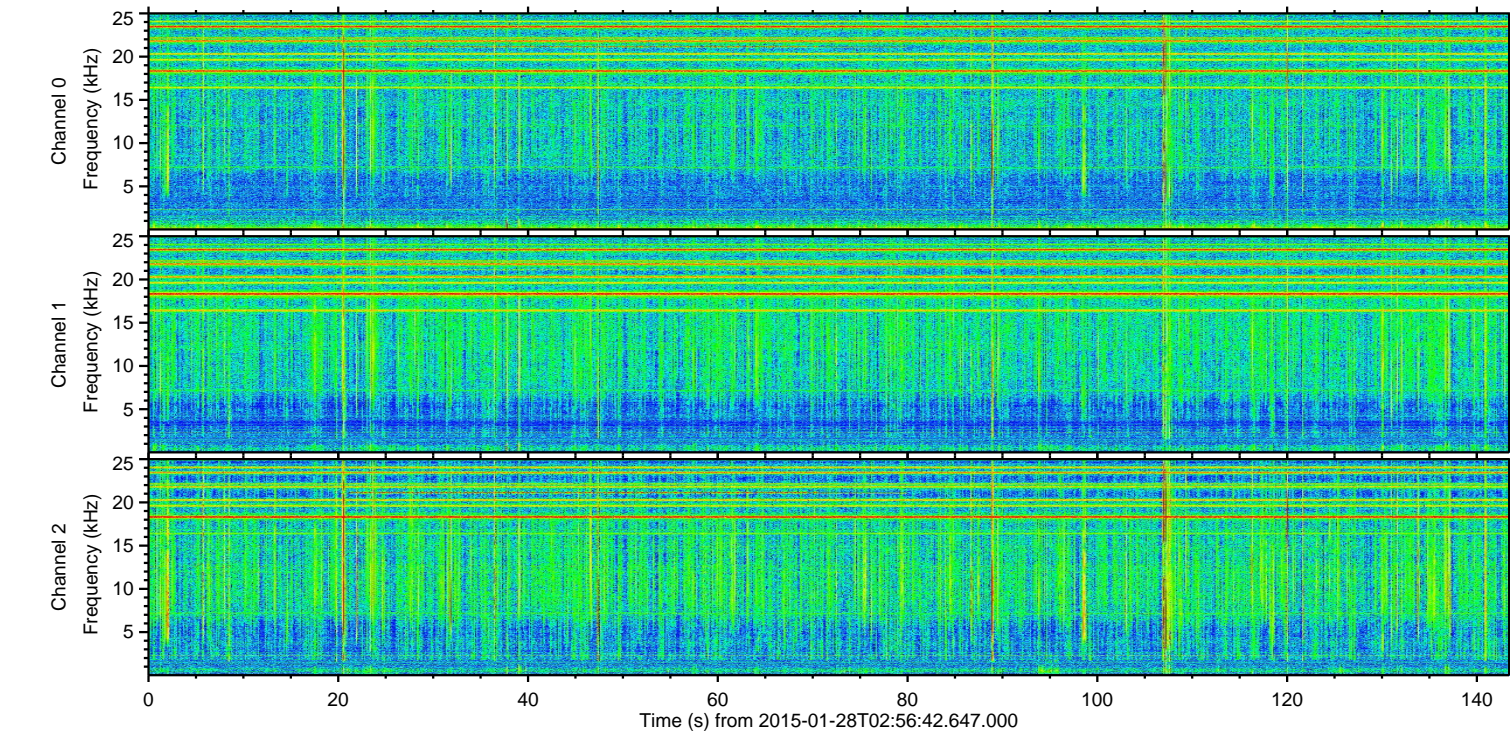
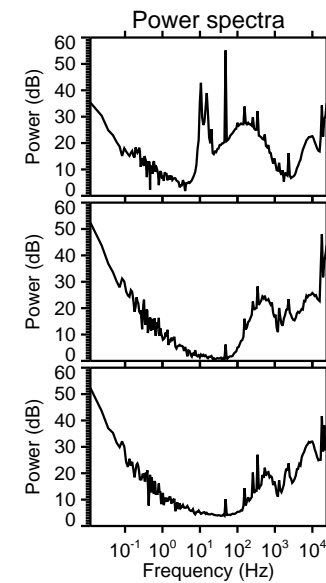
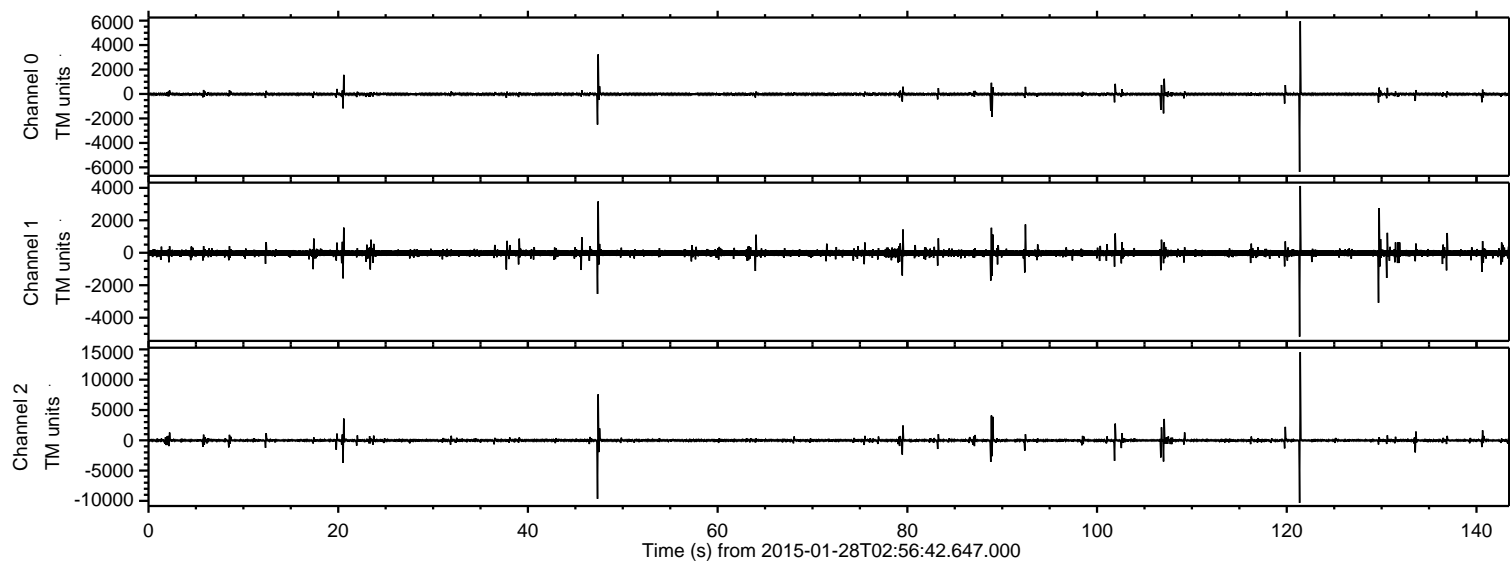


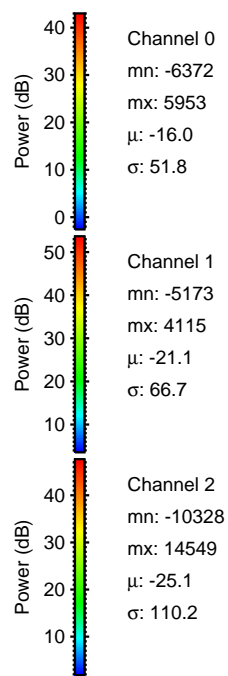
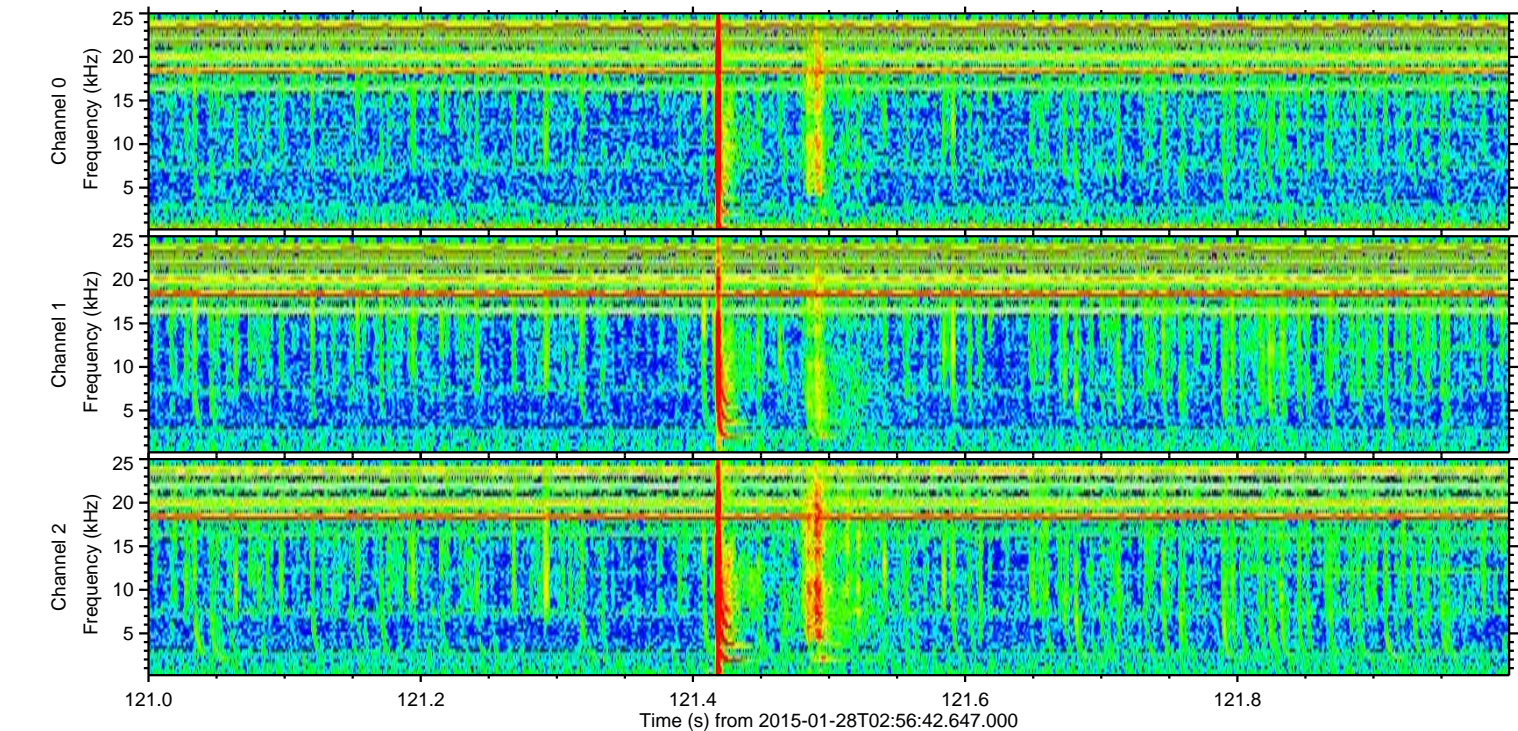
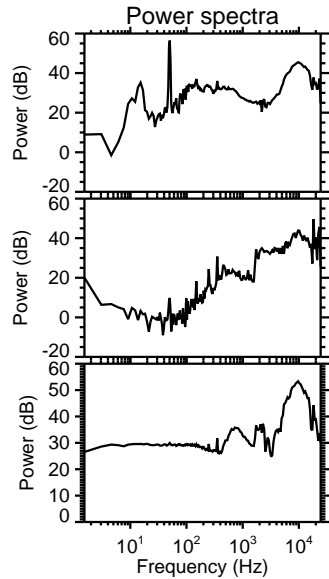
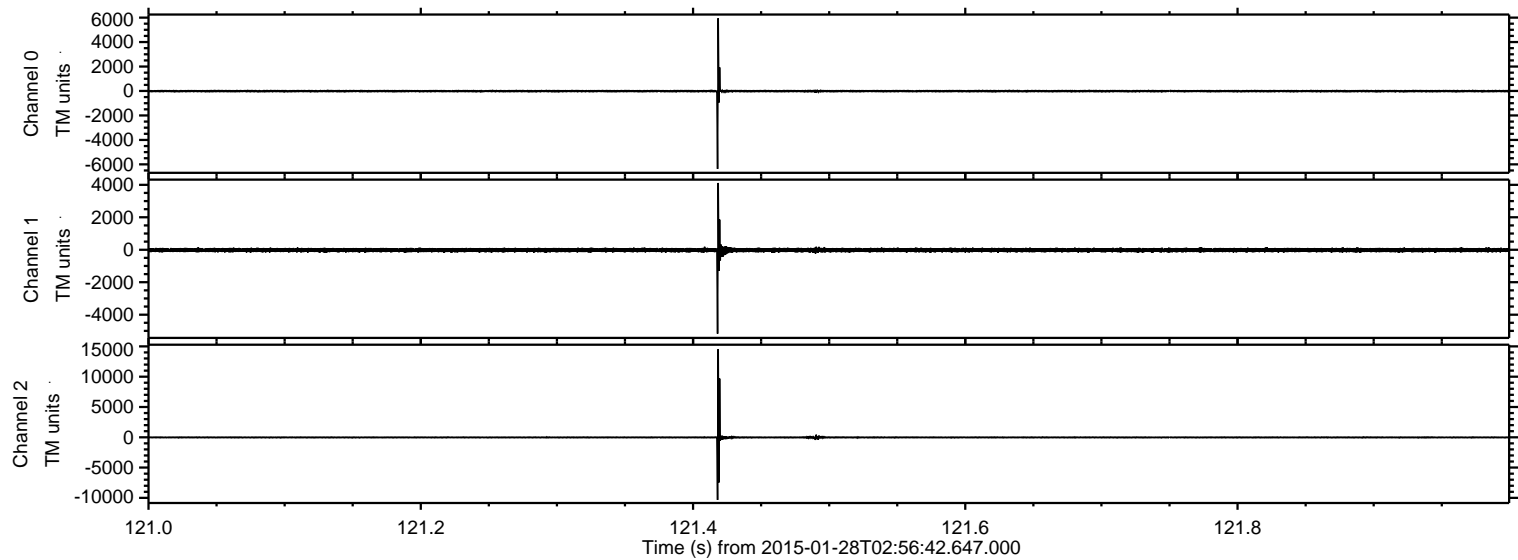
ELMAVAN 3D WAVEFORMS (Measured data sampled at 50 kHz) 49807 packets of 144 samples from 2015-01-28T02:56:42.647.000.

Processed Thu Feb 12 00:54:16 2015 by ELM ver.2012-10-06 from 001__elm20150128_025641__dat00.bin



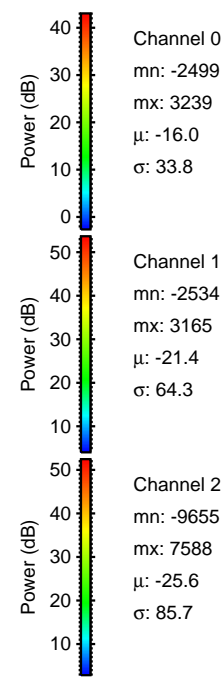
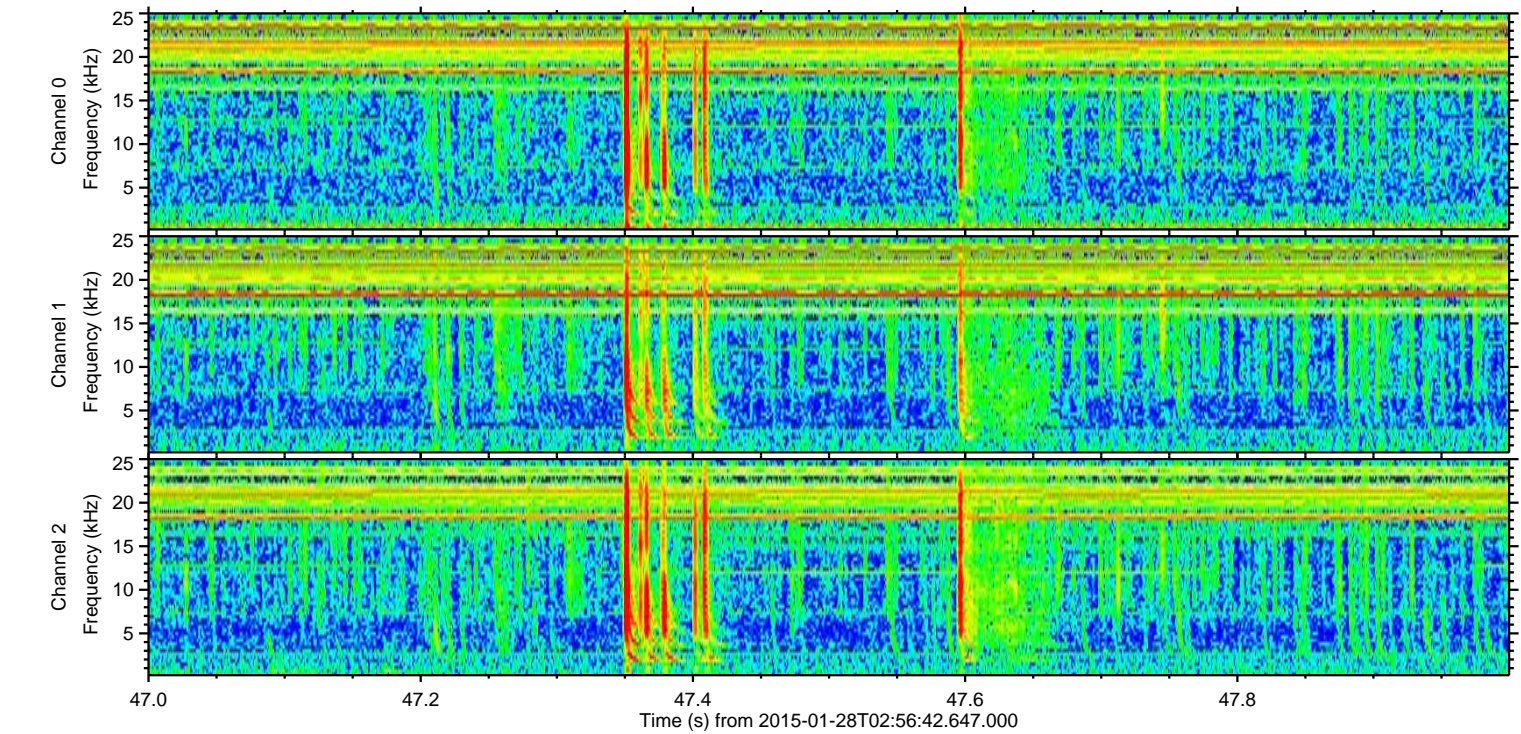
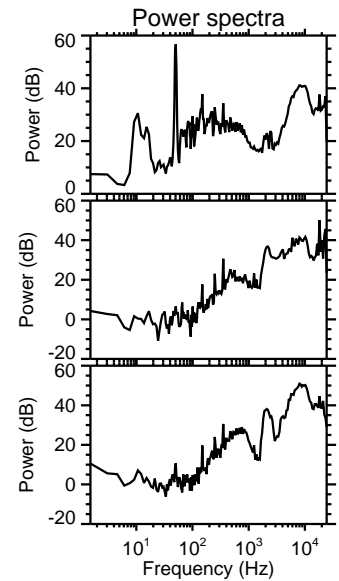
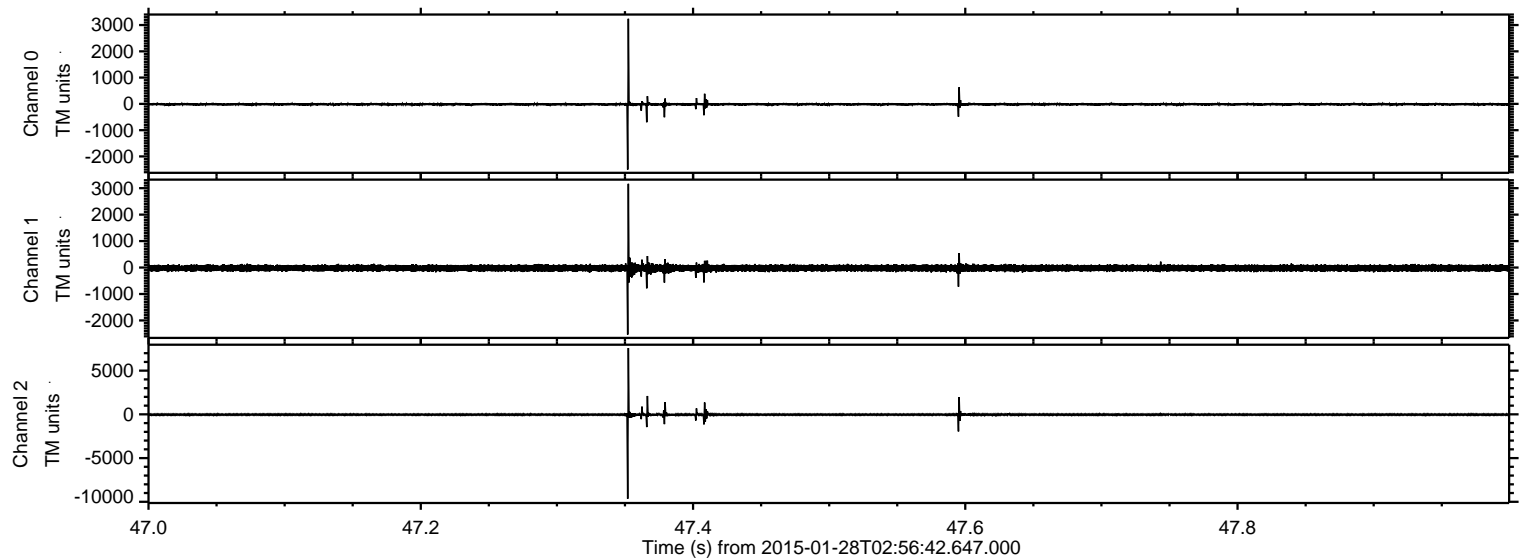
ELMAVAN 3D WAVEFORMS (Measured data sampled at 50 kHz) 49807 packets of 144 samples from 2015-01-28T02:56:42.647.000. Part 122/144

Processed Thu Feb 12 00:54:28 2015 by ELM ver.2012-10-06 from 001__elm20150128_025641__dat00.bin



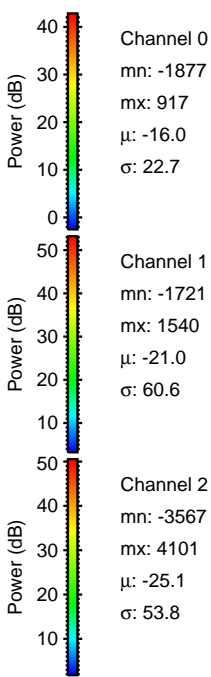
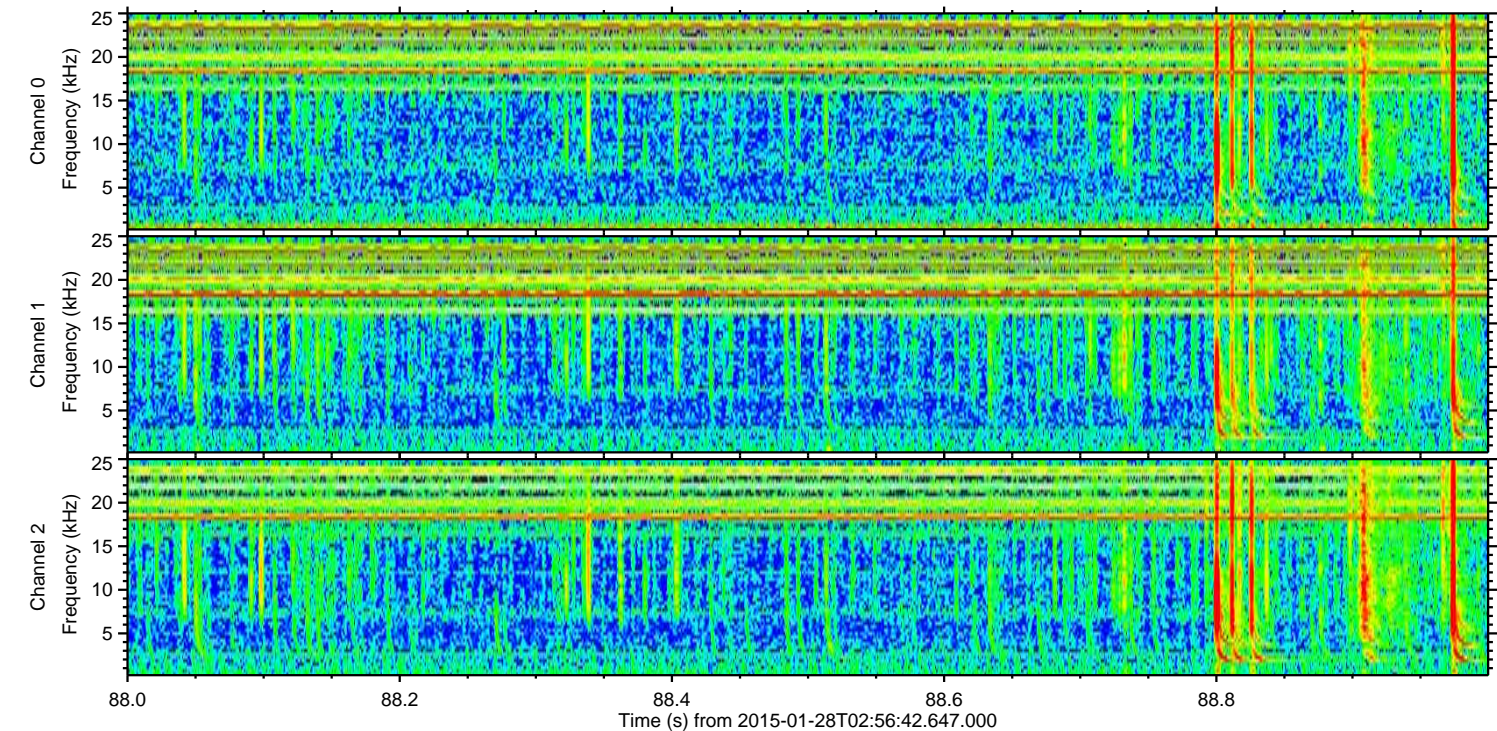
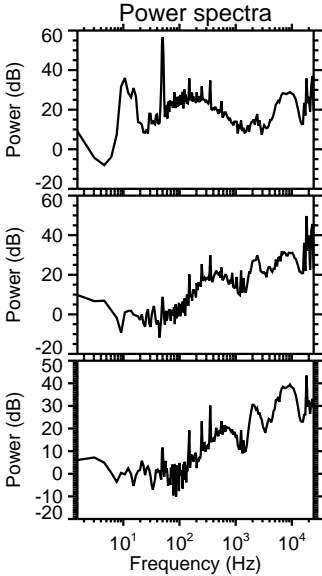
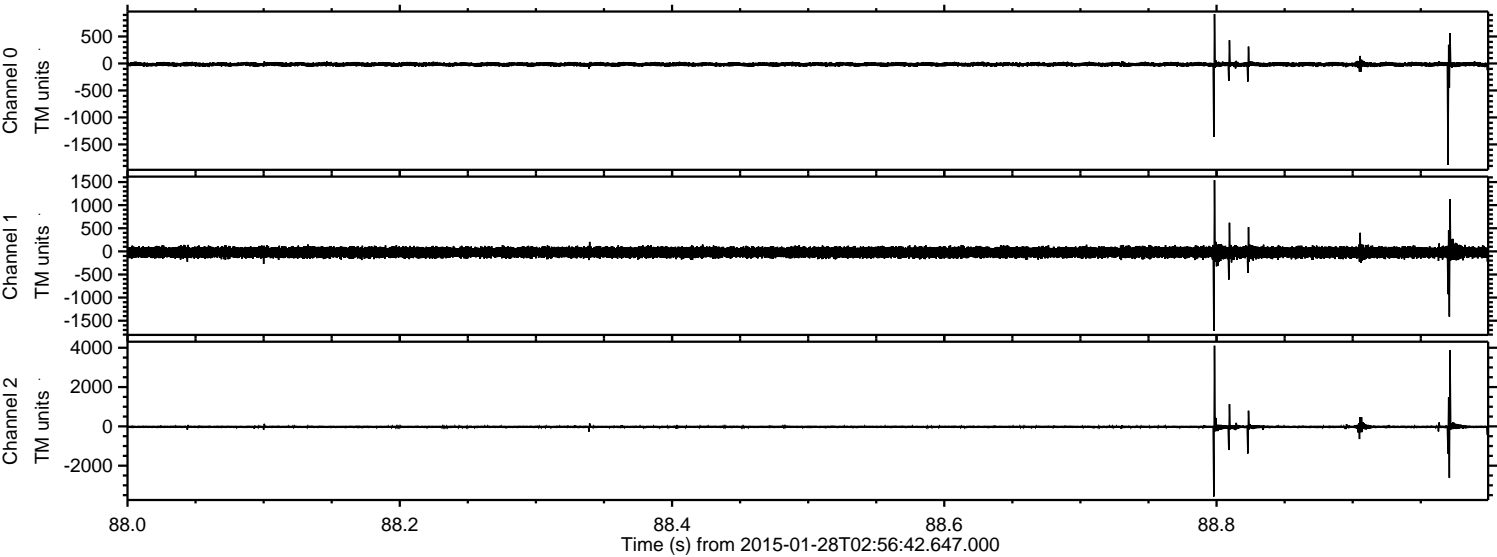
ELMAVAN 3D WAVEFORMS (Measured data sampled at 50 kHz) 49807 packets of 144 samples from 2015-01-28T02:56:42.647.000. Part 48/144

Processed Thu Feb 12 00:54:29 2015 by ELM ver.2012-10-06 from 001__elm20150128_025641__dat00.bin



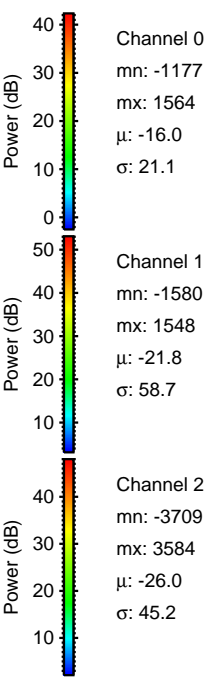
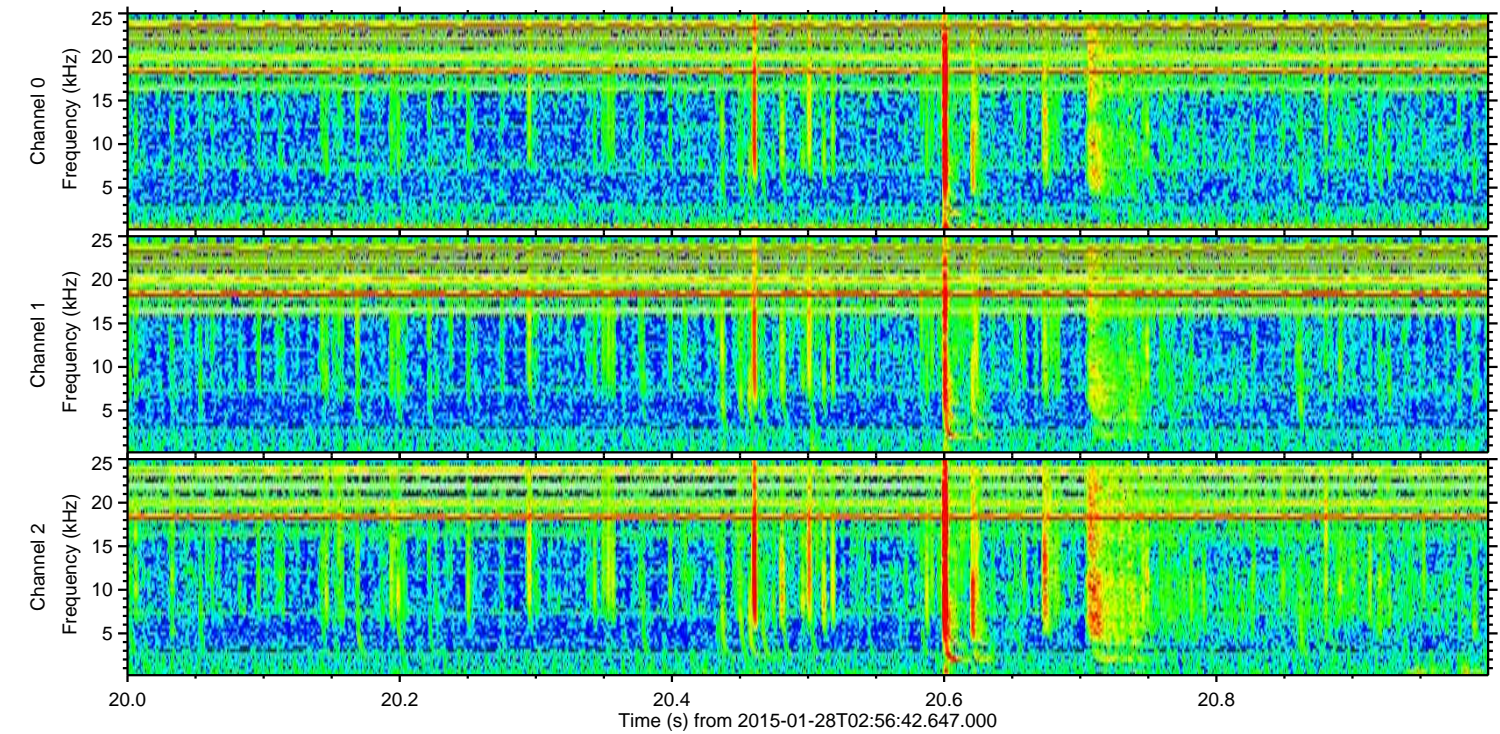
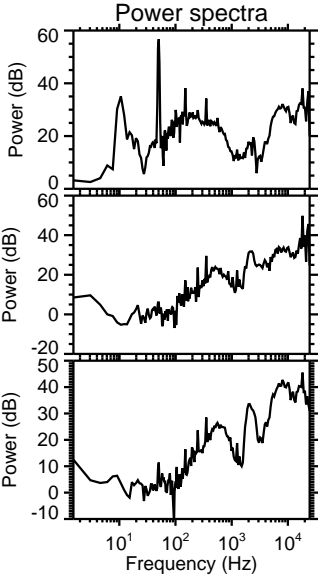
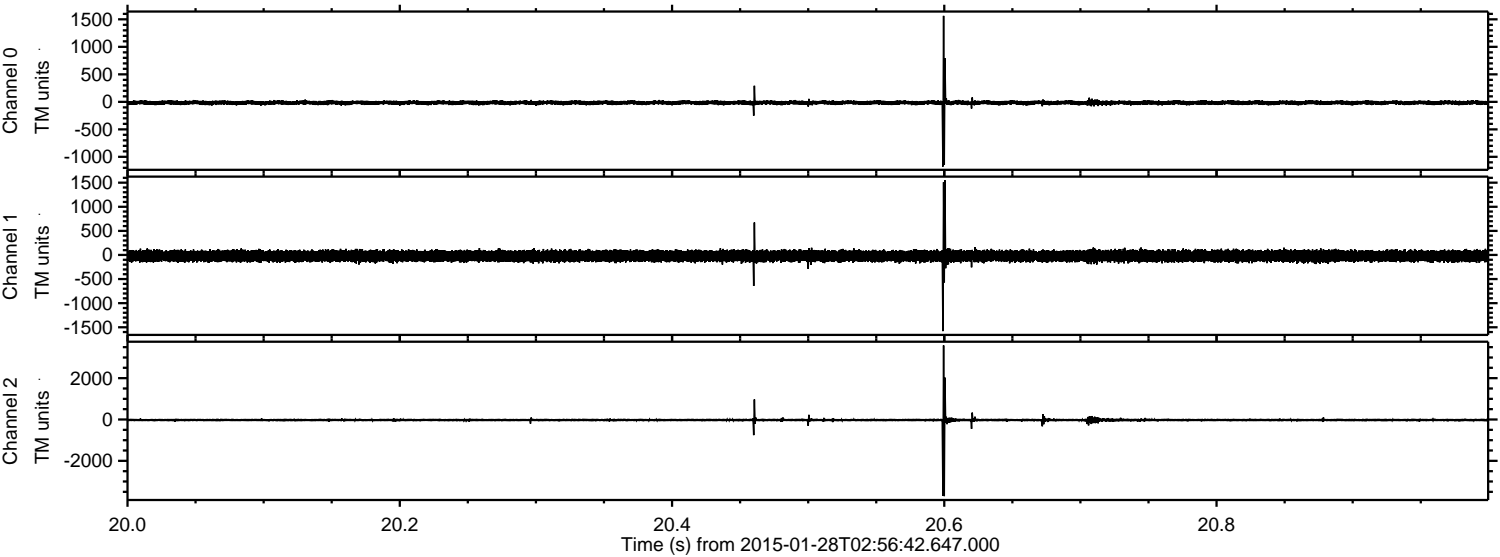
ELMAVAN 3D WAVEFORMS (Measured data sampled at 50 kHz) 49807 packets of 144 samples from 2015-01-28T02:56:42.647.000. Part 89/144

Processed Thu Feb 12 00:54:30 2015 by ELM ver.2012-10-06 from 001__elm20150128_025641__dat00.bin



ELMAVAN 3D WAVEFORMS (Measured data sampled at 50 kHz) 49807 packets of 144 samples from 2015-01-28T02:56:42.647.000. Part 21/144

Processed Thu Feb 12 00:54:30 2015 by ELM ver.2012-10-06 from 001__elm20150128_025641__dat00.bin



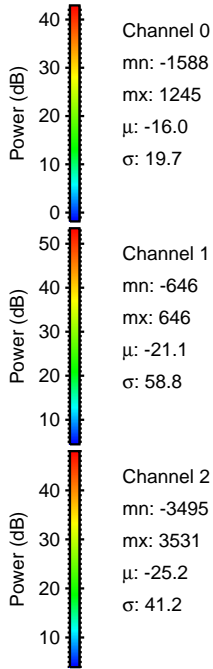
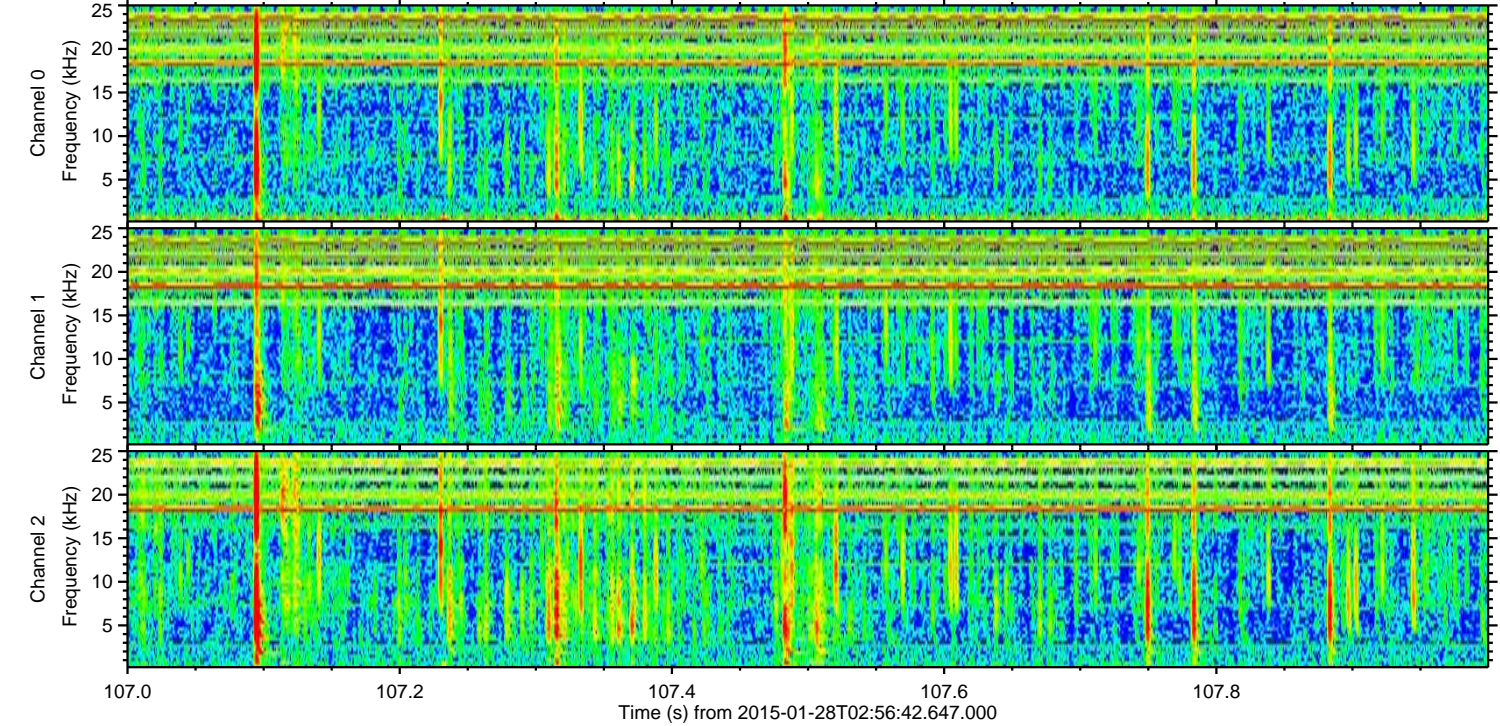
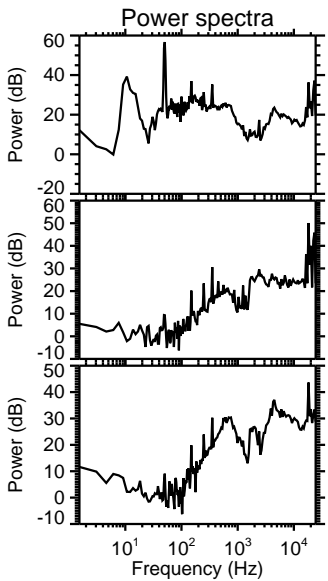
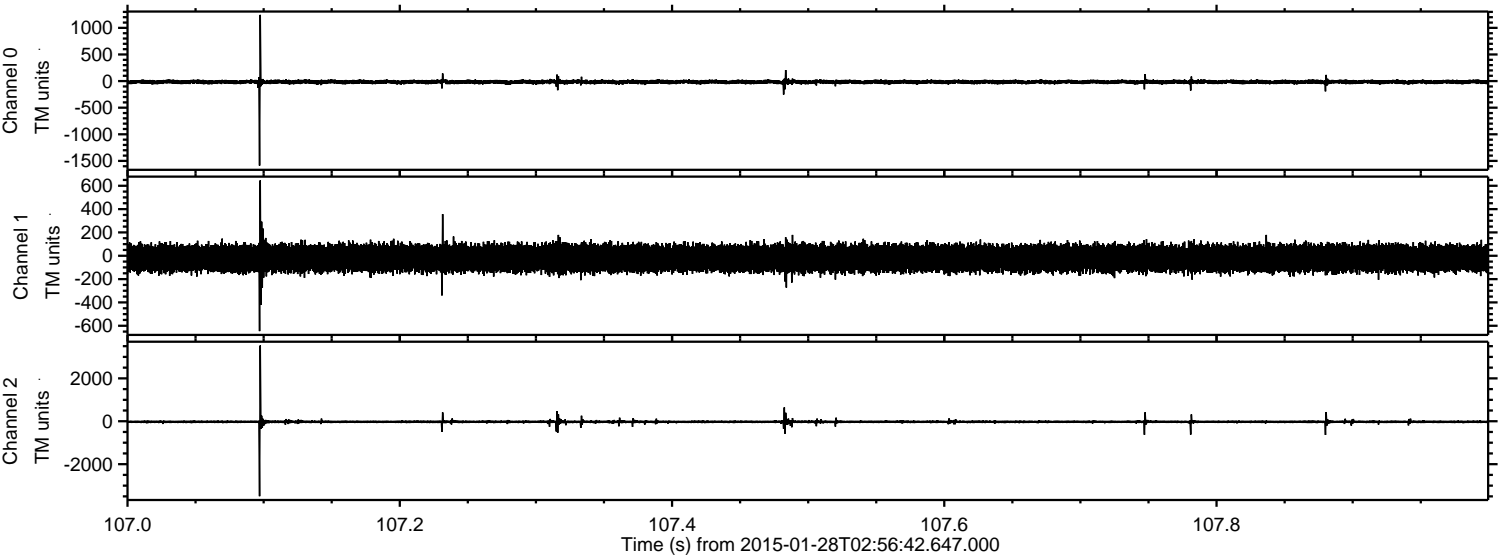
Channel 0
mn: -1177
mx: 1564
 μ : -16.0
 σ : 21.1

Channel 1
mn: -1580
mx: 1548
 μ : -21.8
 σ : 58.7

Channel 2
mn: -3709
mx: 3584
 μ : -26.0
 σ : 45.2

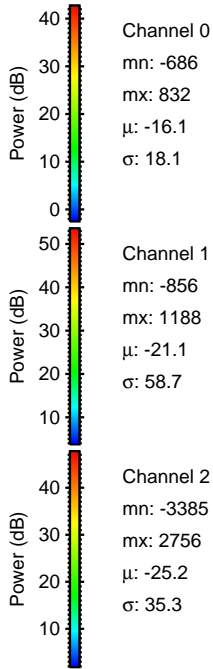
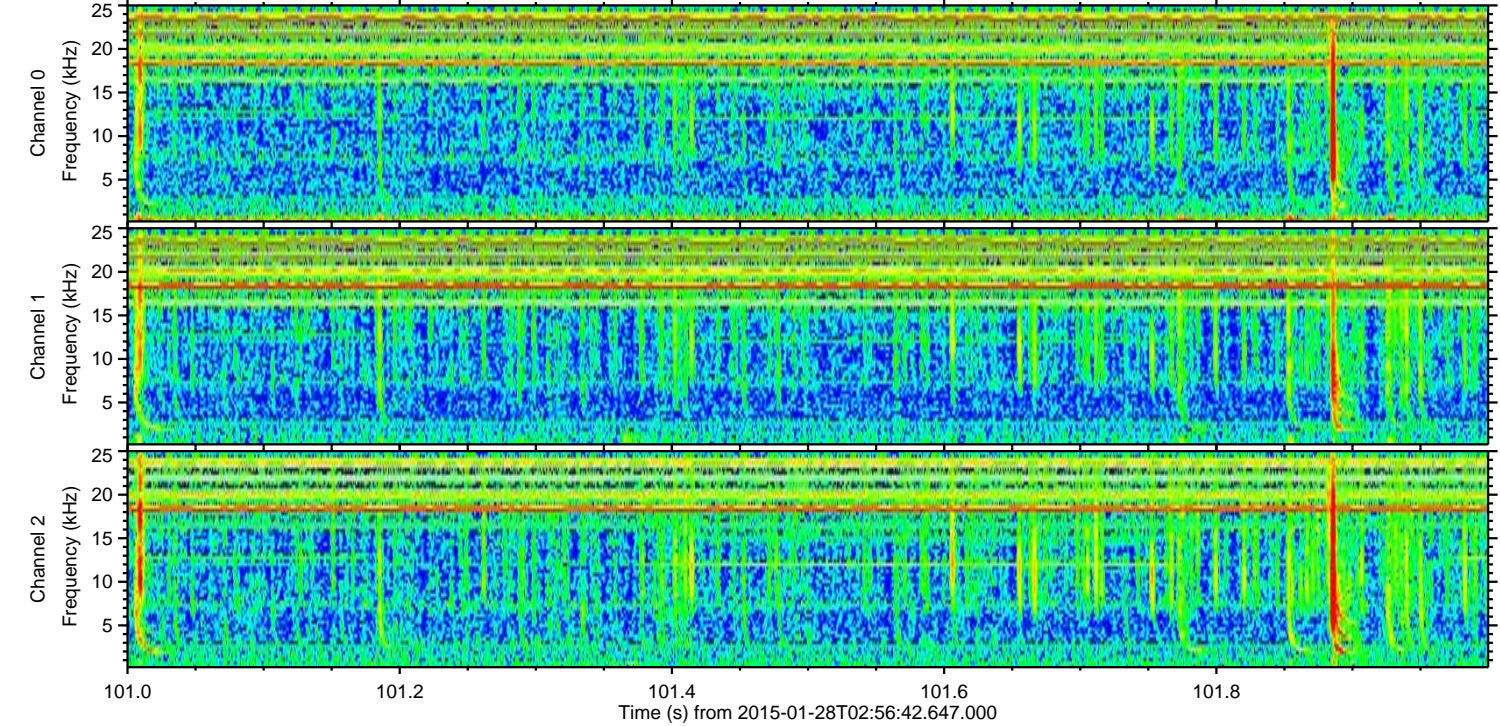
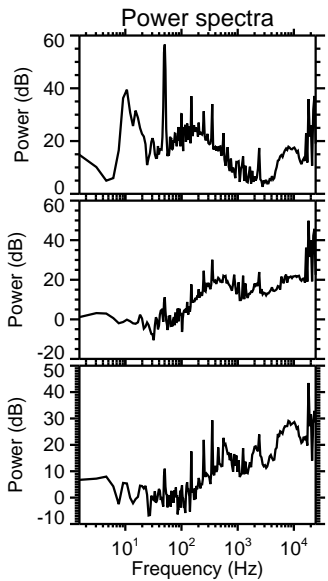
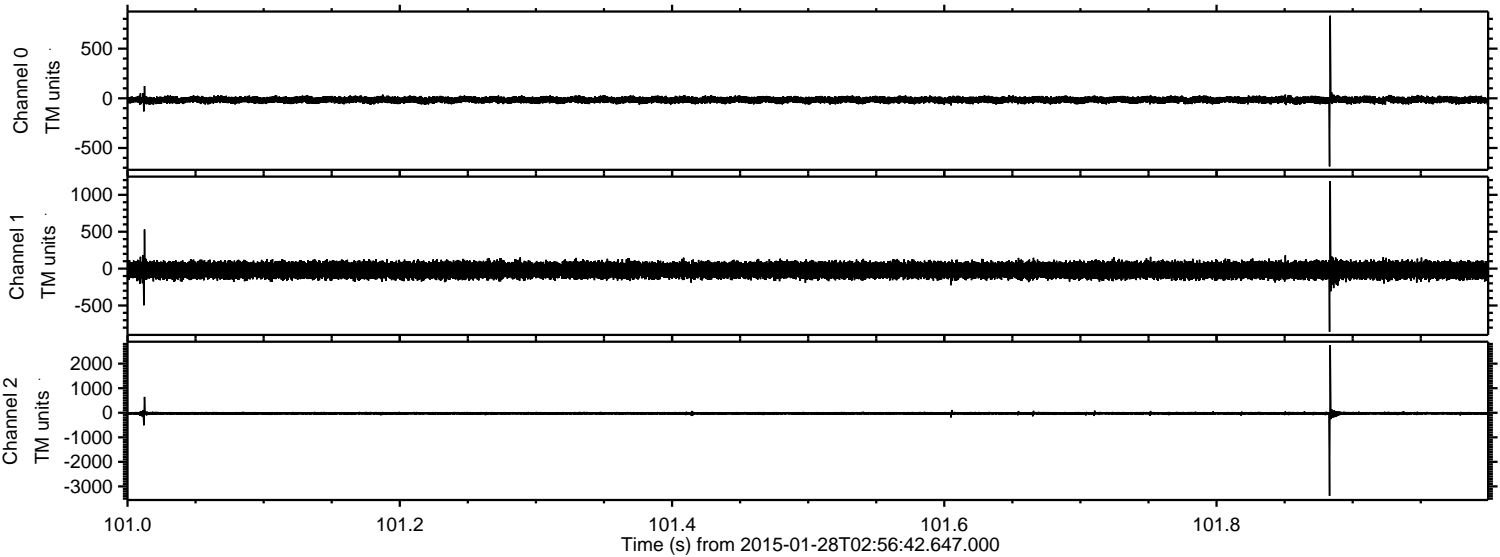
ELMAVAN 3D WAVEFORMS (Measured data sampled at 50 kHz) 49807 packets of 144 samples from 2015-01-28T02:56:42.647.000. Part 108/144

Processed Thu Feb 12 00:54:31 2015 by ELM ver.2012-10-06 from 001__elm20150128_025641__dat00.bin



ELMAVAN 3D WAVEFORMS (Measured data sampled at 50 kHz) 49807 packets of 144 samples from 2015-01-28T02:56:42.647.000. Part 102/144

Processed Thu Feb 12 00:54:32 2015 by ELM ver.2012-10-06 from 001__elm20150128_025641__dat00.bin



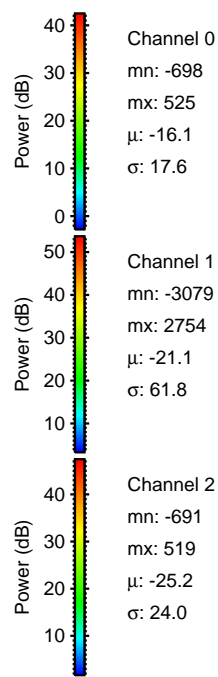
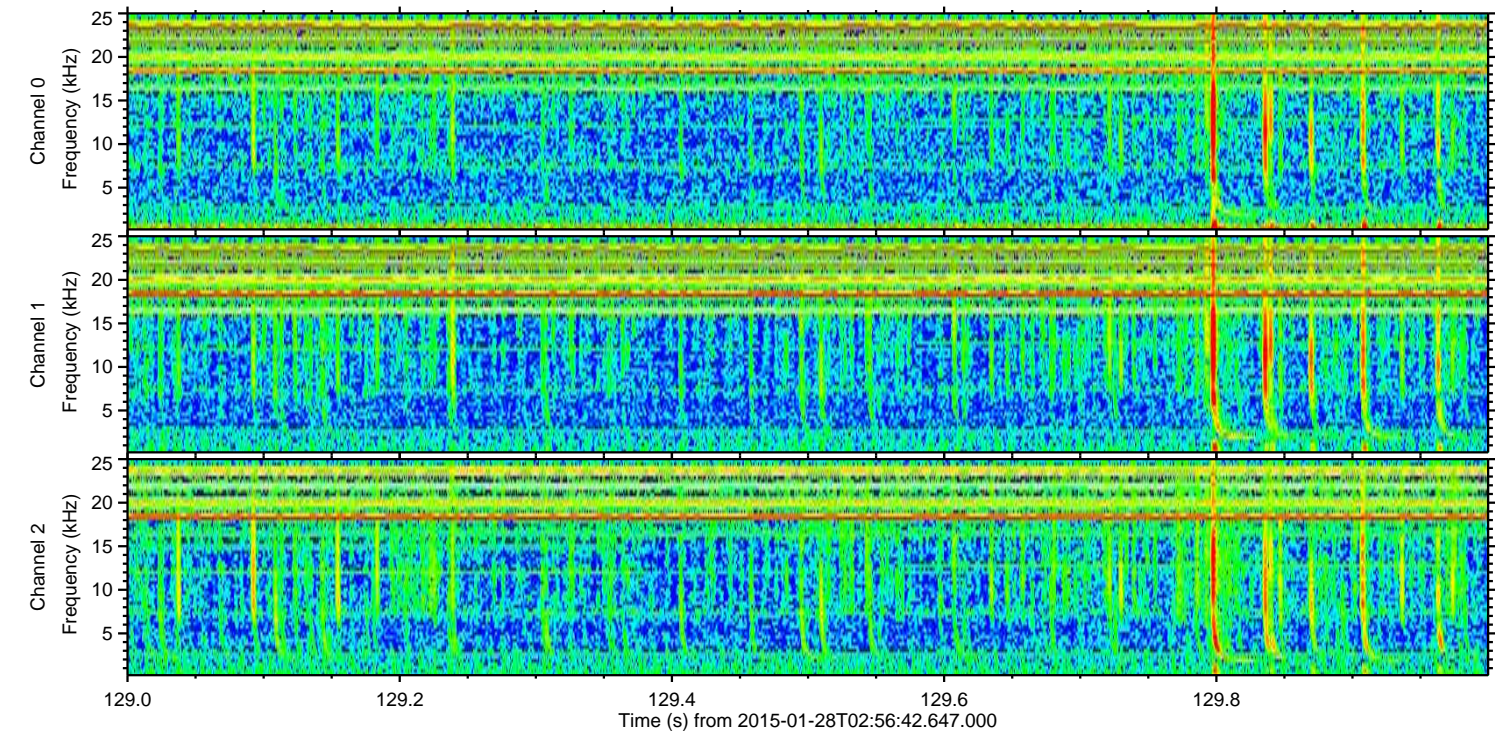
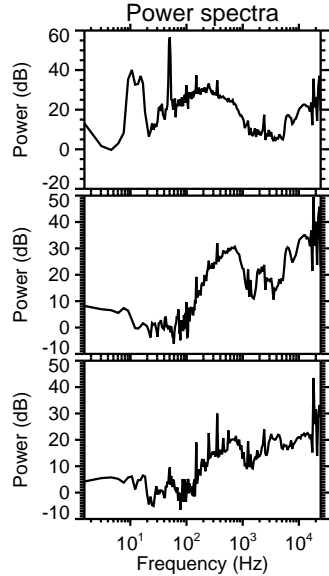
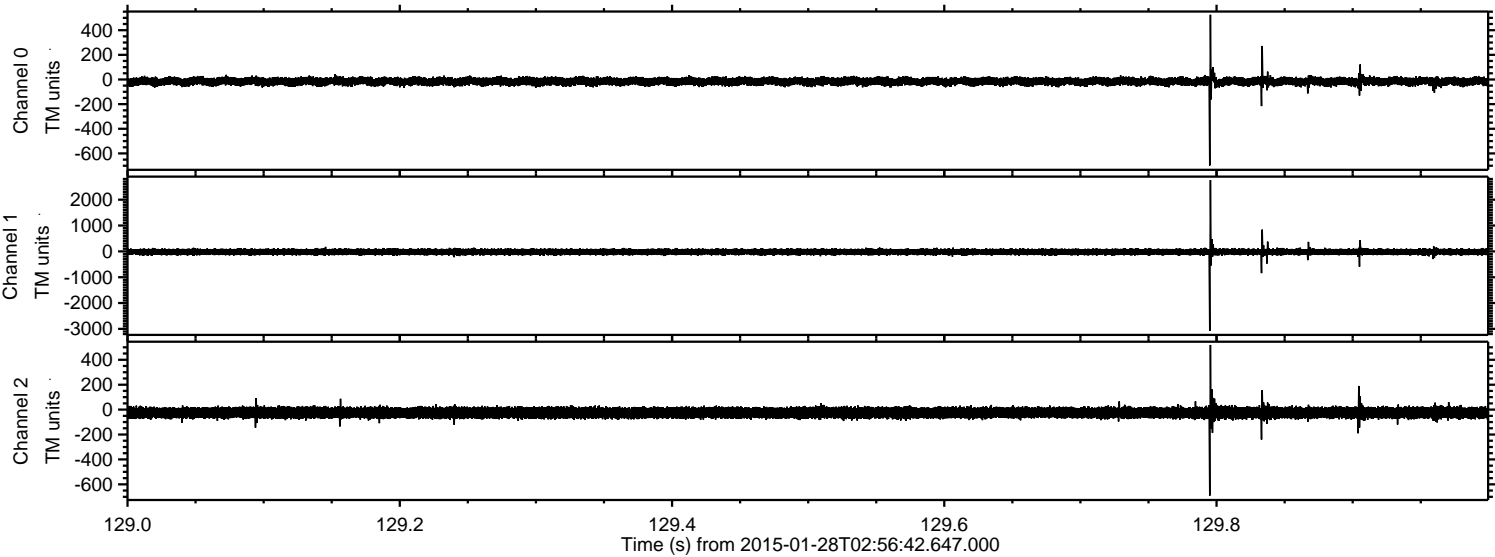
Channel 0
mn: -686
mx: 832
 μ : -16.1
 σ : 18.1

Channel 1
mn: -856
mx: 1188
 μ : -21.1
 σ : 58.7

Channel 2
mn: -3385
mx: 2756
 μ : -25.2
 σ : 35.3

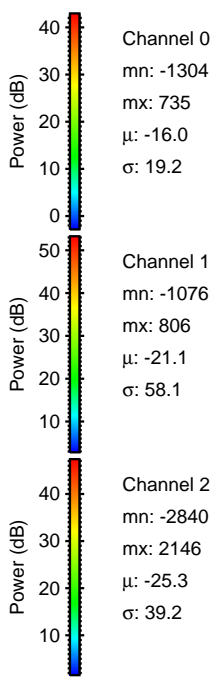
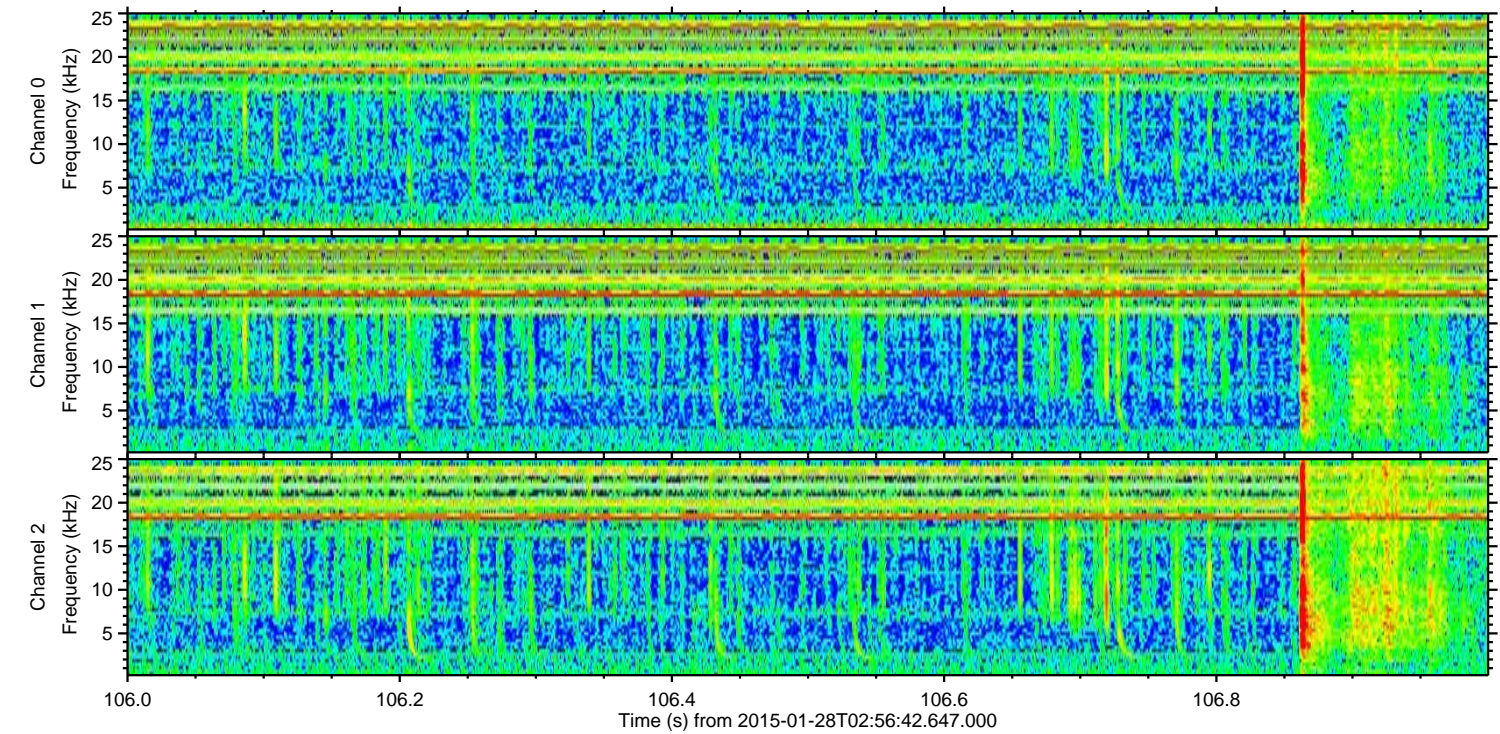
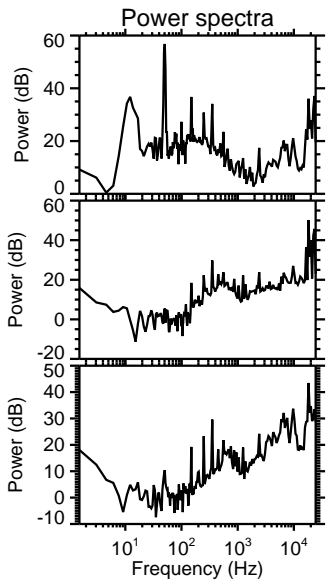
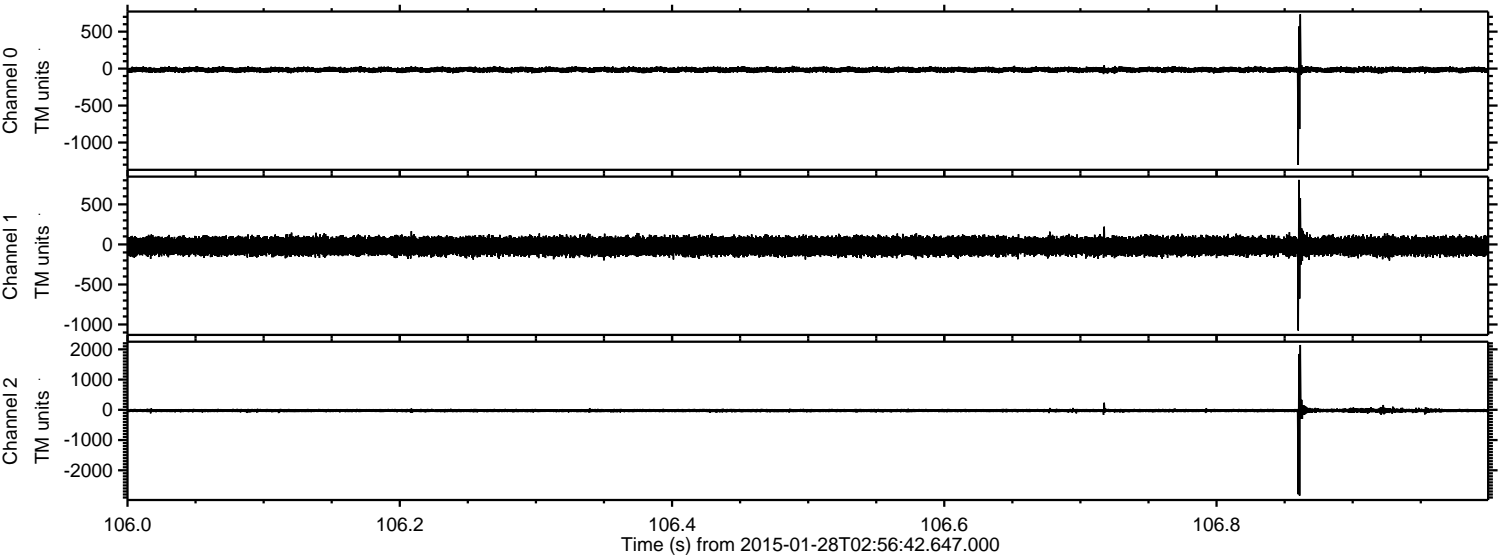
ELMAVAN 3D WAVEFORMS (Measured data sampled at 50 kHz) 49807 packets of 144 samples from 2015-01-28T02:56:42.647.000. Part 130/144

Processed Thu Feb 12 00:54:33 2015 by ELM ver.2012-10-06 from 001__elm20150128_025641__dat00.bin



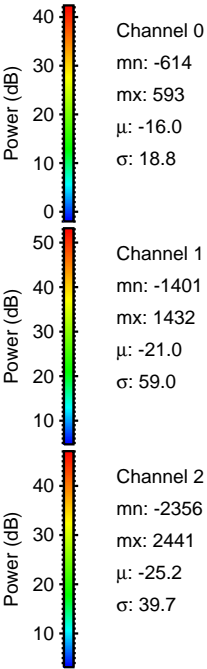
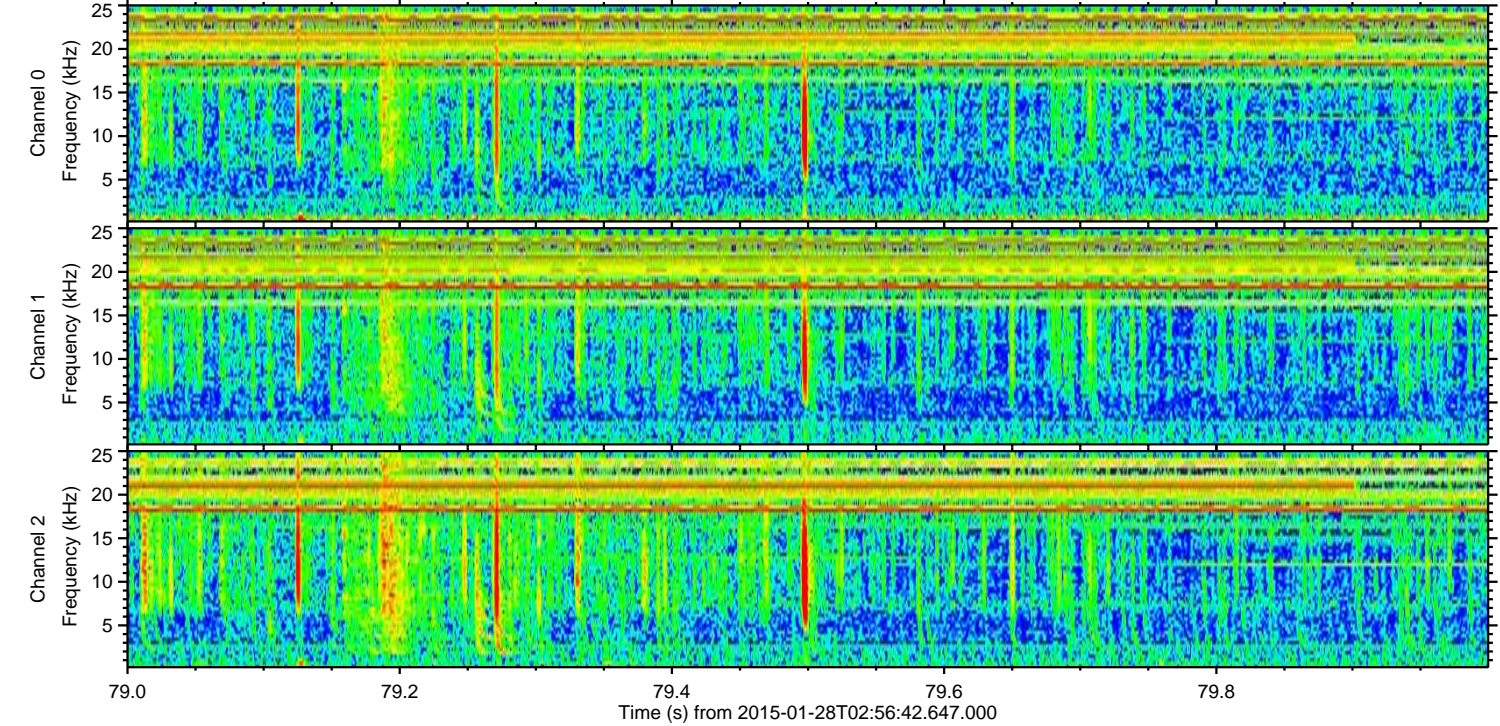
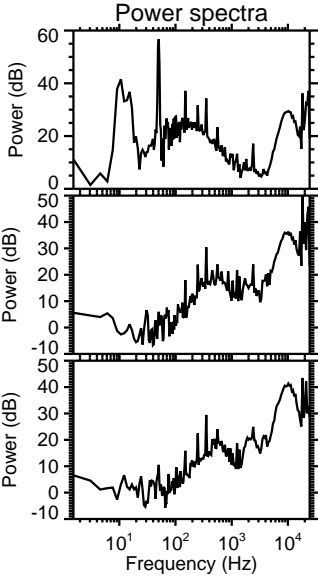
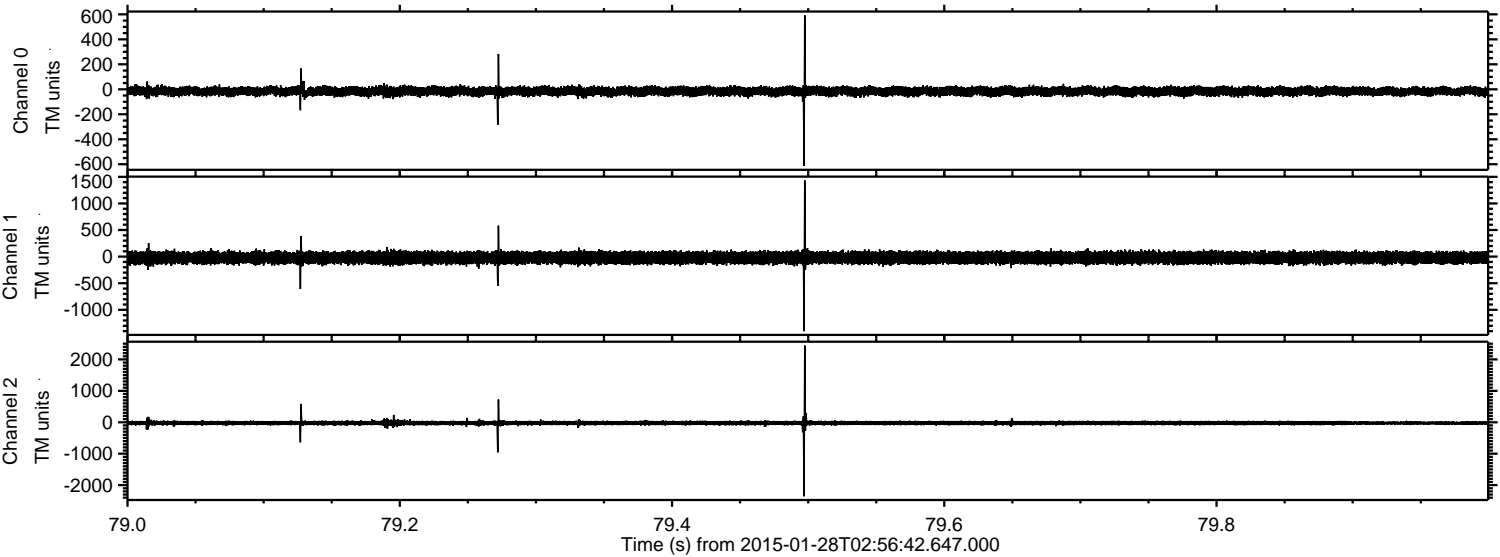
ELMAVAN 3D WAVEFORMS (Measured data sampled at 50 kHz) 49807 packets of 144 samples from 2015-01-28T02:56:42.647.000. Part 107/144

Processed Thu Feb 12 00:54:34 2015 by ELM ver.2012-10-06 from 001__elm20150128_025641__dat00.bin



ELMAVAN 3D WAVEFORMS (Measured data sampled at 50 kHz) 49807 packets of 144 samples from 2015-01-28T02:56:42.647.000. Part 80/144

Processed Thu Feb 12 00:54:35 2015 by ELM ver.2012-10-06 from 001__elm20150128_025641__dat00.bin



ELMAVAN 3D WAVEFORMS (Measured data sampled at 50 kHz) 49807 packets of 144 samples from 2015-01-28T02:56:42.647.000. Part 128/144

