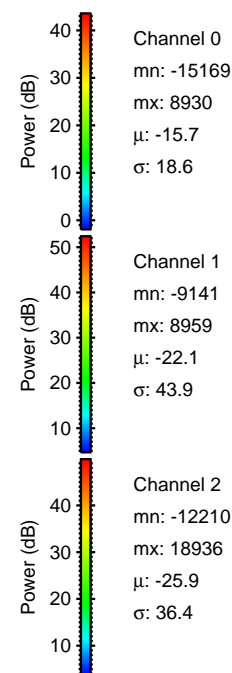
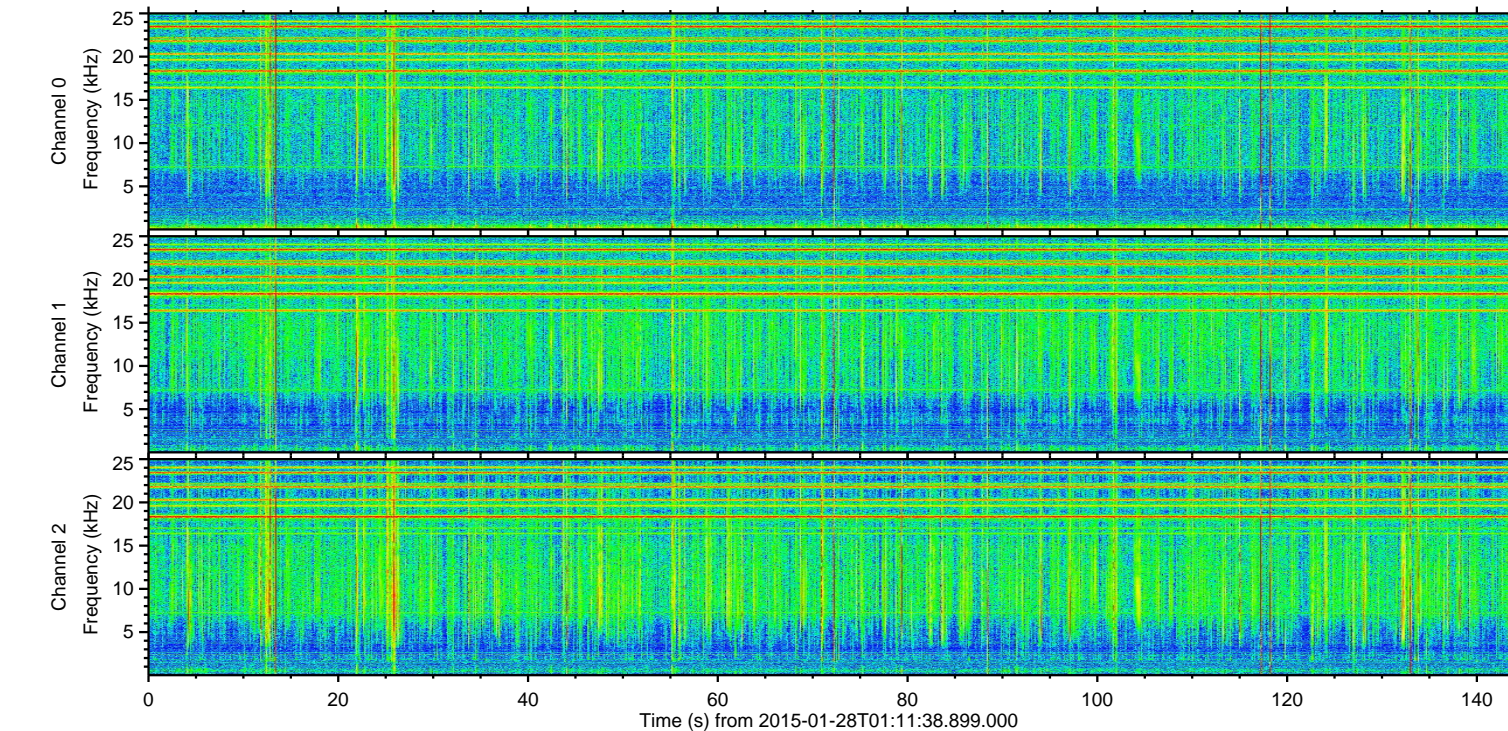
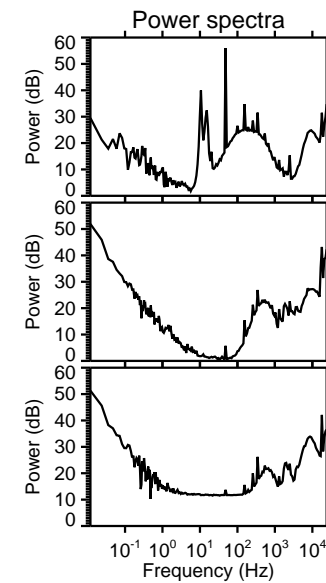
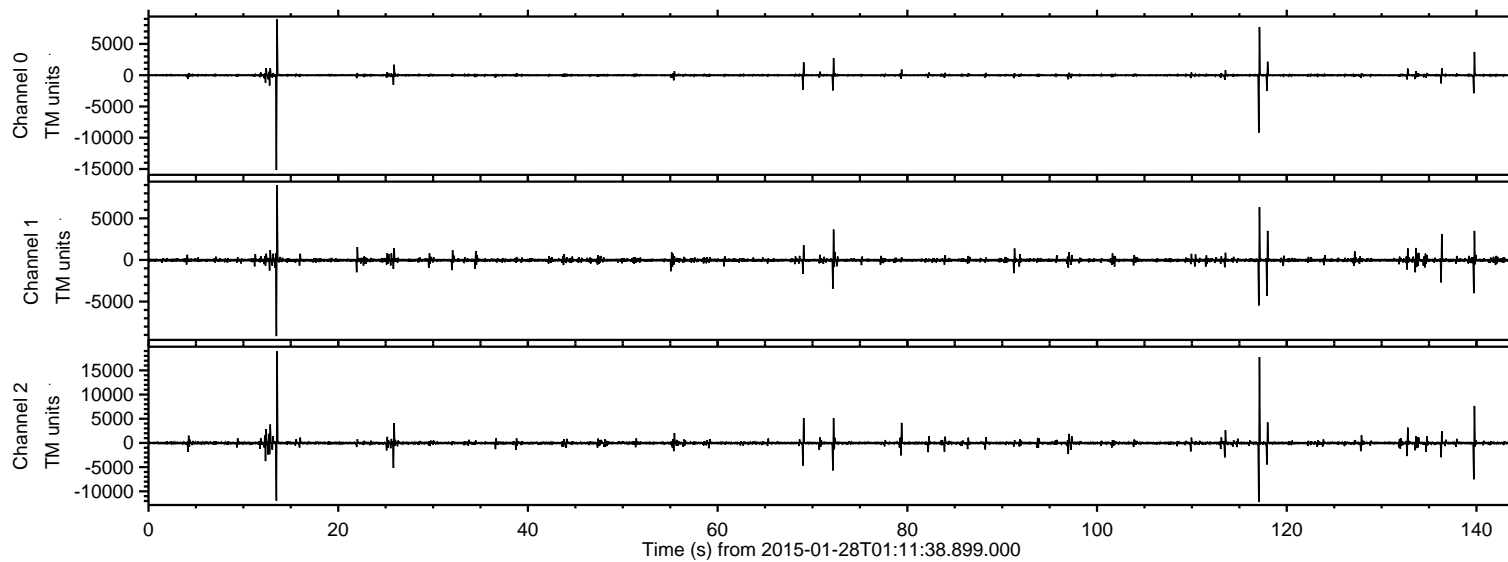


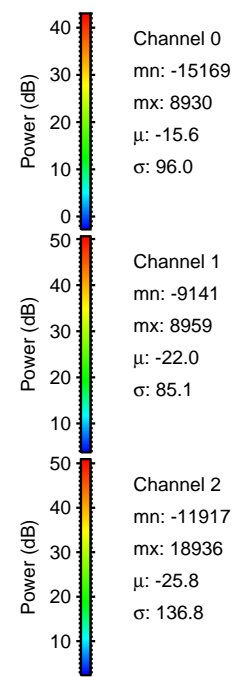
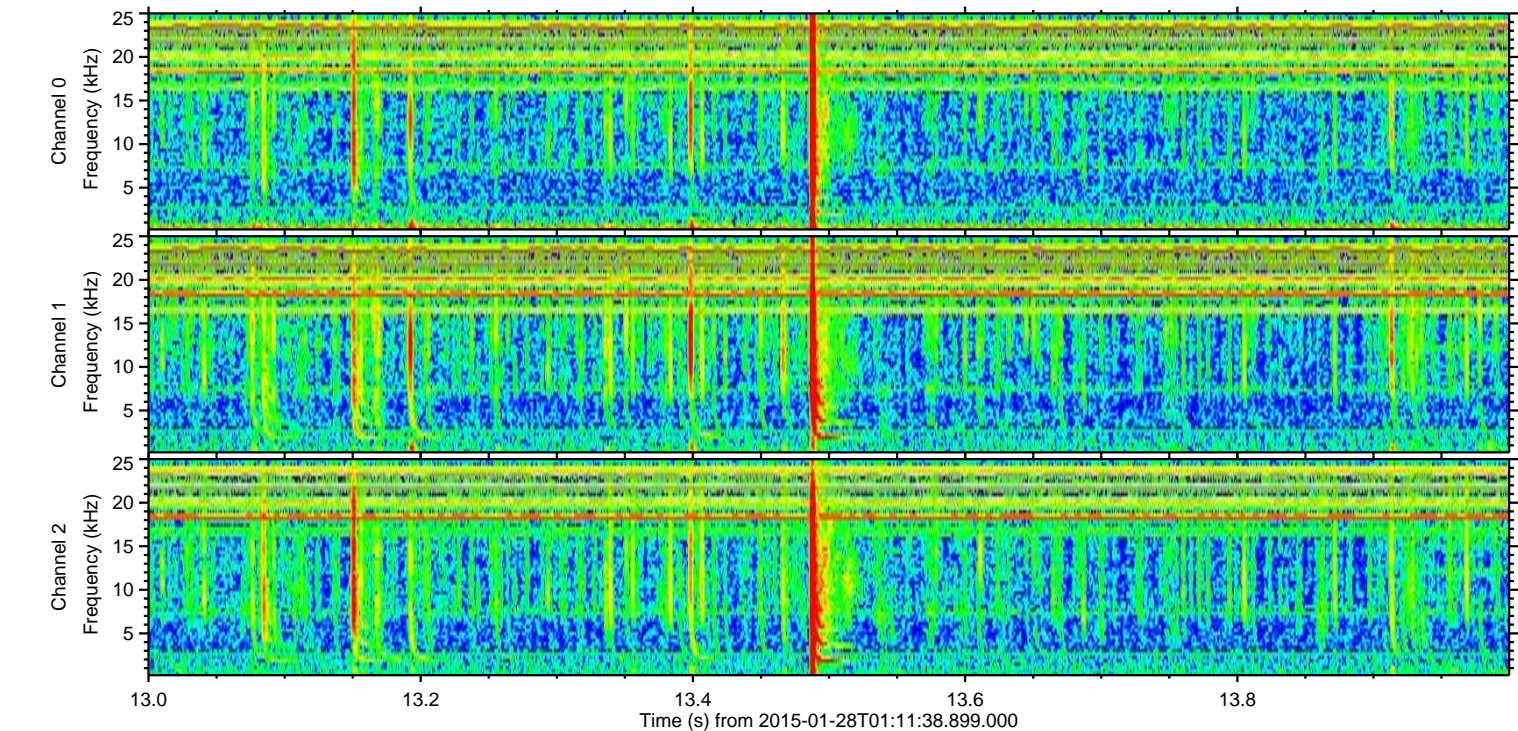
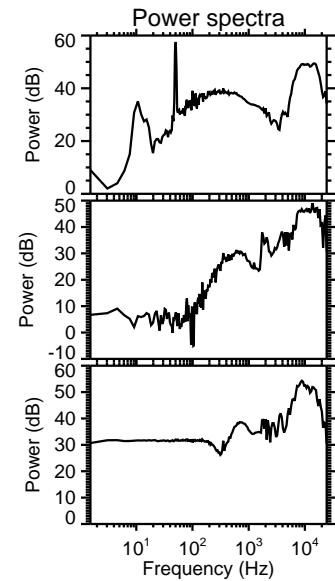
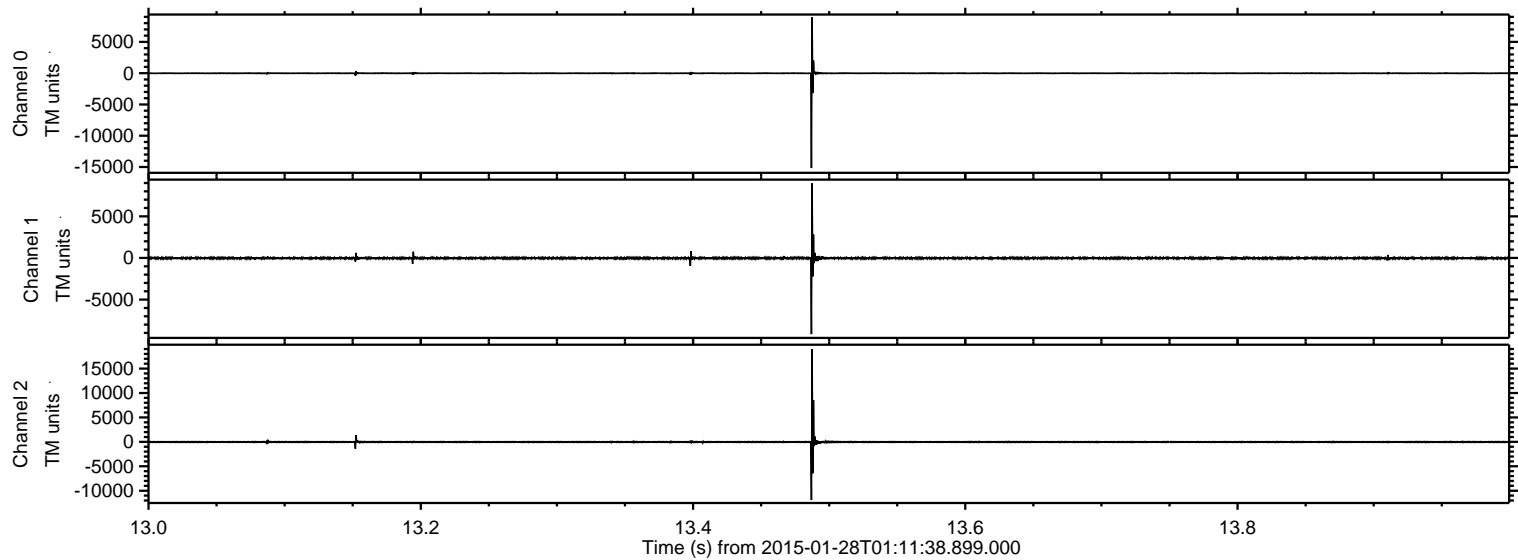
ELMAVAN 3D WAVEFORMS (Measured data sampled at 50 kHz) 49807 packets of 144 samples from 2015-01-28T01:11:38.899.000.

Processed Thu Feb 12 00:29:12 2015 by ELM ver.2012-10-06 from 001__elm20150128_011137__dat00.bin



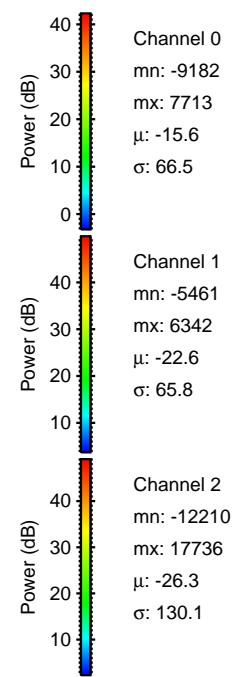
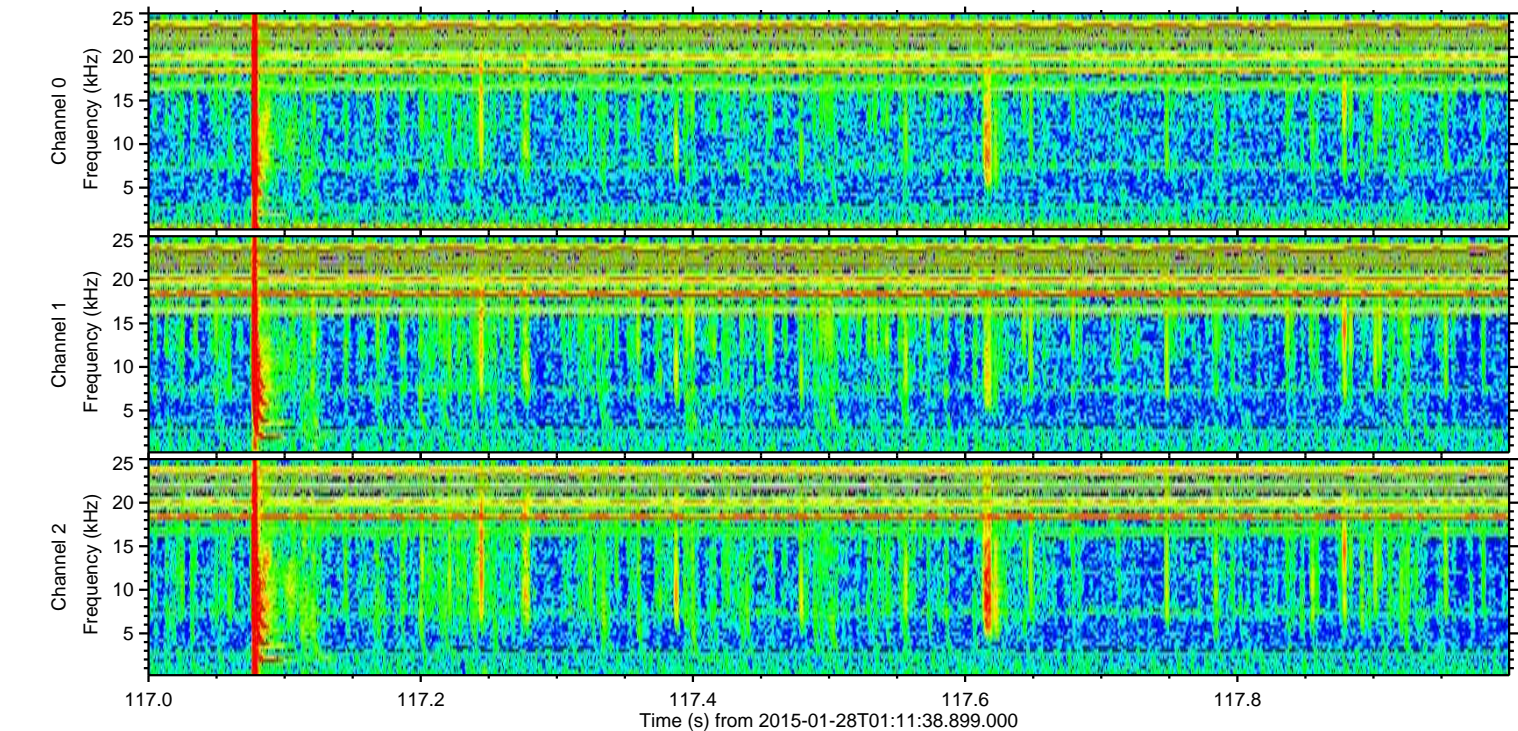
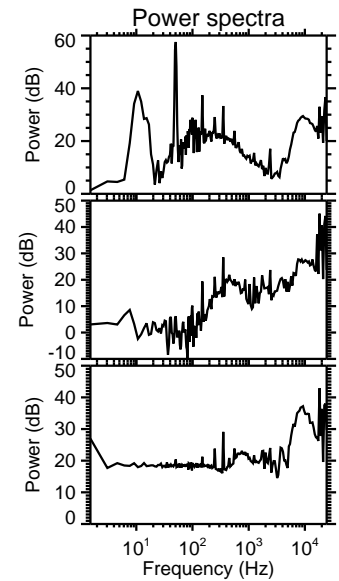
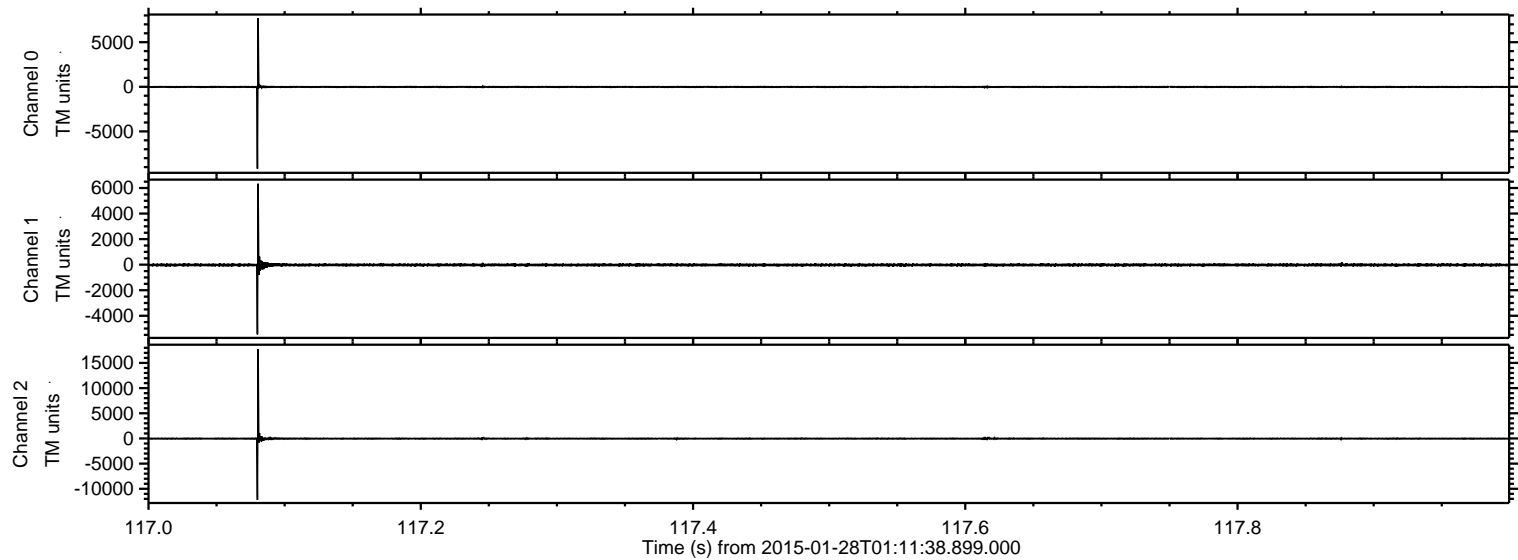
ELMAVAN 3D WAVEFORMS (Measured data sampled at 50 kHz) 49807 packets of 144 samples from 2015-01-28T01:11:38.899.000. Part 14/144

Processed Thu Feb 12 00:29:27 2015 by ELM ver.2012-10-06 from 001__elm20150128_011137__dat00.bin



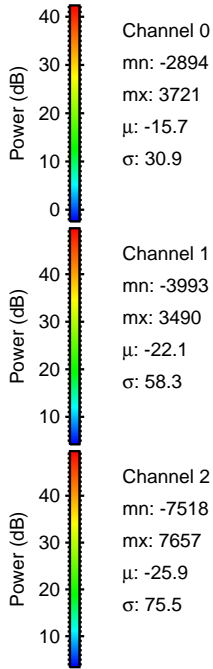
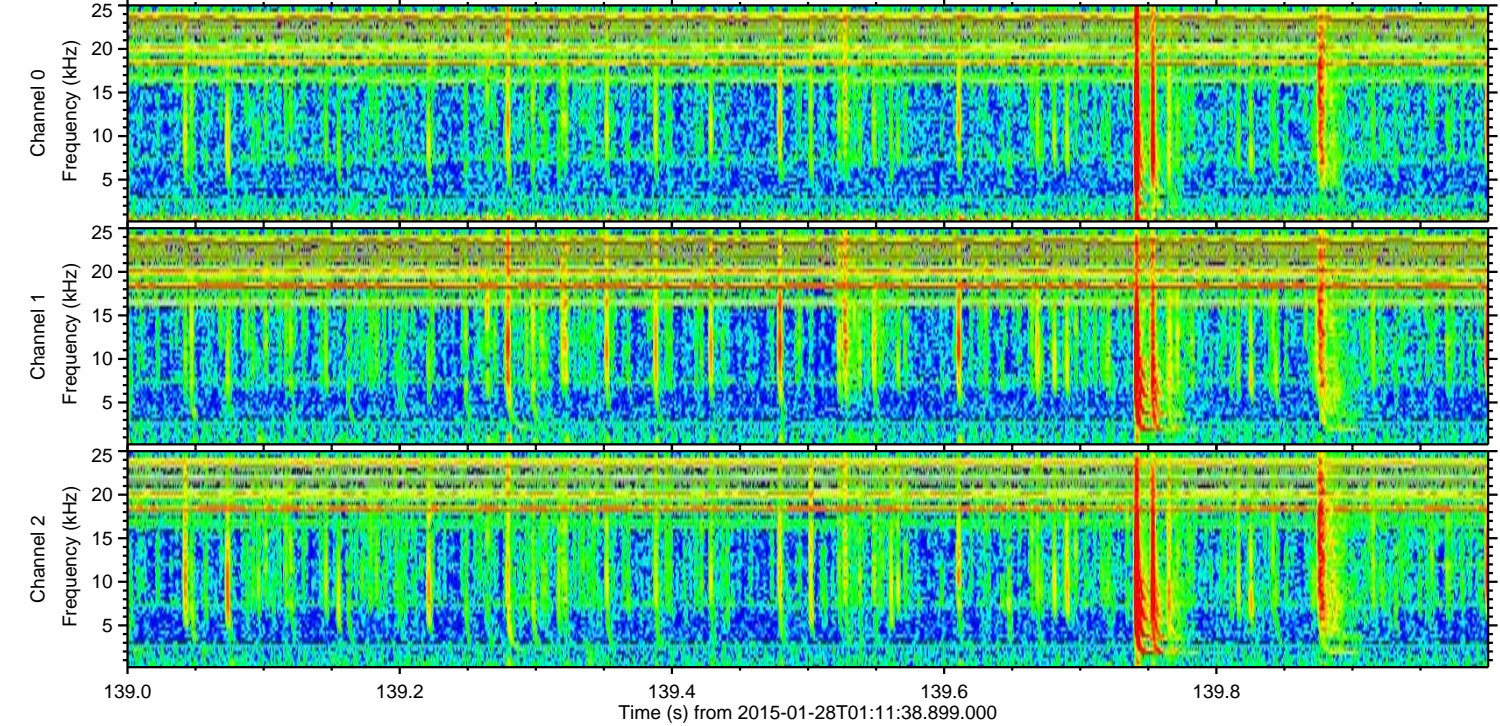
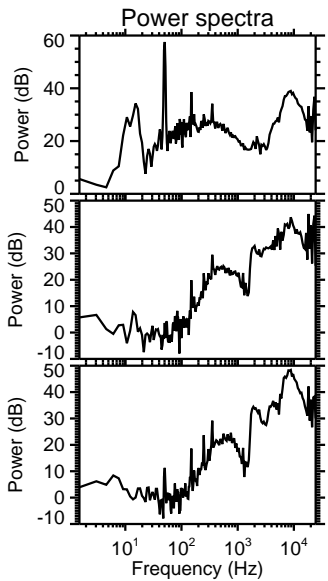
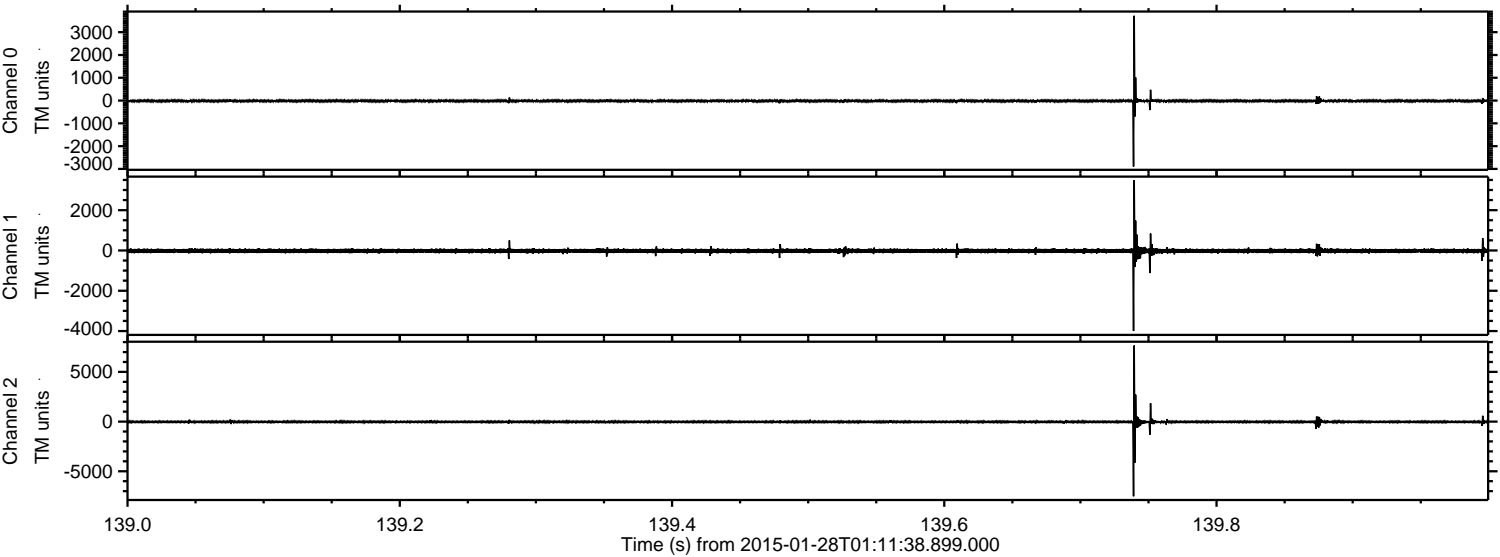
ELMAVAN 3D WAVEFORMS (Measured data sampled at 50 kHz) 49807 packets of 144 samples from 2015-01-28T01:11:38.899.000. Part 118/144

Processed Thu Feb 12 00:29:28 2015 by ELM ver.2012-10-06 from 001__elm20150128_011137__dat00.bin



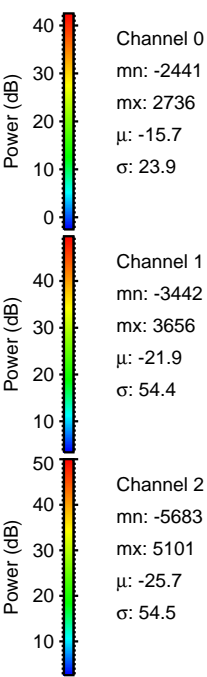
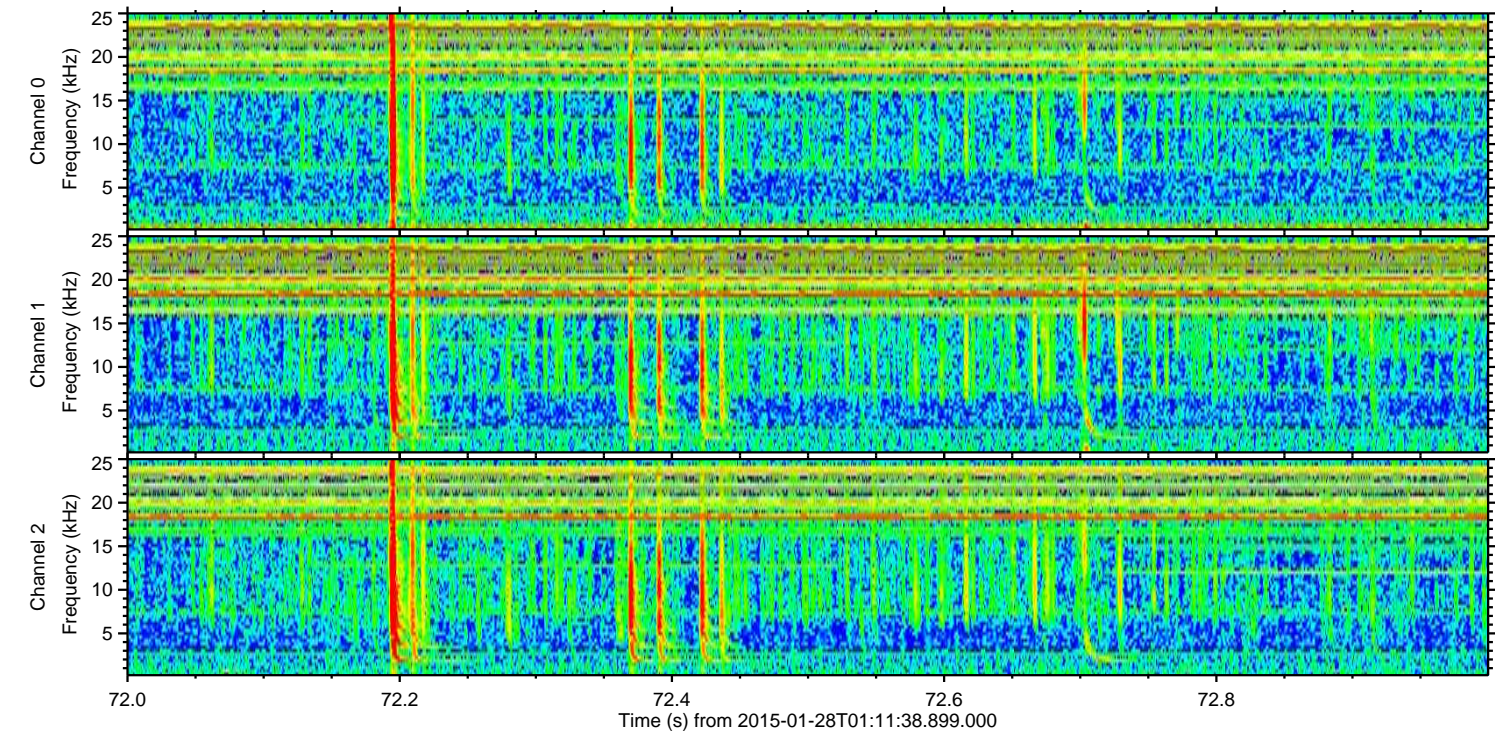
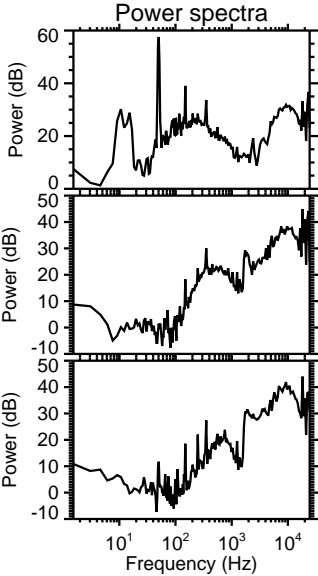
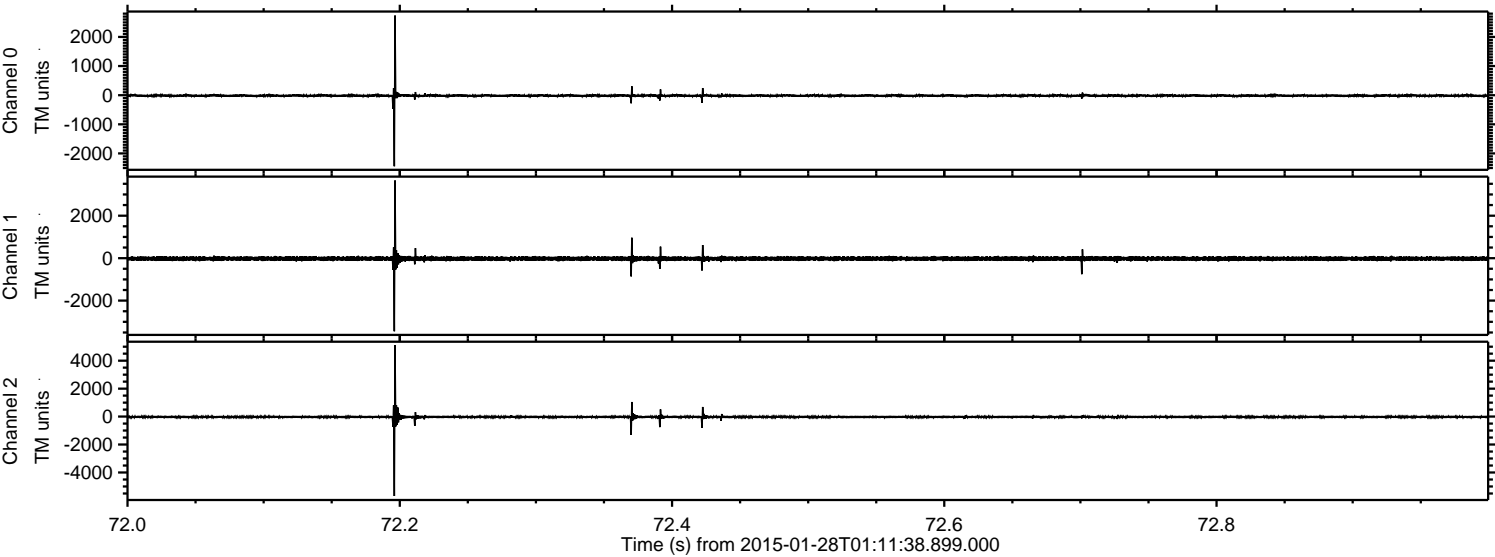
ELMAVAN 3D WAVEFORMS (Measured data sampled at 50 kHz) 49807 packets of 144 samples from 2015-01-28T01:11:38.899.000. Part 140/144

Processed Thu Feb 12 00:29:29 2015 by ELM ver.2012-10-06 from 001__elm20150128_011137__dat00.bin



ELMAVAN 3D WAVEFORMS (Measured data sampled at 50 kHz) 49807 packets of 144 samples from 2015-01-28T01:11:38.899.000. Part 73/144

Processed Thu Feb 12 00:29:30 2015 by ELM ver.2012-10-06 from 001__elm20150128_011137__dat00.bin



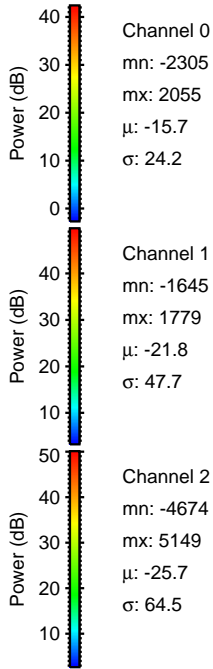
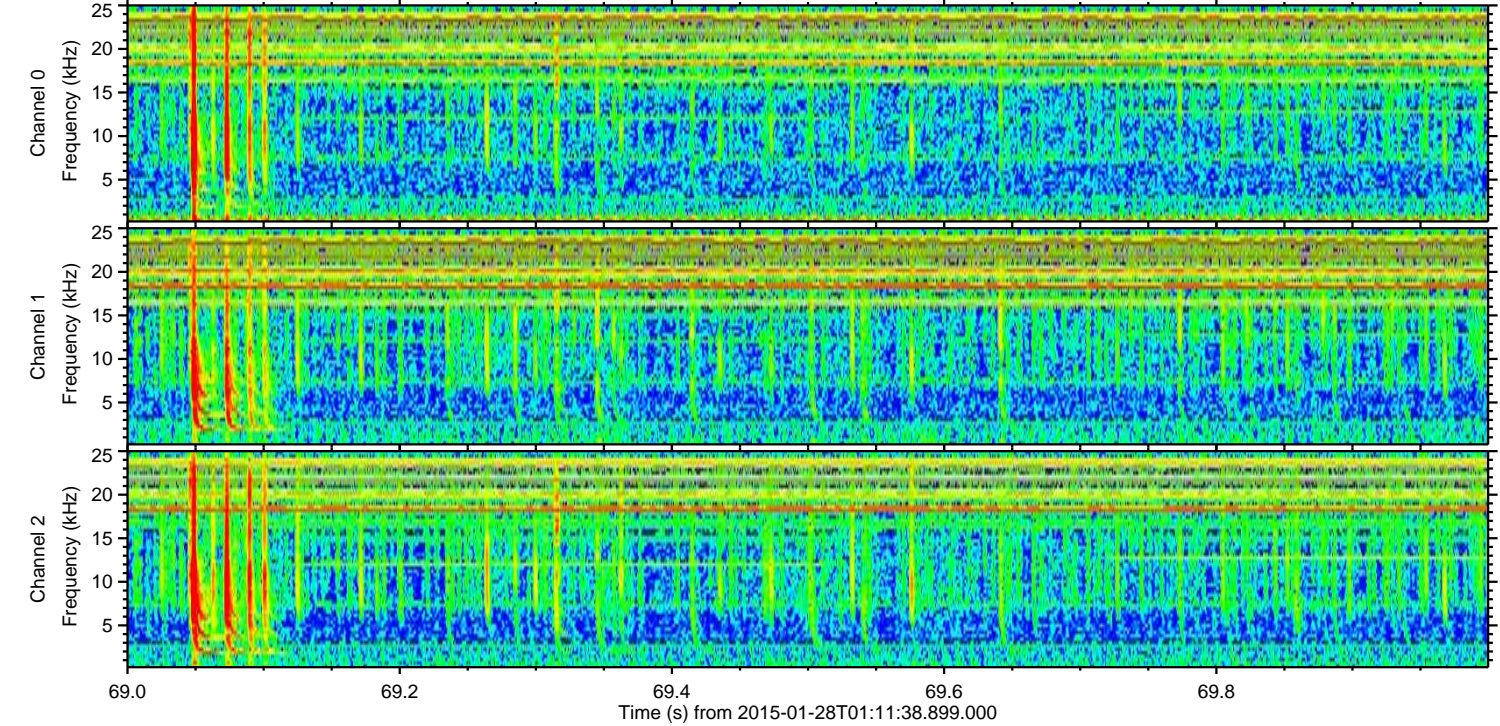
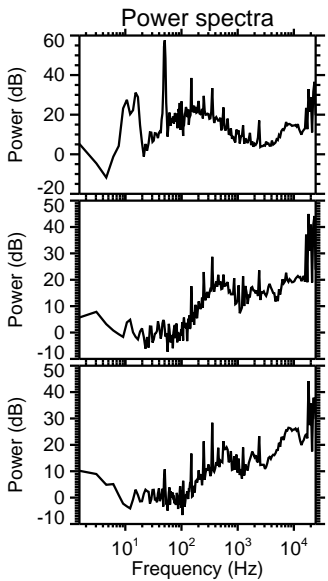
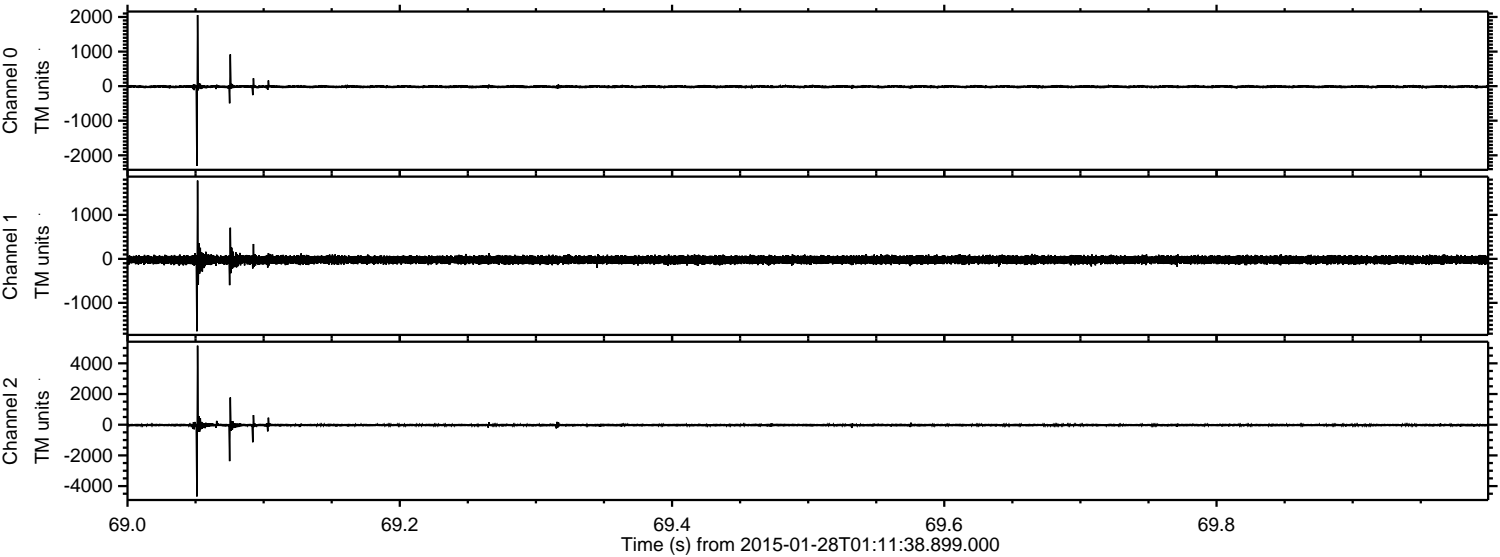
Channel 0
mn: -2441
mx: 2736
 μ : -15.7
 σ : 23.9

Channel 1
mn: -3442
mx: 3656
 μ : -21.9
 σ : 54.4

Channel 2
mn: -5683
mx: 5101
 μ : -25.7
 σ : 54.5

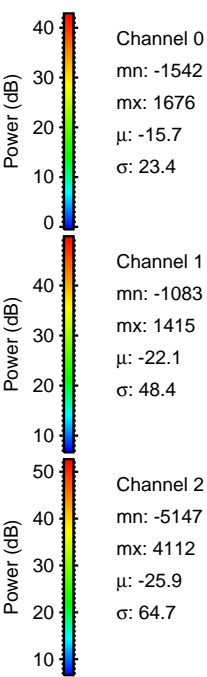
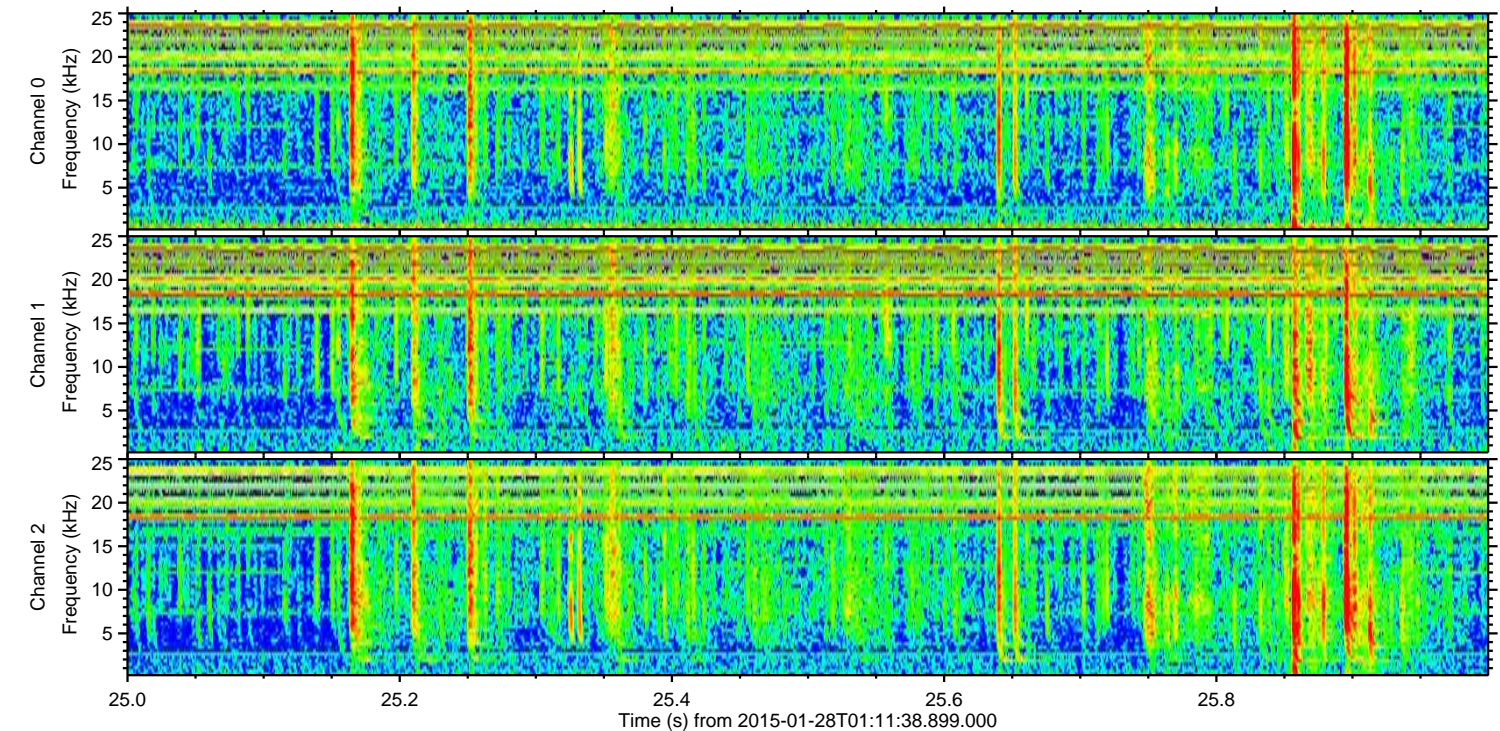
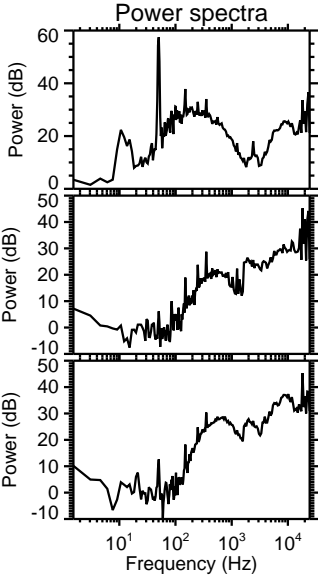
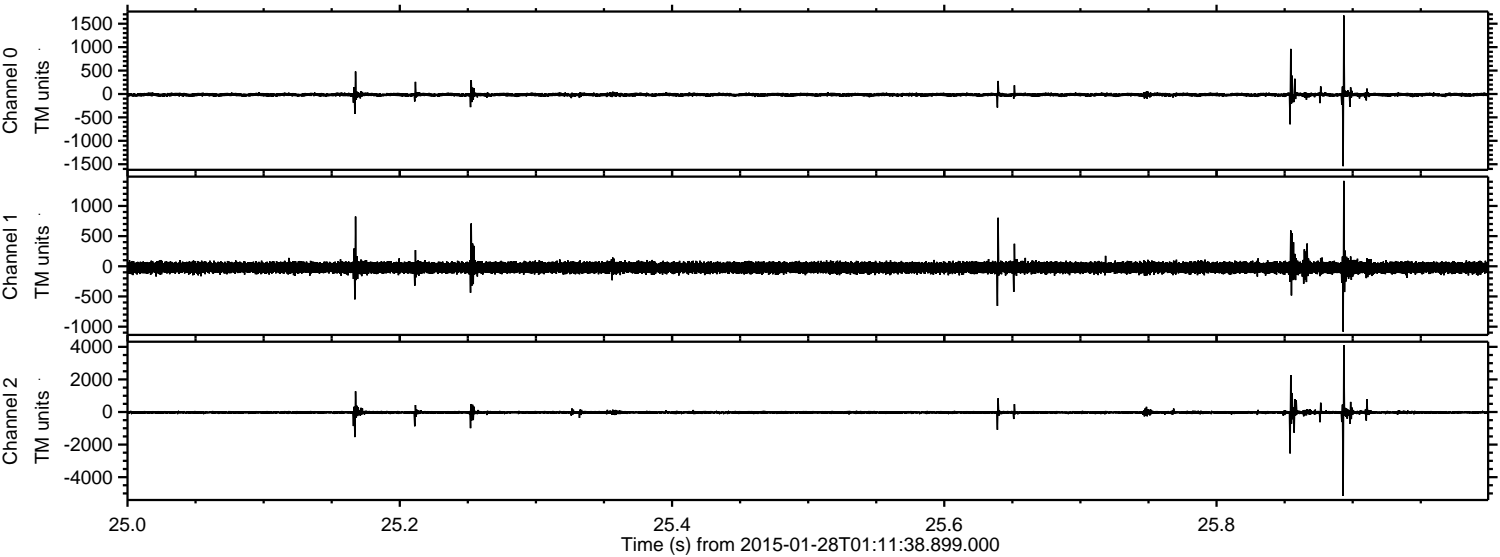
ELMAVAN 3D WAVEFORMS (Measured data sampled at 50 kHz) 49807 packets of 144 samples from 2015-01-28T01:11:38.899.000. Part 70/144

Processed Thu Feb 12 00:29:31 2015 by ELM ver.2012-10-06 from 001__elm20150128_011137__dat00.bin



ELMAVAN 3D WAVEFORMS (Measured data sampled at 50 kHz) 49807 packets of 144 samples from 2015-01-28T01:11:38.899.000. Part 26/144

Processed Thu Feb 12 00:29:32 2015 by ELM ver.2012-10-06 from 001__elm20150128_011137__dat00.bin



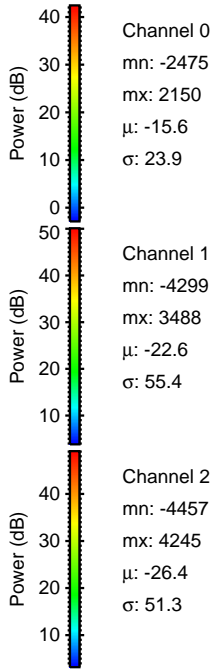
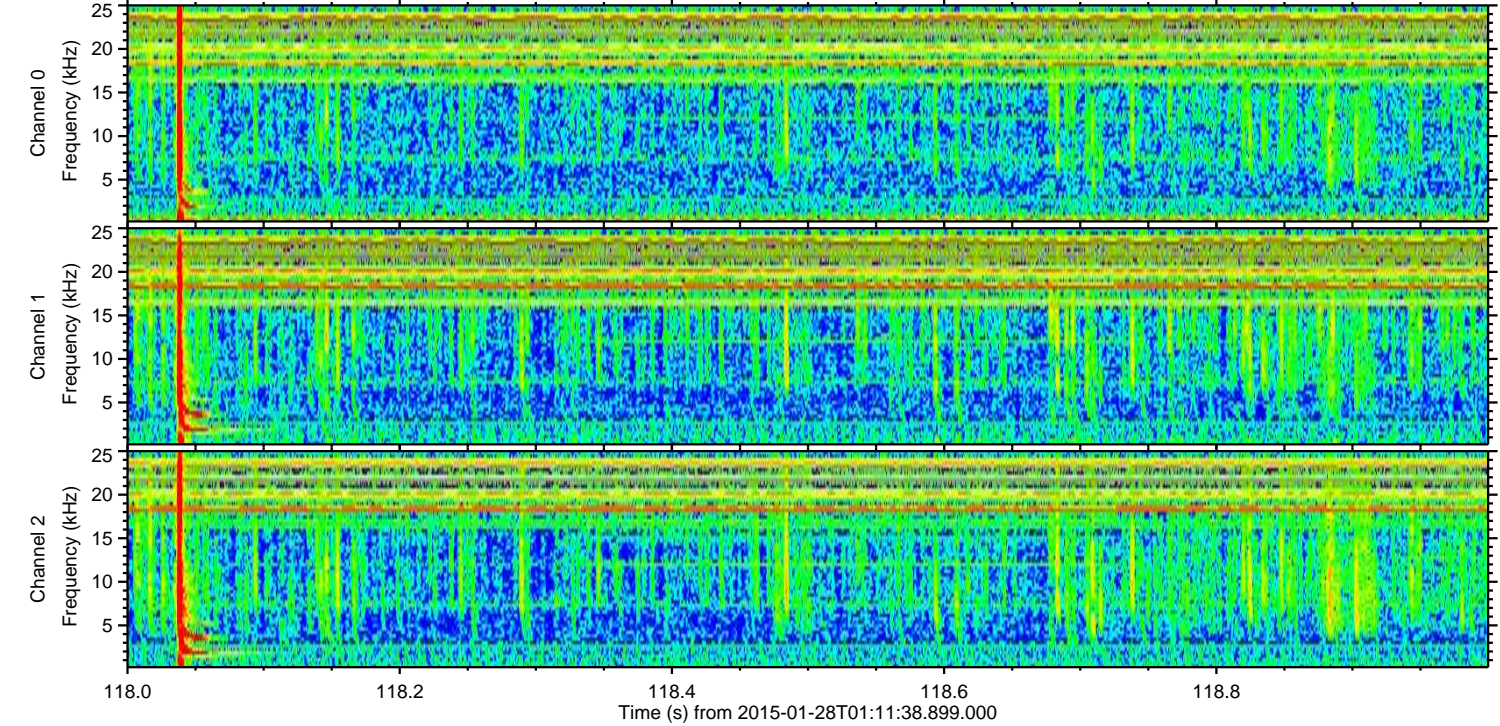
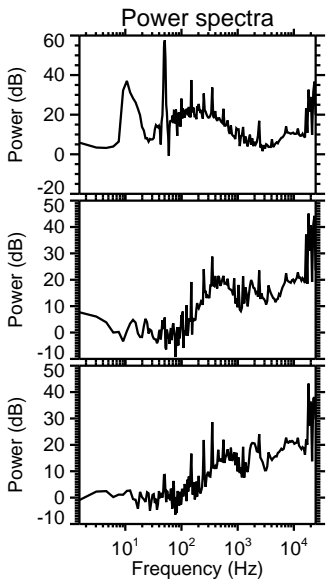
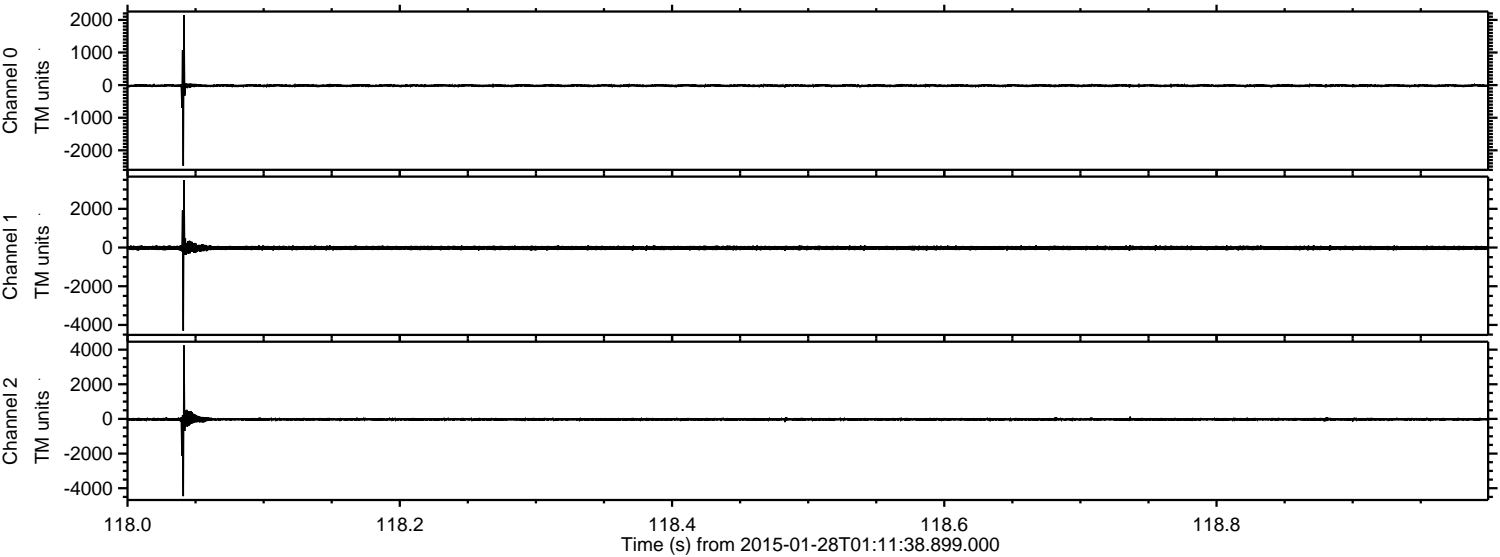
Channel 0
mn: -1542
mx: 1676
 μ : -15.7
 σ : 23.4

Channel 1
mn: -1083
mx: 1415
 μ : -22.1
 σ : 48.4

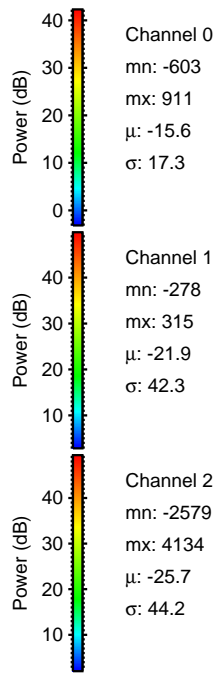
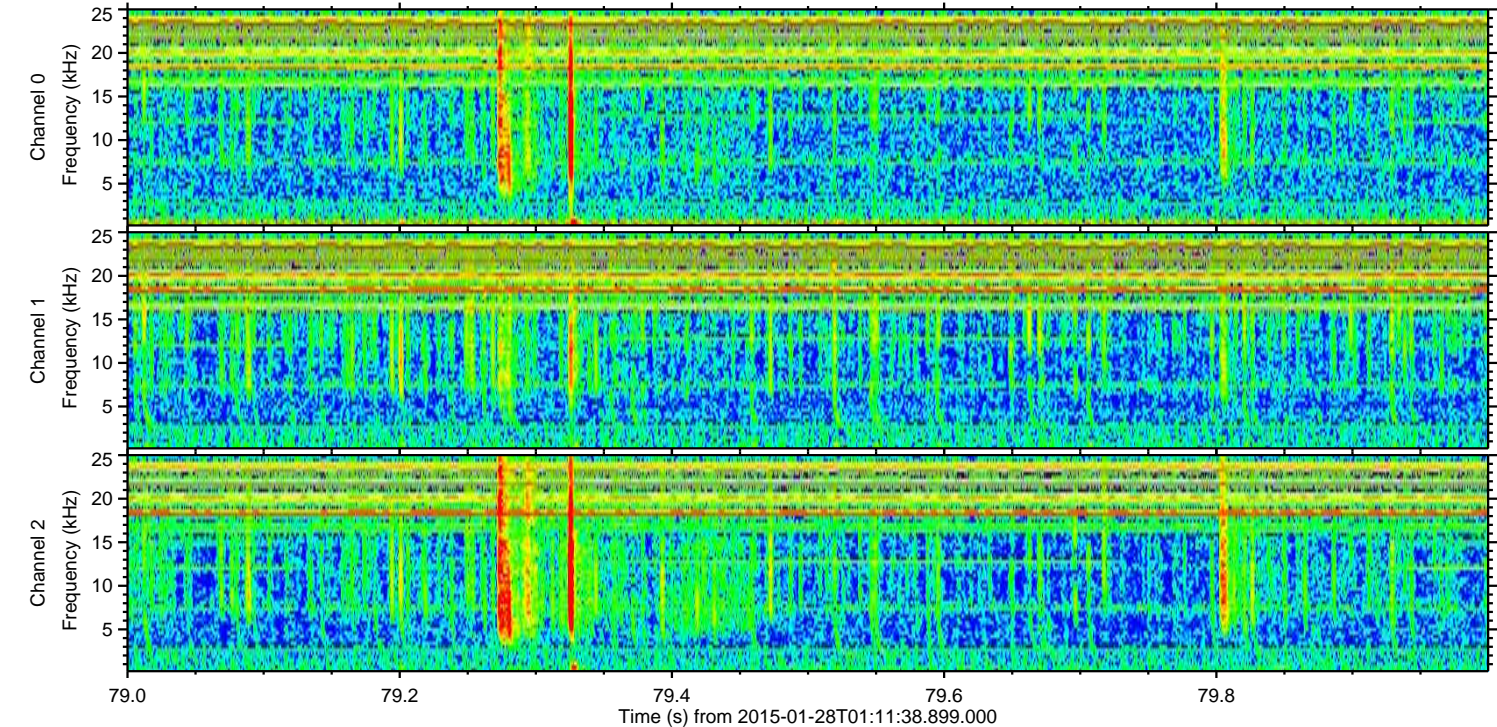
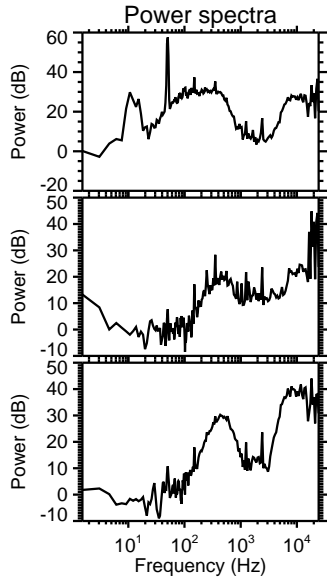
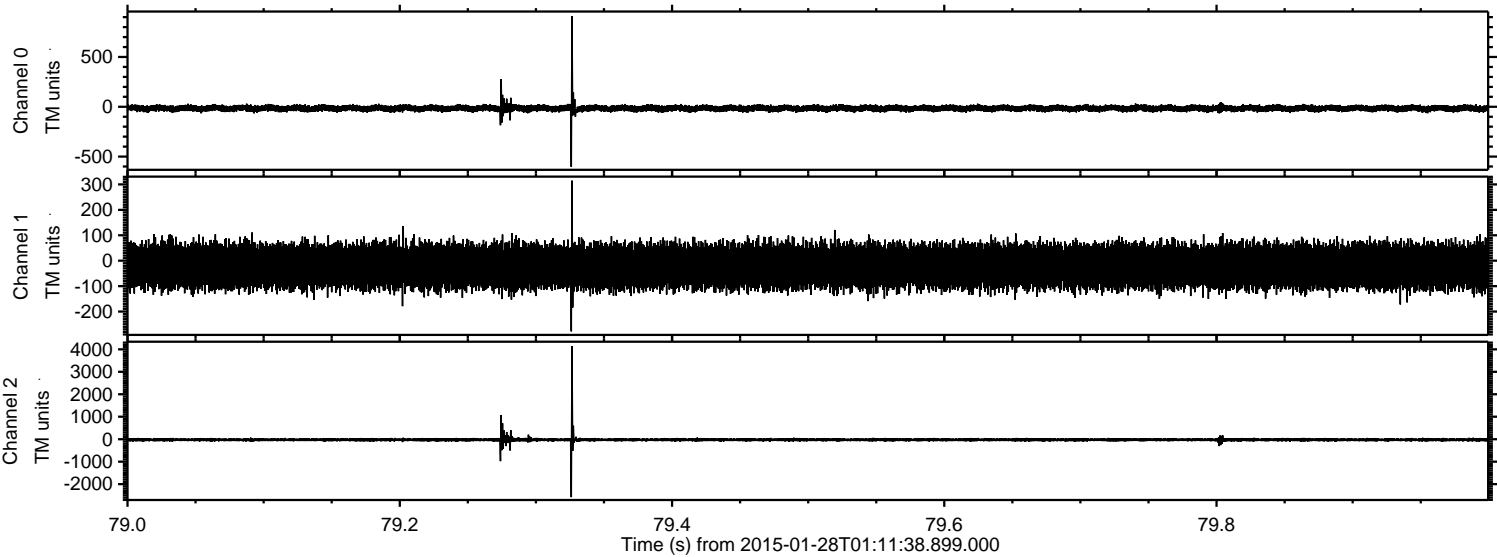
Channel 2
mn: -5147
mx: 4112
 μ : -25.9
 σ : 64.7

ELMAVAN 3D WAVEFORMS (Measured data sampled at 50 kHz) 49807 packets of 144 samples from 2015-01-28T01:11:38.899.000. Part 119/144

Processed Thu Feb 12 00:29:34 2015 by ELM ver.2012-10-06 from 001__elm20150128_011137__dat00.bin

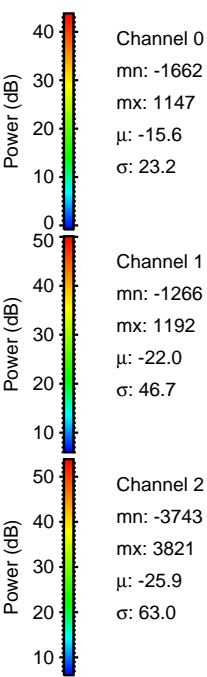
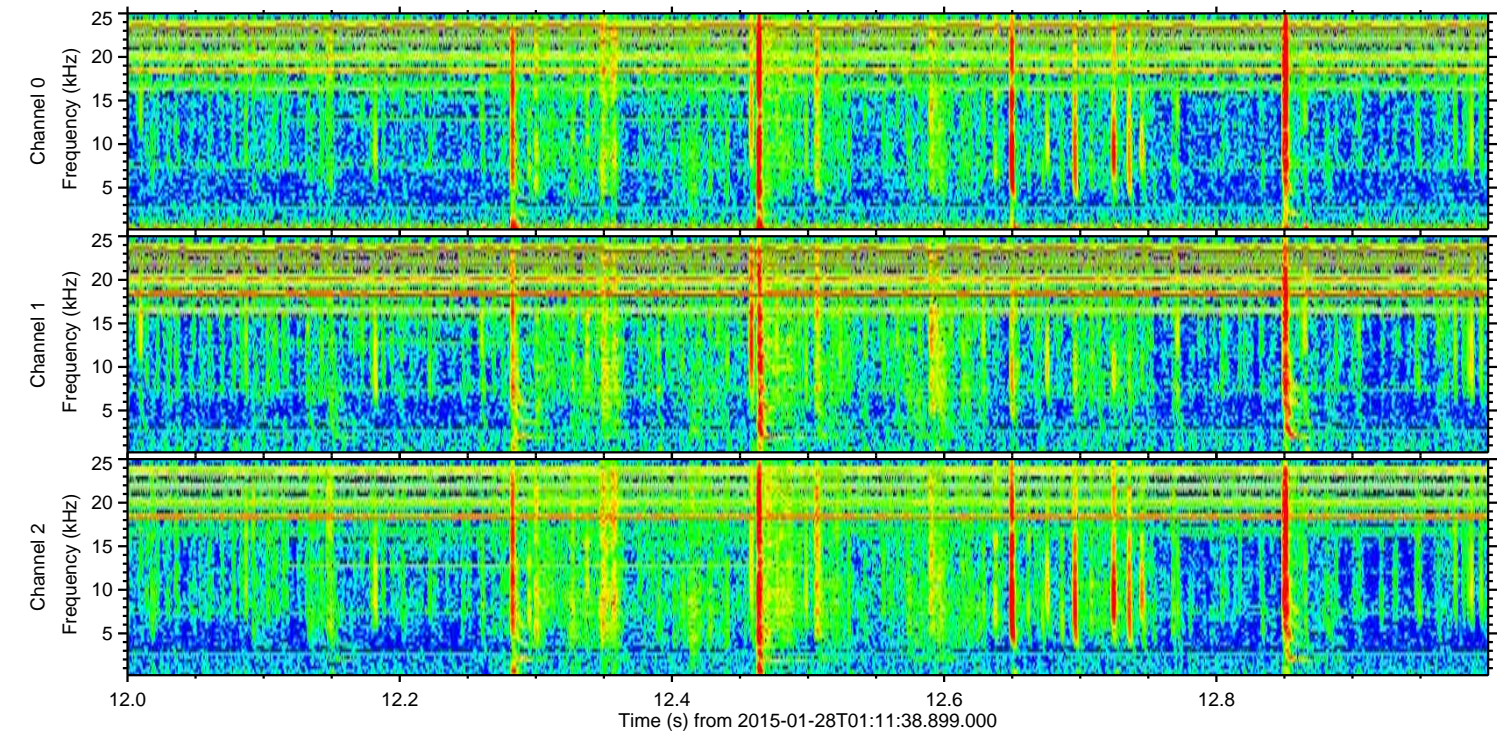
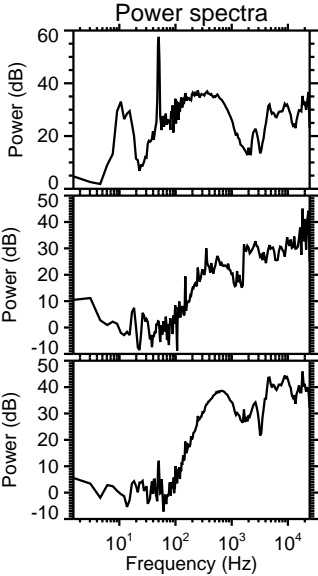
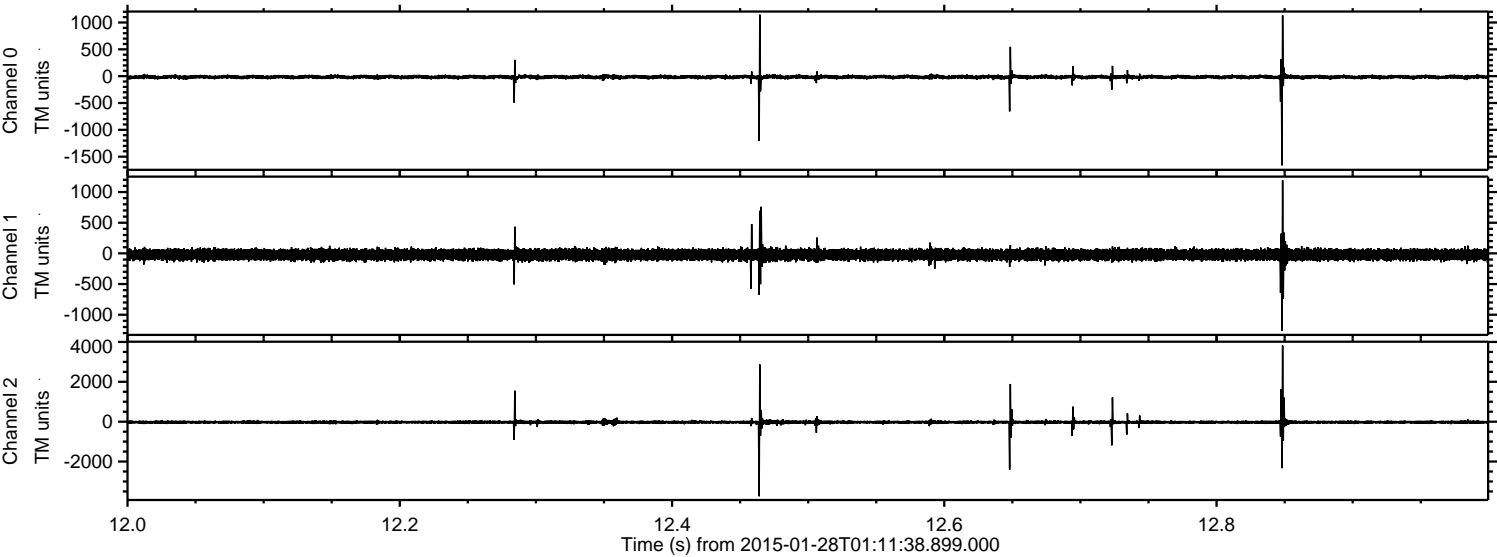


Processed Thu Feb 12 00:29:35 2015 by ELM ver.2012-10-06 from 001__elm20150128_011137__dat00.bin



ELMAVAN 3D WAVEFORMS (Measured data sampled at 50 kHz) 49807 packets of 144 samples from 2015-01-28T01:11:38.899.000. Part 13/144

Processed Thu Feb 12 00:29:36 2015 by ELM ver.2012-10-06 from 001__elm20150128_011137__dat00.bin



Processed Thu Feb 12 00:29:37 2015 by ELM ver.2012-10-06 from 001__elm20150128_011137__dat00.bin

