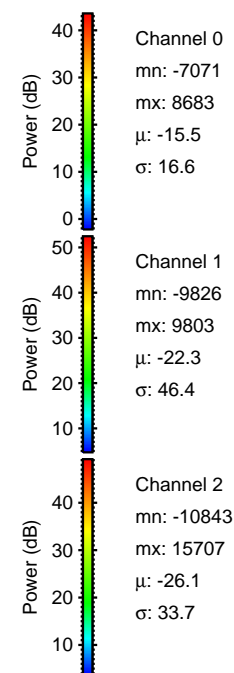
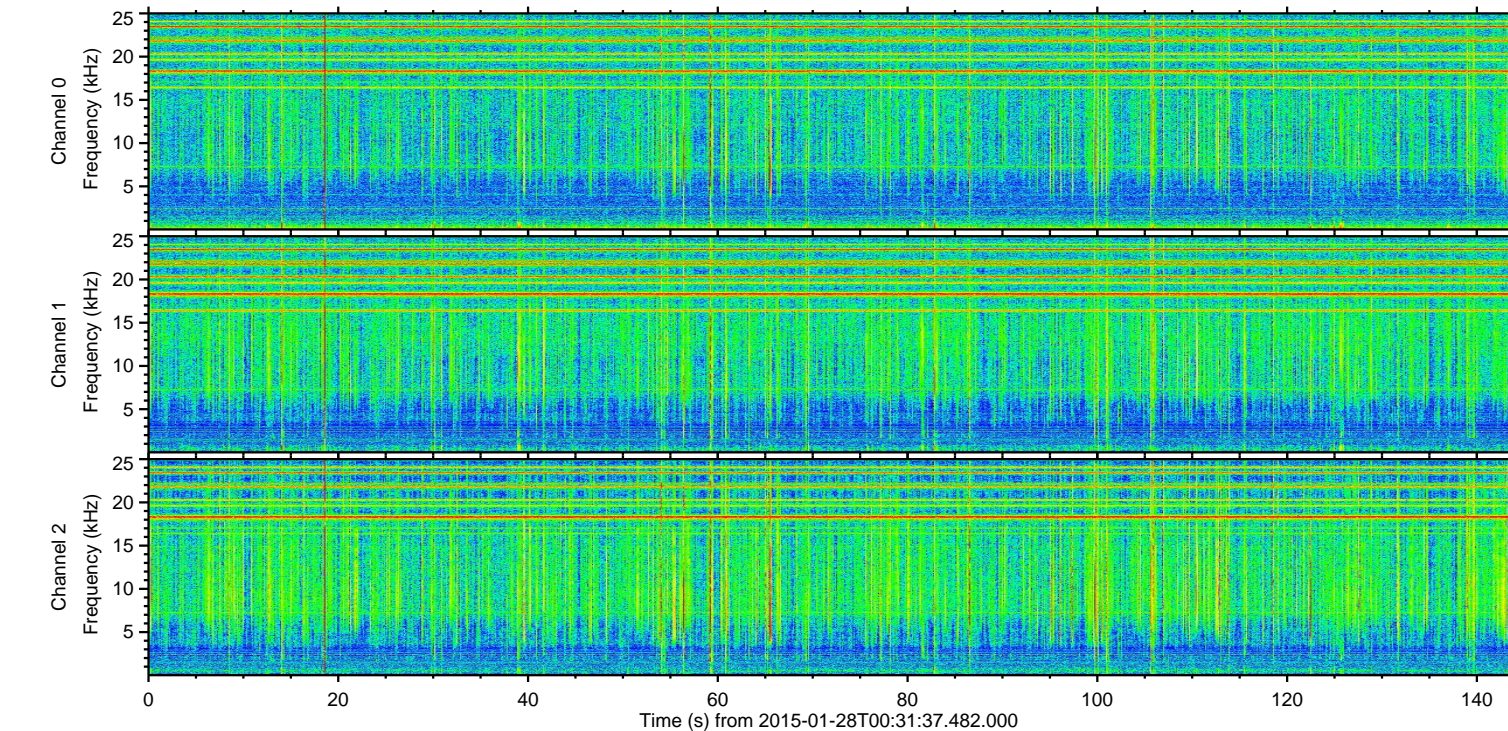
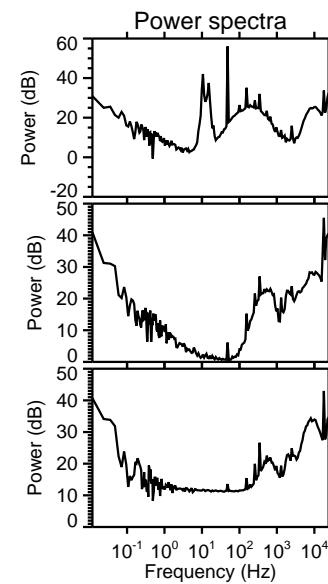
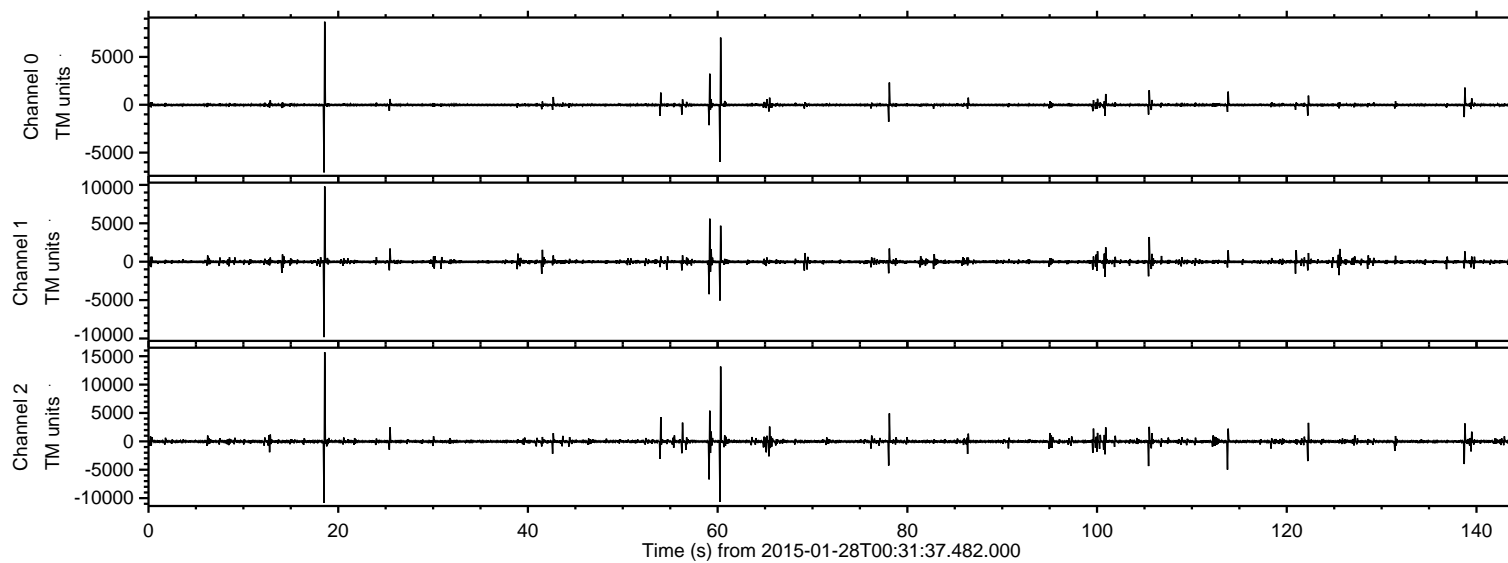


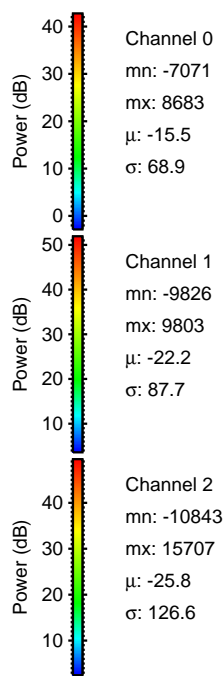
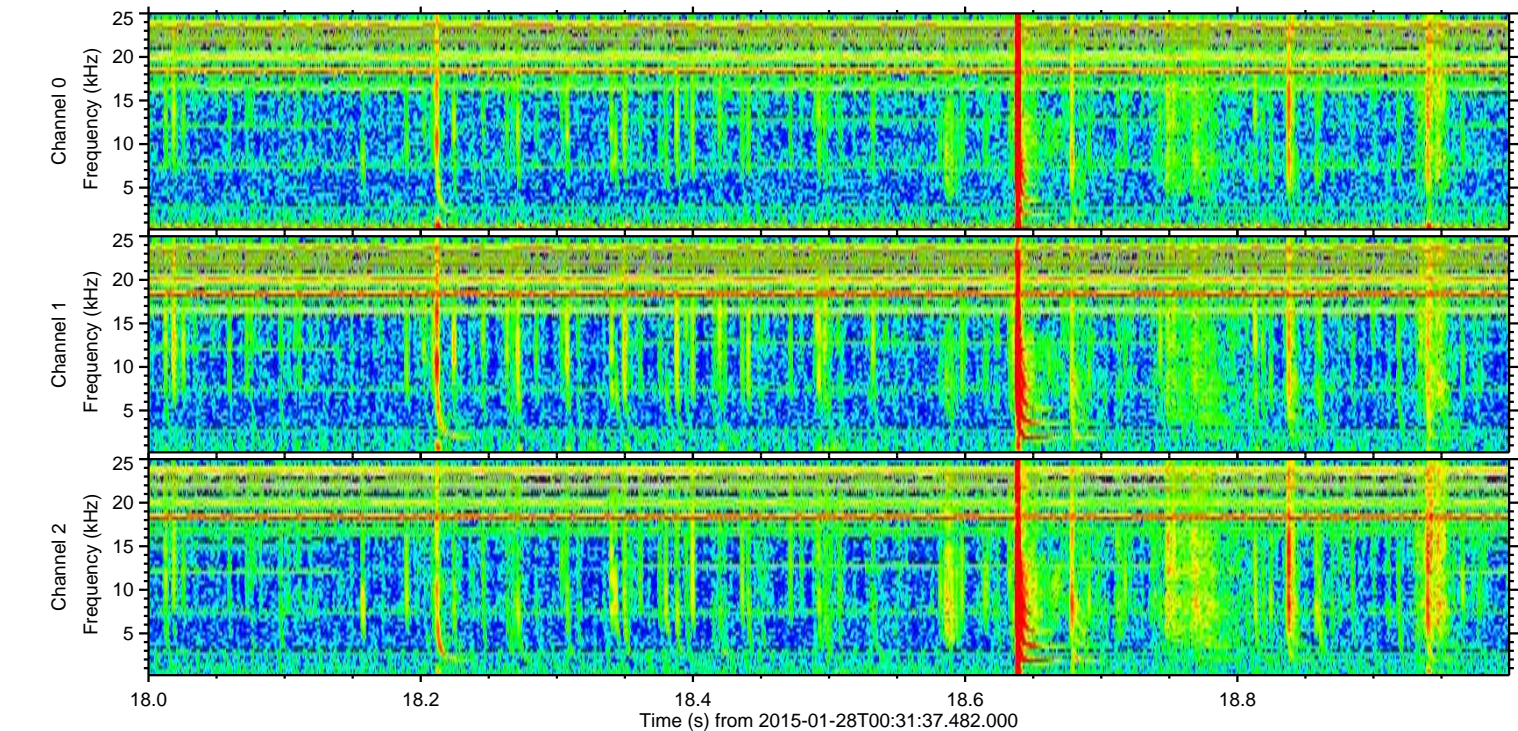
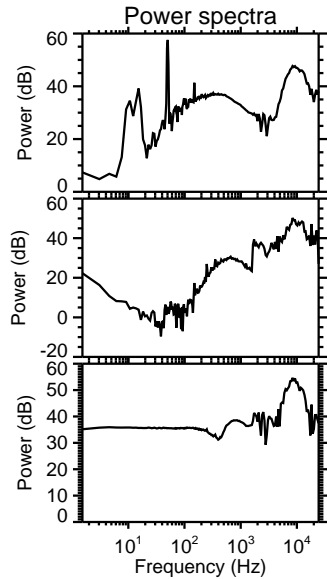
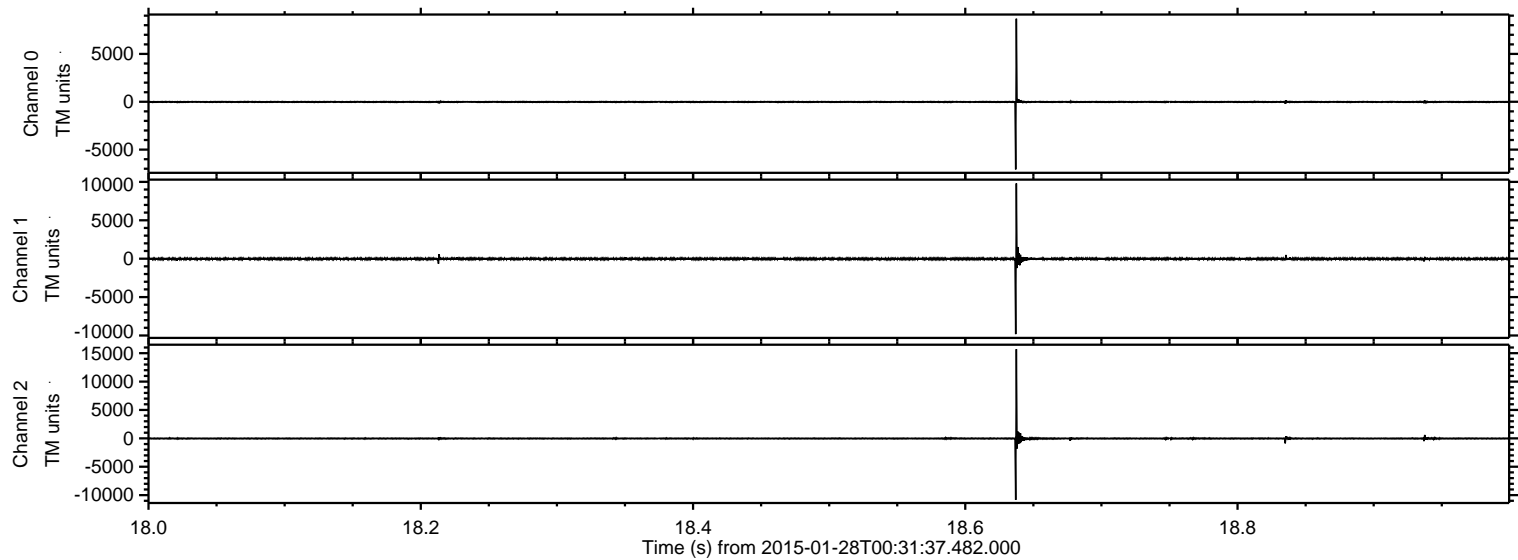
ELMAVAN 3D WAVEFORMS (Measured data sampled at 50 kHz) 49807 packets of 144 samples from 2015-01-28T00:31:37.482.000.

Processed Thu Feb 12 00:20:11 2015 by ELM ver.2012-10-06 from 001__elm20150128_003136__dat00.bin



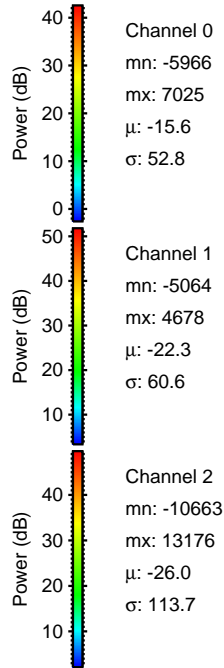
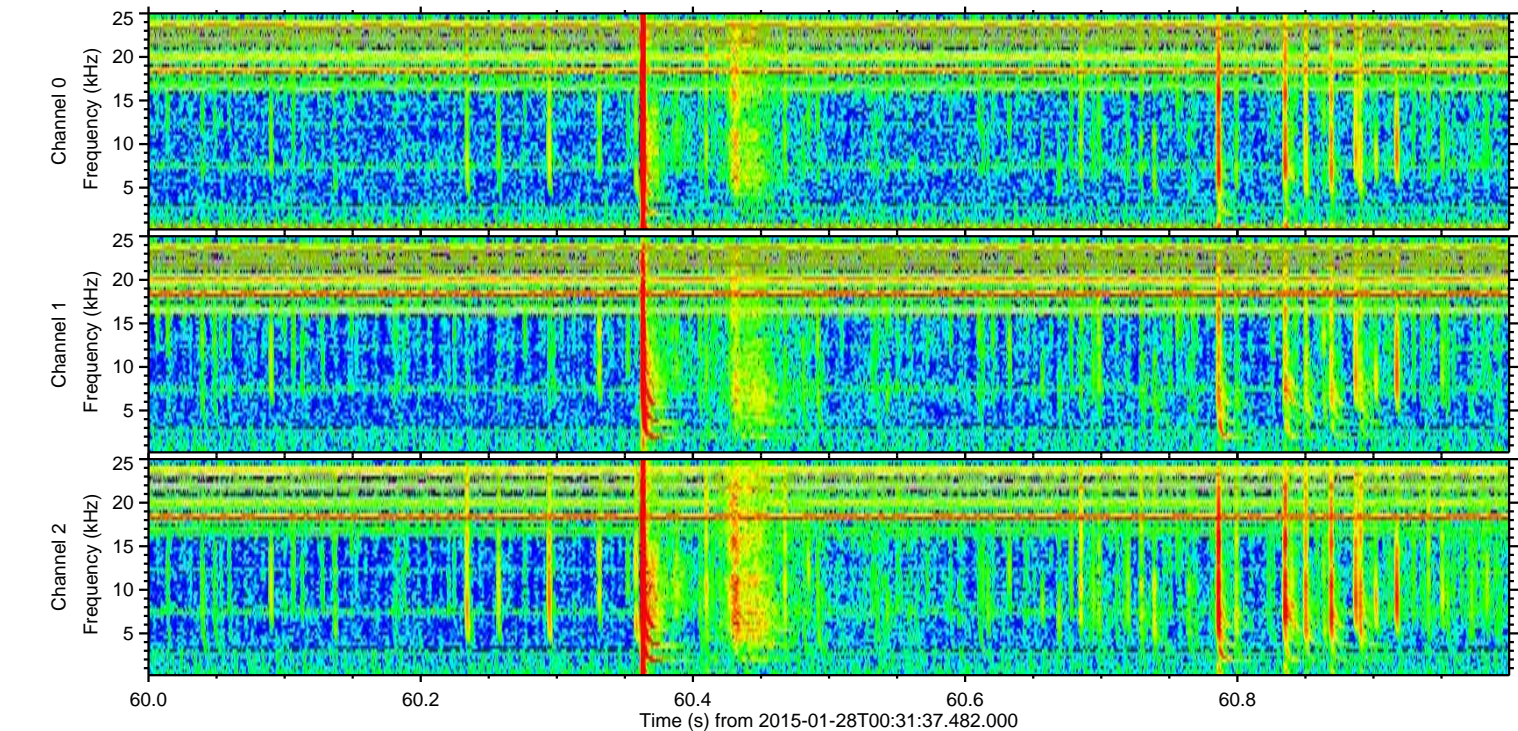
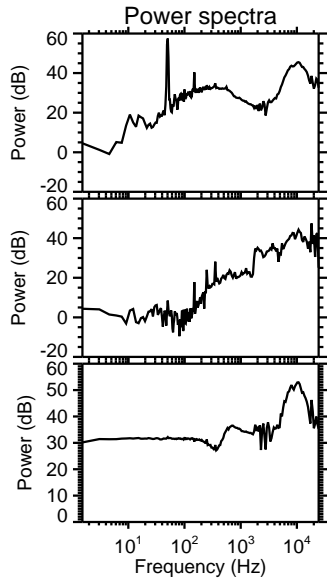
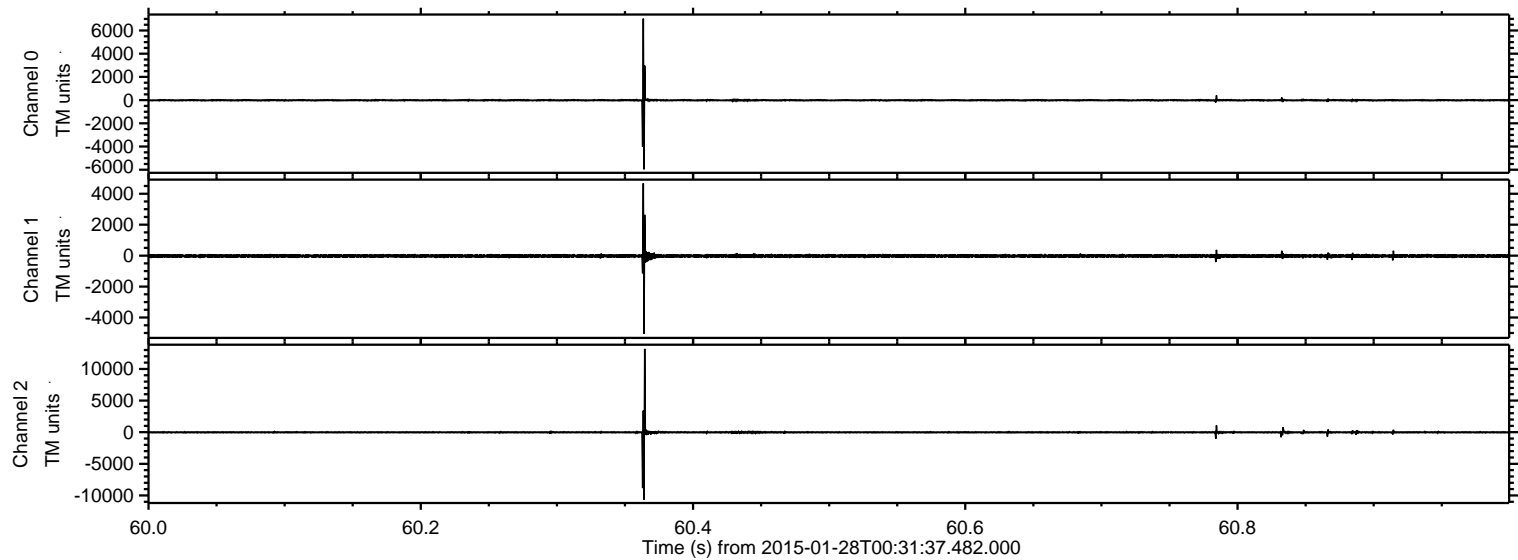
ELMAVAN 3D WAVEFORMS (Measured data sampled at 50 kHz) 49807 packets of 144 samples from 2015-01-28T00:31:37.482.000. Part 19/144

Processed Thu Feb 12 00:20:22 2015 by ELM ver.2012-10-06 from 001__elm20150128_003136__dat00.bin



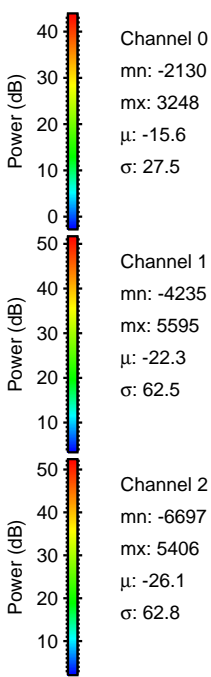
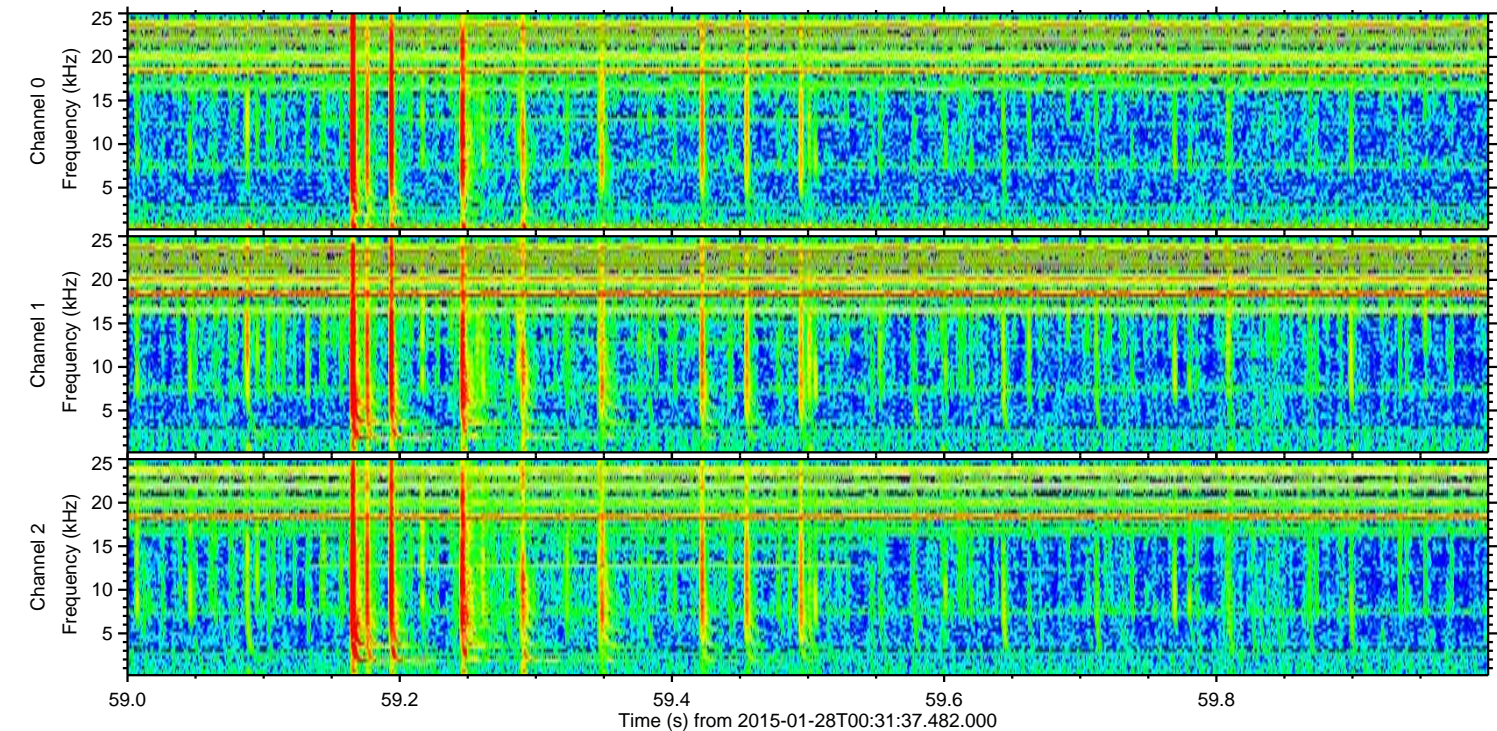
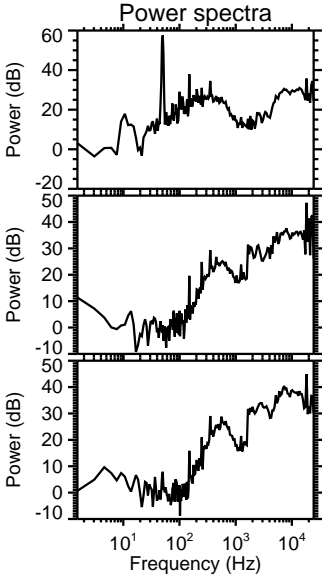
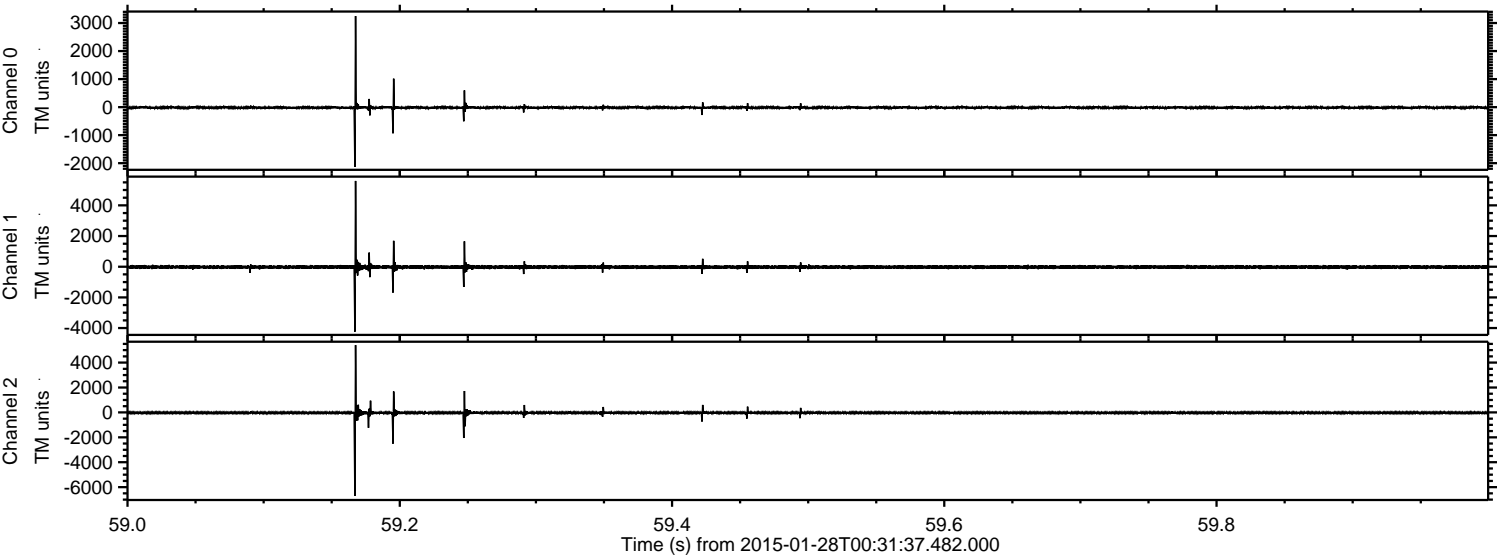
ELMAVAN 3D WAVEFORMS (Measured data sampled at 50 kHz) 49807 packets of 144 samples from 2015-01-28T00:31:37.482.000. Part 61/144

Processed Thu Feb 12 00:20:23 2015 by ELM ver.2012-10-06 from 001__elm20150128_003136__dat00.bin



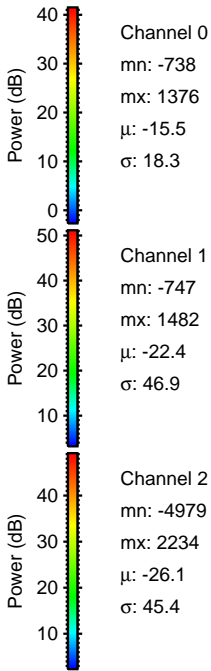
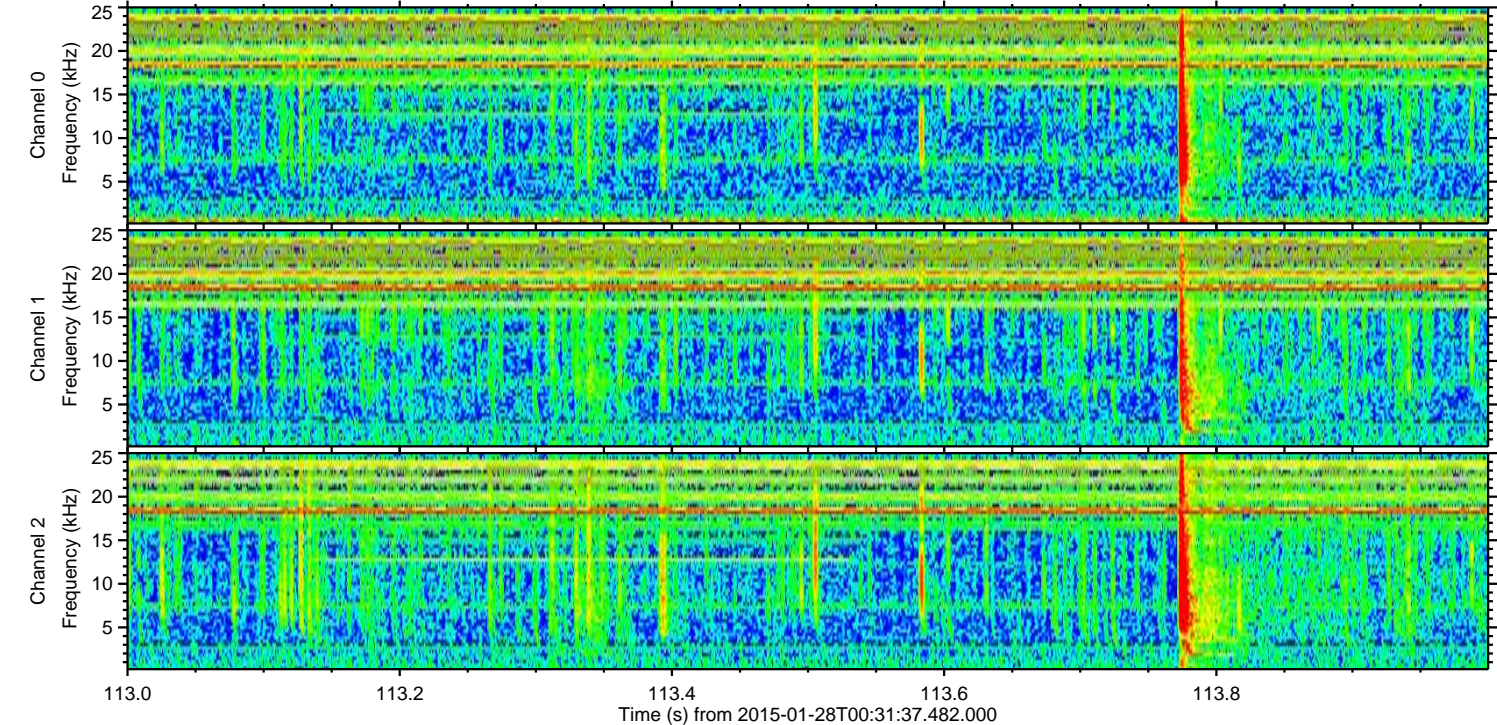
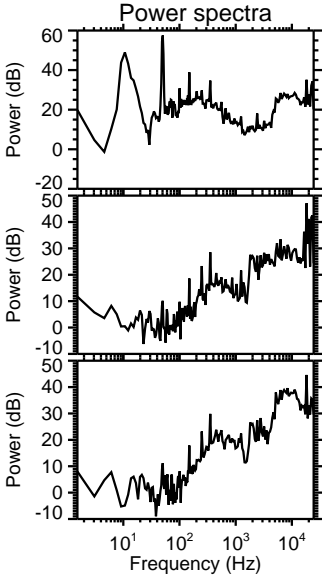
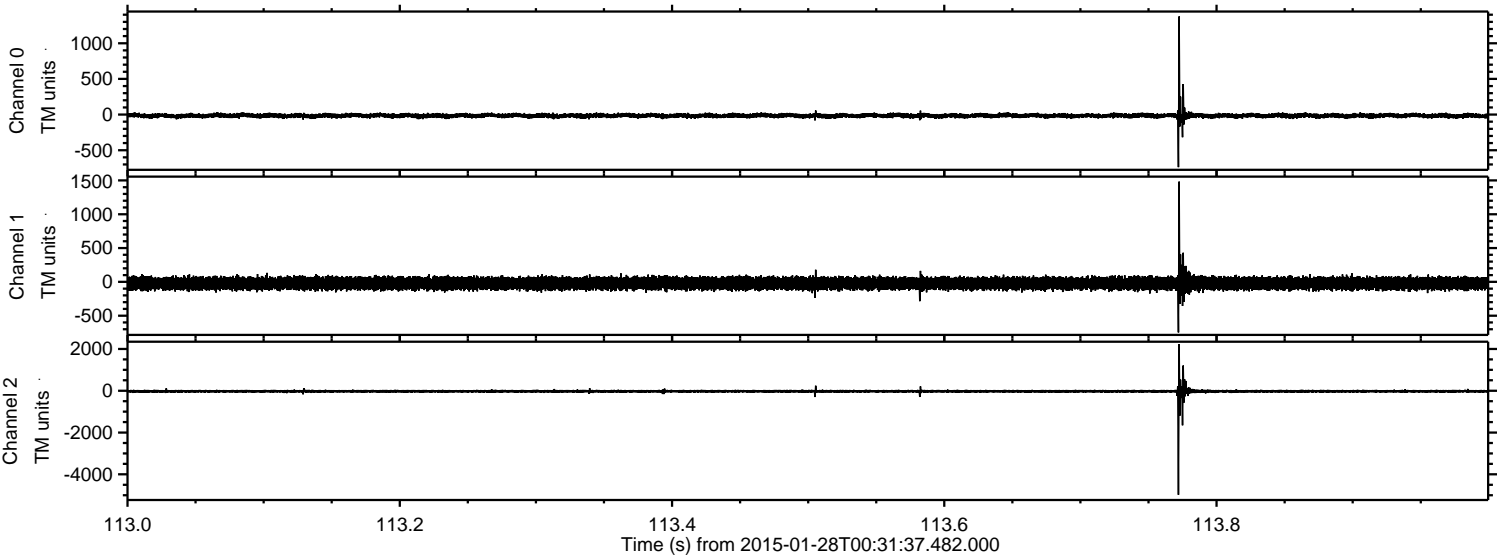
ELMAVAN 3D WAVEFORMS (Measured data sampled at 50 kHz) 49807 packets of 144 samples from 2015-01-28T00:31:37.482.000. Part 60/144

Processed Thu Feb 12 00:20:24 2015 by ELM ver.2012-10-06 from 001__elm20150128_003136__dat00.bin

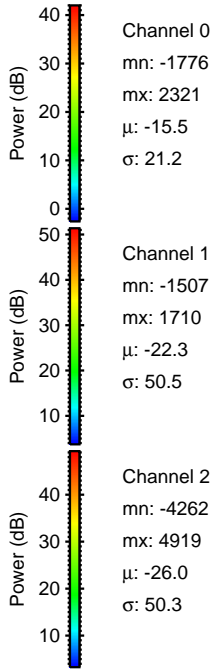
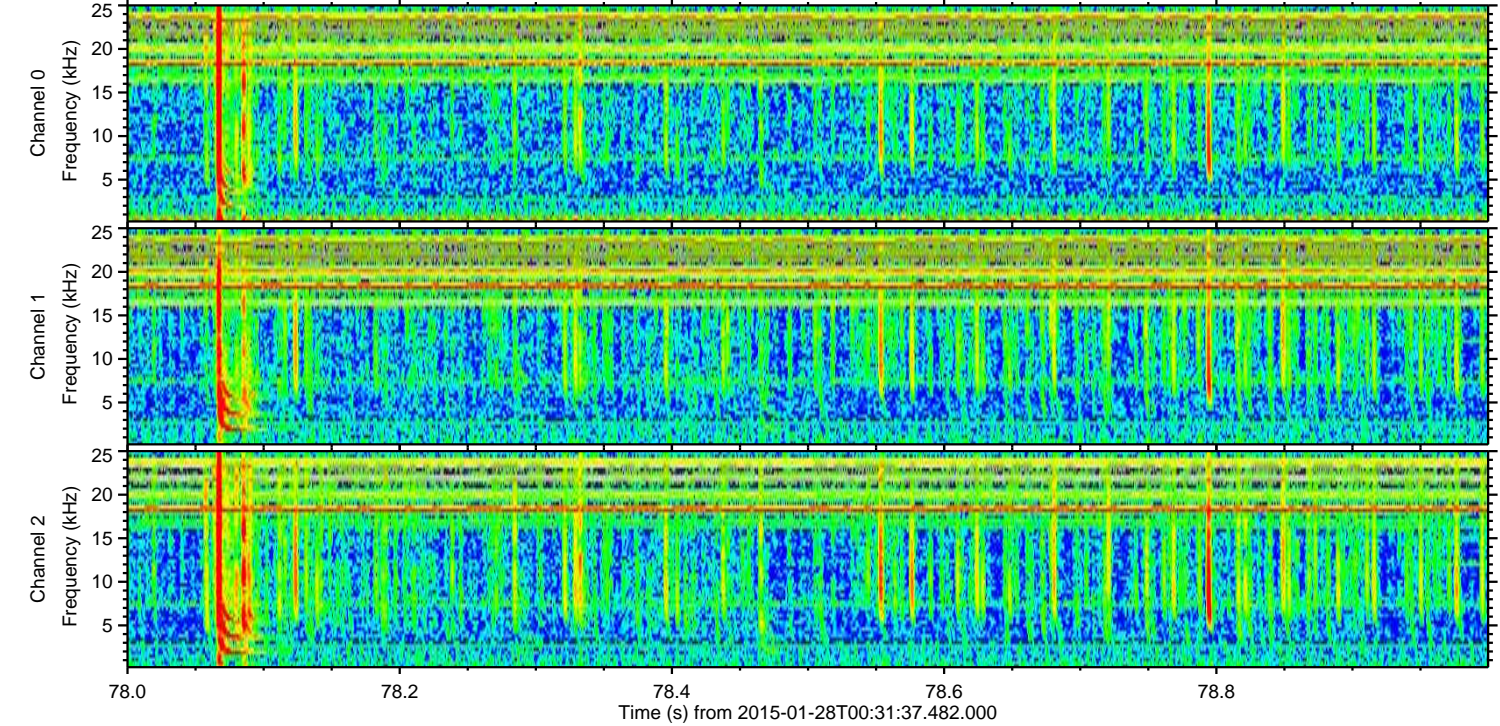
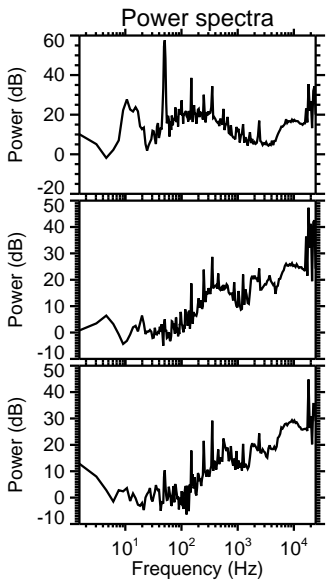
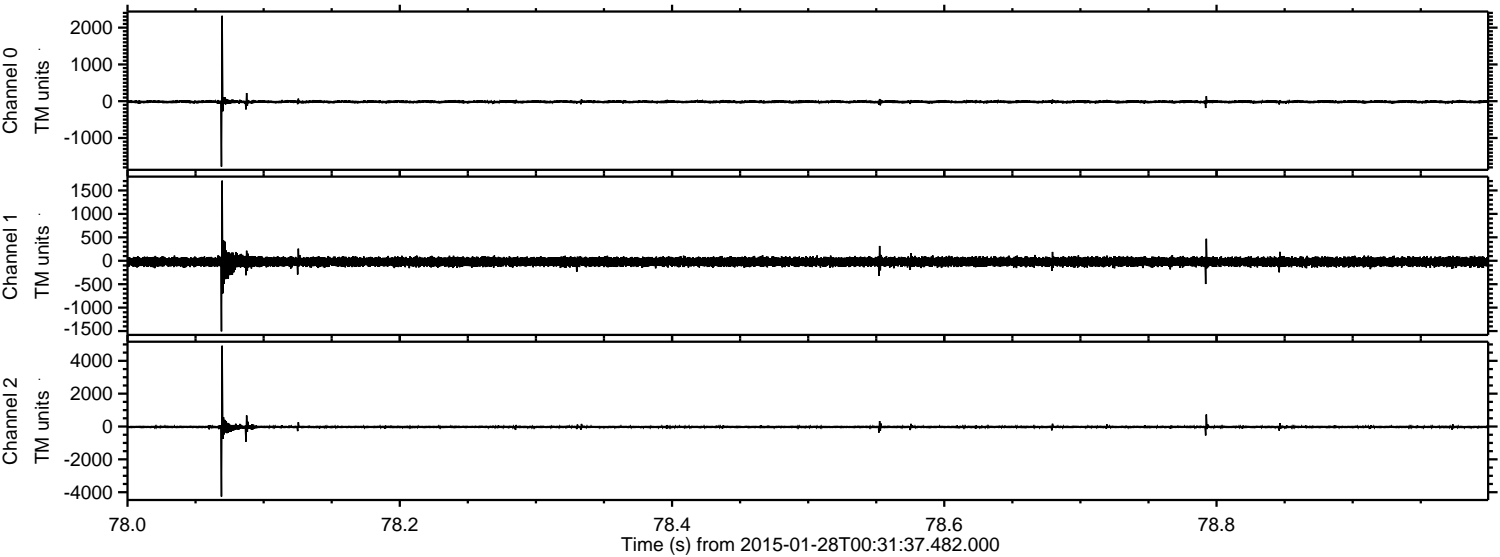


ELMAVAN 3D WAVEFORMS (Measured data sampled at 50 kHz) 49807 packets of 144 samples from 2015-01-28T00:31:37.482.000. Part 114/144

Processed Thu Feb 12 00:20:25 2015 by ELM ver.2012-10-06 from 001__elm20150128_003136__dat00.bin

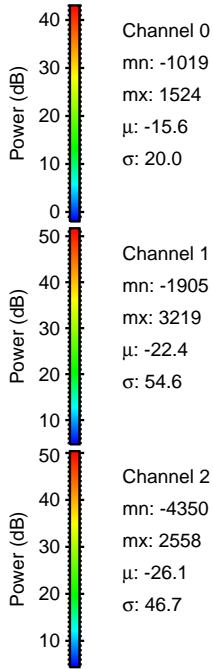
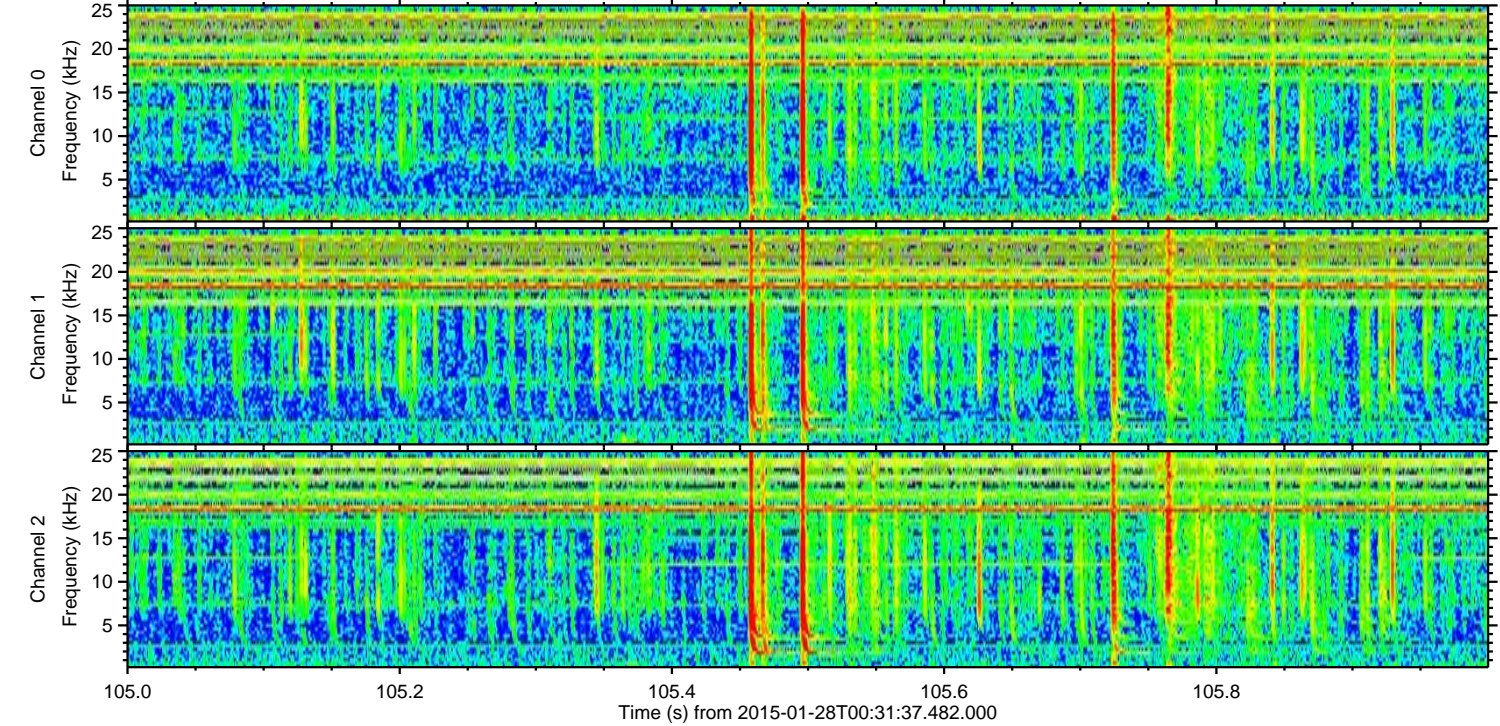
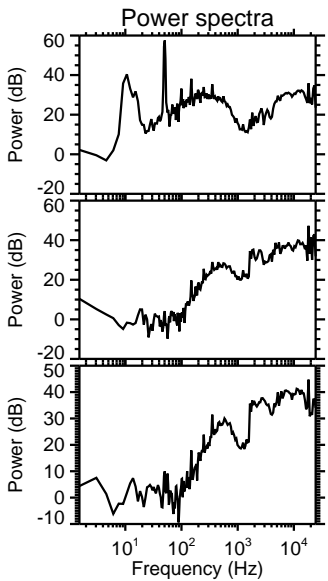
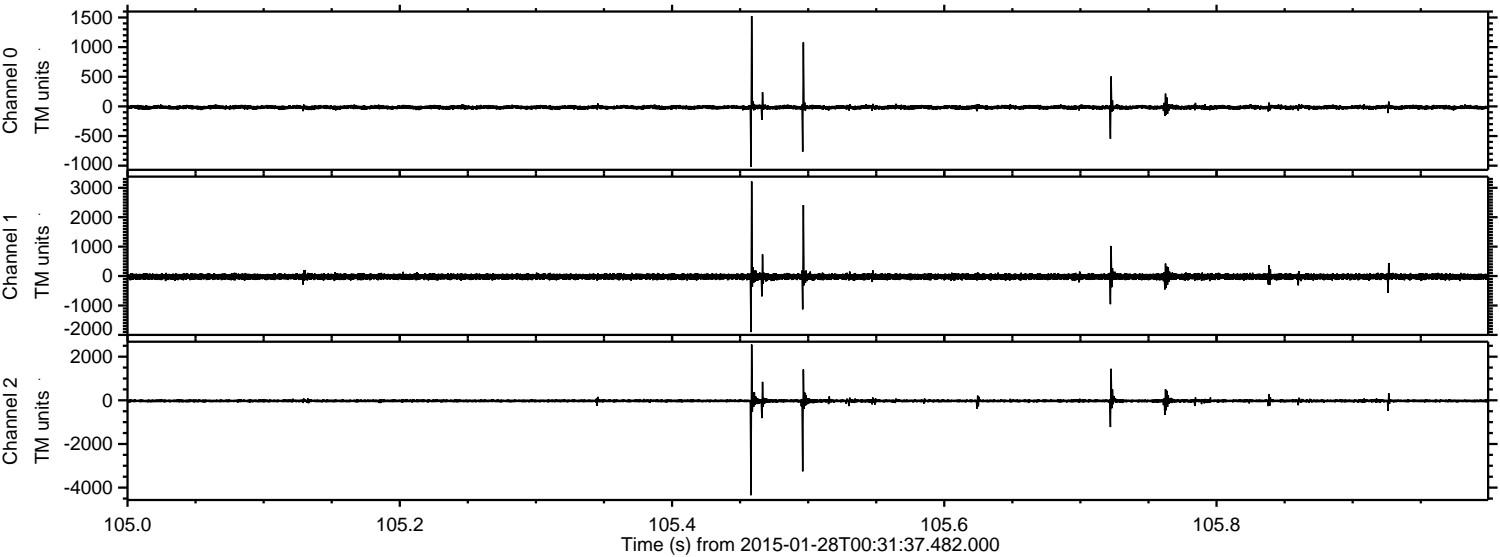


Processed Thu Feb 12 00:20:26 2015 by ELM ver.2012-10-06 from 001__elm20150128_003136__dat00.bin

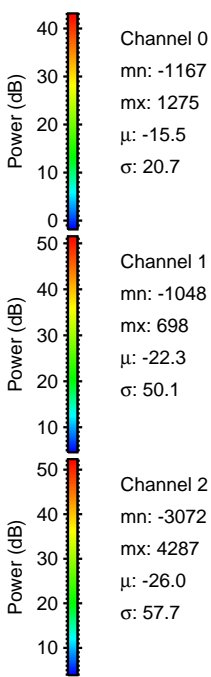
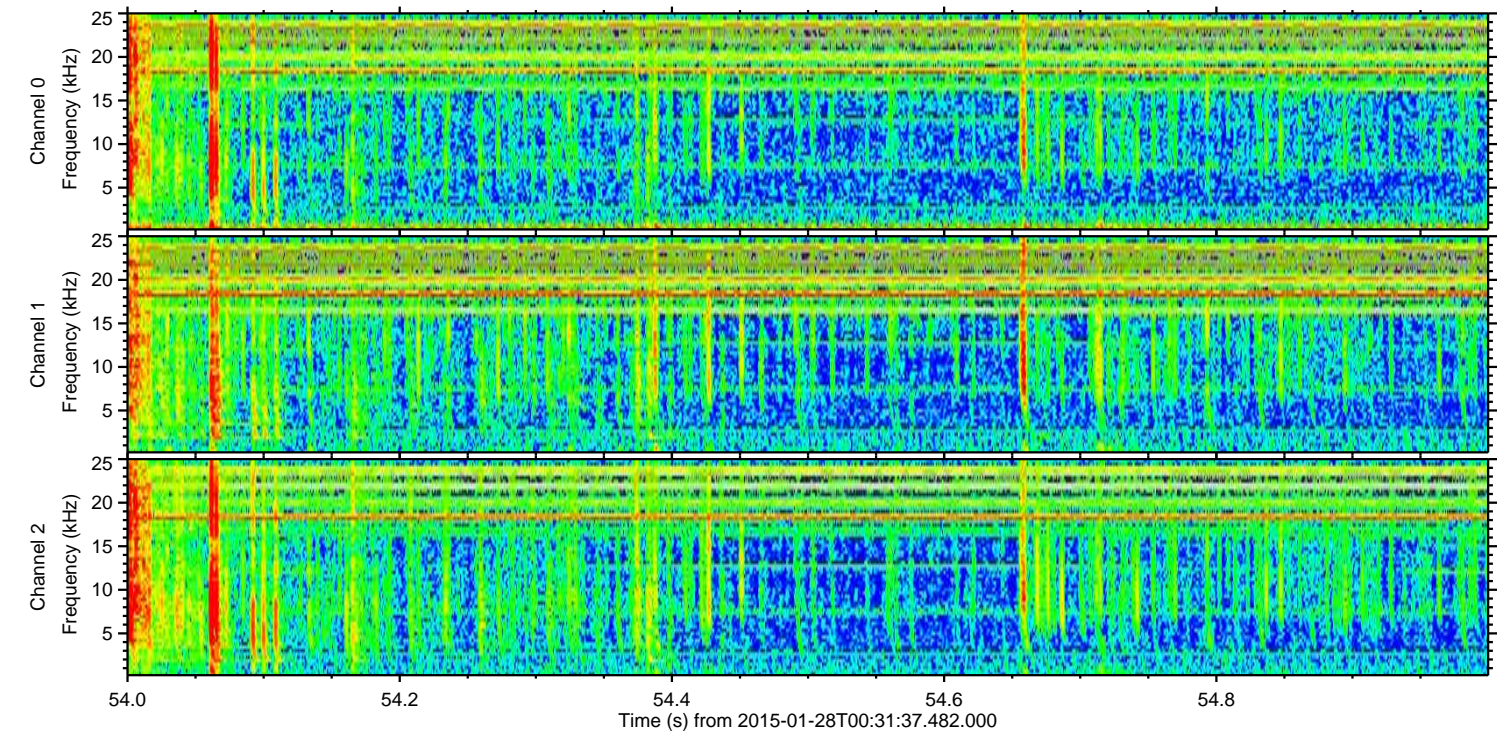
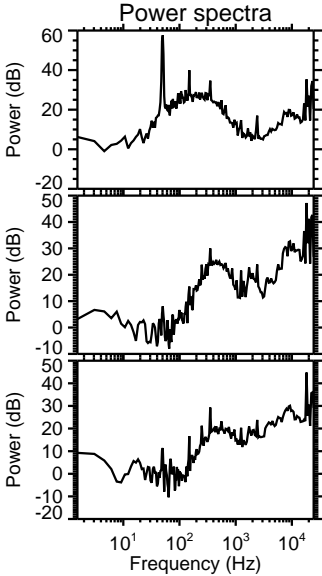
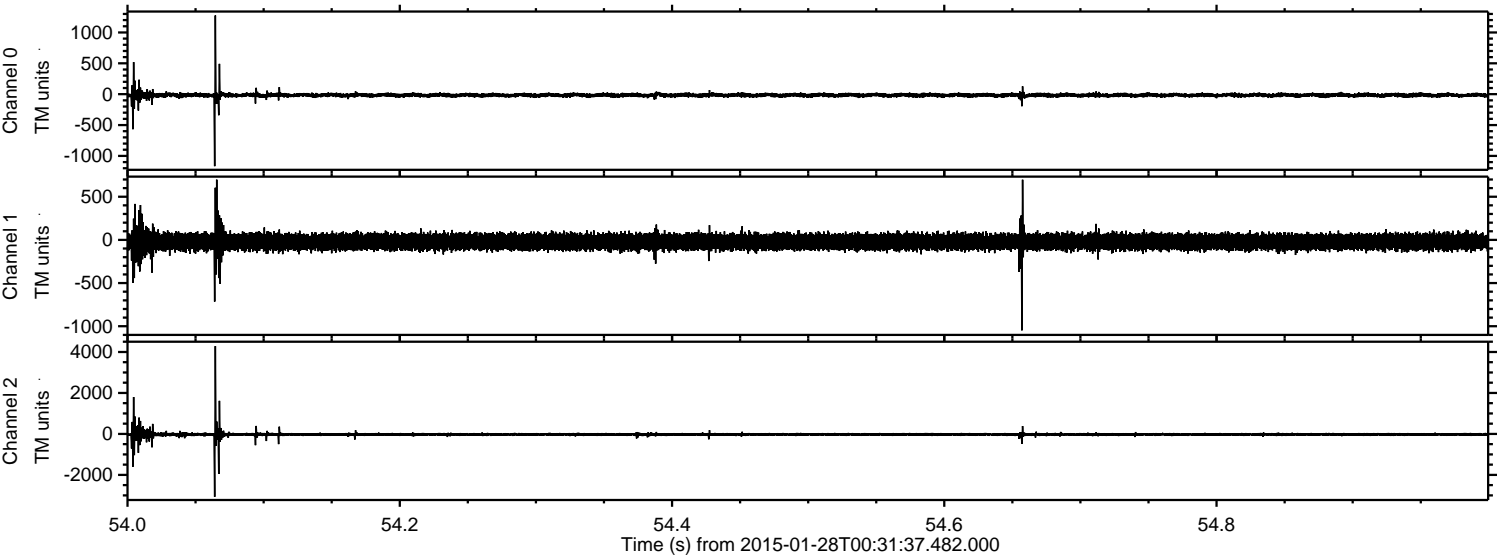


ELMAVAN 3D WAVEFORMS (Measured data sampled at 50 kHz) 49807 packets of 144 samples from 2015-01-28T00:31:37.482.000. Part 106/144

Processed Thu Feb 12 00:20:27 2015 by ELM ver.2012-10-06 from 001__elm20150128_003136__dat00.bin



Processed Thu Feb 12 00:20:28 2015 by ELM ver.2012-10-06 from 001__elm20150128_003136__dat00.bin



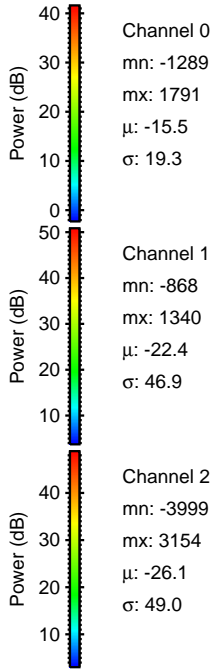
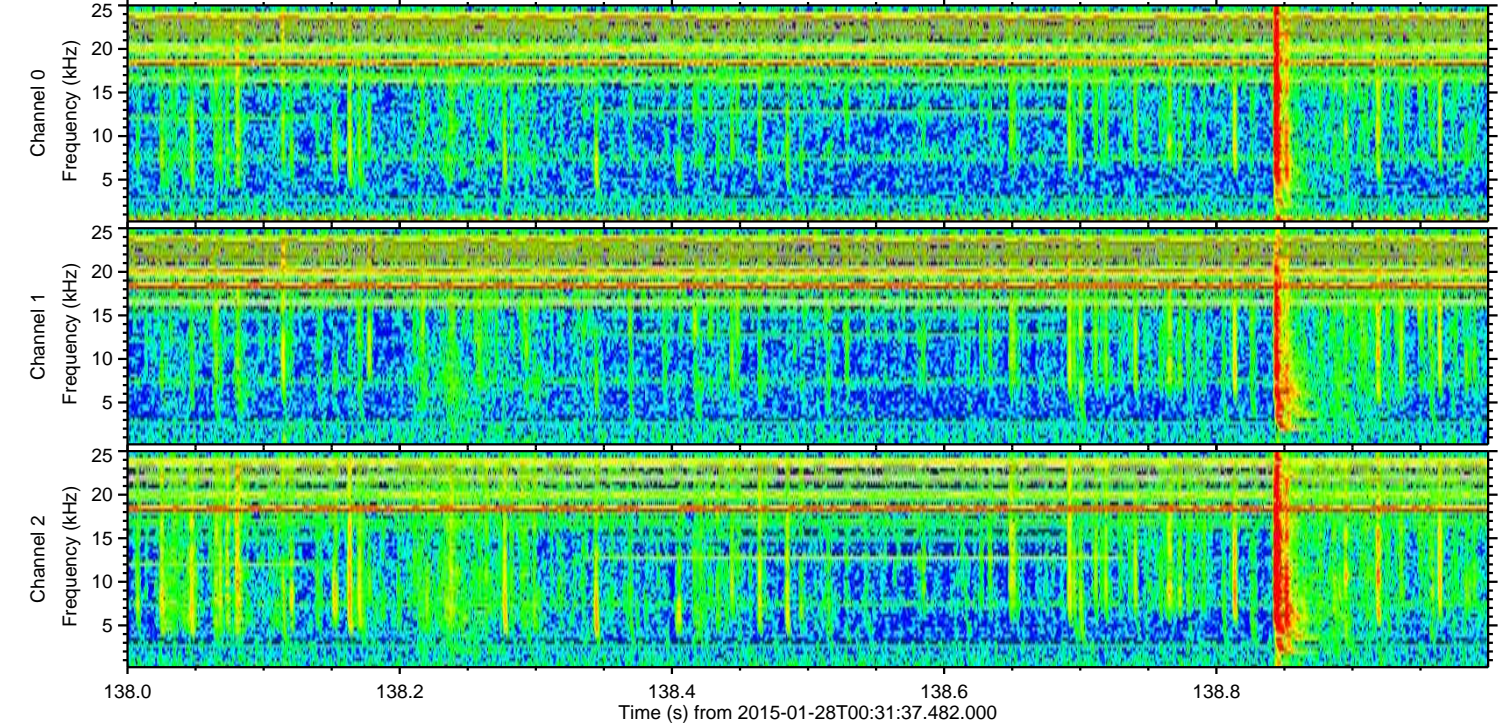
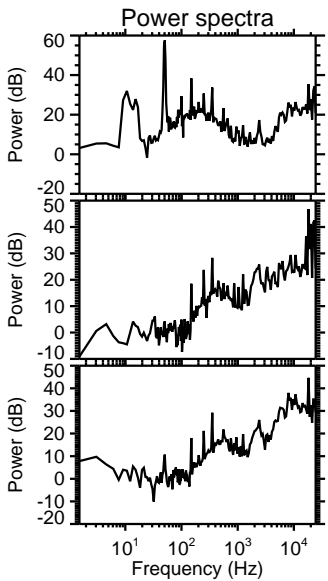
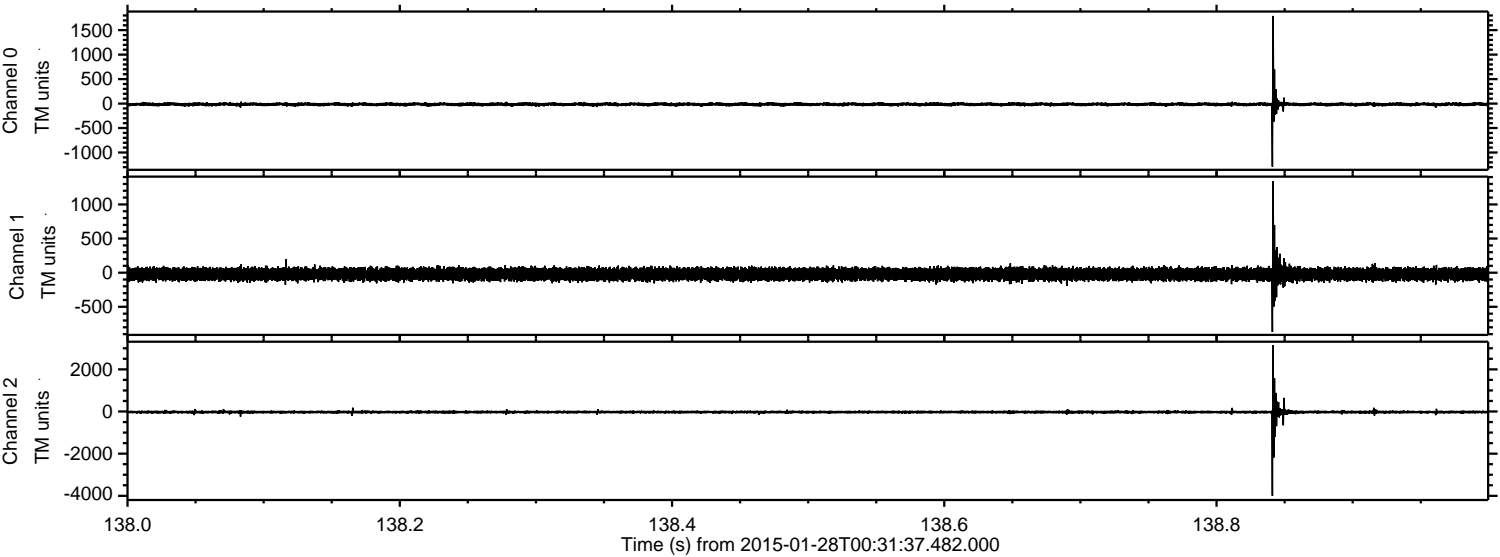
Channel 0
mn: -1167
mx: 1275
 μ : -15.5
 σ : 20.7

Channel 1
mn: -1048
mx: 698
 μ : -22.3
 σ : 50.1

Channel 2
mn: -3072
mx: 4287
 μ : -26.0
 σ : 57.7

ELMAVAN 3D WAVEFORMS (Measured data sampled at 50 kHz) 49807 packets of 144 samples from 2015-01-28T00:31:37.482.000. Part 139/144

Processed Thu Feb 12 00:20:29 2015 by ELM ver.2012-10-06 from 001__elm20150128_003136__dat00.bin



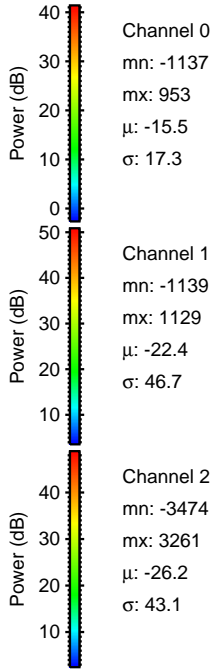
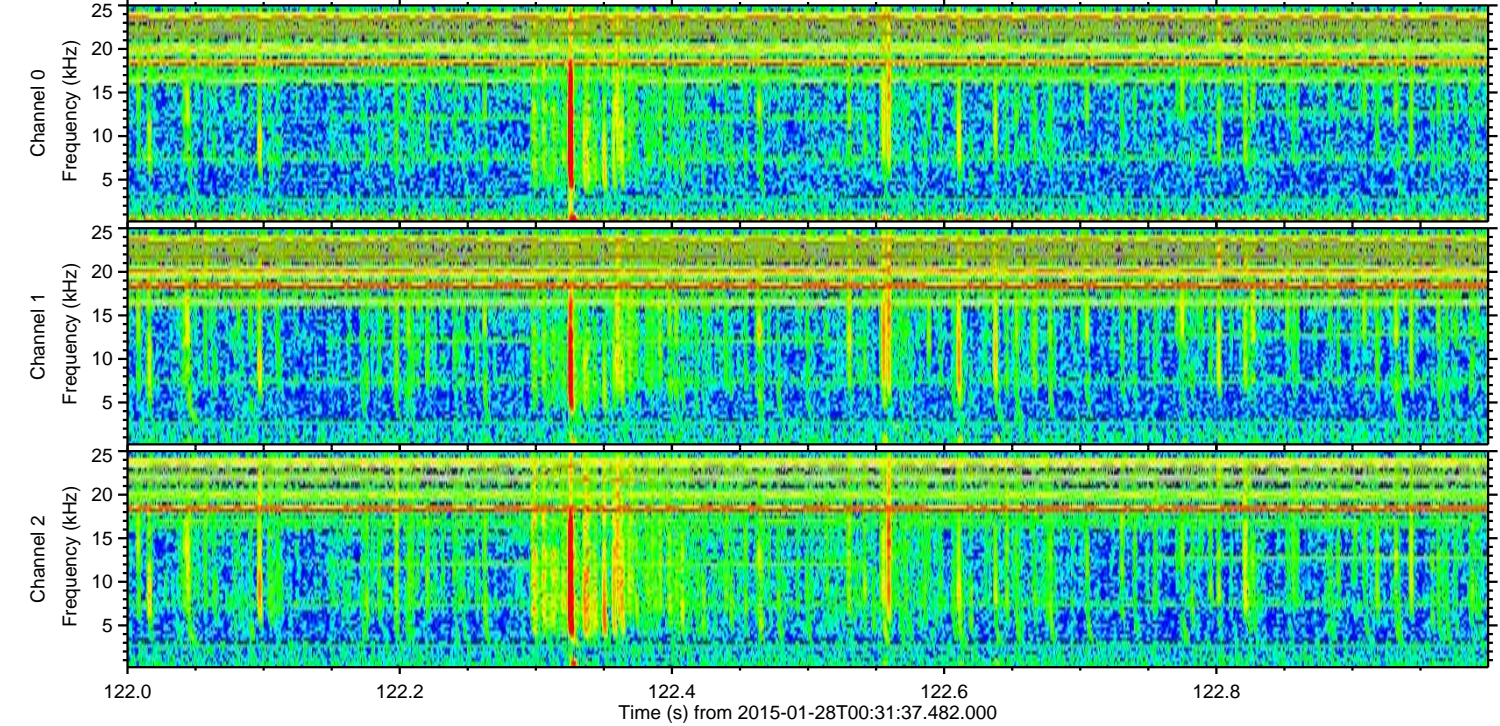
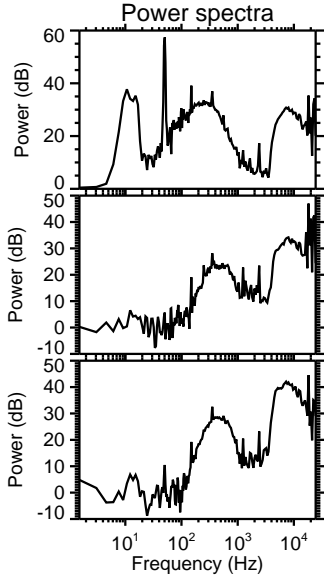
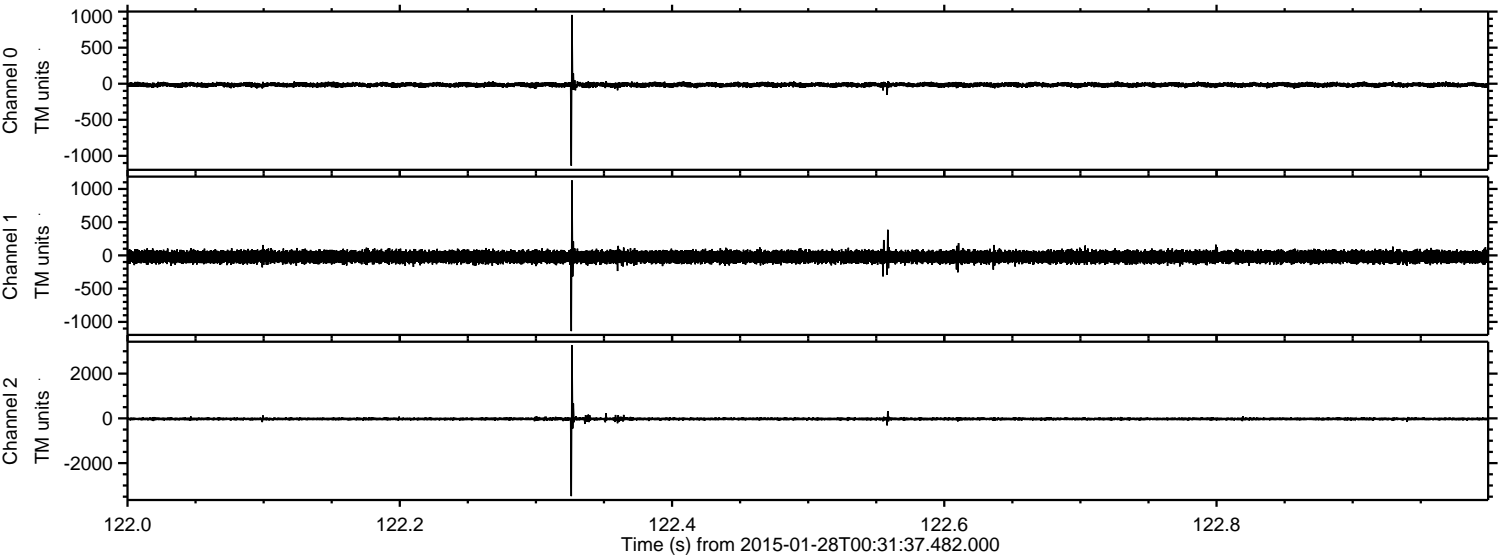
Channel 0
mn: -1289
mx: 1791
 μ : -15.5
 σ : 19.3

Channel 1
mn: -868
mx: 1340
 μ : -22.4
 σ : 46.9

Channel 2
mn: -3999
mx: 3154
 μ : -26.1
 σ : 49.0

ELMAVAN 3D WAVEFORMS (Measured data sampled at 50 kHz) 49807 packets of 144 samples from 2015-01-28T00:31:37.482.000. Part 123/144

Processed Thu Feb 12 00:20:30 2015 by ELM ver.2012-10-06 from 001__elm20150128_003136__dat00.bin



Processed Thu Feb 12 00:20:31 2015 by ELM ver.2012-10-06 from 001__elm20150128_003136__dat00.bin

