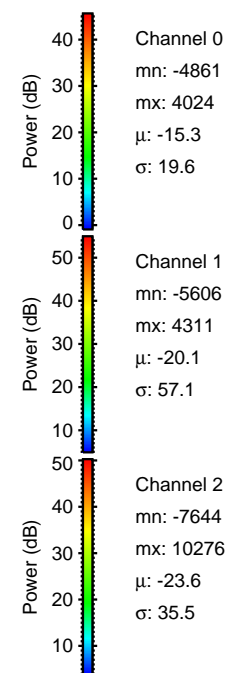
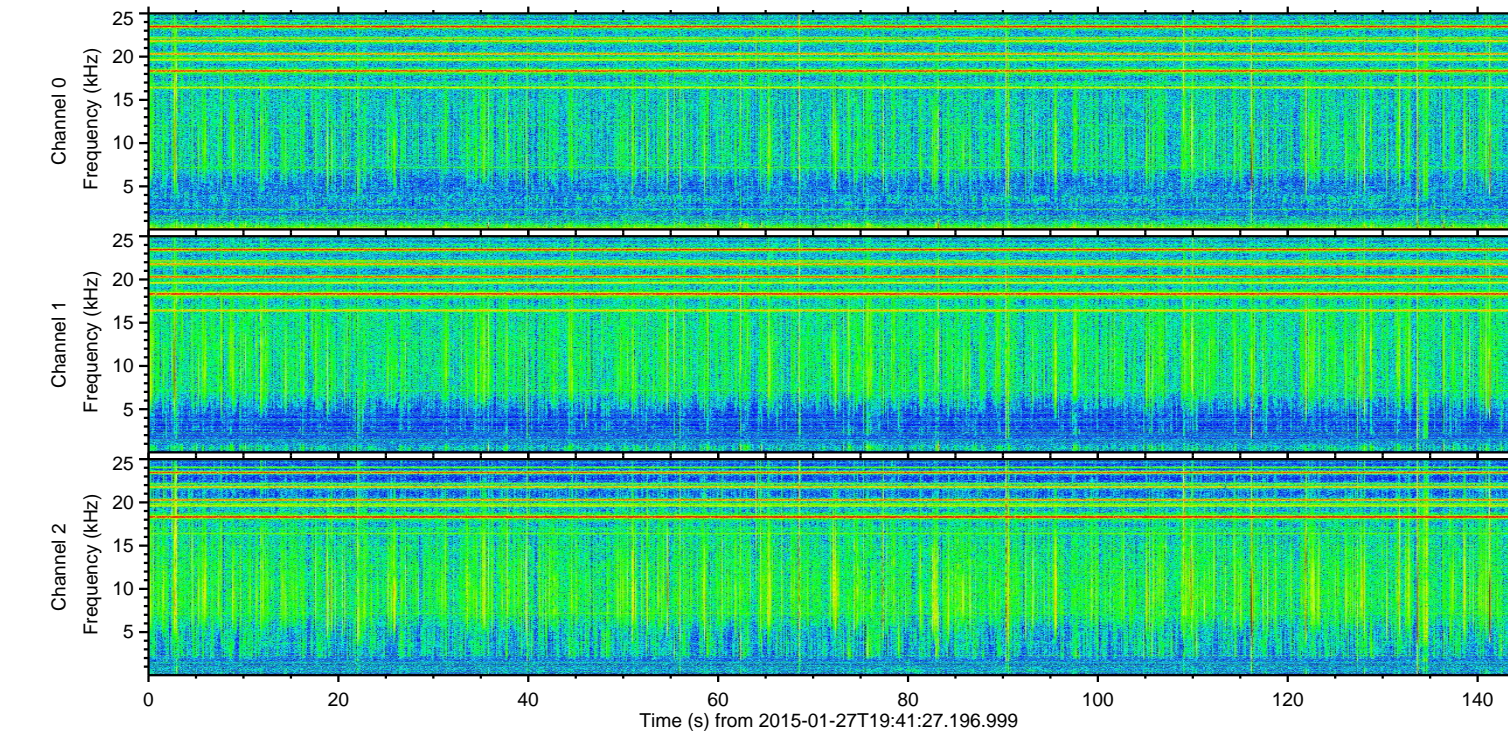
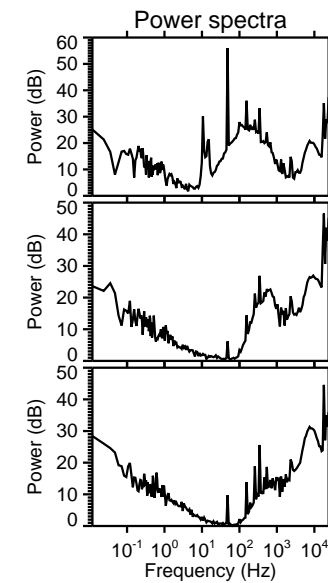
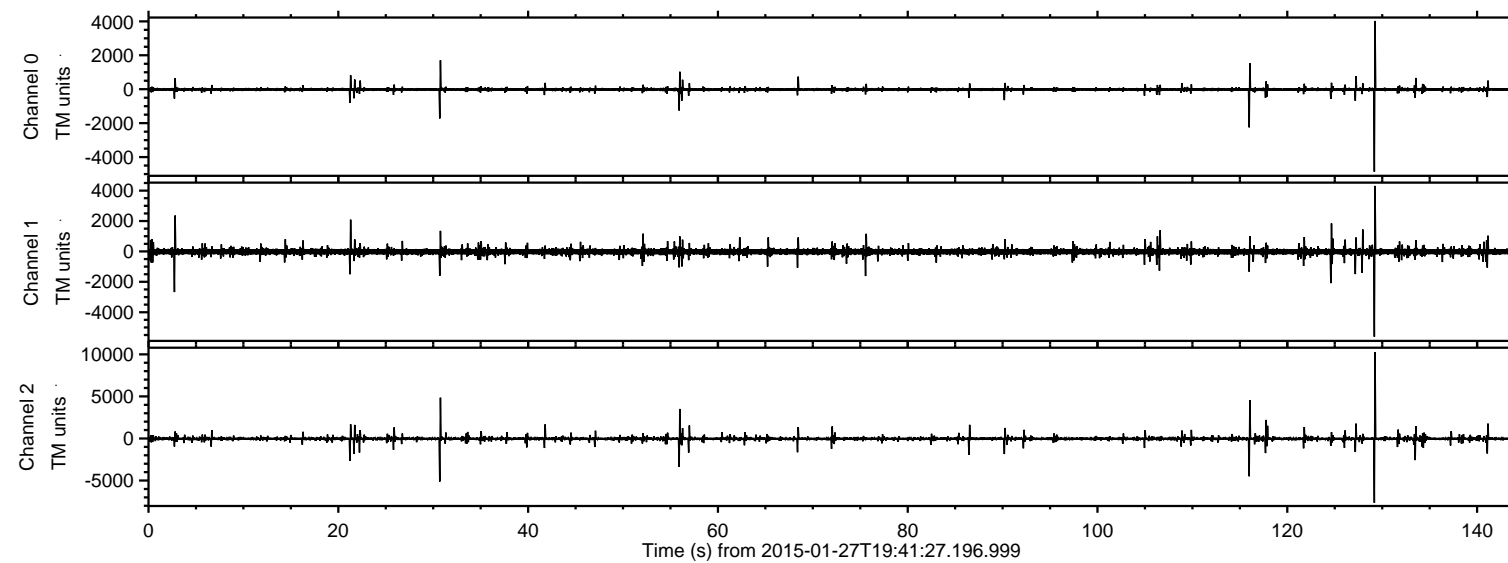


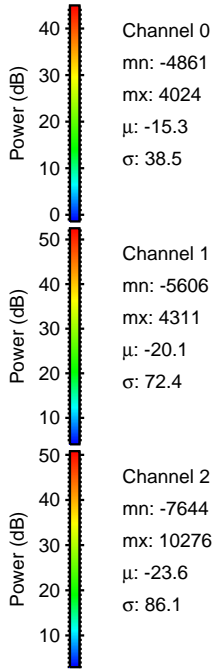
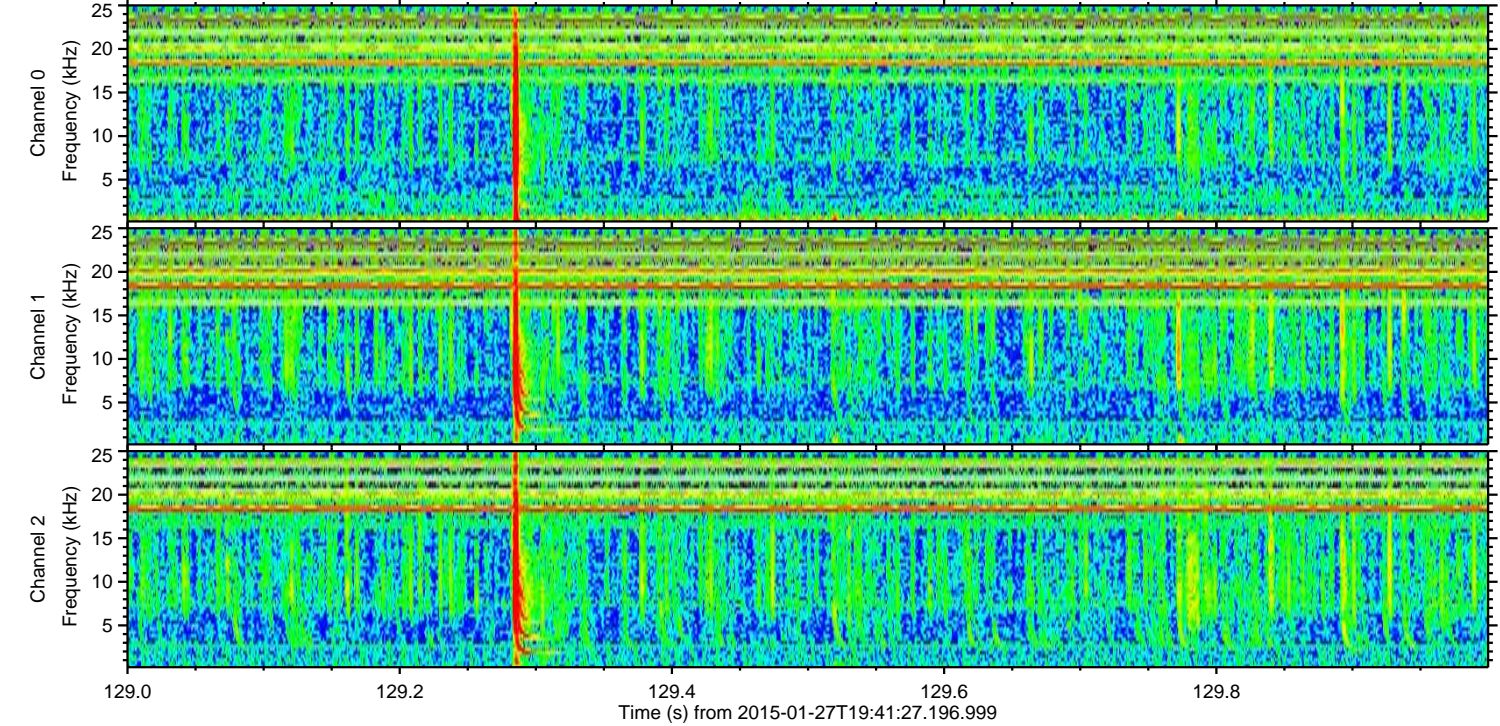
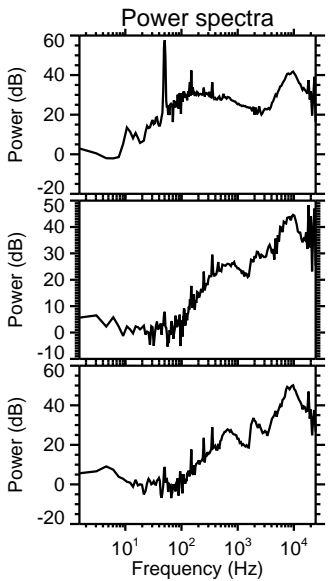
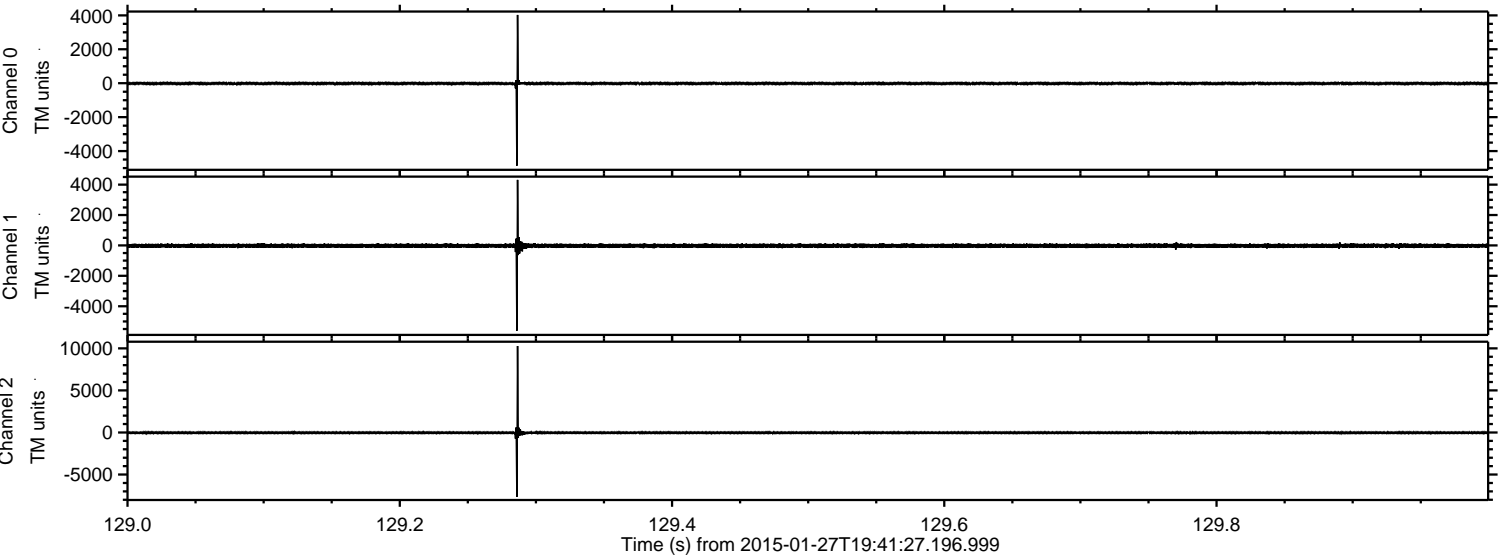
ELMAVAN 3D WAVEFORMS (Measured data sampled at 50 kHz) 49783 packets of 144 samples from 2015-01-27T19:41:27.196.999.

Processed Wed Feb 11 23:11:57 2015 by ELM ver.2012-10-06 from 001__elm20150127_194126__dat00.bin

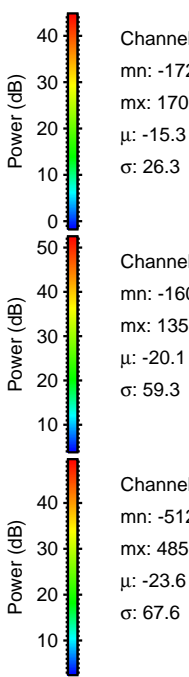
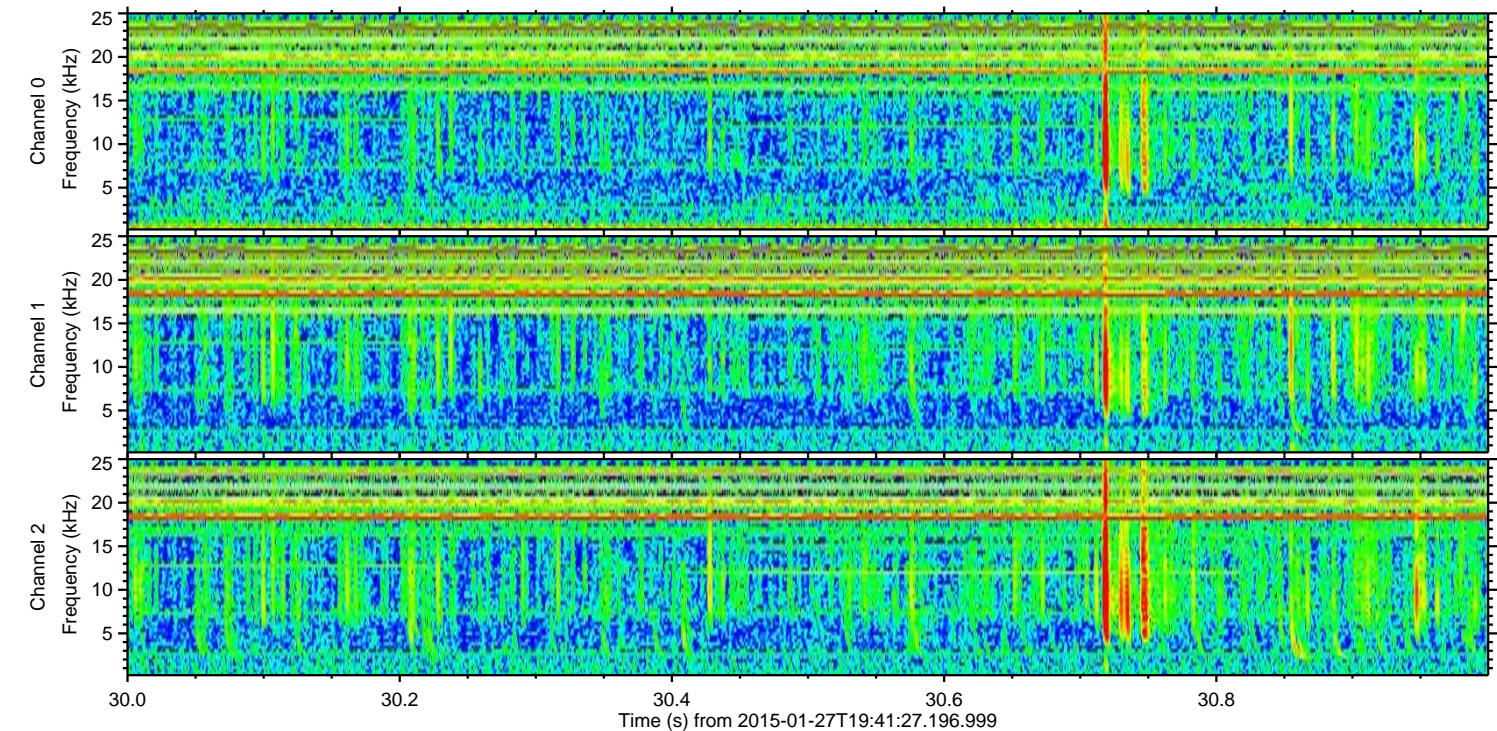
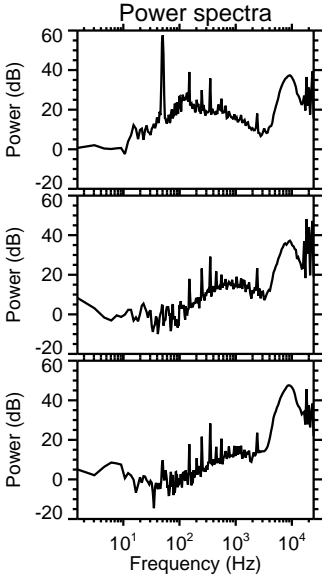
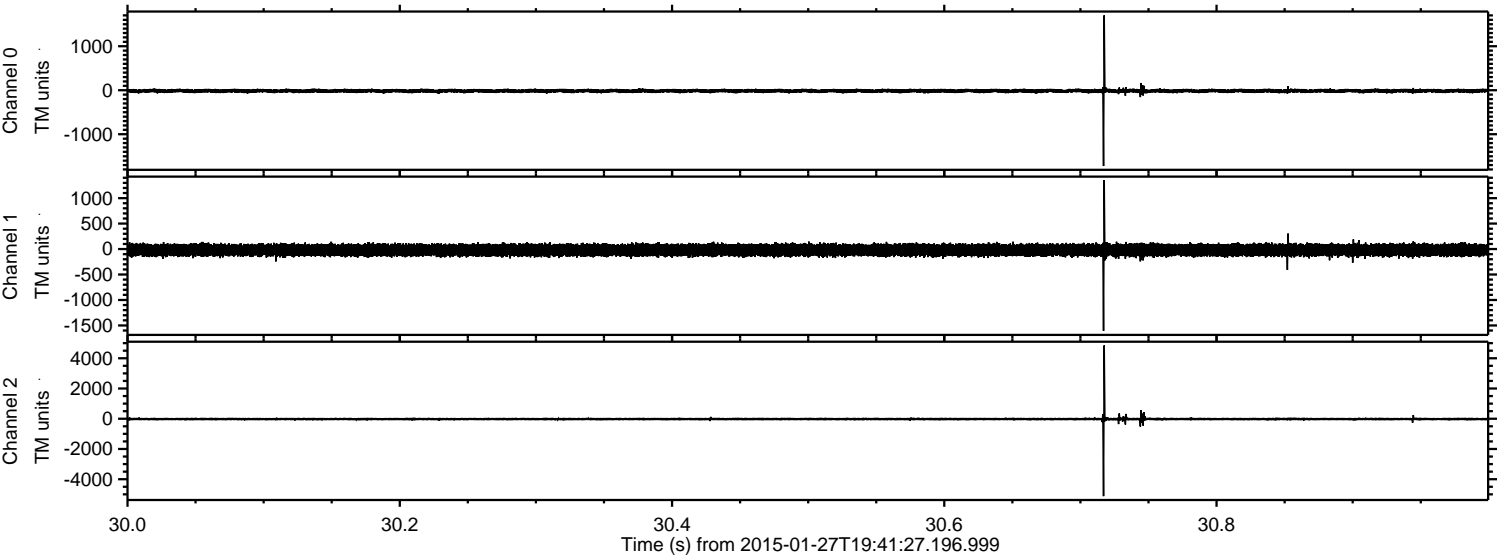


ELMAVAN 3D WAVEFORMS (Measured data sampled at 50 kHz) 49783 packets of 144 samples from 2015-01-27T19:41:27.196.999. Part 130/144

Processed Wed Feb 11 23:12:09 2015 by ELM ver.2012-10-06 from 001__elm20150127_194126__dat00.bin



Processed Wed Feb 11 23:12:10 2015 by ELM ver.2012-10-06 from 001__elm20150127_194126__dat00.bin



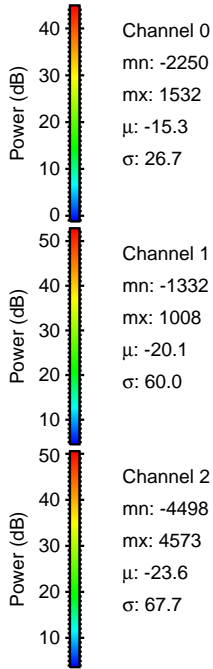
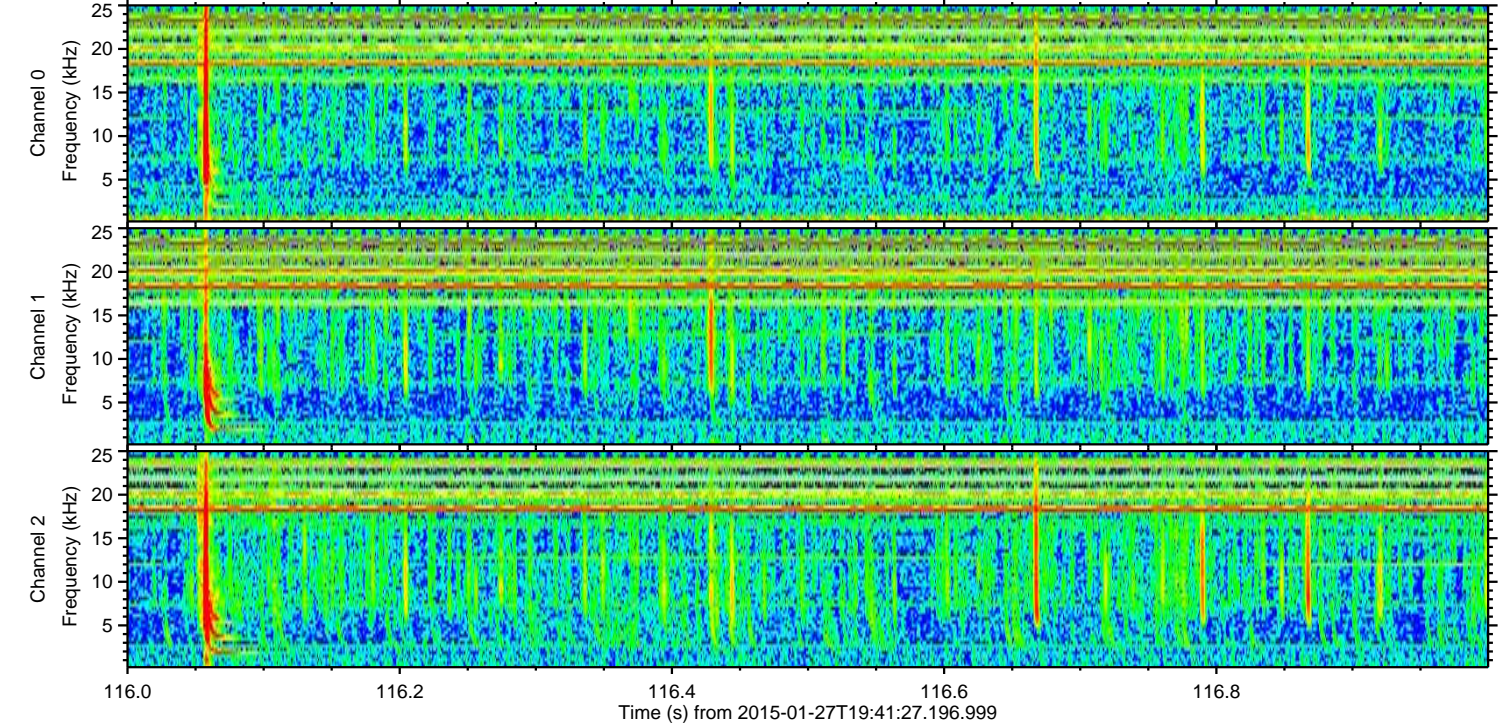
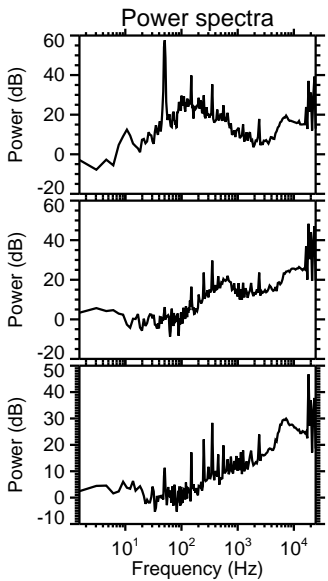
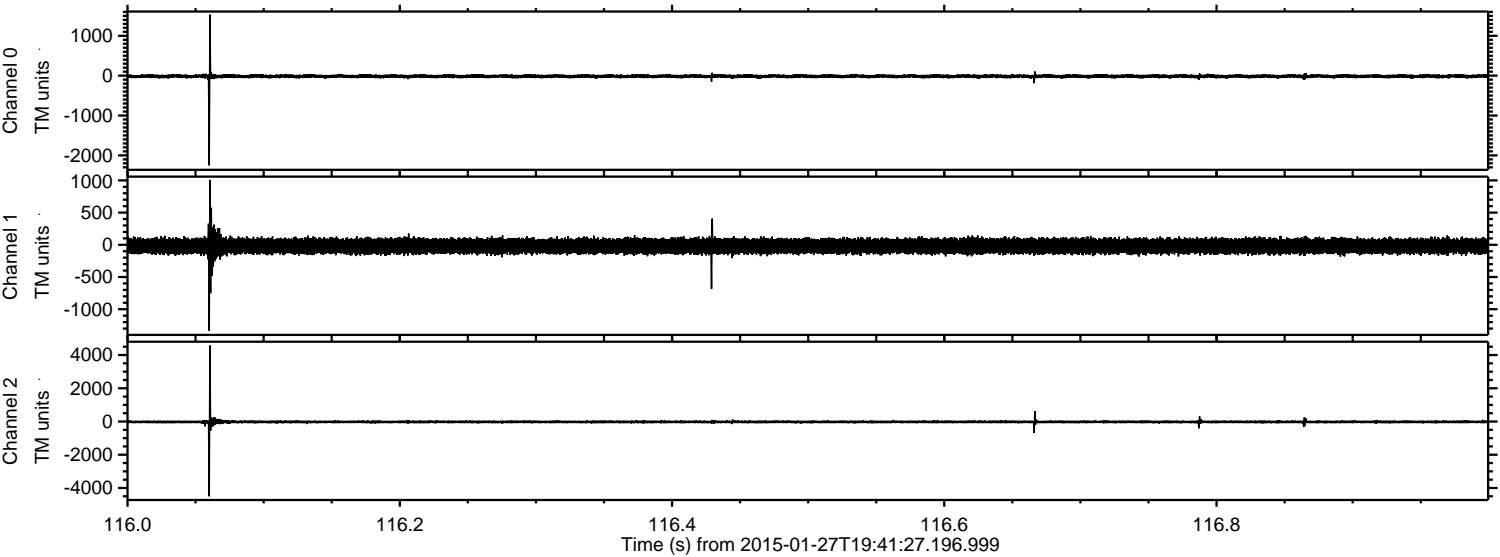
Channel 0
mn: -1722
mx: 1703
 μ : -15.3
 σ : 26.3

Channel 1
mn: -1606
mx: 1355
 μ : -20.1
 σ : 59.3

Channel 2
mn: -5120
mx: 4850
 μ : -23.6
 σ : 67.6

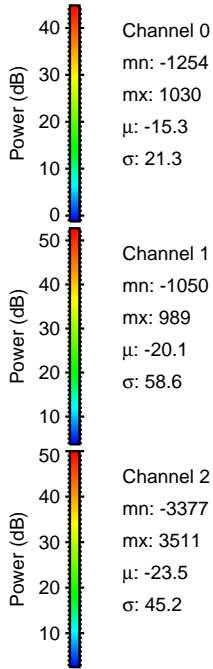
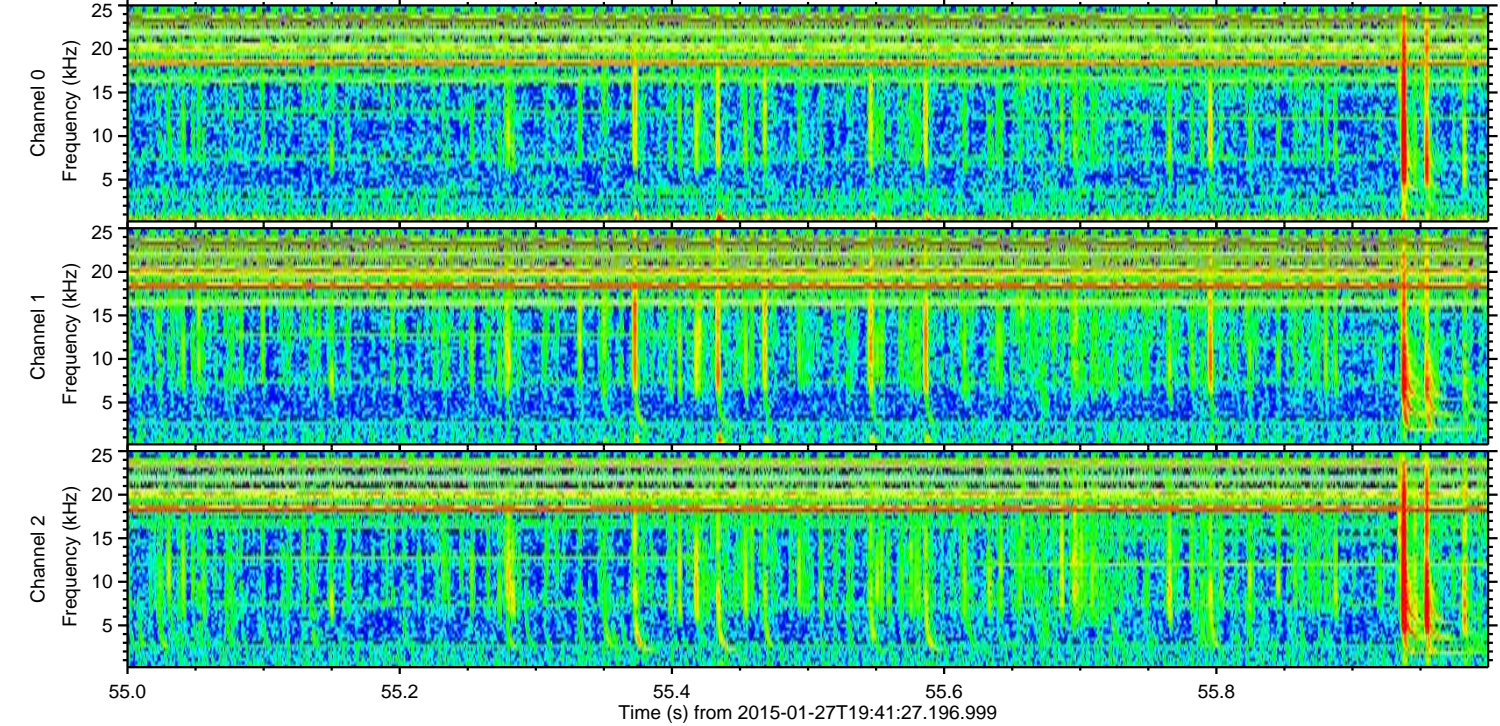
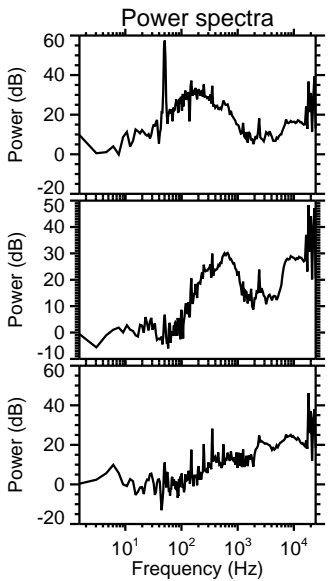
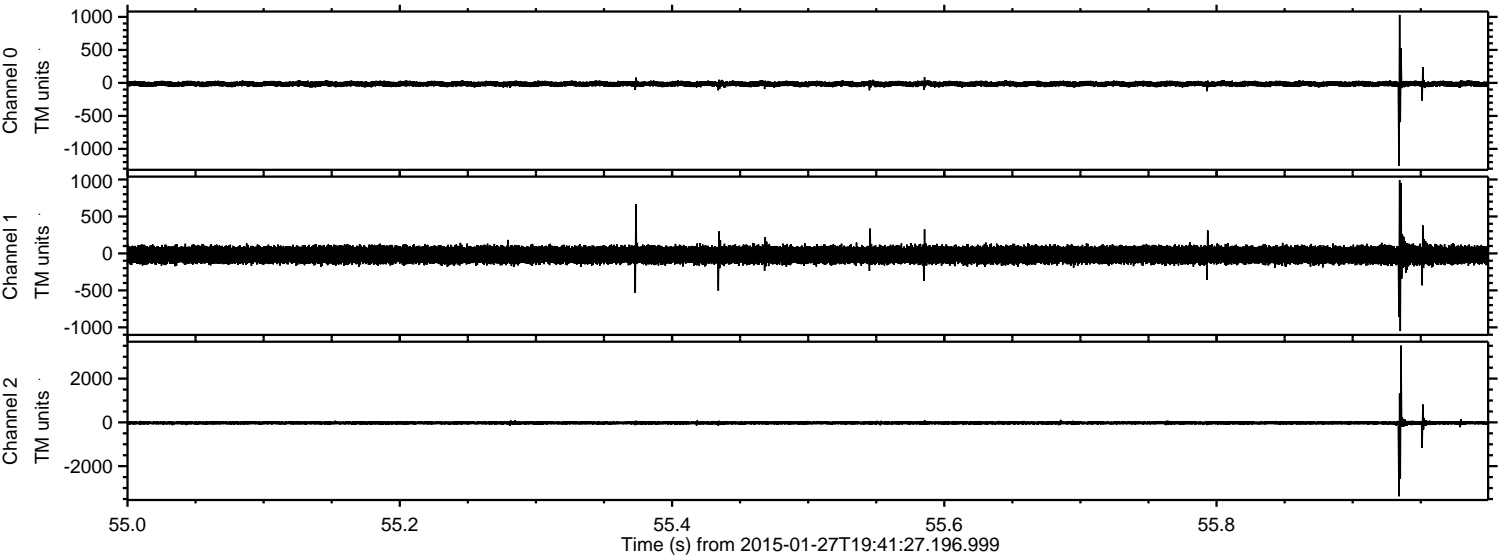
ELMAVAN 3D WAVEFORMS (Measured data sampled at 50 kHz) 49783 packets of 144 samples from 2015-01-27T19:41:27.196.999. Part 117/144

Processed Wed Feb 11 23:12:11 2015 by ELM ver.2012-10-06 from 001__elm20150127_194126__dat00.bin



ELMAVAN 3D WAVEFORMS (Measured data sampled at 50 kHz) 49783 packets of 144 samples from 2015-01-27T19:41:27.196.999. Part 56/144

Processed Wed Feb 11 23:12:12 2015 by ELM ver.2012-10-06 from 001__elm20150127_194126__dat00.bin



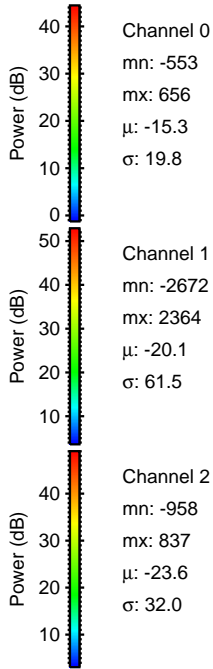
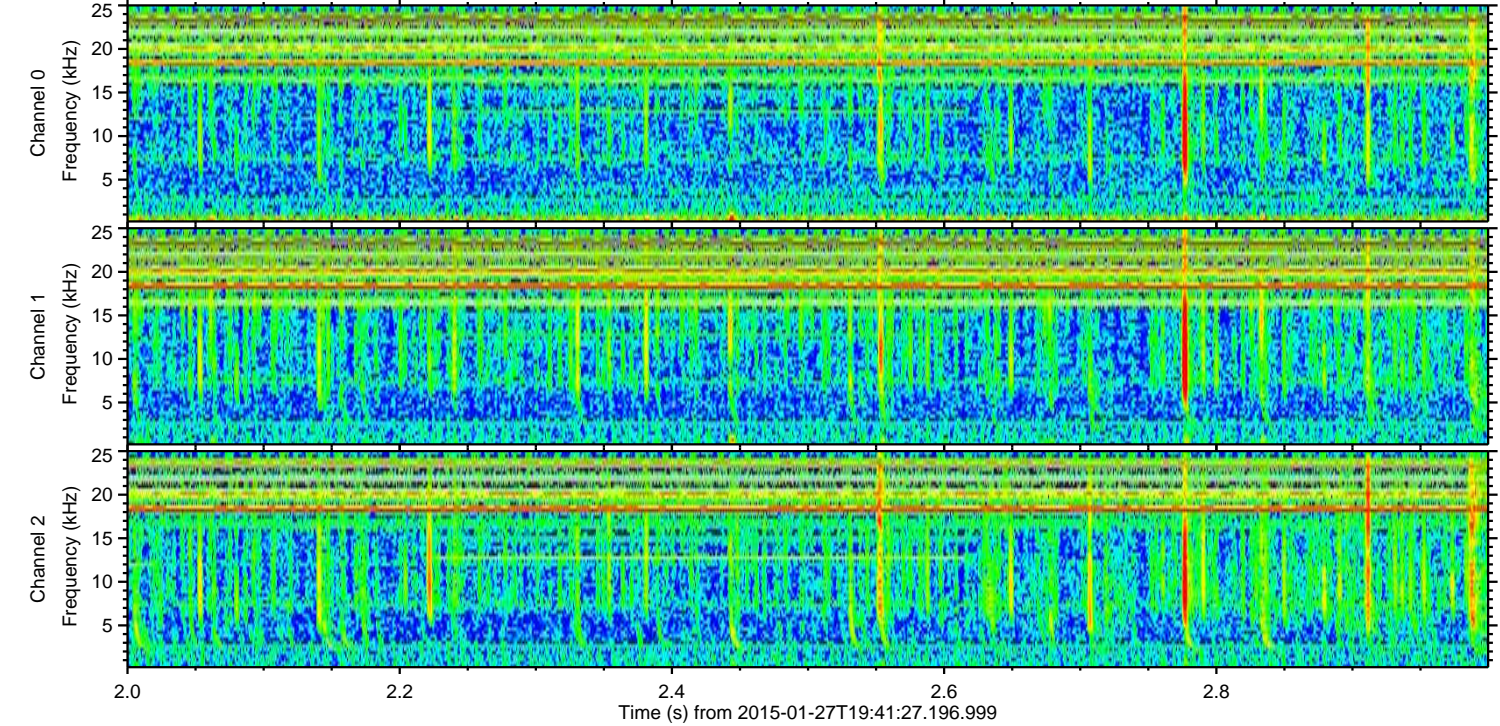
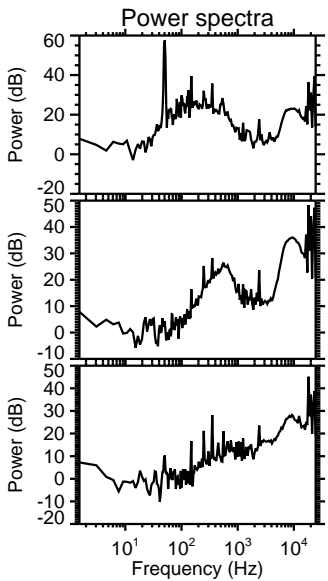
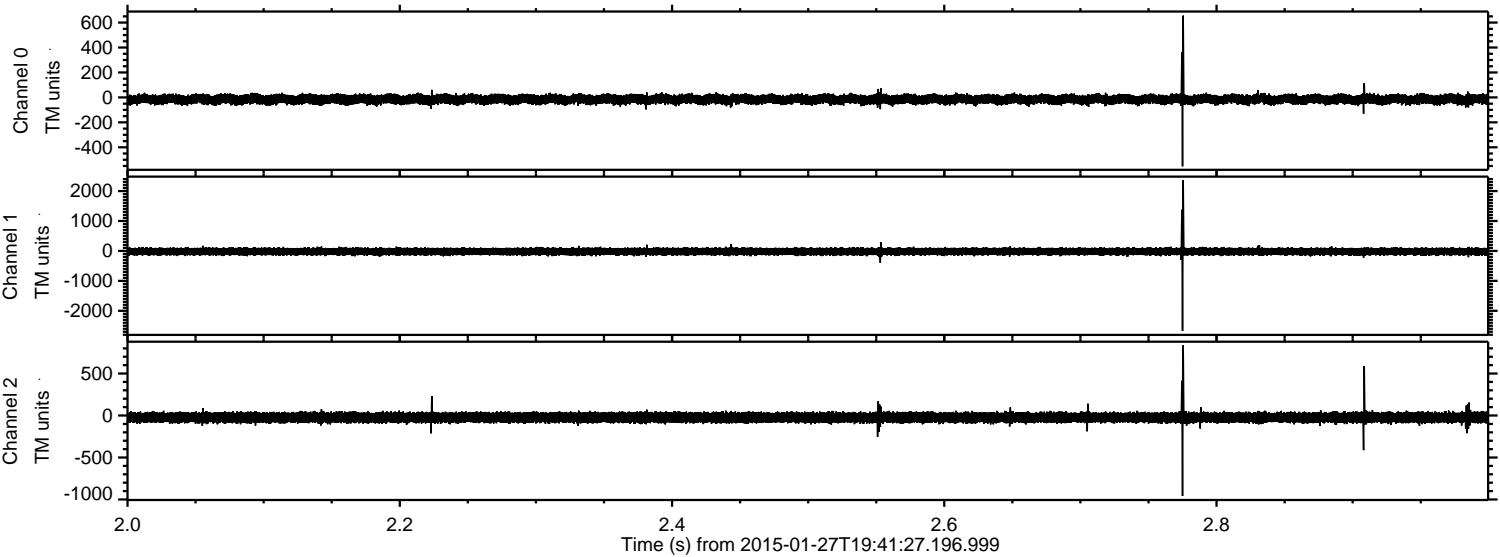
Channel 0
mn: -1254
mx: 1030
μ: -15.3
σ: 21.3

Channel 1
mn: -1050
mx: 989
μ: -20.1
σ: 58.6

Channel 2
mn: -3377
mx: 3511
μ: -23.5
σ: 45.2

ELMAVAN 3D WAVEFORMS (Measured data sampled at 50 kHz) 49783 packets of 144 samples from 2015-01-27T19:41:27.196.999. Part 3/144

Processed Wed Feb 11 23:12:13 2015 by ELM ver.2012-10-06 from 001__elm20150127_194126__dat00.bin

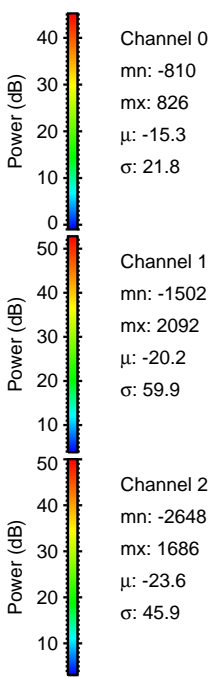
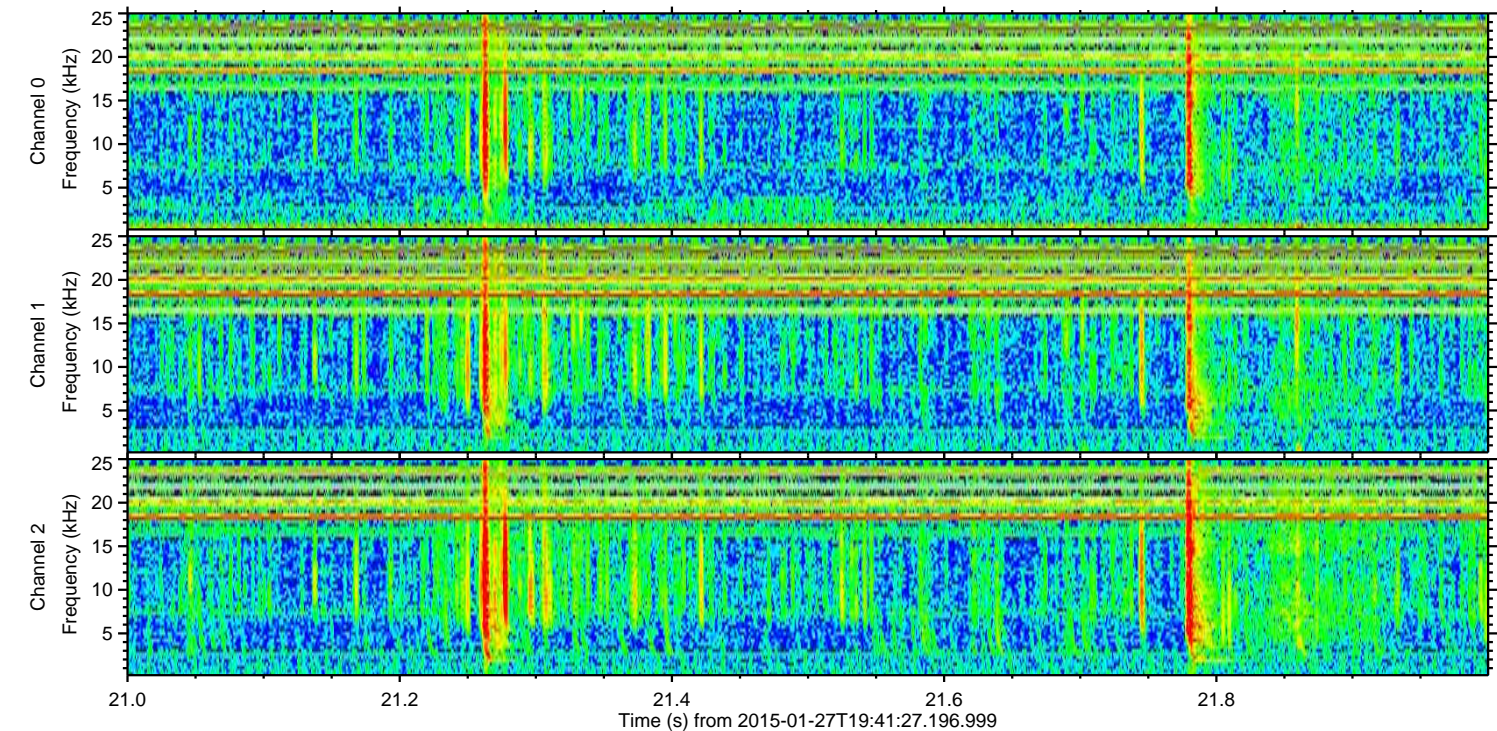
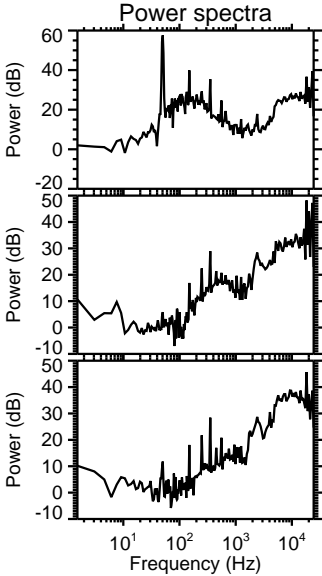
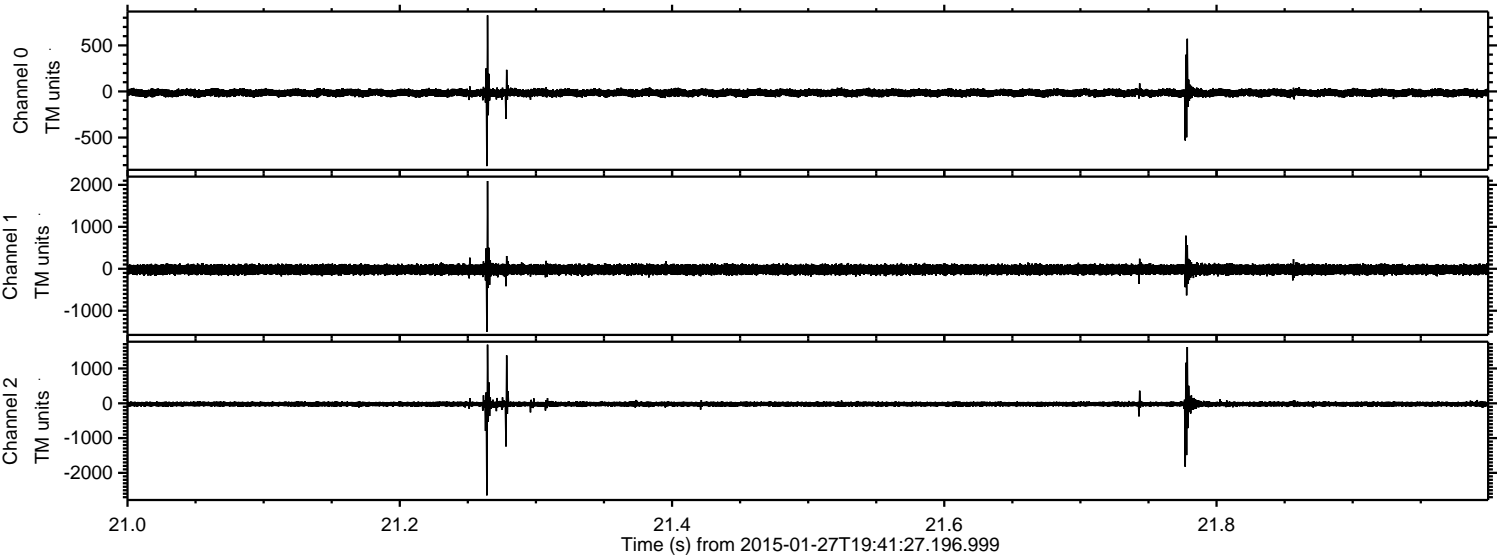


Channel 0
mn: -553
mx: 656
 μ : -15.3
 σ : 19.8

Channel 1
mn: -2672
mx: 2364
 μ : -20.1
 σ : 61.5

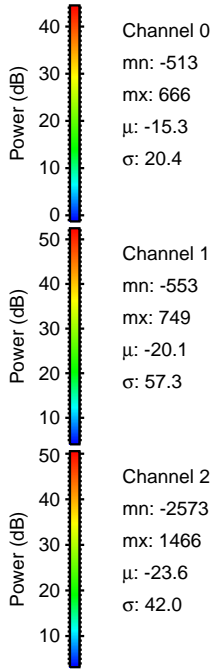
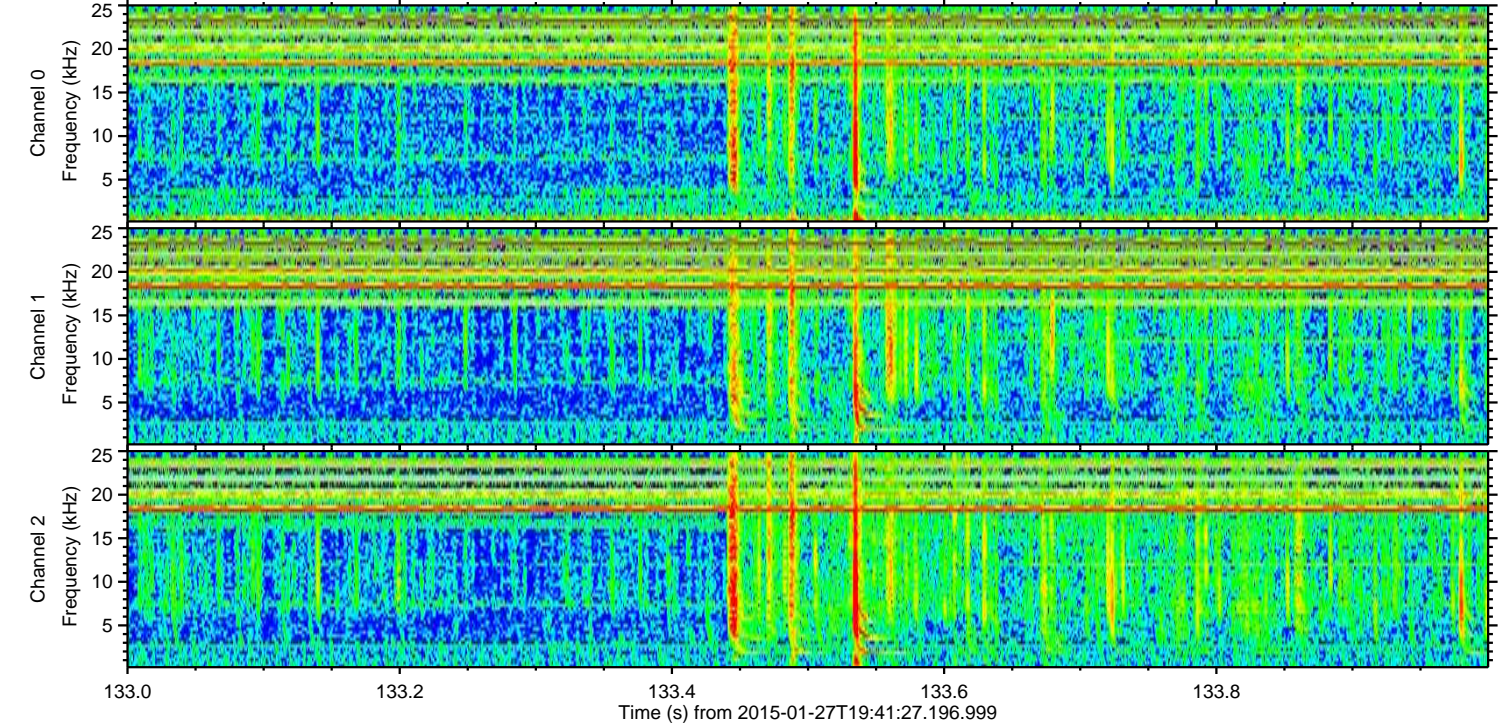
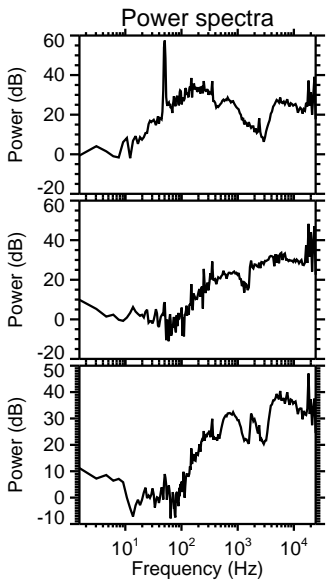
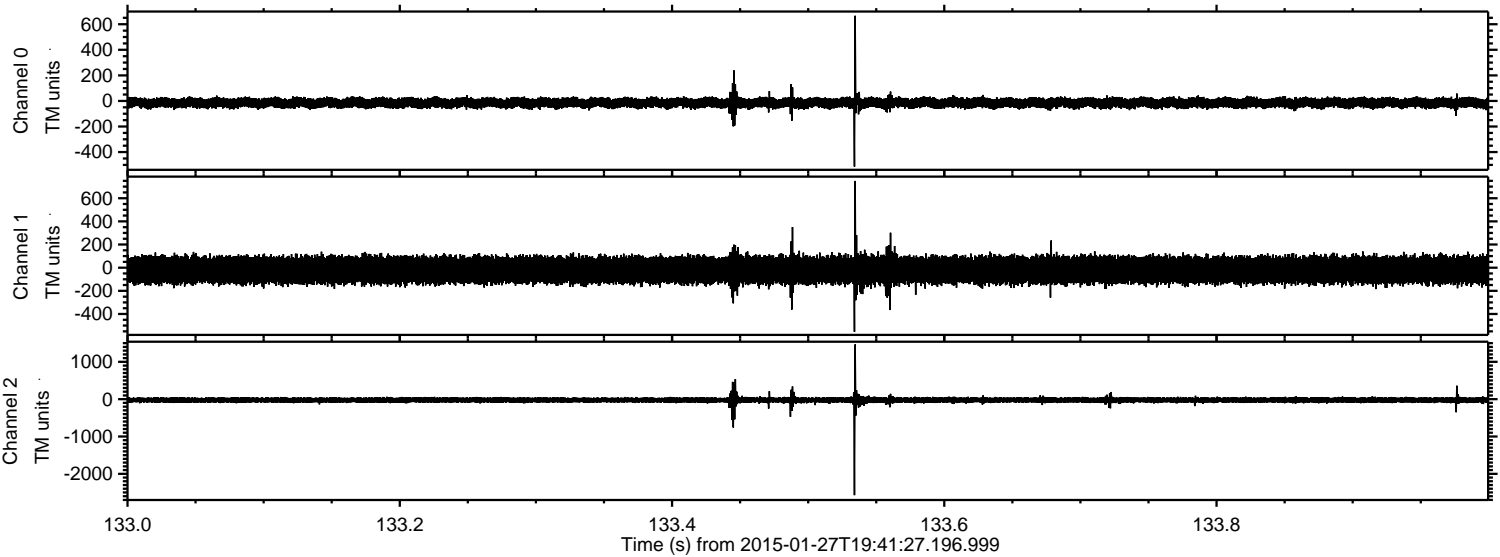
Channel 2
mn: -958
mx: 837
 μ : -23.6
 σ : 32.0

Processed Wed Feb 11 23:12:14 2015 by ELM ver.2012-10-06 from 001__elm20150127_194126__dat00.bin



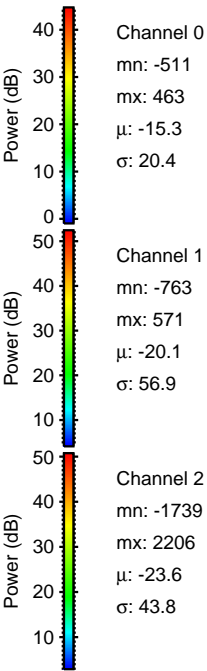
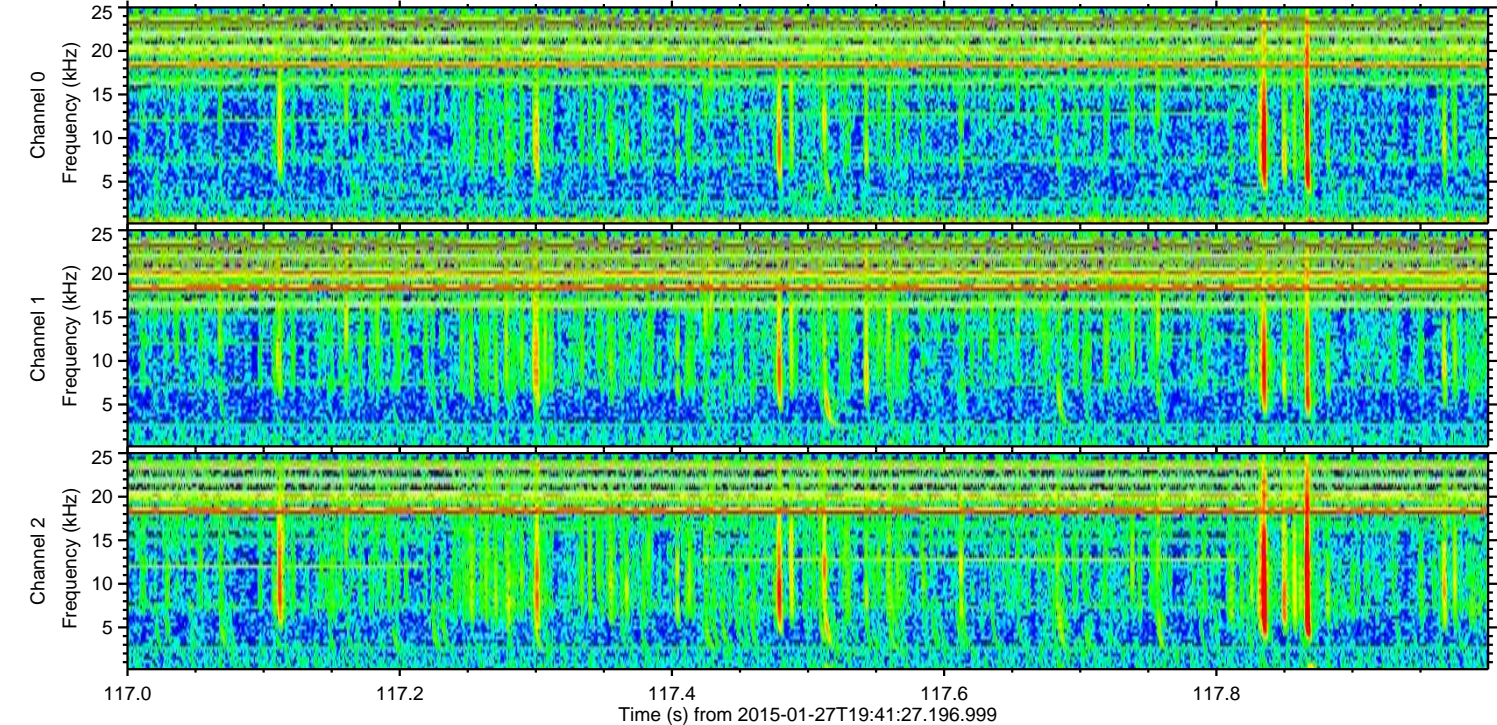
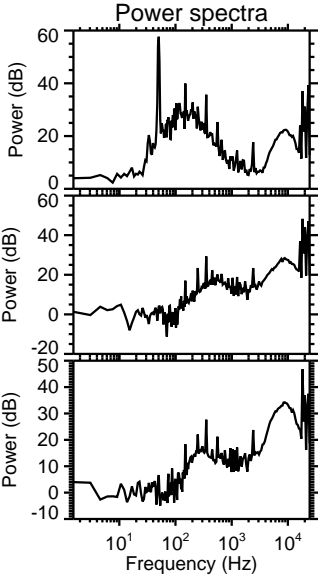
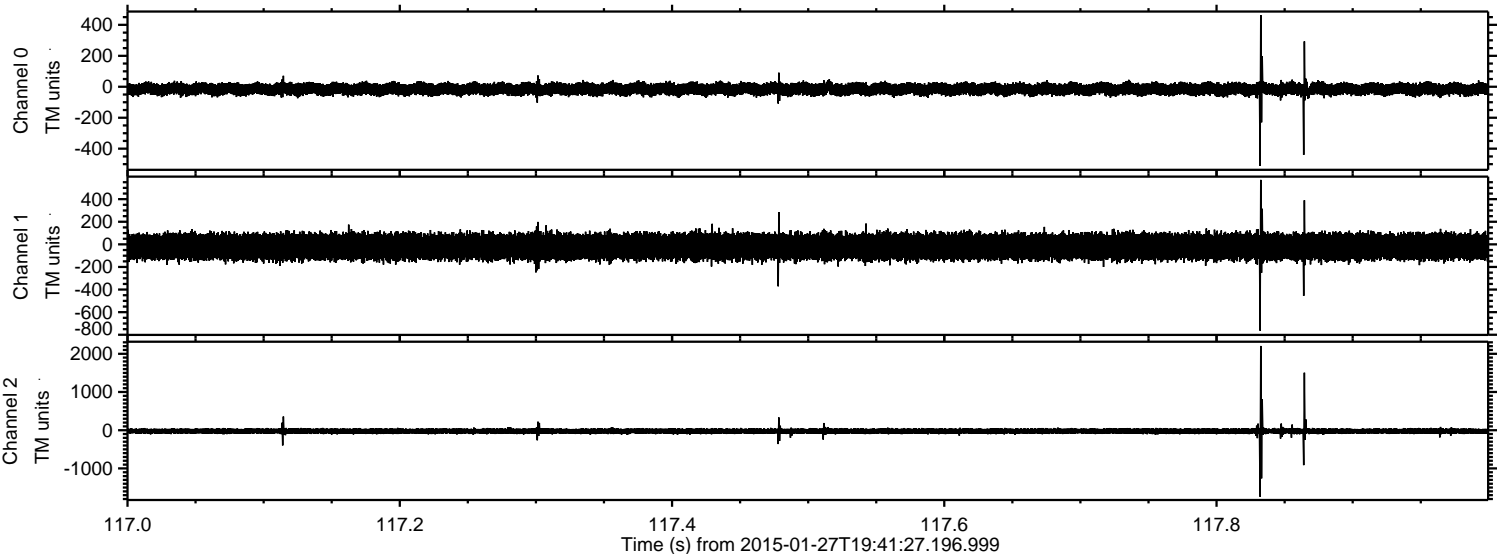
ELMAVAN 3D WAVEFORMS (Measured data sampled at 50 kHz) 49783 packets of 144 samples from 2015-01-27T19:41:27.196.999. Part 134/144

Processed Wed Feb 11 23:12:15 2015 by ELM ver.2012-10-06 from 001__elm20150127_194126__dat00.bin



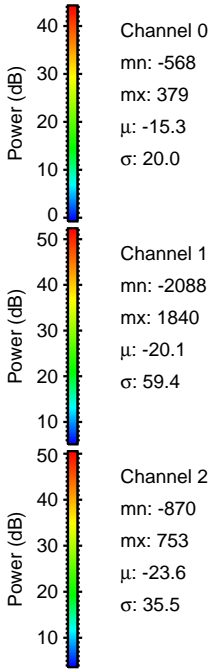
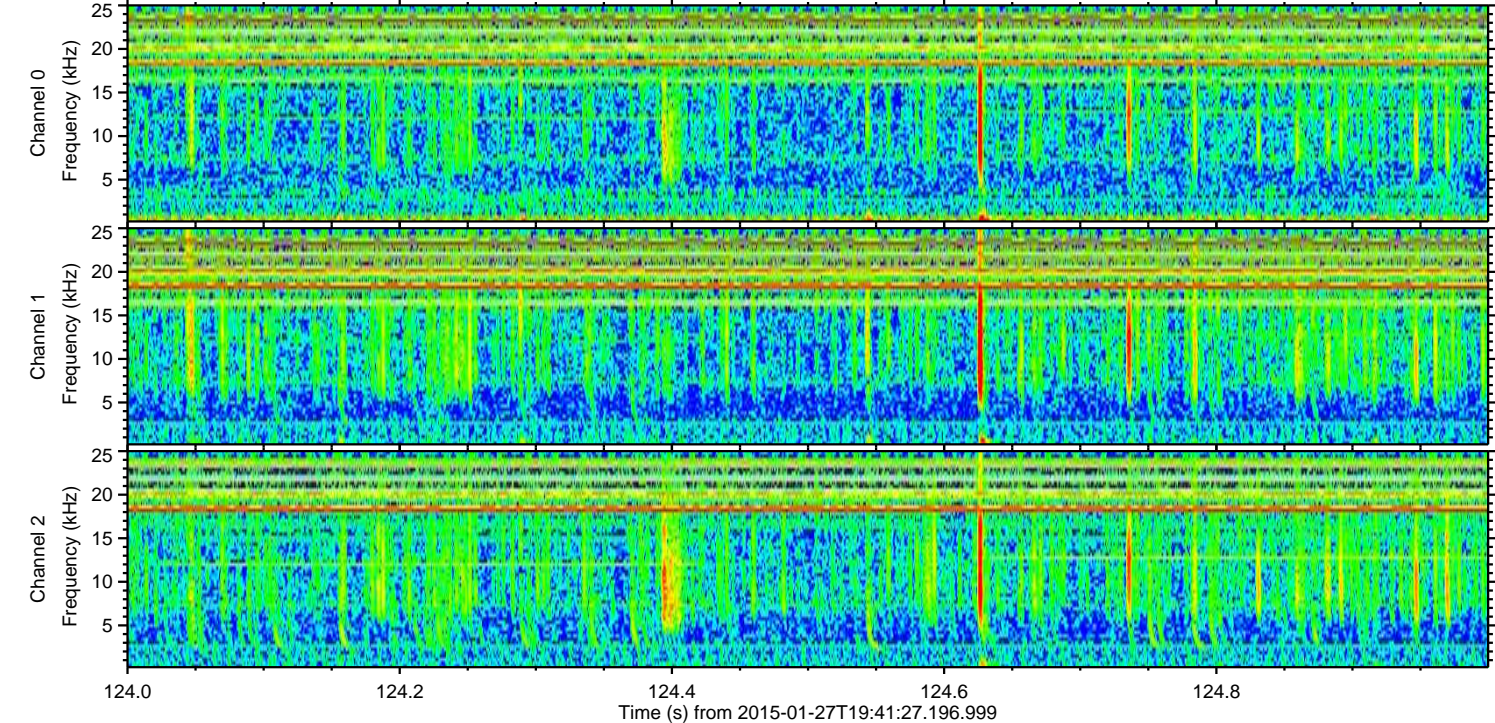
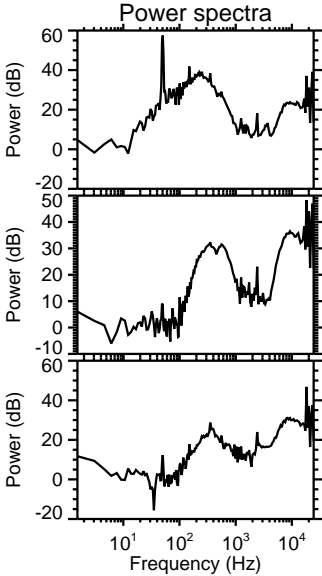
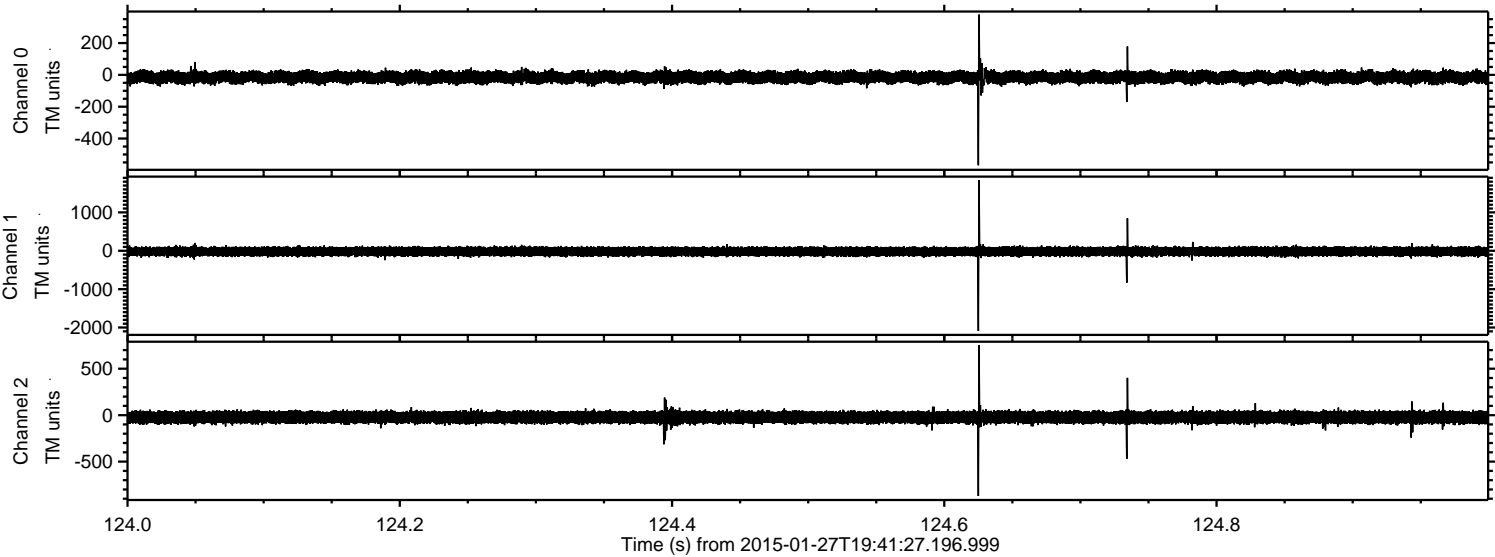
ELMAVAN 3D WAVEFORMS (Measured data sampled at 50 kHz) 49783 packets of 144 samples from 2015-01-27T19:41:27.196.999. Part 118/144

Processed Wed Feb 11 23:12:16 2015 by ELM ver.2012-10-06 from 001__elm20150127_194126__dat00.bin



ELMAVAN 3D WAVEFORMS (Measured data sampled at 50 kHz) 49783 packets of 144 samples from 2015-01-27T19:41:27.196.999. Part 125/144

Processed Wed Feb 11 23:12:17 2015 by ELM ver.2012-10-06 from 001__elm20150127_194126__dat00.bin



ELMAVAN 3D WAVEFORMS (Measured data sampled at 50 kHz) 49783 packets of 144 samples from 2015-01-27T19:41:27.196.999. Part 41/144

Processed Wed Feb 11 23:12:18 2015 by ELM ver.2012-10-06 from 001__elm20150127_194126__dat00.bin

