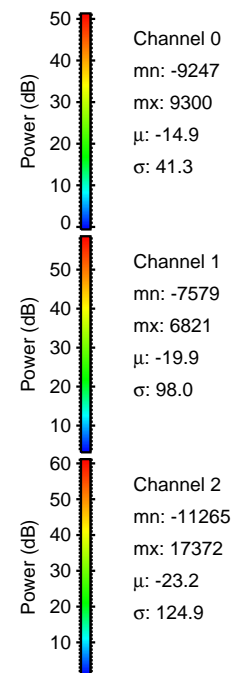
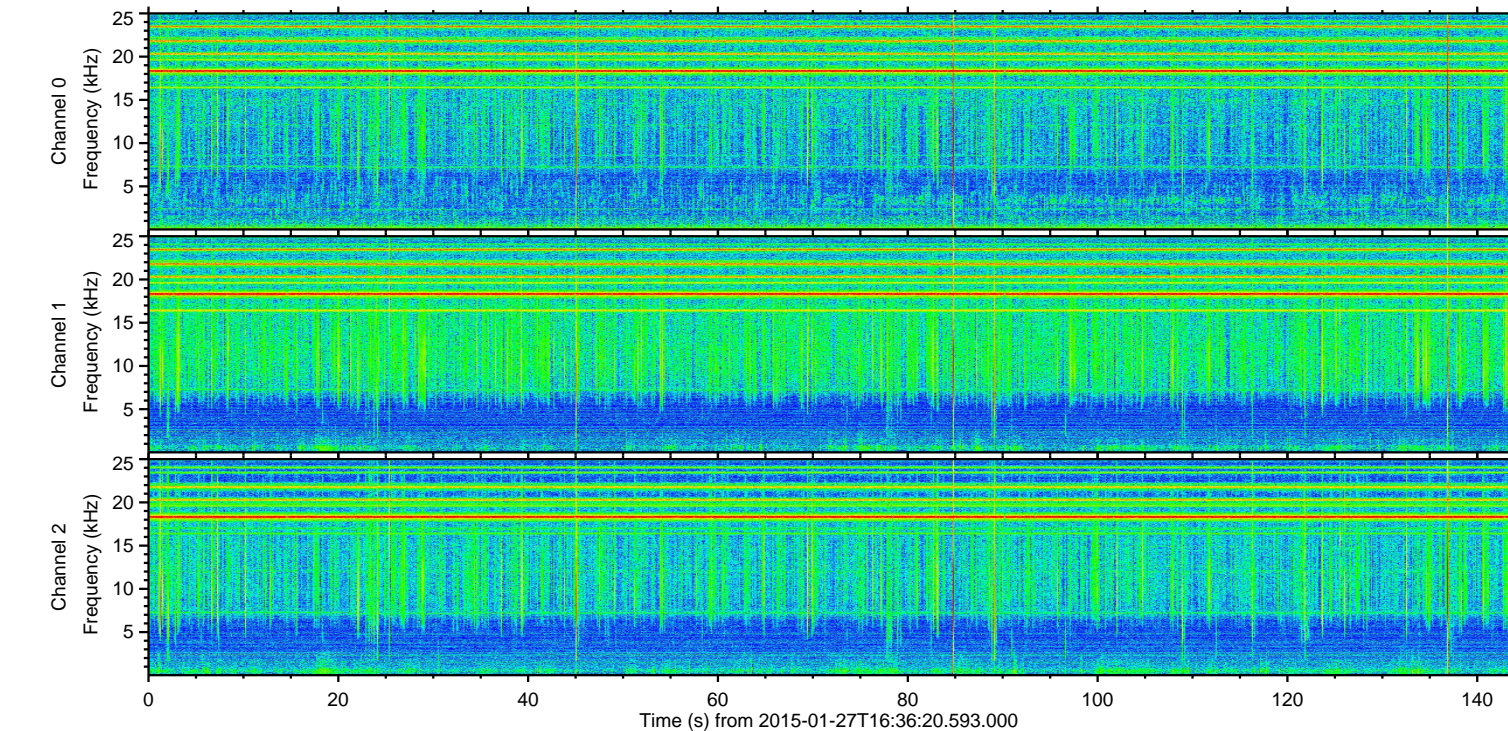
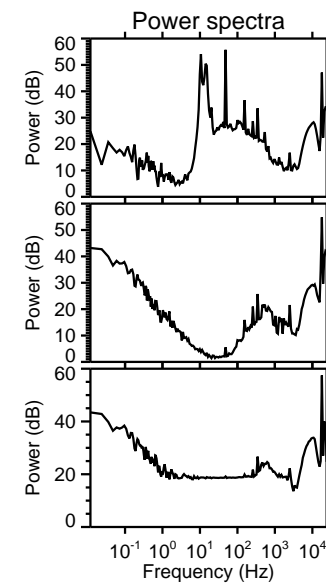
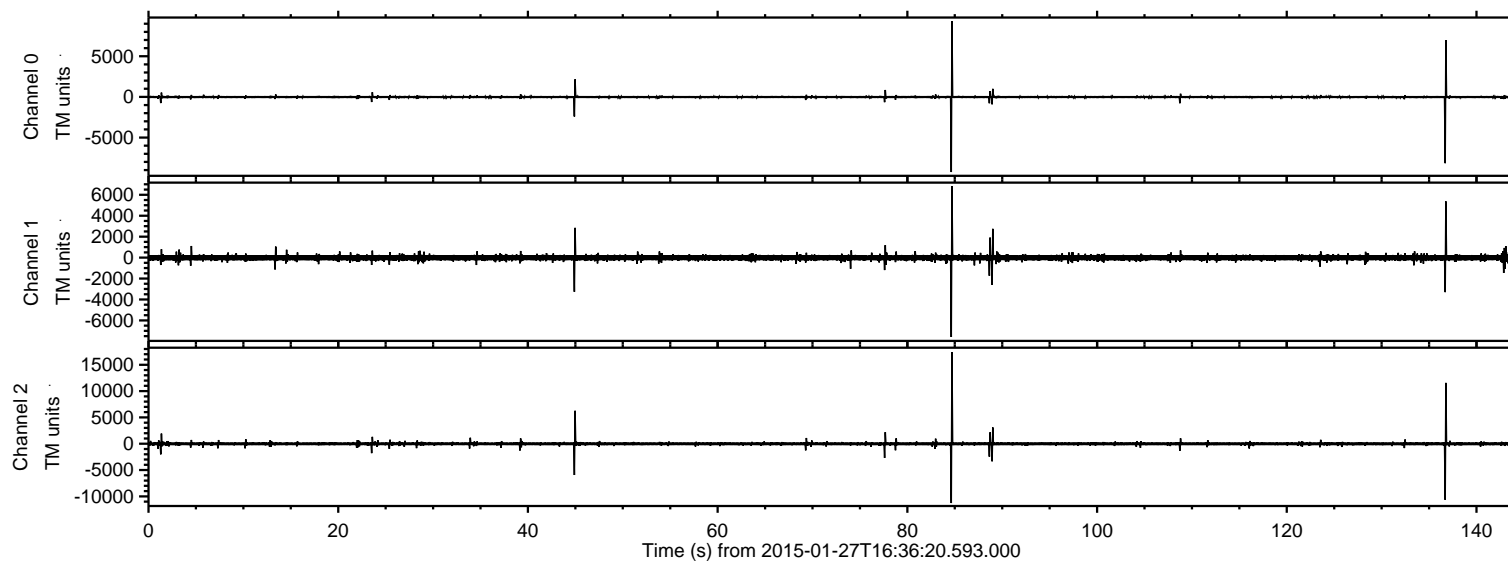
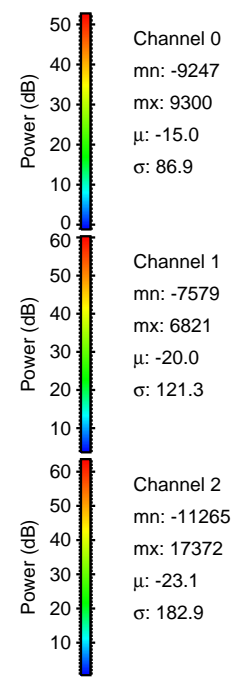
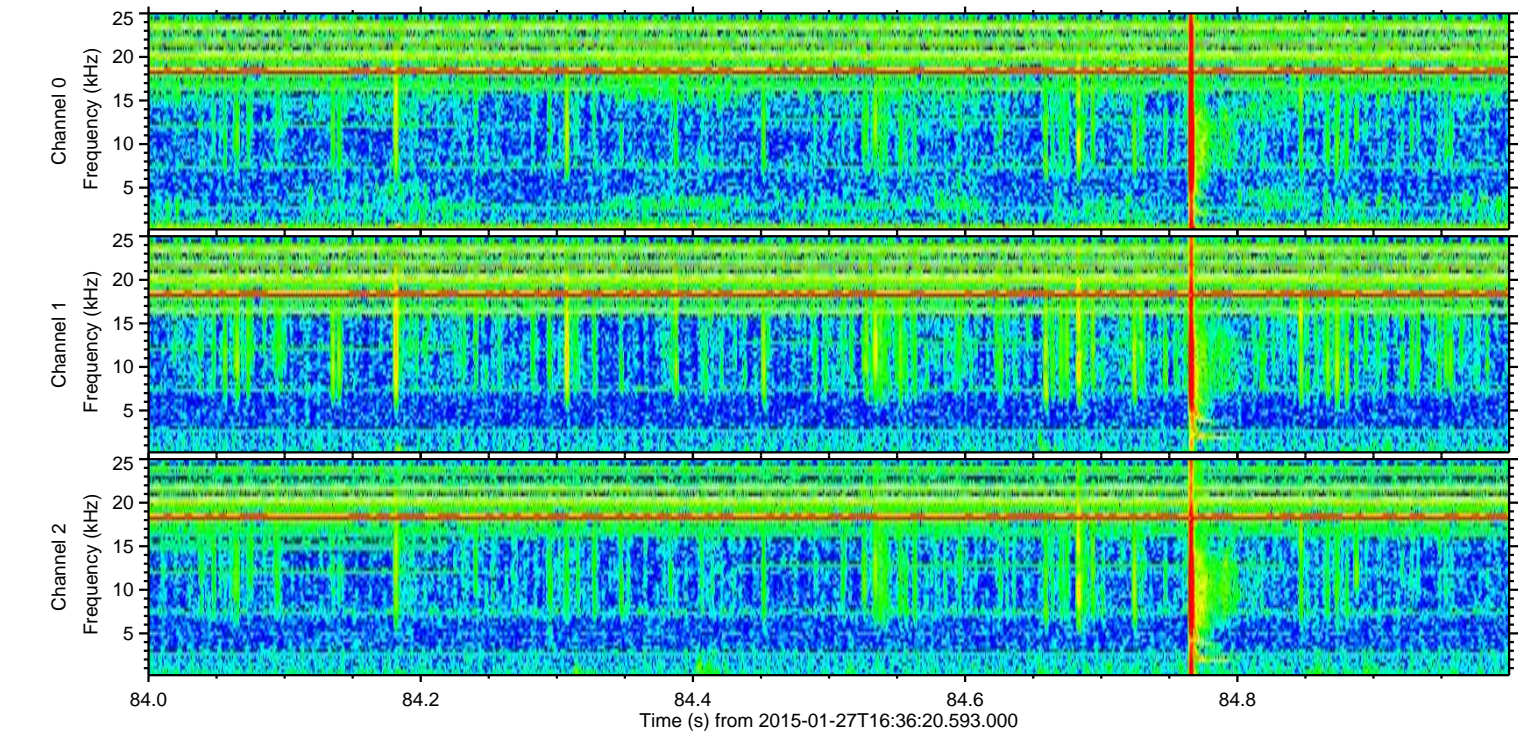
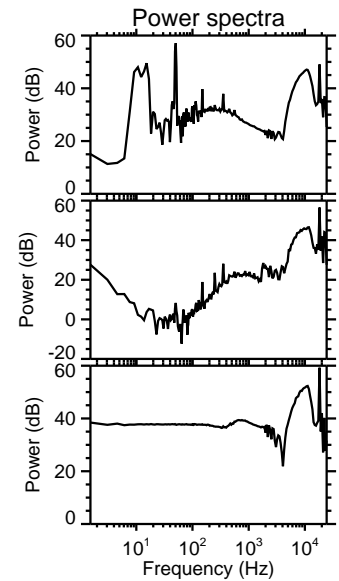
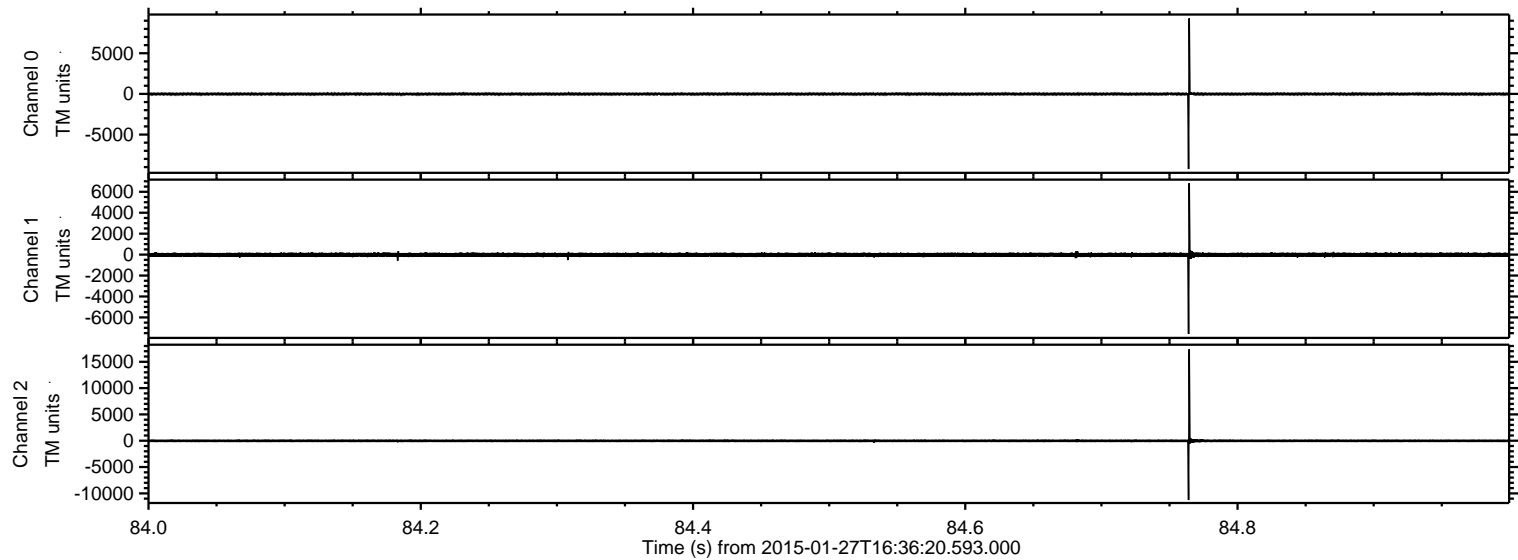


ELMAVAN 3D WAVEFORMS (Measured data sampled at 50 kHz) 49806 packets of 144 samples from 2015-01-27T16:36:20.593.000.

Processed Wed Feb 11 22:27:20 2015 by ELM ver.2012-10-06 from 001__elm20150127_163619__dat00.bin

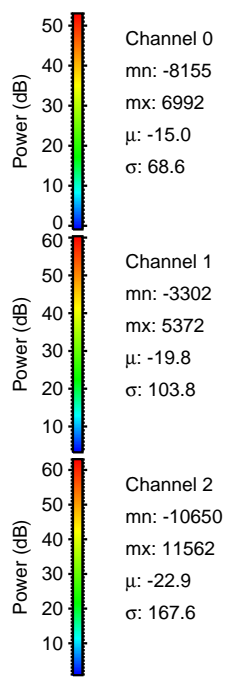
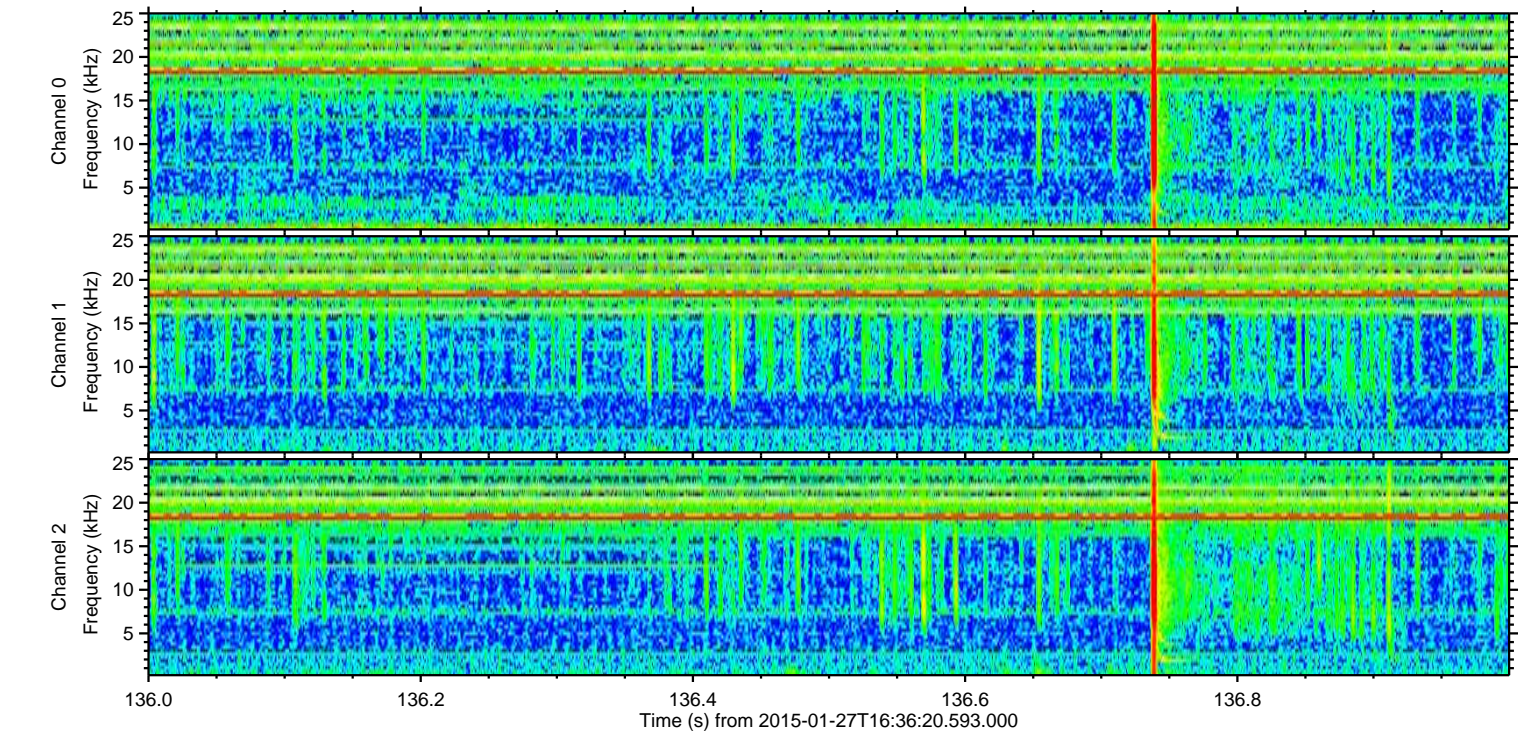
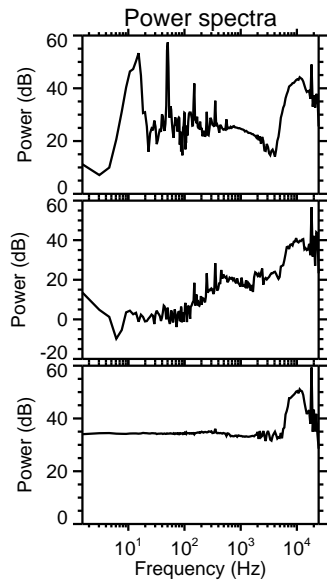
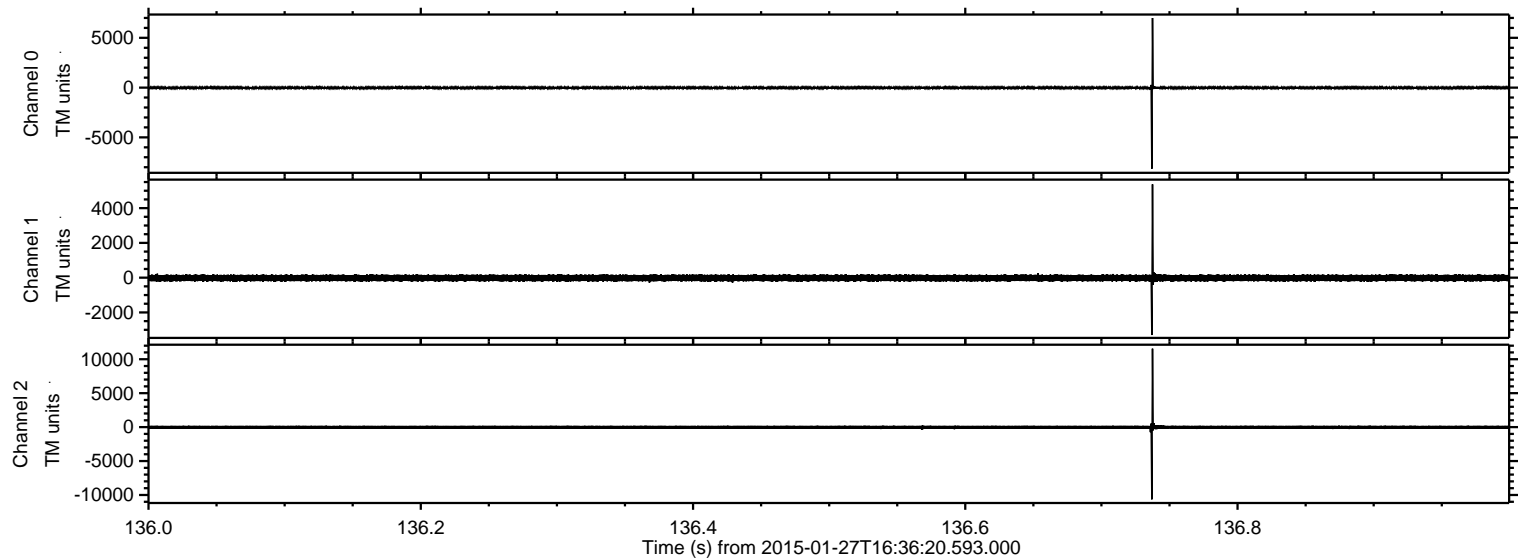


Processed Wed Feb 11 22:27:32 2015 by ELM ver.2012-10-06 from 001__elm20150127_163619__dat00.bin



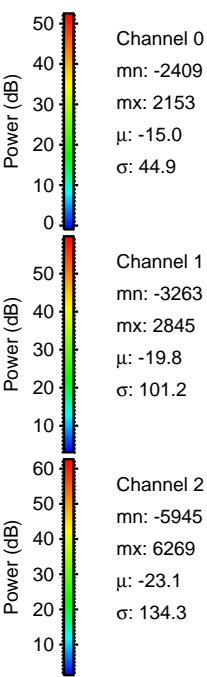
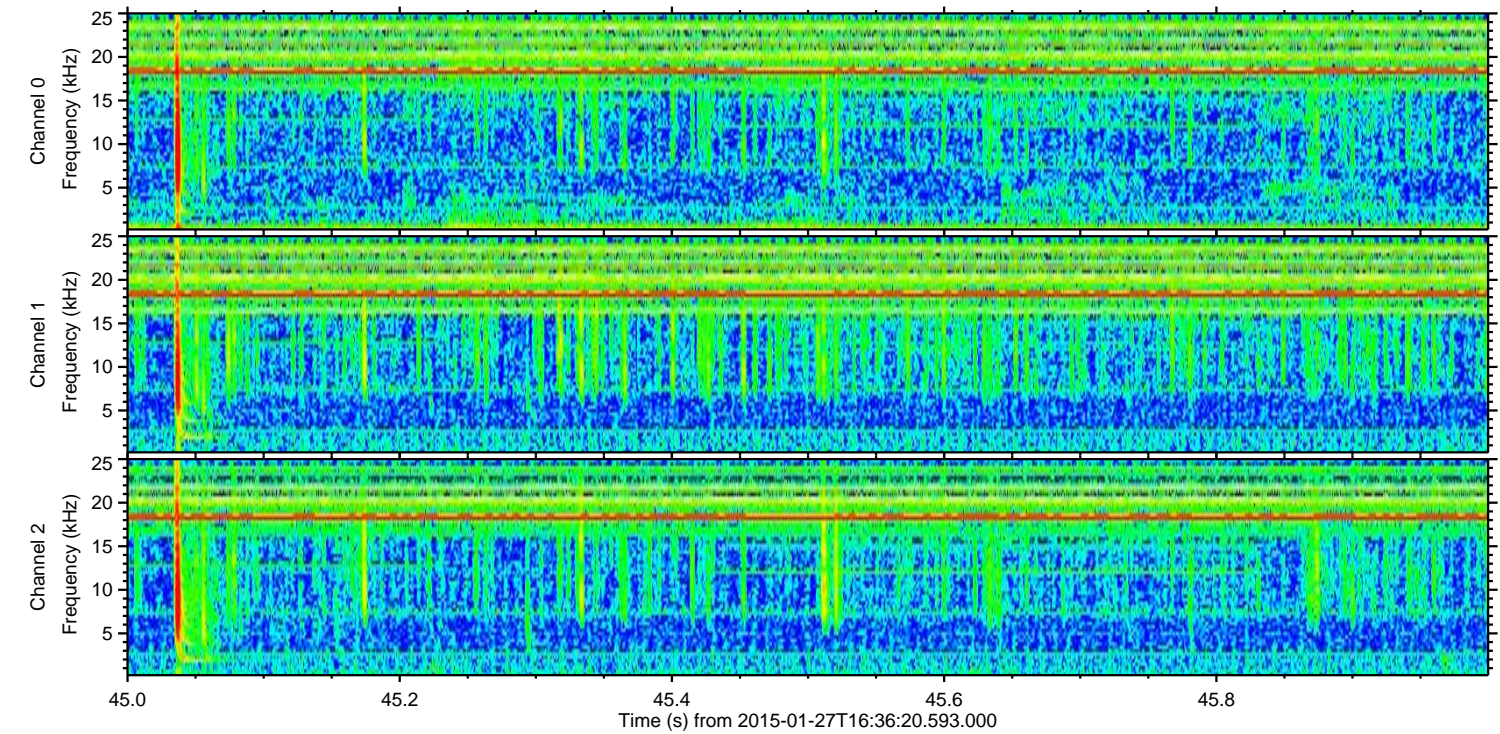
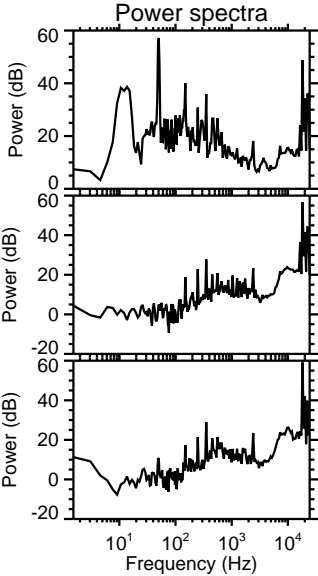
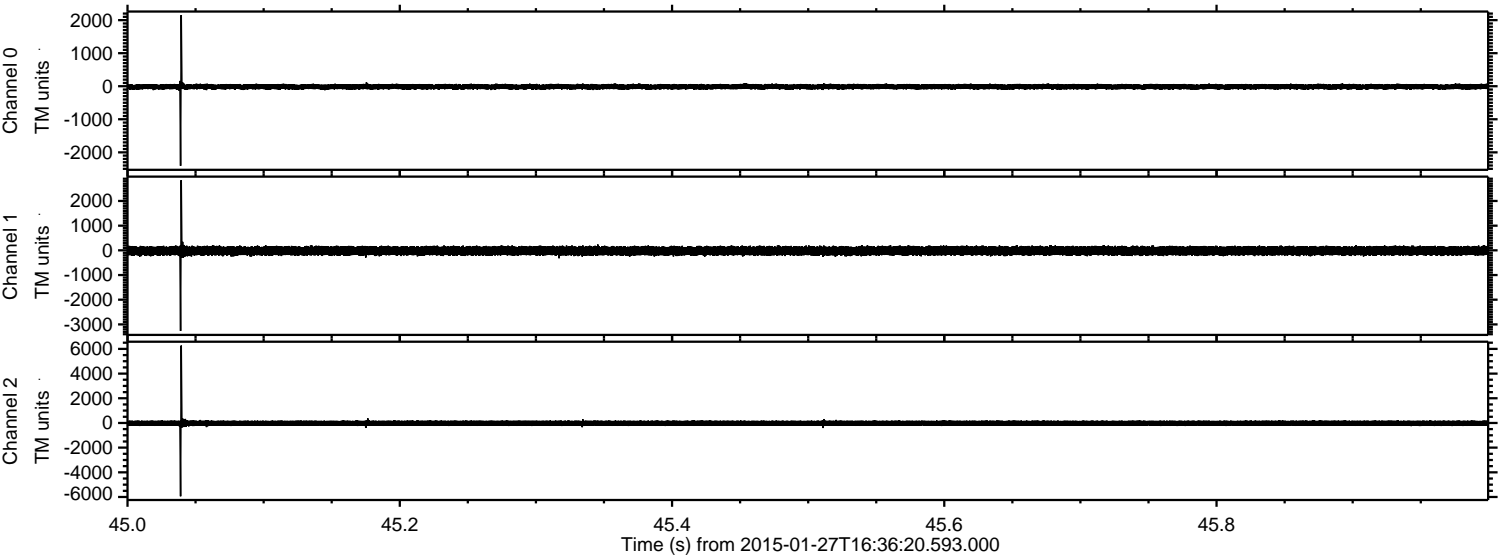
ELMAVAN 3D WAVEFORMS (Measured data sampled at 50 kHz) 49806 packets of 144 samples from 2015-01-27T16:36:20.593.000. Part 137/144

Processed Wed Feb 11 22:27:33 2015 by ELM ver.2012-10-06 from 001__elm20150127_163619__dat00.bin



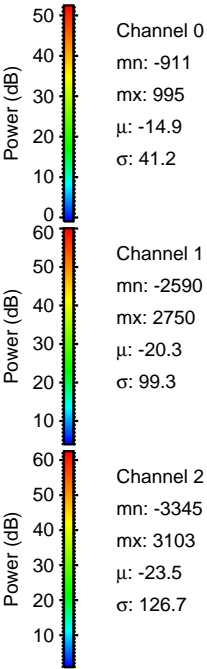
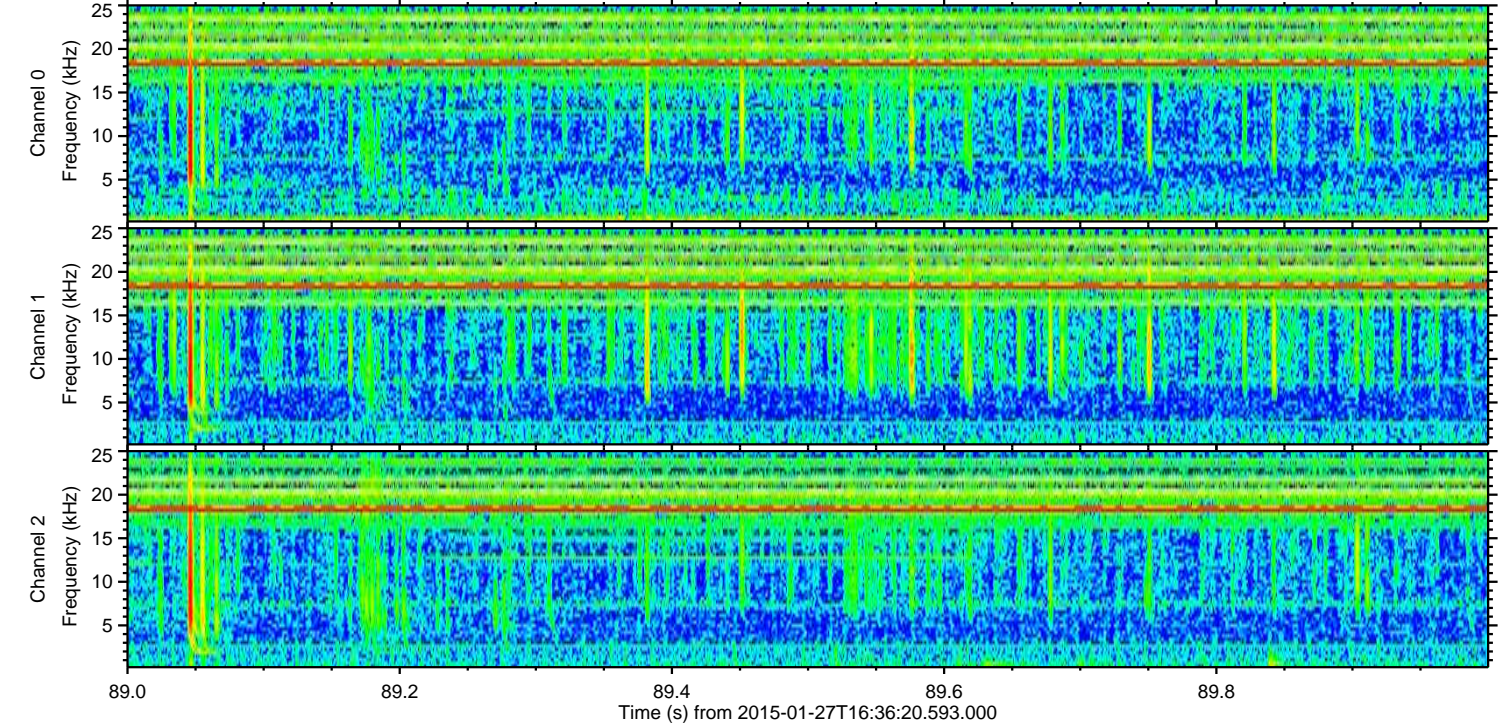
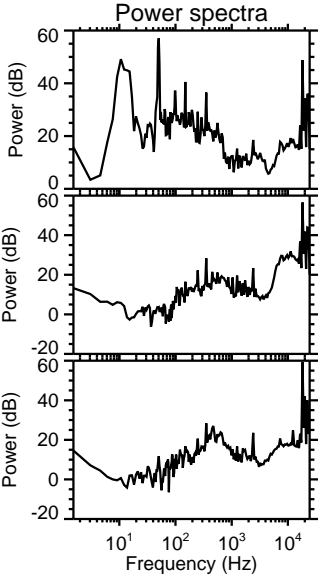
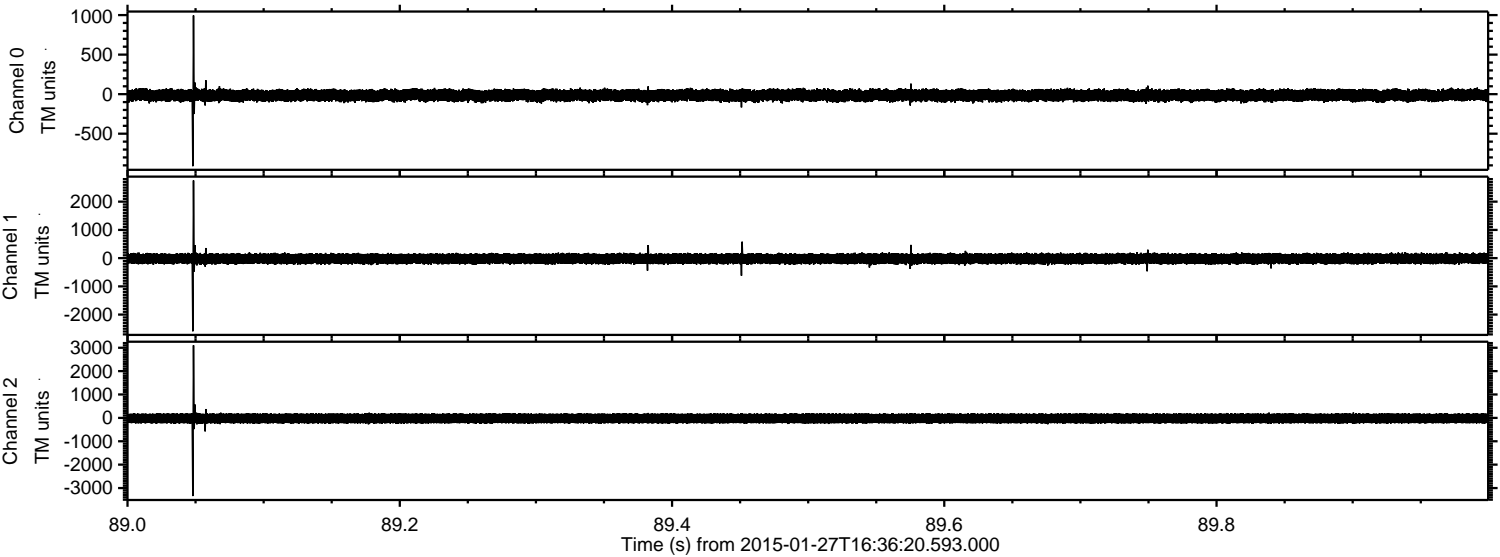
ELMAVAN 3D WAVEFORMS (Measured data sampled at 50 kHz) 49806 packets of 144 samples from 2015-01-27T16:36:20.593.000. Part 46/144

Processed Wed Feb 11 22:27:34 2015 by ELM ver.2012-10-06 from 001__elm20150127_163619__dat00.bin

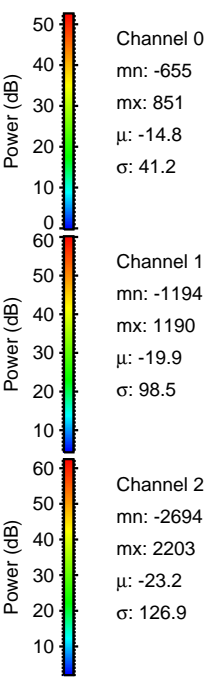
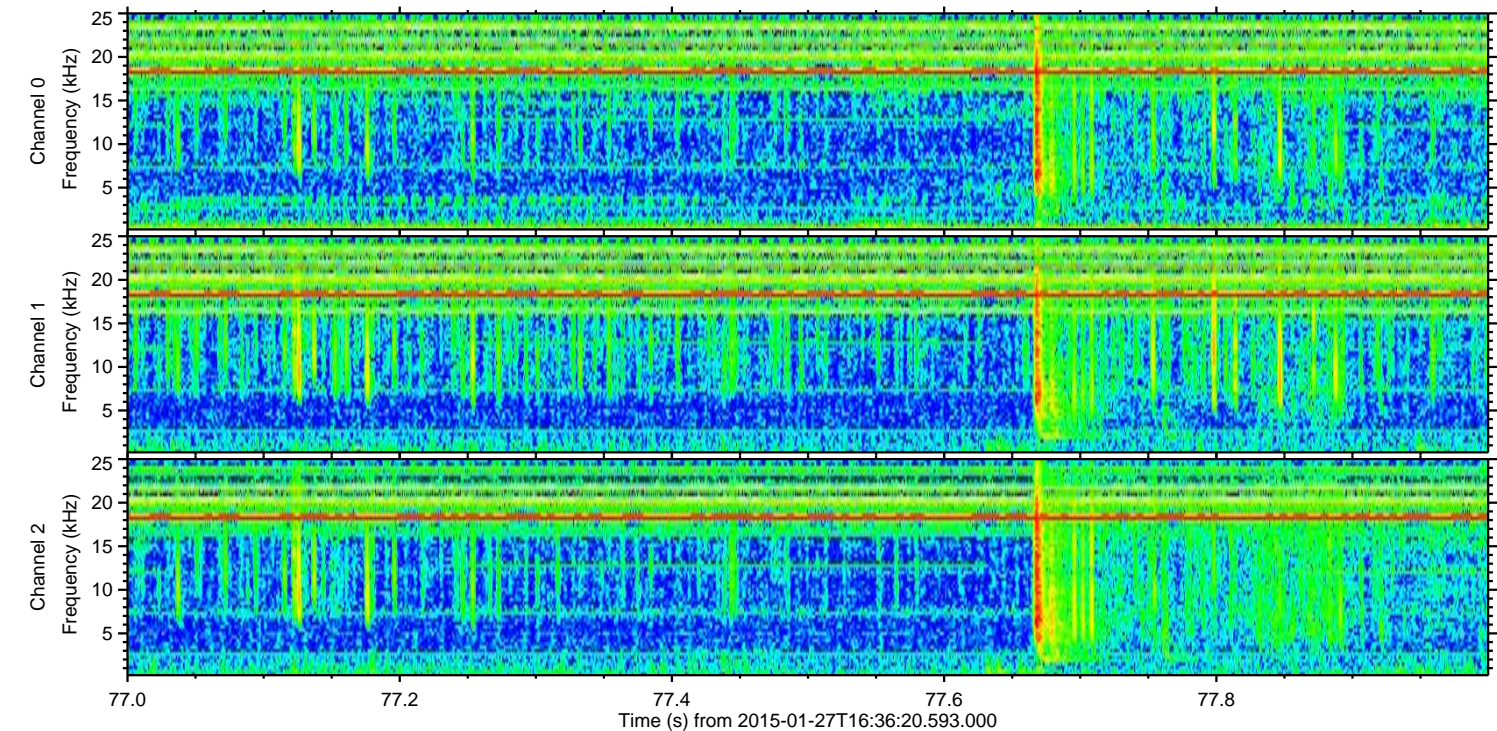
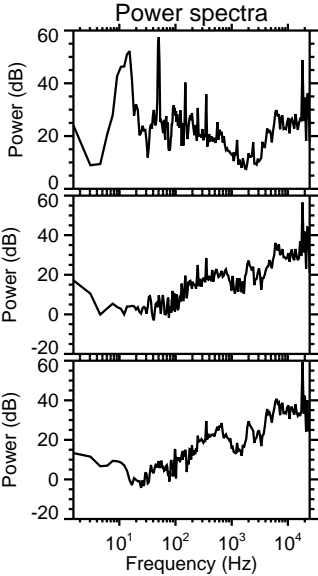
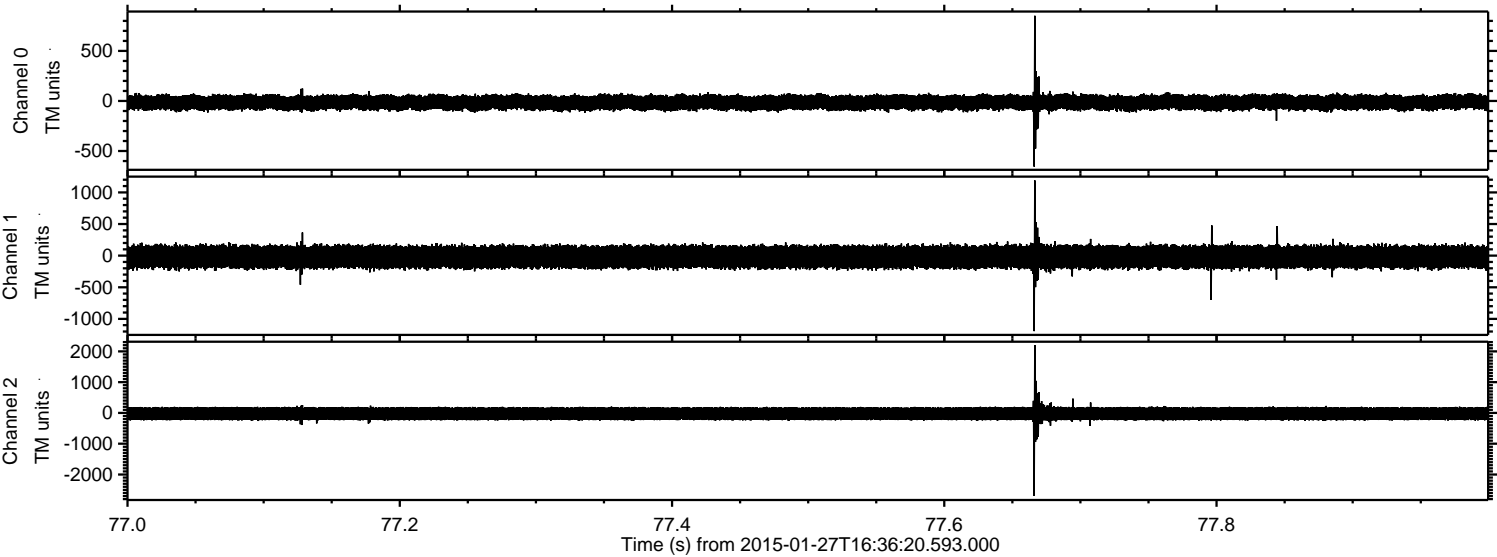


ELMAVAN 3D WAVEFORMS (Measured data sampled at 50 kHz) 49806 packets of 144 samples from 2015-01-27T16:36:20.593.000. Part 90/144

Processed Wed Feb 11 22:27:35 2015 by ELM ver.2012-10-06 from 001__elm20150127_163619__dat00.bin

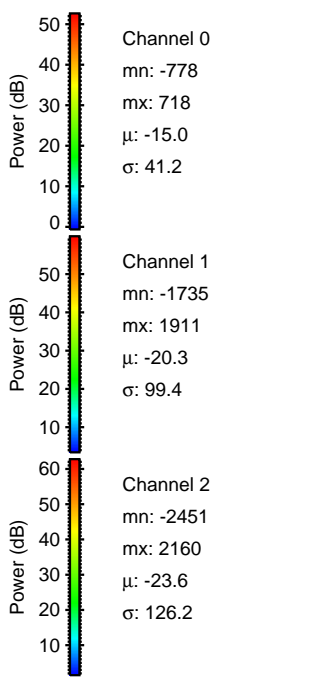
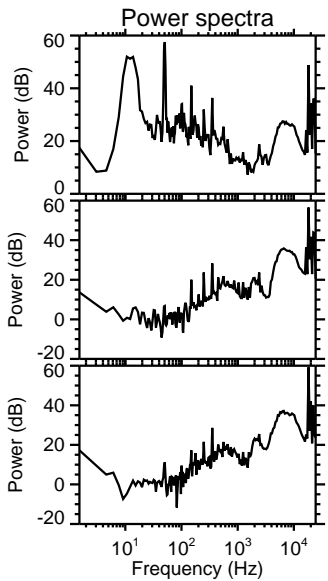
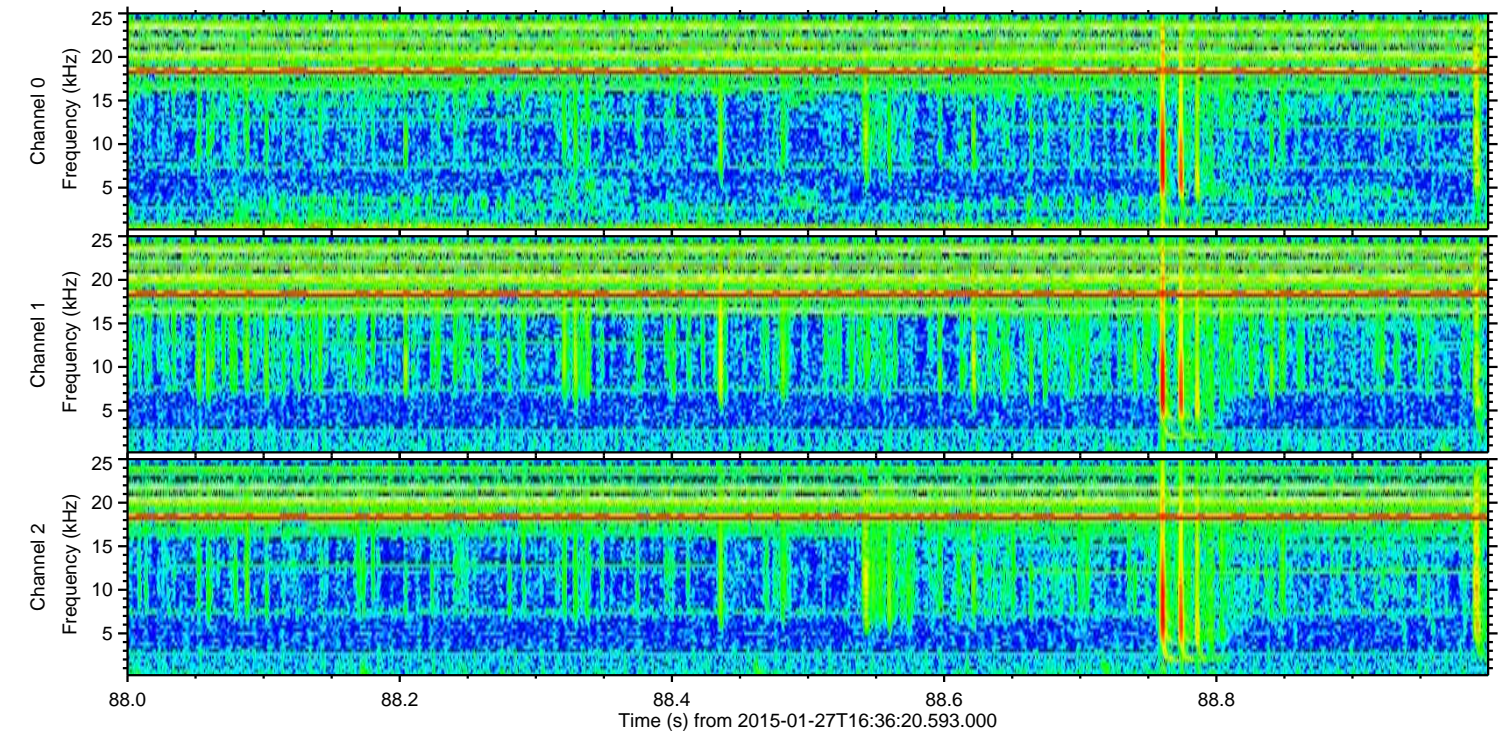
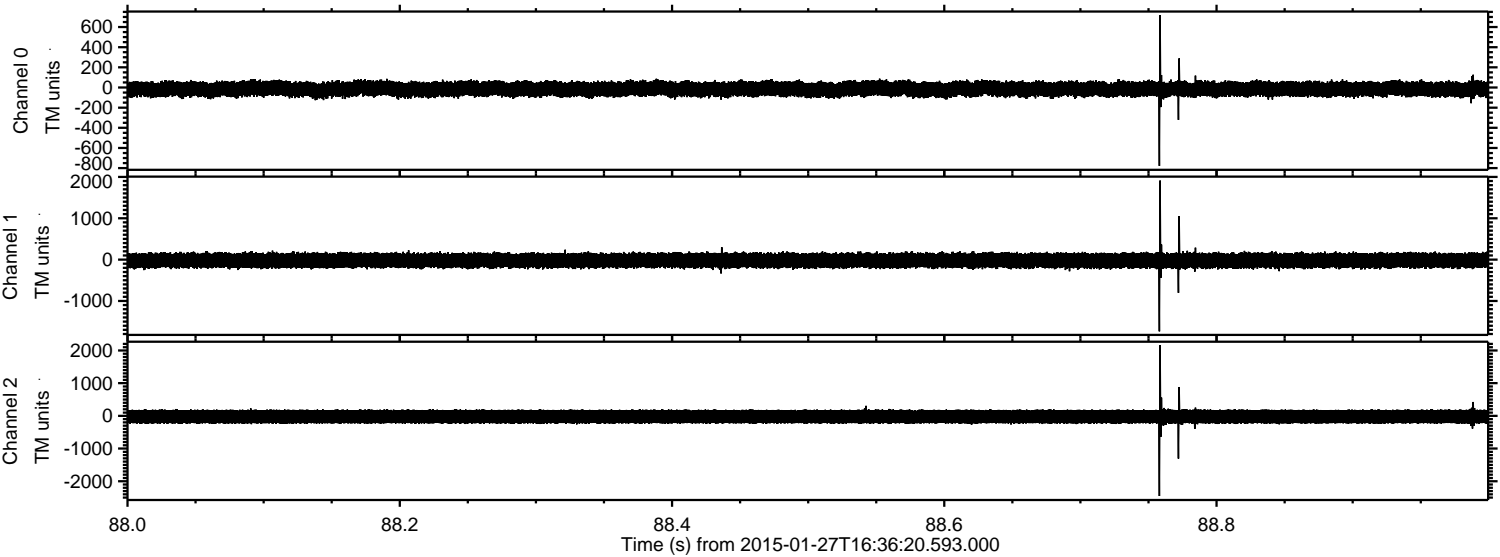


Processed Wed Feb 11 22:27:36 2015 by ELM ver.2012-10-06 from 001__elm20150127_163619__dat00.bin



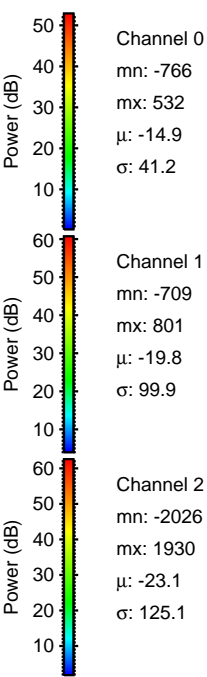
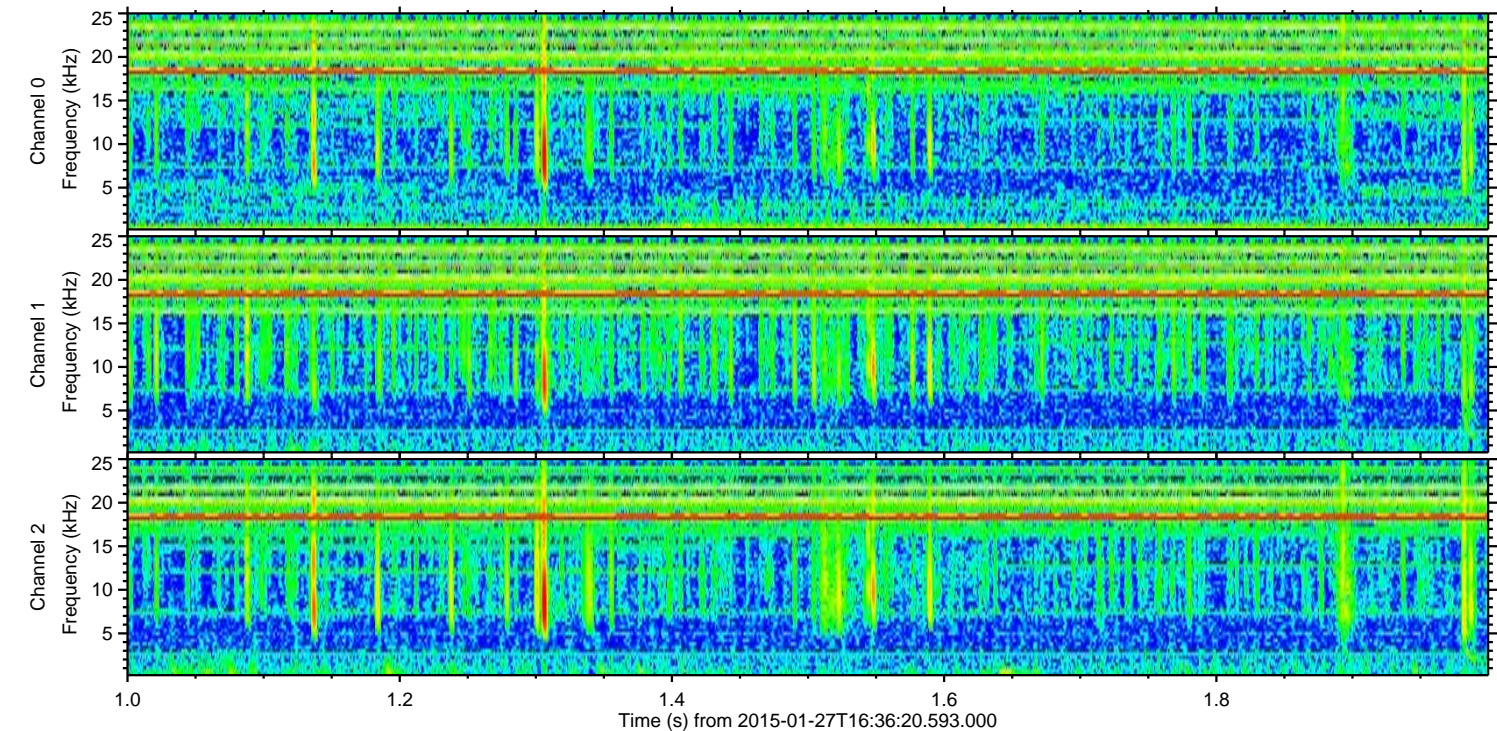
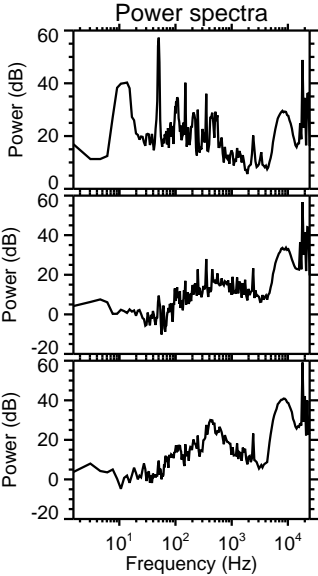
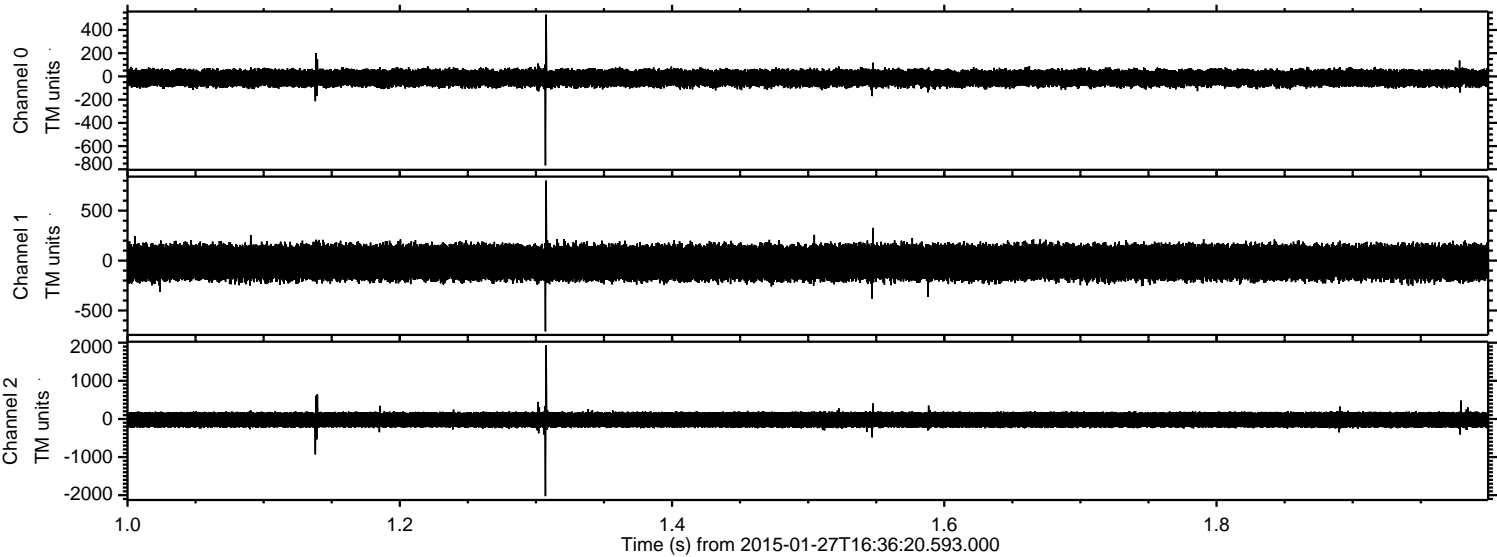
ELMAVAN 3D WAVEFORMS (Measured data sampled at 50 kHz) 49806 packets of 144 samples from 2015-01-27T16:36:20.593.000. Part 89/144

Processed Wed Feb 11 22:27:37 2015 by ELM ver.2012-10-06 from 001__elm20150127_163619__dat00.bin



ELMAVAN 3D WAVEFORMS (Measured data sampled at 50 kHz) 49806 packets of 144 samples from 2015-01-27T16:36:20.593.000. Part 2/144

Processed Wed Feb 11 22:27:38 2015 by ELM ver.2012-10-06 from 001__elm20150127_163619__dat00.bin



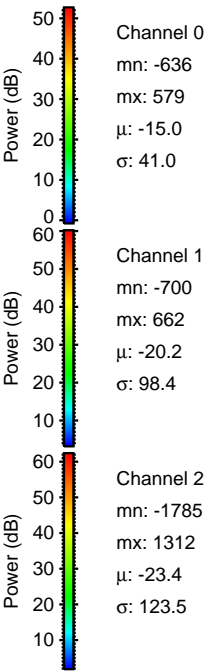
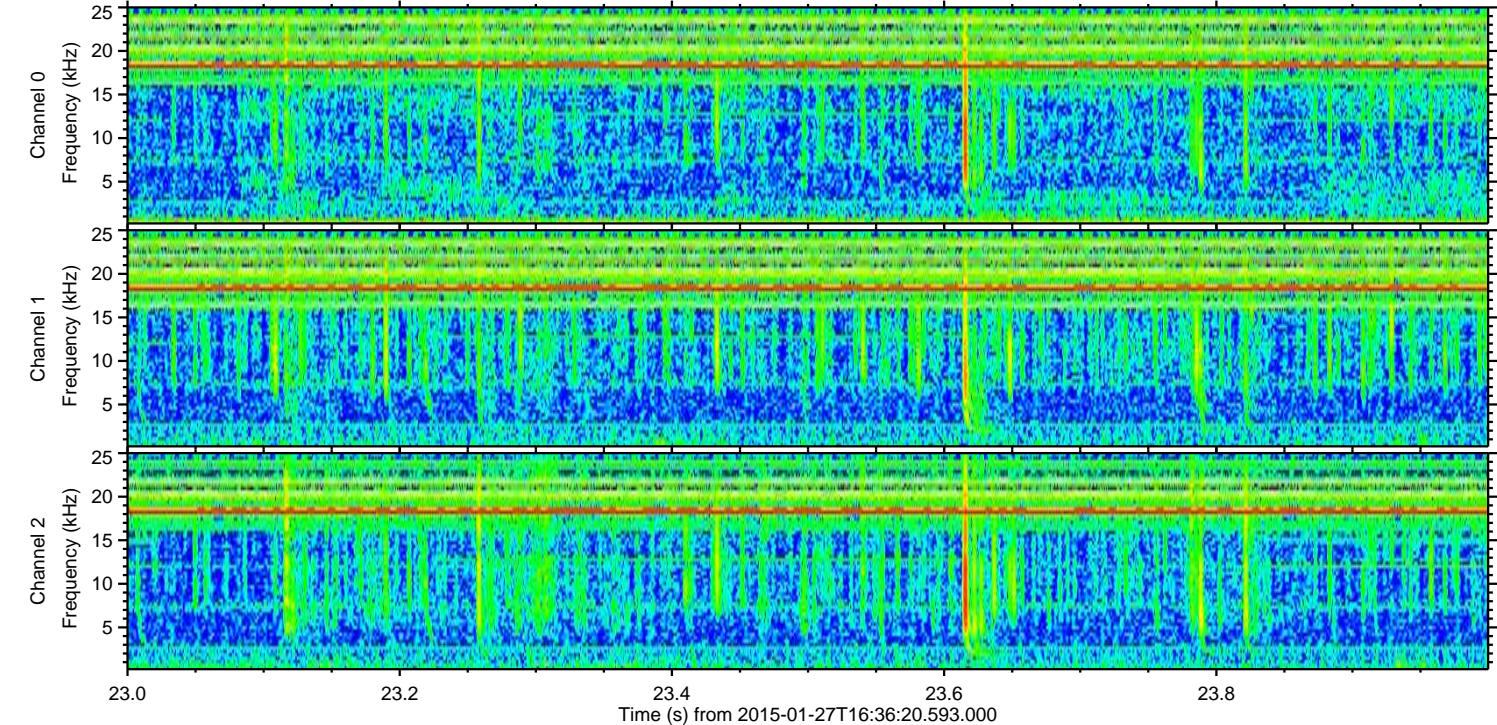
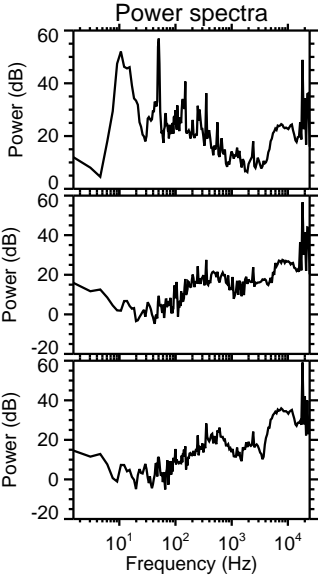
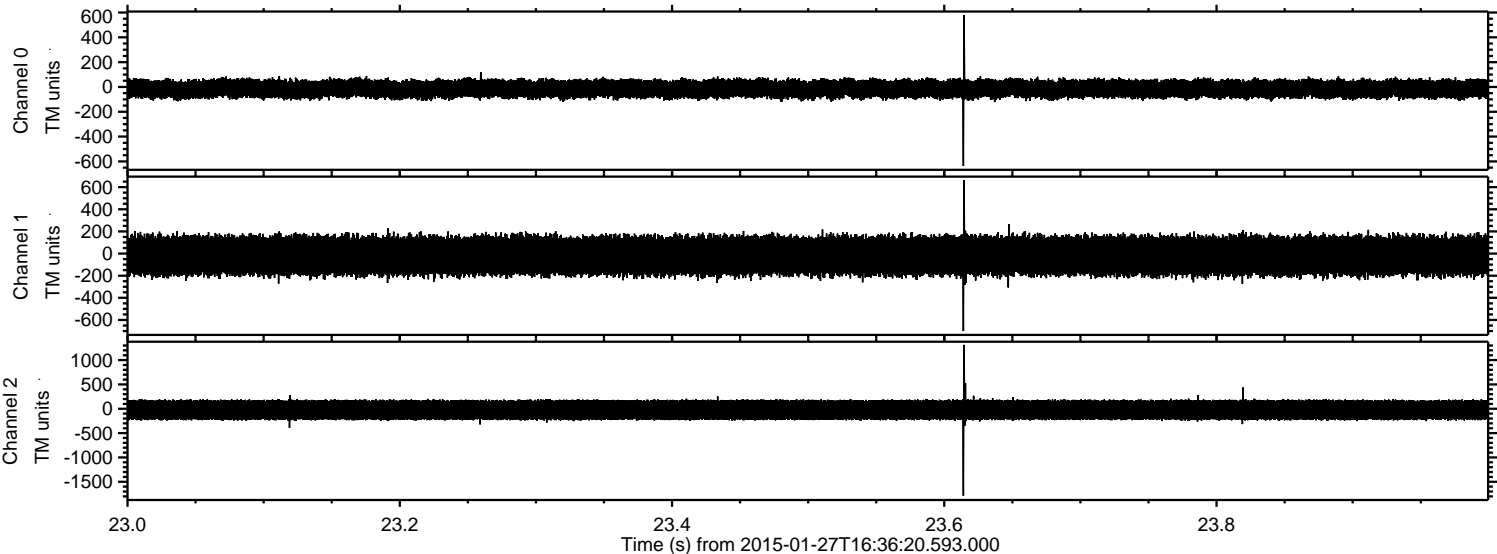
Channel 0
mn: -766
mx: 532
 μ : -14.9
 σ : 41.2

Channel 1
mn: -709
mx: 801
 μ : -19.8
 σ : 99.9

Channel 2
mn: -2026
mx: 1930
 μ : -23.1
 σ : 125.1

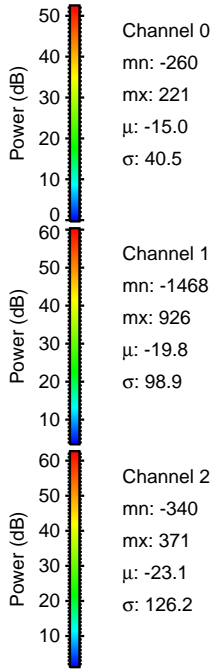
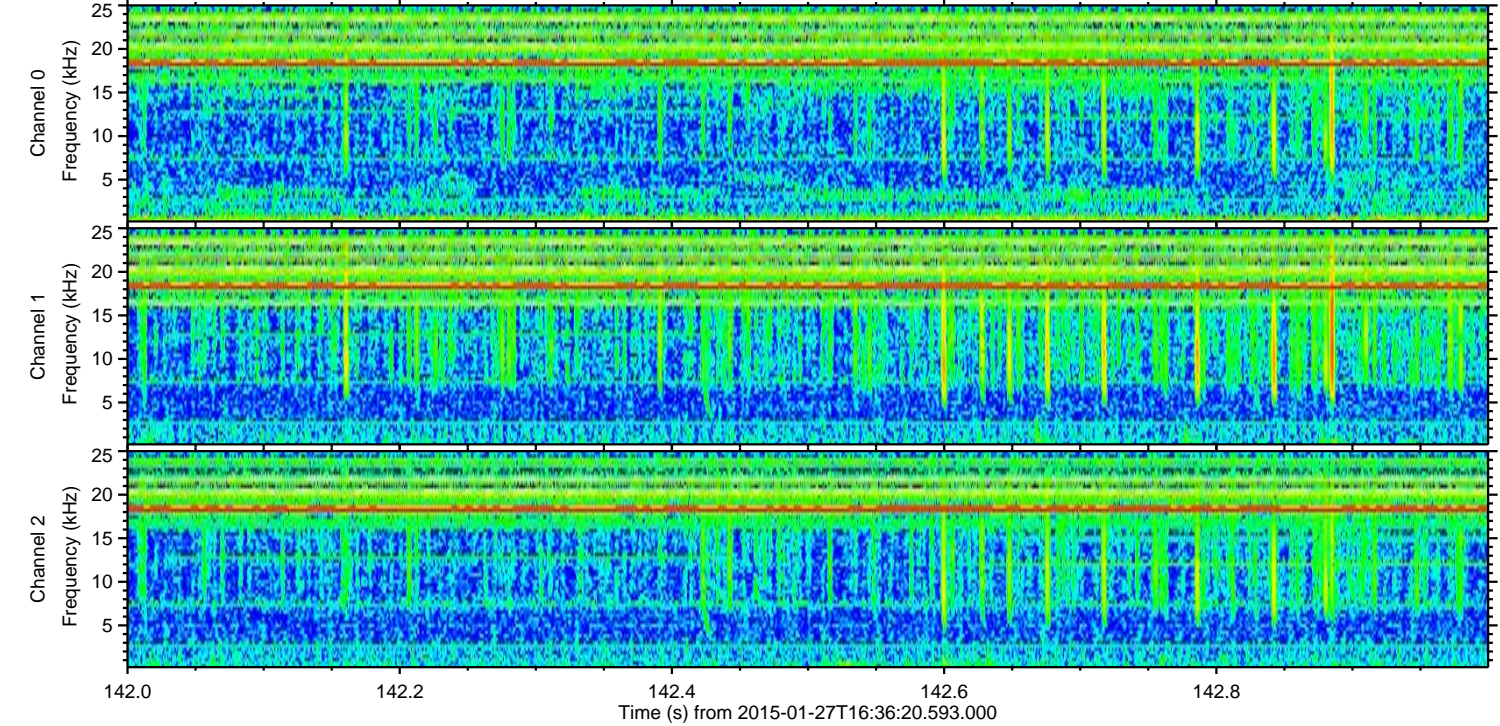
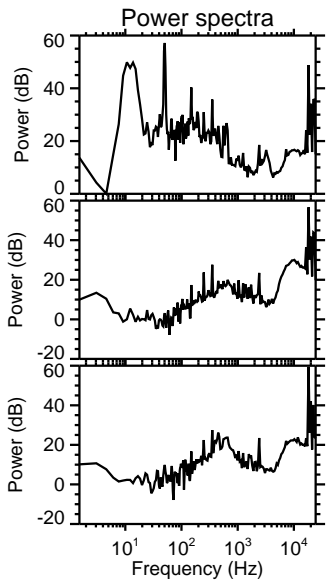
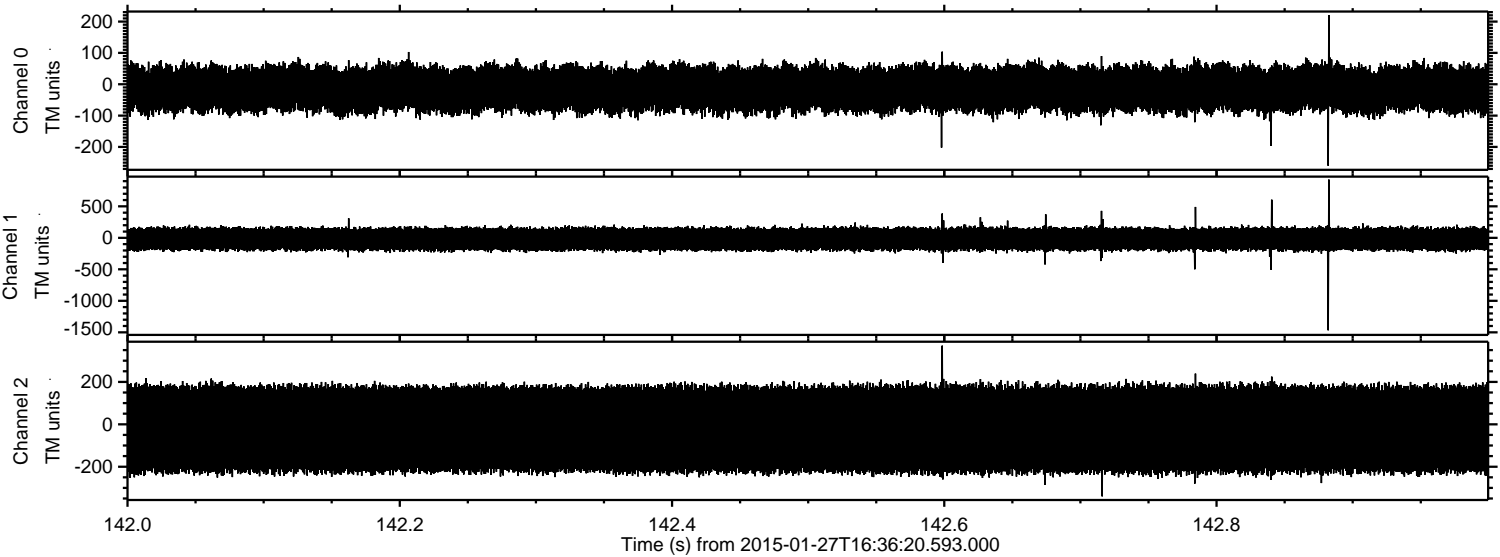
ELMAVAN 3D WAVEFORMS (Measured data sampled at 50 kHz) 49806 packets of 144 samples from 2015-01-27T16:36:20.593.000. Part 24/144

Processed Wed Feb 11 22:27:39 2015 by ELM ver.2012-10-06 from 001__elm20150127_163619__dat00.bin



ELMAVAN 3D WAVEFORMS (Measured data sampled at 50 kHz) 49806 packets of 144 samples from 2015-01-27T16:36:20.593.000. Part 143/144

Processed Wed Feb 11 22:27:40 2015 by ELM ver.2012-10-06 from 001__elm20150127_163619__dat00.bin



Channel 0
mn: -260
mx: 221
 μ : -15.0
 σ : 40.5

Channel 1
mn: -1468
mx: 926
 μ : -19.8
 σ : 98.9

Channel 2
mn: -340
mx: 371
 μ : -23.1
 σ : 126.2

Processed Wed Feb 11 22:27:41 2015 by ELM ver.2012-10-06 from 001__elm20150127_163619__dat00.bin

