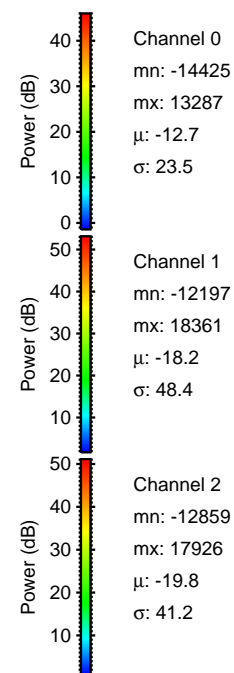
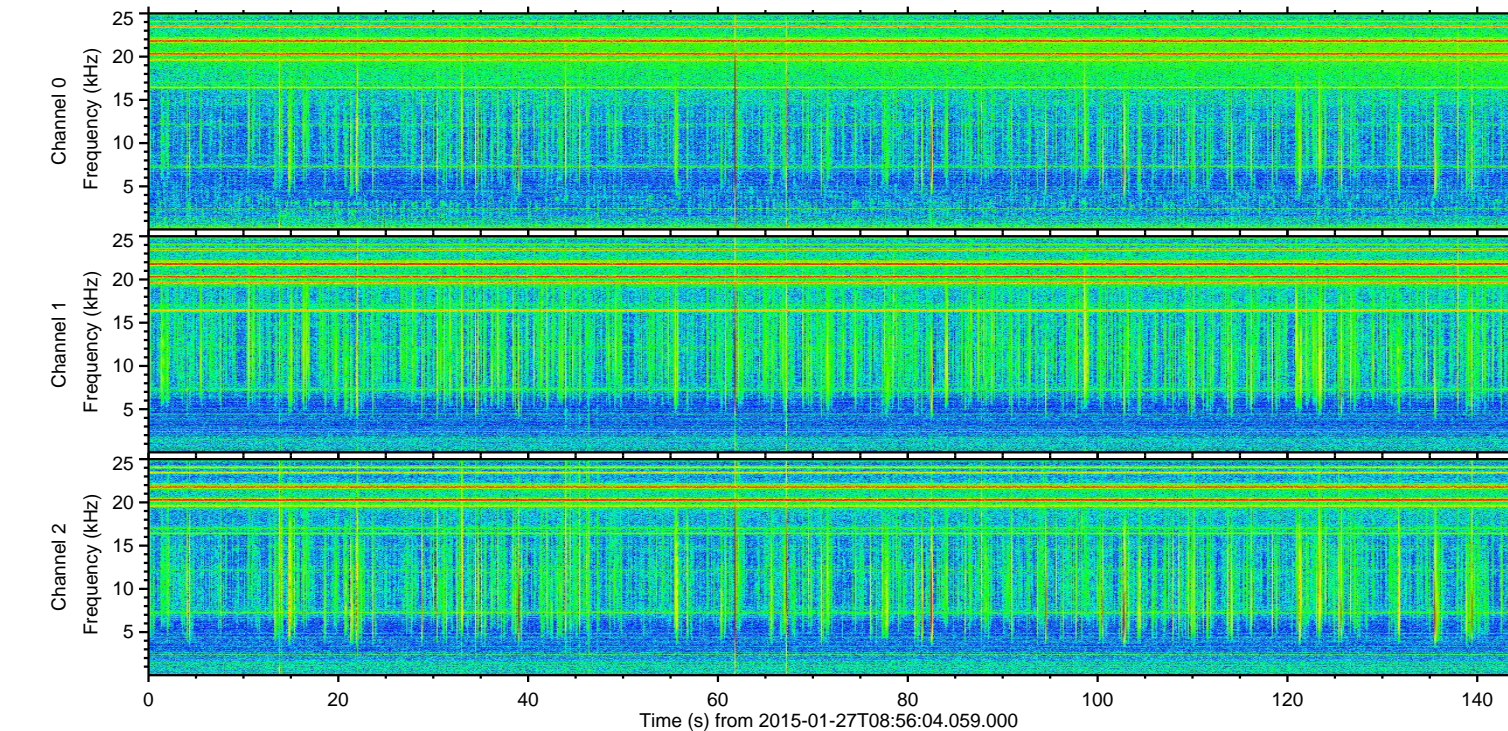
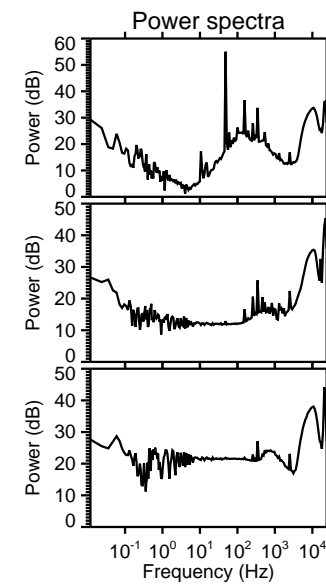
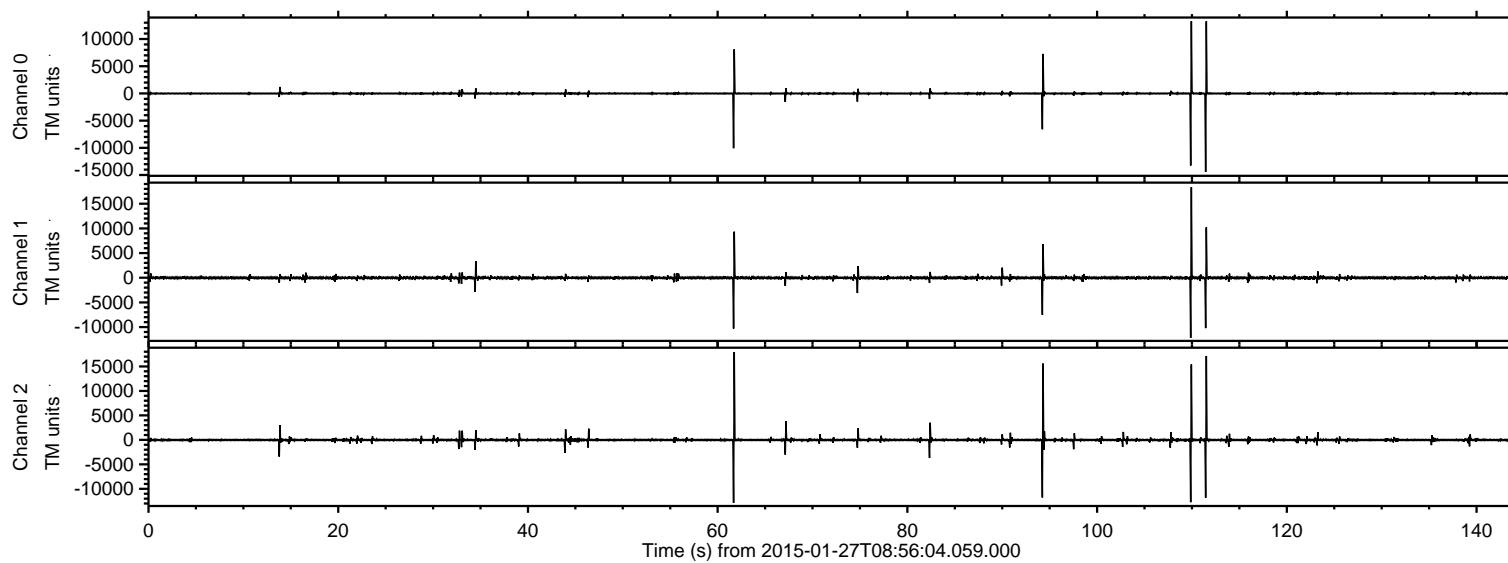


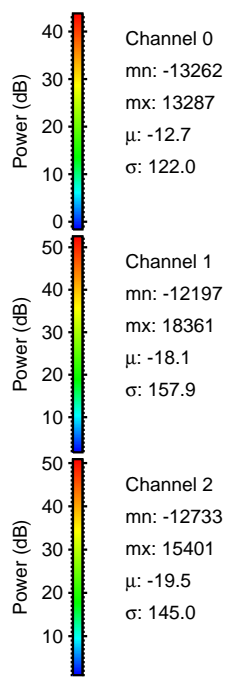
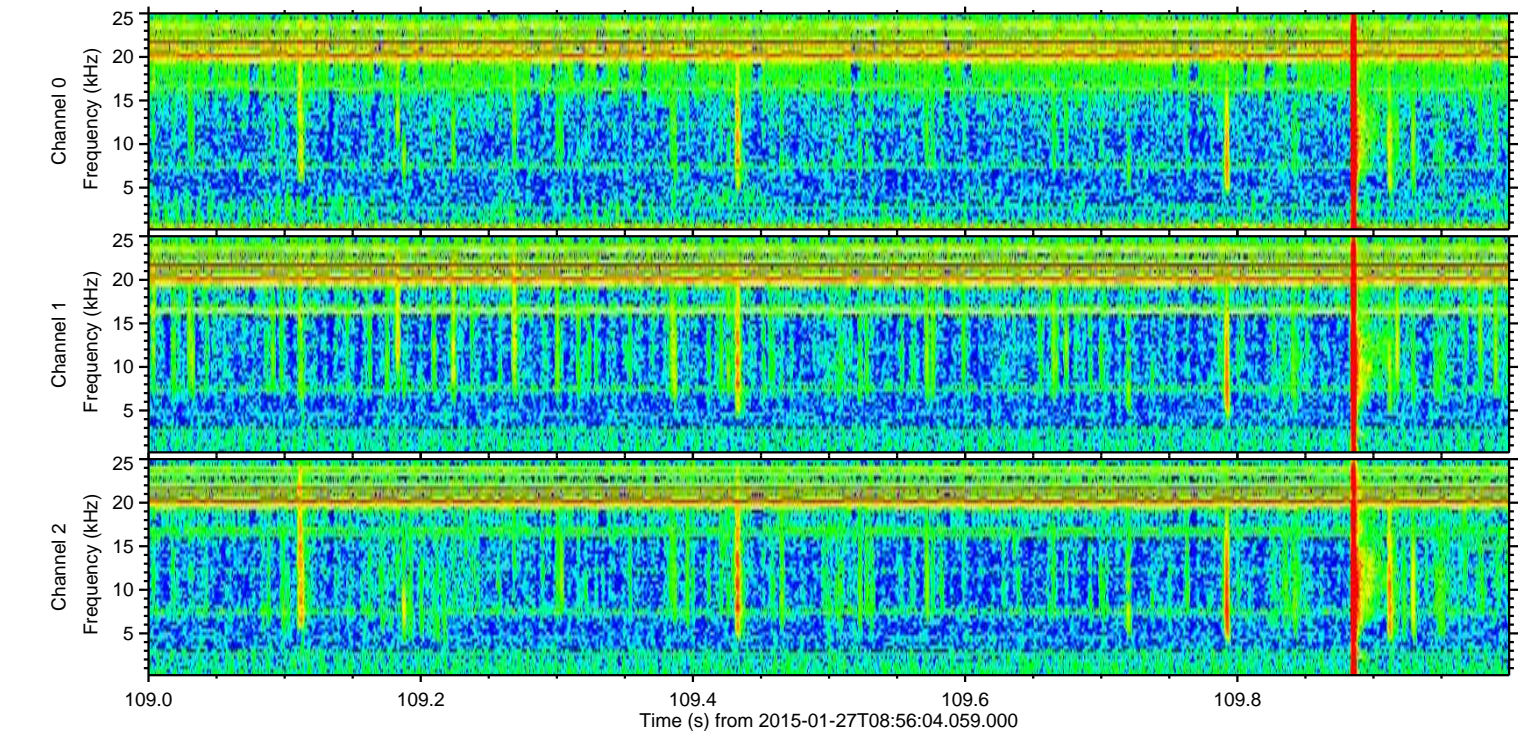
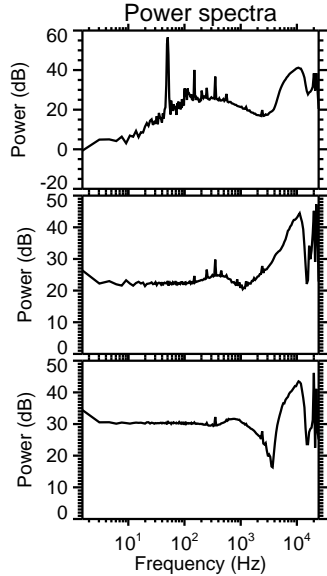
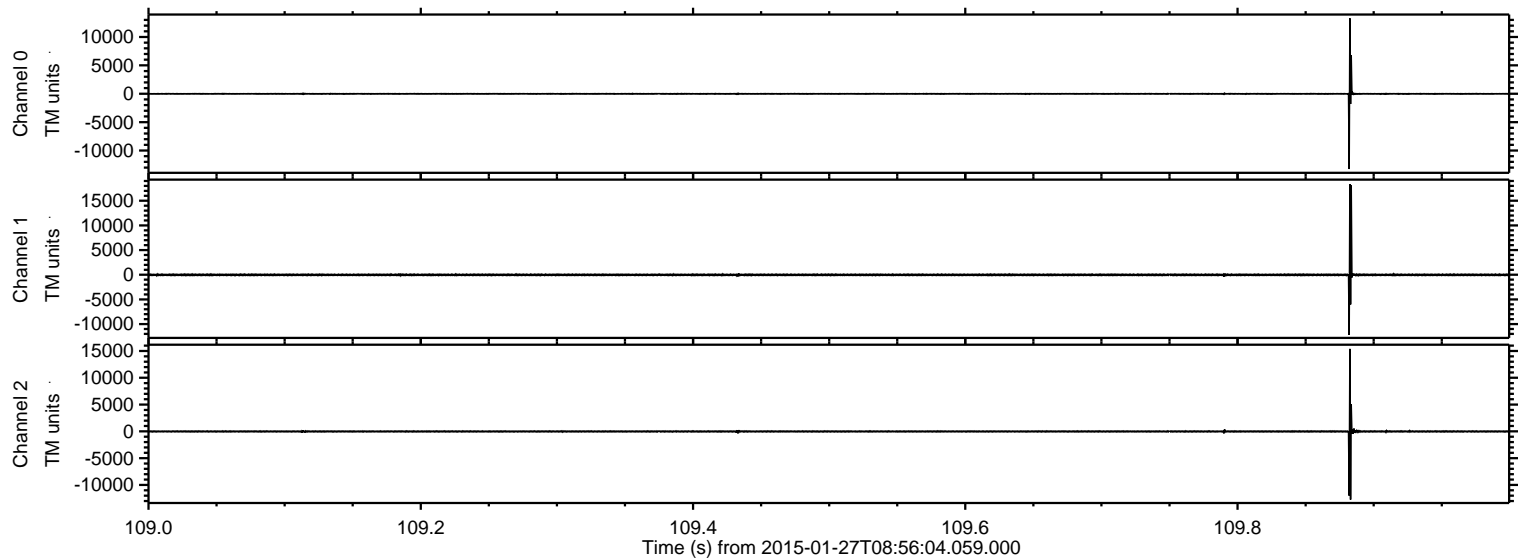
ELMAVAN 3D WAVEFORMS (Measured data sampled at 50 kHz) 49805 packets of 144 samples from 2015-01-27T08:56:04.059.000.

Processed Wed Feb 11 20:36:14 2015 by ELM ver.2012-10-06 from 001__elm20150127_085603__dat00.bin

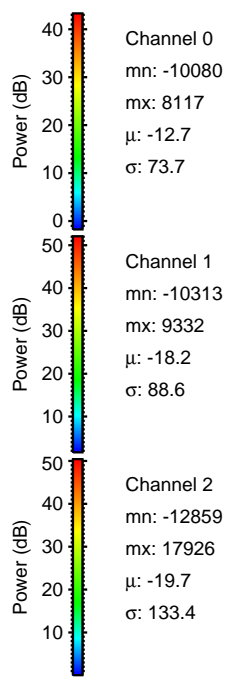
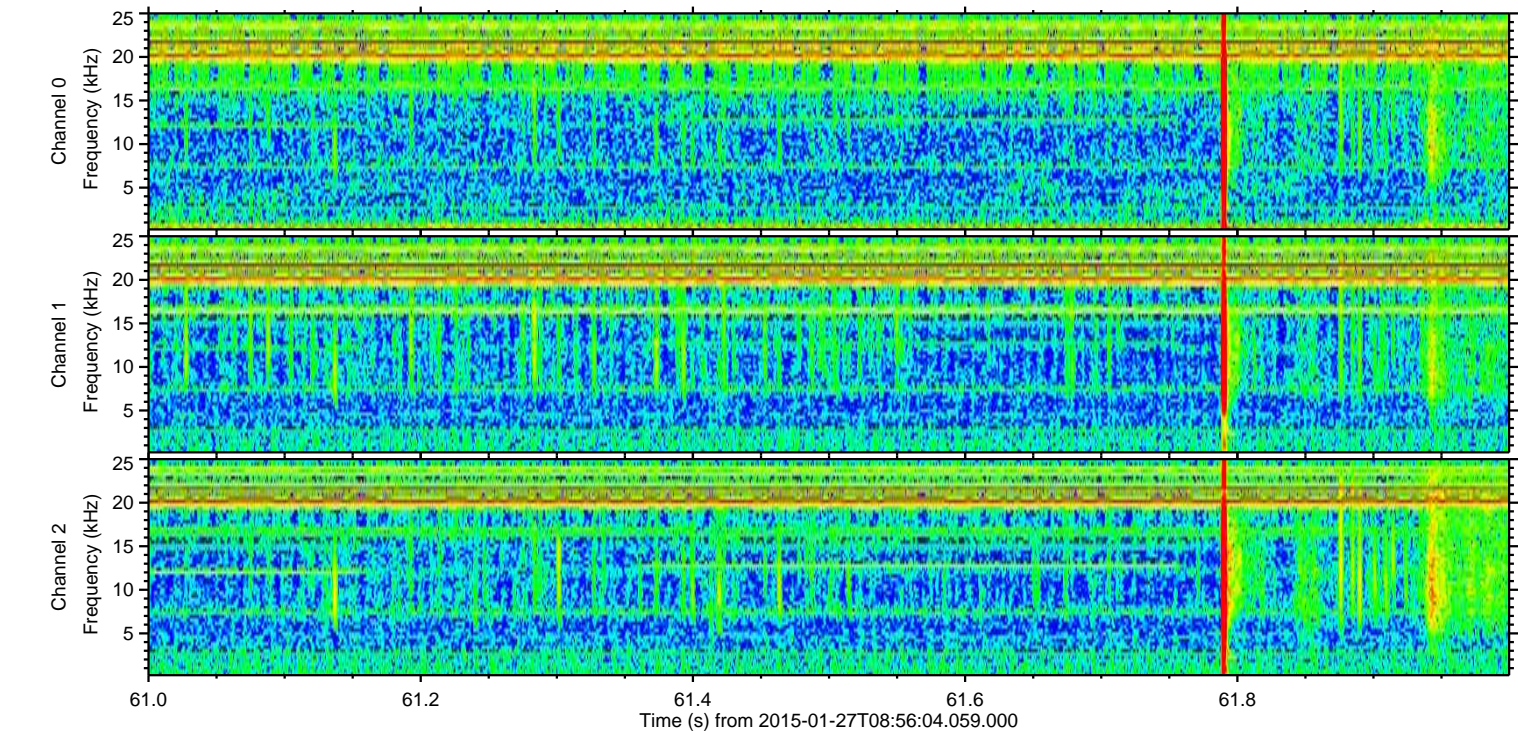
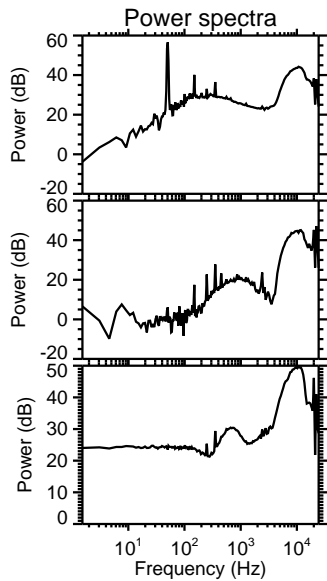
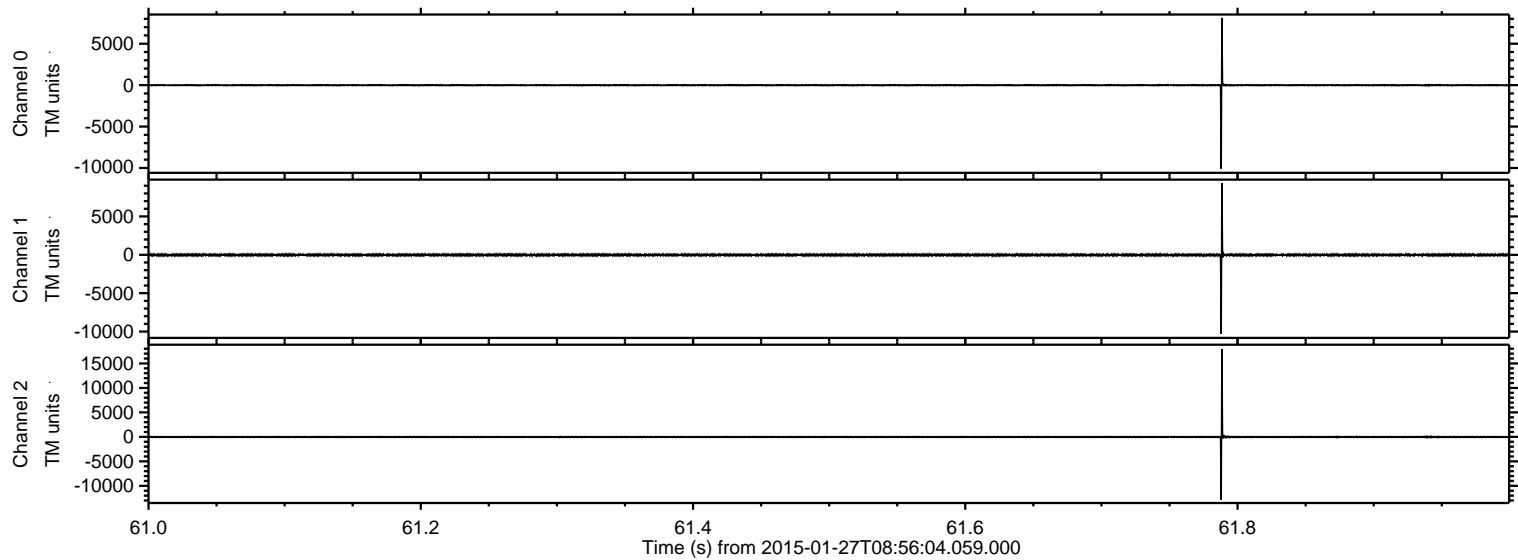


ELMAVAN 3D WAVEFORMS (Measured data sampled at 50 kHz) 49805 packets of 144 samples from 2015-01-27T08:56:04.059.000. Part 110/144

Processed Wed Feb 11 20:36:25 2015 by ELM ver.2012-10-06 from 001__elm20150127_085603__dat00.bin

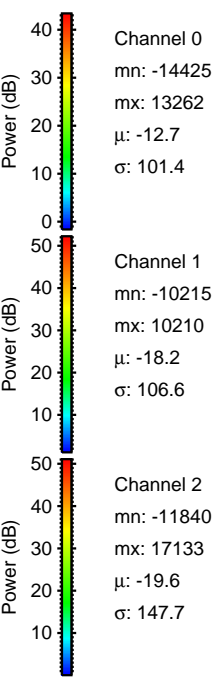
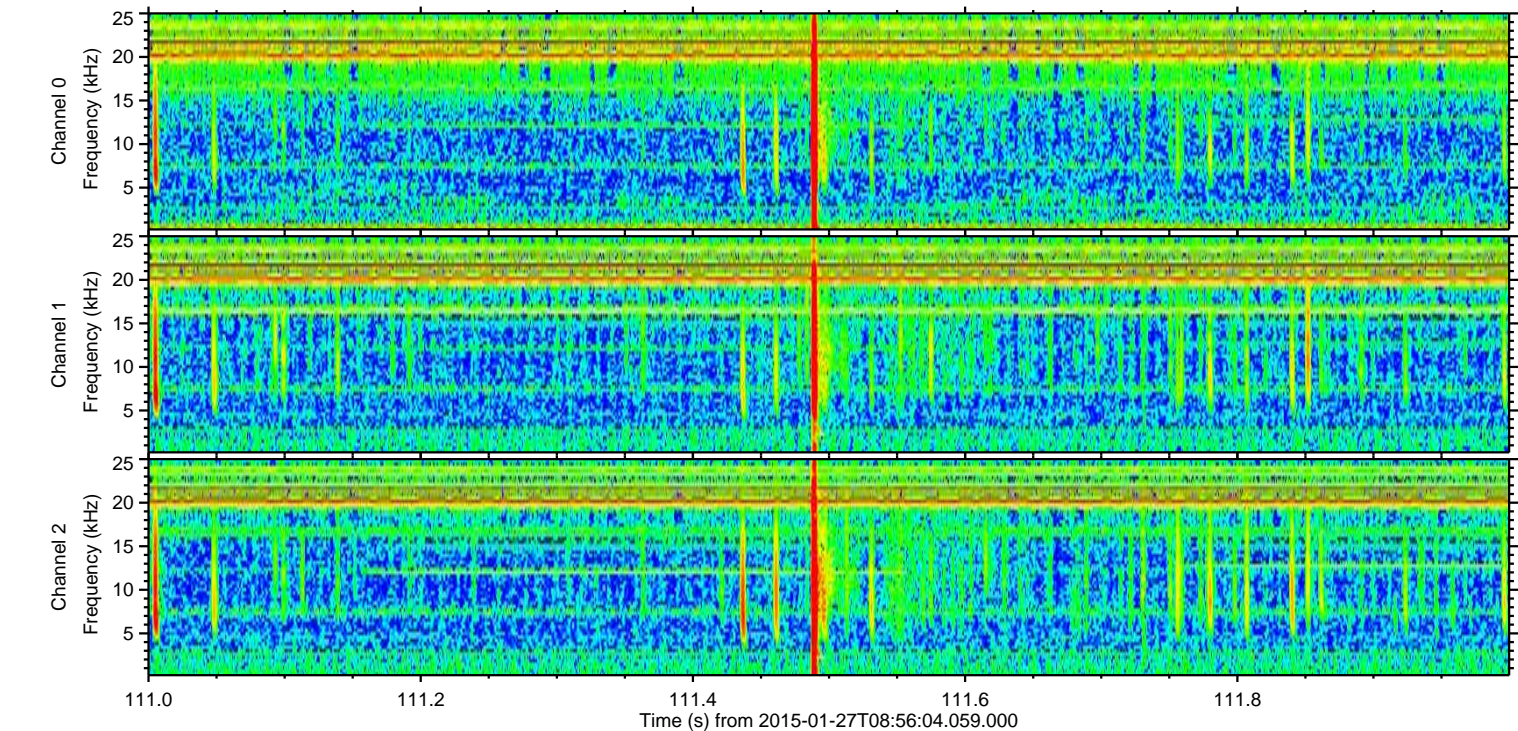
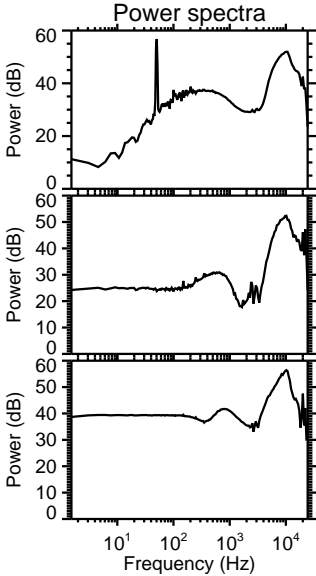
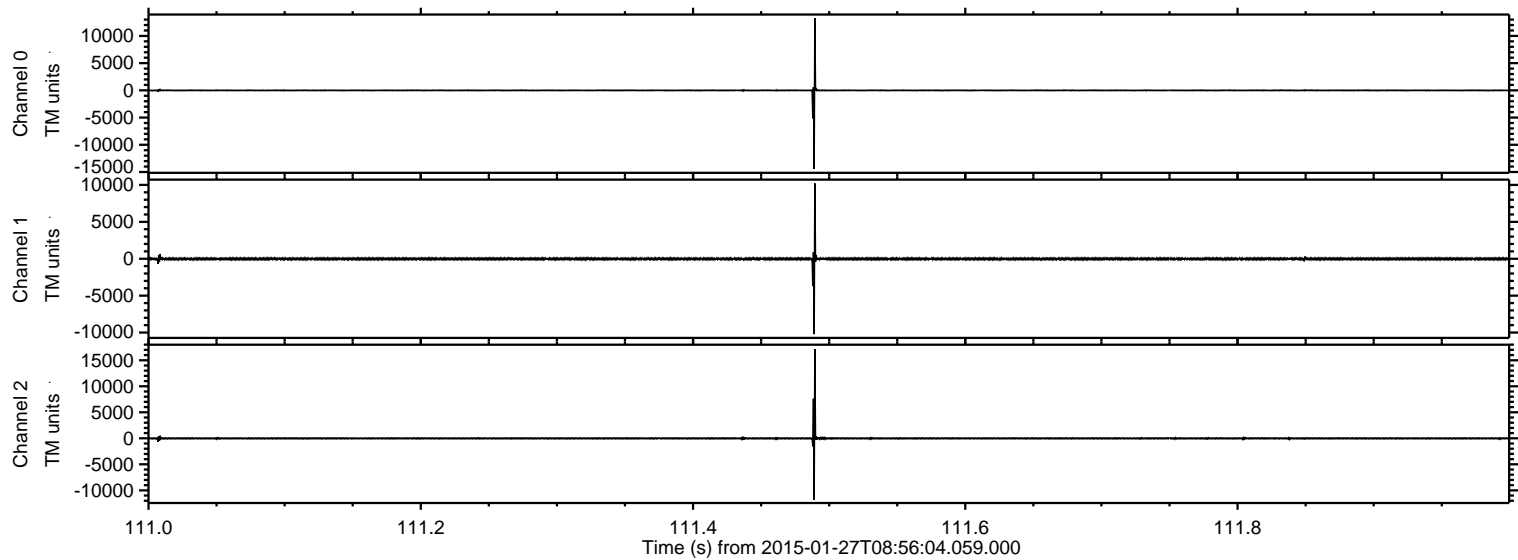


Processed Wed Feb 11 20:36:26 2015 by ELM ver.2012-10-06 from 001__elm20150127_085603__dat00.bin

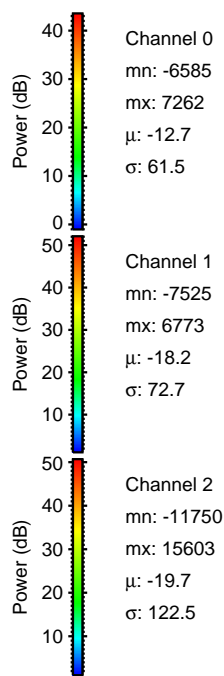
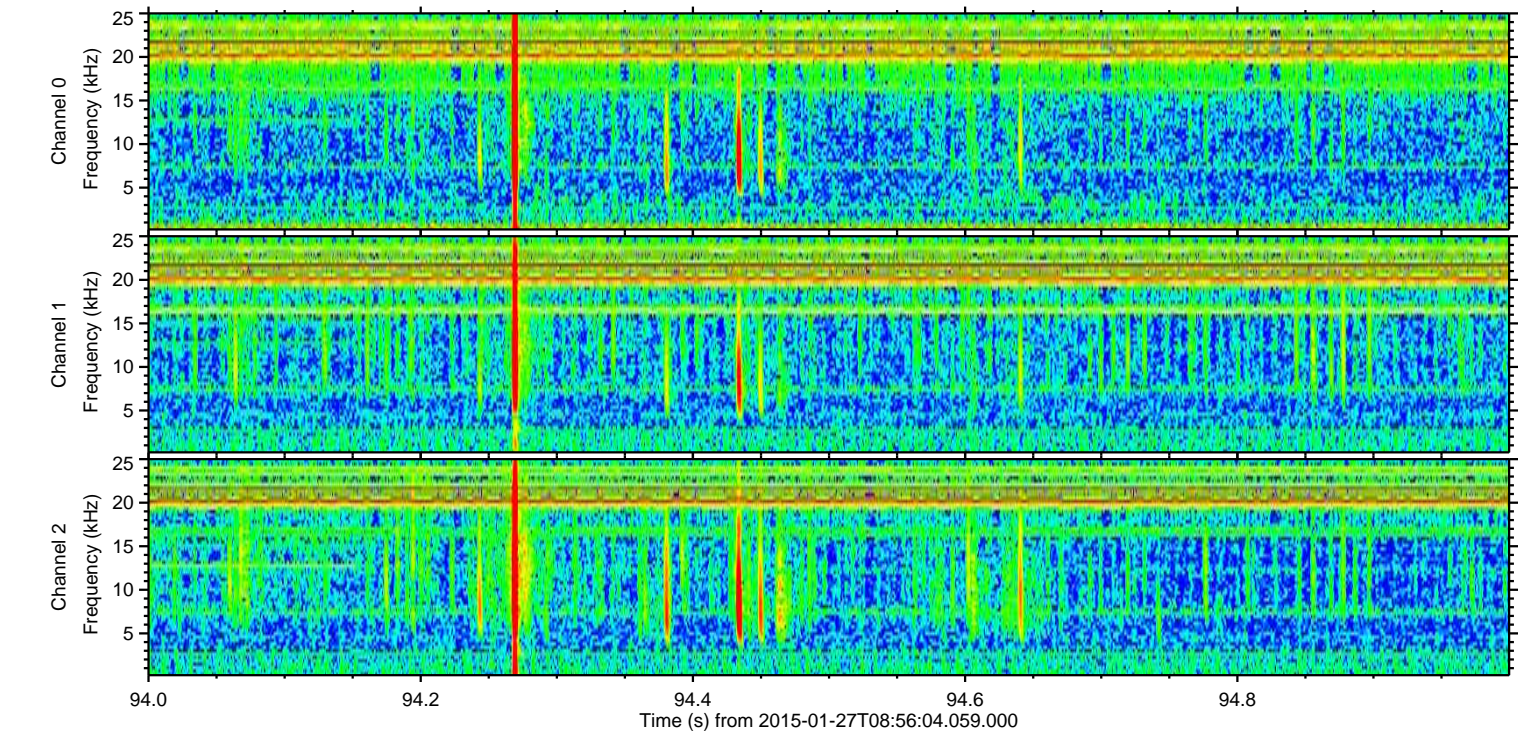
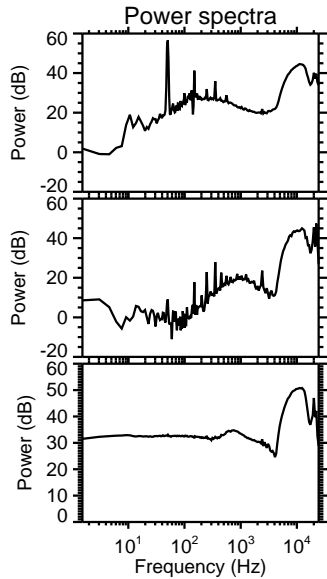
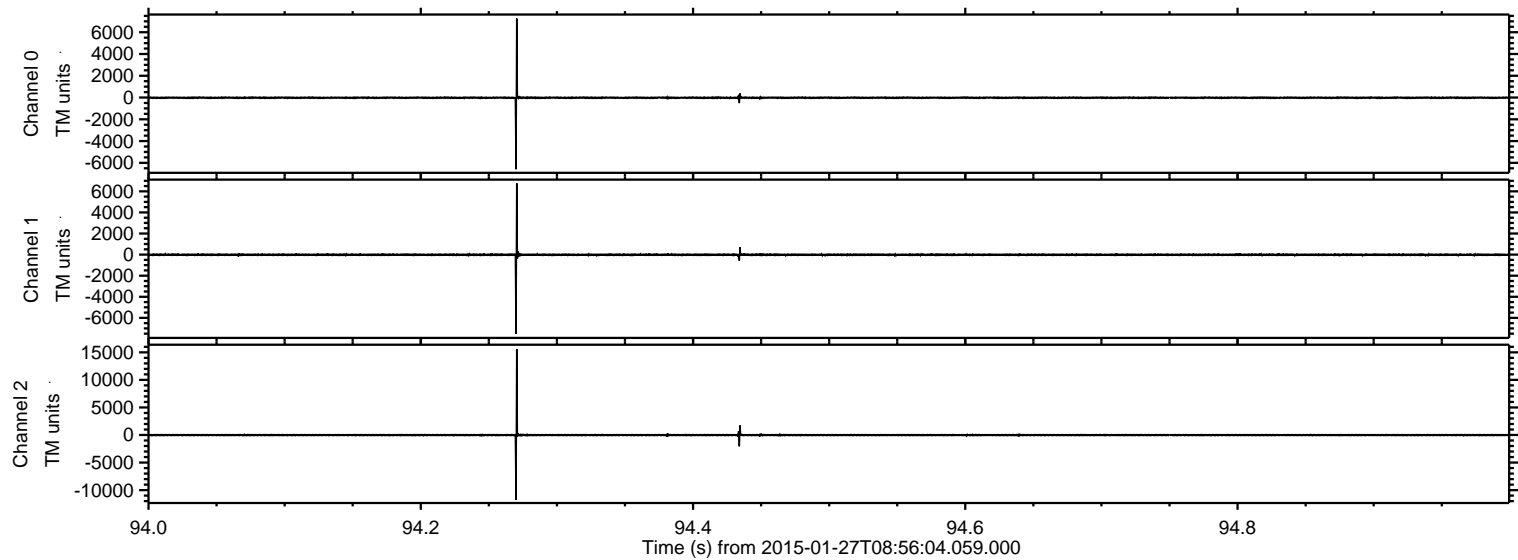


ELMAVAN 3D WAVEFORMS (Measured data sampled at 50 kHz) 49805 packets of 144 samples from 2015-01-27T08:56:04.059.000. Part 112/144

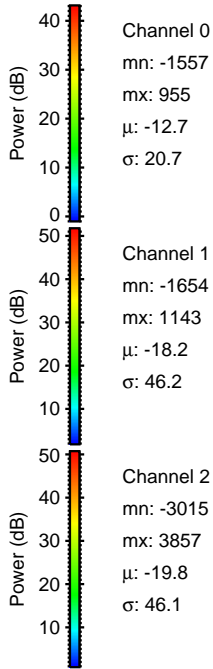
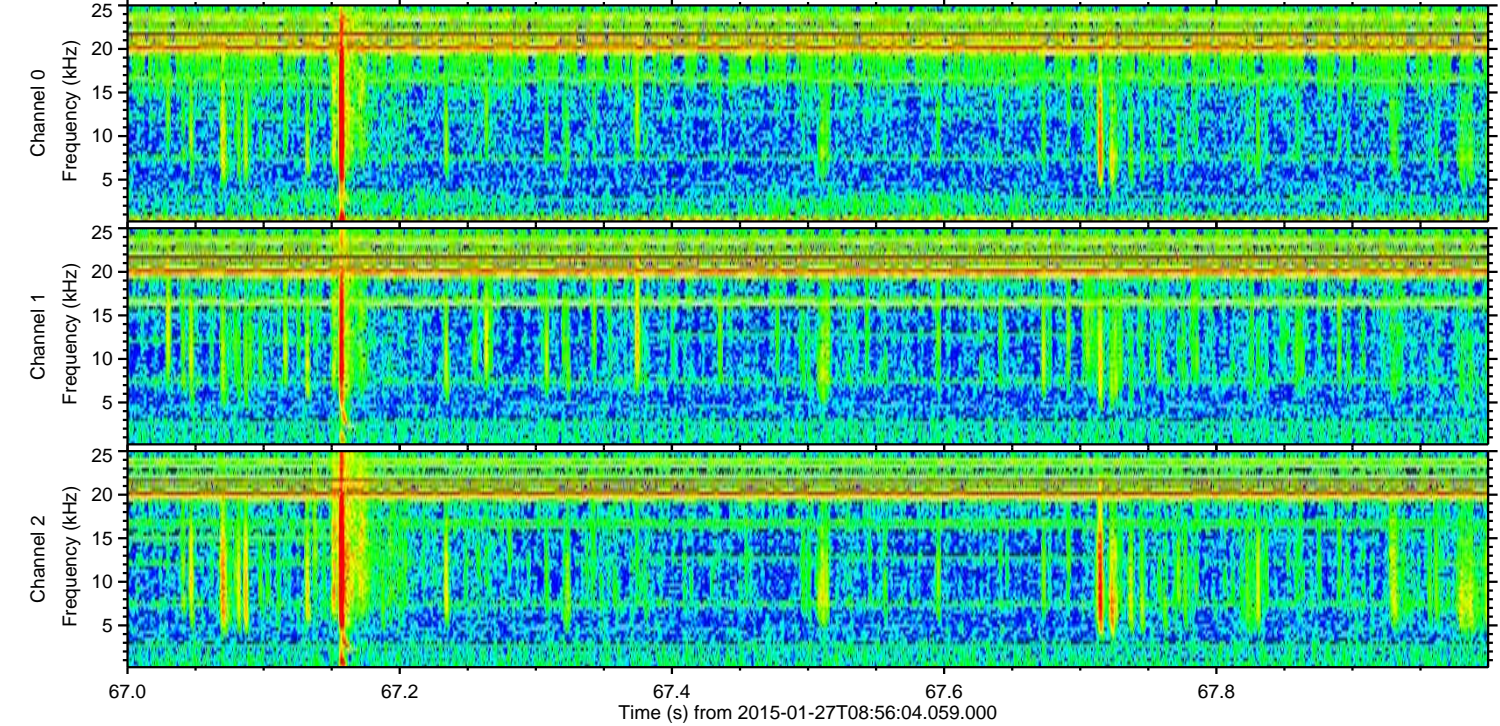
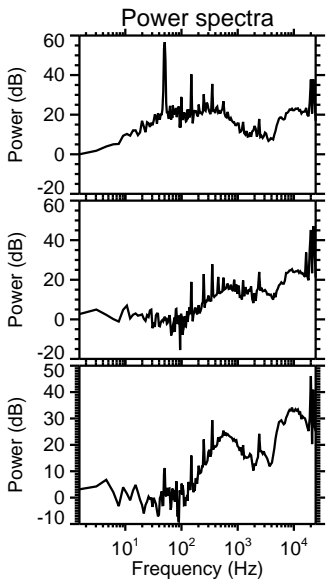
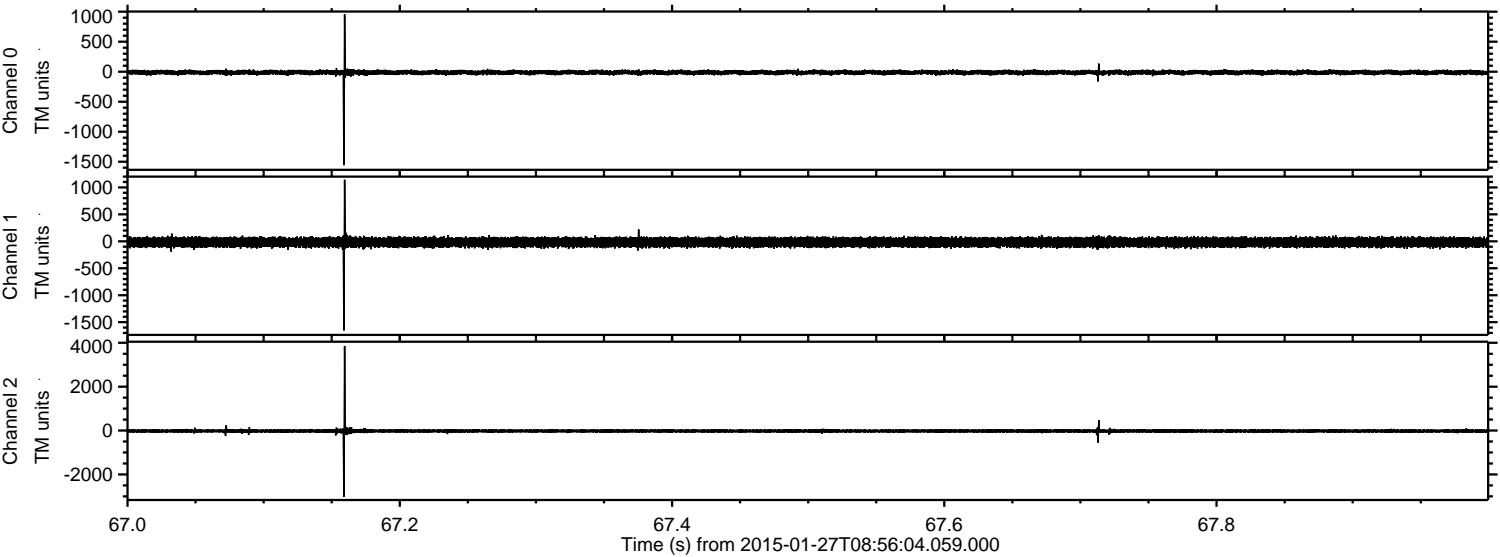
Processed Wed Feb 11 20:36:27 2015 by ELM ver.2012-10-06 from 001__elm20150127_085603__dat00.bin



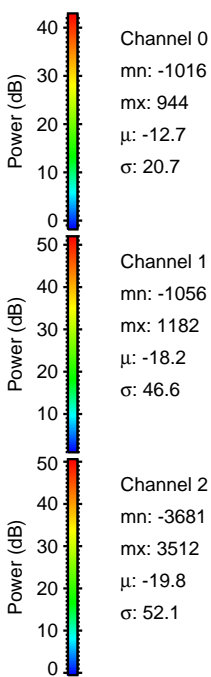
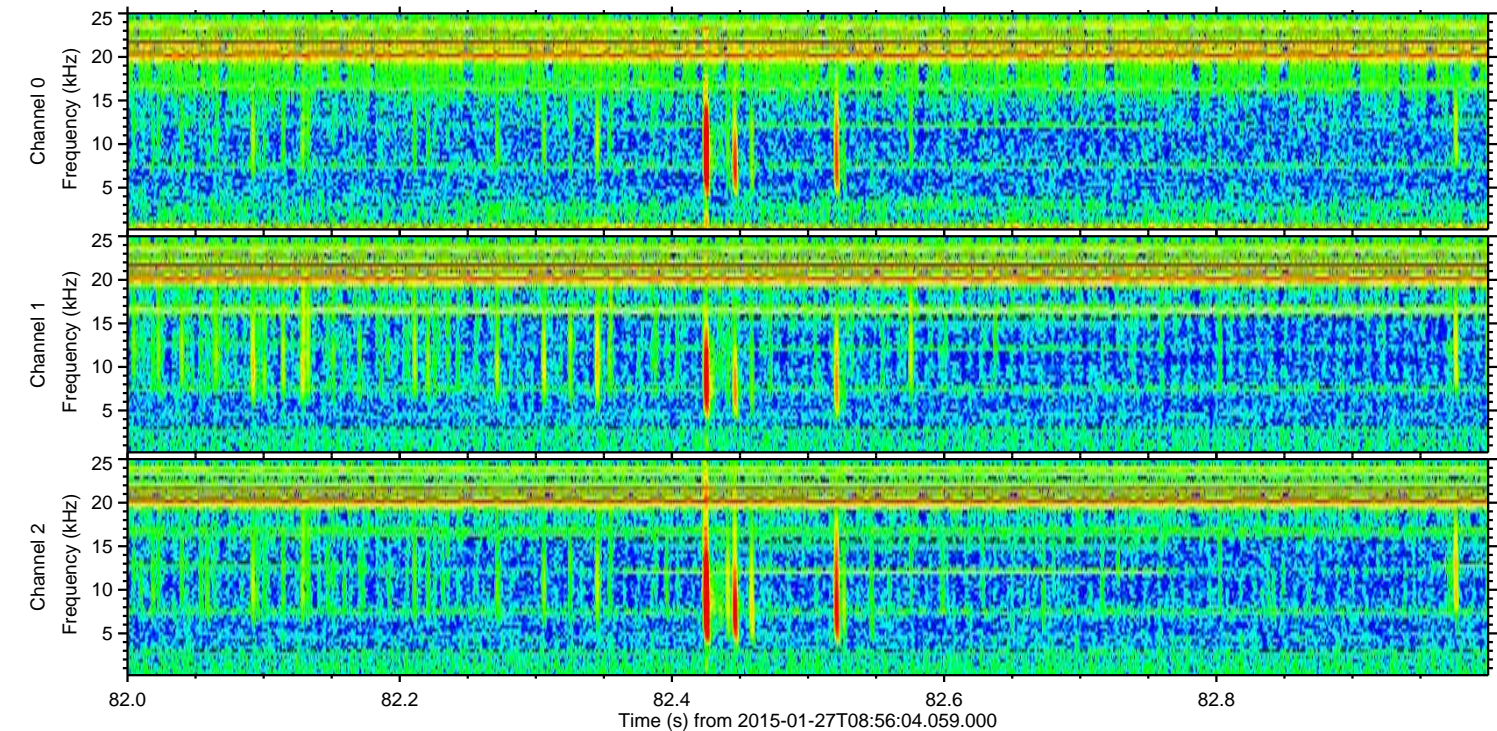
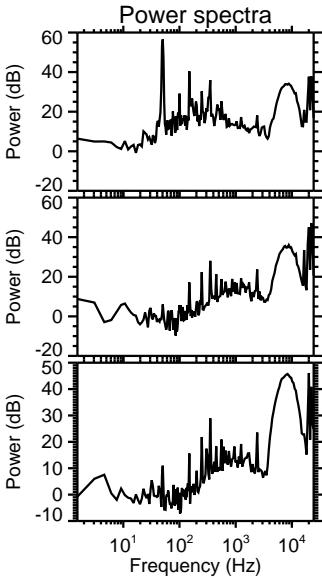
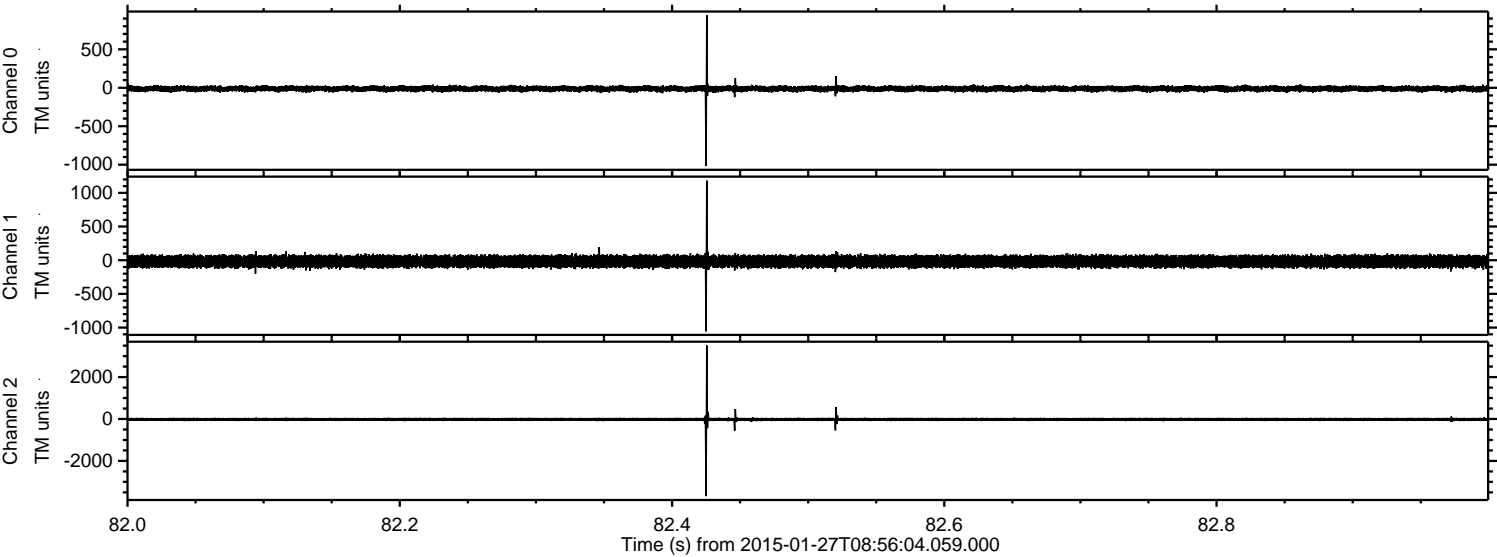
Processed Wed Feb 11 20:36:28 2015 by ELM ver.2012-10-06 from 001__elm20150127_085603__dat00.bin



Processed Wed Feb 11 20:36:29 2015 by ELM ver.2012-10-06 from 001__elm20150127_085603__dat00.bin

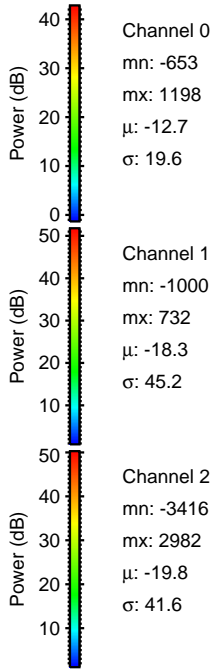
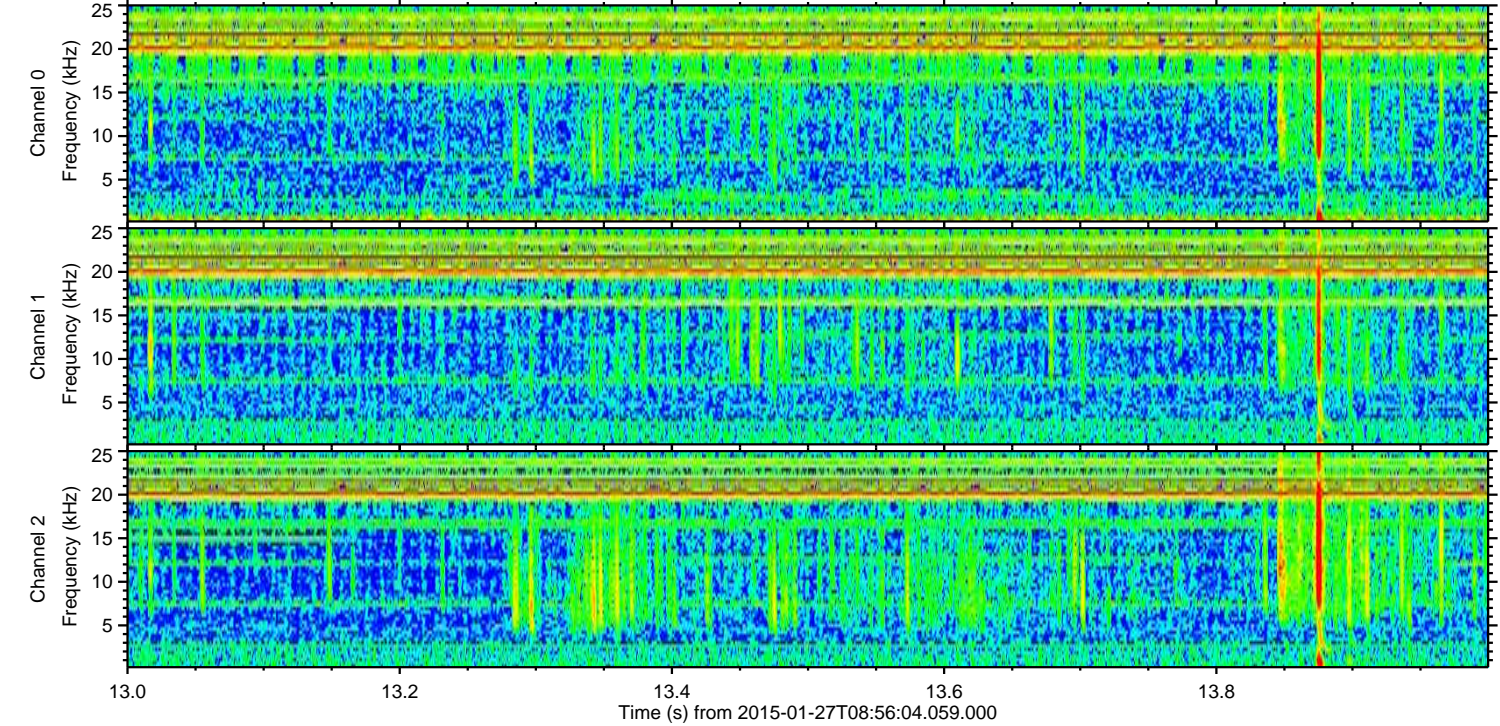
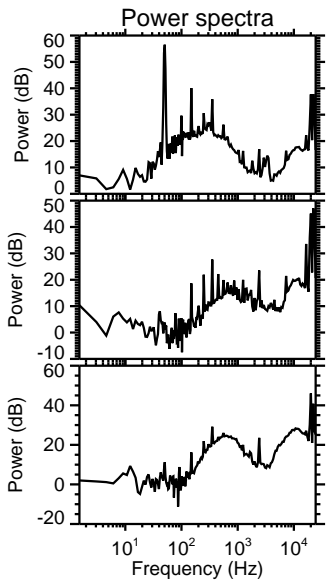
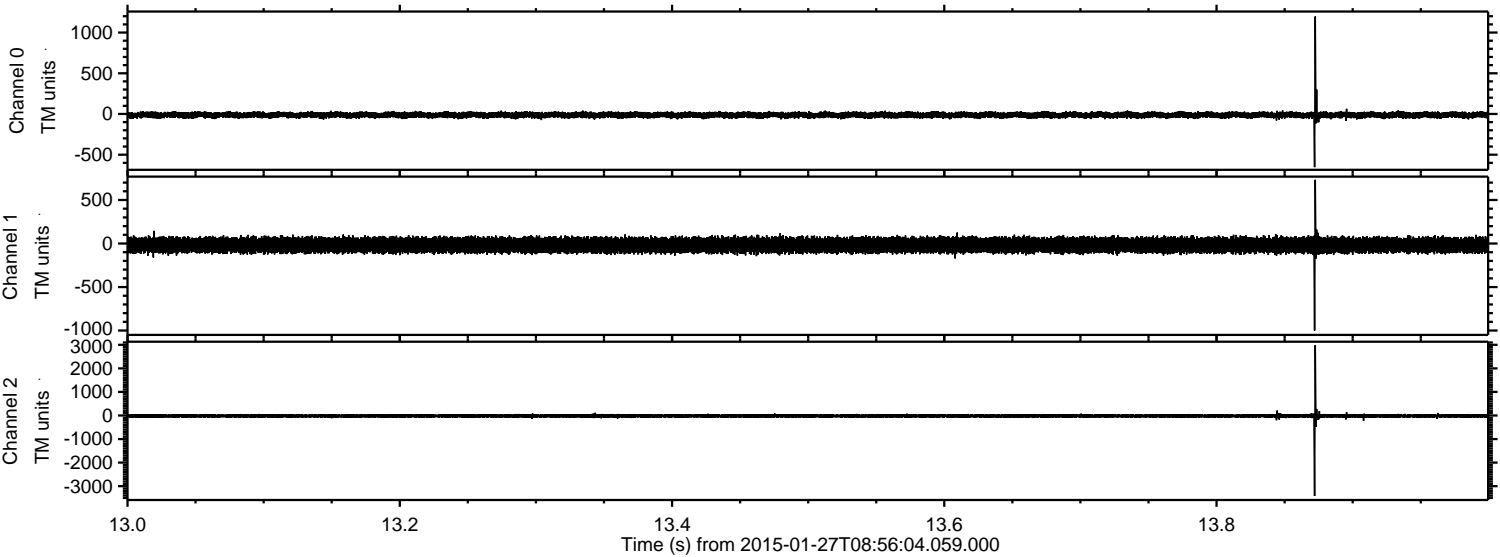


Processed Wed Feb 11 20:36:30 2015 by ELM ver.2012-10-06 from 001__elm20150127_085603__dat00.bin

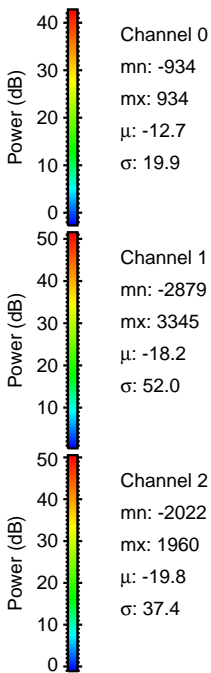
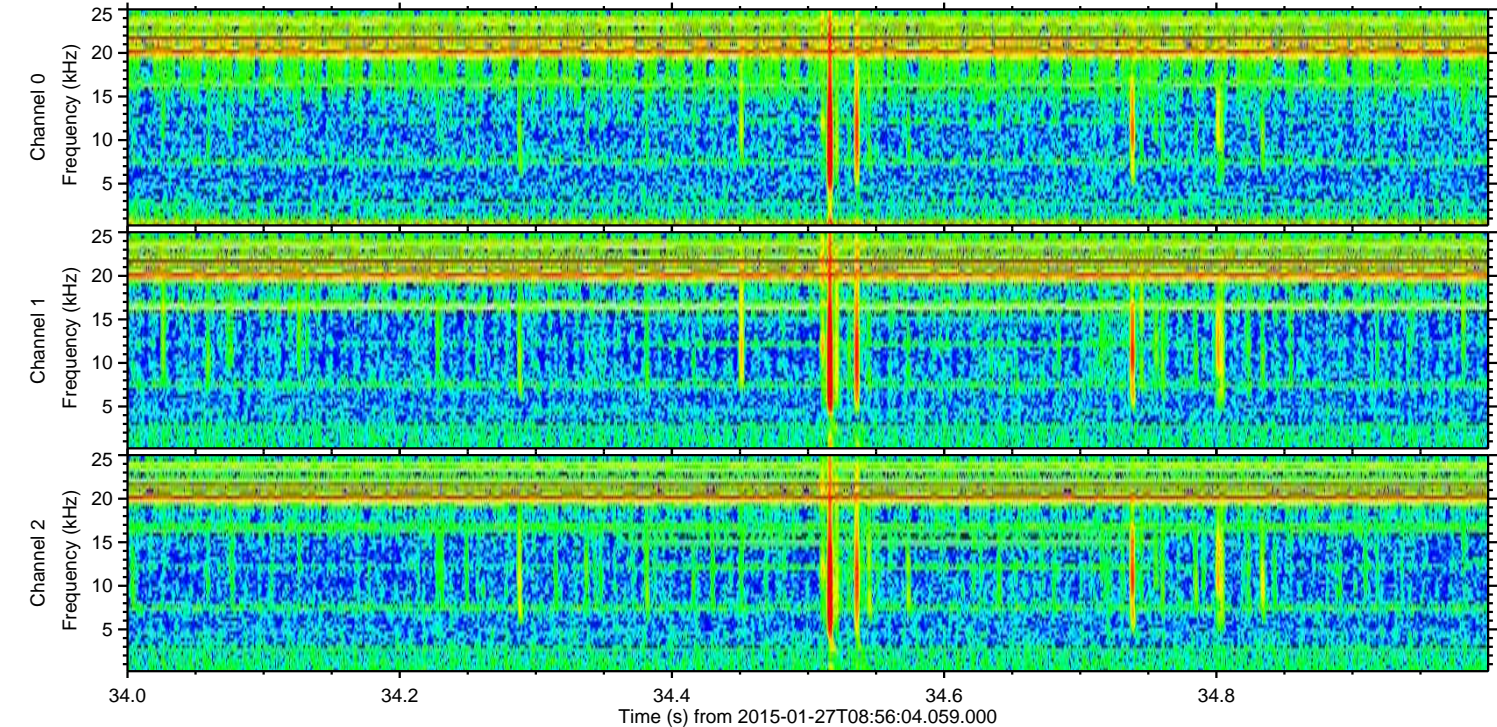
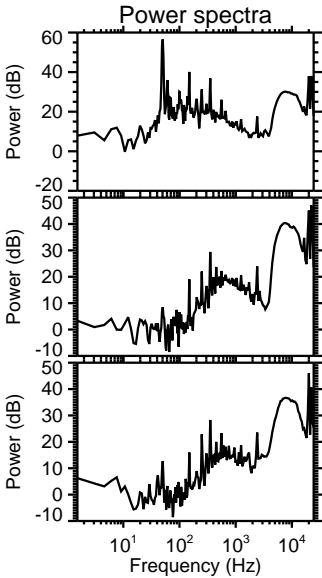
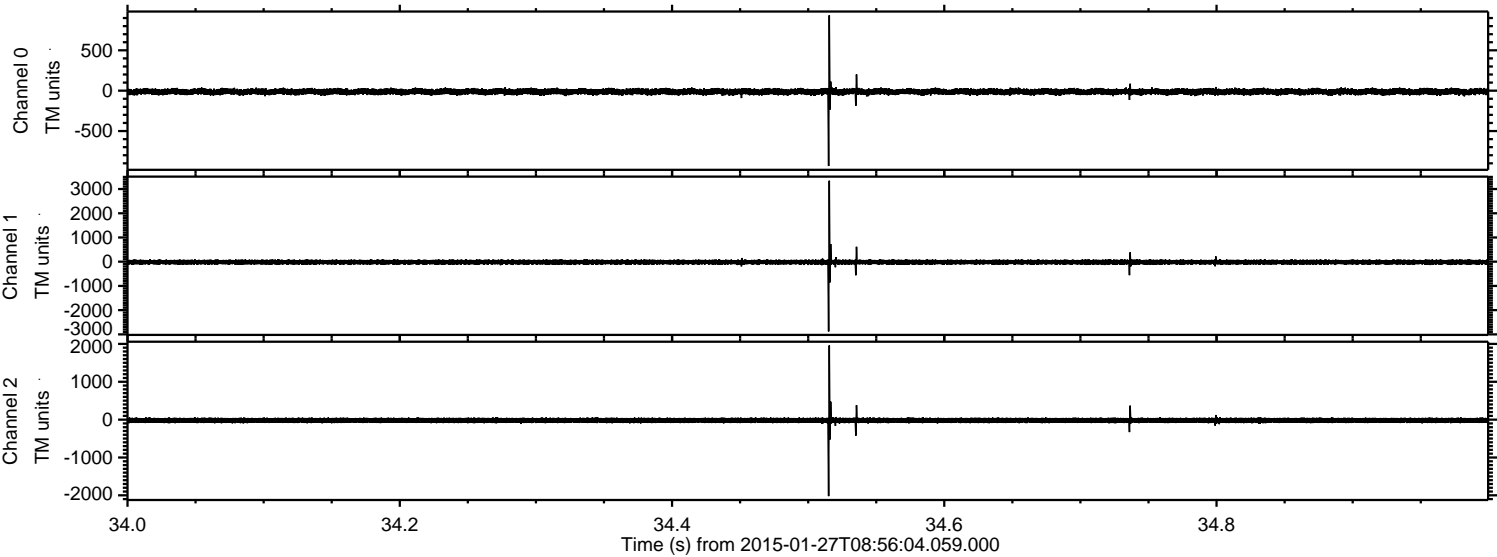


ELMAVAN 3D WAVEFORMS (Measured data sampled at 50 kHz) 49805 packets of 144 samples from 2015-01-27T08:56:04.059.000. Part 14/144

Processed Wed Feb 11 20:36:31 2015 by ELM ver.2012-10-06 from 001__elm20150127_085603__dat00.bin



Processed Wed Feb 11 20:36:32 2015 by ELM ver.2012-10-06 from 001__elm20150127_085603__dat00.bin

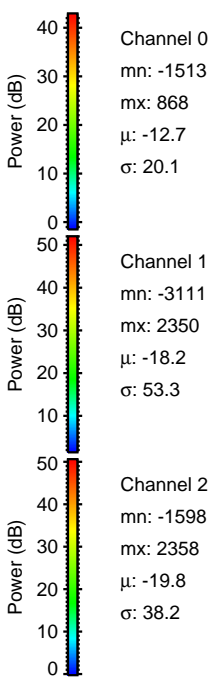
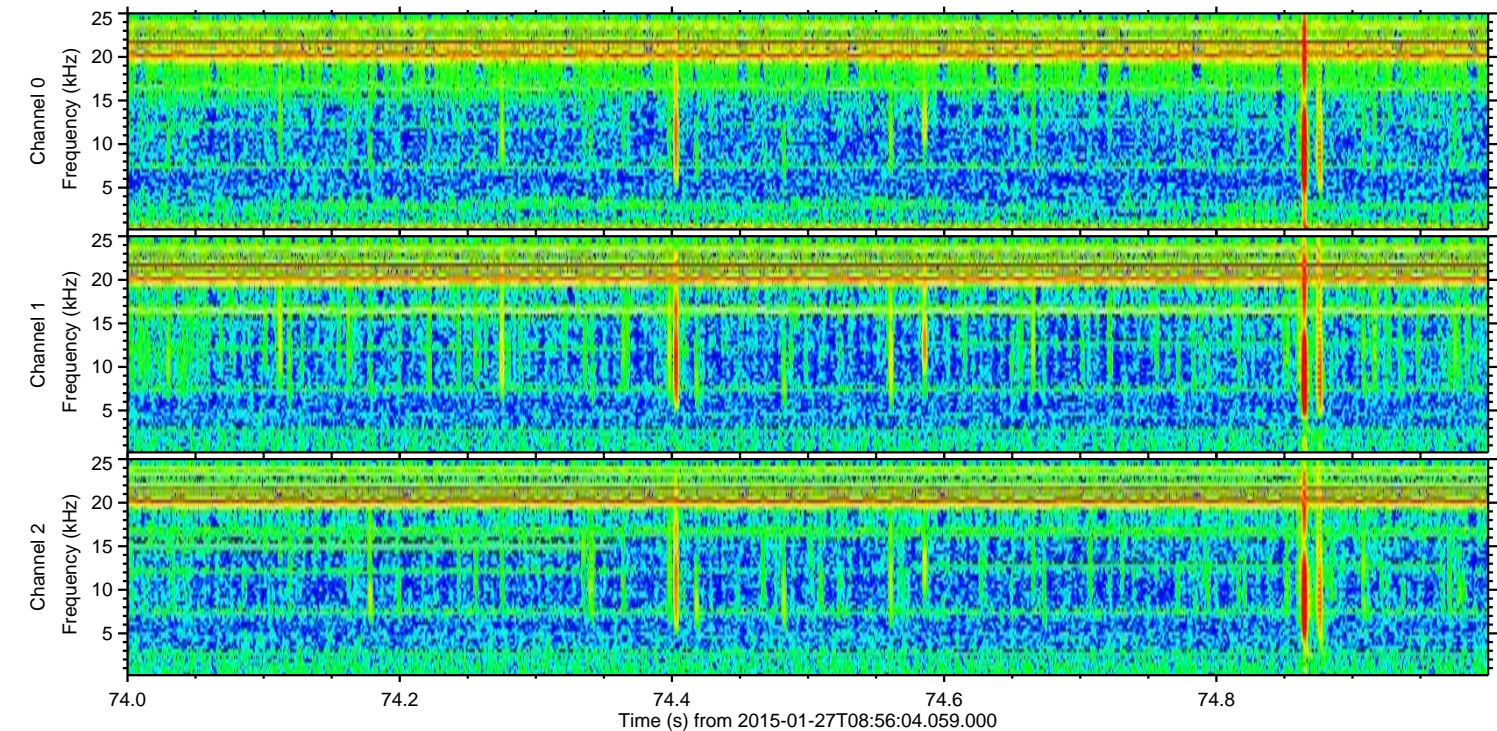
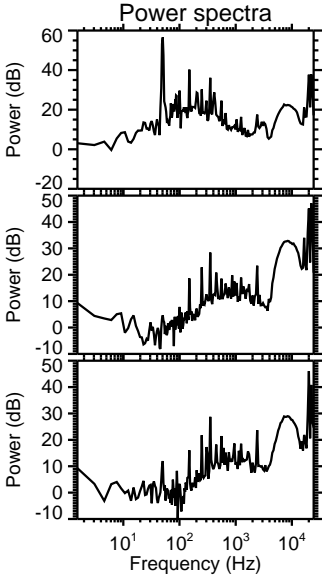
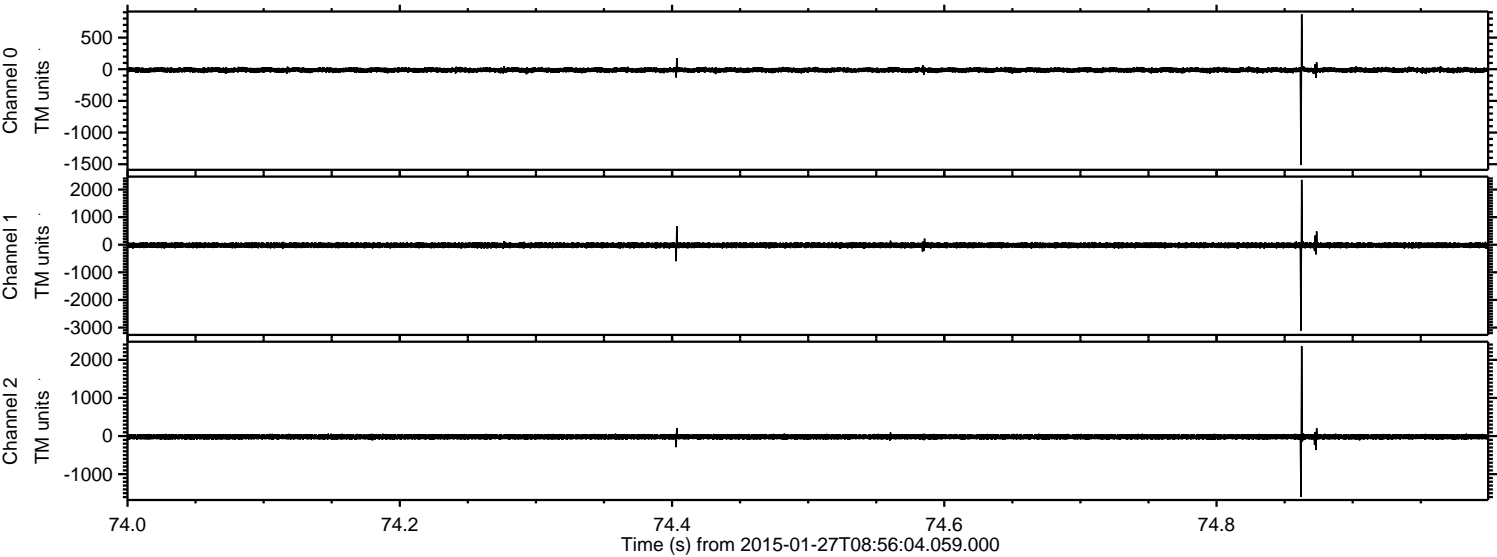


Channel 0
mn: -934
mx: 934
 μ : -12.7
 σ : 19.9

Channel 1
mn: -2879
mx: 3345
 μ : -18.2
 σ : 52.0

Channel 2
mn: -2022
mx: 1960
 μ : -19.8
 σ : 37.4

Processed Wed Feb 11 20:36:33 2015 by ELM ver.2012-10-06 from 001__elm20150127_085603__dat00.bin



Processed Wed Feb 11 20:36:34 2015 by ELM ver.2012-10-06 from 001__elm20150127_085603__dat00.bin

