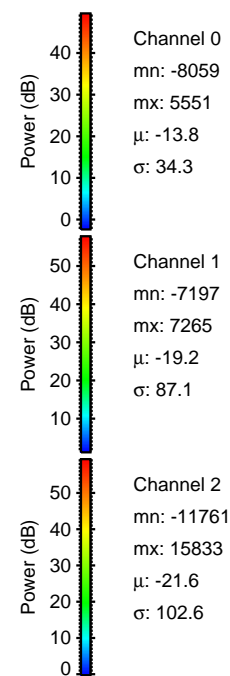
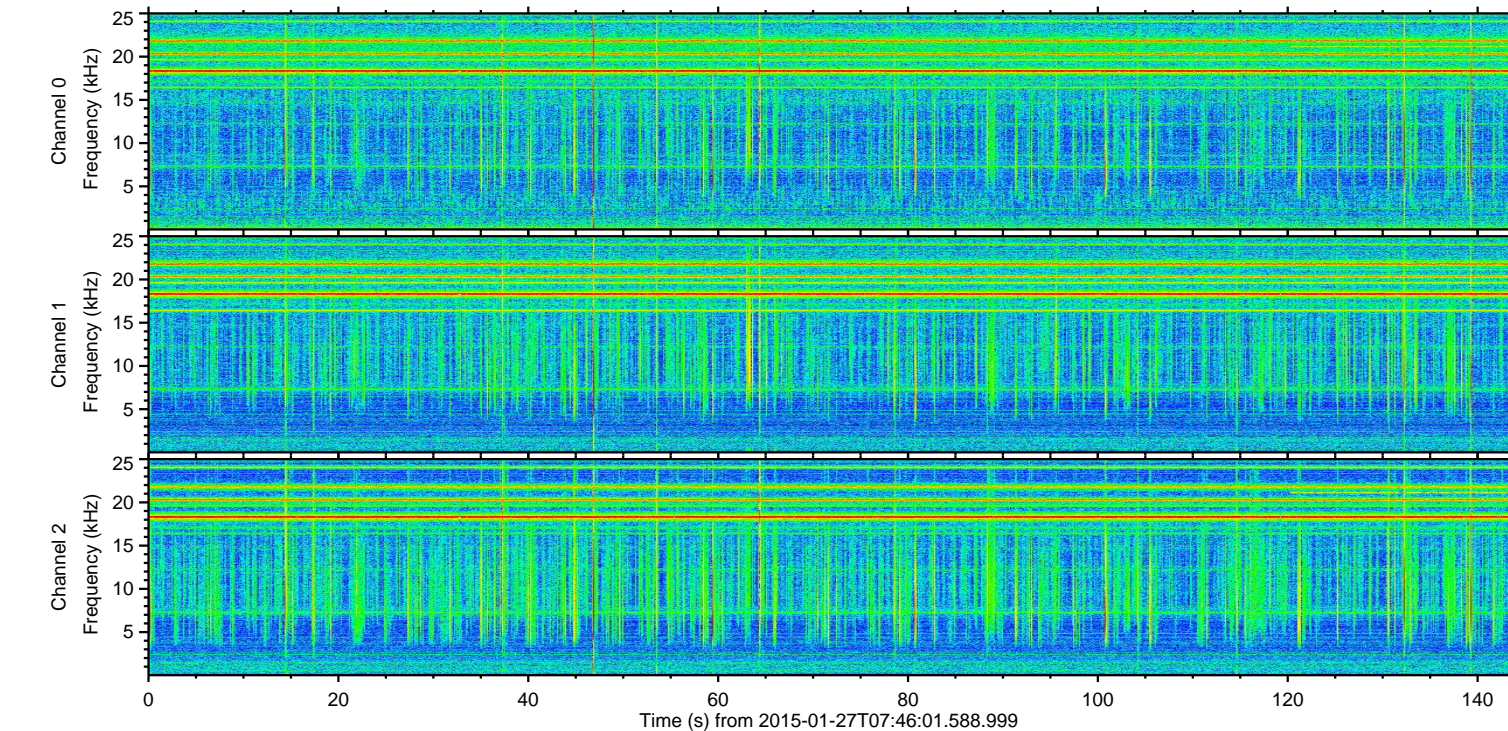
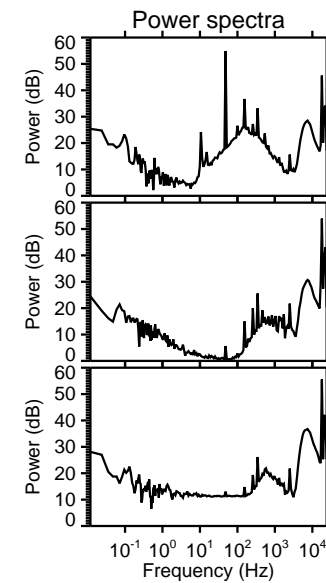
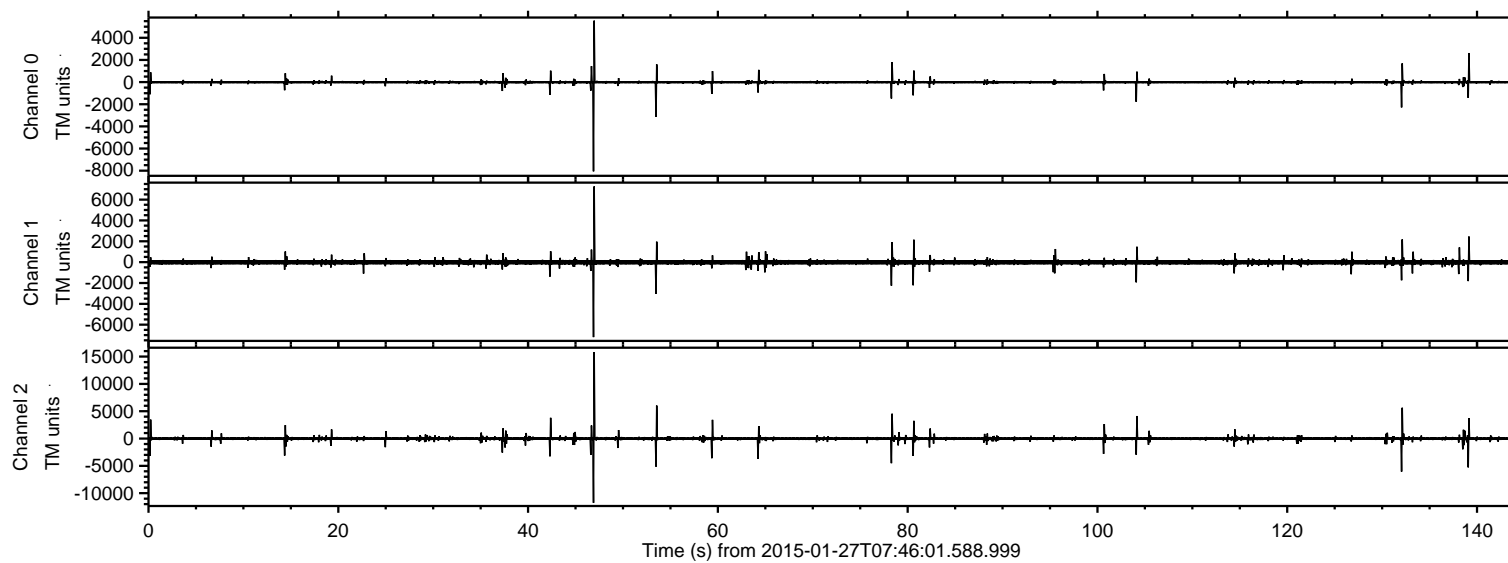


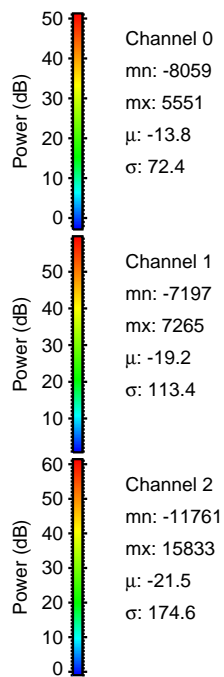
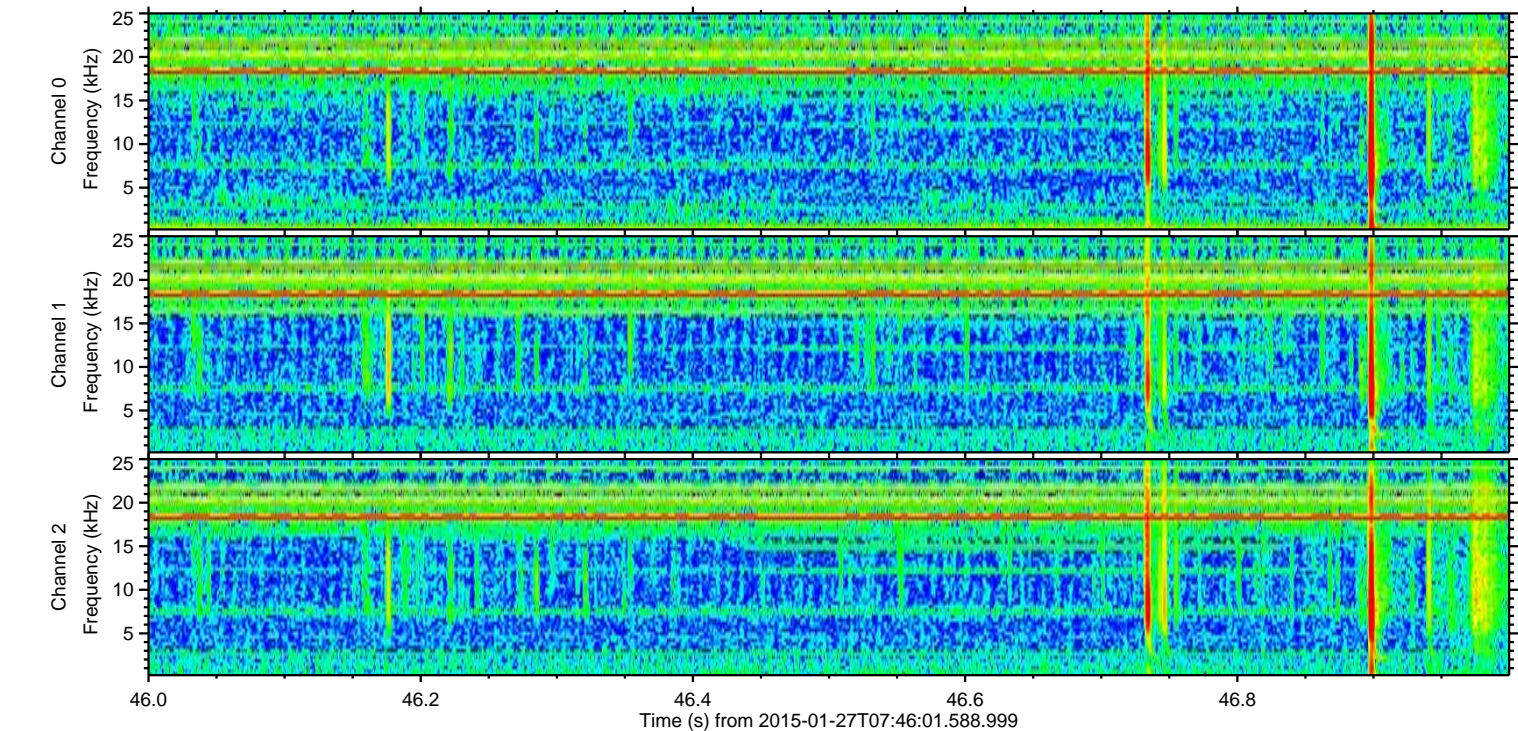
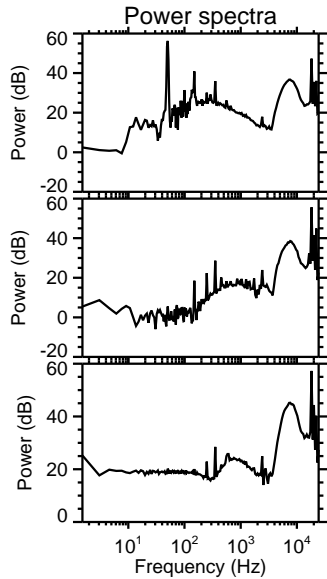
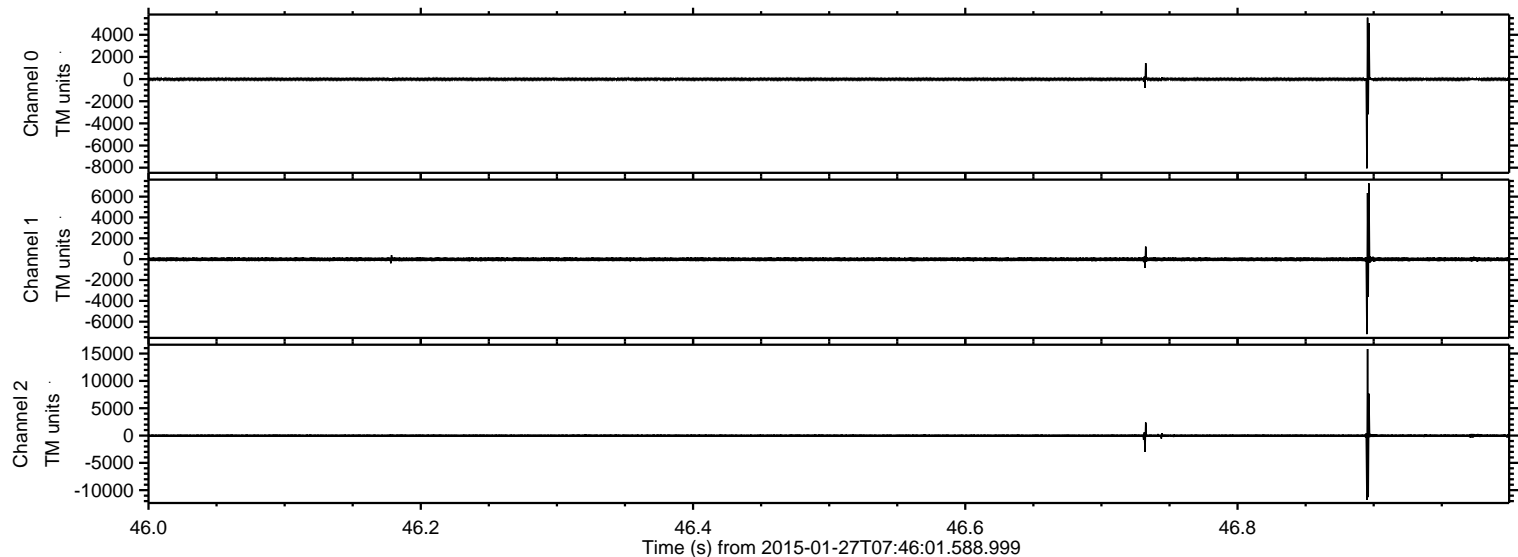
# ELMAVAN 3D WAVEFORMS (Measured data sampled at 50 kHz) 49786 packets of 144 samples from 2015-01-27T07:46:01.588.999.

Processed Wed Feb 11 20:19:17 2015 by ELM ver.2012-10-06 from 001\_\_elm20150127\_074600\_\_dat00.bin





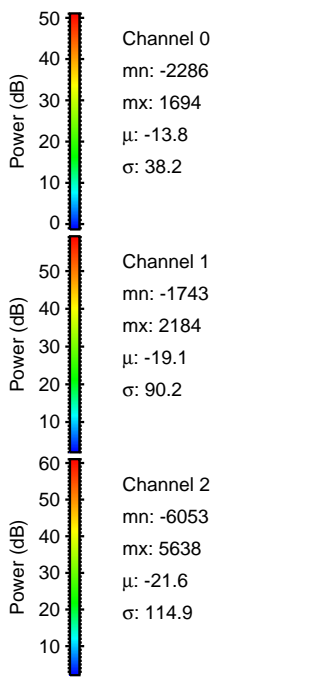
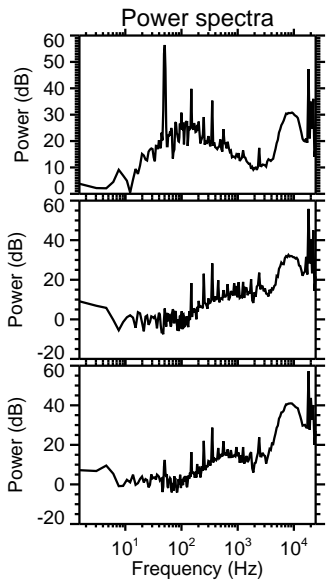
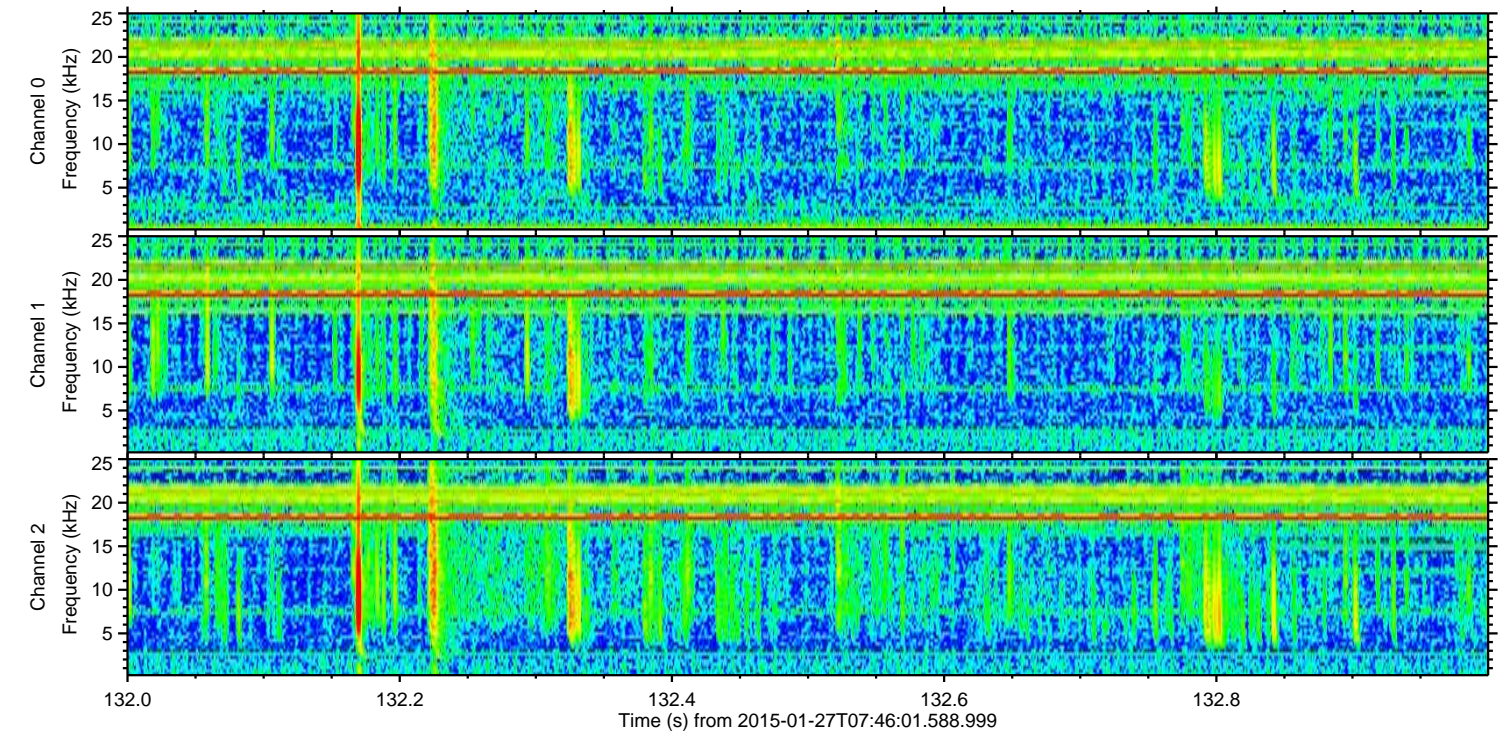
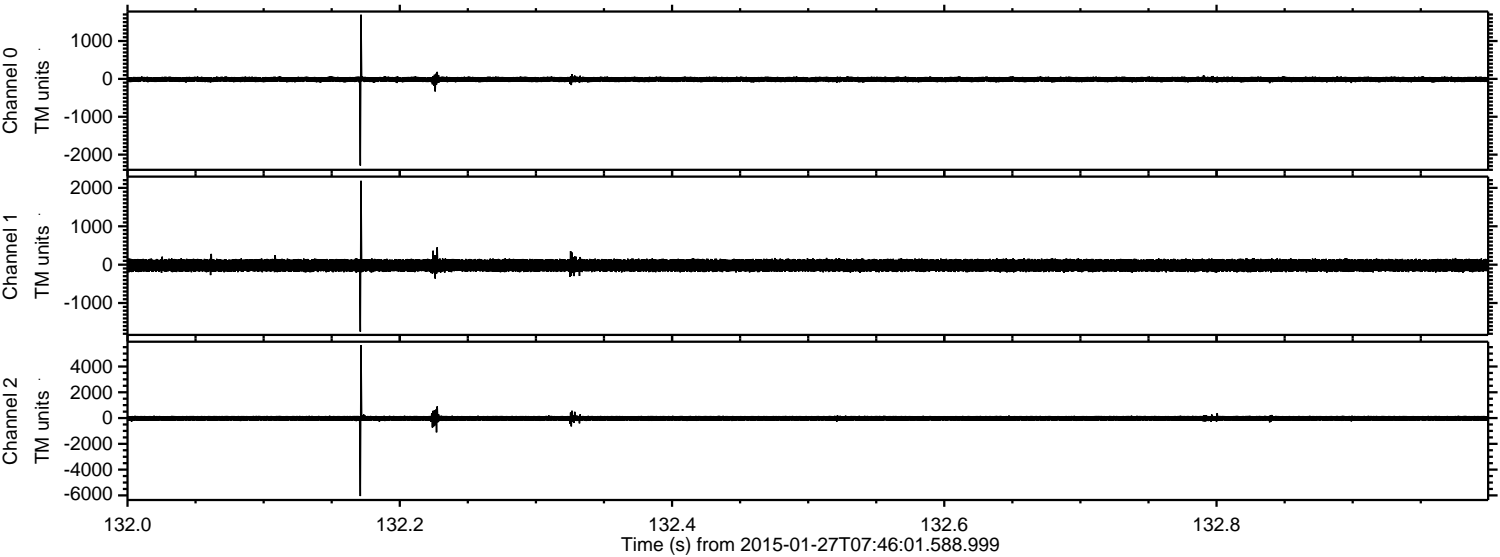
Processed Wed Feb 11 20:19:28 2015 by ELM ver.2012-10-06 from 001\_\_elm20150127\_074600\_\_dat00.bin





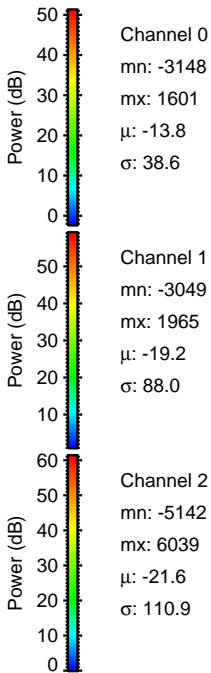
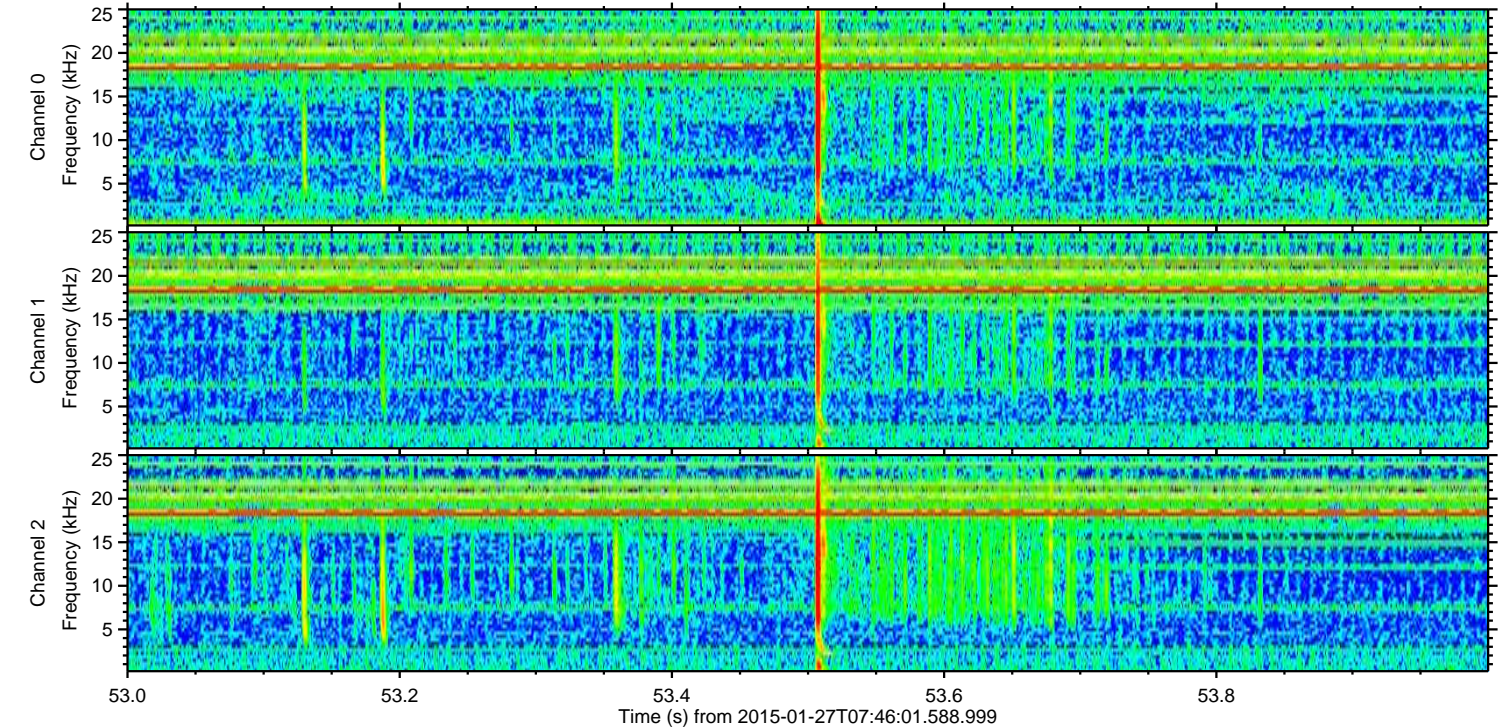
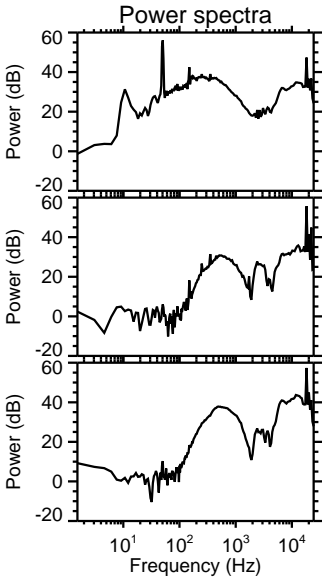
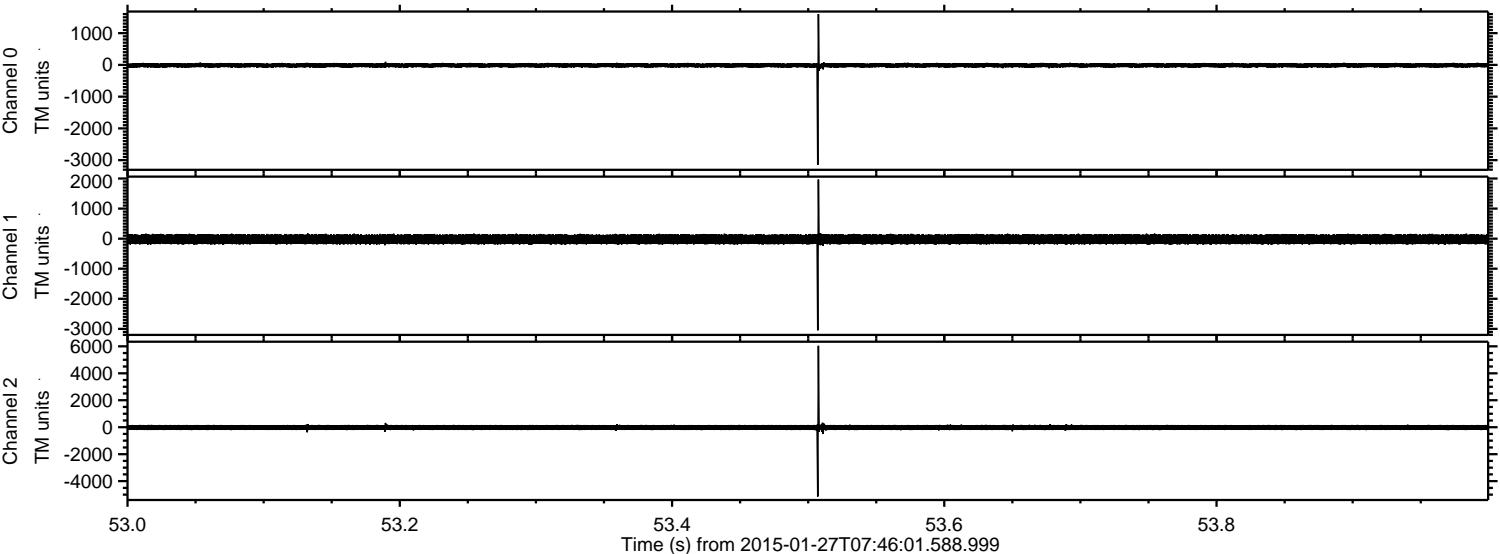
ELMAVAN 3D WAVEFORMS (Measured data sampled at 50 kHz) 49786 packets of 144 samples from 2015-01-27T07:46:01.588.999. Part 133/144

Processed Wed Feb 11 20:19:29 2015 by ELM ver.2012-10-06 from 001\_\_elm20150127\_074600\_\_dat00.bin



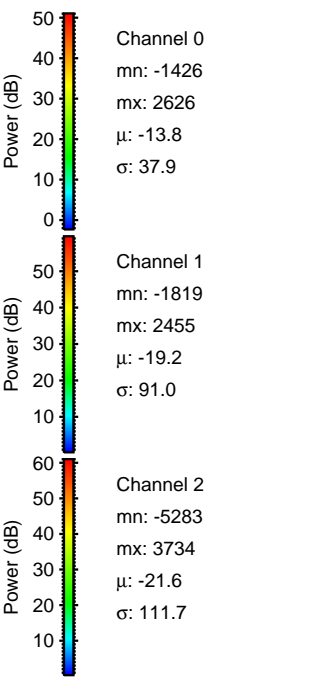
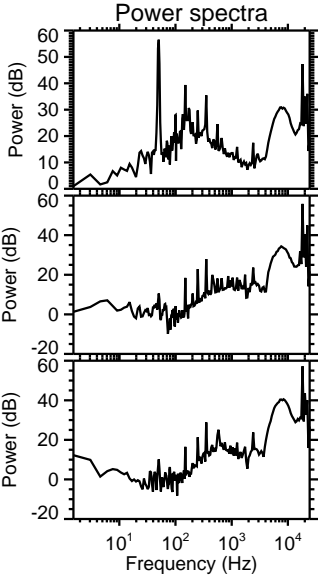
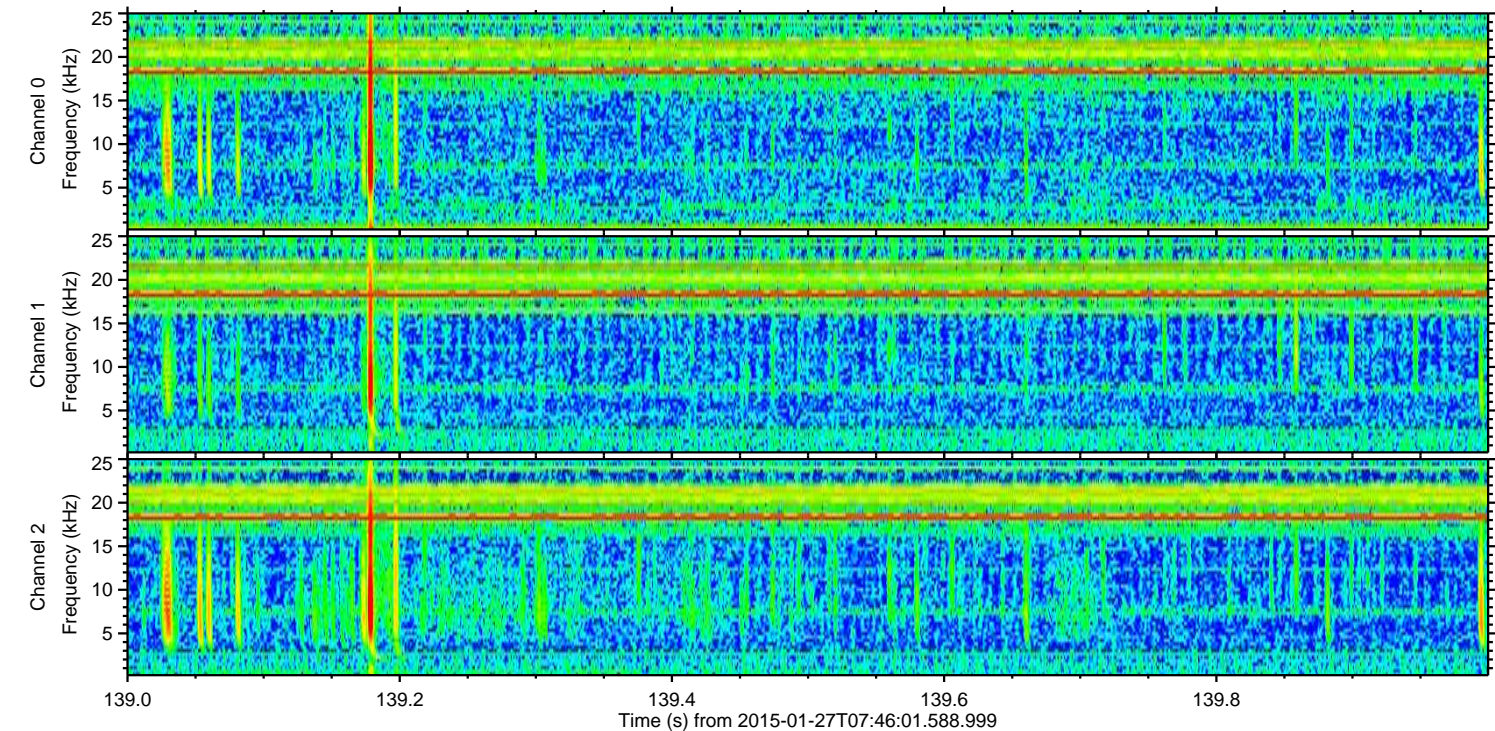
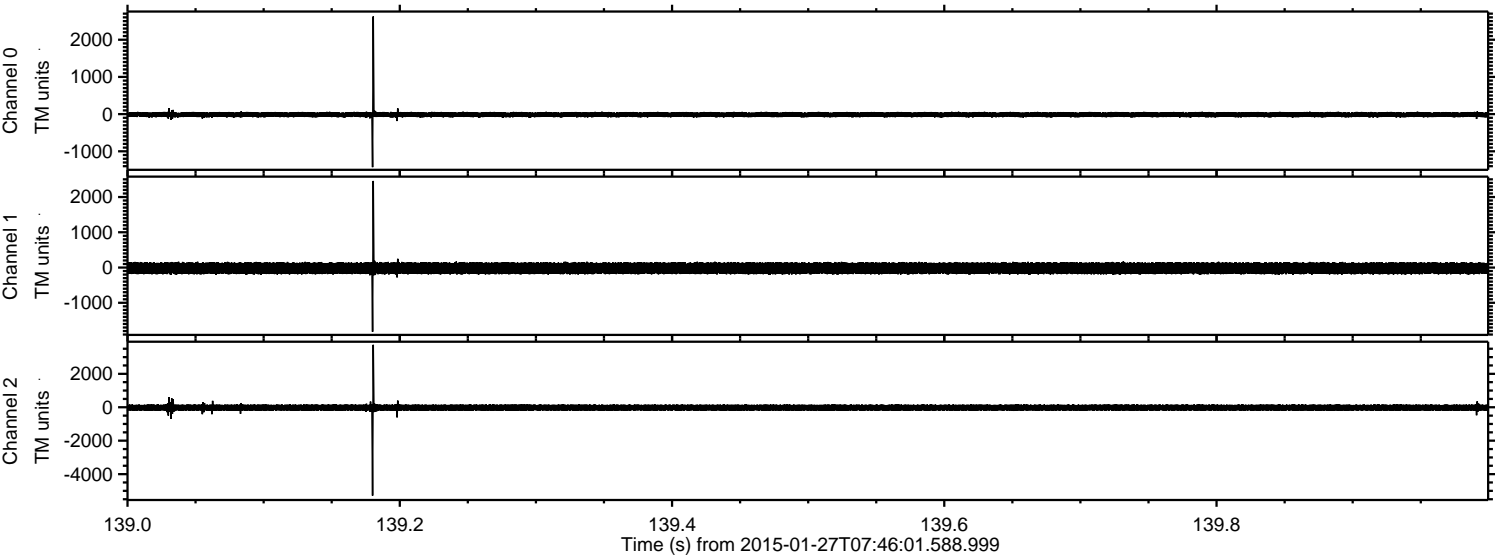


Processed Wed Feb 11 20:19:30 2015 by ELM ver.2012-10-06 from 001\_\_elm20150127\_074600\_\_dat00.bin



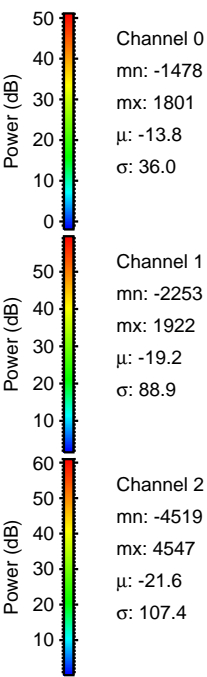
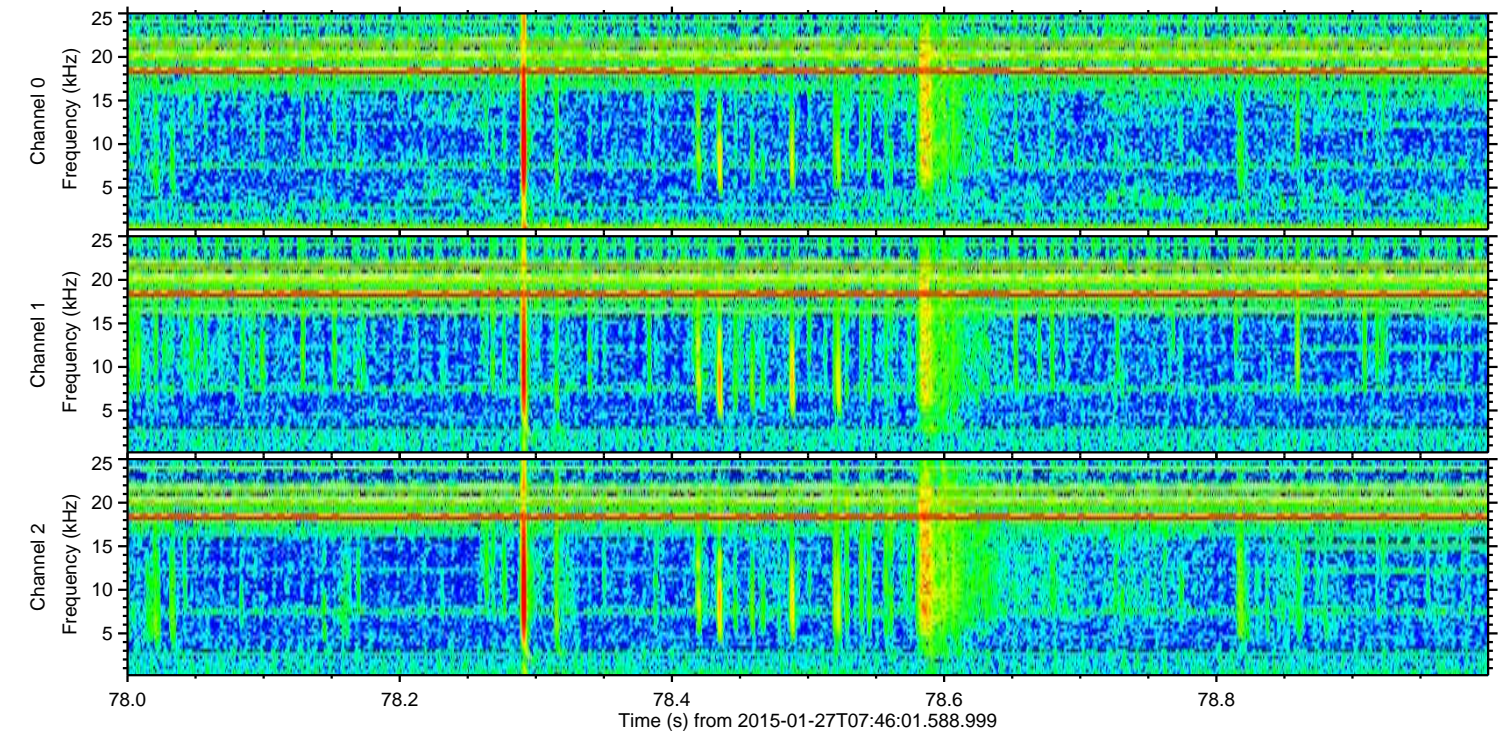
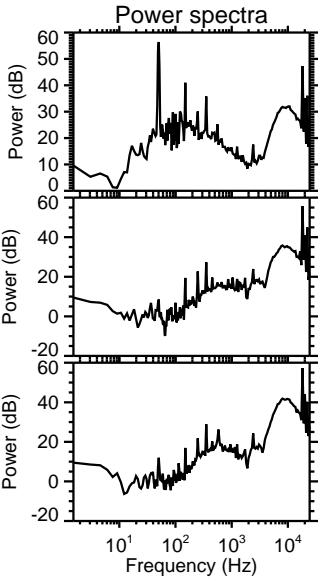
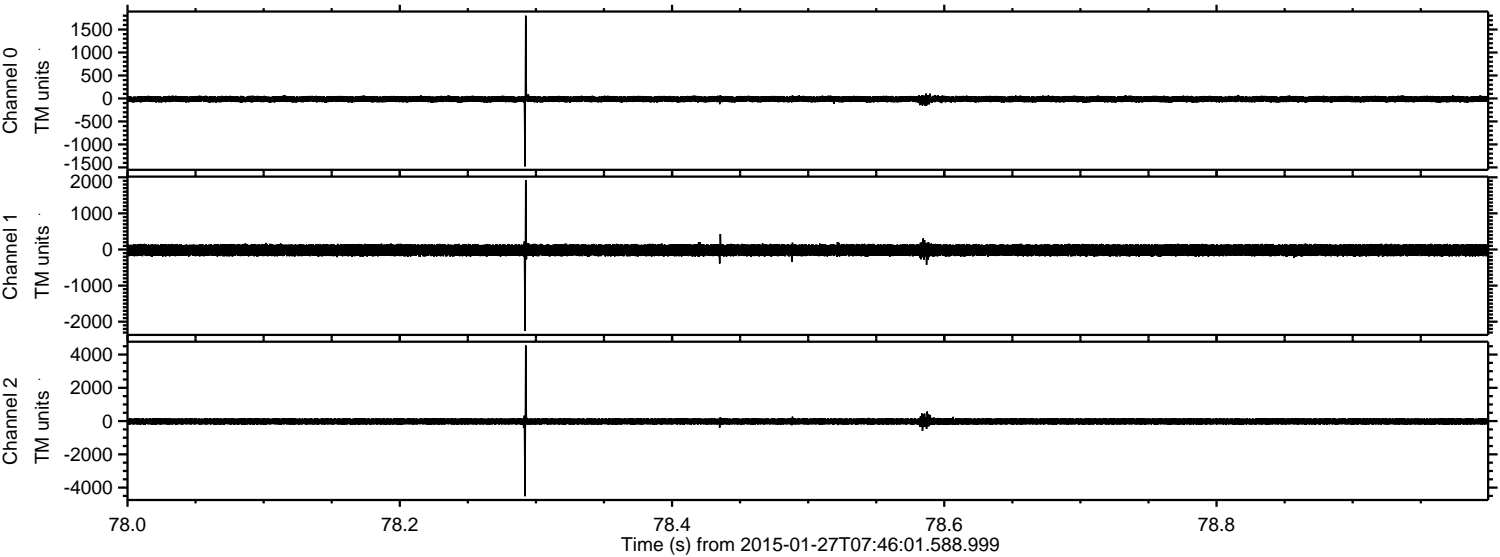


Processed Wed Feb 11 20:19:31 2015 by ELM ver.2012-10-06 from 001\_\_elm20150127\_074600\_\_dat00.bin





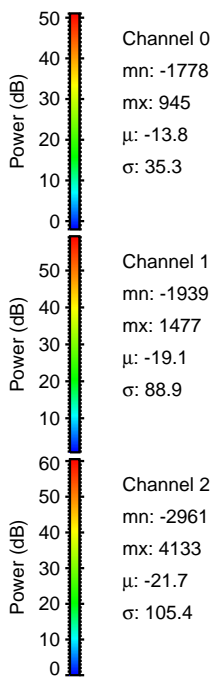
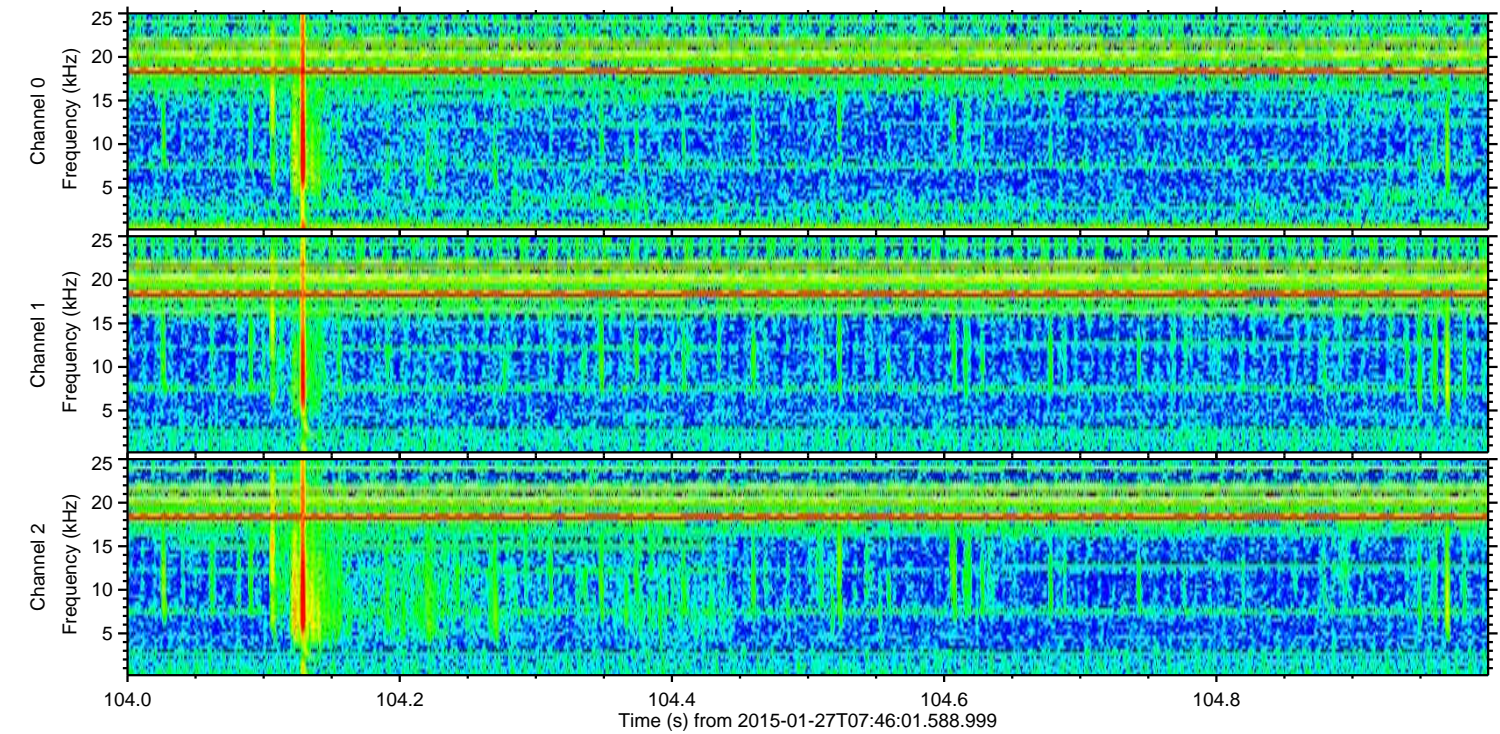
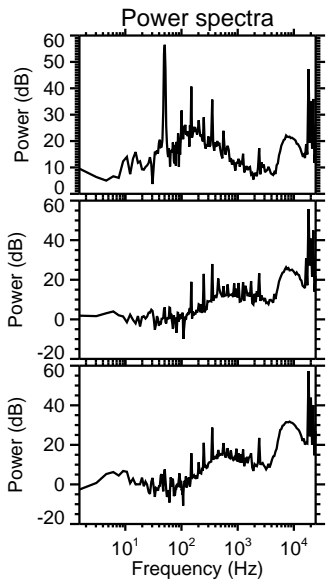
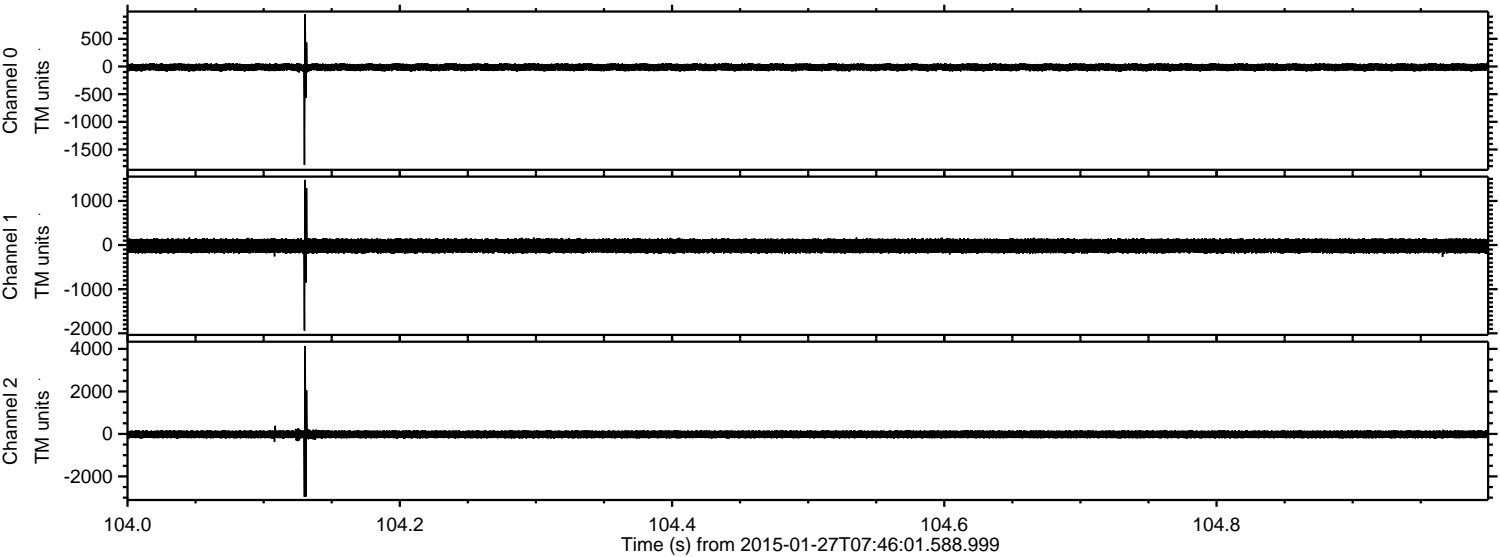
Processed Wed Feb 11 20:19:32 2015 by ELM ver.2012-10-06 from 001\_\_elm20150127\_074600\_\_dat00.bin





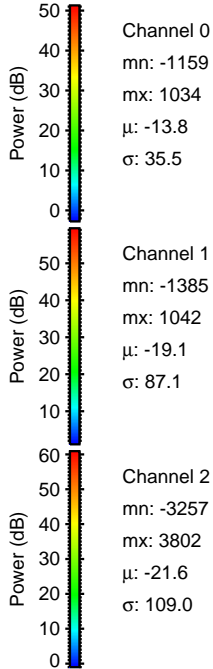
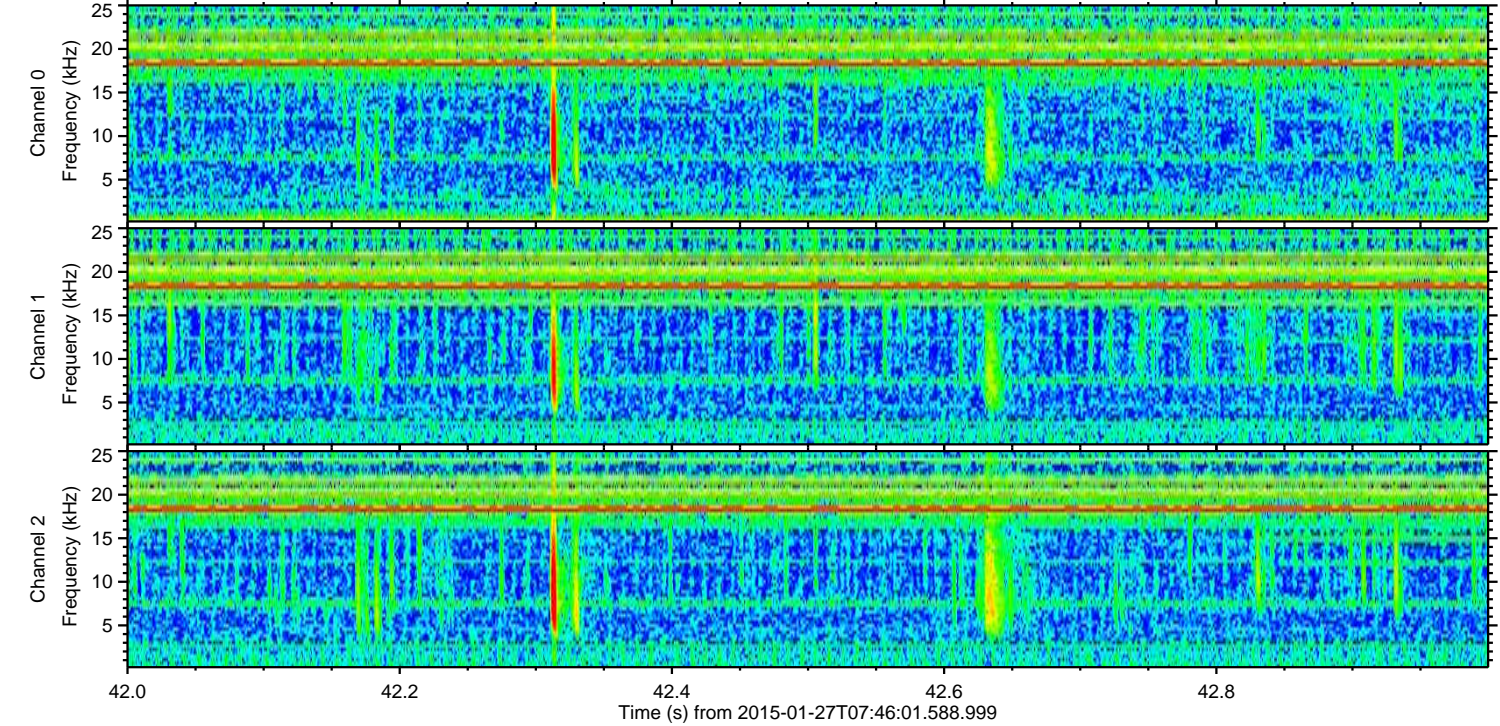
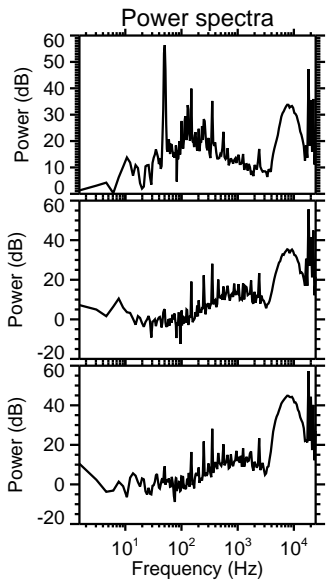
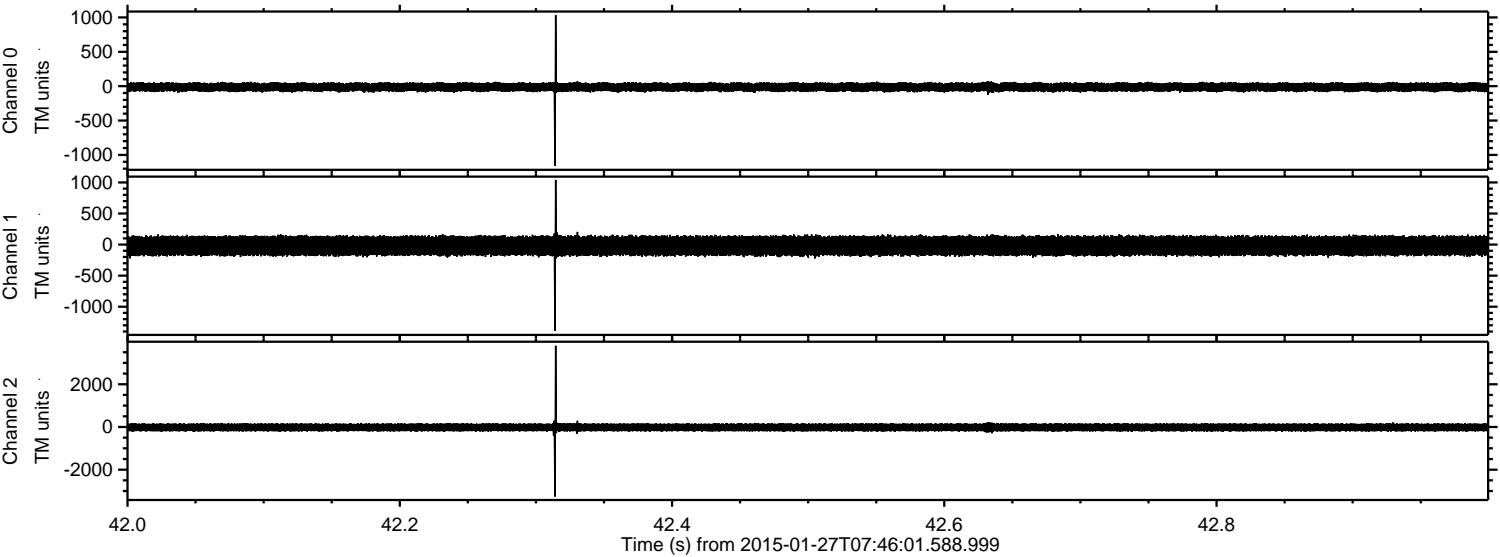
ELMAVAN 3D WAVEFORMS (Measured data sampled at 50 kHz) 49786 packets of 144 samples from 2015-01-27T07:46:01.588.999. Part 105/144

Processed Wed Feb 11 20:19:33 2015 by ELM ver.2012-10-06 from 001\_\_elm20150127\_074600\_\_dat00.bin



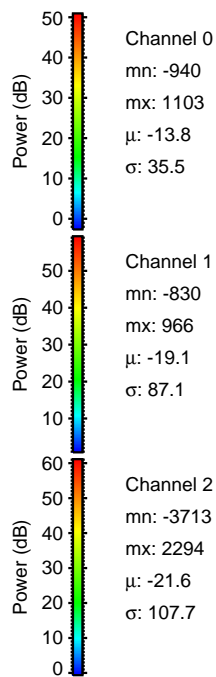
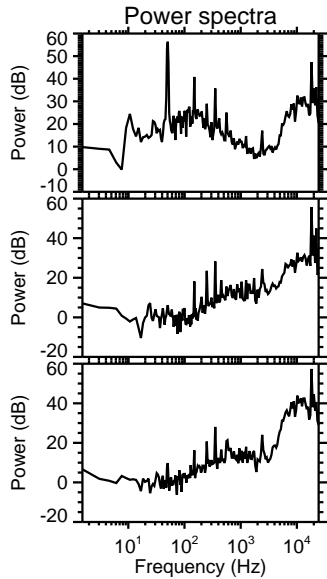
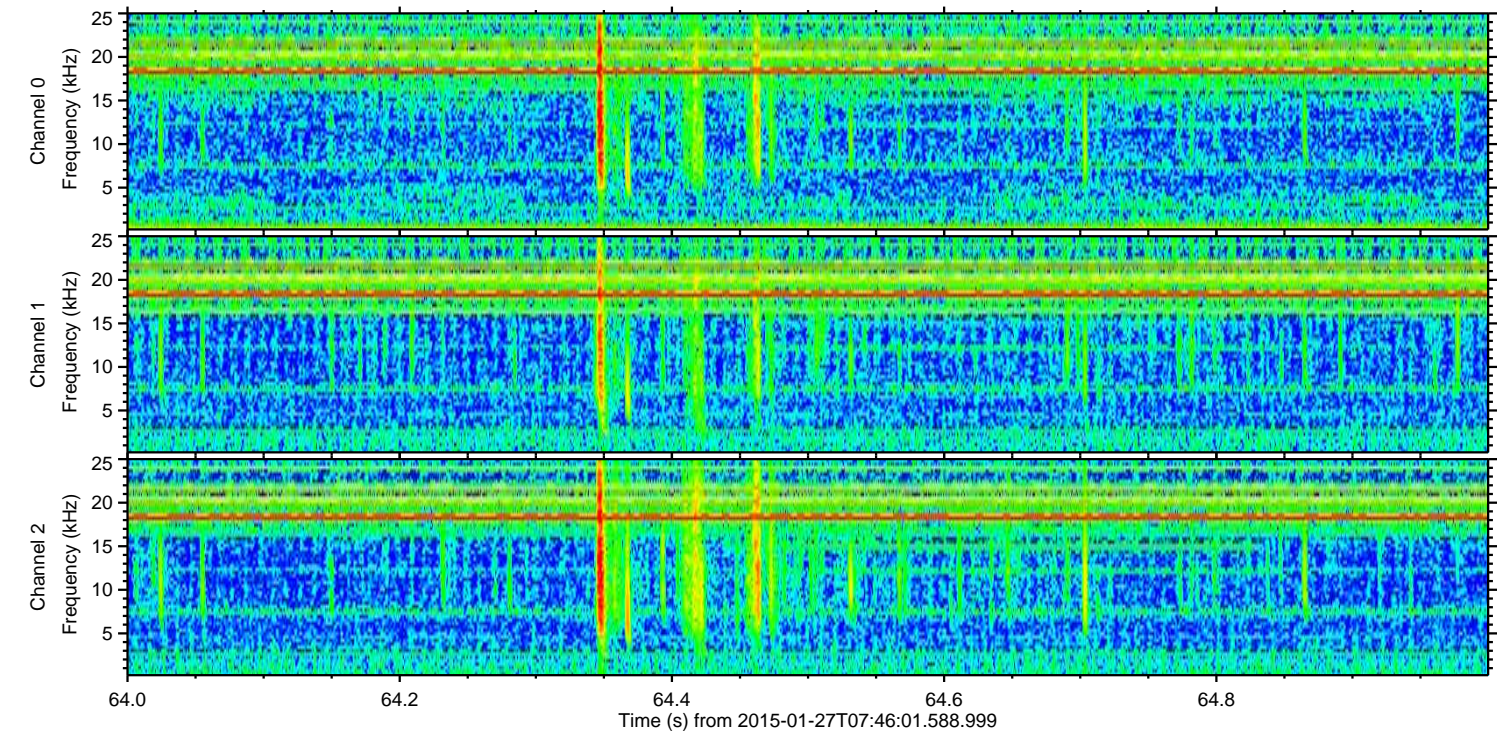
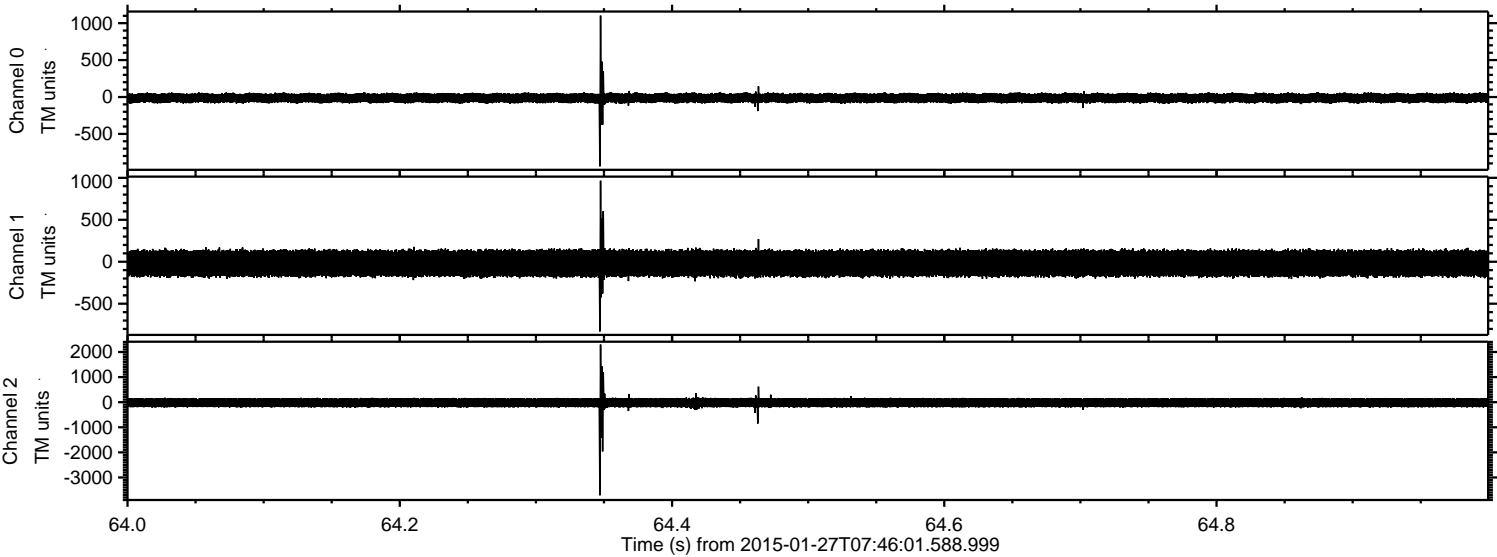


Processed Wed Feb 11 20:19:34 2015 by ELM ver.2012-10-06 from 001\_\_elm20150127\_074600\_\_dat00.bin





Processed Wed Feb 11 20:19:35 2015 by ELM ver.2012-10-06 from 001\_\_elm20150127\_074600\_\_dat00.bin



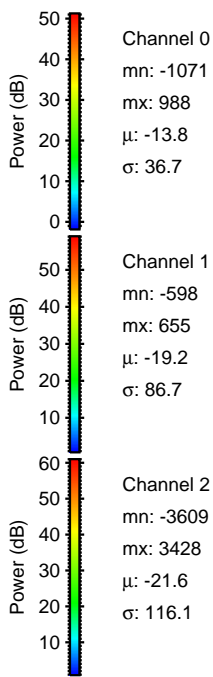
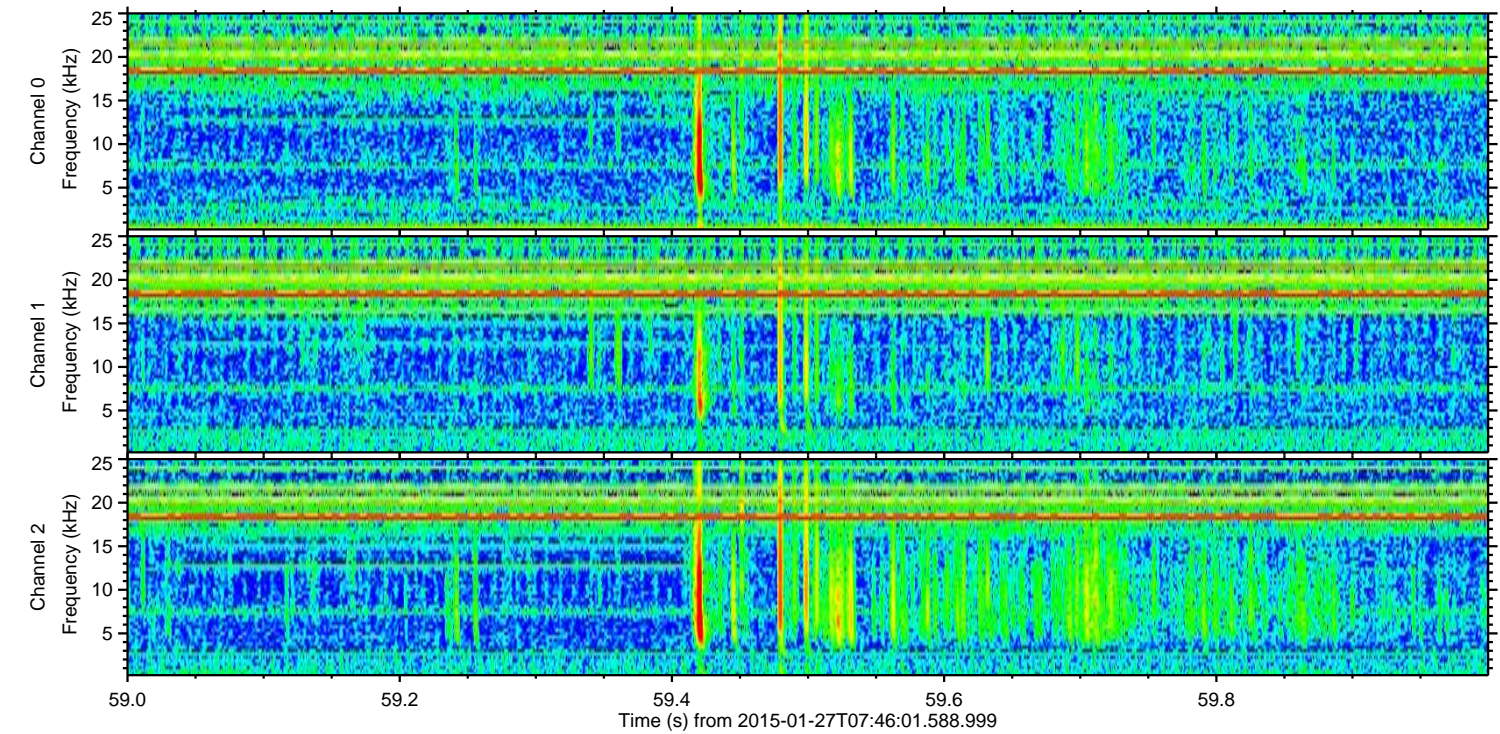
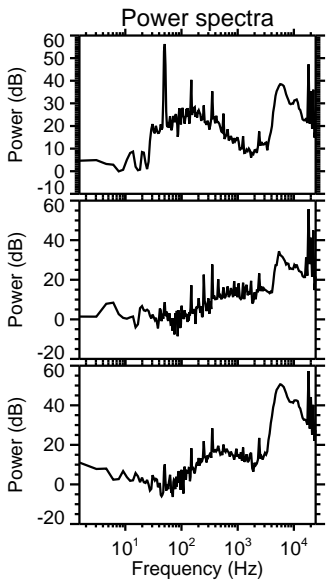
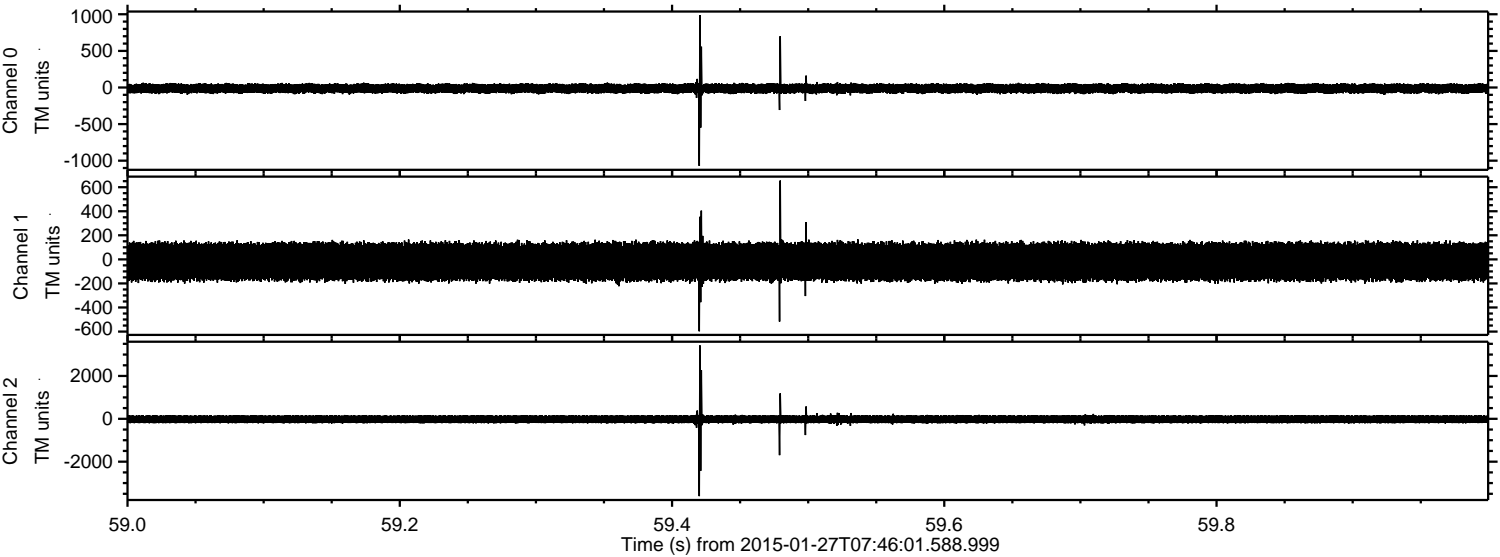
Channel 0  
mn: -940  
mx: 1103  
 $\mu$ : -13.8  
 $\sigma$ : 35.5

Channel 1  
mn: -830  
mx: 966  
 $\mu$ : -19.1  
 $\sigma$ : 87.1

Channel 2  
mn: -3713  
mx: 2294  
 $\mu$ : -21.6  
 $\sigma$ : 107.7



Processed Wed Feb 11 20:19:36 2015 by ELM ver.2012-10-06 from 001\_\_elm20150127\_074600\_\_dat00.bin





Processed Wed Feb 11 20:19:37 2015 by ELM ver.2012-10-06 from 001\_\_elm20150127\_074600\_\_dat00.bin

