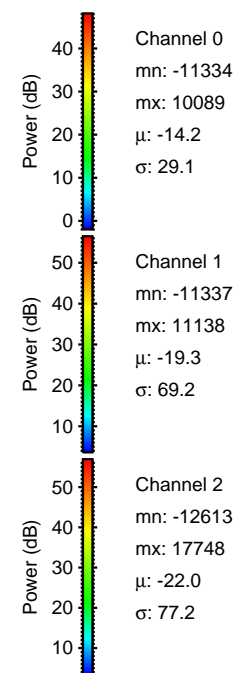
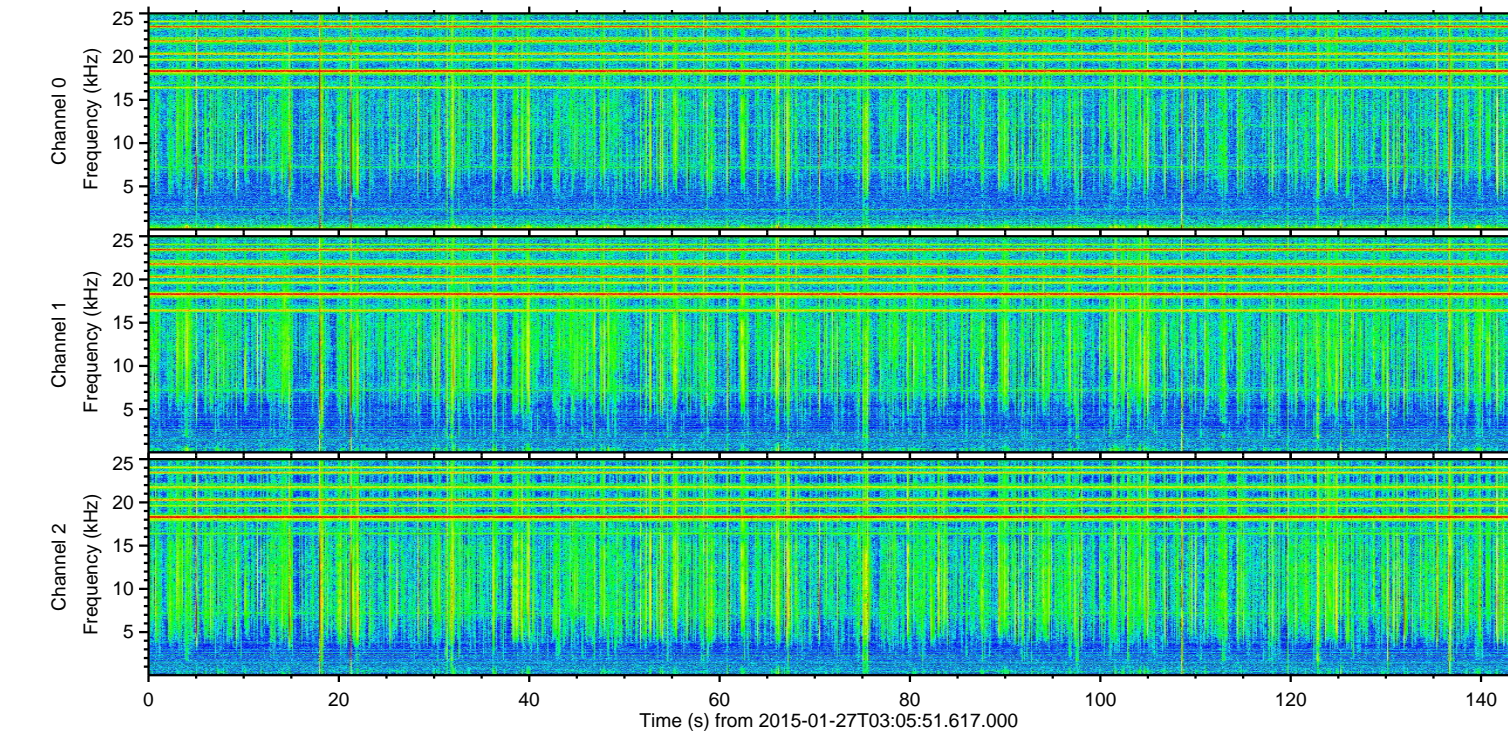
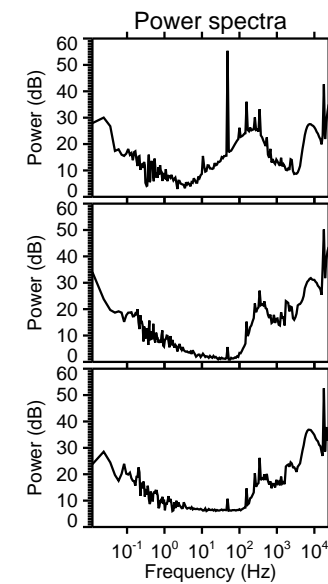
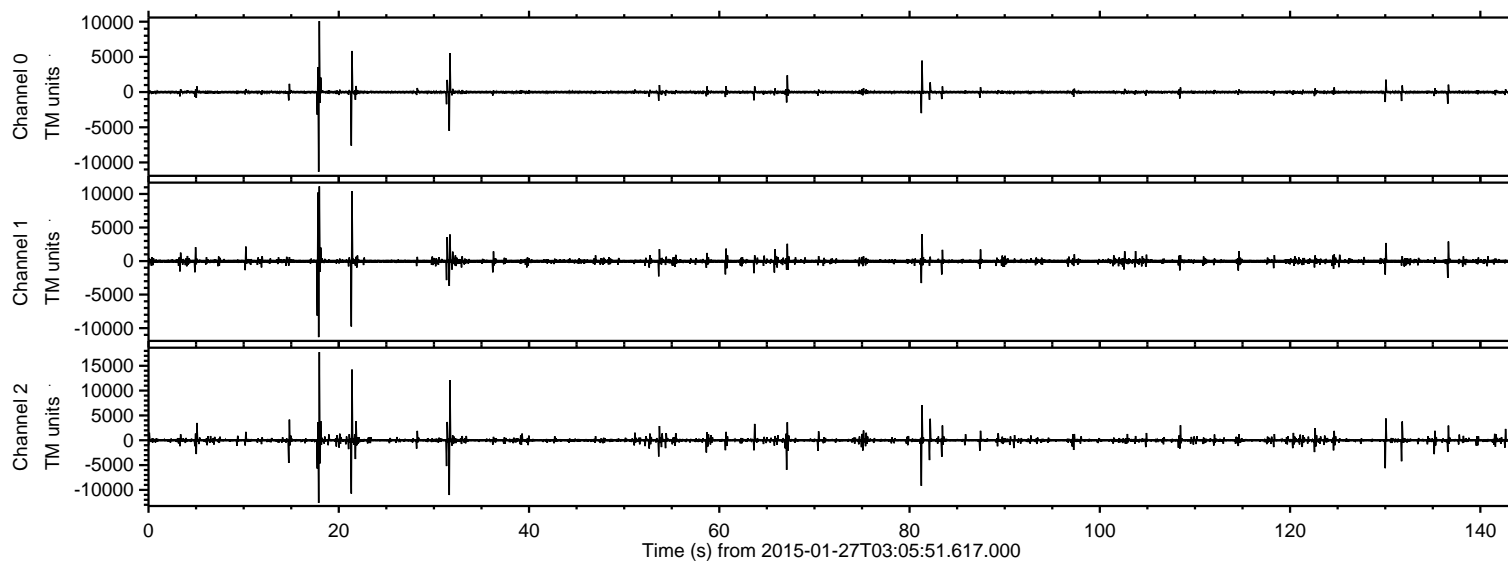


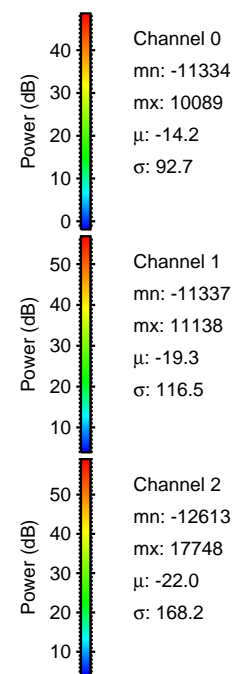
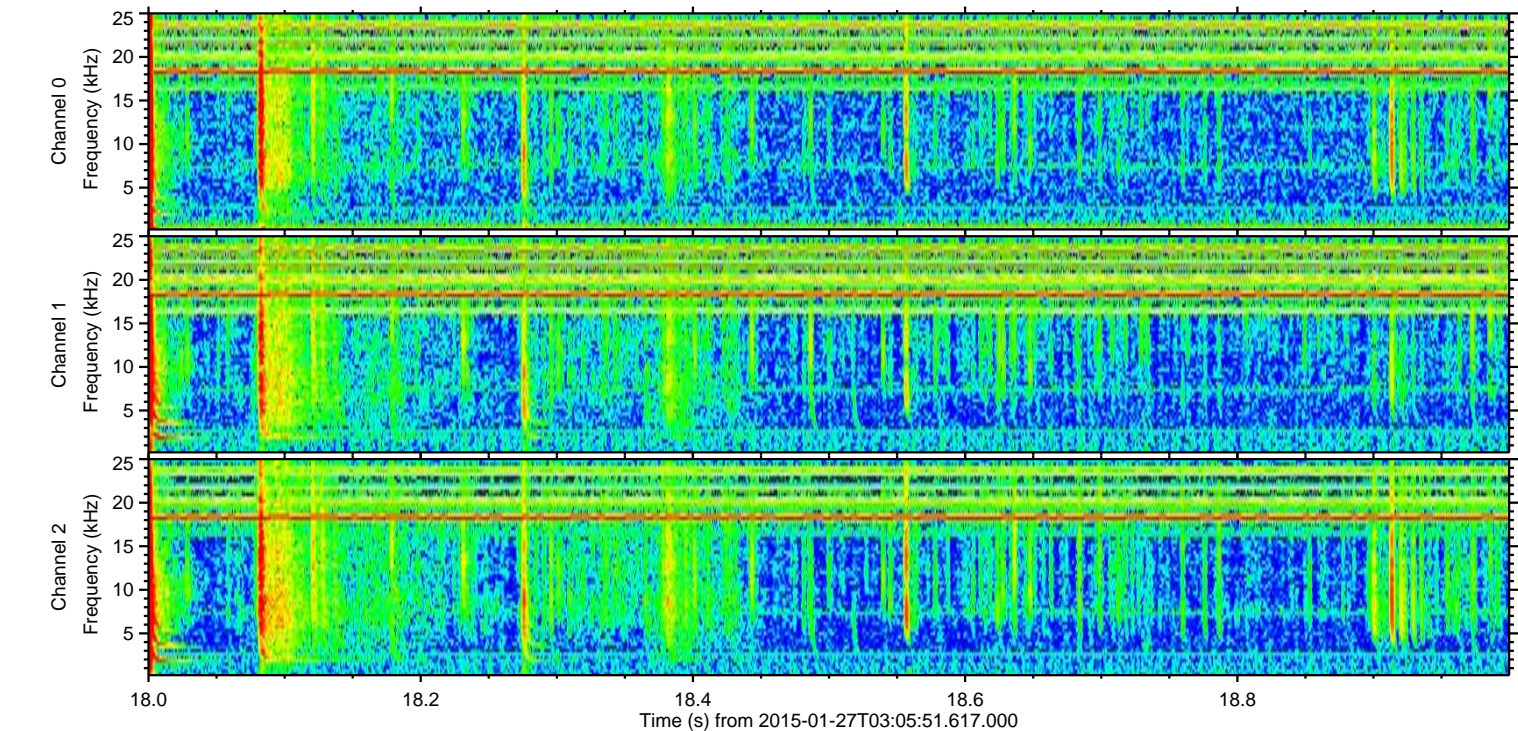
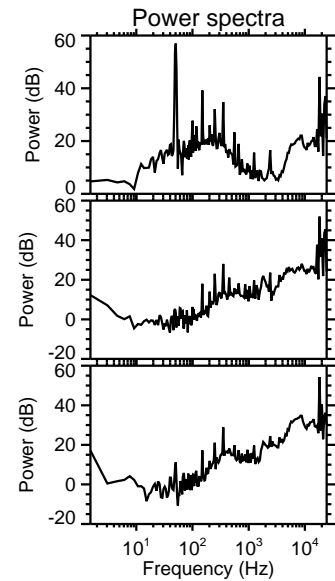
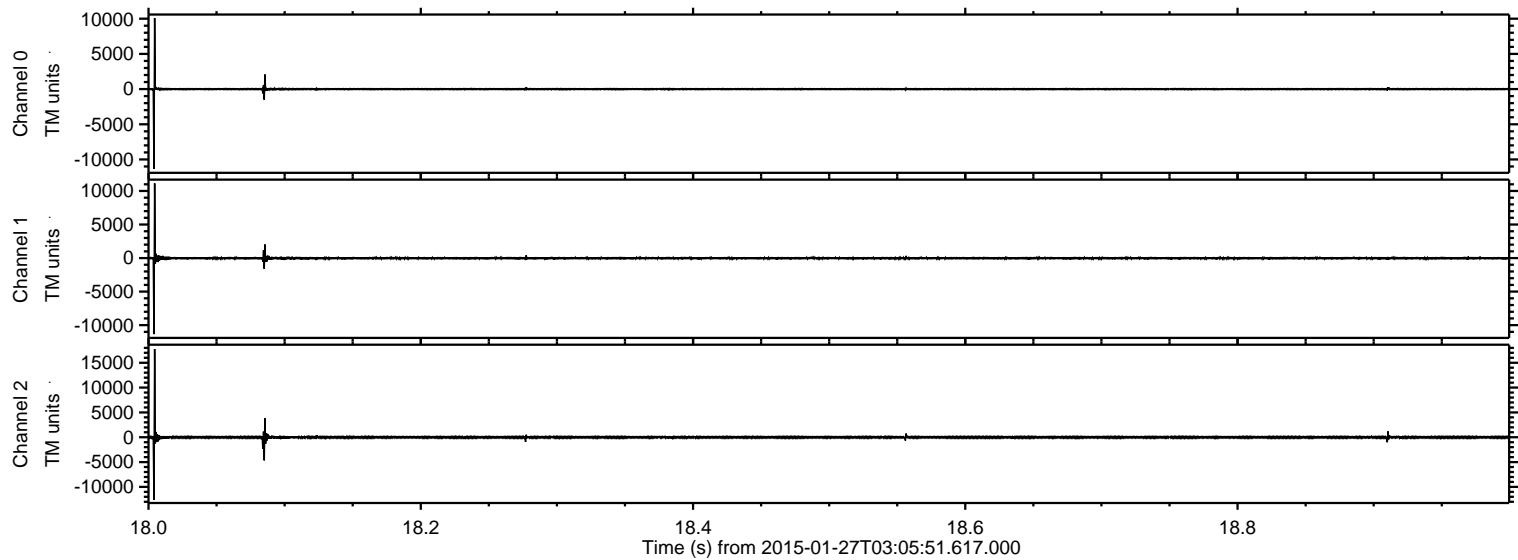
ELMAVAN 3D WAVEFORMS (Measured data sampled at 50 kHz) 49662 packets of 144 samples from 2015-01-27T03:05:51.617.000.

Processed Wed Feb 11 19:10:53 2015 by ELM ver.2012-10-06 from 001__elm20150127_030550__dat00.bin



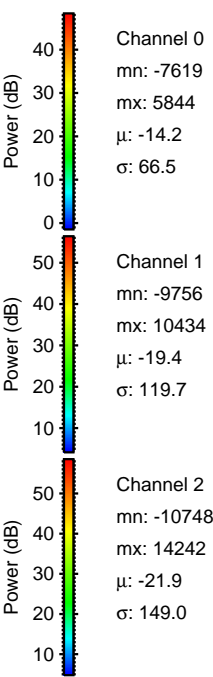
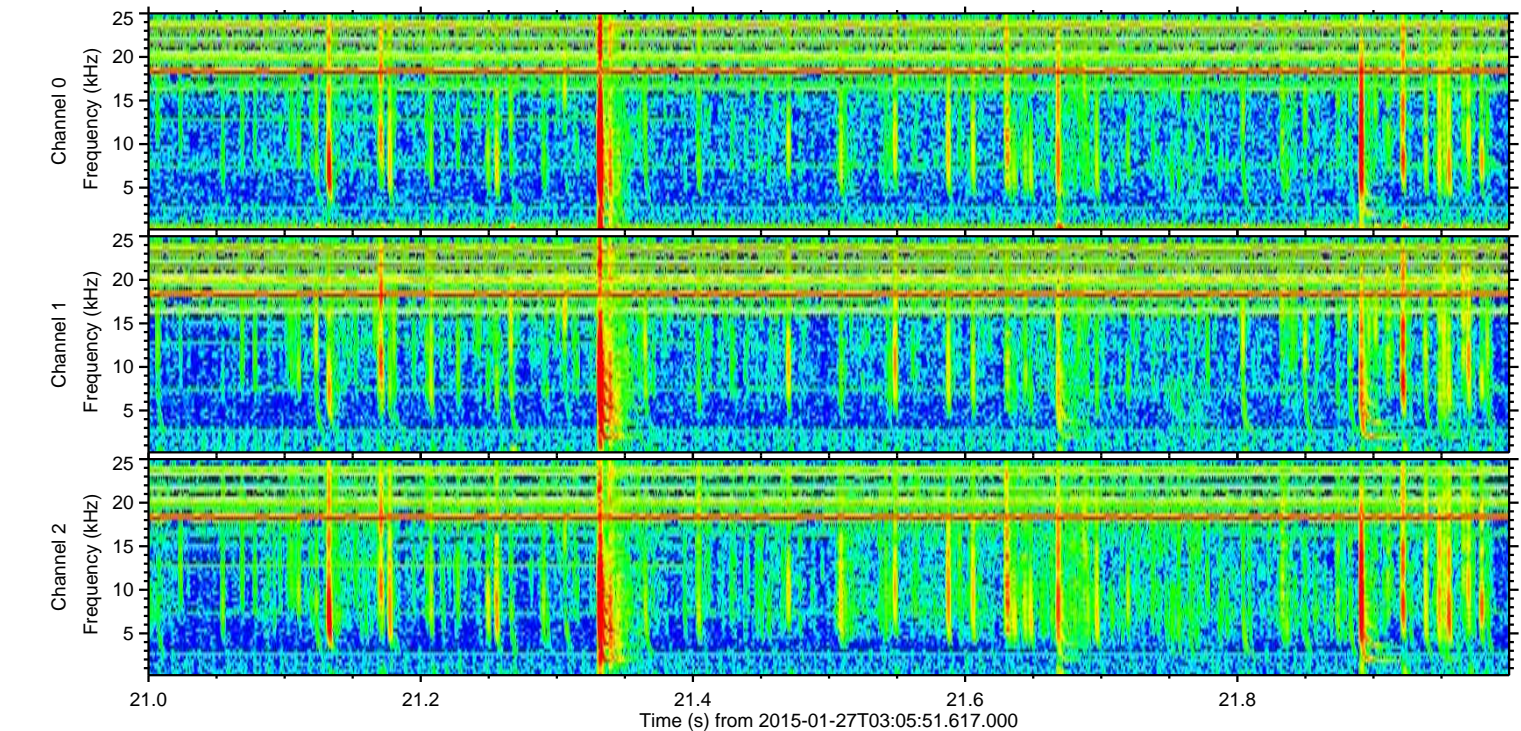
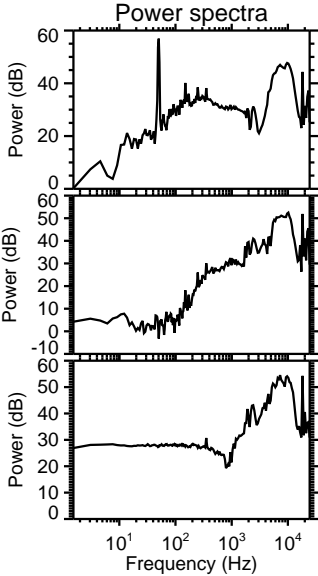
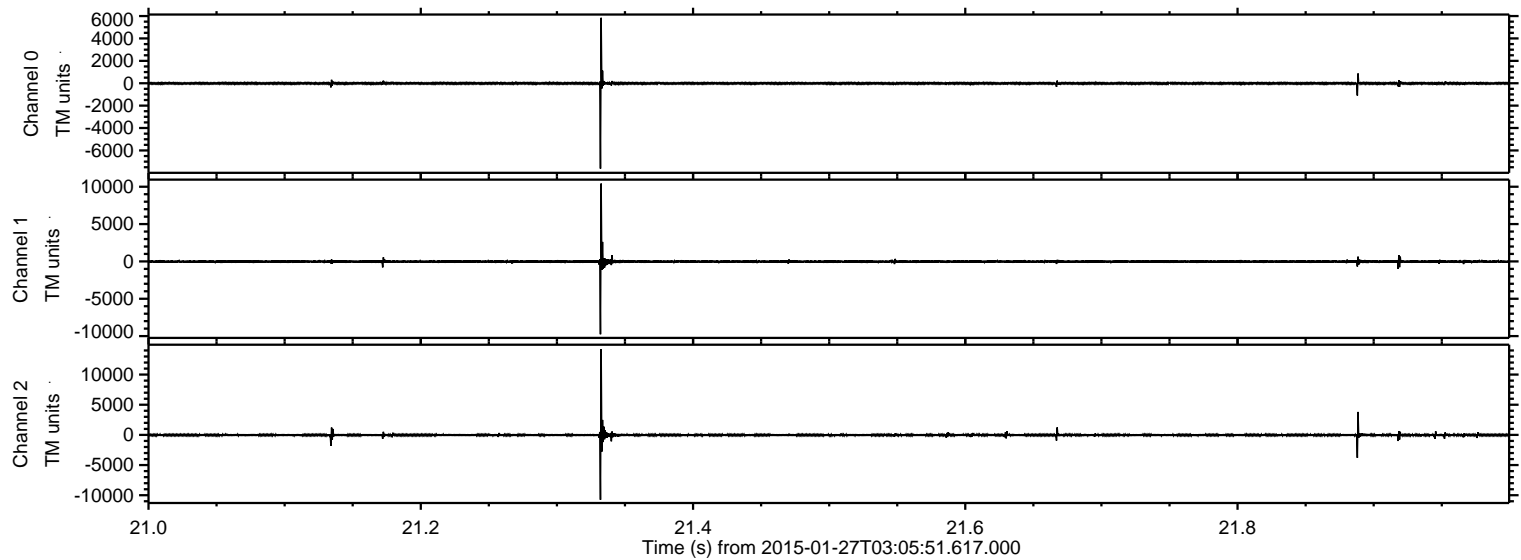
ELMAVAN 3D WAVEFORMS (Measured data sampled at 50 kHz) 49662 packets of 144 samples from 2015-01-27T03:05:51.617.000. Part 19/144

Processed Wed Feb 11 19:11:09 2015 by ELM ver.2012-10-06 from 001__elm20150127_030550__dat00.bin



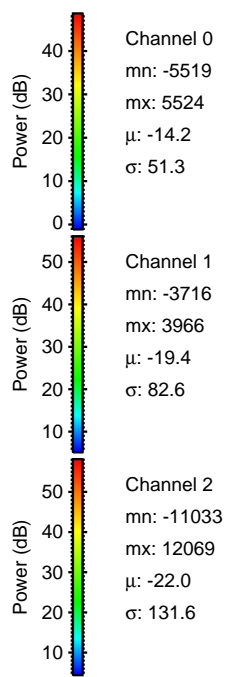
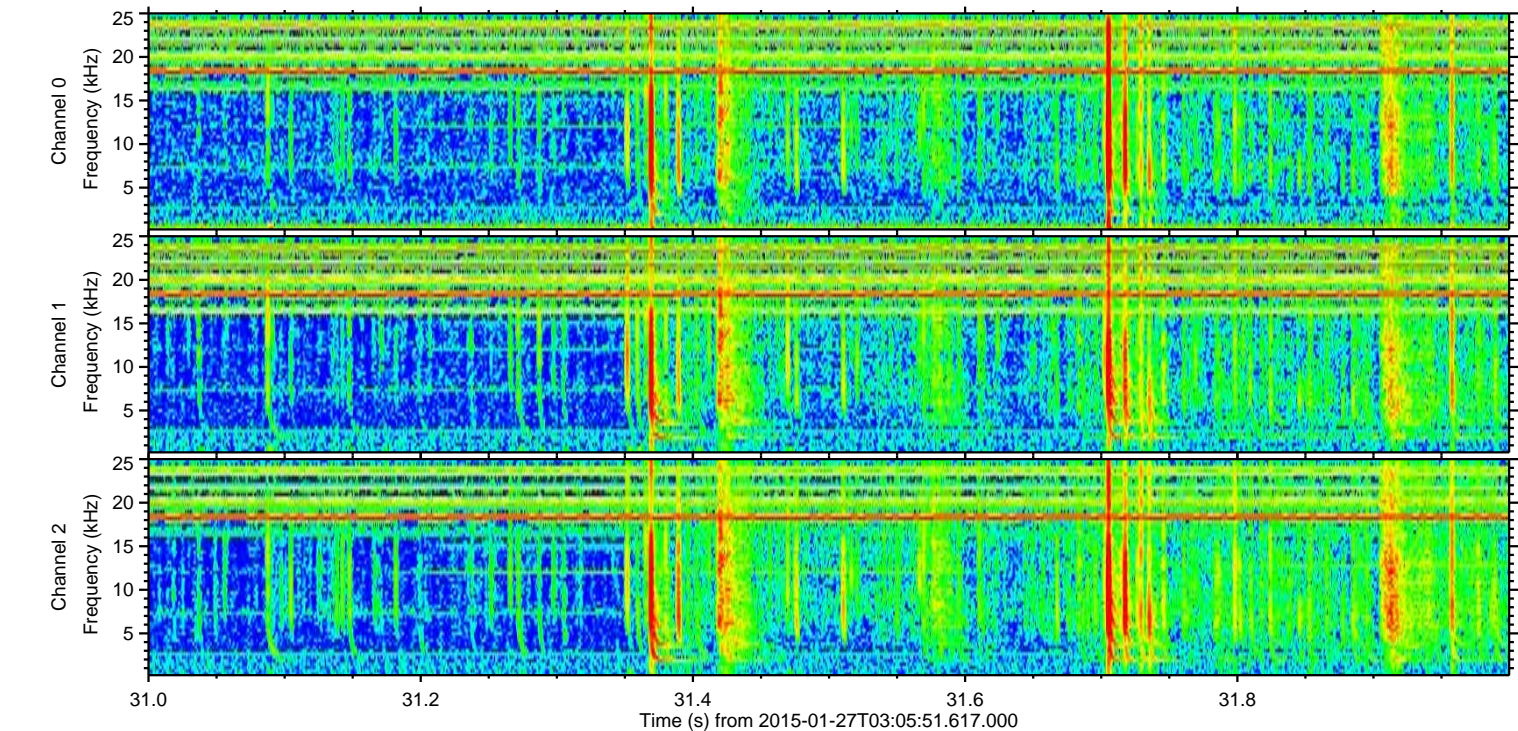
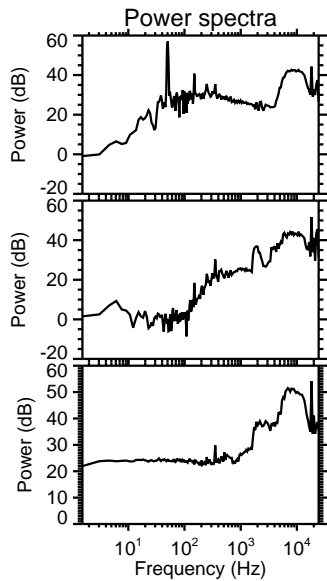
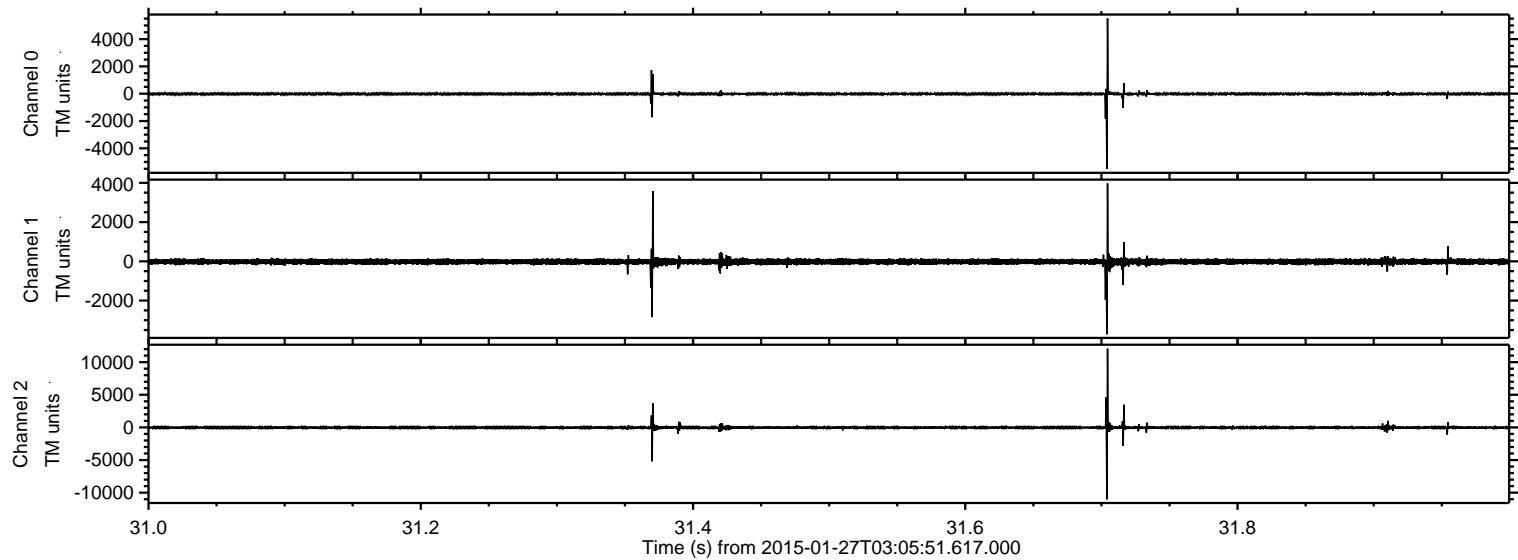
ELMAVAN 3D WAVEFORMS (Measured data sampled at 50 kHz) 49662 packets of 144 samples from 2015-01-27T03:05:51.617.000. Part 22/144

Processed Wed Feb 11 19:11:10 2015 by ELM ver.2012-10-06 from 001__elm20150127_030550__dat00.bin



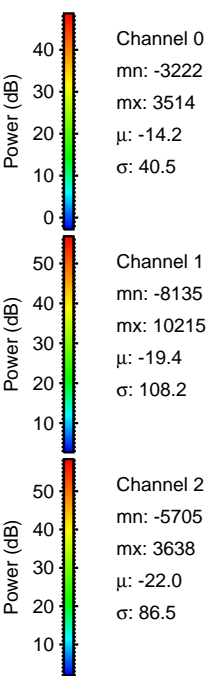
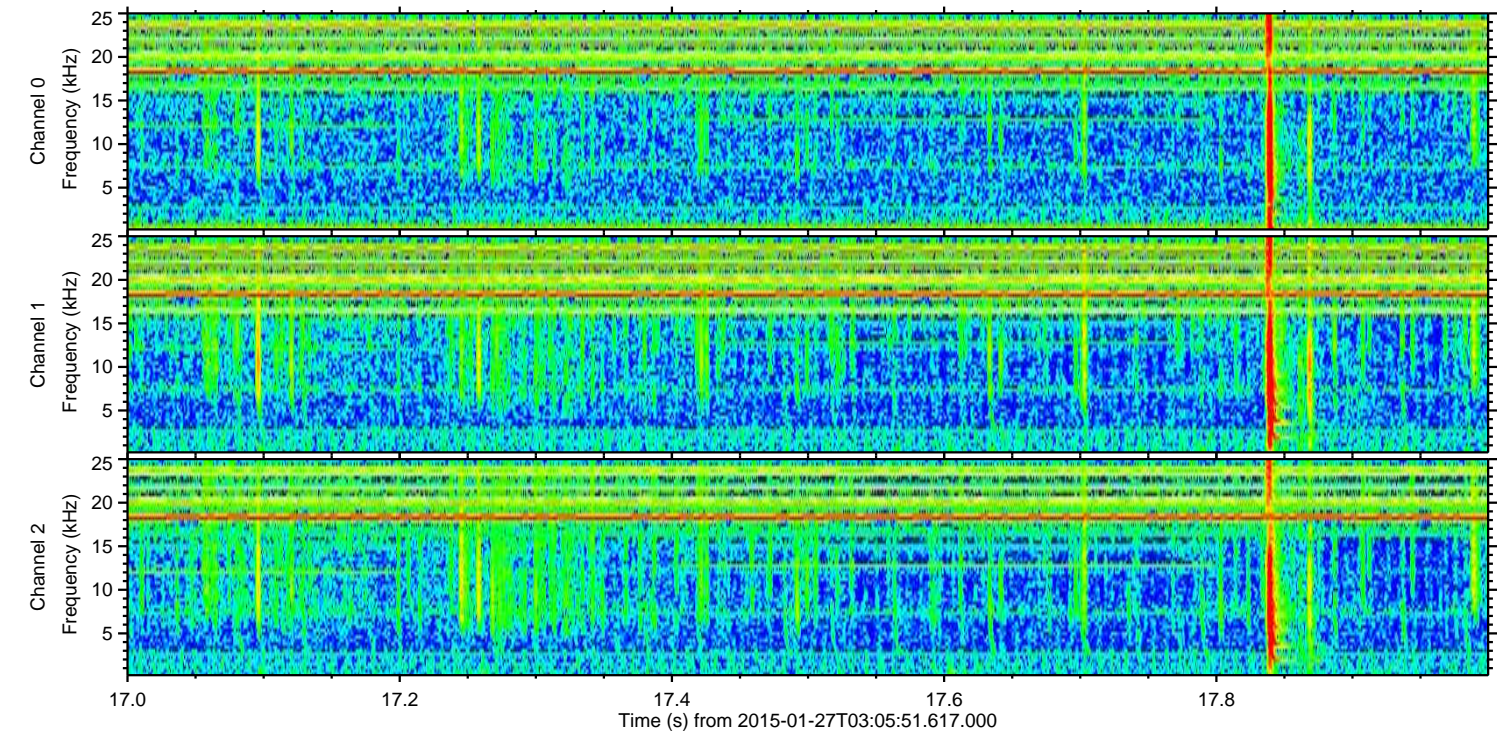
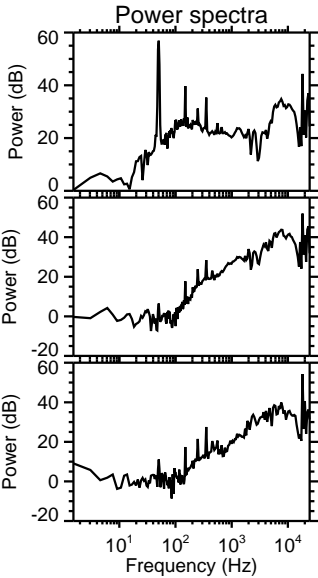
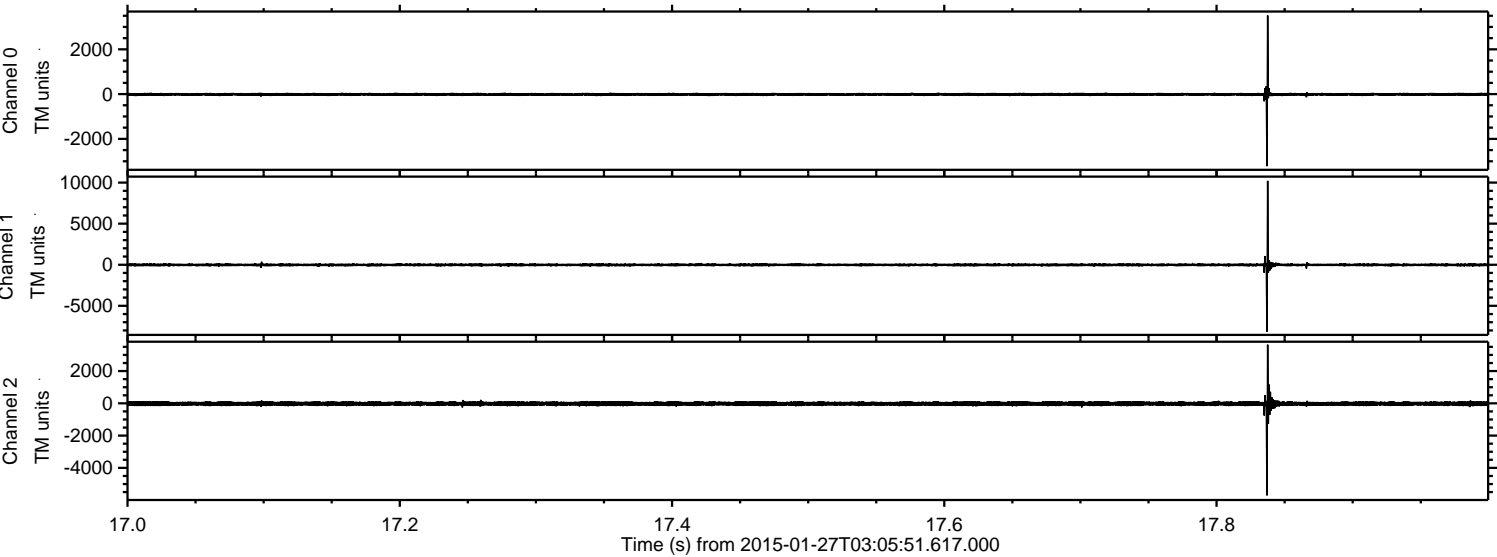
ELMAVAN 3D WAVEFORMS (Measured data sampled at 50 kHz) 49662 packets of 144 samples from 2015-01-27T03:05:51.617.000. Part 32/144

Processed Wed Feb 11 19:11:11 2015 by ELM ver.2012-10-06 from 001__elm20150127_030550__dat00.bin

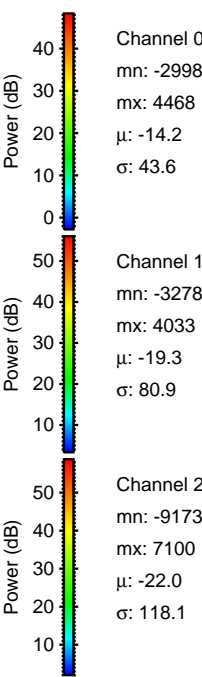
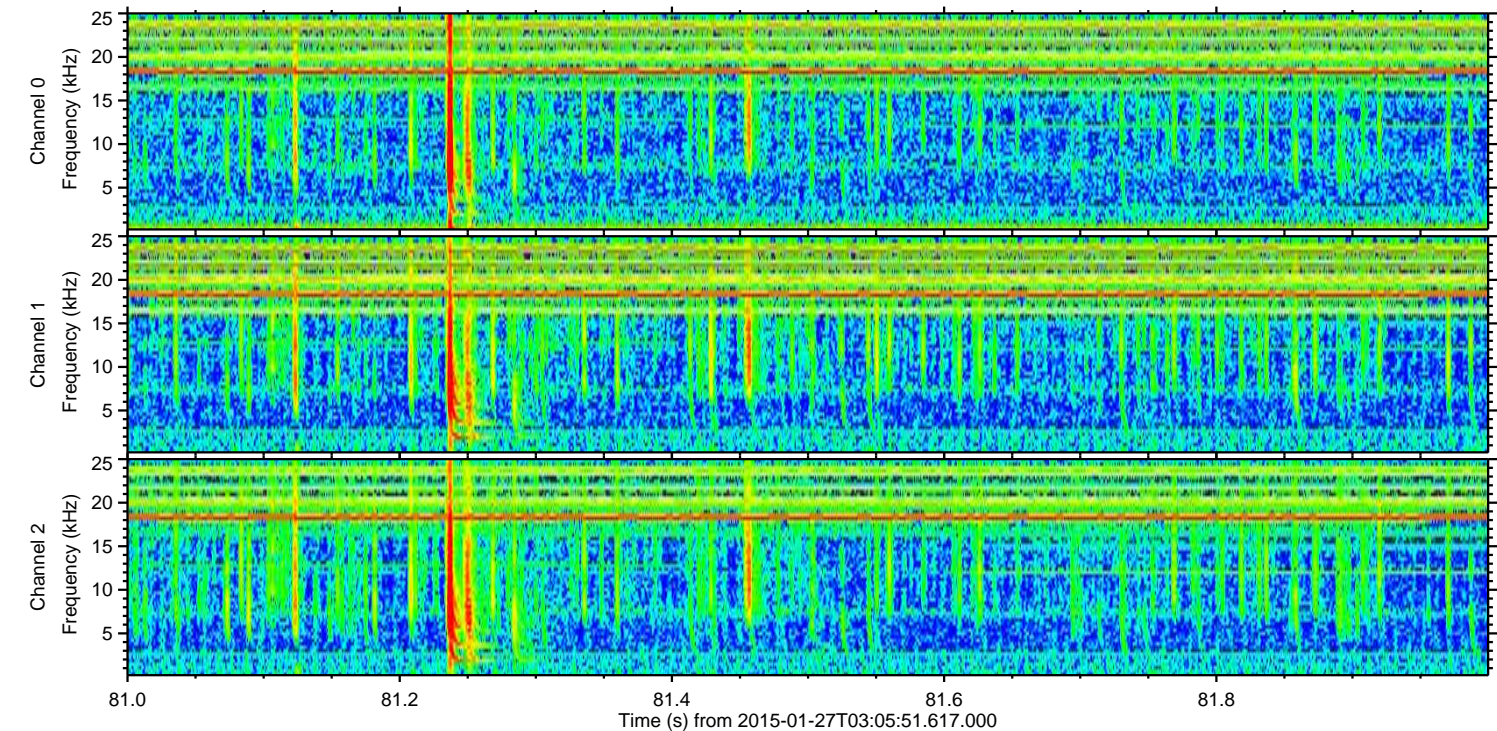
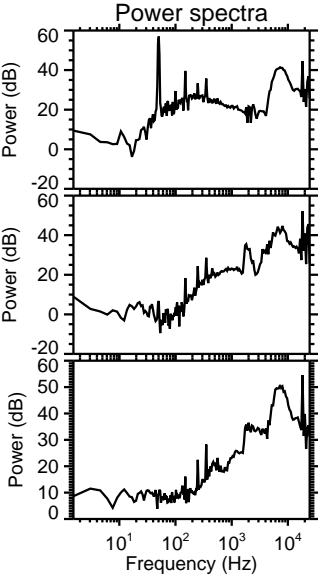
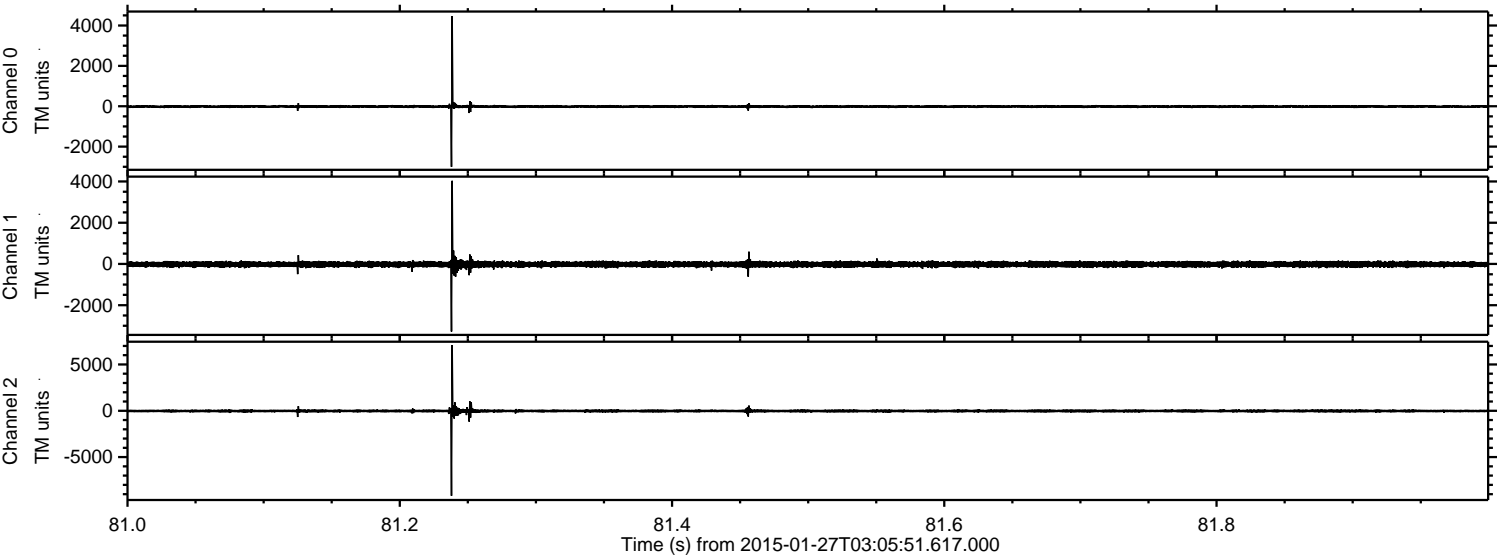


ELMAVAN 3D WAVEFORMS (Measured data sampled at 50 kHz) 49662 packets of 144 samples from 2015-01-27T03:05:51.617.000. Part 18/144

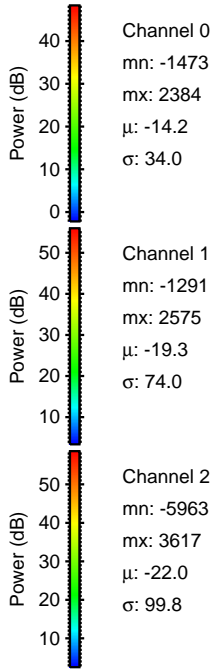
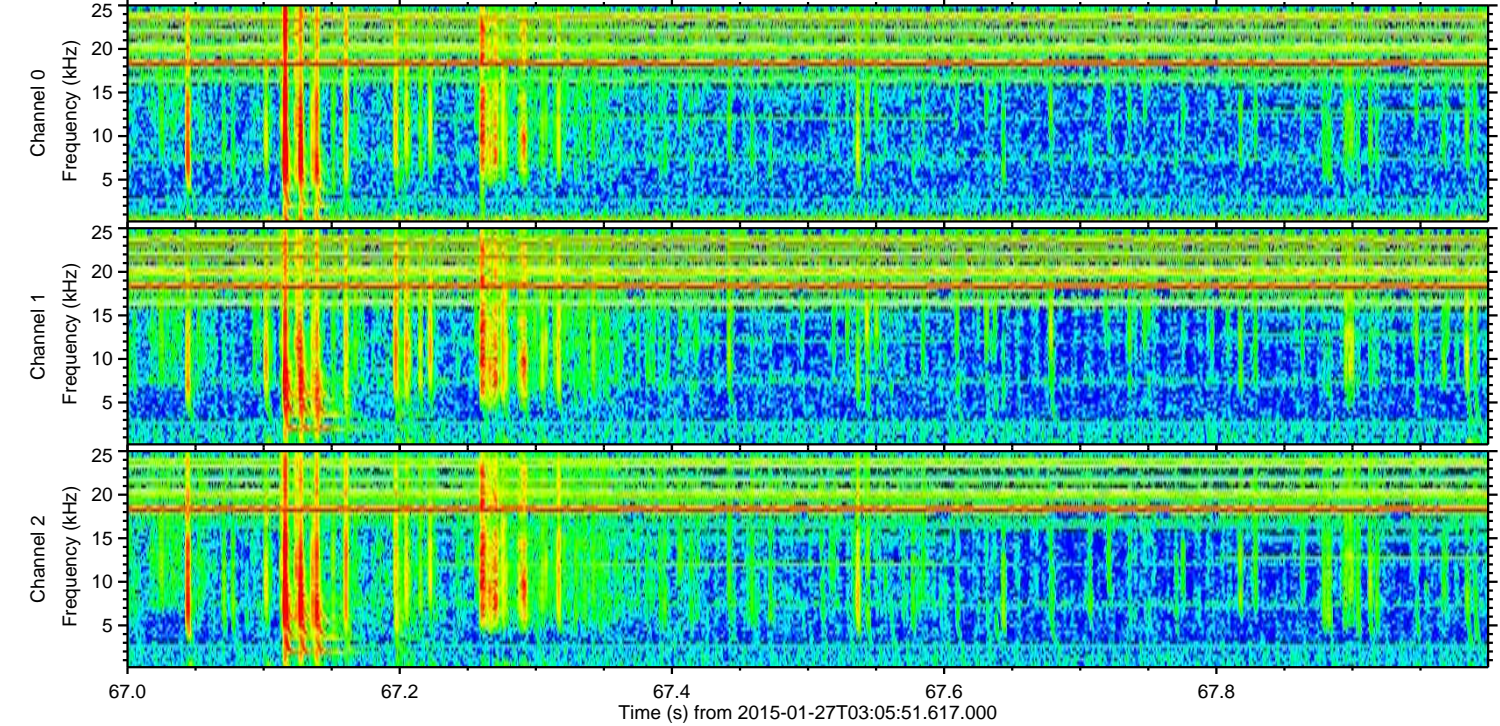
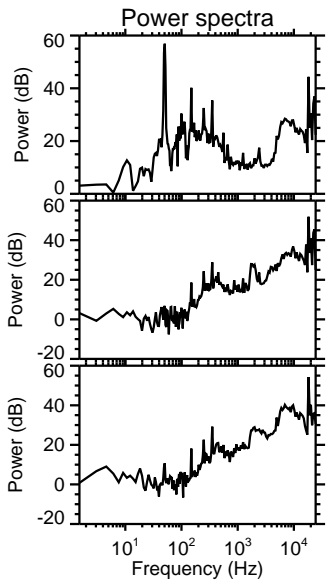
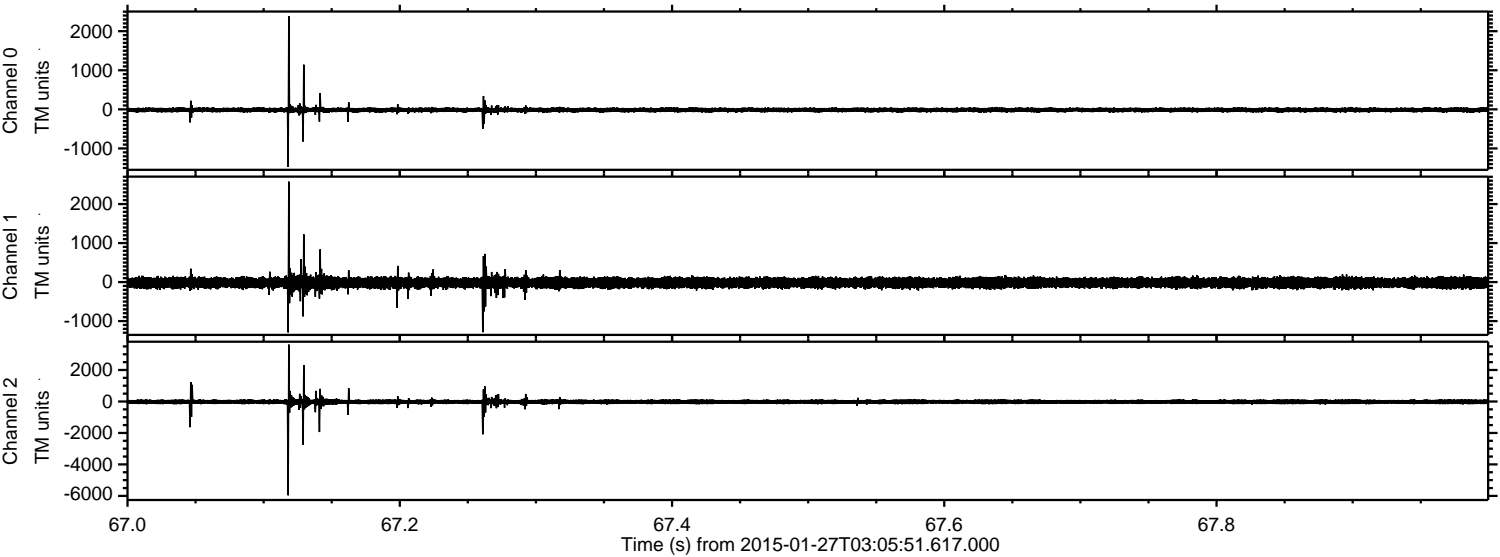
Processed Wed Feb 11 19:11:12 2015 by ELM ver.2012-10-06 from 001__elm20150127_030550__dat00.bin



Processed Wed Feb 11 19:11:13 2015 by ELM ver.2012-10-06 from 001__elm20150127_030550__dat00.bin

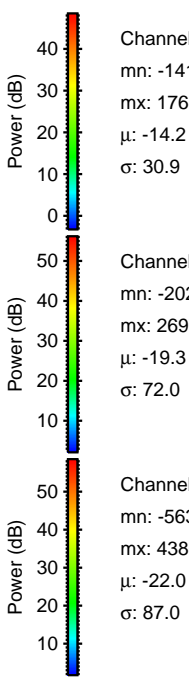
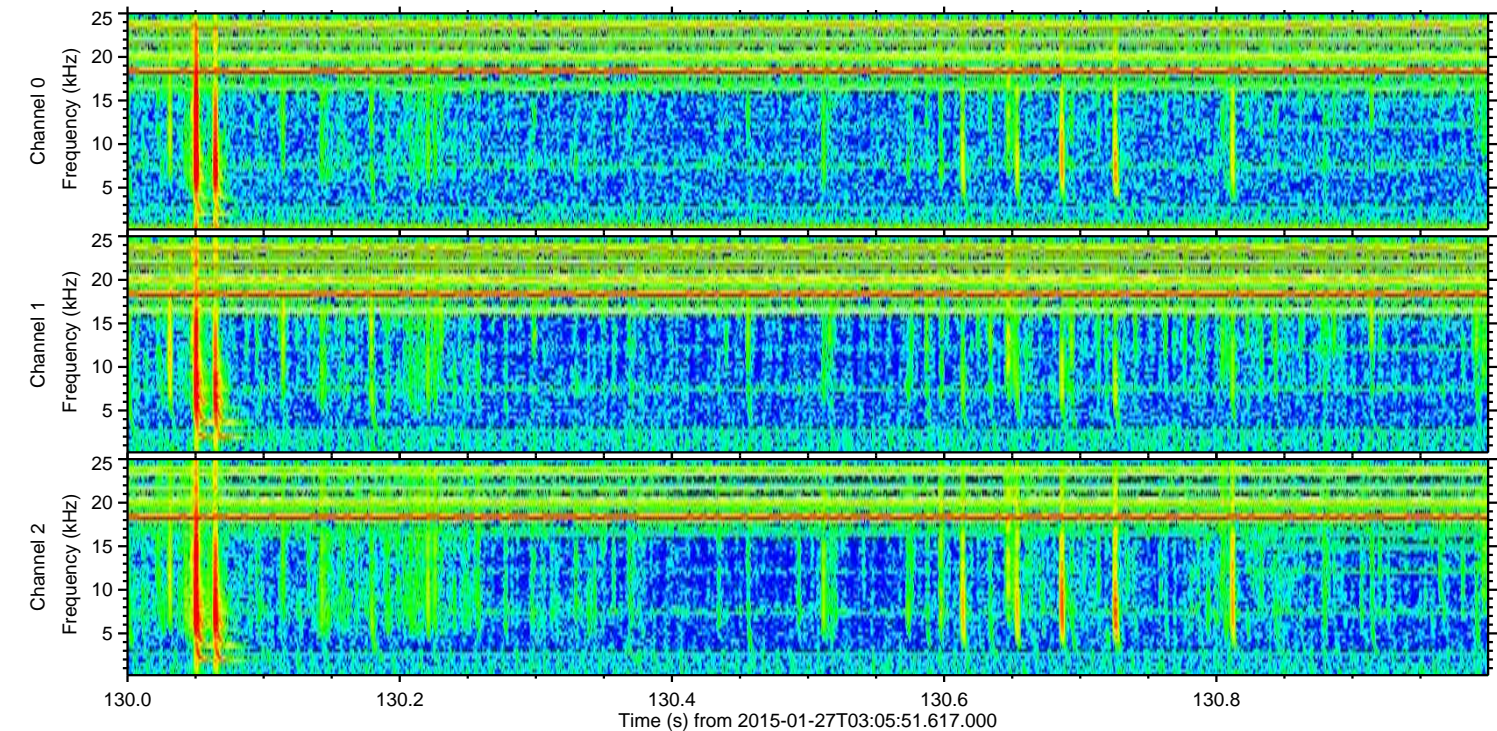
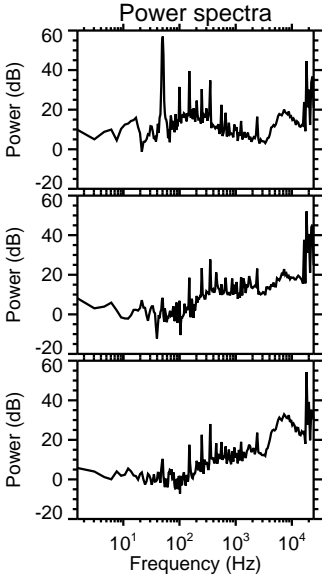
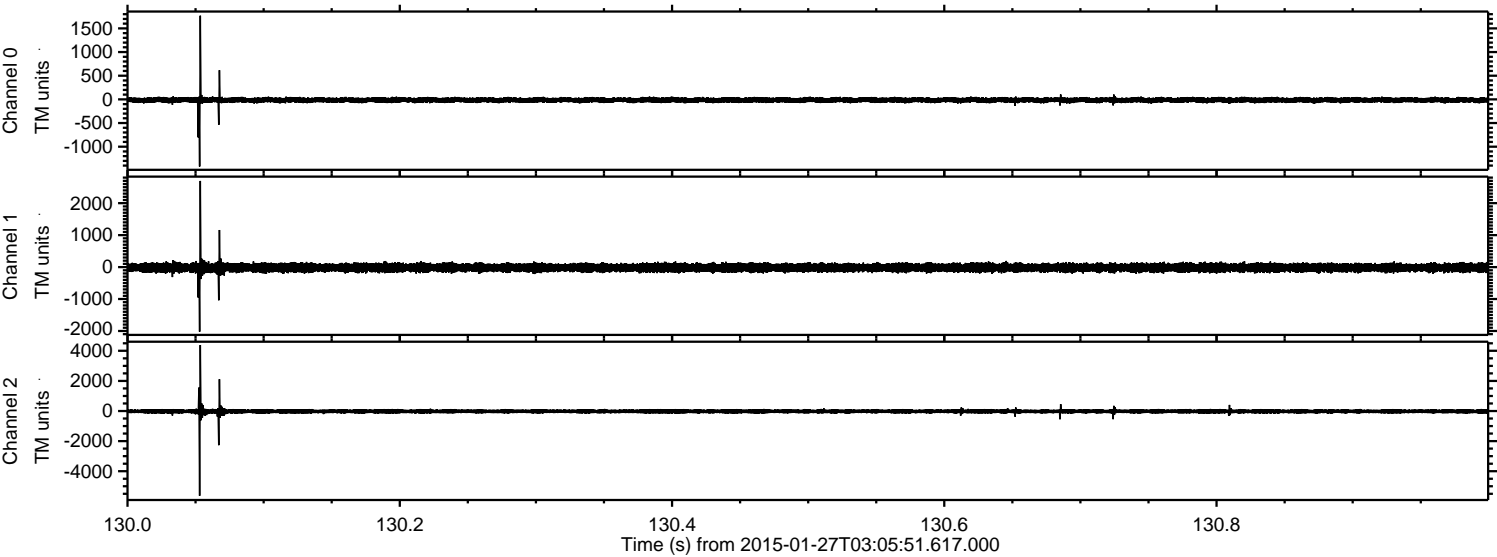


Processed Wed Feb 11 19:11:14 2015 by ELM ver.2012-10-06 from 001__elm20150127_030550__dat00.bin

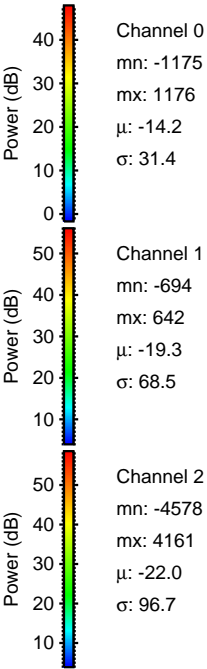
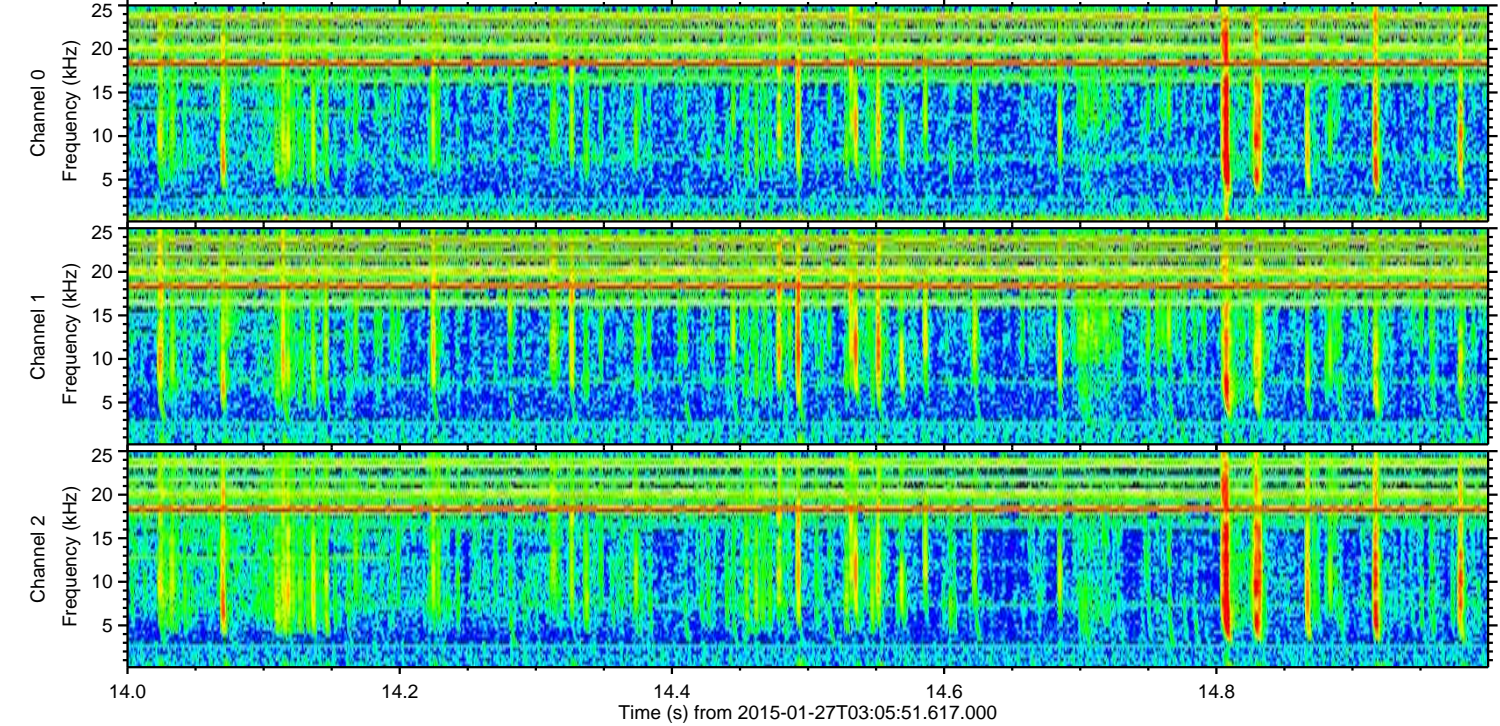
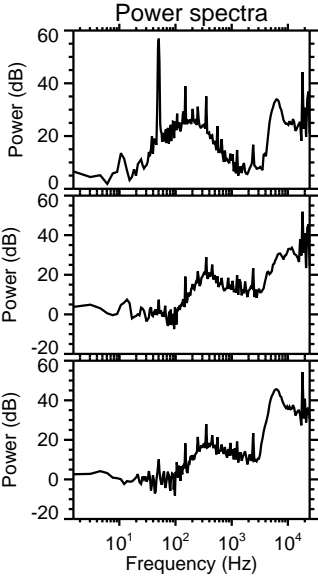
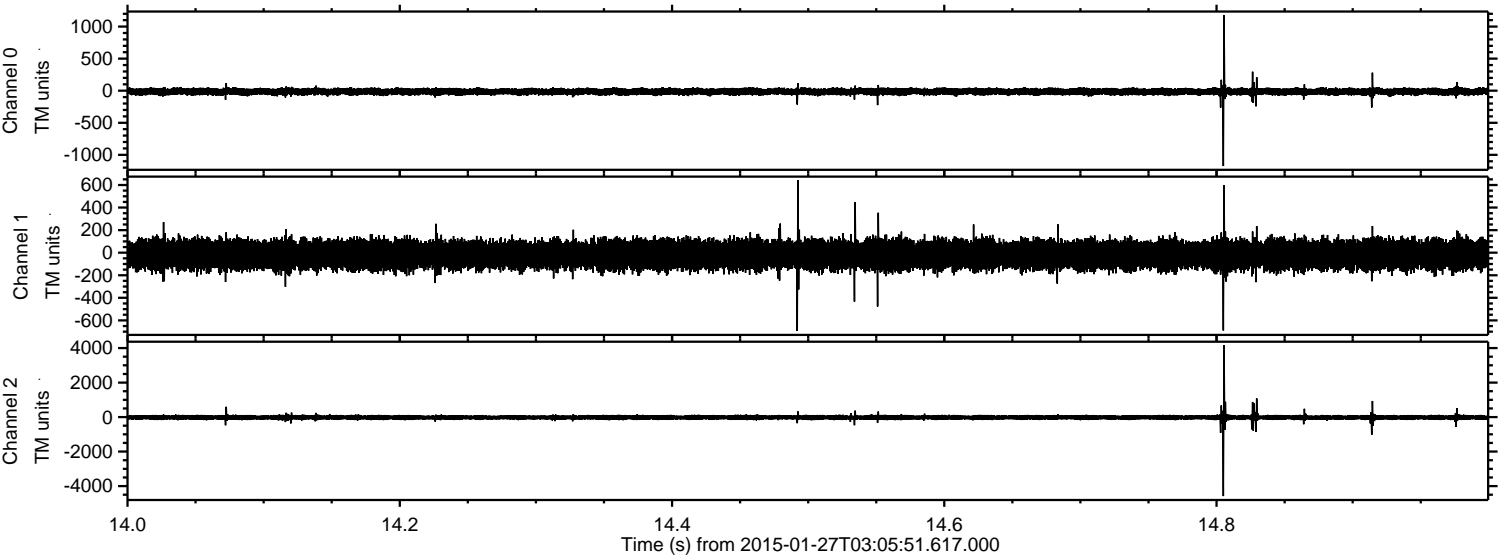


ELMAVAN 3D WAVEFORMS (Measured data sampled at 50 kHz) 49662 packets of 144 samples from 2015-01-27T03:05:51.617.000. Part 131/144

Processed Wed Feb 11 19:11:16 2015 by ELM ver.2012-10-06 from 001__elm20150127_030550__dat00.bin



Processed Wed Feb 11 19:11:17 2015 by ELM ver.2012-10-06 from 001__elm20150127_030550__dat00.bin

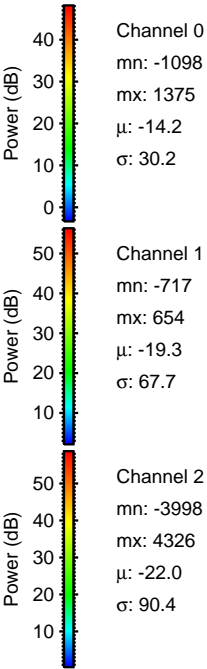
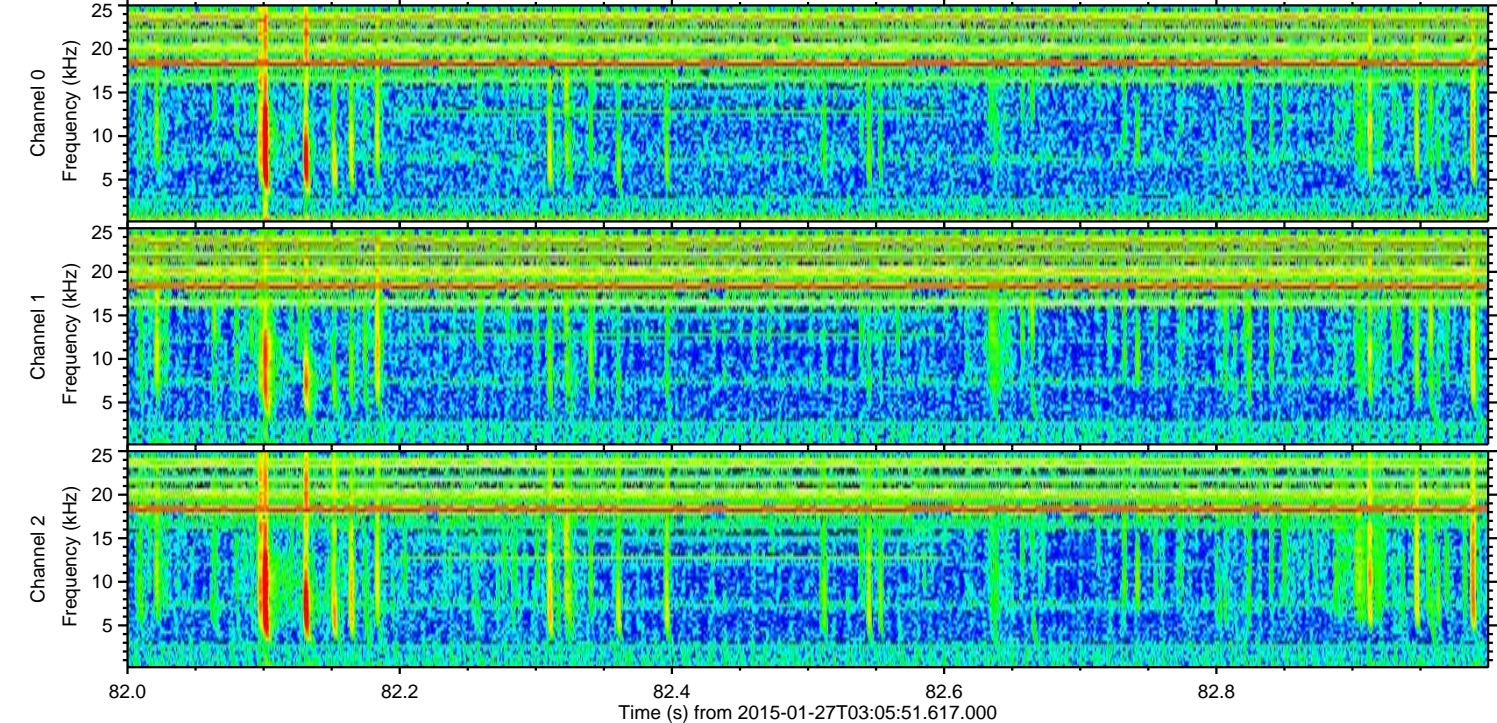
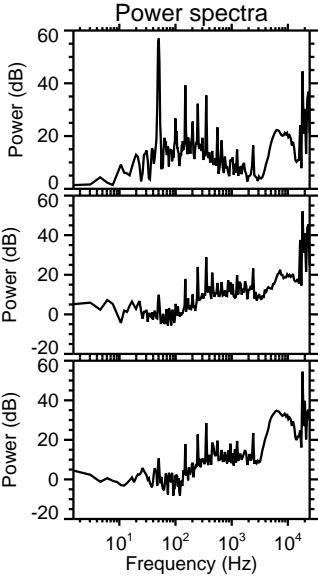
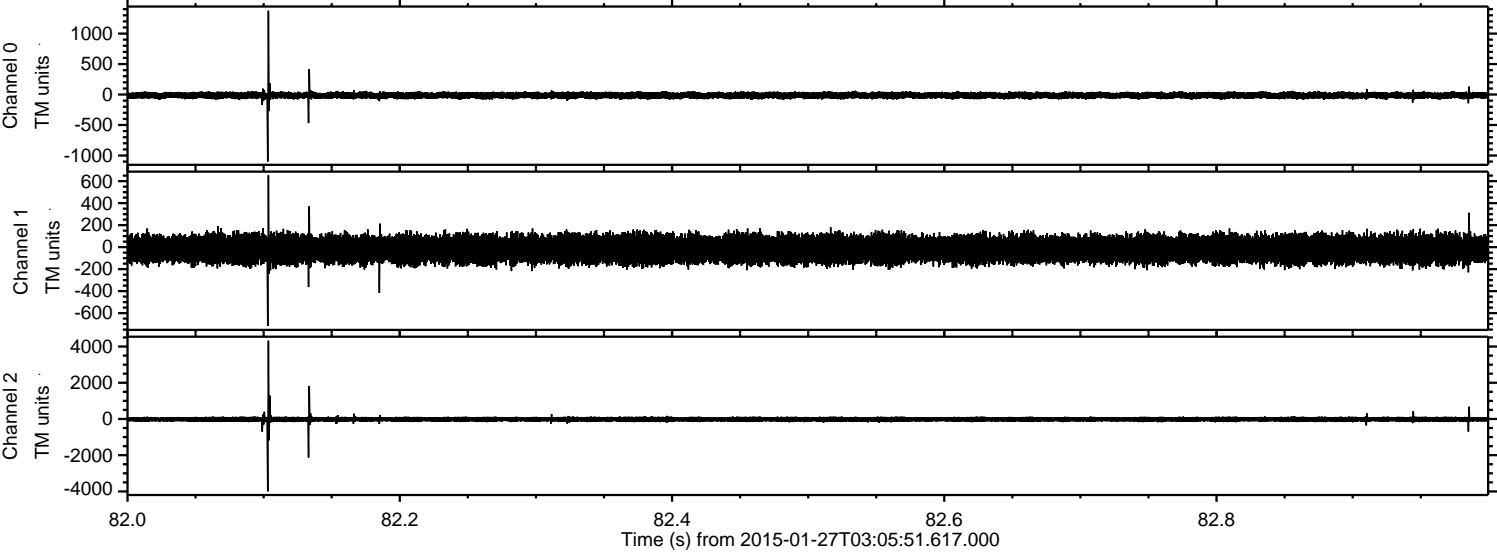


Channel 0
mn: -1175
mx: 1176
 μ : -14.2
 σ : 31.4

Channel 1
mn: -694
mx: 642
 μ : -19.3
 σ : 68.5

Channel 2
mn: -4578
mx: 4161
 μ : -22.0
 σ : 96.7

Processed Wed Feb 11 19:11:18 2015 by ELM ver.2012-10-06 from 001__elm20150127_030550__dat00.bin



Processed Wed Feb 11 19:11:19 2015 by ELM ver.2012-10-06 from 001__elm20150127_030550__dat00.bin

