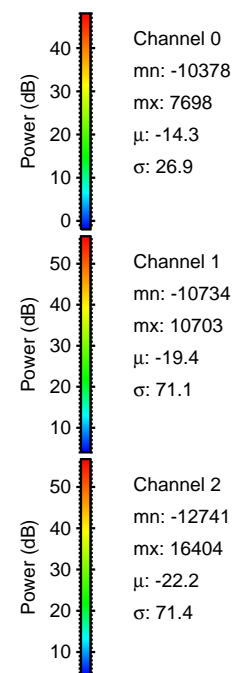
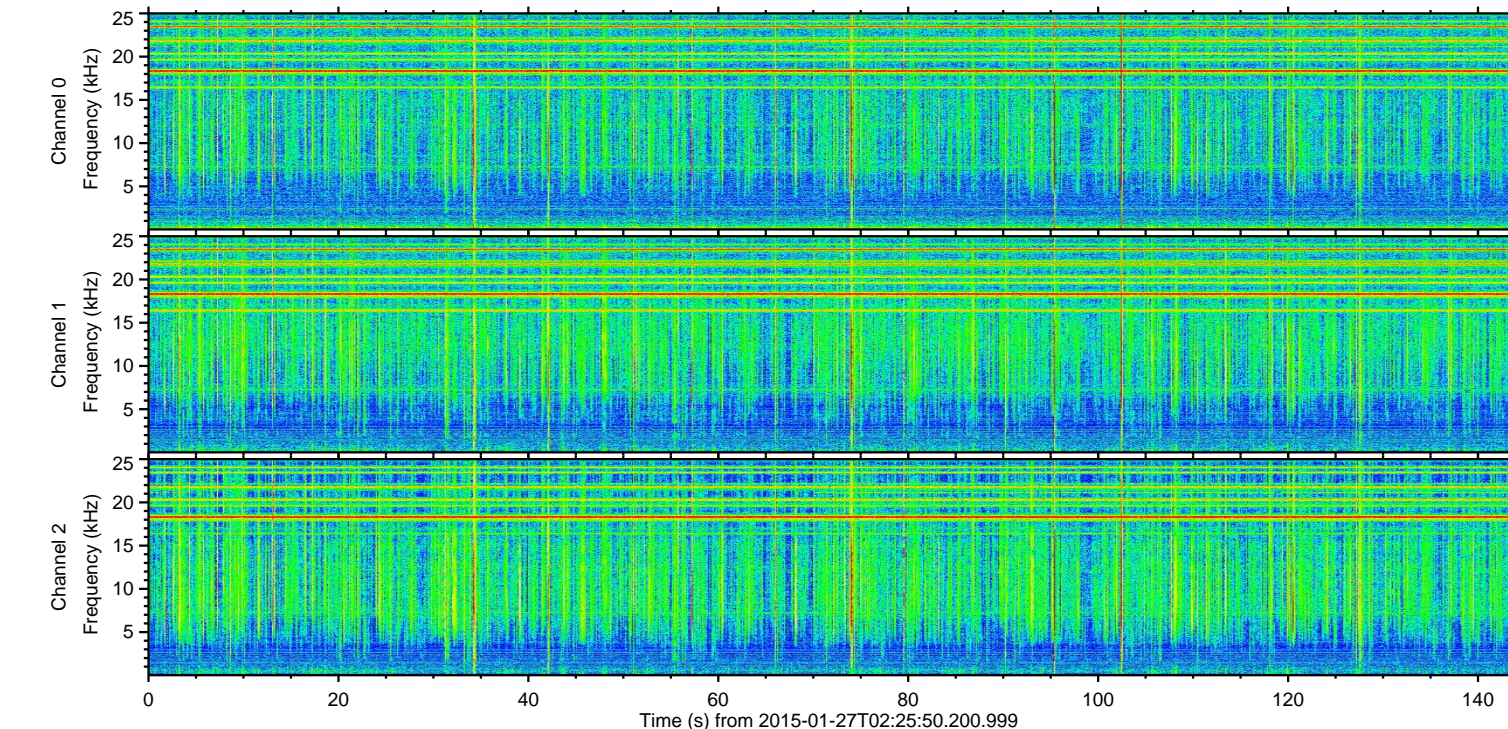
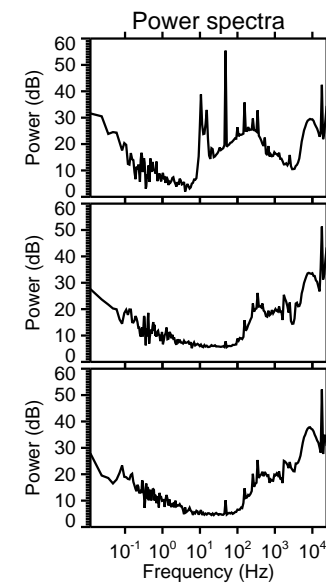
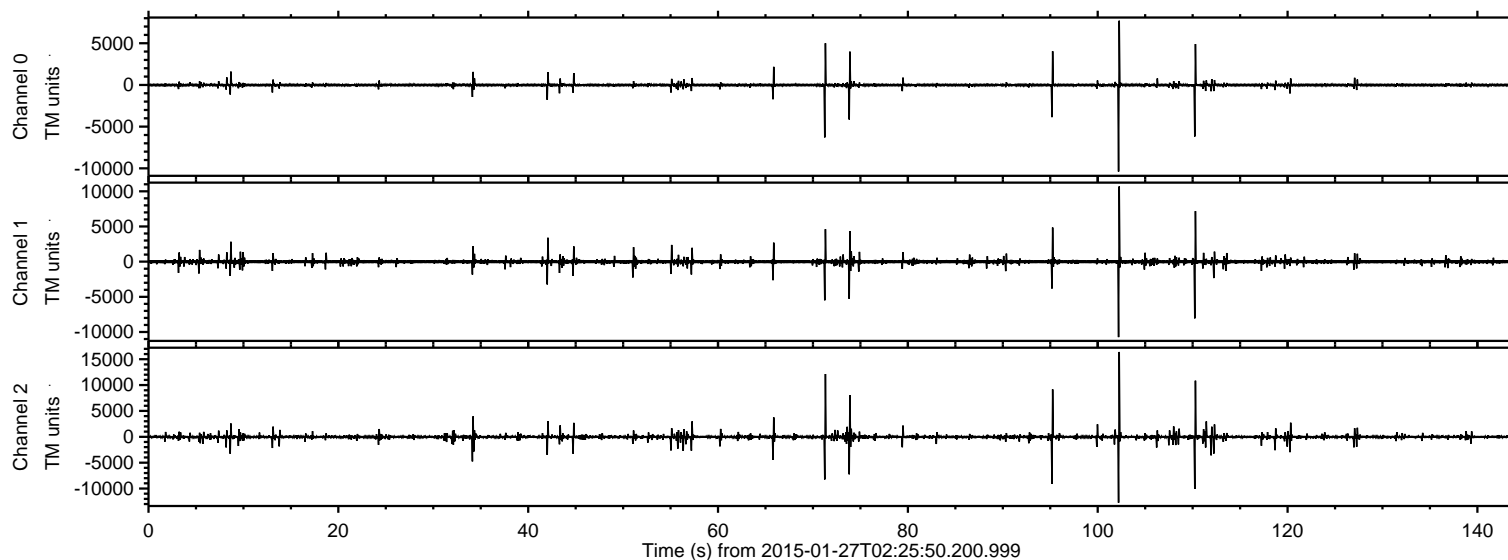


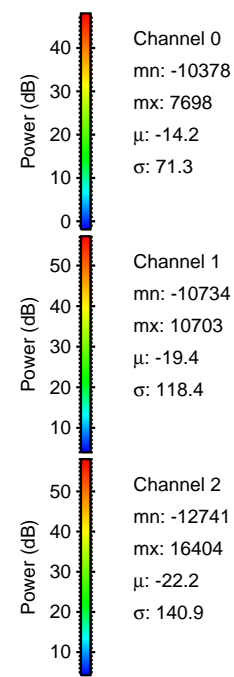
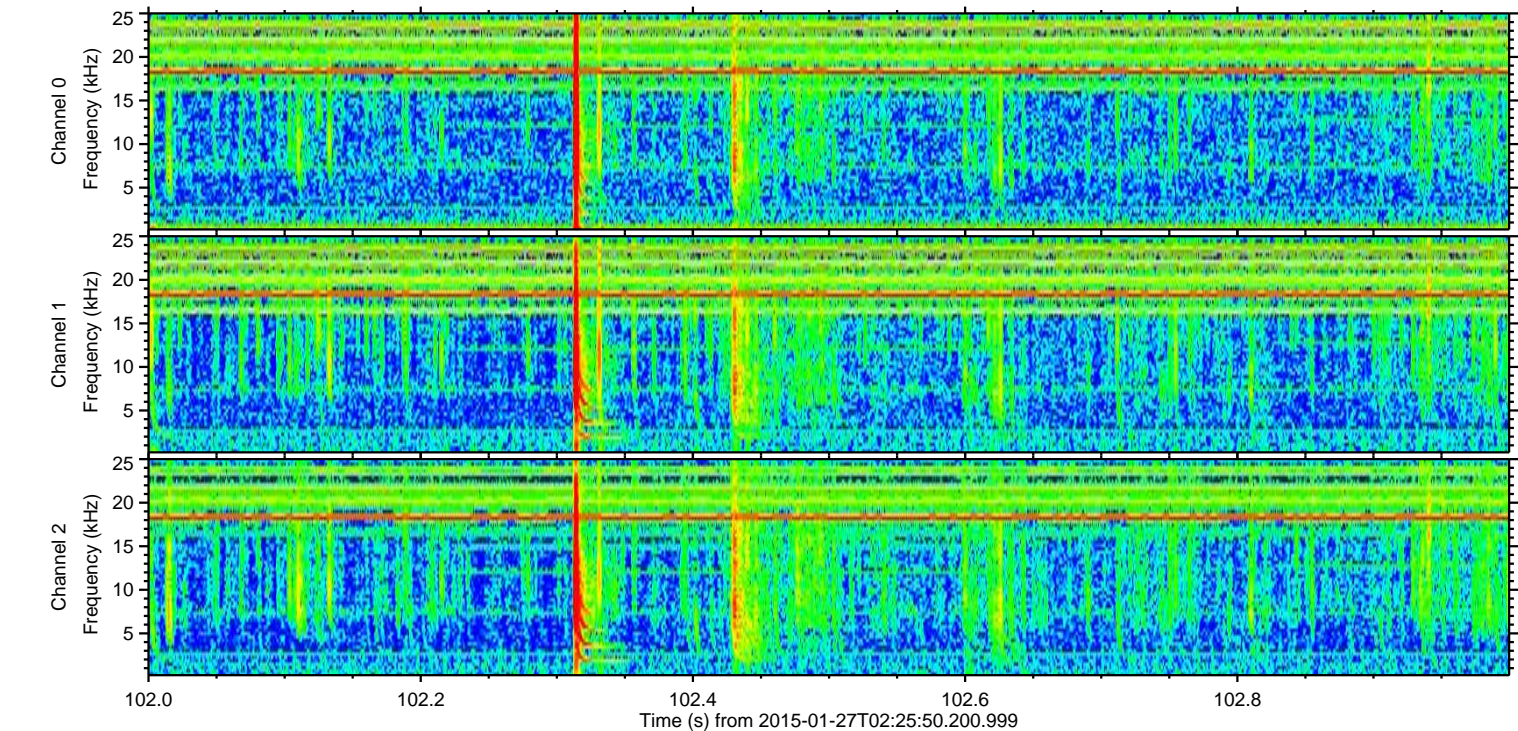
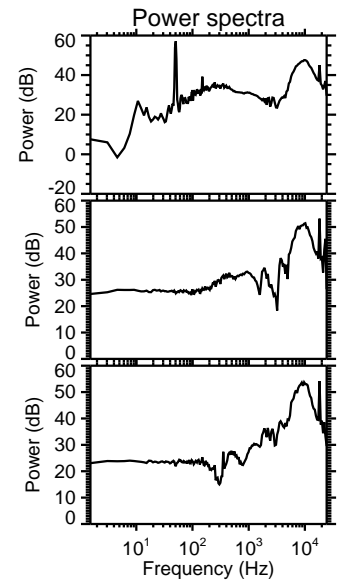
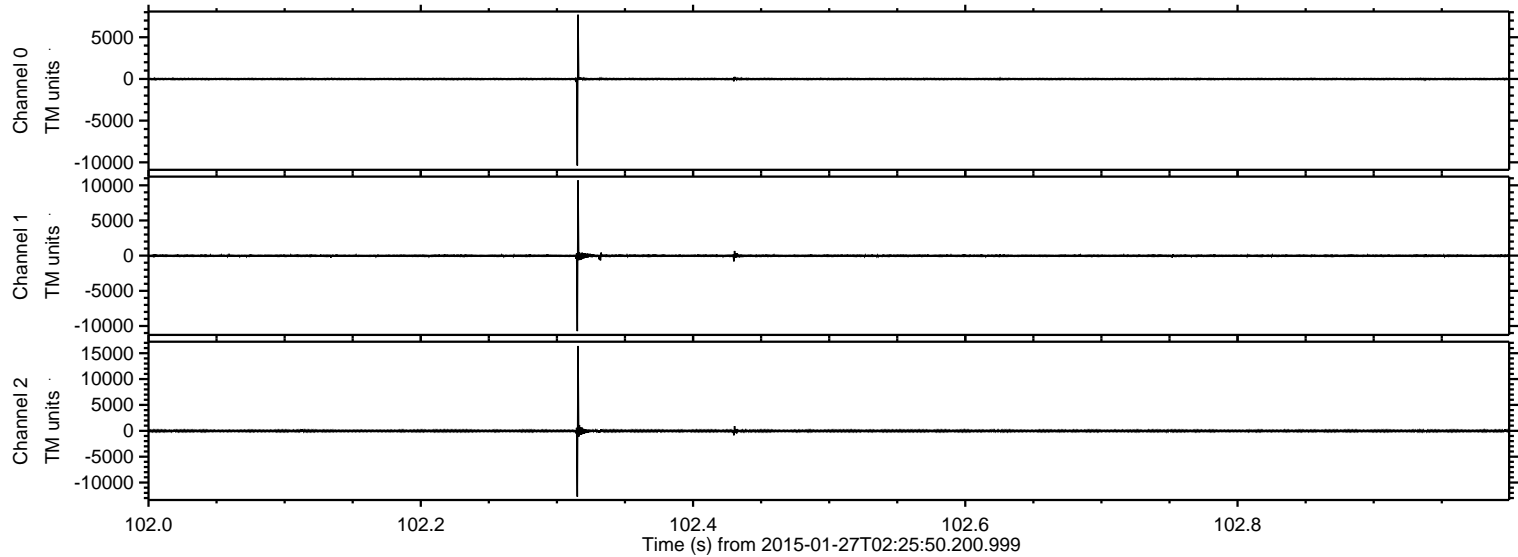
ELMAVAN 3D WAVEFORMS (Measured data sampled at 50 kHz) 49772 packets of 144 samples from 2015-01-27T02:25:50.200.999.

Processed Wed Feb 11 19:00:34 2015 by ELM ver.2012-10-06 from 001__elm20150127_022549__dat00.bin



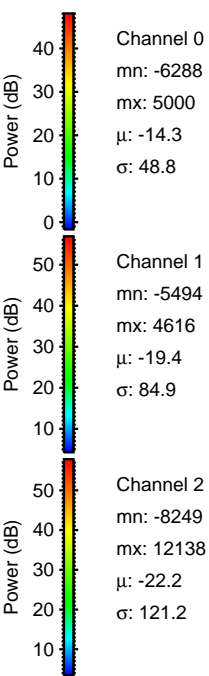
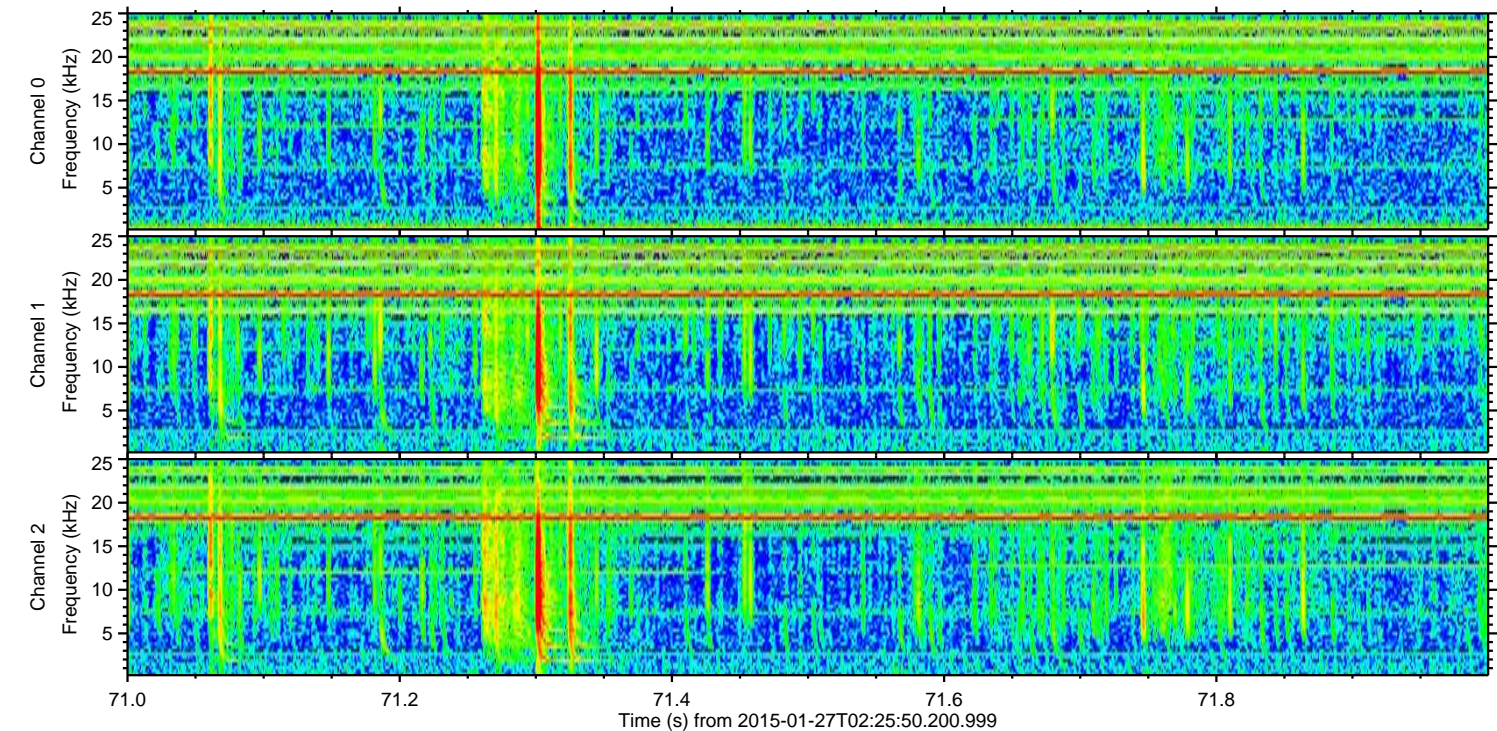
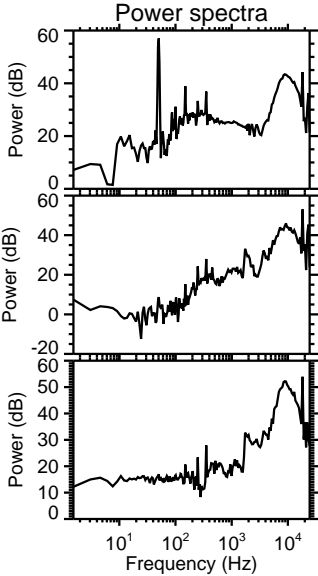
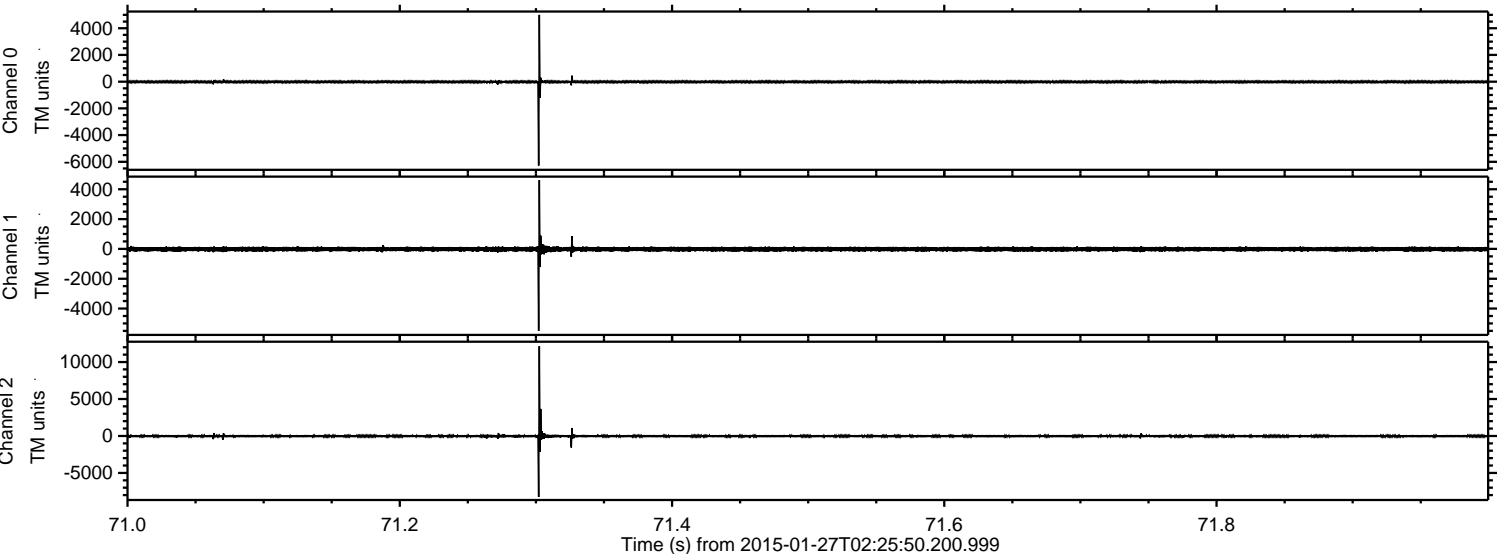
ELMAVAN 3D WAVEFORMS (Measured data sampled at 50 kHz) 49772 packets of 144 samples from 2015-01-27T02:25:50.200.999. Part 103/144

Processed Wed Feb 11 19:00:47 2015 by ELM ver.2012-10-06 from 001__elm20150127_022549__dat00.bin



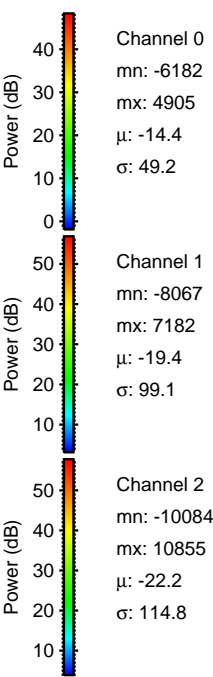
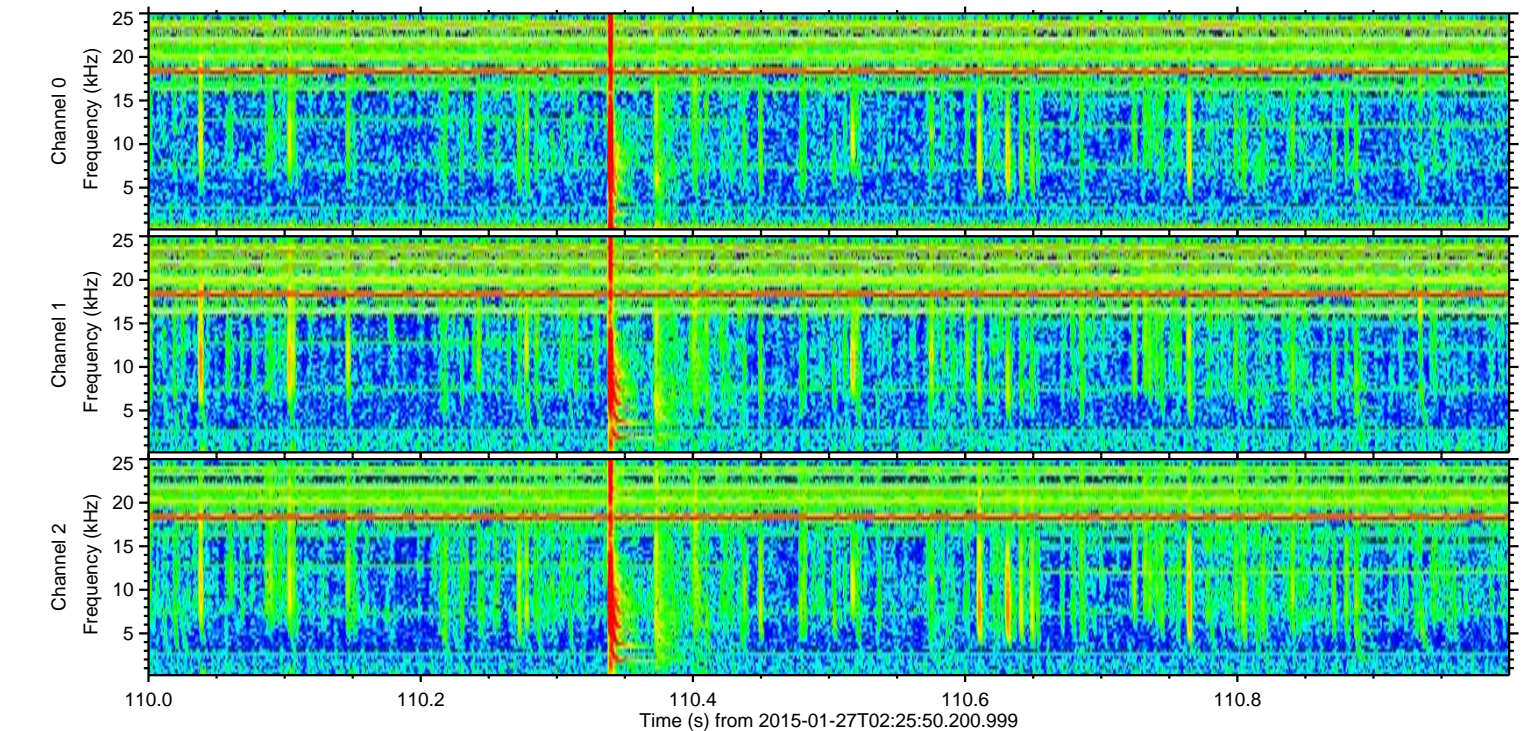
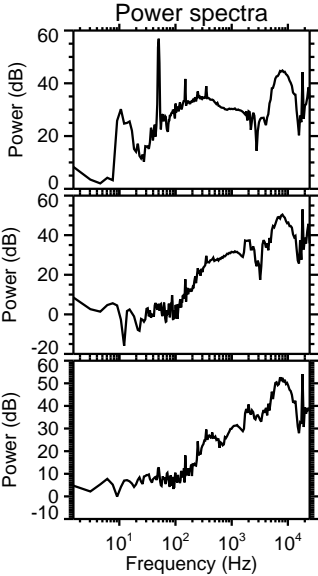
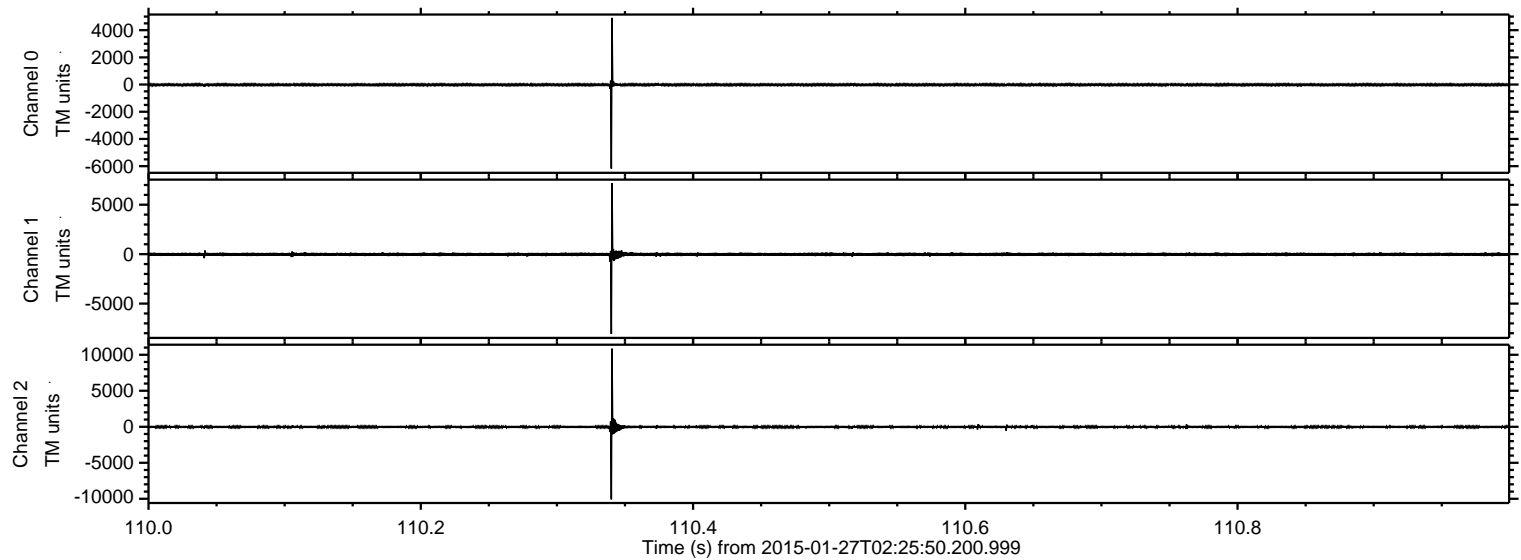
ELMAVAN 3D WAVEFORMS (Measured data sampled at 50 kHz) 49772 packets of 144 samples from 2015-01-27T02:25:50.200.999. Part 72/144

Processed Wed Feb 11 19:00:48 2015 by ELM ver.2012-10-06 from 001__elm20150127_022549__dat00.bin

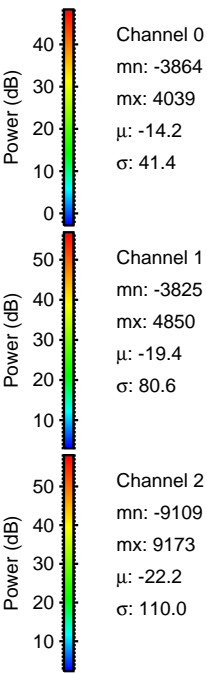
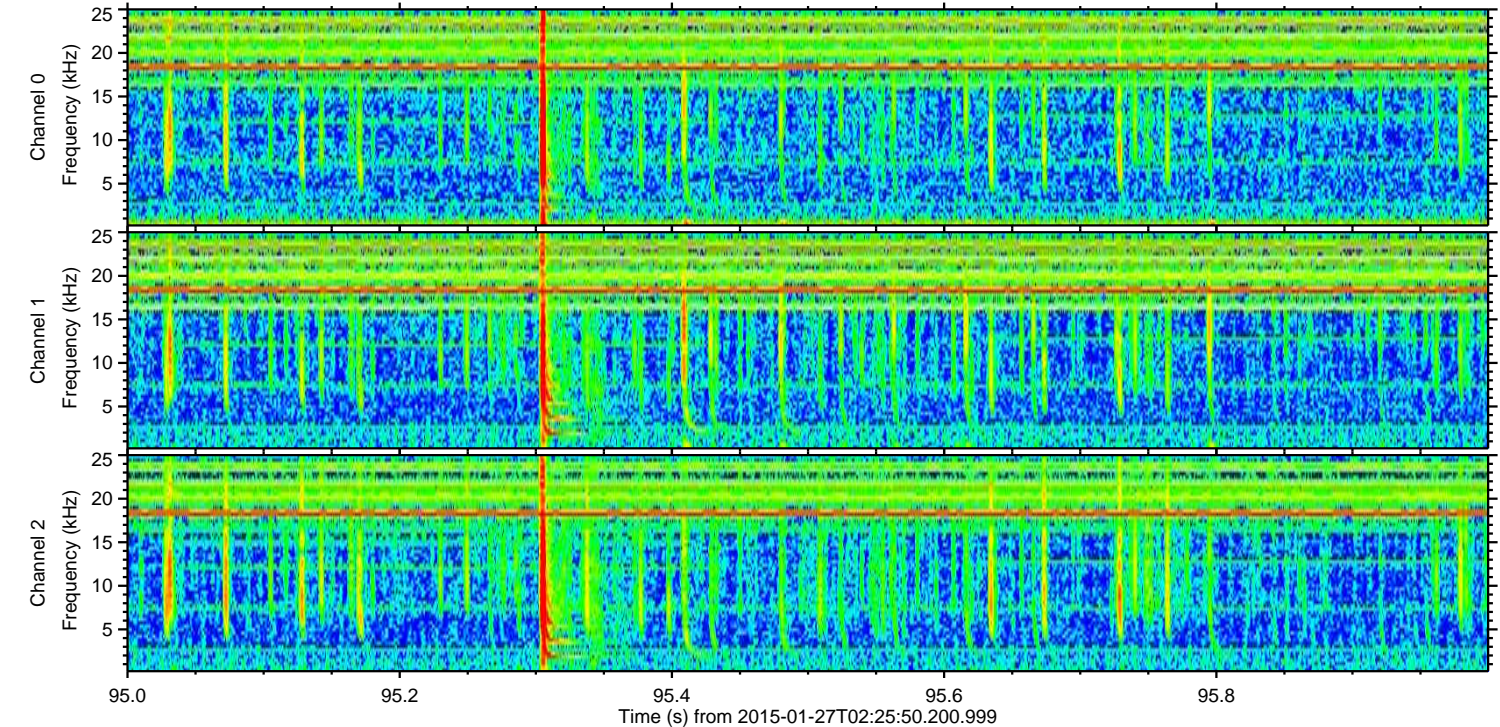
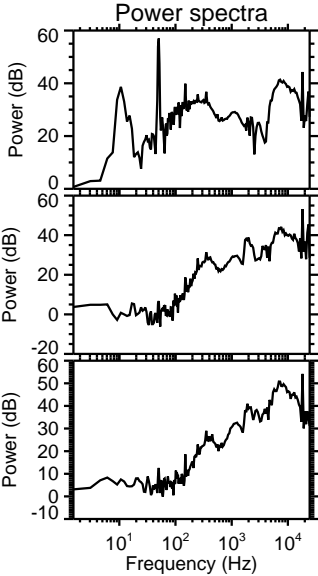
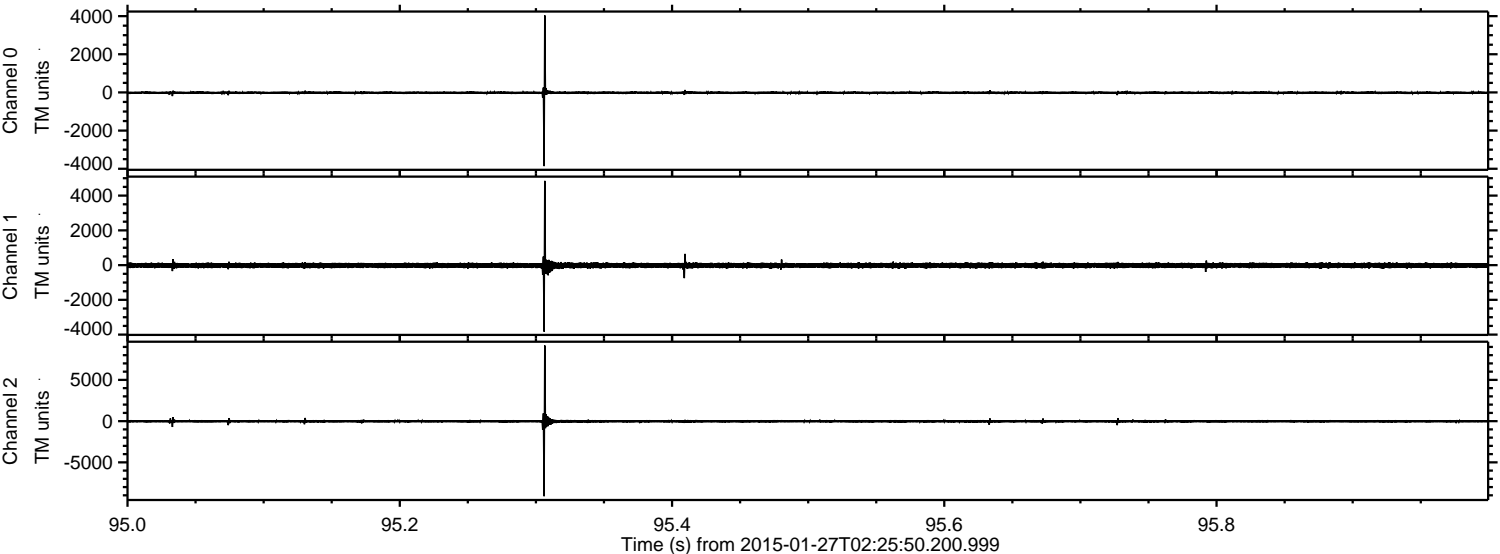


ELMAVAN 3D WAVEFORMS (Measured data sampled at 50 kHz) 49772 packets of 144 samples from 2015-01-27T02:25:50.200.999. Part 111/144

Processed Wed Feb 11 19:00:48 2015 by ELM ver.2012-10-06 from 001__elm20150127_022549__dat00.bin



Processed Wed Feb 11 19:00:49 2015 by ELM ver.2012-10-06 from 001__elm20150127_022549__dat00.bin



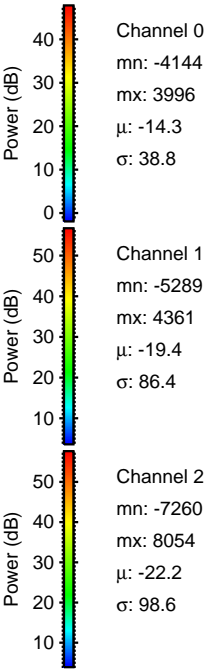
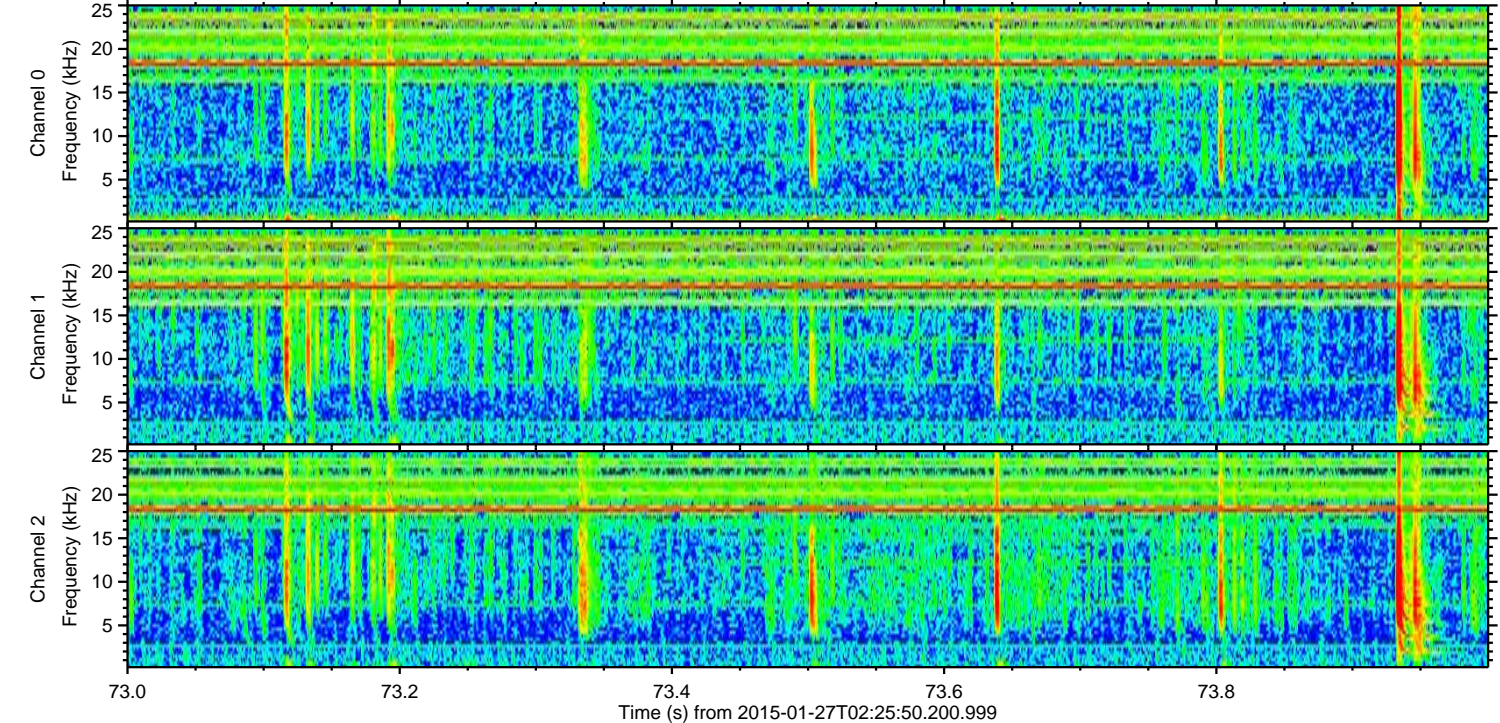
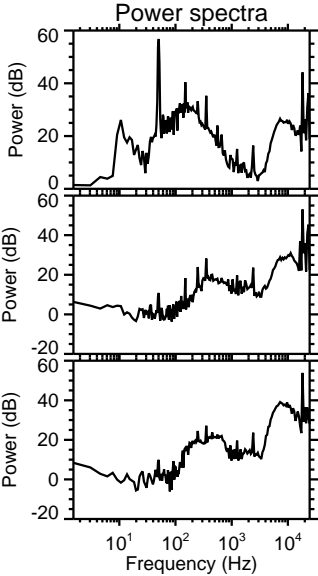
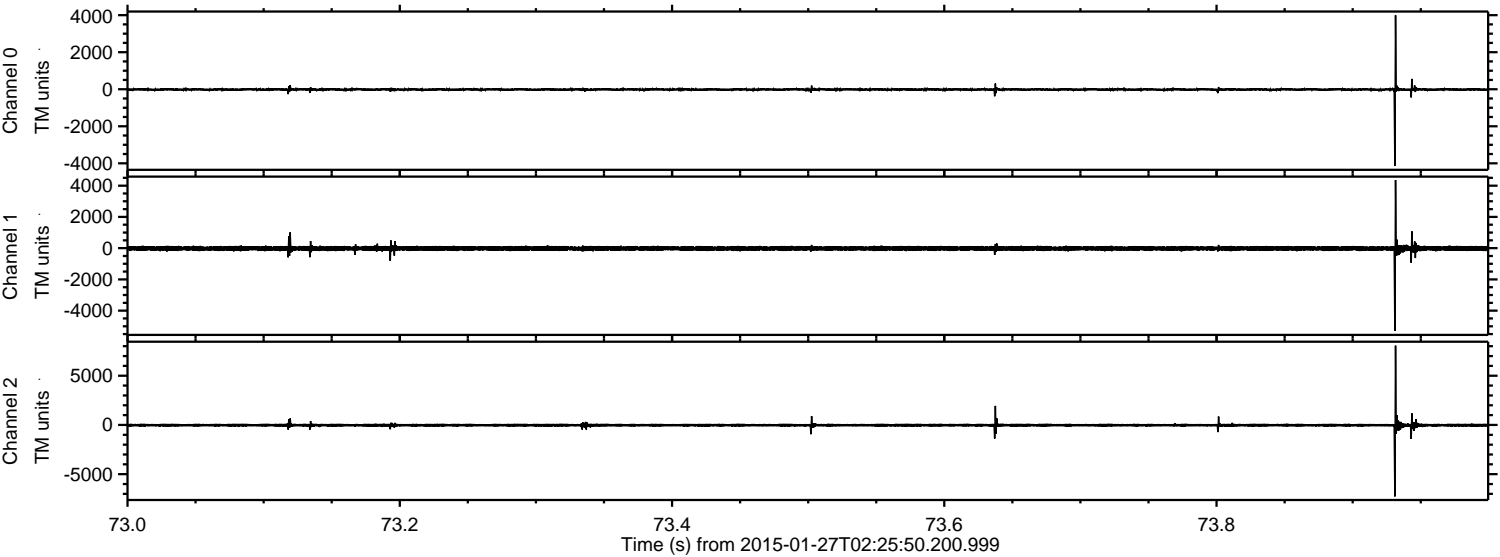
Channel 0
mn: -3864
mx: 4039
 μ : -14.2
 σ : 41.4

Channel 1
mn: -3825
mx: 4850
 μ : -19.4
 σ : 80.6

Channel 2
mn: -9109
mx: 9173
 μ : -22.2
 σ : 110.0

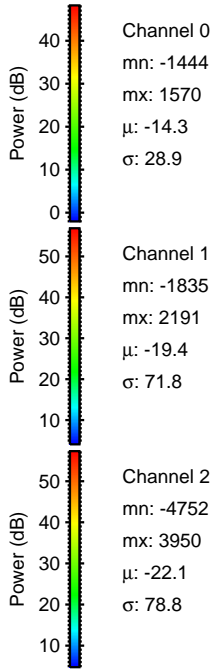
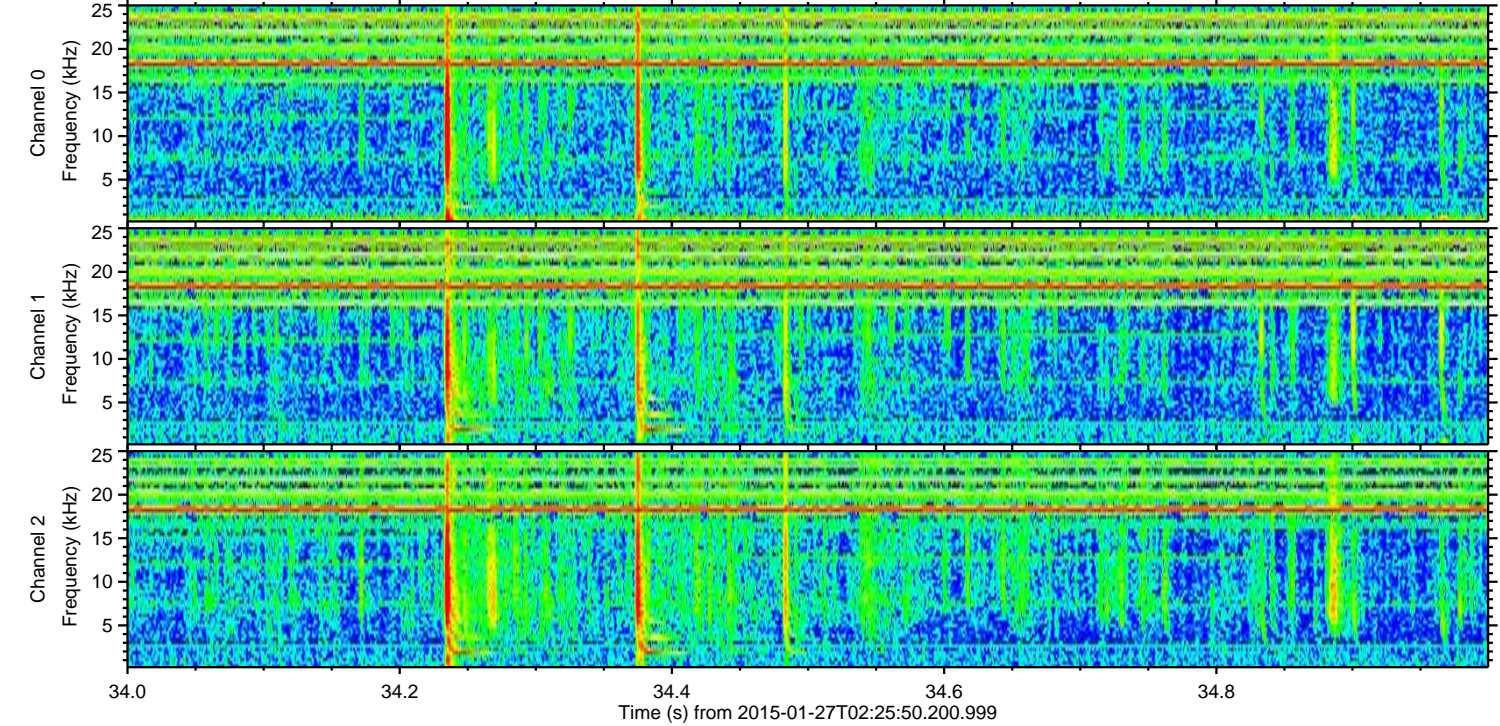
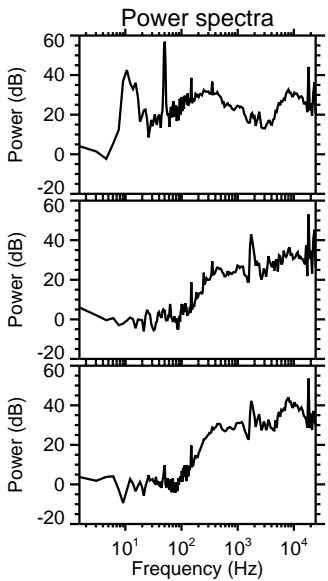
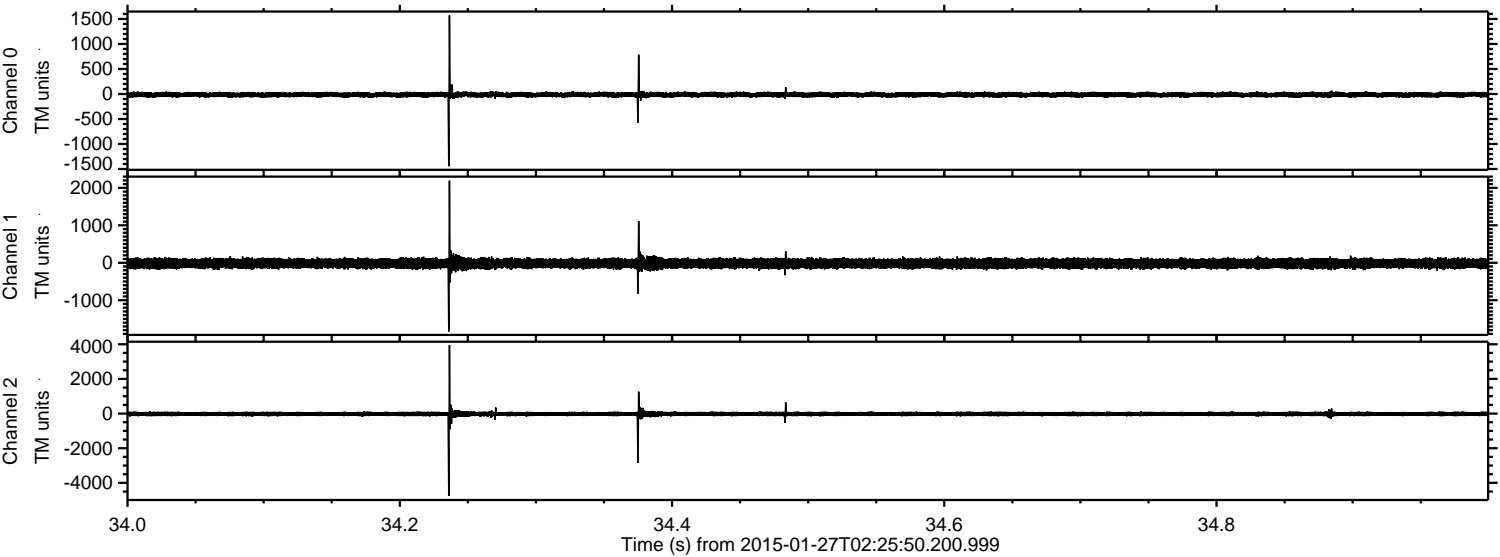
ELMAVAN 3D WAVEFORMS (Measured data sampled at 50 kHz) 49772 packets of 144 samples from 2015-01-27T02:25:50.200.999. Part 74/144

Processed Wed Feb 11 19:00:50 2015 by ELM ver.2012-10-06 from 001__elm20150127_022549__dat00.bin



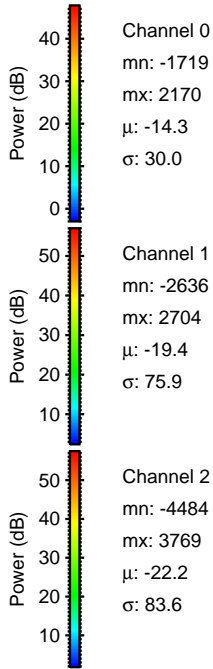
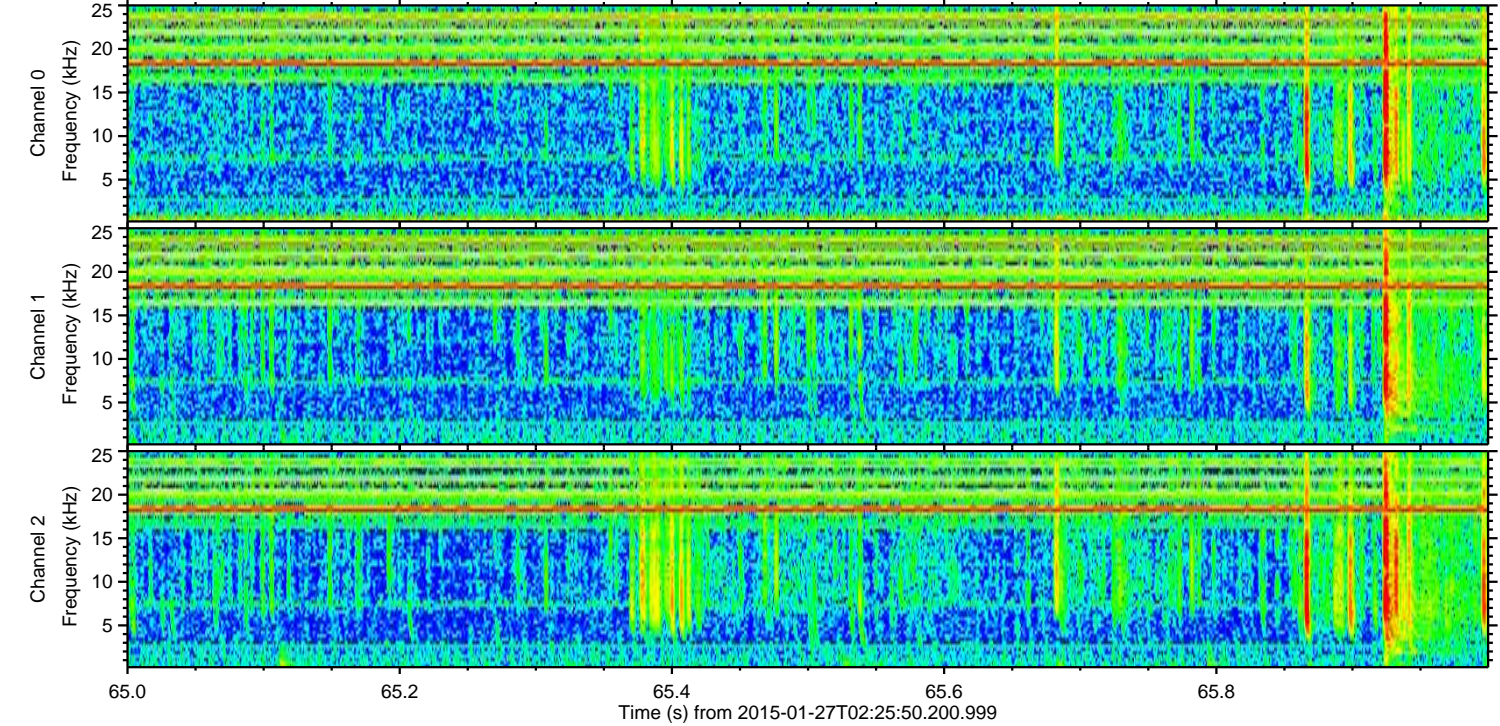
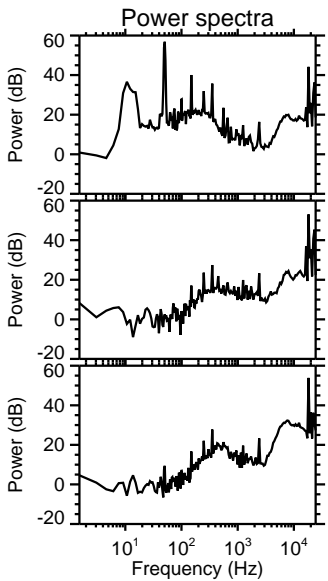
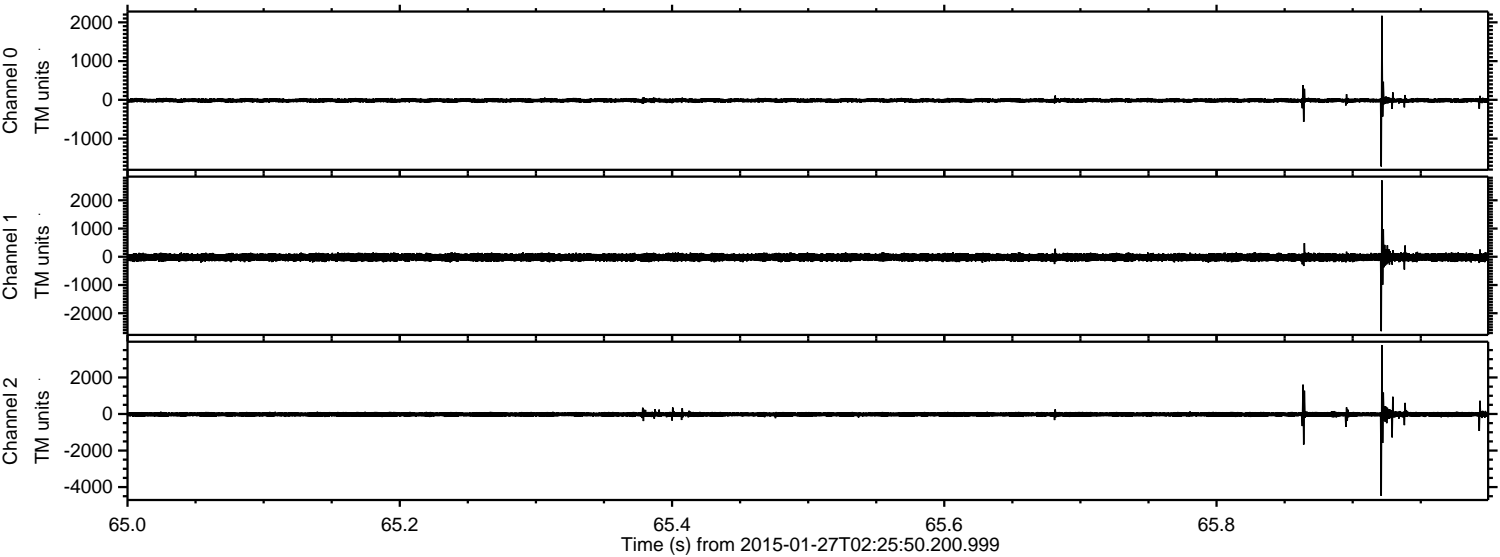
ELMAVAN 3D WAVEFORMS (Measured data sampled at 50 kHz) 49772 packets of 144 samples from 2015-01-27T02:25:50.200.999. Part 35/144

Processed Wed Feb 11 19:00:51 2015 by ELM ver.2012-10-06 from 001__elm20150127_022549__dat00.bin



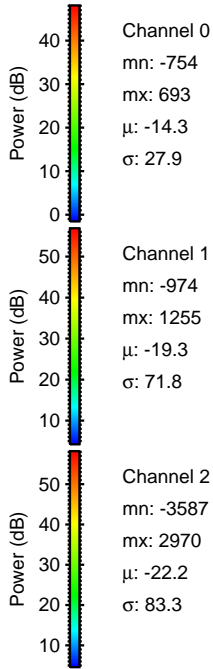
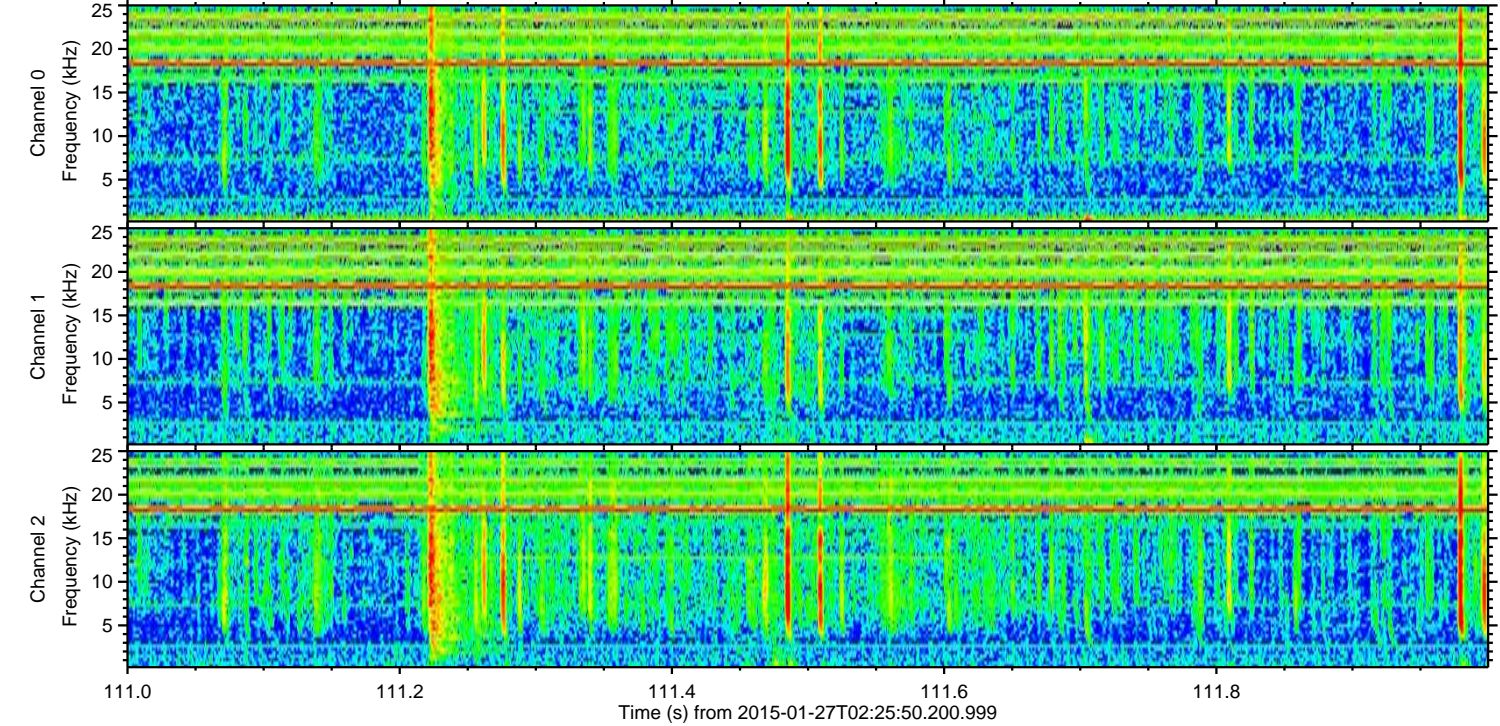
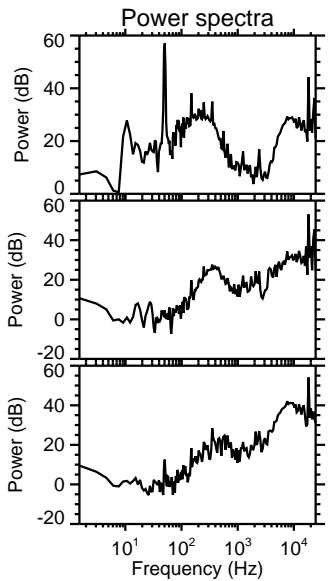
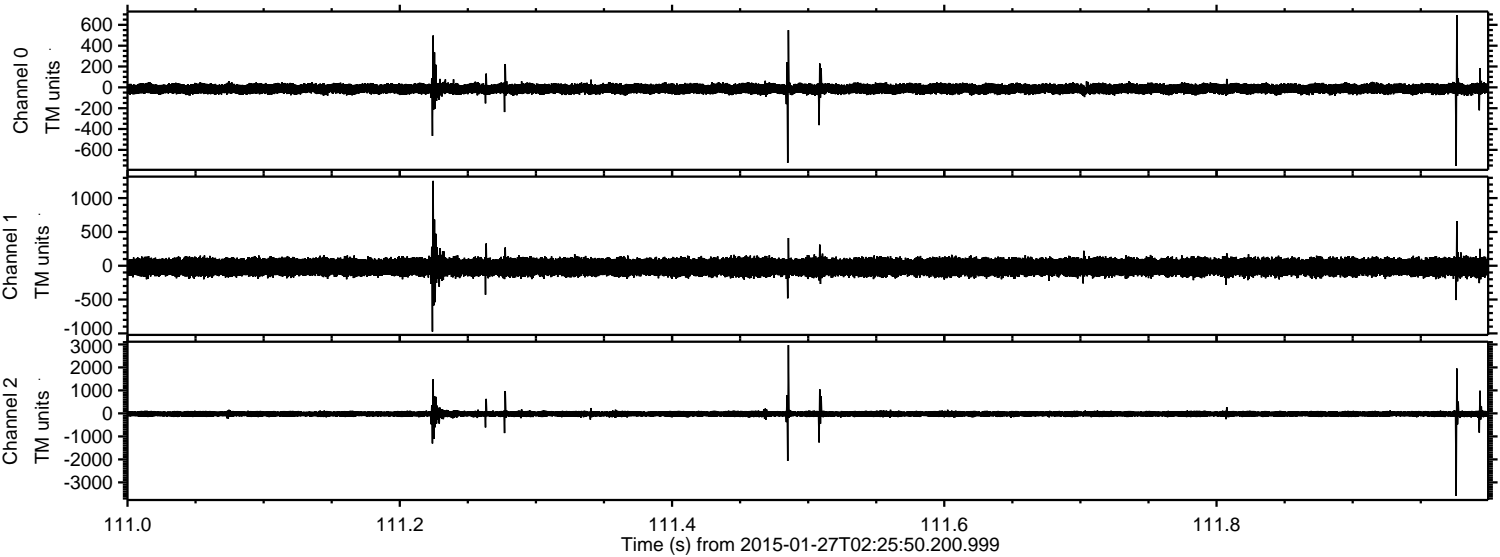
ELMAVAN 3D WAVEFORMS (Measured data sampled at 50 kHz) 49772 packets of 144 samples from 2015-01-27T02:25:50.200.999. Part 66/144

Processed Wed Feb 11 19:00:52 2015 by ELM ver.2012-10-06 from 001__elm20150127_022549__dat00.bin



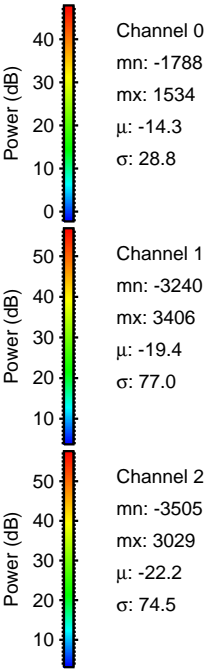
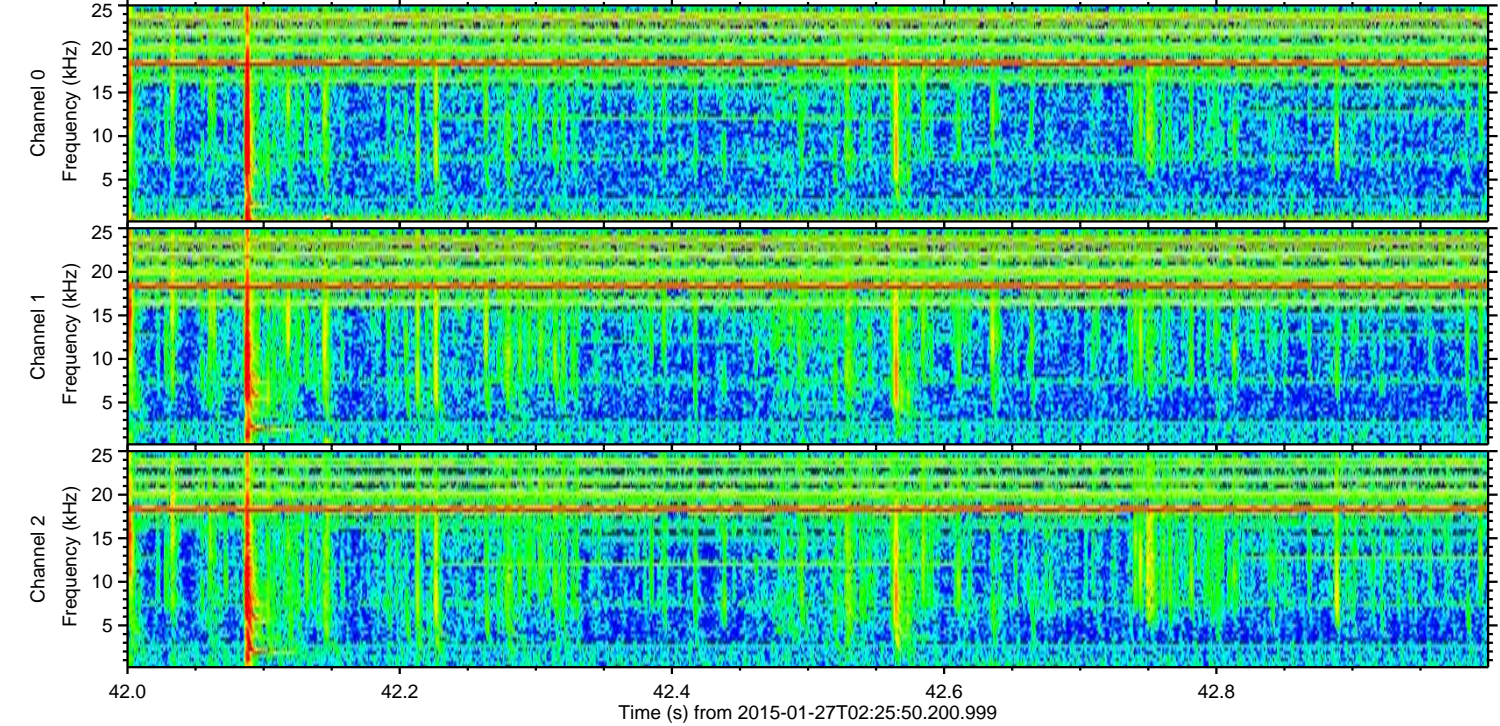
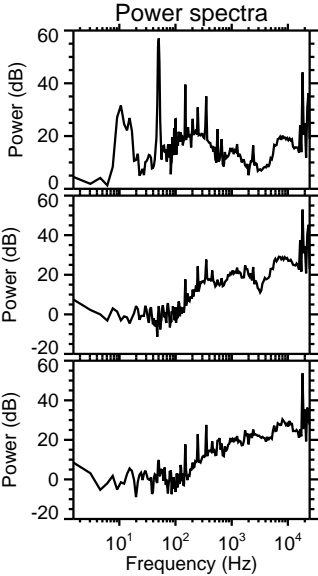
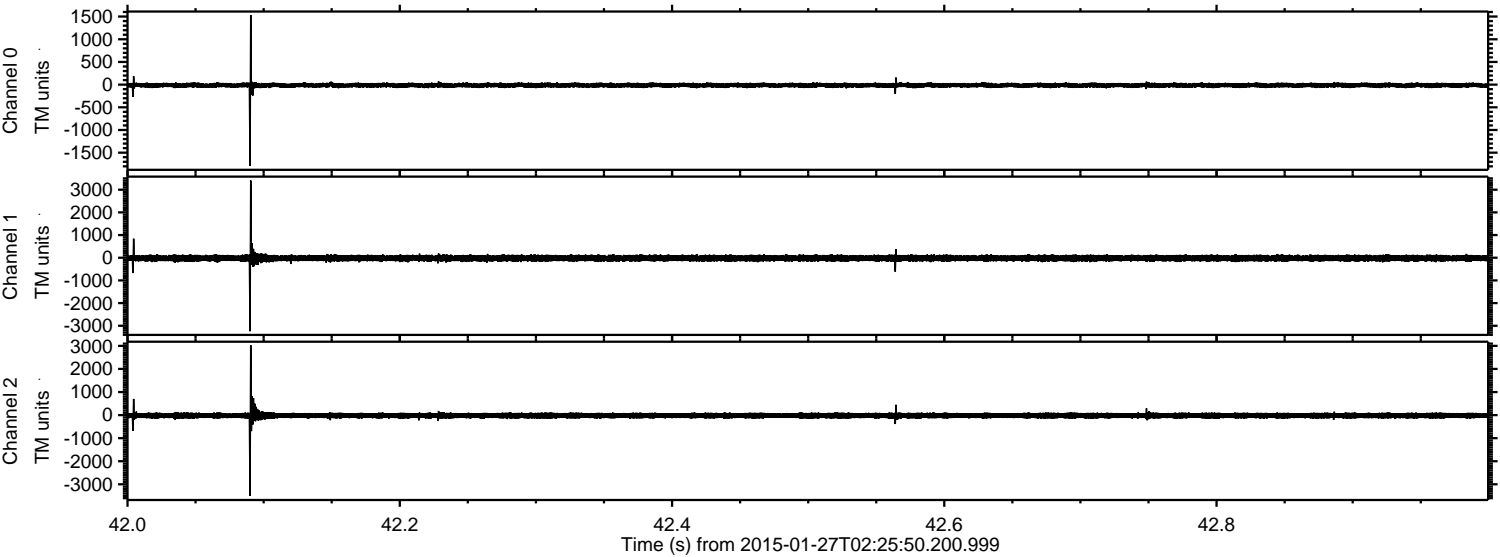
ELMAVAN 3D WAVEFORMS (Measured data sampled at 50 kHz) 49772 packets of 144 samples from 2015-01-27T02:25:50.200.999. Part 112/144

Processed Wed Feb 11 19:00:53 2015 by ELM ver.2012-10-06 from 001__elm20150127_022549__dat00.bin



ELMAVAN 3D WAVEFORMS (Measured data sampled at 50 kHz) 49772 packets of 144 samples from 2015-01-27T02:25:50.200.999. Part 43/144

Processed Wed Feb 11 19:00:54 2015 by ELM ver.2012-10-06 from 001__elm20150127_022549__dat00.bin



ELMAVAN 3D WAVEFORMS (Measured data sampled at 50 kHz) 49772 packets of 144 samples from 2015-01-27T02:25:50.200.999. Part 99/144

Processed Wed Feb 11 19:00:55 2015 by ELM ver.2012-10-06 from 001__elm20150127_022549__dat00.bin

