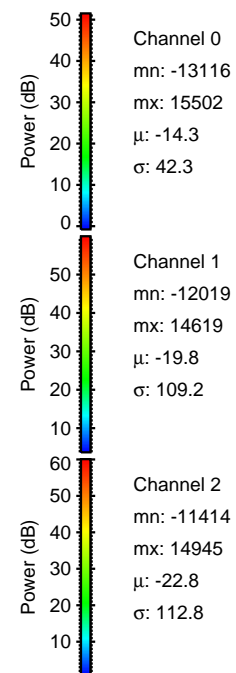
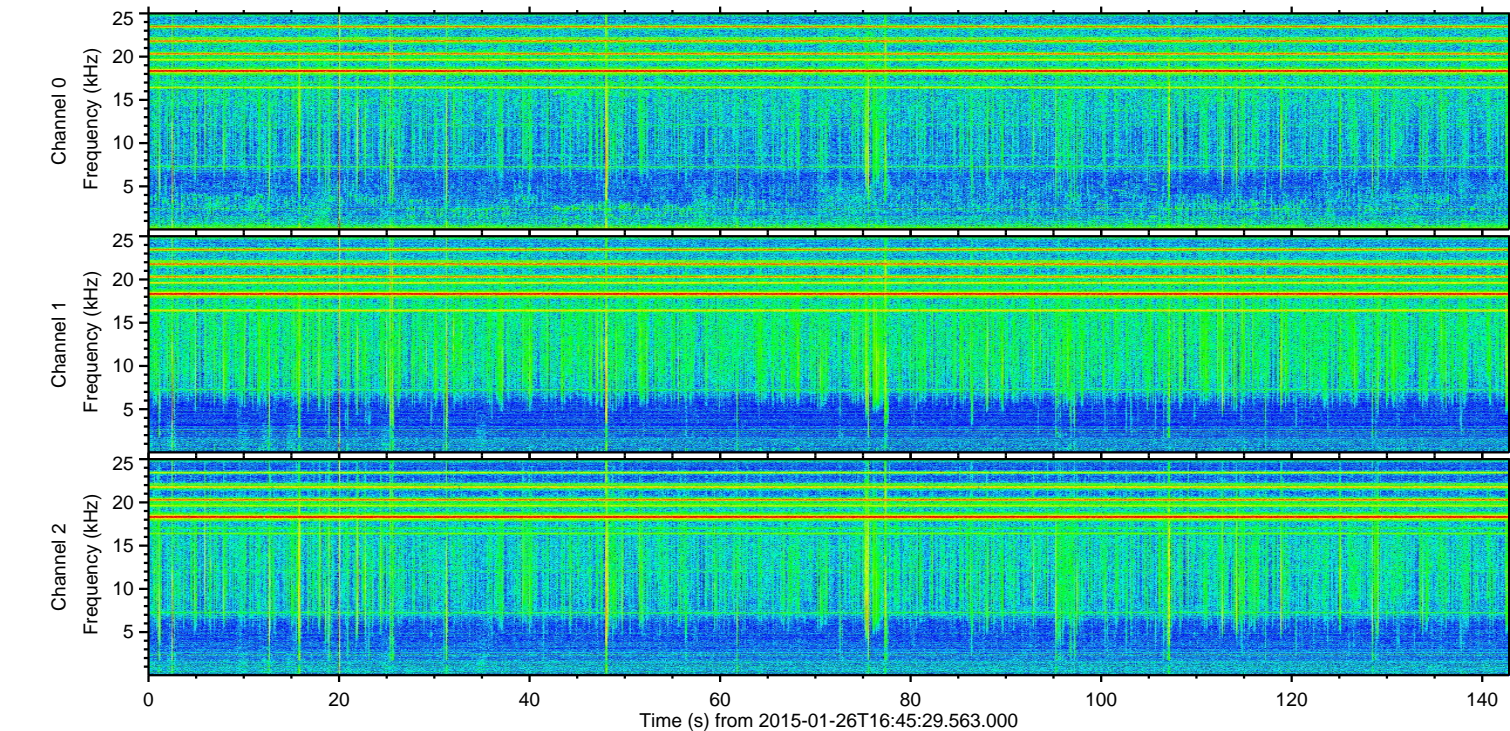
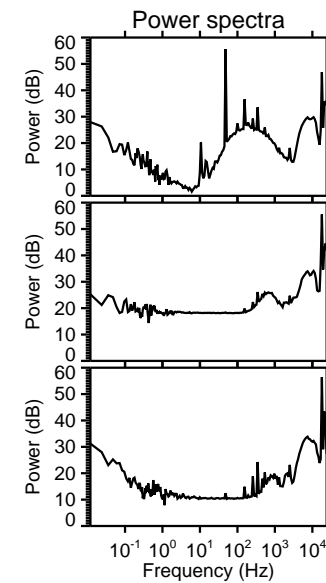
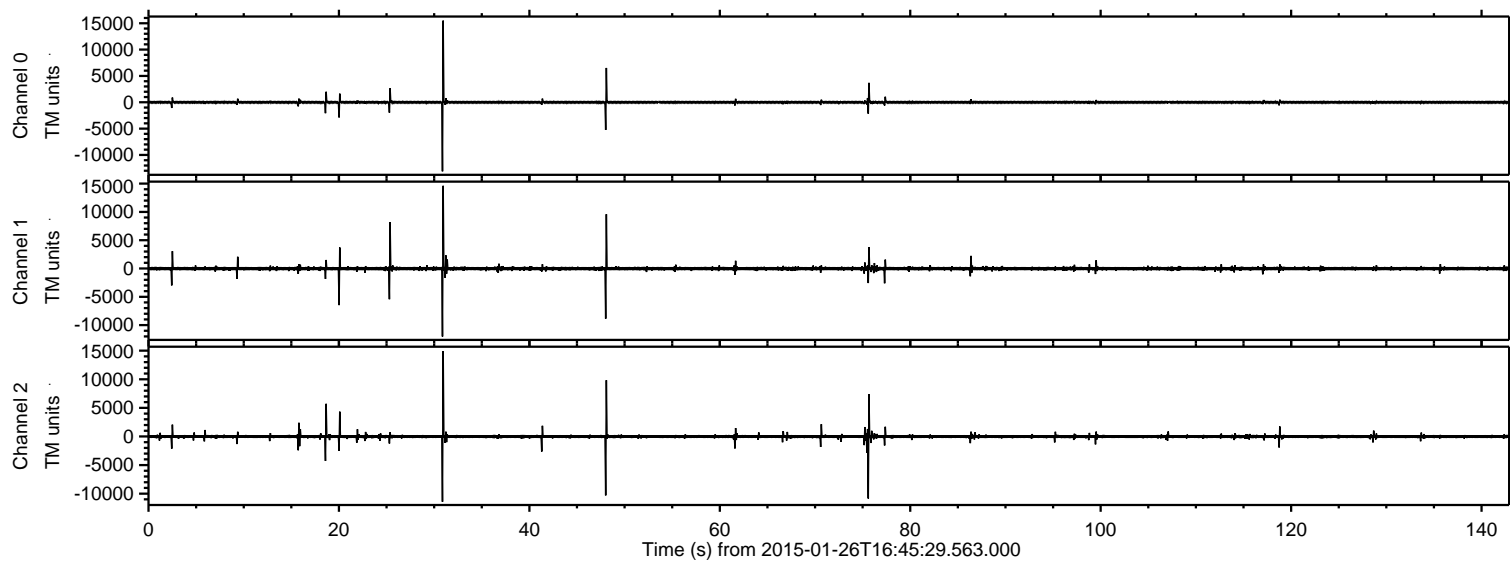


# ELMAVAN 3D WAVEFORMS (Measured data sampled at 50 kHz) 49617 packets of 144 samples from 2015-01-26T16:45:29.563.000.

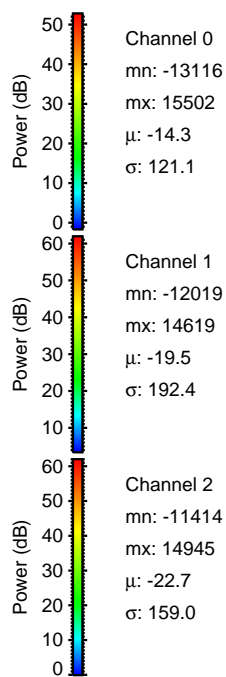
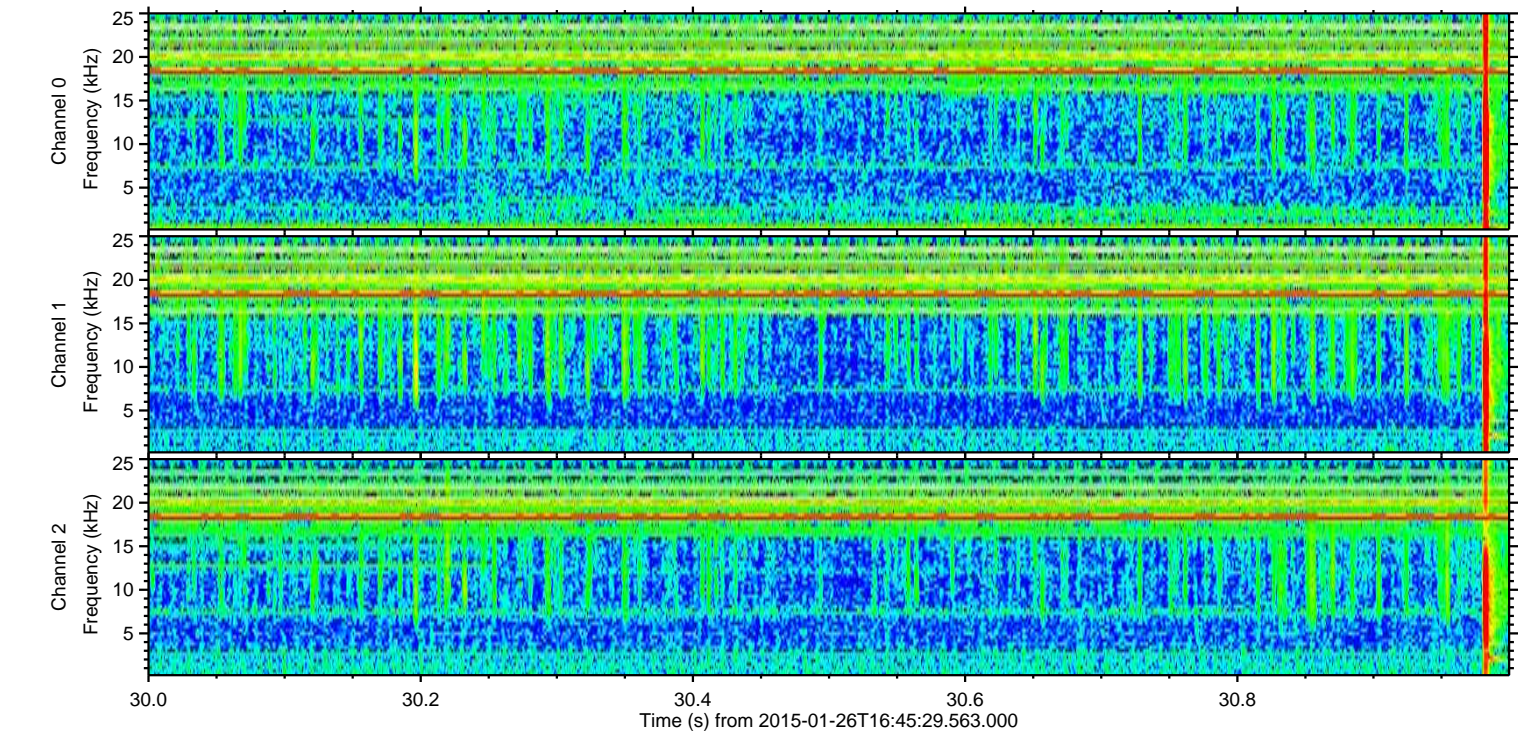
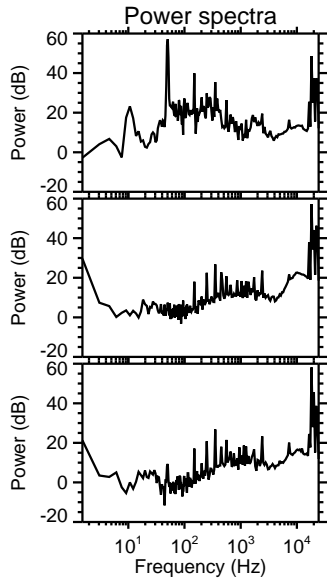
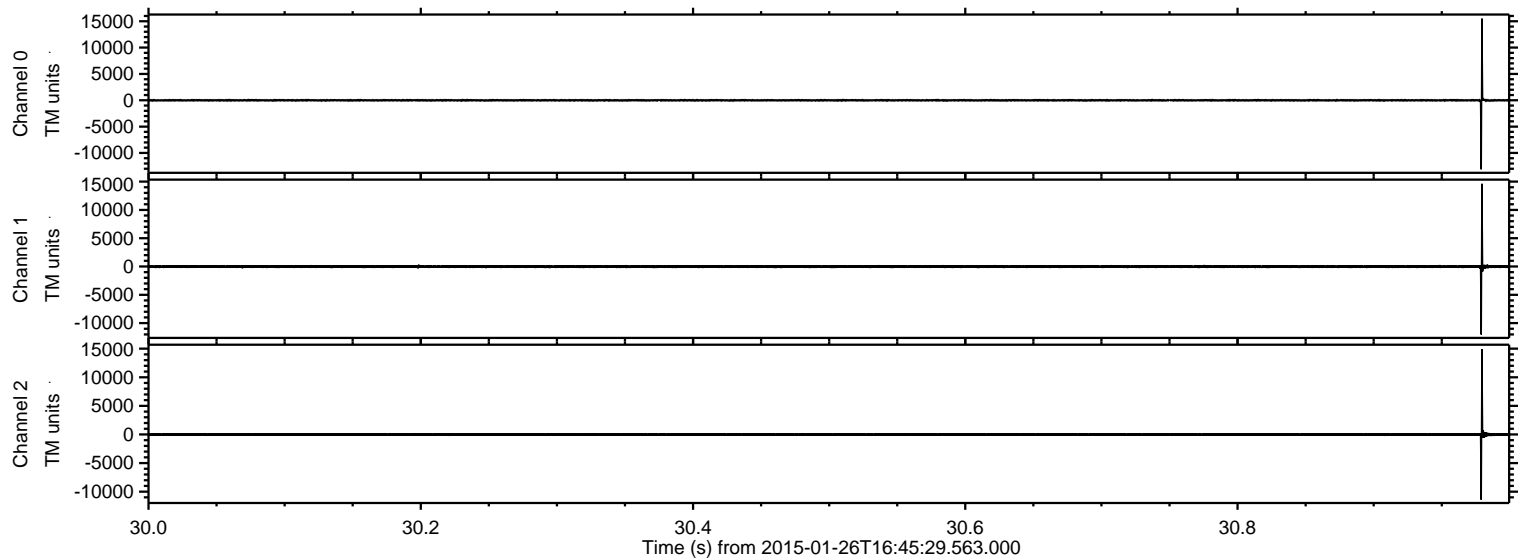
Processed Wed Feb 11 16:37:30 2015 by ELM ver.2012-10-06 from 001\_\_elm20150126\_164528\_\_dat00.bin





ELMAVAN 3D WAVEFORMS (Measured data sampled at 50 kHz) 49617 packets of 144 samples from 2015-01-26T16:45:29.563.000. Part 31/143

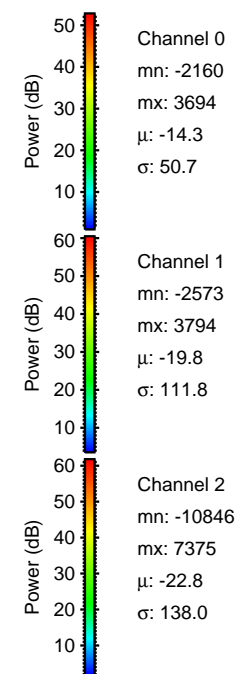
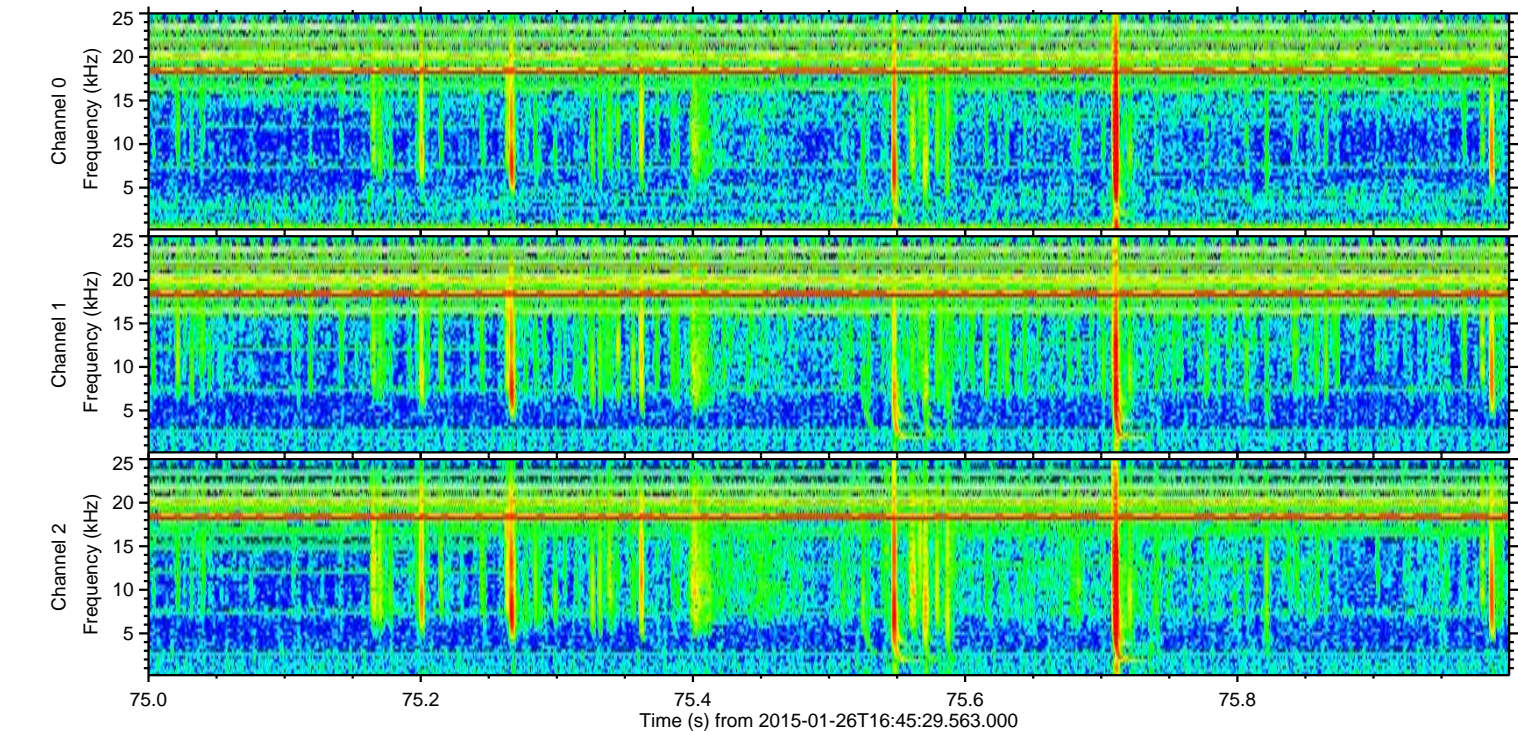
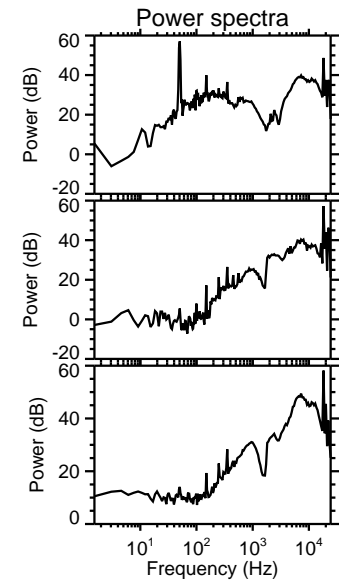
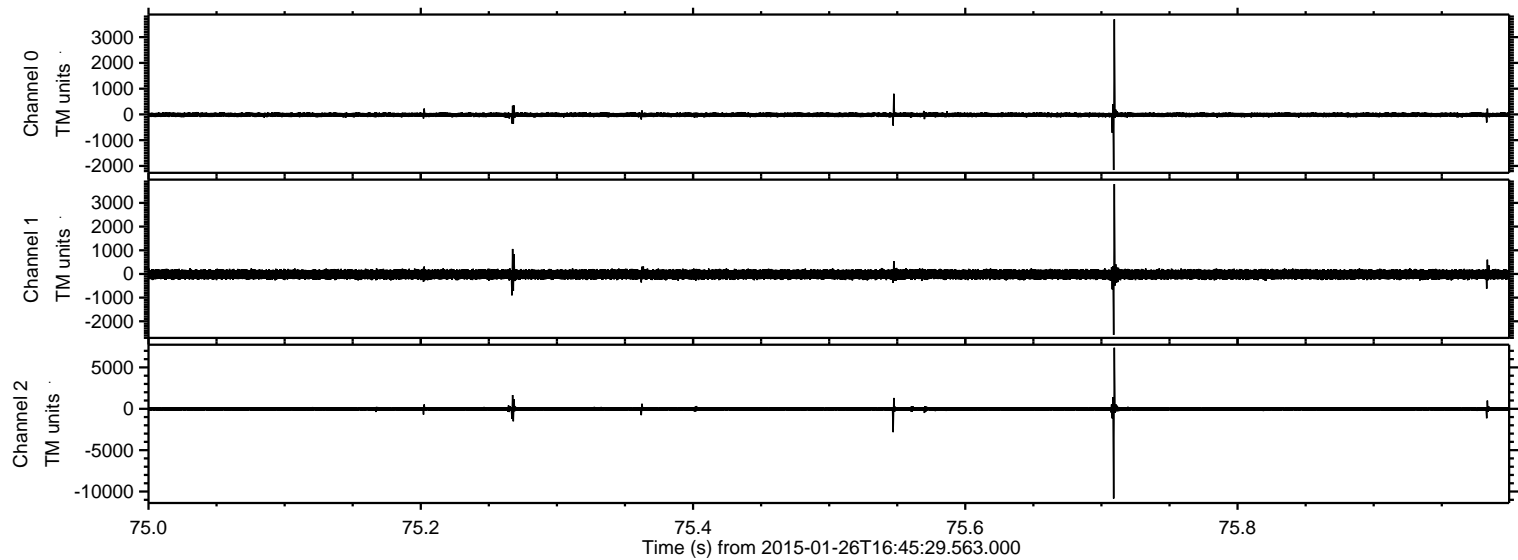
Processed Wed Feb 11 16:37:43 2015 by ELM ver.2012-10-06 from 001\_\_elm20150126\_164528\_\_dat00.bin





ELMAVAN 3D WAVEFORMS (Measured data sampled at 50 kHz) 49617 packets of 144 samples from 2015-01-26T16:45:29.563.000. Part 76/143

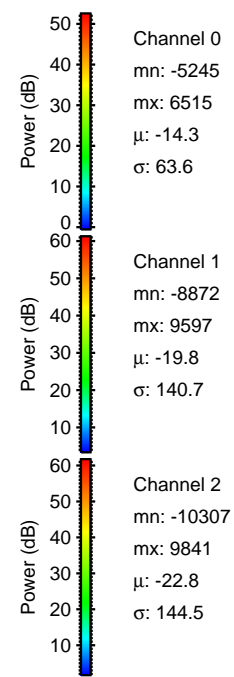
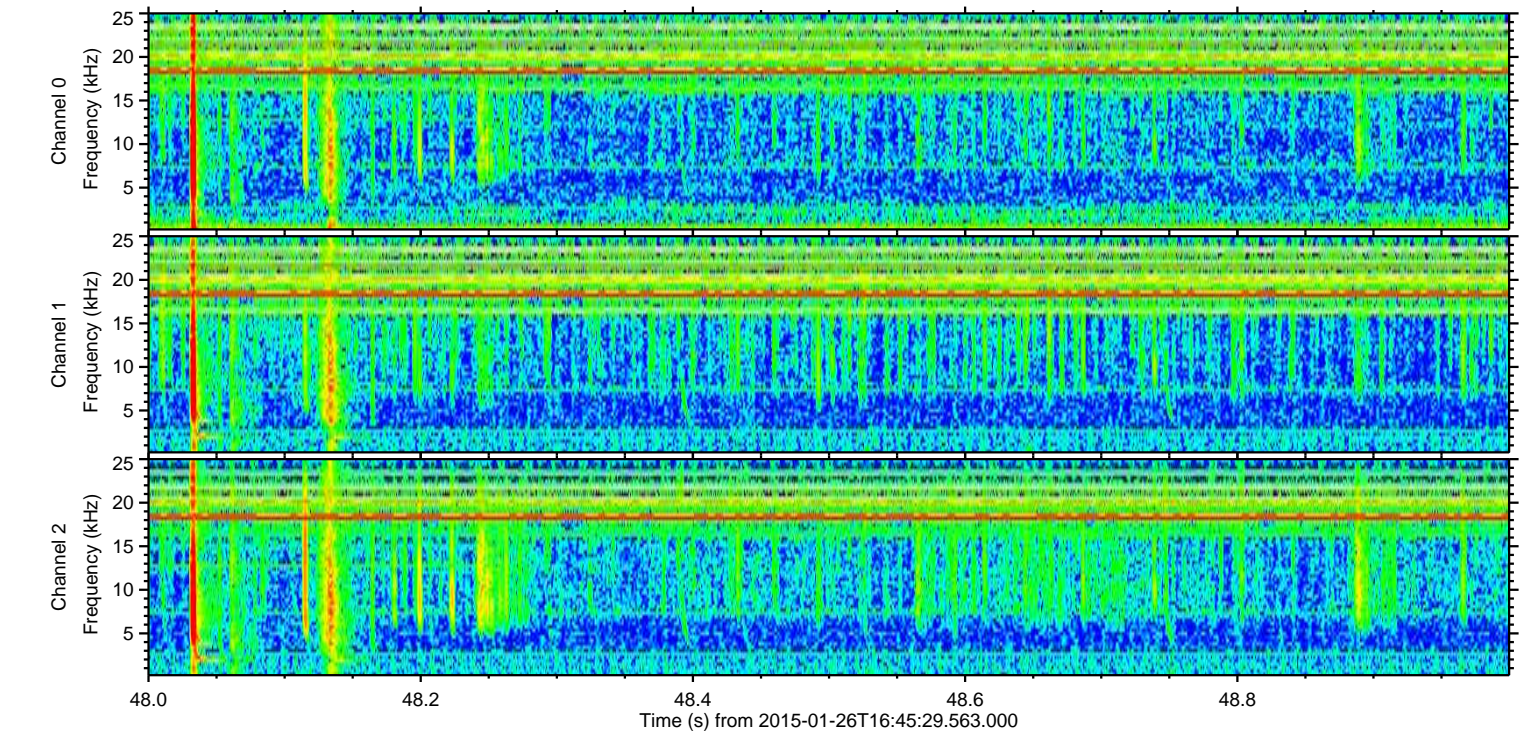
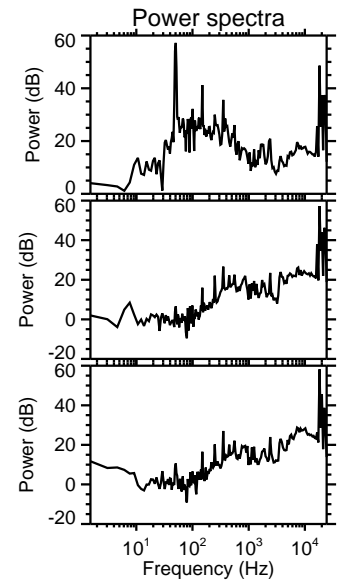
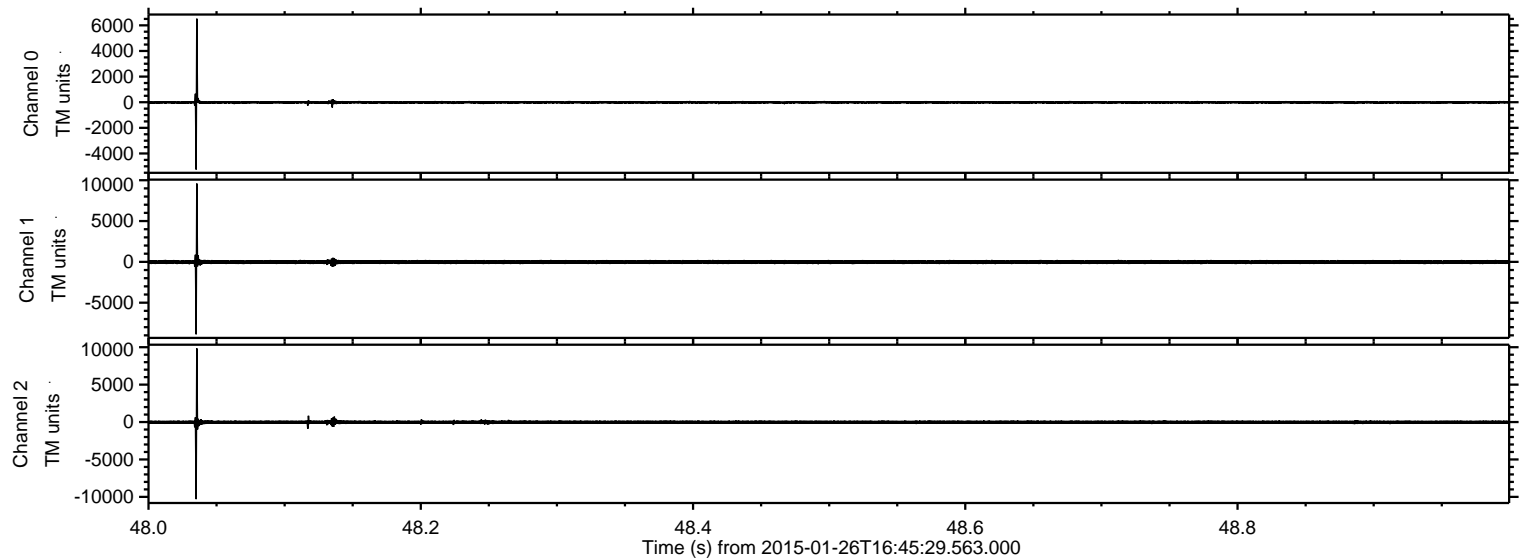
Processed Wed Feb 11 16:37:44 2015 by ELM ver.2012-10-06 from 001\_\_elm20150126\_164528\_\_dat00.bin





ELMAVAN 3D WAVEFORMS (Measured data sampled at 50 kHz) 49617 packets of 144 samples from 2015-01-26T16:45:29.563.000. Part 49/143

Processed Wed Feb 11 16:37:45 2015 by ELM ver.2012-10-06 from 001\_\_elm20150126\_164528\_\_dat00.bin



Channel 0  
mn: -5245  
mx: 6515  
 $\mu$ : -14.3  
 $\sigma$ : 63.6

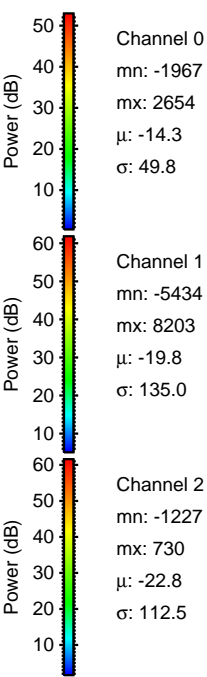
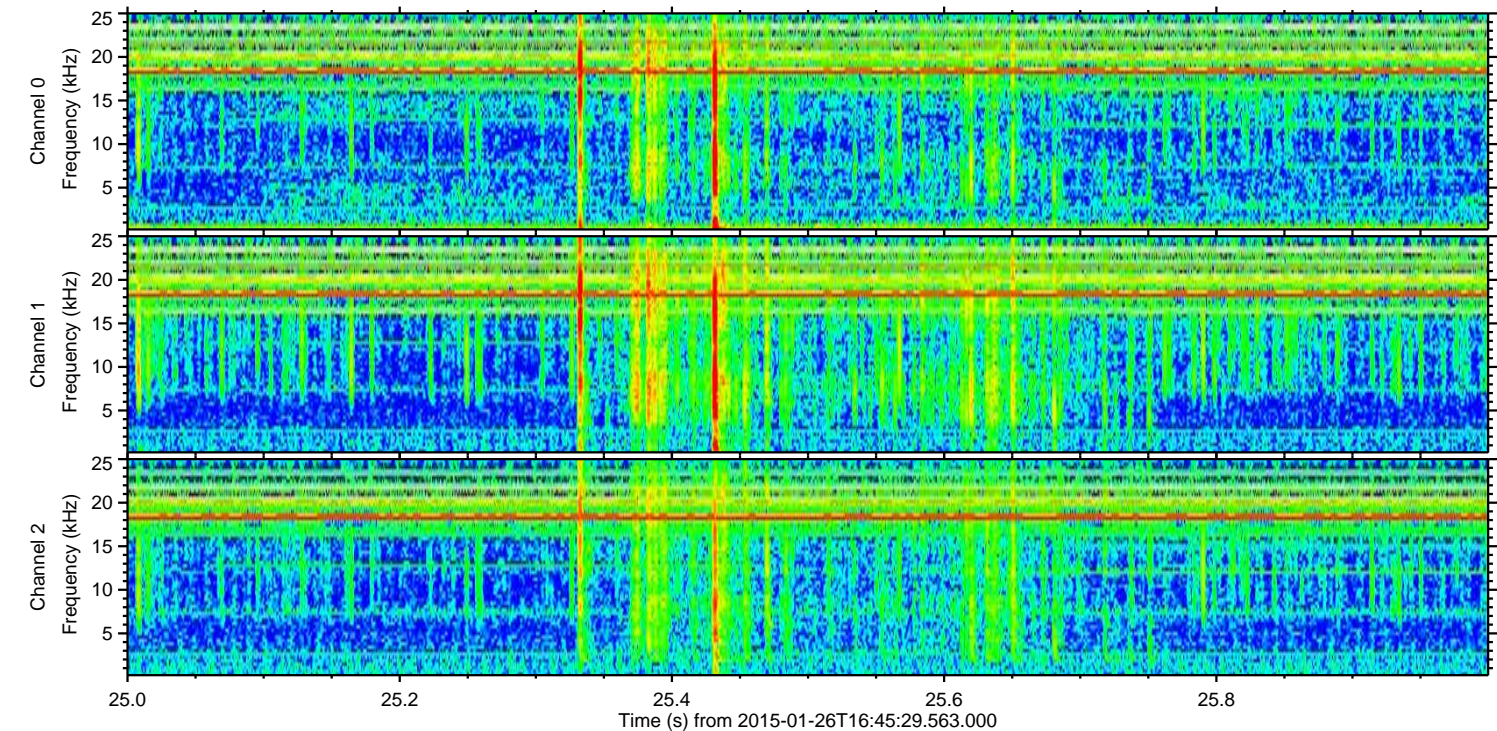
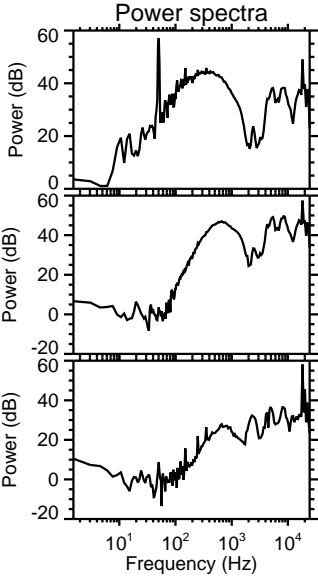
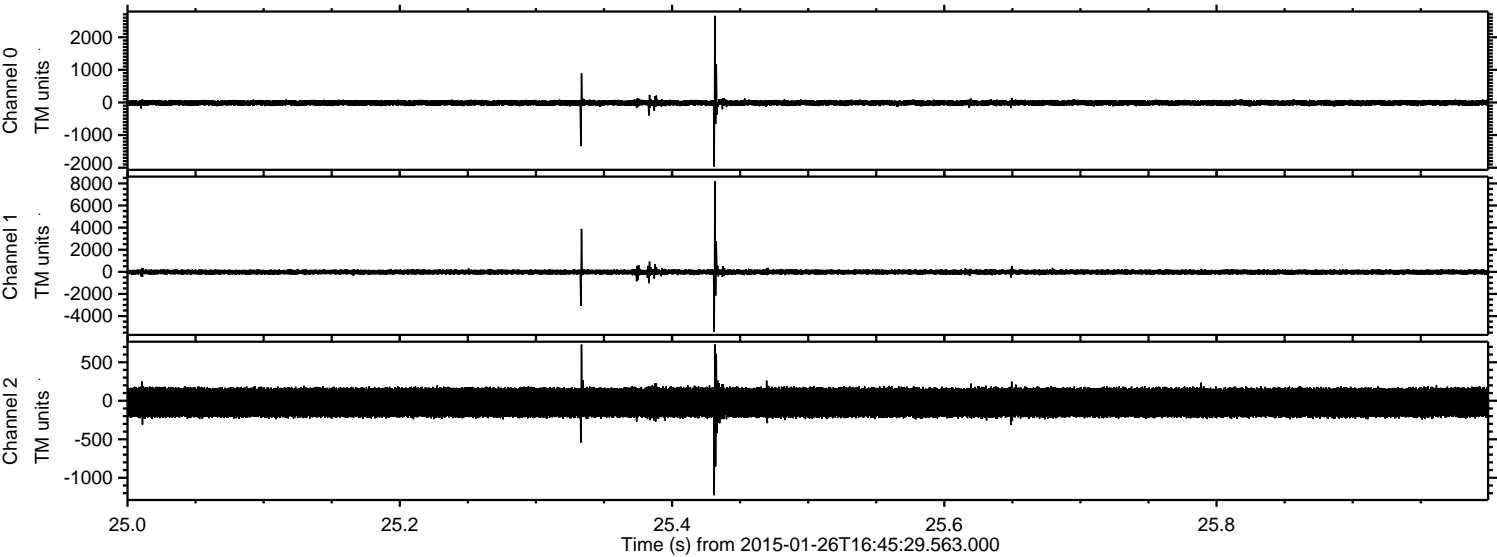
Channel 1  
mn: -8872  
mx: 9597  
 $\mu$ : -19.8  
 $\sigma$ : 140.7

Channel 2  
mn: -10307  
mx: 9841  
 $\mu$ : -22.8  
 $\sigma$ : 144.5



ELMAVAN 3D WAVEFORMS (Measured data sampled at 50 kHz) 49617 packets of 144 samples from 2015-01-26T16:45:29.563.000. Part 26/143

Processed Wed Feb 11 16:37:46 2015 by ELM ver.2012-10-06 from 001\_\_elm20150126\_164528\_\_dat00.bin



Channel 0  
mn: -1967  
mx: 2654  
 $\mu$ : -14.3  
 $\sigma$ : 49.8

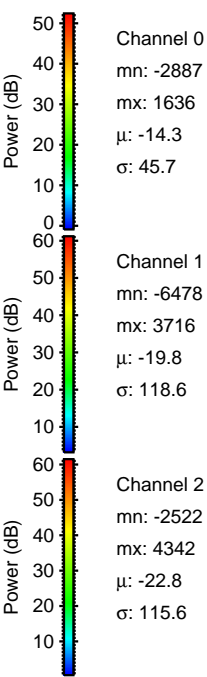
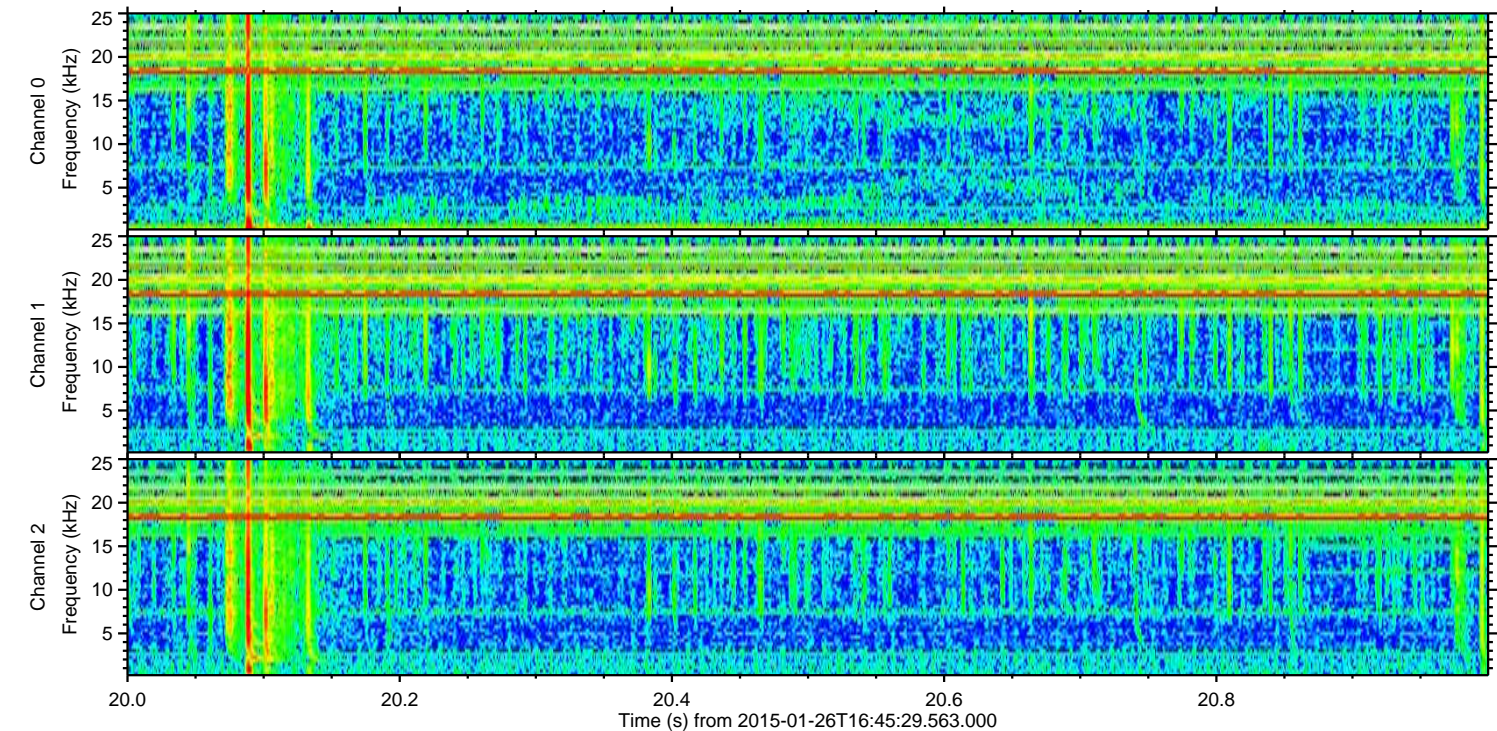
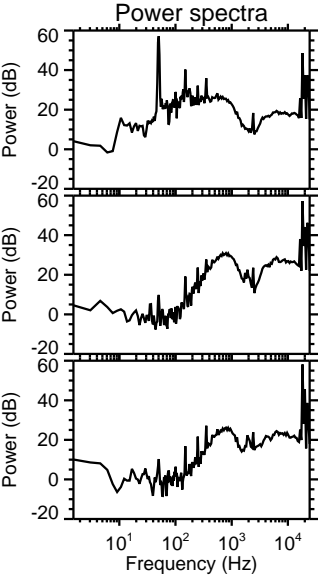
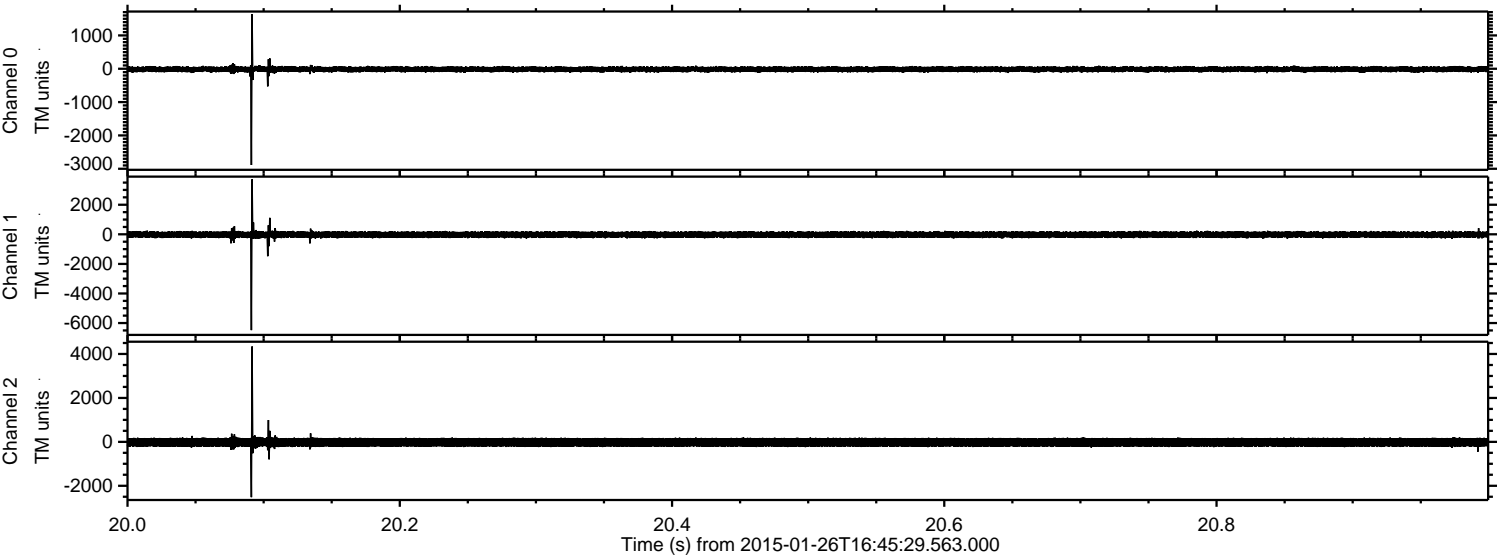
Channel 1  
mn: -5434  
mx: 8203  
 $\mu$ : -19.8  
 $\sigma$ : 135.0

Channel 2  
mn: -1227  
mx: 730  
 $\mu$ : -22.8  
 $\sigma$ : 112.5



ELMAVAN 3D WAVEFORMS (Measured data sampled at 50 kHz) 49617 packets of 144 samples from 2015-01-26T16:45:29.563.000. Part 21/143

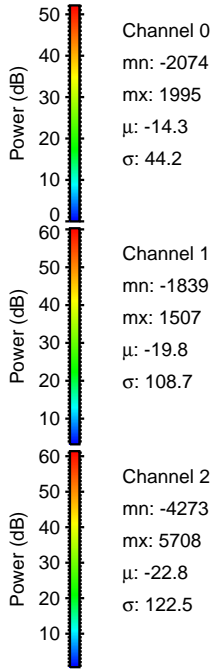
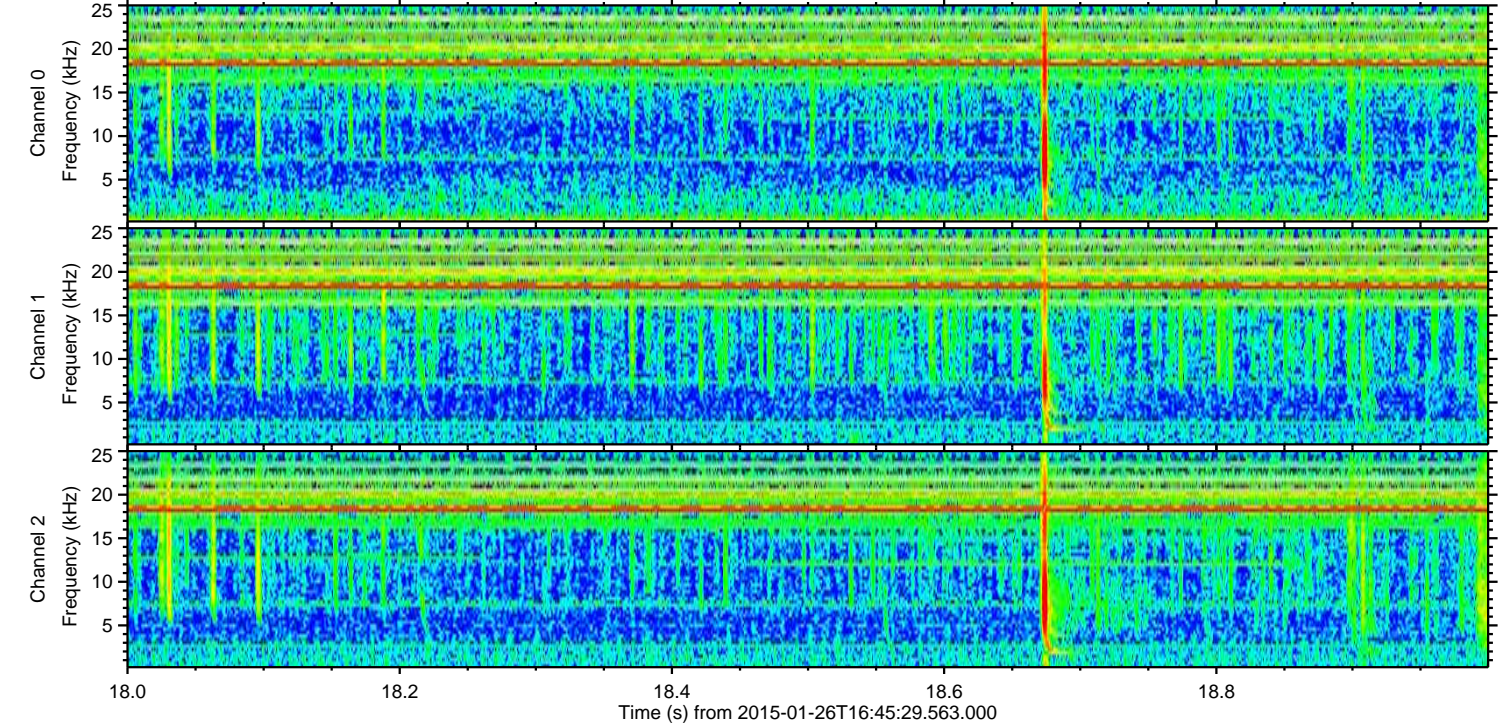
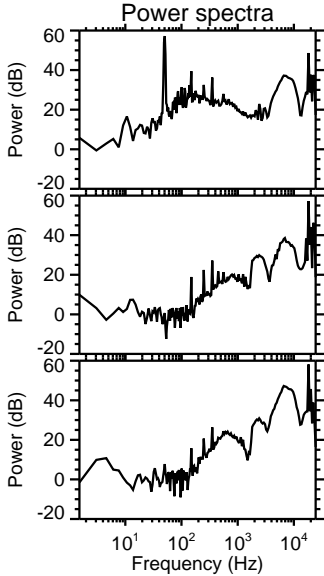
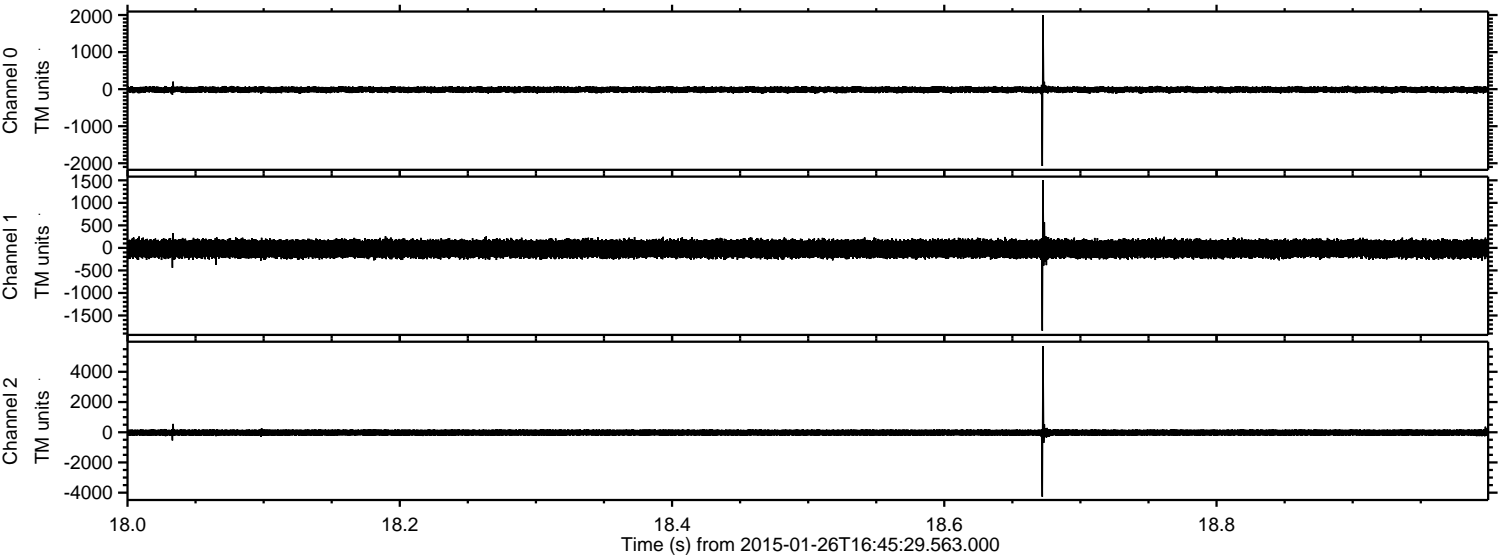
Processed Wed Feb 11 16:37:47 2015 by ELM ver.2012-10-06 from 001\_\_elm20150126\_164528\_\_dat00.bin





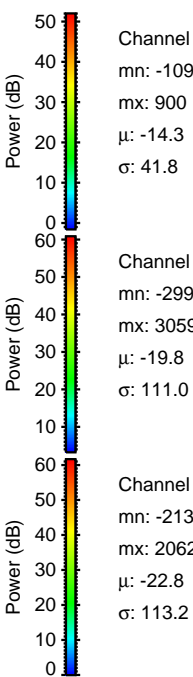
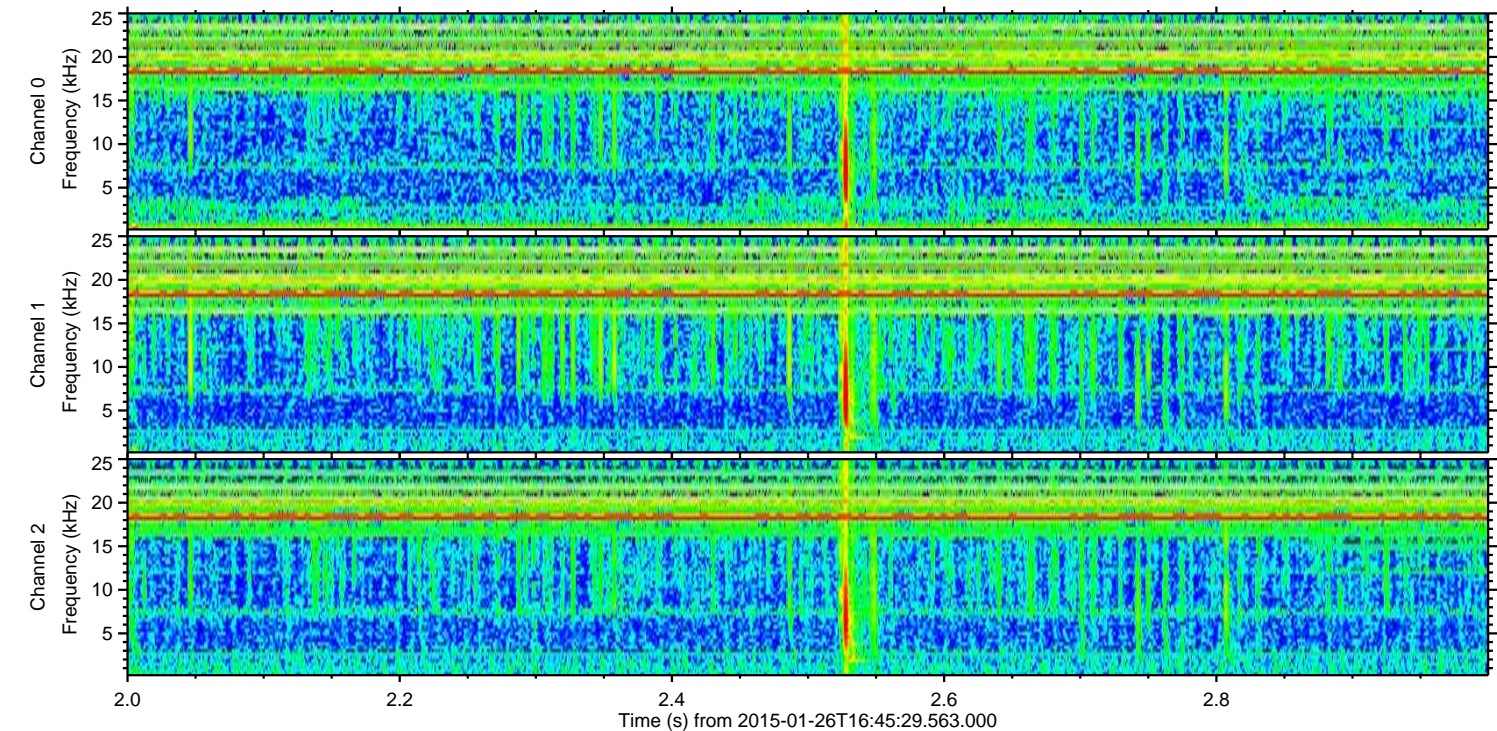
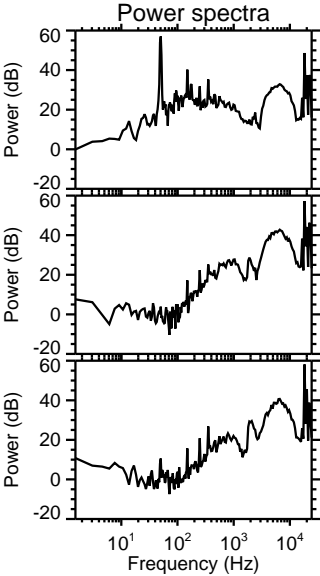
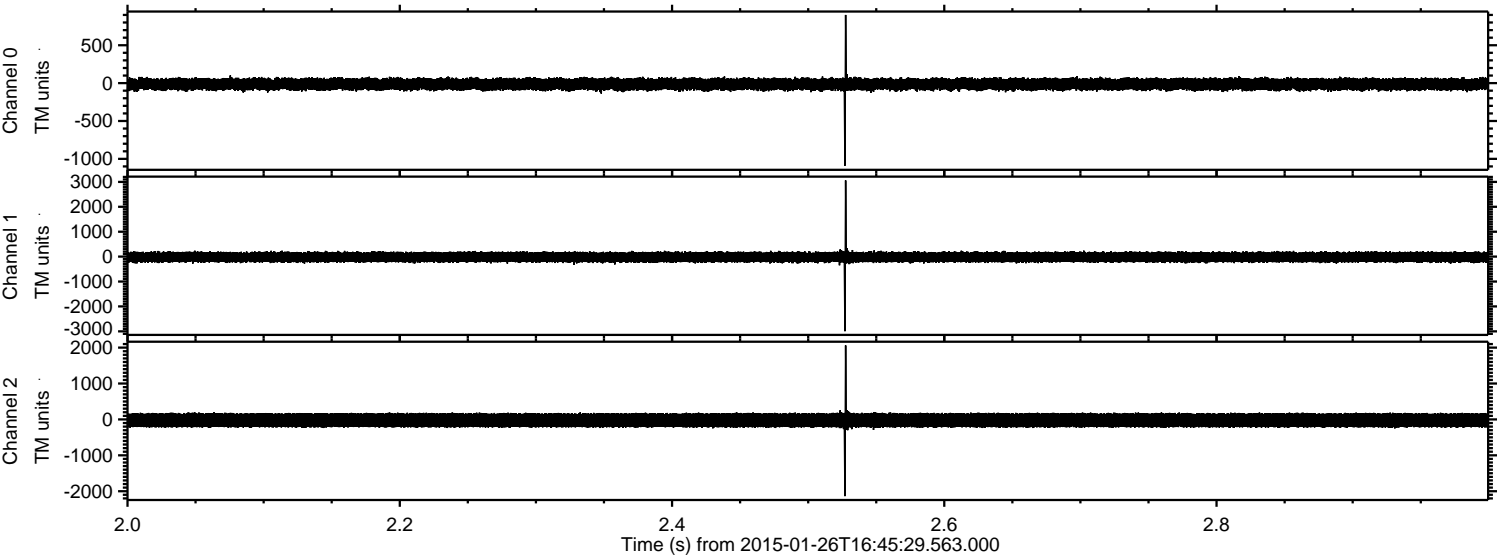
ELMAVAN 3D WAVEFORMS (Measured data sampled at 50 kHz) 49617 packets of 144 samples from 2015-01-26T16:45:29.563.000. Part 19/143

Processed Wed Feb 11 16:37:48 2015 by ELM ver.2012-10-06 from 001\_\_elm20150126\_164528\_\_dat00.bin



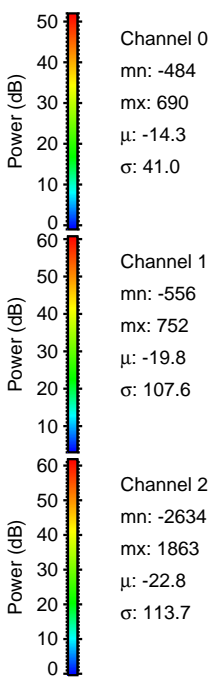
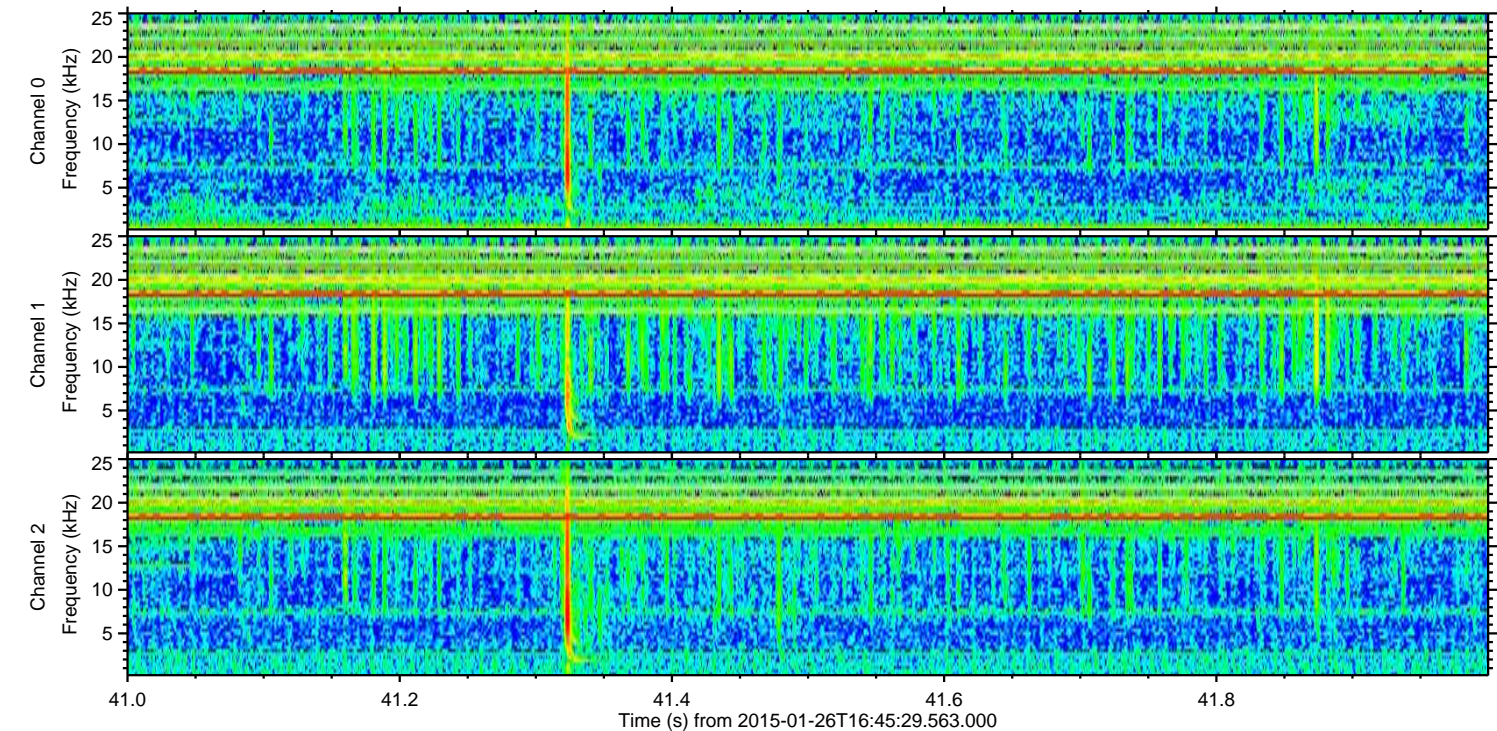
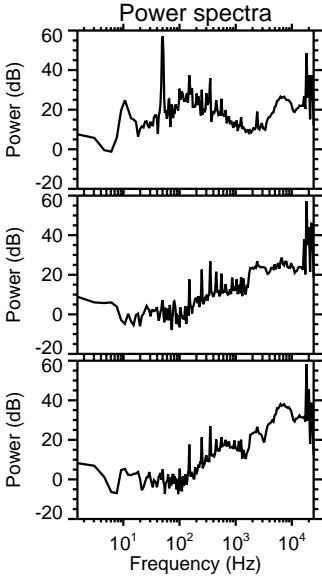
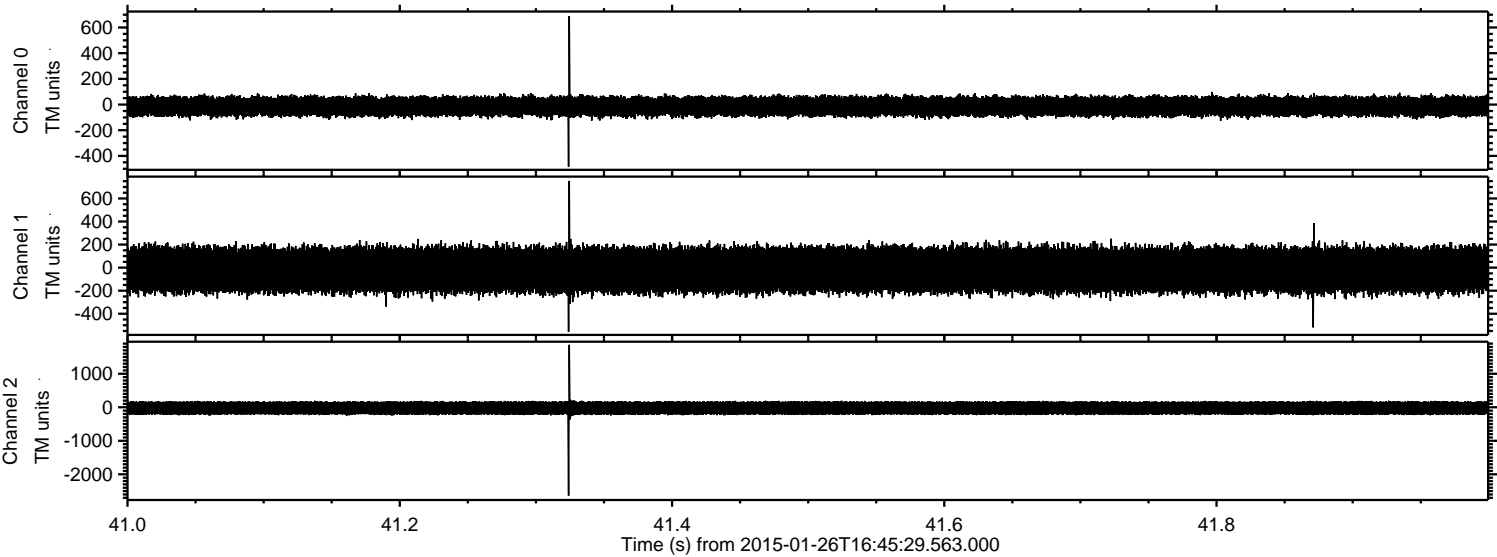


Processed Wed Feb 11 16:37:48 2015 by ELM ver.2012-10-06 from 001\_\_elm20150126\_164528\_\_dat00.bin



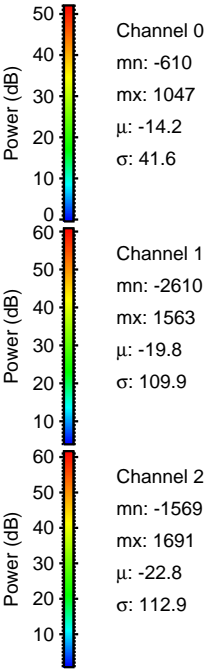
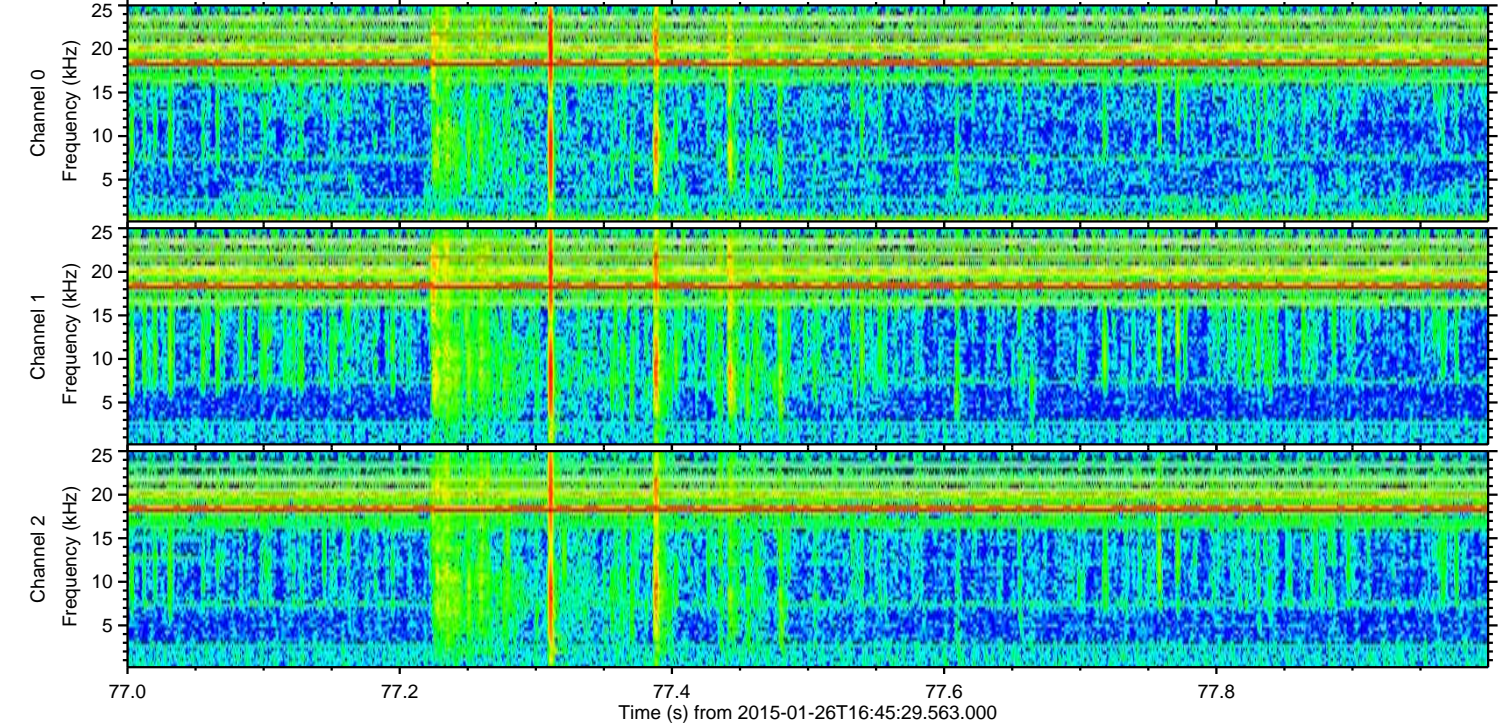
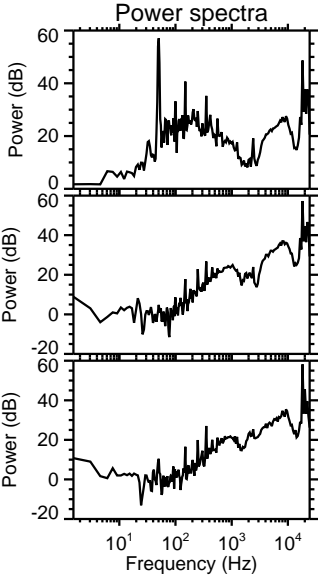
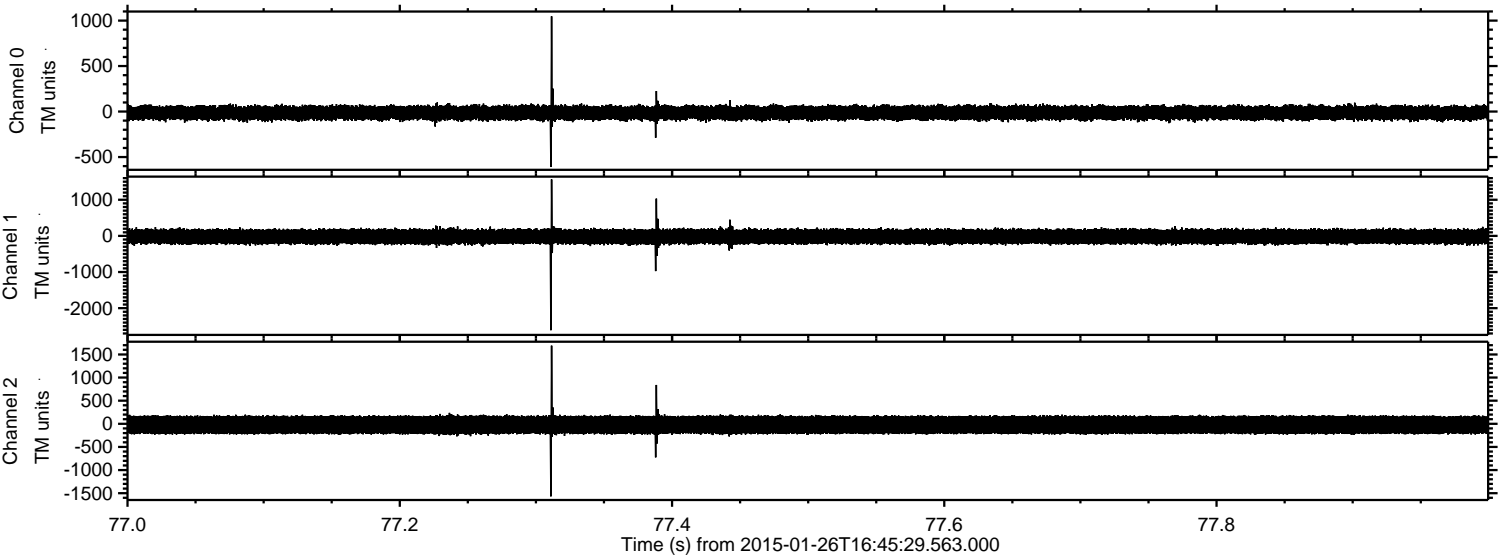


Processed Wed Feb 11 16:37:49 2015 by ELM ver.2012-10-06 from 001\_\_elm20150126\_164528\_\_dat00.bin





Processed Wed Feb 11 16:37:50 2015 by ELM ver.2012-10-06 from 001\_\_elm20150126\_164528\_\_dat00.bin





ELMAVAN 3D WAVEFORMS (Measured data sampled at 50 kHz) 49617 packets of 144 samples from 2015-01-26T16:45:29.563.000. Part 63/143

Processed Wed Feb 11 16:37:51 2015 by ELM ver.2012-10-06 from 001\_\_elm20150126\_164528\_\_dat00.bin

