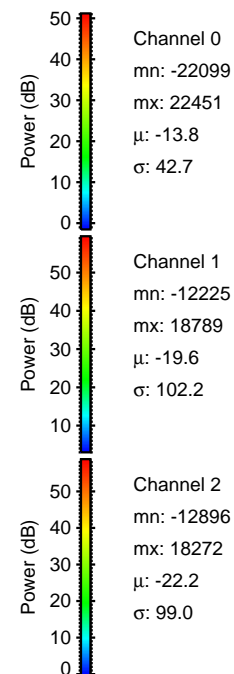
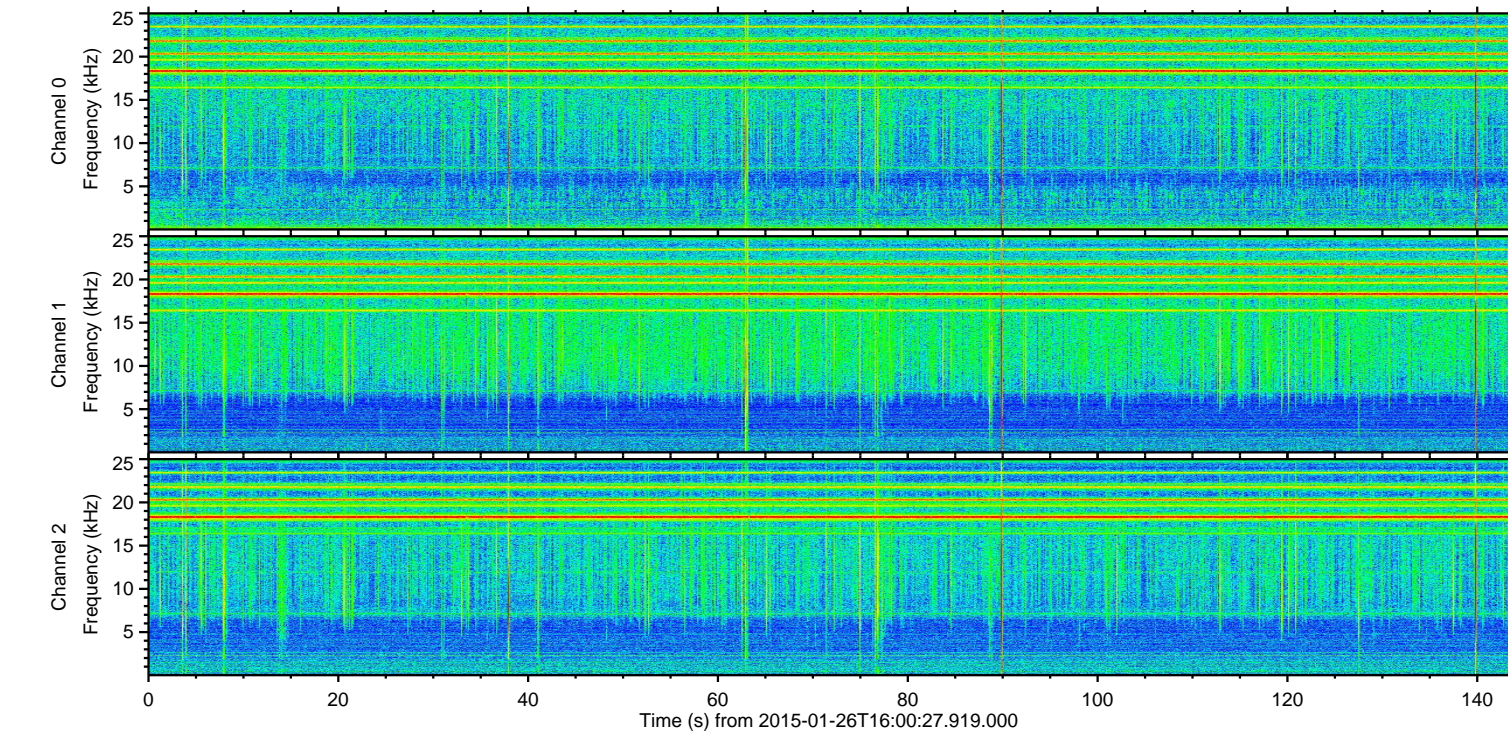
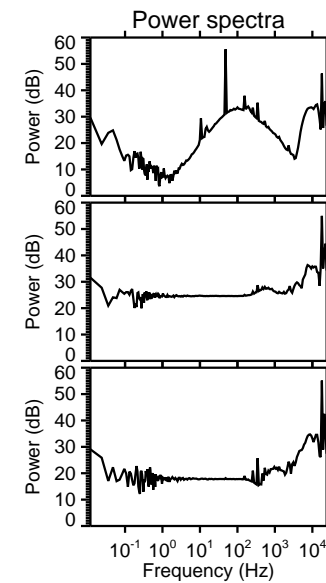
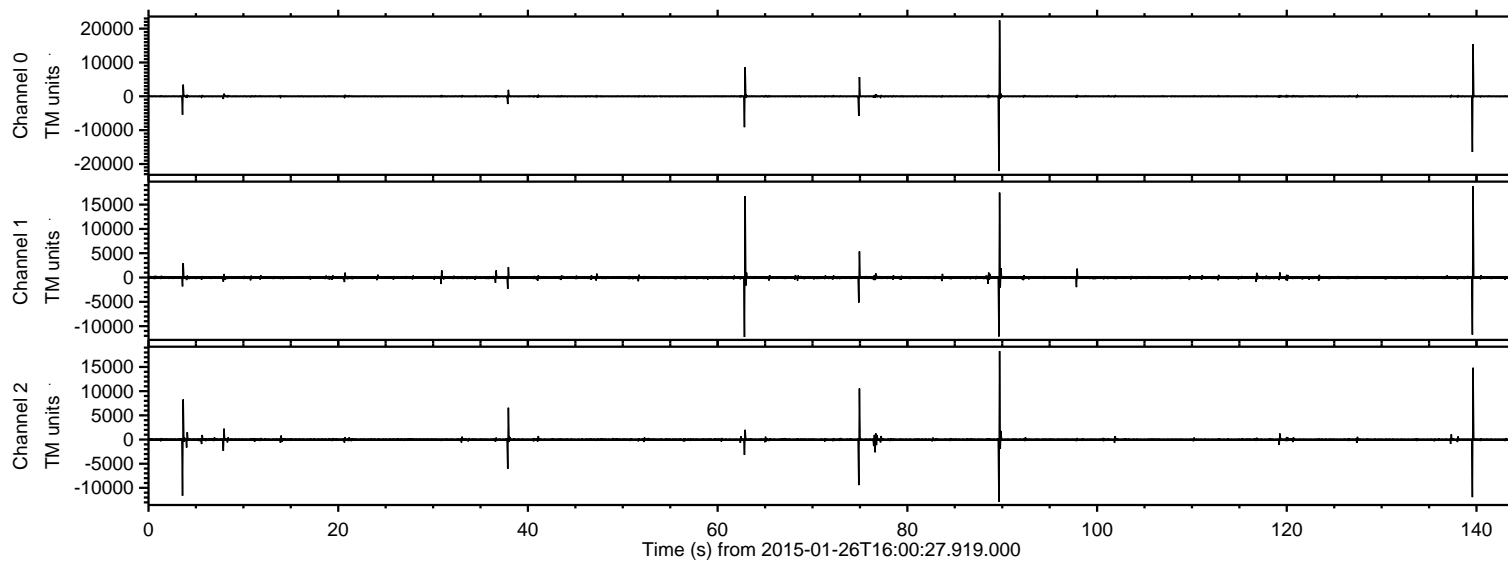


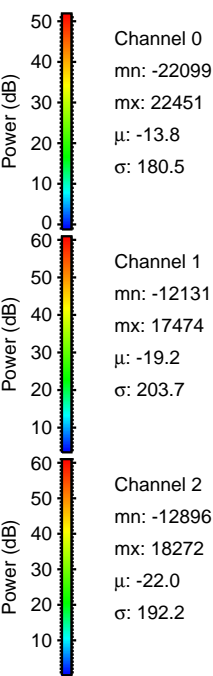
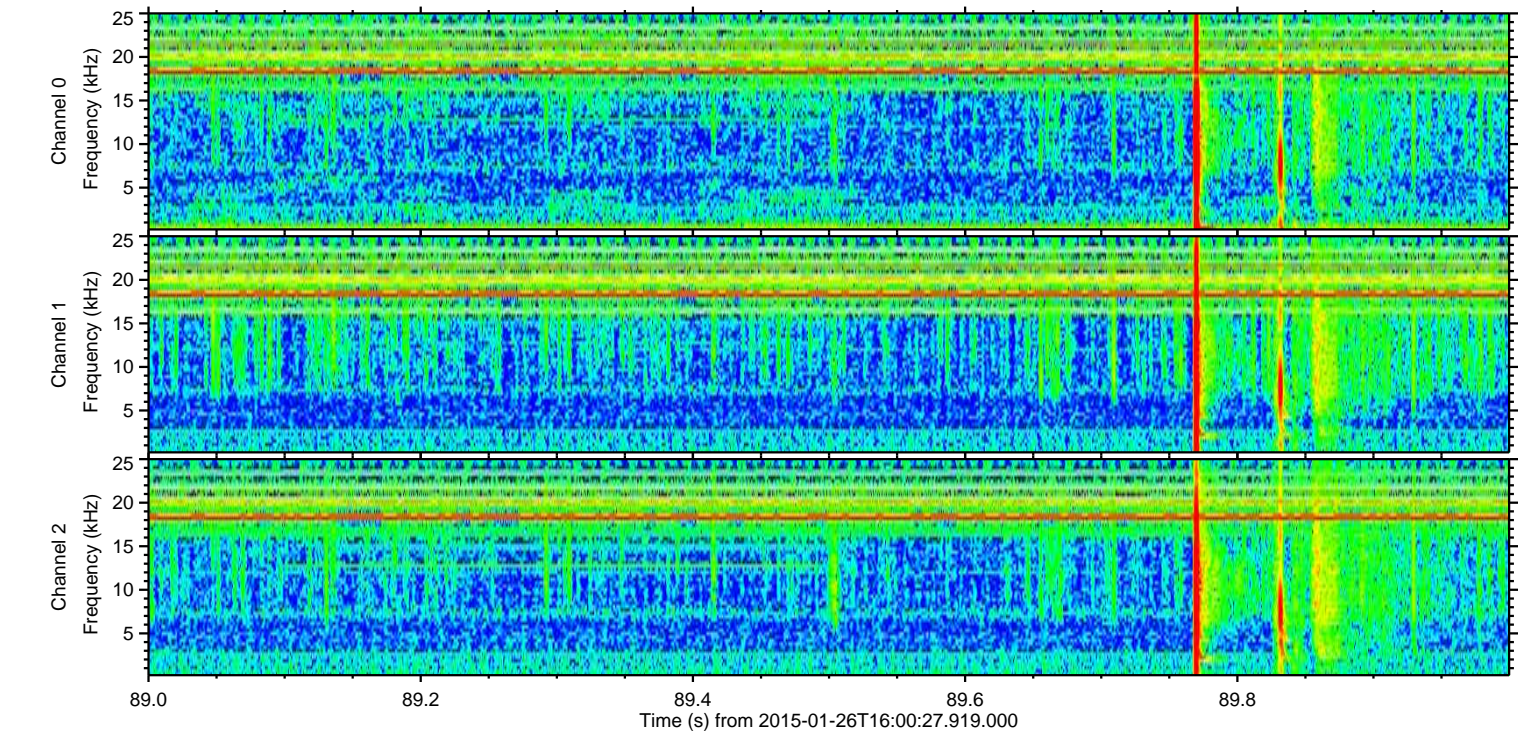
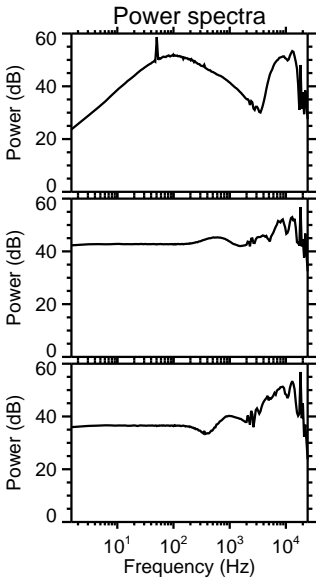
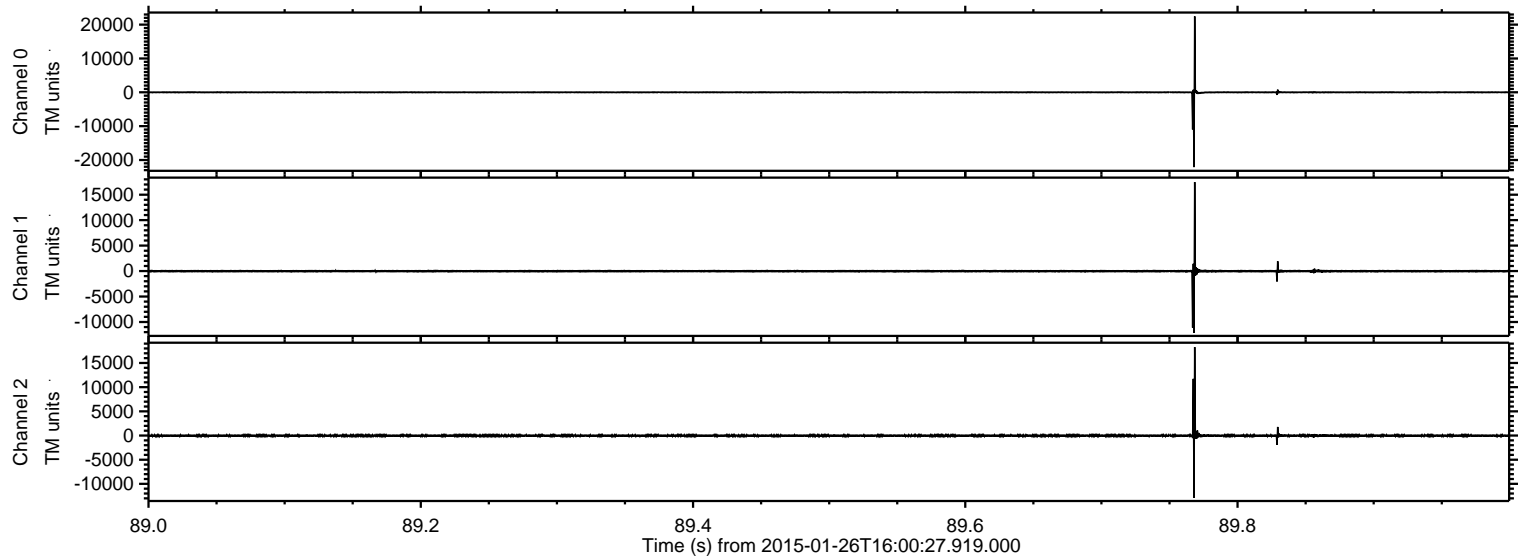
ELMAVAN 3D WAVEFORMS (Measured data sampled at 50 kHz) 49806 packets of 144 samples from 2015-01-26T16:00:27.919.000.

Processed Wed Feb 11 16:26:13 2015 by ELM ver.2012-10-06 from 001__elm20150126_160026__dat00.bin



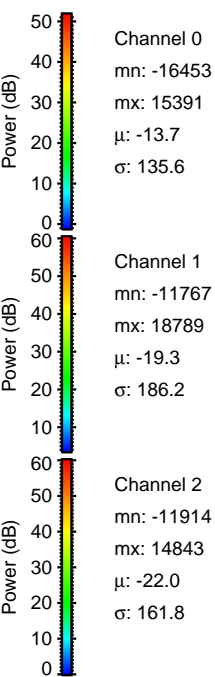
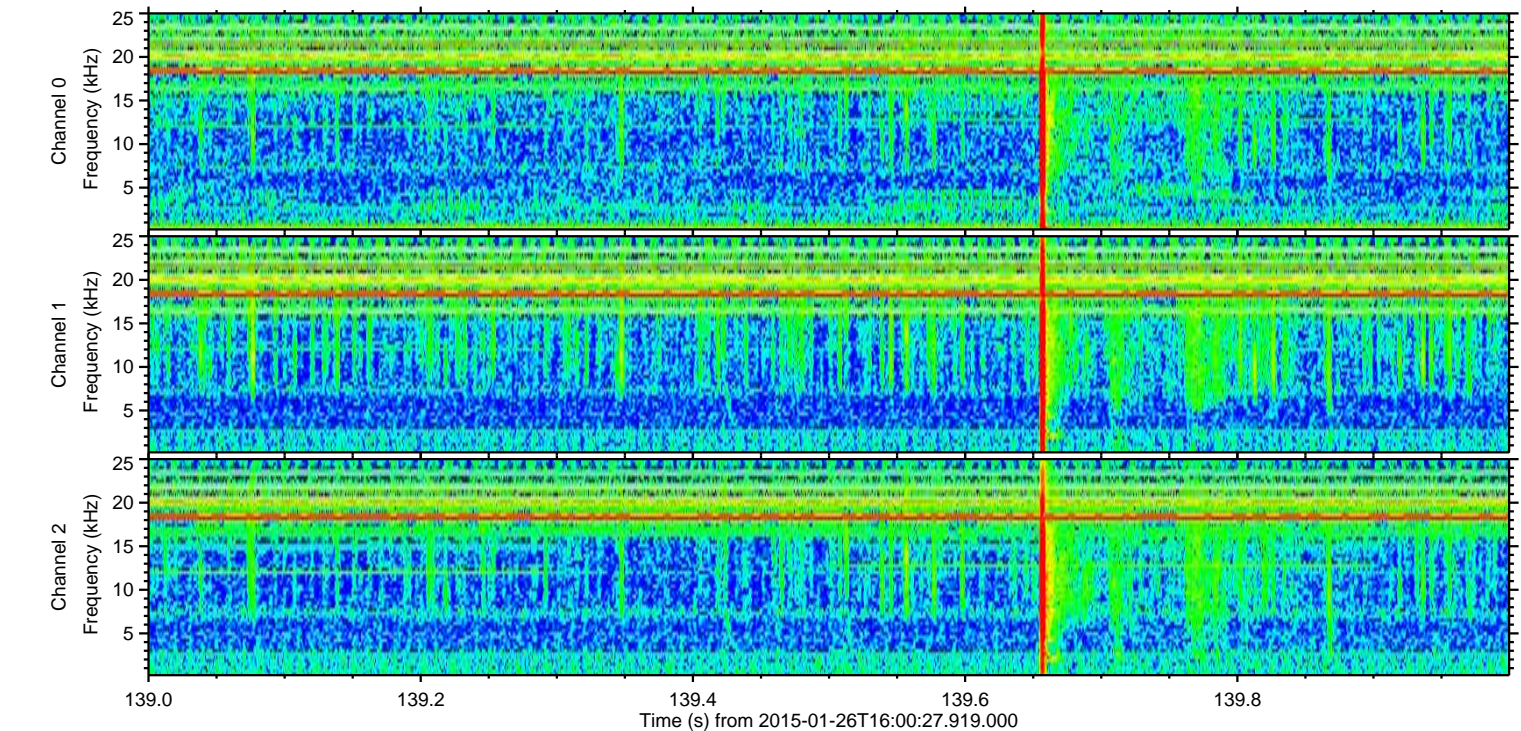
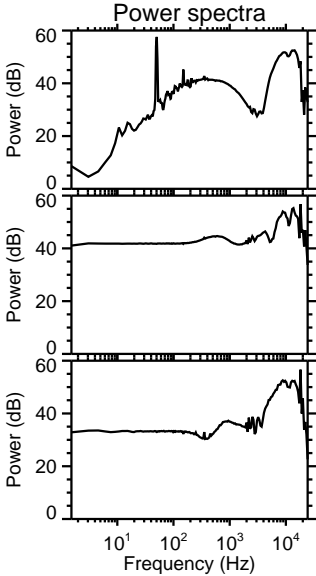
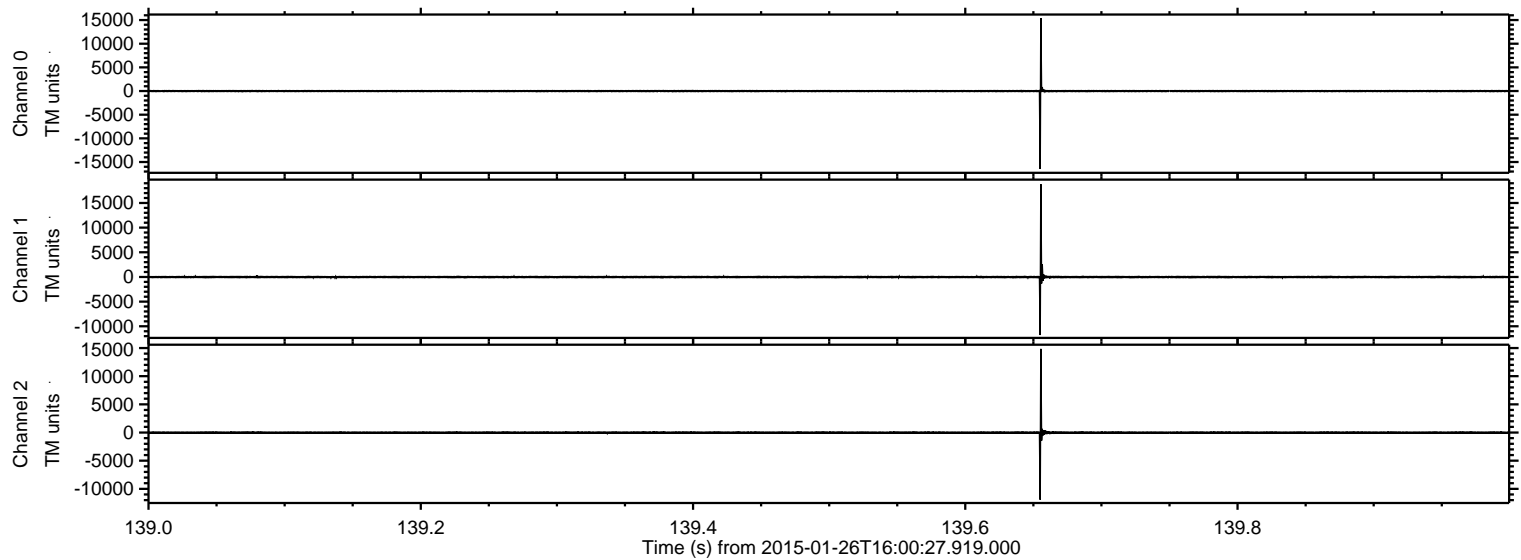
ELMAVAN 3D WAVEFORMS (Measured data sampled at 50 kHz) 49806 packets of 144 samples from 2015-01-26T16:00:27.919.000. Part 90/144

Processed Wed Feb 11 16:26:25 2015 by ELM ver.2012-10-06 from 001__elm20150126_160026__dat00.bin

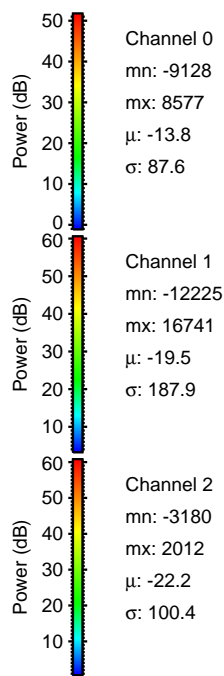
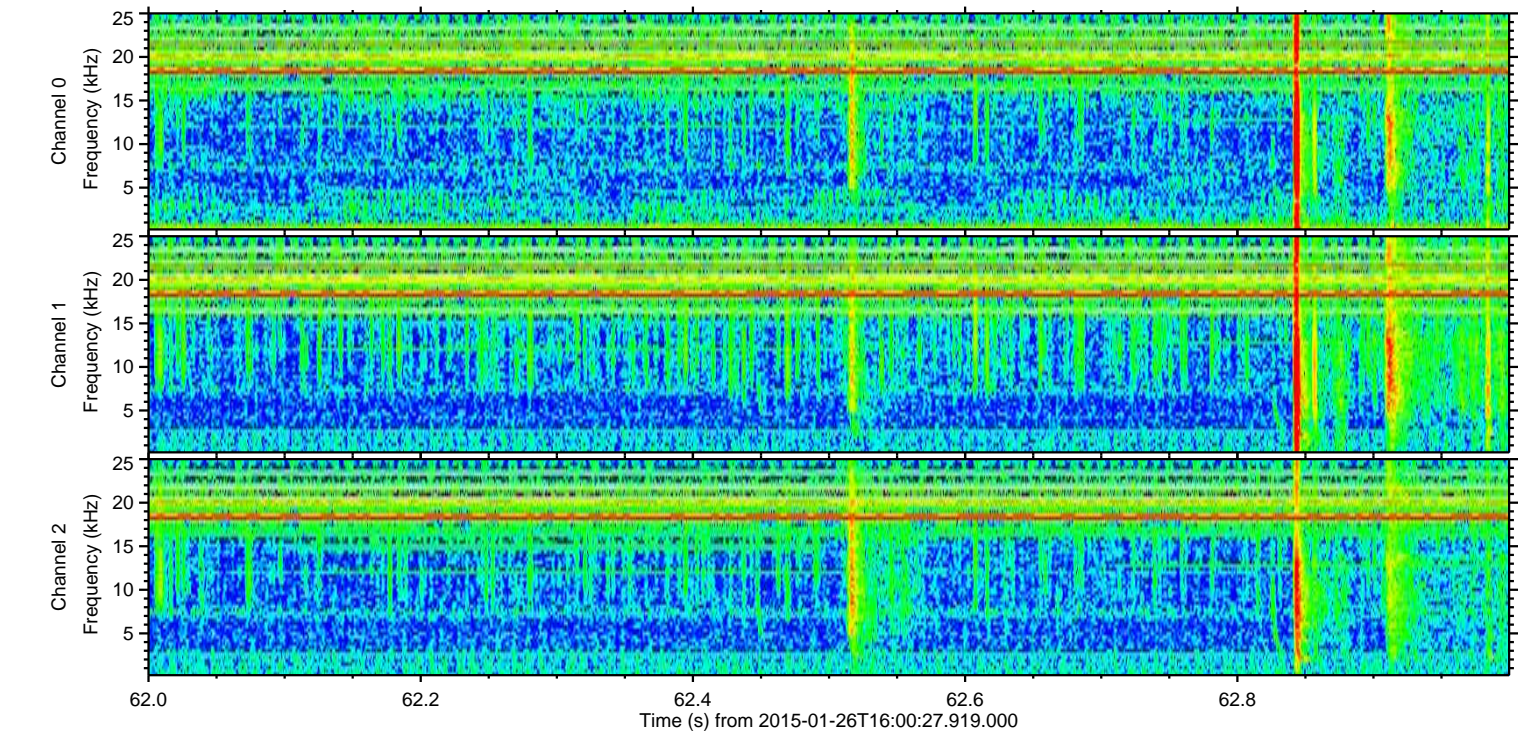
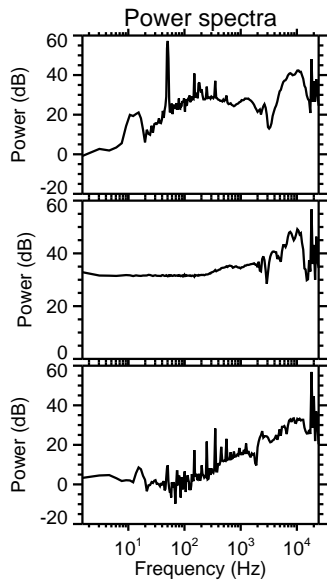
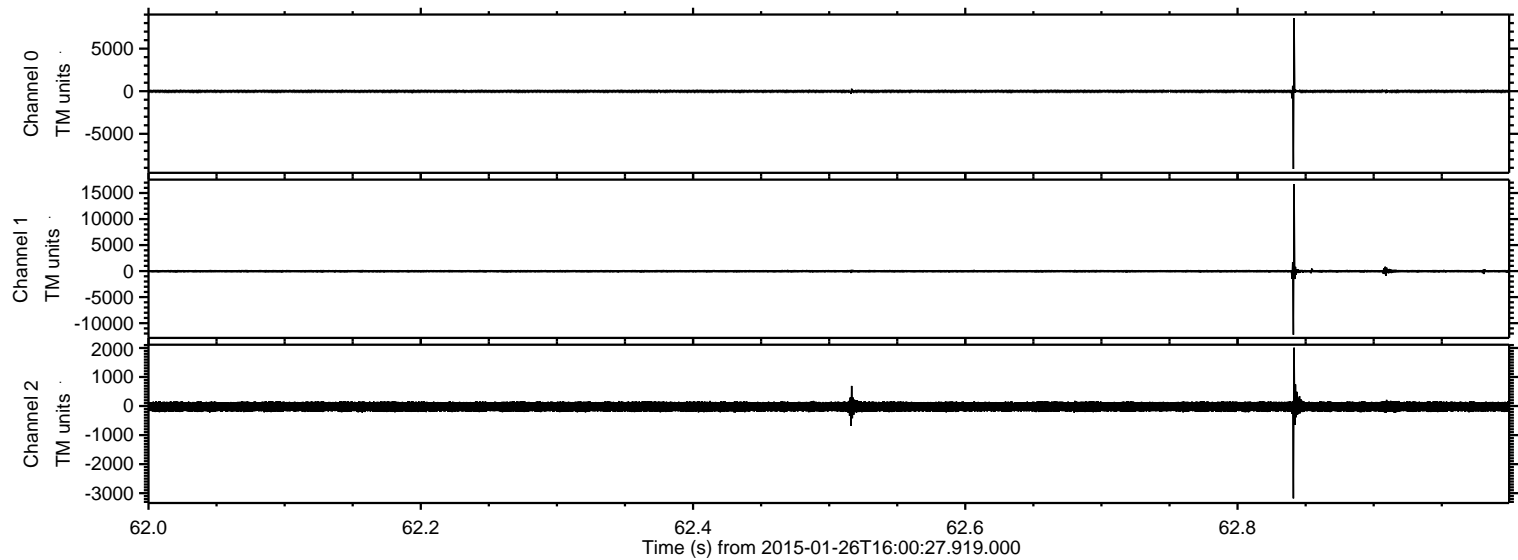


ELMAVAN 3D WAVEFORMS (Measured data sampled at 50 kHz) 49806 packets of 144 samples from 2015-01-26T16:00:27.919.000. Part 140/144

Processed Wed Feb 11 16:26:26 2015 by ELM ver.2012-10-06 from 001__elm20150126_160026__dat00.bin

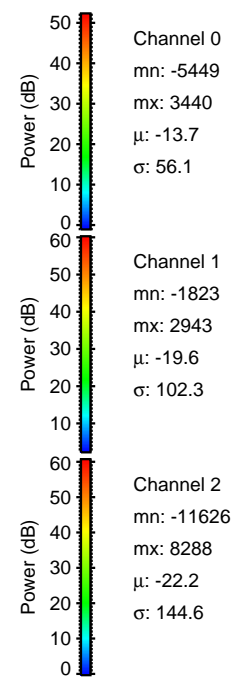
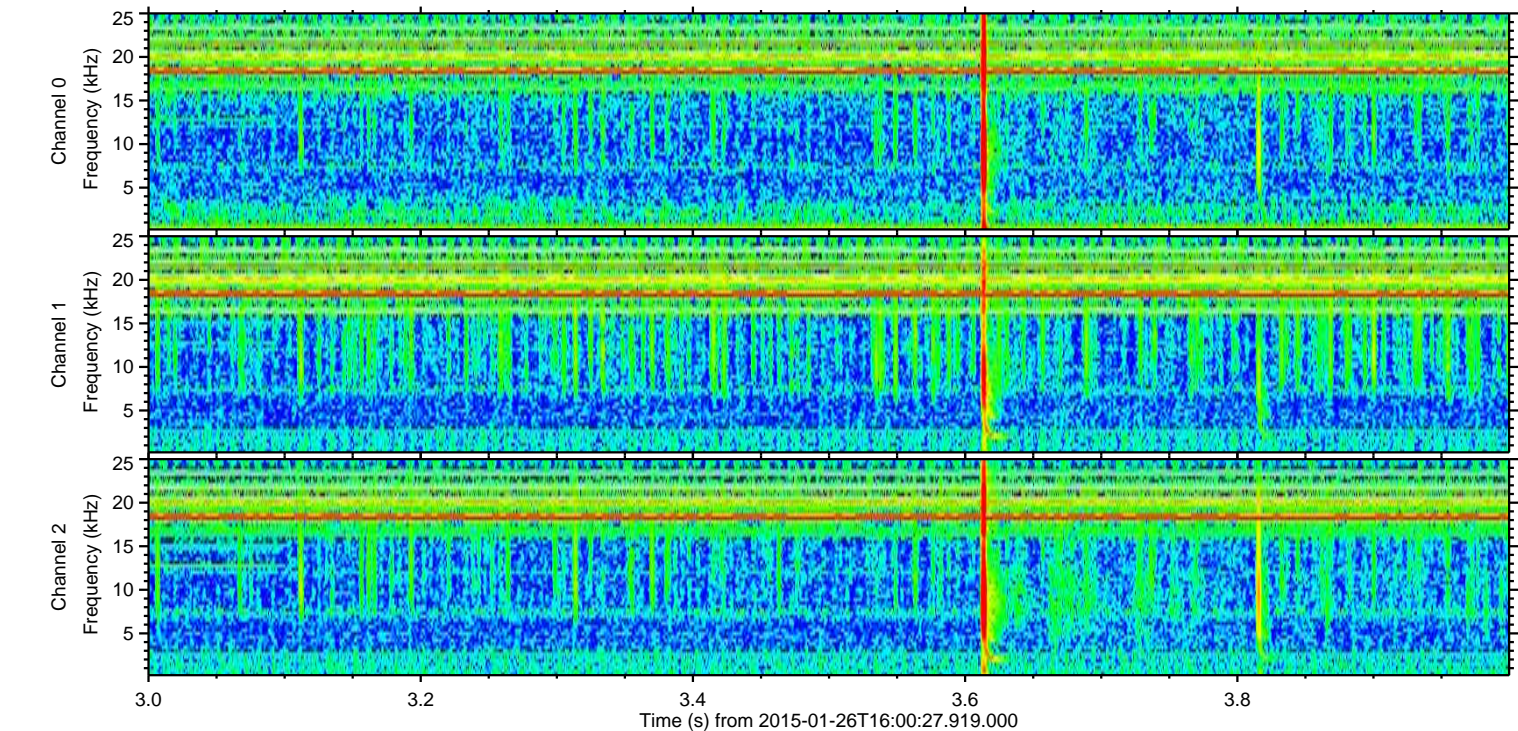
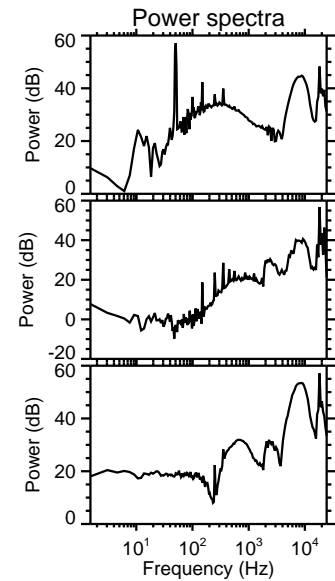
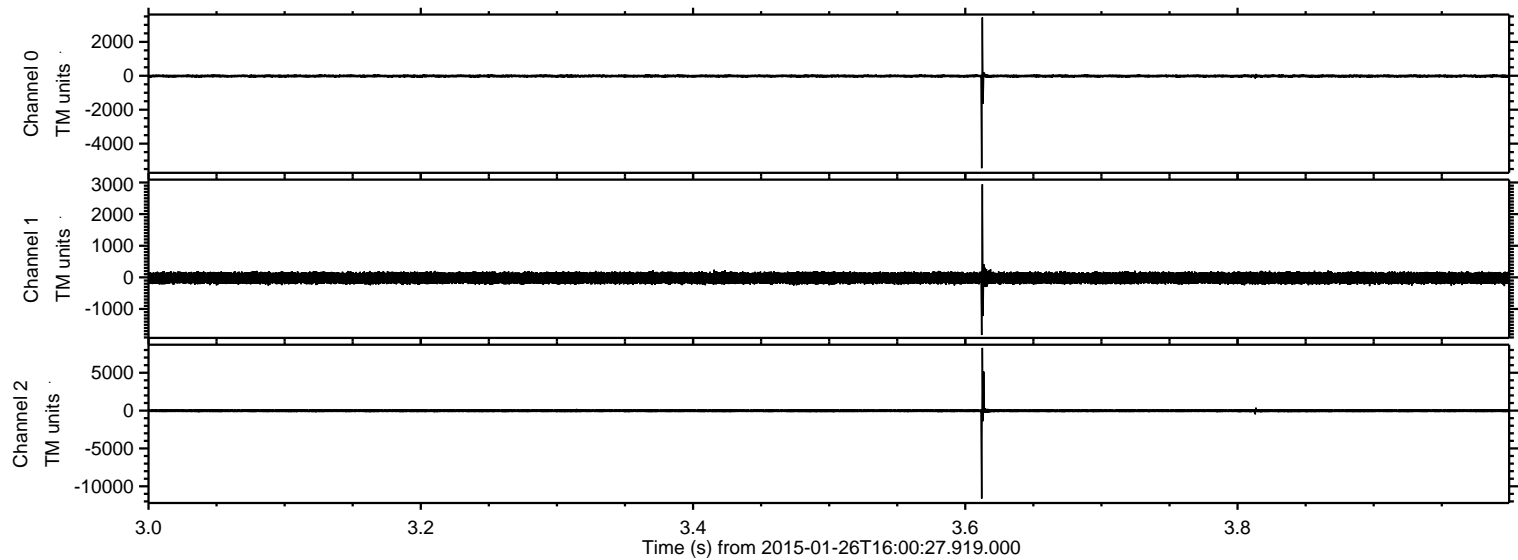


Processed Wed Feb 11 16:26:27 2015 by ELM ver.2012-10-06 from 001__elm20150126_160026__dat00.bin



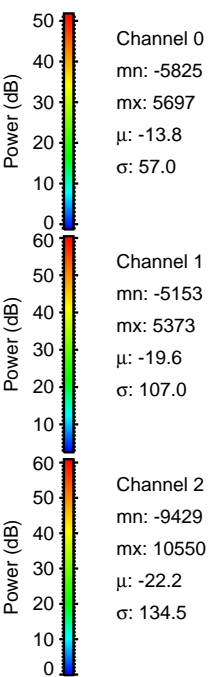
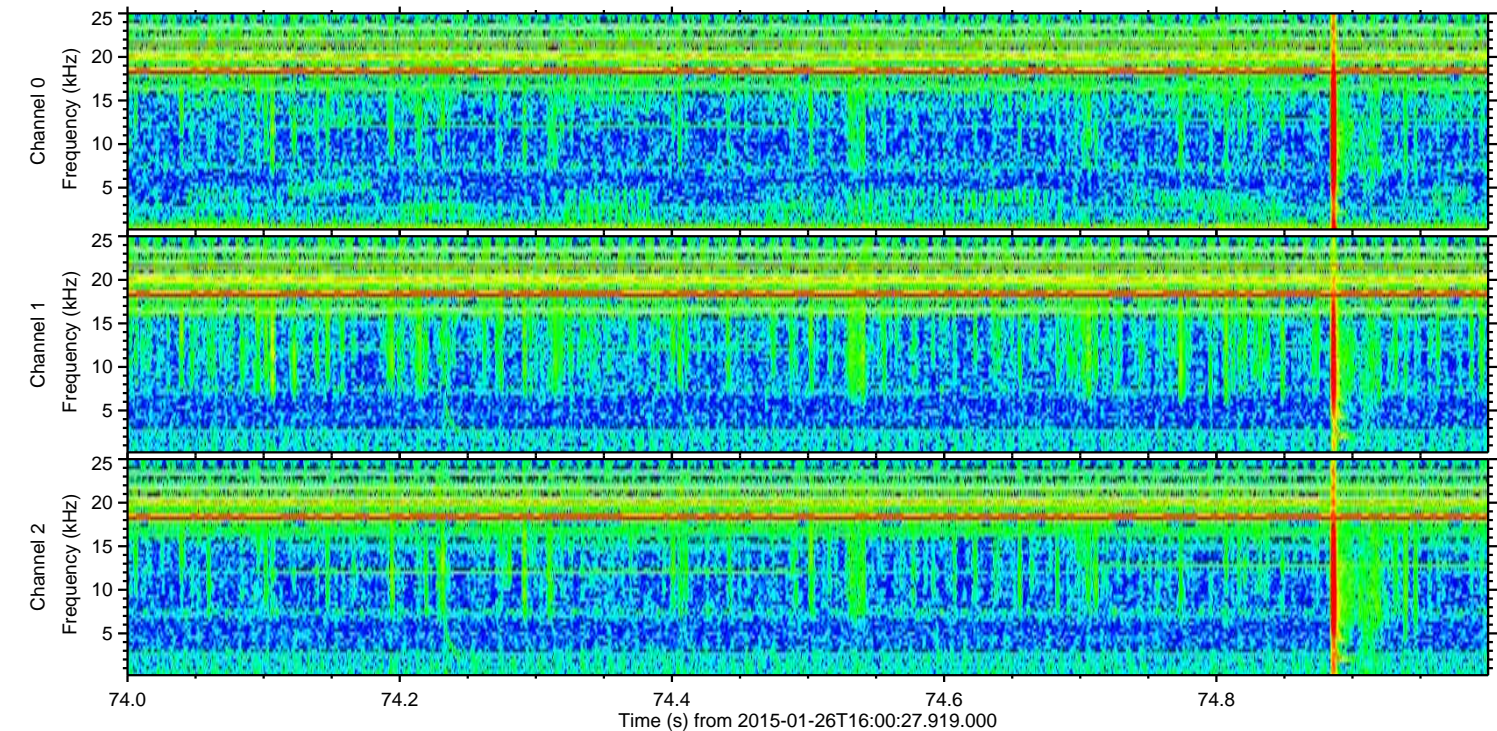
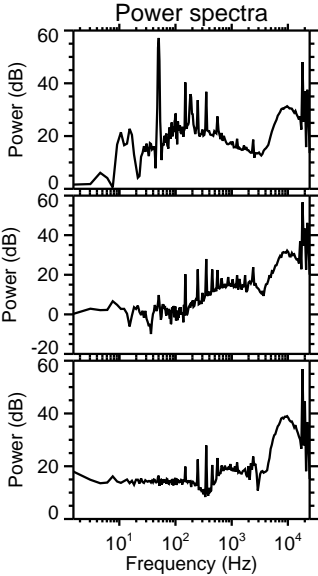
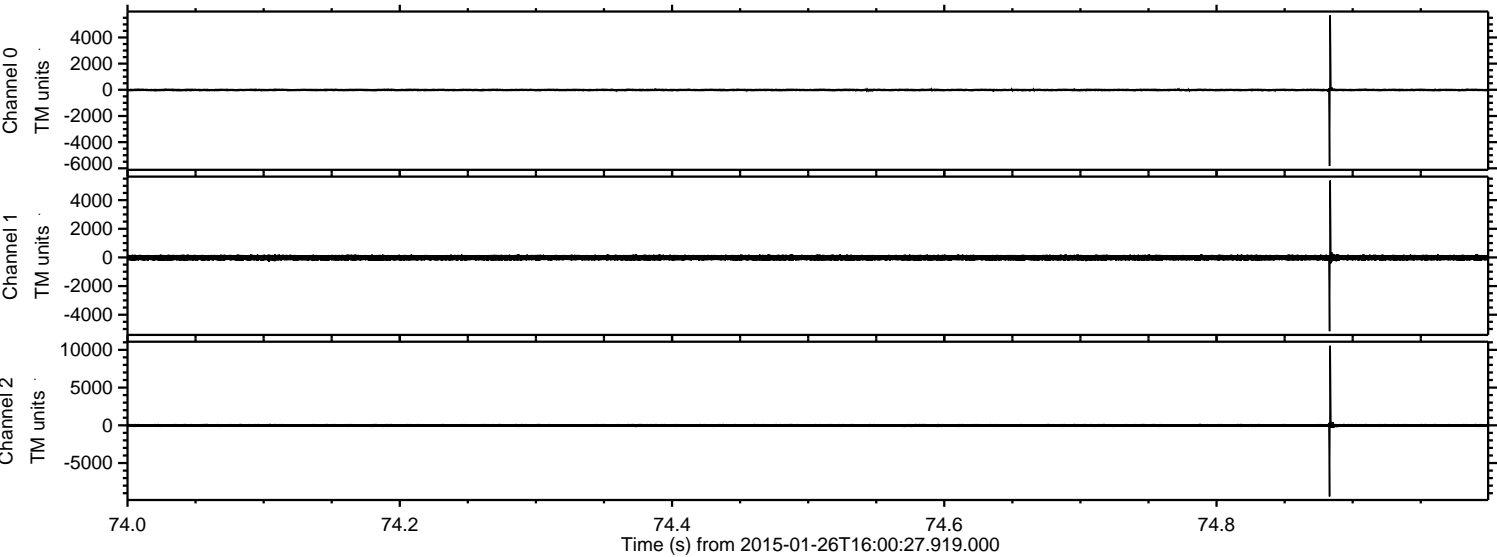
ELMAVAN 3D WAVEFORMS (Measured data sampled at 50 kHz) 49806 packets of 144 samples from 2015-01-26T16:00:27.919.000. Part 4/144

Processed Wed Feb 11 16:26:28 2015 by ELM ver.2012-10-06 from 001__elm20150126_160026__dat00.bin

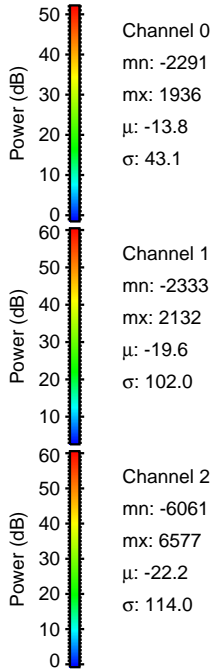
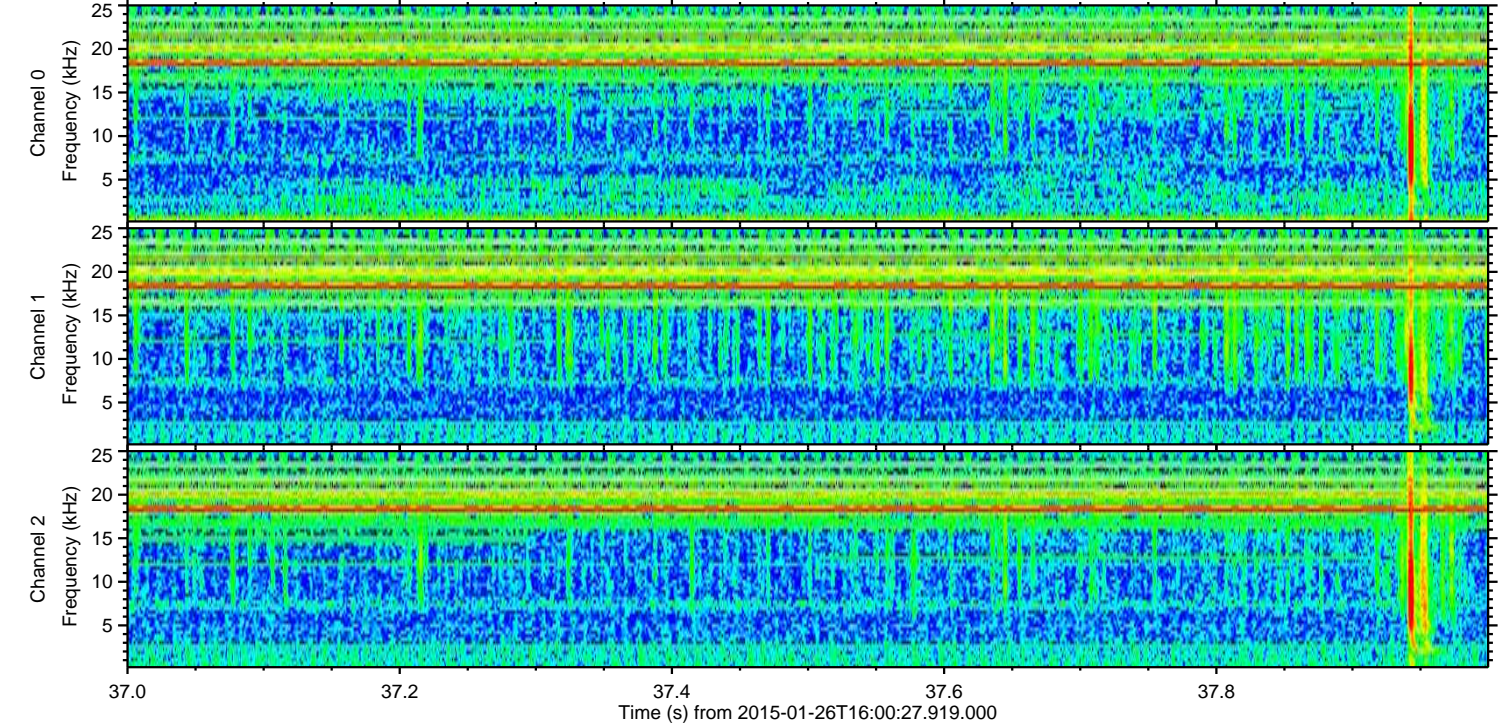
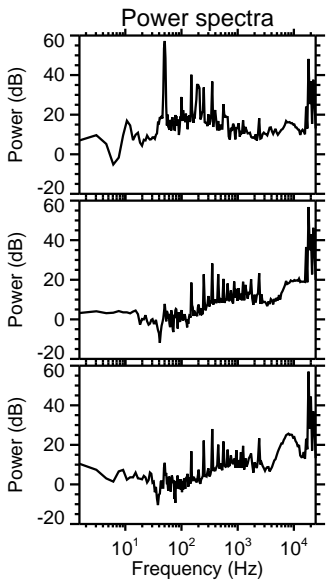
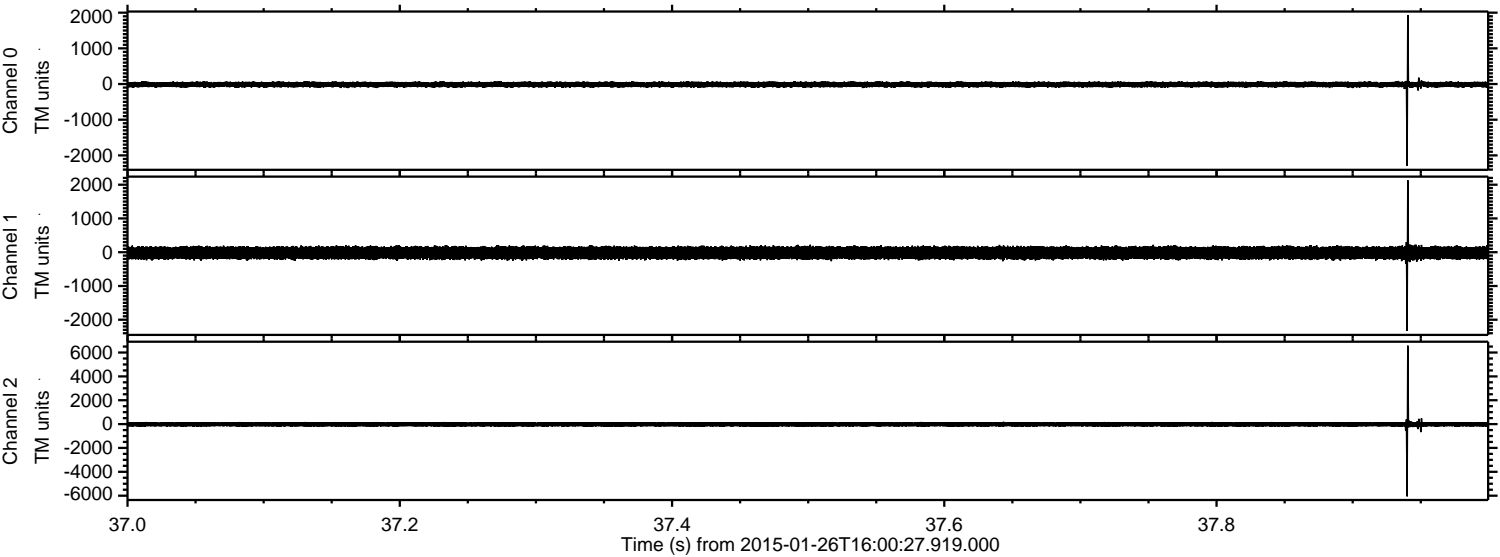


ELMAVAN 3D WAVEFORMS (Measured data sampled at 50 kHz) 49806 packets of 144 samples from 2015-01-26T16:00:27.919.000. Part 75/144

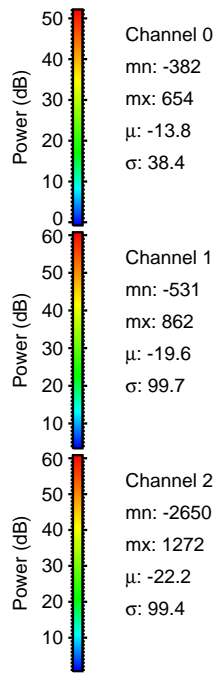
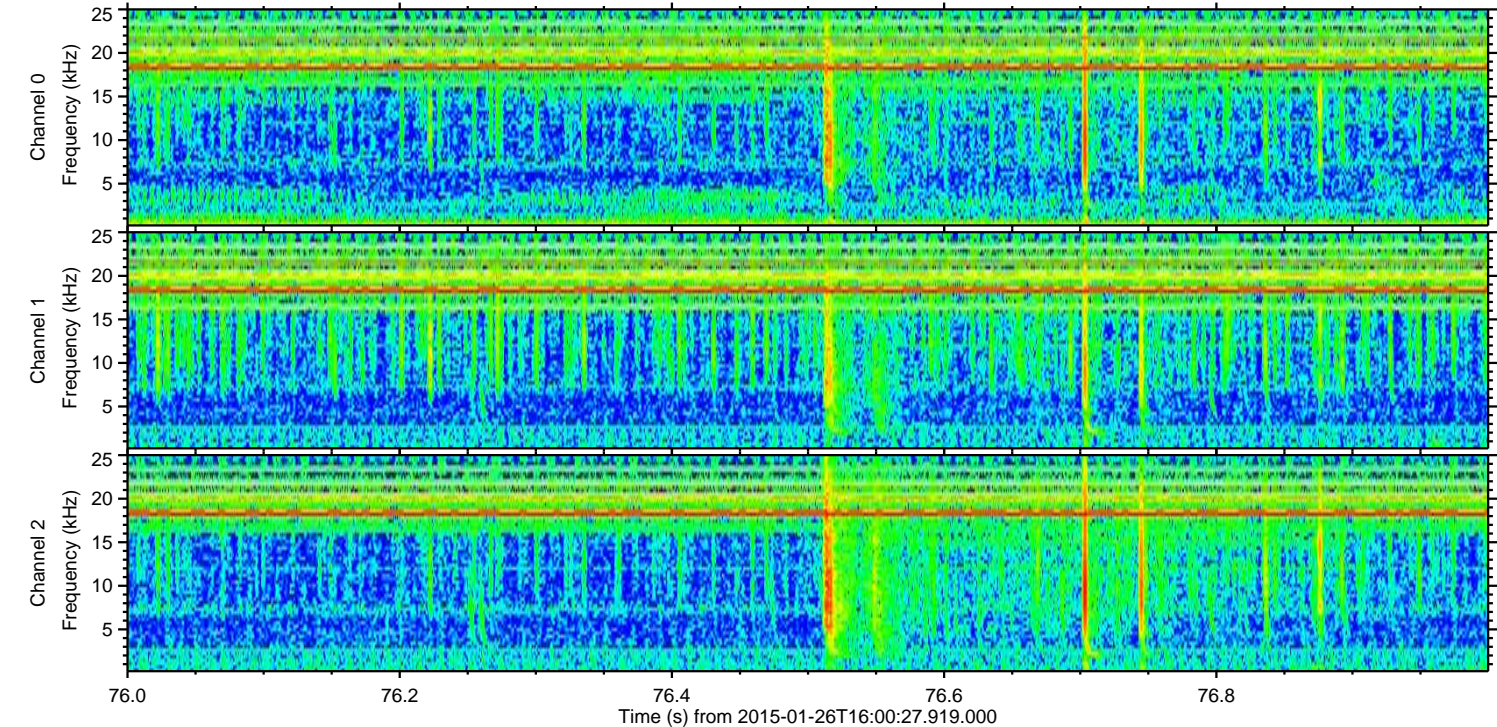
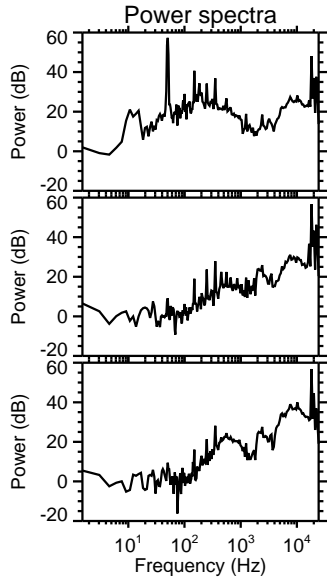
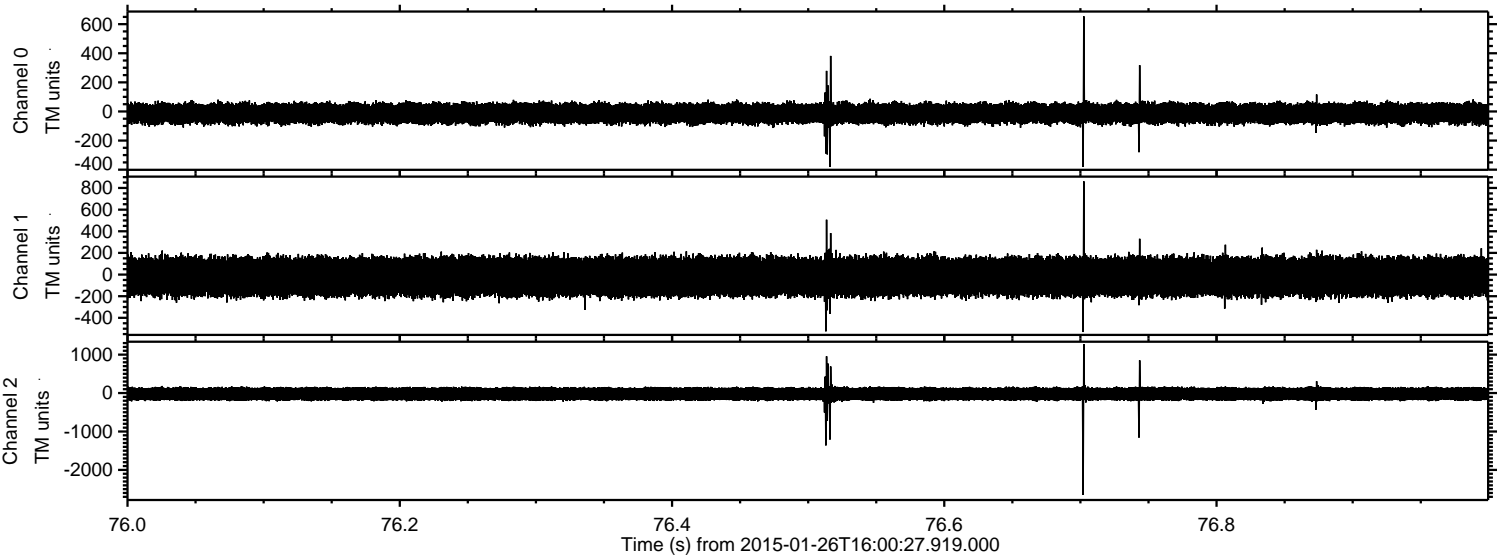
Processed Wed Feb 11 16:26:29 2015 by ELM ver.2012-10-06 from 001__elm20150126_160026__dat00.bin



Processed Wed Feb 11 16:26:30 2015 by ELM ver.2012-10-06 from 001__elm20150126_160026__dat00.bin



Processed Wed Feb 11 16:26:31 2015 by ELM ver.2012-10-06 from 001__elm20150126_160026__dat00.bin

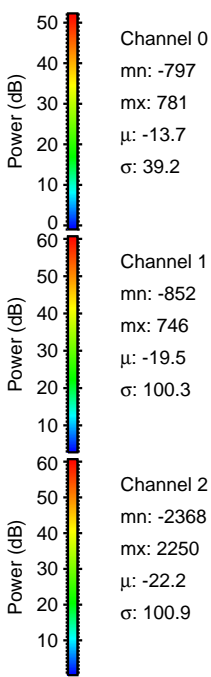
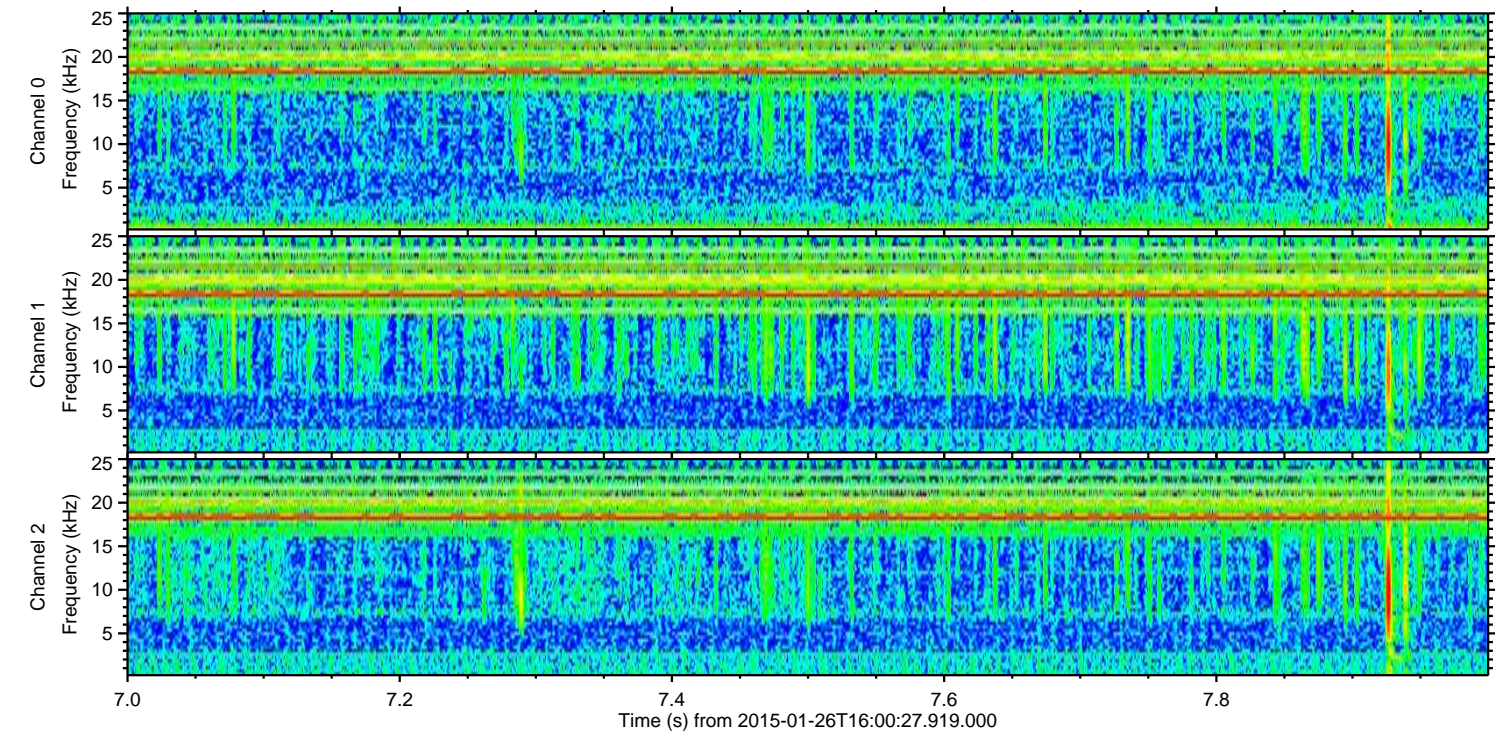
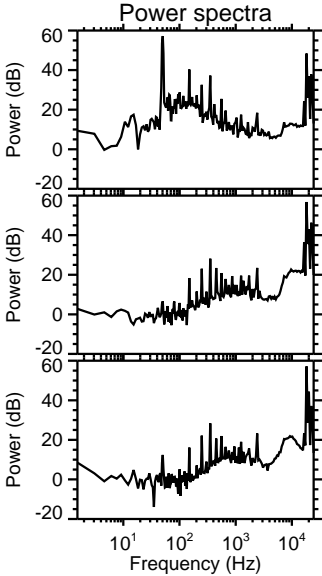
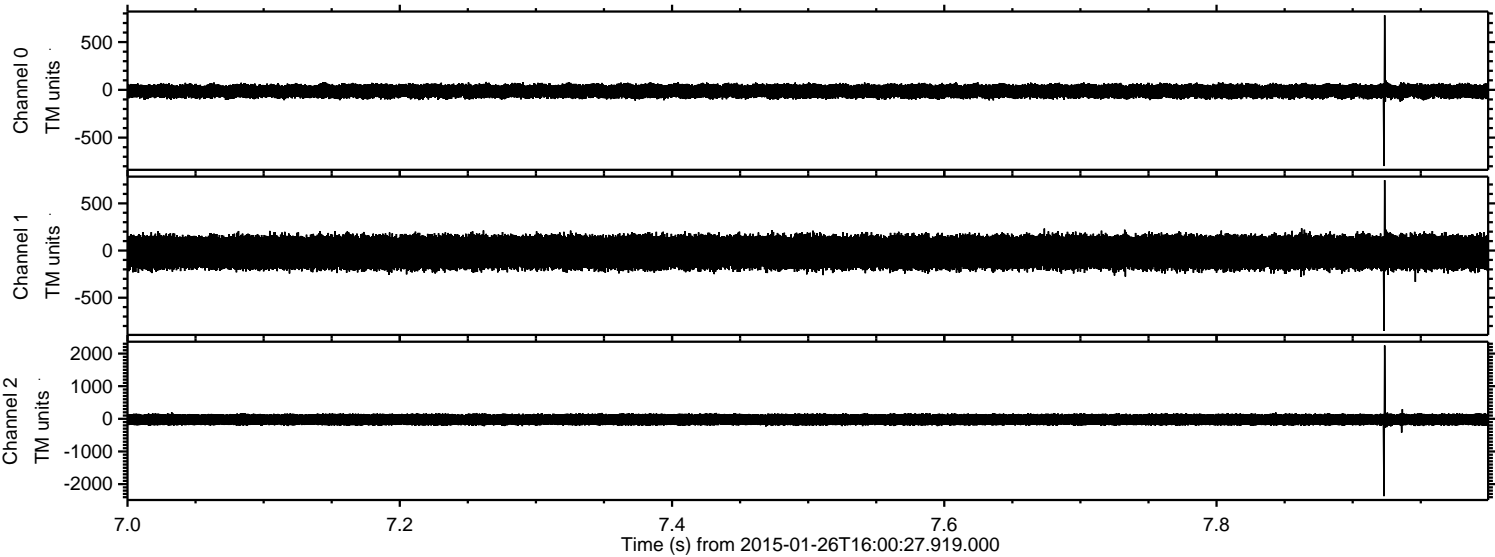


Channel 0
mn: -382
mx: 654
 μ : -13.8
 σ : 38.4

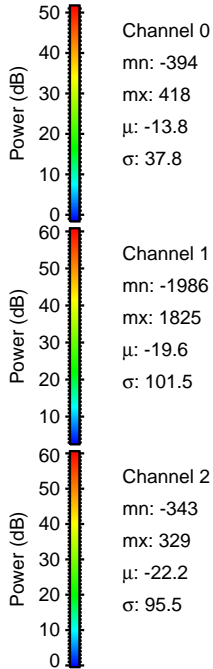
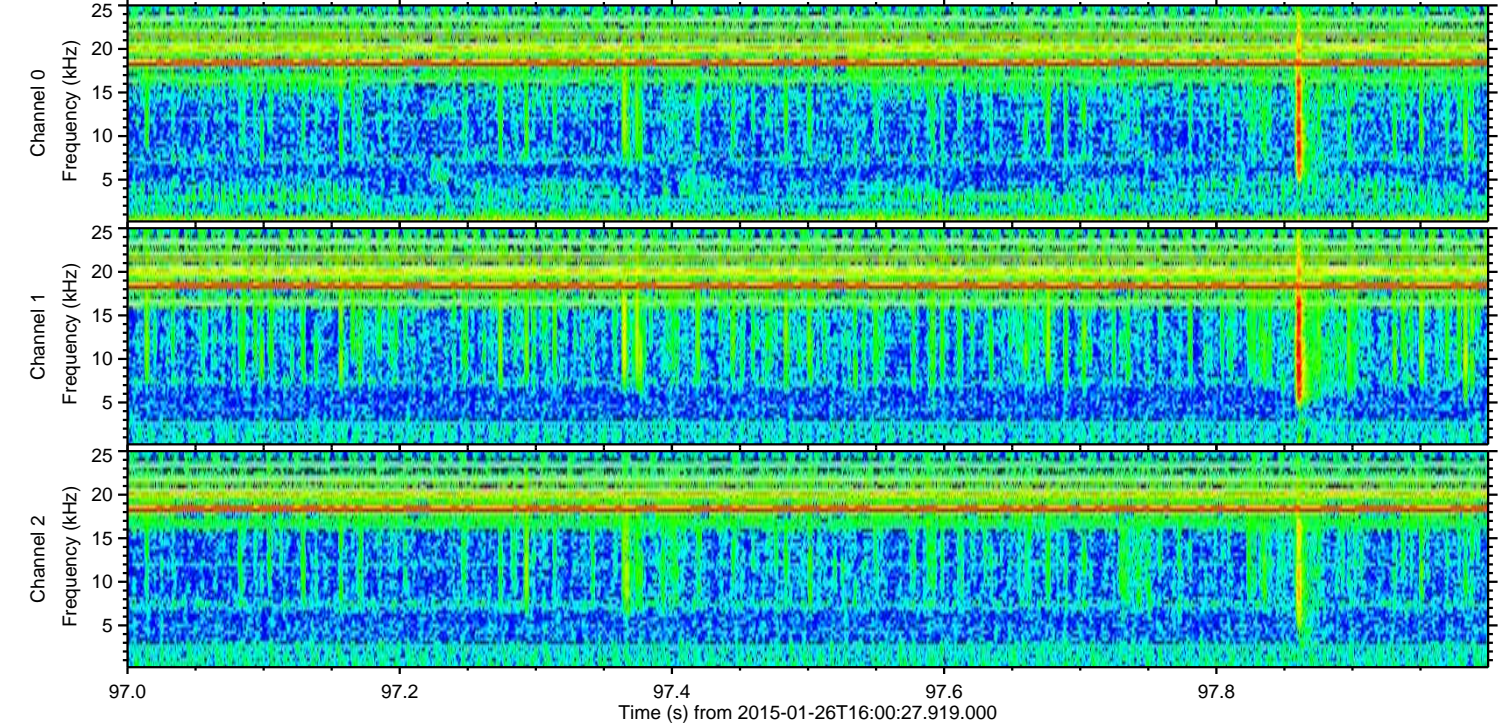
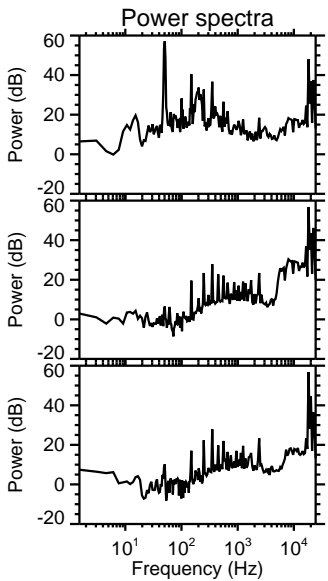
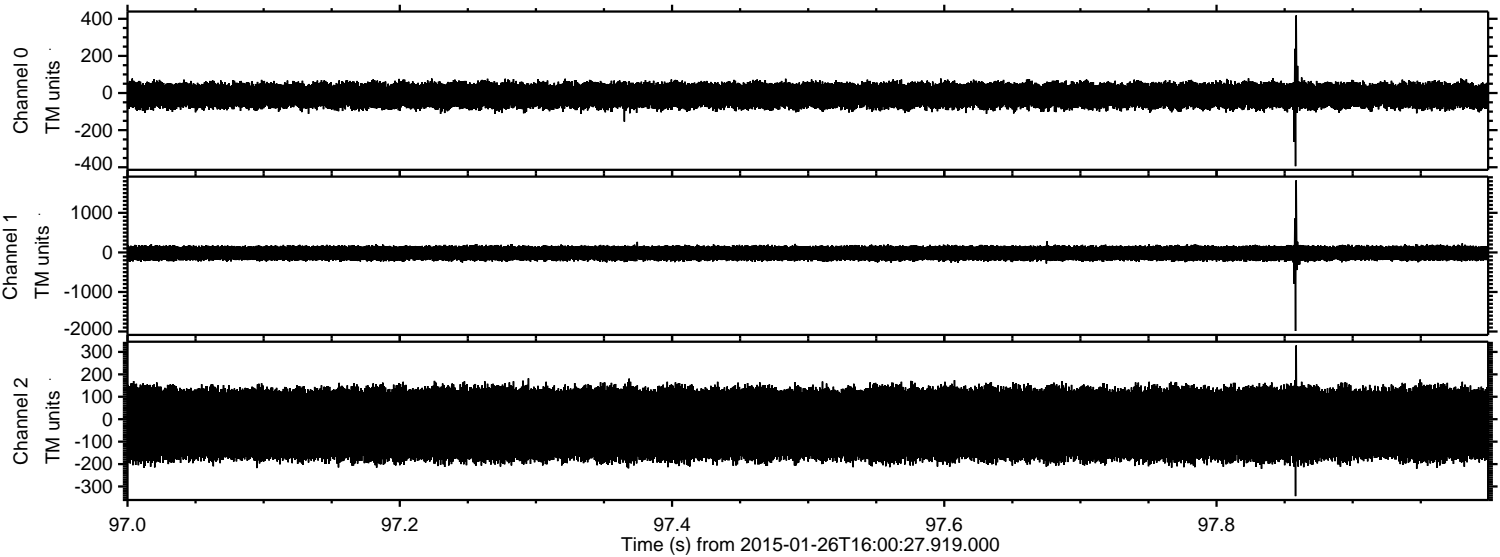
Channel 1
mn: -531
mx: 862
 μ : -19.6
 σ : 99.7

Channel 2
mn: -2650
mx: 1272
 μ : -22.2
 σ : 99.4

Processed Wed Feb 11 16:26:32 2015 by ELM ver.2012-10-06 from 001__elm20150126_160026__dat00.bin



Processed Wed Feb 11 16:26:33 2015 by ELM ver.2012-10-06 from 001__elm20150126_160026__dat00.bin



Processed Wed Feb 11 16:26:34 2015 by ELM ver.2012-10-06 from 001__elm20150126_160026__dat00.bin

