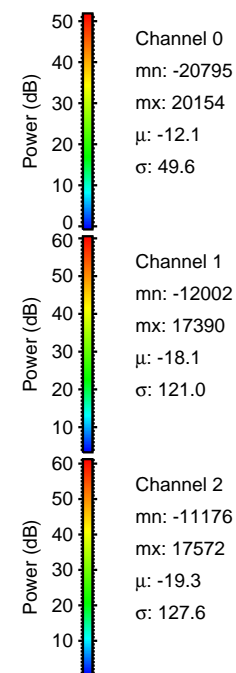
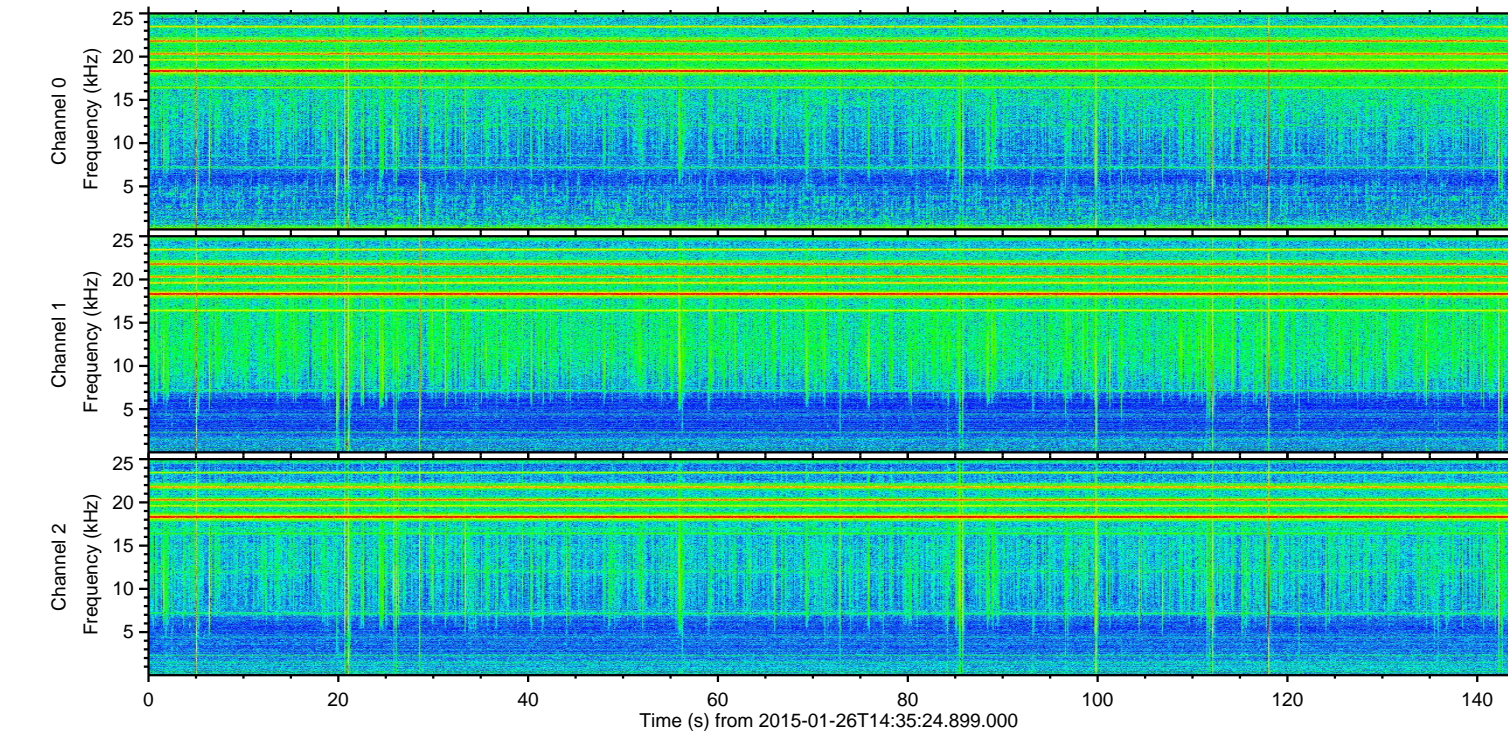
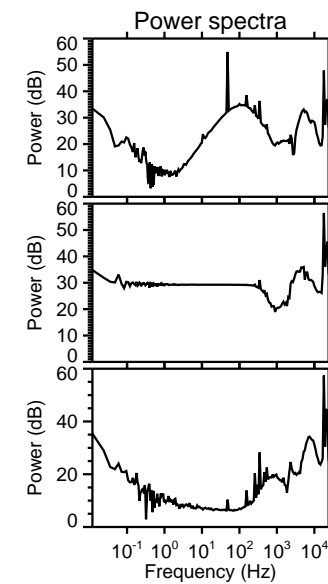
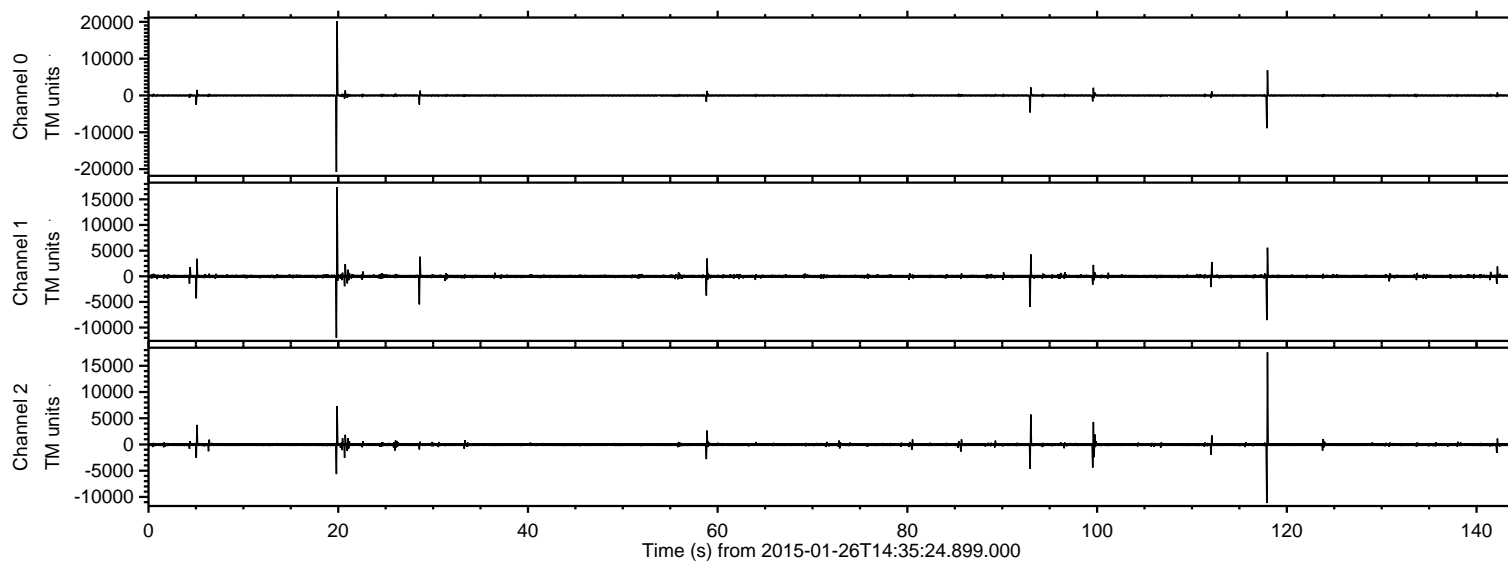


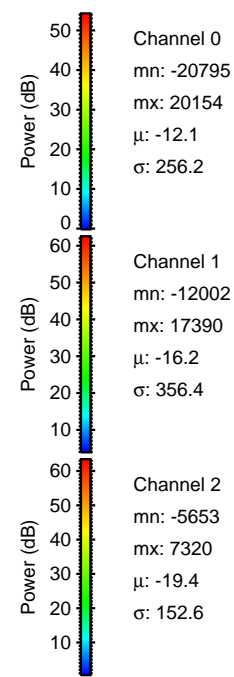
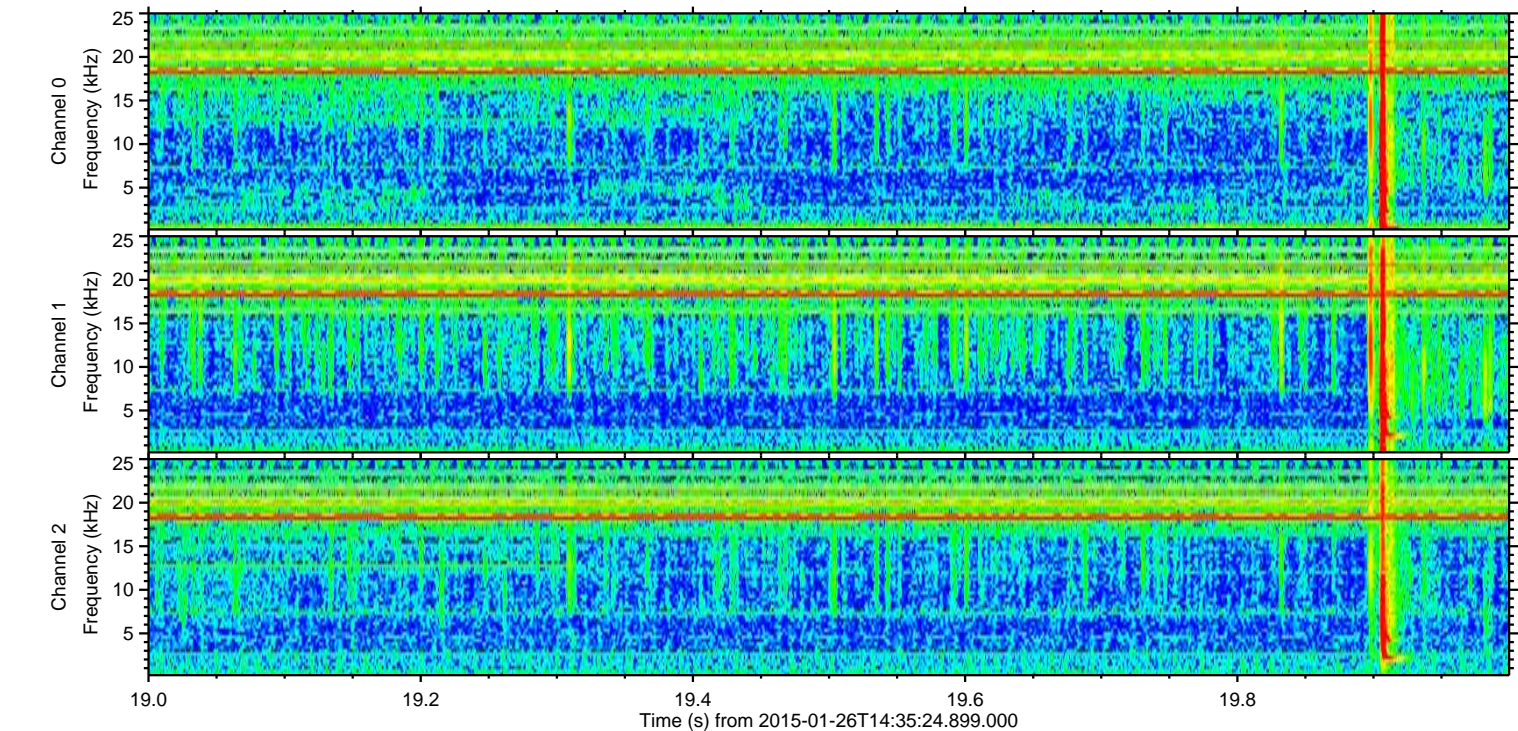
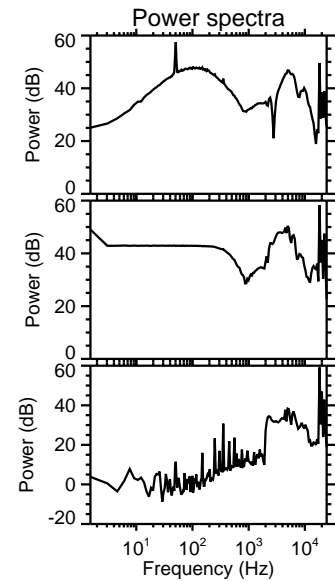
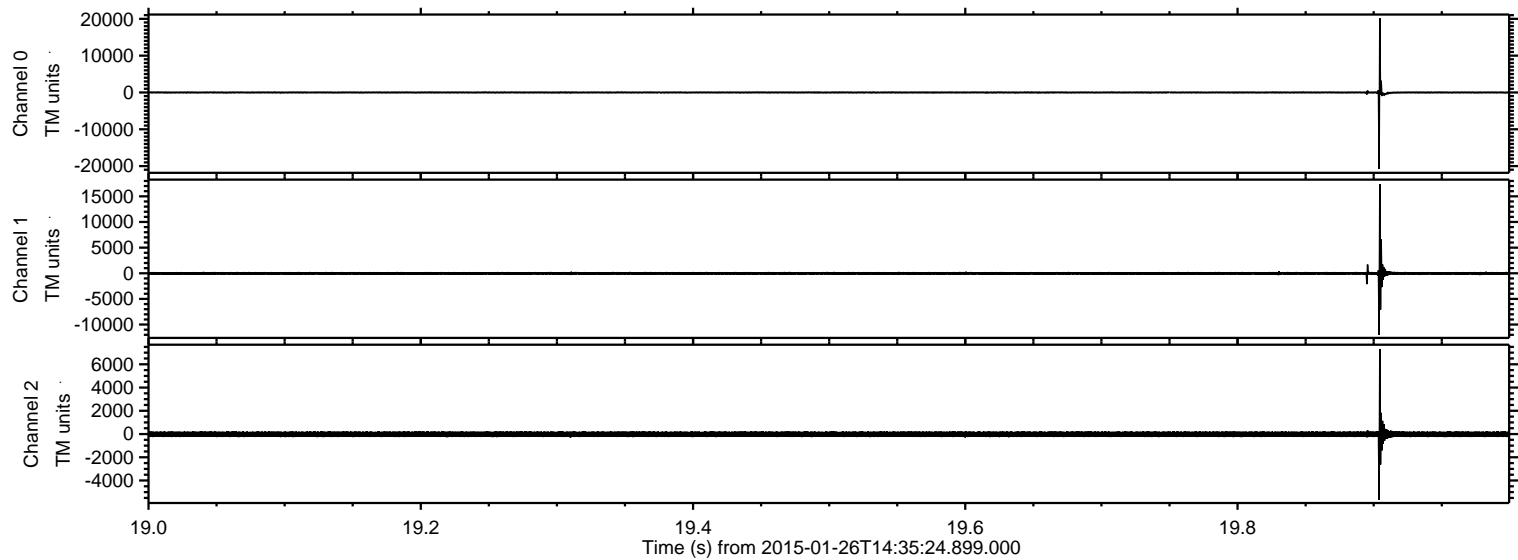
ELMAVAN 3D WAVEFORMS (Measured data sampled at 50 kHz) 49805 packets of 144 samples from 2015-01-26T14:35:24.899.000.

Processed Wed Feb 11 16:03:59 2015 by ELM ver.2012-10-06 from 001__elm20150126_143523__dat00.bin



ELMAVAN 3D WAVEFORMS (Measured data sampled at 50 kHz) 49805 packets of 144 samples from 2015-01-26T14:35:24.899.000. Part 20/144

Processed Wed Feb 11 16:04:14 2015 by ELM ver.2012-10-06 from 001__elm20150126_143523__dat00.bin



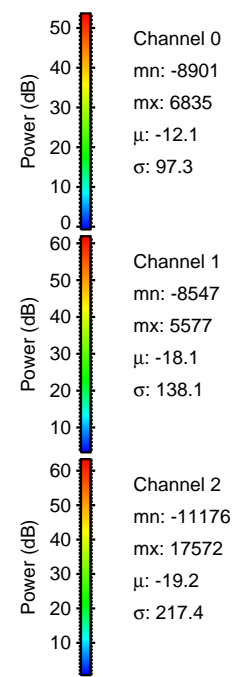
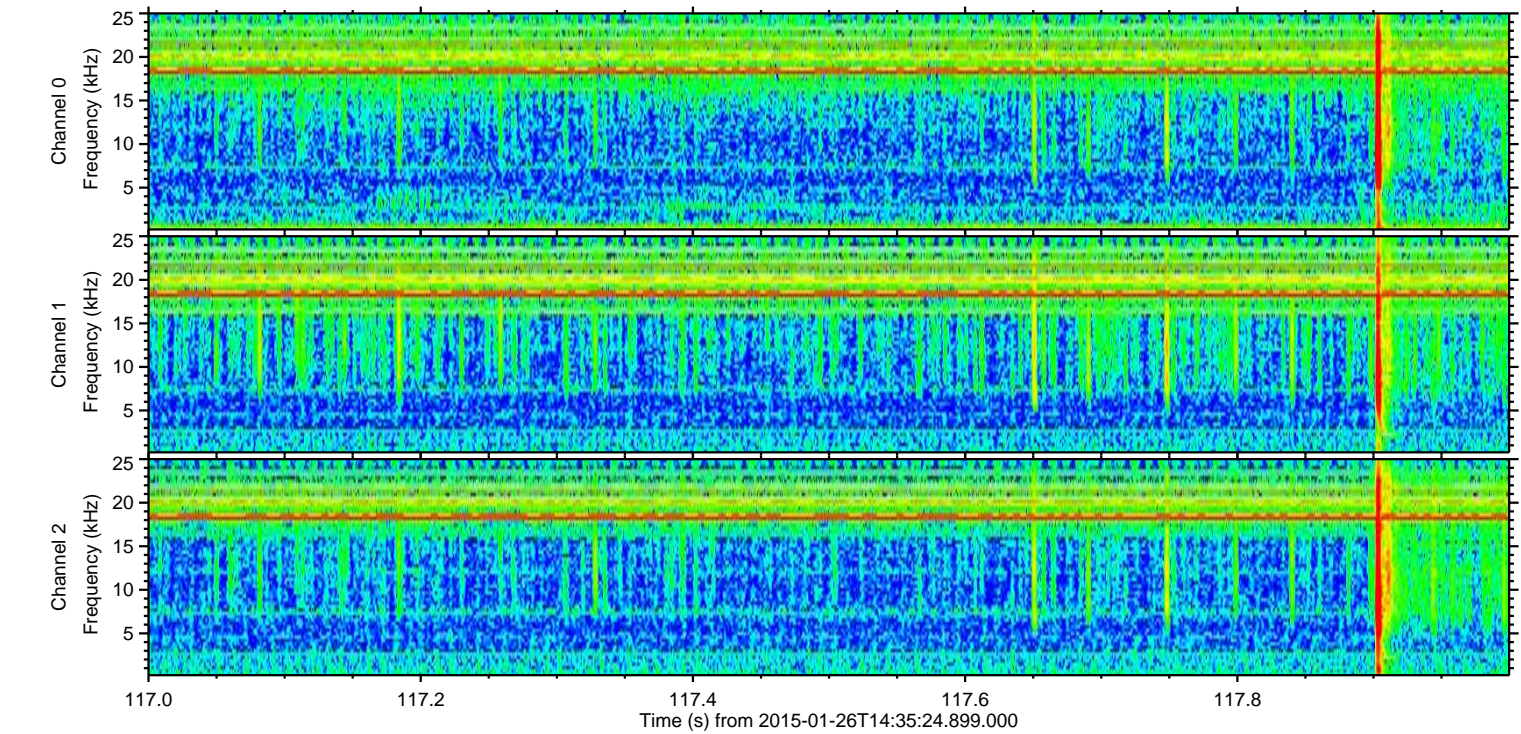
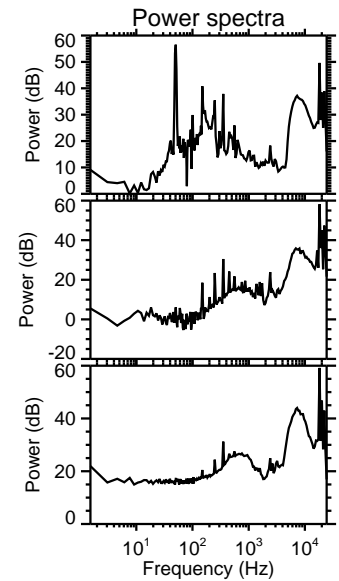
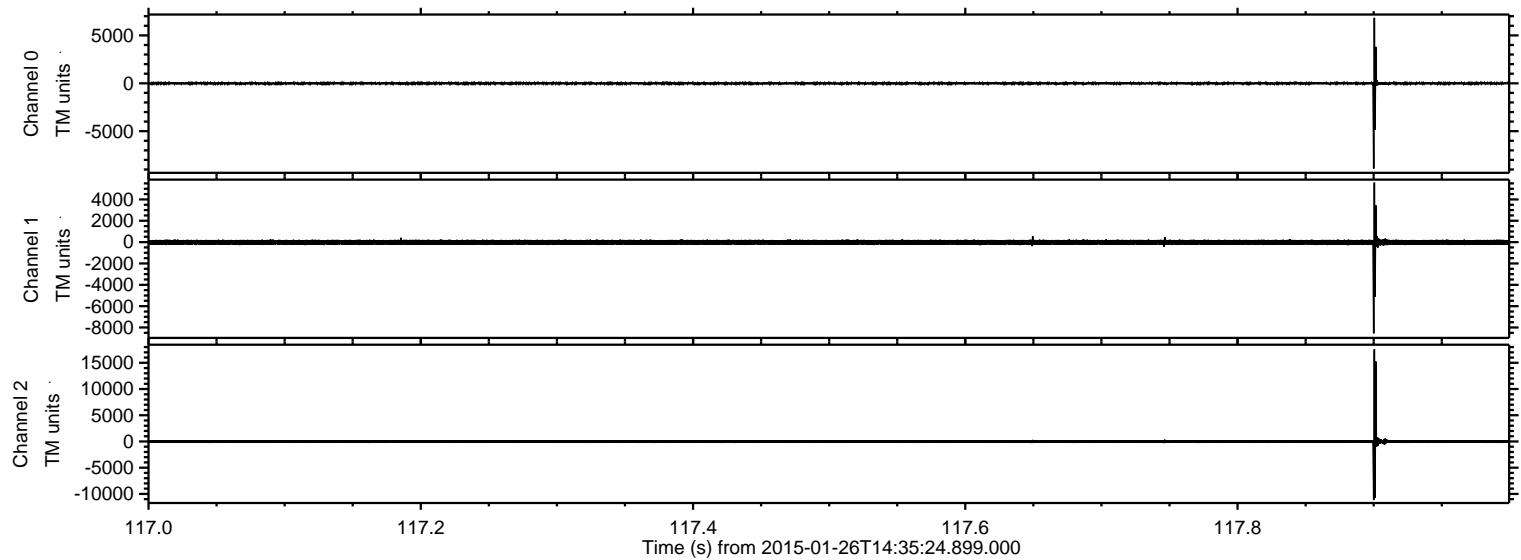
Channel 0
mn: -20795
mx: 20154
 μ : -12.1
 σ : 256.2

Channel 1
mn: -12002
mx: 17390
 μ : -16.2
 σ : 356.4

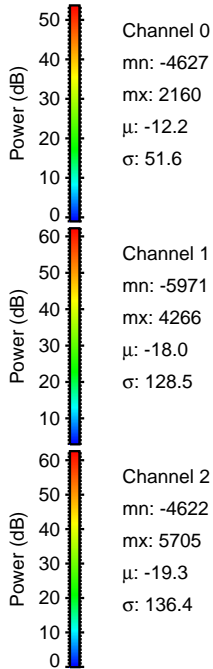
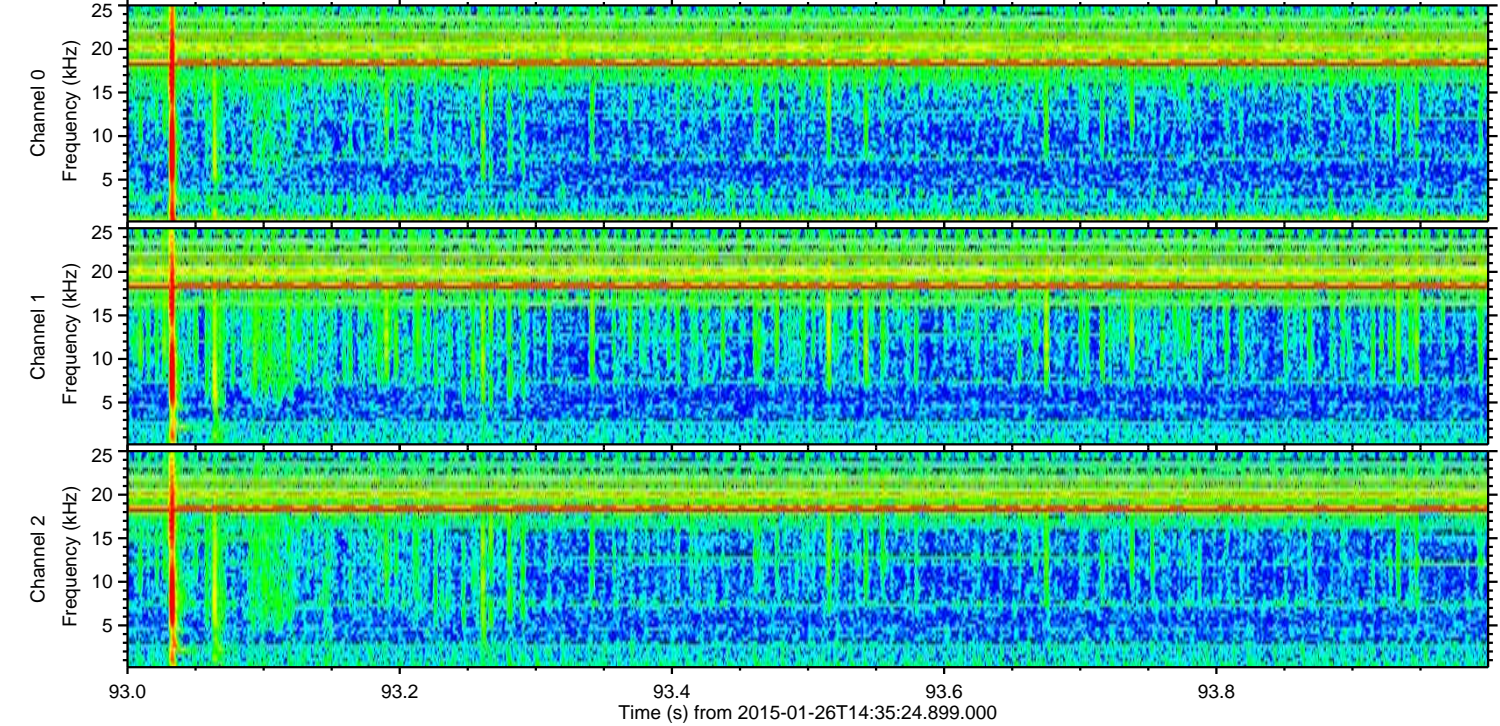
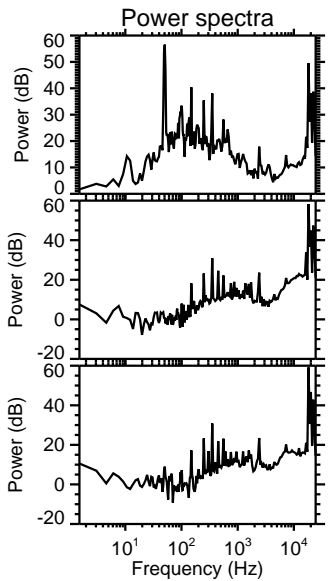
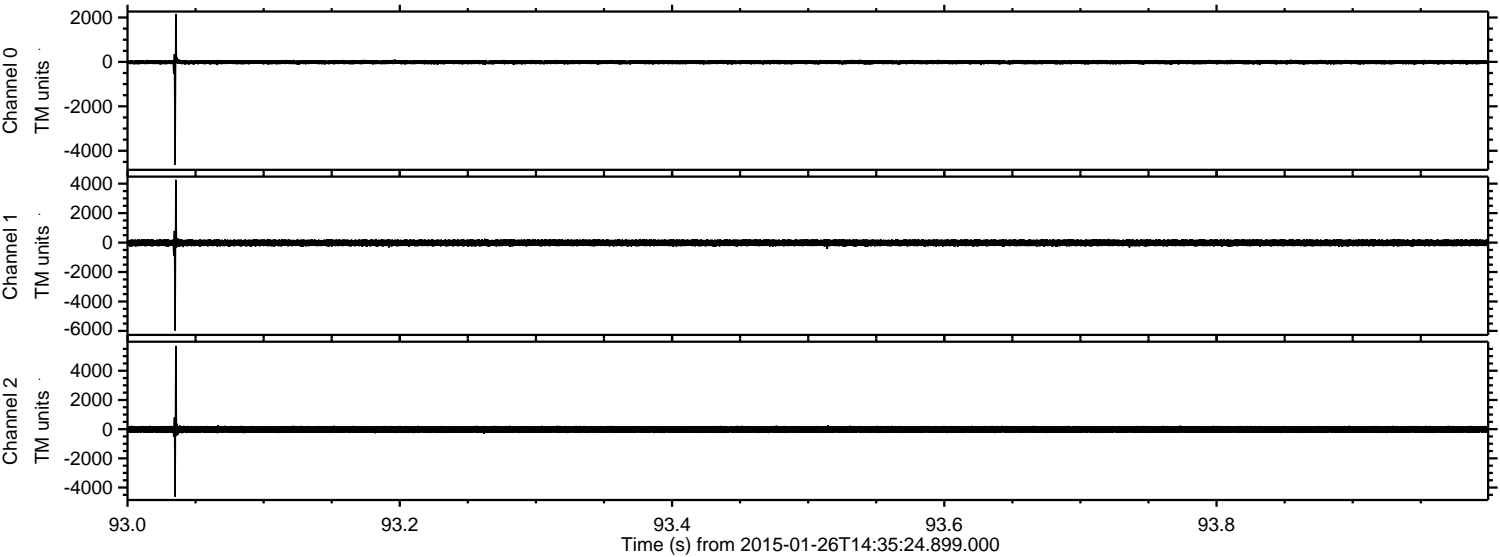
Channel 2
mn: -5653
mx: 7320
 μ : -19.4
 σ : 152.6

ELMAVAN 3D WAVEFORMS (Measured data sampled at 50 kHz) 49805 packets of 144 samples from 2015-01-26T14:35:24.899.000. Part 118/144

Processed Wed Feb 11 16:04:15 2015 by ELM ver.2012-10-06 from 001__elm20150126_143523__dat00.bin

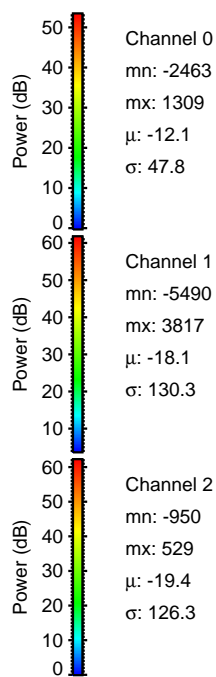
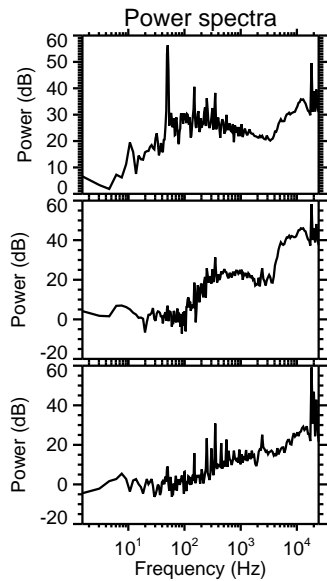
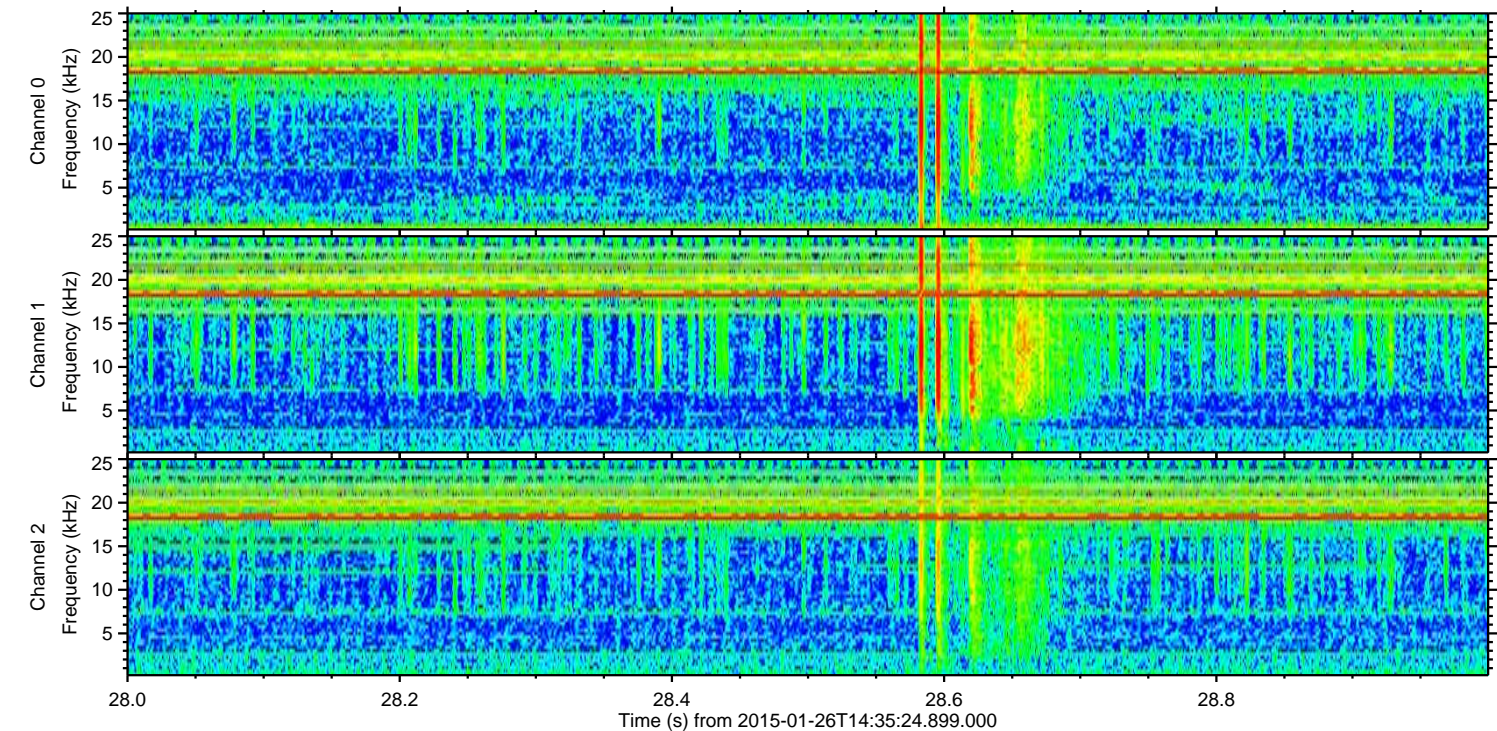
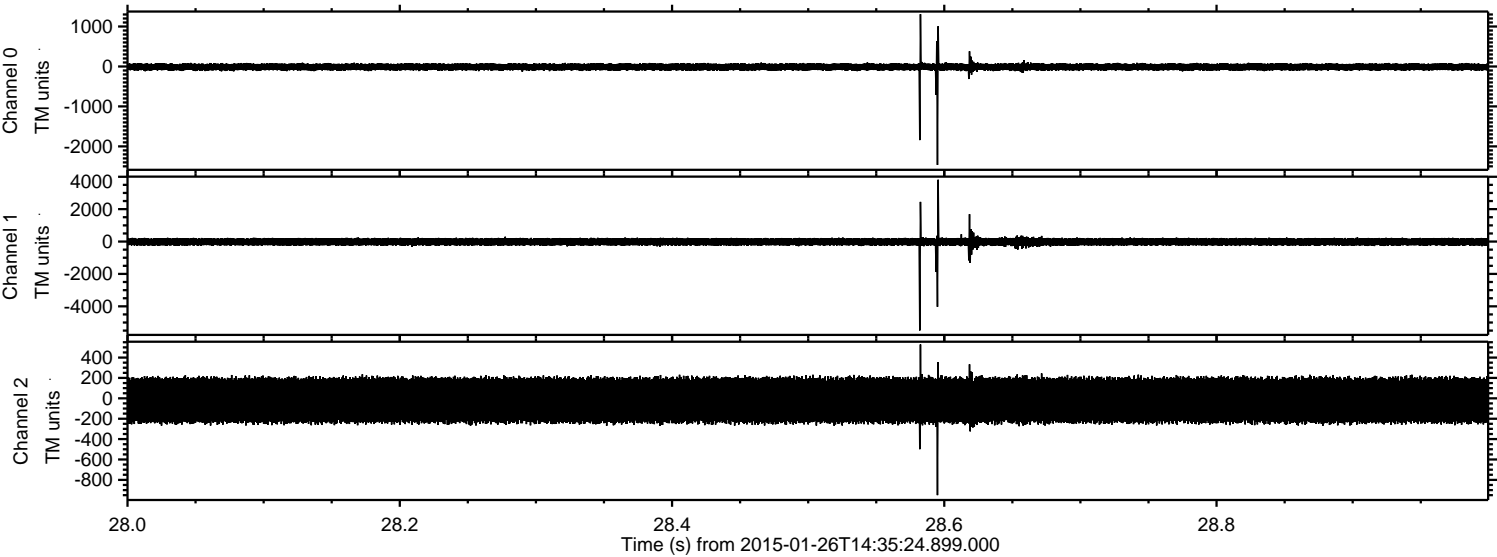


Processed Wed Feb 11 16:04:16 2015 by ELM ver.2012-10-06 from 001__elm20150126_143523__dat00.bin



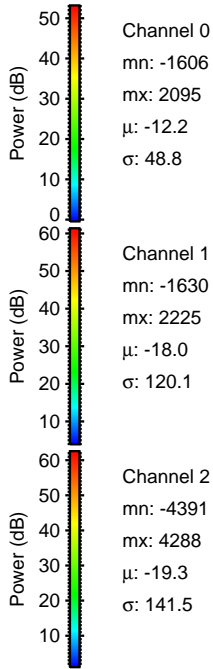
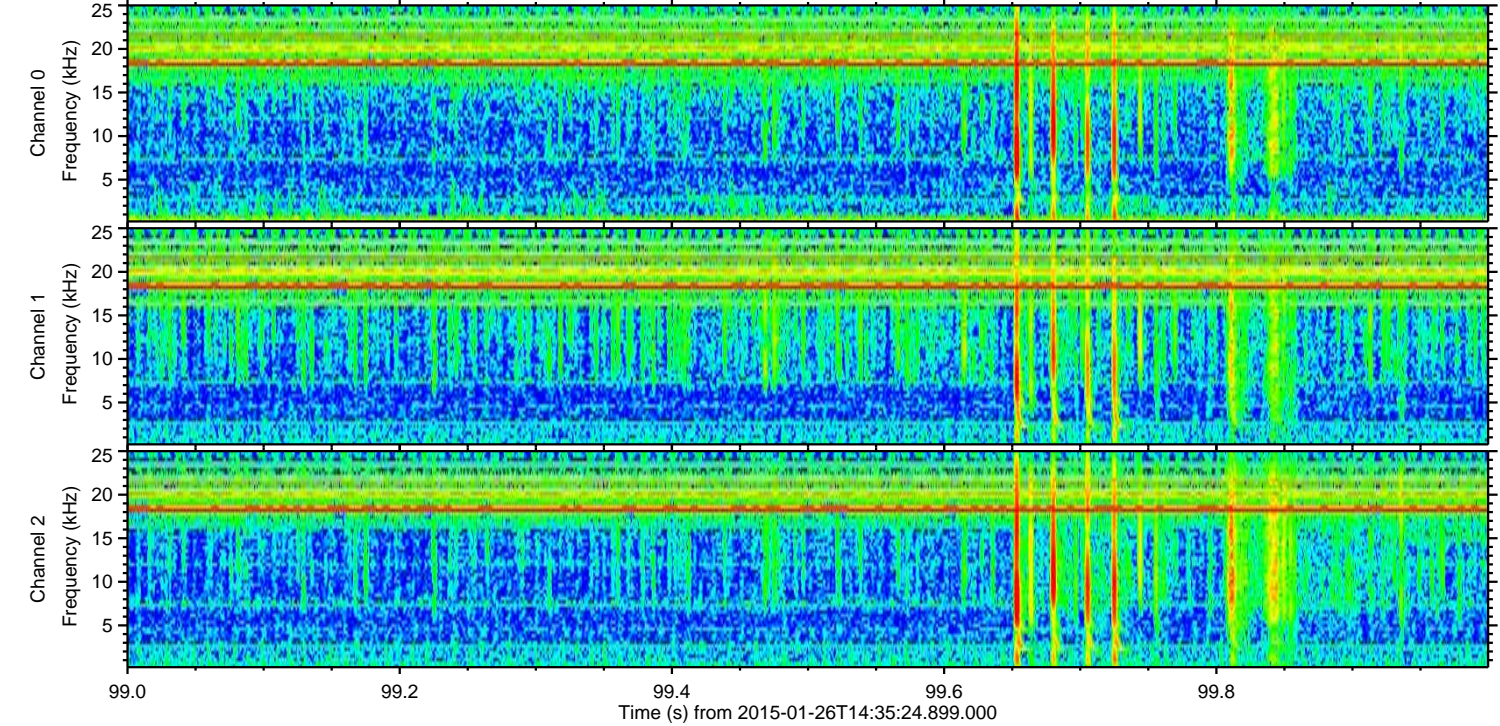
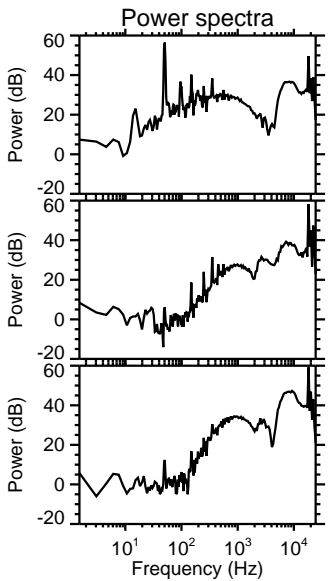
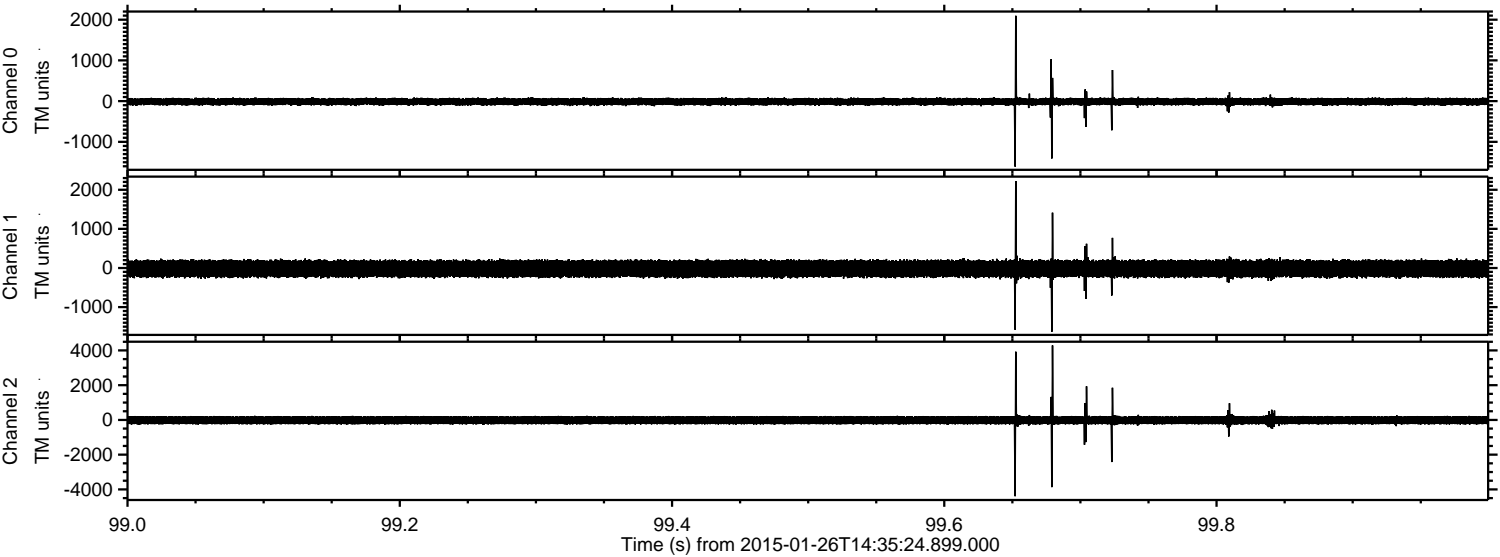
ELMAVAN 3D WAVEFORMS (Measured data sampled at 50 kHz) 49805 packets of 144 samples from 2015-01-26T14:35:24.899.000. Part 29/144

Processed Wed Feb 11 16:04:17 2015 by ELM ver.2012-10-06 from 001__elm20150126_143523__dat00.bin



ELMAVAN 3D WAVEFORMS (Measured data sampled at 50 kHz) 49805 packets of 144 samples from 2015-01-26T14:35:24.899.000. Part 100/144

Processed Wed Feb 11 16:04:18 2015 by ELM ver.2012-10-06 from 001__elm20150126_143523__dat00.bin

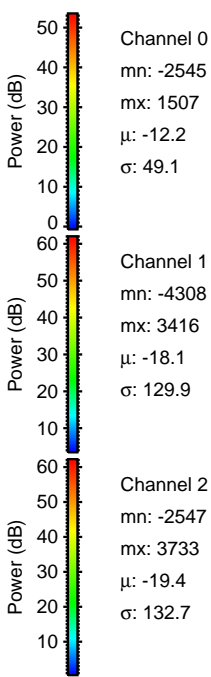
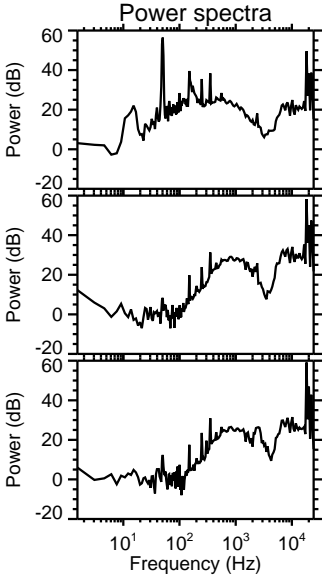
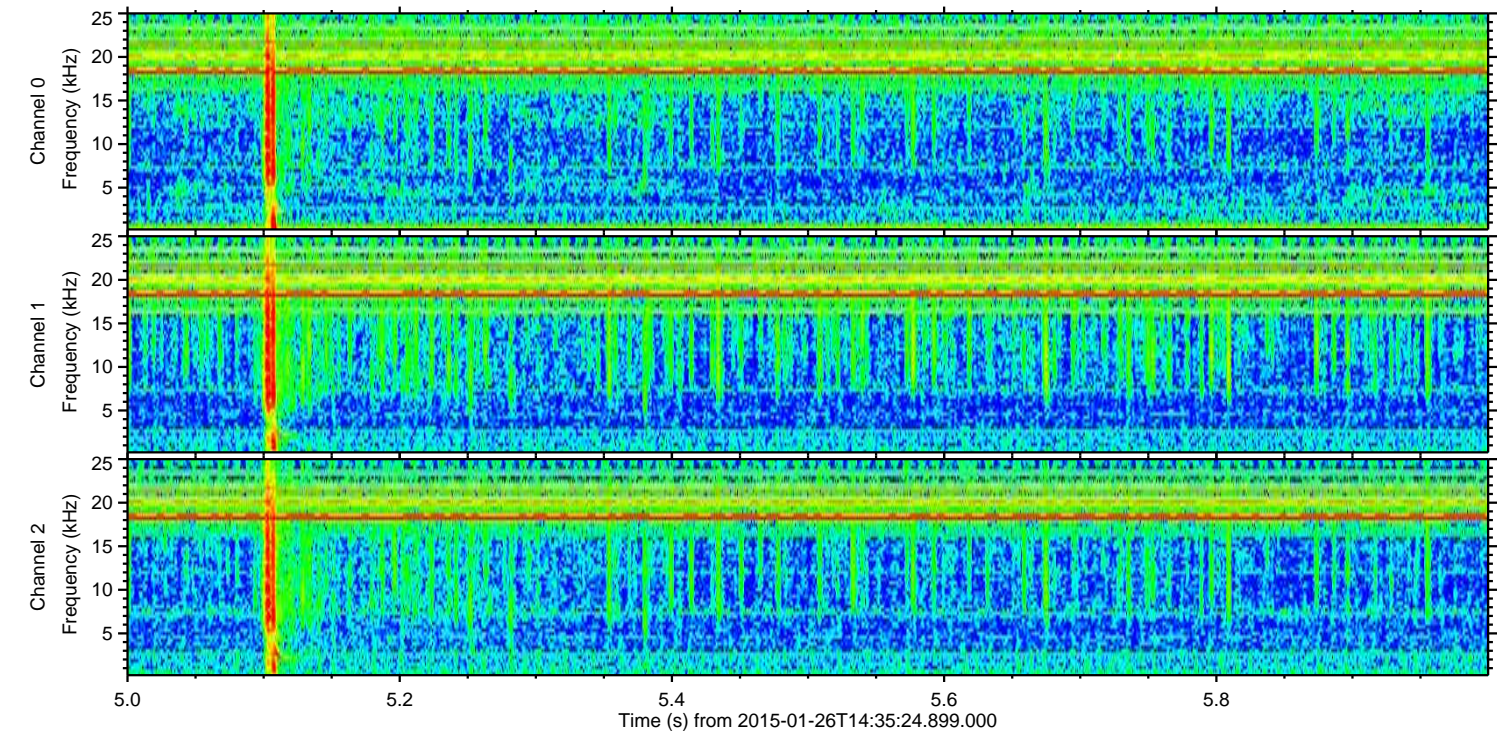
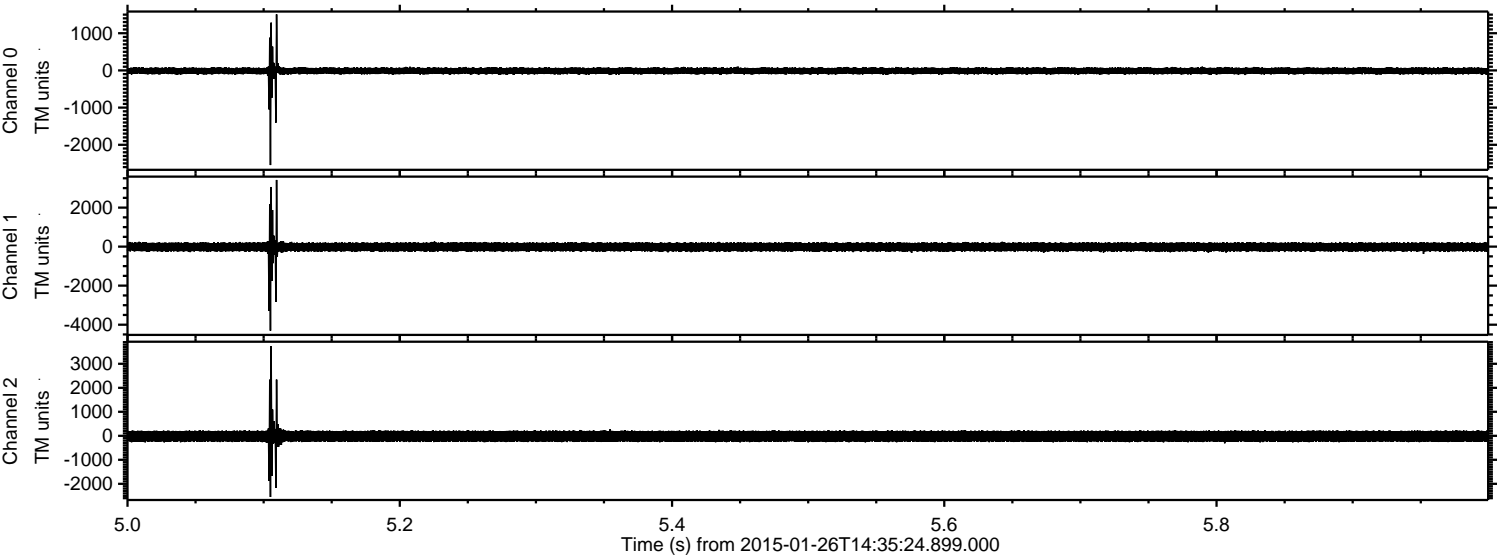


Channel 0
mn: -1606
mx: 2095
 μ : -12.2
 σ : 48.8

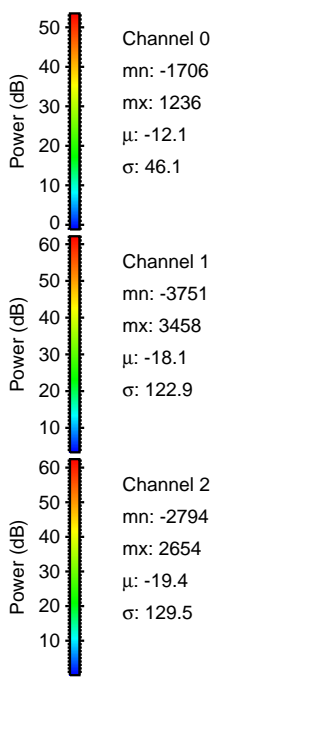
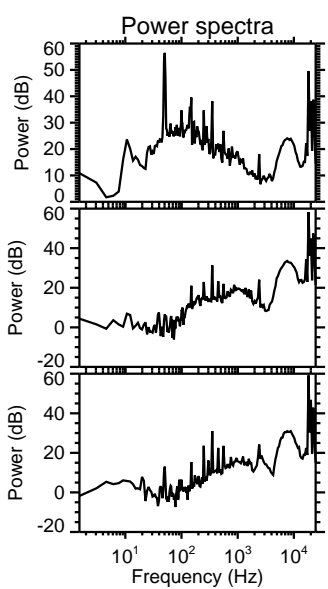
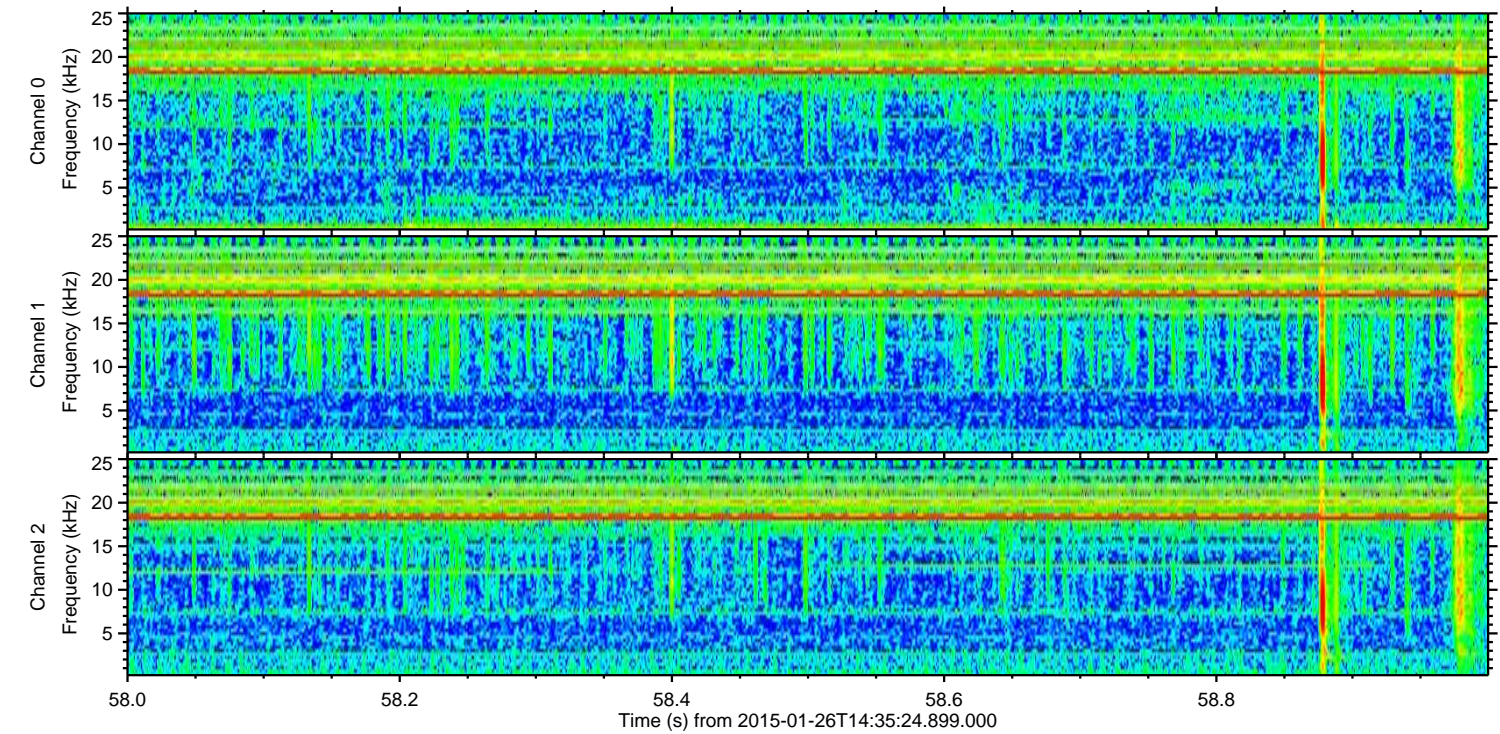
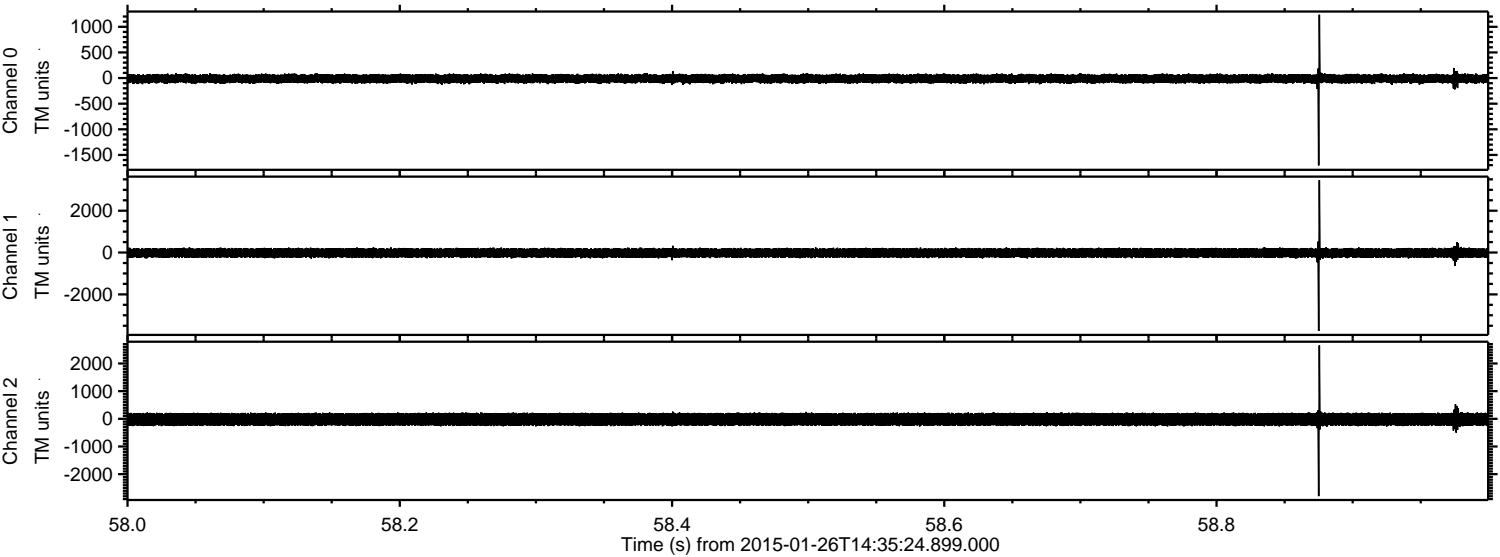
Channel 1
mn: -1630
mx: 2225
 μ : -18.0
 σ : 120.1

Channel 2
mn: -4391
mx: 4288
 μ : -19.3
 σ : 141.5

Processed Wed Feb 11 16:04:19 2015 by ELM ver.2012-10-06 from 001__elm20150126_143523__dat00.bin

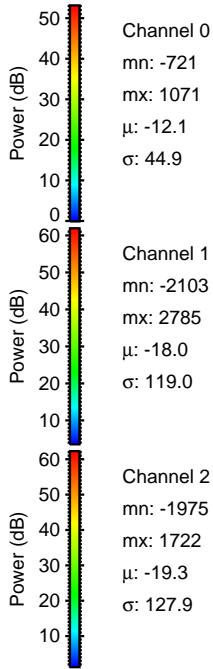
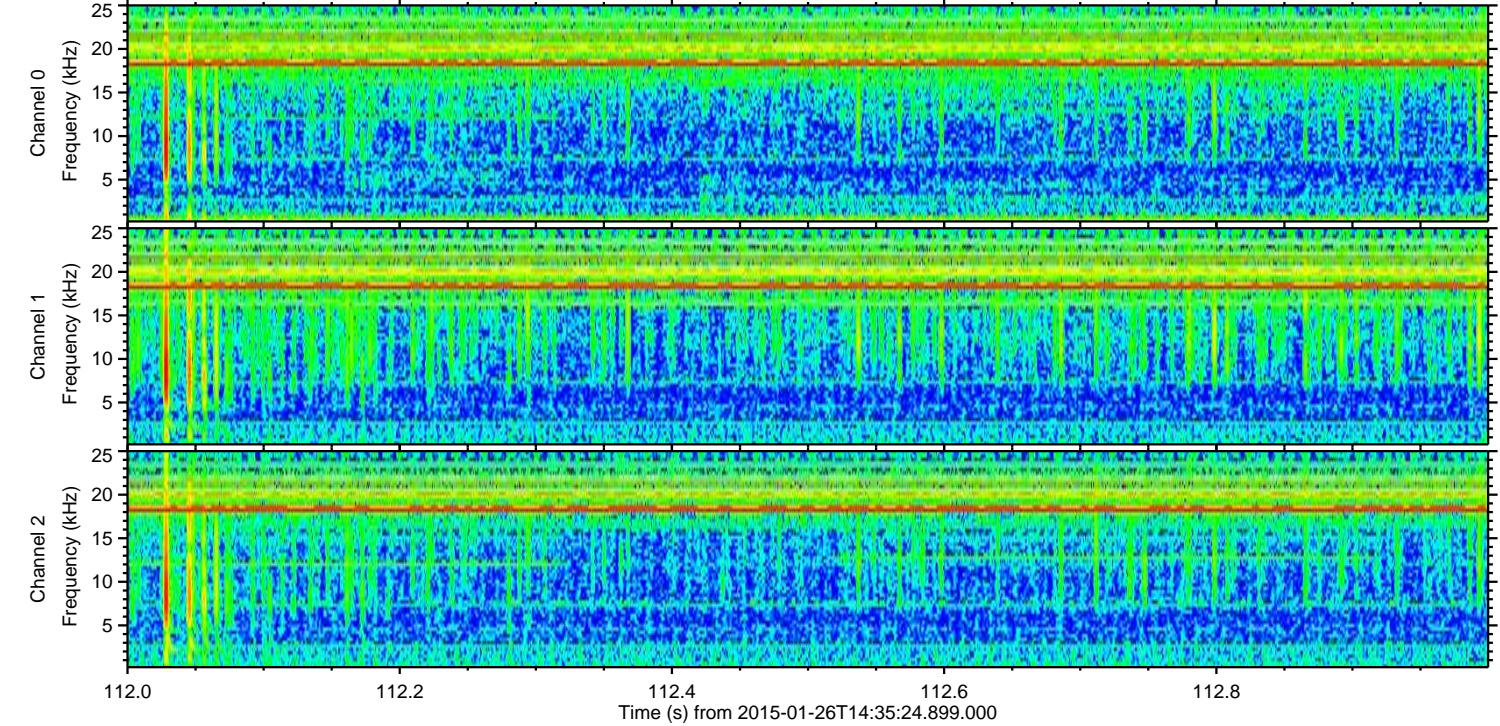
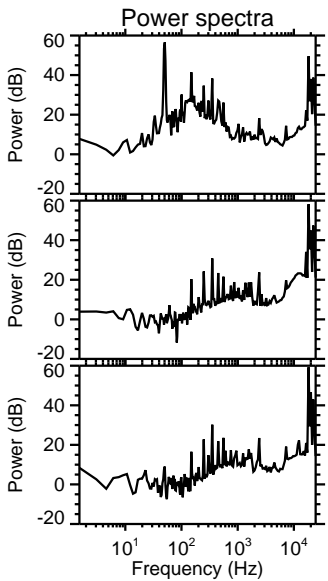
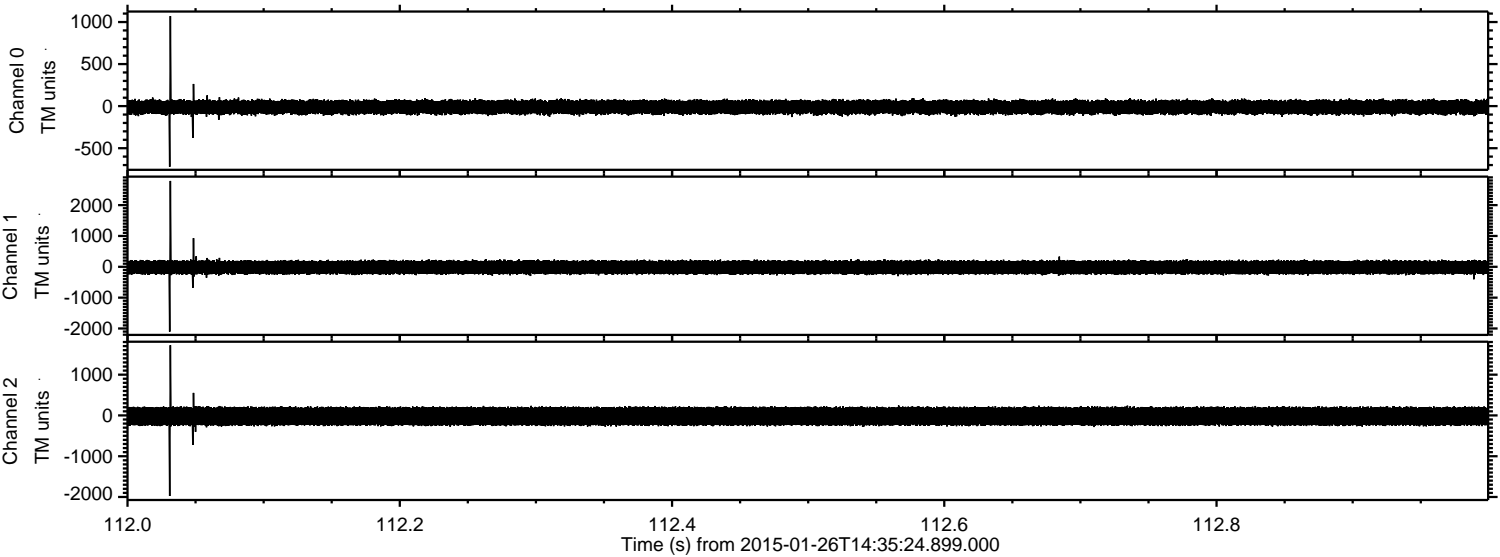


Processed Wed Feb 11 16:04:20 2015 by ELM ver.2012-10-06 from 001__elm20150126_143523__dat00.bin



ELMAVAN 3D WAVEFORMS (Measured data sampled at 50 kHz) 49805 packets of 144 samples from 2015-01-26T14:35:24.899.000. Part 113/144

Processed Wed Feb 11 16:04:22 2015 by ELM ver.2012-10-06 from 001__elm20150126_143523__dat00.bin

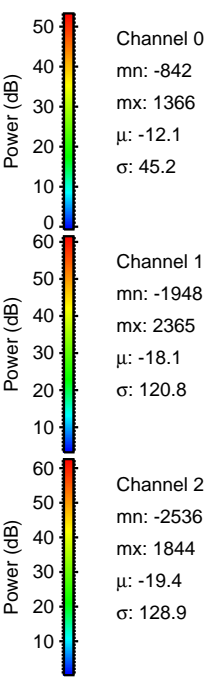
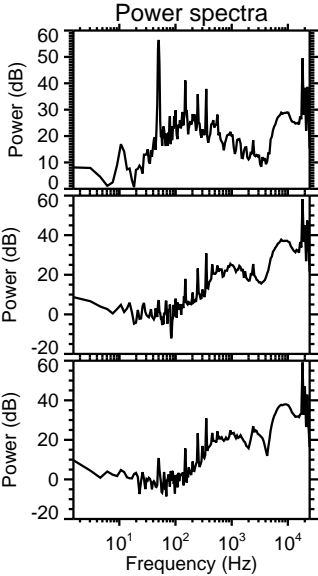
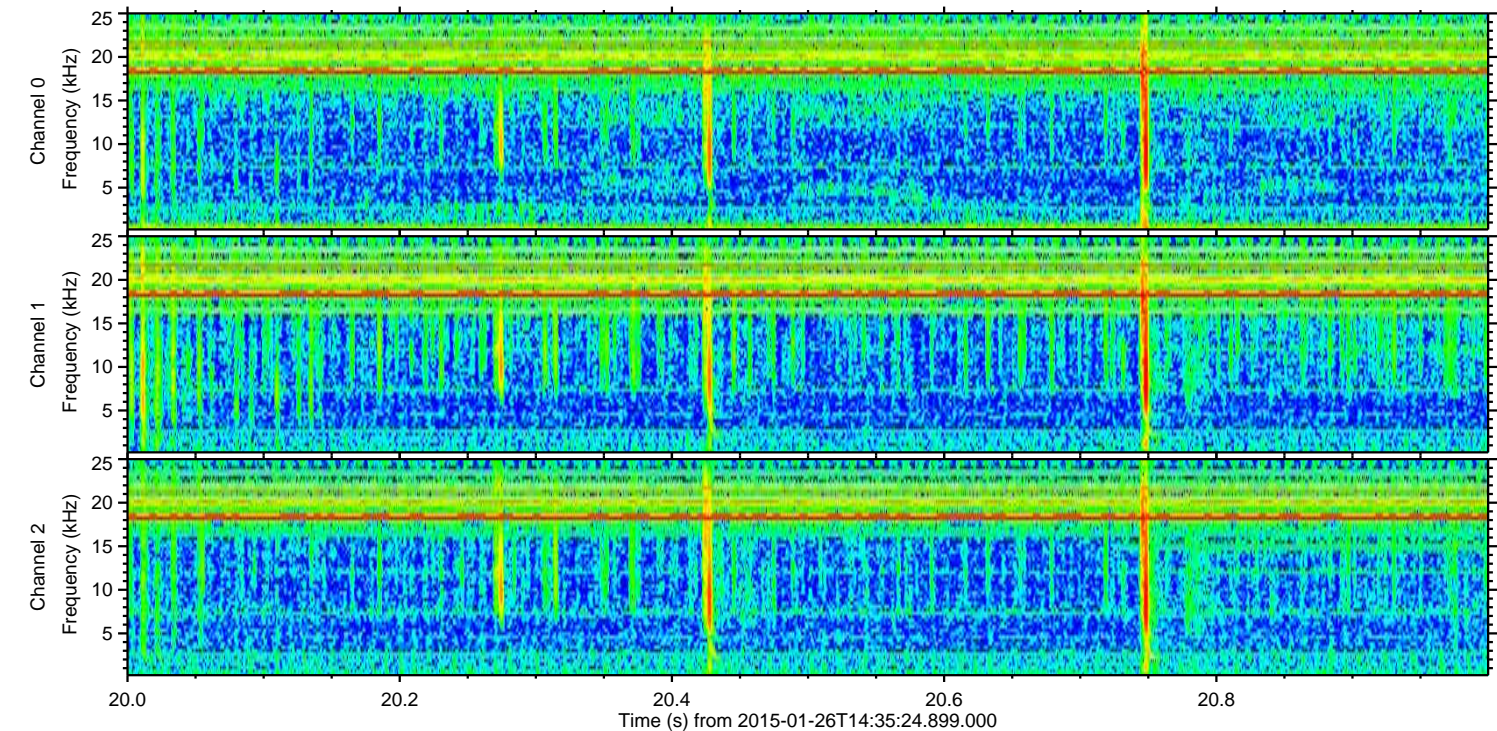
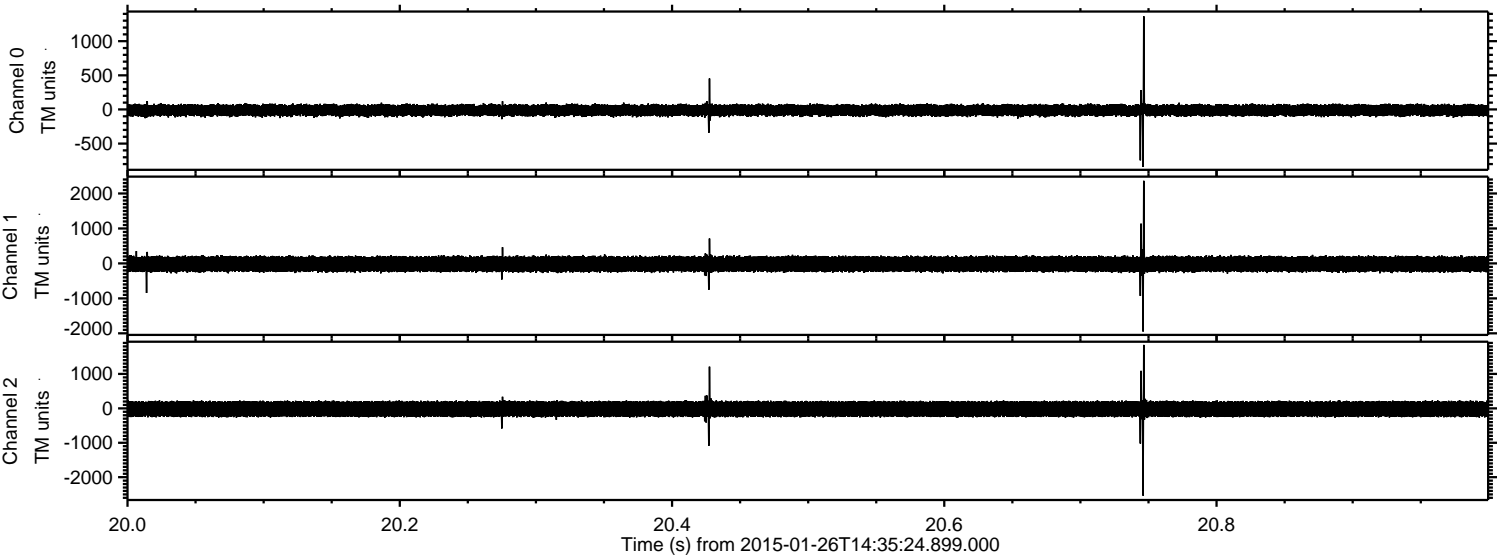


Channel 0
mn: -721
mx: 1071
 μ : -12.1
 σ : 44.9

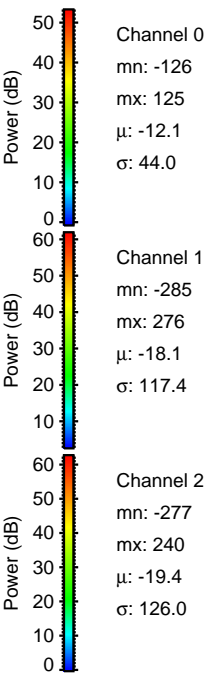
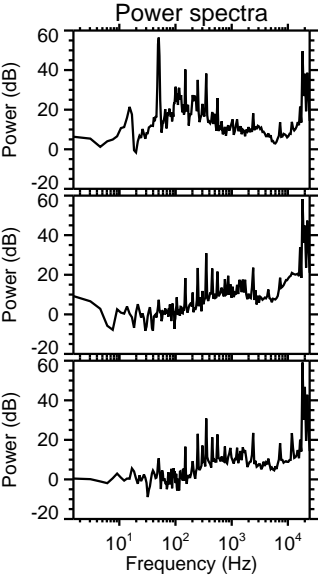
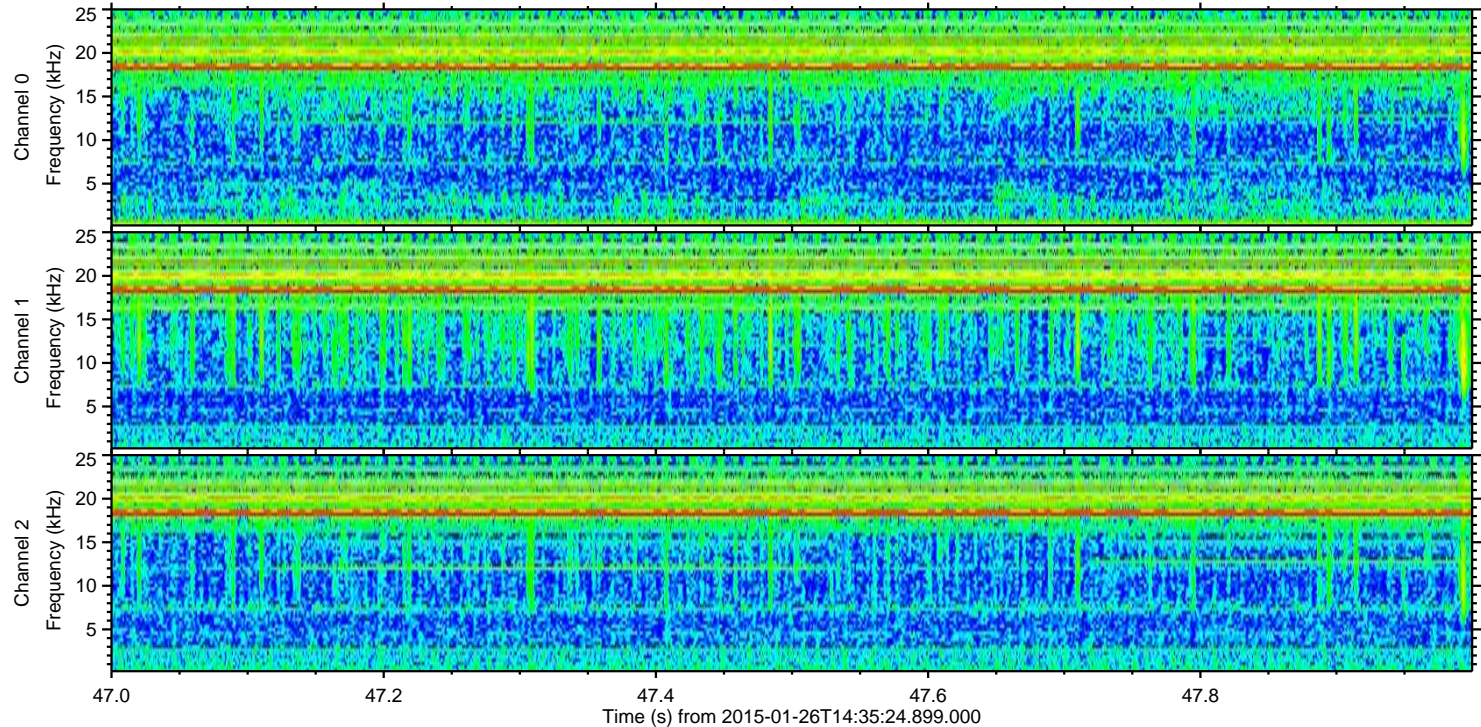
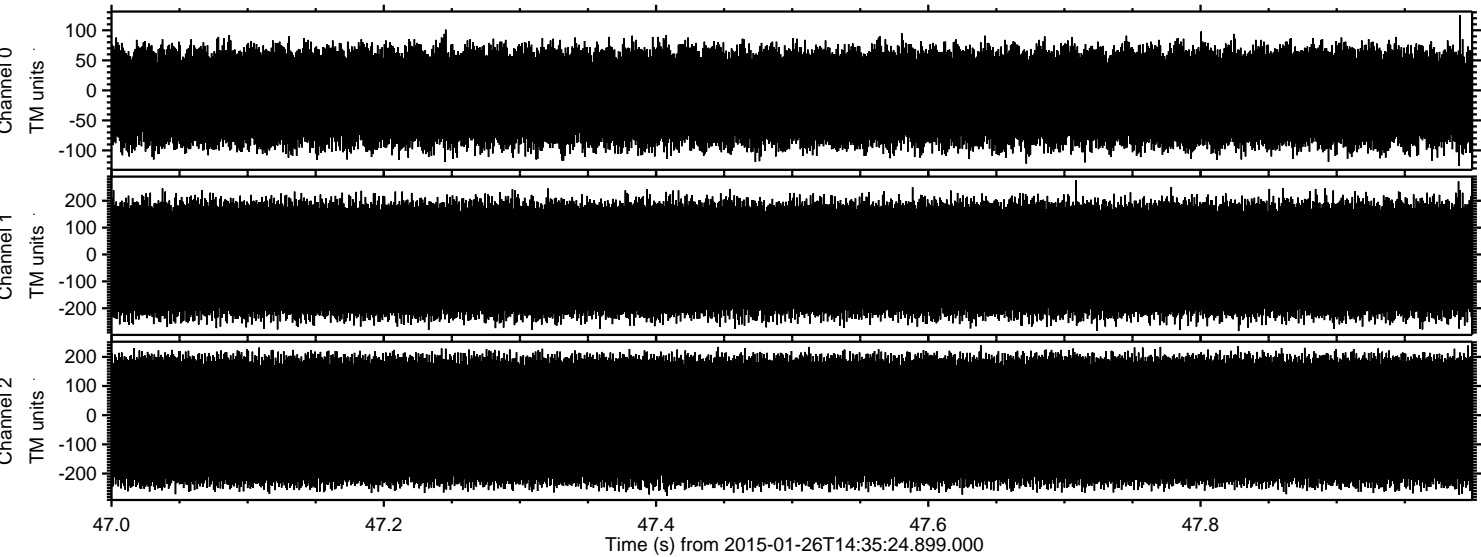
Channel 1
mn: -2103
mx: 2785
 μ : -18.0
 σ : 119.0

Channel 2
mn: -1975
mx: 1722
 μ : -19.3
 σ : 127.9

Processed Wed Feb 11 16:04:23 2015 by ELM ver.2012-10-06 from 001__elm20150126_143523__dat00.bin



Processed Wed Feb 11 16:04:24 2015 by ELM ver.2012-10-06 from 001__elm20150126_143523__dat00.bin



Channel 0
mn: -126
mx: 125
 μ : -12.1
 σ : 44.0

Channel 1
mn: -285
mx: 276
 μ : -18.1
 σ : 117.4

Channel 2
mn: -277
mx: 240
 μ : -19.4
 σ : 126.0