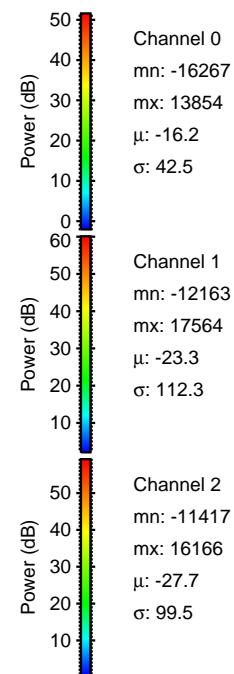
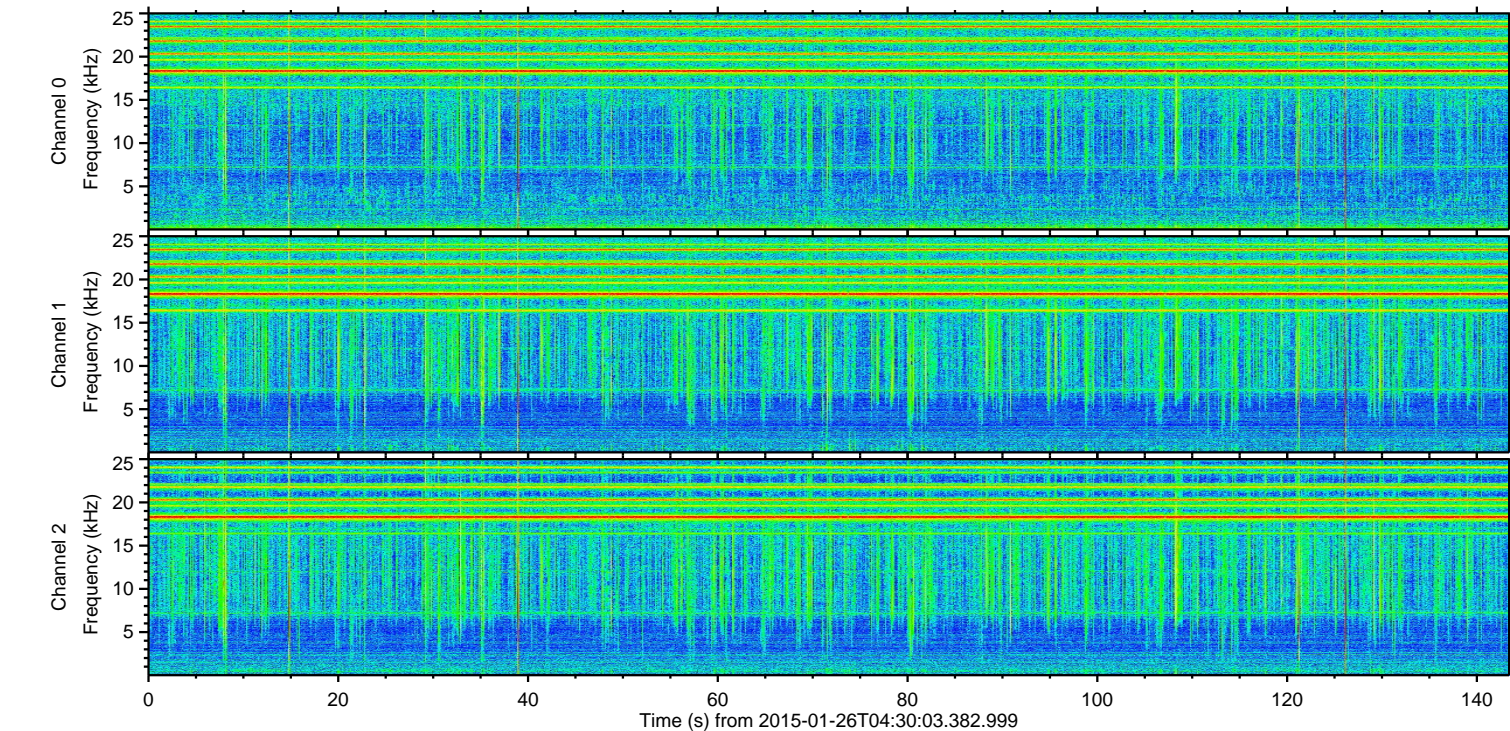
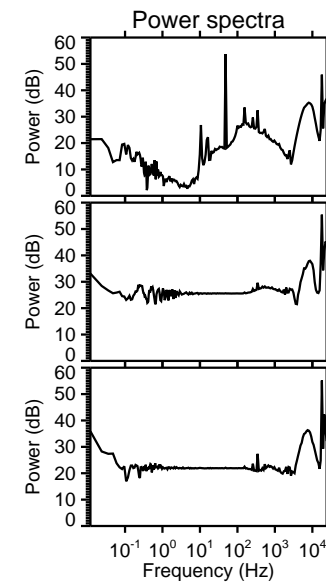
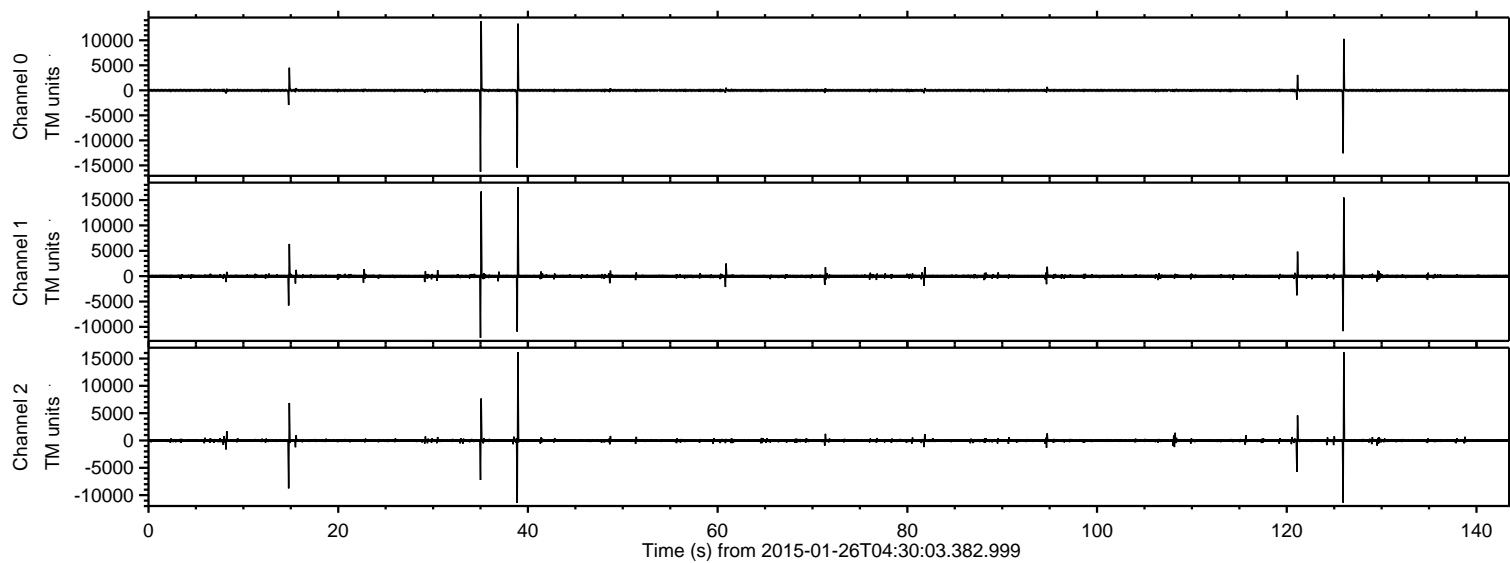


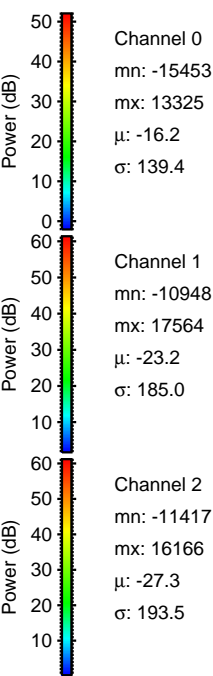
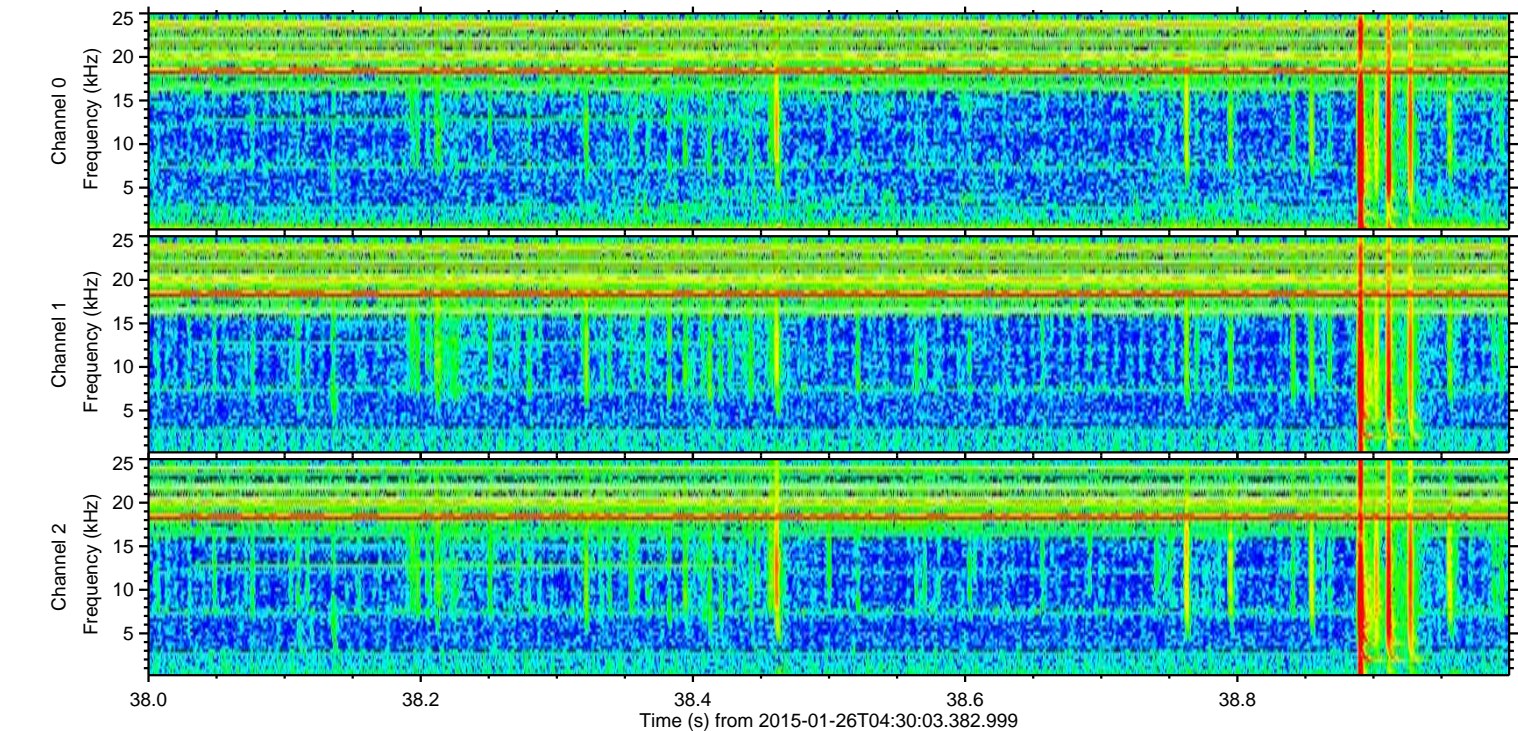
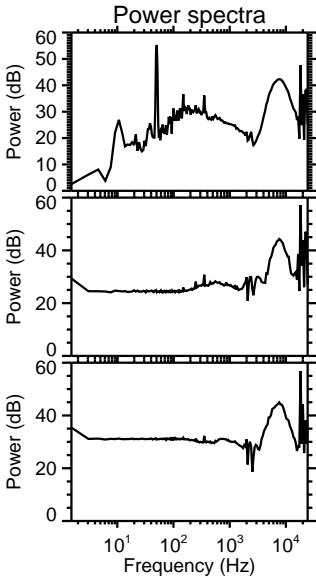
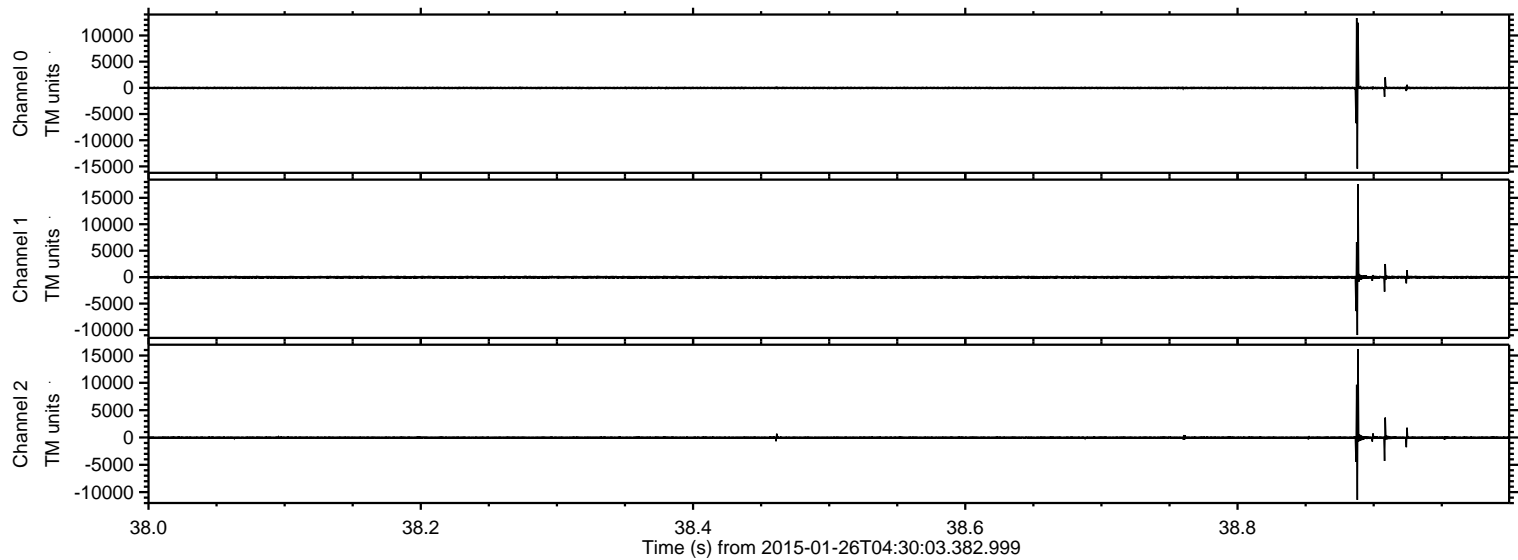
ELMAVAN 3D WAVEFORMS (Measured data sampled at 50 kHz) 49807 packets of 144 samples from 2015-01-26T04:30:03.382.999.

Processed Wed Feb 11 13:36:45 2015 by ELM ver.2012-10-06 from 001__elm20150126_043002__dat00.bin



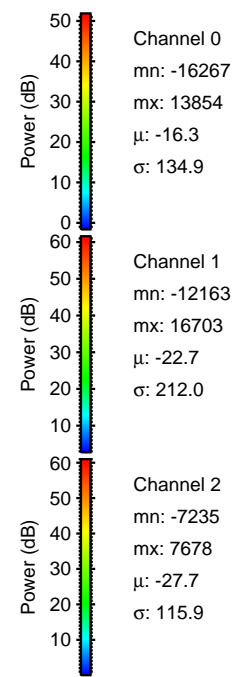
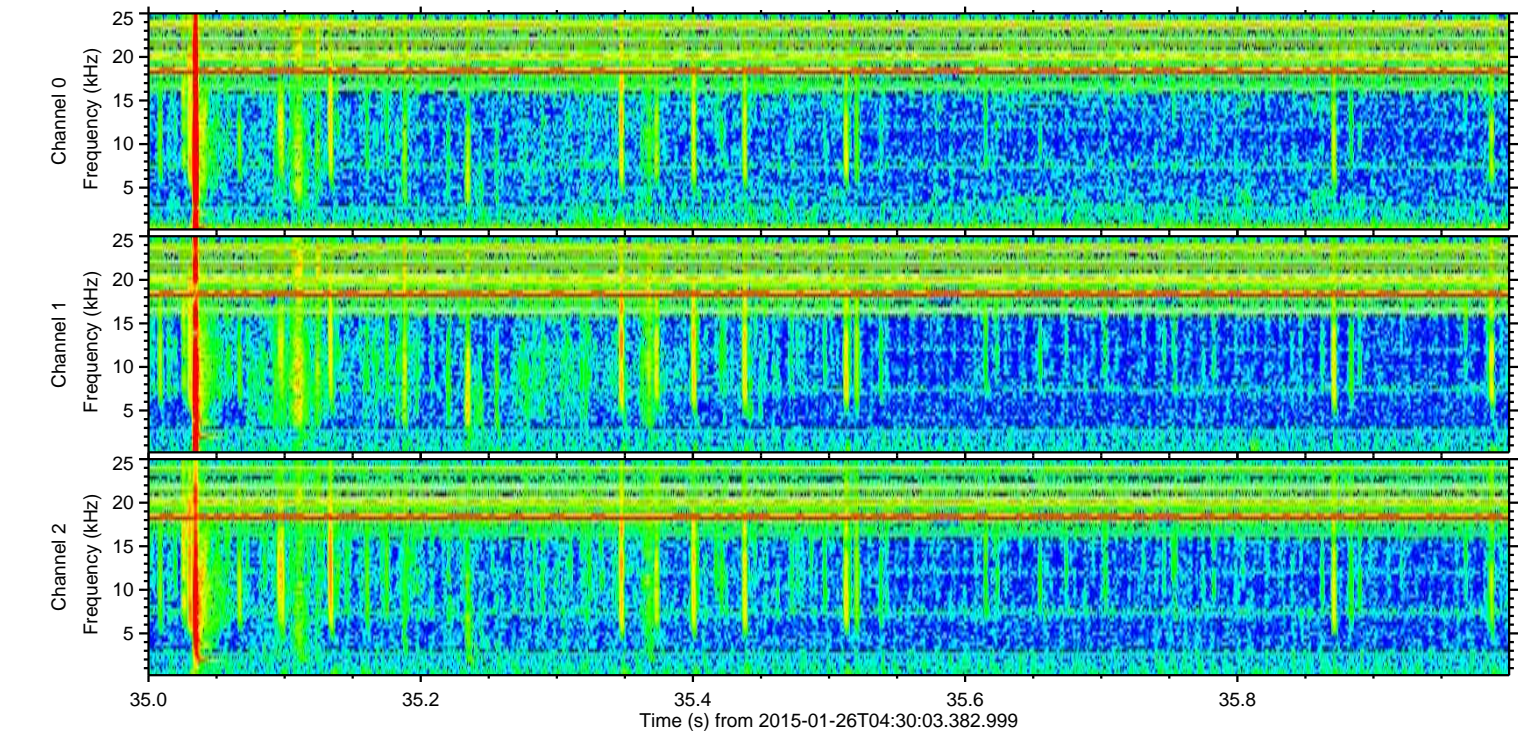
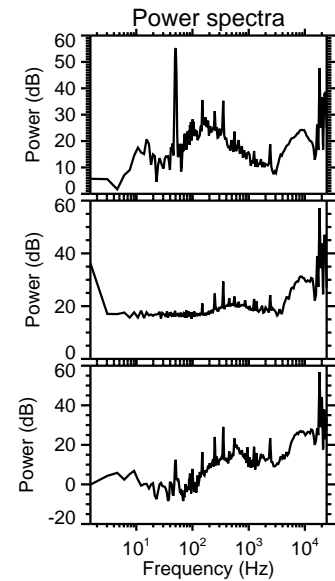
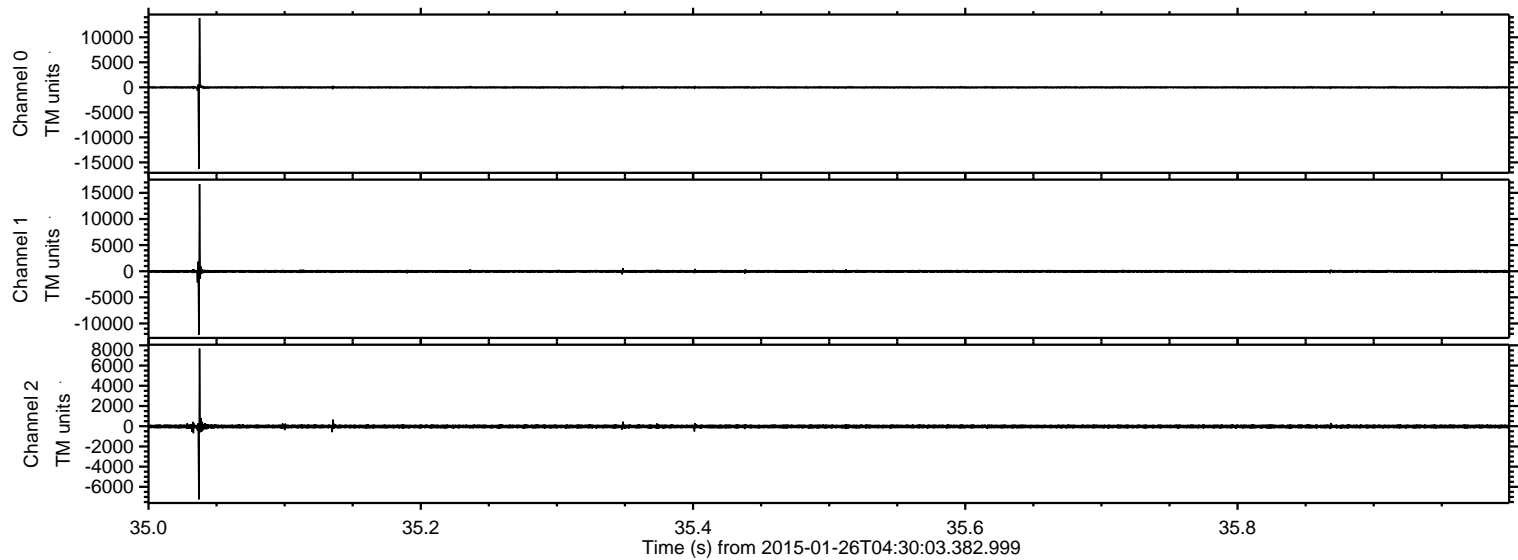
ELMAVAN 3D WAVEFORMS (Measured data sampled at 50 kHz) 49807 packets of 144 samples from 2015-01-26T04:30:03.382.999. Part 39/144

Processed Wed Feb 11 13:36:57 2015 by ELM ver.2012-10-06 from 001_elm20150126_043002__dat00.bin



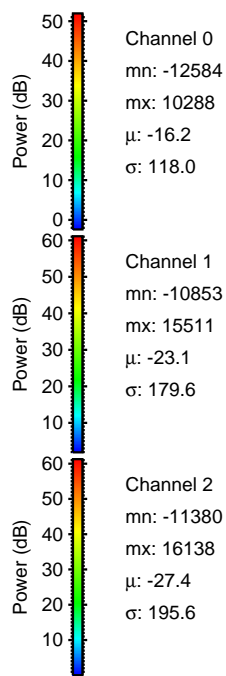
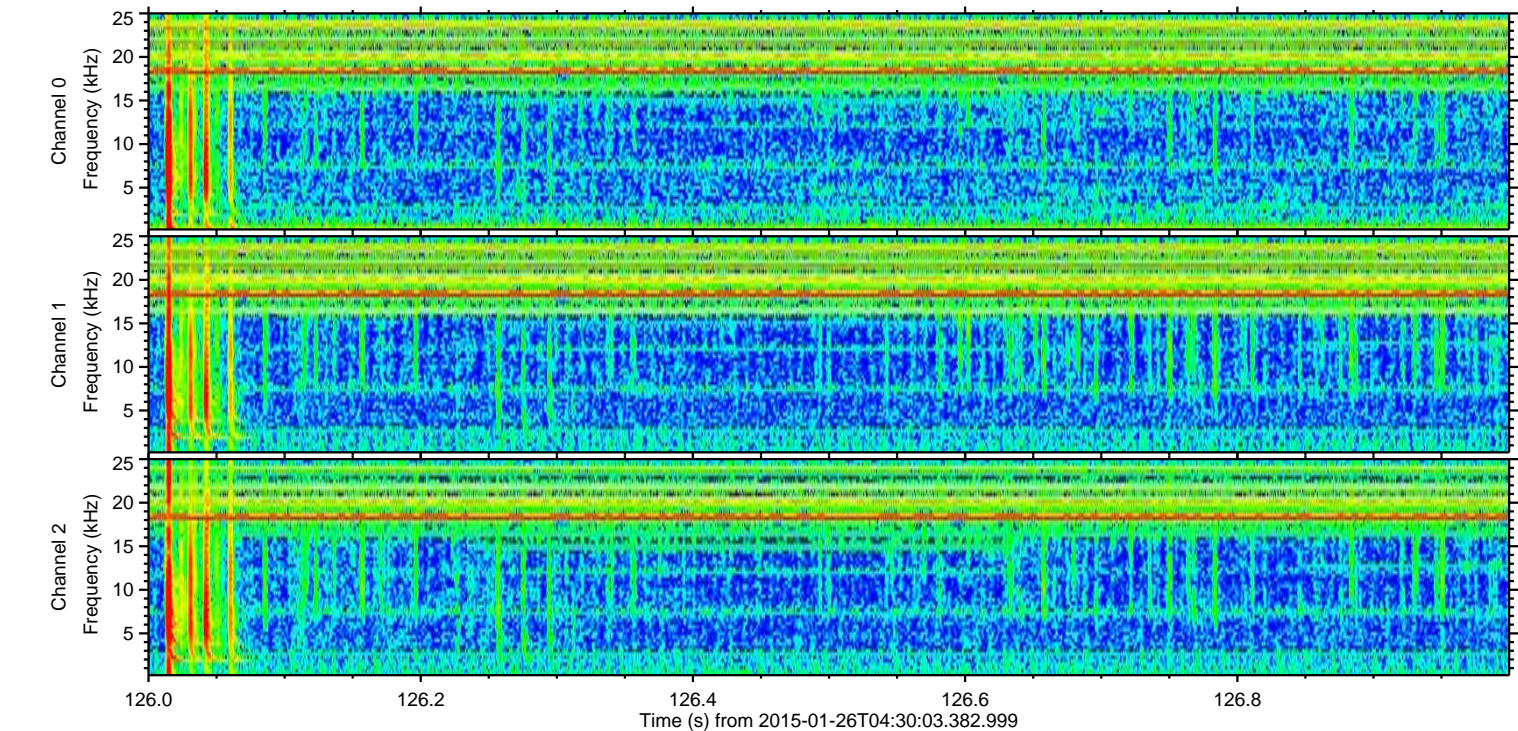
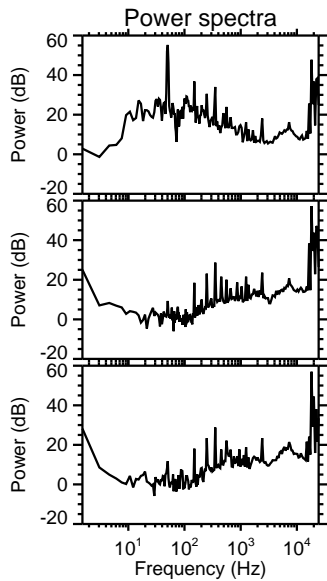
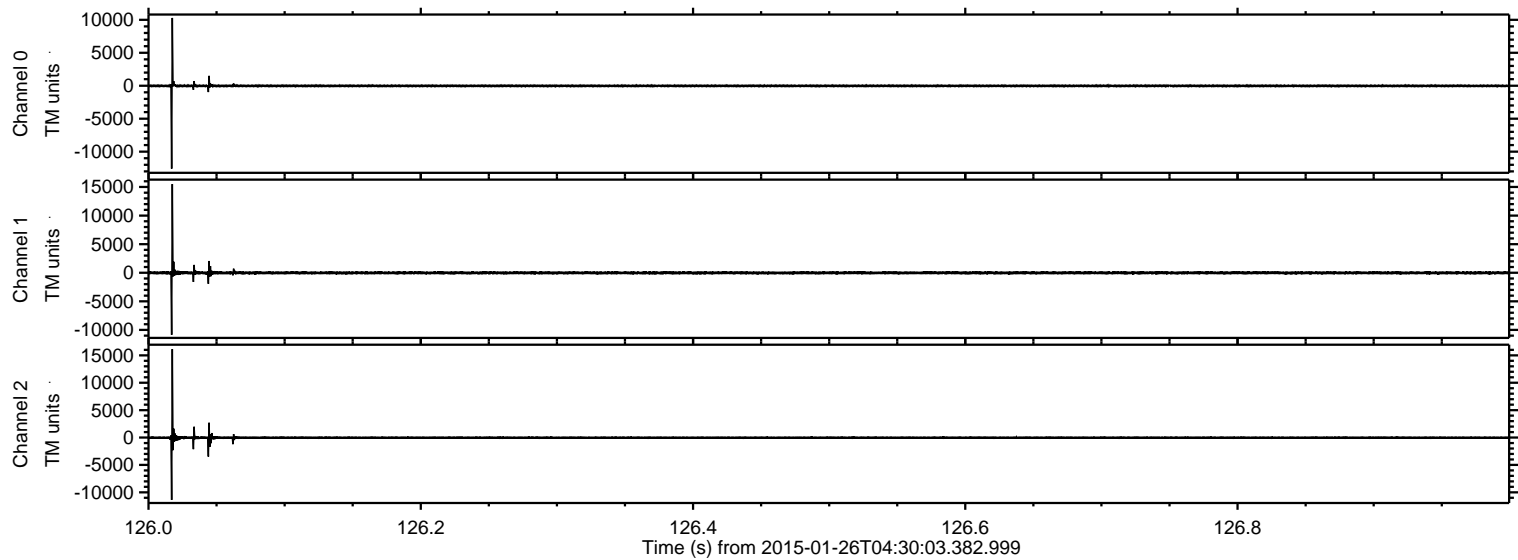
ELMAVAN 3D WAVEFORMS (Measured data sampled at 50 kHz) 49807 packets of 144 samples from 2015-01-26T04:30:03.382.999. Part 36/144

Processed Wed Feb 11 13:36:58 2015 by ELM ver.2012-10-06 from 001__elm20150126_043002__dat00.bin

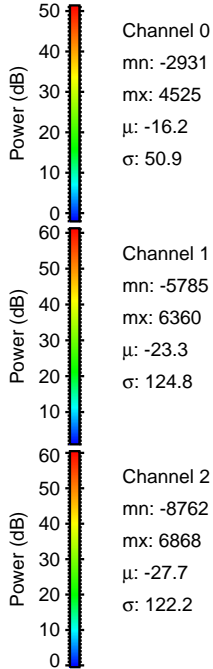
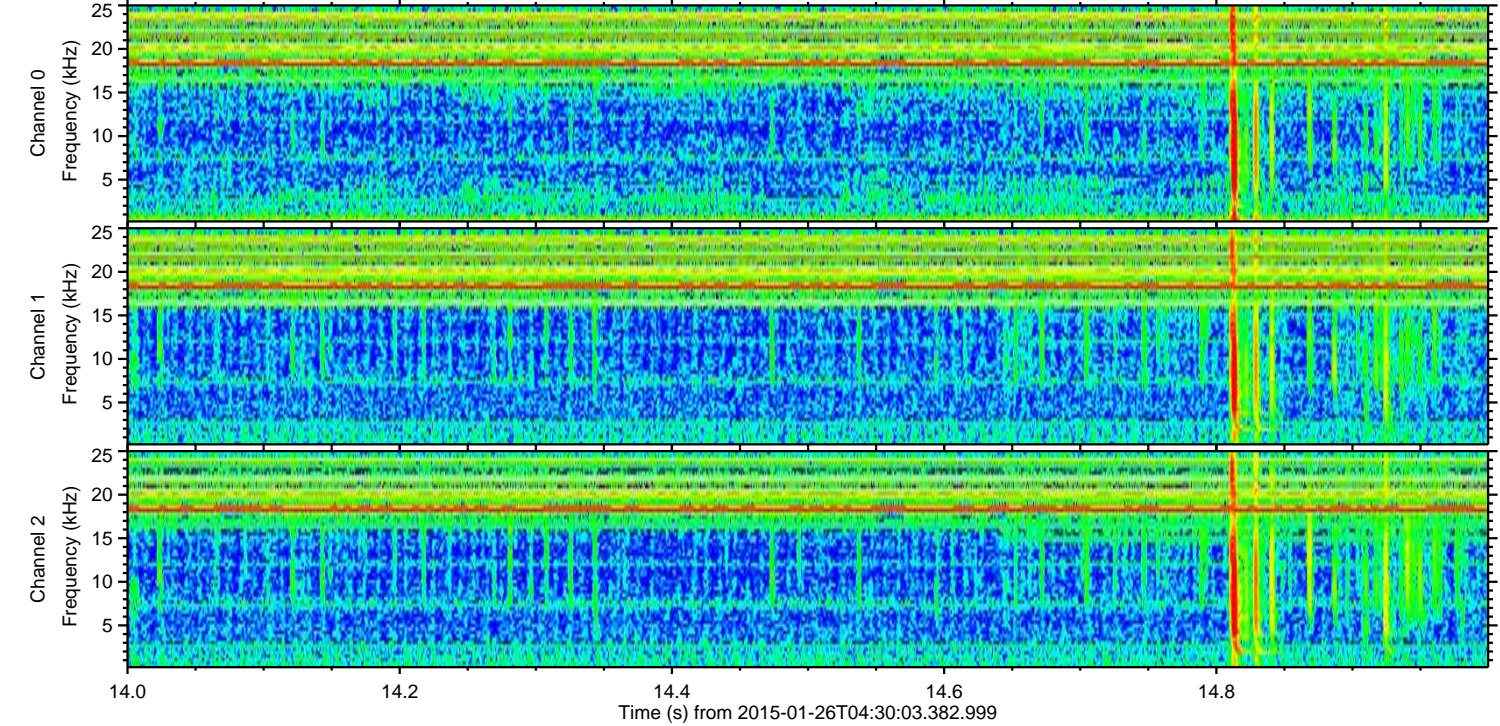
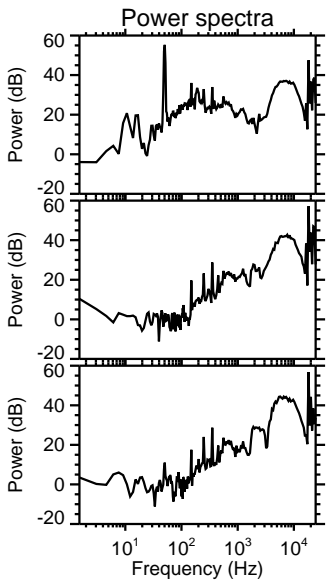
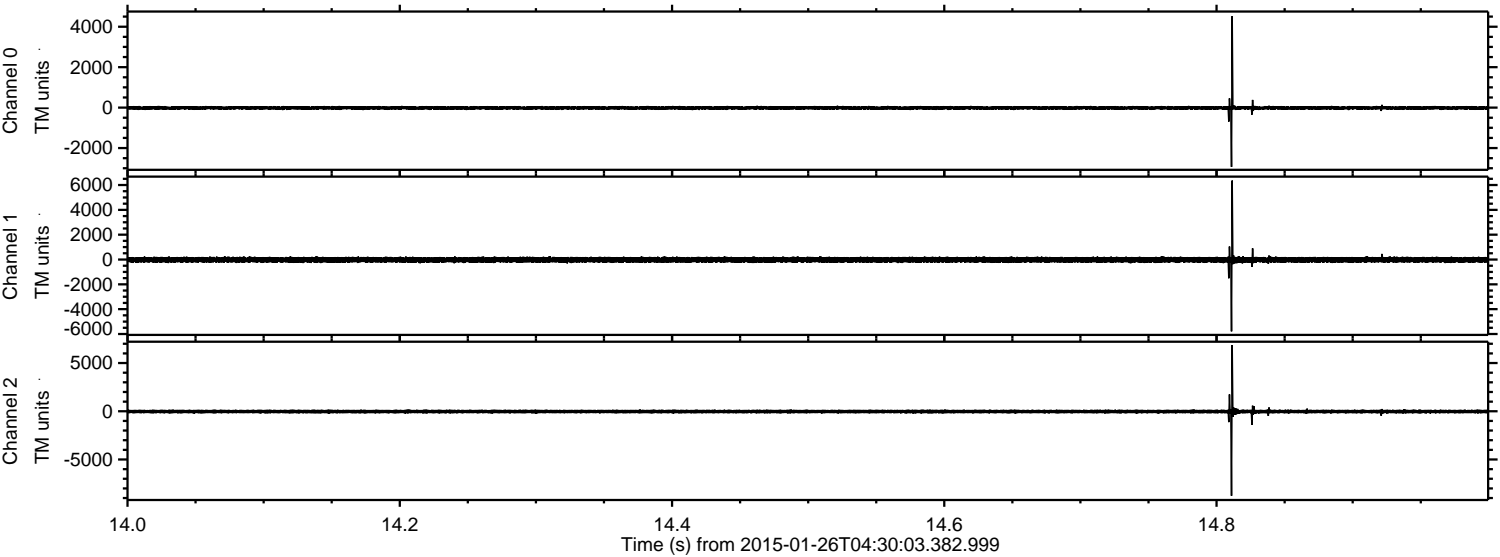


ELMAVAN 3D WAVEFORMS (Measured data sampled at 50 kHz) 49807 packets of 144 samples from 2015-01-26T04:30:03.382.999. Part 127/144

Processed Wed Feb 11 13:36:58 2015 by ELM ver.2012-10-06 from 001__elm20150126_043002__dat00.bin

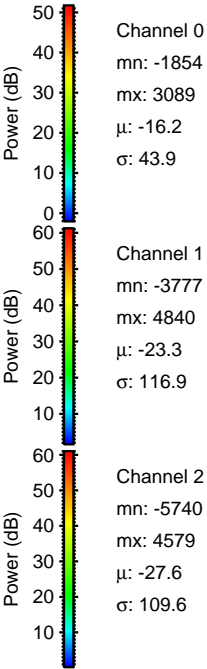
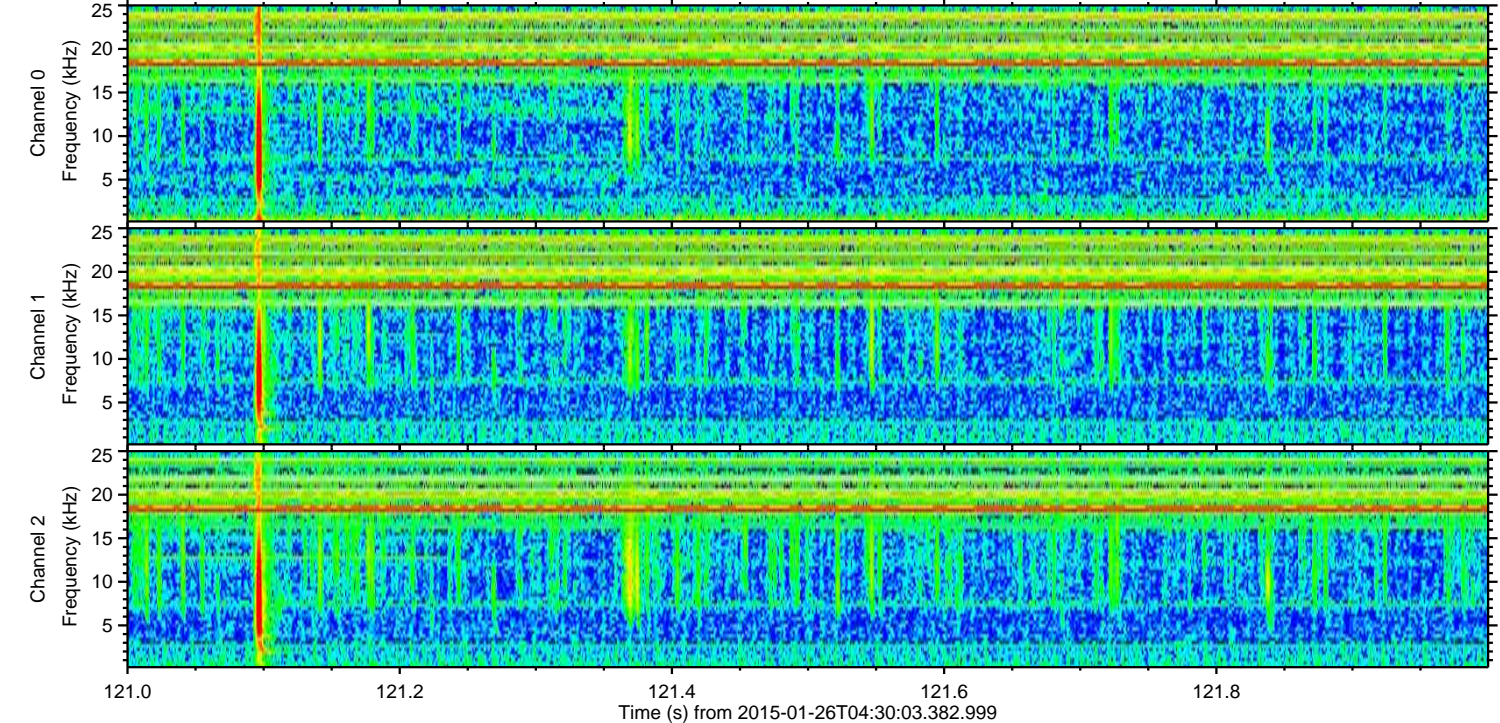
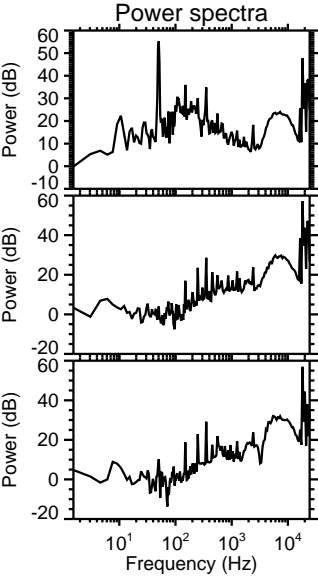
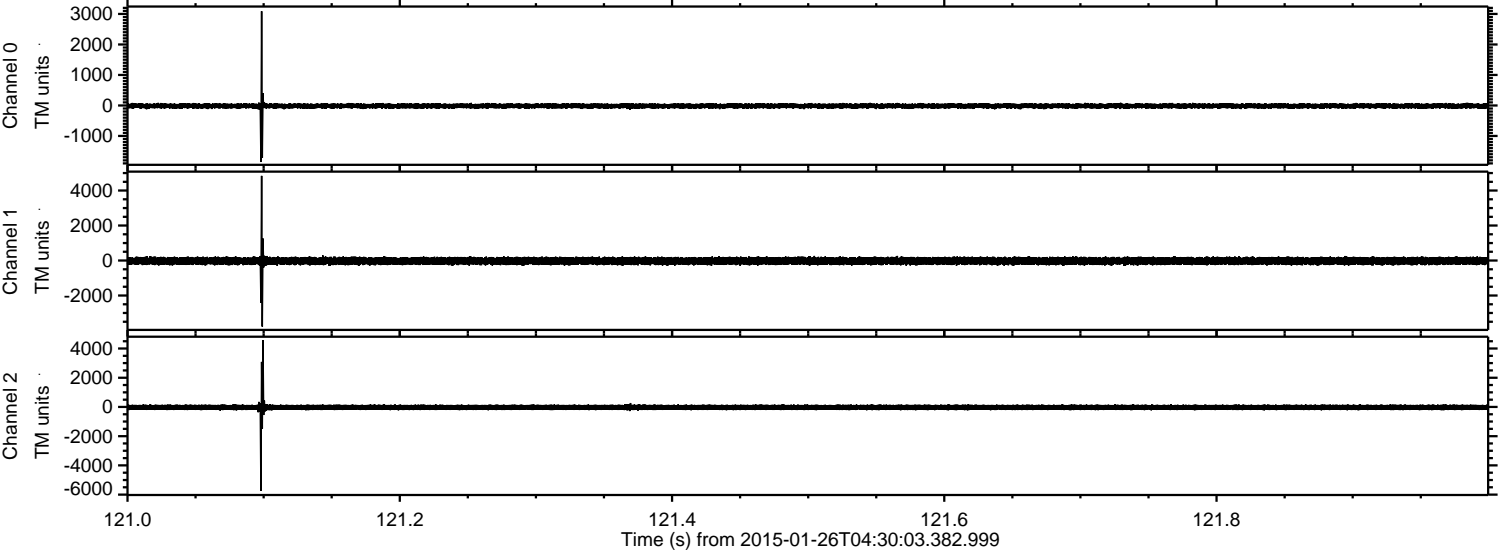


Processed Wed Feb 11 13:36:59 2015 by ELM ver.2012-10-06 from 001_elm20150126_043002__dat00.bin

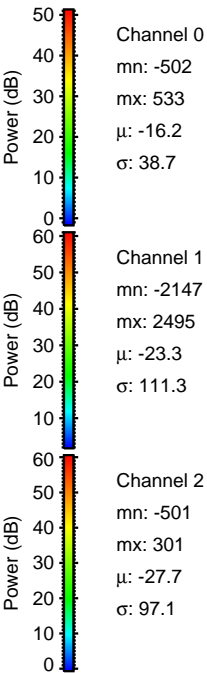
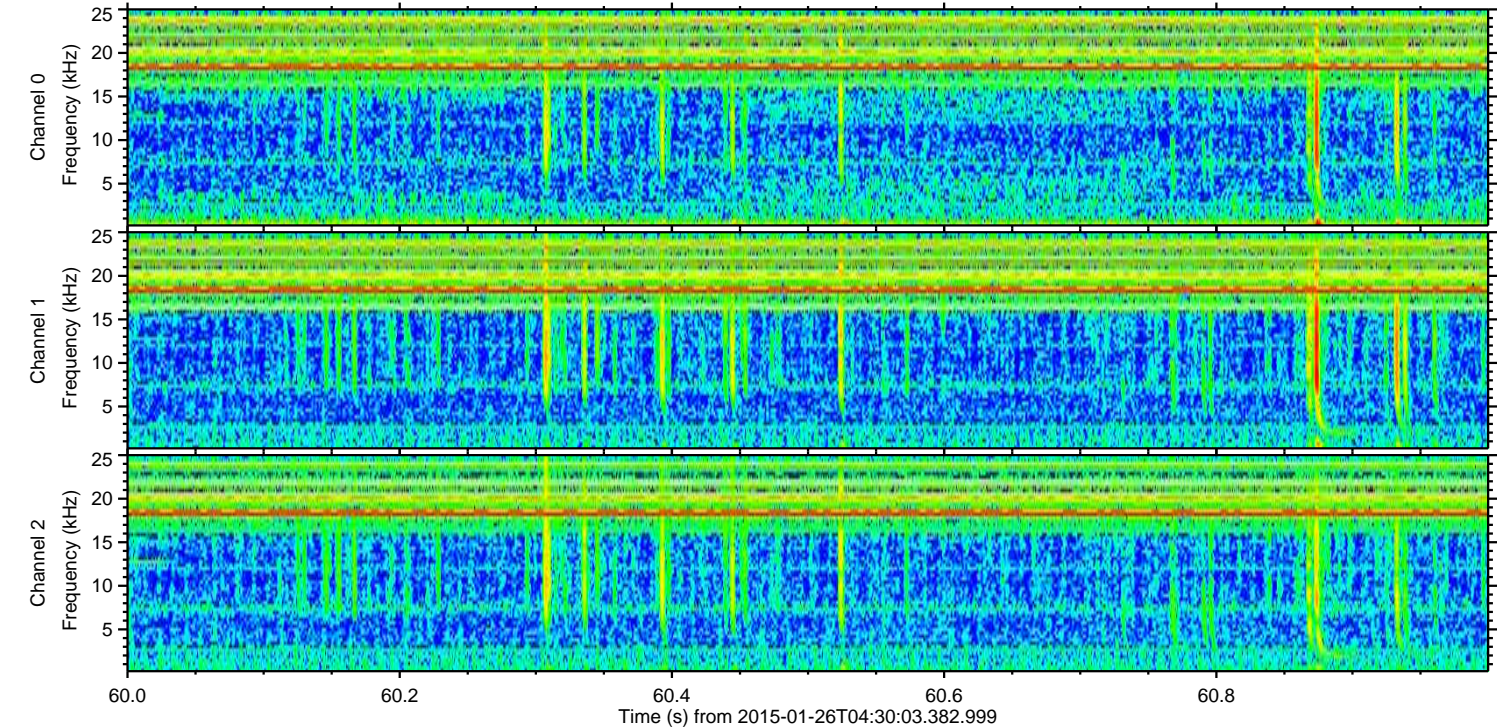
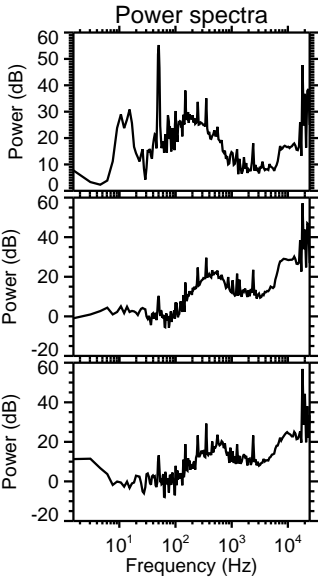
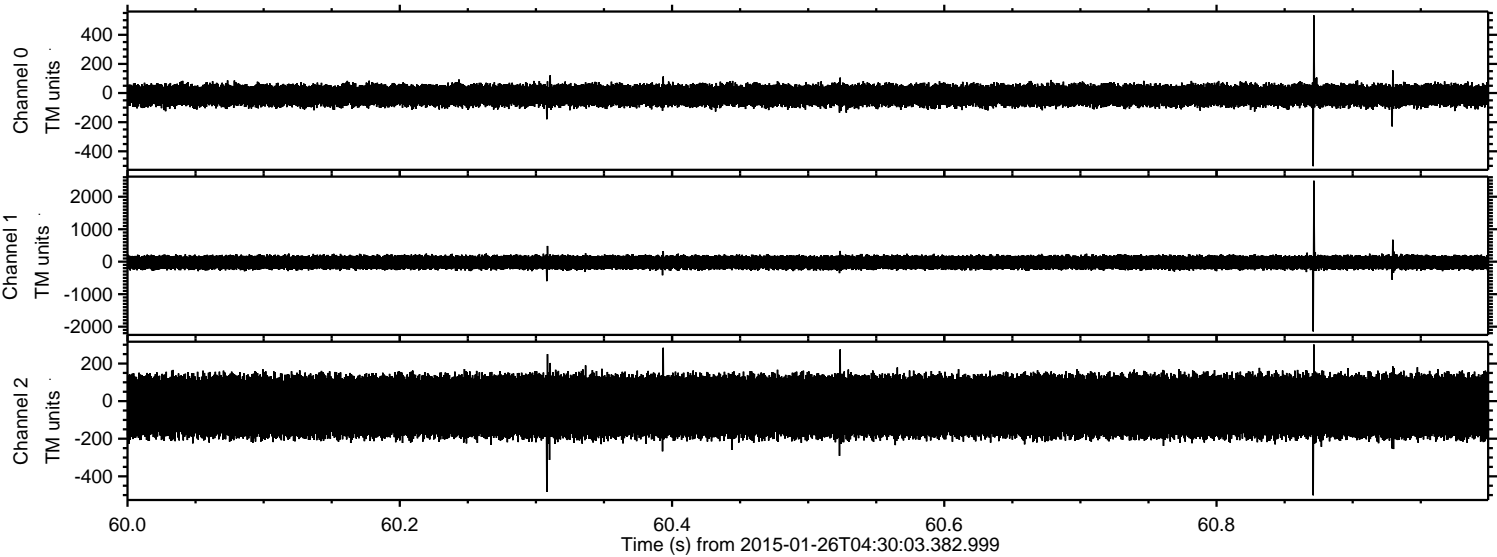


ELMAVAN 3D WAVEFORMS (Measured data sampled at 50 kHz) 49807 packets of 144 samples from 2015-01-26T04:30:03.382.999. Part 122/144

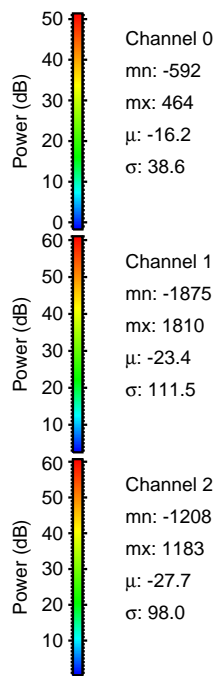
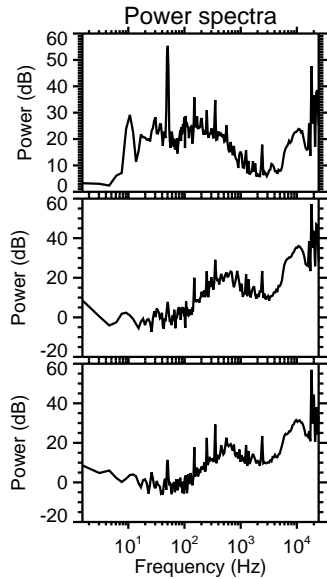
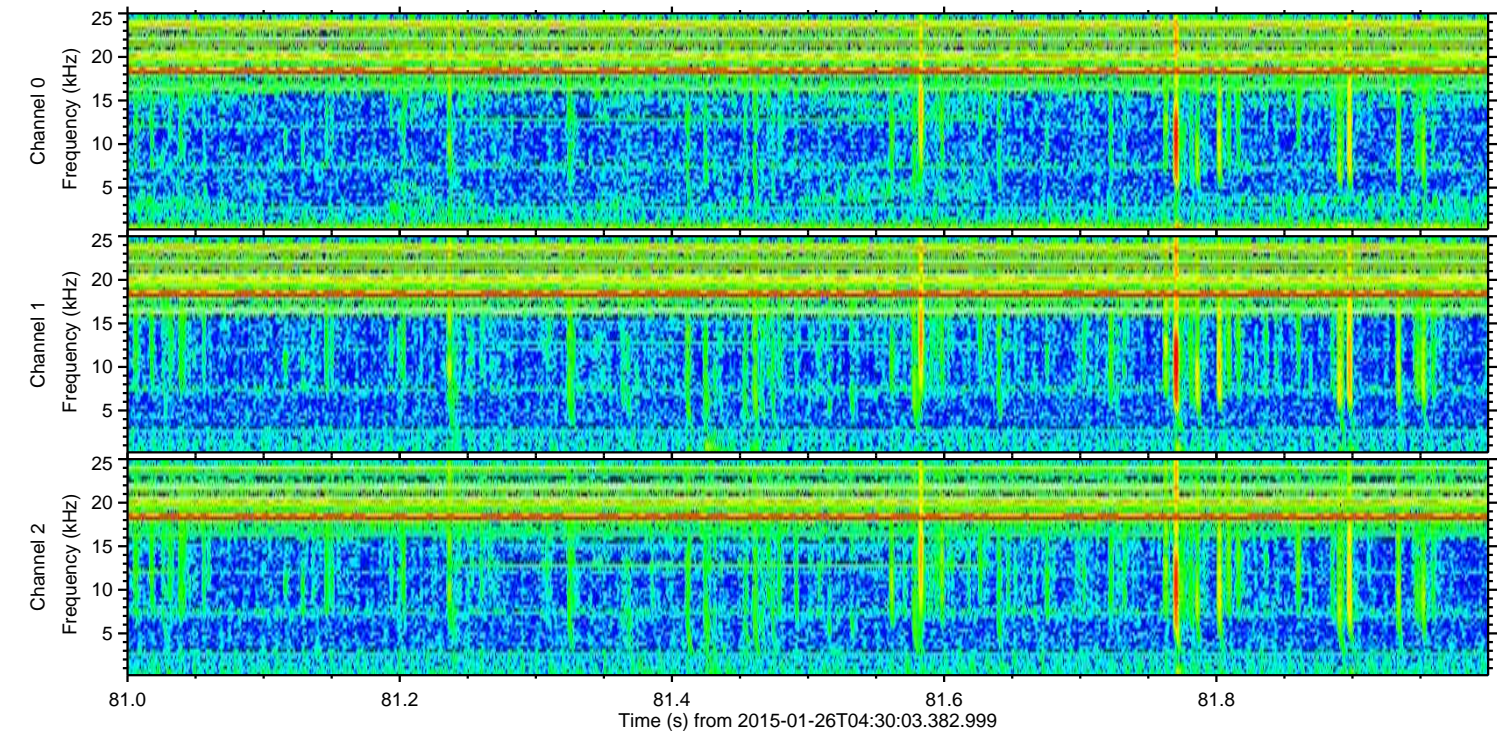
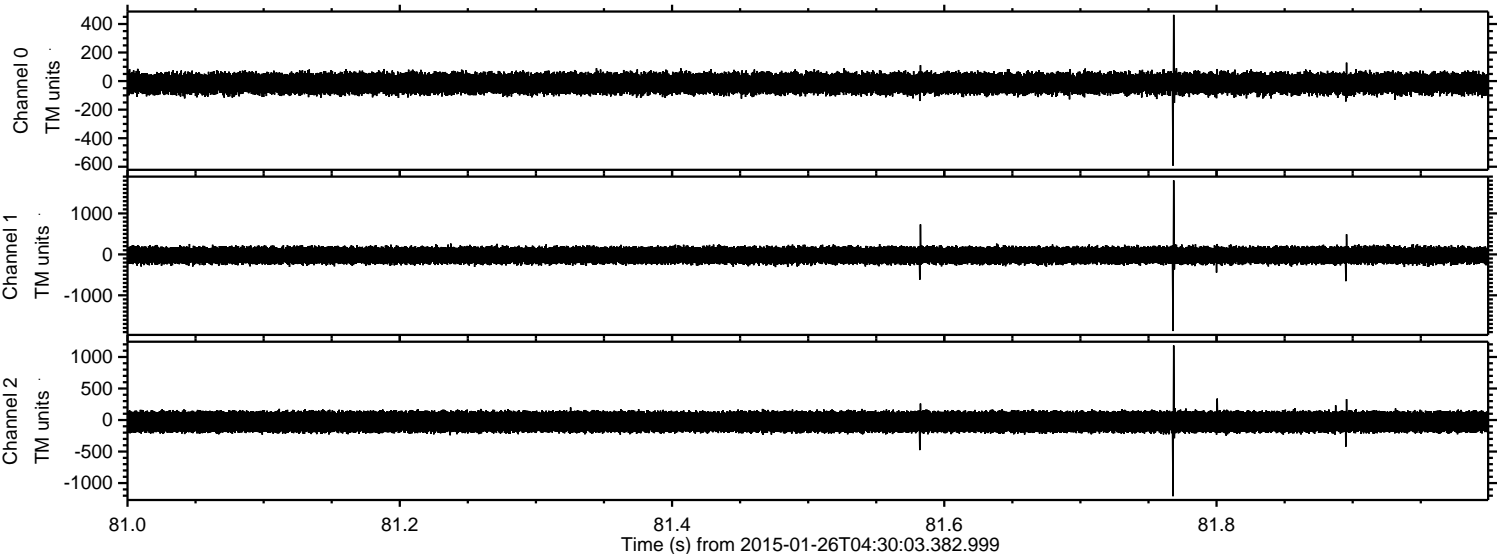
Processed Wed Feb 11 13:37:00 2015 by ELM ver.2012-10-06 from 001__elm20150126_043002__dat00.bin



Processed Wed Feb 11 13:37:01 2015 by ELM ver.2012-10-06 from 001__elm20150126_043002__dat00.bin



Processed Wed Feb 11 13:37:02 2015 by ELM ver.2012-10-06 from 001__elm20150126_043002__dat00.bin

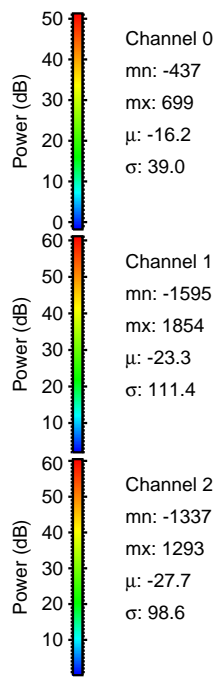
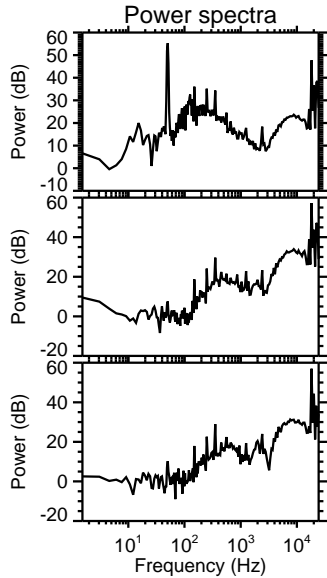
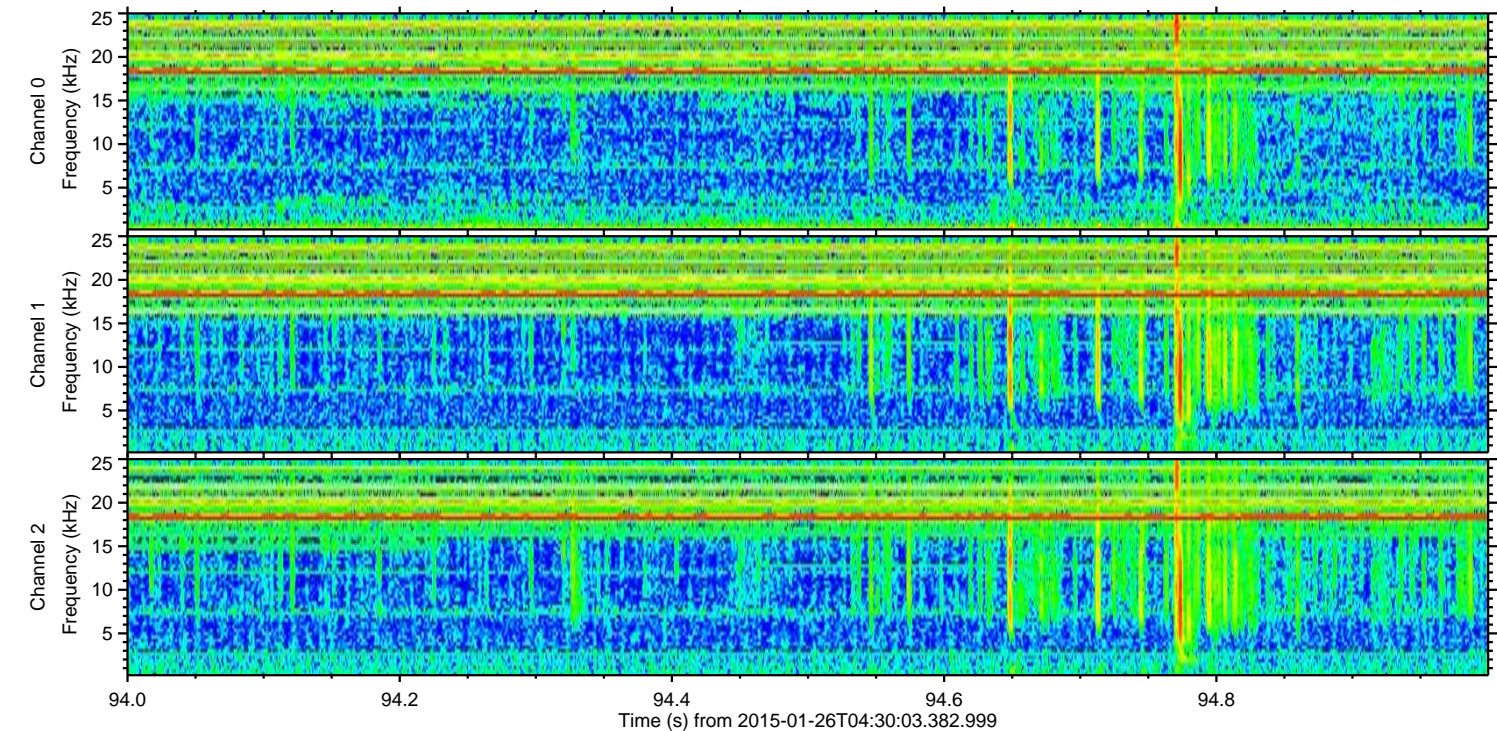
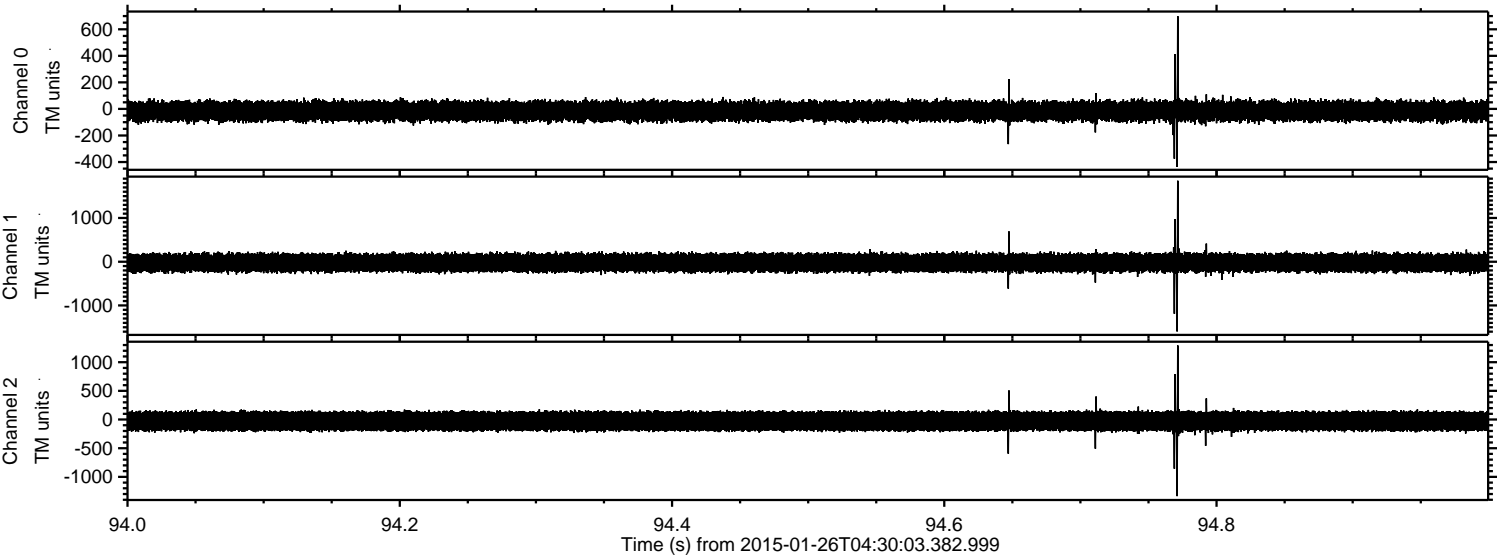


Channel 0
mn: -592
mx: 464
 μ : -16.2
 σ : 38.6

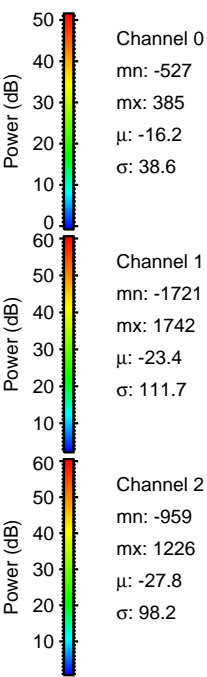
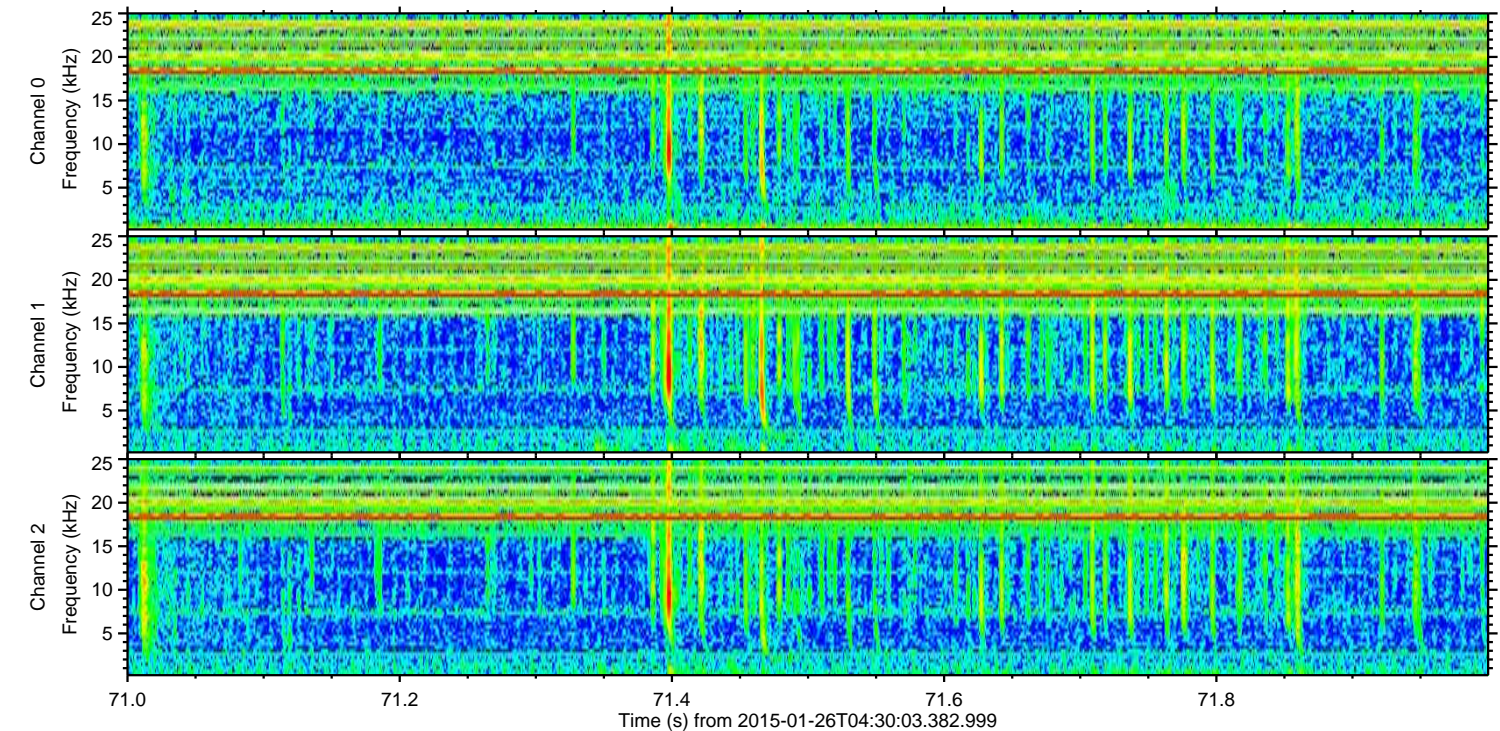
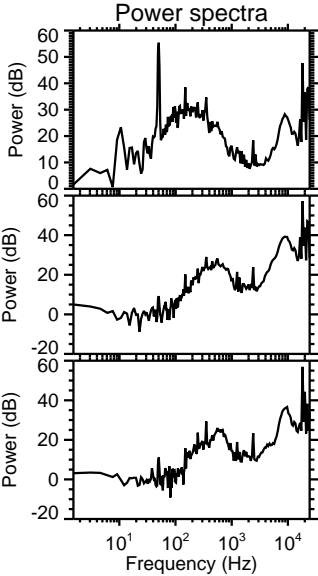
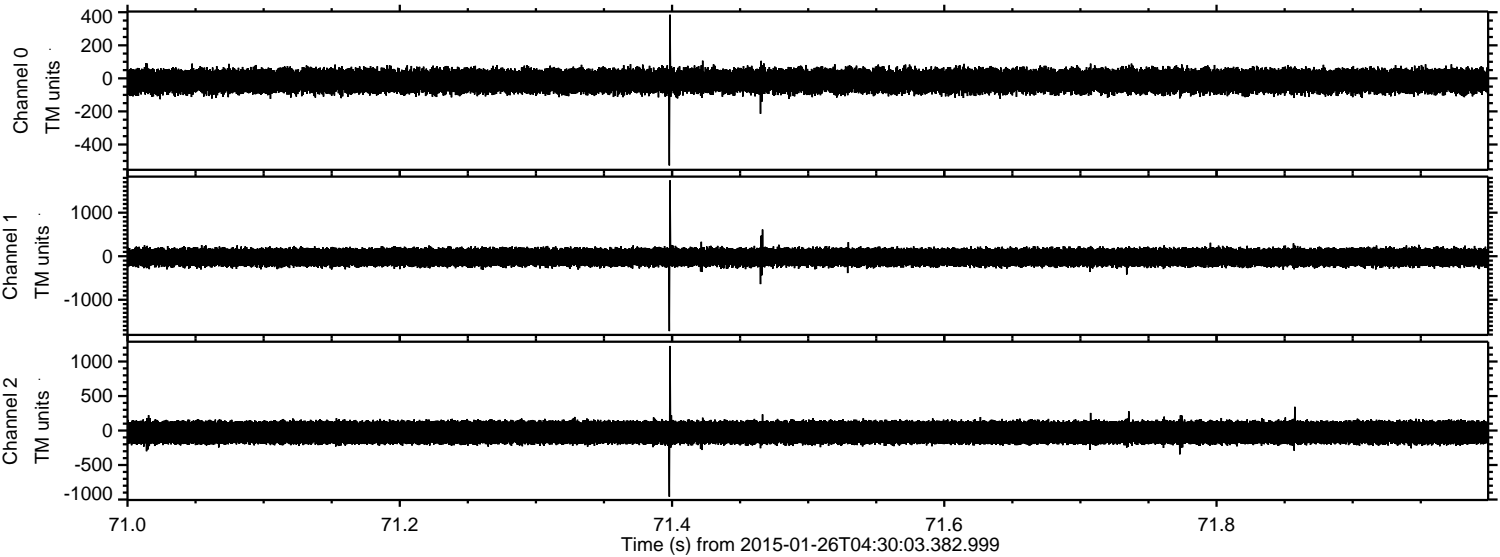
Channel 1
mn: -1875
mx: 1810
 μ : -23.4
 σ : 111.5

Channel 2
mn: -1208
mx: 1183
 μ : -27.7
 σ : 98.0

Processed Wed Feb 11 13:37:03 2015 by ELM ver.2012-10-06 from 001__elm20150126_043002__dat00.bin



Processed Wed Feb 11 13:37:04 2015 by ELM ver.2012-10-06 from 001__elm20150126_043002__dat00.bin



Processed Wed Feb 11 13:37:05 2015 by ELM ver.2012-10-06 from 001__elm20150126_043002__dat00.bin

