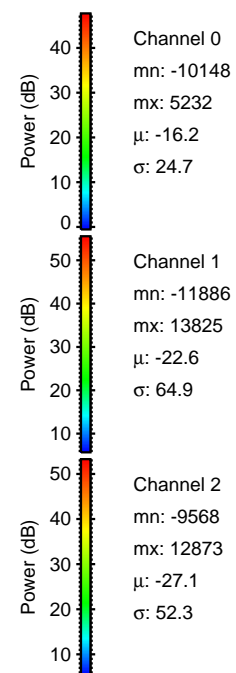
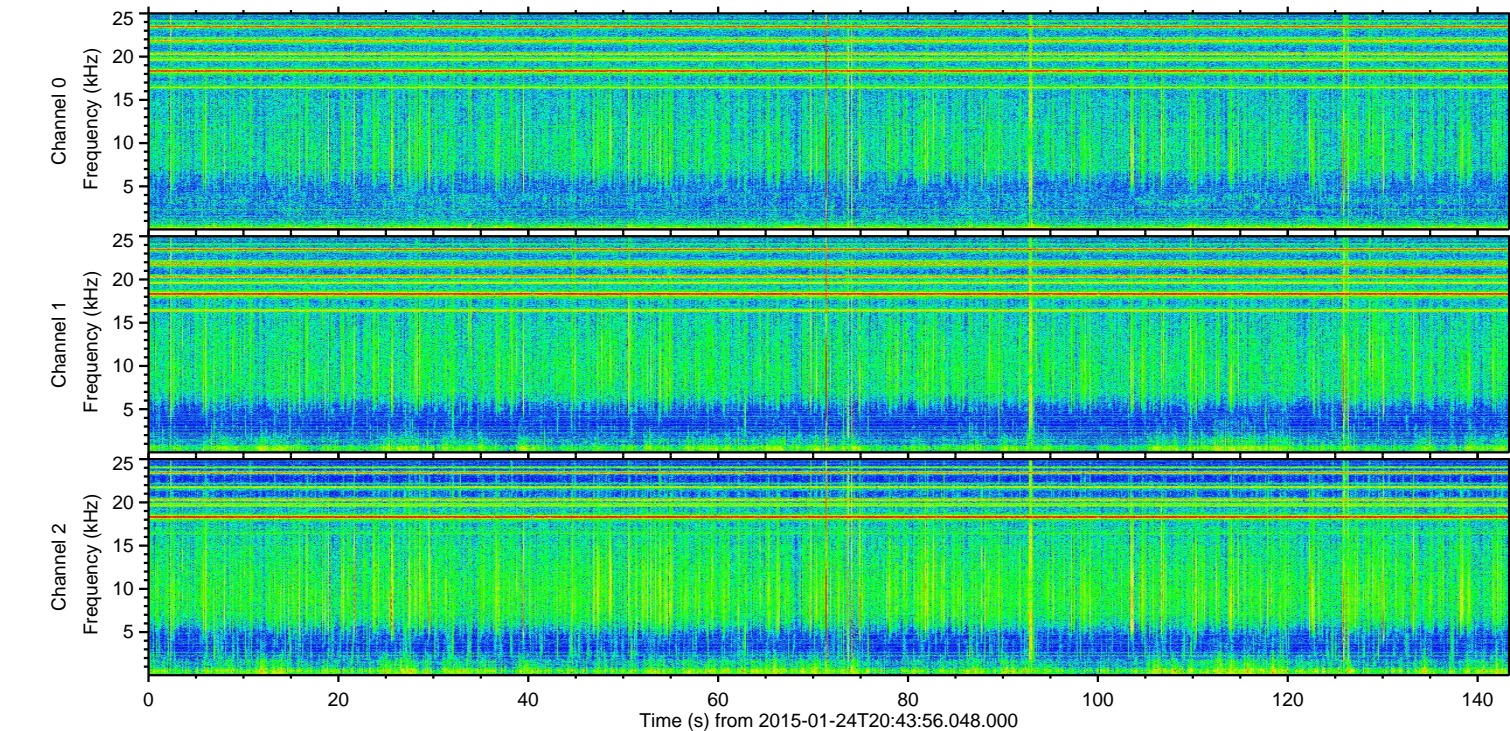
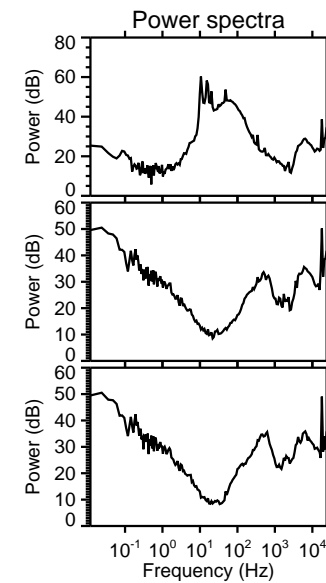
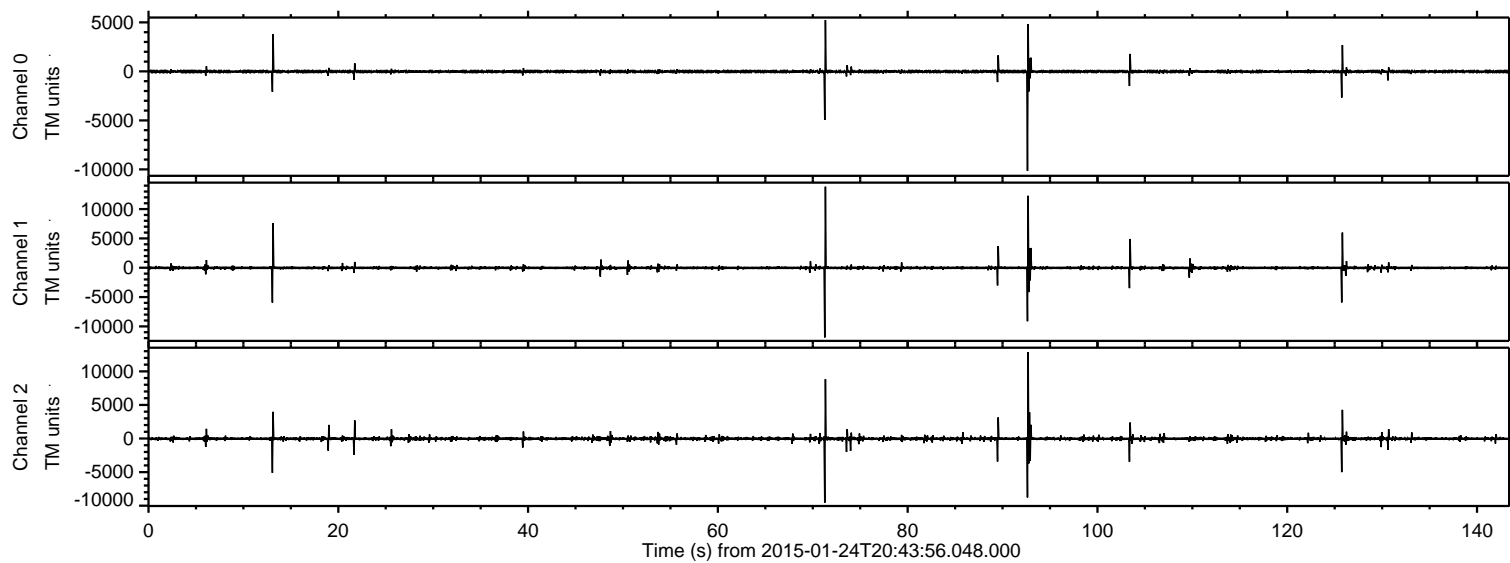
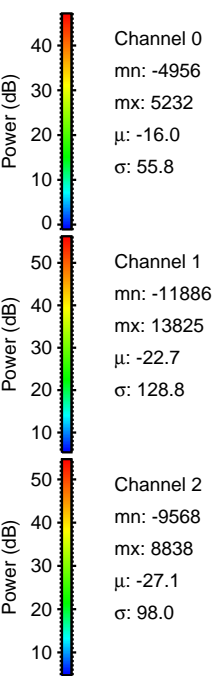
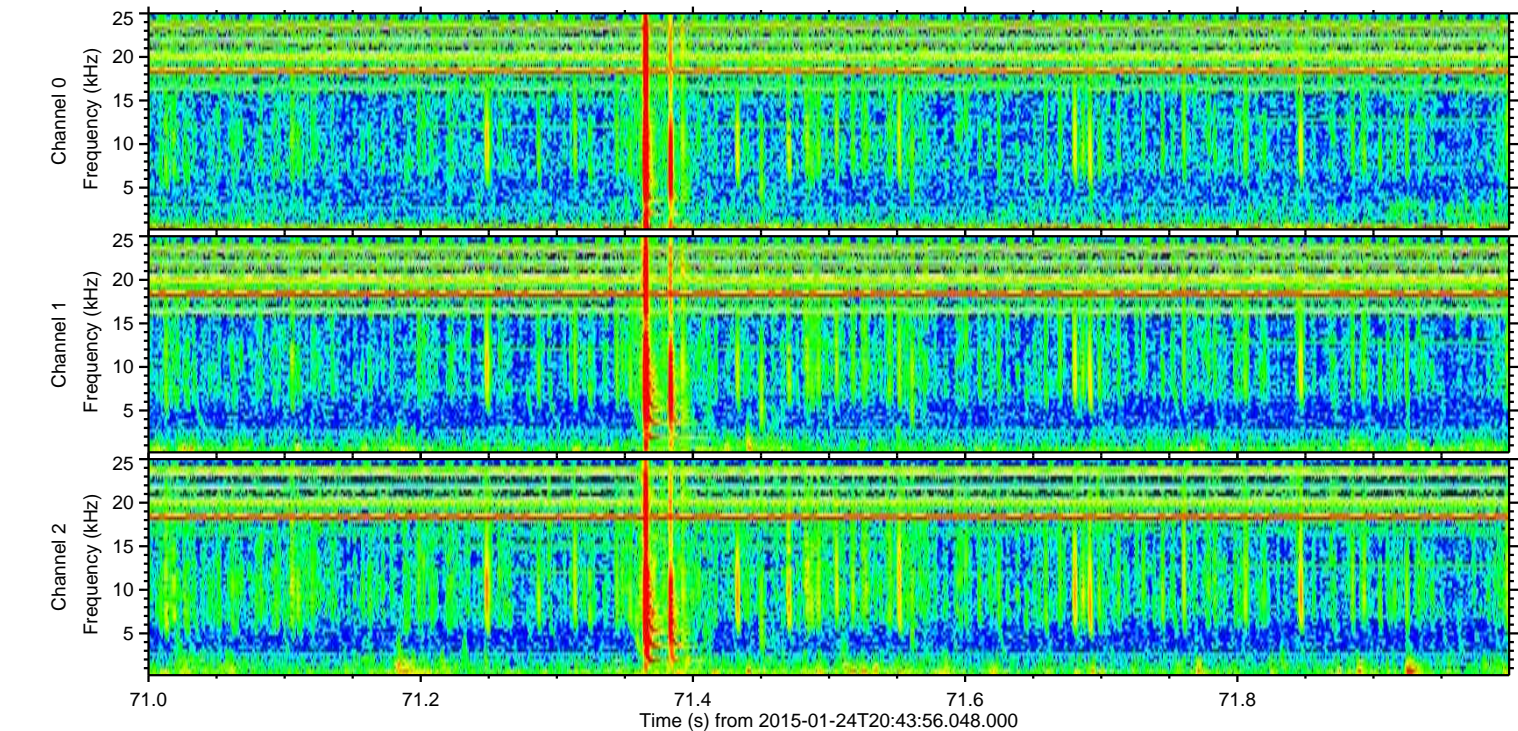
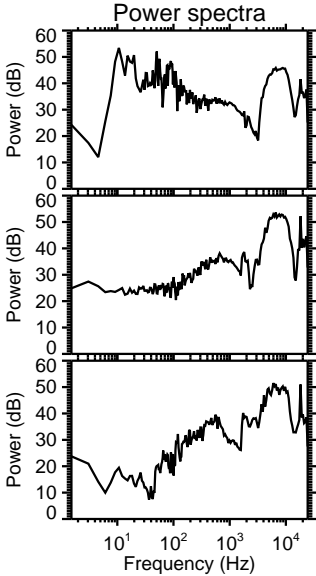
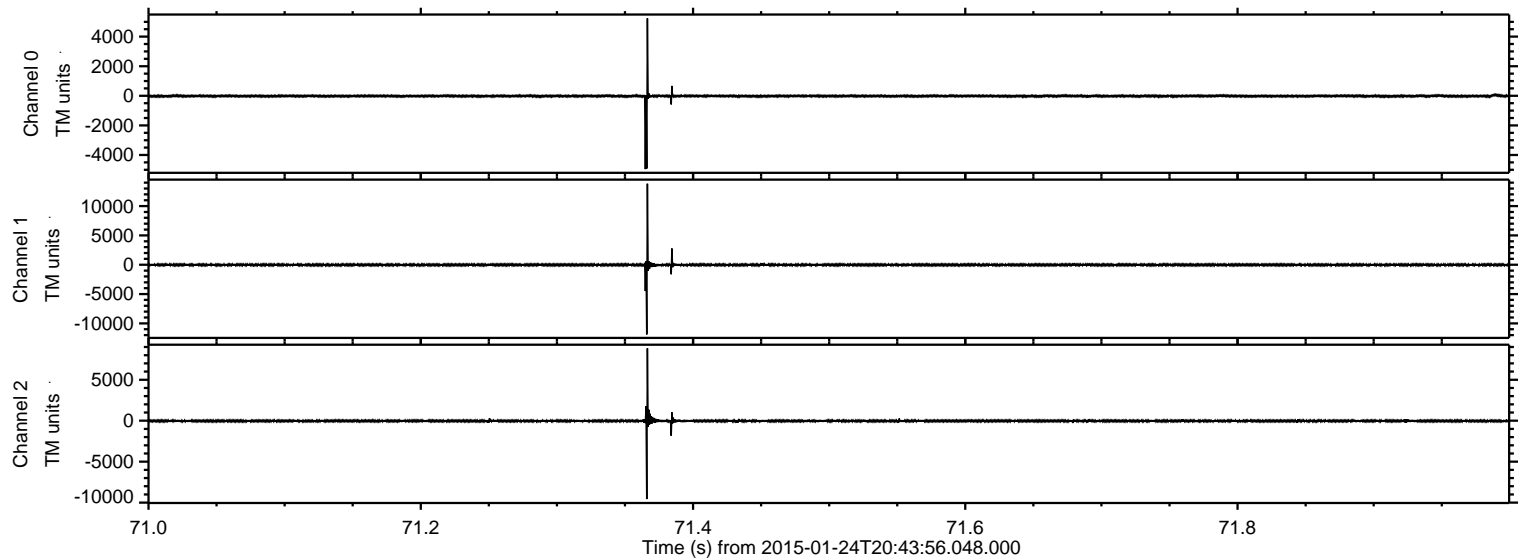


ELMAVAN 3D WAVEFORMS (Measured data sampled at 50 kHz) 49786 packets of 144 samples from 2015-01-24T20:43:56.048.000.

Processed Wed Feb 11 01:04:47 2015 by ELM ver.2012-10-06 from 001__elm20150124_204355__dat00.bin

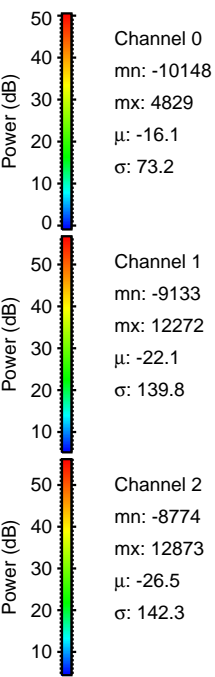
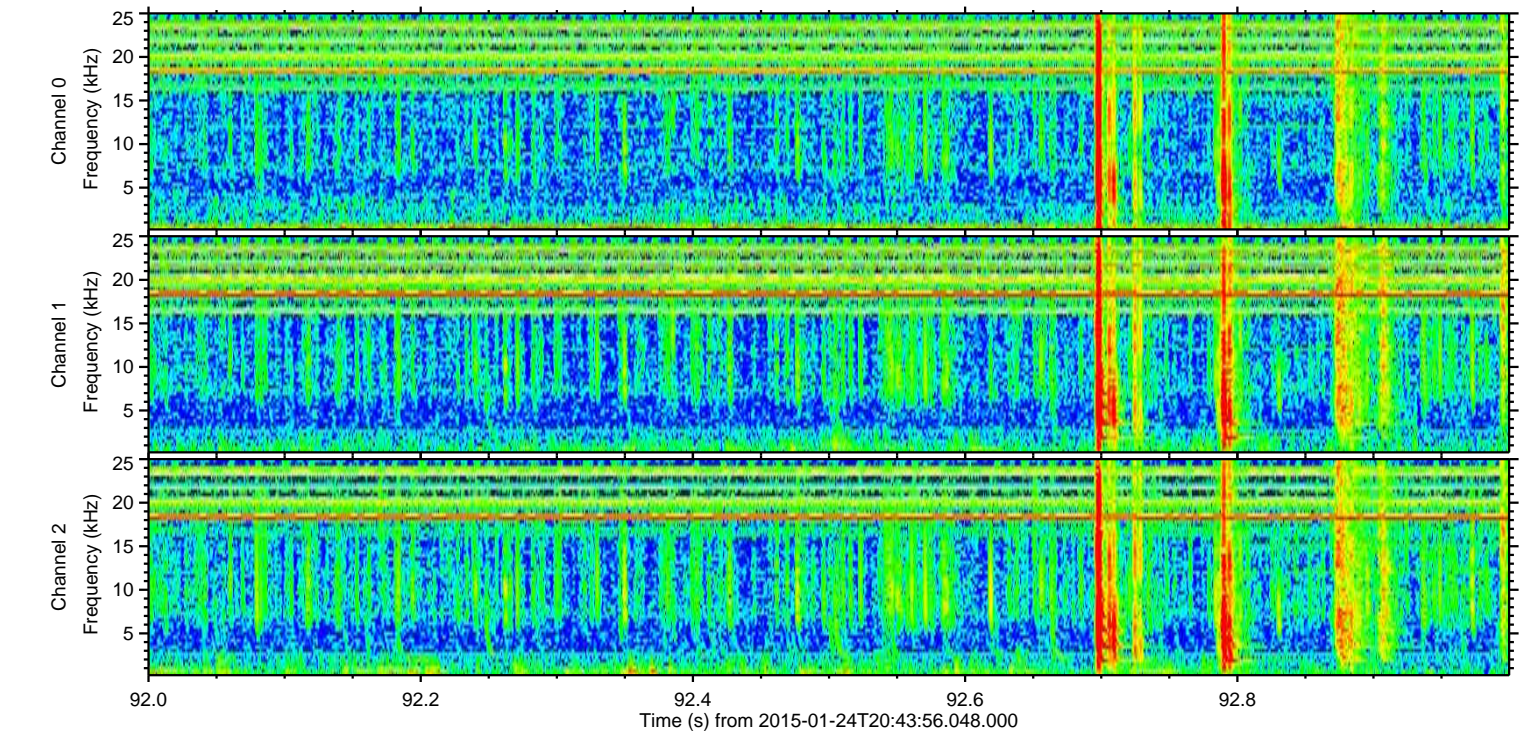
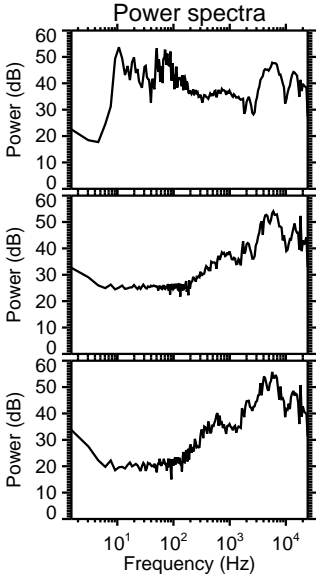
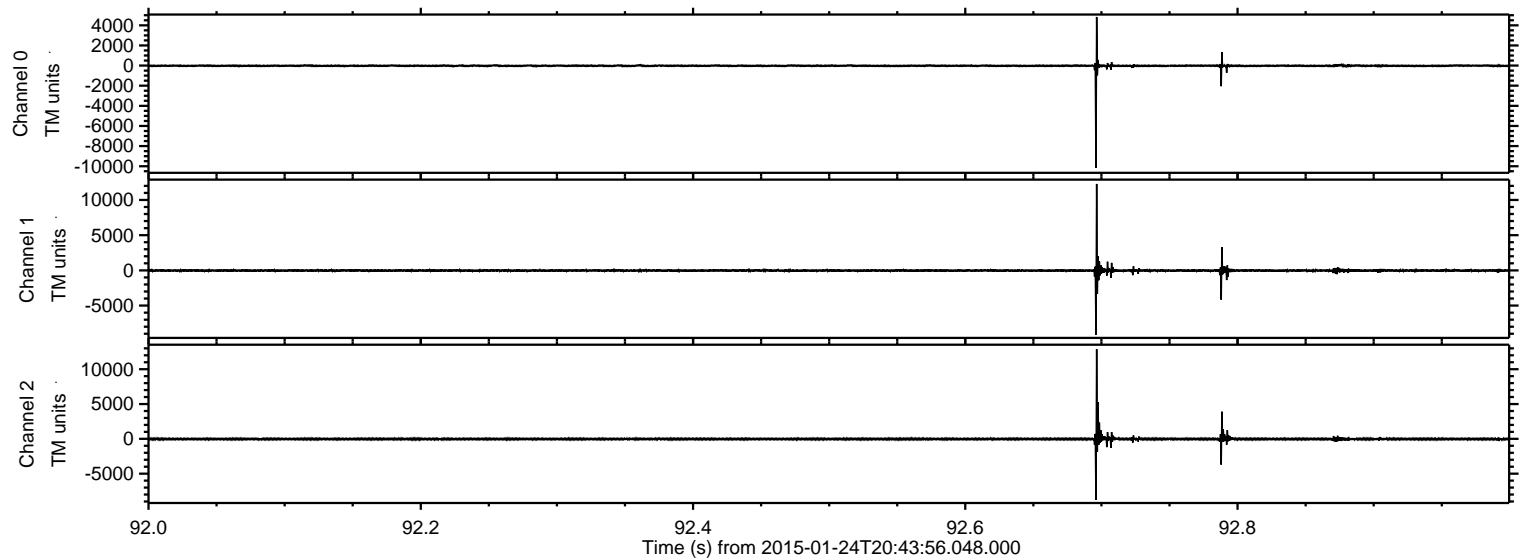


Processed Wed Feb 11 01:04:58 2015 by ELM ver.2012-10-06 from 001__elm20150124_204355__dat00.bin

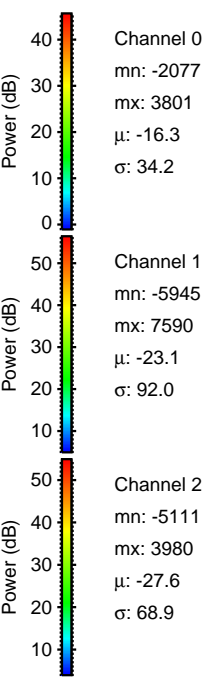
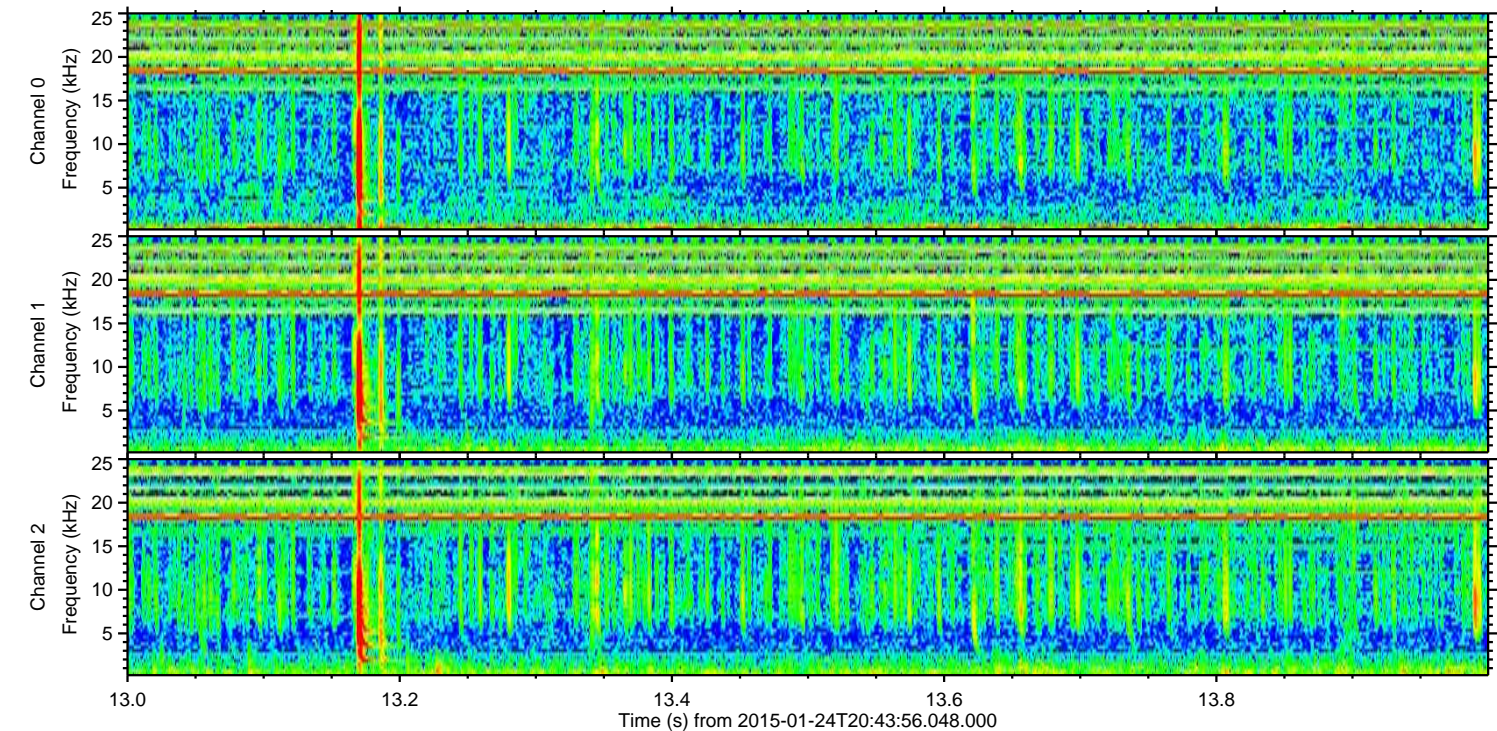
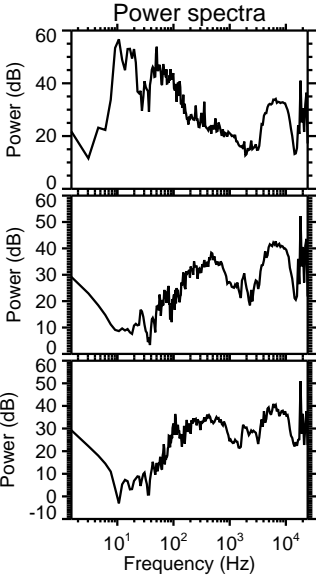
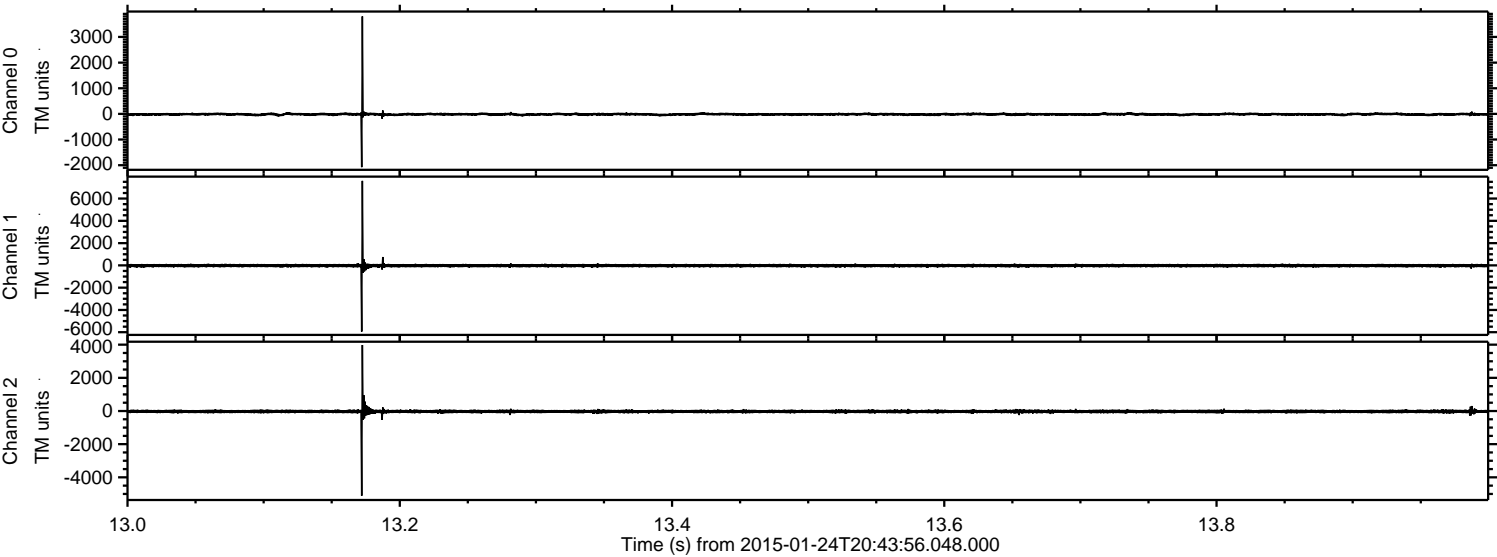


ELMAVAN 3D WAVEFORMS (Measured data sampled at 50 kHz) 49786 packets of 144 samples from 2015-01-24T20:43:56.048.000. Part 93/144

Processed Wed Feb 11 01:04:59 2015 by ELM ver.2012-10-06 from 001__elm20150124_204355__dat00.bin



Processed Wed Feb 11 01:05:00 2015 by ELM ver.2012-10-06 from 001__elm20150124_204355__dat00.bin



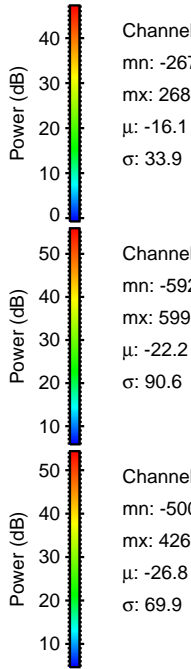
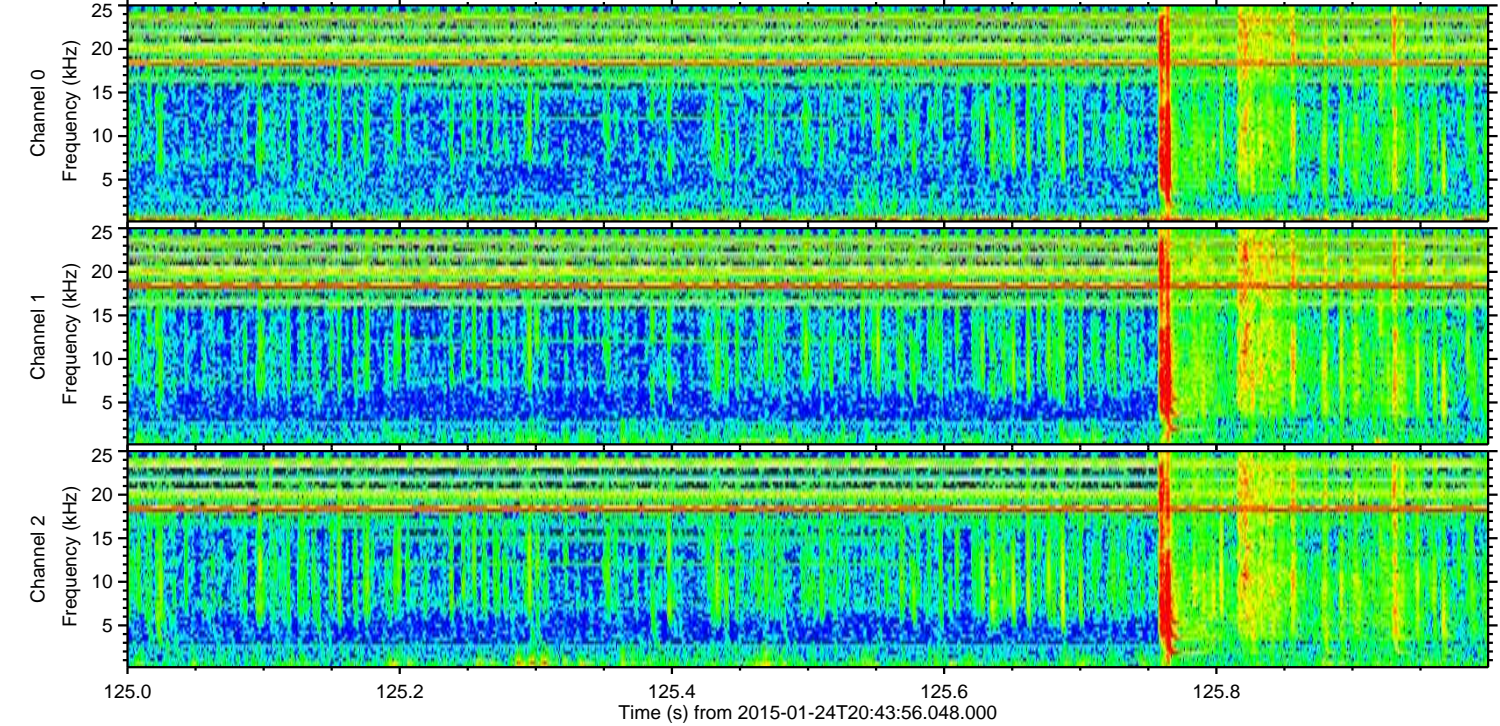
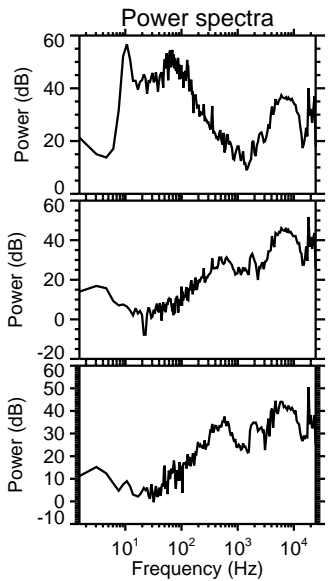
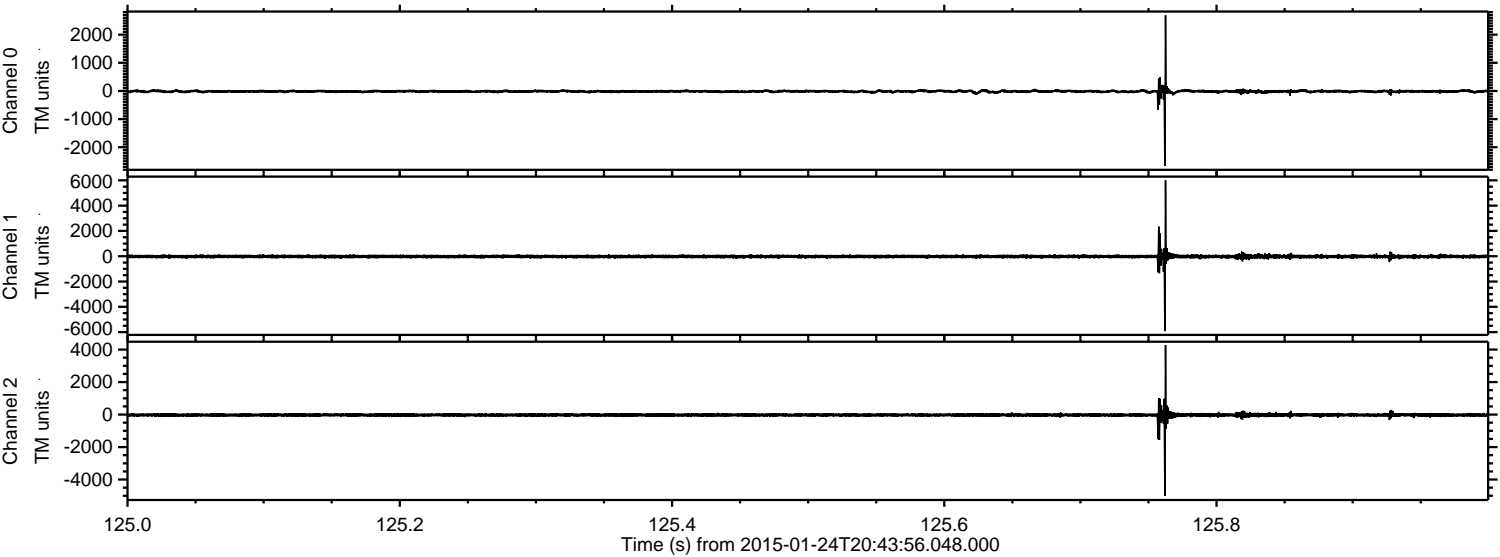
Channel 0
mn: -2077
mx: 3801
 μ : -16.3
 σ : 34.2

Channel 1
mn: -5945
mx: 7590
 μ : -23.1
 σ : 92.0

Channel 2
mn: -5111
mx: 3980
 μ : -27.6
 σ : 68.9

ELMAVAN 3D WAVEFORMS (Measured data sampled at 50 kHz) 49786 packets of 144 samples from 2015-01-24T20:43:56.048.000. Part 126/144

Processed Wed Feb 11 01:05:01 2015 by ELM ver.2012-10-06 from 001__elm20150124_204355__dat00.bin



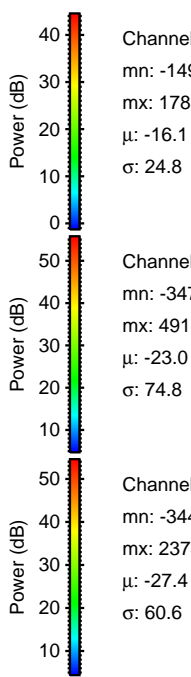
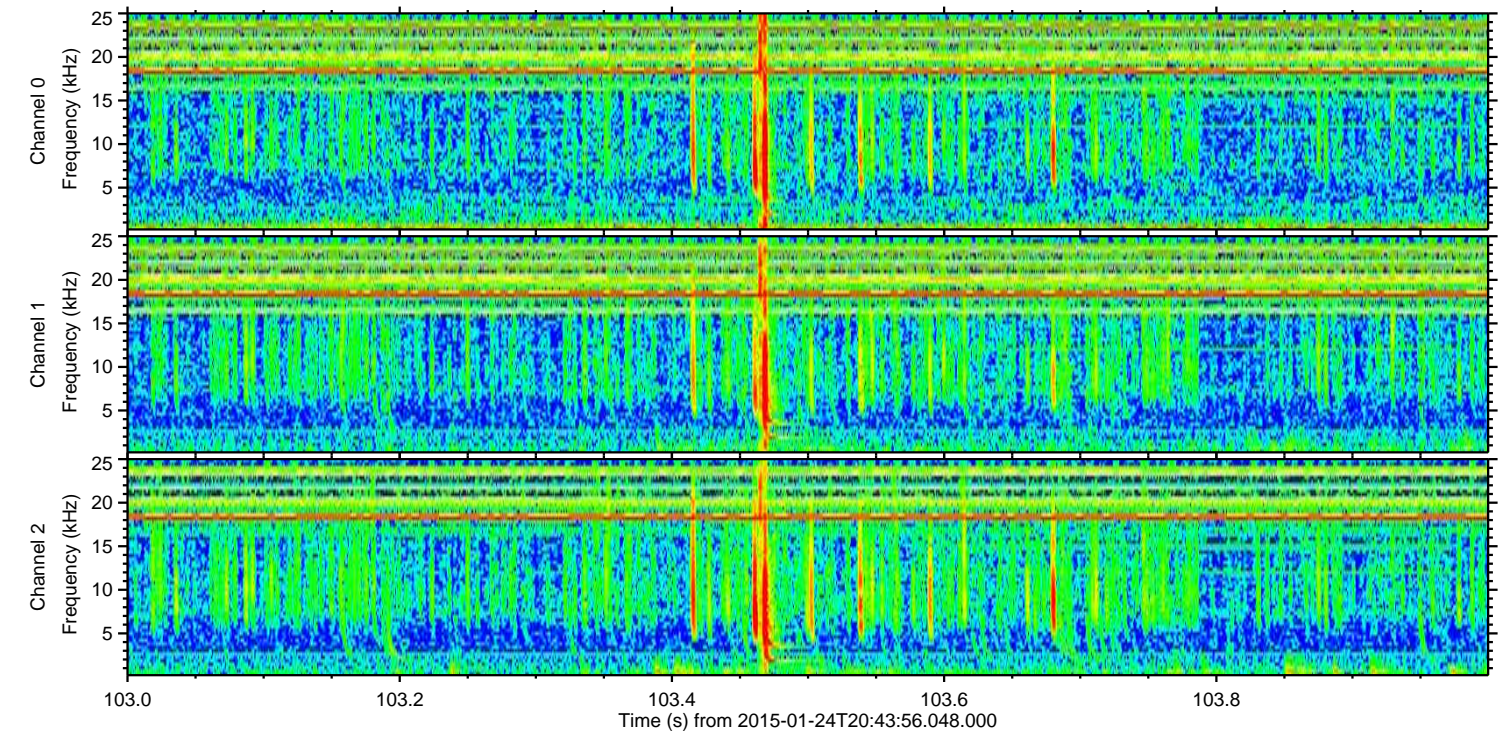
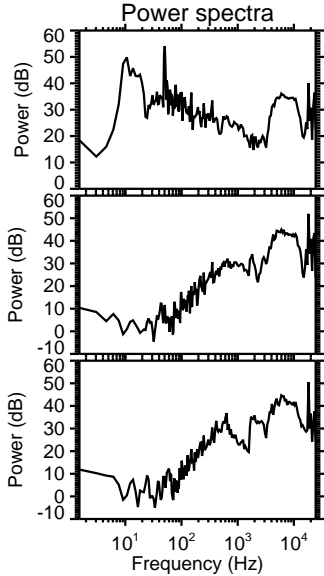
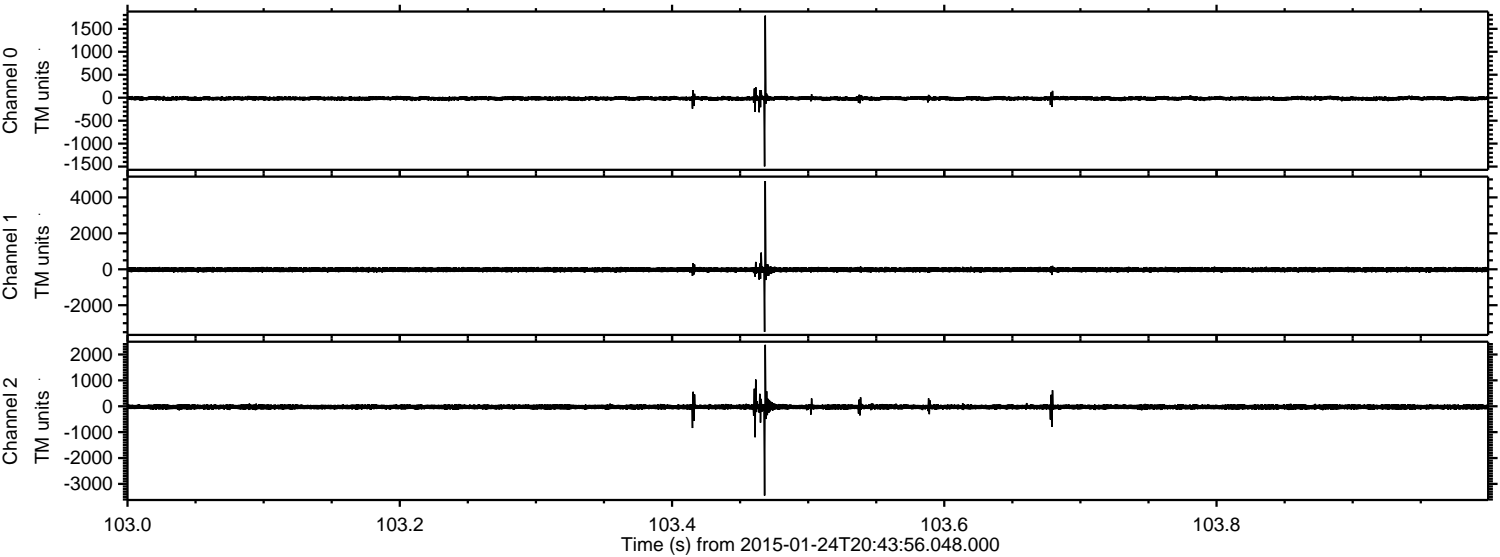
Channel 0
mn: -2670
mx: 2688
 μ : -16.1
 σ : 33.9

Channel 1
mn: -5924
mx: 5993
 μ : -22.2
 σ : 90.6

Channel 2
mn: -5008
mx: 4269
 μ : -26.8
 σ : 69.9

ELMAVAN 3D WAVEFORMS (Measured data sampled at 50 kHz) 49786 packets of 144 samples from 2015-01-24T20:43:56.048.000. Part 104/144

Processed Wed Feb 11 01:05:02 2015 by ELM ver.2012-10-06 from 001__elm20150124_204355__dat00.bin

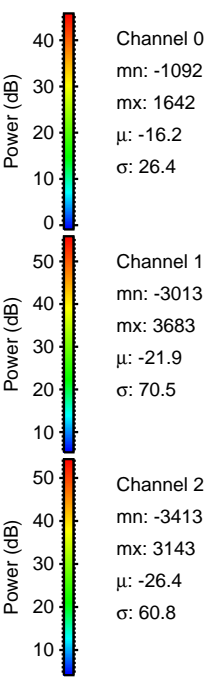
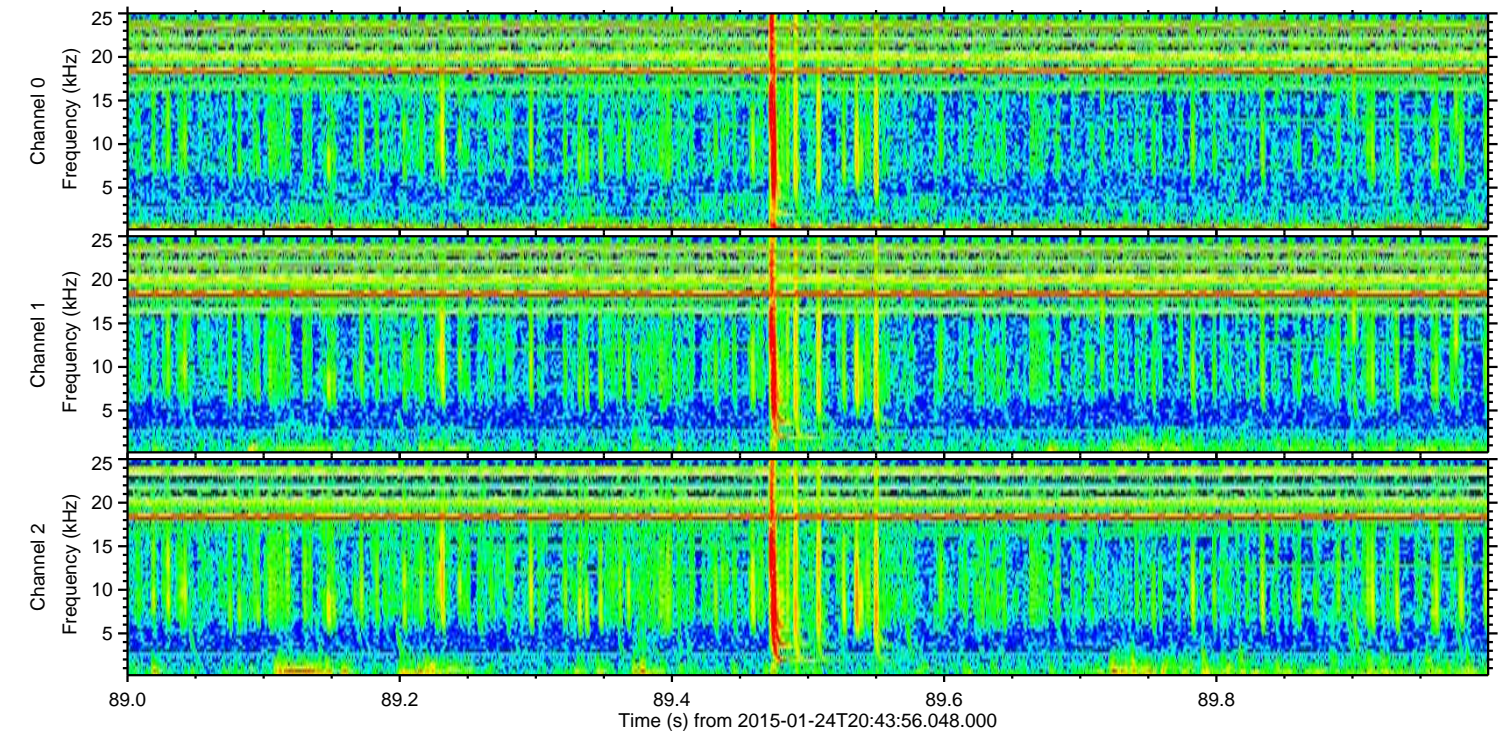
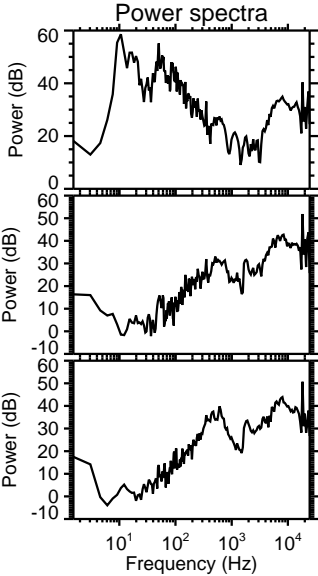
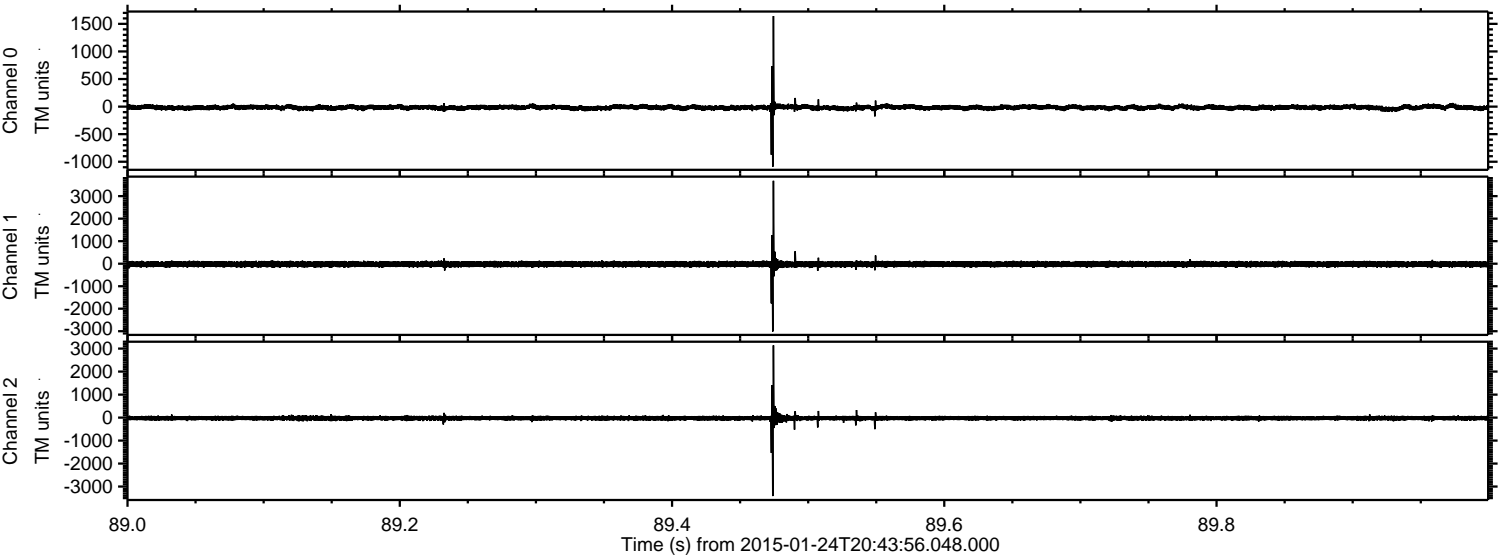


Channel 0
mn: -1496
mx: 1787
 μ : -16.1
 σ : 24.8

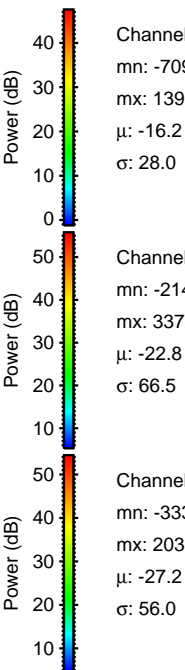
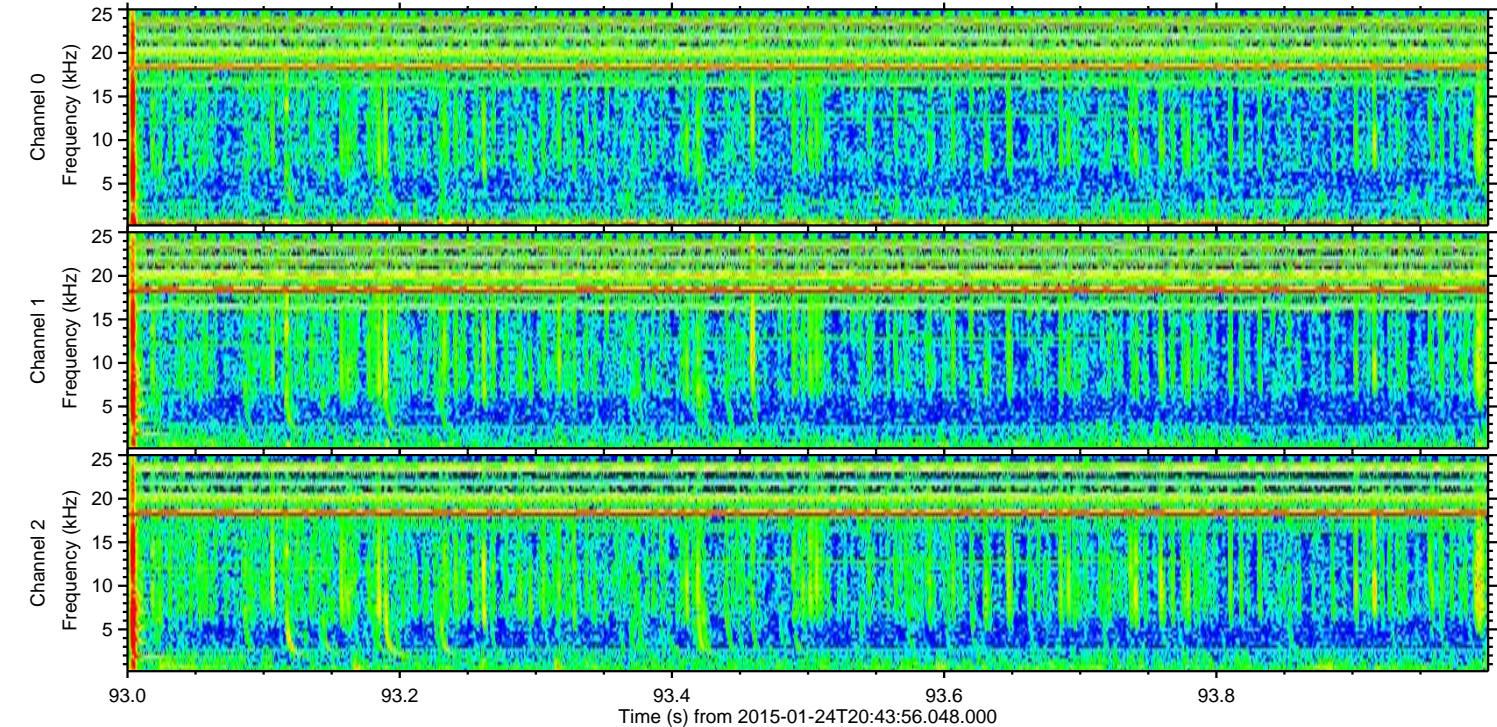
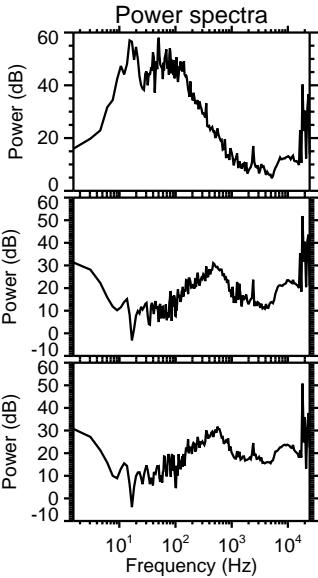
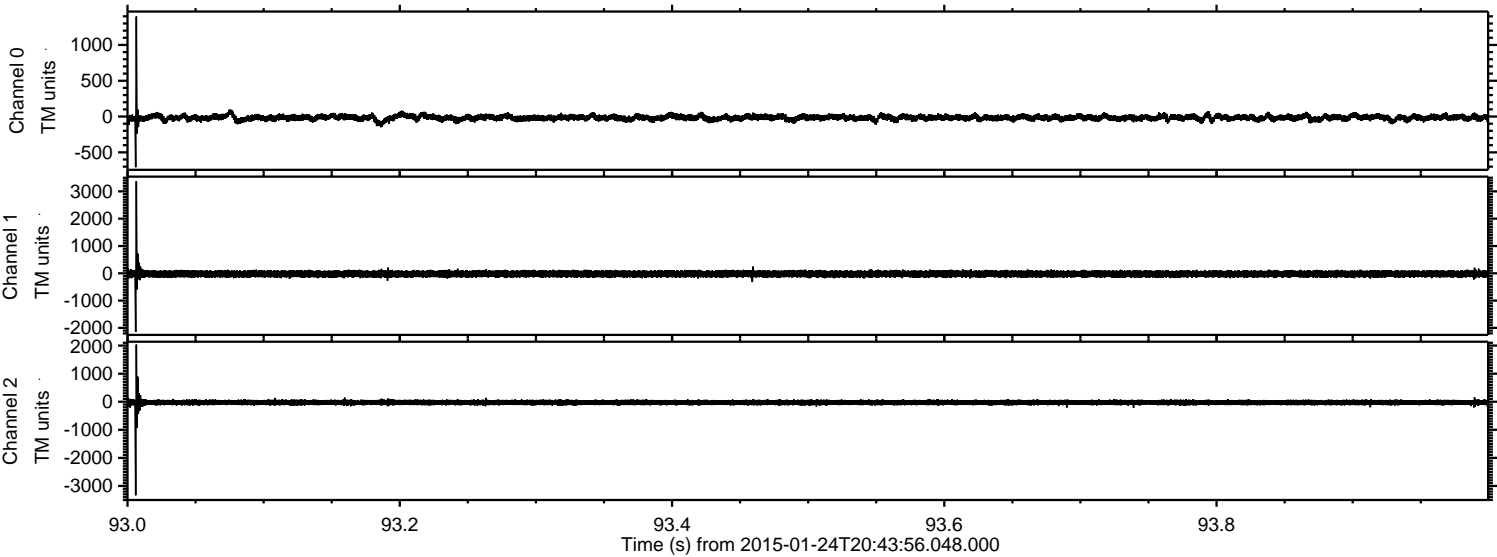
Channel 1
mn: -3477
mx: 4910
 μ : -23.0
 σ : 74.8

Channel 2
mn: -3449
mx: 2374
 μ : -27.4
 σ : 60.6

Processed Wed Feb 11 01:05:03 2015 by ELM ver.2012-10-06 from 001__elm20150124_204355__dat00.bin



Processed Wed Feb 11 01:05:04 2015 by ELM ver.2012-10-06 from 001__elm20150124_204355__dat00.bin

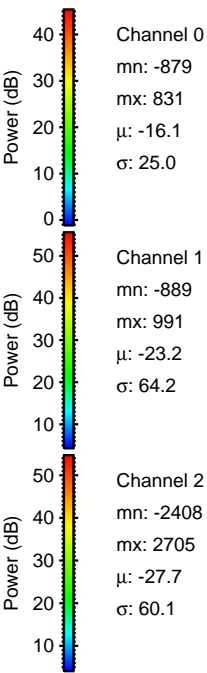
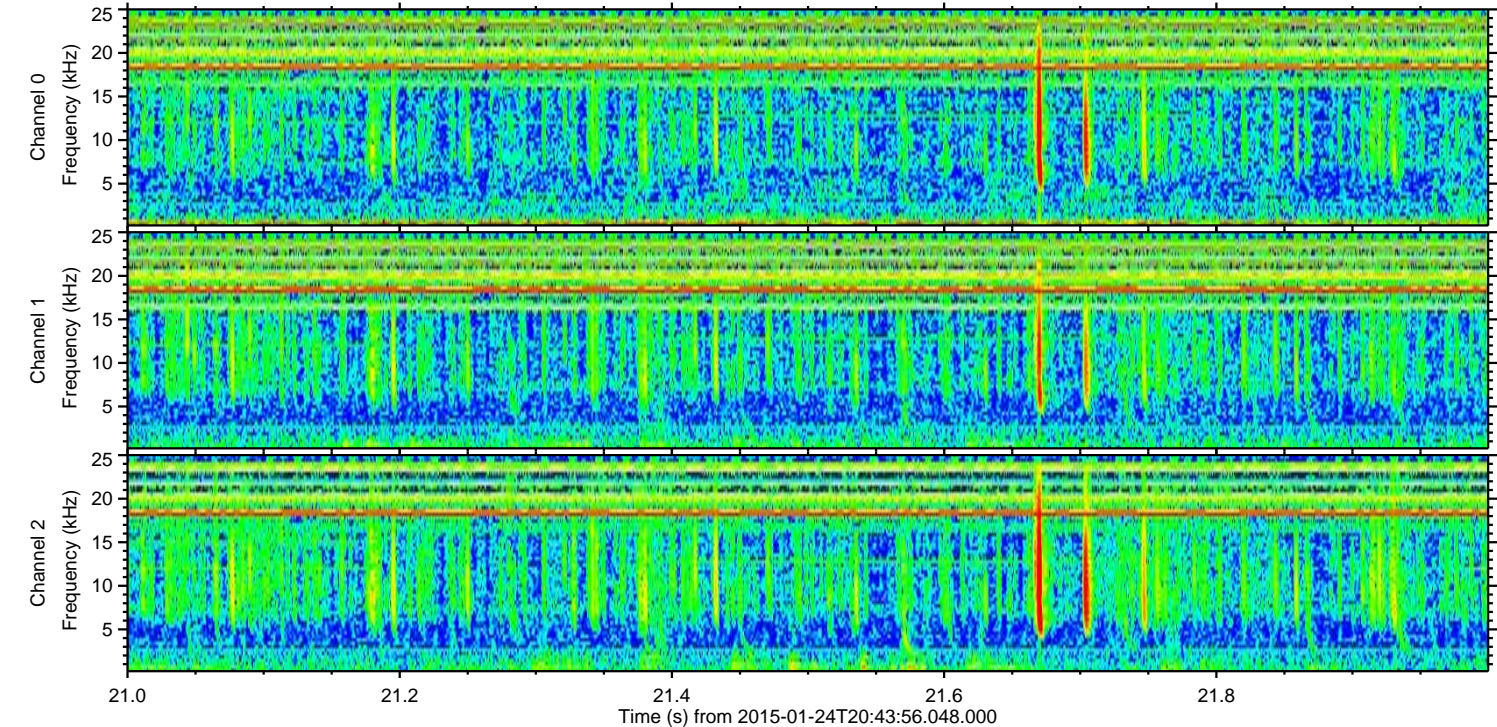
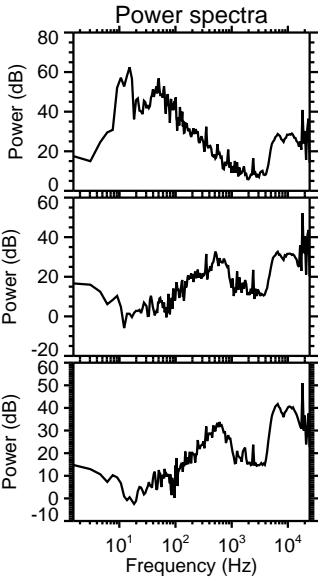
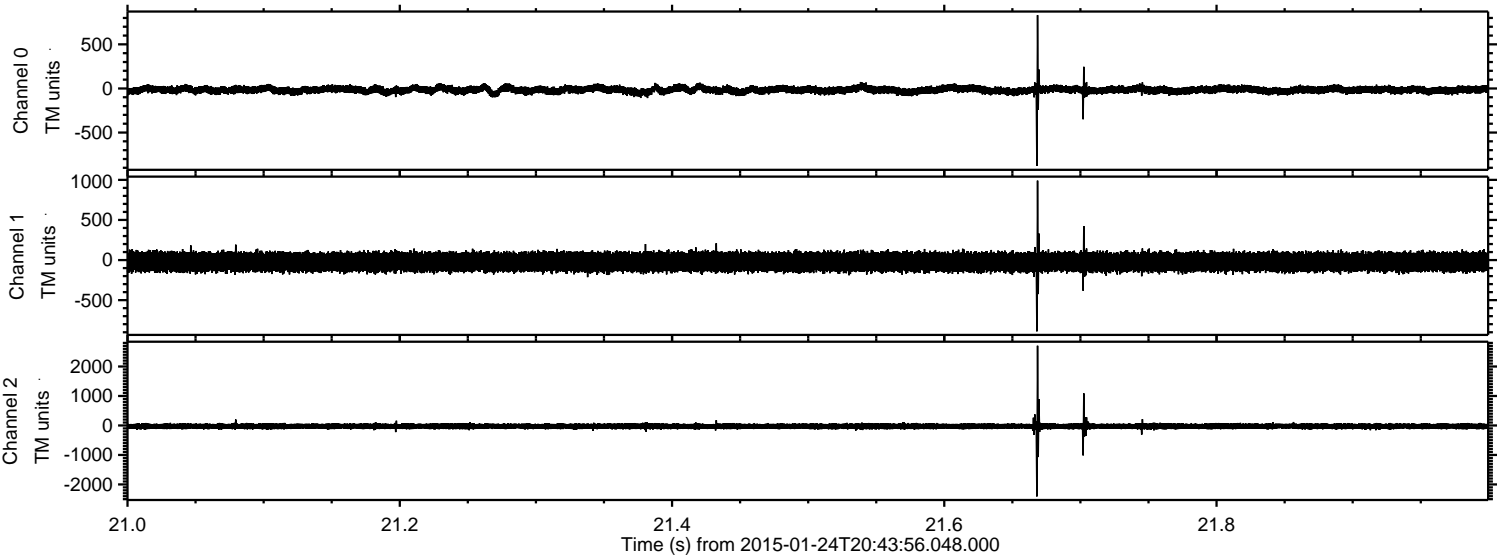


Channel 0
mn: -709
mx: 1397
 μ : -16.2
 σ : 28.0

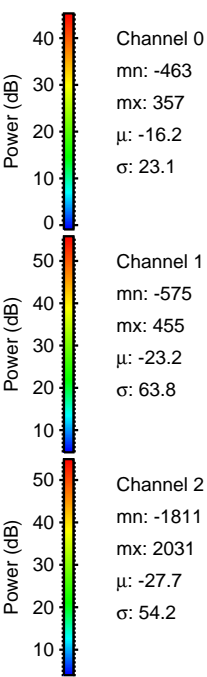
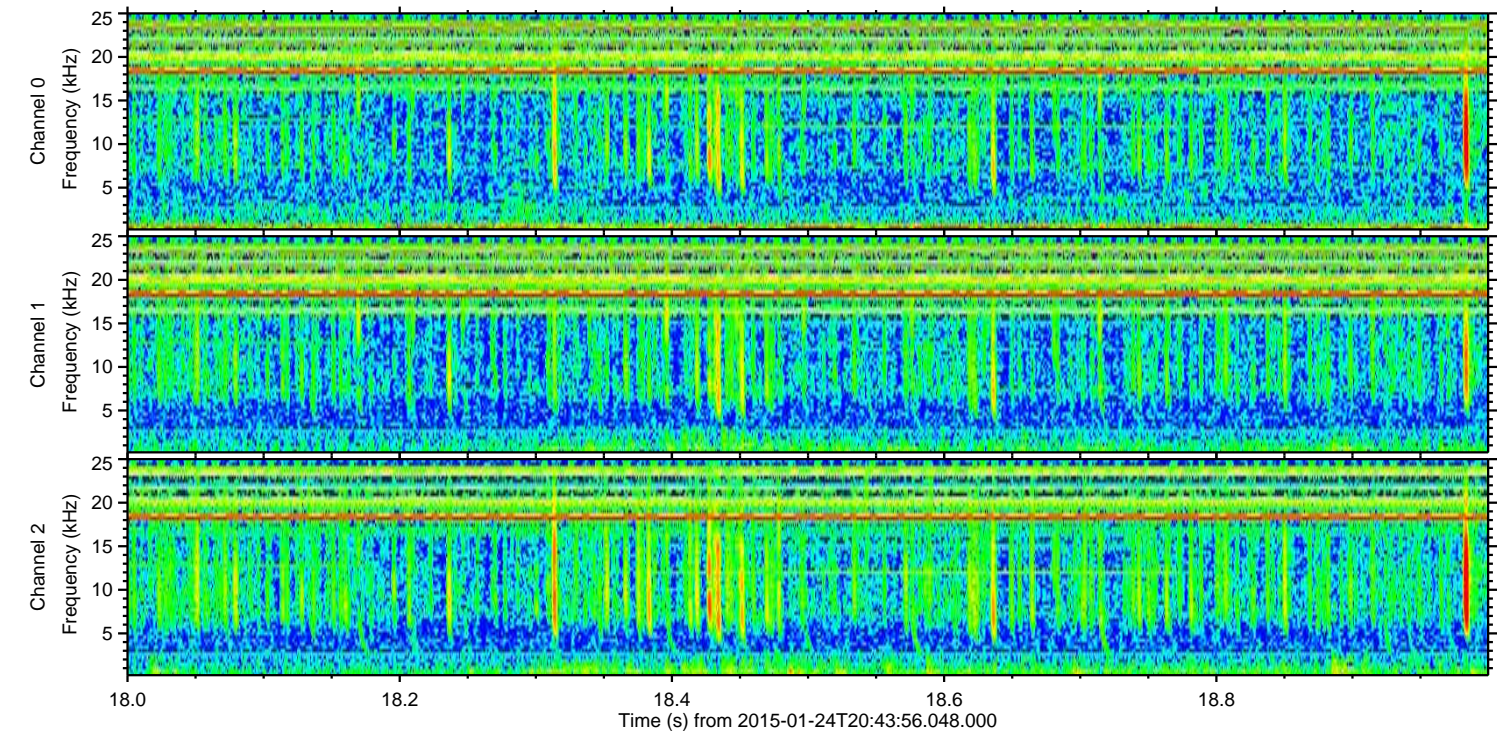
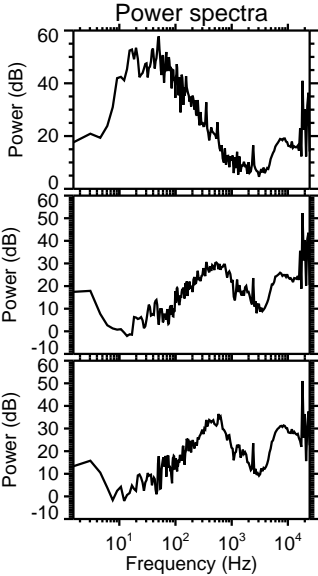
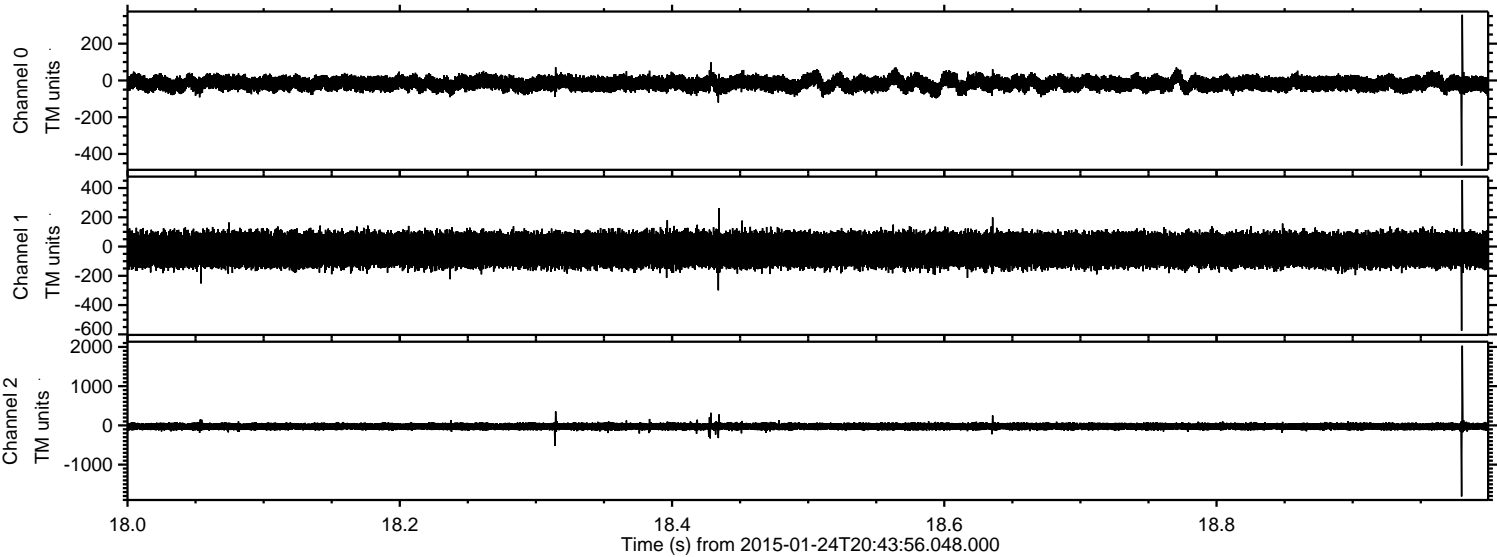
Channel 1
mn: -2149
mx: 3372
 μ : -22.8
 σ : 66.5

Channel 2
mn: -3334
mx: 2036
 μ : -27.2
 σ : 56.0

Processed Wed Feb 11 01:05:05 2015 by ELM ver.2012-10-06 from 001__elm20150124_204355__dat00.bin



Processed Wed Feb 11 01:05:06 2015 by ELM ver.2012-10-06 from 001__elm20150124_204355__dat00.bin



Channel 0
mn: -463
mx: 357
 μ : -16.2
 σ : 23.1

Channel 1
mn: -575
mx: 455
 μ : -23.2
 σ : 63.8

Channel 2
mn: -1811
mx: 2031
 μ : -27.7
 σ : 54.2

ELMAVAN 3D WAVEFORMS (Measured data sampled at 50 kHz) 49786 packets of 144 samples from 2015-01-24T20:43:56.048.000. Part 12/144

Processed Wed Feb 11 01:05:07 2015 by ELM ver.2012-10-06 from 001__elm20150124_204355__dat00.bin

