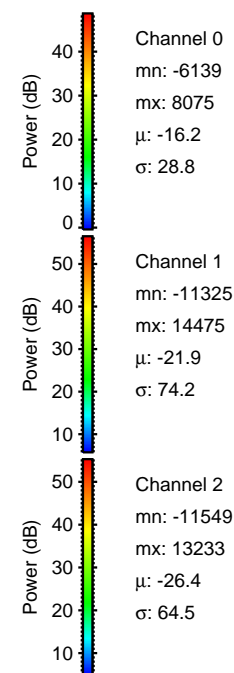
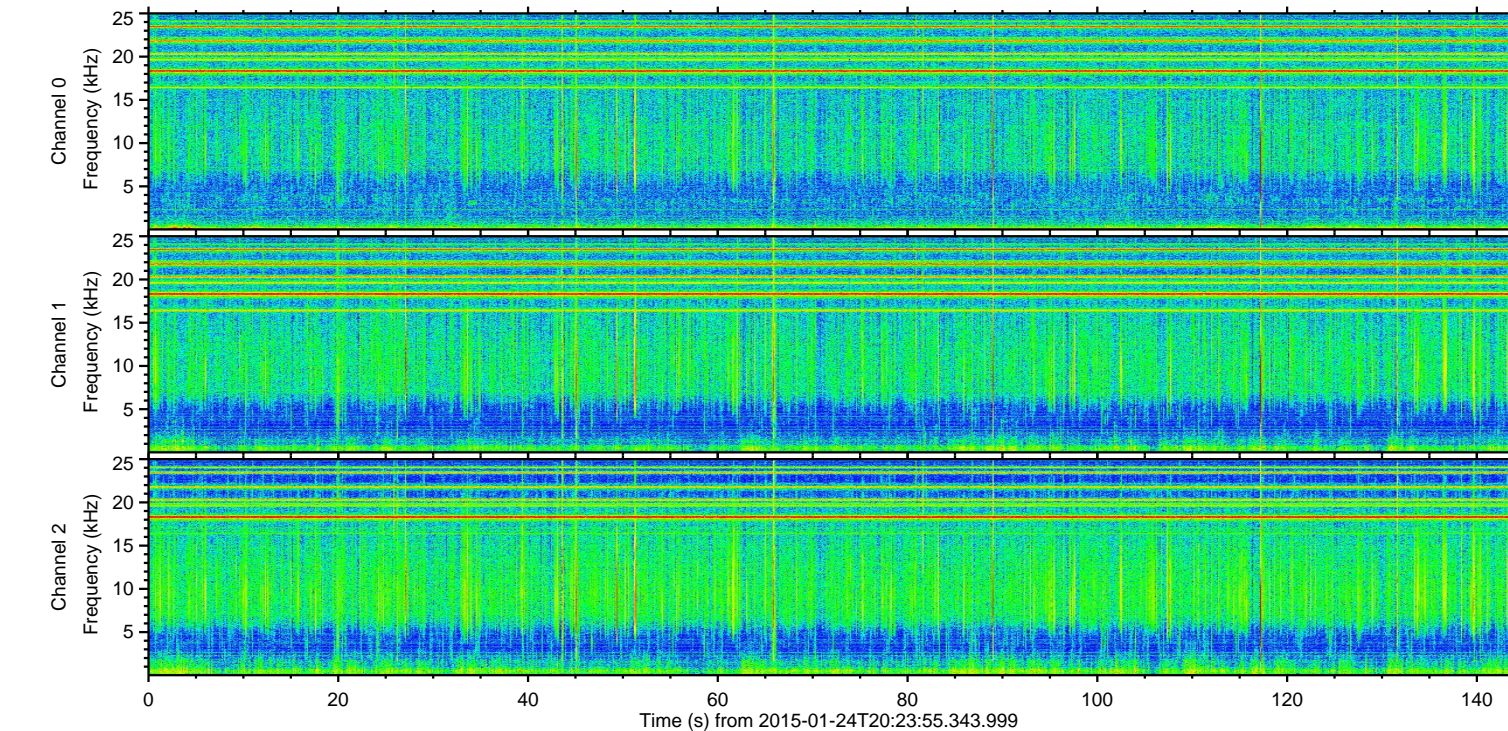
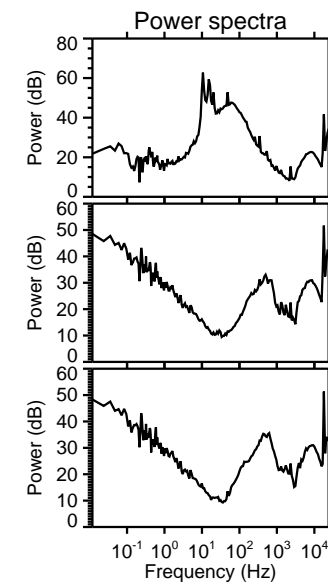
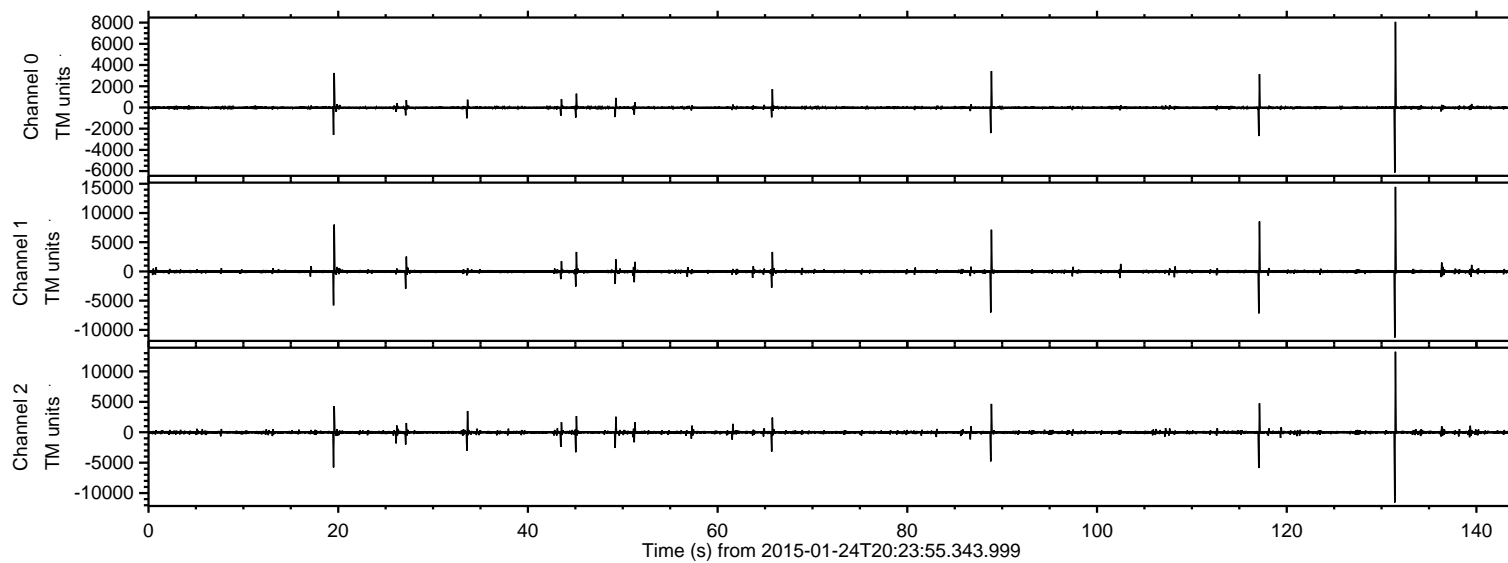


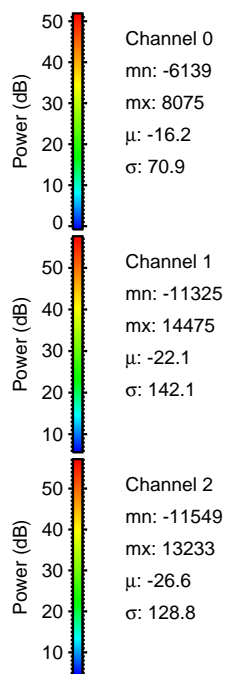
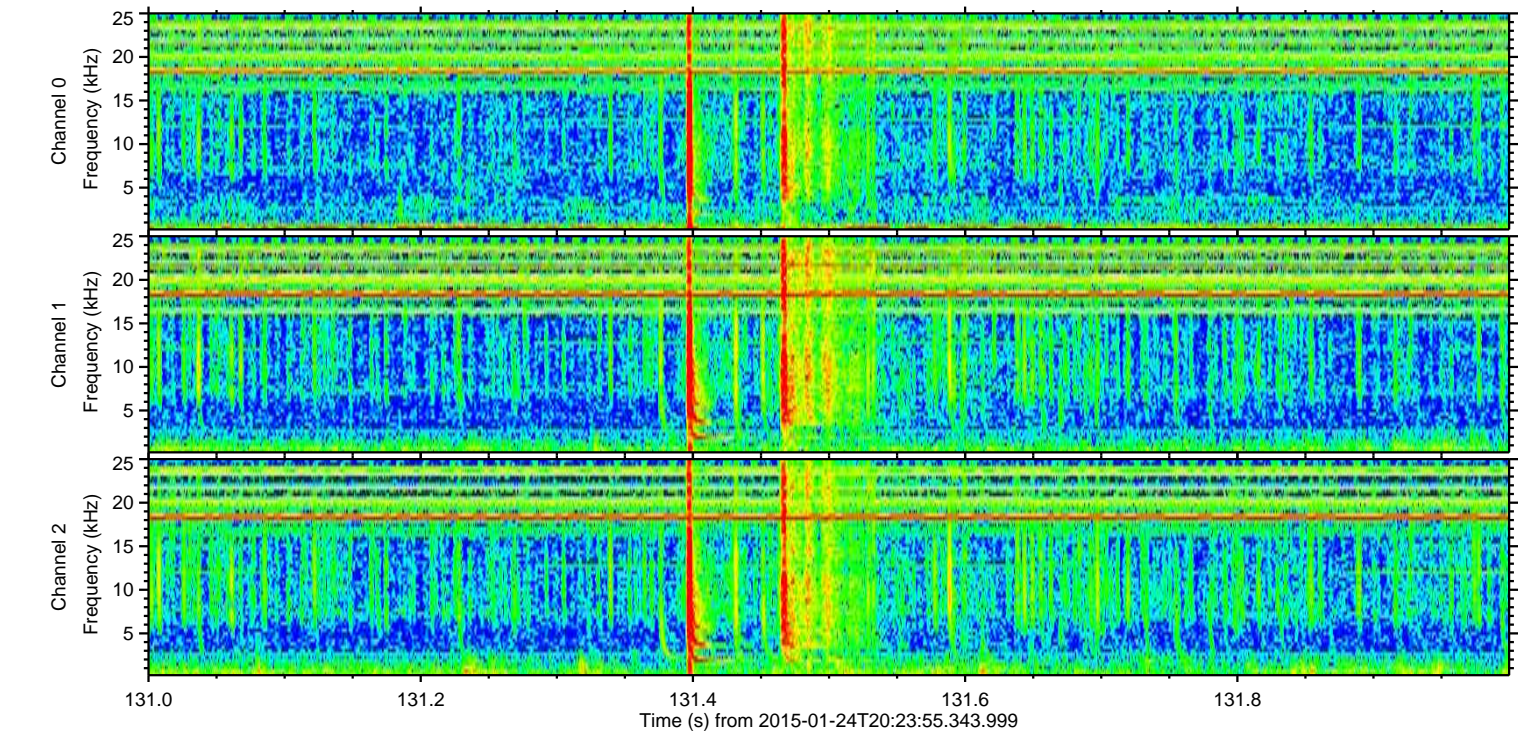
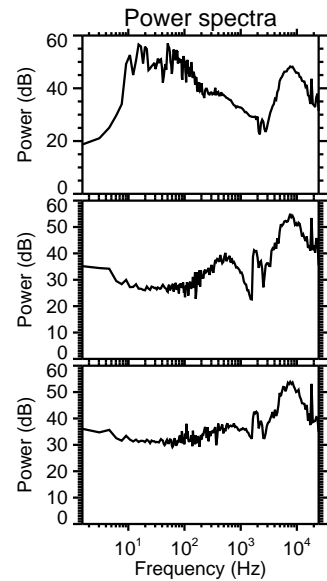
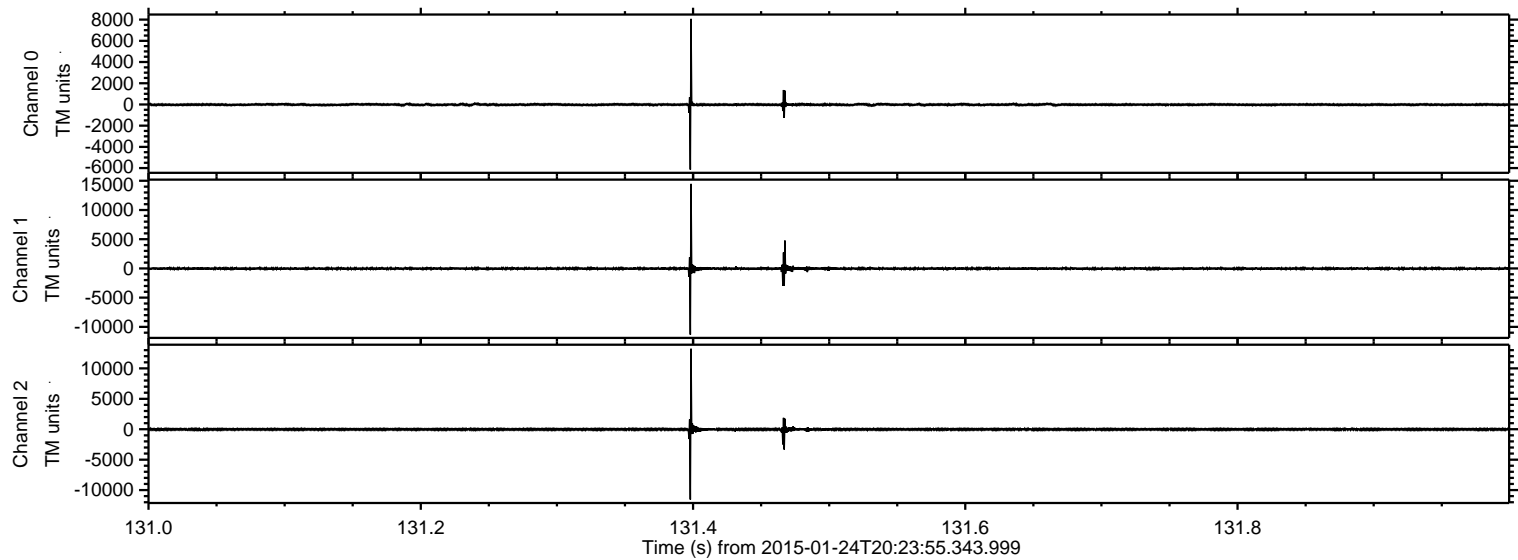
ELMAVAN 3D WAVEFORMS (Measured data sampled at 50 kHz) 49809 packets of 144 samples from 2015-01-24T20:23:55.343.999.

Processed Wed Feb 11 00:59:35 2015 by ELM ver.2012-10-06 from 001__elm20150124_202354__dat00.bin



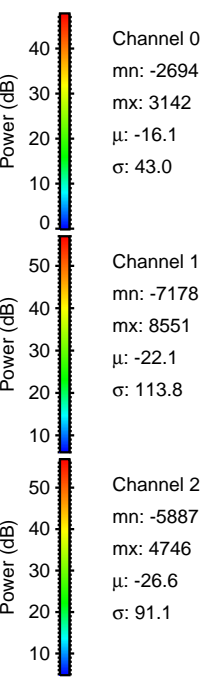
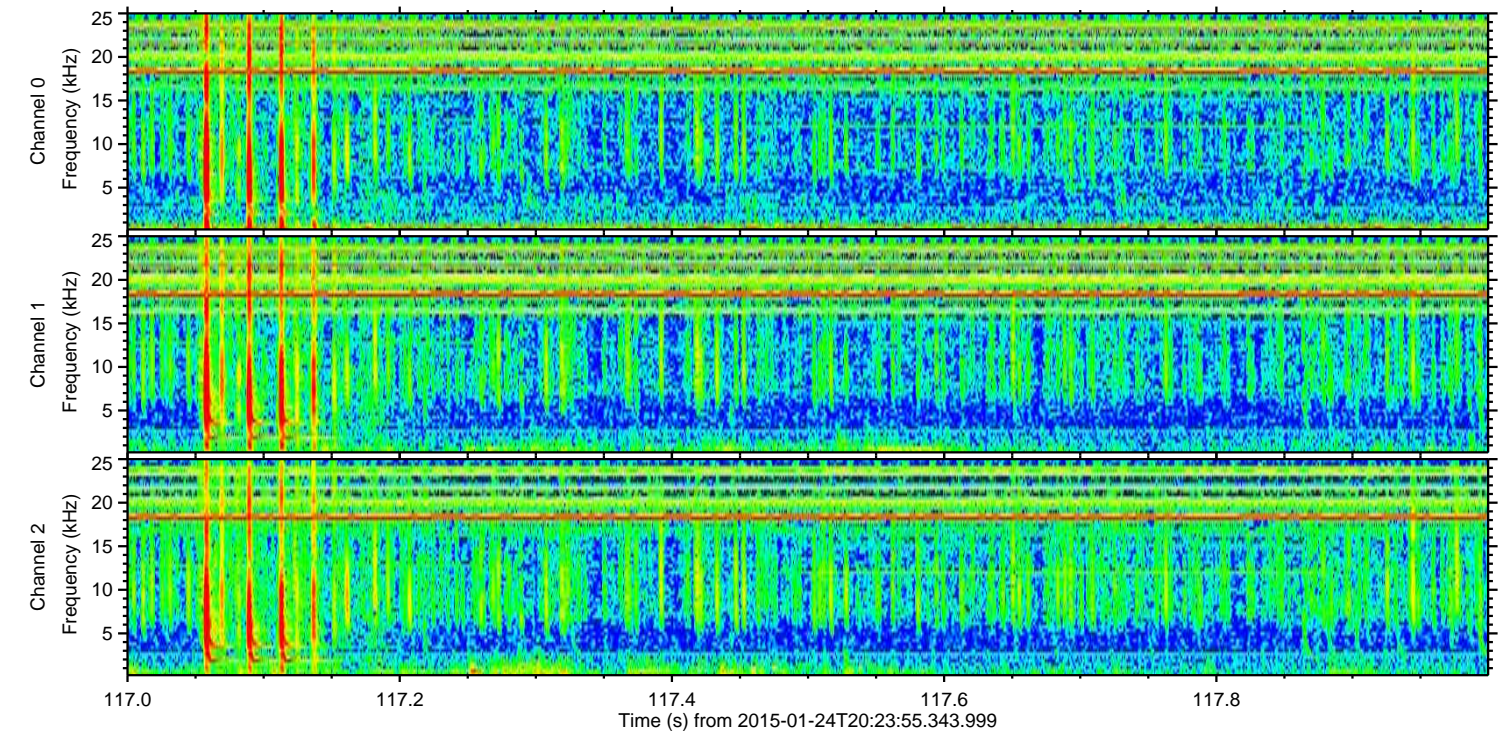
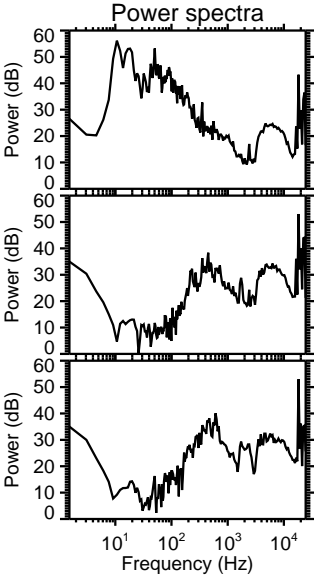
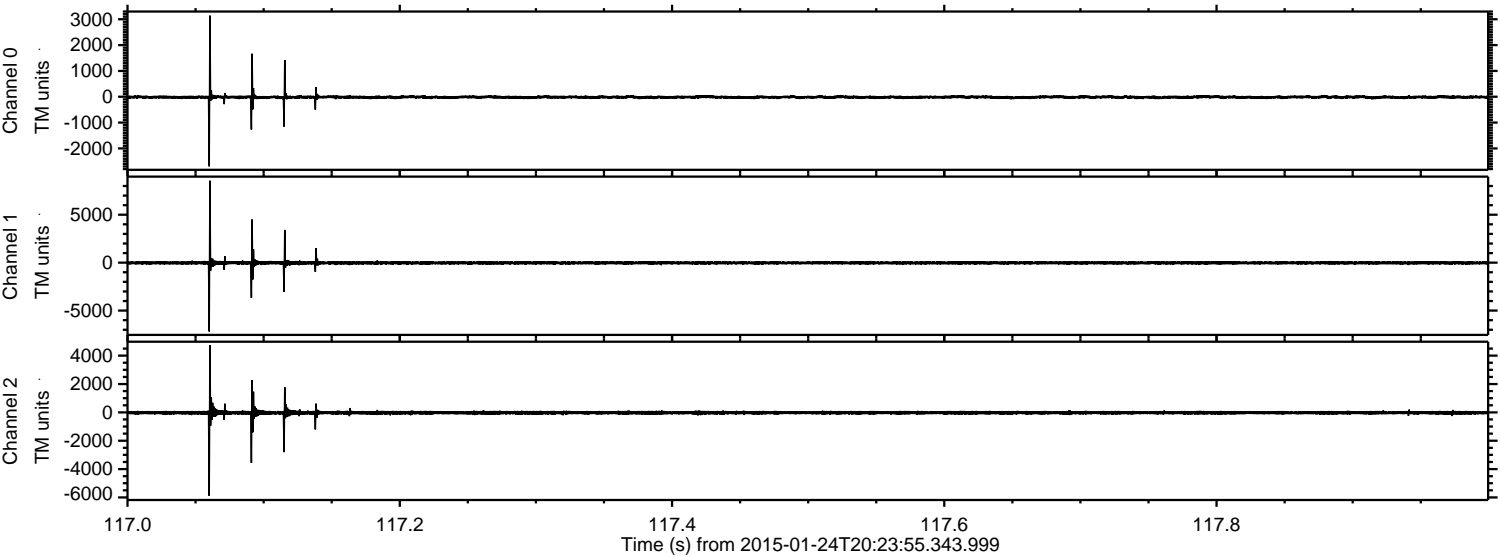
ELMAVAN 3D WAVEFORMS (Measured data sampled at 50 kHz) 49809 packets of 144 samples from 2015-01-24T20:23:55.343.999. Part 132/144

Processed Wed Feb 11 00:59:46 2015 by ELM ver.2012-10-06 from 001__elm20150124_202354__dat00.bin

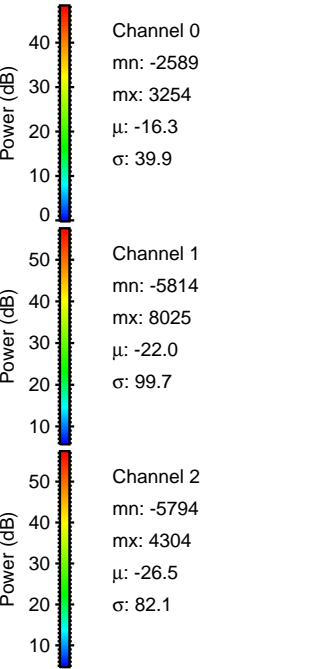
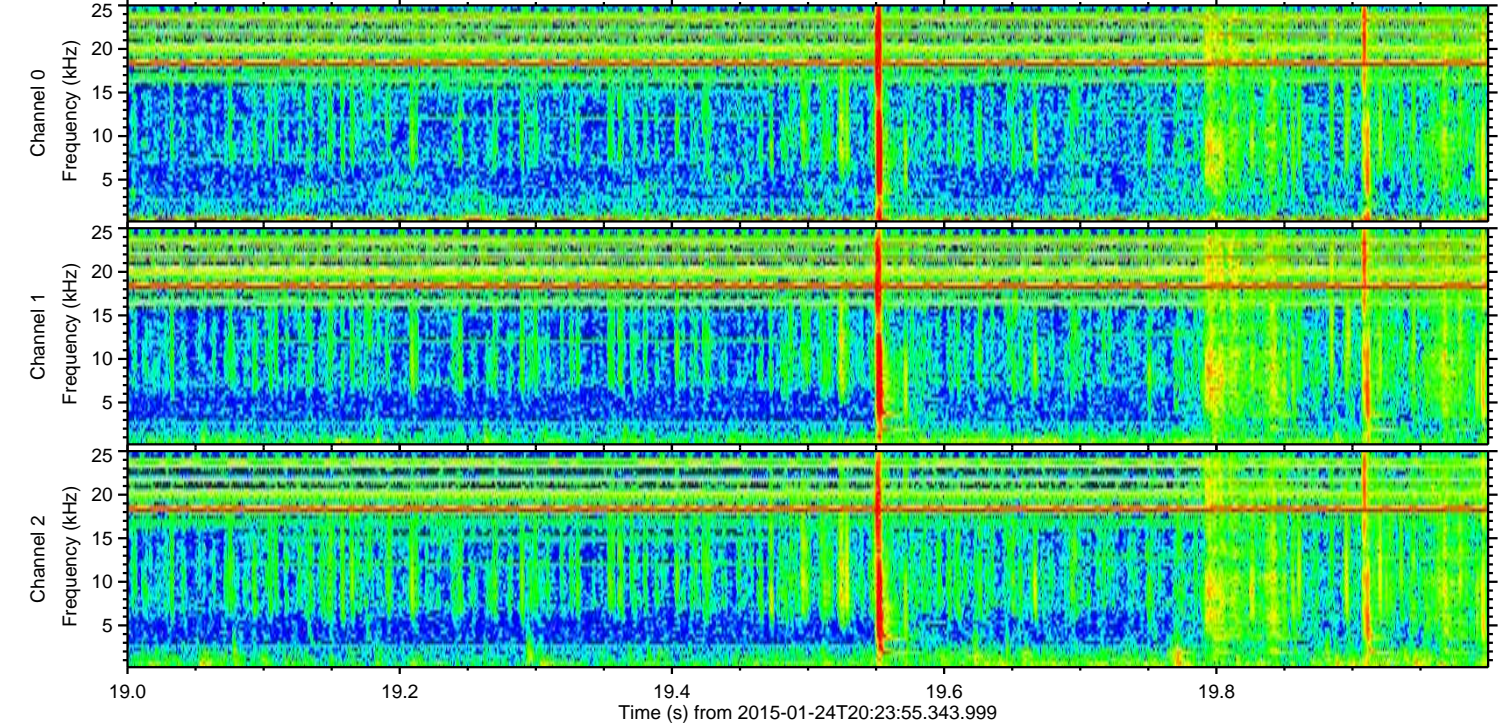
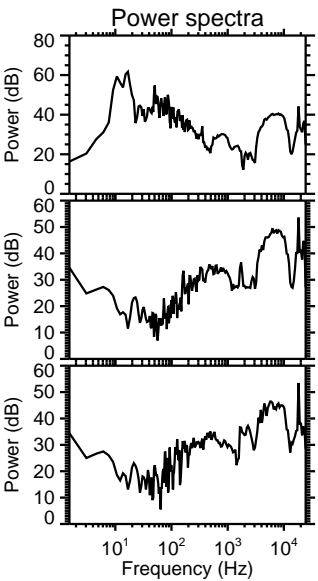
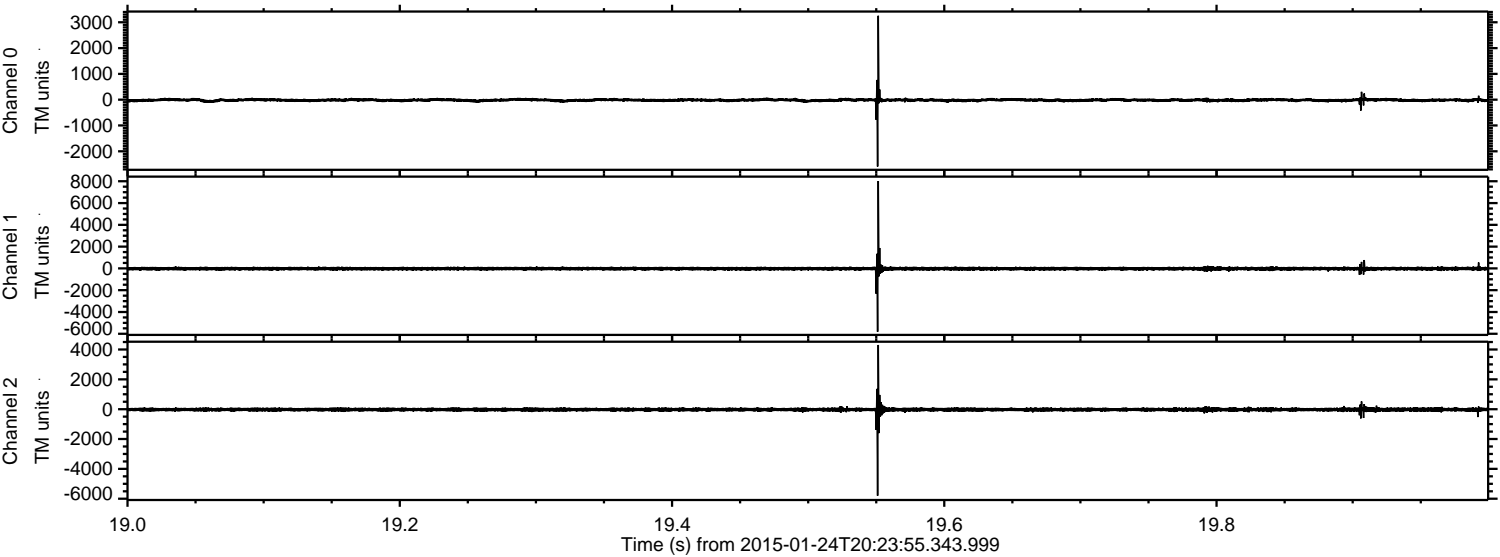


ELMAVAN 3D WAVEFORMS (Measured data sampled at 50 kHz) 49809 packets of 144 samples from 2015-01-24T20:23:55.343.999. Part 118/144

Processed Wed Feb 11 00:59:47 2015 by ELM ver.2012-10-06 from 001__elm20150124_202354__dat00.bin

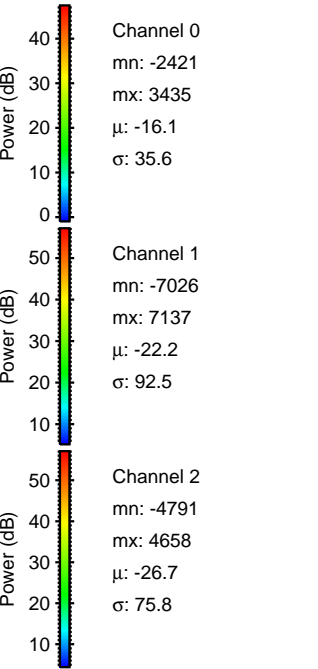
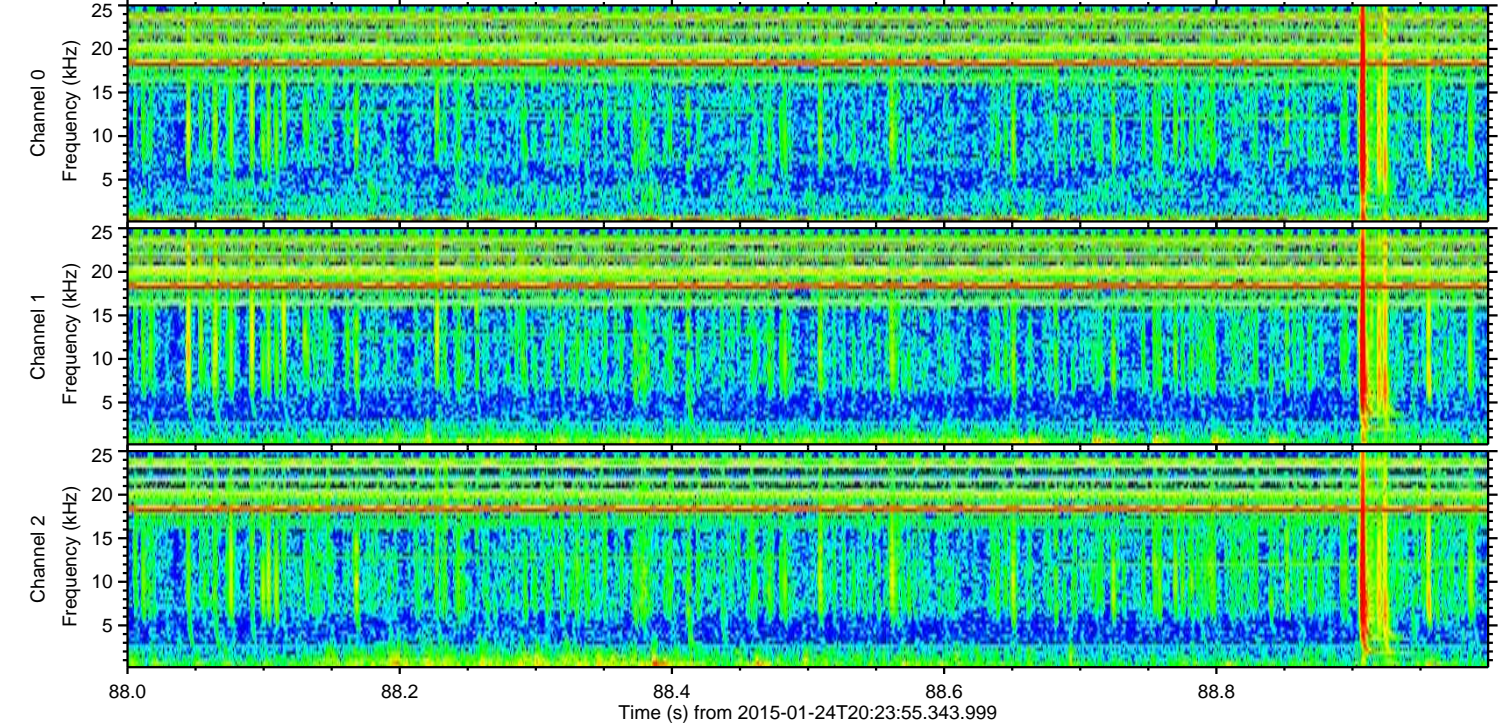
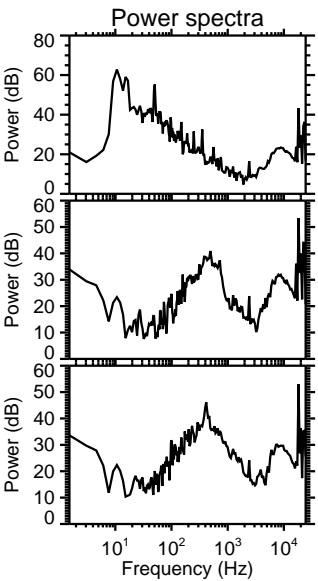
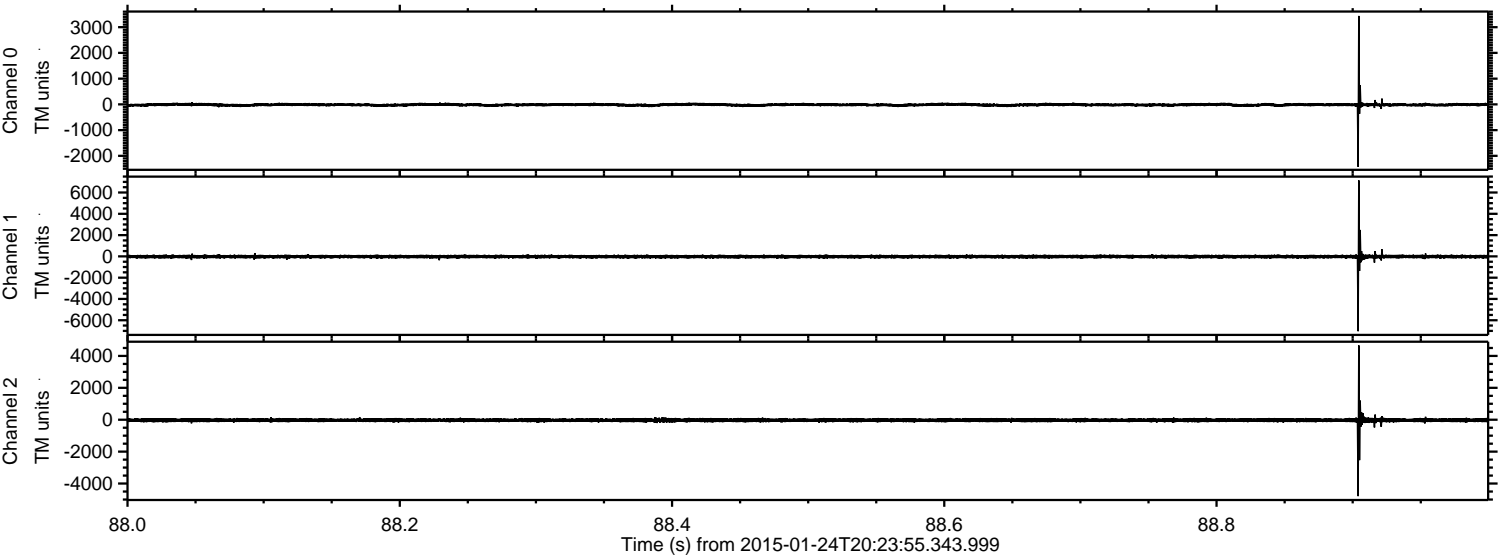


Processed Wed Feb 11 00:59:48 2015 by ELM ver.2012-10-06 from 001__elm20150124_202354__dat00.bin

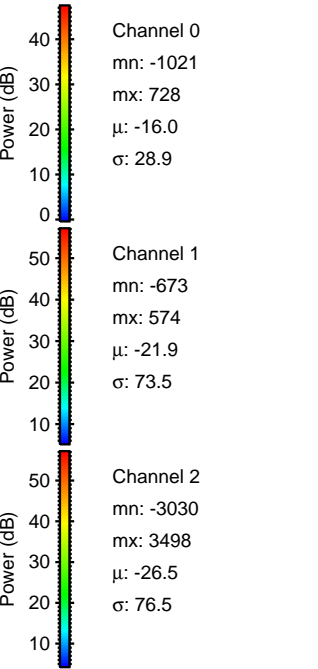
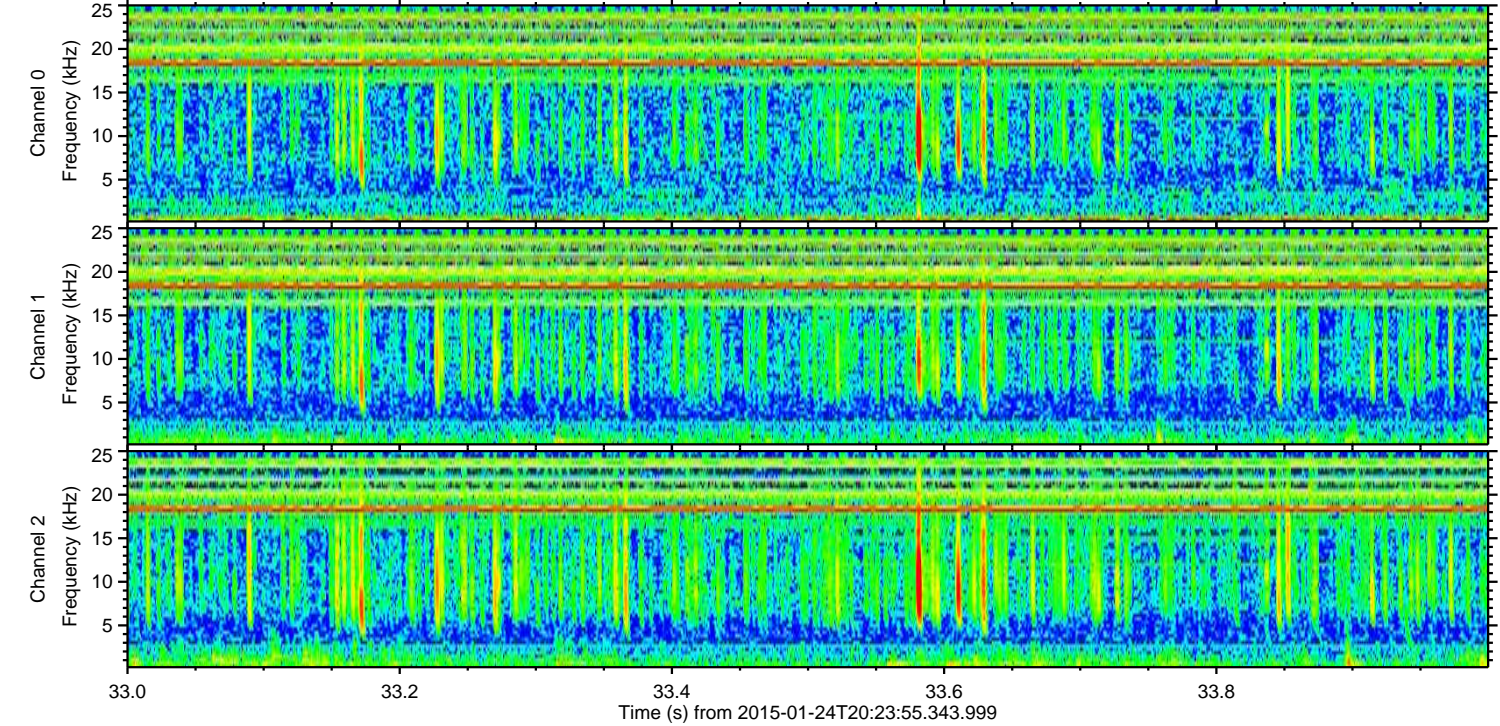
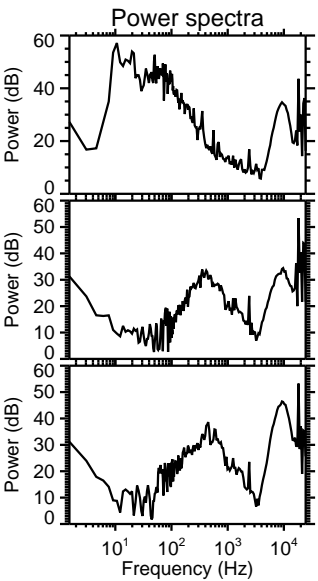
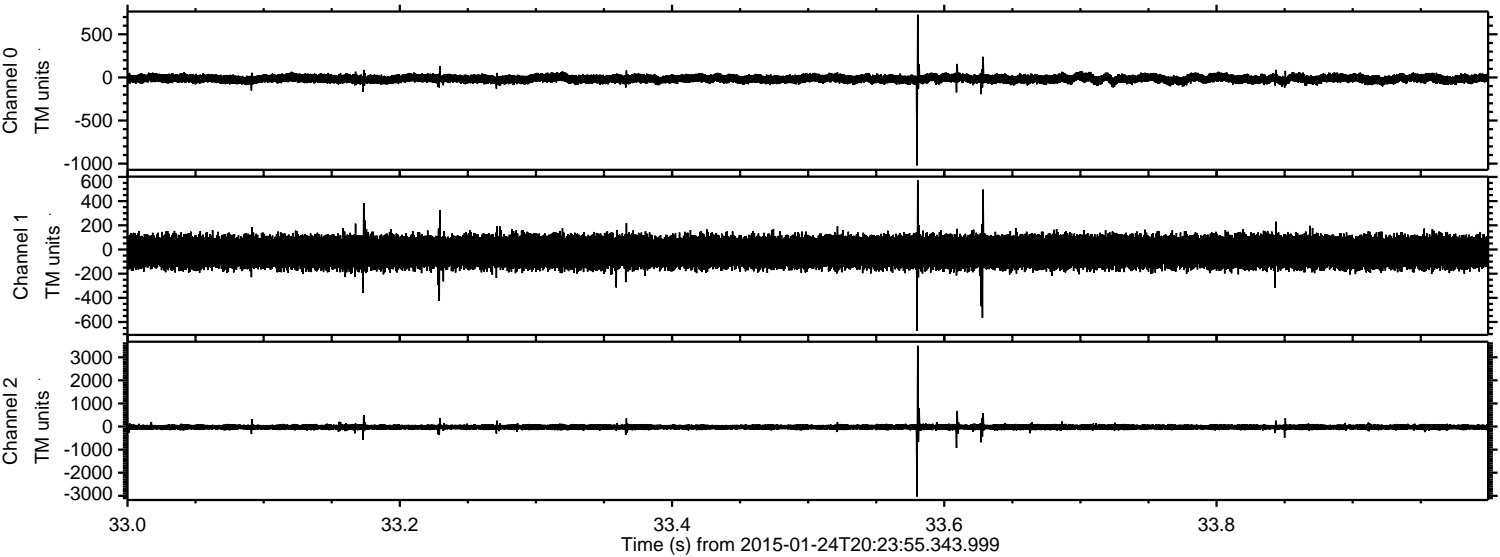


ELMAVAN 3D WAVEFORMS (Measured data sampled at 50 kHz) 49809 packets of 144 samples from 2015-01-24T20:23:55.343.999. Part 89/144

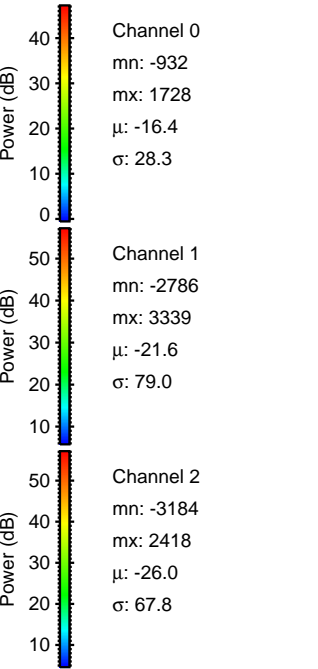
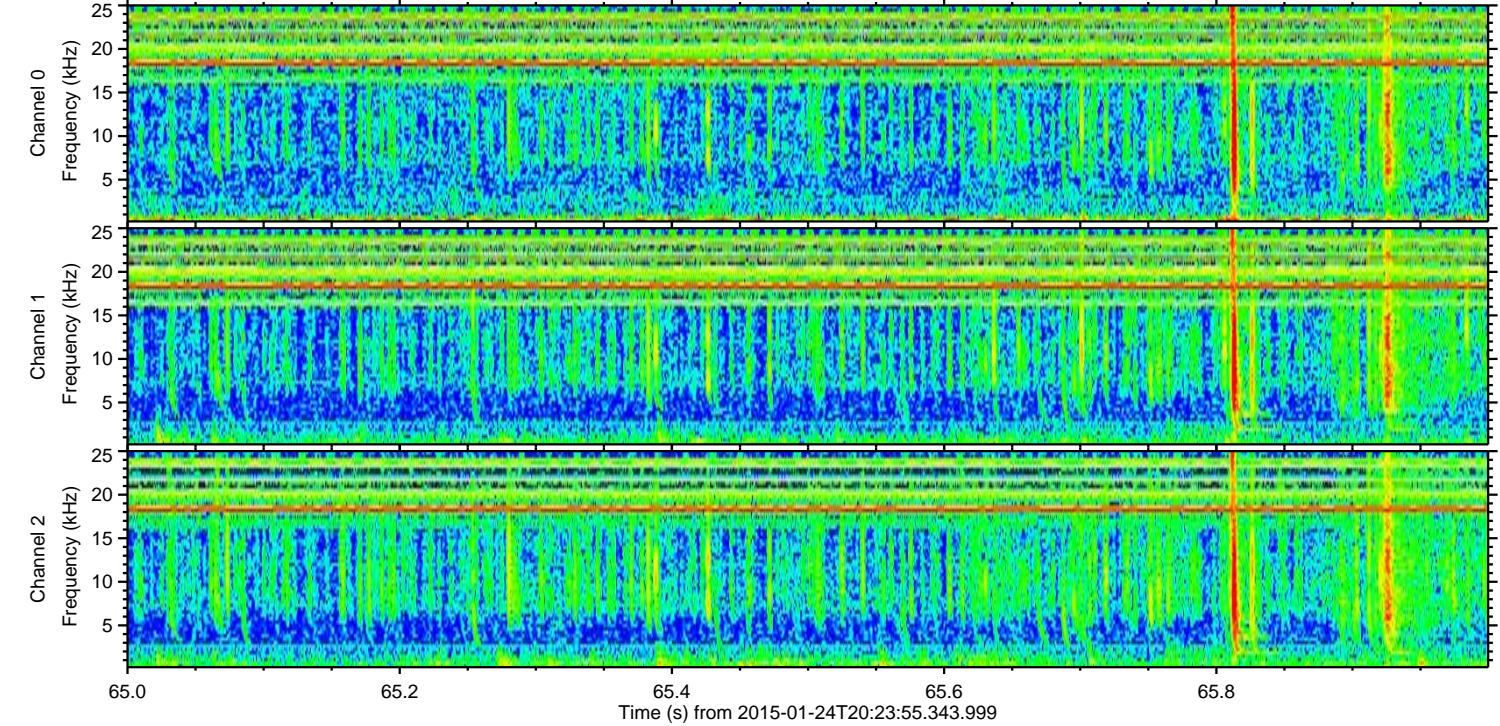
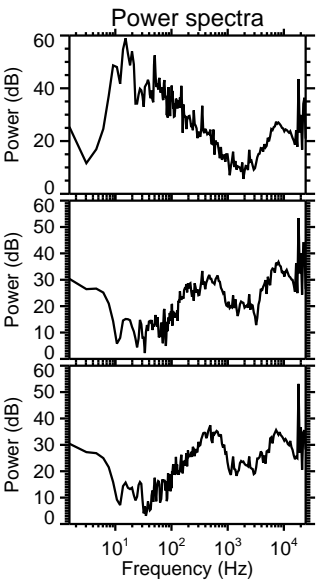
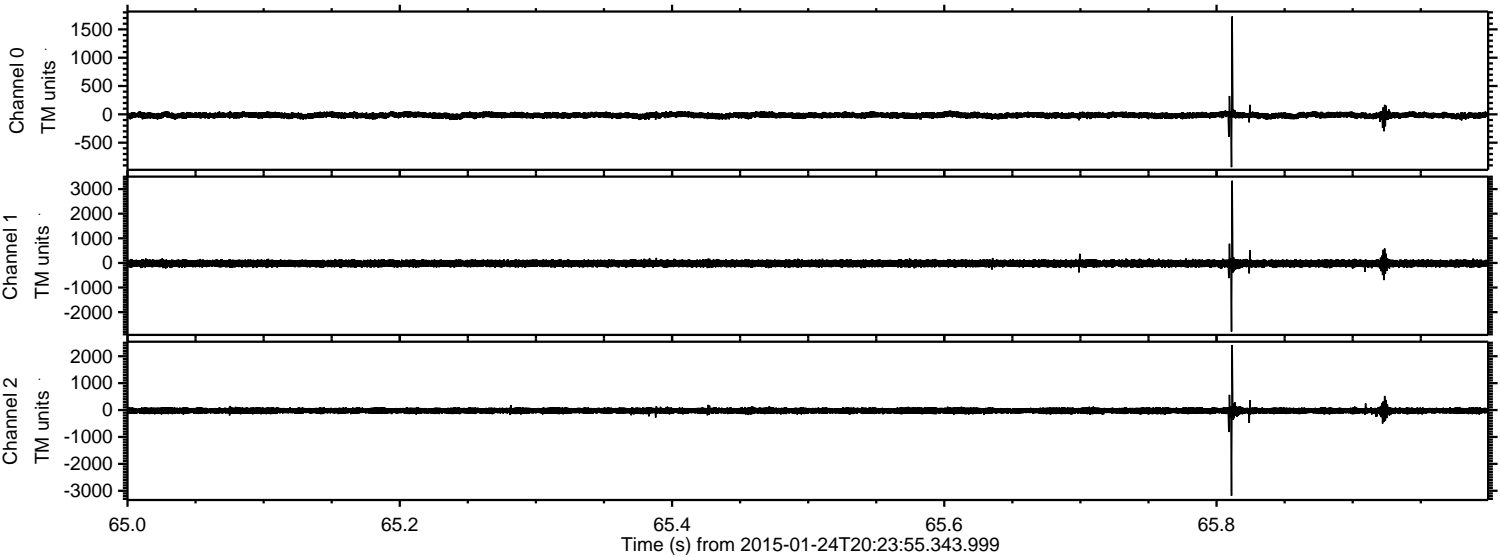
Processed Wed Feb 11 00:59:49 2015 by ELM ver.2012-10-06 from 001__elm20150124_202354__dat00.bin



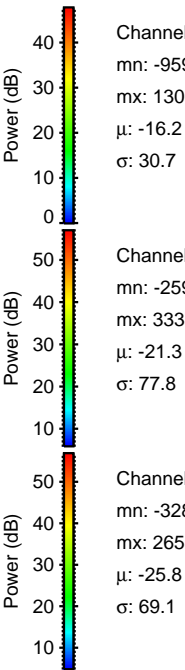
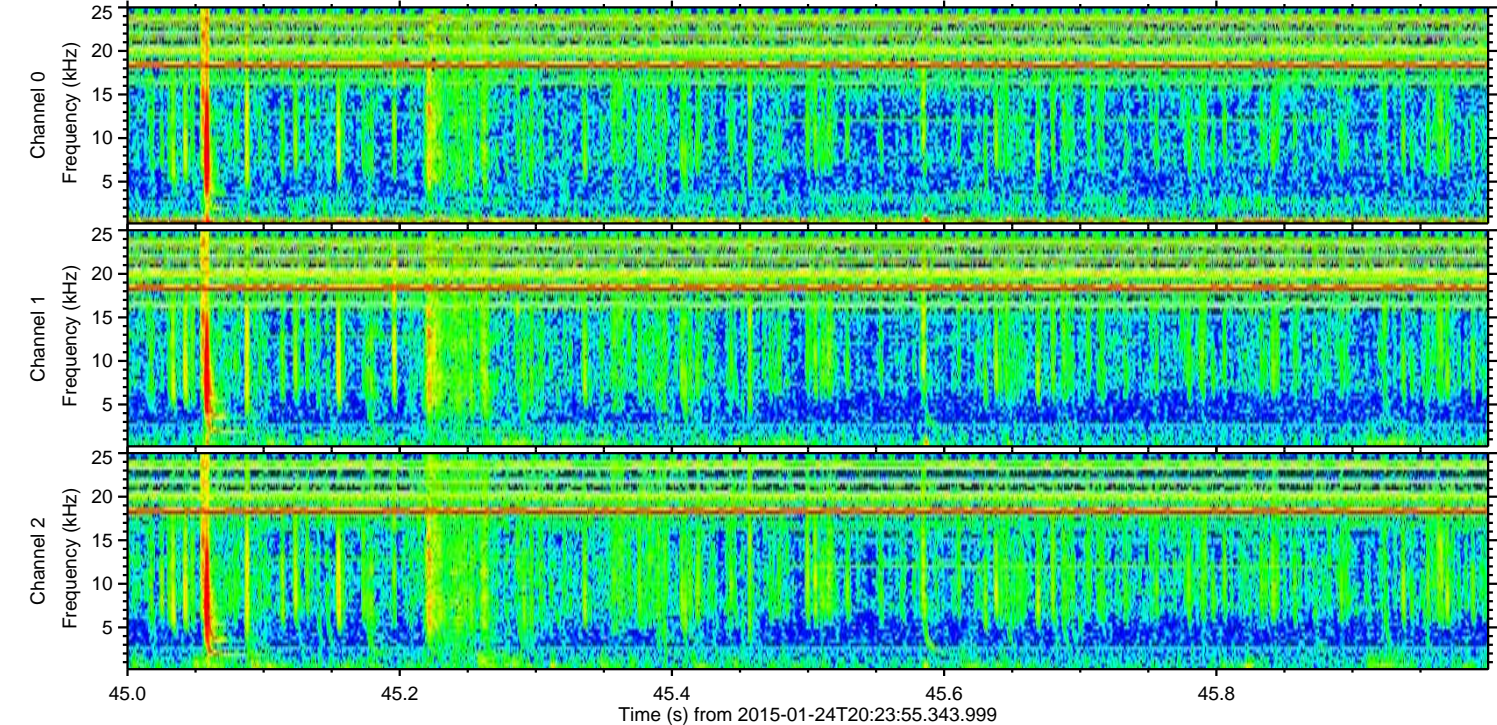
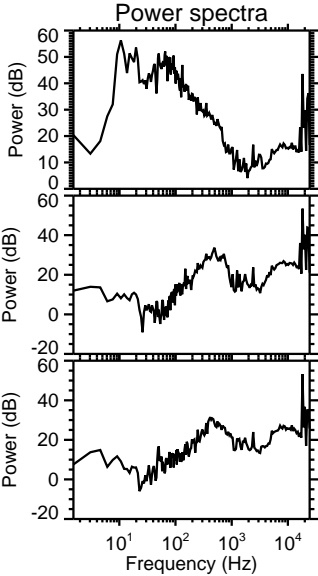
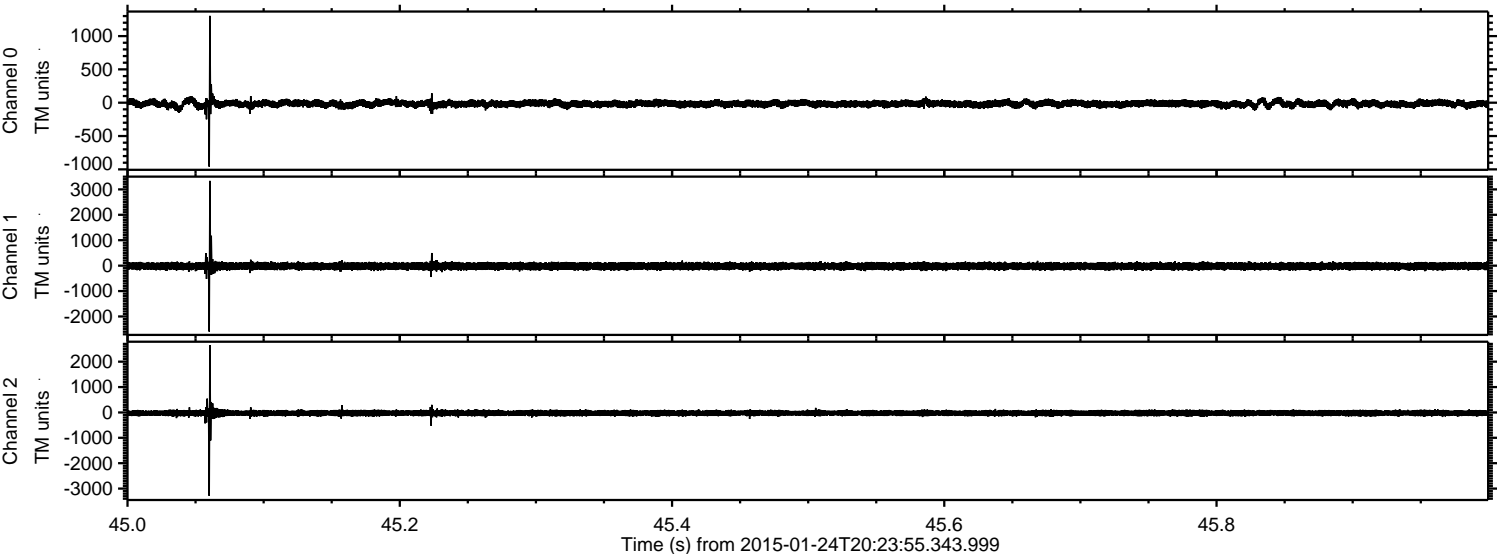
Processed Wed Feb 11 00:59:50 2015 by ELM ver.2012-10-06 from 001__elm20150124_202354__dat00.bin



Processed Wed Feb 11 00:59:51 2015 by ELM ver.2012-10-06 from 001__elm20150124_202354__dat00.bin

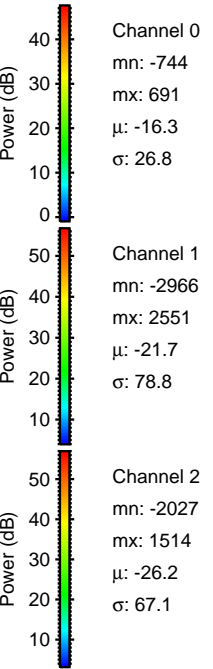
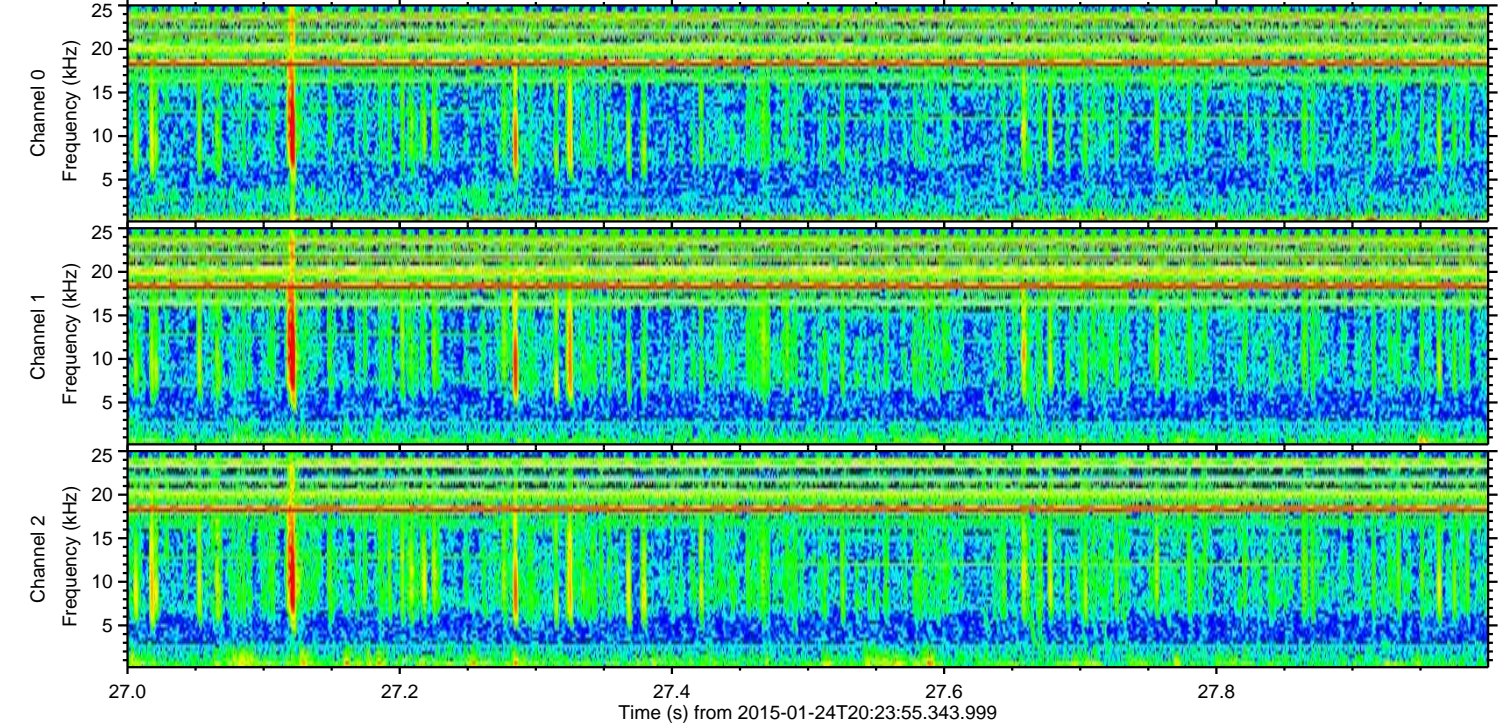
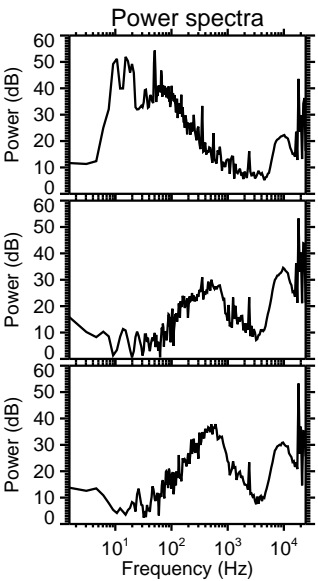
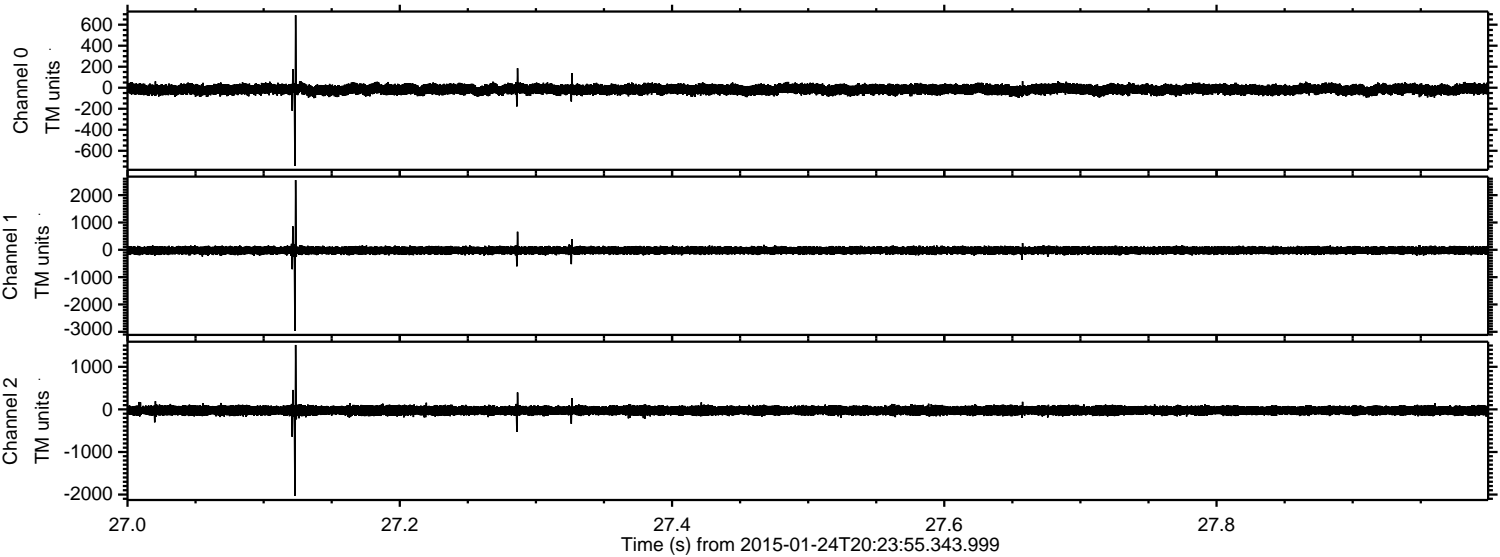


Processed Wed Feb 11 00:59:52 2015 by ELM ver.2012-10-06 from 001__elm20150124_202354__dat00.bin



ELMAVAN 3D WAVEFORMS (Measured data sampled at 50 kHz) 49809 packets of 144 samples from 2015-01-24T20:23:55.343.999. Part 28/144

Processed Wed Feb 11 00:59:53 2015 by ELM ver.2012-10-06 from 001_elm20150124_202354__dat00.bin

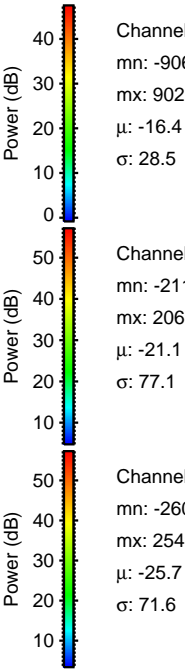
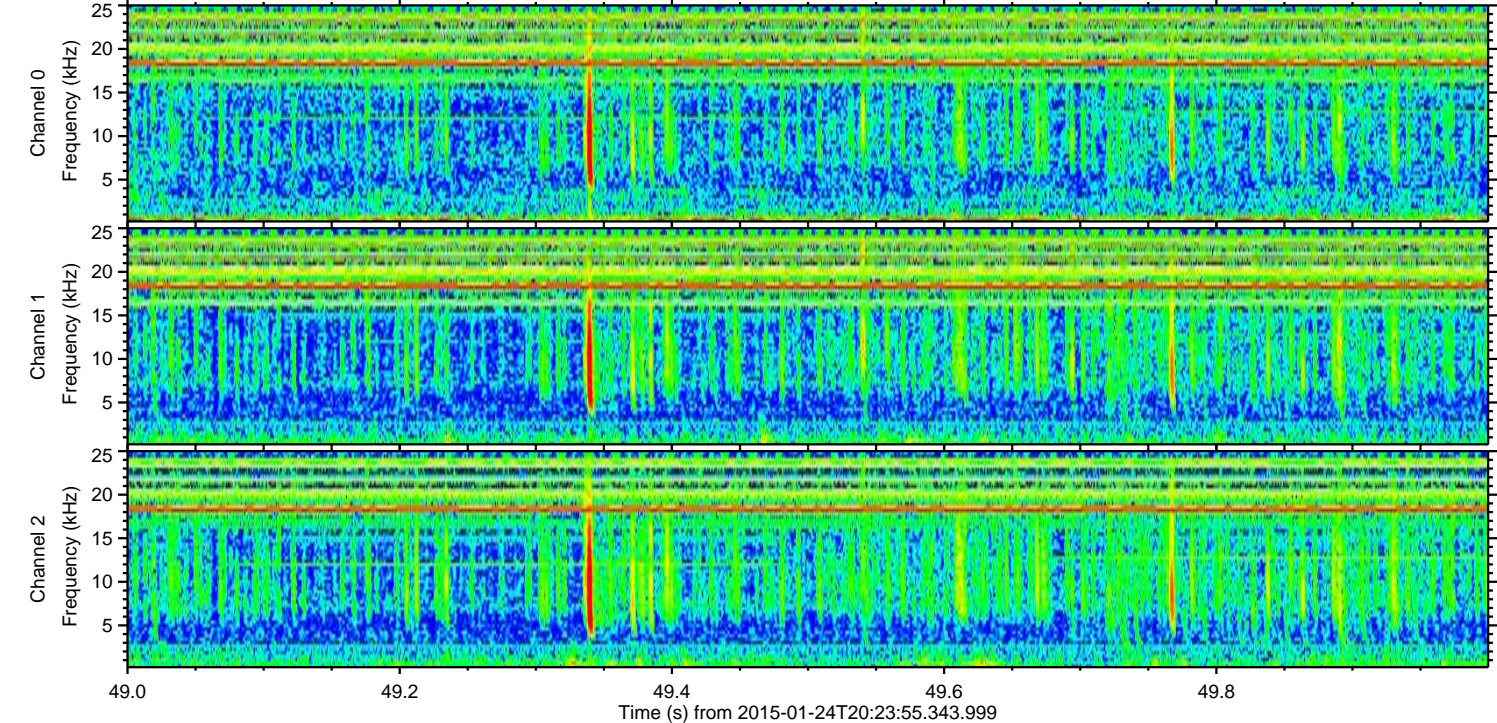
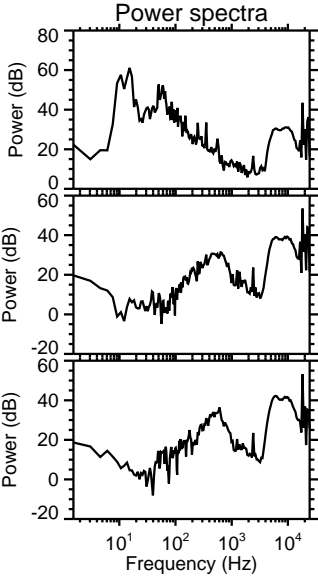
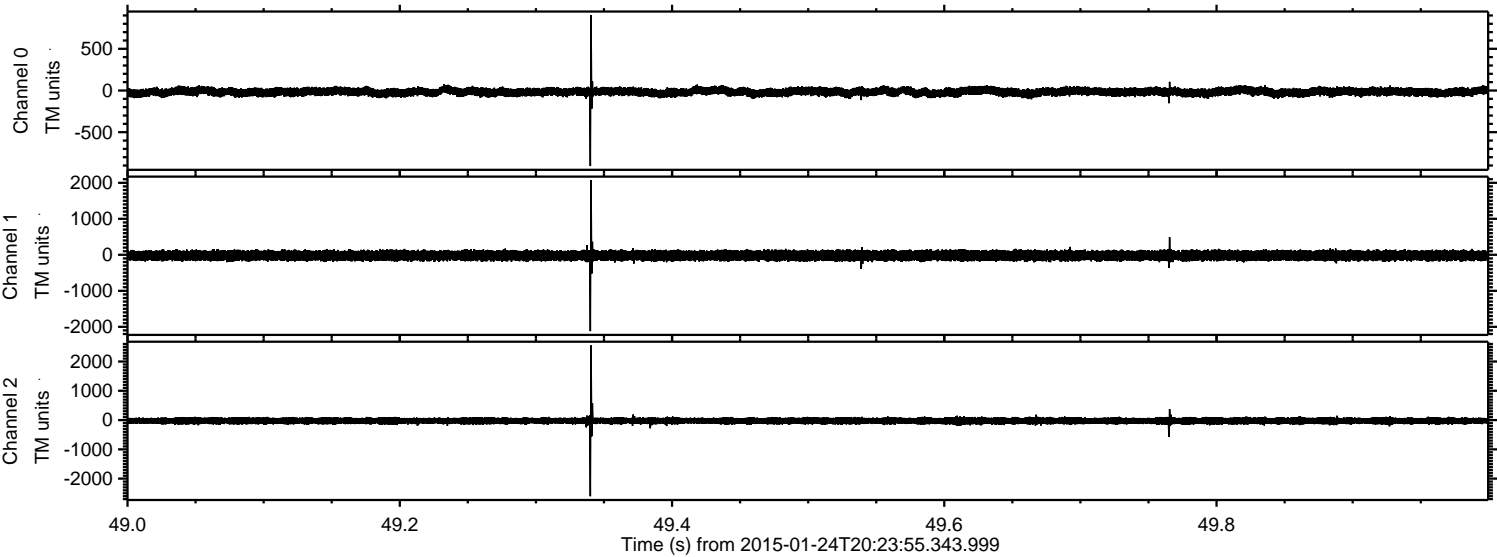


Channel 0
mn: -744
mx: 691
 μ : -16.3
 σ : 26.8

Channel 1
mn: -2966
mx: 2551
 μ : -21.7
 σ : 78.8

Channel 2
mn: -2027
mx: 1514
 μ : -26.2
 σ : 67.1

Processed Wed Feb 11 00:59:54 2015 by ELM ver.2012-10-06 from 001__elm20150124_202354__dat00.bin



Processed Wed Feb 11 00:59:55 2015 by ELM ver.2012-10-06 from 001__elm20150124_202354__dat00.bin

