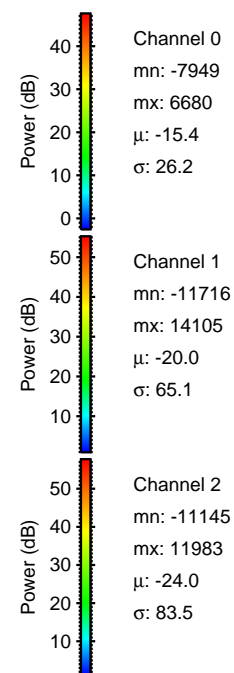
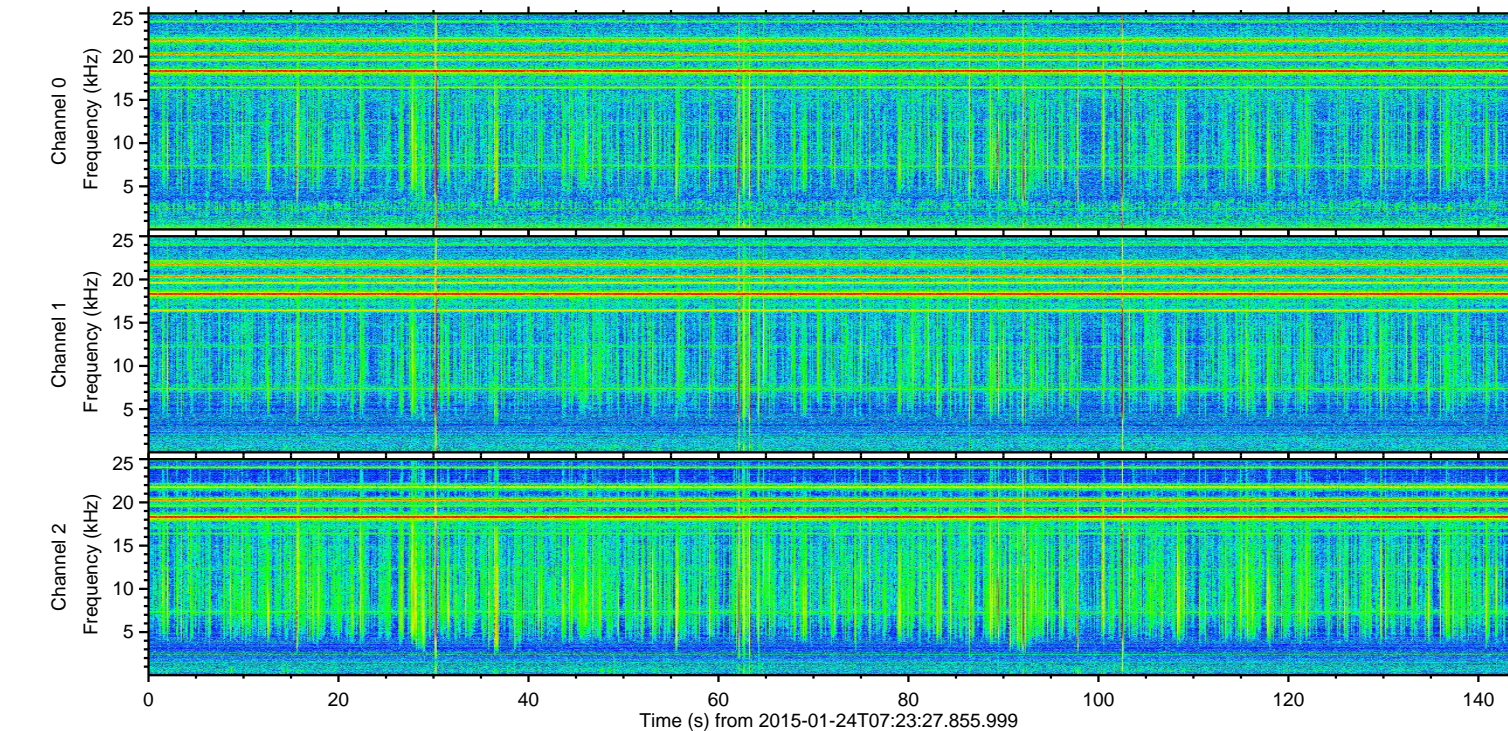
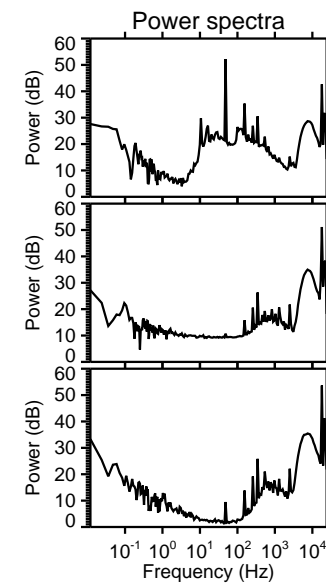
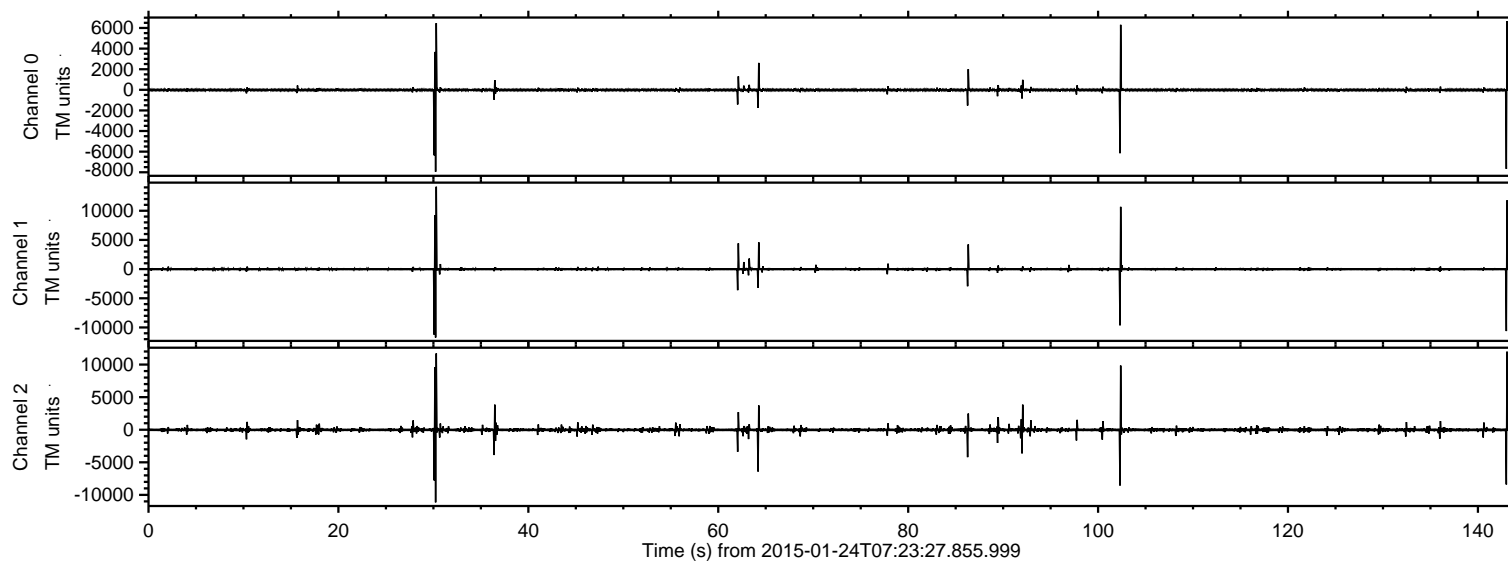


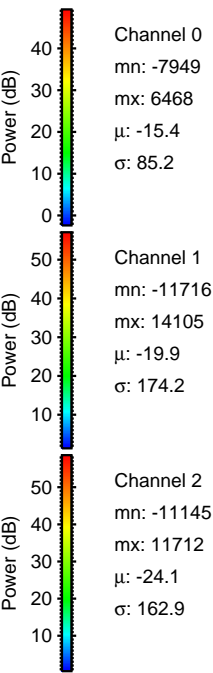
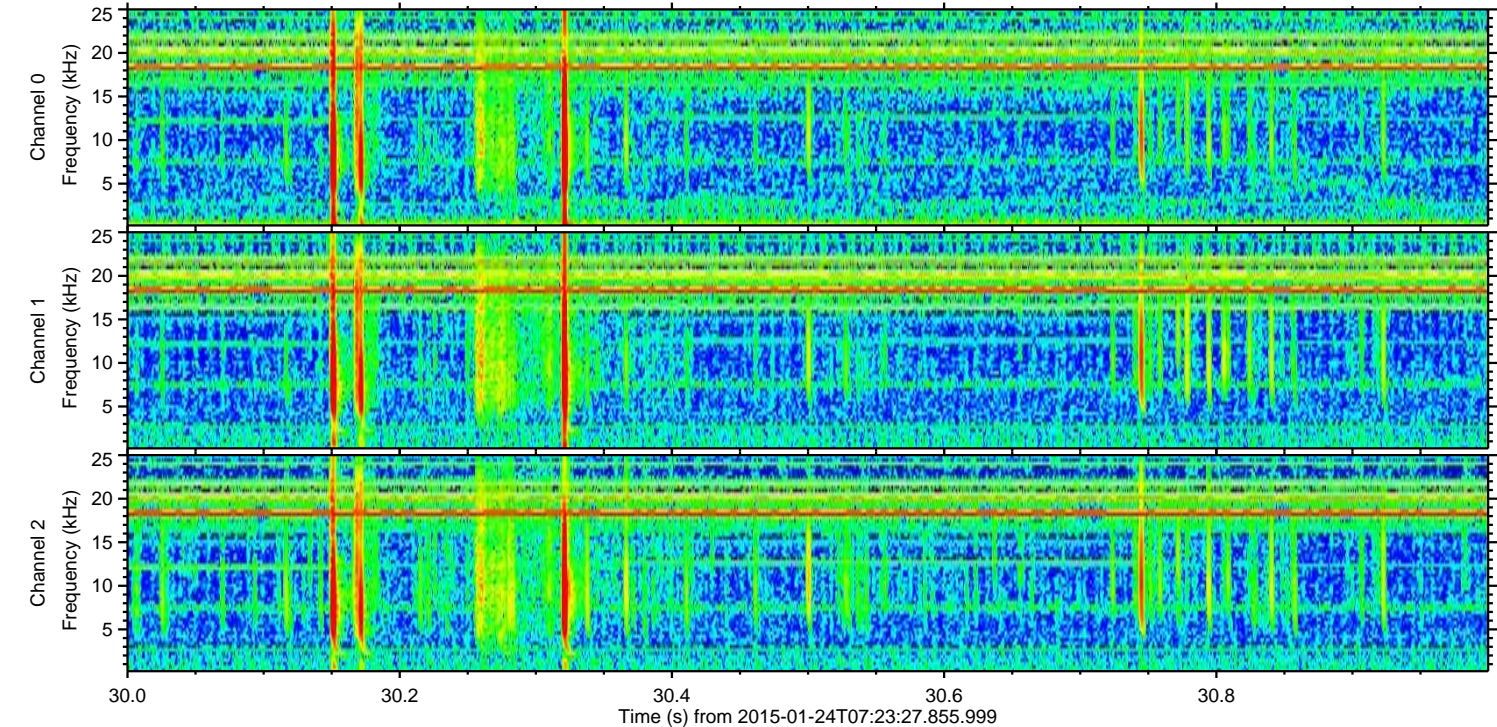
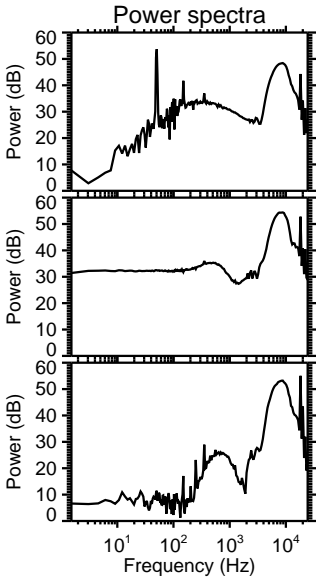
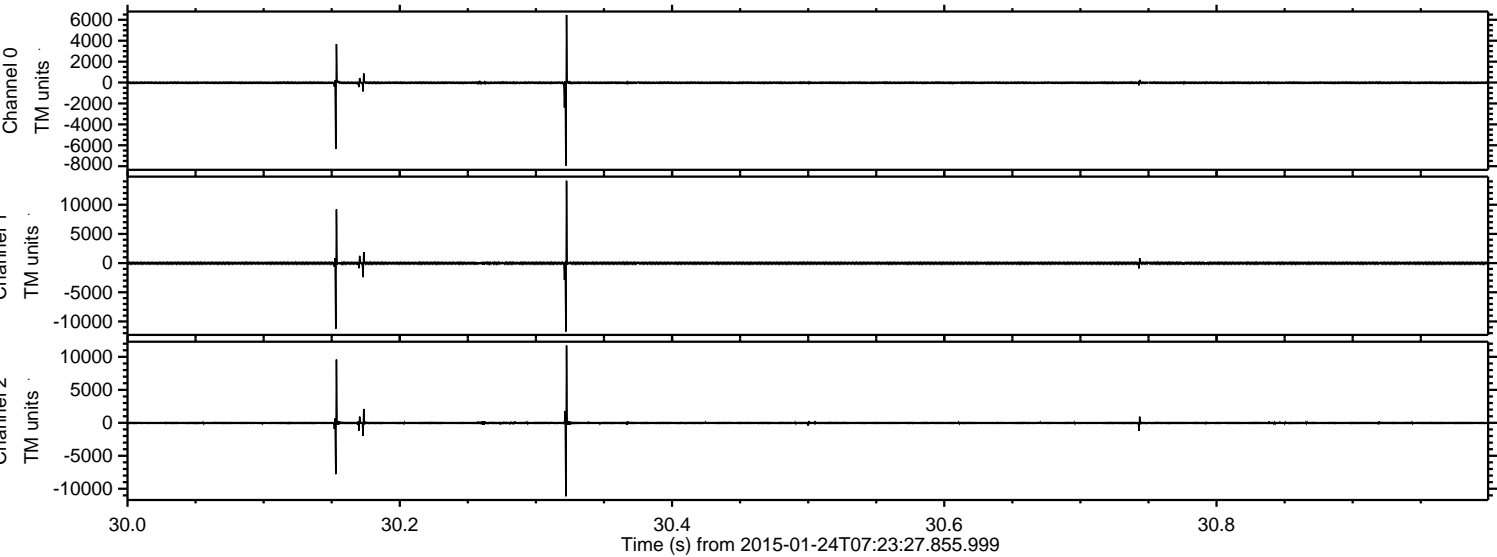
ELMAVAN 3D WAVEFORMS (Measured data sampled at 50 kHz) 49753 packets of 144 samples from 2015-01-24T07:23:27.855.999.

Processed Tue Feb 10 21:53:24 2015 by ELM ver.2012-10-06 from 001__elm20150124_072326__dat00.bin



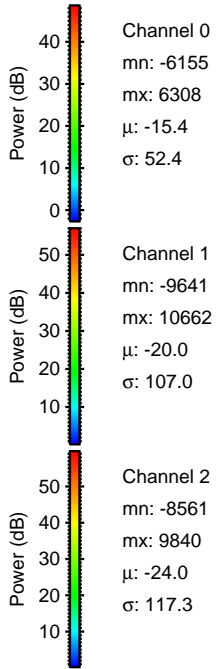
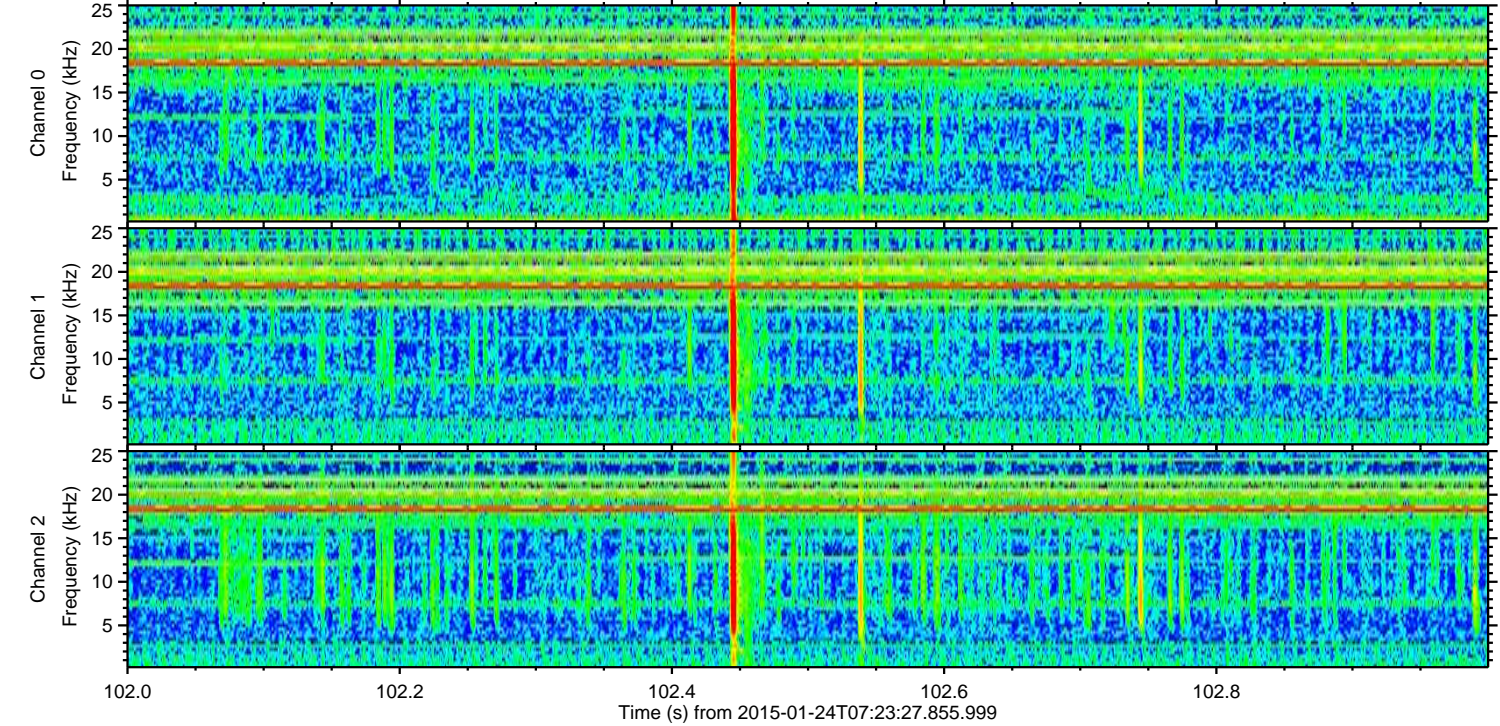
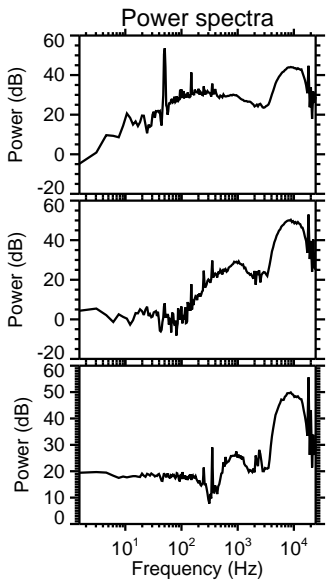
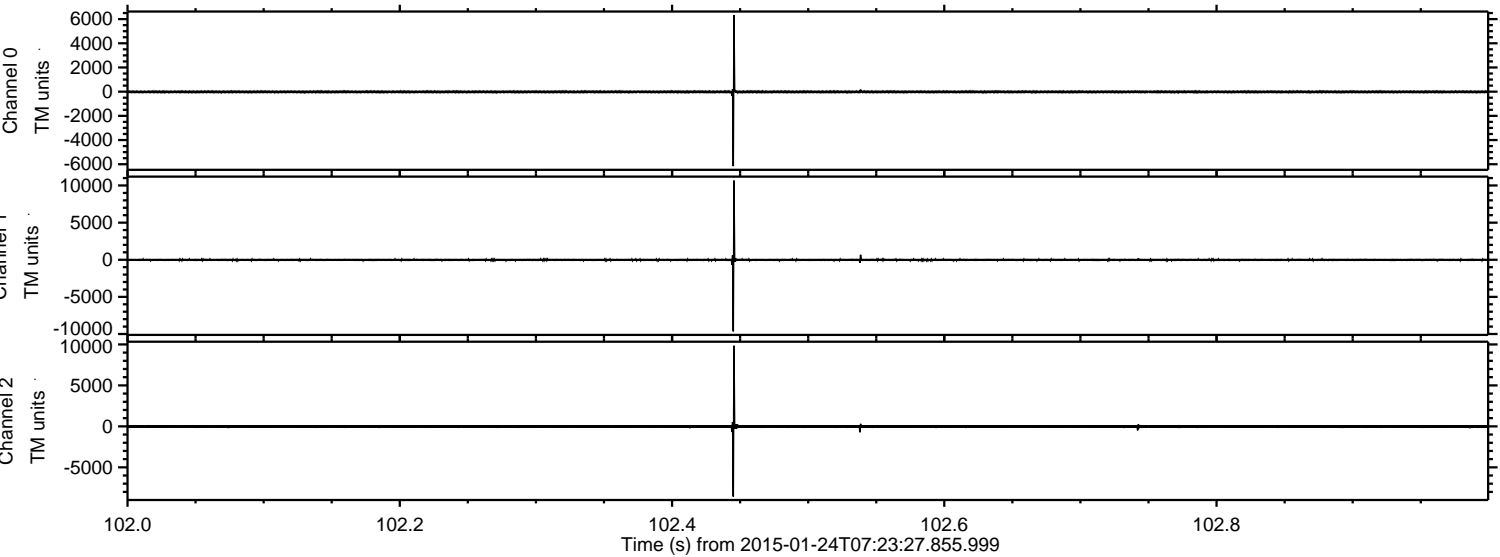
ELMAVAN 3D WAVEFORMS (Measured data sampled at 50 kHz) 49753 packets of 144 samples from 2015-01-24T07:23:27.855.999. Part 31/144

Processed Tue Feb 10 21:53:40 2015 by ELM ver.2012-10-06 from 001__elm20150124_072326__dat00.bin

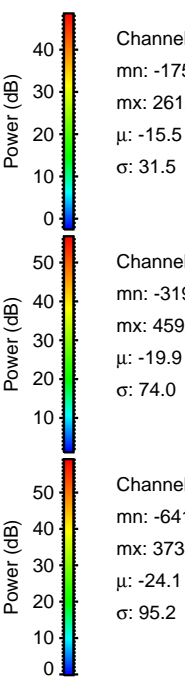
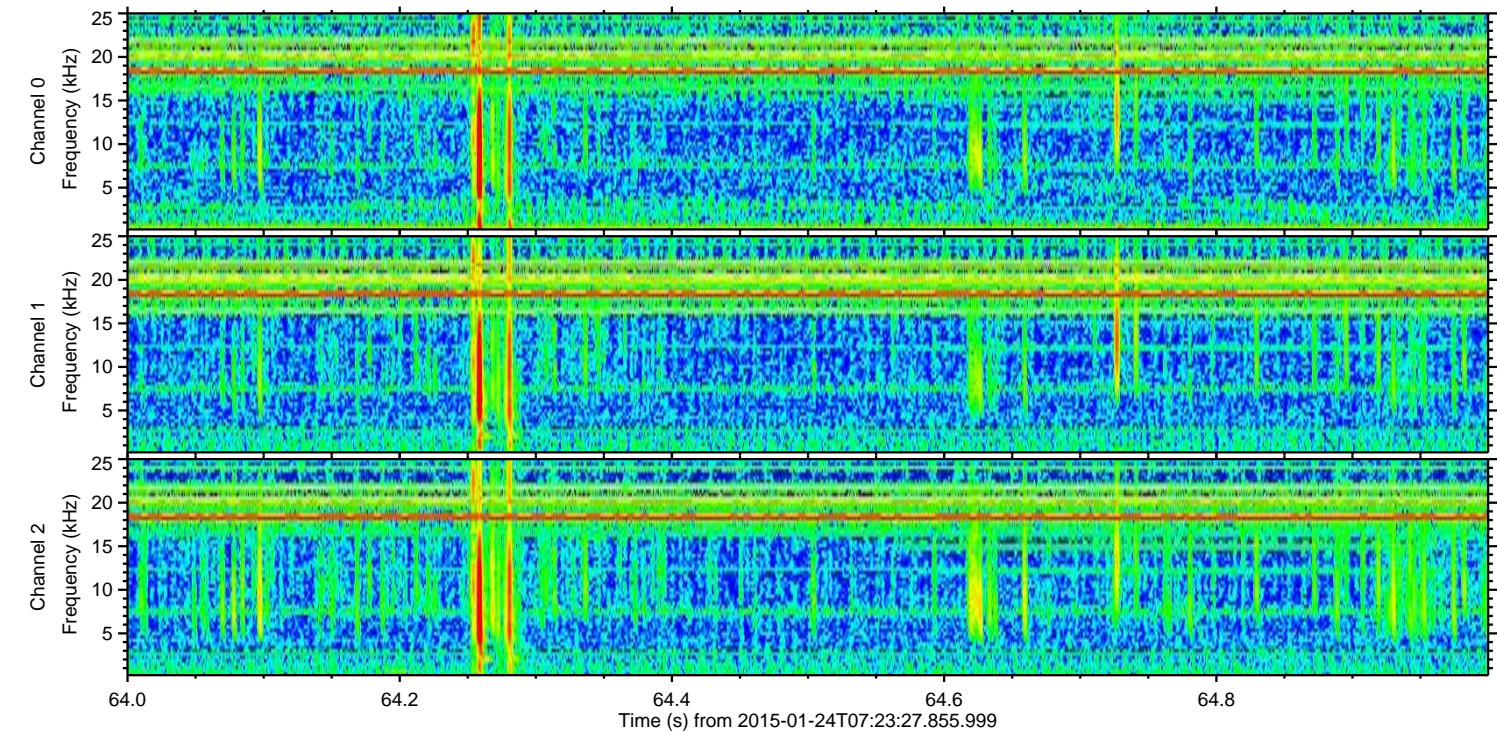
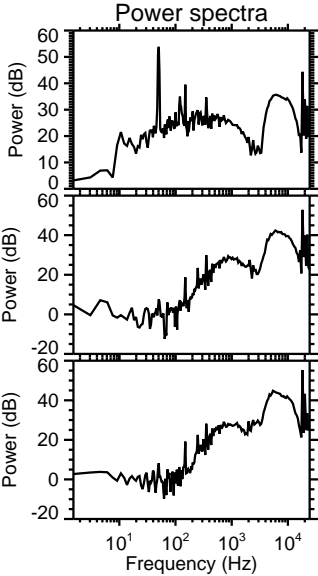
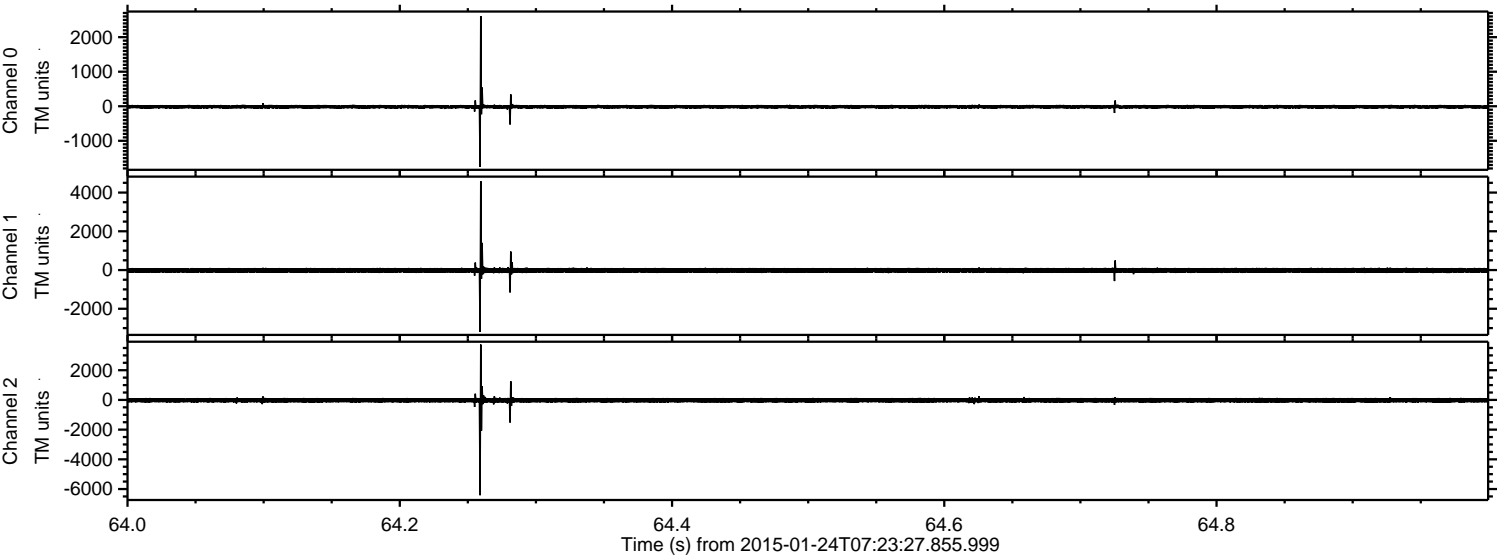


ELMAVAN 3D WAVEFORMS (Measured data sampled at 50 kHz) 49753 packets of 144 samples from 2015-01-24T07:23:27.855.999. Part 103/144

Processed Tue Feb 10 21:53:41 2015 by ELM ver.2012-10-06 from 001__elm20150124_072326__dat00.bin



Processed Tue Feb 10 21:53:42 2015 by ELM ver.2012-10-06 from 001__elm20150124_072326__dat00.bin

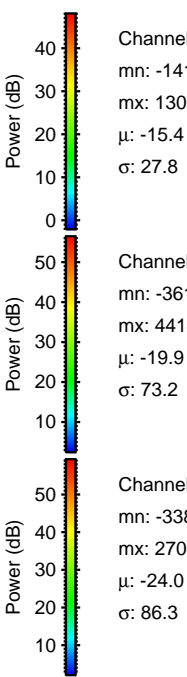
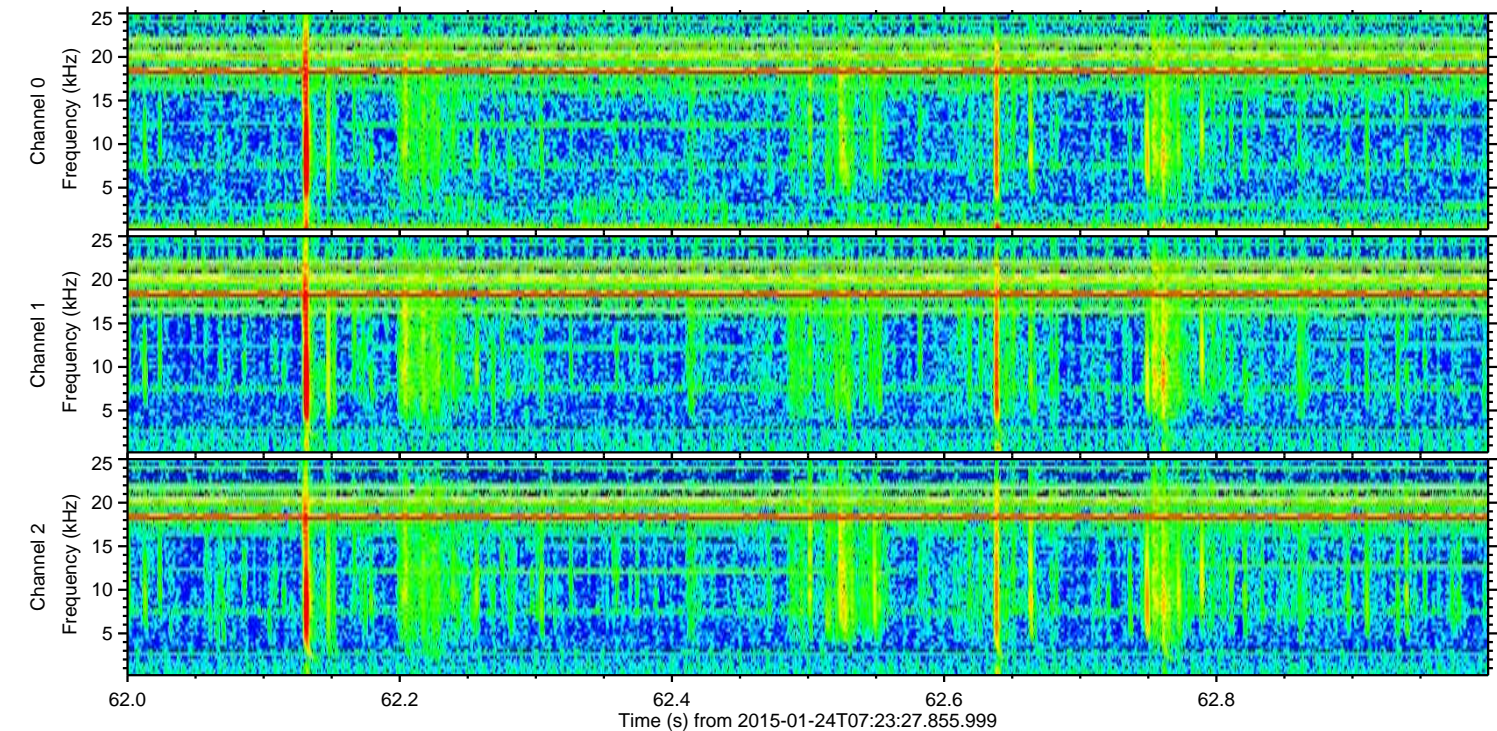
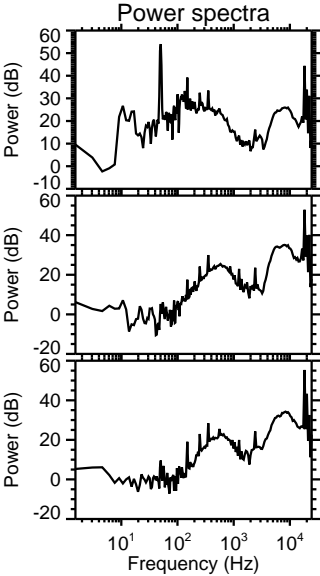
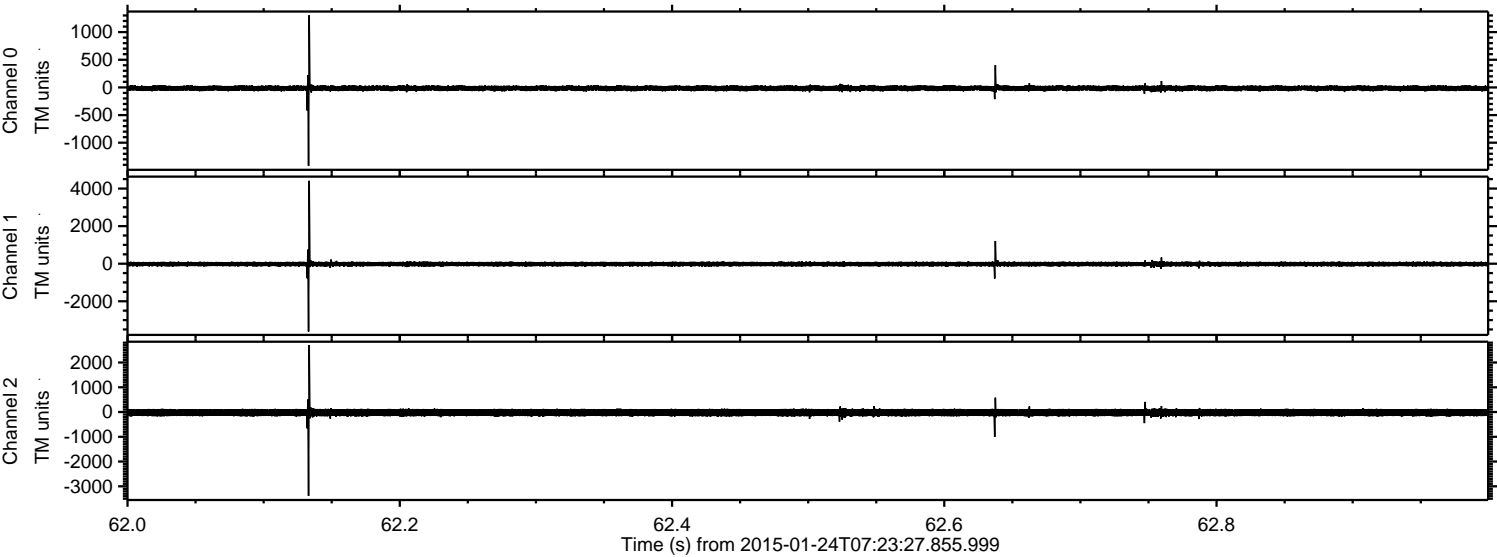


Channel 0
mn: -1752
mx: 2612
 μ : -15.5
 σ : 31.5

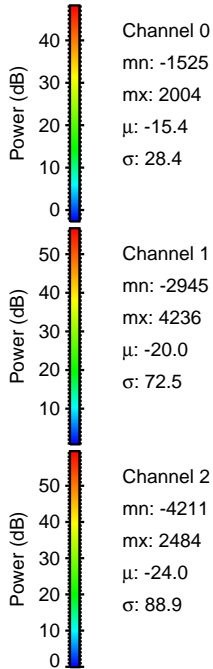
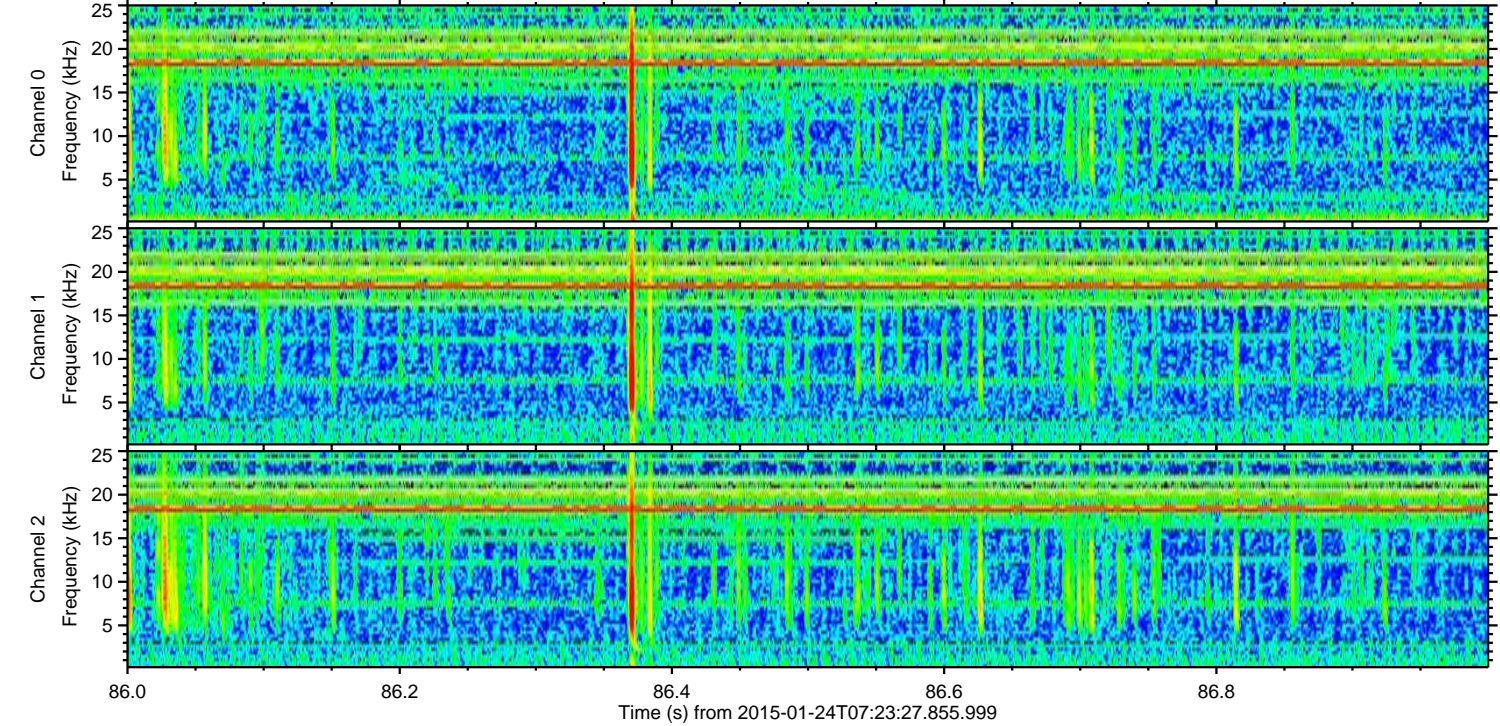
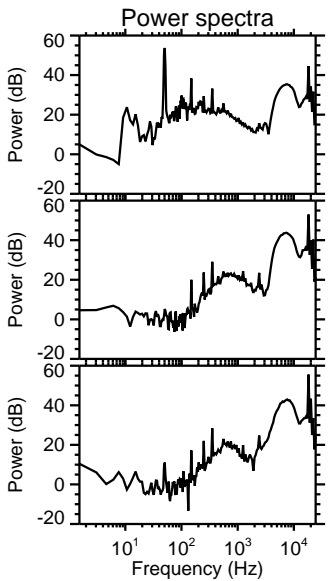
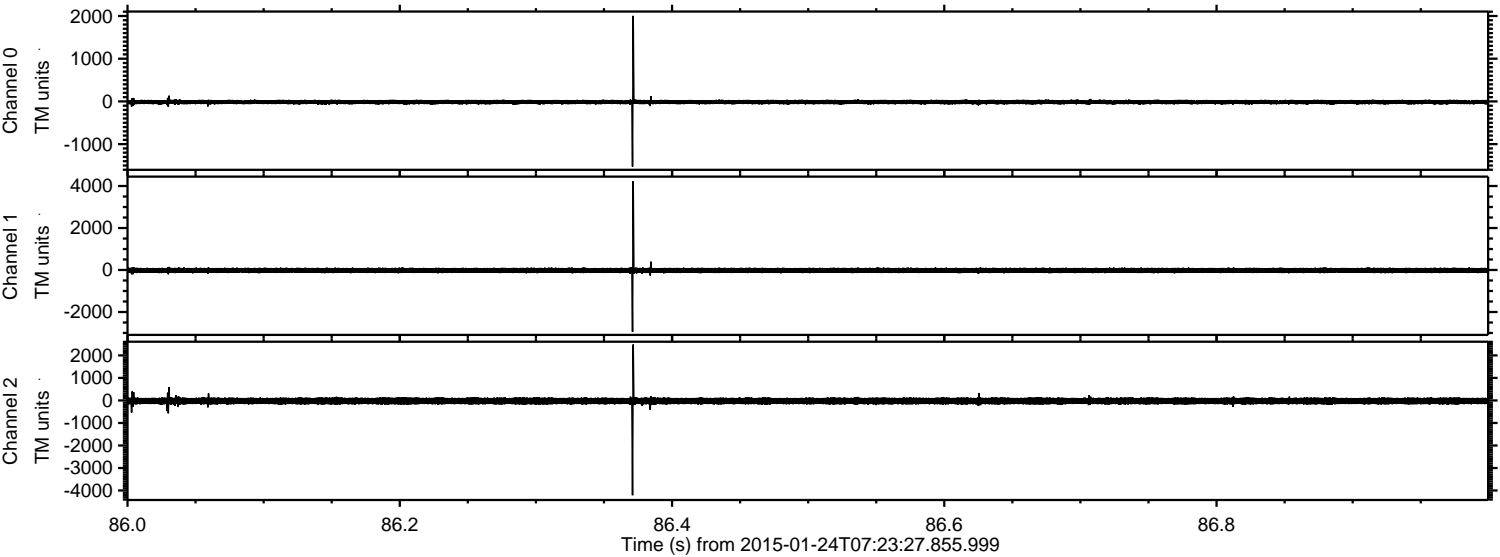
Channel 1
mn: -3190
mx: 4592
 μ : -19.9
 σ : 74.0

Channel 2
mn: -6419
mx: 3734
 μ : -24.1
 σ : 95.2

Processed Tue Feb 10 21:53:43 2015 by ELM ver.2012-10-06 from 001__elm20150124_072326__dat00.bin

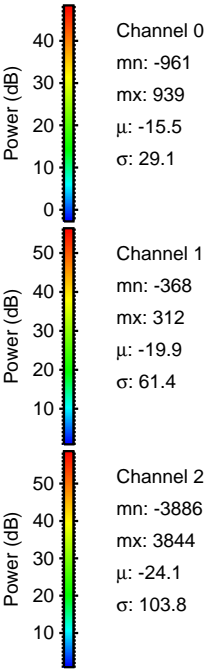
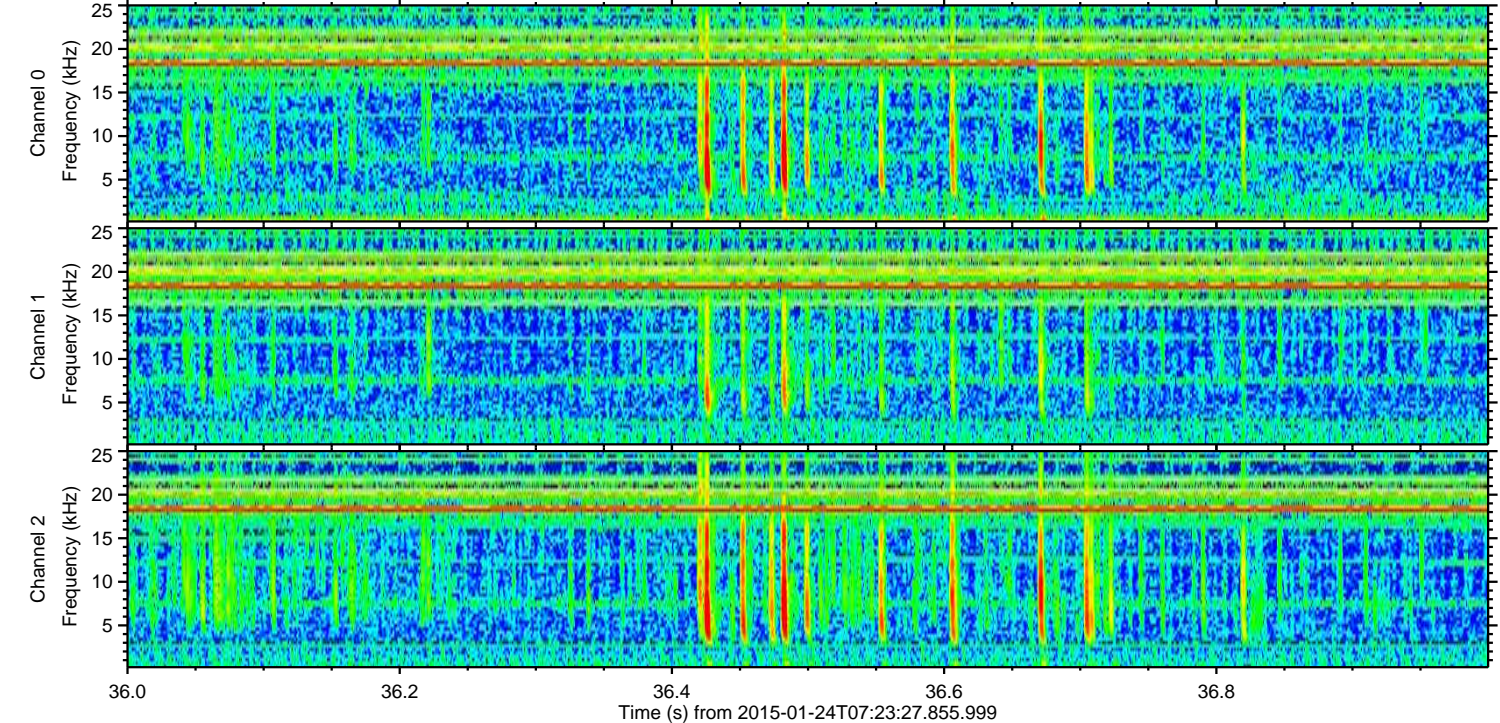
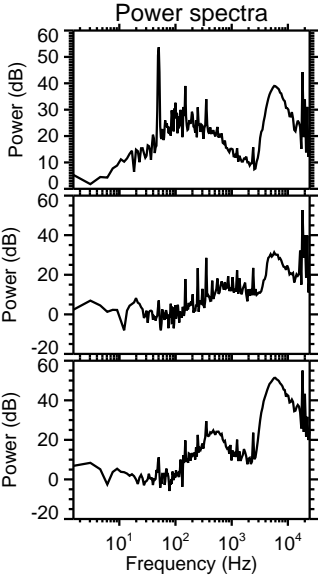
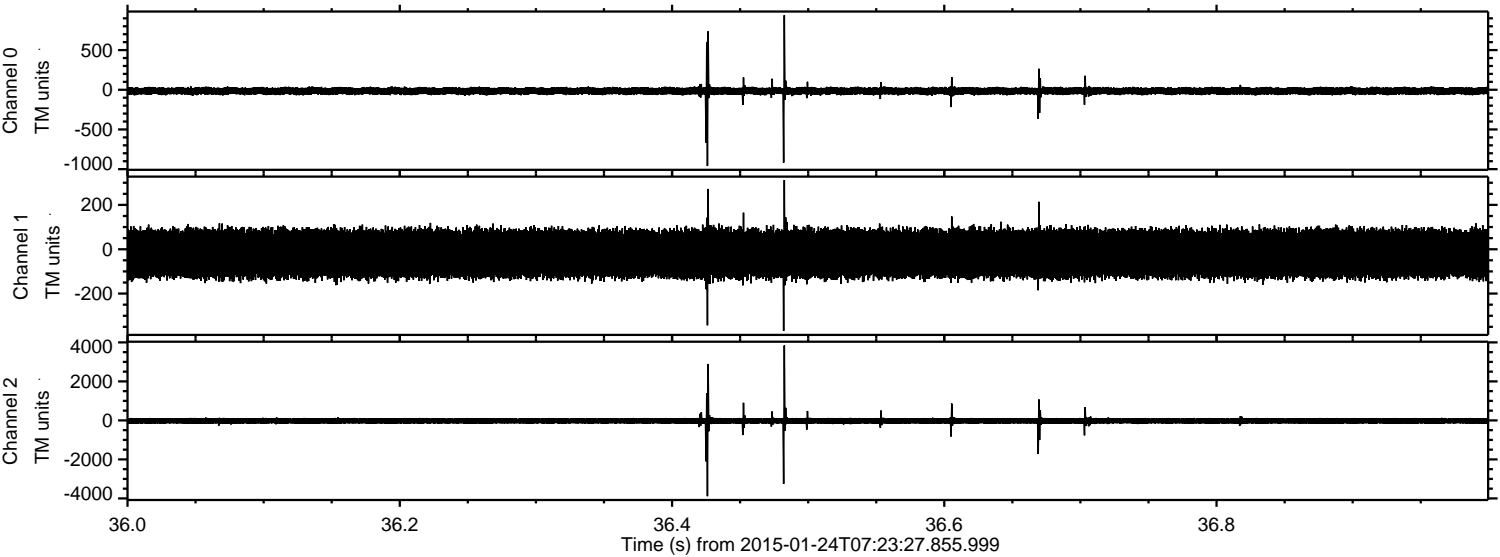


Processed Tue Feb 10 21:53:44 2015 by ELM ver.2012-10-06 from 001__elm20150124_072326__dat00.bin

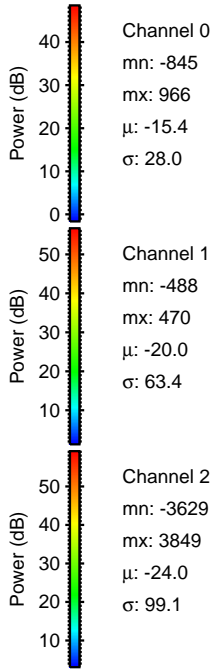
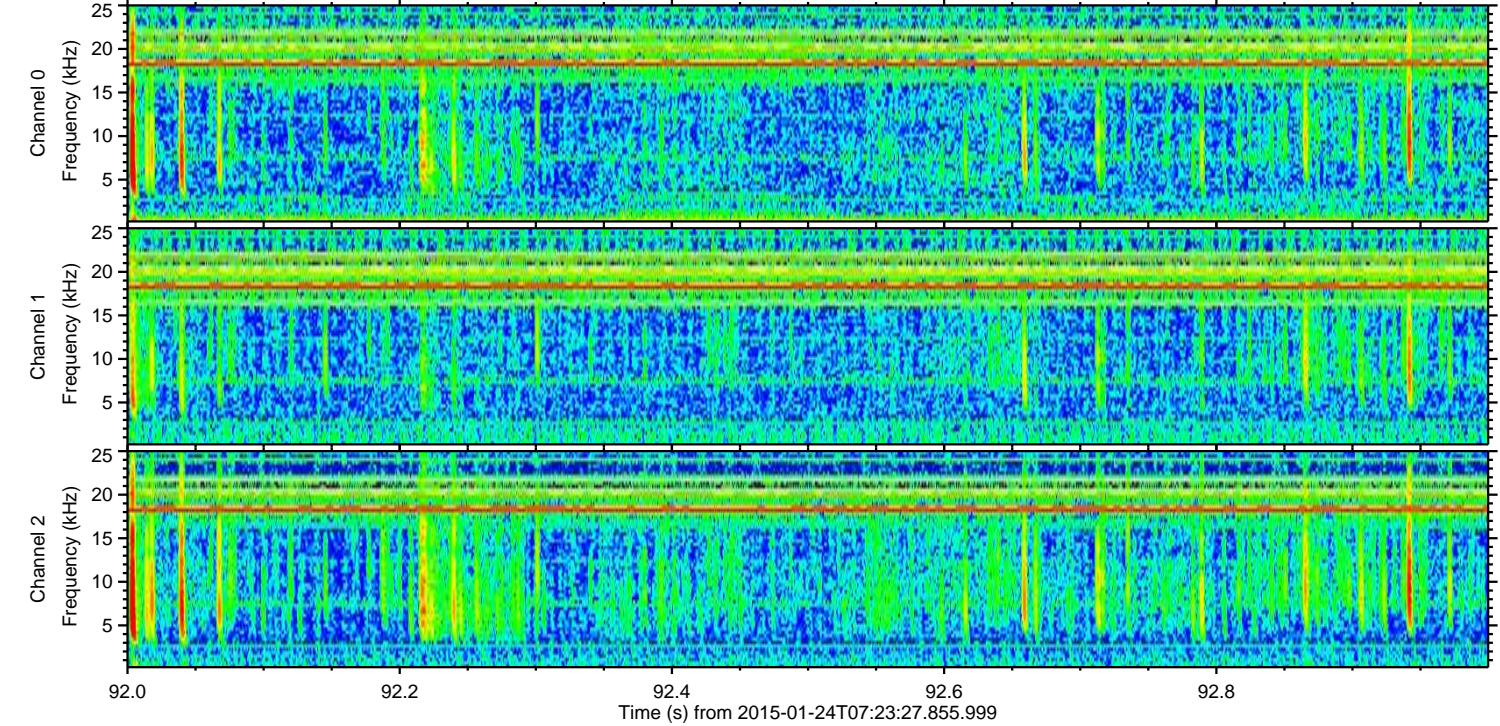
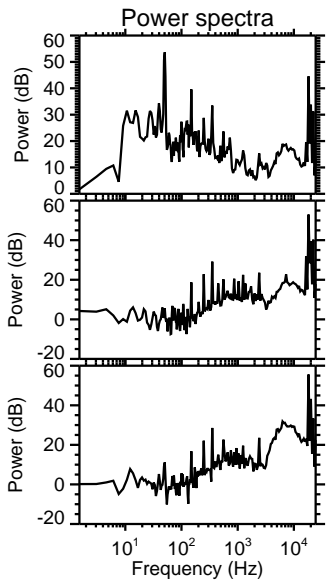
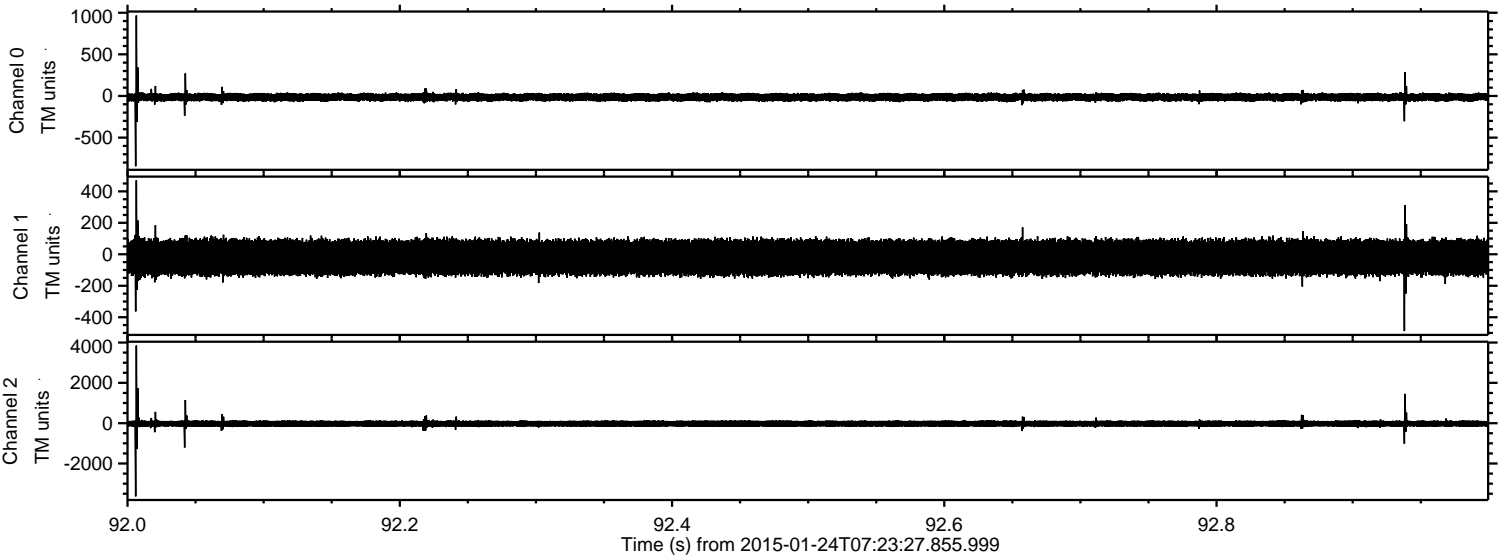


ELMAVAN 3D WAVEFORMS (Measured data sampled at 50 kHz) 49753 packets of 144 samples from 2015-01-24T07:23:27.855.999. Part 37/144

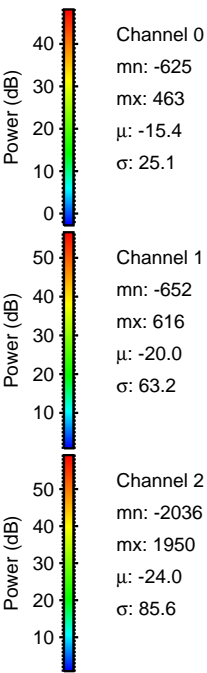
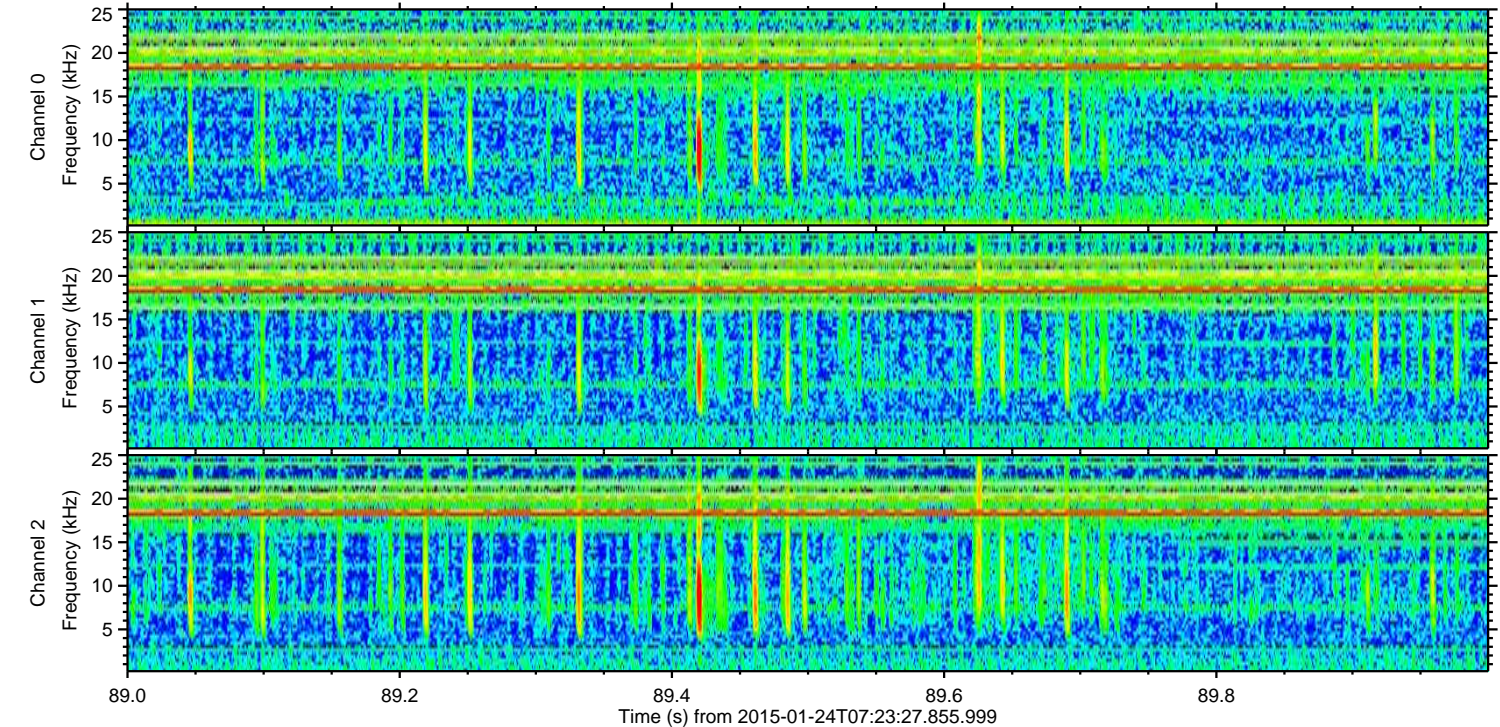
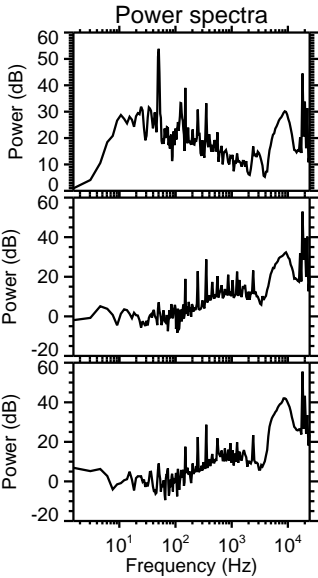
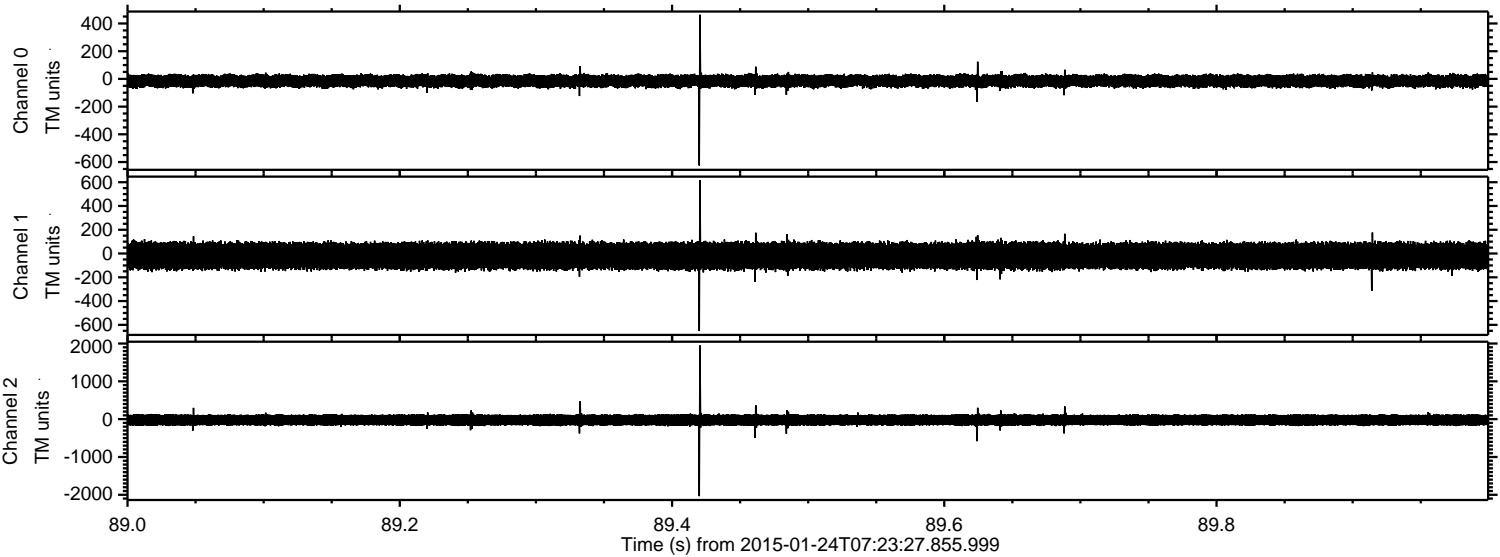
Processed Tue Feb 10 21:53:45 2015 by ELM ver.2012-10-06 from 001__elm20150124_072326__dat00.bin



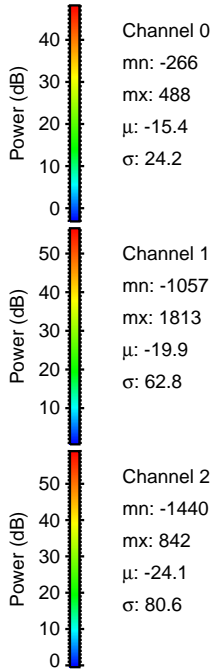
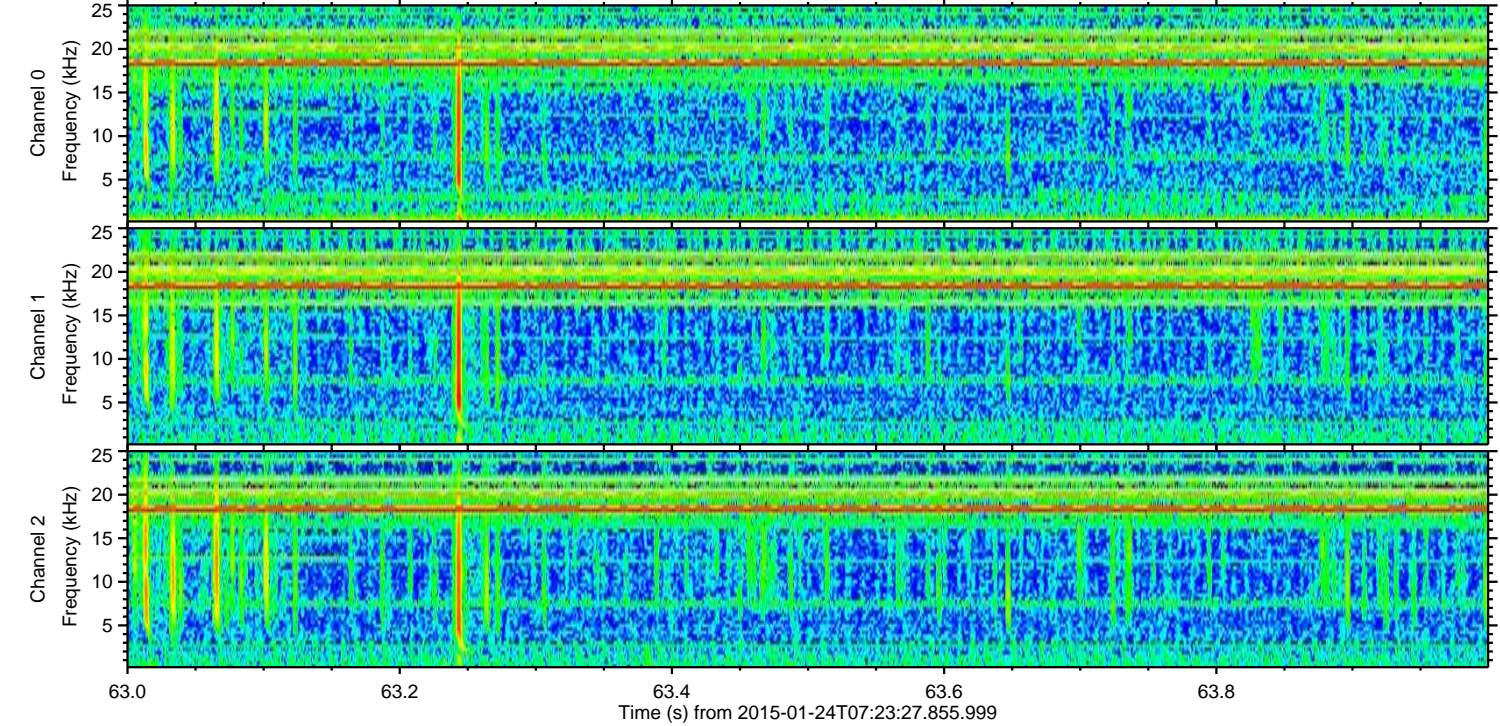
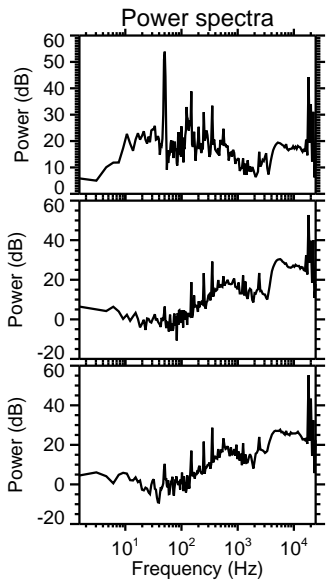
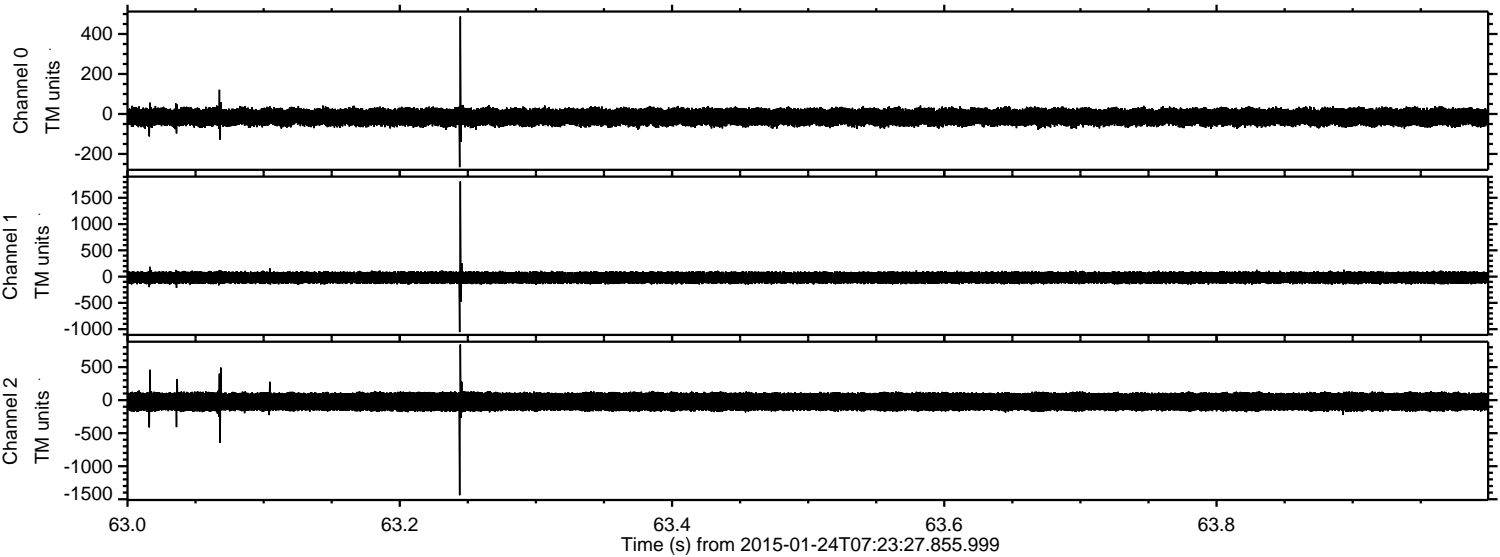
Processed Tue Feb 10 21:53:46 2015 by ELM ver.2012-10-06 from 001__elm20150124_072326__dat00.bin



Processed Tue Feb 10 21:53:48 2015 by ELM ver.2012-10-06 from 001__elm20150124_072326__dat00.bin



Processed Tue Feb 10 21:53:49 2015 by ELM ver.2012-10-06 from 001__elm20150124_072326__dat00.bin



Processed Tue Feb 10 21:53:50 2015 by ELM ver.2012-10-06 from 001__elm20150124_072326__dat00.bin

