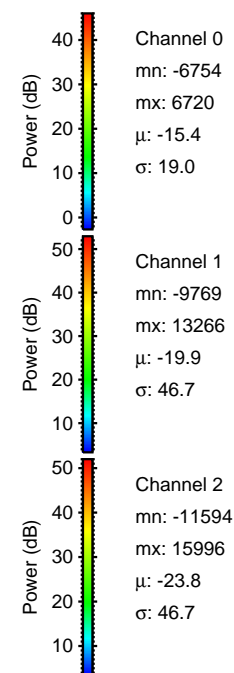
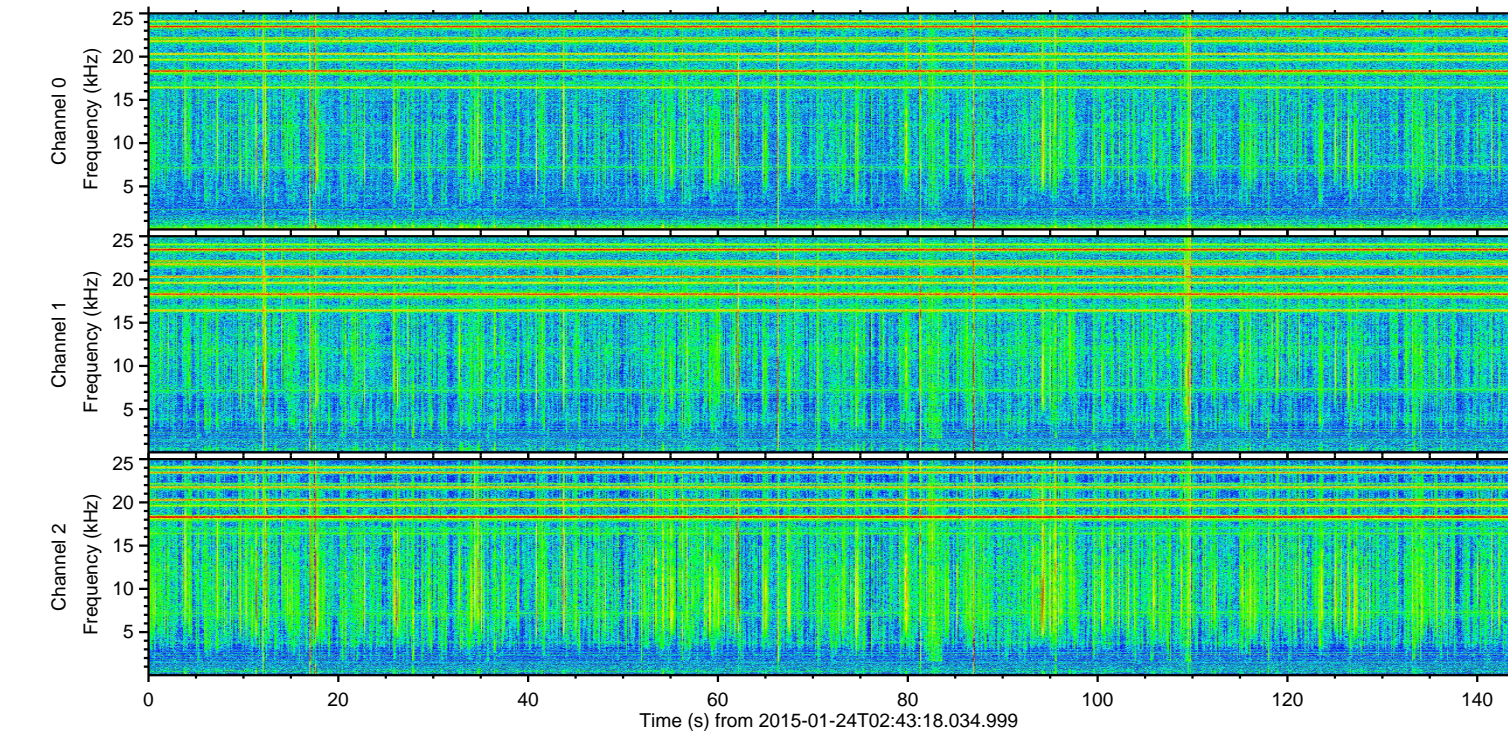
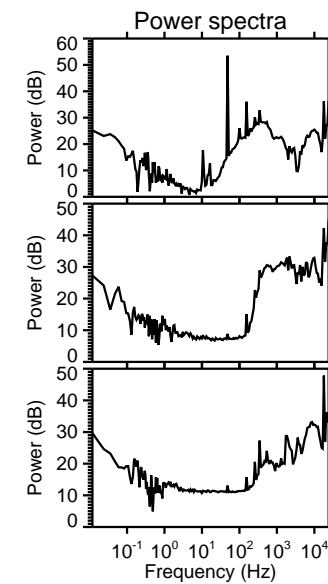
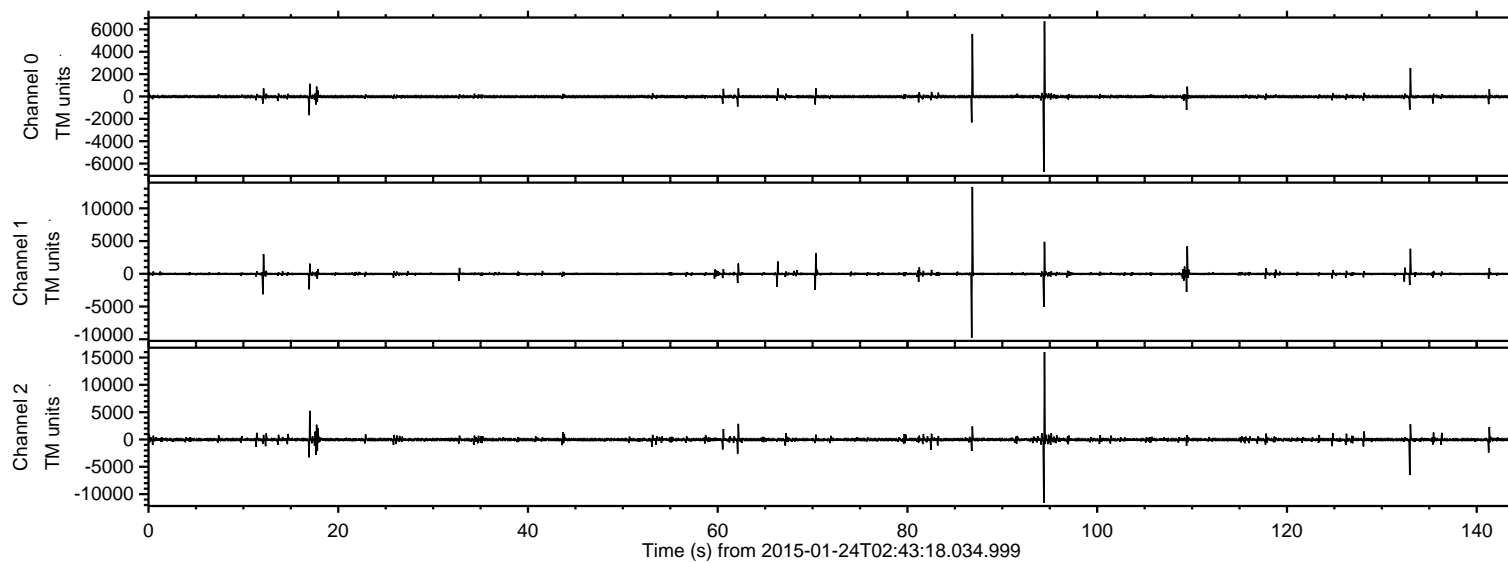


# ELMAVAN 3D WAVEFORMS (Measured data sampled at 50 kHz) 49799 packets of 144 samples from 2015-01-24T02:43:18.034.999.

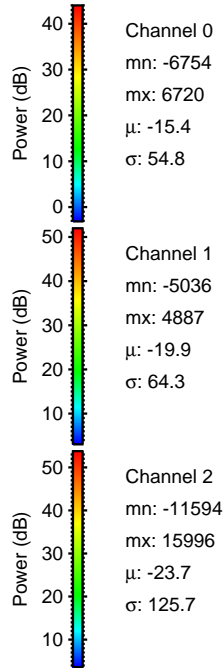
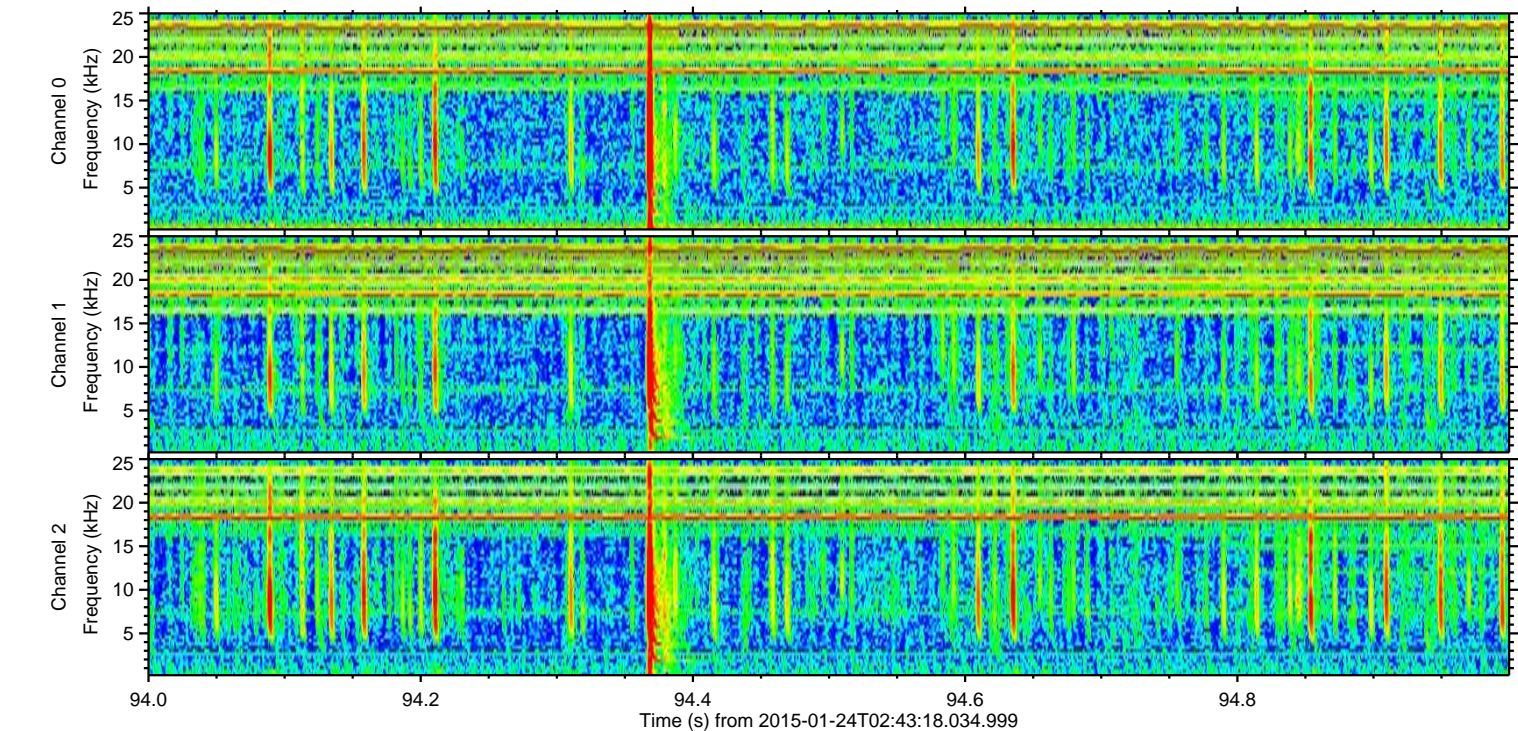
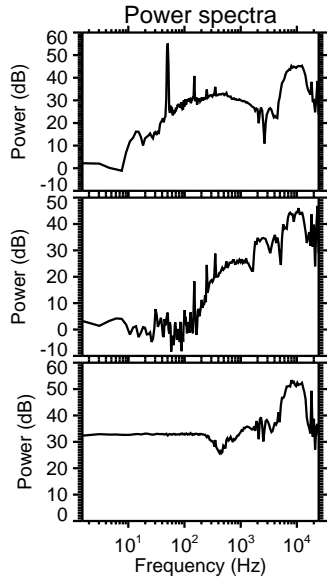
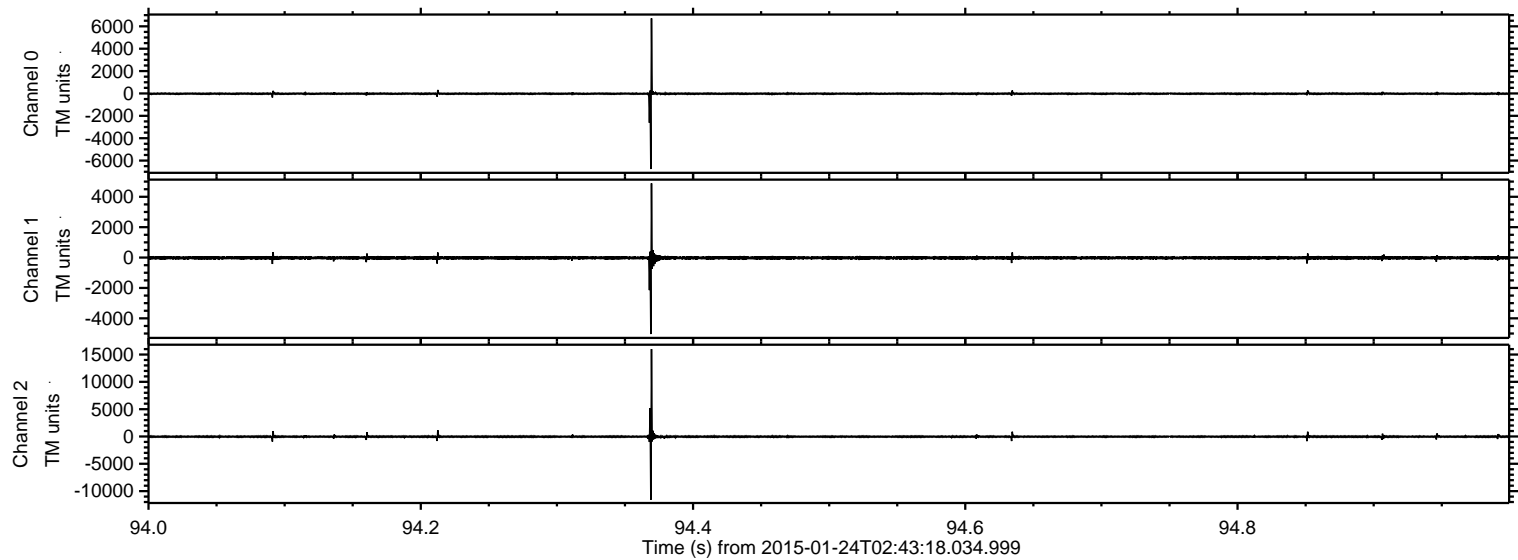
Processed Tue Feb 10 20:41:36 2015 by ELM ver.2012-10-06 from 001\_\_elm20150124\_024317\_\_dat00.bin





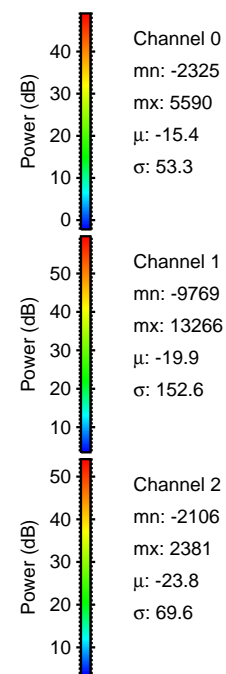
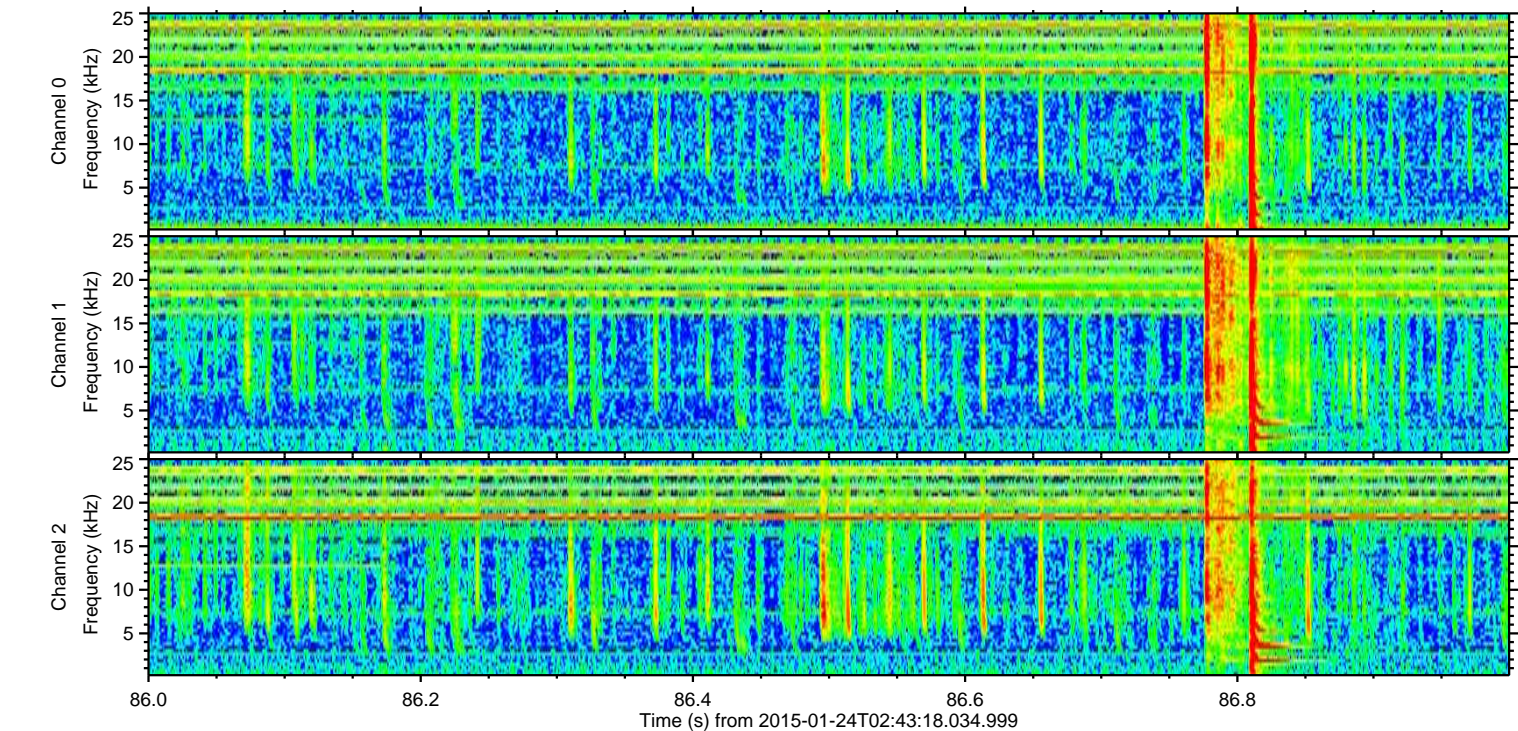
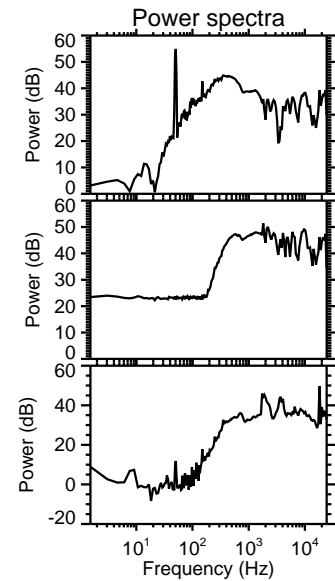
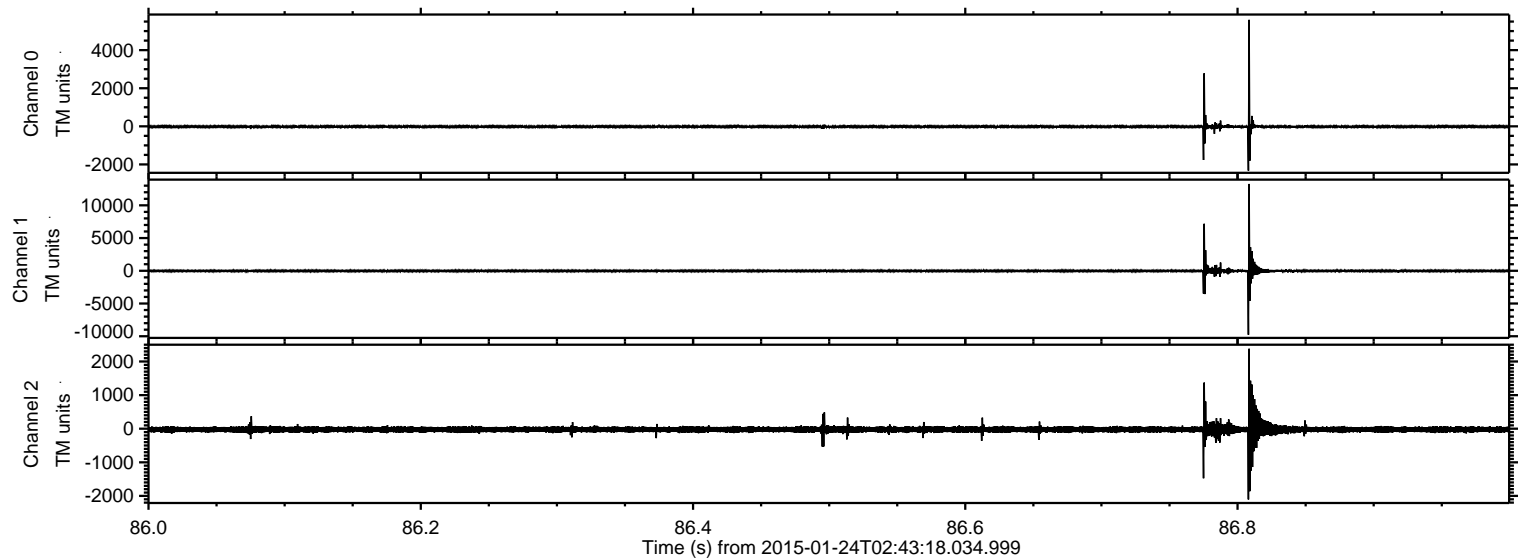
ELMAVAN 3D WAVEFORMS (Measured data sampled at 50 kHz) 49799 packets of 144 samples from 2015-01-24T02:43:18.034.999. Part 95/144

Processed Tue Feb 10 20:41:48 2015 by ELM ver.2012-10-06 from 001\_\_elm20150124\_024317\_\_dat00.bin





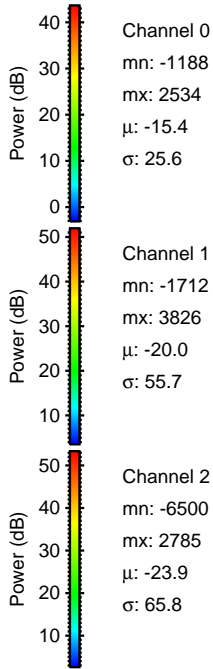
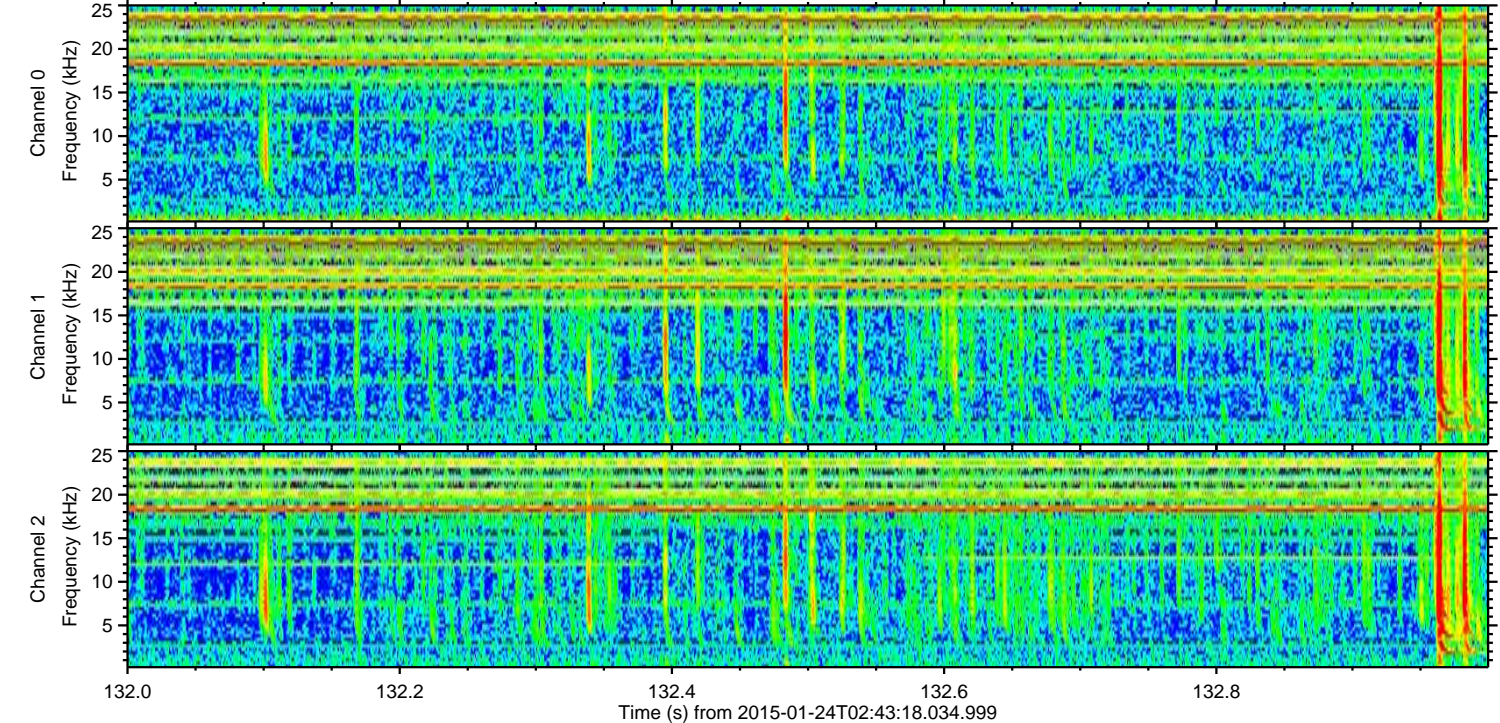
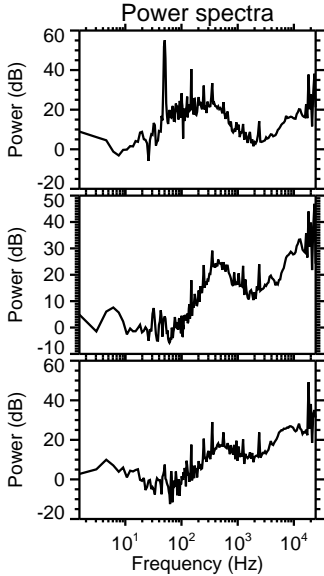
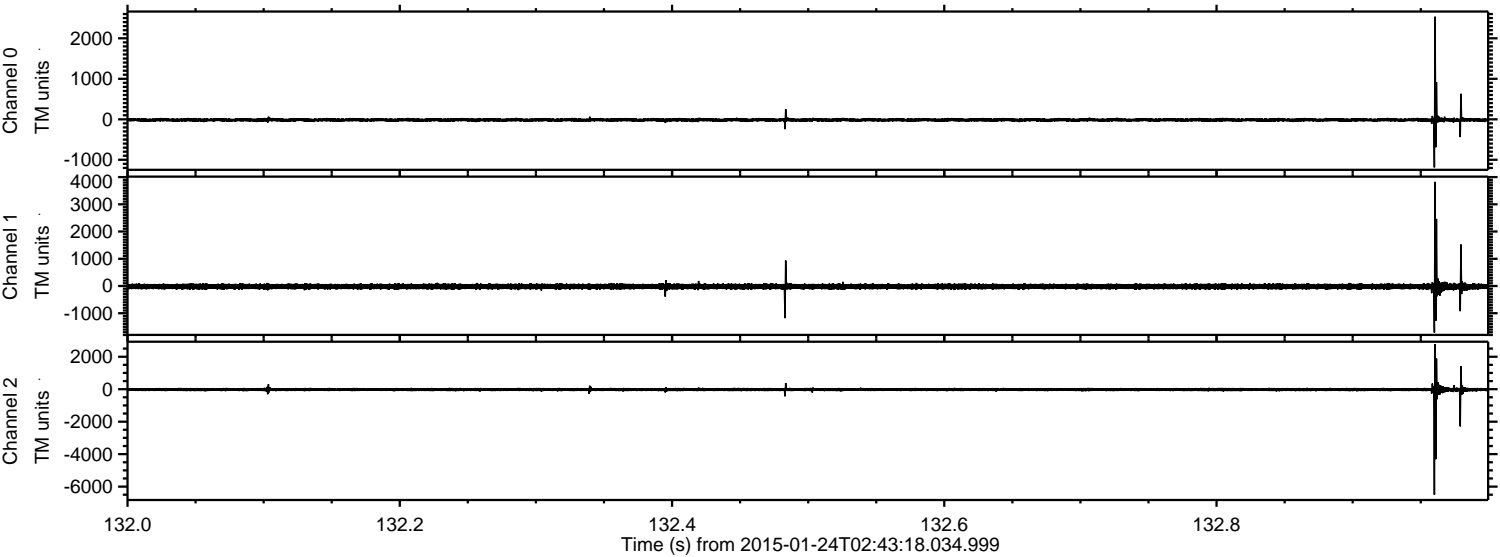
Processed Tue Feb 10 20:41:49 2015 by ELM ver.2012-10-06 from 001\_\_elm20150124\_024317\_\_dat00.bin





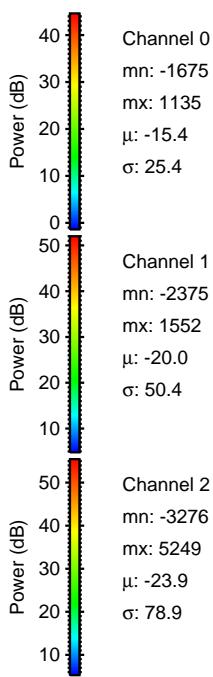
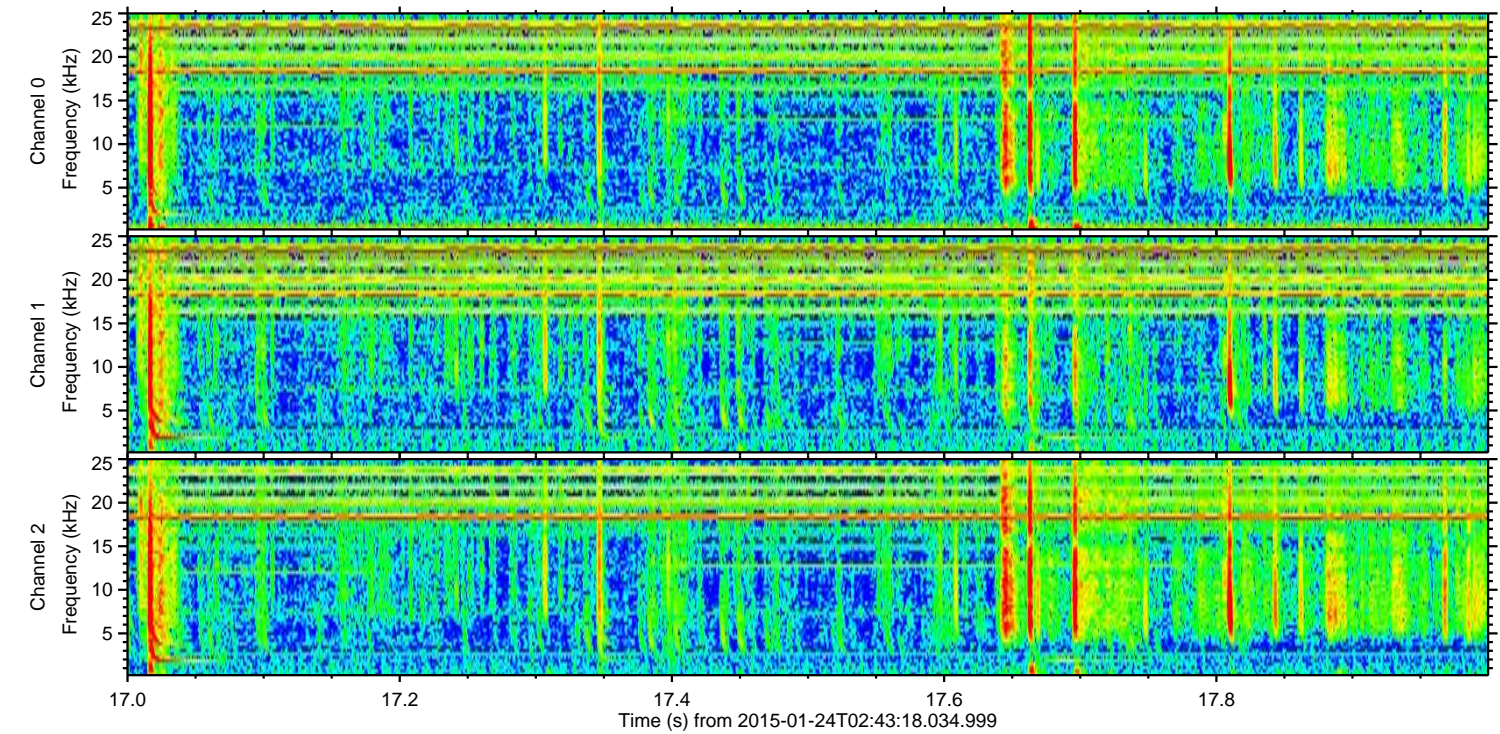
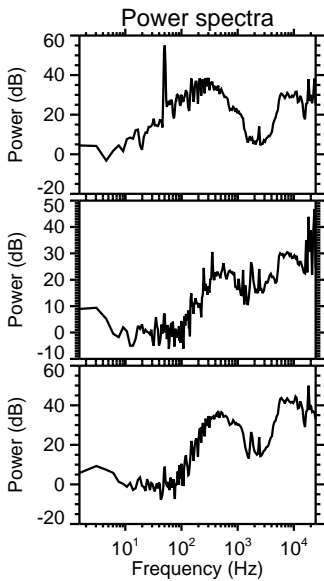
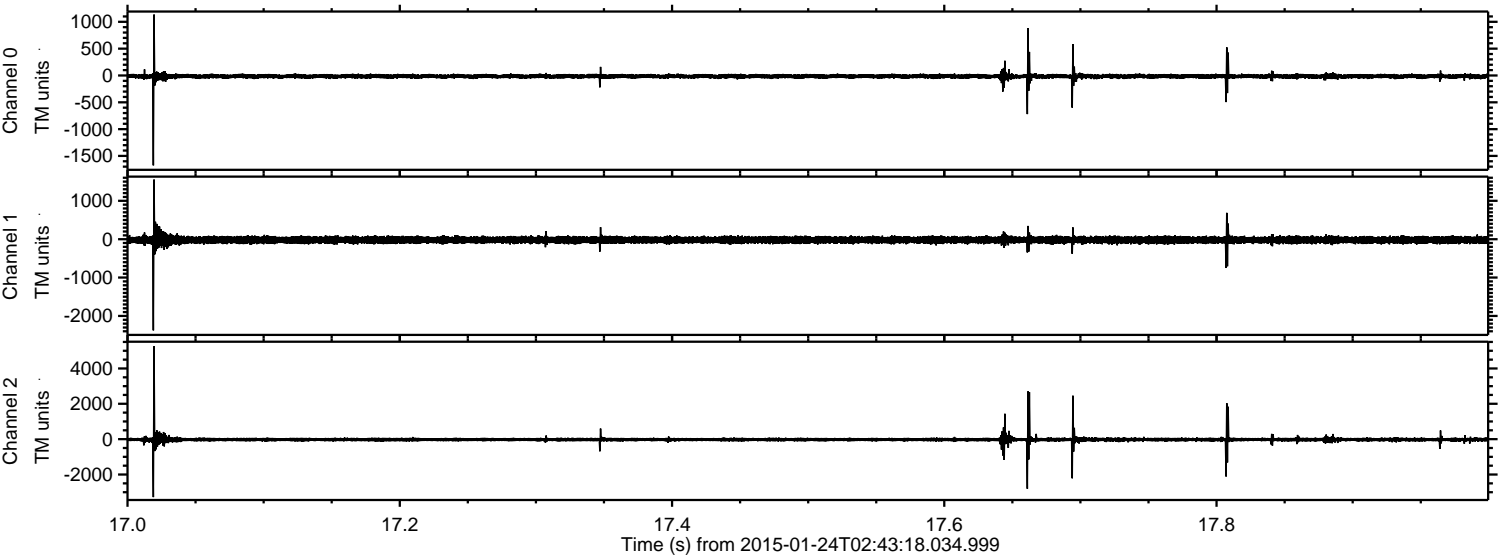
ELMAVAN 3D WAVEFORMS (Measured data sampled at 50 kHz) 49799 packets of 144 samples from 2015-01-24T02:43:18.034.999. Part 133/144

Processed Tue Feb 10 20:41:50 2015 by ELM ver.2012-10-06 from 001\_\_elm20150124\_024317\_\_dat00.bin





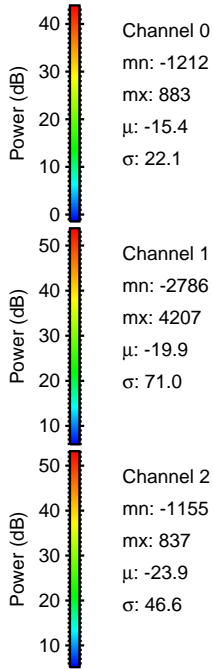
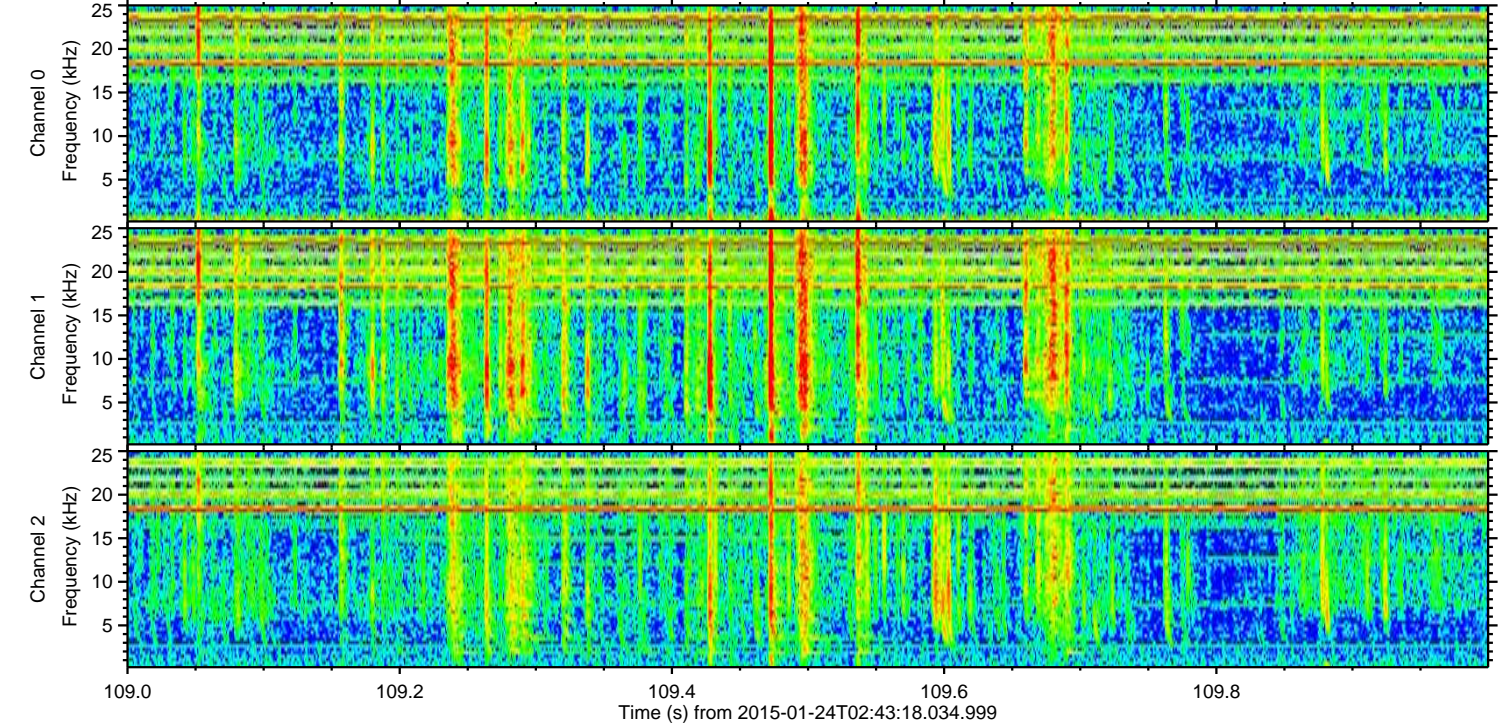
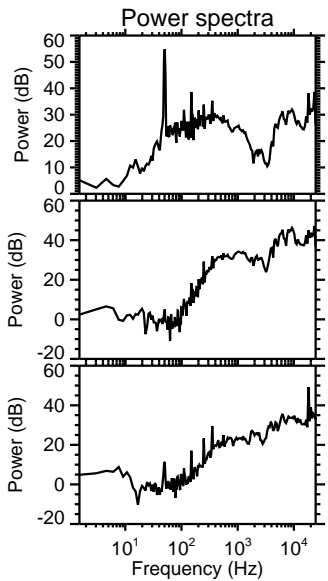
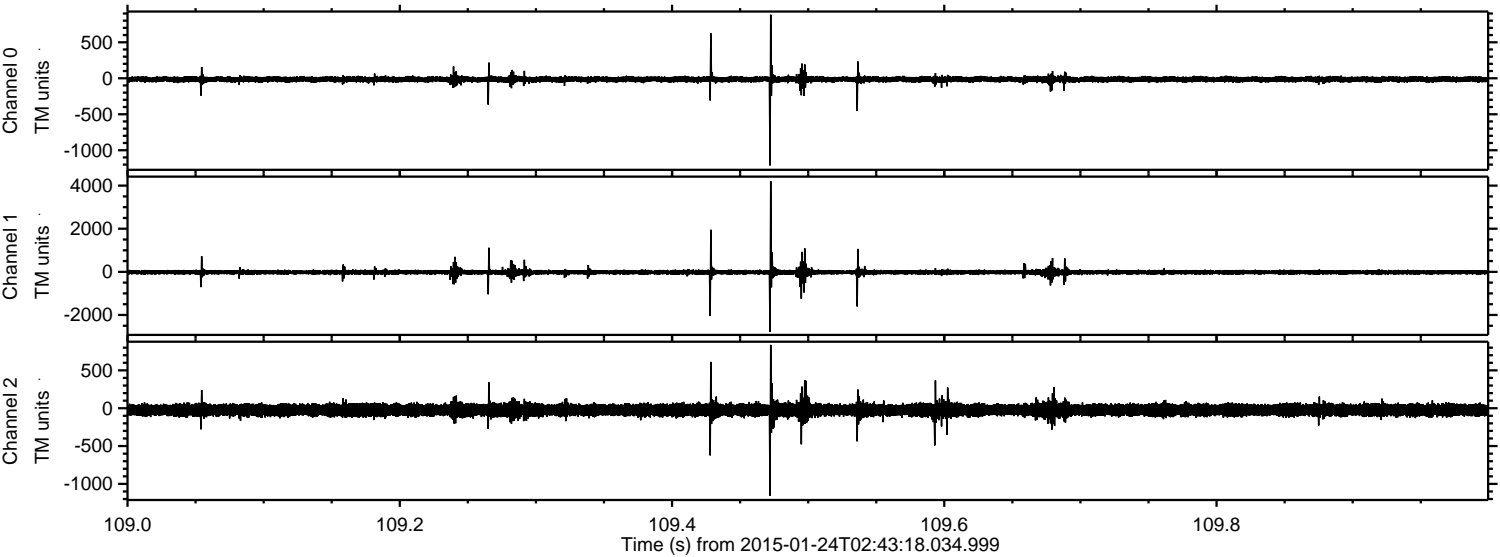
Processed Tue Feb 10 20:41:51 2015 by ELM ver.2012-10-06 from 001\_\_elm20150124\_024317\_\_dat00.bin





ELMAVAN 3D WAVEFORMS (Measured data sampled at 50 kHz) 49799 packets of 144 samples from 2015-01-24T02:43:18.034.999. Part 110/144

Processed Tue Feb 10 20:41:52 2015 by ELM ver.2012-10-06 from 001\_\_elm20150124\_024317\_\_dat00.bin



Channel 0  
mn: -1212  
mx: 883  
 $\mu$ : -15.4  
 $\sigma$ : 22.1

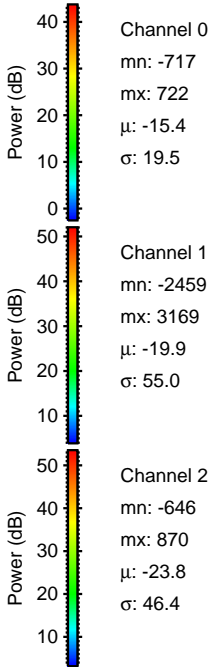
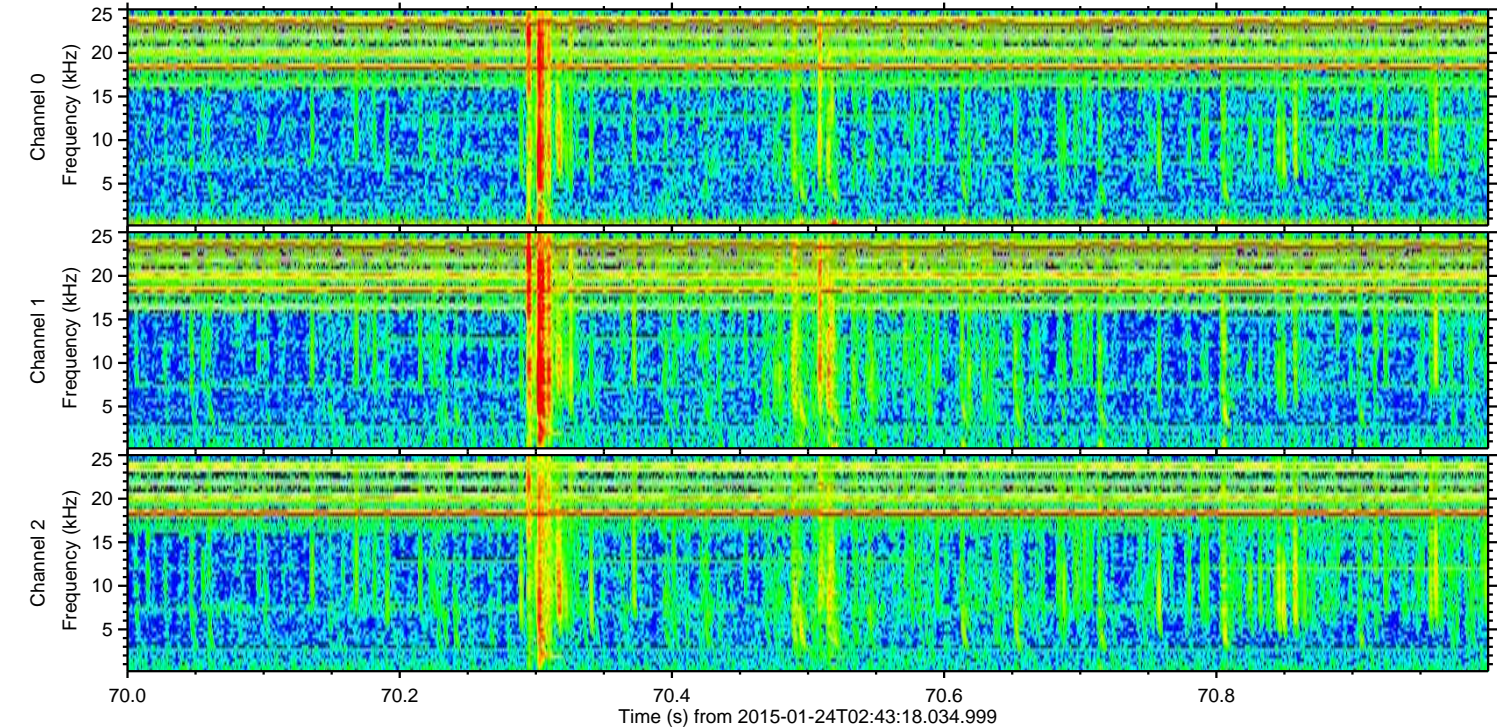
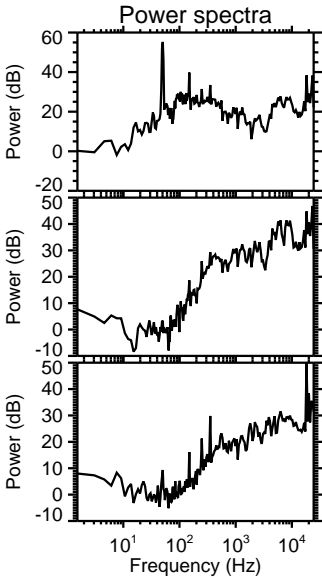
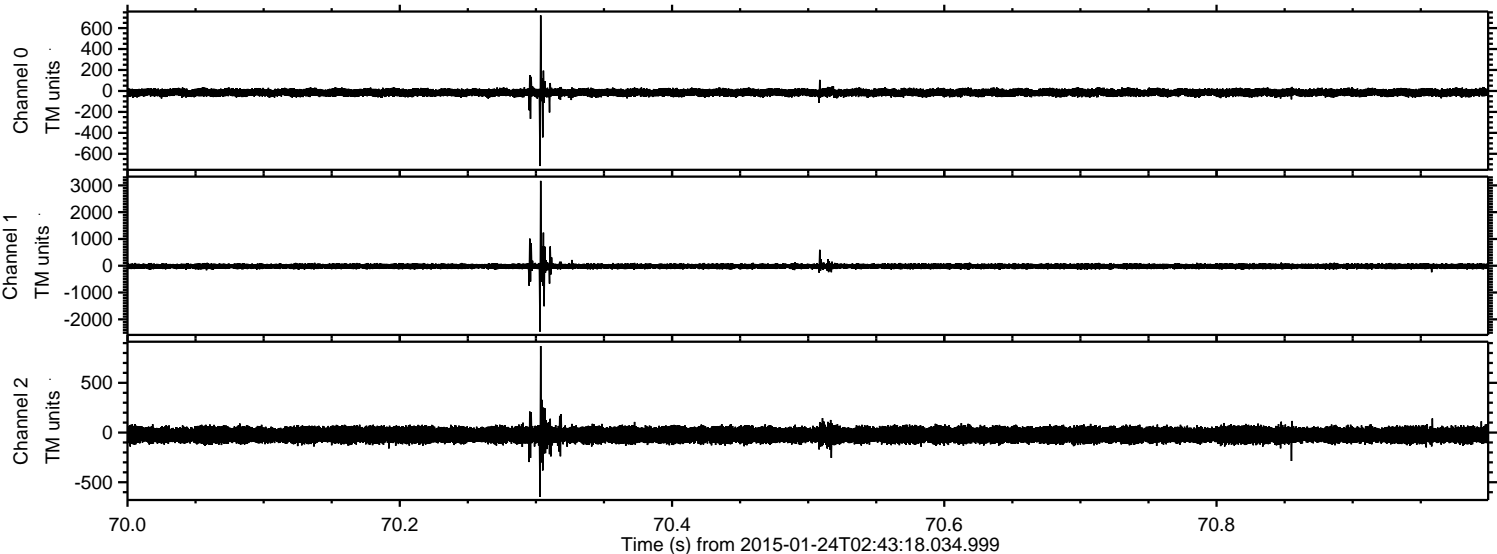
Channel 1  
mn: -2786  
mx: 4207  
 $\mu$ : -19.9  
 $\sigma$ : 71.0

Channel 2  
mn: -1155  
mx: 837  
 $\mu$ : -23.9  
 $\sigma$ : 46.6



ELMAVAN 3D WAVEFORMS (Measured data sampled at 50 kHz) 49799 packets of 144 samples from 2015-01-24T02:43:18.034.999. Part 71/144

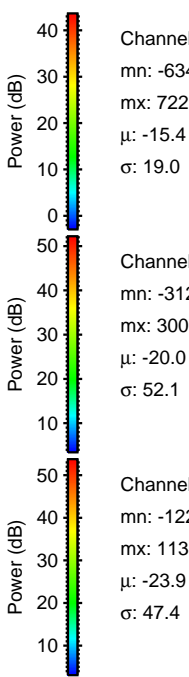
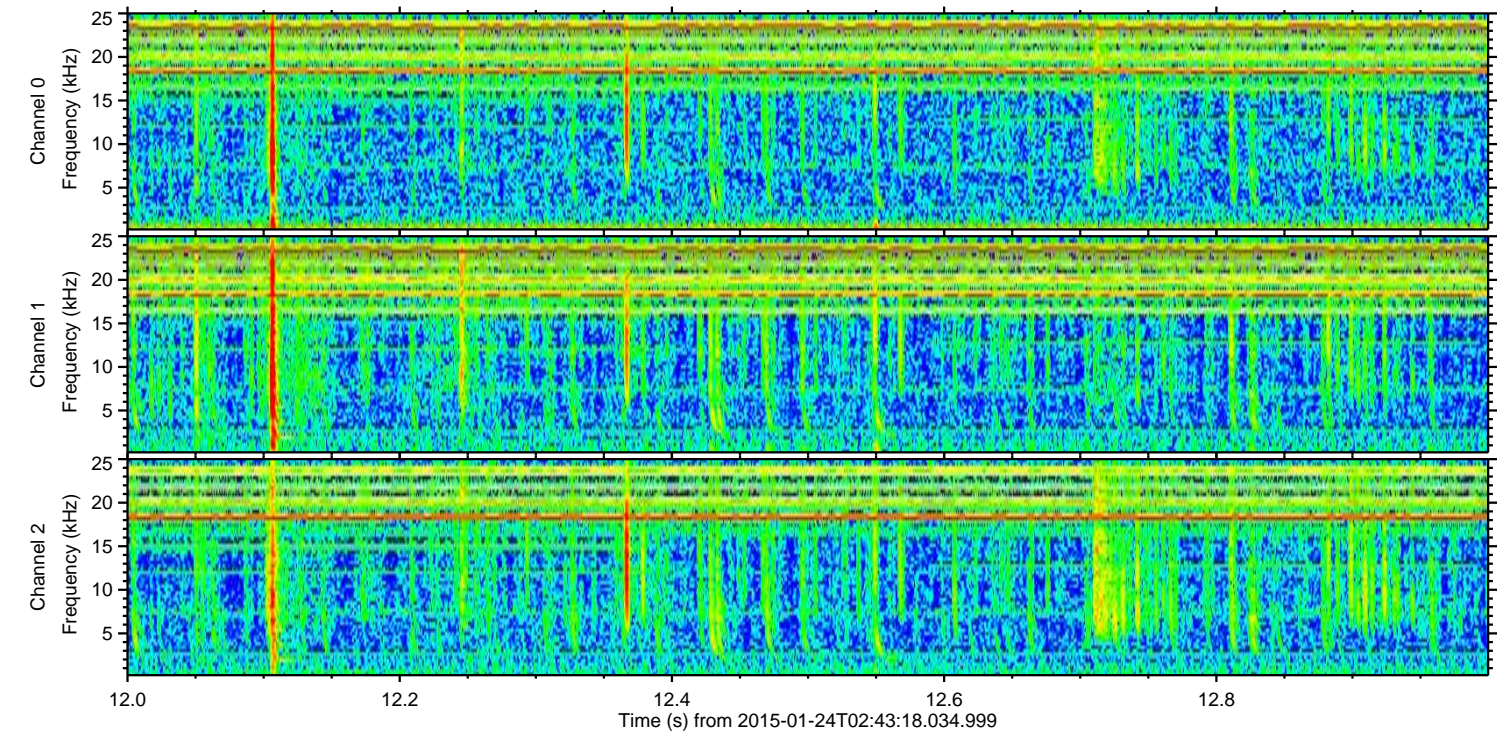
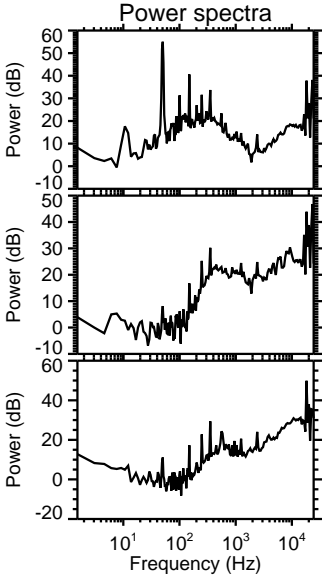
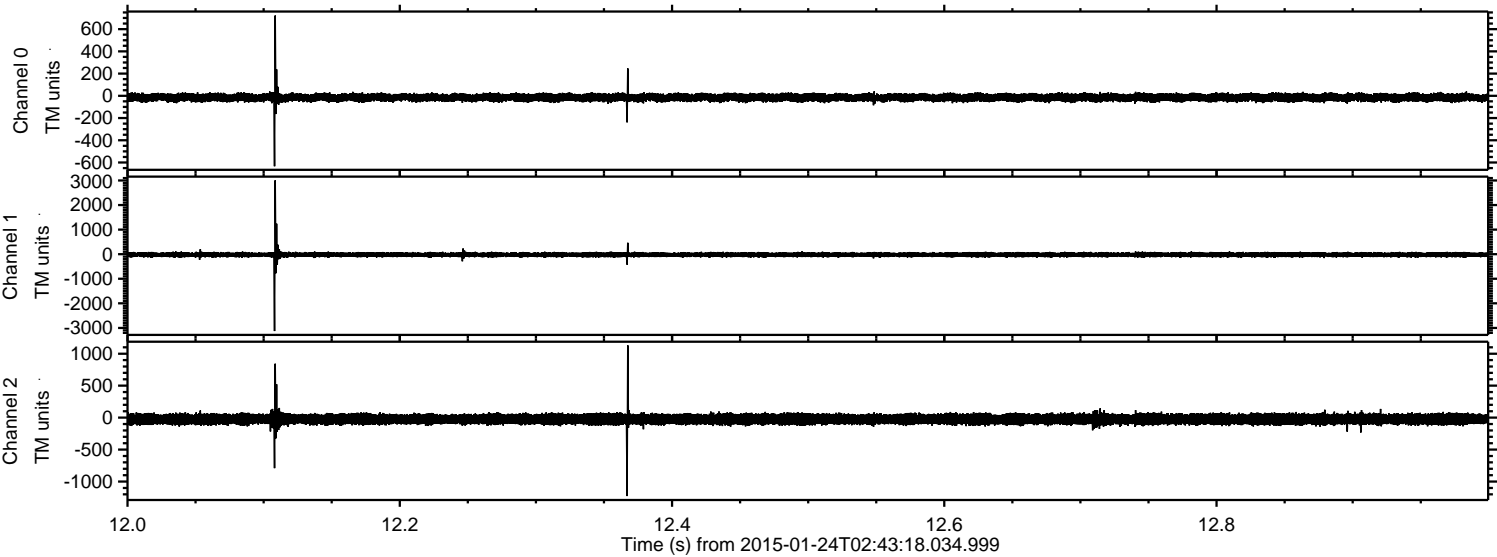
Processed Tue Feb 10 20:41:53 2015 by ELM ver.2012-10-06 from 001\_\_elm20150124\_024317\_\_dat00.bin





ELMAVAN 3D WAVEFORMS (Measured data sampled at 50 kHz) 49799 packets of 144 samples from 2015-01-24T02:43:18.034.999. Part 13/144

Processed Tue Feb 10 20:41:54 2015 by ELM ver.2012-10-06 from 001\_\_elm20150124\_024317\_\_dat00.bin



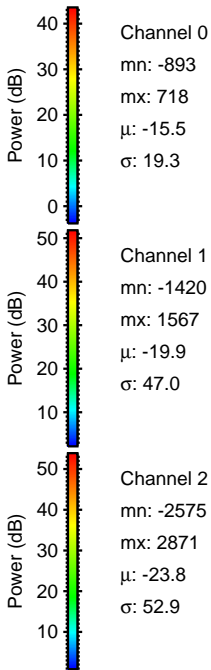
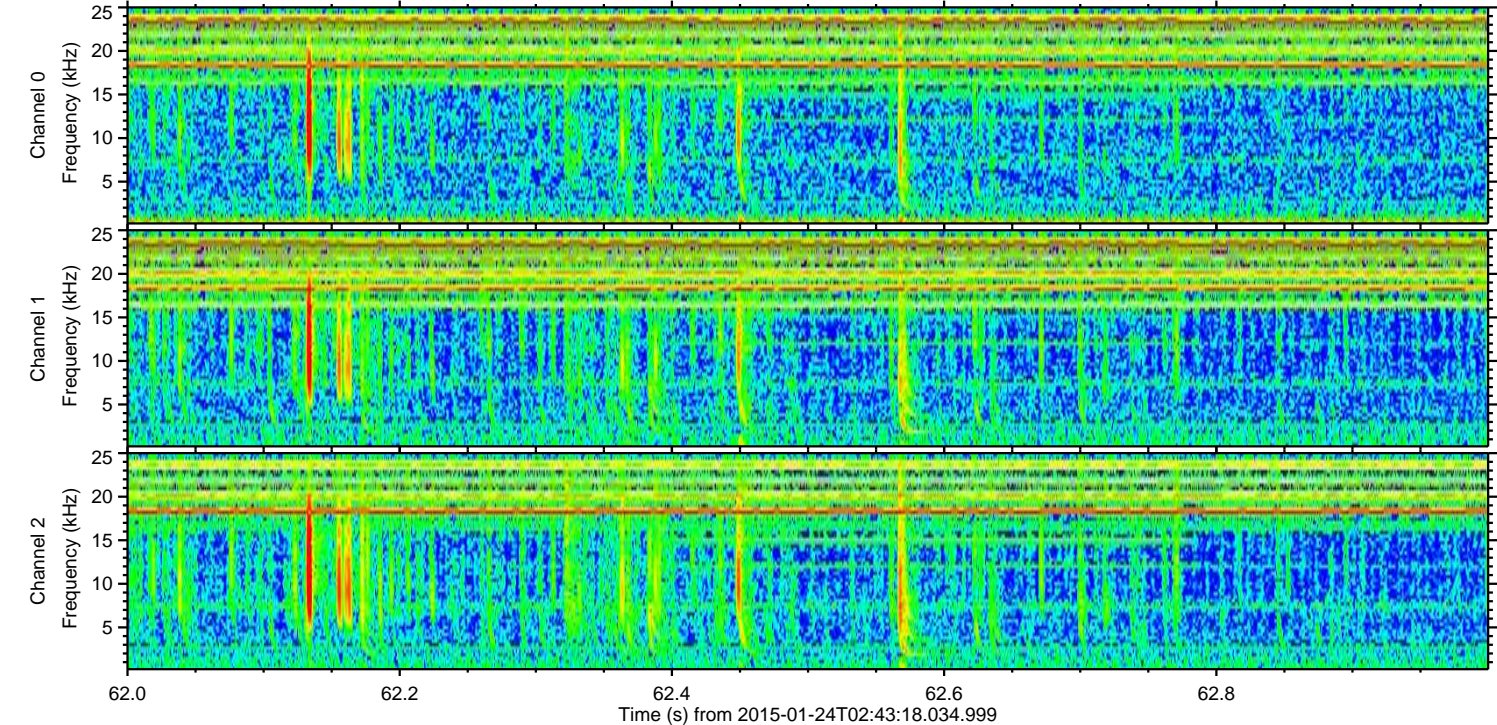
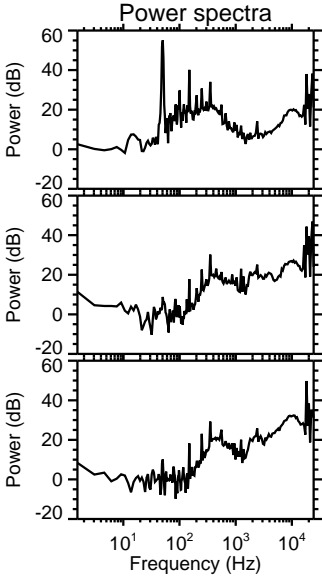
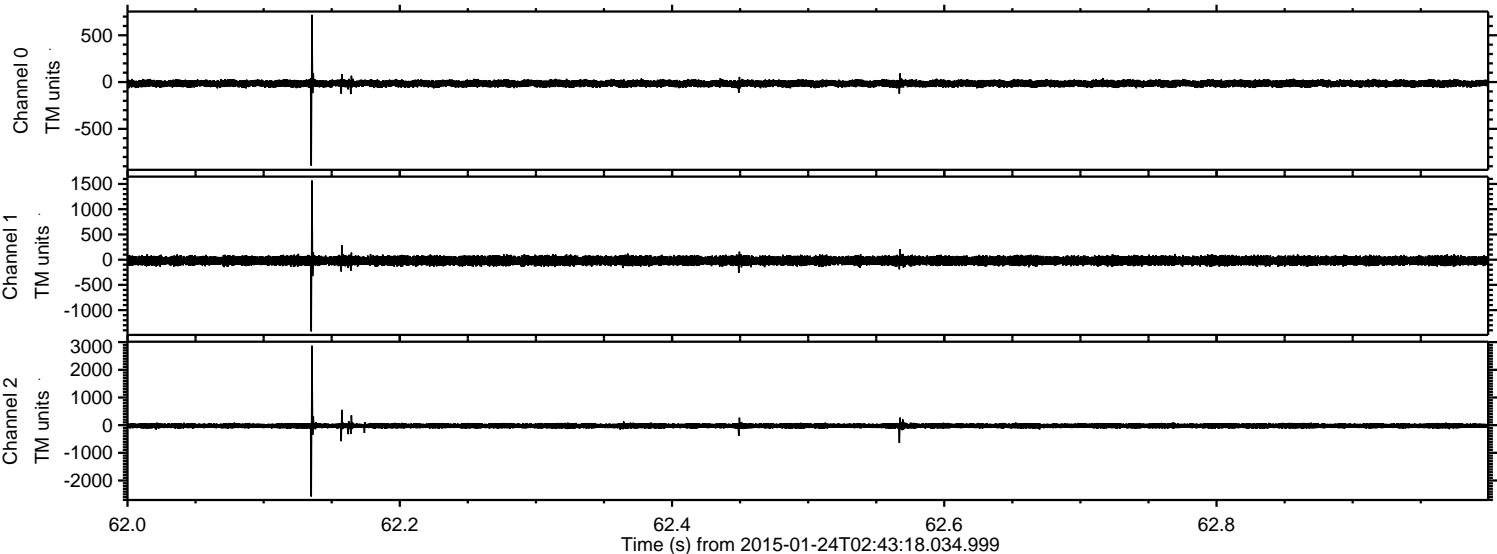
Channel 0  
mn: -634  
mx: 722  
 $\mu$ : -15.4  
 $\sigma$ : 19.0

Channel 1  
mn: -3128  
mx: 3007  
 $\mu$ : -20.0  
 $\sigma$ : 52.1

Channel 2  
mn: -1227  
mx: 1131  
 $\mu$ : -23.9  
 $\sigma$ : 47.4



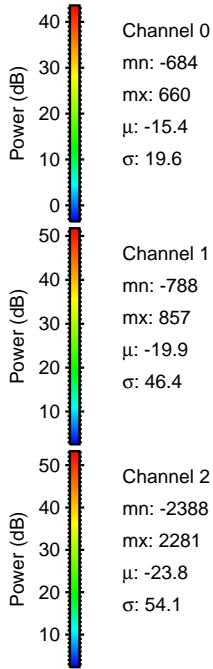
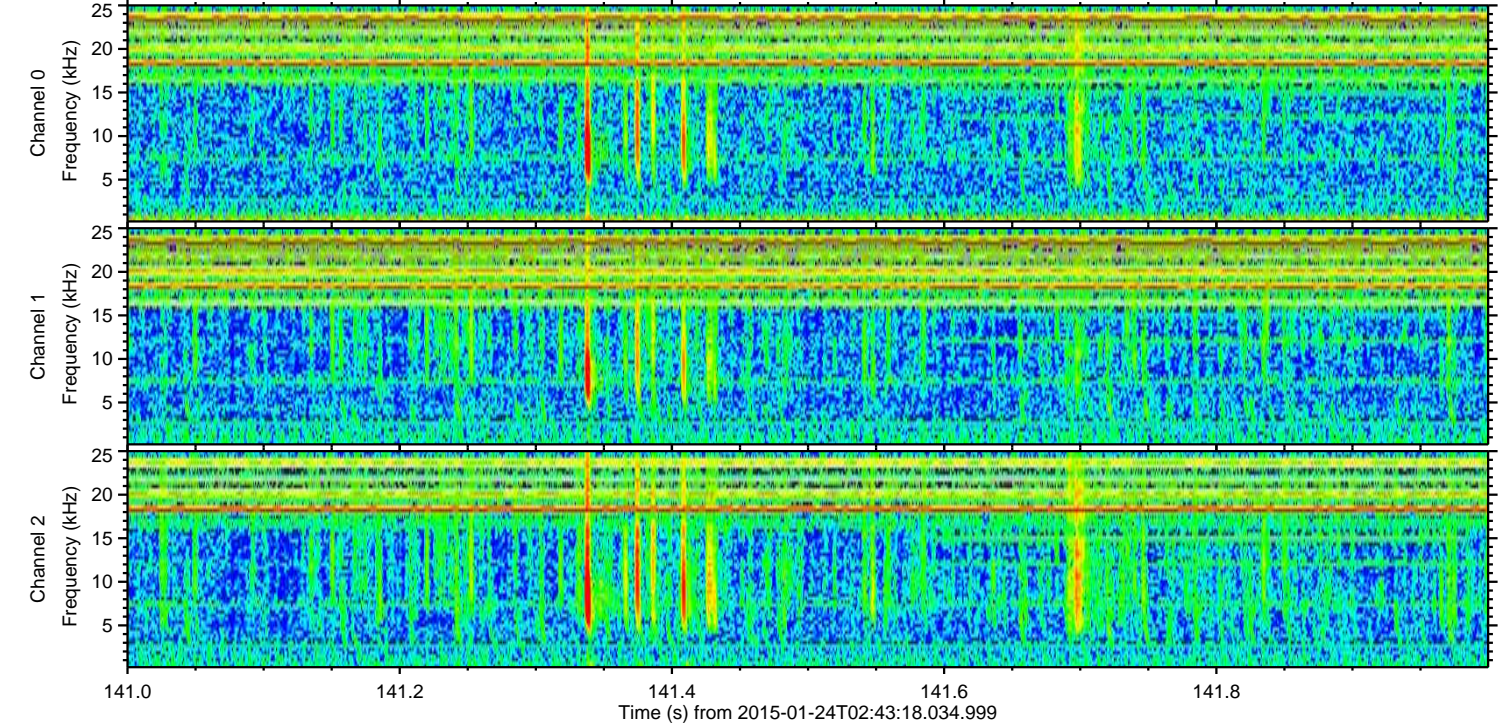
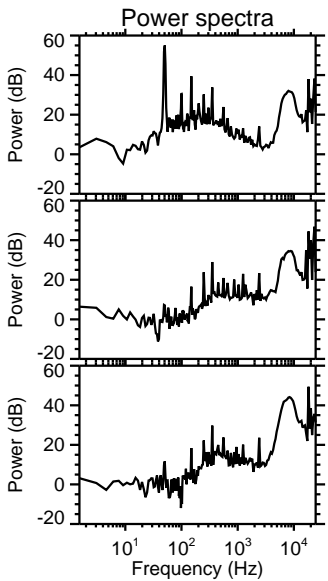
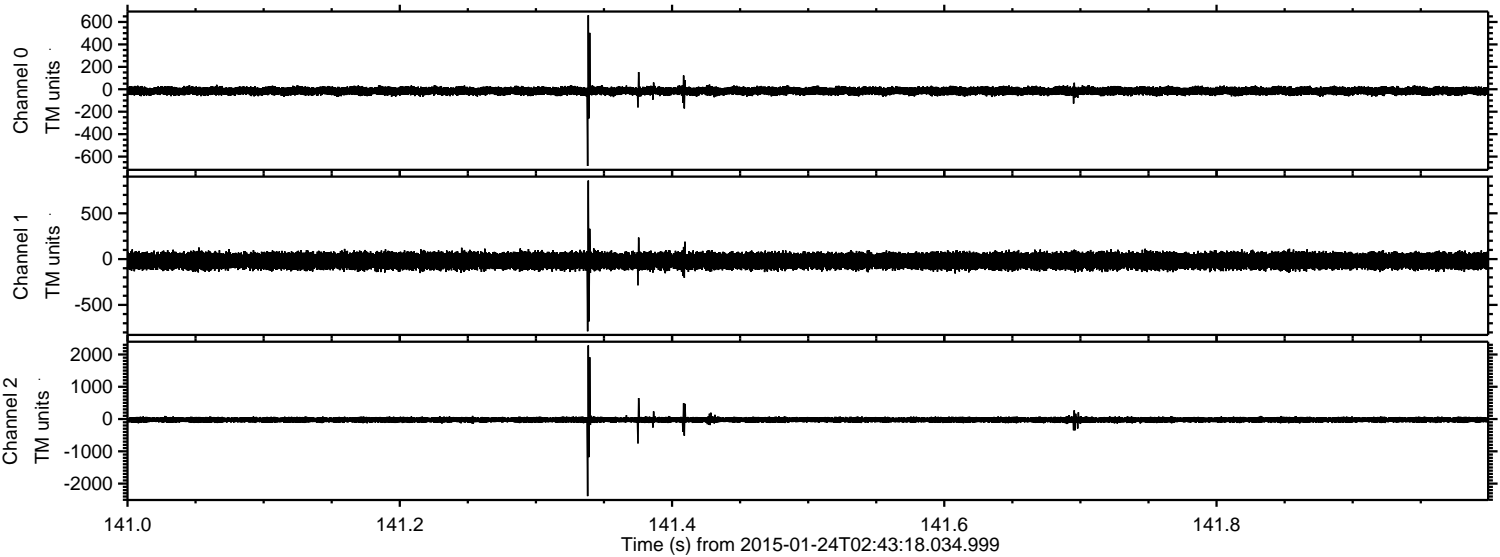
Processed Tue Feb 10 20:41:55 2015 by ELM ver.2012-10-06 from 001\_\_elm20150124\_024317\_\_dat00.bin





ELMAVAN 3D WAVEFORMS (Measured data sampled at 50 kHz) 49799 packets of 144 samples from 2015-01-24T02:43:18.034.999. Part 142/144

Processed Tue Feb 10 20:41:56 2015 by ELM ver.2012-10-06 from 001\_\_elm20150124\_024317\_\_dat00.bin



Channel 0  
mn: -684  
mx: 660  
 $\mu$ : -15.4  
 $\sigma$ : 19.6

Channel 1  
mn: -788  
mx: 857  
 $\mu$ : -19.9  
 $\sigma$ : 46.4

Channel 2  
mn: -2388  
mx: 2281  
 $\mu$ : -23.8  
 $\sigma$ : 54.1



Processed Tue Feb 10 20:41:57 2015 by ELM ver.2012-10-06 from 001\_\_elm20150124\_024317\_\_dat00.bin

