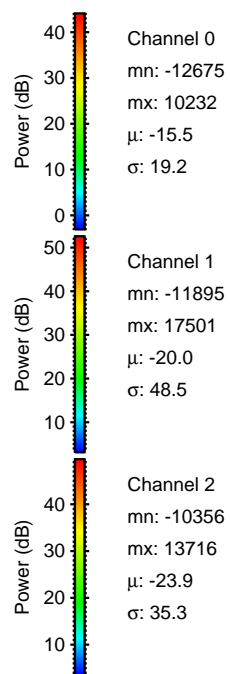
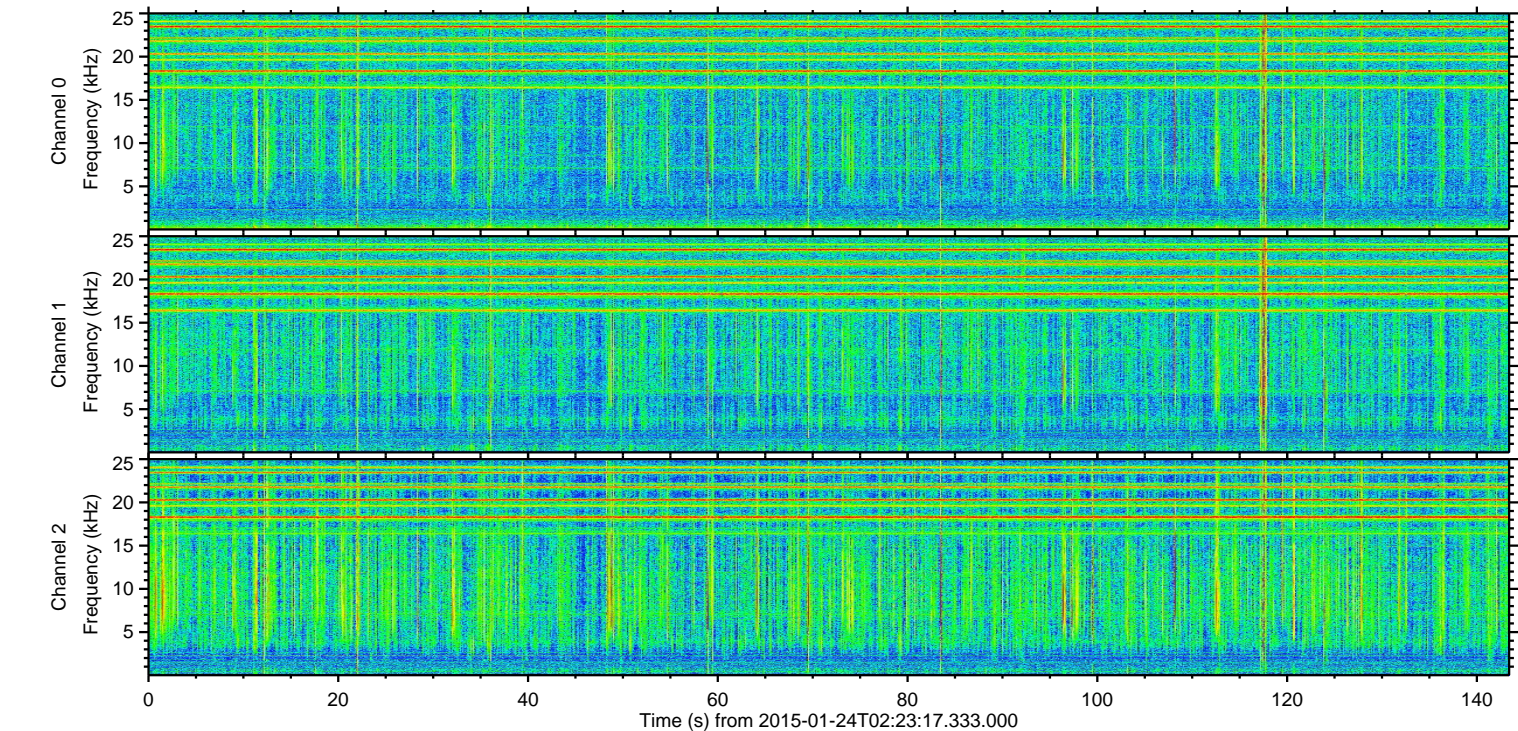
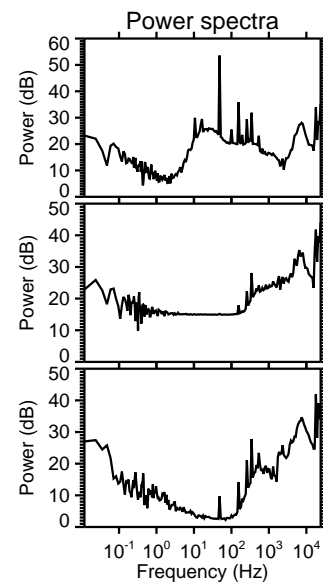
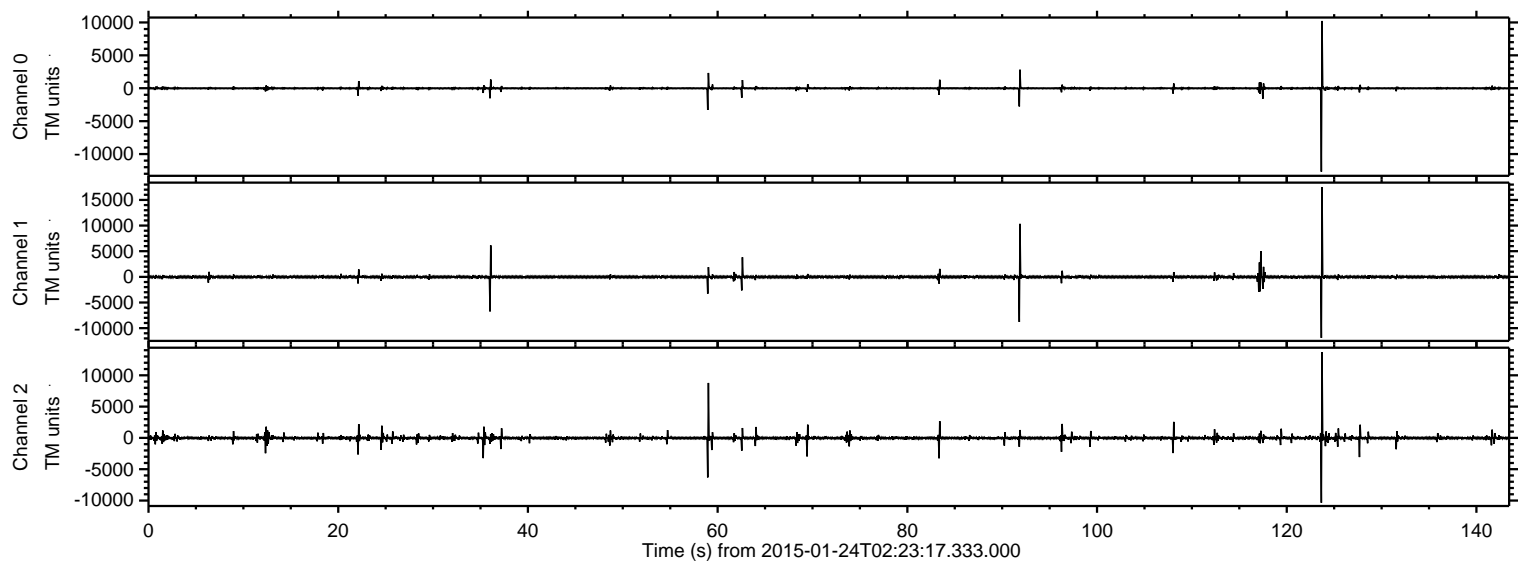


# ELMAVAN 3D WAVEFORMS (Measured data sampled at 50 kHz) 49808 packets of 144 samples from 2015-01-24T02:23:17.333.000.

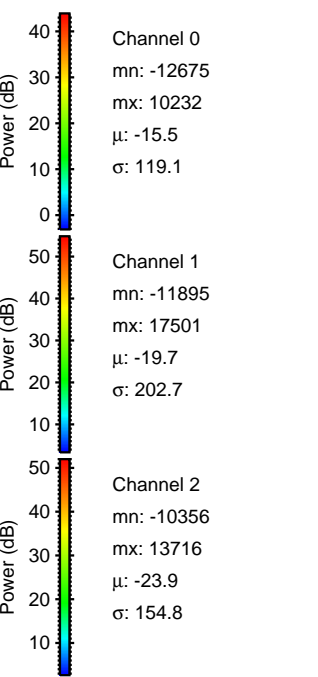
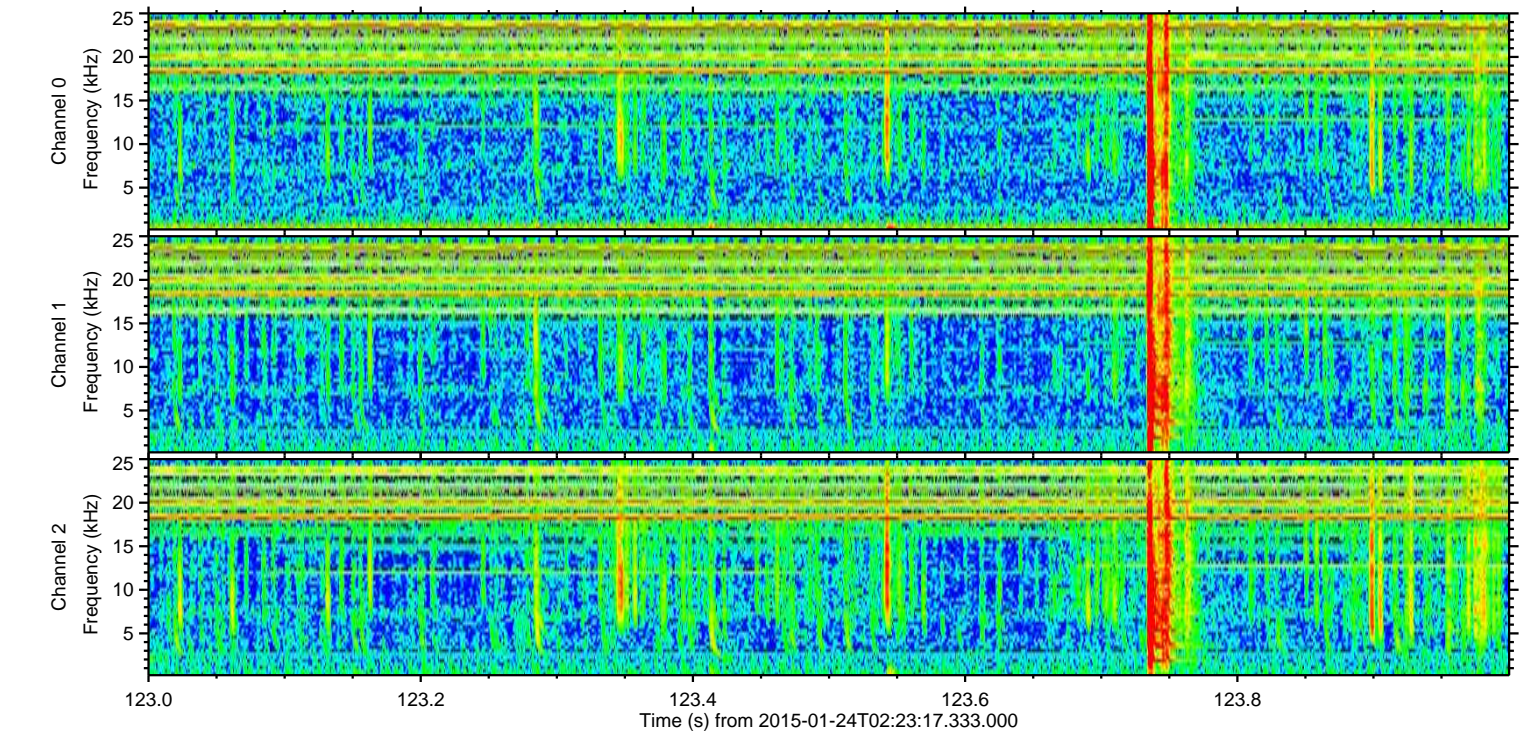
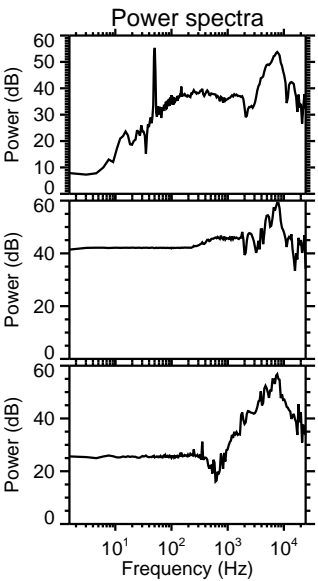
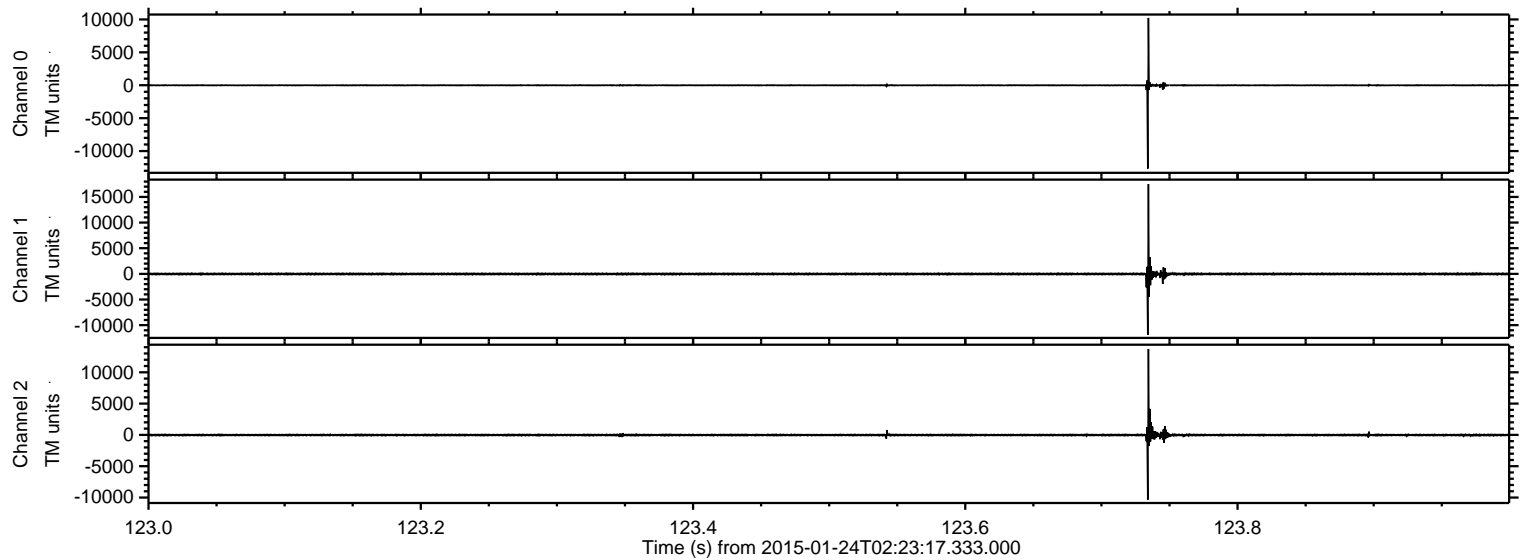
Processed Tue Feb 10 20:36:23 2015 by ELM ver.2012-10-06 from 001\_\_elm20150124\_022316\_\_dat00.bin





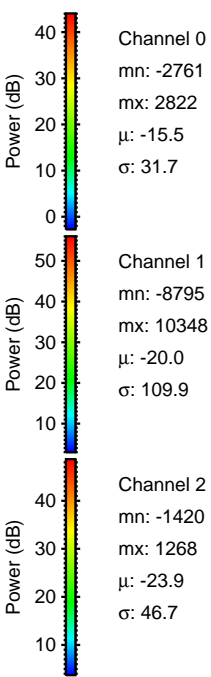
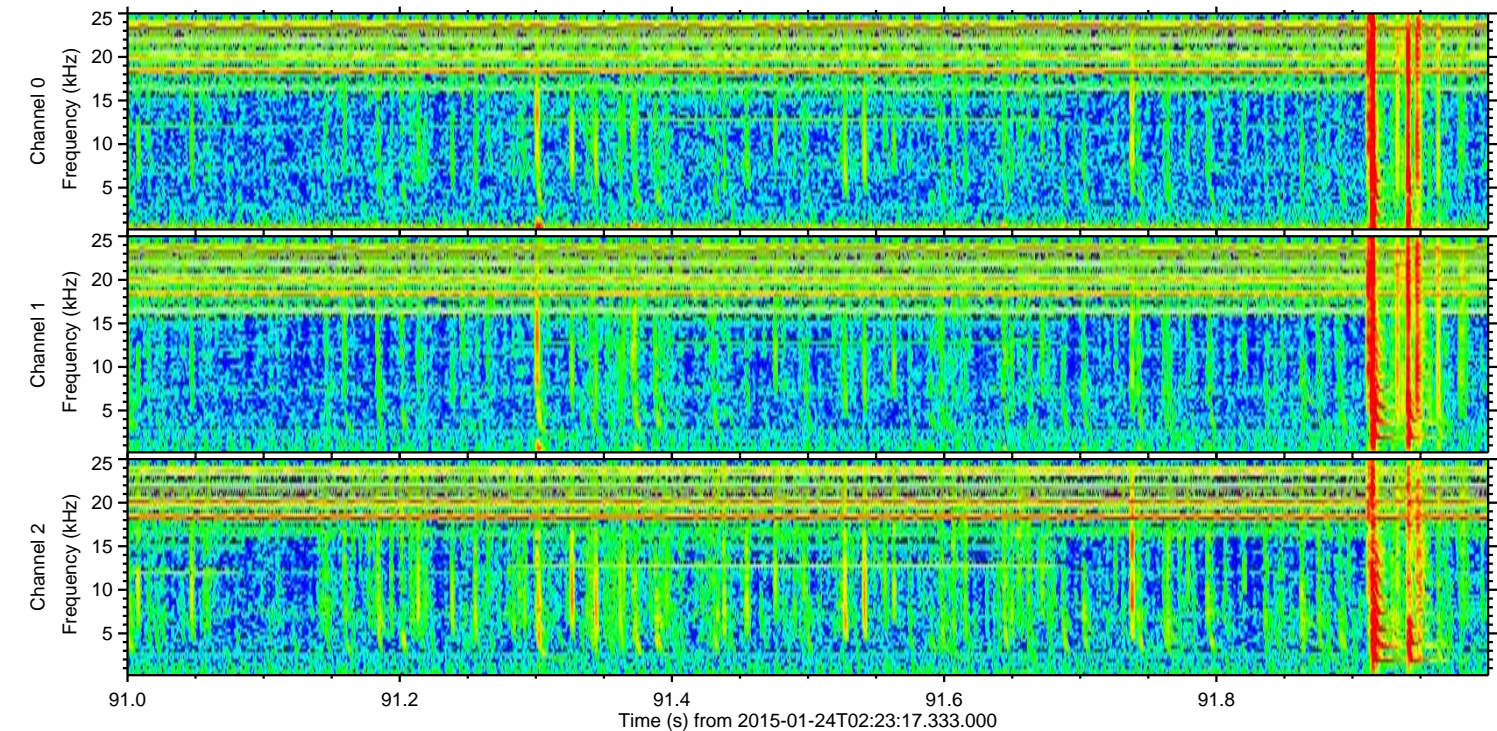
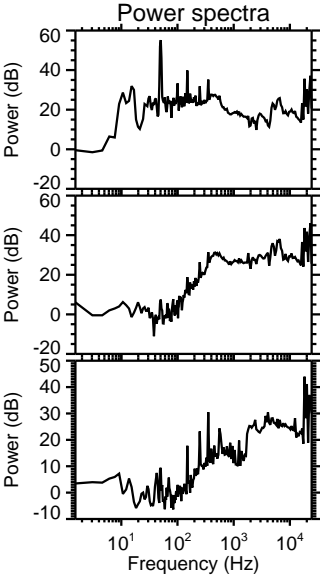
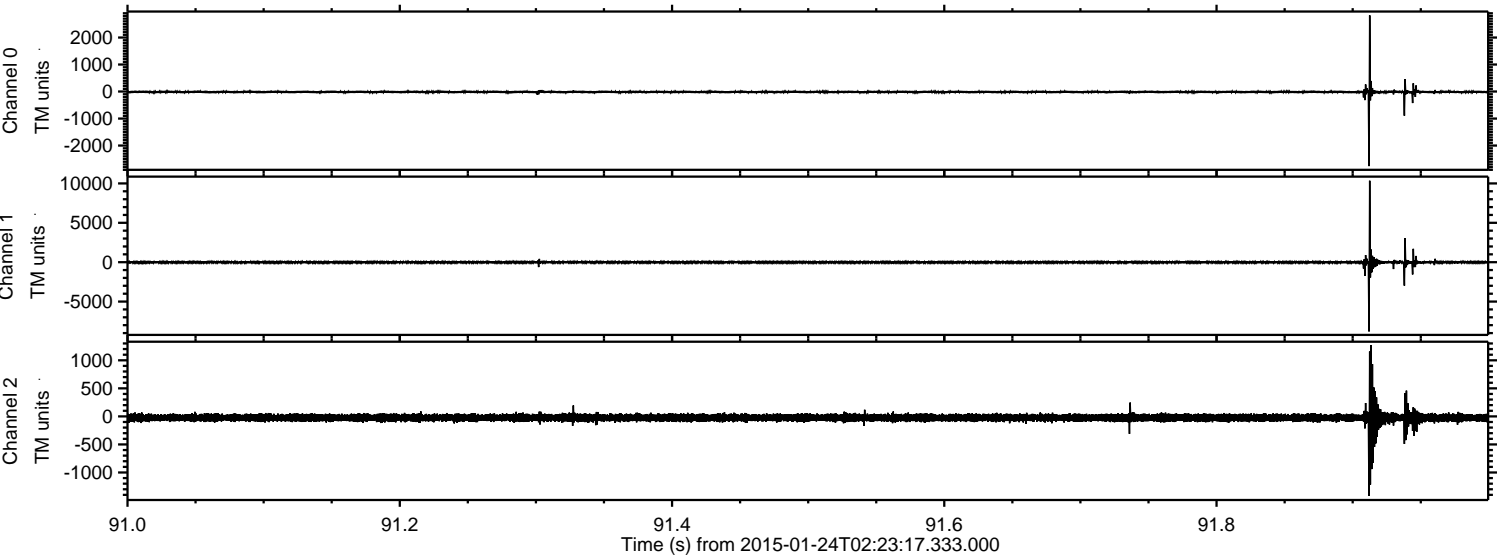
ELMAVAN 3D WAVEFORMS (Measured data sampled at 50 kHz) 49808 packets of 144 samples from 2015-01-24T02:23:17.333.000. Part 124/144

Processed Tue Feb 10 20:36:39 2015 by ELM ver.2012-10-06 from 001\_\_elm20150124\_022316\_\_dat00.bin





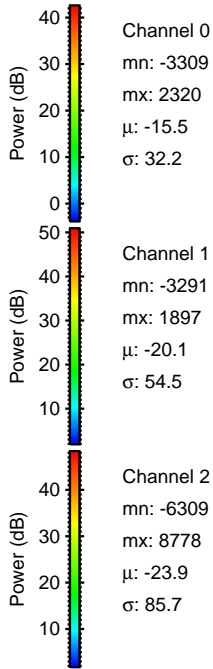
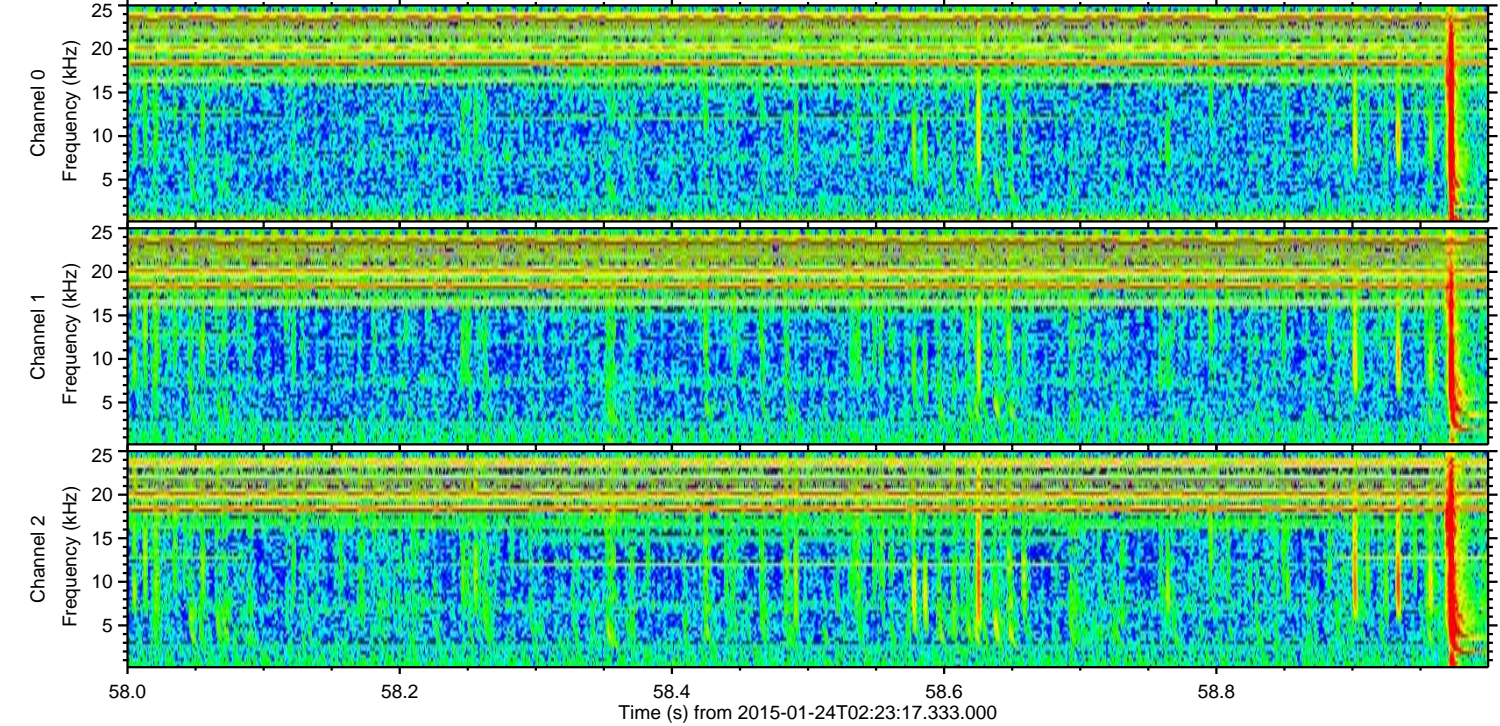
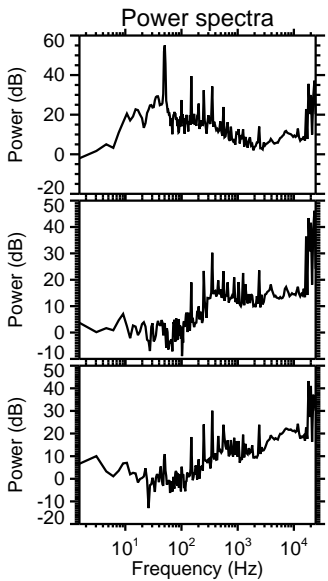
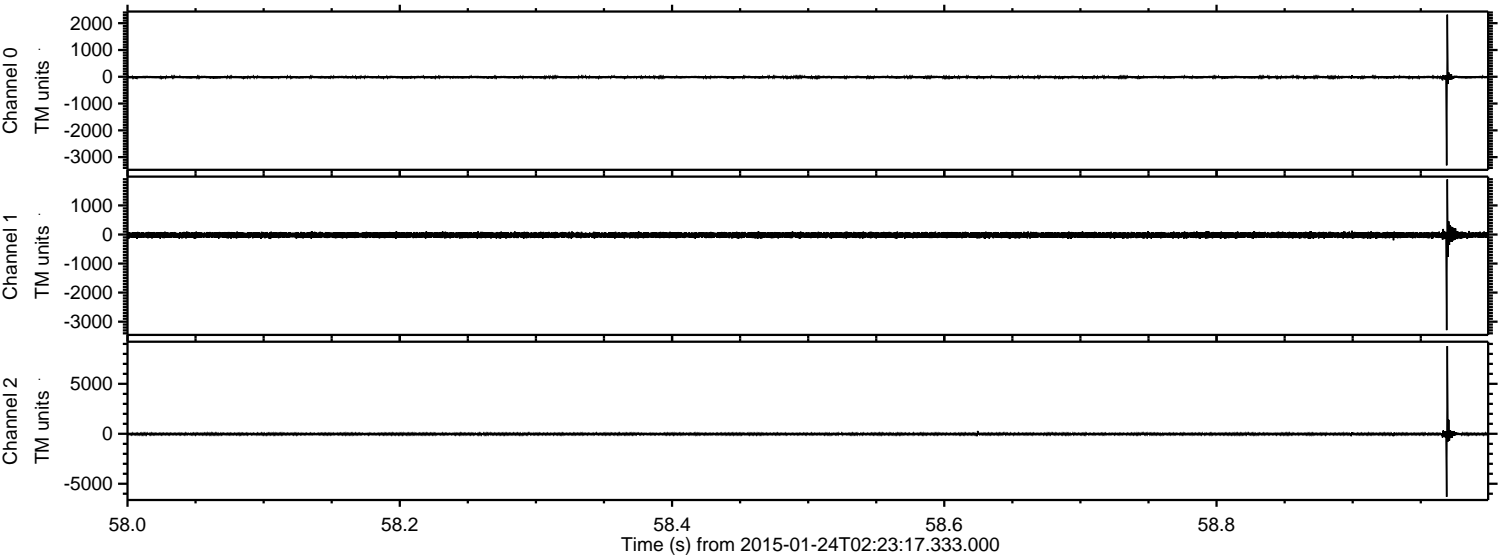
Processed Tue Feb 10 20:36:40 2015 by ELM ver.2012-10-06 from 001\_\_elm20150124\_022316\_\_dat00.bin





ELMAVAN 3D WAVEFORMS (Measured data sampled at 50 kHz) 49808 packets of 144 samples from 2015-01-24T02:23:17.333.000. Part 59/144

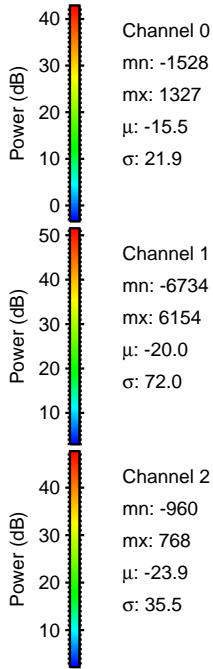
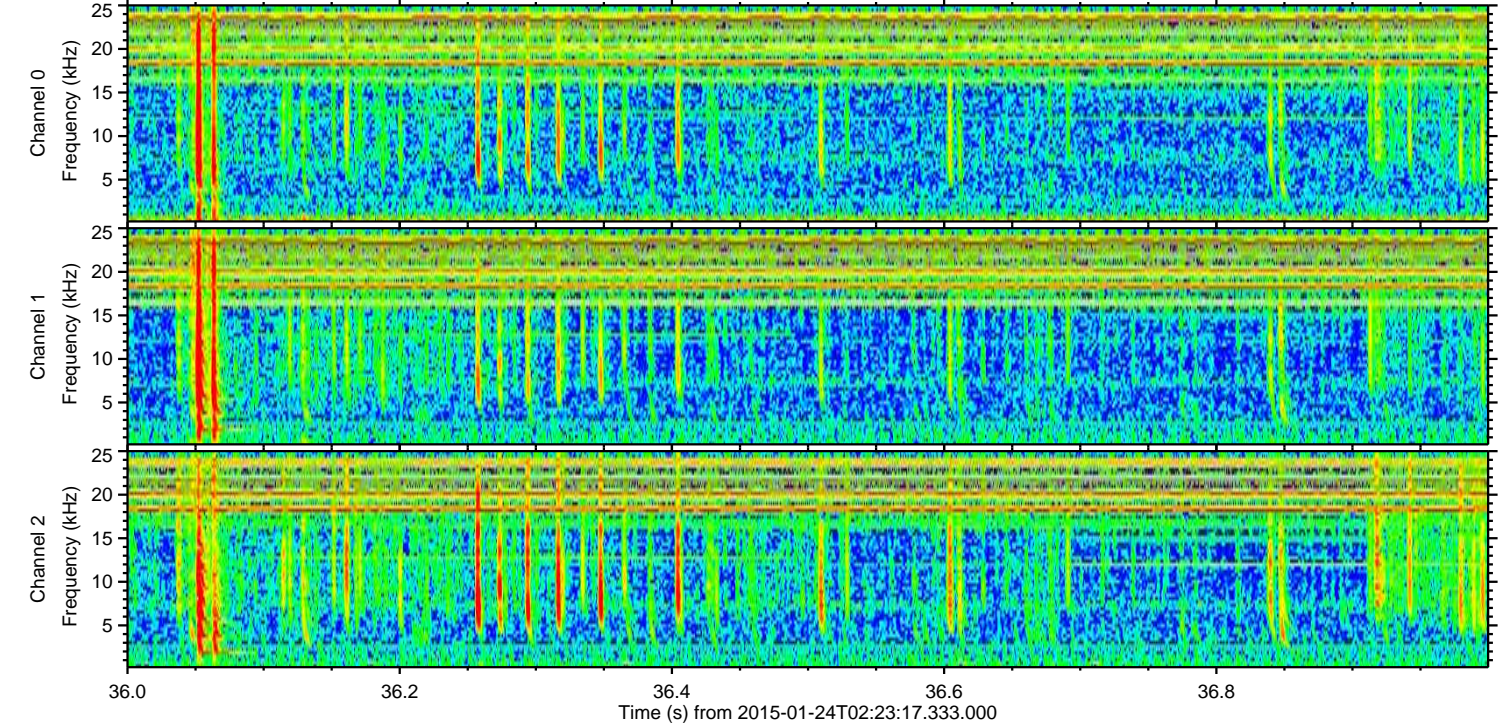
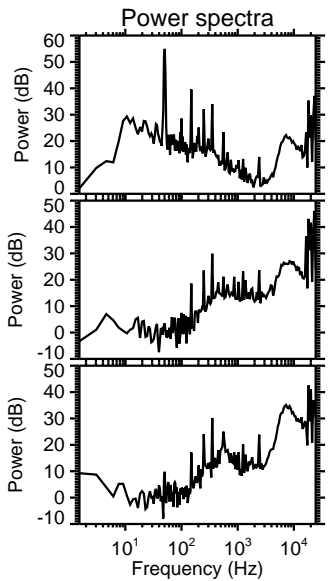
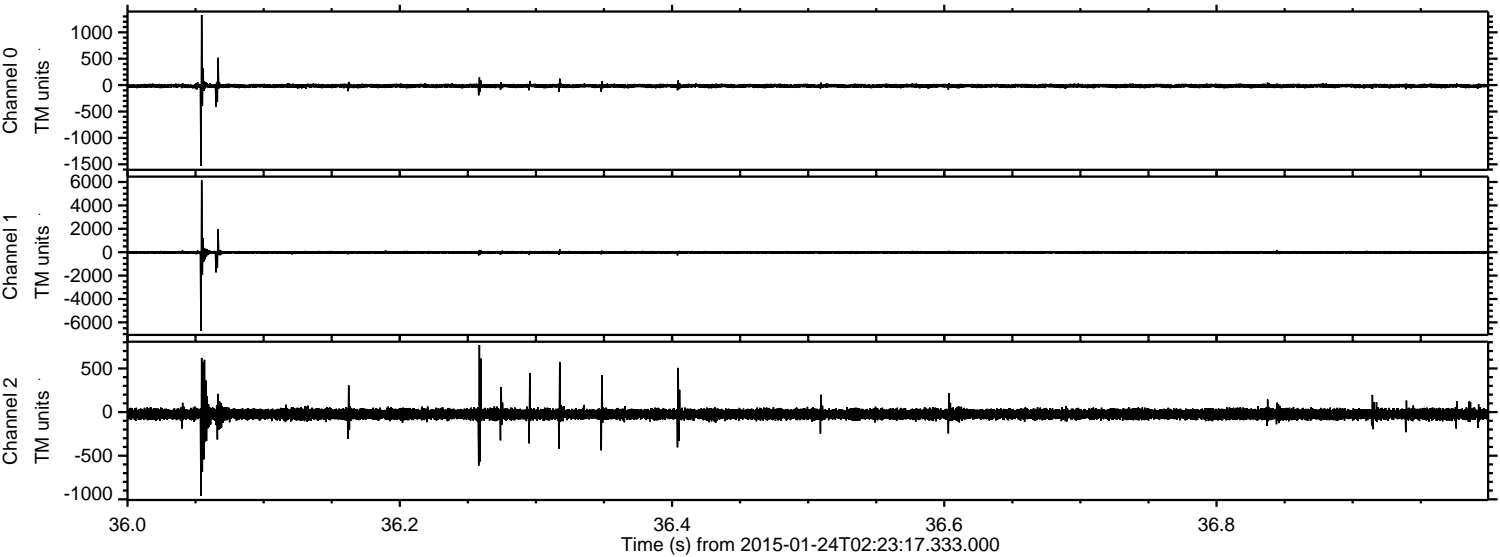
Processed Tue Feb 10 20:36:41 2015 by ELM ver.2012-10-06 from 001\_\_elm20150124\_022316\_\_dat00.bin





ELMAVAN 3D WAVEFORMS (Measured data sampled at 50 kHz) 49808 packets of 144 samples from 2015-01-24T02:23:17.333.000. Part 37/144

Processed Tue Feb 10 20:36:42 2015 by ELM ver.2012-10-06 from 001\_\_elm20150124\_022316\_\_dat00.bin



Channel 0  
mn: -1528  
mx: 1327  
 $\mu$ : -15.5  
 $\sigma$ : 21.9

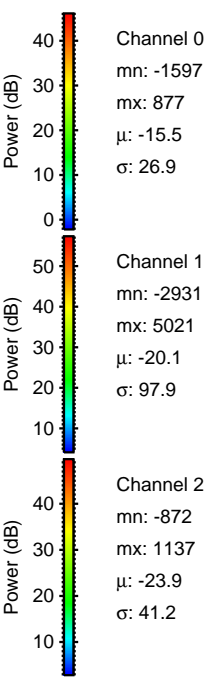
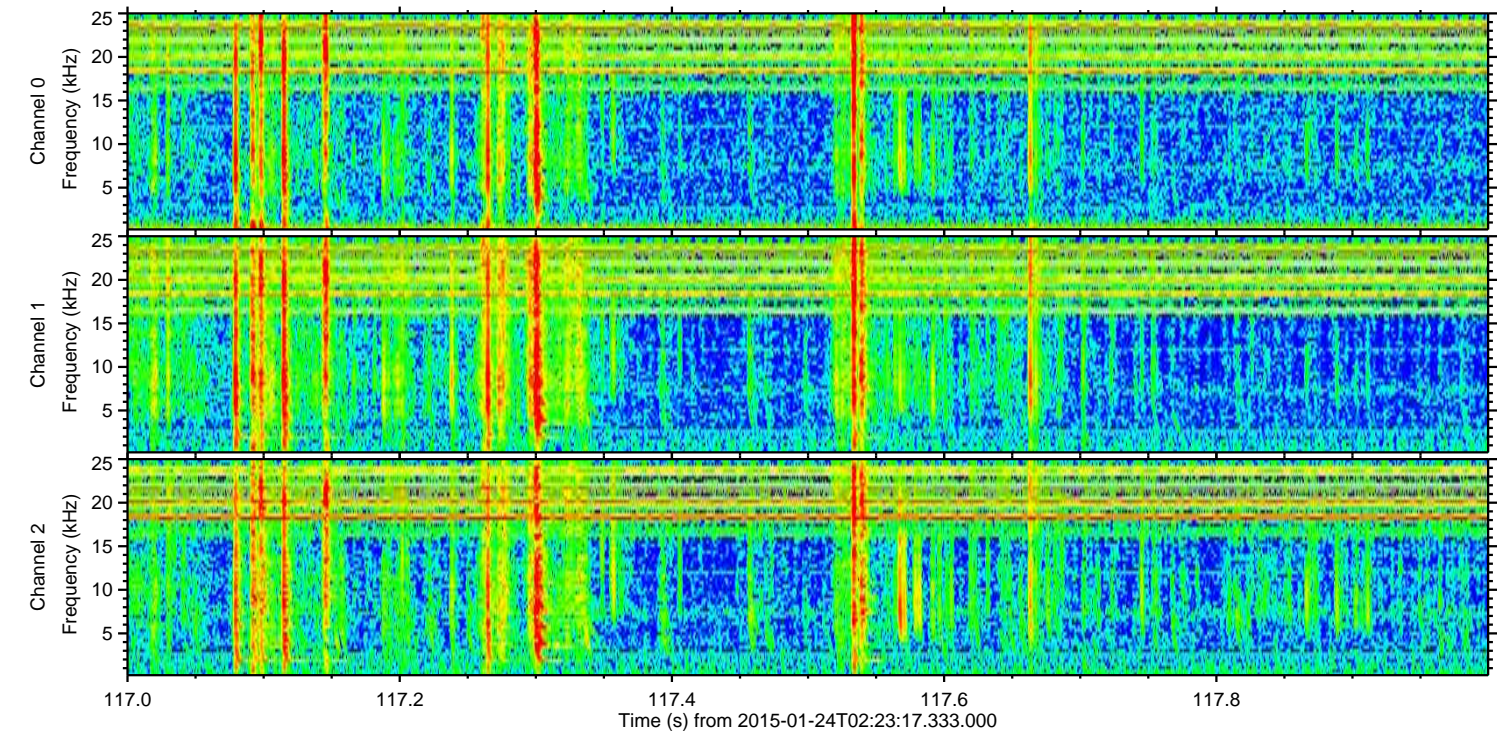
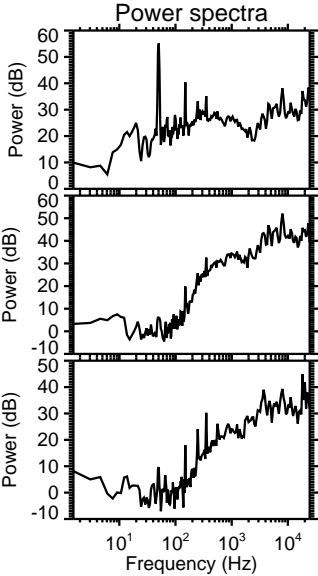
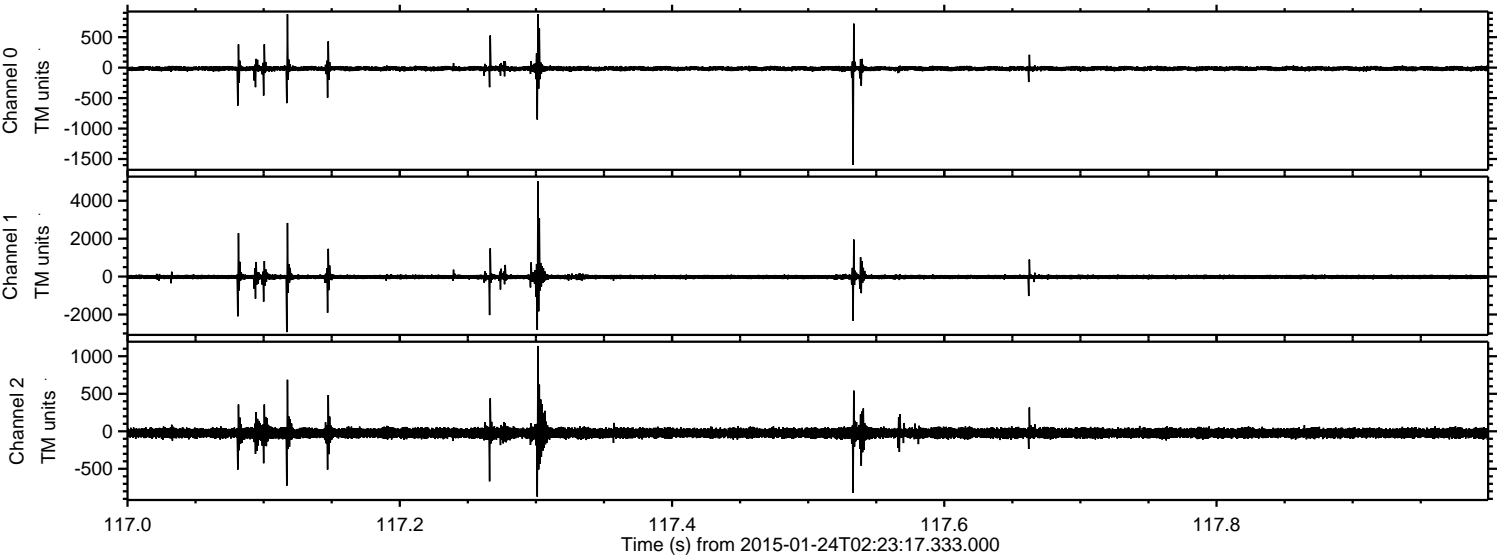
Channel 1  
mn: -6734  
mx: 6154  
 $\mu$ : -20.0  
 $\sigma$ : 72.0

Channel 2  
mn: -960  
mx: 768  
 $\mu$ : -23.9  
 $\sigma$ : 35.5



ELMAVAN 3D WAVEFORMS (Measured data sampled at 50 kHz) 49808 packets of 144 samples from 2015-01-24T02:23:17.333.000. Part 118/144

Processed Tue Feb 10 20:36:43 2015 by ELM ver.2012-10-06 from 001\_\_elm20150124\_022316\_\_dat00.bin



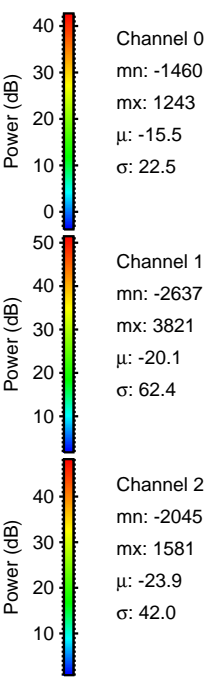
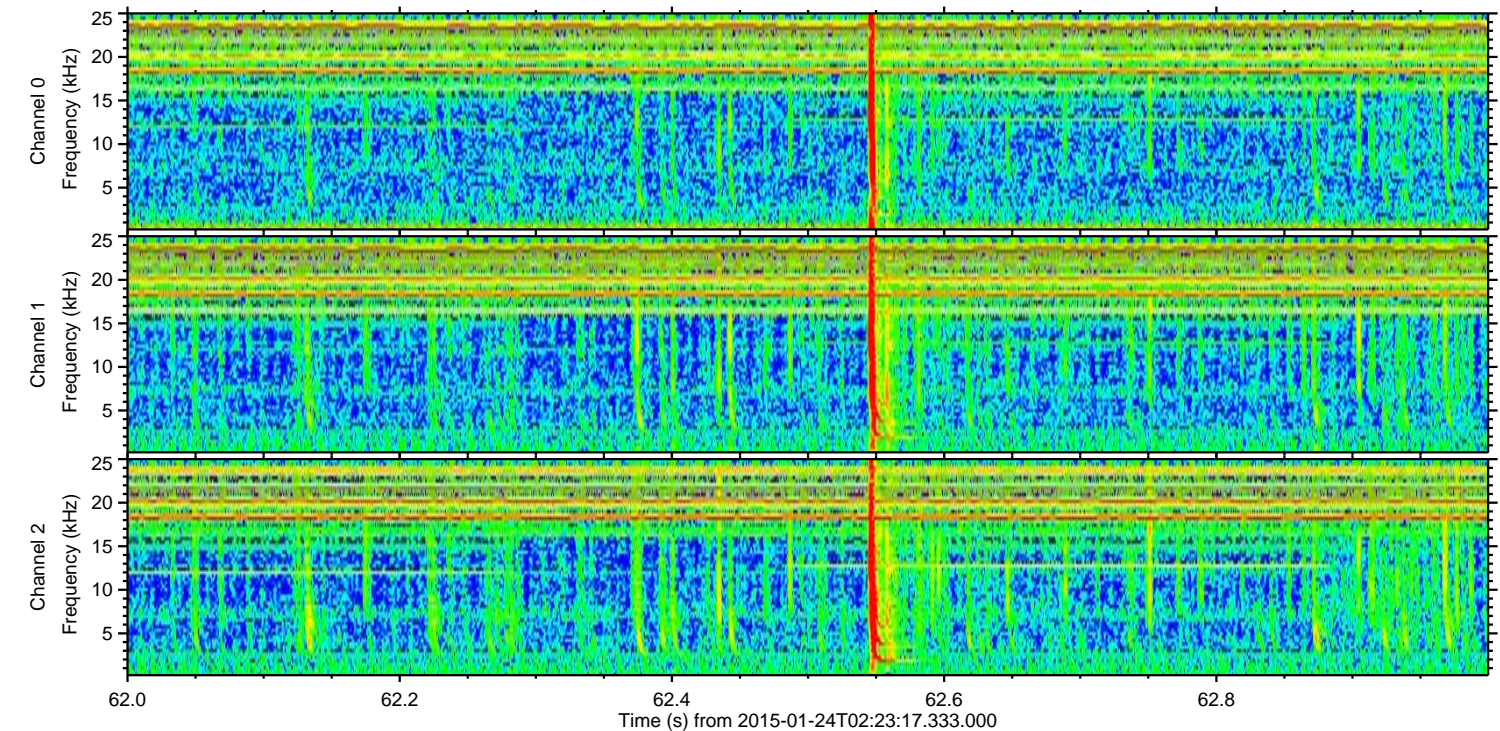
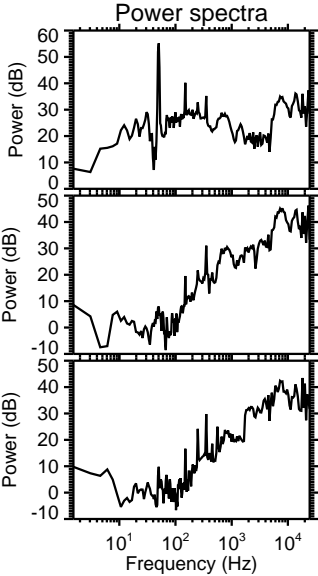
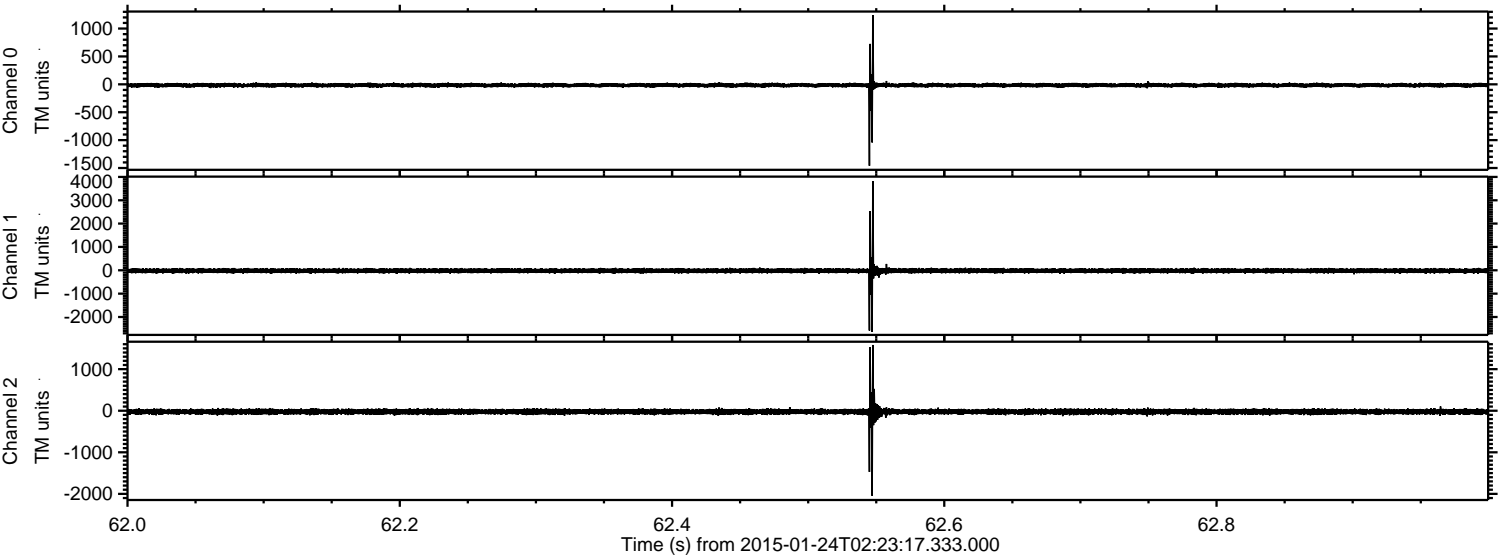
Channel 0  
mn: -1597  
mx: 877  
 $\mu$ : -15.5  
 $\sigma$ : 26.9

Channel 1  
mn: -2931  
mx: 5021  
 $\mu$ : -20.1  
 $\sigma$ : 97.9

Channel 2  
mn: -872  
mx: 1137  
 $\mu$ : -23.9  
 $\sigma$ : 41.2

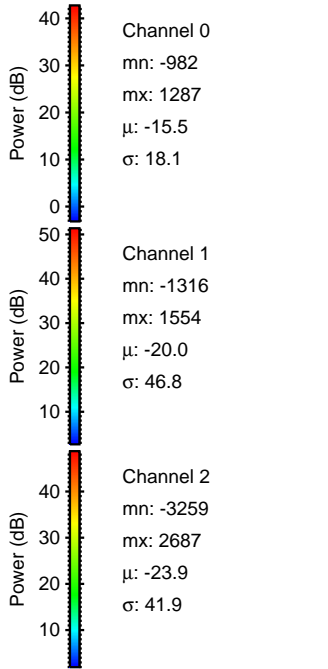
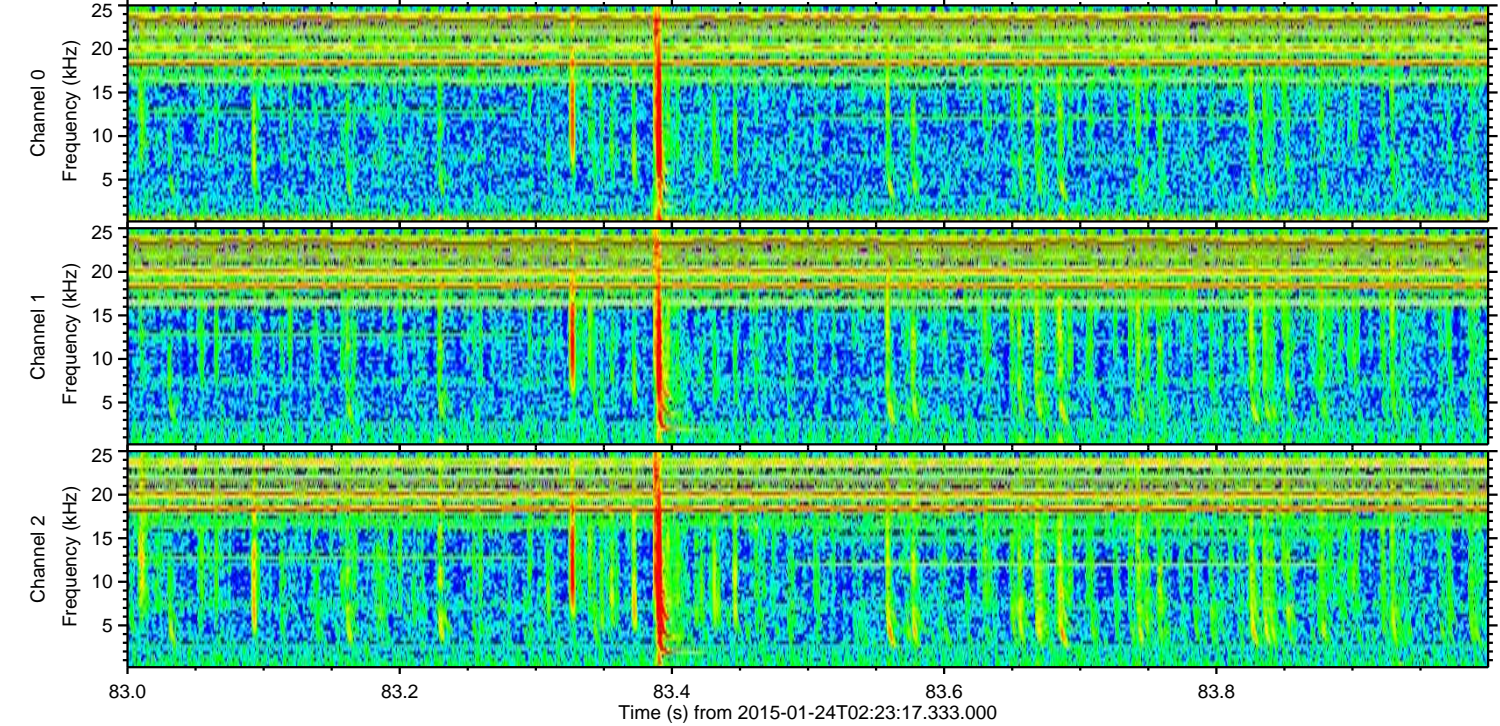
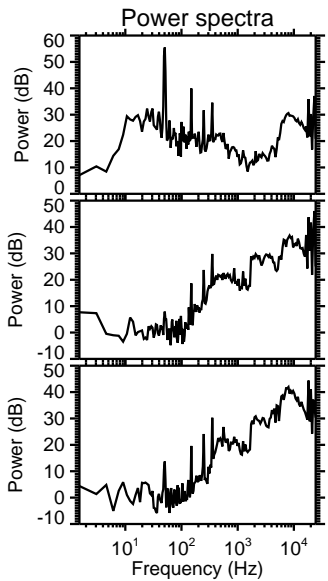
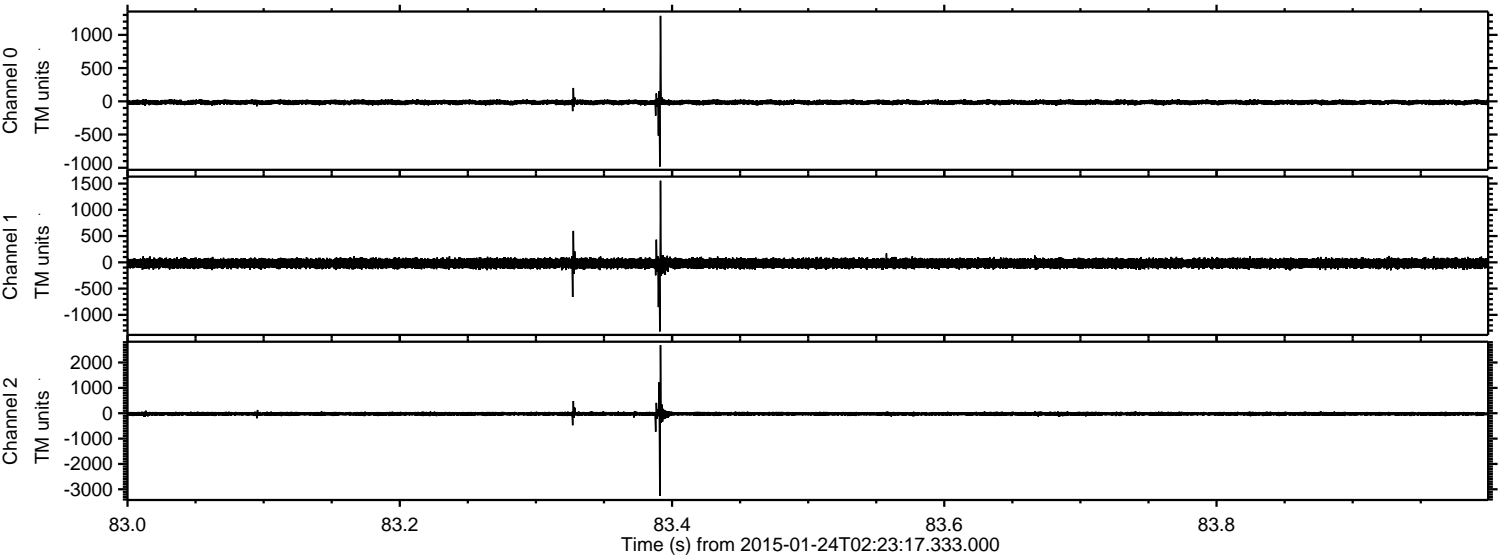


Processed Tue Feb 10 20:36:44 2015 by ELM ver.2012-10-06 from 001\_\_elm20150124\_022316\_\_dat00.bin





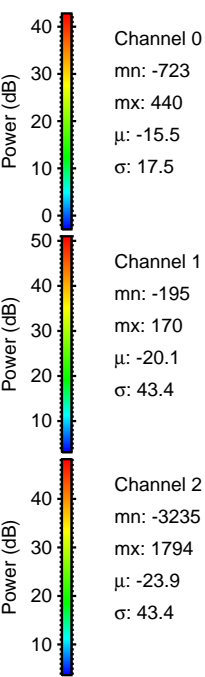
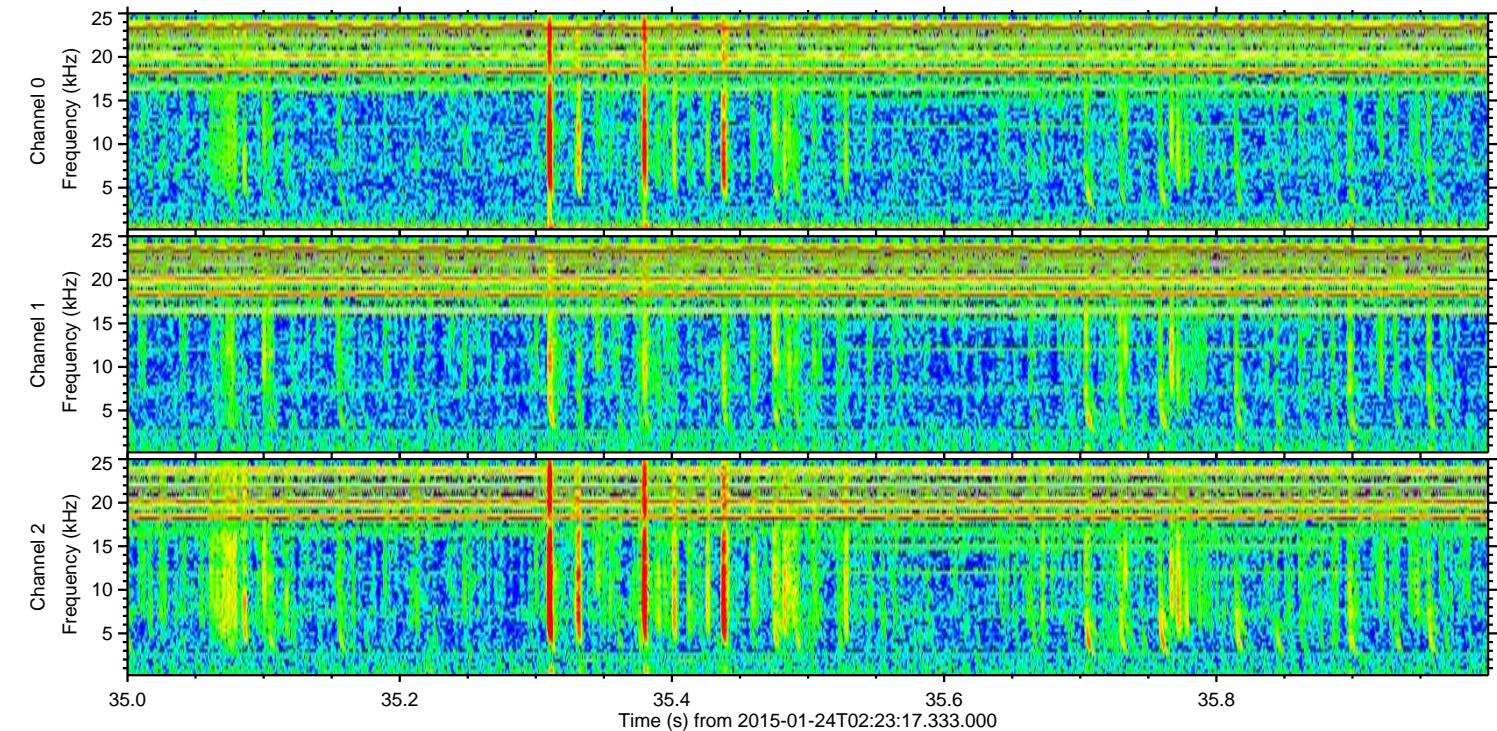
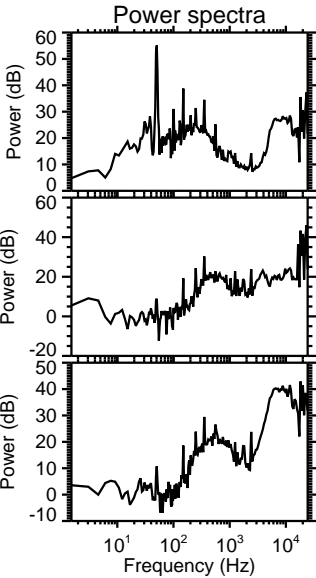
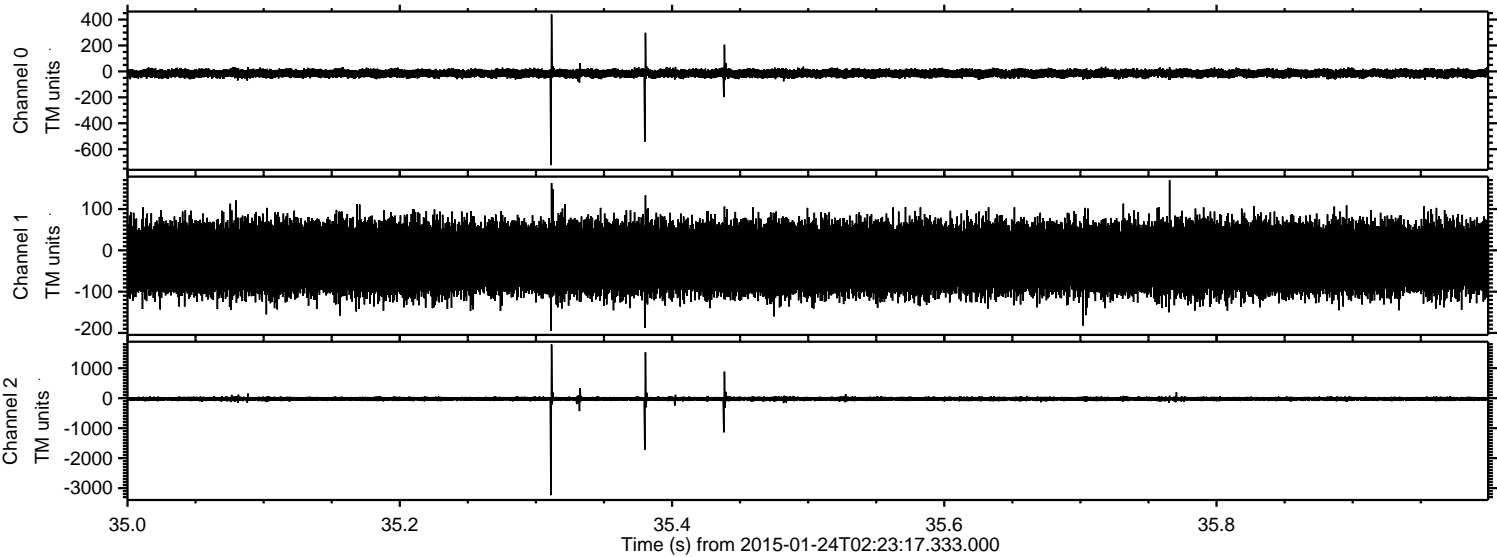
Processed Tue Feb 10 20:36:46 2015 by ELM ver.2012-10-06 from 001\_\_elm20150124\_022316\_\_dat00.bin





ELMAVAN 3D WAVEFORMS (Measured data sampled at 50 kHz) 49808 packets of 144 samples from 2015-01-24T02:23:17.333.000. Part 36/144

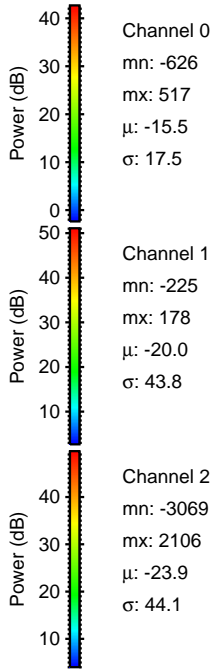
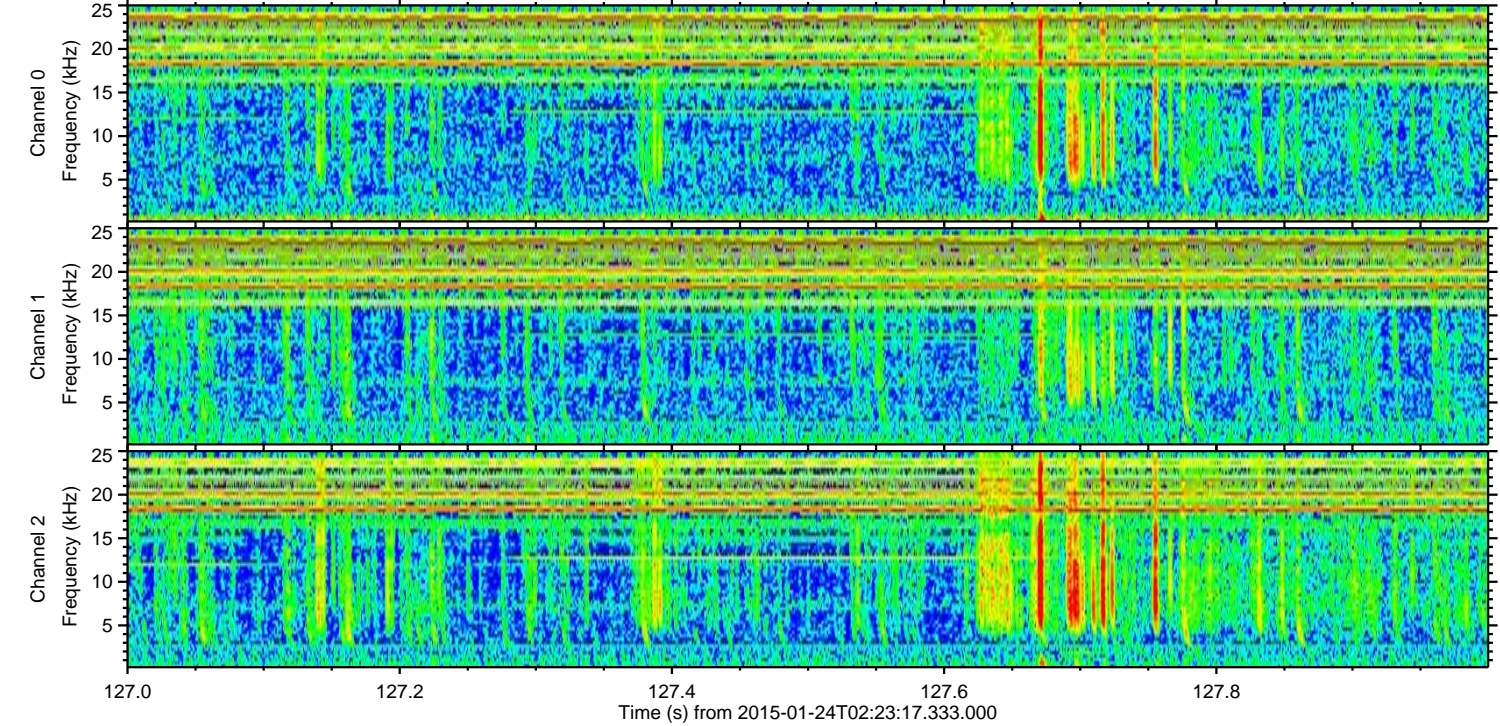
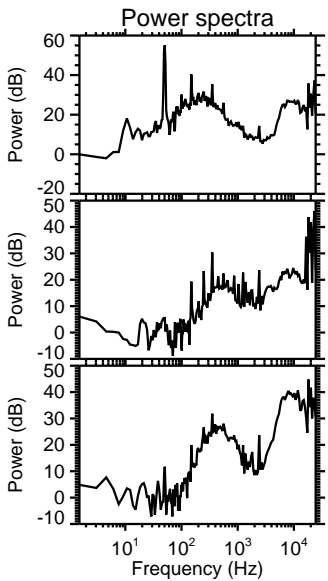
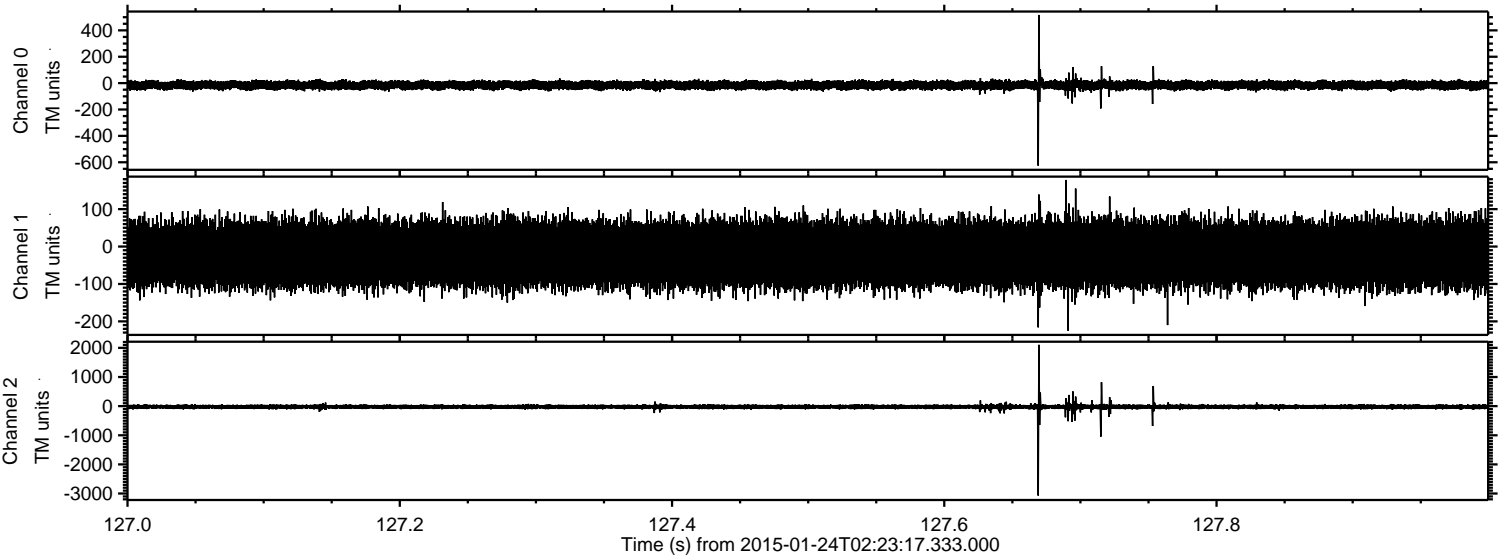
Processed Tue Feb 10 20:36:47 2015 by ELM ver.2012-10-06 from 001\_\_elm20150124\_022316\_\_dat00.bin





ELMAVAN 3D WAVEFORMS (Measured data sampled at 50 kHz) 49808 packets of 144 samples from 2015-01-24T02:23:17.333.000. Part 128/144

Processed Tue Feb 10 20:36:48 2015 by ELM ver.2012-10-06 from 001\_\_elm20150124\_022316\_\_dat00.bin





ELMAVAN 3D WAVEFORMS (Measured data sampled at 50 kHz) 49808 packets of 144 samples from 2015-01-24T02:23:17.333.000. Part 111/144

Processed Tue Feb 10 20:36:49 2015 by ELM ver.2012-10-06 from 001\_\_elm20150124\_022316\_\_dat00.bin

