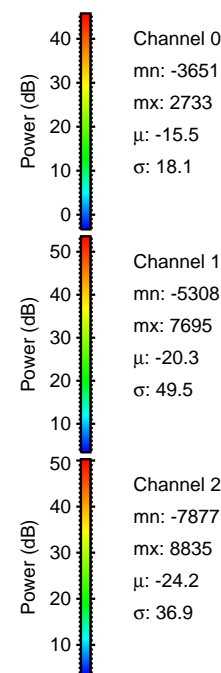
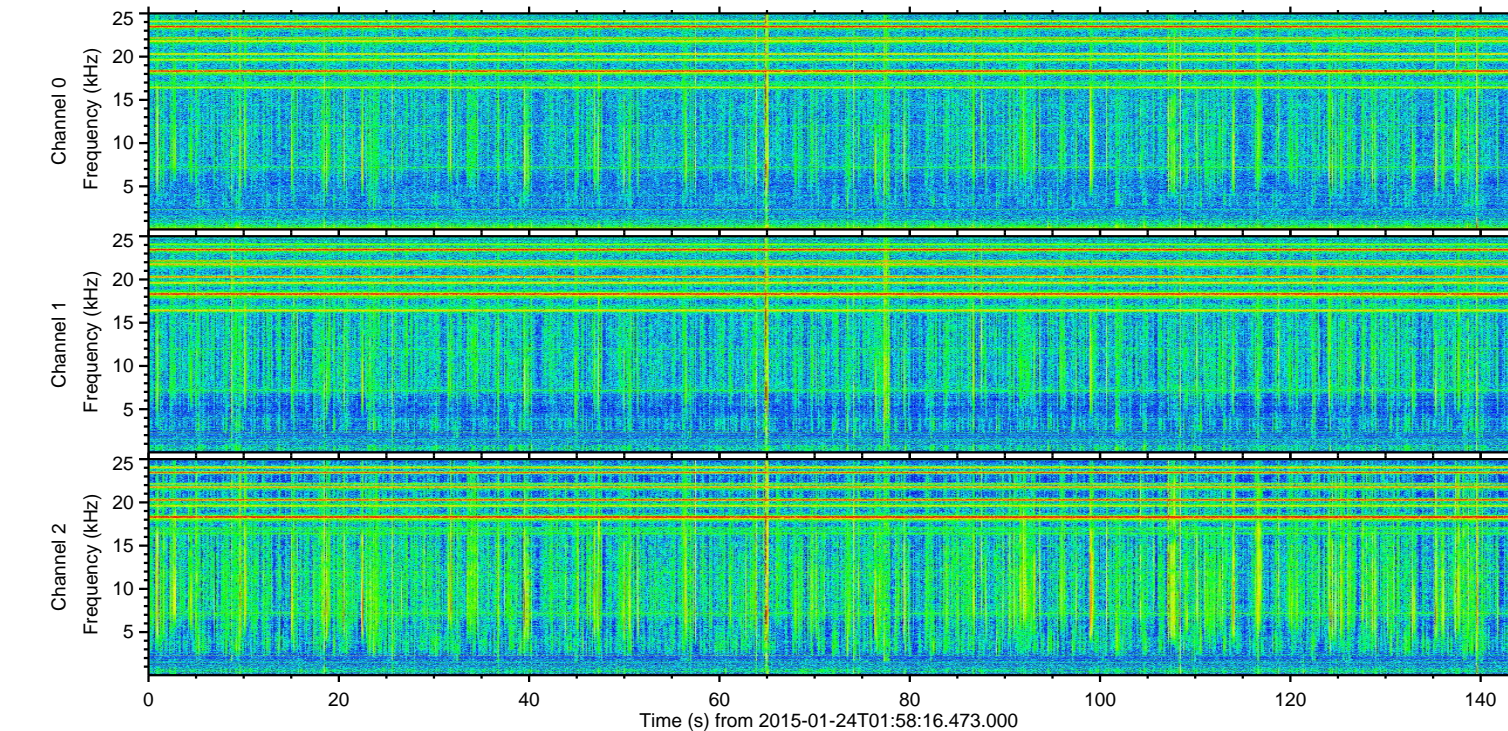
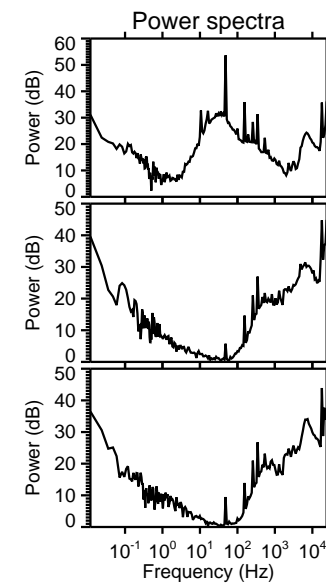
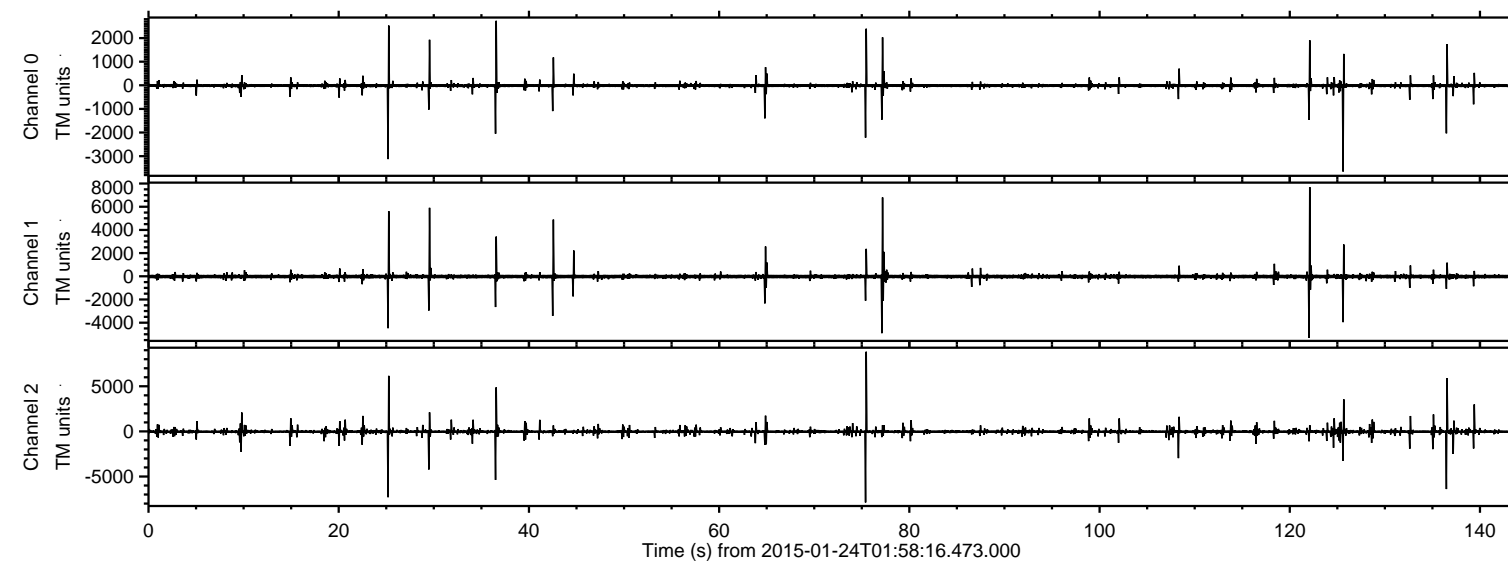


ELMAVAN 3D WAVEFORMS (Measured data sampled at 50 kHz) 49676 packets of 144 samples from 2015-01-24T01:58:16.473.000.

Processed Tue Feb 10 20:30:39 2015 by ELM ver.2012-10-06 from 001__elm20150124_015815__dat00.bin



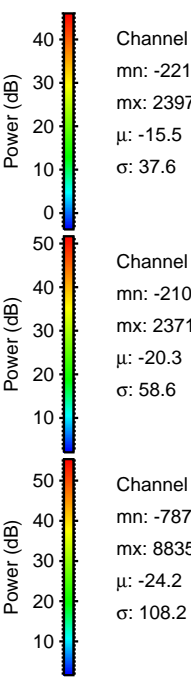
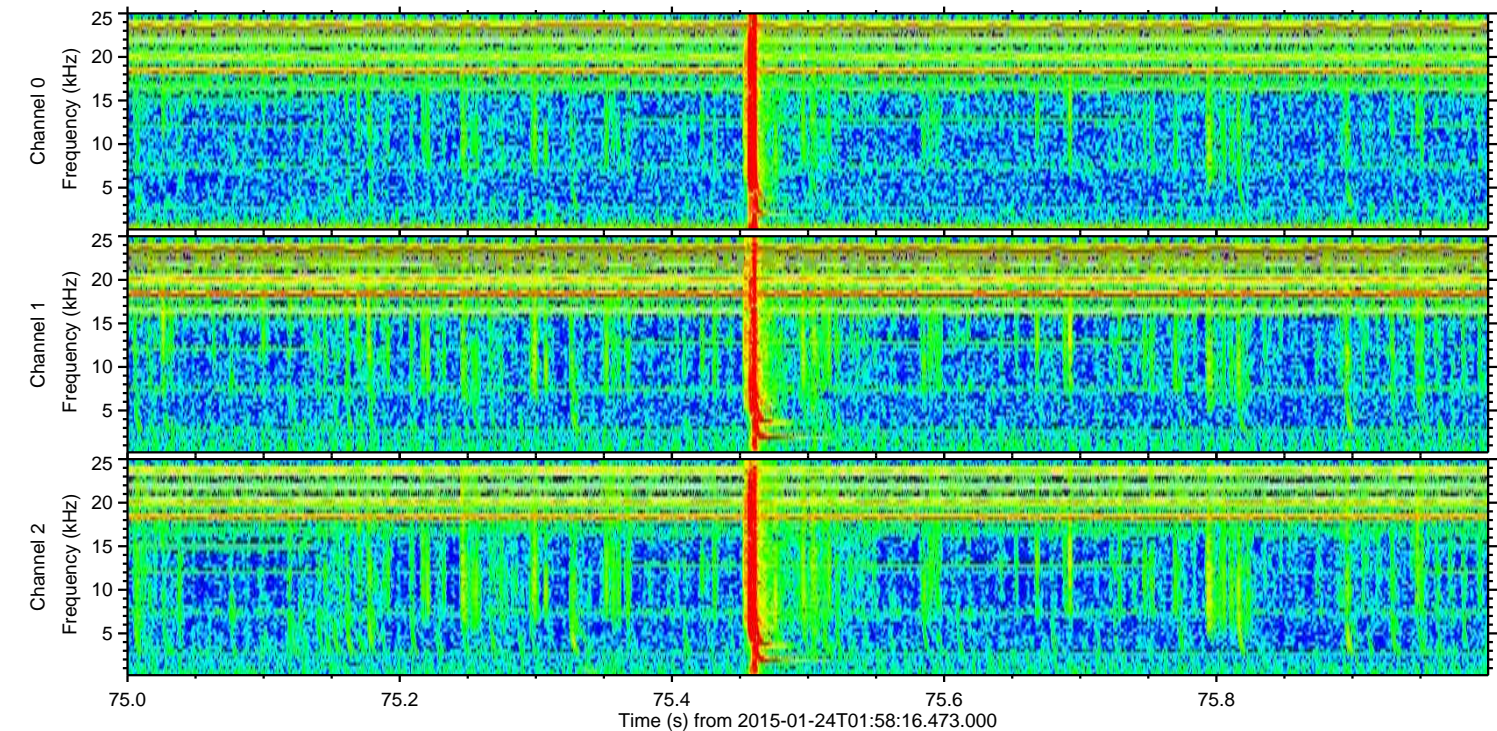
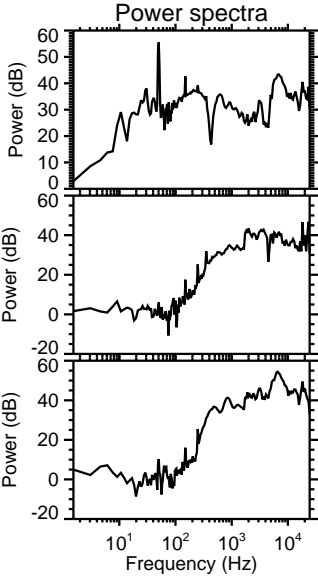
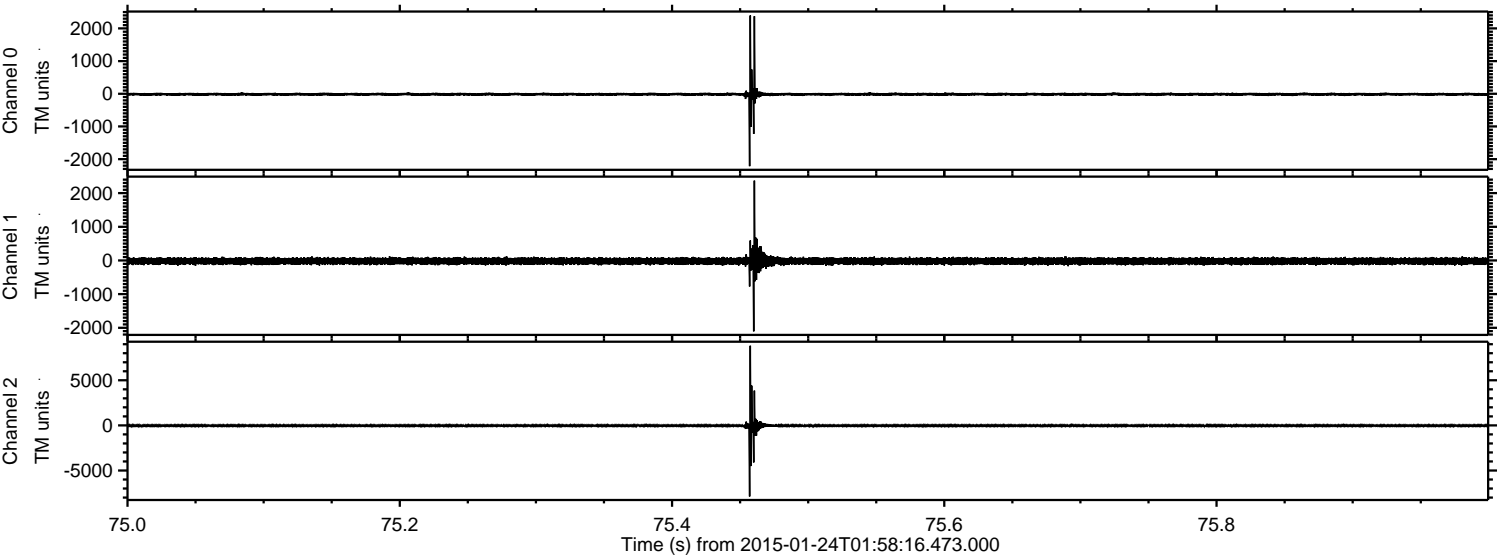
Channel 0
mn: -3651
mx: 2733
 μ : -15.5
 σ : 18.1

Channel 1
mn: -5308
mx: 7695
 μ : -20.3
 σ : 49.5

Channel 2
mn: -7877
mx: 8835
 μ : -24.2
 σ : 36.9

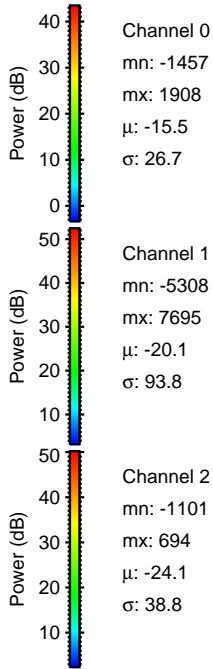
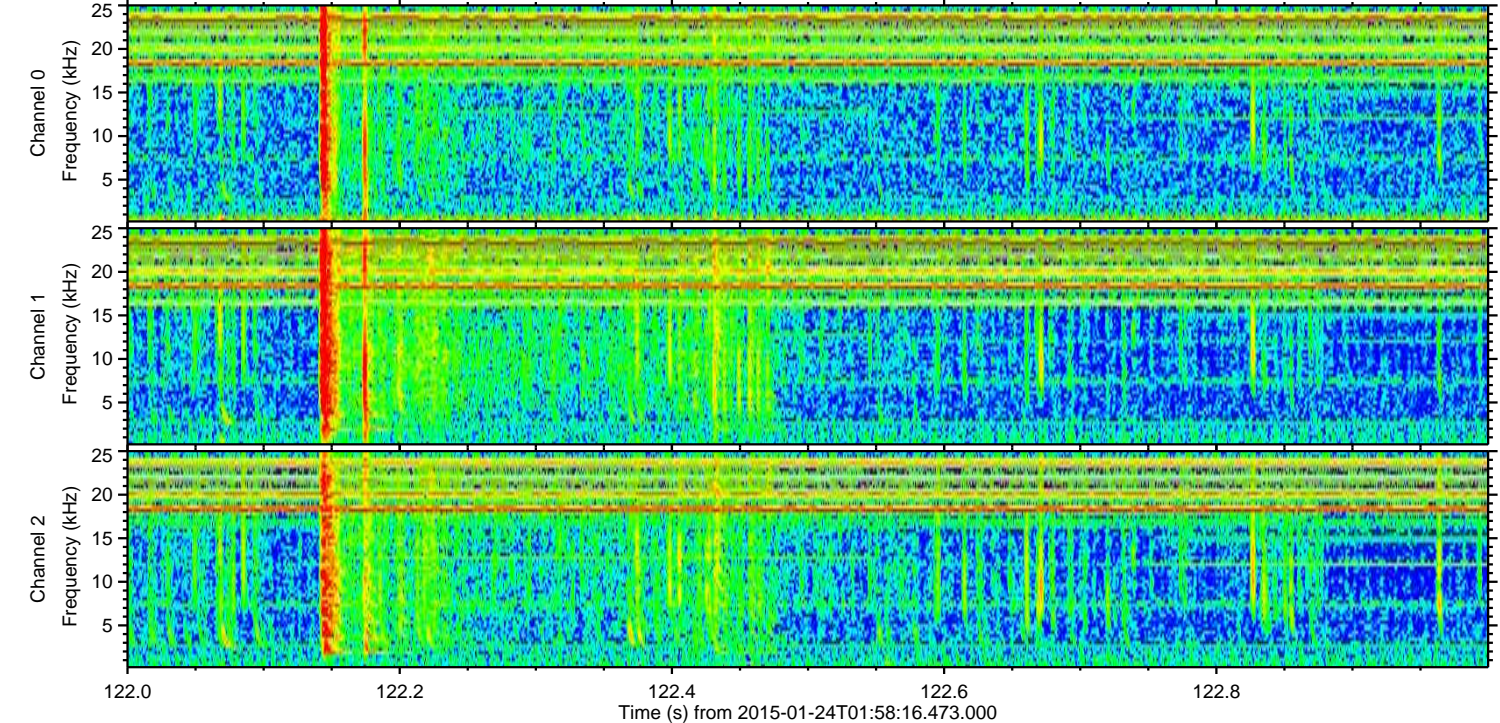
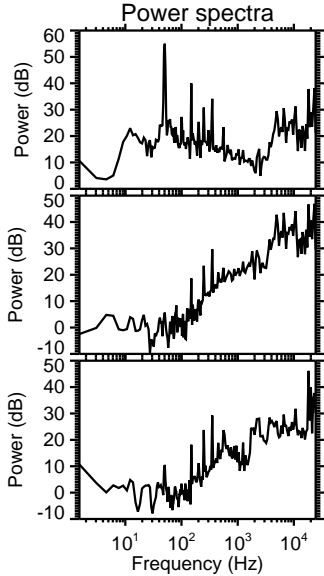
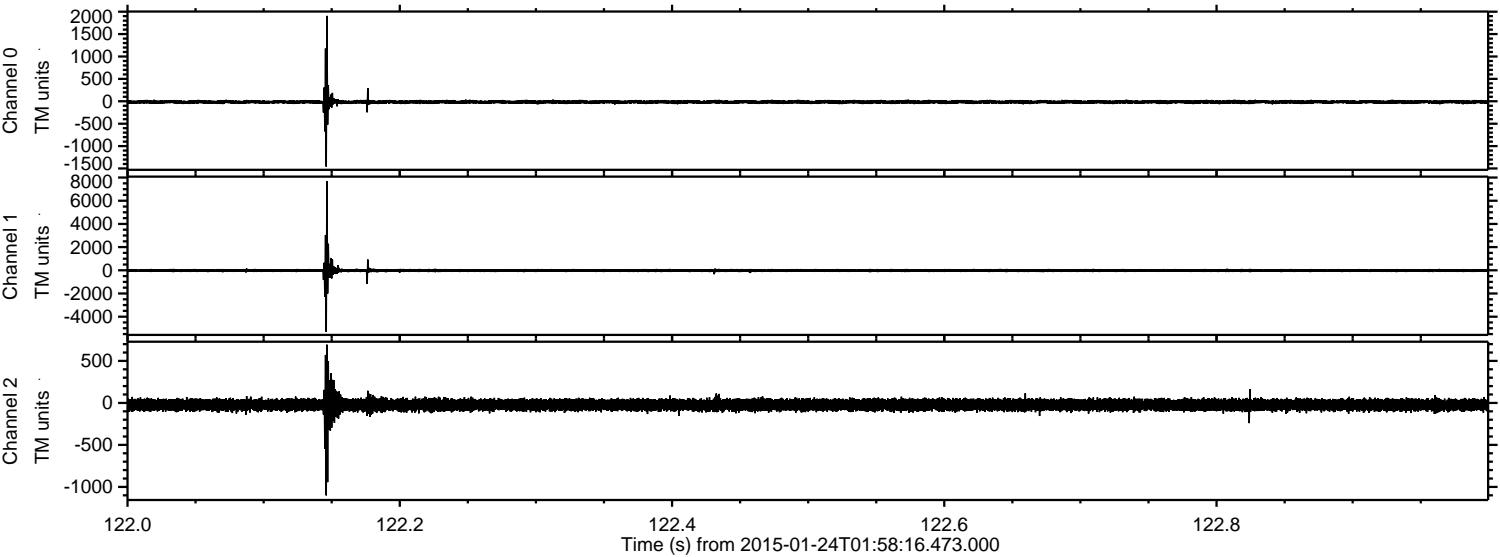
ELMAVAN 3D WAVEFORMS (Measured data sampled at 50 kHz) 49676 packets of 144 samples from 2015-01-24T01:58:16.473.000. Part 76/144

Processed Tue Feb 10 20:30:54 2015 by ELM ver.2012-10-06 from 001__elm20150124_015815__dat00.bin

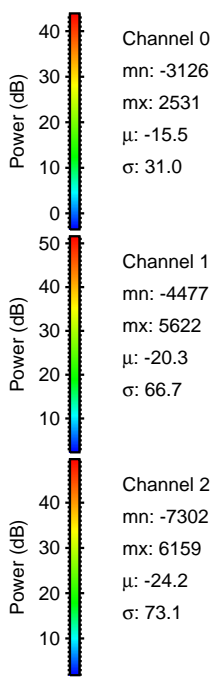
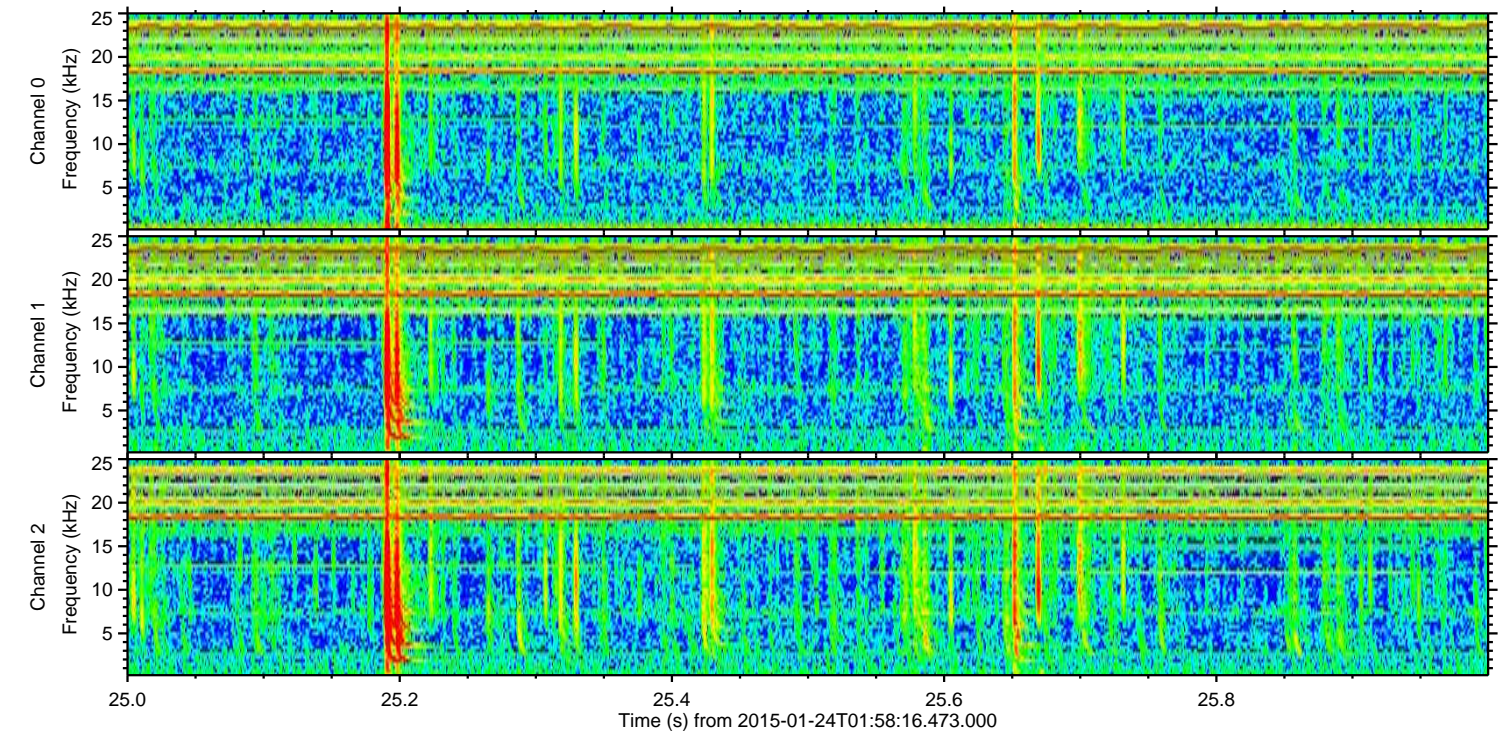
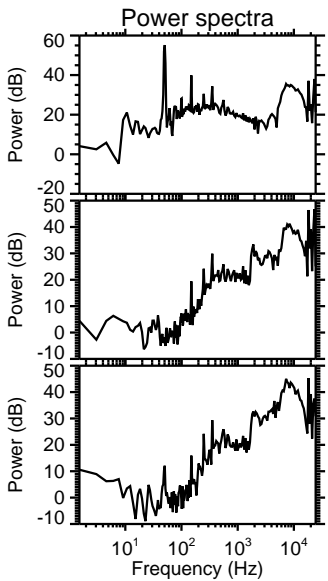
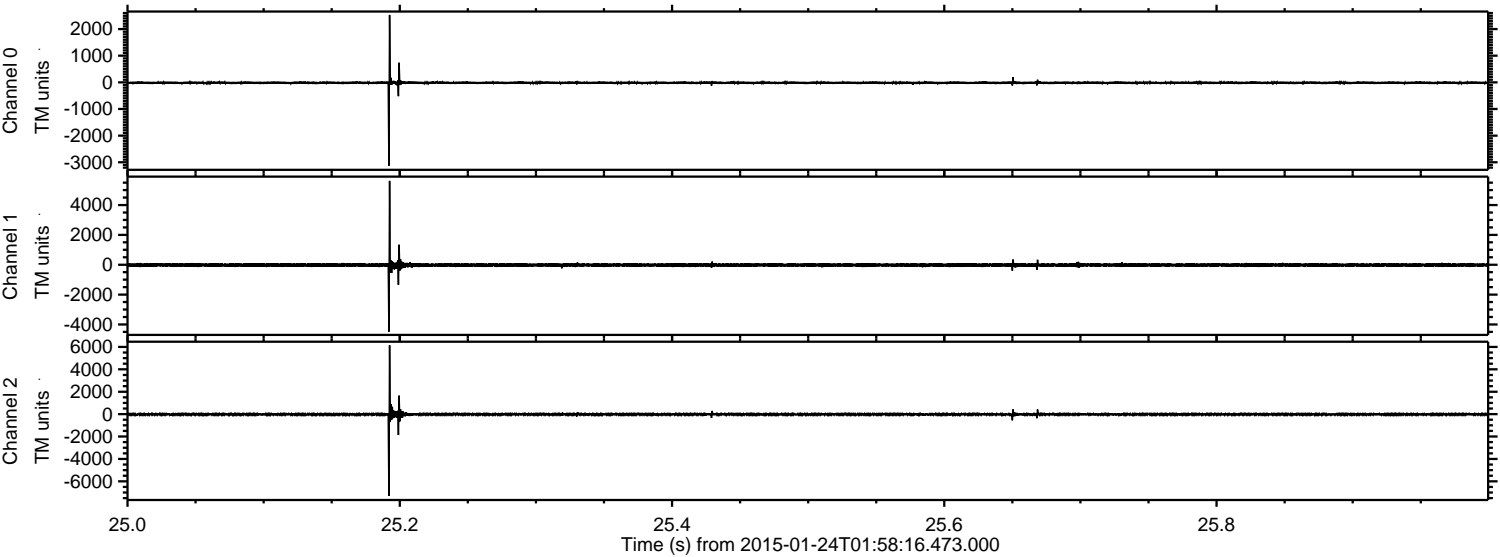


ELMAVAN 3D WAVEFORMS (Measured data sampled at 50 kHz) 49676 packets of 144 samples from 2015-01-24T01:58:16.473.000. Part 123/144

Processed Tue Feb 10 20:30:55 2015 by ELM ver.2012-10-06 from 001__elm20150124_015815__dat00.bin



Processed Tue Feb 10 20:30:56 2015 by ELM ver.2012-10-06 from 001__elm20150124_015815__dat00.bin



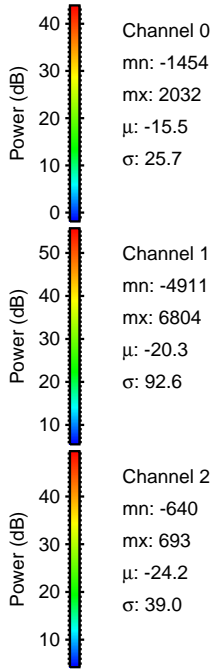
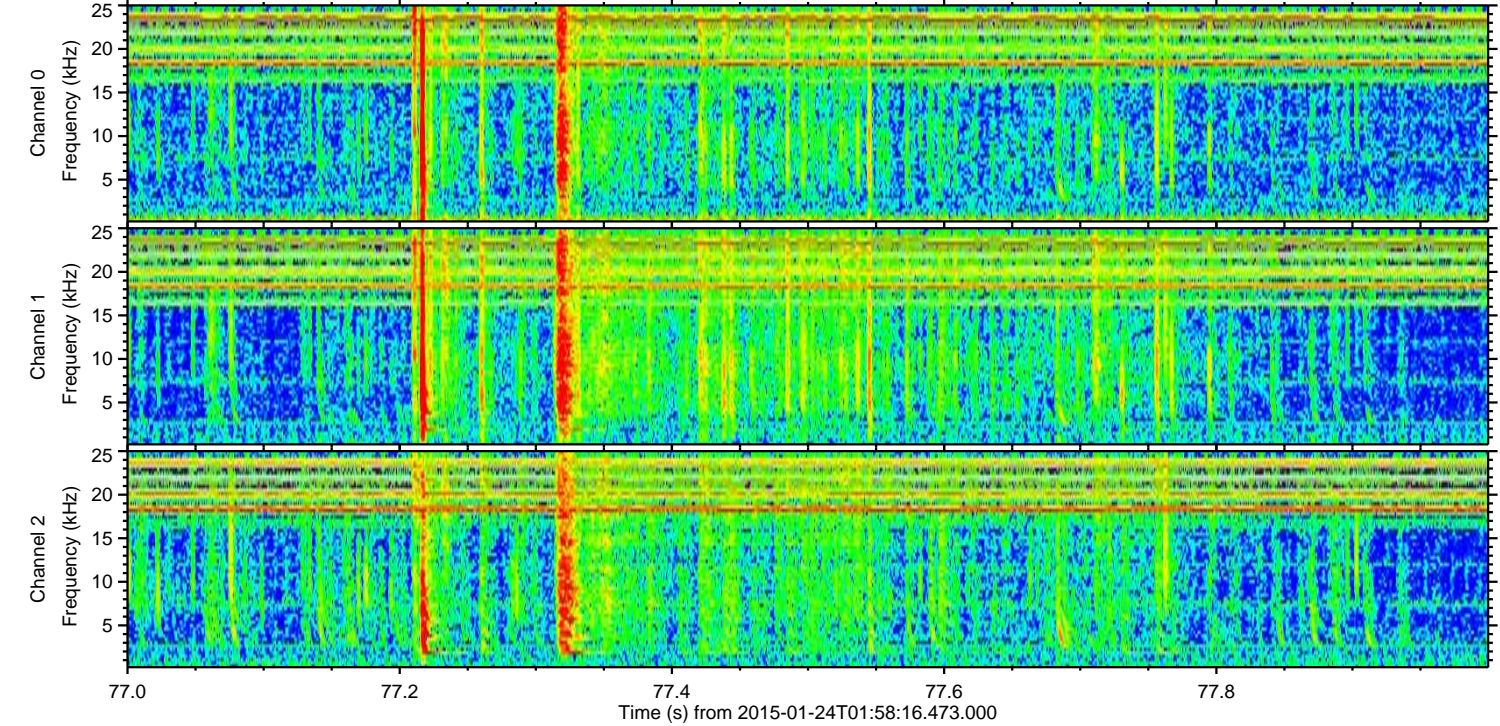
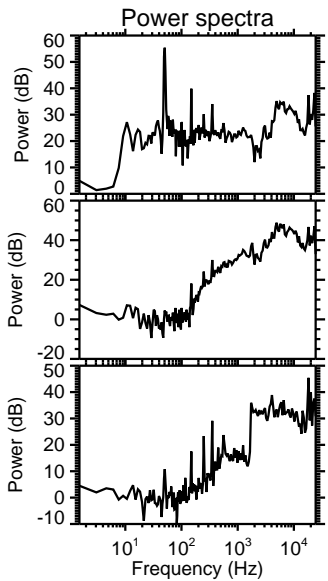
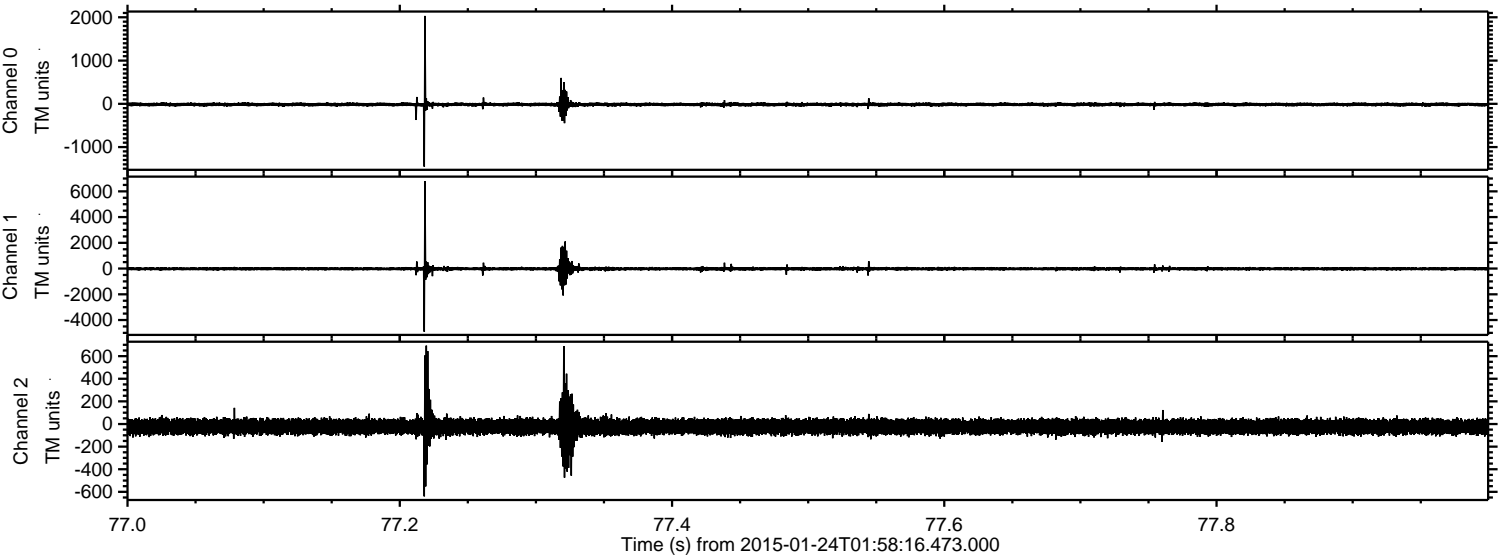
Channel 0
mn: -3126
mx: 2531
 μ : -15.5
 σ : 31.0

Channel 1
mn: -4477
mx: 5622
 μ : -20.3
 σ : 66.7

Channel 2
mn: -7302
mx: 6159
 μ : -24.2
 σ : 73.1

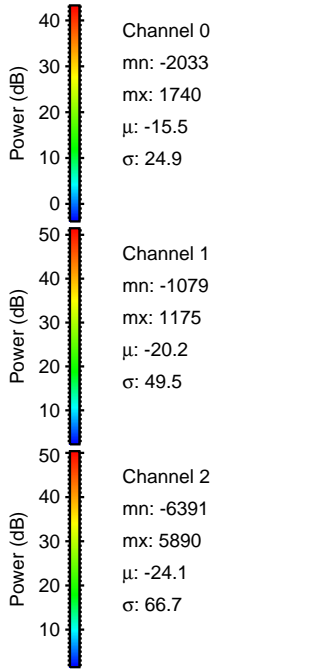
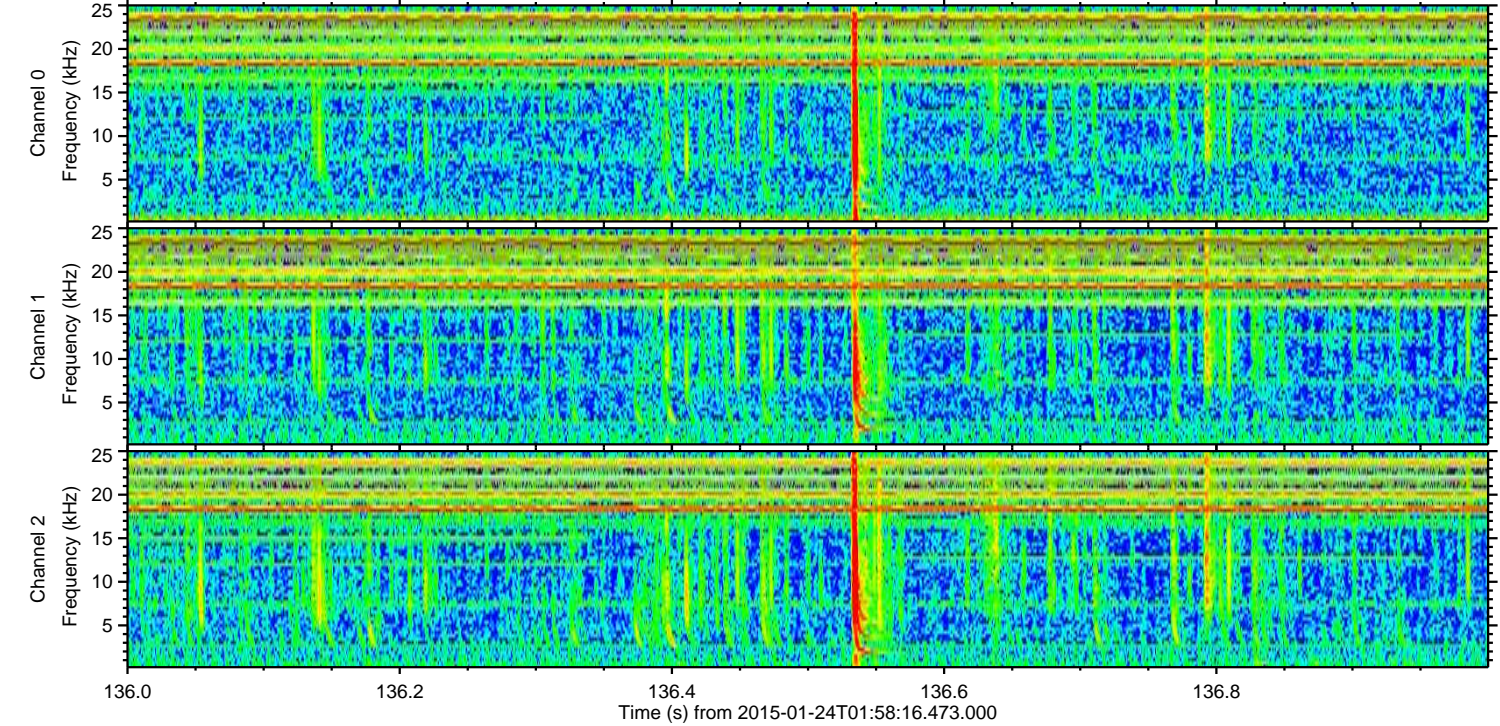
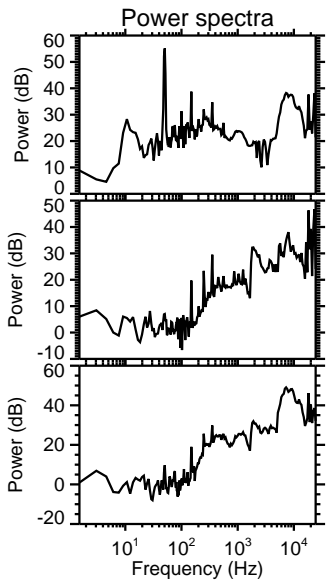
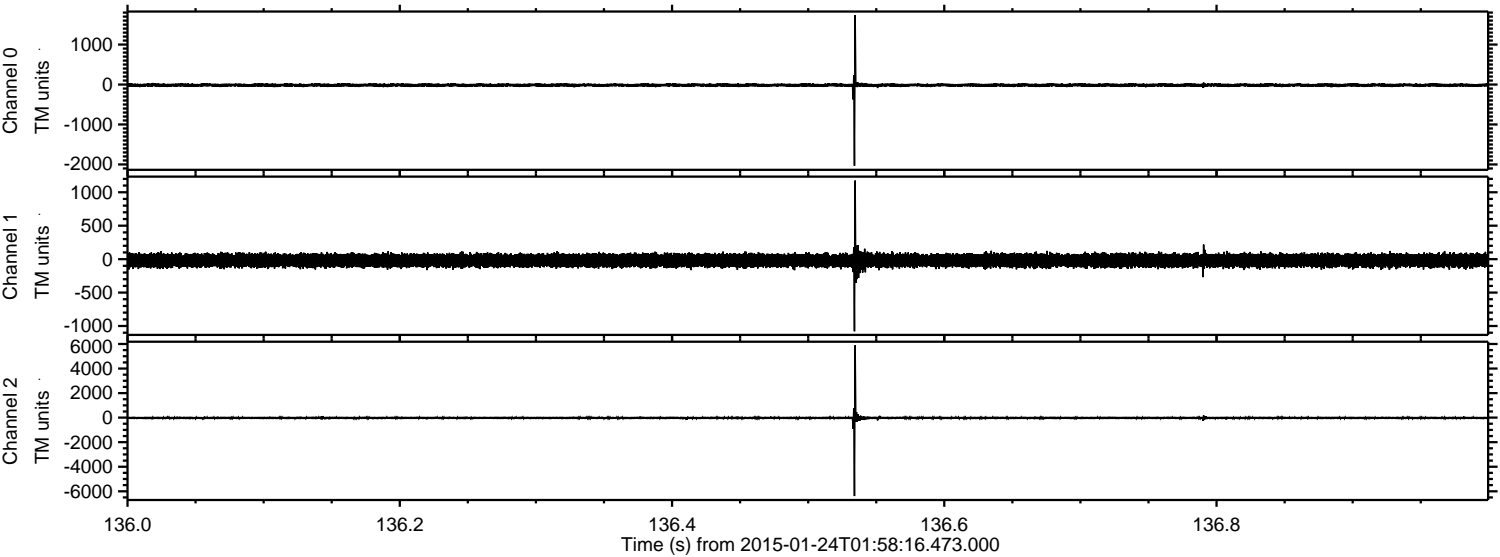
ELMAVAN 3D WAVEFORMS (Measured data sampled at 50 kHz) 49676 packets of 144 samples from 2015-01-24T01:58:16.473.000. Part 78/144

Processed Tue Feb 10 20:30:58 2015 by ELM ver.2012-10-06 from 001__elm20150124_015815__dat00.bin



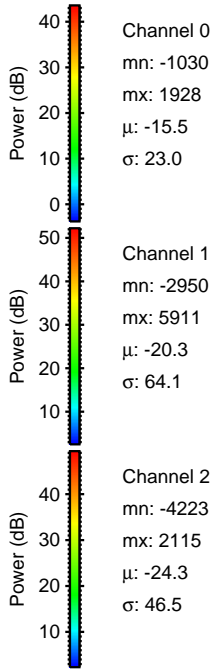
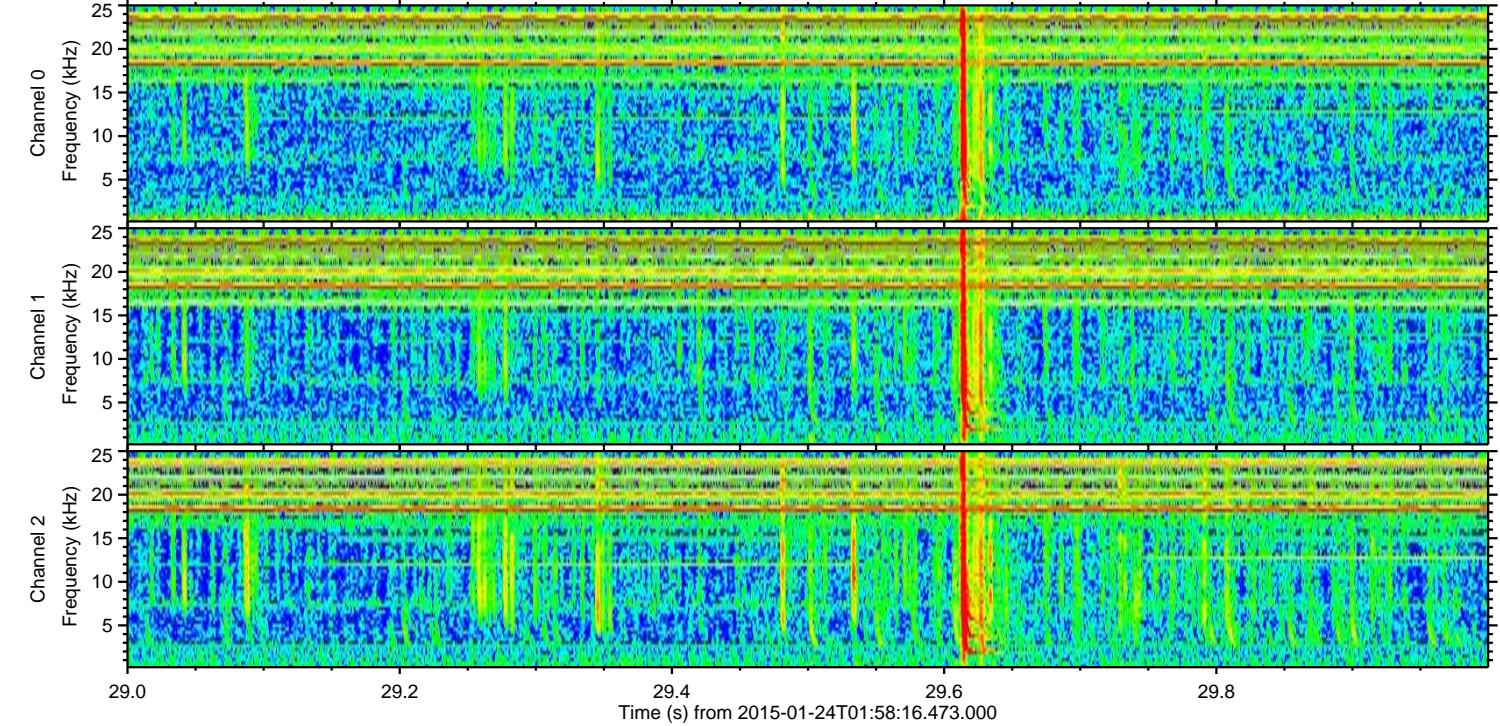
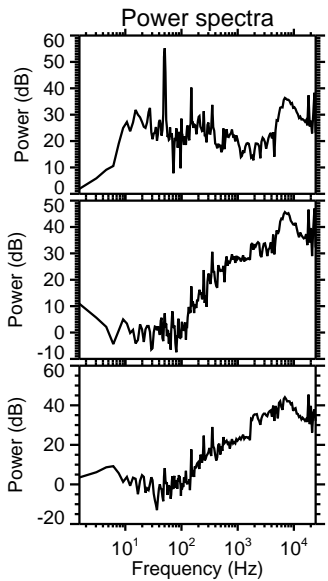
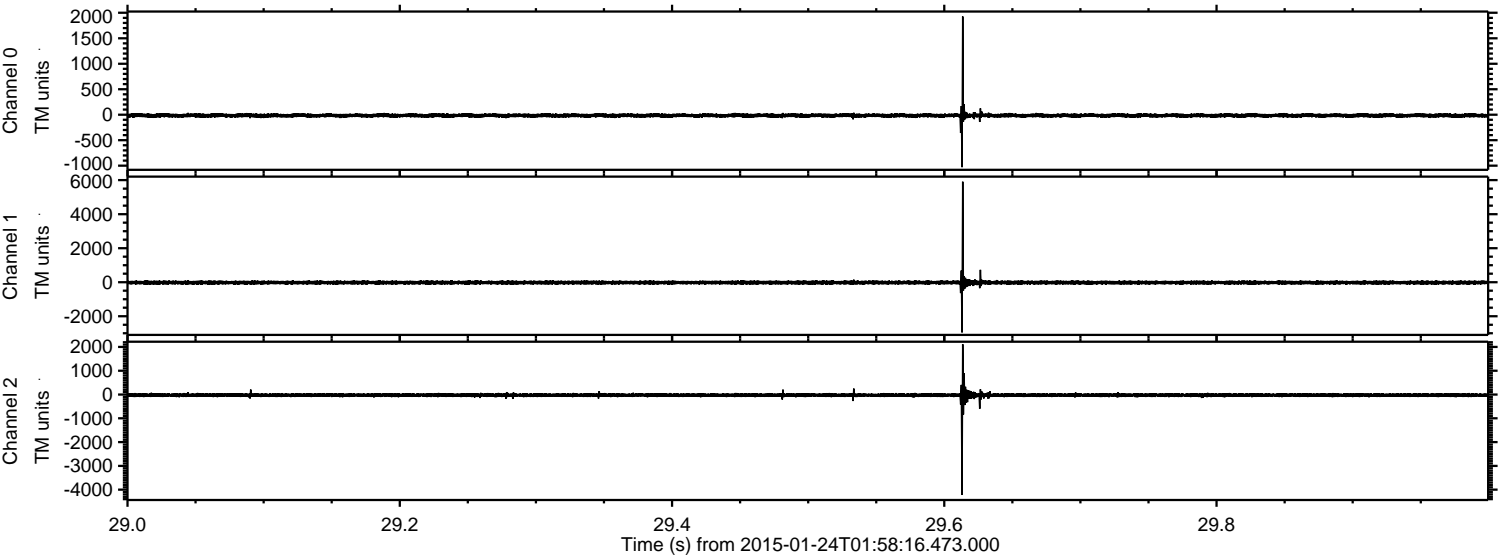
ELMAVAN 3D WAVEFORMS (Measured data sampled at 50 kHz) 49676 packets of 144 samples from 2015-01-24T01:58:16.473.000. Part 137/144

Processed Tue Feb 10 20:30:59 2015 by ELM ver.2012-10-06 from 001__elm20150124_015815__dat00.bin



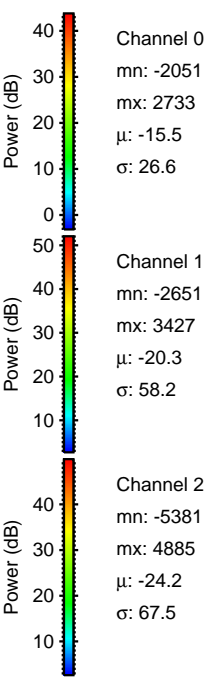
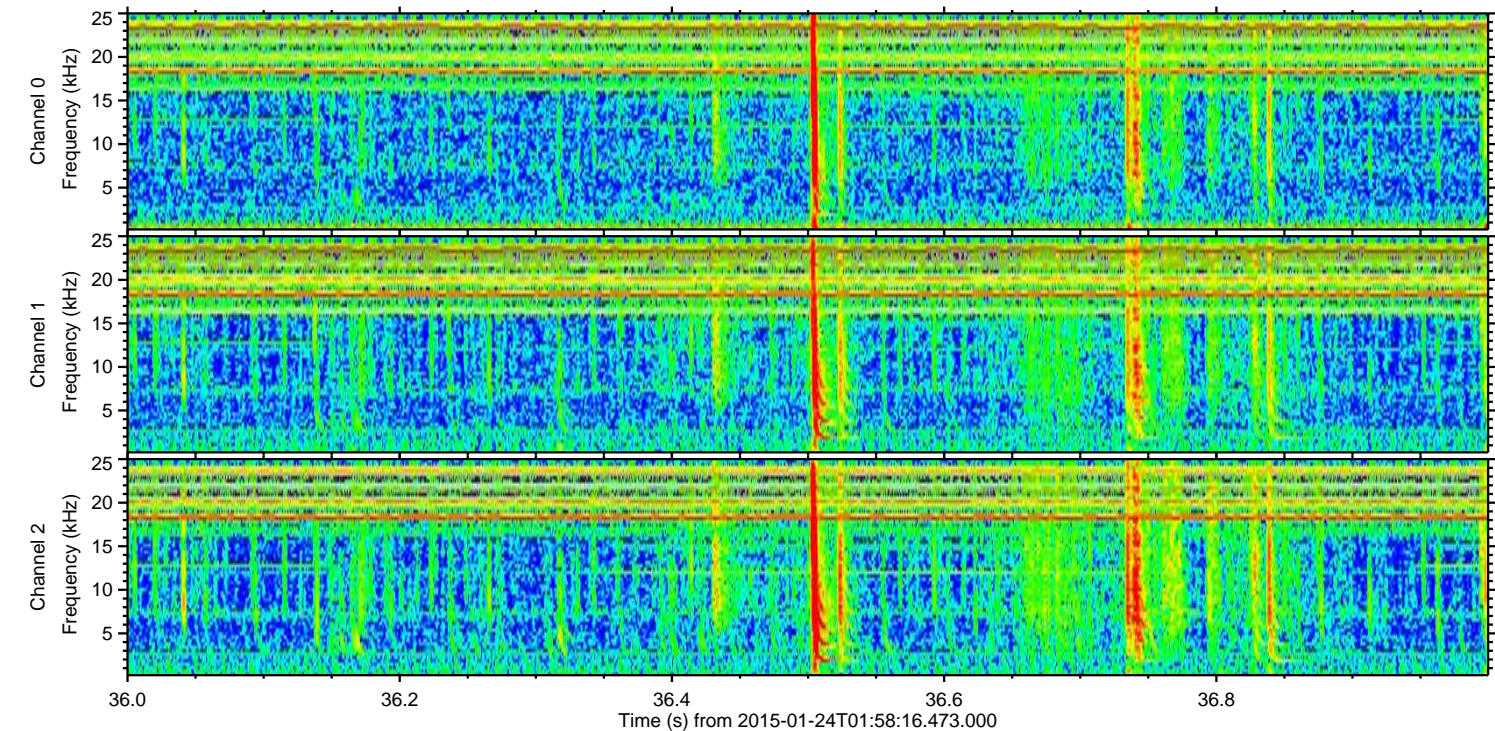
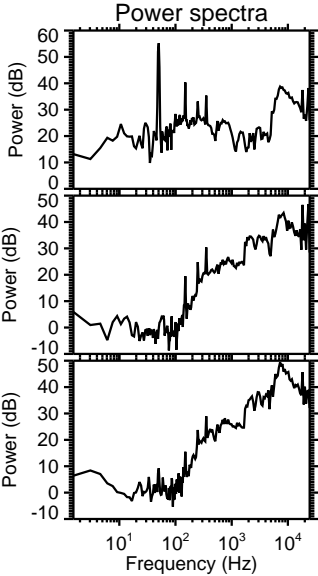
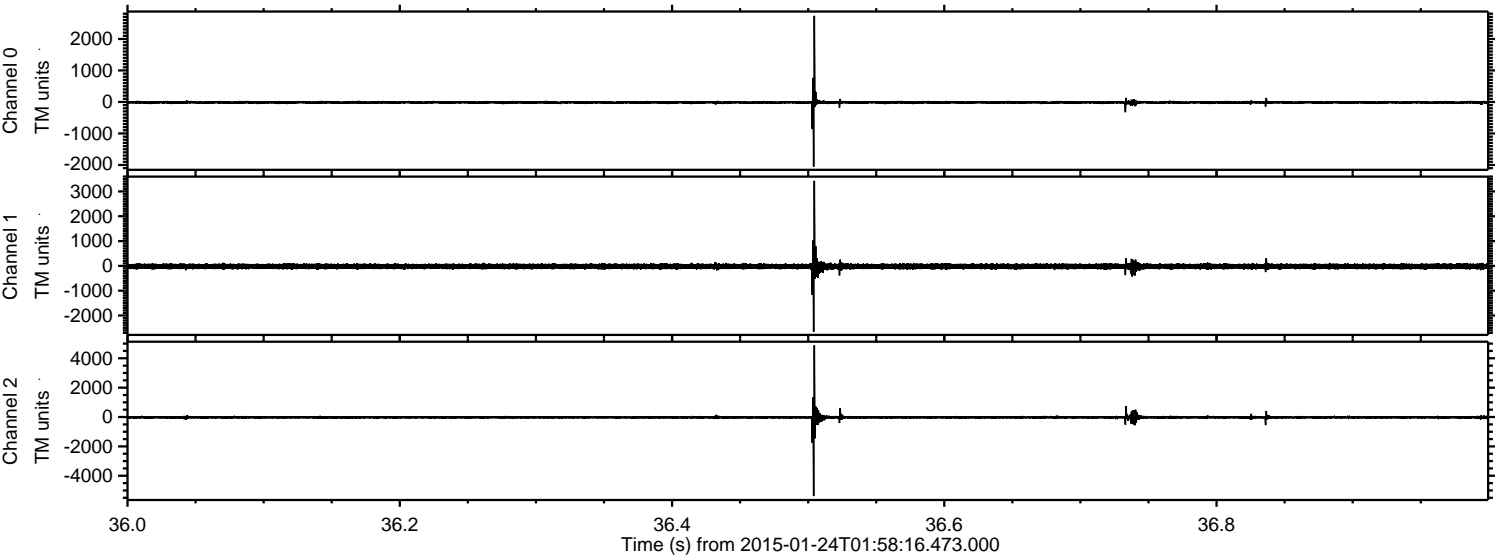
ELMAVAN 3D WAVEFORMS (Measured data sampled at 50 kHz) 49676 packets of 144 samples from 2015-01-24T01:58:16.473.000. Part 30/144

Processed Tue Feb 10 20:31:01 2015 by ELM ver.2012-10-06 from 001__elm20150124_015815__dat00.bin



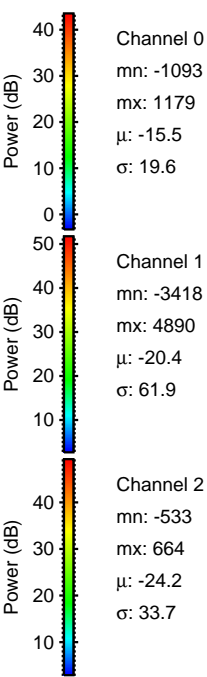
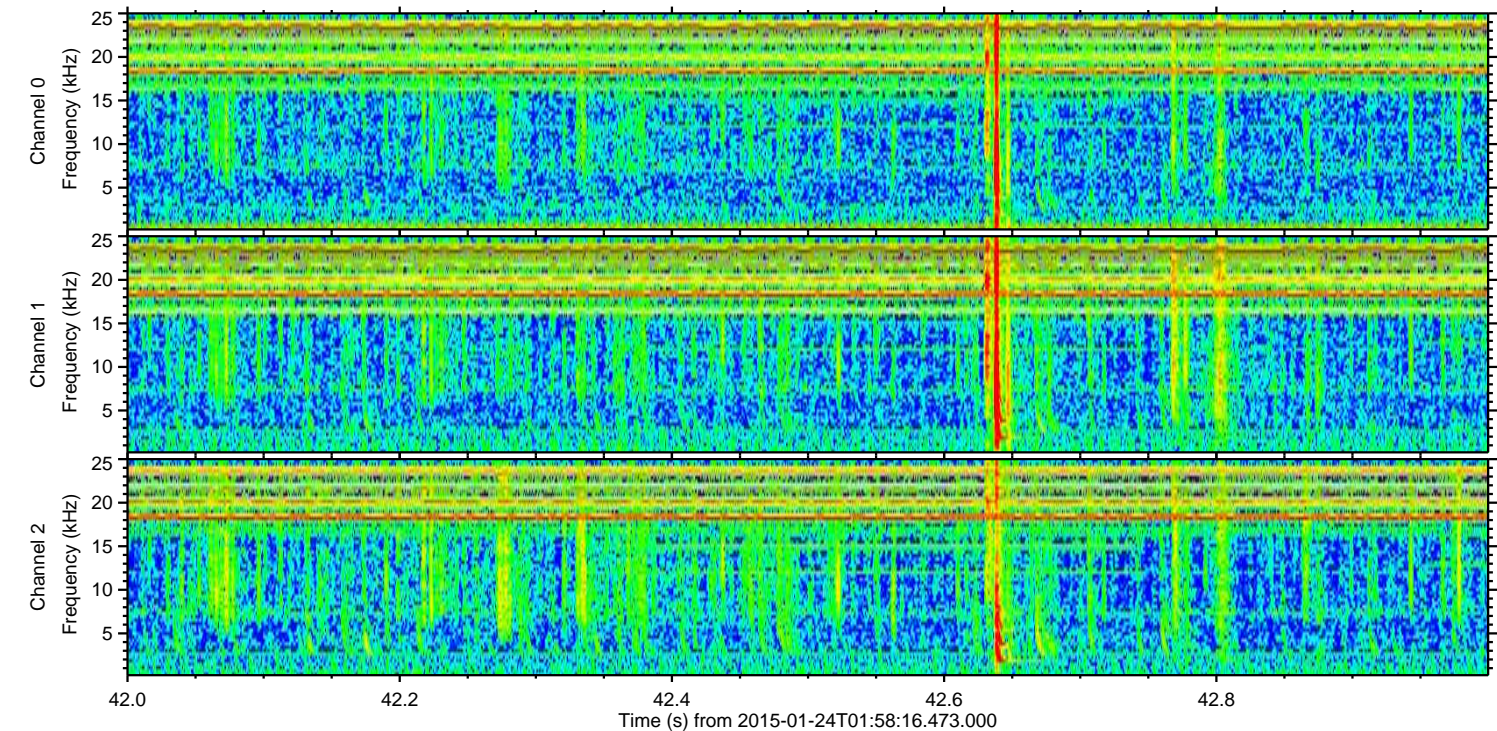
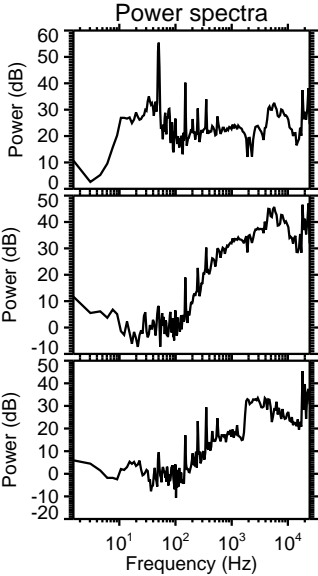
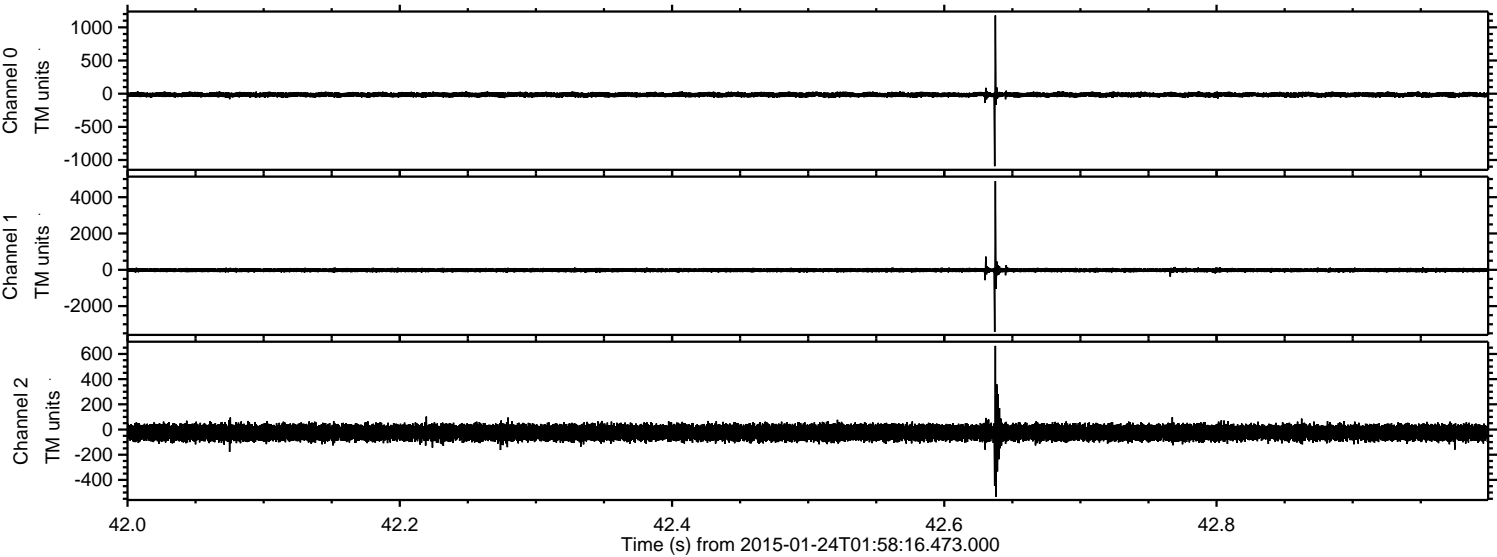
ELMAVAN 3D WAVEFORMS (Measured data sampled at 50 kHz) 49676 packets of 144 samples from 2015-01-24T01:58:16.473.000. Part 37/144

Processed Tue Feb 10 20:31:02 2015 by ELM ver.2012-10-06 from 001__elm20150124_015815__dat00.bin



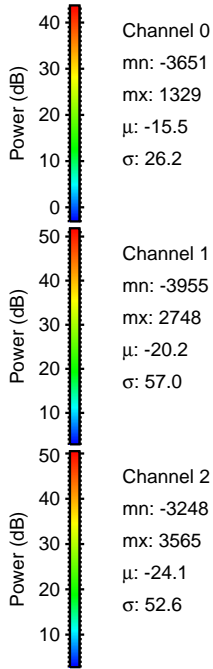
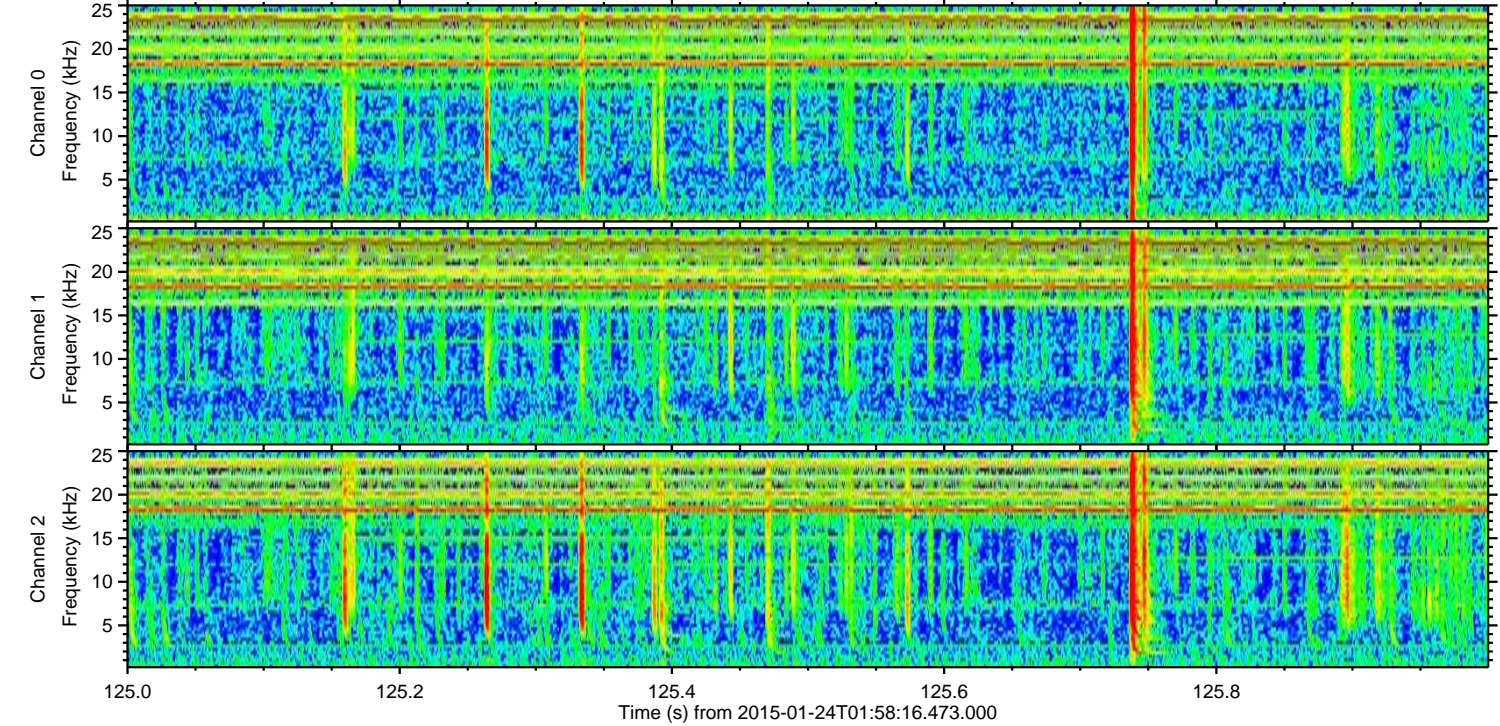
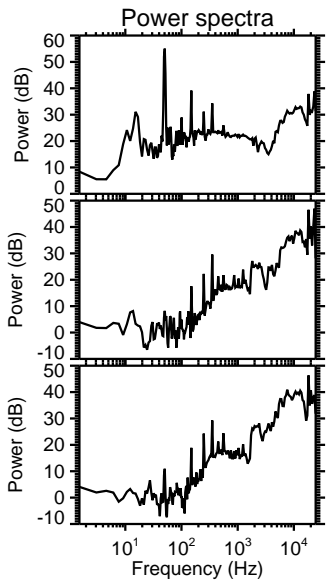
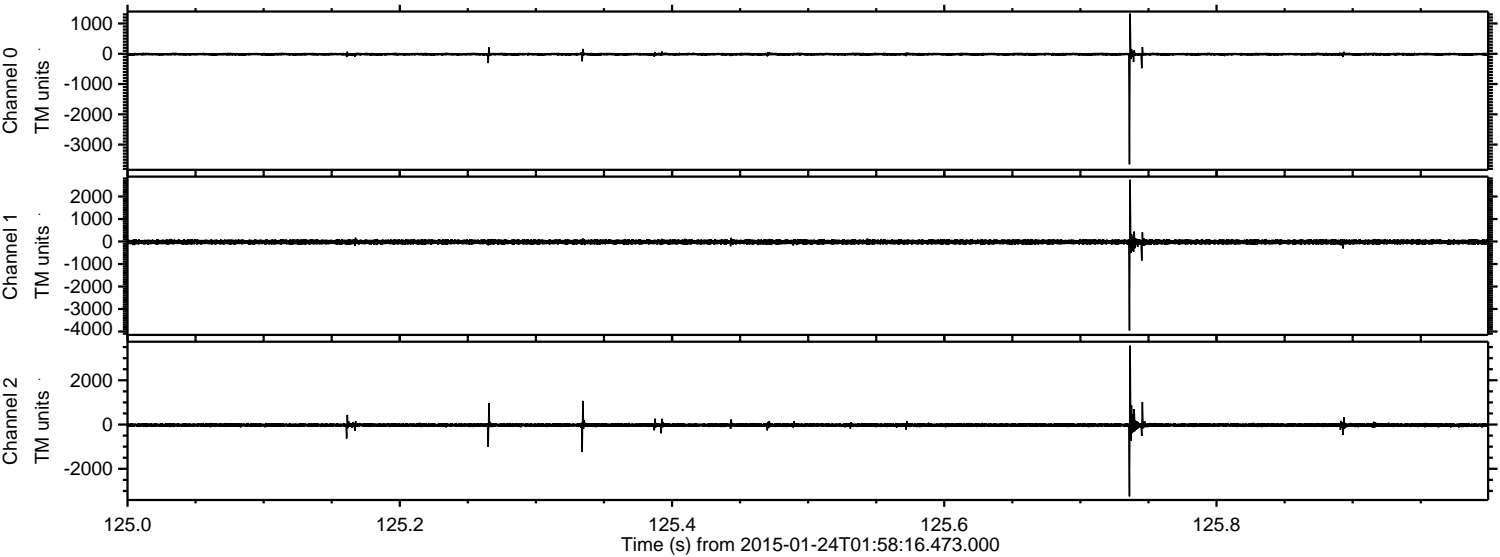
ELMAVAN 3D WAVEFORMS (Measured data sampled at 50 kHz) 49676 packets of 144 samples from 2015-01-24T01:58:16.473.000. Part 43/144

Processed Tue Feb 10 20:31:05 2015 by ELM ver.2012-10-06 from 001__elm20150124_015815__dat00.bin



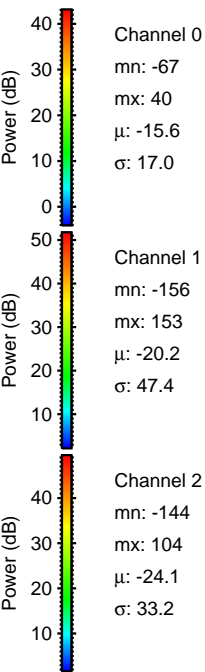
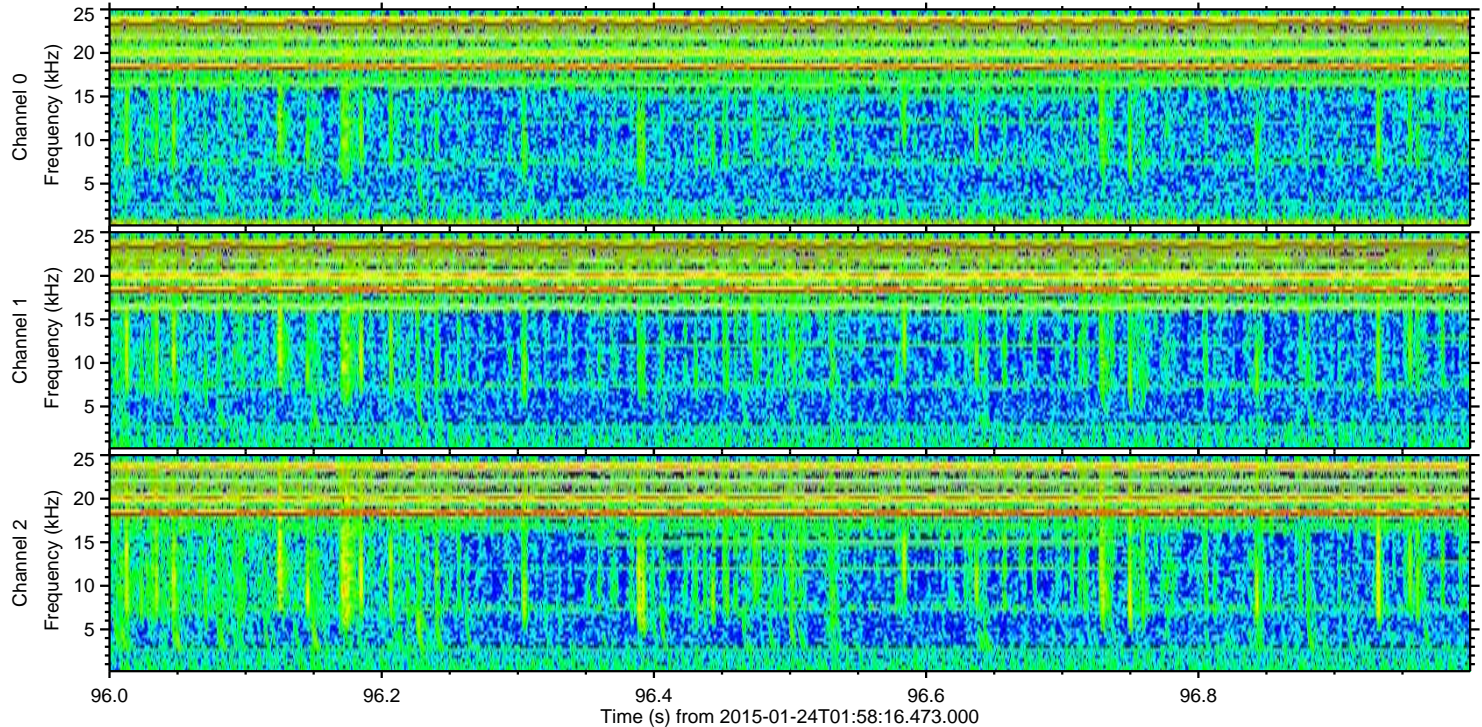
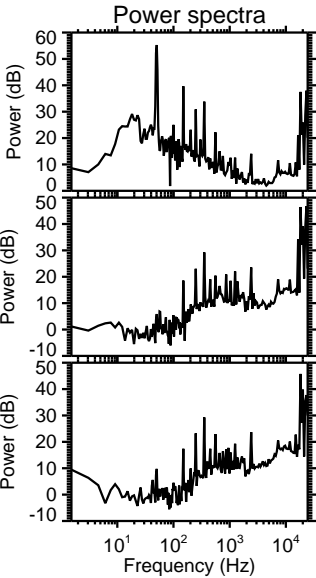
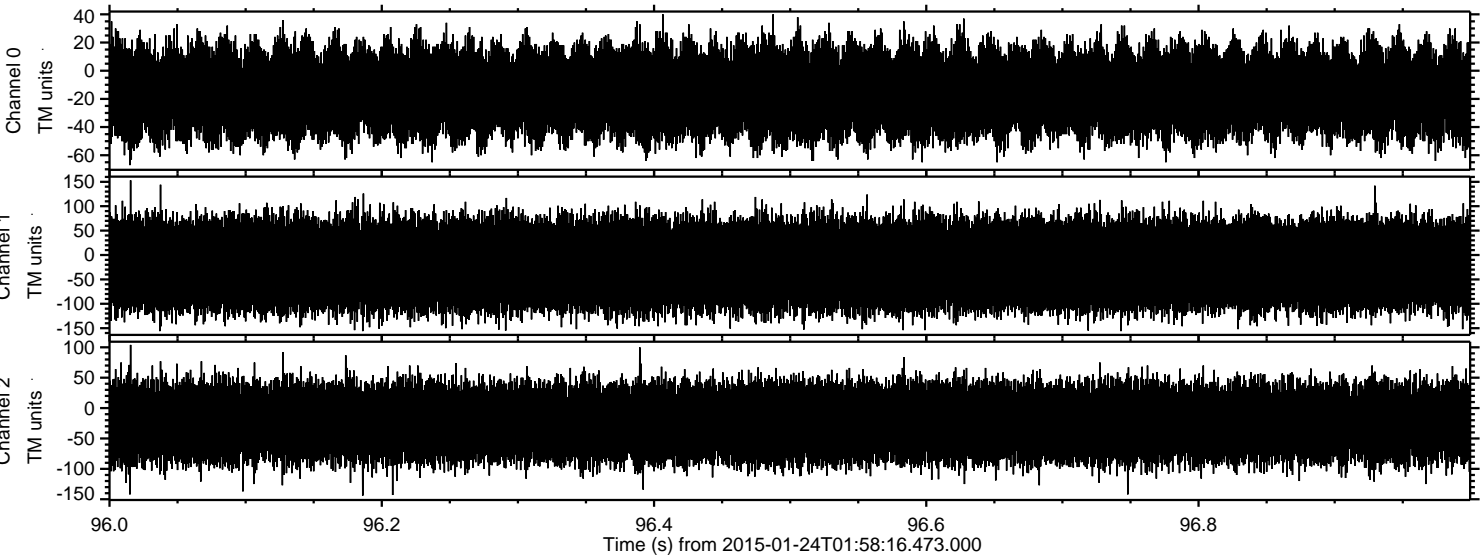
ELMAVAN 3D WAVEFORMS (Measured data sampled at 50 kHz) 49676 packets of 144 samples from 2015-01-24T01:58:16.473.000. Part 126/144

Processed Tue Feb 10 20:31:07 2015 by ELM ver.2012-10-06 from 001__elm20150124_015815__dat00.bin



ELMAVAN 3D WAVEFORMS (Measured data sampled at 50 kHz) 49676 packets of 144 samples from 2015-01-24T01:58:16.473.000. Part 97/144

Processed Tue Feb 10 20:31:08 2015 by ELM ver.2012-10-06 from 001__elm20150124_015815__dat00.bin



Channel 0
mn: -67
mx: 40
 μ : -15.6
 σ : 17.0

Channel 1
mn: -156
mx: 153
 μ : -20.2
 σ : 47.4

Channel 2
mn: -144
mx: 104
 μ : -24.1
 σ : 33.2