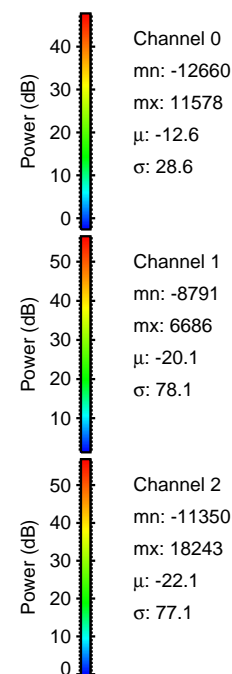
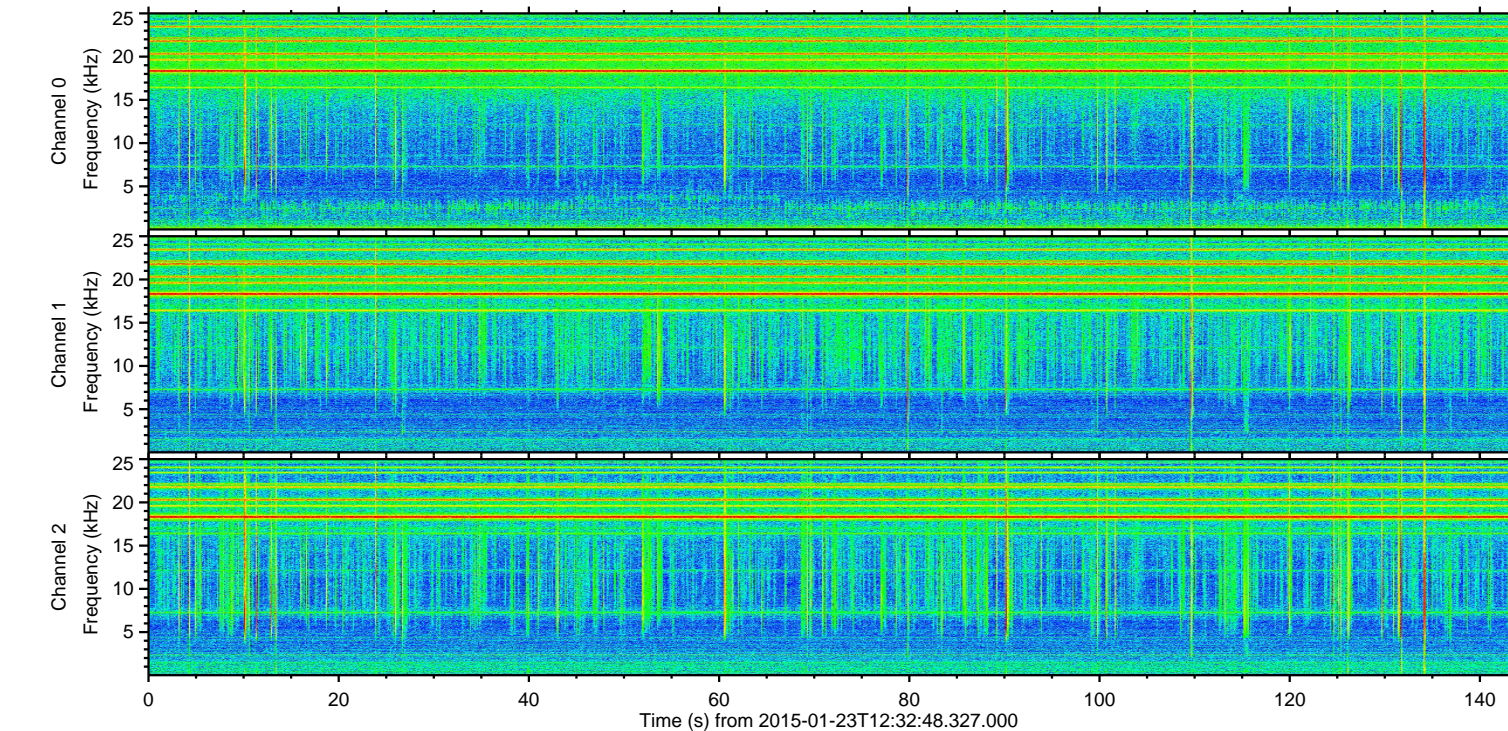
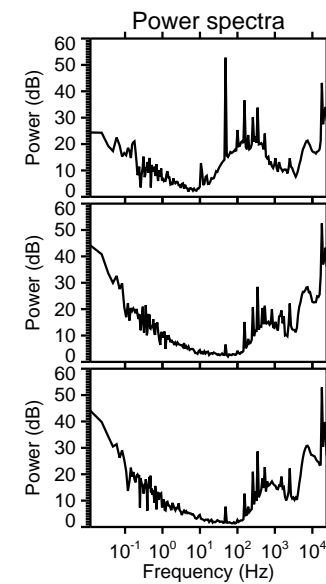
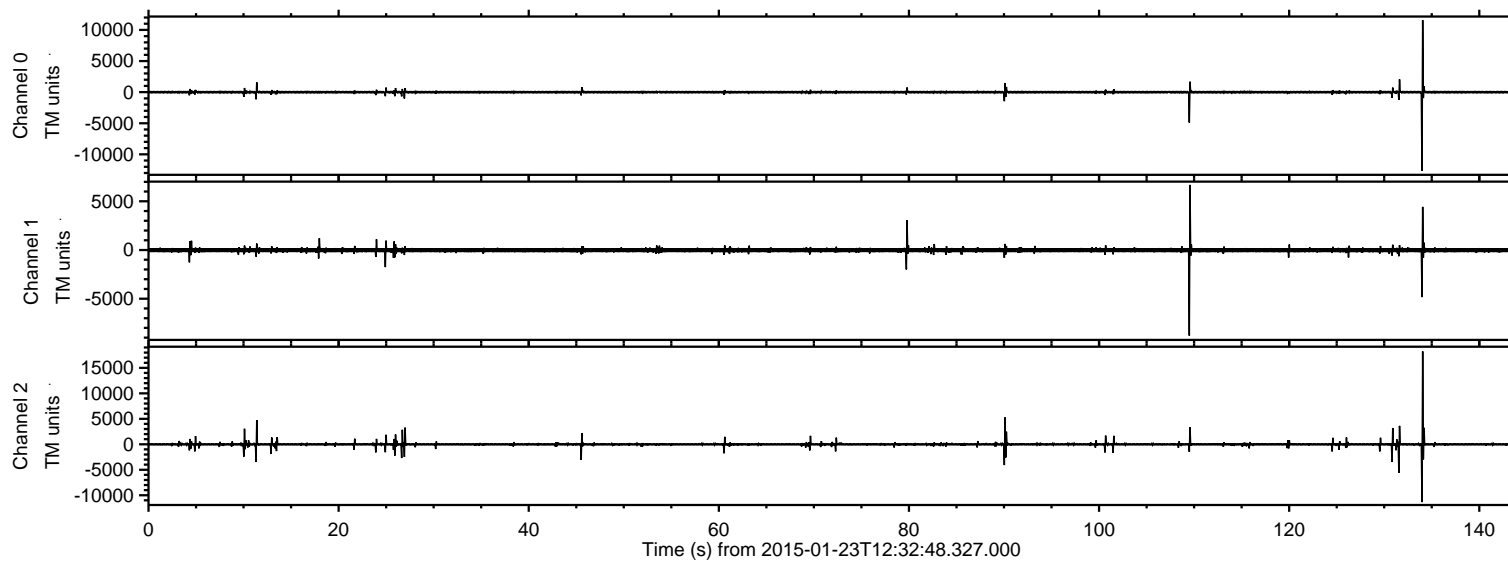


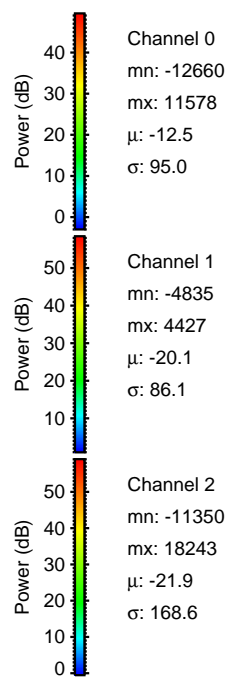
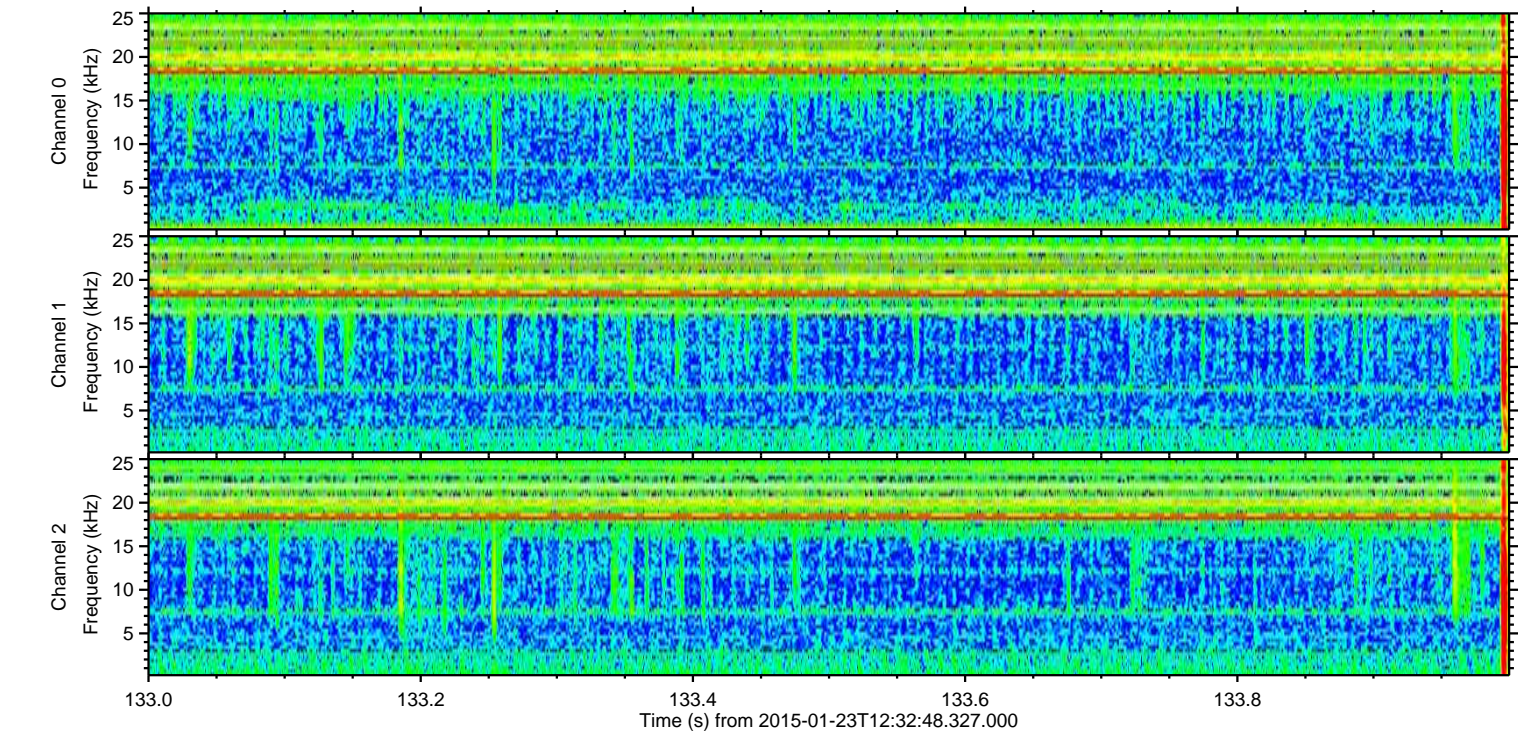
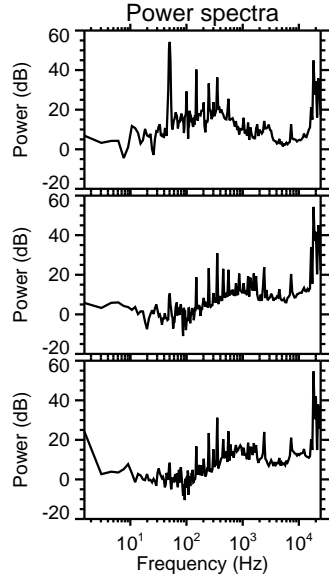
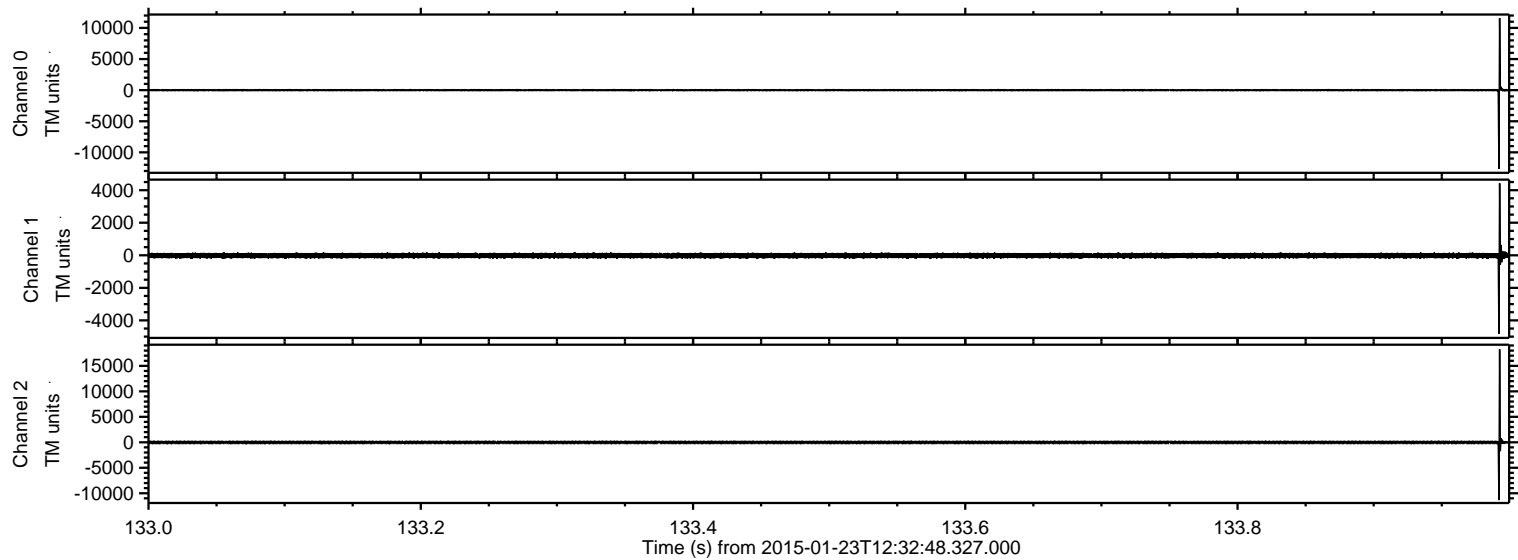
# ELMAVAN 3D WAVEFORMS (Measured data sampled at 50 kHz) 49702 packets of 144 samples from 2015-01-23T12:32:48.327.000.

Processed Tue Feb 10 17:13:06 2015 by ELM ver.2012-10-06 from 001\_\_elm20150123\_123247\_\_dat00.bin





Processed Tue Feb 10 17:13:19 2015 by ELM ver.2012-10-06 from 001\_\_elm20150123\_123247\_\_dat00.bin



Channel 0  
mn: -12660  
mx: 11578  
 $\mu$ : -12.5  
 $\sigma$ : 95.0

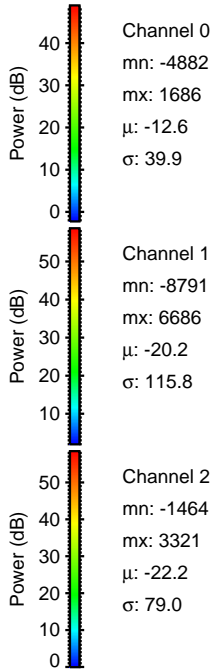
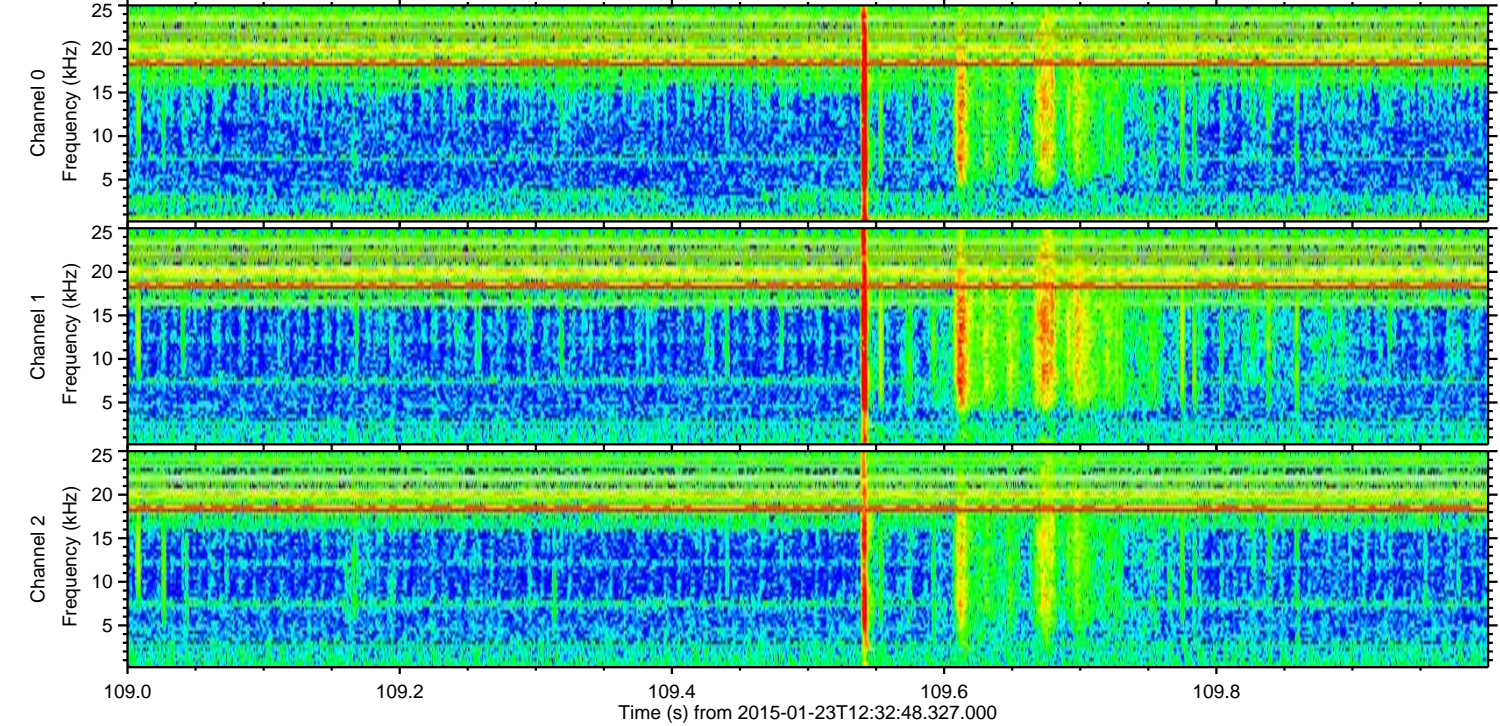
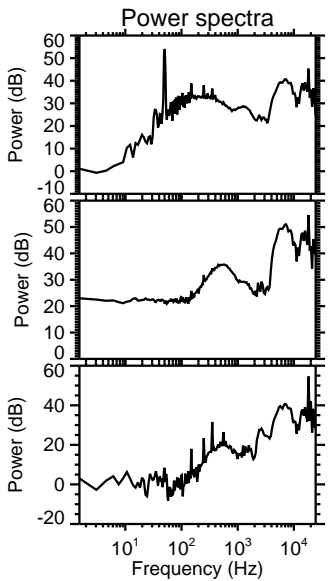
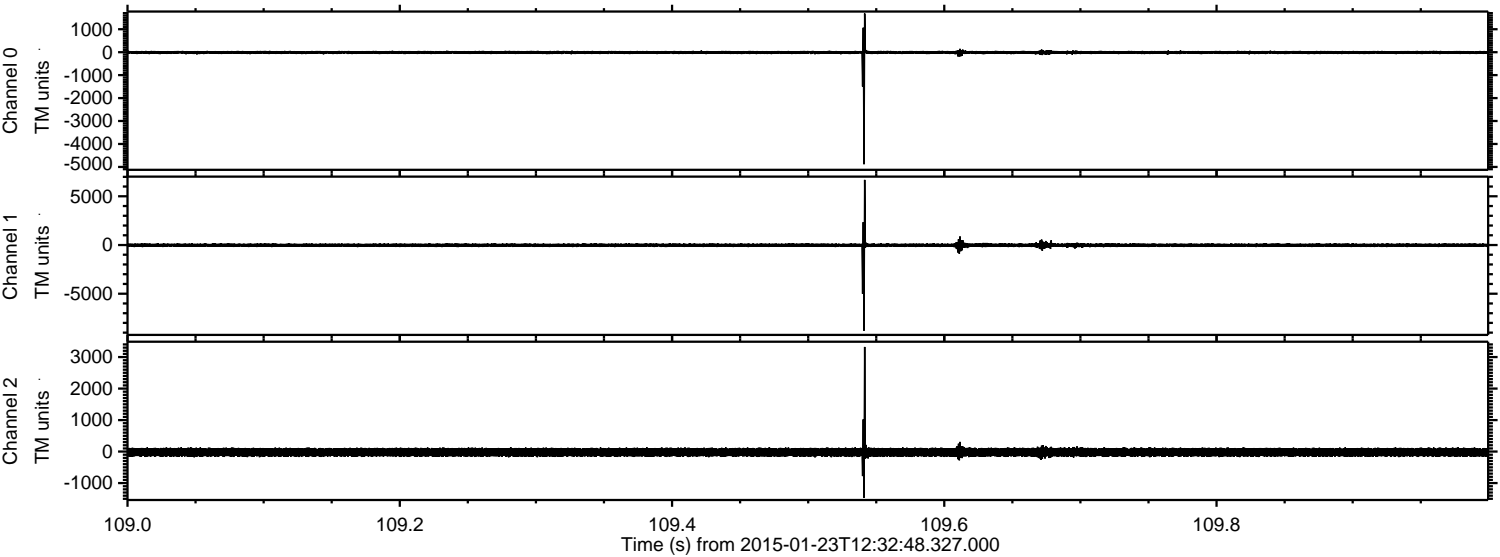
Channel 1  
mn: -4835  
mx: 4427  
 $\mu$ : -20.1  
 $\sigma$ : 86.1

Channel 2  
mn: -11350  
mx: 18243  
 $\mu$ : -21.9  
 $\sigma$ : 168.6



ELMAVAN 3D WAVEFORMS (Measured data sampled at 50 kHz) 49702 packets of 144 samples from 2015-01-23T12:32:48.327.000. Part 110/144

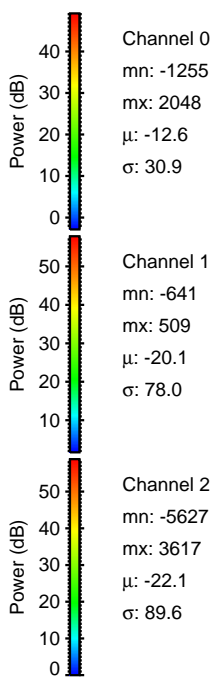
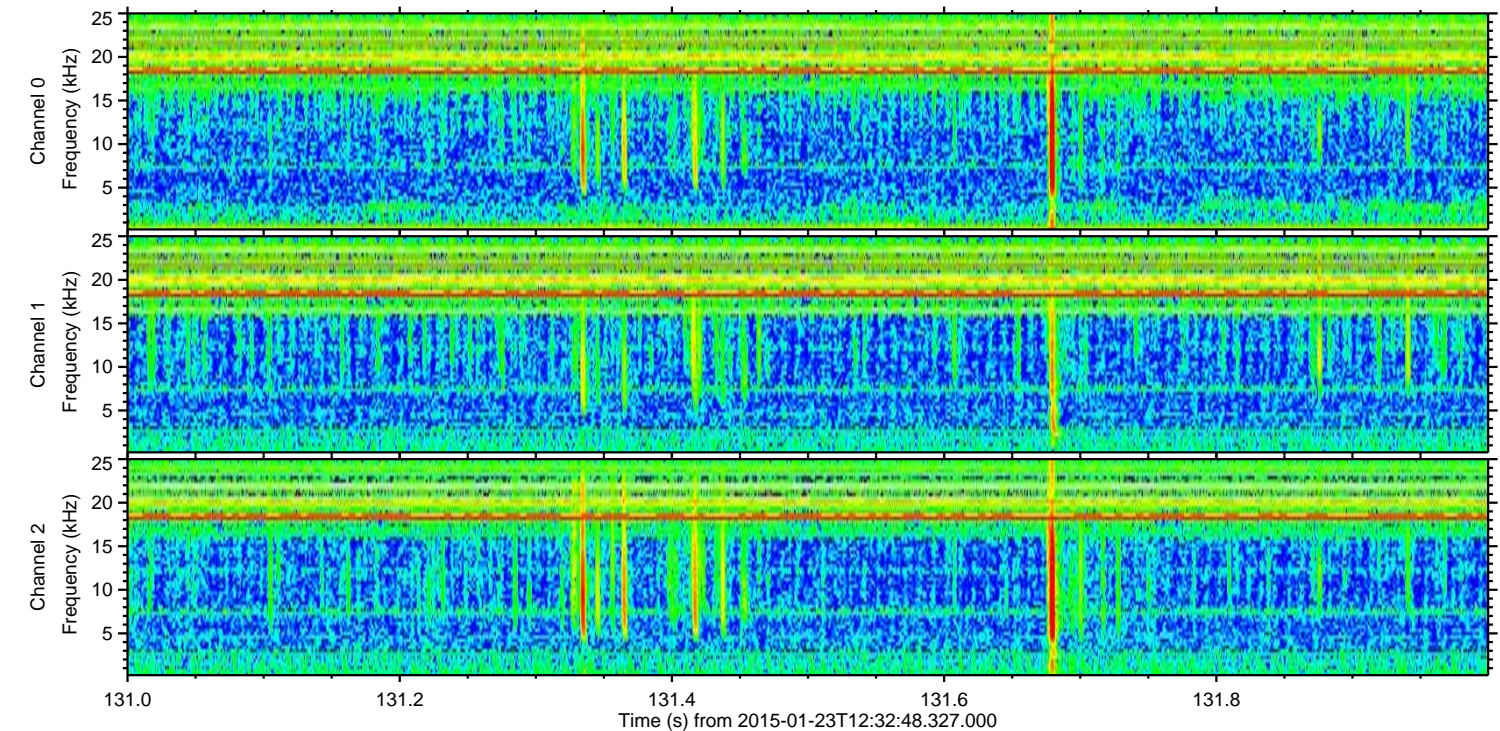
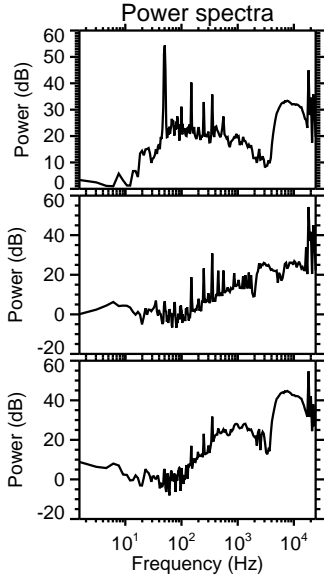
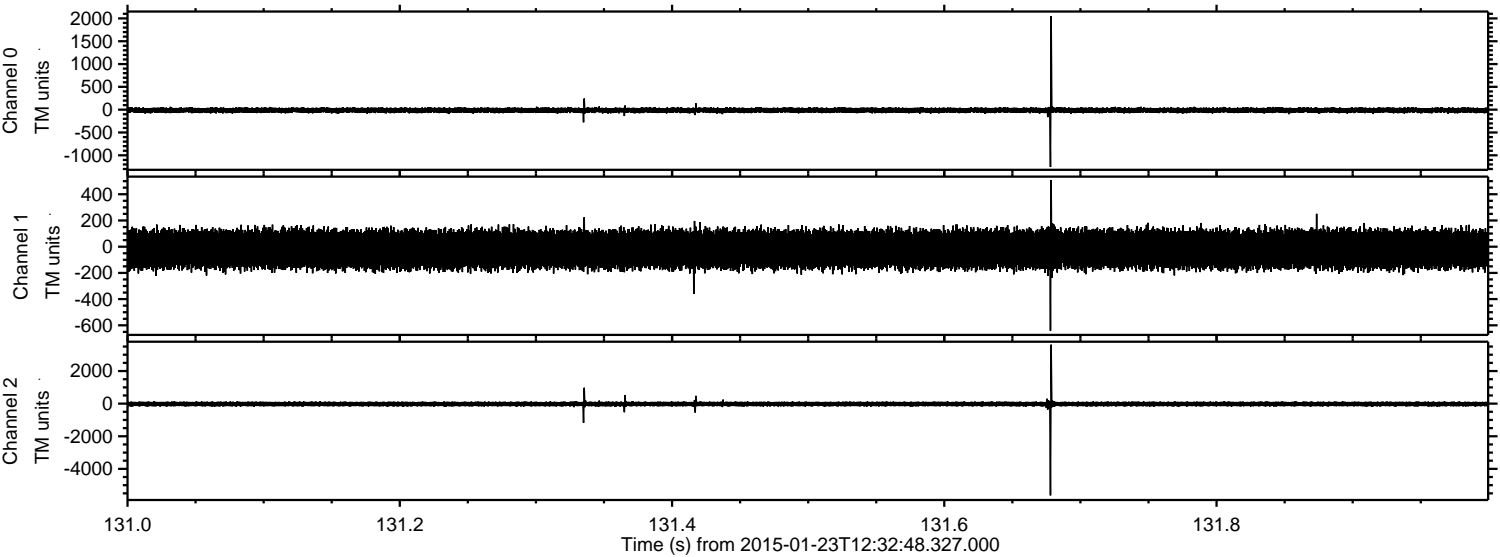
Processed Tue Feb 10 17:13:20 2015 by ELM ver.2012-10-06 from 001\_\_elm20150123\_123247\_\_dat00.bin





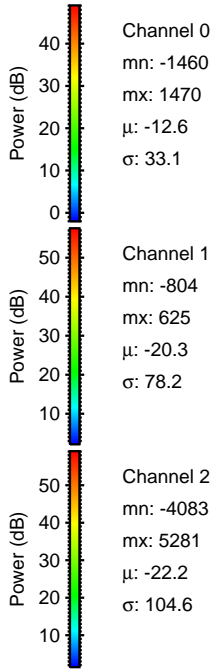
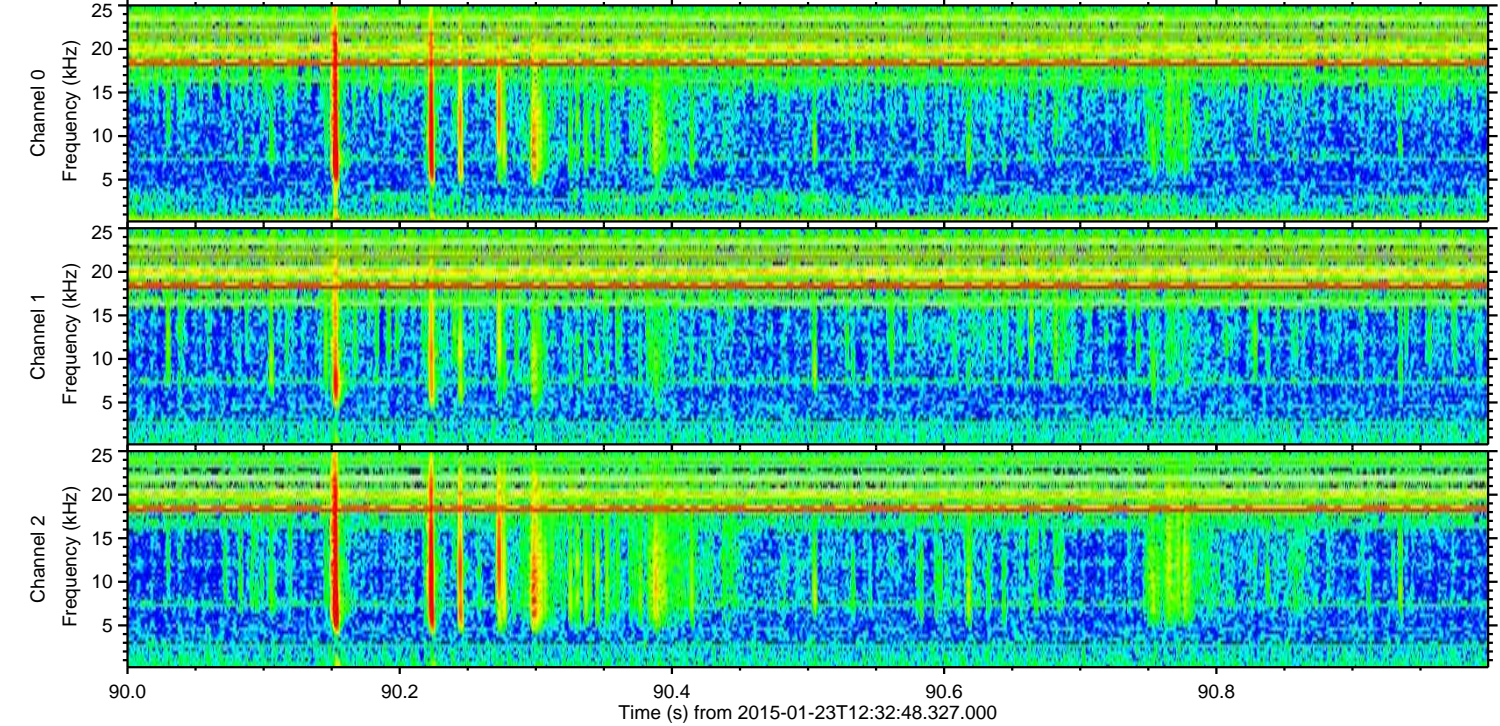
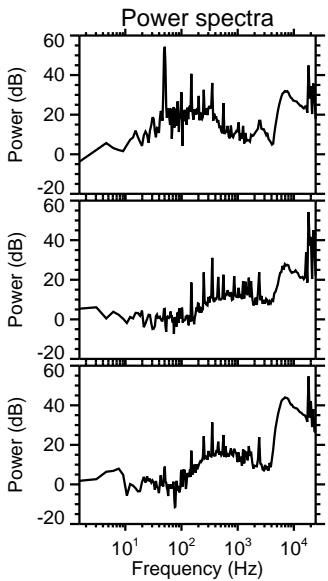
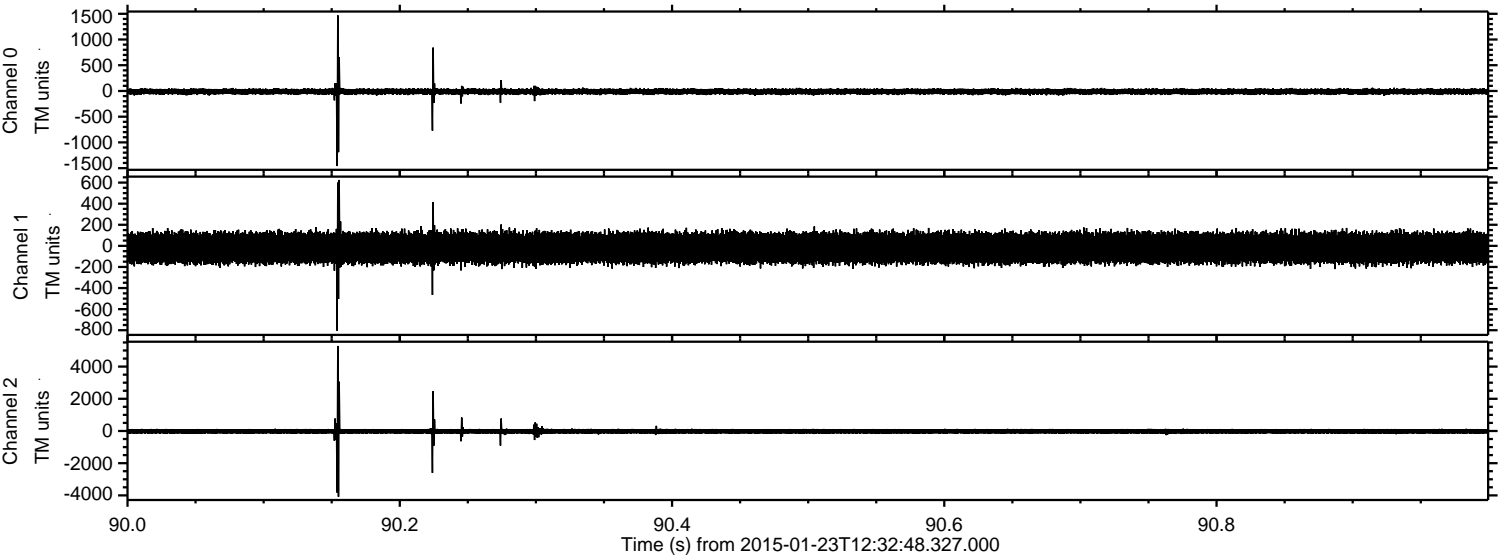
ELMAVAN 3D WAVEFORMS (Measured data sampled at 50 kHz) 49702 packets of 144 samples from 2015-01-23T12:32:48.327.000. Part 132/144

Processed Tue Feb 10 17:13:21 2015 by ELM ver.2012-10-06 from 001\_\_elm20150123\_123247\_\_dat00.bin





Processed Tue Feb 10 17:13:22 2015 by ELM ver.2012-10-06 from 001\_\_elm20150123\_123247\_\_dat00.bin



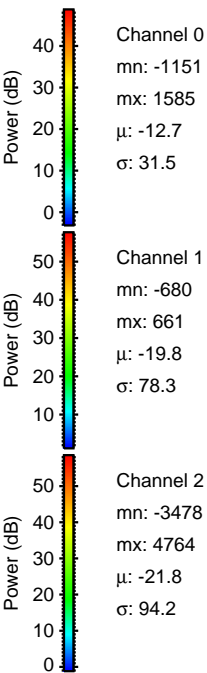
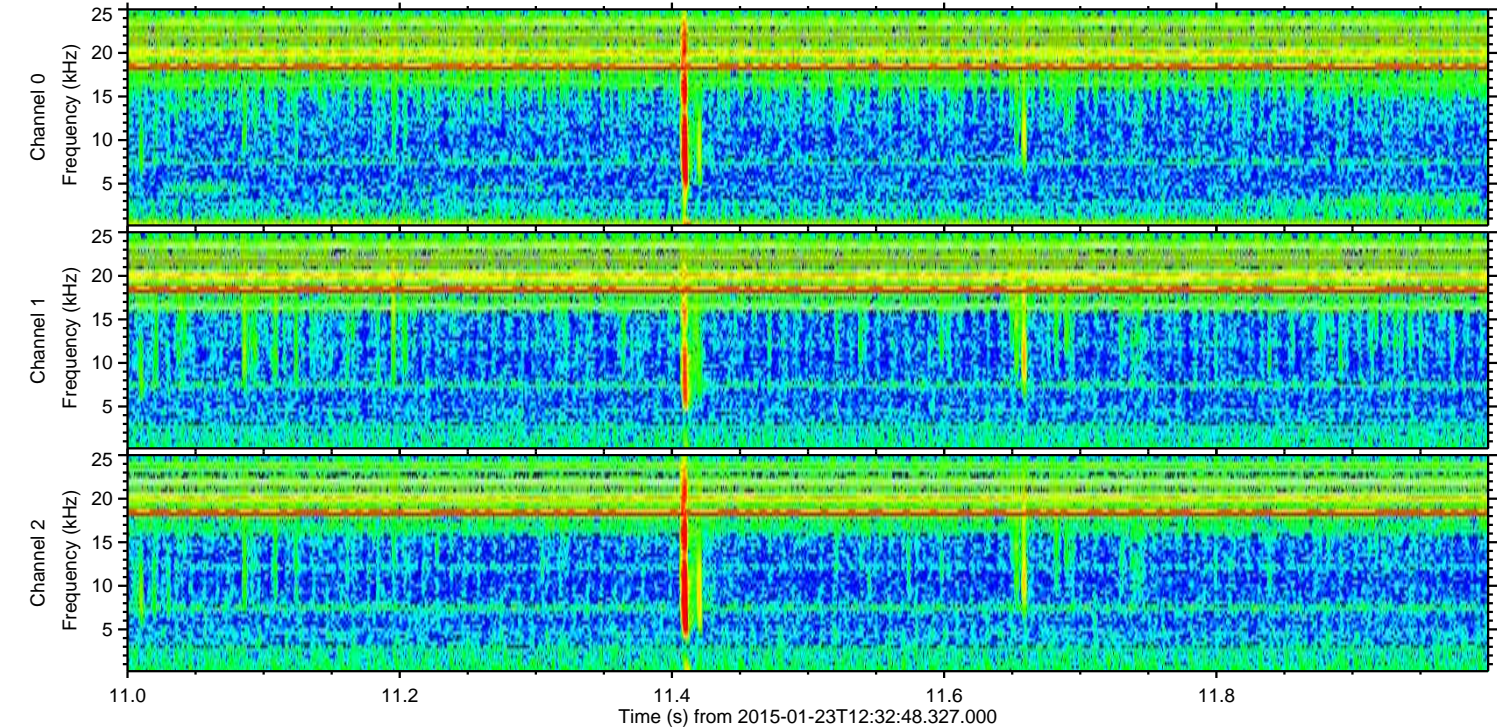
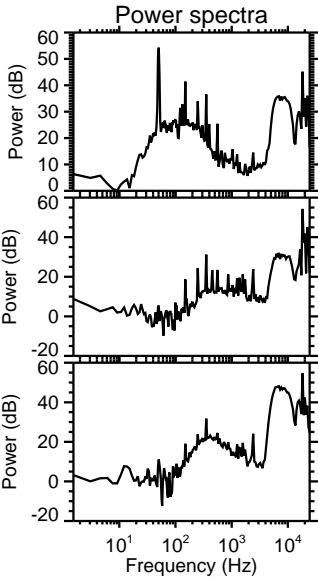
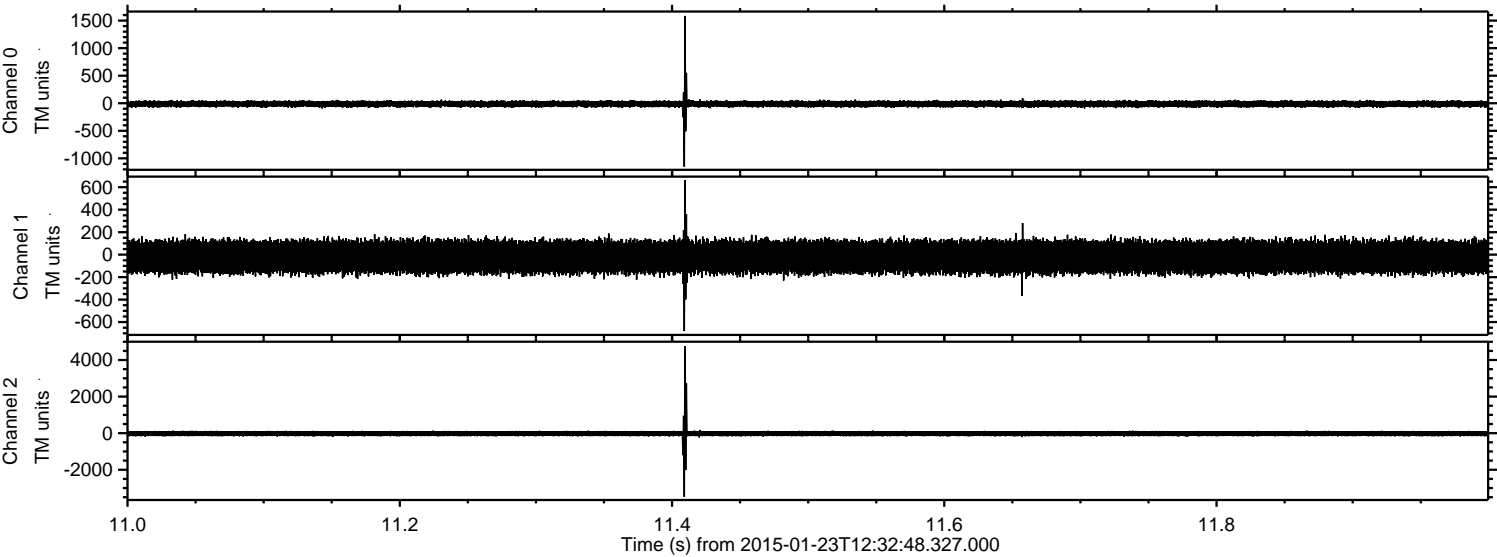
Channel 0  
mn: -1460  
mx: 1470  
 $\mu$ : -12.6  
 $\sigma$ : 33.1

Channel 1  
mn: -804  
mx: 625  
 $\mu$ : -20.3  
 $\sigma$ : 78.2

Channel 2  
mn: -4083  
mx: 5281  
 $\mu$ : -22.2  
 $\sigma$ : 104.6



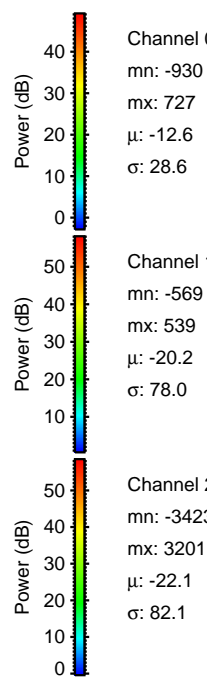
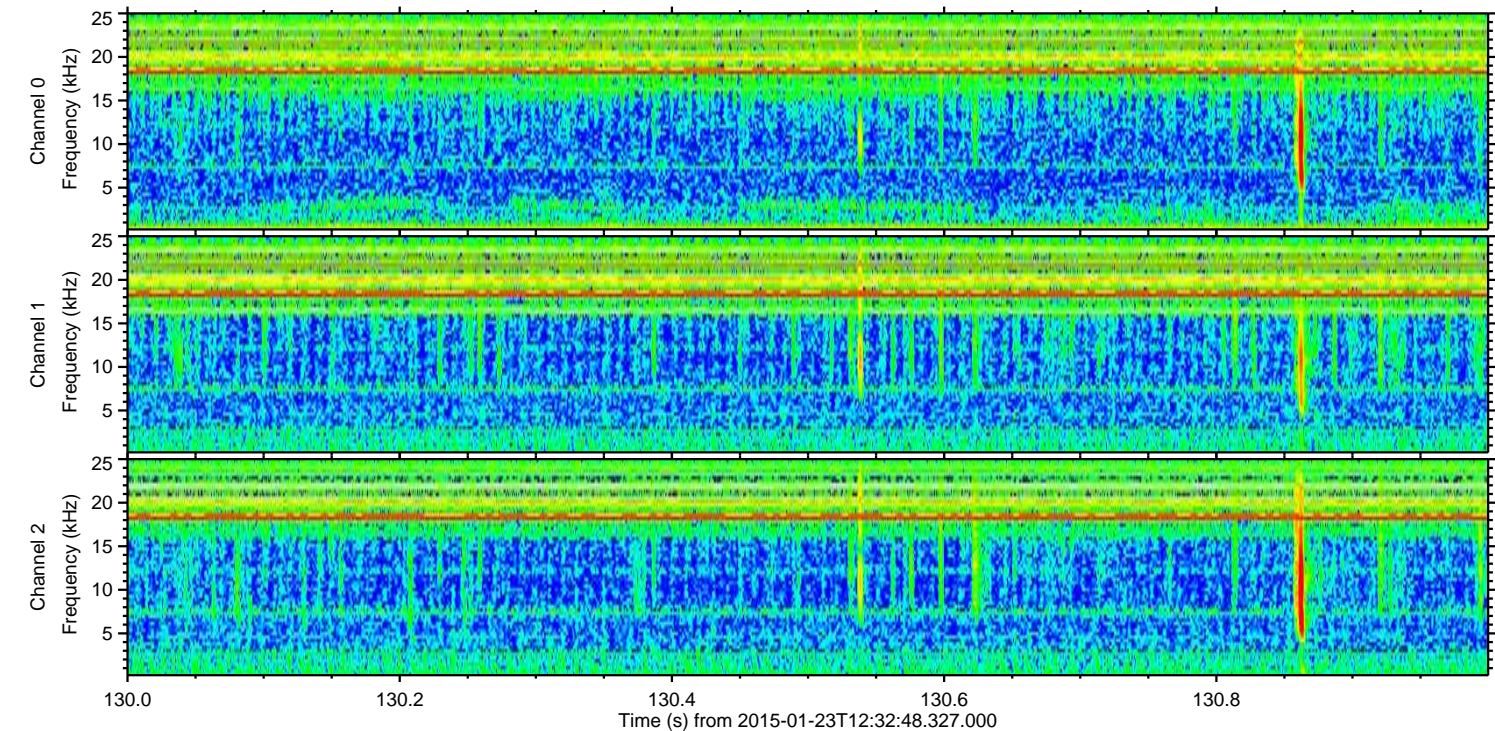
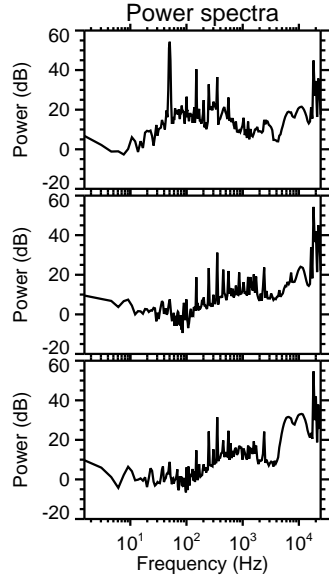
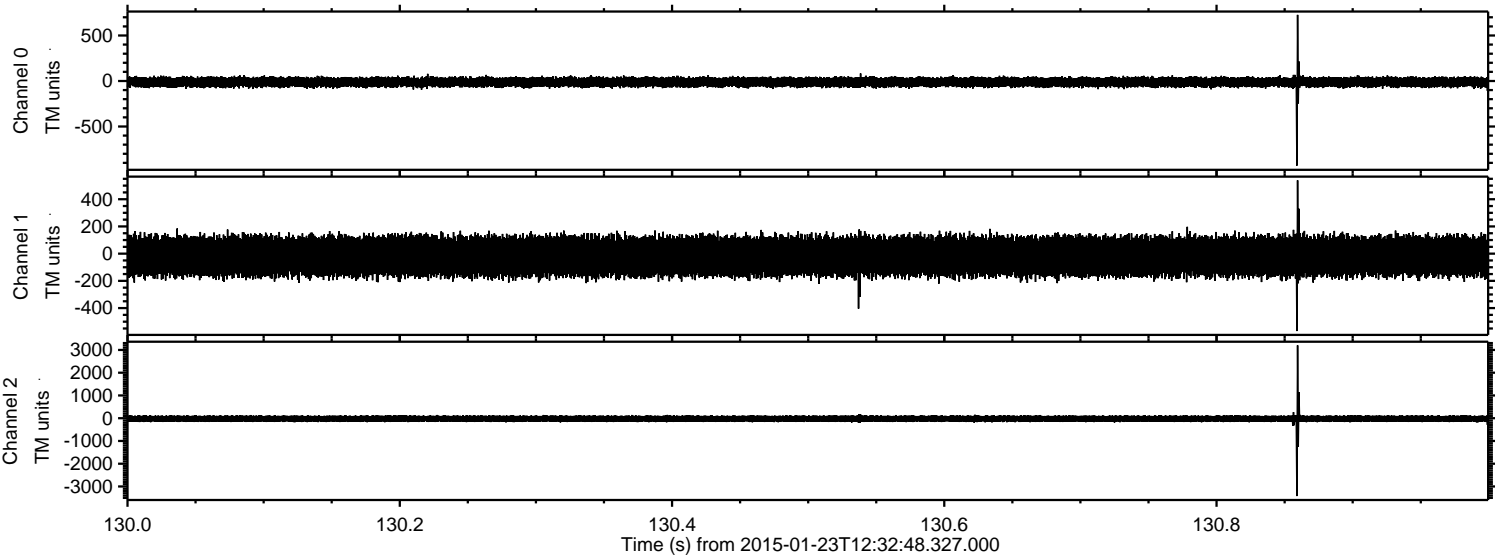
Processed Tue Feb 10 17:13:23 2015 by ELM ver.2012-10-06 from 001\_\_elm20150123\_123247\_\_dat00.bin





ELMAVAN 3D WAVEFORMS (Measured data sampled at 50 kHz) 49702 packets of 144 samples from 2015-01-23T12:32:48.327.000. Part 131/144

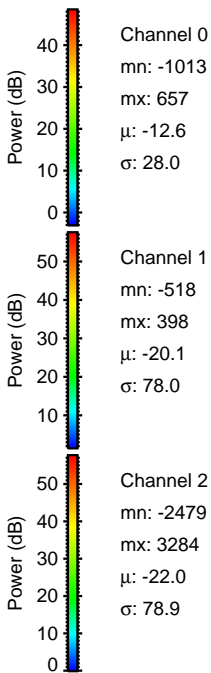
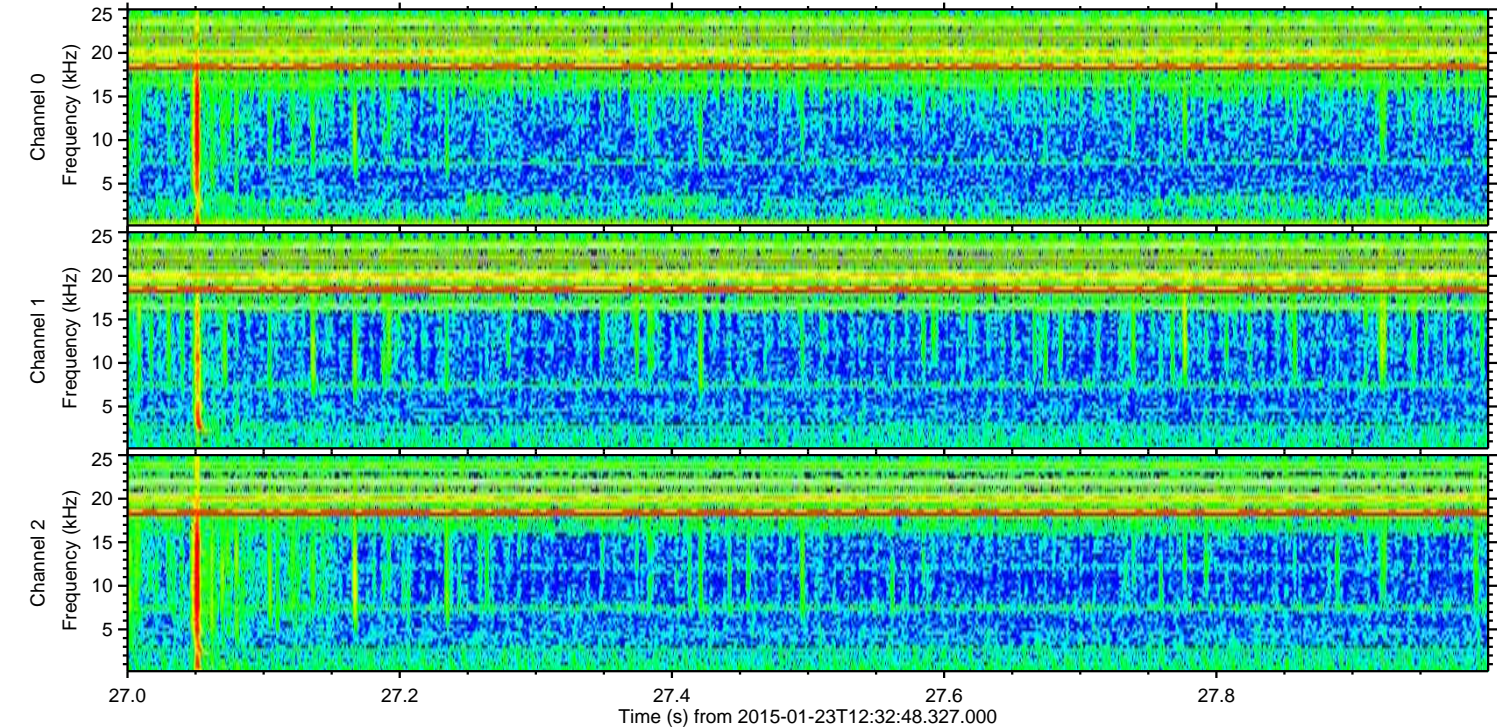
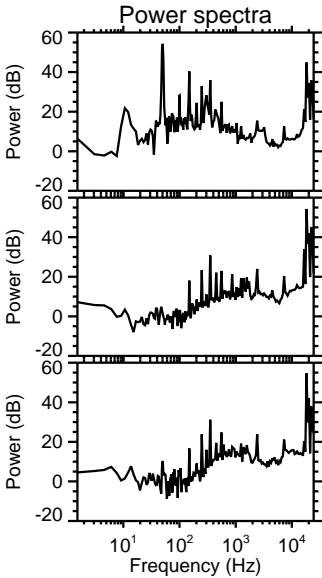
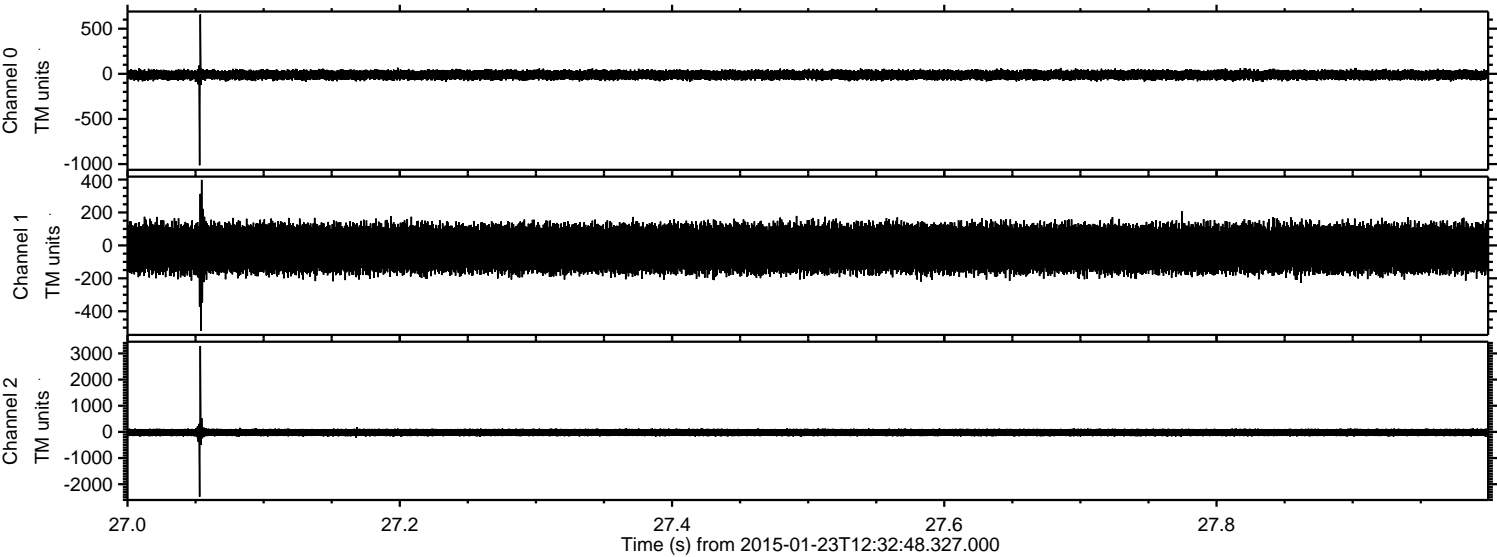
Processed Tue Feb 10 17:13:25 2015 by ELM ver.2012-10-06 from 001\_\_elm20150123\_123247\_\_dat00.bin





ELMAVAN 3D WAVEFORMS (Measured data sampled at 50 kHz) 49702 packets of 144 samples from 2015-01-23T12:32:48.327.000. Part 28/144

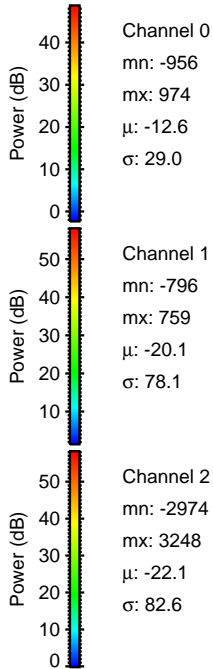
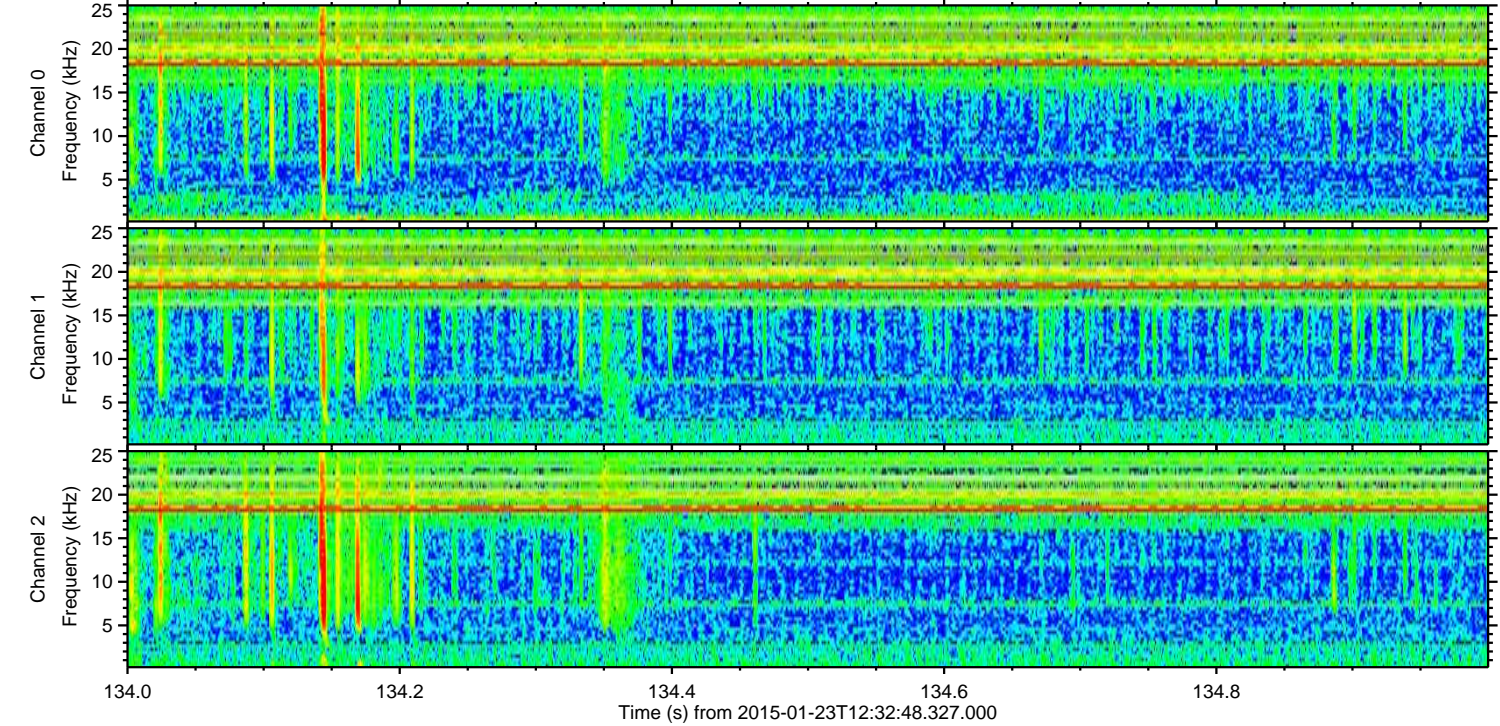
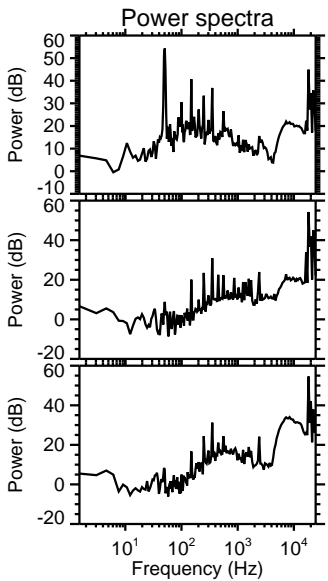
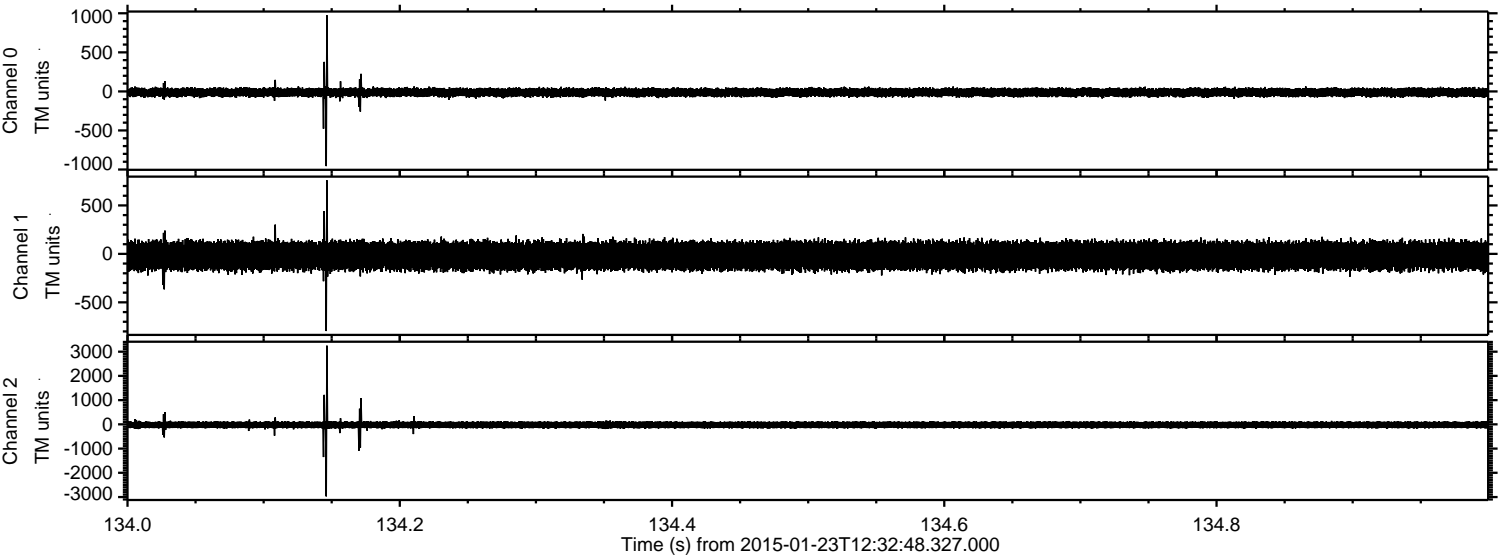
Processed Tue Feb 10 17:13:26 2015 by ELM ver.2012-10-06 from 001\_\_elm20150123\_123247\_\_dat00.bin





ELMAVAN 3D WAVEFORMS (Measured data sampled at 50 kHz) 49702 packets of 144 samples from 2015-01-23T12:32:48.327.000. Part 135/144

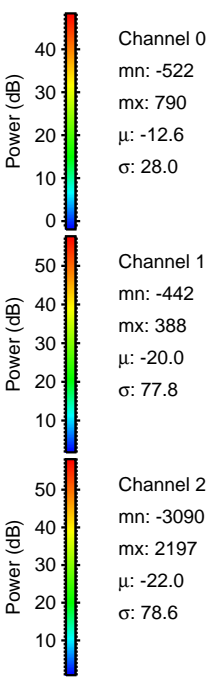
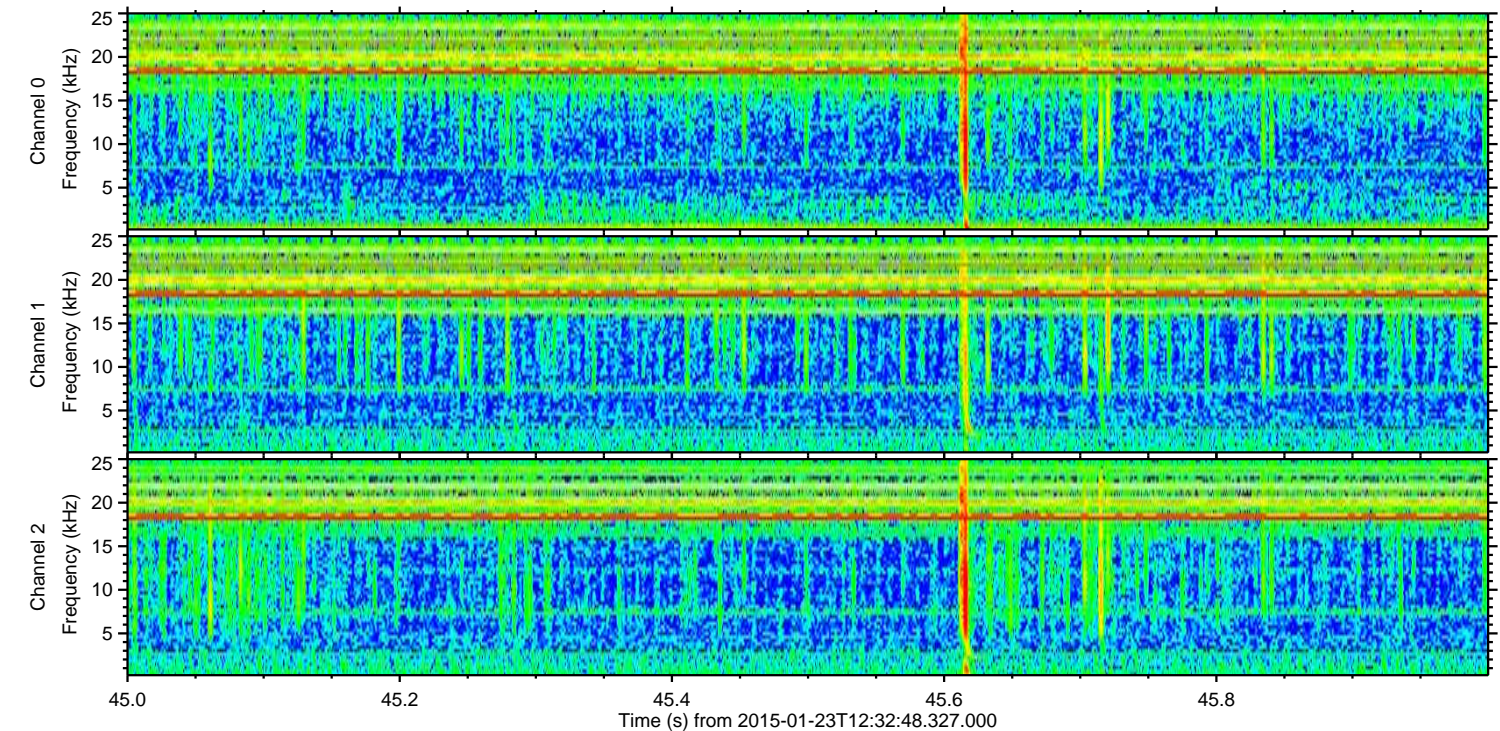
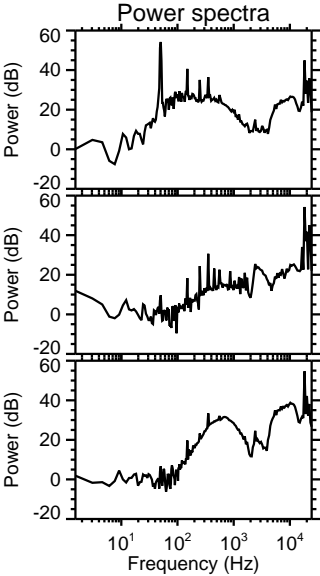
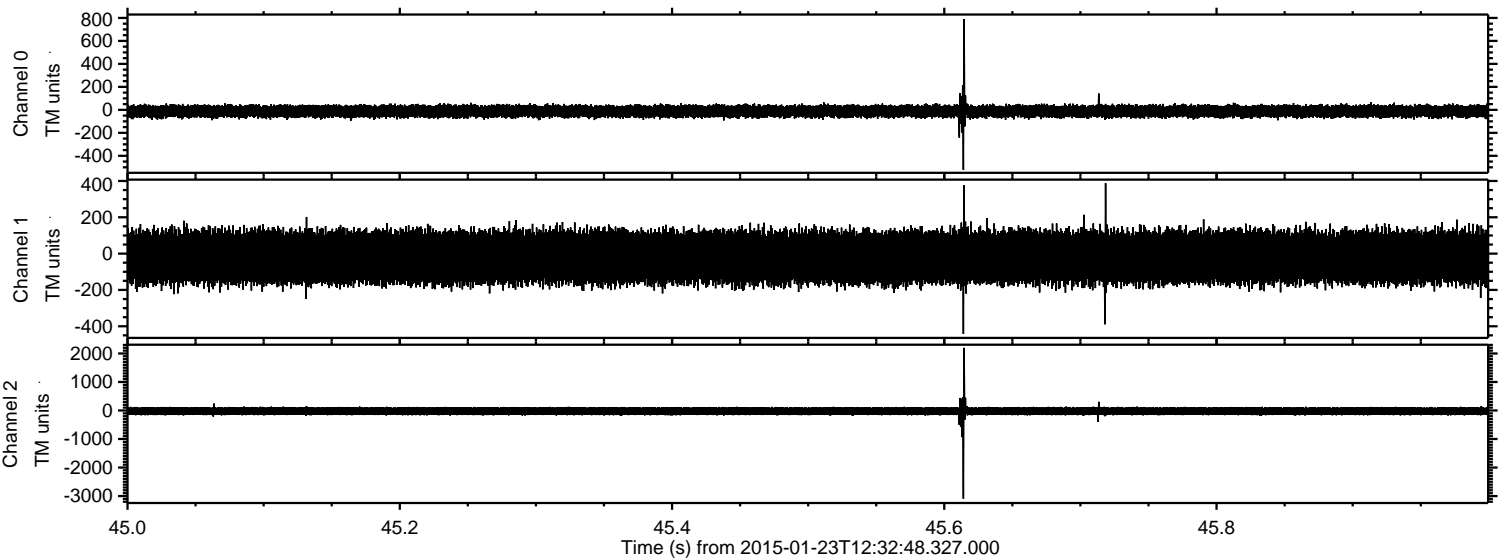
Processed Tue Feb 10 17:13:27 2015 by ELM ver.2012-10-06 from 001\_\_elm20150123\_123247\_\_dat00.bin





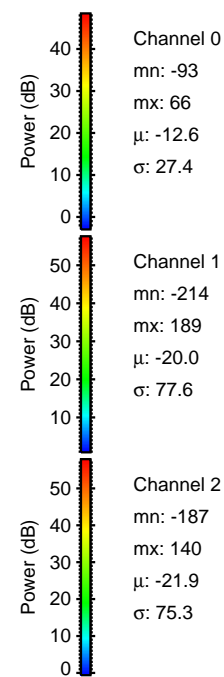
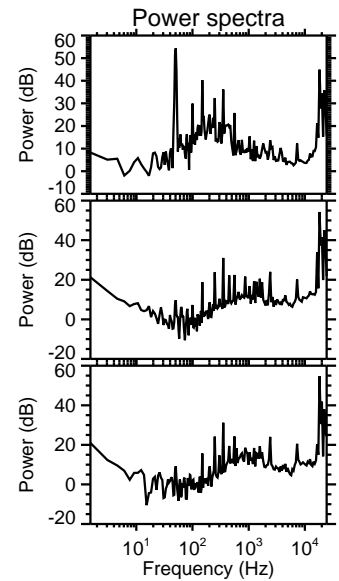
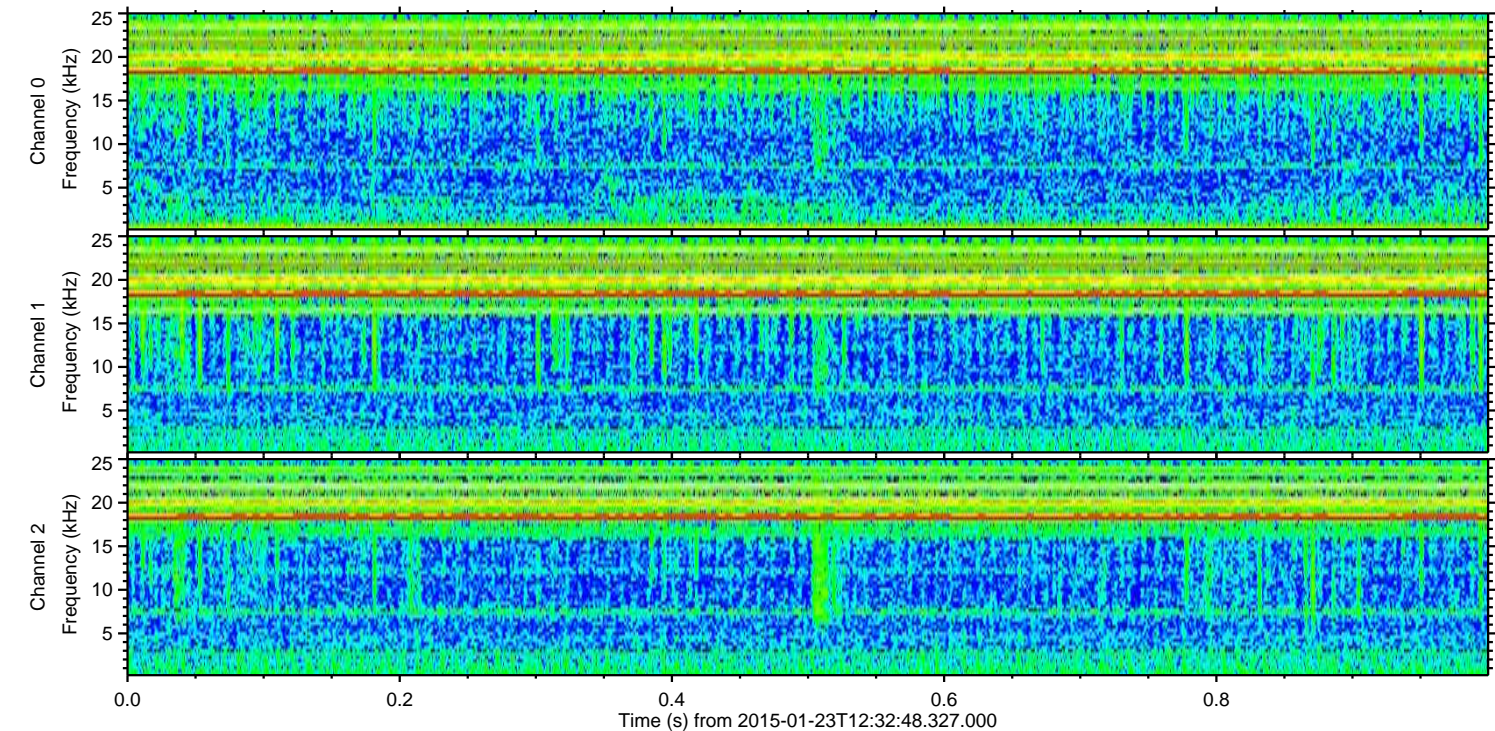
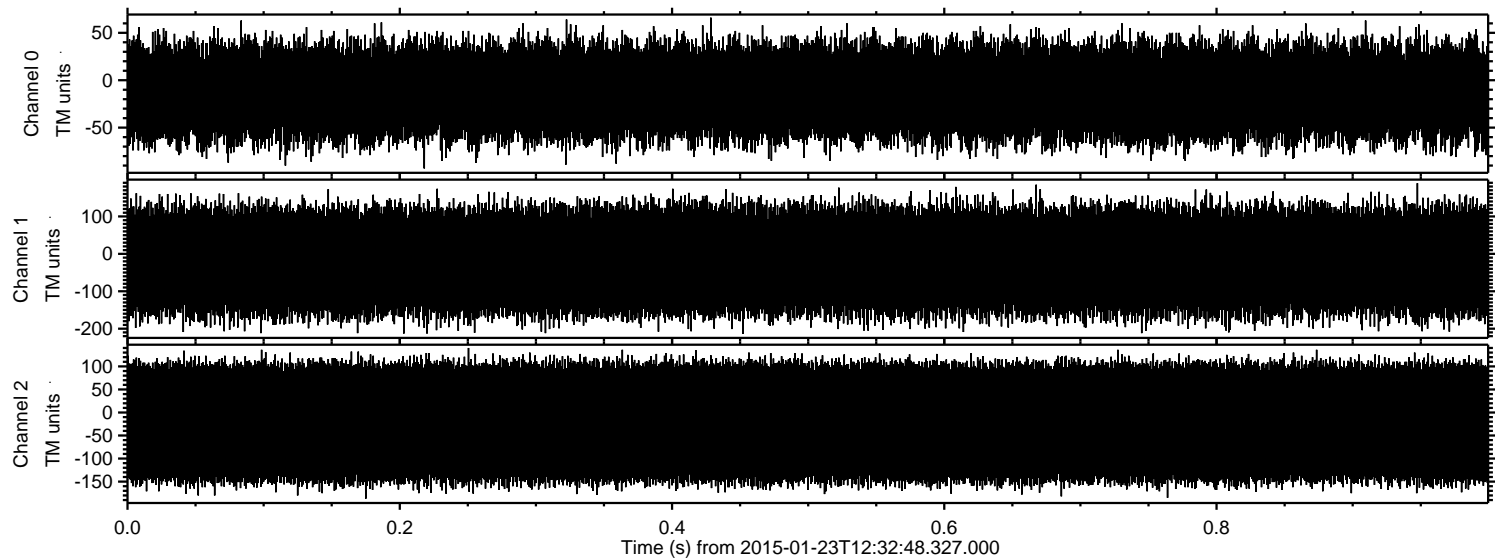
ELMAVAN 3D WAVEFORMS (Measured data sampled at 50 kHz) 49702 packets of 144 samples from 2015-01-23T12:32:48.327.000. Part 46/144

Processed Tue Feb 10 17:13:28 2015 by ELM ver.2012-10-06 from 001\_\_elm20150123\_123247\_\_dat00.bin





Processed Tue Feb 10 17:13:29 2015 by ELM ver.2012-10-06 from 001\_\_elm20150123\_123247\_\_dat00.bin



Channel 0  
mn: -93  
mx: 66  
 $\mu$ : -12.6  
 $\sigma$ : 27.4

Channel 1  
mn: -214  
mx: 189  
 $\mu$ : -20.0  
 $\sigma$ : 77.6

Channel 2  
mn: -187  
mx: 140  
 $\mu$ : -21.9  
 $\sigma$ : 75.3