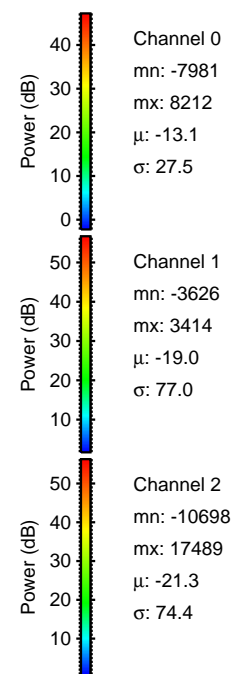
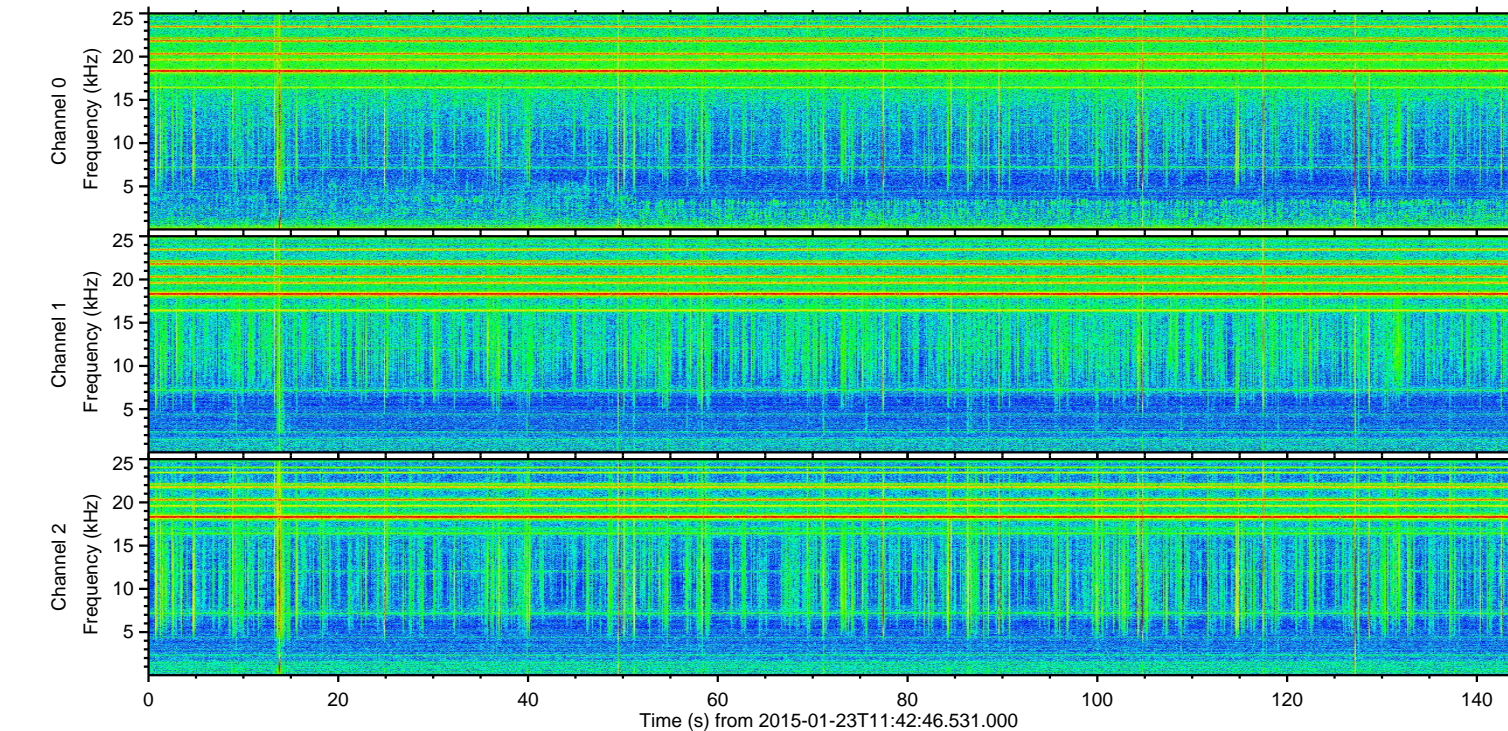
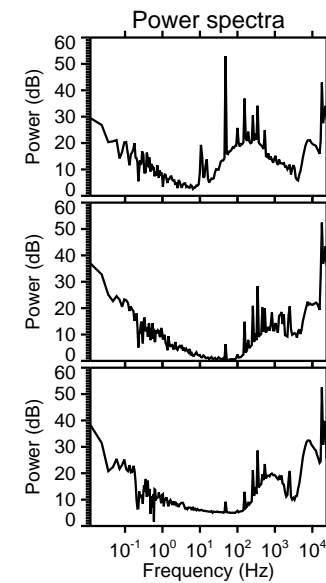
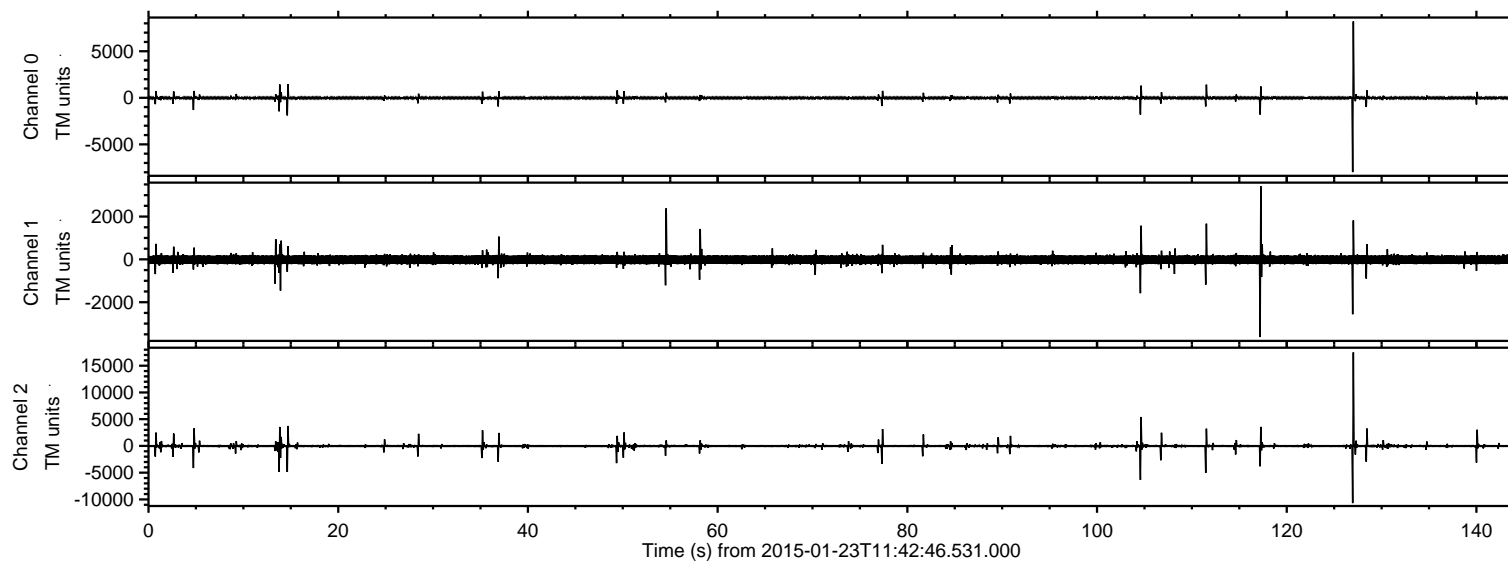


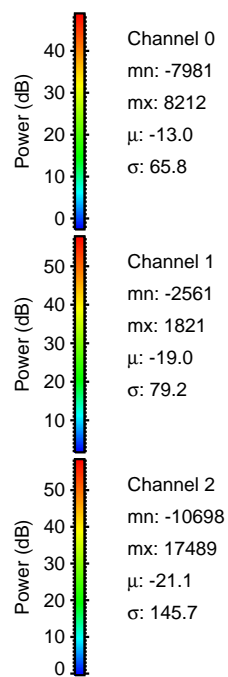
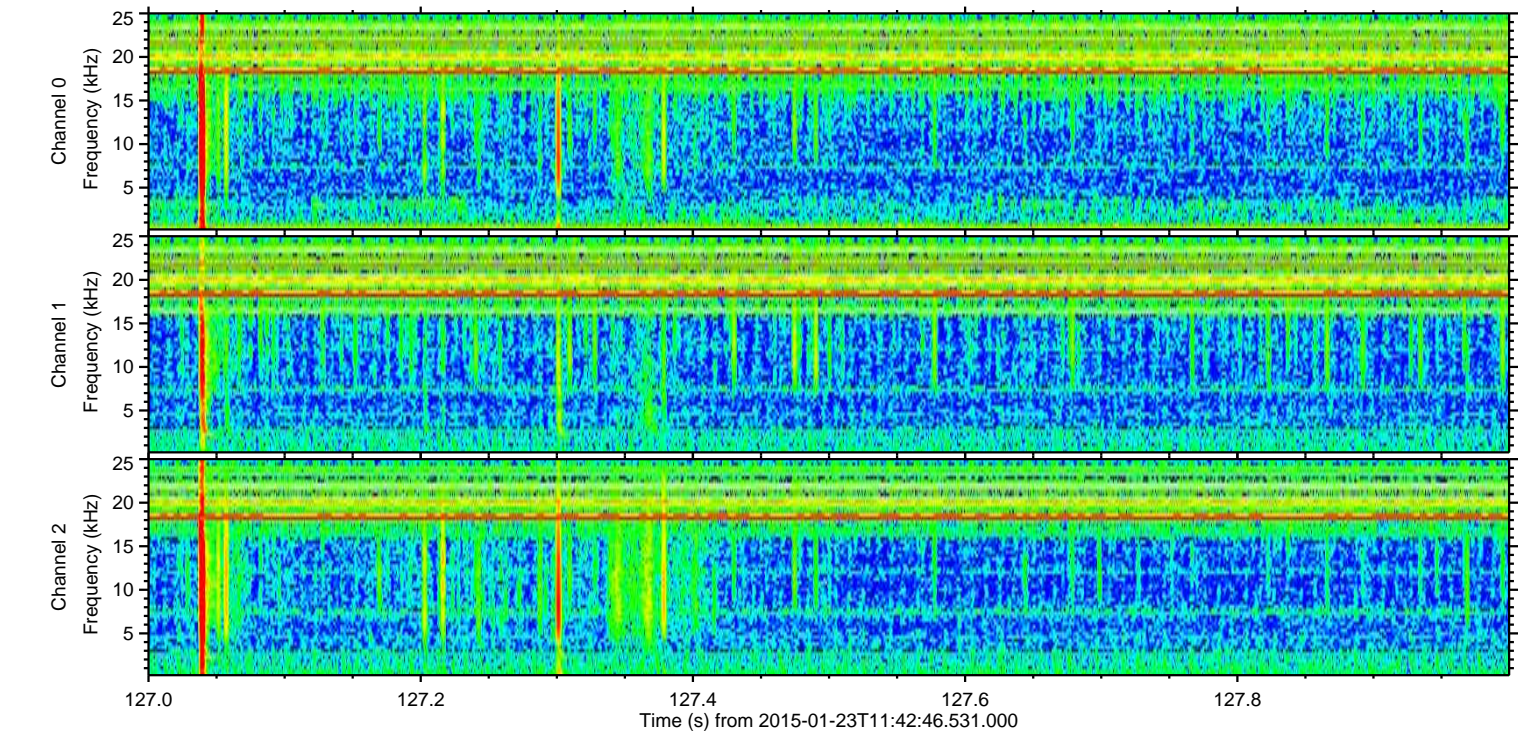
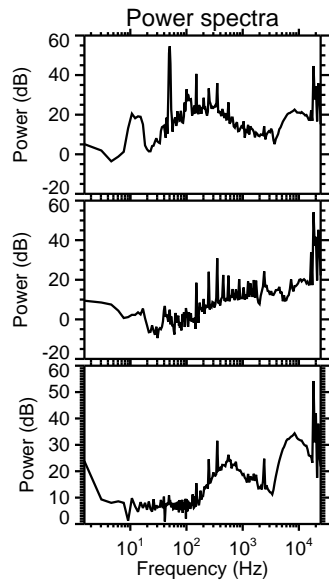
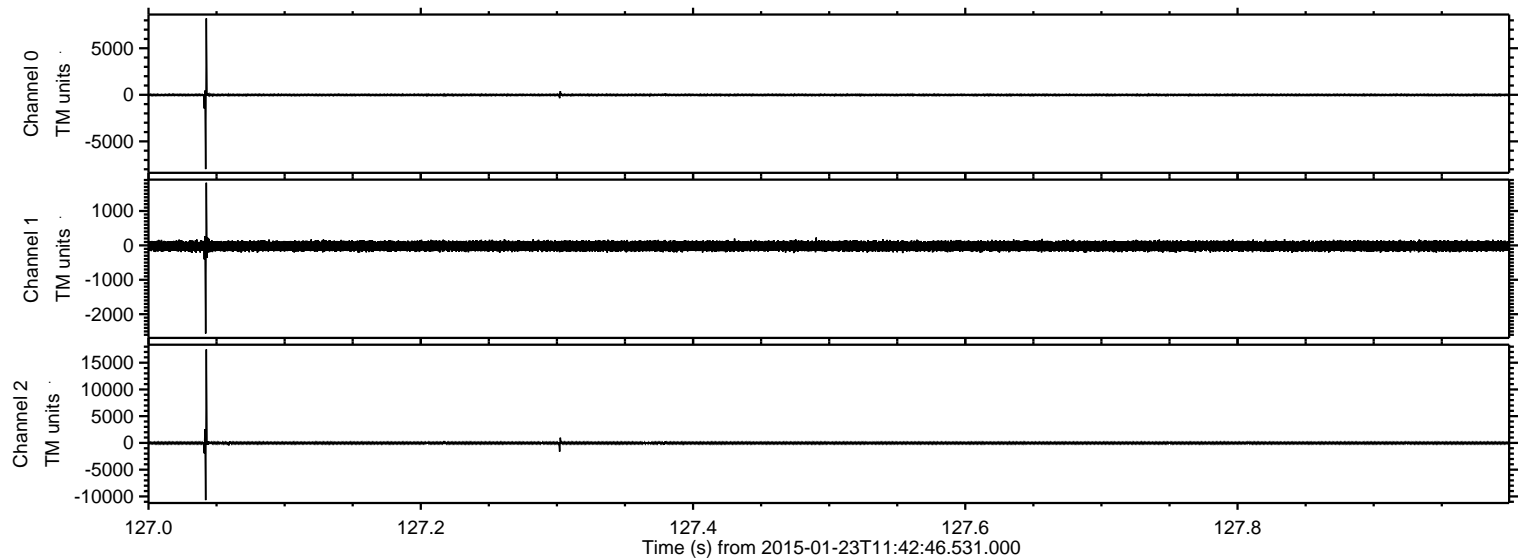
ELMAVAN 3D WAVEFORMS (Measured data sampled at 50 kHz) 49808 packets of 144 samples from 2015-01-23T11:42:46.531.000.

Processed Tue Feb 10 17:01:15 2015 by ELM ver.2012-10-06 from 001__elm20150123_114245__dat00.bin

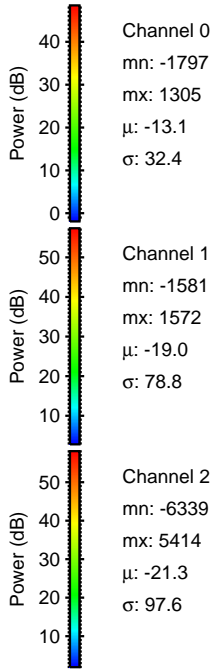
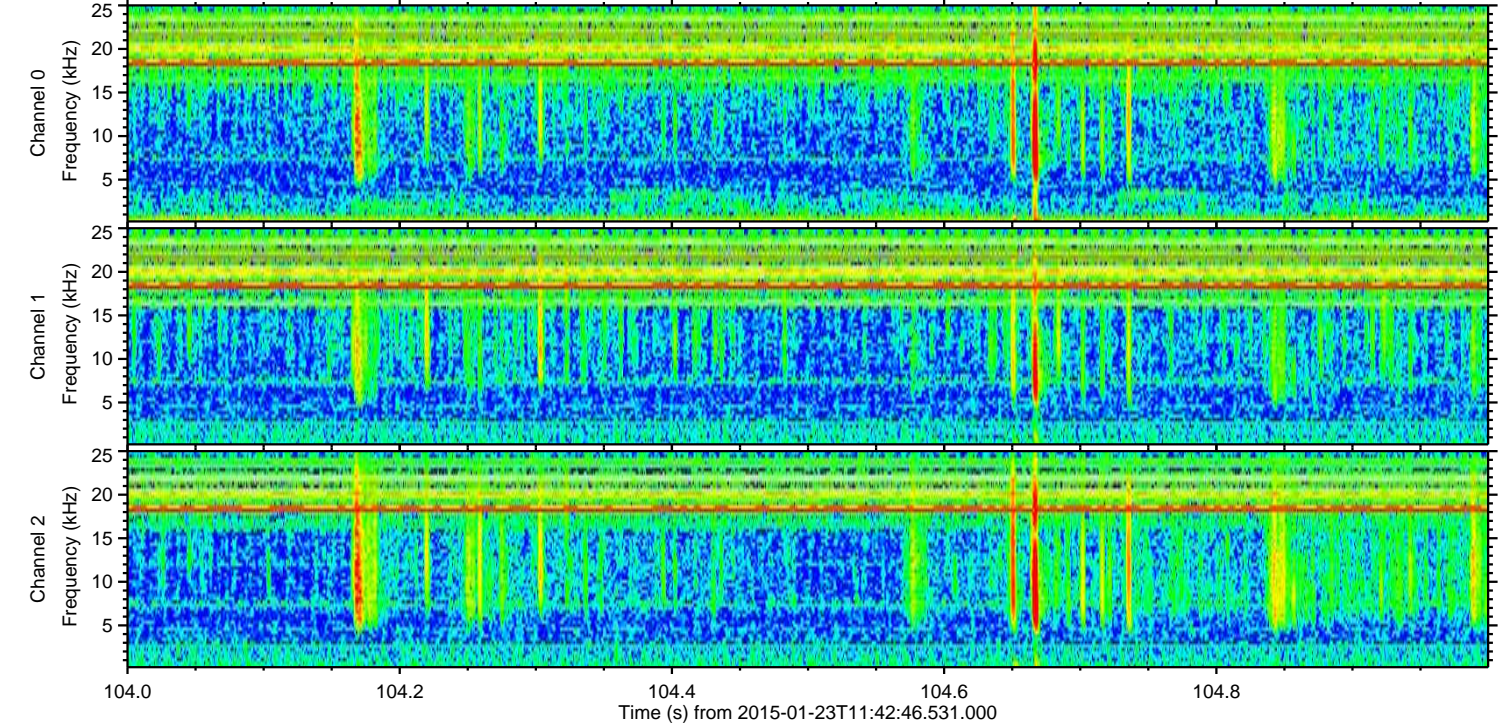
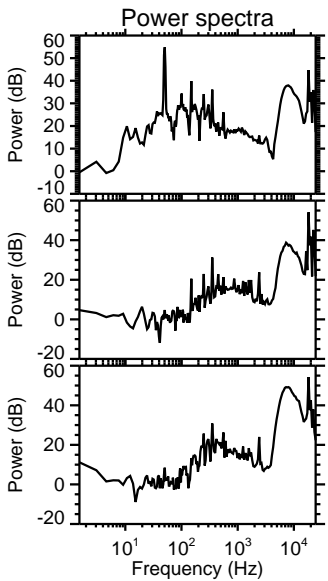
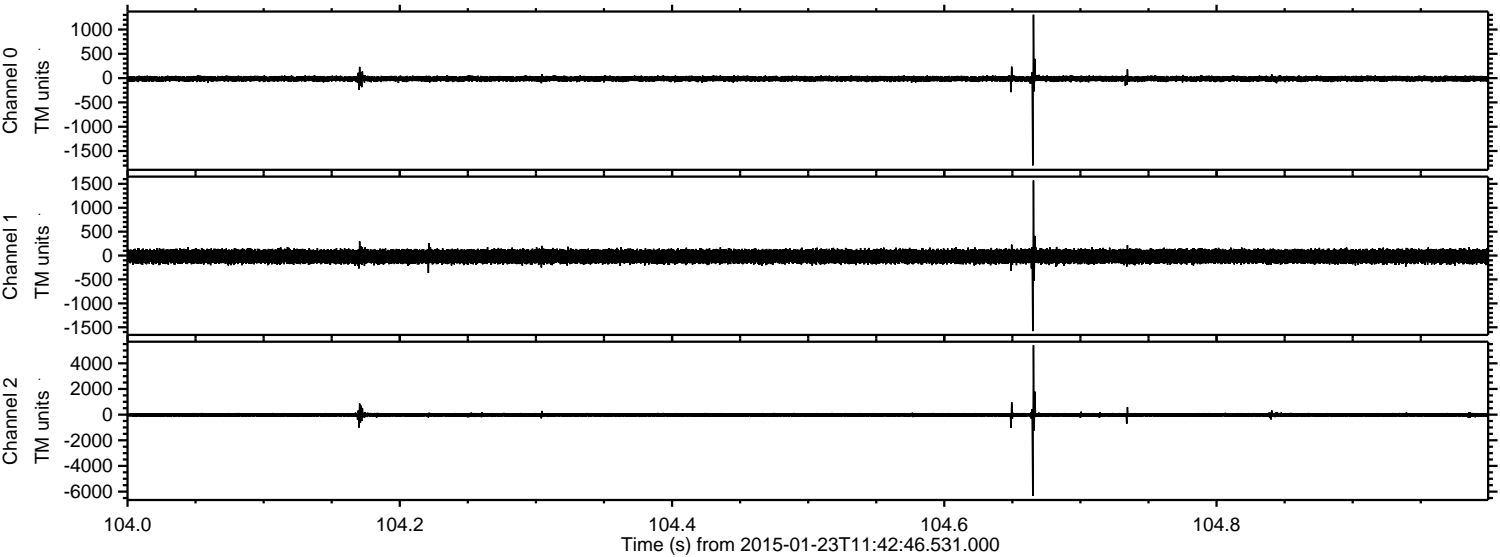


ELMAVAN 3D WAVEFORMS (Measured data sampled at 50 kHz) 49808 packets of 144 samples from 2015-01-23T11:42:46.531.000. Part 128/144

Processed Tue Feb 10 17:01:27 2015 by ELM ver.2012-10-06 from 001__elm20150123_114245__dat00.bin

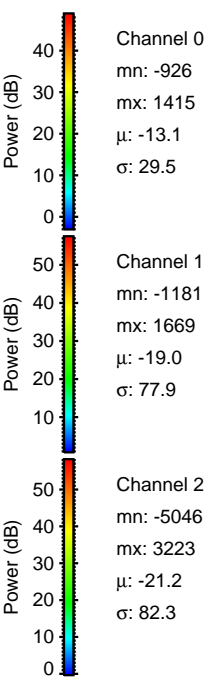
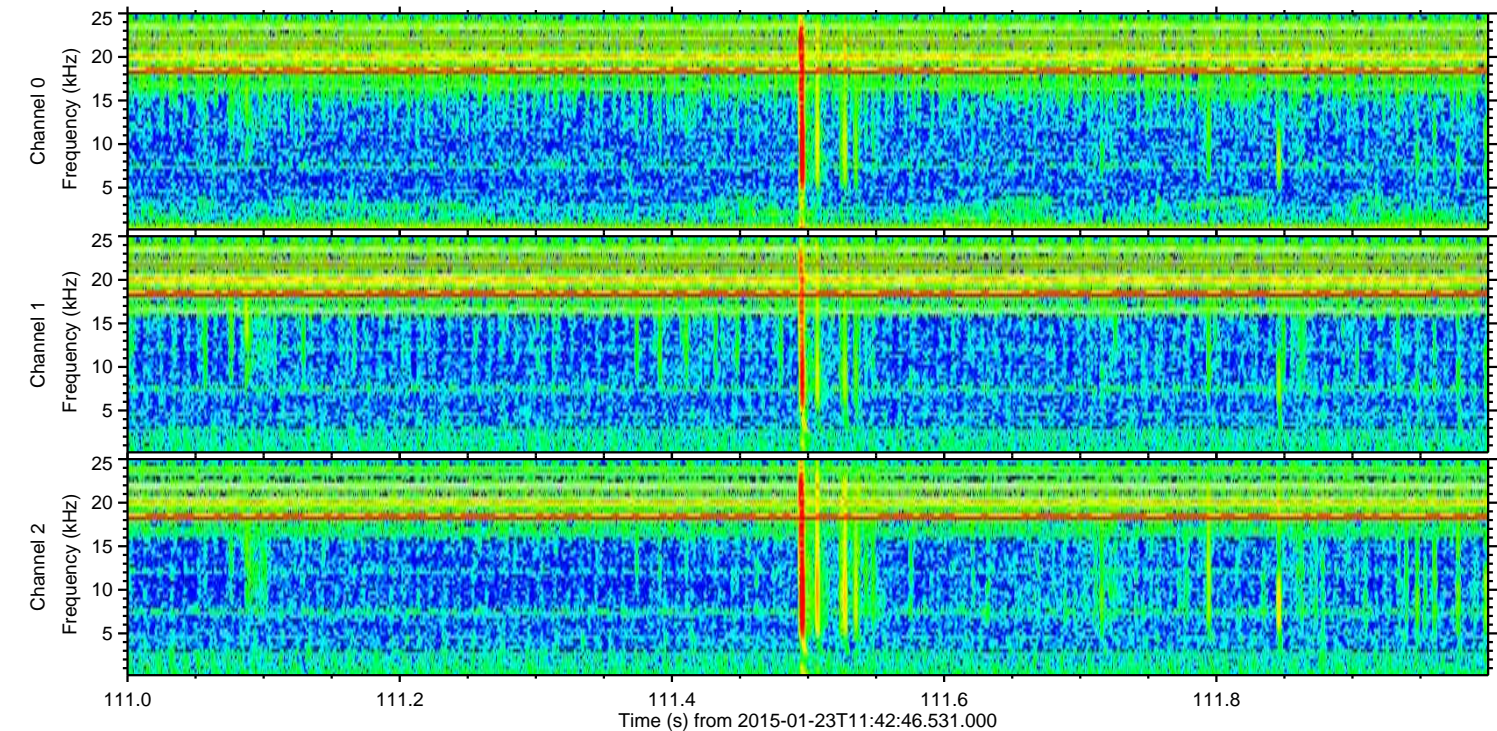
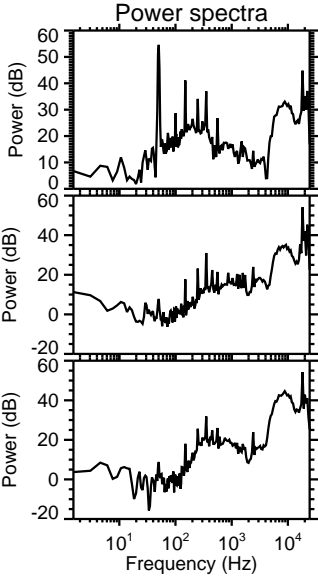
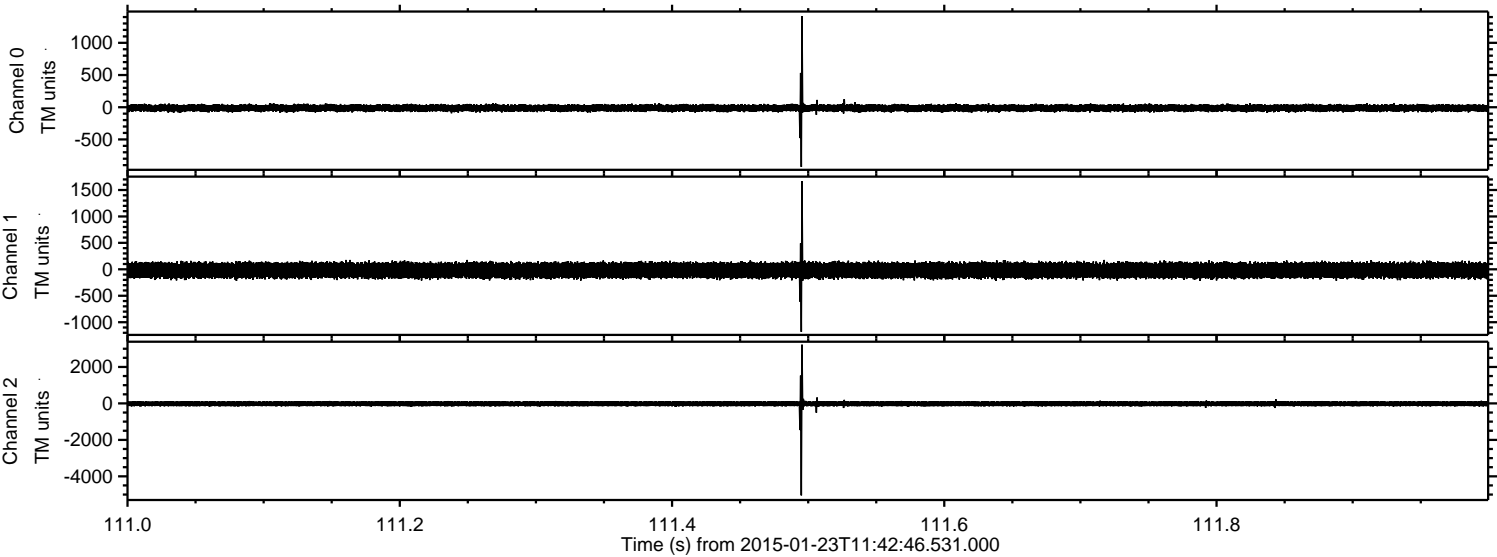


Processed Tue Feb 10 17:01:28 2015 by ELM ver.2012-10-06 from 001__elm20150123_114245__dat00.bin



ELMAVAN 3D WAVEFORMS (Measured data sampled at 50 kHz) 49808 packets of 144 samples from 2015-01-23T11:42:46.531.000. Part 112/144

Processed Tue Feb 10 17:01:29 2015 by ELM ver.2012-10-06 from 001__elm20150123_114245__dat00.bin



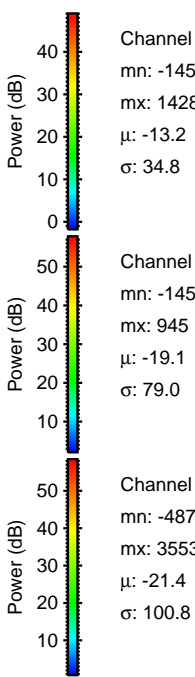
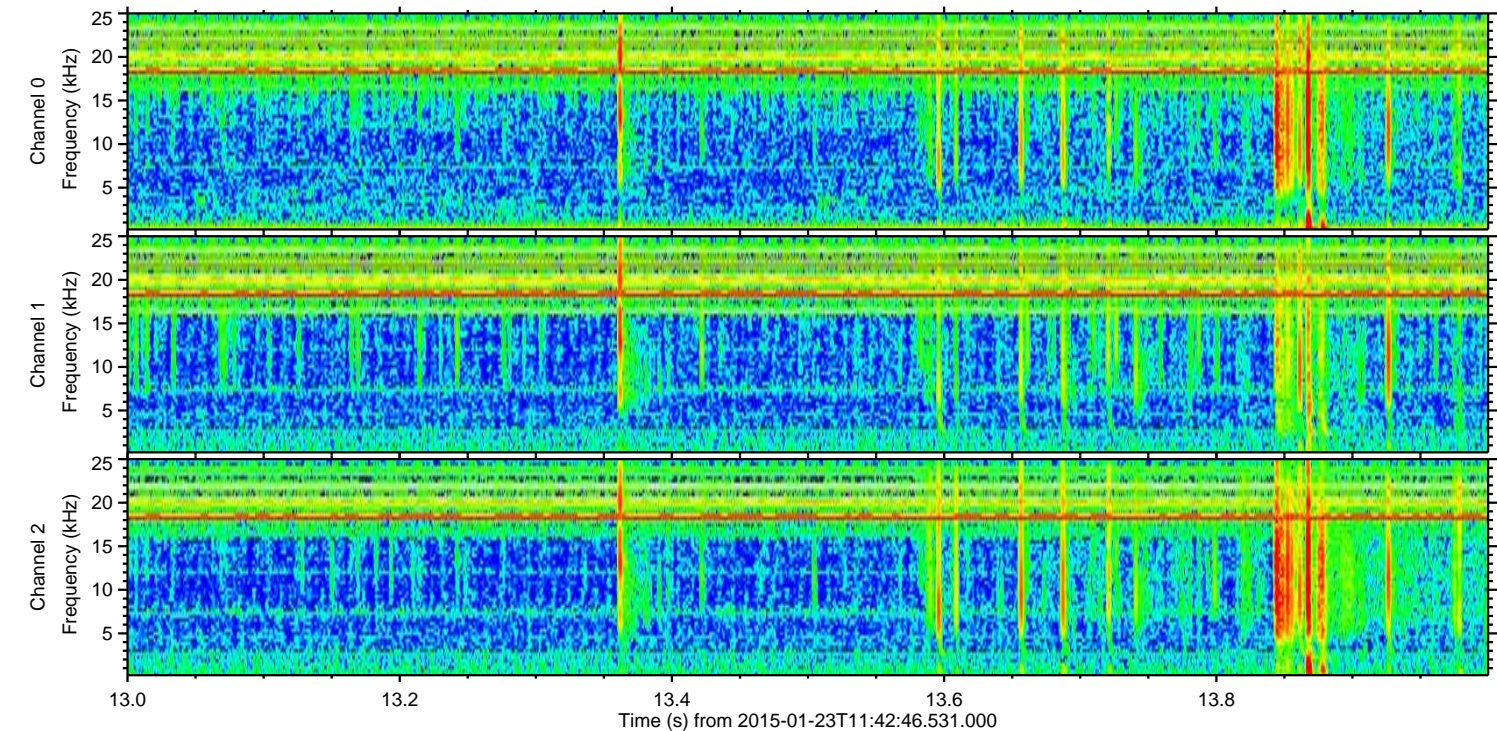
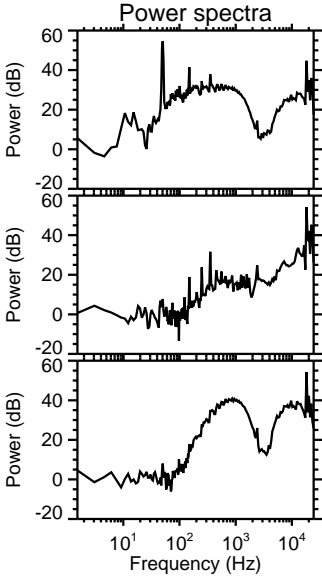
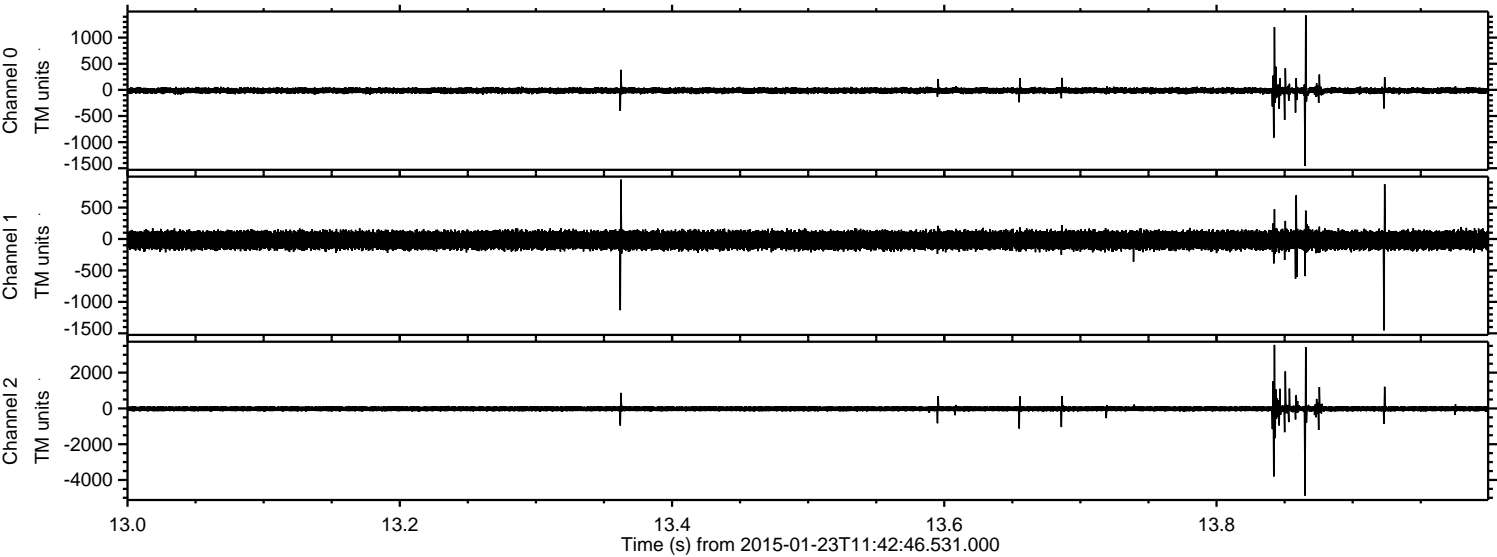
Channel 0
mn: -926
mx: 1415
 μ : -13.1
 σ : 29.5

Channel 1
mn: -1181
mx: 1669
 μ : -19.0
 σ : 77.9

Channel 2
mn: -5046
mx: 3223
 μ : -21.2
 σ : 82.3

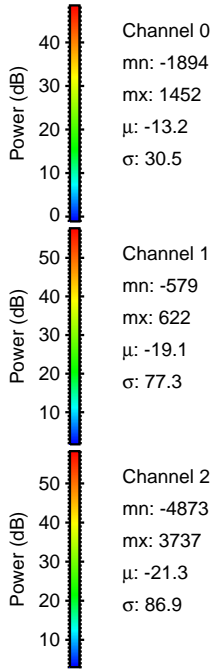
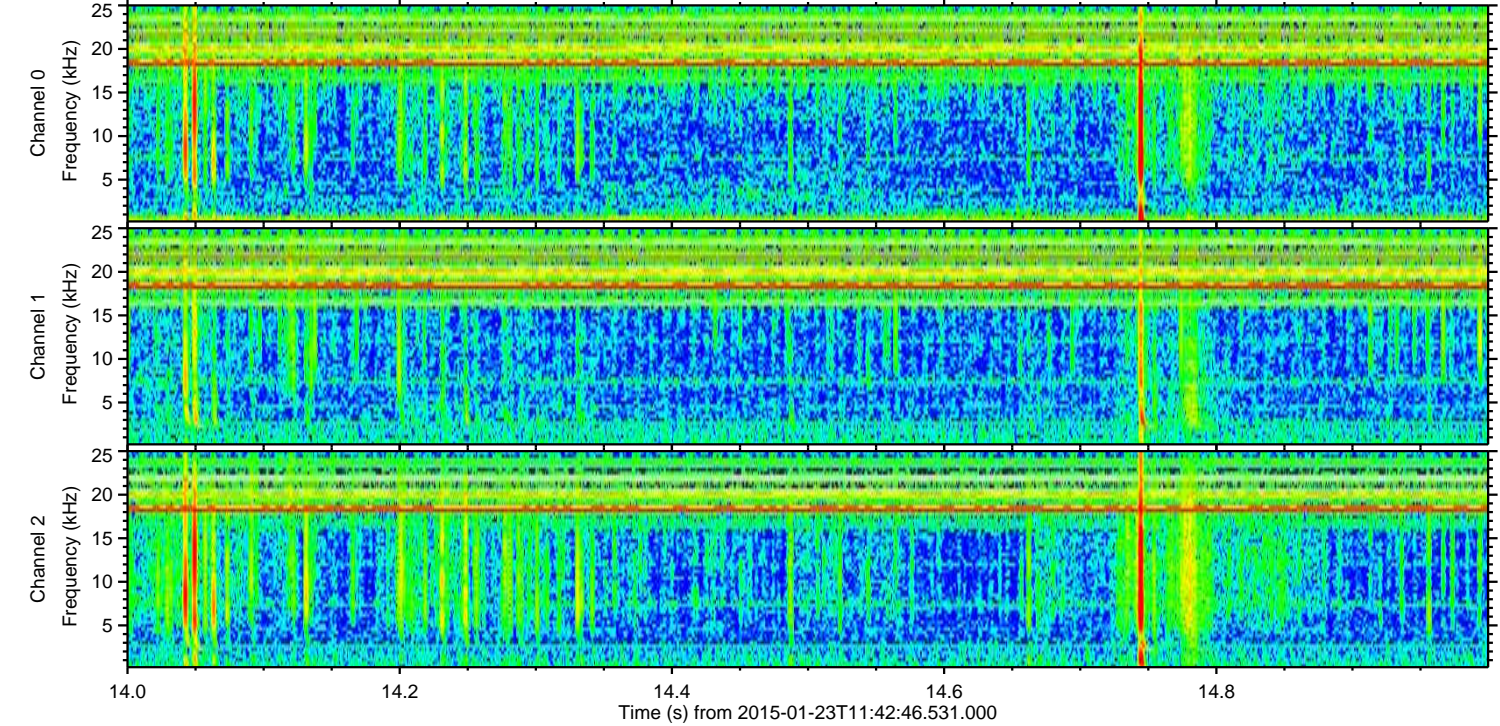
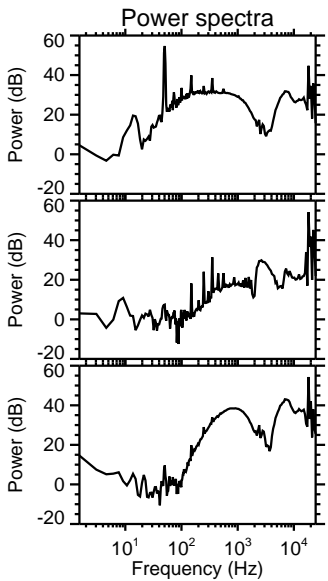
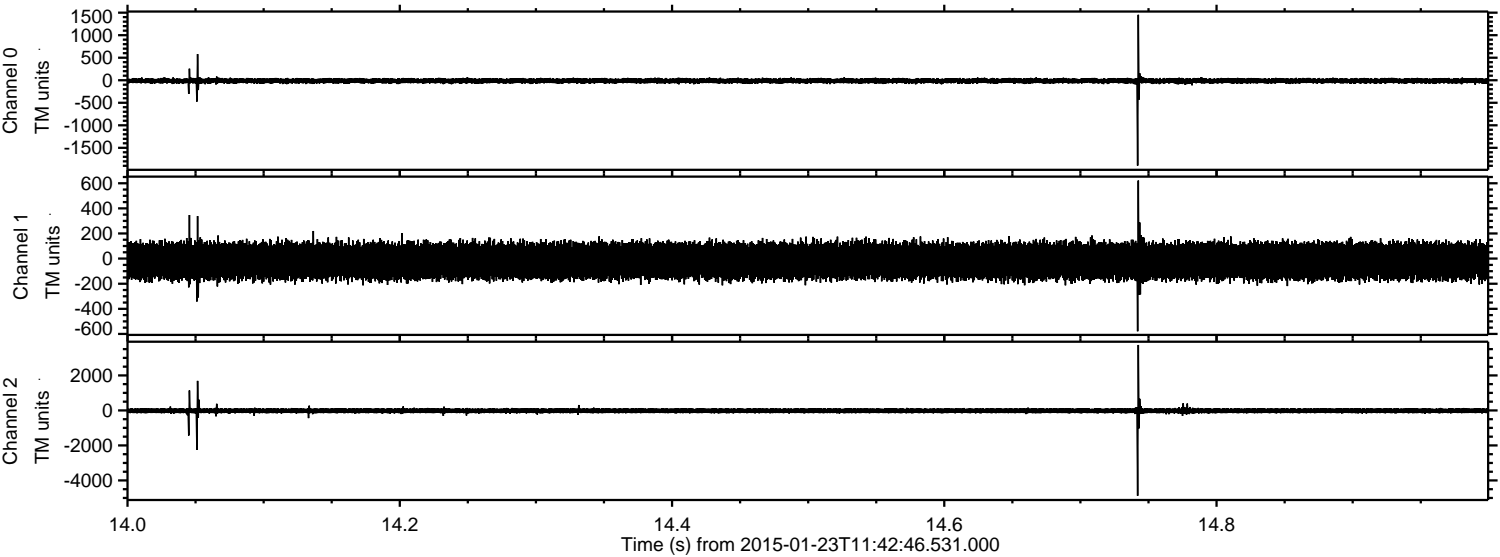
ELMAVAN 3D WAVEFORMS (Measured data sampled at 50 kHz) 49808 packets of 144 samples from 2015-01-23T11:42:46.531.000. Part 14/144

Processed Tue Feb 10 17:01:30 2015 by ELM ver.2012-10-06 from 001__elm20150123_114245__dat00.bin



ELMAVAN 3D WAVEFORMS (Measured data sampled at 50 kHz) 49808 packets of 144 samples from 2015-01-23T11:42:46.531.000. Part 15/144

Processed Tue Feb 10 17:01:31 2015 by ELM ver.2012-10-06 from 001__elm20150123_114245__dat00.bin

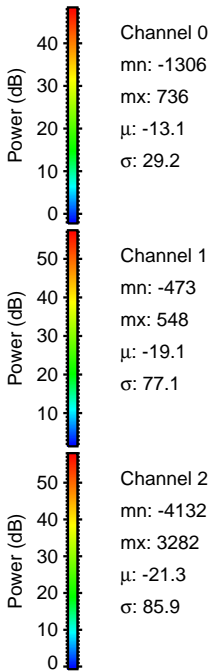
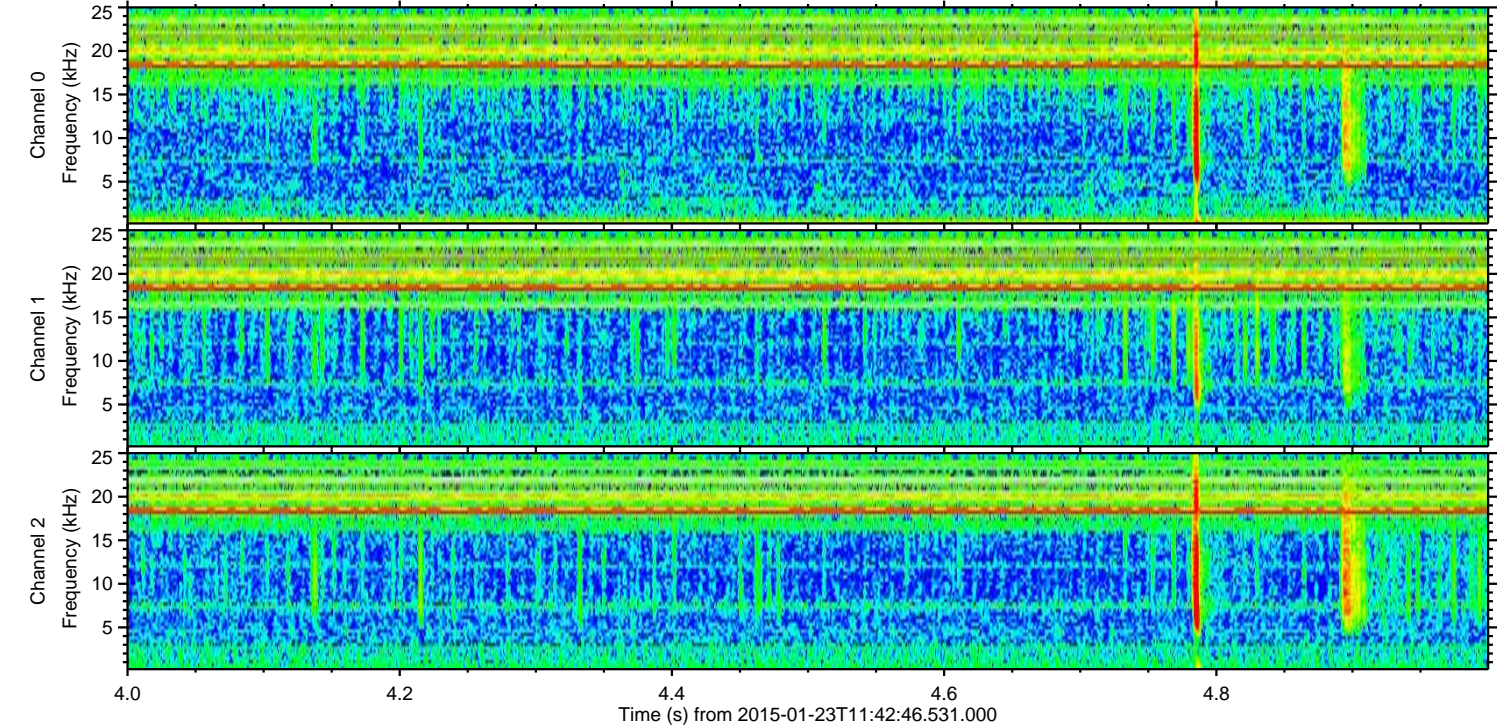
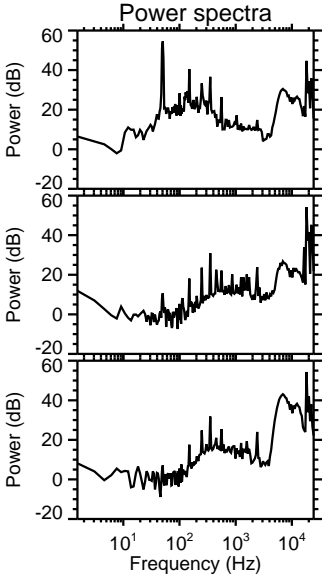
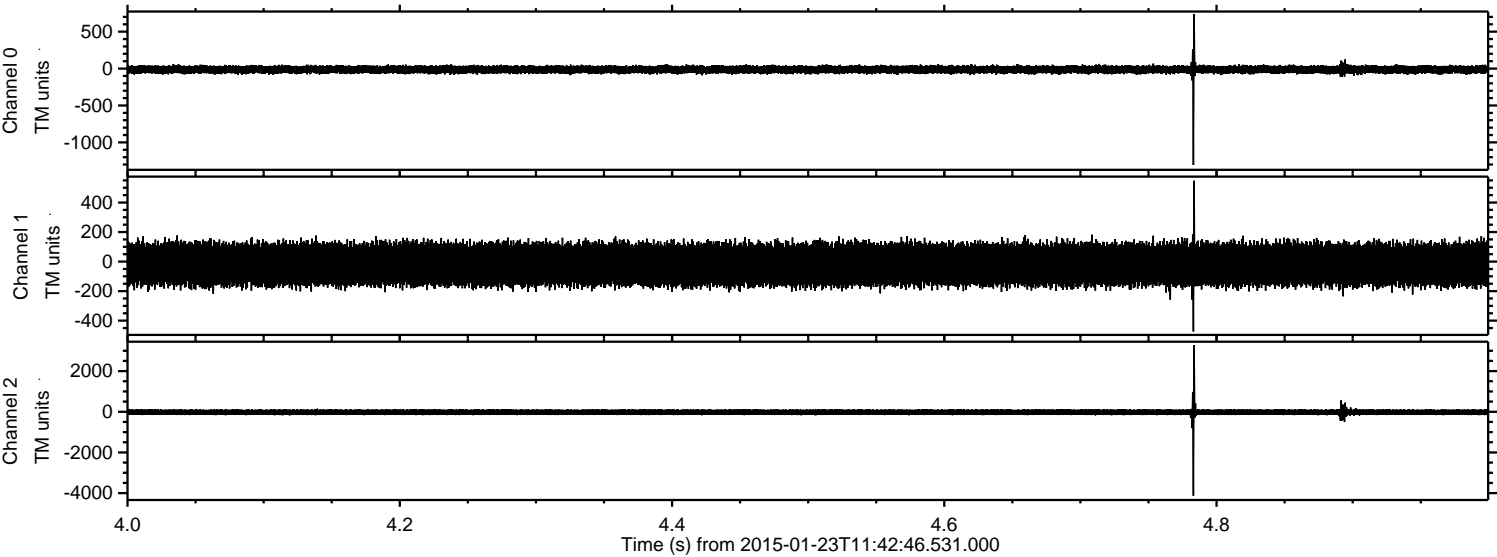


Channel 0
mn: -1894
mx: 1452
 μ : -13.2
 σ : 30.5

Channel 1
mn: -579
mx: 622
 μ : -19.1
 σ : 77.3

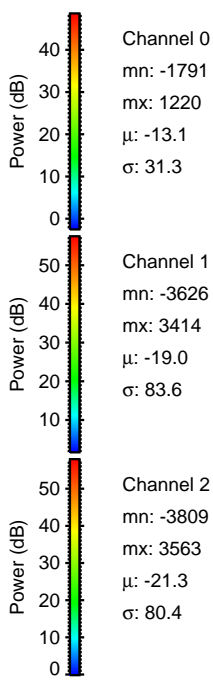
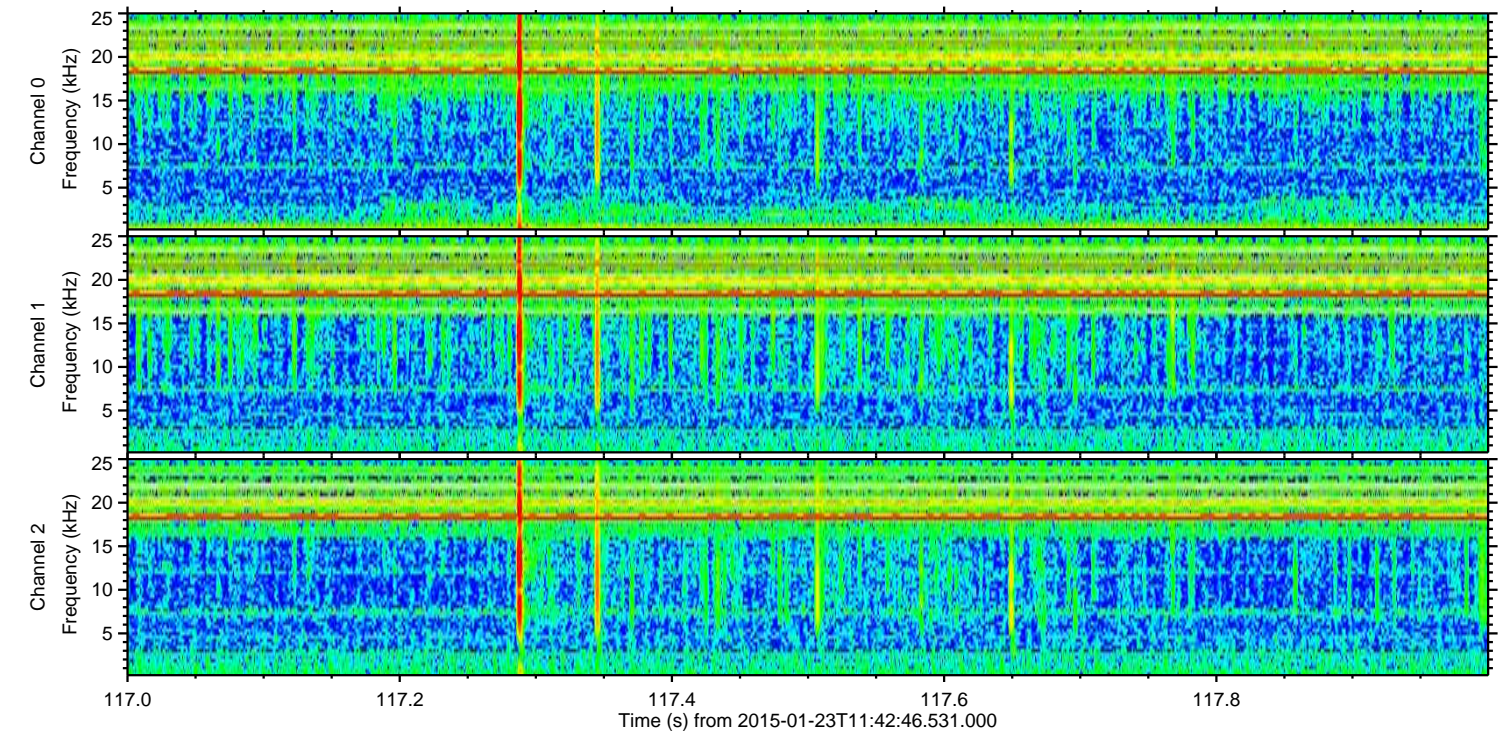
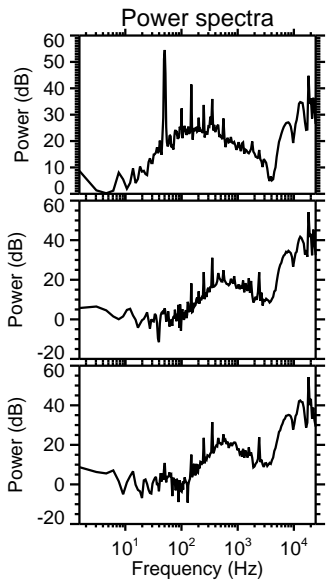
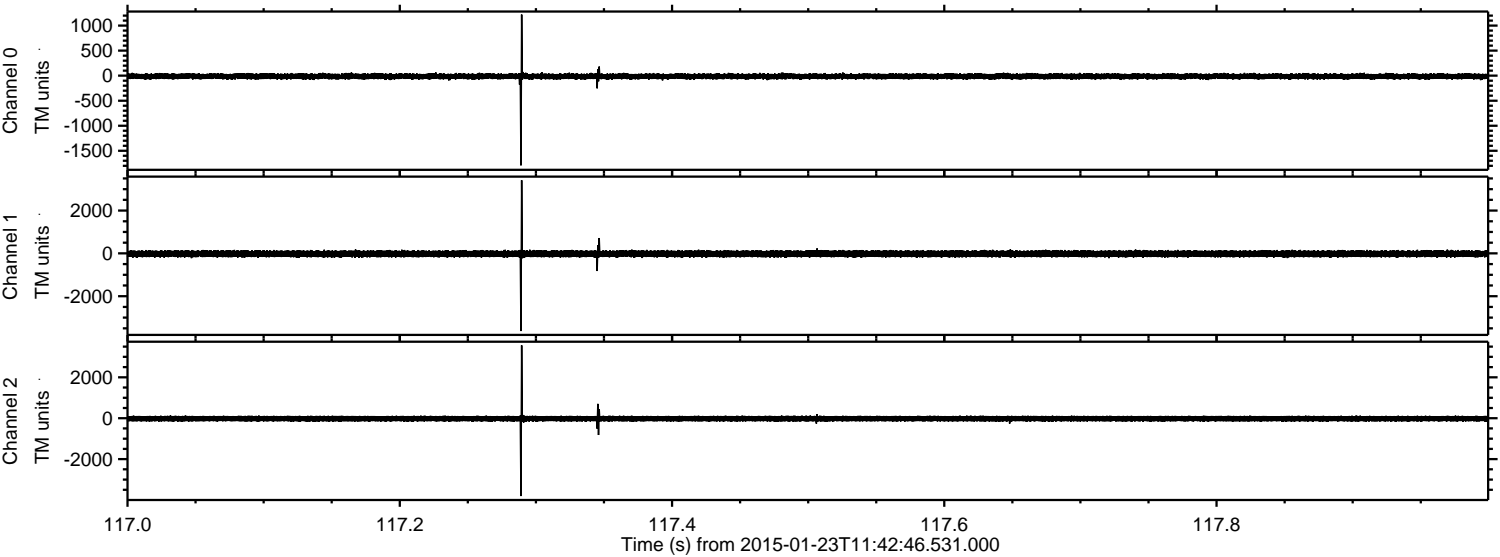
Channel 2
mn: -4873
mx: 3737
 μ : -21.3
 σ : 86.9

Processed Tue Feb 10 17:01:32 2015 by ELM ver.2012-10-06 from 001__elm20150123_114245__dat00.bin



ELMAVAN 3D WAVEFORMS (Measured data sampled at 50 kHz) 49808 packets of 144 samples from 2015-01-23T11:42:46.531.000. Part 118/144

Processed Tue Feb 10 17:01:33 2015 by ELM ver.2012-10-06 from 001__elm20150123_114245__dat00.bin

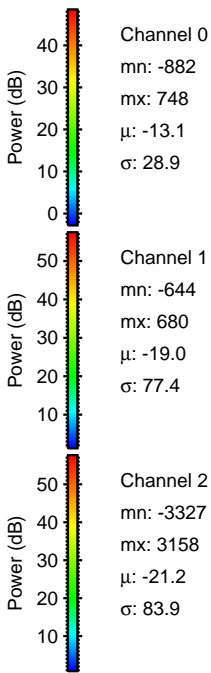
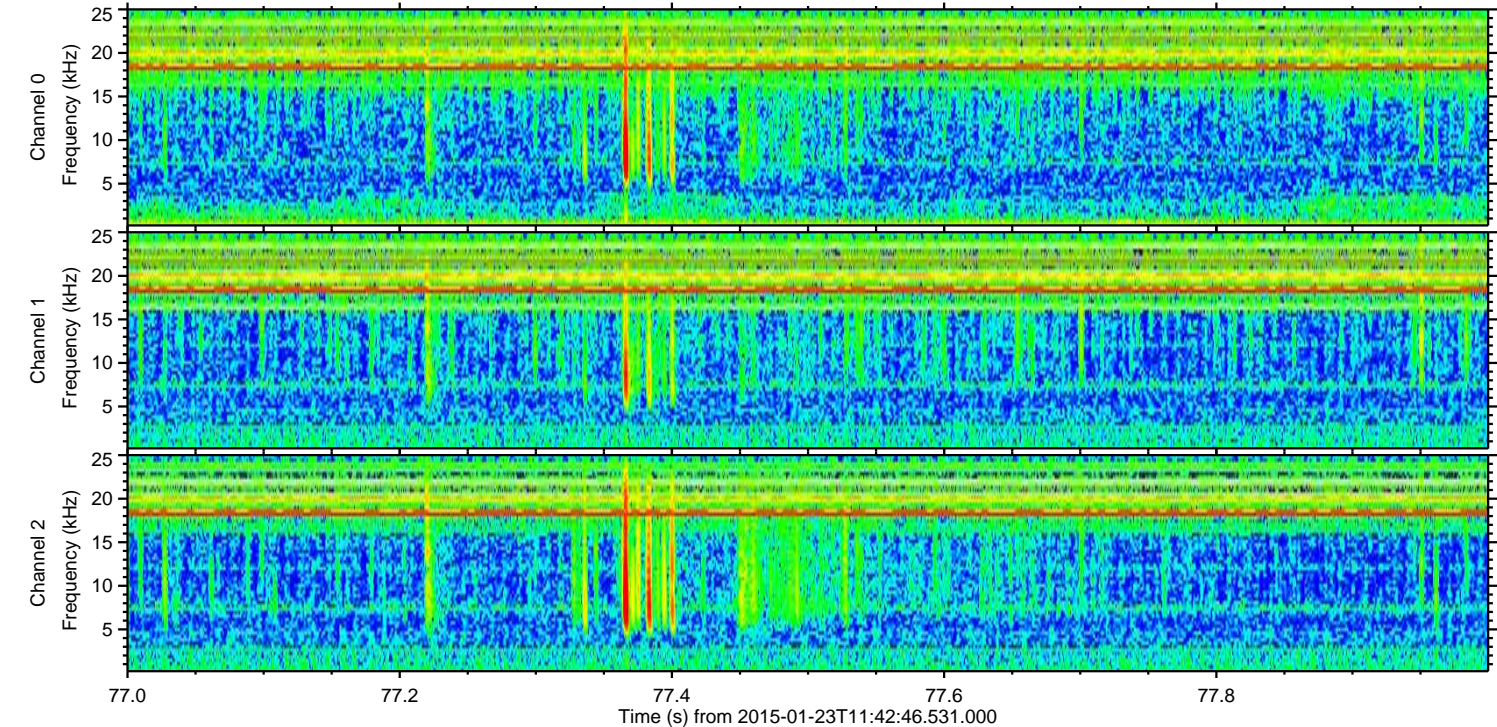
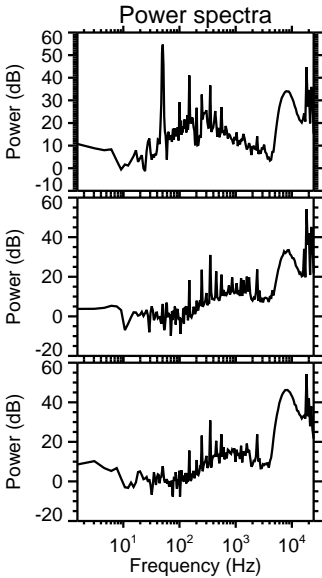
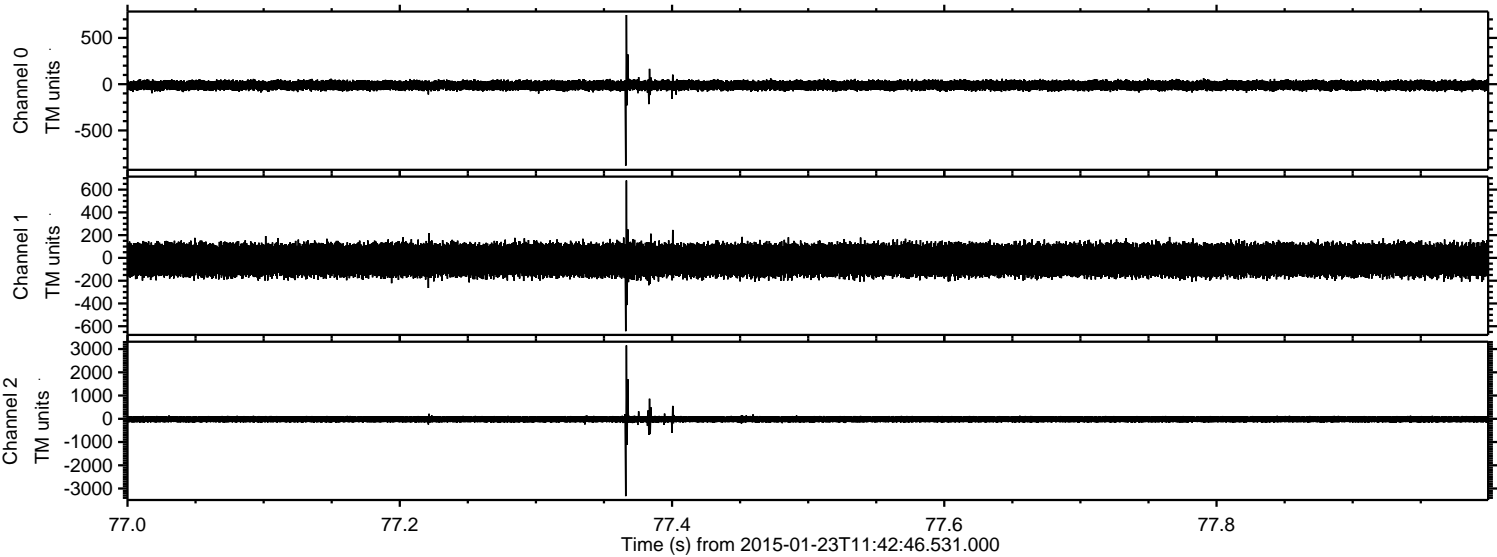


Channel 0
mn: -1791
mx: 1220
 μ : -13.1
 σ : 31.3

Channel 1
mn: -3626
mx: 3414
 μ : -19.0
 σ : 83.6

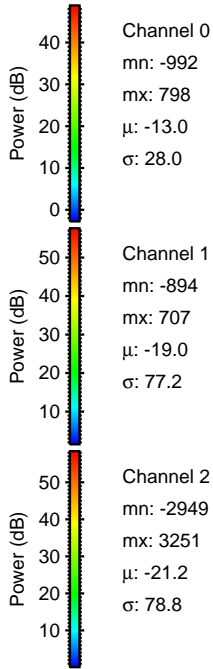
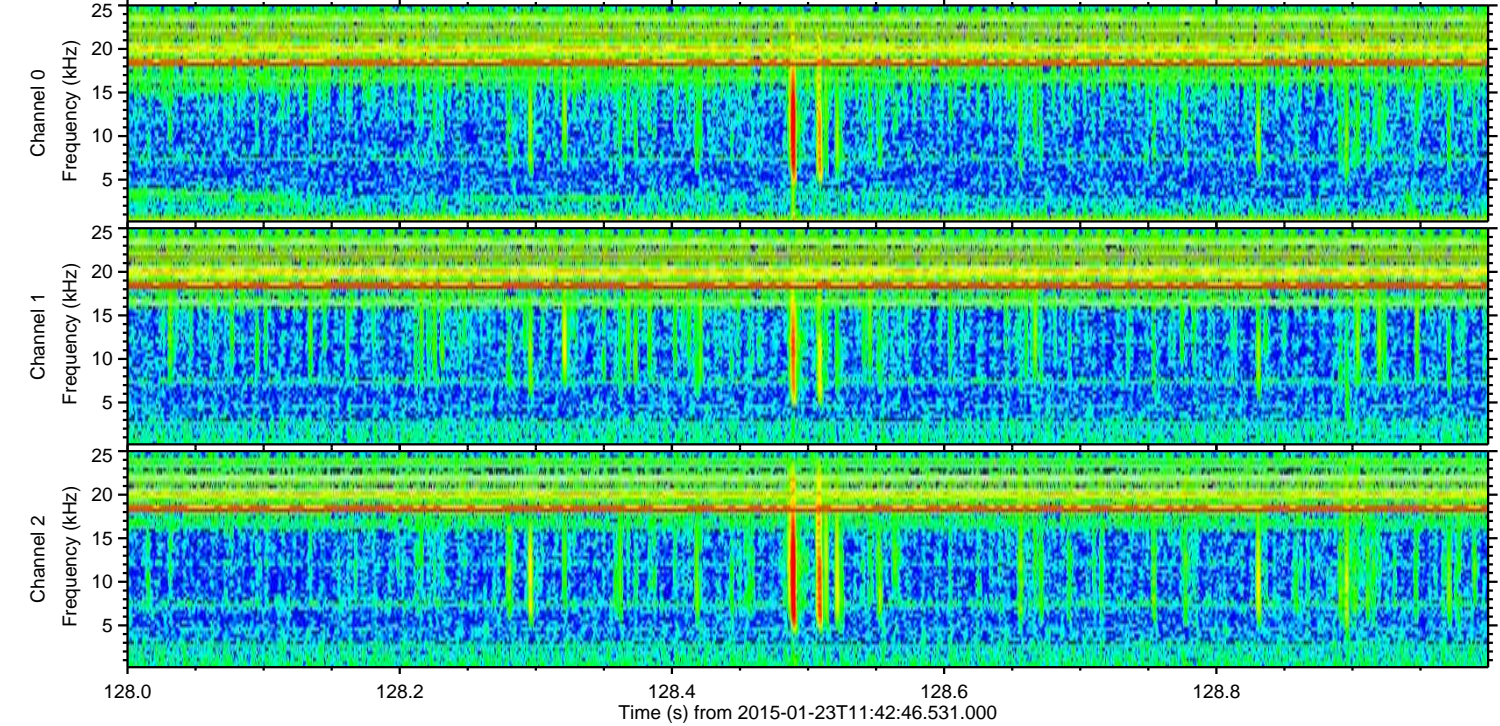
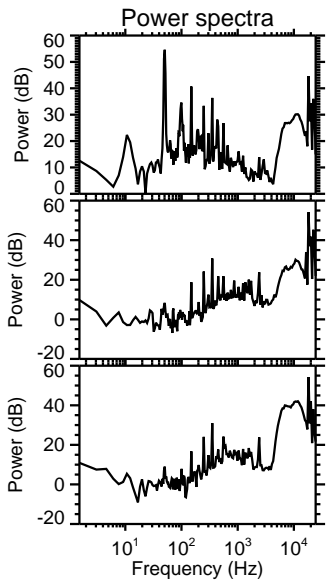
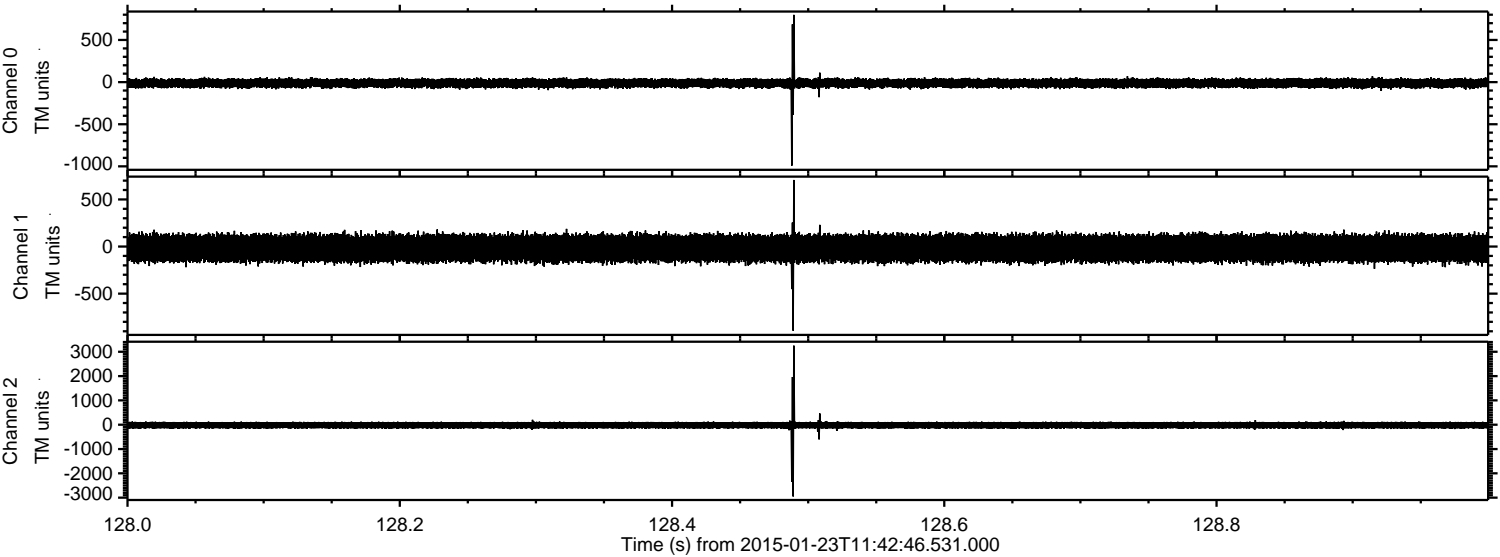
Channel 2
mn: -3809
mx: 3563
 μ : -21.3
 σ : 80.4

Processed Tue Feb 10 17:01:34 2015 by ELM ver.2012-10-06 from 001__elm20150123_114245__dat00.bin



ELMAVAN 3D WAVEFORMS (Measured data sampled at 50 kHz) 49808 packets of 144 samples from 2015-01-23T11:42:46.531.000. Part 129/144

Processed Tue Feb 10 17:01:35 2015 by ELM ver.2012-10-06 from 001__elm20150123_114245__dat00.bin



ELMAVAN 3D WAVEFORMS (Measured data sampled at 50 kHz) 49808 packets of 144 samples from 2015-01-23T11:42:46.531.000. Part 64/144

Processed Tue Feb 10 17:01:36 2015 by ELM ver.2012-10-06 from 001__elm20150123_114245__dat00.bin

