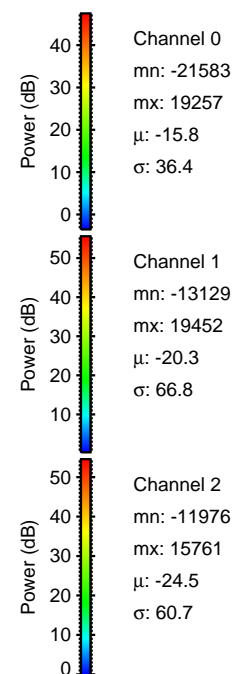
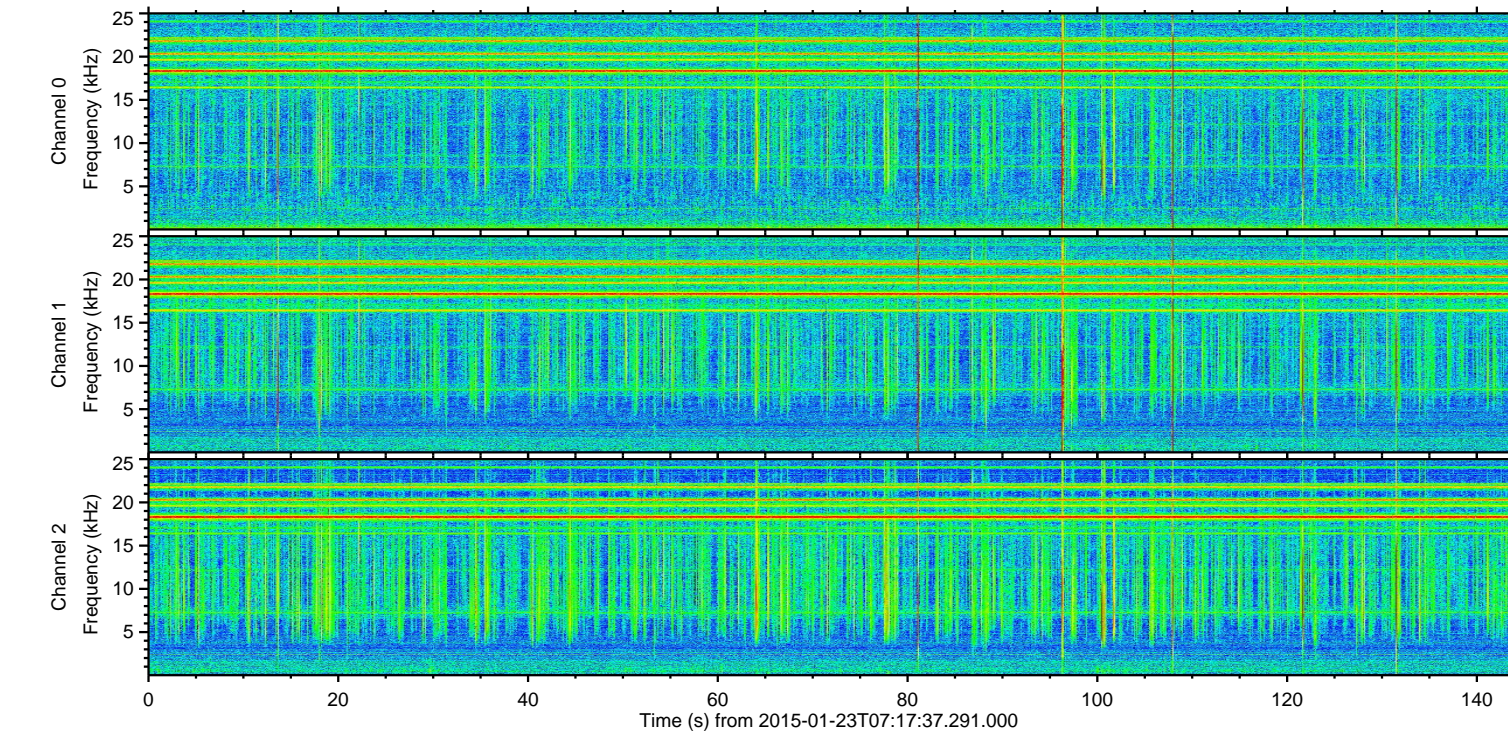
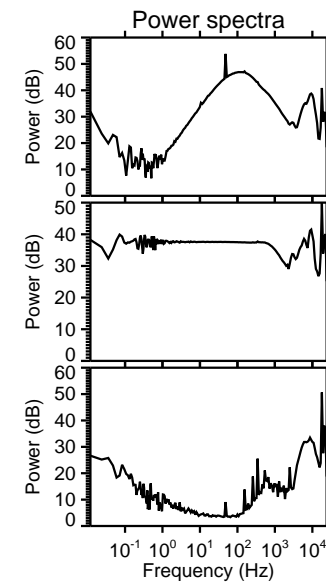
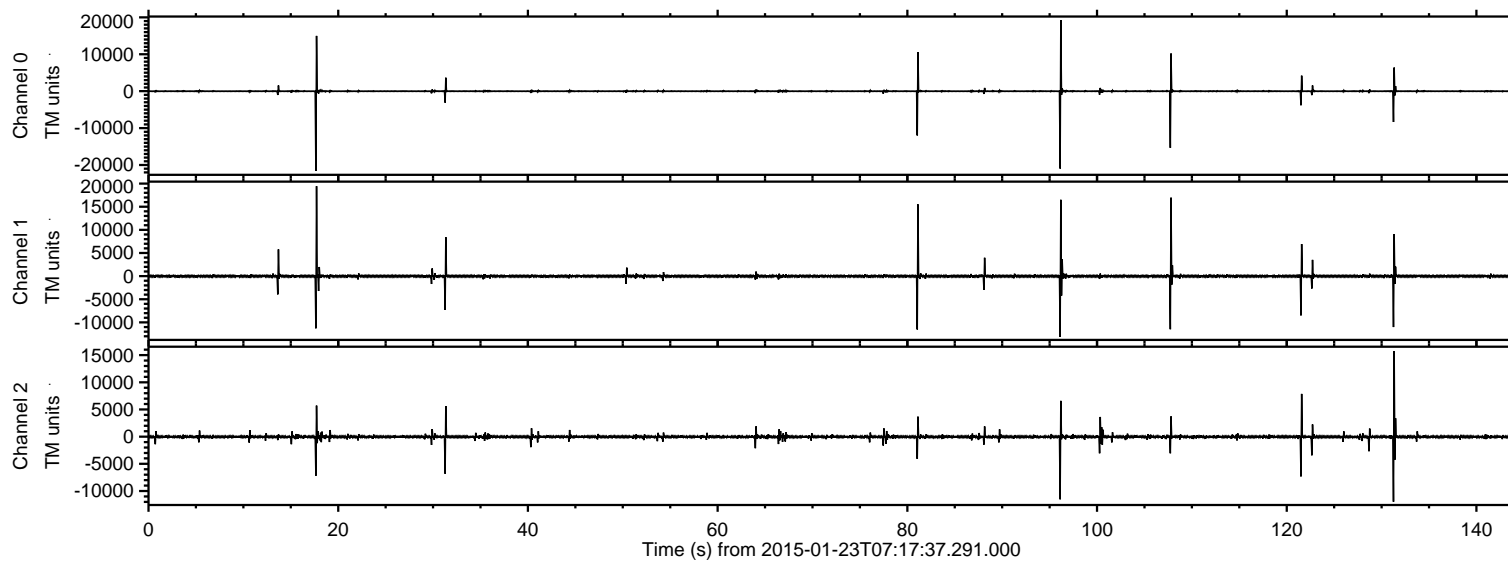


# ELMAVAN 3D WAVEFORMS (Measured data sampled at 50 kHz) 49808 packets of 144 samples from 2015-01-23T07:17:37.291.000.

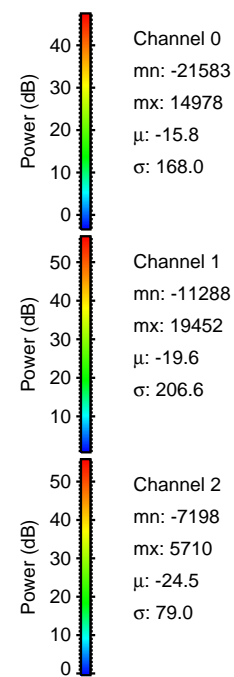
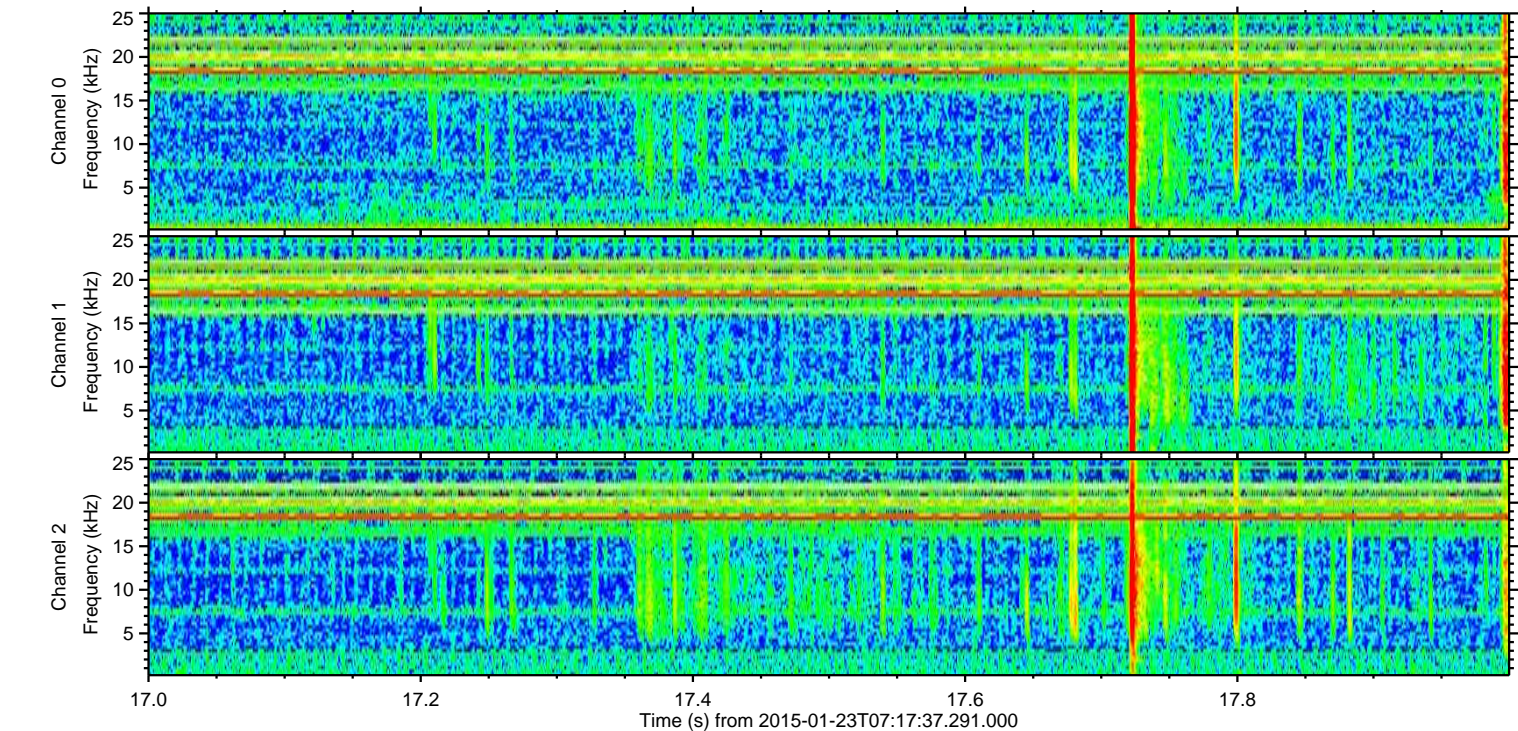
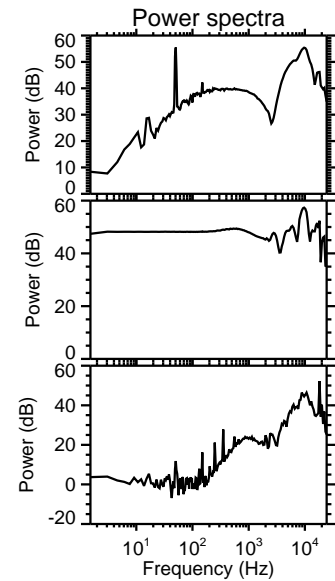
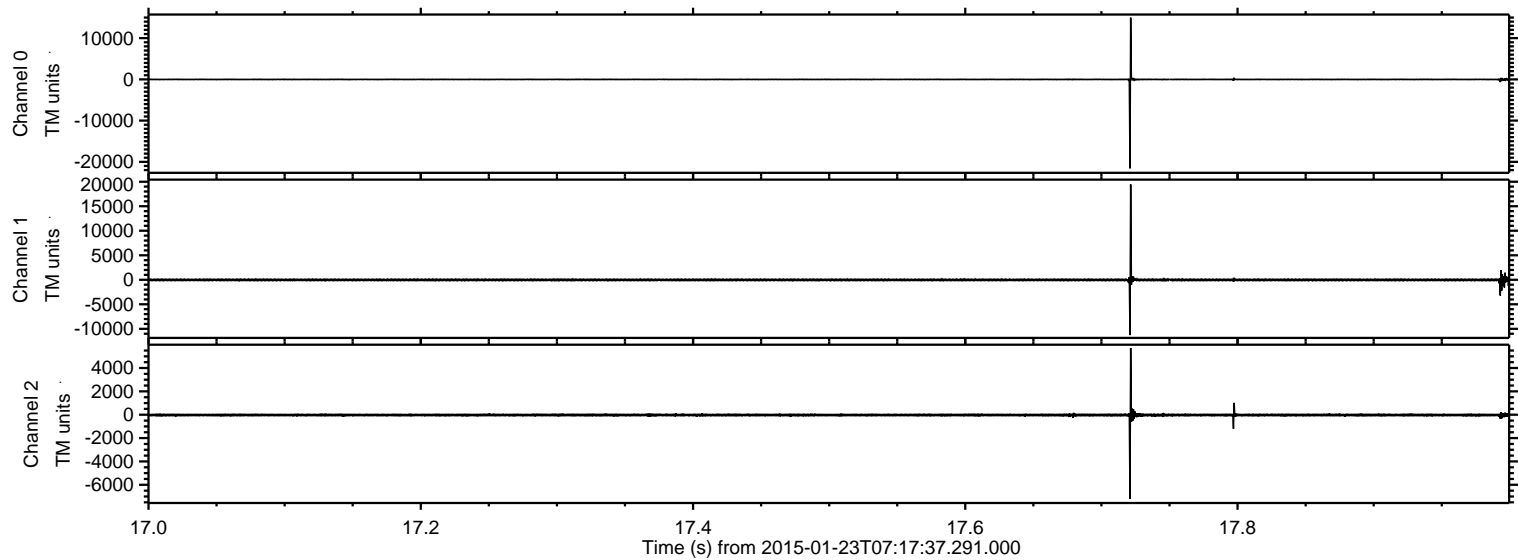
Processed Tue Feb 10 15:55:32 2015 by ELM ver.2012-10-06 from 001\_\_elm20150123\_071736\_\_dat00.bin





ELMAVAN 3D WAVEFORMS (Measured data sampled at 50 kHz) 49808 packets of 144 samples from 2015-01-23T07:17:37.291.000. Part 18/144

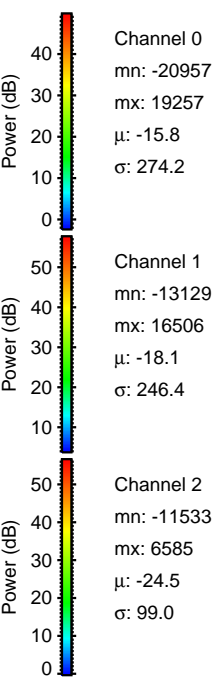
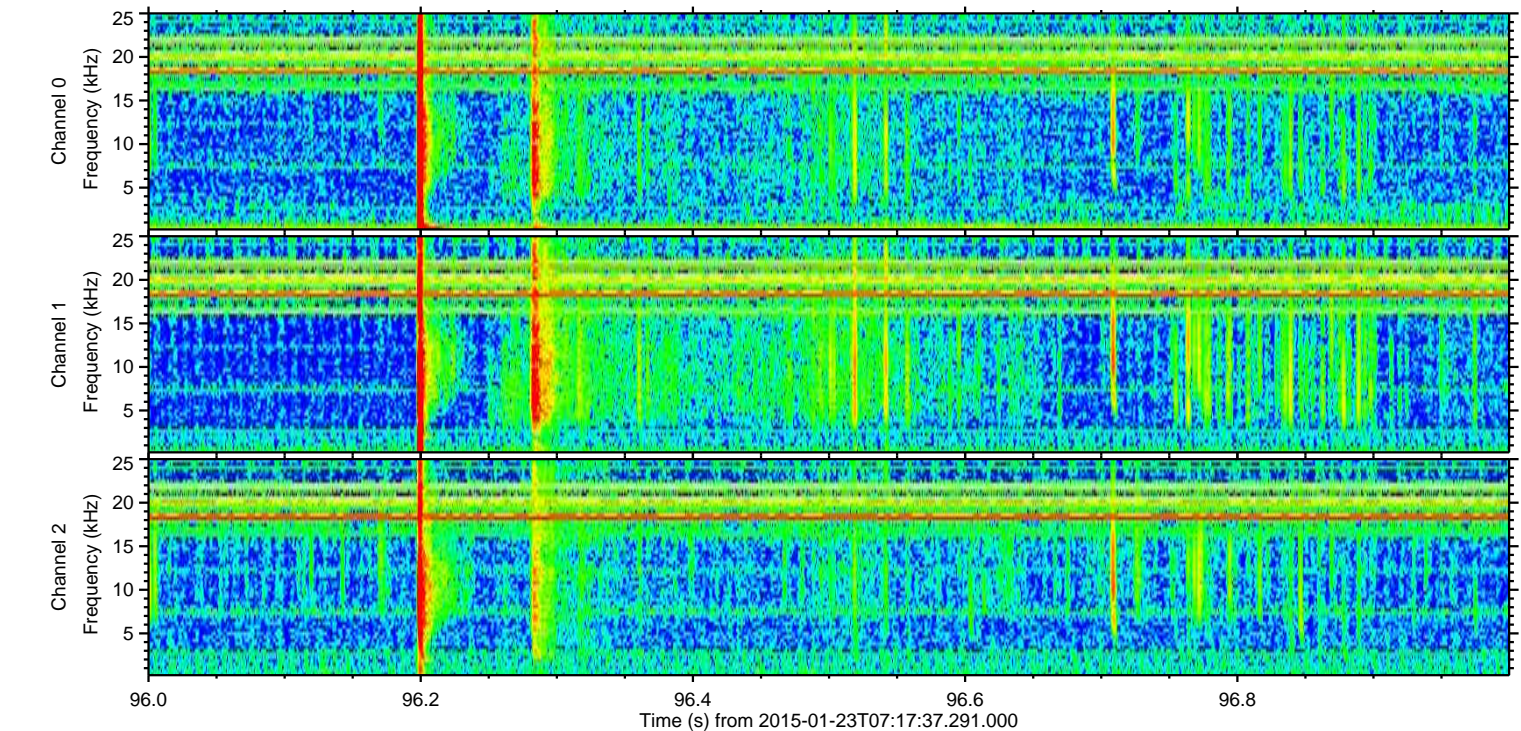
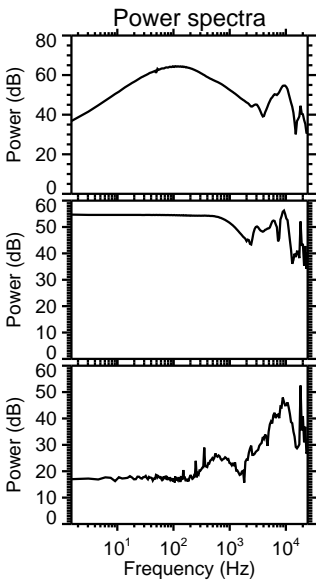
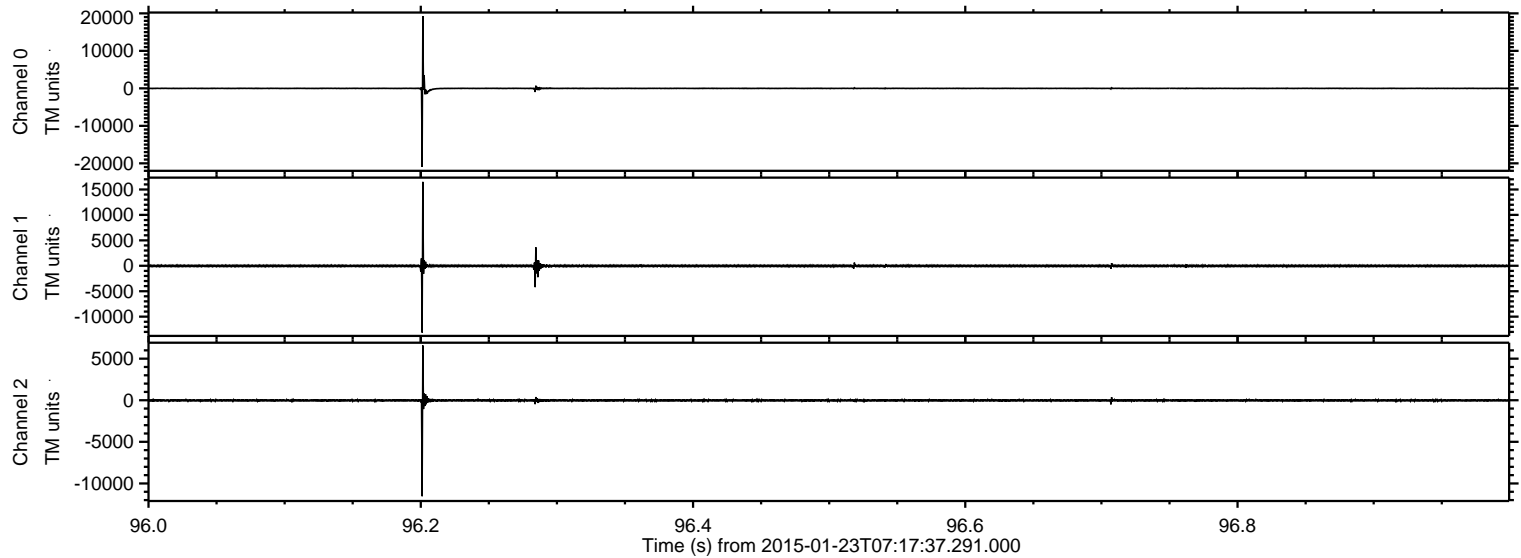
Processed Tue Feb 10 15:55:45 2015 by ELM ver.2012-10-06 from 001\_\_elm20150123\_071736\_\_dat00.bin





ELMAVAN 3D WAVEFORMS (Measured data sampled at 50 kHz) 49808 packets of 144 samples from 2015-01-23T07:17:37.291.000. Part 97/144

Processed Tue Feb 10 15:55:46 2015 by ELM ver.2012-10-06 from 001\_\_elm20150123\_071736\_\_dat00.bin



Channel 0  
mn: -20957  
mx: 19257  
 $\mu$ : -15.8  
 $\sigma$ : 274.2

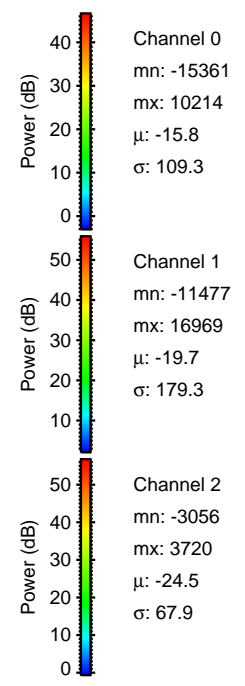
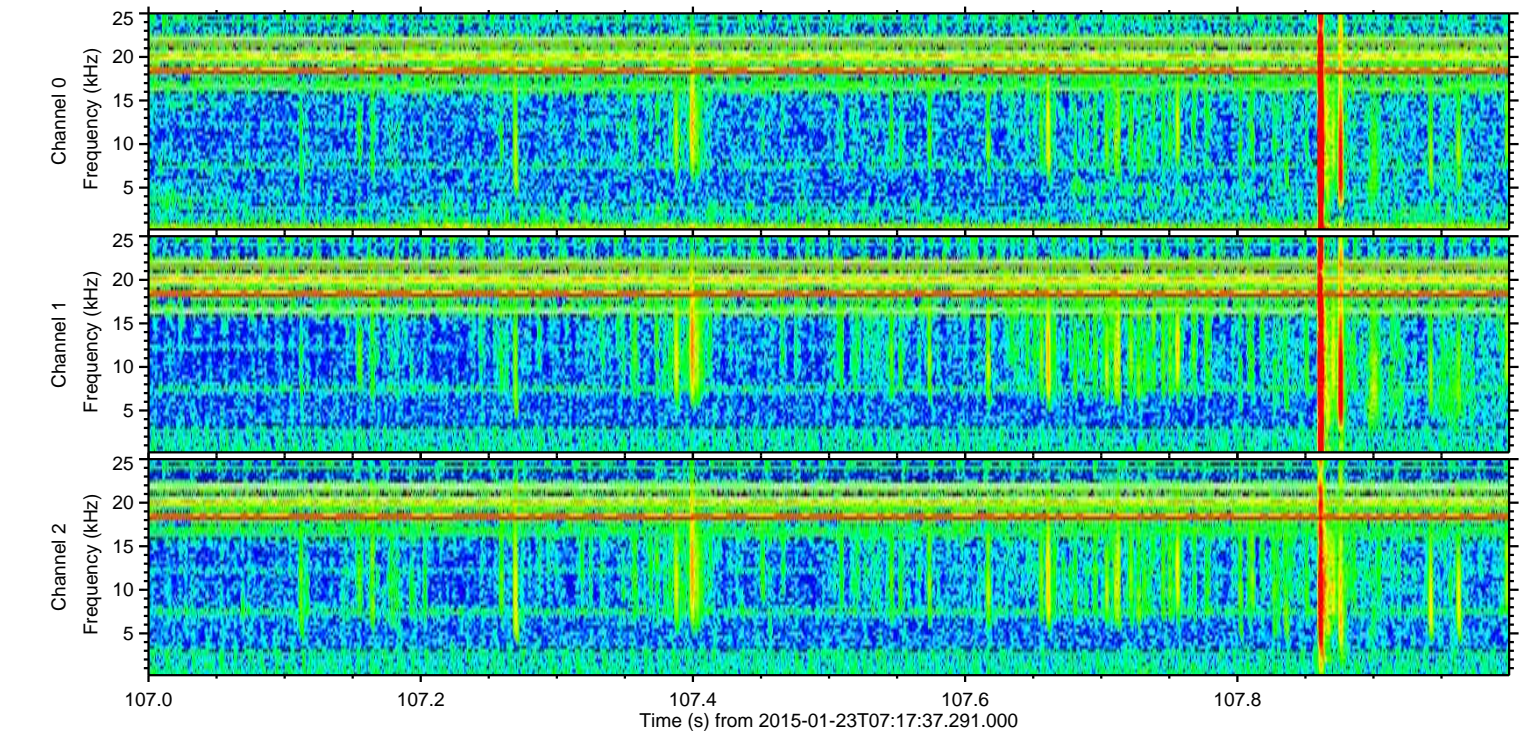
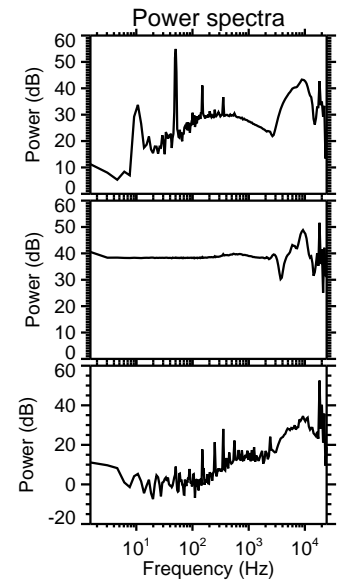
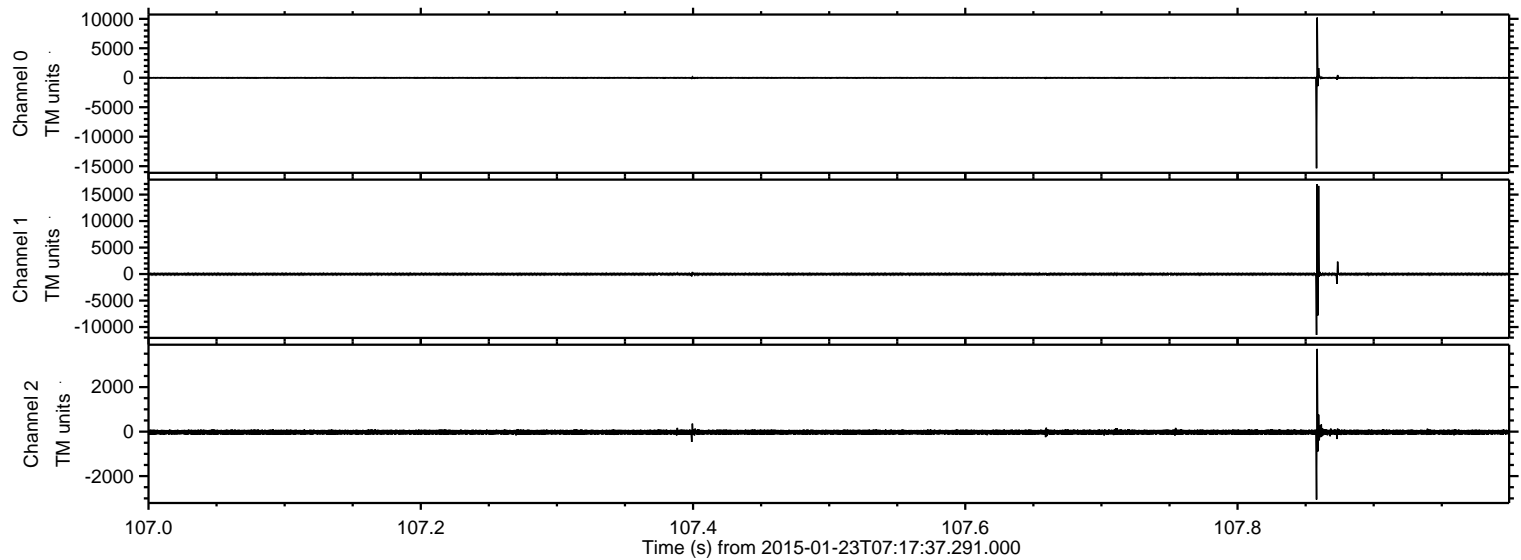
Channel 1  
mn: -13129  
mx: 16506  
 $\mu$ : -18.1  
 $\sigma$ : 246.4

Channel 2  
mn: -11533  
mx: 6585  
 $\mu$ : -24.5  
 $\sigma$ : 99.0



ELMAVAN 3D WAVEFORMS (Measured data sampled at 50 kHz) 49808 packets of 144 samples from 2015-01-23T07:17:37.291.000. Part 108/144

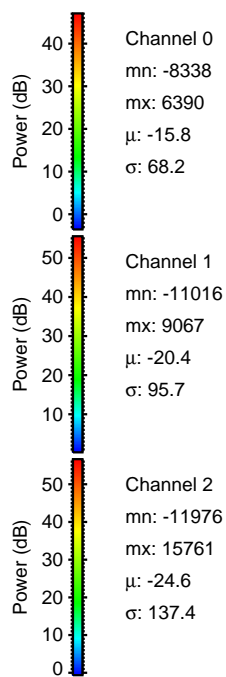
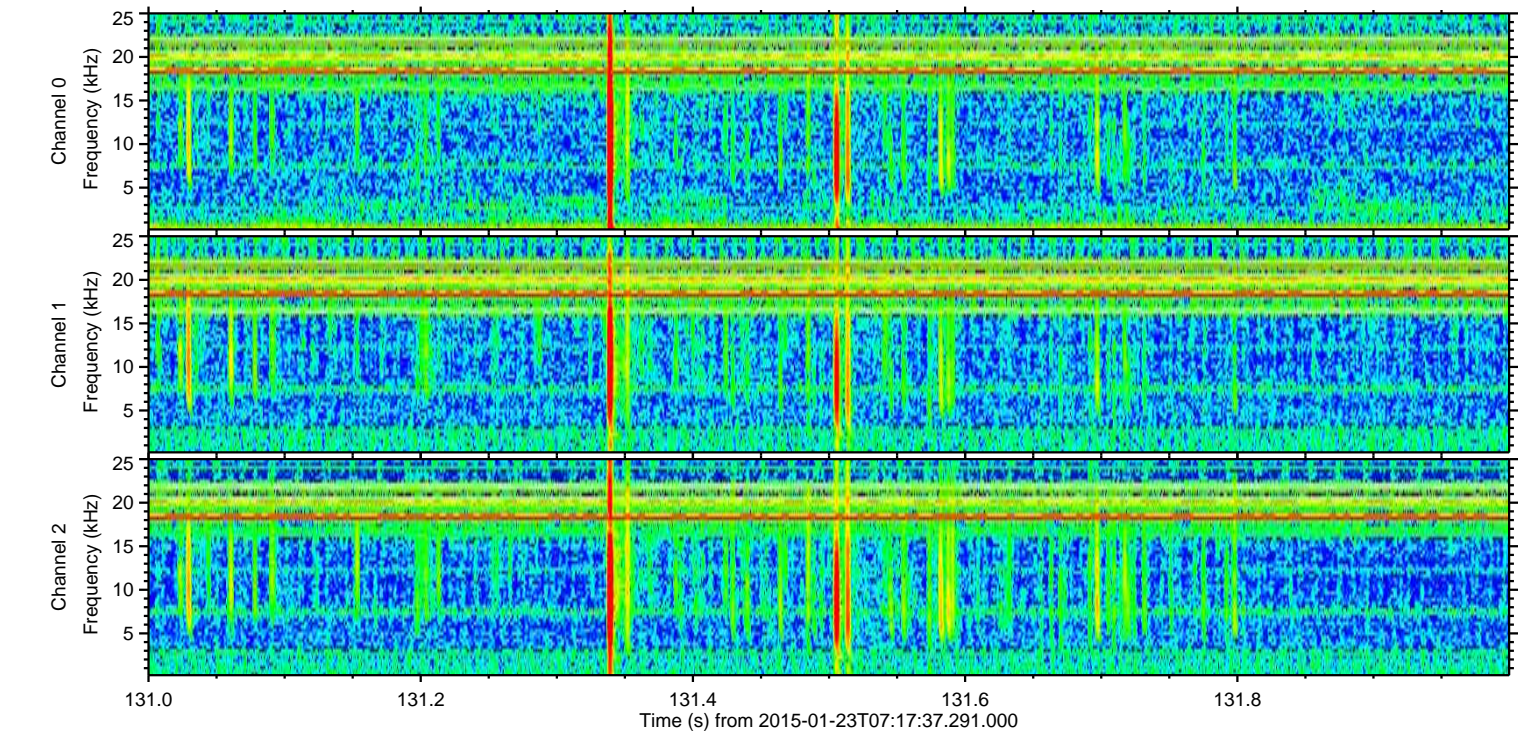
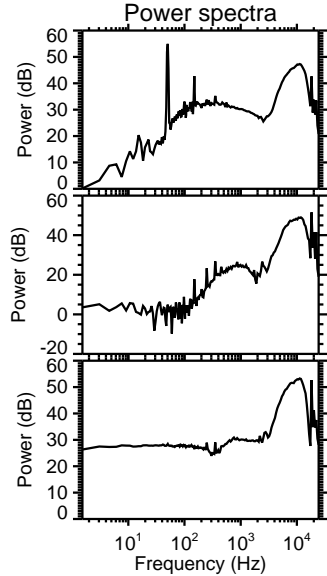
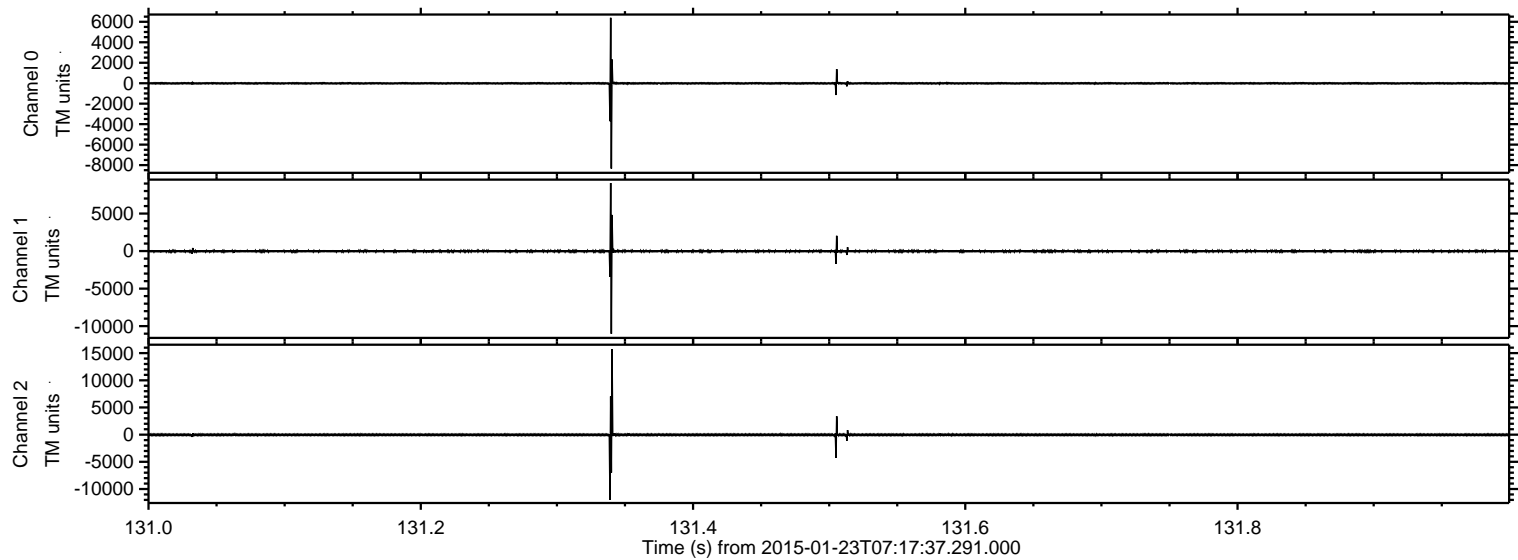
Processed Tue Feb 10 15:55:47 2015 by ELM ver.2012-10-06 from 001\_\_elm20150123\_071736\_\_dat00.bin





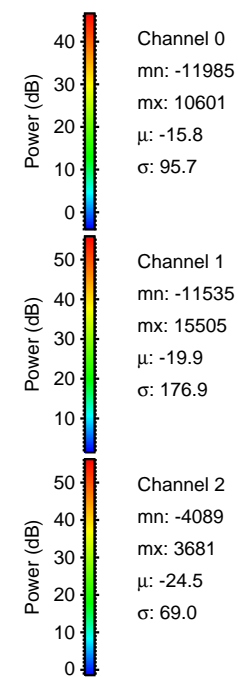
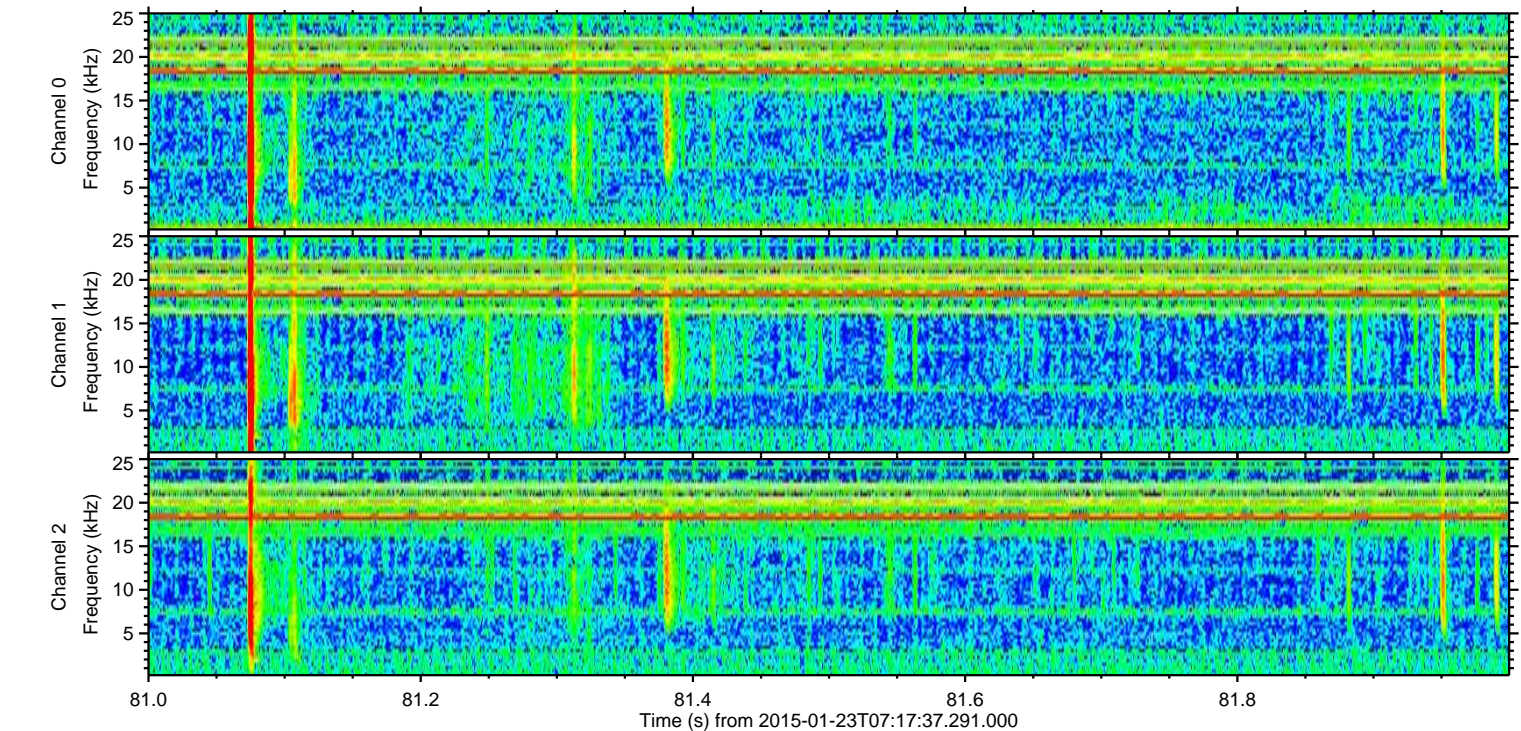
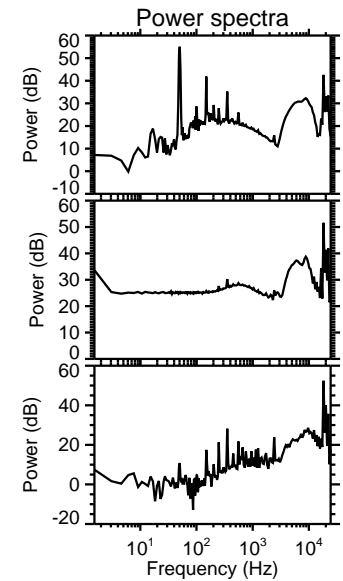
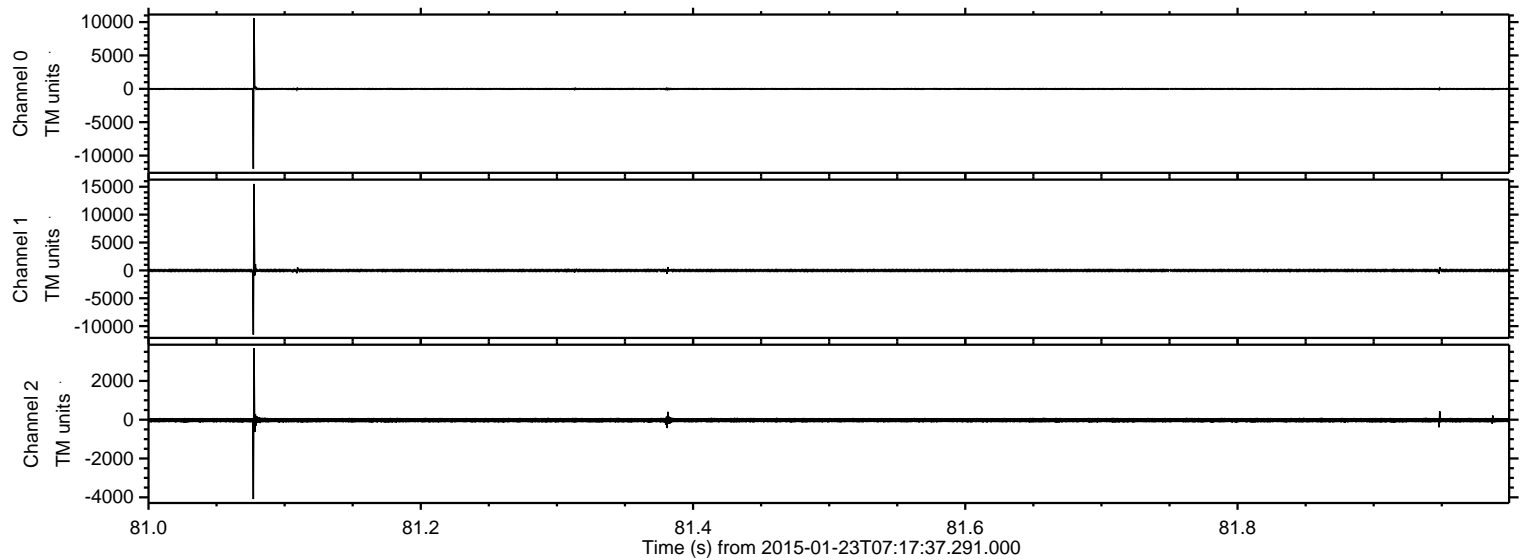
ELMAVAN 3D WAVEFORMS (Measured data sampled at 50 kHz) 49808 packets of 144 samples from 2015-01-23T07:17:37.291.000. Part 132/144

Processed Tue Feb 10 15:55:48 2015 by ELM ver.2012-10-06 from 001\_\_elm20150123\_071736\_\_dat00.bin





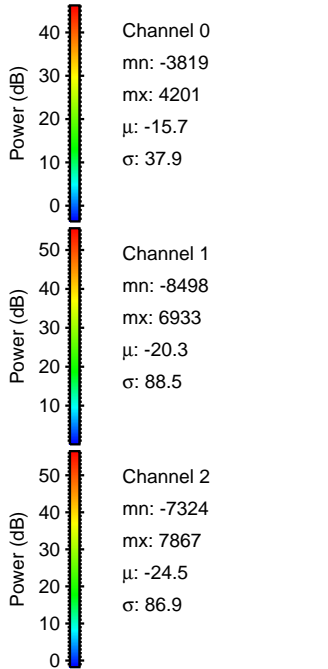
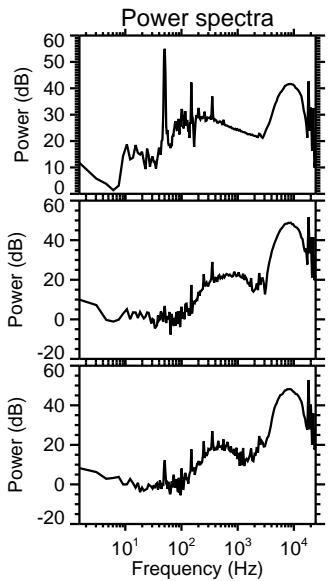
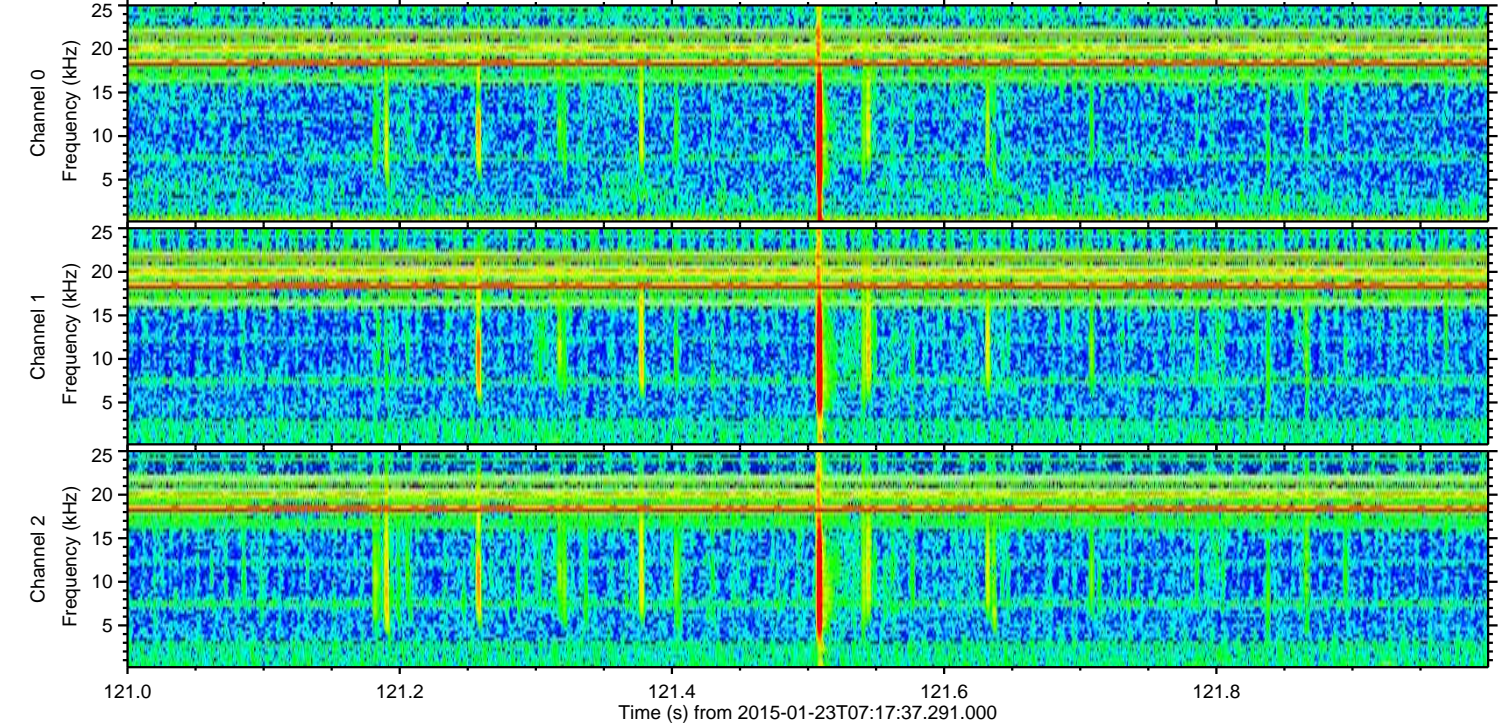
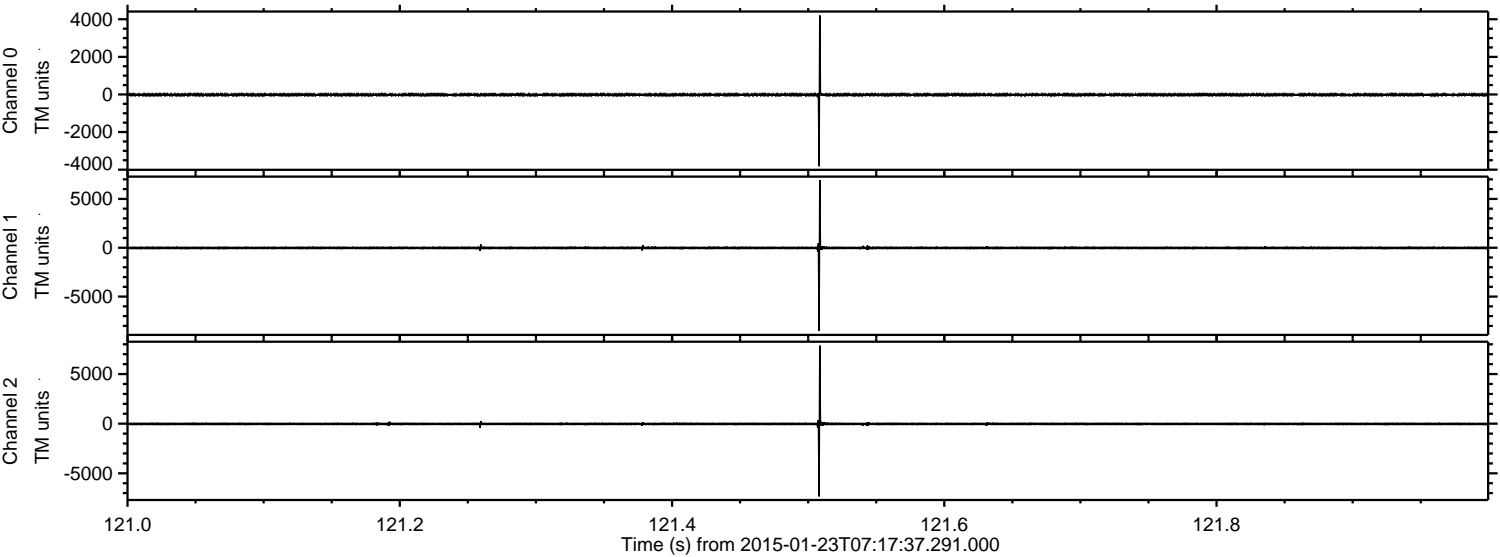
Processed Tue Feb 10 15:55:49 2015 by ELM ver.2012-10-06 from 001\_\_elm20150123\_071736\_\_dat00.bin





ELMAVAN 3D WAVEFORMS (Measured data sampled at 50 kHz) 49808 packets of 144 samples from 2015-01-23T07:17:37.291.000. Part 122/144

Processed Tue Feb 10 15:55:51 2015 by ELM ver.2012-10-06 from 001\_\_elm20150123\_071736\_\_dat00.bin



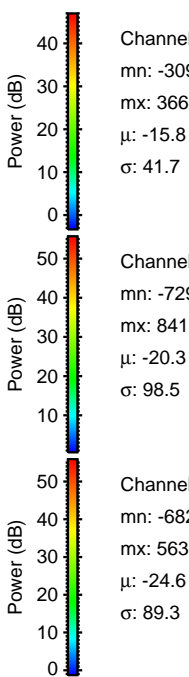
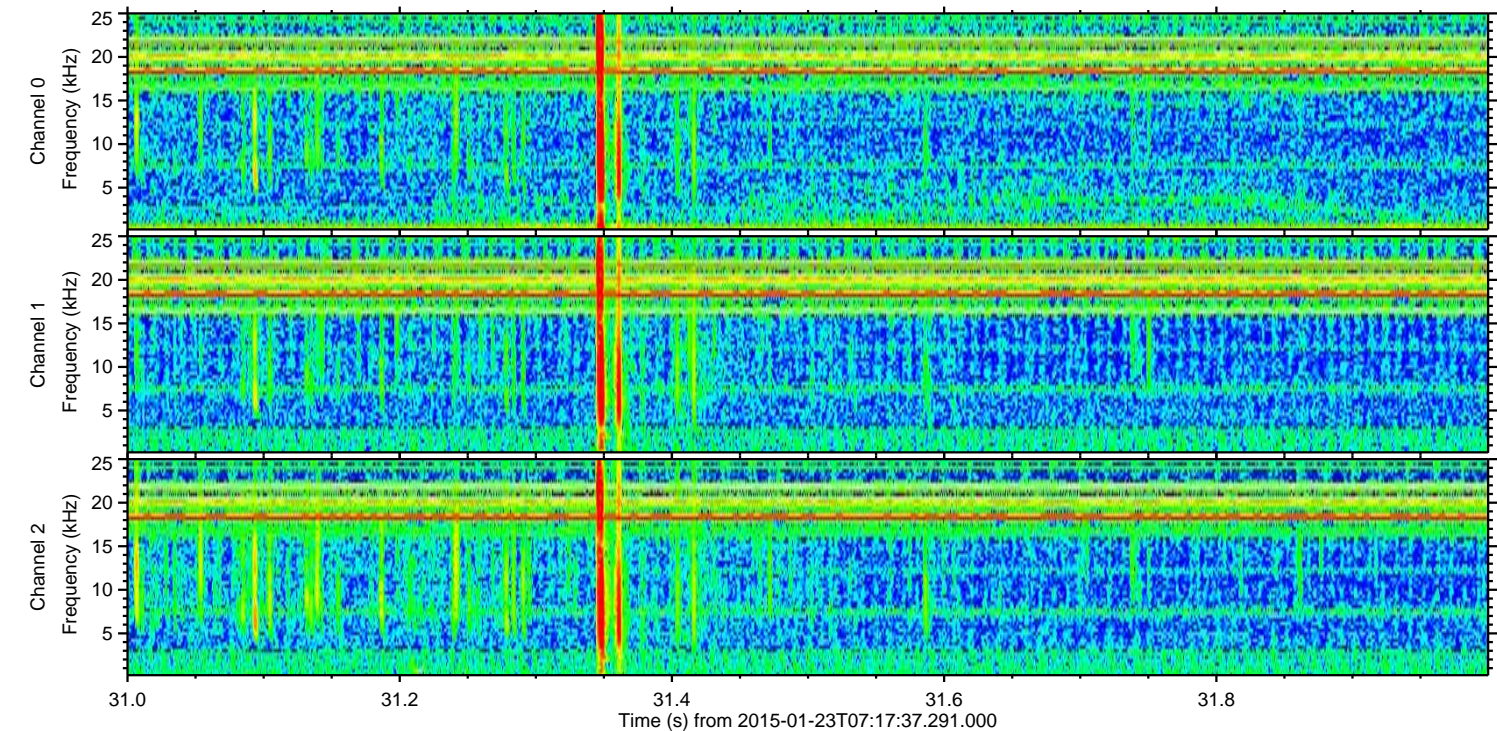
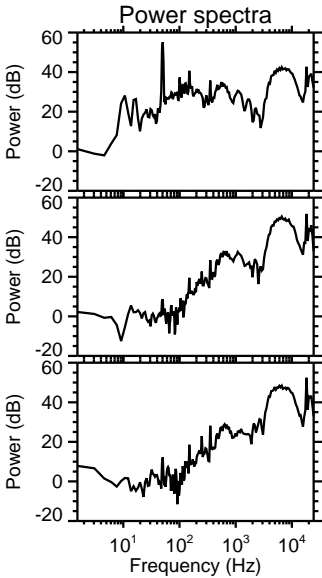
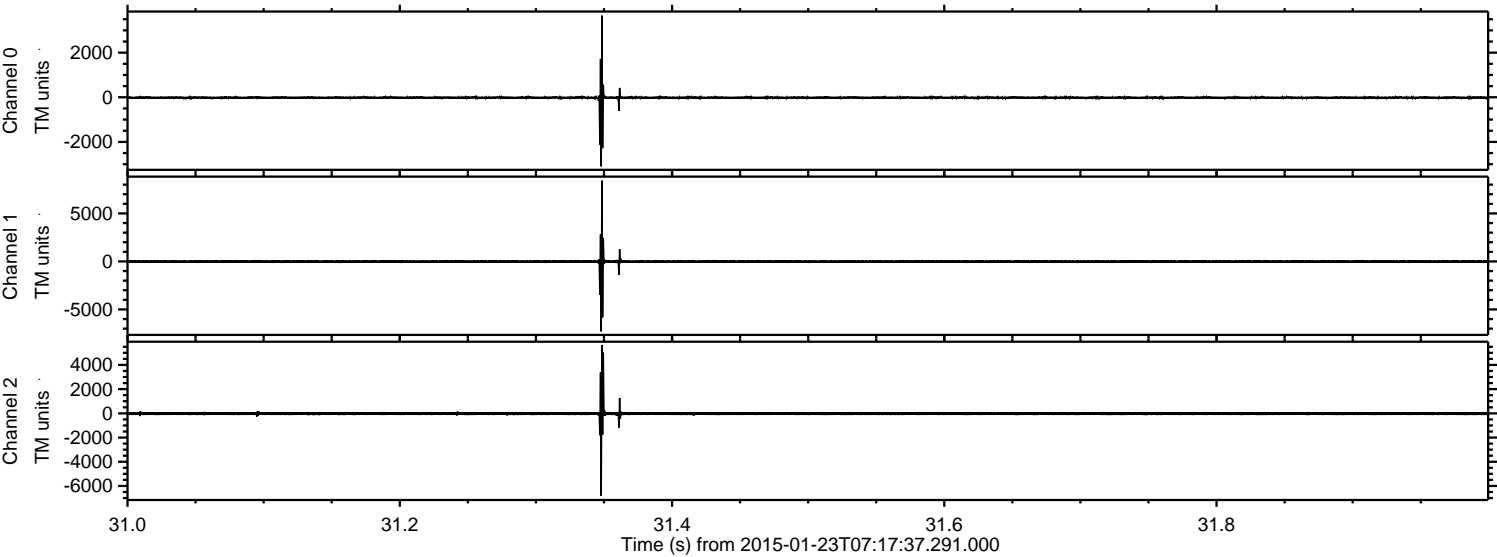
Channel 0  
mn: -3819  
mx: 4201  
 $\mu$ : -15.7  
 $\sigma$ : 37.9

Channel 1  
mn: -8498  
mx: 6933  
 $\mu$ : -20.3  
 $\sigma$ : 88.5

Channel 2  
mn: -7324  
mx: 7867  
 $\mu$ : -24.5  
 $\sigma$ : 86.9



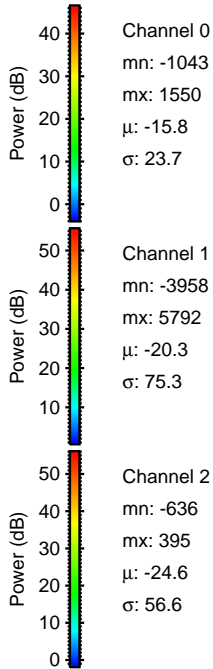
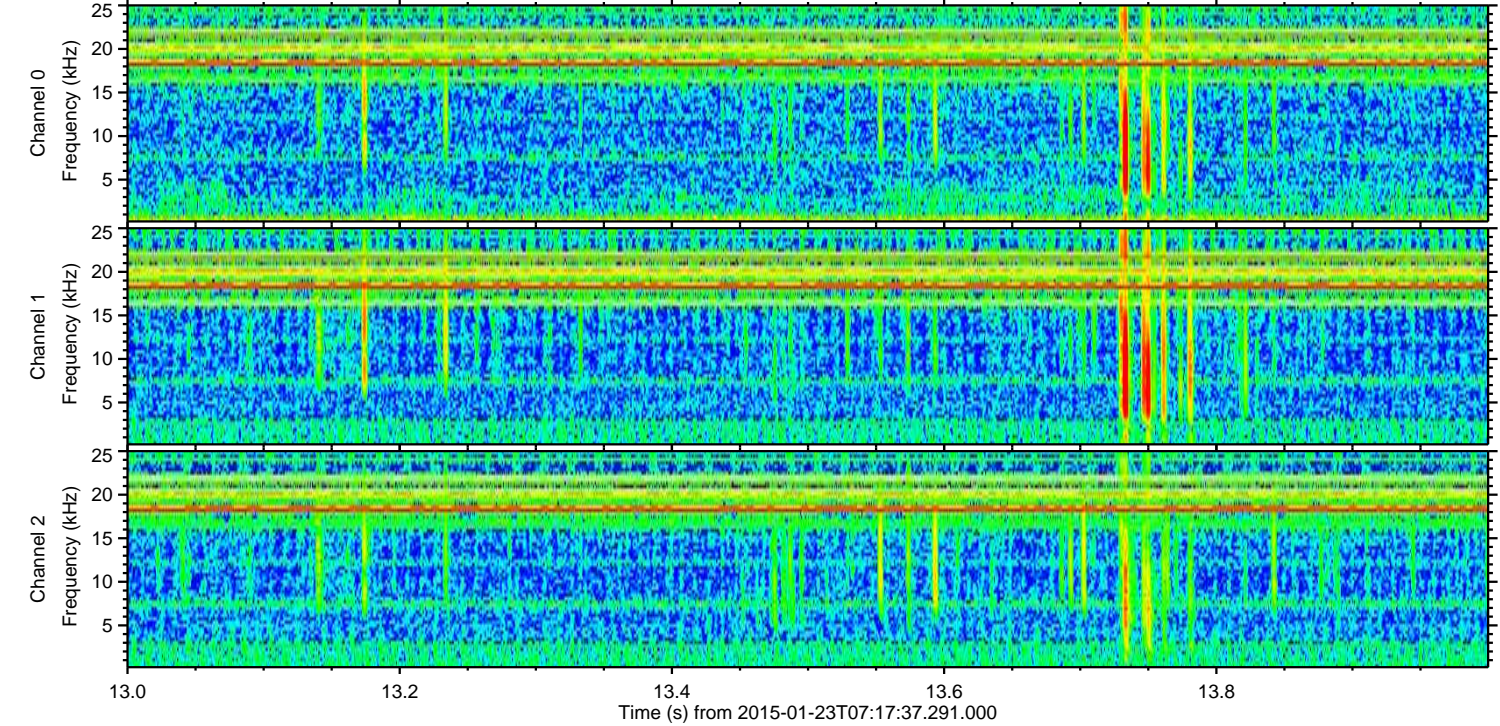
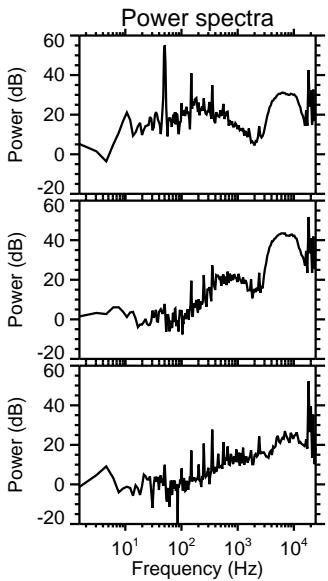
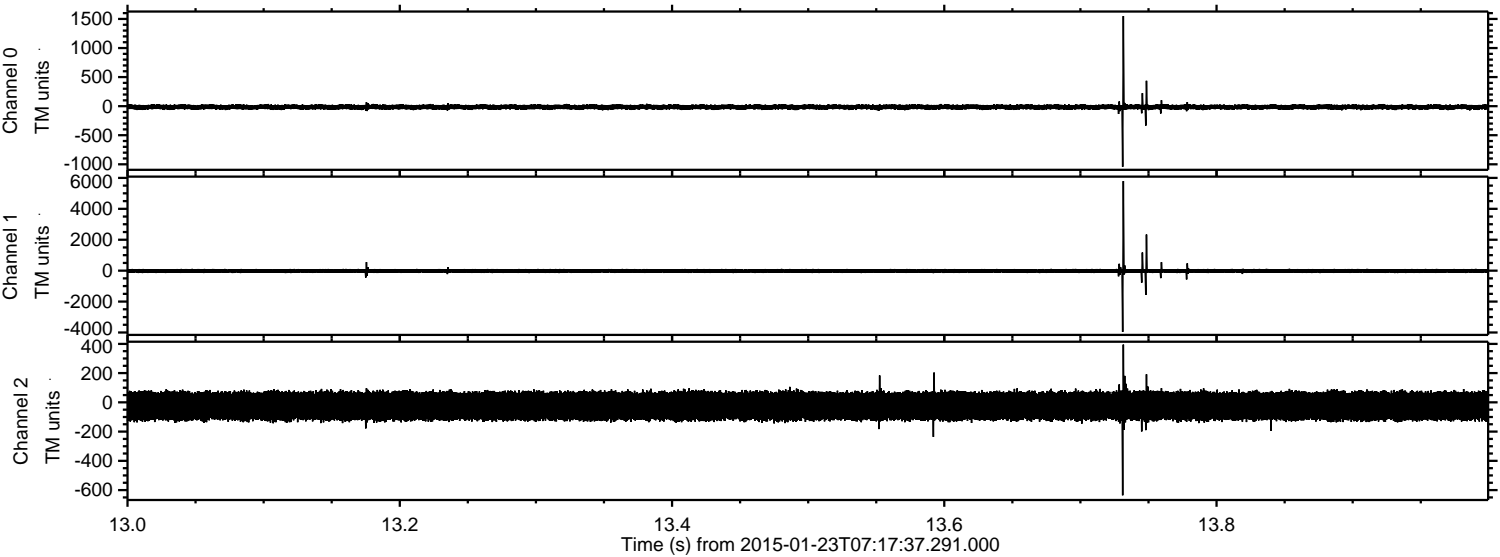
Processed Tue Feb 10 15:55:52 2015 by ELM ver.2012-10-06 from 001\_\_elm20150123\_071736\_\_dat00.bin





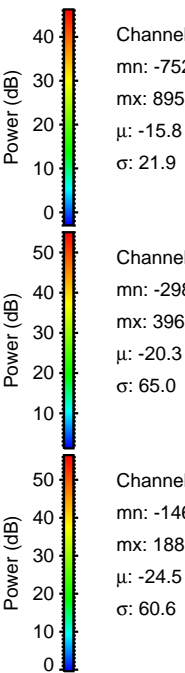
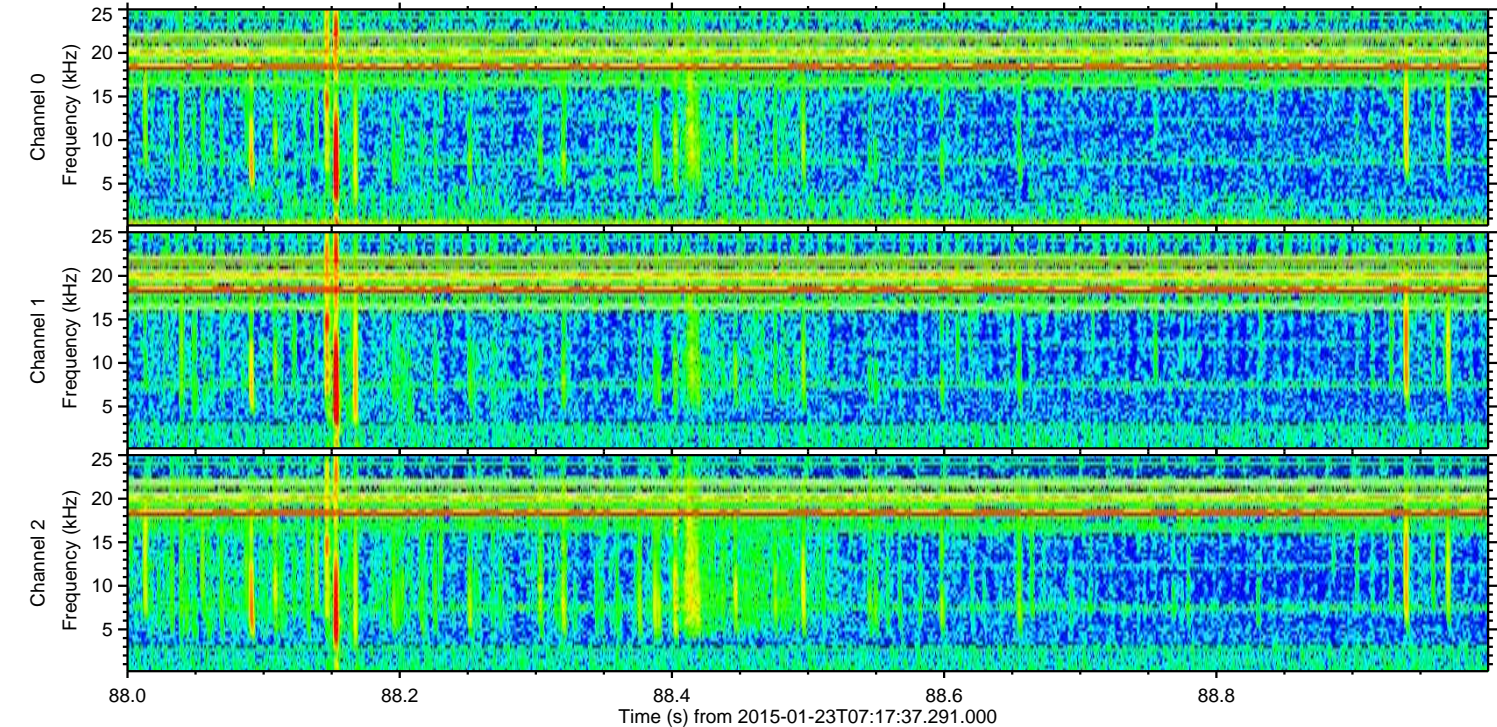
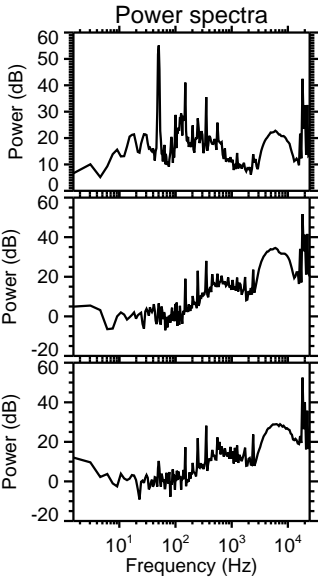
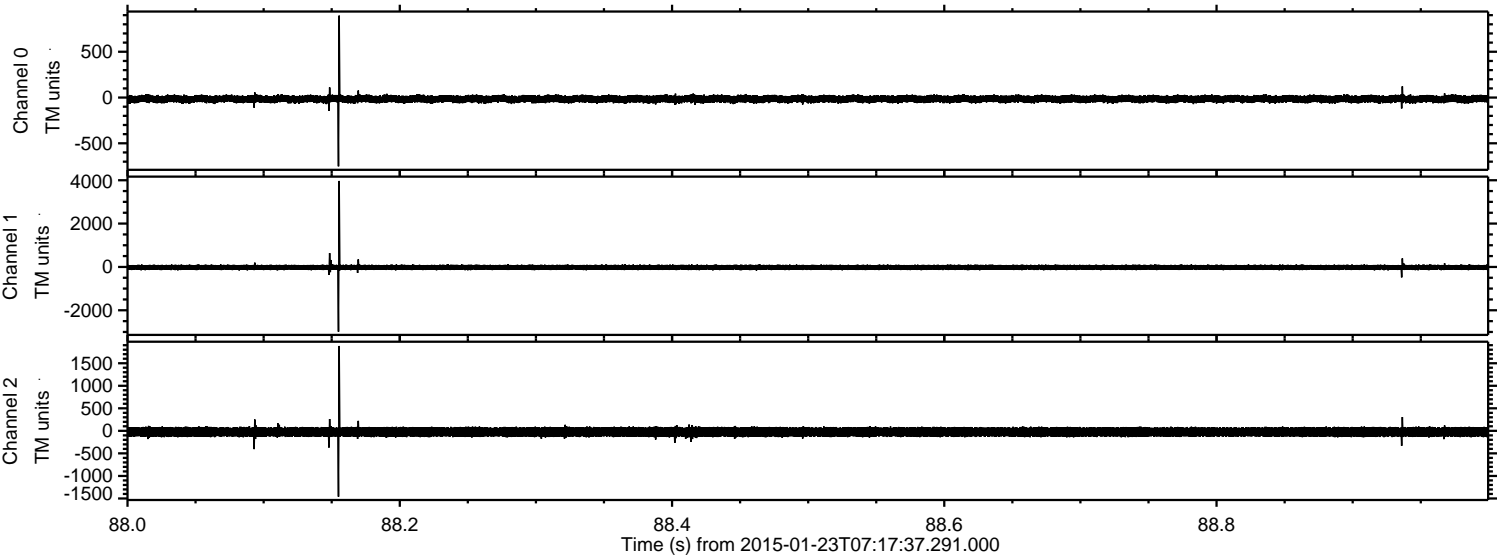
ELMAVAN 3D WAVEFORMS (Measured data sampled at 50 kHz) 49808 packets of 144 samples from 2015-01-23T07:17:37.291.000. Part 14/144

Processed Tue Feb 10 15:55:53 2015 by ELM ver.2012-10-06 from 001\_\_elm20150123\_071736\_\_dat00.bin





Processed Tue Feb 10 15:55:54 2015 by ELM ver.2012-10-06 from 001\_\_elm20150123\_071736\_\_dat00.bin





Processed Tue Feb 10 15:55:55 2015 by ELM ver.2012-10-06 from 001\_\_elm20150123\_071736\_\_dat00.bin

