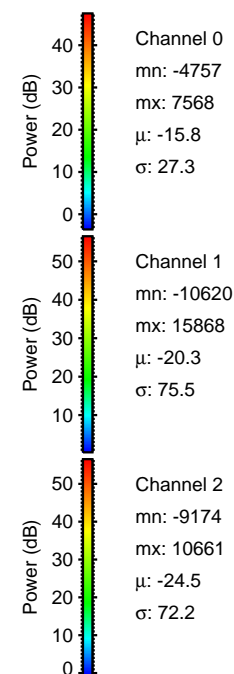
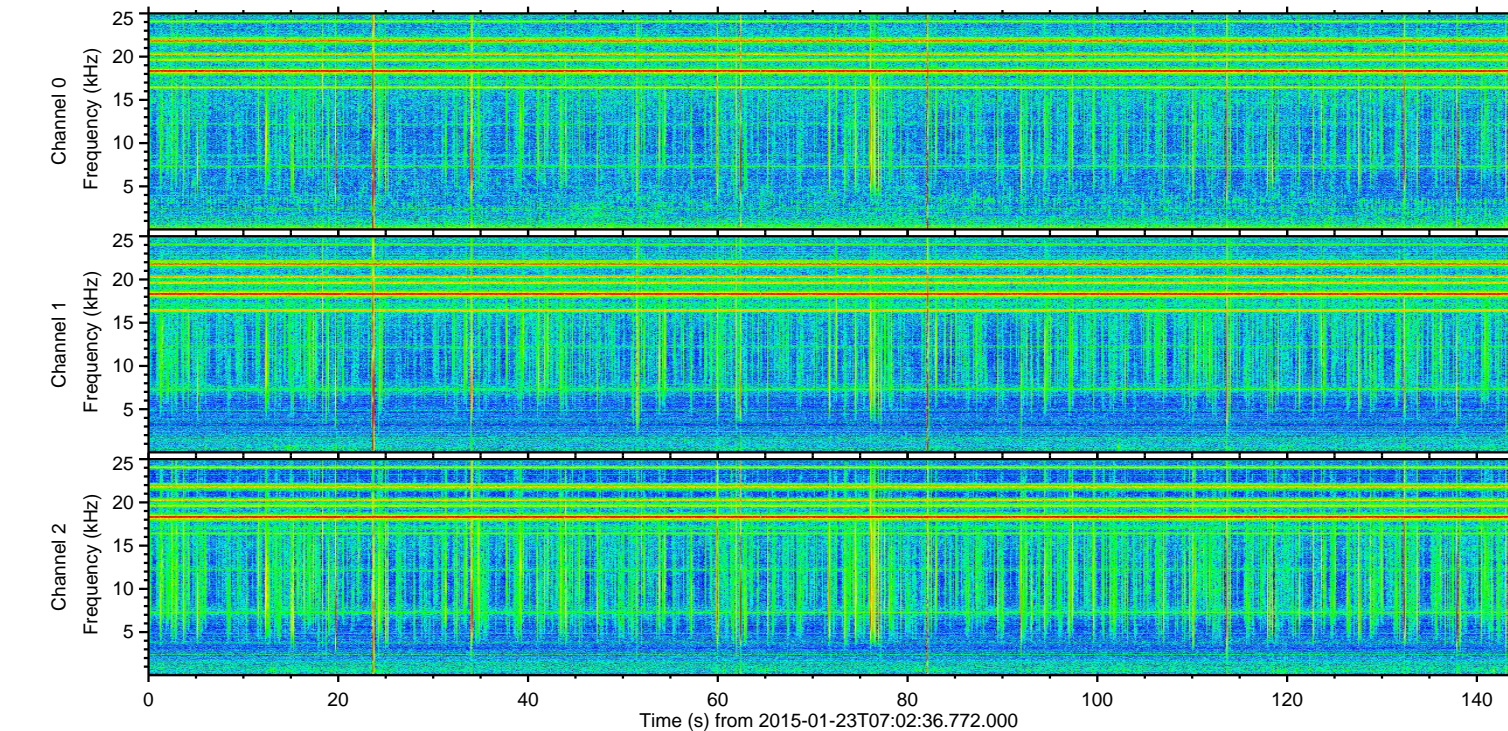
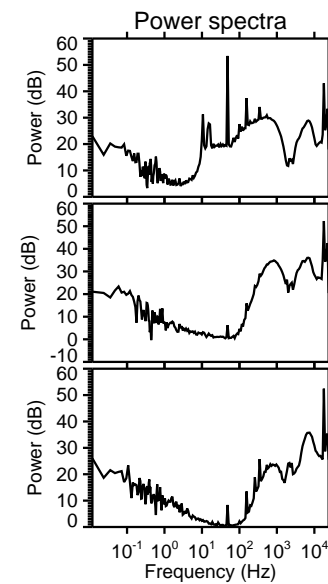
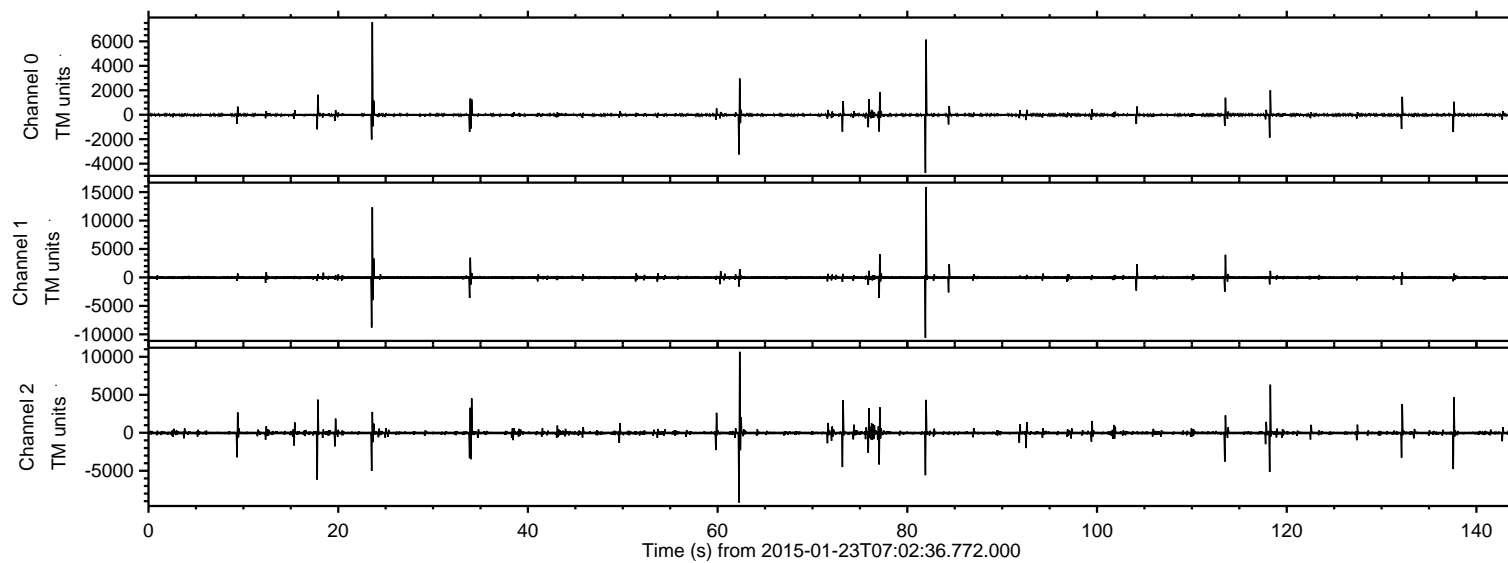
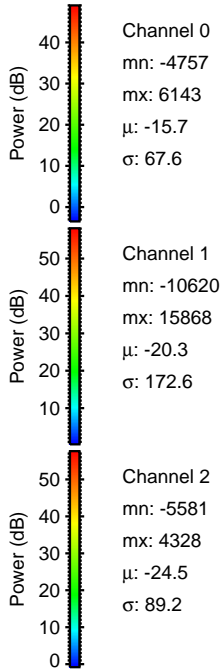
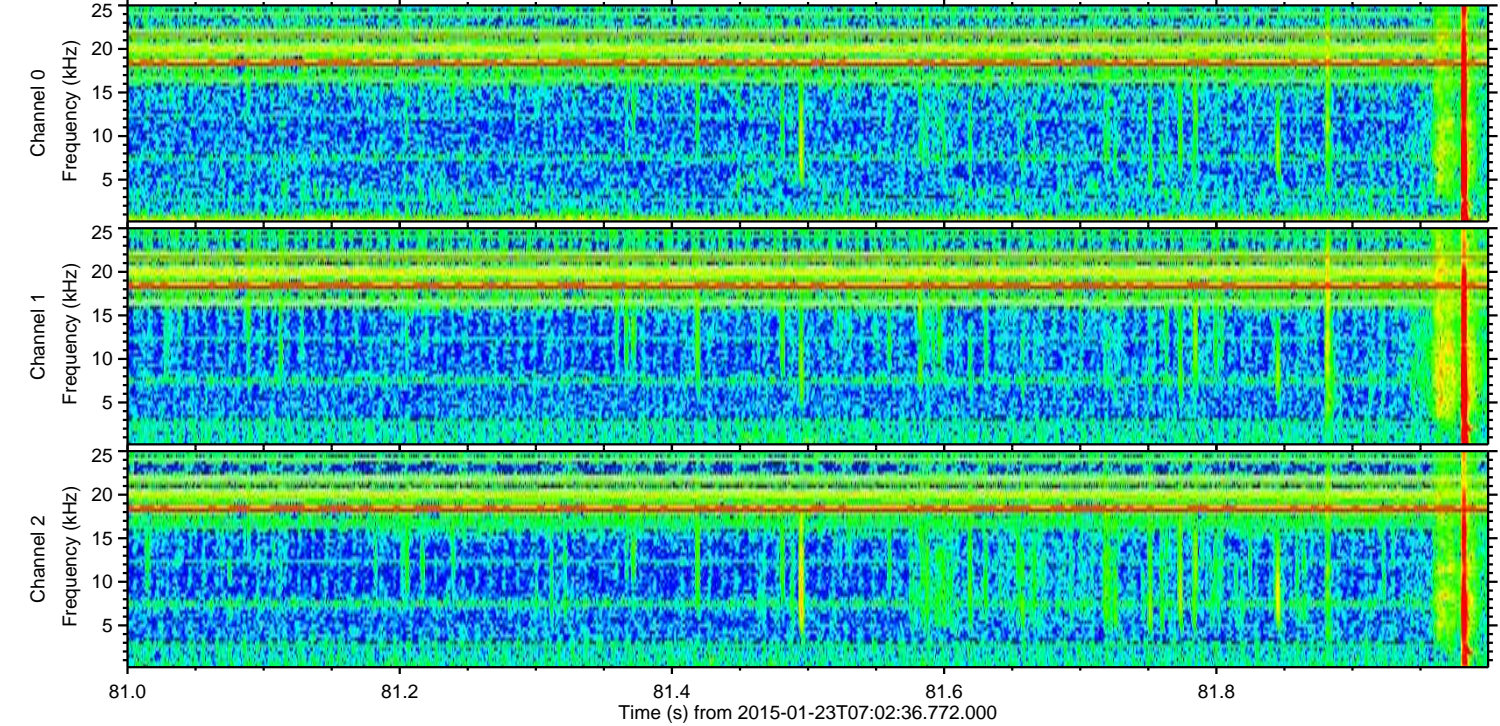
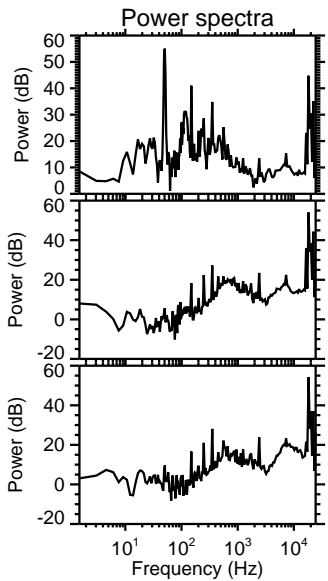
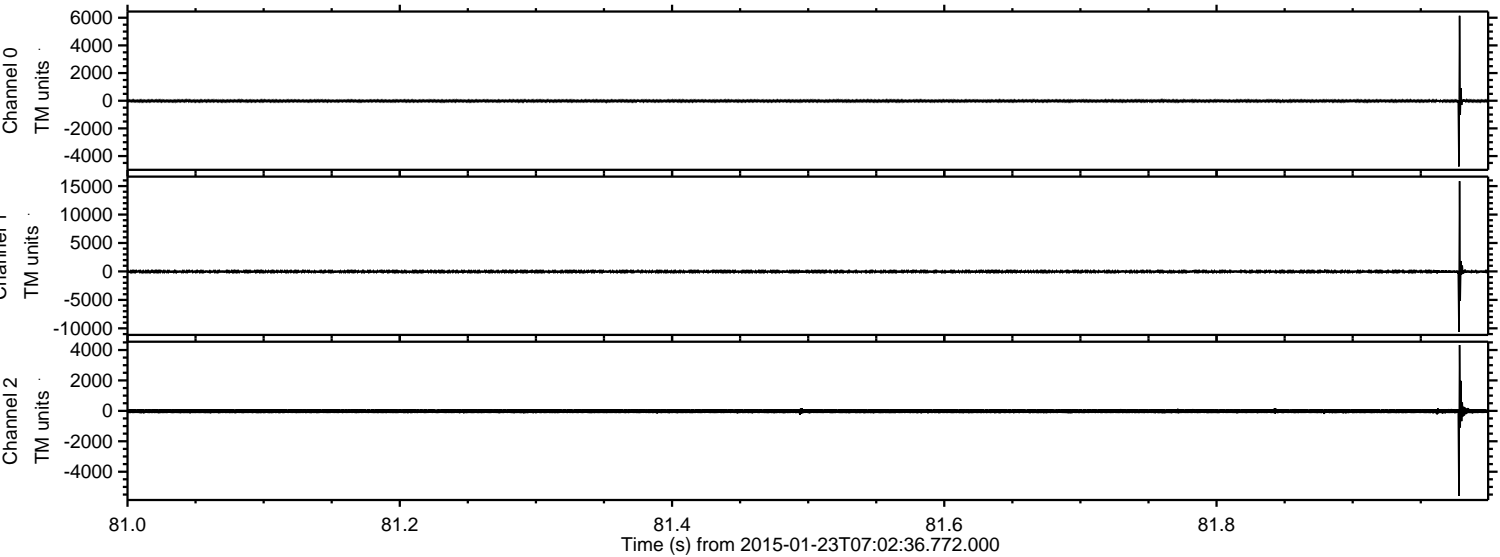


ELMAVAN 3D WAVEFORMS (Measured data sampled at 50 kHz) 49809 packets of 144 samples from 2015-01-23T07:02:36.772.000.

Processed Tue Feb 10 15:51:46 2015 by ELM ver.2012-10-06 from 001__elm20150123_070235__dat00.bin

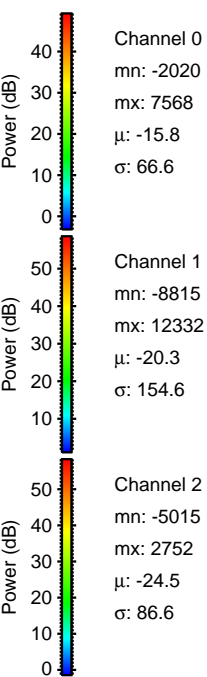
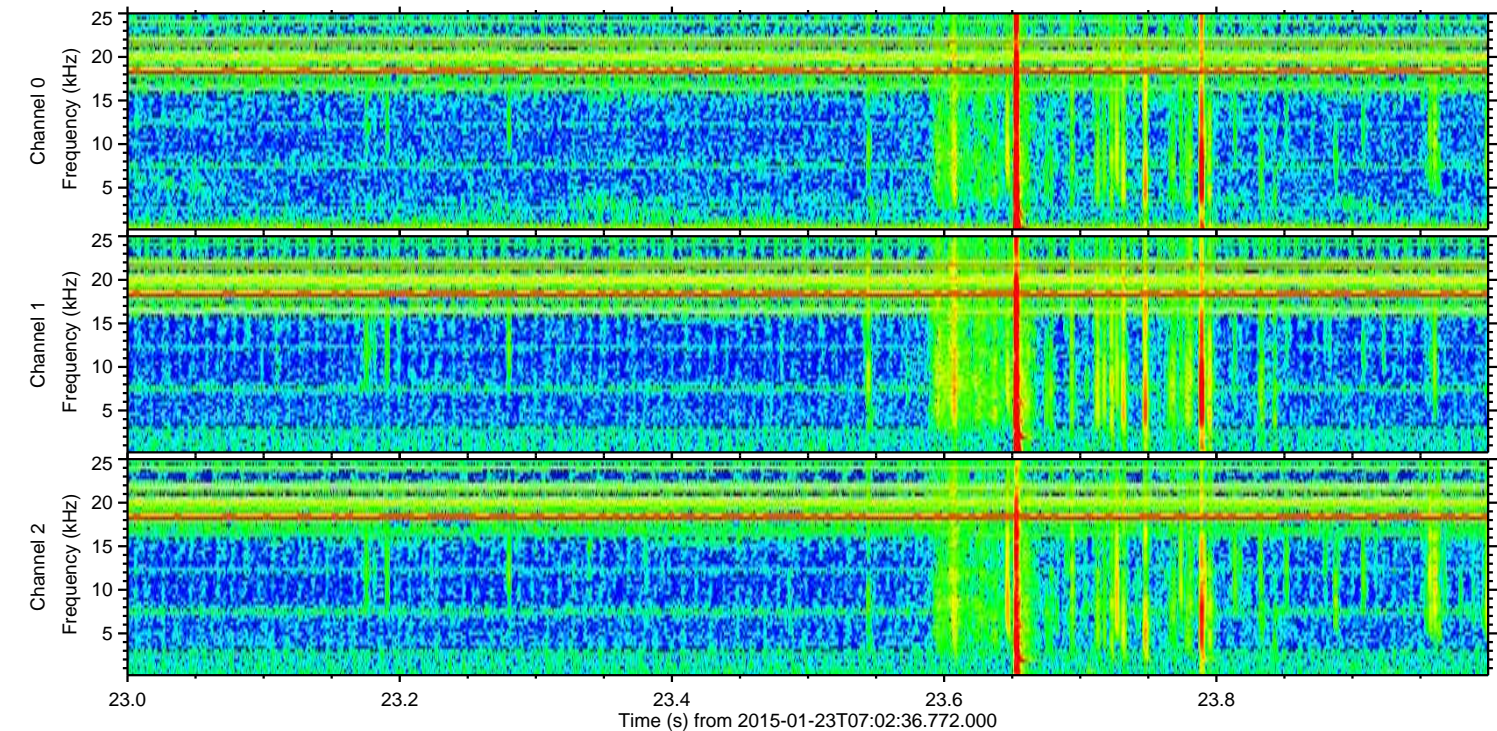
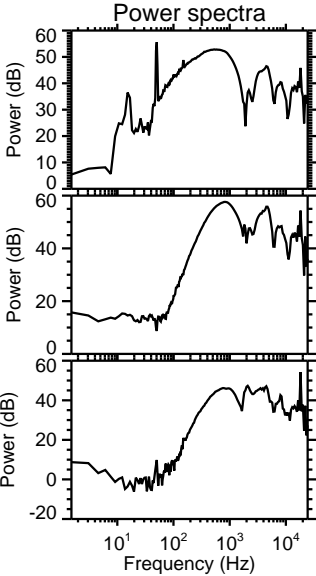
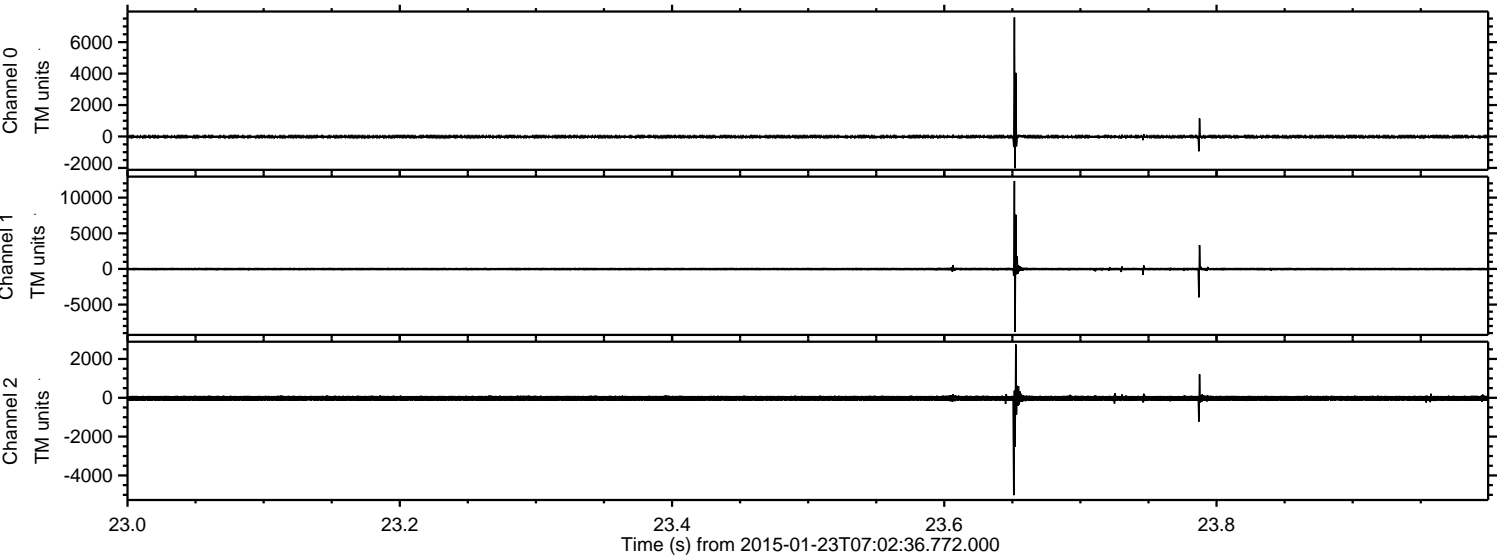


Processed Tue Feb 10 15:52:02 2015 by ELM ver.2012-10-06 from 001__elm20150123_070235__dat00.bin

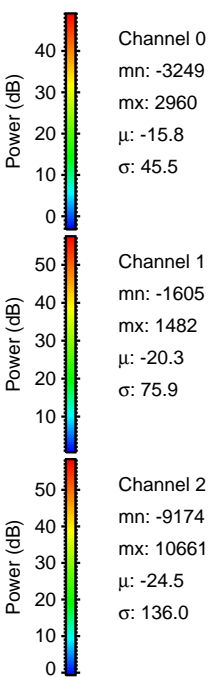
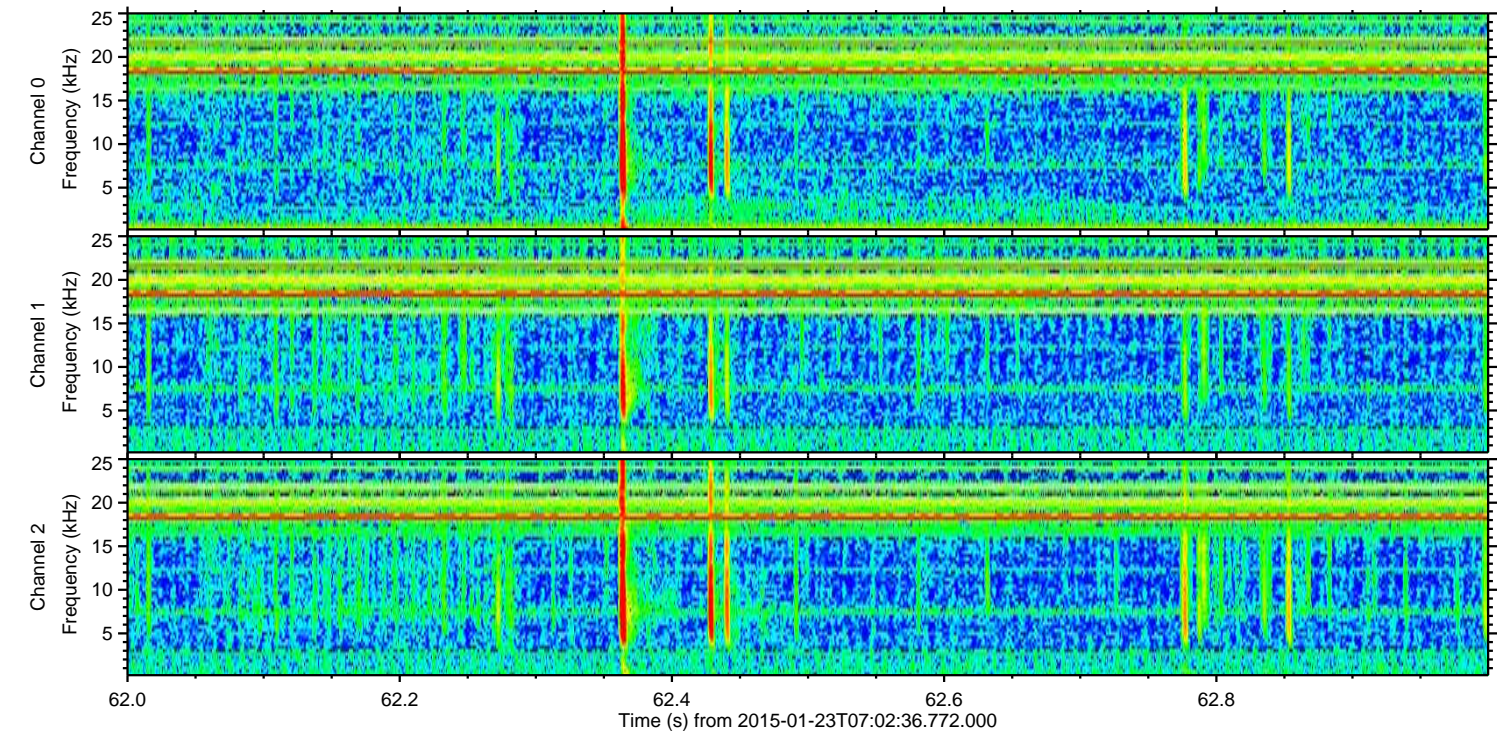
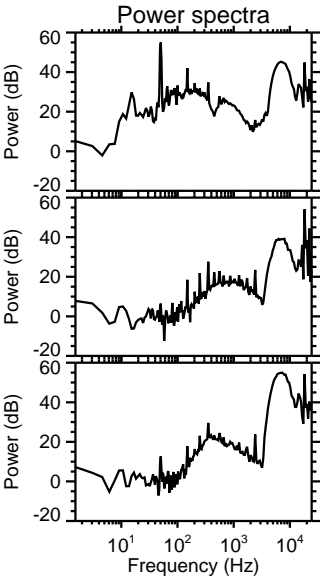
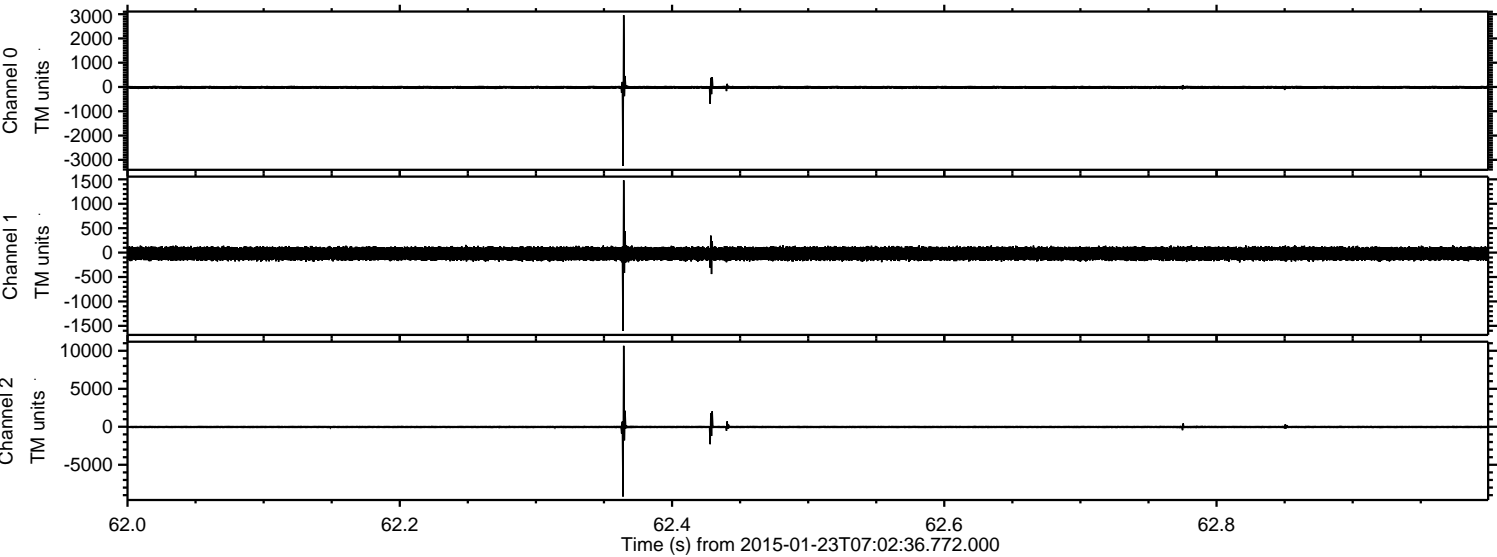


ELMAVAN 3D WAVEFORMS (Measured data sampled at 50 kHz) 49809 packets of 144 samples from 2015-01-23T07:02:36.772.000. Part 24/144

Processed Tue Feb 10 15:52:03 2015 by ELM ver.2012-10-06 from 001__elm20150123_070235__dat00.bin

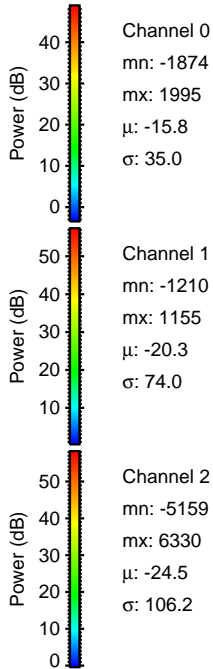
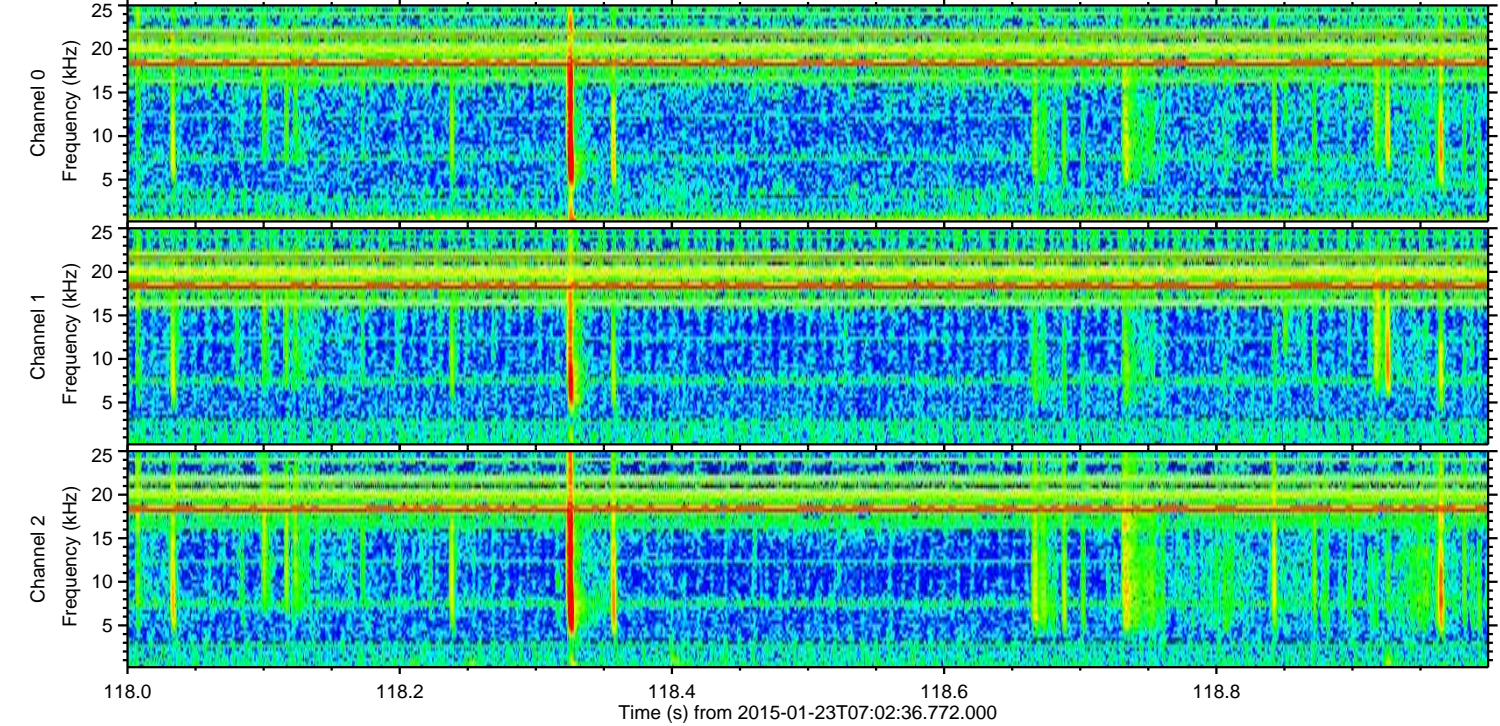
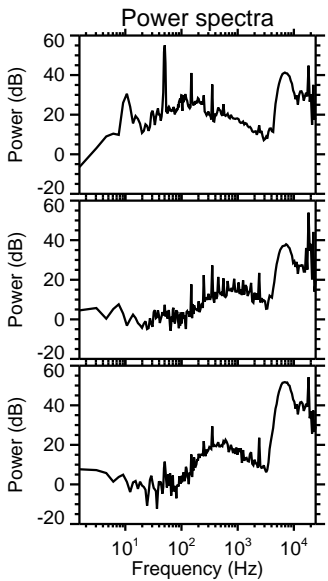
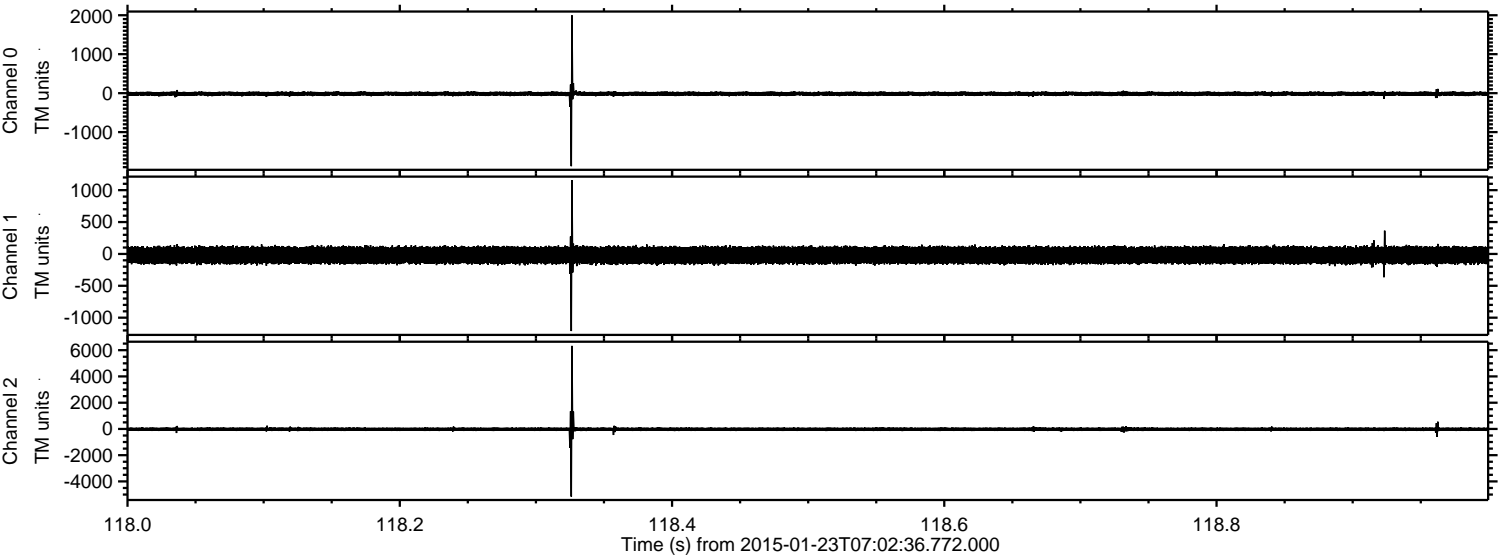


Processed Tue Feb 10 15:52:04 2015 by ELM ver.2012-10-06 from 001__elm20150123_070235__dat00.bin

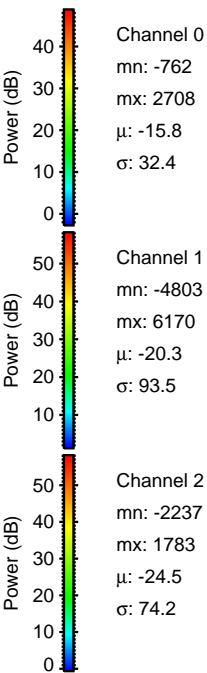
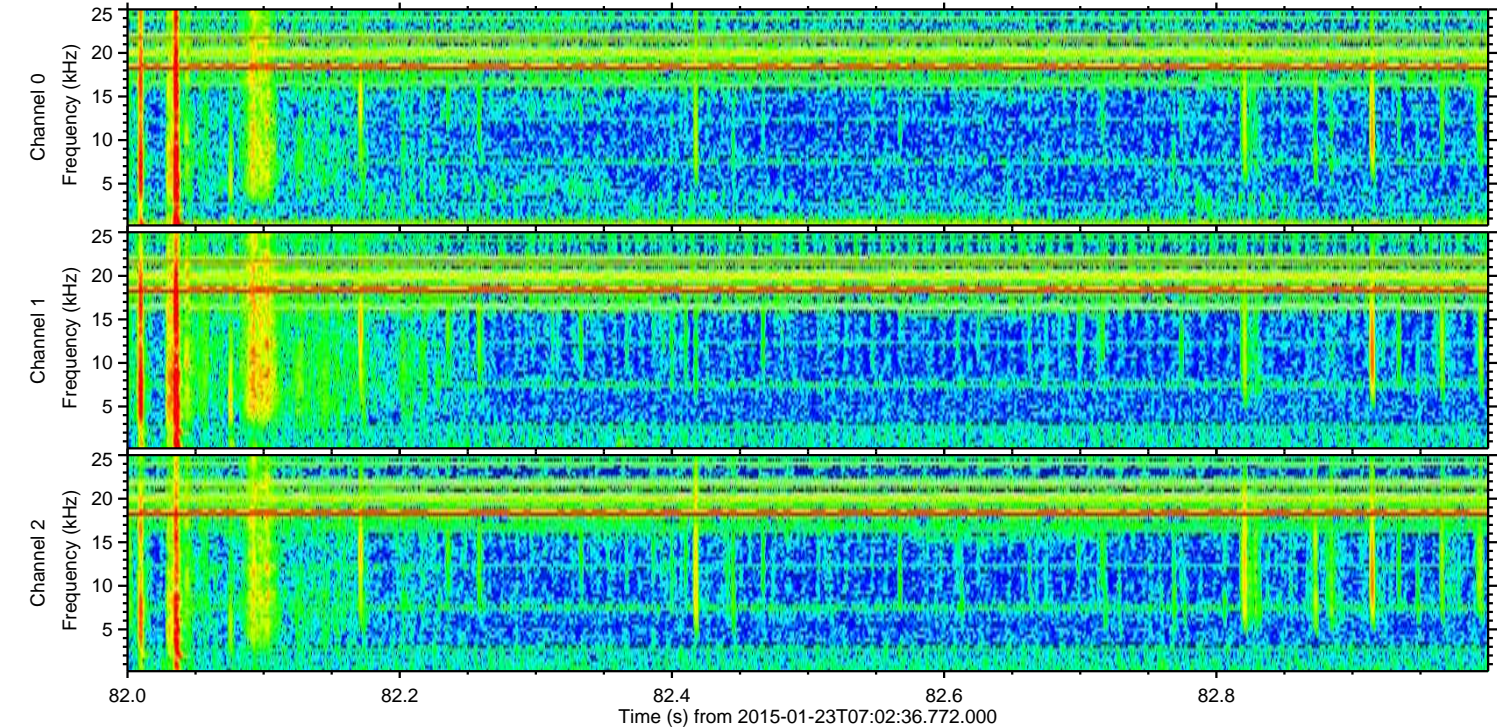
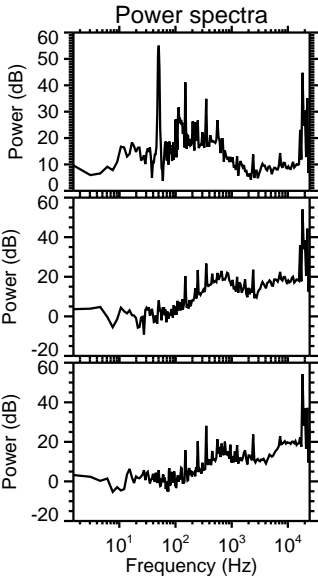
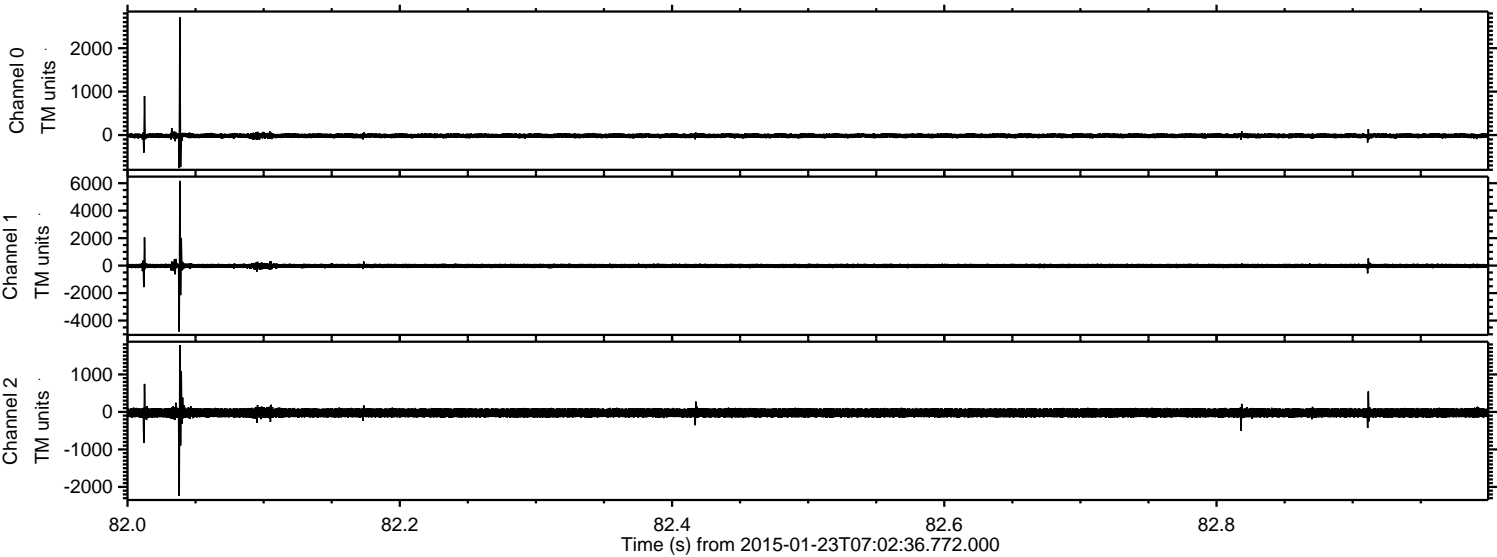


ELMAVAN 3D WAVEFORMS (Measured data sampled at 50 kHz) 49809 packets of 144 samples from 2015-01-23T07:02:36.772.000. Part 119/144

Processed Tue Feb 10 15:52:05 2015 by ELM ver.2012-10-06 from 001__elm20150123_070235__dat00.bin

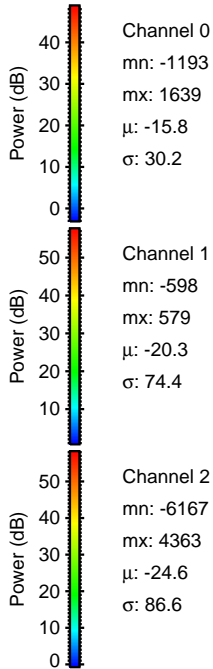
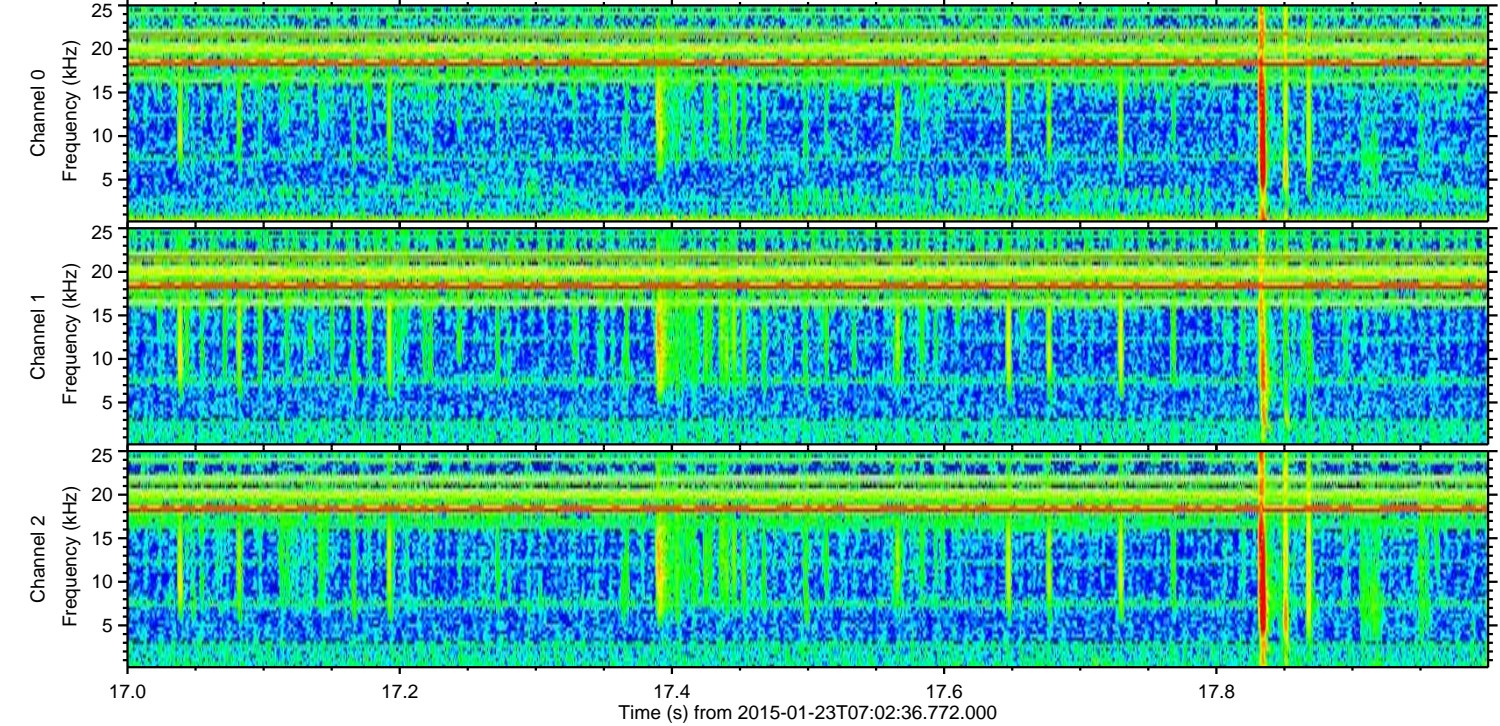
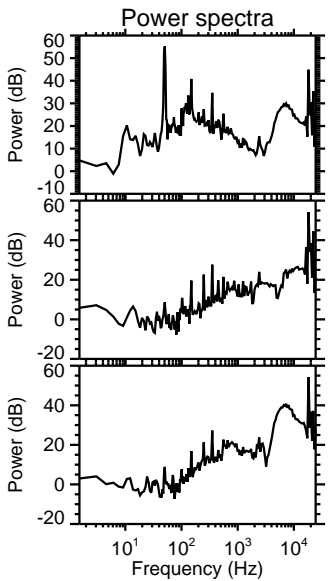
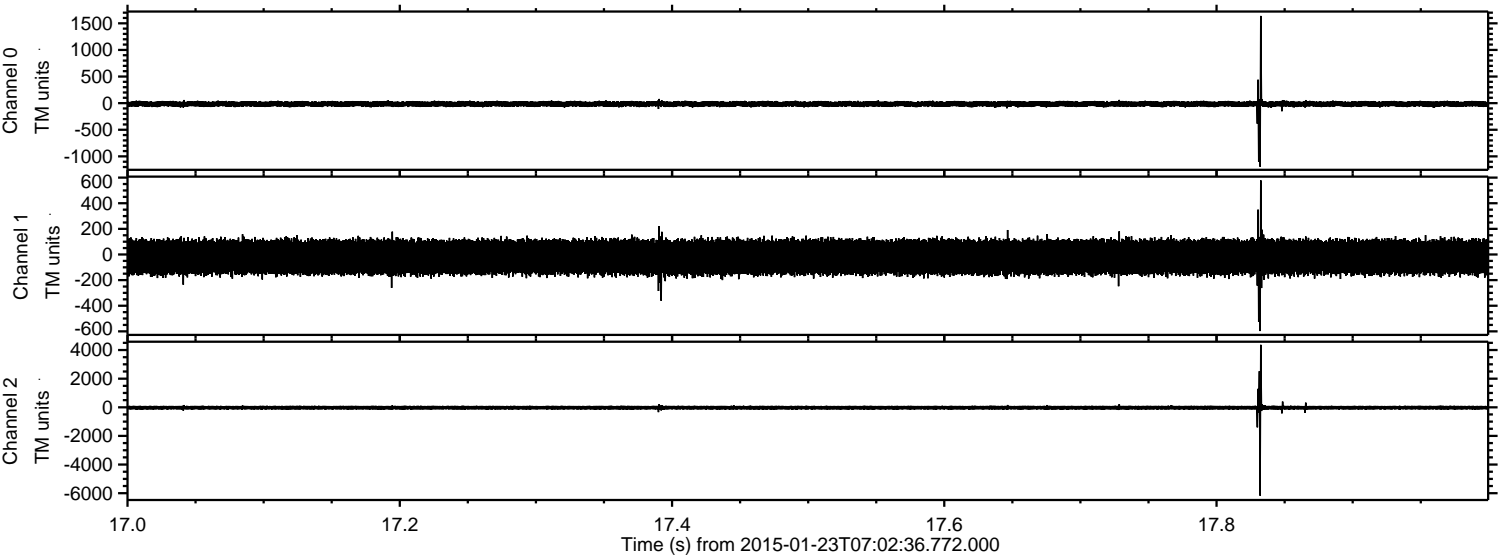


Processed Tue Feb 10 15:52:06 2015 by ELM ver.2012-10-06 from 001__elm20150123_070235__dat00.bin



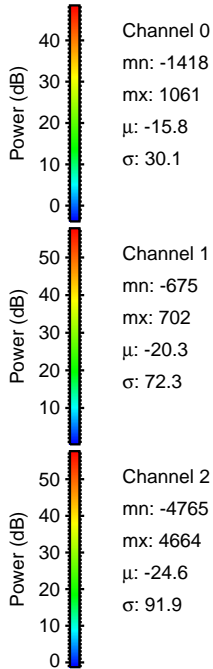
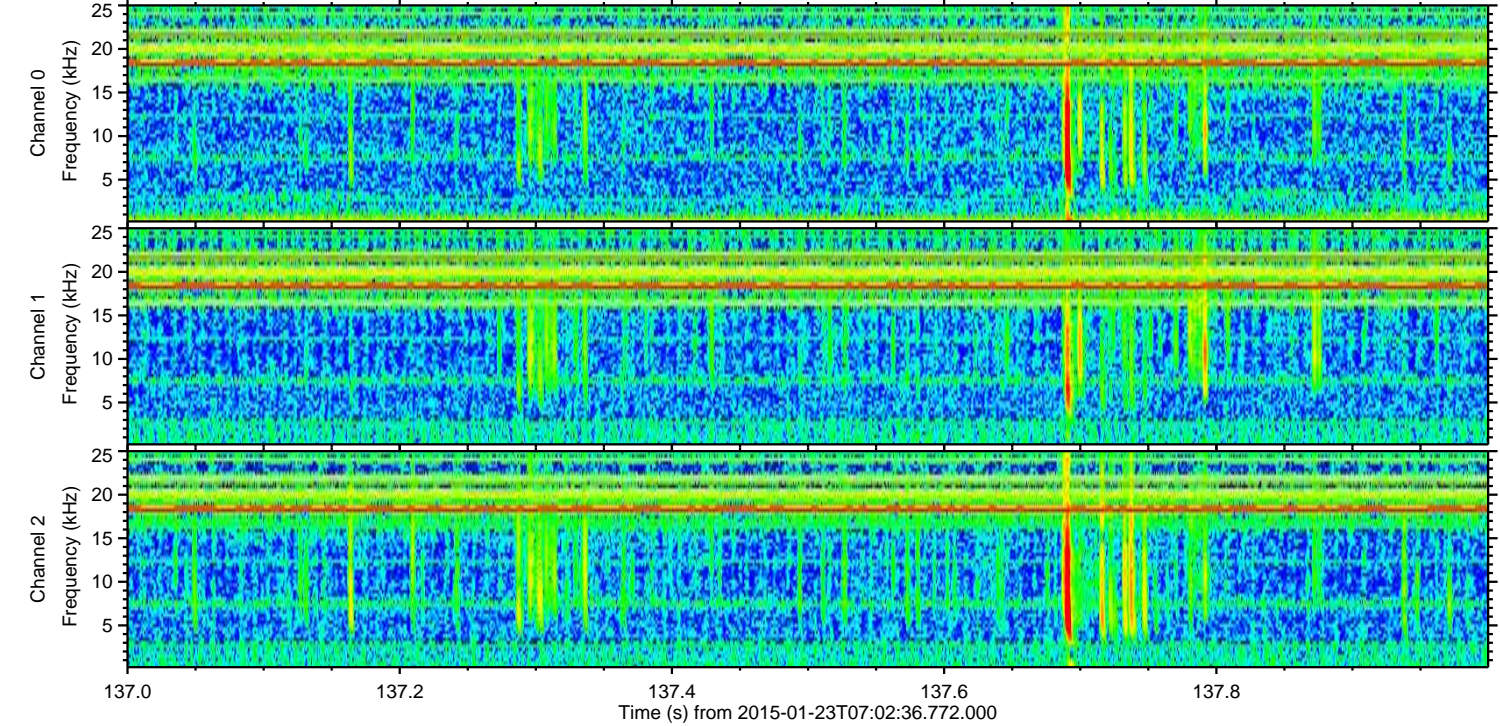
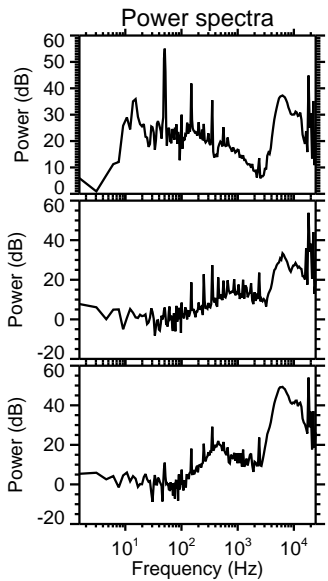
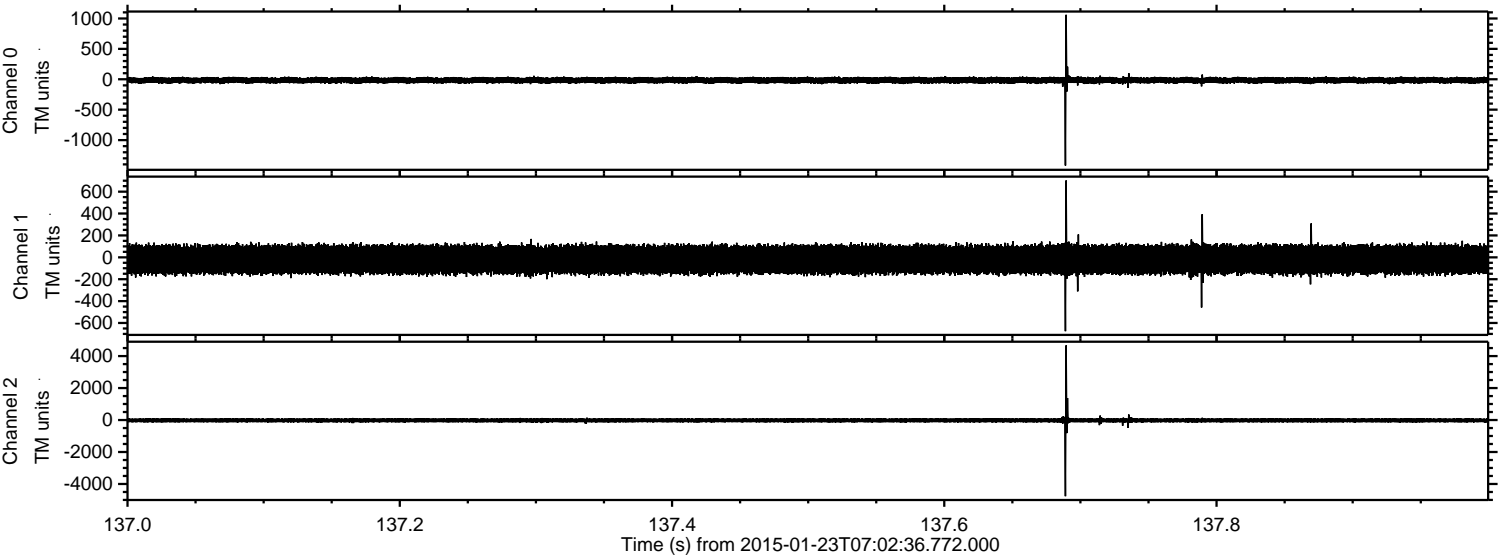
ELMAVAN 3D WAVEFORMS (Measured data sampled at 50 kHz) 49809 packets of 144 samples from 2015-01-23T07:02:36.772.000. Part 18/144

Processed Tue Feb 10 15:52:07 2015 by ELM ver.2012-10-06 from 001__elm20150123_070235__dat00.bin



ELMAVAN 3D WAVEFORMS (Measured data sampled at 50 kHz) 49809 packets of 144 samples from 2015-01-23T07:02:36.772.000. Part 138/144

Processed Tue Feb 10 15:52:09 2015 by ELM ver.2012-10-06 from 001__elm20150123_070235__dat00.bin

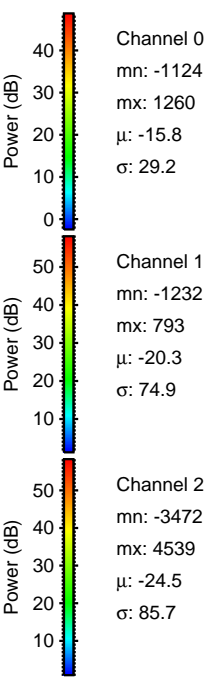
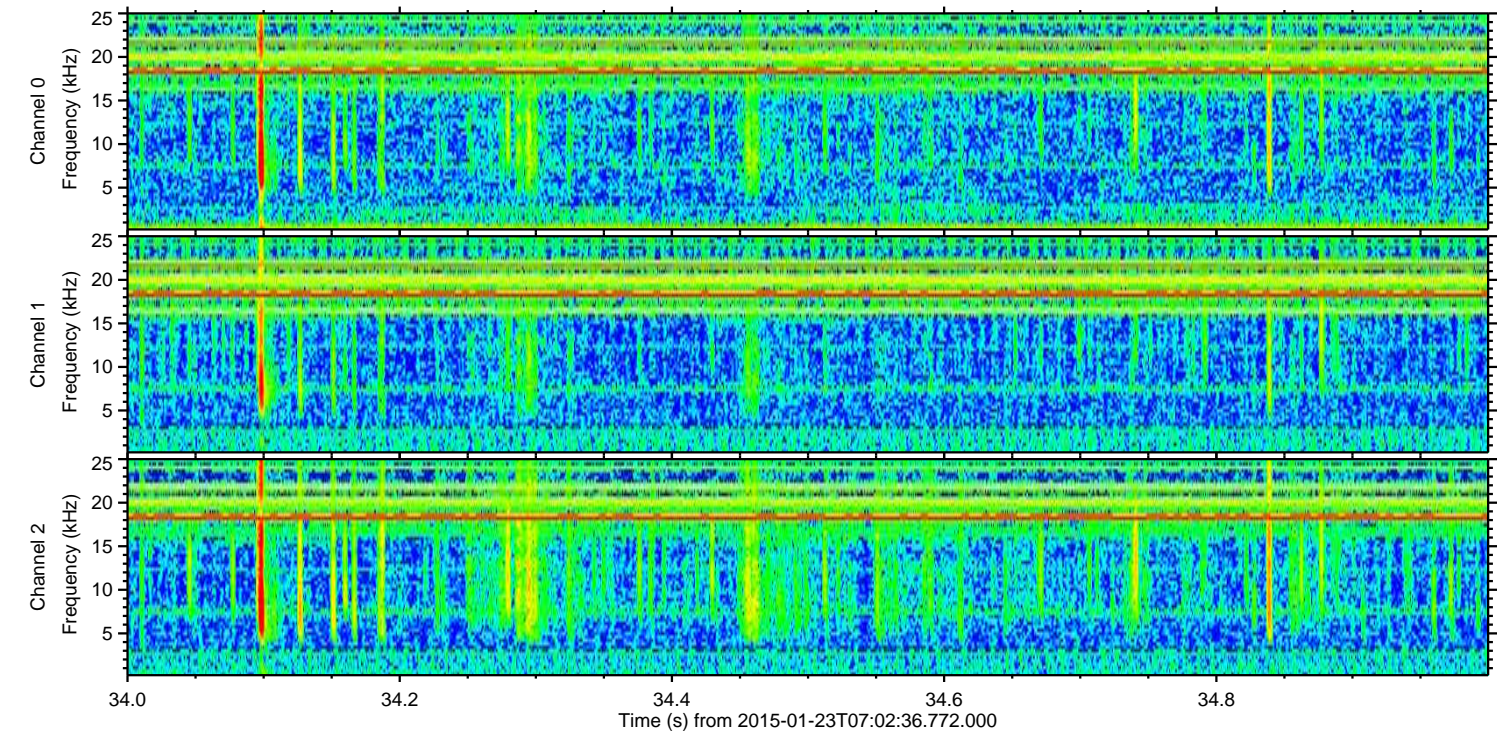
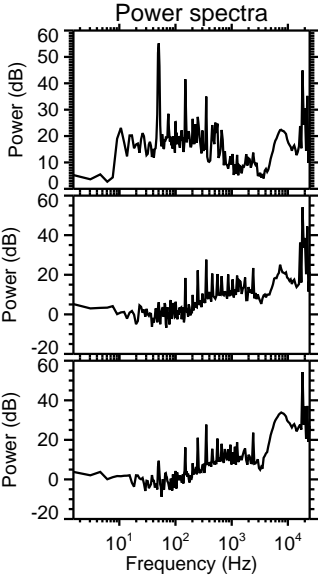
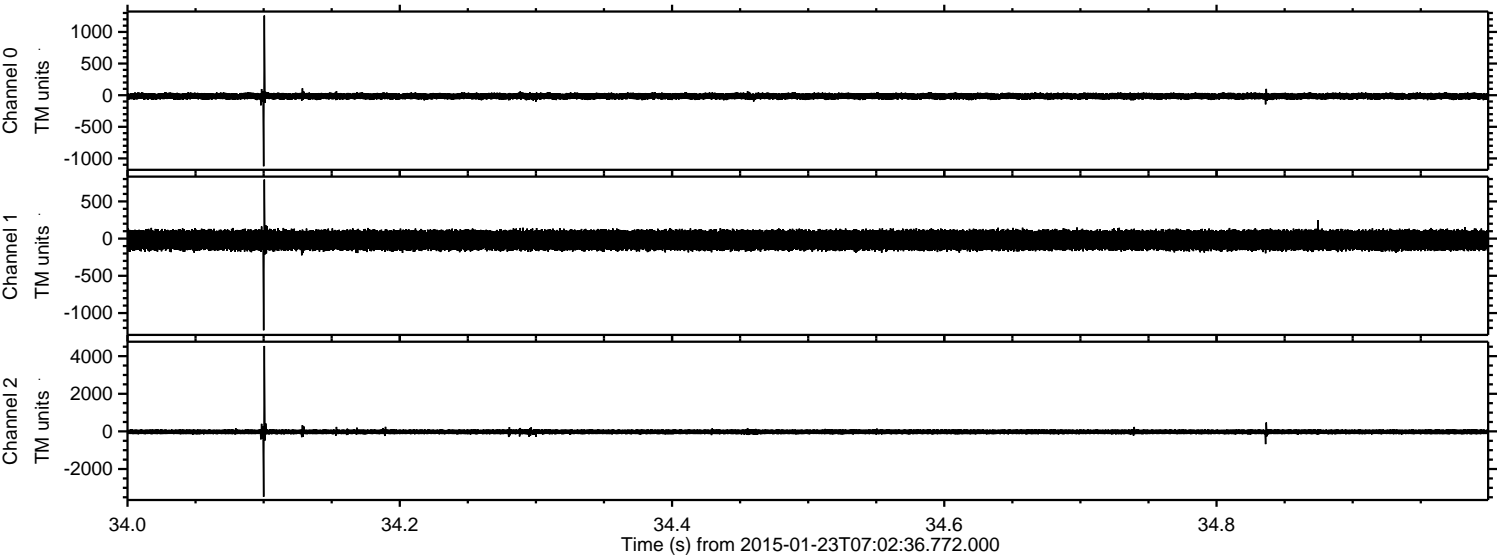


Channel 0
mn: -1418
mx: 1061
 μ : -15.8
 σ : 30.1

Channel 1
mn: -675
mx: 702
 μ : -20.3
 σ : 72.3

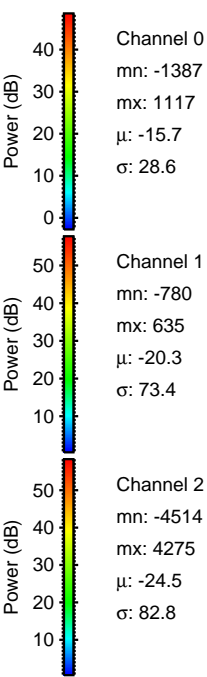
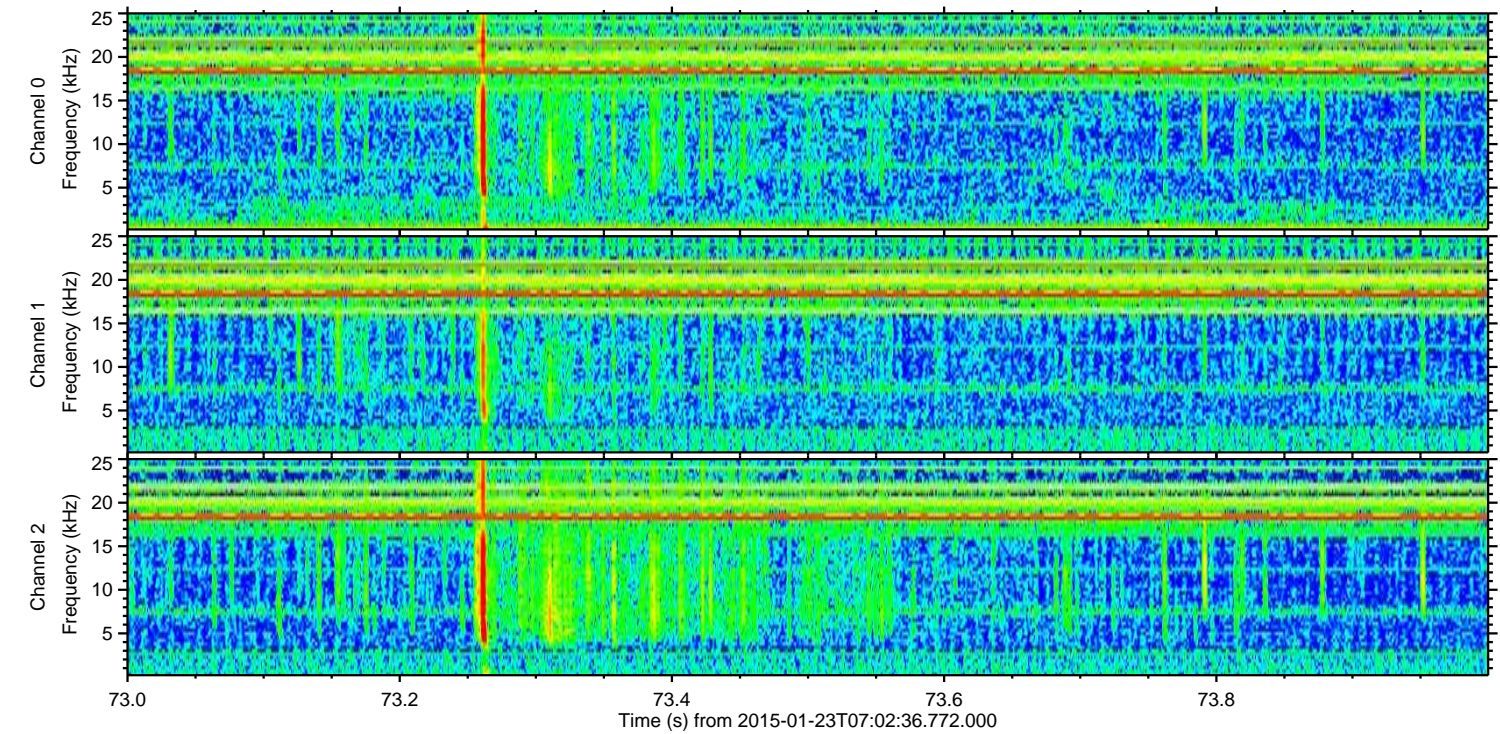
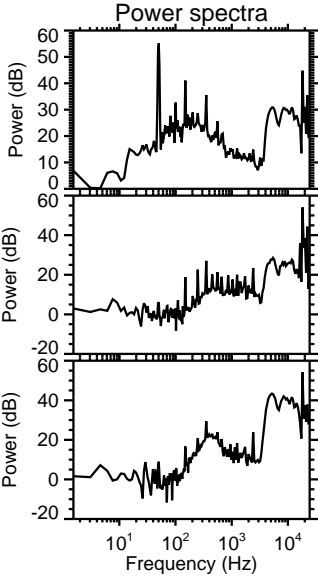
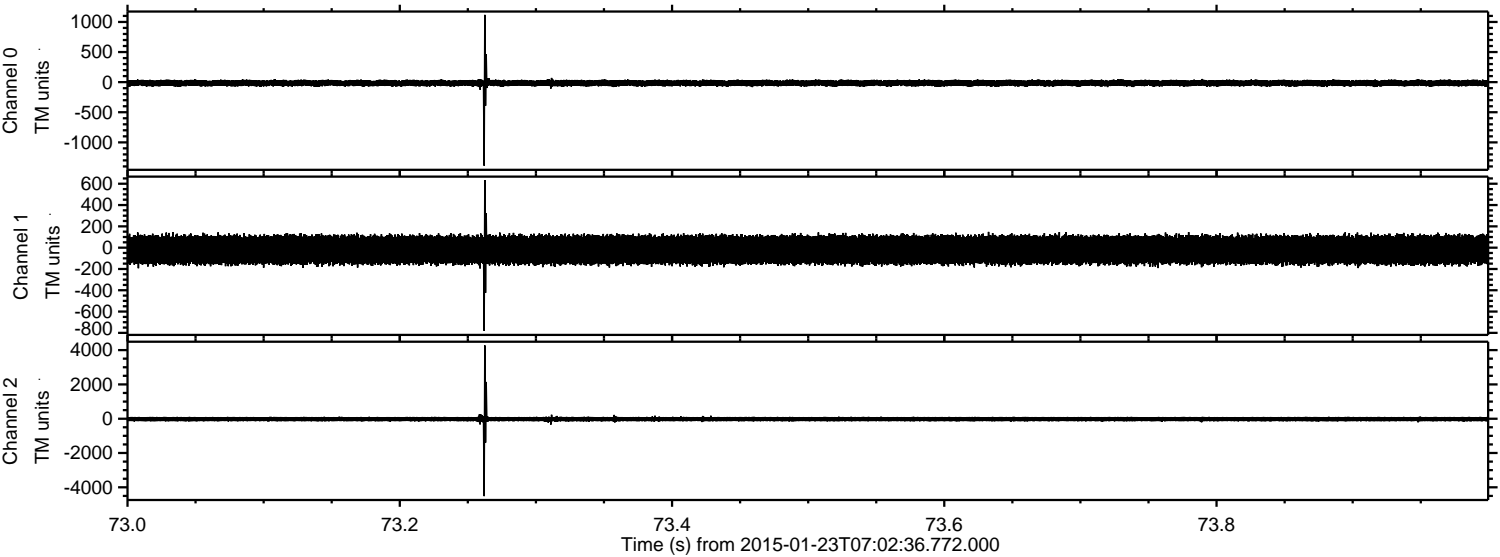
Channel 2
mn: -4765
mx: 4664
 μ : -24.6
 σ : 91.9

Processed Tue Feb 10 15:52:10 2015 by ELM ver.2012-10-06 from 001__elm20150123_070235__dat00.bin



ELMAVAN 3D WAVEFORMS (Measured data sampled at 50 kHz) 49809 packets of 144 samples from 2015-01-23T07:02:36.772.000. Part 74/144

Processed Tue Feb 10 15:52:11 2015 by ELM ver.2012-10-06 from 001__elm20150123_070235__dat00.bin



Channel 0
mn: -1387
mx: 1117
 μ : -15.7
 σ : 28.6

Channel 1
mn: -780
mx: 635
 μ : -20.3
 σ : 73.4

Channel 2
mn: -4514
mx: 4275
 μ : -24.5
 σ : 82.8

ELMAVAN 3D WAVEFORMS (Measured data sampled at 50 kHz) 49809 packets of 144 samples from 2015-01-23T07:02:36.772.000. Part 108/144

