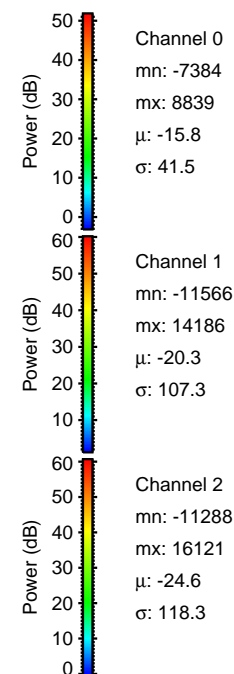
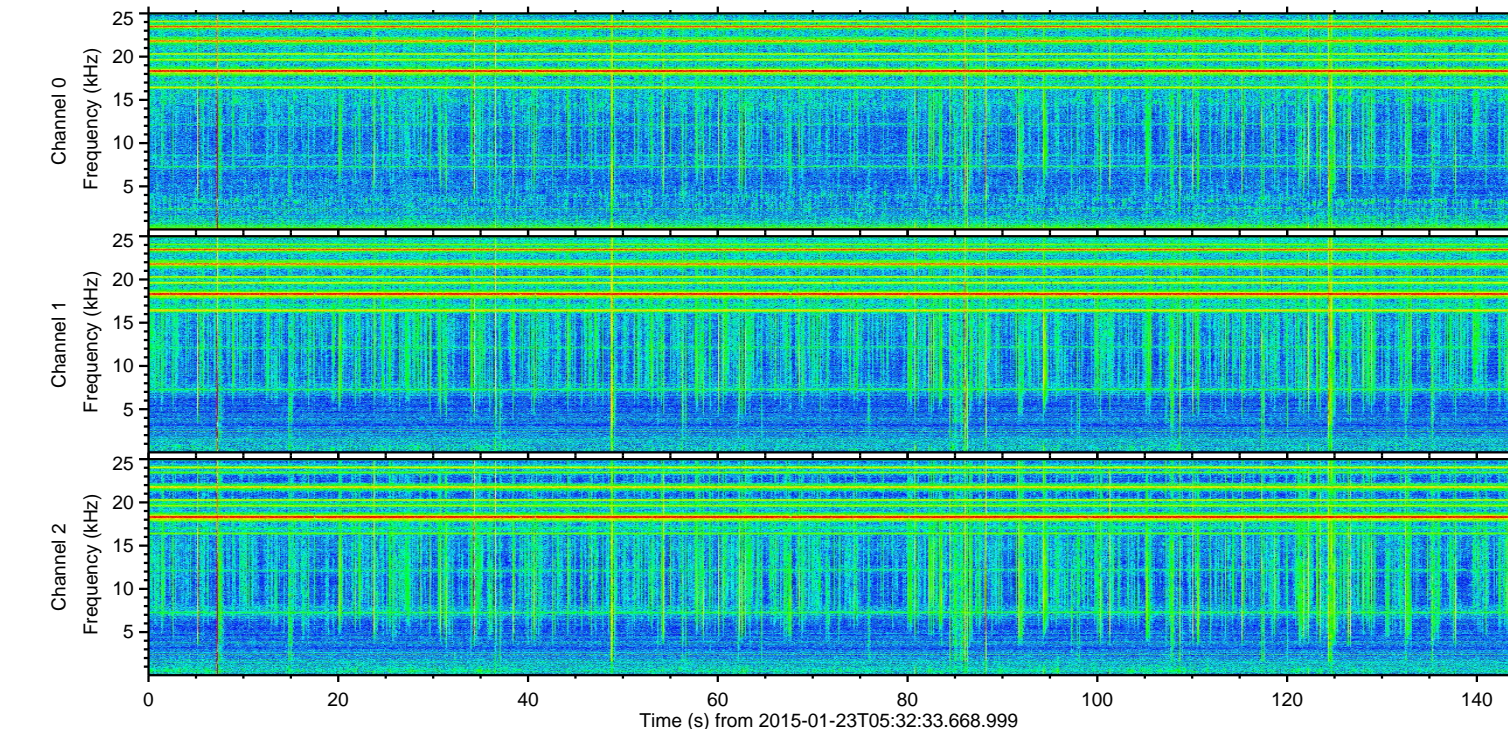
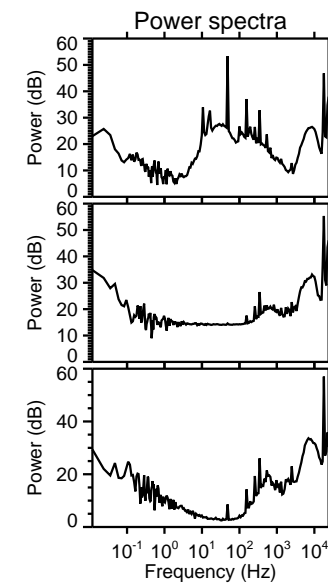
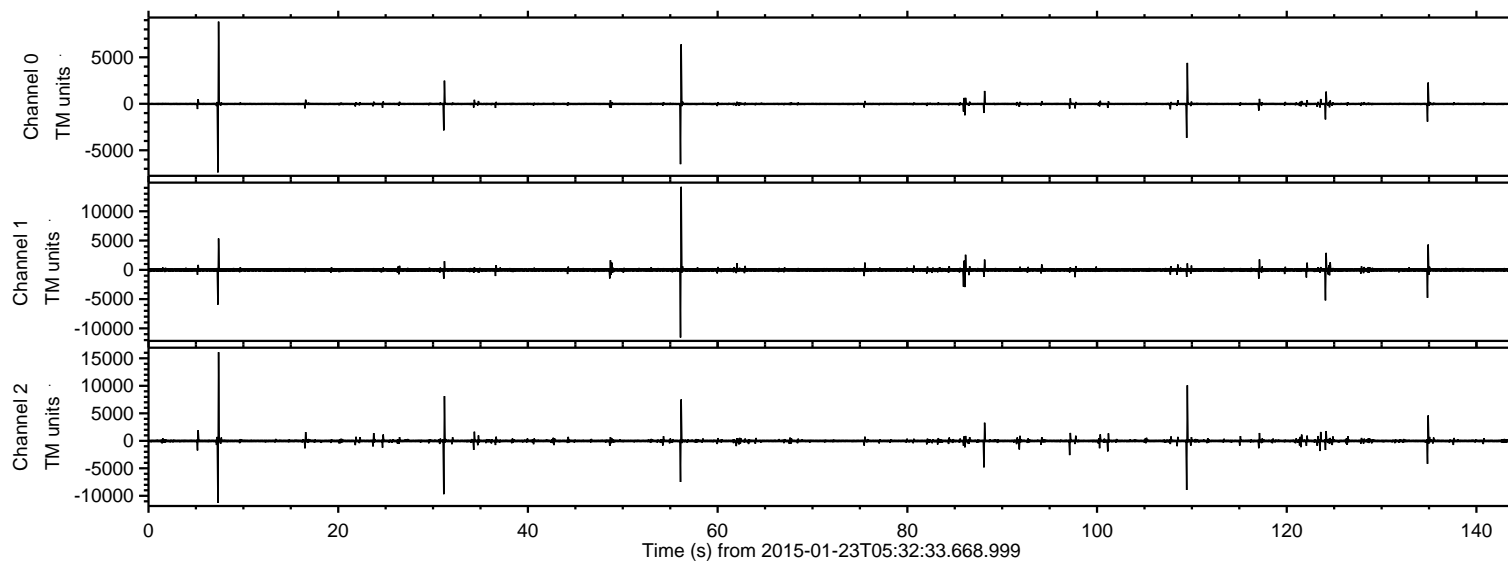
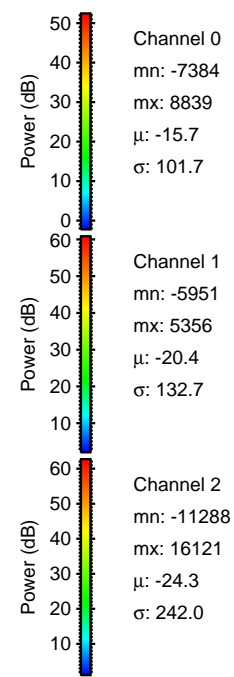
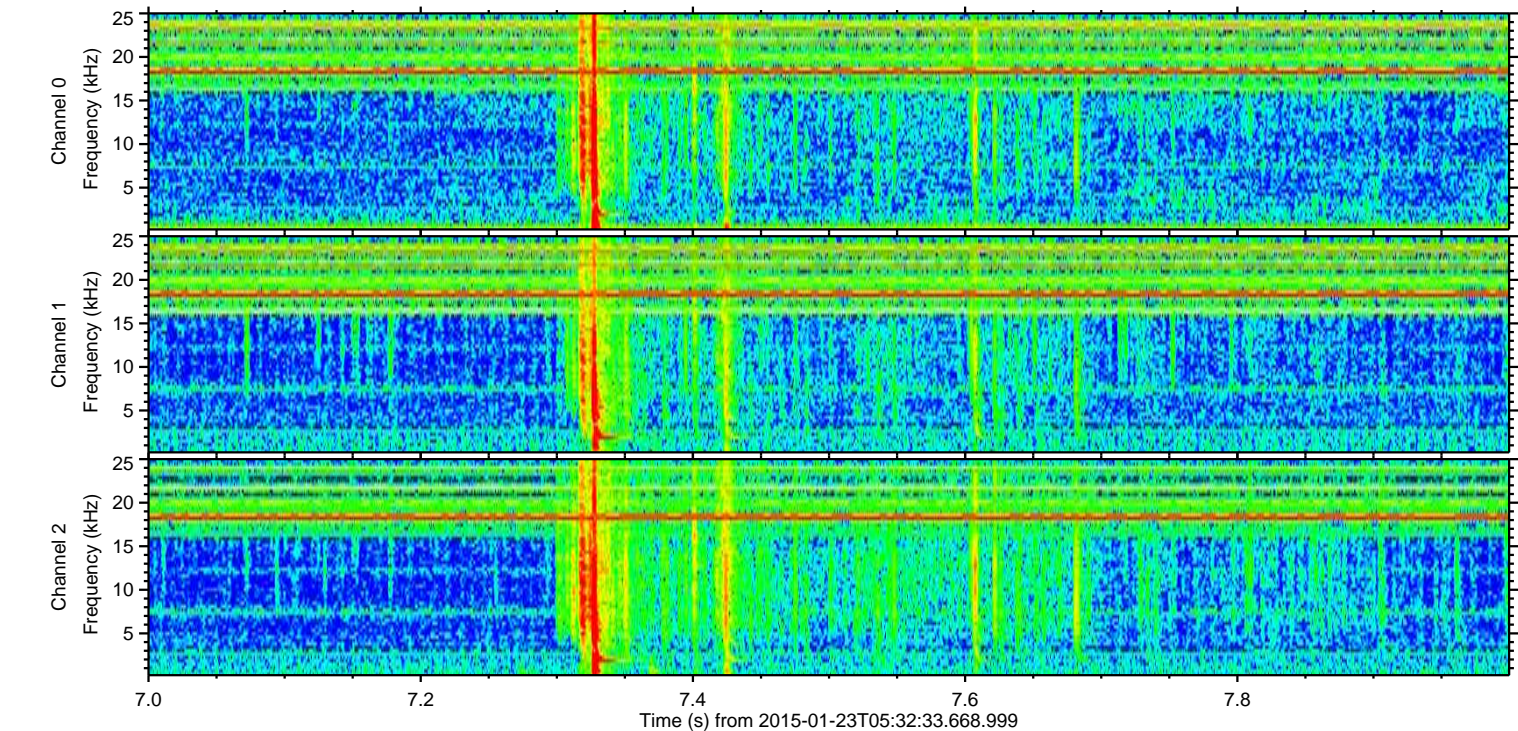
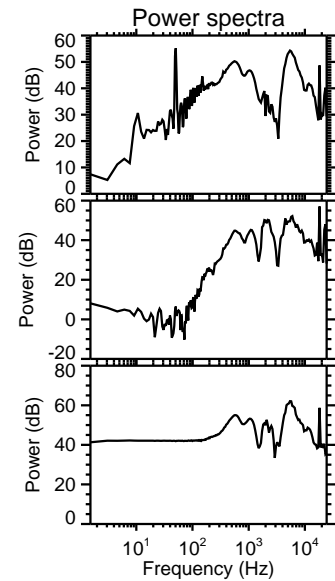
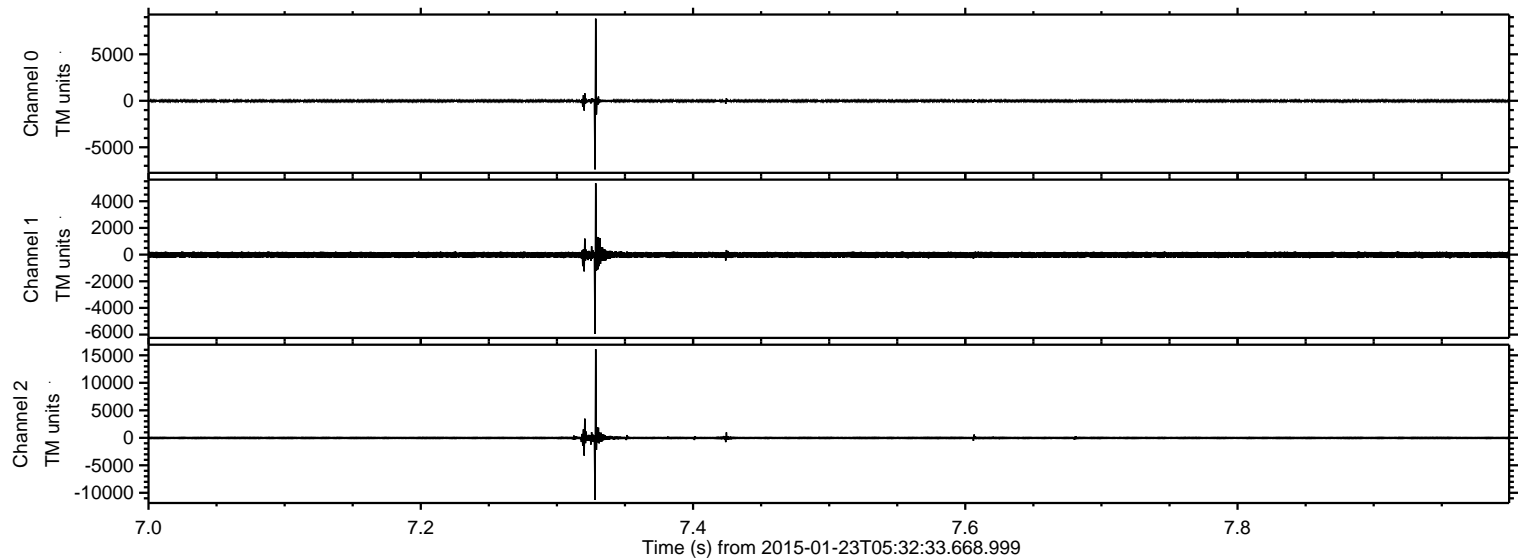


ELMAVAN 3D WAVEFORMS (Measured data sampled at 50 kHz) 49808 packets of 144 samples from 2015-01-23T05:32:33.668.999.

Processed Tue Feb 10 15:31:14 2015 by ELM ver.2012-10-06 from 001__elm20150123_053232__dat00.bin

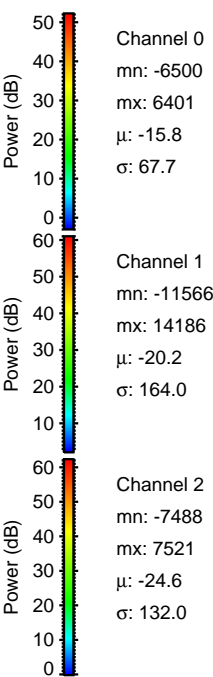
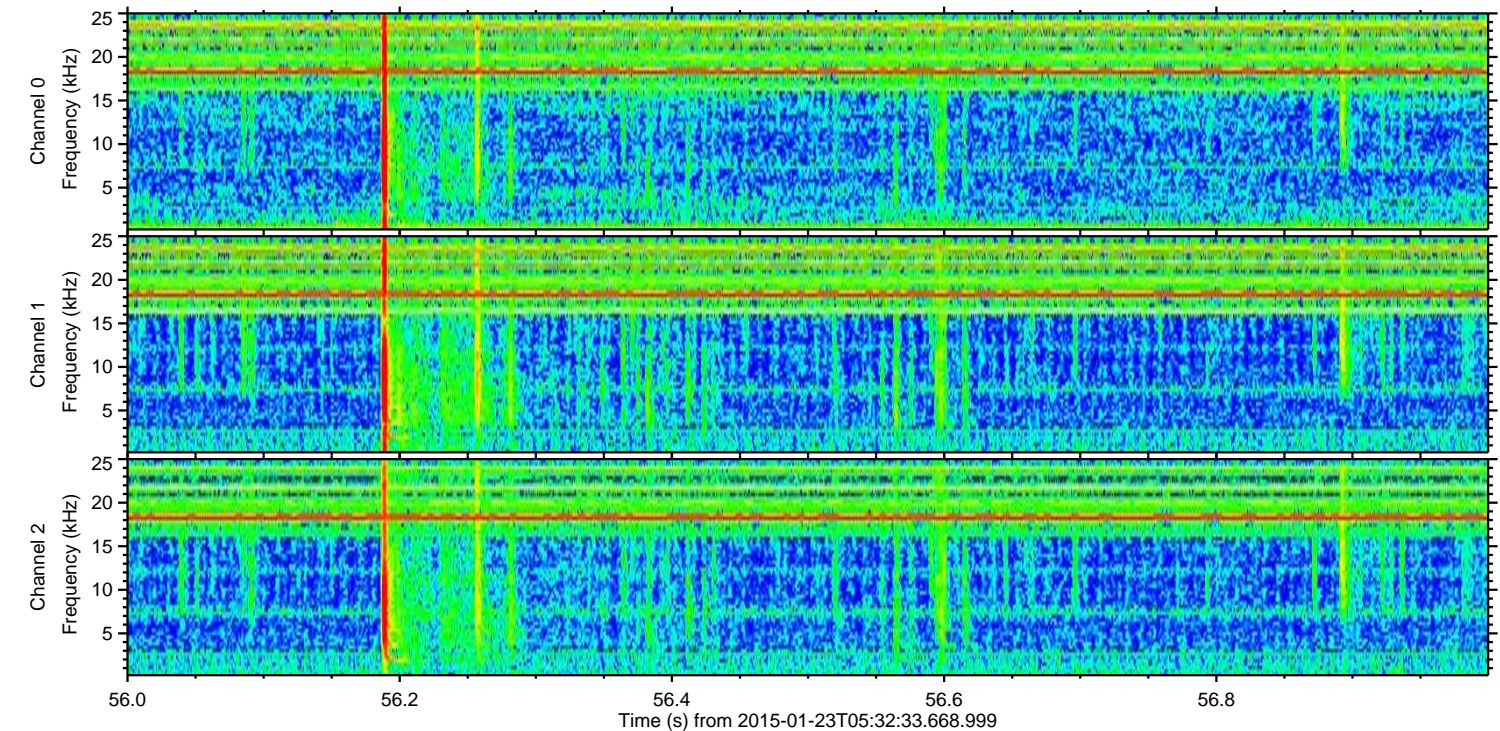
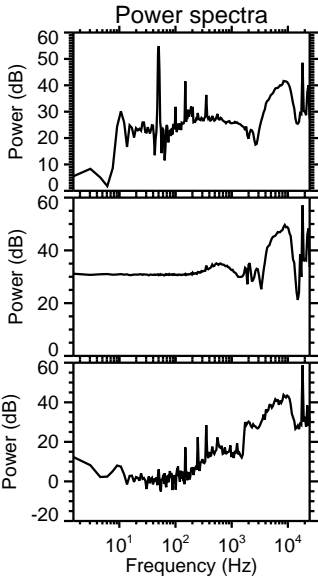
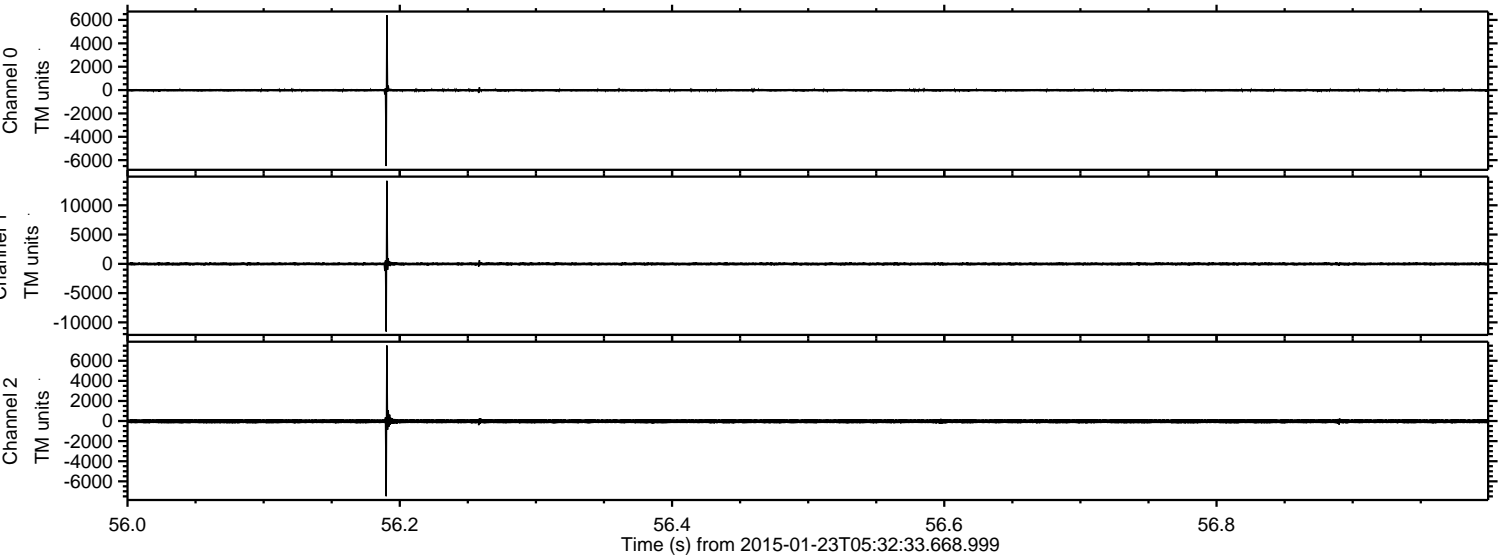


Processed Tue Feb 10 15:31:26 2015 by ELM ver.2012-10-06 from 001__elm20150123_053232__dat00.bin



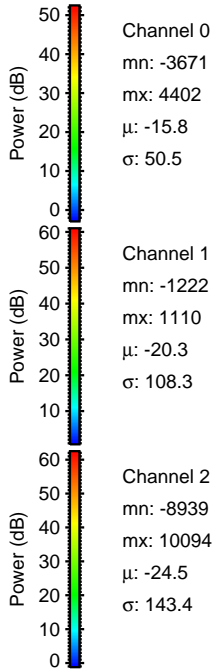
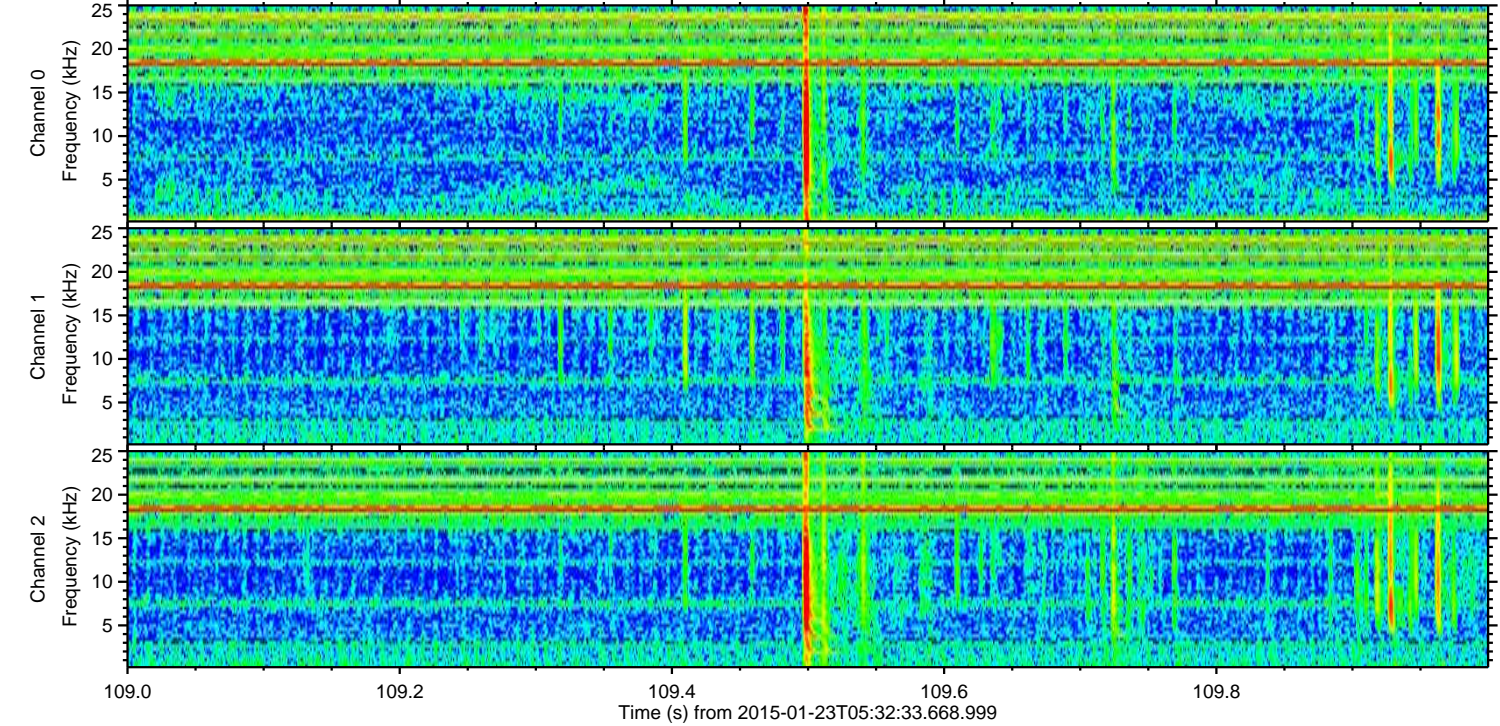
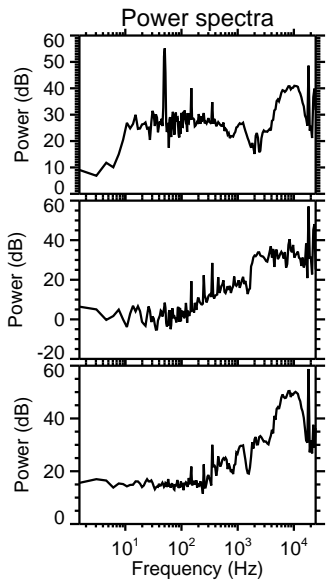
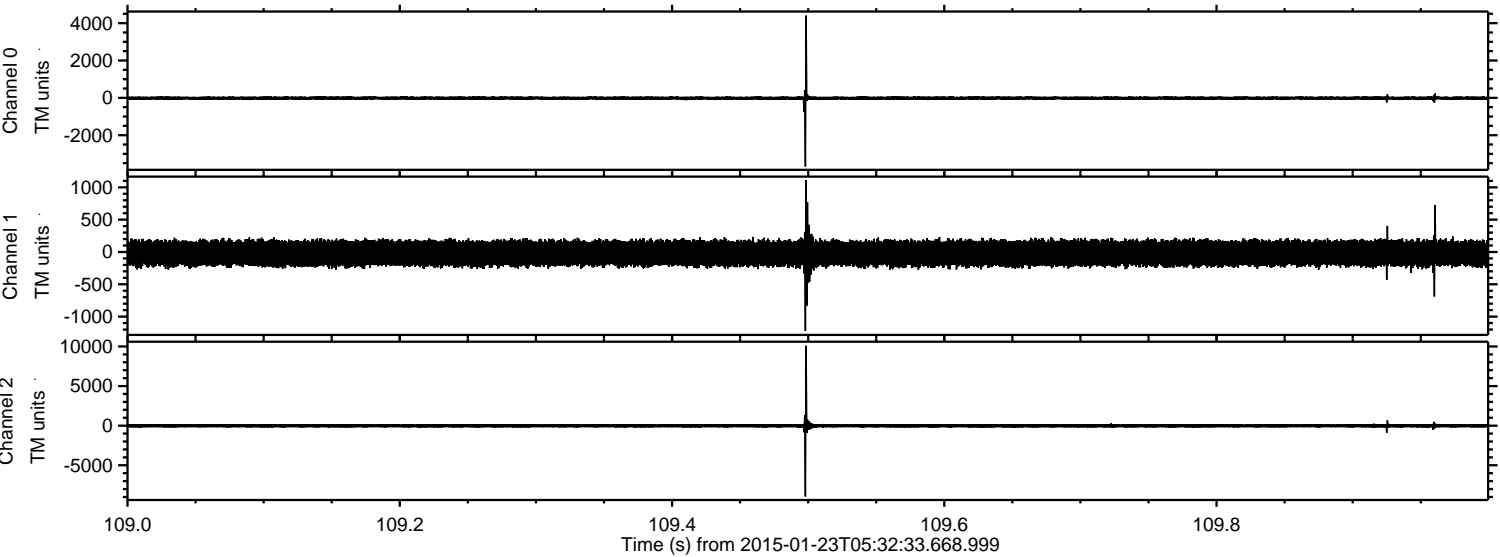
ELMAVAN 3D WAVEFORMS (Measured data sampled at 50 kHz) 49808 packets of 144 samples from 2015-01-23T05:32:33.668.999. Part 57/144

Processed Tue Feb 10 15:31:27 2015 by ELM ver.2012-10-06 from 001__elm20150123_053232__dat00.bin



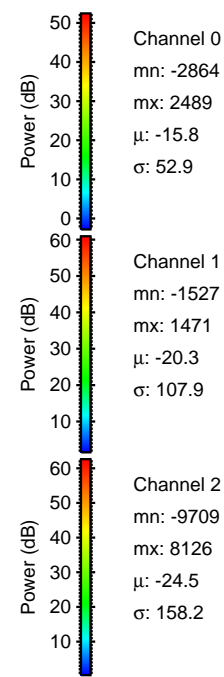
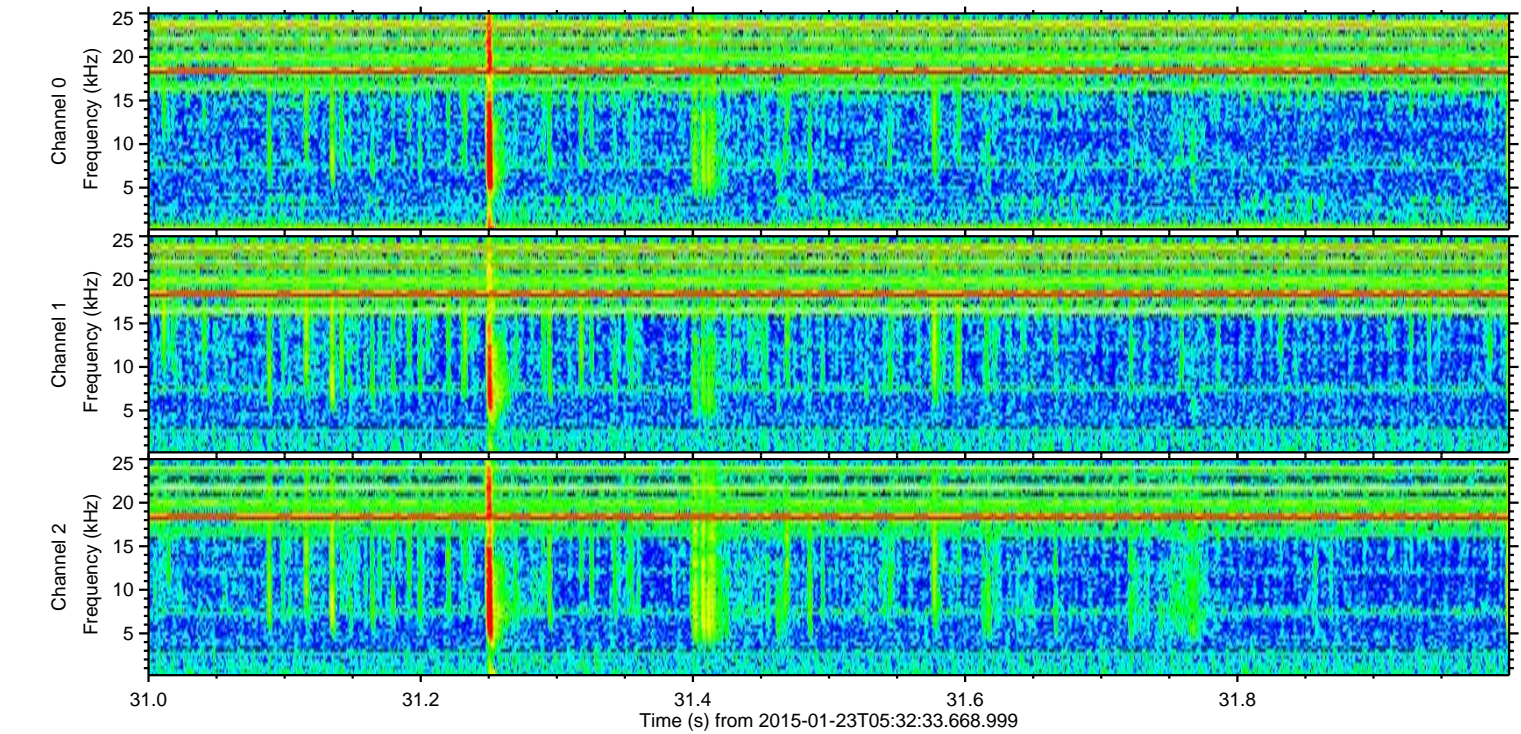
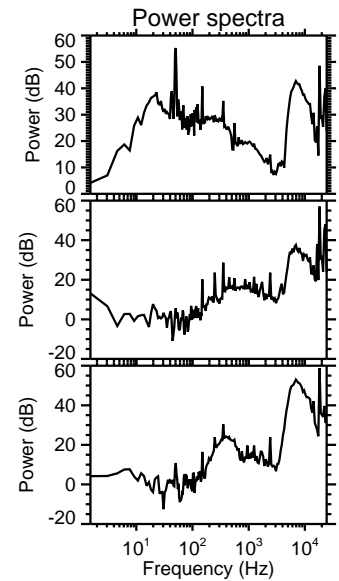
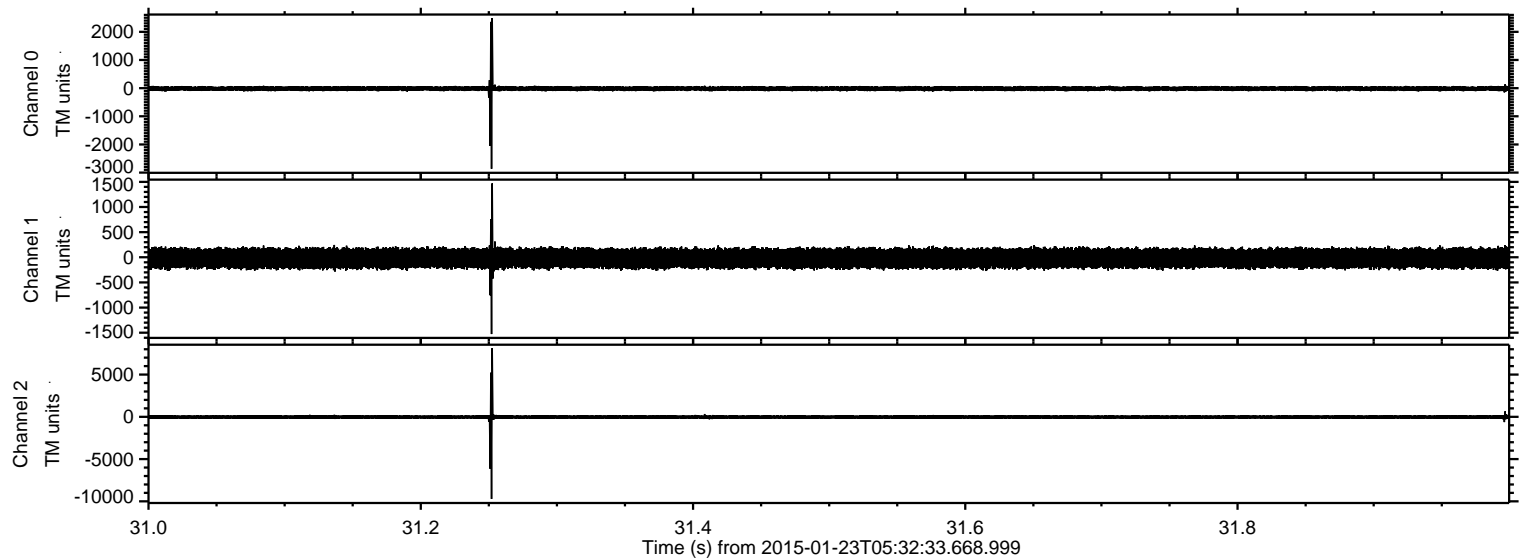
ELMAVAN 3D WAVEFORMS (Measured data sampled at 50 kHz) 49808 packets of 144 samples from 2015-01-23T05:32:33.668.999. Part 110/144

Processed Tue Feb 10 15:31:28 2015 by ELM ver.2012-10-06 from 001__elm20150123_053232__dat00.bin



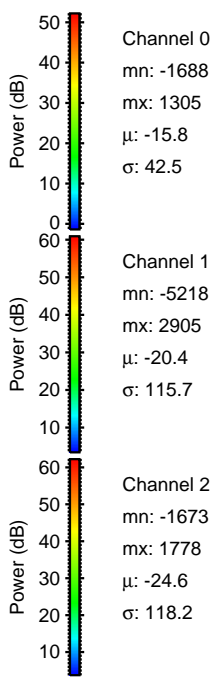
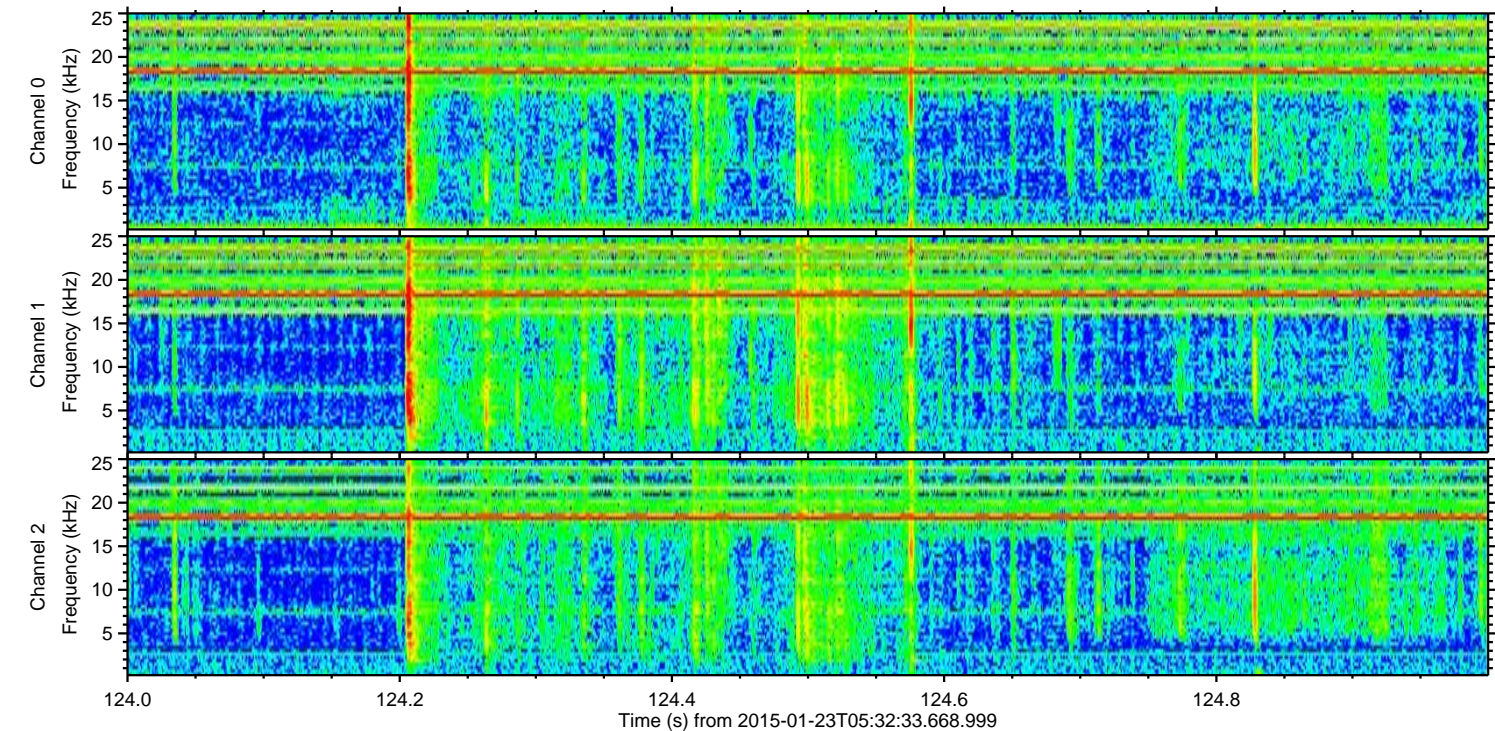
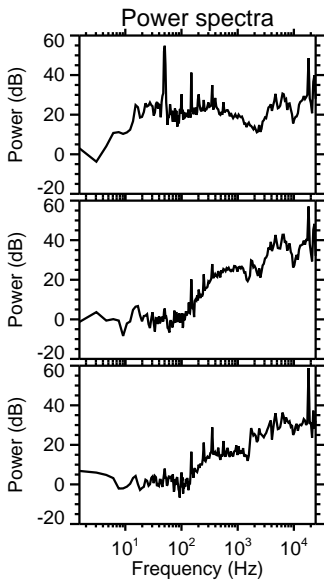
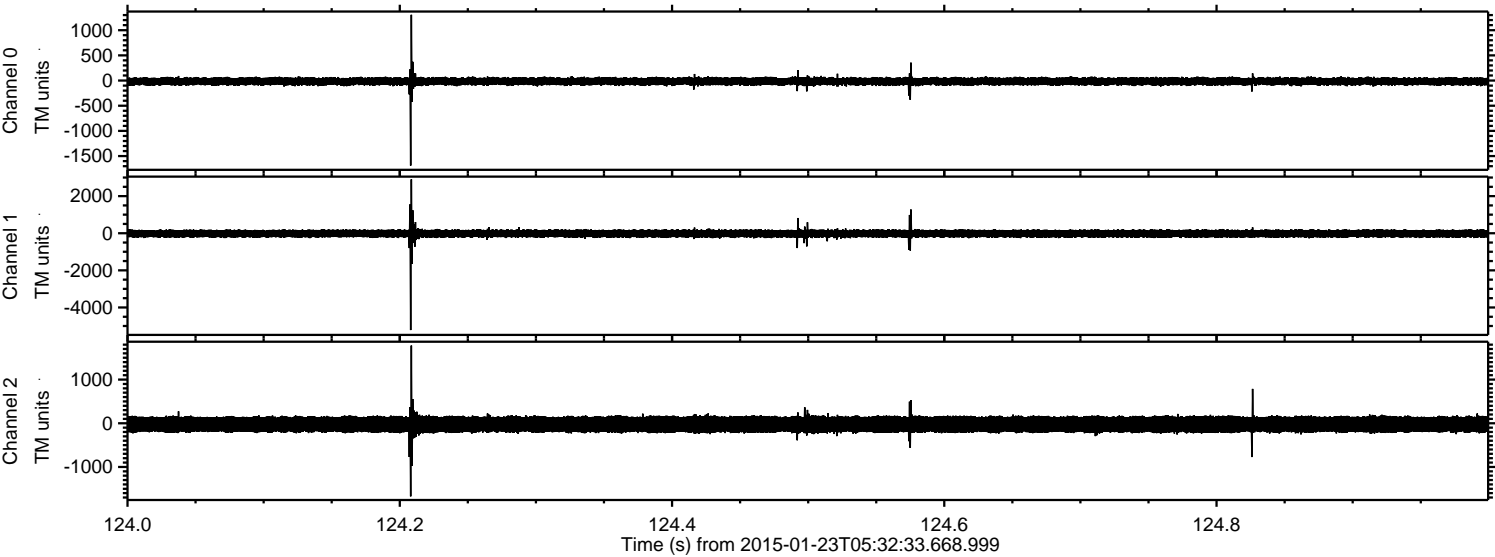
ELMAVAN 3D WAVEFORMS (Measured data sampled at 50 kHz) 49808 packets of 144 samples from 2015-01-23T05:32:33.668.999. Part 32/144

Processed Tue Feb 10 15:31:29 2015 by ELM ver.2012-10-06 from 001__elm20150123_053232__dat00.bin



ELMAVAN 3D WAVEFORMS (Measured data sampled at 50 kHz) 49808 packets of 144 samples from 2015-01-23T05:32:33.668.999. Part 125/144

Processed Tue Feb 10 15:31:30 2015 by ELM ver.2012-10-06 from 001__elm20150123_053232__dat00.bin



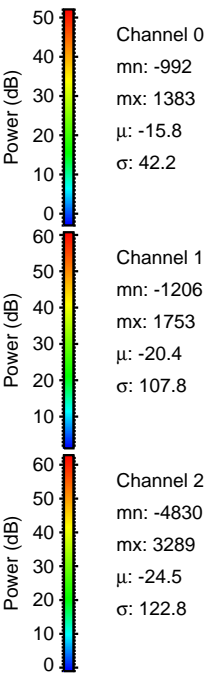
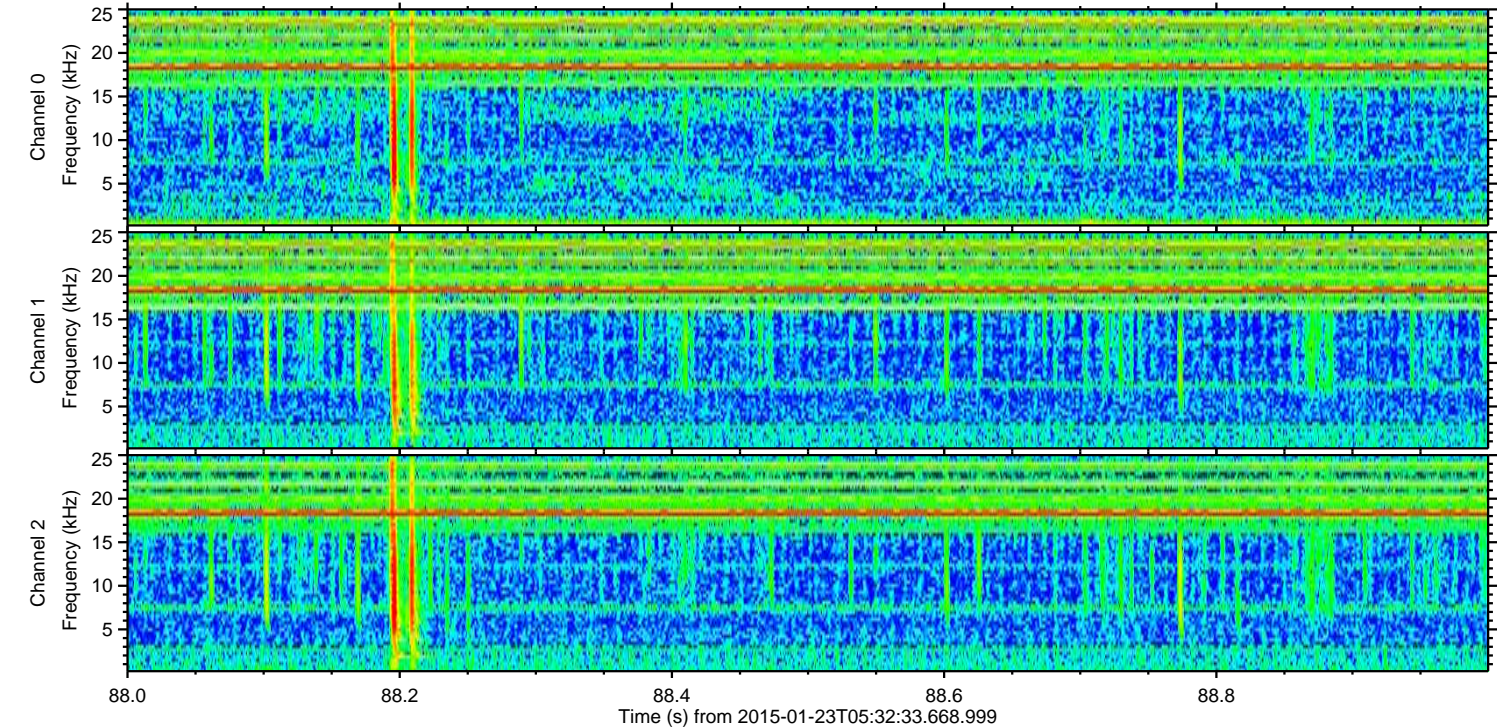
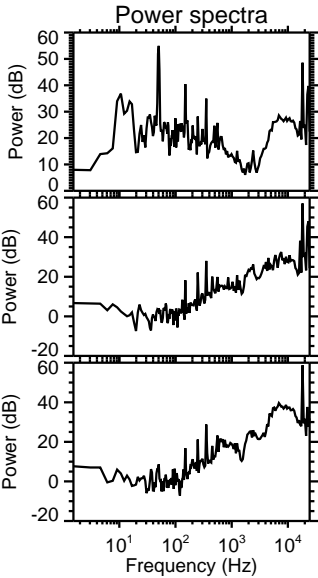
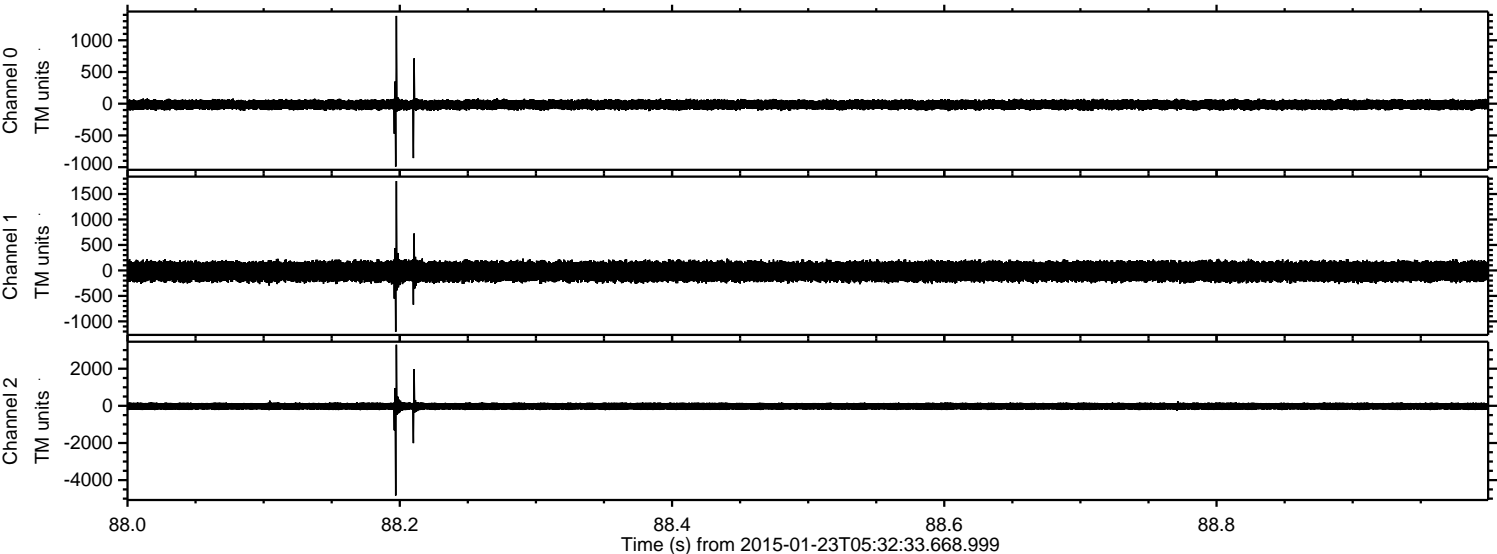
Channel 0
mn: -1688
mx: 1305
 μ : -15.8
 σ : 42.5

Channel 1
mn: -5218
mx: 2905
 μ : -20.4
 σ : 115.7

Channel 2
mn: -1673
mx: 1778
 μ : -24.6
 σ : 118.2

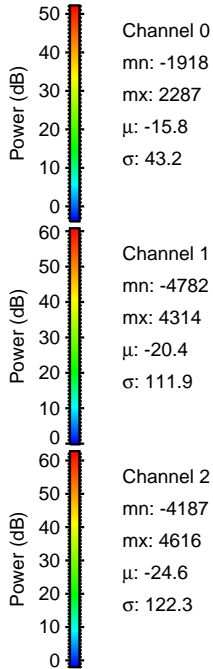
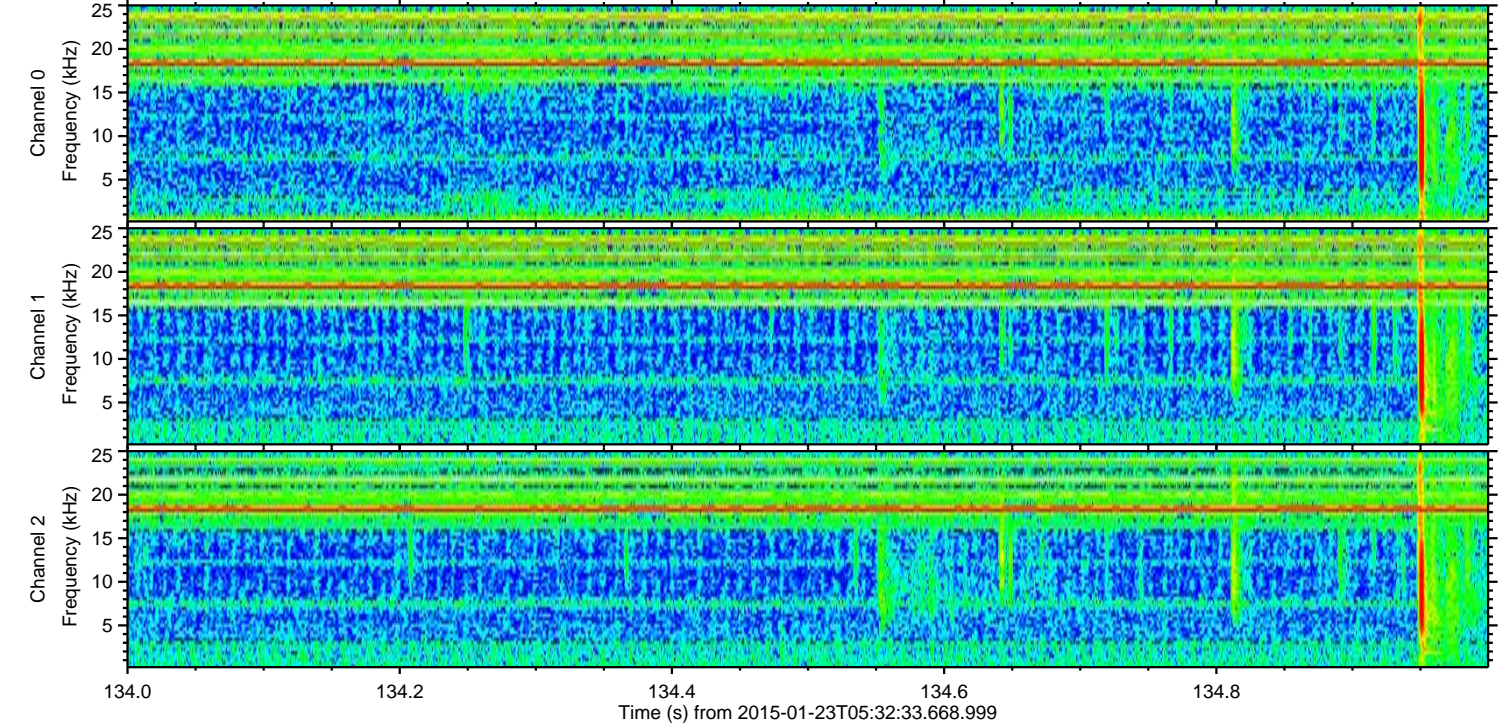
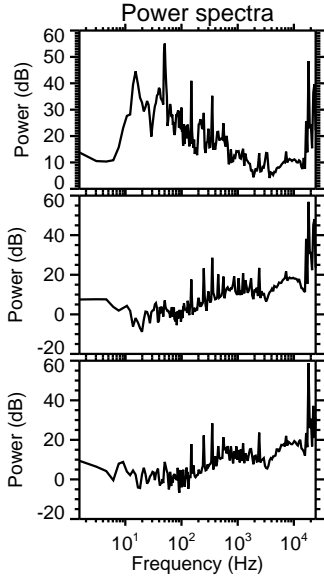
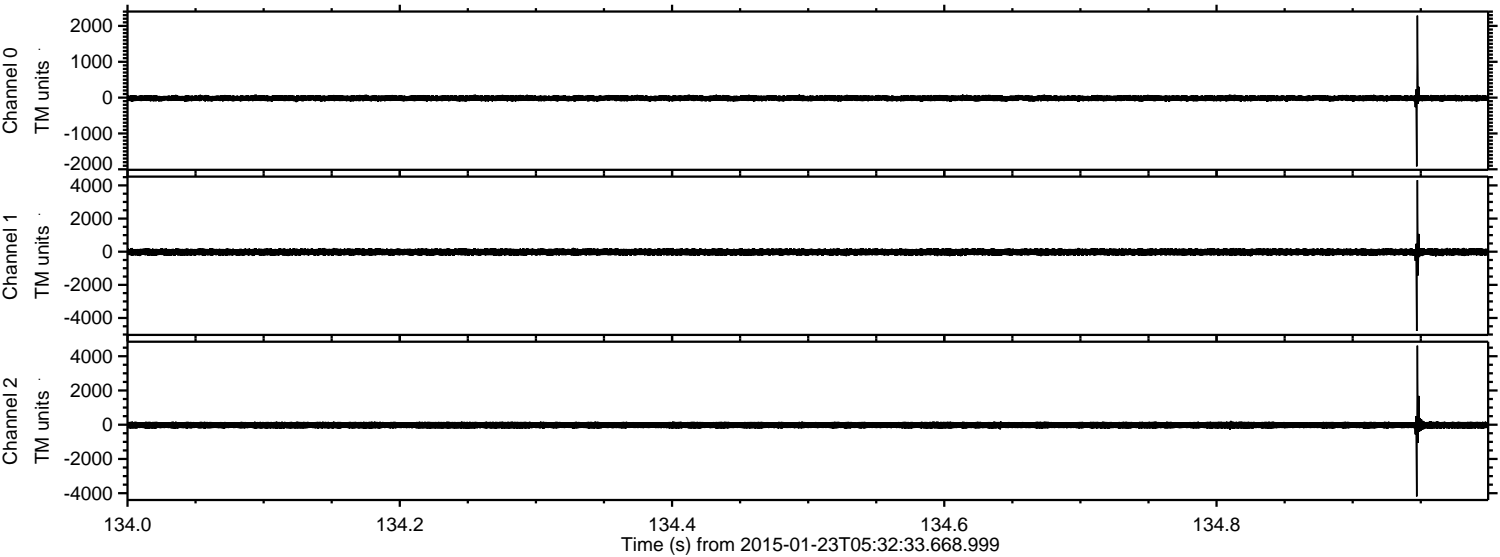
ELMAVAN 3D WAVEFORMS (Measured data sampled at 50 kHz) 49808 packets of 144 samples from 2015-01-23T05:32:33.668.999. Part 89/144

Processed Tue Feb 10 15:31:31 2015 by ELM ver.2012-10-06 from 001__elm20150123_053232__dat00.bin



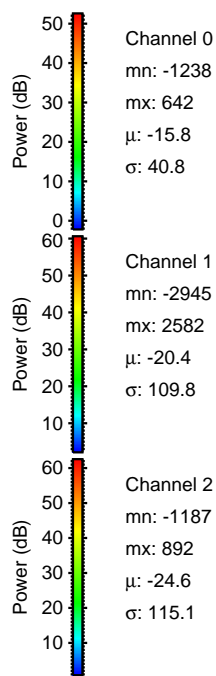
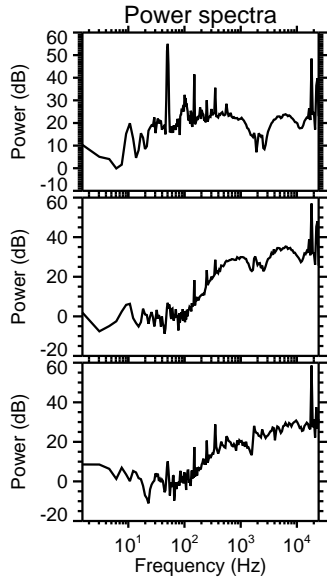
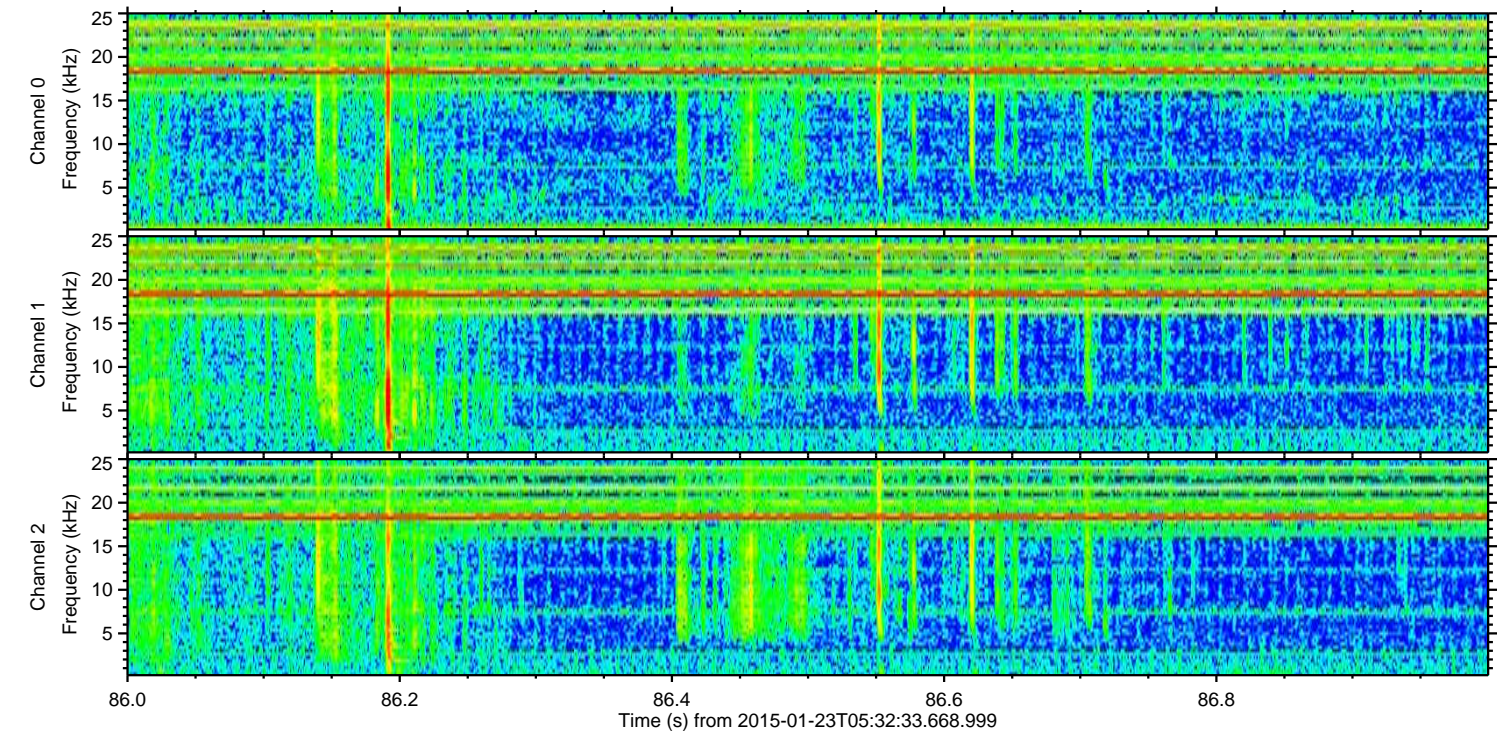
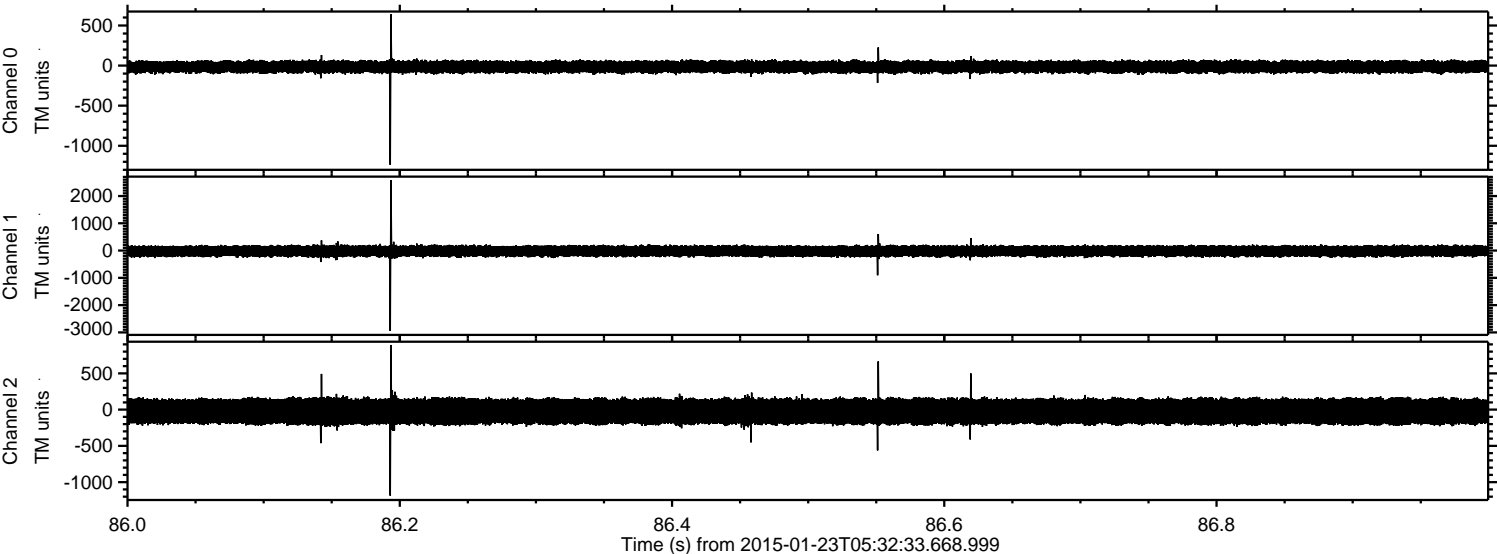
ELMAVAN 3D WAVEFORMS (Measured data sampled at 50 kHz) 49808 packets of 144 samples from 2015-01-23T05:32:33.668.999. Part 135/144

Processed Tue Feb 10 15:31:32 2015 by ELM ver.2012-10-06 from 001__elm20150123_053232__dat00.bin



ELMAVAN 3D WAVEFORMS (Measured data sampled at 50 kHz) 49808 packets of 144 samples from 2015-01-23T05:32:33.668.999. Part 87/144

Processed Tue Feb 10 15:31:33 2015 by ELM ver.2012-10-06 from 001__elm20150123_053232__dat00.bin



Power spectra

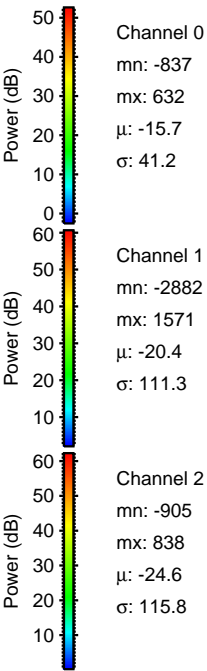
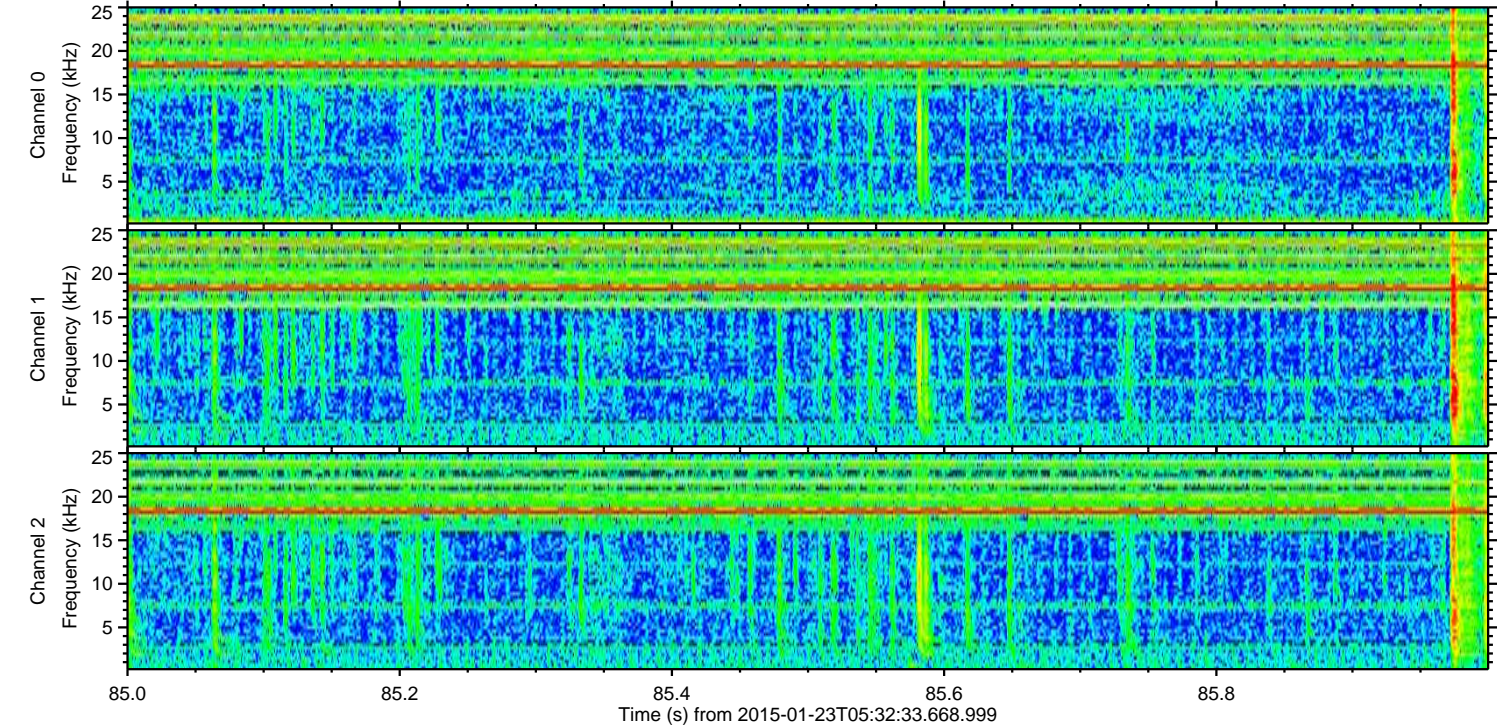
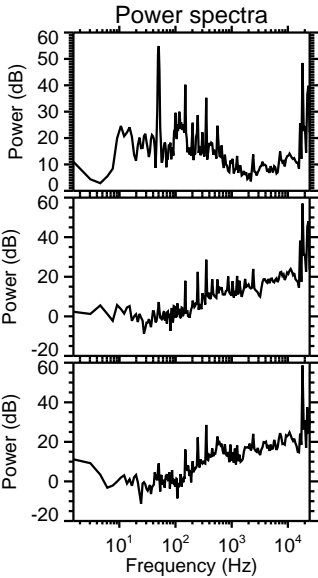
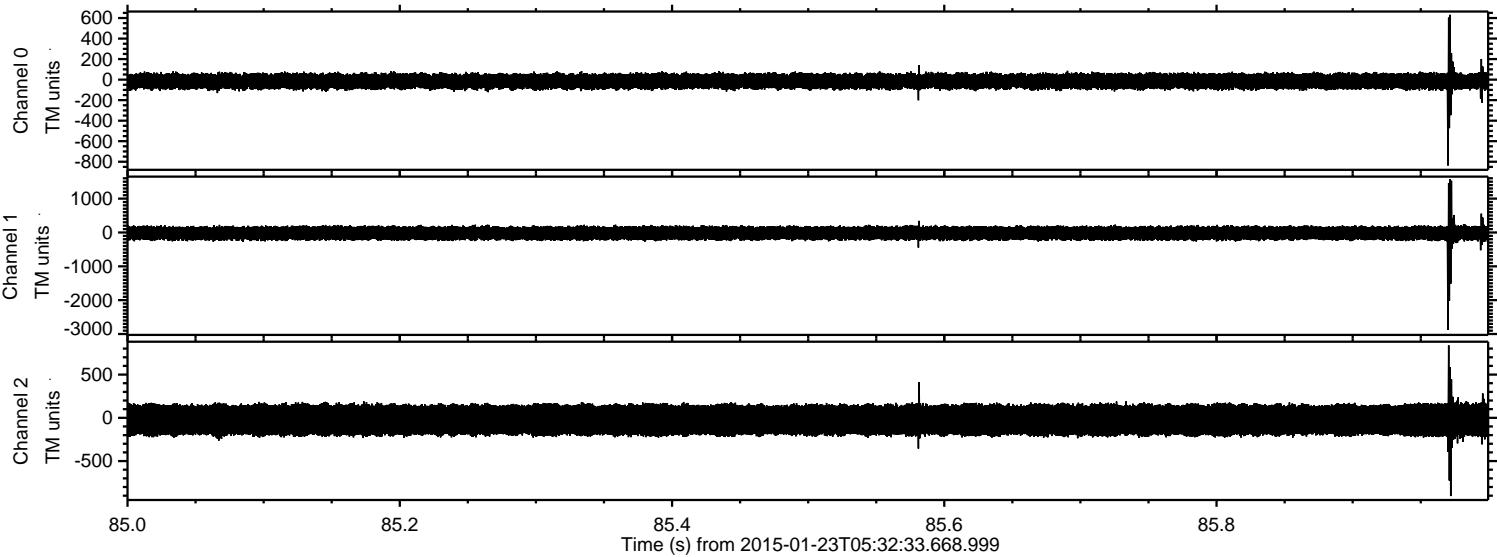
Channel 0
mn: -1238
mx: 642
 μ : -15.8
 σ : 40.8

Channel 1
mn: -2945
mx: 2582
 μ : -20.4
 σ : 109.8

Channel 2
mn: -1187
mx: 892
 μ : -24.6
 σ : 115.1

ELMAVAN 3D WAVEFORMS (Measured data sampled at 50 kHz) 49808 packets of 144 samples from 2015-01-23T05:32:33.668.999. Part 86/144

Processed Tue Feb 10 15:31:34 2015 by ELM ver.2012-10-06 from 001__elm20150123_053232__dat00.bin



ELMAVAN 3D WAVEFORMS (Measured data sampled at 50 kHz) 49808 packets of 144 samples from 2015-01-23T05:32:33.668.999. Part 73/144

Processed Tue Feb 10 15:31:35 2015 by ELM ver.2012-10-06 from 001__elm20150123_053232__dat00.bin

