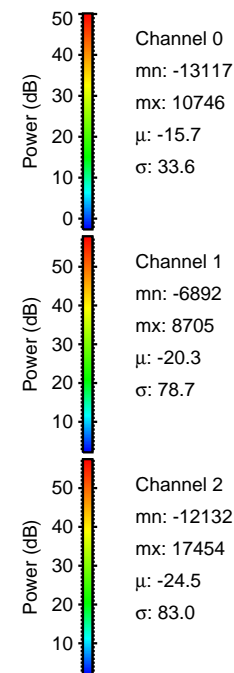
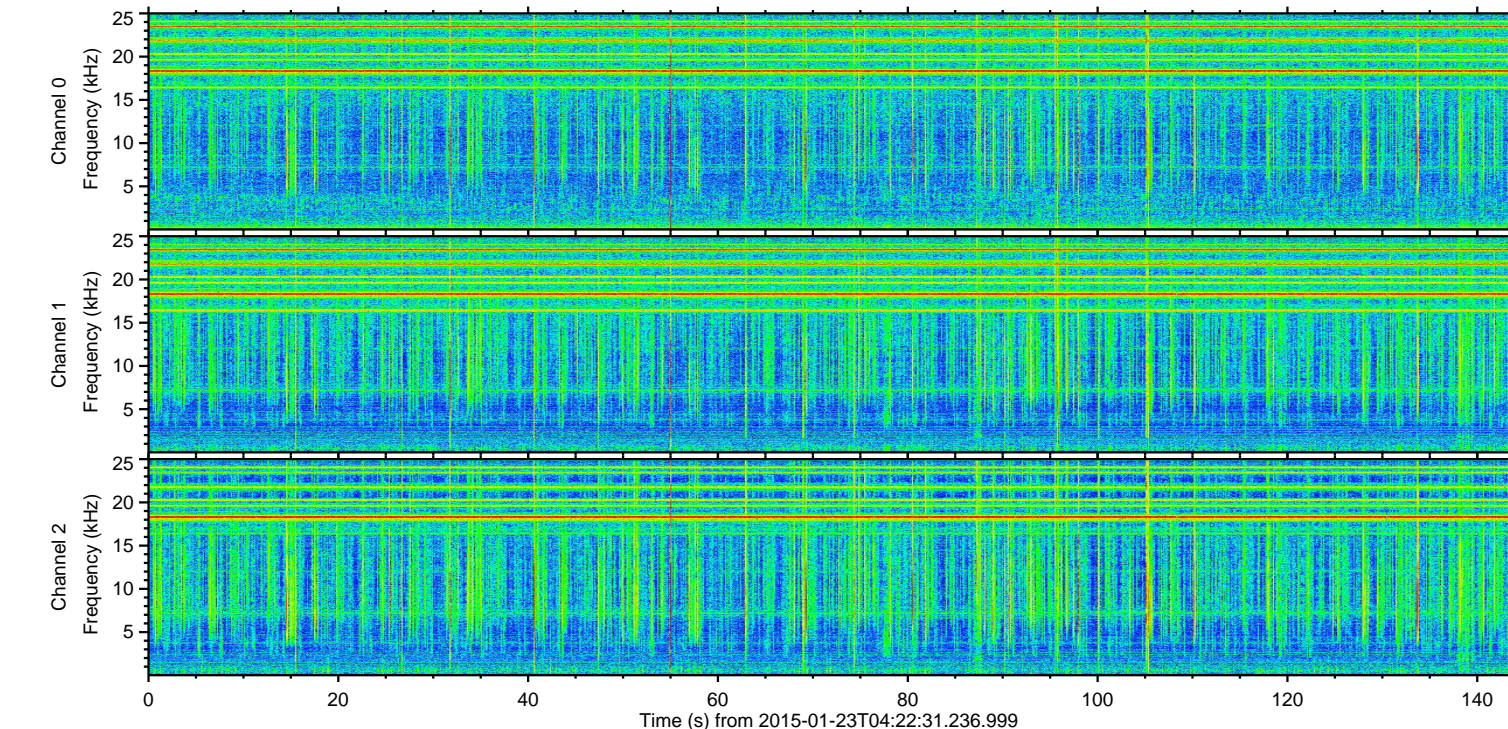
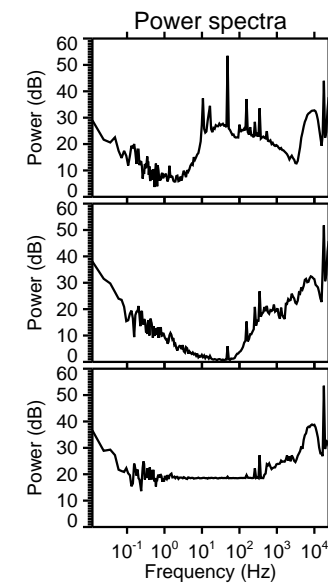
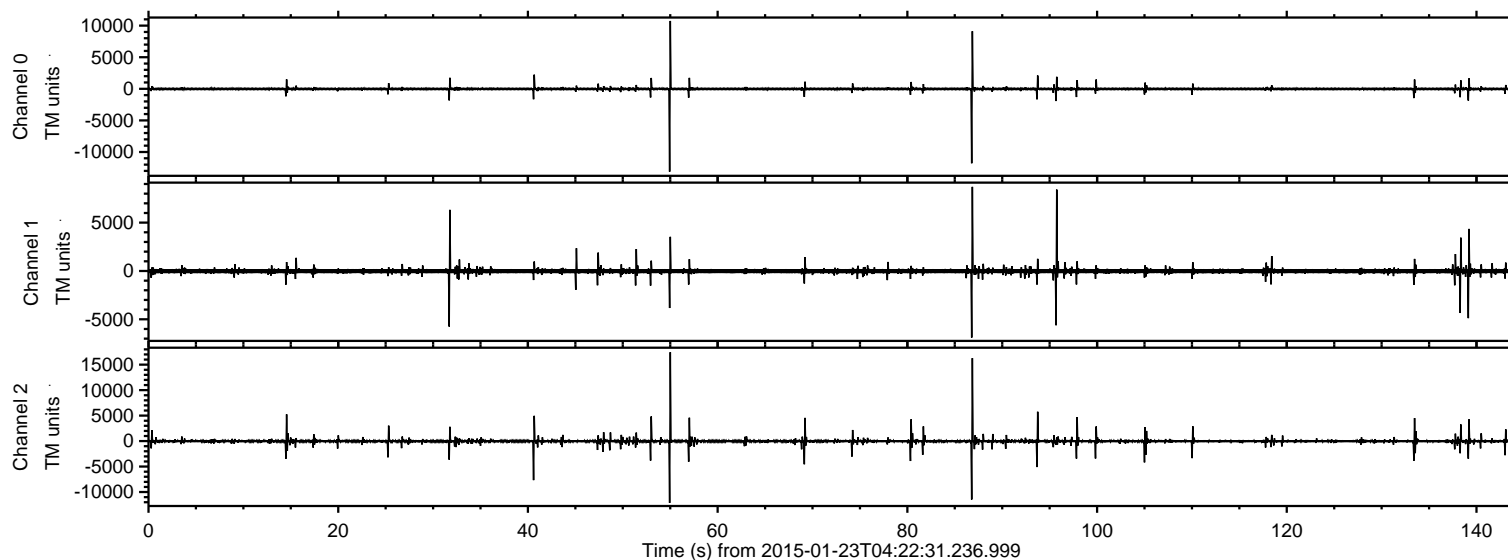


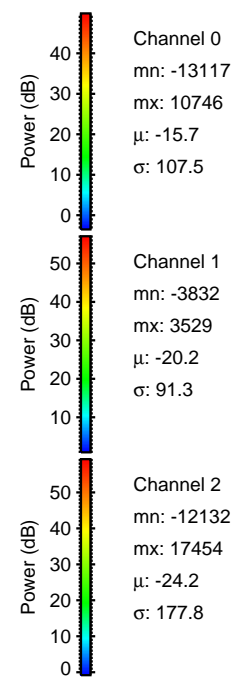
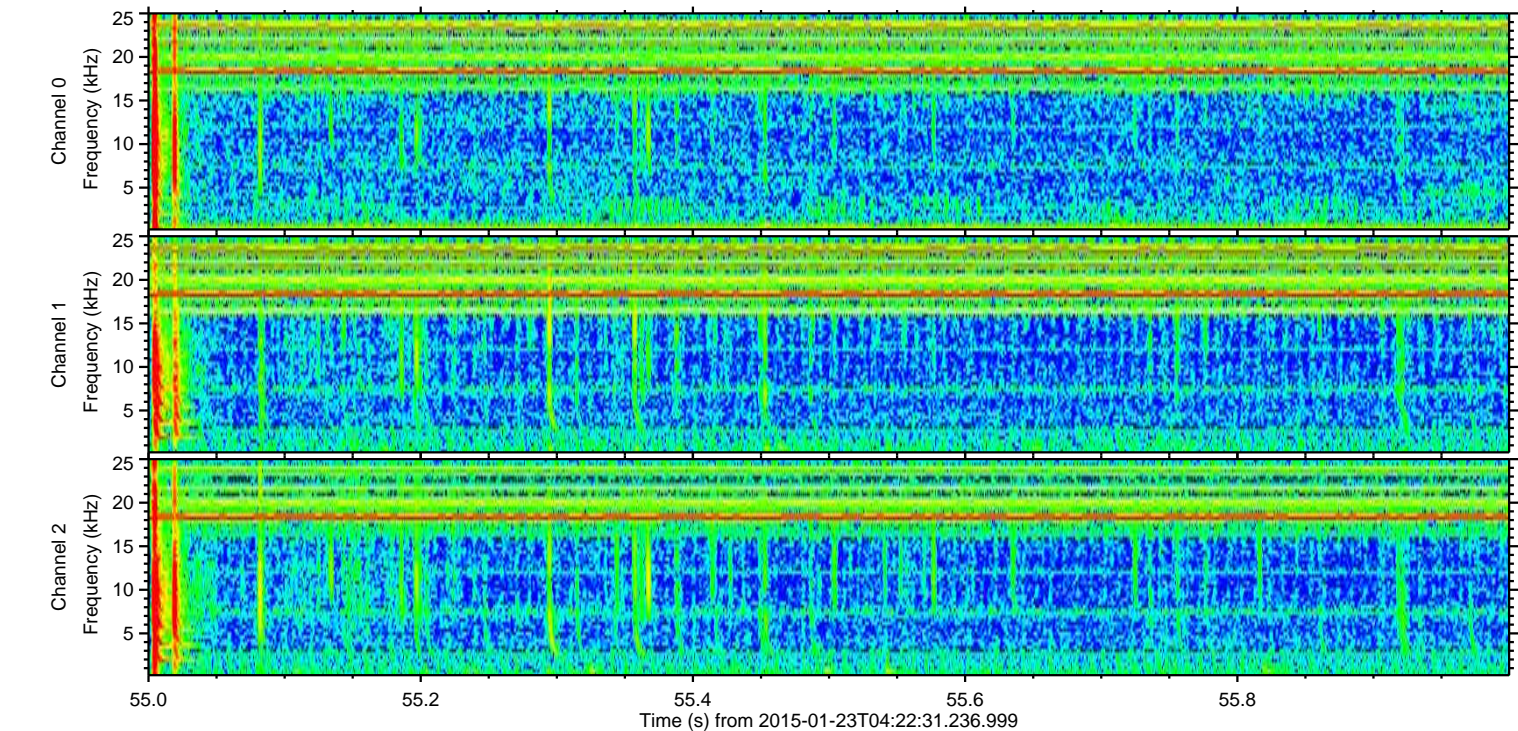
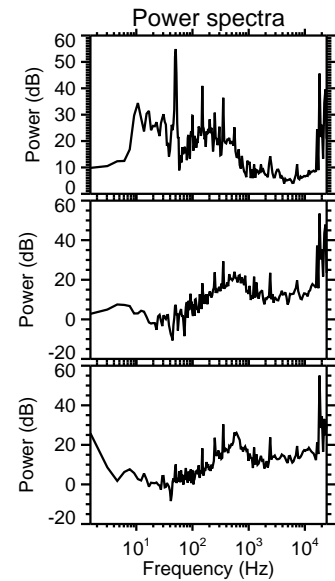
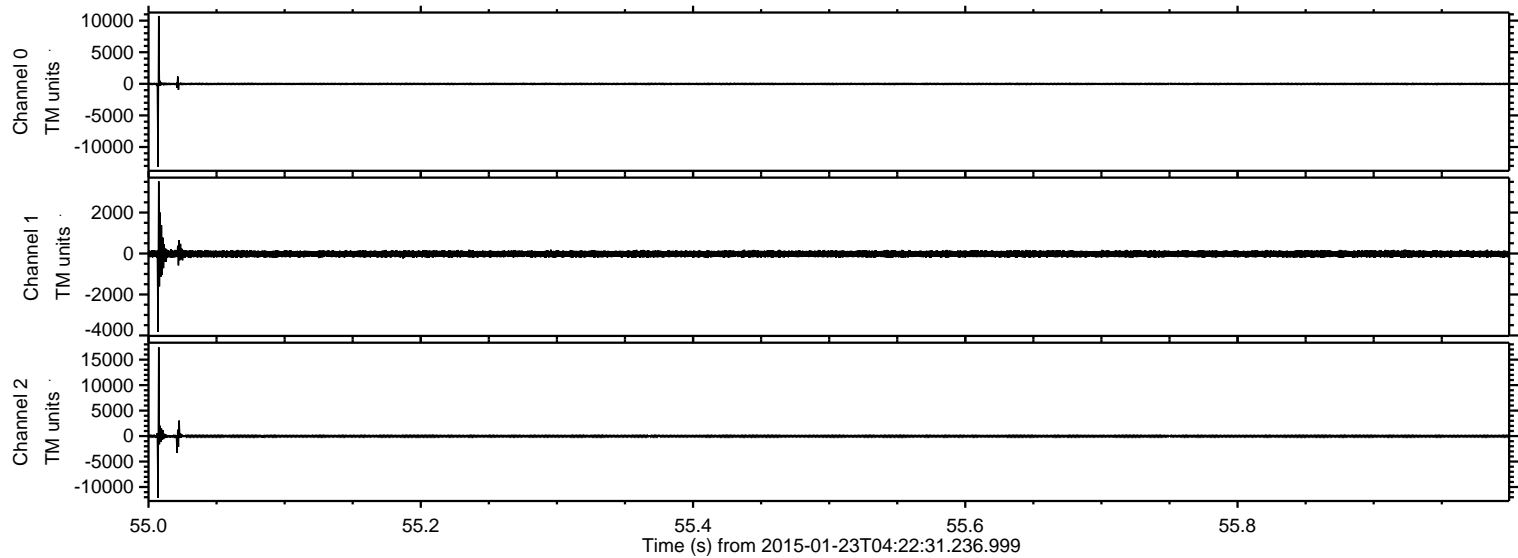
# ELMAVAN 3D WAVEFORMS (Measured data sampled at 50 kHz) 49806 packets of 144 samples from 2015-01-23T04:22:31.236.999.

Processed Tue Feb 10 15:13:44 2015 by ELM ver.2012-10-06 from 001\_\_elm20150123\_042230\_\_dat00.bin





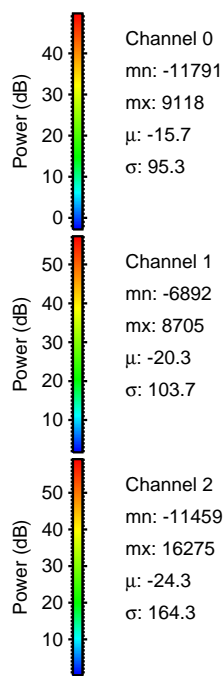
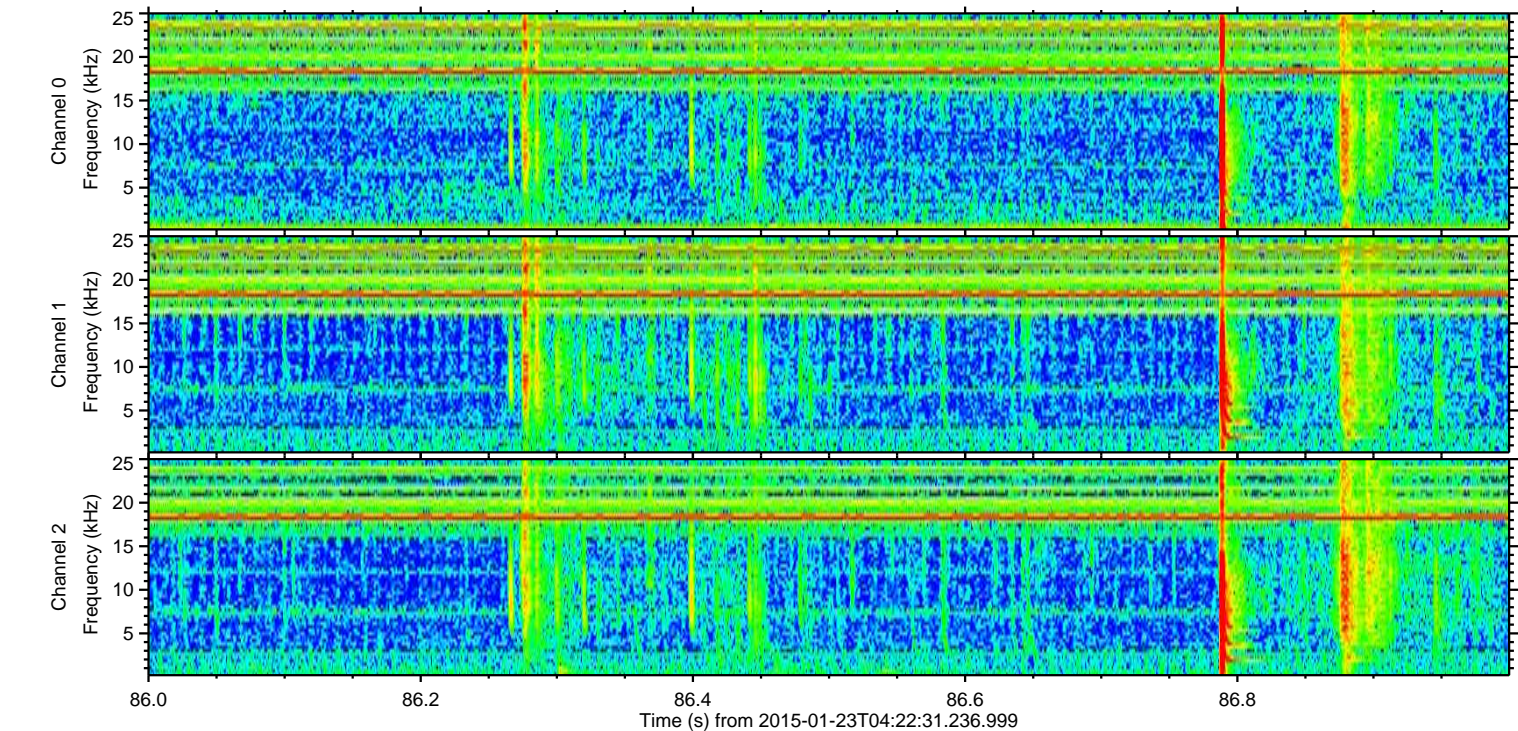
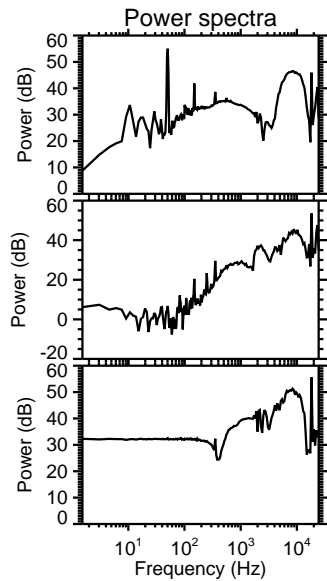
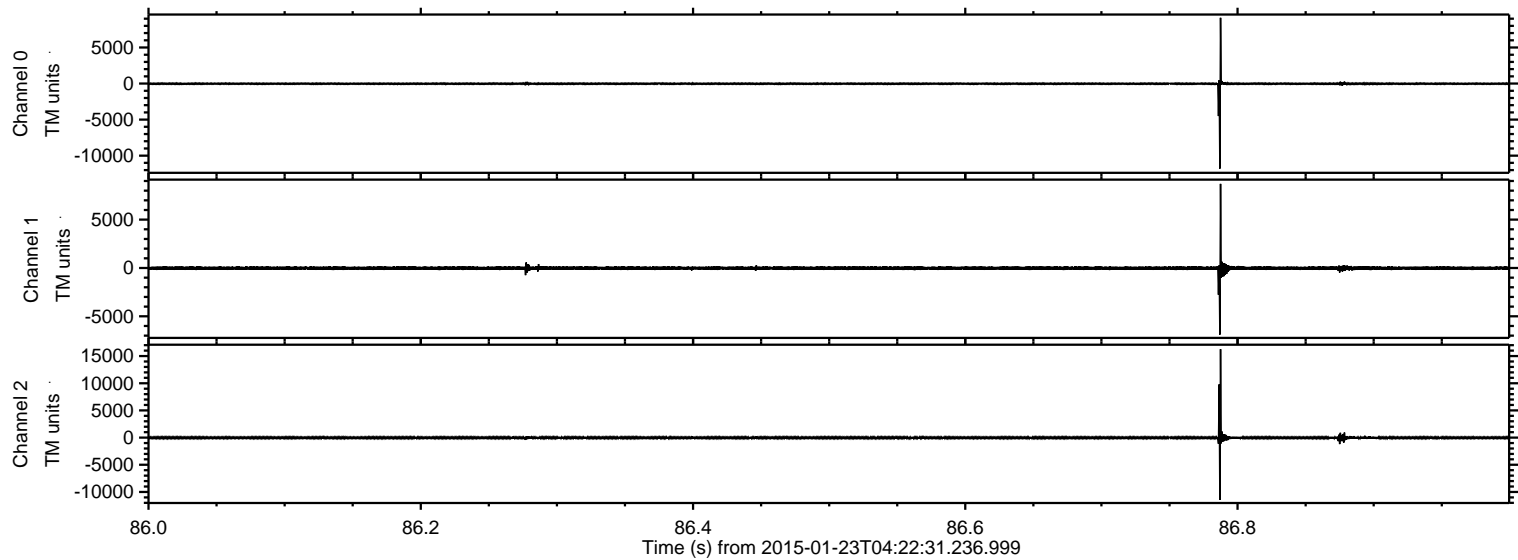
Processed Tue Feb 10 15:13:57 2015 by ELM ver.2012-10-06 from 001\_\_elm20150123\_042230\_\_dat00.bin





ELMAVAN 3D WAVEFORMS (Measured data sampled at 50 kHz) 49806 packets of 144 samples from 2015-01-23T04:22:31.236.999. Part 87/144

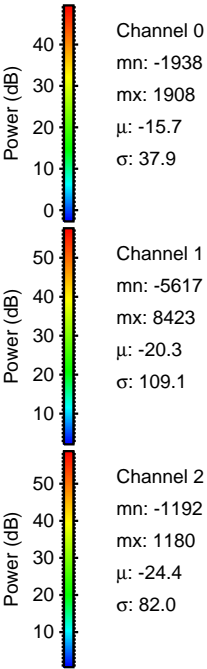
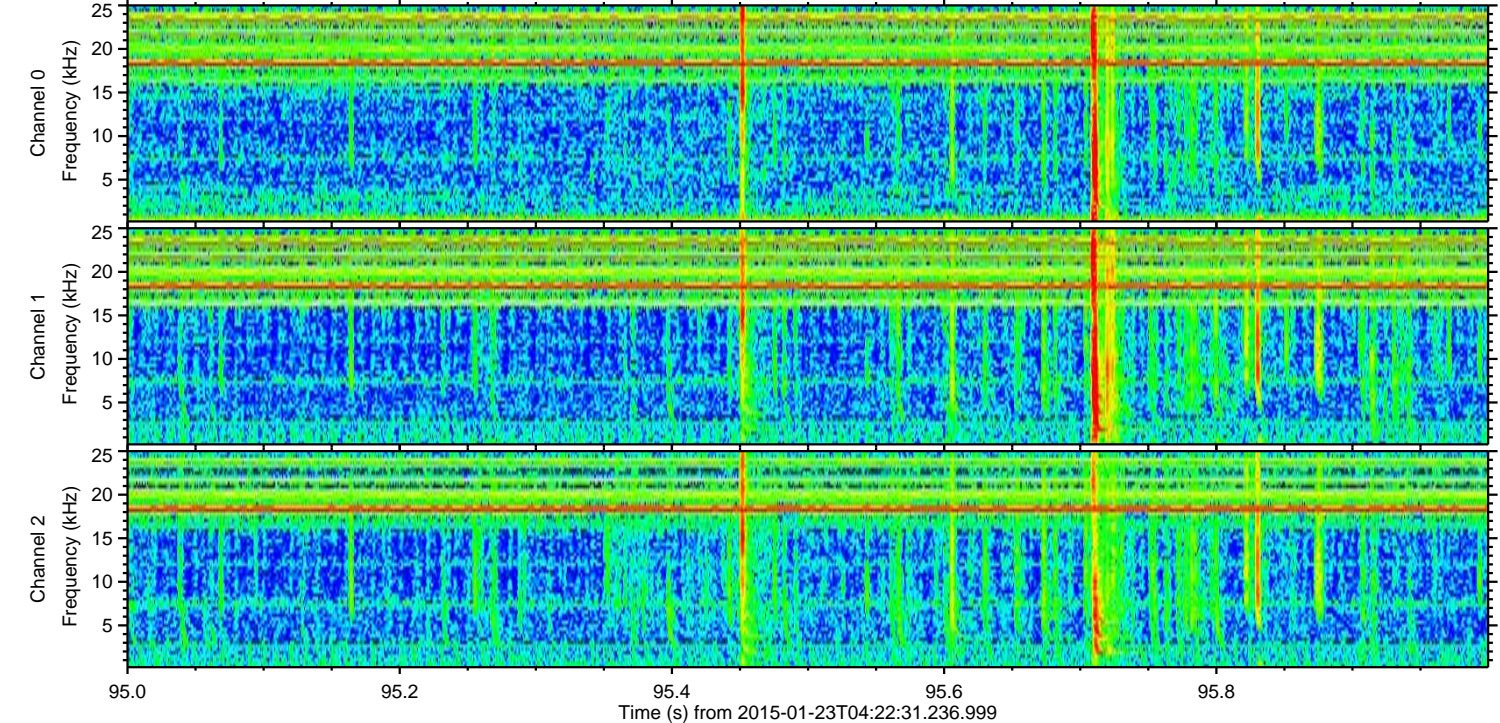
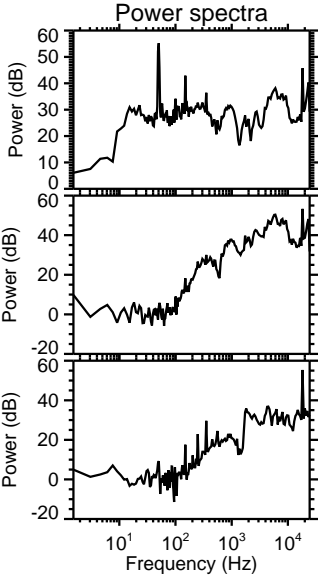
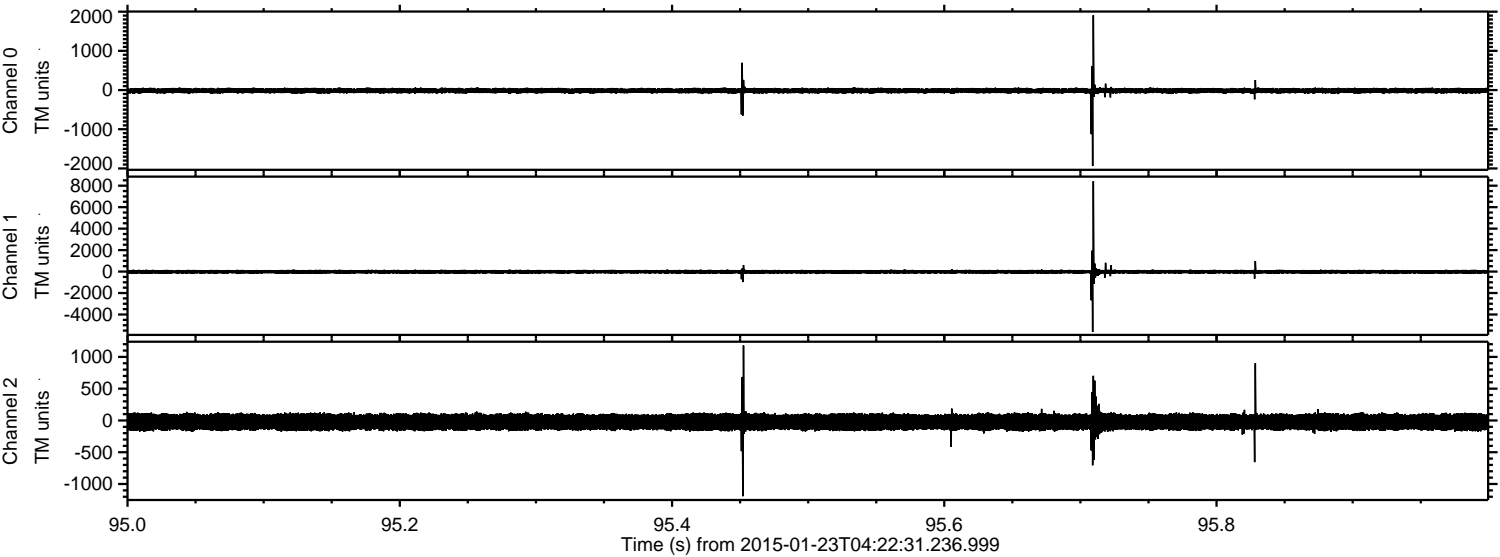
Processed Tue Feb 10 15:13:58 2015 by ELM ver.2012-10-06 from 001\_\_elm20150123\_042230\_\_dat00.bin





ELMAVAN 3D WAVEFORMS (Measured data sampled at 50 kHz) 49806 packets of 144 samples from 2015-01-23T04:22:31.236.999. Part 96/144

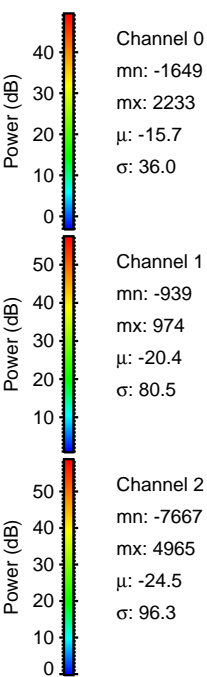
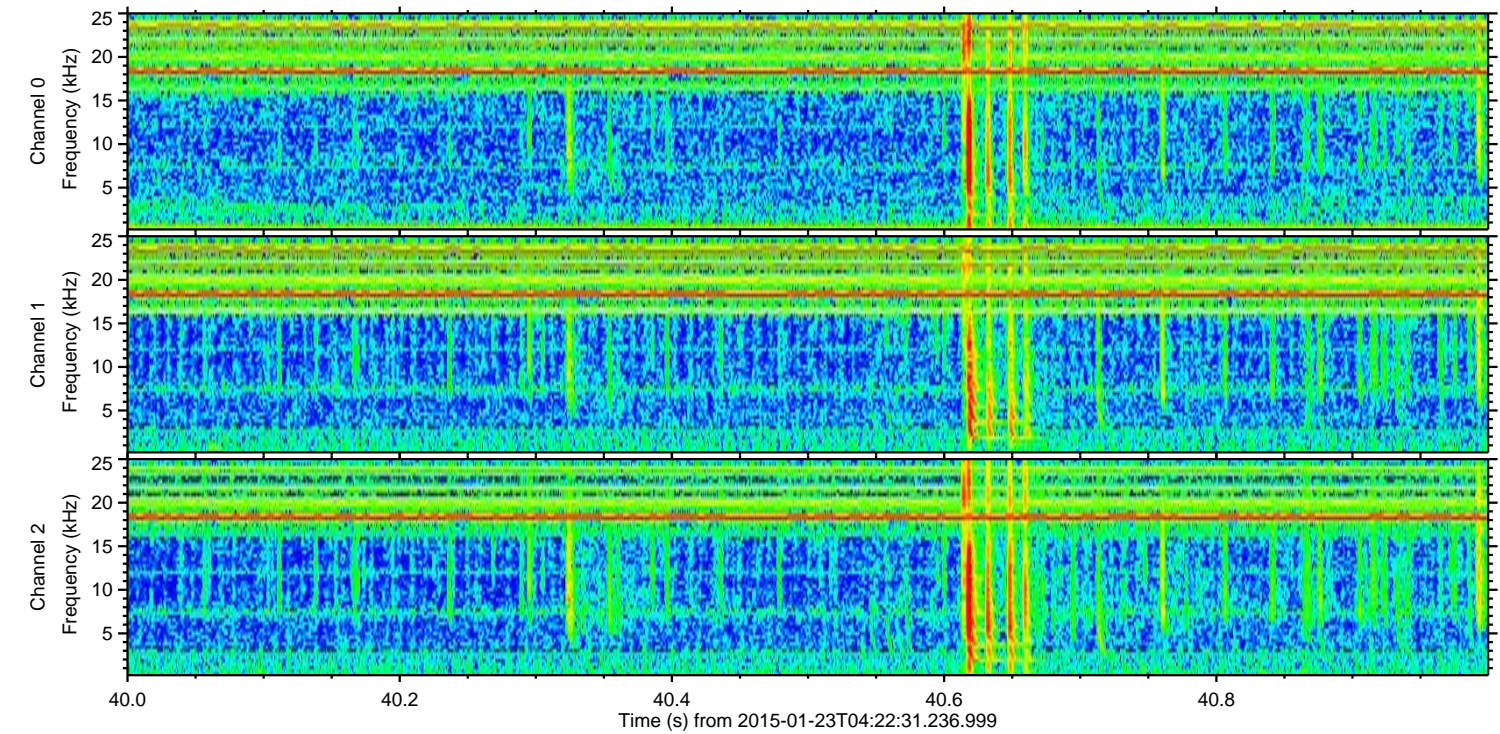
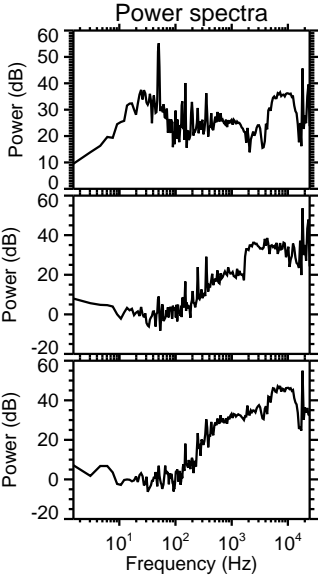
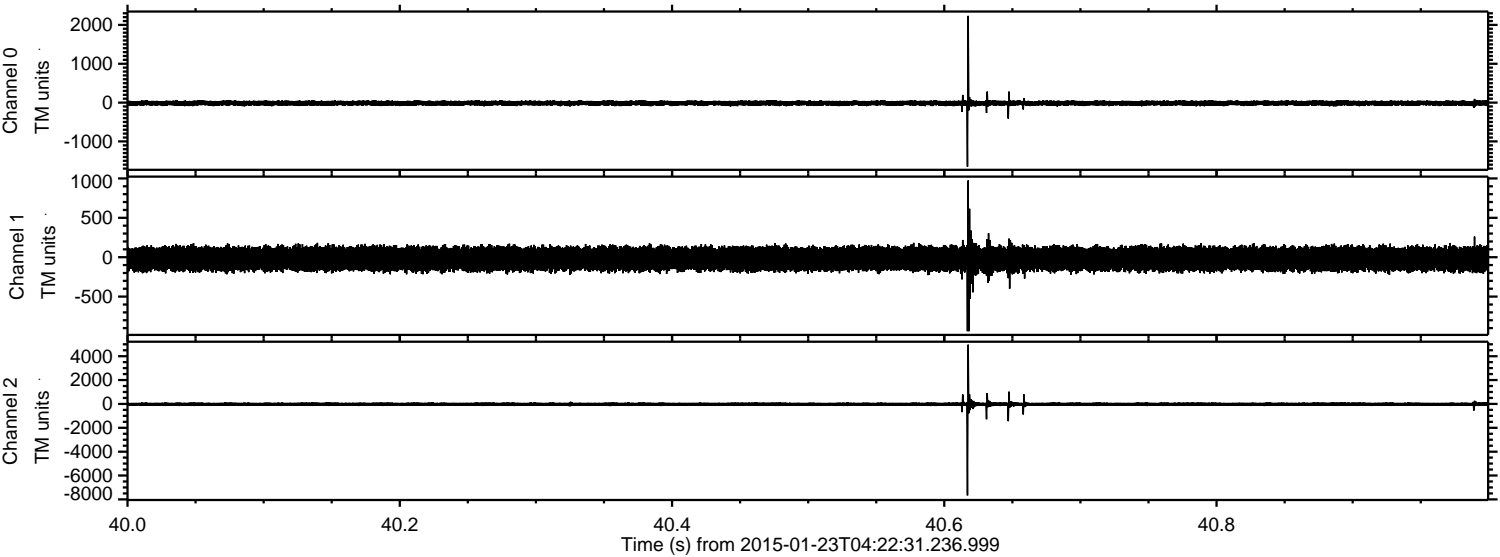
Processed Tue Feb 10 15:14:00 2015 by ELM ver.2012-10-06 from 001\_\_elm20150123\_042230\_\_dat00.bin





ELMAVAN 3D WAVEFORMS (Measured data sampled at 50 kHz) 49806 packets of 144 samples from 2015-01-23T04:22:31.236.999. Part 41/144

Processed Tue Feb 10 15:14:01 2015 by ELM ver.2012-10-06 from 001\_\_elm20150123\_042230\_\_dat00.bin



Channel 0  
mn: -1649  
mx: 2233  
 $\mu$ : -15.7  
 $\sigma$ : 36.0

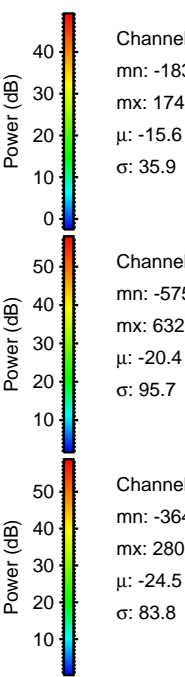
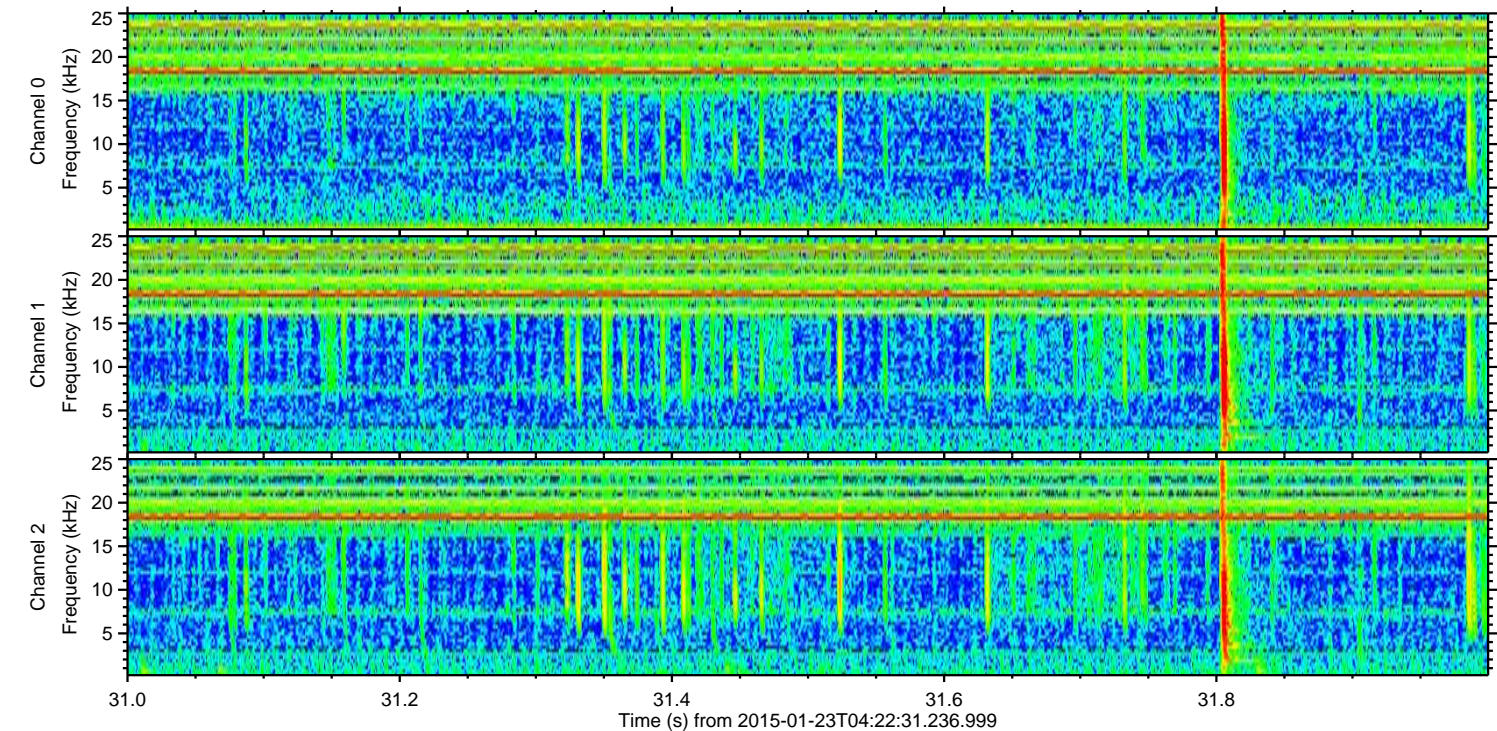
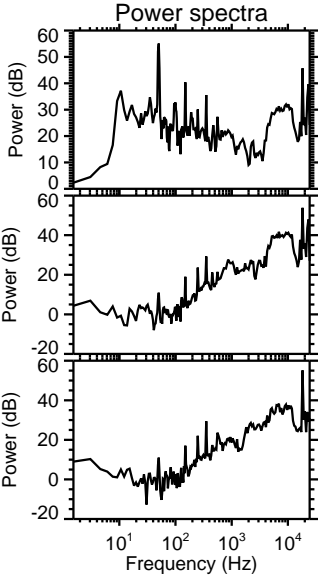
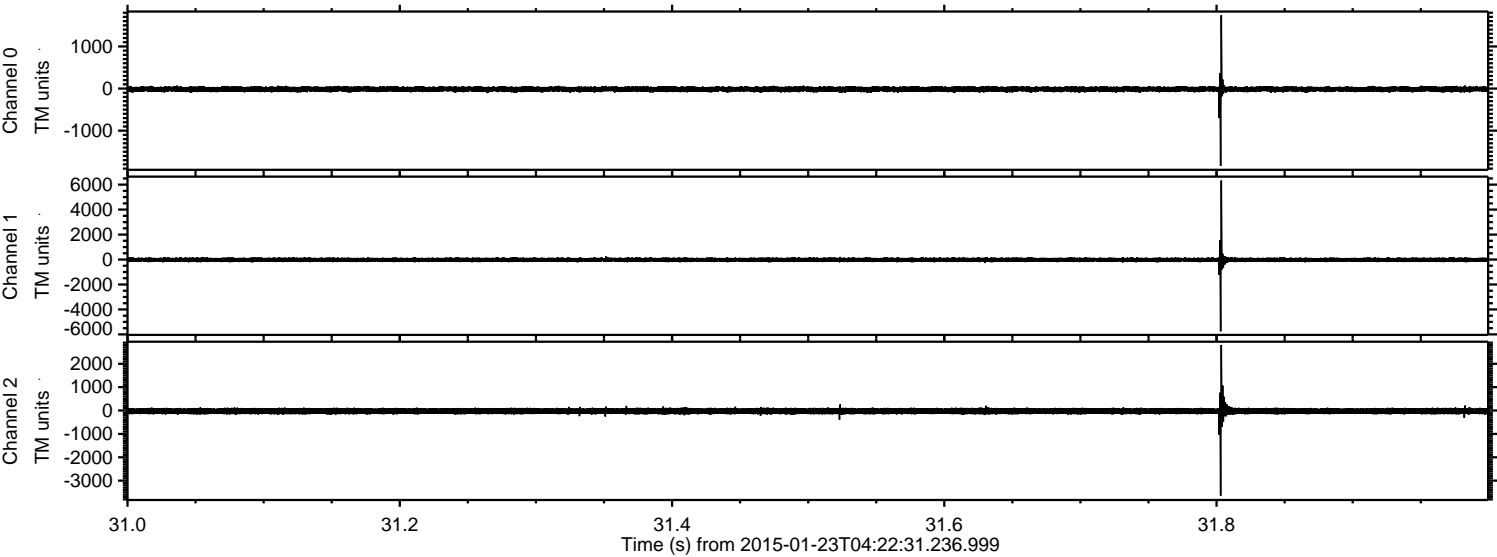
Channel 1  
mn: -939  
mx: 974  
 $\mu$ : -20.4  
 $\sigma$ : 80.5

Channel 2  
mn: -7667  
mx: 4965  
 $\mu$ : -24.5  
 $\sigma$ : 96.3



ELMAVAN 3D WAVEFORMS (Measured data sampled at 50 kHz) 49806 packets of 144 samples from 2015-01-23T04:22:31.236.999. Part 32/144

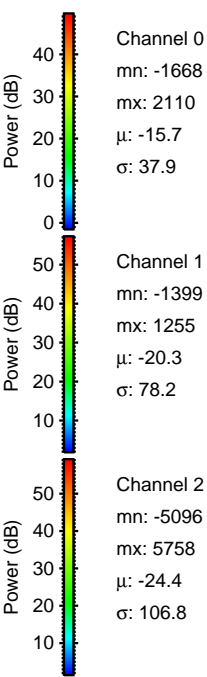
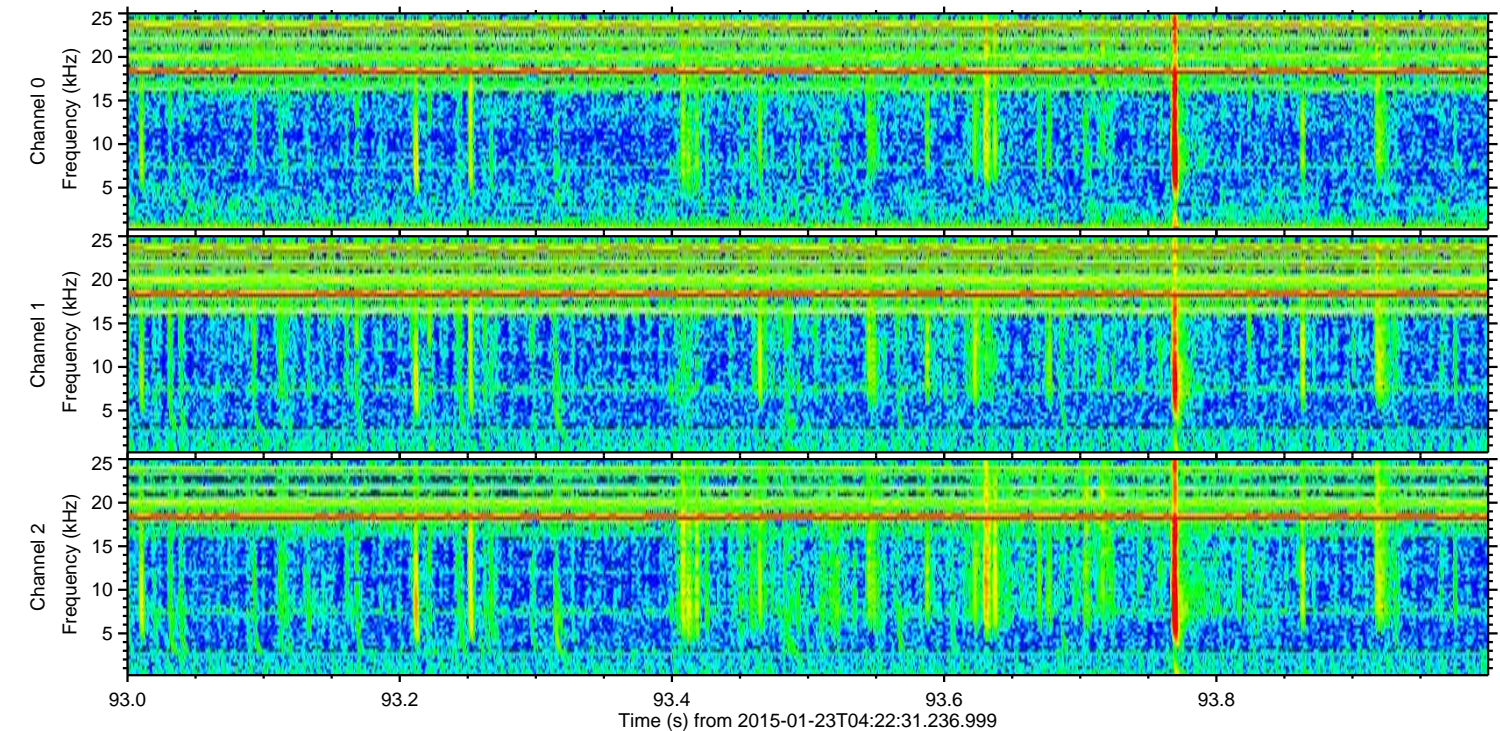
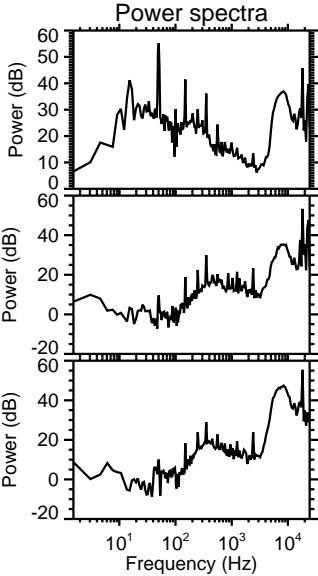
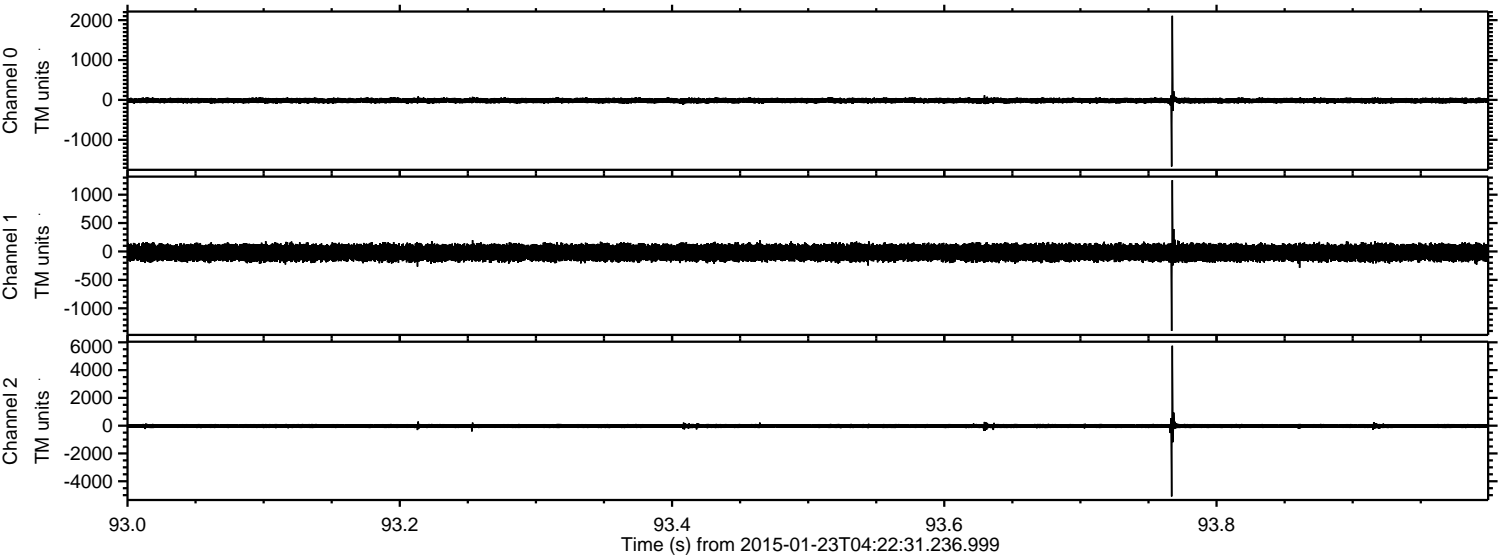
Processed Tue Feb 10 15:14:02 2015 by ELM ver.2012-10-06 from 001\_\_elm20150123\_042230\_\_dat00.bin





ELMAVAN 3D WAVEFORMS (Measured data sampled at 50 kHz) 49806 packets of 144 samples from 2015-01-23T04:22:31.236.999. Part 94/144

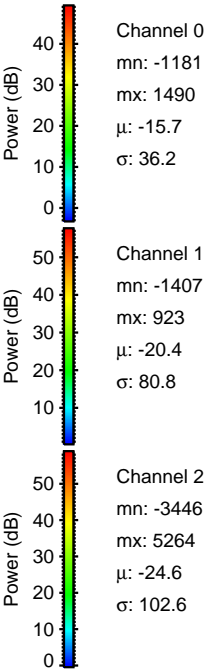
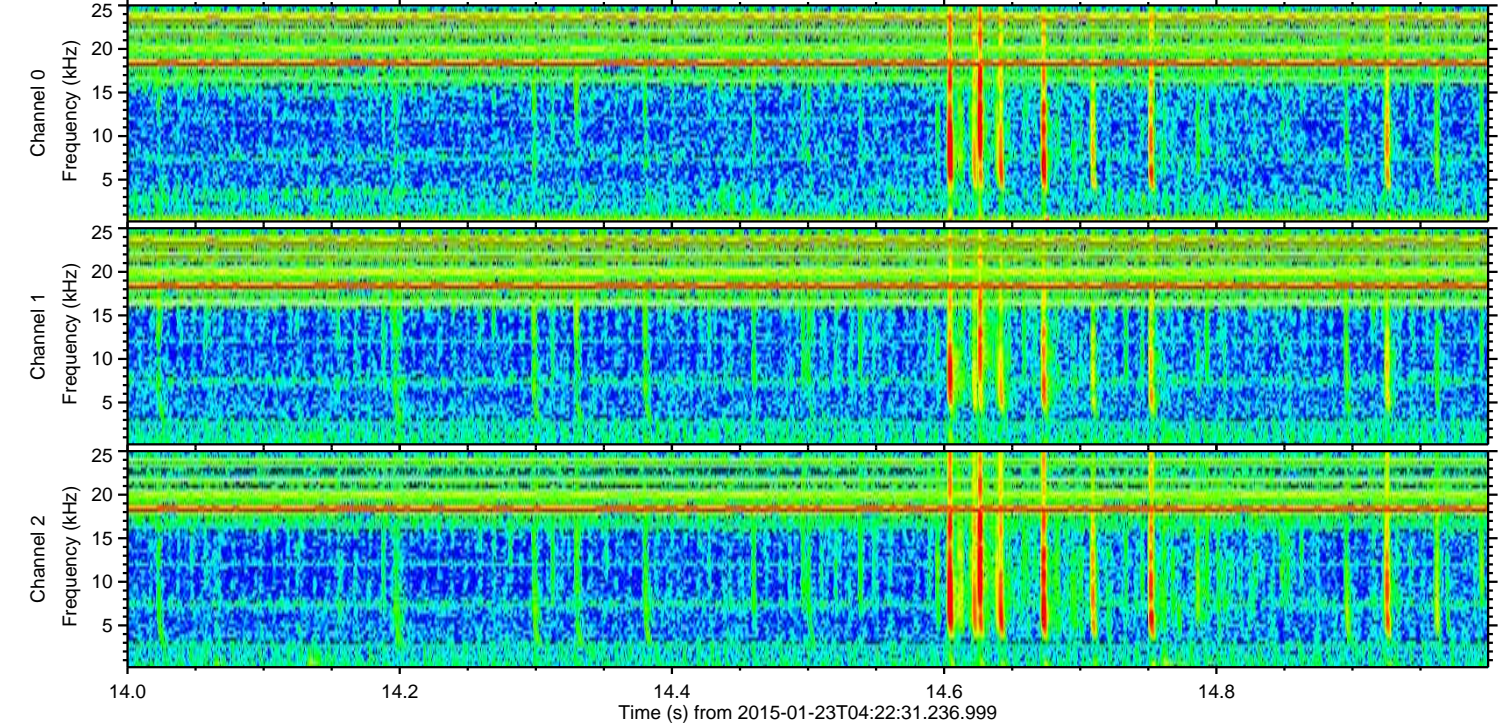
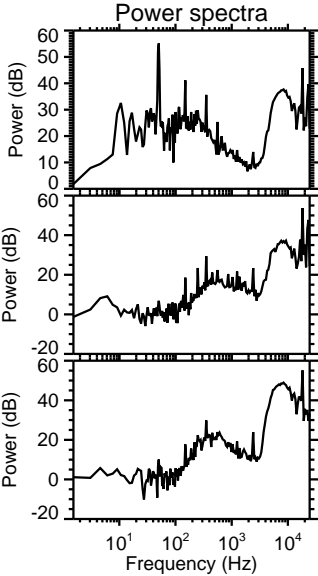
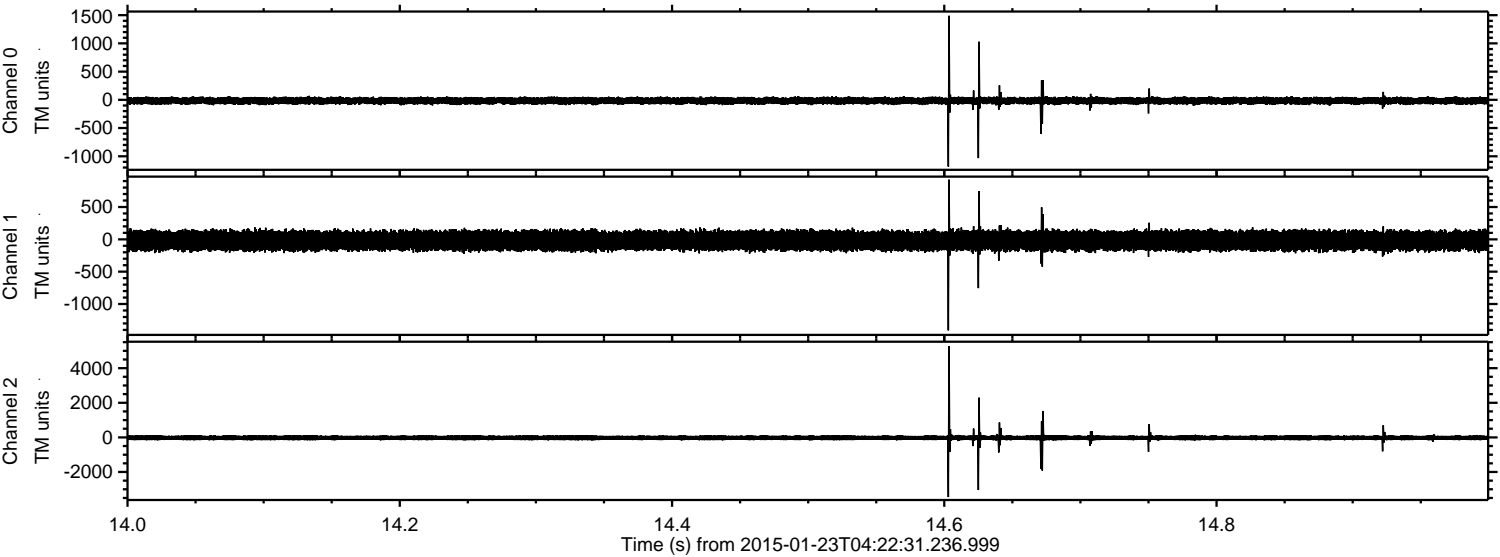
Processed Tue Feb 10 15:14:03 2015 by ELM ver.2012-10-06 from 001\_\_elm20150123\_042230\_\_dat00.bin





ELMAVAN 3D WAVEFORMS (Measured data sampled at 50 kHz) 49806 packets of 144 samples from 2015-01-23T04:22:31.236.999. Part 15/144

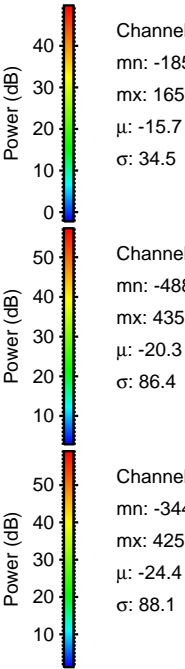
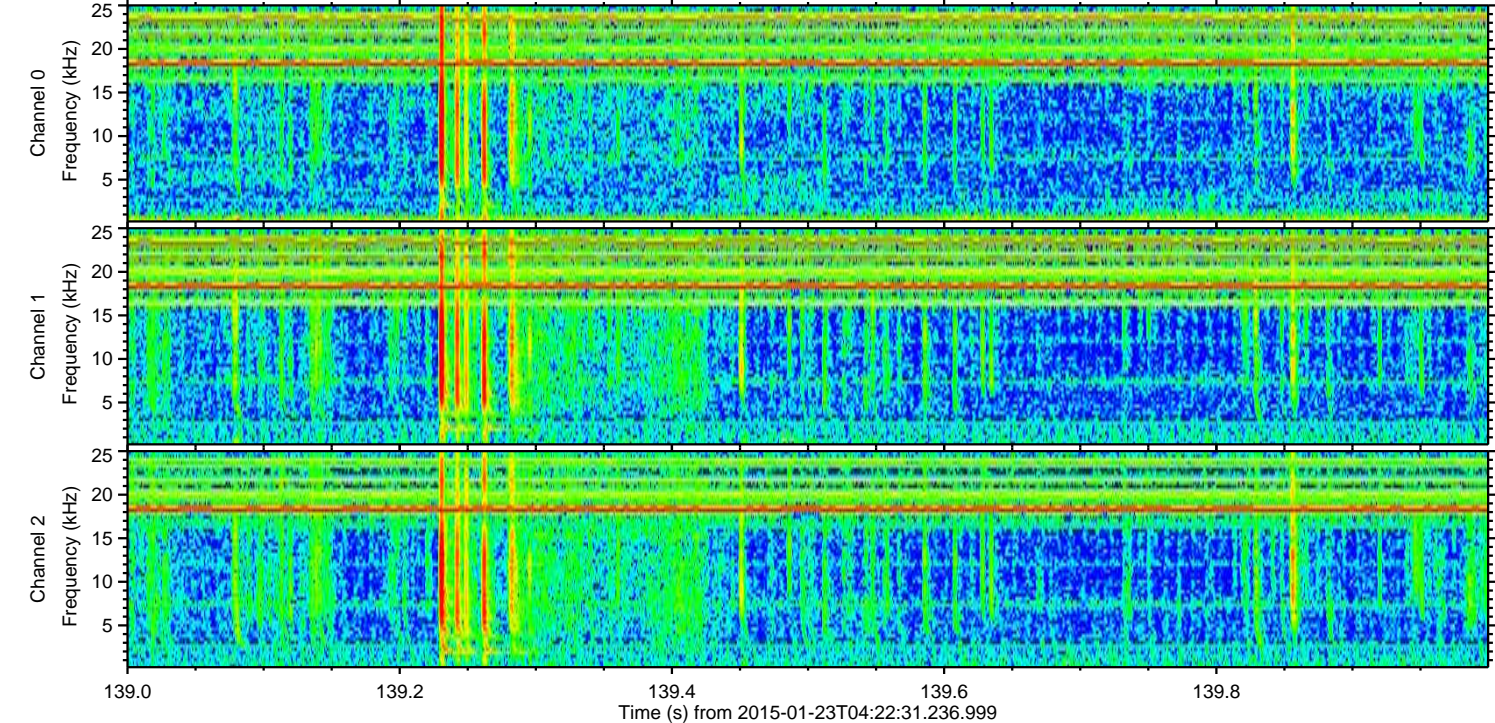
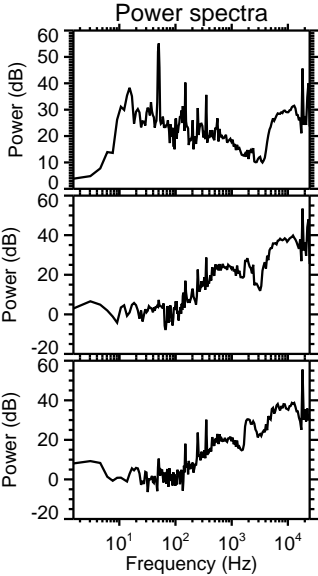
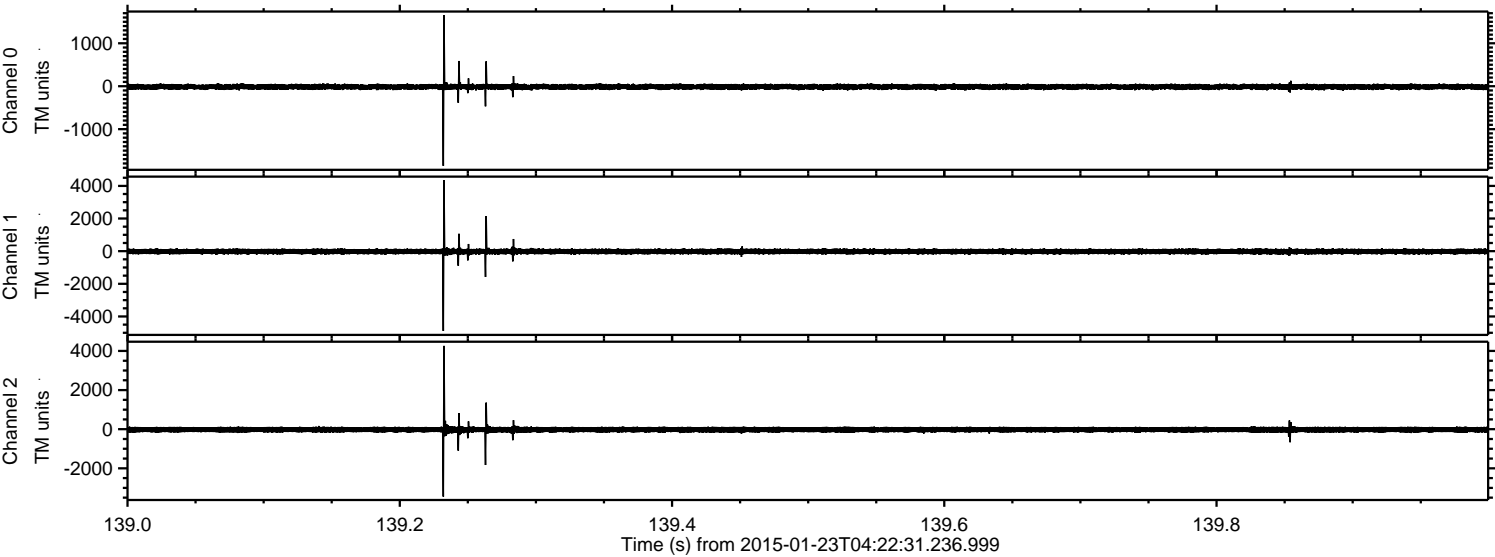
Processed Tue Feb 10 15:14:04 2015 by ELM ver.2012-10-06 from 001\_\_elm20150123\_042230\_\_dat00.bin





ELMAVAN 3D WAVEFORMS (Measured data sampled at 50 kHz) 49806 packets of 144 samples from 2015-01-23T04:22:31.236.999. Part 140/144

Processed Tue Feb 10 15:14:05 2015 by ELM ver.2012-10-06 from 001\_\_elm20150123\_042230\_\_dat00.bin



Channel 0  
mn: -1855  
mx: 1656  
 $\mu$ : -15.7  
 $\sigma$ : 34.5

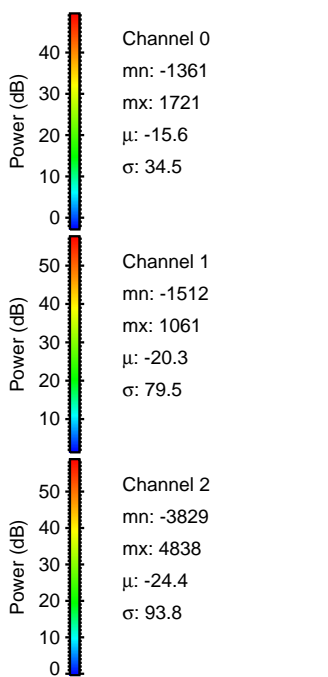
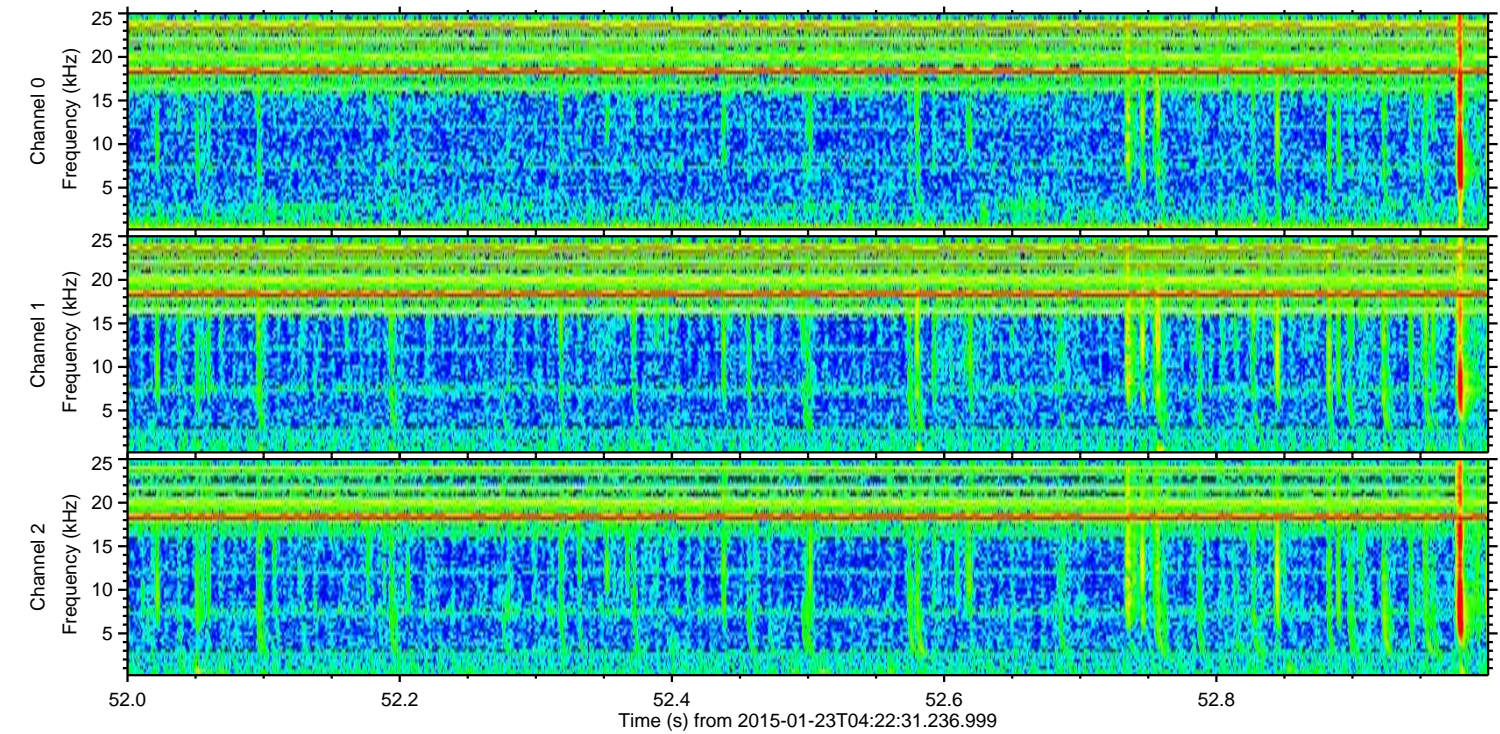
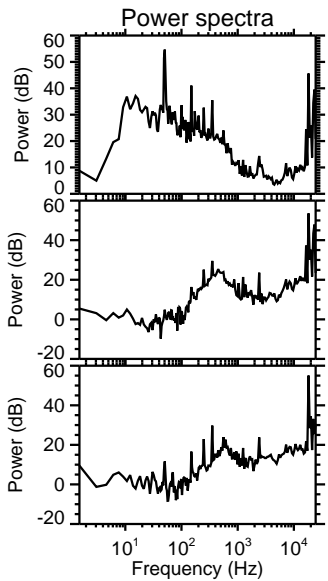
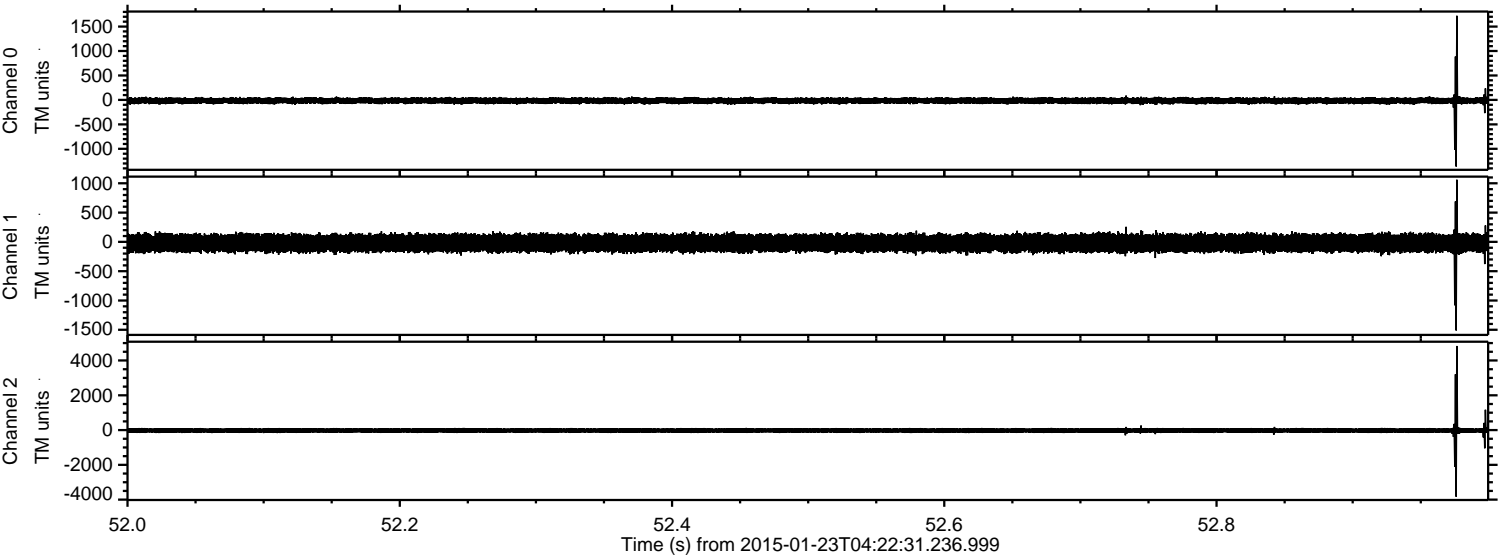
Channel 1  
mn: -4886  
mx: 4350  
 $\mu$ : -20.3  
 $\sigma$ : 86.4

Channel 2  
mn: -3447  
mx: 4259  
 $\mu$ : -24.4  
 $\sigma$ : 88.1



ELMAVAN 3D WAVEFORMS (Measured data sampled at 50 kHz) 49806 packets of 144 samples from 2015-01-23T04:22:31.236.999. Part 53/144

Processed Tue Feb 10 15:14:06 2015 by ELM ver.2012-10-06 from 001\_\_elm20150123\_042230\_\_dat00.bin





Processed Tue Feb 10 15:14:07 2015 by ELM ver.2012-10-06 from 001\_\_elm20150123\_042230\_\_dat00.bin

