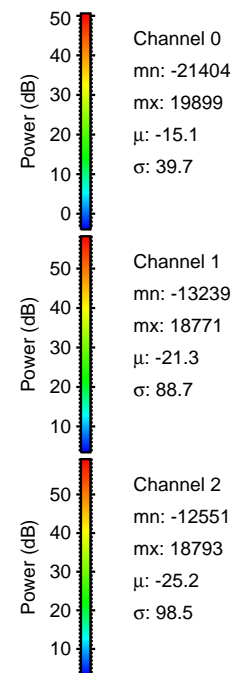
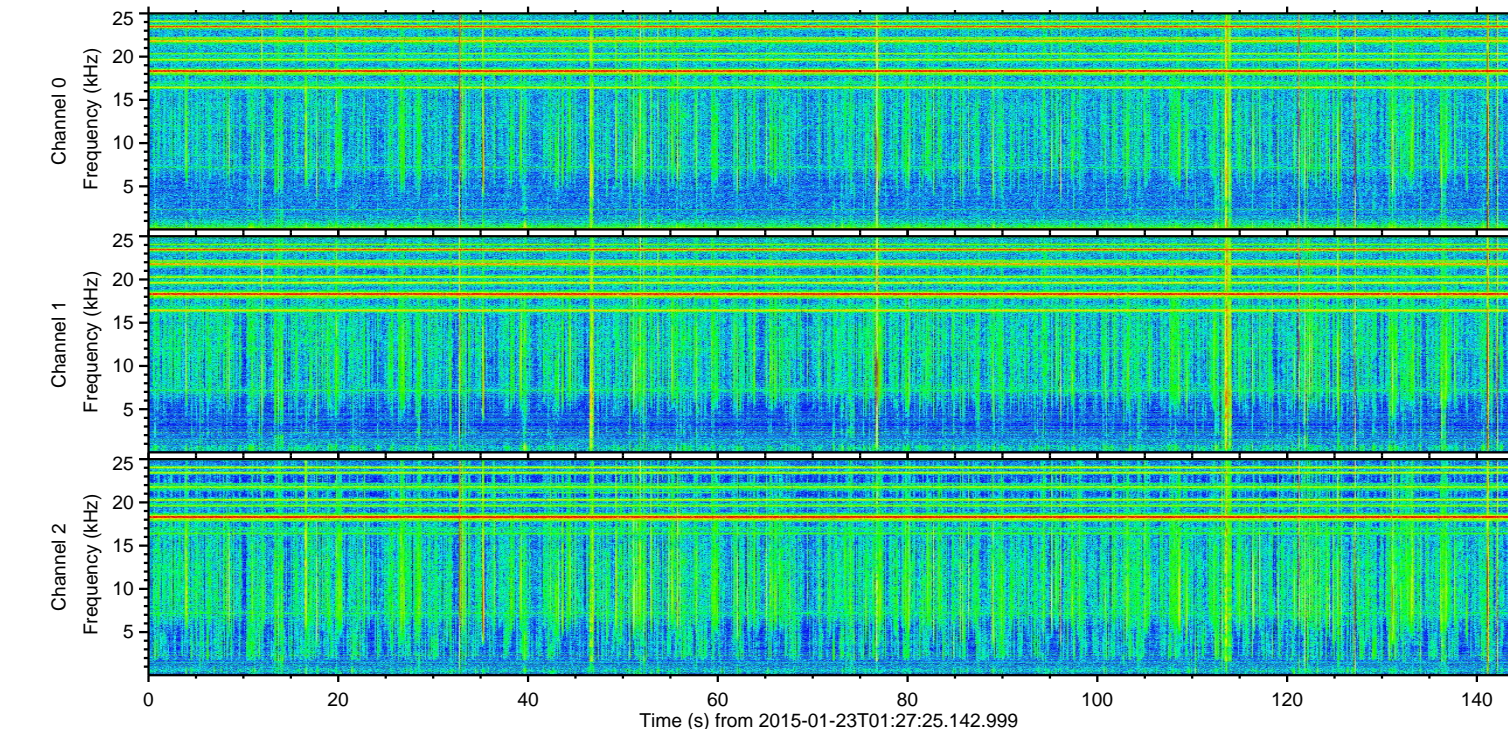
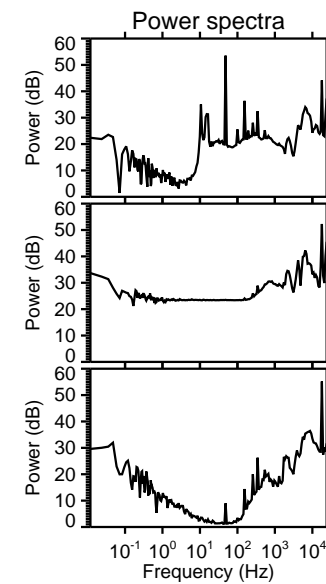
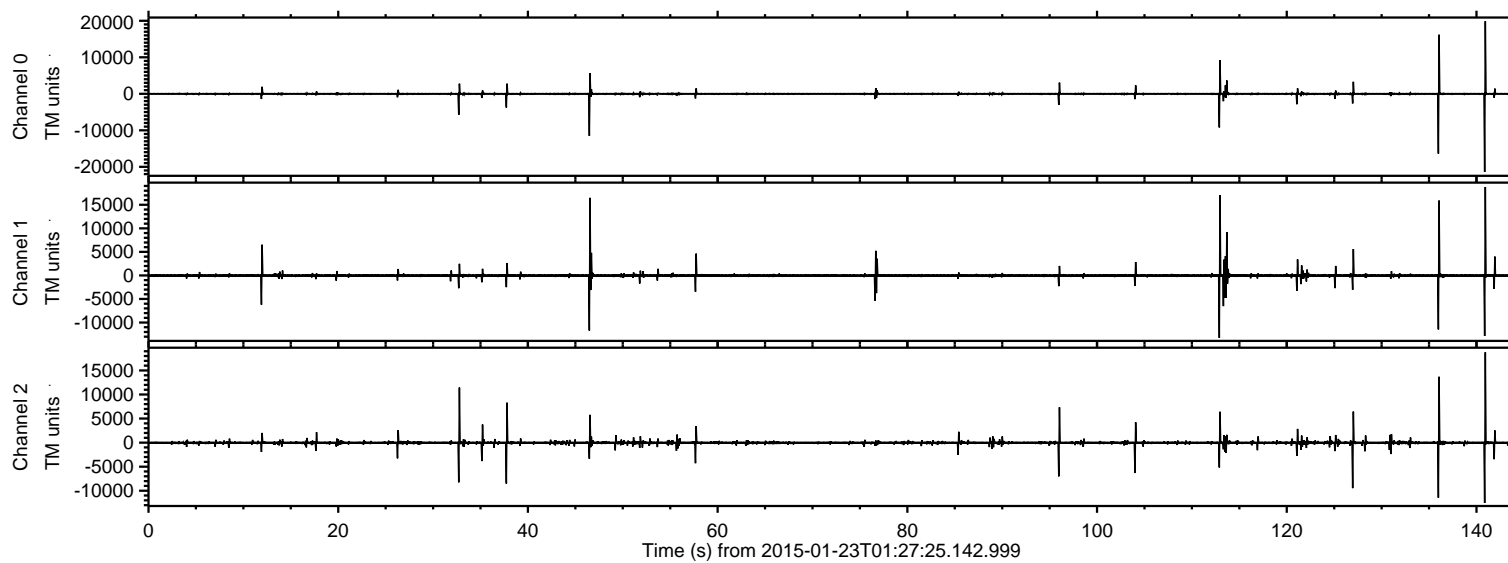


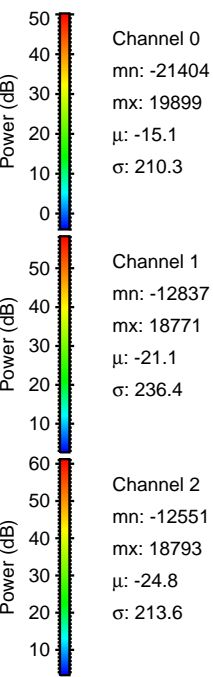
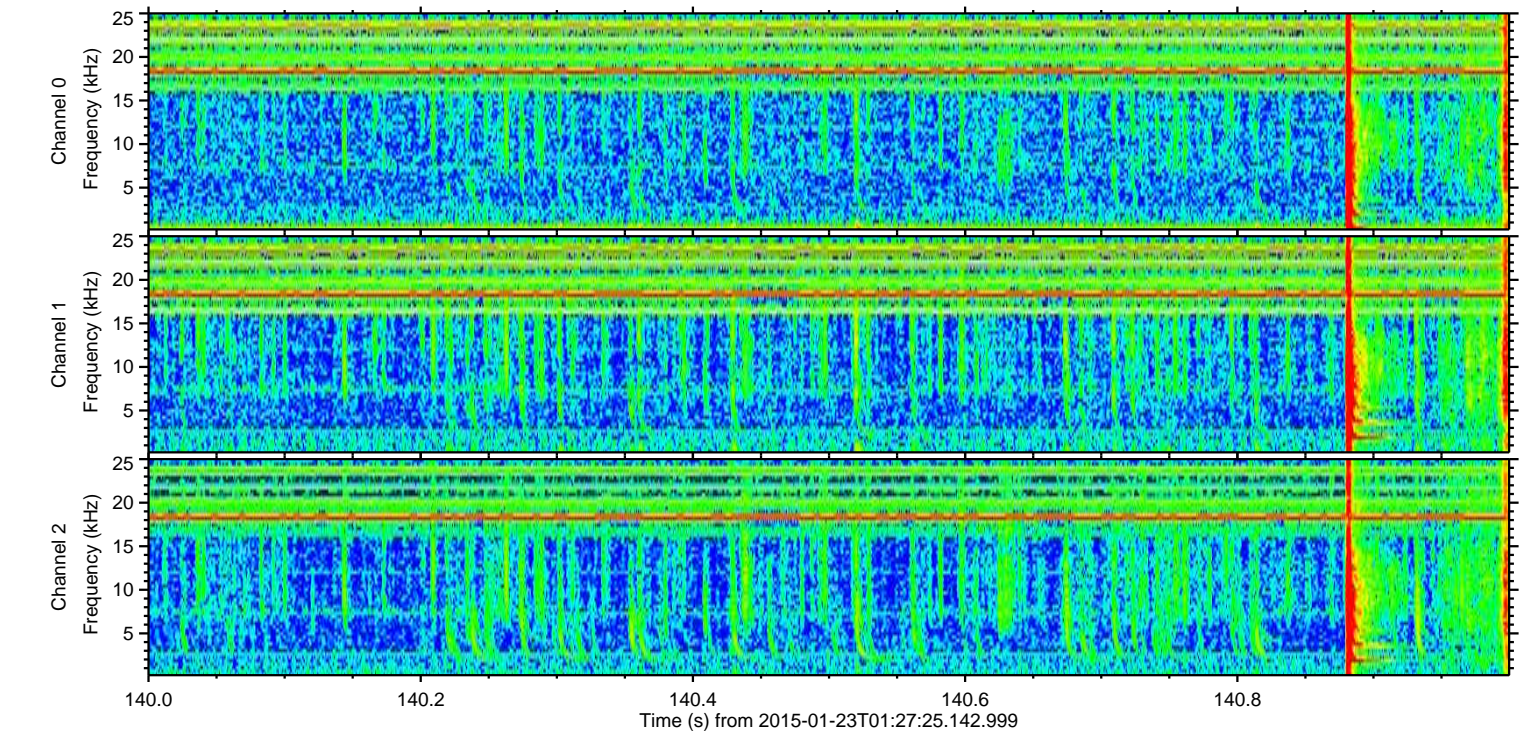
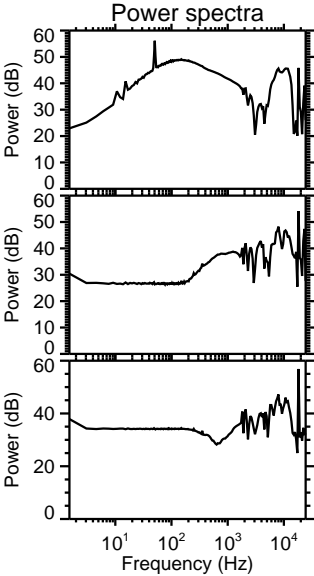
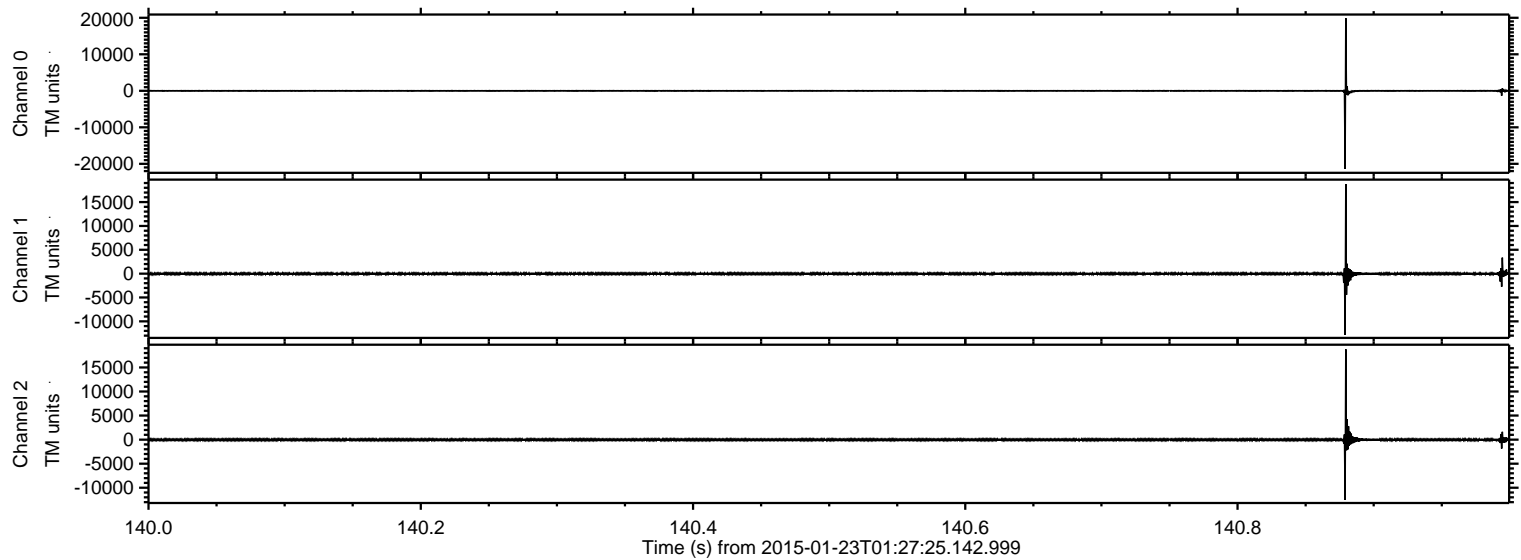
ELMAVAN 3D WAVEFORMS (Measured data sampled at 50 kHz) 49807 packets of 144 samples from 2015-01-23T01:27:25.142.999.

Processed Tue Feb 10 14:29:10 2015 by ELM ver.2012-10-06 from 001__elm20150123_012724__dat00.bin



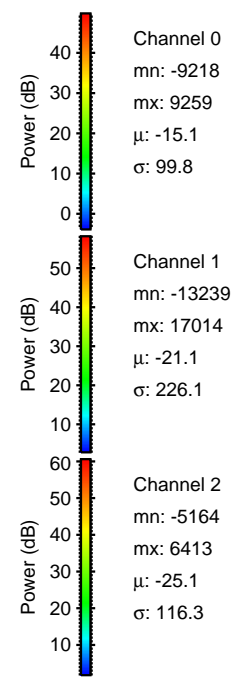
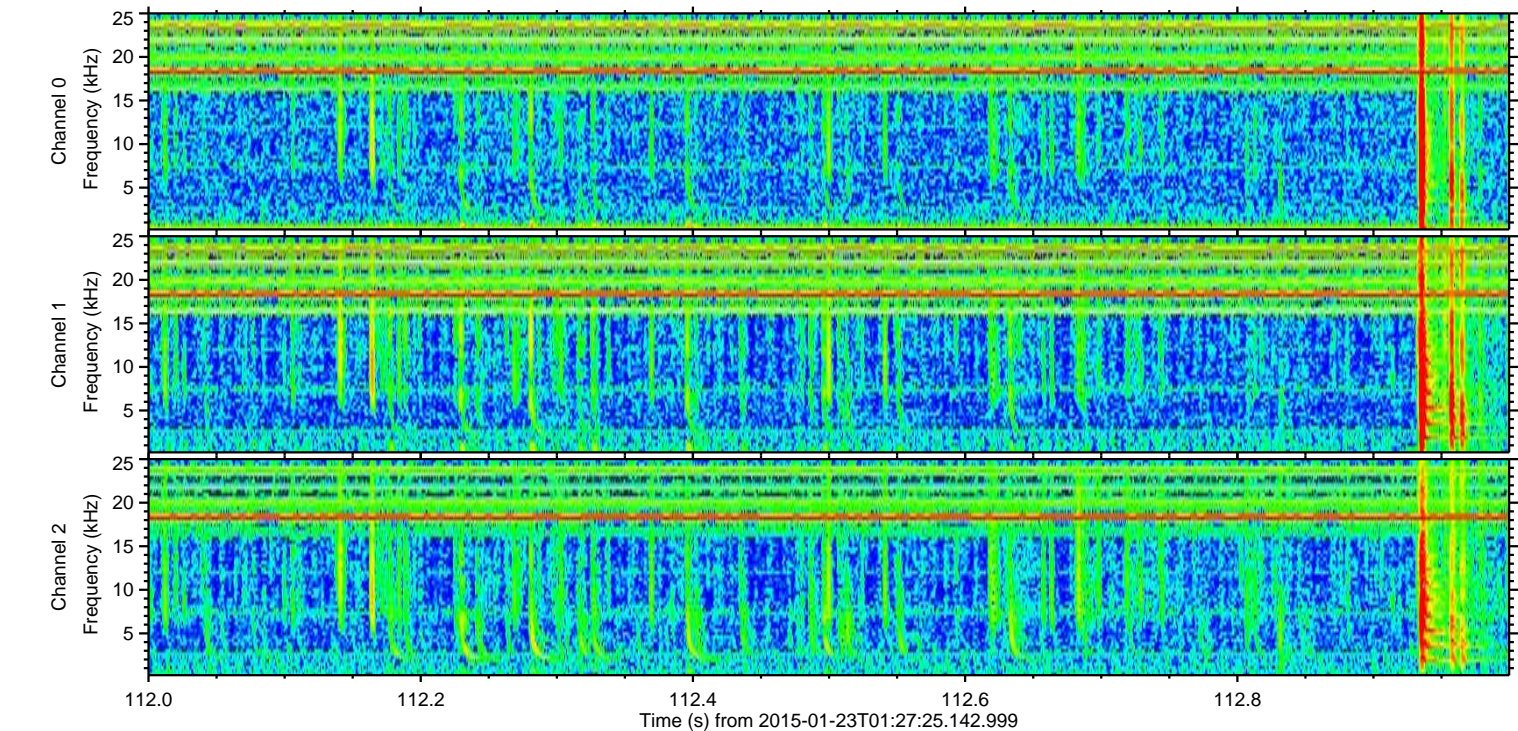
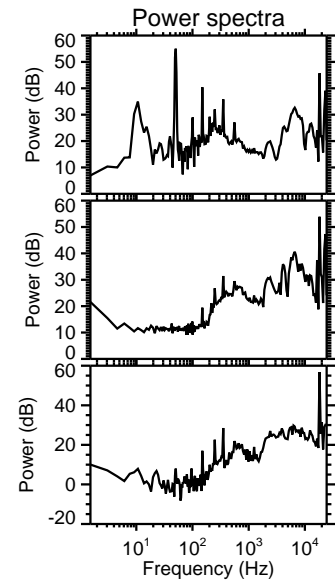
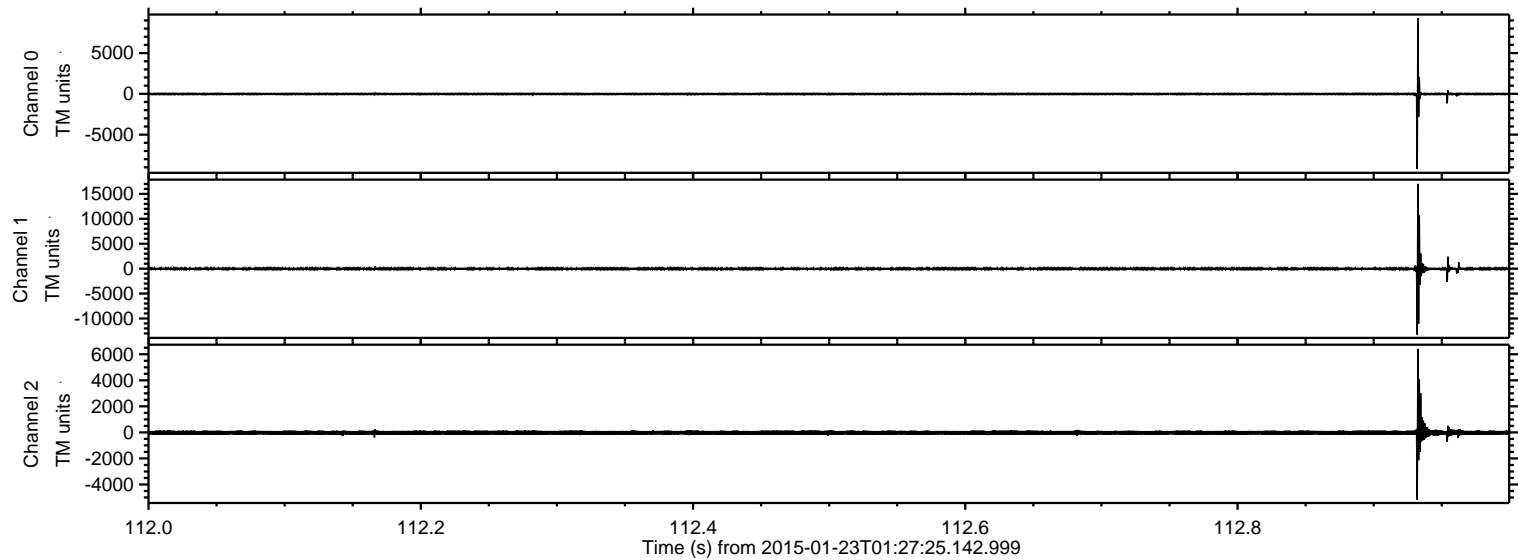
ELMAVAN 3D WAVEFORMS (Measured data sampled at 50 kHz) 49807 packets of 144 samples from 2015-01-23T01:27:25.142.999. Part 141/144

Processed Tue Feb 10 14:29:23 2015 by ELM ver.2012-10-06 from 001__elm20150123_012724__dat00.bin



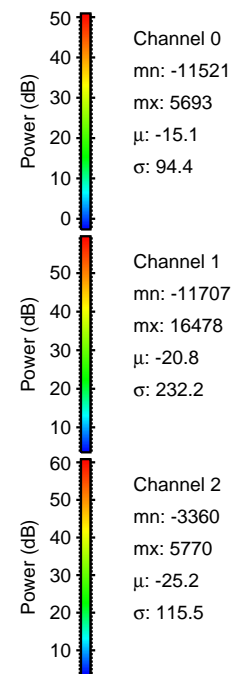
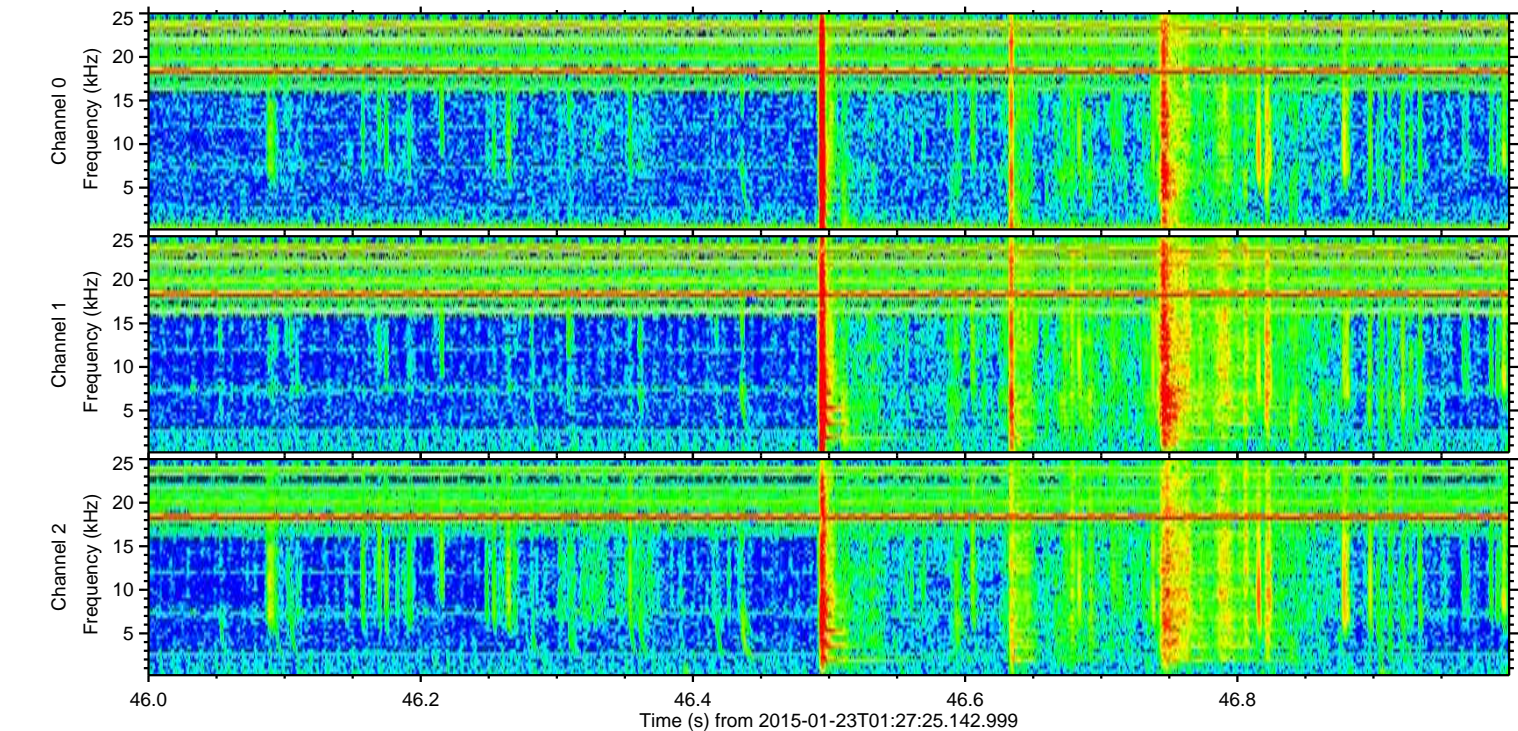
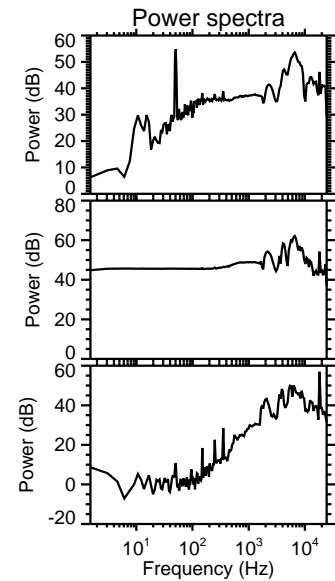
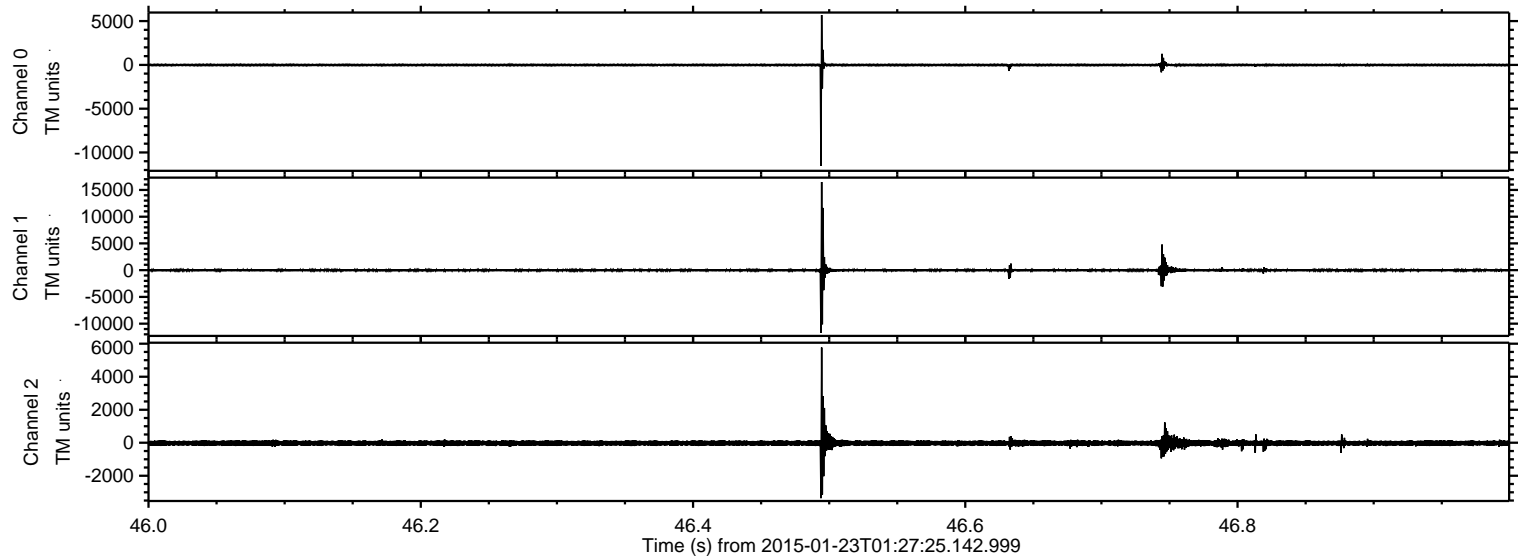
ELMAVAN 3D WAVEFORMS (Measured data sampled at 50 kHz) 49807 packets of 144 samples from 2015-01-23T01:27:25.142.999. Part 113/144

Processed Tue Feb 10 14:29:24 2015 by ELM ver.2012-10-06 from 001__elm20150123_012724__dat00.bin



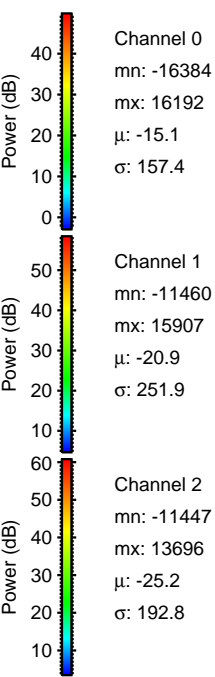
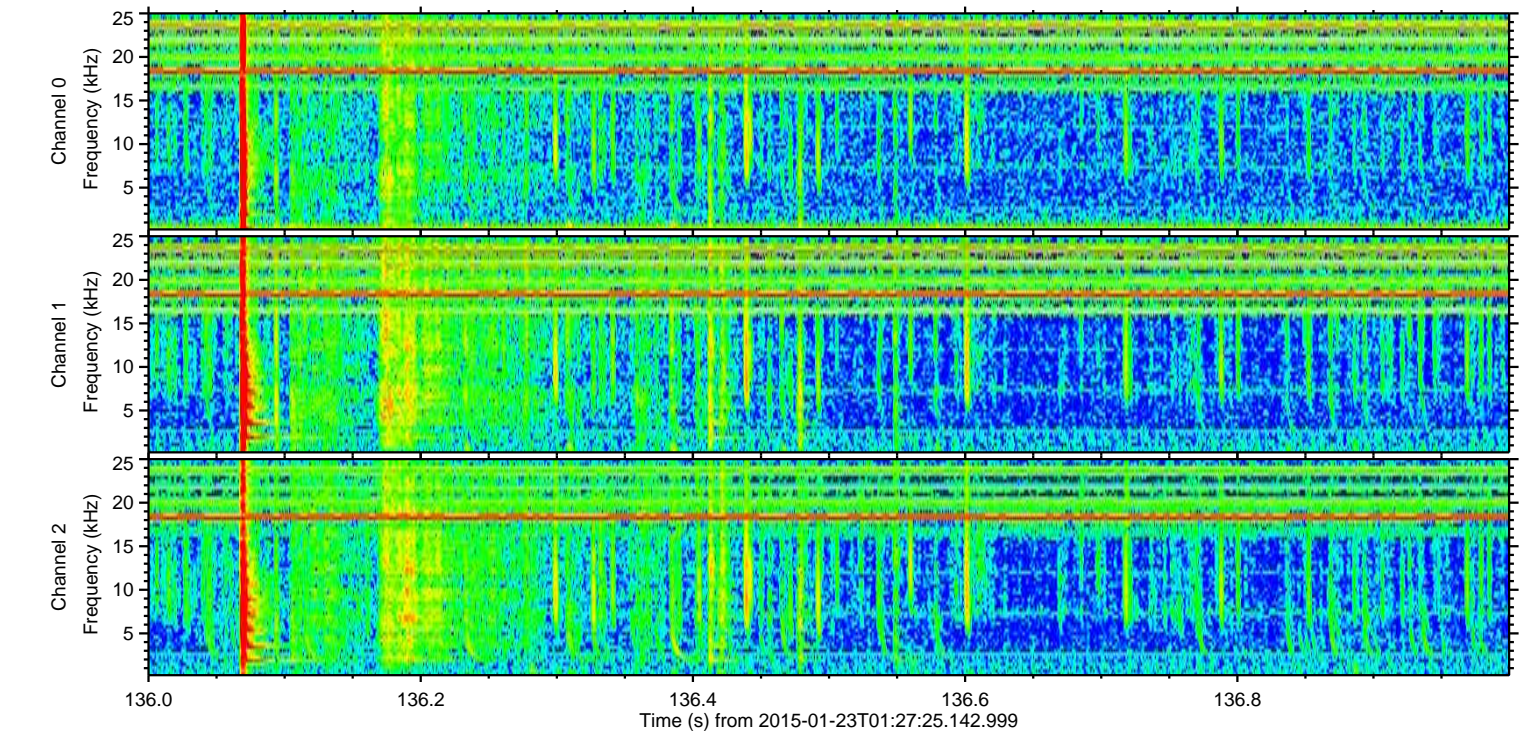
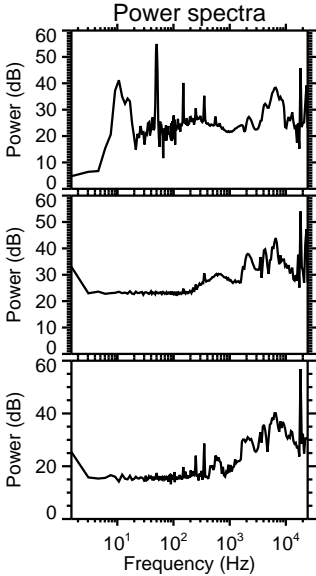
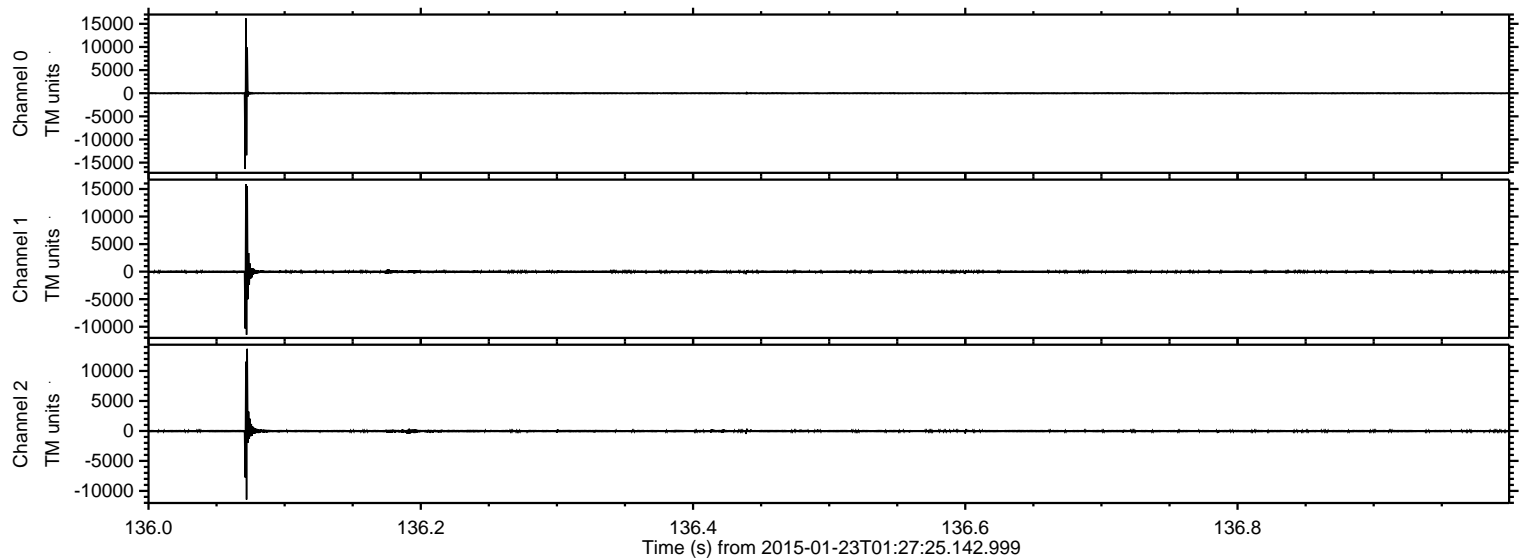
ELMAVAN 3D WAVEFORMS (Measured data sampled at 50 kHz) 49807 packets of 144 samples from 2015-01-23T01:27:25.142.999. Part 47/144

Processed Tue Feb 10 14:29:25 2015 by ELM ver.2012-10-06 from 001__elm20150123_012724__dat00.bin



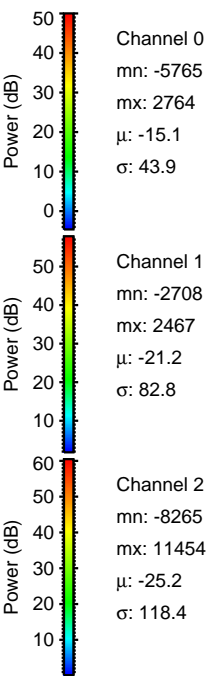
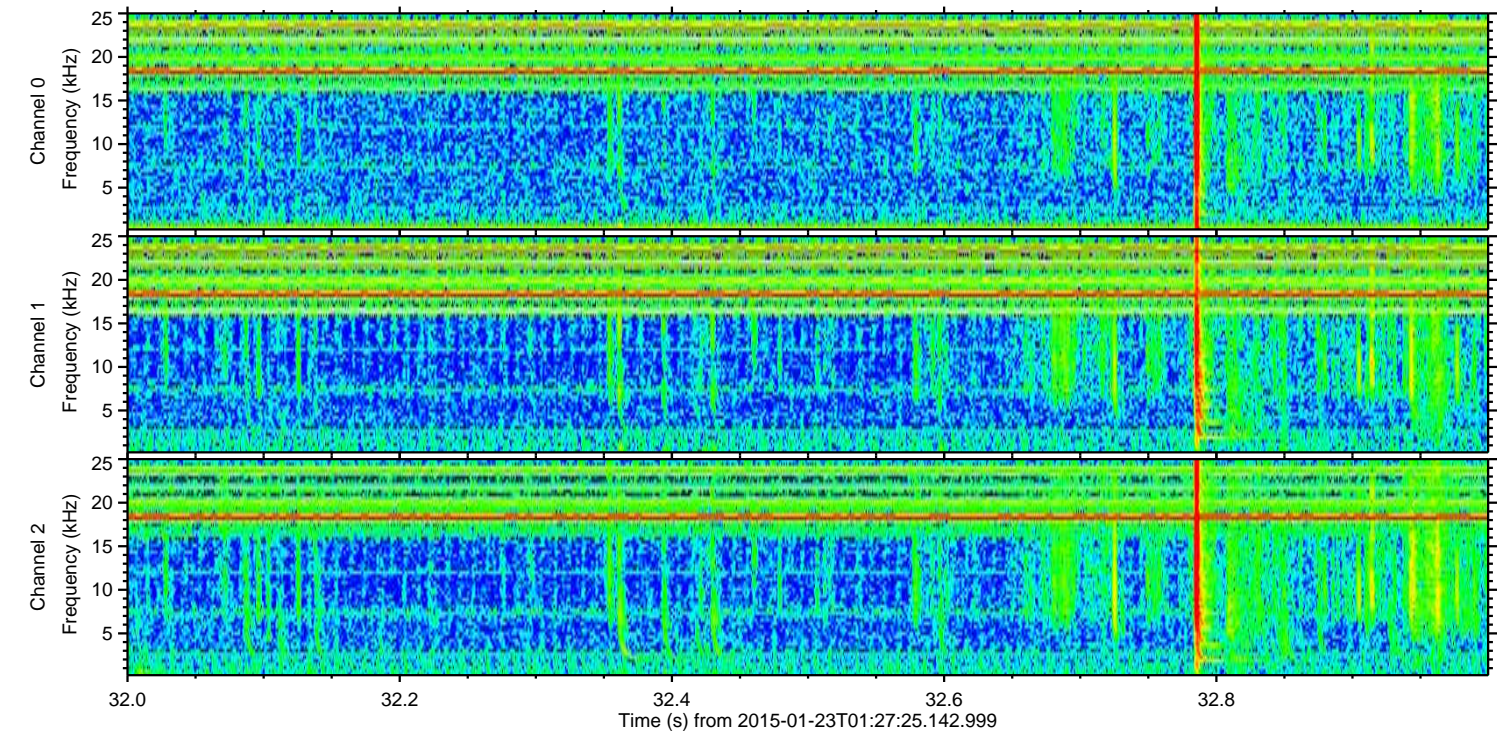
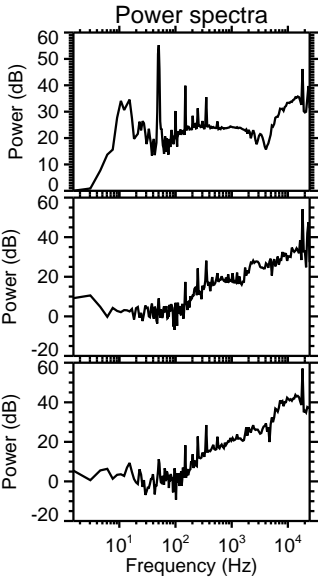
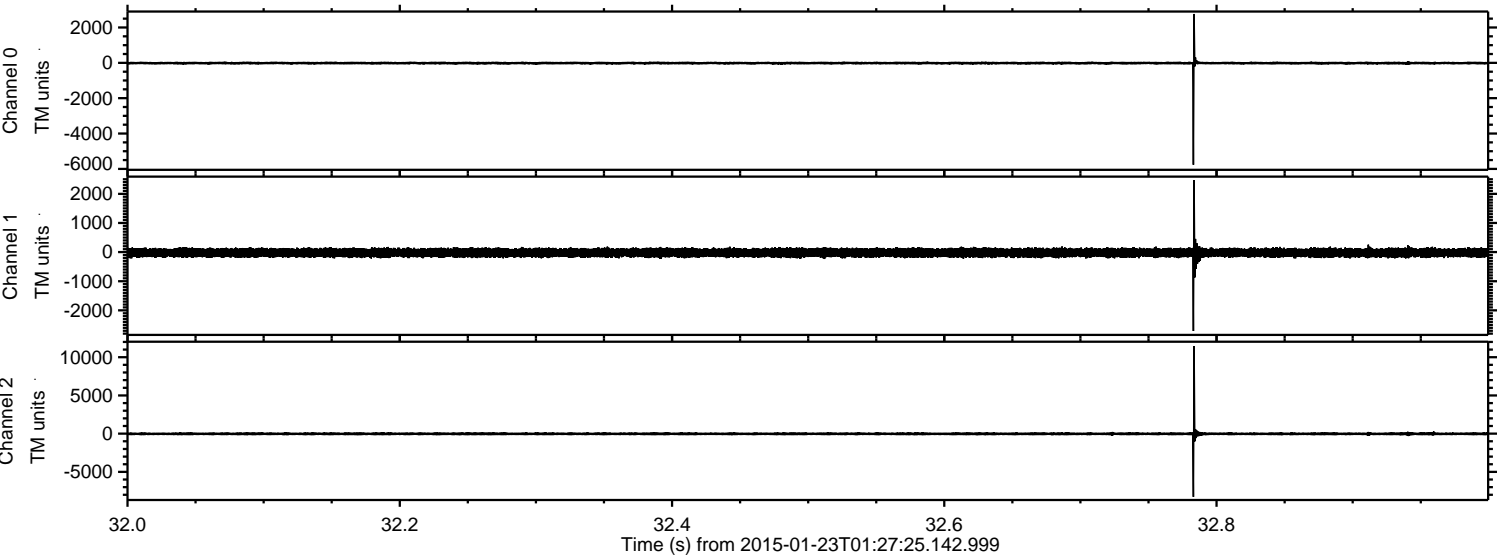
ELMAVAN 3D WAVEFORMS (Measured data sampled at 50 kHz) 49807 packets of 144 samples from 2015-01-23T01:27:25.142.999. Part 137/144

Processed Tue Feb 10 14:29:26 2015 by ELM ver.2012-10-06 from 001__elm20150123_012724__dat00.bin



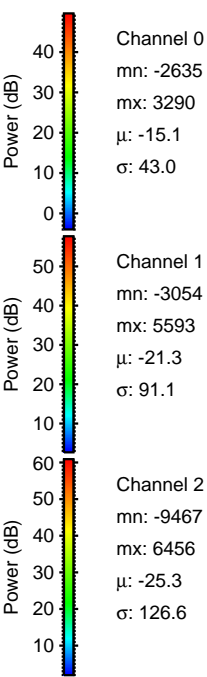
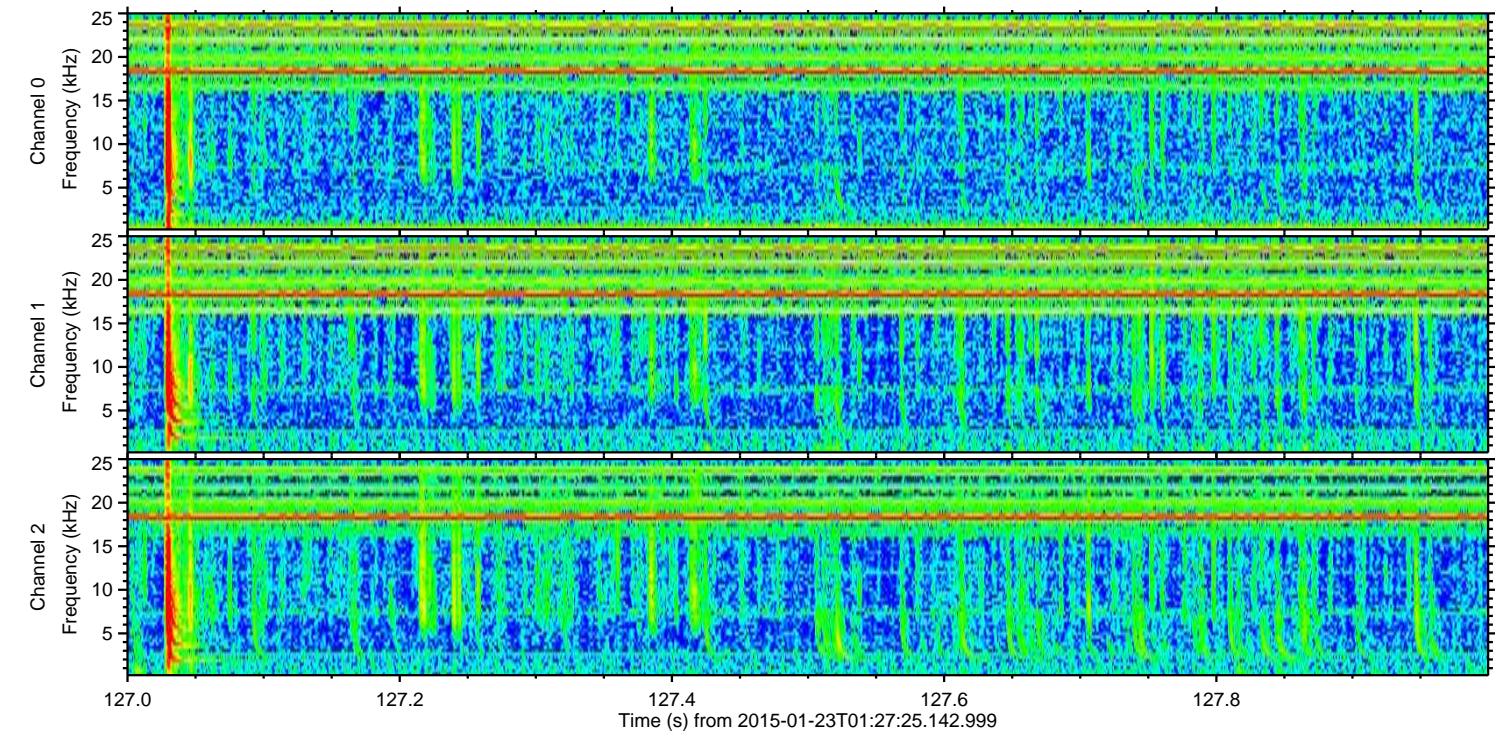
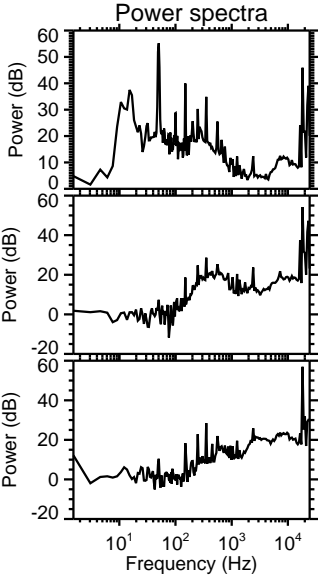
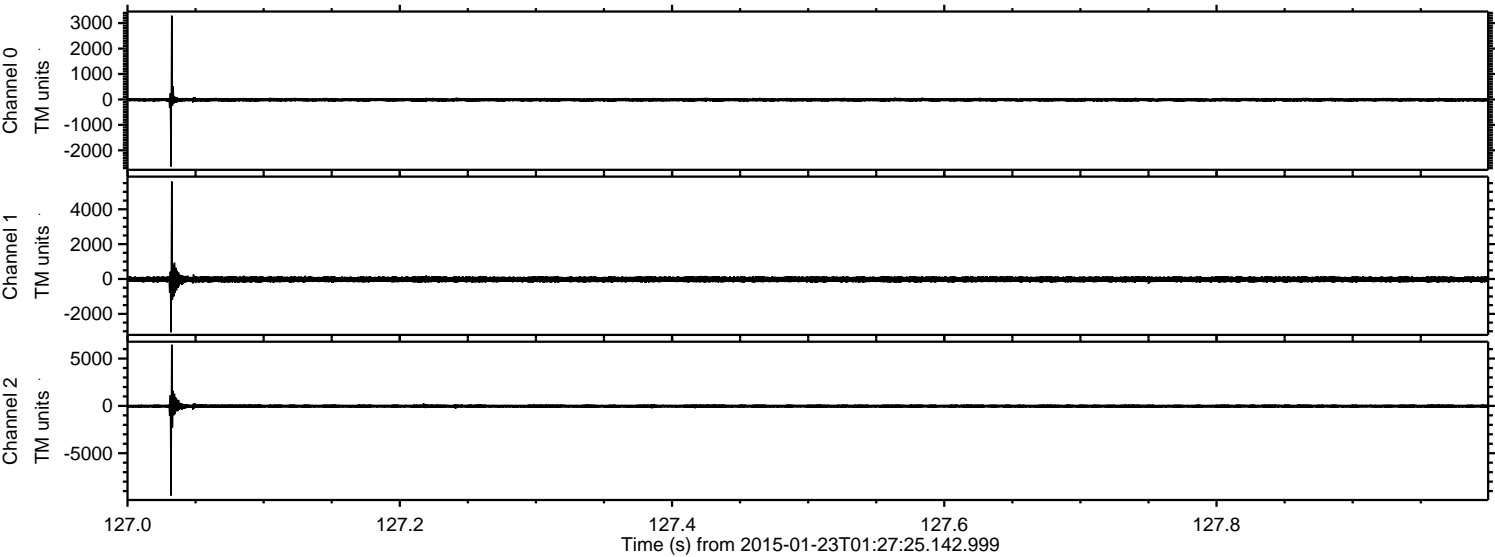
ELMAVAN 3D WAVEFORMS (Measured data sampled at 50 kHz) 49807 packets of 144 samples from 2015-01-23T01:27:25.142.999. Part 33/144

Processed Tue Feb 10 14:29:27 2015 by ELM ver.2012-10-06 from 001__elm20150123_012724__dat00.bin



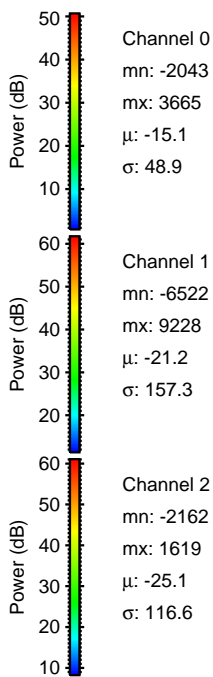
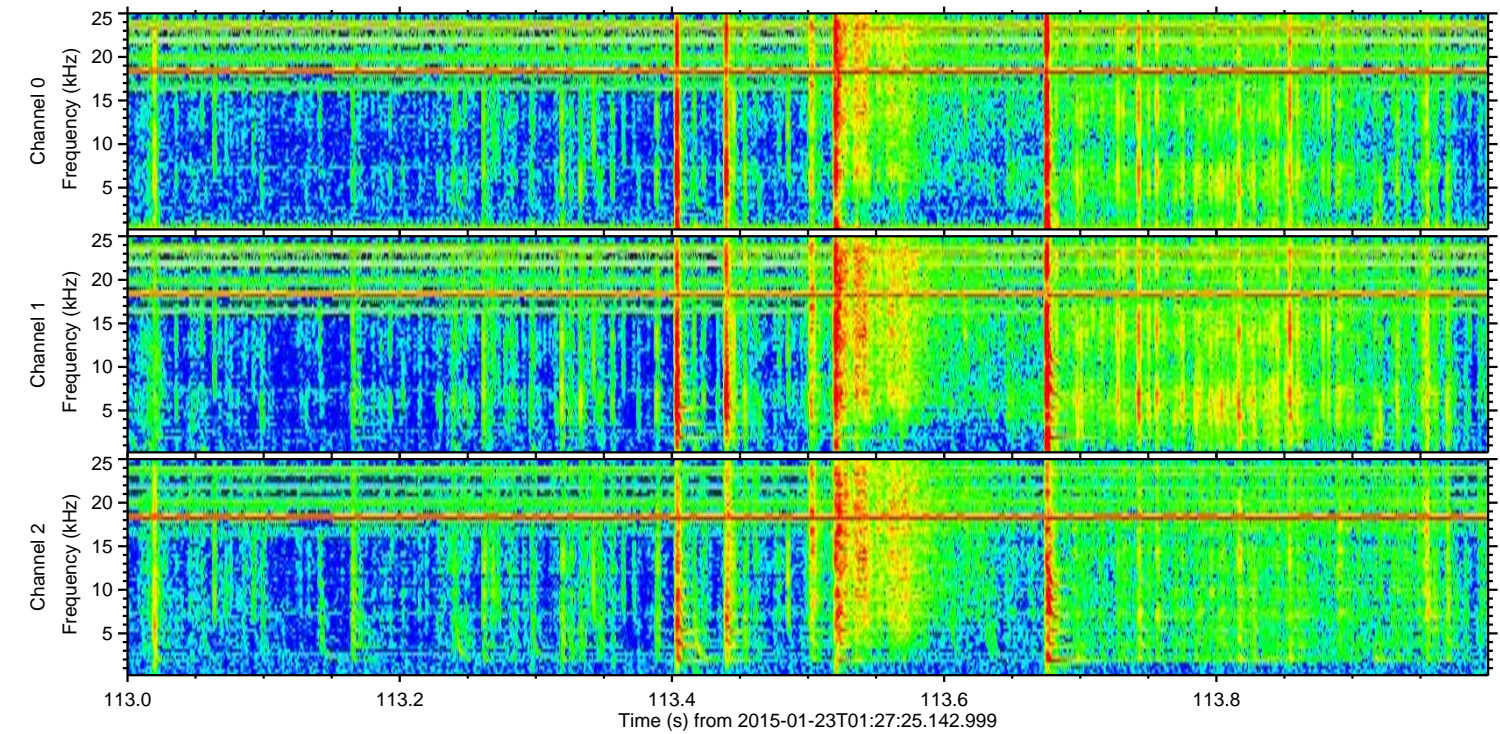
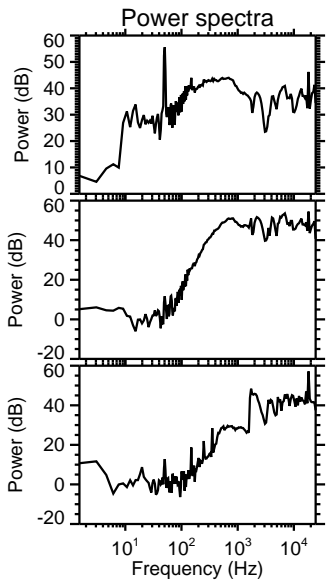
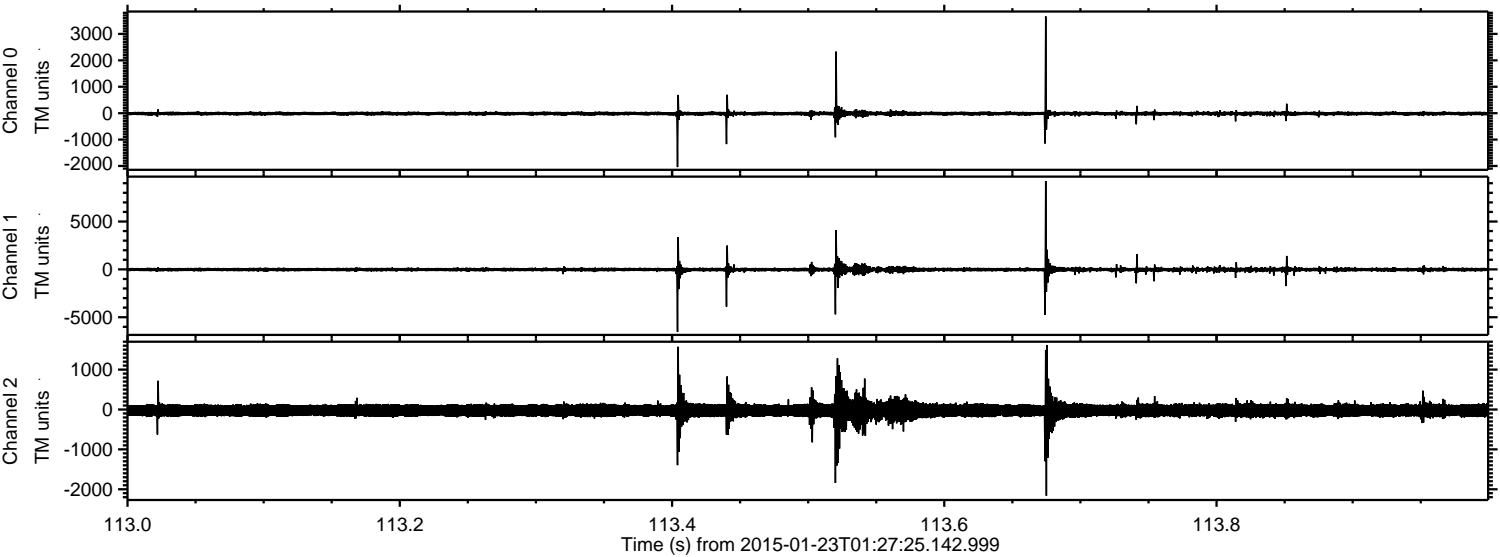
ELMAVAN 3D WAVEFORMS (Measured data sampled at 50 kHz) 49807 packets of 144 samples from 2015-01-23T01:27:25.142.999. Part 128/144

Processed Tue Feb 10 14:29:28 2015 by ELM ver.2012-10-06 from 001__elm20150123_012724__dat00.bin



ELMAVAN 3D WAVEFORMS (Measured data sampled at 50 kHz) 49807 packets of 144 samples from 2015-01-23T01:27:25.142.999. Part 114/144

Processed Tue Feb 10 14:29:29 2015 by ELM ver.2012-10-06 from 001__elm20150123_012724__dat00.bin

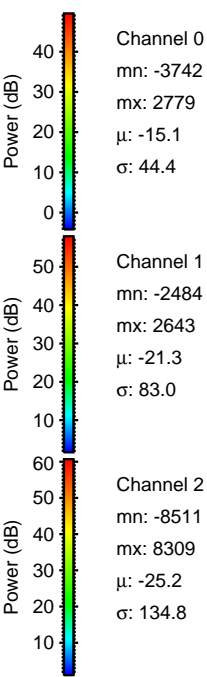
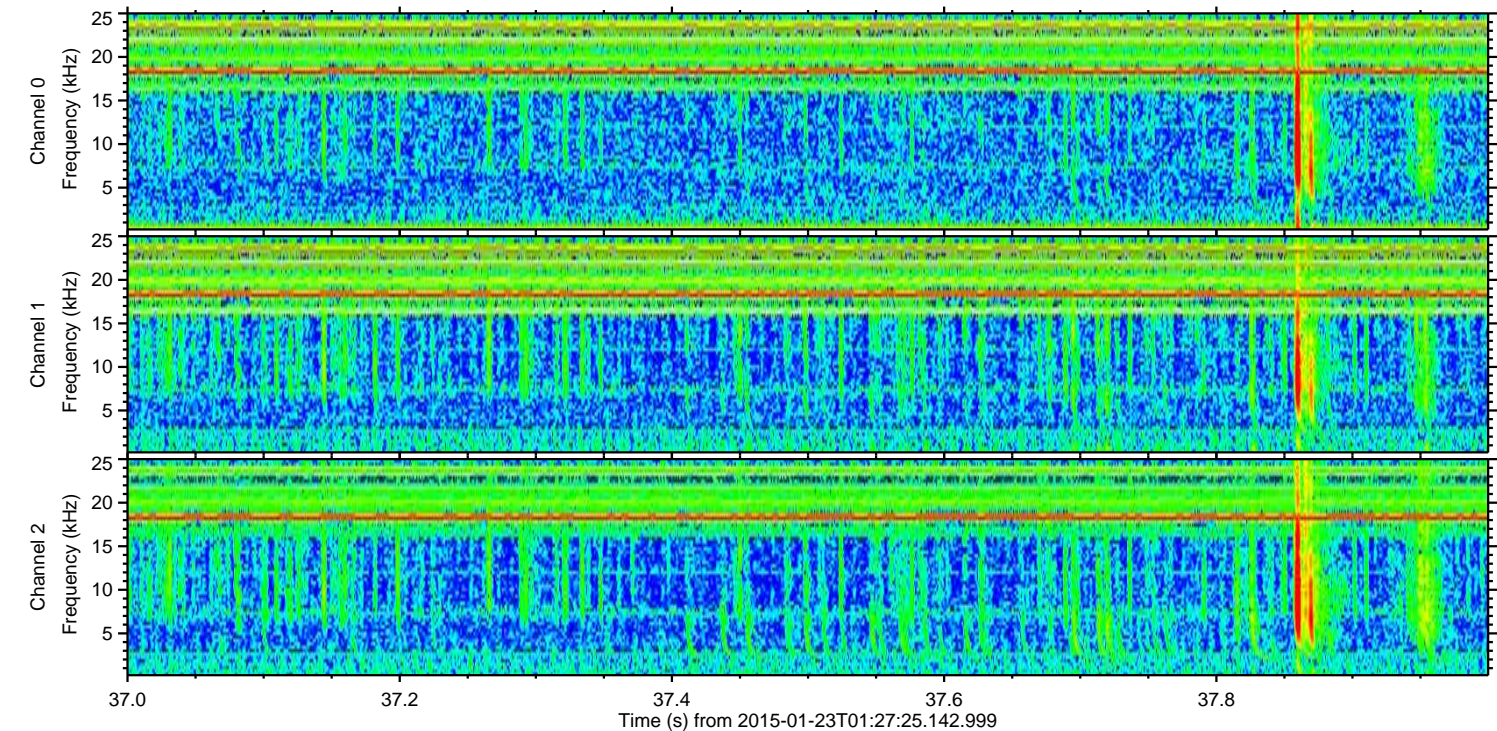
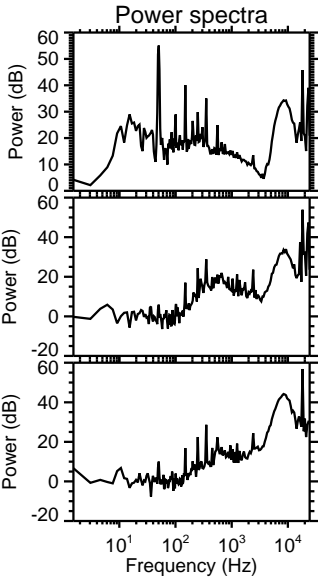
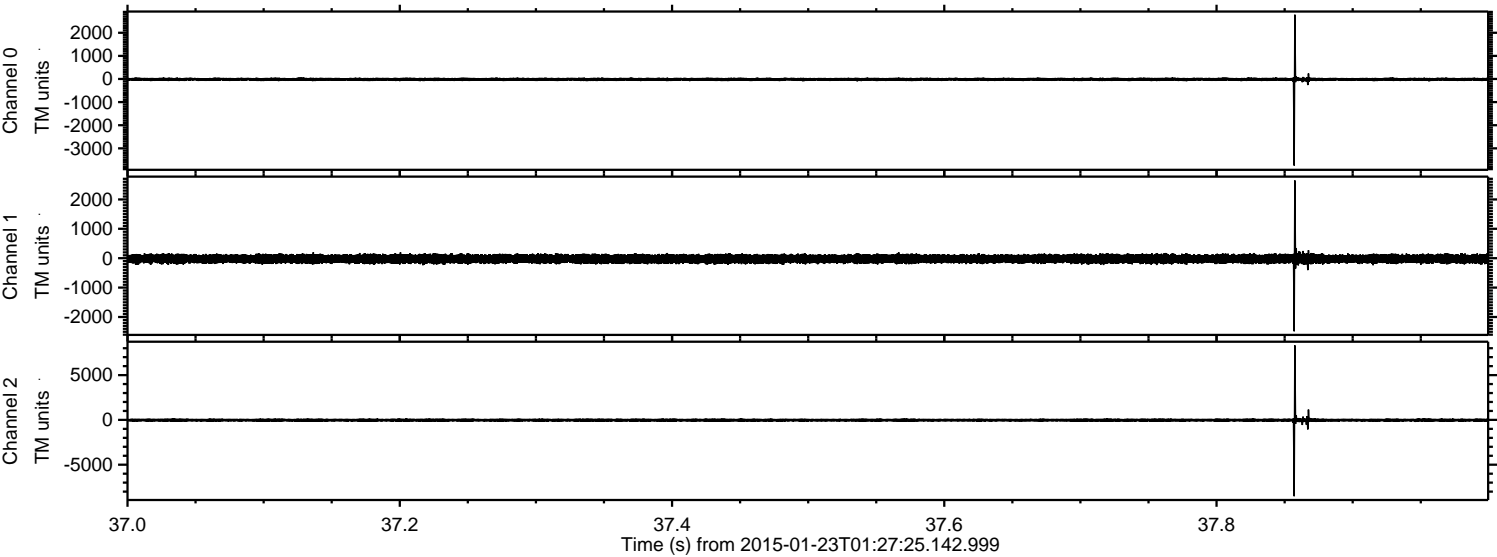


Channel 0
mn: -2043
mx: 3665
 μ : -15.1
 σ : 48.9

Channel 1
mn: -6522
mx: 9228
 μ : -21.2
 σ : 157.3

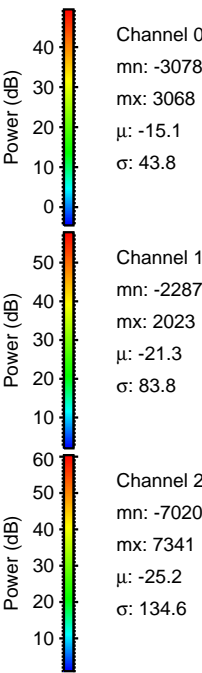
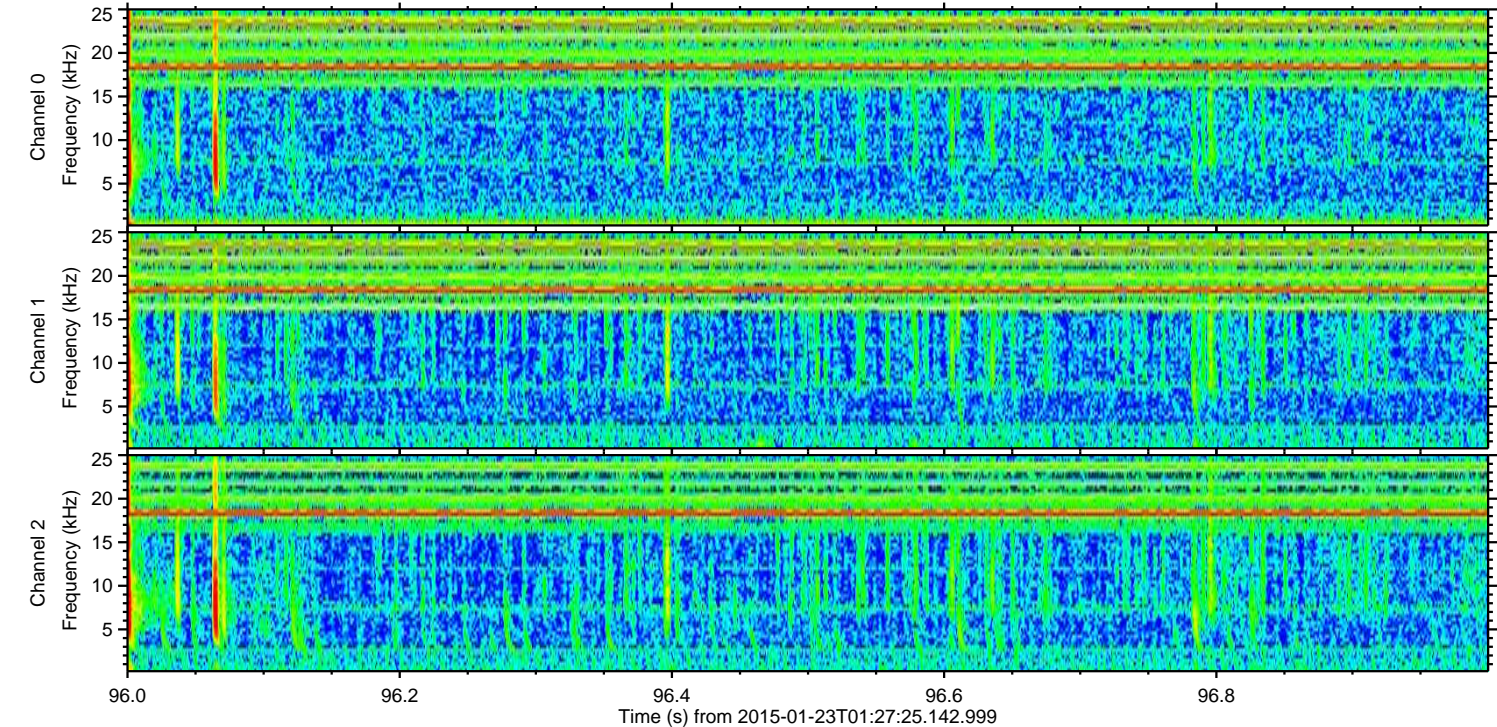
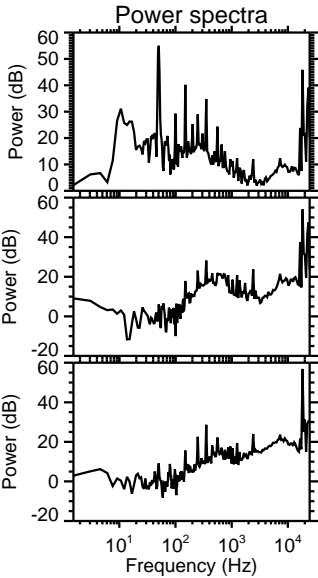
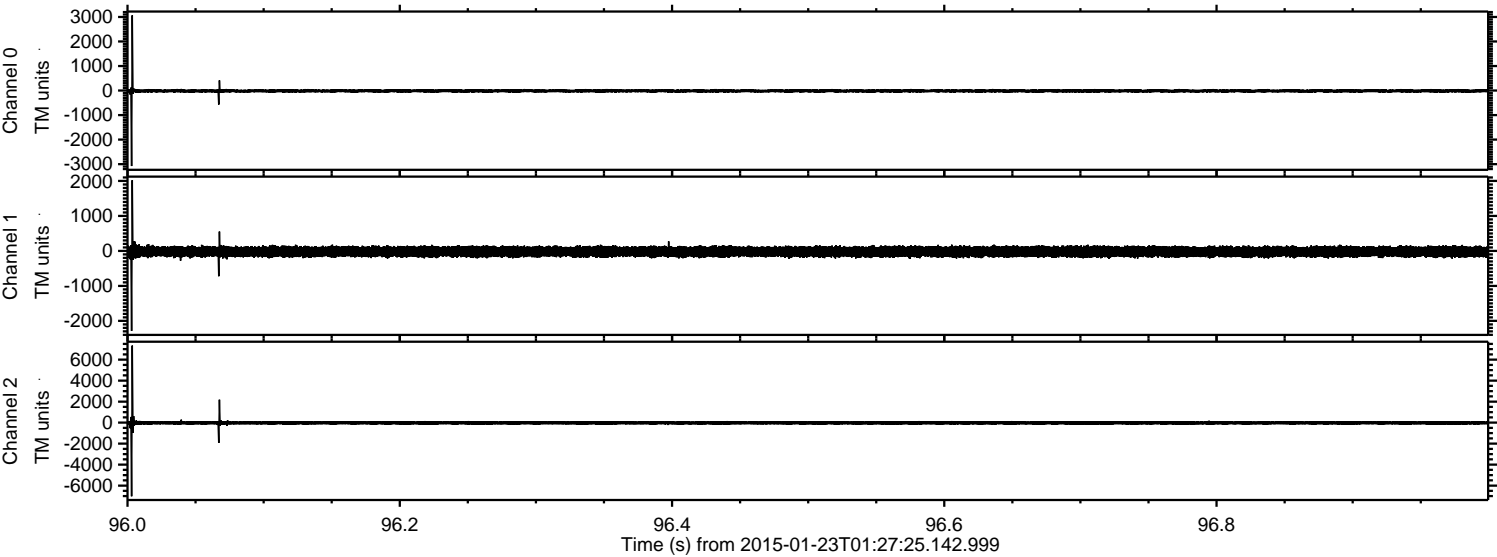
Channel 2
mn: -2162
mx: 1619
 μ : -25.1
 σ : 116.6

Processed Tue Feb 10 14:29:30 2015 by ELM ver.2012-10-06 from 001__elm20150123_012724__dat00.bin



ELMAVAN 3D WAVEFORMS (Measured data sampled at 50 kHz) 49807 packets of 144 samples from 2015-01-23T01:27:25.142.999. Part 97/144

Processed Tue Feb 10 14:29:31 2015 by ELM ver.2012-10-06 from 001__elm20150123_012724__dat00.bin



Channel 0
mn: -3078
mx: 3068
 μ : -15.1
 σ : 43.8

Channel 1
mn: -2287
mx: 2023
 μ : -21.3
 σ : 83.8

Channel 2
mn: -7020
mx: 7341
 μ : -25.2
 σ : 134.6

ELMAVAN 3D WAVEFORMS (Measured data sampled at 50 kHz) 49807 packets of 144 samples from 2015-01-23T01:27:25.142.999. Part 70/144

Processed Tue Feb 10 14:29:32 2015 by ELM ver.2012-10-06 from 001__elm20150123_012724__dat00.bin

