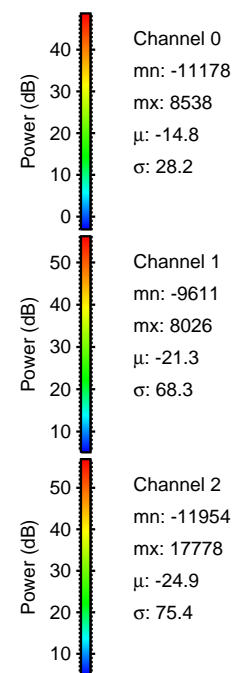
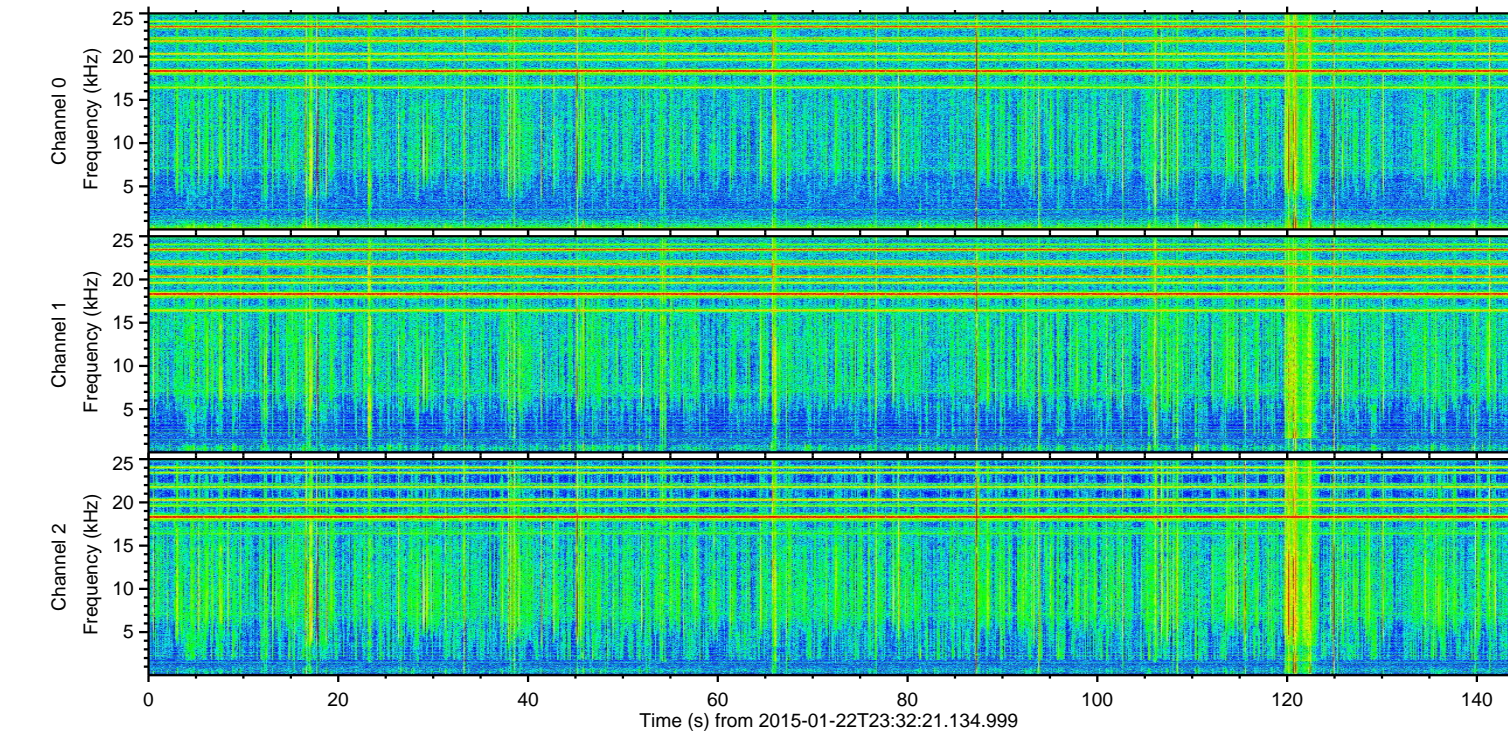
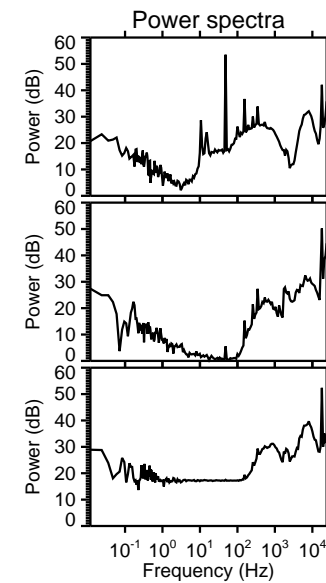
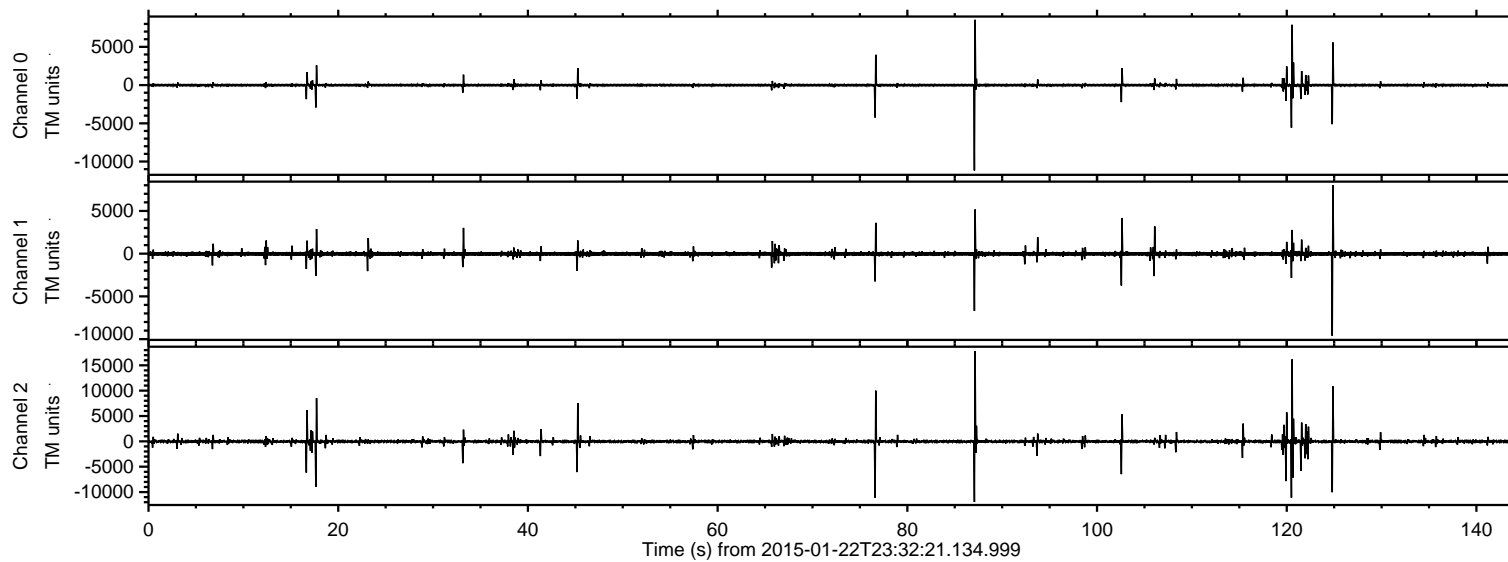
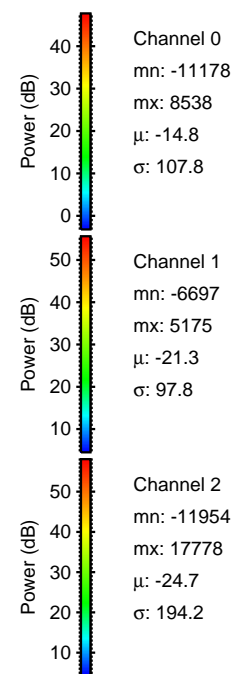
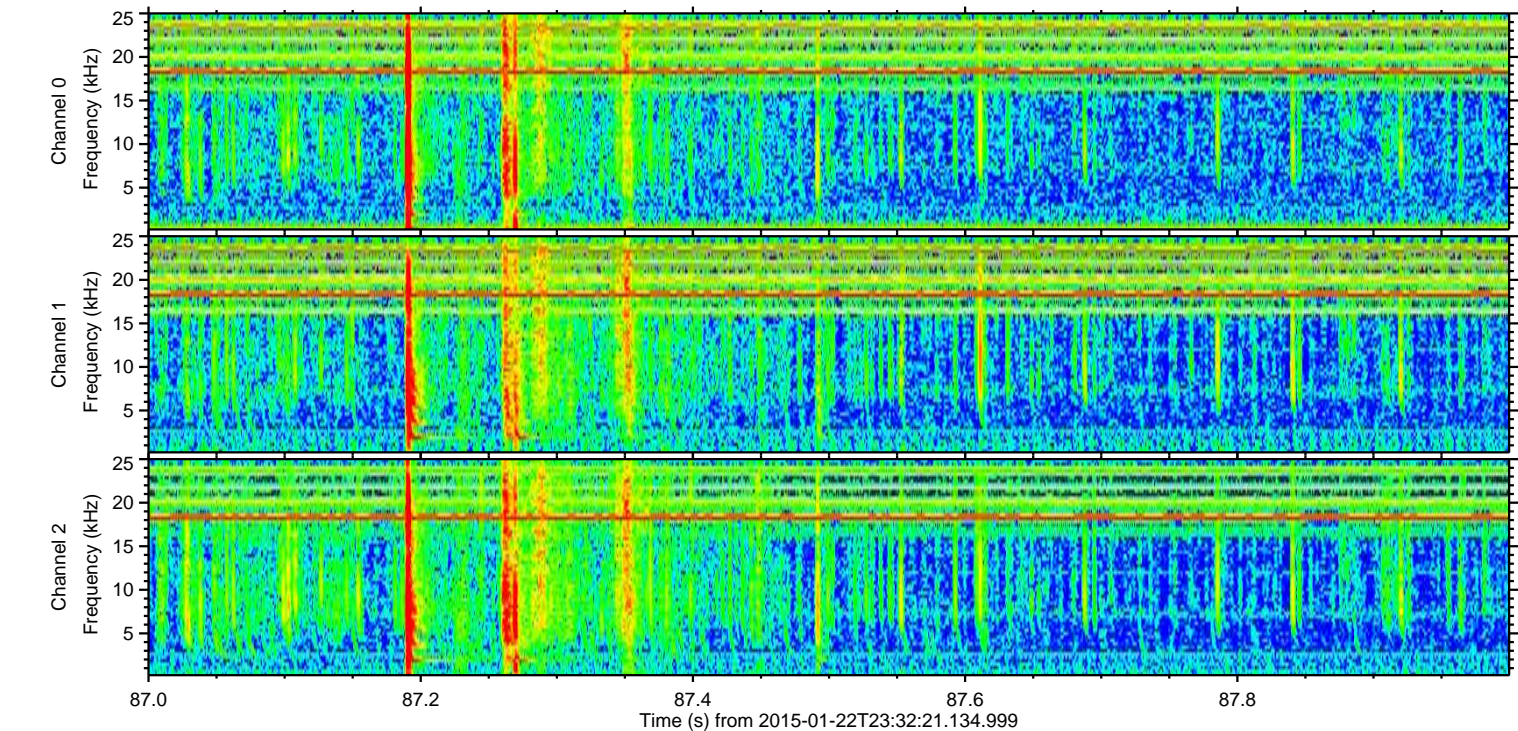
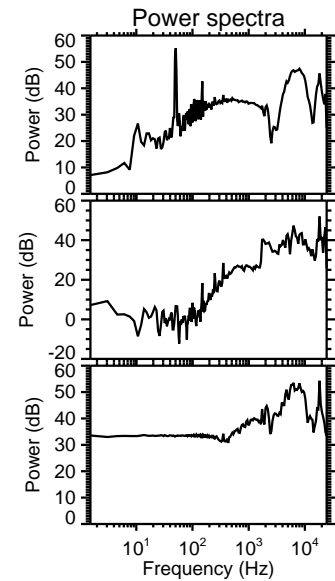
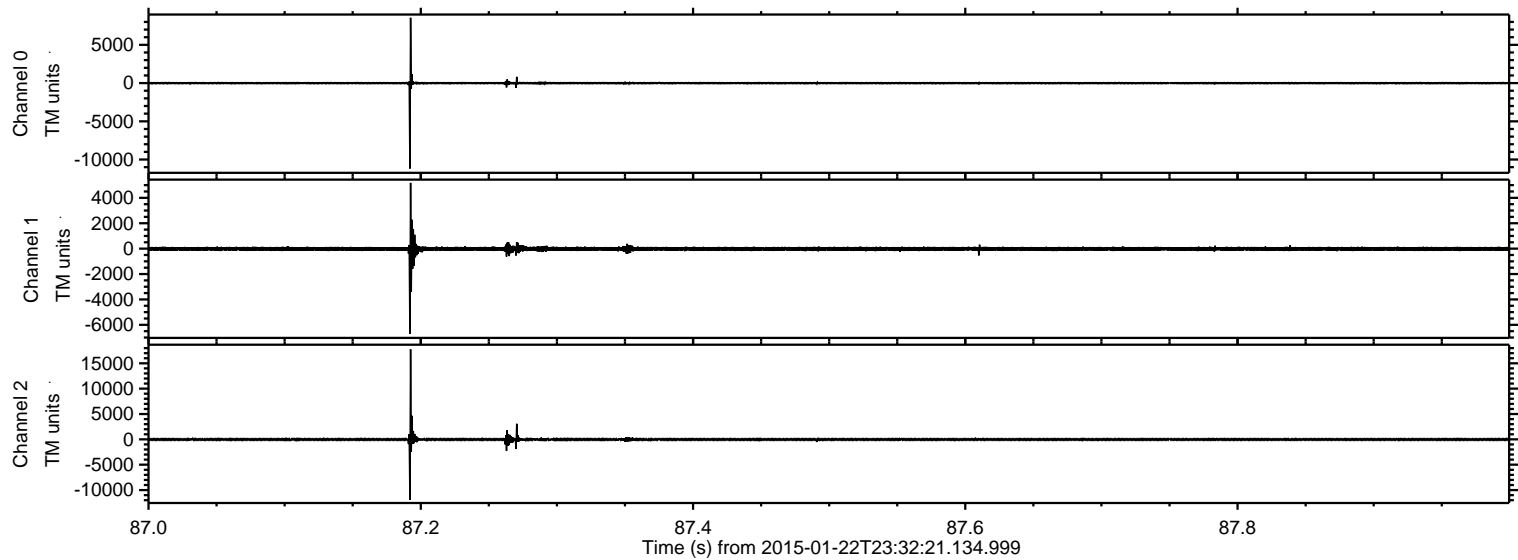


ELMAVAN 3D WAVEFORMS (Measured data sampled at 50 kHz) 49808 packets of 144 samples from 2015-01-22T23:32:21.134.999.

Processed Tue Feb 10 14:01:11 2015 by ELM ver.2012-10-06 from 001__elm20150122_233220__dat00.bin

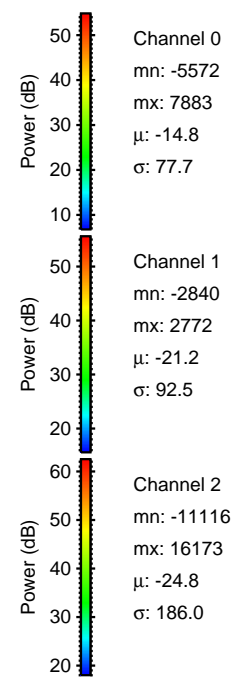
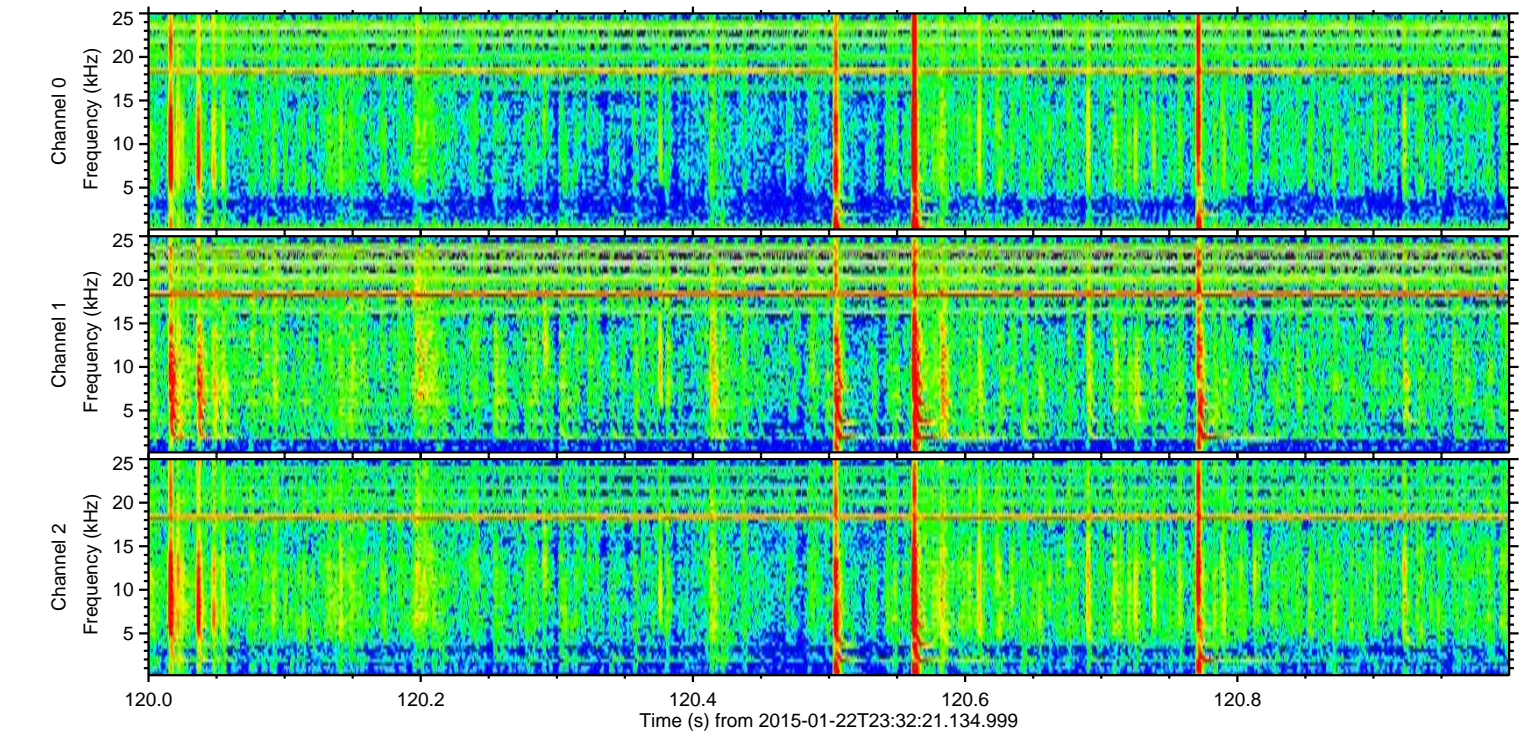
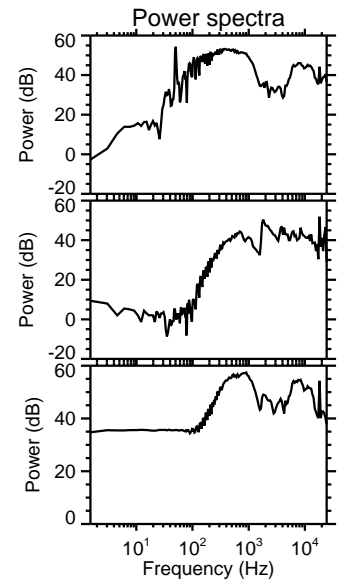
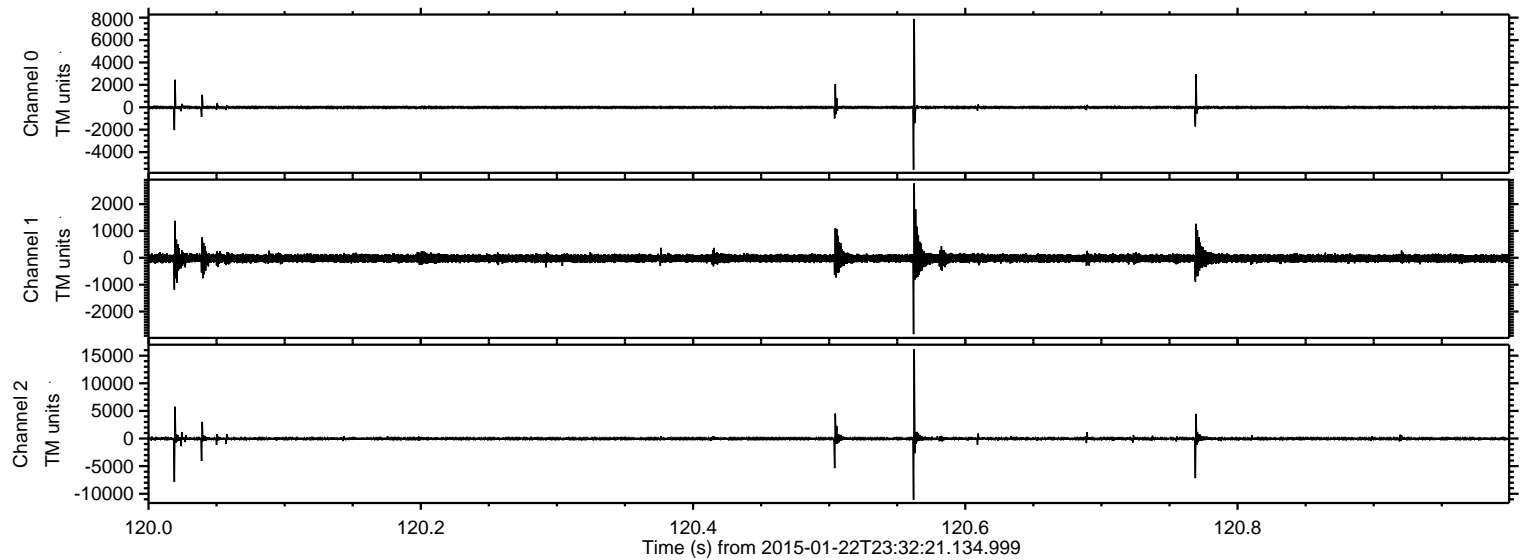


Processed Tue Feb 10 14:01:23 2015 by ELM ver.2012-10-06 from 001__elm20150122_233220__dat00.bin

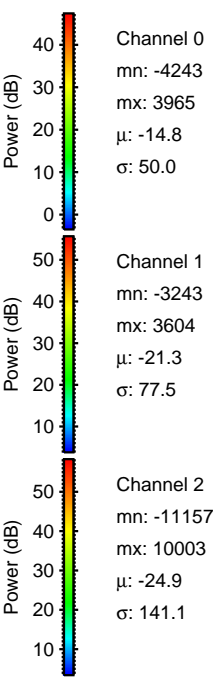
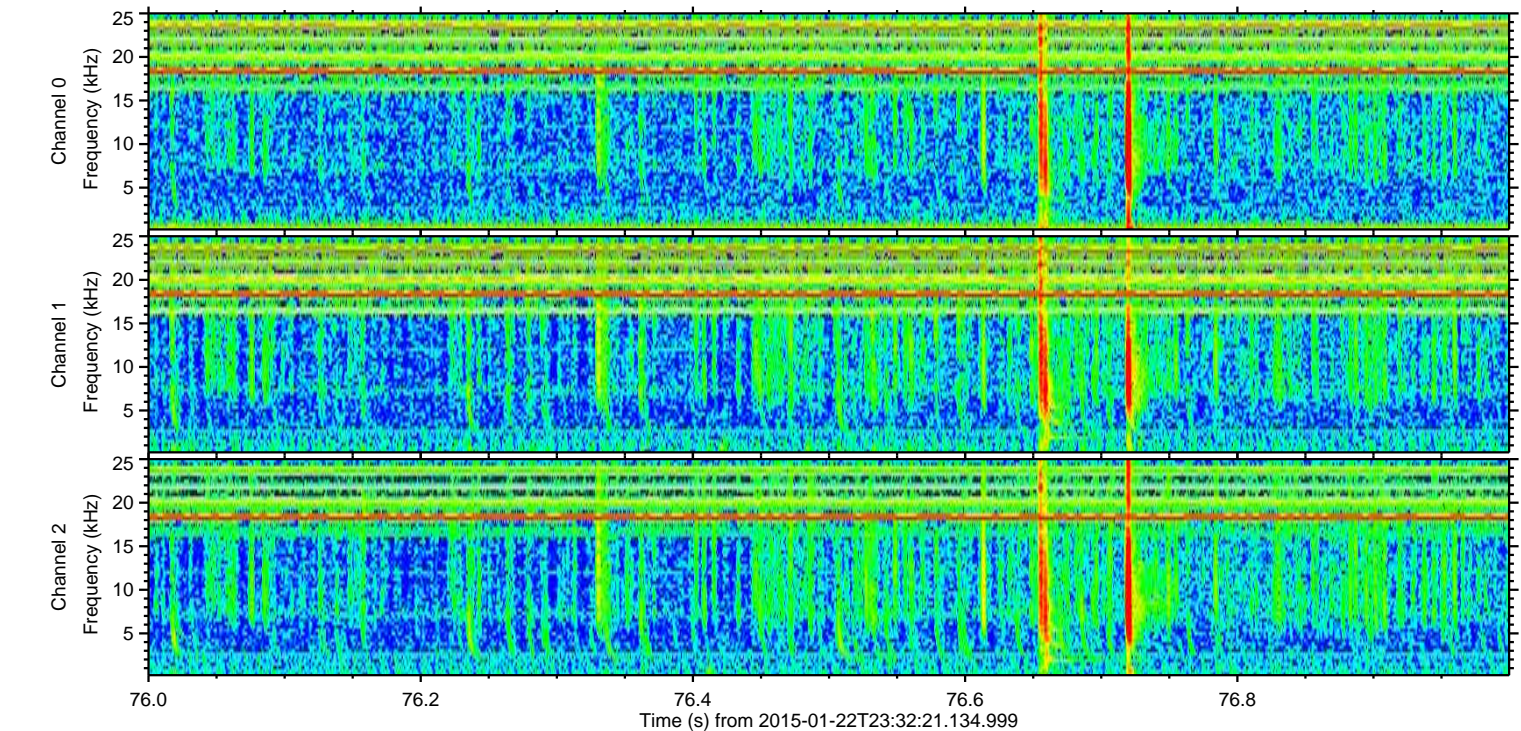
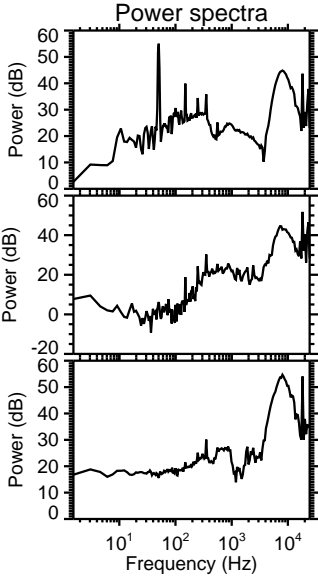
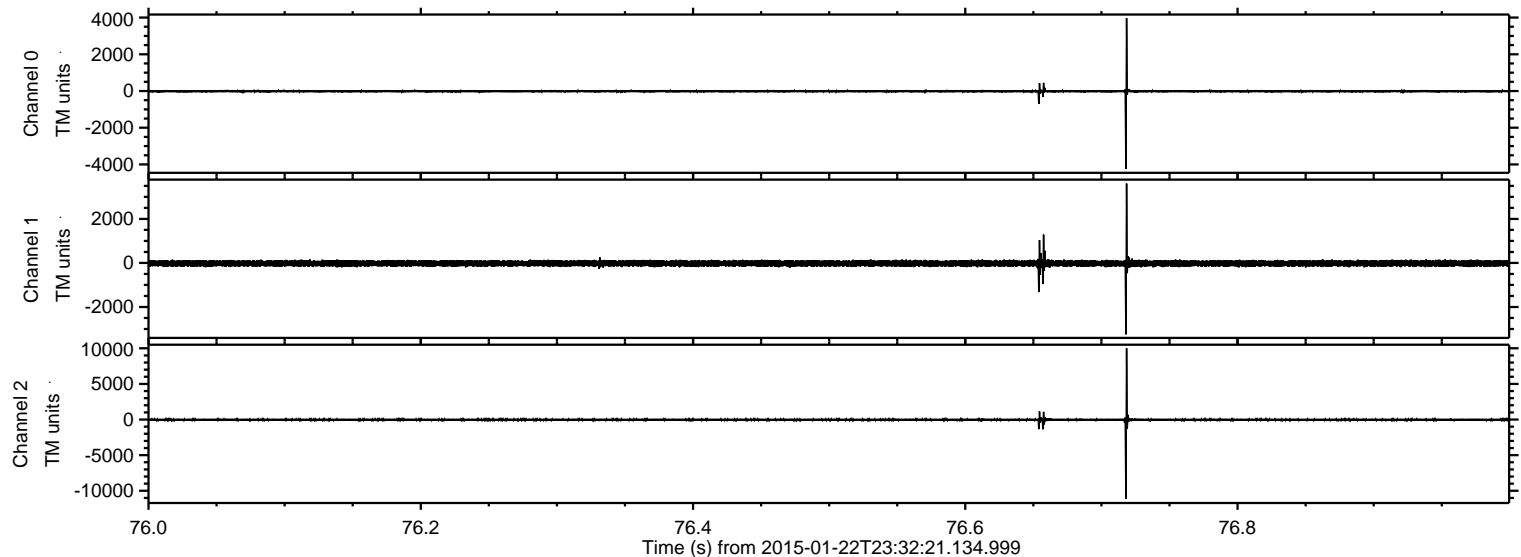


ELMAVAN 3D WAVEFORMS (Measured data sampled at 50 kHz) 49808 packets of 144 samples from 2015-01-22T23:32:21.134.999. Part 121/144

Processed Tue Feb 10 14:01:24 2015 by ELM ver.2012-10-06 from 001__elm20150122_233220__dat00.bin

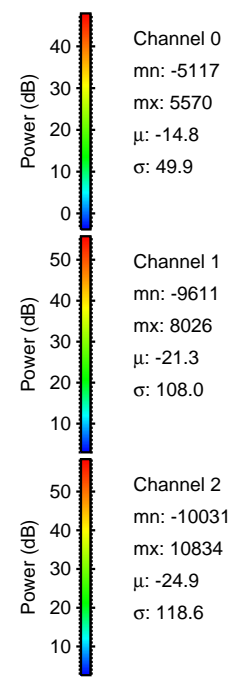
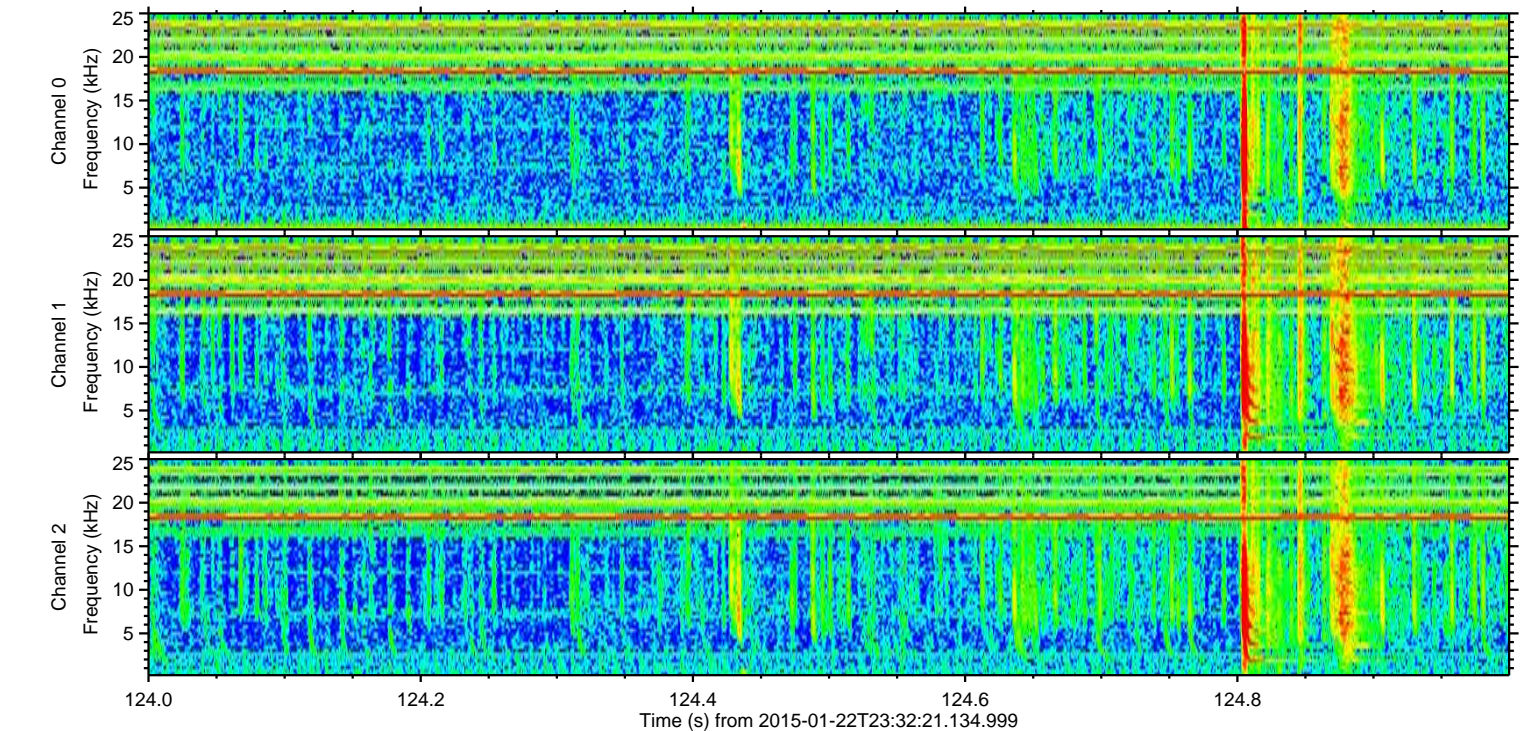
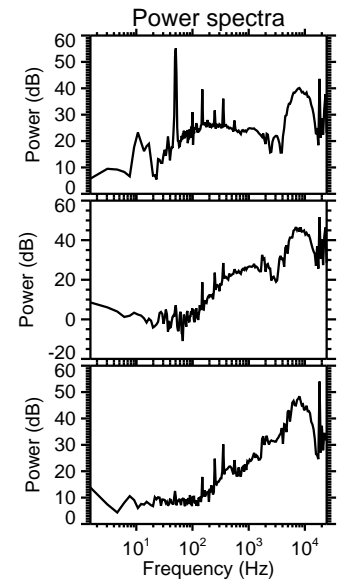
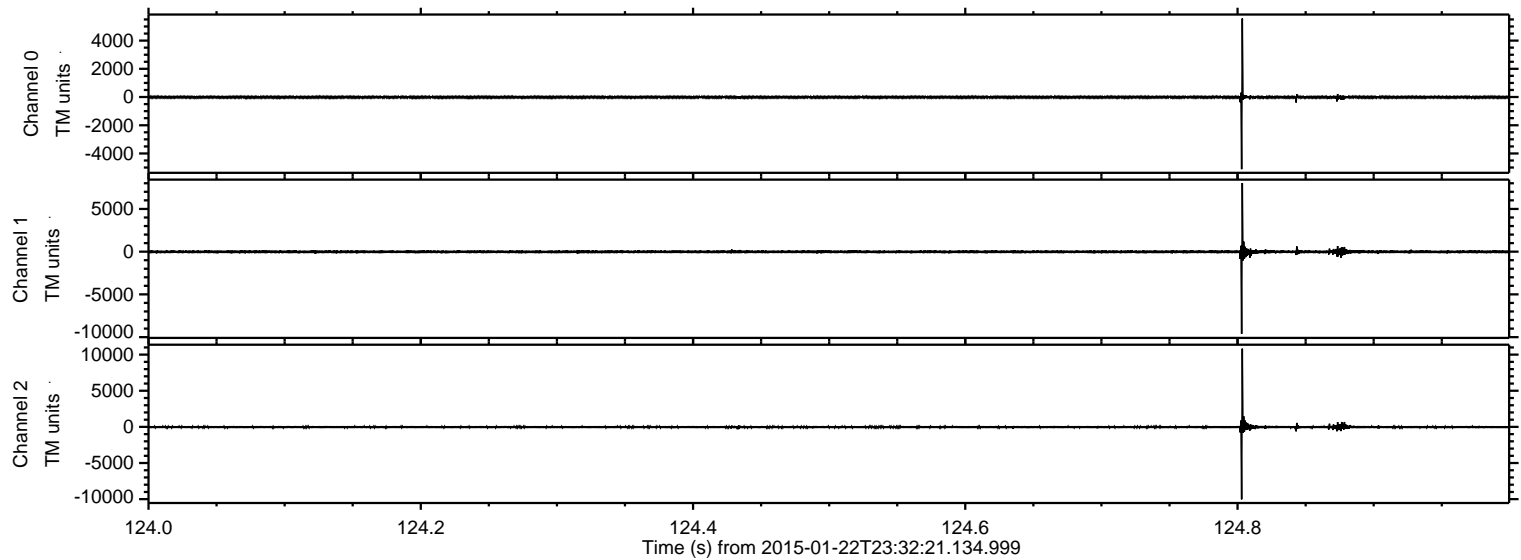


Processed Tue Feb 10 14:01:25 2015 by ELM ver.2012-10-06 from 001__elm20150122_233220__dat00.bin

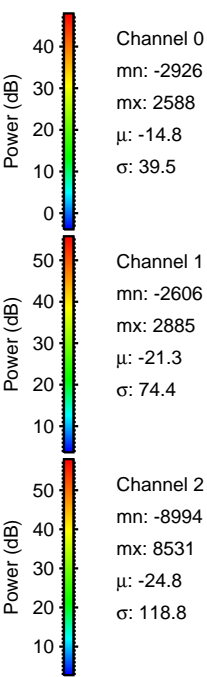
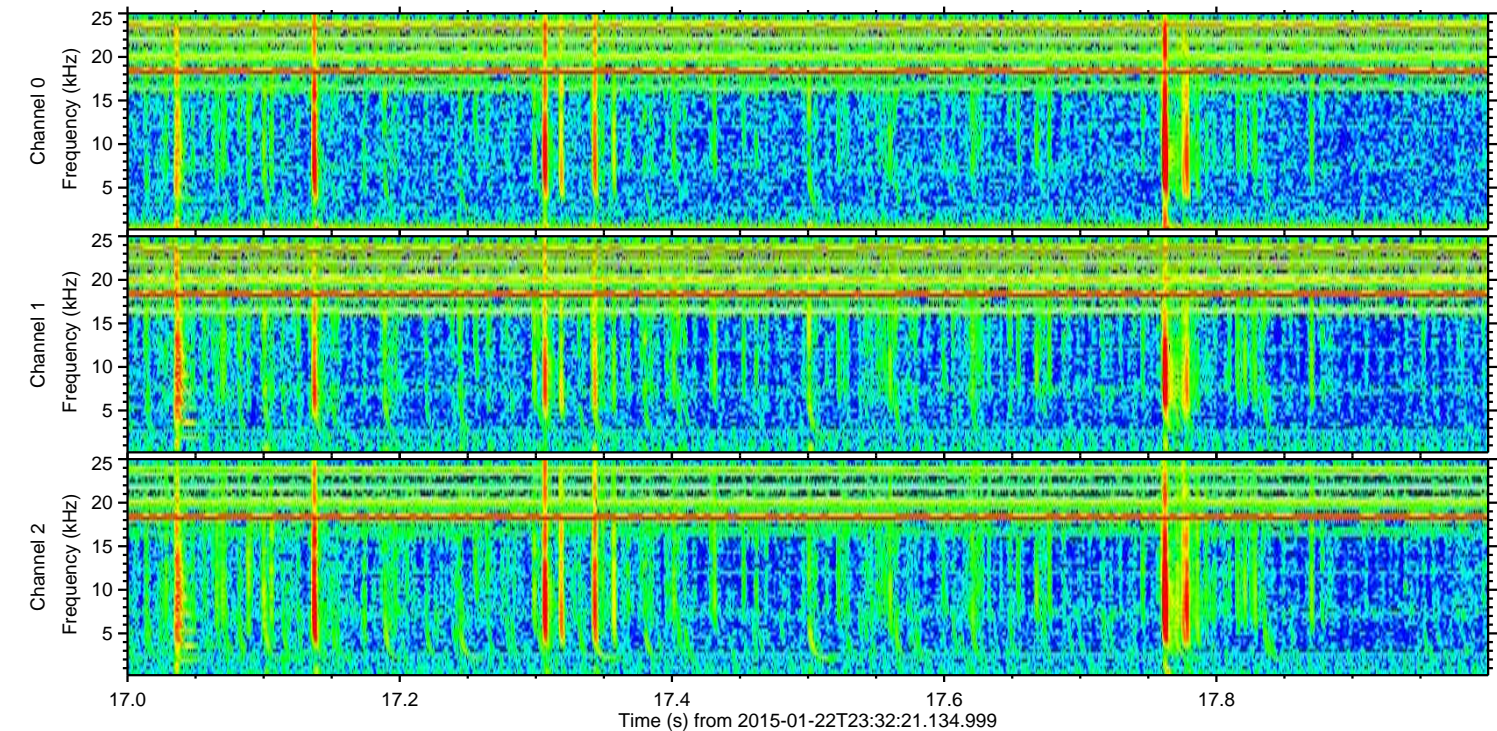
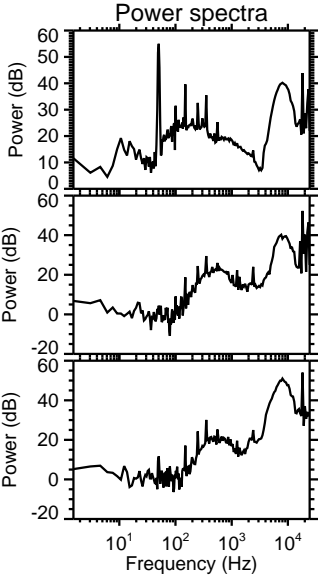
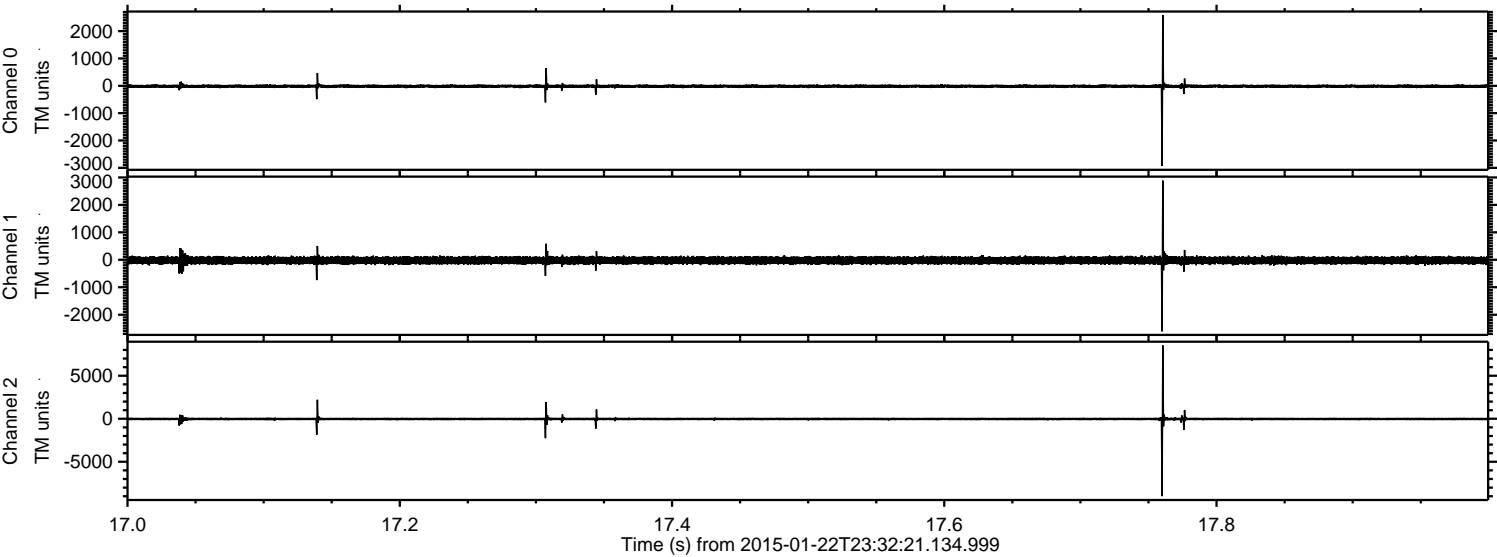


ELMAVAN 3D WAVEFORMS (Measured data sampled at 50 kHz) 49808 packets of 144 samples from 2015-01-22T23:32:21.134.999. Part 125/144

Processed Tue Feb 10 14:01:26 2015 by ELM ver.2012-10-06 from 001__elm20150122_233220__dat00.bin

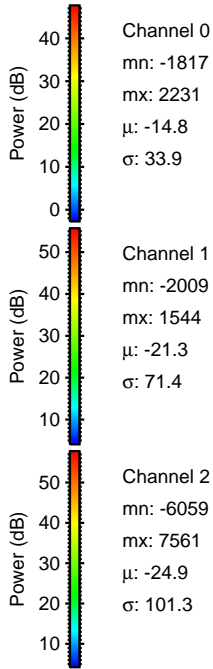
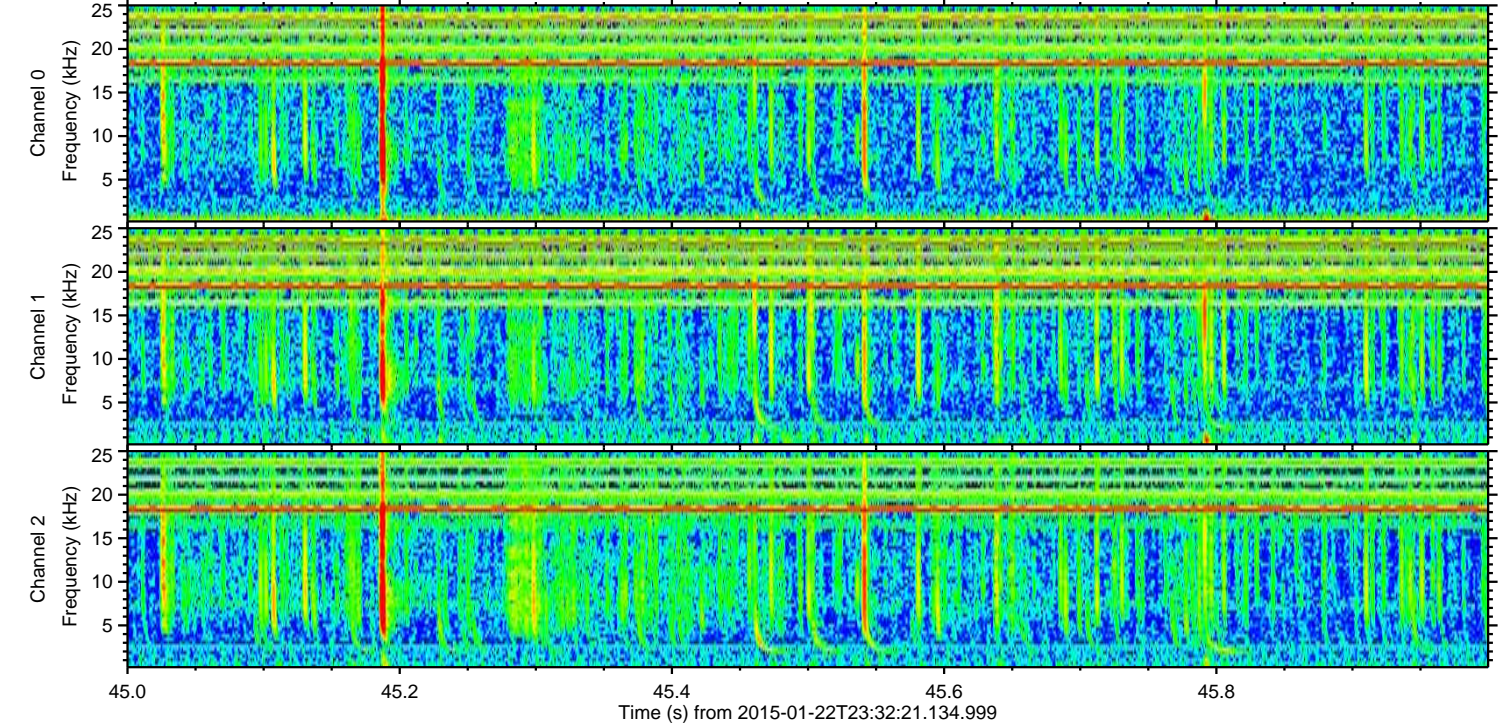
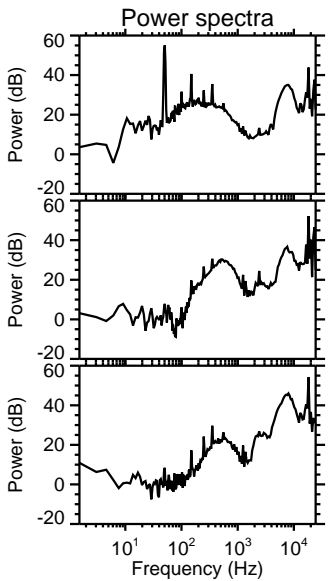
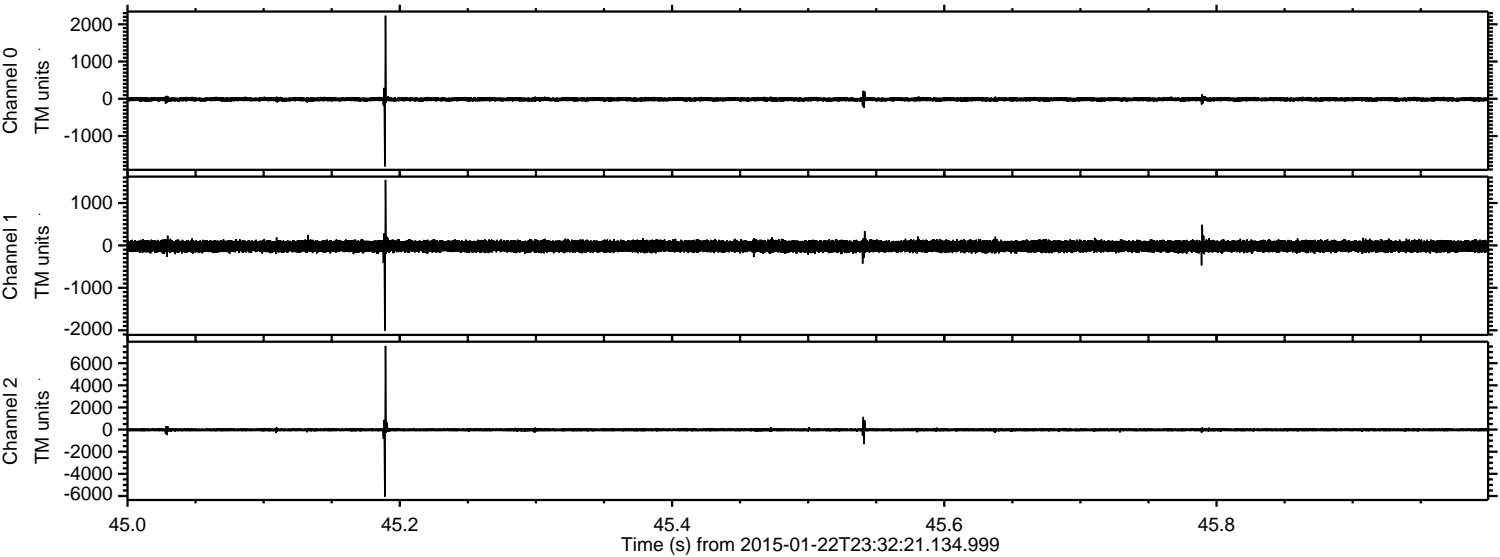


Processed Tue Feb 10 14:01:27 2015 by ELM ver.2012-10-06 from 001__elm20150122_233220__dat00.bin

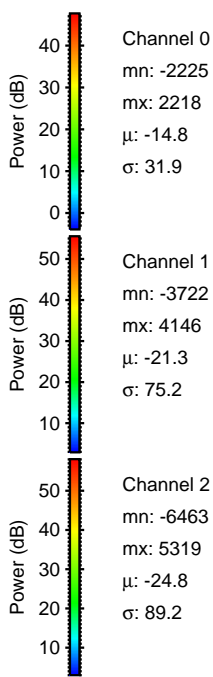
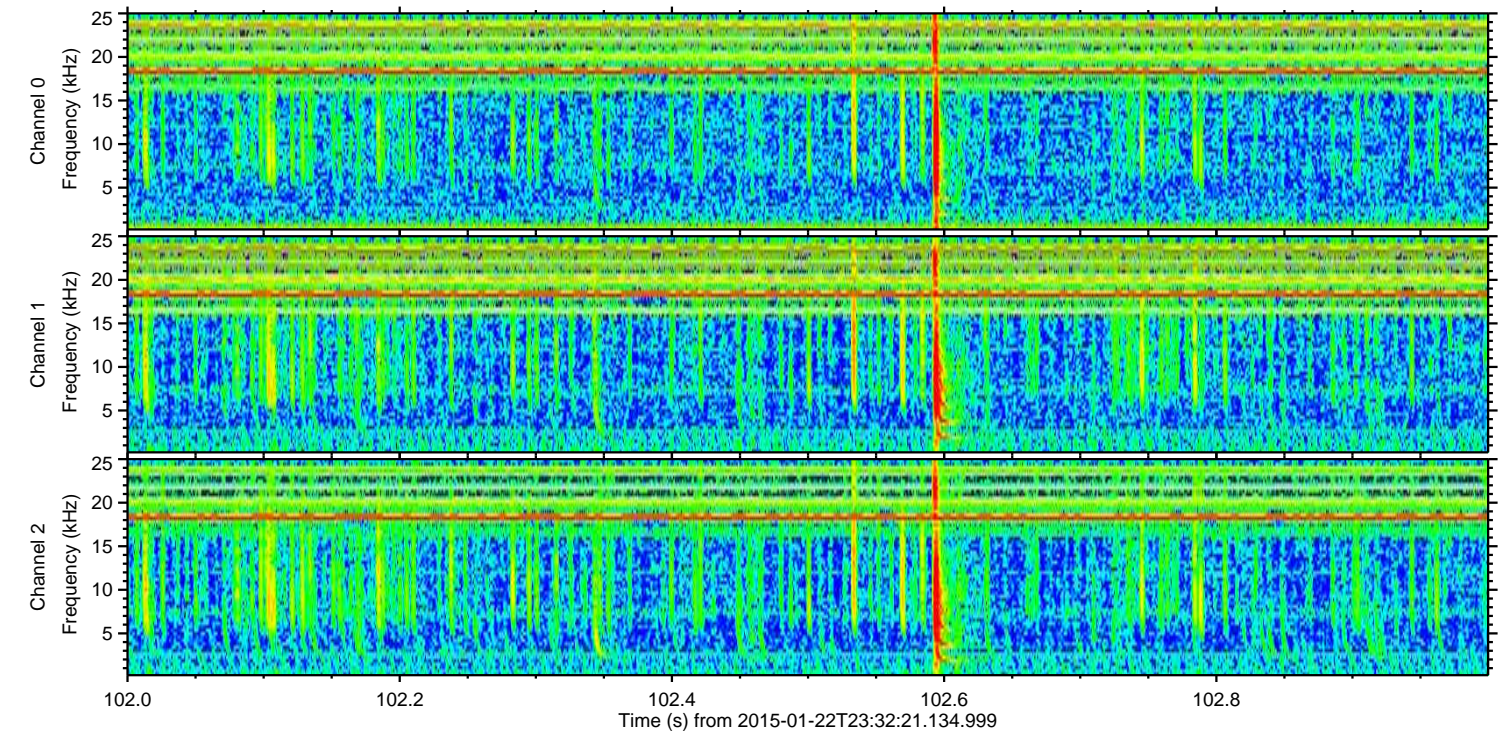
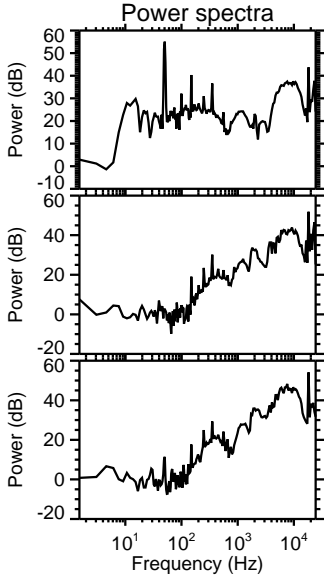
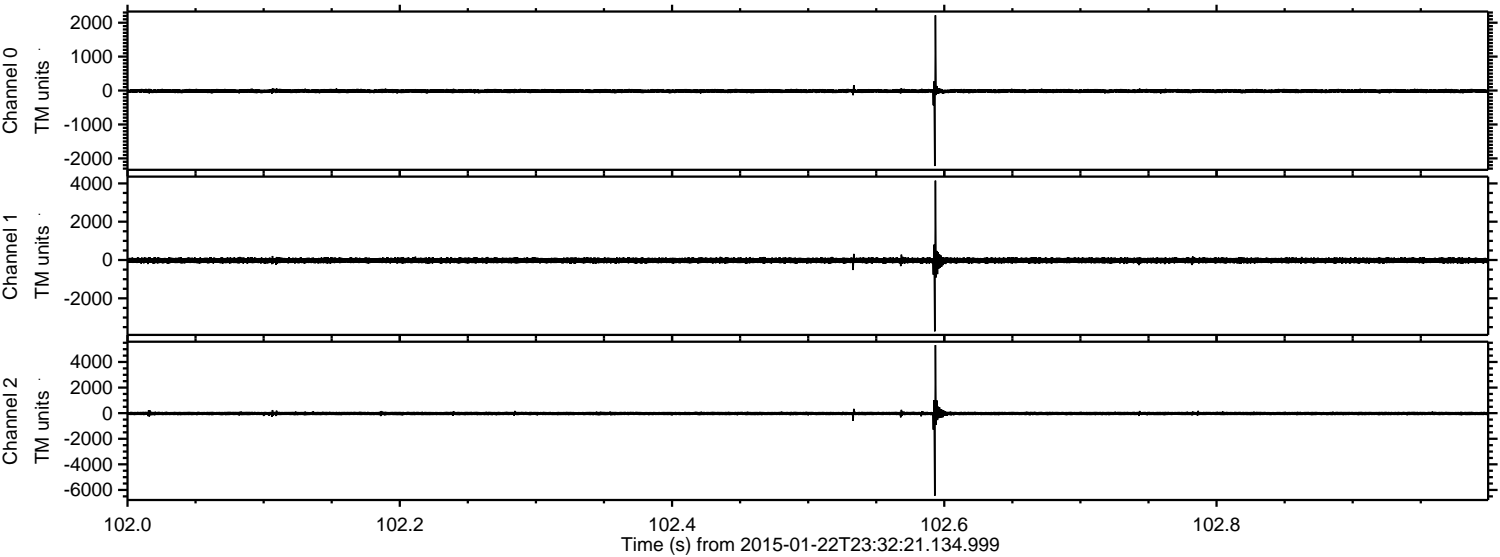


ELMAVAN 3D WAVEFORMS (Measured data sampled at 50 kHz) 49808 packets of 144 samples from 2015-01-22T23:32:21.134.999. Part 46/144

Processed Tue Feb 10 14:01:28 2015 by ELM ver.2012-10-06 from 001__elm20150122_233220__dat00.bin

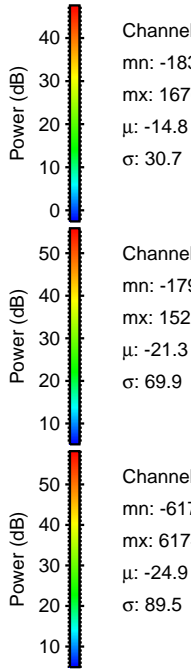
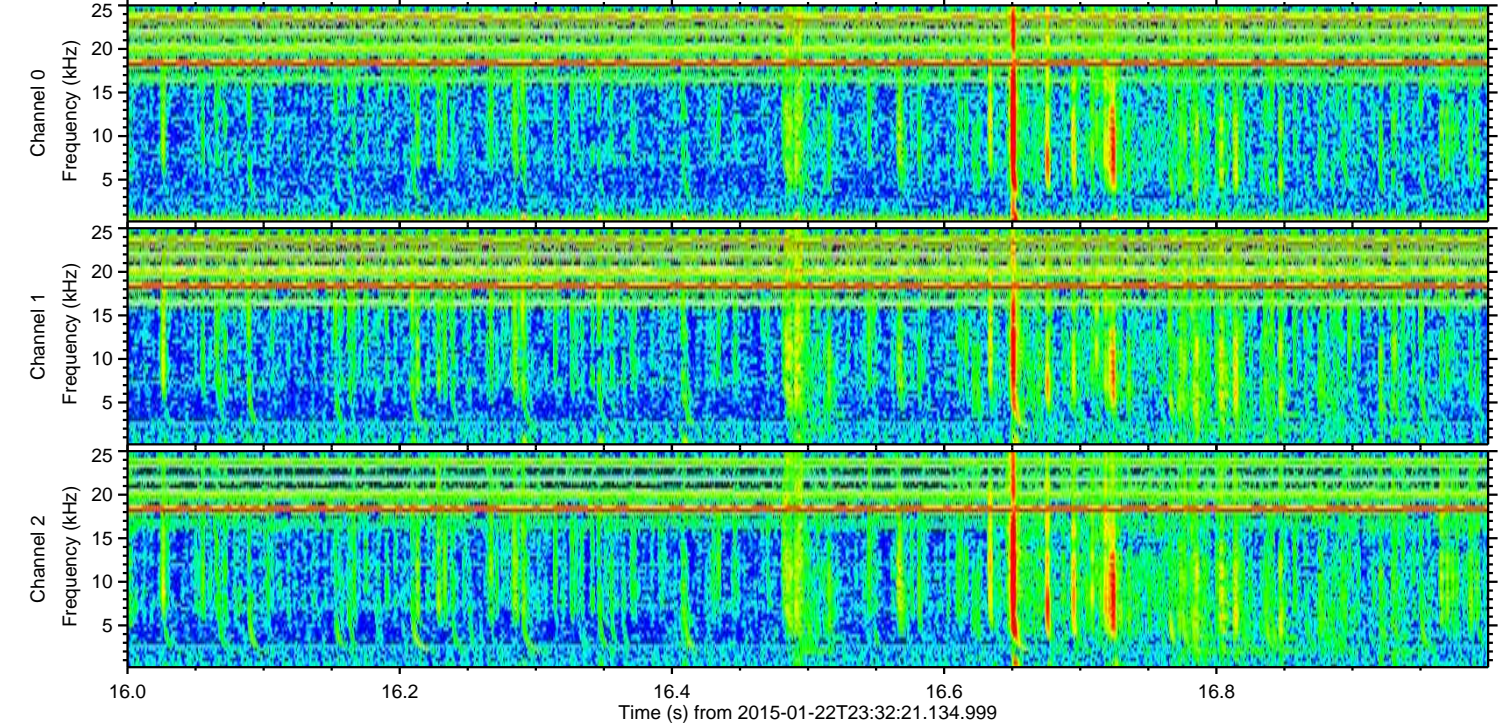
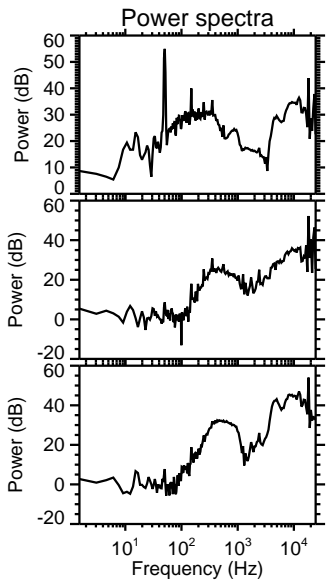
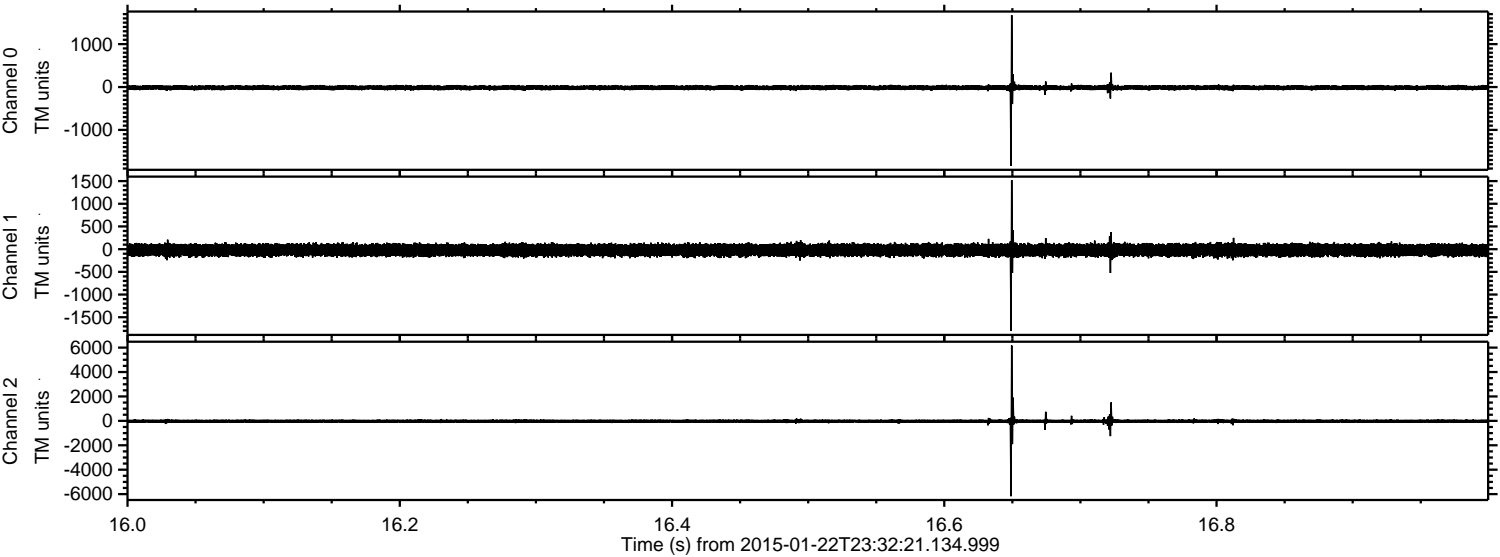


Processed Tue Feb 10 14:01:29 2015 by ELM ver.2012-10-06 from 001__elm20150122_233220__dat00.bin



ELMAVAN 3D WAVEFORMS (Measured data sampled at 50 kHz) 49808 packets of 144 samples from 2015-01-22T23:32:21.134.999. Part 17/144

Processed Tue Feb 10 14:01:30 2015 by ELM ver.2012-10-06 from 001__elm20150122_233220__dat00.bin



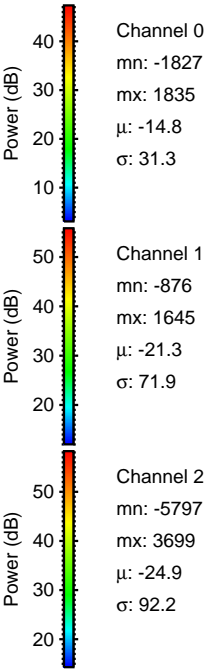
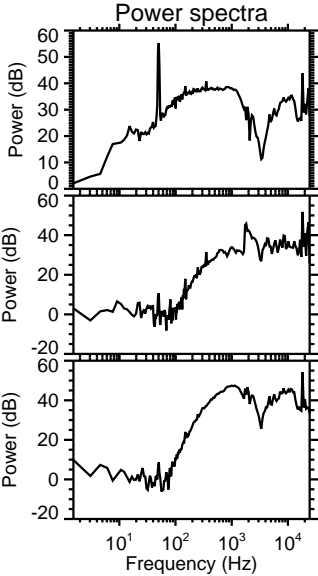
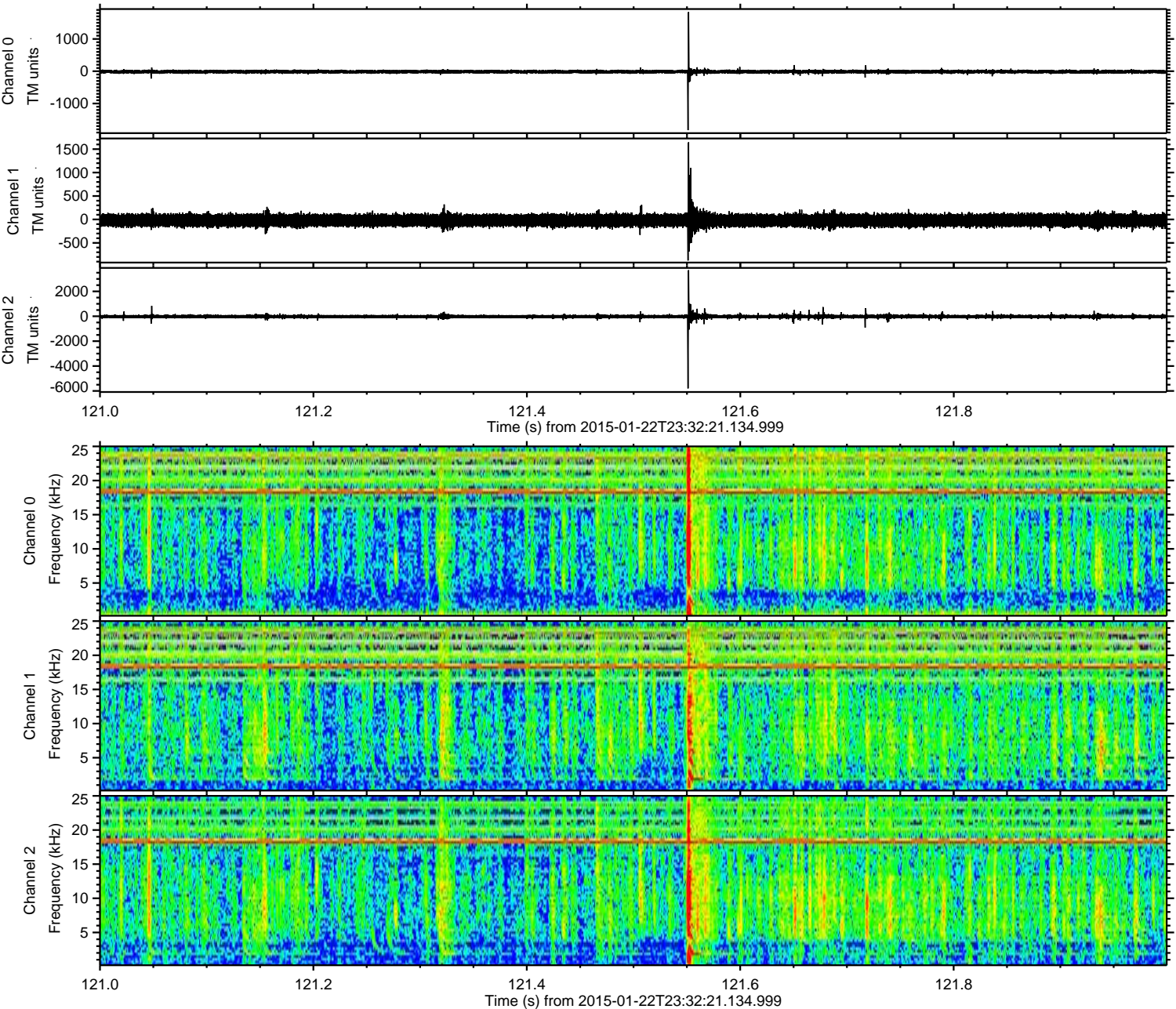
Channel 0
mn: -1838
mx: 1676
 μ : -14.8
 σ : 30.7

Channel 1
mn: -1799
mx: 1522
 μ : -21.3
 σ : 69.9

Channel 2
mn: -6173
mx: 6174
 μ : -24.9
 σ : 89.5

ELMAVAN 3D WAVEFORMS (Measured data sampled at 50 kHz) 49808 packets of 144 samples from 2015-01-22T23:32:21.134.999. Part 122/144

Processed Tue Feb 10 14:01:31 2015 by ELM ver.2012-10-06 from 001__elm20150122_233220__dat00.bin



ELMAVAN 3D WAVEFORMS (Measured data sampled at 50 kHz) 49808 packets of 144 samples from 2015-01-22T23:32:21.134.999. Part 132/144

Processed Tue Feb 10 14:01:32 2015 by ELM ver.2012-10-06 from 001__elm20150122_233220__dat00.bin

