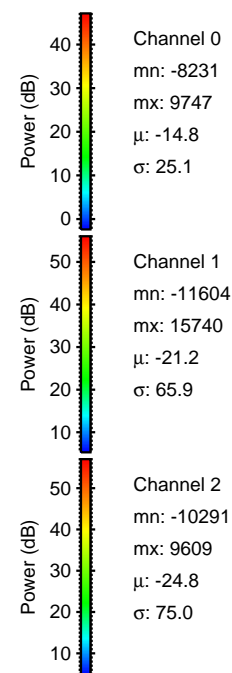
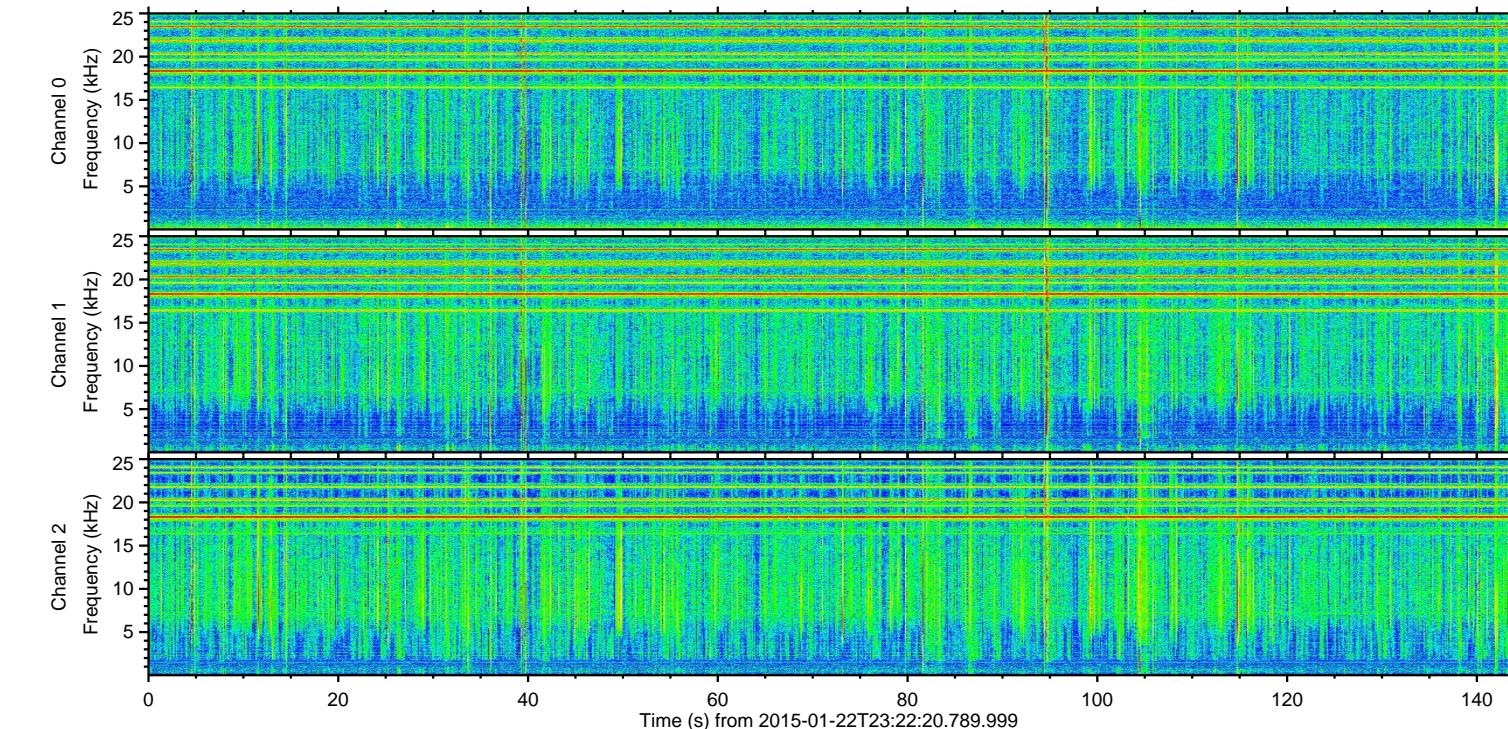
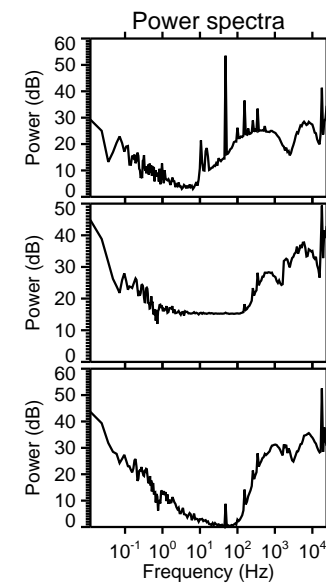
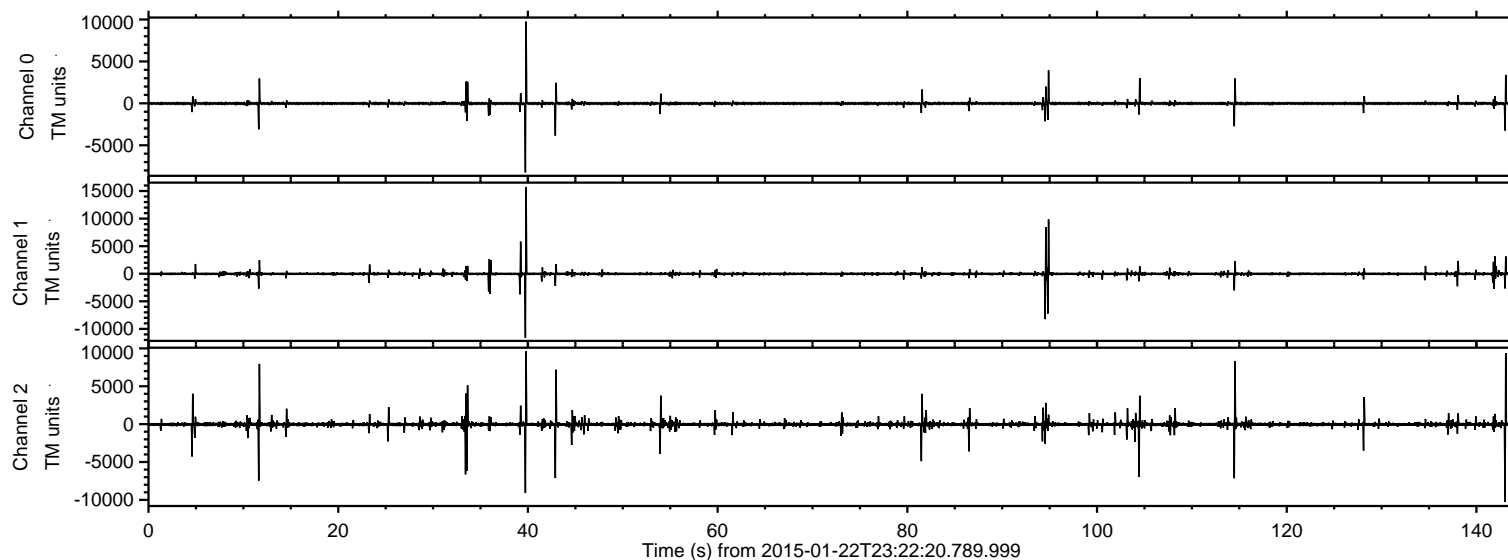


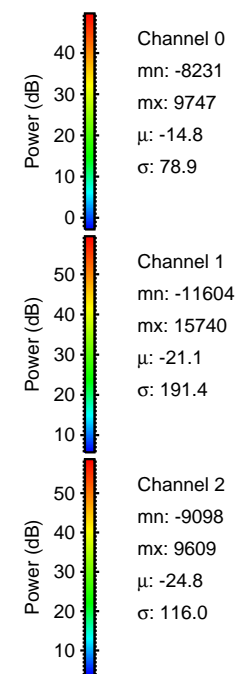
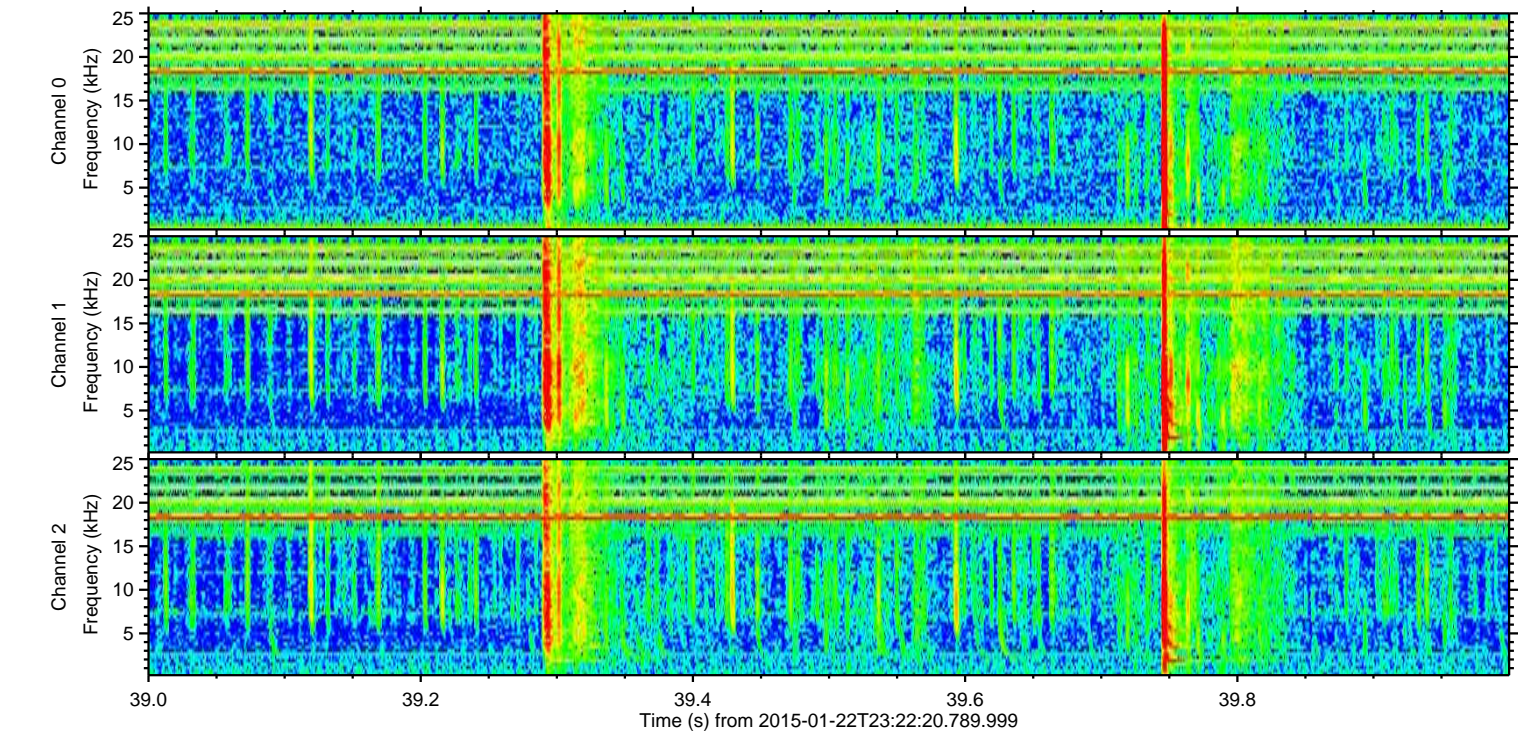
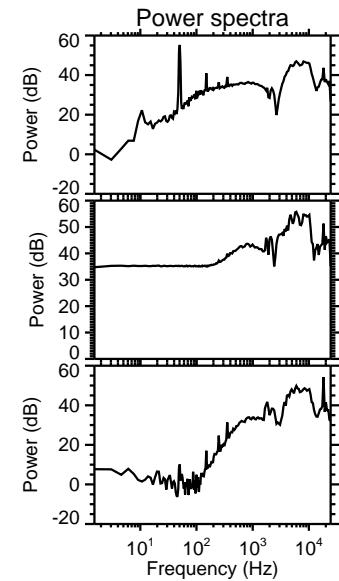
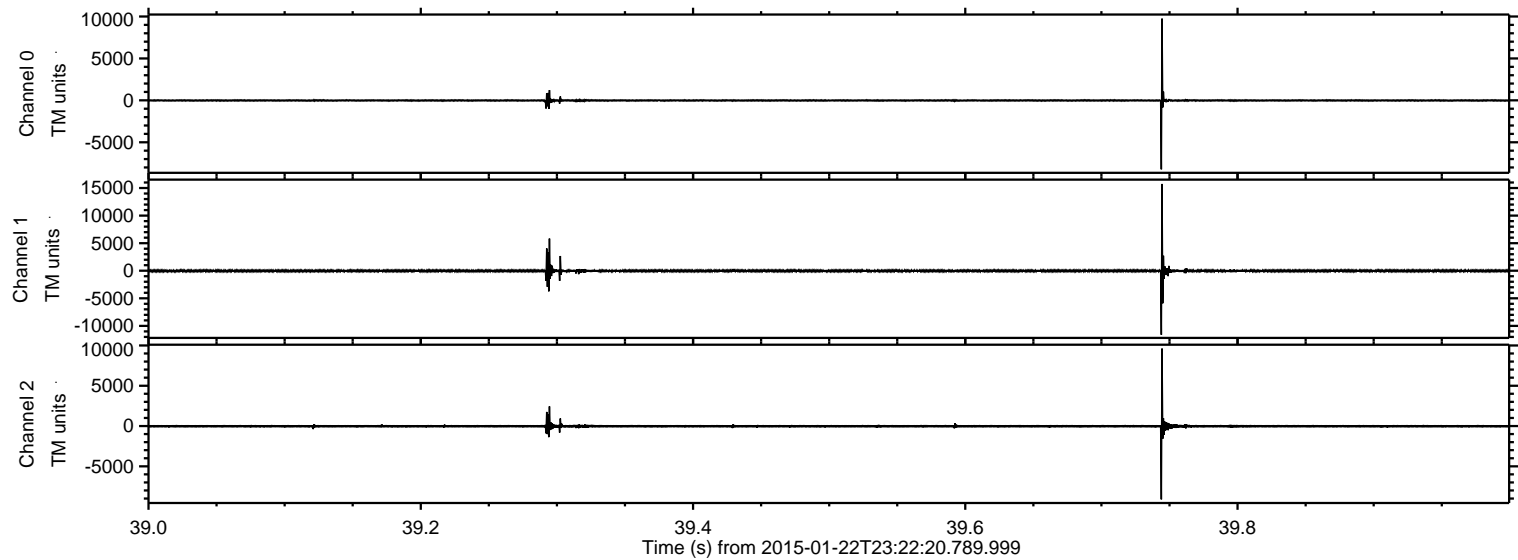
ELMAVAN 3D WAVEFORMS (Measured data sampled at 50 kHz) 49808 packets of 144 samples from 2015-01-22T23:22:20.789.999.

Processed Tue Feb 10 13:58:56 2015 by ELM ver.2012-10-06 from 001__elm20150122_232219__dat00.bin



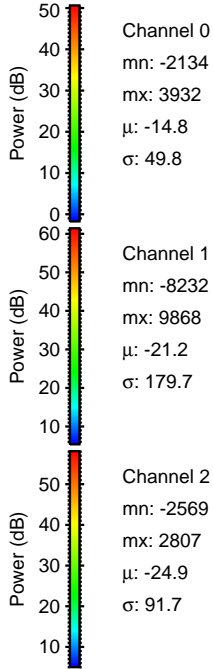
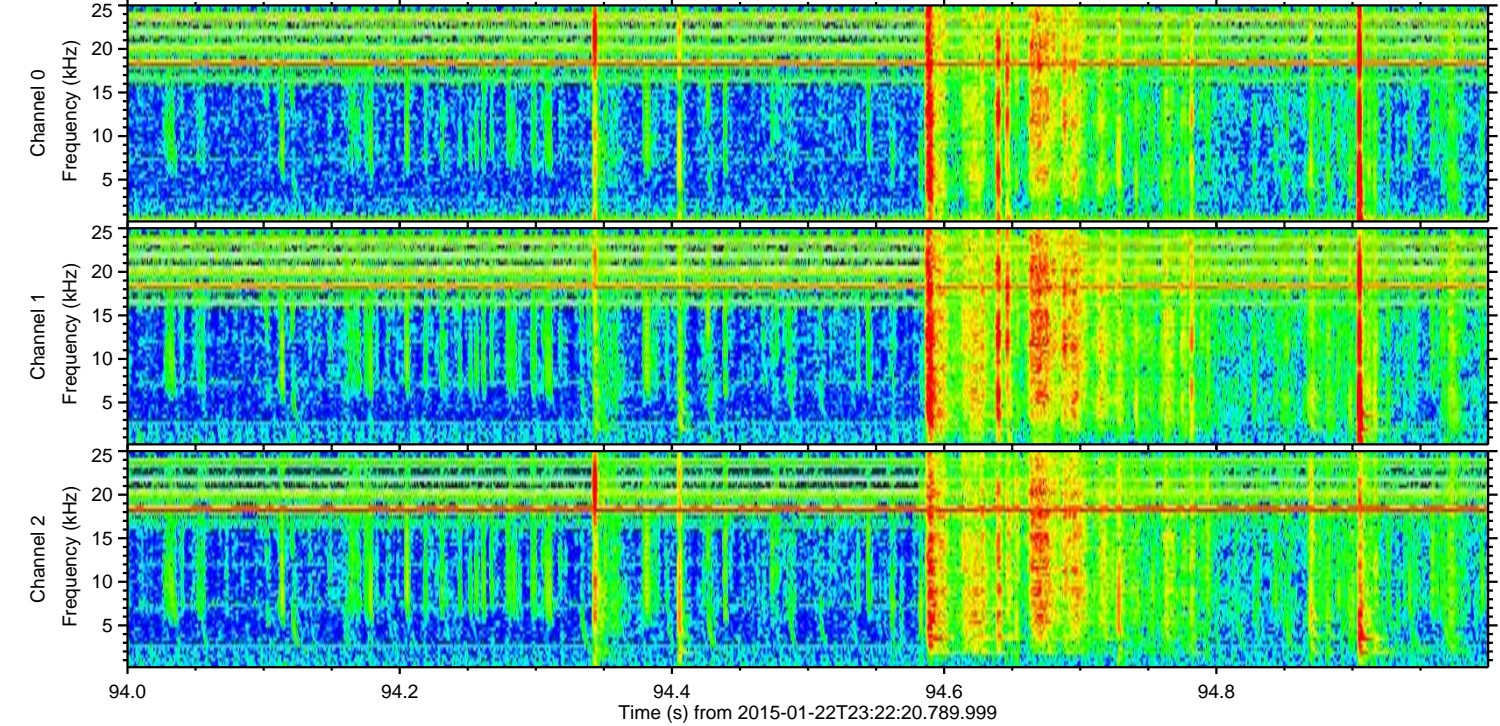
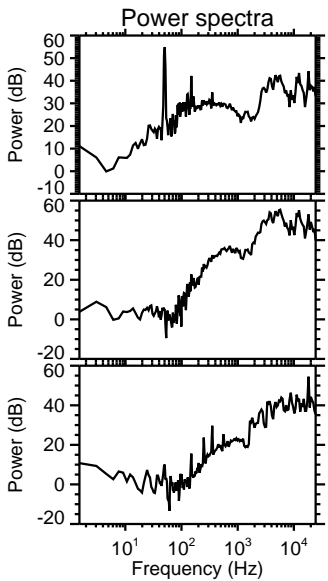
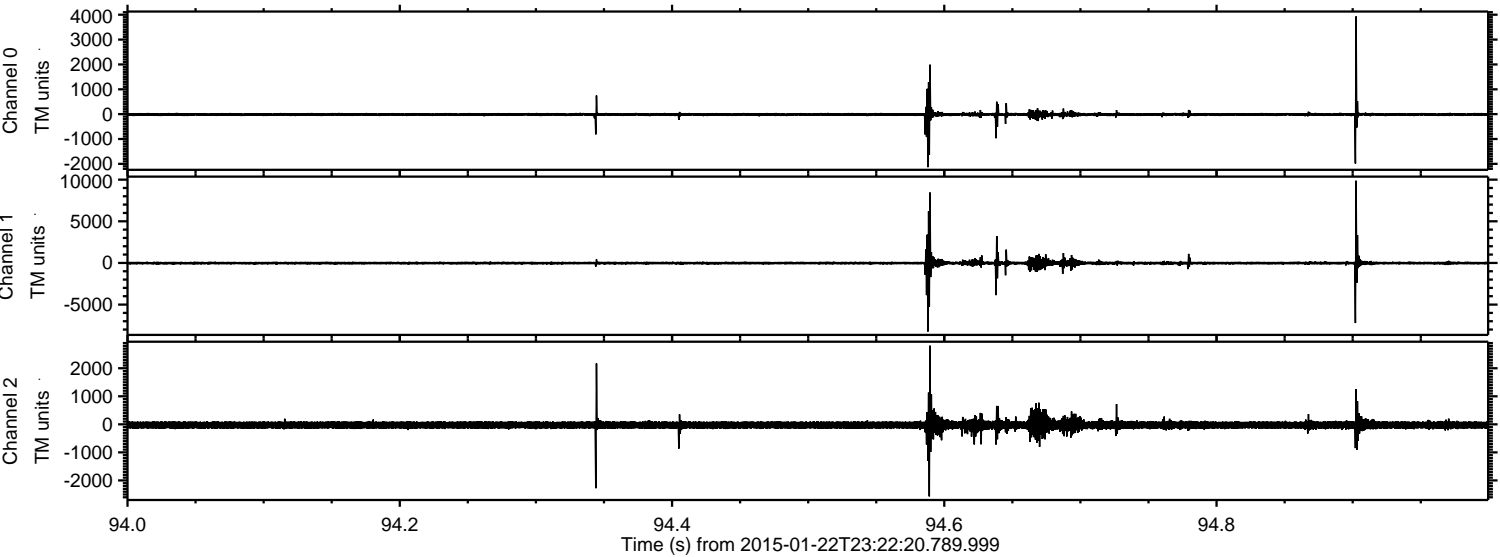
ELMAVAN 3D WAVEFORMS (Measured data sampled at 50 kHz) 49808 packets of 144 samples from 2015-01-22T23:22:20.789.999. Part 40/144

Processed Tue Feb 10 13:59:09 2015 by ELM ver.2012-10-06 from 001__elm20150122_232219__dat00.bin



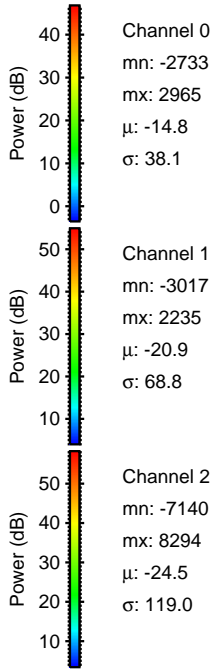
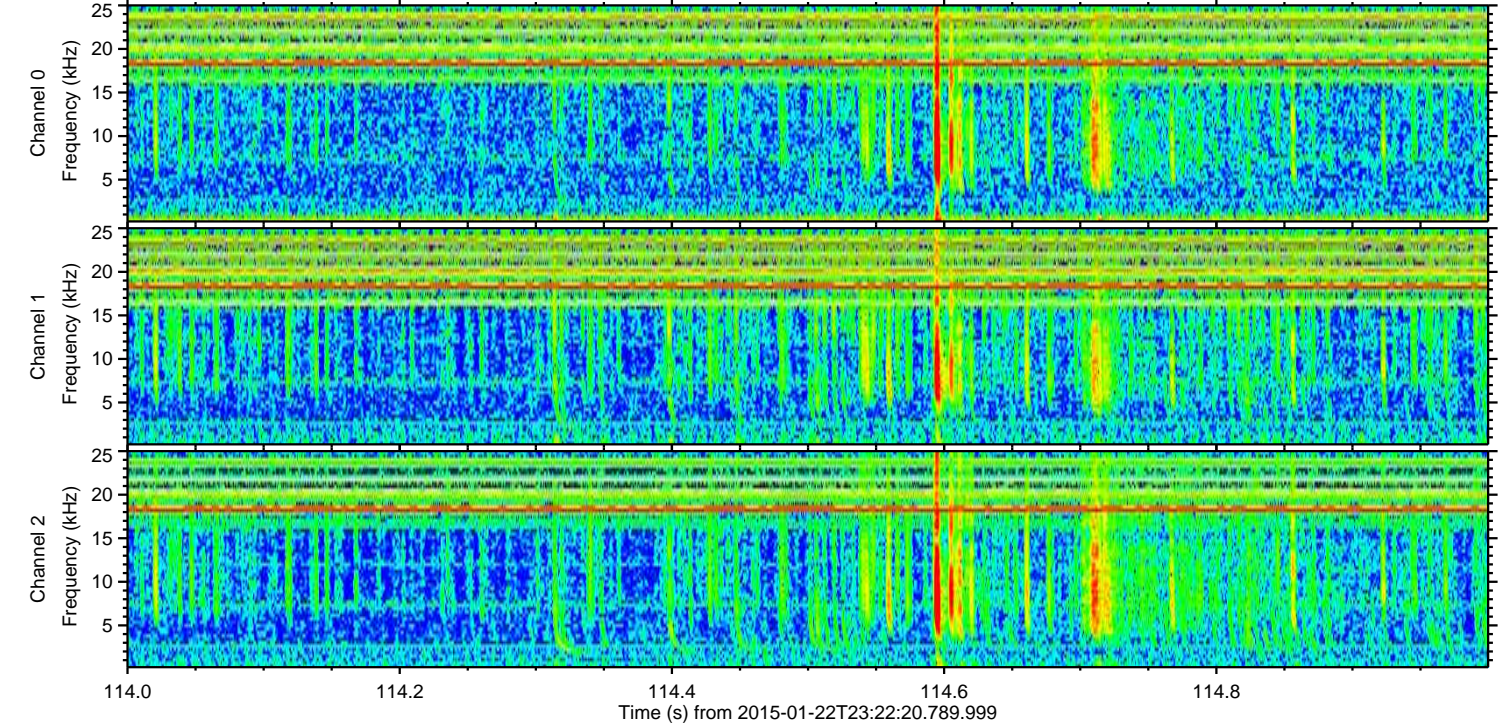
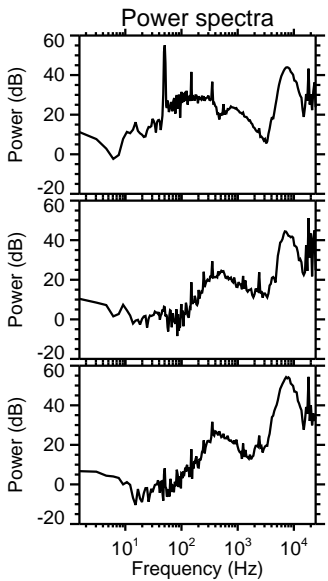
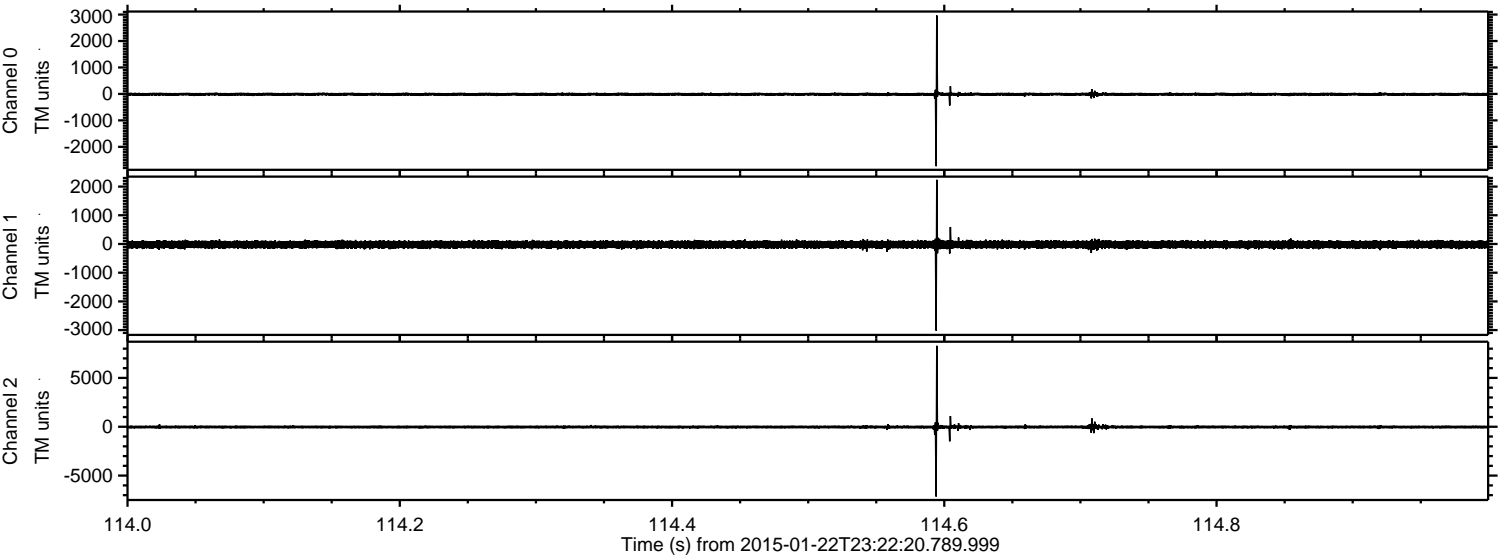
ELMAVAN 3D WAVEFORMS (Measured data sampled at 50 kHz) 49808 packets of 144 samples from 2015-01-22T23:22:20.789.999. Part 95/144

Processed Tue Feb 10 13:59:10 2015 by ELM ver.2012-10-06 from 001__elm20150122_232219__dat00.bin



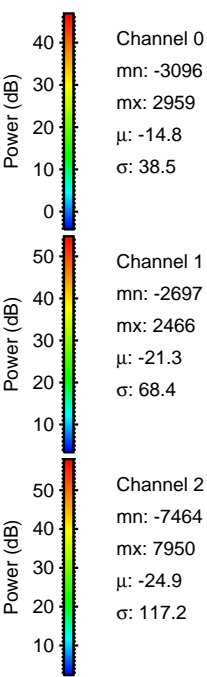
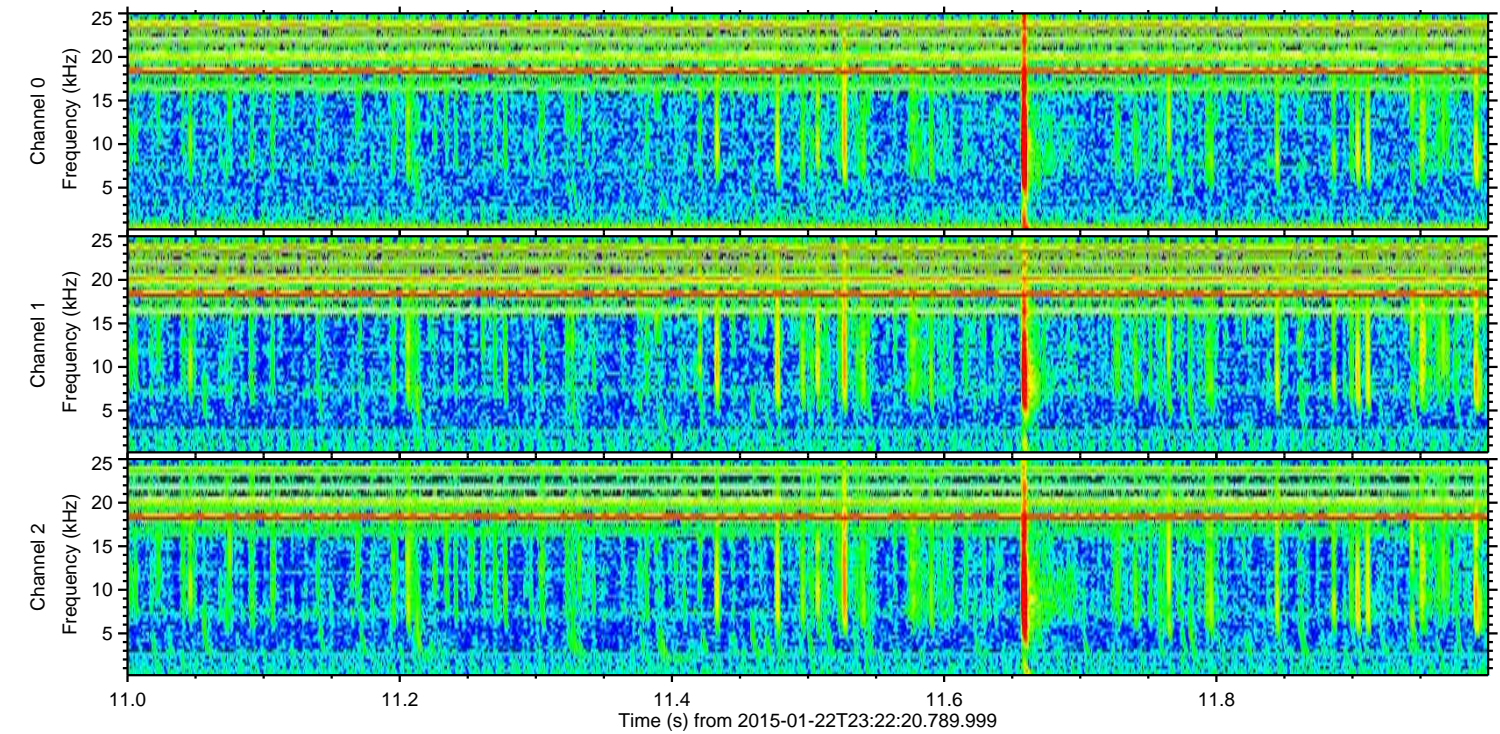
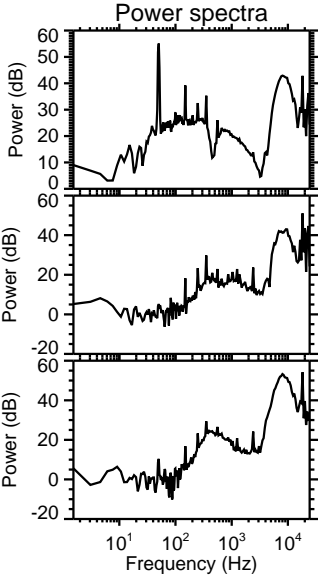
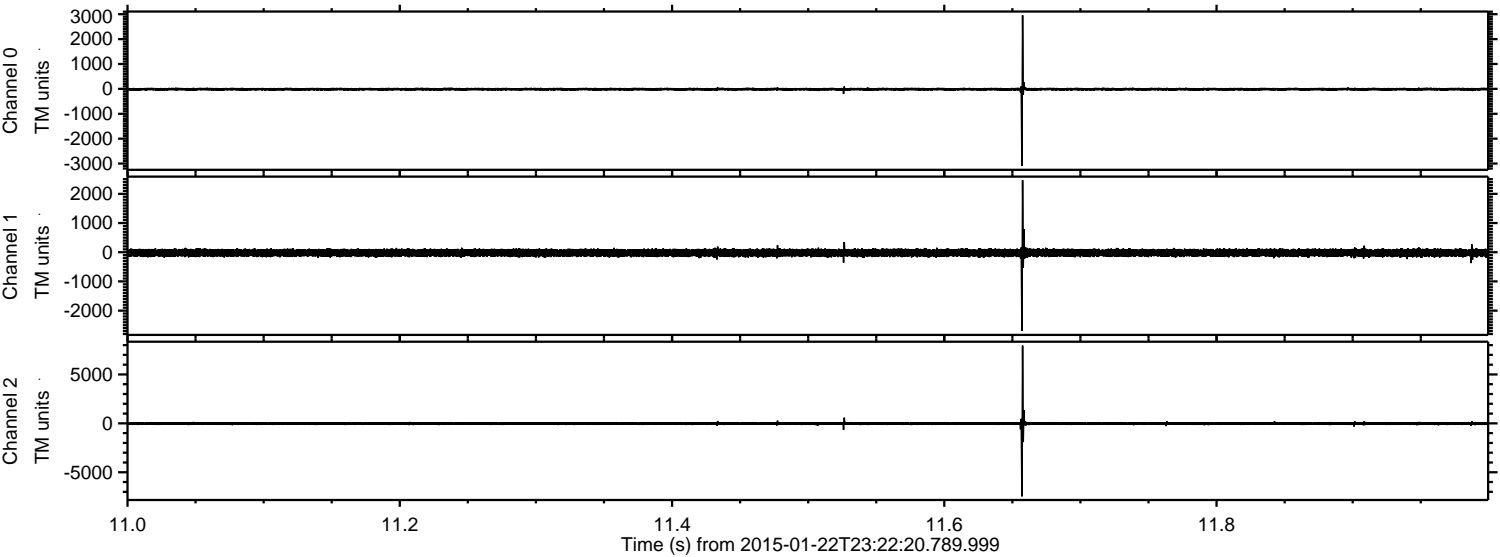
ELMAVAN 3D WAVEFORMS (Measured data sampled at 50 kHz) 49808 packets of 144 samples from 2015-01-22T23:22:20.789.999. Part 115/144

Processed Tue Feb 10 13:59:11 2015 by ELM ver.2012-10-06 from 001__elm20150122_232219__dat00.bin



ELMAVAN 3D WAVEFORMS (Measured data sampled at 50 kHz) 49808 packets of 144 samples from 2015-01-22T23:22:20.789.999. Part 12/144

Processed Tue Feb 10 13:59:12 2015 by ELM ver.2012-10-06 from 001__elm20150122_232219__dat00.bin



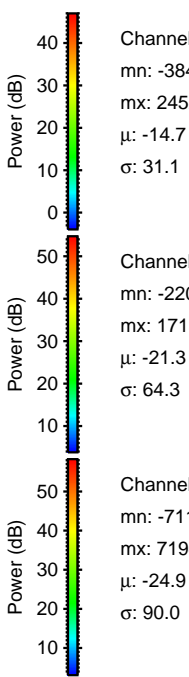
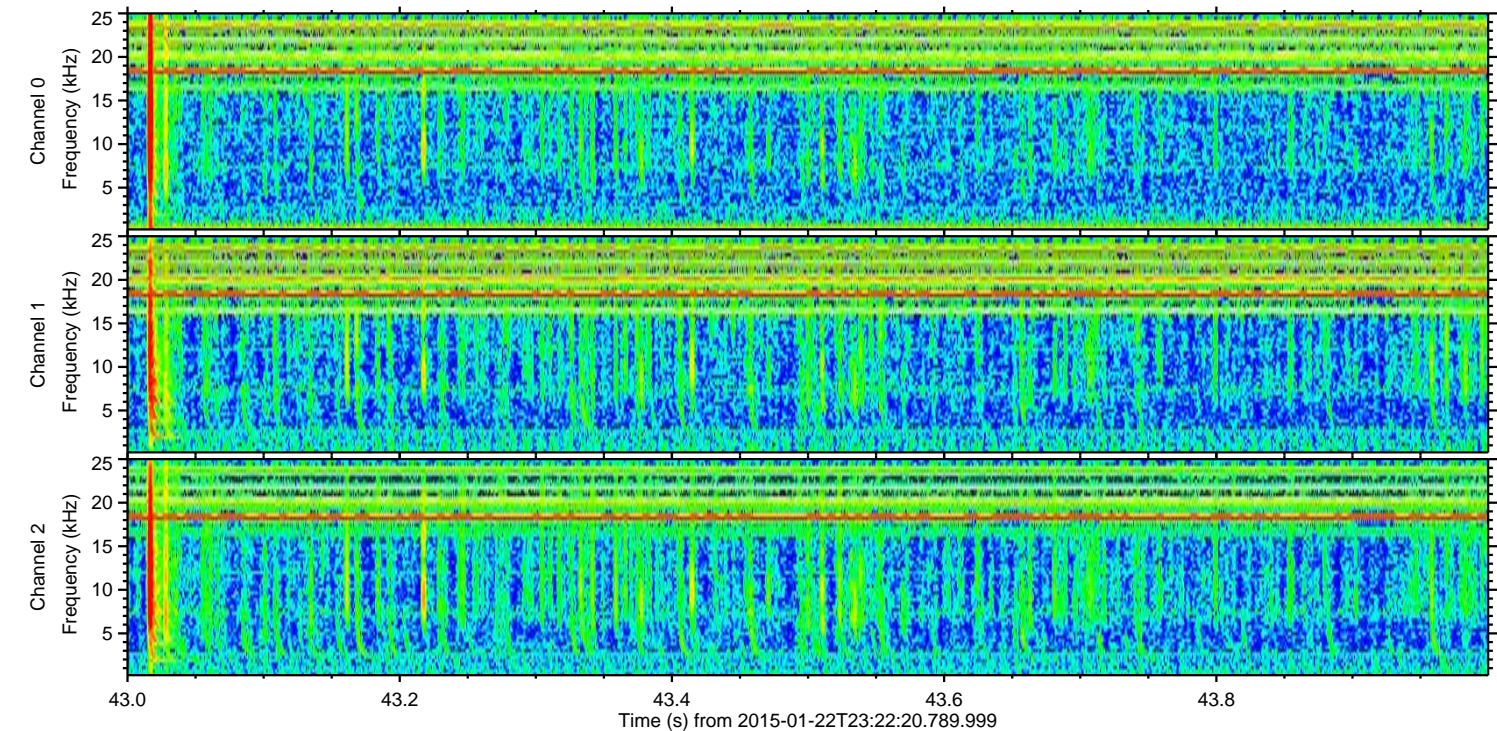
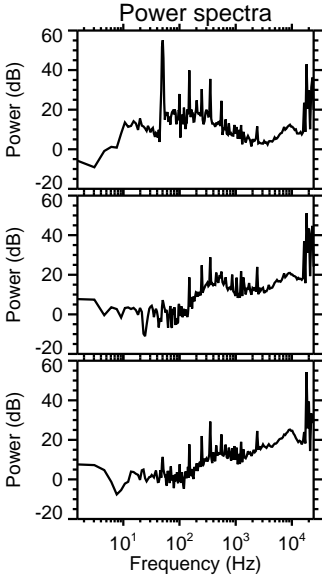
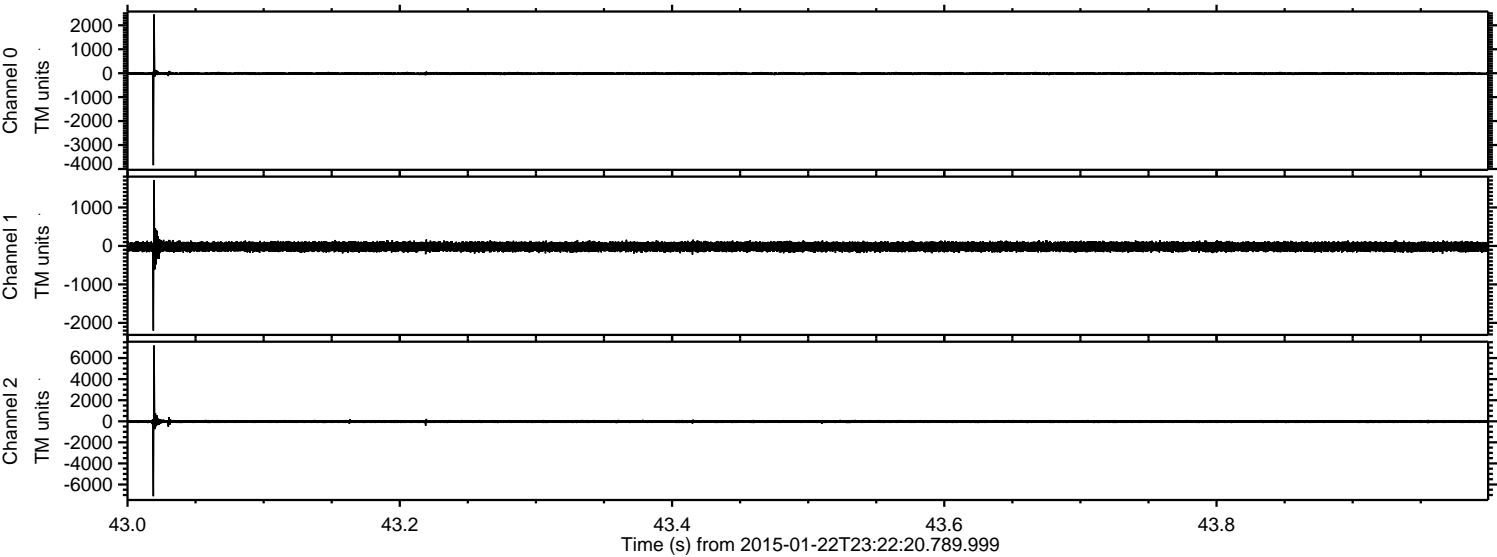
Channel 0
mn: -3096
mx: 2959
 μ : -14.8
 σ : 38.5

Channel 1
mn: -2697
mx: 2466
 μ : -21.3
 σ : 68.4

Channel 2
mn: -7464
mx: 7950
 μ : -24.9
 σ : 117.2

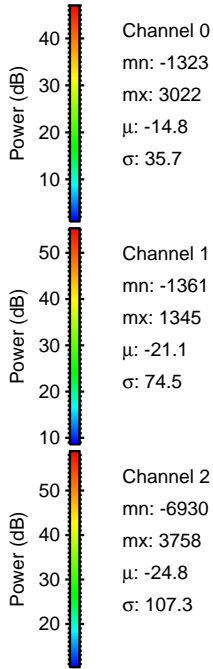
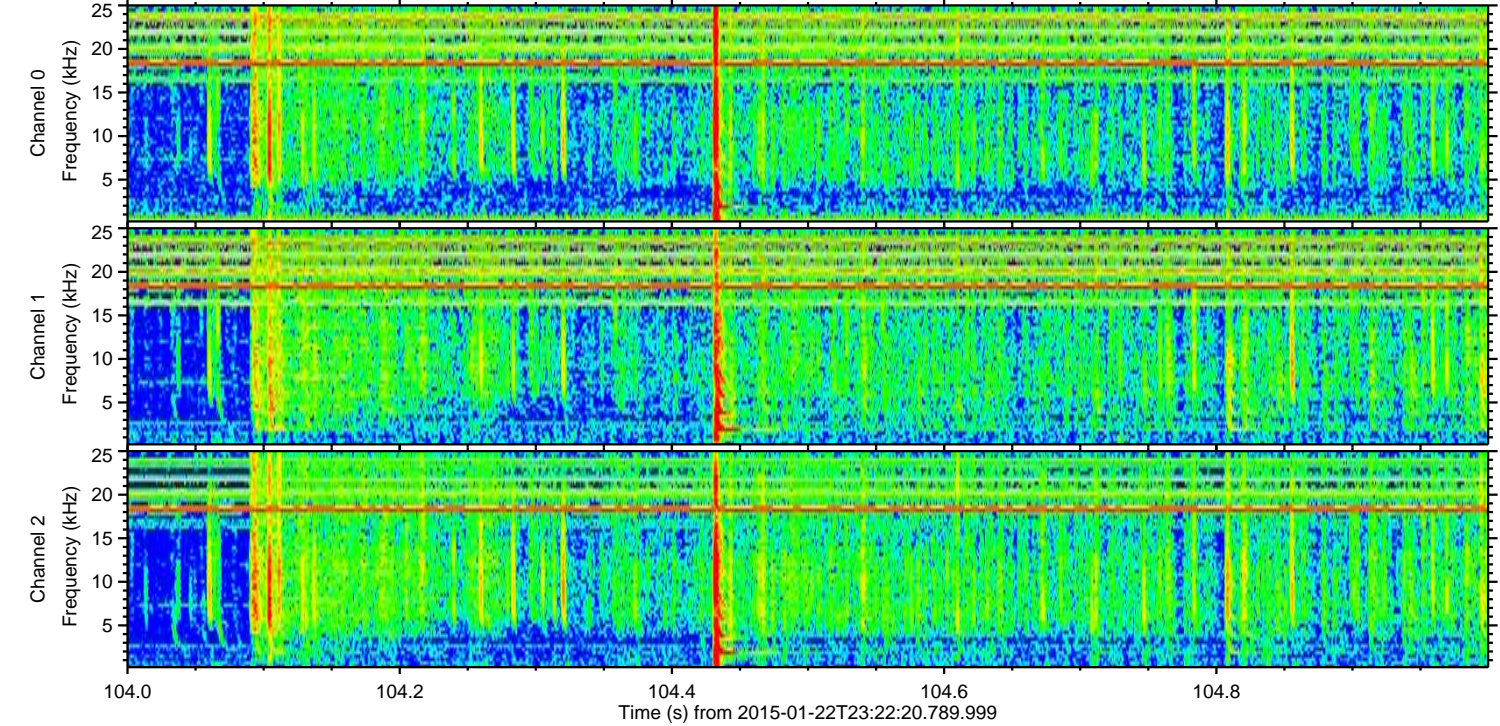
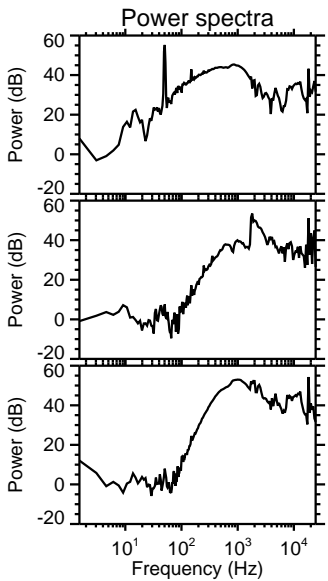
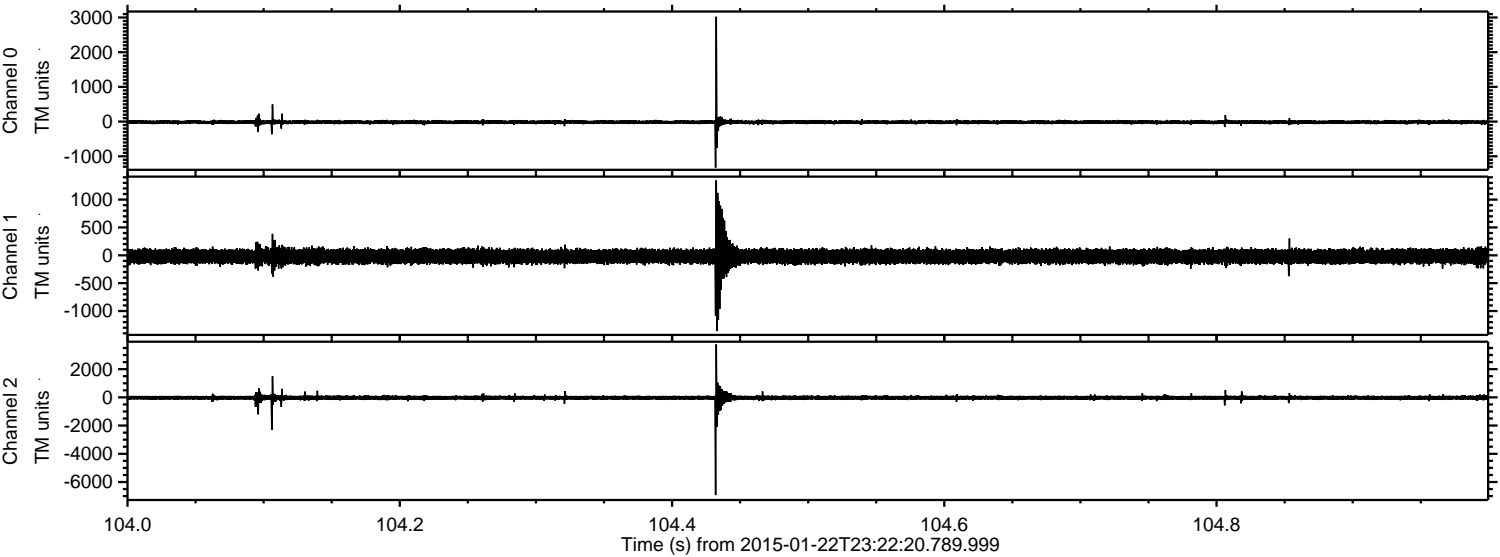
ELMAVAN 3D WAVEFORMS (Measured data sampled at 50 kHz) 49808 packets of 144 samples from 2015-01-22T23:22:20.789.999. Part 44/144

Processed Tue Feb 10 13:59:13 2015 by ELM ver.2012-10-06 from 001__elm20150122_232219__dat00.bin



ELMAVAN 3D WAVEFORMS (Measured data sampled at 50 kHz) 49808 packets of 144 samples from 2015-01-22T23:22:20.789.999. Part 105/144

Processed Tue Feb 10 13:59:14 2015 by ELM ver.2012-10-06 from 001__elm20150122_232219__dat00.bin

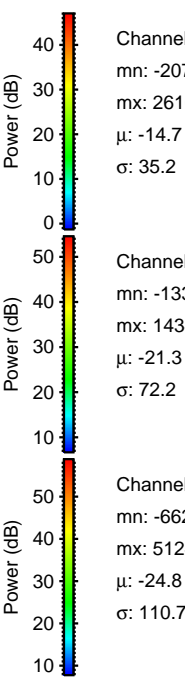
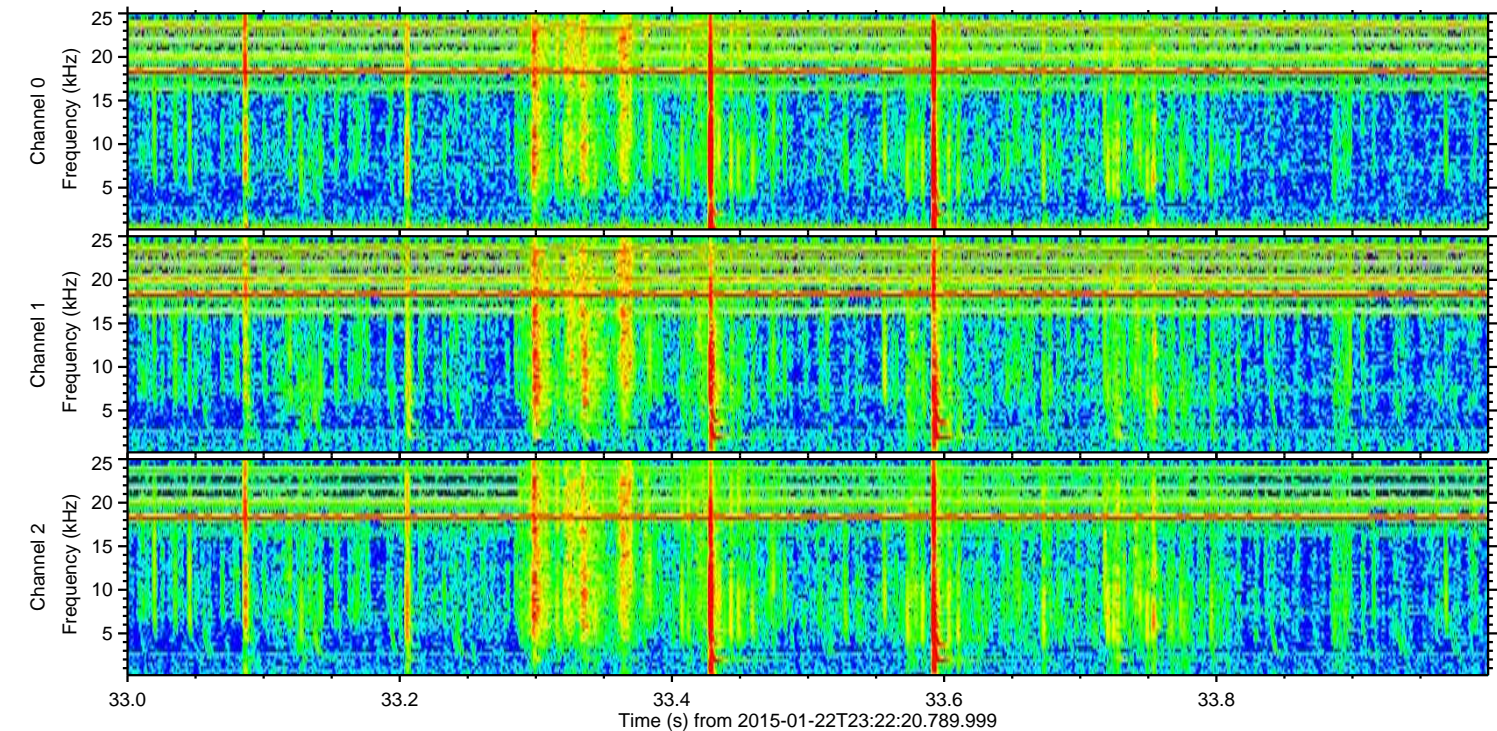
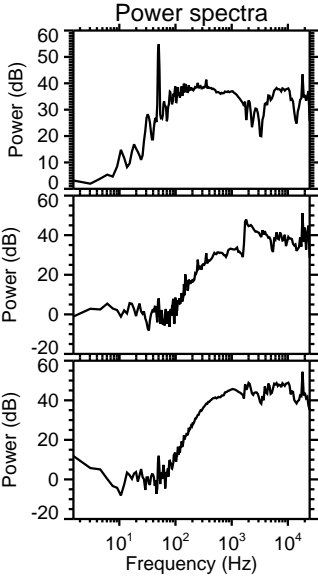
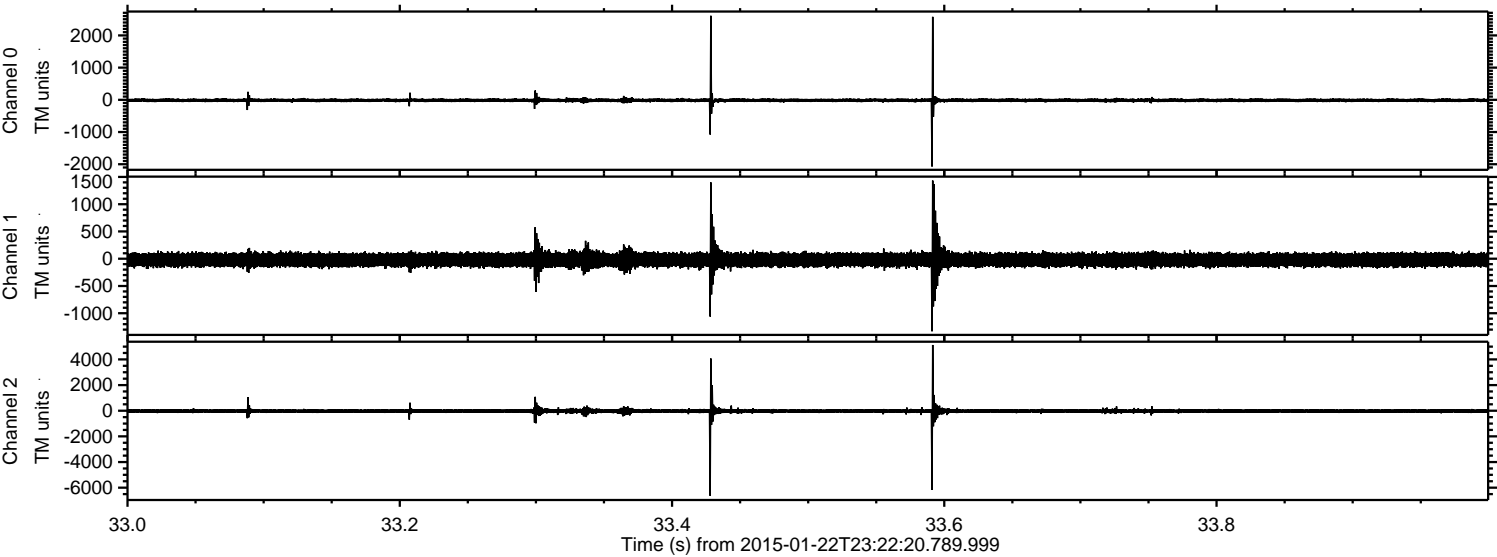


Channel 0
mn: -1323
mx: 3022
 μ : -14.8
 σ : 35.7

Channel 1
mn: -1361
mx: 1345
 μ : -21.1
 σ : 74.5

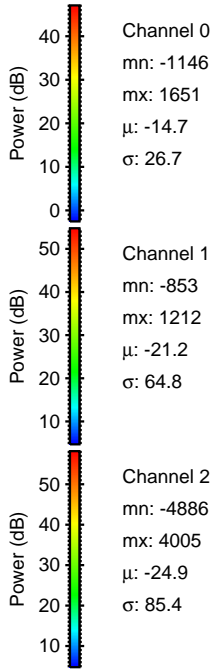
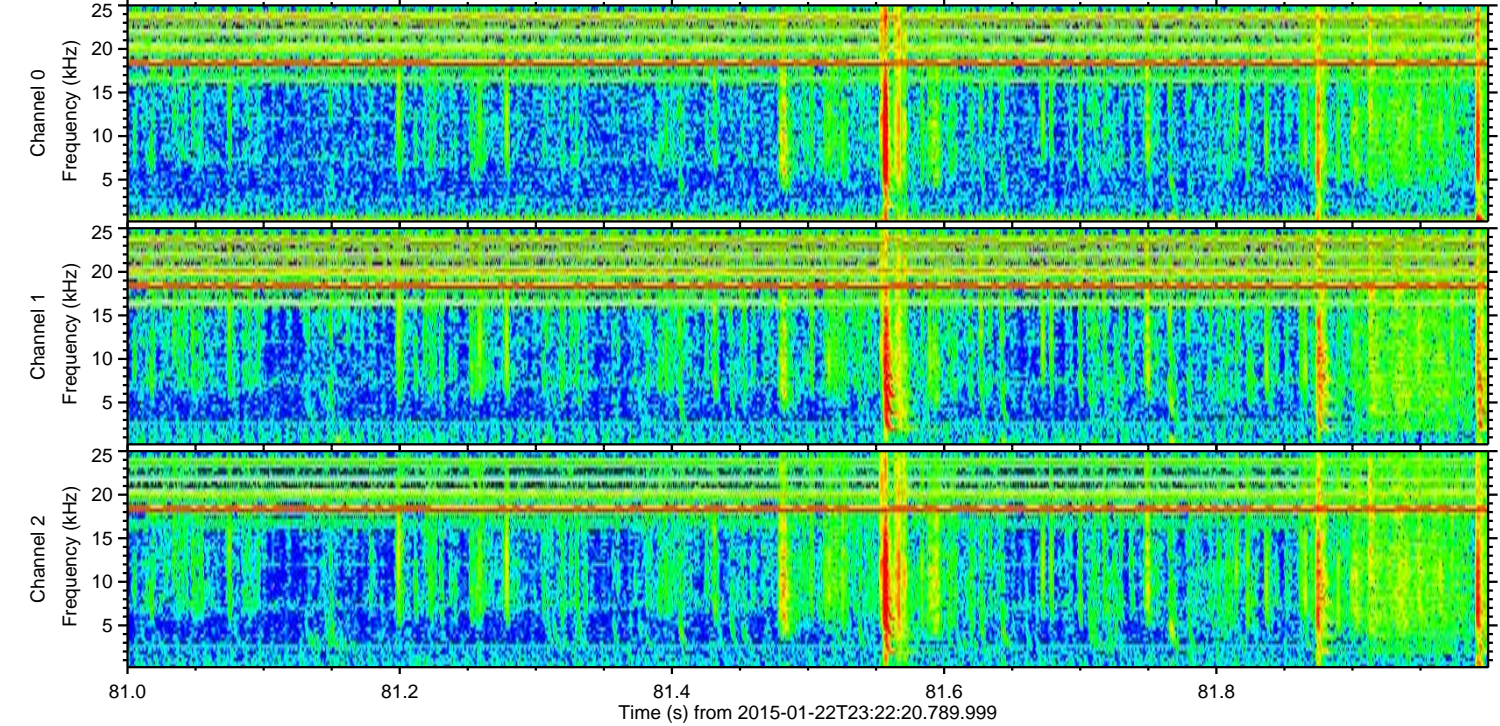
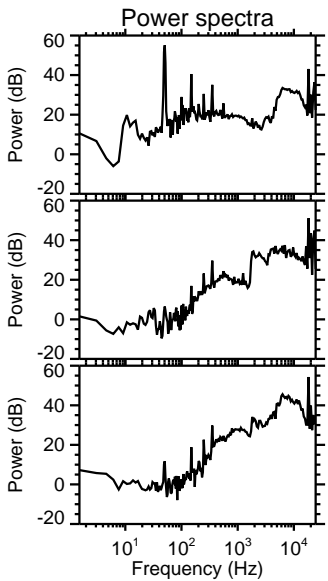
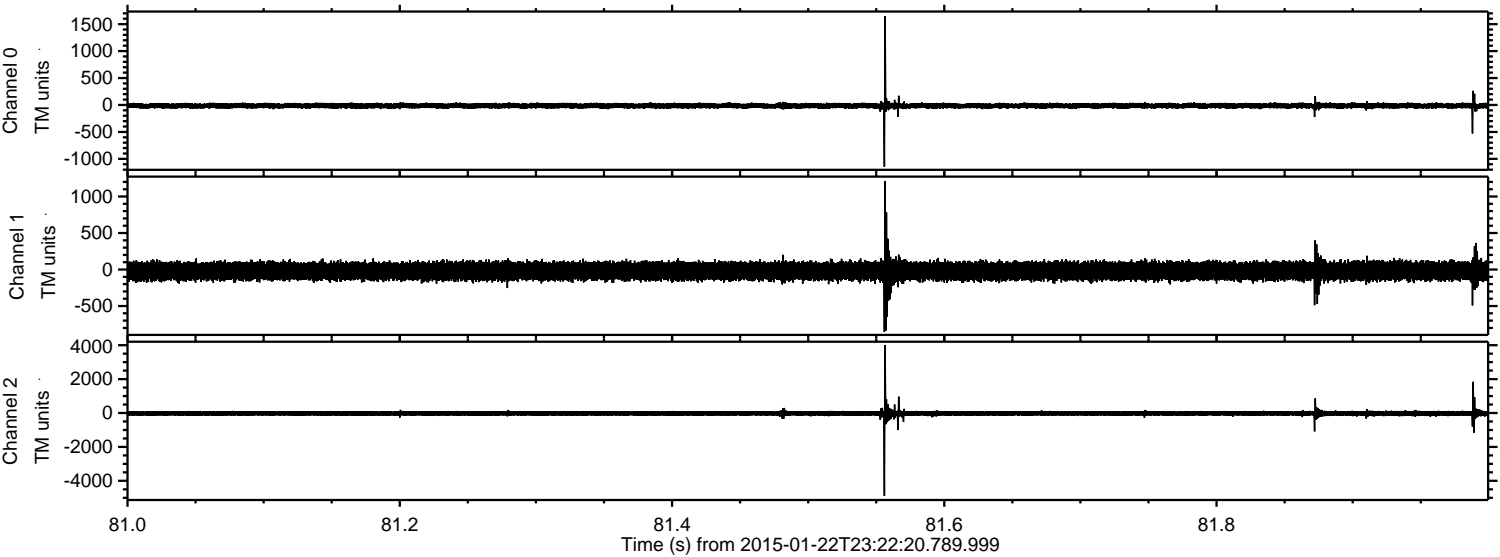
Channel 2
mn: -6930
mx: 3758
 μ : -24.8
 σ : 107.3

Processed Tue Feb 10 13:59:15 2015 by ELM ver.2012-10-06 from 001__elm20150122_232219__dat00.bin

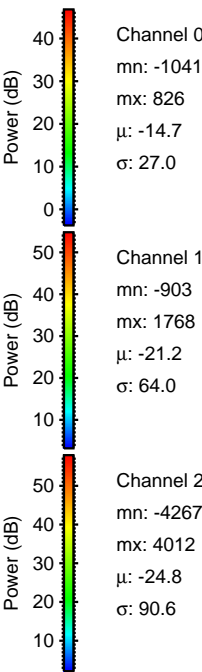
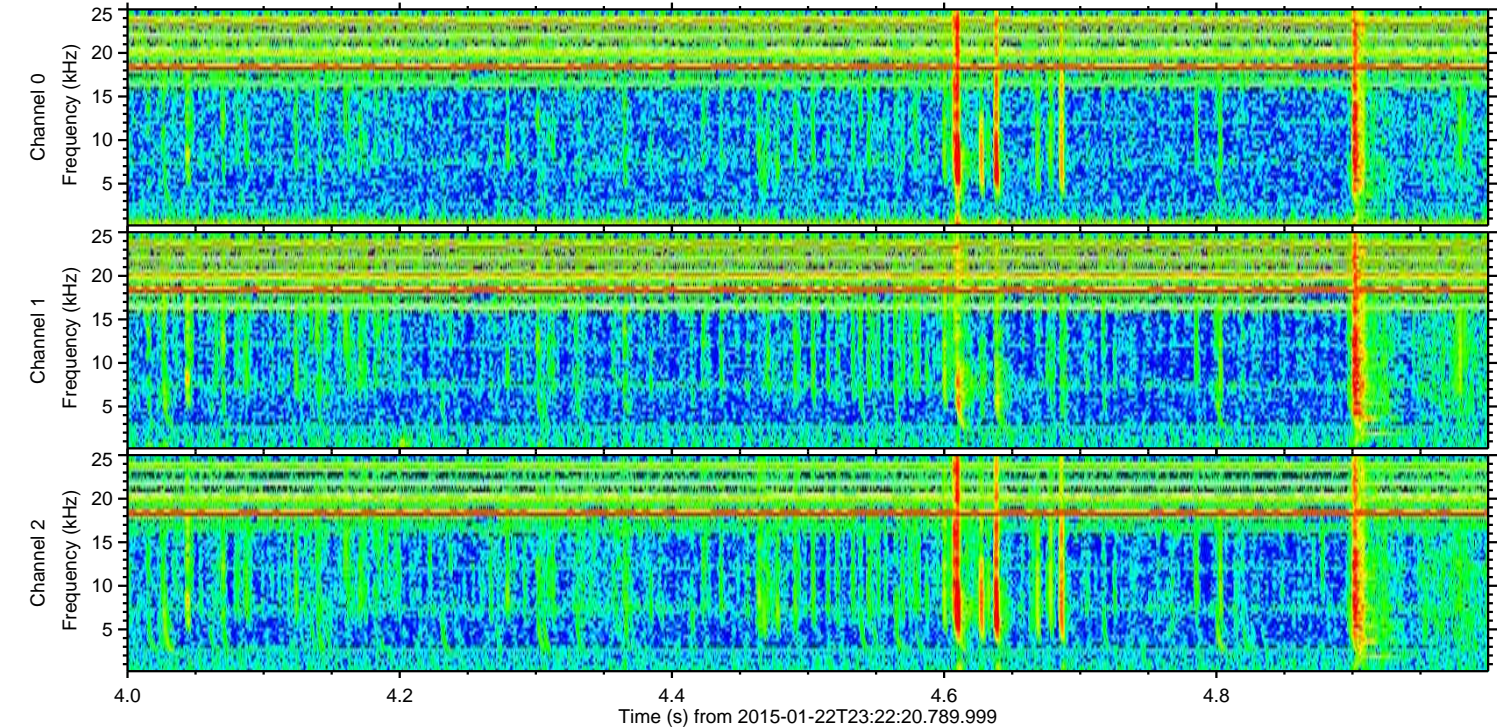
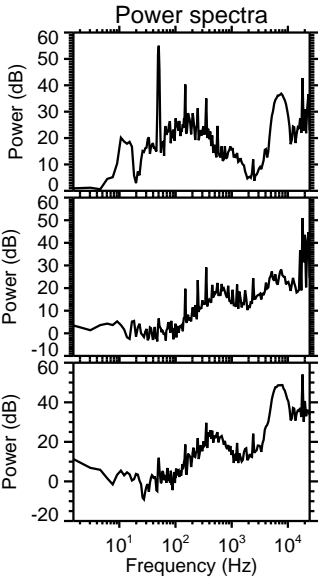
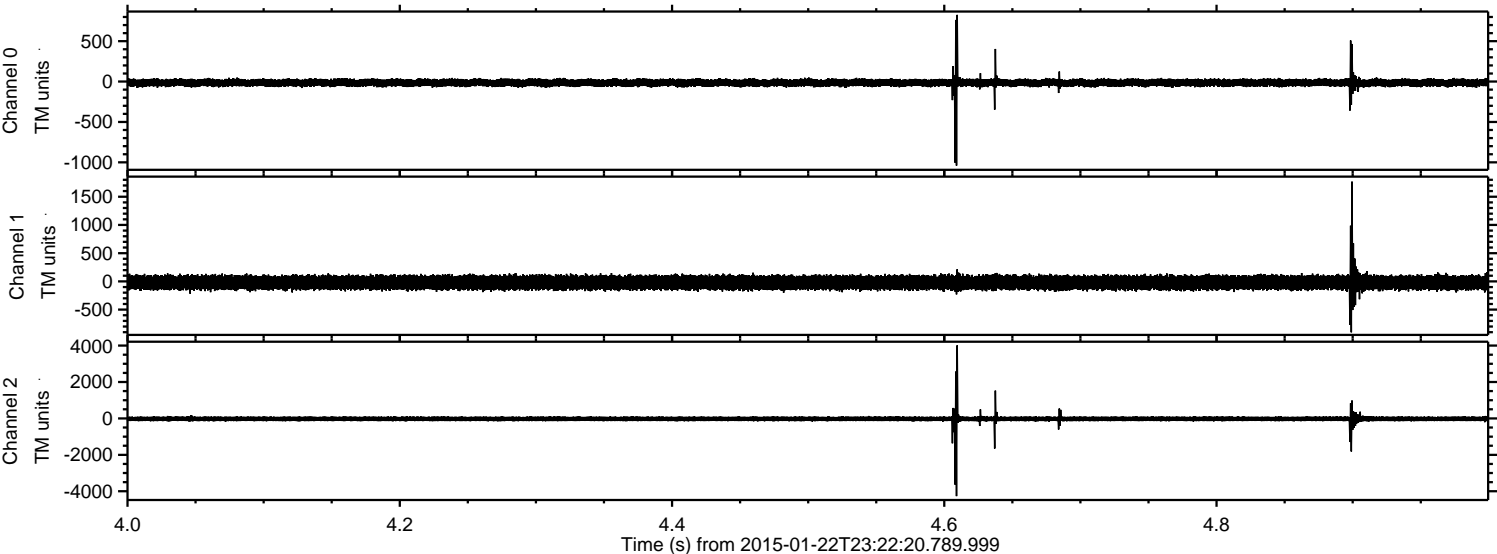


ELMAVAN 3D WAVEFORMS (Measured data sampled at 50 kHz) 49808 packets of 144 samples from 2015-01-22T23:22:20.789.999. Part 82/144

Processed Tue Feb 10 13:59:16 2015 by ELM ver.2012-10-06 from 001__elm20150122_232219__dat00.bin



Processed Tue Feb 10 13:59:16 2015 by ELM ver.2012-10-06 from 001__elm20150122_232219__dat00.bin



ELMAVAN 3D WAVEFORMS (Measured data sampled at 50 kHz) 49808 packets of 144 samples from 2015-01-22T23:22:20.789.999. Part 57/144

Processed Tue Feb 10 13:59:17 2015 by ELM ver.2012-10-06 from 001__elm20150122_232219__dat00.bin

