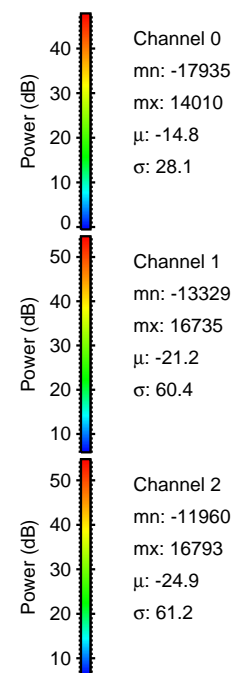
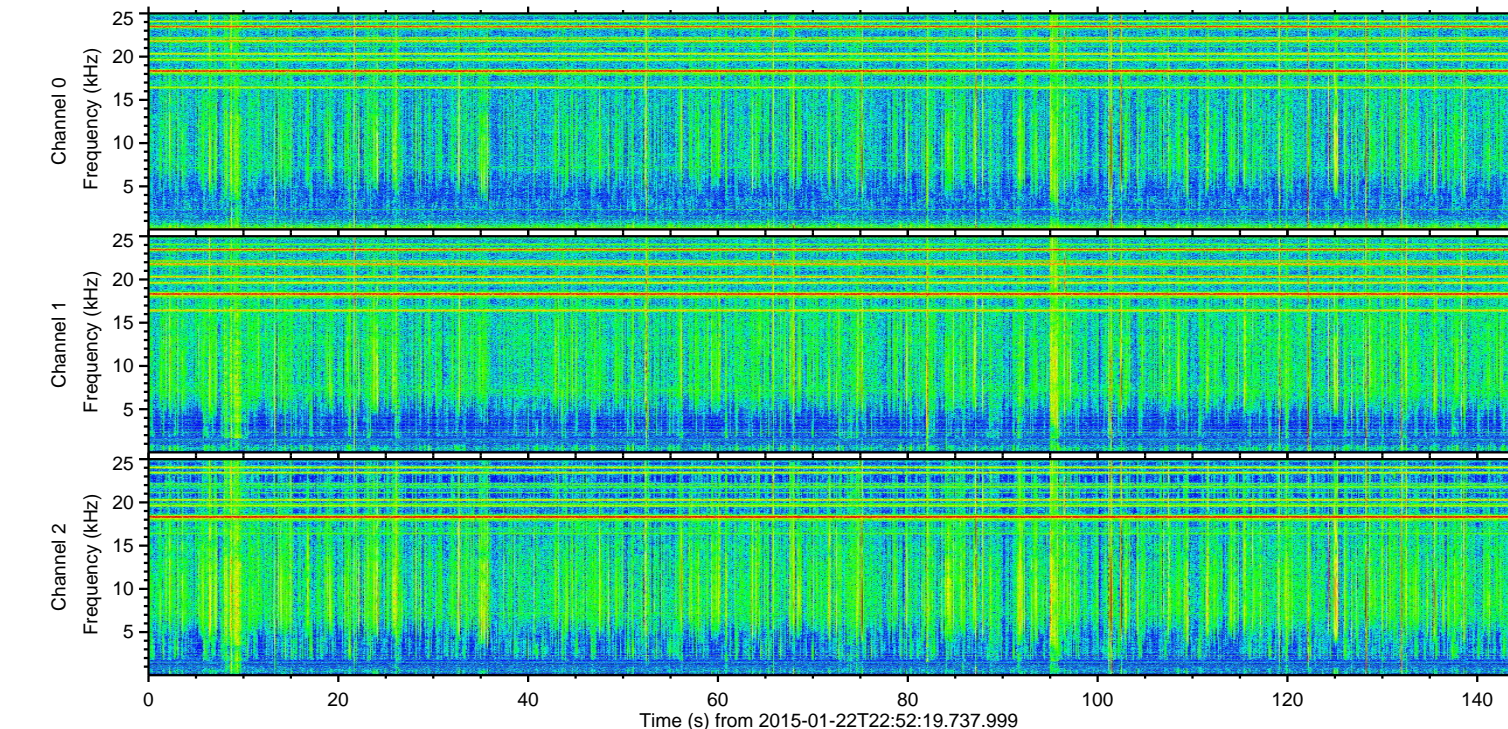
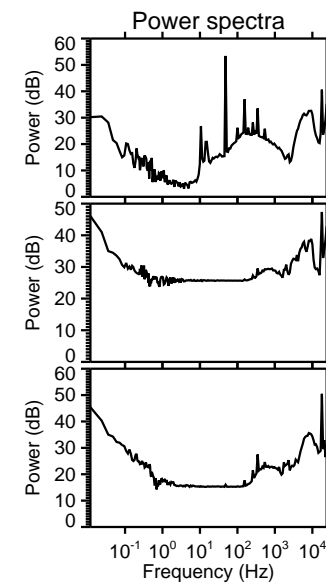
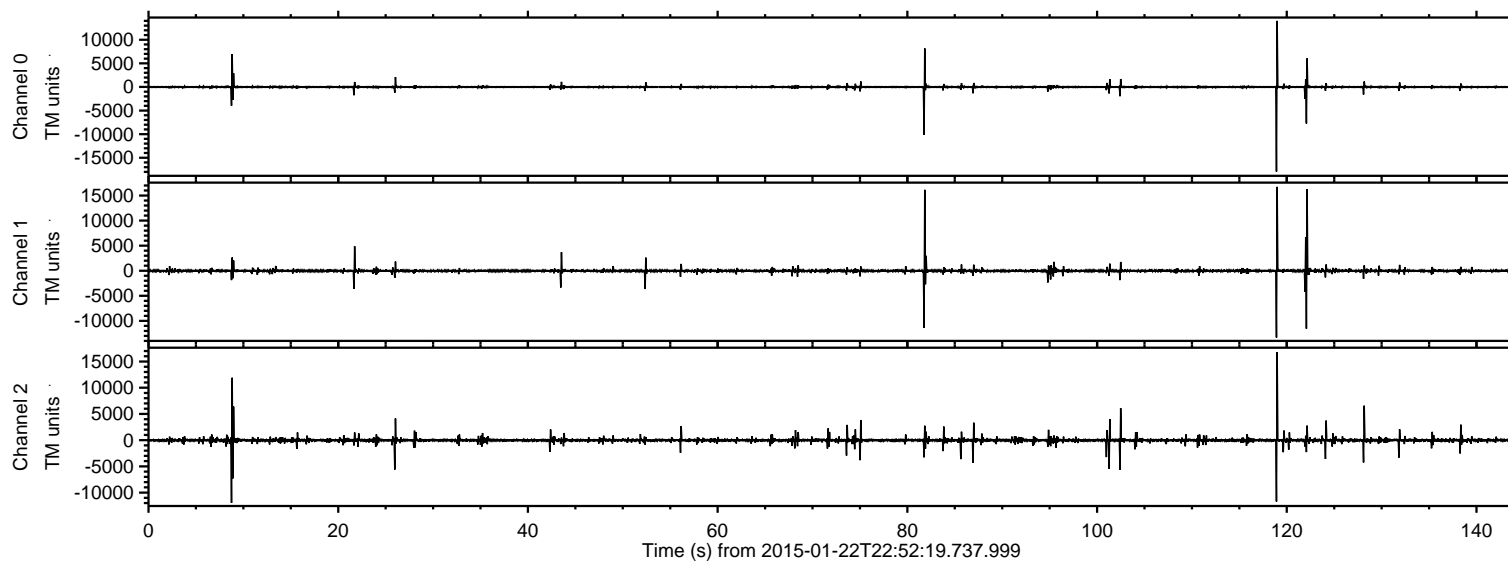


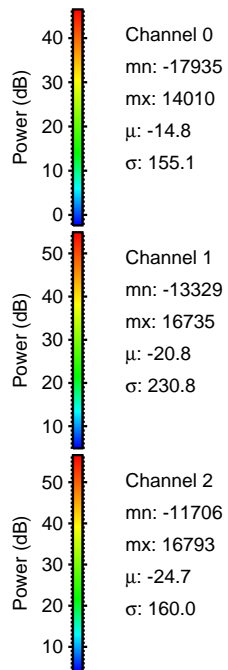
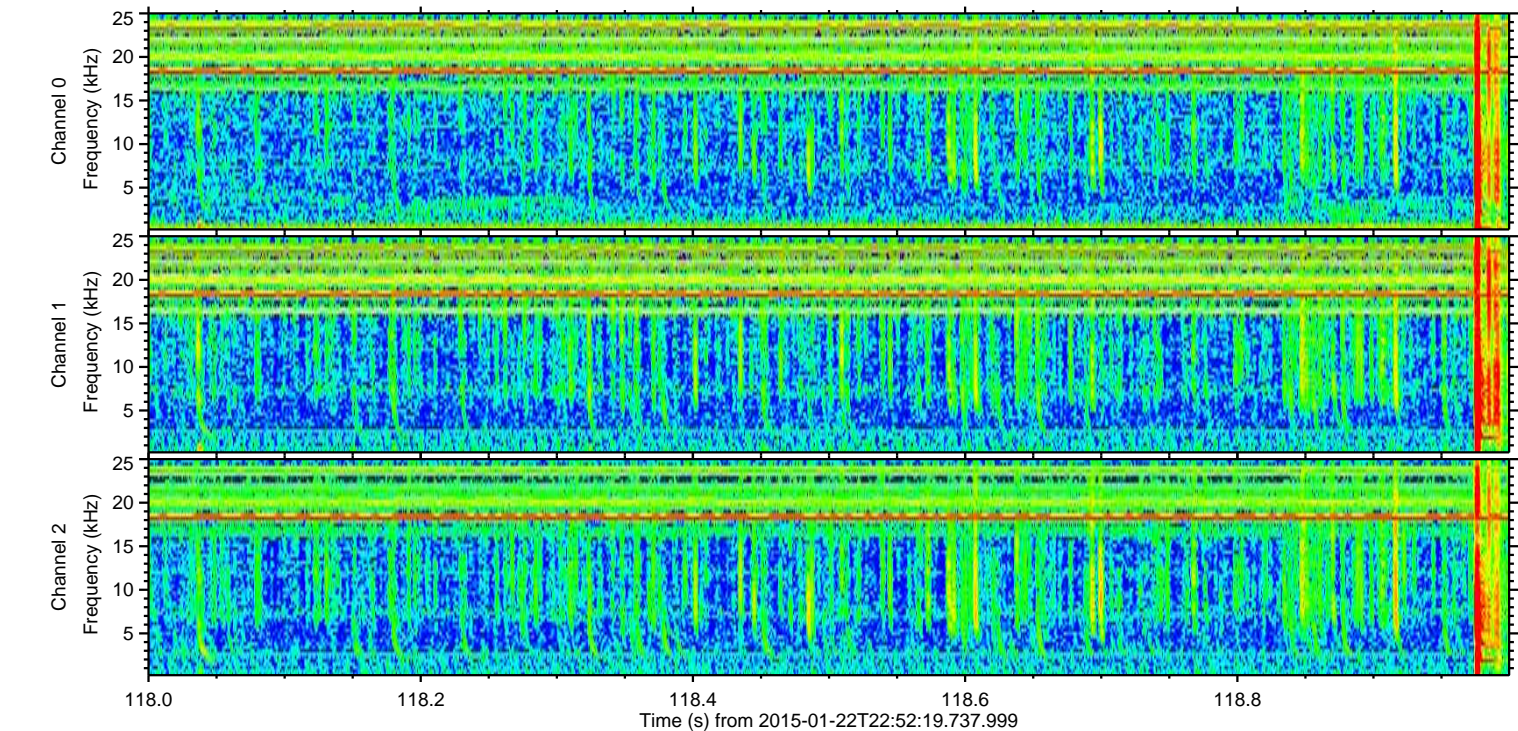
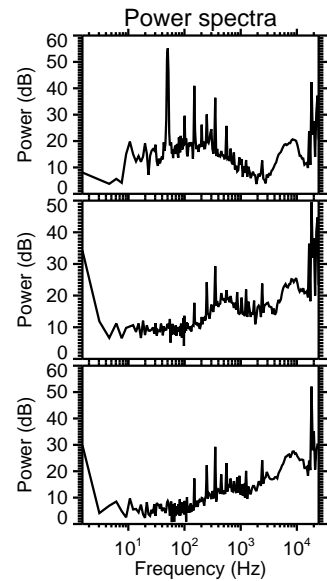
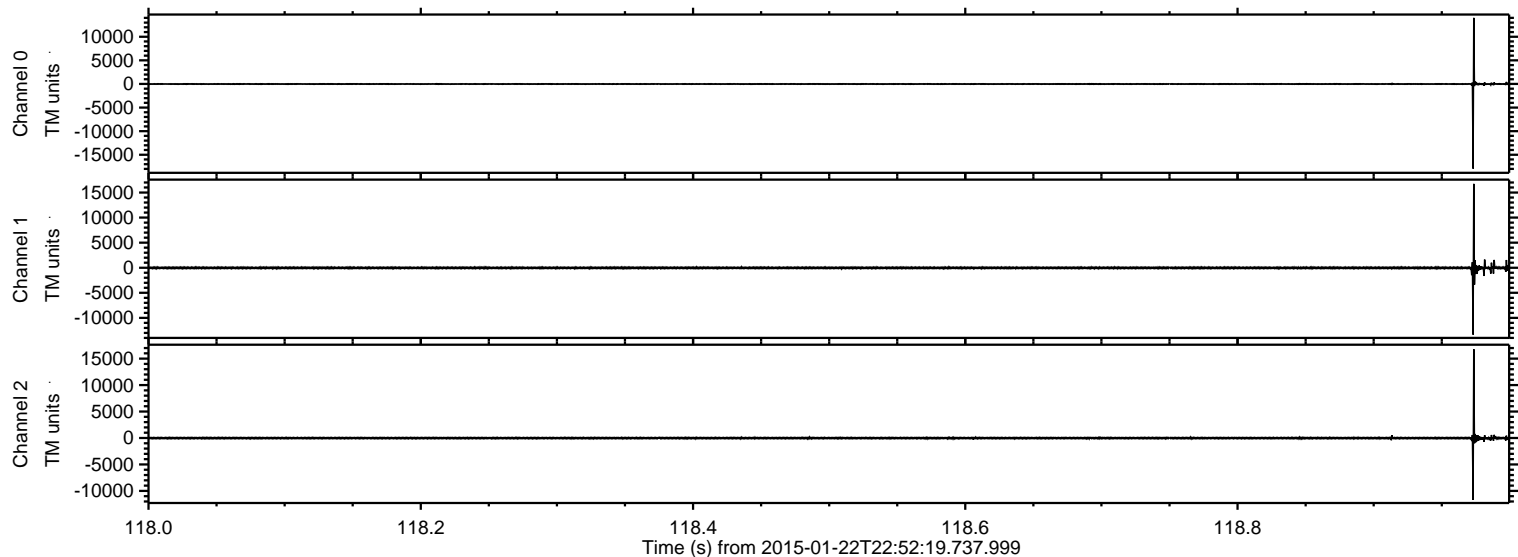
# ELMAVAN 3D WAVEFORMS (Measured data sampled at 50 kHz) 49806 packets of 144 samples from 2015-01-22T22:52:19.737.999.

Processed Tue Feb 10 13:51:29 2015 by ELM ver.2012-10-06 from 001\_\_elm20150122\_225218\_\_dat00.bin



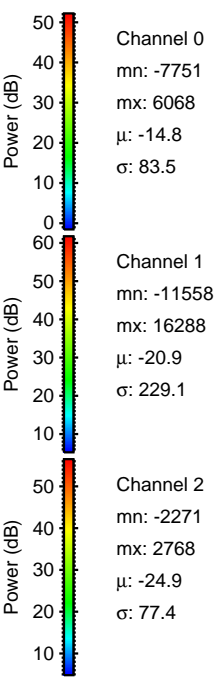
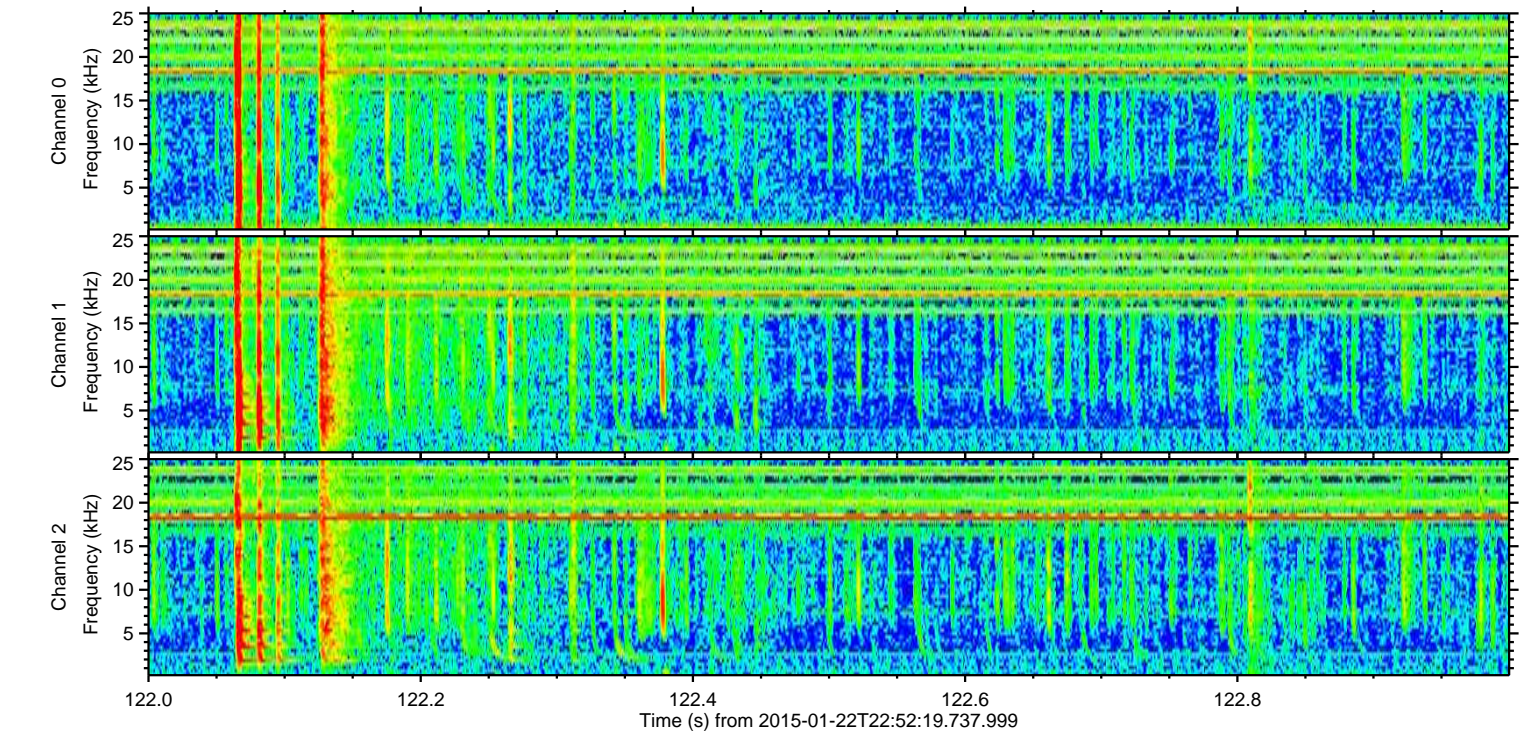
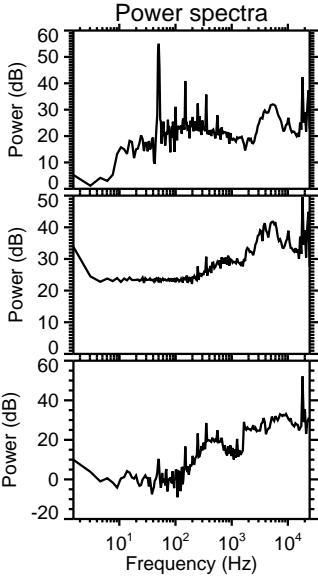
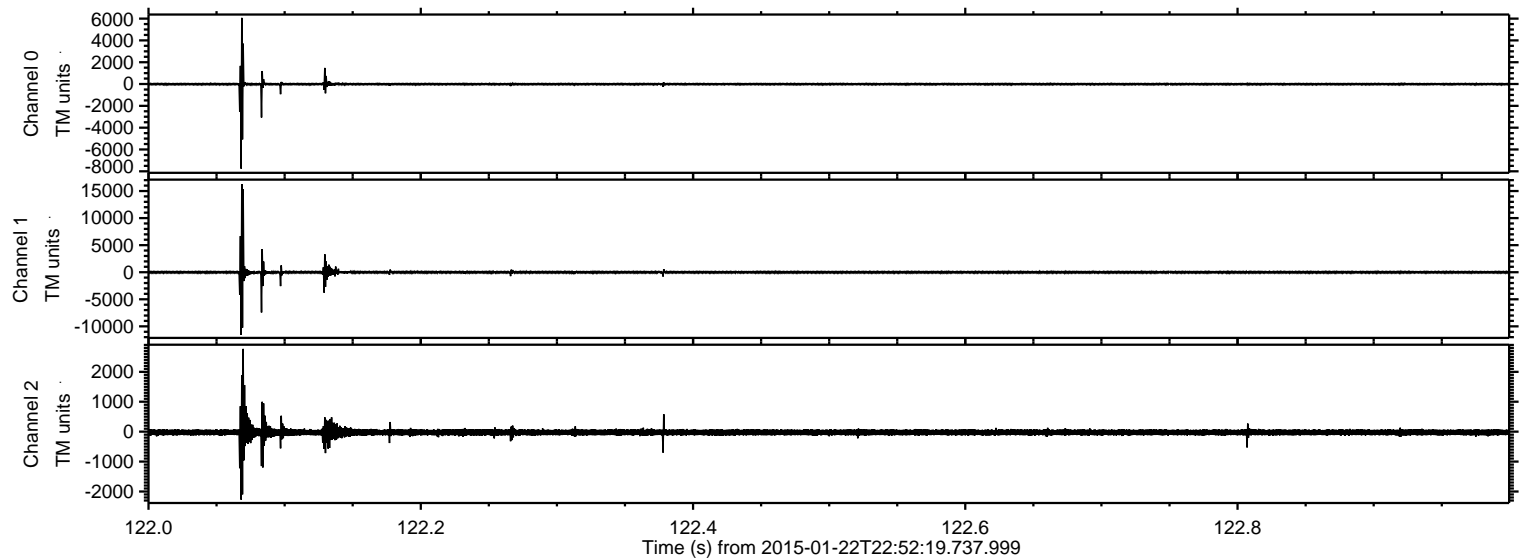
ELMAVAN 3D WAVEFORMS (Measured data sampled at 50 kHz) 49806 packets of 144 samples from 2015-01-22T22:52:19.737.999. Part 119/144

Processed Tue Feb 10 13:51:42 2015 by ELM ver.2012-10-06 from 001\_\_elm20150122\_225218\_\_dat00.bin

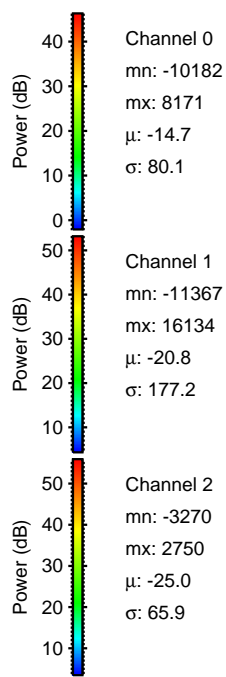
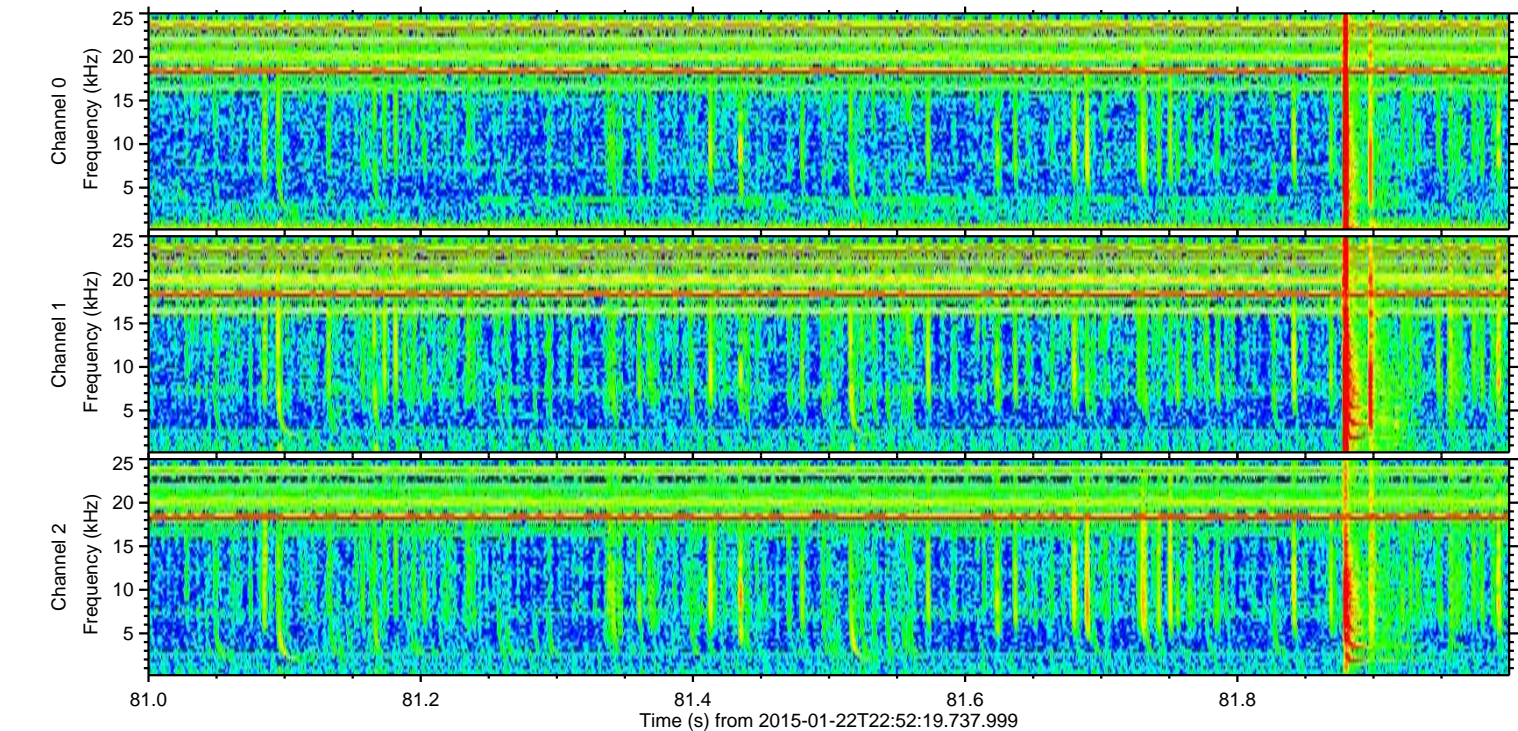
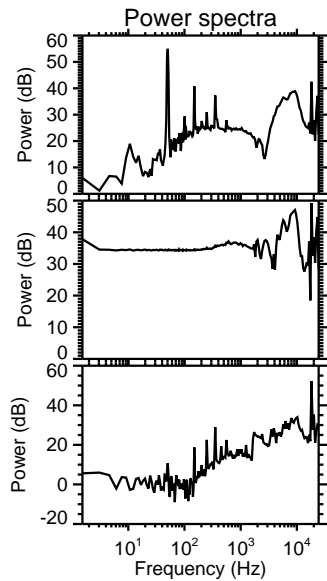
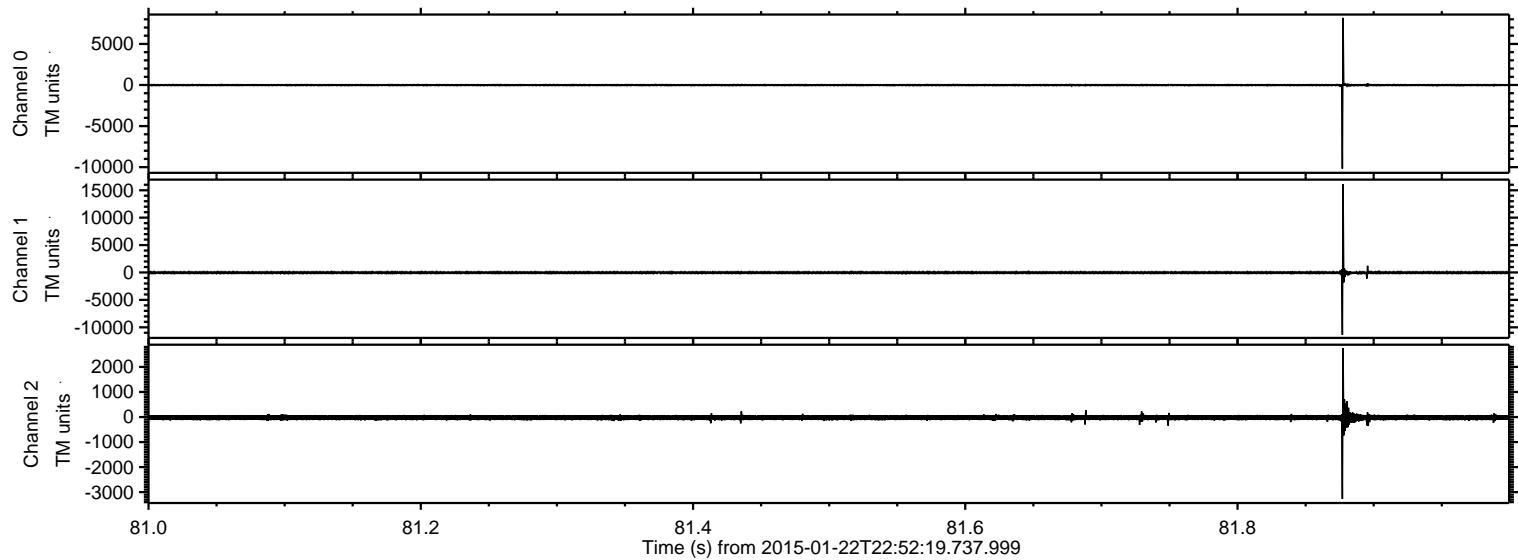


ELMAVAN 3D WAVEFORMS (Measured data sampled at 50 kHz) 49806 packets of 144 samples from 2015-01-22T22:52:19.737.999. Part 123/144

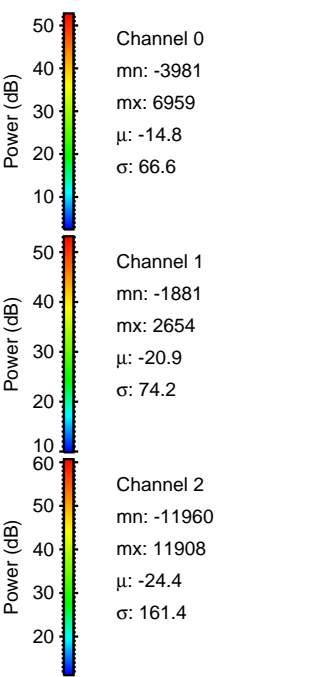
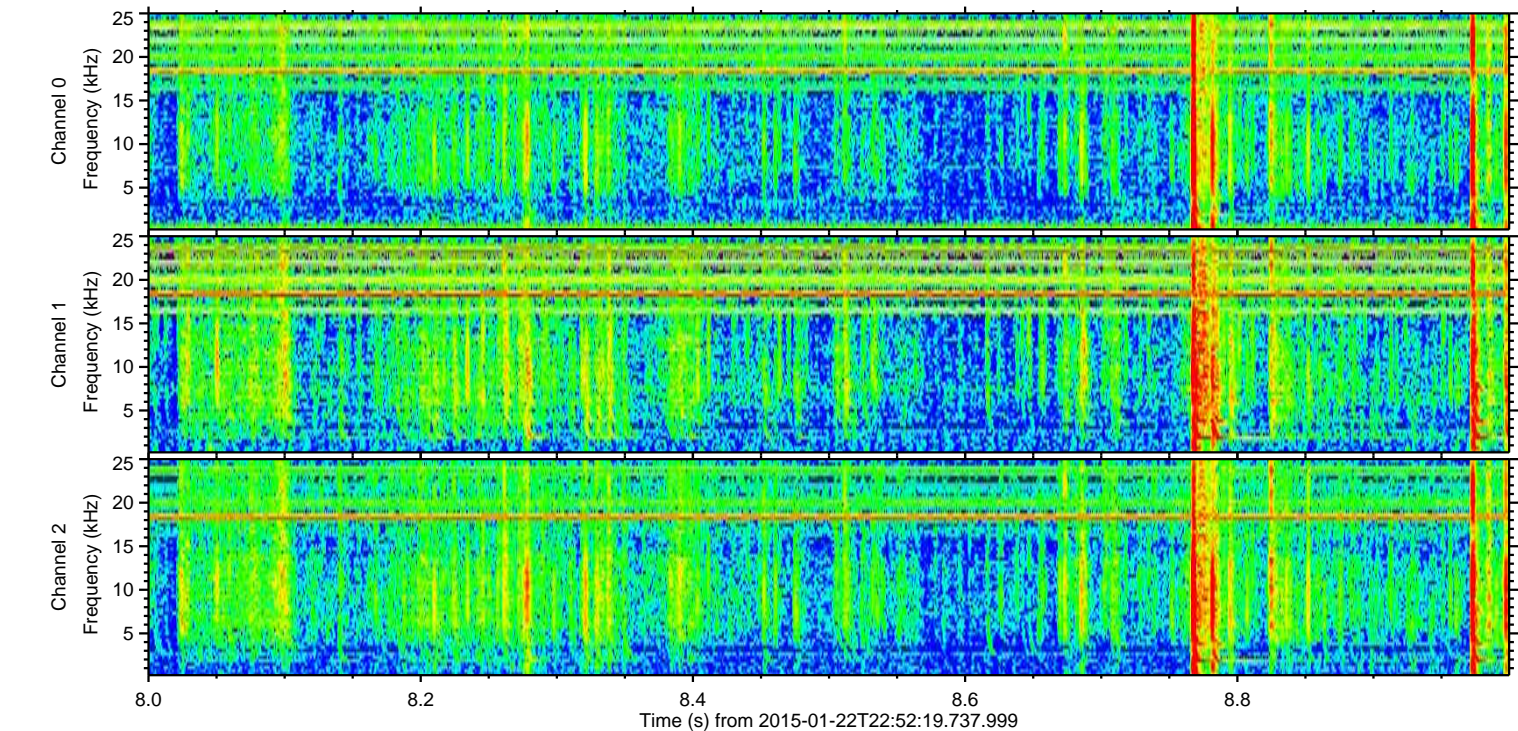
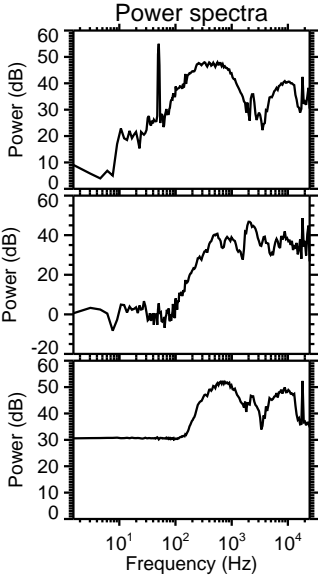
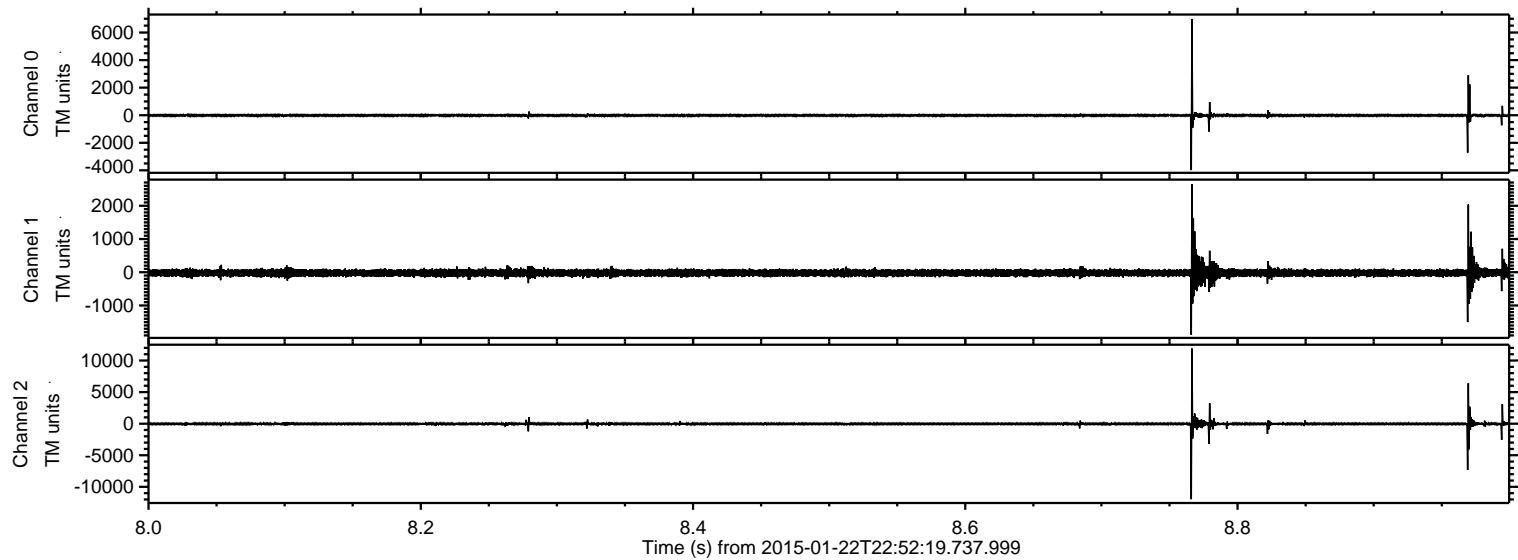
Processed Tue Feb 10 13:51:43 2015 by ELM ver.2012-10-06 from 001\_\_elm20150122\_225218\_\_dat00.bin



Processed Tue Feb 10 13:51:44 2015 by ELM ver.2012-10-06 from 001\_\_elm20150122\_225218\_\_dat00.bin

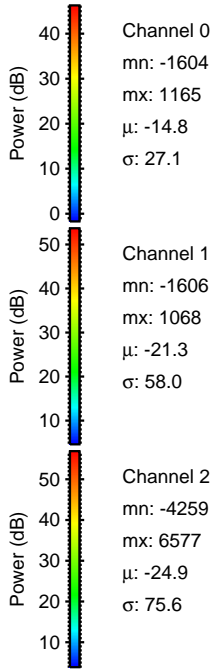
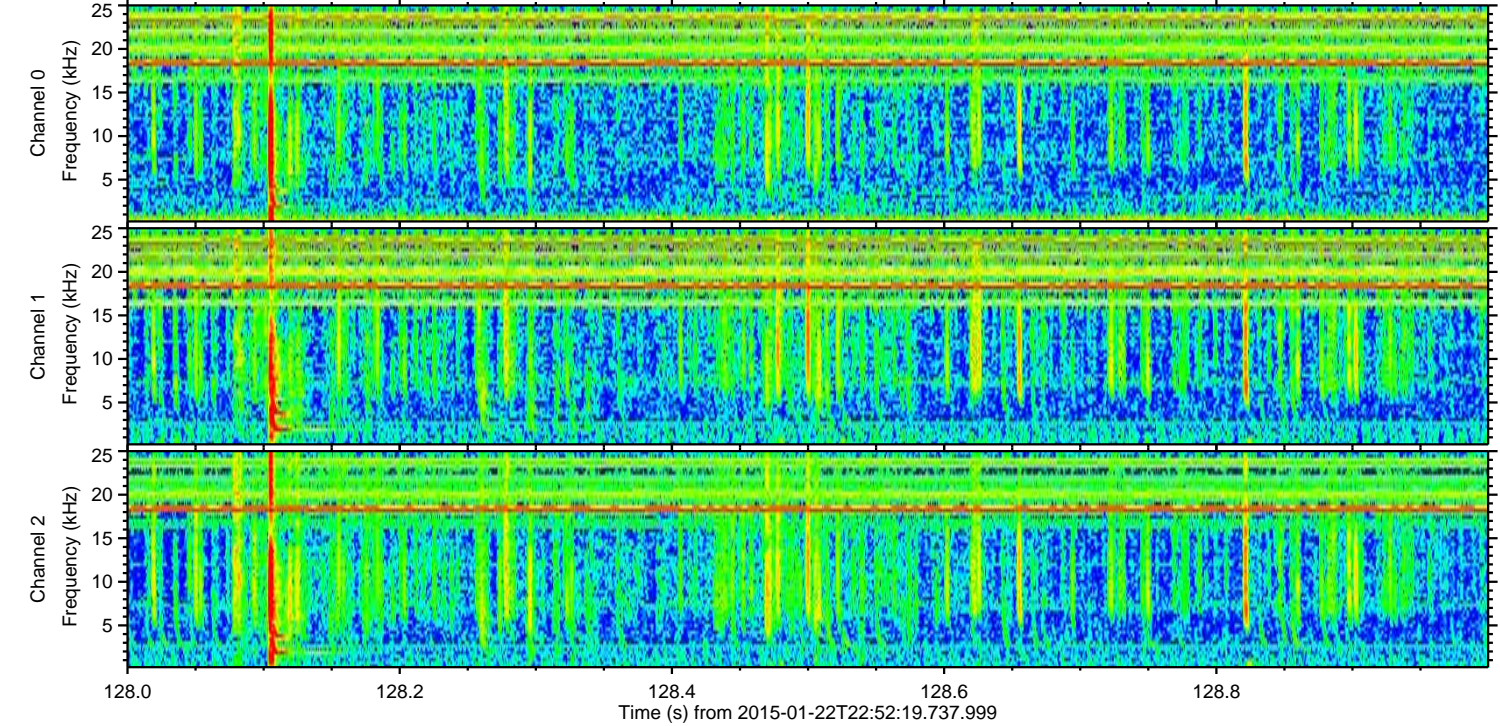
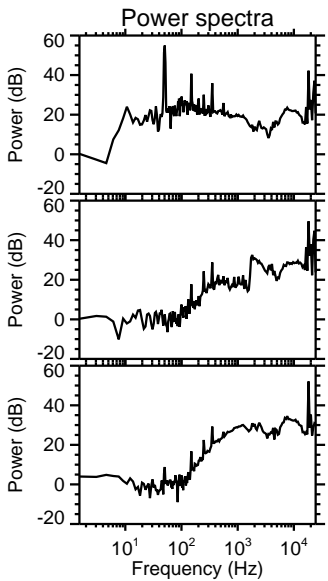
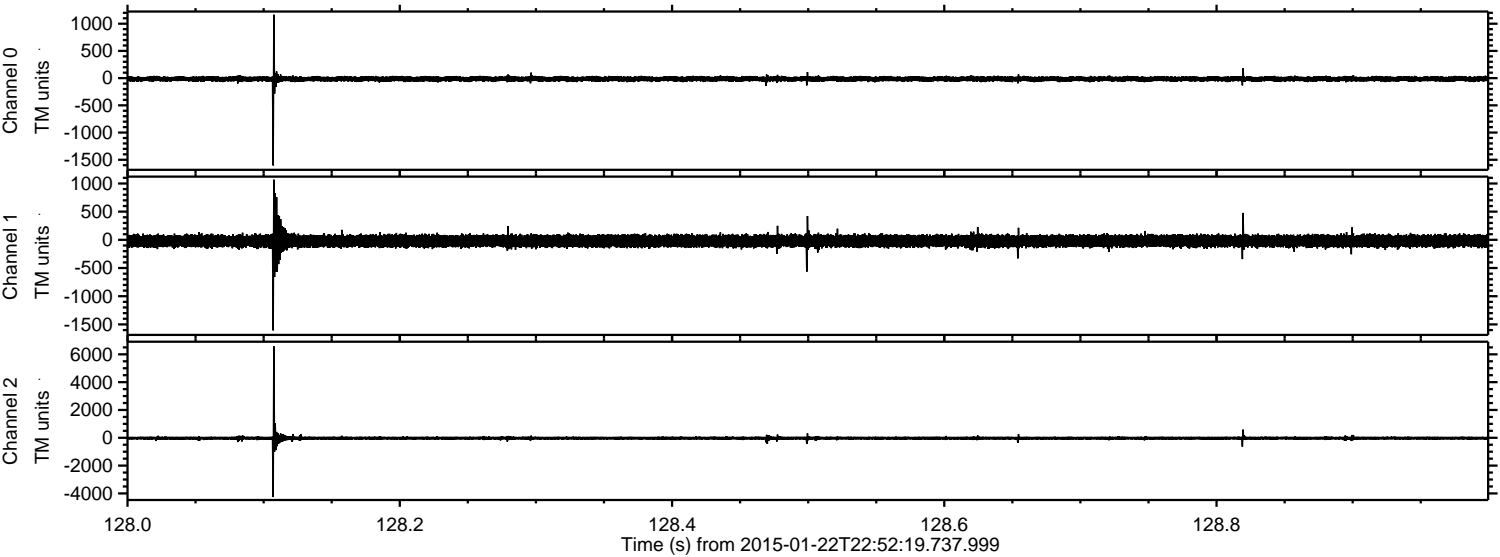


Processed Tue Feb 10 13:51:45 2015 by ELM ver.2012-10-06 from 001\_\_elm20150122\_225218\_\_dat00.bin



ELMAVAN 3D WAVEFORMS (Measured data sampled at 50 kHz) 49806 packets of 144 samples from 2015-01-22T22:52:19.737.999. Part 129/144

Processed Tue Feb 10 13:51:46 2015 by ELM ver.2012-10-06 from 001\_\_elm20150122\_225218\_\_dat00.bin



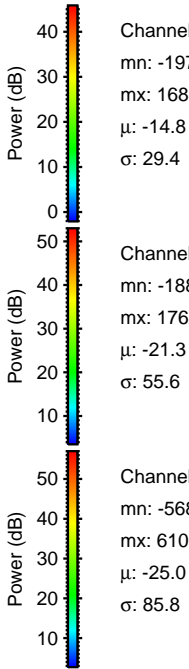
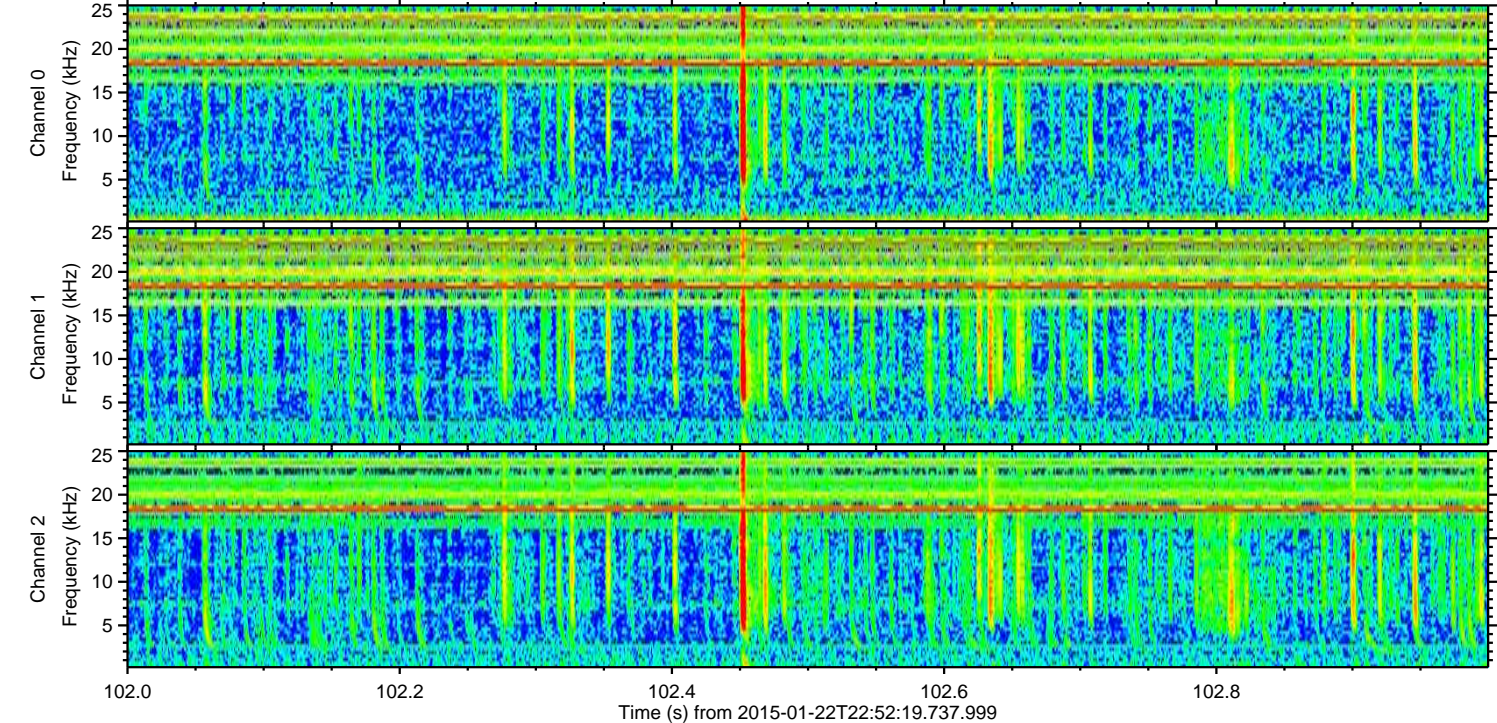
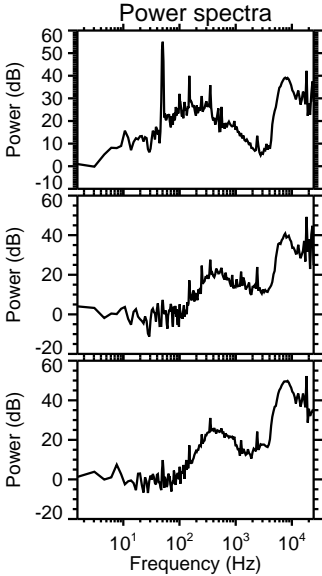
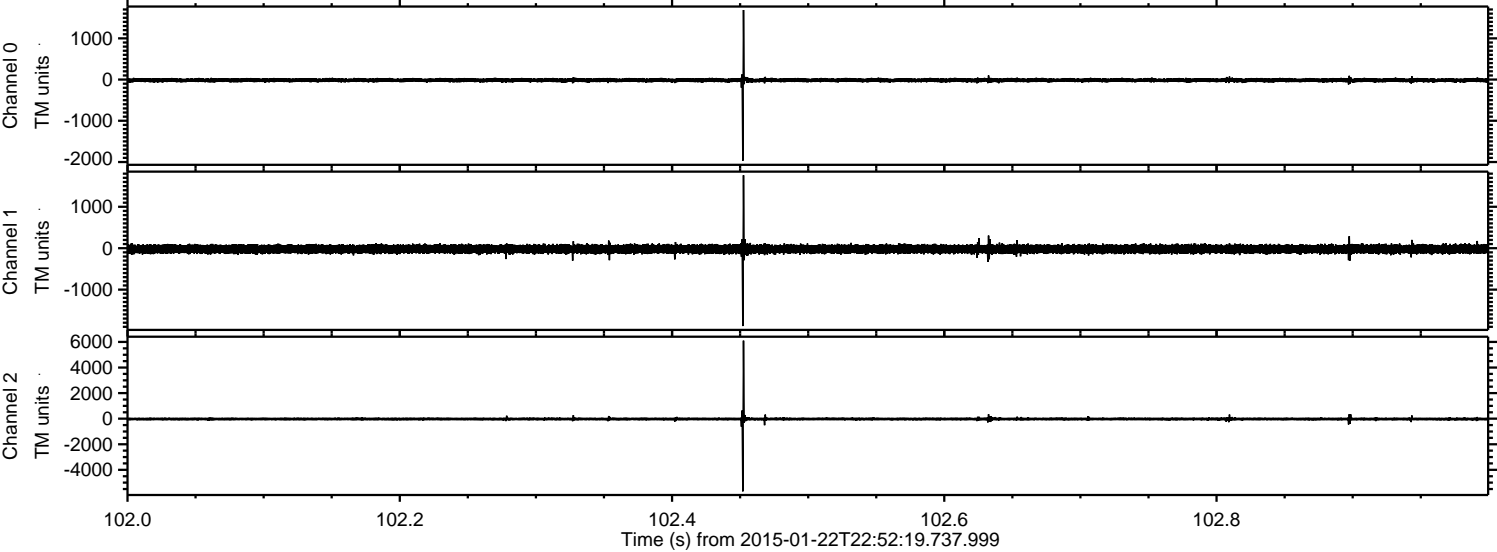
Channel 0  
mn: -1604  
mx: 1165  
 $\mu$ : -14.8  
 $\sigma$ : 27.1

Channel 1  
mn: -1606  
mx: 1068  
 $\mu$ : -21.3  
 $\sigma$ : 58.0

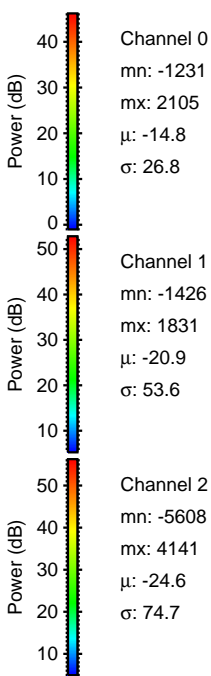
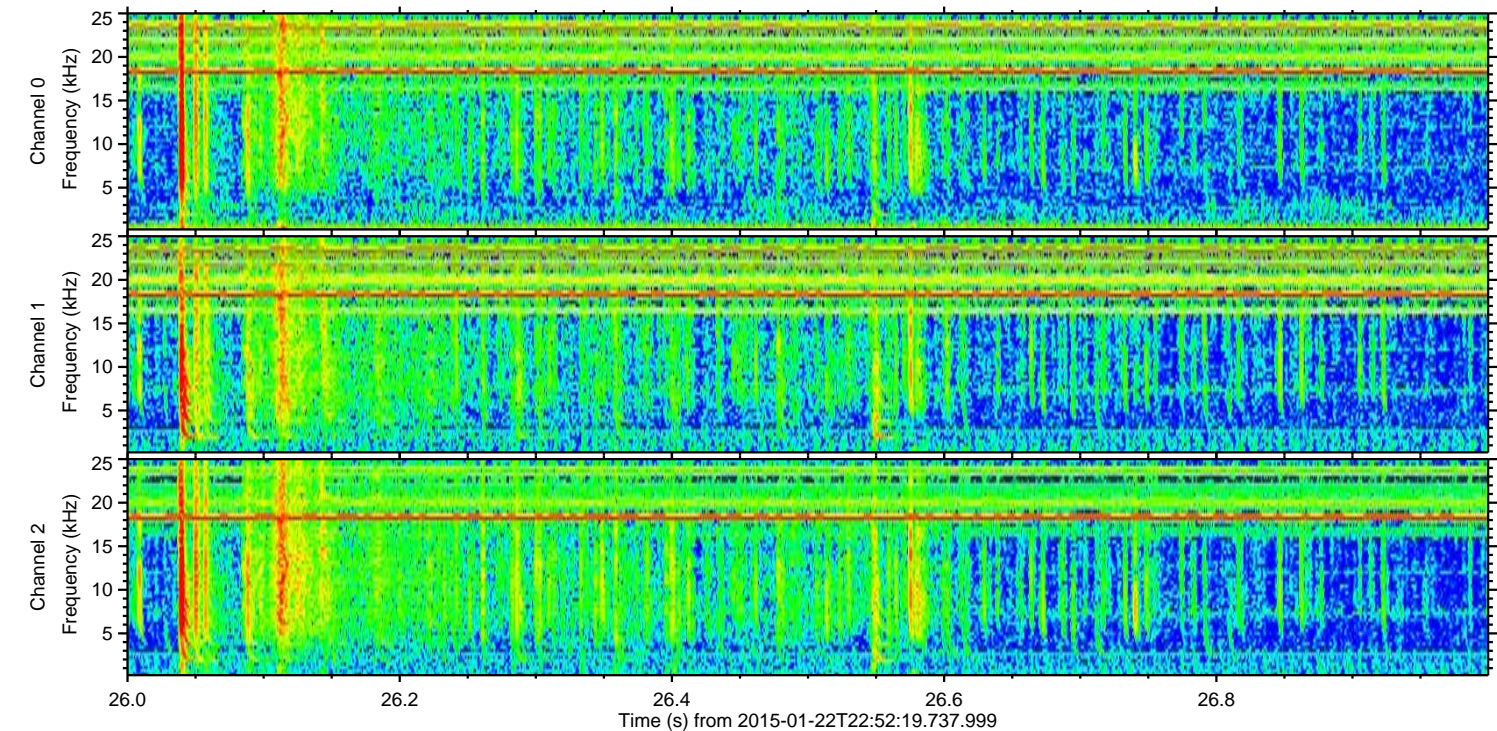
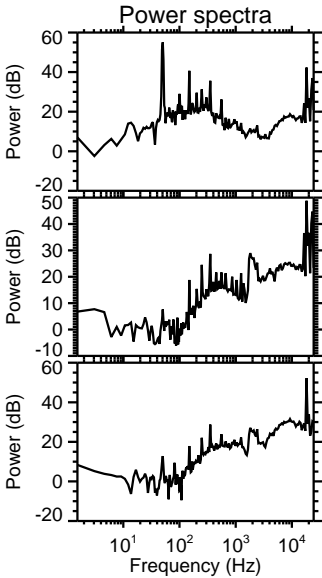
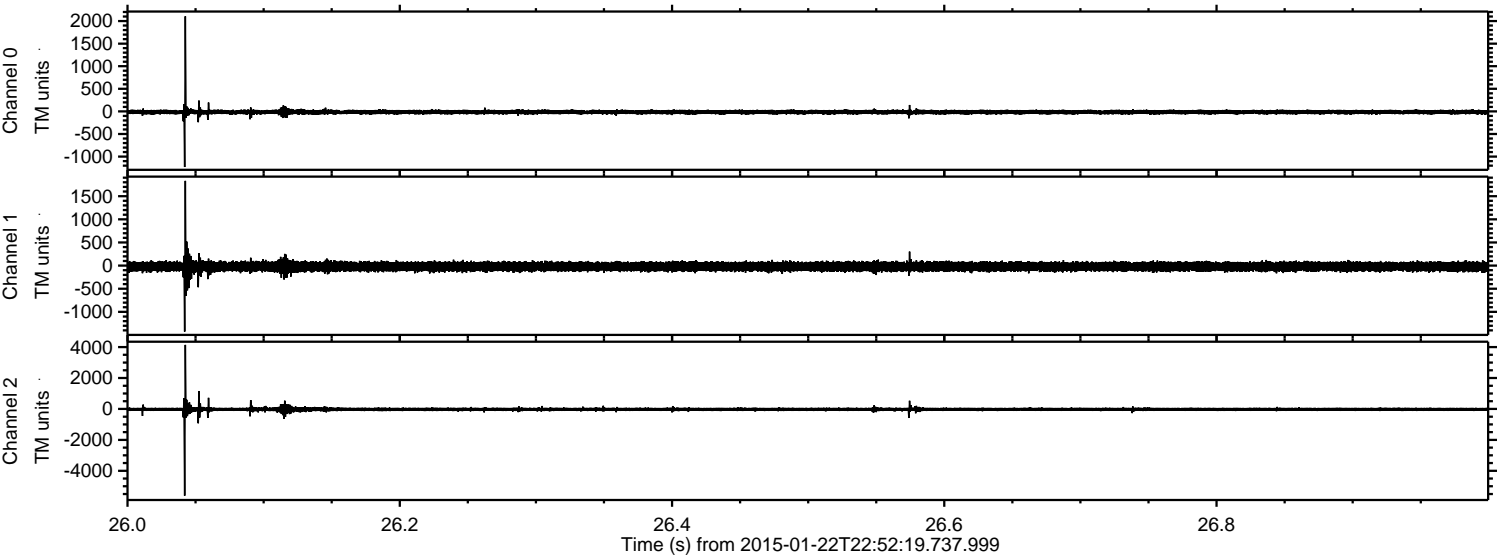
Channel 2  
mn: -4259  
mx: 6577  
 $\mu$ : -24.9  
 $\sigma$ : 75.6

ELMAVAN 3D WAVEFORMS (Measured data sampled at 50 kHz) 49806 packets of 144 samples from 2015-01-22T22:52:19.737.999. Part 103/144

Processed Tue Feb 10 13:51:47 2015 by ELM ver.2012-10-06 from 001\_\_elm20150122\_225218\_\_dat00.bin

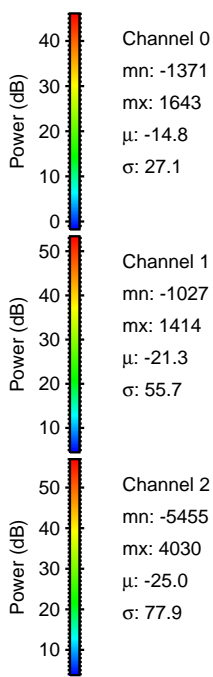
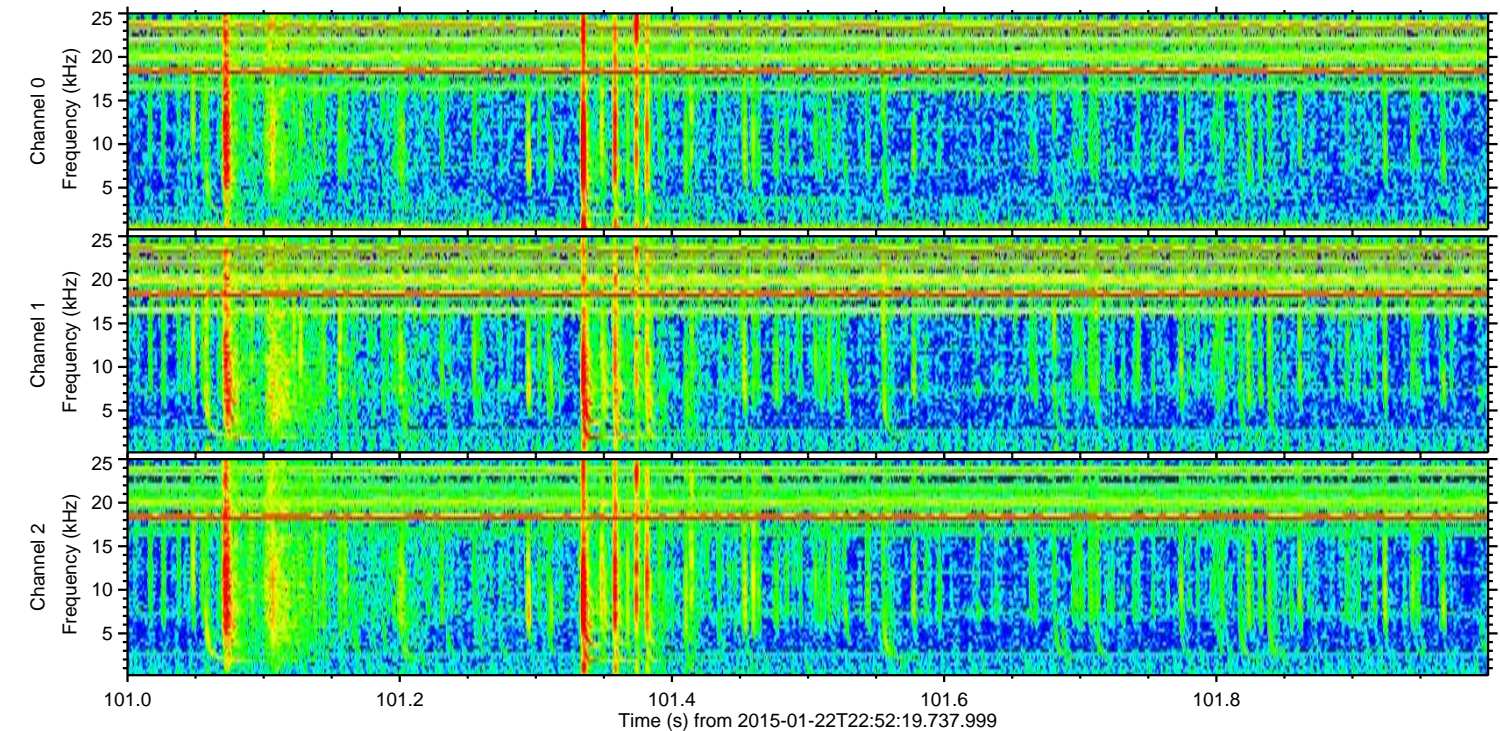
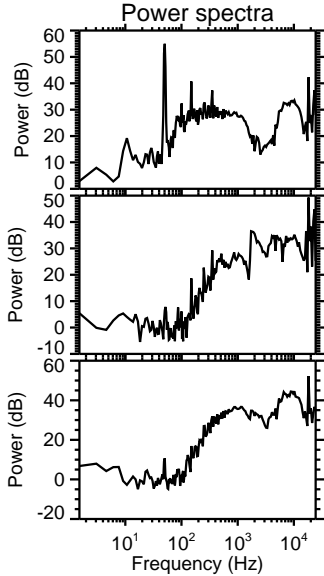
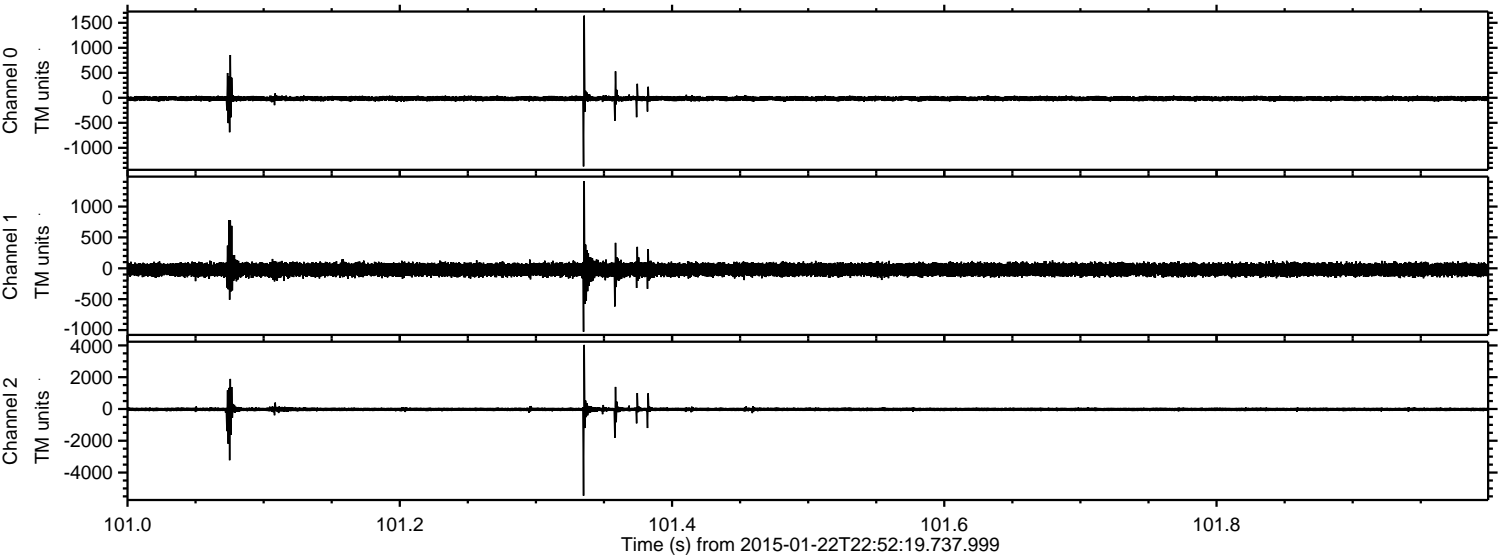


Processed Tue Feb 10 13:51:48 2015 by ELM ver.2012-10-06 from 001\_\_elm20150122\_225218\_\_dat00.bin



ELMAVAN 3D WAVEFORMS (Measured data sampled at 50 kHz) 49806 packets of 144 samples from 2015-01-22T22:52:19.737.999. Part 102/144

Processed Tue Feb 10 13:51:49 2015 by ELM ver.2012-10-06 from 001\_\_elm20150122\_225218\_\_dat00.bin



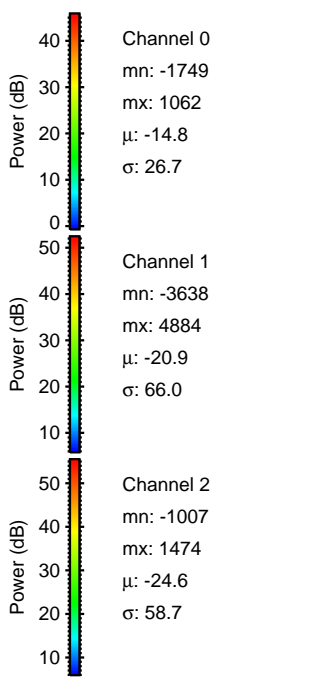
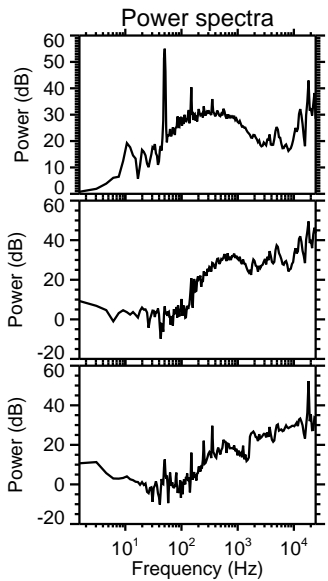
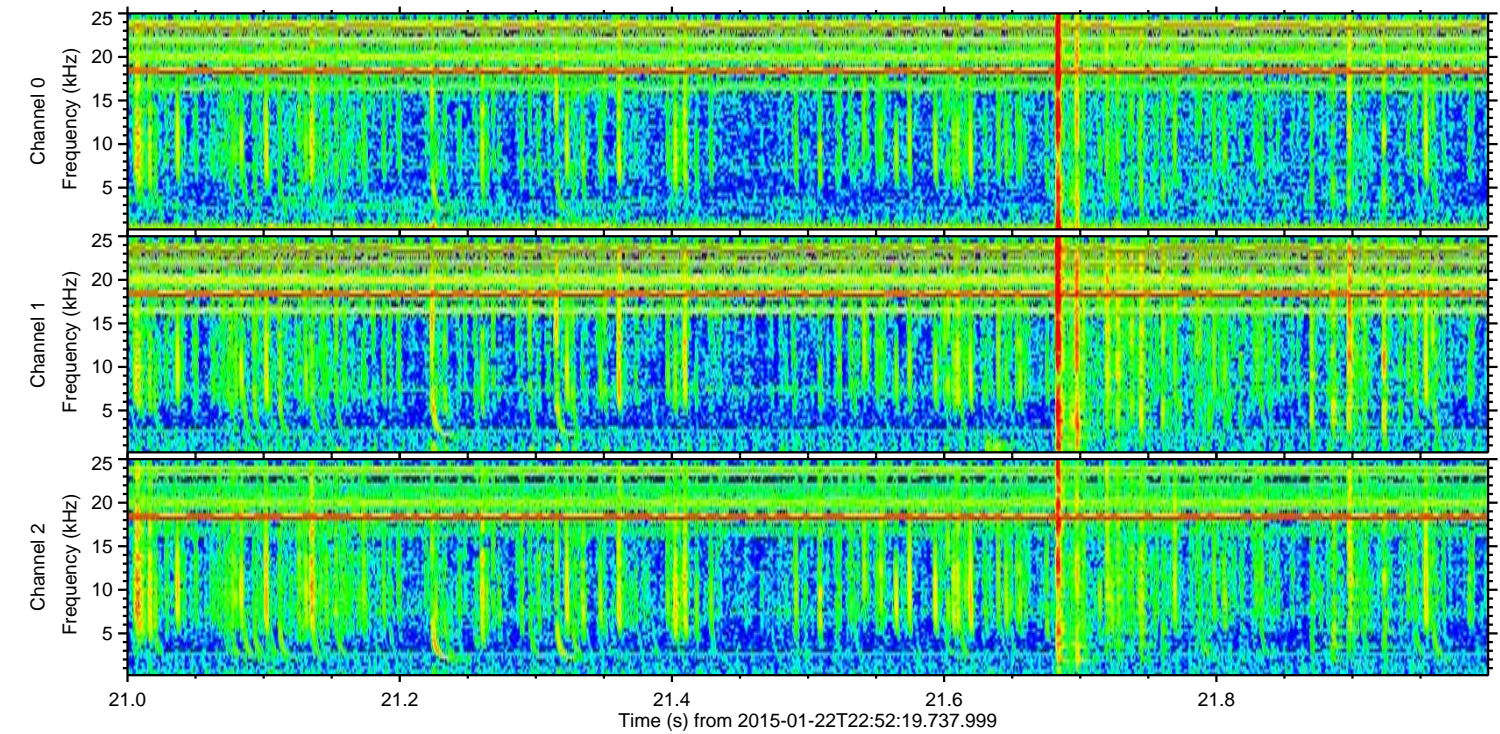
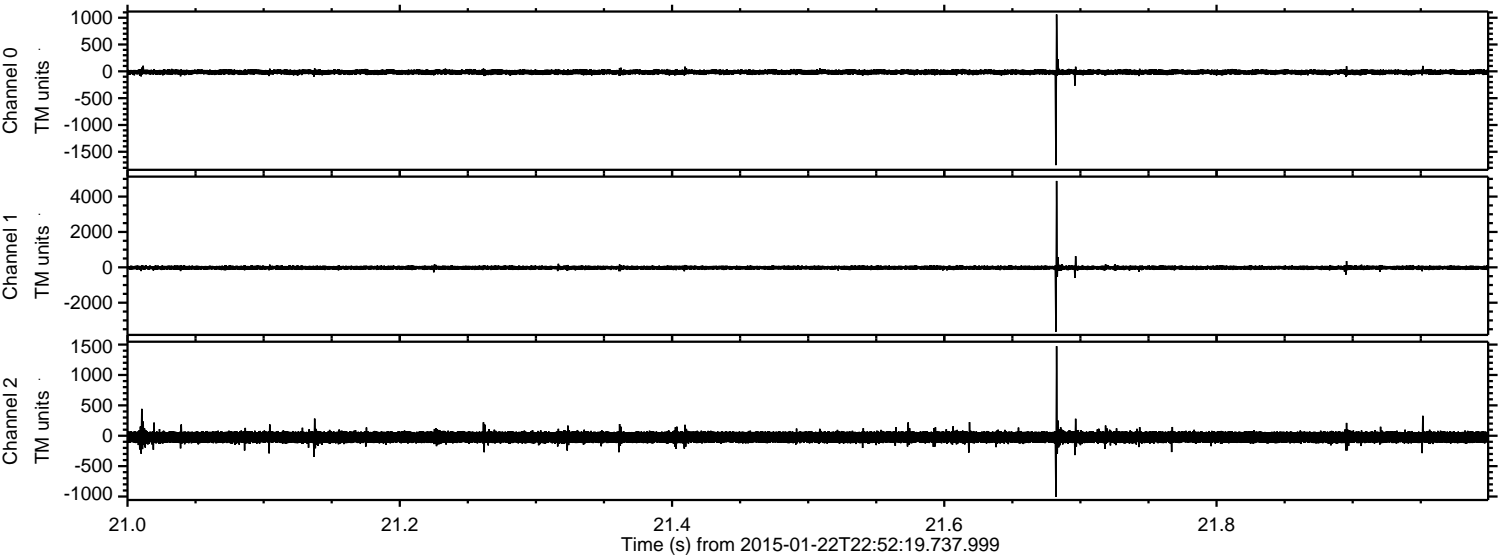
Channel 0  
mn: -1371  
mx: 1643  
 $\mu$ : -14.8  
 $\sigma$ : 27.1

Channel 1  
mn: -1027  
mx: 1414  
 $\mu$ : -21.3  
 $\sigma$ : 55.7

Channel 2  
mn: -5455  
mx: 4030  
 $\mu$ : -25.0  
 $\sigma$ : 77.9

ELMAVAN 3D WAVEFORMS (Measured data sampled at 50 kHz) 49806 packets of 144 samples from 2015-01-22T22:52:19.737.999. Part 22/144

Processed Tue Feb 10 13:51:50 2015 by ELM ver.2012-10-06 from 001\_\_elm20150122\_225218\_\_dat00.bin



ELMAVAN 3D WAVEFORMS (Measured data sampled at 50 kHz) 49806 packets of 144 samples from 2015-01-22T22:52:19.737.999. Part 37/144

Processed Tue Feb 10 13:51:51 2015 by ELM ver.2012-10-06 from 001\_\_elm20150122\_225218\_\_dat00.bin

