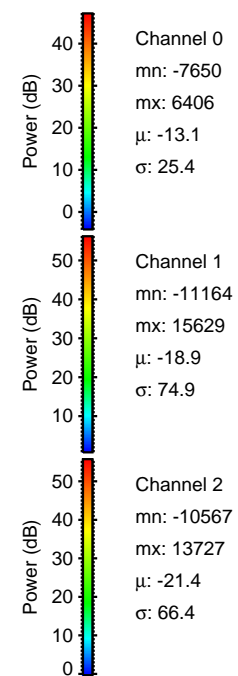
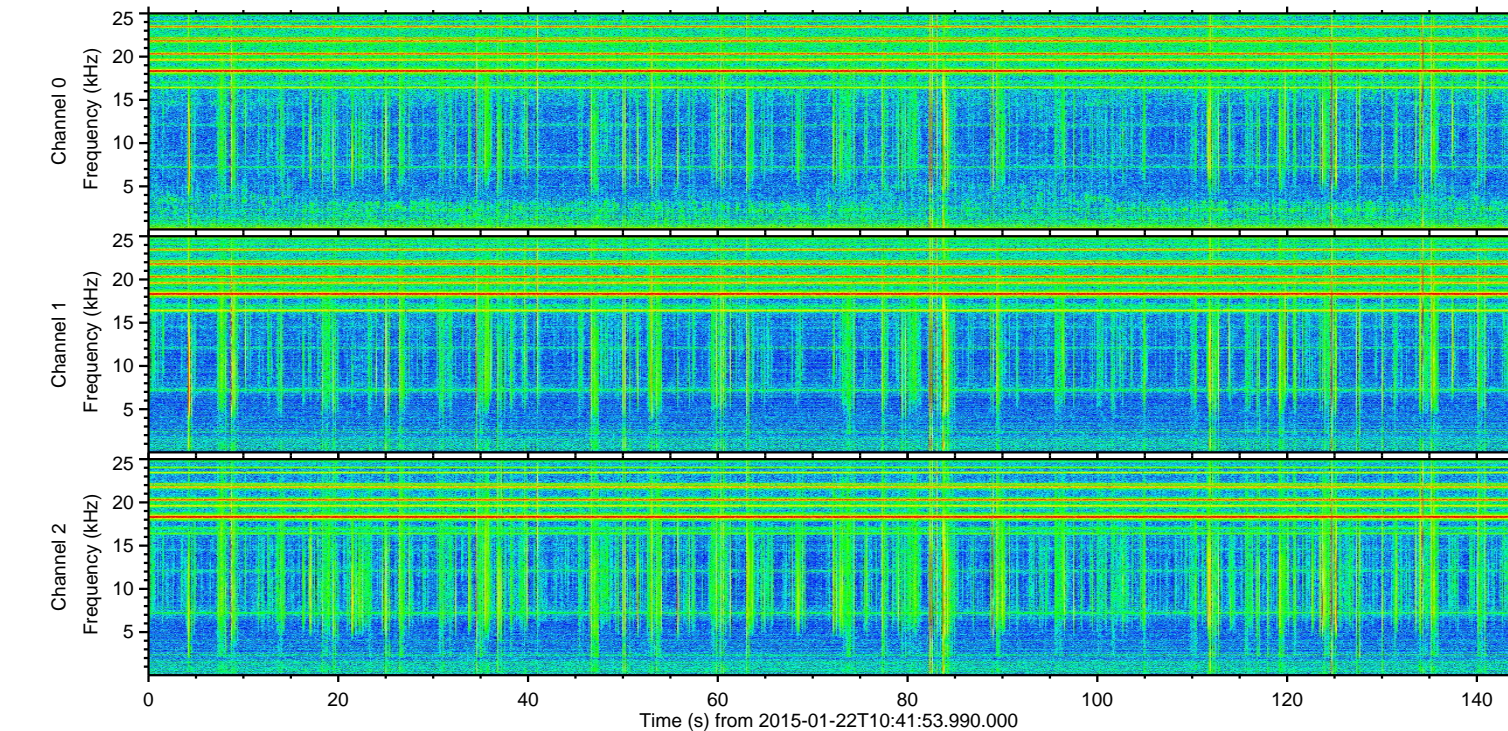
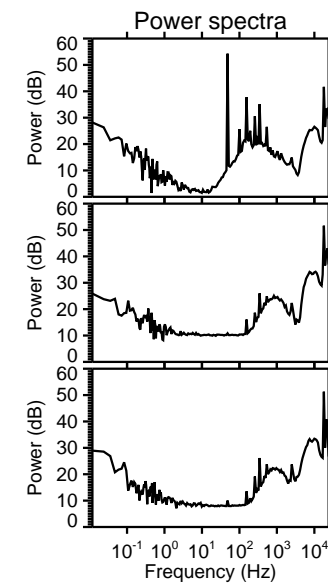
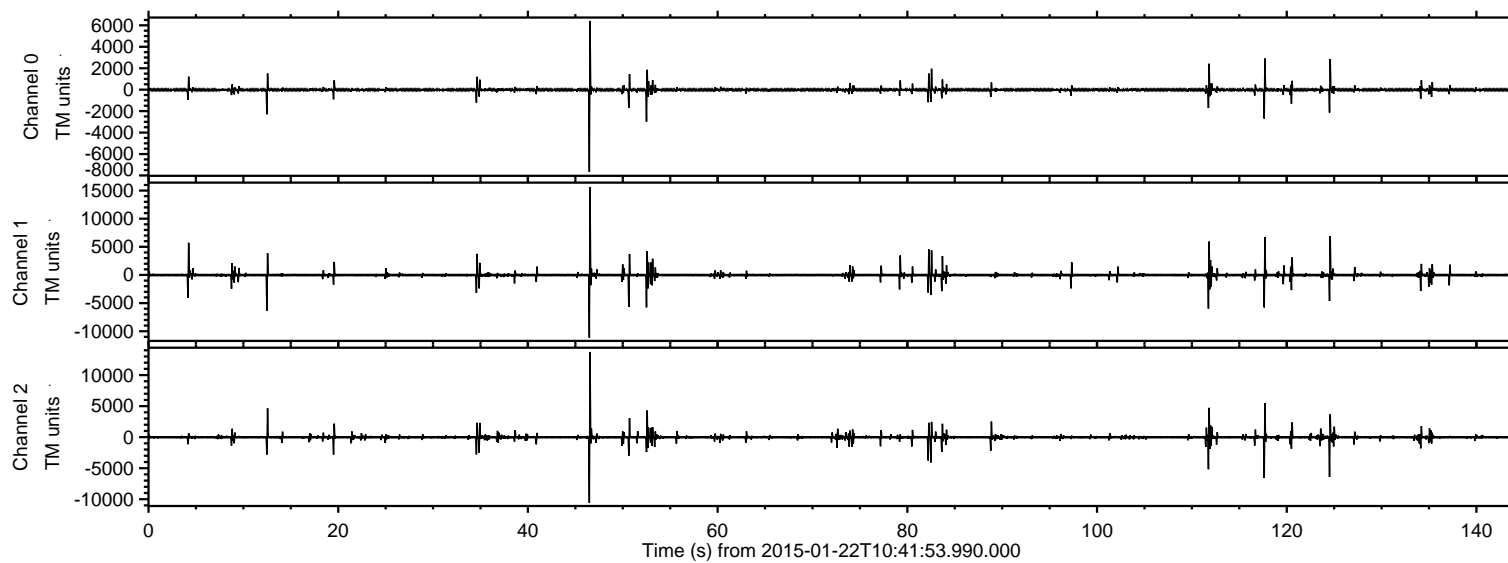


# ELMAVAN 3D WAVEFORMS (Measured data sampled at 50 kHz) 49808 packets of 144 samples from 2015-01-22T10:41:53.990.000.

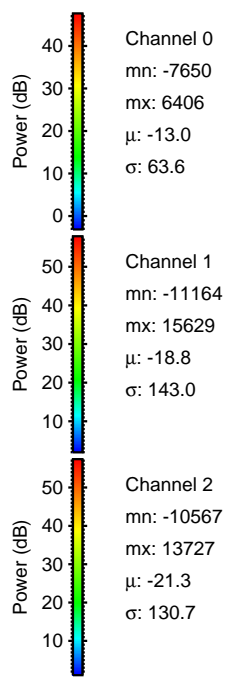
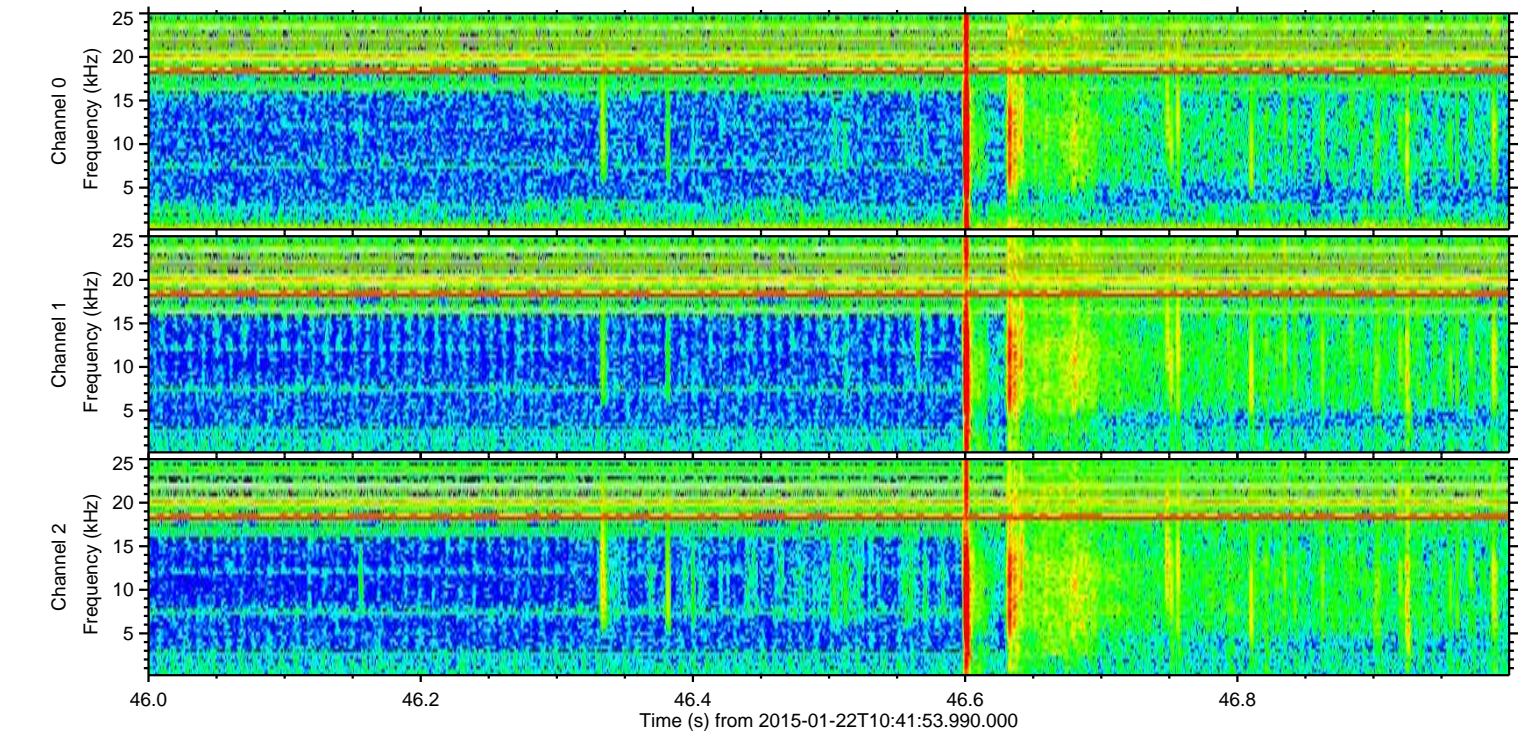
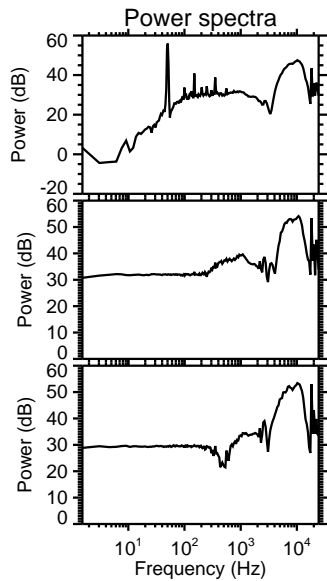
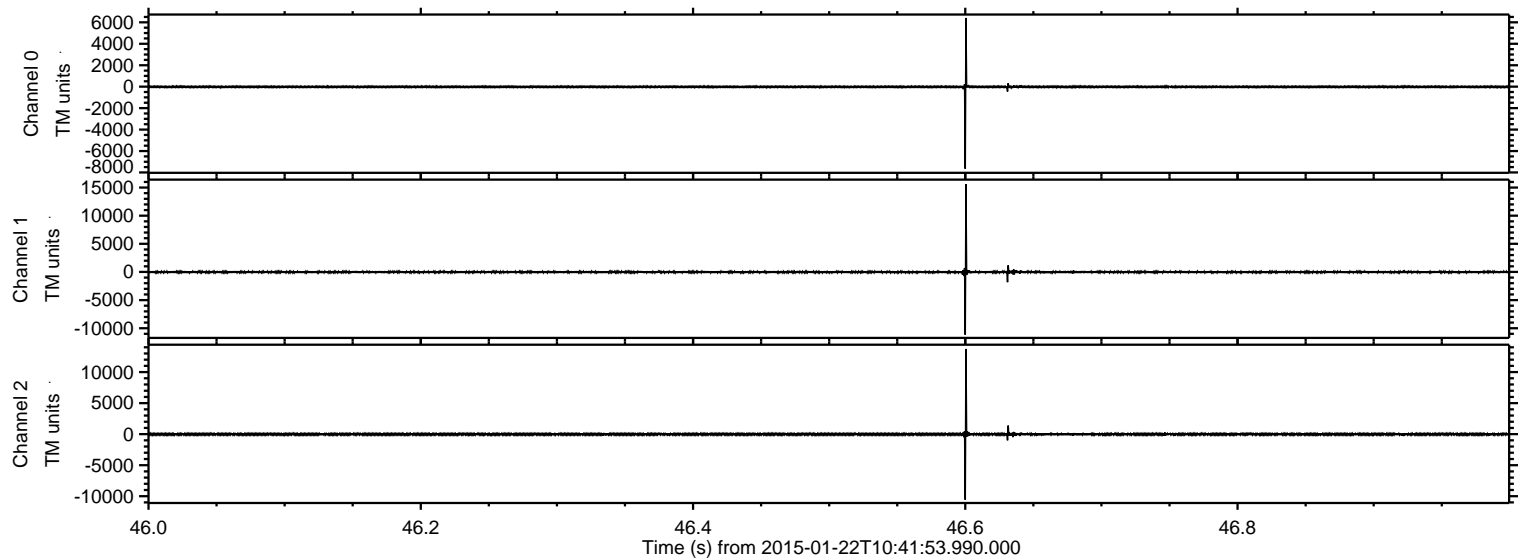
Processed Tue Feb 10 08:42:37 2015 by ELM ver.2012-10-06 from 001\_\_elm20150122\_104152\_\_dat00.bin





ELMAVAN 3D WAVEFORMS (Measured data sampled at 50 kHz) 49808 packets of 144 samples from 2015-01-22T10:41:53.990.000. Part 47/144

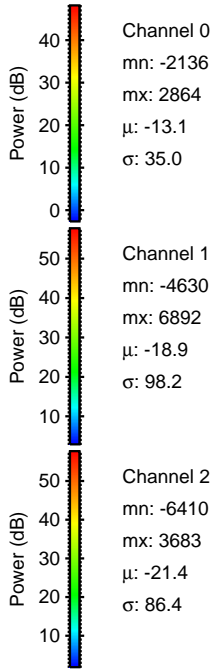
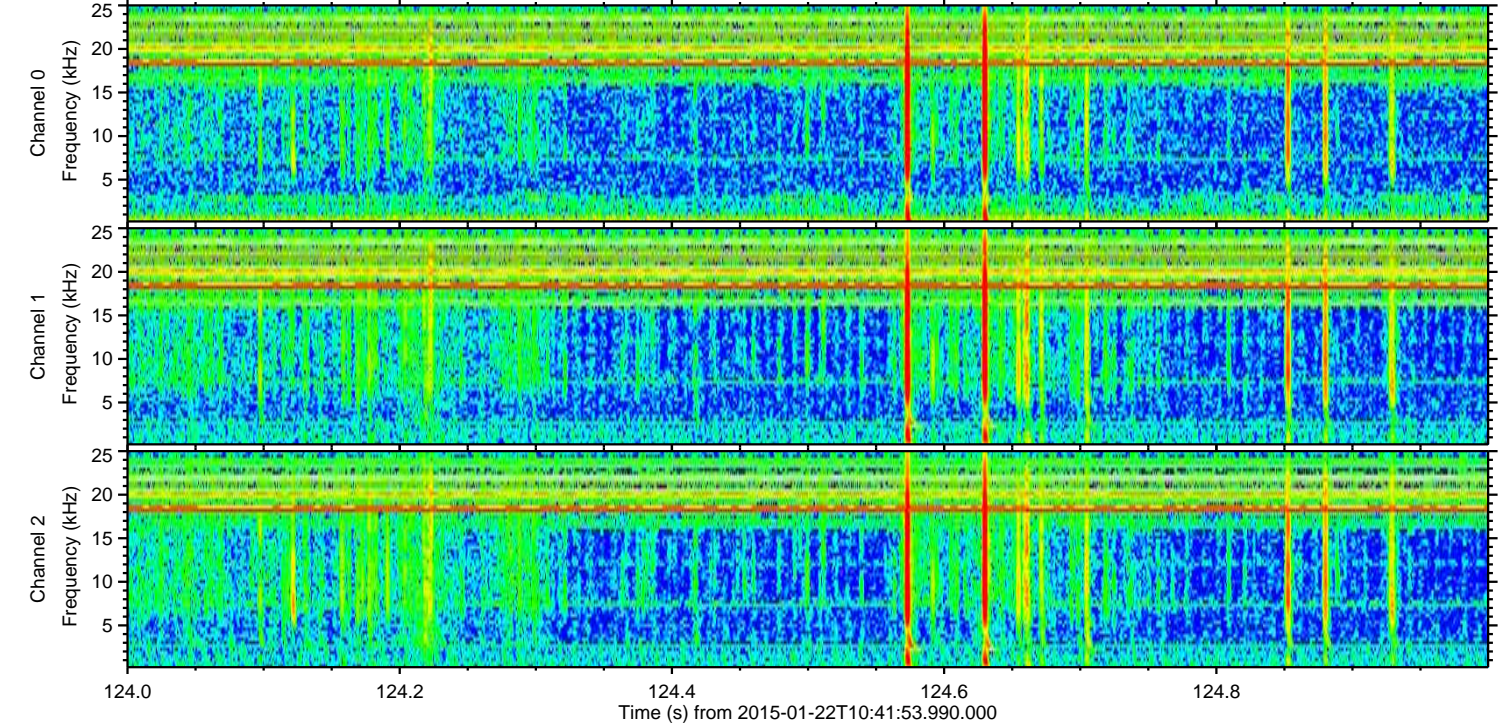
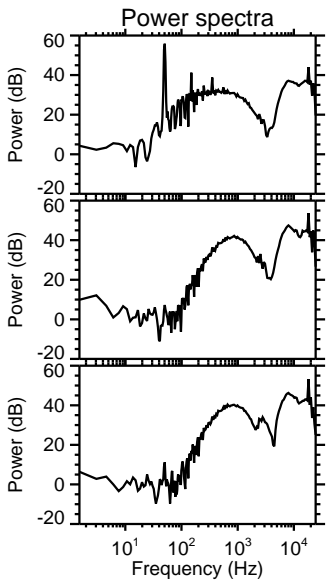
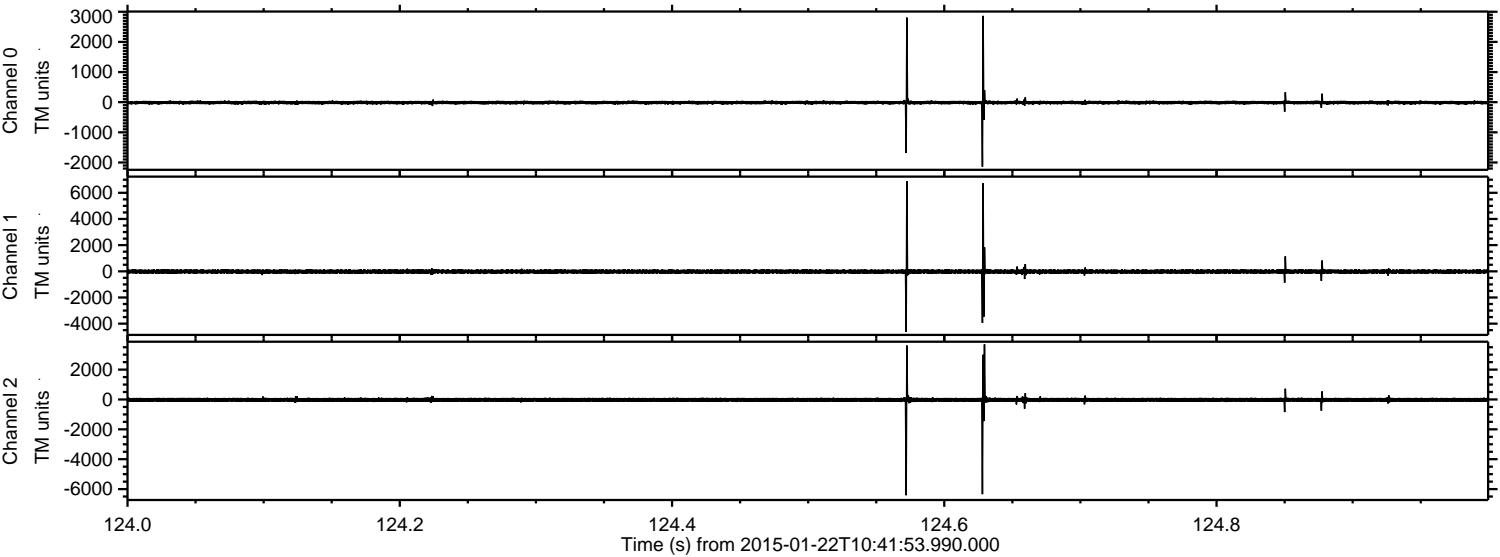
Processed Tue Feb 10 08:42:50 2015 by ELM ver.2012-10-06 from 001\_\_elm20150122\_104152\_\_dat00.bin





ELMAVAN 3D WAVEFORMS (Measured data sampled at 50 kHz) 49808 packets of 144 samples from 2015-01-22T10:41:53.990.000. Part 125/144

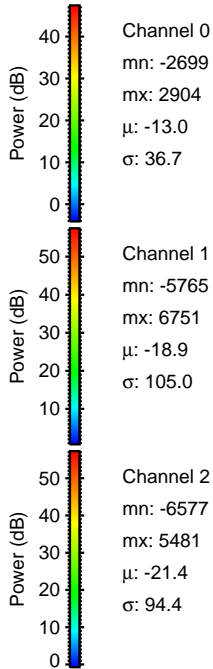
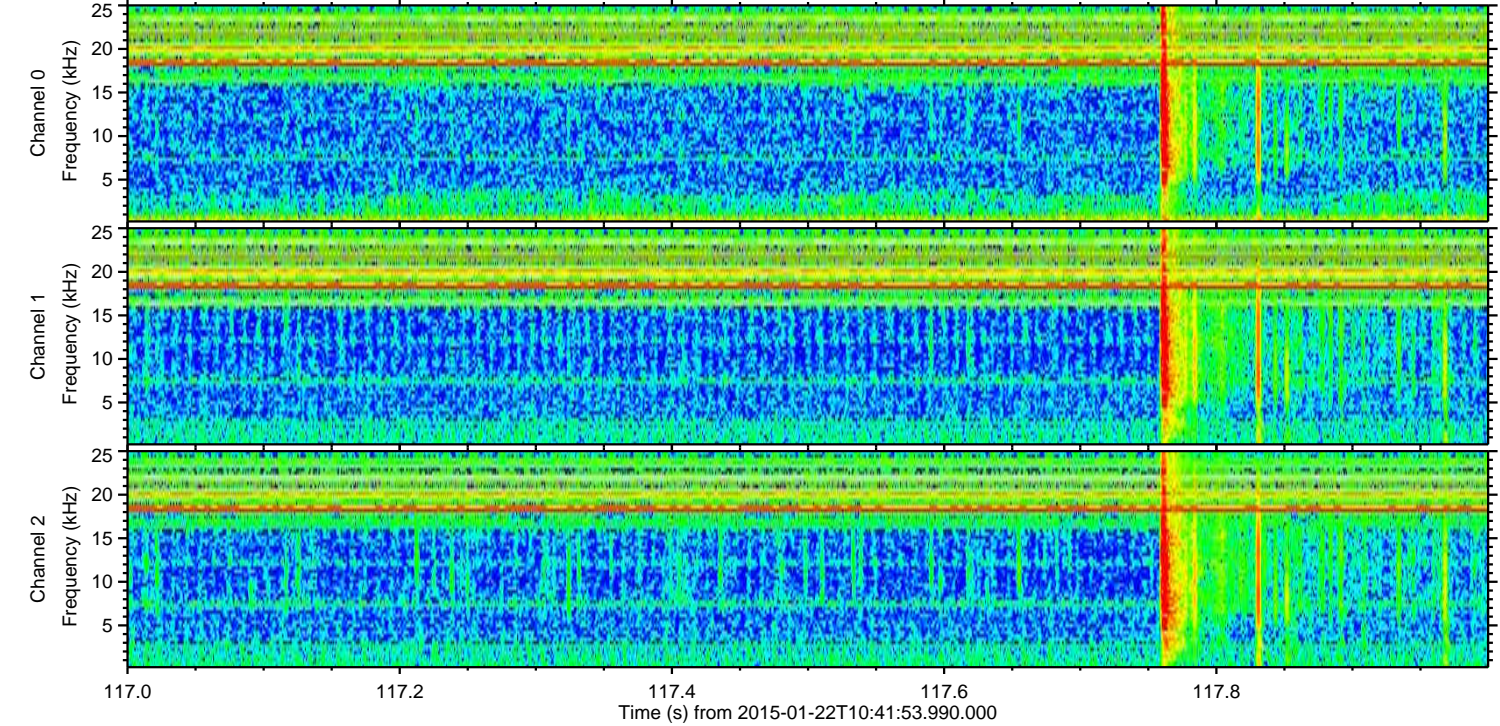
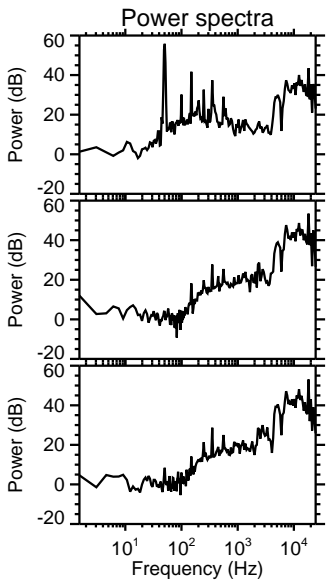
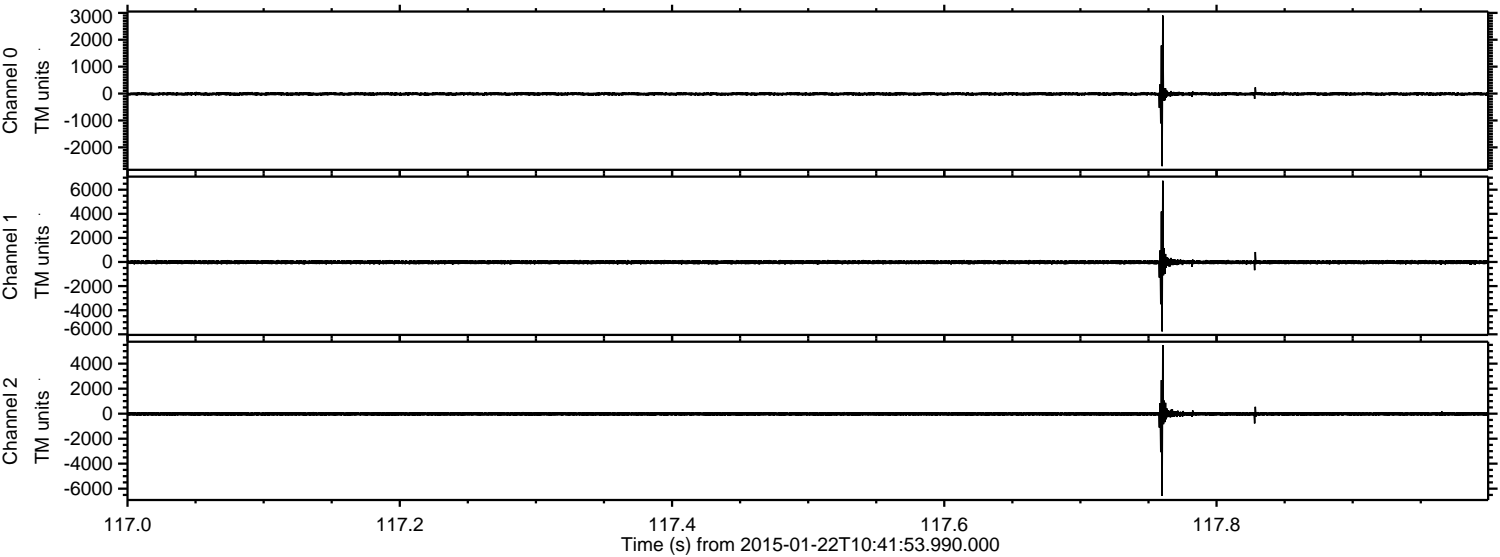
Processed Tue Feb 10 08:42:51 2015 by ELM ver.2012-10-06 from 001\_\_elm20150122\_104152\_\_dat00.bin





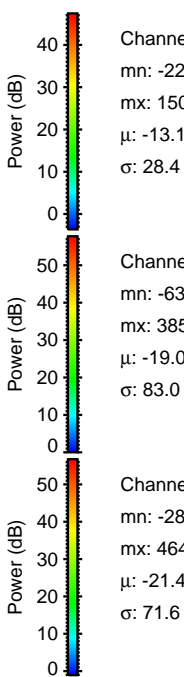
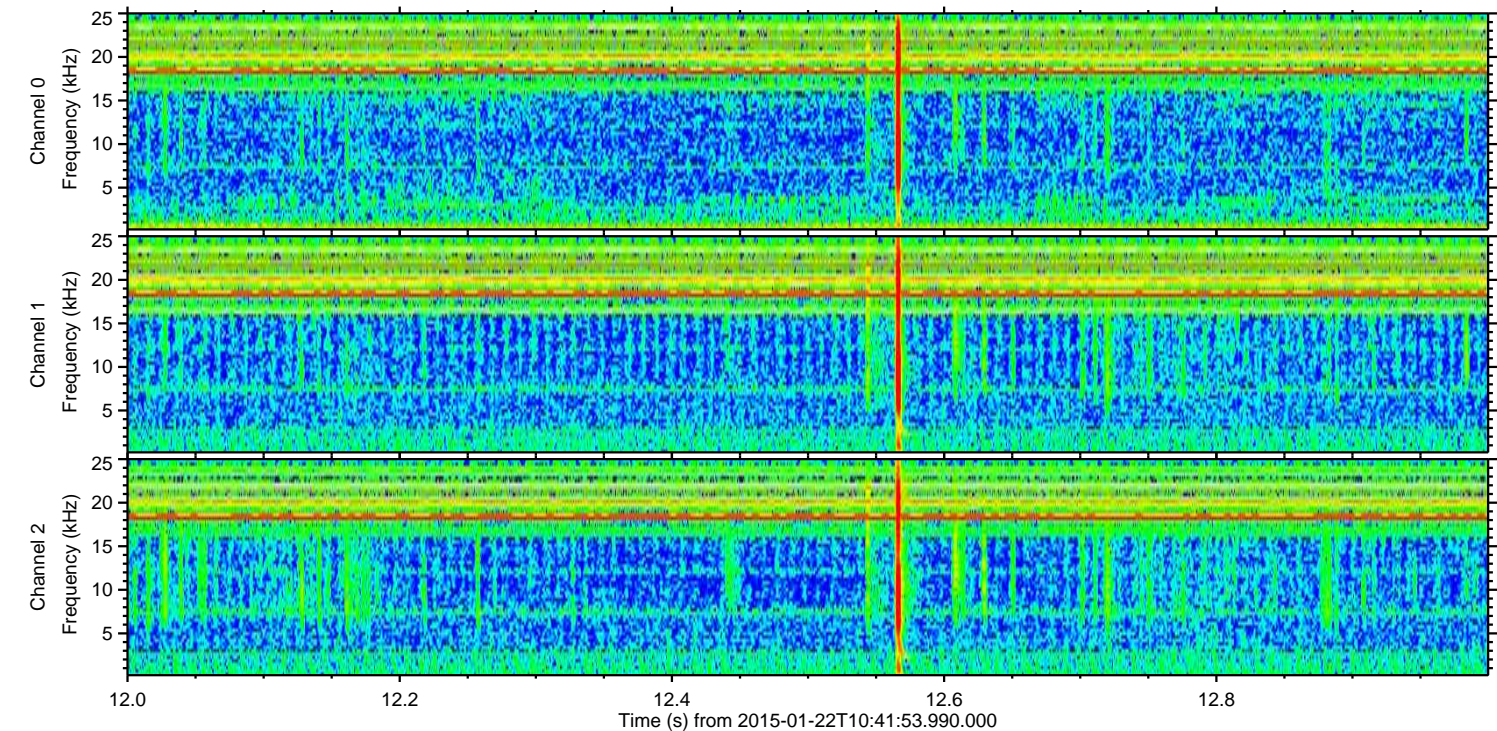
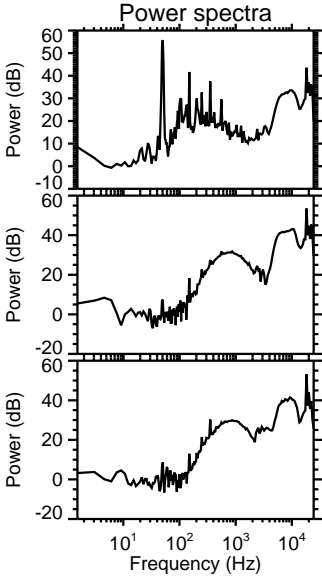
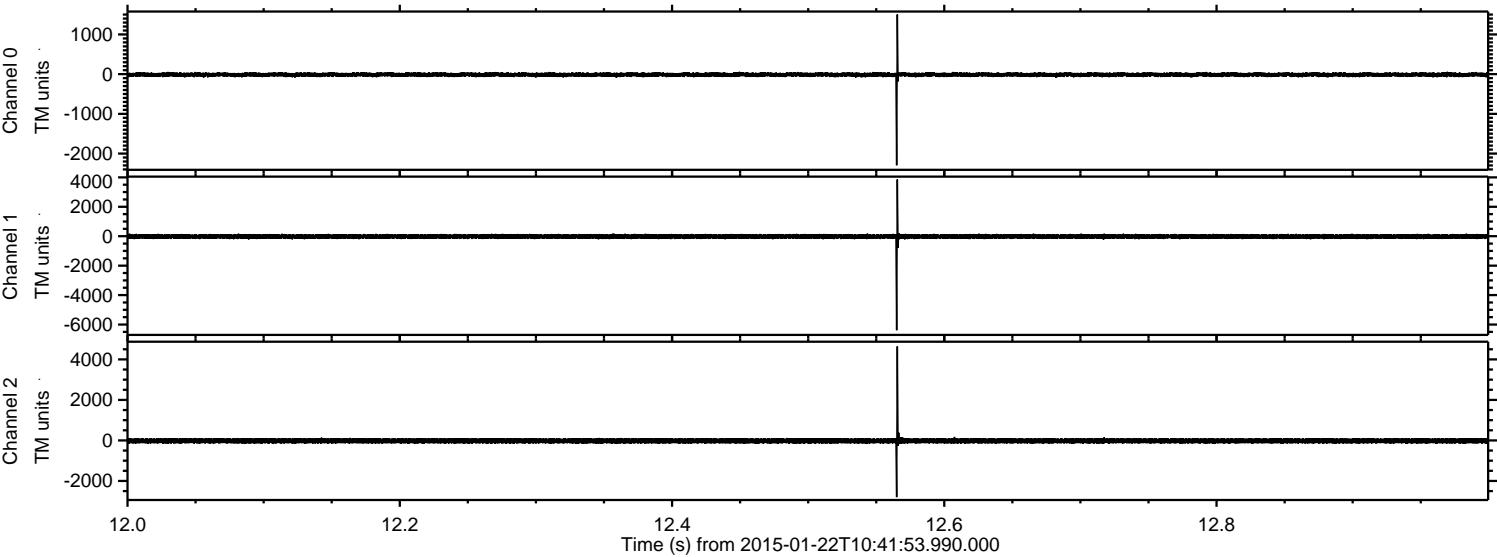
ELMAVAN 3D WAVEFORMS (Measured data sampled at 50 kHz) 49808 packets of 144 samples from 2015-01-22T10:41:53.990.000. Part 118/144

Processed Tue Feb 10 08:42:52 2015 by ELM ver.2012-10-06 from 001\_\_elm20150122\_104152\_\_dat00.bin





Processed Tue Feb 10 08:42:53 2015 by ELM ver.2012-10-06 from 001\_\_elm20150122\_104152\_\_dat00.bin



Channel 0  
mn: -2295  
mx: 1502  
 $\mu$ : -13.1  
 $\sigma$ : 28.4

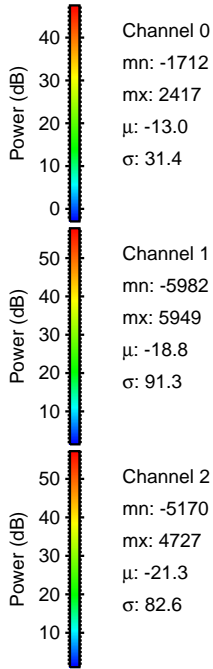
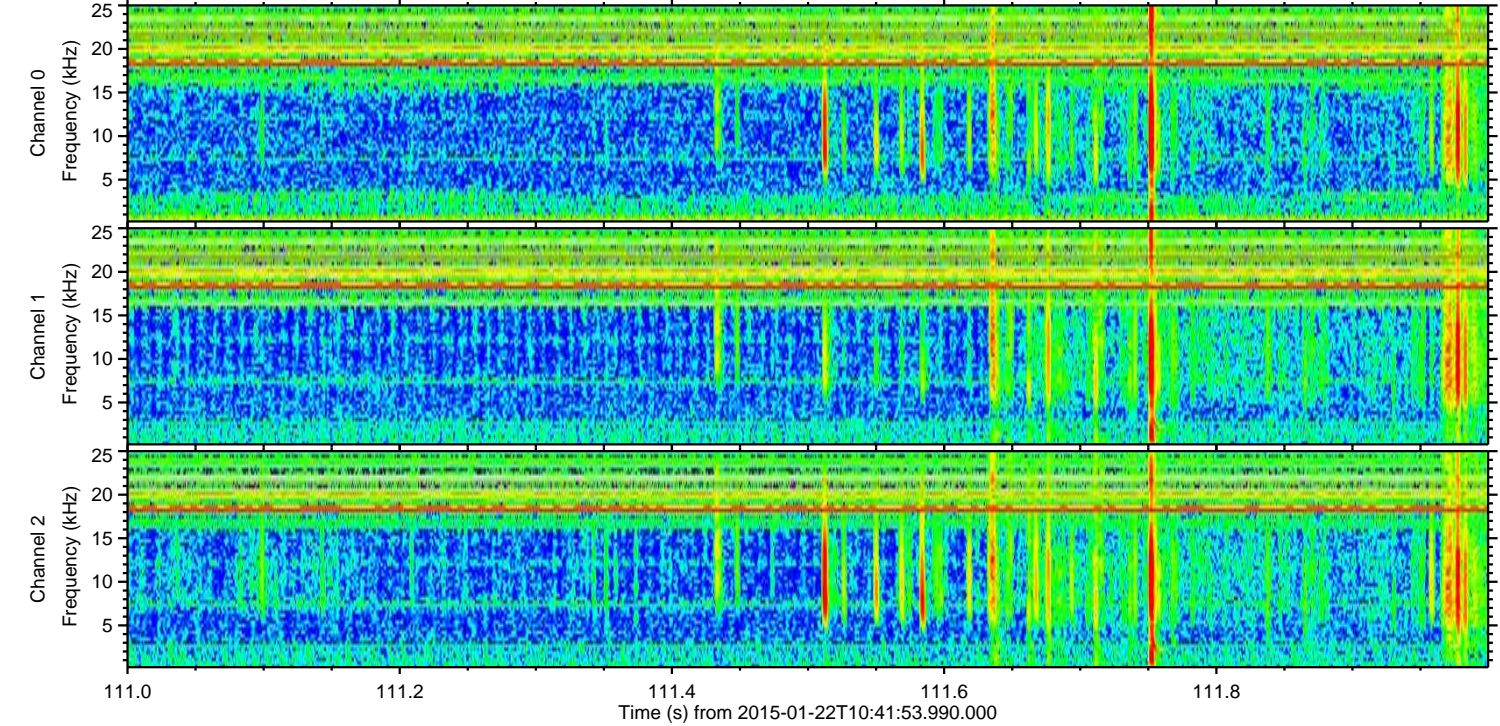
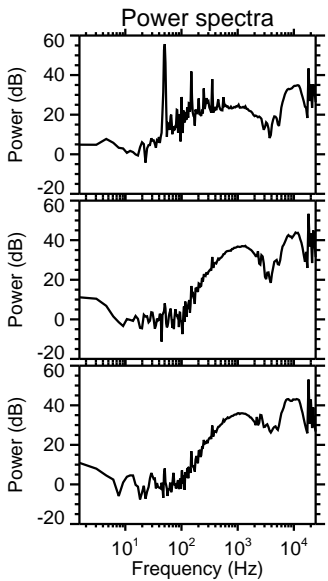
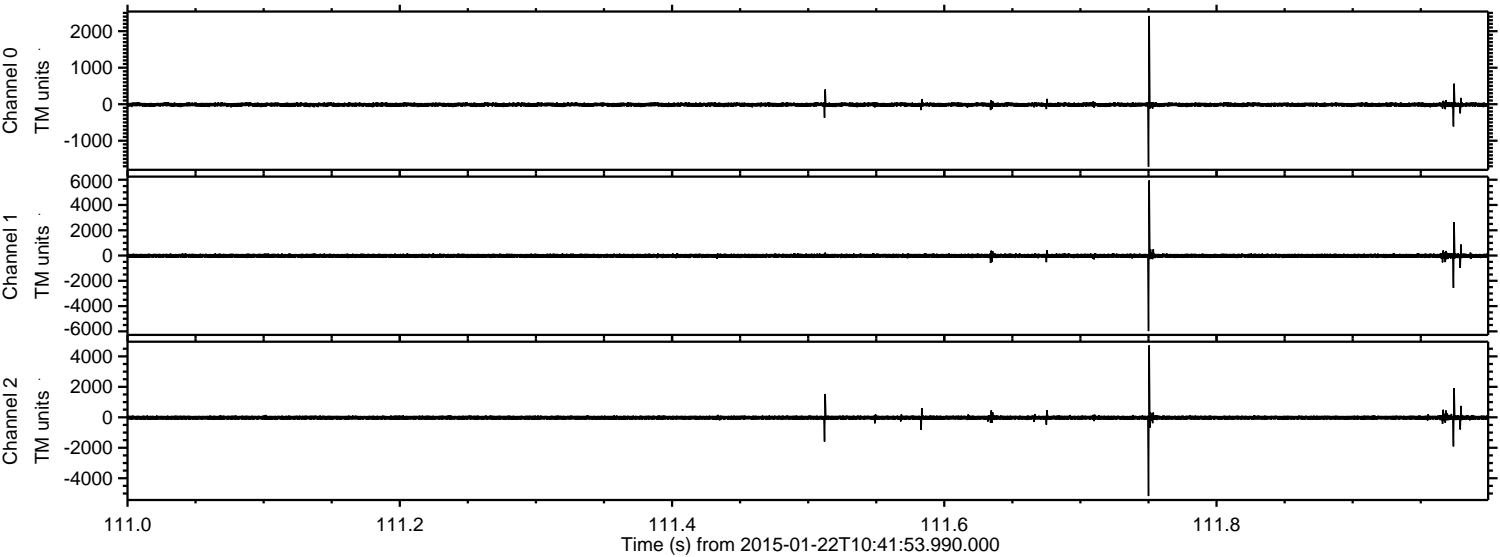
Channel 1  
mn: -6385  
mx: 3856  
 $\mu$ : -19.0  
 $\sigma$ : 83.0

Channel 2  
mn: -2800  
mx: 4642  
 $\mu$ : -21.4  
 $\sigma$ : 71.6



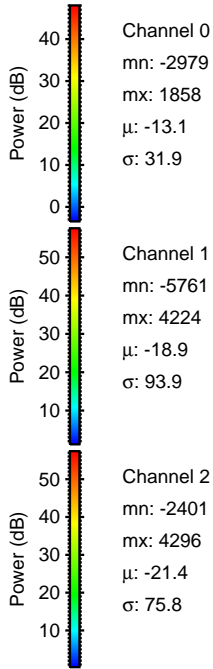
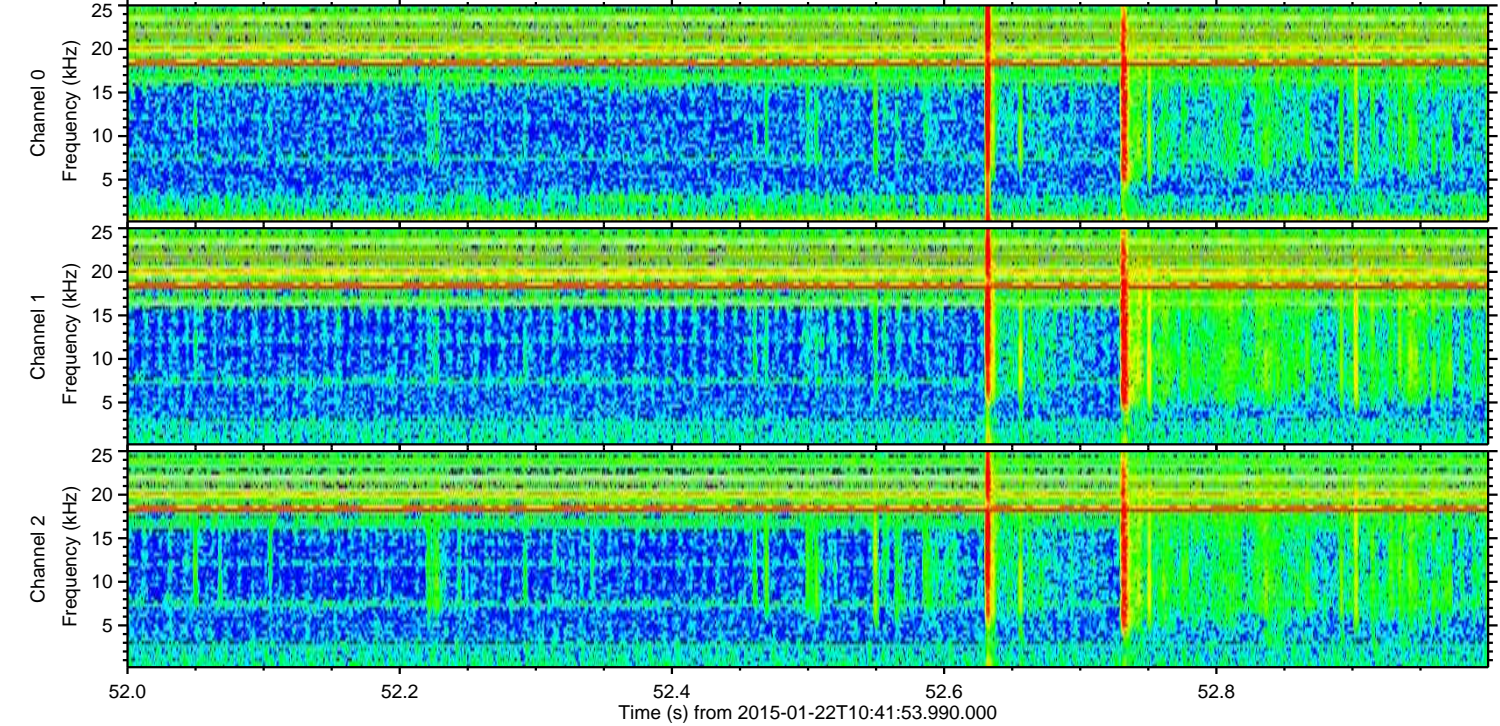
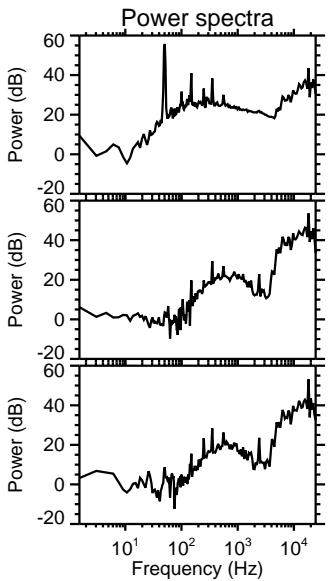
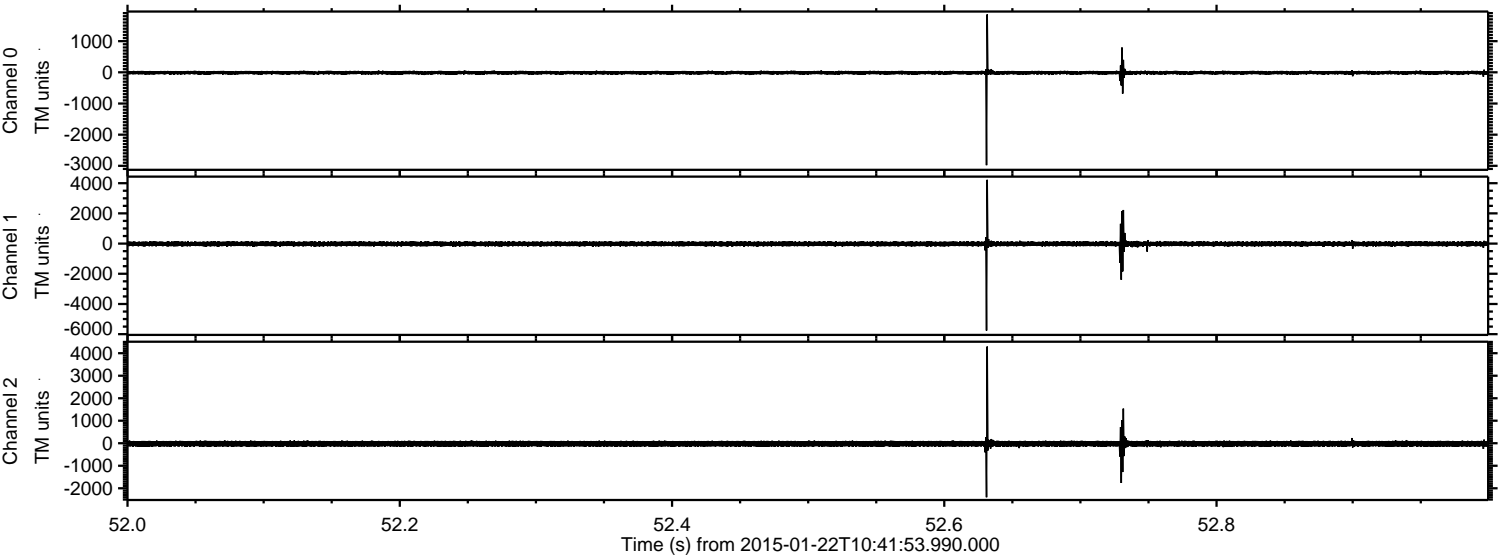
ELMAVAN 3D WAVEFORMS (Measured data sampled at 50 kHz) 49808 packets of 144 samples from 2015-01-22T10:41:53.990.000. Part 112/144

Processed Tue Feb 10 08:42:54 2015 by ELM ver.2012-10-06 from 001\_\_elm20150122\_104152\_\_dat00.bin



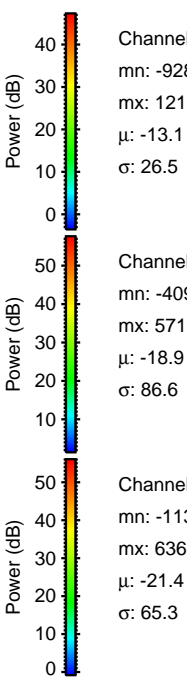
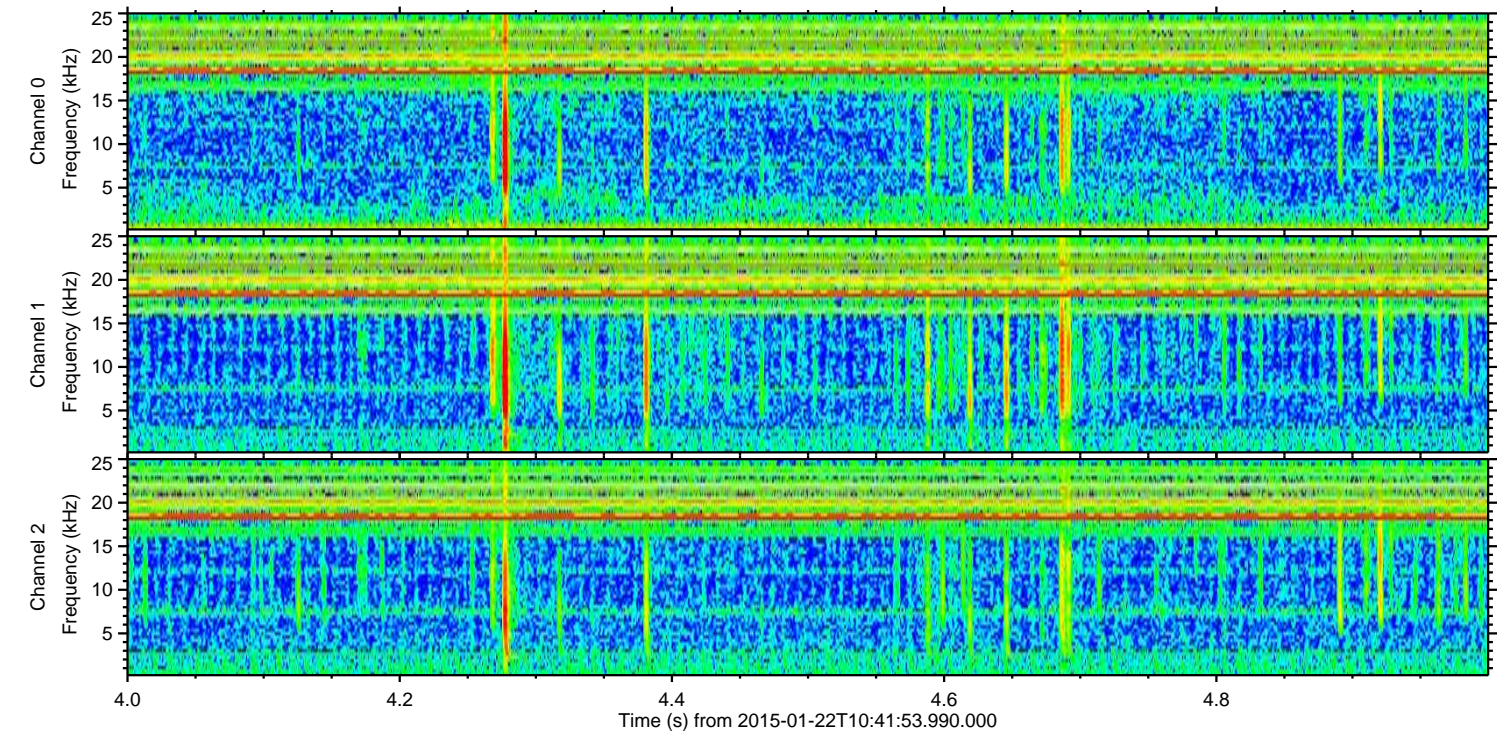
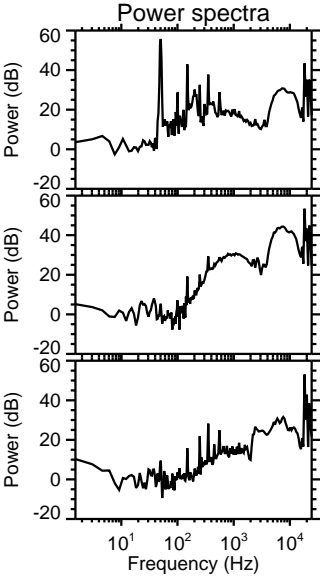
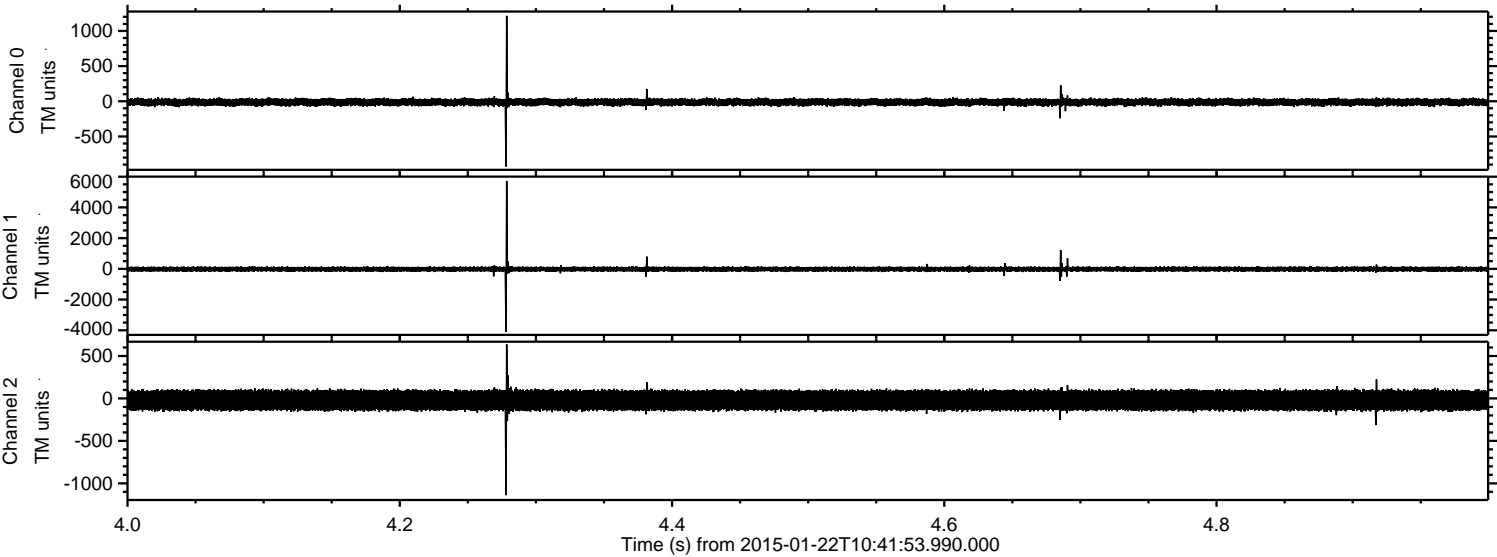


Processed Tue Feb 10 08:42:55 2015 by ELM ver.2012-10-06 from 001\_\_elm20150122\_104152\_\_dat00.bin





Processed Tue Feb 10 08:42:55 2015 by ELM ver.2012-10-06 from 001\_\_elm20150122\_104152\_\_dat00.bin



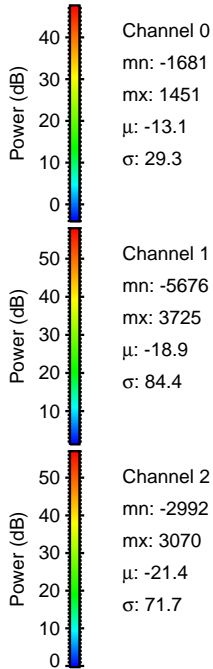
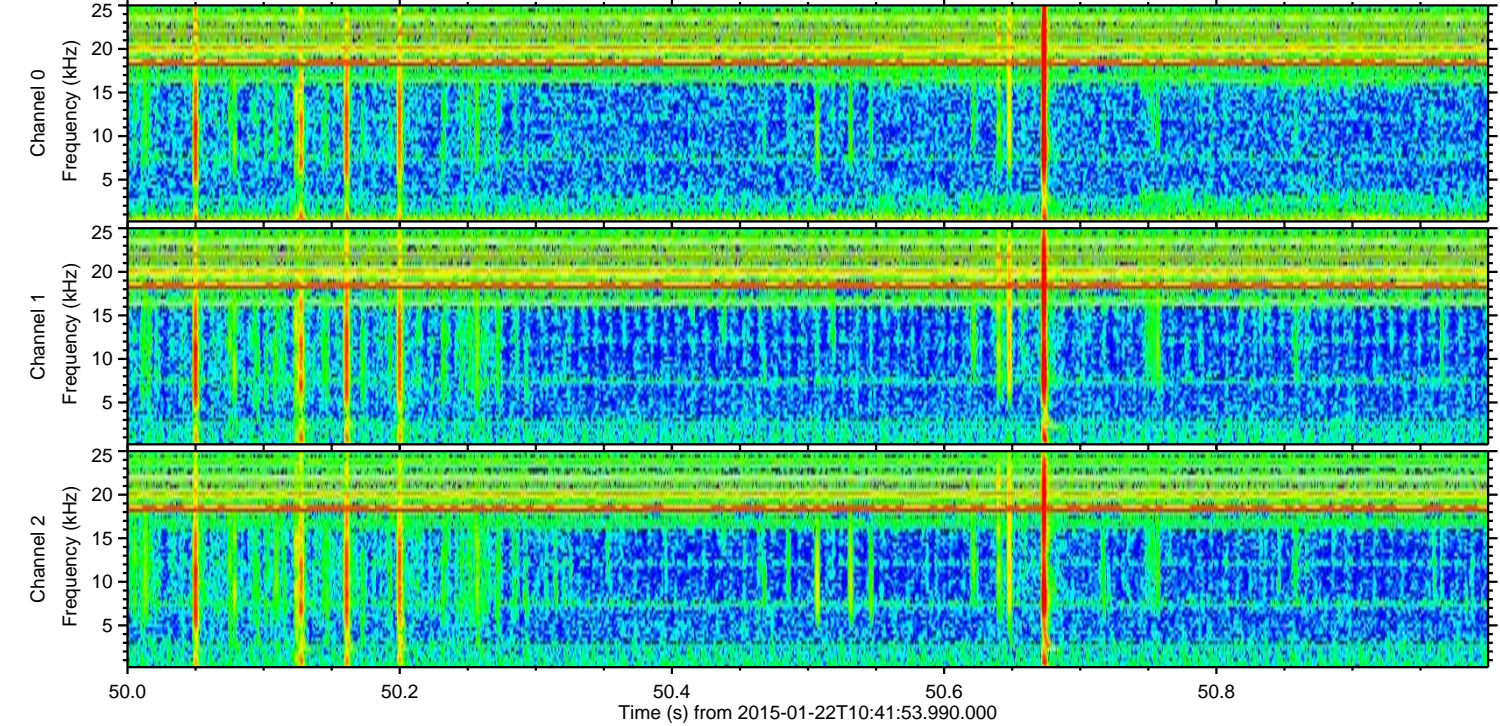
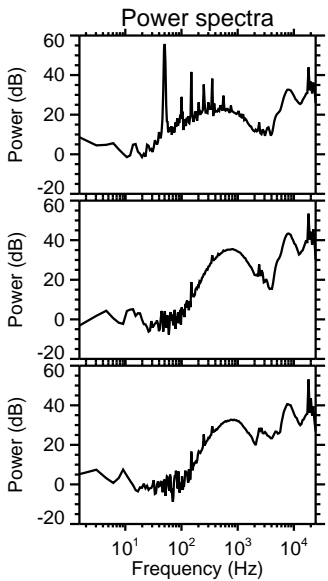
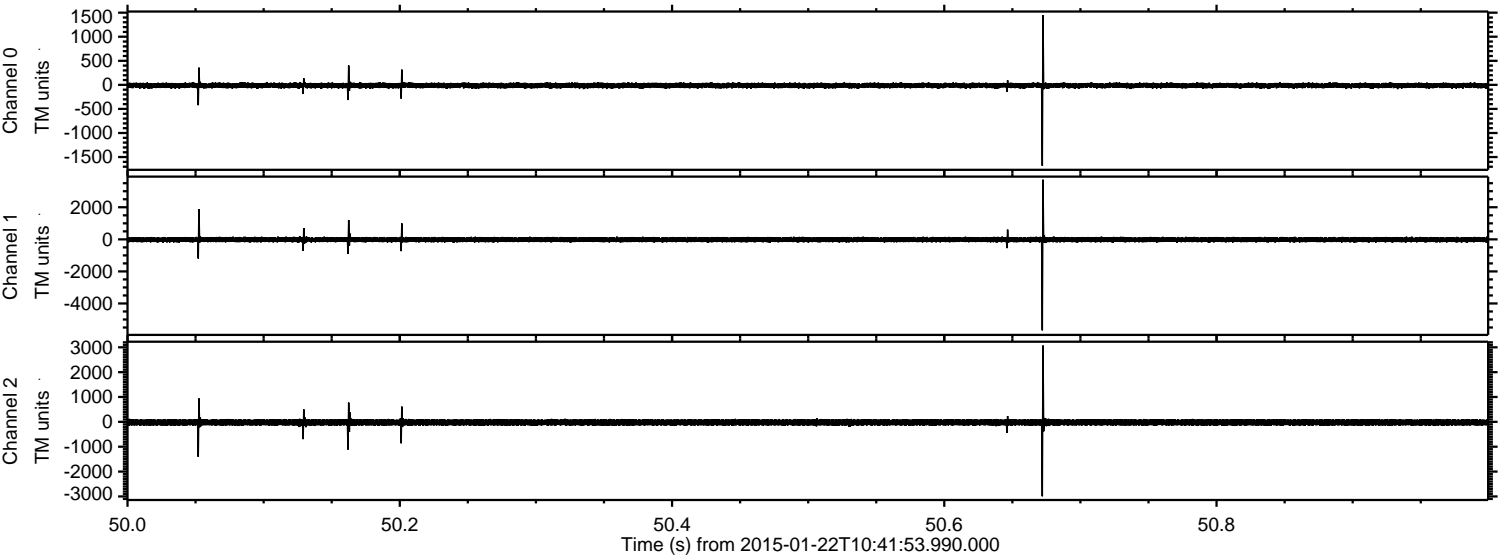
Channel 0  
mn: -928  
mx: 1215  
 $\mu$ : -13.1  
 $\sigma$ : 26.5

Channel 1  
mn: -4096  
mx: 5718  
 $\mu$ : -18.9  
 $\sigma$ : 86.6

Channel 2  
mn: -1139  
mx: 636  
 $\mu$ : -21.4  
 $\sigma$ : 65.3



Processed Tue Feb 10 08:42:56 2015 by ELM ver.2012-10-06 from 001\_\_elm20150122\_104152\_\_dat00.bin



Channel 0  
mn: -1681  
mx: 1451  
 $\mu$ : -13.1  
 $\sigma$ : 29.3

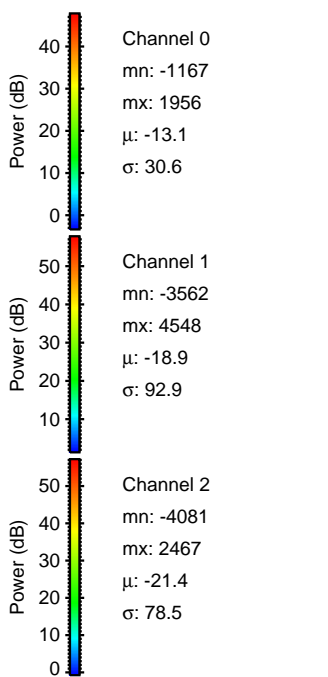
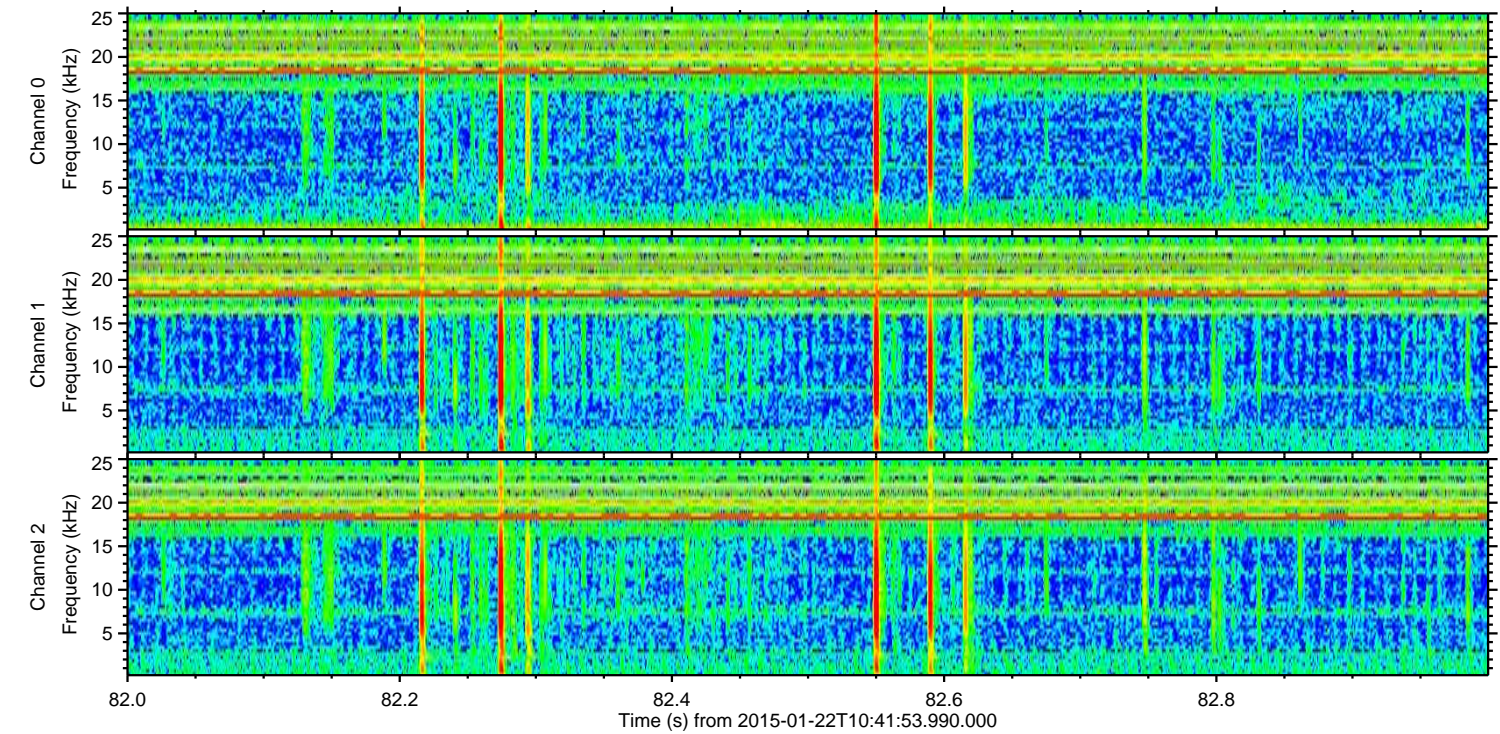
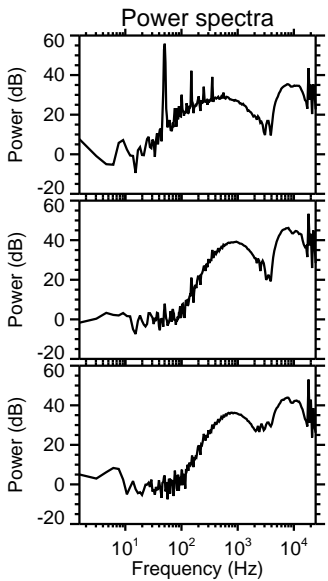
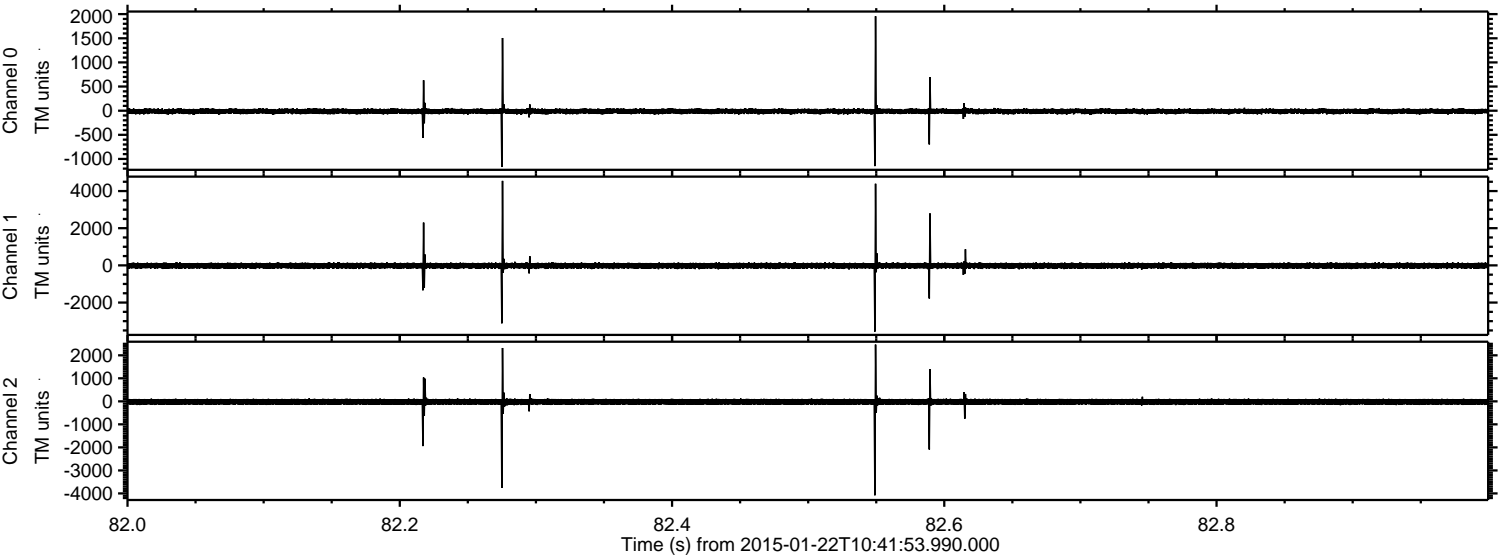
Channel 1  
mn: -5676  
mx: 3725  
 $\mu$ : -18.9  
 $\sigma$ : 84.4

Channel 2  
mn: -2992  
mx: 3070  
 $\mu$ : -21.4  
 $\sigma$ : 71.7



ELMAVAN 3D WAVEFORMS (Measured data sampled at 50 kHz) 49808 packets of 144 samples from 2015-01-22T10:41:53.990.000. Part 83/144

Processed Tue Feb 10 08:42:57 2015 by ELM ver.2012-10-06 from 001\_\_elm20150122\_104152\_\_dat00.bin





ELMAVAN 3D WAVEFORMS (Measured data sampled at 50 kHz) 49808 packets of 144 samples from 2015-01-22T10:41:53.990.000. Part 68/144

Processed Tue Feb 10 08:42:58 2015 by ELM ver.2012-10-06 from 001\_\_elm20150122\_104152\_\_dat00.bin

