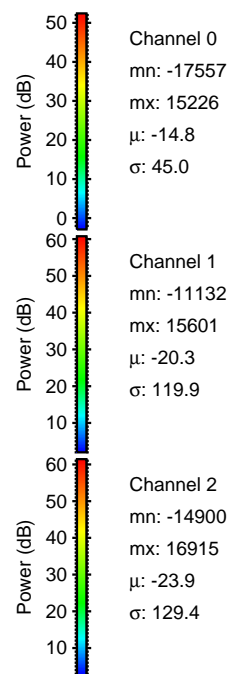
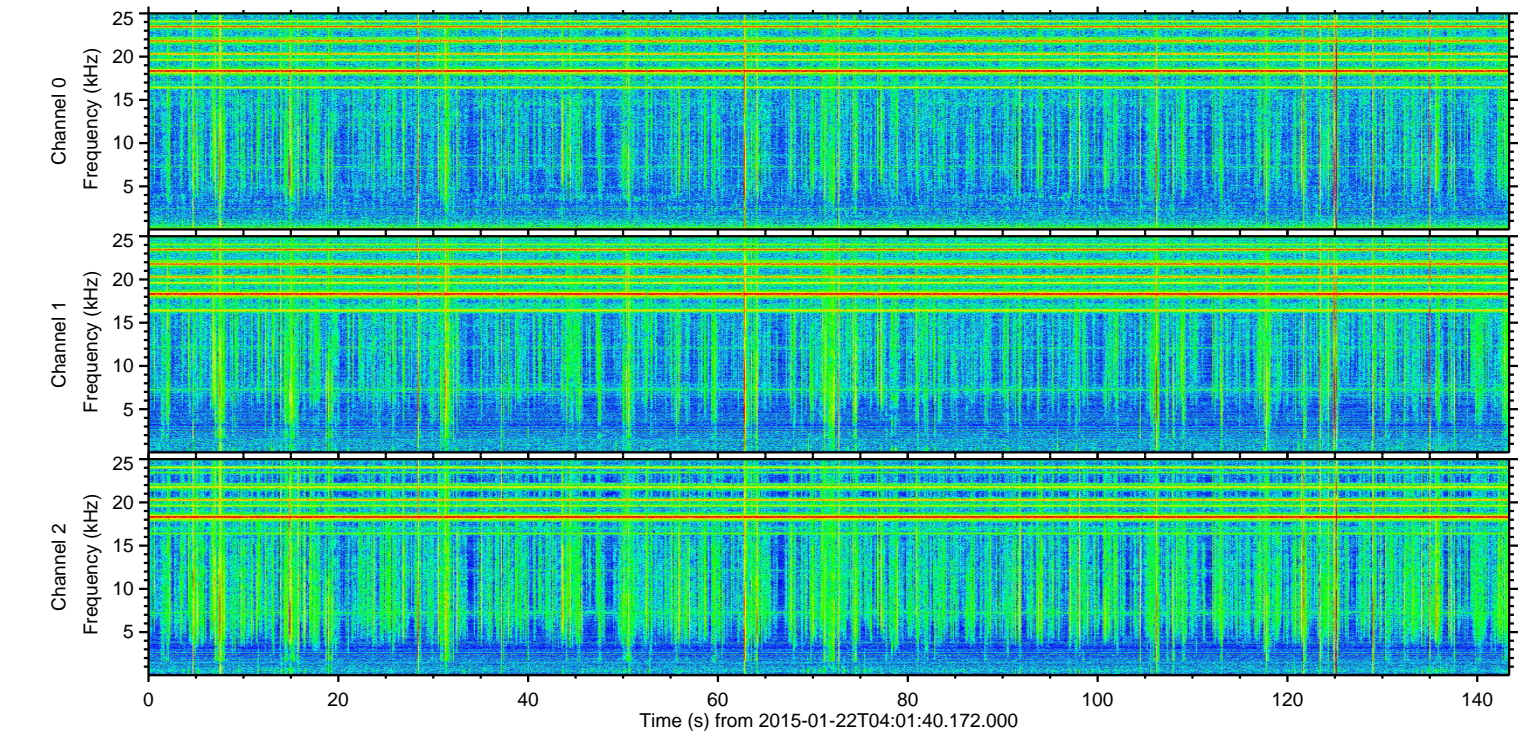
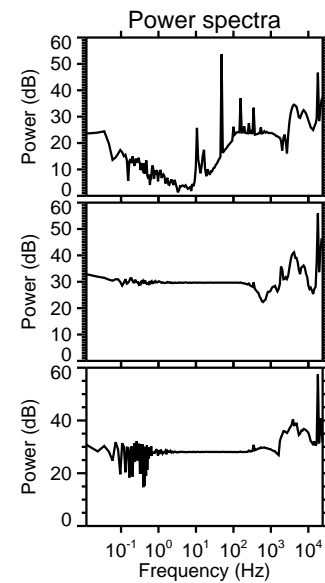
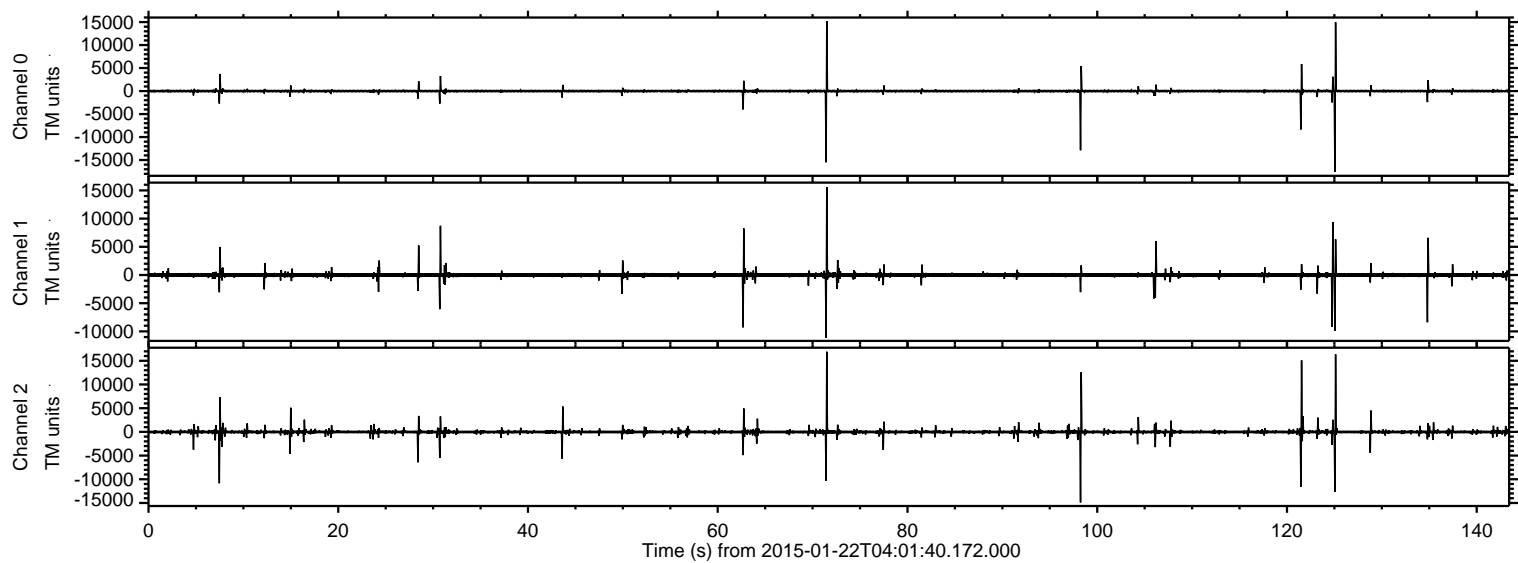


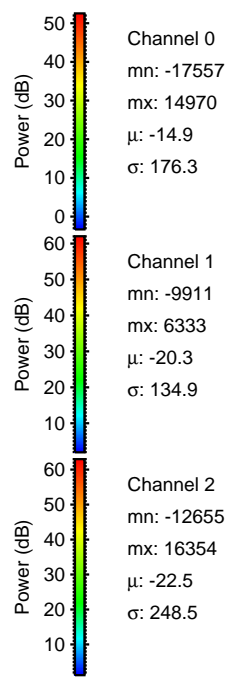
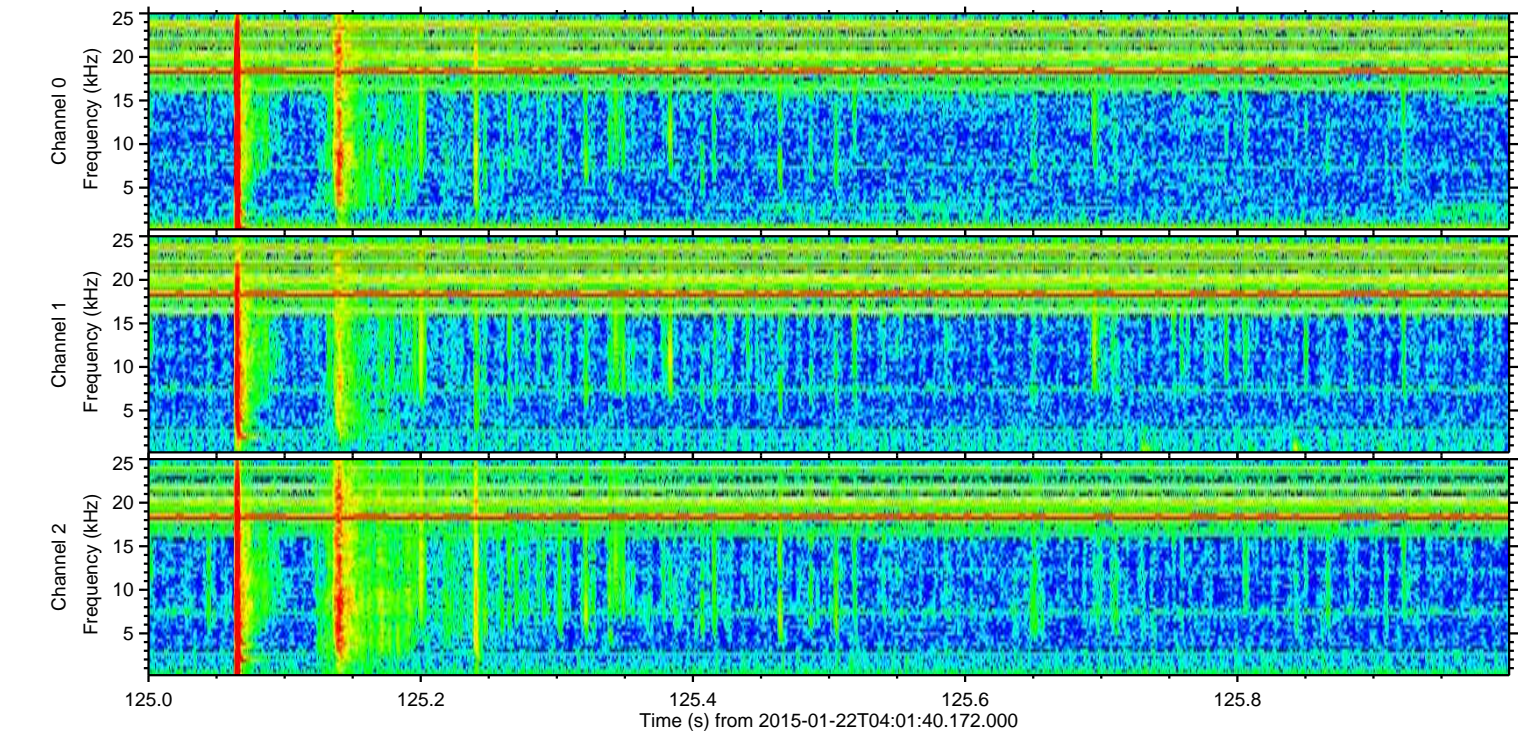
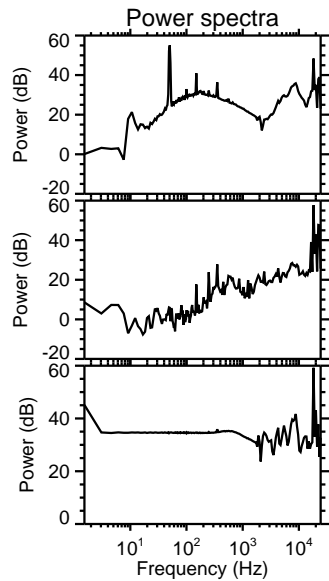
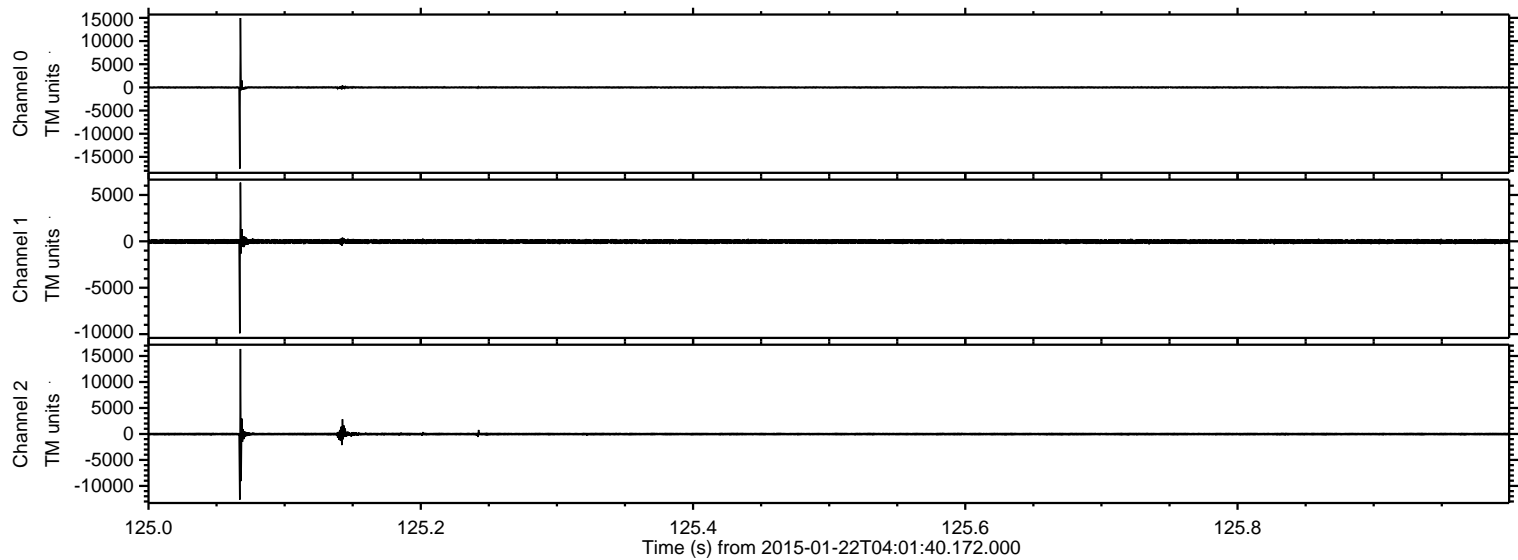
ELMAVAN 3D WAVEFORMS (Measured data sampled at 50 kHz) 49798 packets of 144 samples from 2015-01-22T04:01:40.172.000.

Processed Tue Feb 10 03:45:16 2015 by ELM ver.2012-10-06 from 001__elm20150122_040139__dat00.bin



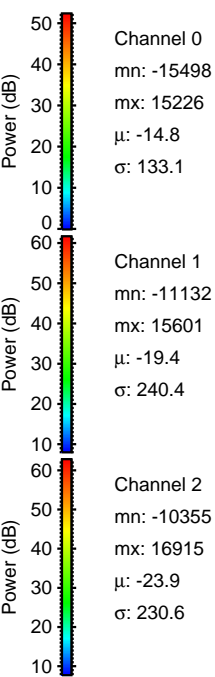
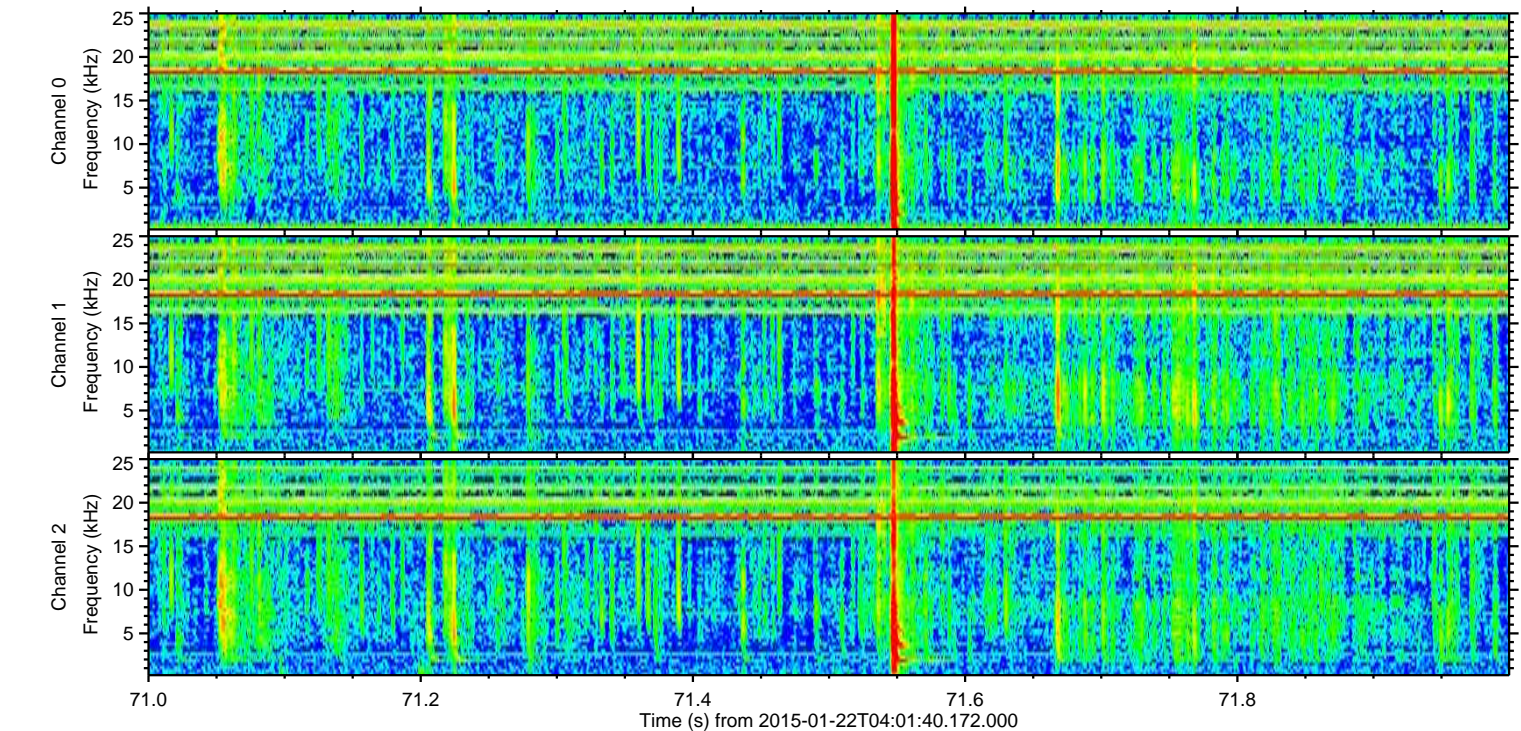
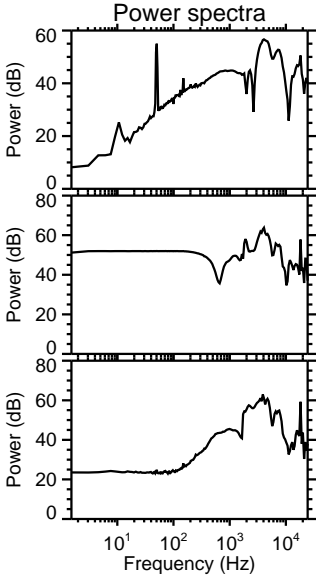
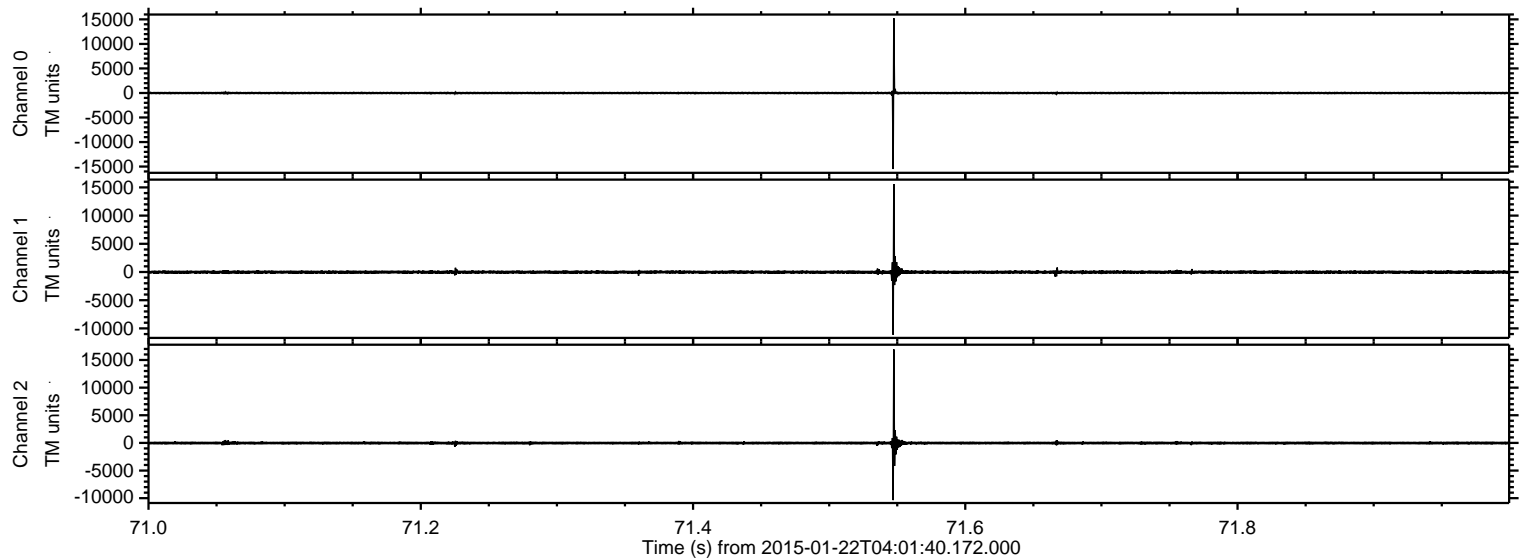
ELMAVAN 3D WAVEFORMS (Measured data sampled at 50 kHz) 49798 packets of 144 samples from 2015-01-22T04:01:40.172.000. Part 126/144

Processed Tue Feb 10 03:45:29 2015 by ELM ver.2012-10-06 from 001__elm20150122_040139__dat00.bin



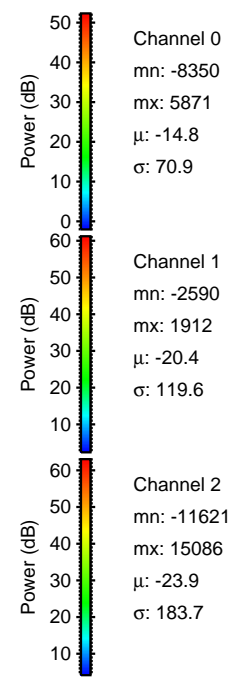
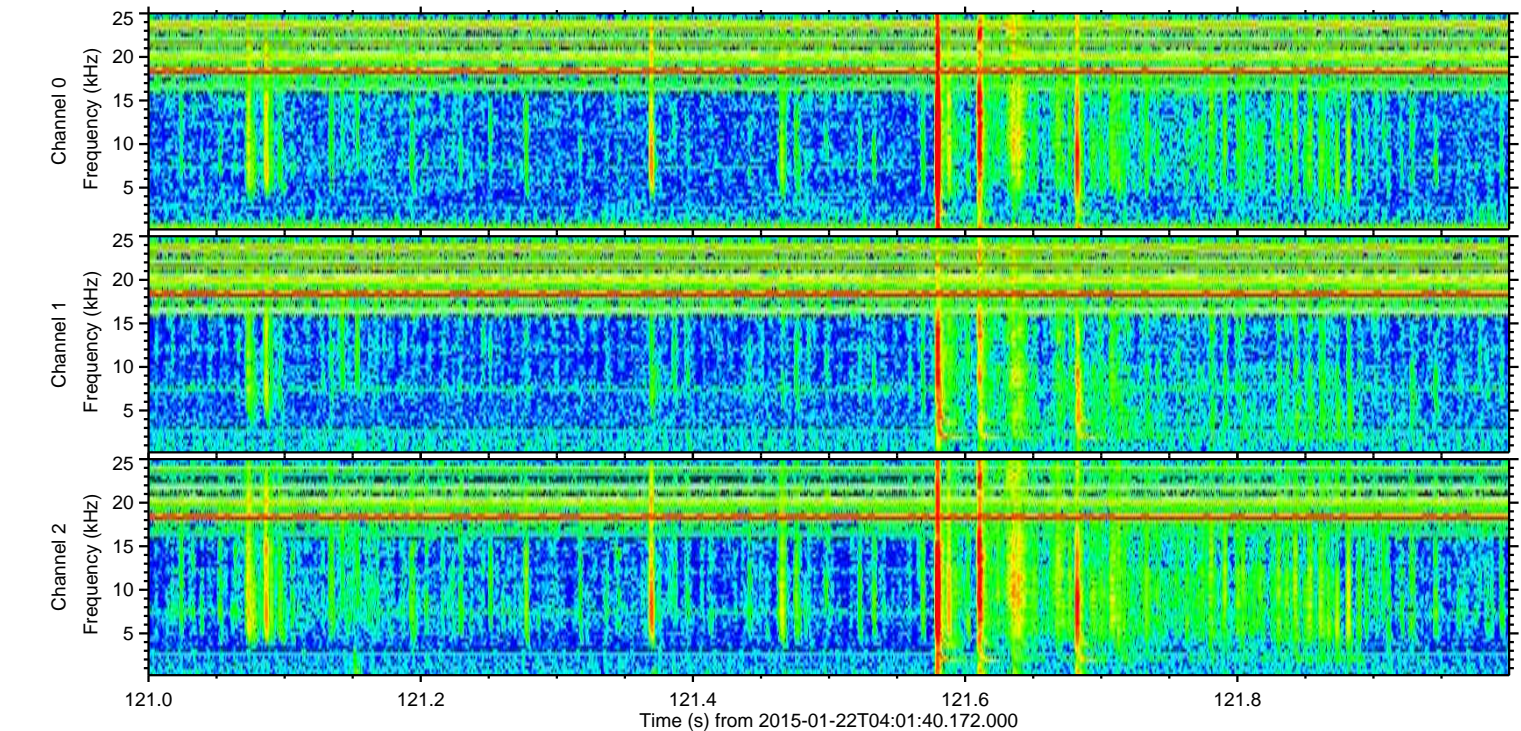
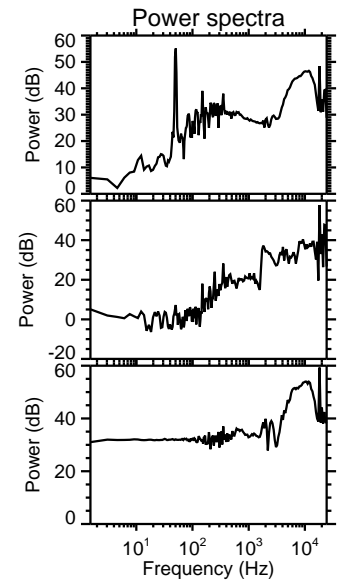
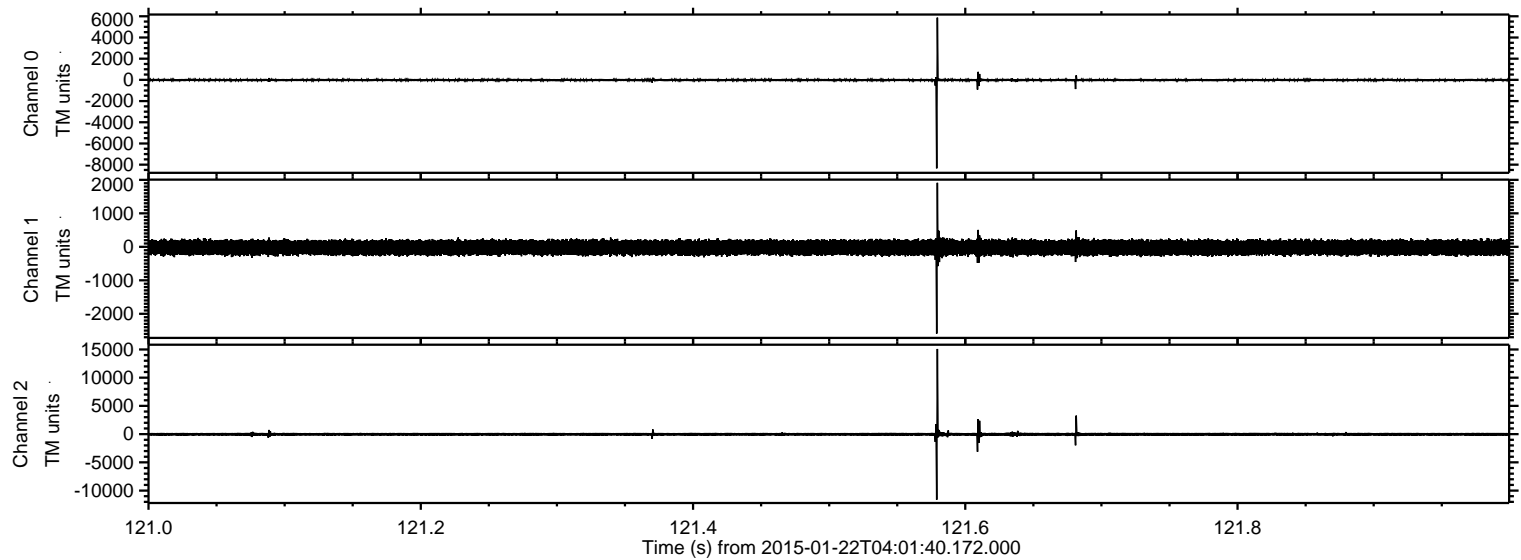
ELMAVAN 3D WAVEFORMS (Measured data sampled at 50 kHz) 49798 packets of 144 samples from 2015-01-22T04:01:40.172.000. Part 72/144

Processed Tue Feb 10 03:45:30 2015 by ELM ver.2012-10-06 from 001__elm20150122_040139__dat00.bin



ELMAVAN 3D WAVEFORMS (Measured data sampled at 50 kHz) 49798 packets of 144 samples from 2015-01-22T04:01:40.172.000. Part 122/144

Processed Tue Feb 10 03:45:31 2015 by ELM ver.2012-10-06 from 001__elm20150122_040139__dat00.bin



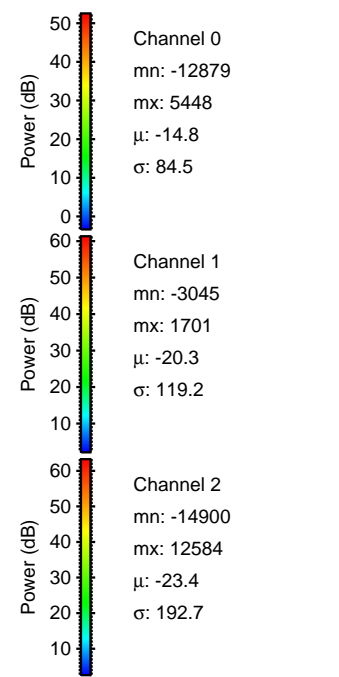
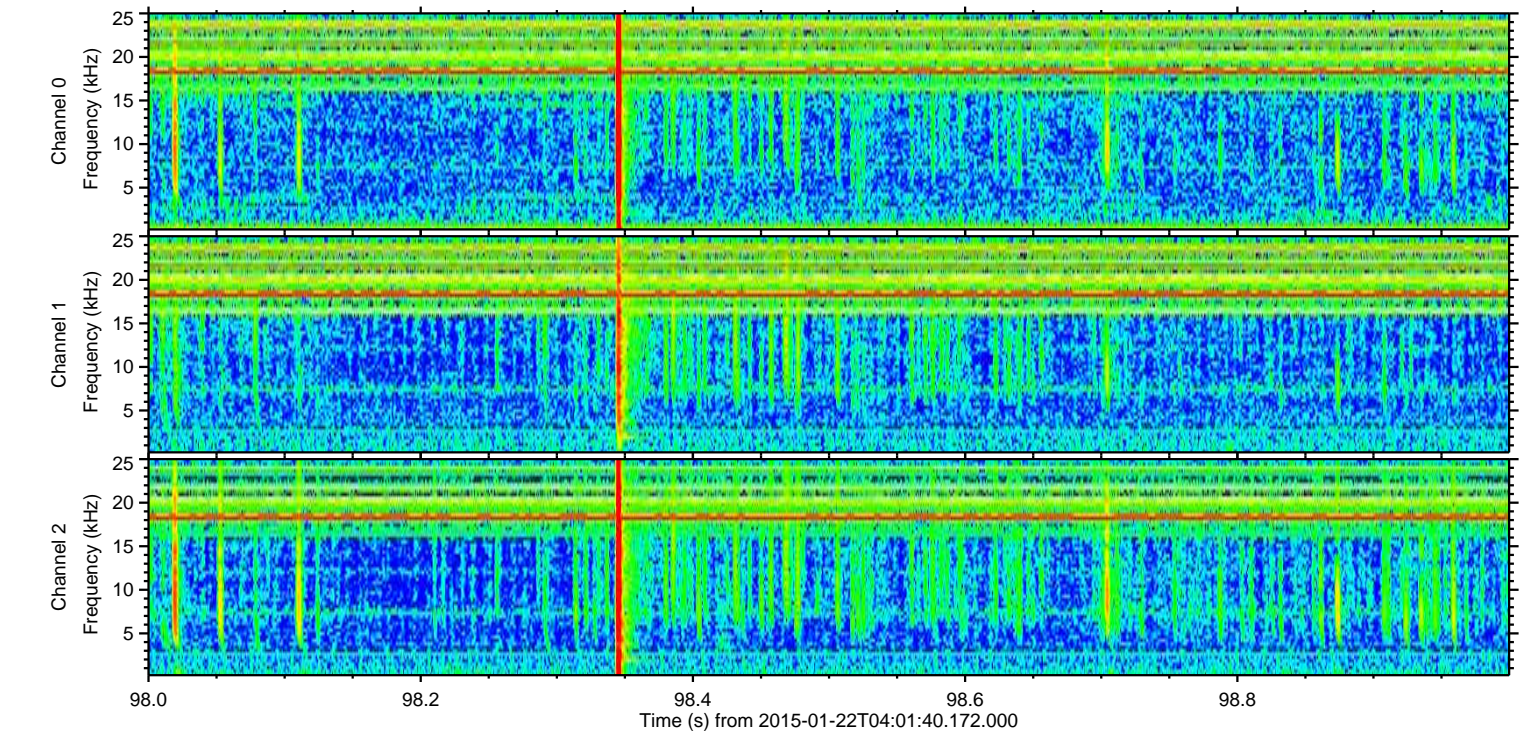
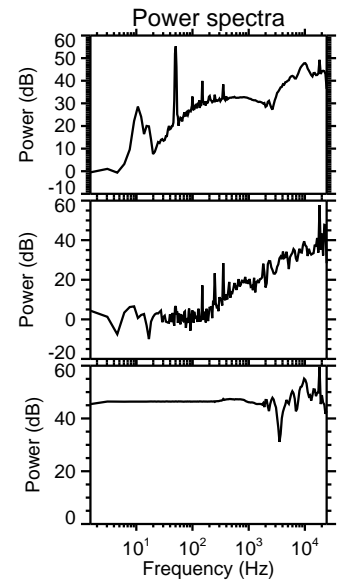
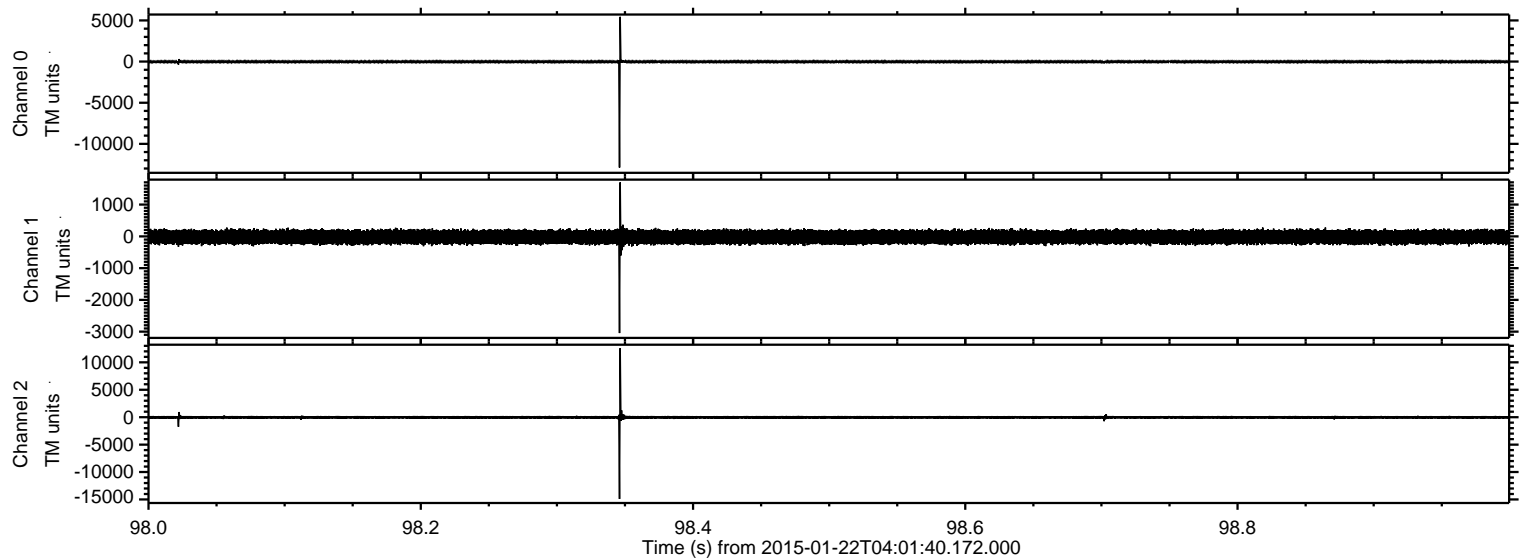
Channel 0
mn: -8350
mx: 5871
 μ : -14.8
 σ : 70.9

Channel 1
mn: -2590
mx: 1912
 μ : -20.4
 σ : 119.6

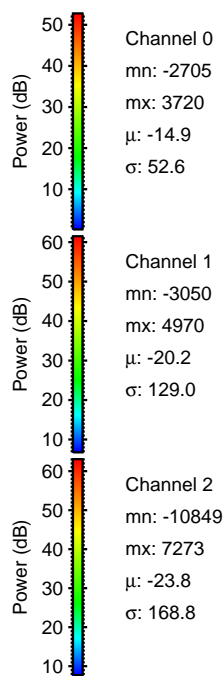
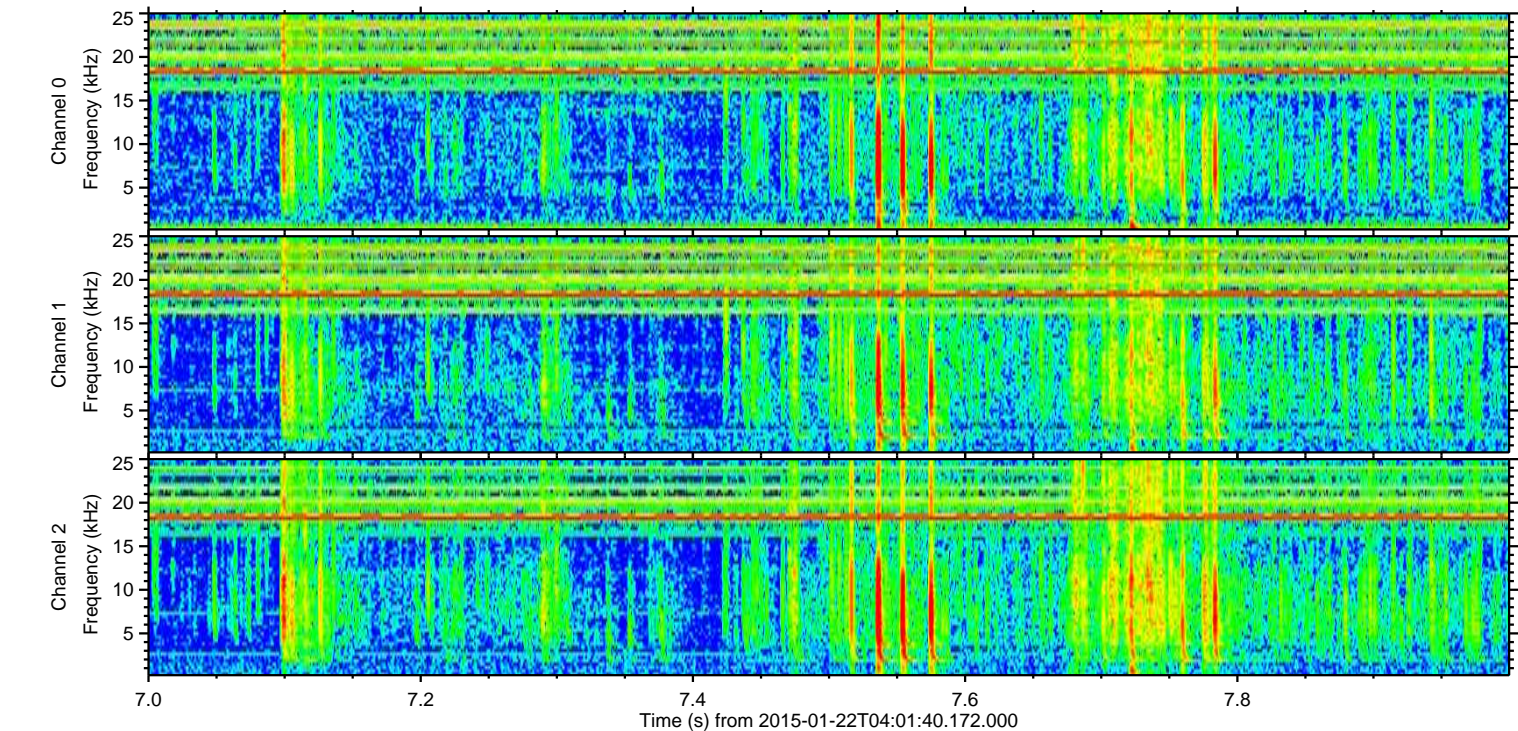
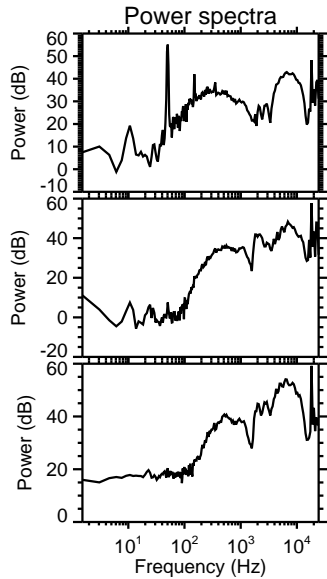
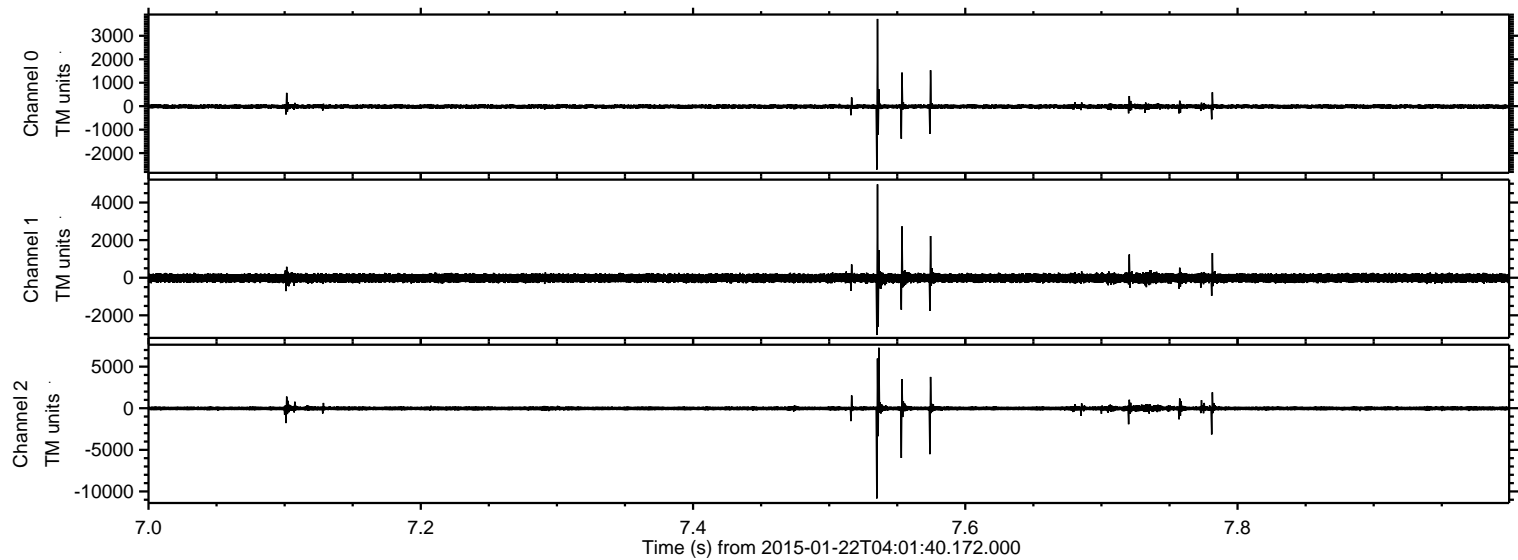
Channel 2
mn: -11621
mx: 15086
 μ : -23.9
 σ : 183.7

ELMAVAN 3D WAVEFORMS (Measured data sampled at 50 kHz) 49798 packets of 144 samples from 2015-01-22T04:01:40.172.000. Part 99/144

Processed Tue Feb 10 03:45:32 2015 by ELM ver.2012-10-06 from 001__elm20150122_040139__dat00.bin

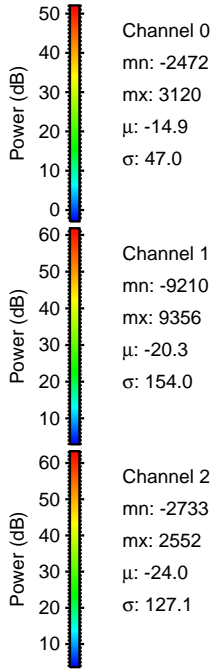
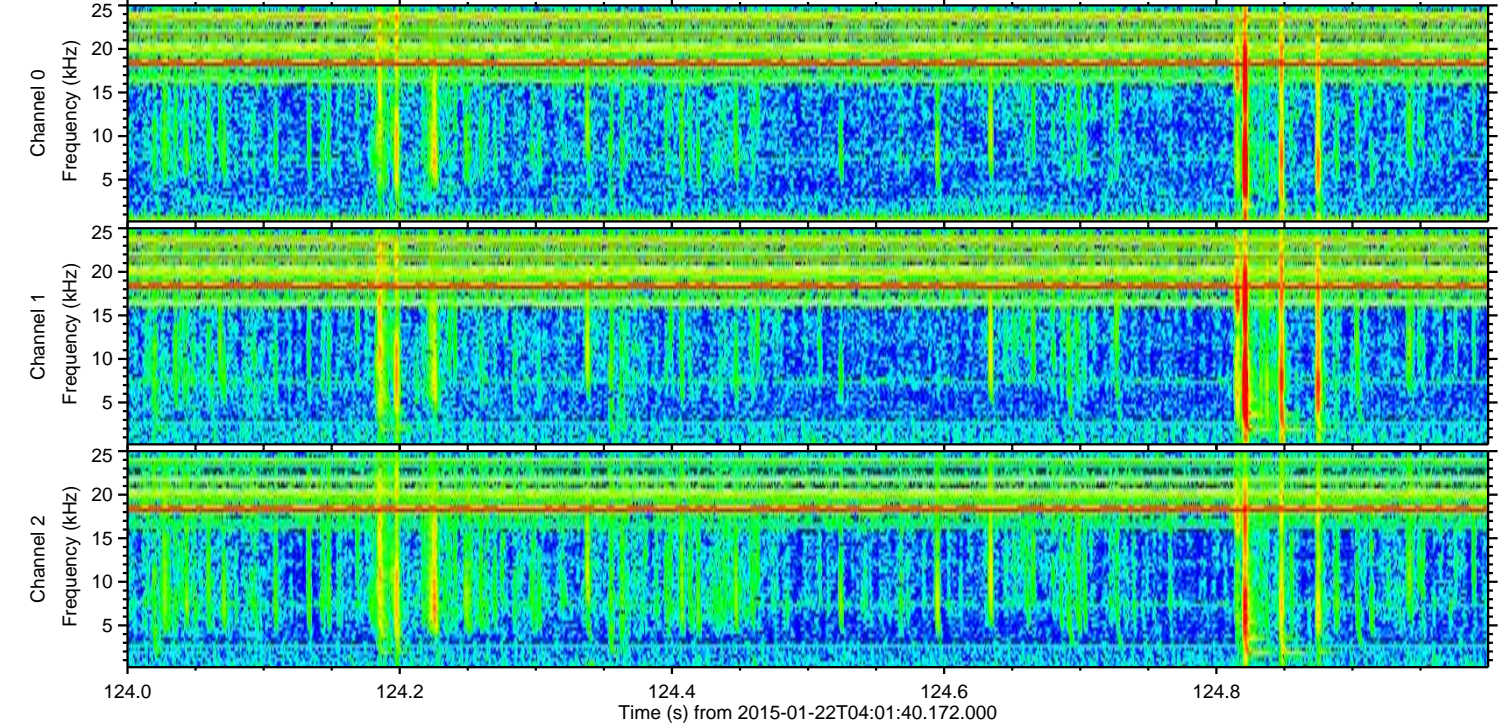
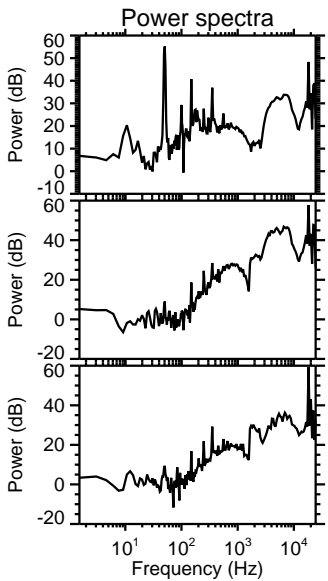
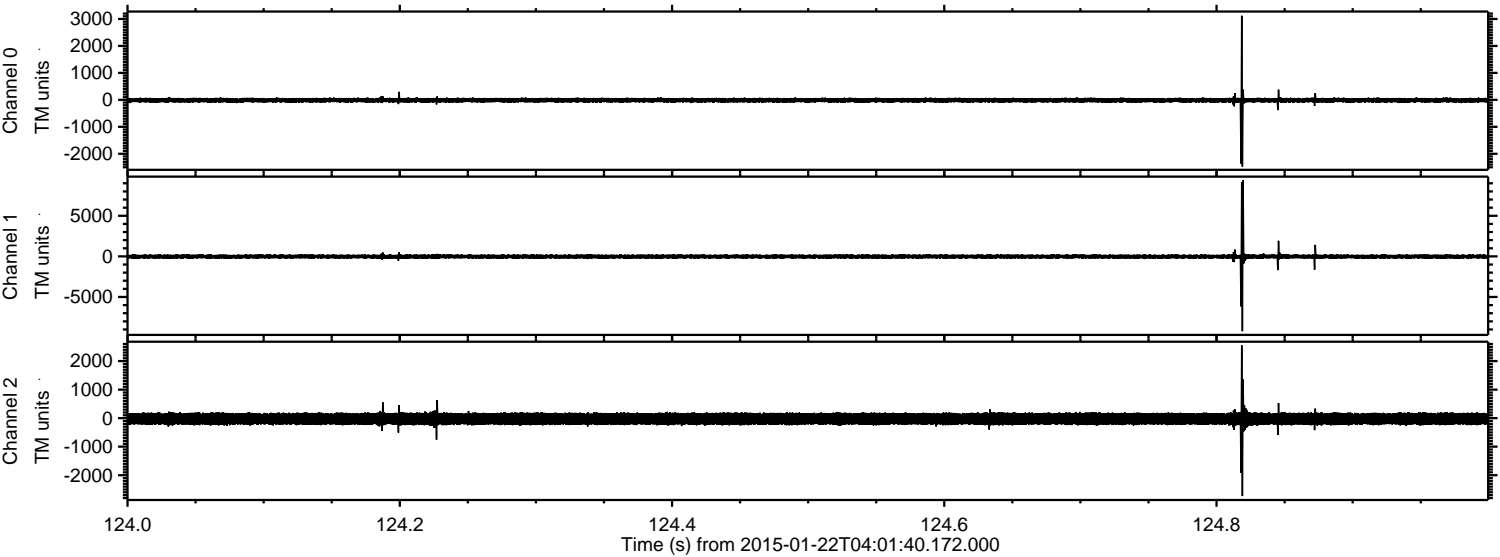


Processed Tue Feb 10 03:45:33 2015 by ELM ver.2012-10-06 from 001__elm20150122_040139__dat00.bin



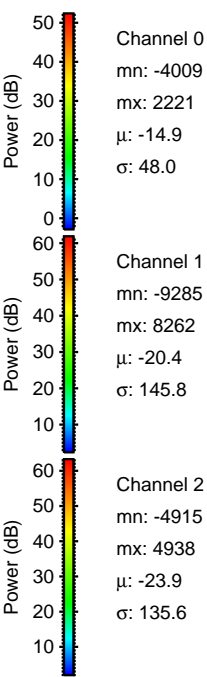
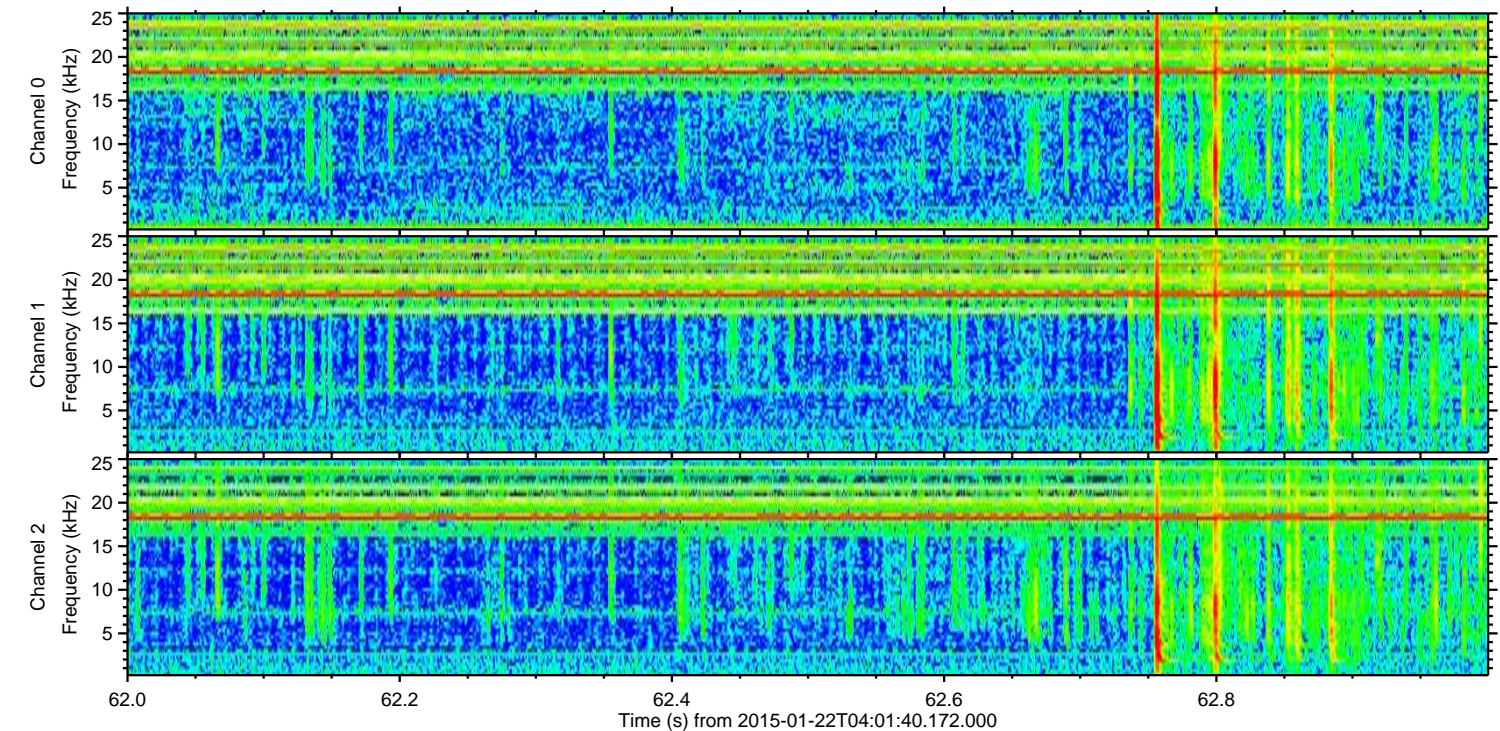
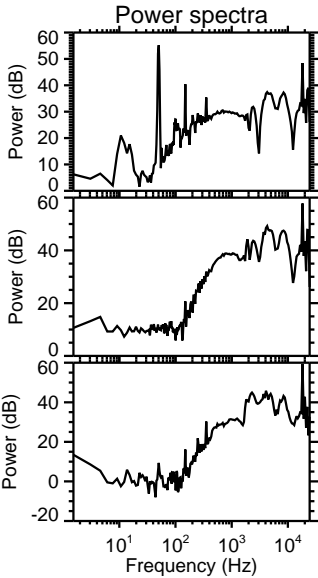
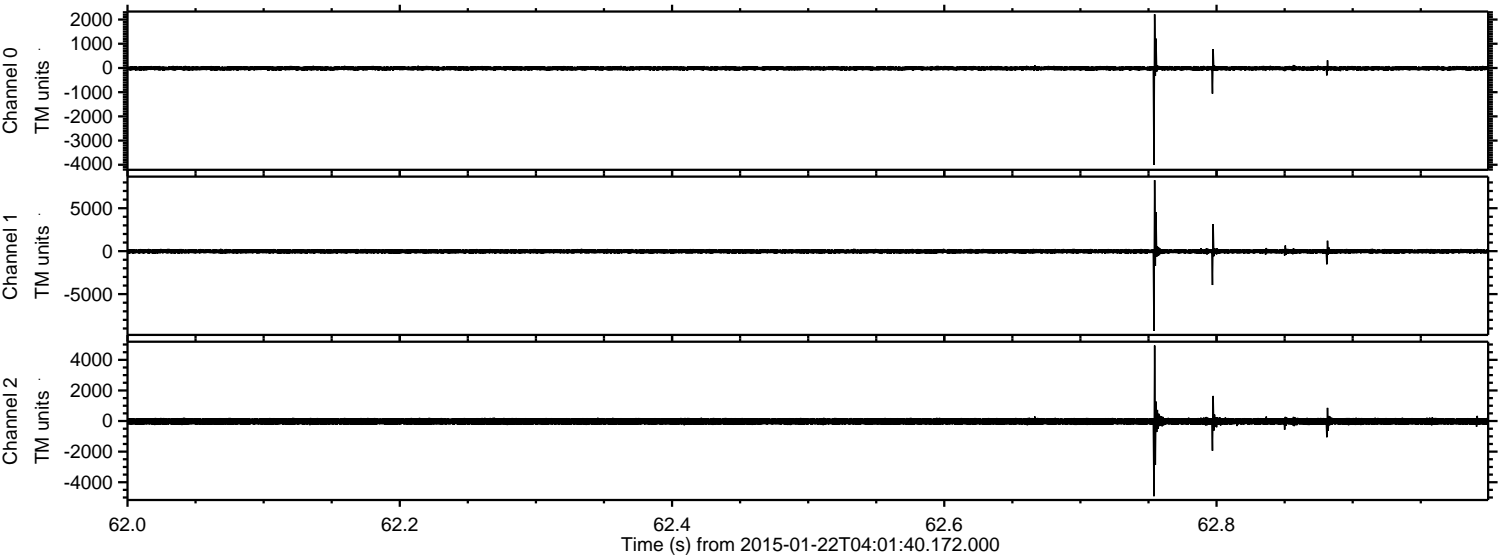
ELMAVAN 3D WAVEFORMS (Measured data sampled at 50 kHz) 49798 packets of 144 samples from 2015-01-22T04:01:40.172.000. Part 125/144

Processed Tue Feb 10 03:45:34 2015 by ELM ver.2012-10-06 from 001__elm20150122_040139__dat00.bin



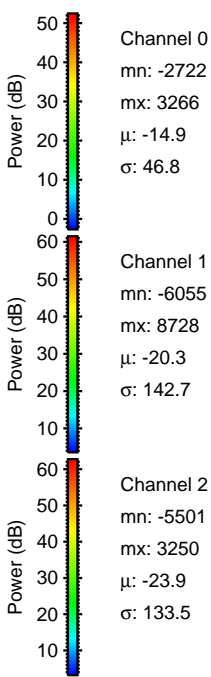
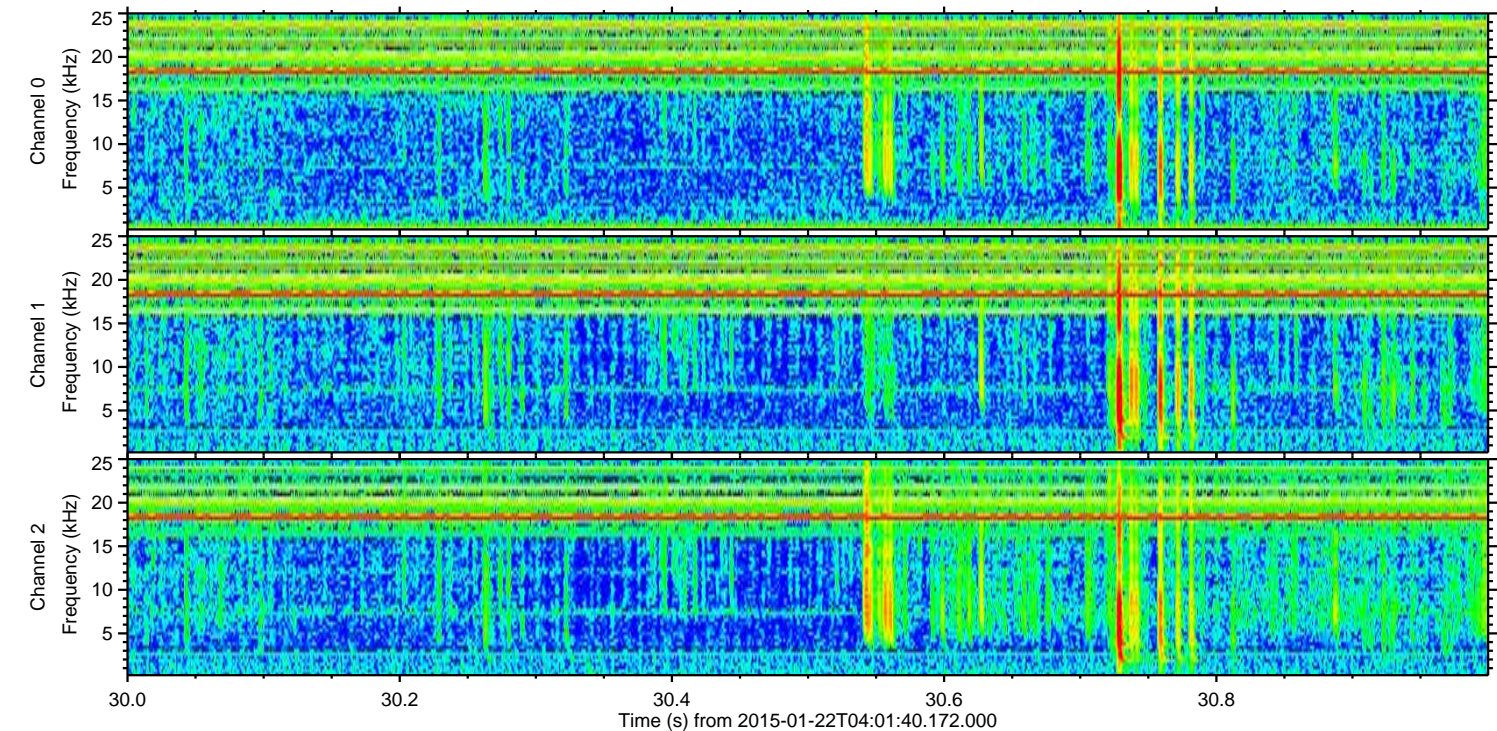
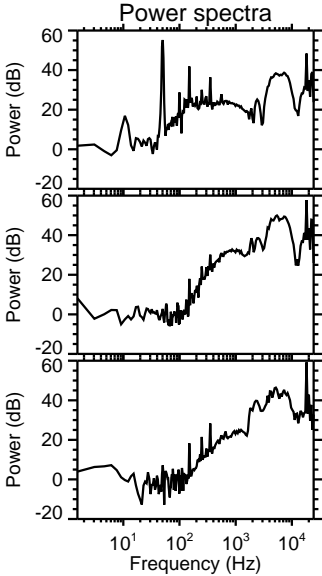
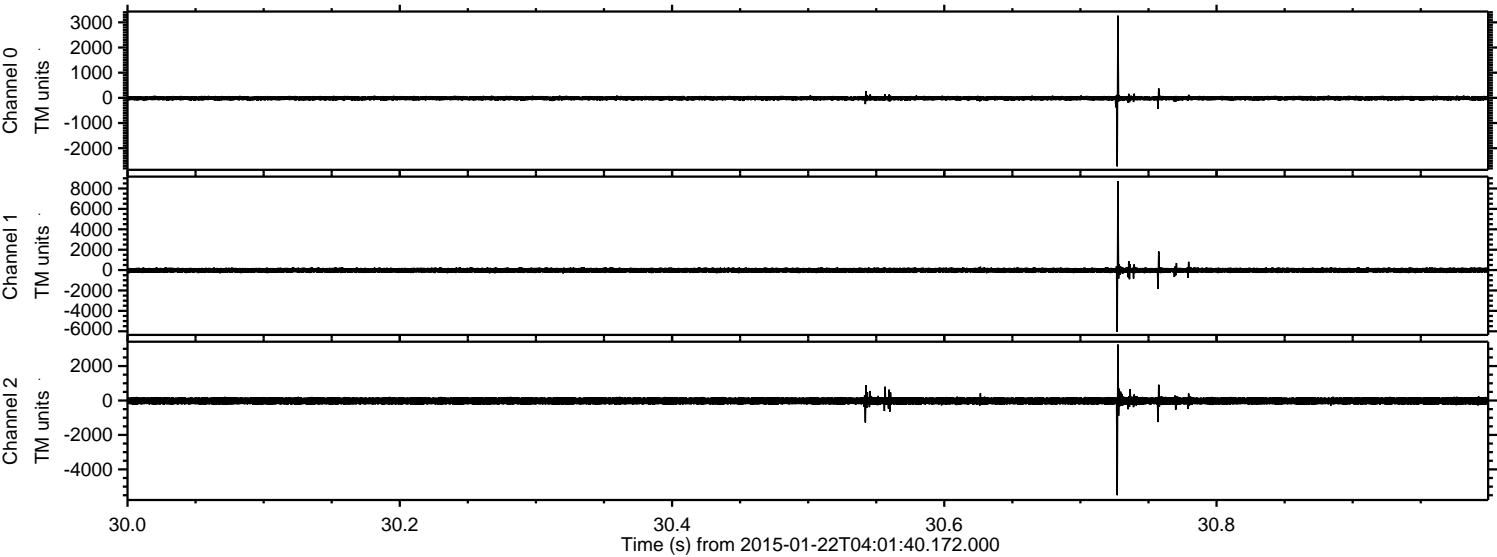
ELMAVAN 3D WAVEFORMS (Measured data sampled at 50 kHz) 49798 packets of 144 samples from 2015-01-22T04:01:40.172.000. Part 63/144

Processed Tue Feb 10 03:45:35 2015 by ELM ver.2012-10-06 from 001__elm20150122_040139__dat00.bin



ELMAVAN 3D WAVEFORMS (Measured data sampled at 50 kHz) 49798 packets of 144 samples from 2015-01-22T04:01:40.172.000. Part 31/144

Processed Tue Feb 10 03:45:36 2015 by ELM ver.2012-10-06 from 001__elm20150122_040139__dat00.bin



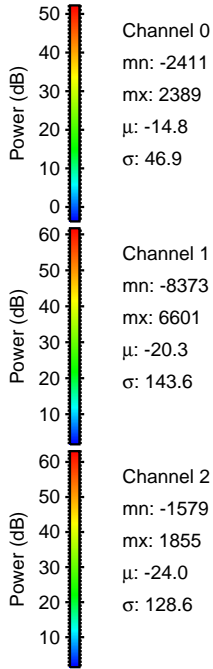
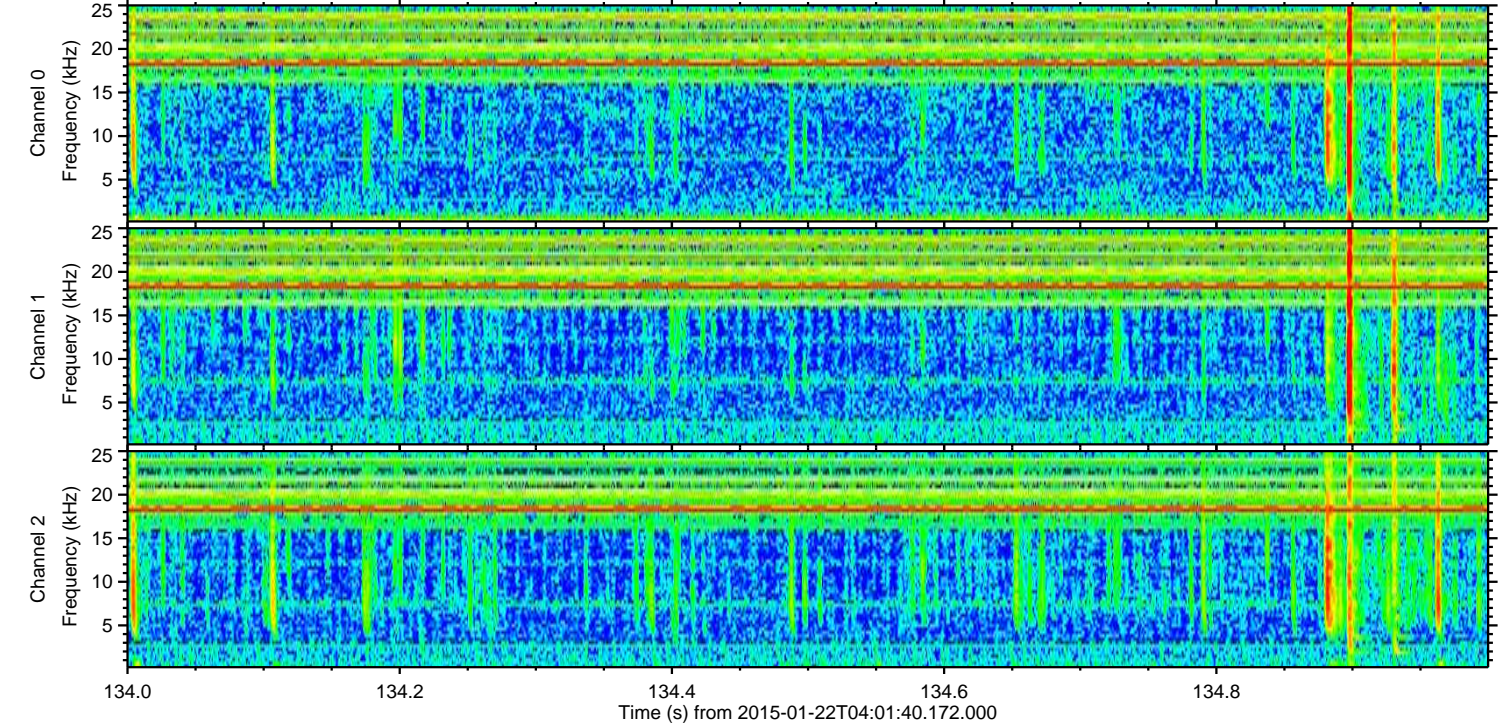
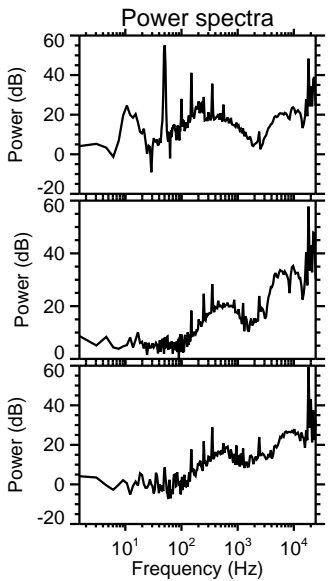
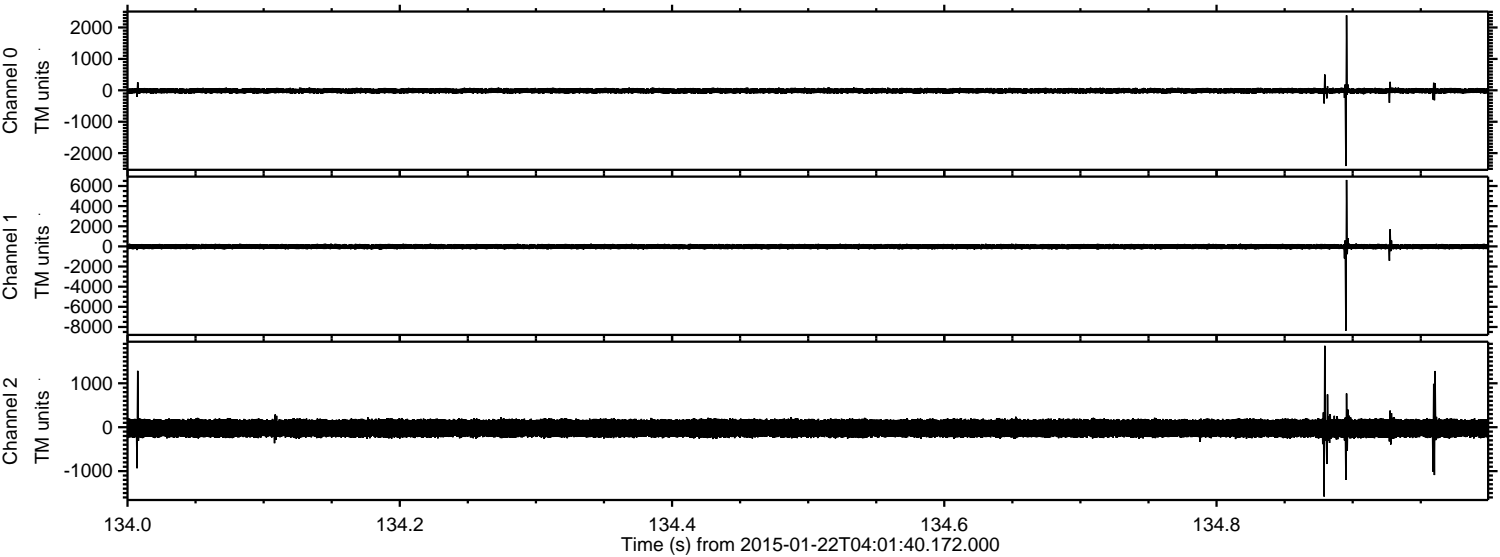
Channel 0
mn: -2722
mx: 3266
 μ : -14.9
 σ : 46.8

Channel 1
mn: -6055
mx: 8728
 μ : -20.3
 σ : 142.7

Channel 2
mn: -5501
mx: 3250
 μ : -23.9
 σ : 133.5

ELMAVAN 3D WAVEFORMS (Measured data sampled at 50 kHz) 49798 packets of 144 samples from 2015-01-22T04:01:40.172.000. Part 135/144

Processed Tue Feb 10 03:45:37 2015 by ELM ver.2012-10-06 from 001__elm20150122_040139__dat00.bin



ELMAVAN 3D WAVEFORMS (Measured data sampled at 50 kHz) 49798 packets of 144 samples from 2015-01-22T04:01:40.172.000. Part 39/144

Processed Tue Feb 10 03:45:38 2015 by ELM ver.2012-10-06 from 001__elm20150122_040139__dat00.bin

