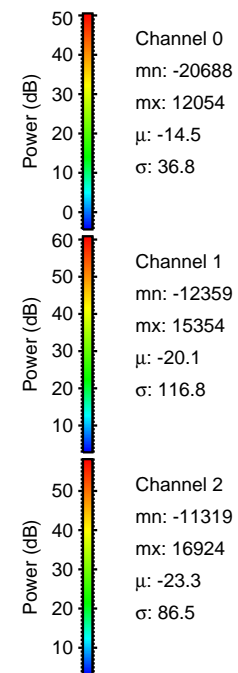
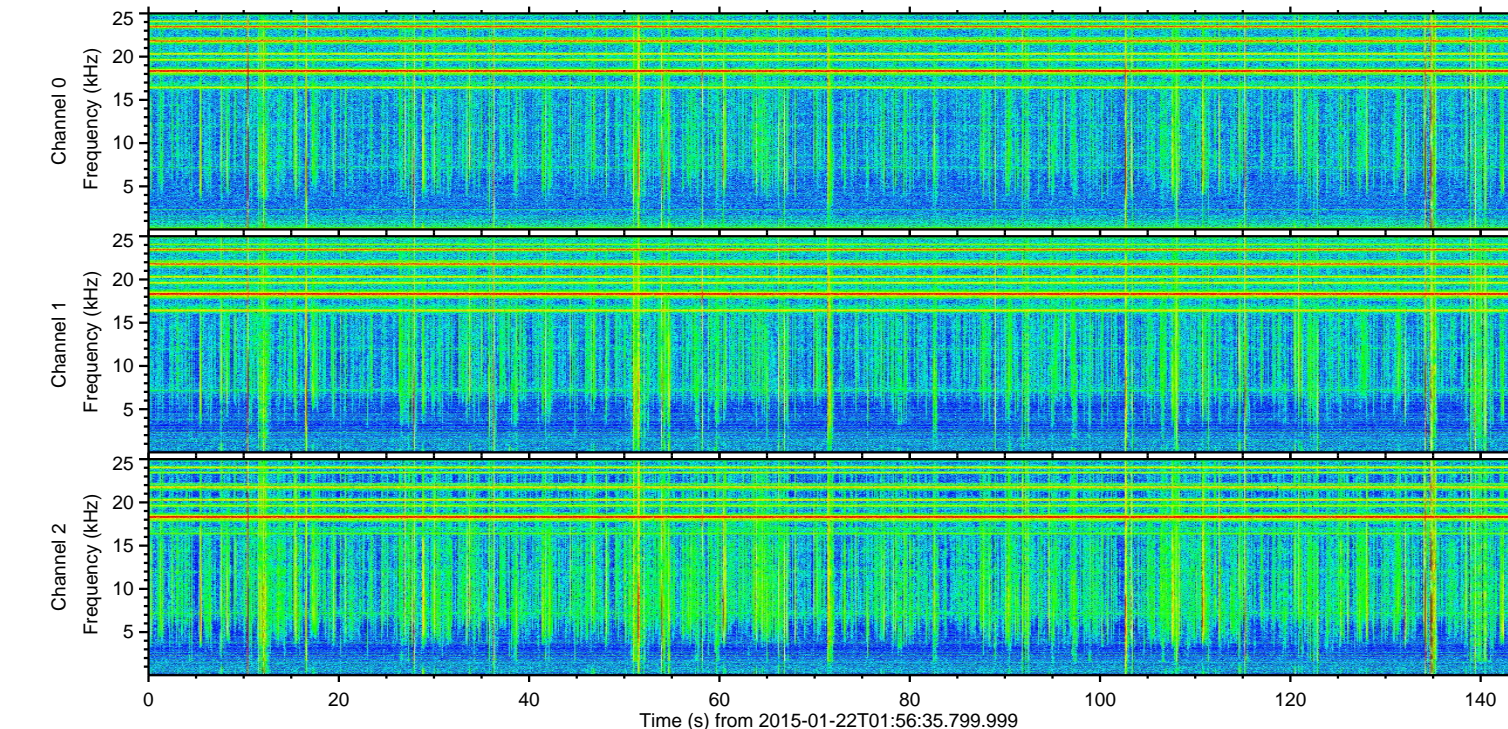
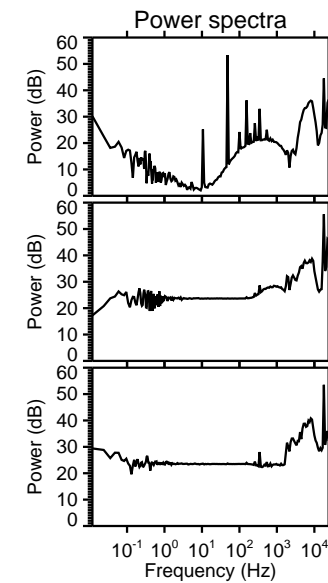
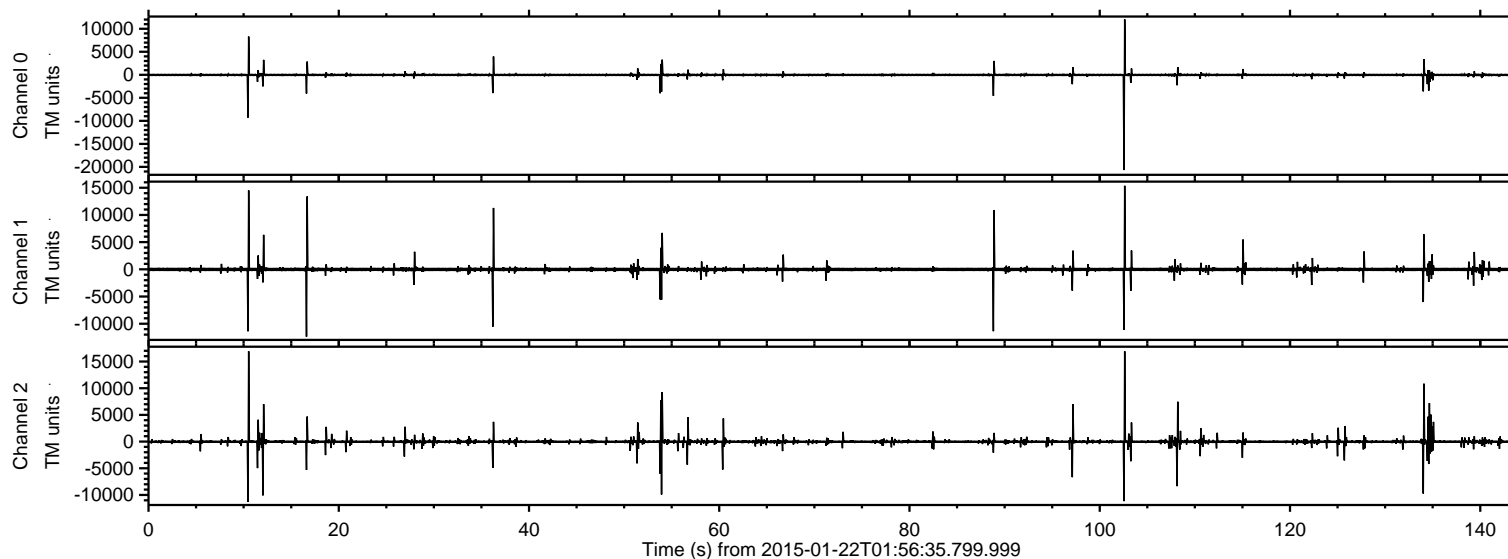


# ELMAVAN 3D WAVEFORMS (Measured data sampled at 50 kHz) 49666 packets of 144 samples from 2015-01-22T01:56:35.799.999.

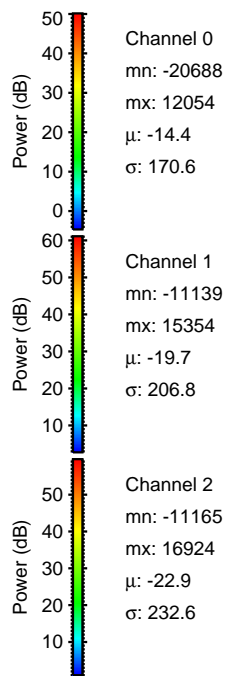
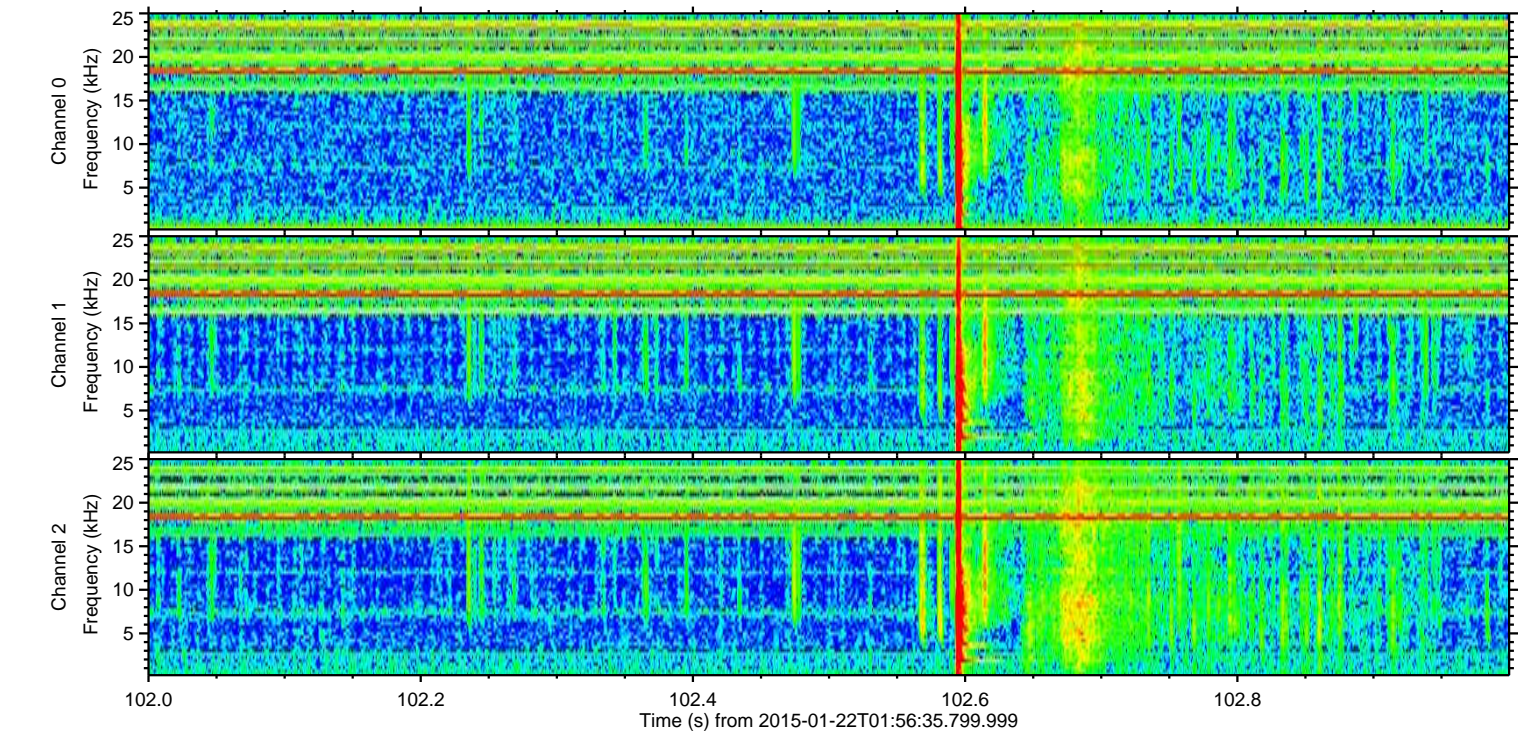
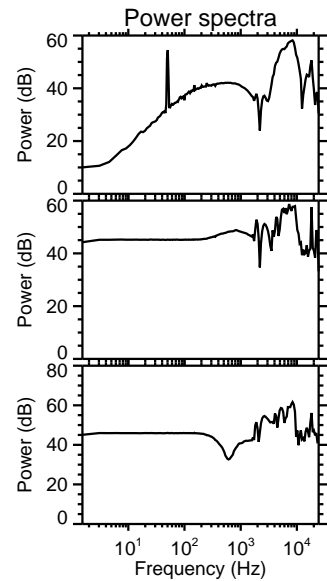
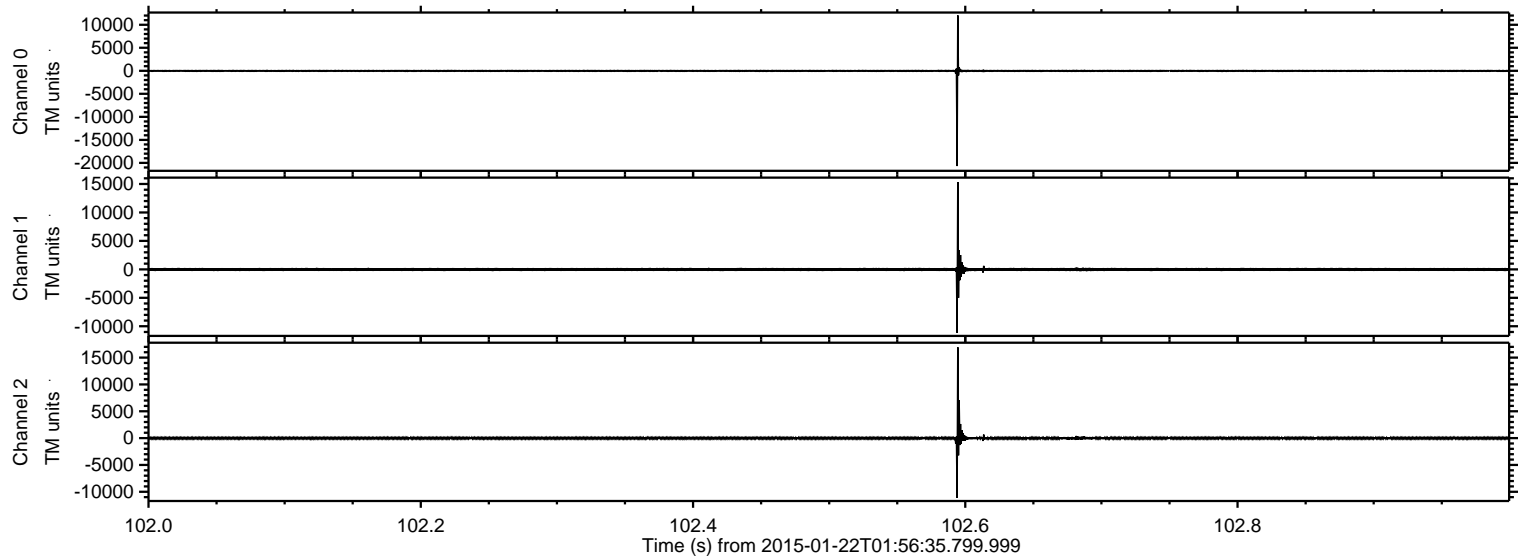
Processed Tue Feb 10 02:34:50 2015 by ELM ver.2012-10-06 from 001\_\_elm20150122\_015634\_\_dat00.bin





ELMAVAN 3D WAVEFORMS (Measured data sampled at 50 kHz) 49666 packets of 144 samples from 2015-01-22T01:56:35.799.999. Part 103/144

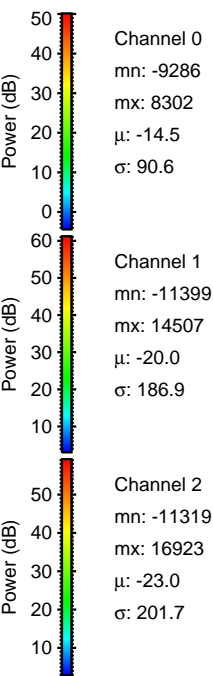
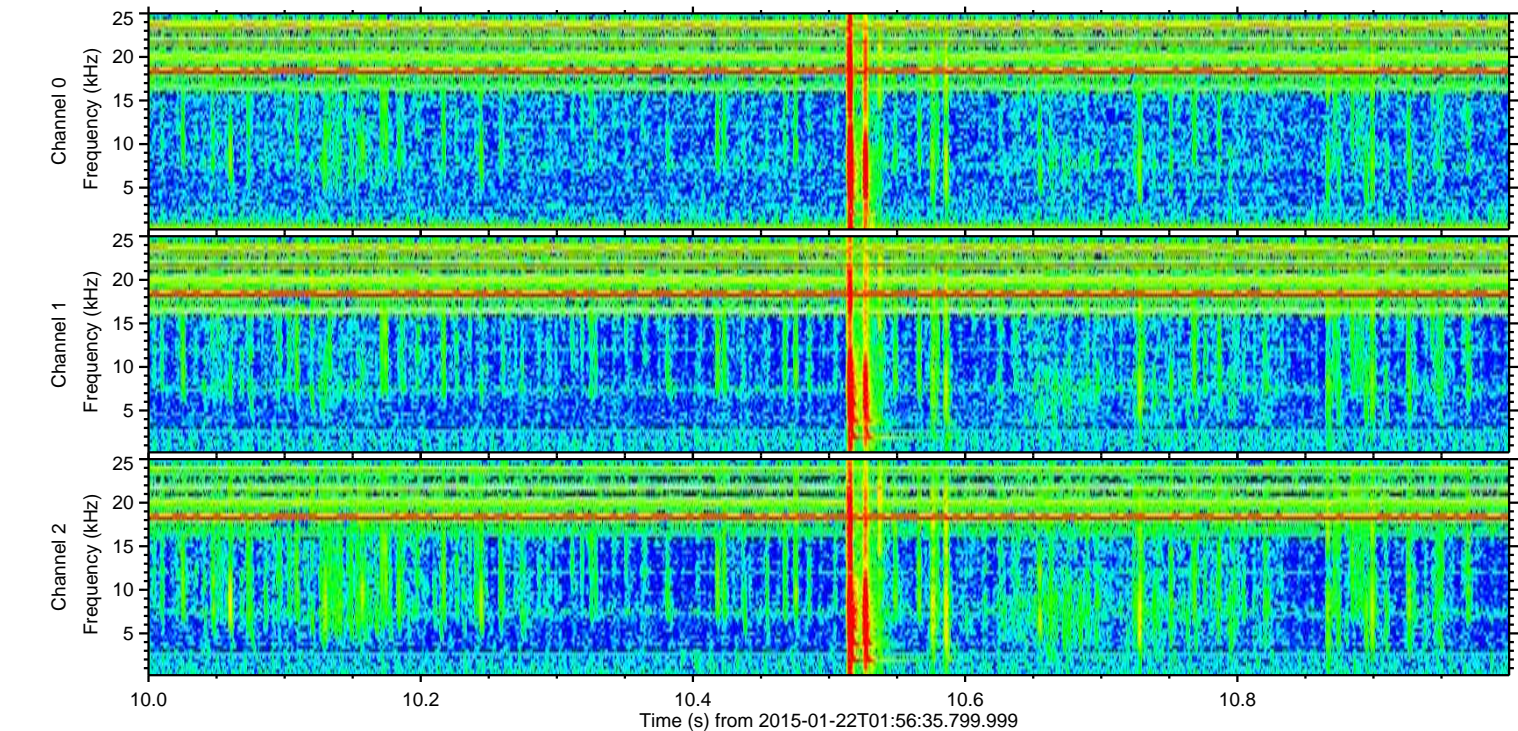
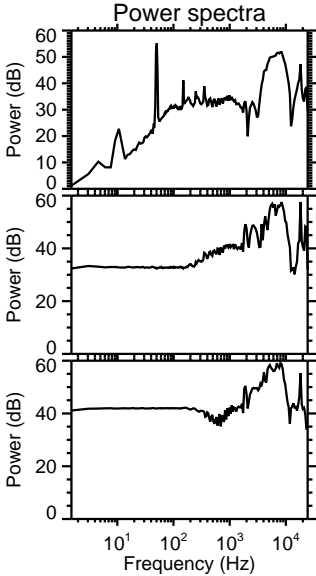
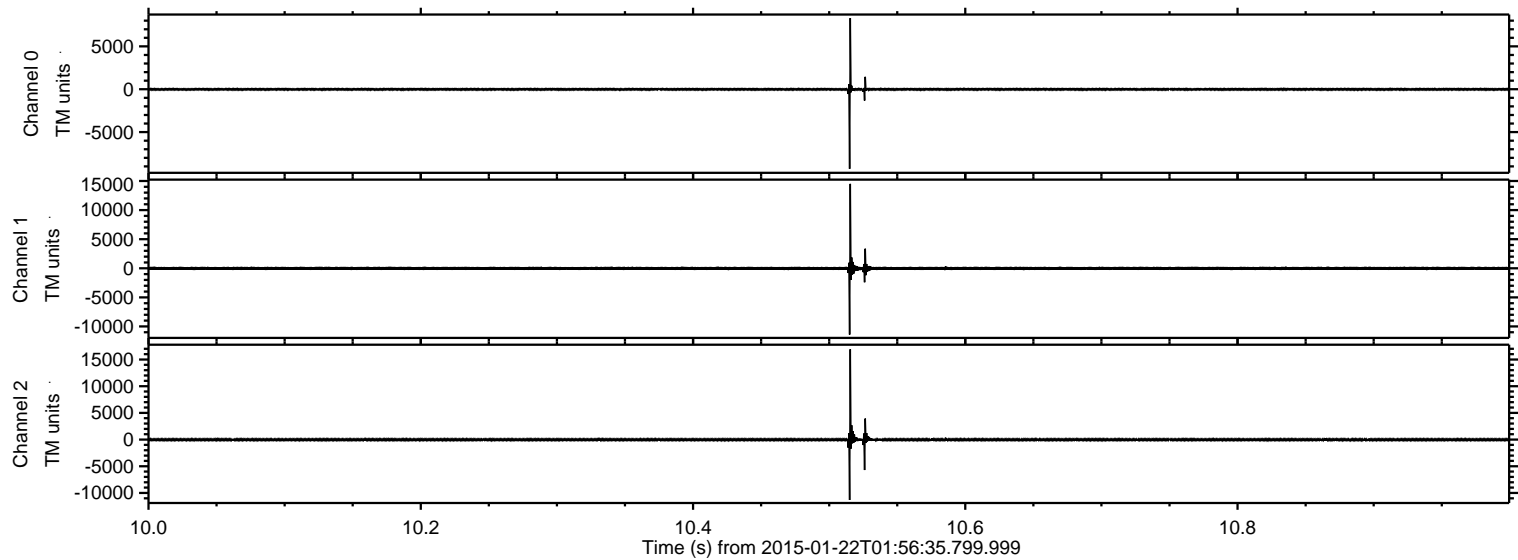
Processed Tue Feb 10 02:35:05 2015 by ELM ver.2012-10-06 from 001\_\_elm20150122\_015634\_\_dat00.bin





ELMAVAN 3D WAVEFORMS (Measured data sampled at 50 kHz) 49666 packets of 144 samples from 2015-01-22T01:56:35.799.999. Part 11/144

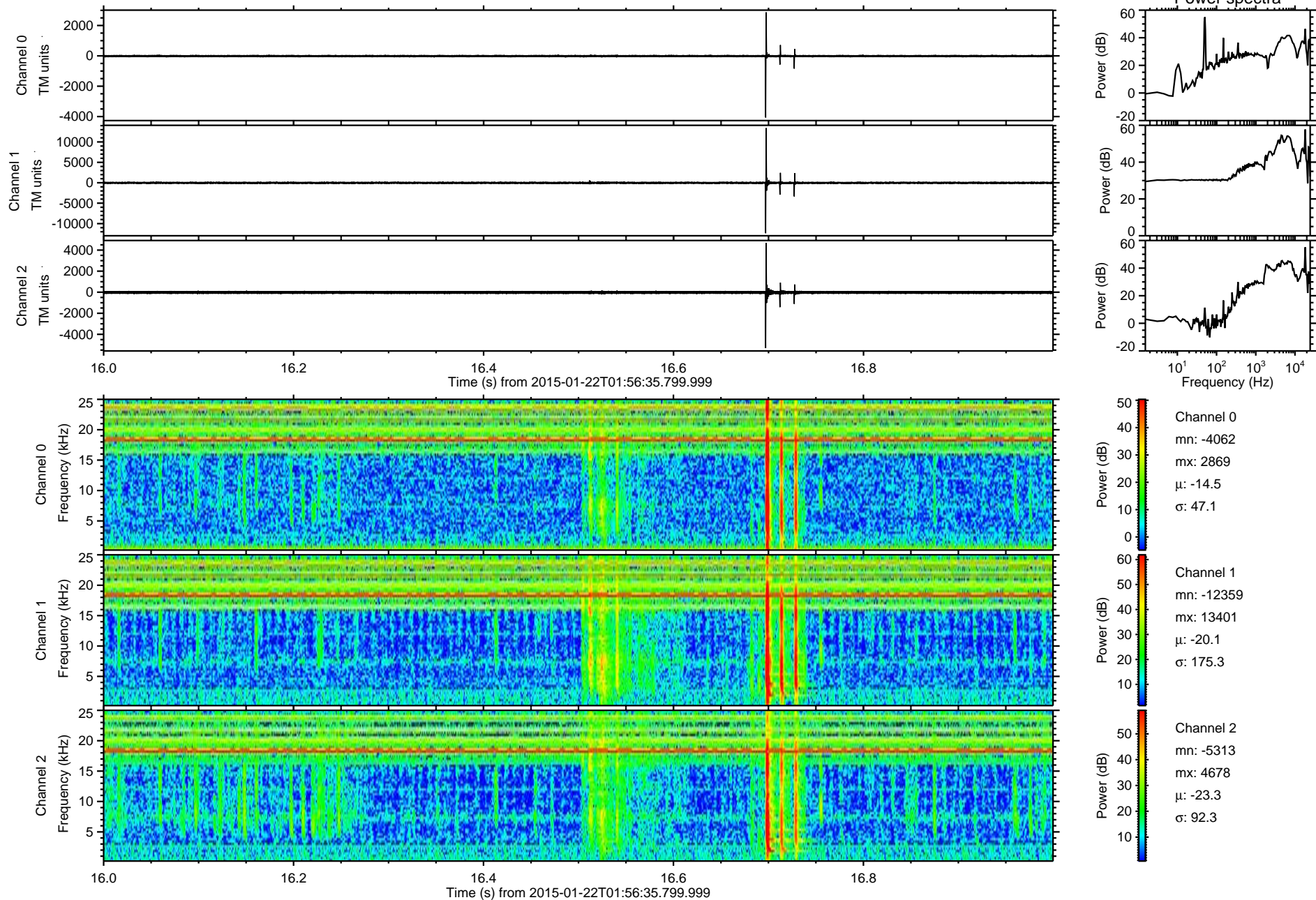
Processed Tue Feb 10 02:35:06 2015 by ELM ver.2012-10-06 from 001\_\_elm20150122\_015634\_\_dat00.bin





ELMAVAN 3D WAVEFORMS (Measured data sampled at 50 kHz) 49666 packets of 144 samples from 2015-01-22T01:56:35.799.999. Part 17/144

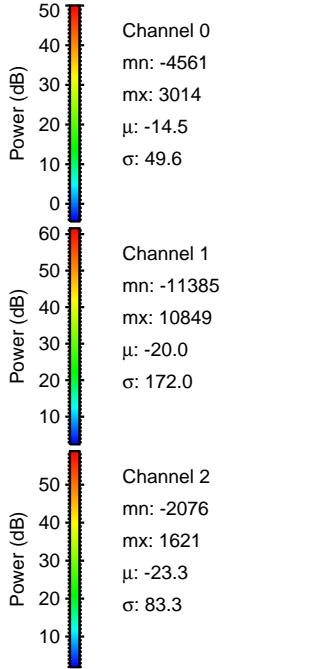
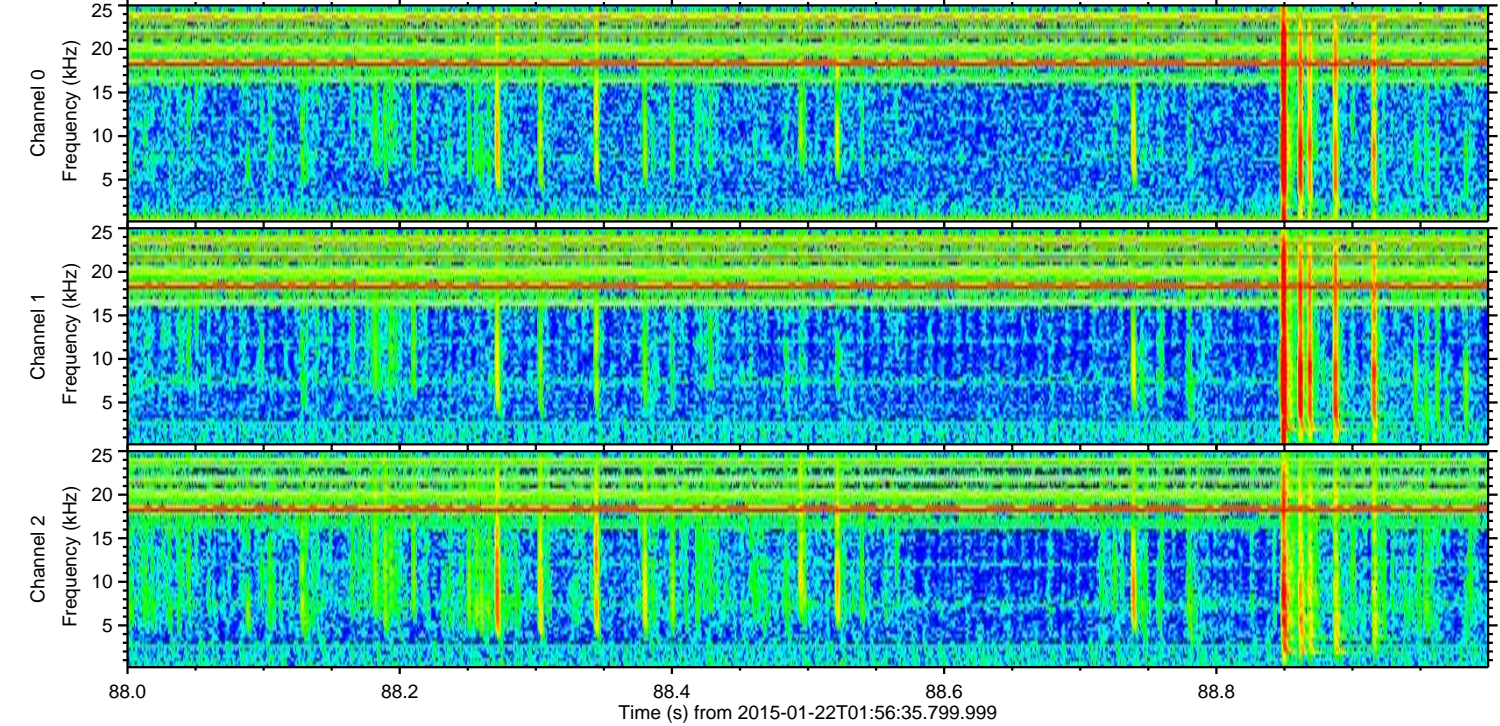
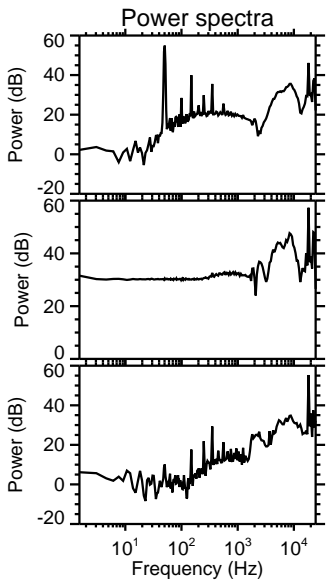
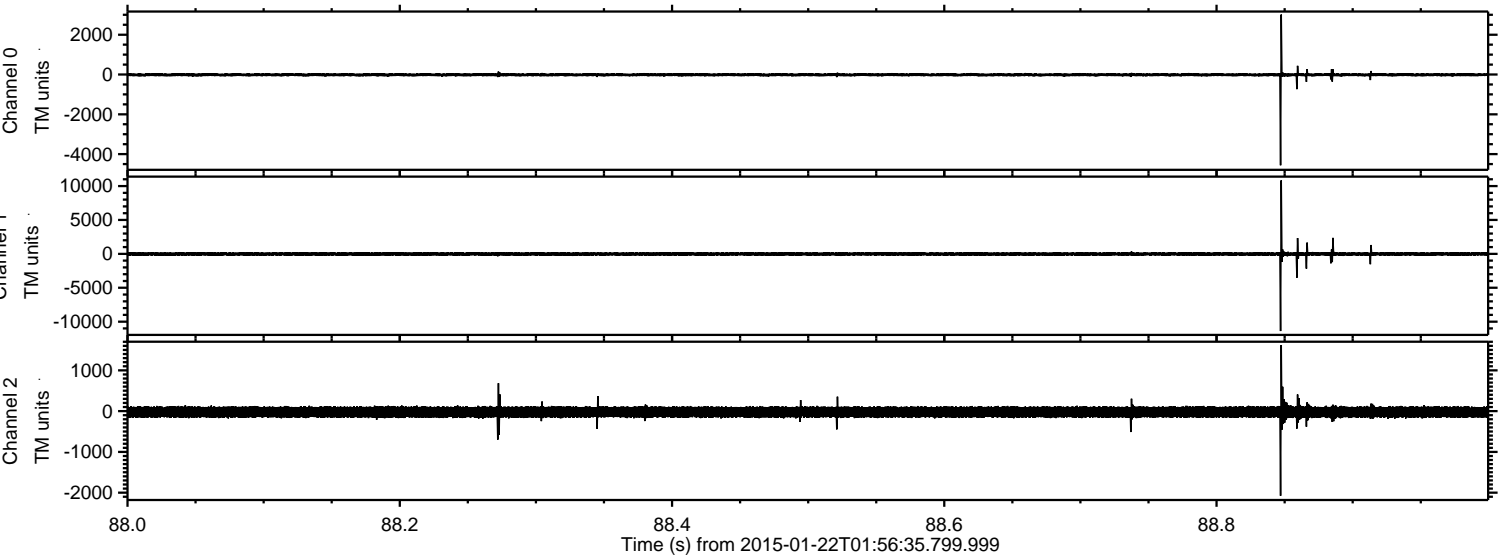
Processed Tue Feb 10 02:35:07 2015 by ELM ver.2012-10-06 from 001\_\_elm20150122\_015634\_\_dat00.bin





ELMAVAN 3D WAVEFORMS (Measured data sampled at 50 kHz) 49666 packets of 144 samples from 2015-01-22T01:56:35.799.999. Part 89/144

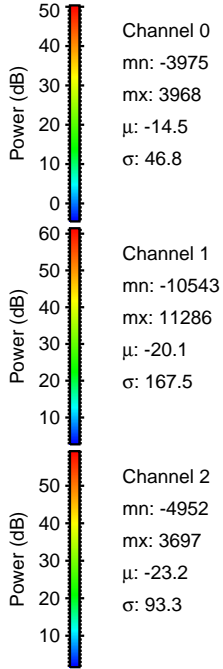
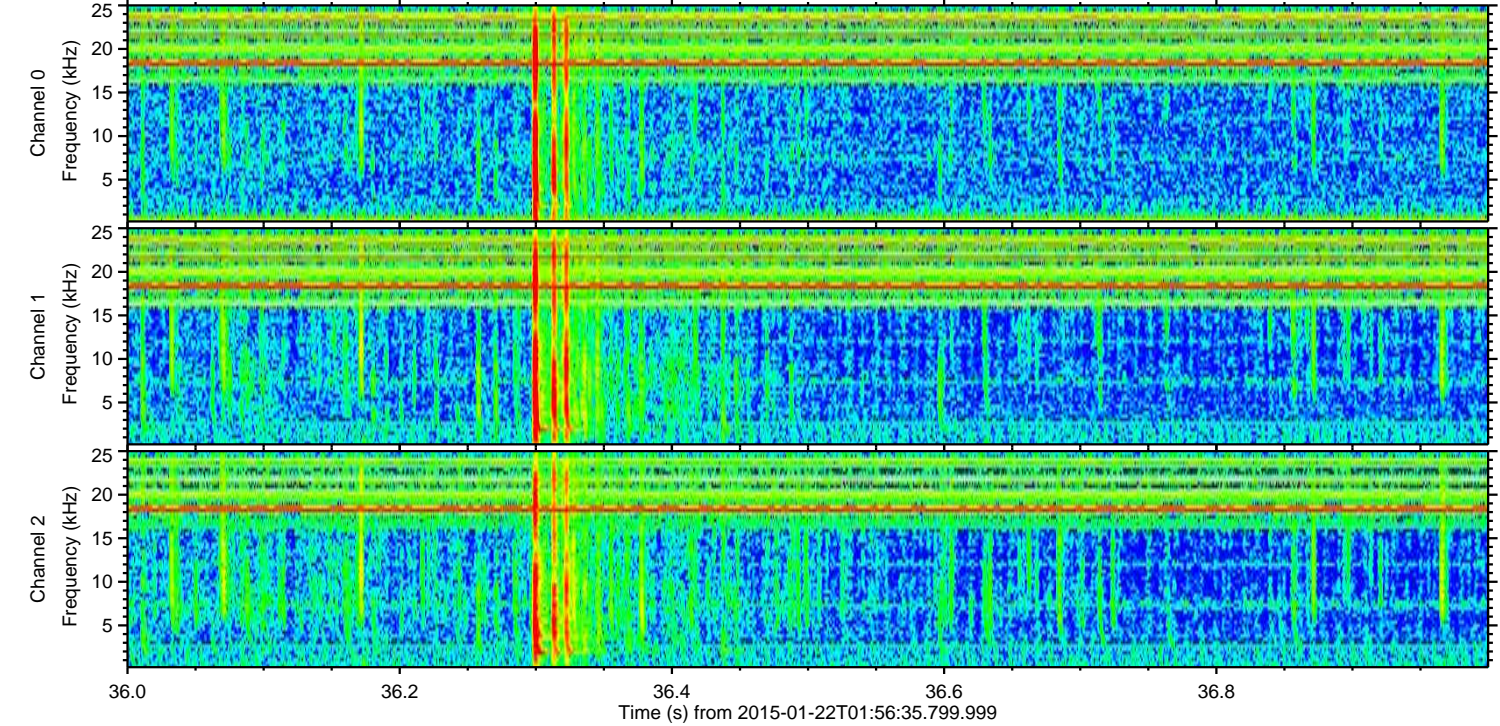
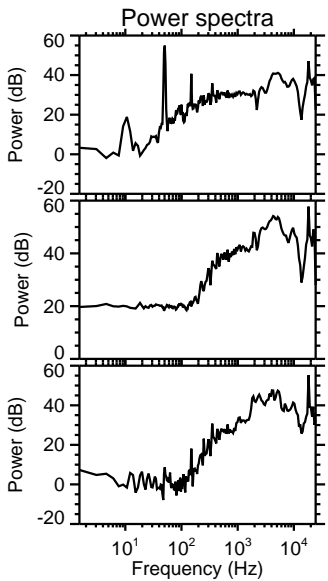
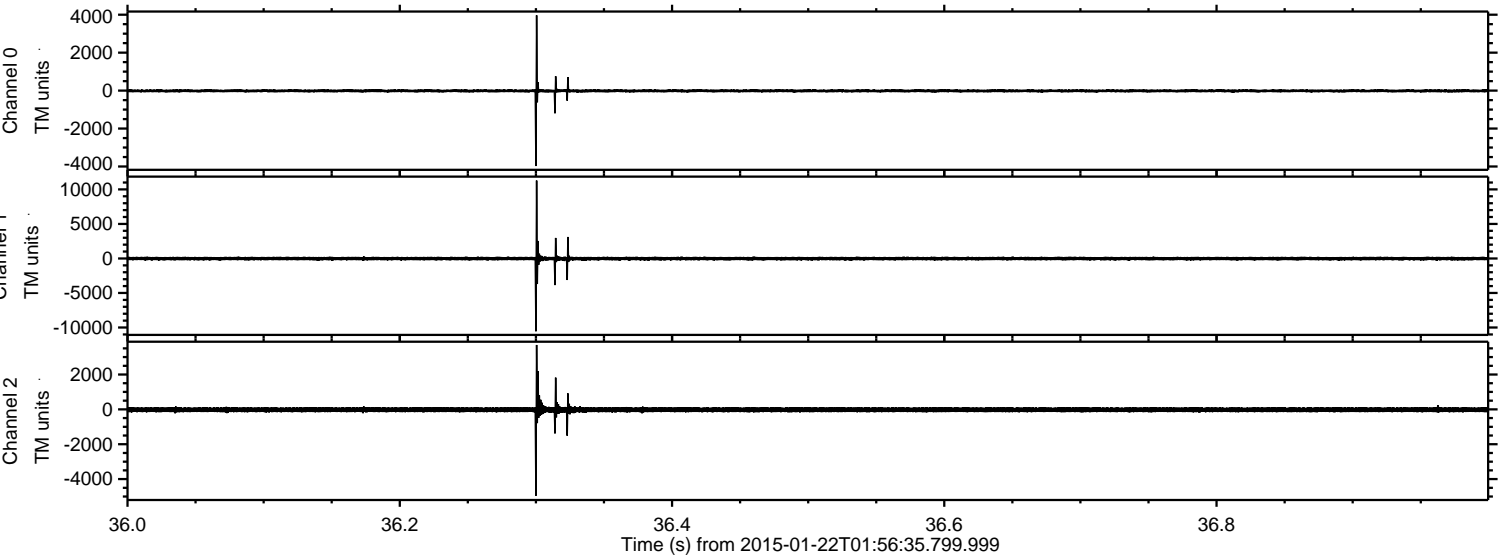
Processed Tue Feb 10 02:35:08 2015 by ELM ver.2012-10-06 from 001\_\_elm20150122\_015634\_\_dat00.bin





ELMAVAN 3D WAVEFORMS (Measured data sampled at 50 kHz) 49666 packets of 144 samples from 2015-01-22T01:56:35.799.999. Part 37/144

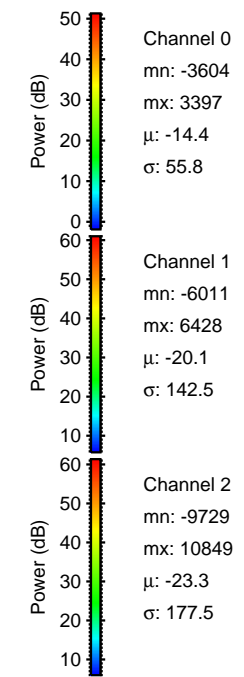
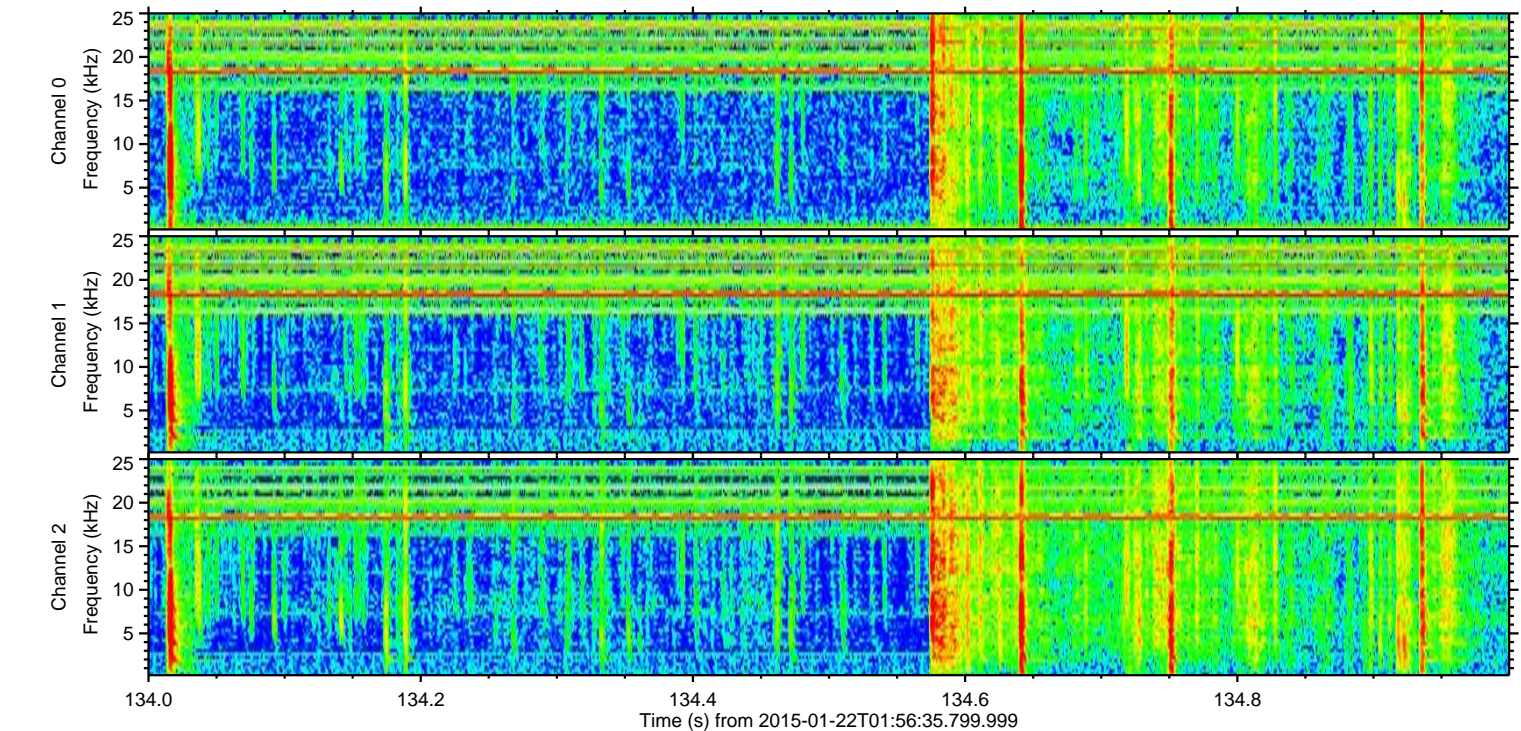
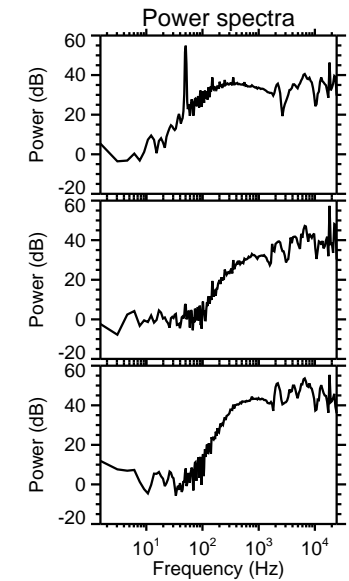
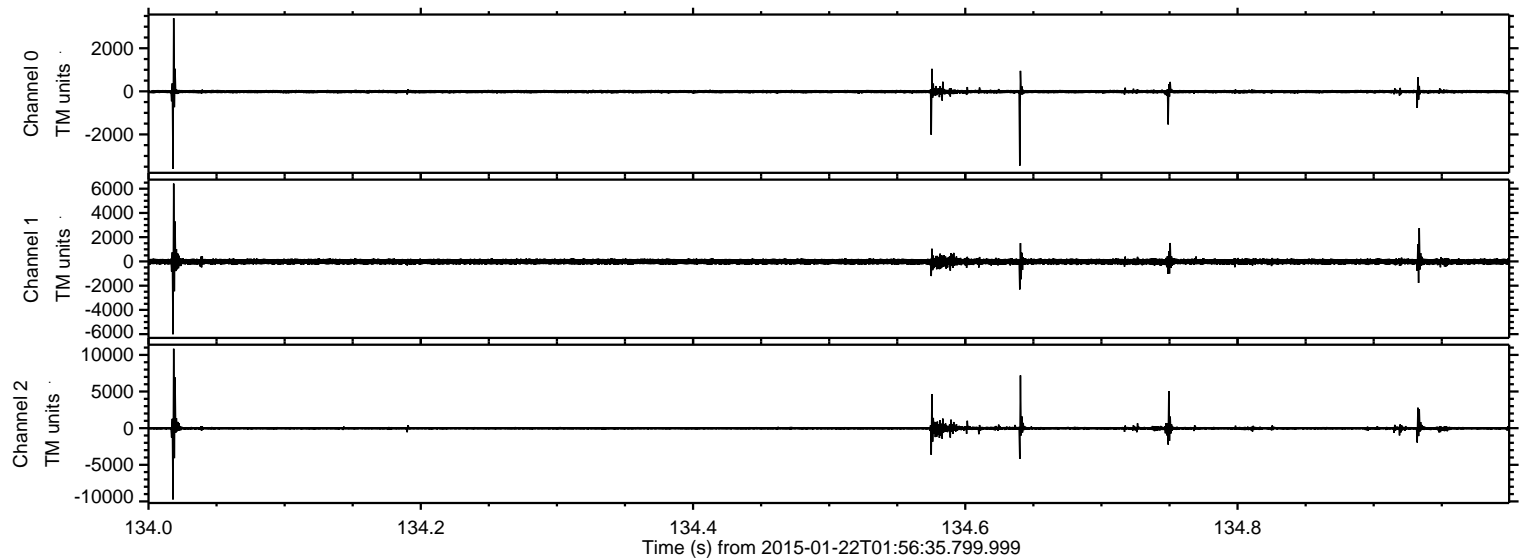
Processed Tue Feb 10 02:35:09 2015 by ELM ver.2012-10-06 from 001\_\_elm20150122\_015634\_\_dat00.bin





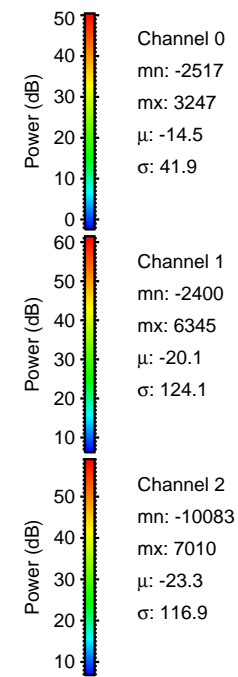
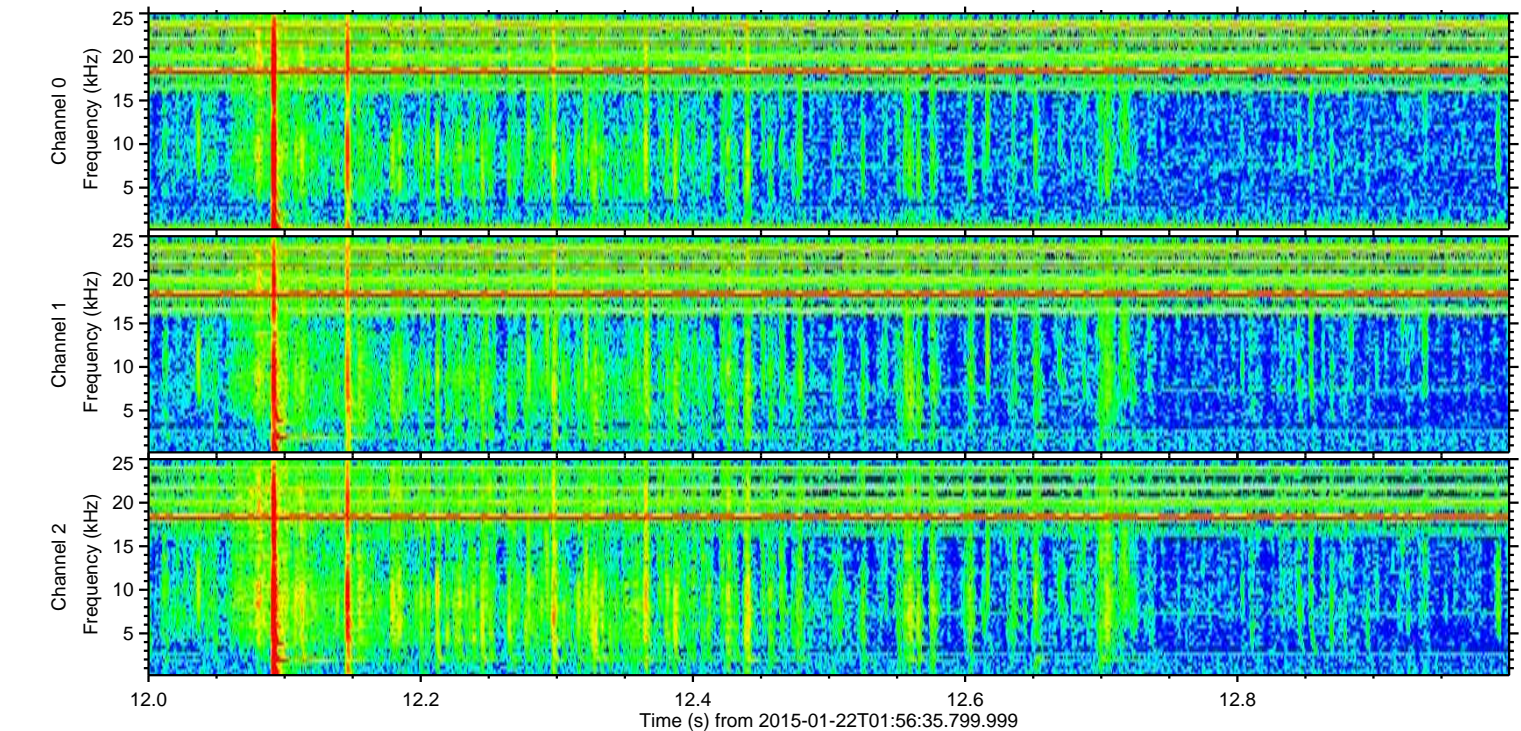
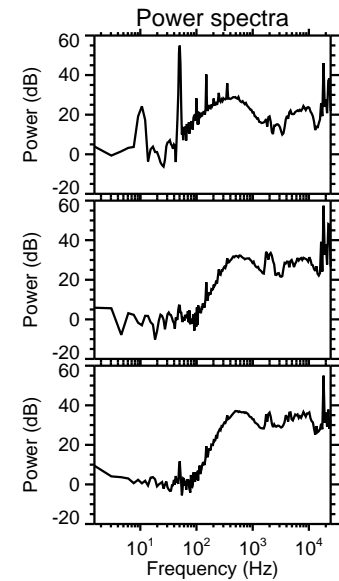
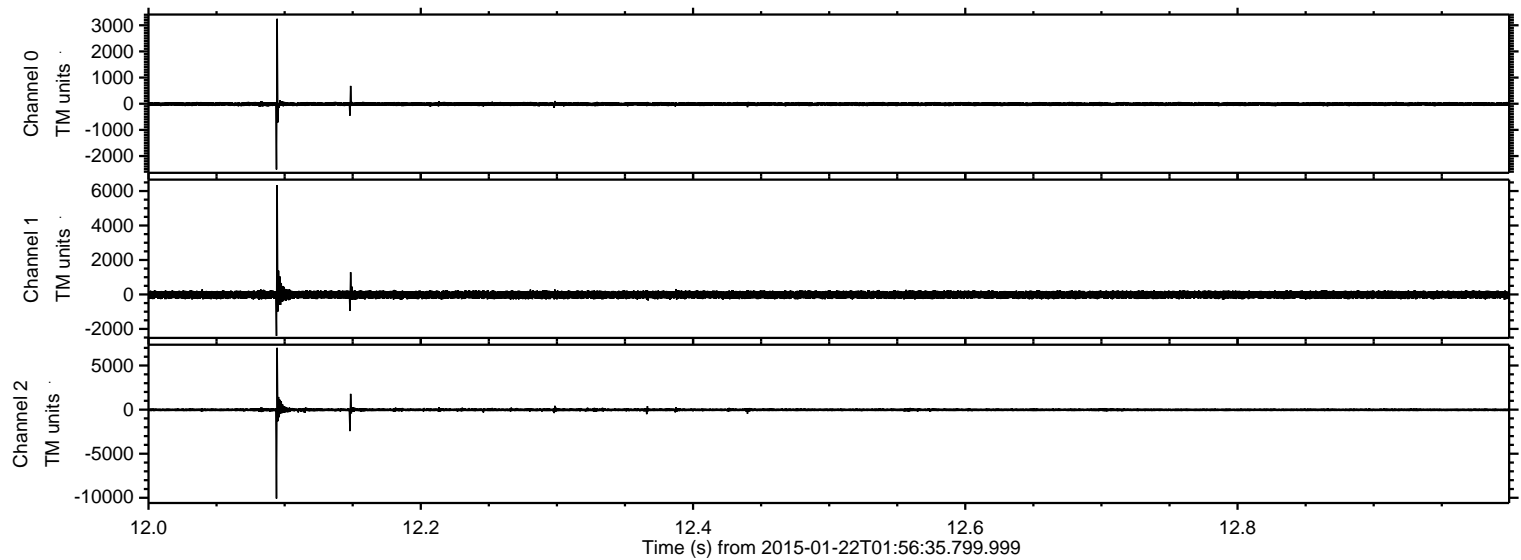
ELMAVAN 3D WAVEFORMS (Measured data sampled at 50 kHz) 49666 packets of 144 samples from 2015-01-22T01:56:35.799.999. Part 135/144

Processed Tue Feb 10 02:35:10 2015 by ELM ver.2012-10-06 from 001\_\_elm20150122\_015634\_\_dat00.bin



ELMAVAN 3D WAVEFORMS (Measured data sampled at 50 kHz) 49666 packets of 144 samples from 2015-01-22T01:56:35.799.999. Part 13/144

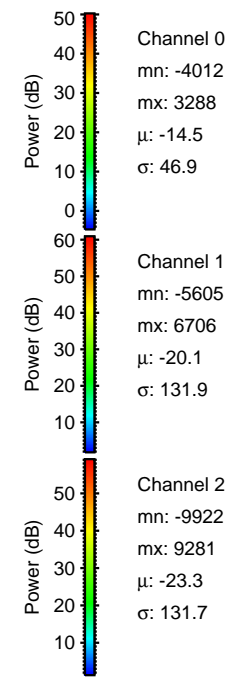
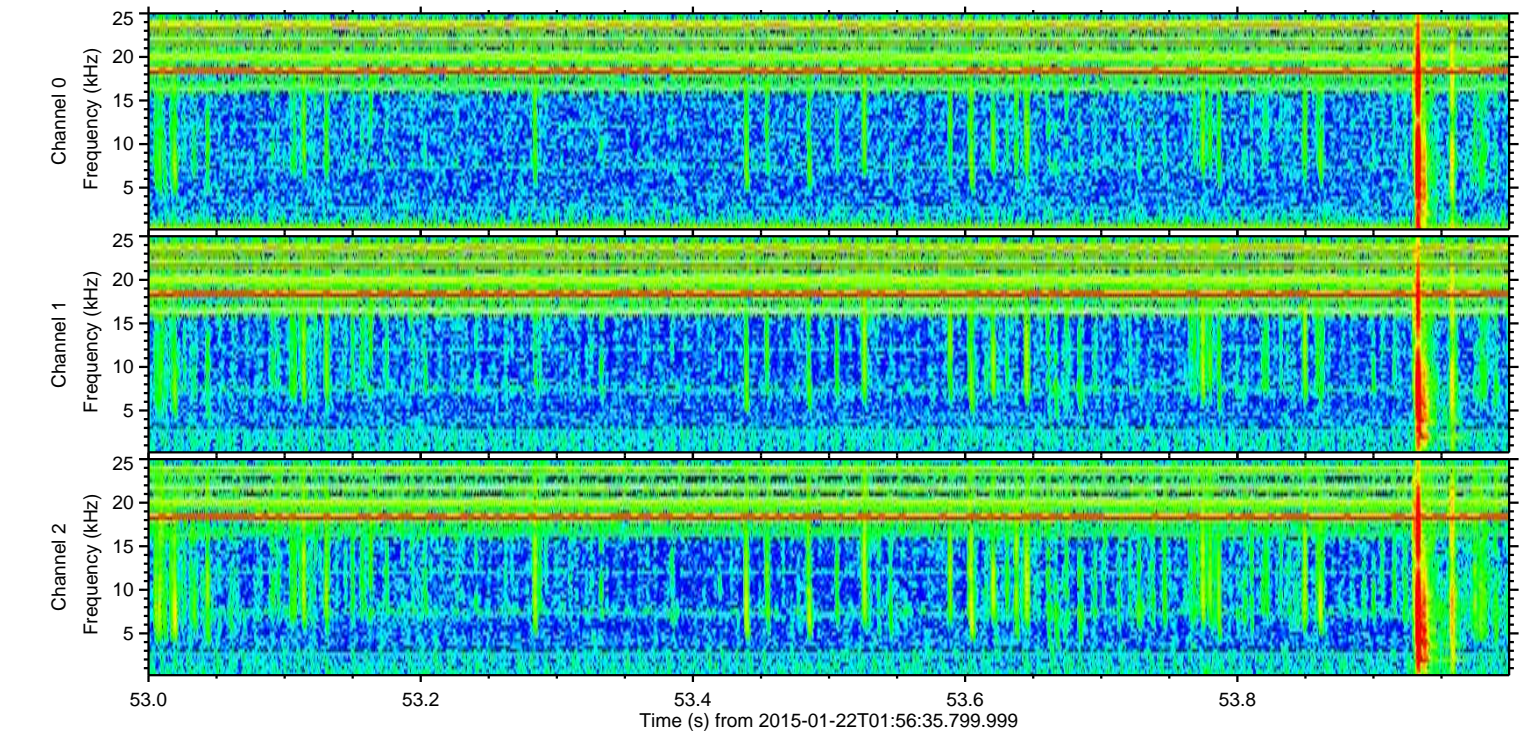
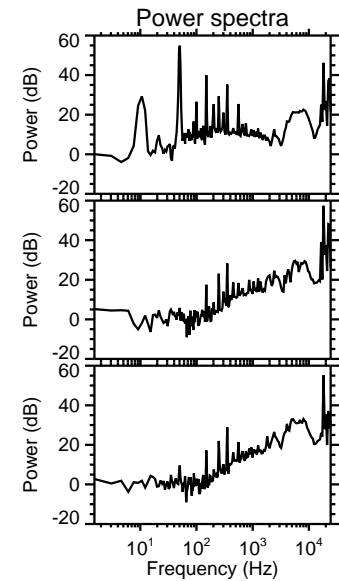
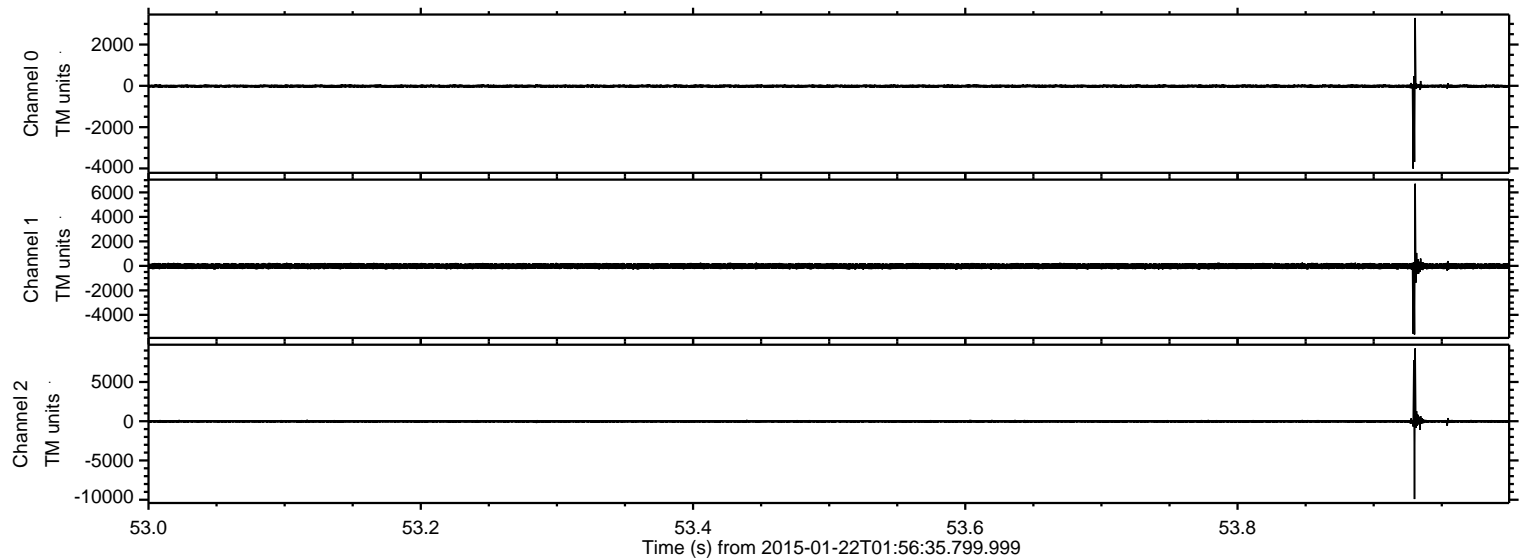
Processed Tue Feb 10 02:35:11 2015 by ELM ver.2012-10-06 from 001\_\_elm20150122\_015634\_\_dat00.bin





ELMAVAN 3D WAVEFORMS (Measured data sampled at 50 kHz) 49666 packets of 144 samples from 2015-01-22T01:56:35.799.999. Part 54/144

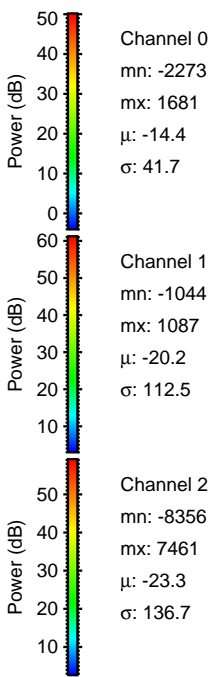
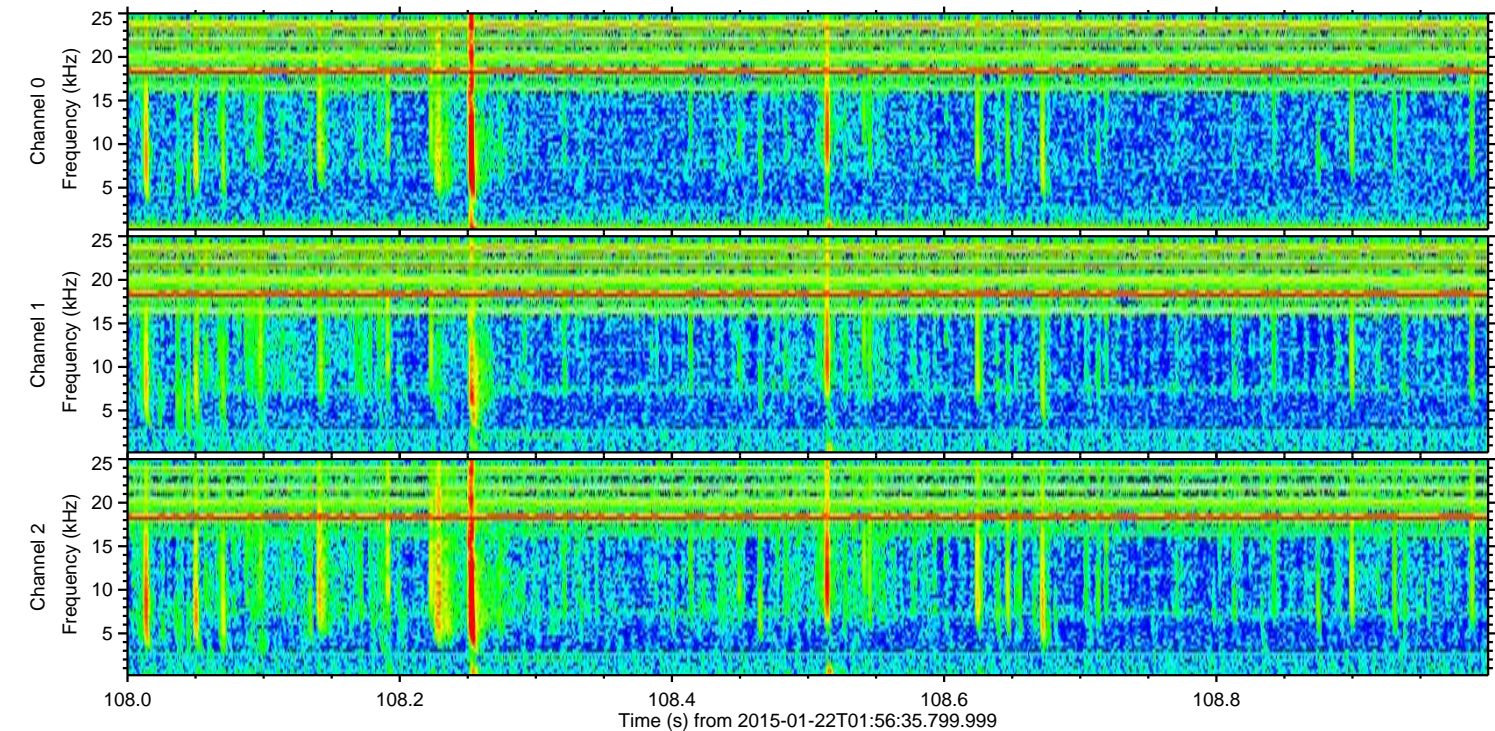
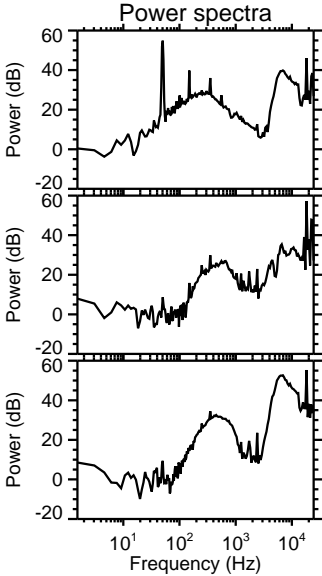
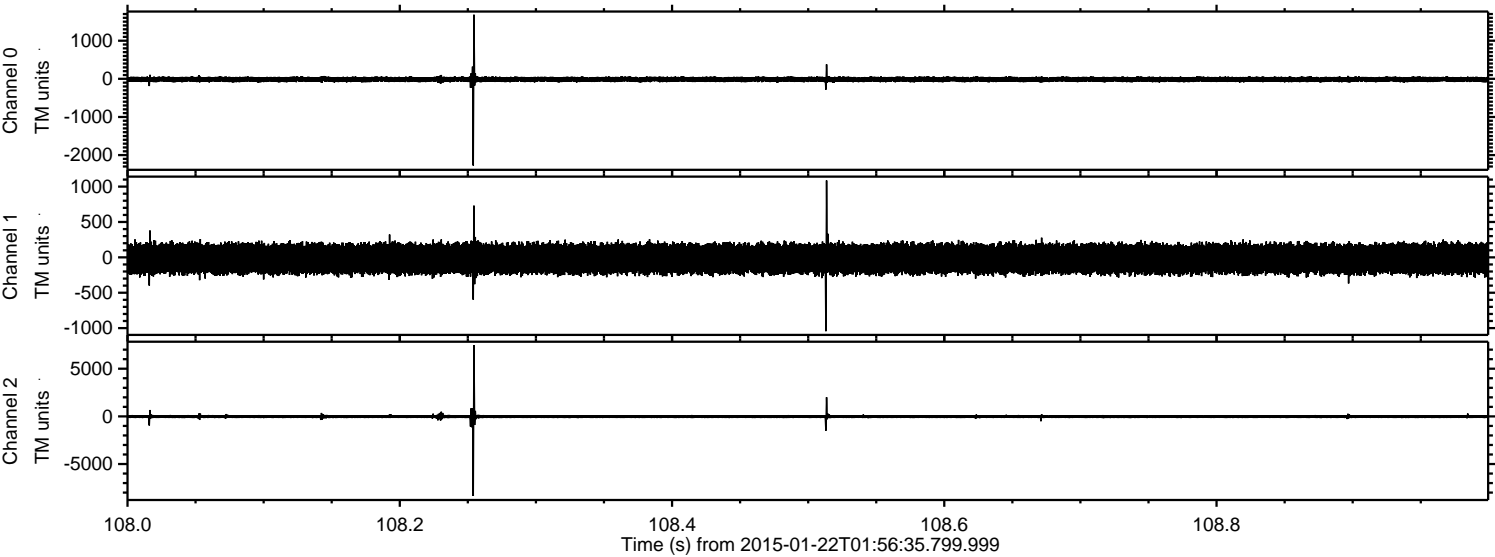
Processed Tue Feb 10 02:35:12 2015 by ELM ver.2012-10-06 from 001\_\_elm20150122\_015634\_\_dat00.bin





ELMAVAN 3D WAVEFORMS (Measured data sampled at 50 kHz) 49666 packets of 144 samples from 2015-01-22T01:56:35.799.999. Part 109/144

Processed Tue Feb 10 02:35:13 2015 by ELM ver.2012-10-06 from 001\_\_elm20150122\_015634\_\_dat00.bin



Channel 0  
mn: -2273  
mx: 1681  
 $\mu$ : -14.4  
 $\sigma$ : 41.7

Channel 1  
mn: -1044  
mx: 1087  
 $\mu$ : -20.2  
 $\sigma$ : 112.5

Channel 2  
mn: -8356  
mx: 7461  
 $\mu$ : -23.3  
 $\sigma$ : 136.7



Processed Tue Feb 10 02:35:14 2015 by ELM ver.2012-10-06 from 001\_\_elm20150122\_015634\_\_dat00.bin

