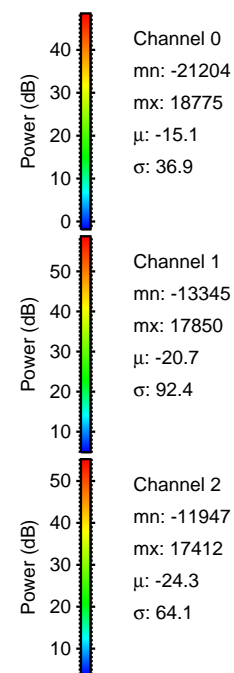
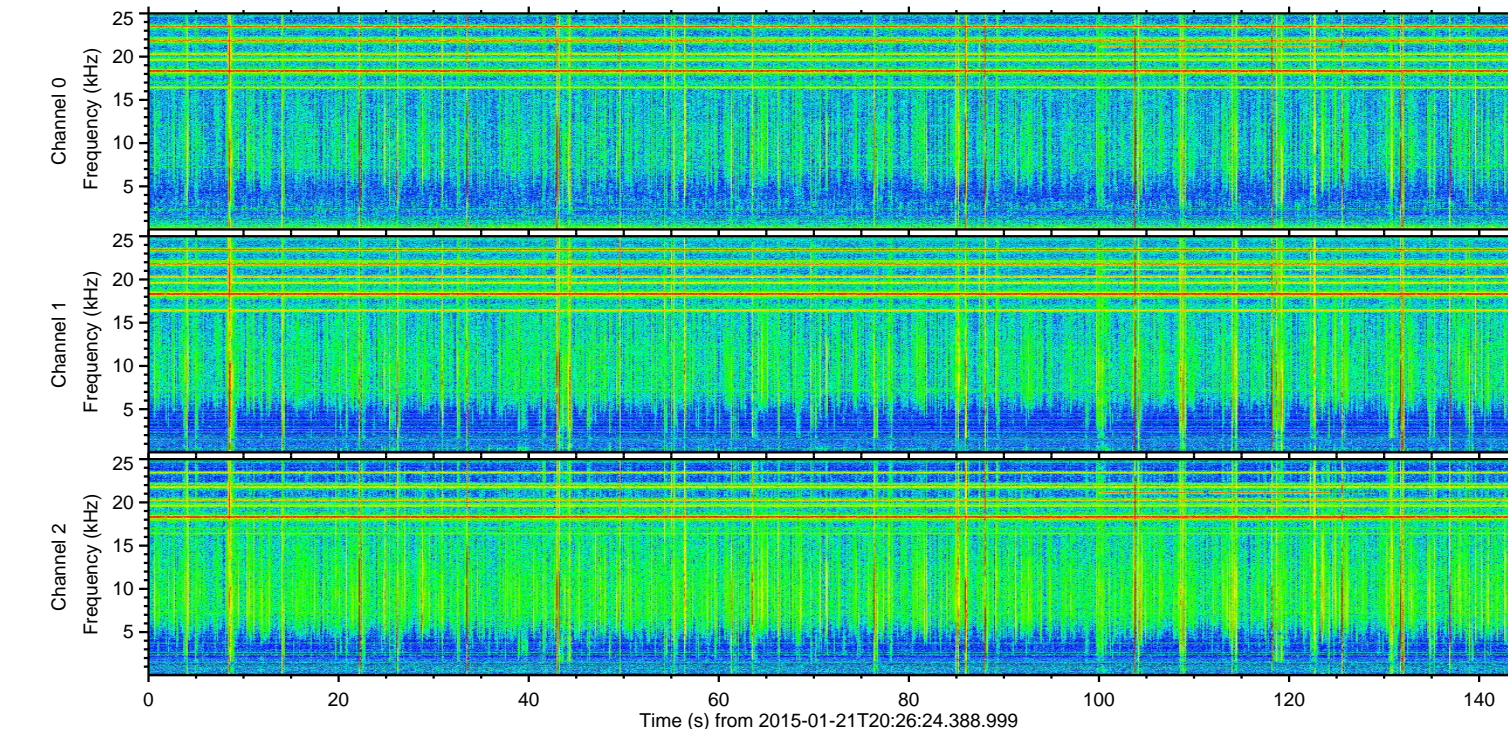
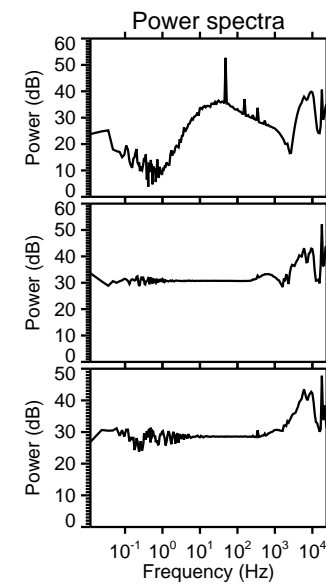
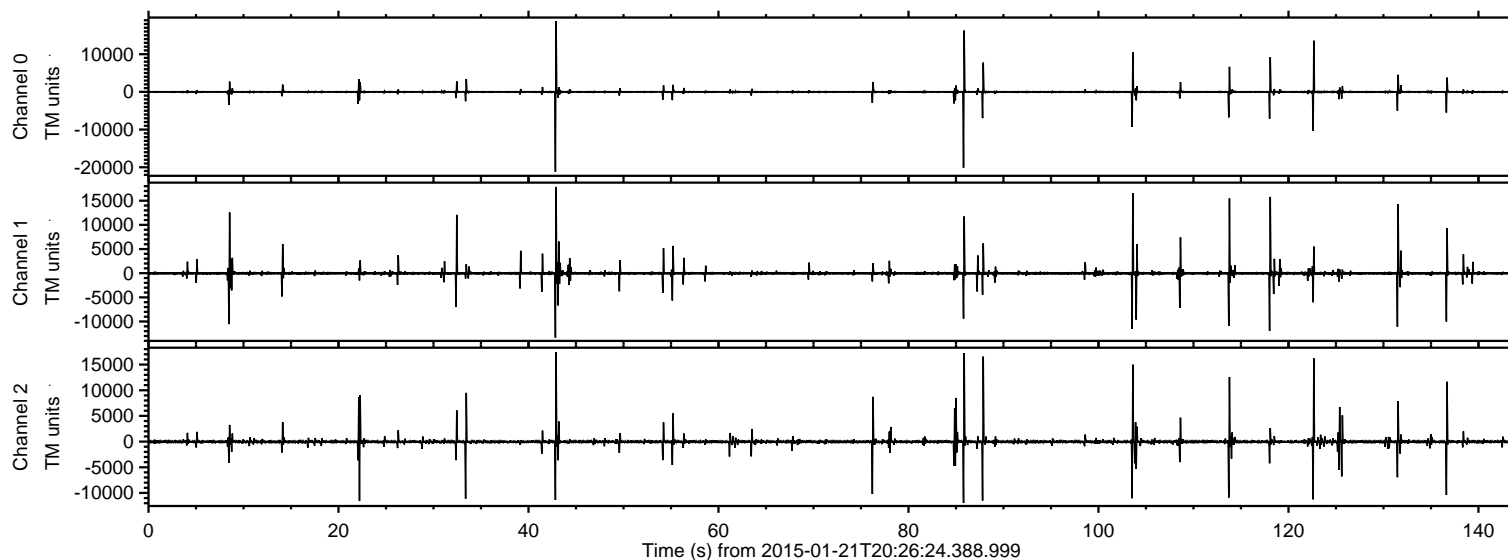


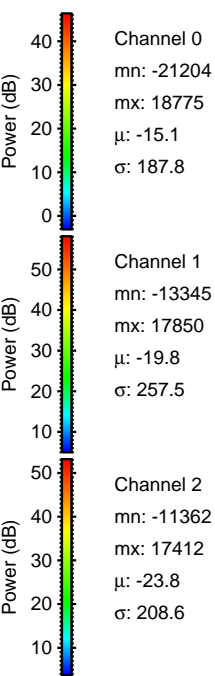
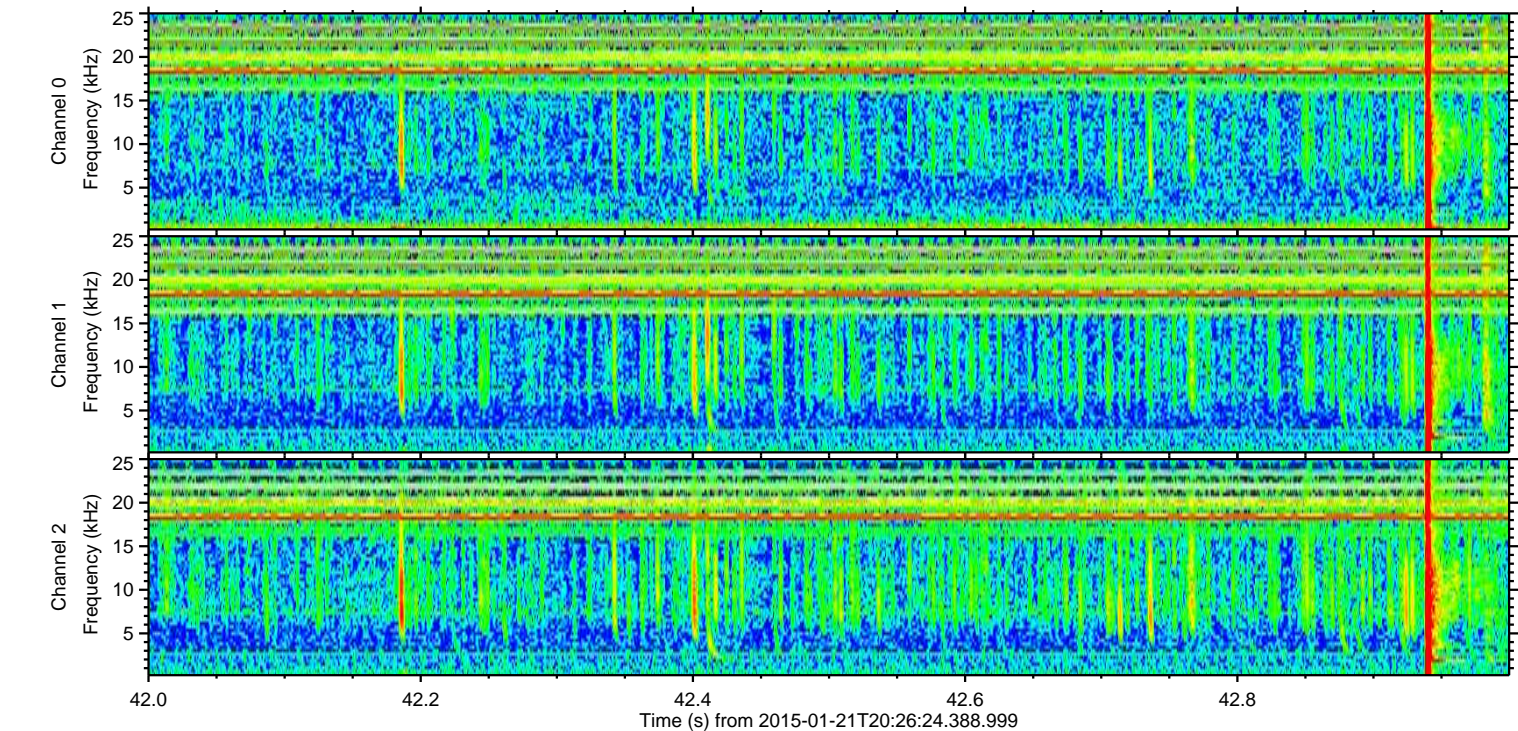
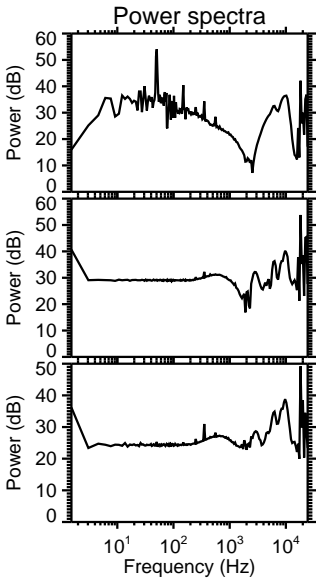
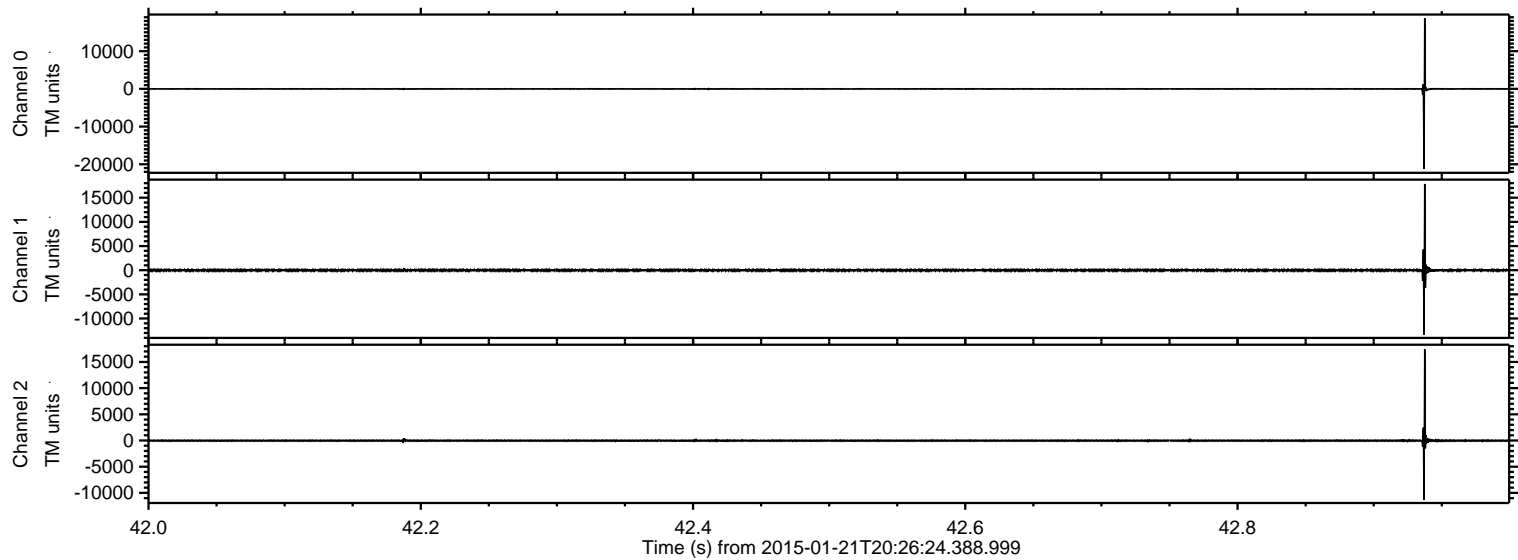
ELMAVAN 3D WAVEFORMS (Measured data sampled at 50 kHz) 49733 packets of 144 samples from 2015-01-21T20:26:24.388.999.

Processed Tue Feb 10 00:01:24 2015 by ELM ver.2012-10-06 from 001__elm20150121_202623__dat00.bin

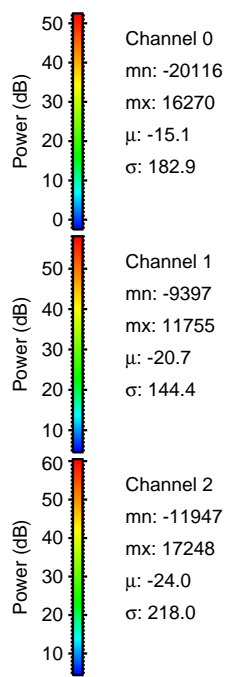
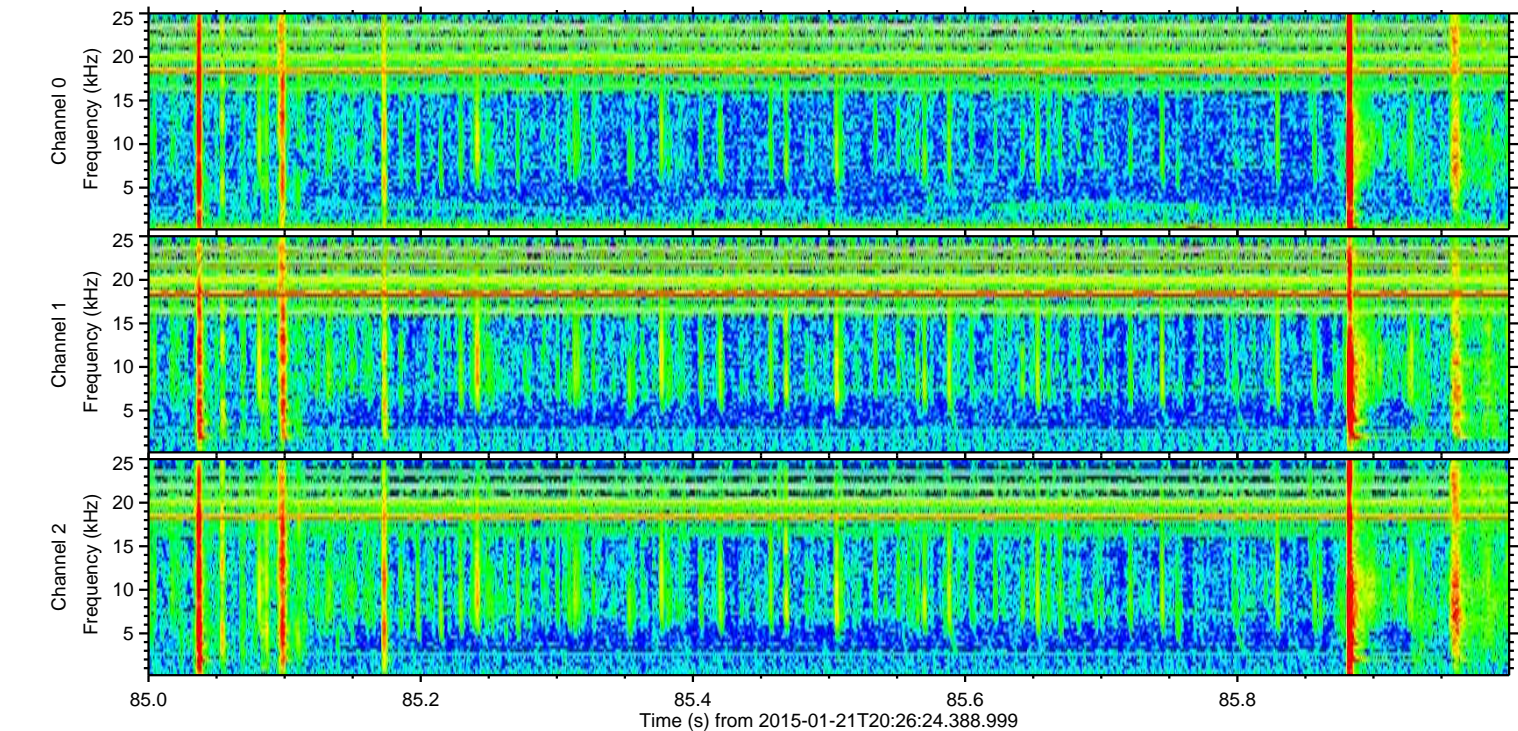
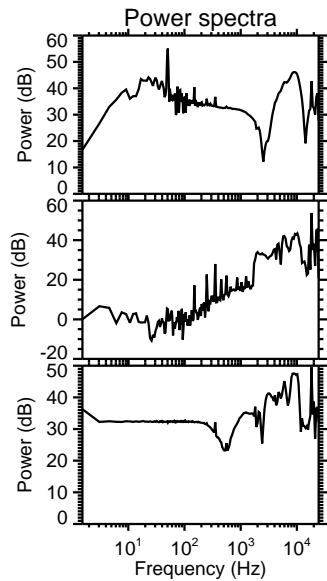
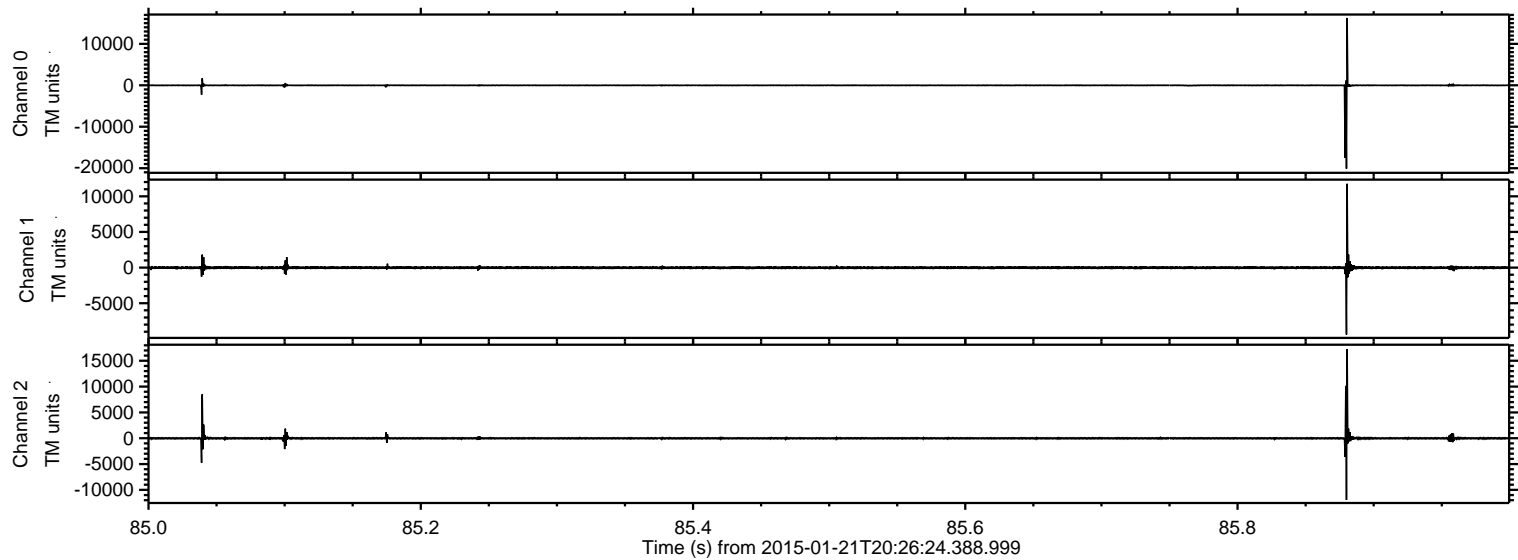


ELMAVAN 3D WAVEFORMS (Measured data sampled at 50 kHz) 49733 packets of 144 samples from 2015-01-21T20:26:24.388.999. Part 43/144

Processed Tue Feb 10 00:01:40 2015 by ELM ver.2012-10-06 from 001__elm20150121_202623__dat00.bin

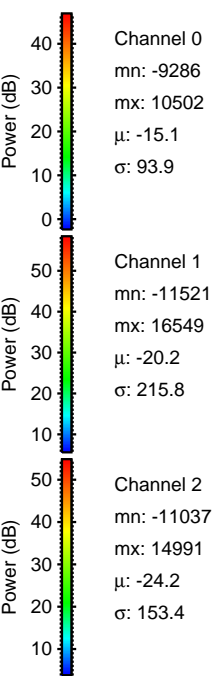
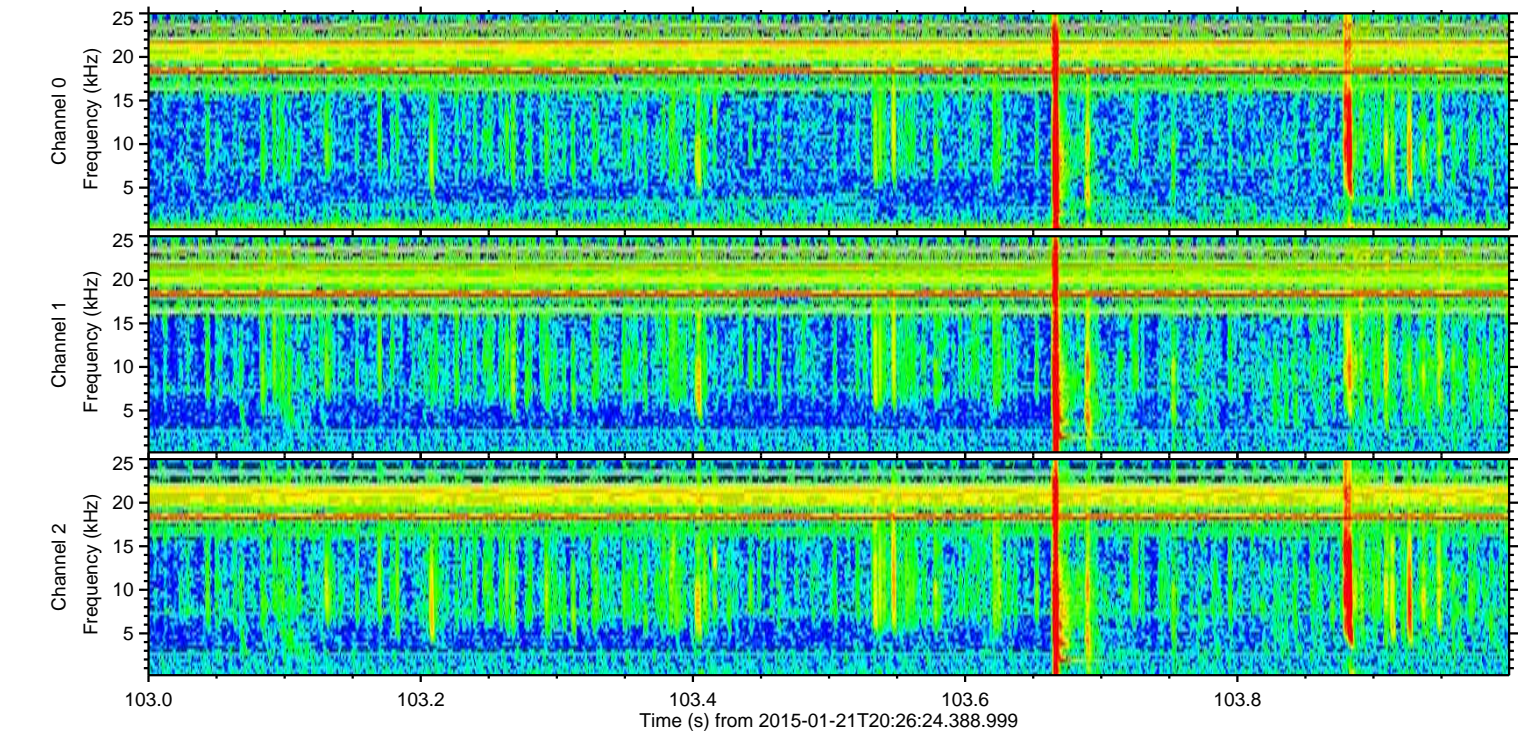
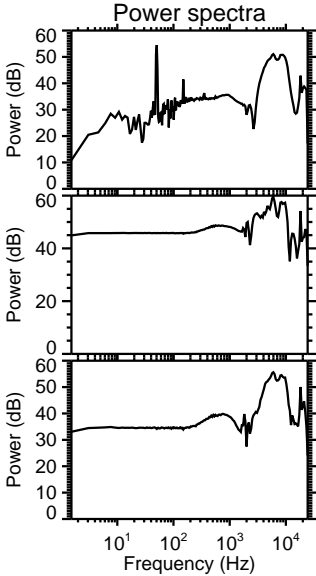
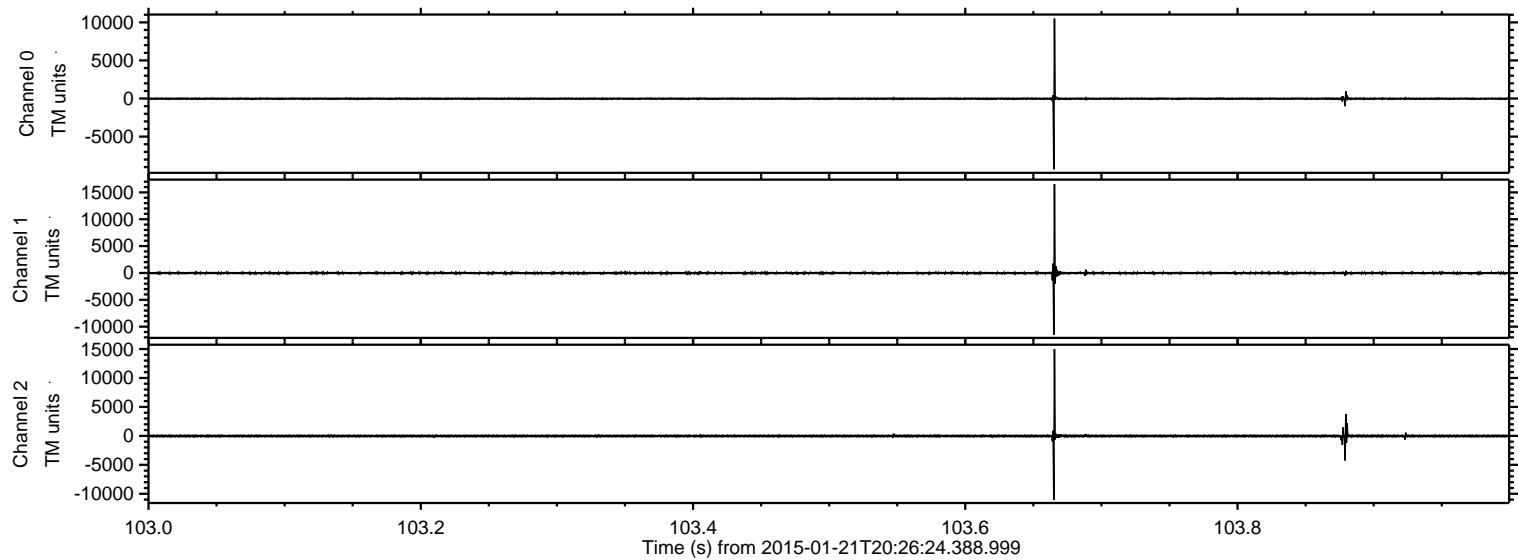


Processed Tue Feb 10 00:01:41 2015 by ELM ver.2012-10-06 from 001__elm20150121_202623__dat00.bin



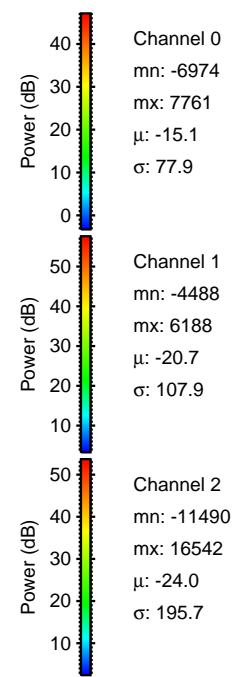
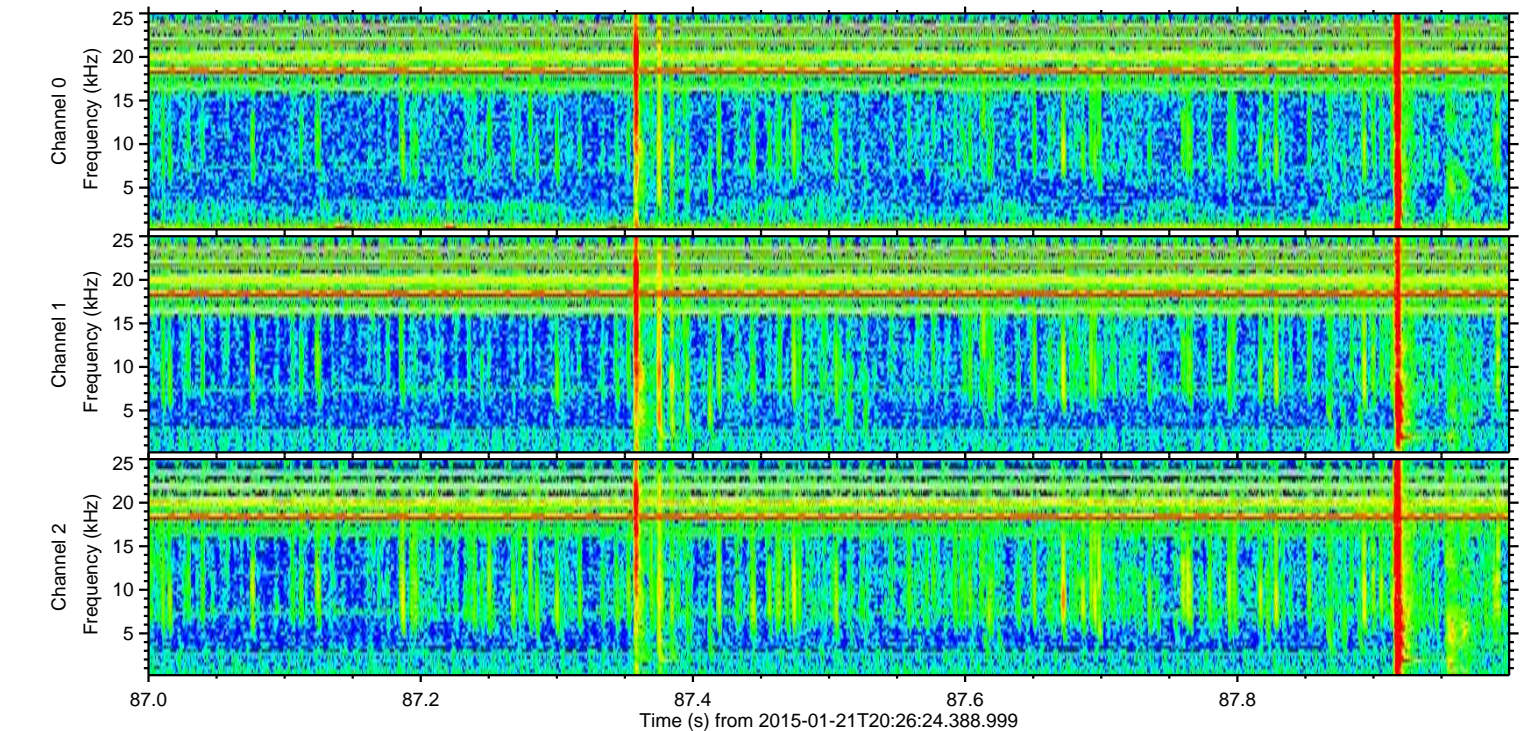
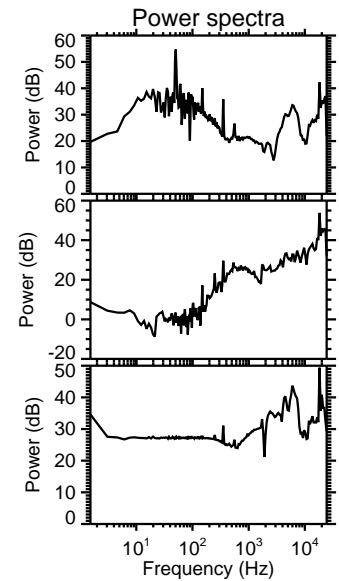
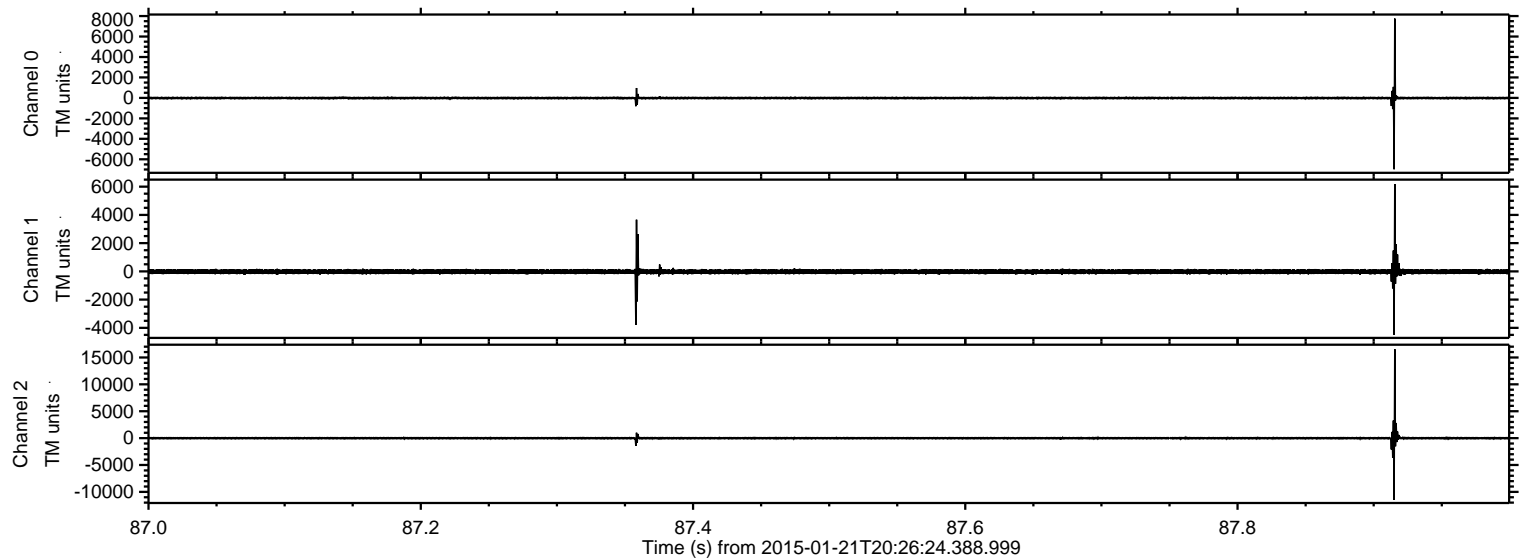
ELMAVAN 3D WAVEFORMS (Measured data sampled at 50 kHz) 49733 packets of 144 samples from 2015-01-21T20:26:24.388.999. Part 104/144

Processed Tue Feb 10 00:01:42 2015 by ELM ver.2012-10-06 from 001__elm20150121_202623__dat00.bin



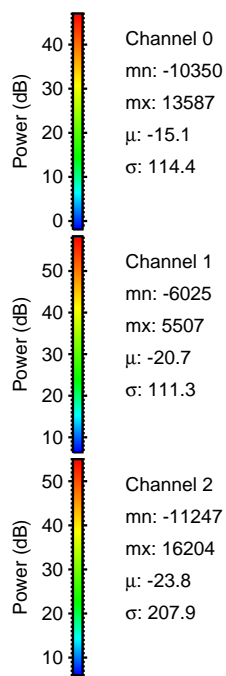
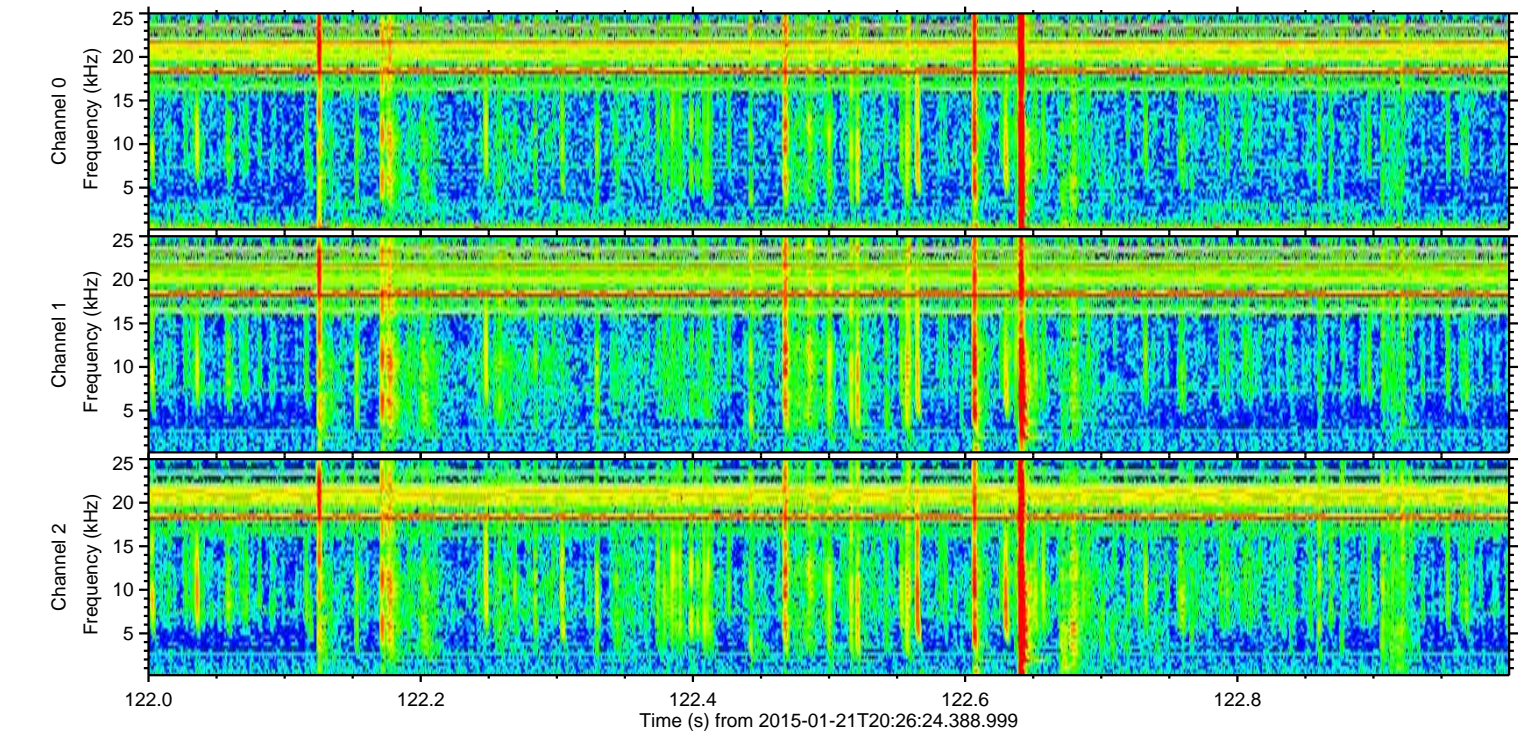
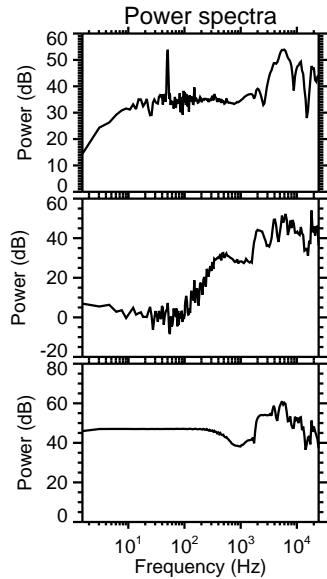
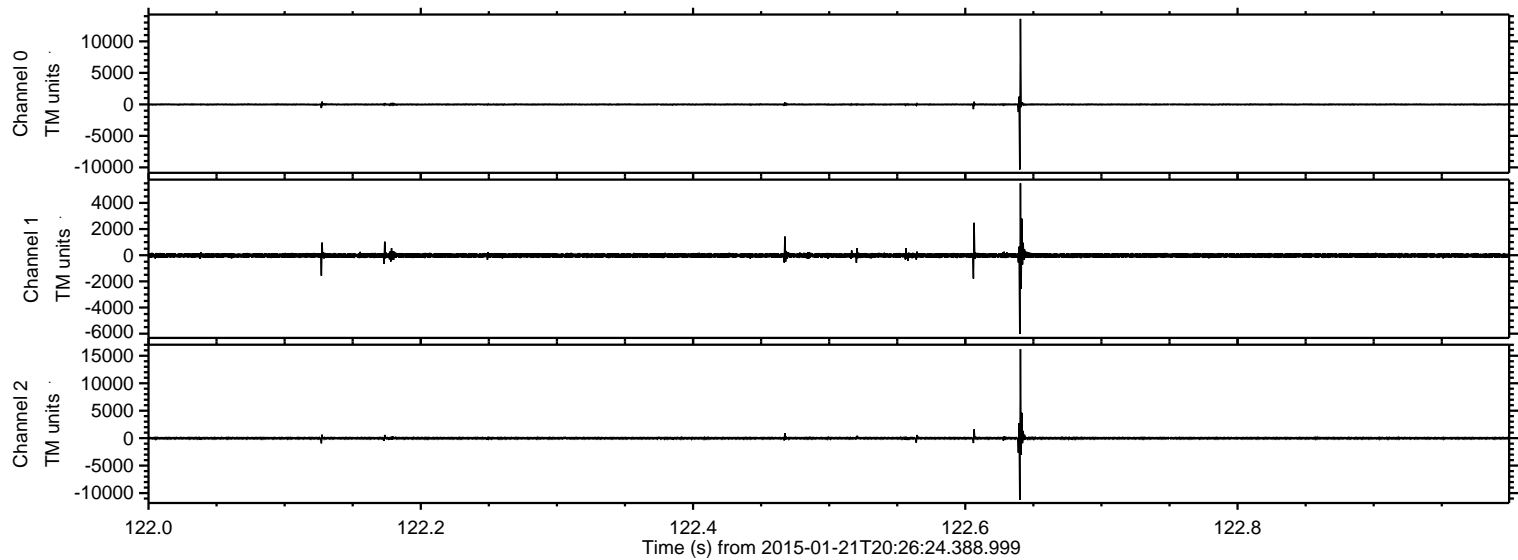
ELMAVAN 3D WAVEFORMS (Measured data sampled at 50 kHz) 49733 packets of 144 samples from 2015-01-21T20:26:24.388.999. Part 88/144

Processed Tue Feb 10 00:01:43 2015 by ELM ver.2012-10-06 from 001__elm20150121_202623__dat00.bin



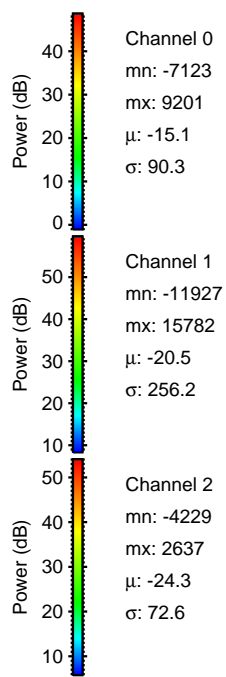
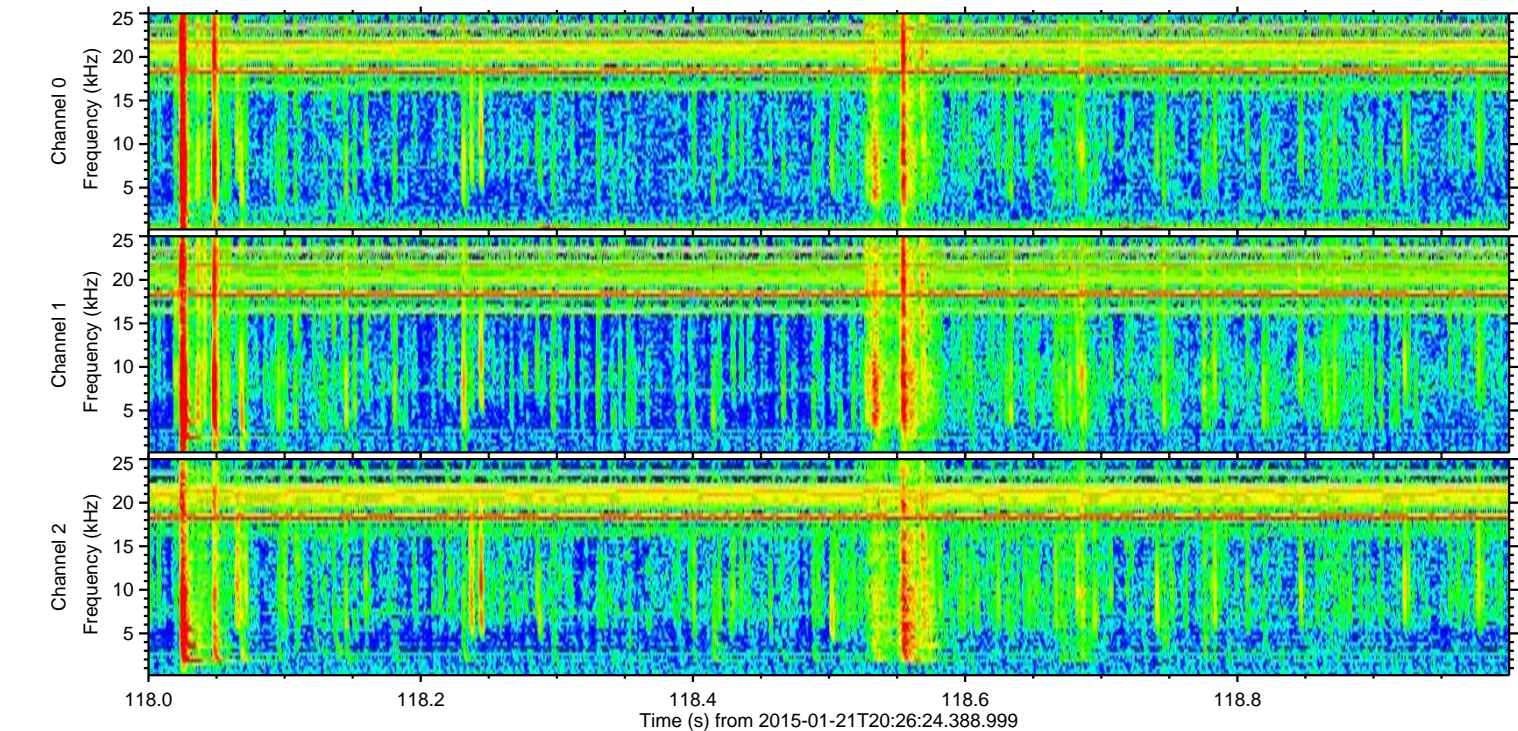
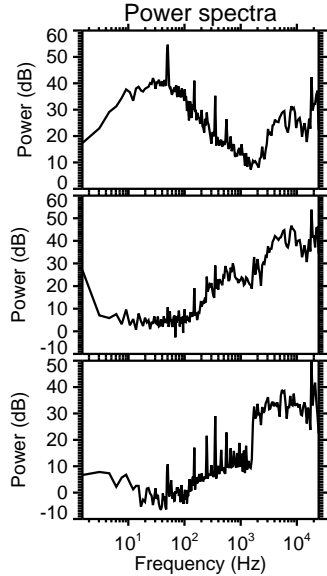
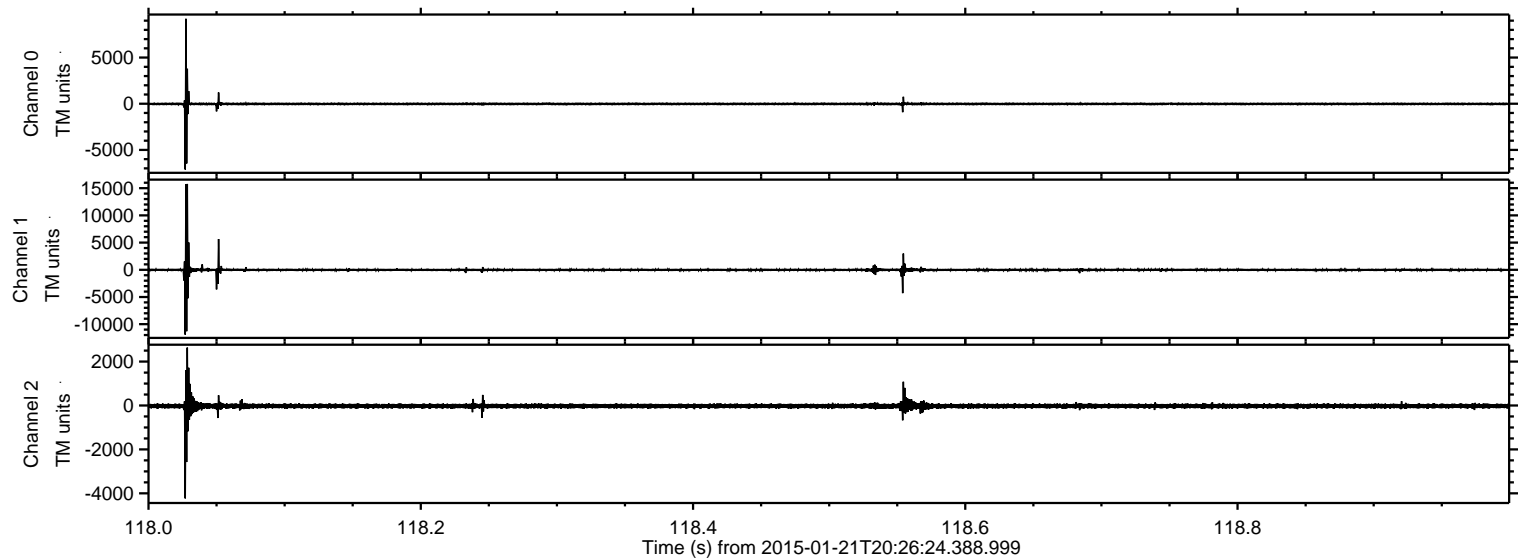
ELMAVAN 3D WAVEFORMS (Measured data sampled at 50 kHz) 49733 packets of 144 samples from 2015-01-21T20:26:24.388.999. Part 123/144

Processed Tue Feb 10 00:01:44 2015 by ELM ver.2012-10-06 from 001__elm20150121_202623__dat00.bin



ELMAVAN 3D WAVEFORMS (Measured data sampled at 50 kHz) 49733 packets of 144 samples from 2015-01-21T20:26:24.388.999. Part 119/144

Processed Tue Feb 10 00:01:45 2015 by ELM ver.2012-10-06 from 001__elm20150121_202623__dat00.bin



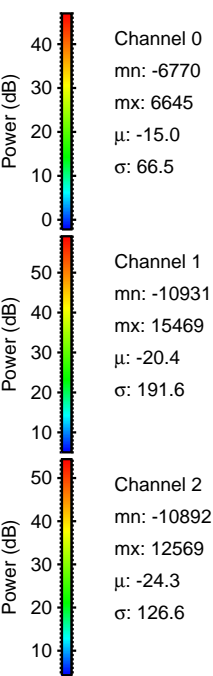
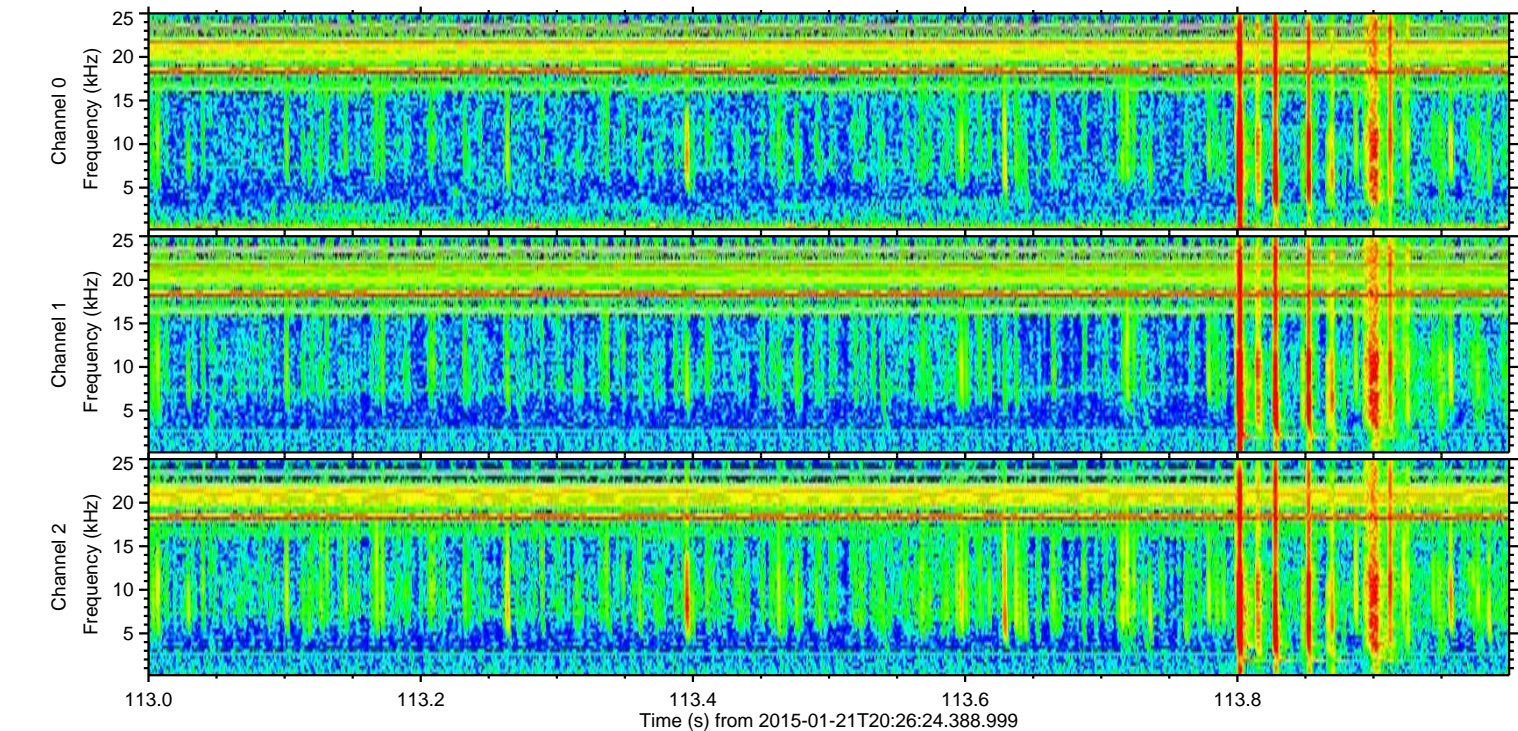
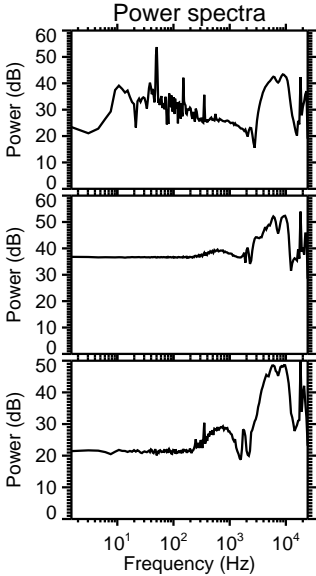
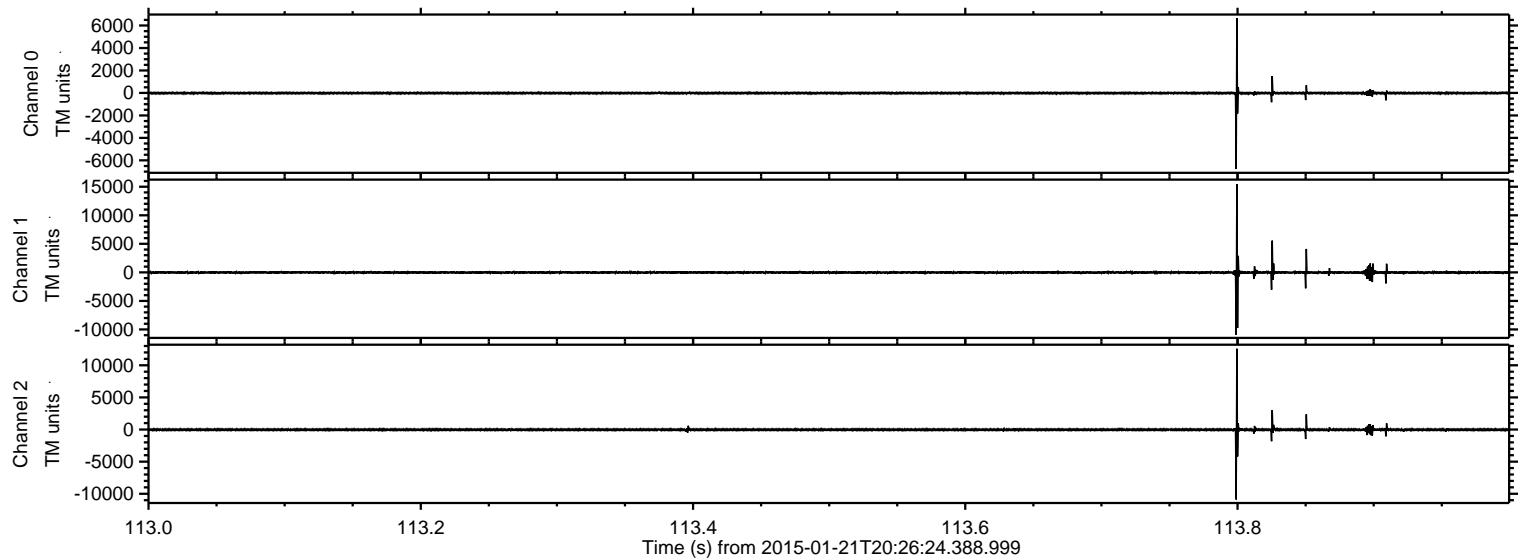
Channel 0
mn: -7123
mx: 9201
 μ : -15.1
 σ : 90.3

Channel 1
mn: -11927
mx: 15782
 μ : -20.5
 σ : 256.2

Channel 2
mn: -4229
mx: 2637
 μ : -24.3
 σ : 72.6

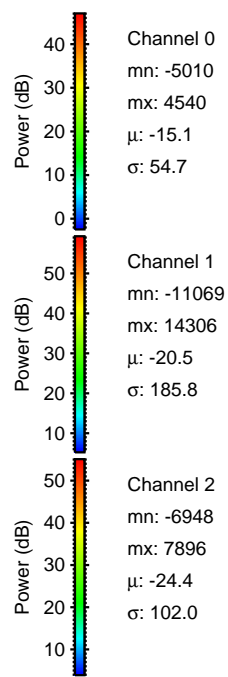
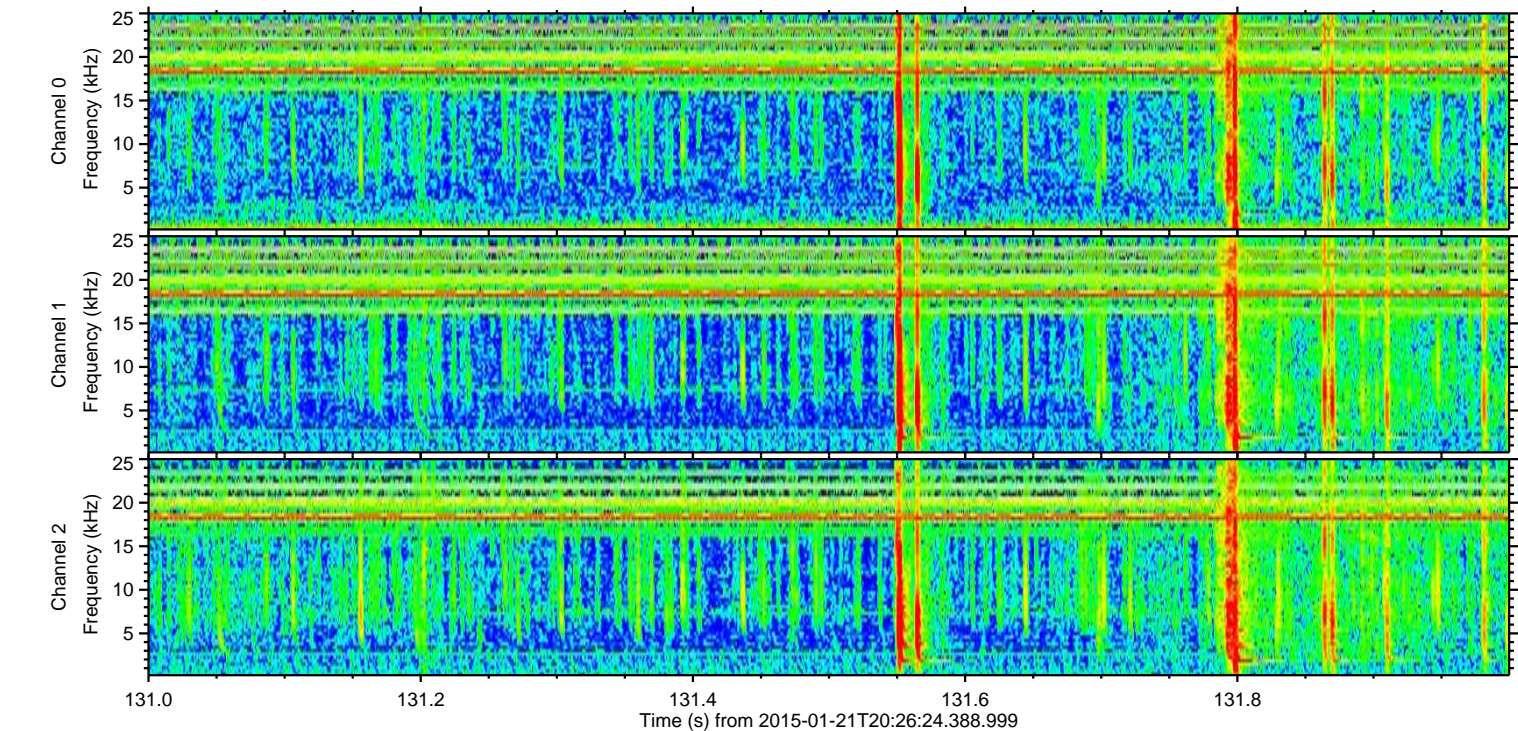
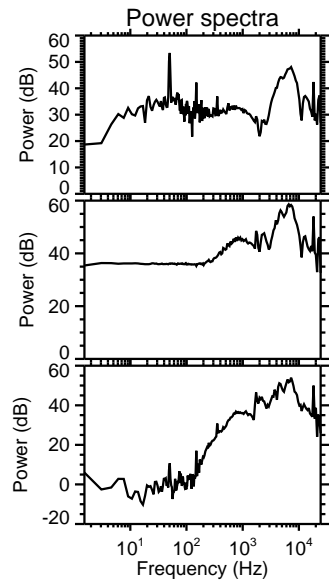
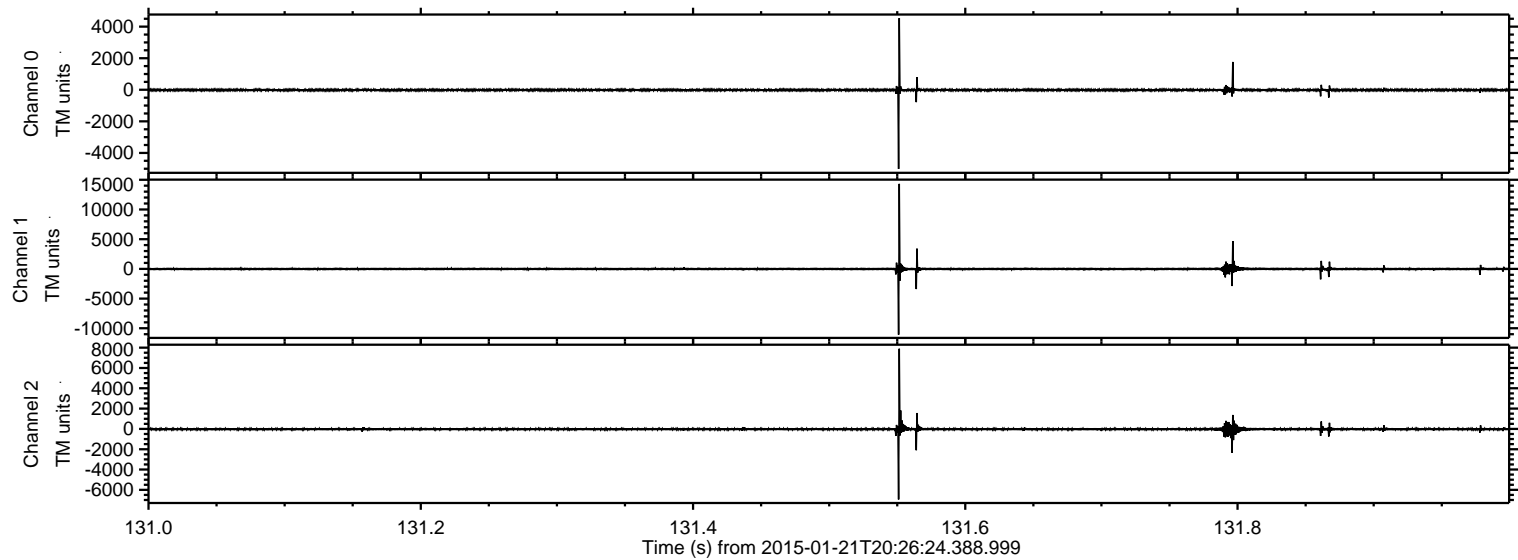
ELMAVAN 3D WAVEFORMS (Measured data sampled at 50 kHz) 49733 packets of 144 samples from 2015-01-21T20:26:24.388.999. Part 114/144

Processed Tue Feb 10 00:01:46 2015 by ELM ver.2012-10-06 from 001__elm20150121_202623__dat00.bin



ELMAVAN 3D WAVEFORMS (Measured data sampled at 50 kHz) 49733 packets of 144 samples from 2015-01-21T20:26:24.388.999. Part 132/144

Processed Tue Feb 10 00:01:47 2015 by ELM ver.2012-10-06 from 001__elm20150121_202623__dat00.bin



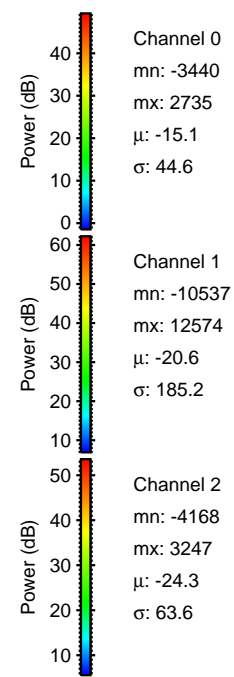
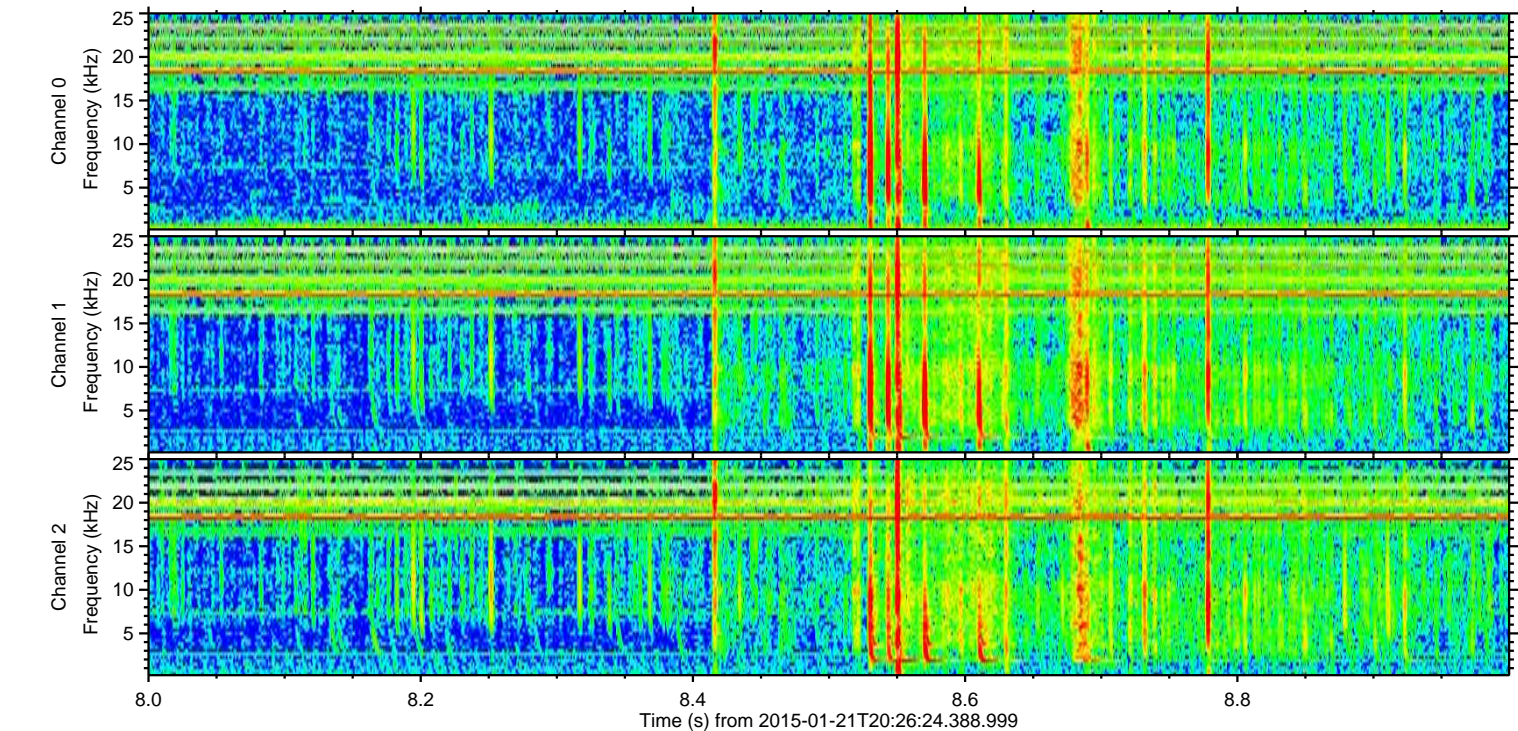
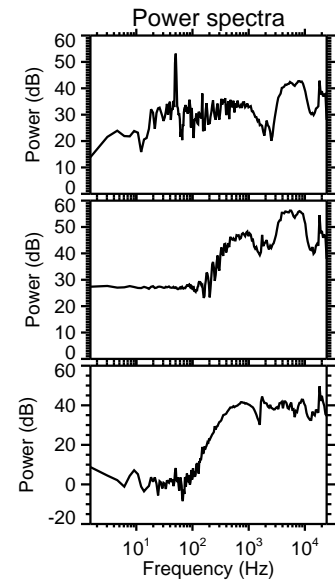
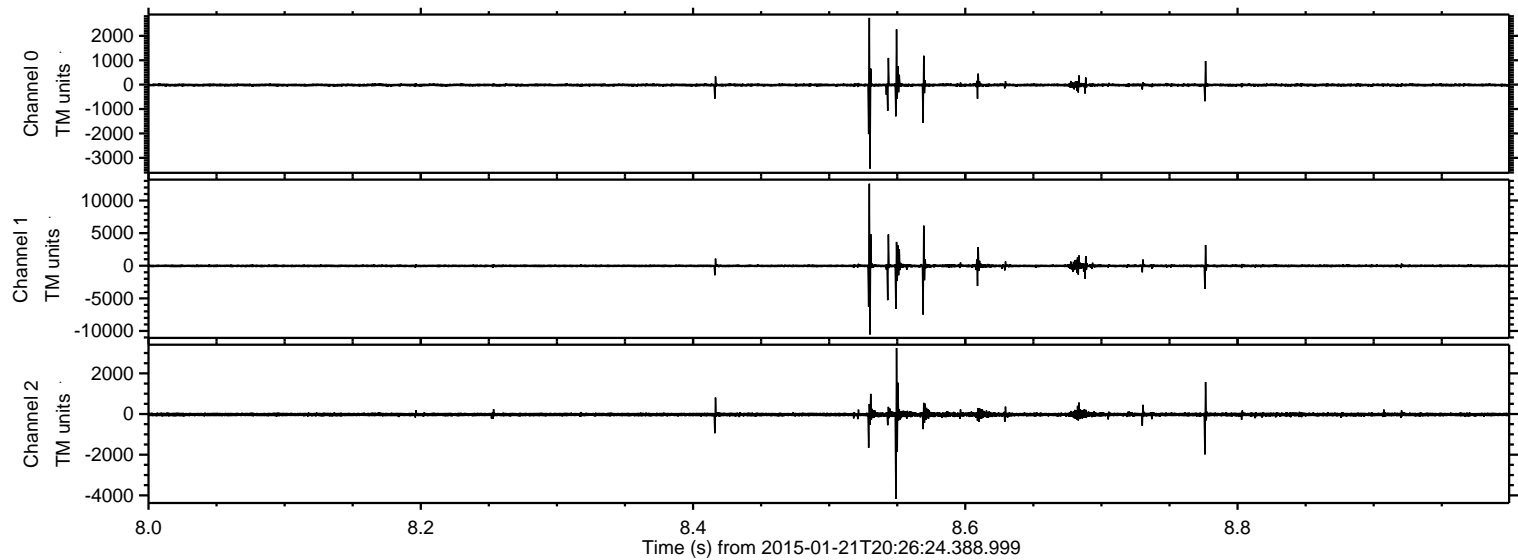
Channel 0
mn: -5010
mx: 4540
 μ : -15.1
 σ : 54.7

Channel 1
mn: -11069
mx: 14306
 μ : -20.5
 σ : 185.8

Channel 2
mn: -6948
mx: 7896
 μ : -24.4
 σ : 102.0

ELMAVAN 3D WAVEFORMS (Measured data sampled at 50 kHz) 49733 packets of 144 samples from 2015-01-21T20:26:24.388.999. Part 9/144

Processed Tue Feb 10 00:01:48 2015 by ELM ver.2012-10-06 from 001__elm20150121_202623__dat00.bin



ELMAVAN 3D WAVEFORMS (Measured data sampled at 50 kHz) 49733 packets of 144 samples from 2015-01-21T20:26:24.388.999. Part 2/144

Processed Tue Feb 10 00:01:49 2015 by ELM ver.2012-10-06 from 001__elm20150121_202623__dat00.bin

