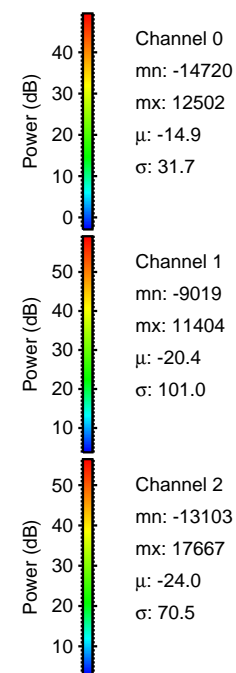
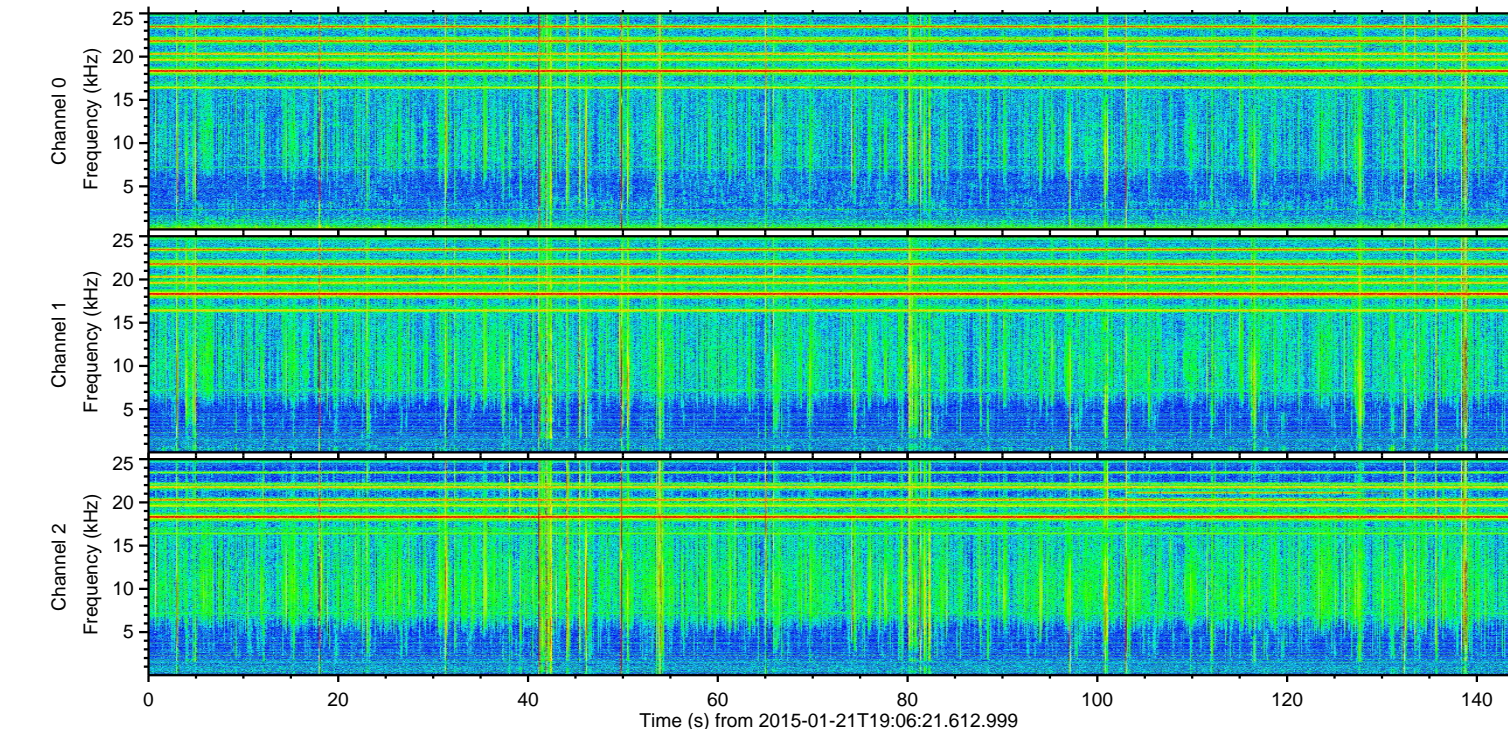
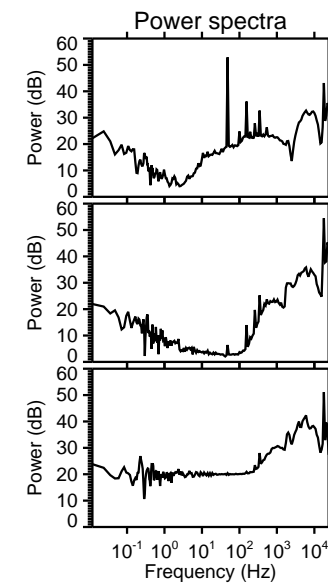
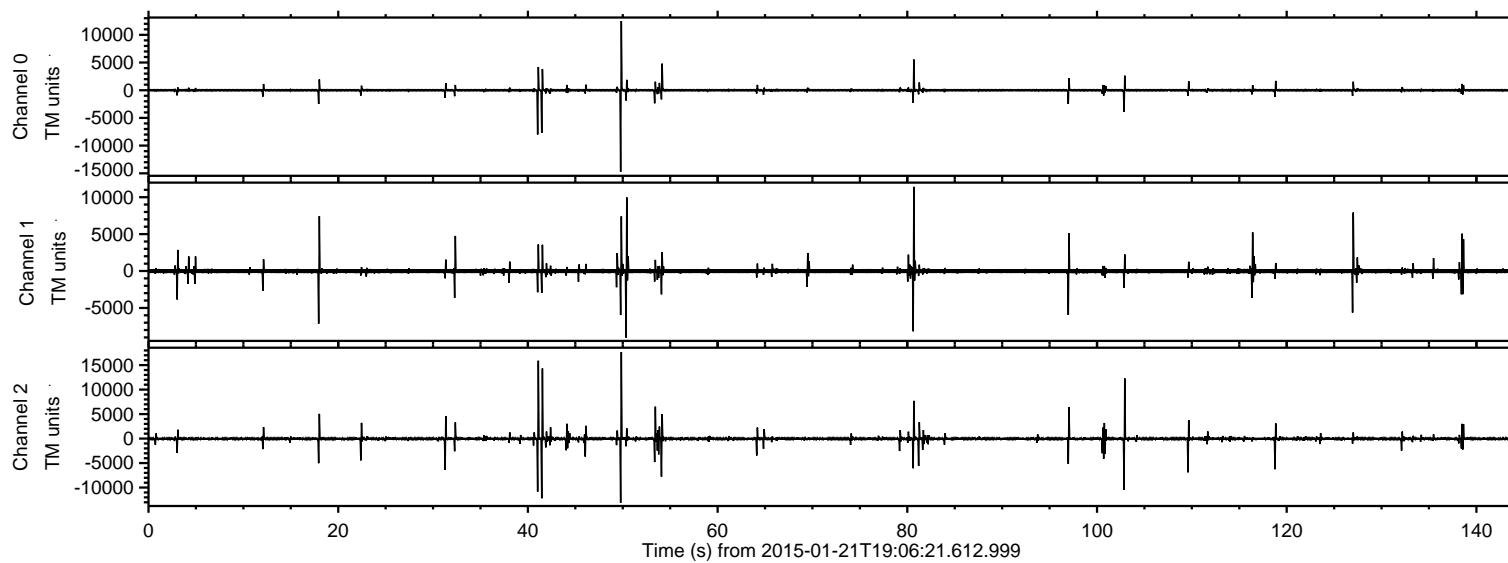


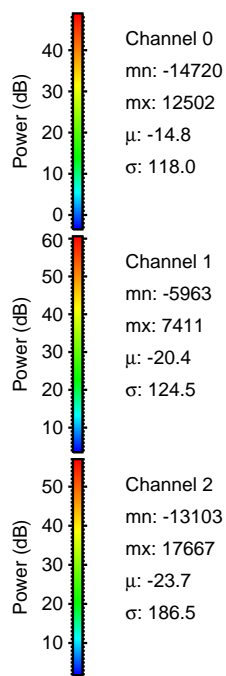
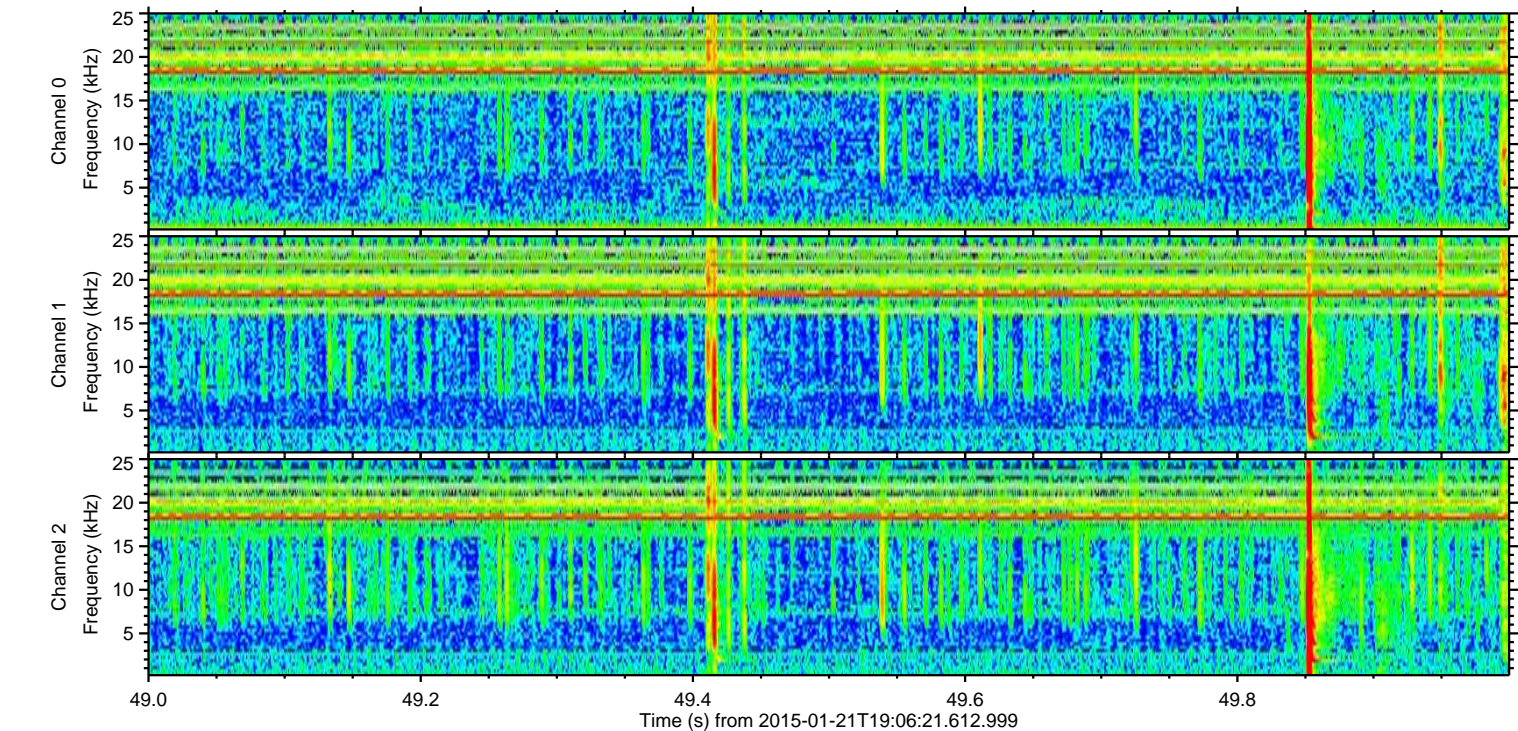
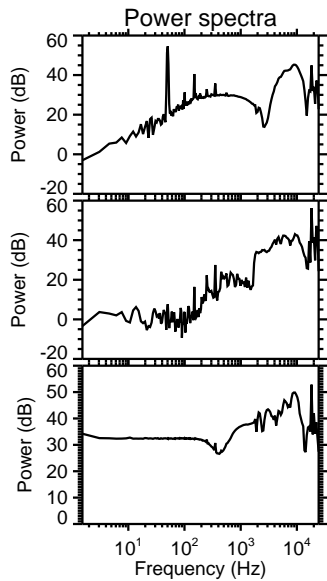
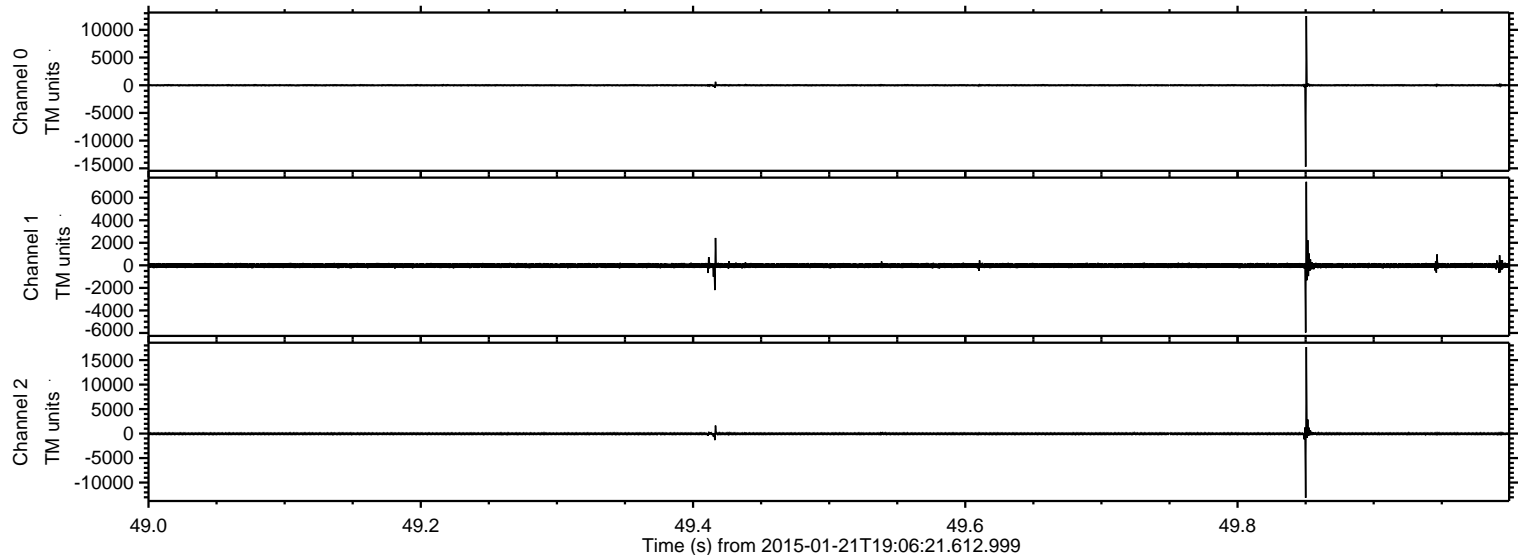
ELMAVAN 3D WAVEFORMS (Measured data sampled at 50 kHz) 49810 packets of 144 samples from 2015-01-21T19:06:21.612.999.

Processed Mon Feb 9 23:22:49 2015 by ELM ver.2012-10-06 from 001__elm20150121_190620__dat00.bin



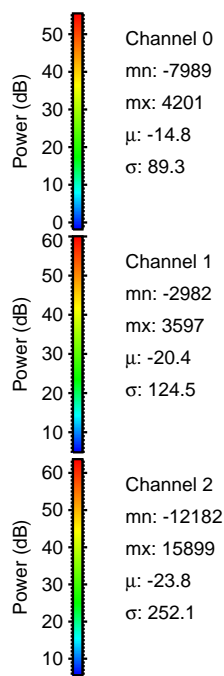
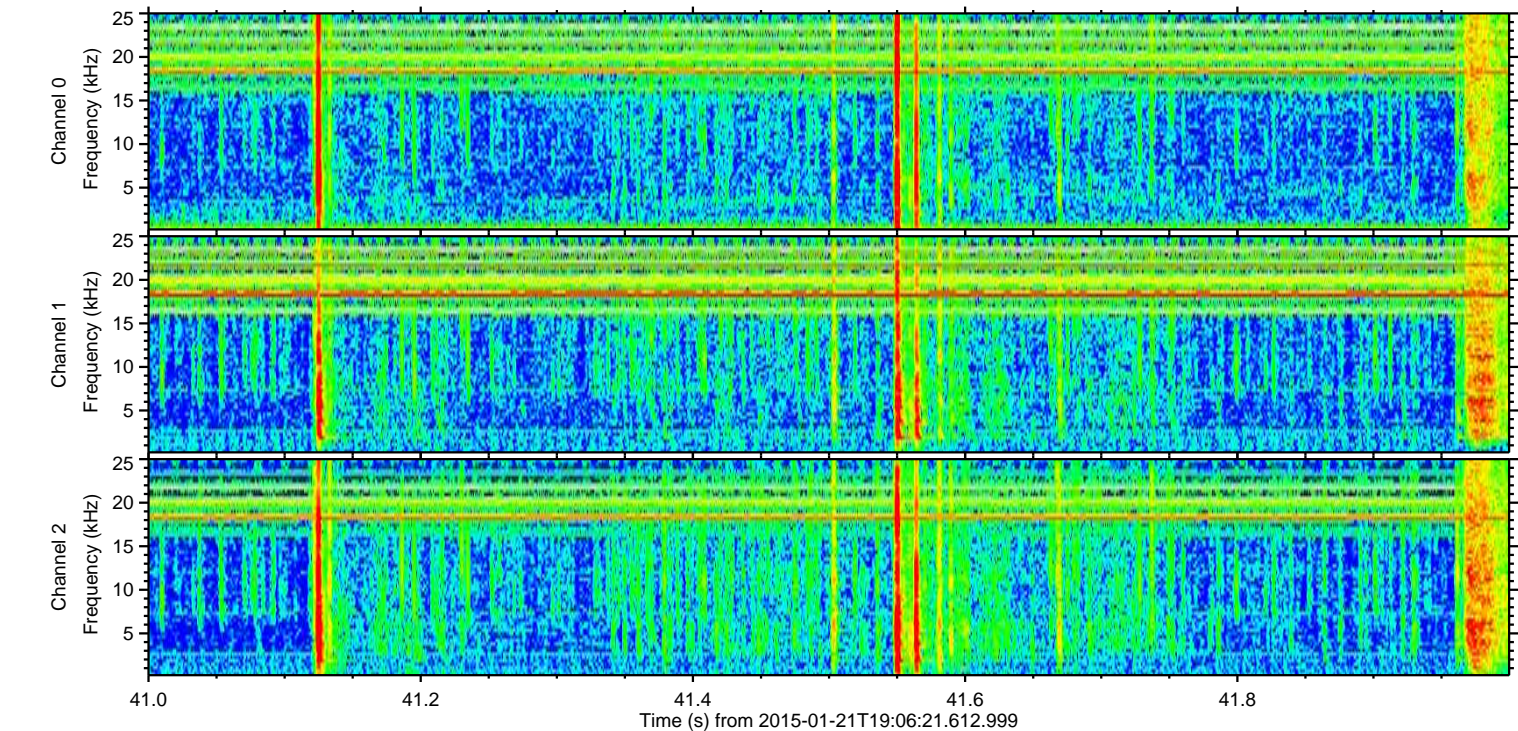
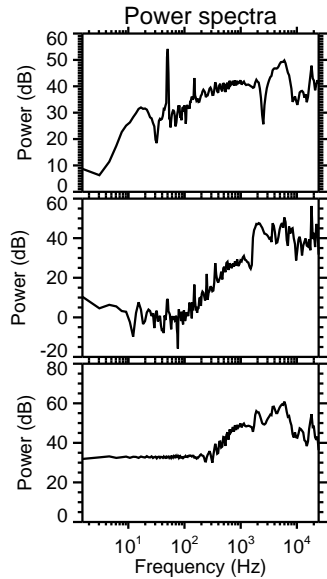
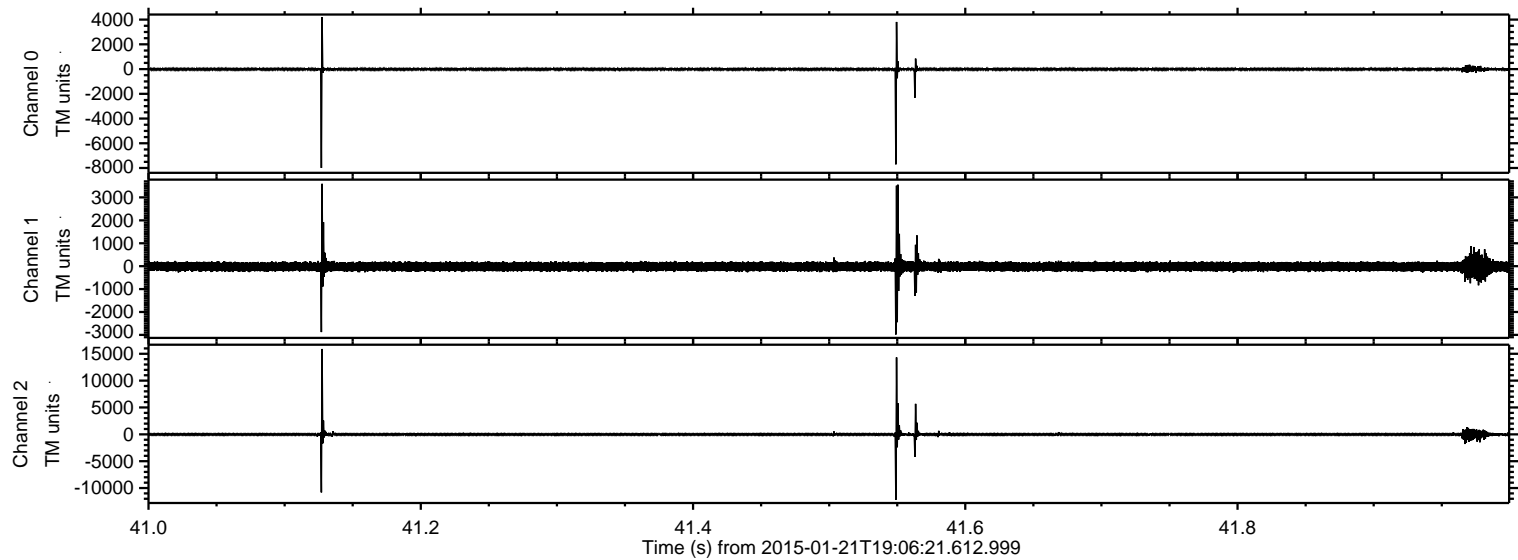
ELMAVAN 3D WAVEFORMS (Measured data sampled at 50 kHz) 49810 packets of 144 samples from 2015-01-21T19:06:21.612.999. Part 50/144

Processed Mon Feb 9 23:23:00 2015 by ELM ver.2012-10-06 from 001__elm20150121_190620__dat00.bin



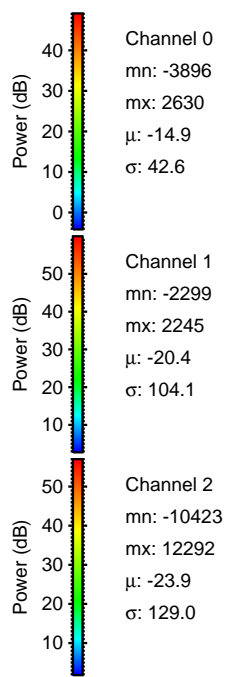
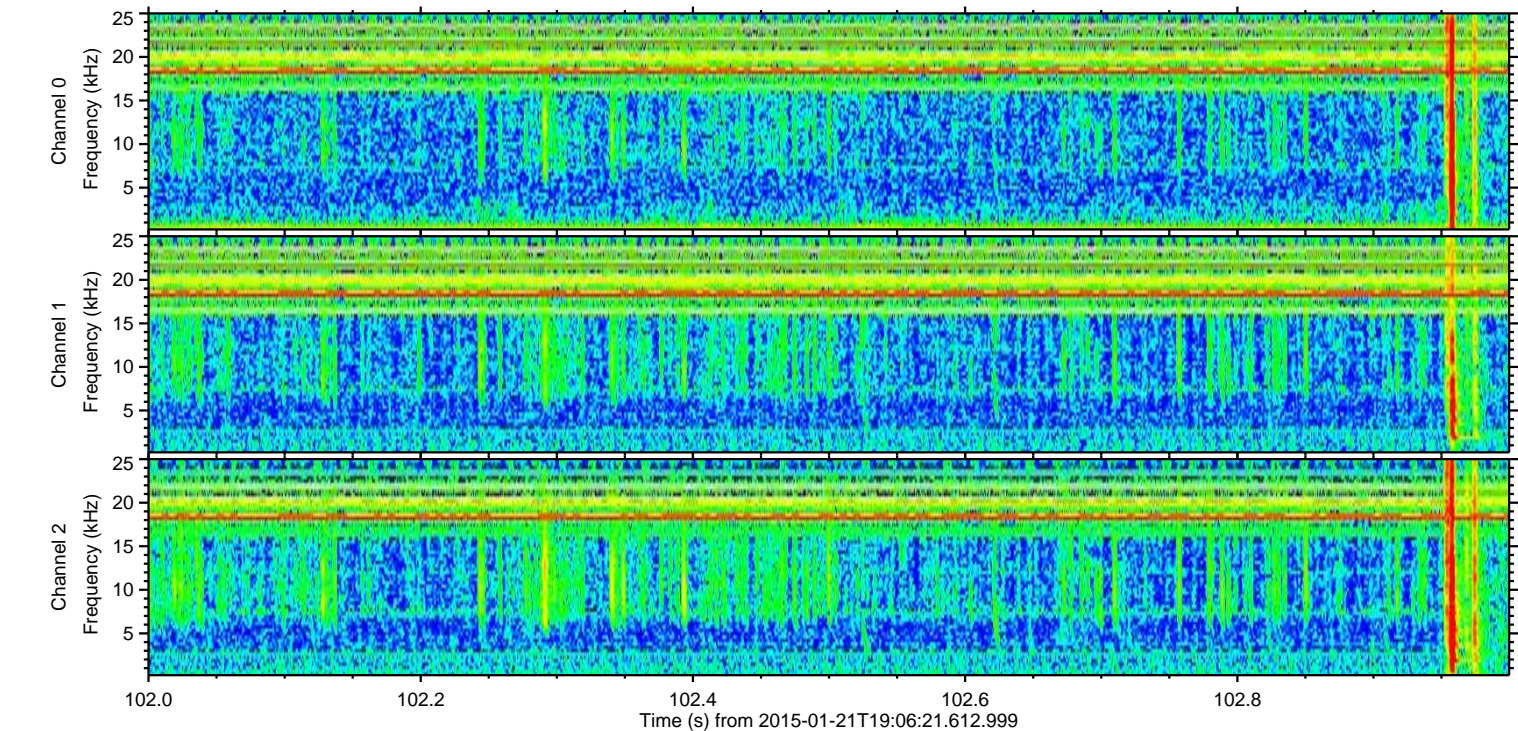
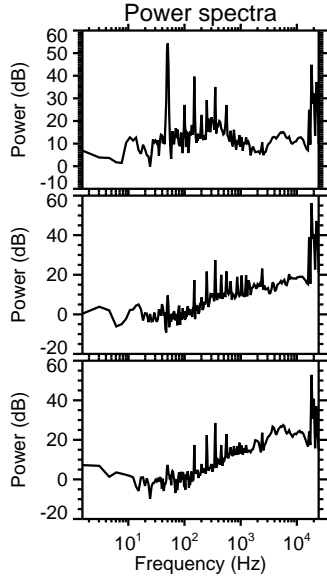
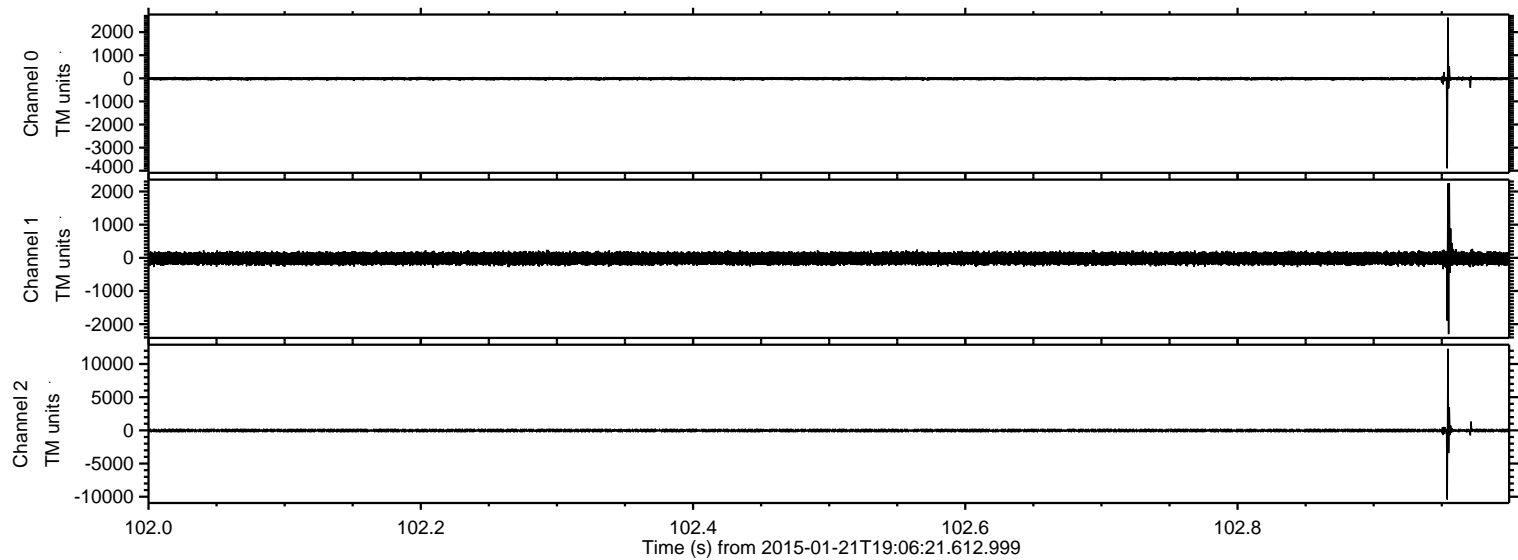
ELMAVAN 3D WAVEFORMS (Measured data sampled at 50 kHz) 49810 packets of 144 samples from 2015-01-21T19:06:21.612.999. Part 42/144

Processed Mon Feb 9 23:23:01 2015 by ELM ver.2012-10-06 from 001__elm20150121_190620__dat00.bin

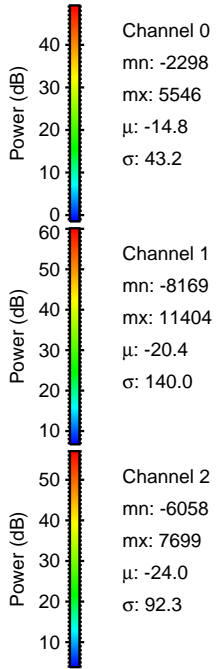
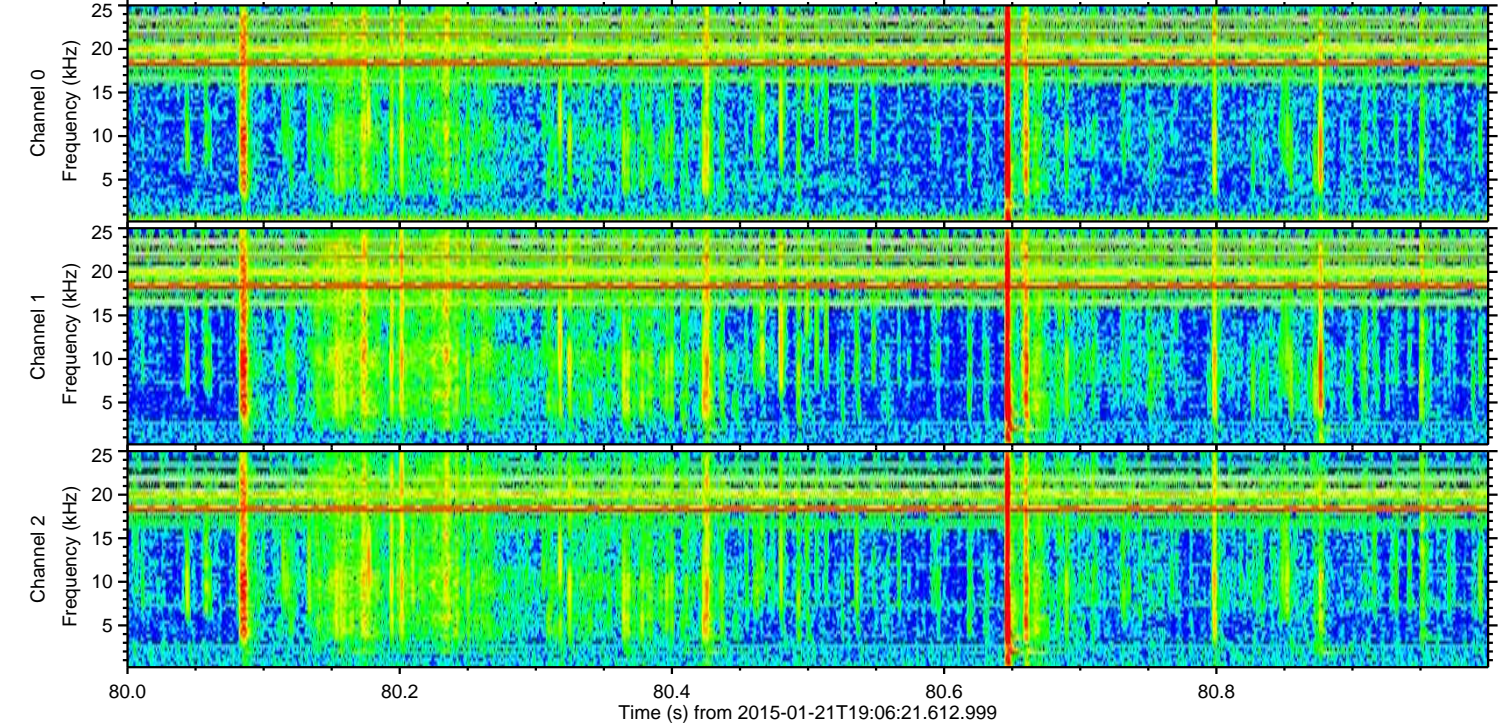
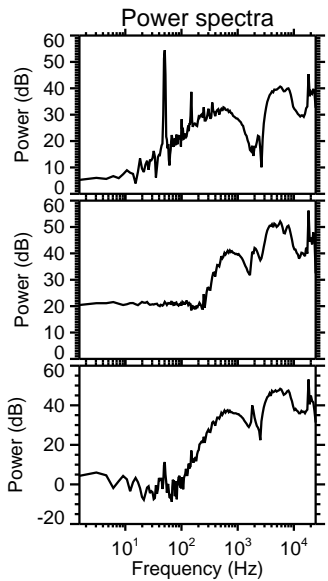
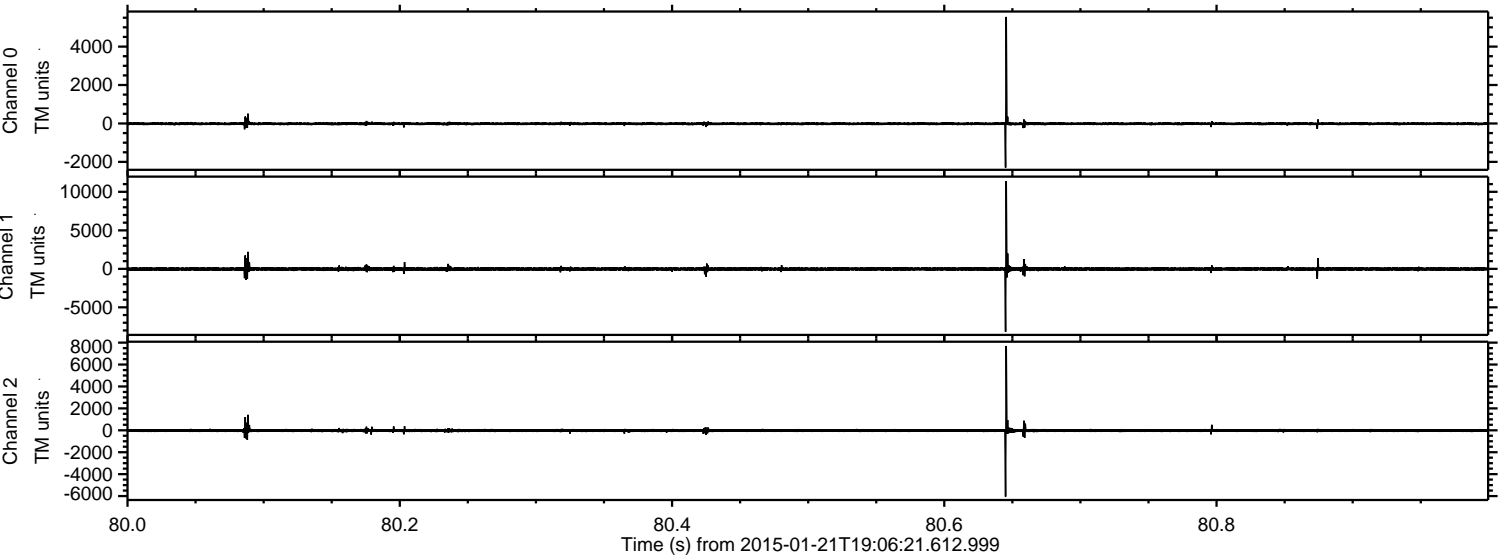


ELMAVAN 3D WAVEFORMS (Measured data sampled at 50 kHz) 49810 packets of 144 samples from 2015-01-21T19:06:21.612.999. Part 103/144

Processed Mon Feb 9 23:23:02 2015 by ELM ver.2012-10-06 from 001__elm20150121_190620__dat00.bin

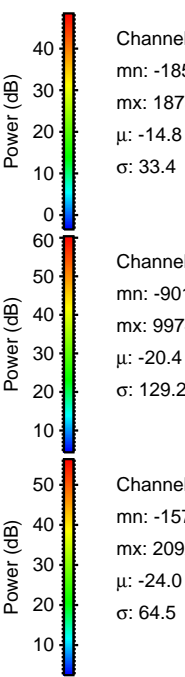
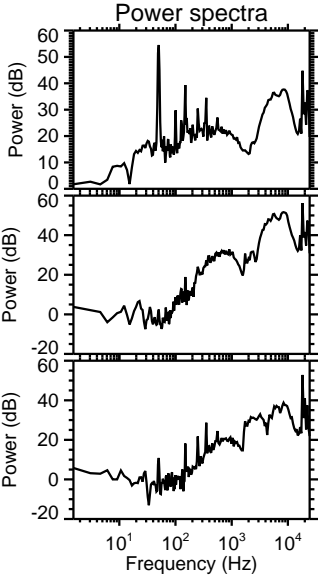
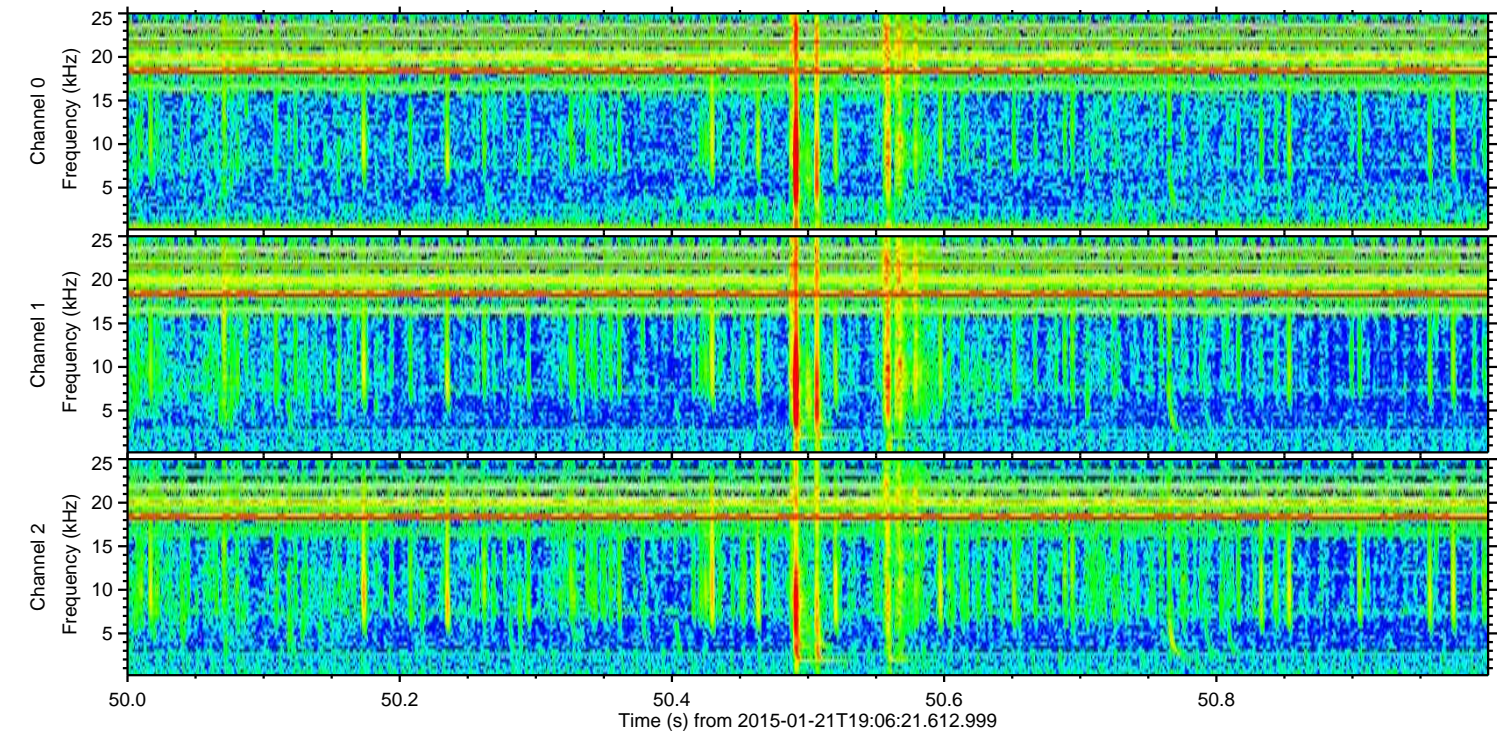
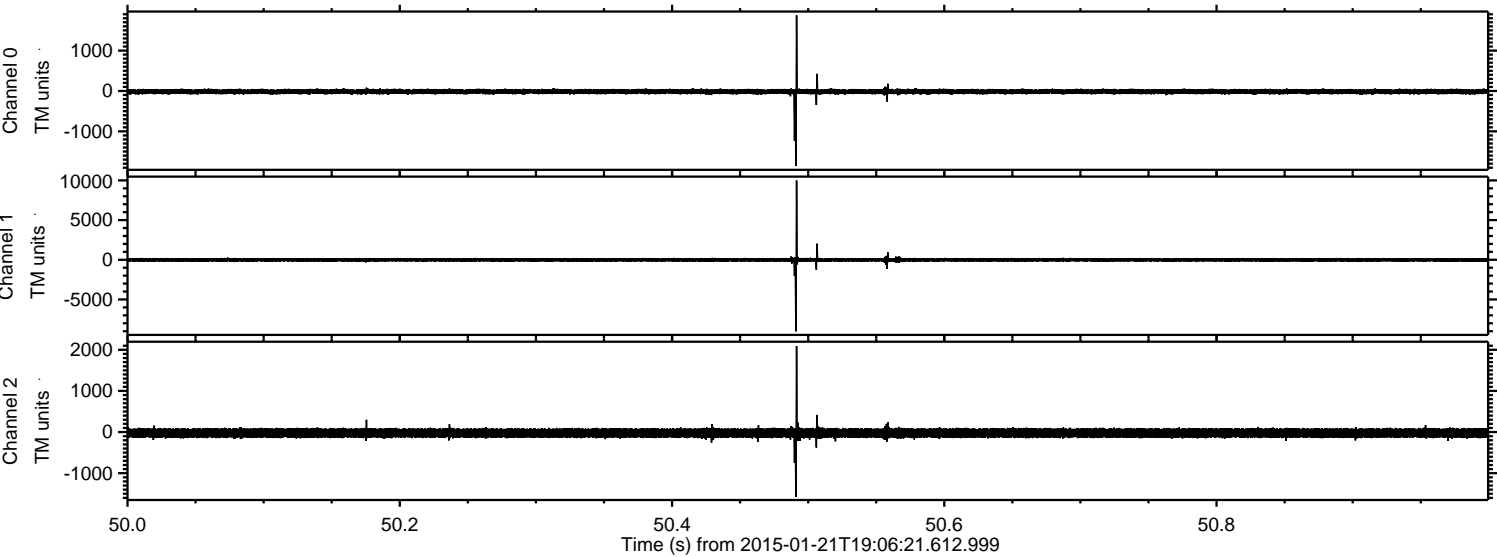


Processed Mon Feb 9 23:23:03 2015 by ELM ver.2012-10-06 from 001__elm20150121_190620__dat00.bin



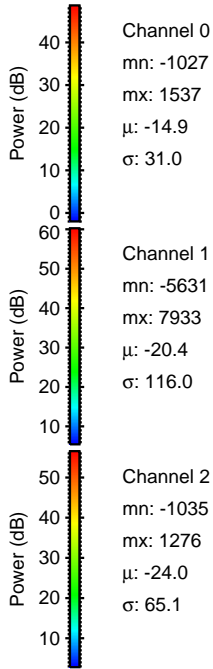
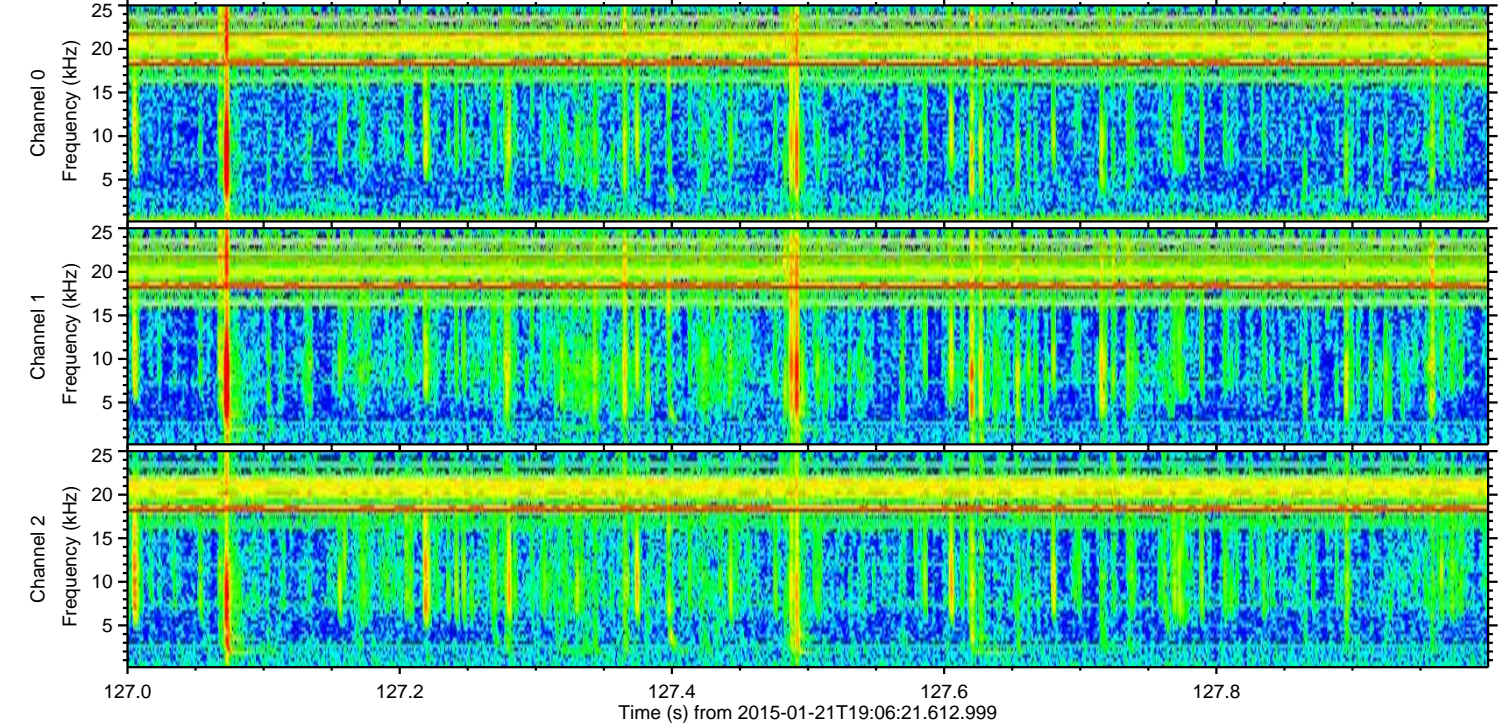
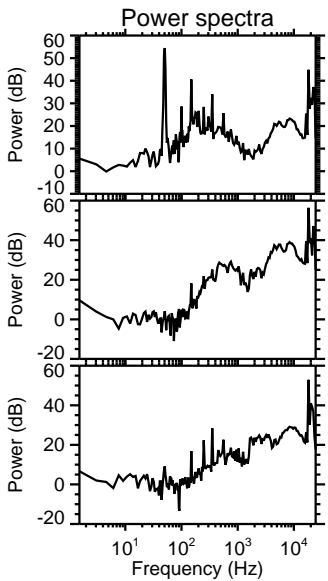
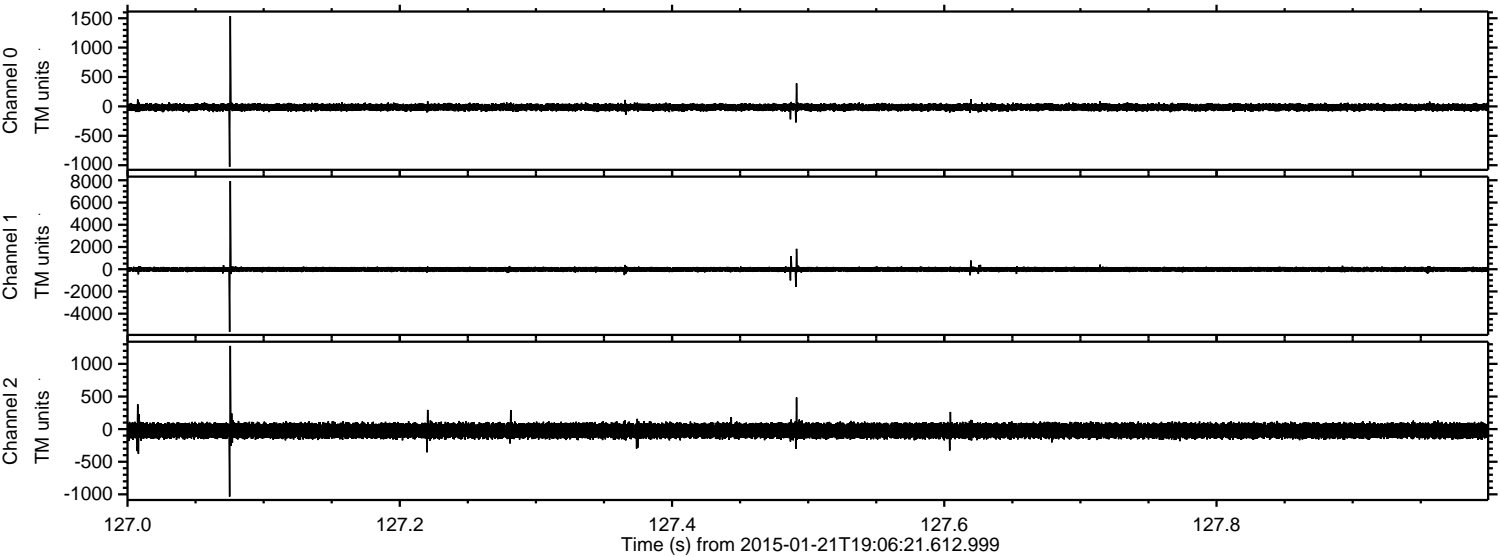
ELMAVAN 3D WAVEFORMS (Measured data sampled at 50 kHz) 49810 packets of 144 samples from 2015-01-21T19:06:21.612.999. Part 51/144

Processed Mon Feb 9 23:23:04 2015 by ELM ver.2012-10-06 from 001__elm20150121_190620__dat00.bin



ELMAVAN 3D WAVEFORMS (Measured data sampled at 50 kHz) 49810 packets of 144 samples from 2015-01-21T19:06:21.612.999. Part 128/144

Processed Mon Feb 9 23:23:05 2015 by ELM ver.2012-10-06 from 001__elm20150121_190620__dat00.bin



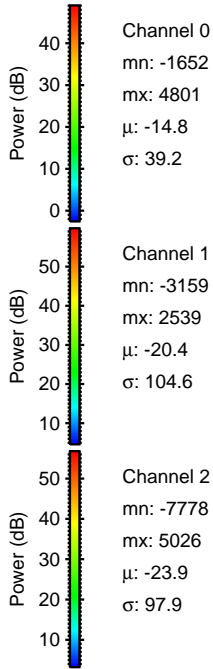
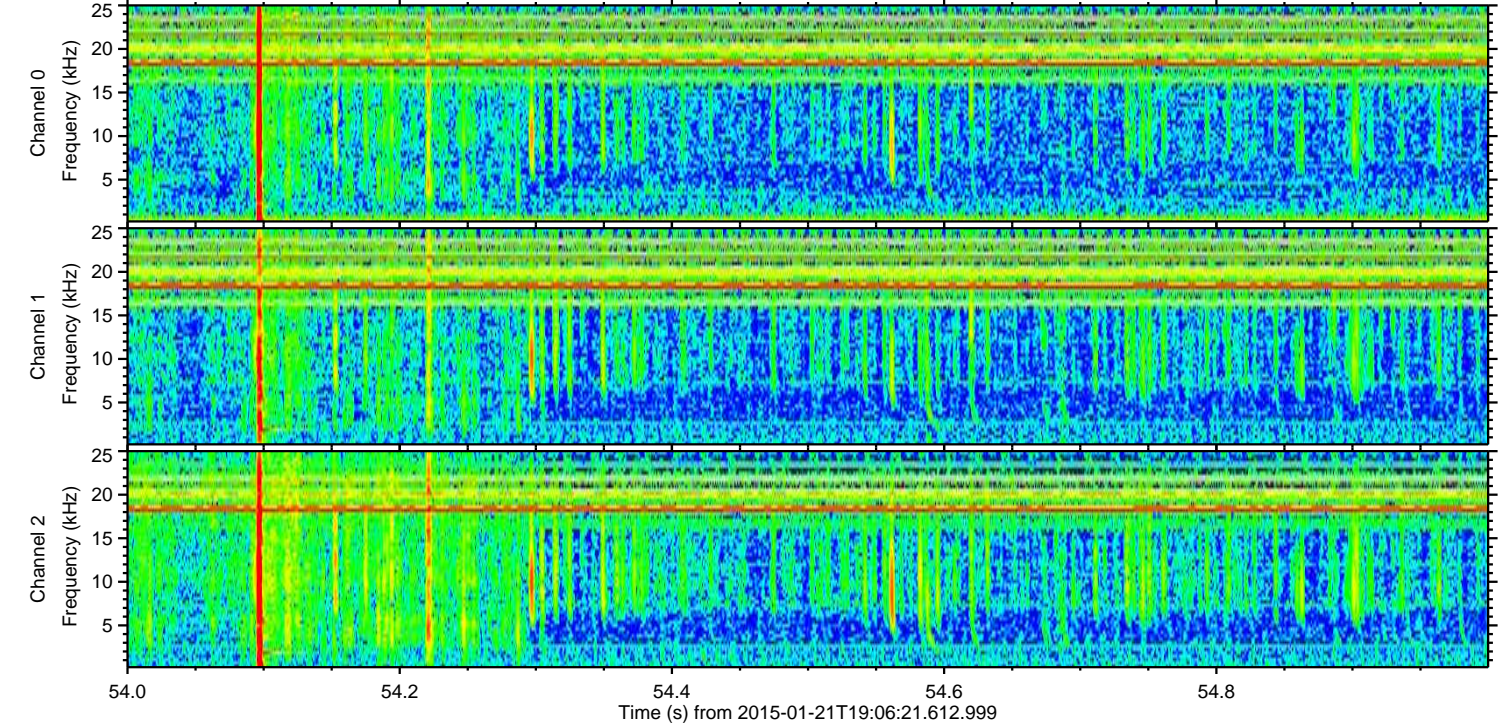
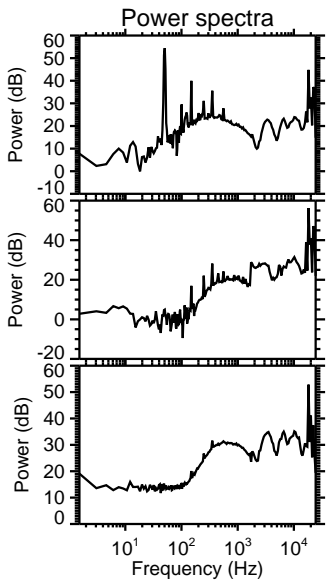
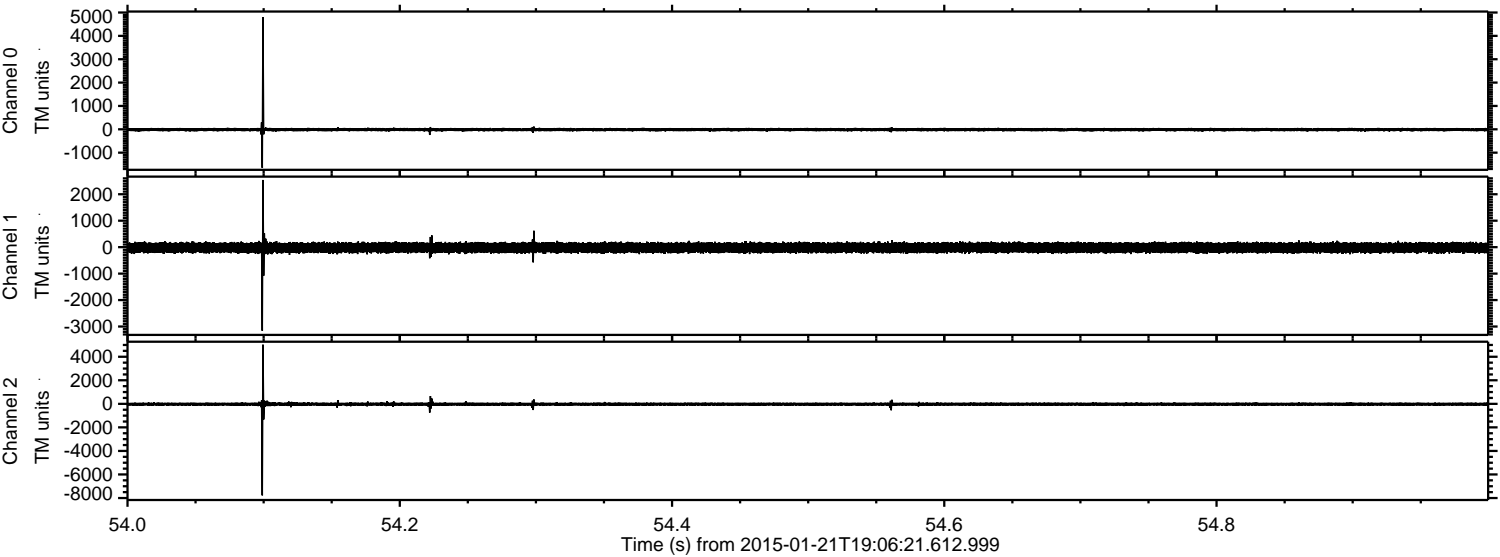
Channel 0
mn: -1027
mx: 1537
 μ : -14.9
 σ : 31.0

Channel 1
mn: -5631
mx: 7933
 μ : -20.4
 σ : 116.0

Channel 2
mn: -1035
mx: 1276
 μ : -24.0
 σ : 65.1

ELMAVAN 3D WAVEFORMS (Measured data sampled at 50 kHz) 49810 packets of 144 samples from 2015-01-21T19:06:21.612.999. Part 55/144

Processed Mon Feb 9 23:23:06 2015 by ELM ver.2012-10-06 from 001__elm20150121_190620__dat00.bin



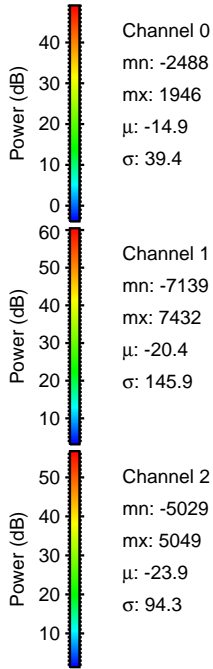
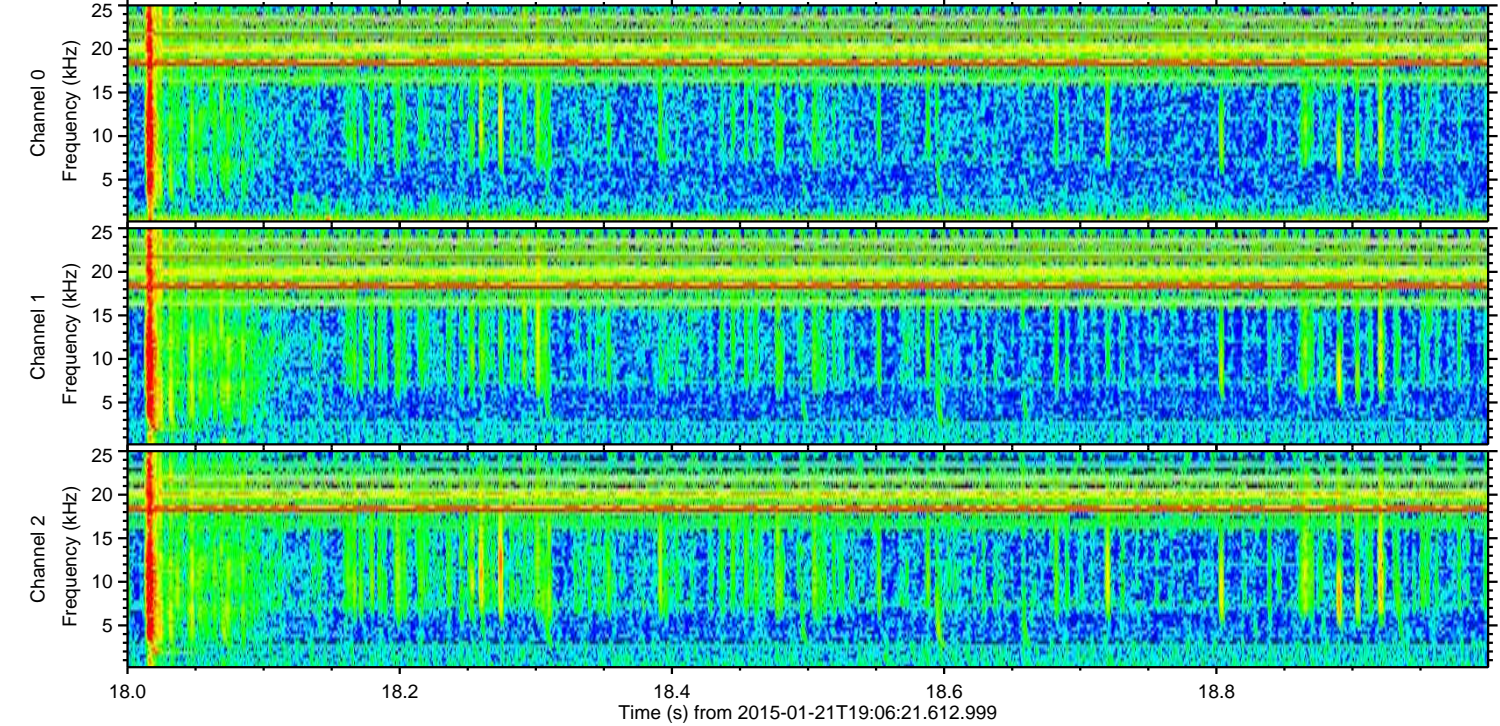
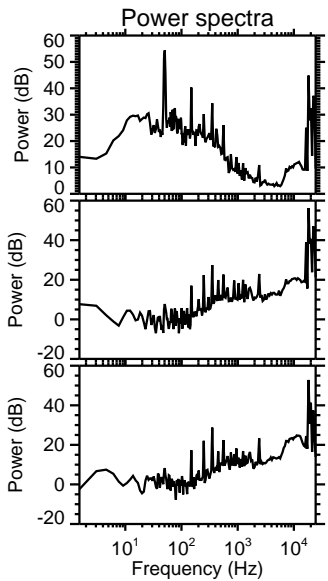
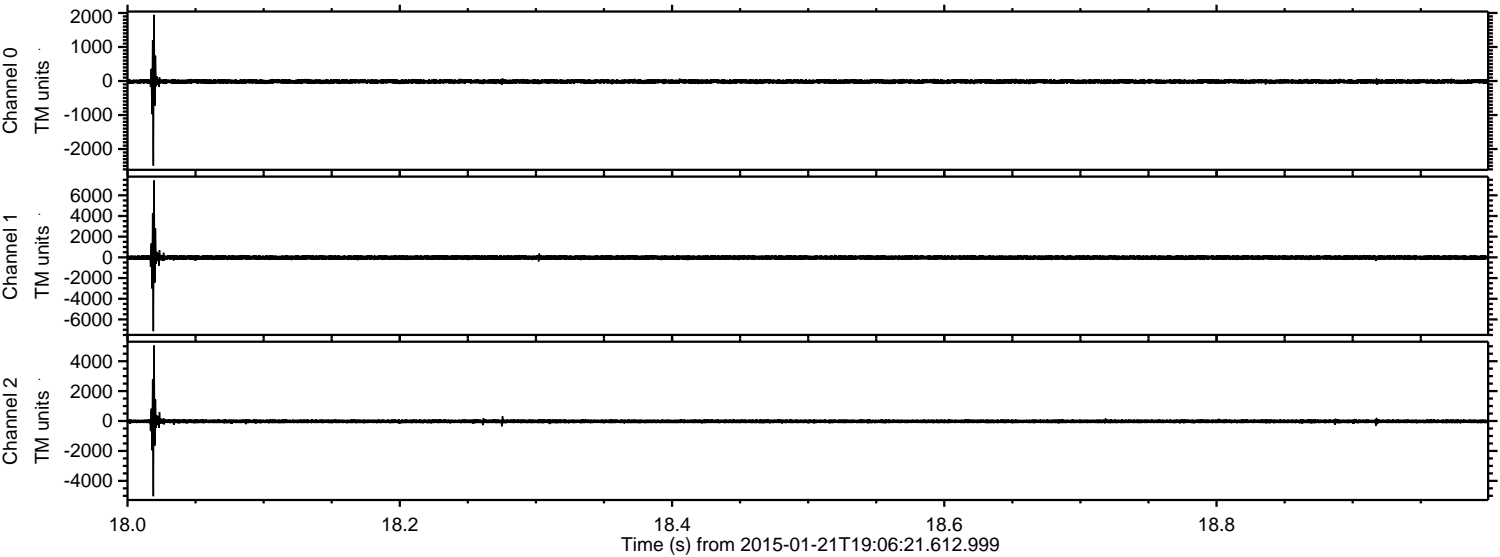
Channel 0
mn: -1652
mx: 4801
 μ : -14.8
 σ : 39.2

Channel 1
mn: -3159
mx: 2539
 μ : -20.4
 σ : 104.6

Channel 2
mn: -7778
mx: 5026
 μ : -23.9
 σ : 97.9

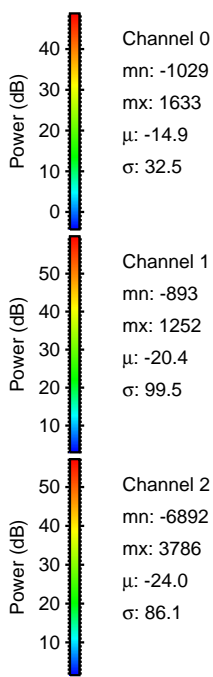
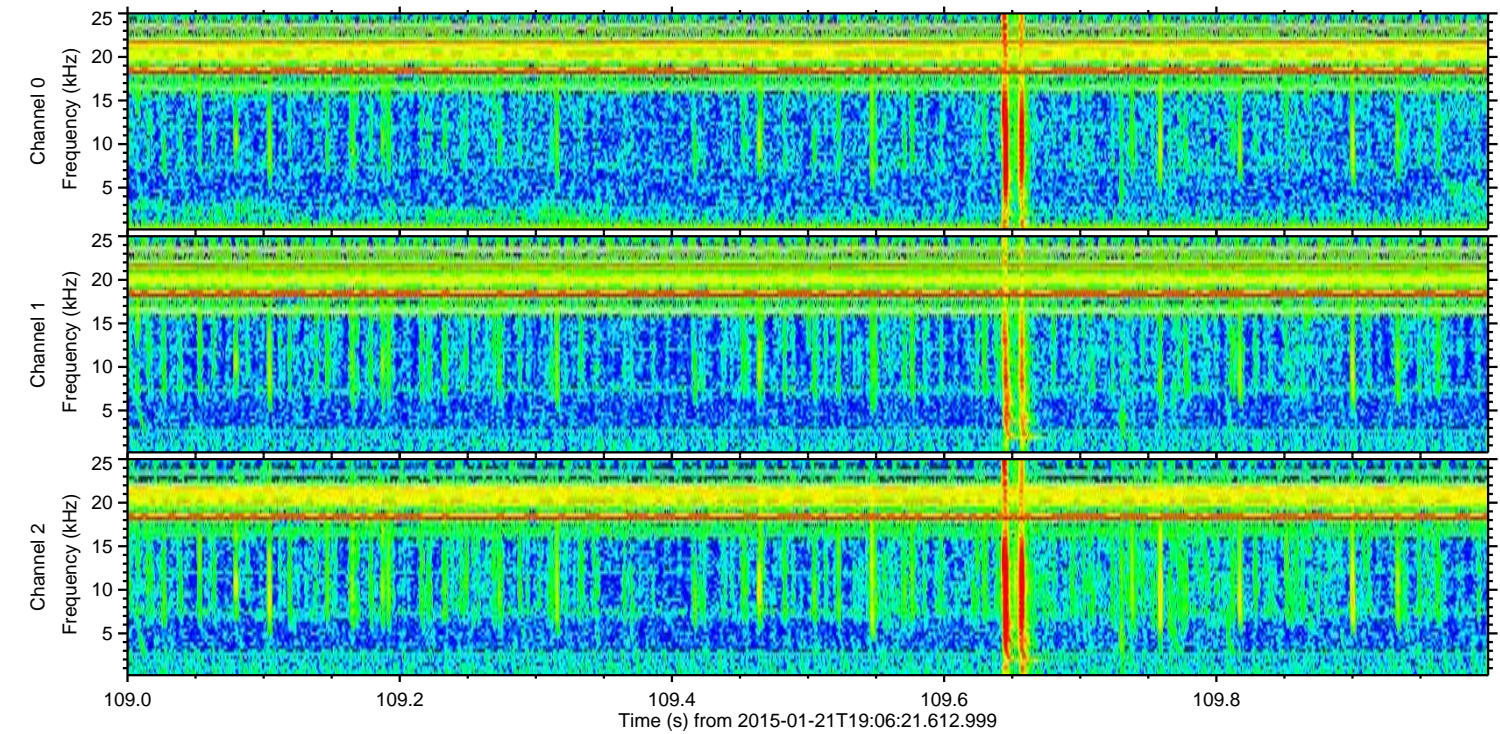
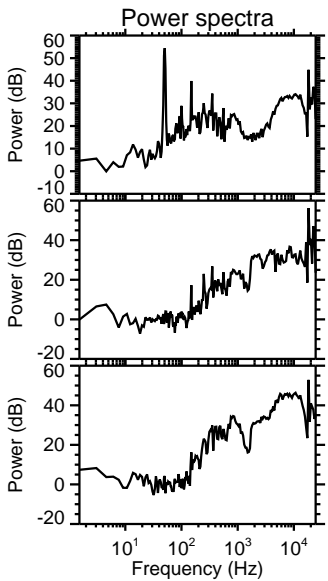
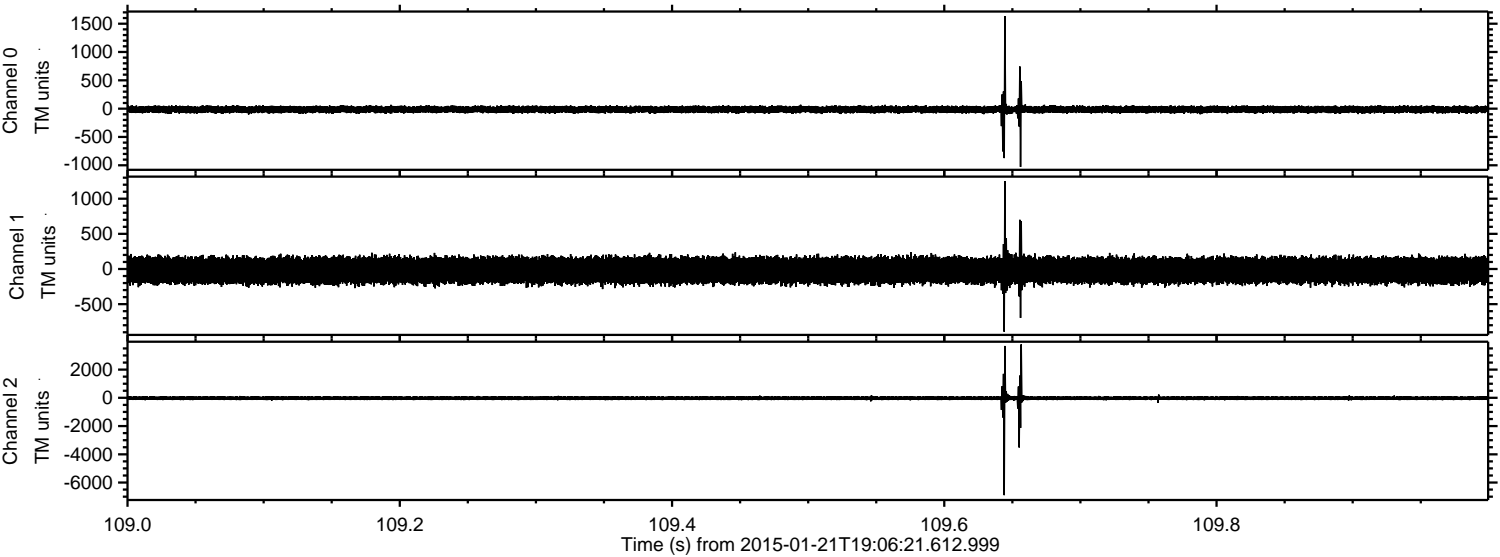
ELMAVAN 3D WAVEFORMS (Measured data sampled at 50 kHz) 49810 packets of 144 samples from 2015-01-21T19:06:21.612.999. Part 19/144

Processed Mon Feb 9 23:23:07 2015 by ELM ver.2012-10-06 from 001__elm20150121_190620__dat00.bin



ELMAVAN 3D WAVEFORMS (Measured data sampled at 50 kHz) 49810 packets of 144 samples from 2015-01-21T19:06:21.612.999. Part 110/144

Processed Mon Feb 9 23:23:08 2015 by ELM ver.2012-10-06 from 001__elm20150121_190620__dat00.bin



Channel 0
mn: -1029
mx: 1633
 μ : -14.9
 σ : 32.5

Channel 1
mn: -893
mx: 1252
 μ : -20.4
 σ : 99.5

Channel 2
mn: -6892
mx: 3786
 μ : -24.0
 σ : 86.1

ELMAVAN 3D WAVEFORMS (Measured data sampled at 50 kHz) 49810 packets of 144 samples from 2015-01-21T19:06:21.612.999. Part 29/144

Processed Mon Feb 9 23:23:09 2015 by ELM ver.2012-10-06 from 001__elm20150121_190620__dat00.bin

