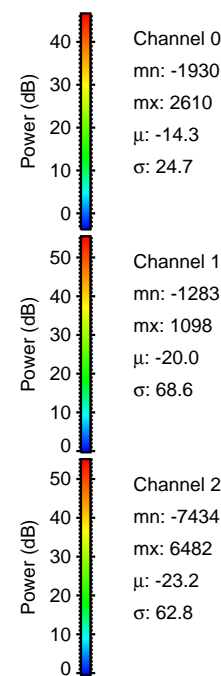
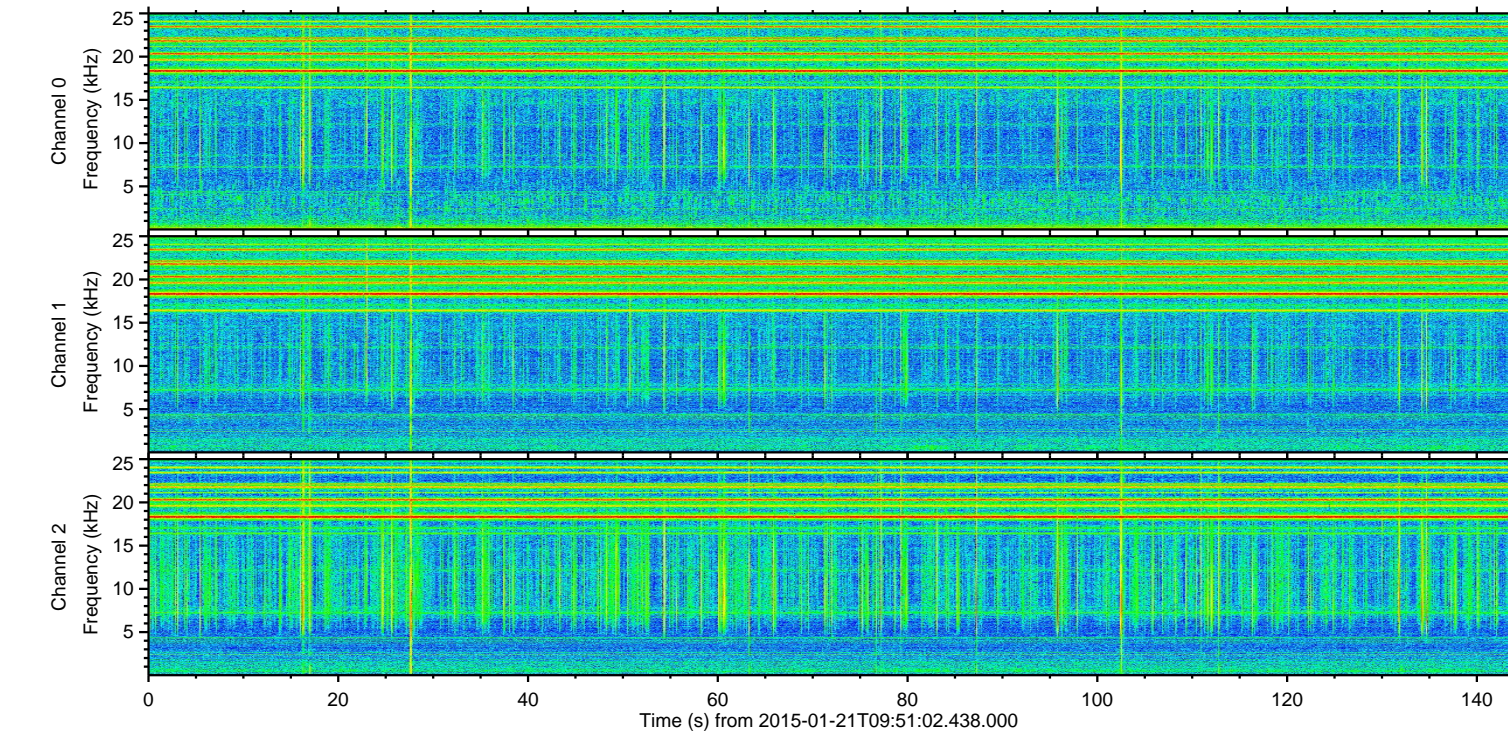
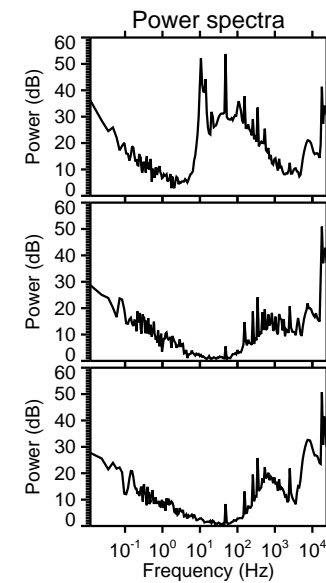
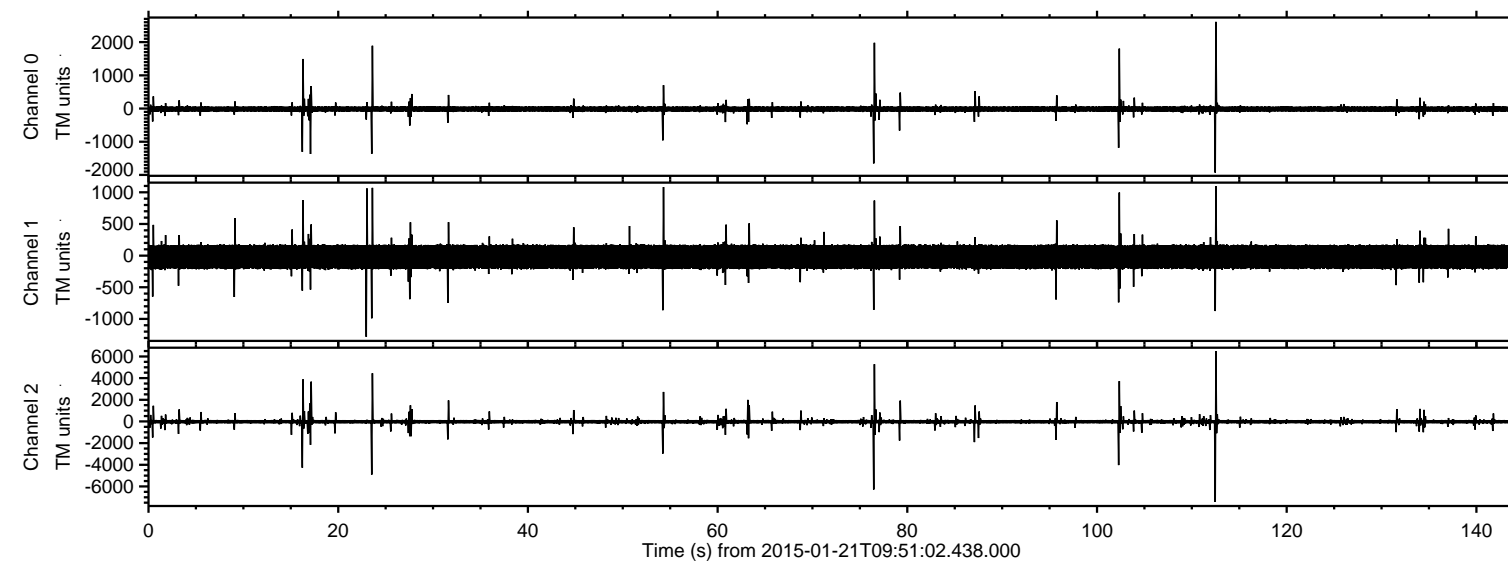


ELMAVAN 3D WAVEFORMS (Measured data sampled at 50 kHz) 49810 packets of 144 samples from 2015-01-21T09:51:02.438.000.

Processed Mon Feb 9 18:52:26 2015 by ELM ver.2012-10-06 from 001__elm20150121_095101__dat00.bin



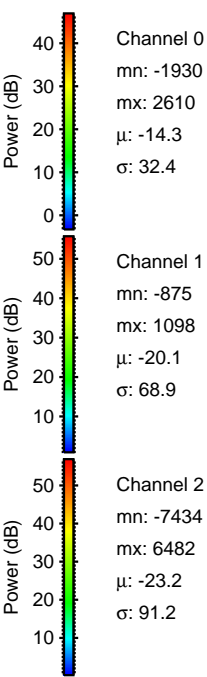
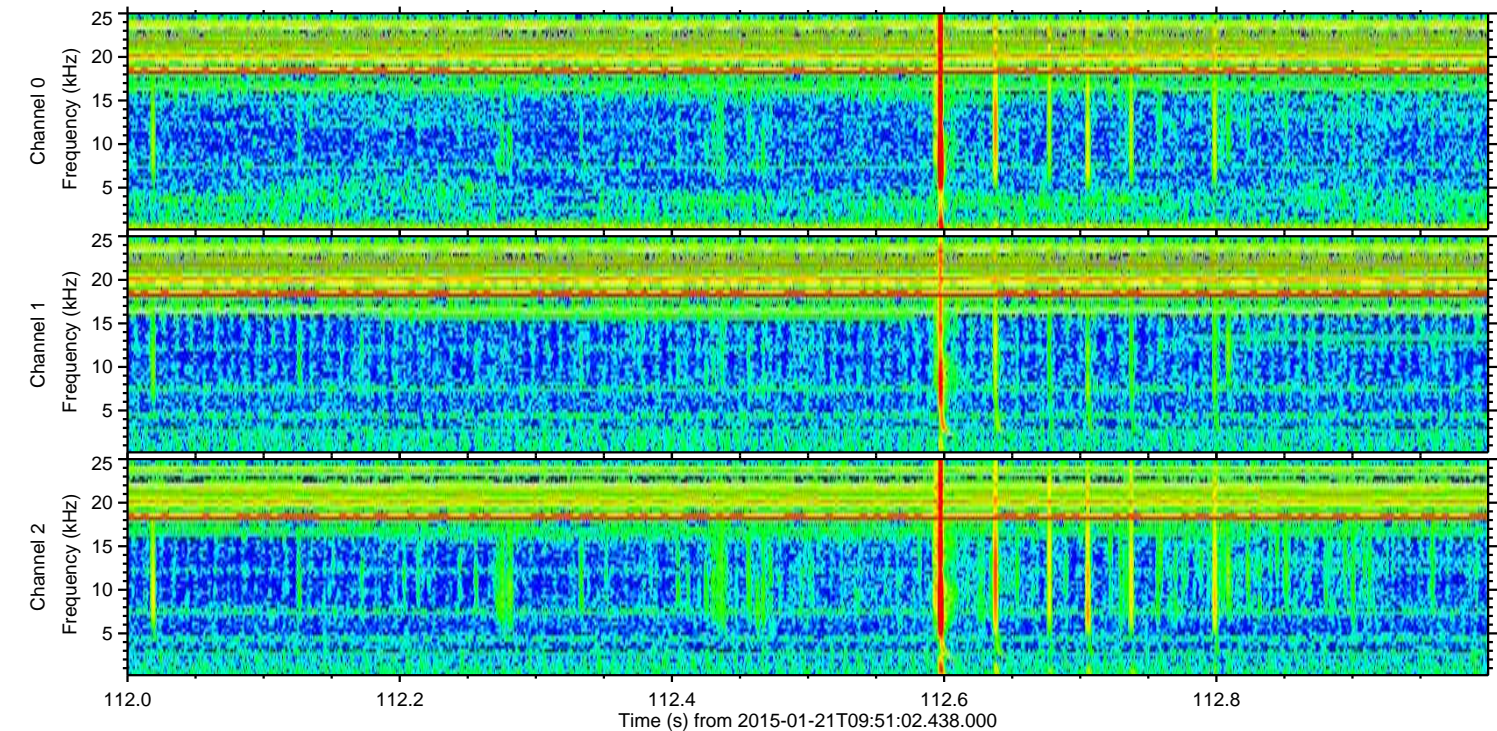
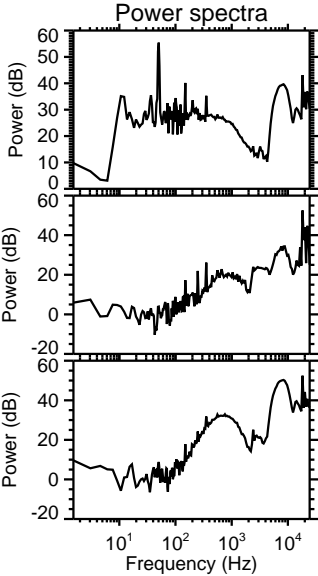
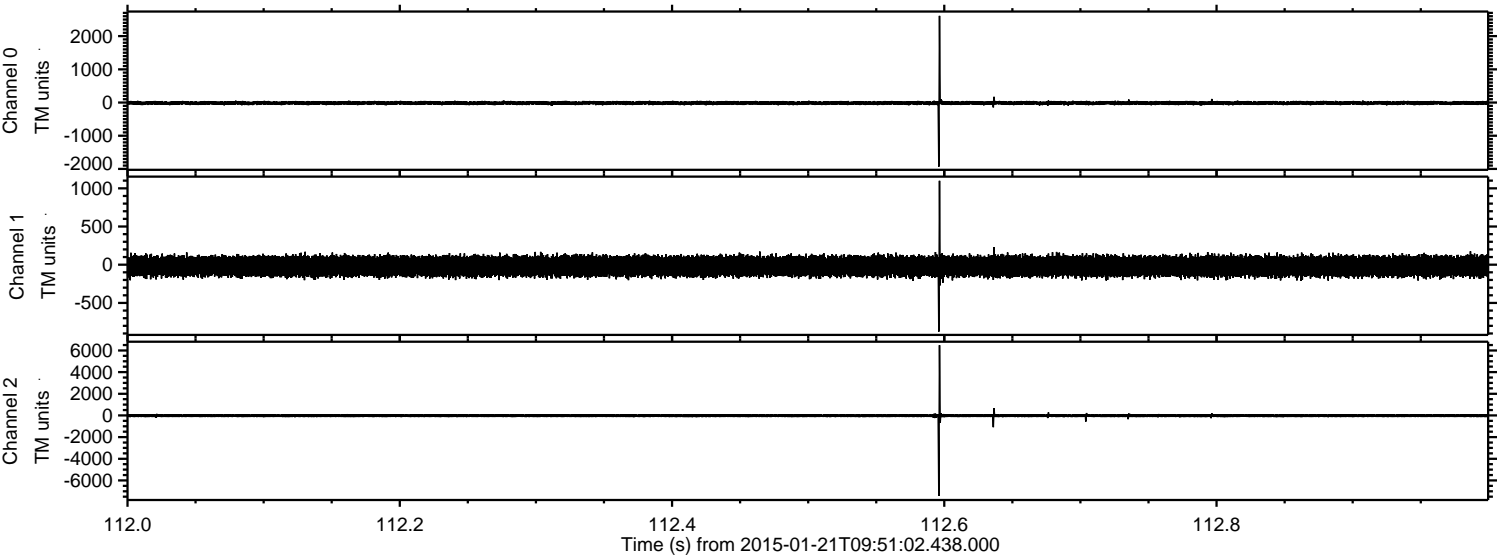
Channel 0
mn: -1930
mx: 2610
 μ : -14.3
 σ : 24.7

Channel 1
mn: -1283
mx: 1098
 μ : -20.0
 σ : 68.6

Channel 2
mn: -7434
mx: 6482
 μ : -23.2
 σ : 62.8

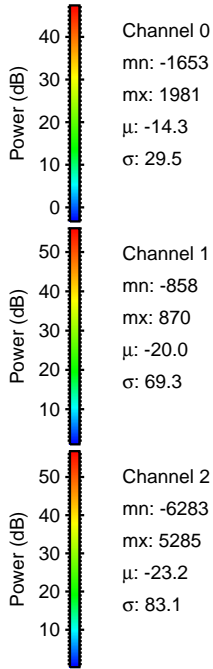
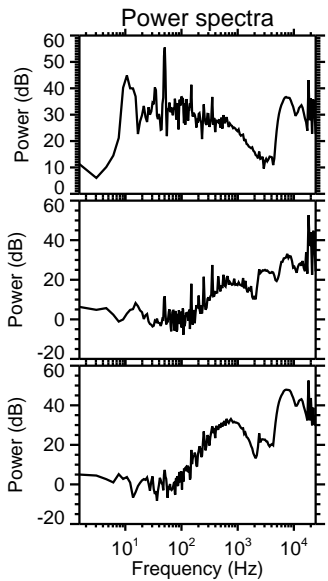
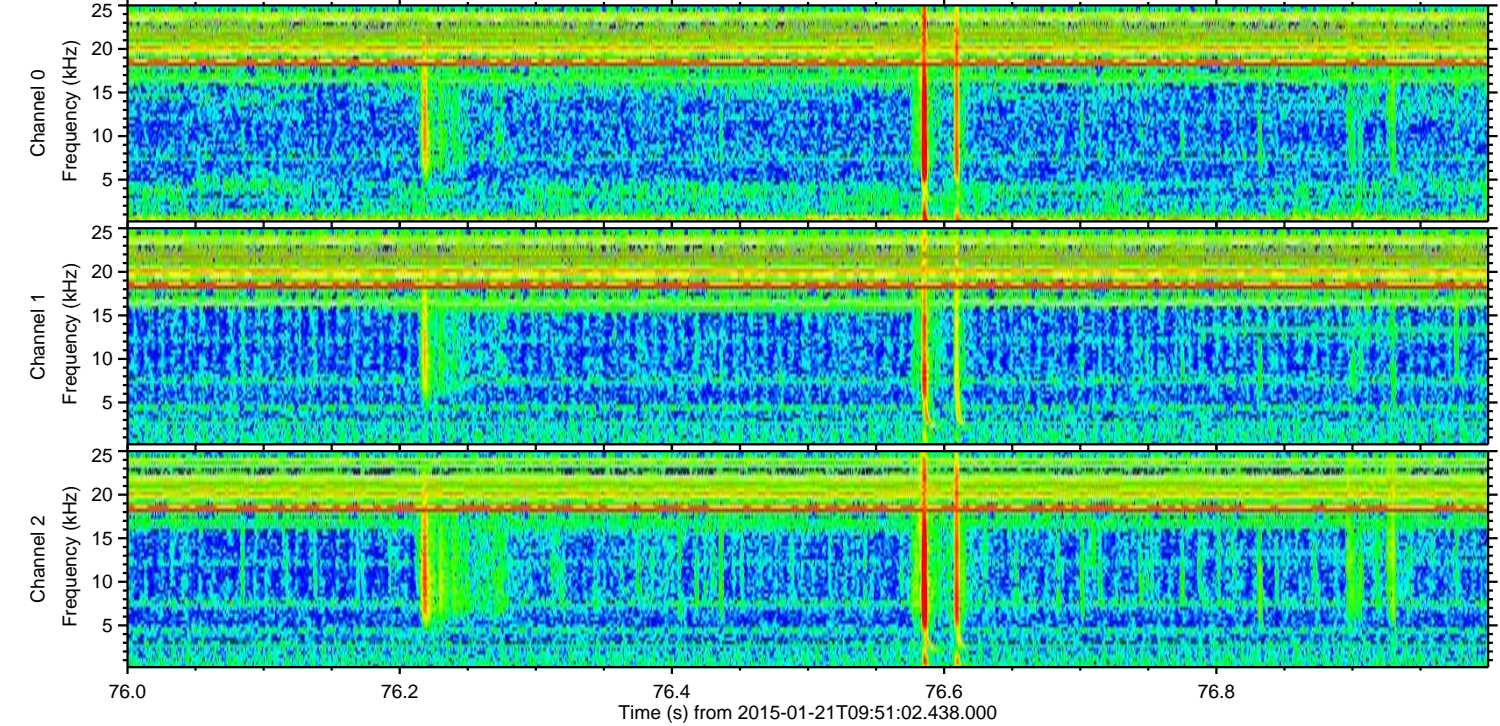
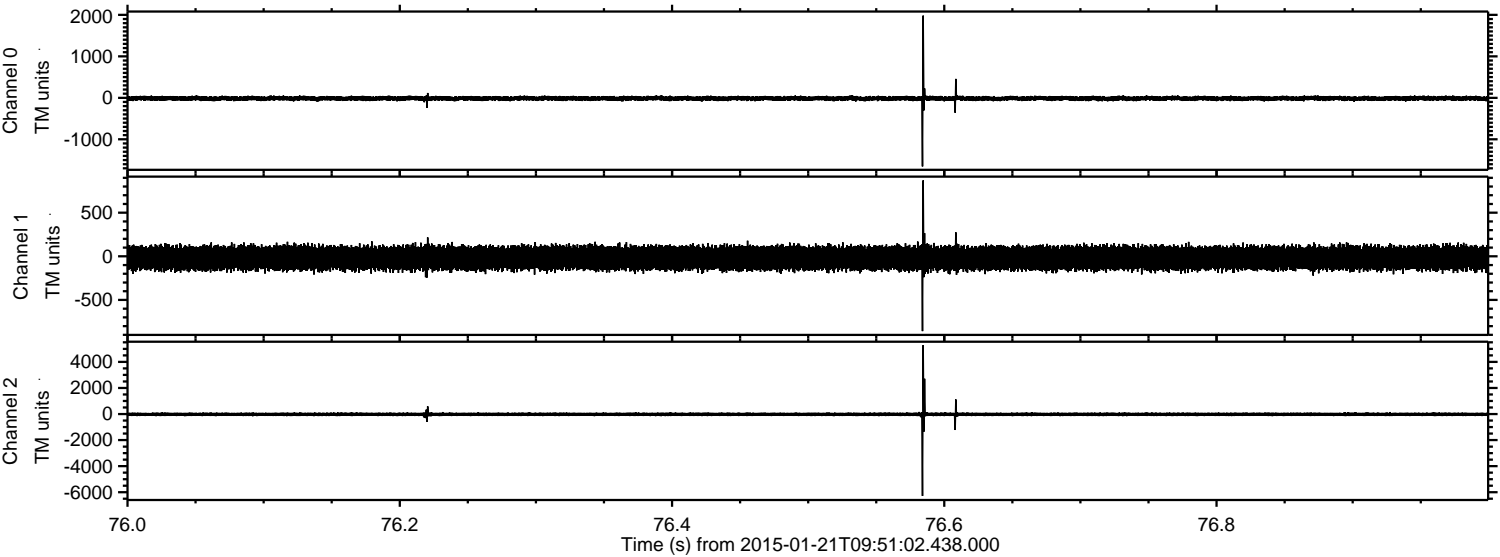
ELMAVAN 3D WAVEFORMS (Measured data sampled at 50 kHz) 49810 packets of 144 samples from 2015-01-21T09:51:02.438.000. Part 113/144

Processed Mon Feb 9 18:52:38 2015 by ELM ver.2012-10-06 from 001__elm20150121_095101__dat00.bin



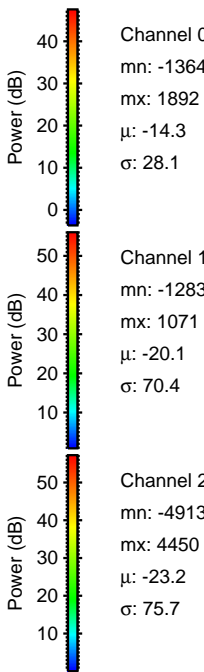
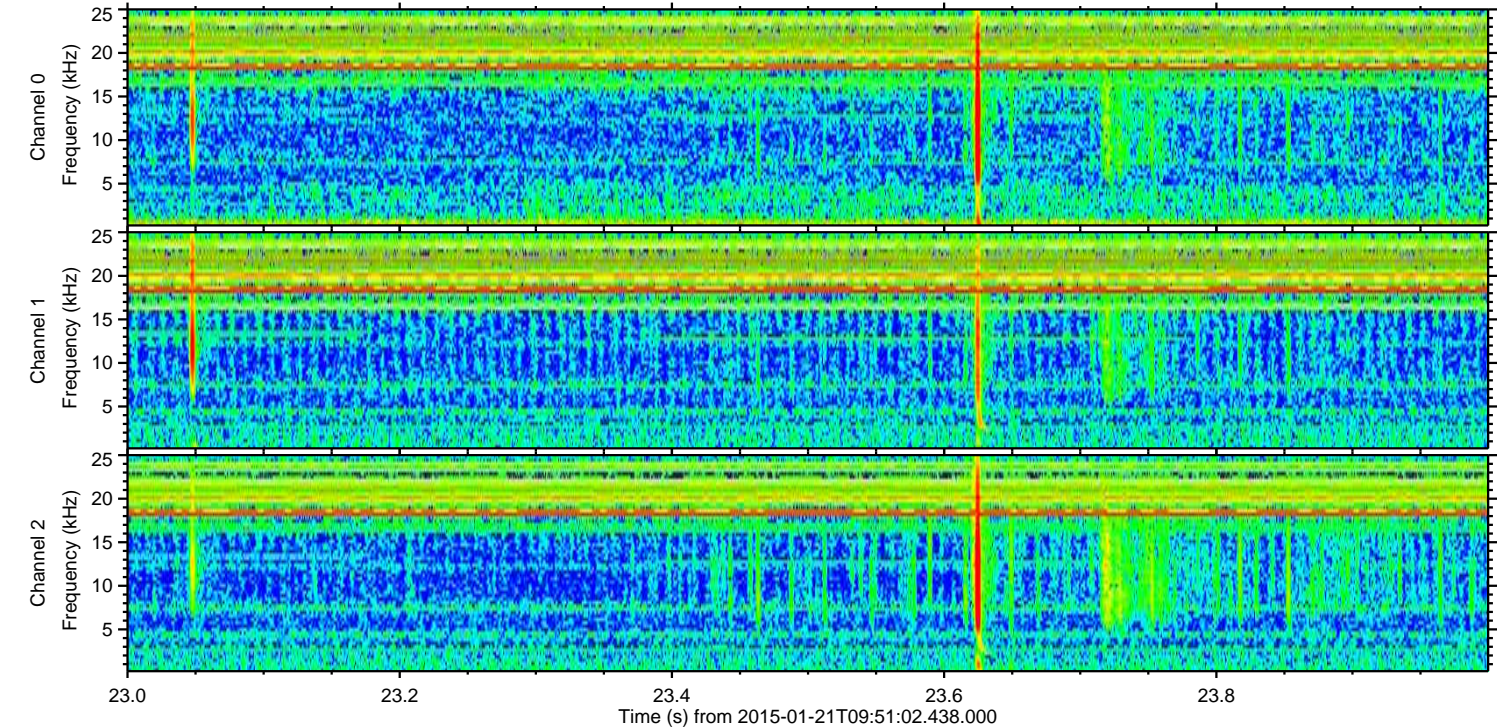
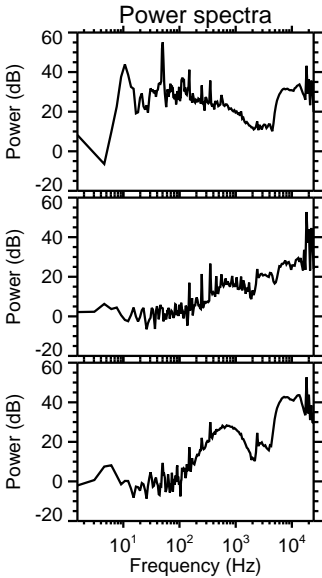
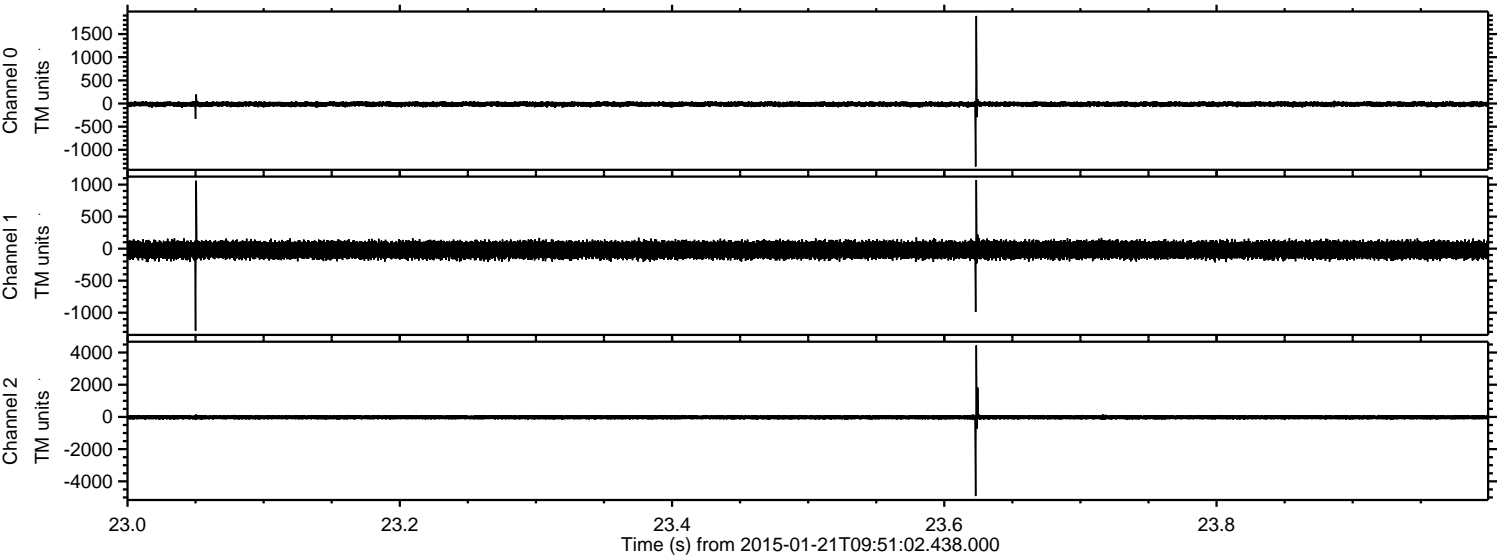
ELMAVAN 3D WAVEFORMS (Measured data sampled at 50 kHz) 49810 packets of 144 samples from 2015-01-21T09:51:02.438.000. Part 77/144

Processed Mon Feb 9 18:52:39 2015 by ELM ver.2012-10-06 from 001__elm20150121_095101__dat00.bin



ELMAVAN 3D WAVEFORMS (Measured data sampled at 50 kHz) 49810 packets of 144 samples from 2015-01-21T09:51:02.438.000. Part 24/144

Processed Mon Feb 9 18:52:40 2015 by ELM ver.2012-10-06 from 001__elm20150121_095101__dat00.bin



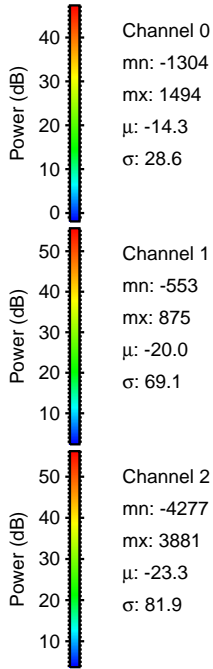
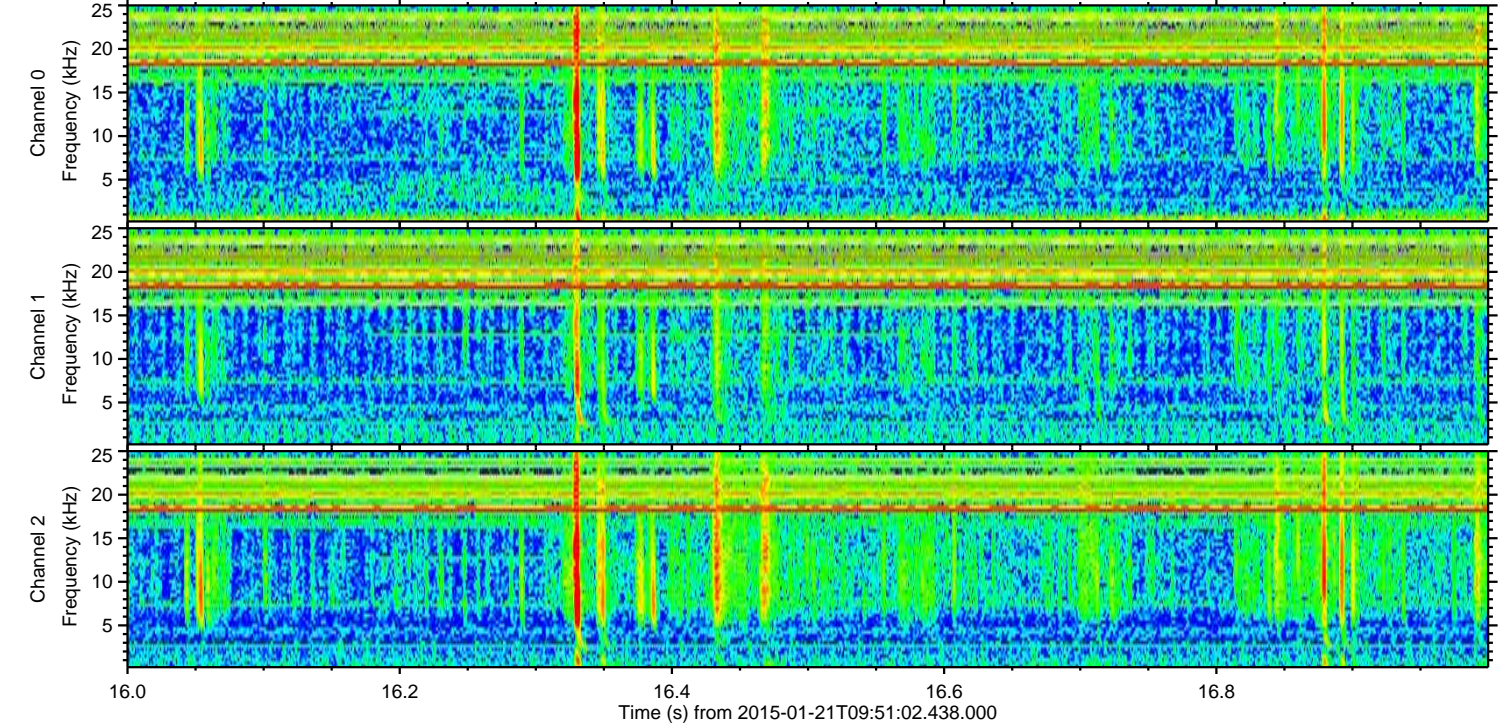
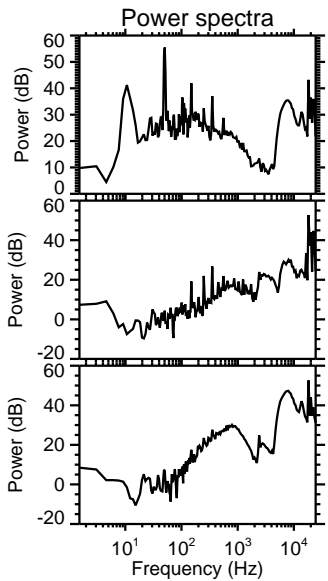
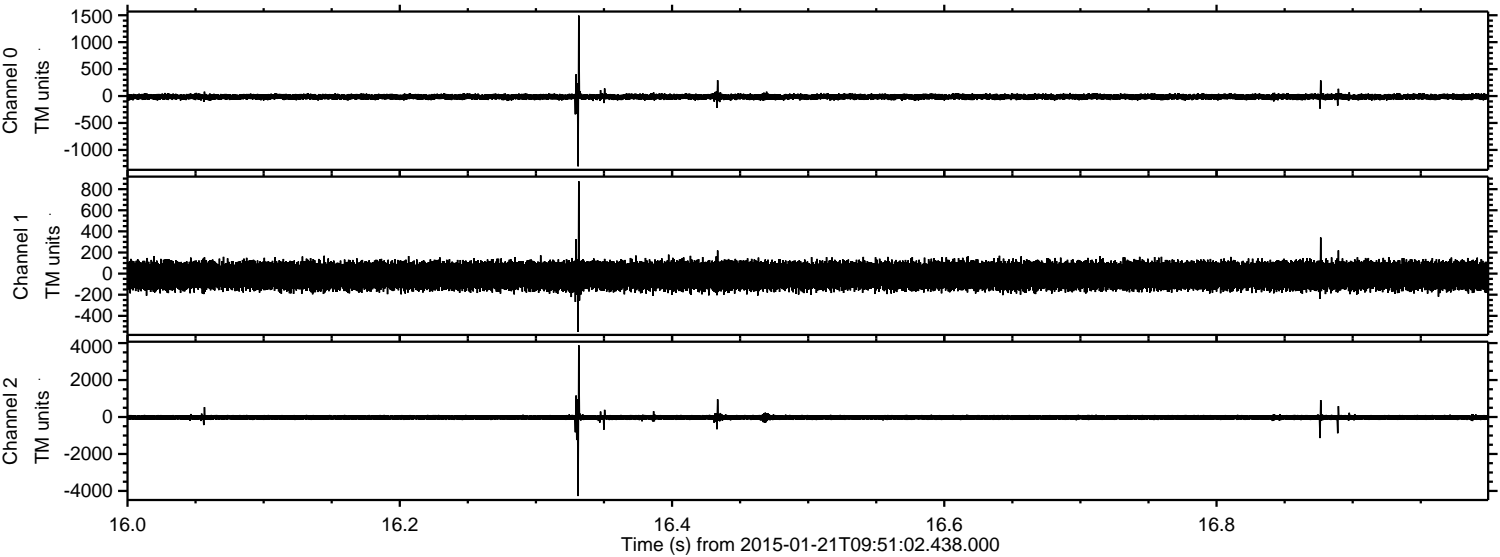
Channel 0
mn: -1364
mx: 1892
μ: -14.3
σ: 28.1

Channel 1
mn: -1283
mx: 1071
μ: -20.1
σ: 70.4

Channel 2
mn: -4913
mx: 4450
μ: -23.2
σ: 75.7

ELMAVAN 3D WAVEFORMS (Measured data sampled at 50 kHz) 49810 packets of 144 samples from 2015-01-21T09:51:02.438.000. Part 17/144

Processed Mon Feb 9 18:52:41 2015 by ELM ver.2012-10-06 from 001__elm20150121_095101__dat00.bin

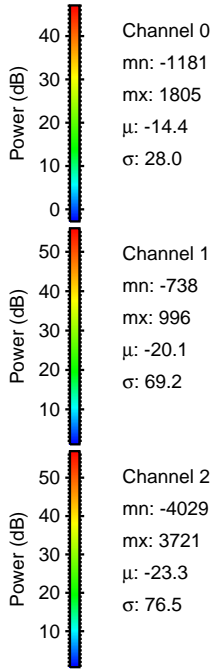
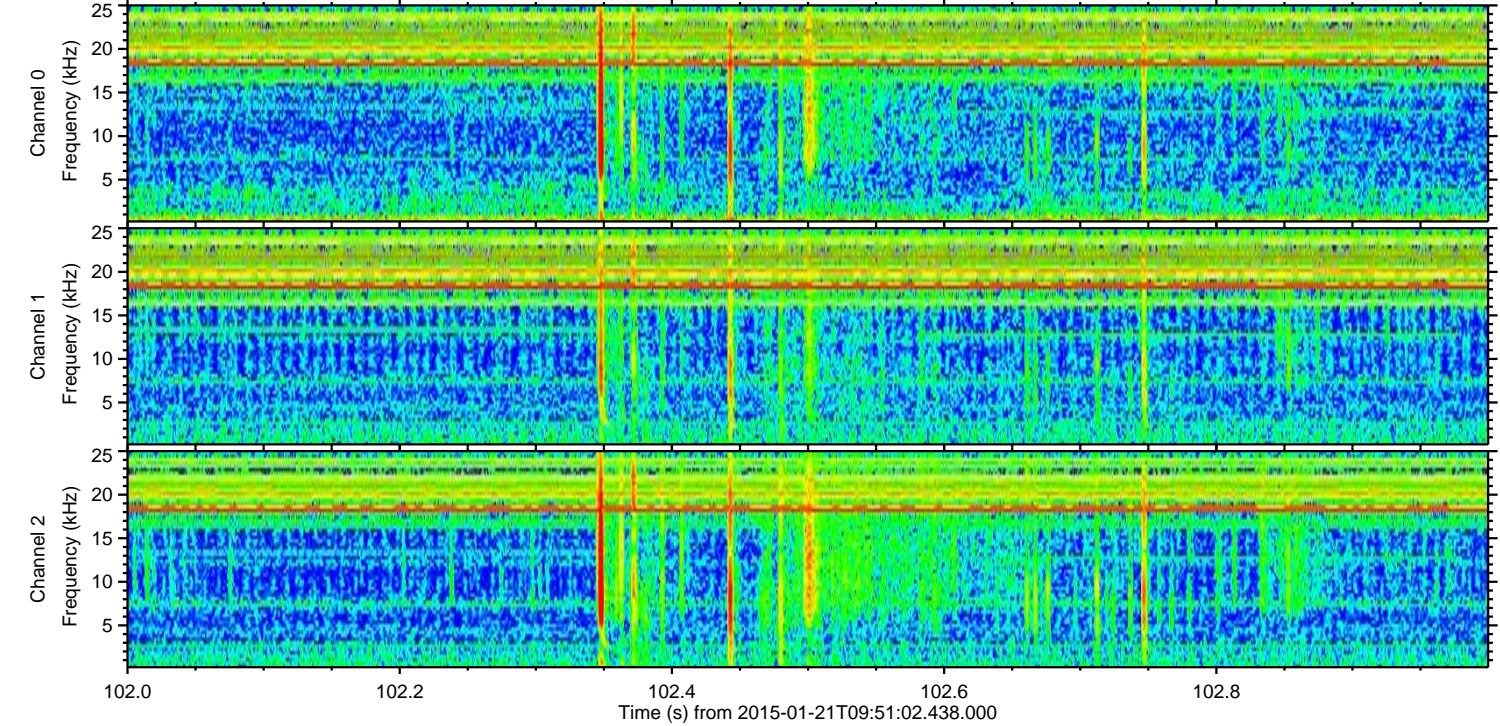
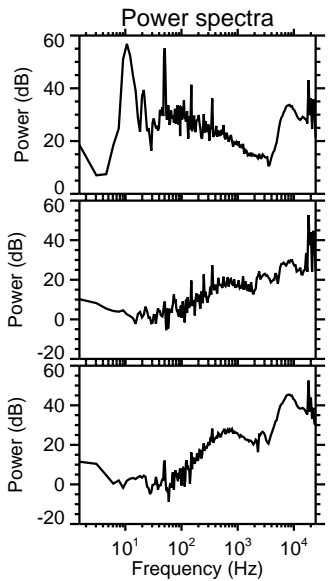
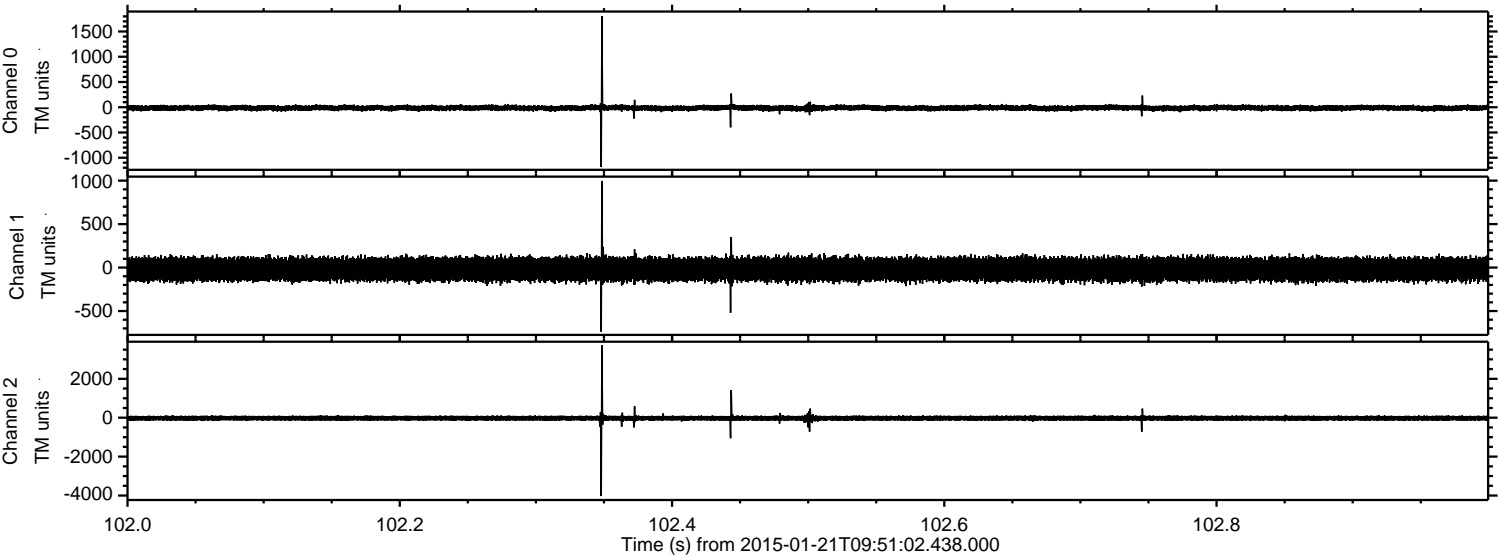


Channel 0
mn: -1304
mx: 1494
 μ : -14.3
 σ : 28.6

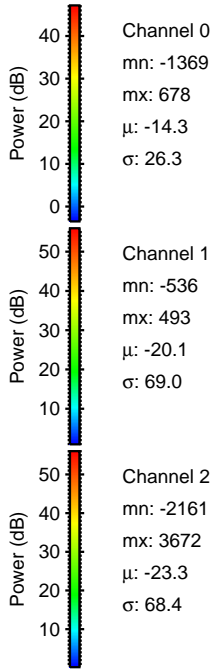
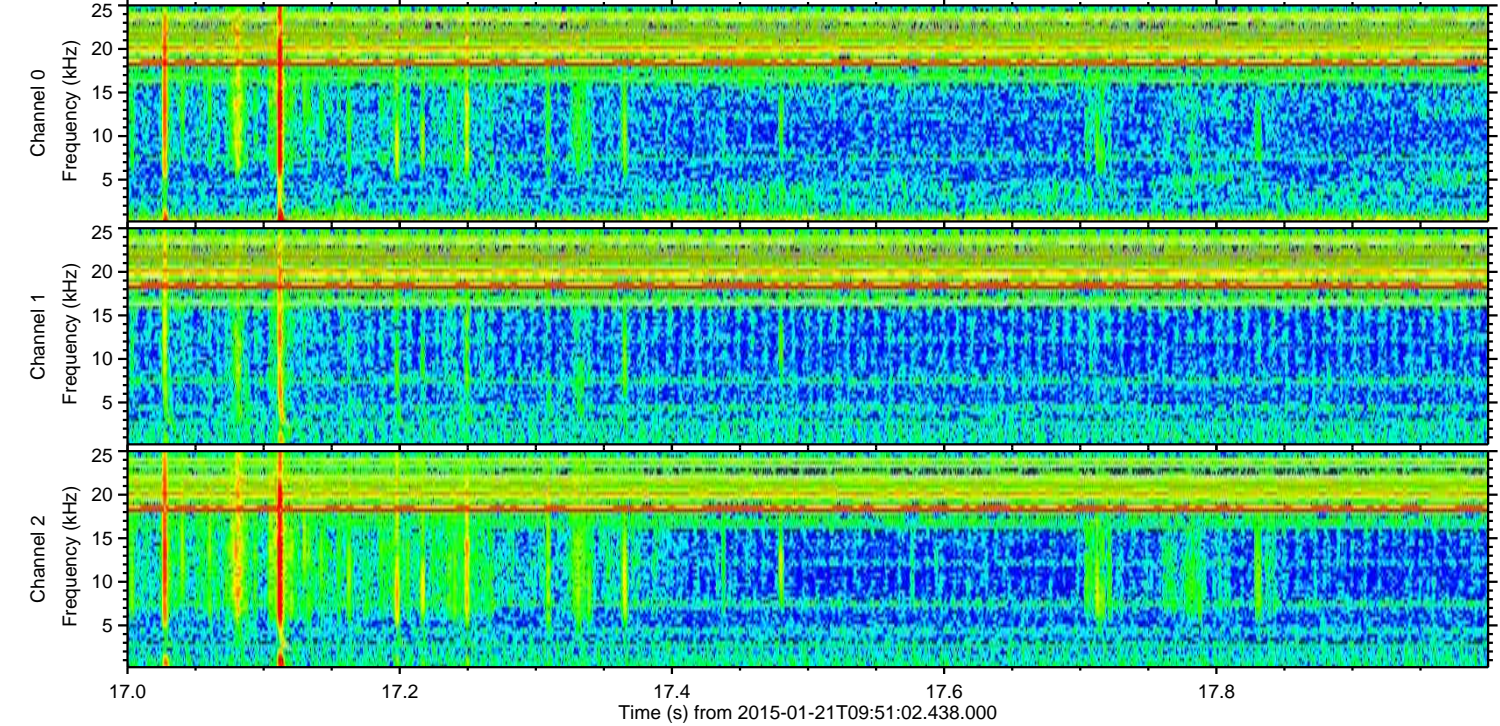
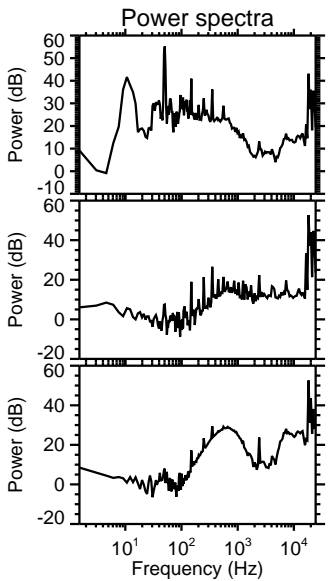
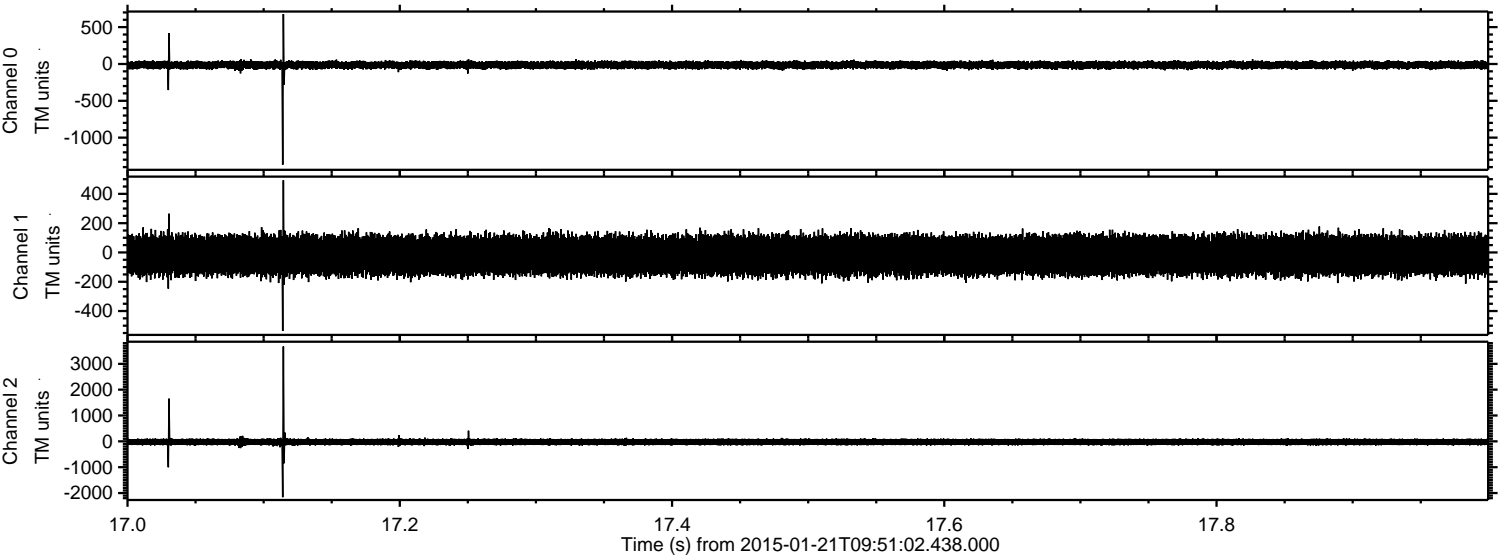
Channel 1
mn: -553
mx: 875
 μ : -20.0
 σ : 69.1

Channel 2
mn: -4277
mx: 3881
 μ : -23.3
 σ : 81.9

Processed Mon Feb 9 18:52:42 2015 by ELM ver.2012-10-06 from 001__elm20150121_095101__dat00.bin



Processed Mon Feb 9 18:52:43 2015 by ELM ver.2012-10-06 from 001__elm20150121_095101__dat00.bin

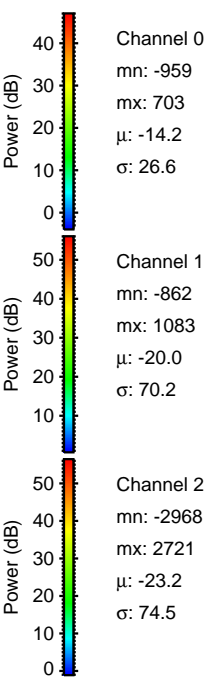
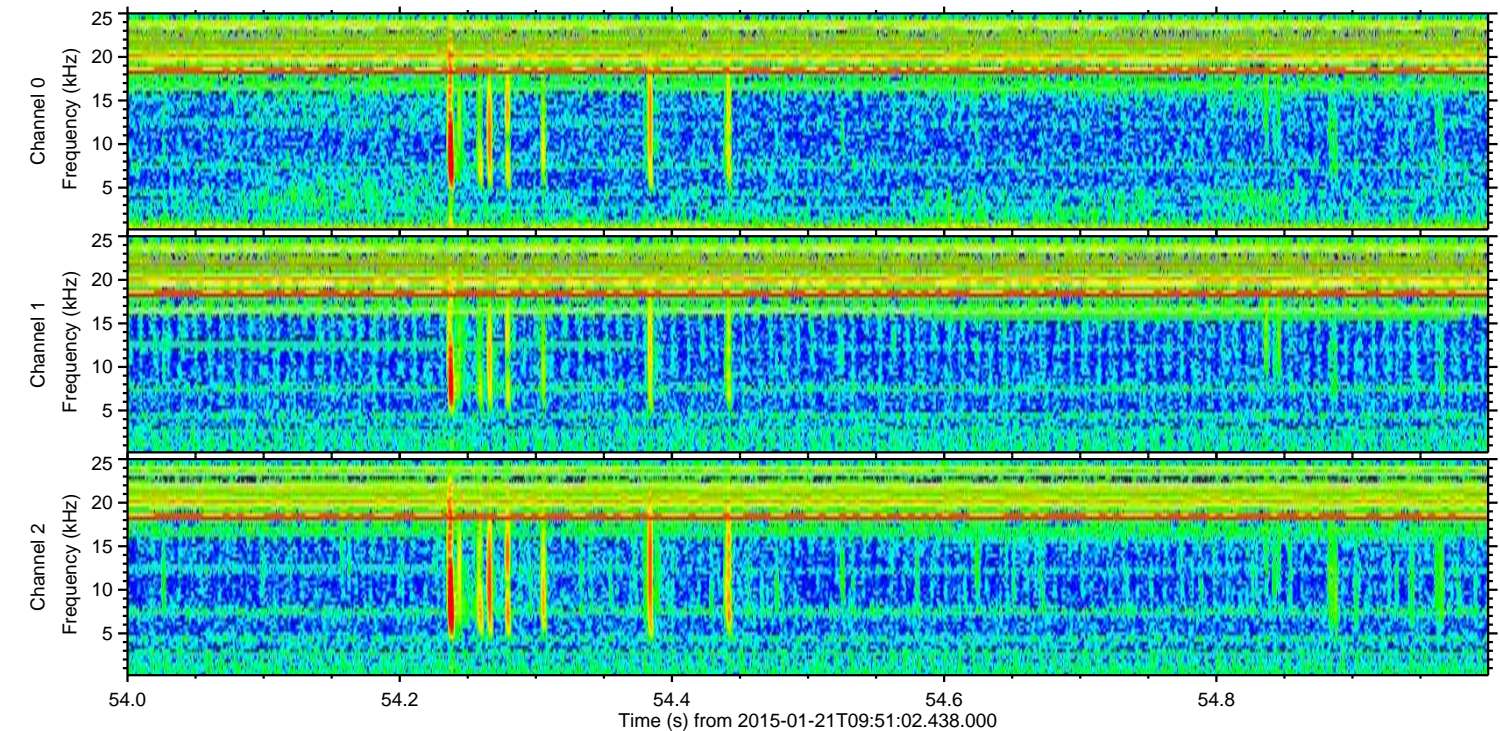
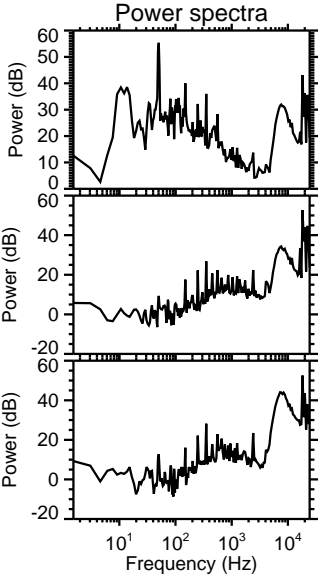
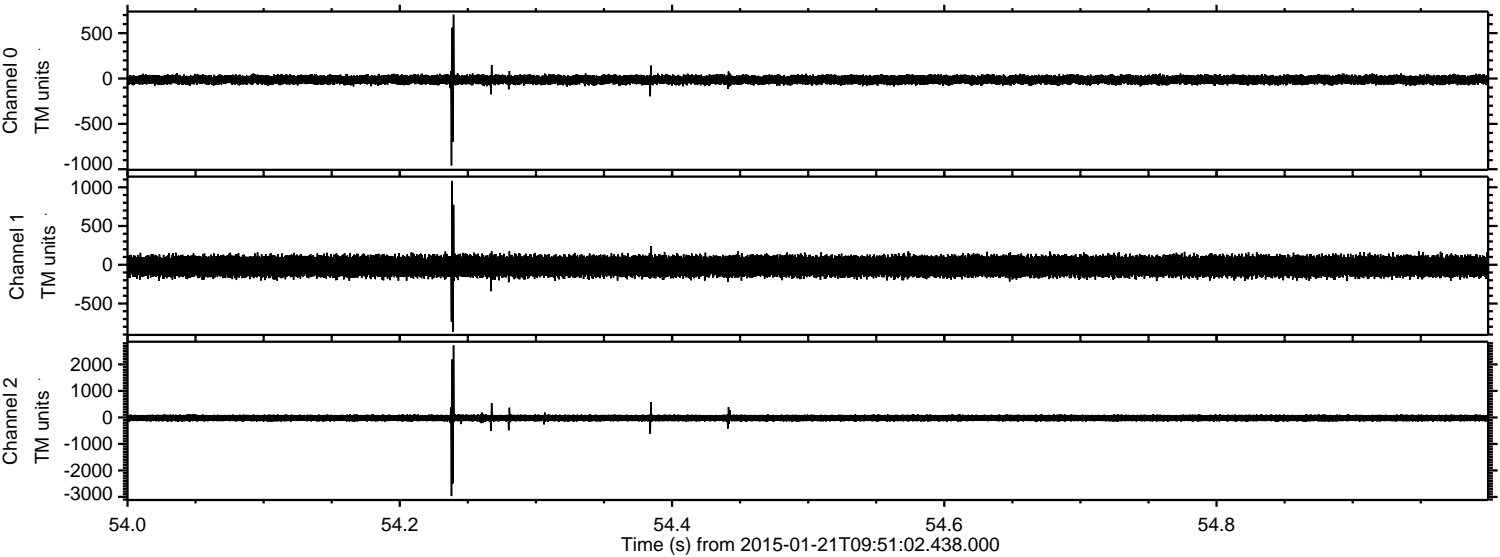


Channel 0
mn: -1369
mx: 678
 μ : -14.3
 σ : 26.3

Channel 1
mn: -536
mx: 493
 μ : -20.1
 σ : 69.0

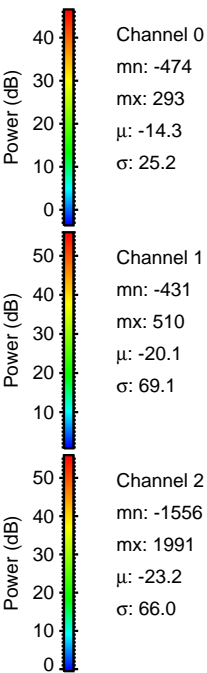
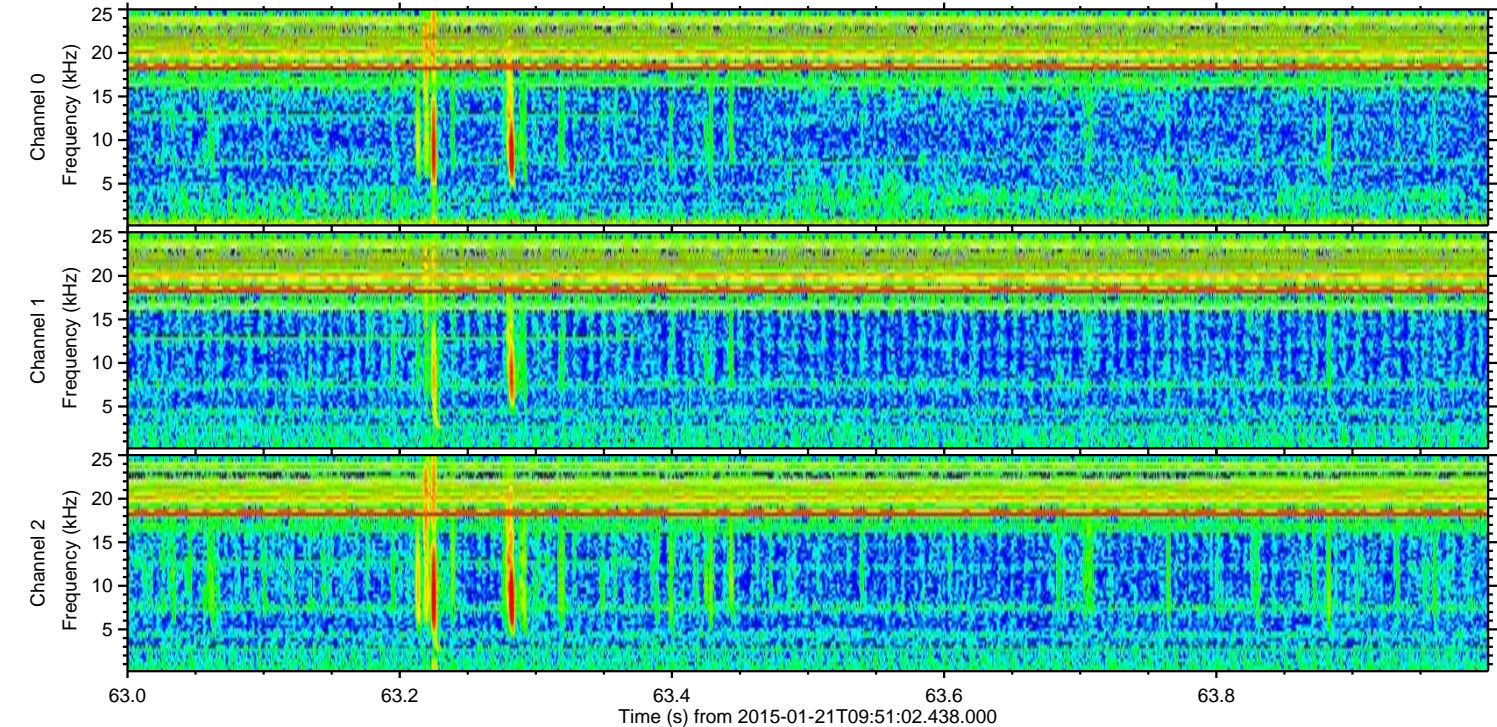
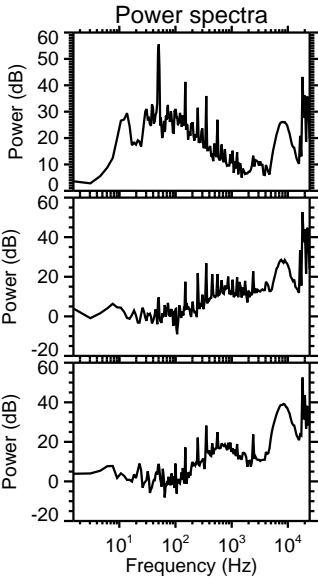
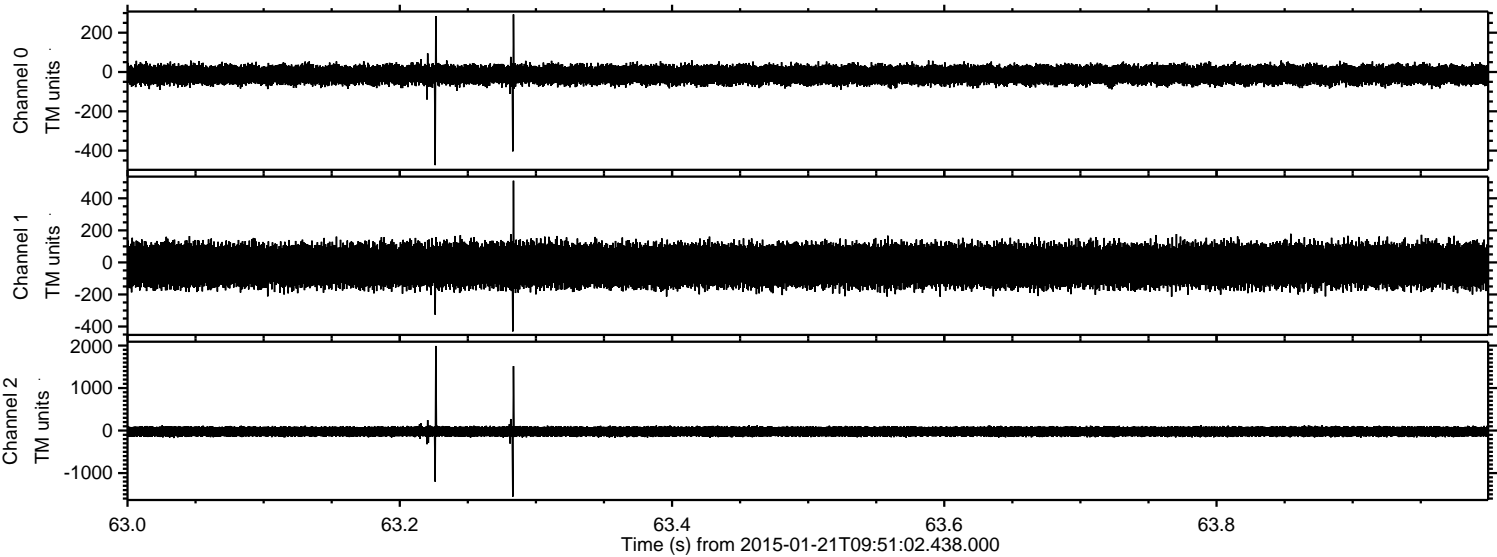
Channel 2
mn: -2161
mx: 3672
 μ : -23.3
 σ : 68.4

Processed Mon Feb 9 18:52:43 2015 by ELM ver.2012-10-06 from 001__elm20150121_095101__dat00.bin



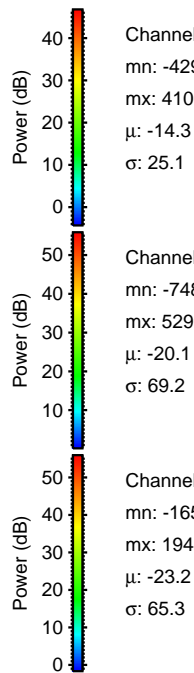
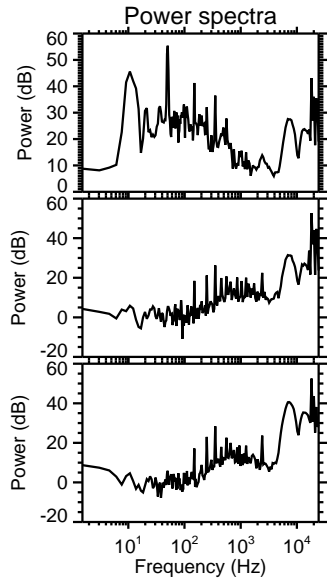
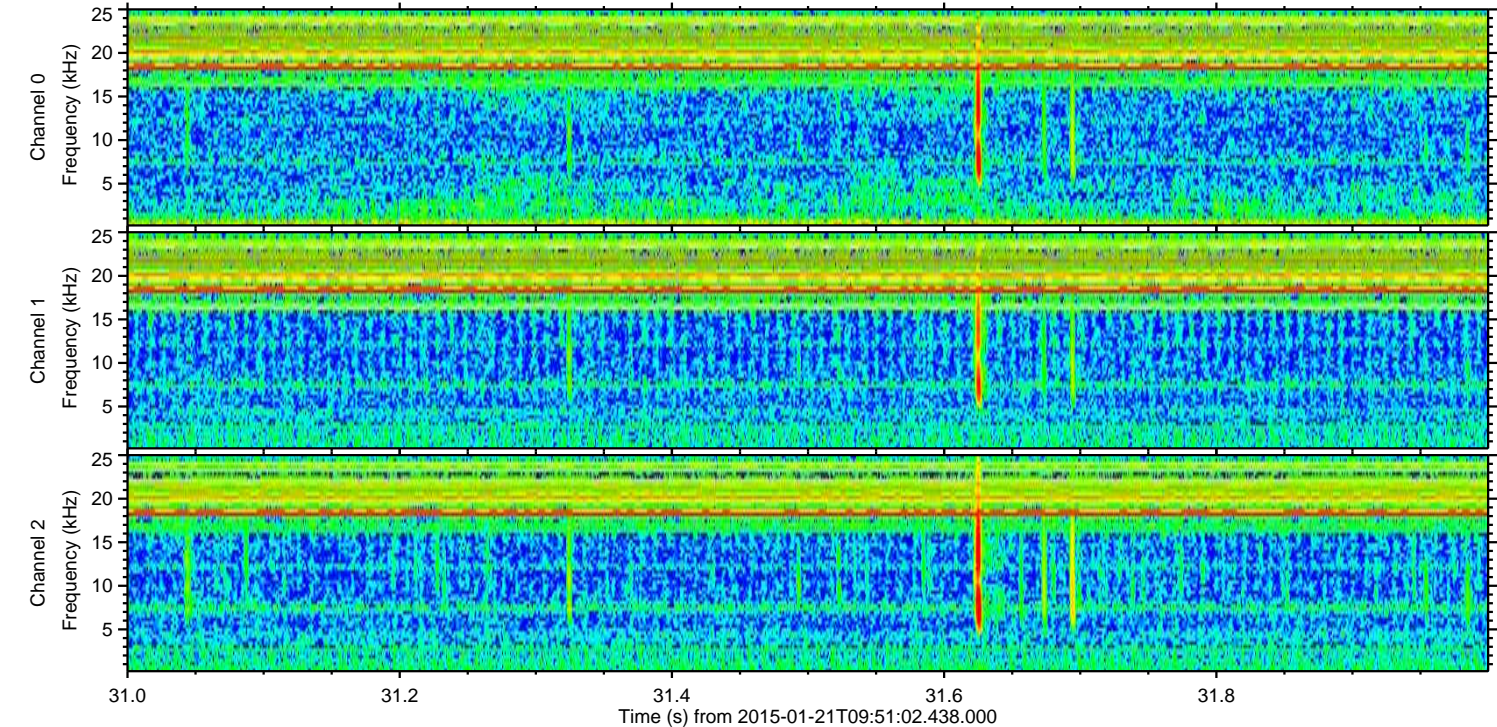
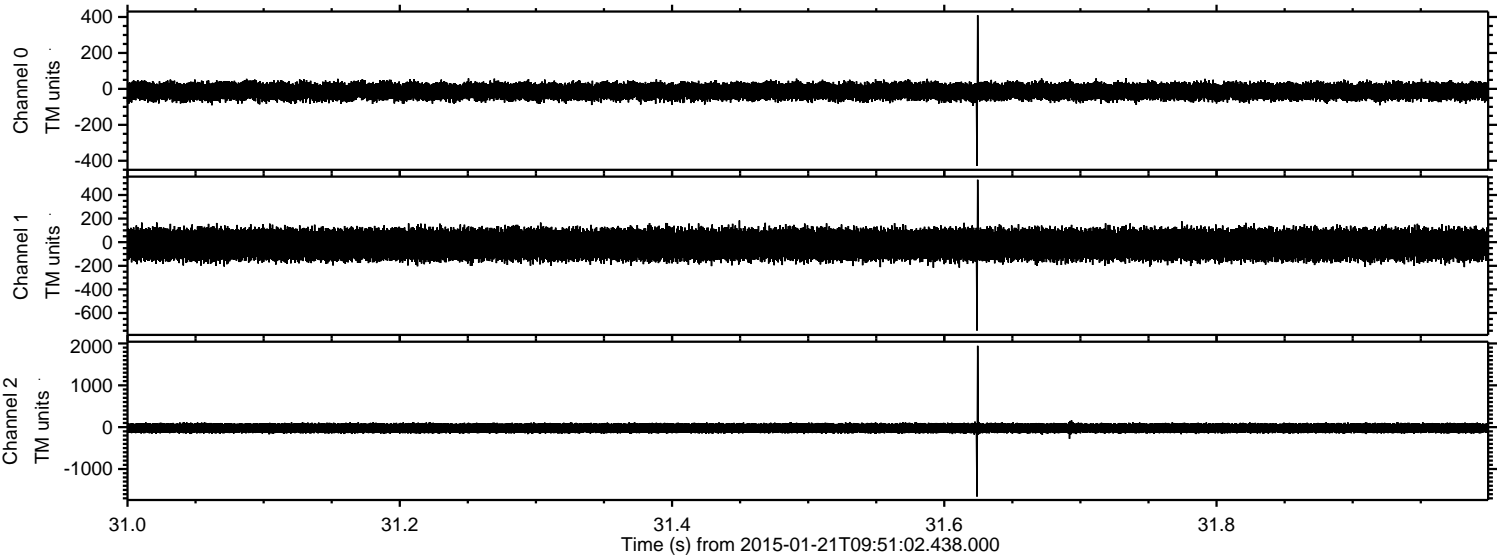
ELMAVAN 3D WAVEFORMS (Measured data sampled at 50 kHz) 49810 packets of 144 samples from 2015-01-21T09:51:02.438.000. Part 64/144

Processed Mon Feb 9 18:52:44 2015 by ELM ver.2012-10-06 from 001__elm20150121_095101__dat00.bin



ELMAVAN 3D WAVEFORMS (Measured data sampled at 50 kHz) 49810 packets of 144 samples from 2015-01-21T09:51:02.438.000. Part 32/144

Processed Mon Feb 9 18:52:45 2015 by ELM ver.2012-10-06 from 001__elm20150121_095101__dat00.bin



ELMAVAN 3D WAVEFORMS (Measured data sampled at 50 kHz) 49810 packets of 144 samples from 2015-01-21T09:51:02.438.000. Part 34/144

Processed Mon Feb 9 18:52:46 2015 by ELM ver.2012-10-06 from 001__elm20150121_095101__dat00.bin

