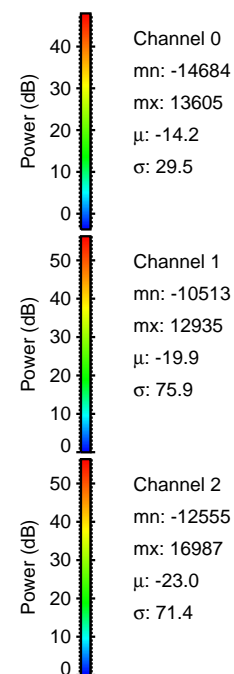
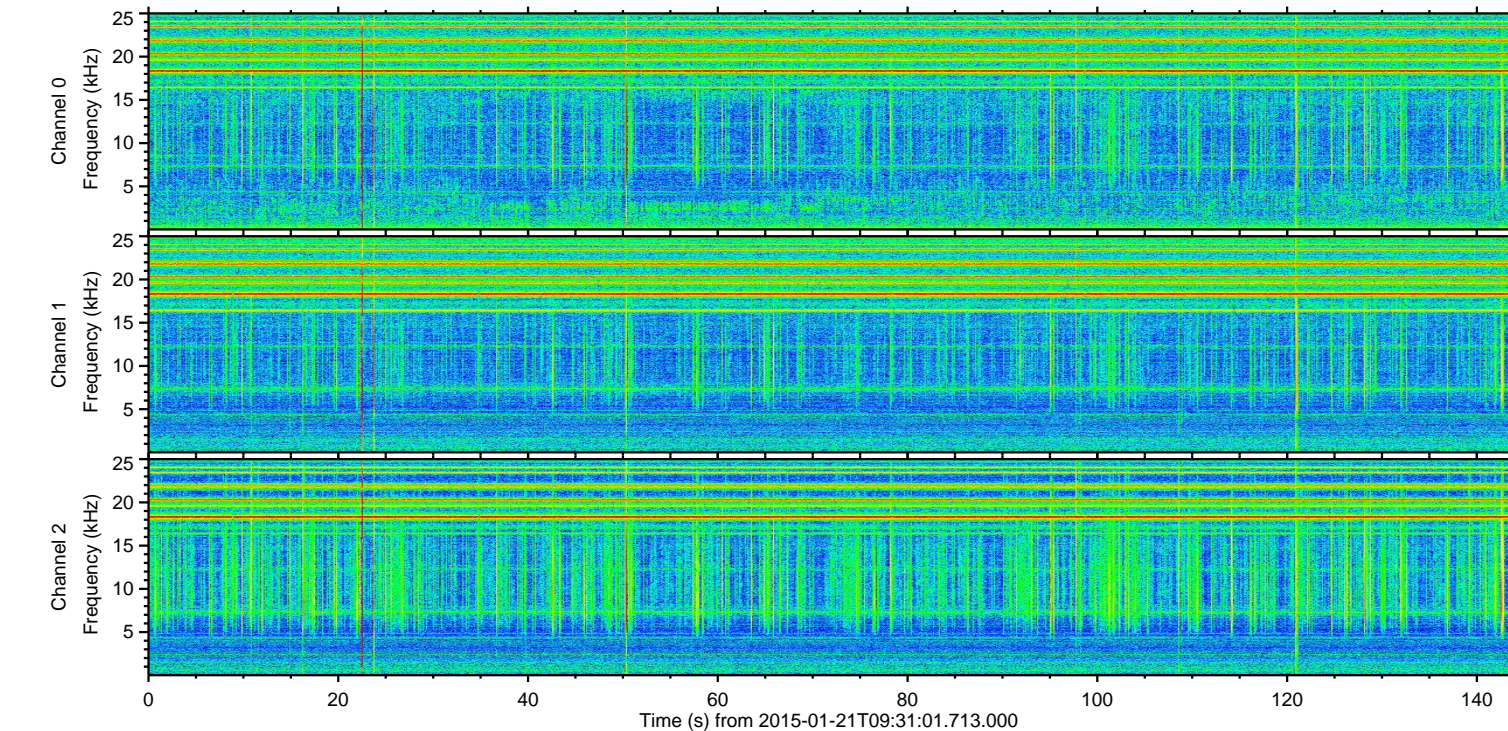
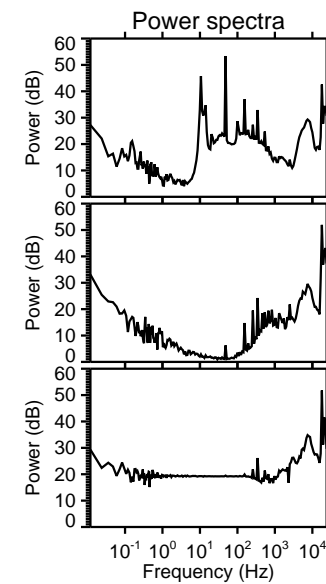
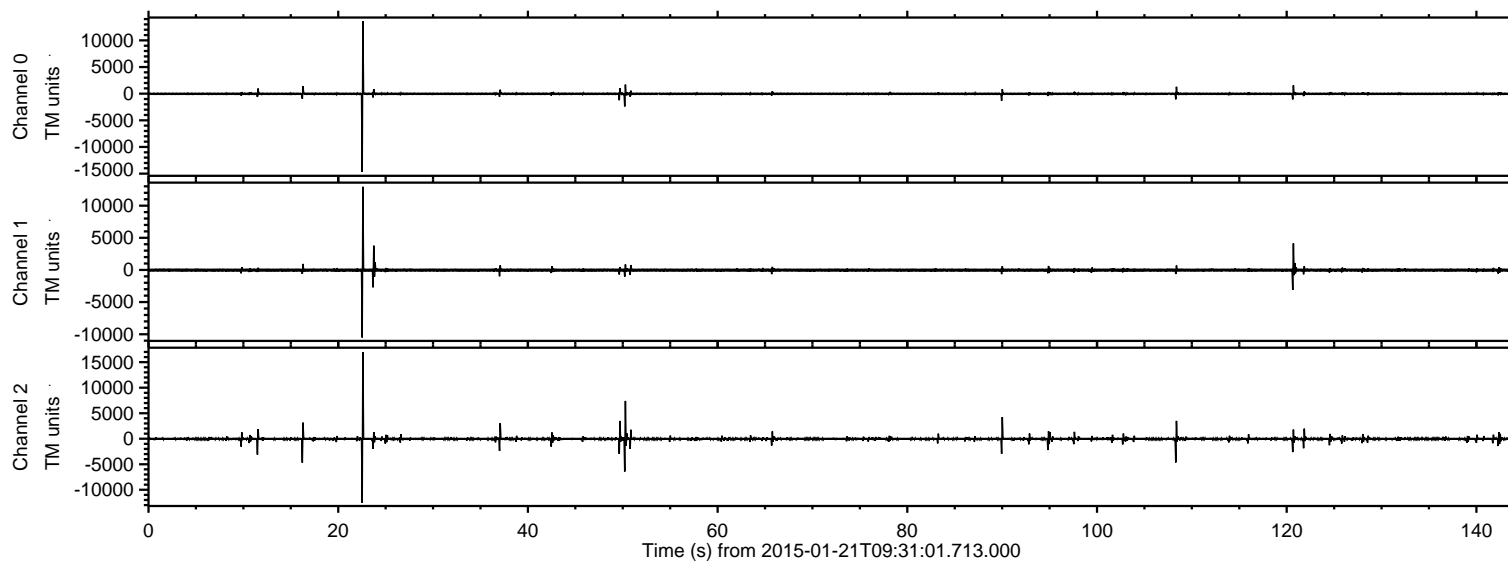


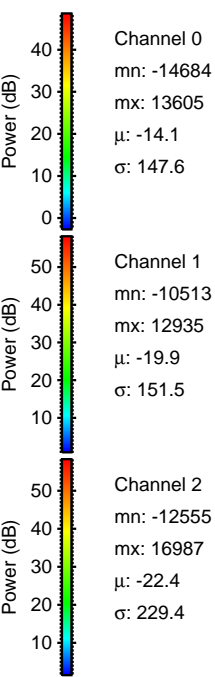
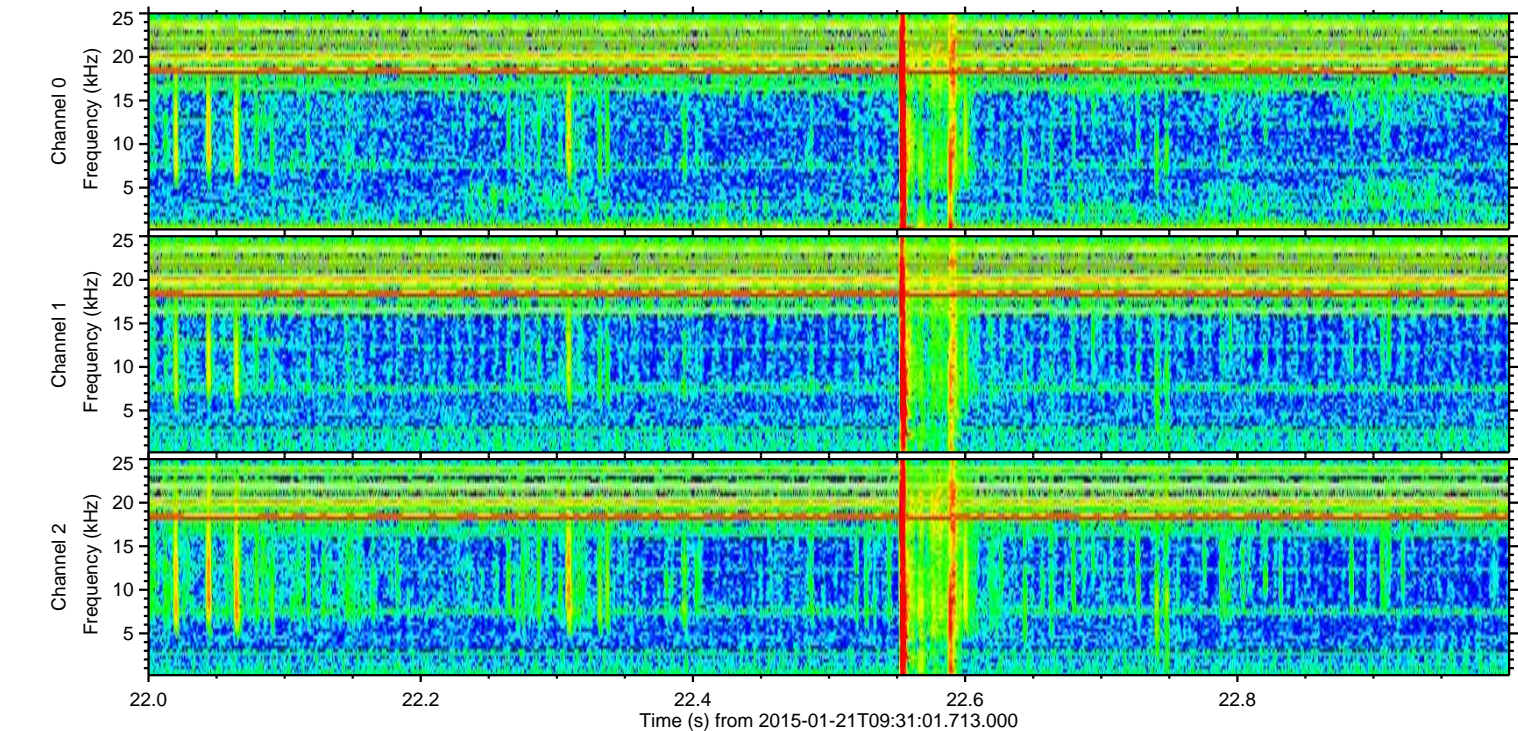
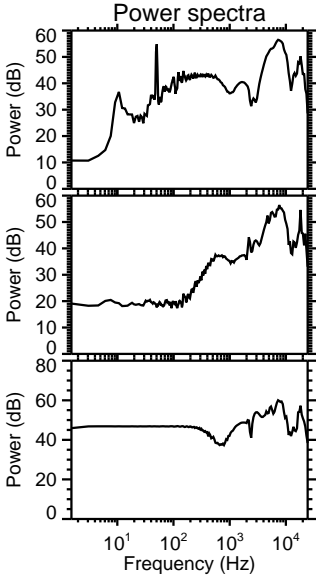
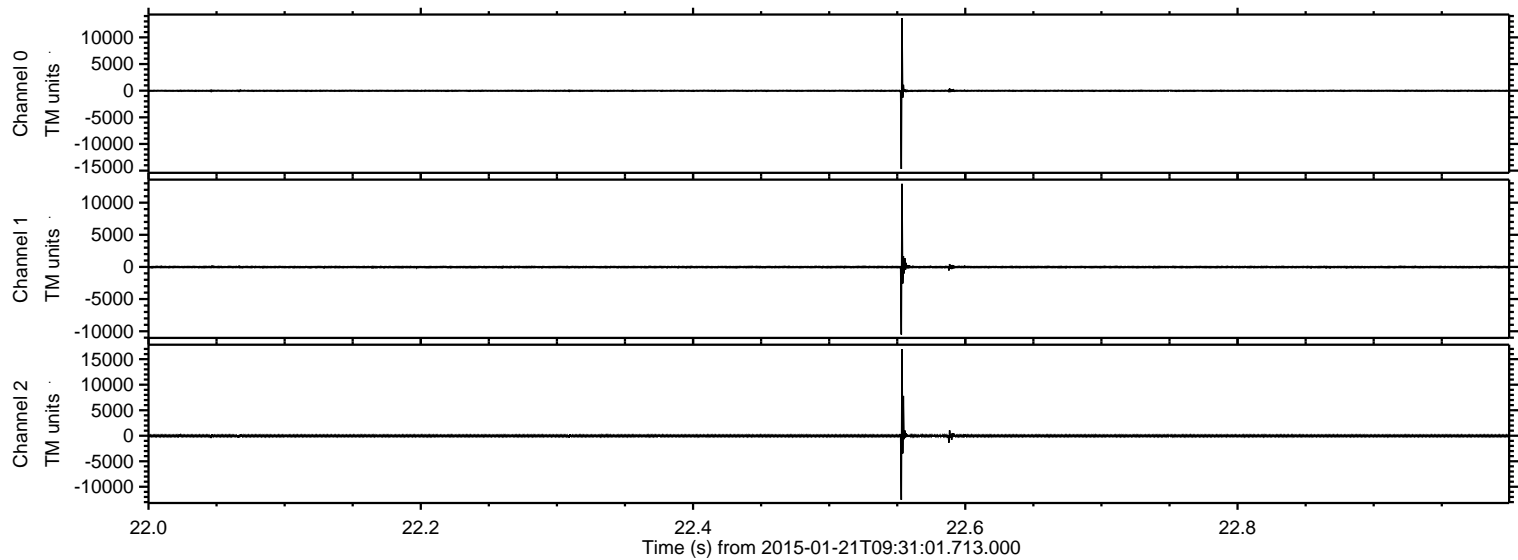
ELMAVAN 3D WAVEFORMS (Measured data sampled at 50 kHz) 49810 packets of 144 samples from 2015-01-21T09:31:01.713.000.

Processed Mon Feb 9 18:39:34 2015 by ELM ver.2012-10-06 from 001__elm20150121_093100__dat00.bin



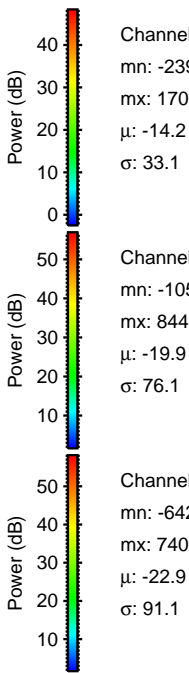
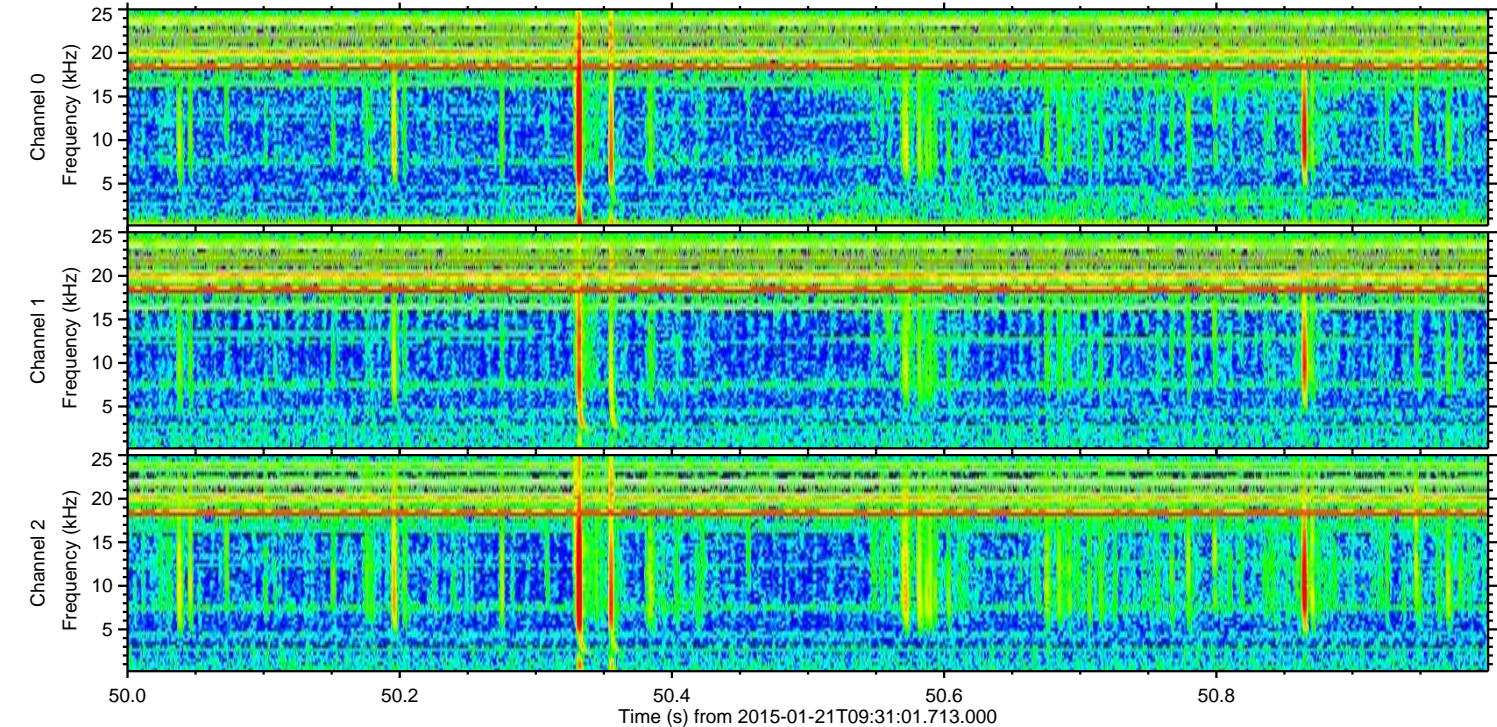
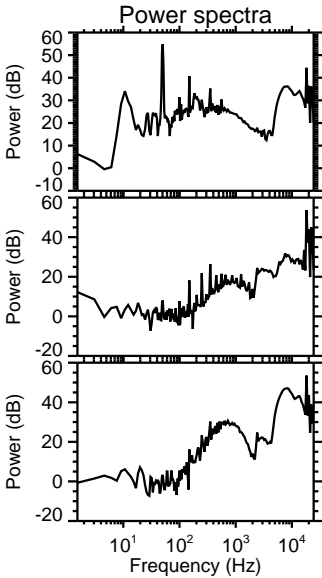
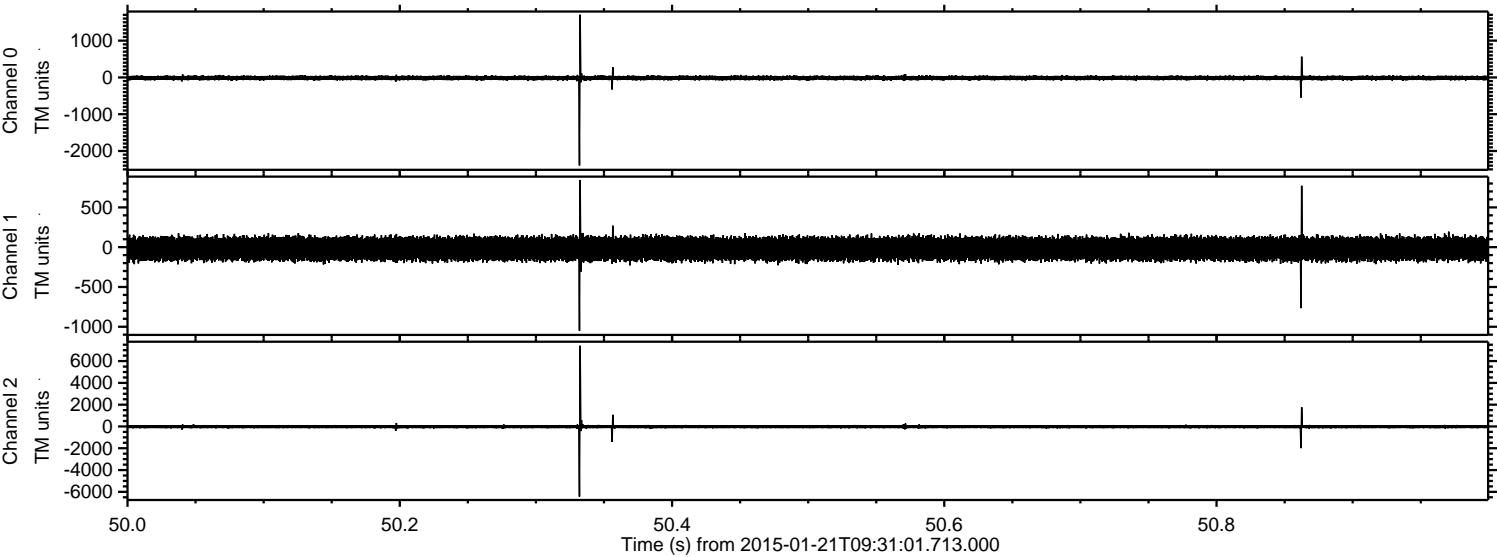
ELMAVAN 3D WAVEFORMS (Measured data sampled at 50 kHz) 49810 packets of 144 samples from 2015-01-21T09:31:01.713.000. Part 23/144

Processed Mon Feb 9 18:39:46 2015 by ELM ver.2012-10-06 from 001__elm20150121_093100__dat00.bin

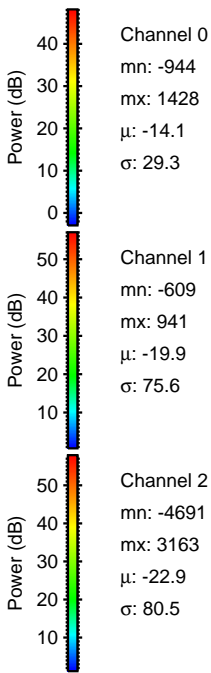
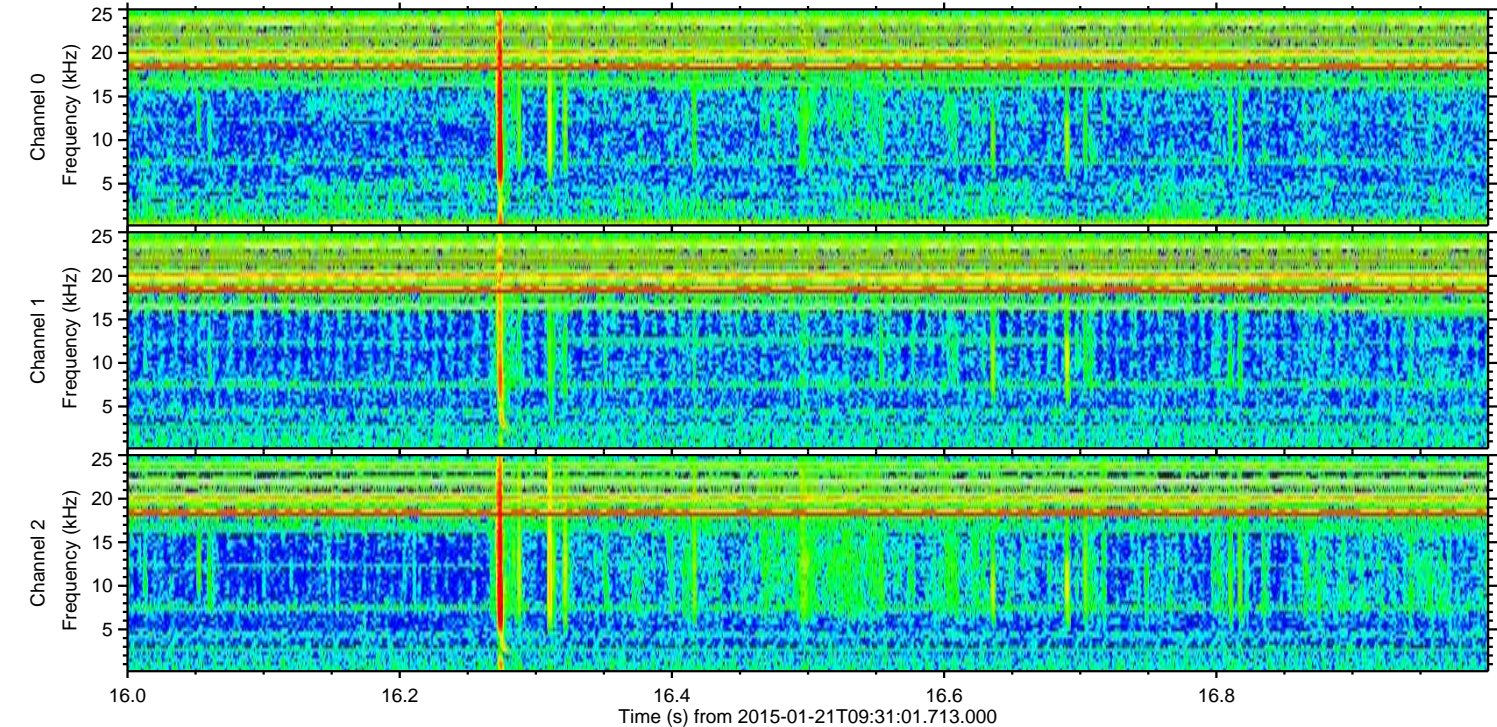
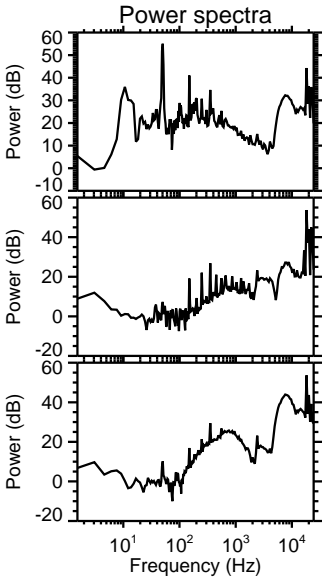
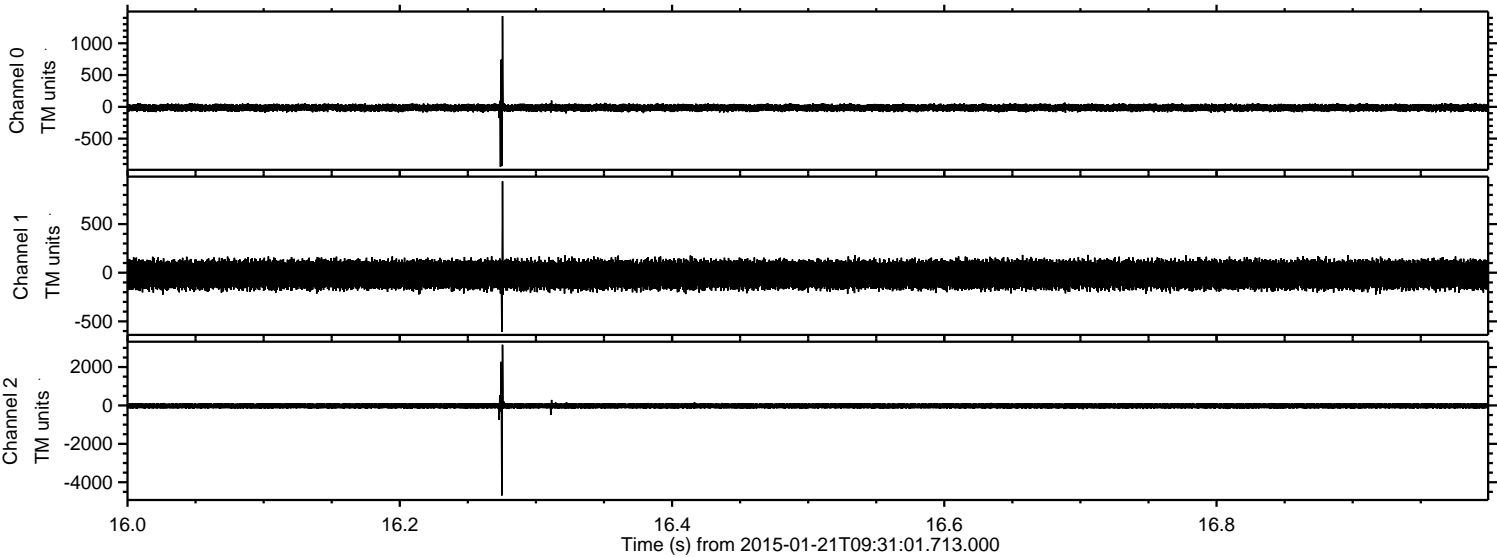


ELMAVAN 3D WAVEFORMS (Measured data sampled at 50 kHz) 49810 packets of 144 samples from 2015-01-21T09:31:01.713.000. Part 51/144

Processed Mon Feb 9 18:39:47 2015 by ELM ver.2012-10-06 from 001__elm20150121_093100__dat00.bin

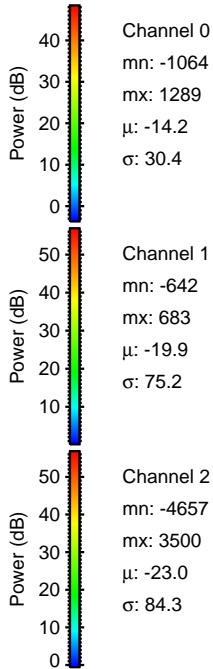
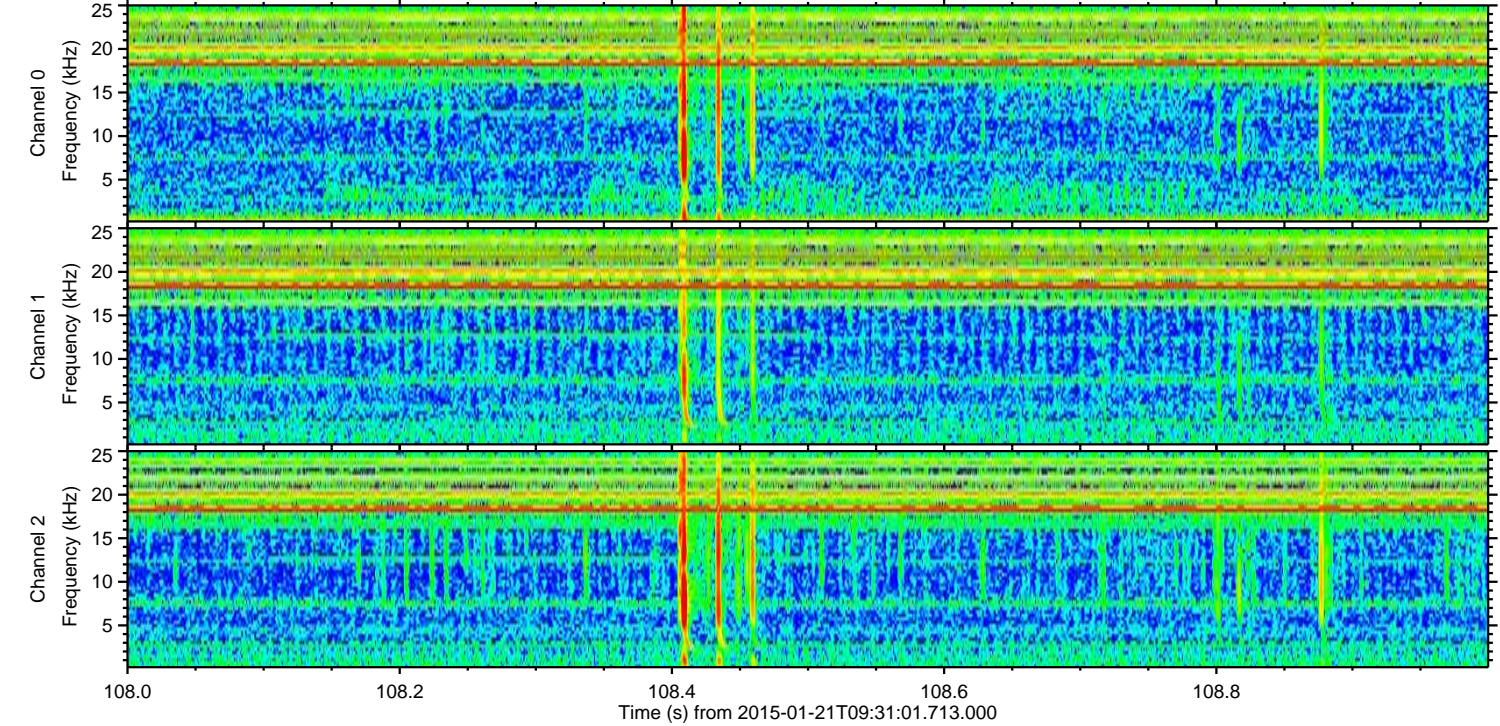
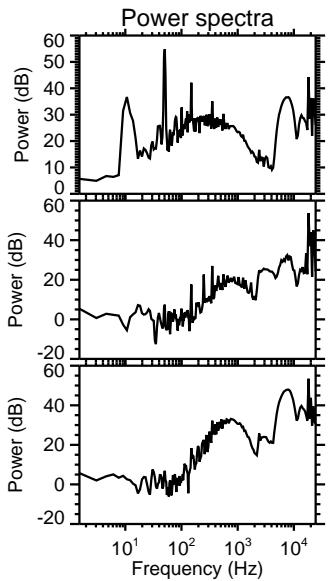
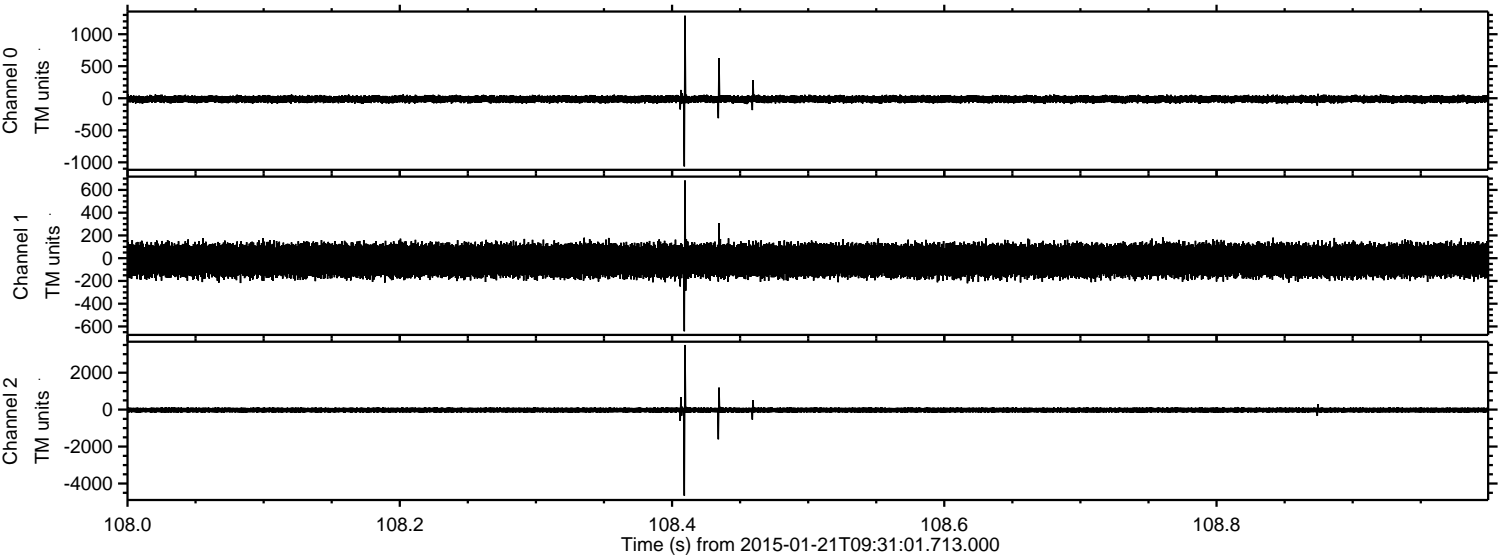


Processed Mon Feb 9 18:39:48 2015 by ELM ver.2012-10-06 from 001__elm20150121_093100__dat00.bin



ELMAVAN 3D WAVEFORMS (Measured data sampled at 50 kHz) 49810 packets of 144 samples from 2015-01-21T09:31:01.713.000. Part 109/144

Processed Mon Feb 9 18:39:49 2015 by ELM ver.2012-10-06 from 001__elm20150121_093100__dat00.bin

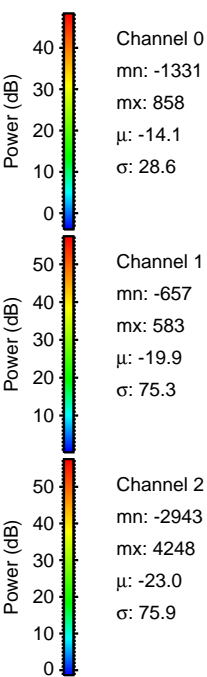
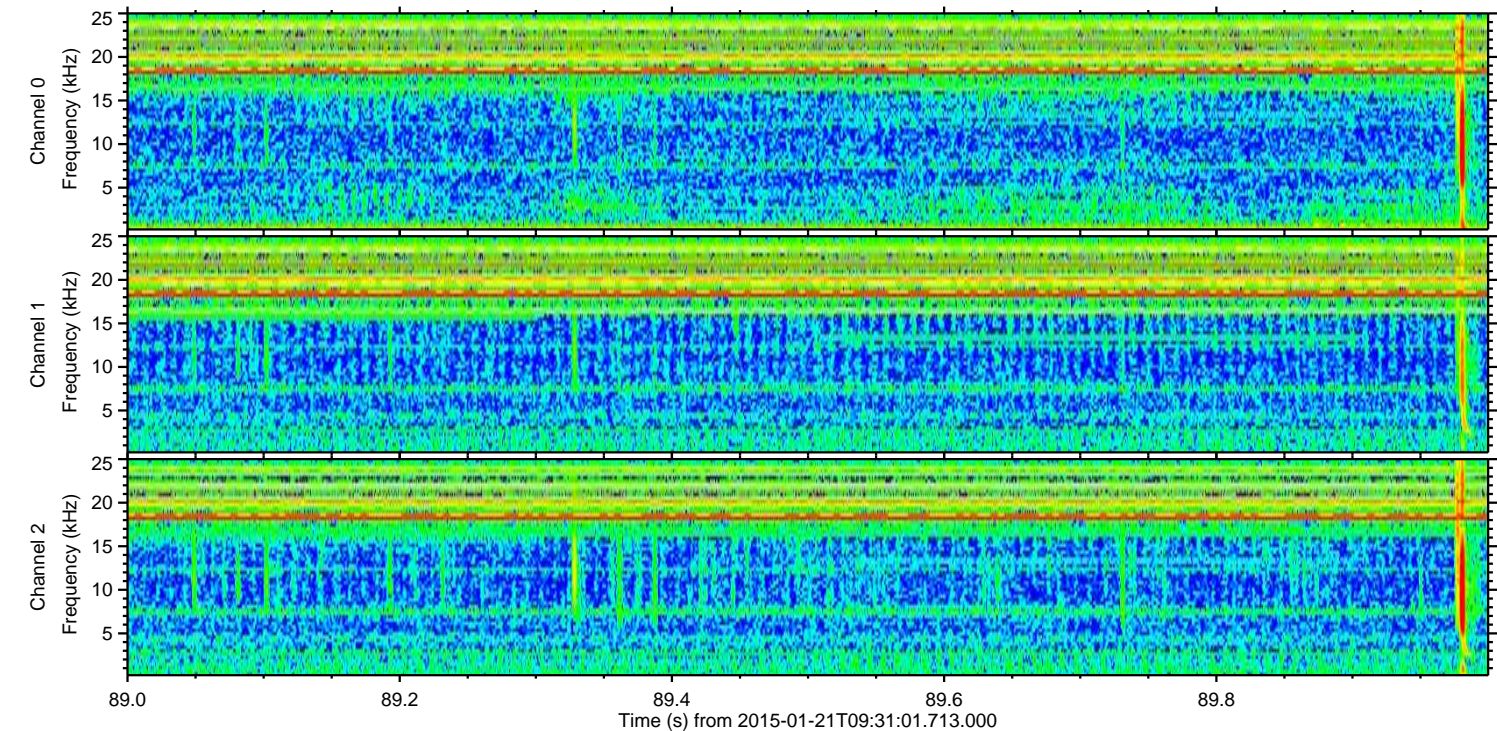
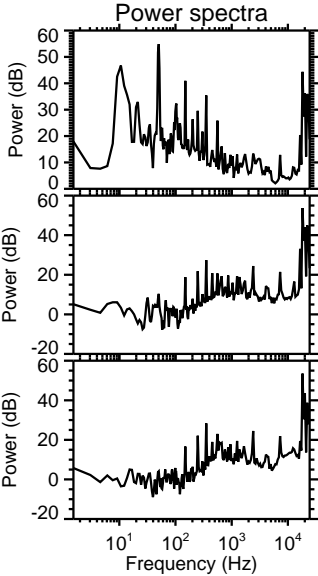
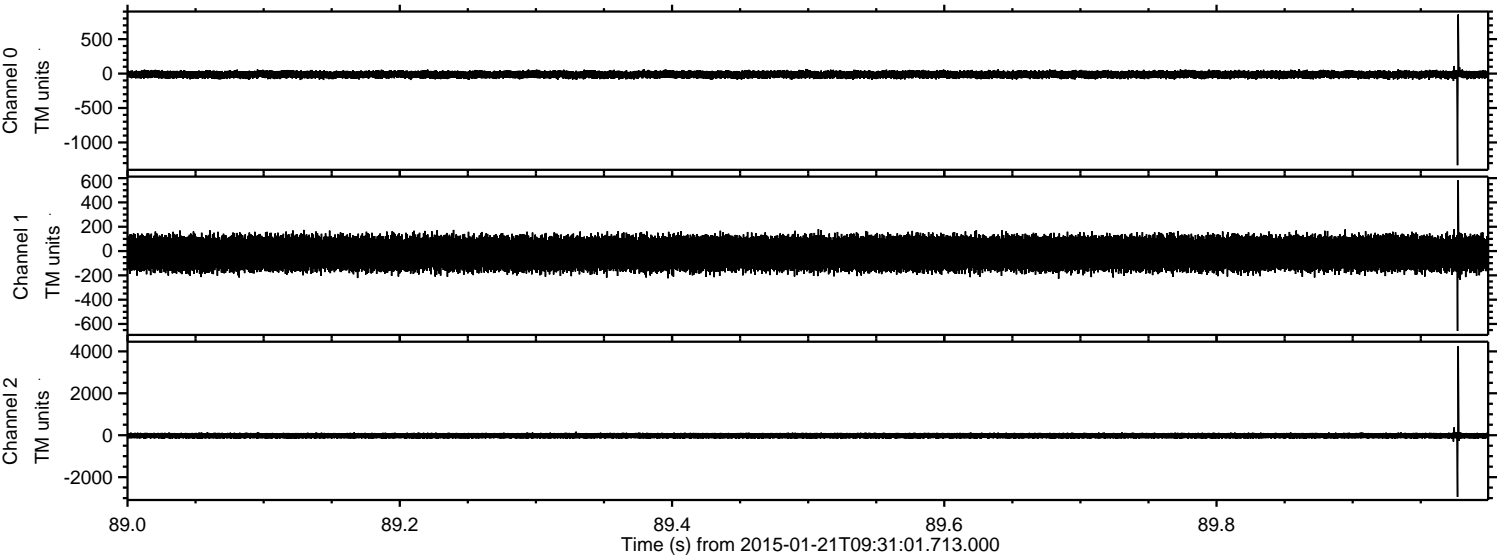


Channel 0
mn: -1064
mx: 1289
 μ : -14.2
 σ : 30.4

Channel 1
mn: -642
mx: 683
 μ : -19.9
 σ : 75.2

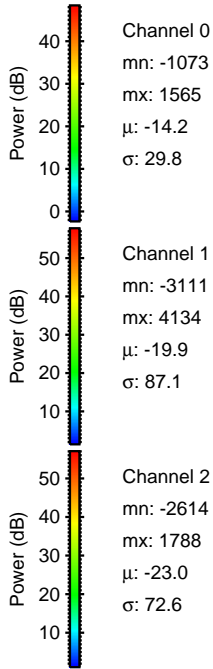
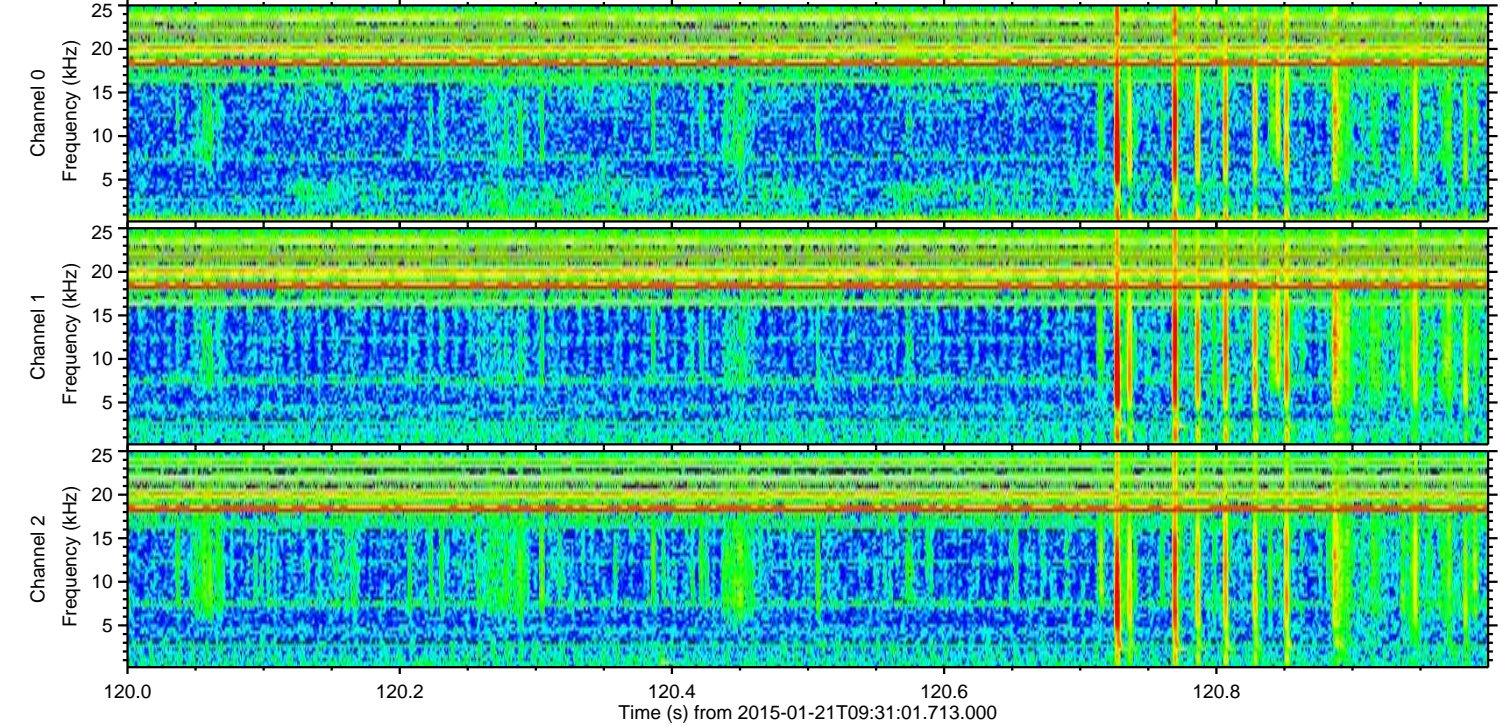
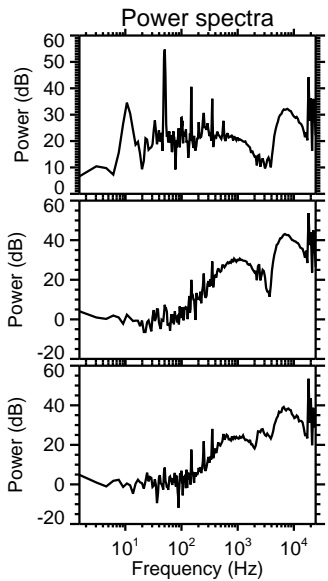
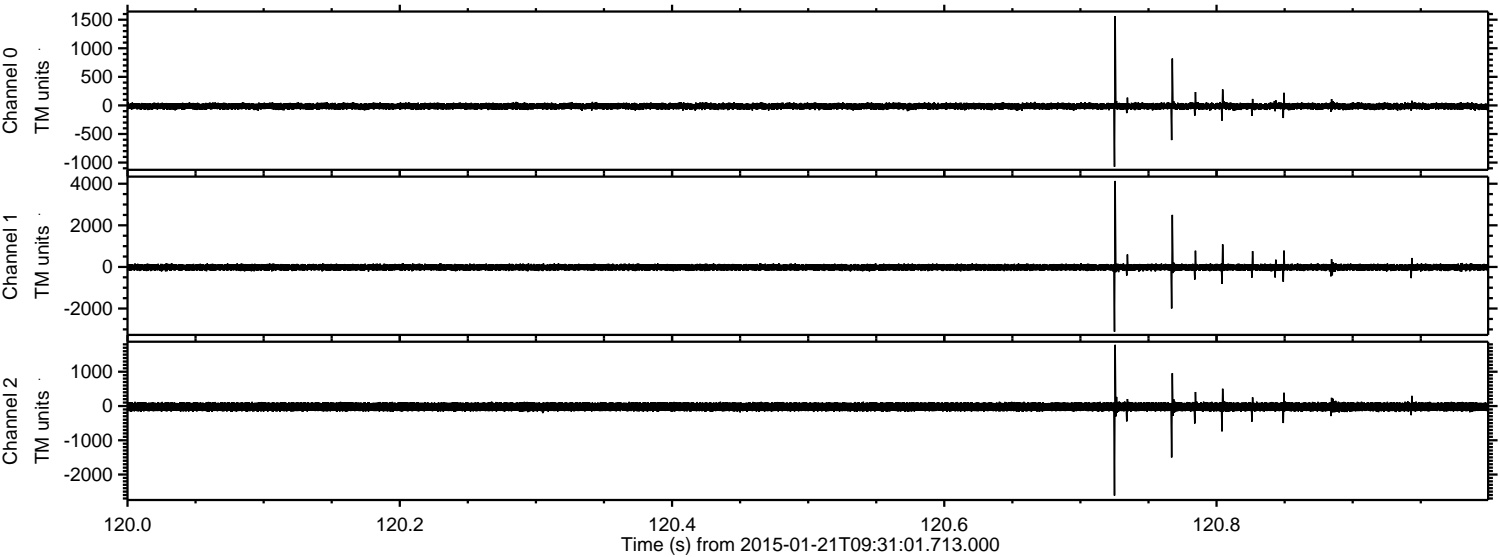
Channel 2
mn: -4657
mx: 3500
 μ : -23.0
 σ : 84.3

Processed Mon Feb 9 18:39:50 2015 by ELM ver.2012-10-06 from 001__elm20150121_093100__dat00.bin



ELMAVAN 3D WAVEFORMS (Measured data sampled at 50 kHz) 49810 packets of 144 samples from 2015-01-21T09:31:01.713.000. Part 121/144

Processed Mon Feb 9 18:39:51 2015 by ELM ver.2012-10-06 from 001__elm20150121_093100__dat00.bin



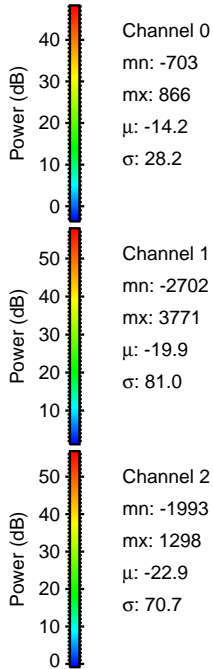
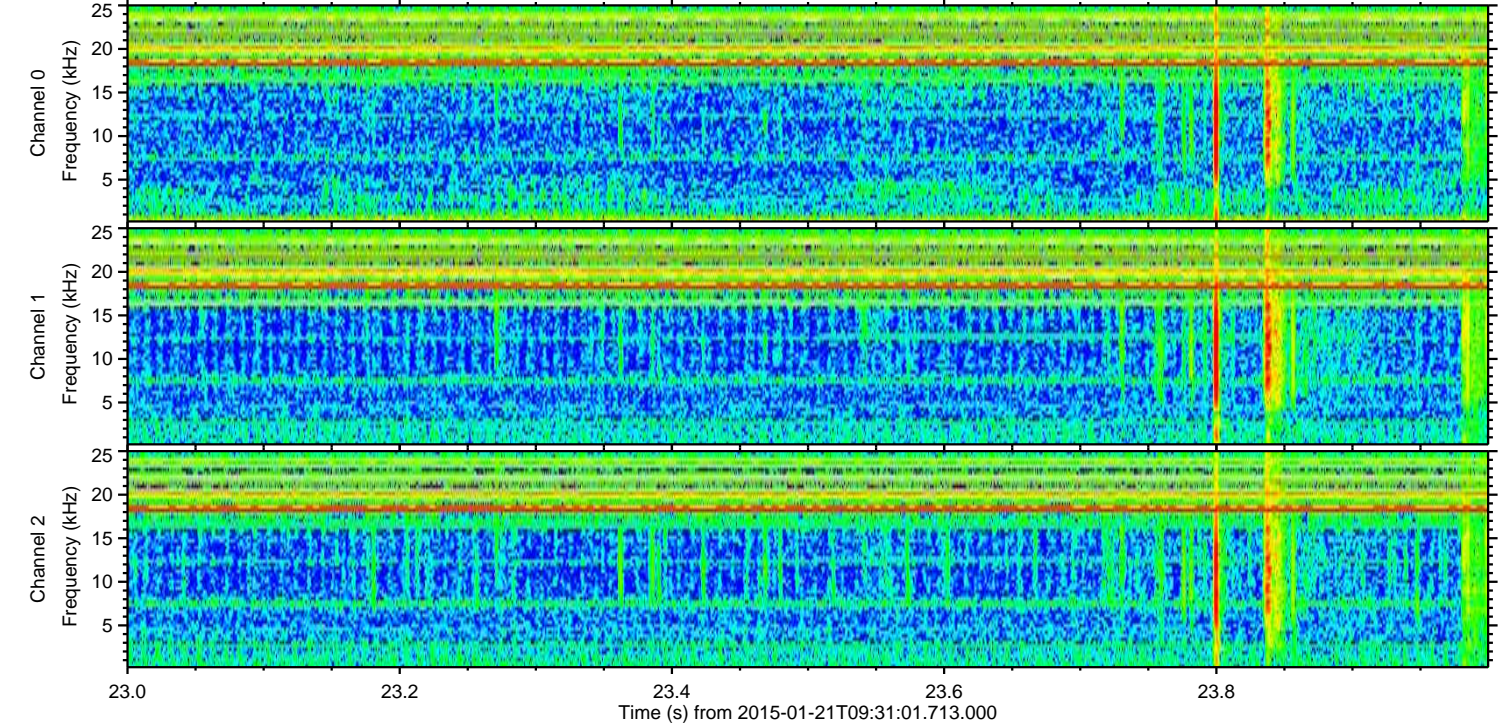
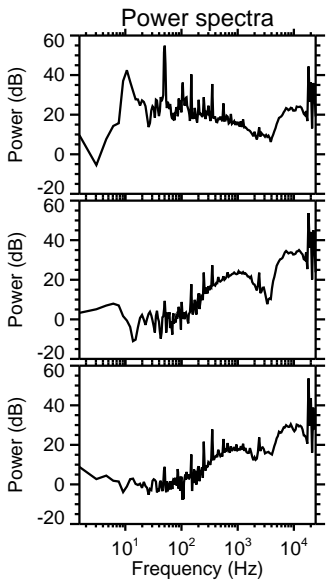
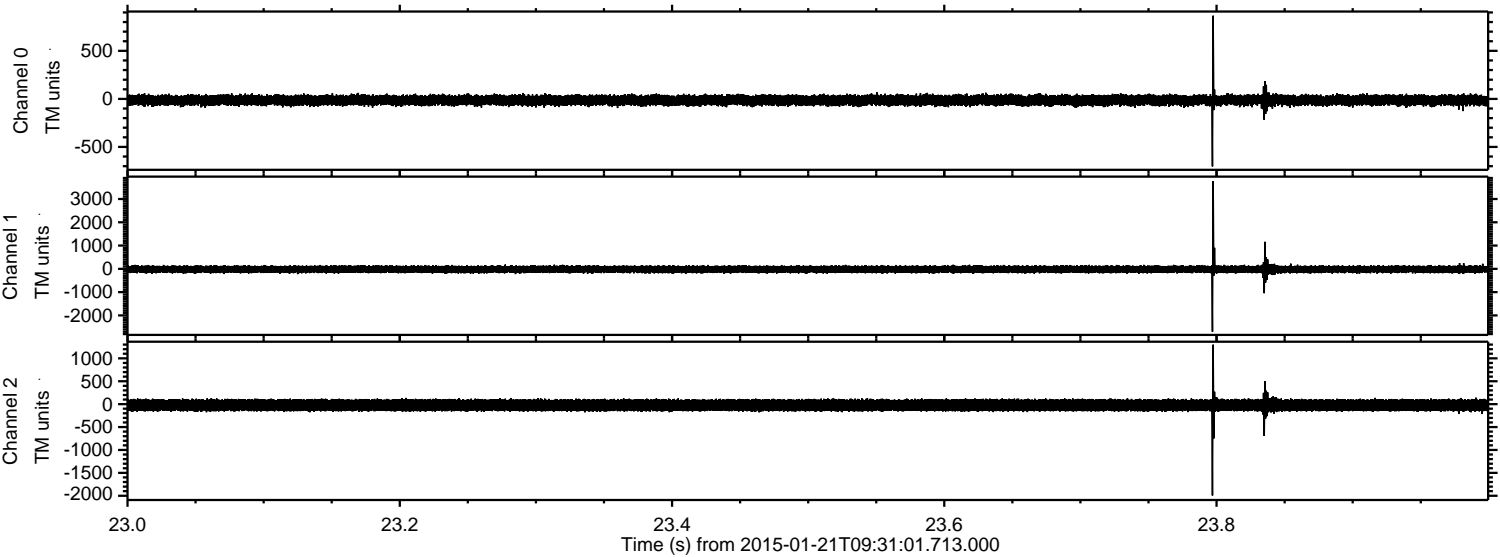
Channel 0
mn: -1073
mx: 1565
 μ : -14.2
 σ : 29.8

Channel 1
mn: -3111
mx: 4134
 μ : -19.9
 σ : 87.1

Channel 2
mn: -2614
mx: 1788
 μ : -23.0
 σ : 72.6

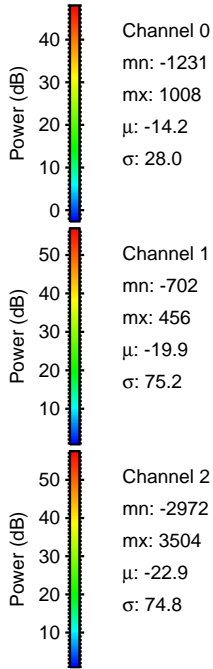
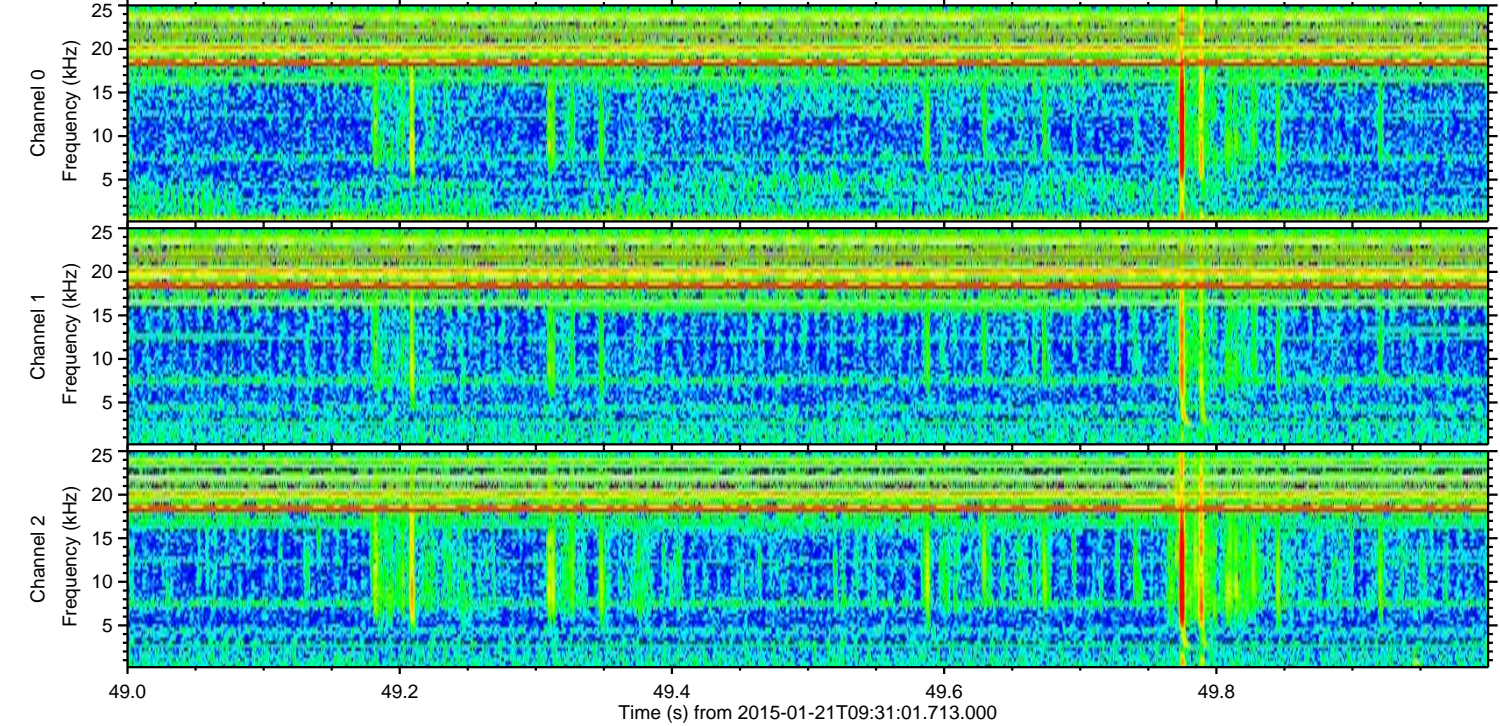
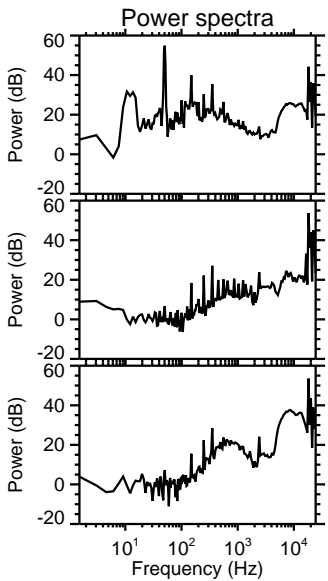
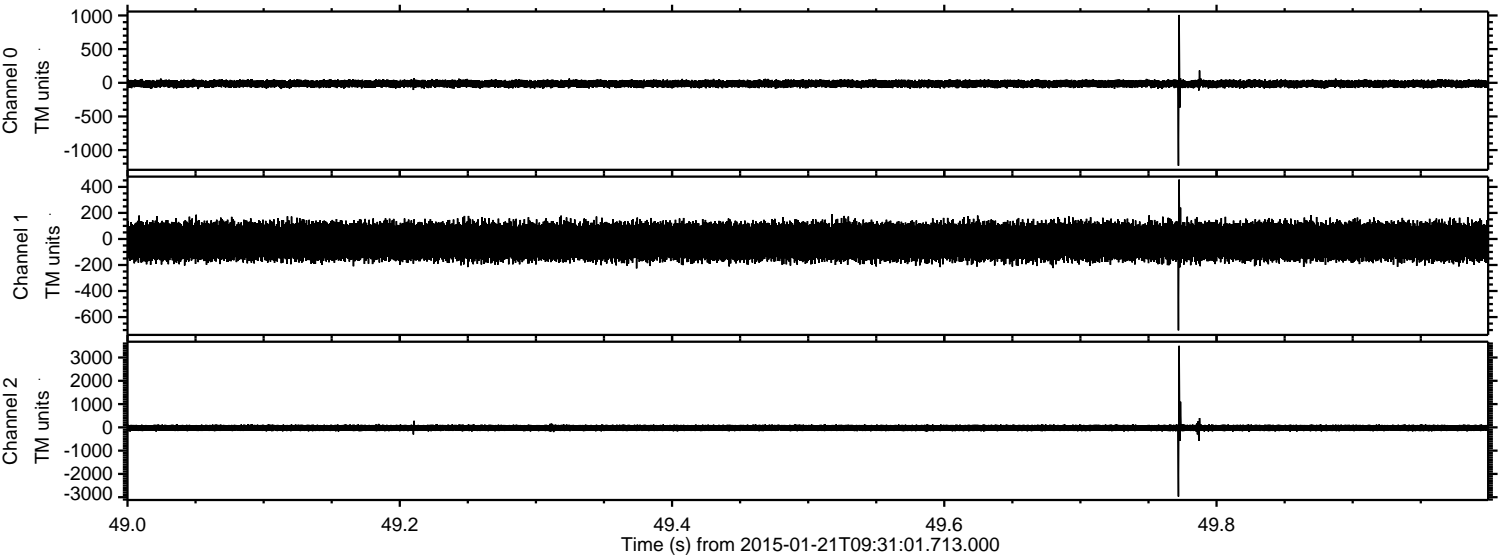
ELMAVAN 3D WAVEFORMS (Measured data sampled at 50 kHz) 49810 packets of 144 samples from 2015-01-21T09:31:01.713.000. Part 24/144

Processed Mon Feb 9 18:39:51 2015 by ELM ver.2012-10-06 from 001__elm20150121_093100__dat00.bin



ELMAVAN 3D WAVEFORMS (Measured data sampled at 50 kHz) 49810 packets of 144 samples from 2015-01-21T09:31:01.713.000. Part 50/144

Processed Mon Feb 9 18:39:52 2015 by ELM ver.2012-10-06 from 001__elm20150121_093100__dat00.bin



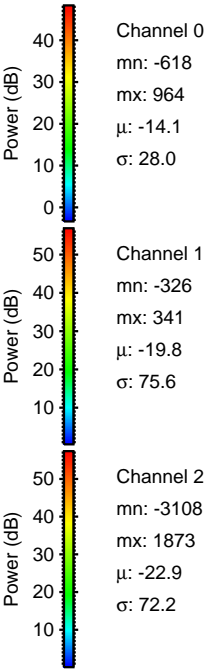
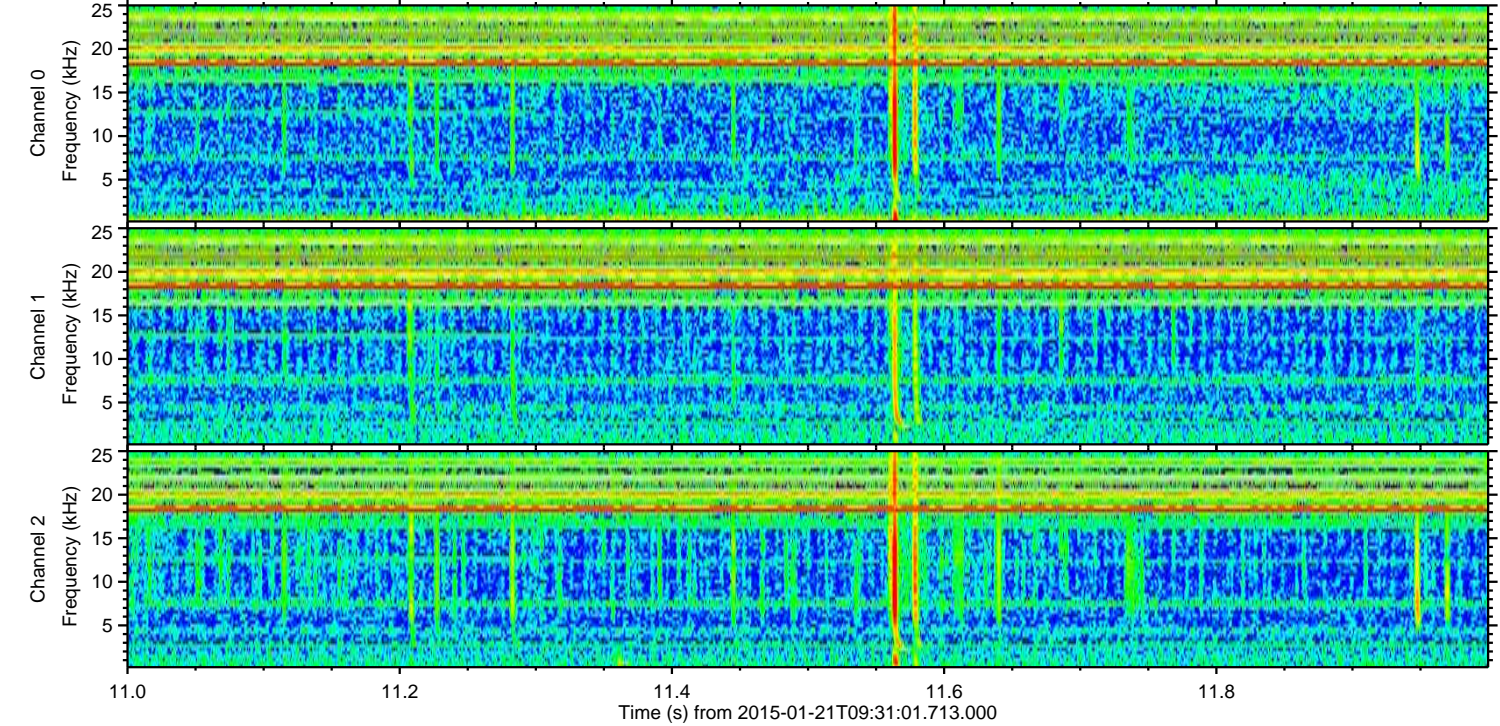
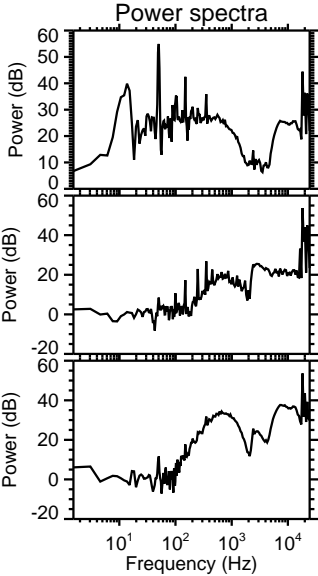
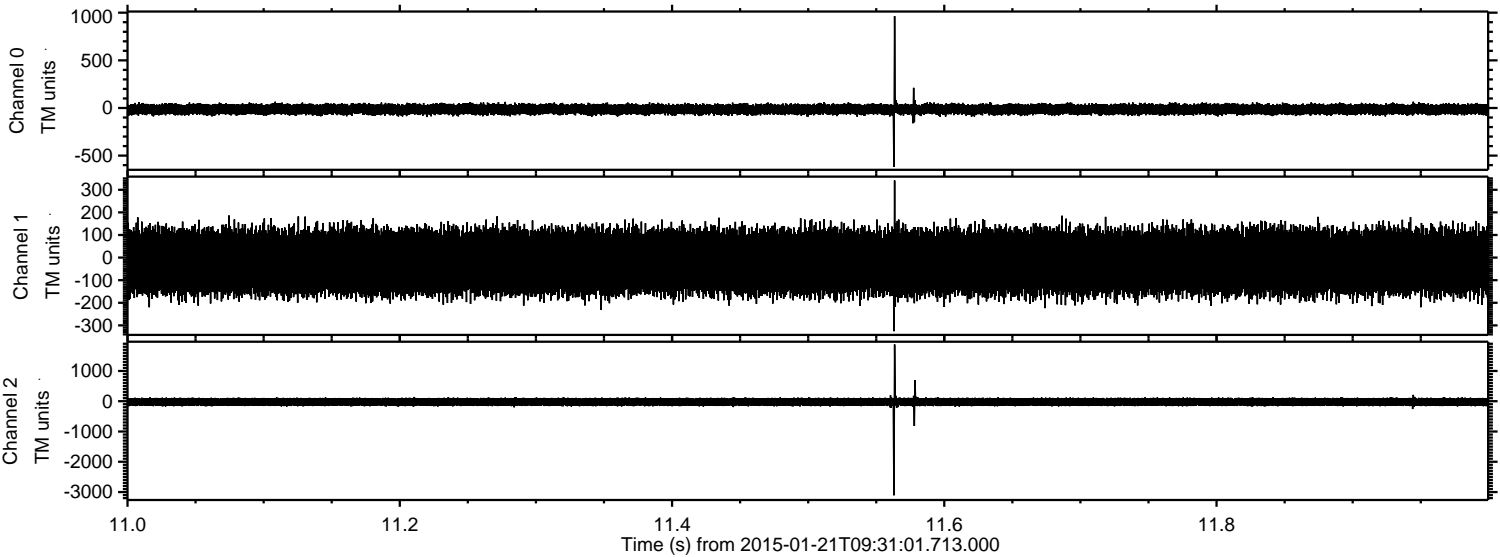
Channel 0
mn: -1231
mx: 1008
 μ : -14.2
 σ : 28.0

Channel 1
mn: -702
mx: 456
 μ : -19.9
 σ : 75.2

Channel 2
mn: -2972
mx: 3504
 μ : -22.9
 σ : 74.8

ELMAVAN 3D WAVEFORMS (Measured data sampled at 50 kHz) 49810 packets of 144 samples from 2015-01-21T09:31:01.713.000. Part 12/144

Processed Mon Feb 9 18:39:53 2015 by ELM ver.2012-10-06 from 001__elm20150121_093100__dat00.bin



Channel 0
mn: -618
mx: 964
 μ : -14.1
 σ : 28.0

Channel 1
mn: -326
mx: 341
 μ : -19.8
 σ : 75.6

Channel 2
mn: -3108
mx: 1873
 μ : -22.9
 σ : 72.2

Processed Mon Feb 9 18:39:54 2015 by ELM ver.2012-10-06 from 001__elm20150121_093100__dat00.bin

