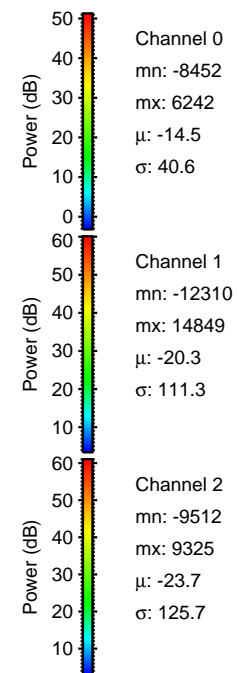
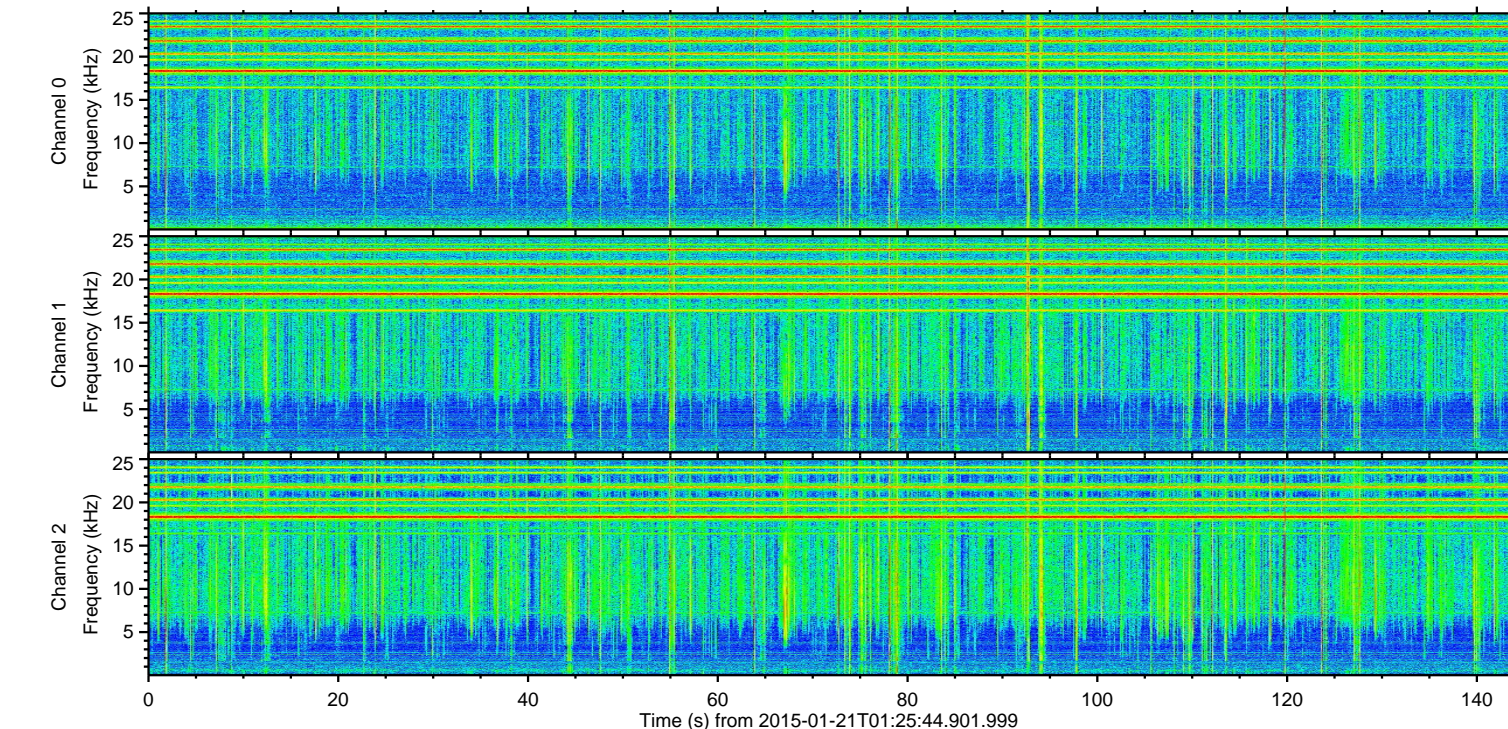
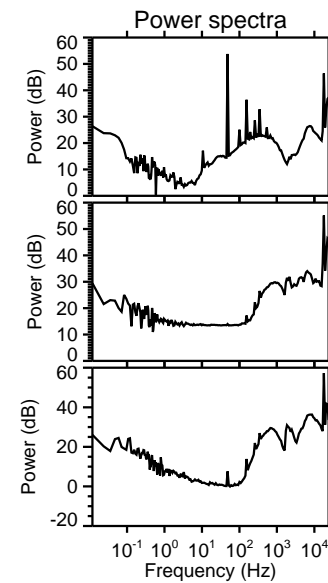
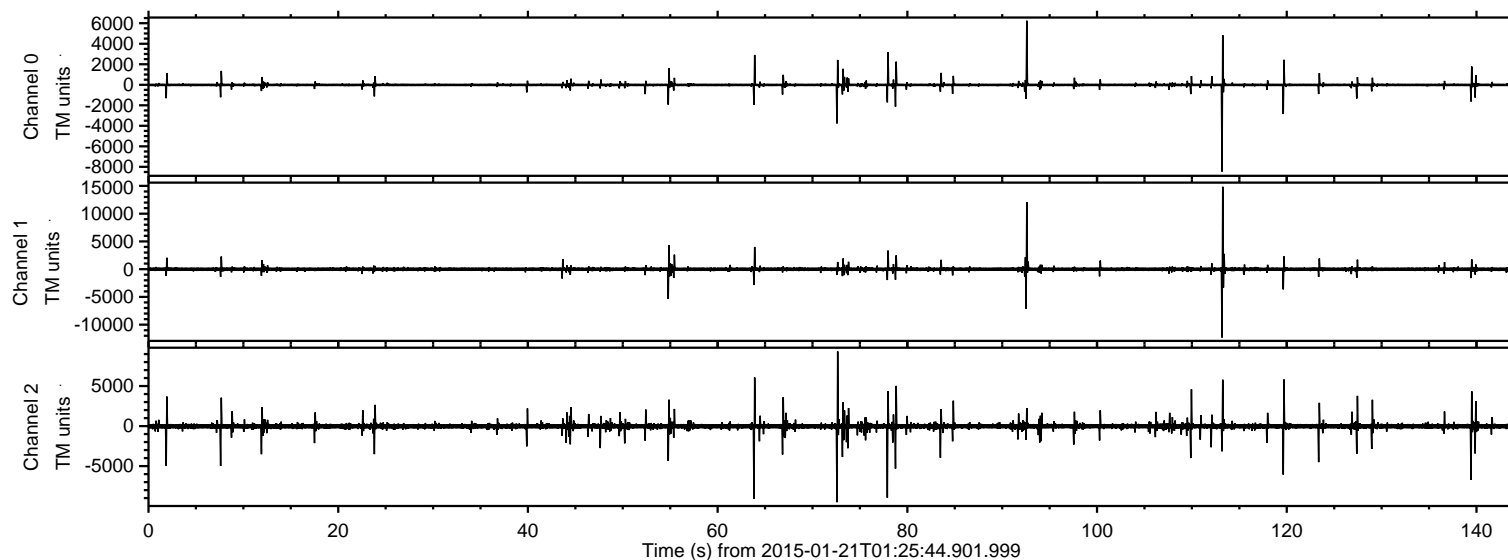


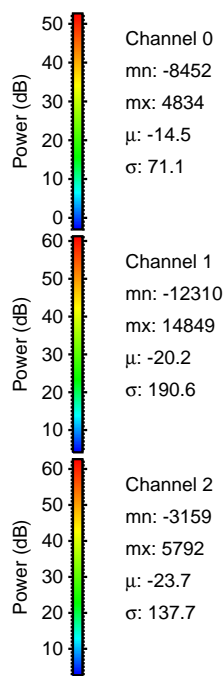
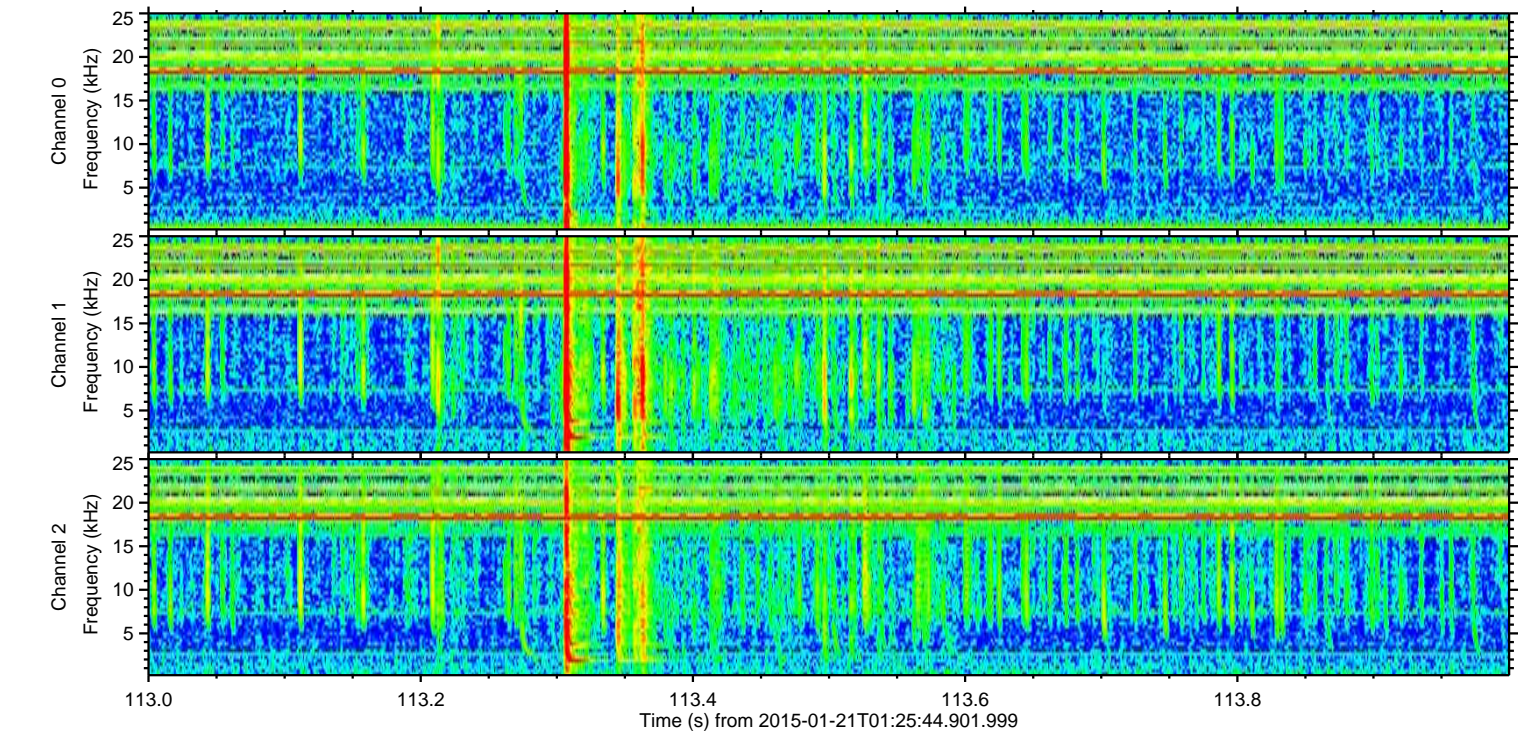
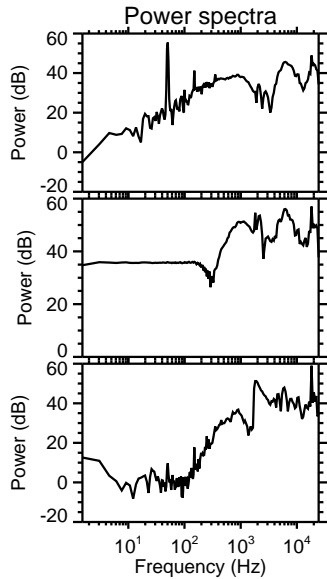
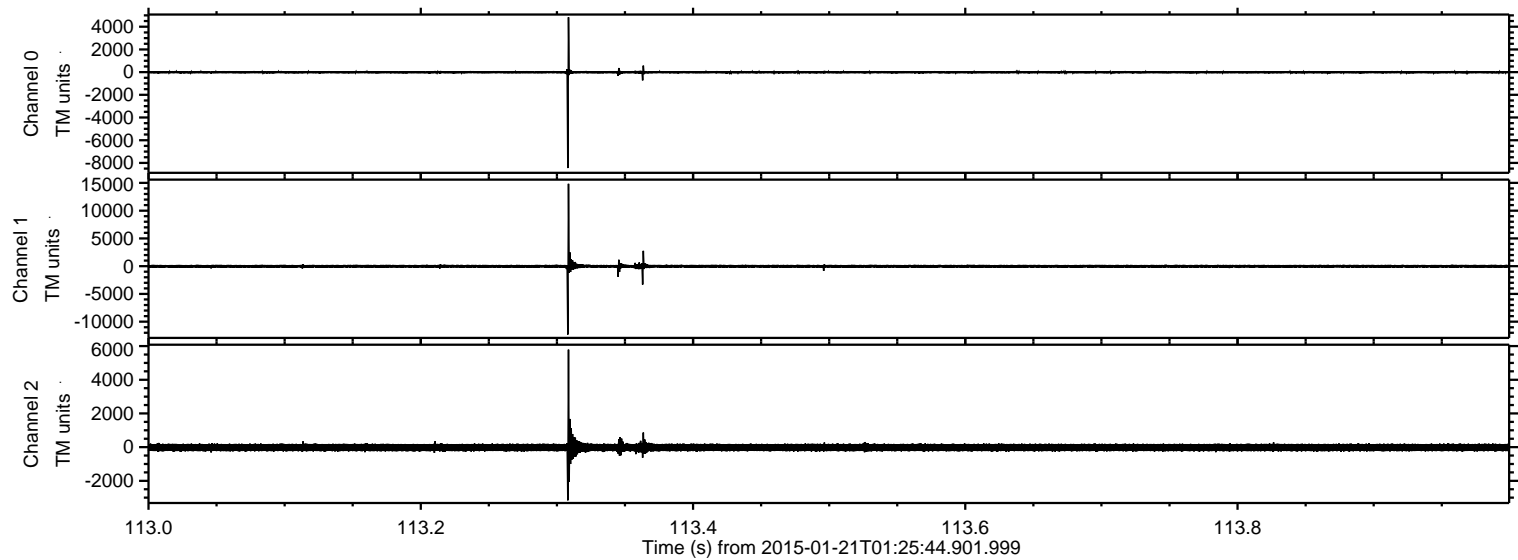
ELMAVAN 3D WAVEFORMS (Measured data sampled at 50 kHz) 49807 packets of 144 samples from 2015-01-21T01:25:44.901.999.

Processed Mon Feb 9 13:00:53 2015 by ELM ver.2012-10-06 from 001__elm20150121_012543__dat00.bin



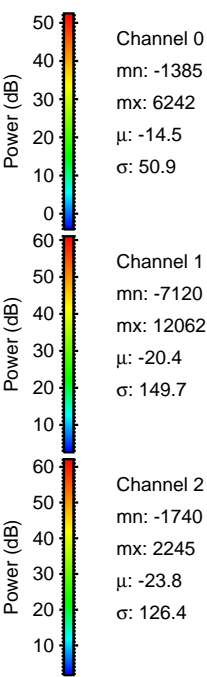
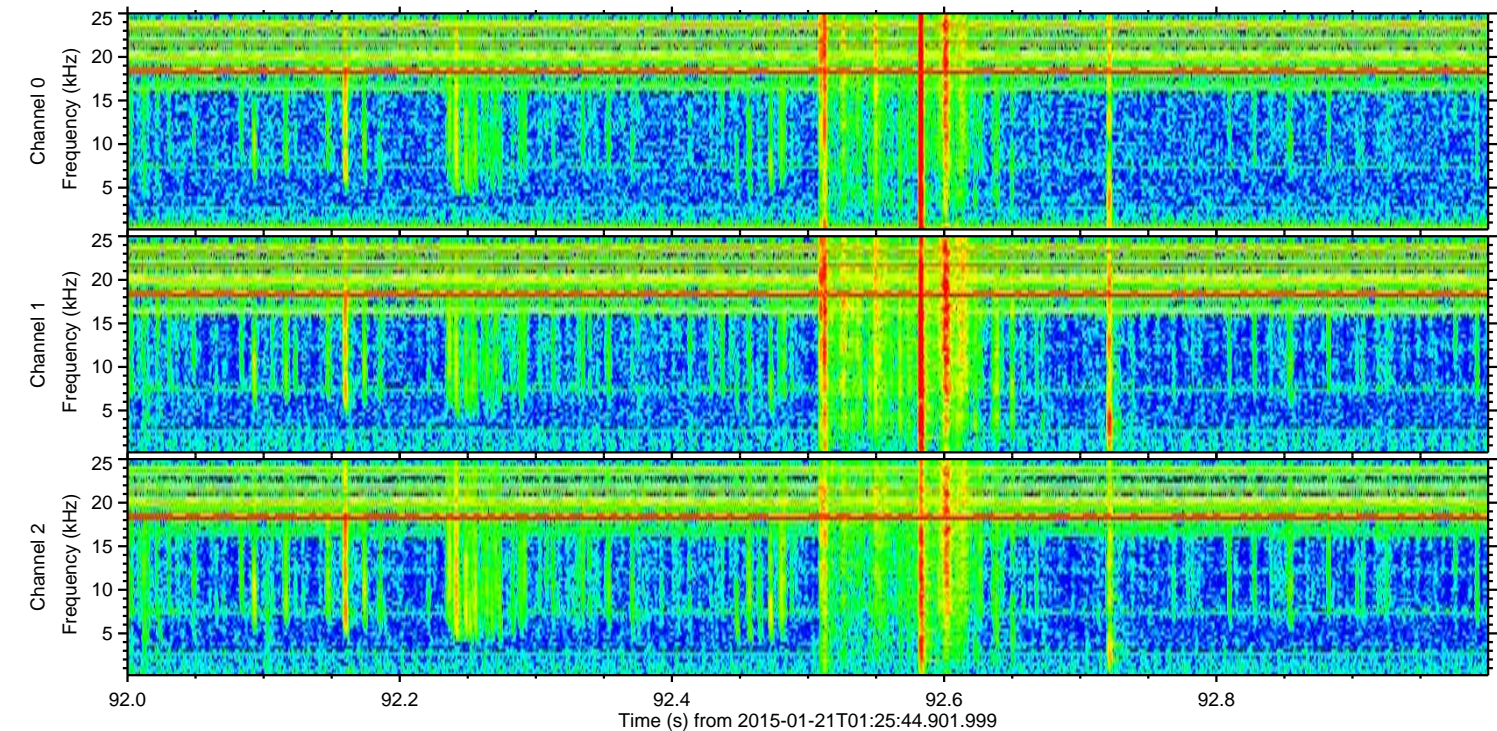
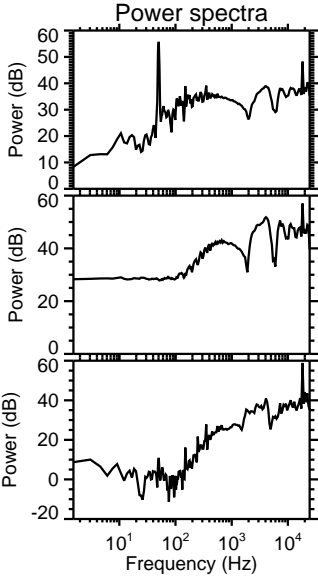
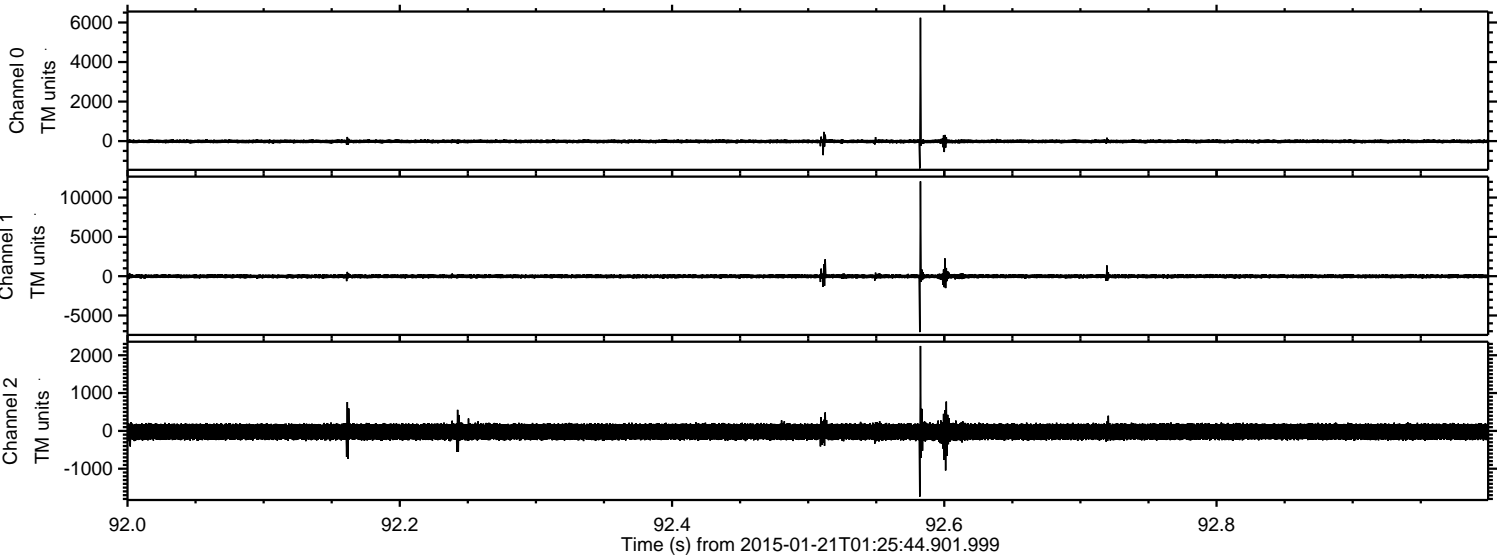
ELMAVAN 3D WAVEFORMS (Measured data sampled at 50 kHz) 49807 packets of 144 samples from 2015-01-21T01:25:44.901.999. Part 114/144

Processed Mon Feb 9 13:01:05 2015 by ELM ver.2012-10-06 from 001__elm20150121_012543__dat00.bin



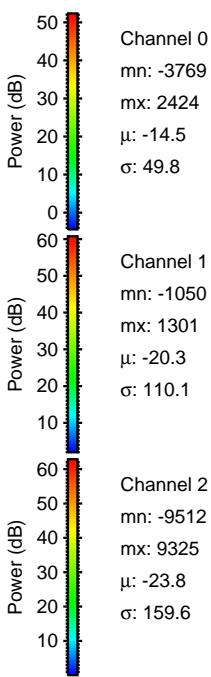
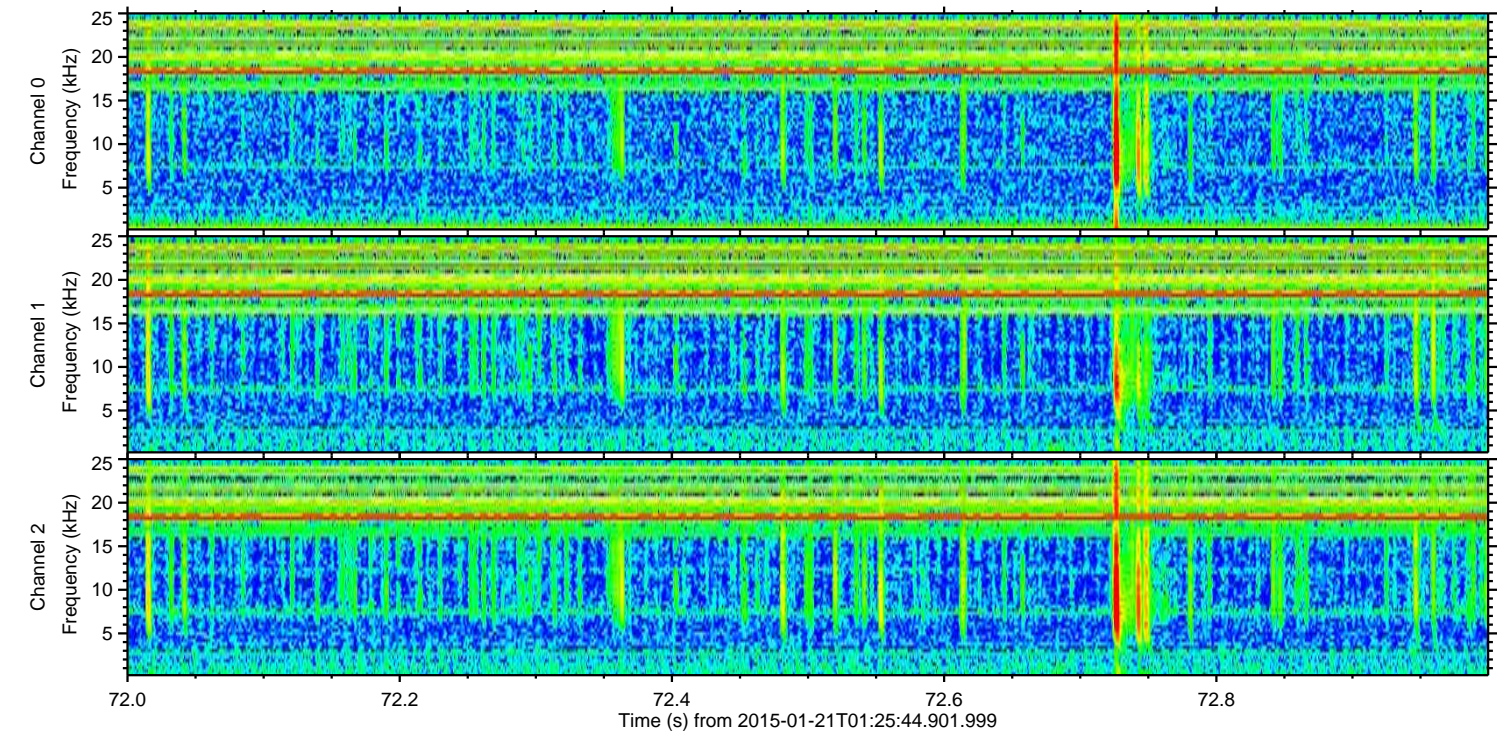
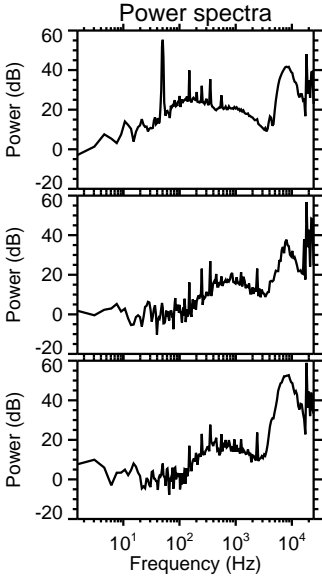
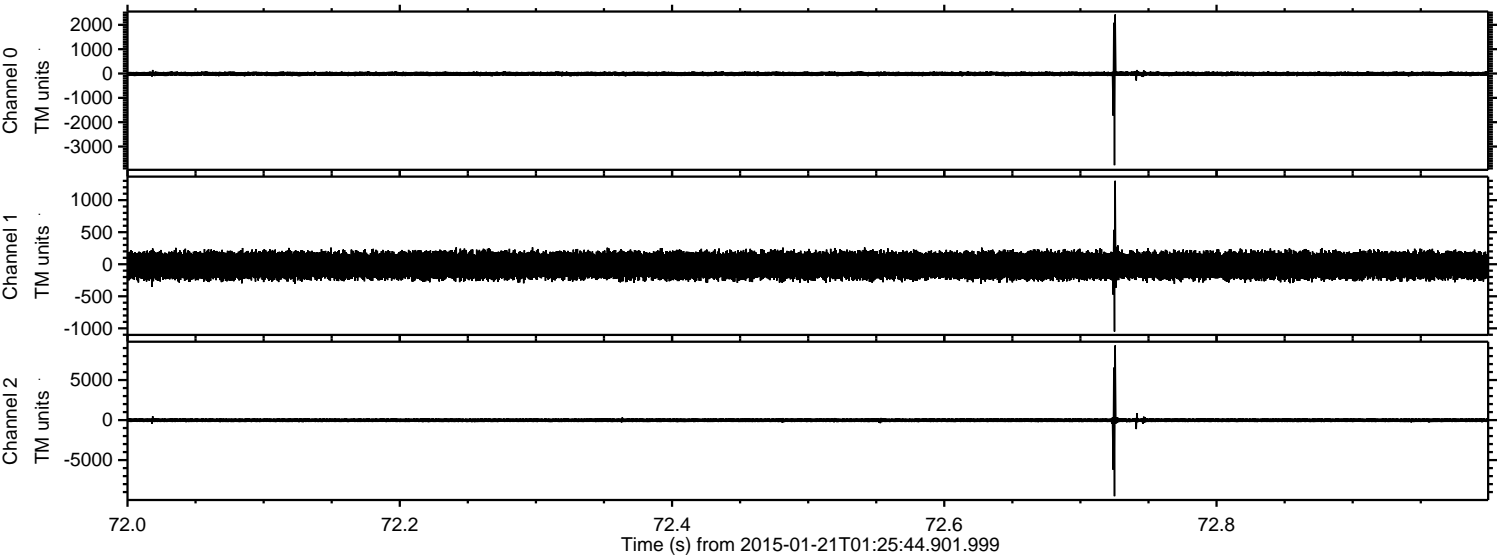
ELMAVAN 3D WAVEFORMS (Measured data sampled at 50 kHz) 49807 packets of 144 samples from 2015-01-21T01:25:44.901.999. Part 93/144

Processed Mon Feb 9 13:01:06 2015 by ELM ver.2012-10-06 from 001__elm20150121_012543__dat00.bin



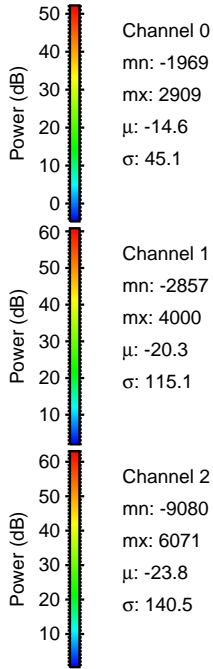
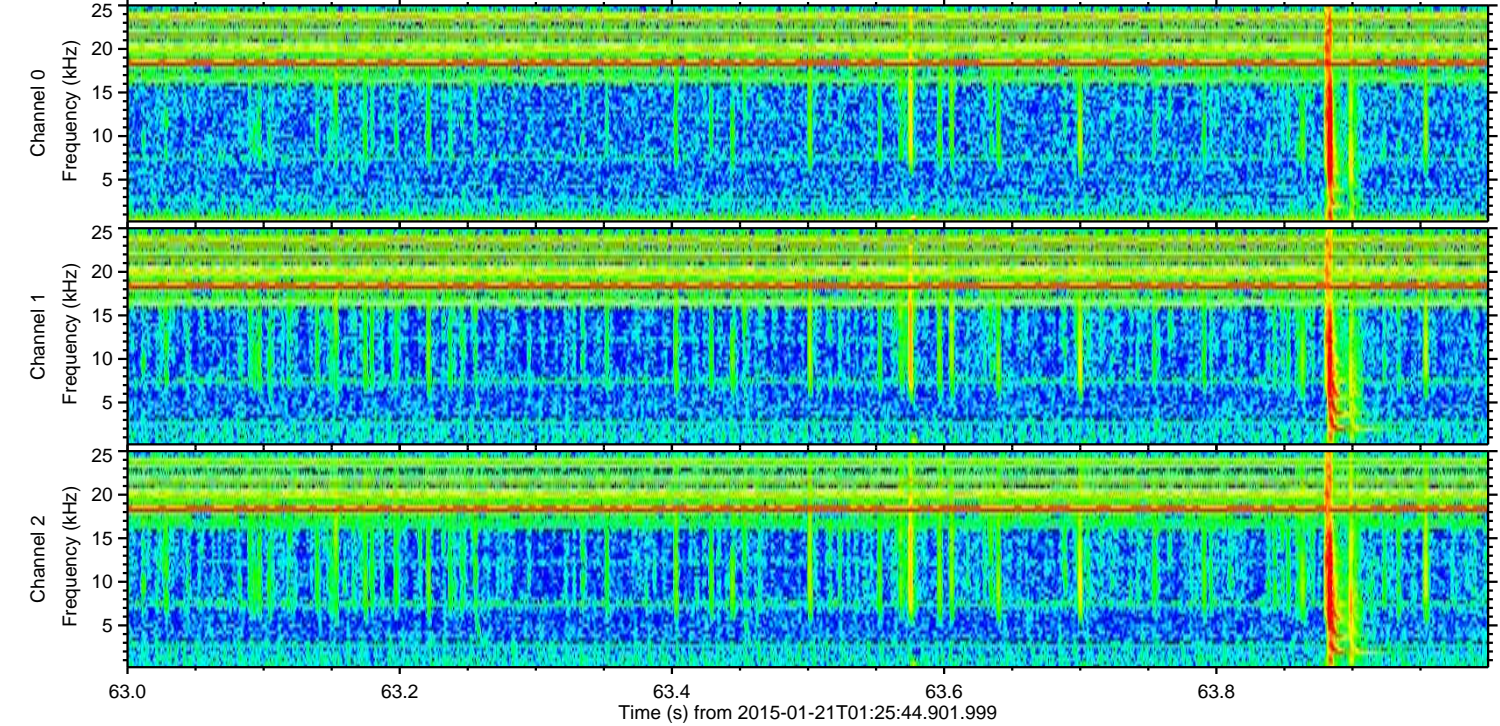
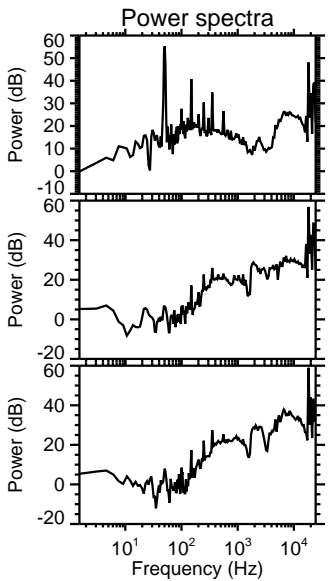
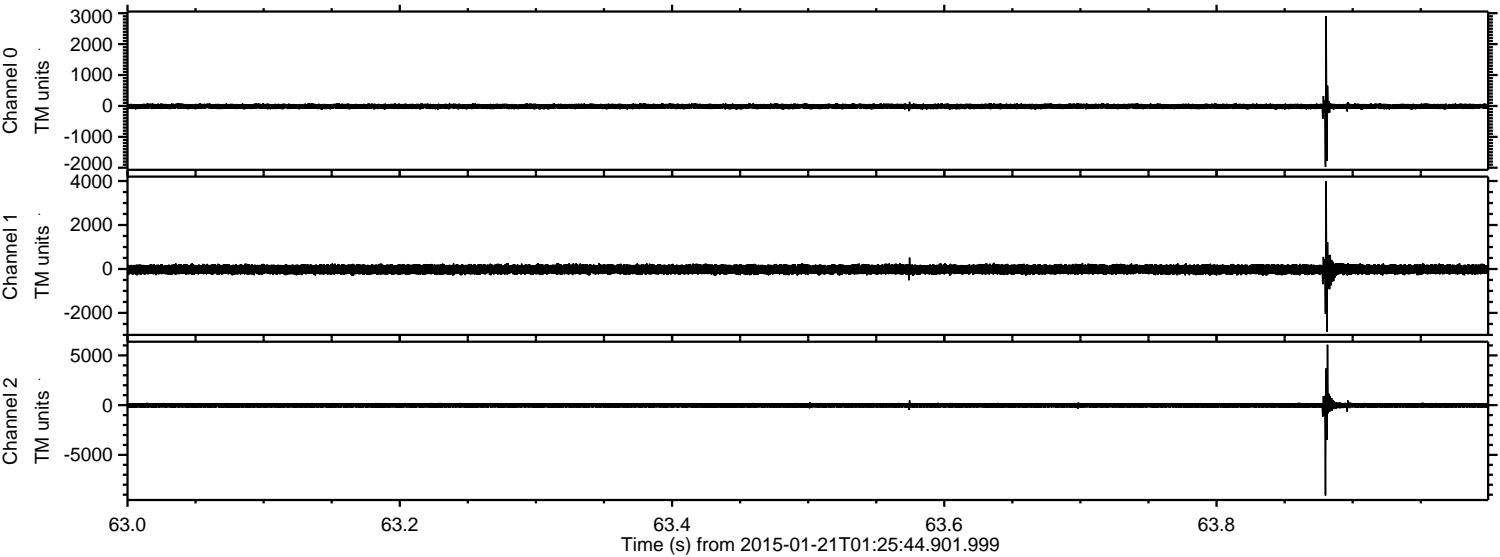
ELMAVAN 3D WAVEFORMS (Measured data sampled at 50 kHz) 49807 packets of 144 samples from 2015-01-21T01:25:44.901.999. Part 73/144

Processed Mon Feb 9 13:01:07 2015 by ELM ver.2012-10-06 from 001__elm20150121_012543__dat00.bin



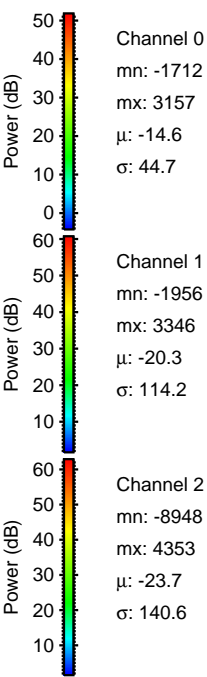
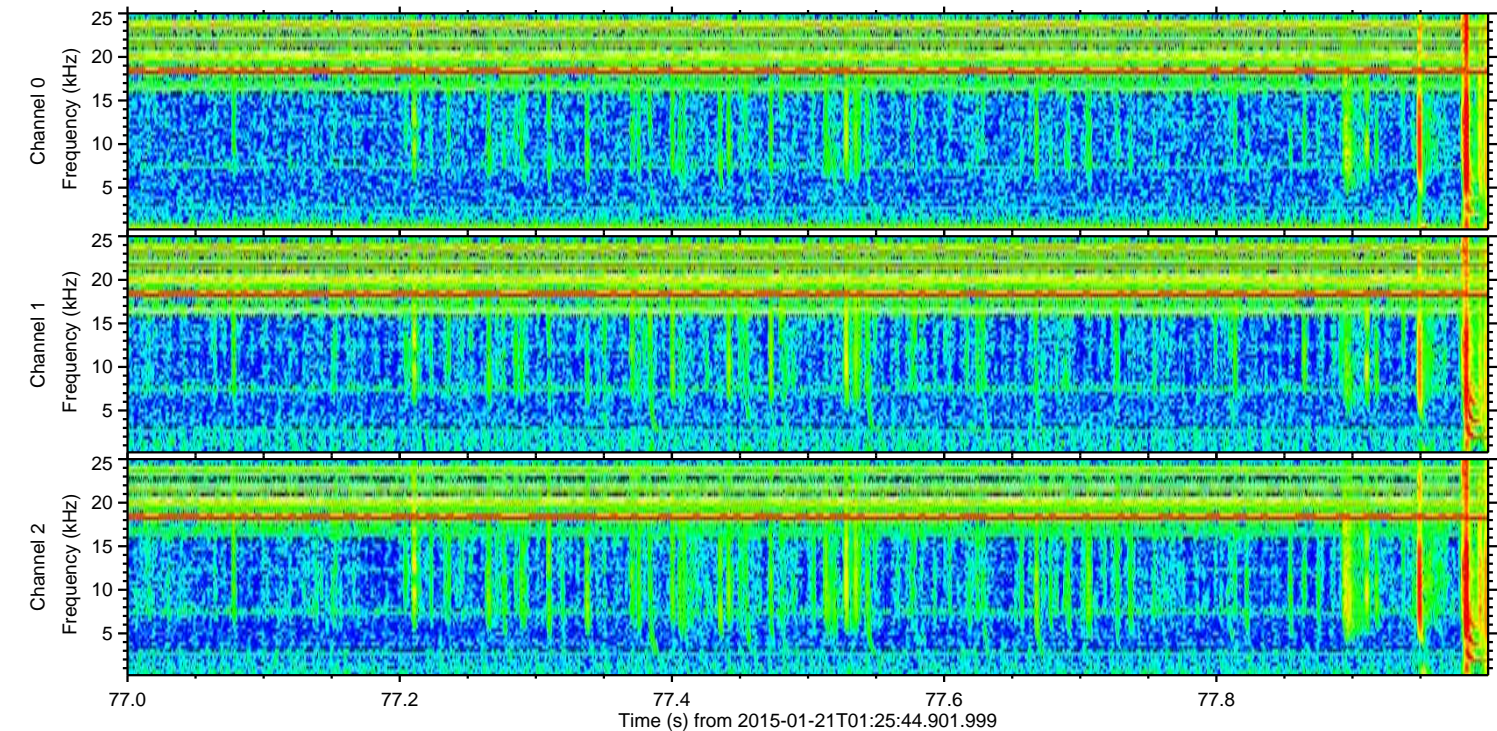
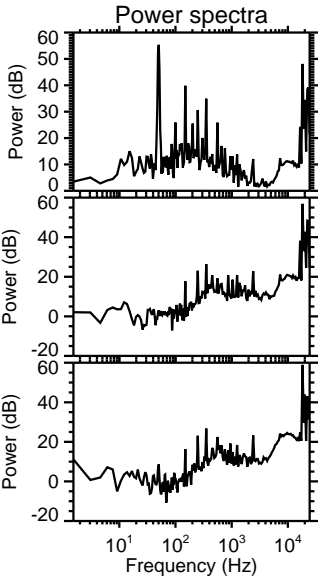
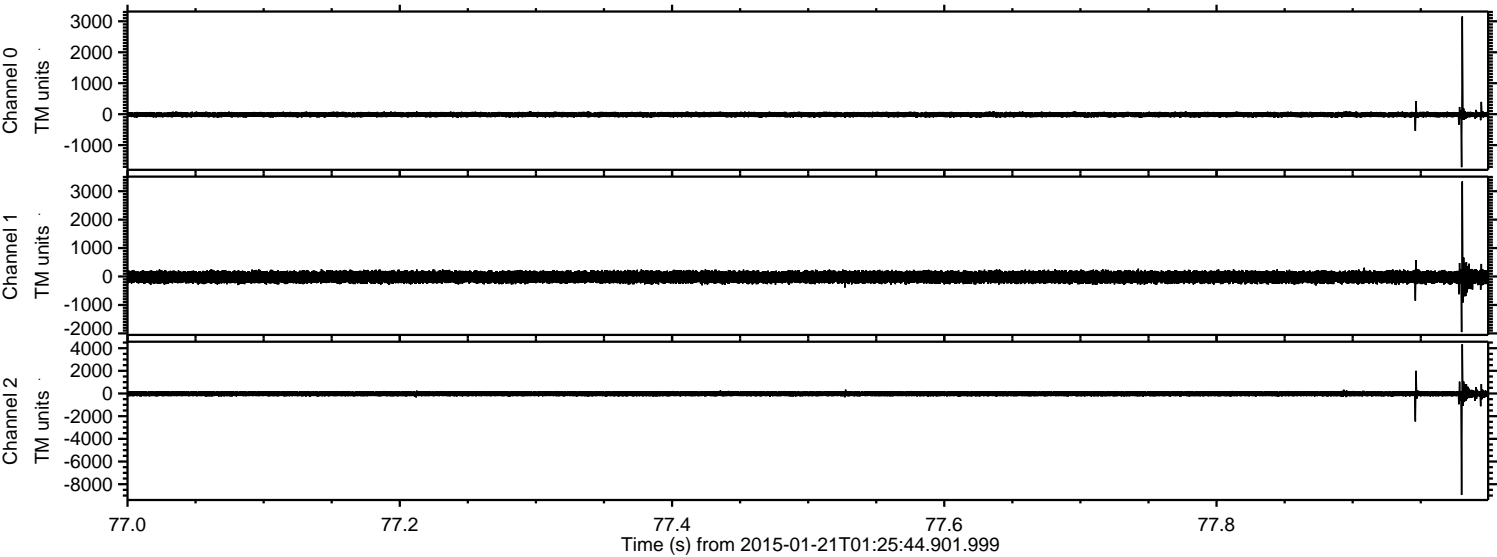
ELMAVAN 3D WAVEFORMS (Measured data sampled at 50 kHz) 49807 packets of 144 samples from 2015-01-21T01:25:44.901.999. Part 64/144

Processed Mon Feb 9 13:01:08 2015 by ELM ver.2012-10-06 from 001__elm20150121_012543__dat00.bin



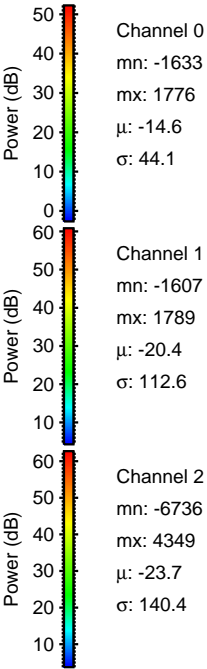
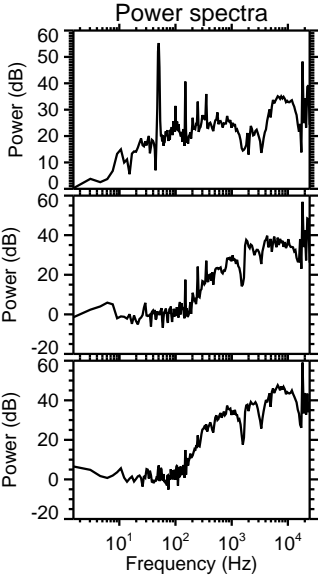
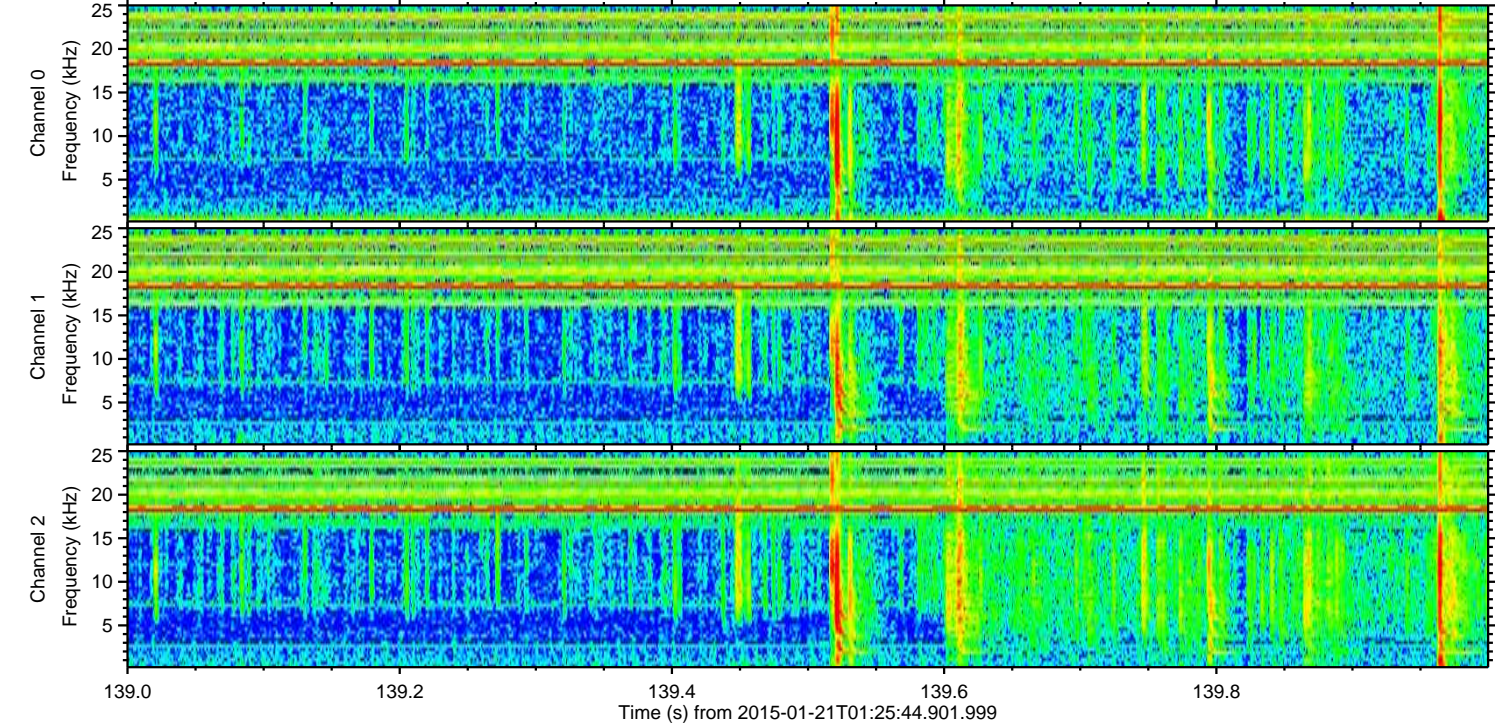
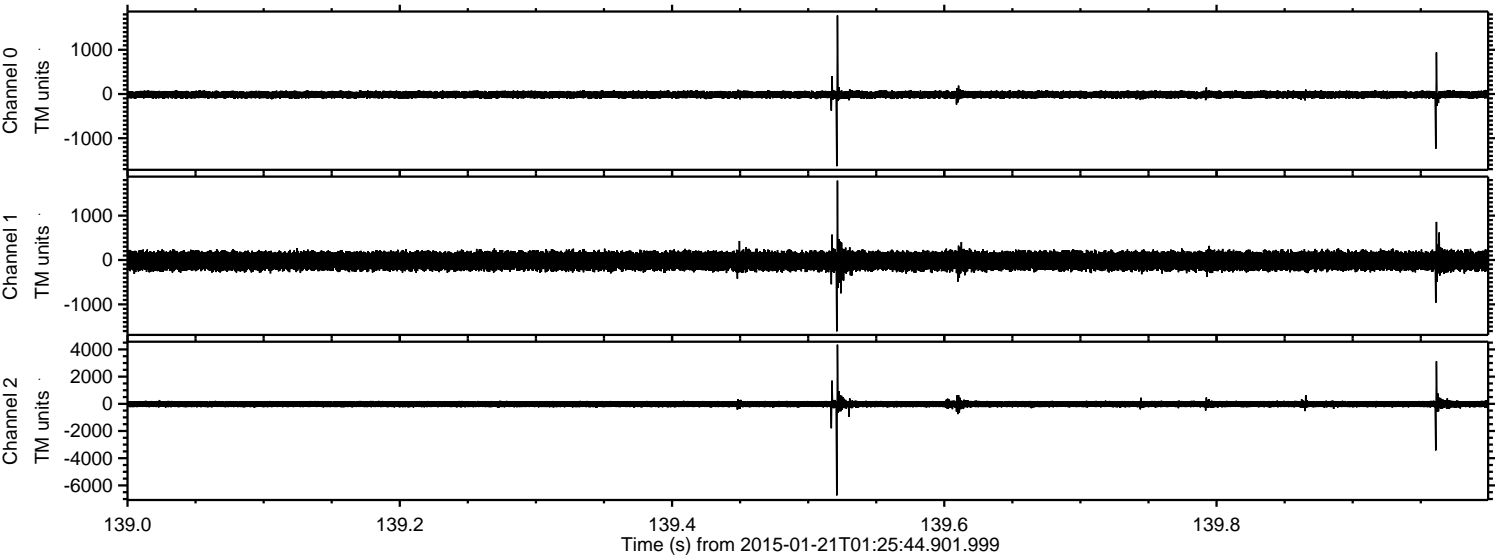
ELMAVAN 3D WAVEFORMS (Measured data sampled at 50 kHz) 49807 packets of 144 samples from 2015-01-21T01:25:44.901.999. Part 78/144

Processed Mon Feb 9 13:01:09 2015 by ELM ver.2012-10-06 from 001__elm20150121_012543__dat00.bin



ELMAVAN 3D WAVEFORMS (Measured data sampled at 50 kHz) 49807 packets of 144 samples from 2015-01-21T01:25:44.901.999. Part 140/144

Processed Mon Feb 9 13:01:10 2015 by ELM ver.2012-10-06 from 001__elm20150121_012543__dat00.bin



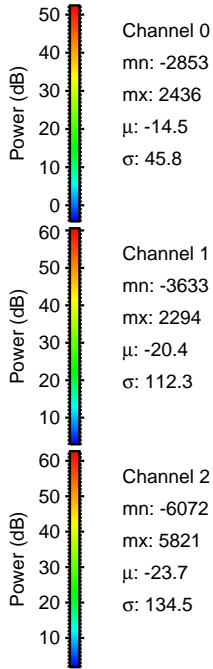
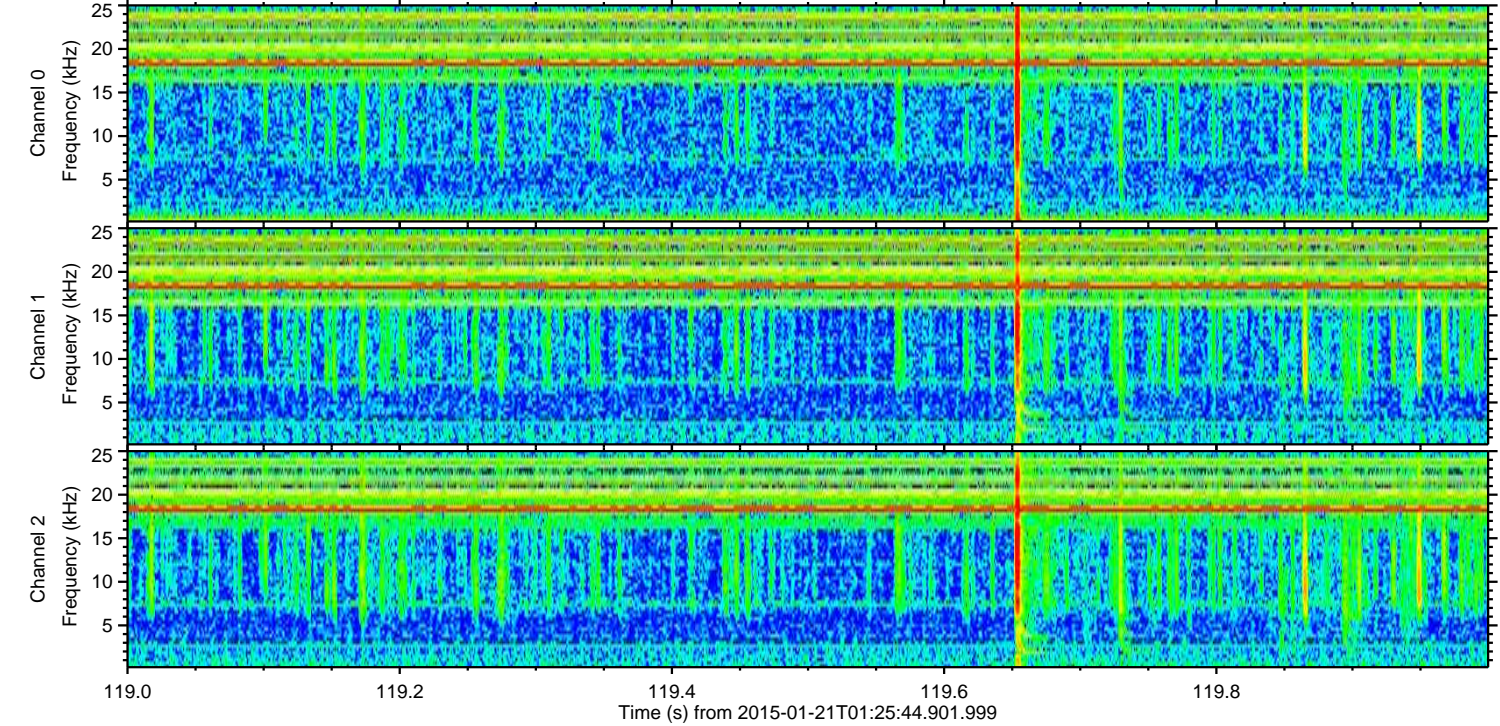
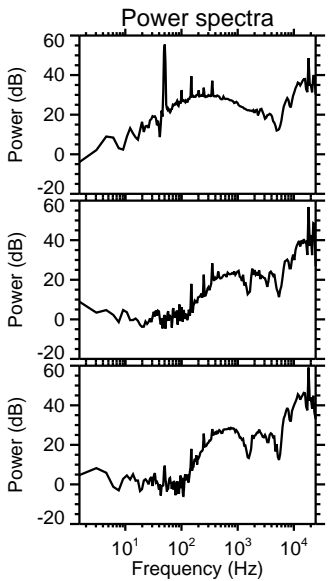
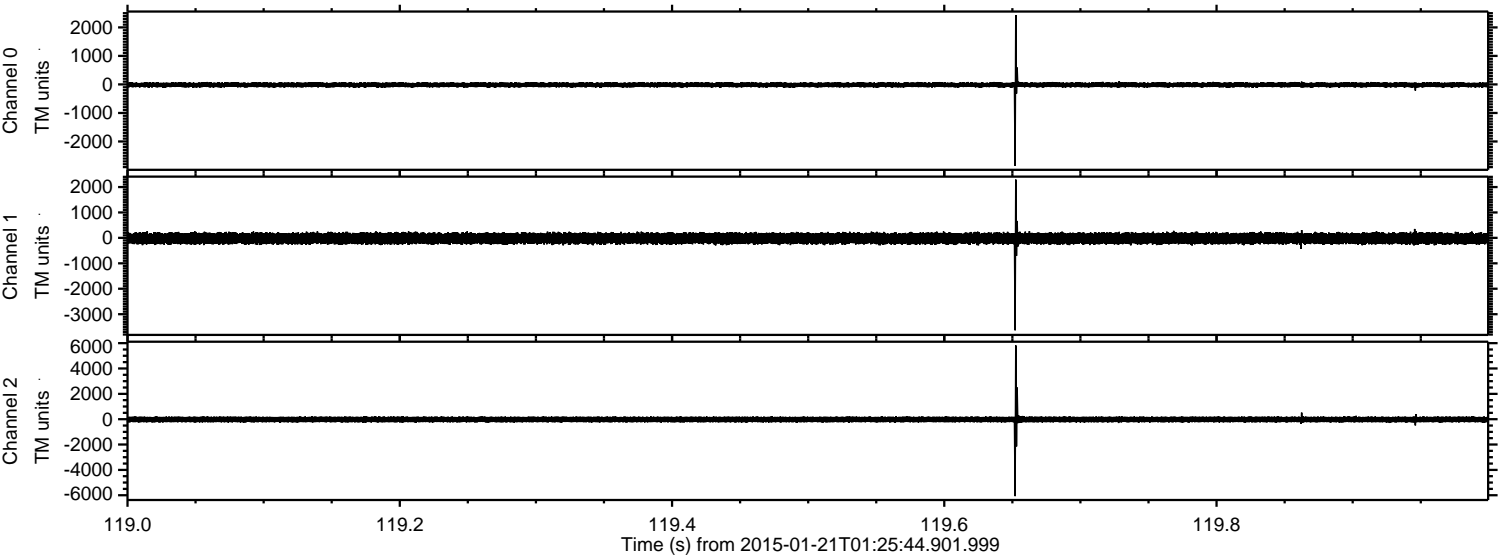
Channel 0
mn: -1633
mx: 1776
 μ : -14.6
 σ : 44.1

Channel 1
mn: -1607
mx: 1789
 μ : -20.4
 σ : 112.6

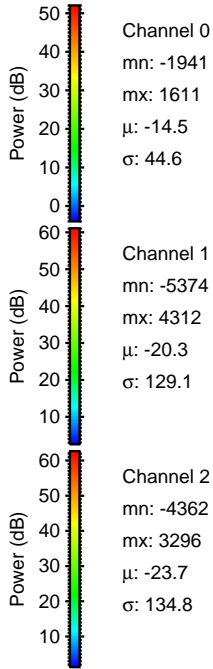
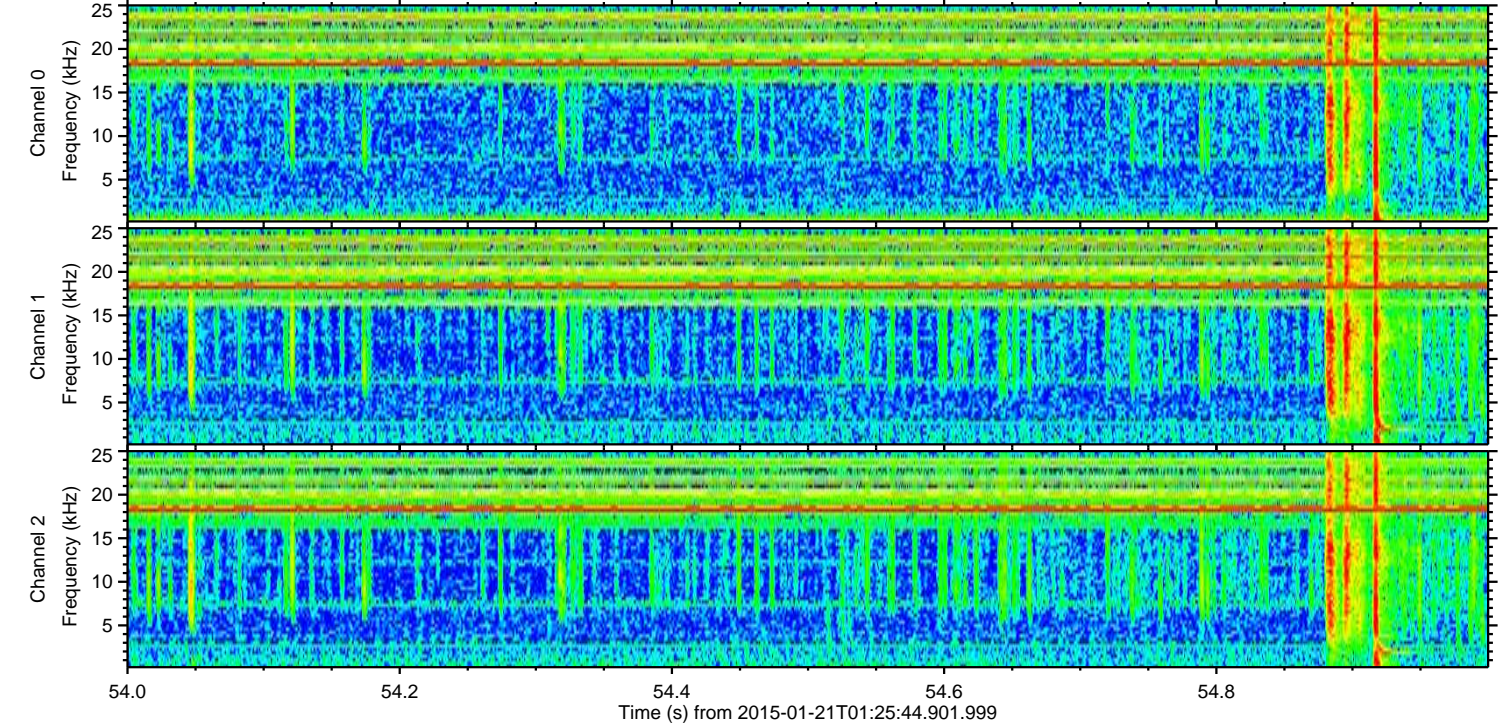
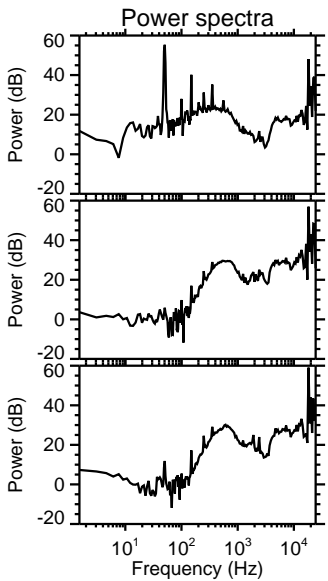
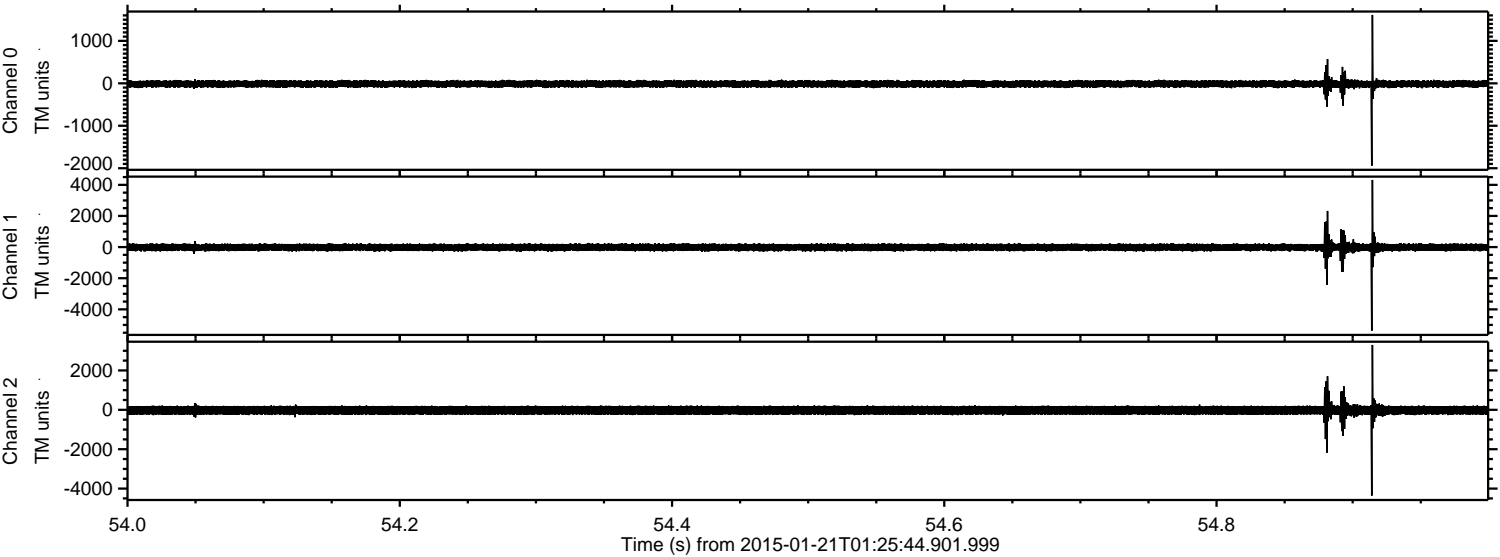
Channel 2
mn: -6736
mx: 4349
 μ : -23.7
 σ : 140.4

ELMAVAN 3D WAVEFORMS (Measured data sampled at 50 kHz) 49807 packets of 144 samples from 2015-01-21T01:25:44.901.999. Part 120/144

Processed Mon Feb 9 13:01:12 2015 by ELM ver.2012-10-06 from 001__elm20150121_012543__dat00.bin

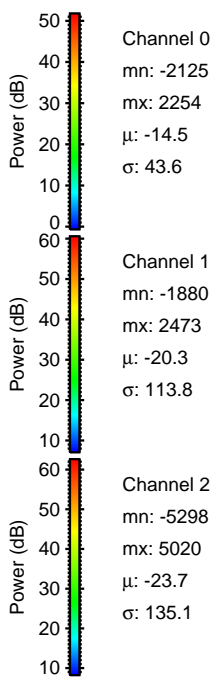
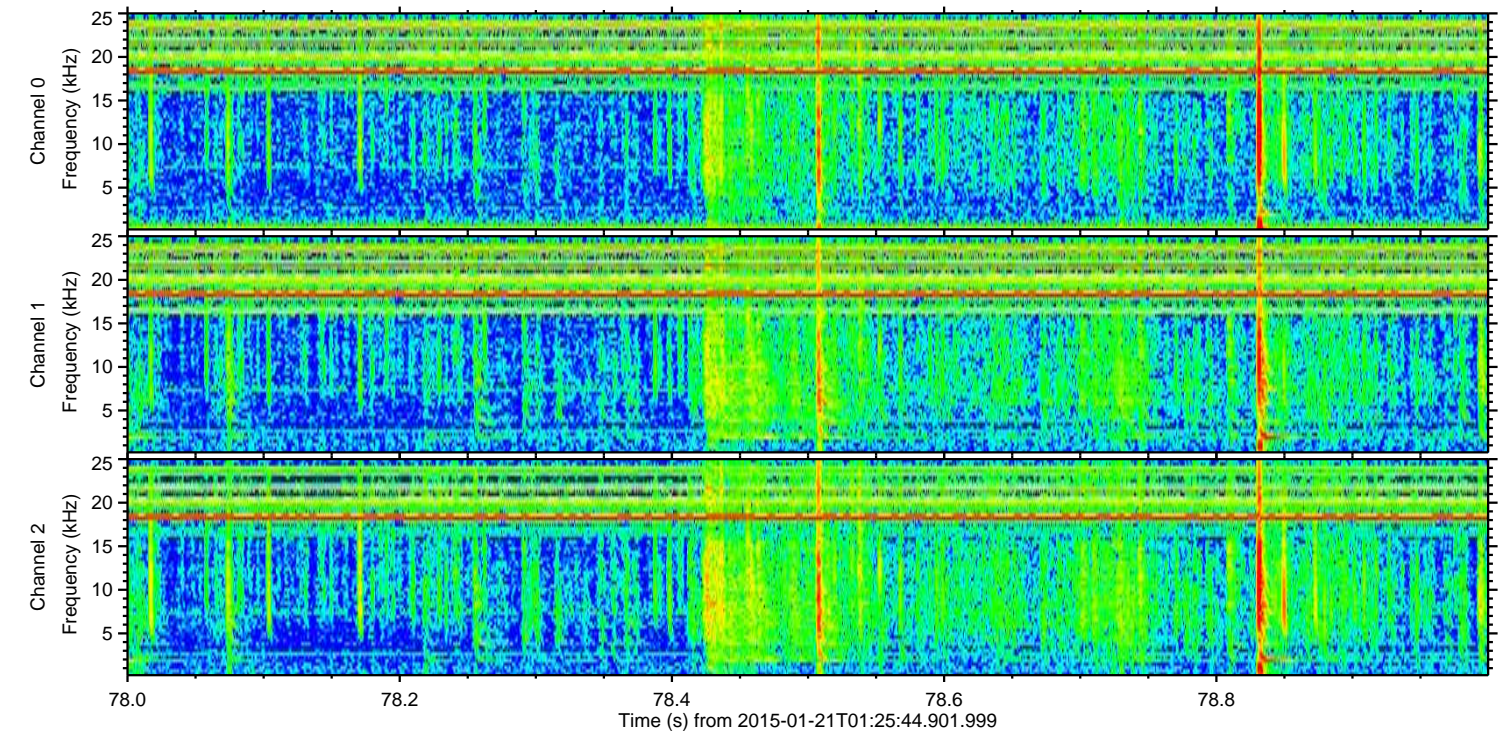
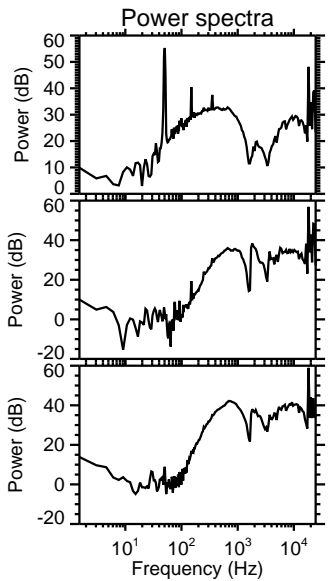
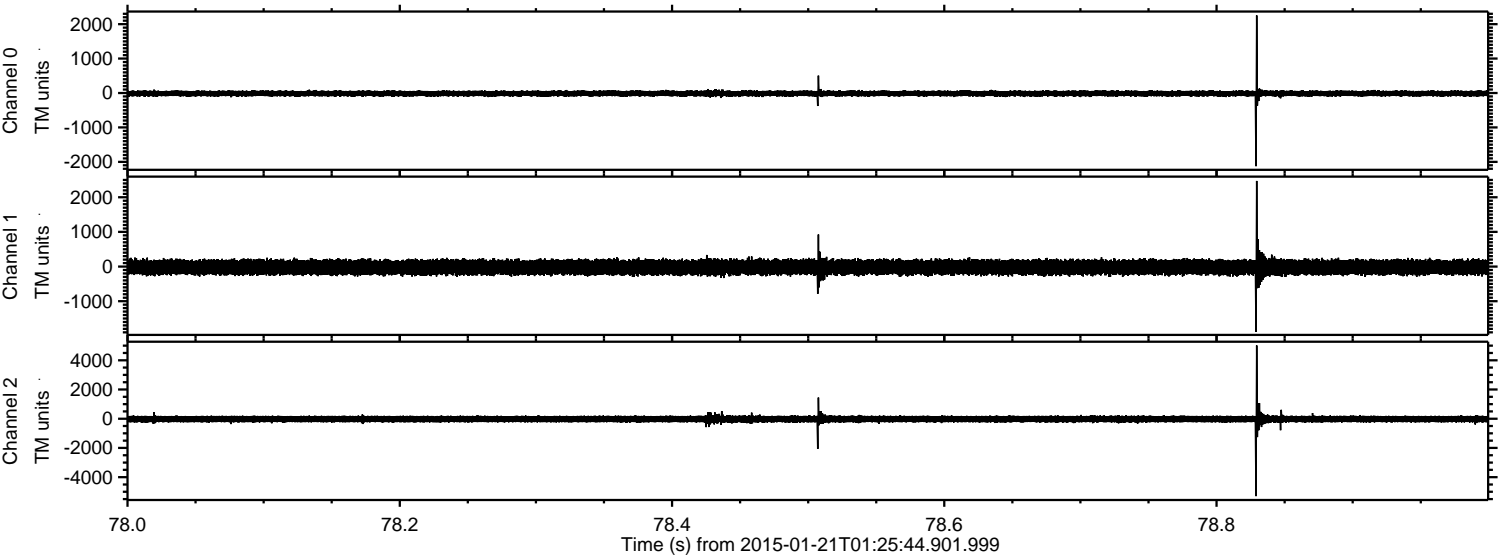


Processed Mon Feb 9 13:01:13 2015 by ELM ver.2012-10-06 from 001__elm20150121_012543__dat00.bin



ELMAVAN 3D WAVEFORMS (Measured data sampled at 50 kHz) 49807 packets of 144 samples from 2015-01-21T01:25:44.901.999. Part 79/144

Processed Mon Feb 9 13:01:14 2015 by ELM ver.2012-10-06 from 001__elm20150121_012543__dat00.bin



Channel 0
mn: -2125
mx: 2254
 μ : -14.5
 σ : 43.6

Channel 1
mn: -1880
mx: 2473
 μ : -20.3
 σ : 113.8

Channel 2
mn: -5298
mx: 5020
 μ : -23.7
 σ : 135.1

ELMAVAN 3D WAVEFORMS (Measured data sampled at 50 kHz) 49807 packets of 144 samples from 2015-01-21T01:25:44.901.999. Part 89/144

Processed Mon Feb 9 13:01:15 2015 by ELM ver.2012-10-06 from 001__elm20150121_012543__dat00.bin

