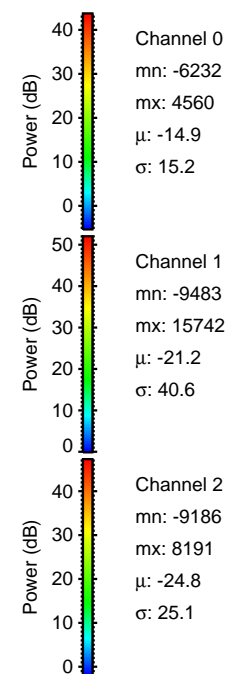
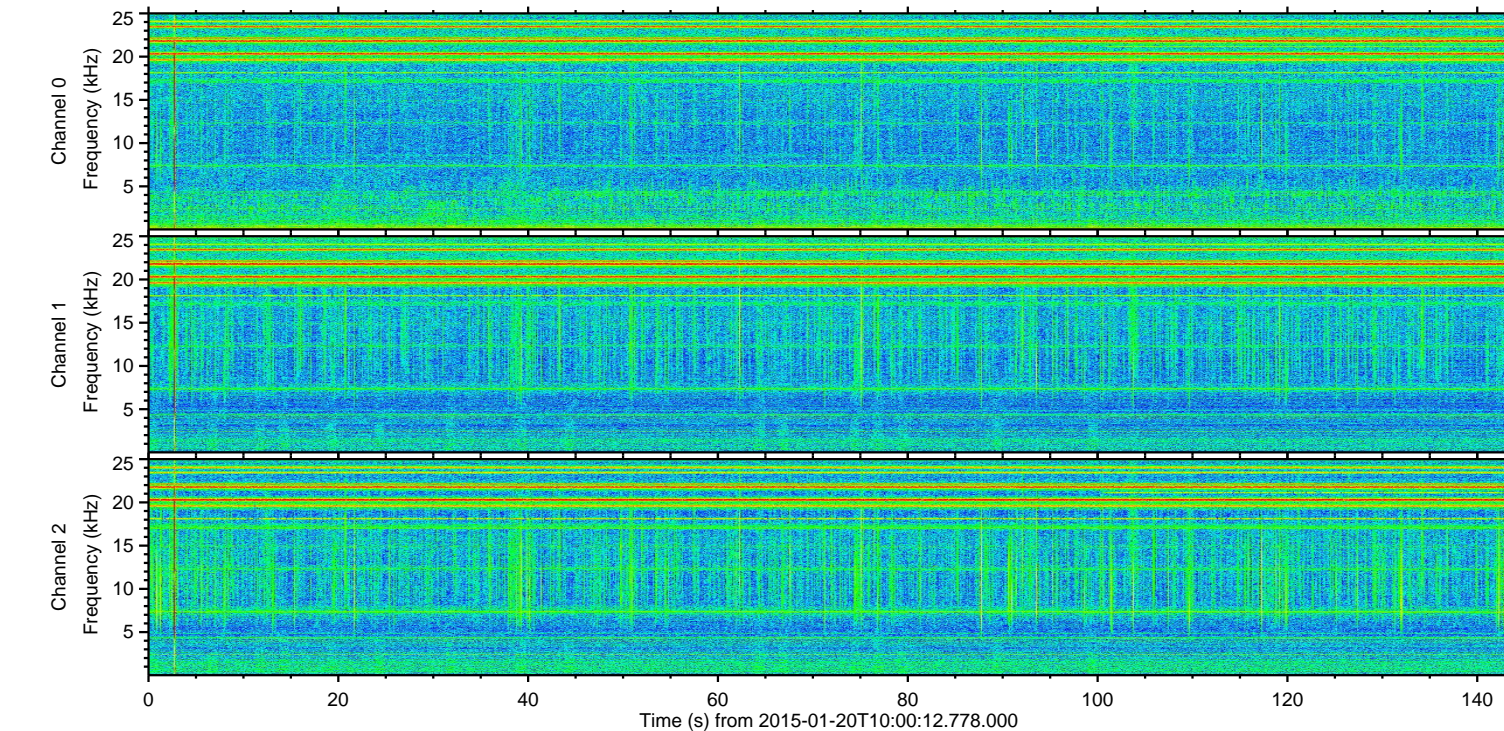
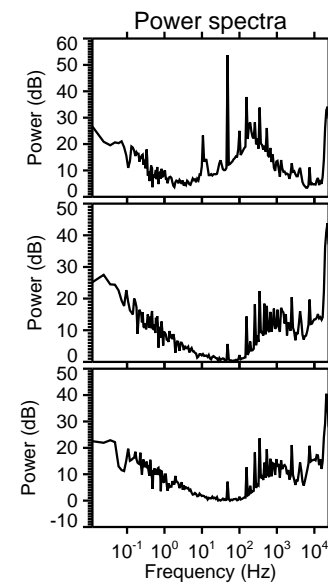
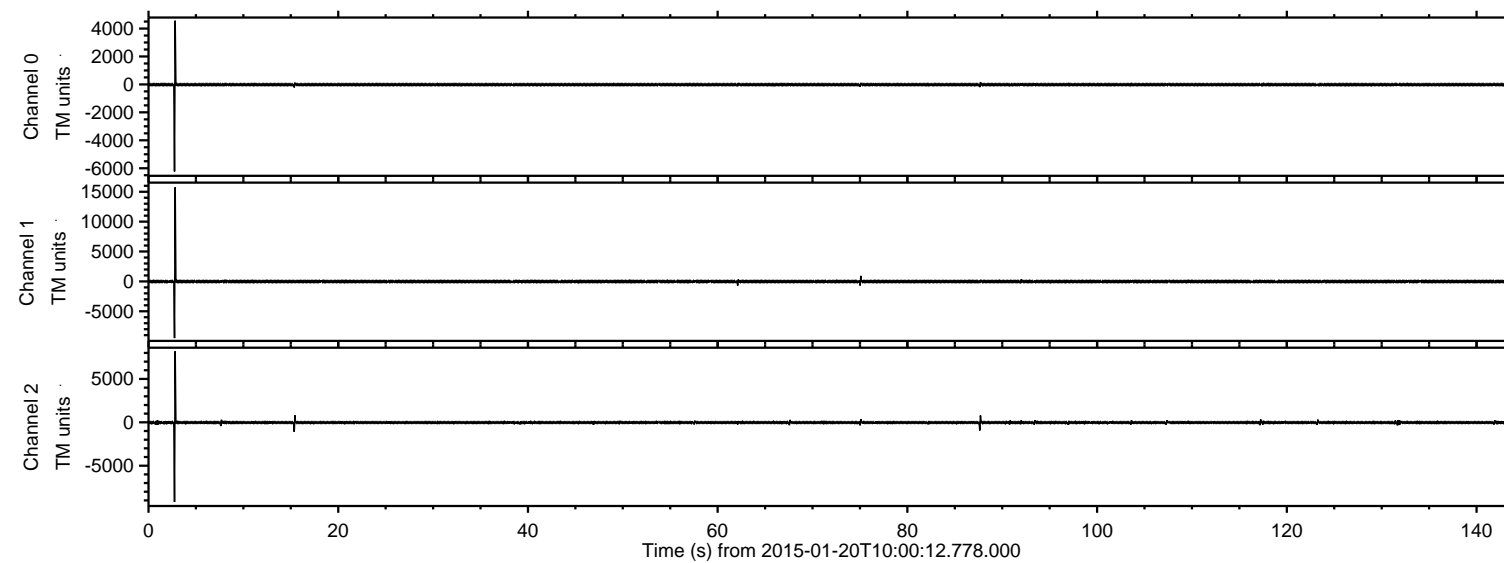


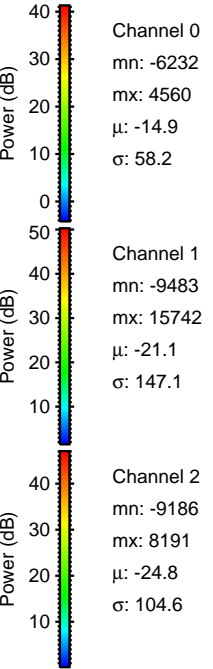
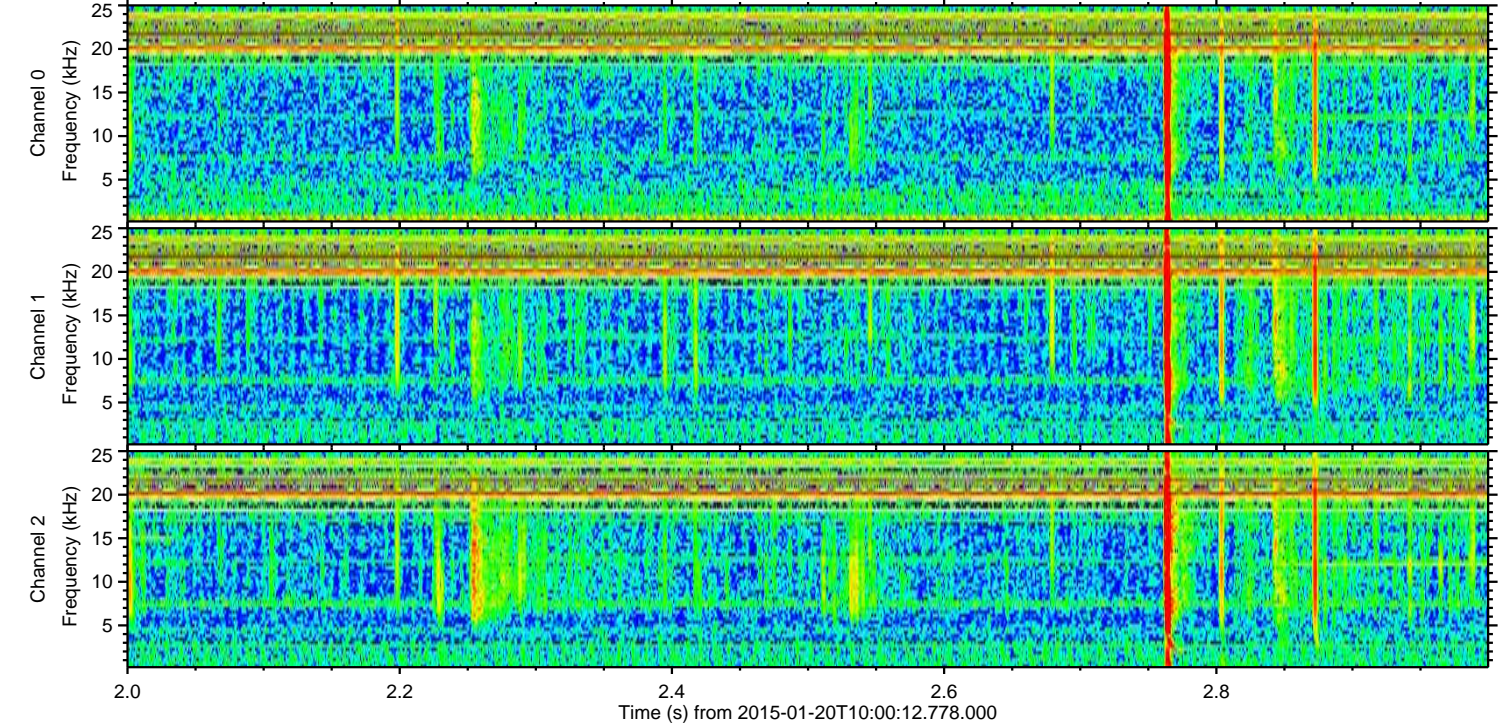
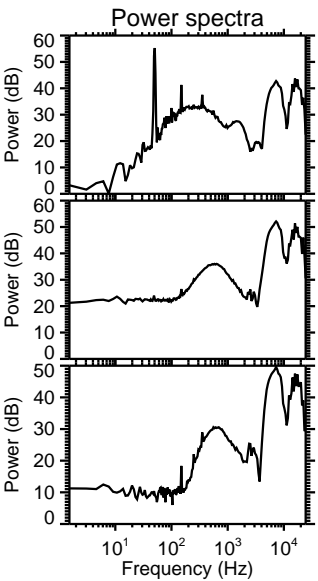
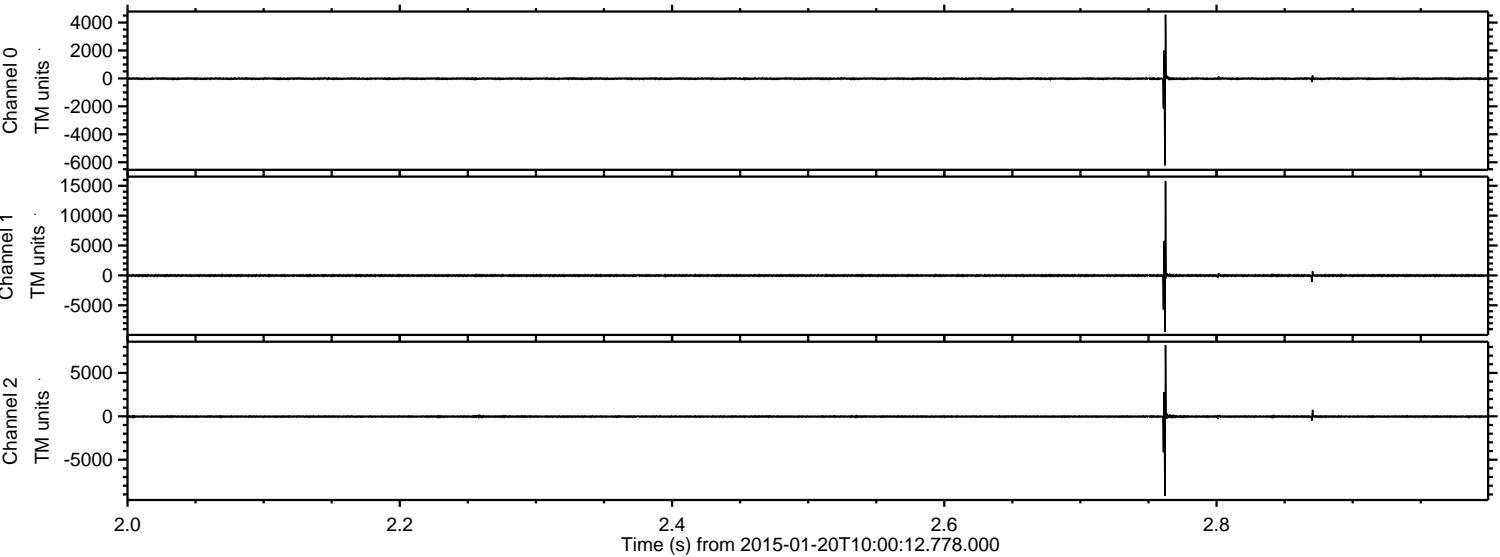
ELMAVAN 3D WAVEFORMS (Measured data sampled at 50 kHz) 49805 packets of 144 samples from 2015-01-20T10:00:12.778.000.

Processed Sun Feb 8 17:16:01 2015 by ELM ver.2012-10-06 from 001__elm20150120_100011__dat00.bin

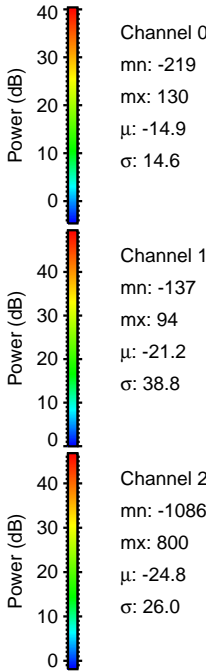
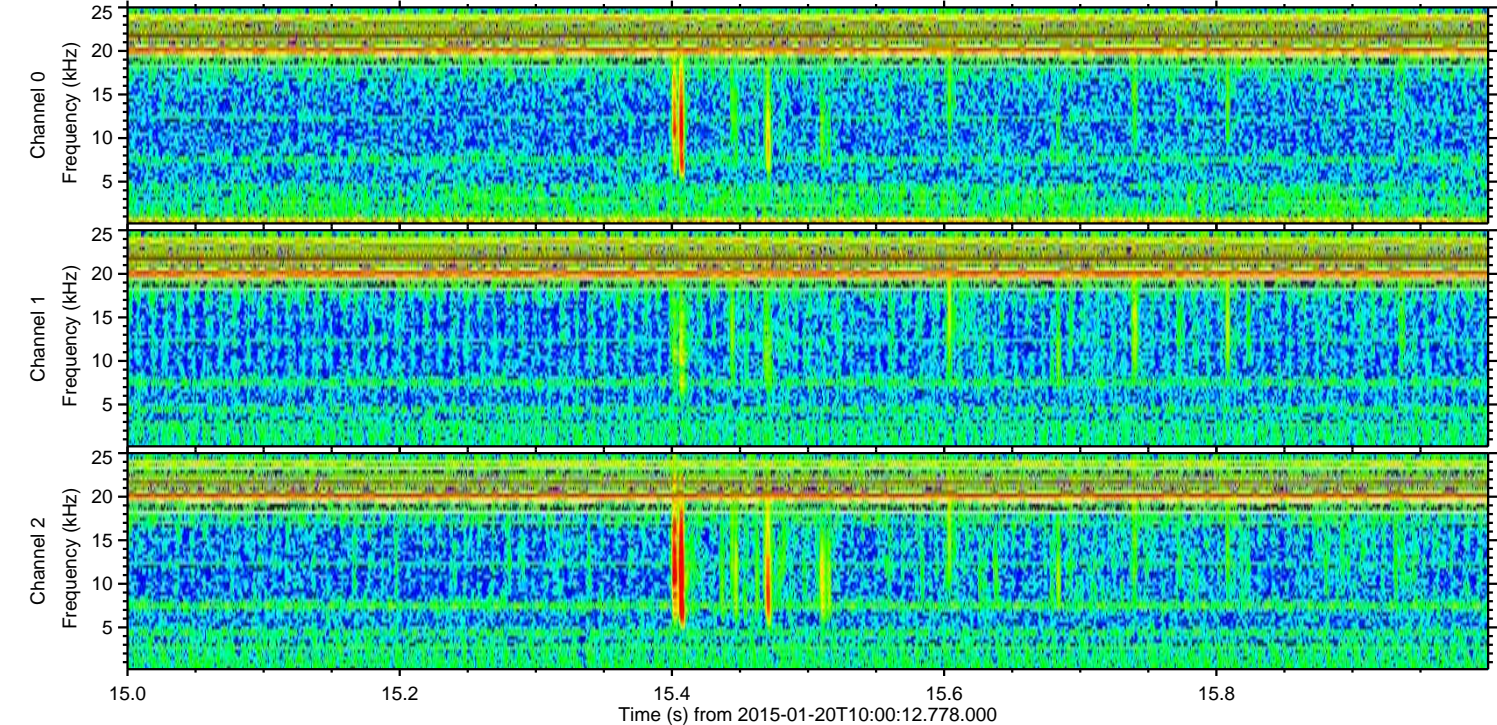
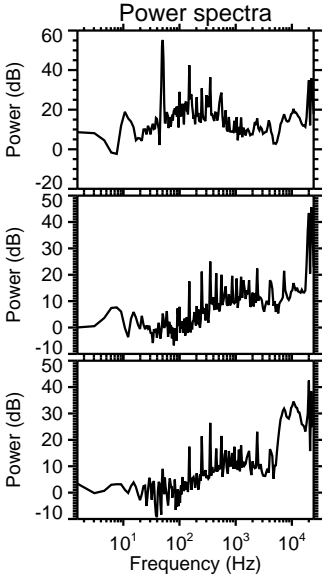
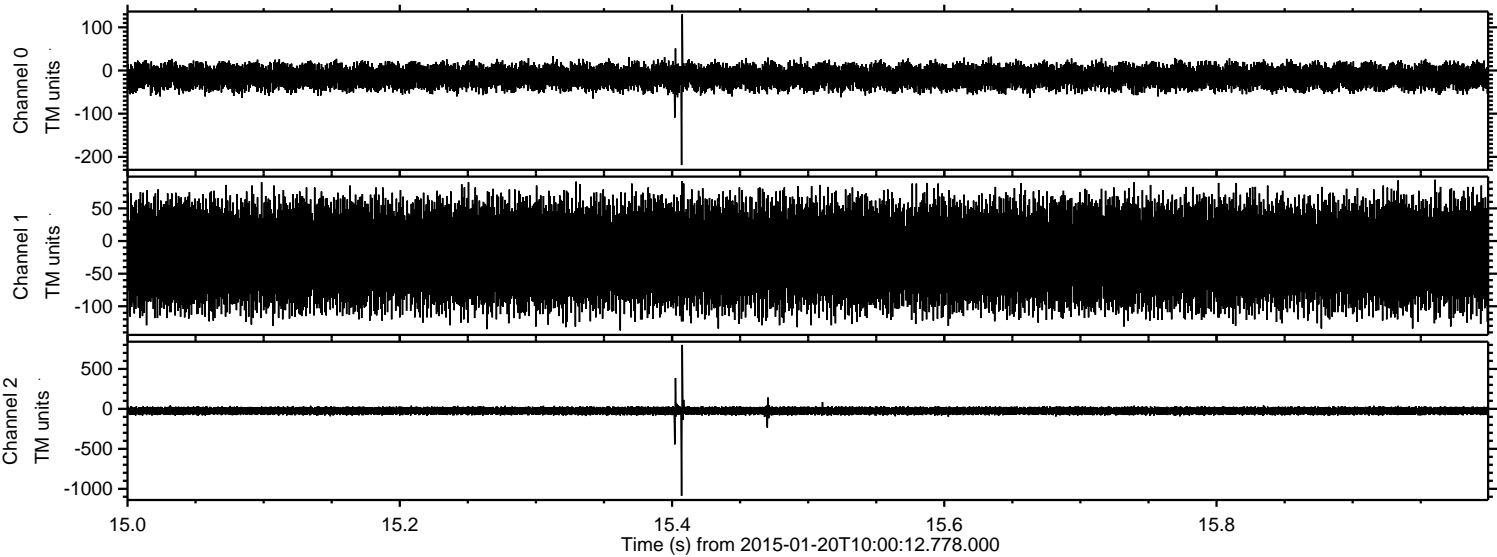


ELMAVAN 3D WAVEFORMS (Measured data sampled at 50 kHz) 49805 packets of 144 samples from 2015-01-20T10:00:12.778.000. Part 3/144

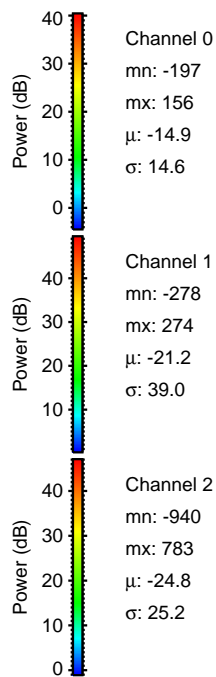
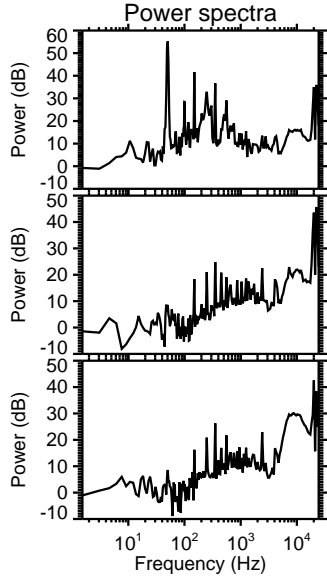
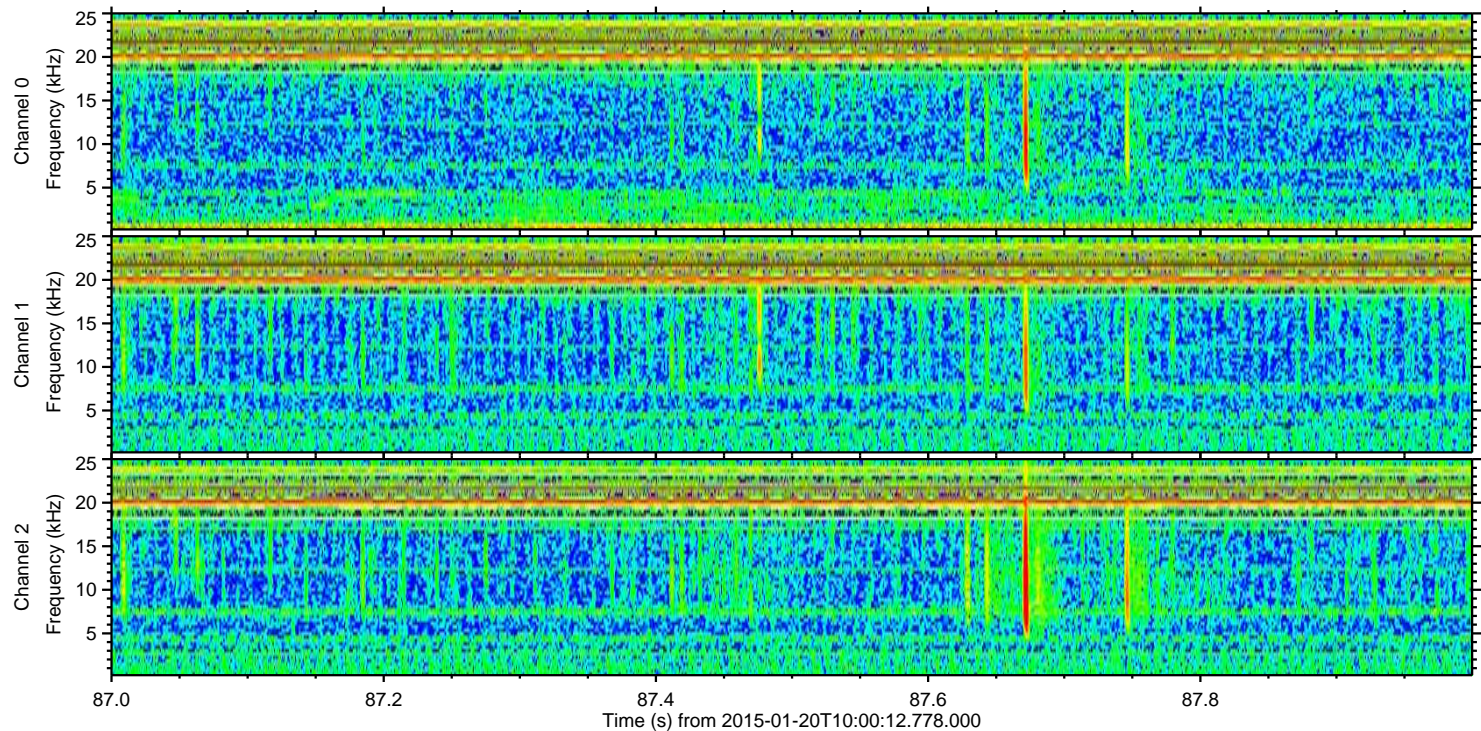
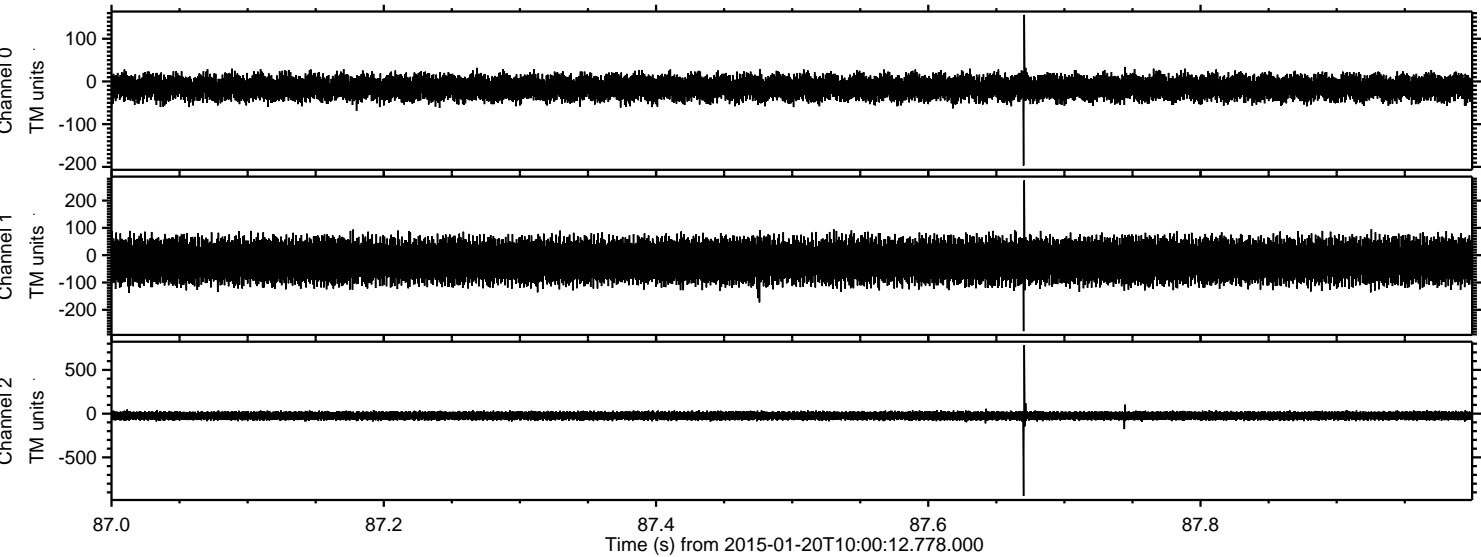
Processed Sun Feb 8 17:16:12 2015 by ELM ver.2012-10-06 from 001__elm20150120_100011__dat00.bin



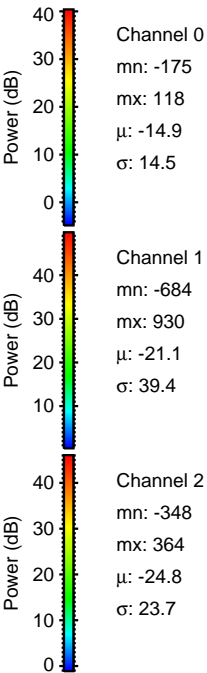
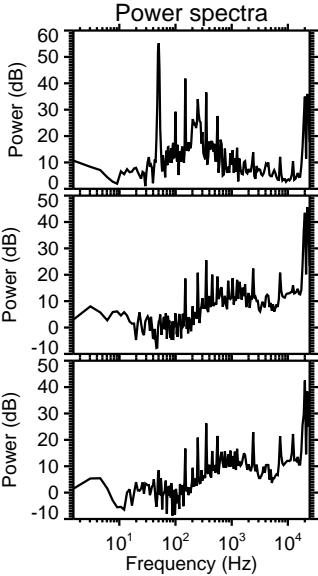
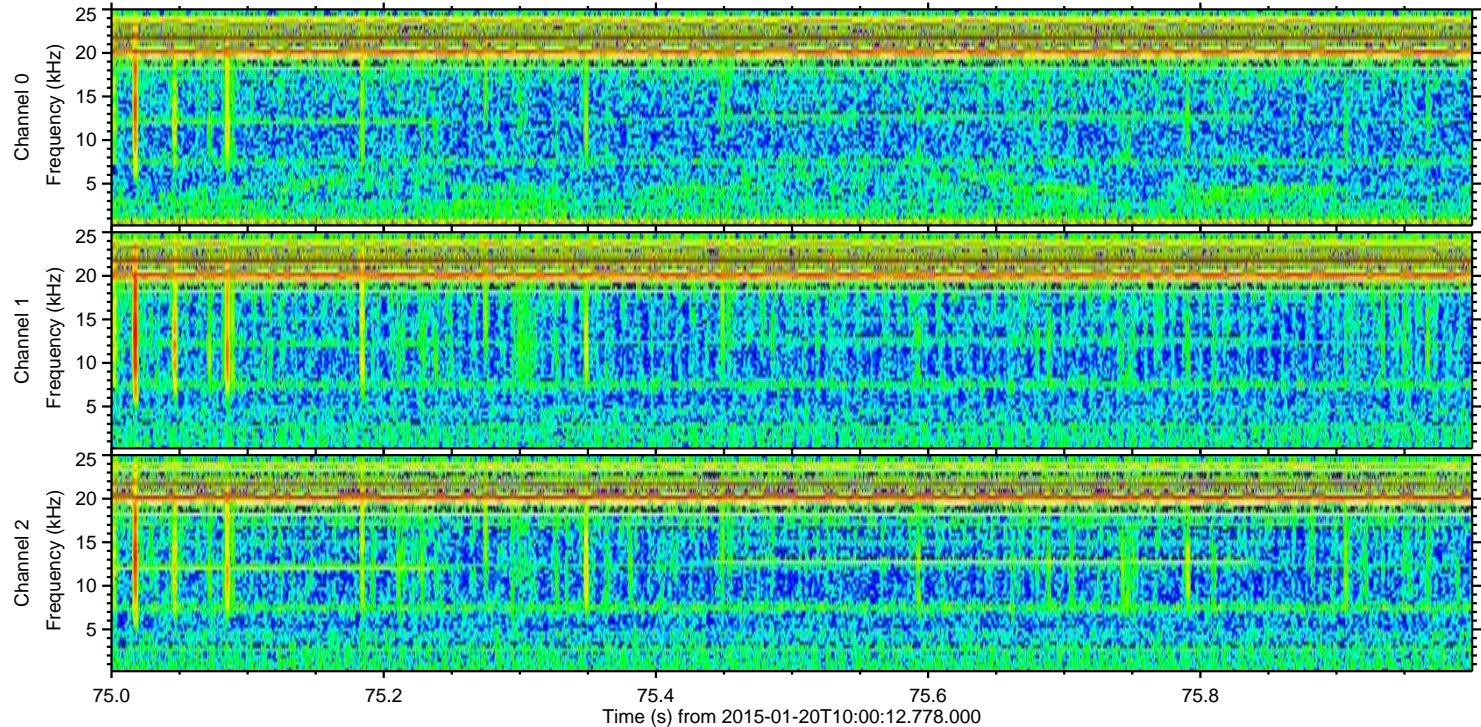
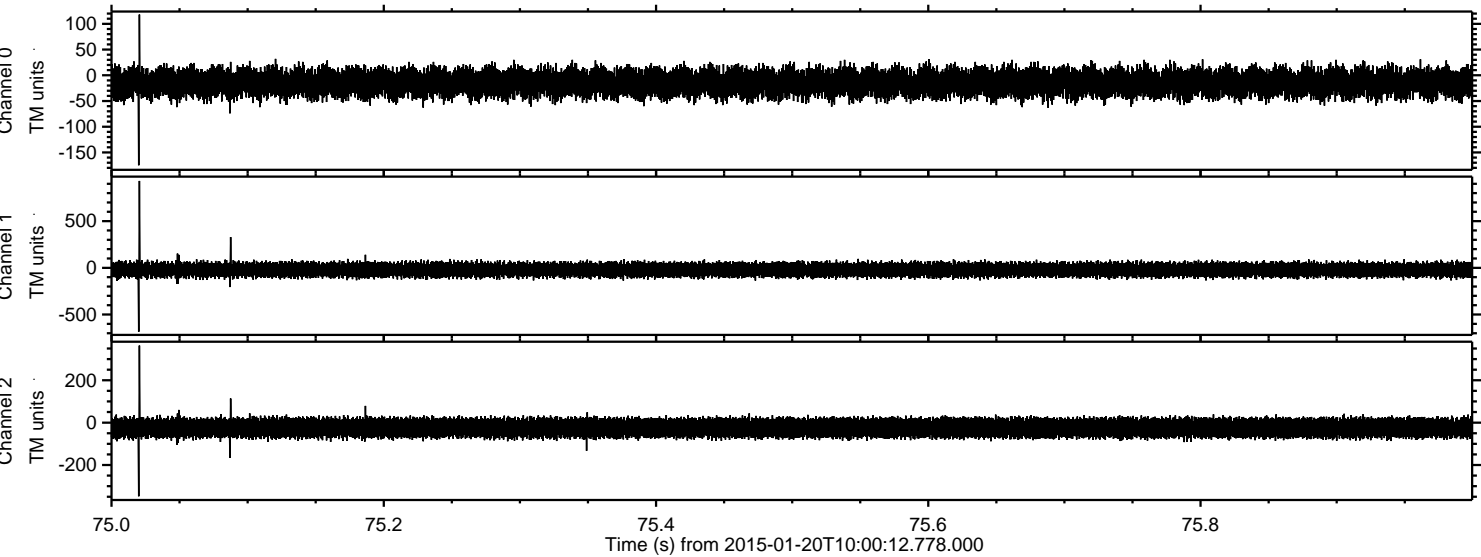
Processed Sun Feb 8 17:16:13 2015 by ELM ver.2012-10-06 from 001__elm20150120_100011__dat00.bin



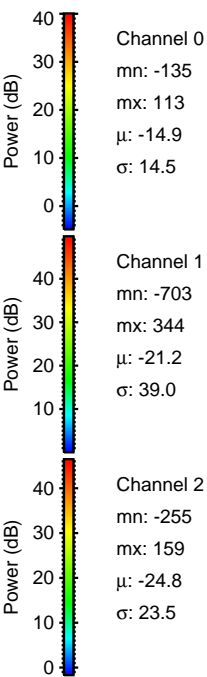
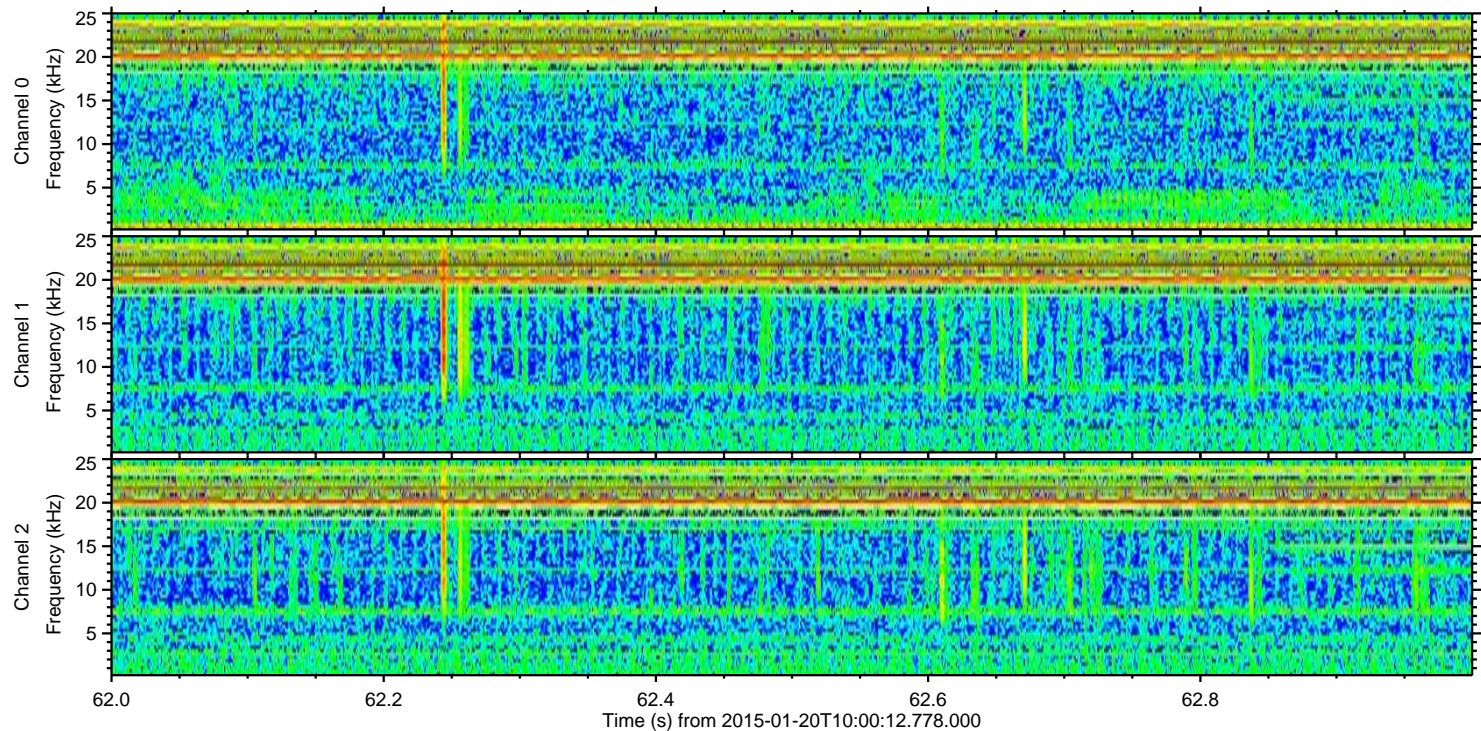
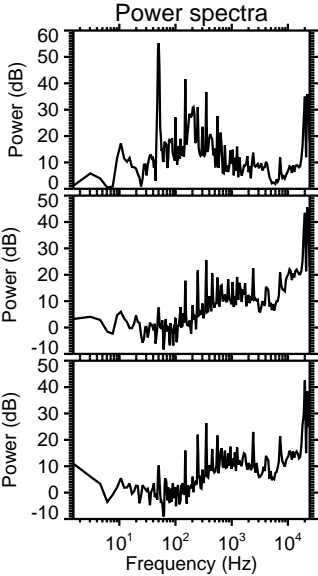
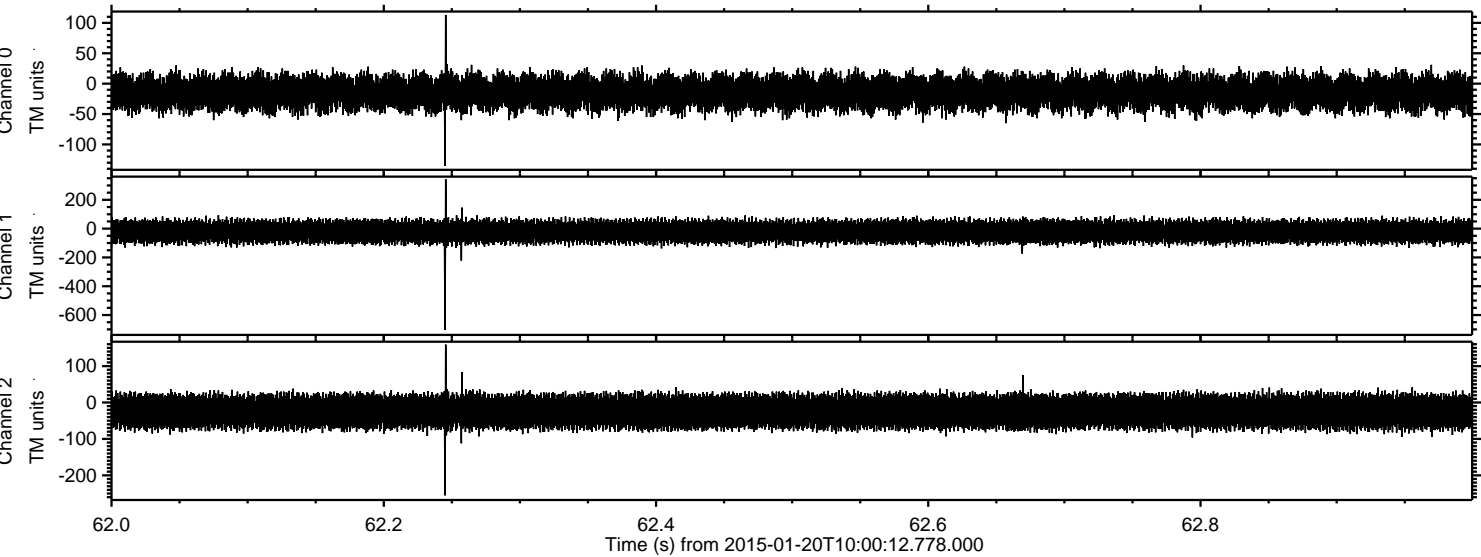
Processed Sun Feb 8 17:16:14 2015 by ELM ver.2012-10-06 from 001__elm20150120_100011__dat00.bin



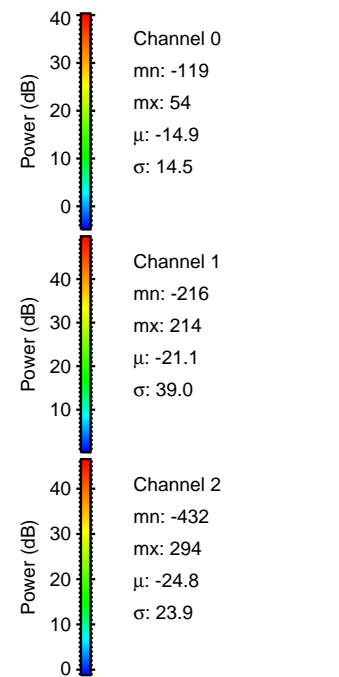
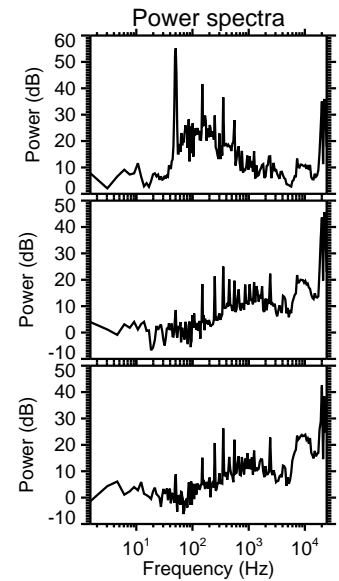
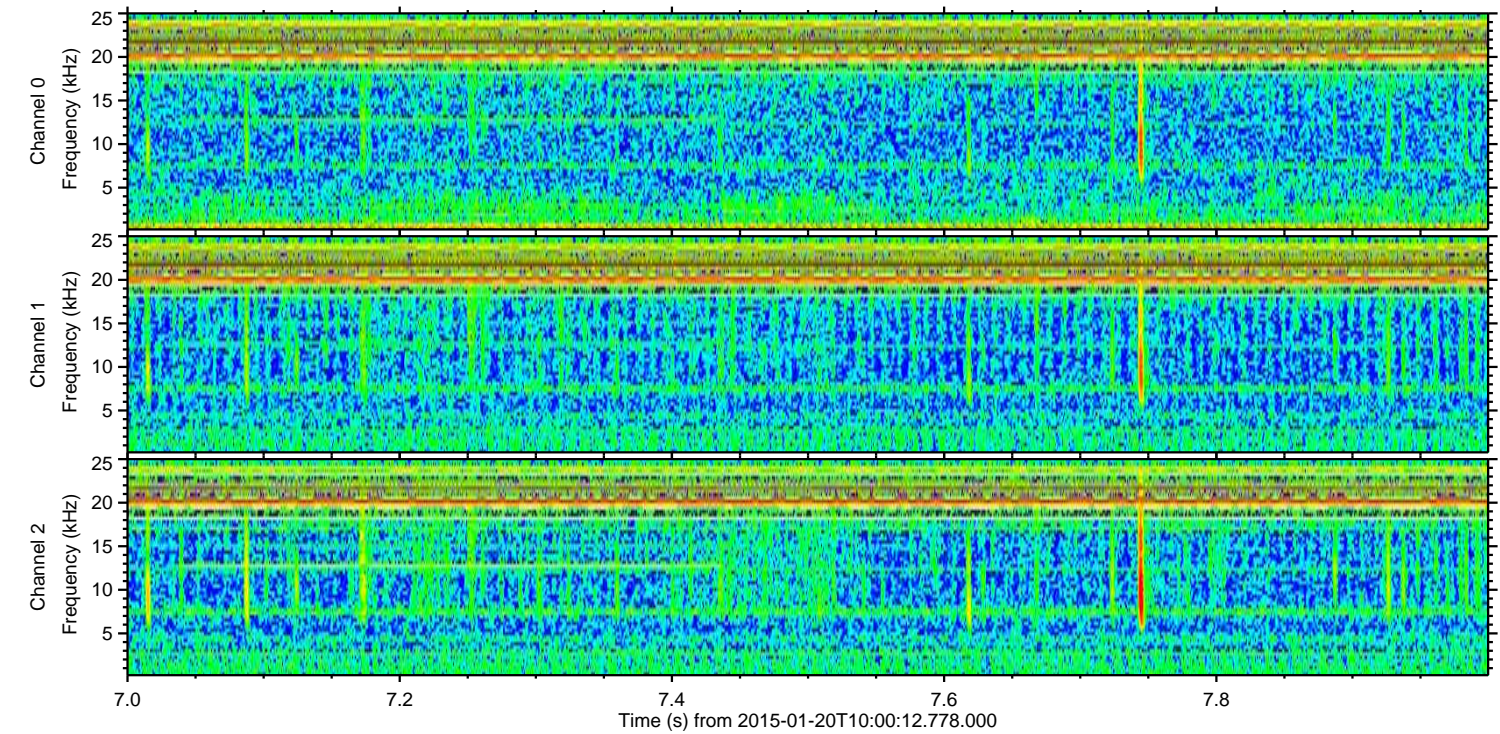
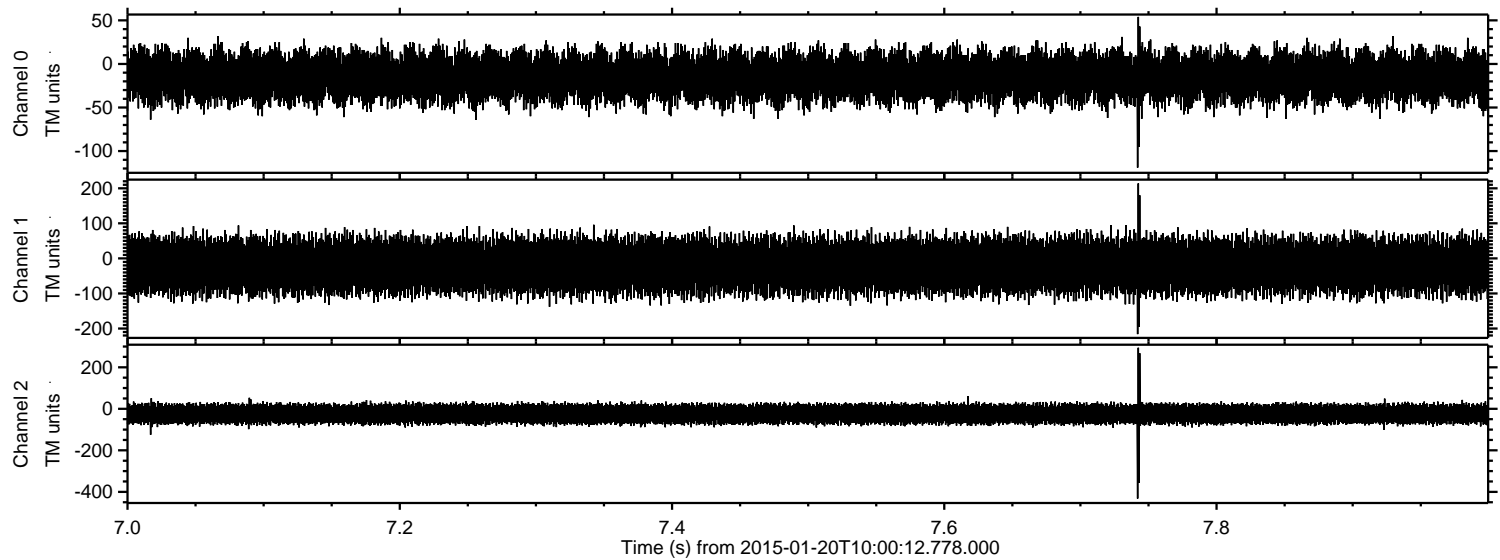
Processed Sun Feb 8 17:16:15 2015 by ELM ver.2012-10-06 from 001__elm20150120_100011__dat00.bin



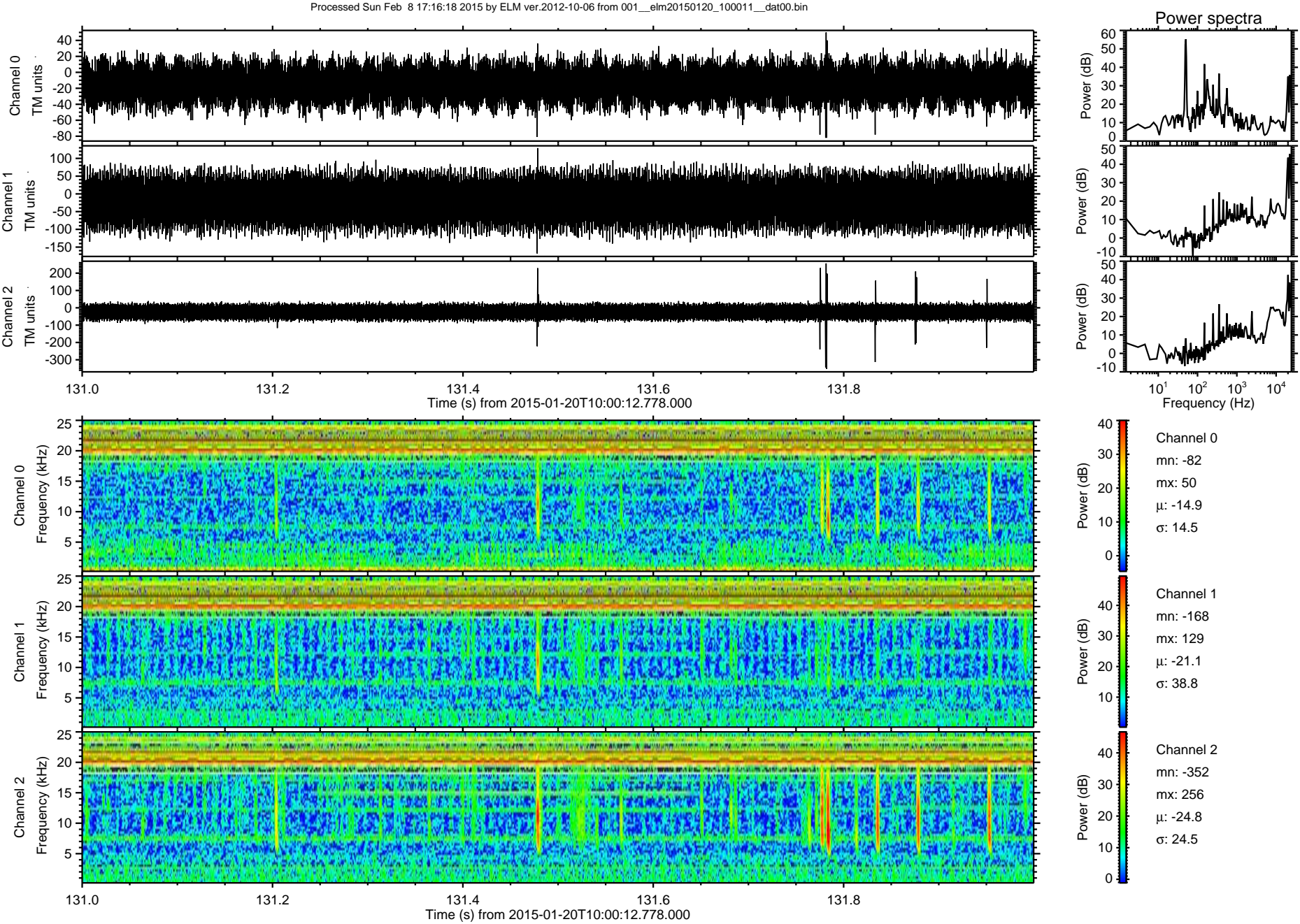
Processed Sun Feb 8 17:16:16 2015 by ELM ver.2012-10-06 from 001__elm20150120_100011__dat00.bin



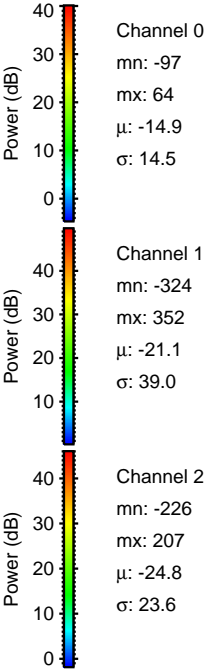
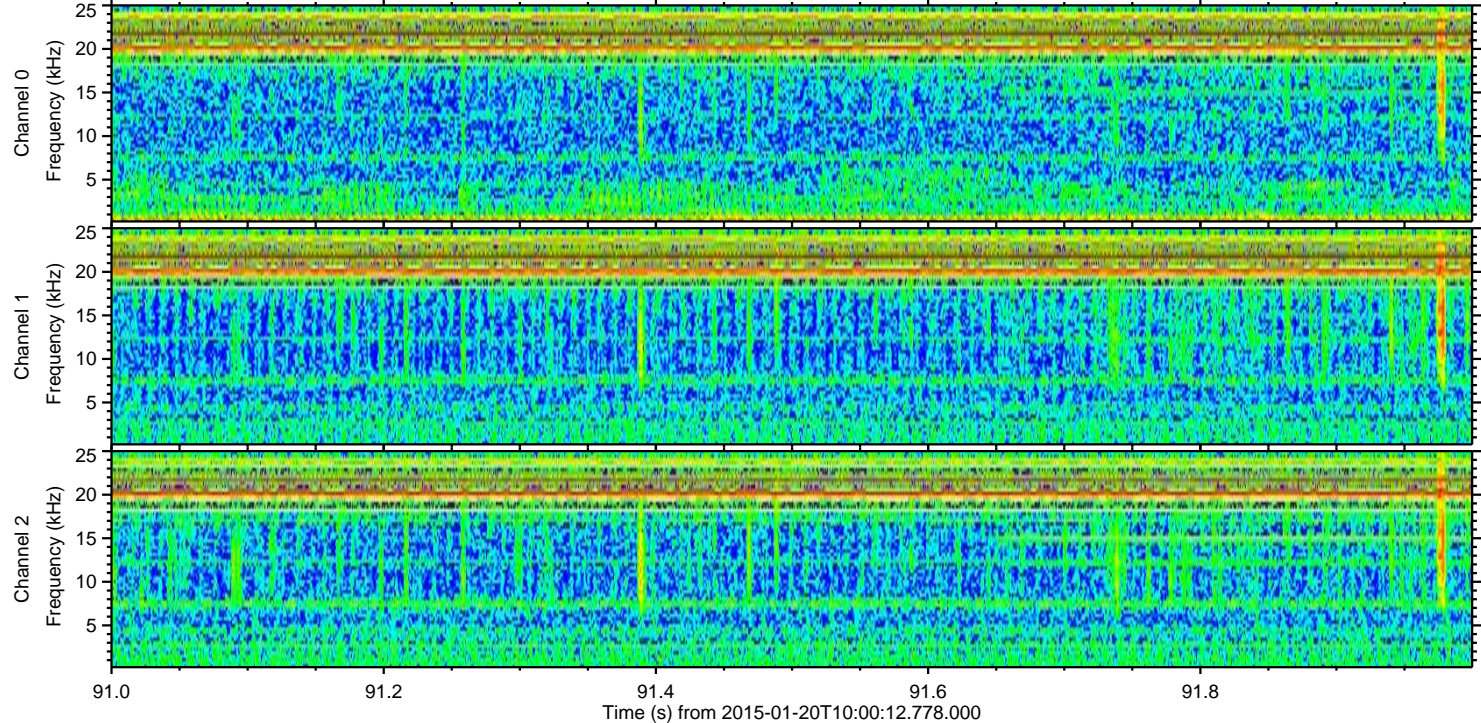
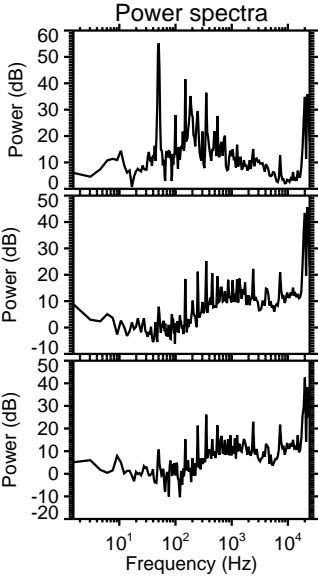
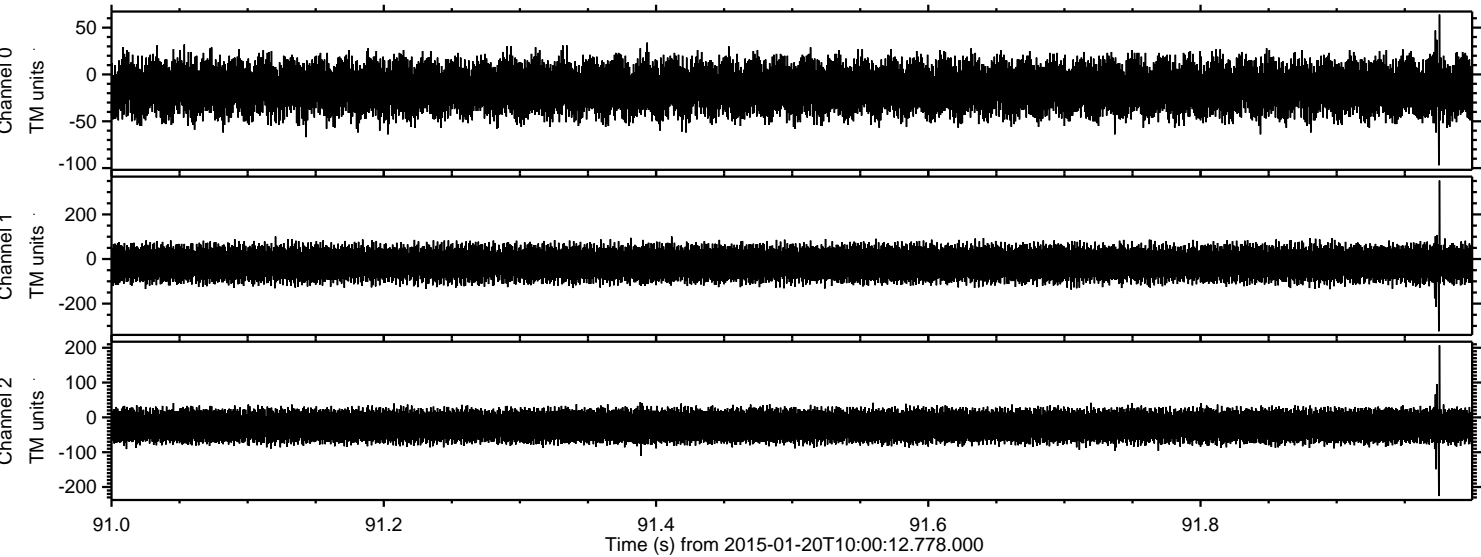
Processed Sun Feb 8 17:16:17 2015 by ELM ver.2012-10-06 from 001__elm20150120_100011__dat00.bin



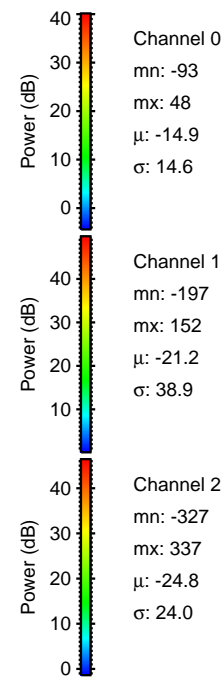
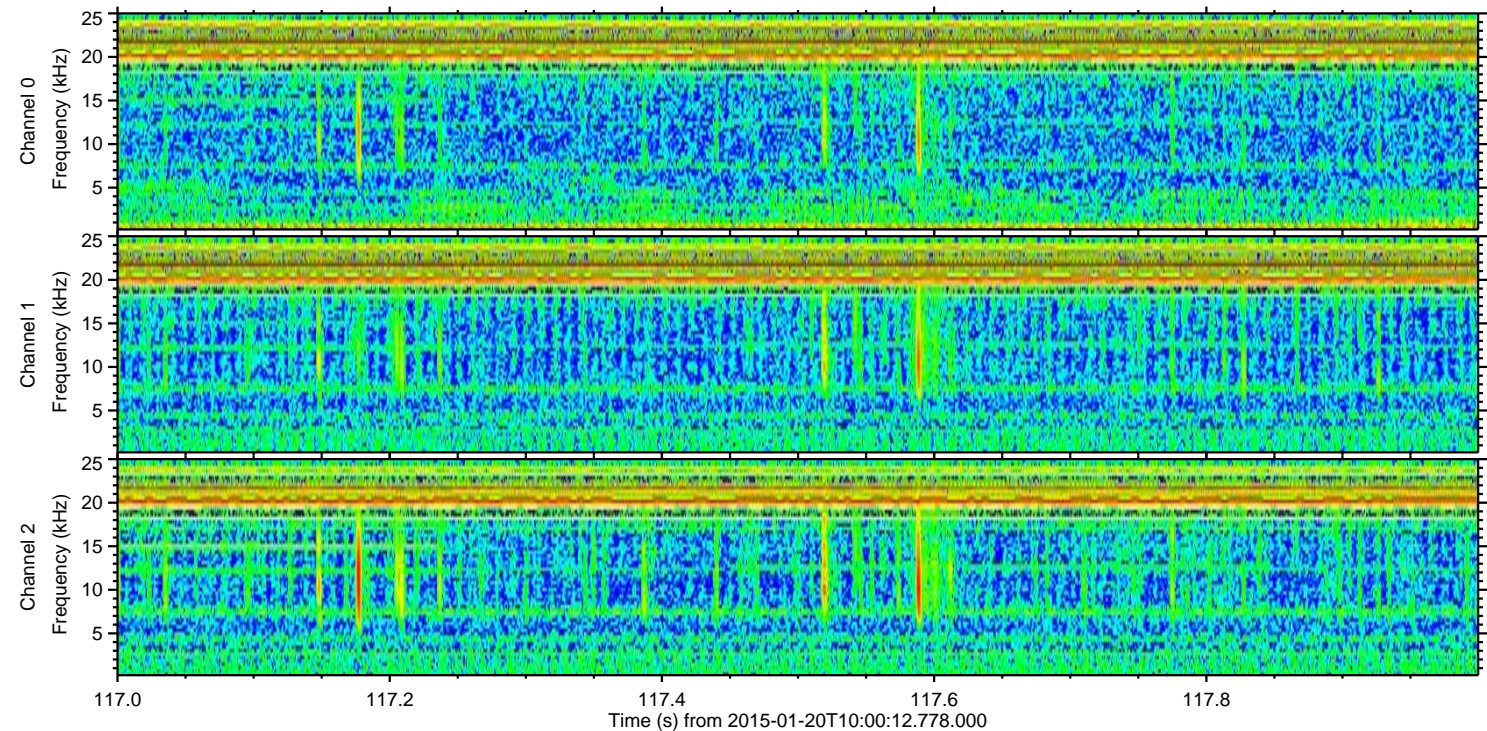
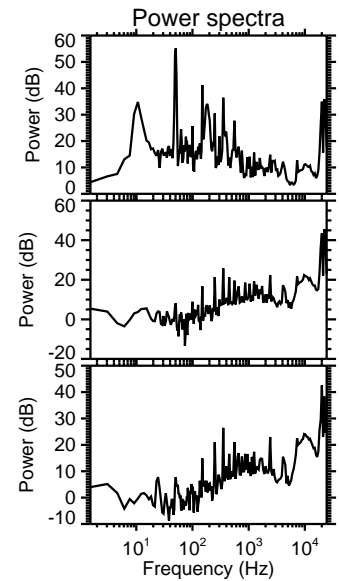
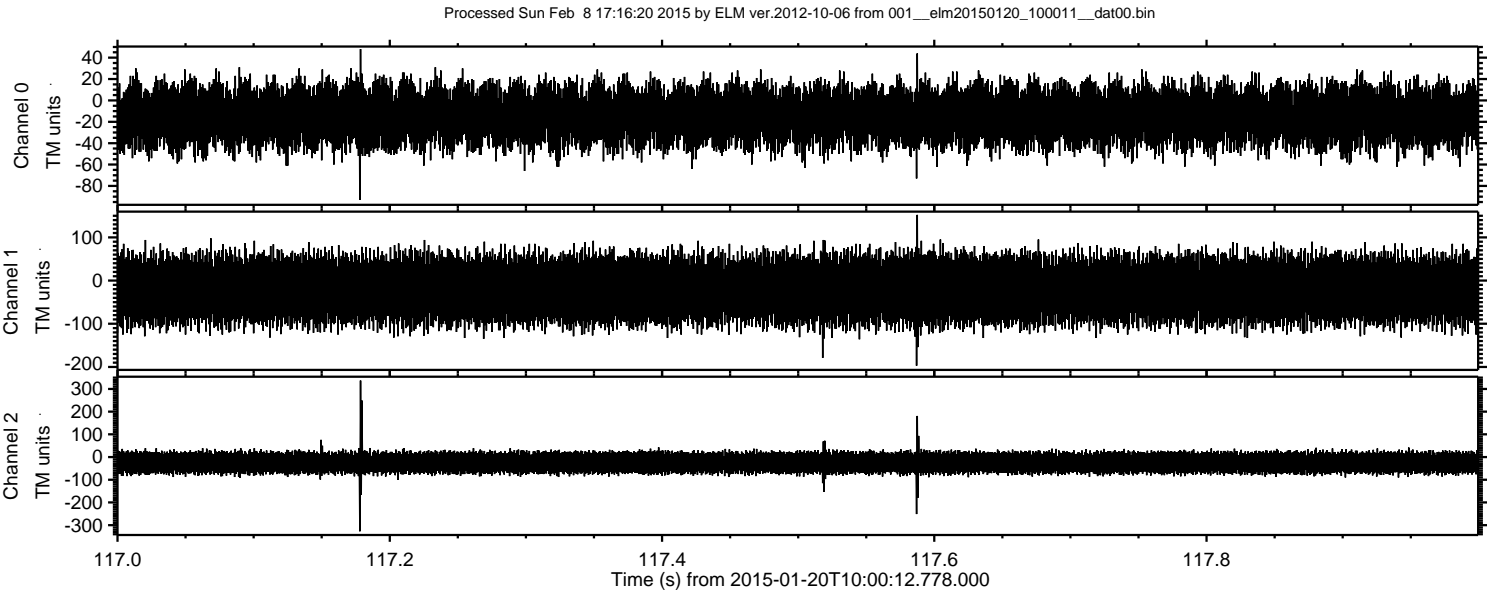
ELMAVAN 3D WAVEFORMS (Measured data sampled at 50 kHz) 49805 packets of 144 samples from 2015-01-20T10:00:12.778.000. Part 132/144



Processed Sun Feb 8 17:16:19 2015 by ELM ver.2012-10-06 from 001__elm20150120_100011__dat00.bin



ELMAVAN 3D WAVEFORMS (Measured data sampled at 50 kHz) 49805 packets of 144 samples from 2015-01-20T10:00:12.778.000. Part 118/144



ELMAVAN 3D WAVEFORMS (Measured data sampled at 50 kHz) 49805 packets of 144 samples from 2015-01-20T10:00:12.778.000. Part 107/144

