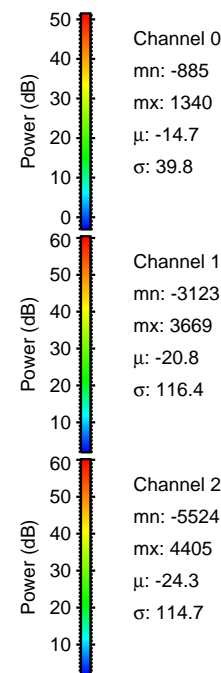
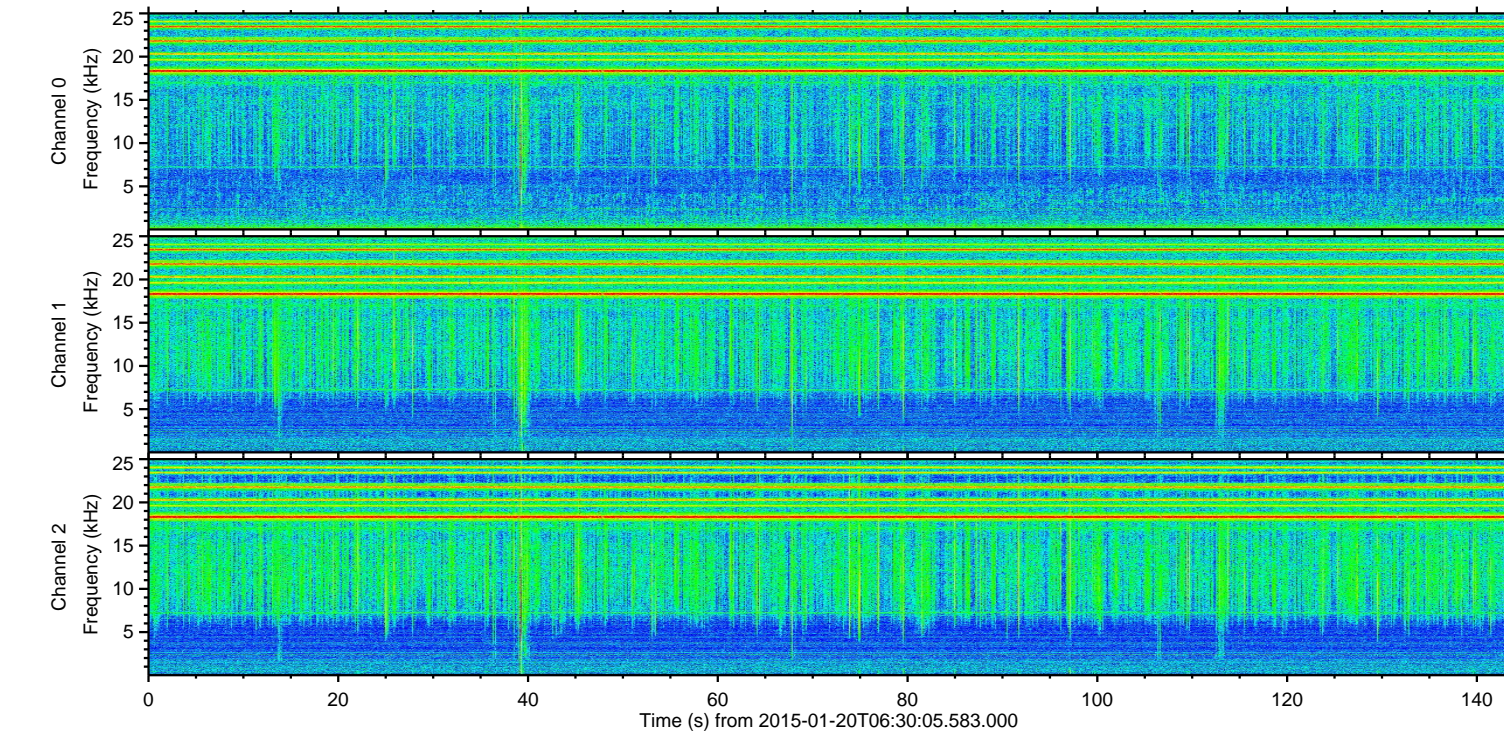
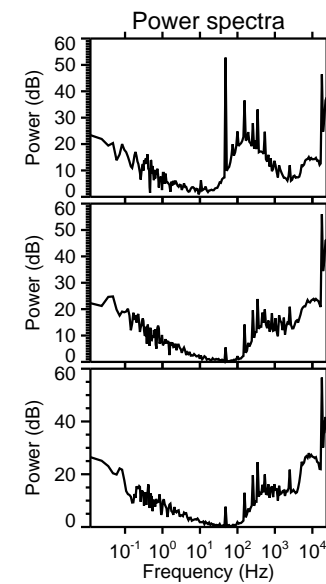
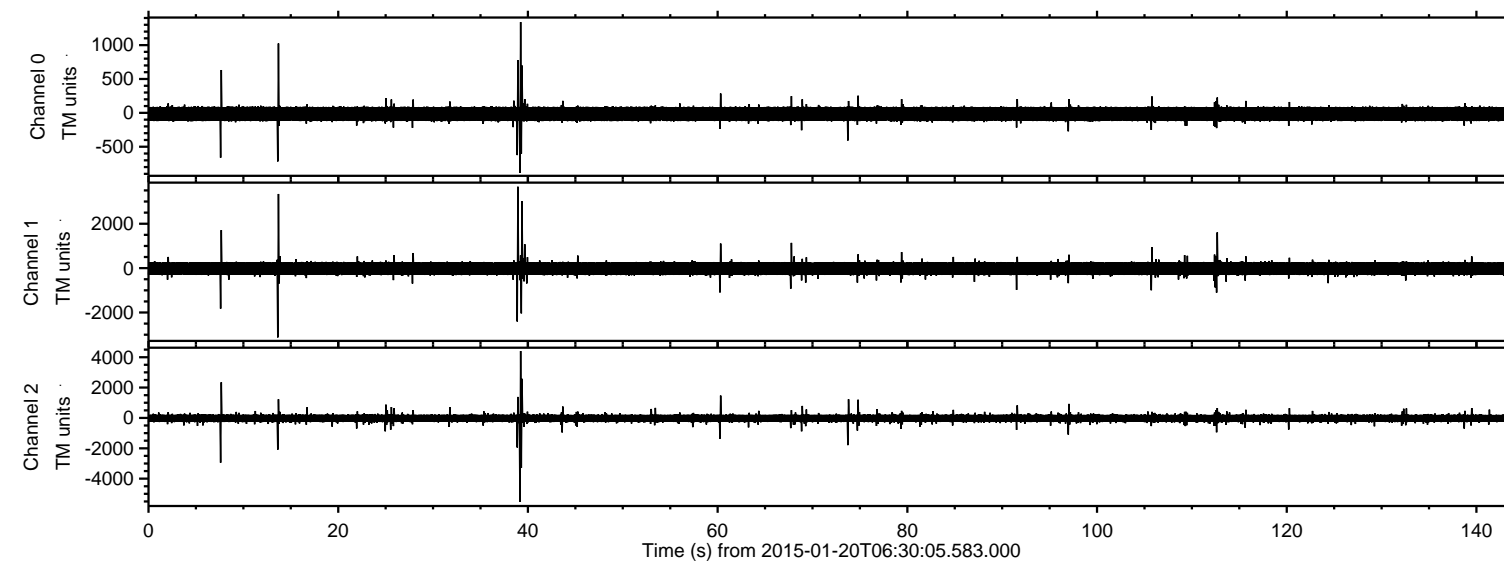
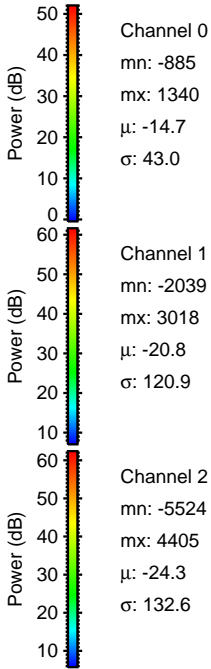
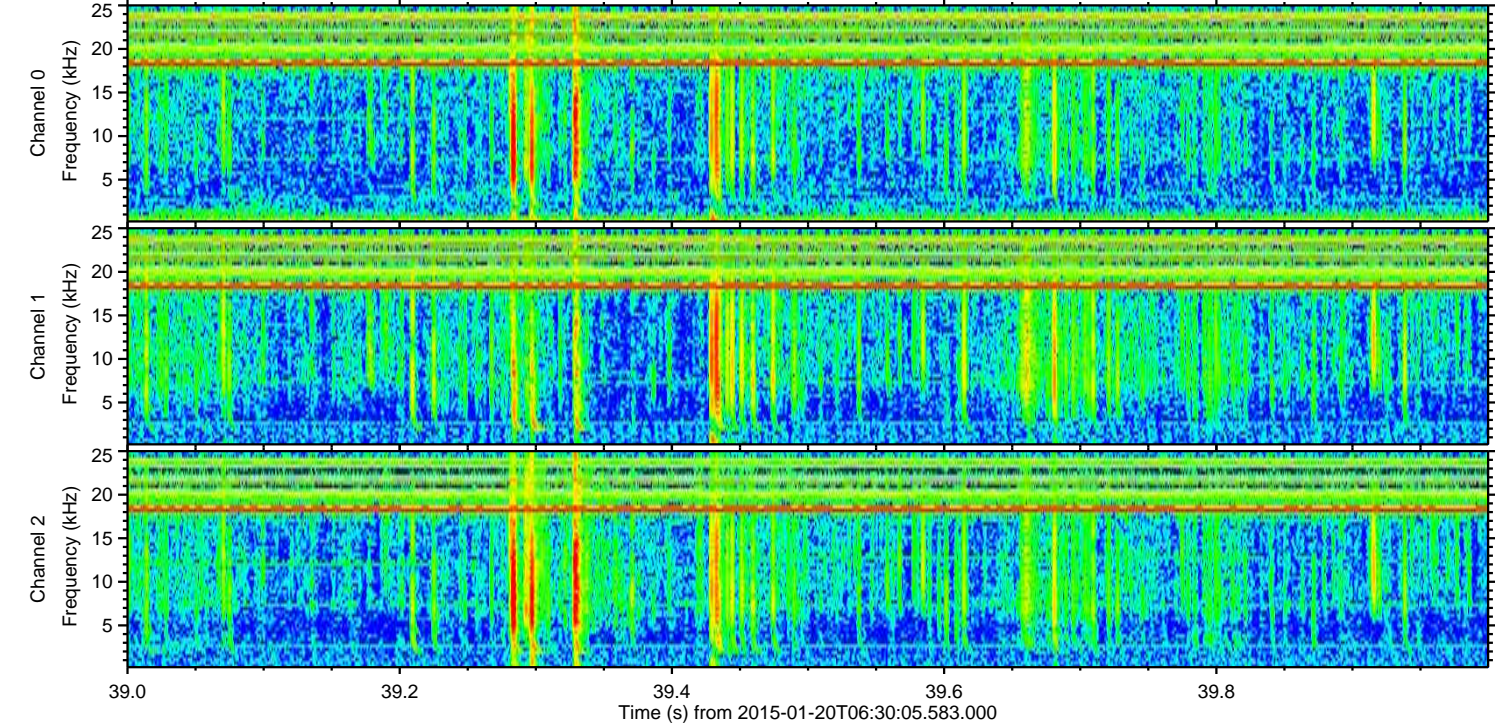
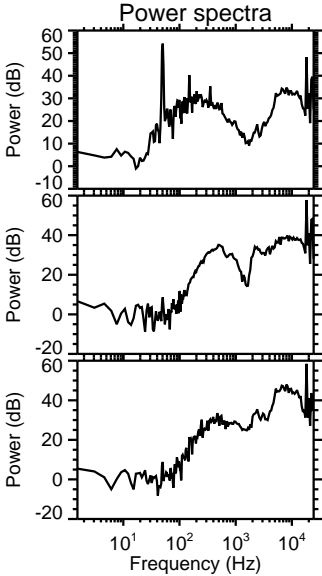
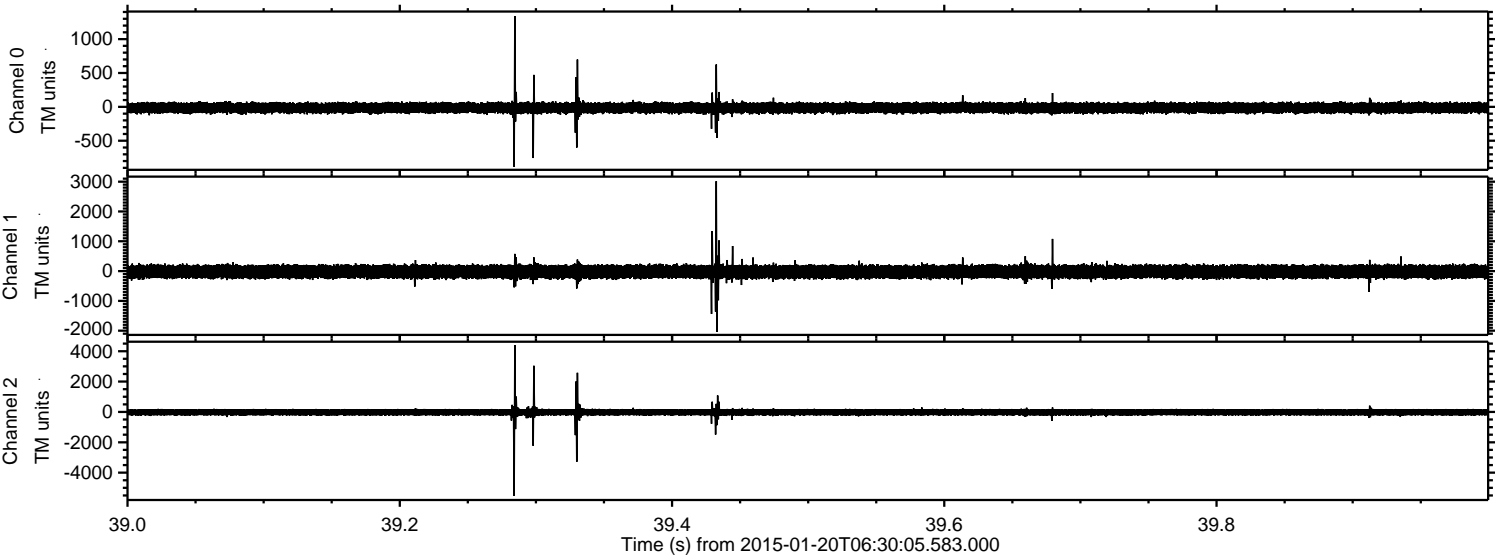


ELMAVAN 3D WAVEFORMS (Measured data sampled at 50 kHz) 49808 packets of 144 samples from 2015-01-20T06:30:05.583.000.

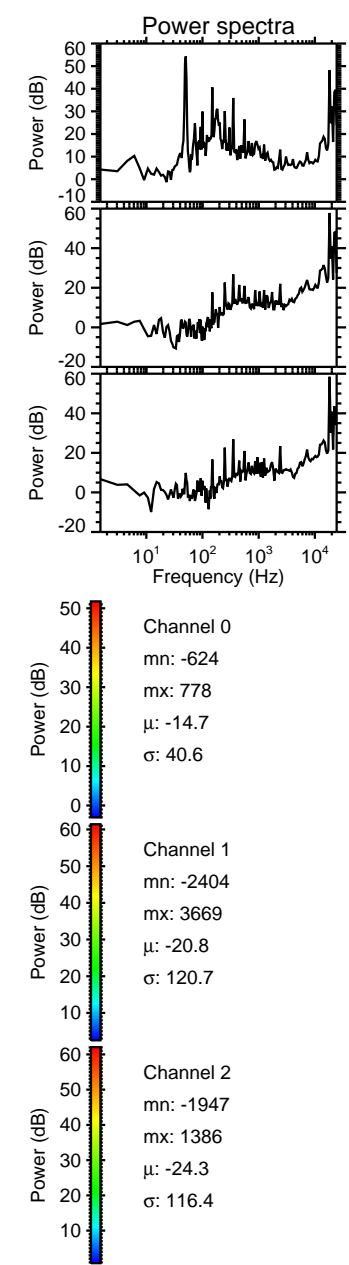
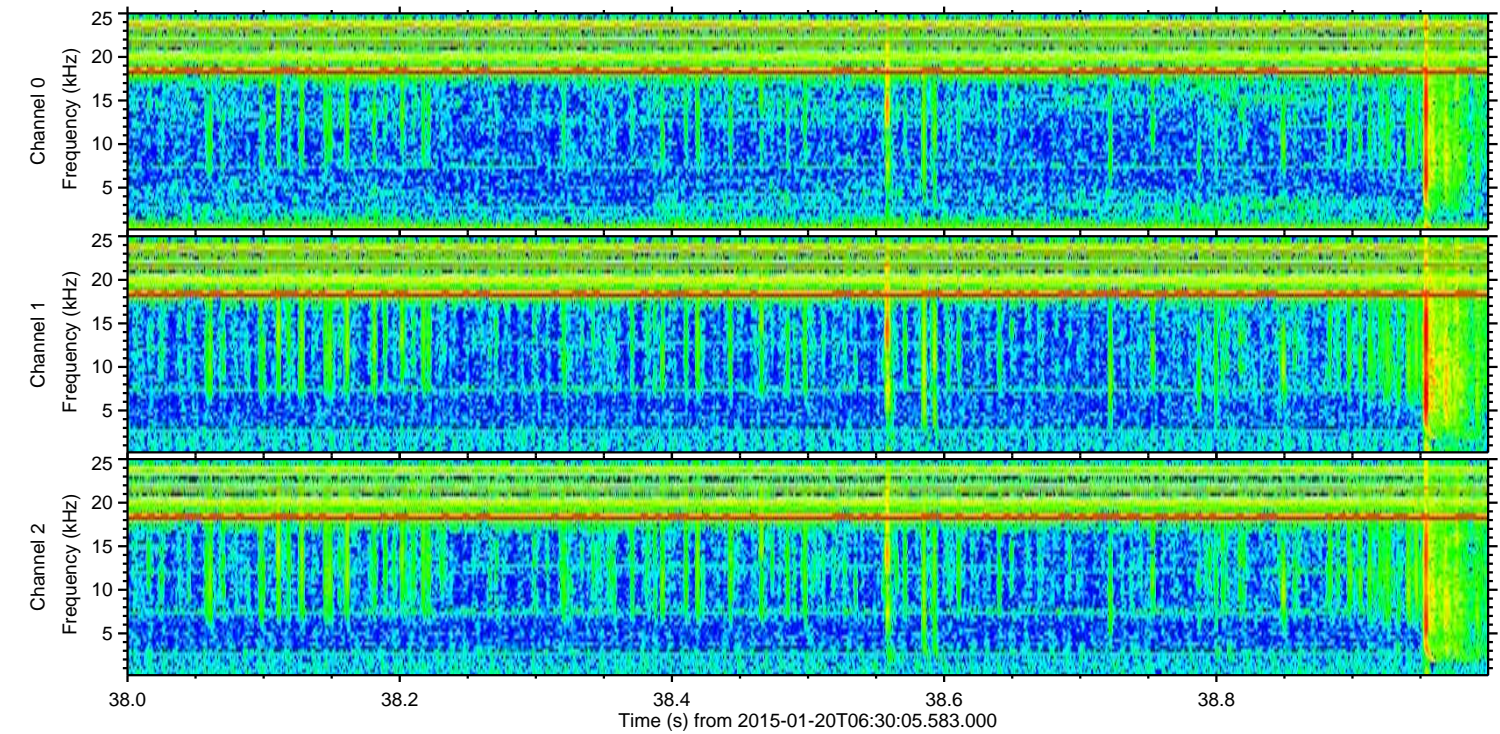
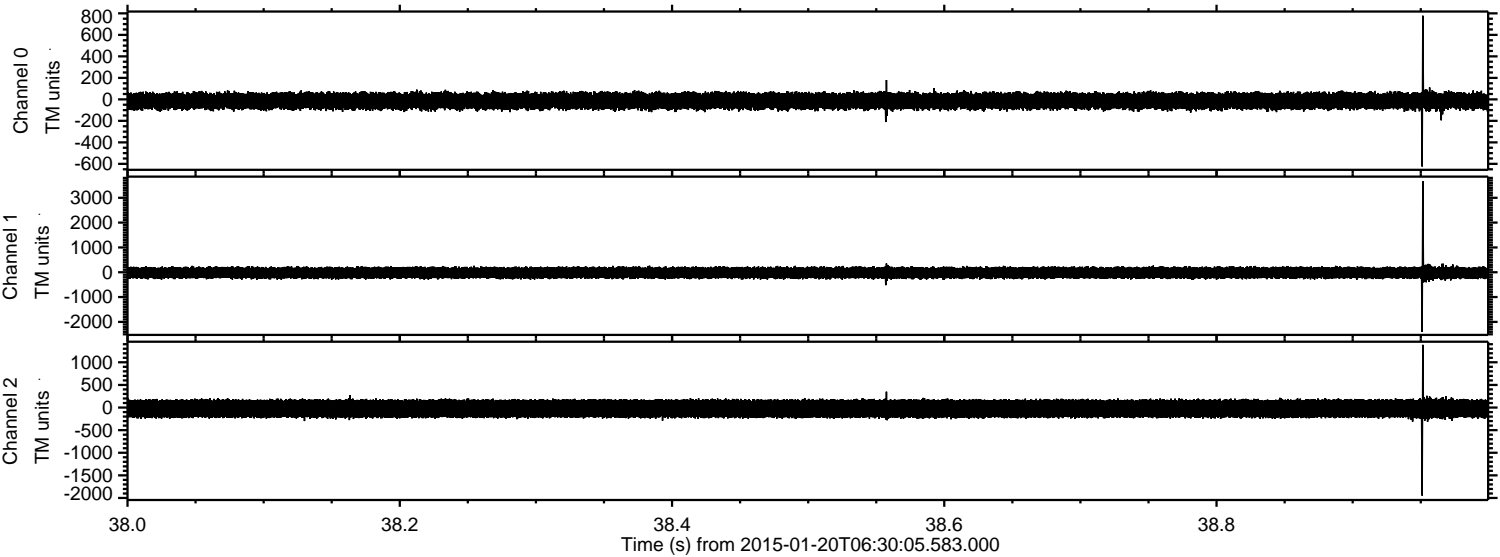
Processed Sun Feb 8 15:23:55 2015 by ELM ver.2012-10-06 from 001__elm20150120_063004__dat00.bin



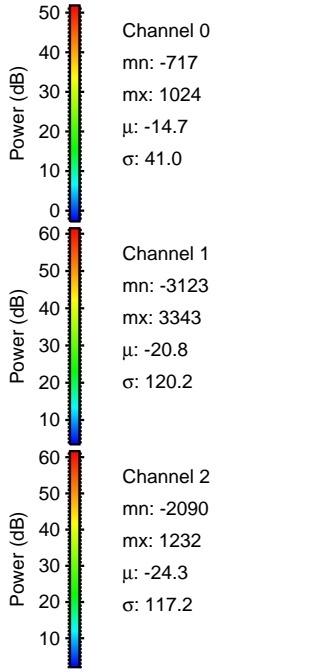
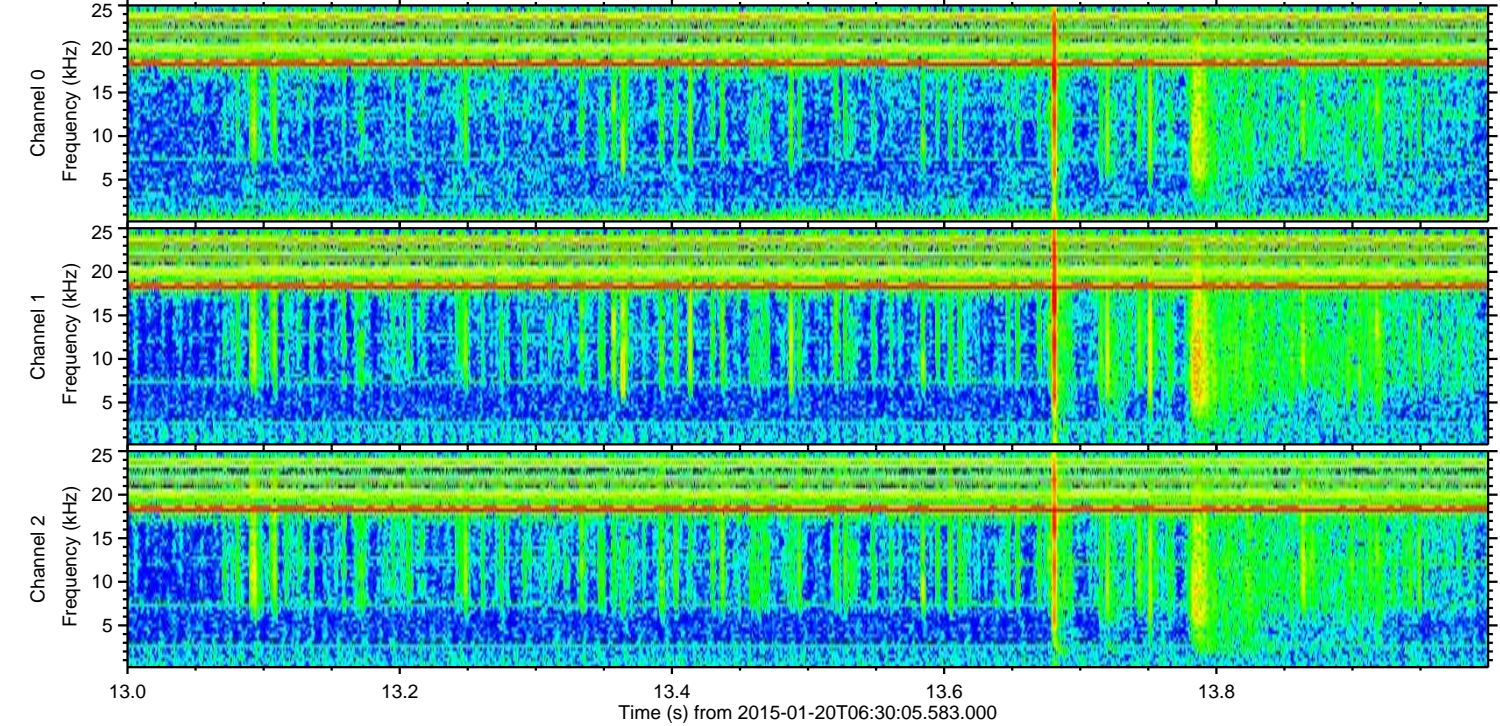
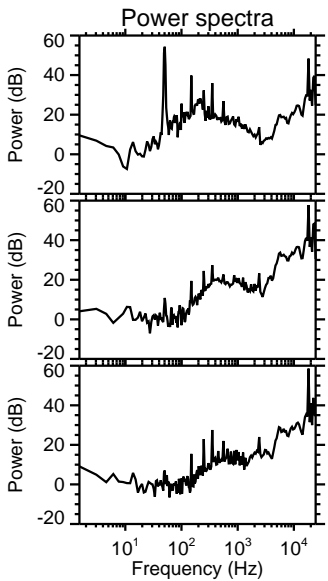
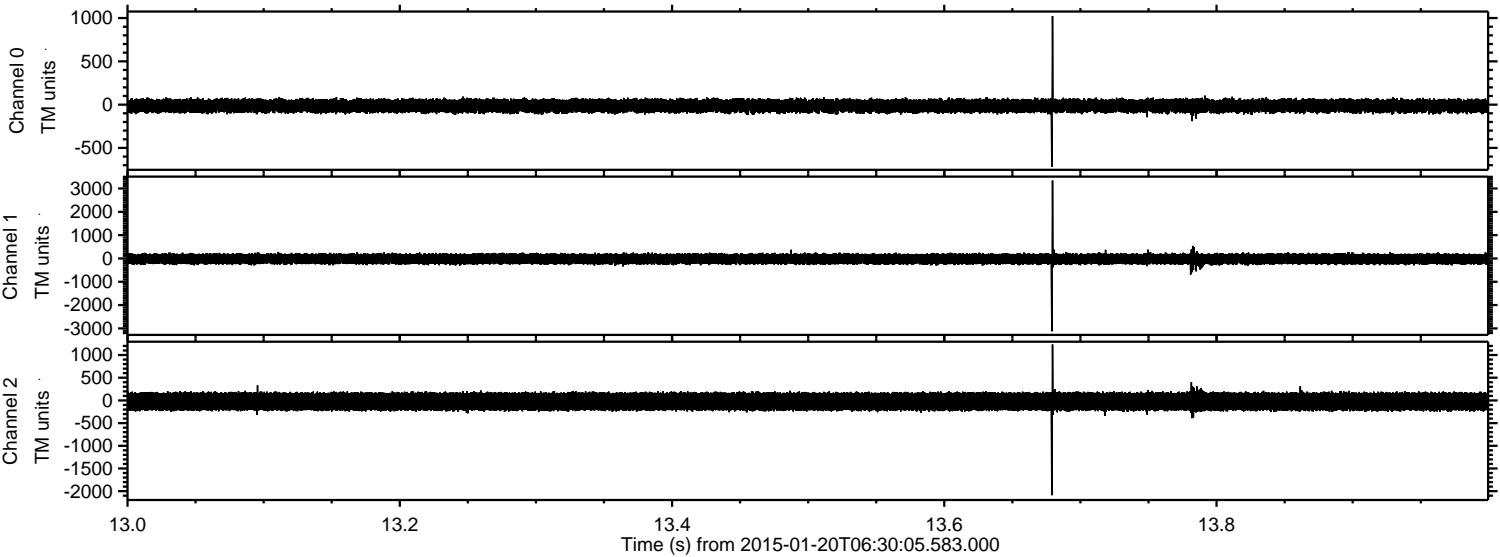
Processed Sun Feb 8 15:24:06 2015 by ELM ver.2012-10-06 from 001__elm20150120_063004__dat00.bin



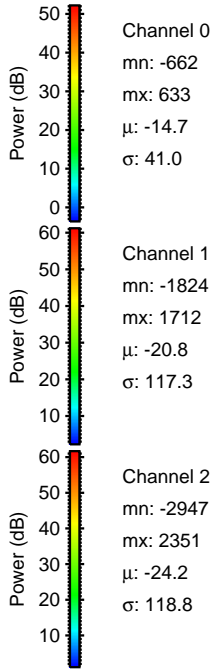
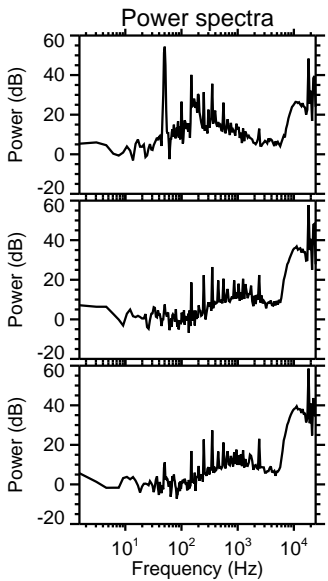
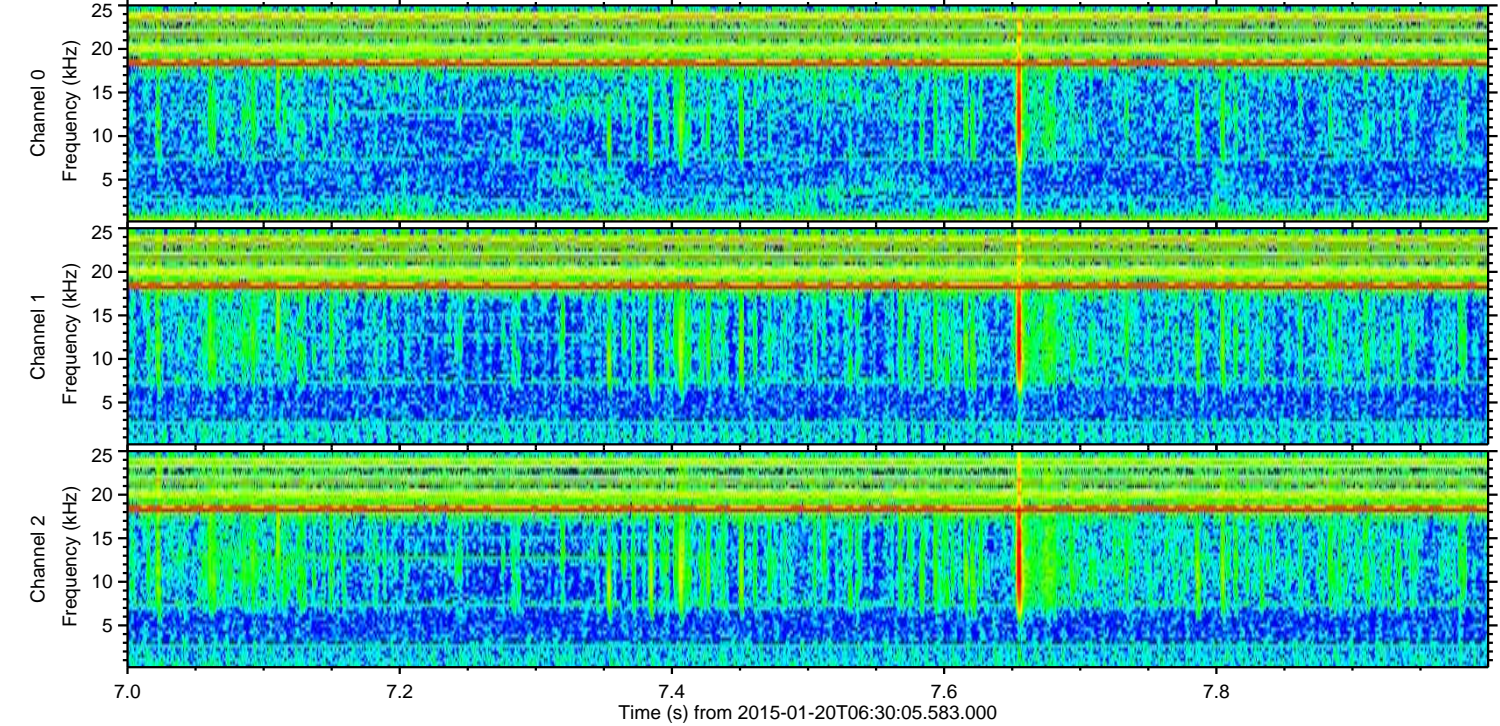
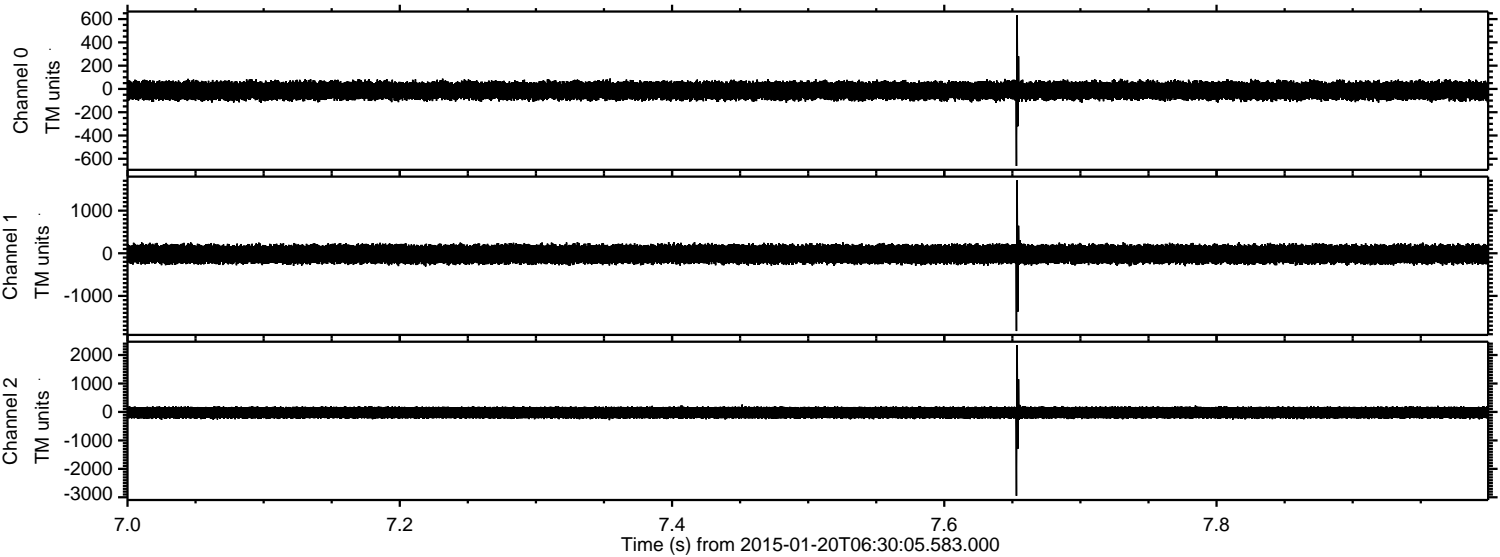
Processed Sun Feb 8 15:24:07 2015 by ELM ver.2012-10-06 from 001__elm20150120_063004__dat00.bin



Processed Sun Feb 8 15:24:08 2015 by ELM ver.2012-10-06 from 001__elm20150120_063004__dat00.bin

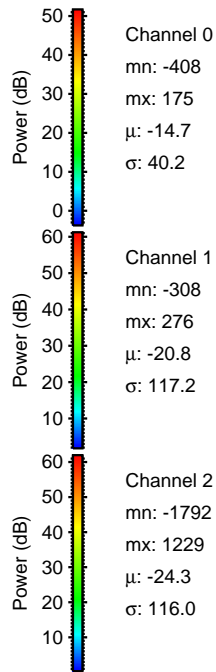
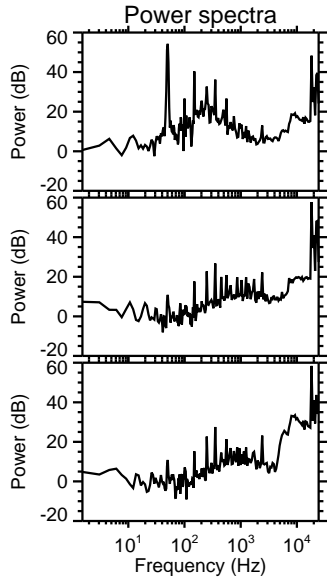
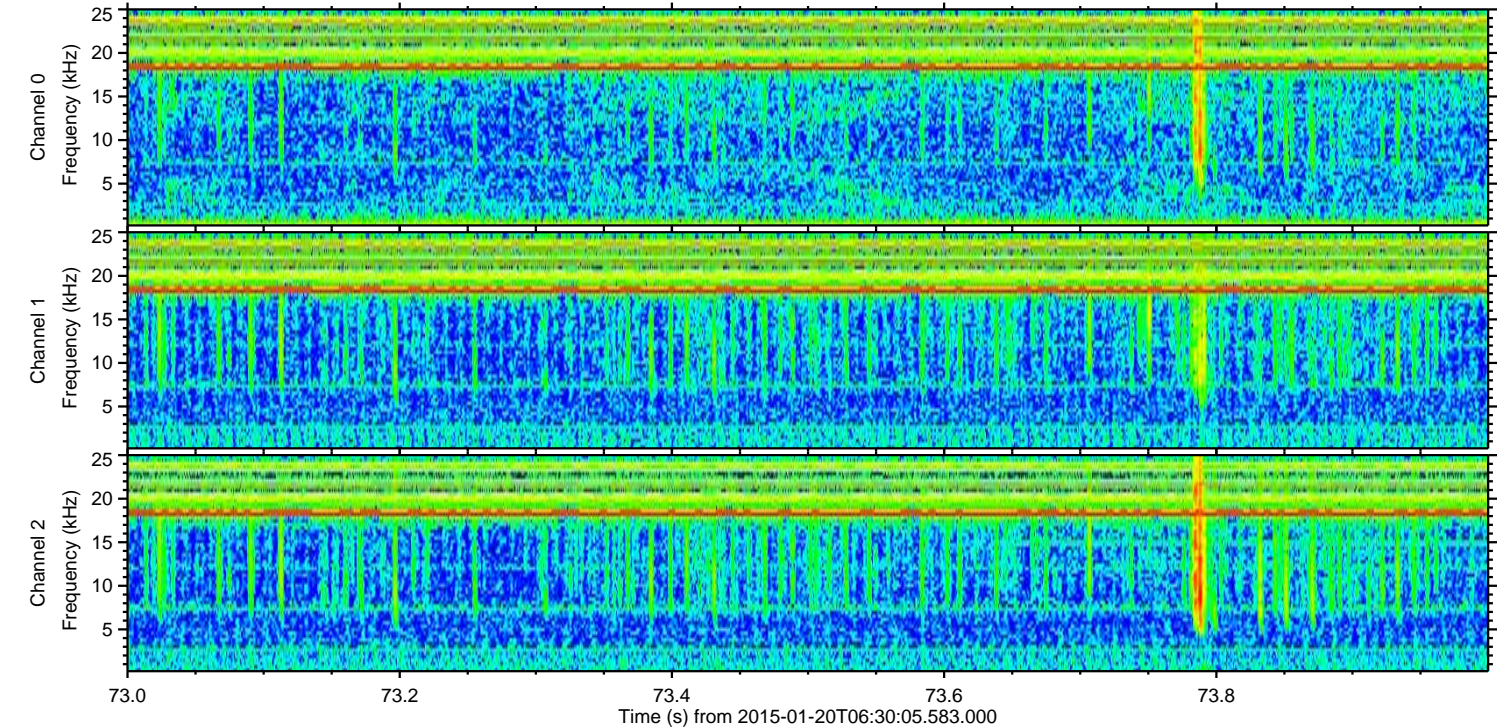
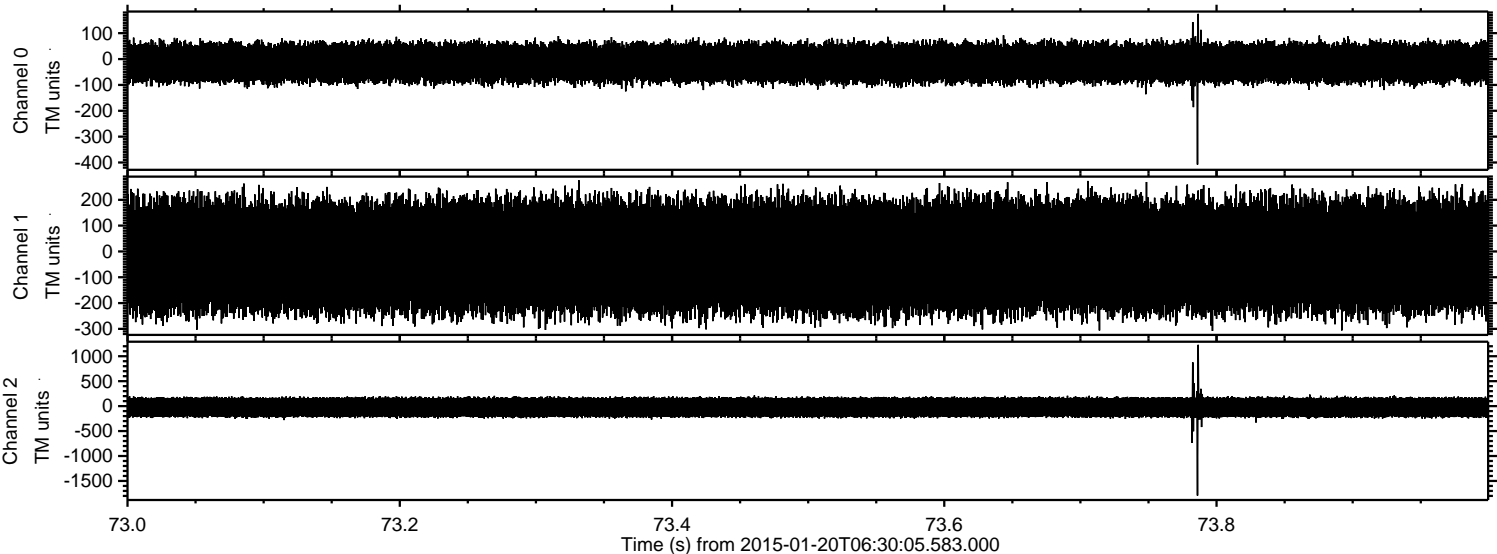


Processed Sun Feb 8 15:24:09 2015 by ELM ver.2012-10-06 from 001__elm20150120_063004__dat00.bin



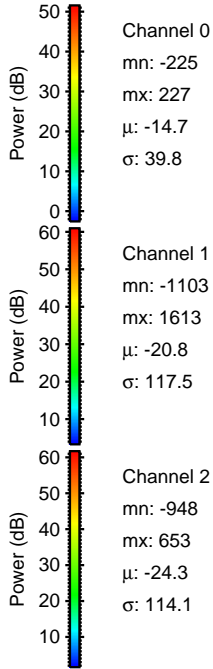
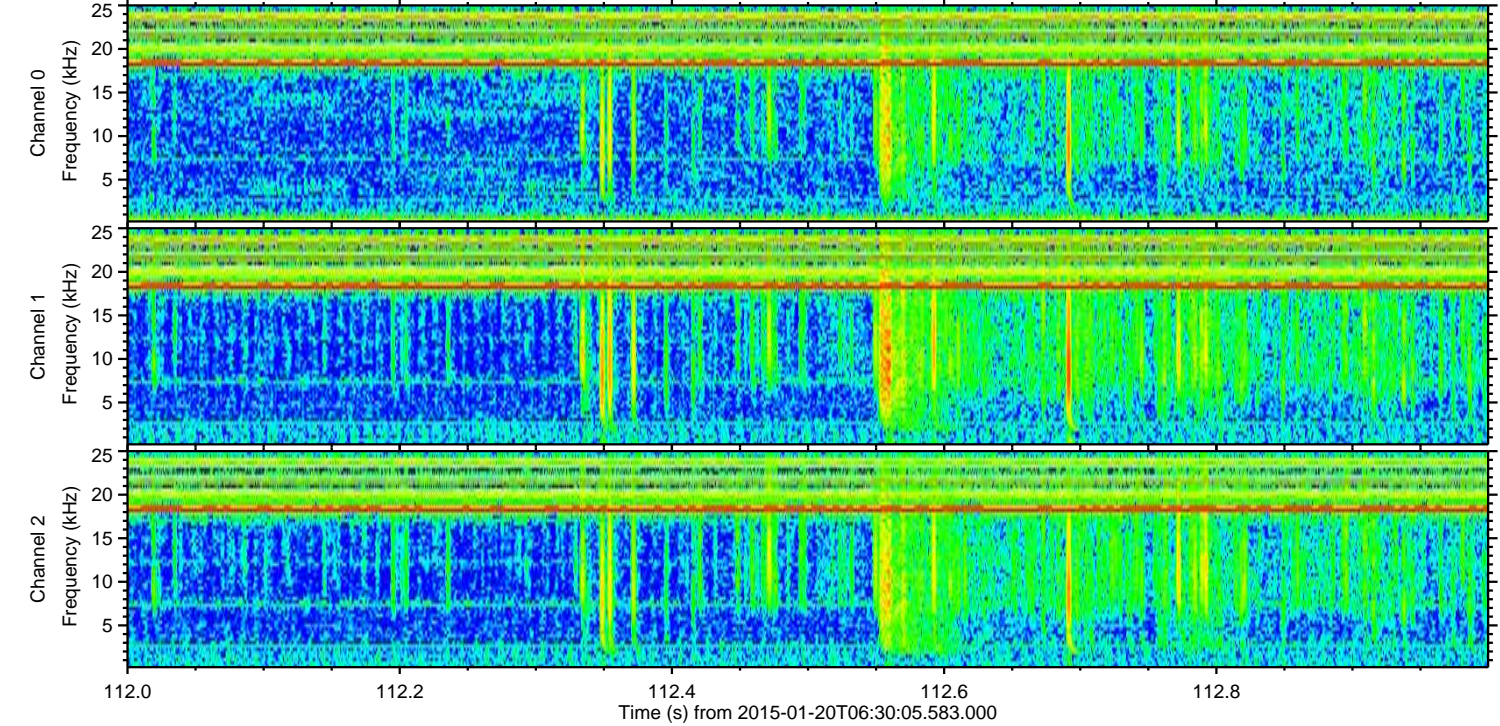
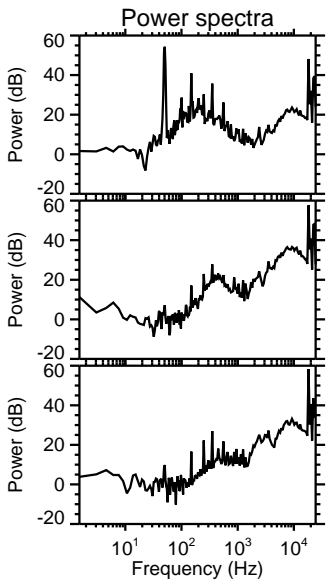
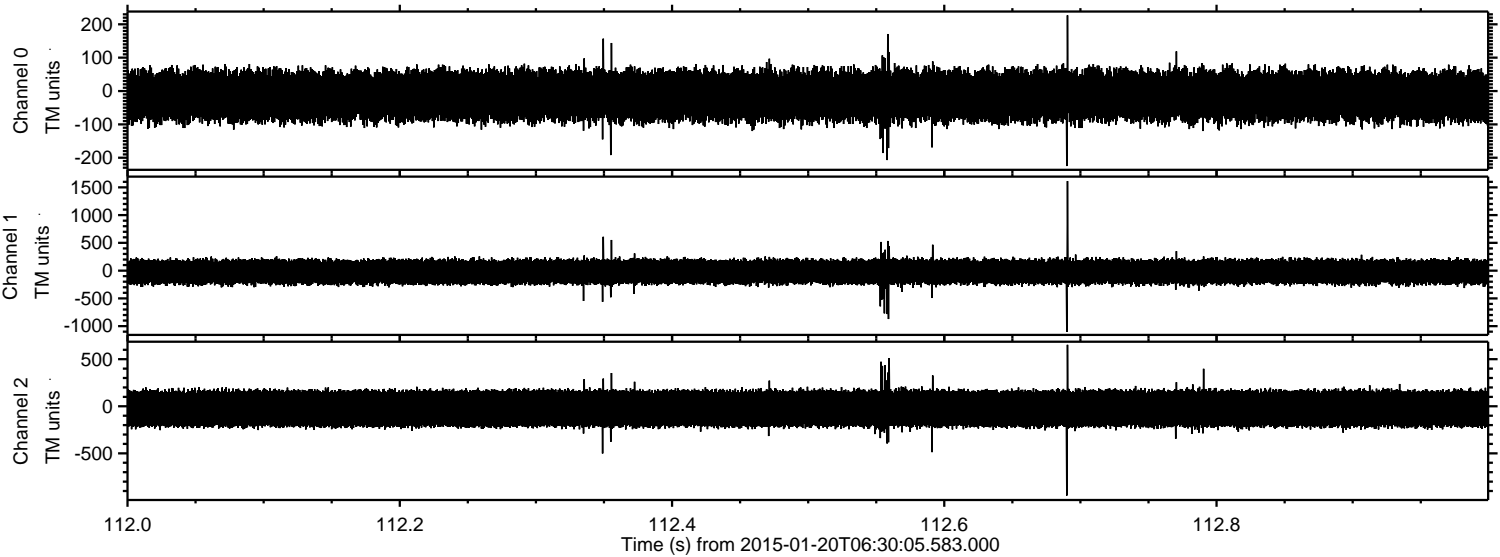
ELMAVAN 3D WAVEFORMS (Measured data sampled at 50 kHz) 49808 packets of 144 samples from 2015-01-20T06:30:05.583.000. Part 74/144

Processed Sun Feb 8 15:24:10 2015 by ELM ver.2012-10-06 from 001__elm20150120_063004__dat00.bin



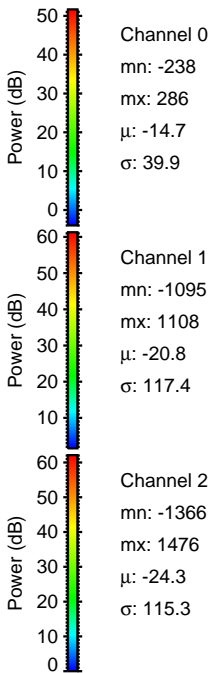
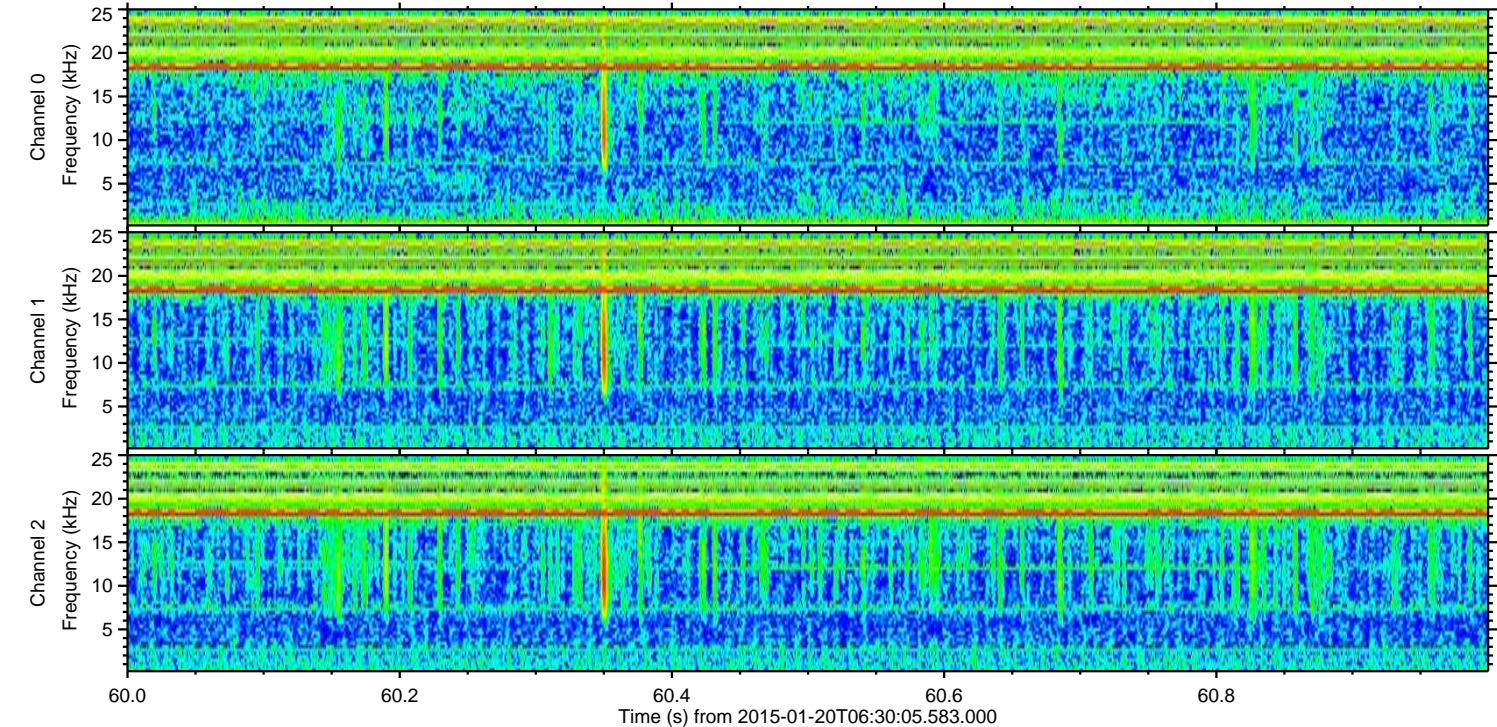
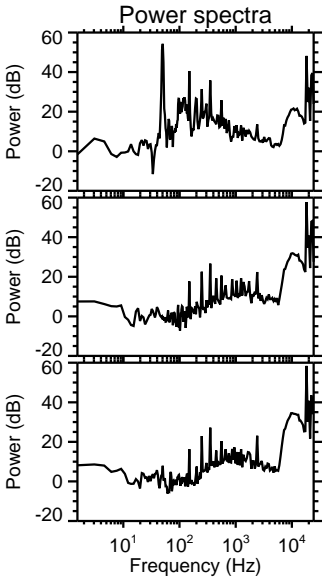
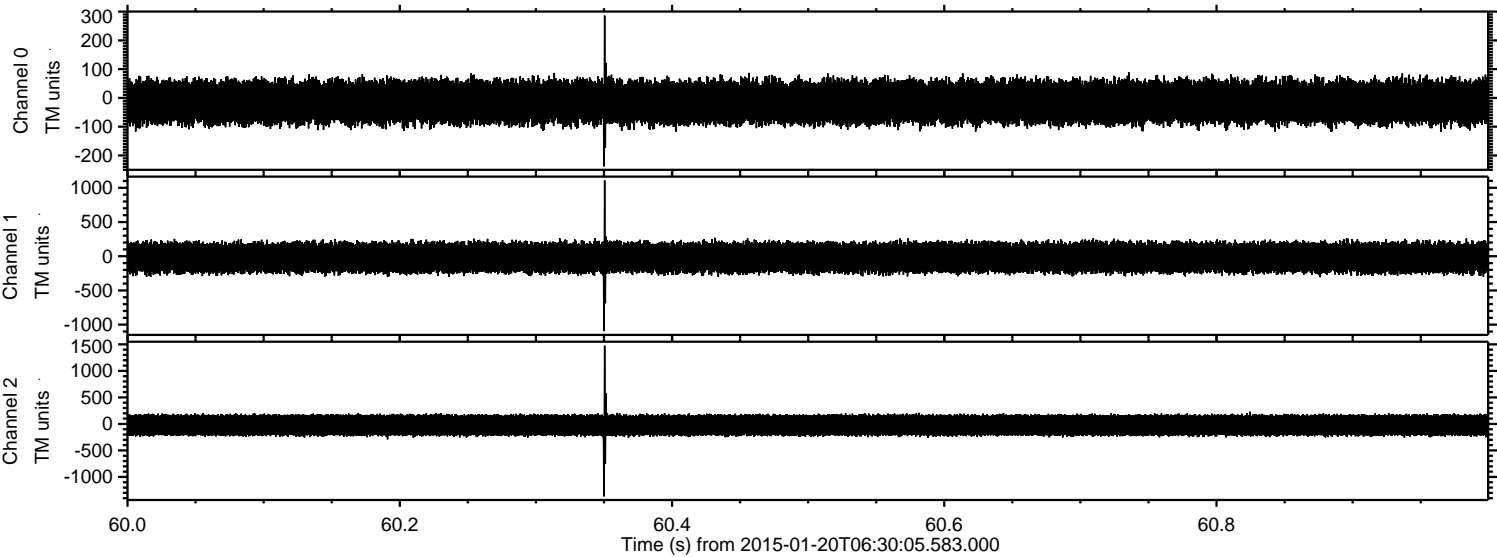
ELMAVAN 3D WAVEFORMS (Measured data sampled at 50 kHz) 49808 packets of 144 samples from 2015-01-20T06:30:05.583.000. Part 113/144

Processed Sun Feb 8 15:24:11 2015 by ELM ver.2012-10-06 from 001__elm20150120_063004__dat00.bin

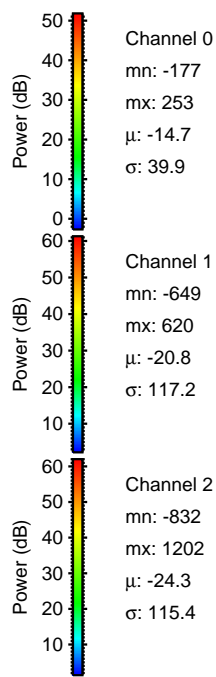
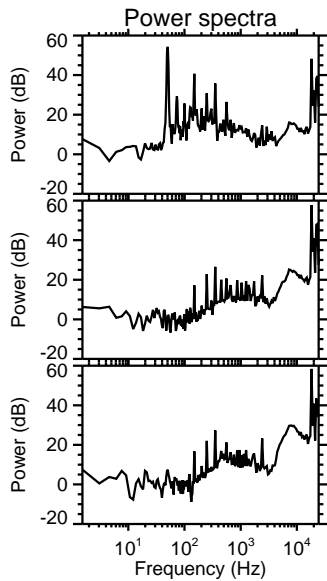
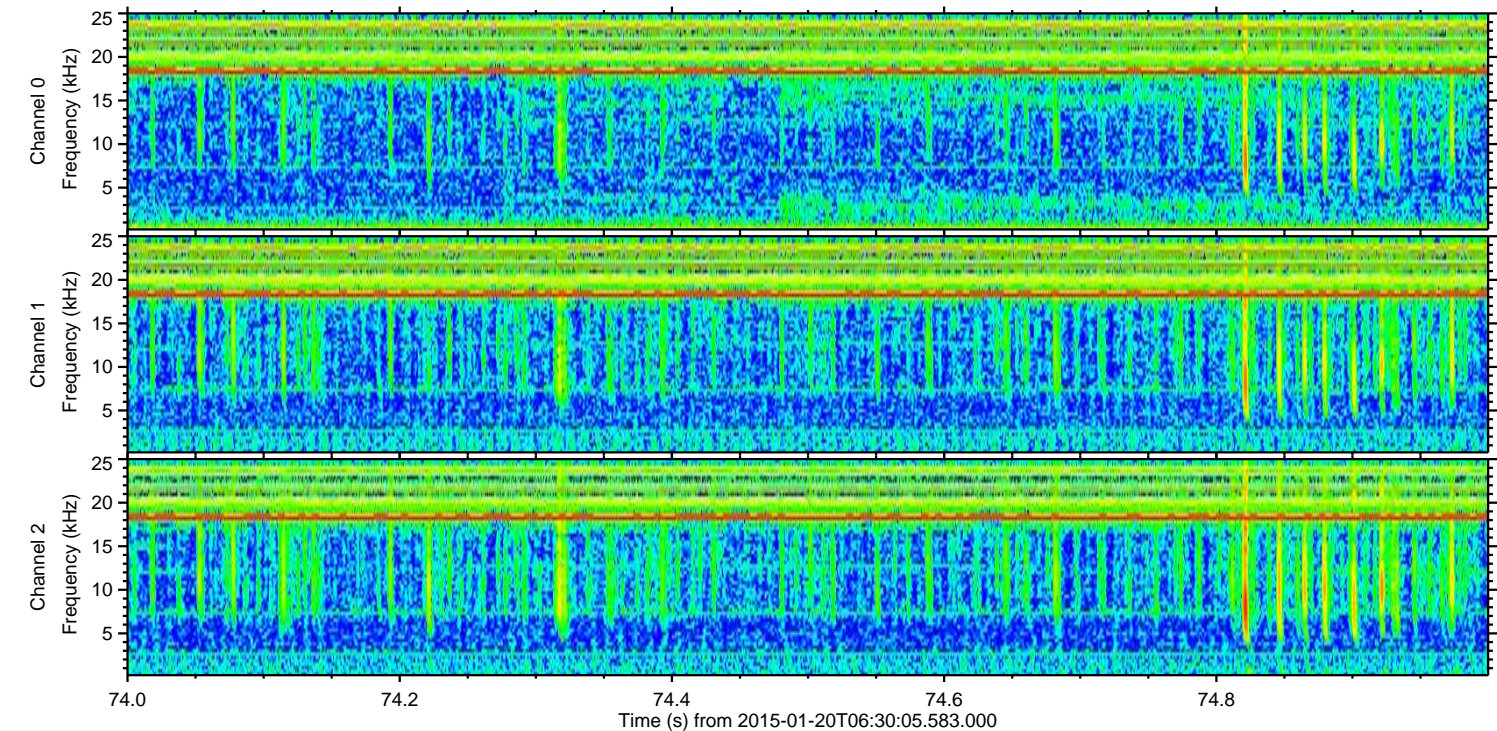
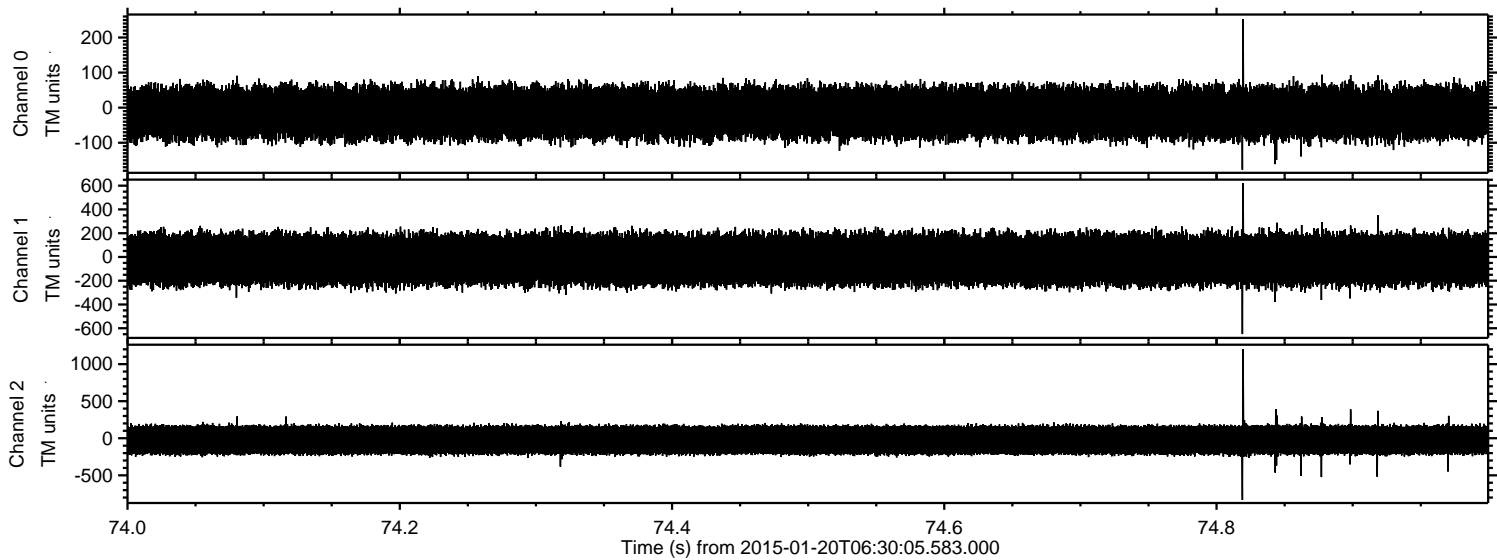


ELMAVAN 3D WAVEFORMS (Measured data sampled at 50 kHz) 49808 packets of 144 samples from 2015-01-20T06:30:05.583.000. Part 61/144

Processed Sun Feb 8 15:24:12 2015 by ELM ver.2012-10-06 from 001__elm20150120_063004__dat00.bin



Processed Sun Feb 8 15:24:13 2015 by ELM ver.2012-10-06 from 001__elm20150120_063004__dat00.bin

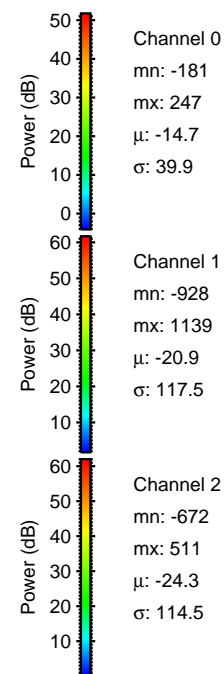
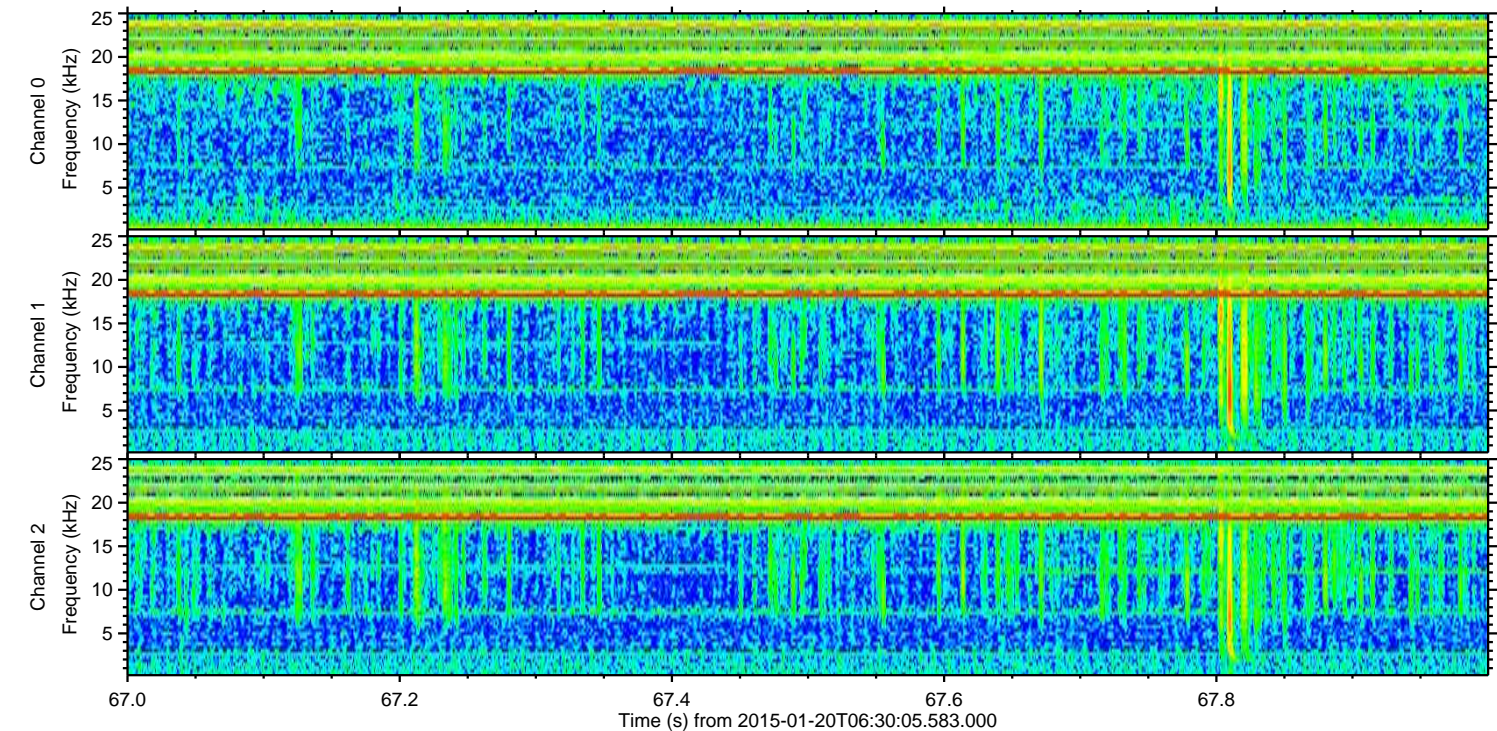
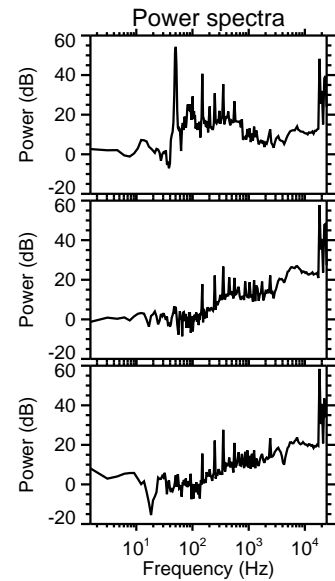
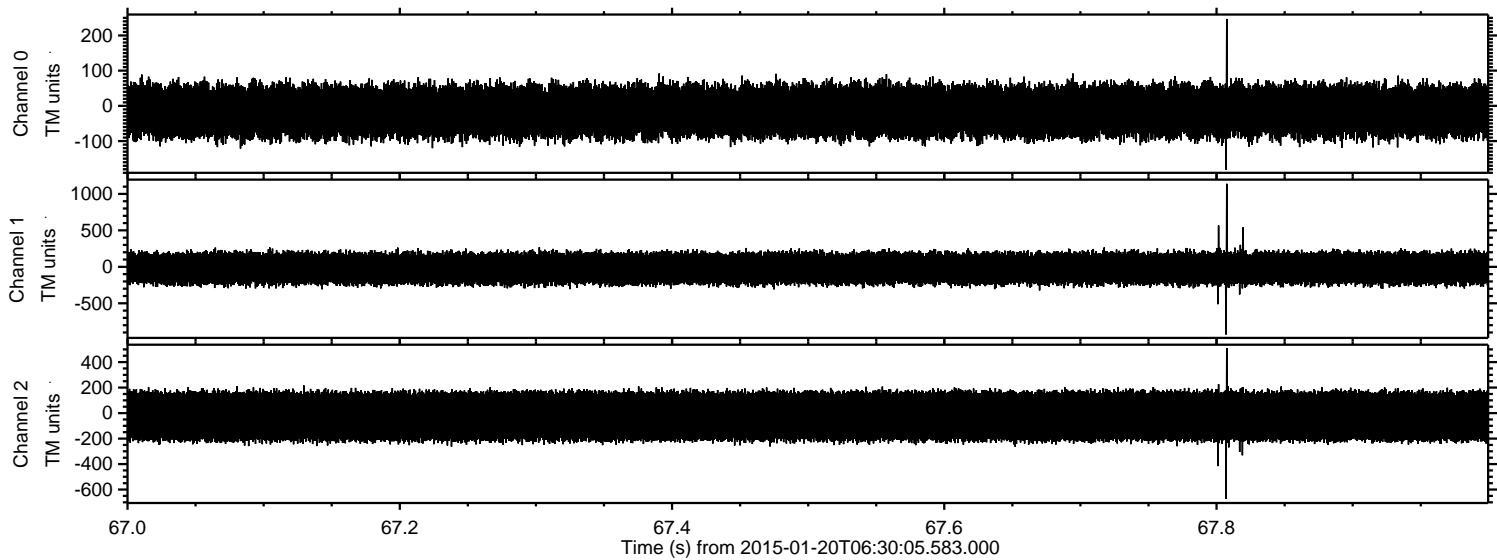


Channel 0
mn: -177
mx: 253
 μ : -14.7
 σ : 39.9

Channel 1
mn: -649
mx: 620
 μ : -20.8
 σ : 117.2

Channel 2
mn: -832
mx: 1202
 μ : -24.3
 σ : 115.4

Processed Sun Feb 8 15:24:14 2015 by ELM ver.2012-10-06 from 001__elm20150120_063004__dat00.bin



Processed Sun Feb 8 15:24:15 2015 by ELM ver.2012-10-06 from 001__elm20150120_063004__dat00.bin

