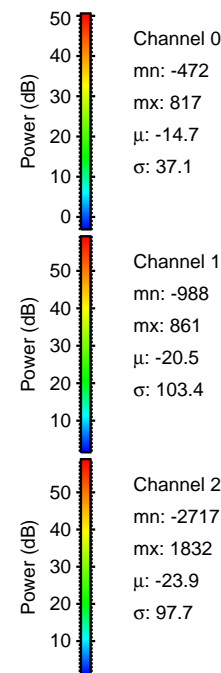
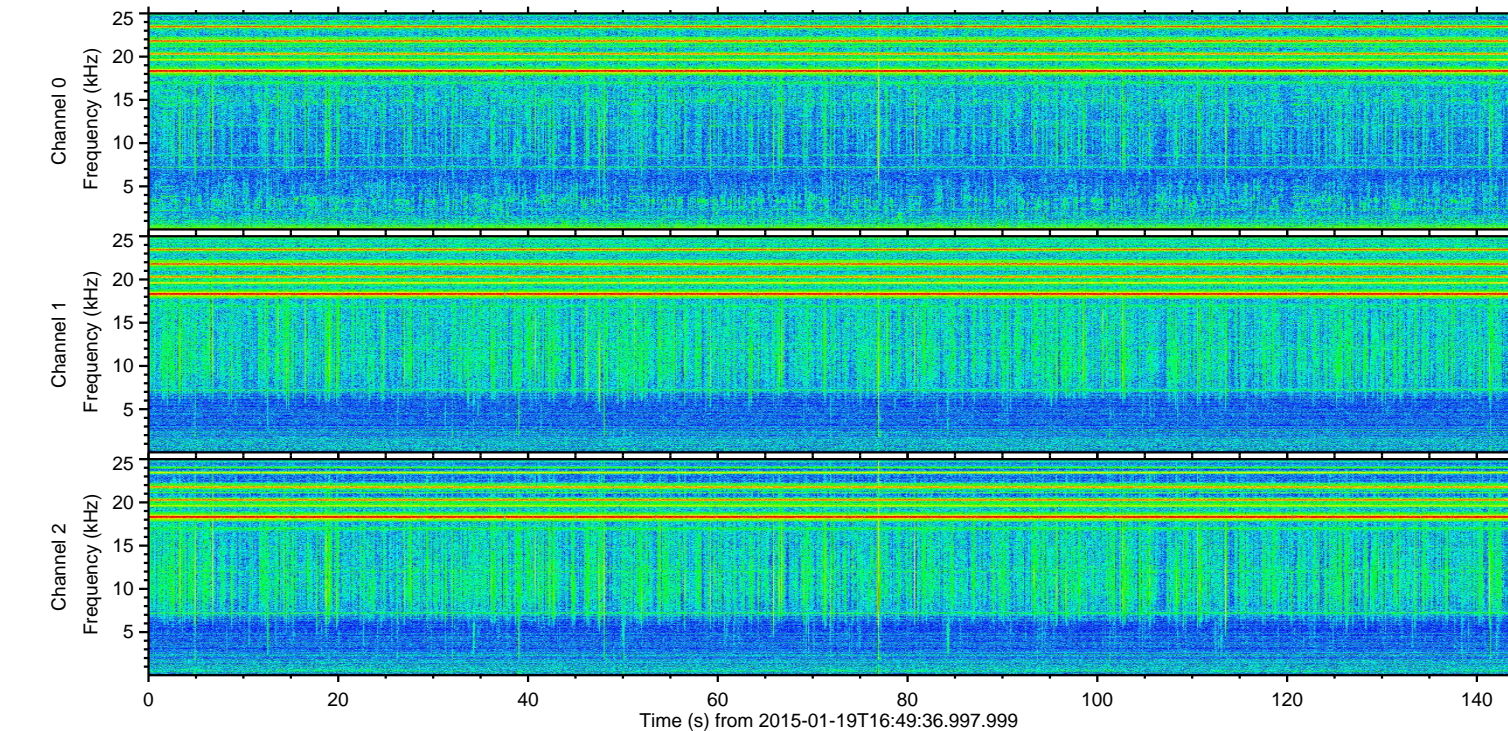
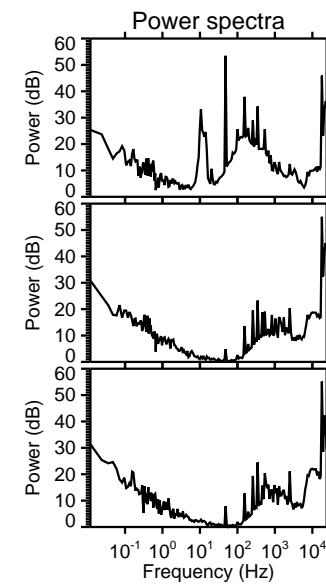
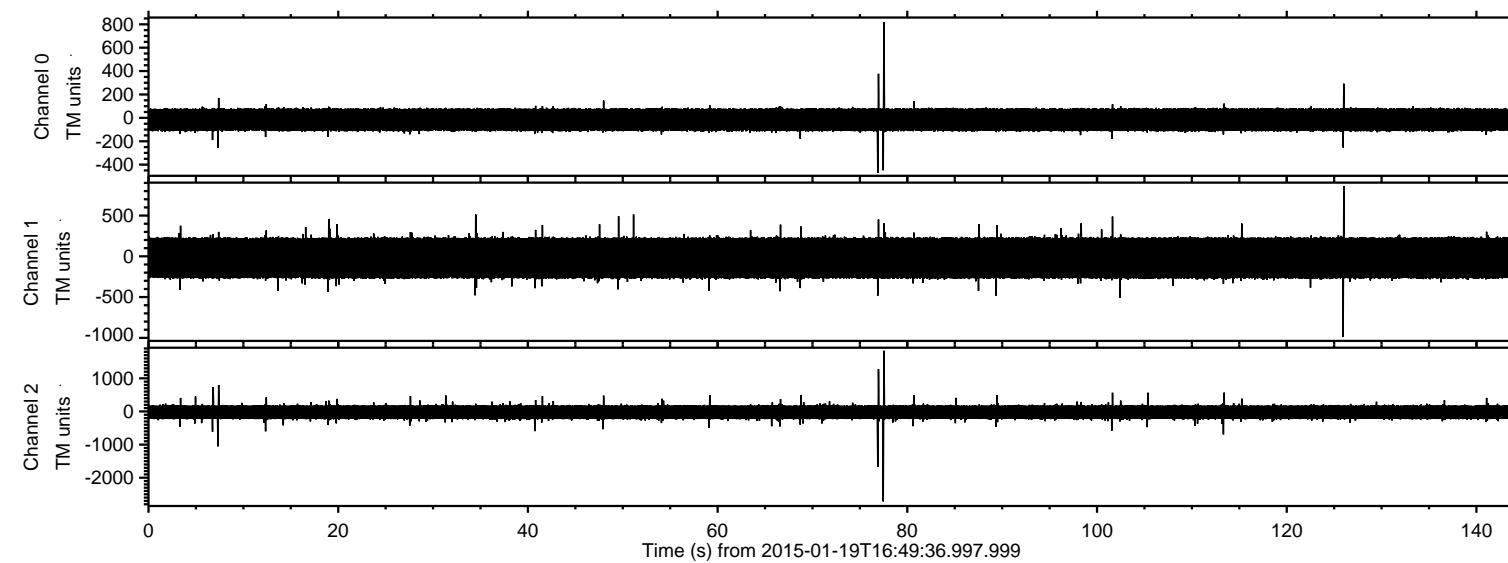
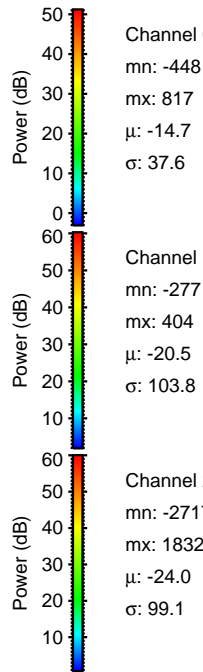
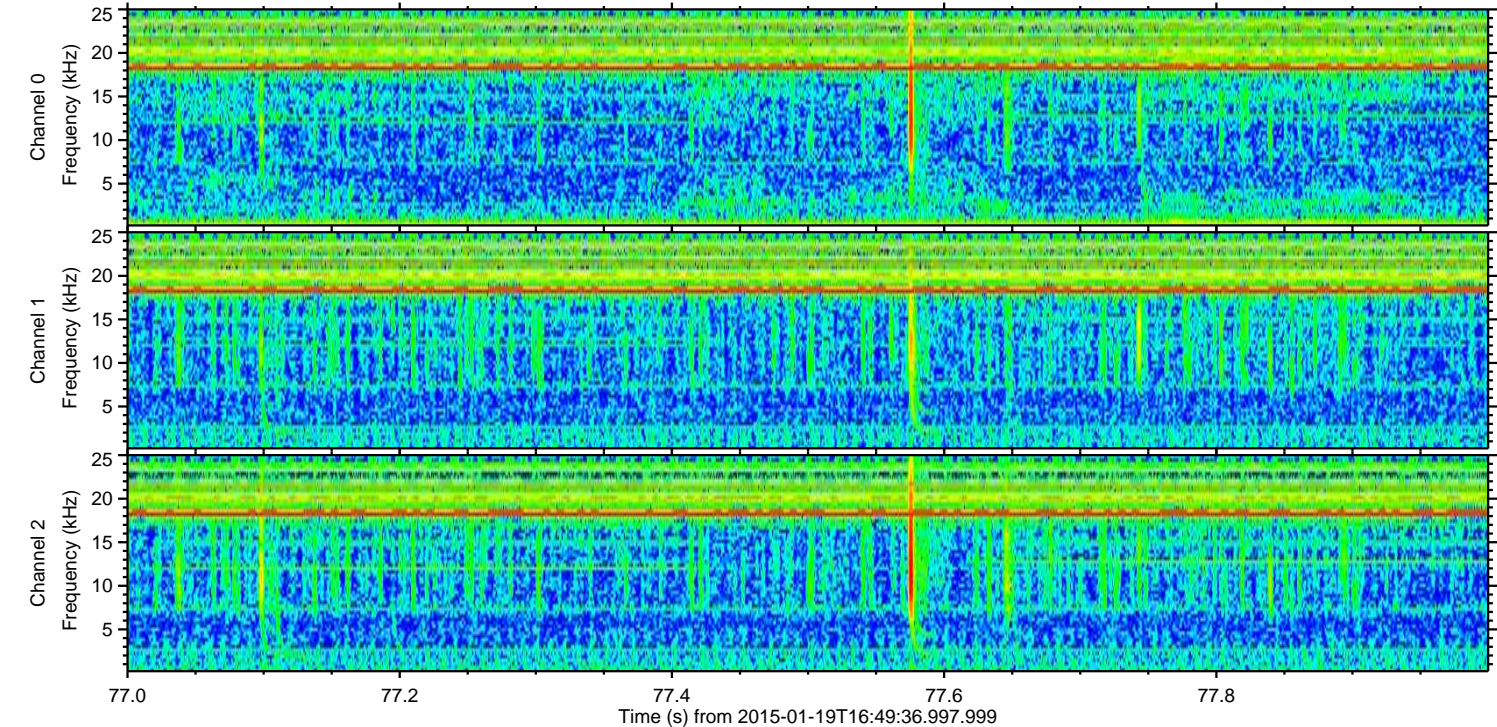
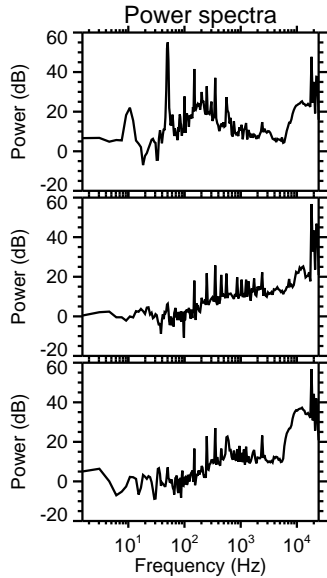
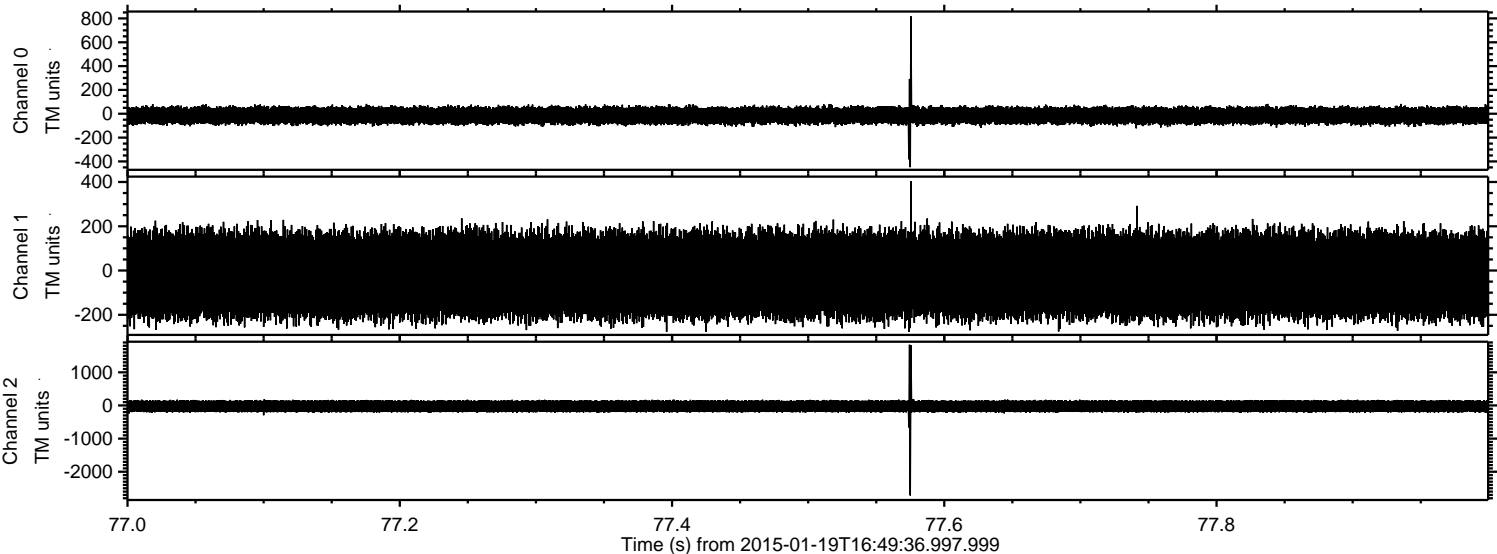


ELMAVAN 3D WAVEFORMS (Measured data sampled at 50 kHz) 49809 packets of 144 samples from 2015-01-19T16:49:36.997.999.

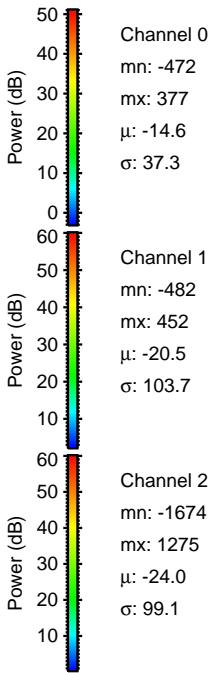
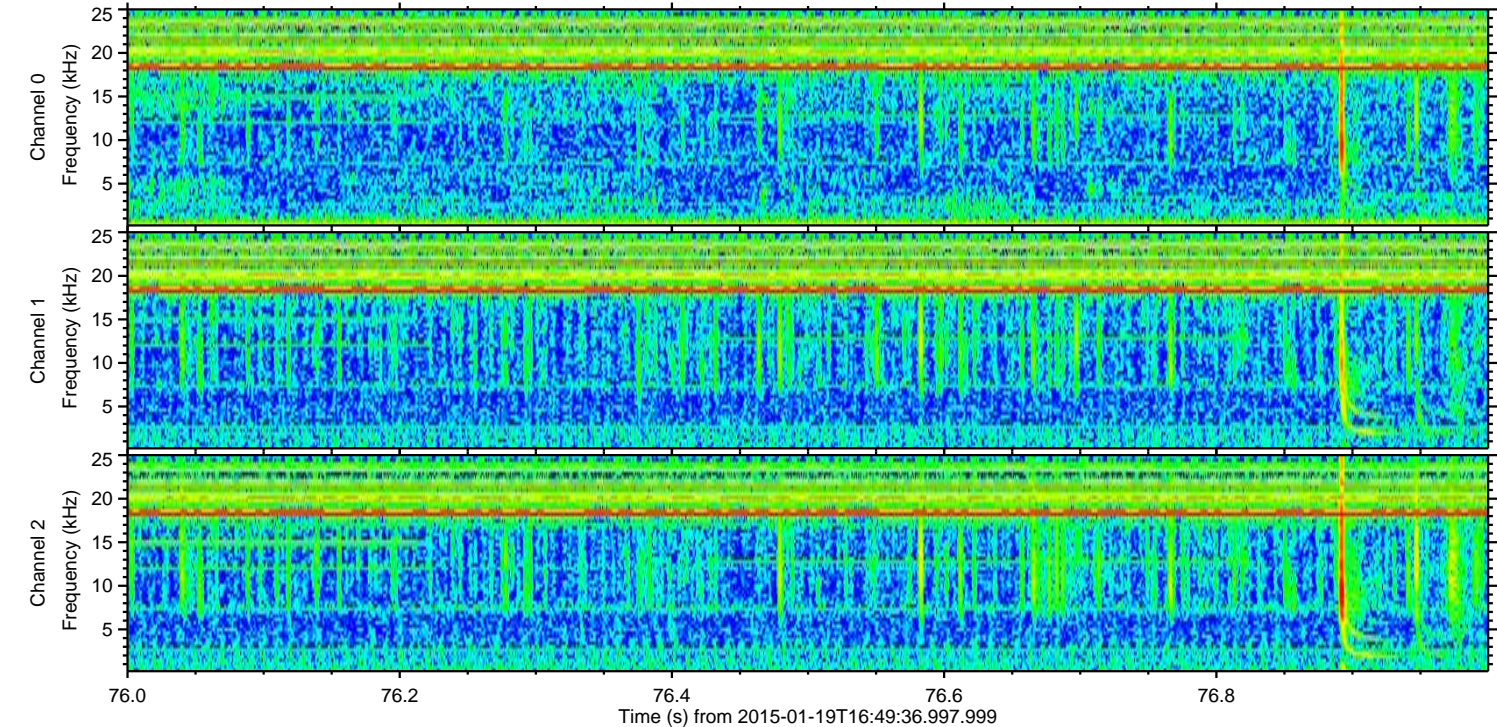
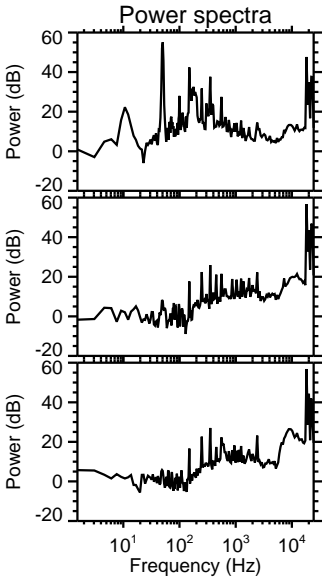
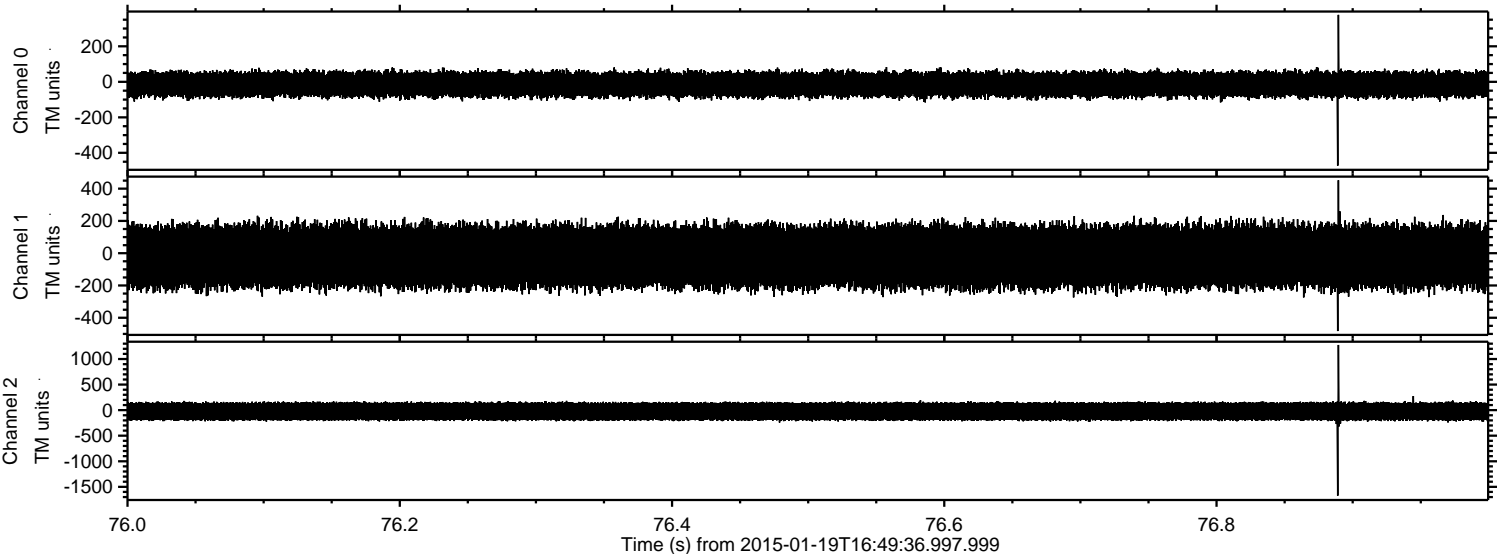
Processed Sat Feb 7 22:21:59 2015 by ELM ver.2012-10-06 from 001__elm20150119_164935__dat00.bin



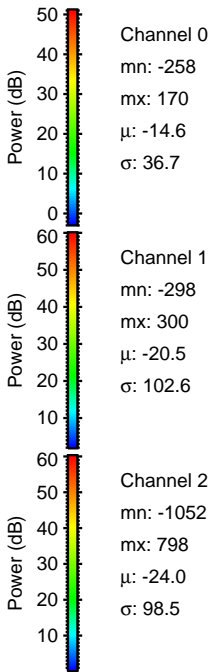
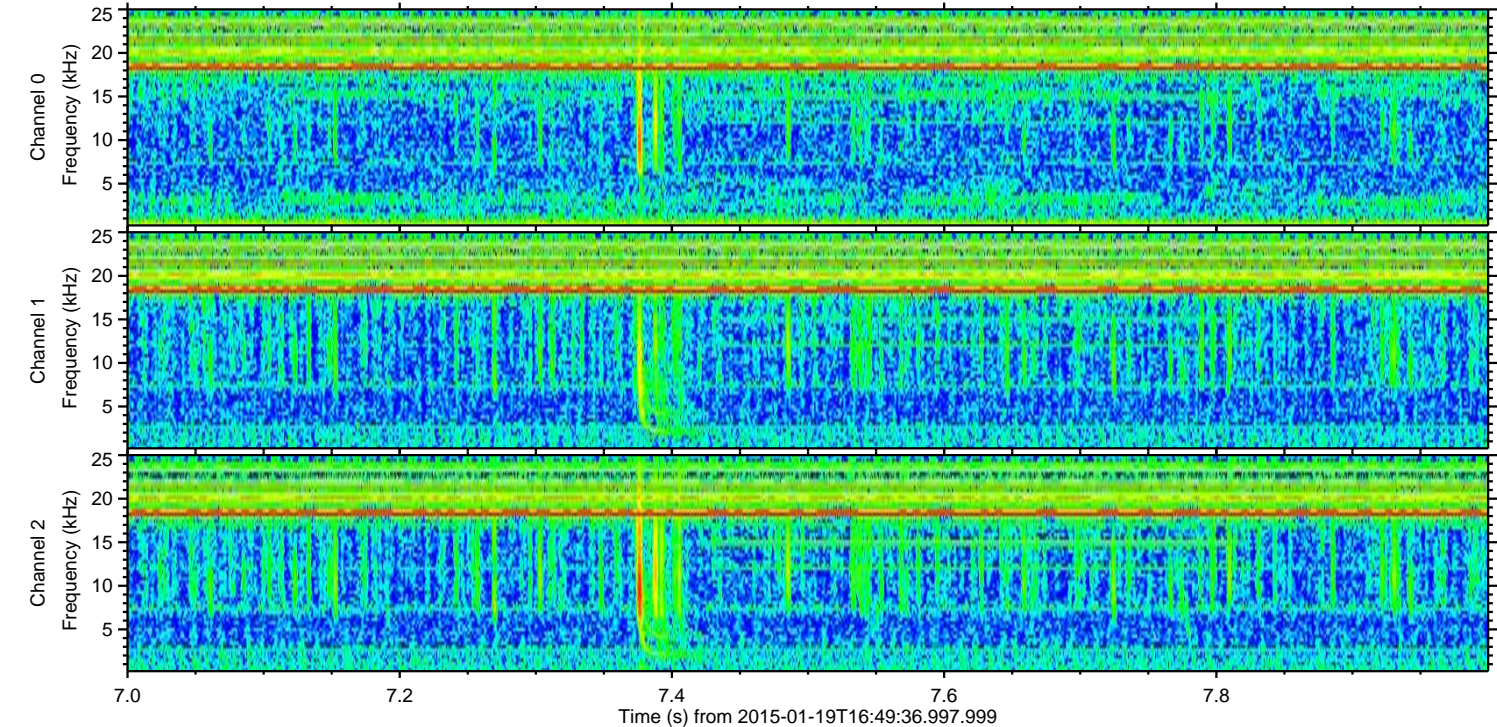
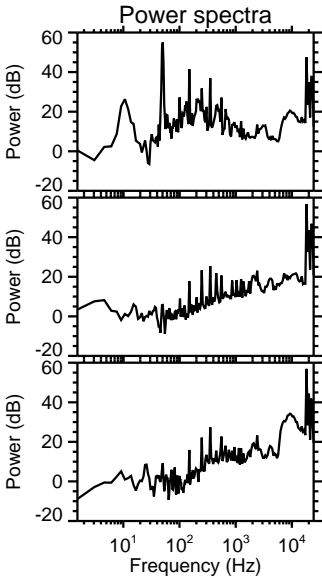
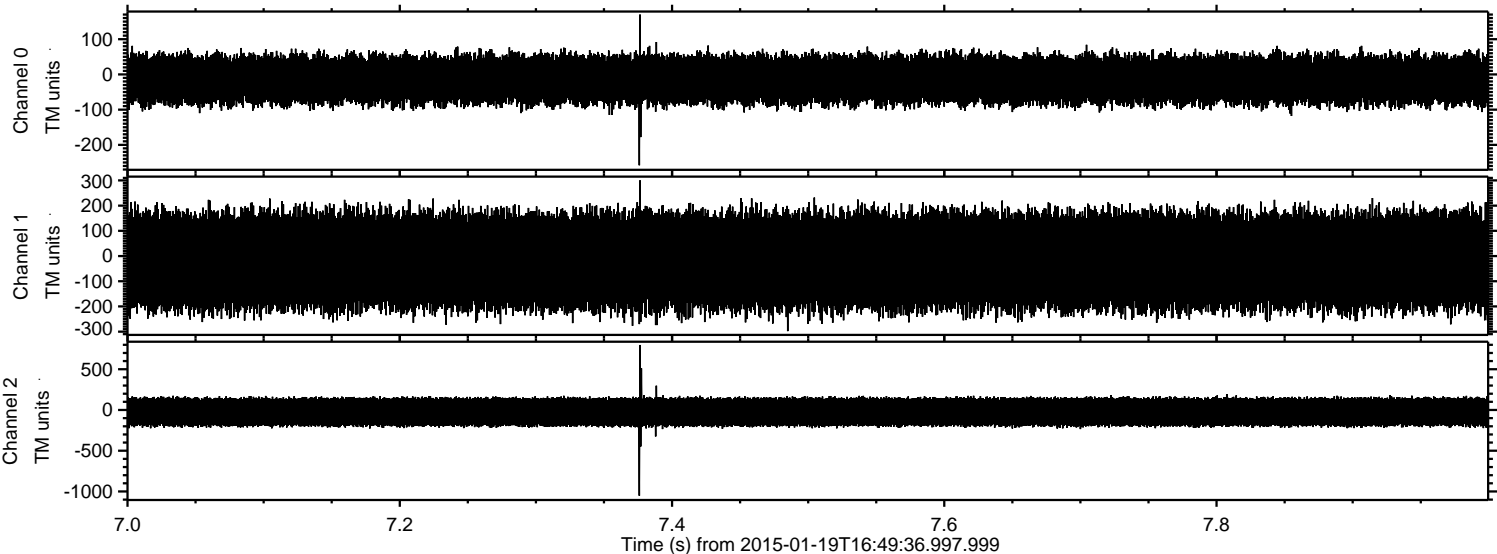
Processed Sat Feb 7 22:22:11 2015 by ELM ver.2012-10-06 from 001__elm20150119_164935__dat00.bin



Processed Sat Feb 7 22:22:12 2015 by ELM ver.2012-10-06 from 001__elm20150119_164935__dat00.bin

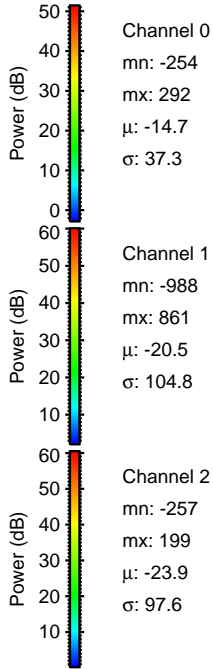
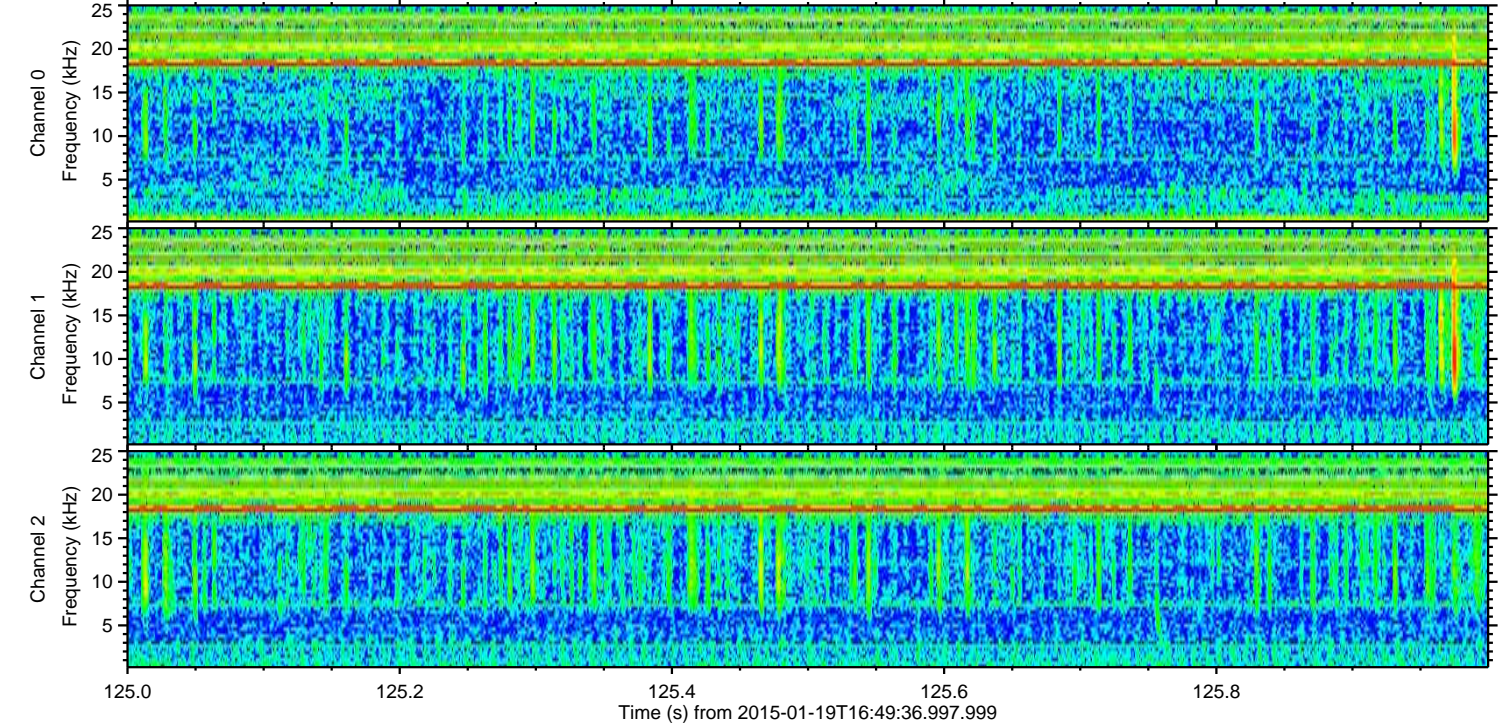
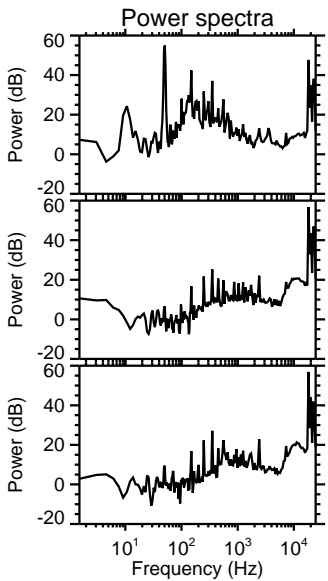
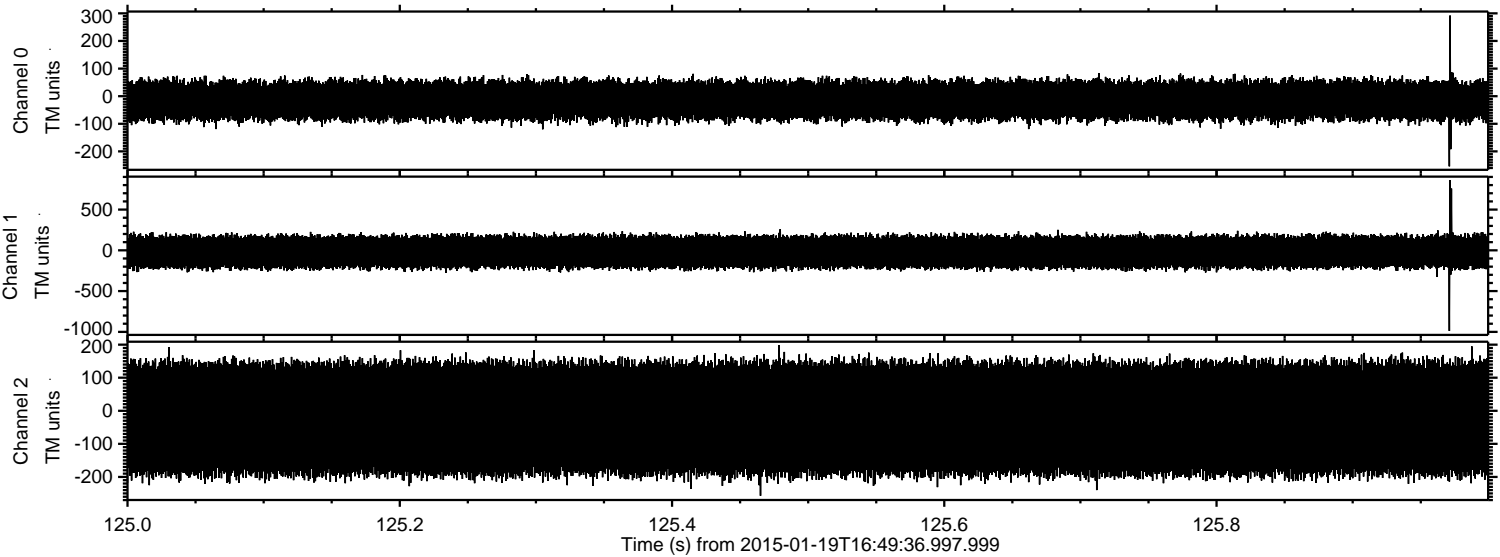


Processed Sat Feb 7 22:22:13 2015 by ELM ver.2012-10-06 from 001__elm20150119_164935__dat00.bin



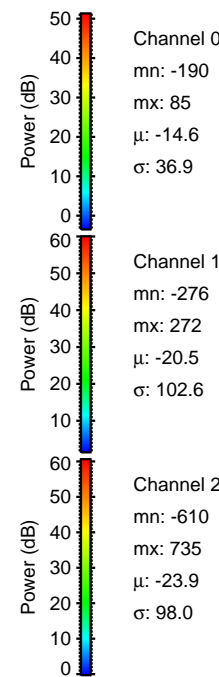
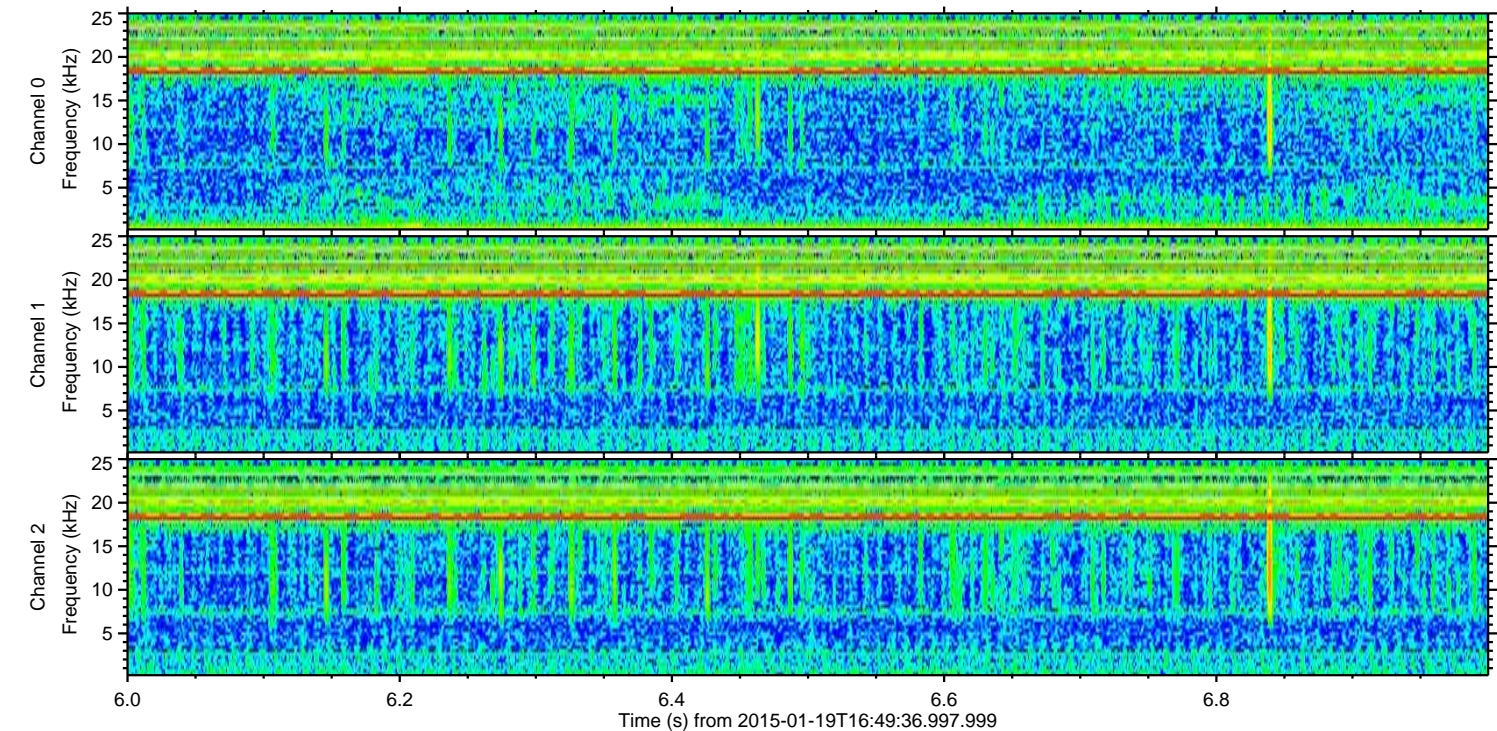
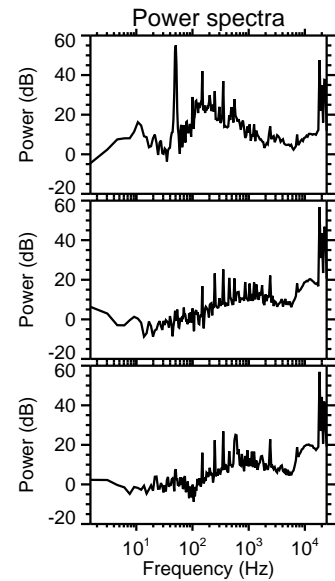
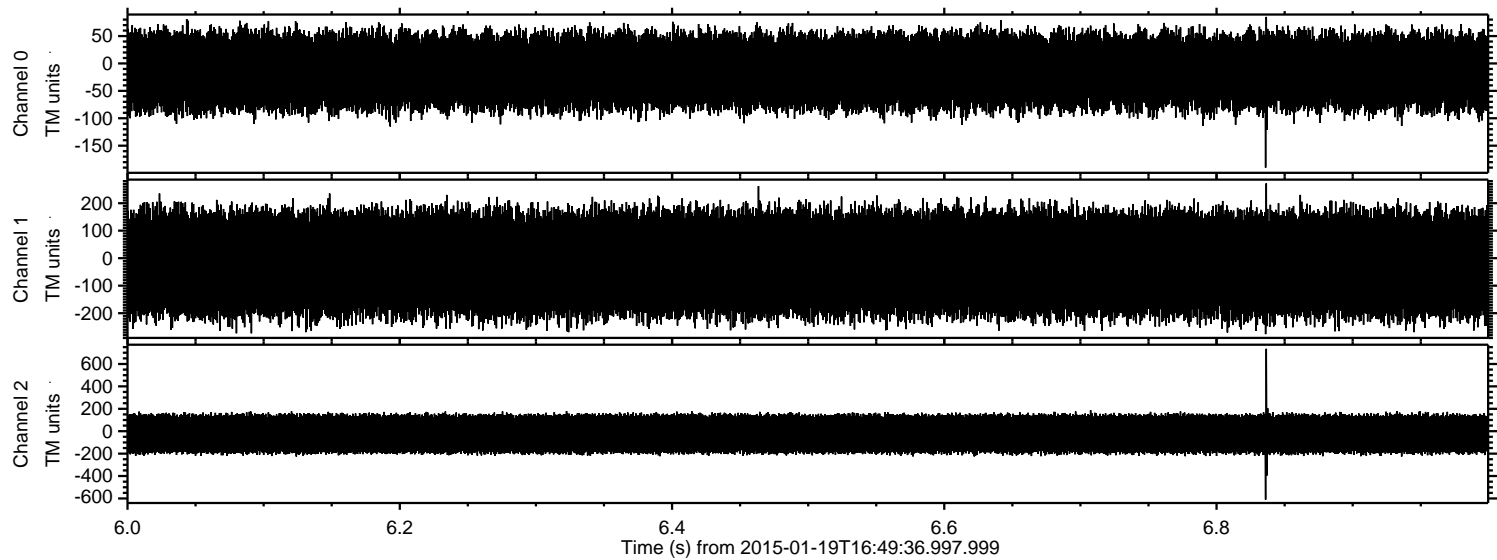
ELMAVAN 3D WAVEFORMS (Measured data sampled at 50 kHz) 49809 packets of 144 samples from 2015-01-19T16:49:36.997.999. Part 126/144

Processed Sat Feb 7 22:22:14 2015 by ELM ver.2012-10-06 from 001__elm20150119_164935__dat00.bin

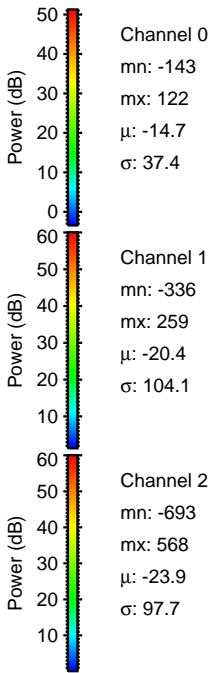
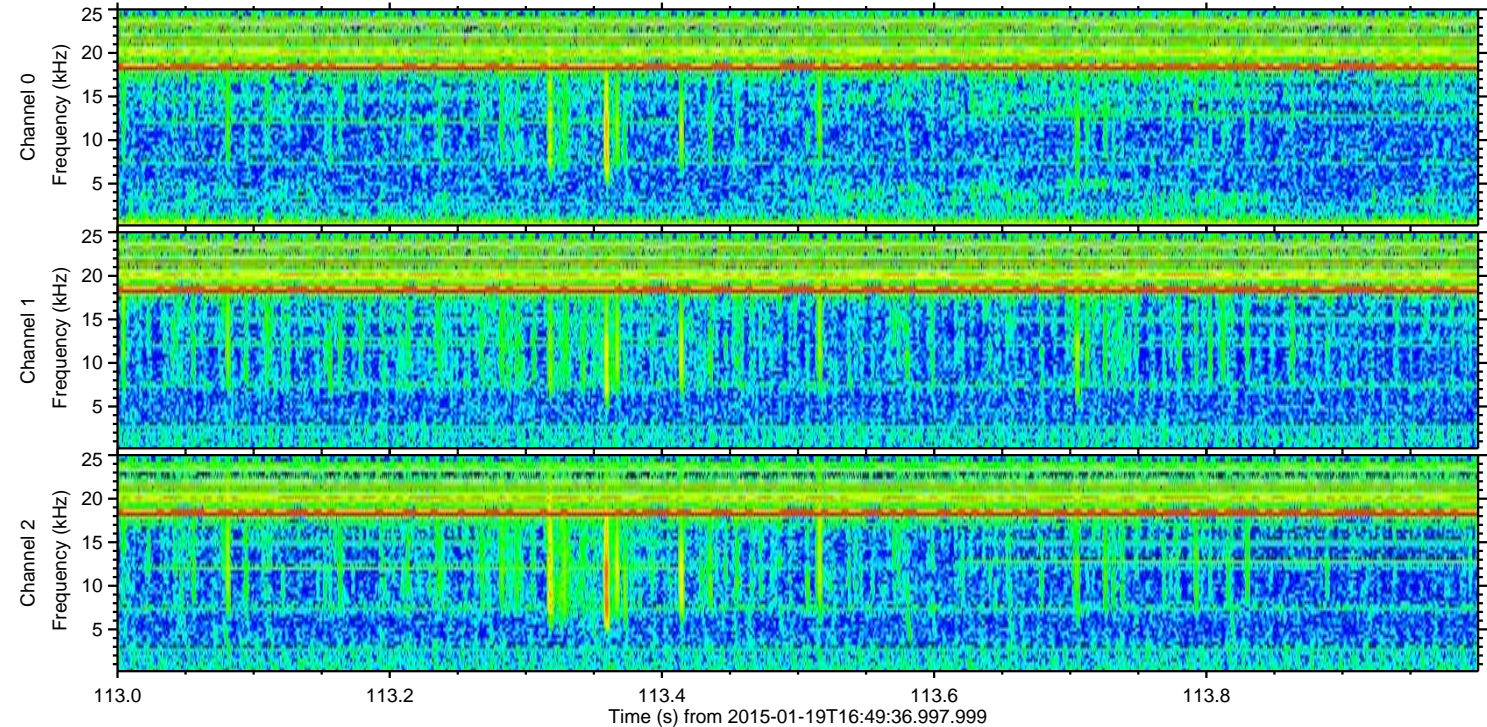
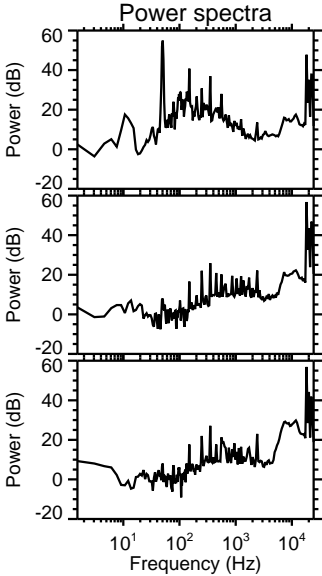
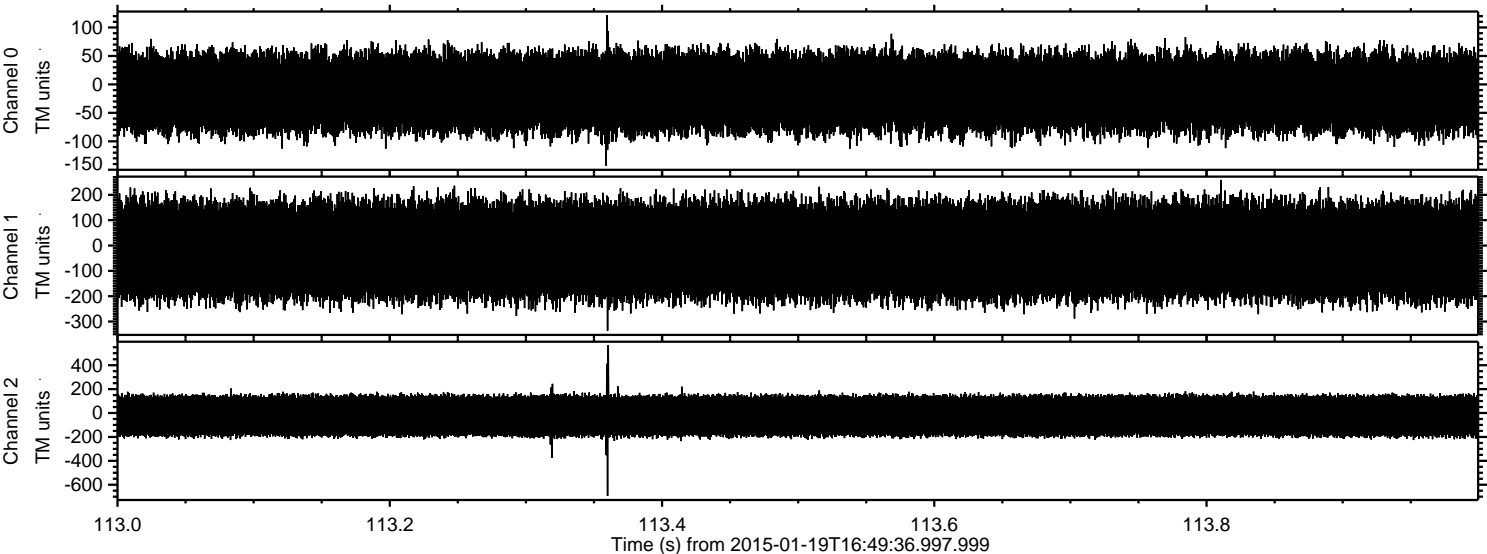


ELMAVAN 3D WAVEFORMS (Measured data sampled at 50 kHz) 49809 packets of 144 samples from 2015-01-19T16:49:36.997.999. Part 7/144

Processed Sat Feb 7 22:22:15 2015 by ELM ver.2012-10-06 from 001__elm20150119_164935__dat00.bin

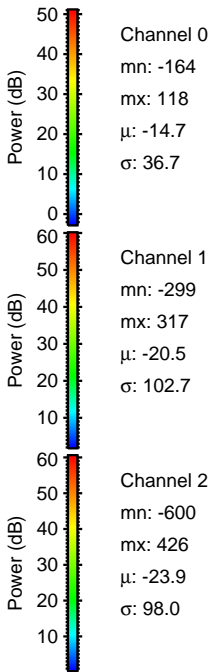
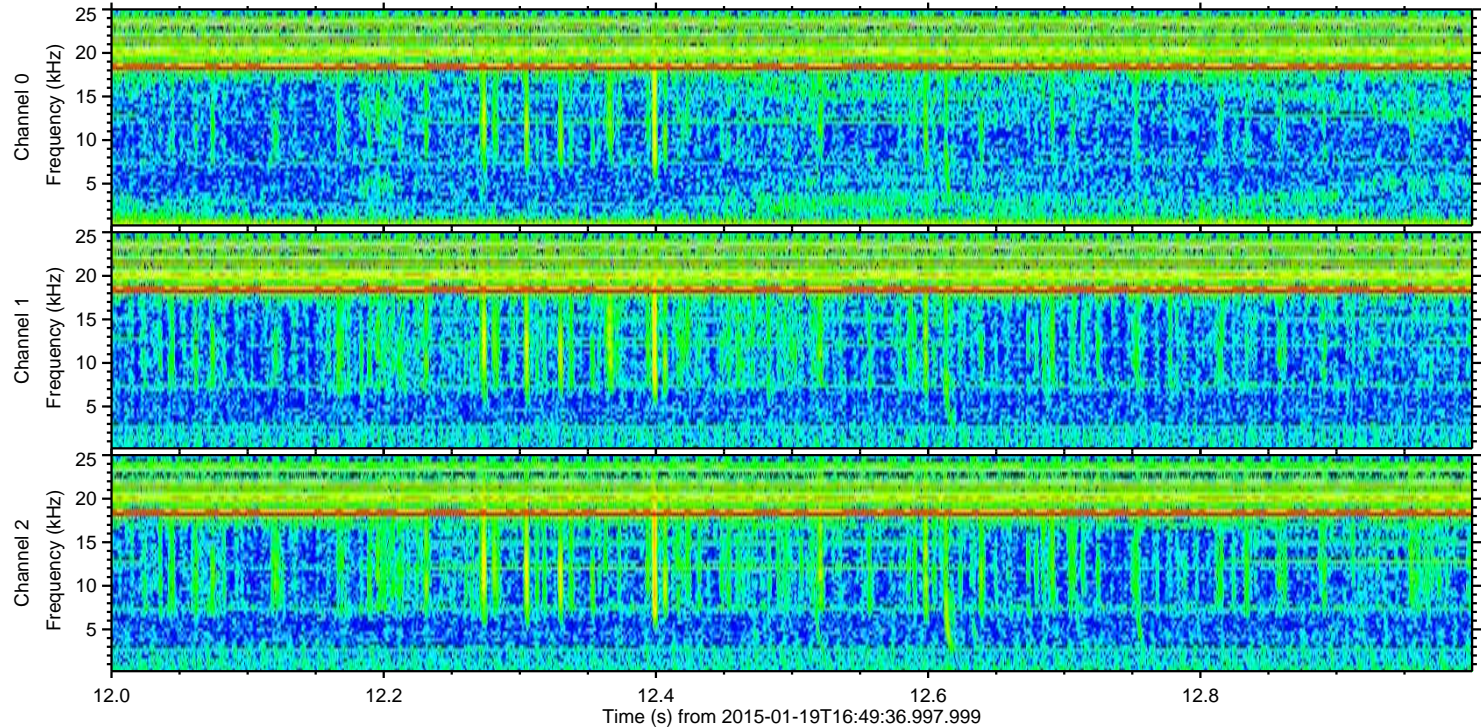
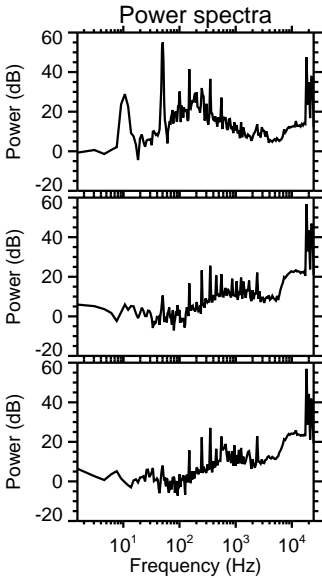
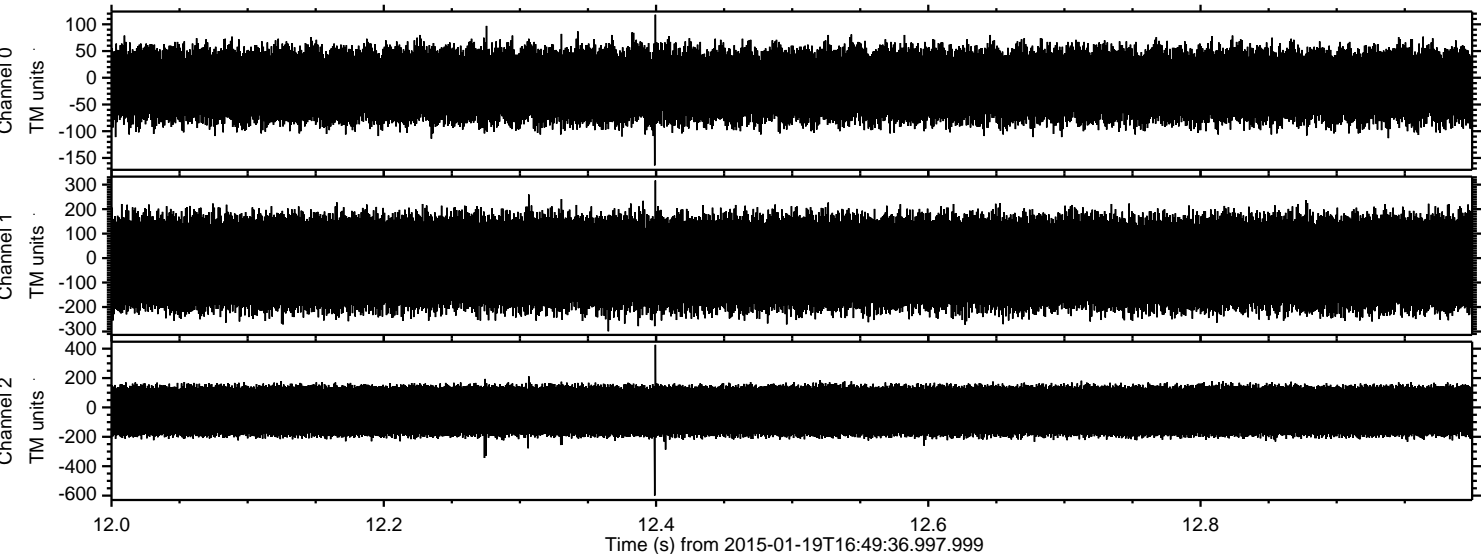


Processed Sat Feb 7 22:22:16 2015 by ELM ver.2012-10-06 from 001__elm20150119_164935__dat00.bin

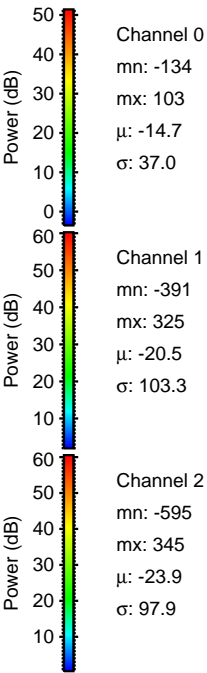
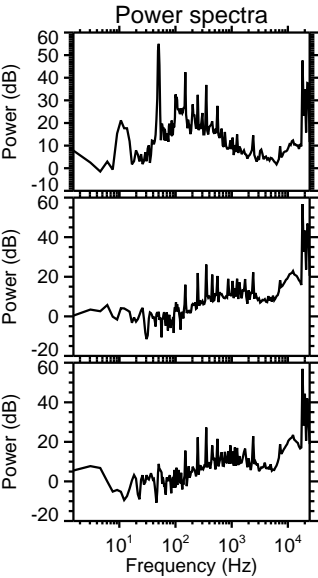
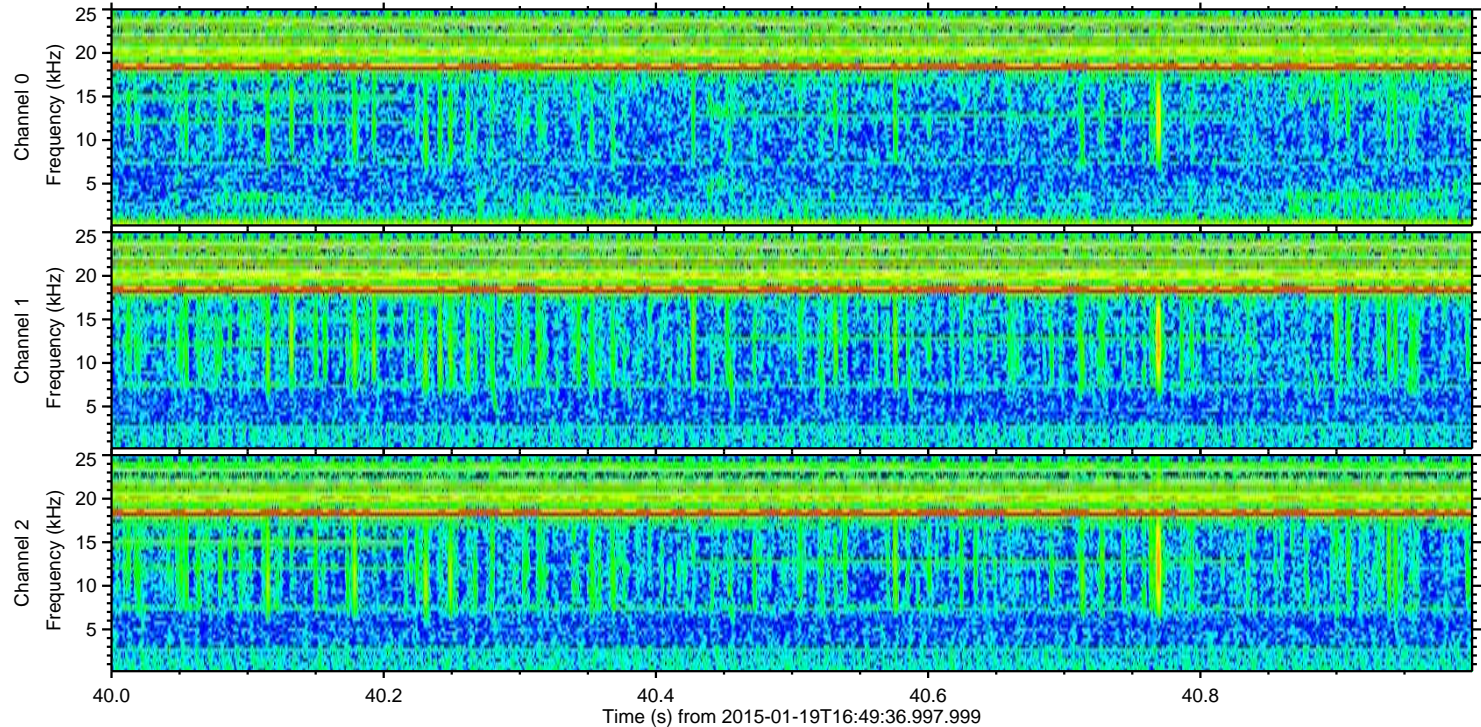
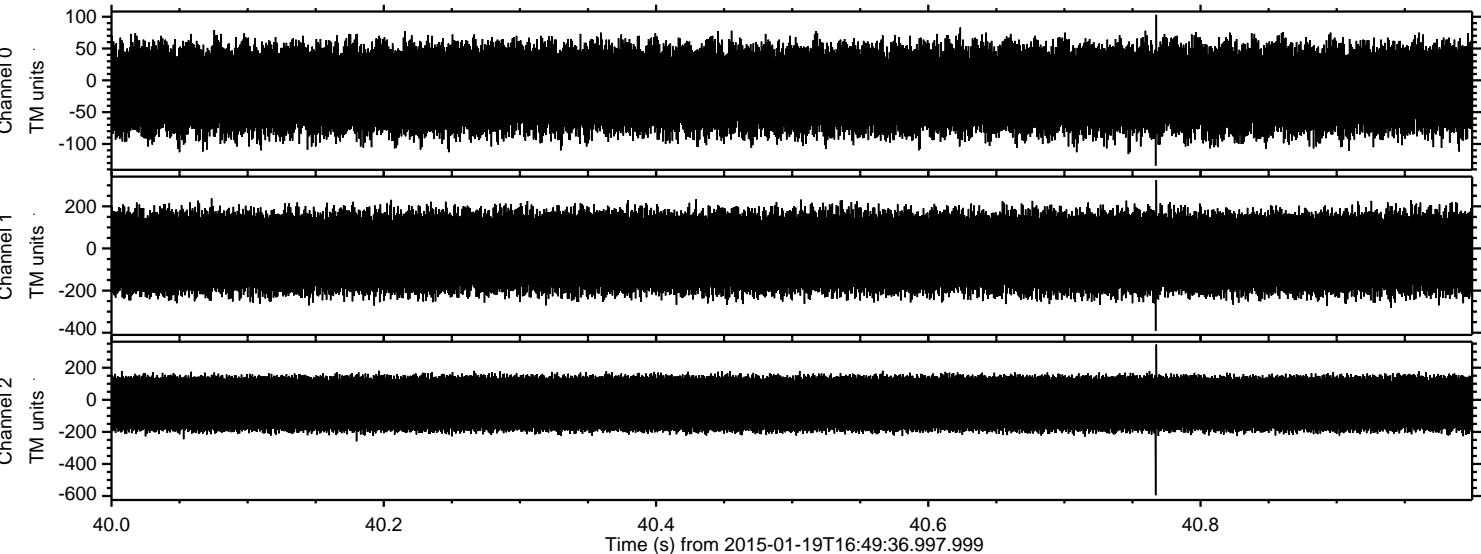


ELMAVAN 3D WAVEFORMS (Measured data sampled at 50 kHz) 49809 packets of 144 samples from 2015-01-19T16:49:36.997.999. Part 13/144

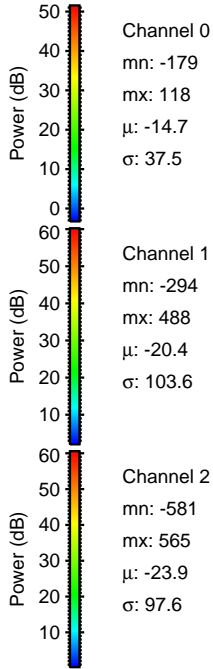
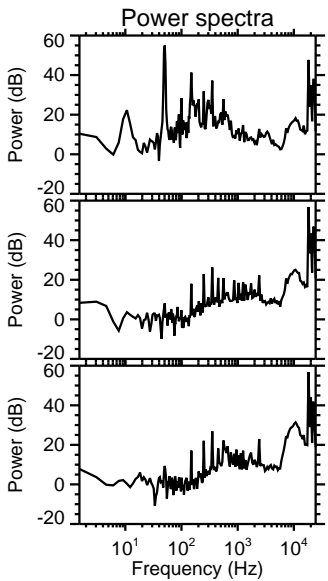
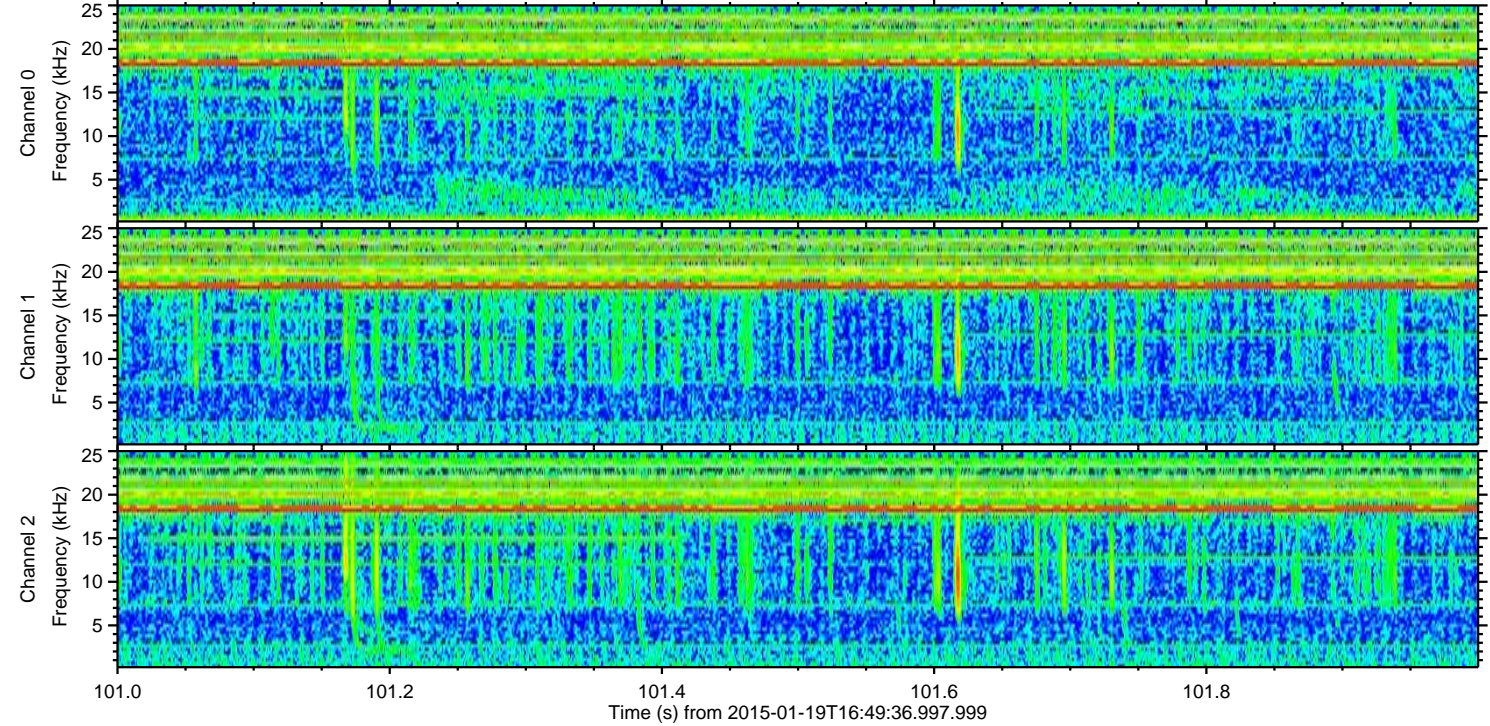
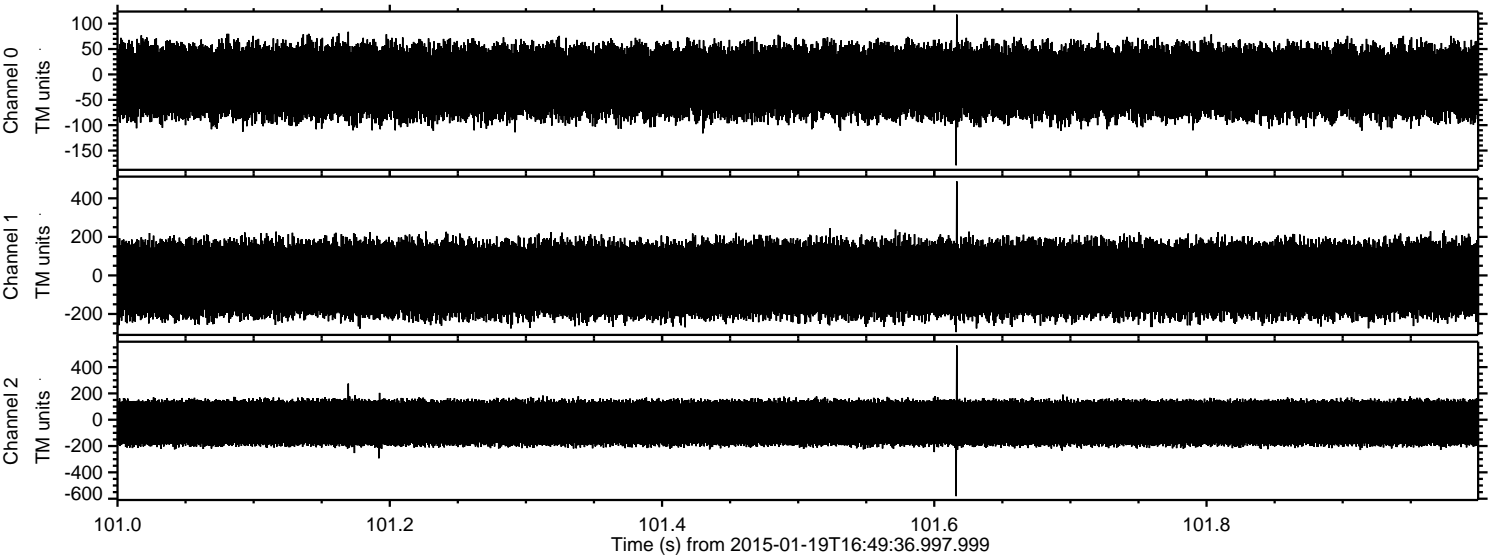
Processed Sat Feb 7 22:22:16 2015 by ELM ver.2012-10-06 from 001__elm20150119_164935__dat00.bin



Processed Sat Feb 7 22:22:17 2015 by ELM ver.2012-10-06 from 001__elm20150119_164935__dat00.bin



Processed Sat Feb 7 22:22:18 2015 by ELM ver.2012-10-06 from 001__elm20150119_164935__dat00.bin



Channel 0
mn: -179
mx: 118
 μ : -14.7
 σ : 37.5

Channel 1
mn: -294
mx: 488
 μ : -20.4
 σ : 103.6

Channel 2
mn: -581
mx: 565
 μ : -23.9
 σ : 97.6

Processed Sat Feb 7 22:22:19 2015 by ELM ver.2012-10-06 from 001__elm20150119_164935__dat00.bin

